

TravelMate4210/4270/4670&Aspire5620/5670
Service Guide

Service guide files and updates are available on the AIPG/CSD web; for more information, please refer to <http://csd.acer.com.tw>

CLICK HERE TO **DOWNLOAD** THE COMPLETE MANUAL

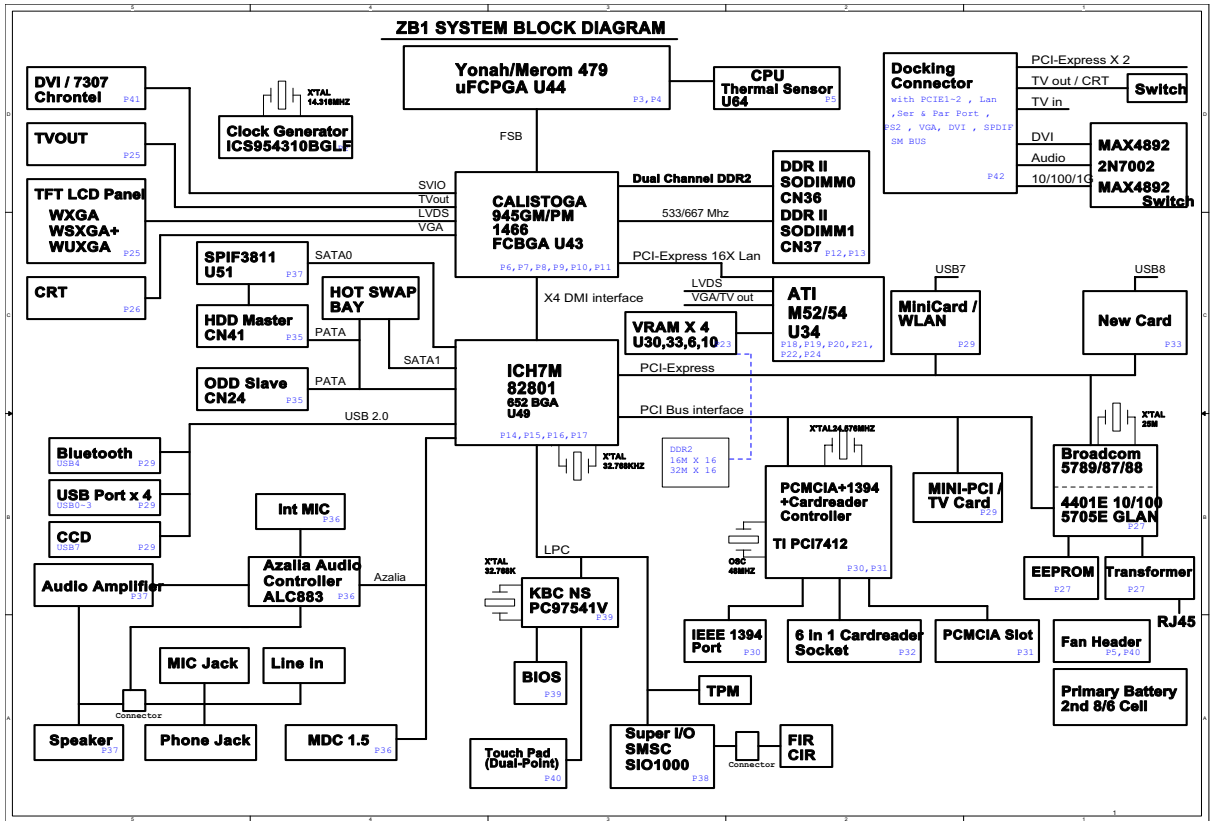
- Thank you very much for reading the preview of the manual.
- You can download the complete manual from: www.heydownloads.com by clicking the link below



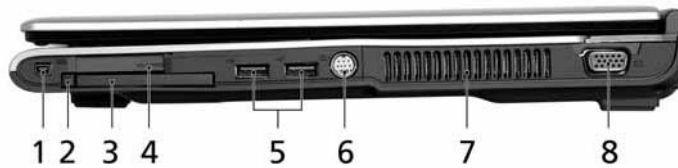
- Please note: If there is no response to CLICKING the link, please download this PDF first and then click on it.

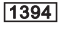





CLICK HERE TO **DOWNLOAD** THE COMPLETE MANUAL

Block Diagram



Right View



#	Icon	Item	Description
1		IEEE 1394 port(4-pin)	Connects to IEEE 1394 devices. (for Aspire 5670 Series)
2		PC Card slot eject button	Ejects the PC Card from the slot.
3		PC Card slot	Connects to one Type II CardBus PC Card.
4		ExpressCard/34 slot	Accepts one ExpressCard/34 module(for Aspire 5670 Series)
5		Two USB 2.0 ports	Connect to Universal Serial Bus (USB) 2.0 devices (e.g., USB mouse, USB camera).
6		S-video port/TV-out (NTSC/PAL) port	Connects to a television or display device with S-video input.(for Aspire 5670 Series)
7		Ventilation slots	Enable the computer to stay cool, even after prolonged use.
8		External display(VGA) port	Connects to a display device(e.g., external monitor, LCD projector)

The Euro Symbol

1. Open a text editor or word processor.
2. Either press < € > at the bottom-right of the keyboard, or hold <Alt Gr> and then press the <5> key at the upper-center of the keyboard.

NOTE: Some fonts and software do not support the Euro symbol. Please refer to www.microsoft.com/typography/faq/faq12.htm for more information.

The US Dollar Sign

1. Open a text editor or word processor.
2. Either press < \$ > at the bottom-right of the keyboard, or hold <Shift> and then press the <4> key at the upper-center of the keyboard.

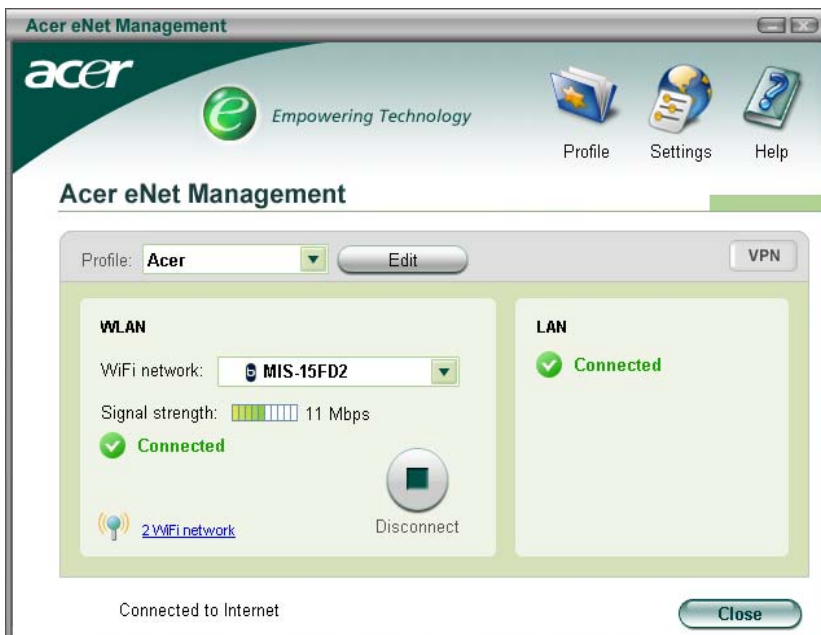
NOTE: This function varies according to the language settings.



Acer eNet Management

Acer eNet Management helps you to quickly and easily connect to both wired and wireless networks in a variety of locations. To access this utility, either click on the “Acer eNet Management” icon on your notebook, or start the program from the Start menu. You also have the option to set Acer eNet Management to start automatically when you boot up your PC.

Acer eNet Management automatically detects the best settings for a new location, while offering you the freedom to manually adjust the settings to match your needs, simply by right-clicking on the icon in the taskbar.



Acer eNet Management can save network settings for a location to a profile, and automatically apply the appropriate profile when you move from one location to another. Settings stored include network connection

AC Adapter

Item	Specification
Vendor & model name	ROHS DELTA -90W ADP-90SB BBAHF BLACK 1.7X5.5X12.5 LITEON -90W PA-1900-04 QB BLUE 1.7X5.5X11 LF LSE-90W SLS0202C19A157 LF BLUE 1.7X5.5X11 LF
Input Requirements	
Maximum input current (A, @100Vac, full load)	1.5A @100Vac input and maximum load
Nominal(Rated) frequency (Hz)	50 or 60 and single phase
Frequency variation range (Hz)	47 - 63
Nominal voltages (Vrms)	90 - 265
Efficiency	High efficiency 85% minimum, at 100~240Vac AC input, full load, warm-up condition.
Output Ratings (CV mode)	
Rated output voltage	Offers rated output voltage 19.0V
Voltage Range	18.2V to 19.8V
Noise + Ripple	300mvp-pmax (20MHz bandwidth) for resistor load
Rated Power	90Watts continuously at all specified conditions
Output current	0 A (min.) to 4.74A (max.)
Dynamic Output Characteristics	
Start-up time	2 sec. (@115 Vac and 230Vac full load)
Hold up time	at least 10ms (@115 Vac input, full load)
Over Voltage Protection (OVP)	30V
Over Current Protection(OCP)	Output current limit is 6A(Max mode)
Short circuit protection	Output can be shorted without damage, and auto recovery
Electrostatic discharge (ESD)	15kV (at air discharge) 8kV (at contact discharge)
Dielectric Withstand Voltage	
Primary to secondary	3000 Vac for 1 second
Leakage current	less than 250uA at 240Vac, 50Hz
Regulatory Requirements	1. CISPR 22 Class B 2. VCCI Class B

Hard Disk Drive Interface

Item	Specification			
Vendor & Model Name	<table border="0"> <tr> <td>Segate SATAST98823AS/ HGST SATA 1.5G NCQ MORAGA+HTS5410 80G9SA00</td> <td>Segate SATA ST9100824AS LF/ Toshiba MK1032GSX/ HGST NCQMORAGA+HTS 541010G9SA00</td> <td>Segate SATA ST9120821AS LF/ Toshiba SATA1.5G W/NCQ MK1234GSX</td> </tr> </table>	Segate SATAST98823AS/ HGST SATA 1.5G NCQ MORAGA+HTS5410 80G9SA00	Segate SATA ST9100824AS LF/ Toshiba MK1032GSX/ HGST NCQMORAGA+HTS 541010G9SA00	Segate SATA ST9120821AS LF/ Toshiba SATA1.5G W/NCQ MK1234GSX
Segate SATAST98823AS/ HGST SATA 1.5G NCQ MORAGA+HTS5410 80G9SA00	Segate SATA ST9100824AS LF/ Toshiba MK1032GSX/ HGST NCQMORAGA+HTS 541010G9SA00	Segate SATA ST9120821AS LF/ Toshiba SATA1.5G W/NCQ MK1234GSX		

CLICK HERE TO **DOWNLOAD** THE COMPLETE MANUAL

- Thank you very much for reading the preview of the manual.
- You can download the complete manual from: www.heydownloads.com by clicking the link below



- Please note: If there is no response to CLICKING the link, please download this PDF first and then click on it.

CLICK HERE TO **DOWNLOAD** THE COMPLETE MANUAL

Security

The Security screen contains parameters that help safeguard and protect your computer from unauthorized use.

PhoenixBIOS Setup Utility			
Info.	Main	Advanced	Security
Supervisor Password Is: Clear User Password Is: Clear HDD Password Is: Clear HDD Master ID: 19894480 Set Supervisor Password [Enter] Set User Password [Enter] Set HDD Password [Enter] Password on Boot: [Disabled]			Item Specific Help Supervisor Password controls accesses of the setup utility.
F1 Help	↑ ↓ Select Item	F5/F6 Change Values	F9 Setup Defaults
Esc Exit	← → Select Menu	Enter Select ▶ Sub-Menu	F10 Save and Exit

The table below describes the parameters in this screen. Settings in **boldface** are the default and suggested parameter settings.

Parameter	Description	Option
Supervisor Password Is	N/A	N/A
User Password Is	N/A	N/A
HDD Password Is	N/A	N/A
HDD Master ID	N/A	N/A
Set Supervisor Password	Press Enter to set the administrator password. When set, this password protects the BIOS Setup Utility from unauthorized access. [Set]: System password is set [Clear]: System password is not set	Length -- No more than 8 characters Characters -- 0-9, A-Z (not case sensitive)
Set User Password		

Removing the TV Tuner, Heatsink Module, CPU, and HDD Module

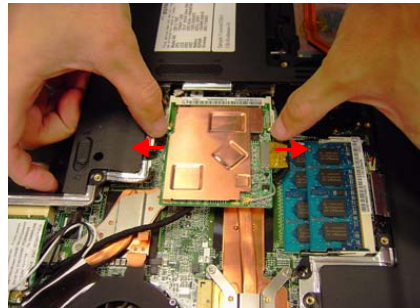
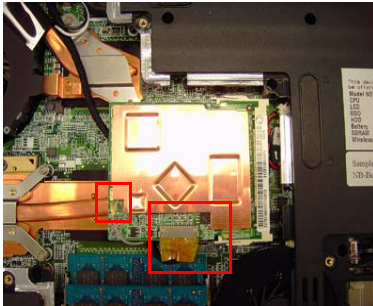
Remove the Heatsink Cover

1. Release the six screws securing the heatsink cover. (The six screws are attached to the heatsink cover)
2. Lift the heatsink cover up and remove it.

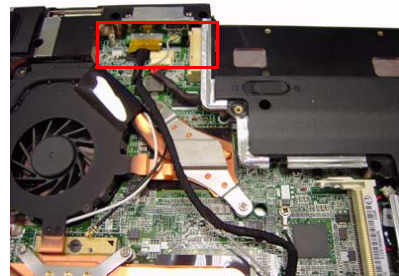


Remove the TV Tuner Card(for selected models)

1. Disconnect the TV tuner cable and antenna from the TV tuner card.
2. Press the left and right latch to release the TV tuner card.



3. Disconnect the TV tuner cable and antenna from the TV board.

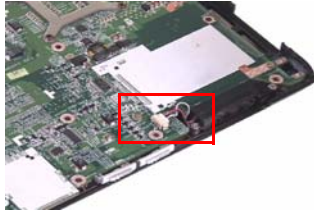


Remove the Heatsink Module

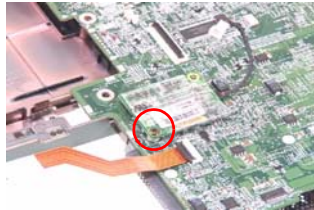
1. Disconnect the main fan cable from the mainboard.
2. Remove the seven screws securing the heatsink module.

Remove the Mainboard

1. Disconnect the speaker cable from the mainboard.



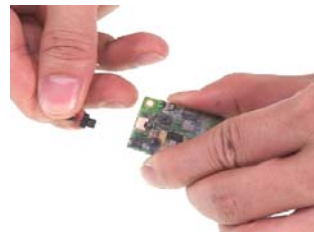
2. Remove the screw securing the MDC board.



3. Remove the MDC board from the mainboard.

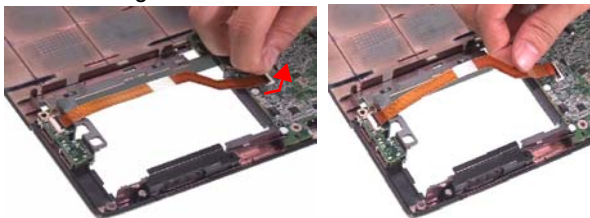


4. Disconnect the MDC cable from the MDC board.

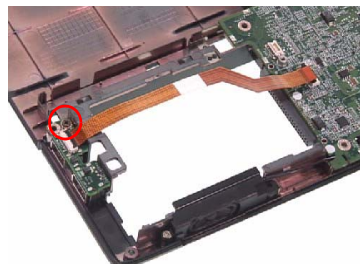


5. Unlatch the latch and disconnect the USB FFC from the mainboard.

6. Remove the screw securing the USB module.



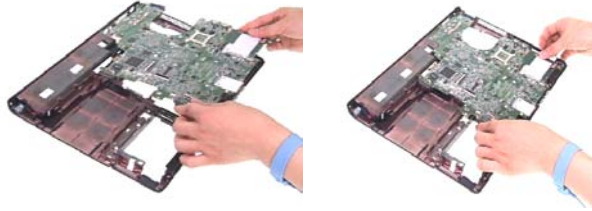
7. Remove the screw securing the USB module.



Main Unit Reassembly

Reassembling the Mainboard, Uppercase, and Lowercase

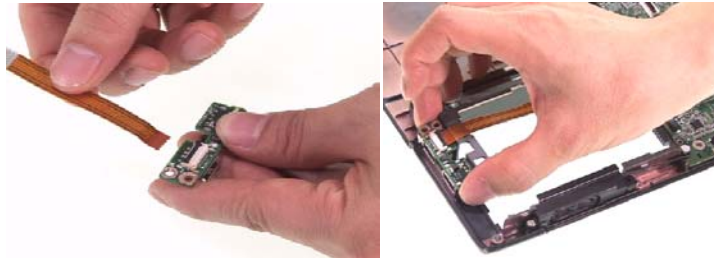
1. Place the mainboard back to the lower case.



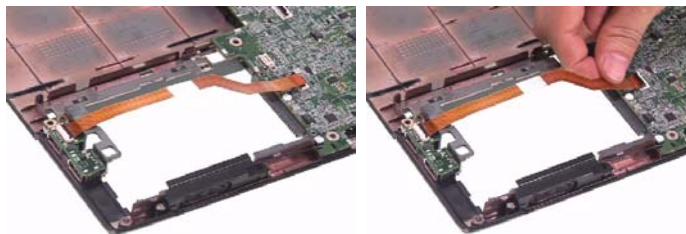
2. Insert the PCMCIA dummy card back to the lower case.



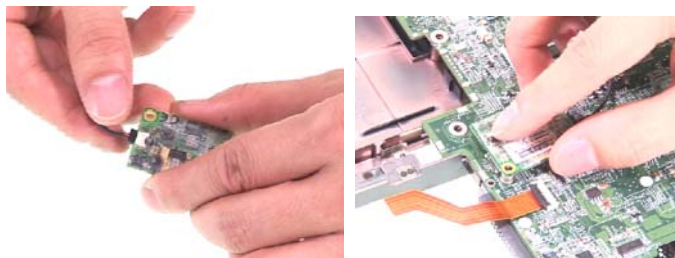
3. Connect the USB FFC to the USB module and latch it well.
4. Place the USB module back to the lower case.



5. Secure the USB module with one screw.
6. Connect the USB FFC to the mainboard and latch it well.



7. Connect the MDC cable to the MDC board.
8. Place the MDC board back to the mainboard.



System Check Procedures

External Diskette Drive Check

If an error occurs with the internal diskette drive, reconnect the diskette connector on the system board.

If the error still remains:

1. Reconnect the external diskette drive/DVD-ROM module.
2. Replace the external diskette drive/CD-ROM module.
3. Replace the main board.

External CD-ROM Drive Check

Do the following to isolate the problem to a controller, drive, or CD-ROM. Make sure that the CD-ROM does not have any label attached to it. The label can cause damage to the drive or can cause the drive to fail.

Do the following to select the test device:

1. Boot from the diagnostics diskette and start the diagnostics program.
2. See if CD-ROM Test is passed when the program runs to CD-ROM Test.
3. Follow the instructions in the message window.

If an error occurs, reconnect the connector on the System board. If the error still remains:

1. Reconnect the external diskette drive/CD-ROM module.
2. Replace the external diskette drive/CD-ROM module.
3. Replace the main board.

Keyboard or Auxiliary Input Device Check

Remove the external keyboard if the internal keyboard is to be tested.

If the internal keyboard does not work or an unexpected character appears, make sure that the flexible cable extending from the keyboard is correctly seated in the connector on the system board.

If the keyboard cable connection is correct, run the Keyboard Test.

If the tests detect a keyboard problem, do the following one at a time to correct the problem. Do not replace a non-defective FRU:

1. Reconnect the keyboard cables.
2. Replace the keyboard.
3. Replace the main board.

The following auxiliary input devices are supported by this computer:

- Numeric keypad
- External keyboard

If any of these devices do not work, reconnect the cable connector and repeat the failing operation.

Memory check

Memory errors might stop system operations, show error messages on the screen, or hang the system.

1. Boot from the diagnostics diskette and start the doagmpstotics program (please refer to main board).
2. Go to the diagnostic memory in the test items.
3. Press F2 in the test items.
4. Follow the instructions in the message window.

NOTE: Make sure that the DIMM is fully installed into the connector. A loose connection can cause an error.

Index of Symptom-to-FRU Error Message

LCD-Related Symptoms

Symptom / Error	Action in Sequence
LCD backlight doesn't work	First, plug a monitor to CRT port. Next, enter BIOS utility to running "Load Default Settings" then reboot the system. Reconnect the LCD connectors. Keyboard (if the brightness function key doesn't work). LCD cable LCD inverter LCD Main board
LCD is too dark LCD brightness cannot be adjusted	Enter BIOS Utility to execute "Load Setup Default Settings", then reboot system. Reconnect the LCD connectors. Keyboard (if the brightness function key doesn't work). LCD cable LCD inverter LCD Main board
Unreadable LCD screen Missing pels in characters Abnormal screen Wrong color displayed LCD has extra horizontal or vertical lines displayed.	Reconnect the LCD cable LCD cable LCD Main board

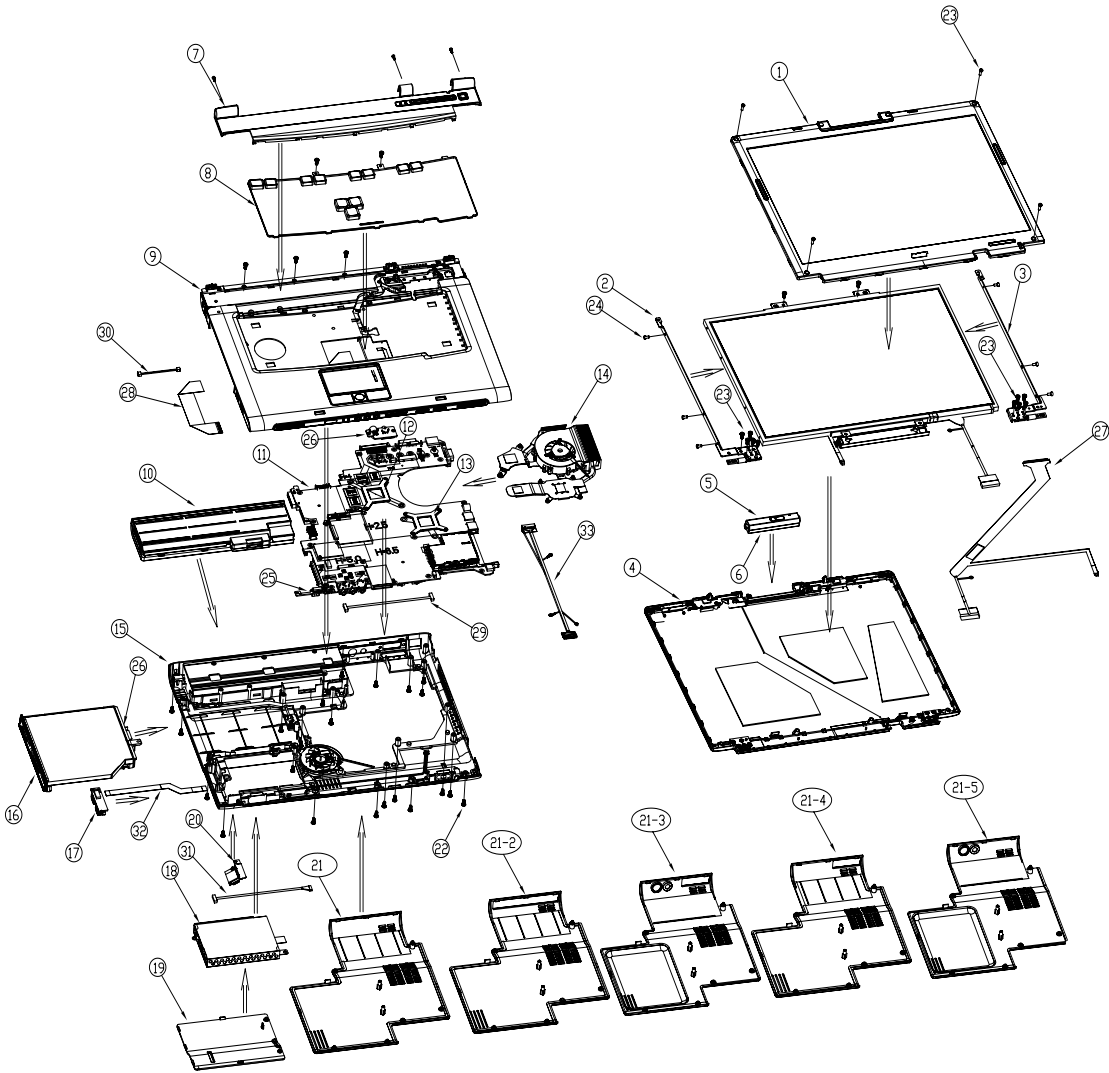
Indicator-Related Symptoms

Symptom / Error	Action in Sequence
Indicator incorrectly remains off or on, but system runs correctly	Main board
HDD/CD-ROM active indicators cannot work	HDD/CD-ROM drive Device driver Main board

Power-Related Symptoms

Symptom / Error	Action in Sequence
Power shuts down during operation	Power source (battery pack and power adapter). See "Power System Check" on page 95. Battery pack AC adapter See if the thermal module is overheat (Heat sink or fan). Main board
The system cannot power-on.	Power source (battery pack and power adapter). See "Power System Check" on page 95. Battery pack Power adapter CPU Main board
The system cannot power-off.	In Windows XP operating system, hold and press the power switch for more than 4 seconds. If the system can power off, then the main board is OK. Verify OS in the HDD. Main board

Exploded Diagram



CLICK HERE TO **DOWNLOAD** THE COMPLETE MANUAL

- Thank you very much for reading the preview of the manual.
- You can download the complete manual from: www.heydownloads.com by clicking the link below



- Please note: If there is no response to CLICKING the link, please download this PDF first and then click on it.

CLICK HERE TO **DOWNLOAD** THE COMPLETE MANUAL