

Acer TravelMate 2000/2500 Series

Service Guide

PRINTED IN TAIWAN

CLICK HERE TO **DOWNLOAD** THE COMPLETE MANUAL

- Thank you very much for reading the preview of the manual.
- You can download the complete manual from: www.heydownloads.com by clicking the link below



- Please note: If there is no response to CLICKING the link, please download this PDF first and then click on it.

CLICK HERE TO **DOWNLOAD** THE COMPLETE MANUAL

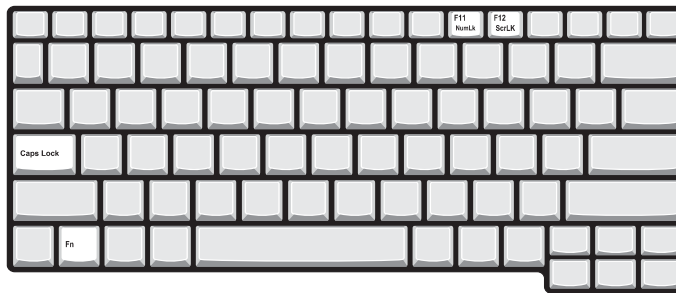
Keyboard








The keyboard has full-sized keys and an embedded keypad, separate cursor keys, two Windows keys and twelve function keys.

Special keys

Lock keys

The keyboard has three lock keys which you can toggle on and off.



Lock key	Description
Caps Lock 	When  is on, all alphabetic characters typed are in uppercase.
Num Lock (Fn-F11) 	When  is on, the embedded keypad is in numeric mode. The keys function as a calculator (complete with the arithmetic operators), -, *, and /). Use this mode when you need to do a lot of numeric data entry. A better solution would be to connect an external keypad.
Scroll Lock (Fn-F12) 	When  is on, the screen moves one line up or down when you press the up or down arrow keys respectively.  does not work with some applications.

CD-ROM Interface

Items	Specification
Rotation speed	5100 rpm for QSI 5400 rpm for Mitsumi 24X CAV mode
Data Buffer Capacity	128 KB (built-in)
Interface	Compliant to ATA/ATAPI-6
Applicable disc format	QSI: CD-DA, CD-ROM Mode-1, CD-ROM/XA Mode-2, Form-1 and Mode-2 Form-2, CD-i Ready, Video-CD (MPEG-1), Karaoke CD, Photo-CD, Enhanced CD, CD Plus, CD Extra, i-trax CD, CD-Text, CD-R and CD-RW Mitsumi: CD-DA, CD-ROM (Mode 1 and Mode2) CD-ROM XA (Mode 2 Form 1 and Form2), CD-I (Mode2 Form 1 and Form 2), CD-I Bridge (Photo CD, CD EXTRA), Enhanced CD, CD-RW, CD-R, CD-TEXT
Loading mechanism	Drawer with soft eject and emergency eject hole
Power Requirement	
Input Voltage	+5V[DC] +/-5%

DVD-ROM Interface

Item	Specification	
Vendor & model name	MKE SR-8177	
Performance Specification	With CD Diskette	With DVD Diskette
Transfer rate (KB/sec)	Average Sustained: CAV mode 775~1800 blocks/sec (10.3X to 24X) 1550~3600kBytes/sec (Mode 1) 1768~4106 kBytes/sec (Mode 2)	DVD-5: Normal Speed (1X) 11.08 Mbits/sec CAV mode 36.67~88.64 Mbits/sec DVD-9/DVD-R: Normal Speed (1X) 11.08 Mbits/sec CAV mode 36.67~88.64 Mbits/sec

Removing a Password

Follow these steps:

1. Use the **↑** and **↓** keys to highlight the Set Supervisor Password parameter and press the **ENTER** key. The Set Password box appears:

Set Supervisor Password

Enter current password []

Enter New Password []

Confirm New Password []

2. Type the current password in the Enter Current Password field and press **ENTER**.
3. Press **ENTER** twice **without** typing anything in the Enter New Password and Confirm New Password fields. The computer then sets the Supervisor Password parameter to “Clear”.
4. When you have changed the settings, press **F10** to save the changes and exit the BIOS Setup Utility.

Changing a Password

1. Use the **↑** and **↓** keys to highlight the Set Supervisor Password parameter and press the **ENTER** key. The Set Password box appears:

Set Supervisor Password

Enter current password []

Enter New Password []

Confirm New Password []

2. Type the current password in the Enter Current Password field and press **ENTER**.
3. Type a password in the Enter New Password field. Retype the password in the Confirm New Password field.
4. Press **ENTER**. After setting the password, the computer sets the User Password parameter to “Set”.
5. If desired, you can enable the Password on boot parameter.
6. When you are done, press **F10** to save the changes and exit the BIOS Setup Utility.

If the verification is OK, the screen will display as following.

Setup Notice

Changes have been saved.

[continue]

The password setting is complete after the user presses **F10**.

CLICK HERE TO **DOWNLOAD** THE COMPLETE MANUAL

- Thank you very much for reading the preview of the manual.
- You can download the complete manual from: www.heydownloads.com by clicking the link below

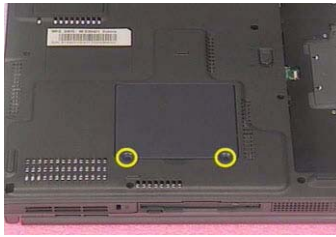


- Please note: If there is no response to CLICKING the link, please download this PDF first and then click on it.

CLICK HERE TO **DOWNLOAD** THE COMPLETE MANUAL

Removing the Memory Module

1. See “Removing the Battery” on page 52.
2. To remove the memory module from the machine, first remove the two screws holding the dimm cover.



3. Remove the dimm cover.



4. Pop up the memory.
5. Then remove the memory.



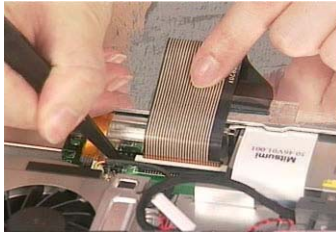
Disassembling the Main Unit

Removing the Keyboard

1. See “Removing the Battery” on page 52.
2. See “Removing the Middle Cover” on page 56.
3. To remove the keyboard, carefully pull the keyboard out and upwards as the picture shows.

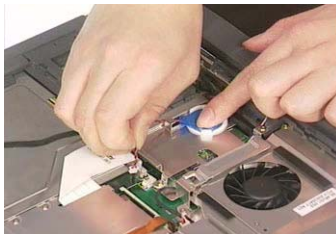


4. Use a plastic tweezers or a plastic flat screwdriver to disconnect the keyboard cable from the main board carefully, then remove the keyboard.



Removing the RTC Battery

1. See “Removing the Battery” on page 52.
2. See “Removing the Middle Cover” on page 56.
3. See “Removing the Keyboard” on page 63.
4. Disconnect the RTC battery cable then remove it.



Removing the Fan

1. See “Removing the Battery” on page 52.
2. See “Removing the Middle Cover” on page 56.
3. See “Removing the Keyboard” on page 63.
4. Disconnect the fan cable and remove the three screws fastening the fan. Then remove the fan.

System Upgrade Procedure

Base Unit to Wireless Unit

1. Turn out the two screws fastening the modem cover then open the cover.
2. Connect the wireless antennae.
3. Insert the wireless LAN board to the wireless socket on the main board.
4. Close the modem cover and fasten the cover with the two screws.

NOTE: You must connect the wireless antennae before you insert the wireless LAN board to the socket. If you insert the wireless LAN card first, the pressure you press to fasten the wireless antennae may damage the main board.



Index of Symptom-to-FRU Error Message

LCD-Related Symptoms


Symptom / Error	Action in Sequence
LCD backlight doesn't work LCD is too dark LCD brightness cannot be adjusted LCD contrast cannot be adjusted	Enter BIOS Utility to execute "Load Setup Default Settings", then reboot system. Reconnect the LCD connectors. Keyboard (if contrast and brightness function key doesn't work). LCD inverter ID LCD cable LCD inverter LCD System board
Unreadable LCD screen Missing pels in characters Abnormal screen Wrong color displayed	Reconnect the LCD connector LCD inverter ID LCD cable LCD inverter LCD System board
LCD has extra horizontal or vertical lines displayed.	LCD inverter ID LCD inverter LCD cable LCD System board

Indicator-Related Symptoms

Symptom / Error	Action in Sequence
Indicator incorrectly remains off or on, but system runs correctly	Reconnect the inverter board Inverter board System board

Power-Related Symptoms

Symptom / Error	Action in Sequence
Power shuts down during operation	Power source (battery pack and power adapter). See "Power System Check" on page 76. Battery pack Power adapter Hard drive & battery connection board System board
The system doesn't power-on.	Power source (battery pack and power adapter). See "Power System Check" on page 76. Battery pack Power adapter Hard drive & battery connection board System board
The system doesn't power-off.	Power source (battery pack and power adapter). See "Power System Check" on page 76. Hold and press the power switch for more than 4 seconds. System board
Battery can't be charged	See "Check the Battery Pack" on page 78. Battery pack System board

A dark gray rectangular area containing white text. The text is arranged in three lines: "Please Insert Any Recovery CD", "Please Press Any Key to Continue.", and "Press any key to continue...". A single horizontal line is positioned below the third line of text.

```
Please Insert Any Recovery CD

Please Press Any Key to Continue.
Press any key to continue...
_
```

After you place the Recovery CD to the optical drive, you will see the display below.

A dark gray rectangular area containing white text. The text is arranged in two lines: "Please Wait for COPYING" and "X:\images \70E40I01.HDD".

```
Please Wait for COPYING .....
X:\images \70E40I01.HDD
```

7. Then insert the System CD to the optical drive.

Picture	No.	Partname And Description	Part Number
		UPPER CASE W/COVERSWITCH CABLE & TOUCHPAD CABLE & SCROLL KEY	60.A20V1.002
		LOWER CASE W/DIMM COVER& SPEAKER W/O MDC COVER	60.A20V1.002
		DIMM COVER	42.A20V1.002
		MIDDLE COVER W/LAUNCH BOARD & NAME PLATE	60.A19V1.003
		MODEM COVER W/SCREW	42.A20V1.001
Communication Module			
		WIRELESS ANTENNA RIGHT (BLACK)	50.A20V1.001
		WIRELESS ANTENNA LEFT (GRAY)	50.A20V1.002
CPU			

Microsoft Windows XP Environment Test

Item	Specifications
Processor	Northwood 2.60GHz/.13m/512K L2/400Mhz FSB Northwood 2.80GHz/.13m/512K L2/533Mhz FSB/HT Northwood 3.06GHz/.13m/512K L2/533Mhz FSB/HT Northwood 3.0GHz/.13m/512K L2/800Mhz FSB/HT Northwood 3.20GHz/.13m/512K L2/800Mhz FSB/HT Northwood 3.4Ghz/.13m/512K/800FSB/HT Prescott 3 GHz/1MB L2/800 FSB/HT Prescott 3.2GHz/1MB L2/800 FSB/HT Prescott 3.4GHz/1MB L2/800 FSB/HT Prescott 3.6GHz/1MB L2/800 FSB/HT Prescott 3.8GHz/1MB L2/800 FSB/HT Mobile Pentium 4 3.06GHz/512K/533 Mhz/HT Mobile Pentium 4 3.20 GHz/512K/533 Mhz/HT
Memory	128MB Infineon SO-DIMM HY64D16000GDL-6-B 256MB Infineon SO-DIMM HY64D32000GDL-6-B 256MB Nanya SO-DIMM NT256D64SH8BAGN-6KE 256MB Micron SO-DIMM MT8VDDT3264HDG-35C3 512MB Infineon SO-DIMM HYS64D64020GBDL-6-B 512MB Nanya SO-DIMM NT512D64S8HBAFM-6K
LCD	14.1" XGA TFT AU B141XN04 15" XGA TFT AUO B150XG01 LG LP150X08-A5 15" SXGA+ TFT AU B150PG01 V0
Hard Disk Drive	20G HGST Moraga IC25N020ATMR04 f/w:AD4A 20GB Toshiba Neptune MK2023GAP 30GB HGST Moraga IC25N030ATMR04 30GB Toshiba Neptune MK3021GAS 30G Fujitsu V-40 MHT2030AT 30G Seagate N1 ST93015A 40GB IBM HGST Moraga IC25N040ATMR04-0 40GB TOSHIBA Pluto 40G MK4025GAS 40G Fujitsu V40+ MHT2040AT 40G Seagate N1 ST94019A 60G HGST Moraga IC25N060ATMR04-0 60G HGST Fresno DK23FA-60 HT 60G TOSHIBA Neptune MK6021GAS 80G HGST Moraga IC25N080ATMR04 80G Pluto MK8025GAS
DVD-ROM Drive 8X	MKE SR-8177
CD-ROM Drive 24X	Mitsumi SR-224W1 QSI SCR242
DVD/CD-RW Combo	KME UJDA750 QSI SBW-242B

CLICK HERE TO **DOWNLOAD** THE COMPLETE MANUAL

- Thank you very much for reading the preview of the manual.
- You can download the complete manual from: www.heydownloads.com by clicking the link below



- Please note: If there is no response to CLICKING the link, please download this PDF first and then click on it.

CLICK HERE TO **DOWNLOAD** THE COMPLETE MANUAL