

# Aspire one Series Service Guide

Service guide files and updates are available on the ACER/CSD web; for more information, please refer to <http://csd.acer.com.tw>

PRINTED IN TAIWAN

CLICK HERE TO **DOWNLOAD** THE COMPLETE MANUAL

- Thank you very much for reading the preview of the manual.
- You can download the complete manual from: [www.heydownloads.com](http://www.heydownloads.com) by clicking the link below



- Please note: If there is no response to CLICKING the link, please download this PDF first and then click on it.

CLICK HERE TO **DOWNLOAD** THE COMPLETE MANUAL

# System Specifications

---

## Features

Below is a brief summary of the computer's many feature:

### Operating System

- Microsoft Windows® XP™ / Linux

### Platform

- Diamondville Atom series standard voltage 533FSB processors
  - Intel 945GSE + ICH7M Chipset

### System Memory

**NOTE: It is not possible for end users to upgrade the Aspire one memory.**

- One DDRII SO-DIMM slots support 512MB to 1024MB system memory
  - 512MB on board memory
  - 1MB Flash BIOS

### Display and graphics

- 8.9" Wide Screen LCD (1024x600)
  - LED backlight LCD

### Storage subsystem

- 8GB SSD module PATA interface
- Fixed type for 80GB or higher capacity SATA HDD

### Audio

- HD audio codec
- Internal Digital MIC

### Dimensions and Weight

- 248 (W) x 169.4 (D) x 29.5 (H) mm (ME dimension)
- 995g weight with 8.9" LCD and 8GB SSD

### Communication

- On-Board PCI-E 10/100 LAN
- Mini-card Wireless LAN
- Wake-on-LAN support

---

## Special Key

You can locate the Euro symbol and the US dollar sign at the upper-center and/or bottom-right of your keyboard.



### The Euro symbol

1. Open a text editor or word processor.
2. Hold <Alt Gr> and then press the <5> key at the upper-center of the keyboard.

**NOTE:** Some fonts and software do not support the Euro symbol.

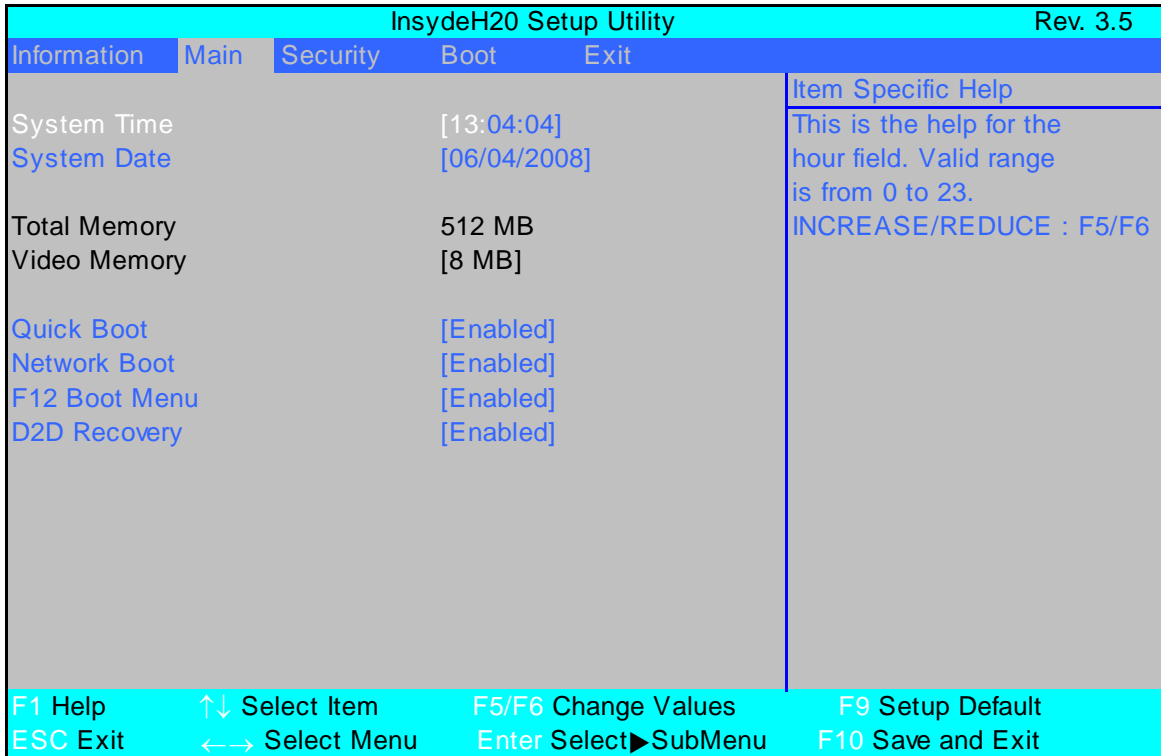
### The US dollar sign

1. Open a text editor or word processor.
2. Hold <Shift> and then press the <4> key at the upper-center of the keyboard.

**NOTE:** This function varies according to the language settings.

# Main

The Main screen allows the user to set the system time and date as well as enable and disable boot option and recovery.



**NOTE:** The screen above is for your reference only. Actual values may differ.

The table below describes the parameters in this screen. Settings in **boldface** are the default and suggested parameter settings.

Parameter	Description	Format/Option
System Time	Sets the system time. The hours are displayed with 24-hour format.	Format: HH:MM:SS (hour:minute:second)
System Date	Sets the system date.	Format MM/DD/YYYY (month/day/year)
Total Memory	This field reports the memory size of the system. Memory size is fixed to 3017 MB.	N/A
Video Memory	Shows the video memory size. VGA Memory size=32 MB	N/A
Quick Boot	Allows startup to skip certain tests while booting, decreasing the time needed to boot the system.	Option: <b>Enabled</b> or Disabled
Network Boot	Enables, disables the system boot from LAN (remote server).	Option: <b>Enabled</b> or Disabled
F12 Boot Menu	Enables, disables Boot Menu during POST.	Option: <b>Enabled</b> or Enabled
D2D Recovery	Enables, disables D2D Recovery function. The function allows the user to create a hidden partition on hard disc drive to store operation system and restore the system to factory defaults.	Option: <b>Enabled</b> or Disabled

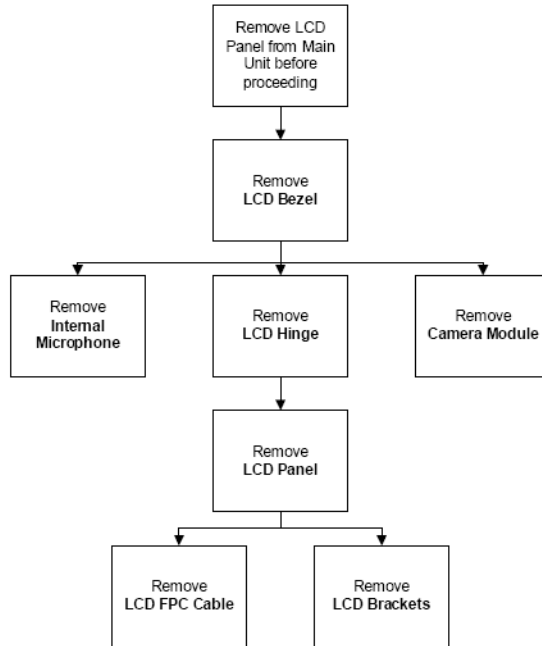
- 
3. Reboot the system and key in the selected string (qjig9vy, 07yqmjd etc.) for the BIOS user password.



---

# LCD Module Disassembly Process

## LCD Module Disassembly Flowchart

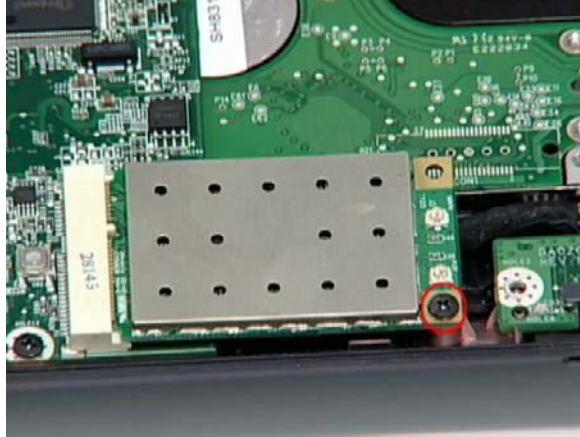



### Screw List

Step	Screw	Quantity	Color	Part No.
LCD Bezel	M2*5 (NL)	6	Black	86.TG607.004
LCD Module	M2*5 (NL)	4	Black	86.TG607.004
LCD Panel	M2*4 (NL)	5	Black	86.W0107.003
LCD Brackets	M2*3 (NL)	4	Black	86.TG607.004

## Removing the WLAN Module

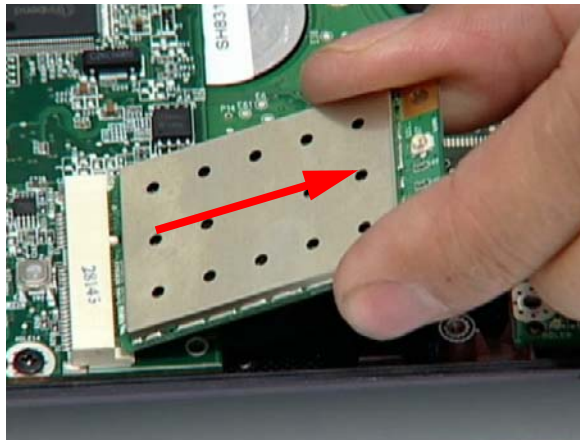
1. See "Removing the Battery Pack" on page 36.
2. Remove the securing screw as shown.



Step	Size	Quantity	Screw Type
WLAN Module	M2*3 (NL)	1	

**NOTE:** The antenna cables were removed during the LCD module disassembly. See "Removing the LCD Module" on page 42.

3. The module pops up. Remove it from the mainboard as shown.



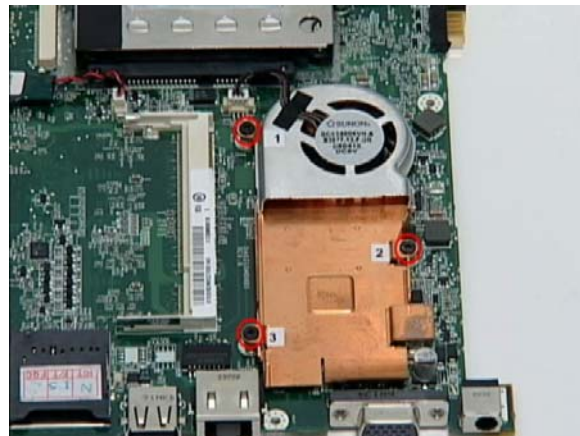
## Removing the Thermal Module


1. Remove the Mainboard. See “Removing the Mainboard” on page 55.
2. Turn the Mainboard CPU side up, and place it on a clean surface.
3. Grip the cable connector and disconnect the Fan cable from the mainboard.

**IMPORTANT:** Do not grip the cable itself to prevent stripping.



4. Remove the three securing screws from the heatsink.



Step	Size	Quantity	Screw Type
Thermal Module	M2*3(NL)	3	

CLICK HERE TO **DOWNLOAD** THE COMPLETE MANUAL

- Thank you very much for reading the preview of the manual.
- You can download the complete manual from: [www.heydownloads.com](http://www.heydownloads.com) by clicking the link below



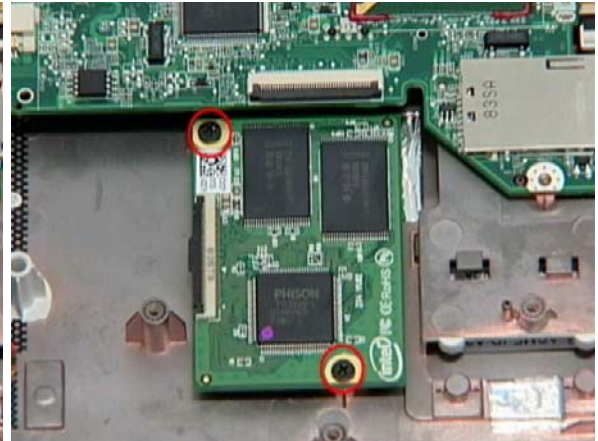
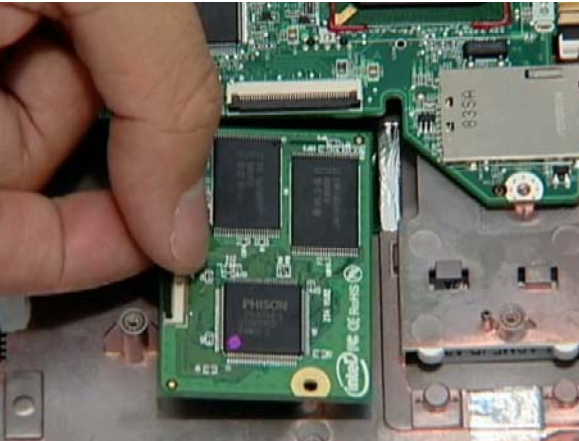
- Please note: If there is no response to CLICKING the link, please download this PDF first and then click on it.

CLICK HERE TO **DOWNLOAD** THE COMPLETE MANUAL

## Replacing the SDD Module

**IMPORTANT:**The SSD module is only available on the Aspire one SSD computer SKU.

1. Place the SDD in the lower case.
2. Replace the two screws to secure the module.



3. Connect the FFC cable to the module and close the cable latch.

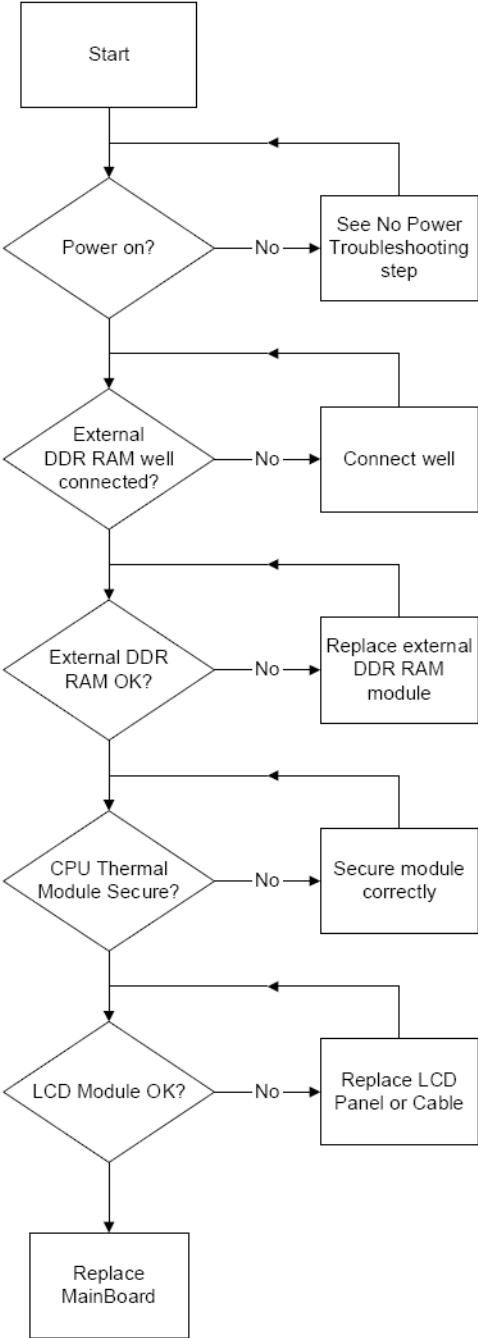


4. Connect the FFC cable to the mainboard and close the cable latch.



# No Display Issue

If the **Display** doesn't work, perform the following actions one at a time to correct the problem. Do not replace a non-defective FRUs:



---

## Intermittent Problems

Intermittent system hang problems can be caused by a variety of reasons that have nothing to do with a hardware defect, such as: cosmic radiation, electrostatic discharge, or software errors. FRU replacement should be considered only when a recurring problem exists.

When analyzing an intermittent problem, do the following:

1. Run the advanced diagnostic test for the system board in loop mode at least 10 times.
2. If no error is detected, do not replace any FRU.
3. If any error is detected, replace the FRU. Rerun the test to verify that there are no more errors.

## Undetermined Problems

The diagnostic problems does not identify which adapter or device failed, which installed devices are incorrect, whether a short circuit is suspected, or whether the system is inoperative.

Follow these procedures to isolate the failing FRU (do not isolate non-defective FRU).

**NOTE:** Verify that all attached devices are supported by the computer.

**NOTE:** Verify that the power supply being used at the time of the failure is operating correctly. (See “Power On Issue” on page 80):

1. Power-off the computer.
2. Visually check them for damage. If any problems are found, replace the FRU.
3. Remove or disconnect all of the following devices:
  - Non-Acer devices
  - Printer, mouse, and other external devices
  - Battery pack
  - Hard disk drive
  - DIMM
  - CD-ROM/Diskette drive Module
  - PC Cards
4. Power-on the computer.
5. Determine if the problem has changed.
6. If the problem does not recur, reconnect the removed devices one at a time until you find the failing FRU.
7. If the problem remains, replace the following FRU one at a time. Do not replace a non-defective FRU:
  - System board
  - LCD assembly

---

## Why are some Flash webpages unable to display normally in Firefox?

Ensure you have the latest Flash Player Installers from Linux in Adobe Lab (<http://labs.adobe.com/>).

## How do I browse PDF files?

The system ships with Adobe Reader 8 for Linux, which can open pdfs directly and operates similarly to the Windows version.

## Are there virus scanners available for Linux?

At present, about 99.xx% of viruses are aimed at attacking the Windows operating system, however, users of OpenOffice can open and view Microsoft Office documents that may contain viruses. These viruses don't infect the Linux computer but the user can easily attach and send infected documents unknowingly to other users who are at risk. For more information on viruses and available software go to [www.openoffice.org](http://www.openoffice.org).

## Why is my webpage garbled?

The character encoding may not be automatically detected. Try selecting **View** → **Character encoding** and select the appropriate coding language.

## How do I search for specific files?

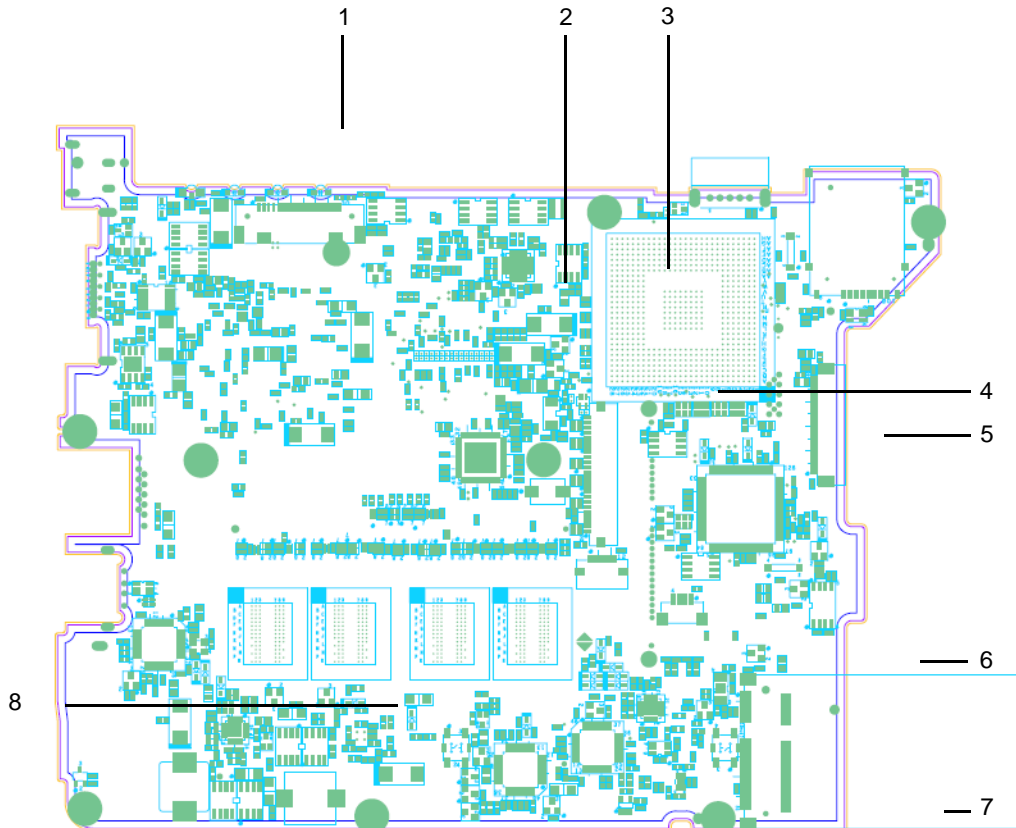
There is a search bar on the desk-top upper right corner. Type the file name in the field provided, and click the magnifying glass icon to begin searching.

**NOTE:** Select **Local** from the drop down menu to search the local system only.






# Jumper and Connector Locations

## Top View



No.	Description	No.	Description
1	LCD Connector	5	MDC Connector
2	Powerboard Connector	6	ExpressCard Board Connector
3	Keyboard Connector	7	Bluetooth Connector
4	DDR3 Connector	8	PCMCIA Connector

Category	Description	Part No.
	HDD BRACKET	33.S0207.004
SDD		
	FLASH DISK SANDISK FLASH MODULE NAND 4GB SDUS5FJ-004G LF	KF.4GB0D.002
	FLASH DISK INTEL FLASH MODULE NAND 4GB SSDPAMM0004G1 LF MM#898543	KF.4GB0N.003
	Flash Disk INTEL Flash Module NAND 8GB SSDPAMM0008G1 LF MM#898544	KF.8GB0N.001
Keyboard		
	KEYBOARD 8KB-FV1 BLACK MACLES 84KS BLACK TRADITIONAL CHINESE	KB.INT00.540
	KEYBOARD 8KB-FV1 BLACK MACLES 84KS BLACK GREEK	KB.INT00.533
	KEYBOARD 8KB-FV1 BLACK MACLES 84KS BLACK THAILAND	KB.INT00.517
	KEYBOARD 8KB-FV1 BLACK MACLES 85KS BLACK SLO/CRO	KB.INT00.522
	KEYBOARD 8KB-FV1 BLACK MACLES 85KS BLACK CZECH	KB.INT00.539
	KEYBOARD 8KB-FV1 BLACK MACLES 85KS BLACK HUNGARIAN	KB.INT00.532
	KEYBOARD 8KB-FV1 BLACK MACLES 85KS BLACK POLISH	KB.INT00.525
	KEYBOARD 8KB-FV1 BLACK MACLES 85KS BLACK BRAZILIAN PORTUGUESE	KB.INT00.542
	KEYBOARD 8KB-FV1 BLACK MACLES 84KS BLACK RUSSIAN	KB.INT00.523
	KEYBOARD 8KB-FV1 BLACK MACLES 85KS BLACK SLOVAK	KB.INT00.521
	KEYBOARD 8KB-FV1 BLACK MACLES 85KS BLACK TURKISH	KB.INT00.516
	KEYBOARD 8KB-FV1 BLACK MACLES 85KS BLACK BELGIUM	KB.INT00.543
	KEYBOARD 8KB-FV1 BLACK MACLES 85KS BLACK SWEDISH	KB.INT00.519
	KEYBOARD 8KB-FV1 BLACK MACLES 85KS BLACK UK	KB.INT00.515
	KEYBOARD 8KB-FV1 BLACK MACLES 85KS BLACK FRENCH	KB.INT00.535
	KEYBOARD 8KB-FV1 BLACK MACLES 85KS BLACK GERMAN	KB.INT00.534
	KEYBOARD 8KB-FV1 BLACK MACLES 85KS BLACK DUTCH	KB.INT00.537
	KEYBOARD 8KB-FV1 BLACK MACLES 85KS BLACK ITALIAN	KB.INT00.529
	KEYBOARD 8KB-FV1 BLACK MACLES 88KS BLACK JAPANESE	KB.INT00.548
	KEYBOARD 8KB-FV1 BLACK MACLES 85KS BLACK CANADIAN FRENCH	KB.INT00.541
	KEYBOARD 8KB-FV1 BLACK MACLES 85KS BLACK DANISH	KB.INT00.538
KEYBOARD 8KB-FV1 BLACK MACLES 85KS BLACK SPANISH	KB.INT00.520	
KEYBOARD 8KB-FV1 BLACK MACLES 84KS BLACK ARABIC/ ENGLISH	KB.INT00.544	
KEYBOARD 8KB-FV1 BLACK MACLES 84KS BLACK US INTERNATIONAL	KB.INT00.513	
KEYBOARD 8KB-FV1 BLACK MACLES 85KS BLACK SWISS/G	KB.INT00.518	

Model	RO	Country	Acer Part No	Description	CPU
AOA150-Bb	EMEA	Eastern Europe	LU.S050B.078	AOA150-Bb AOXPHSTEU5 MC UMACb 2*512/80/3L/5R/CB_bg_0.3D_BAG_GE_PL12	ATMN270B
AOA150-Bb	EMEA	Sweden/Finland	LU.S050B.077	AOA150-Bb AOXPHSTSE1 MC UMACb 2*512/80/3L/5R/CB_bg_0.3D_BAG_GE_FI12	ATMN270B
AOA150-Bb	EMEA	Holland	LU.S050B.081	AOA150-Bb AOXPHSTNL1 MC UMACb 2*512/80/3L/5R/CB_bg_0.3D_BAG_GE_NL12	ATMN270B
AOA150-Bb	EMEA	Middle East	LU.S050B.067	AOA150-Bb AOXPHSTME2 MC UMACb 1*512/80/3L/5R/CB_bg_0.3D_BAG_GE_EN12	ATMN270B
AOA150-Bb	EMEA	Middle East	LU.S050B.069	AOA150-Bb AOXPHSTME4 MC UMACb 1*512/80/3L/5R/CB_bg_0.3D_BAG_GE_EN12	ATMN270B
AOA150-Bb	EMEA	UK	LU.S050B.072	AOA150-Bb AOXPHSTGB1 MC UMACb 1*512/80/3L/5R/CB_bg_0.3D_BAG_GE_EN12	ATMN270B
AOA150-Bb	EMEA	Middle East	LU.S050B.102	AOA150-Bb AOXPHSTME6 MC UMACb 2*512/80/3L/5R/CB_bg_0.3D_BAG_GE_EN12	ATMN270B
AOA150-Bb	EMEA	Greece	LU.S050B.096	AOA150-Bb AOXPHSTGR1 MC UMACb 2*512/80/3L/5R/CB_bg_0.3D_BAG_GE_EL32	ATMN270B
AOA150-Bb	EMEA	Turkey	LU.S050B.095	AOA150-Bb AOXPHSTTR1 MC UMACb 2*512/80/3L/5R/CB_bg_0.3D_BAG_GE_TR32	ATMN270B
AOA150-Bb	EMEA	Israel	LU.S050B.094	AOA150-Bb AOXPHSTIL1 MC UMACb 2*512/80/3L/5R/CB_bg_0.3D_BAG_GE_HE12	ATMN270B
AOA150-Bb	EMEA	Spain	LU.S050B.093	AOA150-Bb AOXPHSTES1 MC UMACb 2*512/80/3L/5R/CB_bg_0.3D_BAG_GE_ES22	ATMN270B
AOA150-Bb	EMEA	Slovenia/Croatia	LU.S050B.091	AOA150-Bb AOXPHSTSI1 MC UMACb 2*512/80/3L/5R/CB_bg_0.3D_BAG_GE_EN12	ATMN270B
AOA150-Bb	EMEA	Middle East	LU.S050B.101	AOA150-Bb AOXPHSTME2 MC UMACb 2*512/80/3L/5R/CB_bg_0.3D_BAG_GE_EN12	ATMN270B
AOA150-Bb	EMEA	Middle East	LU.S050B.100	AOA150-Bb AOXPHSTME9 MC UMACb 2*512/80/3L/5R/CB_bg_0.3D_BAG_GE_FR22	ATMN270B
AOA150-Bb	EMEA	Middle East	LU.S050B.099	AOA150-Bb AOXPHSTME3 MC UMACb 2*512/80/3L/5R/CB_bg_0.3D_BAG_GE_FR22	ATMN270B
AOA150-Bb	EMEA	Middle East	LU.S050B.098	AOA150-Bb AOXPHSTME2 MC UMACb 2*512/80/3L/5R/CB_bg_0.3D_BAG_GE_AR22	ATMN270B
AOA150-Bb	EMEA	Portugal	LU.S050B.092	AOA150-Bb AOXPHSTPT1 MC UMACb 2*512/80/3L/5R/CB_bg_0.3D_BAG_GE_PT12	ATMN270B
AOA150-Bb	EMEA	Switzerland	LU.S050B.105	AOA150-Bb AOXPHSTCH1 MC UMACb 2*512/80/3L/5R/CB_bg_0.3D_BAG_GE_IT42	ATMN270B
AOA150-Bb	EMEA	Middle East	LU.S050B.104	AOA150-Bb AOXPHSTME2 MC UMACb 2*512/80/3L/5R/CB_bg_0.3D_BAG_GE_AR12	ATMN270B
AOA150-Bb	EMEA	Italy	LU.S050B.097	AOA150-Bb AOXPHSTIT1 MC UMACb 2*512/80/3L/5R/CB_bg_0.3D_BAG_GE_IT12	ATMN270B
AOA150-Bb	EMEA	UK	LU.S050B.106	AOA150-Bb AOXPHSTGB1 MC UMACb 2*512/80/3L/5R/CB_bg_0.3D_BAG_GE_EN12	ATMN270B
AOA150-Bb	EMEA	Hungary	LU.S050B.090	AOA150-Bb AOXPHSTHU1 MC UMACb 2*512/80/3L/5R/CB_bg_0.3D_BAG_GE_HU12	ATMN270B
AOA150-Bb	EMEA	Czech	LU.S050B.089	AOA150-Bb AOXPHSTCZ2 MC UMACb 2*512/80/3L/5R/CB_bg_0.3D_BAG_GE_SK12	ATMN270B
AOA150-Bb	EMEA	Eastern Europe	LU.S050B.088	AOA150-Bb AOXPHSTEU3 MC UMACb 2*512/80/3L/5R/CB_bg_0.3D_BAG_GE_RU12	ATMN270B
AOA150-Bb	EMEA	Eastern Europe	LU.S050B.087	AOA150-Bb AOXPHSTEU3 MC UMACb 2*512/80/3L/5R/CB_bg_0.3D_BAG_GE_RU22	ATMN270B
AOA150-Bb	EMEA	Middle East	LU.S050B.103	AOA150-Bb AOXPHSTME4 MC UMACb 2*512/80/3L/5R/CB_bg_0.3D_BAG_GE_EN12	ATMN270B
AOA150-Bb	EMEA	Eastern Europe	LU.S050B.051	AOA150-Bb AOXPHSTEU3 MC UMACb 1*512/80/3L/5R/CB_bg_0.3D_BAG_GE_RU22	ATMN270B
AOA150-Bb	EMEA	Eastern Europe	LU.S050B.052	AOA150-Bb AOXPHSTEU3 MC UMACb 1*512/80/3L/5R/CB_bg_0.3D_BAG_GE_RU12	ATMN270B
AOA150-Bb	EMEA	Czech	LU.S050B.053	AOA150-Bb AOXPHSTCZ2 MC UMACb 1*512/80/3L/5R/CB_bg_0.3D_BAG_GE_SK12	ATMN270B
AOA150-Bb	EMEA	Hungary	LU.S050B.056	AOA150-Bb AOXPHSTHU1 MC UMACb 1*512/80/3L/5R/CB_bg_0.3D_BAG_GE_HU12	ATMN270B
AOA150-Bb	EMEA	Italy	LU.S050B.063	AOA150-Bb AOXPHSTIT1 MC UMACb 1*512/80/3L/5R/CB_bg_0.3D_BAG_GE_IT12	ATMN270B





CLICK HERE TO **DOWNLOAD** THE COMPLETE MANUAL

- Thank you very much for reading the preview of the manual.
- You can download the complete manual from: [www.heydownloads.com](http://www.heydownloads.com) by clicking the link below



- Please note: If there is no response to CLICKING the link, please download this PDF first and then click on it.

CLICK HERE TO **DOWNLOAD** THE COMPLETE MANUAL