

Aspire 5738DG/5738DZG Series
Aspire 5542G/5542/5242 Series
Aspire 5738G/5738ZG/5738Z/5738/5338 Series
Aspire 5536/5536G/5236 Series
Service Guide

Service guide files and updates are available on the ACER/CSD web; for more information, please refer to <http://csd.acer.com.tw>

PRINTED IN TAIWAN

CLICK HERE TO **DOWNLOAD** THE COMPLETE MANUAL

- Thank you very much for reading the preview of the manual.
- You can download the complete manual from: www.heydownloads.com by clicking the link below



- Please note: If there is no response to CLICKING the link, please download this PDF first and then click on it.

CLICK HERE TO **DOWNLOAD** THE COMPLETE MANUAL

-
- WLAN:
 - Intel® Wireless WiFi Link 5100/5300* (For Aspire 5738G/5738ZG/5738Z/5738/5338 and Aspire 5738DG only)
 - Acer InviLink™ Nplify™ 802.11b/g/Draft-N*
 - Acer InviLink™ 802.11b/g*
 - WPAN: Bluetooth® 2.0+Enhanced Data Rate (EDR)*
 - LAN: Gigabit Ethernet; Wake-on-LAN ready
 - Modem: 56K ITU V.92; Wake-on-Ring ready

I/O Ports

- Acer Bio-Protection fingerprint reader*
- 5-in-1 card reader (SD/MMC/MS/MS PRO/xD)
- USB 2.0 port
- HDMI™ port with HDCP support
- External display (VGA) port
- Headphones/speaker/line-out jack with S/PDIF support
- Microphone-in jack
- Line-in jack
- Ethernet (RJ-45) port
- Modem (RJ-11) port
- DC-in jack for AC adapter

Environment

- Temperature:
 - Operating: 5 °C to 35 °C
 - Non-operating: -20 °C to 65 °C
- Humidity (non-condensing):
 - Operating: 20% to 80%
 - Non-operating: 20% to 80%

Dimension and weight

- Dimension: 383.82* 250* 37.74 mm
- Weight: <3.1 kg

NOTES: 1. "*" means only for certain models".

2. The specifications listed above are for reference only. The exact configuration of your PC depends on the model purchased.

| Function | Left button (2) | Right button (3) | Main touchpad (1) |
|---------------------|---|------------------|--|
| Execute | Quickly click twice. | | Tap twice (at the same speed as double-clicking a mouse button). |
| Select | Click once. | | Tap once. |
| Drag | Click and hold, then use finger on the touchpad to drag the cursor. | | Tap twice (at the same speed as double-clicking a mouse button); rest your finger on the touchpad on the second tap and drag the cursor. |
| Access context menu | | Click once. | |

NOTE: Illustrations are for reference only. The exact configuration of your PC depends on the model purchased.

NOTE: When using the touchpad, keep it — and your fingers — dry and clean. The touchpad is sensitive to finger movement; hence, the lighter the touch, the better the response. Tapping harder will not increase the touchpad's responsiveness.

NOTE: By default, vertical and horizontal scrolling is enabled on your touchpad. It can be disabled under Mouse settings in Windows Control Panel.

Using the Keyboard

The keyboard has full-sized keys and an embedded numeric keypad, separate cursor, lock, Windows, function and special keys.

Lock Keys and embedded numeric keypad

The keyboard has three lock keys which you can toggle on and off.

| Lock key | Description |
|--------------------------|--|
| Caps Lock | When Caps Lock is on, all alphabetic characters typed are in uppercase. |
| Num Lock <Fn> + <F11> | When Num Lock is on, the embedded keypad is in numeric mode. The keys function as a calculator (complete with the arithmetic operators +, -, *, and /). Use this mode when you need to do a lot of numeric data entry. A better solution would be to connect an external keypad. NOTE: <Fn> + <F11> works only for certain models. |
| Scroll Lock <Fn> + <F12> | When Scroll Lock is on, the screen moves one line up or down when you press the up or down arrow keys respectively. Scroll Lock does not work with some applications. |

The embedded numeric keypad functions like a desktop numeric keypad. It is indicated by small characters located on the upper right corner of the key caps. To simplify the keyboard legend, cursor-control key symbols are not printed on the keys.

| Desired access | Num Lock on | Num Lock off |
|--|---|--|
| Number keys on embedded keypad | Type numbers in a normal manner. | |
| Cursor-control keys on embedded keypad | Hold <Shift> while using cursor-control keys. | Hold <Fn> while using cursor-control keys. |

Optical Disc Drive

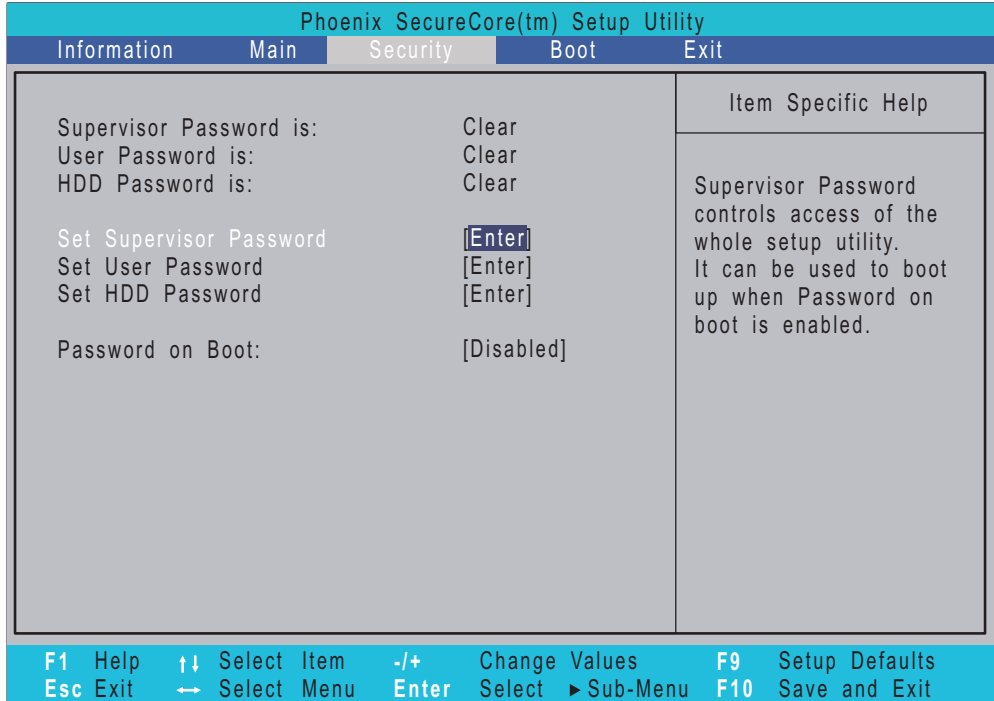
| Item | Specification |
|-------------------|---|
| Loading mechanism | Load: Manual Release: (a) Electrical Release (Release Button) (b) Release by ATAPI command (c) Emergency Release |
| Power Requirement | |
| Input Voltage | 5 V +/- 5% (Operating) |

Blu-Ray Disc Drive

| Item | Specification | | |
|---------------------------|--|-----------------------------------|---------------------------------|
| Vendor & model name | HLDS BD COMBO DRIVE TRAY DL 4X CT10 LF PANASONIC BD COMBO 12.7mm Tray DL 4X UJ-130A | | |
| Performance Specification | With CD Disc | With DVD Disc | With Blu-ray Disc |
| Transfer rate (KB/sec) | Sustained: Max 3.6Mbytes/sec | Sustained: Max 10.08Mbytes/sec | Sustained: Max 11 Mbytes/sec |
| Buffer Memory | 2MB | | 4.5 MB |
| Interface | SATA | | |
| Applicable disc format | <p>Applicable disc format</p> <p>CD: CD-DA, CD-ROM, CD-ROM XA, Photo CD (multi-session), Video CD, Cd-Extra (CD+), CD-text</p> <p>DVD: DVD-VIDEO, DVD-ROM, DVD-R (3.9GB, 4.7GB) DVD-R DL, DVD-RW, DVD-RAM, DVD+R, DVD+R DL, DVD+RW</p> <p>CD:</p> <p>CD-DA (Red Book) - Standard Audio CD & CD-TEXT</p> <p>CD-ROM (Yellow Book Mode1 & 2) - Standard Data</p> <p>CD-ROM XA (Mode2 Form1 & 2) - Photo CD, Multi-Session</p> <p>CD-I (Green Book, Mode2 Form1 & 2, Ready, Bridge)</p> <p>CD-Extra/ CD-Plus (Blue Book) - Audio & Text/Video</p> <p>Video-CD (White Book) - MPEG1 Video</p> <p>CD-R (Orange Book Part)</p> <p>CD-RW & HSRW (Orange Book Part Volume1 & Volume 2</p> <p>Super Audio CD (SACD) Hybrid type</p> <p>US & US+ RW</p> <p>DVD:</p> <p>DVD-ROM (Book 1.02), DVD-Dual</p> <p>DVD-Video (Book 1.1)</p> <p>DVD-R (Book 1.0, 3.9G)</p> <p>DVD-R (Book 2.0, 4.7G) - General & Authoring</p> <p>DVD+R (Version 1.0)</p> <p>DVD+RW</p> <p>DVD-RW (Non CPRM & CPRM)</p> <p>DVD+/-R Dual</p> <p>Blu-Ray:</p> <p>BD-R, BD-R DL, BD-RE, BD-RE DL</p> | | |

Security

The Security screen contains parameters that help safeguard and protect your computer from unauthorized use.



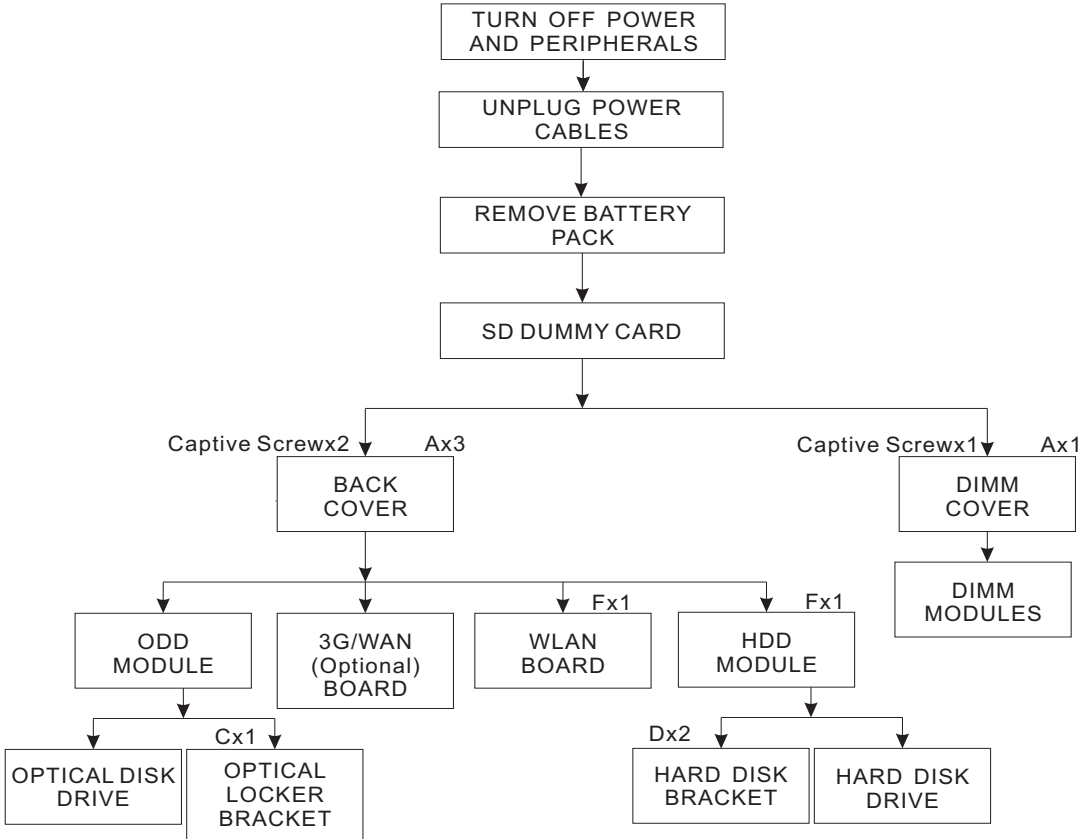
NOTE: Please refer to "Remove HDD/BIOS Password" section if you need to know how to remove HDD/BIOS Password.

External Module Disassembly Process

External Modules Disassembly Flowchart

The flowchart below gives you a graphic representation on the entire disassembly sequence and instructs you on the components that need to be removed during servicing. For example, if you want to remove the main board, you must first remove the keyboard, then disassemble the inside assembly frame in that order.

EXTERNAL MODULE DISASSEMBLY



Screw List

| Item | Screw | Color | Part No. |
|------|-----------|--------|--------------|
| A | M2.5 x L8 | Black | 86.00E34.738 |
| D | M3 x L4 | Silver | 86.9A554.4R0 |
| F | M2 x L4 | Silver | 86.9A552.4R0 |

10. Press the latch to pop up the WLAN card and detach the WLAN card from the WLAN socket.

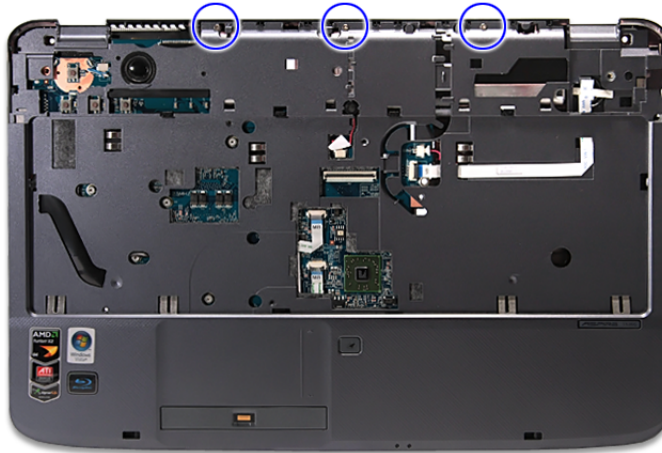


NOTE: When attaching the antenna back to the WLAN board, make sure the cable are arranged properly.

Removing the Optical Drive Module

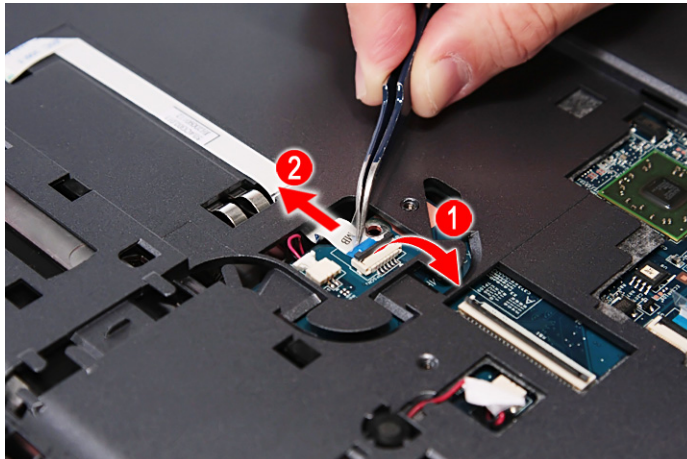
1. See “Removing the Battery Pack” on page 44.
2. See “Removing the SD Dummy Card” on page 45.
3. See “Removing the DIMM Module” on page 46.
4. See “Removing the Back Cover” on page 47.
5. See “Removing the Hard Disk Drive Module” on page 48.
6. See “Removing the WLAN Modules” on page 51.

11. Remove the three screws (F) from the middle cover.

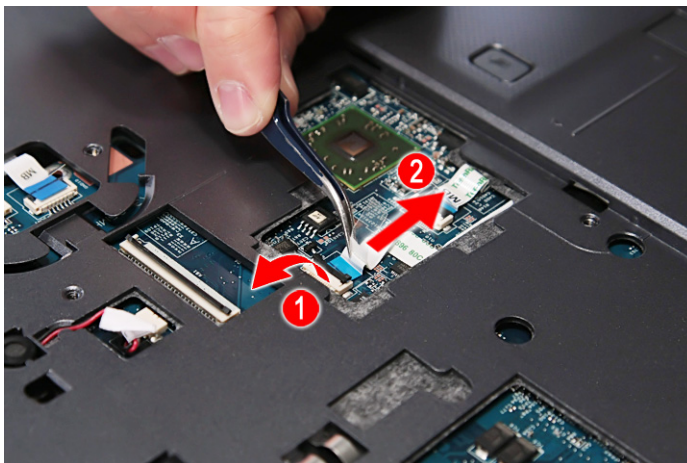


| Size (Quantity) | Color | Torque | Part No. |
|-----------------|--------|------------|--------------|
| M2 x L4 (3) | Silver | 1.6 kgf-cm | 86.9A552.4R0 |

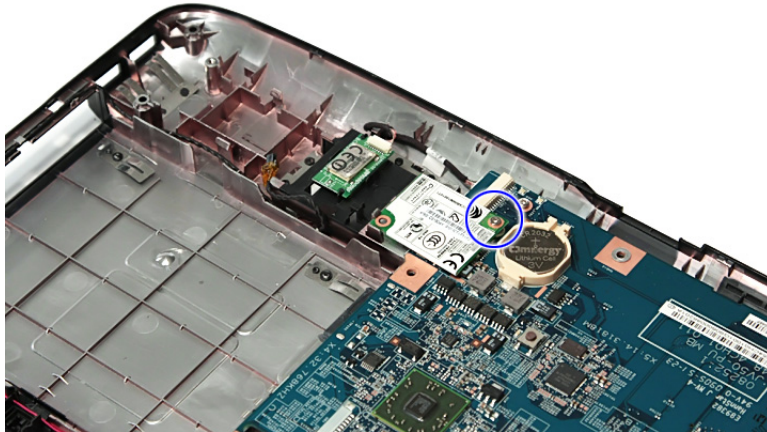
12. Release the latch and disconnect the volume button board cable from its connector the main board.



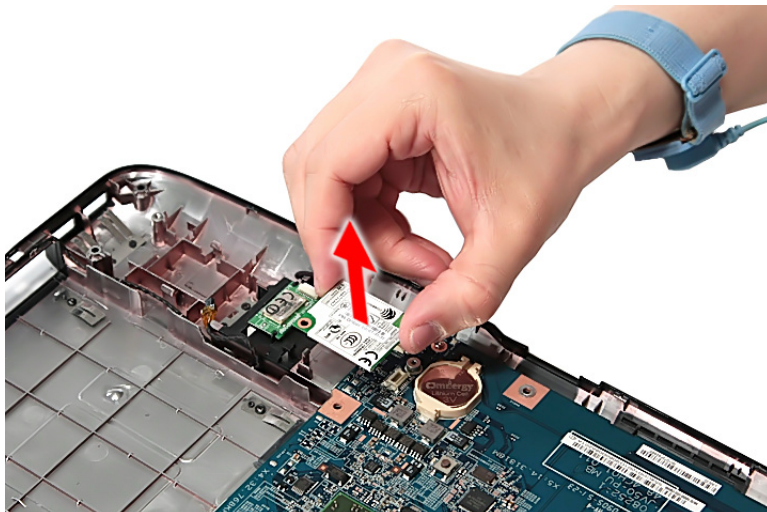
13. Release the latch and disconnect the touch pad cable from TPCN1 connector on the main board.



15. Remove the one screws (F) securing the modem board module to the lower case.



| Size (Quantity) | Color | Torque | Part No. |
|-----------------|--------|------------|--------------|
| M2 x L4 (1) | Silver | 1.6 kgf-cm | 86.9A552.4R0 |



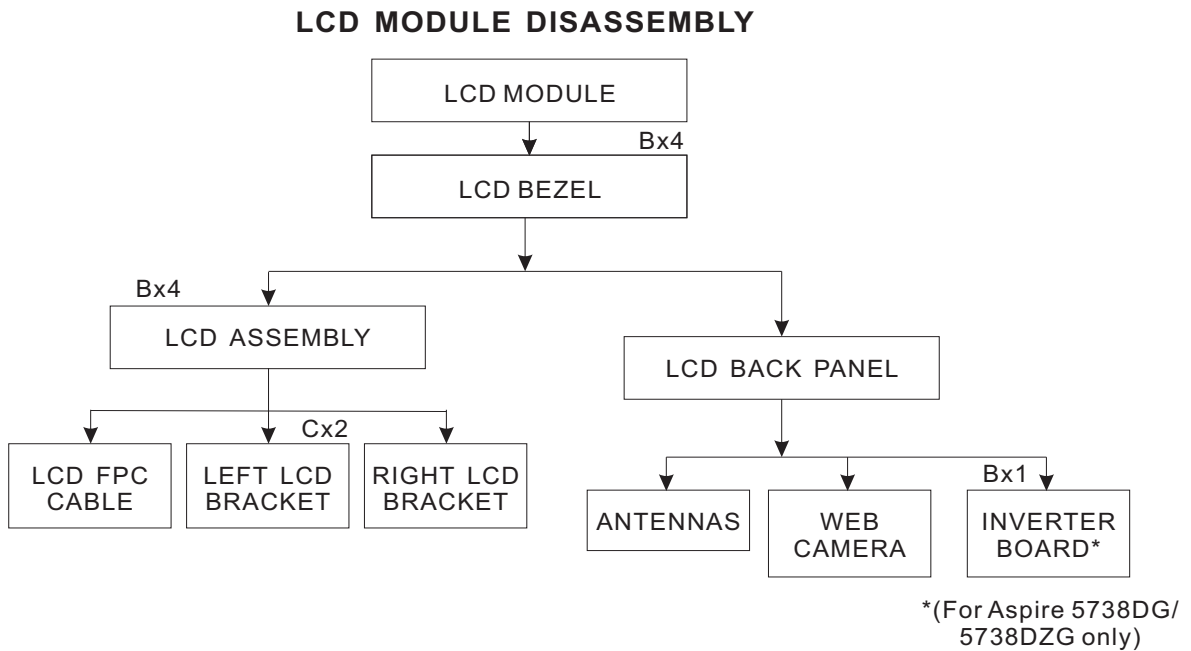
16. Release the modem board module from the latch and remove it from the lower case.

Removing the Bluetooth Module

1. See "Removing the Battery Pack" on page 44.
2. See "Removing the SD Dummy Card" on page 45.
3. See "Removing the DIMM Module" on page 46.
4. See "Removing the Back Cover" on page 47.
5. See "Removing the Hard Disk Drive Module" on page 48.
6. See "Removing the WLAN Modules" on page 51.
7. See "Removing the Optical Drive Module" on page 53.
8. See "Removing the Middle Cover" on page 56.
9. See "Removing the Keyboard" on page 58.
10. See "Removing the LCD Module" on page 59.

LCD Module Disassembly Process

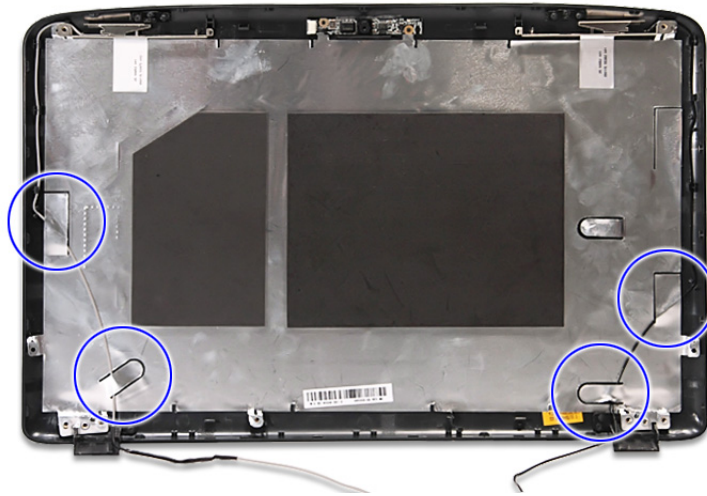
LCD Module Disassembly Flowchart



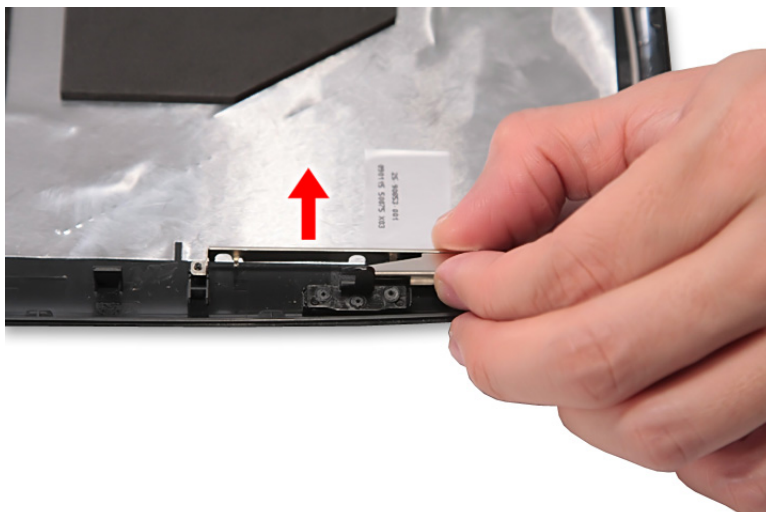
Screw List

| Item | Screw | Color | Part No. |
|------|-----------|--------|--------------|
| B | M2.5 x L6 | Black | 86.00E12.536 |
| C | M2 x L3 | Silver | 86.9A522.3R0 |

14. See “Removing the LCD Brackets” on page 89.
15. See “Removing the FPC Cable” on page 90.
16. Release the antenna cables from the aluminium tapes.



17. Remove the left and right antenna cables together with the tapes holding them in place.



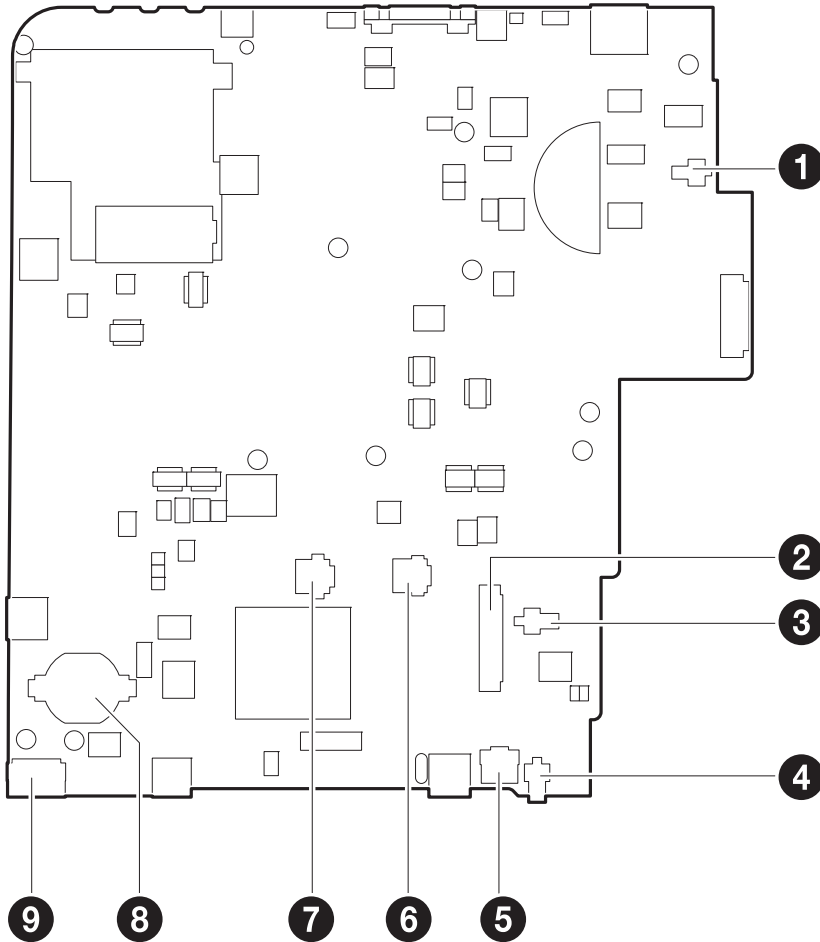
NOTE: There is no need to remove the antenna unless you really need to replace it.

| Code | Beeps | POST Routine Description |
|------|---------|--|
| 3Ch | | Advanced configuration of chipset registers |
| 3Dh | | Load alternate registers with CMOS values |
| 42h | | Initialize interrupt vectors |
| 45h | | POST device initialization |
| 46h | 2-1-2-3 | Check ROM copyright notice |
| 48h | | Check video configuration against CMOS |
| 49h | | Initialize PCI bus and devices |
| 4Ah | | Initialize all video adapters in system |
| 4Bh | | QuietBoot start (optional) |
| 4Ch | | Shadow video BIOS ROM |
| 4Eh | | Display BIOS copyright notice |
| 50h | | Display CPU type and speed |
| 51h | | Initialize EISA board |
| 52h | | Test keyboard |
| 54h | | Set key click if enabled |
| 58h | 2-2-3-1 | Test for unexpected interrupts |
| 59h | | Initialize POST display service |
| 5Ah | | Display prompt "Press F2 to enter SETUP" |
| 5Bh | | Disable CPU cache |
| 5Ch | | Test RAM between 512 and 640 KB |
| 60h | | Test extended memory |
| 62h | | Test extended memory address lines |
| 64h | | Jump to User Patch1 |
| 66h | | Configure advanced cache registers |
| 67h | | Initialize Multi Processor APIC |
| 68h | | Enable external and CPU caches |
| 69h | | Setup System Management Mode (SMM) area |
| 6Ah | | Display external L2 cache size |
| 6Bh | | Load custom defaults (optional) |
| 6Ch | | Display shadow-area message |
| 6Eh | | Display possible high address for UMB recovery |
| 70h | | Display error messages |
| 72h | | Check for configuration errors |
| 76h | | Check for keyboard errors |
| 7Ch | | Set up hardware interrupt vectors |
| 7Eh | | Initialize coprocessor if present |
| 80h | | Disable onboard Super I/O ports and IRQs |
| 81h | | Late POST device initialization |

Connector Locations

Main Board

Top View



| No. | Code | Connector |
|-----|---------|-------------------------------------|
| 1 | SPKR_L1 | Left speaker cable connector |
| 2 | KB1 | Keyboard cable connector |
| 3 | AMIC1 | MIC cable connector |
| 4 | SPKR_R1 | Right speaker cable connector |
| 5 | PSCN1 | Volume button board cable connector |
| 6 | TPCN1 | Touchpad board cable connector |
| 7 | FPCN1 | Fingerprint cable connector |
| 8 | RTC1 | RTC battery connector |
| 9 | USBCN1 | USB cable connector |

FRU List

Aspire 5738DG/5738DZG Series, Aspire 5542G/5542/5242 Series, Aspire 5738G/5738ZG/5738Z/5738/5338 Series and Aspire 5536/5536G/5236 Series FRU List

1. ACER_ASPIRE 5738DG M92XT512CBB 2V3_JV50_MV (NO: LX.PKD02.002)

| Category | No | Part Name and Description | Acer Part No. |
|---|----|--|---------------|
| ADAPTER  | 1 | ADAPTER 65W 19V 3PIN HIPRO HP-A0652R3B 1LF LV5 LED LF YELLOW | AP.0650A.012 |
| | 1 | ADAPTER 65W 19V 3PIN DELTA ADP-65JH DB A LV5 LED LF YELLOW | AP.06501.026 |
| | 1 | ADAPTER 65W 19V 3PIN LITEON PA-1650-22AC LV5 LED LF YELLOW | AP.06503.024 |
| BATTERY  | 1 | BATTERY PANASONIC AS-2007A LI-ION 3S2P PANASONIC 6 CELL 4400MAH MAIN COMMON PSS | BT.00605.020 |
| | 1 | BATTERY SANYO AS-2007A LI-ION 3S2P SANYO 6 CELL 4400MAH MAIN COMMON NORMAL TYPE | BT.00603.041 |
| | 1 | BATTERY SONY AS-2007A LI-ION 3S2P SONY 6 CELL 4400MAH MAIN COMMON NORMAL TYPE | BT.00604.024 |
| | 1 | BATTERY SIMPLO AS-2007A LI-ION 3S2P PANASONIC 6 CELL 4400MAH MAIN COMMON PSS | BT.00607.015 |
| | 1 | BATTERY SIMPLO AS-2007A LI-ION 3S2P LGC 6 CELL 4400MAH 2ND COMMON | BT.00607.019 |
| | 1 | BATTERY SIMPLO AS-2007A LI-ION 3S2P SAMSUNG 6 CELL 4400MAH MAIN COMMON SDI 2.2MAH F TYPE | BT.00607.034 |
| BOARDS  | 1 | BLUETOOTH BOARD FOXCONN BCM2045 V2 T60H928.11 | BT.21100.005 |
| | 1 | BLUETOOTH BOARD FOXCONN BRM 2046 BT.1 T60H928.33 F/W:861 | BH.21100.004 |
|  | 2 | INVERTER BOARD YEC YNV-W15 | 19.AR501.001 |
| | 2 | INVERTER BOARD FOXCONN T62I240.03 V.00 | 19.AR501.002 |
| | 2 | INVERTER BOARD SUMIDA TWS-458-124 MS | 19.AUA01.002 |
| | 2 | INVERTER BOARD 17" DARFON VK.21189.408 | 19.TQ901.002 |
|  | 1 | LED BUTTON BOARD | 55.PAT01.001 |
|  | 2 | MODEM BOARD LITEON CONEXANT -UNIZION 1.5_3.3V AUS B85247600G | FX.22500.021 |
| | 2 | MODEM BOARD FOXCONN DELPHI-AM5 V2H 1.5_3.3V AUS T60M951.36 | FX.22500.023 |
|  | 1 | TOUCHPAD BOARD SYNAPTICS TM00540-005 | 56.ATR01.001 |
|  | 1 | TOUCHPAD BOARD ALPS KGDF0038A | 56.PAW01.001 |
|  | 1 | TOUCH PAD BUTTON BOARD | 55.PAW01.003 |

| Category | No. | Part Name & Description | Acer Part No. |
|--|-----|---|---------------|
| CASE/COVER/ BRACKET ASSEMBLY  | 2 | 3D FILM LCD BRACKET W/HINGE RIGHT | 34.4CG34.001 |
|  | 2 | 3D FILM LCD BRACKET W/HINGE LEFT | 34.4CG35.001 |
|  | 2 | BLUE-RAY COMBO BEZEL | 42.PAW01.005 |
| | 2 | DVD-RW SUPER-MULTI BEZEL | 42.PAW01.004 |
|  | 2 | HDD BRACKET | 33.PAW01.003 |
| | 2 | LCD BEZEL 15.6" W/CAMERA HOLE | 60.4CG60.001 |
| | 2 | LCD COVER IMR 15.6" BLUE W/ANTENNA*2 & LOGO NONE 3G FOR MMW | 60.4CG68.001 |
|  | 1 | LOWER CASE W/MODEM CABLE&SPEAKER | 60.PAW01.001 |
|  | 1 | MIDDLE COVER W/BLUETOOTH BUTTON WITH BLUE LIGHT NONE 3G BUTTON | 42.PAW01.001 |
|  | 2 | OPTICAL BRACKET | 33.PAW01.002 |
|  | 1 | SD DUMMY CARD | 42.TKJ01.001 |
|  | 1 | TOUCHPAD BRACKET | 33.PAW01.001 |
|  | 1 | UNITLOAD COVER | 42.PAW01.002 |
|  | 1 | UPPER CASE BLUE W/LED BUTTON BOARD CABLE&MICROPHONE&SPEAKER&FINGER PRINT HOLE | 60.PAX01.001 |



CLICK HERE TO **DOWNLOAD** THE COMPLETE MANUAL

- Thank you very much for reading the preview of the manual.
- You can download the complete manual from: www.heydownloads.com by clicking the link below





- Please note: If there is no response to CLICKING the link, please download this PDF first and then click on it.

CLICK HERE TO **DOWNLOAD** THE COMPLETE MANUAL




| Category | No. | Part Name & Description | Acer Part No. | |
|--|---|--|----------------------------------|--------------|
| HDD/HARD DISK DRIVE | 2 | HDD 250GB 5400RPM SATA WD WD2500BEVT-22ZCT0 F/W:11.01A11 | KH.25008.021 | |
| | 1 | HDD MODULE 320GB 5400RPM SATA | | |
| | 2 | HDD 320GB 5400RPM SATA HGST HTS545032B9A300 PANTHER B LF | KH.32007.007 | |
| | 2 | HDD 320GB 5400RPM SATA SEAGATE ST9320320AS F/W:2010 | KH.32001.008 | |
| | 2 | HDD 320GB 5400RPM SATA HGST HTS543232L9A300 F/W:C30C | KH.32007.004 | |
| | 2 | HDD 320GB 5400RPM 2.5" SATA HGST HTS545032B9A300 PANTHER B LF F/W:C60F DISK IMBALANCE CRITERIA = 0.014G-CM | KH.32007.008 | |
| | 2 | HDD 320GB 5400RPM SATA WD WD3200BEVT-22ZCT0 ML125 F/W:01.01A01 | KH.32008.013 | |
| | 1 | HDD MODULE 500GB 5400RPM SATA | | |
| | 2 | HDD 500GB 5400RPM WD SATA WD5000BEVT-22ZAT0 F/W:01.01A01 | KH.50008.013 | |
| | 2 | HDD 500GB 5400RPM SEAGATE ST9500325AS SATA LF F/W:0001SDM1 | KH.50001.011 | |
| | 2 | HDD 500GB 5400RPM HGST SATA HTS545050B9A300 PANTHER B LF | KH.50007.009 | |
| | 2 | HDD HGST 2.5" 5400RPM 500GB HTS545050B9A300 PANTHER B SATA LF F/W:C60F DISK IMBALANCE CRITERIA = 0.014G-CM | KH.50007.010 | |
| | HEATSINK  | 1 | CPU HEATSINK DISCRETE DDR2 W/FAN | 60.PEY01.001 |
| | | 1 | CPU HEATSINK DISCRETE DDR2 W/FAN | 60.PEY01.001 |
| KEYBOARD  | 1 | KEYBOARD 104KEYS NSK-ALAOJ AC7T JV50 INTERNAL 17 STANDARD BLACK TEXTURE SPANISH | KB.1170A.050 | |
| | 1 | KEYBOARD 103KEYS NSK-ALAOJ AC7T JV50 INTERNAL 17 STANDARD BLACK TEXTURE RUSSIAN | KB.1170A.048 | |
| | 1 | KEYBOARD 104KEYS NSK-ALAOJ AC7T JV50 INTERNAL 17 STANDARD BLACK TEXTURE GERMAN | KB.1170A.040 | |
| | 1 | KEYBOARD 104KEYS NSK-ALAOJ AC7T JV50 INTERNAL 17 STANDARD BLACK TEXTURE UK | KB.1170A.055 | |
| | 1 | KEYBOARD 104KEYS NSK-ALAOJ AC7T JV50 INTERNAL 17 STANDARD BLACK TEXTURE SWISS | KB.1170A.052 | |
| | 1 | KEYBOARD 103KEYS NSK-ALAOJ AC7T JV50 INTERNAL 17 STANDARD BLACK TEXTURE TAIWAN | KB.1170A.036 | |
| | 1 | KEYBOARD 103KEYS NSK-ALAOJ AC7T JV50 INTERNAL 17 STANDARD BLACK TEXTURE THAILAND | KB.1170A.053 | |
| | 1 | KEYBOARD 104KEYS NSK-ALAOJ AC7T JV50 INTERNAL 17 STANDARD BLACK TEXTURE PORTUGAL | KB.1170A.047 | |
| | 1 | KEYBOARD 103KEYS NSK-ALAOJ AC7T JV50 INTERNAL 17 STANDARD BLACK TEXTURE ARABIC | KB.1170A.032 | |
| | 1 | KEYBOARD 103KEYS NSK-ALAOJ AC7T JV50 INTERNAL 17 STANDARD BLACK TEXTURE ARABIC | KB.1170A.032 | |
| | 1 | KEYBOARD 104KEYS NSK-ALAOJ AC7T JV50 INTERNAL 17 STANDARD BLACK TEXTURE DANISH | KB.1170A.037 | |
| | 1 | KEYBOARD 104KEYS NSK-ALAOJ AC7T JV50 INTERNAL 17 STANDARD BLACK TEXTURE DANISH | KB.1170A.037 | |
| | 1 | KEYBOARD 104KEYS NSK-ALAOJ AC7T JV50 INTERNAL 17 STANDARD BLACK TEXTURE ITALIAN | KB.1170A.043 | |


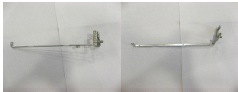
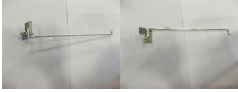
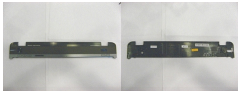


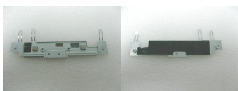
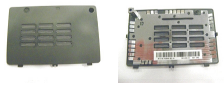
| Category | No. | Part Name & Description | Acer Part No. |
|--|-----|---|---------------|
| BOARDS  | 1 | LED BUTTON BOARD | 55.4FN03.001G |
| | 2 | MODEM BOARD LITEON CONEXANT -UNIZION 1.5_3.3V AUS B85247600G | FX.22500.021 |
|  | 1 | TOUCHPAD BOARD SYNAPTICS TM00540-005 | 56.ATR01.001 |
|  | 1 | TOUCHPAD BOARD ALPS KGDF0038A | 56.PAW01.001 |
| | 1 | TOUCH PAD BUTTON BOARD | 55.PAW01.003 |
|  | 1 | USB BOARD | 55.4FN02.001G |
|  | 1 | WIRELESS LAN BOARD FOXCONN ATHEROS XB63 MINICARD B/G | NI.23600.046 |
| | 1 | WIRELESS LAN BOARD QMI ATHEROS HB93 1X2 BGN HM EM306 | NI.23600.054 |
| | 1 | WIRELESS LAN BOARD 802.11BG FOXCONN T77H121.01 ATHEROS AR9285(HB95) | NI.23600.047 |
| CABLES | 1 | BLUETOOTH BOARD CABLE | 50.PAW01.004 |
| | 1 | BLUETOOTH BOARD CALBE | 50.ATR01.002 |
| | 2 | CCFL LCD/CAMERA CABLE | 50.PAT01.001 |
|  | 1 | FINGER PRINT / TP BUTTON BOARD CABLE | 50.PAW01.003 |
| | 2 | LED BUTTON BOARD CABLE | 50.4CG02.001 |
| | 2 | LED BUTTON BOARD CABLE | 50.4CG02.011 |
| | 2 | LED LCD/CAMERA CABLE | 50.PAW01.005 |
| | 2 | MODEM CABLE | 50.4CG04.011 |
| | 2 | MODEM CABLE | 50.4CG04.001 |
|  | 1 | POWER CORD 10A 125V US | 27.T30V1.001 |
| | 1 | POWER CORD 10A 125V 3PIN US BK | 27.01518.641 |
| | 1 | POWER CORD 10A 250V ARGENTINE | 27.01518.0U1 |
| | 1 | POWER CORD 7A 250V 2PIN KOREAN | 27.01518.531 |
| | 1 | POWER CORD 3A 250V 3PIN UK | 27.01518.541 |


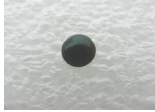
| Category | No. | Part Name & Description | Acer Part No. |
|--|-----|--|---------------|
| CASE/COVER/ BRACKET ASSEMBLY  | 1 | WIRELESS LAN COVER | 42.PAW01.003 |
| | 1 | BLU-RAY COMBO MODULE 4X SATA FOR WINDOWS7 | |
| COMBO MODULE  | 2 | ODD PIONEER BD COMBO 12.7MM TRAY DL 4X SATA BDC-TD01RS LF W/O BEZEL FOR WINDOWS7 | KO.00405.003 |
| | 2 | ODD PLDS BD COMBO 12.7MM TRAY DL 4X DS-4E1S LF W/O BEZEL SATA FOR WINDOWS7 | KO.0040F.003 |
| CPU/PROCESSOR  | 1 | CPU AMD ATHLONII M300 2.0G 1M 35W CASPIAN | KC.AM002.300 |
| | 1 | CPU AMD ATHLONII M320 2.1G 1M 35W CASPIAN | KC.AM002.320 |
| | 1 | CPU AMD SEMPRONM M100 2.0G 512K 25W CASPIAN | KC.SM002.100 |
| | 1 | CPU AMD TURIONII M500 2.2G 1M 35W | KC.TM002.500 |
| | 1 | CPU AMD TURIONII M520 2.3G 1M 35W | KC.TM002.520 |
| | 1 | CPU AMD TURION M600 2.4G 2M 35W CASPIAN | KC.TM002.600 |
| | 1 | CPU AMD TURION M620 2.5G 2M 35W CASPIAN | KC.TM002.620 |
| | 1 | CPU AMD TURION M640 2.6G 2M 35W CASPIAN | KC.TM002.640 |
| DVD-RW DRIVE | 1 | DVD-RW SUPER-MULTI MODULE 8X SATA FOR WINDOWS7 | |
| | 2 | ODD HLDS SUPER-MULTI DRIVE 12.7MM TRAY DL 8X GT30N LF W/O BEZEL SATA FOR HF+WINDOWS7 | KU.0080D.048 |
| | 2 | ODD TOSHIBA SUPER-MULTI DRIVE 12.7MM TRAY DL 8X TS-L633C LF W/O BEZEL SATA FOR HF+WINDOWS7 | KU.00801.035 |
| | 2 | ODD PANASONIC SUPER-MULTI DRIVE 12.7MM TRAY DL 8X UJ890A LF W/O BEZEL SATA HF+WINDOWS 7 | KU.00807.070 |
| HDD/HARD DISK DRIVE  | 1 | HDD MODULE 160GB 5400RPM SATA | |
| | 2 | HDD 160GB 5400RPM 2.5" SATA WYATT SEAGATE ST9160314AS F/W:0001SDM1 | KH.16001.042 |
| | 2 | HDD 160GB 5400RPM SATA TOSHIBA LIBRA-BS MK1655GSX F/W:FG0101J 5.4 | KH.16004.006 |
| | 2 | HDD 160GB 5400RPM SATA HGST PANTHER-B PANTHER-B HTS545016B9A300 F/W:C60F | KH.16007.024 |
| | 2 | HDD 160GB 5400RPM 2.5" SATA WD WD1600BEVT-22ZCT0 FW:11.01A11 | KH.16008.022 |
| | 1 | HDD MODULE 250GB 5400RPM SATA | |
| | 2 | HDD 2.5" 5400RPM 250GB SEAGATE ST9250315AS WYATT SATA LF F/W:0001SDM1 | KH.25001.016 |
| | 2 | HDD 250GB 5400RPM SATA TOSHIBA LIBRA-BS MK2555GSX F/W:FG000J 5.4K | KH.25004.003 |
| | 2 | HDD 250GB 5400RPM SATA HGST HTS545025B9A300 PANTHER-B LF | KH.25007.015 |
| | 2 | HDD 250GB 5400RPM SATA WD WD2500BEVT-22ZCT0 F/W:11.01A11 | KH.25008.021 |
| | 1 | HDD MODULE 320GB 5400RPM SATA | |
| | 2 | HDD 320GB 5400RPM SATA HGST HTS545032B9A300 PANTHER B LF | KH.32007.007 |
| | 2 | HDD 320GB 5400RPM SATA SEAGATE WYATT ST9320325AS FW:0001SDM1 | KH.32001.017 |
| | 2 | HDD 320GB 5400RPM SATA TOSHIBA MK3255GSX LIBRA LF F/W:FG010J | KH.32004.002 |

| Category | No. | Part Name and Description | Acer Part No. |
|---|---|--|---------------|
| MEMORY | 1 | SODIMM 2GB DDRIII 1066MHZ SAMSUNG M471B5673DZ1-CF8 | KN.2GB09.004 |
| | 1 | SODIMM 2GB DDRLLL 1066MHZ SAMSUNG M471B5673EH1-CF8 | KN.2GB0B.005 |
| | 1 | SODIMM 2GB DDRLLL 1066MHZ HYNIX HMT125S6AFP8C-G7N0 | KN.2GB0B.012 |
| MICROPHONE | 2 | MICROPHONE | 23.42239.001 |
| | 2 | MICROPHONE | 23.42231.001 |
| | 2 | MICROPHONE | 23.40544.001 |
| | 2 | MICROPHONE | 23.42238.001 |
| MISCELLANEOUS | 1 | LCD SCREW RUBBER | 47.AU401.001 |
| |  | | |
| | 1 | LCD COVER SPONGE LEFT | 47.PAT01.001 |
| | 1 | LCD COVER SPONGE RIGHT | 47.PAT01.002 |
| | 1 | NAME PLATE AS5738Z | 40.PAT01.001 |
| ODD MODULE | 1 | BLU-RAY COMBO MODULE 4X SATA | 6M.PAW01.001 |
|  | 2 | ODD PLDS BD COMBO 12.7MM TRAY DL 4X DS-4E1S LF W/O BEZEL SATA | KO.0040D.002 |
| | 2 | ODD PIONEER BD COMBO 12.7 SATA DL 4X BDC-TD01RS LF W/O BEZEL SATA | KO.0040F.001 |
| | 2 | ODD HLDS BD COMBO 12.7MM TRAY DL 4X CT10 LF W/O BEZEL SATA | KO.00405.002 |
| | 1 | DVD-RW SUPER-MULTI MODULE 8X SATA | 6M.PAW01.002 |
| | 2 | DVD-RW SUPER-MULTI BEZEL | 42.PAW01.004 |
| | 2 | ODD SONY SUPER-MULTI DRIVE 12.7MM TRAY DL 8X AD-7590S LF W/O BEZEL SATA | KU.0080F.004 |
| | 2 | ODD TOSHIBA SUPER-MULTI DRIVE 12.7MM TRAY DL 8X SATA TS-L633B LF W/O BEZEL | KU.0080E.025 |
| | 2 | ODD HLDS SUPER-MULTI DRIVE 12.7MM TRAY DL 8X GT20N LF W/O BEZEL SATA | KU.00801.030 |
| | 2 | ODD SONY SUPER-MULTI DRIVE 12.7MM TRAY DL 8X AD-7580S LF W/O BEZEL SATA | KU.0080D.040 |
| | 2 | ODD PLDS SUPER-MULTI DRIVE 12.7MM TRAY DL 8X SATA DS-8A3S LF W/O BEZEL | KU.0080E.017 |
| SPEAKER | 2 | SPEAKER ON UPPER CASE | 23.40543.001 |
| | 2 | SPEAKER ON UPPER CASE | 23.40535.001 |
| | 2 | SPEAKER ON UPPER CASE | 23.40542.001 |
| | 2 | SPEAKER ON LOWER CASE | 23.40536.001 |
| | 2 | SPEAKER ON LOWER CASE | 23.40539.001 |
| SCREWS | 1 | ISO M2.5XL6(H=0.7~0.8MM) | 86.00E12.536 |
| | 1 | SCREW M2.5XL8 NYLOK CR3+ | 86.00E34.738 |
| | 1 | SCREW M2.5XL10 | 86.1Z533.100 |
| | 1 | SCREW M2XL3 | 86.9A522.3R0 |
| | 1 | SCREW M2XL4 WAFER NI | 86.9A552.4R0 |
| | 1 | SCREW MACH WAFER M3XL4 NI | 86.9A554.4R0 |

| Category | No. | Part Name | Acer Part No. |
|---|---|--|--------------------------------------|
| CABLES | 1 | POWER CORD 10A 250V 3PIN SWISS BK | 27.01518.581 |
| | 1 | POWER CORD 10A 250V ARGENTINE | 27.01518.0U1 |
| | 1 | POWER CORD 10A 125V US | 27.01518.641 |
| | 1 | POWER CORD 10A 125V 3PIN US BK | 27.01518.521 |
| | 1 | POWER CORD 7A 250V 2PIN KOREAN | 27.01518.531 |
| | 1 | POWER CORD 7A 125V 2PIN JAPAN | 27.01518.551 |
| | 1 | POWER CORD 10A 3PIN BK DENMARK | 27.01518.671 |
| | 1 | POWER CORD 10A 250V 3PIN DENMARK BK | 27.01518.561 |
| | 1 | POWER CORD 10A 250V 3PIN BK SOUTH AFRICA | 27.01518.681 |
| | 1 | POWER CORD 16A 250V SOUTH AFRICA BK | 27.01518.571 |
| | 1 | POWER CORD 10A 250V 3PIN CHINA | 27.01518.701 |
| | 1 | POWER CORD 10A 250V 3PIN CHINA BK | 27.01518.591 |
| | 1 | POWER CORD 250V 3PIN EUR BK | 27.01518.731 |
| | 1 | POWER CABLE 16A 250V 3PIN EUR BK | 27.01518.601 |
| | 1 | POWER CORD 10A 250V 3PIN ITALY | 27.01518.711 |
| | 1 | POWER CORD 10A 250V 3PIN ITALY BK | 27.01518.611 |
| | 1 | POWER CORD 2.5A 250V AUSTRALIA | 27.01518.621 |
| | 1 | POWER CORD 2.5A 250V SOUTH AFRICA BK (INDIA) | 27.01518.721 |
| | 1 | POWER CORD 10A 250V SOUTH AFRICA BK (INDIA) | 27.01518.631 |
| | 1 | POWER CORD 7A 125V 2PIN JAPAN BK | 27.01518.661 |
| | 1 | POWER CORD 250V 10A 3PIN ISRAEL | 27.01518.761 |
| | 1 | POWER CORD 10A 250V 1.8M BRAZIL BLK | 27.01518.A41 |
| | 1 | POWER CORD ACA / ACNZ | 27.03218.051 |
| | 1 | POWER CORD 7.5A 250V 3P AUSTRALIA BK | 27.03218.021 |
| | 1 | POWER CODE 7A 125V 2PIN JAPAN | 27.03518.161 |
| | 1 | TOUCHPAD CABLE | 50.4CG03.011 |
| | 1 | TOUCHPAD CABLE | 50.4CG03.001 |
| | 1 | USB BOARD CABLE | 50.4CG05.021 |
| | 1 | USB BOARD CABLE | 50.4CG05.001 |
| | 1 | USB BOARD CABLE | 50.4CG05.011 |
| CAMERA  | 2 | CAMERA 0.3M CHICONY CNF701721004973L | 56.18012.094 |
| |  | 2 | CAMERA 0.3M SUYIN CN0314-SN30-OV03-5 |
| CASE/COVER/BRACKET ASSEMBLY  | 2 | BLUE-RAY COMBO BEZEL | 42.PAW01.005 |
| | 2 | DVD-RW SUPER-MULTI BEZEL | 42.PAW01.004 |
| | 2 | LCD BEZEL 15.6" W/CAMERA HOLE | 60.PAW01.004 |
| | 2 | LCD BRACKET W/HINGE RIGHT | 34.4K808.021 |
| | 2 | LCD BRACKET W/HINGE RIGHT | 34.4K808.001 |
| | 2 | LCD BRACKET W/HINGE RIGHT | 34.4K808.011 |

| Category | No. | Part Name | Acer Part No. |
|--|---|---|--|
| KEYBOARD | 1 | KEYBOARD 104KEYS NSK-ALA0J AC7T JV50 INTERNAL 17 STANDARD BLACK TEXTURE FRENCH CANADIAN | TBD |
| | 1 | KEYBOARD 104KEYS NSK-ALA0J AC7T JV50 INTERNAL 17 STANDARD BLACK TEXTURE NORWEGIAN | KB.I170A.046 |
| | 1 | KEYBOARD 104KEYS NSK-ALA0J AC7T JV50 INTERNAL 17 STANDARD BLACK TEXTURE HUNGARIAN | KB.I170A.042 |
| | 1 | KEYBOARD 104KEYS NSK-ALA0J AC7T JV50 INTERNAL 17 STANDARD BLACK TEXTURE SPANISH | KB.I170A.050 |
| | 1 | KEYBOARD 104KEYS NSK-ALA0J AC7T JV50 INTERNAL 17 STANDARD BLACK TEXTURE TURKISH | KB.I170A.054 |
| | 1 | KEYBOARD 104KEYS NSK-ALA0J AC7T JV50 INTERNAL 17 STANDARD BLACK TEXTURE NORDIC | KB.I170A.045 |
| | 1 | KEYBOARD 104KEYS NSK-ALA0J AC7T JV50 INTERNAL 17 STANDARD BLACK TEXTURE FRENCH ARABIC | KB.I170A.038 |
| | 1 | KEYBOARD 104KEYS NSK-ALA0J AC7T JV50 INTERNAL 17 STANDARD BLACK TEXTURE FRENCH CANADIAN | KB.I170A.058 |
| | 1 | KEYBOARD 104KEYS NSK-ALA0J AC7T JV50 INTERNAL 17 STANDARD BLACK TEXTURE CZECH/SLOVAK | KB.I170A.035 |
| | 1 | KEYBOARD 104KEYS NSK-ALA0J AC7T JV50 INTERNAL 17 STANDARD BLACK TEXTURE SLOVAK | TBD |
| | 1 | KEYBOARD 104KEYS NSK-ALA0J AC7T JV50 INTERNAL 17 STANDARD BLACK TEXTURE BLANK | TBD |
| LCD  | 1 | LED LCD MODULE 15.6" WXGA GLARE W/ ANTENNA*2&CAMERA (NONE 3G) | 6M.PAW01.003 |
| | 2 | LED LCD 15.6" WXGA GLARE LG LP156WH2-TLE1 LF 220NIT 8MS 400:1 | LK.15606.003 |
| | 2 | LED LCD 15.6" WXGA GLARE AUO B156XW02 V0 LF 220NIT 8MS 500:1 | LK.15608.002 |
| | 2 | LED LCD 15.6" WXGA GLARE CMO N156B6-L04 LF 220NIT 8MS 500:1 | LK.15605.003 |
| | 2 | LED LCD 15.6" WXGA GLARE SAMSUNG LTN156AT02-A01 LF 220NIT 8MS 500:1 | LK.1560D.005 |
| | 1 | LED LCD MODULE 15.6" WXGA GLARE W/CAMERA W/O ANTENNA (NONE 3G) | 6M.PAW01.004 |
| | 2 | LED LCD 15.6" WXGA GLARE CMO N156B6-L04 LF 220NIT 8MS 500:1 | LK.15608.002 |
| | 2 | LED LCD 15.6" WXGA GLARE SAMSUNG LTN156AT02-A01 LF 220NIT 8MS 500:1 | LK.1560D.005 |
| | 2 | LED LCD 15.6" WXGA GLARE AUO B156XW02 V0 LF 220NIT 8MS 500:1 | LK.15606.003 |
| | MAINBOARD  | 1 | MAINBOARD JV50_PU UMA RS780MN SB700 LF W/RTC BATTERY&MODEM BOARD |
| MEMORY  | 1 | SODIMM 1GB DDRII667 MICRON MT8HTF12864HDY-667G1 LF | KN.1GB0G.022 |
| | 1 | SODIMM 1GB DDRII667 SAMSUNG M470T2864EH3-CE6 LF | KN.1GB04.010 |
| | 1 | SODIMM 1GB DDRII667 NANYA NT1GT64UH8D0FN-3C LF (0.07U) | KN.1GB0B.027 |
| | 1 | SODIMM 1GB DDRII667 HYNIX HMP112S6EFR6C-Y5 LF | KN.1GB03.026 |
| | 1 | SODIMM 2GB DDRII667 SAMSUNG M470T5663EH3-CE6 LF | KN.2GB0G.012 |
| | 1 | SODIMM 2GB DDRII667 NANYA NT2GT64U8HD0BN-3C LF (0.07U) | KN.2GB0B.011 |
| | 1 | SODIMM 2GB DDRII667 MICRON MT16HTF25664HY-667G1 LF | KN.2GB03.011 |
| | 1 | SODIMM 2GB DDRII667 HYNIX HMP125S6EFR8C-Y5 LF | KN.2GB04.010 |

| Category | No. | Part Name | Acer Part No. | |
|---|---|--------------------------------------|--|--------------|
| CABLES | 1 | POWER CORD 10A 250V 1.8M BRAZIL BLK | 27.01518.A41 | |
| | 1 | POWER CORD ACA / ACNZ | 27.03218.051 | |
| | 1 | POWER CORD 7.5A 250V 3P AUSTRALIA BK | 27.03218.021 | |
| | 1 | POWER CODE 7A 125V 2PIN JAPAN | 27.03518.161 | |
| | 1 | USB BOARD CABLE | 50.4CG05.021 | |
| | 1 | USB BOARD CABLE | 50.4CG05.001 | |
| | 1 | USB BOARD CABLE | 50.4CG05.011 | |
| | 1 | TOUCHPAD CABLE | 50.4CG03.011 | |
| | 1 | TOUCHPAD CABLE | 50.4CG03.001 | |
| CAMERA | 2 | CAMERA 0.3M CHICONY CNF701721004973L | 56.18012.094 | |
| | 2 | CAMERA 0.3M SUYIN CN0314-SN30-OV03-5 | 56.18007.094 | |
| CASE/COVER/BRACKET ASSEMBLY  | 2 | BLUE-RAY COMBO BEZEL | 42.PAW01.005 | |
| | 2 | DVD-RW SUPER-MULTI BEZEL | 42.PAW01.004 | |
| | 2 | HDD BRACKET | 33.PAW01.003 | |
| | 2 | LCD BEZEL 15.6" W/CAMERA HOLE | 60.PAW01.004 | |
| |  | 2 | LED LCD BRACKET RIGHT W/HINGE | 34.4CG12.001 |
| | | 2 | LED LCD BRACKET RIGHT W/HINGE | 34.4CG12.011 |
| | | 2 | LED LCD BRACKET RIGHT W/HINGE | 34.4CG12.021 |
| |  | 2 | LED LCD BRACKET LEFT W/HINGE | 34.4CG13.001 |
| | | 2 | LED LCD BRACKET LEFT W/HINGE | 34.4CG13.011 |
| | | 2 | LED LCD BRACKET LEFT W/HINGE | 34.4CG13.021 |
| | | 2 | LED LCD COVER IMR 15.6" W/ANTENNA*2 & LOGO NONE 3G | 60.PAW01.005 |
| | | 2 | LED LCD COVER IMR 15.6" W/LOGO W/O ANTENNA&3G | 60.PAW01.006 |
| | | 1 | LOWER CASE W/MODEM CABLE&SPEAKER | 60.PAW01.001 |
| |  | 1 | MIDDLE COVER W/BLUETOOTH BUTTON WITH BLUE LIGHT NONE 3G BUTTON | 42.PAW01.001 |
| |  | 2 | OPTICAL BRACKET | 33.PAW01.002 |
|  | 1 | SD DUMMY CARD | 42.TKJ01.001 | |
|  | 1 | TOUCHPAD BRACKET | 33.PAW01.001 | |
|  | 1 | WIRELESS LAN COVER | 42.PAW01.003 | |

| Category | No. | Part Name | Acer Part No. |
|---|-----|--|---------------|
| ODD | 2 | ODD SONY SUPER-MULTI DRIVE 12.7MM TRAY DL 8X AD-7580S LF W/O BEZEL SATA | KU.0080F.004 |
| | 2 | ODD TOSHIBA SUPER-MULTI DRIVE 12.7MM TRAY DL 8X SATA TS-L633B LF W/O BEZEL | KU.0080E.017 |
| | 2 | ODD SONY SUPER-MULTI DRIVE 12.7MM TRAY DL 8X AD-7590S LF W/O BEZEL SATA | KU.00801.030 |
| | 2 | ODD HLDS SUPER-MULTI DRIVE 12.7MM TRAY DL 8X GT20N LF W/O BEZEL SATA | KU.0080E.025 |
| | 2 | ODD PLDS SUPER-MULTI DRIVE 12.7MM TRAY DL 8X SATA DS-8A3S LF W/O BEZEL | KU.0080D.040 |
| MEMORY  | 1 | SODIMM 1GB DDRII667 NANYA NT1GT64UH8D0FN-3C LF (0.07U) | KN.1GB0G.022 |
| | 1 | SODIMM 1GB DDRII667 MICRON MT8HTF12864HDY-667G1 LF | KN.1GB03.026 |
| | 1 | SODIMM 1GB DDRII667 SAMSUNG M470T2864EH3-CE6 LF | KN.1GB04.010 |
| | 1 | SODIMM 1GB DDRII667 HYNIX HMP112S6EFR6C-Y5 LF | KN.1GB0B.027 |
| | 1 | SODIMM 2GB DDRII667 SAMSUNG M470T5663EH3-CE6 LF | KN.2GB0G.012 |
| | 1 | SODIMM 2GB DDRII667 NANYA NT2GT64U8HD0BN-3C LF (0.07U) | KN.2GB0B.011 |
| | 1 | SODIMM 2GB DDRII667 MICRON MT16HTF25664HY-667G1 LF | KN.2GB03.011 |
| | 1 | SODIMM 2GB DDRII667 HYNIX HMP125S6EFR8C-Y5 LF | KN.2GB04.010 |
| MISCELLANEOUS  | 1 | LCD SCREW RUBBER | 47.AU401.001 |
| | 1 | NAME PLATE AS5536G | 40.PB101.001 |
| SCREWS | 1 | SCREW | 86.00E12.536 |
| | 1 | SCREW | 86.00E34.738 |
| | 1 | SCREW | 86.1Z533.100 |
| | 1 | SCREW | 86.9A522.3R0 |
| | 1 | SCREW | 86.9A552.4R0 |
| | 1 | SCREW | 86.9A554.4R0 |
| SPEAKER | 2 | SPEAKER ON LOWER CASE | 23.40536.001 |
| | 2 | SPEAKER ON LOWER CASE | 23.40539.001 |
| | 2 | SPEAKER ON UPPER CASE | 23.40543.001 |
| | 2 | SPEAKER ON UPPER CASE | 23.40535.001 |
| | 2 | SPEAKER ON UPPER CASE | 23.40542.001 |

| Model | RO | Country | Acer Part No | Description | CPU | LCD | VGA Chip | VRAM 1 | Memory 1/ Memory 2 | HDD 1(GB) | ODD | WLAN | WLAN1 | Bluetooth | Finger- print | Camera |
|---------------------------|----------|-------------------|--------------|---|--------------|---------------|-------------|----------------------------|-----------------------|-------------|--------|---------------------|---------------------|-----------|------------------|---------|
| AS5738ZG - 423G25Mn | EME A | Poland | LX.PAT0X.004 | AS5738ZG-423G25Mn VHP32ATPL1 MC N10MGE1512Cbb 2G+1G/250/6L/ CB_bgn_0.3D_PL11 | PMDT420 0 | NLED15.6WXGAG | N10MG E1 | 512M- DDR2(6 4*16*4) | SO2GBIII10 | N250GB5.4KS | NSM8XS | 3rd WiFi 1x2 BGN | 3rd WiFi 1x2 BGN | N | N | 0.3M DV |
| AS5738ZG - 423G25Mn | EME A | Middle East | LX.PAT0X.011 | AS5738ZG-423G25Mn EM VHP32ATME6 MC N10MGE1512Cbb 2G+1G/250/6L/ CB_bgn_0.3D_EN15 | PMDT420 0 | NLED15.6WXGAG | N10MG E1 | 512M- DDR2(6 4*16*4) | SO2GBIII10 | N250GB5.4KS | NSM8XS | 3rd WiFi 1x2 BGN | 3rd WiFi 1x2 BGN | N | N | 0.3M DV |
| AS5738ZG - 423G25Mn | EME A | Eastern Europe | LX.PAT0X.024 | AS5738ZG-423G25Mn VHP32ATEU5 MC N10MGE1512Cbb 2G+1G/250/6L/ CB_bgn_0.3D_RO12 | PMDT420 0 | NLED15.6WXGAG | N10MG E1 | 512M- DDR2(6 4*16*4) | SO2GBIII10 | N250GB5.4KS | NSM8XS | 3rd WiFi 1x2 BGN | 3rd WiFi 1x2 BGN | N | N | 0.3M DV |
| AS5738ZG - 423G25Mn | EME A | Greece | LX.PAT0X.015 | AS5738ZG-423G25Mn VHP32ATGR1 MC N10MGE1512Cbb 2G+1G/250/6L/ CB_bgn_0.3D_EL32 | PMDT420 0 | NLED15.6WXGAG | N10MG E1 | 512M- DDR2(6 4*16*4) | SO2GBIII10 | N250GB5.4KS | NSM8XS | 3rd WiFi 1x2 BGN | 3rd WiFi 1x2 BGN | N | N | 0.3M DV |
| AS5738ZG - 423G25Mn | EME A | Eastern Europe | LX.PAT0X.023 | AS5738ZG-423G25Mn VHP32ATEU7 MC N10MGE1512Cbb 2G+1G/250/6L/ CB_bgn_0.3D_ENR2 | PMDT420 0 | NLED15.6WXGAG | N10MG E1 | 512M- DDR2(6 4*16*4) | SO2GBIII10 | N250GB5.4KS | NSM8XS | 3rd WiFi 1x2 BGN | 3rd WiFi 1x2 BGN | N | N | 0.3M DV |
| AS5738ZG - 423G25Mn | EME A | Eastern Europe | LX.PAT0X.025 | AS5738ZG-423G25Mn VHP32ATEU7 MC N10MGE1512Cbb 2G+1G/250/6L/ CB_bgn_0.3D_SL11 | PMDT420 0 | NLED15.6WXGAG | N10MG E1 | 512M- DDR2(6 4*16*4) | SO2GBIII10 | N250GB5.4KS | NSM8XS | 3rd WiFi 1x2 BGN | 3rd WiFi 1x2 BGN | N | N | 0.3M DV |
| AS5738ZG - 423G25Mn | EME A | Eastern Europe | LX.PAT0X.021 | AS5738ZG-423G25Mn VHP32ATEU3 MC N10MGE1512Cbb 2G+1G/250/6L/ CB_bgn_0.3D_RU23 | PMDT420 0 | NLED15.6WXGAG | N10MG E1 | 512M- DDR2(6 4*16*4) | SO2GBIII10 | N250GB5.4KS | NSM8XS | 3rd WiFi 1x2 BGN | 3rd WiFi 1x2 BGN | N | N | 0.3M DV |
| AS5738ZG - 423G25Mn | EME A | Hungary | LX.PAT0X.018 | AS5738ZG-423G25Mn VHP32ATHU1 MC N10MGE1512Cbb 2G+1G/250/6L/ CB_bgn_0.3D_HU13 | PMDT420 0 | NLED15.6WXGAG | N10MG E1 | 512M- DDR2(6 4*16*4) | SO2GBIII10 | N250GB5.4KS | NSM8XS | 3rd WiFi 1x2 BGN | 3rd WiFi 1x2 BGN | N | N | 0.3M DV |
| AS5738ZG - 423G25Mn | EME A | Finland | LX.PAT0X.019 | AS5738ZG-423G25Mn VHP32ATFI2 MC N10MGE1512Cbb 2G+1G/250/6L/ CB_bgn_0.3D_FI11 | PMDT420 0 | NLED15.6WXGAG | N10MG E1 | 512M- DDR2(6 4*16*4) | SO2GBIII10 | N250GB5.4KS | NSM8XS | 3rd WiFi 1x2 BGN | 3rd WiFi 1x2 BGN | N | N | 0.3M DV |
| AS5738ZG - 423G25Mn | EME A | Eastern Europe | LX.PAT0X.020 | AS5738ZG-423G25Mn VHP32ATEU4 MC N10MGE1512Cbb 2G+1G/250/6L/ CB_bgn_0.3D_SV22 | PMDT420 0 | NLED15.6WXGAG | N10MG E1 | 512M- DDR2(6 4*16*4) | SO2GBIII10 | N250GB5.4KS | NSM8XS | 3rd WiFi 1x2 BGN | 3rd WiFi 1x2 BGN | N | N | 0.3M DV |
| AS5738ZG - 423G25Mn | EME A | Portugal | LX.PAT0X.017 | AS5738ZG-423G25Mn VHP32ATPT1 MC N10MGE1512Cbb 2G+1G/250/6L/ CB_bgn_0.3D_PT12 | PMDT420 0 | NLED15.6WXGAG | N10MG E1 | 512M- DDR2(6 4*16*4) | SO2GBIII10 | N250GB5.4KS | NSM8XS | 3rd WiFi 1x2 BGN | 3rd WiFi 1x2 BGN | N | N | 0.3M DV |
| AS5738ZG - 423G25Mn | EME A | Spain | LX.PAT0X.016 | AS5738ZG-423G25Mn VHP32ATES1 MC N10MGE1512Cbb 2G+1G/250/6L/ CB_bgn_0.3D_ES22 | PMDT420 0 | NLED15.6WXGAG | N10MG E1 | 512M- DDR2(6 4*16*4) | SO2GBIII10 | N250GB5.4KS | NSM8XS | 3rd WiFi 1x2 BGN | 3rd WiFi 1x2 BGN | N | N | 0.3M DV |
| AS5738ZG - 423G25Mn | EME A | Czech | LX.PAT0X.026 | AS5738ZG-423G25Mn VHP32ATCZ2 MC N10MGE1512Cbb 2G+1G/250/6L/ CB_bgn_0.3D_SK12 | PMDT420 0 | NLED15.6WXGAG | N10MG E1 | 512M- DDR2(6 4*16*4) | SO2GBIII10 | N250GB5.4KS | NSM8XS | 3rd WiFi 1x2 BGN | 3rd WiFi 1x2 BGN | N | N | 0.3M DV |
| AS5738ZG - 423G25Mn | EME A | Eastern Europe | LX.PAT0X.022 | AS5738ZG-423G25Mn VHP32ATEU5 MC N10MGE1512Cbb 2G+1G/250/6L/ CB_bgn_0.3D_PL13 | PMDT420 0 | NLED15.6WXGAG | N10MG E1 | 512M- DDR2(6 4*16*4) | SO2GBIII10 | N250GB5.4KS | NSM8XS | 3rd WiFi 1x2 BGN | 3rd WiFi 1x2 BGN | N | N | 0.3M DV |
| AS5738ZG - 423G25Mn | EME A | Belgium | LX.PAT0X.034 | AS5738ZG-423G25Mn VHP32ATBE1 MC N10MGE1512Cbb 2G+1G/250/6L/ CB_bgn_0.3D_NL13 | PMDT420 0 | NLED15.6WXGAG | N10MG E1 | 512M- DDR2(6 4*16*4) | SO2GBIII10 | N250GB5.4KS | NSM8XS | 3rd WiFi 1x2 BGN | 3rd WiFi 1x2 BGN | N | N | 0.3M DV |
| AS5738ZG - 423G25Mn | EME A | Norway | LX.PAT0X.031 | AS5738ZG-423G25Mn VHP32ATNO1 MC N10MGE1512Cbb 2G+1G/250/6L/ CB_bgn_0.3D_NO12 | PMDT420 0 | NLED15.6WXGAG | N10MG E1 | 512M- DDR2(6 4*16*4) | SO2GBIII10 | N250GB5.4KS | NSM8XS | 3rd WiFi 1x2 BGN | 3rd WiFi 1x2 BGN | N | N | 0.3M DV |
| AS5738ZG - 423G25Mn | EME A | Norway | LX.PAT0X.030 | AS5738ZG-423G25Mn VHP32ATNO3 MC N10MGE1512Cbb 2G+1G/250/6L/ CB_bgn_0.3D_ENS3 | PMDT420 0 | NLED15.6WXGAG | N10MG E1 | 512M- DDR2(6 4*16*4) | SO2GBIII10 | N250GB5.4KS | NSM8XS | 3rd WiFi 1x2 BGN | 3rd WiFi 1x2 BGN | N | N | 0.3M DV |
| AS5738ZG - 423G25Mn | EME A | Denmark | LX.PAT0X.037 | AS5738ZG-423G25Mn VHP32ATDK2 MC N10MGE1512Cbb 2G+1G/250/6L/ CB_bgn_0.3D_ENS3 | PMDT420 0 | NLED15.6WXGAG | N10MG E1 | 512M- DDR2(6 4*16*4) | SO2GBIII10 | N250GB5.4KS | NSM8XS | 3rd WiFi 1x2 BGN | 3rd WiFi 1x2 BGN | N | N | 0.3M DV |

| Model | RO | Country | Acer Part No | Description | CPU | LCD | VGA Chip | VRAM 1 | Memory 1/ Memory 2 | HDD 1(GB) | ODD | WLAN | WLAN1 | Bluetooth | Finger- print | Camera |
|-----------------|-------|----------------|--------------|--|----------|---------------|----------|--------|-----------------------|-------------|--------|-----------|------------|-----------|------------------|---------|
| AS5738-643G25Mi | EME A | Ukraine | LX.PAJ0X.002 | AS5738-643G25Mi VHP32ATUK1 MC UMACbb 2G+1G/250/6L/CB_abg_0.3D_RU11 | C2DT6400 | NLED15.6WXGAG | UMA | N | SO2GBIII10 | N250GB5.4KS | NSM8XS | SP1x2MM W | SP1x2MA BG | N | N | 0.3M DV |
| AS5738-643G25Mn | EME A | Italy | LX.PAJ0X.039 | AS5738-643G25Mn VHP32ATIT1 MC UMACbb 2G+1G/250/6L/CB_n2_0.3D_IT12 | C2DT6400 | NLED15.6WXGAG | UMA | N | SO2GBIII10 | N250GB5.4KS | NSM8XS | SP1x2MM W | SP1x2MM W | N | N | 0.3M DV |
| AS5738-643G25Mn | EME A | Greece | LX.PAJ0X.038 | AS5738-643G25Mn VHP32ATGR1 MC UMACbb 2G+1G/250/6L/CB_n2_0.3D_EL32 | C2DT6400 | NLED15.6WXGAG | UMA | N | SO2GBIII10 | N250GB5.4KS | NSM8XS | SP1x2MM W | SP1x2MM W | N | N | 0.3M DV |
| AS5738-643G25Mn | EME A | Israel | LX.PAJ0X.008 | AS5738-643G25Mn VHP32ATIL1 MC UMACbb 2G+1G/250/6L/CB_n2_0.3D_HE12 | C2DT6400 | NLED15.6WXGAG | UMA | N | SO2GBIII10 | N250GB5.4KS | NSM8XS | SP1x2MM W | SP1x2MM W | N | N | 0.3M DV |
| AS5738-643G25Mn | EME A | Middle East | LX.PAJ0X.007 | AS5738-643G25Mn EM VHP32ATME9 MC UMACbb 2G+1G/250/6L/CB_n2_0.3D_FR22 | C2DT6400 | NLED15.6WXGAG | UMA | N | SO2GBIII10 | N250GB5.4KS | NSM8XS | SP1x2MM W | SP1x2MM W | N | N | 0.3M DV |
| AS5738-643G25Mn | EME A | Spain | LX.PAJ0X.009 | AS5738-643G25Mn VHP32ATES1 MC UMACbb 2G+1G/250/6L/CB_n2_0.3D_ES22 | C2DT6400 | NLED15.6WXGAG | UMA | N | SO2GBIII10 | N250GB5.4KS | NSM8XS | SP1x2MM W | SP1x2MM W | N | N | 0.3M DV |
| AS5738-643G25Mn | EME A | Hungary | LX.PAJ0X.037 | AS5738-643G25Mn VHP32ATHU1 MC UMACbb 2G+1G/250/6L/CB_n2_0.3D_HU13 | C2DT6400 | NLED15.6WXGAG | UMA | N | SO2GBIII10 | N250GB5.4KS | NSM8XS | SP1x2MM W | SP1x2MM W | N | N | 0.3M DV |
| AS5738-643G25Mn | EME A | Eastern Europe | LX.PAJ0X.012 | AS5738-643G25Mn VHP32ATEU7 MC UMACbb 2G+1G/250/6L/CB_n2_0.3D_ENR2 | C2DT6400 | NLED15.6WXGAG | UMA | N | SO2GBIII10 | N250GB5.4KS | NSM8XS | SP1x2MM W | SP1x2MM W | N | N | 0.3M DV |
| AS5738-643G25Mn | EME A | Eastern Europe | LX.PAJ0X.013 | AS5738-643G25Mn VHP32ATEU5 MC UMACbb 2G+1G/250/6L/CB_n2_0.3D_PL13 | C2DT6400 | NLED15.6WXGAG | UMA | N | SO2GBIII10 | N250GB5.4KS | NSM8XS | SP1x2MM W | SP1x2MM W | N | N | 0.3M DV |
| AS5738-643G25Mn | EME A | Eastern Europe | LX.PAJ0X.011 | AS5738-643G25Mn VHP32ATEU5 MC UMACbb 2G+1G/250/6L/CB_n2_0.3D_RO12 | C2DT6400 | NLED15.6WXGAG | UMA | N | SO2GBIII10 | N250GB5.4KS | NSM8XS | SP1x2MM W | SP1x2MM W | N | N | 0.3M DV |
| AS5738-643G25Mn | EME A | Eastern Europe | LX.PAJ0X.014 | AS5738-643G25Mn VHP32ATEU3 MC UMACbb 2G+1G/250/6L/CB_n2_0.3D_RU23 | C2DT6400 | NLED15.6WXGAG | UMA | N | SO2GBIII10 | N250GB5.4KS | NSM8XS | SP1x2MM W | SP1x2MM W | N | N | 0.3M DV |
| AS5738-643G25Mn | EME A | Portugal | LX.PAJ0X.021 | AS5738-643G25Mn VHP32ATPT1 MC UMACbb 2G+1G/250/6L/CB_n2_0.3D_PT12 | C2DT6400 | NLED15.6WXGAG | UMA | N | SO2GBIII10 | N250GB5.4KS | NSM8XS | SP1x2MM W | SP1x2MM W | N | N | 0.3M DV |
| AS5738-643G25Mn | EME A | Eastern Europe | LX.PAJ0X.015 | AS5738-643G25Mn VHP32ATEU4 MC UMACbb 2G+1G/250/6L/CB_n2_0.3D_SV22 | C2DT6400 | NLED15.6WXGAG | UMA | N | SO2GBIII10 | N250GB5.4KS | NSM8XS | SP1x2MM W | SP1x2MM W | N | N | 0.3M DV |
| AS5738-643G25Mn | EME A | Finland | LX.PAJ0X.016 | AS5738-643G25Mn VHP32ATFI2 MC UMACbb 2G+1G/250/6L/CB_n2_0.3D_FI11 | C2DT6400 | NLED15.6WXGAG | UMA | N | SO2GBIII10 | N250GB5.4KS | NSM8XS | SP1x2MM W | SP1x2MM W | N | N | 0.3M DV |
| AS5738-643G25Mn | EME A | Sweden | LX.PAJ0X.036 | AS5738-643G25Mn VHP32ATSE1 MC UMACbb 2G+1G/250/6L/CB_n2_0.3D_FI13 | C2DT6400 | NLED15.6WXGAG | UMA | N | SO2GBIII10 | N250GB5.4KS | NSM8XS | SP1x2MM W | SP1x2MM W | N | N | 0.3M DV |
| AS5738-643G25Mn | EME A | Austria | LX.PAJ0X.023 | AS5738-643G25Mn VHP32ATAT1 MC UMACbb 2G+1G/250/6L/CB_n2_0.3D_DE11 | C2DT6400 | NLED15.6WXGAG | UMA | N | SO2GBIII10 | N250GB5.4KS | NSM8XS | SP1x2MM W | SP1x2MM W | N | N | 0.3M DV |
| AS5738-643G25Mn | EME A | Czech | LX.PAJ0X.022 | AS5738-643G25Mn VHP32ATCZ2 MC UMACbb 2G+1G/250/6L/CB_n2_0.3D_SK12 | C2DT6400 | NLED15.6WXGAG | UMA | N | SO2GBIII10 | N250GB5.4KS | NSM8XS | SP1x2MM W | SP1x2MM W | N | N | 0.3M DV |
| AS5738-643G25Mi | EME A | Russia | LX.PAJ0X.035 | AS5738-643G25Mi VHP32ATRU1 MC UMACbb 2G+1G/250/6L/CB_abg_0.3D_RU11 | C2DT6400 | NLED15.6WXGAG | UMA | N | SO2GBIII10 | N250GB5.4KS | NSM8XS | SP1x2MM W | SP1x2MA BG | N | N | 0.3M DV |
| AS5738-643G25Mn | EME A | Norway | LX.PAJ0X.024 | AS5738-643G25Mn VHP32ATNO3 MC UMACbb 2G+1G/250/6L/CB_n2_0.3D_ENS3 | C2DT6400 | NLED15.6WXGAG | UMA | N | SO2GBIII10 | N250GB5.4KS | NSM8XS | SP1x2MM W | SP1x2MM W | N | N | 0.3M DV |
| AS5738-643G25Mn | EME A | Belgium | LX.PAJ0X.032 | AS5738-643G25Mn VHP32ATBE1 MC UMACbb 2G+1G/250/6L/CB_n2_0.3D_NL13 | C2DT6400 | NLED15.6WXGAG | UMA | N | SO2GBIII10 | N250GB5.4KS | NSM8XS | SP1x2MM W | SP1x2MM W | N | N | 0.3M DV |
| AS5738-643G25Mn | EME A | Eastern Europe | LX.PAJ0X.010 | AS5738-643G25Mn VHP32ATEU7 MC UMACbb 2G+1G/250/6L/CB_n2_0.3D_SL11 | C2DT6400 | NLED15.6WXGAG | UMA | N | SO2GBIII10 | N250GB5.4KS | NSM8XS | SP1x2MM W | SP1x2MM W | N | N | 0.3M DV |
| AS5738-643G25Mn | EME A | Luxembourg | LX.PAJ0X.025 | AS5738-643G25Mn VHP32ATLU3 MC UMACbb 2G+1G/250/6L/CB_n2_0.3D_IT41 | C2DT6400 | NLED15.6WXGAG | UMA | N | SO2GBIII10 | N250GB5.4KS | NSM8XS | SP1x2MM W | SP1x2MM W | N | N | 0.3M DV |
| AS5738-643G25Mn | EME A | Norway | LX.PAJ0X.034 | AS5738-643G25Mn VHP32ATNO1 MC UMACbb 2G+1G/250/6L/CB_n2_0.3D_NO12 | C2DT6400 | NLED15.6WXGAG | UMA | N | SO2GBIII10 | N250GB5.4KS | NSM8XS | SP1x2MM W | SP1x2MM W | N | N | 0.3M DV |
| AS5738-643G25Mn | EME A | Holland | LX.PAJ0X.033 | AS5738-643G25Mn VHP32ATNL1 MC UMACbb 2G+1G/250/6L/CB_n2_0.3D_NL12 | C2DT6400 | NLED15.6WXGAG | UMA | N | SO2GBIII10 | N250GB5.4KS | NSM8XS | SP1x2MM W | SP1x2MM W | N | N | 0.3M DV |
| AS5738-643G25Mn | EME A | Germany | LX.PAJ0X.031 | AS5738-643G25Mn VHP32ATDE1 MC UMACbb 2G+1G/250/6L/CB_n2_0.3D_DE13 | C2DT6400 | NLED15.6WXGAG | UMA | N | SO2GBIII10 | N250GB5.4KS | NSM8XS | SP1x2MM W | SP1x2MM W | N | N | 0.3M DV |

| Model | RO | Country | Acer Part No | Description | CPU | LCD | VGA Chip | VRAM 1 | Memory 1 | Memory 2 | HDD 1(GB) | ODD | Wireless LAN | Wireless LAN1 | Blue-tooth | Finger Print |
|-----------------|------|-----------------------|--------------|---|--------|----------------|----------|--------|----------|----------|-------------|--------|------------------|------------------|------------|--------------|
| AS5536-724G25Mn | EMEA | UK | LX.PAW0X.067 | AS5536-724G25Mn VHP32ATGB1 MC UMACbb 2*2G/250/6L/5R/ CB_bgn_0.3D_EN14 | ATRM72 | NLED15.6 WXGAG | UMA | N | SO2GBII6 | SO2GBII6 | N250GB5.4KS | NSM8XS | 3rd WiFi 1x2 BGN | 3rd WiFi 1x2 BGN | N | N |
| AS5536-724G32Mn | EMEA | UK | LX.PAW0X.066 | AS5536-724G32Mn VHP32ATGB1 MC UMACbb 2*2G/320/6L/5R/ CB_bgn_0.3D_EN14 | ATRM72 | NLED15.6 WXGAG | UMA | N | SO2GBII6 | SO2GBII6 | N320GB5.4KS | NSM8XS | 3rd WiFi 1x2 BGN | 3rd WiFi 1x2 BGN | N | N |
| AS5536-642G25Mn | PA | ACLA-Portuguese | LX.PAW0X.065 | AS5536-642G25Mn EM VHP32ATXC2 MC UMACbb 2*1G/250/6L/5R/ CB_bgn_0.3D_XC21 | AAQL64 | NLED15.6 WXGAG | UMA | N | SO1GBII6 | SO1GBII6 | N250GB5.4KS | NSM8XS | 3rd WiFi 1x2 BGN | 3rd WiFi 1x2 BGN | N | N |
| AS5536-642G25Mn | PA | ACLA-Spanish | LX.PAW0X.064 | AS5536-642G25Mn EM VHP32ATEA3 MC UMACbb 2*1G/250/6L/5R/ CB_bgn_0.3D_ES22 | AAQL64 | NLED15.6 WXGAG | UMA | N | SO1GBII6 | SO1GBII6 | N250GB5.4KS | NSM8XS | 3rd WiFi 1x2 BGN | 3rd WiFi 1x2 BGN | N | N |
| AS5536-723G32Mn | PA | ACLA-Spanish | LX.PAW0X.067 | AS5536-723G32Mn EM VHP32ATEA1 MC UMACbb 2G+1G/320/6L/5R/ CB_bgn_0.3D_ES22 | ATRM72 | NLED15.6 WXGAG | UMA | N | SO2GBII6 | SO1GBII6 | N320GB5.4KS | NSM8XS | 3rd WiFi 1x2 BGN | 3rd WiFi 1x2 BGN | N | N |
| AS5536-723G32Mn | PA | ACLA-Spanish | LX.PAW0X.068 | AS5536-723G32Mn EM VHP32ATEA3 MC UMACbb 2G+1G/320/6L/5R/ CB_bgn_0.3D_ES22 | ATRM72 | NLED15.6 WXGAG | UMA | N | SO2GBII6 | SO1GBII6 | N320GB5.4KS | NSM8XS | 3rd WiFi 1x2 BGN | 3rd WiFi 1x2 BGN | N | N |
| AS5536-643G25Mn | PA | ACLA-Portuguese | LX.PAW0X.061 | AS5536-643G25Mn EM VHP32ATXC2 MC UMACbb 2G+1G/250/6L/5R/ CB_bgn_0.3D_XC21 | AAQL64 | NLED15.6 WXGAG | UMA | N | SO2GBII6 | SO1GBII6 | N250GB5.4KS | NSM8XS | 3rd WiFi 1x2 BGN | 3rd WiFi 1x2 BGN | N | N |
| AS5536-643G25Mn | PA | ACLA-Spanish | LX.PAW0X.062 | AS5536-643G25Mn EM VHP32ATEA3 MC UMACbb 2G+1G/250/6L/5R/ CB_bgn_0.3D_ES22 | AAQL64 | NLED15.6 WXGAG | UMA | N | SO2GBII6 | SO1GBII6 | N250GB5.4KS | NSM8XS | 3rd WiFi 1x2 BGN | 3rd WiFi 1x2 BGN | N | N |
| AS5536-723G32Mn | PA | ACLA-Portuguese | LX.PAW0X.069 | AS5536-723G32Mn EM VHP32ATXC2 MC UMACbb 2G+1G/320/6L/5R/ CB_bgn_0.3D_XC21 | ATRM72 | NLED15.6 WXGAG | UMA | N | SO2GBII6 | SO1GBII6 | N320GB5.4KS | NSM8XS | 3rd WiFi 1x2 BGN | 3rd WiFi 1x2 BGN | N | N |
| AS5536-643G25Mn | PA | ACLA-Spanish | LX.PAW0X.060 | AS5536-643G25Mn EM VHP32ATEA1 MC UMACbb 2G+1G/250/6L/5R/ CB_bgn_0.3D_ES22 | AAQL64 | NLED15.6 WXGAG | UMA | N | SO2GBII6 | SO1GBII6 | N250GB5.4KS | NSM8XS | 3rd WiFi 1x2 BGN | 3rd WiFi 1x2 BGN | N | N |
| AS5536-642G25Mn | PA | ACLA-Spanish | LX.PAW0X.063 | AS5536-642G25Mn EM VHP32ATEA1 MC UMACbb 2*1G/250/6L/5R/ CB_bgn_0.3D_ES22 | AAQL64 | NLED15.6 WXGAG | UMA | N | SO1GBII6 | SO1GBII6 | N250GB5.4KS | NSM8XS | 3rd WiFi 1x2 BGN | 3rd WiFi 1x2 BGN | N | N |
| AS5536-643G32M | PA | USA | LX.PAW0X.066 | AS5536-643G32MVHP32ATUS1 MC UMACbbM 2G+1G/320/6L/5R/CB_0.3D_EN32 | AAQL64 | NLED15.6 WXGAG | UMA | N | SO2GBII6 | SO1GBII6 | N320GB5.4KS | NSM8XS | N | N | N | N |
| AS5536-642G25Mn | AAP | Australia/New Zealand | LX.PAW0X.065 | AS5536-642G25Mn VHP32ATAU1 MC UMACbbM 1*2G/250/6L/5R/ CB_bgn_0.3D_EN12 | AAQL64 | NLED15.6 WXGAG | UMA | N | SO2GBII6 | N | N250GB5.4KS | NSM8XS | 3rd WiFi 1x2 BGN | 3rd WiFi 1x2 BGN | N | N |
| AS5536-642G25Mn | AAP | Japan | LX.PAW0X.064 | AS5536-642G25Mn VHP32APJP1 MC UMACbbM 1*2G/250/6L/5R/ CB_bgn_0.3D_JA11 | AAQL64 | NLED15.6 WXGAG | UMA | N | SO2GBII6 | N | N250GB5.4KS | NSM8XS | 3rd WiFi 1x2 BGN | 3rd WiFi 1x2 BGN | N | N |

| Model | RO | Country | Acer Part No | Description | CPU | Memory 1/ Memory 2 | HDD 1(GB) | Wireless LAN1 | Bluetooth | Finger Print | NB Chipset | K/B | Power Cord |
|-------------------|------|-------------------|--------------|--|----------|-----------------------|-------------|------------------|-----------|--------------|---------------|--------------------------|--------------------|
| AS5738DG-664G32Mn | EMEA | Czech | LX.PKD02.023 | AS5738DG-664G32Mn W7HP64ATCZ2 MC M92XT512Cbb_2V3 2*2G/320/ 6L2.2/5R/ CB_n2_0.3D_GC_GWW_HG_SK1 1 | C2DT6600 | SO2GBII6 | N320GB5.4KS | SP1x2MMW | N | N | PM45 | CZ/SK (KB.I170A.035) | Continental |
| AS5738DG-664G32Mn | EMEA | Italy | LX.PKD02.021 | AS5738DG-664G32Mn W7HP64ATIT1 MC M92XT512Cbb_2V3 2*2G/320/ 6L2.2/5R/ CB_n2_0.3D_GC_GWW_HG_IT11 | C2DT6600 | SO2GBII6 | N320GB5.4KS | SP1x2MMW | N | N | PM45 | Italian (KB.I170A.043) | Italian |
| AS5738DG-664G32Mn | EMEA | Norway | LX.PKD02.024 | AS5738DG-664G32Mn W7HP64ATNO1 MC M92XT512Cbb_2V3 2*2G/320/ 6L2.2/5R/ CB_n2_0.3D_GC_GWW_HG_NO 11 | C2DT6600 | SO2GBII6 | N320GB5.4KS | SP1x2MMW | N | N | PM45 | Norwegian (KB.I170A.046) | Continental |
| AS5738DG-664G32Mn | EMEA | Denmark | LX.PKD02.035 | AS5738DG-664G32Mn W7HP64ATDK1 MC M92XT512Cbb_2V3 2*2G/320/ 6L2.2/5R/ CB_n2_0.3D_GC_GWW_HG_NO 11 | C2DT6600 | SO2GBII6 | N320GB5.4KS | SP1x2MMW | N | N | PM45 | Danish (KB.I170A.037) | Danish |
| AS5738DG-664G32Mn | EMEA | Eastern Europe | LX.PKD02.025 | AS5738DG-664G32Mn W7HP64ATEU4 MC M92XT512Cbb_2V3 2*2G/320/ 6L2.2/5R/ CB_n2_0.3D_GC_GWW_HG_SV2 1 | C2DT6600 | SO2GBII6 | N320GB5.4KS | SP1x2MMW | N | N | PM45 | Sweden (KB.I170A.051) | Continental |
| AS5738DG-664G32Mn | EMEA | Finland | LX.PKD02.022 | AS5738DG-664G32Mn W7HP64ATF12 MC M92XT512Cbb_2V3 2*2G/320/ 6L2.2/5R/ CB_n2_0.3D_GC_GWW_HG_FI11 | C2DT6600 | SO2GBII6 | N320GB5.4KS | SP1x2MMW | N | N | PM45 | Sweden (KB.I170A.051) | Continental |
| AS5738DG-664G32Mn | EMEA | Sweden | LX.PKD02.018 | AS5738DG-664G32Mn W7HP64ATSE1 MC M92XT512Cbb_2V3 2*2G/320/ 6L2.2/5R/ CB_n2_0.3D_GC_GWW_HG_FI11 | C2DT6600 | SO2GBII6 | N320GB5.4KS | SP1x2MMW | N | N | PM45 | Sweden (KB.I170A.051) | Continental |
| AS5738DG-664G32Mn | EMEA | Germany | LX.PKD02.030 | AS5738DG-664G32Mn W7HP64ATDE1 MC M92XT512Cbb_2V3 2*2G/320/ 6L2.2/5R/ CB_n2_0.3D_GC_GWW_HG_DE 11 | C2DT6600 | SO2GBII6 | N320GB5.4KS | SP1x2MMW | N | N | PM45 | German (KB.I170A.040) | Continental |
| AS5738DG-664G32Mn | EMEA | Austria | LX.PKD02.026 | AS5738DG-664G32Mn W7HP64ATAT1 MC M92XT512Cbb_2V3 2*2G/320/ 6L2.2/5R/ CB_n2_0.3D_GC_GWW_HG_DE 61 | C2DT6600 | SO2GBII6 | N320GB5.4KS | SP1x2MMW | N | N | PM45 | German (KB.I170A.040) | Continental |
| AS5738DG-664G32Mn | EMEA | Denmark | LX.PKD02.032 | AS5738DG-664G32Mn W7HP64ATDK2 MC M92XT512Cbb_2V3 2*2G/320/ 6L2.2/5R/ CB_n2_0.3D_GC_GWW_HG_EN S1 | C2DT6600 | SO2GBII6 | N320GB5.4KS | SP1x2MMW | N | N | PM45 | Nordic (KB.I170A.045) | Danish/Continental |
| AS5738DG-664G32Mn | EMEA | Norway | LX.PKD02.029 | AS5738DG-664G32Mn W7HP64ATNO3 MC M92XT512Cbb_2V3 2*2G/320/ 6L2.2/5R/ CB_n2_0.3D_GC_GWW_HG_EN S1 | C2DT6600 | SO2GBII6 | N320GB5.4KS | SP1x2MMW | N | N | PM45 | Nordic (KB.I170A.045) | Danish/Continental |

Aspire 5542G/5542/5242 Series

NOTE: All models have following common specifications: Card reader (5-in-1), LCD (NLED15.6WXGAG), NB Chipset (AMDRS880M), SB (AMDSB710), Battery (6CELL2.2)

| Model | RO | Country | Acer Part No | Description | CPU | LCD | VGA Chip | VRAM 1 | Memory 1/ Memory 2 | HDD 1(GB) | ODD | Wireless LAN1 | Bluetooth | Finger Print | Adapter | Camera | K/B | Power Cord |
|------------------|-----|---------------------------|--------------|--|---------|---------------|----------|----------------------------|-----------------------|-------------|--------|---------------------|-----------|--------------|---------|---------|------------------------------------|---------------------------|
| AS5242-102G25Mn | WW | GCTWN | S2.PHT0C.001 | AS5242-102G25Mn LINPUSAWW1 UMACFbb 2*1G/250/BT/6L2.2/5R/ CB_bgn_FP_0.3D_HG_ENX1 | SMPM100 | NLED15.6WXGAG | UMA | N | SO1GBIIE6 | N250GB5.4KS | NSM8XS | 3rd WIFI 1x2 BGN | BT 2.1 | AES1610 | 65W | 0.3M DV | US International (KB.I170A.056) | US and Continental |
| AS5242-102G25Mn | WW | GCTWN | S2.PHS0C.001 | AS5242-102G25Mn LINPUSAWW1 UMACbb 2*1G/250/BT/6L2.2/5R/ CB_bgn_0.3D_HG_ENX1 | SMPM100 | NLED15.6WXGAG | UMA | N | SO1GBIIE6 | N250GB5.4KS | NSM8XS | 3rd WIFI 1x2 BGN | BT 2.1 | N | 65W | 0.3M DV | US International (KB.I170A.056) | US and Continental |
| AS5242-102G25Mn | WW | GCTWN | S2.PHR0C.001 | AS5242-102G25Mn LINPUSAWW1 UMAbb 2*1G/250/BT/6L2.2/5R/ CB_bgn_HG_ENX1 | SMPM100 | NLED15.6WXGAG | UMA | N | SO1GBIIE6 | N250GB5.4KS | NSM8XS | 3rd WIFI 1x2 BGN | BT 2.1 | N | 65W | N | US International (KB.I170A.056) | US and Continental |
| AS5542G-503G32Mn | AAP | India | LX.PHQ0C.009 | AS5542G-503G32Mn LINPUSAIN1 M92XT512CFbb_V3 2G+1G/320/BT/ 6L2.2/5R/CB_bgn_FP_0.3D_HG_EN11 | ATM500 | NLED15.6WXGAG | M92XT | 512M- DDR3 (64*16*4) | SO2GBIIE6 | N320GB5.4KS | NSM8XS | 3rd WIFI 1x2 BGN | BT 2.1 | AES1610 | 90W | 0.3M DV | US International (KB.I170A.056) | South Africa-S (India) |
| AS5542G-504G50Mn | AAP | India | LX.PHQ02.005 | AS5542G-504G50Mn W7HP64INATIN1 MC M92XT512CFbb_V3 2*2G/500_L/BT/ 6L2.2/5R/CB_bgn_FP_0.3D_HG_ES61 | ATM500 | NLED15.6WXGAG | M92XT | 512M- DDR3 (64*16*4) | SO2GBIIE6 | N500GB5.4KS | NSM8XS | 3rd WIFI 1x2 BGN | BT 2.1 | AES1610 | 90W | 0.3M DV | US International (KB.I170A.056) | South Africa-S (India) |
| AS5542G-503G32Mn | AAP | India | LX.PHQ02.011 | AS5542G-503G32Mn W7HP64INATIN1 MC M92XT512CFbb_V3 2G+1G/320/BT/ 6L2.2/5R/CB_bgn_FP_0.3D_HG_ES61 | ATM500 | NLED15.6WXGAG | M92XT | 512M- DDR3 (64*16*4) | SO2GBIIE6 | N320GB5.4KS | NSM8XS | 3rd WIFI 1x2 BGN | BT 2.1 | AES1610 | 90W | 0.3M DV | US International (KB.I170A.056) | South Africa-S (India) |
| AS5542G-304G50Mn | AAP | Australia/ New Zealand | LX.PHQ02.010 | AS5542G-304G50Mn W7HP64ATAU1 MC M92XT512CFbb_V3 2*2G/500_L/ 6L2.2/5R/CB_bgn_FP_0.3D_HG_ES61 | AAM300 | NLED15.6WXGAG | M92XT | 512M- DDR3 (64*16*4) | SO2GBIIE6 | N500GB5.4KS | NSM8XS | 3rd WIFI 1x2 BGN | N | AES1610 | 90W | 0.3M DV | US International (KB.I170A.056) | Australia w/ label |
| AS5542G-304G50Mn | AAP | Australia/ New Zealand | LX.PHQ02.009 | AS5542G-304G50Mn W7HP64ATAU1 MC M92XT512CFbb_V3 2*2G/500_L/ 6L2.2/5R/CB_bgn_FP_0.3D_HG_ES61 | AAM300 | NLED15.6WXGAG | M92XT | 512M- DDR3 (64*16*4) | SO2GBIIE6 | N500GB5.4KS | NSM8XS | 3rd WIFI 1x2 BGN | BT 2.1 | AES1610 | 90W | 0.3M DV | US International (KB.I170A.056) | Australia w/ label |
| AS5542G-604G50Mn | AAP | Singapore | LX.PHQ02.008 | AS5542G-604G50Mn W7HP64ATSG1 MC M92XT512CFbb_V3 2*2G/500_L/ 6L2.2/5R/CB_bgn_FP_0.3D_HG_ES61 | ATUM600 | NLED15.6WXGAG | M92XT | 512M- DDR3 (64*16*4) | SO2GBIIE6 | N500GB5.4KS | NSM8XS | 3rd WIFI 1x2 BGN | BT 2.1 | AES1610 | 90W | 0.3M DV | US International (KB.I170A.056) | UK |
| AS5542G-644G50Mn | AAP | Singapore | LX.PHQ02.007 | AS5542G-644G50Mn W7HP64ATSG1 MC M92XT512CFbb_V3 2*2G/500_L/BT/ 6L2.2/5R/CB_bgn_FP_0.3D_HG_ES61 | ATUM640 | NLED15.6WXGAG | M92XT | 512M- DDR3 (64*16*4) | SO2GBIIE6 | N500GB5.4KS | NSM8XS | 3rd WIFI 1x2 BGN | BT 2.1 | AES1610 | 90W | 0.3M DV | US International (KB.I170A.056) | UK |
| AS5542G-624G50Mn | AAP | Singapore | LX.PHQ02.006 | AS5542G-624G50Mn W7HP64ATSG1 MC M92XT512CFbb_V3 2*2G/500_L/BT/ 6L2.2/5R/CB_bgn_FP_0.3D_HG_ES61 | ATUM620 | NLED15.6WXGAG | M92XT | 512M- DDR3 (64*16*4) | SO2GBIIE6 | N500GB5.4KS | NSM8XS | 3rd WIFI 1x2 BGN | BT 2.1 | AES1610 | 90W | 0.3M DV | US International (KB.I170A.056) | UK |
| AS5542G-644G50Mn | AAP | Thailand | LX.PHQ0C.008 | AS5542G-644G50Mn LINPUSATH1 M92XT512CFbb_V3 2*2G/500_L/BT/ 6L2.2/5R/CB_bgn_FP_0.3D_HG_TH51 | ATUM640 | NLED15.6WXGAG | M92XT | 512M- DDR3 (64*16*4) | SO2GBIIE6 | N500GB5.4KS | NSM8XS | 3rd WIFI 1x2 BGN | BT 2.1 | AES1610 | 90W | 0.3M DV | Thailand (KB.I170A.053) | US-110V |
| AS5542G-642G50Mn | AAP | Thailand | LX.PHQ0C.007 | AS5542G-642G50Mn LINPUSATH1 M92XT512CFbb_V3 1*2G/500_L/BT/ 6L2.2/5R/CB_bgn_FP_0.3D_HG_TH51 | ATUM640 | NLED15.6WXGAG | M92XT | 512M- DDR3 (64*16*4) | SO2GBIIE6/N | N500GB5.4KS | NSM8XS | 3rd WIFI 1x2 BGN | BT 2.1 | AES1610 | 90W | 0.3M DV | Thailand (KB.I170A.053) | US-110V |
| AS5542G-622G50Mn | AAP | Thailand | LX.PHQ0C.006 | AS5542G-622G50Mn LINPUSATH1 M92XT512CFbb_V3 1*2G/500_L/BT/ 6L2.2/5R/CB_bgn_FP_0.3D_HG_TH51 | ATUM620 | NLED15.6WXGAG | M92XT | 512M- DDR3 (64*16*4) | SO2GBIIE6/N | N500GB5.4KS | NSM8XS | 3rd WIFI 1x2 BGN | BT 2.1 | AES1610 | 90W | 0.3M DV | Thailand (KB.I170A.053) | US-110V |
| AS5542G-624G50Mn | AAP | Thailand | LX.PHQ0C.005 | AS5542G-624G50Mn LINPUSATH1 M92XT512CFbb_V3 2*2G/500_L/BT/ 6L2.2/5R/CB_bgn_FP_0.3D_HG_TH51 | ATUM620 | NLED15.6WXGAG | M92XT | 512M- DDR3 (64*16*4) | SO2GBIIE6 | N500GB5.4KS | NSM8XS | 3rd WIFI 1x2 BGN | BT 2.1 | AES1610 | 90W | 0.3M DV | Thailand (KB.I170A.053) | US-110V |
| AS5542G-604G50Mn | AAP | Thailand | LX.PHQ0C.004 | AS5542G-604G50Mn LINPUSATH1 M92XT512CFbb_V3 2*2G/500_L/BT/ 6L2.2/5R/CB_bgn_FP_0.3D_HG_TH51 | ATUM600 | NLED15.6WXGAG | M92XT | 512M- DDR3 (64*16*4) | SO2GBIIE6 | N500GB5.4KS | NSM8XS | 3rd WIFI 1x2 BGN | BT 2.1 | AES1610 | 90W | 0.3M DV | Thailand (KB.I170A.053) | US-110V |
| AS5542G-602G50Mn | AAP | Thailand | LX.PHQ0C.003 | AS5542G-602G50Mn LINPUSATH1 M92XT512CFbb_V3 1*2G/500_L/BT/ 6L2.2/5R/CB_bgn_FP_0.3D_HG_TH51 | ATUM600 | NLED15.6WXGAG | M92XT | 512M- DDR3 (64*16*4) | SO2GBIIE6 | N500GB5.4KS | NSM8XS | 3rd WIFI 1x2 BGN | BT 2.1 | AES1610 | 90W | 0.3M DV | Thailand (KB.I170A.053) | US-110V |

| Model | RO | Country | Acer Part No | Description | CPU | LCD | VGA Chip | VRAM 1 | Memory 1/ Memory 2 | HDD 1(GB) | ODD | Wireless LAN1 | Bluetooth | Finger Print | Adapter | Camera | K/B | Power Cord |
|-----------------|------|----------------|--------------|---|--------|---------------|----------|--------|-----------------------|-------------|--------|---------------------|-----------|--------------|---------|---------|------------------------------------|-------------------------|
| AS5542-303G32Mn | PA | Chile | LX.PHA0C.033 | AS5542-303G32Mn LIMPUSACL3 UMACbb 2G*1G/320/6L2.2/5R/ CB_bgn_0.3D_HG_EN61 | AAM300 | NLED15.6WXGAG | UMA | N | SO2GBII6 | N320GB5.4KS | NSM8XS | 3rd WiFi 1x2 BGN | N | N | 65W | 0.3M DV | Spanish (KB.I170A.050) | Italian |
| AS5542-303G32Mn | PA | ACLA-Spanish | LX.PHA0C.031 | AS5542-303G32Mn LIMPUSAE3 UMACbb 2G*1G/320/6L2.2/5R/ CB_bgn_0.3D_HG_EN61 | AAM300 | NLED15.6WXGAG | UMA | N | SO2GBII6 | N320GB5.4KS | NSM8XS | 3rd WiFi 1x2 BGN | N | N | 65W | 0.3M DV | Spanish (KB.I170A.050) | Argentine Power Cord |
| AS5542-504G50Mn | PA | Chile | LX.PHA0C.030 | AS5542-504G50Mn LIMPUSACL3 UMACbb 2*2G/500_L/6L2.2/5R/ CB_bgn_0.3D_HG_EN61 | ATM500 | NLED15.6WXGAG | UMA | N | SO2GBII6 | N500GB5.4KS | NSM8XS | 3rd WiFi 1x2 BGN | N | N | 65W | 0.3M DV | Spanish (KB.I170A.050) | Italian |
| AS5542-504G50Mn | PA | ACLA-Spanish | LX.PHA0C.029 | AS5542-504G50Mn LIMPUSAE4 UMACbb 2*2G/500_L/6L2.2/5R/ CB_bgn_0.3D_HG_EN62 | ATM500 | NLED15.6WXGAG | UMA | N | SO2GBII6 | N500GB5.4KS | NSM8XS | 3rd WiFi 1x2 BGN | N | N | 65W | 0.3M DV | US International (KB.I170A.056) | US-110V |
| AS5542-504G50Mn | PA | ACLA-Spanish | LX.PHA0C.028 | AS5542-504G50Mn LIMPUSAE1 UMACbb 2*2G/500_L/6L2.2/5R/ CB_bgn_0.3D_HG_EN62 | ATM500 | NLED15.6WXGAG | UMA | N | SO2GBII6 | N500GB5.4KS | NSM8XS | 3rd WiFi 1x2 BGN | N | N | 65W | 0.3M DV | Spanish (KB.I170A.050) | US-110V |
| AS5542-303G32Mn | EMEA | Eastern Europe | LX.PHA0C.014 | AS5542-303G32Mn LIMPUSAEU5 UMACbb 2G*1G/320/6L2.2/5R/ CB_bgn_0.3D_HG_ENF1 | AAM300 | NLED15.6WXGAG | UMA | N | SO2GBII6 | N320GB5.4KS | NSM8XS | 3rd WiFi 1x2 BGN | N | N | 65W | 0.3M DV | US International (KB.I170A.056) | Continental |
| AS5542-304G32MI | EMEA | Russia | LX.PHA02.097 | AS5542-304G32MI W7HP64RUATRU1 MC UMACbb 2*2G/320/6L2.2/5R/ CB_bg_0.3D_HG_RU11 | AAM300 | NLED15.6WXGAG | UMA | N | SO2GBII6 | N320GB5.4KS | NSM8XS | 3rd WiFi BG | N | N | 65W | 0.3M DV | Russian (KB.I170A.048) | Continental |
| AS5542-304G32Mn | EMEA | Ukraine | LX.PHA02.096 | AS5542-304G32Mn W7HP64RUATUK1 MC UMACbb 2*2G/320/6L2.2/5R/ CB_bgn_0.3D_HG_RU61 | AAM300 | NLED15.6WXGAG | UMA | N | SO2GBII6 | N320GB5.4KS | NSM8XS | 3rd WiFi 1x2 BGN | N | N | 65W | 0.3M DV | Russian (KB.I170A.048) | Continental |
| AS5542-304G32Mn | EMEA | Middle East | LX.PHA02.095 | AS5542-304G32Mn EM W7HP64EMATME9 MC UMACbb 2*2G/ 320/6L2.2/5R/CB_bgn_0.3D_HG_ES81 | AAM300 | NLED15.6WXGAG | UMA | N | SO2GBII6 | N320GB5.4KS | NSM8XS | 3rd WiFi 1x2 BGN | N | N | 65W | 0.3M DV | FR/Arabic (KB.I170A.038) | Continental |
| AS5542-304G32Mn | EMEA | South Africa | LX.PHA02.094 | AS5542-304G32Mn EM W7HP64EMATZA1 MC UMACbb 2*2G/ 320/6L2.2/5R/CB_bgn_0.3D_HG_ES81 | AAM300 | NLED15.6WXGAG | UMA | N | SO2GBII6 | N320GB5.4KS | NSM8XS | 3rd WiFi 1x2 BGN | N | N | 65W | 0.3M DV | French (KB.I170A.039) | Continental |
| AS5542-304G32Mn | EMEA | Middle East | LX.PHA02.093 | AS5542-304G32Mn EM W7HP64EMATME2 MC UMACbb 2*2G/ 320/6L2.2/5R/CB_bgn_0.3D_HG_ES61 | AAM300 | NLED15.6WXGAG | UMA | N | SO2GBII6 | N320GB5.4KS | NSM8XS | 3rd WiFi 1x2 BGN | N | N | 65W | 0.3M DV | Arabic (KB.I170A.032) | UK and US- 110V |
| AS5542-304G32Mn | EMEA | South Africa | LX.PHA02.092 | AS5542-304G32Mn EM W7HP64EMATZA4 MC UMACbb 2*2G/ 320/6L2.2/5R/CB_bgn_0.3D_HG_ES61 | AAM300 | NLED15.6WXGAG | UMA | N | SO2GBII6 | N320GB5.4KS | NSM8XS | 3rd WiFi 1x2 BGN | N | N | 65W | 0.3M DV | US International (KB.I170A.056) | UK |
| AS5542-304G32Mn | EMEA | Turkey | LX.PHA02.091 | AS5542-304G32Mn EM W7HP64EMATTR1 MC UMACbb 2*2G/ 320/6L2.2/5R/CB_bgn_0.3D_HG_TR31 | AAM300 | NLED15.6WXGAG | UMA | N | SO2GBII6 | N320GB5.4KS | NSM8XS | 3rd WiFi 1x2 BGN | N | N | 65W | 0.3M DV | Turkish (KB.I170A.054) | Continental |
| AS5542-304G32Mn | EMEA | South Africa | LX.PHA02.090 | AS5542-304G32Mn EM W7HP64EMATZA2 MC UMACbb 2*2G/ 320/6L2.2/5R/CB_bgn_0.3D_HG_ES61 | AAM300 | NLED15.6WXGAG | UMA | N | SO2GBII6 | N320GB5.4KS | NSM8XS | 3rd WiFi 1x2 BGN | N | N | 65W | 0.3M DV | US International (KB.I170A.056) | AF |
| AS5542-304G32Mn | EMEA | Middle East | LX.PHA02.089 | AS5542-304G32Mn EM W7HP64EMATME6 MC UMACbb 2*2G/ 320/6L2.2/5R/CB_bgn_0.3D_HG_ES61 | AAM300 | NLED15.6WXGAG | UMA | N | SO2GBII6 | N320GB5.4KS | NSM8XS | 3rd WiFi 1x2 BGN | N | N | 65W | 0.3M DV | US International (KB.I170A.056) | UK |
| AS5542-304G32Mn | EMEA | Middle East | LX.PHA02.088 | AS5542-304G32Mn EM W7HP64EMATME2 MC UMACbb 2*2G/ 320/6L2.2/5R/CB_bgn_0.3D_HG_AR21 | AAM300 | NLED15.6WXGAG | UMA | N | SO2GBII6 | N320GB5.4KS | NSM8XS | 3rd WiFi 1x2 BGN | N | N | 65W | 0.3M DV | Arabic (KB.I170A.032) | UK and US- 110V |
| AS5542-304G32Mn | EMEA | Middle East | LX.PHA02.087 | AS5542-304G32Mn EM W7HP64EMATME2 MC UMACbb 2*2G/ 320/6L2.2/5R/CB_bgn_0.3D_HG_AR11 | AAM300 | NLED15.6WXGAG | UMA | N | SO2GBII6 | N320GB5.4KS | NSM8XS | 3rd WiFi 1x2 BGN | N | N | 65W | 0.3M DV | Arabic (KB.I170A.032) | UK and US- 110V |
| AS5542-304G32Mn | EMEA | Algeria | LX.PHA02.085 | AS5542-304G32Mn EM W7HP64EMATDZ1 MC UMACbb 2*2G/ 320/6L2.2/5R/CB_bgn_0.3D_HG_ES81 | AAM300 | NLED15.6WXGAG | UMA | N | SO2GBII6 | N320GB5.4KS | NSM8XS | 3rd WiFi 1x2 BGN | N | N | 65W | 0.3M DV | FR/Arabic (KB.I170A.038) | Continental |
| AS5542-304G32Mn | EMEA | Middle East | LX.PHA02.086 | AS5542-304G32Mn EM W7HP64EMATME4 MC UMACbb 2*2G/ 320/6L2.2/5R/CB_bgn_0.3D_HG_ES61 | AAM300 | NLED15.6WXGAG | UMA | N | SO2GBII6 | N320GB5.4KS | NSM8XS | 3rd WiFi 1x2 BGN | N | N | 65W | 0.3M DV | Russian (KB.I170A.048) | Continental |
| AS5542-304G32Mn | EMEA | Middle East | LX.PHA02.084 | AS5542-304G32Mn EM W7HP64EMATME4 MC UMACbb 2*2G/ 320/6L2.2/5R/CB_bgn_0.3D_HG_RU61 | AAM300 | NLED15.6WXGAG | UMA | N | SO2GBII6 | N320GB5.4KS | NSM8XS | 3rd WiFi 1x2 BGN | N | N | 65W | 0.3M DV | Russian (KB.I170A.048) | Continental |

CLICK HERE TO **DOWNLOAD** THE COMPLETE MANUAL

- Thank you very much for reading the preview of the manual.
- You can download the complete manual from: www.heydownloads.com by clicking the link below



- Please note: If there is no response to CLICKING the link, please download this PDF first and then click on it.

CLICK HERE TO **DOWNLOAD** THE COMPLETE MANUAL