

Aspire 5738G/5738ZG/5738Z/5738/5338 Series Aspire 5536/5536G/5236 Series Service Guide

Service guide files and updates are available on the ACER/CSD web; for more information, please refer to <http://csd.acer.com.tw>

PRINTED IN TAIWAN

CLICK HERE TO **DOWNLOAD** THE COMPLETE MANUAL

- Thank you very much for reading the preview of the manual.
- You can download the complete manual from: www.heydownloads.com by clicking the link below



- Please note: If there is no response to CLICKING the link, please download this PDF first and then click on it.

CLICK HERE TO **DOWNLOAD** THE COMPLETE MANUAL

-
- WLAN:
 - Intel® Wireless WiFi Link 5100/5300* (For Aspire 5738G/5738ZG/5738Z/5738/5338 Series only)
 - Acer InviLink™ Nplify™ 802.11b/g/Draft-N*
 - Acer InviLink™ 802.11b/g*
 - WPAN: Bluetooth® 2.0+Enhanced Data Rate (EDR)*
 - LAN: Gigabit Ethernet; Wake-on-LAN ready
 - Modem: 56K ITU V.92; Wake-on-Ring ready

I/O Ports

- Acer Bio-Protection fingerprint reader*
- 5-in-1 card reader (SD/MMC/MS/MS PRO/xD)
- USB 2.0 port
- HDMI™ port with HDCP support
- External display (VGA) port
- Headphones/speaker/line-out jack with S/PDIF support
- Microphone-in jack
- Line-in jack
- Ethernet (RJ-45) port
- Modem (RJ-11) port
- DC-in jack for AC adapter

Environment

- Temperature:
 - Operating: 5 °C to 35 °C
 - Non-operating: -20 °C to 65 °C
- Humidity (non-condensing):
 - Operating: 20% to 80%
 - Non-operating: 20% to 80%

Dimension and weight

- Dimension: 383.82* 250* 37.74 mm
- Weight: 2.8 kg




















NOTES: 1. "*" means only for certain models".

2. The specifications listed above are for reference only. The exact configuration of your PC depends on the model purchased.

Desired access	Num Lock on	Num Lock off
Main keyboard keys	Hold <Fn> while typing letters on embedded keypad.	Type the letters in a normal manner.

Windows Keys

The keyboard has two keys that perform Windows-specific functions.

Key	Description
 Windows key	<p>Pressed alone, this key has the same effect as clicking on the Windows Start button; it launches the Start menu.</p> <p>It can also be used with other keys to provide a variety of functions:</p> <ul style="list-style-type: none"> <  >: Open or close the Start menu <  > + <D>: Display the desktop <  > + <E>: Open Windows Explore <  > + <F>: Search for a file or folder <  > + <G>: Cycle through Sidebar gadgets <  > + <L>: Lock your computer (if you are connected to a network domain), or switch users (if you're not connected to a network domain) <  > + <M>: Minimizes all windows <  > + <R>: Open the Run dialog box <  > + <T>: Cycle through programs on the taskbar <  > + <U>: Open Ease of Access Center <  > + <X>: Open Windows Mobility Center <  > + <BREAK>: Display the System Properties dialog box <  > + <SHIFT+M>: Restore minimized windows to the desktop <  > + <TAB>: Cycle through programs on the taskbar by using Windows Flip 3-D <  > + <SPACEBAR>: Bring all gadgets to the front and select Windows Sidebar <CTRL> + <  > + <F>: Search for computers (if you are on a network) <CTRL> + <  > + <TAB>: Use the arrow keys to cycle through programs on the taskbar by using Windows Flip 3-D <p>Note: Depending on your edition of Windows Vista, some shortcuts may not function as described.</p>
 Application key	<p>This key has the same effect as clicking the right mouse button; it opens the application's context menu.</p>

Audio Interface

Item	Specification
Compatibility	HD audio Interface; S/PDIF output for PCM or AC-3 content
Sampling rate	1Hz resolution VSR (Variable Sampling Rate)
Internal microphone	Yes
Internal speaker / Quantity	Yes/2.1 (2W speakers)

Video Memory

Item	Specification
Chipset	Aspire 5738G/5738ZG/5738Z/5738/5338 Series: <ul style="list-style-type: none">• Mobile Intel® GL40 Express Chipset*• Mobile Intel® GM45 Express Chipset*• NVIDIA® GeForce® G105M* Aspire 5536/5536G/5236 Series: <ul style="list-style-type: none">• ATI Radeon™ HD 3200 Graphics*• ATI Mobility Radeon™ HD 4570*
Memory size	1024M/512M GDDR3/

USB

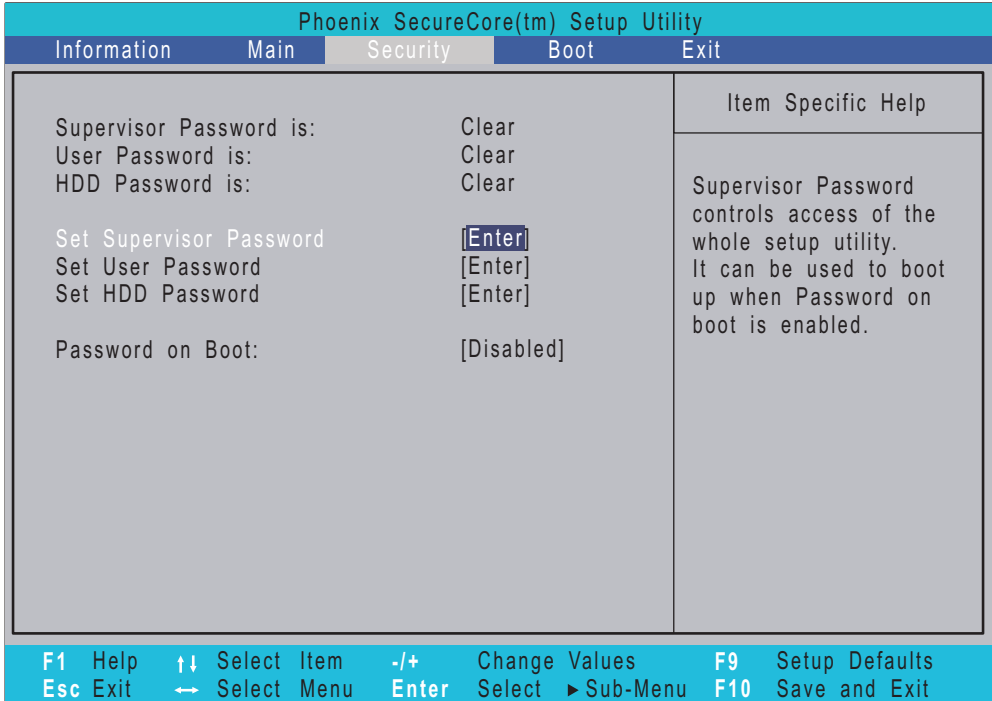
Item	Specification
Chipset	Aspire 5738G/5738ZG/5738Z/5738/5338 Series: ICH-9M Aspire 5536/5536G/5236 Series: AMD SB700/
USB Compliancy Level	2.0
OHCI	USB 1.1 and USB 2.0 Host controller
Number of USB ports	4
Location	Two on the right side/two on the left side
Serial port function control	Enable/Disable by BIOS Setup

System Board Major Chips

Item	Controller
Core logic	Aspire 5738G/5738ZG/5738Z/5738/5338 Series: Mobile Intel® GM45/GL40/PM45 Aspire 5536/5536G/5236 Series: ATI RS780MN
USB 2.0	Aspire 5738G/5738ZG/5738Z/5738/5338 Series: Intel ICH-9M Aspire 5536/5536G/5236 Series: AMD SB700
Super I/O controller	N/A
MODEM	Aspire 5738G/5738ZG/5738Z/5738/5338 Series: Foxconn Delphi-AM5 V2H 1.5_3.3v AUS T60M951 Aspire 5536/5536G/5236 Series: Lite-On Conexant -Unizion 1.5_3.3v AUS RD02-D330
Bluetooth	Foxconn Bluetooth FOX_BRM_2.0 F/W 300

Security

The Security screen contains parameters that help safeguard and protect your computer from unauthorized use.



NOTE: Please refer to "Remove HDD/BIOS Password" section if you need to know how to remove HDD/BIOS Password.

Machine Disassembly and Replacement

This chapter contains step-by-step procedures on how to disassemble the notebook computer for maintenance and troubleshooting.

Disassembly Requirements

To disassemble the computer, you need the following tools:

- Wrist grounding strap and conductive mat for preventing electrostatic discharge
- Flat screwdriver
- Philips screwdriver
- Hex screwdriver
- Plastic flat screwdriver
- Plastic tweezers

NOTE: The screws for the different components vary in size. During the disassembly process, group the screws with the corresponding components to avoid mismatch when putting back the components.

Removing the WLAN Modules

1. See “Removing the Battery Pack” on page 46.
2. See “Removing the SD Dummy Card” on page 47.
3. See “Removing the DIMM Module” on page 48.
4. See “Removing the Back Cover” on page 49.
5. See “Removing the Hard Disk Drive Module” on page 50.
6. Disconnect the black antenna cable from connector #1 and the white antenna cable from connector #2 on the short wireless board module.



7. Remove the one screw (F) securing the short wireless board module to the system.

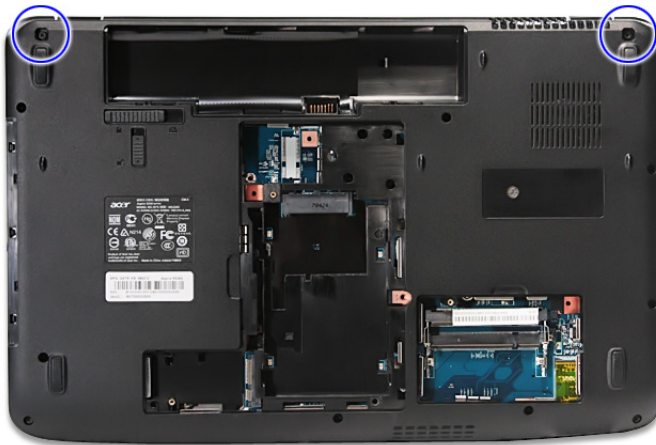


Size (Quantity)	Color	Torque	Part No.
M2 x L4 (1)	Silver	1.6 kgf-cm	86.9A552.4R0

8. Detach the short wireless board module from the WLAN socket.

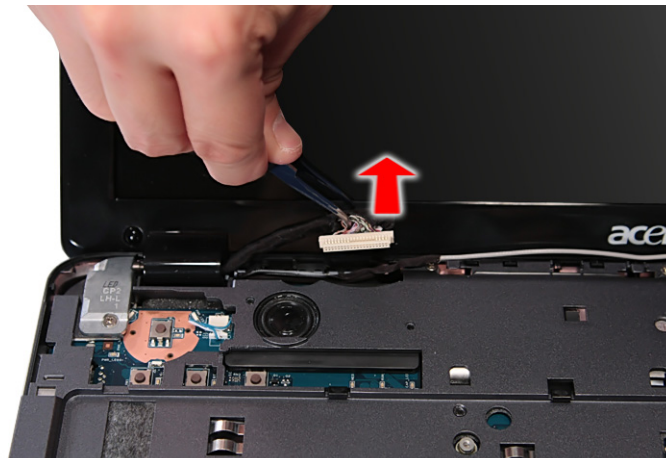


13. Turn over the system and remove the two screws (A) from the bottom of the left and right hinges.

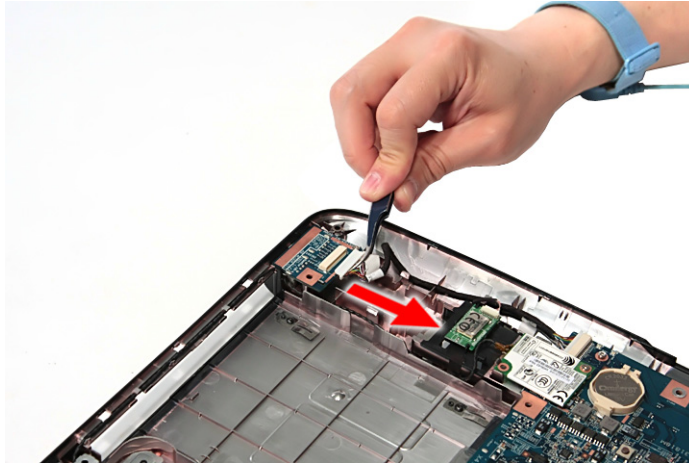


Size (Quantity)	Color	Torque	Part No.
M2.5 x L8 (2)	Black	3.0 kgf-cm	86.00E34.738

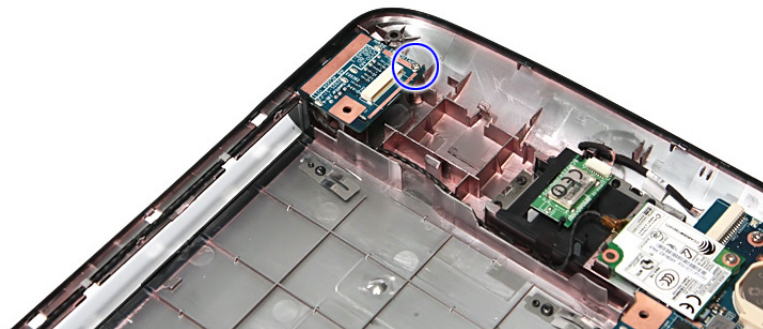
14. Detach the LCD cable from the connector on the main board.



12. Disconnect the cables from the USB board module.

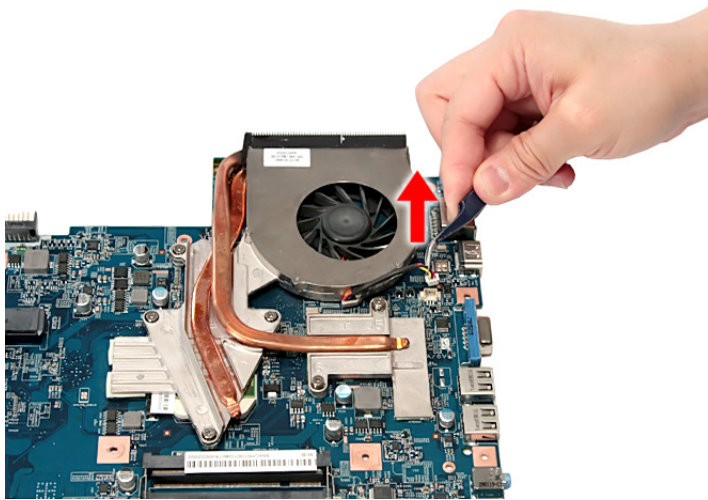


13. Remove the one screw (F) securing the USB board module to the lower case.

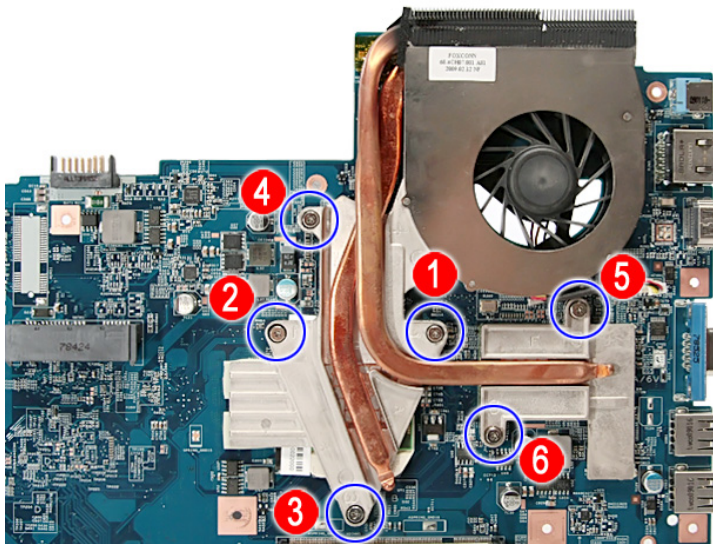


Size (Quantity)	Color	Torque	Part No.
M2 x L4 (1)	Silver	1.6 kgf-cm	86.9A552.4R0

17. See “Removing the Main Board” on page 80.
18. Disconnect the heatsink connector from the main board.

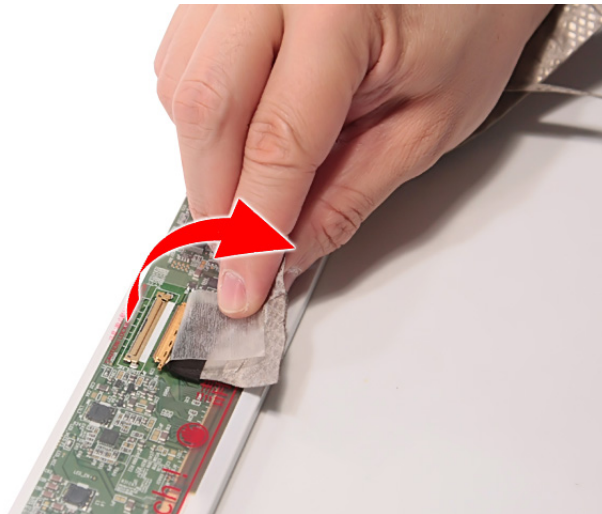


19. Remove the six screws securing the heatsink module in the order shown.



NOTE: Aspire 5738G/5738ZG/5738Z/5738/5338 Series uses the NVdia VGA board, while Aspire 5536/5536G/5236 Series uses the ATI VGA board.

-
14. Disconnect the FPC cable from the LCD panel.



Removing the Antennas

1. See “Removing the Battery Pack” on page 46.
2. See “Removing the SD Dummy Card” on page 47.
3. See “Removing the DIMM Module” on page 48.
4. See “Removing the Back Cover” on page 49.
5. See “Removing the Hard Disk Drive Module” on page 50.
6. See “Removing the WLAN Modules” on page 53.
7. See “Removing the Optical Drive Module” on page 55.
8. See “Removing the Middle Cover” on page 58.
9. See “Removing the Keyboard” on page 60.
10. See “Removing the LCD Module” on page 61.
11. See “Removing the LCD Bezel” on page 88.
12. See “Removing the LCD panel with the Brackets” on page 89.

CLICK HERE TO **DOWNLOAD** THE COMPLETE MANUAL

- Thank you very much for reading the preview of the manual.
- You can download the complete manual from: www.heydownloads.com by clicking the link below



- Please note: If there is no response to CLICKING the link, please download this PDF first and then click on it.

CLICK HERE TO **DOWNLOAD** THE COMPLETE MANUAL

Error Message List

No beep Error Messages	FRU/Action in Sequence
No beep, power-on indicator turns off and LCD is blank.	Power source (battery pack and power adapter). See "Power System Check" on page 99.. Ensure every connector is connected tightly and correctly. Reconnect the DIMM. LED board. System board.
No beep, power-on indicator turns on and LCD is blank.	Power source (battery pack and power adapter). See "Power System Check" on page 99.. Reconnect the LCD connector Hard disk drive LCD inverter ID LCD cable LCD Inverter LCD System board
No beep, power-on indicator turns on and LCD is blank. But you can see POST on an external CRT.	Reconnect the LCD connectors. LCD inverter ID LCD cable LCD inverter LCD System board
No beep, power-on indicator turns on and a blinking cursor shown on LCD during POST.	Ensure every connector is connected tightly and correctly. System board
No beep during POST but system runs correctly.	Speaker System board

Intermittent Problems

Intermittent system hang problems can be caused by a variety of reasons that have nothing to do with a hardware defect, such as: cosmic radiation, electrostatic discharge, or software errors. FRU replacement should be considered only when a recurring problem exists.

When analyzing an intermittent problem, do the following:

1. Run the advanced diagnostic test for the system board in loop mode at least 10 times.
2. If no error is detected, do not replace any FRU.
3. If any error is detected, replace the FRU. Rerun the test to verify that there are no more errors.



FRU (Field Replaceable Unit) List



This chapter gives you the FRU (Field Replaceable Unit) listing in global configurations of Aspire 5738G/5738ZG/5738Z/5738/5338 Series. Refer to this chapter whenever ordering for parts to repair or for RMA (Return Merchandise Authorization).

Please note that WHEN ORDERING FRU PARTS, you should check the most up-to-date information available on your regional web or channel. For whatever reasons a part number change is made, it will not be noted on the printed Service Guide. For ACER AUTHORIZED SERVICE PROVIDERS, your Acer office may have a DIFFERENT part number code from those given in the FRU list of this printed Service Guide. You MUST use the local FRU list provided by your regional Acer office to order FRU parts for repair and service of customer machines.

NOTE: To scrap or to return the defective parts, you should follow the local government ordinance or regulations on how to dispose it properly, or follow the rules set by your regional Acer office on how to return it.

Category	No.	Part Name and Description	Acer Part No.
	1	POWER CORD 2.5A 125V USA	27.01518.A11
	1	POWER CORD 2.5A 125V 1.8M BLACK TAIWANESE	27.01518.781
	1	POWER CORD 10A 250V SWISS	27.01518.691
	1	POWER CORD 10A 250V 3PIN SWISS BK	27.01518.581
	1	POWER CORD 10A 250V ARGENTINE	27.01518.0U1
	1	POWER CORD 10A 125V US	27.01518.641
	1	POWER CORD 10A 125V 3PIN US BK	27.01518.521
	1	POWER CORD 7A 250V 2PIN KOREAN	27.01518.531
	1	POWER CORD 7A 125V 2PIN JAPAN	27.01518.551
	1	POWER CORD 10A 3PIN BK DENMARK	27.01518.671
	1	POWER CORD 10A 250V 3PIN DENMARK BK	27.01518.561
	1	POWER CORD 10A 250V 3PIN BK SOUTH AFRICA	27.01518.681
	1	POWER CORD 16A 250V SOUTH AFRICA BK	27.01518.571
	1	POWER CORD 10A 250V 3PIN CHINA	27.01518.701
	1	POWER CORD 10A 250V 3PIN CHINA BK	27.01518.591
	1	POWER CORD 250V 3PIN EUR BK	27.01518.731
	1	POWER CABLE 16A 250V 3PIN EUR BK	27.01518.601
	1	POWER CORD 10A 250V 3PIN ITALY	27.01518.711
	1	POWER CORD 10A 250V 3PIN ITALY BK	27.01518.611
	1	POWER CORD 2.5A 250V AUSTRALIA	27.01518.621
	1	POWER CORD 2.5A 250V SOUTH AFRICA BK (INDIA)	27.01518.721
	1	POWER CORD 10A 250V SOUTH AFRICA BK (INDIA)	27.01518.631
	1	POWER CORD 7A 125V 2PIN JAPAN BK	27.01518.661
	1	POWER CORD 250V 10A 3PIN ISRAEL	27.01518.761
	1	POWER CORD 10A 250V 1.8M BRAZIL BLK	27.01518.A41
	1	POWER CORD ACA / ACNZ	27.03218.051
	1	POWER CORD 7.5A 250V 3P AUSTRALIA BK	27.03218.021
	1	POWER CODE 7A 125V 2PIN JAPAN	27.03518.161
	1	TOUCHPAD CABLE	50.4CG03.011
	1	TOUCHPAD CABLE	50.4CG03.001
	1	USB BOARD CABLE	50.4CG05.021
	1	USB BOARD CABLE	50.4CG05.001
	1	USB BOARD CABLE	50.4CG05.011
CAMERA	2	CAMERA 0.3M CHICONY CNF701721004973L	56.18012.094
	2	CAMERA 0.3M SUYIN CN0314-SN30-OV03-5	56.18007.094
CASE/COVER/BRACKET ASSEMBLY	2	BLUE-RAY COMBO BEZEL	42.PAW01.005
	2	DVD-RW SUPER-MULTI BEZEL	42.PAW01.004
	2	HDD BRACKET	33.PAW01.003
	2	LCD COVER IMR 15.6" W/ANTENNA*2 & LOGO NONE 3G	60.PAT01.002
	2	LCD BEZEL 15.6" W/CAMERA HOLE	60.PAW01.004
	2	LCD BRACKET W/HINGE RIGHT	34.4K808.021
	2	LCD BRACKET W/HINGE RIGHT	34.4K808.001
	2	LCD BRACKET W/HINGE RIGHT	34.4K808.011
	2	LCD BRACKET W/HINGE LEFT	34.4K809.021
	2	LCD BRACKET W/HINGE LEFT	34.4K809.001
	2	LCD BRACKET W/HINGE LEFT	34.4K809.011
	2	LCD COVER IMR 15.6" W/ANTENNA*3 & LOGO NONE 3G	60.PAQ01.002
	2	LED LCD BRACKET RIGHT W/HINGE	34.4CG12.021
	2	LED LCD BRACKET RIGHT W/HINGE	34.4CG12.011

Category	No.	Part Name	Acer Part No.
	1	KEYBOARD 104KEYS NSK-ALA0J AC7T JV50 INTERNAL 17 STANDARD BLACK TEXTURE SLOVAK	TBD
	1	KEYBOARD 104KEYS NSK-ALA0J AC7T JV50 INTERNAL 17 STANDARD BLACK TEXTURE BLANK	TBD
LCD	2	LCD AUO 15.6" WXGA GLARE AUO B156XW01 V0 LF 220NIT 8MS	LK.1560D.001
	2	LCD AUO 15.6" WXGA GLARE LG LP156WH1-TLA1 LF 220NIT 8MS 400:1	LK.15605.001
	2	LCD AUO 15.6" WXGA GLARE CMO N156B3-L02 LF 220NIT 8MS	LK.15608.001
	1	LCD MODULE 15.6" WXGA GLARE W/ANTENNA*2&CAMERA (NONE 3G)	
	1	LCD MODULE 15.6" WXGA GLARE W/ANTENNA*3&CAMERA (NONE 3G)	
	2	LED LCD 15.6" WXGA GLARE CMO N156B6-L04 LF 220NIT 8MS 500:1	LK.15608.002
	2	LED LCD 15.6" WXGA GLARE SAMSUNG LTN156AT02-A01 LF 220NIT 8MS 500:1	LK.1560D.005
	2	LED LCD 15.6" WXGA GLARE AUO B156XW02 V0 LF 220NIT 8MS 500:1	LK.15606.003
	2	LED LCD 15.6" WXGA GLARE LG LP156WH2-TLE1 LF 220NIT 8MS 400:1	LK.15605.003
	1	LED MODULE 15.6" WXGA GLARE W/ANTENNA*2&CAMERA (NONE 3G)	
	1	LED MODULE 15.6" WXGA GLARE W/ANTENNA*3&CAMERA (NONE 3G)	
MAINBOARD 	1	MAINBOARD JV50_MV DIS GM45 ICH9M NVIDIA N10MGE1 VRAM SAMSUNG DDRII500 1GB LF W/RTC BATTERY&MODEM BOARD NONE 3G	TBD
MEMORY 	1	SODIMM 1GB DDRLLL 1066MHZ HYNIX HMT112S6AFP6C-G7N0	KN.1GB0B.028
	1	SODIMM 1GB DDRIII 1066MHZ SAMSUNG M471B2874DZ1-CF8	KN.1GB0G.019
	1	SODIMM 1GB DDRIII 1066MHZ MICRON MT8JSF12864HY-1G1D1	KN.1GB0B.019
	1	SODIMM 1GB DDRLLL 1066MHZ ELPIDA EBJ11UE6BBS0-AE-F	KN.1GB04.003
	1	SODIMM 1GB DDRLLL 1066MHZ SAMSUNG M471B2873EH1-CF8	KN.1GB09.011
	1	SODIMM 2GB DDRLLL 1066MHZ HYNIX HMT125S6AFP8C-G7N0	KN.2GB0B.012
	1	SODIMM 2GB DDRIII 1066MHZ SAMSUNG M471B5673DZ1-CF8	KN.2GB0G.009
	1	SODIMM 2GB DDRIII 1066MHZ MICRON MT16JSF25664HY-1G1D1	KN.2GB0B.005
	1	SODIMM 2GB DDRLLL 1066MHZ ELPIDA EBJ21UE8BBS0-AE-F	KN.2GB04.004
	1	SODIMM 2GB DDRLLL 1066MHZ SAMSUNG M471B5673EH1-CF8	KN.2GB09.004
MICROPHONE	2	MICROPHONE	23.42239.001
	2	MICROPHONE	23.42231.001
	2	MICROPHONE	23.40544.001
	2	MICROPHONE	23.42238.001
MISCELLANEOUS	1	LCD SCREW RUBBER	47.AU401.001
	1	NAME PLATE AS5738Z	TBD
	1	LCD COVER SPONGE LEFT	TBD
	1	LCD COVER SPONGE RIGHT	TBD

Category	No.	Part Name	Acer Part No.
	1	UPPER CASE W/LED BUTTON BOARD CABLE&MICROPHONE&SPEAKER&FINGER PRINT HOLE	60.PAX01.001
	1	WIRELESS LAN COVER	42.PAW01.003
CPU/PROCESSOR 	1	CPU AMD TURION RM72 PGA 2.1G 1M 638 35W GRIFFIN B1	KC.TRM02.720
	1	CPU AMD TURION RM-74 2.2G 1M 638 35W GRIFFIN B1	KC.TRM02.740
	1	CPU AMD TURION RM75 PGA 2.2G 1M 638 35W GRIFFIN B1	KC.TRM02.750
	1	CPU AMD ATHLON64X2 QL62 PGA 2.0G 1M 638 35W GRIFFIN B1	KC.AQL02.620
	1	CPU AMD ATHLON64X2 QL-64 2.1G 638 35W GRIFFIN B1	KC.AQL02.640
	1	CPU AMD ATHLON QL65 PGA 2.1G 1M 638 35W GRIFFIN B1	KC.AQL02.650
HDD/HARD DISK DRIVE 	1	HDD MODULE 160GB 5400RPM SATA	
	2	HDD 160GB 5400RPM SATA WD WD1600BEVT-22ZC T0 F/W:11.01A11	KH.16007.019
	2	HDD 160GB 5400RPM SATA SEAGATE ST9160310AS F/W:2010	KH.16008.022
	2	HDD 160GB 5400RPM SATA TOSHIBA LIBRA-BS MK1655GSX F/ W:FG010J 5.4	KH.16001.034
	2	HDD 160GB 5400RPM SATA HGST HTS543216L9A300 F/ W:C30C	KH.16004.006
	1	HDD MODULE 250GB 5400RPM SATA	
	2	HDD 250GB 5400RPM SATA HGST HTS545025B9A300 PANTHER-B LF F/W:C50K	KH.25008.021
	2	HDD 250GB 5400RPM SATA SEAGATE ST9250315AS LF F/ W:0001SDM1	KH.25007.015
	2	HDD 250GB 5400RPM SATA TOSHIBA LIBRA-BS MK2555GSX F/ W:FG000J 5.4K	KH.25001.016
	2	HDD 250GB 5400RPM SATA WD WD2500BEVT-22ZC T0 F/ W:11.01A11	KH.25004.003
	1	HDD MODULE 320GB 5400RPM SATA	
	2	HDD 320GB 5400RPM SATA HGST HTS545032B9A300 PANTHER B LF	KH.32008.013
	2	HDD 320GB 5400RPM SATA SEAGATE ST9320320AS F/W:2010	KH.32007.007
	2	HDD 320GB 5400RPM SATA TOSHIBA MK3255GSX LIBRA LF F/ W:FG010J	KH.32001.008
	2	HDD 320GB 5400RPM SATA WD WD3200BEVT-22ZC T0 ML125 F/W:01.01A01	KH.32004.002
	1	HDD MODULE 500GB 5400RPM SATA	
	2	HDD 500GB 5400RPM HGST SATA HTS545050B9A300 PANTHER B LF	KH.50008.013
	2	HDD SEAGATE 2.5" 5400RPM 500GB ST9500325AS SATA LF F/ W:0001SDM1	KH.50007.009
	2	HDD 500GB 5400RPM SATA TOSHIBA MK5055GSX LIBRA-BS F/ W:FG000J LF	KH.50001.011
	2	HDD WD 2.5" 500GB 5400RPM SATA WD5000BEVT-22ZAT0 F/ W:01.01A01	KH.50004.001
HEATSINK 	1	CPU HEATSINK UMA W/FAN	60.4CH17.001
	1	CPU HEATSINK UMA W/FAN	60.4CH11.001
	1	CPU HEATSINK UMA W/FAN	60.4CH04.001

Category	No.	Part Name	Acer Part No.
MAINBOARD 	1	MAINBOARD AS5536G ATI RS780 SB700 M92M-XT 512MB LF W/RTC BATTERY&MODEM BOARD	MB.P4201.002
MEMORY 	1	SODIMM 1GB DDRII667 NANYA NT1GT64UH8D0FN-3C LF (0.07U)	KN.1GB0G.022
	1	SODIMM 1GB DDRII667 MICRON MT8HTF12864HDY-667G1 LF	KN.1GB03.026
	1	SODIMM 1GB DDRII667 SAMSUNG M470T2864EH3-CE6 LF	KN.1GB04.010
	1	SODIMM 1GB DDRII667 HYNIX HMP112S6EFR6C-Y5 LF	KN.1GB0B.027
	1	SODIMM 2GB DDRII667 MICRON MT16HTF25664HY-667G1 LF	KN.2GB0G.012
	1	SODIMM 2GB DDRII667 SAMSUNG M470T5663EH3-CE6 LF	KN.2GB04.010
	1	SODIMM 2GB DDRII667 NANYA NT2GT64U8HD0BN-3C LF (0.07U)	KN.2GB0B.011
	1	SODIMM 2GB DDRII667 HYNIX HMP125S6EFR8C-Y5 LF	KN.2GB03.011
MICROPHONE	2	MICROPHONE	23.42239.001
	2	MICROPHONE	23.42231.001
	2	MICROPHONE	23.40544.001
	2	MICROPHONE	23.42238.001
MISCELLANEOUS	1	LCD SCREW RUBBER	47.AU401.001
	1	NAME PLATE AS5536G	40.PB101.001
ODD 	1	BLU-RAY COMBO MODULE 4X SATA	6M.PAW01.001
	2	OPTICAL BRACKET	33.PAW01.002
	2	ODD PLDS BD COMBO 12.7MM TRAY DL 4X DS-4E1S LF W/O BEZEL SATA	KO.00405.002
	2	ODD HLDS BD COMBO 12.7MM TRAY DL 4X CT10 LF W/O BEZEL SATA	KO.0040F.001
	2	ODD PIONEER BD COMBO 12.7 SATA DL 4X BDC-TD01RS LF W/O BEZEL SATA	KO.0040D.002
	1	DVD-RW SUPER-MULTI MODULE 8X SATA	6M.PAW01.002
	2	ODD SONY SUPER-MULTI DRIVE 12.7MM TRAY DL 8X AD-7580S LF W/O BEZEL SATA	KU.0080F.004
	2	ODD TOSHIBA SUPER-MULTI DRIVE 12.7MM TRAY DL 8X SATA TS-L633B LF W/O BEZEL	KU.0080E.017
	2	ODD SONY SUPER-MULTI DRIVE 12.7MM TRAY DL 8X AD-7590S LF W/O BEZEL SATA	KU.00801.030
	2	ODD HLDS SUPER-MULTI DRIVE 12.7MM TRAY DL 8X GT20N LF W/O BEZEL SATA	KU.0080E.025
	2	ODD PLDS SUPER-MULTI DRIVE 12.7MM TRAY DL 8X SATA DS-8A3S LF W/O BEZEL	KU.0080D.040
SCREWS	1	SCREW	86.00E12.536
	1	SCREW	86.00E34.738
	1	SCREW	86.1Z533.100
	1	SCREW	86.9A522.3R0
	1	SCREW	86.9A552.4R0
	1	SCREW	86.9A554.4R0
SPEAKER	2	SPEAKER ON UPPER CASE	23.40543.001
	2	SPEAKER ON UPPER CASE	23.40535.001
	2	SPEAKER ON UPPER CASE	23.40542.001
	2	SPEAKER ON LOWER CASE	23.40536.001
	2	SPEAKER ON LOWER CASE	23.40539.001

Model	RO	Country	Acer Part No	Description	CPU	LCD	VGA Chip	VRAM 1	Memory 1	Memory 2	HDD 1(GB)	ODD	Card Reader	WLAN	WLAN1	Bluetooth	Finger-print	Battery	Adapter	Camera
AS5738G-744G50Bn	AAP	Australia/ New Zealand	LX.PAN0X.00 3	AS5738G-744G50Bn VHP32ATAU1 MC N10MGE1512CFbM 2*2G/500_L/6L/5R/ CB_n2_FP_0.3D_EN12	C2DP7450	NLED15.6WXGAG	N10MG E1	512M- DDR2(6 4*16*4)	SO2GBIII10	SO2GBIII 10	N500GB5. 4KS	NBDCB4 XS	5 in 1- Build in	SP1x2M MW	SP1x2 MMW	BT 2.0	AES16 10	6CELL2.2	65W	0.3M DV
AS5738G-643G32Mn	AAP	Australia/ New Zealand	LX.PAN0X.00 5	AS5738G-643G32Mn VHP32ATAU1 MC N10MGE1512CFbM 2G+1G/320/BT/6L/5R/ CB_n2_FP_0.3D_EN12	C2DT6400	NLED15.6WXGAG	N10MG E1	512M- DDR2(6 4*16*4)	SO2GBIII10	SO1GBIII 10	N320GB5. 4KS	NSM8XS	5 in 1- Build in	SP1x2M MW	SP1x2 MMW	BT 2.0	AES16 10	6CELL2.2	65W	0.3M DV
AS5738G-664G50Mn	AAP	Australia/ New Zealand	LX.PAN0X.00 7	AS5738G-664G50Mn VHP32ATAU1 MC N10MGE1512CFbM 2*2G/500_L/6L/5R/ CB_n2_FP_0.3D_EN12	C2DT6600	NLED15.6WXGAG	N10MG E1	512M- DDR2(6 4*16*4)	SO2GBIII10	SO2GBIII 10	N500GB5. 4KS	NSM8XS	5 in 1- Build in	SP1x2M MW	SP1x2 MMW	BT 2.0	AES16 10	6CELL2.2	65W	0.3M DV
AS5738G-644G50Mn	AAP	Australia/ New Zealand	LX.PAN0X.00 9	AS5738G-644G50Mn VHP32ATAU1 MC N10MGE1512CFbM 2*2G/500_L/6L/5R/ CB_n2_FP_0.3D_EN12	C2DT6400	NLED15.6WXGAG	N10MG E1	512M- DDR2(6 4*16*4)	SO2GBIII10	SO2GBIII 10	N500GB5. 4KS	NSM8XS	5 in 1- Build in	SP1x2M MW	SP1x2 MMW	BT 2.0	AES16 10	6CELL2.2	65W	0.3M DV
AS5738G-642G32Mn	TW N	GCTWN	LX.PAN0X.00 1	AS5738G-642G32Mn VHP32ATTW1 MC N10MGE1512CFbM 1*2G/320/BT/6L/ CB_n2_FP_0.3D_TC11	C2DT6400	NLED15.6WXGAG	N10MG E1	512M- DDR2(6 4*16*4)	SO2GBIII10	N	N320GB5. 4KS	NSM8XS	5 in 1- Build in	SP1x2M MW	SP1x2 MMW	BT 2.0	AES16 10	6CELL2.2	65W	0.3M DV
AS5738G-644G32Mi	EME A	Russia	LX.PAM0X.05 1	AS5738G-644G32Mi VHP32ATRU1 MC N10MGE1512Cbb 2*2G/320/BT/6L/5R/ CB_abg_0.3D_RU11	C2DT6400	NLED15.6WXGAG	N10MG E1	512M- DDR2(6 4*16*4)	SO2GBIII10	SO2GBIII 10	N320GB5. 4KS	NSM8XS	5 in 1- Build in	SP1x2M MW	SP1x2 MABG	BT 2.0	N	6CELL2.2	65W	0.3M DV
AS5738G-642G25Mn	EME A	Poland	LX.PAM0C.00 5	AS5738G-642G25Mn LIMPUSAPL1 N10MGE1512Cbb 1*2G/250/BT/6L/5R/ CB_n2_0.3D_EN41	C2DT6400	NLED15.6WXGAG	N10MG E1	512M- DDR2(6 4*16*4)	SO2GBIII10	N	N250GB5. 4KS	NSM8XS	5 in 1- Build in	SP1x2M MW	SP1x2 MMW	BT 2.0	N	6CELL2.2	65W	0.3M DV
AS5738G-643G32Mn	EME A	Poland	LX.PAM0C.00 4	AS5738G-643G32Mn LIMPUSAPL1 N10MGE1512Cbb 2G+1G/320/BT/6L/5R/ CB_n2_0.3D_EN41	C2DT6400	NLED15.6WXGAG	N10MG E1	512M- DDR2(6 4*16*4)	SO2GBIII10	SO1GBIII 10	N320GB5. 4KS	NSM8XS	5 in 1- Build in	SP1x2M MW	SP1x2 MMW	BT 2.0	N	6CELL2.2	65W	0.3M DV
AS5738G-643G32Mn	EME A	Middle East	LX.PAM0C.00 3	AS5738G-643G32Mn LIMPUSAME4 N10MGE1512Cbb 2G+1G/320/BT/6L/5R/ CB_n2_0.3D_EN72	C2DT6400	NLED15.6WXGAG	N10MG E1	512M- DDR2(6 4*16*4)	SO2GBIII10	SO1GBIII 10	N320GB5. 4KS	NSM8XS	5 in 1- Build in	SP1x2M MW	SP1x2 MMW	BT 2.0	N	6CELL2.2	65W	0.3M DV
AS5738G-744G50Mn	EME A	Spain	LX.PAM0X.05 0	AS5738G-744G50Mn VHP32ATES1 MC N10MGE1512Cbb 2*2G/500_L/6L/5R/ CB_n2_0.3D_ES22	C2DP7450	NLED15.6WXGAG	N10MG E1	512M- DDR2(6 4*16*4)	SO2GBIII10	SO2GBIII 10	N500GB5. 4KS	NSM8XS	5 in 1- Build in	SP1x2M MW	SP1x2 MMW	N	N	6CELL2.2	65W	0.3M DV
AS5738G-644G32Mn	EME A	Eastern Europe	LX.PAM0X.03 0	AS5738G-644G32Mn VHP32ATEU5 MC N10MGE1512CbbM 2*2G/320/6L/5R/ CB_n2_0.3D_RO12	C2DT6400	NLED15.6WXGAG	N10MG E1	512M- DDR2(6 4*16*4)	SO2GBIII10	SO2GBIII 10	N320GB5. 4KS	NSM8XS	5 in 1- Build in	SP1x2M MW	SP1x2 MMW	N	N	6CELL2.2	65W	0.3M DV
AS5738G-642G32Mn	AAP	Australia/ New Zealand	LX.PAM0X.04 9	AS5738G-642G32Mn VHP32ATAU1 MC N10MGE1512CbbM 1*2G/320/6L/5R/ CB_n2_0.3D_EN12	C2DT6400	NLED15.6WXGAG	N10MG E1	512M- DDR2(6 4*16*4)	SO2GBIII10	N	N320GB5. 4KS	NSM8XS	5 in 1- Build in	SP1x2M MW	SP1x2 MMW	N	N	6CELL2.2	65W	0.3M DV

Model	RO	Country	Acer Part No	Description	CPU	LCD	VGA Chip	VRAM 1	Memory 1	Memory 2	HDD 1(GB)	ODD	Card Reader	WLAN	WLAN1	Bluetooth	Finger-print	Battery	Adapter	Camera
AS5738ZG - 423G25Mn	EME A	Middle East	LX.PAT0X.006	AS5738ZG-423G25Mn EM VHP32ATME2 MC N10MGE1512Cbb 2G+1G/250/6L/ CB_bgn_0.3D_AR23	PMDT420 0	NLED15.6WXGAG	N10MG E1	512M- DDR2(6 4*16*4)	SO2GBIII10	SO1GBIII 10	N250GB5. 4KS	NSM8XS	5 in 1- Build in	3rd WiFi 1x2 BGN	3rd WiFi 1x2 BGN	N	N	6CELL2.2	65W	0.3M DV
AS5738ZG - 423G25Mn	EME A	Middle East	LX.PAT0X.010	AS5738ZG-423G25Mn EM VHP32ATME2 MC N10MGE1512Cbb 2G+1G/250/6L/ CB_bgn_0.3D_EN15	PMDT420 0	NLED15.6WXGAG	N10MG E1	512M- DDR2(6 4*16*4)	SO2GBIII10	SO1GBIII 10	N250GB5. 4KS	NSM8XS	5 in 1- Build in	3rd WiFi 1x2 BGN	3rd WiFi 1x2 BGN	N	N	6CELL2.2	65W	0.3M DV
AS5738ZG - 423G25Mn	EME A	Poland	LX.PAT0X.004	AS5738ZG-423G25Mn VHP32ATPL1 MC N10MGE1512Cbb 2G+1G/250/6L/ CB_bgn_0.3D_PL11	PMDT420 0	NLED15.6WXGAG	N10MG E1	512M- DDR2(6 4*16*4)	SO2GBIII10	SO1GBIII 10	N250GB5. 4KS	NSM8XS	5 in 1- Build in	3rd WiFi 1x2 BGN	3rd WiFi 1x2 BGN	N	N	6CELL2.2	65W	0.3M DV
AS5738ZG - 423G25Mn	EME A	Middle East	LX.PAT0X.011	AS5738ZG-423G25Mn EM VHP32ATME6 MC N10MGE1512Cbb 2G+1G/250/6L/ CB_bgn_0.3D_EN15	PMDT420 0	NLED15.6WXGAG	N10MG E1	512M- DDR2(6 4*16*4)	SO2GBIII10	SO1GBIII 10	N250GB5. 4KS	NSM8XS	5 in 1- Build in	3rd WiFi 1x2 BGN	3rd WiFi 1x2 BGN	N	N	6CELL2.2	65W	0.3M DV
AS5738ZG - 423G25Mn	EME A	Eastern Europe	LX.PAT0X.024	AS5738ZG-423G25Mn VHP32ATEU5 MC N10MGE1512Cbb 2G+1G/250/6L/ CB_bgn_0.3D_RO12	PMDT420 0	NLED15.6WXGAG	N10MG E1	512M- DDR2(6 4*16*4)	SO2GBIII10	SO1GBIII 10	N250GB5. 4KS	NSM8XS	5 in 1- Build in	3rd WiFi 1x2 BGN	3rd WiFi 1x2 BGN	N	N	6CELL2.2	65W	0.3M DV
AS5738ZG - 423G25Mn	EME A	Greece	LX.PAT0X.015	AS5738ZG-423G25Mn VHP32ATGR1 MC N10MGE1512Cbb 2G+1G/250/6L/ CB_bgn_0.3D_EL32	PMDT420 0	NLED15.6WXGAG	N10MG E1	512M- DDR2(6 4*16*4)	SO2GBIII10	SO1GBIII 10	N250GB5. 4KS	NSM8XS	5 in 1- Build in	3rd WiFi 1x2 BGN	3rd WiFi 1x2 BGN	N	N	6CELL2.2	65W	0.3M DV
AS5738ZG - 423G25Mn	EME A	Eastern Europe	LX.PAT0X.023	AS5738ZG-423G25Mn VHP32ATEU7 MC N10MGE1512Cbb 2G+1G/250/6L/ CB_bgn_0.3D_ENR2	PMDT420 0	NLED15.6WXGAG	N10MG E1	512M- DDR2(6 4*16*4)	SO2GBIII10	SO1GBIII 10	N250GB5. 4KS	NSM8XS	5 in 1- Build in	3rd WiFi 1x2 BGN	3rd WiFi 1x2 BGN	N	N	6CELL2.2	65W	0.3M DV
AS5738ZG - 423G25Mn	EME A	Eastern Europe	LX.PAT0X.025	AS5738ZG-423G25Mn VHP32ATEU7 MC N10MGE1512Cbb 2G+1G/250/6L/ CB_bgn_0.3D_SL11	PMDT420 0	NLED15.6WXGAG	N10MG E1	512M- DDR2(6 4*16*4)	SO2GBIII10	SO1GBIII 10	N250GB5. 4KS	NSM8XS	5 in 1- Build in	3rd WiFi 1x2 BGN	3rd WiFi 1x2 BGN	N	N	6CELL2.2	65W	0.3M DV
AS5738ZG - 423G25Mn	EME A	Eastern Europe	LX.PAT0X.021	AS5738ZG-423G25Mn VHP32ATEU3 MC N10MGE1512Cbb 2G+1G/250/6L/ CB_bgn_0.3D_RU23	PMDT420 0	NLED15.6WXGAG	N10MG E1	512M- DDR2(6 4*16*4)	SO2GBIII10	SO1GBIII 10	N250GB5. 4KS	NSM8XS	5 in 1- Build in	3rd WiFi 1x2 BGN	3rd WiFi 1x2 BGN	N	N	6CELL2.2	65W	0.3M DV
AS5738ZG - 423G25Mn	EME A	Hungary	LX.PAT0X.018	AS5738ZG-423G25Mn VHP32ATHU1 MC N10MGE1512Cbb 2G+1G/250/6L/ CB_bgn_0.3D_HU13	PMDT420 0	NLED15.6WXGAG	N10MG E1	512M- DDR2(6 4*16*4)	SO2GBIII10	SO1GBIII 10	N250GB5. 4KS	NSM8XS	5 in 1- Build in	3rd WiFi 1x2 BGN	3rd WiFi 1x2 BGN	N	N	6CELL2.2	65W	0.3M DV
AS5738ZG - 423G25Mn	EME A	Finland	LX.PAT0X.019	AS5738ZG-423G25Mn VHP32ATF12 MC N10MGE1512Cbb 2G+1G/250/6L/ CB_bgn_0.3D_FI11	PMDT420 0	NLED15.6WXGAG	N10MG E1	512M- DDR2(6 4*16*4)	SO2GBIII10	SO1GBIII 10	N250GB5. 4KS	NSM8XS	5 in 1- Build in	3rd WiFi 1x2 BGN	3rd WiFi 1x2 BGN	N	N	6CELL2.2	65W	0.3M DV
AS5738ZG - 423G25Mn	EME A	Eastern Europe	LX.PAT0X.020	AS5738ZG-423G25Mn VHP32ATEU4 MC N10MGE1512Cbb 2G+1G/250/6L/ CB_bgn_0.3D_SV22	PMDT420 0	NLED15.6WXGAG	N10MG E1	512M- DDR2(6 4*16*4)	SO2GBIII10	SO1GBIII 10	N250GB5. 4KS	NSM8XS	5 in 1- Build in	3rd WiFi 1x2 BGN	3rd WiFi 1x2 BGN	N	N	6CELL2.2	65W	0.3M DV

Model	RO	Country	Acer Part No	Description	CPU	LCD	VGA Chip	VRAM 1	Memory 1	Memory 2	HDD 1(GB)	ODD	Card Reader	WLAN	WLAN1	Bluetooth	Finger-print	Battery	Adapter	Camera
AS5738Z-422G32Mn	AAP	India	LX.PAR0X.048	AS5738Z-422G32Mn VHP32ATIN1 MC UMACbbm 1*2G/320/ BT/6L/5R/ CB_bgn_0.3D_EN12	PMDT4200	NLED15.6WXGAG	UMA	N	SO2GBIII10	N	N320GB5.4KS	NSM8XS	5 in 1- Build in	3rd WiFi 1x2 BGN	3rd WiFi 1x2 BGN	BT 2.0	N	6CELL2.2	65W	0.3M DV
AS5738Z-423G25Mn	EME A	Denmark	LX.PAR0X.020	AS5738Z-423G25Mn VHP32ATDK2 MC UMACbbm 2G+1G/250/ 6L/5R/ CB_bgn_0.3D_ENS3	PMDT4200	NLED15.6WXGAG	UMA	N	SO2GBIII10	SO1GBIII10	N250GB5.4KS	NSM8XS	5 in 1- Build in	3rd WiFi 1x2 BGN	3rd WiFi 1x2 BGN	N	N	6CELL2.2	65W	0.3M DV
AS5738Z-423G25Mn	EME A	Austria	LX.PAR0X.010	AS5738Z-423G25Mn VHP32ATAT1 MC UMACbbm 2G+1G/250/ 6L/5R/ CB_bgn_0.3D_DE11	PMDT4200	NLED15.6WXGAG	UMA	N	SO2GBIII10	SO1GBIII10	N250GB5.4KS	NSM8XS	5 in 1- Build in	3rd WiFi 1x2 BGN	3rd WiFi 1x2 BGN	N	N	6CELL2.2	65W	0.3M DV
AS5738Z-423G25Mn	EME A	Germany	LX.PAR0X.022	AS5738Z-423G25Mn VHP32ATDE1 MC UMACbbm 2G+1G/250/ 6L/5R/ CB_bgn_0.3D_DE13	PMDT4200	NLED15.6WXGAG	UMA	N	SO2GBIII10	SO1GBIII10	N250GB5.4KS	NSM8XS	5 in 1- Build in	3rd WiFi 1x2 BGN	3rd WiFi 1x2 BGN	N	N	6CELL2.2	65W	0.3M DV
AS5738Z-423G25Mn	EME A	France	LX.PAR0X.021	AS5738Z-423G25Mn VHP32ATFR1 MC UMACbbm 2G+1G/250/ 6L/5R/ CB_bgn_0.3D_FR23	PMDT4200	NLED15.6WXGAG	UMA	N	SO2GBIII10	SO1GBIII10	N250GB5.4KS	NSM8XS	5 in 1- Build in	3rd WiFi 1x2 BGN	3rd WiFi 1x2 BGN	N	N	6CELL2.2	65W	0.3M DV
AS5738Z-423G25Mn	EME A	Middle East	LX.PAR0X.028	AS5738Z-423G25Mn EM VHP32ATME3 MC UMACbbm 2G+1G/250/ 6L/5R/ CB_bgn_0.3D_FR23	PMDT4200	NLED15.6WXGAG	UMA	N	SO2GBIII10	SO1GBIII10	N250GB5.4KS	NSM8XS	5 in 1- Build in	3rd WiFi 1x2 BGN	3rd WiFi 1x2 BGN	N	N	6CELL2.2	65W	0.3M DV
AS5738Z-423G25Mn	EME A	South Africa	LX.PAR0X.026	AS5738Z-423G25Mn EM VHP32ATZA1 MC UMACbbm 2G+1G/250/ 6L/5R/ CB_bgn_0.3D_FR23	PMDT4200	NLED15.6WXGAG	UMA	N	SO2GBIII10	SO1GBIII10	N250GB5.4KS	NSM8XS	5 in 1- Build in	3rd WiFi 1x2 BGN	3rd WiFi 1x2 BGN	N	N	6CELL2.2	65W	0.3M DV
AS5738Z-423G25Mn	EME A	UK	LX.PAR0X.030	AS5738Z-423G25Mn VHP32ATGB1 MC UMACbbm 2G+1G/250/ 6L/5R/ CB_bgn_0.3D_EN14	PMDT4200	NLED15.6WXGAG	UMA	N	SO2GBIII10	SO1GBIII10	N250GB5.4KS	NSM8XS	5 in 1- Build in	3rd WiFi 1x2 BGN	3rd WiFi 1x2 BGN	N	N	6CELL2.2	65W	0.3M DV
AS5738Z-423G25Mn	EME A	Eastern Europe	LX.PAR0X.005	AS5738Z-423G25Mn VHP32ATEU7 MC UMACbbm 2G+1G/250/ 6L/5R/ CB_bgn_0.3D_SL11	PMDT4200	NLED15.6WXGAG	UMA	N	SO2GBIII10	SO1GBIII10	N250GB5.4KS	NSM8XS	5 in 1- Build in	3rd WiFi 1x2 BGN	3rd WiFi 1x2 BGN	N	N	6CELL2.2	65W	0.3M DV
AS5738Z-423G25Mn	EME A	Eastern Europe	LX.PAR0X.032	AS5738Z-423G25Mn VHP32ATEU7 MC UMACbbm 2G+1G/250/ 6L/5R/ CB_bgn_0.3D_ENR2	PMDT4200	NLED15.6WXGAG	UMA	N	SO2GBIII10	SO1GBIII10	N250GB5.4KS	NSM8XS	5 in 1- Build in	3rd WiFi 1x2 BGN	3rd WiFi 1x2 BGN	N	N	6CELL2.2	65W	0.3M DV
AS5738Z-423G25Mn	EME A	Norway	LX.PAR0X.011	AS5738Z-423G25Mn VHP32ATNO1 MC UMACbbm 2G+1G/250/ 6L/5R/ CB_bgn_0.3D_NO12	PMDT4200	NLED15.6WXGAG	UMA	N	SO2GBIII10	SO1GBIII10	N250GB5.4KS	NSM8XS	5 in 1- Build in	3rd WiFi 1x2 BGN	3rd WiFi 1x2 BGN	N	N	6CELL2.2	65W	0.3M DV
AS5738Z-423G25Mn	EME A	Sweden	LX.PAR0X.007	AS5738Z-423G25Mn VHP32ATSE1 MC UMACbbm 2G+1G/250/ 6L/5R/ CB_bgn_0.3D_FI13	PMDT4200	NLED15.6WXGAG	UMA	N	SO2GBIII10	SO1GBIII10	N250GB5.4KS	NSM8XS	5 in 1- Build in	3rd WiFi 1x2 BGN	3rd WiFi 1x2 BGN	N	N	6CELL2.2	65W	0.3M DV

Model	RO	Country	Acer Part No	Description	CPU	LCD	VGA Chip	VRAM 1	Memory 1	Memory 2	HDD 1(GB)	ODD	Card Reader	Wireless LAN	Wireless LAN1	Blue-tooth	Finger Print	Battery	Camera
AS5536G-724G32Mn	AAP	Australia /New Zealand	LX.PB10X.004	AS5536G-724G32Mn VHP32ATAU1 MC M92XT512CFbbM 2*2G/320/BT/6L/5R/CB_bgn_FP_0.3D_EN12	ATRM72	NLED15.6 WXGAG	M92X T	512M-DDR2(64*16*4)	SO2GBI6	SO2G BI6	N320GB5.4KS	NSM8XS	5 in 1-Build in	3rd WiFi 1x2 BGN	3rd WiFi 1x2 BGN	BT 2.0	AES16 10	6CELL2.2	0.3M DV
AS5536G-744G50Mn	AAP	Australia /New Zealand	LX.PB10X.003	AS5536G-744G50Mn VHP32ATAU1 MC M92XT512CFbbM 2*2G/500_L/BT/6L/5R/CB_bgn_FP_0.3D_EN12	ATRM74	NLED15.6 WXGAG	M92X T	512M-DDR2(64*16*4)	SO2GBI6	SO2G BI6	N500GB5.4KS	NSM8XS	5 in 1-Build in	3rd WiFi 1x2 BGN	3rd WiFi 1x2 BGN	BT 2.0	AES16 10	6CELL2.2	0.3M DV
AS5536G-642G32Mn	AAP	Australia /New Zealand	LX.PB10X.002	AS5536G-642G32Mn VHP32ATAU1 MC M92XT512CFbbM 1*2G/320/BT/6L/5R/CB_bgn_FP_0.3D_EN12	AAQL64	NLED15.6 WXGAG	M92X T	512M-DDR2(64*16*4)	SO2GBI6	N	N320GB5.4KS	NSM8XS	5 in 1-Build in	3rd WiFi 1x2 BGN	3rd WiFi 1x2 BGN	BT 2.0	AES16 10	6CELL2.2	0.3M DV
AS5536G-741G32Mn	AAP	Philippines	LX.PB10Y.002	AS5536G-741G32Mn EM VHB32ATPH1 MC M92XT512CFbbM 1*1G/320/6L/SR/CB_bg_FP_0.3D_EN14	ATRM74	NLED15.6 WXGAG	M92X T	512M-DDR2(64*16*4)	SO1GBI6	N	N320GB5.4KS	NSM8XS	5 in 1-Build in	3rd WiFi 1x2 BGN	3rd WiFi 1x2 BGN	N	AES16 10	6CELL2.2	0.3M DV
AS5536G-642G32Mn	CHINA	China	LX.PB10Y.001	AS5536G-642G32Mn VHB32ATCN1 MC M92XT512CFbbM 1*2G/320/6L/CB_bgn_FP_0.3D_SC11	AAQL64	NLED15.6 WXGAG	M92X T	512M-DDR2(64*16*4)	SO2GBI6	N	N320GB5.4KS	NSM8XS	5 in 1-Build in	3rd WiFi 1x2 BGN	3rd WiFi 1x2 BGN	N	AES16 10	6CELL2.2	0.3M DV
AS5536G-744G50Bn	WW	WW	S2.PB10X.002	AS5536G-744G50Bn VHP32AWW1 MC M92XT512CFbbM 2*2G/500_L/BT/6L/CB_bgn_FP_0.3D_EN11	ATRM74	N15.6WX GAG	M92X T	512M-DDR2(64*16*4)	SO2GBI6	SO2G BI6	N500GB5.4KS	NBDCB4 XS	5 in 1-Build in	3rd WiFi 1x2 BGN	3rd WiFi 1x2 BGN	BT 2.0	AES16 10	6CELL2.2	0.3M DV
AS5536G-744G50Bn	WW	GCTWN	S2.PB10X.001	AS5536G-744G50Bn VHP32AWW1 MC M92XT512CFbbM 2*2G/500_L/BT/6L/CB_bgn_FP_0.3D_ENX1	ATRM74	N15.6WX GAG	M92X T	512M-DDR2(64*16*4)	SO2GBI6	SO2G BI6	N500GB5.4KS	NBDCB4 XS	5 in 1-Build in	3rd WiFi 1x2 BGN	3rd WiFi 1x2 BGN	BT 2.0	AES16 10	6CELL2.2	0.3M DV
AS5536G-644G32Mn	AAP	Australia /New Zealand	LX.PAZ0X.050	AS5536G-644G32Mn VHP32ATAU1 MC M92XT512Cbb 2*2G/320/6L/5R/CB_bgn_0.3D_EN12	AAQL64	NLED15.6 WXGAG	M92X T	512M-DDR2(64*16*4)	SO2GBI6	SO2G BI6	N320GB5.4KS	NSM8XS	5 in 1-Build in	3rd WiFi 1x2 BGN	3rd WiFi 1x2 BGN	N	N	6CELL2.2	0.3M DV
AS5536G-643G50Mn	EMEA	Poland	LX.PAZ0C.001	AS5536G-643G50Mn LINPUSAPL1 M92XT512Cbb 2G+1G/500_L/BT/6L/5R/CB_bgn_0.3D_EN41	AAQL64	NLED15.6 WXGAG	M92X T	512M-DDR2(64*16*4)	SO2GBI6	SO1G BI6	N500GB5.4KS	NSM8XS	5 in 1-Build in	3rd WiFi 1x2 BGN	3rd WiFi 1x2 BGN	BT 2.0	N	6CELL2.2	0.3M DV
AS5536G-643G32Mn	EMEA	Poland	LX.PAZ0C.002	AS5536G-643G32Mn LINPUSAPL1 M92XT512Cbb 2G+1G/320/BT/6L/5R/CB_bgn_0.3D_EN41	AAQL64	NLED15.6 WXGAG	M92X T	512M-DDR2(64*16*4)	SO2GBI6	SO1G BI6	N320GB5.4KS	NSM8XS	5 in 1-Build in	3rd WiFi 1x2 BGN	3rd WiFi 1x2 BGN	BT 2.0	N	6CELL2.2	0.3M DV
AS5536G-644G25Mn	EMEA	France	LX.PAZ0X.049	AS5536G-644G25Mn VHP32ATFR1 MC M92XT512Cbb 2*2G/250/6L/5R/CB_bgn_0.3D_FR23	AAQL64	NLED15.6 WXGAG	M92X T	512M-DDR2(64*16*4)	SO2GBI6	SO2G BI6	N250GB5.4KS	NSM8XS	5 in 1-Build in	3rd WiFi 1x2 BGN	3rd WiFi 1x2 BGN	N	N	6CELL2.2	0.3M DV
AS5536G-744G32Mn	EMEA	Turkey	LX.PAZ0X.024	AS5536G-744G32Mn EM VHP32ATTR1 MC M92XT512Cbb 2*2G/320/6L/5R/CB_bgn_0.3D_TR33	ATRM74	NLED15.6 WXGAG	M92X T	512M-DDR2(64*16*4)	SO2GBI6	SO2G BI6	N320GB5.4KS	NSM8XS	5 in 1-Build in	3rd WiFi 1x2 BGN	3rd WiFi 1x2 BGN	N	N	6CELL2.2	0.3M DV

Model	RO	Country	Acer Part No	Description	CPU	LCD	VGA Chip	VRAM 1	Memory 1	Memory 2	HDD 1(GB)	ODD	Card Reader	Wireless LAN	Wireless LAN1	Blue-tooth	Finger Print	Battery	Camera
AS5536-644G25Mn	EME A	Finland	LX.PAW0X.015	AS5536-644G25Mn VHP32ATF12 MC UMACbbm 2*2G/250/6L/CB_bgn_0.3D_F111	AAQL64	NLED15.6 WXGAG	UMA	N	SO2GBI6	SO2G BI6	N250GB5.4KS	NSM8XS	5 in 1-Build in	3rd WiFi 1x2 BGN	3rd WiFi 1x2 BGN	N	N	6CELL2.2	0.3M DV
AS5536-644G25Mn	EME A	Turkey	LX.PAW0X.025	AS5536-644G25Mn EM VHP32ATR1 MC UMACbbm 2*2G/250/6L/CB_bgn_0.3D_TR33	AAQL64	NLED15.6 WXGAG	UMA	N	SO2GBI6	SO2G BI6	N250GB5.4KS	NSM8XS	5 in 1-Build in	3rd WiFi 1x2 BGN	3rd WiFi 1x2 BGN	N	N	6CELL2.2	0.3M DV
AS5536-644G25Mn	EME A	Poland	LX.PAW0X.026	AS5536-644G25Mn VHP32ATPL1 MC UMACbbm 2*2G/250/6L/CB_bgn_0.3D_PL11	AAQL64	NLED15.6 WXGAG	UMA	N	SO2GBI6	SO2G BI6	N250GB5.4KS	NSM8XS	5 in 1-Build in	3rd WiFi 1x2 BGN	3rd WiFi 1x2 BGN	N	N	6CELL2.2	0.3M DV
AS5536-644G25Mn	EME A	Switzerland	LX.PAW0X.027	AS5536-644G25Mn VHP32ATCH1 MC UMACbbm 2*2G/250/6L/CB_bgn_0.3D_IT42	AAQL64	NLED15.6 WXGAG	UMA	N	SO2GBI6	SO2G BI6	N250GB5.4KS	NSM8XS	5 in 1-Build in	3rd WiFi 1x2 BGN	3rd WiFi 1x2 BGN	N	N	6CELL2.2	0.3M DV
AS5536-644G25Mn	EME A	South Africa	LX.PAW0X.043	AS5536-644G25Mn EM VHP32ATZ1 MC UMACbbm 2*2G/250/6L/CB_bgn_0.3D_FR23	AAQL64	NLED15.6 WXGAG	UMA	N	SO2GBI6	SO2G BI6	N250GB5.4KS	NSM8XS	5 in 1-Build in	3rd WiFi 1x2 BGN	3rd WiFi 1x2 BGN	N	N	6CELL2.2	0.3M DV
AS5536-644G25Mn	EME A	Denmark	LX.PAW0X.041	AS5536-644G25Mn VHP32ATDK2 MC UMACbbm 2*2G/250/6L/CB_bgn_0.3D_ENS3	AAQL64	NLED15.6 WXGAG	UMA	N	SO2GBI6	SO2G BI6	N250GB5.4KS	NSM8XS	5 in 1-Build in	3rd WiFi 1x2 BGN	3rd WiFi 1x2 BGN	N	N	6CELL2.2	0.3M DV
AS5536-644G25Mn	EME A	Germany	LX.PAW0X.039	AS5536-644G25Mn VHP32ATDE1 MC UMACbbm 2*2G/250/6L/CB_bgn_0.3D_DE13	AAQL64	NLED15.6 WXGAG	UMA	N	SO2GBI6	SO2G BI6	N250GB5.4KS	NSM8XS	5 in 1-Build in	3rd WiFi 1x2 BGN	3rd WiFi 1x2 BGN	N	N	6CELL2.2	0.3M DV
AS5536-644G25Mn	EME A	Holland	LX.PAW0X.037	AS5536-644G25Mn VHP32ATNL1 MC UMACbbm 2*2G/250/6L/CB_bgn_0.3D_NL12	AAQL64	NLED15.6 WXGAG	UMA	N	SO2GBI6	SO2G BI6	N250GB5.4KS	NSM8XS	5 in 1-Build in	3rd WiFi 1x2 BGN	3rd WiFi 1x2 BGN	N	N	6CELL2.2	0.3M DV
AS5536-644G25Mn	EME A	Norway	LX.PAW0X.035	AS5536-644G25Mn VHP32ATNO1 MC UMACbbm 2*2G/250/6L/CB_bgn_0.3D_NO12	AAQL64	NLED15.6 WXGAG	UMA	N	SO2GBI6	SO2G BI6	N250GB5.4KS	NSM8XS	5 in 1-Build in	3rd WiFi 1x2 BGN	3rd WiFi 1x2 BGN	N	N	6CELL2.2	0.3M DV
AS5536-644G25Mn	EME A	Austria	LX.PAW0X.032	AS5536-644G25Mn VHP32ATAT1 MC UMACbbm 2*2G/250/6L/CB_bgn_0.3D_DE11	AAQL64	NLED15.6 WXGAG	UMA	N	SO2GBI6	SO2G BI6	N250GB5.4KS	NSM8XS	5 in 1-Build in	3rd WiFi 1x2 BGN	3rd WiFi 1x2 BGN	N	N	6CELL2.2	0.3M DV
AS5536-644G25Mi	EME A	Russia	LX.PAW0X.033	AS5536-644G25Mi VHP32ATRU1 MC UMACbbm 2*2G/250/6L/CB_bg_0.3D_RU11	AAQL64	NLED15.6 WXGAG	UMA	N	SO2GBI6	SO2G BI6	N250GB5.4KS	NSM8XS	5 in 1-Build in	3rd WiFi 1x2 BGN	3rd WiFi BG	N	N	6CELL2.2	0.3M DV
AS5536-644G25Mn	EME A	Norway	LX.PAW0X.034	AS5536-644G25Mn VHP32ATNO3 MC UMACbbm 2*2G/250/6L/CB_bgn_0.3D_ENS3	AAQL64	NLED15.6 WXGAG	UMA	N	SO2GBI6	SO2G BI6	N250GB5.4KS	NSM8XS	5 in 1-Build in	3rd WiFi 1x2 BGN	3rd WiFi 1x2 BGN	N	N	6CELL2.2	0.3M DV
AS5536-644G25Mn	EME A	Luxembourg	LX.PAW0X.036	AS5536-644G25Mn VHP32ATLU3 MC UMACbbm 2*2G/250/6L/CB_bgn_0.3D_IT41	AAQL64	NLED15.6 WXGAG	UMA	N	SO2GBI6	SO2G BI6	N250GB5.4KS	NSM8XS	5 in 1-Build in	3rd WiFi 1x2 BGN	3rd WiFi 1x2 BGN	N	N	6CELL2.2	0.3M DV
AS5536-644G25Mn	EME A	Belgium	LX.PAW0X.038	AS5536-644G25Mn VHP32ATBE1 MC UMACbbm 2*2G/250/6L/CB_bgn_0.3D_NL13	AAQL64	NLED15.6 WXGAG	UMA	N	SO2GBI6	SO2G BI6	N250GB5.4KS	NSM8XS	5 in 1-Build in	3rd WiFi 1x2 BGN	3rd WiFi 1x2 BGN	N	N	6CELL2.2	0.3M DV

CLICK HERE TO **DOWNLOAD** THE COMPLETE MANUAL

- Thank you very much for reading the preview of the manual.
- You can download the complete manual from: www.heydownloads.com by clicking the link below



- Please note: If there is no response to CLICKING the link, please download this PDF first and then click on it.

CLICK HERE TO **DOWNLOAD** THE COMPLETE MANUAL