

# Aspire 5735/5735Z/5335 Series Service Guide

Service guide files and updates are available on the ACER/CSD web; for more information, please refer to <http://csd.acer.com.tw>

PRINTED IN TAIWAN

CLICK HERE TO **DOWNLOAD** THE COMPLETE MANUAL

- Thank you very much for reading the preview of the manual.
- You can download the complete manual from: [www.heydownloads.com](http://www.heydownloads.com) by clicking the link below



- Please note: If there is no response to CLICKING the link, please download this PDF first and then click on it.

CLICK HERE TO **DOWNLOAD** THE COMPLETE MANUAL

# System Specifications

---

## Features

Below is a brief summary of the computer's many feature:

### Platform

Intel® Centrino® 2 processor technology, featuring:

- Intel® Core™ 2 Duo processor\*
- Intel® Pentium® dual-core processor\*
- Intel® Celeron® processor\*
- Mobile Intel® GL40/GM45 Express Chipset (GL40 for Aspire 5730/5730Z/5330; GL45 for Aspire 5735/5735Z/5335)
- Intel® Wireless WiFi Link 5100/5300\*
- Acer InviLink™ Nplify™ 802.11b/g/Draft-N\*
- Acer InviLink™ 802.11b/g\*

**NOTE:** Intel® Core™ 2 Duo T5800/T5900/T9400/P7350/P8400 for Aspire 5735; Intel® Pentium® dual-core T3200/T3400 for Aspire 5735Z; Intel® Celeron® M 575/585/T1600 for Aspire 5335

### System Memory

- Dual-channel SDRAM support
- Up to 1 GB of DDR2 667 MHz memory, upgradeable to 2 GB using two soDIMM modules\*
- Up to 2 GB of DDR2 667 MHz memory, upgradeable to 4 GB using two soDIMM modules\*

### Display and graphics

- 15.6" HD 1366 x 768
- Mobile Intel® GL40/GM45 Express Chipset (GM45 for Aspire 5735/5735Z/5335)\*

### Storage subsystem

- 2.5" hard disk drives
- Optical drive options:
  - DVD-Super Multi double-layer drive
- 5-in-1 card reader

### Special keys and controls

- 105-/106-key keyboard
- Touchpad pointing device
- Empowering Key
- Easy-launch buttons: WLAN, Volume Up, Volume Down and Bluetooth

### Audio

- Two built-in stereo speakers

---

# Using the Keyboard

The keyboard has full-sized keys and an embedded numeric keypad, separate cursor, lock, Windows, function and special keys.

## Lock Keys and embedded numeric keypad

The keyboard has three lock keys which you can toggle on and off.

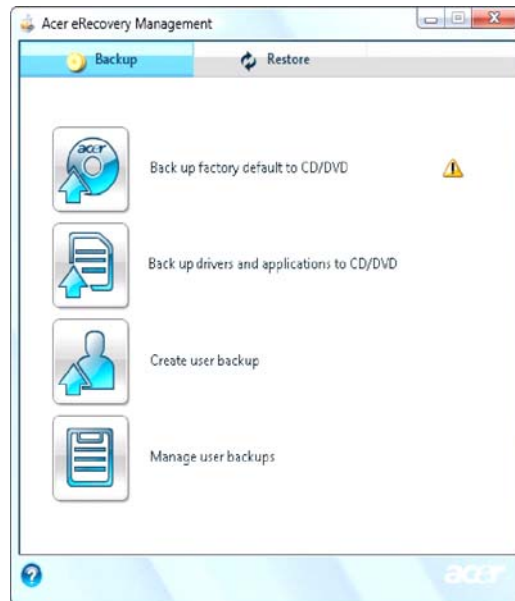
Lock key	Description
Caps Lock	When Caps Lock is on, all alphabetic characters typed are in uppercase.
Num Lock <Fn> + <F11>	When Num Lock is on, the embedded keypad is in numeric mode. The keys function as a calculator (complete with the arithmetic operators +, -, *, and /). Use this mode when you need to do a lot of numeric data entry. A better solution would be to connect an external keypad. <b>NOTE:</b> <Fn> + <F11> works only for certain models.
Scroll Lock <Fn> + <F12>	When Scroll Lock is on, the screen moves one line up or down when you press the up or down arrow keys respectively. Scroll Lock does not work with some applications.

The embedded numeric keypad functions like a desktop numeric keypad. It is indicated by small characters located on the upper right corner of the key caps. To simplify the keyboard legend, cursor-control key symbols are not printed on the keys.

Desired access	Num Lock on	Num Lock off
Number keys on embedded keypad	Type numbers in a normal manner.	
Cursor-control keys on embedded keypad	Hold <Shift> while using cursor-control keys.	Hold <Fn> while using cursor-control keys.
Main keyboard keys	Hold <Fn> while typing letters on embedded keypad.	Type the letters in a normal manner.

- Back up factory default to CD/DVD
- Back up drivers and applications to CD/DVD
- Create user backup
- Manage user backups
- Restore:
  - Restore system to factory default
  - Reinstall applications/drivers
  - Restore system from user backup
  - Password settings

To use the password protection feature of Acer eRecovery Management to protect your data, you must first set the Empowering Technology password. To set the password, refer to the section "**Empowering Technology password**".



For more information, please refer to "**Acer eRecovery Management**" on page 62 in the **Acer System User's Guide**.

**NOTE:** If your computer did not come with a Recovery CD or System CD, please use Acer eRecovery Management's Backup factory default to CD/DVD feature to burn a backup image to CD or DVD. To ensure the best results when recovering your system using a CD or Acer eRecovery Management, detach all peripherals (except the external Acer ODD, if your computer has one), including your Acer ezDock.

## Battery

Item	Specification
Battery Type	Li-ion
Pack capacity	6Cell 4400 MAH/8Cell 4800 MAH
Number of battery cell	6/8
Package configuration	3 cells in series, 2 series in parallel 4 cells in series, 2 series in parallel

## LCD 15.4" inch

Item	Specification
Vendor & model name	CMO/AUO/LG
Screen Diagonal (mm)	15.4 inches
Display resolution (pixels)	1280 x 800 WXGA
Pixel Pitch	0.204 x 0.204
Pixel Arrangement	R.G.B. Vertical Stripe
Display Mode	Normally White
Typical White Luminance (NIT) also called Brightness	220
Luminance Uniformity	1.25 max.
Contrast Ratio	400 typical
Response Time msec	8
Nominal Input Voltage VDD	+3.3V
Viewing Angle (degree) Horizontal: Right/Left Vertical: Upper/Lower	45/45 15/35
Temperature Range(° C) Operating Storage (shipping)	0 to +50 -40 to +60

## AC Adaptor

Item	Specification
Input	100-240V~ 1.5A, 50-60Hz/
Output	19V 4.74A 90W/19V 3.42A 65W

## System Power Management

ACPI mode	Power Management
Mech. Off (G3)	All devices in the system are turned off completely.
Soft Off (G2/S5)	OS initiated shutdown. All devices in the system are turned off completely.
Working (G0/S0)	Individual devices such as the CPU and hard disc may be power managed in this state.

---

If the current password entered does not match the actual current password, the screen will show you the Setup Warning.

Setup Warning  
Invalid password  
Re-enter Password  
[ continue]

If the new password and confirm new password strings do not match, the screen will display the following message.

Setup Warning  
Password do not match  
Re-enter Password

---

## Removing the SD dummy card

1. Push the SD dummy card all the way in to eject it.



2. Pull it out from the slot.



## Removing the ExpressCard dummy card

1. Push the ExpressCard dummy card all the way in to eject it.



CLICK HERE TO **DOWNLOAD** THE COMPLETE MANUAL

- Thank you very much for reading the preview of the manual.
- You can download the complete manual from: [www.heydownloads.com](http://www.heydownloads.com) by clicking the link below



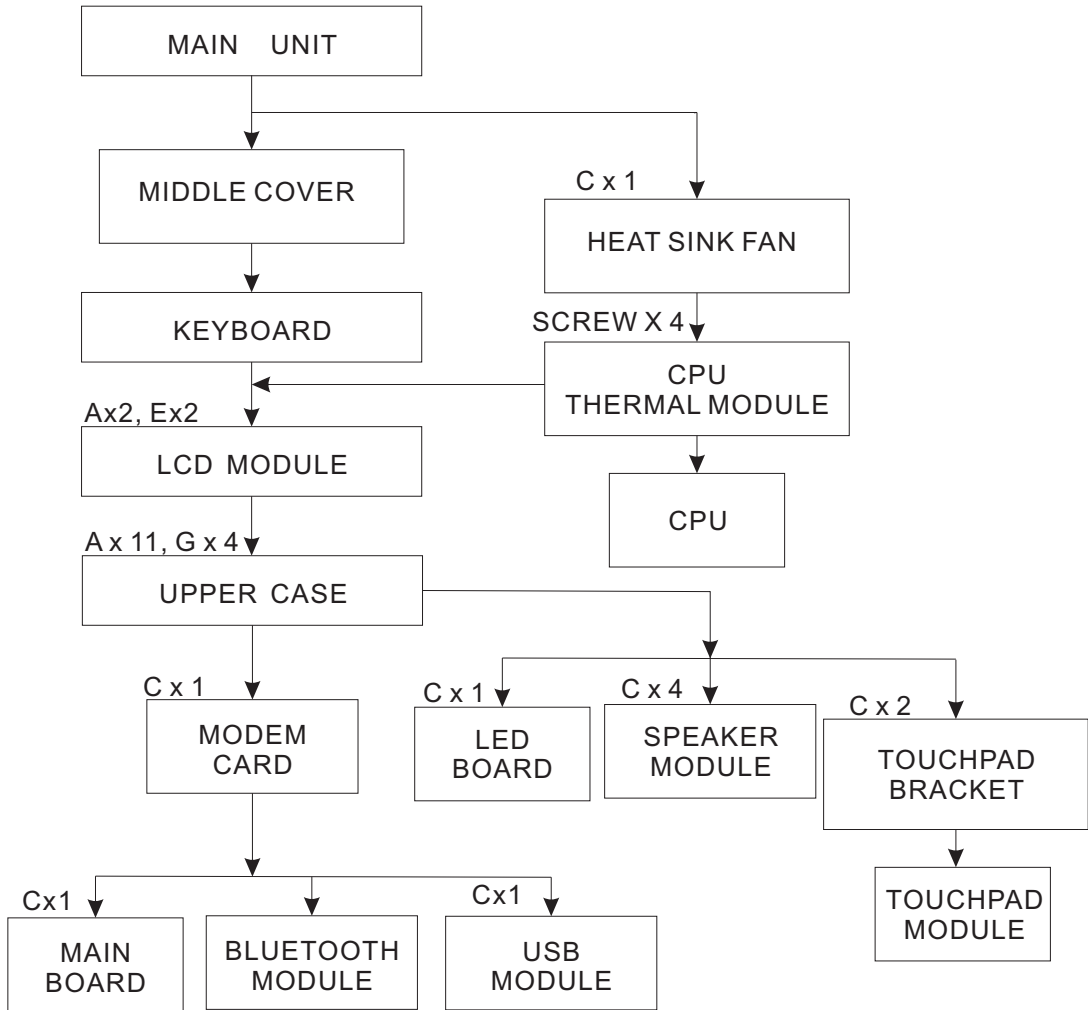
- Please note: If there is no response to CLICKING the link, please download this PDF first and then click on it.

CLICK HERE TO **DOWNLOAD** THE COMPLETE MANUAL

# Main Unit Disassembly Process

## Main Unit Disassembly Flowchart

### MAIN UNIT DISASSEMBLY



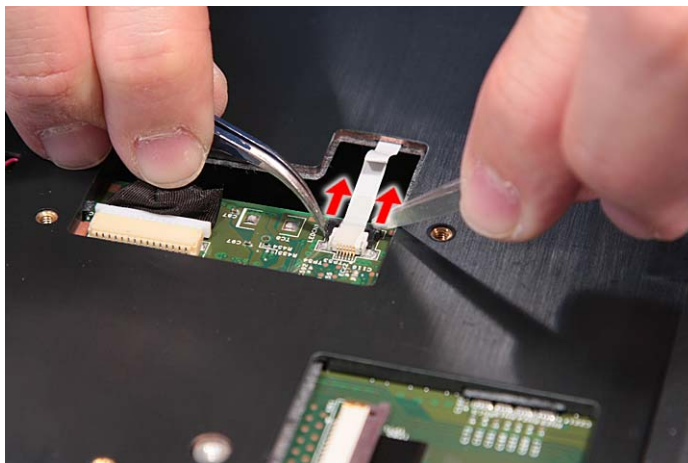
#### Screw List

Item	Screw	Color	Part No.
A	M2 x L8	Black	86.00E34.738
C	M2 x L3	Silver	86.9A522.3R0
E	M2.5 x L10	Silver	86.00F84.73A
G	M2 x L4	Black	86.00A02.140
H	M2 x L3	Black	86.9A552.3R0

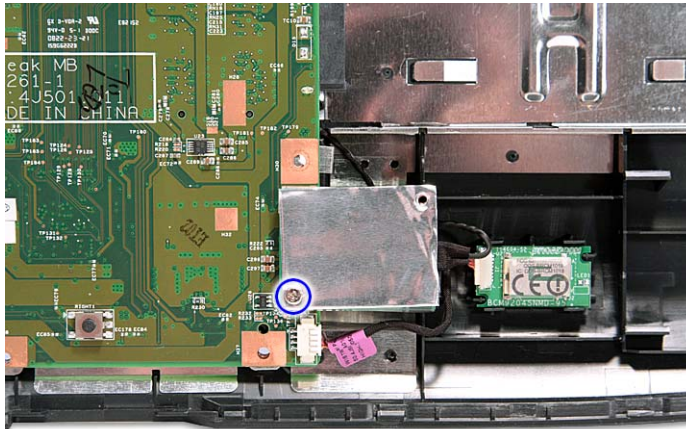
15. Disconnect the touchpad cable from the TPAD1 connector on the main board.



16. Disconnect the LED cable from LEDCN1 on the main board.

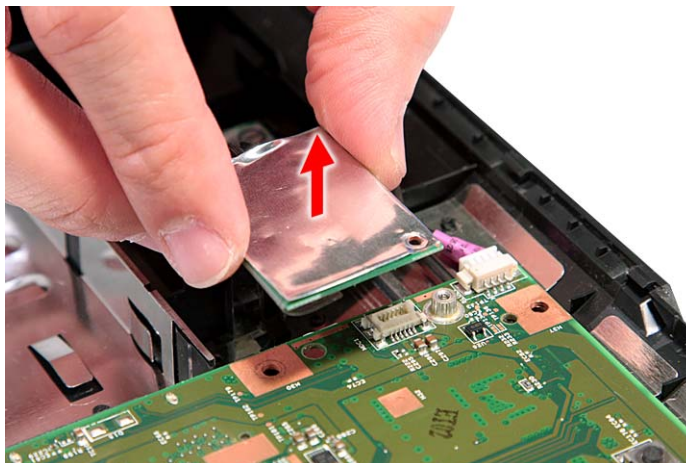


13. See “Removing the CPU” on page 66.
14. See “Removing the LCD Module” on page 67.
15. See “Separating the Upper Case from the Lower Case” on page 70.
16. Remove the one screw (C) securing the modem card.

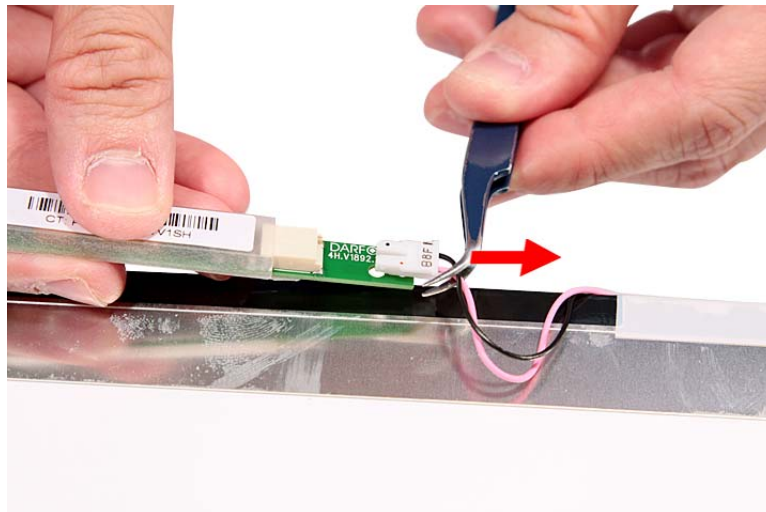
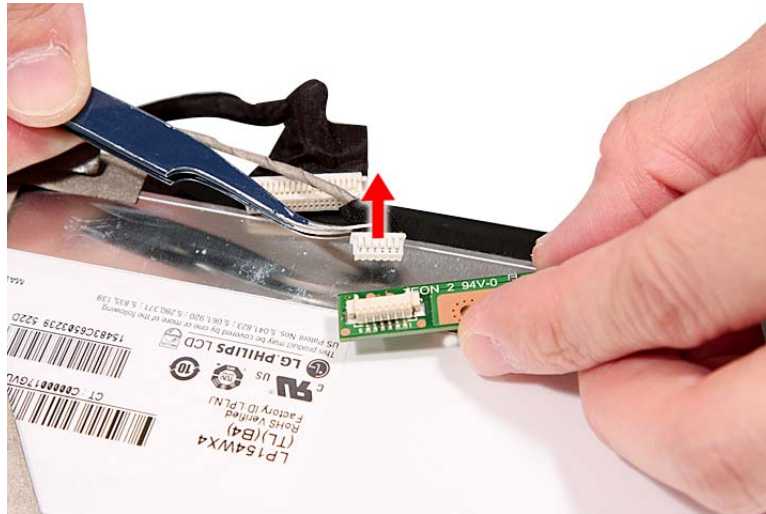


Step	Size (Quantity)	Color	Torque
1	M2 x L3 (1)	Silver	1.6 kgf-cm

17. Lift the modem board from the main board.



2. See “Removing the SD dummy card” on page 51.
3. See “Removing the ExpressCard dummy card” on page 51.
4. See “Removing the Lower Cover” on page 52.
5. See “Removing the WLAN Board Modules” on page 54.
6. See “Removing the Middle Cover” on page 62.
7. See “Removing the Heatsink Fan Module” on page 64.
8. See “Removing the CPU Heatsink Module” on page 65.
9. See “Removing the LCD Module” on page 67.
10. See “Removing the LCD Bezel” on page 88.
11. See “Removing the LCD panel with the Brackets” on page 89.
12. Disconnect the cables from the inverter board.



---

## Check the Battery Pack

To check the battery pack, do the following:

From Software:

1. Check out the Power Management in control Panel
2. In Power Meter, confirm that if the parameters shown in the screen for Current Power Source and Total Battery Power Remaining are correct.
3. Repeat the steps 1 and 2, for both battery and adapter.
4. This helps you identify first the problem is on recharging or discharging.

From Hardware:

1. Power off the computer.
2. Remove the battery pack and measure the voltage between battery terminals 1(+) and 6(ground).
3. If the voltage is still less than 7.5 Vdc after recharging, replace the battery.

To check the battery charge operation, use a discharged battery pack or a battery pack that has less than 50% of the total power remaining when installed in the computer.

If the battery status indicator does not light up, remove the battery pack and let it return to room temperature. Re-install the battery pack.

If the charge indicator still does not light up, replace the battery pack. If the charge indicator still does not light up, replace the DC/DC charger board.

## Touchpad Check

If the touchpad doesn't work, do the following actions one at a time to correct the problem. Do not replace a non-defective FRU:

1. Reconnect the touchpad cables.
2. Replace the touchpad.
3. Replace the system board.

After you use the touchpad, the pointer drifts on the screen for a short time. This self-acting pointer movement can occur when a slight, steady pressure is applied to the touchpad pointer. This symptom is not a hardware problem. No service actions are necessary if the pointer movement stops in a short period of time.

# Index of Symptom-to-FRU Error Message

## LCD-Related Symptoms

Symptom / Error	Action in Sequence
LCD backlight doesn't work LCD is too dark LCD brightness cannot be adjusted LCD contrast cannot be adjusted	Enter BIOS Utility to execute "Load Setup Default Settings", then reboot system. Reconnect the LCD connectors. Keyboard (if contrast and brightness function key doesn't work). LCD inverter ID LCD cable LCD inverter LCD System board
Unreadable LCD screen Missing pels in characters Abnormal screen Wrong color displayed	Reconnect the LCD connector LCD inverter ID LCD cable LCD inverter LCD System board
LCD has extra horizontal or vertical lines displayed.	LCD inverter ID LCD inverter LCD cable LCD System board

## Indicator-Related Symptoms

Symptom / Error	Action in Sequence
Indicator incorrectly remains off or on, but system runs correctly	Reconnect the inverter board Inverter board System board

## Power-Related Symptoms

Symptom / Error	Action in Sequence
Power shuts down during operation	Power source (battery pack and power adapter). See "Power System Check" on page 99. Battery pack Power adapter Hard drive & battery connection board System board
The system doesn't power-on.	Power source (battery pack and power adapter). See "Power System Check" on page 99. Battery pack Power adapter Hard drive & battery connection board System board

## FRU (Field Replaceable Unit) List

---

This chapter gives you the FRU (Field Replaceable Unit) listing in global configurations of 5730Z/5330 Series. Refer to this chapter whenever ordering for parts to repair or for RMA (Return Merchandise Authorization).

Please note that WHEN ORDERING FRU PARTS, you should check the most up-to-date information available on your regional web or channel. For whatever reasons a part number change is made, it will not be noted on the printed Service Guide. For ACER AUTHORIZED SERVICE PROVIDERS, your Acer office may have a DIFFERENT part number code from those given in the FRU list of this printed Service Guide. You MUST use the local FRU list provided by your regional Acer office to order FRU parts for repair and service of customer machines.

NOTE: To scrap or to return the defective parts, you should follow the local government ordinance or regulations on how to dispose it properly, or follow the rules set by your regional Acer office on how to return it.

CATEGORY	No.	PART NAME	DESCRIPTION	ACER OEM PURCHASE NO
KEYBOARD		KEYBOARD 17KB-FV5 BLACK 106KS CANADIAN FRENCH	KB DARFON NSK-AFF0M FC FR-CANA	KB.I1700.033
KEYBOARD		KEYBOARD 17KB-FV5 BLACK 106KS BRAZILIAN PORTUGUESE	KB DARFON NSK-AFF1B BP BRAZ-PT	KB.I1700.034
KEYBOARD		KEYBOARD 17KB-FV5 BLACK 106KS BELGIUM	KB DARFON NSK-AFF1A BE BELGIAN	KB.I1700.035
KEYBOARD		KEYBOARD 17KB-FV5 BLACK 105KS ARABIC/ENGLISH	KB DARFON NSK-AFF0A AR ARABIC	KB.I1700.036
KEYBOARD		KEYBOARD 17KB-FV5 BLACK 106KS ARABIC/FRENCH	KB DARFON NSK-AFF2A ARABIC-FR	KB.I1700.037
KEYBOARD		KEYBOARD 17KB-FV5 BLACK 106KS ENGLISH/CANADIAN FRENCH	KB DARFON NSK-AFF2M FC-ENG	KB.I1700.039
KEYBOARD		KEYBOARD 17KB-FV5 BLACK 106KS CZECH/SLOVAK	KB DARFON NSK-AFF13 CS CZ/SK	KB.I1700.041
LCD		LCD MODULE 15.6" WXGA GLARE W/ ANTENNA*2 & 0.3M CAMERA	LCD N15.6WXGAG W/ CCD&ANT*2	6M.ATR01.002
BOARDS		INVERTER BOARD 17" DARFON VK.21189.408	INVERTER 17" ROHS VK.21189.407	19.TQ901.002
BOARDS		INVERTER BOARD FOXCONN T62I240.03 V.00	INVERTER 17" T62I240.03 06L1	19.AR501.002
BOARDS		INVERTER BOARD SUMIDA TWS-458-124 MS	INVERTER 17" TWS-458-124 MS	19.AUA01.002
BOARDS		INVERTER BOARD YEC YNV-W06C	INVERTER 17" YNV-W06C	19.AUA01.001
CABLES		LCD/CAMERA CABLE	C.A. LCD CABLE CCD CP2 MEC	50.ATR01.003
CABLES		LCD/CAMERA CABLE	C.A. LCD CABLE CCD CP2 WS	50.ATR01.003
CABLES		LCD/CAMERA CABLE	C.A. LCD CABLE CCD CP2 HL	50.ATR01.003
CABLES		LCD/CAMERA CABLE	C.A. LCD CABLE CCD CP2 HT	50.ATR01.003
CAMERA		CAMERA 0.3M SUYIN CN0314-SN30-OV03-1	CAMERA 0.3M CN0314-SN30-OV03-1	57.TQ901.001
CAMERA		CAMERA 0.3M BISON BN30V407-030 OV772	CAMERA 0.3M BN30V407-030 OV772	57.AU401.001
CASE/COVER/BRACKET ASSEMBLY		LCD BRACKET W/ HINGE RIGHT	HINGE LCD R CP2 LH	33.ATR01.004

CLICK HERE TO **DOWNLOAD** THE COMPLETE MANUAL

- Thank you very much for reading the preview of the manual.
- You can download the complete manual from: [www.heydownloads.com](http://www.heydownloads.com) by clicking the link below



- Please note: If there is no response to CLICKING the link, please download this PDF first and then click on it.

CLICK HERE TO **DOWNLOAD** THE COMPLETE MANUAL