

# Aspire 5732Z/5332 Service Guide

Service guide files and updates are available on the ACER/CSD web; for more information, please refer to <http://csd.acer.com.tw>

PRINTED IN TAIWAN

CLICK HERE TO **DOWNLOAD** THE COMPLETE MANUAL

- Thank you very much for reading the preview of the manual.
- You can download the complete manual from: [www.heydownloads.com](http://www.heydownloads.com) by clicking the link below



- Please note: If there is no response to CLICKING the link, please download this PDF first and then click on it.

CLICK HERE TO **DOWNLOAD** THE COMPLETE MANUAL

# System Specifications

---

## Features

Below is a brief summary of the computer's many features:

**NOTE:** Items denoted with a (\*) are only available for select models.

## Operating System

- Genuine Windows® Vista™\*
- Genuine Windows® 7™\*

## Platform

- Intel® Pentium® mobile processor\*
- Intel® Celeron® mobile processor\*
- Mobile Intel® GL40 Express Chipset
- Acer InviLink™ 802.11b/g\*
- Acer InviLink™ Nplify™ 802.11b/g/Draft-N\*

## System Memory

- Dual-channel support
- Up to 2 GB of DDR2 667 MHz memory, upgradeable to 4 GB using two soDIMM modules

## Display

- 15.6" WXGA, HD 720p, 1366x768
- 16:9 aspect ratio

## Graphics

- Mobile Intel® GL40 Express Chipset

## Storage subsystem

- One 9.5mm, 2.5" HDD (5400 rpm) supported with 160/250/320/500GB and above
- DVD-Super Multi double-layer drive
- Multi-in-1 card-reader

## Optical Drive

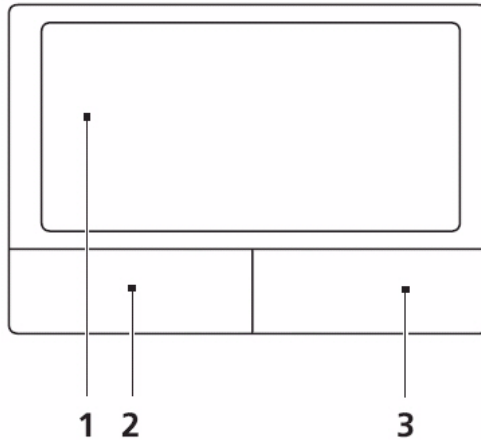
- Fixed type, G-base, SATA interface, Combo/Super-multi DVD-ROM drive

## Audio

- Two built-in stereo speakers

# TouchPad Basics

The following items show you how to use the TouchPad:



- Move your finger across the TouchPad (1) to move the cursor.
- Press the left (2) and right (3) buttons located beneath the TouchPad to perform selection and execution functions. These two buttons are similar to the left and right buttons on a mouse. Tapping on the TouchPad is the same as clicking the left button.

Function	Left Button (2)	Right Button (3)	Main TouchPad (1)
Execute	Quickly click twice.		Tap twice (at the same speed as double-clicking a mouse button).
Select	Click once.		Tap once.
Drag	Click and hold, then use finger on the TouchPad to drag the cursor.		Tap twice (at the same speed as double-clicking a mouse button); rest your finger on the TouchPad on the second tap and drag the cursor.
Access context menu		Click once.	

**NOTE:** When using the TouchPad, keep it - and your fingers - dry and clean. The TouchPad is sensitive to finger movement; hence, the lighter the touch, the better the response. Tapping too hard will not increase the TouchPad's responsiveness.

## Super-Multi Drive Module

Item	Specification			
Vendor & model name	HLDS GT20N		Sony AD7580S	
Performance Specification	With CD Diskette	With DVD Diskette	With CD Diskette	With DVD Diskette
Transfer rate (MB/sec)	Sustained: 3,600 KB/s (24x) max.	Sustained: 11.08 Mbytes/s (8x) max.	Sustained: 1,571 (typical)	Sustained: 10,993 (typical)
Buffer Memory	2 MB			
Interface	SATA			
Applicable disc formats	<ul style="list-style-type: none"> <li>• DVD-ROM:               <ul style="list-style-type: none"> <li>• 4.7GB (Single Layer)</li> <li>• 8.5GB (Dual Layer)</li> </ul> </li> <li>• DVD-R:               <ul style="list-style-type: none"> <li>• 3.95GB (Ver. 1.0: read only)</li> <li>• 4.7GB (Ver. 2.0 for Authoring: read only)</li> <li>• 4.7GB (Ver. 2.1 for General: read &amp; write)</li> <li>• (DL) 8.5GB (Ver. 3.0)</li> </ul> </li> <li>• DVD-RW:               <ul style="list-style-type: none"> <li>• 4.7GB (Ver. 1.2/ Rev 1.0, 2.0, 3.0)</li> </ul> </li> <li>• DVD-RAM: 1.46GB/side, 4.7GB/side (Ver. 2.2)</li> <li>• DVD+R: 4.7GB (Ver. 1.3)               <ul style="list-style-type: none"> <li>• (DL) 8.5GB (Ver. 1.1)</li> </ul> </li> <li>• DVD+RW:               <ul style="list-style-type: none"> <li>• 4.7GB (Vol.1 Ver.1.3)</li> </ul> </li> <li>• CD-ROM Mode-1 data disc</li> <li>• CD-ROM Mode-2 data disc</li> <li>• CD-ROM XA, CD-I, Photo-CD Multi-Session, Video CD</li> <li>• CD-Audio Disc</li> <li>• Mixed mode CD-ROM disc (data and audio)</li> <li>• CD-Extra</li> <li>• CD-Text</li> <li>• CD-R (Conforming to "Orange Book Part 2": read &amp; write)</li> <li>• CD-RW (Conforming to "Orange Book Part 3": read &amp; write)</li> </ul>		DVD Read: DVD-ROM (DVD-5, DVD-9, DVD-10, DVD-18), DVD-Video, DVD-Audio, SACD (Hybrid), UDF DVD, DVD-R, DVD-R DL, DVD-R 3.95 GB, DVD-R Authoring, DVD-R Multi-Border, DVD-RW, DVD+R, DVD+R DL, DVD+R Multi-Session, DVD+RW, DVD-RAM V1.0, DVDRAM V2.0 & 2.1 & 2.2.  CD Read: CD-DA, CD-ROM Mode-1, CD-ROM/XA Mode-2 Form-1 and Mode-2 Form-2, CD-i, CD-i Bridge, Video-CD (MPEG-1), Karaoke CD, Photo-CD, Enhanced CD, CD Plus, CD Extra, itrax CD, CD-Text, UDF CD, CD-R, and CD-RW  DVD Write: DVD Data & Video  CD Read: CD-DA, CD-ROM Mode-1, CD-ROM/XA Mode-2 Form-1 and Mode-2 Form-2, CD-i, Video-CD, CD-Text	
Loading mechanism	Drawer (Solenoid Open) Tact SW (Open) Emergency Release (draw open hole)			
Power Requirement				
Input Voltage	DC 5 V +/- 5%			

### Audio Interface

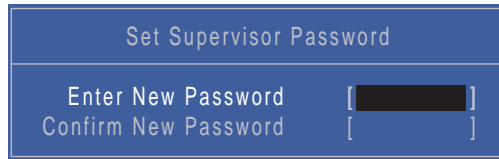
Item	Specification
Chipset	Realtek ALC272X-GR
Package	48-pin LQFP 'Green'
Features	High Definition Audio Codec with Dolby Digital Live

---

## Setting a Password

Follow these steps as you set the user or the supervisor password:

1. Use the ↑ and ↓ keys to highlight the Set Supervisor Password parameter and press the **Enter** key. The Set Supervisor Password box appears:



Set Supervisor Password	
Enter New Password	[ ]
Confirm New Password	[ ]

2. Type a password in the “Enter New Password” field. The password length can not exceed 8 alphanumeric characters (A-Z, a-z, 0-9, not case sensitive). Retype the password in the “Confirm New Password” field.

**IMPORTANT:** Be very careful when typing your password because the characters do not appear on the screen.

3. Press **Enter**. After setting the password, the computer sets the User Password parameter to “Set”.
4. If desired, you can opt to enable the Password on boot parameter.
5. When you are done, press F10 to save the changes and exit the BIOS Setup Utility.

## Removing a Password

Follow these steps:

1. Use the ↑ and ↓ keys to highlight the Set Supervisor Password parameter and press the **Enter** key. The Set Password box appears:



Set Supervisor Password	
Enter Current Password	[ ]
Enter New Password	[ ]
Confirm New Password	[ ]

2. Type the current password in the Enter Current Password field and press **Enter**.
3. Press **Enter** twice **without** typing anything in the Enter New Password and Confirm New Password fields. The computer then sets the Supervisor Password parameter to “Clear”.
4. When you have changed the settings, press u to save the changes and exit the BIOS Setup Utility.

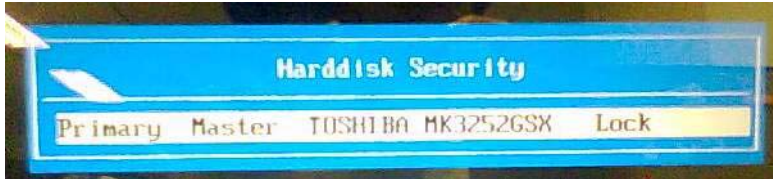
---

# Remove HDD/BIOS Password Utilities

This section provides you with details about removing HDD/BIOS password:

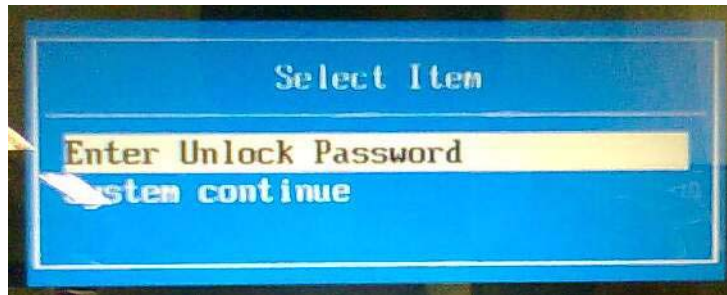
## Remove HDD Password:

If you key in the wrong HDD password three times, an error is generated.

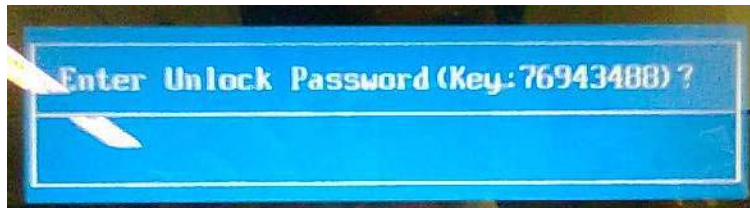


To reset the HDD password, perform the following steps:

1. After the error is displayed, select the **Enter Unlock Password** option on the screen.



2. An Encode key is generated for unlocking utilities. Note down this key.



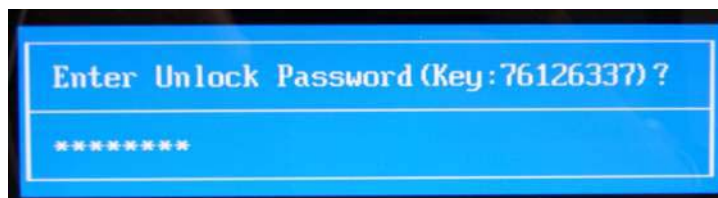
3. Execute the **UnlockHD.EXE** file to create the unlock code in DOS Mode using the format **UnlockHD [Encode code]** with the code noted in the previous step, as follows:

```
UnlockHD 76943488
```

4. The command generates a password which can be used for unlocking the HDD.

```
Password : 46548274
```

5. Key in the password from the previous step to unlock the HDD as shown.



---

## Removing the SD Dummy Card

1. Push the SD dummy card all the way in to eject it.



2. Pull it out from the slot.



---

## Removing the Switch Cover

**CAUTION:** Using metal tools to remove the Switch Cover may cause damage to the outer casing. The use of plastic tools or fingers is recommended to remove the Switch Cover.

1. See “Removing the Battery Pack” on page 50.
2. Turn the computer over. Press down the / and \* keys on the right side of the Keyboard to expose the cutout. Insert a suitable plastic tool (or finger) and pry the Switch Cover upward, away from the Upper Cover.



3. Work along the Switch Cover toward the left hinge, gently prying up the cover as shown.

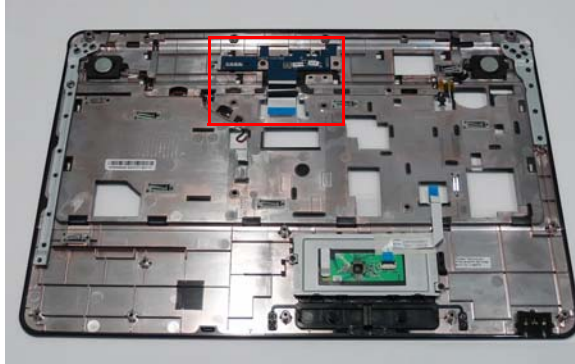


4. Lift the Switch Cover clear of the computer.

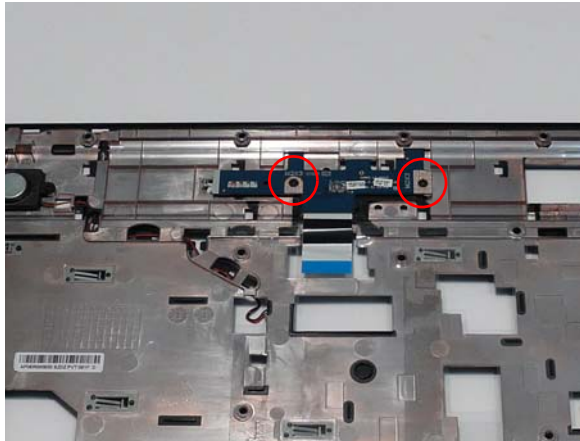



## Removing the Power Board

1. See "Removing the Upper Cover" on page 67.
2. Locate the Power Board on the Upper Cover as shown.

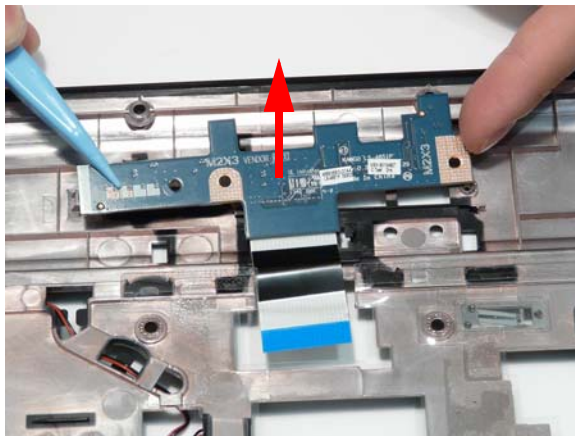


3. Remove the two (2) screws securing the Power Board to the Upper Cover.



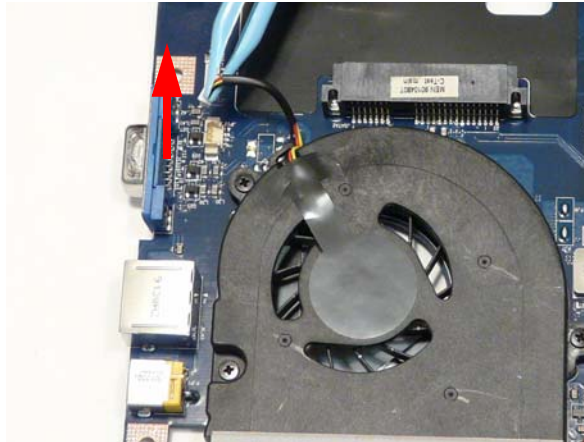
Step	Size	Quantity	Screw Type
Power Board	M2*3	2	

4. Lift the Power Board clear of the Upper Cover as shown.

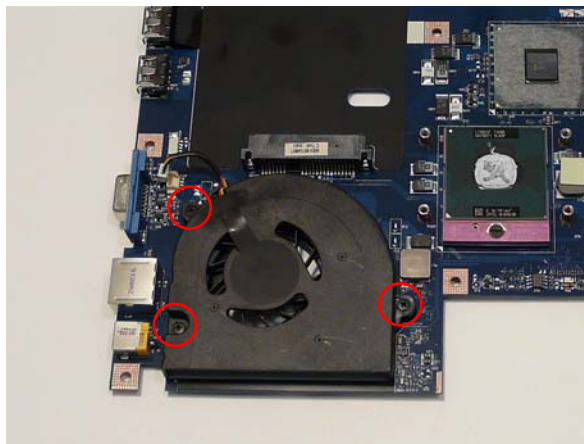



## Removing the CPU Fan

1. See "Removing the Thermal Module" on page 80.
2. Disconnect the Fan cable from the Mainboard as shown.



3. Remove the three (3) securing screws from the Fan Module.



Step	Size	Quantity	Screw Type
CPU Fan	M2*3	3	

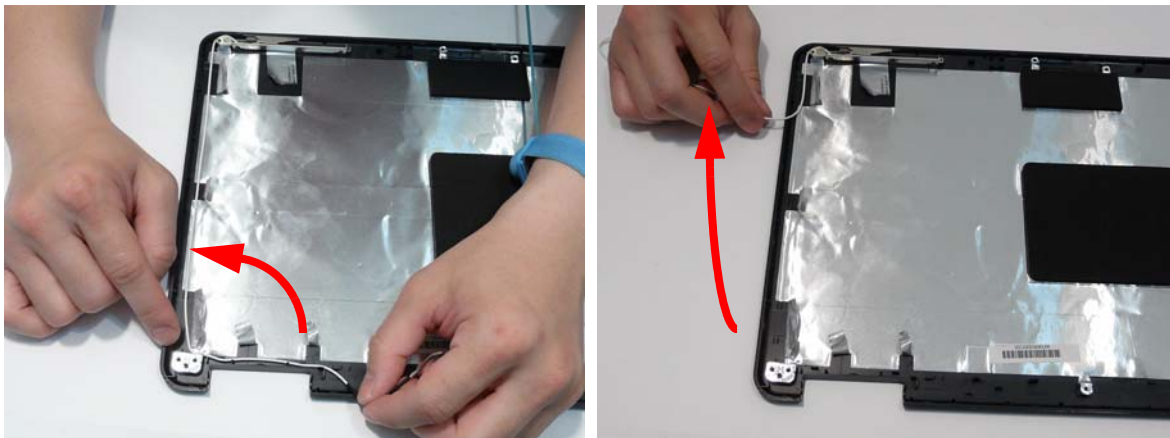
---

## Removing the Antennas

1. See “Removing the LCD Panel” on page 87.
2. Remove the adhesive strips holding the left antenna cable in place. Ensure the cable is free from obstructions.



3. Remove the cable from the cable channel. Ensure that the cable is free from all cable clips and adhesive strips.



4. Remove the adhesive tape securing the left Antenna to the LCD Module.



CLICK HERE TO **DOWNLOAD** THE COMPLETE MANUAL

- Thank you very much for reading the preview of the manual.
- You can download the complete manual from: [www.heydownloads.com](http://www.heydownloads.com) by clicking the link below



- Please note: If there is no response to CLICKING the link, please download this PDF first and then click on it.

CLICK HERE TO **DOWNLOAD** THE COMPLETE MANUAL

---

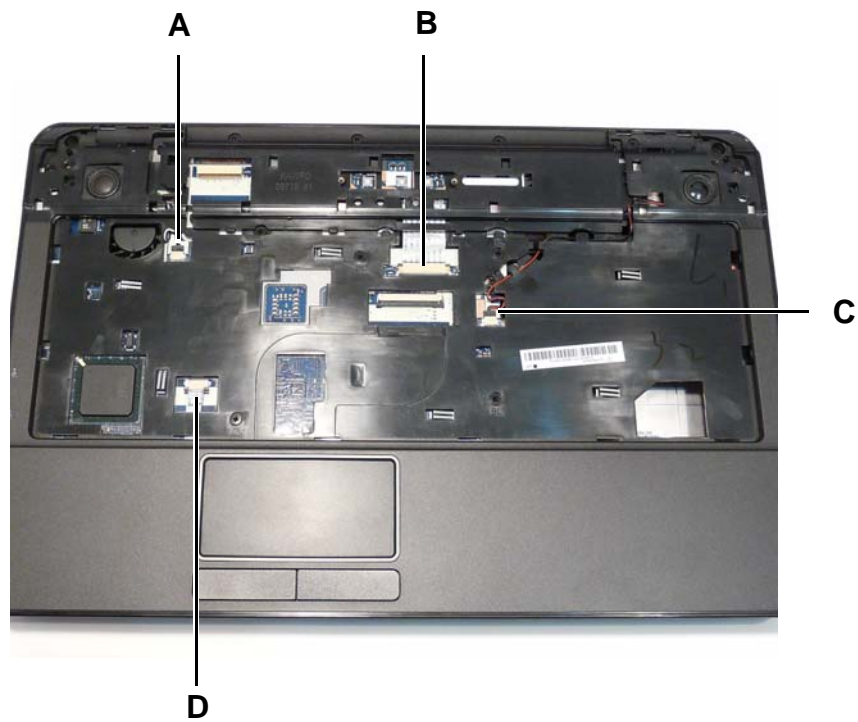
2. Replace the four (4) screws and screw caps provided.



4. Replace the three (3) screw caps as shown.



5. Connect the following cables to the Mainboard.

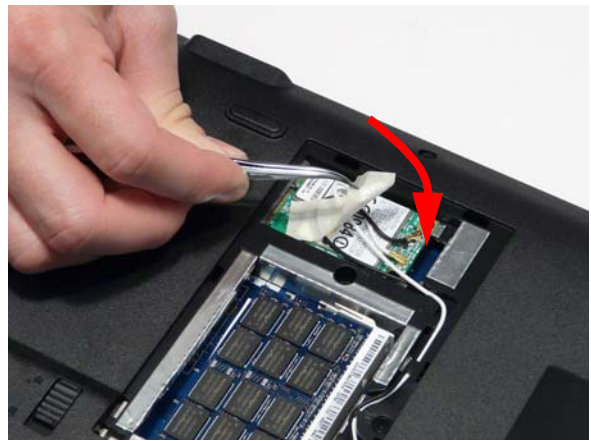


# Replacing the WLAN Module

1. Insert the WLAN Module into the WLAN socket.
2. Replace the two (2) screws to secure the module.

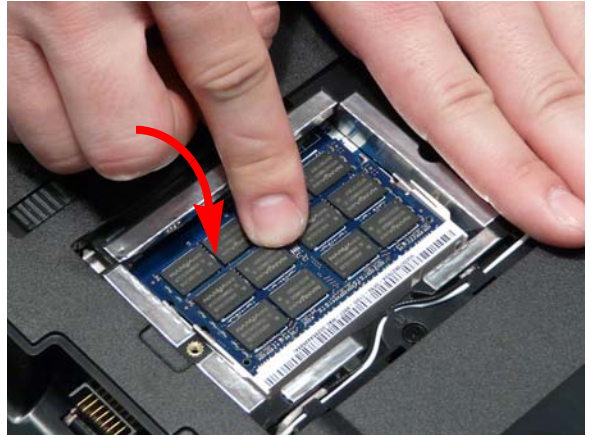
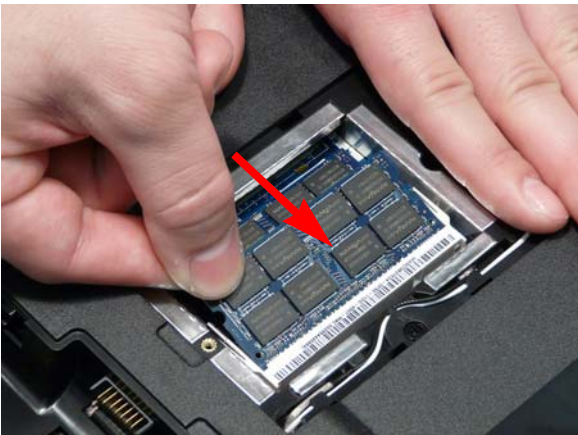


3. Connect the two (2) Antenna cables to the module.  
**NOTE:** The black cable connects to the upper terminal (MAIN) and the white cable to the lower terminal (MAIN).
4. After connecting the cables to the terminals, secure the cables in place with adhesive tape to avoid trapping.



# Replacing the DIMM Modules

1. Insert the DIMM Module in place.
2. Press down to lock the DIMM module in place.



3. Repeat steps for the second DIMM module if present.

---

## Sound Problems

If sound problems are experienced, perform the following actions one at a time to correct the problem.

1. Reboot the computer.
2. Navigate to **Start**→ **Control Panel**→ **System and Maintenance**→ **System**→ **Device Manager**. Check the Device Manager to determine that:
  - The device is properly installed.
  - There are no red Xs or yellow exclamation marks.
  - There are no device conflicts.
  - No hardware is listed under Other Devices.
3. Roll back the audio driver to the previous version, if updated recently.
4. Remove and reinstall the audio driver.
5. Ensure that all volume controls are set mid range:
  - a. Click the volume icon on the taskbar and drag the slider to 50. Ensure that the volume is not muted.
  - b. Click Mixer to verify that other audio applications are set to 50 and not muted.
6. Navigate to **Start**→ **Control Panel**→ **Hardware and Sound**→ **Sound**. Ensure that Speakers are selected as the default audio device (green check mark).

**NOTE:** If Speakers does not show, right-click on the **Playback** tab and select **Show Disabled Devices** (clear by default).
7. Select Speakers and click **Configure** to start **Speaker Setup**. Follow the onscreen prompts to configure the speakers.
8. Remove and recently installed hardware or software.
9. Restore system and file settings from a known good date using **System Restore**.

If the issue is not fixed, repeat the preceding steps and select an earlier time and date.
10. Reinstall the Operating System.
11. If the Issue is still not resolved, see “Online Support Information” on page 215.

## Microphone Problems

If internal or external **Microphones** do not operate correctly, perform the following actions one at a time to correct the problem.

1. Check that the microphone is enabled. Navigate to **Start**→ **Control Panel**→ **Hardware and Sound**→ **Sound** and select the **Recording** tab.
2. Right-click on the **Recording** tab and select **Show Disabled Devices** (clear by default).
3. The microphone appears on the **Recording** tab.
4. Right-click on the microphone and select **Enable**.
5. Select the microphone then click **Properties**. Select the **Levels** tab.
6. Increase the volume to the maximum setting and click **OK**.
7. Test the microphone hardware:
  - a. Select the microphone and click **Configure**.
  - b. Select **Set up microphone**.
  - c. Select the microphone type from the list and click **Next**.
  - d. Follow the onscreen prompts to complete the test.
8. If the Issue is still not resolved, see “Online Support Information” on page 215.

---

<b>Code</b>	<b>Description</b>
0xF8	Report that ExitBootServices () has been called
0xF9	Runtime driver set virtual address map

---

# BIOS Recovery by Crisis Disk

## BIOS Recovery Boot Block:

BIOS Recovery Boot Block is a special block of BIOS. It is used to boot up the system with minimum BIOS initialization. Users can enable this feature to restore the BIOS firmware to a successful one once the previous BIOS flashing process failed.

## BIOS Recovery Hotkey:





The system provides a function hotkey: **Fn+Esc**, for enable BIOS Recovery process when system is powered on during BIOS POST. To use this function, it is strongly recommended to have the AC adapter and Battery present. If this function is enabled, the system will force the BIOS to enter a special BIOS block, called Boot Block.

## Steps for BIOS Recovery from USB Storage:

Before doing this, prepare the Crisis USB key. The Crisis USB key could be made by executing the Crisis Disk program in another system with Windows Vista or Windows 7 OS.

Follow the steps below:

1. Format the USB storage disk using the Fast Format option.
2. Save ROM file (file name: **JAL90x64.fd**) to the root directory of USB storage. Make sure that there is no other BIOS file saved in the same directory.
3. Plug USB storage into USB port.
4. Press **Fn + ESC** button then plug in AC power.  
The Power button flashes once.
5. Press **Power** button to initiate system CRISIS mode.  
When CRISIS is complete, the system auto restarts with a workable BIOS.
6. Update the latest version BIOS for this machine by regular BIOS flashing process.

CATEGORY	Description	AcerPN
	Keyboard ACER EM-7Tv2 HM51 Internal 17 Standard 100KS Black Nordic Texture	KB.I170A.129
	Keyboard ACER EM-7Tv2 HM51 Internal 17 Standard 100KS Black FR/Arabic Texture	KB.I170A.122
	Keyboard ACER EM-7Tv2 HM51 Internal 17 Standard 100KS Black US w/ Canadian French Texture	KB.I170A.142
	Keyboard ACER EM-7Tv2 HM51 Internal 17 Standard 100KS Black Brazilian Portuguese Texture	KB.I170A.118
	Keyboard ACER EM-7Tv2 HM51 Internal 17 Standard 100KS Black CZ/SK Texture	KB.I170A.119
	Keyboard ACER EM-7Tv2 HM51 Internal 17 Standard 103KS Black Japanese Texture	KB.I170A.128
<b>LCD</b>		
	ASSY LCD MODULE 15.6 IN. WXGA GLARE W/ ANTENNA*2, CCD 0.3M	6M.PGV02.001
	ASSY LCD MODULE 15.6 IN. WXGA GLARE W/ ANTENNA*3, CCD 0.3M	6M.PGV02.002
	ASSY LCD MODULE 15.6 IN. WXGA GLARE W/ ANTENNA*2, W/O CCD	6M.PGX02.001
	ASSY LCD MODULE 15.6 IN. WXGA GLARE W/ ANTENNA*3, W/O CCD	6M.PGX02.002
	LCD AUO 15.6" WXGA Glare B156XW01-V0 LF 220nit 8ms	LK.15605.001
	CCFL LCD AUO 15.6"W WXGA Glare B156XW01 V0 1A LF 220nit 8ms 500:1	LK.15605.002
	CCFL LCD SAMSUNG 15.6"W WXGA Glare LTN156AT01-A01 LF 220nit 8ms 600:1	LK.15606.001
	CCFL LCD LPL 15.6" WXGA Glare LP156WH1-TLA1 LF 220nit 8ms 400:1	LK.15608.001
	CCFL LCD LPL 15.6"W WXGA Glare LP156WH1-TLA3 LF 220nit 8ms 400:1	LK.15608.006
	LCD CMO 15.6" WXGA Glare N156B3-L02 LF 220nit 8ms	LK.1560D.001
	LCD COVER	60.PGT02.003
	ANTENNA-AUX	50.N2802.002
	ANTENNA-MAIN	50.N2802.003
	ANTENNA-MAIN+MIMO	50.N2802.004

Model	RO	Country	Acer Part No	Description	CPU
AS5332-303G16Mn	EMEA	UK	LX.PGW02.002	AS5332-303G16Mn W7HP64ATGB1 MC UMAbs2 2G+1G/160/6L2.2/5R/ CB_bgn_HG_EN11	CMT3000
AS5332-303G50Mn	EMEA	UK	LX.PGW02.004	AS5332-303G50Mn W7HP64ATGB1 MC UMAbs2 2G+1G/500_L/6L2.2/5R/ CB_bgn_HG_EN11	CMT3000
AS5332-903G25Mn	EMEA	UK	LX.PGW02.003	AS5332-903G25Mn W7HP64ATGB1 MC UMAbs2 2G+1G/250/6L2.2/5R/ CB_bgn_HG_EN11	CM900
AS5332-303G16Mn	EMEA	UK	LX.PGW0X.002	AS5332-303G16Mn VHP32ATGB1 MC UMAbs2 2G+1G/160/6L2.2/5R/ CB_bgn_HG_EN14	CMT3000
AS5332-304G32Mn	EMEA	UK	LX.PGW0X.001	AS5332-304G32Mn VHP32ATGB1 MC UMAbs2 2*2G/320/6L2.2/5R/ CB_bgn_HG_EN14	CMT3000
AS5332-572G16Mn	WW	WW	S2.PGW0C.001	AS5332-572G16Mn LINPUSAWW1 UMAbs2 2*1G/160/6L2.2/5R/CB_bgn_HG_EN11	CM575
AS5732Z-434G50Mn	EMEA	Belgium	LX.PGU02.115	AS5732Z-434G50Mn W7HP64ATBE1 MC UMACbs2 2*2G/500_L/6L2.2/5R/ CB_bgn_0.3D_HG_NL11	PMDT4300
AS5732Z-434G50Mn	EMEA	Holland	LX.PGU02.114	AS5732Z-434G50Mn W7HP64ATNL1 MC UMACbs2 2*2G/500_L/6L2.2/5R/ CB_bgn_0.3D_HG_NL11	PMDT4300
AS5732Z-434G50Mn	EMEA	Luxembourg	LX.PGU02.113	AS5732Z-434G50Mn W7HP64ATLU3 MC UMACbs2 2*2G/500_L/6L2.2/5R/ CB_bgn_0.3D_HG_IT41	PMDT4300
AS5732Z-433G50Mn	EMEA	Italy	LX.PGU02.112	AS5732Z-433G50Mn W7HP64ATIT1 MC UMACbs2 2G+1G/500_L/6L2.2/5R/ CB_bgn_0.3D_HG_IT11	PMDT4300
AS5732Z-444G50Mn	EMEA	Portugal	LX.PGU02.086	AS5732Z-444G50Mn W7HP64ATPT1 MC UMACbs2 2*2G/500_L/6L2.2/5R/ CB_bgn_0.3D_HG_PT11	PMDT4400
AS5732Z-434G32Mn	EMEA	Italy	LX.PGU02.111	AS5732Z-434G32Mn W7HP64ATIT1 MC UMACbs2 2*2G/320/6L2.2/5R/ CB_bgn_0.3D_HG_IT11	PMDT4300
AS5732Z-434G25Mi	EMEA	Russia	LX.PGU01.002	AS5732Z-434G25Mi W7HB64RUATRU1 MC UMACbs2 2*2G/250/6L2.2/5R/ CB_bg_0.3D_HG_RU11	PMDT4300
AS5732Z-434G50Mn	EMEA	Italy	LX.PGU02.096	AS5732Z-434G50Mn W7HP64ATIT1 MC UMACbs2 2*2G/500_L/6L2.2/5R/ CB_bgn_0.3D_HG_IT11	PMDT4300
AS5732Z-433G25Mn	EMEA	Middle East	LX.PGU0C.018	AS5732Z-433G25Mn LINPUSAME2 UMACbs2 2G+1G/250/6L2.2/5R/ CB_bgn_0.3D_HG_EN13	PMDT4300
AS5732Z-433G25Mn	EMEA	Middle East	LX.PGU0Y.013	AS5732Z-433G25Mn EM VHB32ATME9 MC UMACbs2 2G+1G/250/6L2.2/5R/ CB_bgn_0.3D_HG_FR22	PMDT4300
AS5732Z-434G25Mn	EMEA	Holland	LX.PGU02.041	AS5732Z-434G25Mn W7HP64ATNL1 MC UMACbs2 2*2G/250/6L2.2/5R/ CB_bgn_0.3D_HG_NL11	PMDT4300





Vendor	Type	Description
SIMPLO	6CELL2.2	Battery SIMPLO AS-2009A Li-Ion 3S2P LGC 6 cell 4400mAh Main COMMON LGC 2.2Ah(S3 )
SIMPLO	6CELL2.2	Battery SIMPLO AS-2009A Li-Ion 3S2P SAMSUNG 6 cell 4400mAh Main COMMON SDI 2.2Ah(F)
SANYO	6CELL2.2	Battery SANYO AS-2009A Li-Ion 3S2P SANYO 6 cell 4400mAh Main COMMON 2.2Ah(A)
SONY	6CELL2.2	Battery SONY AS-2009A Li-Ion 3S2P SONY 6 cell 4400mAh Main COMMON 2.2Ah(G6F)
PANASONIC	6CELL2.2	Battery PANASONIC AS-2009A Li-Ion 3S2P PANASONIC 6 cell 4400mAh Main COMMON 2.2Ah(CG )
SAMSUNG	6CELL2.2	Battery SAMSUNG AS-2009A Li-Ion 3S2P SAMSUNG 6 cell 4400mAh Main COMMON 2.2Ah(F)
SIMPLO	6CELL2.2	Battery SIMPLO AS-2009A Li-Ion 3S2P PANASONIC 6 cell 4400mAh Main COMMON Panasonic 2.2Ah ( CG )
SIMPLO	6CELL2.2	Battery SIMPLO AS-2009A Li-Ion 3S2P LGC 6 cell 4400mAh Main COMMON LGC 2.2Ah(S3 )
SIMPLO	6CELL2.2	Battery SIMPLO AS-2009A Li-Ion 3S2P SAMSUNG 6 cell 4400mAh Main COMMON SDI 2.2Ah(F)
SANYO	6CELL2.2	Battery SANYO AS-2009A Li-Ion 3S2P SANYO 6 cell 4400mAh Main COMMON 2.2Ah(A)
SONY	6CELL2.2	Battery SONY AS-2009A Li-Ion 3S2P SONY 6 cell 4400mAh Main COMMON 2.2Ah(G6F)
PANASONIC	6CELL2.2	Battery PANASONIC AS-2009A Li-Ion 3S2P PANASONIC 6 cell 4400mAh Main COMMON 2.2Ah(CG )
SAMSUNG	6CELL2.2	Battery SAMSUNG AS-2009A Li-Ion 3S2P SAMSUNG 6 cell 4400mAh Main COMMON 2.2Ah(F)
SIMPLO	6CELL2.2	Battery SIMPLO AS-2009A Li-Ion 3S2P PANASONIC 6 cell 4400mAh Main COMMON Panasonic 2.2Ah ( CG )
SIMPLO	6CELL2.2	Battery SIMPLO AS-2009A Li-Ion 3S2P LGC 6 cell 4400mAh Main COMMON LGC 2.2Ah(S3 )
SIMPLO	6CELL2.2	Battery SIMPLO AS-2009A Li-Ion 3S2P SAMSUNG 6 cell 4400mAh Main COMMON SDI 2.2Ah(F)
SANYO	6CELL2.2	Battery SANYO AS-2009A Li-Ion 3S2P SANYO 6 cell 4400mAh Main COMMON 2.2Ah(A)
SONY	6CELL2.2	Battery SONY AS-2009A Li-Ion 3S2P SONY 6 cell 4400mAh Main COMMON 2.2Ah(G6F)
PANASONIC	6CELL2.2	Battery PANASONIC AS-2009A Li-Ion 3S2P PANASONIC 6 cell 4400mAh Main COMMON 2.2Ah(CG )
SAMSUNG	6CELL2.2	Battery SAMSUNG AS-2009A Li-Ion 3S2P SAMSUNG 6 cell 4400mAh Main COMMON 2.2Ah(F)
SIMPLO	6CELL2.2	Battery SIMPLO AS-2009A Li-Ion 3S2P PANASONIC 6 cell 4400mAh Main COMMON Panasonic 2.2Ah ( CG )
SIMPLO	6CELL2.2	Battery SIMPLO AS-2009A Li-Ion 3S2P LGC 6 cell 4400mAh Main COMMON LGC 2.2Ah(S3 )
SIMPLO	6CELL2.2	Battery SIMPLO AS-2009A Li-Ion 3S2P SAMSUNG 6 cell 4400mAh Main COMMON SDI 2.2Ah(F)
SANYO	6CELL2.2	Battery SANYO AS-2009A Li-Ion 3S2P SANYO 6 cell 4400mAh Main COMMON 2.2Ah(A)
SONY	6CELL2.2	Battery SONY AS-2009A Li-Ion 3S2P SONY 6 cell 4400mAh Main COMMON 2.2Ah(G6F)

Vendor	Type	Description
SONY	NSM8XS	ODD SONY Super-Multi DRIVE 12.7mm Tray DL 8X AD-7580S LF W/O bezel SATA
PLDS	NSM8XS	ODD PLDS Super-Multi DRIVE 12.7mm Tray DL 8X DS-8A3S LF W/O bezel SATA
PANASONIC	NSM8XS	ODD PANASONIC Super-Multi DRIVE 12.7mm Tray DL 8X UJ880A LF W/O bezel SATA
HLDS	NSM8XS	ODD HLDS Super-Multi DRIVE 12.7mm Tray DL 8X GT20N LF W/O bezel SATA
SONY	NSM8XS	ODD SONY Super-Multi DRIVE 12.7mm Tray DL 8X AD-7580S LF W/O bezel SATA
PLDS	NSM8XS	ODD PLDS Super-Multi DRIVE 12.7mm Tray DL 8X DS-8A3S LF W/O bezel SATA
PANASONIC	NSM8XS	ODD PANASONIC Super-Multi DRIVE 12.7mm Tray DL 8X UJ880A LF W/O bezel SATA
HLDS	NSM8XS	ODD HLDS Super-Multi DRIVE 12.7mm Tray DL 8X GT20N LF W/O bezel SATA
SONY	NSM8XS	ODD SONY Super-Multi DRIVE 12.7mm Tray DL 8X AD-7580S LF W/O bezel SATA
PLDS	NSM8XS	ODD PLDS Super-Multi DRIVE 12.7mm Tray DL 8X DS-8A3S LF W/O bezel SATA
PANASONIC	NSM8XS	ODD PANASONIC Super-Multi DRIVE 12.7mm Tray DL 8X UJ880A LF W/O bezel SATA
HLDS	NSM8XS	ODD HLDS Super-Multi DRIVE 12.7mm Tray DL 8X GT20N LF W/O bezel SATA
SONY	NSM8XS	ODD SONY Super-Multi DRIVE 12.7mm Tray DL 8X AD-7580S LF W/O bezel SATA
PLDS	NSM8XS	ODD PLDS Super-Multi DRIVE 12.7mm Tray DL 8X DS-8A3S LF W/O bezel SATA
PANASONIC	NSM8XS	ODD PANASONIC Super-Multi DRIVE 12.7mm Tray DL 8X UJ880A LF W/O bezel SATA
HLDS	NSM8XS	ODD HLDS Super-Multi DRIVE 12.7mm Tray DL 8X GT20N LF W/O bezel SATA
SONY	NSM8XS	ODD SONY Super-Multi DRIVE 12.7mm Tray DL 8X AD-7580S LF W/O bezel SATA
PLDS	NSM8XS	ODD PLDS Super-Multi DRIVE 12.7mm Tray DL 8X DS-8A3S LF W/O bezel SATA
PANASONIC	NSM8XS	ODD PANASONIC Super-Multi DRIVE 12.7mm Tray DL 8X UJ880A LF W/O bezel SATA
HLDS	NSM8XS	ODD HLDS Super-Multi DRIVE 12.7mm Tray DL 8X GT20N LF W/O bezel SATA
SONY	NSM8XS	ODD SONY Super-Multi DRIVE 12.7mm Tray DL 8X AD-7580S LF W/O bezel SATA
PLDS	NSM8XS	ODD PLDS Super-Multi DRIVE 12.7mm Tray DL 8X DS-8A3S LF W/O bezel SATA
<b>VGA Chip</b>		
None	UMA	UMA (Intel)
None	UMA	UMA (Intel)
AMD	M92XT	AMD M92XT 55nm 23mm*23mm S2 package
AMD	M92XT	AMD M92XT 55nm 23mm*23mm S2 package

CLICK HERE TO **DOWNLOAD** THE COMPLETE MANUAL

- Thank you very much for reading the preview of the manual.
- You can download the complete manual from: [www.heydownloads.com](http://www.heydownloads.com) by clicking the link below



- Please note: If there is no response to CLICKING the link, please download this PDF first and then click on it.

CLICK HERE TO **DOWNLOAD** THE COMPLETE MANUAL