



MASSEY FERGUSON

Massey Ferguson

Massey Ferguson

Massey Ferguson

Massey Ferguson

# MF 5700S "RTS"



Dyna-4



AGCO - S.A.S. - Beauvais - France - RCB562104539  
MASSEY FERGUSON is a worldwide brand of AGCO.  
Copyright © AGCO 2016

04/2016  
ACT002601  
Issue 2  
en

CLICK HERE TO **DOWNLOAD** THE COMPLETE MANUAL

- Thank you very much for reading the preview of the manual.
- You can download the complete manual from: [www.heydownloads.com](http://www.heydownloads.com) by clicking the link below



- Please note: If there is no response to CLICKING the link, please download this PDF first and then click on it.

CLICK HERE TO **DOWNLOAD** THE COMPLETE MANUAL

---

## 1.2 Warranty requests

---

### 1.2.1 Failure codes

The repair time schedule plays a very important role in submitting warranty requests to Massey Ferguson. It contains all the allocated repair times and all the fault codes required to fill in the warranty request form.

Massey Ferguson has defined the warranty procedures. It is important to understand these procedures by reading the corresponding Warranty Manual and Service Bulletins. These contain all the necessary instructions for submitting warranty requests.

Have the Repair Time Schedule to hand when completing your request. USE IT. Massey Ferguson will reimburse you on the basis of this schedule.

After you have identified the faulty part, refer to the relevant page in the Repair Time Schedule and look up the part. Then note down the failure code in the "Failure code" box on the warranty request form. Add the two fault code figures to this number. For example:

Leak at input shaft seal

Failure code - 020.2010

Fault code - 14

Note down - 020.2010 14

---

### 1.2.2 Fault codes

#### Alphabetical order

Incorrect assembly	11
Blocked	03
Broken	04
Noisy	56
Incorrect shimming	25
Jamming	34
Excessive fuel consumption	28
Excessive consumption of lubricating oil	27
Contamination	(49)
Correction of load rating	74.
Corrosion	06
Circuit error	72
Misshapen	24
Loose	16
Blown-up view	(46)
Unexpected engagement/disengagement	61
Dimensional error	08
Stretched	(47)
Split	(46)
Threads, splines stripped	(44)
Cracked	04



| **RTS**

3





# 5700SL

5710SL  
5711SL  
5712SL  
5713SL

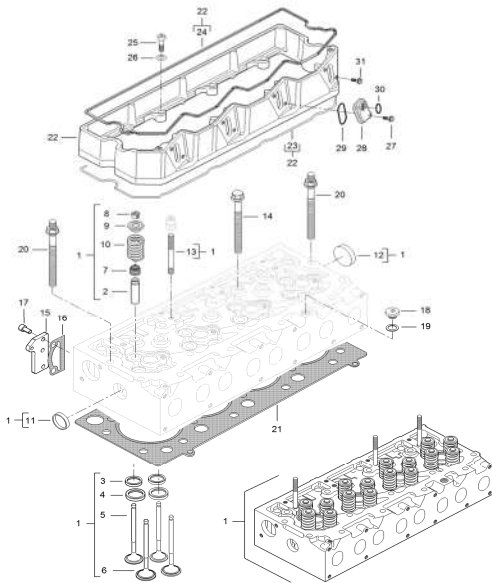
Code



Description

## ENGINE, FUEL AND EXHAUST SYSTEM

AP6J1797



•	•	•	•	1	010.1009	28,00	c,d	CYLINDER HEAD
•	•	•	•	2	010.1009	28,00	a	VALVE GUIDE
•	•	•	•	3	010.1009	28,00	b	VALVE SEAT
•	•	•	•	4	010.1009	28,00	b	VALVE SEAT
•	•	•	•	5	010.1009	29,50		EXHAUST VALVE
•	•	•	•	6	010.1009	29,50		INTAKE VALVE
•	•	•	•	7				VALVE STEM GASKET
•	•	•	•	8	010.1009	9,00		COTTER
•	•	•	•	9	010.1009	9,00		SPRING PLATE
•	•	•	•	10	010.1003	9,00		VALVE SPRING
•	•	•	•	11	010.1009	16,25		PLUG
•	•	•	•	12	010.1009	24,00		PLUG
•	•	•	•	13	010.1009	7,00		STUD BOLT
•	•	•	•	14	010.1009	7,00		CYLINDER HEAD BOLT
•	•	•	•	15				COVER
•	•	•	•	16	010.1009	1,75		GASKET
•	•	•	•	17				HEX SOCKET SCREW
•	•	•	•	18				PLUG
•	•	•	•	19				SEALING WASHER
•	•	•	•	20	010.1009	7,00		CYLINDER HEAD BOLT
•	•	•	•	21	010.1009	18,00	d	CYLINDER HEAD GASKET
•	•	•	•	22	010.1009	6,75	d	VALVE ROCKER COVER FRAME
•	•	•	•	23	010.1009	6,75	d	VALVE ROCKER COVER GASKET
•	•	•	•	24	010.1009	5,50		VALVE ROCKER COVER GASKET
•	•	•	•	25				HEX SOCKET SCREW
•	•	•	•	26				SPRING WASHER
•	•	•	•	27				SCREW
•	•	•	•	28	010.1009	3,00		FLANGE
•	•	•	•	29	010.1009			O-RING
•	•	•	•	30	010.1009	3,00		O-RING
•	•	•	•	31				HEX CAP SCREW
				a	52 15 01	0,25		Additional valve guide
				b	52 18 01	0,50		Additional valve gasket
				c	52 03 01	24,00		Cylinder head overhaul
				d	16 02 96	0,75		Touch-up (paint)

AP6J1797

MF 5700SL 5710->5613 - Issue 2

CYLINDER HEAD

4-01-13









# 5700SL

5710SL	5711SL	5712SL	5713SL
--------	--------	--------	--------

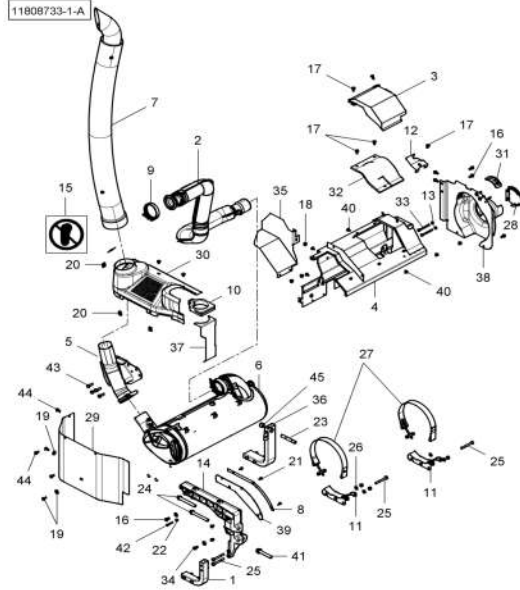
Code



Description

**ENGINE, FUEL AND EXHAUST SYSTEM**

11808733-1-A



11808733-1-A

MF 5700SL 5710-&gt;5613 - Issue 2

5710SL	5711SL	5712SL	5713SL	Code			Description
•	•	•	•	1	010.1004	2,75	SUPPORT
•	•	•	•	2	010.1019	3,50	TAIL PIPE
•	•	•	•	3	010.1019	0,50	SHIELD
•	•	•	•	4	010.1019	3,50	SHIELD
•	•	•	•	5	010.1019	1,75	EXHAUST TAILPIPE
•	•	•	•	6	010.1019	3,50	CATALYST
•	•	•	•	7	010.1019	1,00	TAIL PIPE
•	•	•	•	8			BRACKET
•	•	•	•	9			T-BOLT CLAMP
•	•	•	•	10			GASKET
•	•	•	•	11	010.1004	3,25	SUPPORT
•	•	•	•	12	010.1019	3,00	SHIELD
•	•	•	•	13			FLAT WASHER
•	•	•	•	14	010.1004	3,50	SUPPORT
•	•	•	•	15	002.0203	0,50	NOTICE DECAL
•	•	•	•	16			HEXAGON FLANGE HEAD BOLT
•	•	•	•	17			SCREW
•	•	•	•	18			HEX FLANGE NUT
•	•	•	•	19			WASHER
•	•	•	•	20			SPRING NUT
•	•	•	•	21			SCREW
•	•	•	•	22			HEX FLANGE NUT
•	•	•	•	23			STUD BOLT
•	•	•	•	24			SCREW 12 POINTS FLANGE HEAD
•	•	•	•	25			HEXAGONAL HEAD BOLT
•	•	•	•	26			FLAT WASHER
•	•	•	•	27	010.1019	3,50	STRAP
•	•	•	•	28		1,00	COVER
•	•	•	•	29	010.1019	0,50	SHIELD
•	•	•	•	30	010.1019	1,50	COWL
•	•	•	•	31	010.1019	1,00	SHIELD
•	•	•	•	32		0,75	INSULATION
•	•	•	•	33			HEX CAP SCREW
•	•	•	•	34			NUT METRIC
•	•	•	•	35	010.1019	2,00	SHIELD
•	•	•	•	36	010.1004	3,25	SUPPORT
•	•	•	•	37	010.1019	2,00	SHIELD

VERTICAL EXHAUST ON THE SIDE

4-01-53



5700SL

5710SL

5711SL

5712SL

5713SL

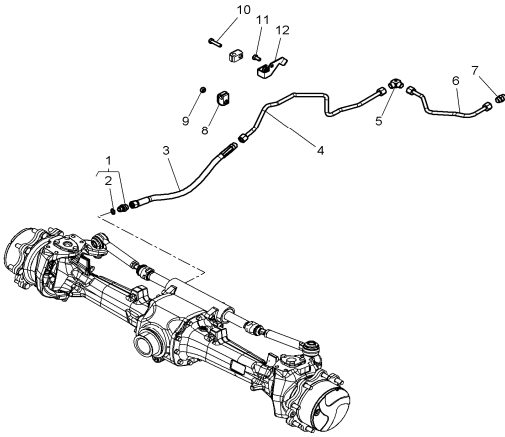
Code



Description

AXLES

1-WK12-037-A



5710SL	5711SL	5712SL	5713SL	Code			Description
•	•	•	•				UNION
•	•	•	•				O RING
•	•	•	•	3	013.1307	0,75	HYDR. HOSE
•	•	•	•	4	013.1307	3,00	a, b TUBE
•	•	•	•	5			UNION
•	•	•	•	6	013.1307	1,50	a, b TUBE
•	•	•	•	7			UNION
•	•	•	•	8			BRIDLE
•	•	•	•	9			HEX NUT
•	•	•	•	10			HEX CAP SCREW
•	•	•	•	11			HEXAGONAL HEAD BOLT
•	•	•	•	12			SUPPORT
				a	33 06 51	2,00	Addition for front loader
				b	28 07 00	2,00	Chassis reinforcement - 2 sides

1-WK12-037-A



5700SL

5710SL  
5711SL  
5712SL  
5713SL

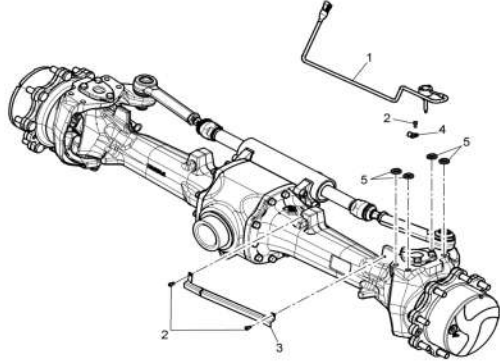
Code



Description

AXLES

11594010-1-A



•	•	•	1	008.0815	2,00	a , b	SENSOR
•	•	•	2				HEXAGONAL HEAD BOLT
•	•	•	3	001.0103	0,50		COWL
•	•	•	4				CLIP
•	•	•	5				FLAT WASHER
			a	14 01 00	0,75		Electrical diagnostics
			b	25 19 74	0,25		Potentiometer calibration

11594010-1-A



# 5700SL

5710SL  
5711SL  
5712SL  
5713SL

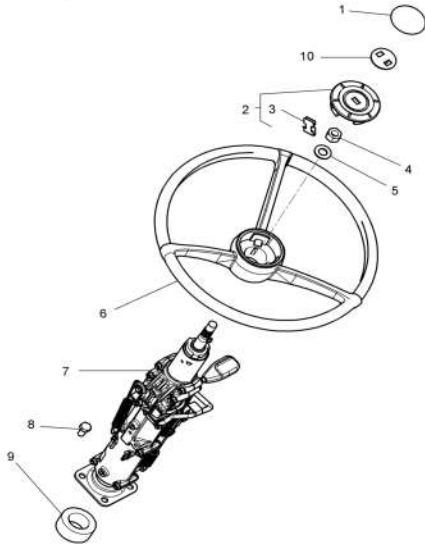
Code



Description

### STEERING SYSTEM

8028444-1-A



Code	Code	Code	Code	Code	Code	Code	Description
• • • •	• • • •	• • • •	• • • •	1	003.0312	0,25	BADGE
• • • •	• • • •	• • • •	• • • •	2	003.0312	0,25	CAP
• • • •	• • • •	• • • •	• • • •	3			CLIP
• • • •	• • • •	• • • •	• • • •	4			HEX JAM NUT
• • • •	• • • •	• • • •	• • • •	5			FLAT WASHER
• • • •	• • • •	• • • •	• • • •	6	003.0312	0,50	STEERING WHEEL
• • • •	• • • •	• • • •	• • • •	7	003.0312	2,00	a STEERING COLUMN
• • • •	• • • •	• • • •	• • • •	8			HEXAGONAL HEAD BOLT
• • • •	• • • •	• • • •	• • • •	9			
• • • •	• • • •	• • • •	• • • •	10			
				a	58 31 98	1,00	Addition for additional heating

8028444-1-A



5700SL

5710SL

5711SL

5712SL

5713SL

Code



Description

STEERING SYSTEM

PLANCHES EN  
COURS  
D'ILLUSTRATION

- 38
- 39

UNION  
HYDR. HOSE

BVS



# 5700SL

5710SL  
5711SL  
5712SL  
5713SL

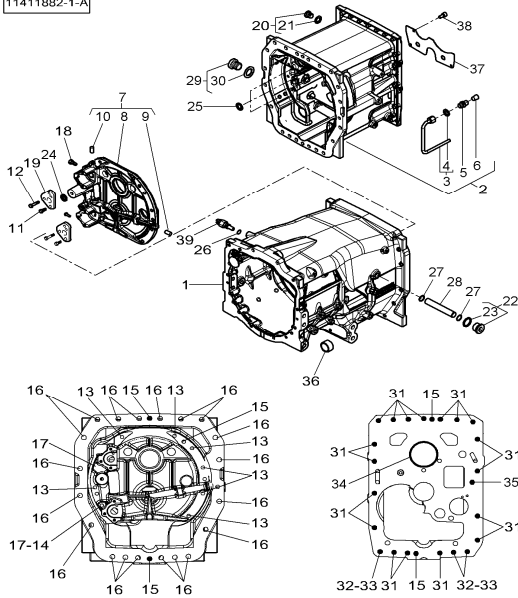
Code



Description

## DRIVE TRAIN SYSTEM

11411882-1-A



11411882-1-A

MF 5700SL 5710->5613 - Issue 2

5710SL	5711SL	5712SL	5713SL	Code	Time 1	Time 2	Options	Description
•	•	•	•	1	020.2002	28,50	a, b, c, d	TRANSM.HOUSING
•	•	•	•	2	020.2002	28,00	a, b, c, d	TRANSM.HOUSING
•	•	•	•	3				TUBE
•	•	•	•	4				BUSH UNION
•	•	•	•	5				UNION
•	•	•	•	6				PLUG
•	•	•	•	7				
•	•	•	•	8	020.2002	26,00	a, b, c, d	COVER
•	•	•	•	9				SEAL CAP
•	•	•	•	10				SEAL CAP
•	•	•	•	11	020.2010	20,25	a, b, c, d	SCREW
•	•	•	•	12	020.2002	22,00	a, b, c, d	HEXAGONAL HEAD BOLT
•	•	•	•	13				SCREW
•	•	•	•	14				PIN
•	•	•	•	15				LOCATOR
•	•	•	•	16				SCREW 12 POINTS FLANGE HEAD
•	•	•	•	17				HEX SOCKET SCREW
•	•	•	•	18	020.2007	4,50		PLUNGER
•	•	•	•	19	020.2002	22,00	a, b, c, d	PLATE
•	•	•	•	20				PLUG
•	•	•	•	21				SEAL
•	•	•	•	22				DRAIN PLUG
•	•	•	•	23				O RING
•	•	•	•	24				O RING
•	•	•	•	25				O RING
•	•	•	•	26				SEALING WASHER
•	•	•	•	27	013.1302	22,00	a, b, c, d	O-RING
•	•	•	•	28	020.2002	2,50		TUBE
•	•	•	•	29				PLUG
•	•	•	•	30				O RING
•	•	•	•	31				SCREW 12 POINTS FLANGE HEAD
•	•	•	•	32				STUD BOLT
•	•	•	•	33				NUT METRIC
•	•	•	•	34				O RING
•	•	•	•	35				O RING
•	•	•	•	36				
•	•	•	•	37	020.2002	16,00		SHIELD

TRANSMISSION

4-04-3



5700SL

5710SL  
5711SL  
5712SL  
5713SL

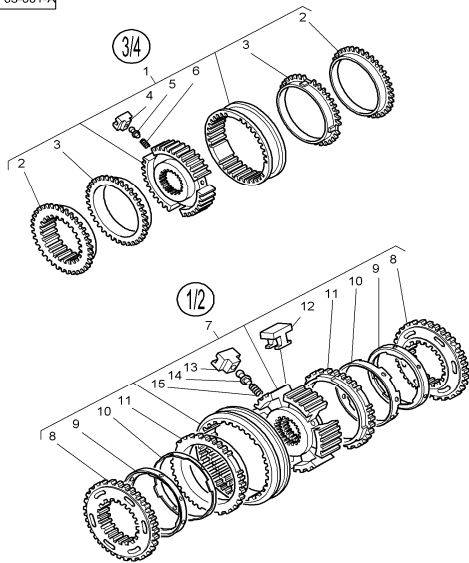
Code



Description

DRIVE TRAIN SYSTEM

1-WF03-001-A



1-WF03-001-A

••••	1	020.2011	27,00	a, b,c	SYNCHRO UNIT
••••	2				SYNCHRO RING
••••	3				SYNCHRO RING
••••	4				POPPET
••••	5				PIVOT PIN
••••	6				SPRING
••••	7	020.2011	27,00	a, b,c	SYNCHRO UNIT
••••	8				CONE
••••	9				BUSH
••••	10				CONE
••••	11				SYNCHRO RING
••••	12				SKATE
••••	13				THRUST PIECE
••••	14				PIN
••••	15				SYNCHRONIZING SPRING
	a	34 12 60	1,50		Addition for chassis reinforcement
	b	33 06 51	2,00		Addition for front loader
	c	22 05 99	2,00		Addition for midmounted

MF 5700SL 5710->5613 - Issue 2

TRANSMISSION

4-04-13



# 5700SL

5710SL	5711SL	5712SL	5713SL
--------	--------	--------	--------

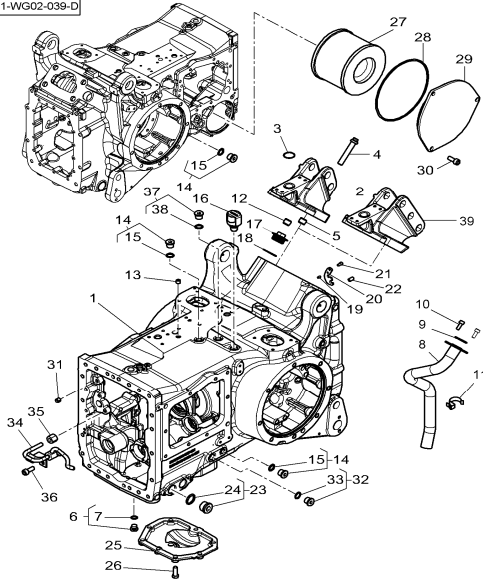
Code



Description

## DRIVE TRAIN SYSTEM

1-WG02-039-D



1-WG02-039-D

MF 5700SL 5710-&gt;5613 - Issue 2

CENTRE HOUSING

4-04-23

5710SL	5711SL	5712SL	5713SL	Code			Description
•	•	•	•	1	001.0108	31,00	b,d,e ASSEMBLE IN FACTORY HOUSING
•	•	•	•	2			
•	•	•	•	3			O RING
•	•	•	•	4			SCREW
•	•	•	•	5			PIN
•	•	•	•	6			PLUG
•	•	•	•	7			O RING
•	•	•	•	8	013.1307	3,00	TUBE
•	•	•	•	9	013.1307	3,00	O RING
•	•	•	•	10			HEX SOCKET SCREW
•	•	•	•	11			SPRING CLIP
•	•	•	•	12			PIN
•	•	•	•	13			SCREWED PLUG
•	•	•	•	14			PLUG
•	•	•	•	15			O RING
•	•	•	•	16	001.0114	0,75	BREATHER
•	•	•	•	17			PLUG
•	•	•	•	18			O RING
•	•	•	•	19			ROLL PIN
•	•	•	•	20	003.0311	3,50	LUG
•	•	•	•	21			SCREW METRIC
•	•	•	•	22			PIN
•	•	•	•	23			DRAIN PLUG
•	•	•	•	24			O RING
•	•	•	•	25	001.0114	2,00	c COVER
•	•	•	•	26			HEX CAP SCREW
•	•	•	•	27	013.1305	1,25	HYDRAULIC ELEMENT
•	•	•	•	28			O RING
•	•	•	•	29			COVER
•	•	•	•	30			HEX SOCKET SCREW
•	•	•	•	31			PIN
•	•	•	•	32			DRAIN PLUG
•	•	•	•	33			O RING
•	•	•	•	34	013.1307	16,00	TUBE ASSY
•	•	•	•	35			UNION FITTING
•	•	•	•	36			
•	•	•	•	37			PLUG



# 5700SL

5710SL  
5711SL  
5712SL  
5713SL

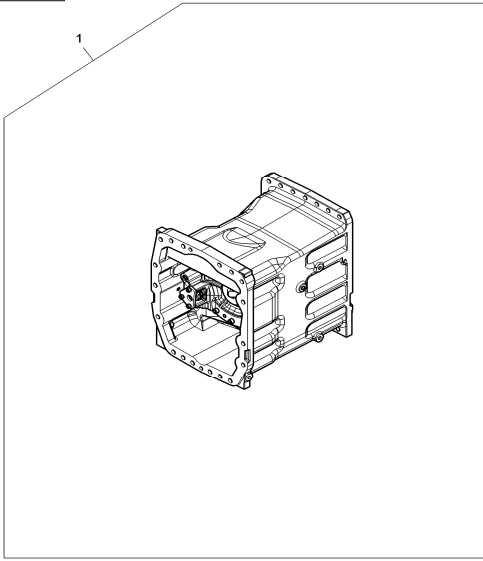
Code



Description

## DRIVE TRAIN SYSTEM

1-WE74-001-A



•	•	•	•					
			1	020.2002	24,00			ASSEMBLE IN FACTORY GEARBOX

1-WE74-001-A



**Not available for these models.  
Non disponible pour ces modèles.  
Nicht für diese Modelle verfügbar.  
Non disponibile per questi modelli.  
No disponible para estos modelos.  
Ikke til rådighed for disse modeller.**



# 5700SL

5710SL  
5711SL  
5712SL  
5713SL

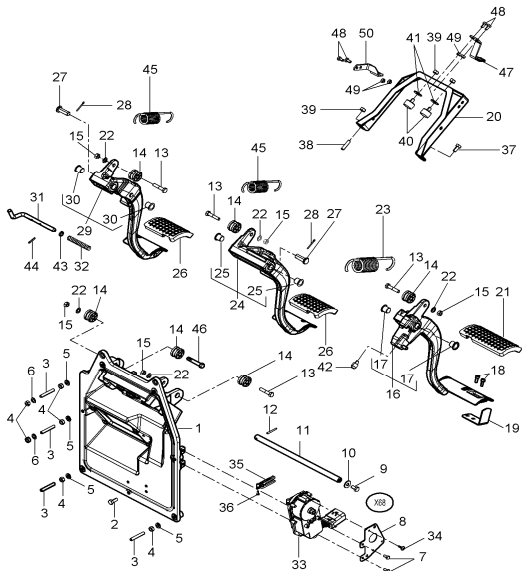
Code



Description

## HYDRAULIC SYSTEM

11832278-1-A



11832278-1-A

5710SL	5711SL	5712SL	5713SL	Code	Time	Description
•	•	•	•	38		STUD BOLT
•	•	•	•	39		HEX NUT
•	•	•	•	40		PAD
•	•	•	•	41		FLAT WASHER
•	•	•	•	42	003.0306 2,50	STOP
•	•	•	•	43		WASHER
•	•	•	•	44		ROLL PIN
•	•	•	•	45	003.0306 2,50	SPRING
•	•	•	•	46		HEX CAP SCREW
•	•	•	•	47	003.0306 2,50	SUPPORT
•	•	•	•	48		HEXAGONAL HEAD BOLT
•	•	•	•	49		NUT METRIC
•	•	•	•	50	003.0306 2,50	SUPPORT
				a	58 31 98 1,00	Addition for additional heating
				b	14 01 00 0,75	Electrical diagnostics



# 5700SL

5710SL  
5711SL  
5712SL  
5713SL

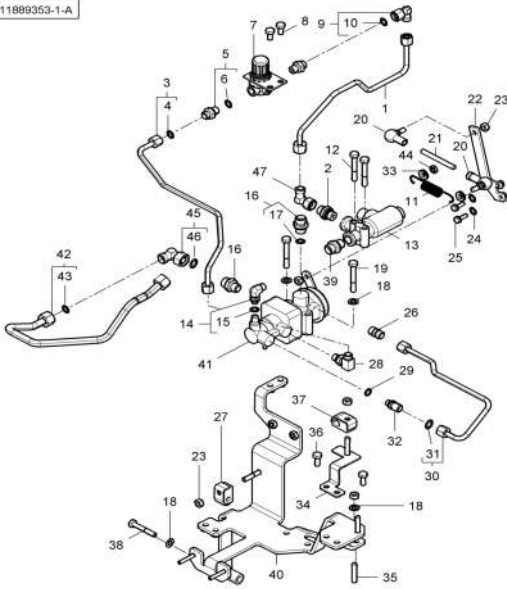
Code



Description

## HYDRAULIC SYSTEM

11889353-1-A



11889353-1-A

5710SL	5711SL	5712SL	5713SL	Code	Quantity	Part Number	Description
•	•	•	•	1	013.1307	1,00	PIPE
•	•	•	•	2			UNION
•	•	•	•	3	013.1307	1,00	TUBE
•	•	•	•	4			BUSH
•	•	•	•	5			STRAIGHT FITTING
•	•	•	•	6			SEAL
•	•	•	•	7	013.1311	0,75	a RESTRICTOR
•	•	•	•	8			HEXAGONAL HEAD BOLT
•	•	•	•	9			ELBOW
•	•	•	•	10			O RING
•	•	•	•	11	013.1315	0,75	SPRING
•	•	•	•	12			HEXAGONAL HEAD BOLT
•	•	•	•	13	013.1311	1,25	a,b VALVE SOLENOID
•	•	•	•	14			ELBOW UNION
•	•	•	•	15			O RING
•	•	•	•	16			UNION
•	•	•	•	17			SEAL
•	•	•	•	18			FLAT WASHER
•	•	•	•	19			HEXAGONAL HEAD BOLT
•	•	•	•	20	013.1315	0,75	STUB
•	•	•	•	21	013.1315	0,75	STUD BOLT
•	•	•	•	22	013.1315	0,75	LEVER
•	•	•	•	23			HEX NUT
•	•	•	•	24			FLAT WASHER
•	•	•	•	25			HEXAGONAL HEAD BOLT
•	•	•	•	26			UNION
•	•	•	•	27			BRIDLE
•	•	•	•	28			ELBOW UNION
•	•	•	•	29			SEALING WASHER
•	•	•	•	30	013.1307	2,00	TUBE
•	•	•	•	31			BUSH
•	•	•	•	32			STRAIGHT FITTING
•	•	•	•	33			SPACER
•	•	•	•	34			SUPPORT
•	•	•	•	35			STUD BOLT
•	•	•	•	36			HEXAGONAL HEAD BOLT
•	•	•	•	37			HOSE STRAP



# 5700SL

5710SL  
5711SL  
5712SL  
5713SL

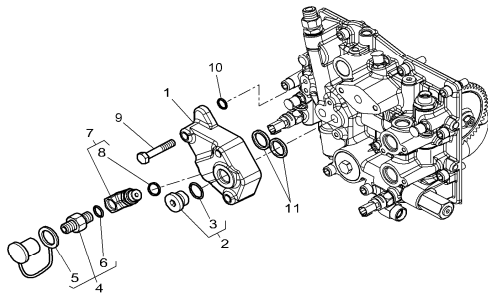
Code



Description

## HYDRAULIC SYSTEM

1-WP05-008-A



•	•	•	•	1	013.1302	1,00	a	PLATE
•	•	•	•	2				PLUG
•	•	•	•	3				O RING
•	•	•	•	4	013.1307	0,75		PRESSURE INTAKE
•	•	•	•	5				CAP
•	•	•	•	6				O RING
•	•	•	•	7				ELBOW
•	•	•	•	8				O RING
•	•	•	•	9				SCREW
•	•	•	•	10				O RING
•	•	•	•	11				O RING
				a	16 02 96	0,50		Touch-up (paint)

1-WP05-008-A



# 5700SL

5710SL  
5711SL  
5712SL  
5713SL

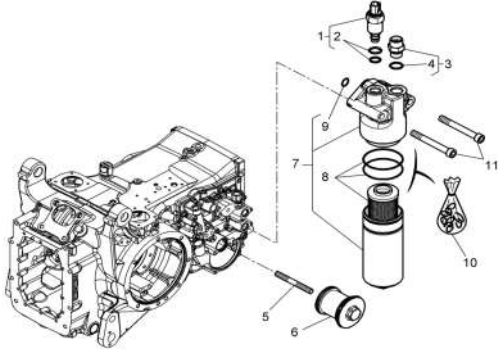
Code



Description

## HYDRAULIC SYSTEM

8020316-1-A



8020316-1-A

5710SL	5711SL	5712SL	5713SL	Code	0	1	2	3	4	5	6	7	8	9	10	11	12	13	14	15	16	17	18	19	20
.	.	.	.	1	008.0822	0,75		<b>a</b>	SENSOR																
.	.	.	.	2					SEALS KIT																
.	.	.	.	3	008.0822	1,00			STRAIGHT FITTING																
.	.	.	.	4					O RING																
.	.	.	.	5					STUD BOLT																
.	.	.	.	6	013.1305	1,50			STRAINER																
.	.	.	.	7	013.1305	1,50		<b>b</b>	FILTER																
.	.	.	.	8	013.1305	1,25			FILTER ELEMENT																
.	.	.	.	9																					
.	.	.	.	10					SEALS KIT																
.	.	.	.	11					SCREW																
				<b>a</b>	<b>14 01 00</b>	<b>0,75</b>			<b>Electrical diagnostics</b>																
				<b>b</b>	<b>16 02 96</b>	<b>0,50</b>			<b>Touch-up (paint)</b>																



# 5700SL

5710SL  
5711SL  
5712SL  
5713SL

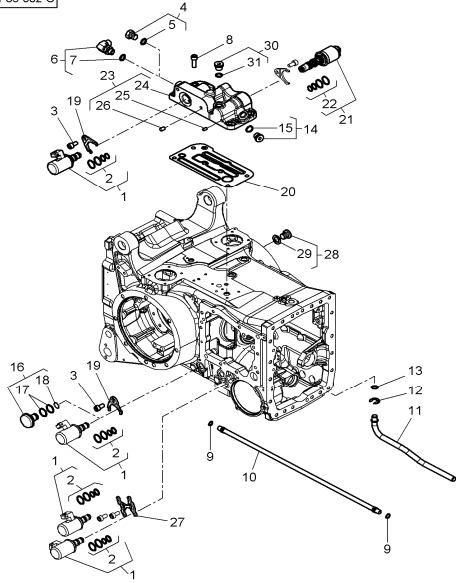
Code



Description

## HYDRAULIC SYSTEM

1-WP83-002-C



1-WP83-002-D

5710SL	5711SL	5712SL	5713SL	Code			Description	
•	•	•	•	1	013.1310	0,75	a,c	ELECTROVALVE
•	•	•	•	2				JOINT/GASKET KIT
•	•	•	•	3				HEX SOCKET SCREW
•	•	•	•	4				
•	•	•	•	5				
•	•	•	•	6				ELBOW UNION
•	•	•	•	7				O RING
•	•	•	•	8				HEX SOCKET SCREW
•	•	•	•	9	013.1307	3,50		O RING
•	•	•	•	10	013.1307	3,50		TUBE
•	•	•	•	11	013.1307	11,00		TUBE
•	•	•	•	12				EXTERNAL RETAINING RING
•	•	•	•	13				O RING
•	•	•	•	14				PLUG
•	•	•	•	15				O RING
•	•	•	•	16				
•	•	•	•	17				
•	•	•	•	18				
•	•	•	•	19	020.2002	0,75		BRIDLE
•	•	•	•	20	018.1801	2,00	c	GASKET
•	•	•	•	21	013.1310	1,00	a	ELECTROVALVE
•	•	•	•	22				
•	•	•	•	23				
•	•	•	•	24	013.1306	2,00	b,c	BLOCK
•	•	•	•	25				SEAL CAP
•	•	•	•	26				SEAL CAP
•	•	•	•	27	020.2002	0,75		BRIDLE
•	•	•	•	28				PLUG
•	•	•	•	29				O RING
•	•	•	•	30				PLUG
•	•	•	•	31				O RING
				a	14 01 00	0,75		Electrical diagnostics
				b	16 02 96	0,5		Touch-up (paint)
				c	79 19 99	2,00		Addition for pneumatic brake



# 5700SL

5710SL  
5711SL  
5712SL  
5713SL

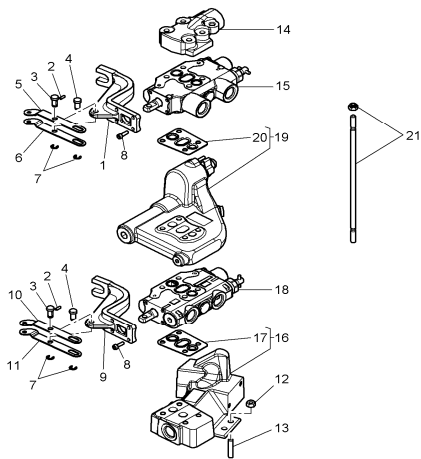
Code



Description

## HYDRAULIC SYSTEM

1-WP34-090-A



5710SL	5711SL	5712SL	5713SL	Code			Description
•	•	•	•	1	013.1311	1,25	ANGLE DRIVE
•	•	•	•	2	013.1311	0,50	SCREW
•	•	•	•	3	013.1311	0,50	CLEVIS PIN
•	•	•	•	4	013.1311	0,50	CLEVIS PIN
•	•	•	•	5	013.1311	0,75	TOGGLE
•	•	•	•	6	013.1311	0,75	TOGGLE
•	•	•	•	7	013.1311	0,50	STOP RING
•	•	•	•	8			HEX SOCKET SCREW
•	•	•	•	9	013.1311	1,25	ANGLE DRIVE
•	•	•	•	10	013.1311	0,75	TOGGLE
•	•	•	•	11	013.1311	0,75	TOGGLE
•	•	•	•	12			NUT METRIC
•	•	•	•	13			STUD BOLT
•	•	•	•	14	013.1306	0,75	a PLATE
•	•	•	•	15	013.1311	3,00	a DISTRIBUTOR
•	•	•	•	16	013.1311	3,50	a BRACKET KIT
•	•	•	•	17	013.1311	3,00	SEALING PLATE
•	•	•	•	18	013.1311	3,00	a DISTRIBUTOR
•	•	•	•	19	013.1311	3,00	a KIT, GOVERNOR
•	•	•	•	20	013.1311	3,00	SEALING PLATE
•	•	•	•	21	013.1311	1,50	KIT, STUD
				a	16 02 96	0,50	Touch-up (paint)

1-WP34-090-A



# 5700SL

5710SL  
5711SL  
5712SL  
5713SL

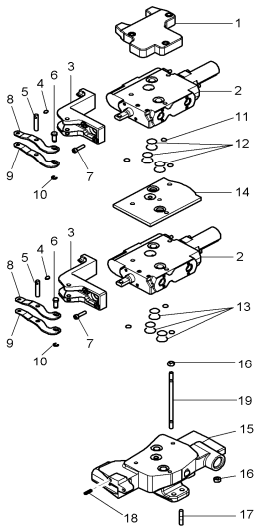
Code



Description

## HYDRAULIC SYSTEM

1-WP34-124-B



5710SL	5711SL	5712SL	5713SL	Code			Description
•	•	•	•	1	013.1311	1,25	a ELEMENT
•	•	•	•	2	013.1311	1,50	a DISTRIBUTOR
•	•	•	•	3	013.1311	0,75	ANGLE DRIVE
•	•	•	•	4			SCREW
•	•	•	•	5			CLEVIS PIN
•	•	•	•	6			CLEVIS PIN
•	•	•	•	7			HEX SOCKET SCREW
•	•	•	•	8	013.1311	0,50	TOGGLE
•	•	•	•	9	013.1311	0,50	TOGGLE
•	•	•	•	10			STOP RING
•	•	•	•	11			PADDING
•	•	•	•	12			O RING
•	•	•	•	13			BUSH
•	•	•	•	14	013.1311	1,50	a SPACER
•	•	•	•	15	013.1311	2,50	a SUPPORT
•	•	•	•	16			NUT METRIC
•	•	•	•	17			STUD BOLT
•	•	•	•	18			SEAL CAP
•	•	•	•	19	013.1311	1,00	STUD BOLT
				a	16 02 96	0,50	Touch-up (paint)

1-WP34-124-B



# 5700SL

5710SL	5711SL	5712SL	5713SL
--------	--------	--------	--------

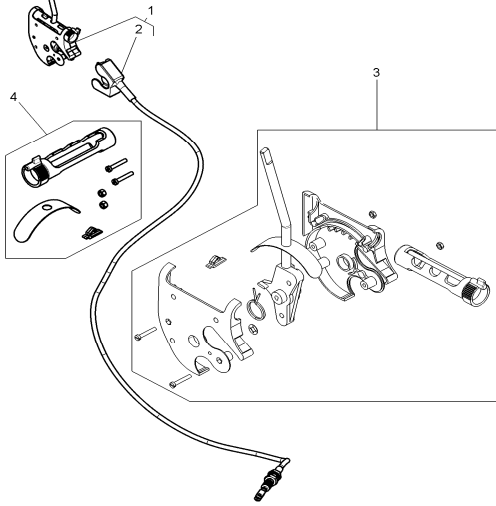
Code



Description

### HYDRAULIC SYSTEM

1-WP49-004-A



5710SL	5711SL	5712SL	5713SL	Code			Description
.	.	.	.	1	003.0306	3,00	WOBBLE DRIVE
.	.	.	.	2	003.0306	3,25	CABLE
.	.	.	.	3			KIT CASE
.	.	.	.	4			PARTS PACK

1-WP49-004-A

CLICK HERE TO **DOWNLOAD** THE COMPLETE MANUAL

- Thank you very much for reading the preview of the manual.
- You can download the complete manual from: [www.heydownloads.com](http://www.heydownloads.com) by clicking the link below



- Please note: If there is no response to CLICKING the link, please download this PDF first and then click on it.

CLICK HERE TO **DOWNLOAD** THE COMPLETE MANUAL



# 5700SL

5710SL  
5711SL  
5712SL  
5713SL

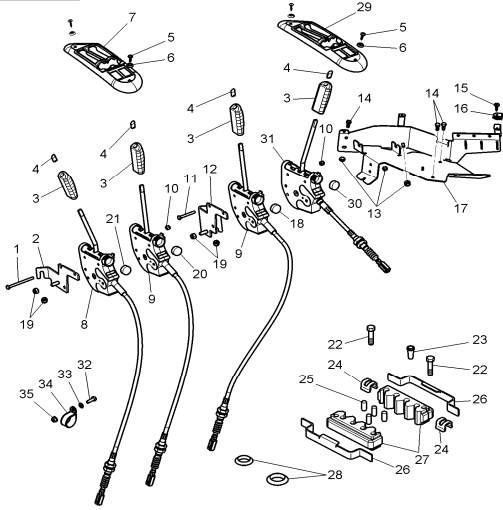
Code



Description

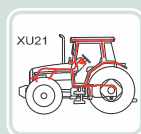
## HYDRAULIC SYSTEM

1-WP23-003-B



1-WP23-003-B

•		1				HEX CAP SCREW
•		2	003.0306	1,75		FLANGE
•		3	003.0306	0,50		GRIP
•		4				MUFF
•		5				SCREW
•		6				WASHER
•		7	003.0305	0,75		COVER
•		8	003.0306	3,00	a	WOBBLE DRIVE
•		9	003.0306	3,00	a	WOBBLE DRIVE
•		10				HEX NYLON INSERT LOCKNUT
•		11				HEX CAP SCREW
•		12				FLANGE
•		13				HEX NYLON INSERT LOCKNUT
•		14				HEXAGONAL HEAD BOLT
•		15				SCREW
•		16				NUT
•		17	003.0306	2,50		SUPPORT
•		18				PADDING
•		19				HEX NYLON INSERT LOCKNUT
•		20				PADDING
•		21				PADDING
•		22				HEX CAP SCREW
•		23				PLUG
•		24				CLIP
•		25				PLUG
•		26				SUPPORT
•		27				HALF CLAMP
•		28				PLUG
•		29	003.0305	0,75		COVER
•		30				PADDING
•		31	003.0306	3,00	a	WOBBLE DRIVE
•		32				HEXAGONAL HEAD BOLT
•		33				FLAT WASHER
•		34				CLIP
•		35				HEX FLANGE NUT
		a	22 03 02	0,50		Additional cable



**ELECTRICAL SYSTEM  
SYSTÈME ÉLECTRIQUE  
ELEKTRIKSYSTEM  
IMPIANTO ELETTRICO  
SISTEMA ELÉCTRICO**

**| RTS**







# 5700SL

5710SL	5711SL	5712SL	5713SL
--------	--------	--------	--------

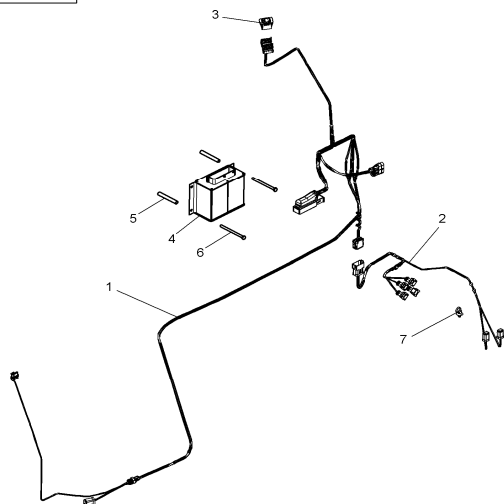
Code



Description

## ELECTRICAL SYSTEM

1-WW09-040-A



•	•	•	•	1	008.0824	1,75	a	HARNES
•	•	•	•	2	008.0824	1,25	a	HARNES
•	•	•	•	3				HYDRAULIC LOCKOUT ROCKER SWITCH
•	•	•	•	4	008.0807	0,75	a	CALCULATOR
•	•	•	•	5				SPACER
•	•	•	•	6				HEX CAP SCREW
•	•	•	•	7				CLAMP
				a	14 01 00	0,75		Electrical diagnostics

1-WW09-040-A



5700SL

5710SL  
5711SL  
5712SL  
5713SL

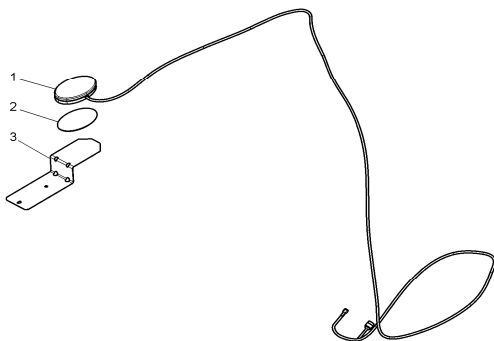
Code



Description

ELECTRICAL SYSTEM

1-WA11-003-A



1-WA11-003-A

		•											
		1	008.0824	3,50	a	TELEMETRY ANTENNA							
		2											
		3											
		a	14 01 00	0,75		Electrical diagnostics							



# 5700SL

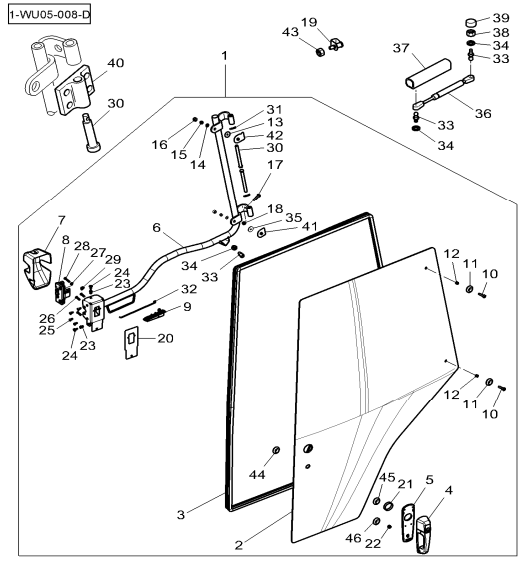
5710SL  
5711SL  
5712SL  
5713SL

Code



Description

CAB



1-WU05-008-D

5710SL	5711SL	5712SL	5713SL	Code		Description
•	•	•	•			38 HEX NUT
•	•	•	•			39 HELMET
•	•	•	•	003.0307	2,00	40 DOWEL
•	•	•	•			41 SHIM
•	•	•	•			42 SHIM
•	•	•	•			43 LOCKNUT
•	•	•	•			44 SPACER
•	•	•	•			45 GASKET
•	•	•	•			46 WASHER



# 5700SL

5710SL  
5711SL  
5712SL  
5713SL

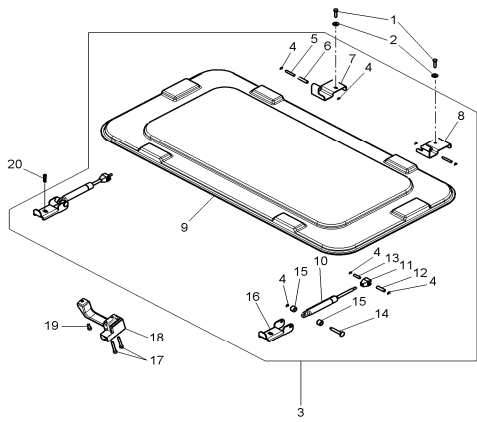
Code



Description

CAB

1-WU43-003-B



1-WU43-003-B

Quantity	Code	Description
•	•	1 HEXAGONAL HEAD BOLT
•	•	2 FLAT WASHER
•	•	3 003.0307 1,00 TRAP
•	•	4 EXTERNAL RETAINING RING
•	•	5 CLEVIS PIN
•	•	6 BUSH
•	•	7 NON-SERVICEABLE PART
•	•	8 002.0202 0,75 NON-SERVICEABLE PART
•	•	9 003.0310 1,00 NON-SERVICEABLE PART
•	•	10 003.0307 0,50 GAS STRUT
•	•	11 HEAD
•	•	12 BUSH
•	•	13 CLEVIS PIN
•	•	14 PIVOT
•	•	15 BUSH
•	•	16 003.0306 0,75 SUPPORT
•	•	17 HEX SOCKET SCREW
•	•	18 003.0306 0,50 GRIP
•	•	19 SCREW METRIC
•	•	20 HEXAGONAL HEAD BOLT



# 5700SL

5710SL	5711SL	5712SL	5713SL
--------	--------	--------	--------

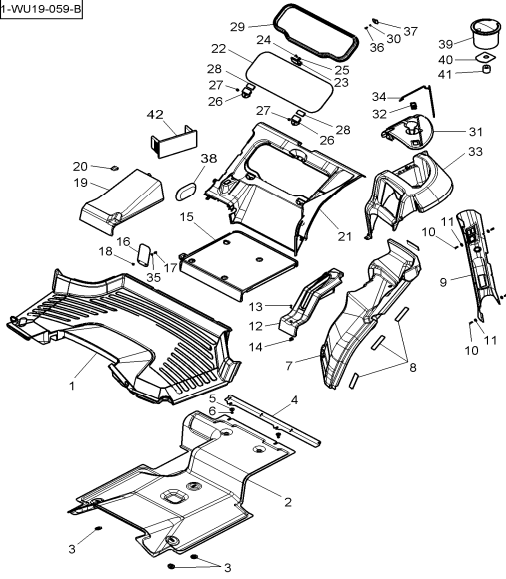
Code



Description

CAB

1-WU19-059-B



1-WU19-059-B

MF 5700SL 5710-&gt;5613 - Issue 2

TRACTOR CAB

4-07-27

5710SL	5711SL	5712SL	5713SL	Code			Description	
•	•	•	•	1	003.0309	1,00	a	MAT
•	•	•	•	2				ENVELOPE
•	•	•	•	3				CLIP
•	•	•	•	4				STRIP
•	•	•	•	5				NUT METRIC
•	•	•	•	6				FLAT WASHER
•	•	•	•	7	003.0309	0,75		ENVELOPE
•	•	•	•	8				PAD
•	•	•	•	9	003.0309	0,75		LEFT HAND PILLAR
•	•	•	•	10				SCREW
•	•	•	•	11				WASHER
•	•	•	•	12	003.0309	0,50		COVER
•	•	•	•	13				SCREW
•	•	•	•	14				NUT
•	•	•	•	15	003.0309	1,25		ENVELOPE
•	•	•	•	16				SUPPORT
•	•	•	•	17				HEXAGONAL HEAD BOLT
•	•	•	•	18				NUT METRIC
•	•	•	•	19	003.0309	0,50		COVER
•	•	•	•	20				COMPRESSION LATCH
•	•	•	•	21	003.0307	1,50		REAR WINDOW
•	•	•	•	22	003.0307	0,75		REAR WINDOW BEZEL
•	•	•	•	23				LATCH
•	•	•	•	24				SCREW
•	•	•	•	25				WASHER
•	•	•	•	26				HINGE
•	•	•	•	27				BLIND NUT
•	•	•	•	28				HINGE SEAL
•	•	•	•	29	003.0309	0,50		GASKET
•	•	•	•	30				HOOK
•	•	•	•	31	003.0305	0,50		COVER, LEFT HAND
•	•	•	•	32				HASP
•	•	•	•	33	003.0309	1,25		LEFT HAND ENVELOPE
•	•	•	•	34				CLEVIS PIN
•	•	•	•	35				FLAT WASHER
•	•	•	•	36				SCREW
•	•	•	•	37				FLAT WASHER



# 5700SL

5710SL  
5711SL  
5712SL  
5713SL

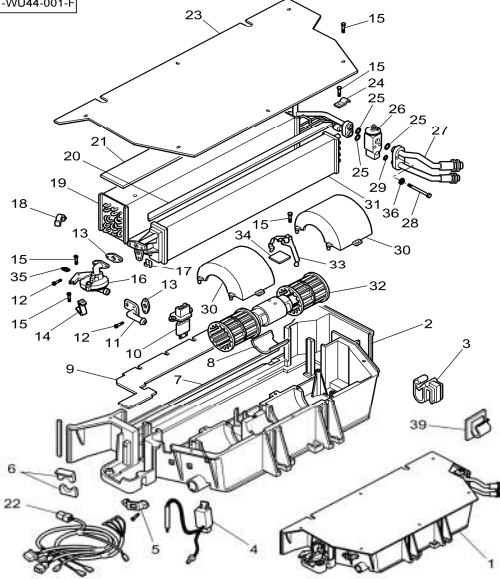
Code



Description

CAB

1-WU44-001-F



••••	••••	38				NUT
••••	••••	39				CLIP
		a	14 01 00	0,75		Electrical diagnostics
		b	28 15 99	0,75		Addition for Auto-Guide

1-WU44-001-F



5700SL

5710SL

5711SL

5712SL

5713SL

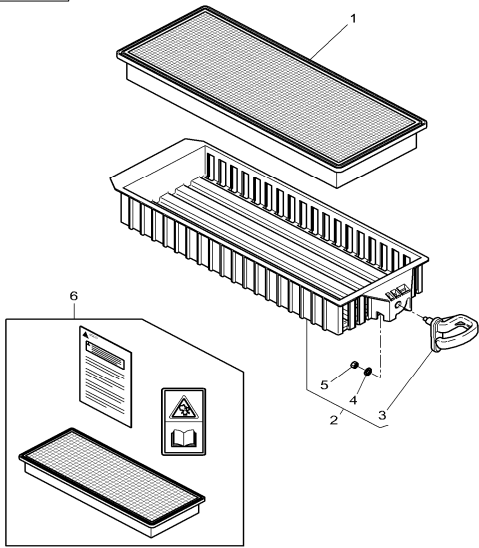
Code



Description

CAB

1-WU48-001-B



5710SL	5711SL	5712SL	5713SL	Code	Quantity	Unit Price	Description
.	.	.	.	1	003.0308	0,50	CAB FILTER
.	.	.	.	2	003.0308	0,50	FILTER BOX
.	.	.	.	3			GRIP
.	.	.	.	4			FLAT WASHER
.	.	.	.	5			LOCKNUT
.	.	.	.	6			KIT, FILTER

1-WU48-001-B







# 5700SL

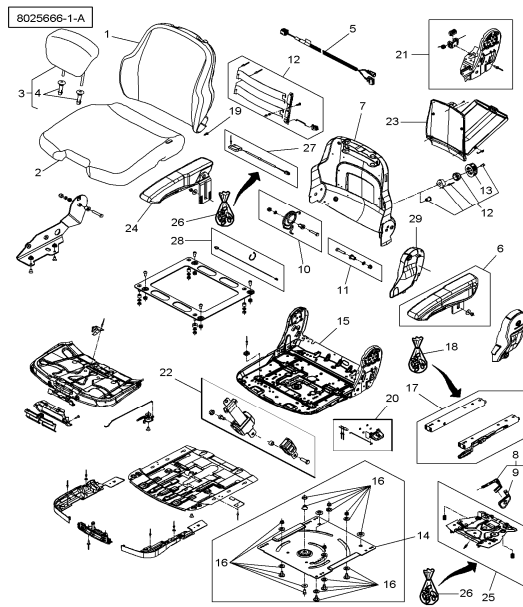
5710SL  
5711SL  
5712SL  
5713SL

Code



Description

CAB



8025666-1-A

5710SL	5711SL	5712SL	5713SL	Code	Quantity	Price	Description
•	•	•	•	1	003.0311	1,25	BACK REST
•	•	•	•	2	003.0311	2,00	CUSHION
•	•	•	•	3	003.0311	0,50	HEAD REST
•	•	•	•	4			GUIDE SLEEVE
•	•	•	•	5	008.0824	2,00	a HARNESS
•	•	•	•	6	003.0311	0,75	LEFT HAND ARMREST
•	•	•	•	7	003.0311	2,50	BACK PART
•	•	•	•	8	003.0311	1,75	LEVER
•	•	•	•	9			HANDLE
•	•	•	•	10	003.0311	3,25	KIT, HARDWARE
•	•	•	•	11	003.0311	3,25	CARRIER
•	•	•	•	12	003.0311	1,50	LUMBAR SUPPORT
•	•	•	•	13			CONTROL KNOB
•	•	•	•	14	003.0311	4,00	TURN-TILT PLATE
•	•	•	•	15	003.0311	3,75	SEAT PLATE
•	•	•	•	16			MOUNTING PART
•	•	•	•	17	003.0311	2,00	ADJUSTMENT RAIL SET
•	•	•	•	18			KIT, ATTACHMENT
•	•	•	•	19			SMALL PARTS KIT
•	•	•	•	20			HANDLE
•	•	•	•	21	003.0311	3,75	CARRIER
•	•	•	•	22	003.0311	1,00	SAFETY BELT
•	•	•	•	23	003.0311	0,50	BAG
•	•	•	•	24			ARMREST
•	•	•	•	25	003.0311	3,00	PIVOT PLATE
•	•	•	•	26			SMALL PARTS KIT
•	•	•	•	27	008.0819	2,75	a SENSOR
•	•	•	•	28	008.0824	3,00	a WIRE HARNESS
•	•	•	•	29	003.0311	0,75	RIGHT HAND COVER
				a	14 01 00	0,75	Electrical diagnostics

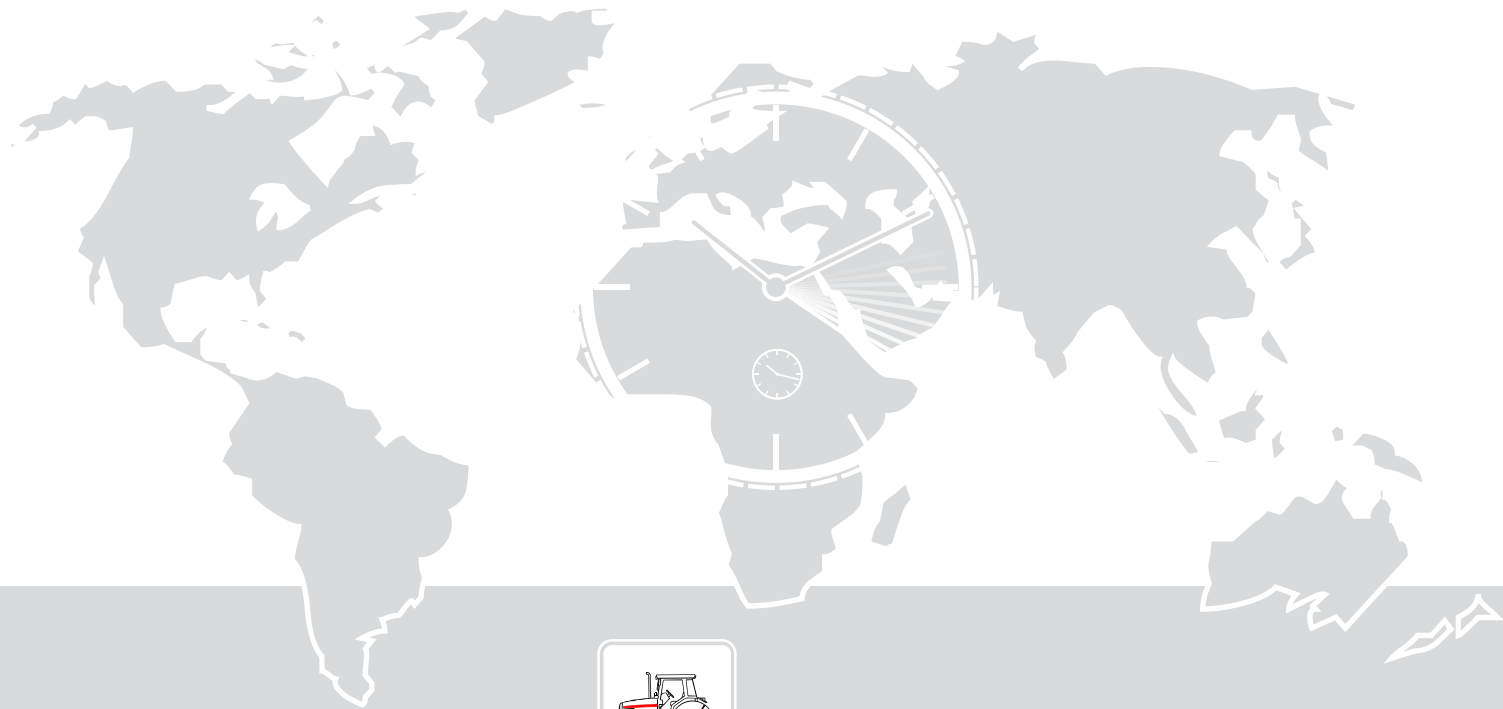
MF 5700SL 5710->5613 - Issue 2

SEAT

4-07-76







**DECALS  
DECALCOMANIES  
AUFKLEBER  
DECALCOMANIE  
ADHESIVOS**

**| RTS**



# 5700SL

5710SL  
5711SL  
5712SL  
5713SL

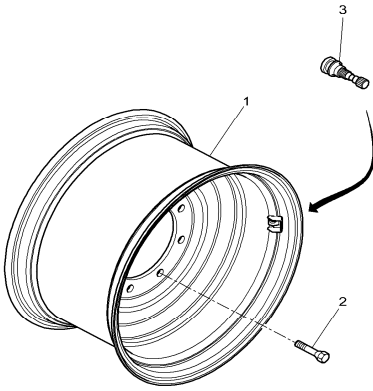
Code



Description

**WHEELS**

1-WL03-009-C



1-WL03-009-C

	•	1	021.2108	1,50	a	WHEEL RIM
	•	2				
	•	3				PRESSURE VALVE
	a		25 07 99	0,50		Touch-up (paint)



5700SL

5710SL  
5711SL  
5712SL  
5713SL

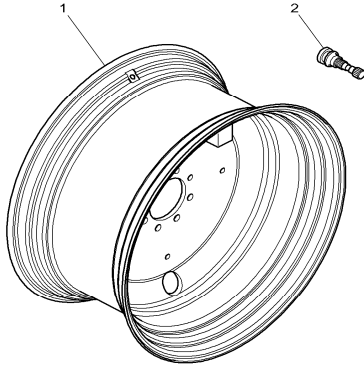
Code



Description

WHEELS

1-WM01-015-A



•	1	021.2108	2,00	a, b	WHEEL RIM
•	2				PRESSURE VALVE
a	16 02 96	0,50			Touch-up (paint)
b	16 01 05	1,00			Addition for wheel weight

1-WM01-015-A



# 5700SL

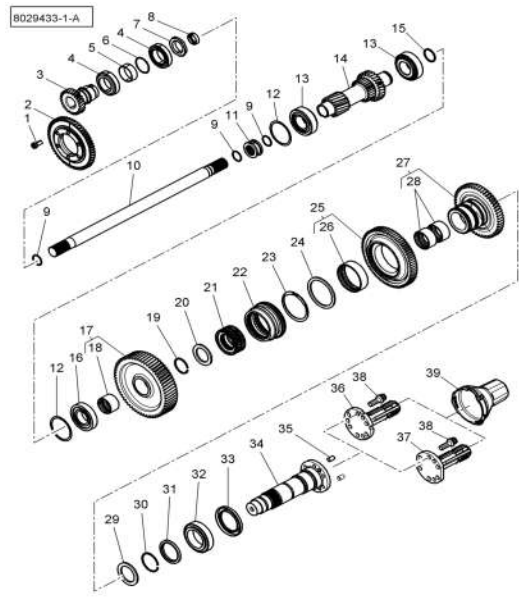
5710SL  
5711SL  
5712SL  
5713SL

Code



Description

## IMPLEMENT DRIVE SYSTEM



8029433-1-A

•	•	•	1	018.1806	4,00	SCREW
•	•	•	2	018.1806	4,00	DRIVE PINION
•	•	•	3	018.1806	4,00	PINION
•	•	•	4	018.1806	4,00	TAPER BEARING
•	•	•	5	018.1806	4,00	SPACER
•	•	•	6	018.1806	4,00	ADJUSTING SHIM
•	•	•	7	018.1806	4,00	NUT
•	•	•	8	018.1806	4,00	SUPPORT WASHER
•	•	•	9	018.1806	4,00	STOP RING
•	•	•	10	018.1806	4,00	SHAFT
•	•	•	11	018.1806	4,00	BUSH
•	•	•	12	018.1806	4,00	ADJUSTING SHIM
•	•	•	13	018.1806	4,00	TAPERED BEARING
•	•	•	14	018.1806	4,00	PINION
•	•	•	15	018.1806	4,00	SEGMENT
•	•	•	16	018.1806	4,00	ROLLER BEARING
•	•	•	17	018.1806	4,00	PINION
•	•	•	18			
•	•	•	19	018.1806	4,00	EXTERNAL RETAINING RING
•	•	•	20	018.1806	4,00	THRUST WASHER
•	•	•	21	018.1806	4,00	HUB
•	•	•	22	018.1806	4,00	COUPLER
•	•	•	23	018.1806	4,00	STOP RING
•	•	•	24	018.1806	4,00	WASHER
•	•	•	25	018.1806	4,00	PINION
•	•	•	26			
•	•	•	27	018.1806	4,00	PINION
•	•	•	28			
•	•	•	29	018.1806	4,00	WASHER
•	•	•	30	018.1806	4,00	EXTERNAL RETAINING RING
•	•	•	31	018.1806	4,00	WASHER
•	•	•	32	018.1806	4,00	TAPER BEARING
•	•	•	33	018.1806	4,00	OIL SEAL
•	•	•	34	018.1806	4,50	SHAFT
•	•	•	35			CENTRALISER
•	•	•	36	018.1806	0,75	STUB
•	•	•	37	018.1806	0,75	STUB

MF 5700SL 5710->5613 - Issue 2

PTO-DRIVE MECHANISM

4-10-7



# 5700SL

5710SL  
5711SL  
5712SL  
5713SL

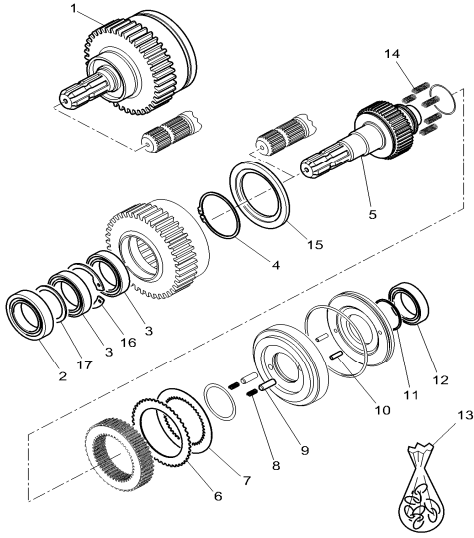
Code



Description

## IMPLEMENT DRIVE SYSTEM

1-WX50-004-D



1-WX50-004-D

	• 1	018.1804	4,50		a,b	CLUTCH
	• 2	018.1802	5,00		a,b	BEAR. 6308 2RS
	• 3	018.1802	5,00		a,b	BEAR. 6010 2RS
	• 4	018.1802	5,50		a,b	EXTERNAL RETAINING RING
	• 5	018.1802	5,50		a,b	SHAFT
	• 6	018.1805	5,50		a,b	DISC
	• 7	018.1806	5,50		a,b	DISC
	• 8	018.1804	5,00		a,b	SPRING
	• 9	018.1804	5,00		a,b	PIN
	• 10					PIN
	• 11	018.1802	5,00		a,b	EXTERNAL RETAINING RING
	• 12	018.1802	5,00		a,b	BEAR. 6208 2RS
	• 13	013.1309	5,50		a,b	JOINT/GASKET KIT
	• 14					SPRING
	• 15	018.1802	5,50		a,b	BACKUP RING
	• 16					INTERNAL RETAINING RING
	• 17					SPACER
	a	33 06 51	2,00			Addition for front loader
	b	25 20 75	2,00			Addition for suspended front axle unit

MF 5700SL 5710->5613 - Issue 2

FRONT PTO

4-10-17





5700SL

5710SL  
5711SL  
5712SL  
5713SL

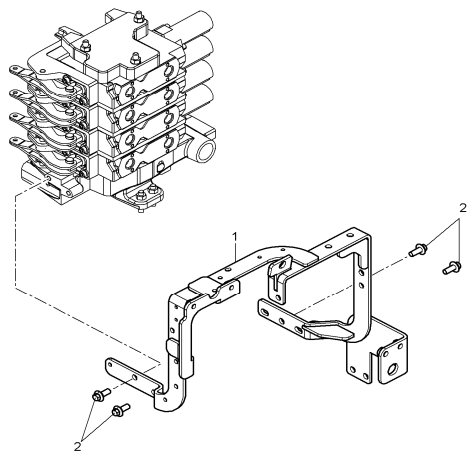
Code



Description

LINKAGE

1-WQ34-036-A



1-WQ34-036-A

•	•	1	018.1801	0,75		BRACKET
•	•	2				HEXAGON FLANGE HEAD BOLT

MF 5700SL 5710->5613 - Issue 2

TOP LINK LOCK

4-12-11



5700SL

5710SL  
5711SL  
5712SL  
5713SL

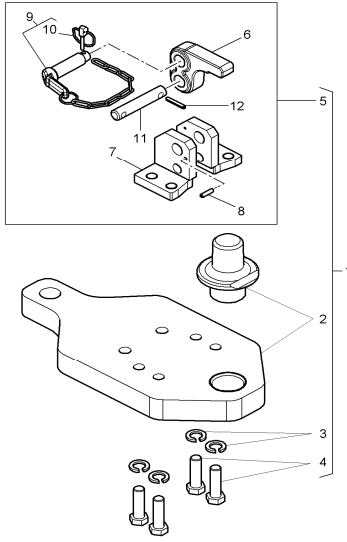
Code



Description

LINKAGE

1-WQ25-005-A



1-WQ25-005-A

5710SL	5711SL	5712SL	5713SL	Code	Interval	Description
.	.	.	.	1	001.0116 0,75	SUPPORT
.	.	.	.	2		
.	.	.	.	3		LOCK WASHER
.	.	.	.	4		HEXAGONAL HEAD BOLT
.	.	.	.	5	001.0116 0,75	SUPPORT
.	.	.	.	6	001.0116 0,50	LATCH
.	.	.	.	7		
.	.	.	.	8		ROLL PIN
.	.	.	.	9	001.0116 0,50	CLEVIS PIN
.	.	.	.	10	018.1801 0,50	LINCH PIN
.	.	.	.	11		CLEVIS PIN
.	.	.	.	12		ROLL PIN



# 5700SL

5710SL  
5711SL  
5712SL  
5713SL

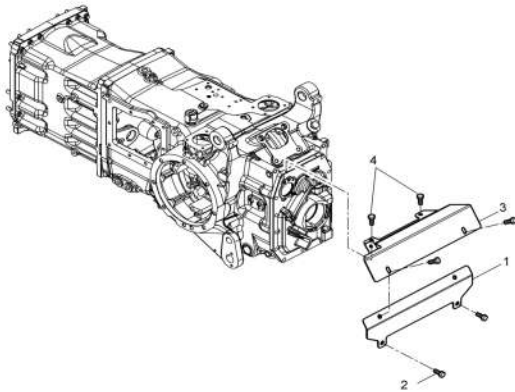
Code



Description

## LINKAGE

8023455-1-A



8023455-1-A

5710SL	5711SL	5712SL	5713SL	Code		Description
.	.	.	.	1	018.1801 0,50	COWL
.	.	.	.	2		HEXAGONAL HEAD BOLT
.	.	.	.	3	018.1801 0,50	COWL
.	.	.	.	4		HEXAGONAL HEAD BOLT



5700SL

5710SL  
5711SL  
5712SL  
5713SL

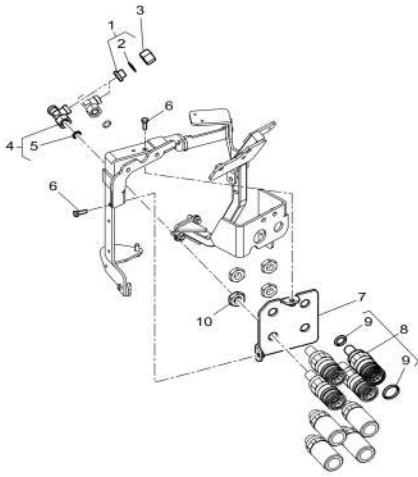
Code



Description

LINKAGE

8028249-1-A



									• • • •	1						SHUTTER
									• • • •	2						O RING
									• • • •	3						NUT METRIC
									• • • •	4	013.1302	1,00				T-PIECE
									• • • •	5						O RING
									• • • •	6						HEXAGONAL HEAD BOLT
									• • • •	7	013.1315	1,00				PLATE
									• • • •	8	013.1315	0,50				QUICK COUPLER
									• • • •	9						JOINT/GASKET KIT
									• • • •	10						NUT METRIC

8028249-1-A



CLICK HERE TO **DOWNLOAD** THE COMPLETE MANUAL

- Thank you very much for reading the preview of the manual.
- You can download the complete manual from: [www.heydownloads.com](http://www.heydownloads.com) by clicking the link below



- Please note: If there is no response to CLICKING the link, please download this PDF first and then click on it.

CLICK HERE TO **DOWNLOAD** THE COMPLETE MANUAL