

2650 / 2660 / 2670 / 2680 TRACTORS REPAIR TIME SCHEDULE

Form Number 4283422M1 Contents

Section	Description
1	Introduction
2	Engine and Equipments
3	Clutch
4	Transmission
5	Rear Axle
6	Linkage
7	Power Take Off
8	Front Axle
9	Hydraulic
10	Electrical Equipment
11	Sheet Metal
12	Tractor Cab
13	Operator Plataform
14	Rims and Wheels Weights
15	Accessories

*NOTE: This Repair Time Schedule (RTS) can be used with Repair Time
Schedule storage binder supplied separately through the repair parts department.*

CLICK HERE TO **DOWNLOAD** THE COMPLETE MANUAL

- Thank you very much for reading the preview of the manual.
- You can download the complete manual from: www.heydownloads.com by clicking the link below




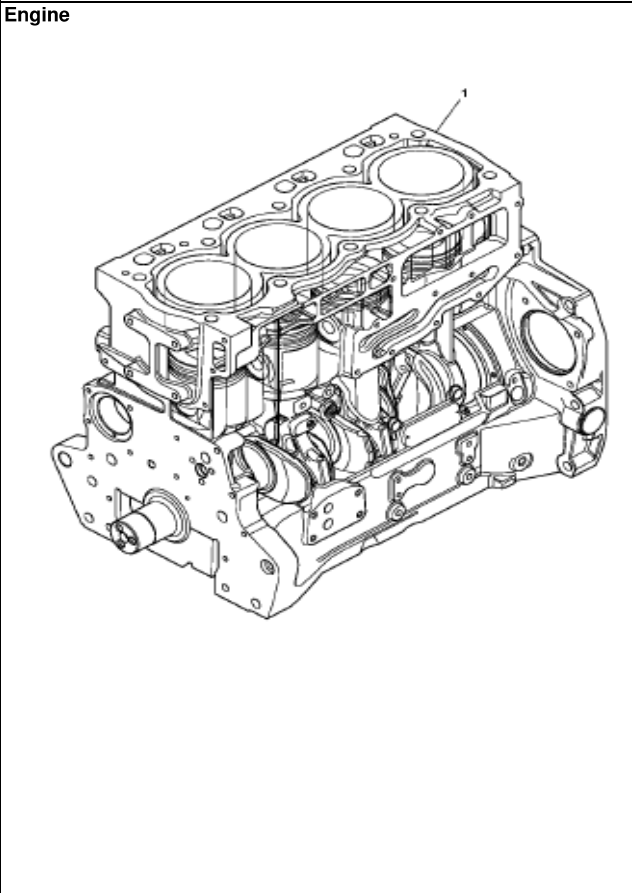
- Please note: If there is no response to CLICKING the link, please download this PDF first and then click on it.

CLICK HERE TO **DOWNLOAD** THE COMPLETE MANUAL



HD Series 2650; 2660; 2670; 2680

Item	Group	Fault Code		Description
1	29A	510600	28,00	KIT, MOTOR




Engine and Equipment

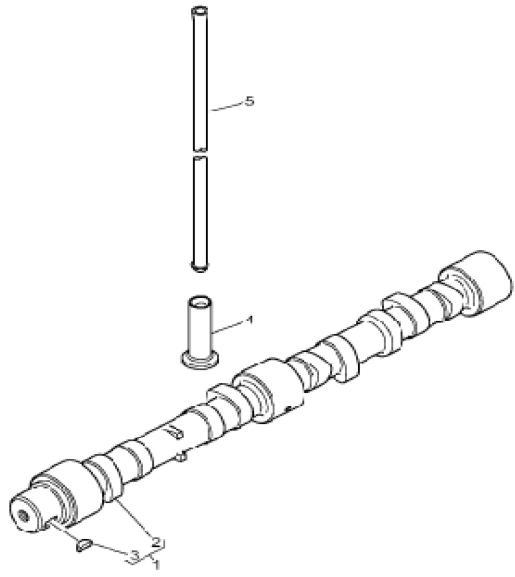
10-15



HD Series 2650; 2660; 2670; 2680

Item	Group	Fault Code		Description
1	29A	550500	28.00	CAMSHAFT
4	29A	551000	12.00	TAPPET
5	24A	550900	3.00	ROD

Camshaft




Engine and Equipment

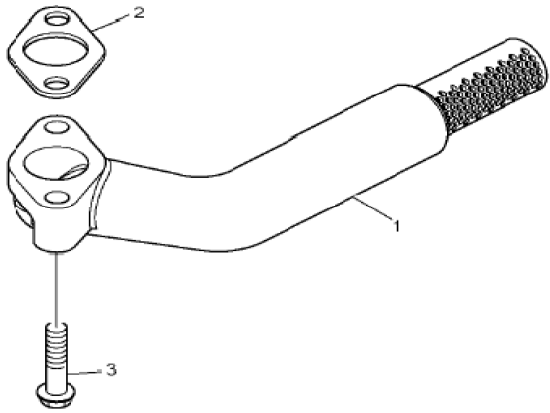
10-65



HD Series 2650; 2660; 2670; 2680

Item	Group	Fault Code	 1,00	Description
1	29A	560400	1,00	PIPE

Pipe




Engine and Equipment

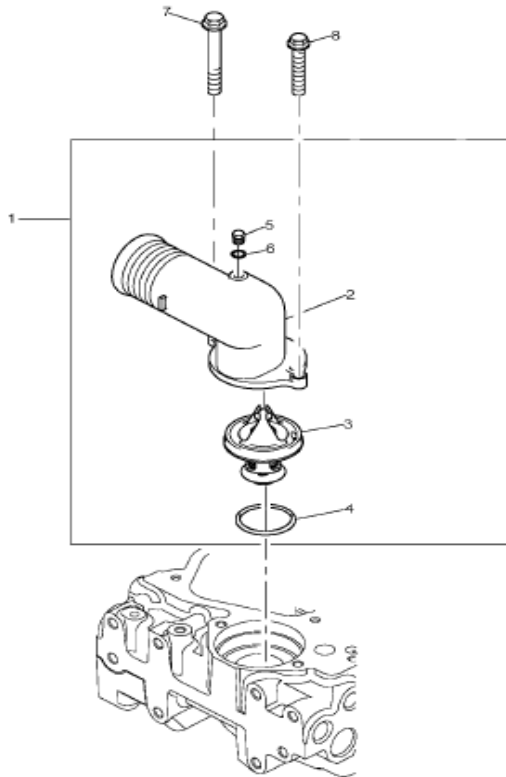
10-115



HD Series 2650; 2660; 2670; 2680

Item	Group	Fault Code		Description
2	29A	591700	0.75	HOUSING
3	29A	591600	0.75	THERMOSTAT

Valve




Engine and Equipment

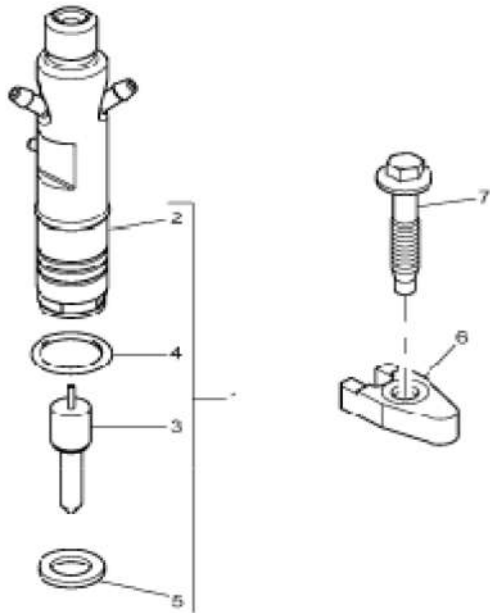
10-165



HD Series 2650; 2660; 2670; 2680

Item	Group	Fault Code		Description
2	29B	570700	2.50	ATOMISER
3	29B	572100	2.50	NOZZLE

Fuel Injector



Engine and Equipment

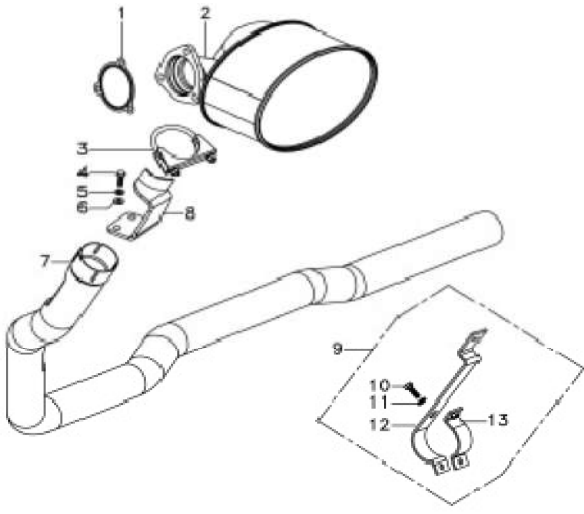
10-215



HD Series 2650; 2660; 2670; 2680


Item	Group	Fault Code		Description
1	34A	585710	0.75	GASKET
2	34A	585720	0.75	SILENCER
7	34A	585721	0.75	EXHAUST PIPE

Horizontal Exhaust

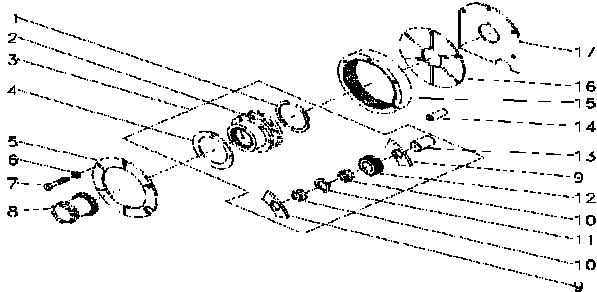




HD Series 2650; 2660

Item	Group	Fault Code		Description
3	9A	190505	6,50	CARRIER
5	9A	190503	6,50	PLATE
7	9A	190524	6,50	BOLT
8	9A	190508	6,50	SLEEVE
9	9A	190520	6,50	WASHER
12	9A	190512	6,50	GEAR
15	9A	190501	6,50	ANNULAR GEAR
16	9A	190522	6,50	PLATE
17	9A	190523	6,50	SHIM


Transmission



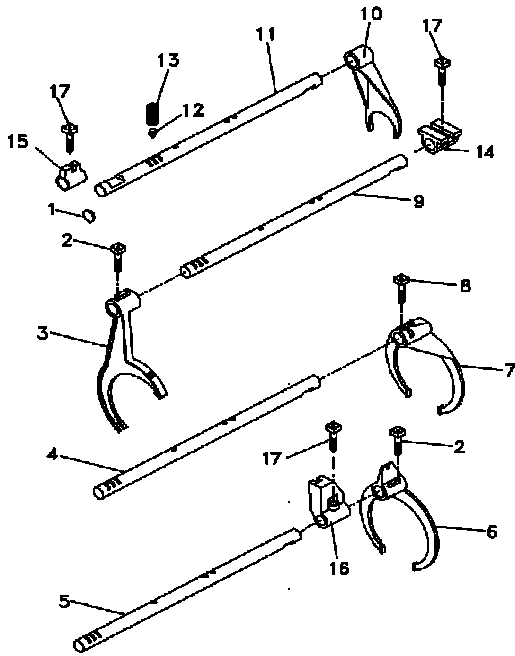
Transmission



HD Series 2650; 2660

Item	Group	Fault Code		Description
3	9A	190923	7,00	FORK
4	9A	190901	5,75	SHAFT
5	9A	190905	5,75	SHAFT
6	9A	190906	5,75	FORK
7	9A	190902	5,75	FORK
9	9A	190922	5,75	SHAFT
10	9A	190910	5,75	FORK
11	9A	190909	5,75	SHAFT
14	9A	190911	5,75	SELECTOR
16	9A	190911	5,75	SELECTOR

12 Speed Transmission - Syncro




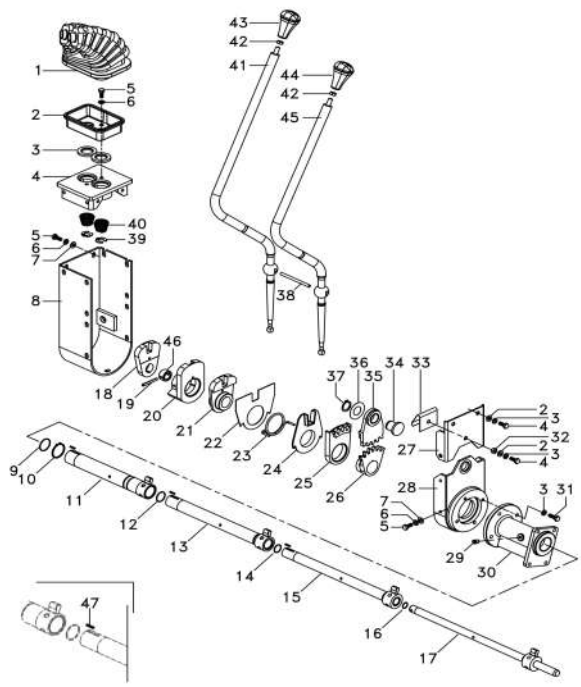
Transmission

25-75



HD Series 2650; 2660; 2670; 2680

Item	Group	Fault Code		Description
Drive Assembly				
1	9A	200303	0,25	GUARD
2	9A	200369	0,50	PLATE
3	9A	200370	0,50	WASHER
4	9A	200368	0,50	BEARING
11	9A	200371	1,50	PIPE
13	9A	200372	1,50	PIPE
15	9A	200373	1,50	PIPE
17	9A	200374	1,50	SHAFT
18	9A	200335	2,00	LEVER
20	9A	200315	3,00	LEVER
21	9A	200330	2,00	LEVER
24	9A	200340	2,00	RING
25	9A	200362	2,00	SEGMENT
26	9A	200371	2,00	LEVER
27	9A	200365	2,00	GUARD
28	9A	200366	2,00	BOWL
35	9A	200371	2,00	SEGMENT
41	9A	200301	2,00	LEVER
43	9A	200302	0,25	KNOB
44	9A	200302	0,25	KNOB
45	9A	200301	2,00	LEVER



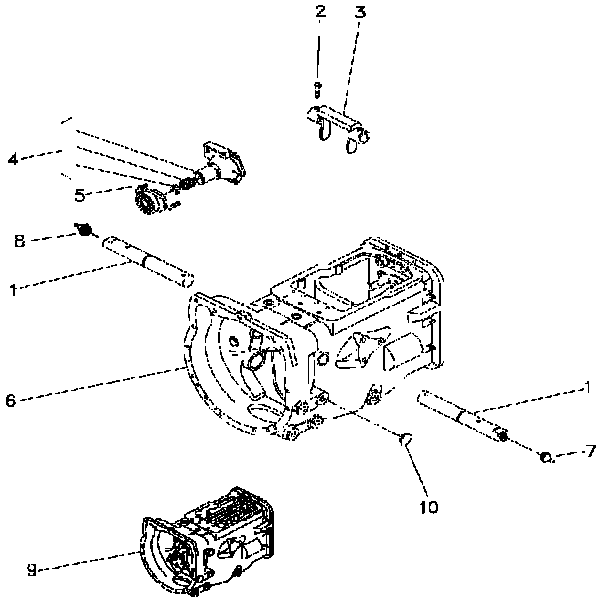
Transmission



HD Series 2650; 2660

Item	Group	Fault Code		Description
1	23A	210305	3,50	SHAFT
2	23A	210306	3,50	BOLT
3	23A	210304	3,50	FORK
4	9A	191309	5,00	BEARING FLANGE
5	23A	191004	3,50	SPRING
6	9A	191301	12,00	HOUSE ASSY
9	23A	300201	3,50	KIT, TRANSMISSION

8 Speed Transmission




Transmission

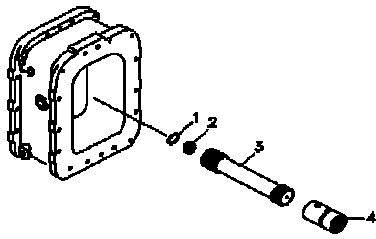
25-175



HD Series 2650; 2660; 2670; 2680

Item	Group	Fault Code		Description
3	11A	270401	5,00	SHAFT
4	11A	270404	2,00	SLEEVE
ADD 1,00 HOUR FOR TRATCOR WITH SIDE TANK				

Drive Shaft



Rear Axle

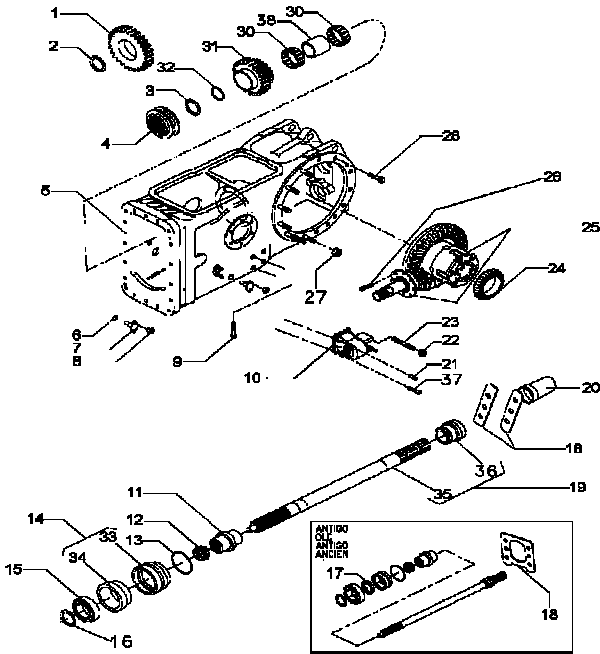
30-10



HD Series 2650; 2660; 2670; 2680

Item	Group	Fault Code		Description
1	13D	270325	0,50	GEAR
5	13A	270301	14,00	HOUSE ASSY
7	13D	270325	0,50	PIN
10	13D	290507	0,25	DRIVE HOUSING
11	13D	290105	2,00	SLEEVE
12	13D	290201	2,00	BEARING NEEDLE
15	13D	290201	2,00	BEARING
24	13A	270114	7,00	BEARING ASSY
25	13A	271011	7,00	KIT,DIFFERENTIAL
28	13D	270309	1,00	BOLT
30	13D	190202	3,00	BEARING
33	13D	290235	2,00	SEAL
35	13D	290101	2,00	SHAFT

Middle Body - 4 Wd Side Drive



Rear Axle

CLICK HERE TO **DOWNLOAD** THE COMPLETE MANUAL

- Thank you very much for reading the preview of the manual.
- You can download the complete manual from: www.heydownloads.com by clicking the link below




- Please note: If there is no response to CLICKING the link, please download this PDF first and then click on it.

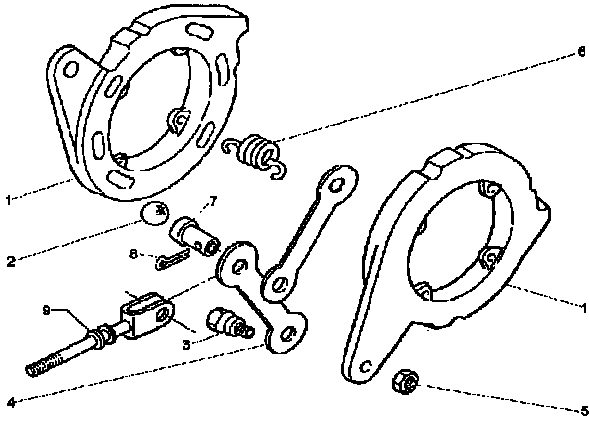
CLICK HERE TO **DOWNLOAD** THE COMPLETE MANUAL



HD Series 2650; 2660; 2670; 2680

Item	Group	Fault Code		Description
9	13B	260225	1,00	ROD

Brake Drive


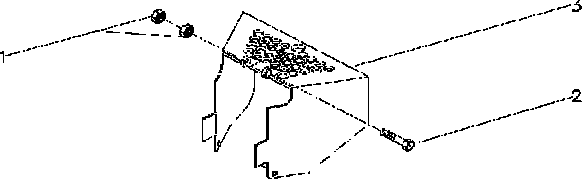


Rear Axle

30-110



HD Series 2650; 2660; 2670; 2680


	Item	Group	Fault Code		Description
Guard 	3	13D	300170	0,50	GUARD

PTO-Drive Mechanism

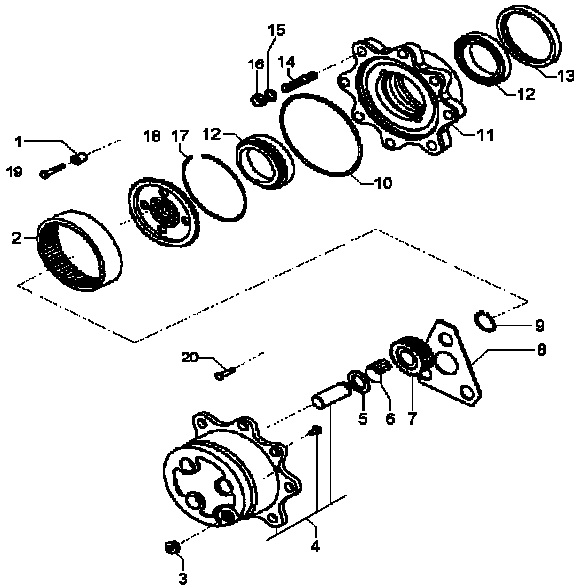
50-40



HD Series 2650; 2660

Item	Group	Fault Code		Description
2	4D	252038	3,00	SPROCKET
4	4D	252039	3,00	HUB
7	4D	252037	3,00	GEAR
10	4D	252050	3,00	O RING
11	4D	252043	3,00	HUB
12	4D	252031	3,00	BEARING
13	4D	252032	3,00	SEAL
17	4D	252071	3,00	BRACKET
18	4D	252070	3,00	BOLT


Front Axle



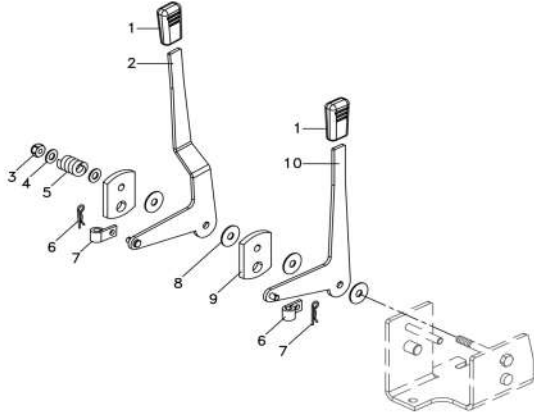
Front Axle



HD Series 2650; 2660; 2670; 2680

Item	Group	Fault Code		Description
1	19A	330195	0,25	KNOB
2	19A	330224	1,00	LEVER
10	19A	330224	1,00	LEVER

Hydraulic Cylinder



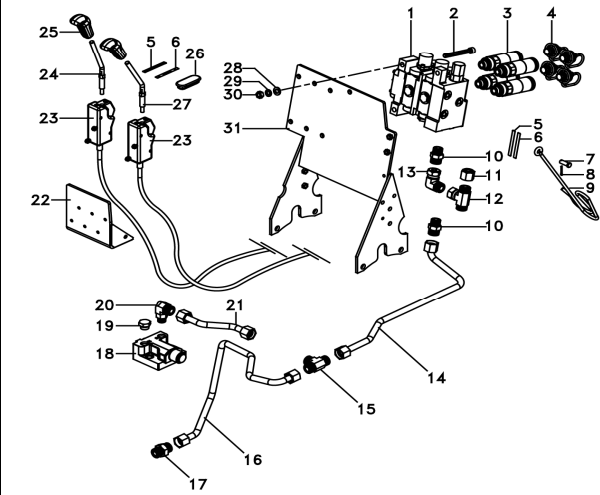
Hydraulics

70-45



HD Series 2650; 2660; 2670; 2680

Item	Group	Fault Code		Description
1	25A	220901	1,00	REMOTE CONTROL
3	25A	221201	0,25	FEMALE COUPLER
14	25A	220308	0,50	PIPE
16	25A	220320	0,25	PIPE
18	25A	220304	0,25	VALVE
21	25A	220320	0,50	PIPE
23	25A	220960	0,50	CABLE
24	25A	220908	0,50	LEVER
25	25A	220910	0,25	KNOB
31	25A	220902	1,00	KIT, BRACKET




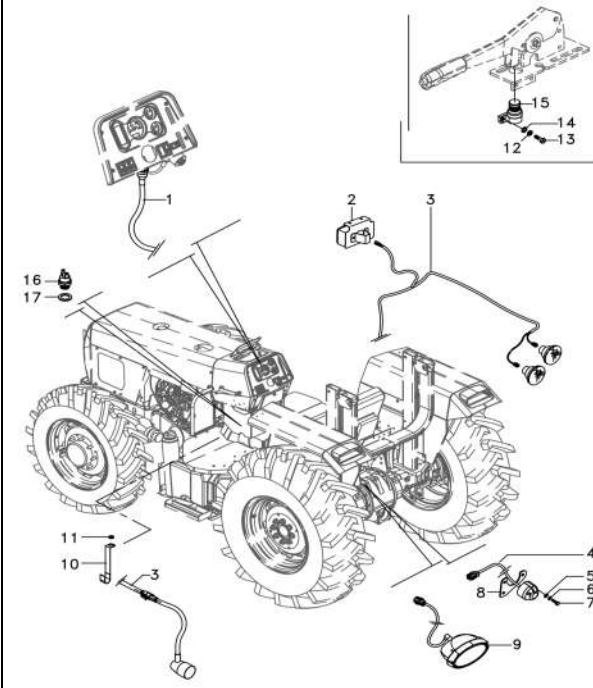
Hydraulics

70-95



HD Series 2650; 2660; 2670; 2680


Item	Group	Fault Code		Description
Main Wiring Harness Rear				
1	27C	130906	0,50	HARNES
2	27E	130814	0,25	SIGNAL
3	27C	130906	0,50	HARNES
4	27C	130965	0,25	HARNES
9	27E	130802	0,25	LIGHT
15				SWITCH



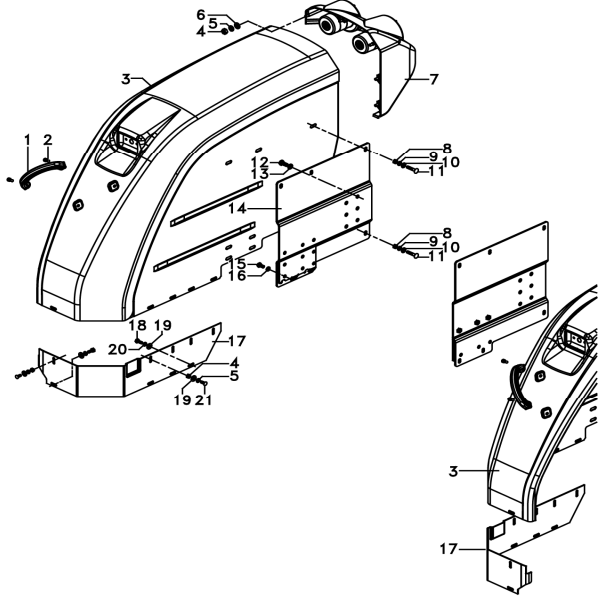
Electric Equipment & Instrument Panel



HD Series 2650; 2660; 2670; 2680

Item	Group	Fault Code		Description
3	34E	280120	1,50	FENDER
3	34E	280121	1,50	FENDER

Rear Mudguard




Sheet Metal

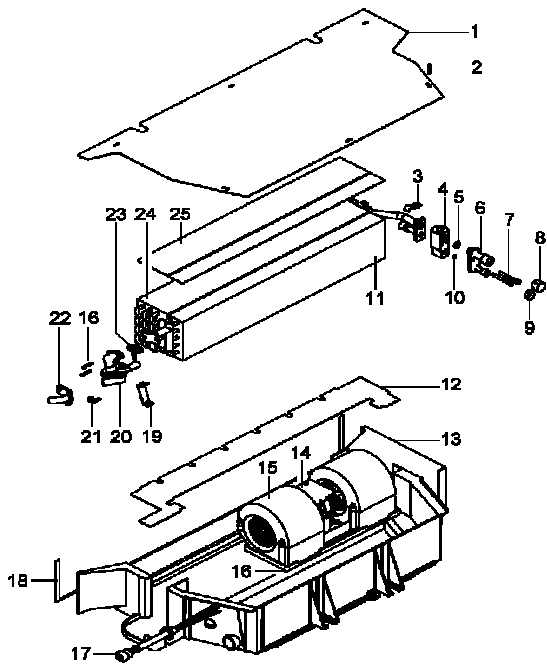
100-45



HD Series 2650; 2660; 2670; 2680

Item	Group	Fault Code		Description
6	40B	150108	1,00	CONNECTION
11	40B	150170	2,00	RADIATOR
15	40B	150126	1,50	ENGINE
17	40B	150110	8,00	HARNESS
20	40B	150135	1,00	VALVE
24	40B	150175	1,50	EVAPORATOR

Cab



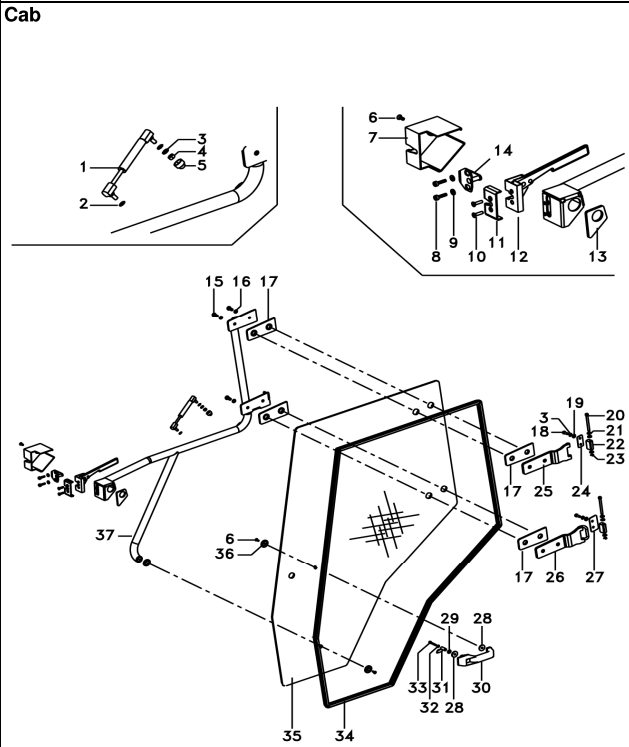
Tractor Cab

105-20



HD Series 2650; 2660; 2670; 2680

Item	Group	Fault Code		Description
1	40B	281530	0,25	DAMPER
12	40B	281566	0,50	LATCH
14	40B	281540	0,50	LATCH
30	40B	880126	1,00	HANDLE
34	40B	281555	1,00	SEALING
35	40B	281556	1,00	GLASS
37	40B	281559	0,50	HANDLE




Tractor Cab

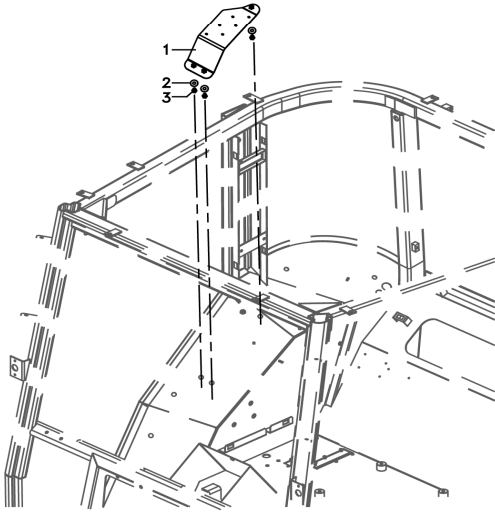
105-70



HD Series 2650; 2660; 2670; 2680

Item	Group	Fault Code	 0,50	Description
1	27A	280440	0,50	BRACKET
3	27A	280452	0,50	BOLT

Support



Tractor Cab

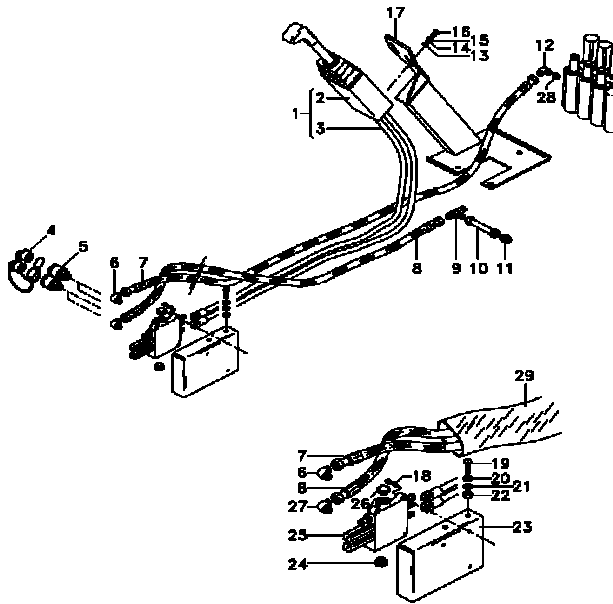
105-120



HD Series 2650; 2660; 2670; 2680

Item	Group	Fault Code		Description
2	25A	220908	0,50	JOYSTICK
3	25A	220960	0,50	CABLE
5	25A	221201	0,25	QUICK LINK
7	25A	220906	0,25	HOSE
8	25A	220906	0,25	HOSE
17	25A	220902	1,00	KIT, BRACKET
25	25A	220901	0,50	KIT, ACTUATOR

Loader




Tractor Cab

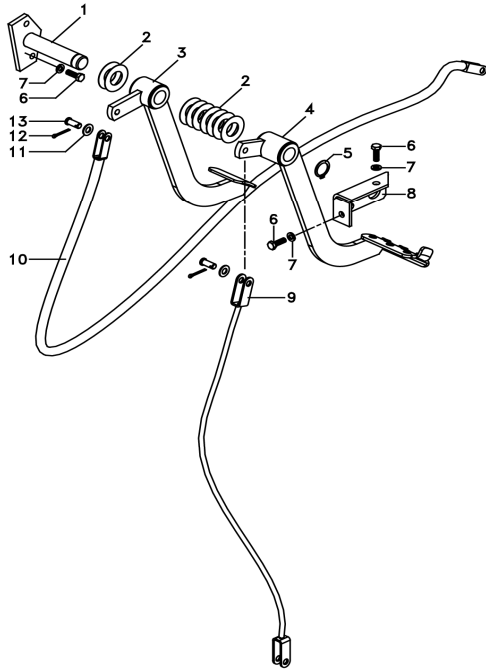
105-170



HD Series 2650; 2660; 2670; 2680

Item	Group	Fault Code		Description
1	23B	210318	1,00	SHAFT
3	13A	210309	2,00	PEDAL
4	13A	210309	2,00	PEDAL
9	23B	210350	0,50	CABLE
10	23B	210350	0,50	CABLE

Clutch




Operator Platform

110-45



HD Series 2650; 2660; 2670; 2680

Item	Group	Fault Code		Description
1	5A	160201	1,25	WHEEL
2	5A	160301	1,25	TYRE AND TUBE

Rims and Wheels Weight

130-20

CLICK HERE TO **DOWNLOAD** THE COMPLETE MANUAL

- Thank you very much for reading the preview of the manual.
- You can download the complete manual from: www.heydownloads.com by clicking the link below



- Please note: If there is no response to CLICKING the link, please download this PDF first and then click on it.

CLICK HERE TO **DOWNLOAD** THE COMPLETE MANUAL