

NEW HOLLAND

**410GM
420GM
430GM**

**REPAIR
MANUAL**



SERVICE

CLICK HERE TO **DOWNLOAD** THE COMPLETE MANUAL

- Thank you very much for reading the preview of the manual.
- You can download the complete manual from: www.heydownloads.com by clicking the link below

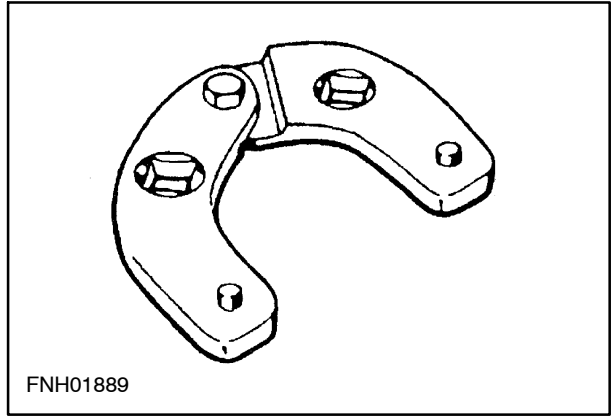


- Please note: If there is no response to CLICKING the link, please download this PDF first and then click on it.

CLICK HERE TO **DOWNLOAD** THE COMPLETE MANUAL

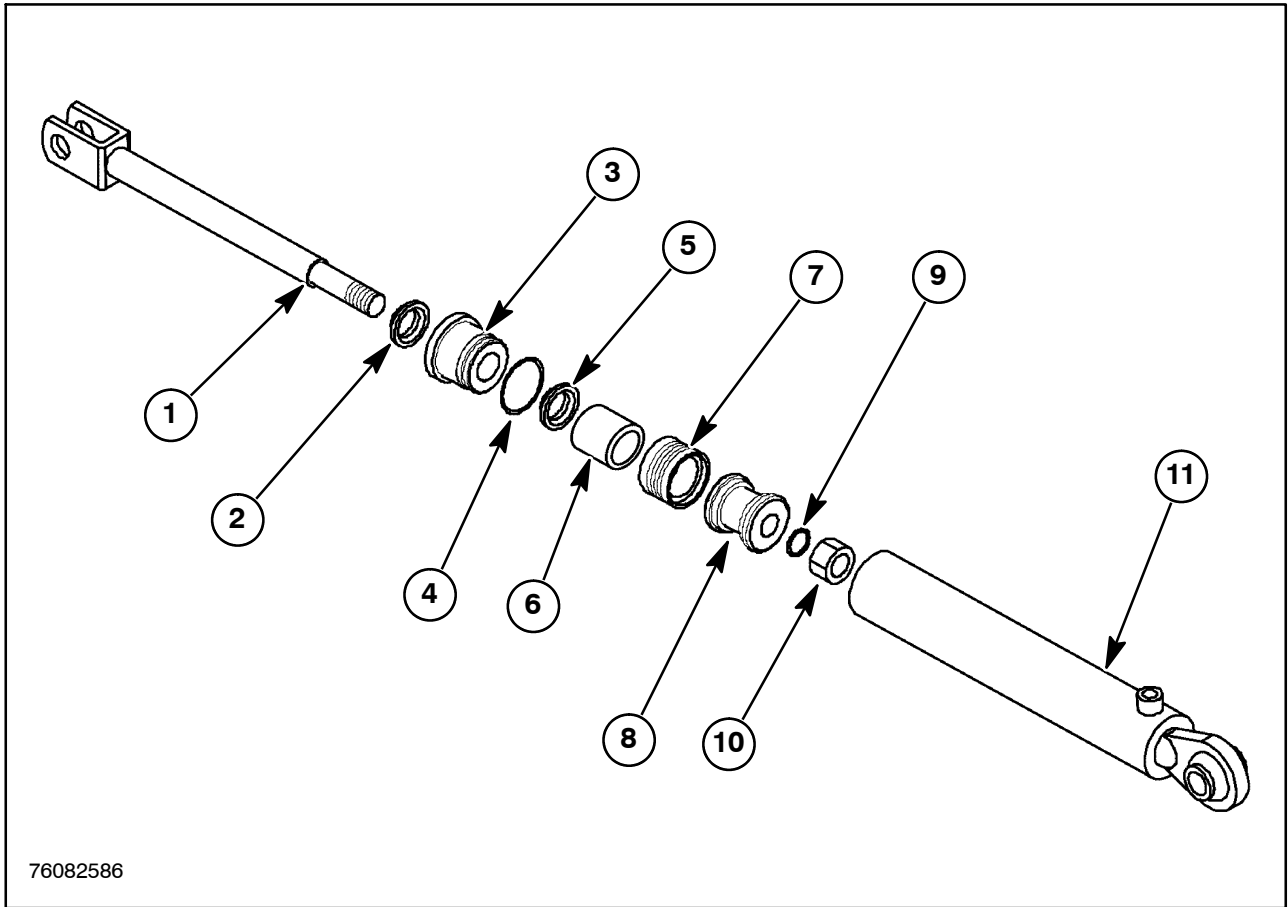
SPECIAL TOOLS

Spanner Wrench #FNH01889



1

LATERAL CYLINDER COMPONENTS (APART) (410GM AND 420GM)

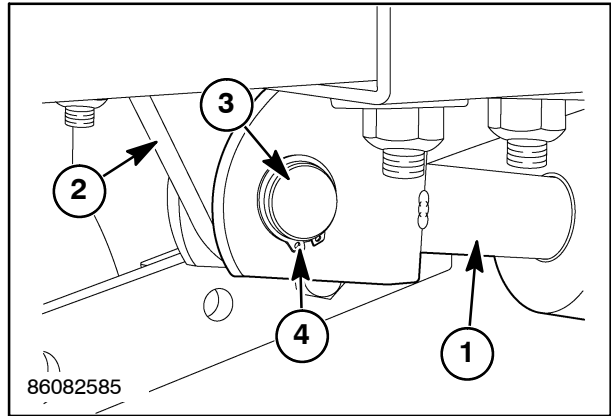


76082586

- | | |
|-------------------|--------------------|
| 1. Rod | 7. Seal, Piston |
| 2. Seal, Wiper | 8. Piston |
| 3. Head, Cylinder | 9. O-ring |
| 4. O-ring | 10. Nut, M20 x 1.5 |
| 5. Seal, Inner | 11. Cylinder |
| 6. Bushing | |

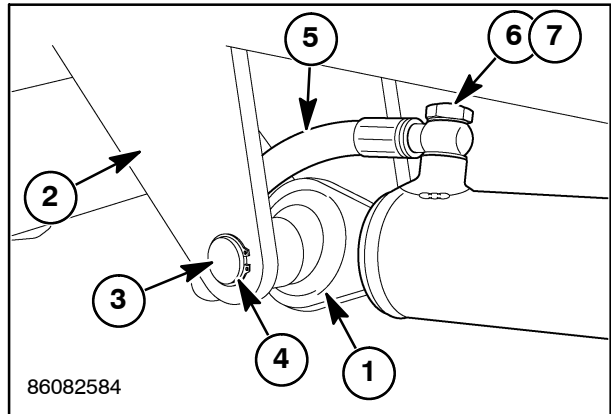
Installation

1. Install the rod, 1, to the mount, 2, on the lateral arm.
2. Slide the pin, 3, through the rod, 1.
3. Secure the pin, 3, with an external E25 snap ring, 4.



29

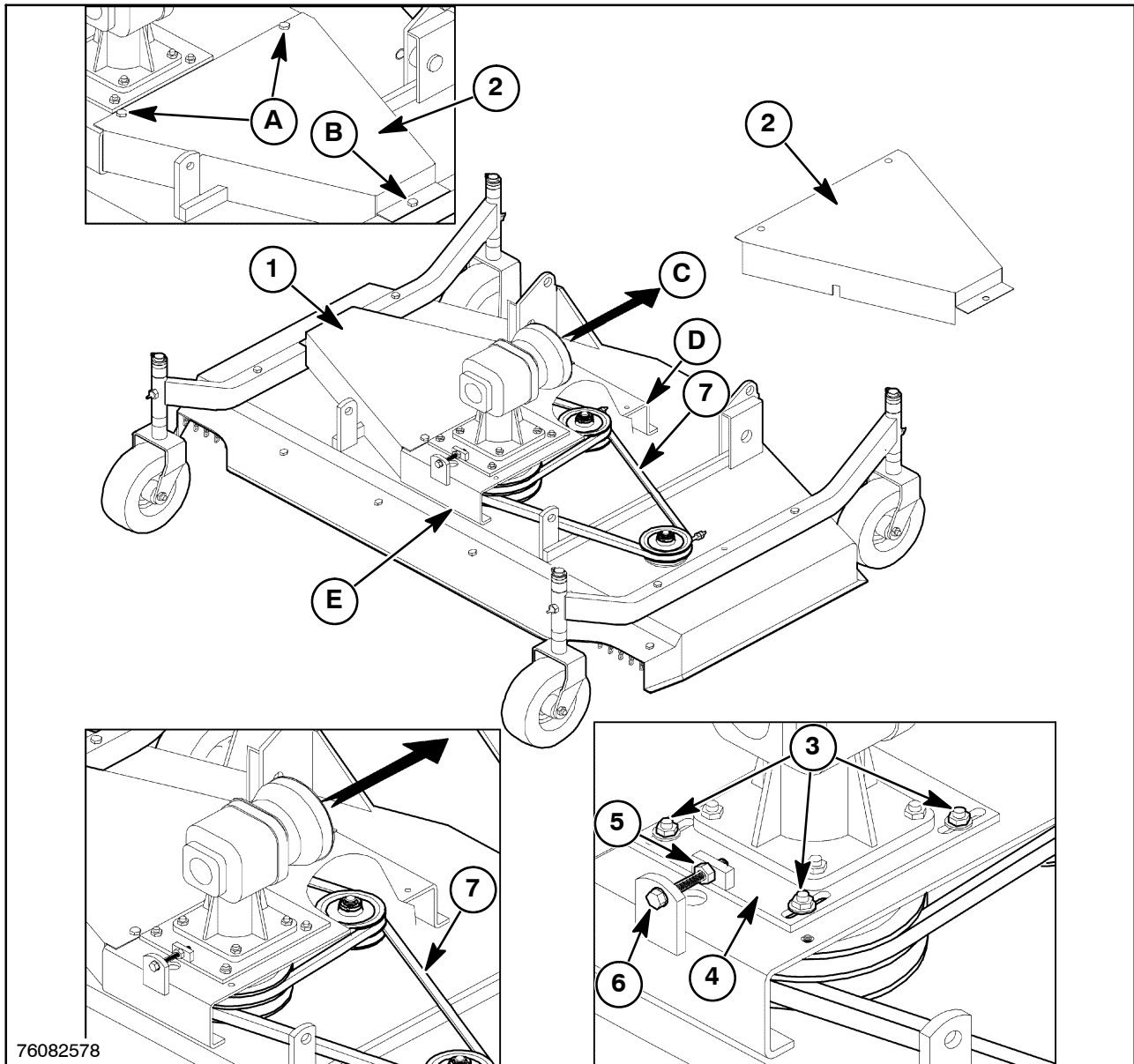
4. Line up the cylinder, 1, to the mount, 2, on the lateral arm. Then slide the pin, 3, through the cylinder.
5. Secure the pin, 3, with an external E25 snap ring, 4.
6. Reinstall the 3/8 in hydraulic hose, 5, to the cylinder, 1. Secure the hose to the cylinder using the 3/8 in banjo bolt, 6, and two 3/8 in copper washers, 7.



30

NOTE: Use new copper washers when securing the hose to the cylinder.

7. Check the hydraulic oil level in the tractor and add oil as necessary.
8. With the Flex Wing mower connected to the tractor. Raise and lower the Flex Wing mower decks several times until all the air is bled out of the lateral cylinders.
9. Once all the air is bled out from the rear cylinder. The Flex Wing mower decks should rise up and down smoothly.



76082578

3

Removal



WARNING

Before replacing the belts make sure the tractor is shut off, and the PTO shaft is disconnected.

1. Remove the left and right belt cover shields, 1 and 2, by removing the handles and washers at points "A" and "B".
2. Clean the area around the gearbox and pulleys.
3. Loosen the four nuts, 3, that fasten the slide-reduction unit-pulley assembly, 4.
4. Loosen the jam nut, 5, and unscrew the screw, 6, so the assembly, 4, will slide in the direction of "C" until it is possible to remove the belts, 7, from the grooves of the pulleys.
5. Remove the three screws on side "D" of the reduction unit mount, then loosen the three screws located under side "E" of the reduction unit mount until it can be raised enough on side "D" to allow the belts to be pulled out from underneath it.

Inspection

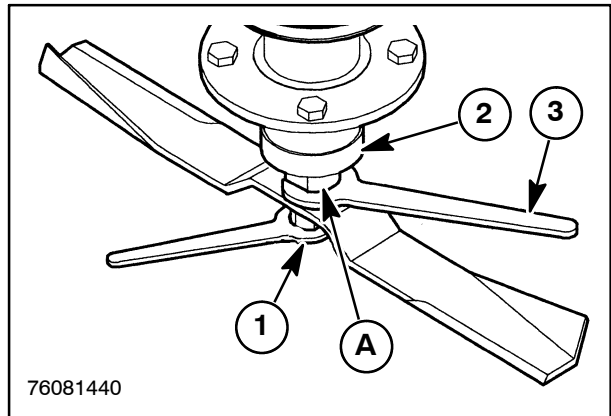
1. Inspect the blades for any chips, cracks or bends.
Any damage that is not repairable through sharpening only, warrants blade replacement.

Blade Installation

1. Place the new or sharpened and balanced blades on the spindles with the curved edge (sail) part of the blade facing "up" towards the underside of the deck.

NOTE: Rotate the blades to different spindles (from the removed position).

2. Reinstall the nut, 1, onto the spindle, 2.
3. Use a wrench, 3, on part "A" of the spindle. While holding the wrench, 3, torque the nut, 1, to 200 - 210 N·m (148 - 155 ft-lbs).



3

IMPORTANT: Recheck and re-torque the blade after the first hour of mower operation, and daily thereafter.

CLICK HERE TO **DOWNLOAD** THE COMPLETE MANUAL

- Thank you very much for reading the preview of the manual.
- You can download the complete manual from: www.heydownloads.com by clicking the link below

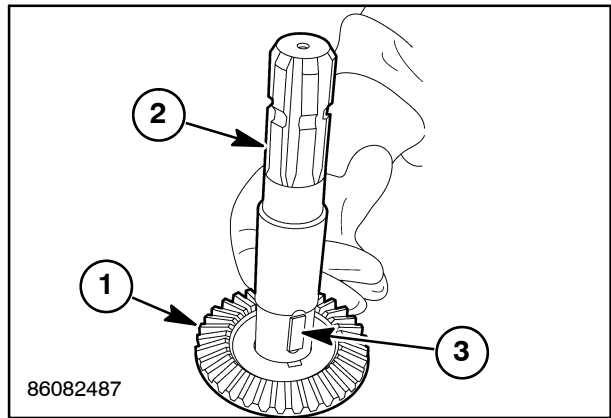


- Please note: If there is no response to CLICKING the link, please download this PDF first and then click on it.

CLICK HERE TO **DOWNLOAD** THE COMPLETE MANUAL

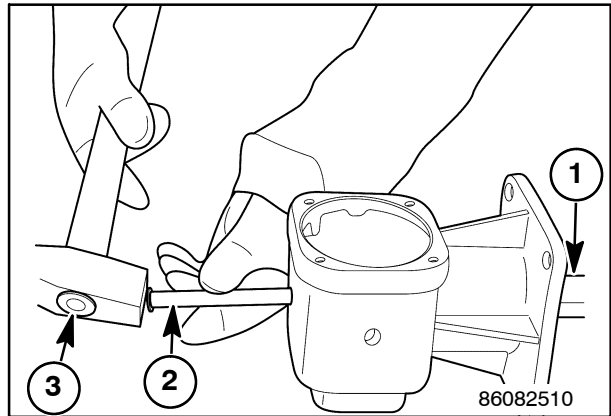
SECTION 58 - MOWER - CHAPTER 3

14. Remove the gear, 1, from the input shaft, 2, by placing the input shaft in a press, and then carefully press the shaft down through the gear. Then remove the parallel key, 3, from the shaft.



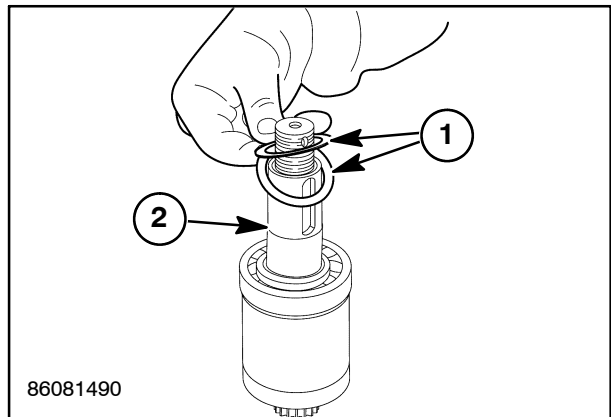
17

15. Remove the output shaft, 1, from the gearbox housing by hitting the shaft with a punch, 2, and a hammer, 3, through the top oil fill hole of the gearbox.



18

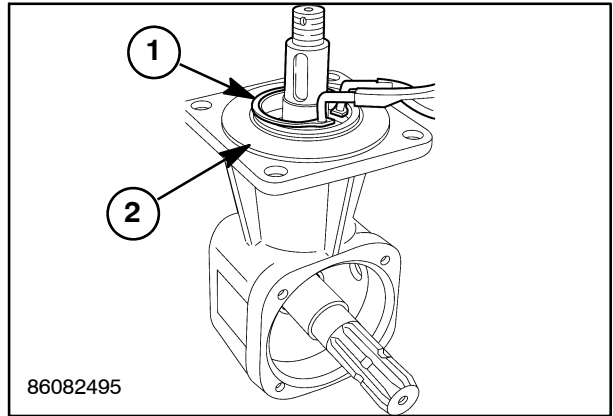
16. Remove the snap ring and then remove the two shims, 1, from the output shaft, 2.



19

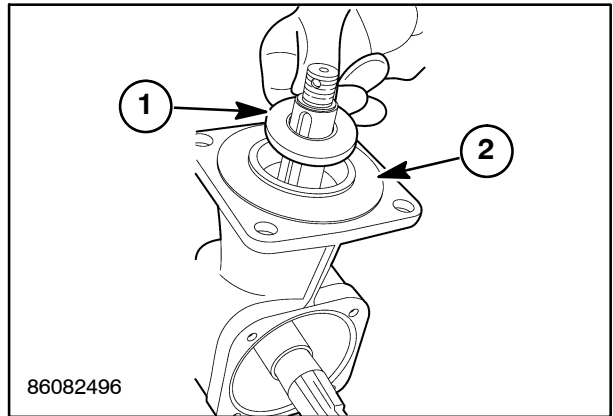
SECTION 58 - MOWER - CHAPTER 3

26. Install the snap ring, 1, onto the gearbox housing, 2



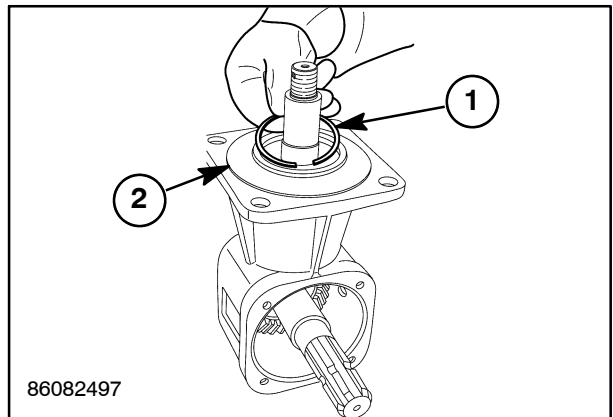
44

27. Install a new oil seal, 1, onto the gearbox housing, 2.



45

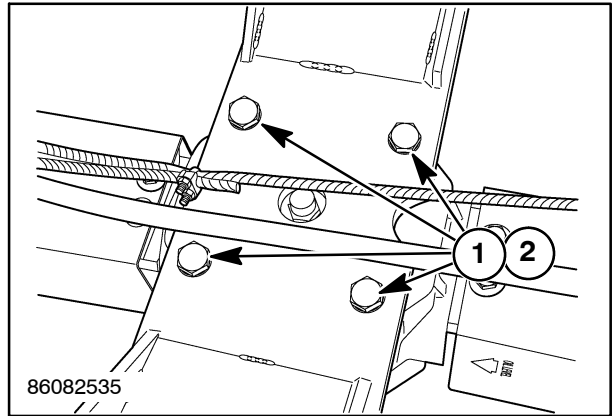
28. Install the retaining ring, 1, on top of the oil seal on the gearbox housing, 2.



46

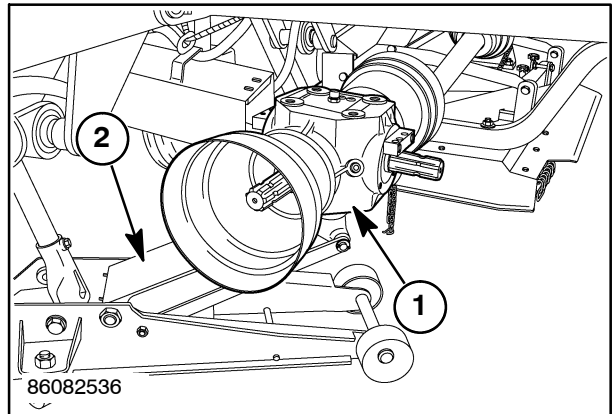
SECTION 58 - MOWER - CHAPTER 4

16. Support the Flex Wing gearbox with a jack. Then remove the four M12 x 30 cap screws and M13 spring washers, 1 and 2.



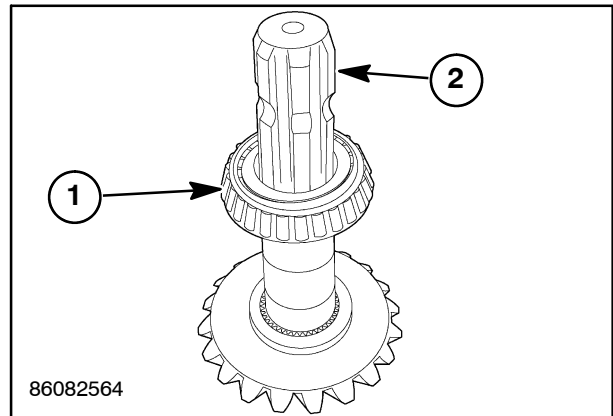
10

17. Then remove the gearbox, 1, by lowering the jack, 2.



11

38. Remove the tapered bearing, 1, from the shaft, 2, by placing the end of the shaft that has the bearing on it into a hot oil bath. Once the hot oil bath is up to temperature the bearing should slide right off of the shaft.
39. If replacing the tapered bearing and bearing race. Remove the bearing race by hitting the race into the gearbox with a punch and hammer.
40. Remove the outer bearing from the left side of the gearbox by using a press to carefully press down on the bearing from the inside of the gearbox.

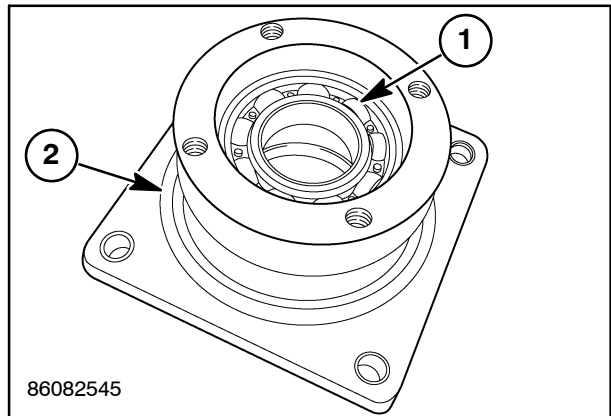


Inspection

1. Clean and inspect all the shafts and bearings for any, scoring, pitting, wear or damaged. Replace as necessary.
2. Inspect the gears for any wear or damage and replace as necessary.

SECTION 58 - MOWER - CHAPTER 4

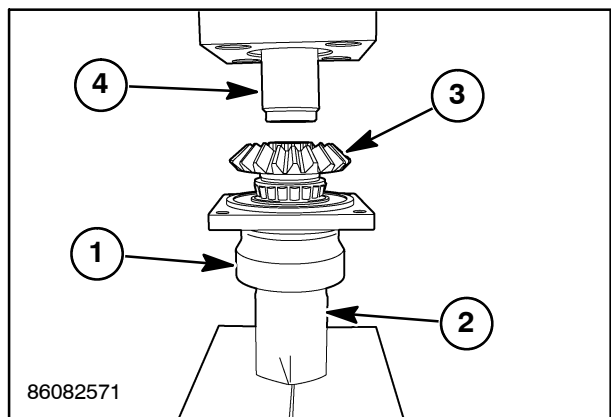
- 34. Place the bearing, 1, into the support cover, 2.
- 35. Use a press to carefully press the bearing, 1, into the support cover, 2, until seated.



63

- 36. Place the support cover, 1, onto the socket, 2, or similar device located on the press.
- 37. Place the right lateral shaft, 3, into the support cover, 1.
- 38. Using a press, 4, carefully press the shaft down into the support cover until seated.

NOTE: The socket or similar device prevents the other bearing from being pressed out while pressing the shaft into the support cover.

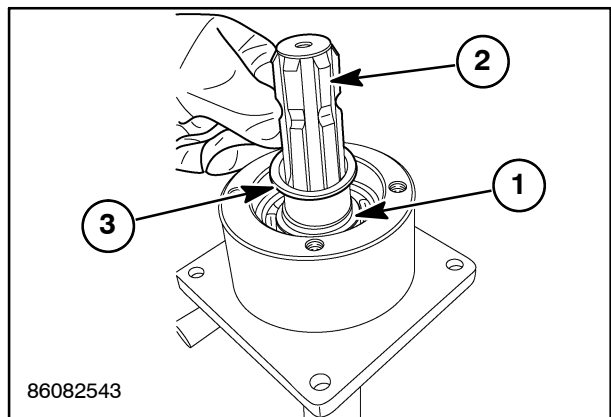


64

IMPORTANT: Shims are used to provide the correct endplay, therefore different quantities and types of shims may be needed.

- 39. Place the M50 x 0.5 shims, 1, as needed onto the shaft, 2. Then place the M50 x 2 shim, 3, onto the shaft.

NOTE: The M50 x 0.5 shims will be added until the space between the snap ring and bearing is taken up with the combined thickness of the M50 x 0.5 shims and M50 x 2 shim. This will result in zero endplay.



65

SECTION 58 - MOWER

Chapter 5 - Spindles

CONTENTS

Section	Description	Page
	Mower Spindles	2
	Preparation	2
	Removal	3
	Special Tools	4
	Spindle Components	5
	Disassembly	6
	Inspection	6
	Assembly	7
	Installation	8

CLICK HERE TO **DOWNLOAD** THE COMPLETE MANUAL

- Thank you very much for reading the preview of the manual.
- You can download the complete manual from: www.heydownloads.com by clicking the link below



- Please note: If there is no response to CLICKING the link, please download this PDF first and then click on it.

CLICK HERE TO **DOWNLOAD** THE COMPLETE MANUAL