
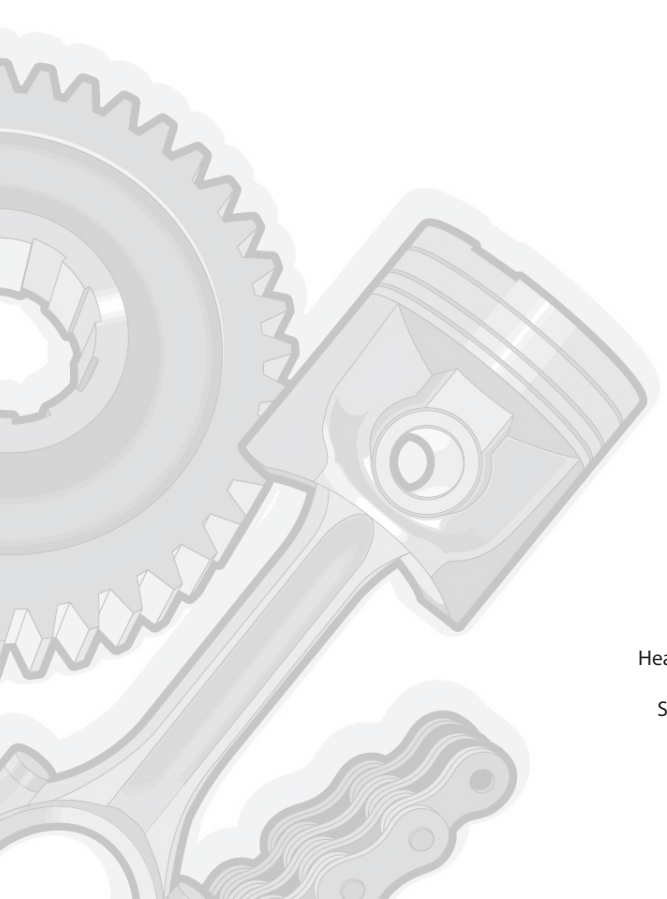




**REPAIR MANUAL  
MANUEL DE RÉPARATION  
REPARATURANLEITUNG  
MANUAL DE REPARACIÓN  
MANUALE RIPARAZIONE**

This document has been printed from  **mye doc**



**MANITOU BF**

Head office: 430, Rue de l'Aubinière  
44150 Ancenis - FRANCE  
Share capital: 39,548,949 euros  
857 802 508 RCS Nantes  
Tel: +33 (0)2 40 09 10 11  
[www.manitou.com](http://www.manitou.com)

CLICK HERE TO **DOWNLOAD** THE COMPLETE MANUAL

- Thank you very much for reading the preview of the manual.
- You can download the complete manual from: [www.heydownloads.com](http://www.heydownloads.com) by clicking the link below



- Please note: If there is no response to CLICKING the link, please download this PDF first and then click on it.

CLICK HERE TO **DOWNLOAD** THE COMPLETE MANUAL

**FRONT TYRE**

DIMENSIONS	PRESSURE	TYRE LOAD		PRESSURE ON THE CONTACT SURFACE		AREA OF THE CONTACT SURFACE	
				HARD GROUND	LIGHT GROUND	HARD GROUND	LIGHT GROUND
<b>10-16,5 - 10PR 5T N5 SKS SOLIDEAL / TUBELESS</b>	<b>4,2 BAR</b>	FRONT UNLADEN	630 KG	KG/CM2	KG/CM2	95 CM2	CM2
		FRONT LADEN	1755 KG	KG/CM2	KG/CM2	200 CM2	CM2
<b>31 X 15,5 - 15 8PR STG1 GOODYEAR / TUBELESS</b>	<b>3,2 BAR</b>	FRONT UNLADEN	KG	KG/CM2	KG/CM2	CM2	CM2
		FRONT LADEN	KG	KG/CM2	KG/CM2	CM2	CM2
		FRONT UNLADEN	KG	KG/CM2	KG/CM2	CM2	CM2
		FRONT LADEN	KG	KG/CM2	KG/CM2	CM2	CM2

**REAR TYRE**

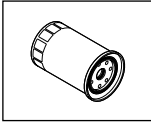
DIMENSIONS	PRESSURE	TYRE LOAD		PRESSURE ON THE CONTACT SURFACE		AREA OF THE CONTACT SURFACE	
				HARD GROUND	LIGHT GROUND	HARD GROUND	LIGHT GROUND
<b>10-16,5 - 10PR 5T N5 SKS SOLIDEAL / TUBELESS</b>	<b>4,2 BAR</b>	REAR UNLADEN	1365 KG	KG/CM2	KG/CM2	150 CM2	CM2
		REAR LADEN	510 KG	KG/CM2	KG/CM2	55 CM2	CM2
<b>31 X 15,5 - 15 8PR STG1 GOODYEAR / TUBELESS</b>	<b>3,2 BAR</b>	REAR UNLADEN	KG	KG/CM2	KG/CM2	CM2	CM2
		REAR LADEN	KG	KG/CM2	KG/CM2	CM2	CM2
		REAR UNLADEN	KG	KG/CM2	KG/CM2	CM2	CM2
		REAR LADEN	KG	KG/CM2	KG/CM2	CM2	CM2

**HYDRAULIC CIRCUIT**

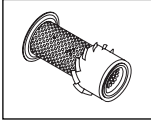
- Type		Gear
. Capacity		16,8 cm3/r
. Flow rate at full speed		40 L/min
- Pressure		
. Lifting, tilting, telescoping circuit		250 Bar
. Steering direction		120 Bar
- Filtration		
. Suction		15 µ
. Return		15 µ
. Air contained in the tank		5 µ

## FILTERS CARTRIDGES AND BELTS

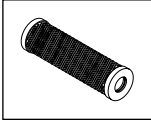
### I.C. ENGINE



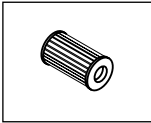
I.C. ENGINE OIL FILTER  
Part number : 702577  
Change : 500 H



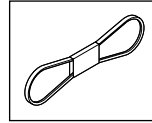
DRY AIR FILTER CARTRIDGE  
Part number : 227959  
Clean : 50 H\*  
Change : 500 H\*



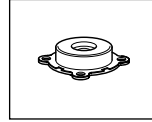
SAFETY DRY AIR FILTER CARTRIDGE  
Part number : 227960  
Change : 1000 H\*



FUEL FILTER CARTRIDGE  
Part number : 109401  
Change : 500 H



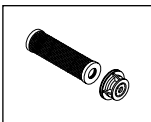
ALTERNATOR BELT  
Part number : 703259  
Change : 1000 H



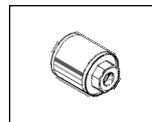
INTERNAL COMBUSTION ENGINE'S SNIFFLER  
Part number : 703289  
Change : 2000 H

\* : This periodicity is given for information only (see : 3 - MAINTENANCE : SERVICING SCHEDULE) for cleaning and changing.

### HYDRAULICS



SUCTION OIL AND HYDRAULIC RETURN FILTER CARTRIDGE  
Part number : 686237  
Change : 500 H

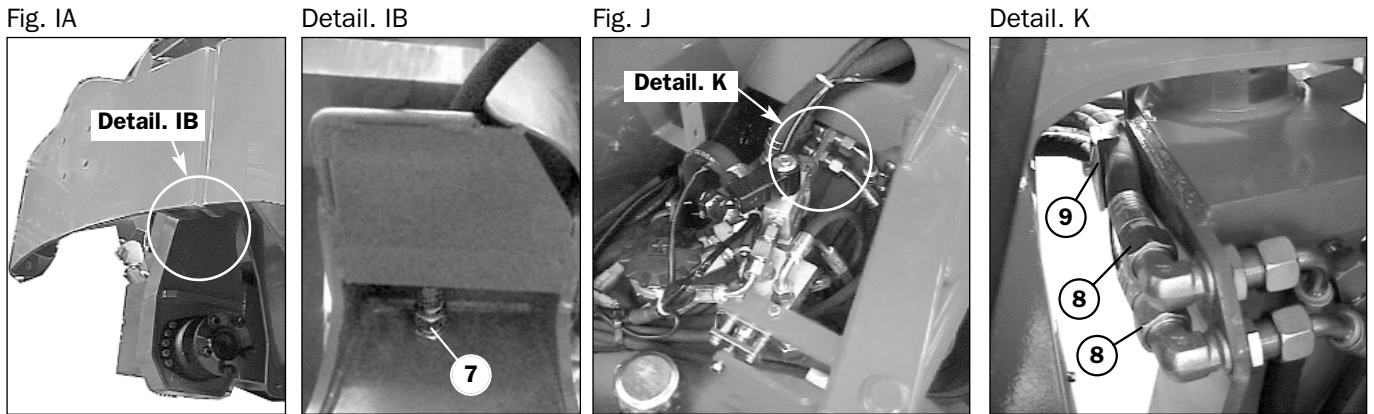


SUCTION STRAINER FOR HYDRAULIC OIL TANK  
Part number : 721939  
Clean : 1000 H



FILTER CAP FOR HYDRAULIC OIL TANK  
Part number : 62415  
Change : 1000 H

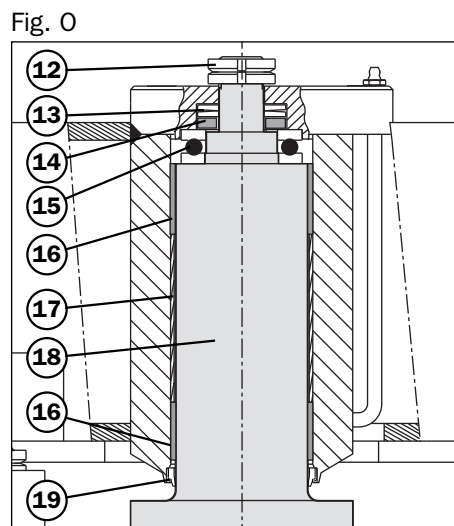
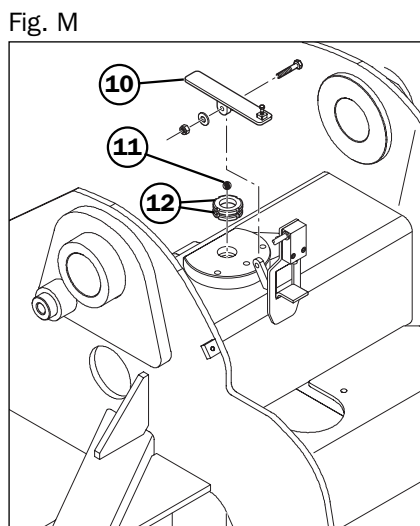
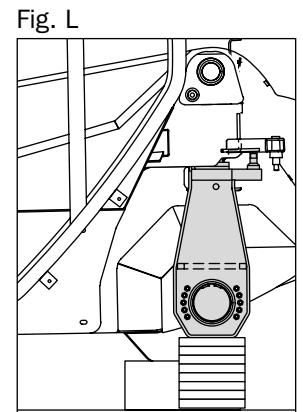
- Disconnect the hose item. 7 (Detail. IB) of the rear pivot.
- Note the connections of the two supply hoses item. 8 (Detail. K) of the rear pivot motor and disconnect.
- Loosen the flange item. 9 (Detail. K) holding the hoses.



- Disassemble the cam item. 10 and remove the ball item. 11 (Fig. M) in its hole.

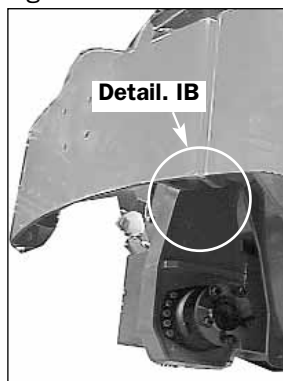
**⚠ Perform the following two operations extremely carefully.**

- Fit a wedge under the pivot (Fig. L).
- Remove the two nuts holding the pivot item. 12 (Fig. O). Lower the pivot. Take care not to damage the threads on the head of the pivot.
- Check the good condition of the spring washers item. 13 (Fig. O). Change them if necessary.
- Check the good condition of the bearing item. Rep. 15 (Fig. O). Change it if necessary.
- Check the surface condition of the rings item. 16 (Fig. O) inside the pivot. Change them if necessary.
- Check the good condition of the wiper seal item. 19 (Fig. O). Change it if necessary.



- Disconnect the hose item. 7 (Detail. IB) of the rear pivot.
- Note the connections of the two supply hoses item. 8 (Detail. K) of the rear pivot motor and disconnect.
- Loosen the flange item. 9 (Detail. K) holding the hoses.

Fig. IA



Detail. IB

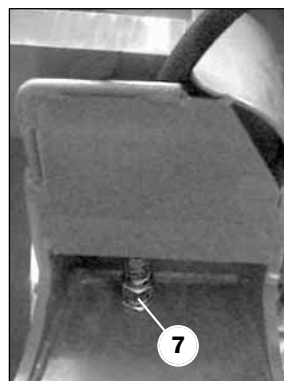
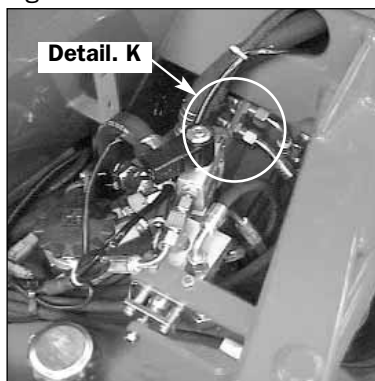
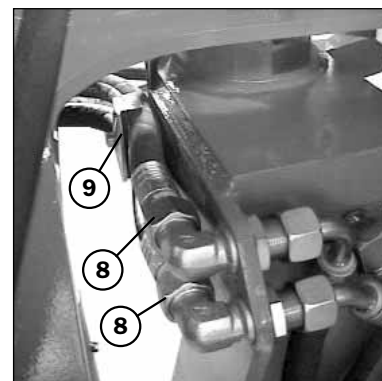


Fig. J



Detail. K



- Disassemble the cam item. 10 and remove the ball item. 11 (Fig. M) in its hole.



**Perform the following two operations extremely carefully.**

- Fit a wedge under the pivot (Fig. L).
- Remove the two nuts holding the pivot item. 12 (Fig. O). Lower the pivot. Take care not to damage the threads on the head of the pivot.
- Check the good condition of the spring washers item. 13 (Fig. O). Change them if necessary.
- Check the good condition of the bearing item. Rep. 15 (Fig. O). Change it if necessary.
- Check the surface condition of the rings item. 16 (Fig. O) inside the pivot. Change them if necessary.
- Check the good condition of the wiper seal item. 19 (Fig. O). Change it if necessary.

Fig. L

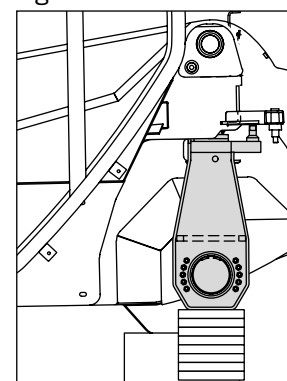


Fig. M

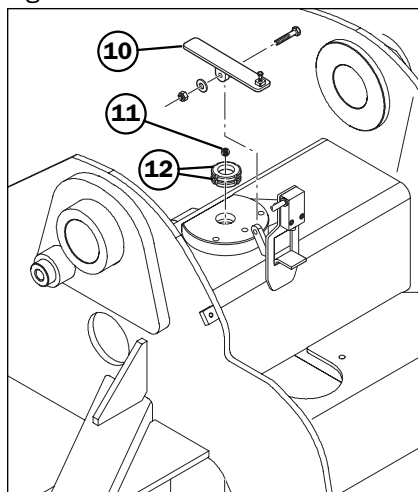
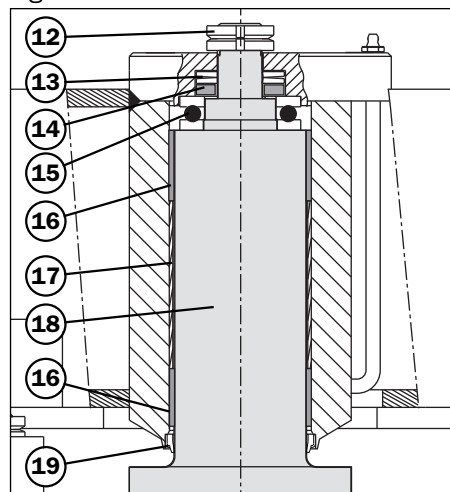
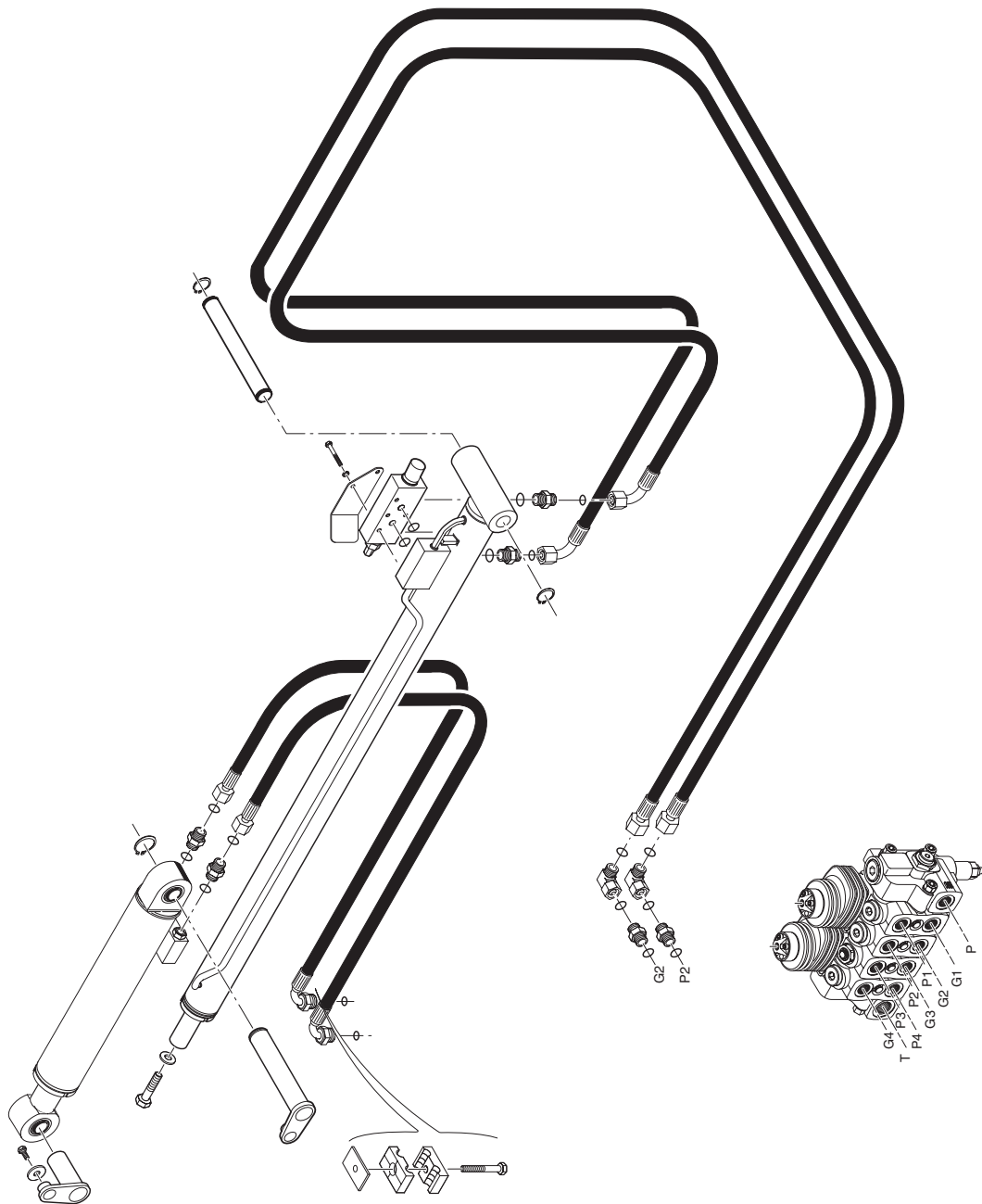


Fig. O



**JIB HYDRAULIC CIRCUIT**  
**SLT 415 Série 2-E2 / SLT 415 B Série 2-E2**



## **CONTENTS**

HYDRAULIC DIAGRAM SLT 415 B - SLT 420 B

**5 et 7**

CLICK HERE TO **DOWNLOAD** THE COMPLETE MANUAL

- Thank you very much for reading the preview of the manual.
- You can download the complete manual from: [www.heydownloads.com](http://www.heydownloads.com) by clicking the link below



- Please note: If there is no response to CLICKING the link, please download this PDF first and then click on it.

CLICK HERE TO **DOWNLOAD** THE COMPLETE MANUAL