



**BP 249 Z. I.
44 158 ANCENIS CEDEX FRANCE
TEL : 02 40 09 10 11**

YOUR DEALER

REF : 547 312 EN (01 / 00)

**PLATFORMS
D 80 E - D 80 ER
D 80 ERS - D80 EP**

REPAIR MANUAL

CLICK HERE TO **DOWNLOAD** THE COMPLETE MANUAL

- Thank you very much for reading the preview of the manual.
- You can download the complete manual from: www.heydownloads.com by clicking the link below



- Please note: If there is no response to CLICKING the link, please download this PDF first and then click on it.

CLICK HERE TO **DOWNLOAD** THE COMPLETE MANUAL

TECHNICAL CHARACTERISTICS
D 80 E / D 80 ER / D 80 ERS / D 80 EP
0-1-M.10 EN

D 80 EP

SPECIFICATIONS

- Use	Interior and exterior
- capacity	450 Kg including 1 people
- Weight of on-board fittings allowed :	370 kg
- Control system	Electro-hydraulic
- Travel speed of the access platform	
. position in bottom	0 to 4 km/h
. working position	0 to 1,5 km/h
- Working height	6000 mm
- Platform height	4000 mm
- Offset	
. Maximum forward	300 mm
. Maximum reverse	360 mm
- Access platform weight	
. Unladen	2410 Kg
. Rated load	2860 Kg
- Number of speed	2
- Maximum slope	20%
- Maximum authorized wind speed	45 km/h
- Admissible maximum tipping	5% or 3°
- - Maximum allowed horizontal manual force	200 Newtons
- 1 daN = 1kg	

FRONT TYRES

DIMENSIONS	PRESSURE	TYRE LOAD UNLADEN	UNDER MAX.LOAD
18 - 7 - 8/14	Foam	600 Kg	1000 kg

REAR TYRES

DIMENSIONS	PRESSURE	TYRE LOAD UNLADEN	UNDER MAX.LOAD
6 - 50/10	Foam	600 Kg	1000 kg

**ADJUSTMENT OF WHEEL ALIGNMENT
D 80 E / D 80 ER / D 80 ERS / D 80 EP
35-8-M.10 EN**

NOTE : For this operation, you will need guide wires

- they must be resistant and flexible
- once attached onto the hoses, they will be covered with tape to form a type of cone that will facilitate the passage into the ducts.

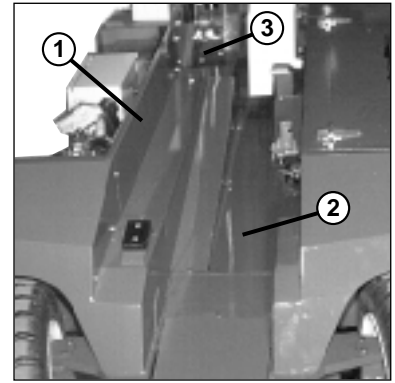
- Lift the lower arm
- Remove the Distributor cowl
- Dismantle the 3 covers 1-2-3 (Fig. A3)
- Lower the arm for better access to the elements to be dismantled
- Cut off the power supply by means of the battery disconnecter (under the battery cowl).
- Locate the two hoses 4 (Fig. A4) on the rotation motor.
- Remove them and seal them off with plugs
- Fix a guide wire 5 (Fig. A4) at the end of the hoses.
- Remove the duct 6 (Fig. A4) from the electric wire to facilitate the passage of the hoses.

Note : It is necessary to dismantle the two hoses simultaneously, in order to release the duct at the level of the articulation of the arms.

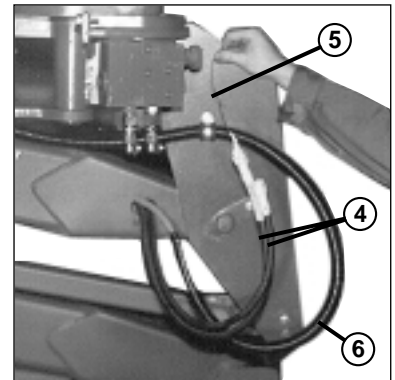
- Release the duct 7 (Fig. A5) from the upper arm and the two hoses.
- Separate the two hoses and attach a guide wire onto the hose to be changed.

- Dismantle the attachment clamps and release the lower duct 8 (Fig. A6).
- Remove the damaged hose.
- Disconnect the hose from one of the connecting tees 9 (Fig A7) to the distributor.
- Fix a guide wire and release the hose via the lower duct 8 (Fig. A6).

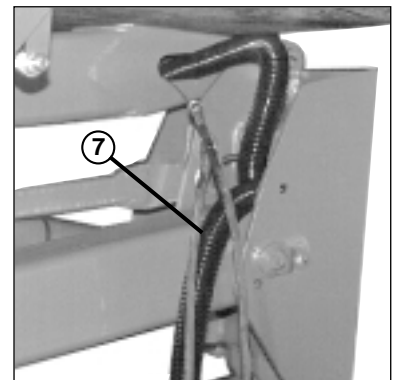
A3



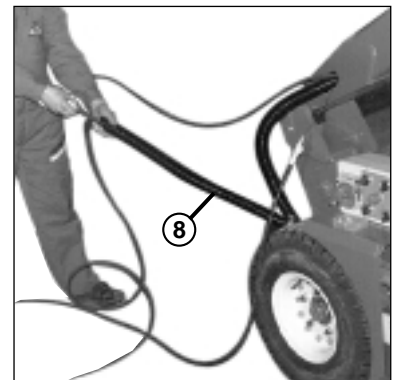
A4



A5



A6

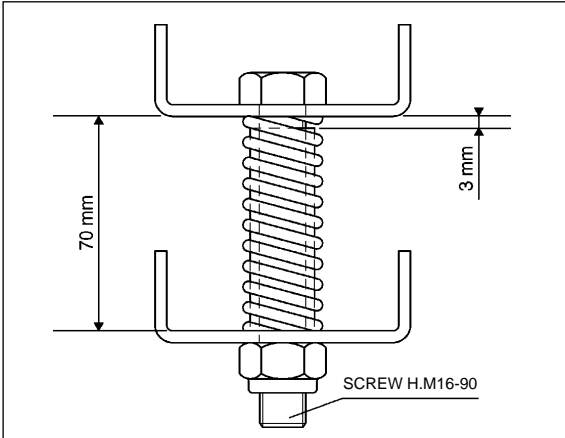


ADJUSTING THE PLATFORM OVERLOAD SPRINGS

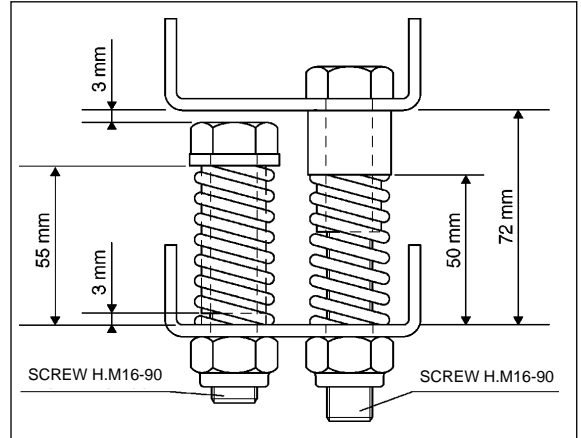
This operation must be carried out when one or several springs have been dismantled.

- Adjust each spring in accordance with the dimensions stated below.

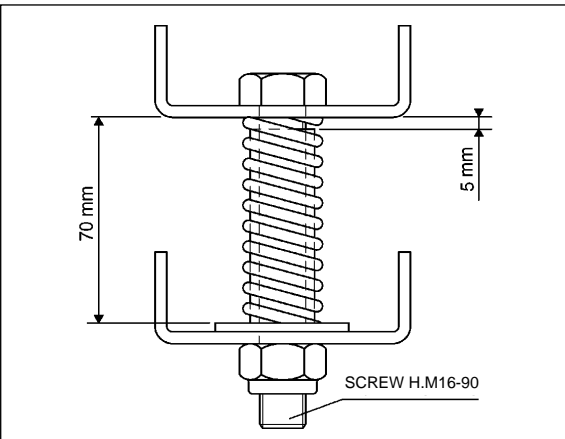
- PLATFORM D 80 E - D 80 EP - D 80 ERS
A : up to N° 500393



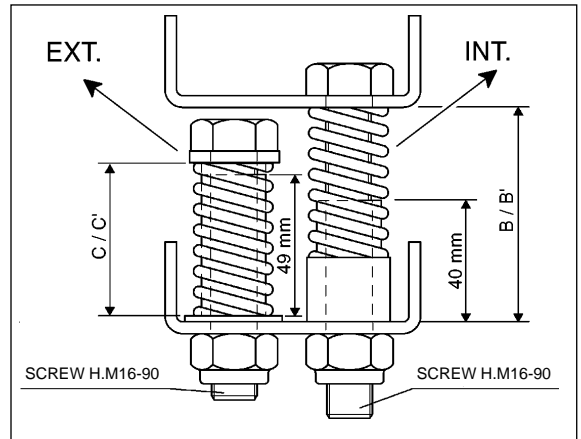
PLATFORM D 80 ER
D : up to N° 500348



- PLATFORM D 80 E - D 80 EP - D 80 ERS
B : from N° 500394



PLATFORM D 80 ER
E : from N° 500349

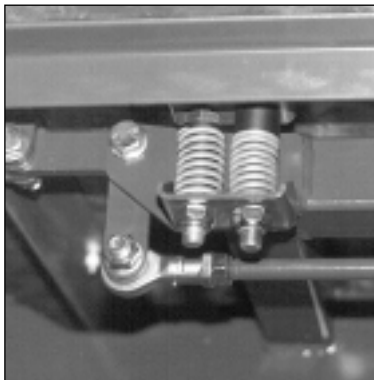


Adjustments : Front exterior (C) 69 mm
Front interior (B) 72 mm
Rear exterior (C') 71 mm
Rear interior (B') 74 mm

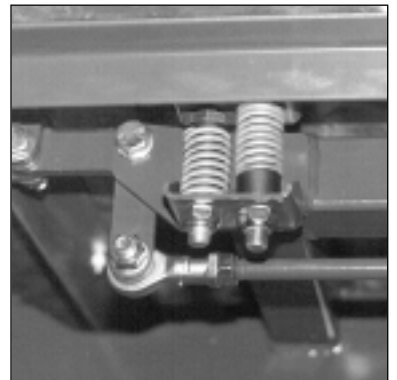
C



F : up to N° 500348



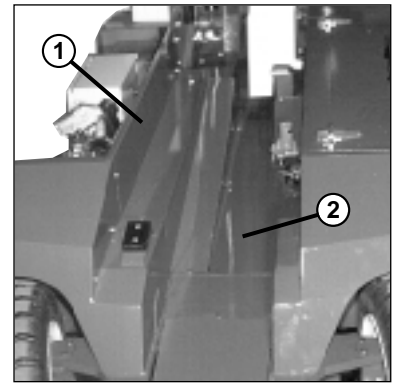
G : from N° 500349



REMOVING THE ELECTRIC PUMP

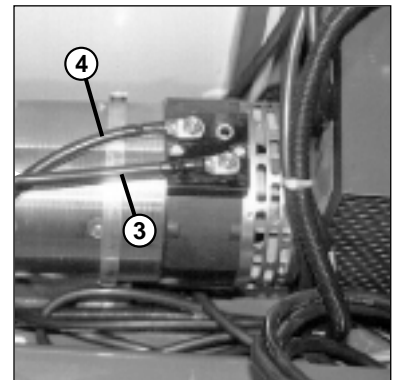
- Lift the lower arm.
- Cut off the power supply (battery disconnecter).
- Remove the Distributor cowl.
- Remove the covers 1 and 2 (Fig. A).

A



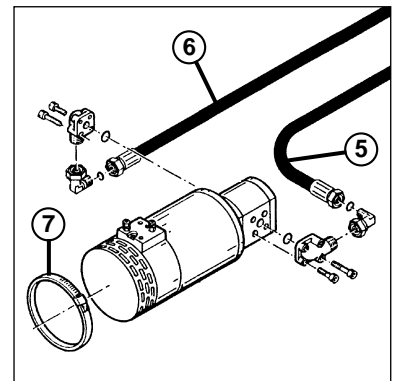
- Disconnect the engine electric cables.
 - 3 (Fig. B) = A1 (+ battery disconnecter)
 - 4 (Fig. B) = D2 (- variator)

B



- Drain the oil tank.
- Dismantle the suction tube 5 (Fig. C) (36 mm wrench) and the lifting hose 6 (Fig. C) of the pump (30 mm wrench).
- Dismantle the two attachment clamps 7 (Fig. C) of the electric pump.
- Remove the assembly.

C



REASSEMBLY

- Carry out the operations described above in the reverse order.
- Fill the oil tank (see chapter "GENERAL POINTS") and check the level.

DISTRIBUTEUR
KOMMANDOSTEUERVENTIL
DISTRIBUTOR
VALVE BANK

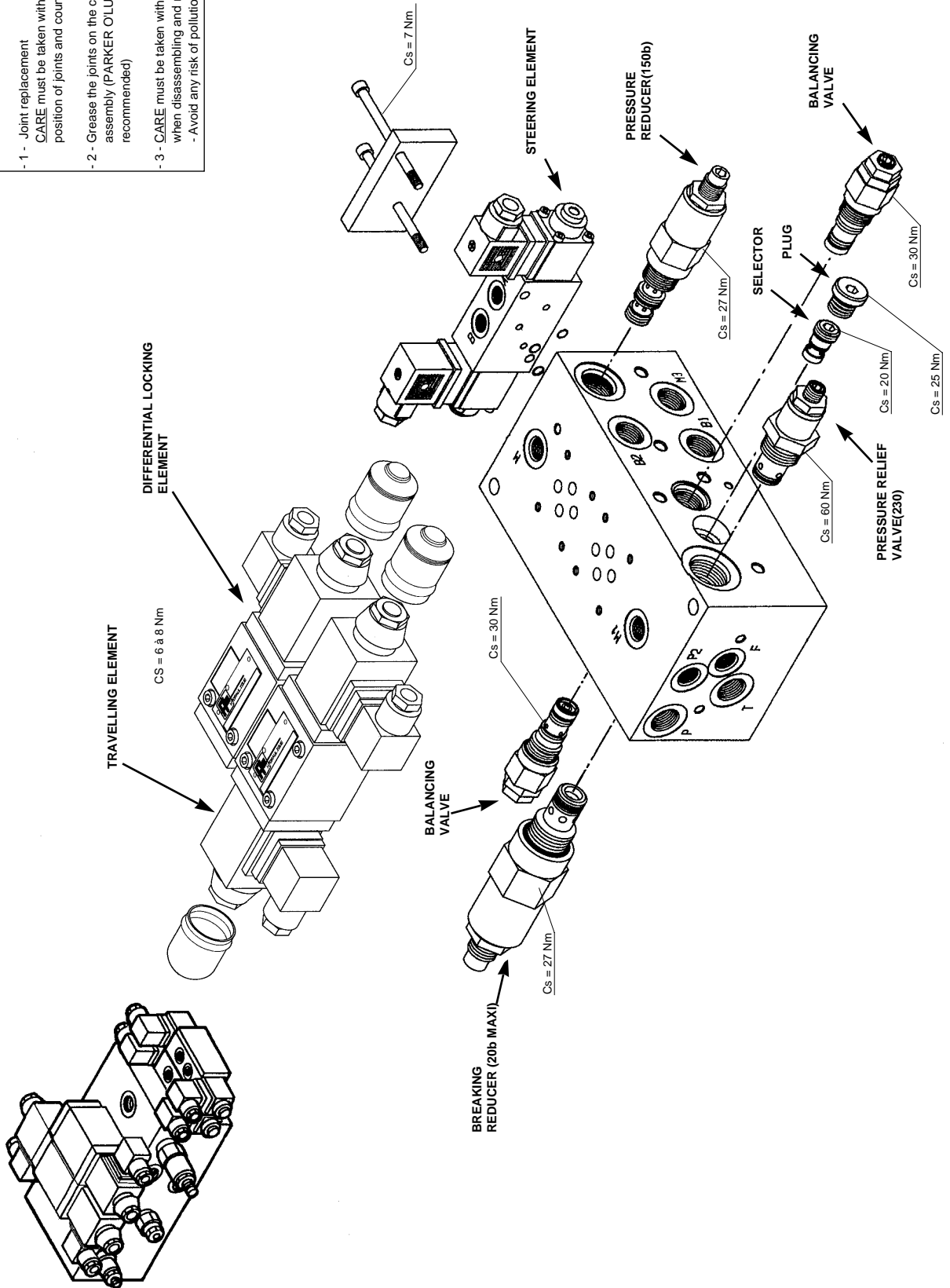
D 80 E

D 80 EP

from N°500293

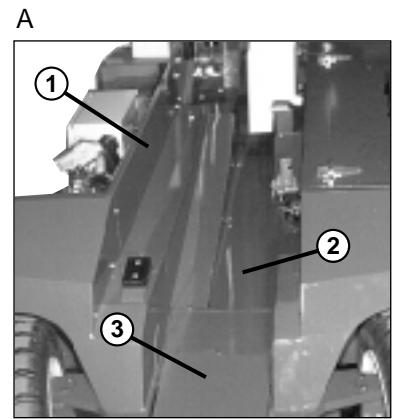
Safety measures to be taken during intervention.

- 1 - Joint replacement
CARE must be taken with the direction and position of joints and counter-joints.
- 2 - Grease the joints on the cartridges before assembly (PARKER O'LUB grease recommended)
- 3 - CARE must be taken with the cleanliness when disassembling and reassembling.
- Avoid any risk of pollution.

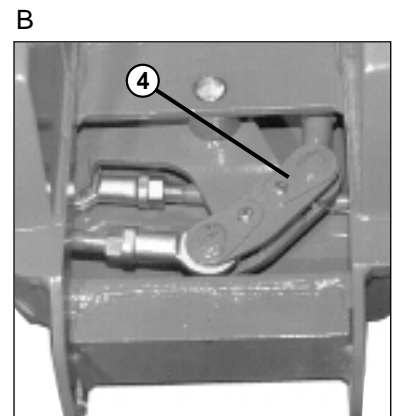


REMOVING THE STEERING CYLINDER

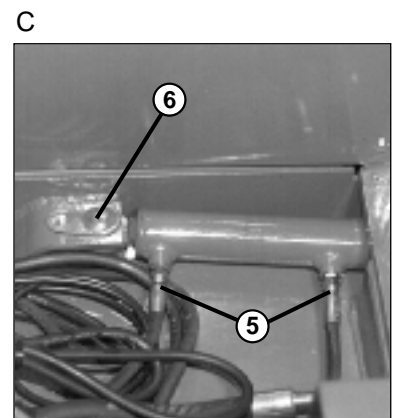
- Lift the lower arm.
- Lock the right wheels as far as possible to the right .
- Remove the Distributor cowl.
- Dismantle the covers 1-2-3 (Fig A).



- Remove the shaft 4 (Fig. B) of the steering cylinder head.



- Dismantle the two hoses 5 (Fig. C) (19 mm wrench).
- Dismantle the axis 6 (Fig. B) from steering cylinder foot.
- Remove the cylinder.



REASSEMBLY

- Carry out the operations described above in the reverse order.

INDEX

– D 80 E - D 80 EP (up to N°500292)	3
– D 80 E - D 80 EP (from N°500293)	4
– D 80 ER (up to N°500292)	5
– D 80 ER (from N°500293)	6
– D 80 ERS	7
– D 80 ER N° 500216.....	8
– D 80 E N° 500124.....	9

CLICK HERE TO **DOWNLOAD** THE COMPLETE MANUAL

- Thank you very much for reading the preview of the manual.
- You can download the complete manual from: www.heydownloads.com by clicking the link below



- Please note: If there is no response to CLICKING the link, please download this PDF first and then click on it.

CLICK HERE TO **DOWNLOAD** THE COMPLETE MANUAL

GROUPS 80

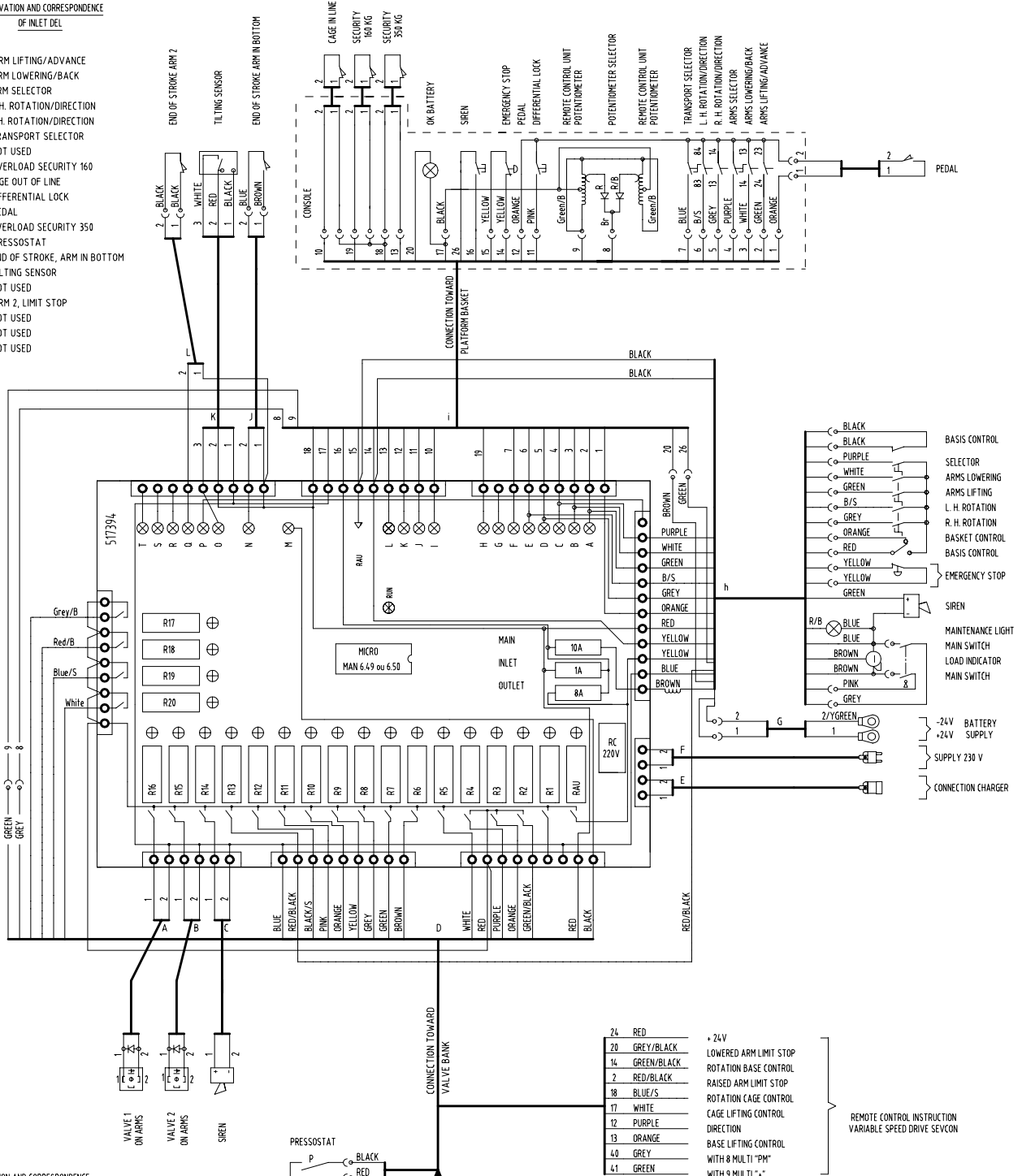
ELECTRICITY

**REMOVING THE TRACTION BATTERY
D 80 E / D 80 ER / D 80 ERS / D 80 EP
80-2-12-M.10 EN**

ELECTRIC DIAGRAMS
D 80 E / D 80 ER / D 80 ERS / D 80 EP
80-6-M.11 EN

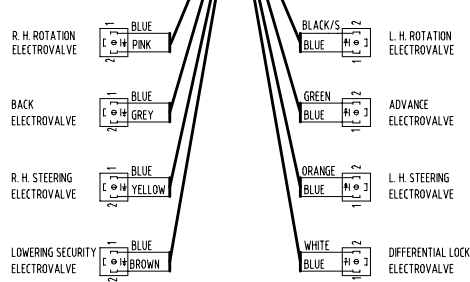
**ABBREVIATION AND CORRESPONDENCE
OF INLET DEL**

- A = ARM LIFTING/ADVANCE
- B = ARM LOWERING/BACK
- C = ARM SELECTOR
- D = R.H. ROTATION/DIRECTION
- E = L.H. ROTATION/DIRECTION
- F = TRANSPORT SELECTOR
- G = NOT USED
- H = OVERLOAD SECURITY 160
- I = CAGE OUT OF LINE
- J = DIFFERENTIAL LOCK
- K = PEDAL
- L = OVERLOAD SECURITY 350
- M = PRESSOSTAT
- N = END OF STROKE, ARM IN BOTTOM
- O = TILTING SENSOR
- P = NOT USED
- Q = ARM 2, LIMIT STOP
- R = NOT USED
- S = NOT USED
- T = NOT USED



**ABBREVIATION AND CORRESPONDENCE
OF RELAYS AND OUTLET DEL**

- R1 = NOT USED
- R2 = ROTATION SPEED, BASE CONTROL
- R3 = LIFTING SPEED, BASIS CONTROL
- R4 = ROTATION SPEED
- R5 = DIFFERENTIAL BLOCKING
- R6 = LOWERING SECURITY
- R7 = ADVANCE TRANSLATION
- R8 = BACK TRANSLATION
- R9 = R. H. DIRECTION
- R10 = L. H. DIRECTION
- R11 = R. H. ROTATION
- R12 = L. H. ROTATION
- R13 = MAINTENANCE LIGHT
- R14 = SIREN
- R15 = VALVE ON ARM 2
- R16 = VALVE ON ARM 1
- R17 = TRANSLATION SPEED, ARM LOWERED
- R18 = TRANSLATION SPEED, ARM RAISED
- R19 = ROTATION SPEED, BASKET CONTROL
- R20 = LIFTING SPEED, BASKET CONTROL



MOS90 PUMP VARIATOR

Product family	Type	Current			Mechanics			Note	
		Notes (1) 2mm	(2) CC 1 Hr	(3) Dropout	Power connections	W	L		H
Option 24/48V	MOS90C	400	175	800	5 (25mm ²)	140	283	62	Steering switches + choice of 2 switches or CC/ FW/ PS

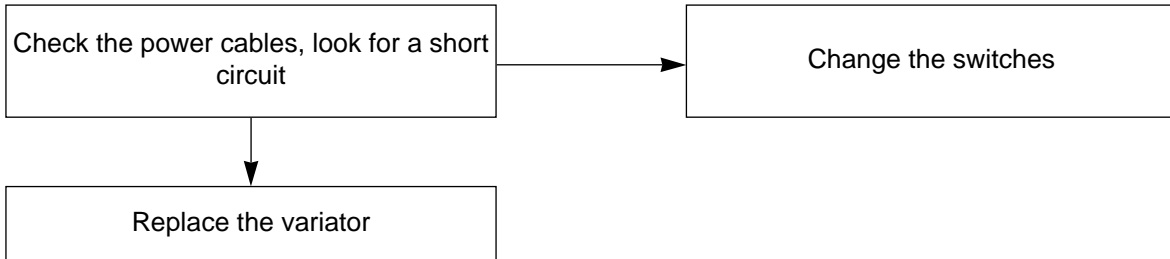
Notes :

- (1) : The limit current is measured for a maximum 60 % ON (ON = transistor conductor times, OFF = variator idle).
- (2) : Single hour current whatever the ON %, provided that the variator is correctly mounted onto the chassis (Single hour current - maximum continuous current over one hour).
- (3) : This is the maximum value, this current is usually adjusted to 1.5 times the limit current. Care must be taken with the permitted power for the switches and motor.

3 FLASHES

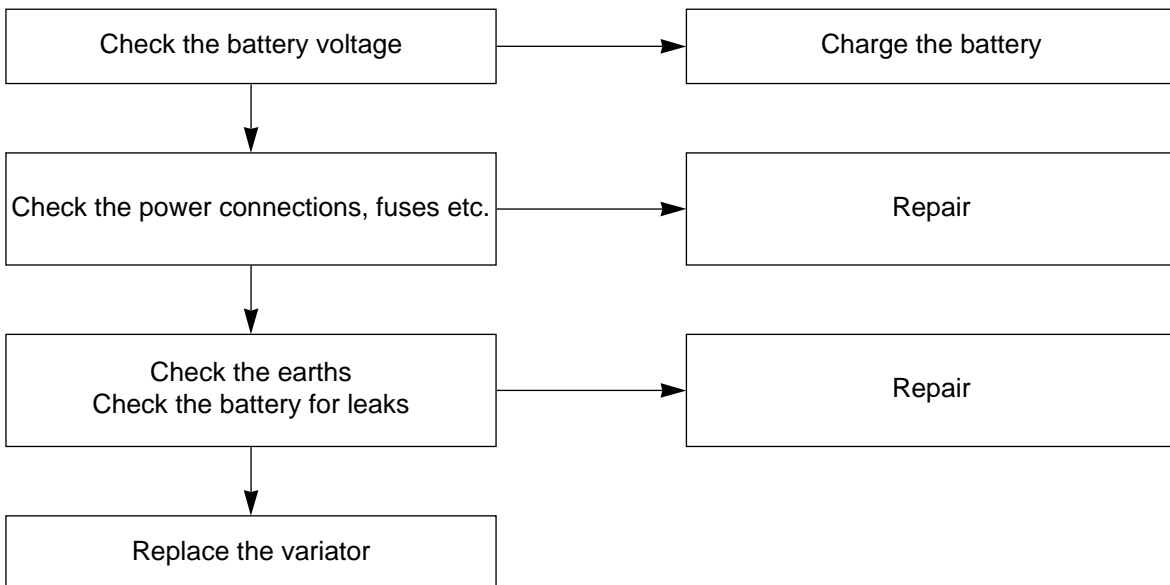
- Point A < 7 volts in neutral position or < 7 volts for 15 ms or switch coil short circuited.
- No driving allowed.
- Recycle in neutral position to stop the flashing.

NOTE : If this is not enough, the fault being due to the short circuit switch coil, recycle with the ignition key.



7 FLASHES

- Battery flat < 13 volts
- No driving allowed.
- Recycle in neutral position to stop the flashing.



MANIPULATOR ASSEMBLY PROCEDURE
D 80 E / D 80 ER / D 80 ERS / D 80 EP
80-8-85-M.10 EN

GROUPS 100

**TROUBLE
SHOOTING**

TRACING ELECTRICAL FAULTS

D80ER

from no. 500157 to no. 500348

PROBLEM	POSSIBLE CAUSES
No movement possible	<ul style="list-style-type: none">_ Is the battery disconnecter activated ?_ Is the main cut-out activated ?_ Are the three fuses on the printed circuit open (make a visual check that the LEDs are on). _ Is the battery charger connection connected?_ Is the base or basket selector key control in position in the control station?_ Are the emergency stops unlocked? (make a visual check that the RAU LED is on). _ Is the RUN LED flashing ?
The siren goes on and off	<ul style="list-style-type: none">_ The machine is on a slope.
The siren goes on all the time	<ul style="list-style-type: none">_ The platform basket is overloaded.
Certain movements are not performed	<ul style="list-style-type: none">_ See table of relevant movements.

TABLE OF LED STATUS BY POSSIBLE MOVEMENT (Part no. Micro MAN 6,46)

D80ER

CI input	A	B	C	D	E	F	G	H	I	J	K	L	M	N	O	P	Q	R	S	T
Movement																				
Left Direction "basket in axe"	x	x	x	0	1	1	0	x	1	x	1	1	x	x	x	x	x	x	x	x
Left Direction "basket not in axe"	x	x	x	0	1	1	0	1	0	x	1	1	x	x	x	x	x	x	x	x

CI input	R1	R2	R3	R4	R5	R6	R7	R8	R9	R10	R11	R12	R13	R14	R15	R16	R17	R18	R19	R20
Movement																				
Left Direction	0	0	0	1	0	0	0	0	0	1	0	0	x	0	0	0	0	0	0	0

CI input	A	B	C	D	E	F	G	H	I	J	K	L	M	N	O	P	Q	R	S	T
Movement																				
Right Direction "basket in axe"	x	x	x	1	0	1	0	x	1	x	1	1	x	x	x	x	x	x	x	x
Right Direction "basket not in axe"	x	x	x	1	0	1	0	1	0	x	1	1	x	x	x	x	x	x	x	x

CI input	R1	R2	R3	R4	R5	R6	R7	R8	R9	R10	R11	R12	R13	R14	R15	R16	R17	R18	R19	R20
Movement																				
Right Direction	0	0	0	1	0	0	0	0	1	0	0	x	0	0	0	0	0	0	0	0

0 = Platinum LED off to have movement
 1 = Lit LED off to have movement
 X = No account taken of status 0 - 1 to have movement

CLICK HERE TO **DOWNLOAD** THE COMPLETE MANUAL

- Thank you very much for reading the preview of the manual.
- You can download the complete manual from: www.heydownloads.com by clicking the link below



- Please note: If there is no response to CLICKING the link, please download this PDF first and then click on it.

CLICK HERE TO **DOWNLOAD** THE COMPLETE MANUAL