



BP 249 Z.I.
44158 ANCENIS CEDEX FRANCE
TEL : 02 40 09 10 11

YOUR DEALER

REF : 547 333 EN (03 / 02)

PLATFORMS 110ELX

REPAIR MANUAL

CLICK HERE TO **DOWNLOAD** THE COMPLETE MANUAL

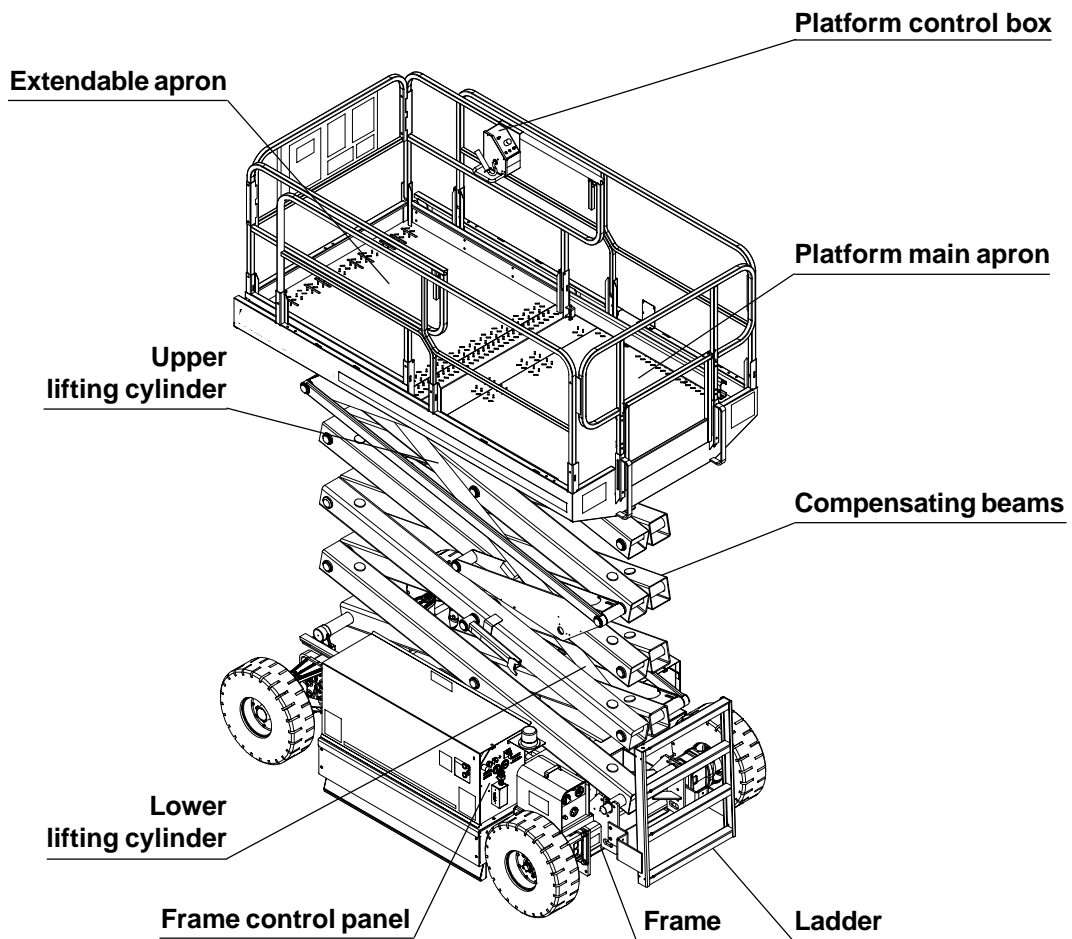
- Thank you very much for reading the preview of the manual.
- You can download the complete manual from: www.heydownloads.com by clicking the link below



- Please note: If there is no response to CLICKING the link, please download this PDF first and then click on it.

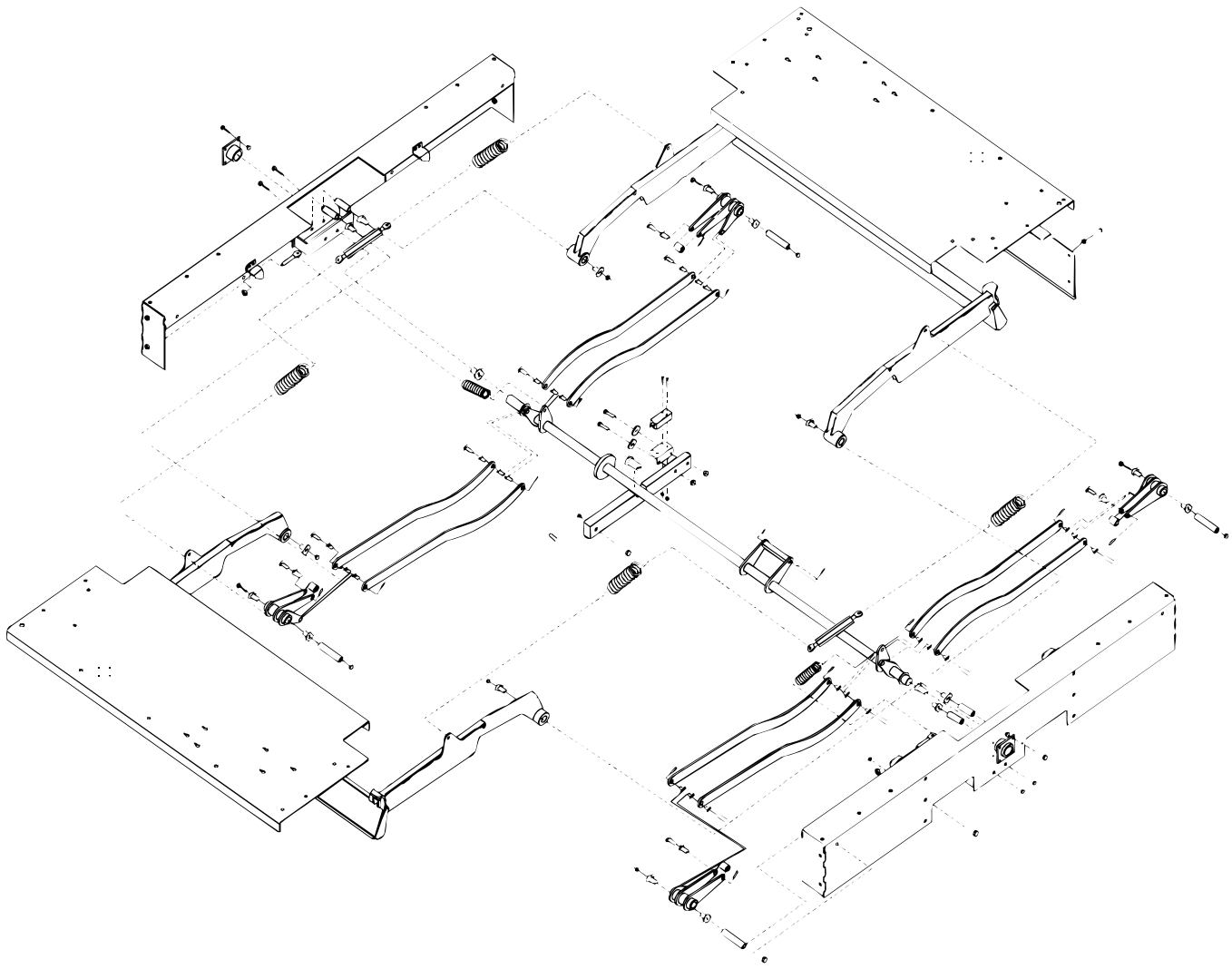
CLICK HERE TO **DOWNLOAD** THE COMPLETE MANUAL

MAIN PARTS OF THE MACHINE

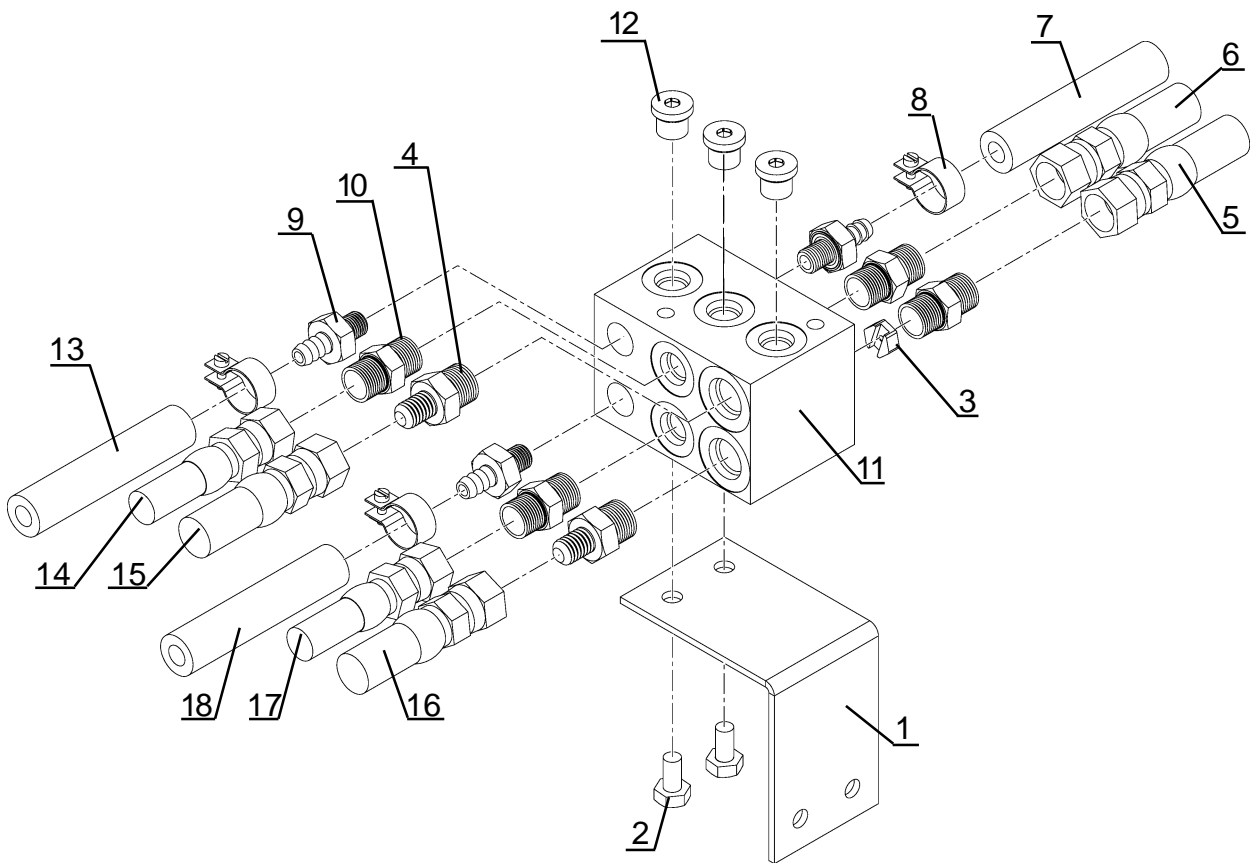


UNIT 40

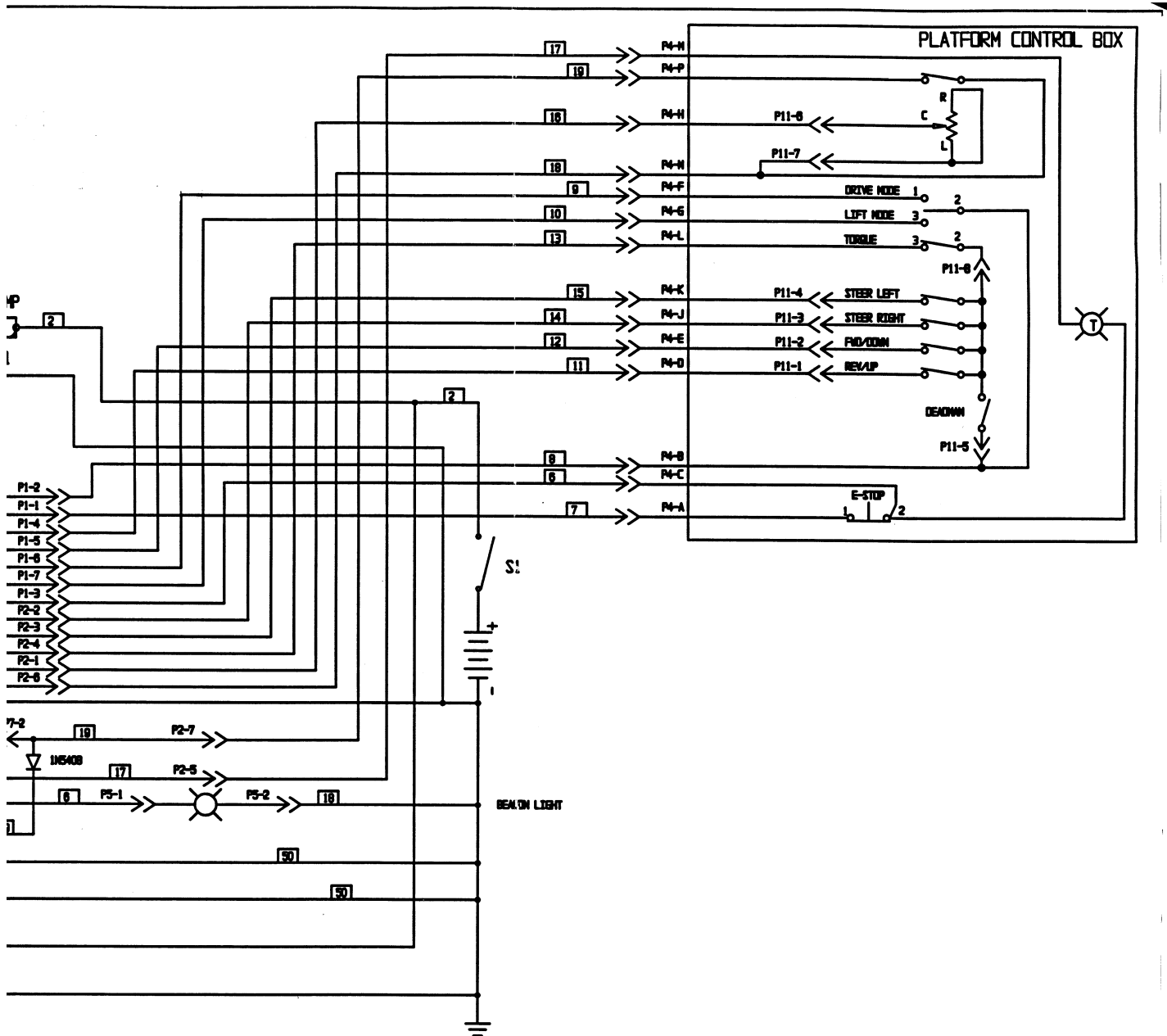
BRAKE



STABILISERS



LIFTING UNIT



- [30] DRIVE REVERSE (2X)
- LIFT DOWN
- P10-2 LIFT DOWN (CYLINDER)
- LIFT UP (2X)
- TORQUE (3X)
- STEER LEFT
- DECEL & CLAMP
- DRIVE FORWARD (2X)
- NOTION ALARM LIGHT
- STEER RIGHT
- [41]

SEVCON VARIATOR
110 ELX
80-8-M.63 EN

POSITION OF SENSORS
110 ELX
80-8-81-M.63 EN

PROBLEM	CAUSE	REMEDY
Moving	<p>No moving or reduced speed forward or reverse moving.</p> <p>At test orifice level pressure is a lot lower than 48 bars</p> <p>At test orifice level pressure is a lot higher than 48 bars.</p> <p>The torque mode does not engage.</p> <p>The machine moves over flat ground but will not climb.</p> <p>The machine does not stop smoothly.</p>	<p>Check orifice test (3) pressure whilst moving. During normal operation moving pressure should reach approximately 48 bars on flat ground.</p> <p>Check the voltage at valve H level. During moving the coil should be under power.</p> <p>Check the adjustment of safety valve A. It should be set at 190 bars.</p> <p>Check voltage at level of valve K. During moving the coil should be under power.</p> <p>Check that valves H and K are not dirty.</p> <p>Ensure that valve L is completely closed (clockwise).</p> <p>Check the voltage of valves J and T. For each drive steering the opposite coils should be under power.</p> <p>Check the voltage of valves M, N, and O. the coils in question should be under power in engaged torque mode, or without power in disengaged torque mode.</p> <p>Check that valves B, F, J, M, and O are not dirty.</p> <p>Check orifice 5 pressure. It should be similar to that of the test orifice.</p> <p>Check that valves M, N, and O are not dirty.</p> <p>Check the voltage of valves M, N, and O. The coils in question should be under power so that the torque mode engages.</p> <p>Check the adjustment of safety valve A., it should be 190 bars.</p> <p>Check the voltage of valve K. The coil should be without voltage when the machine stops moving.</p> <p>Check that the orifice located under the K valve is not full of dirt.</p>
Brakes	<p>It is impossible to establish pressure manually.</p>	<p>Check that the manual push valve C retains pressure. Once the valve has been pushed in the closed position (by pumping oil using the hand pump), the pressure should rise to activate the brakes.</p> <p>Check that valve D is not dirty.</p>

CLICK HERE TO **DOWNLOAD** THE COMPLETE MANUAL

- Thank you very much for reading the preview of the manual.
- You can download the complete manual from: www.heydownloads.com by clicking the link below



- Please note: If there is no response to CLICKING the link, please download this PDF first and then click on it.

CLICK HERE TO **DOWNLOAD** THE COMPLETE MANUAL