



BP 249 Z.I.  
44158 ANCENIS CEDEX FRANCE  
TEL : 02 40 09 10 11

*YOUR DEALER*

REF : 547 322 EN (10 / 01)

**PLATFORMS**

**65 EX**

**75 EX**

**REPAIR MANUAL**

CLICK HERE TO **DOWNLOAD** THE COMPLETE MANUAL

- Thank you very much for reading the preview of the manual.
- You can download the complete manual from: [www.heydownloads.com](http://www.heydownloads.com) by clicking the link below



- Please note: If there is no response to CLICKING the link, please download this PDF first and then click on it.

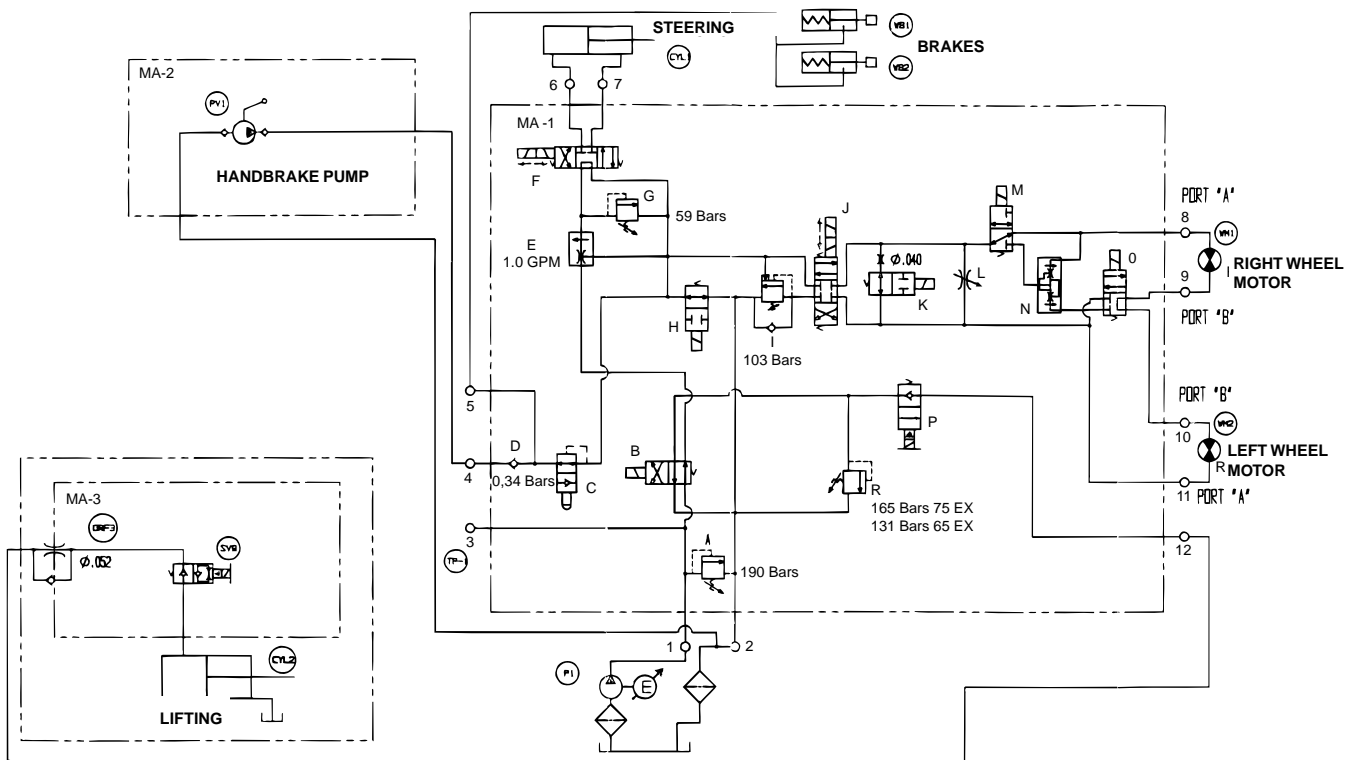
CLICK HERE TO **DOWNLOAD** THE COMPLETE MANUAL

# SPECIFICATIONS

## 65 EX

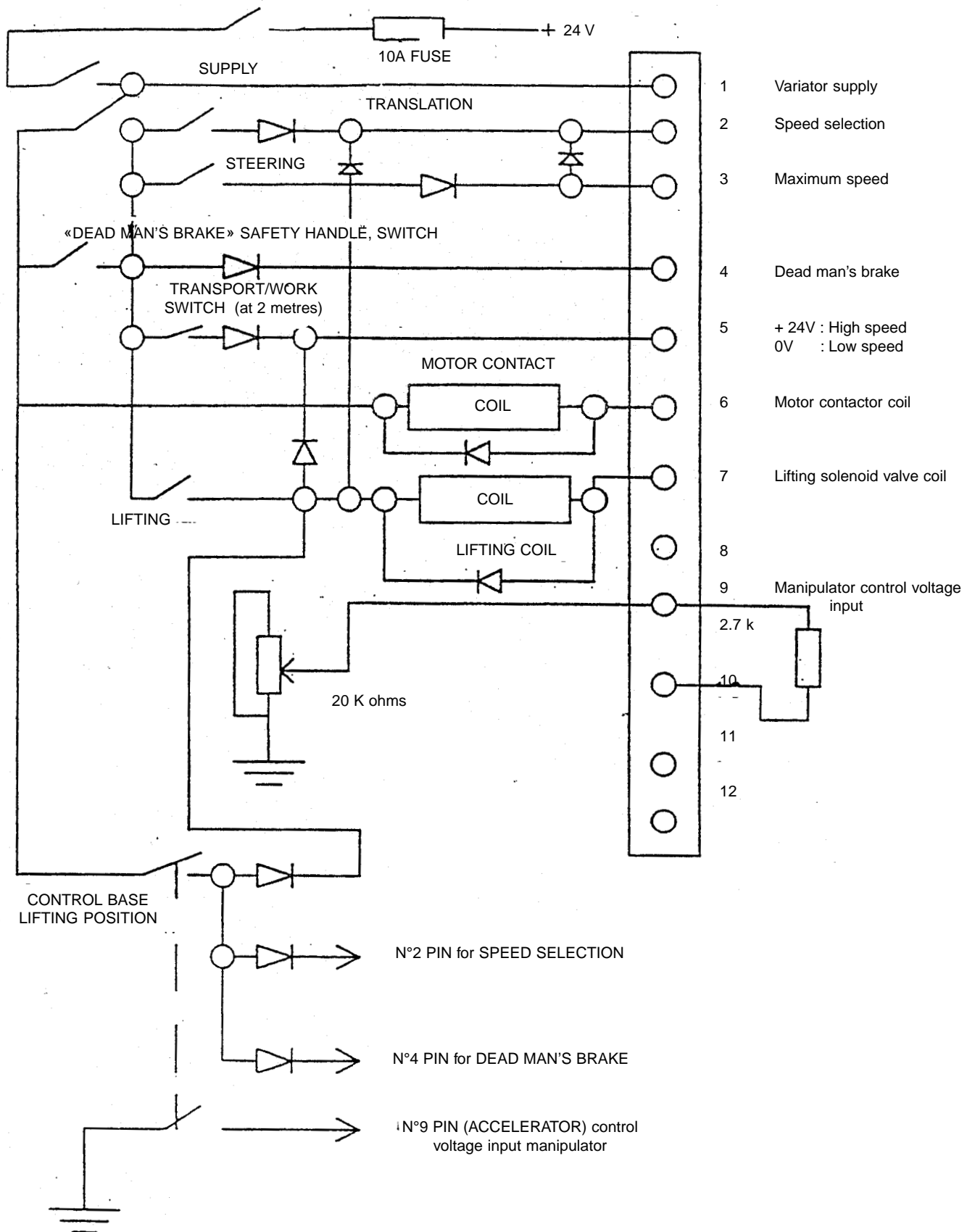
### SPECIFICATIONS

- Working height	6,40 m
- Height of platform	4,57 m
- Height of the secured machine : Rails retracted	1,97 m Not applicable
- Lifting capacity (evenly distributed) Capacity of the unwinding extension apron	272 kg 113 kg
- Platform dimensions With the apron extension Rails Height of the foot board Length of the extended apron	0,76 x 1,68 m 1,10 m 19,05 cm 0,91 m
- Total length	1,88 m
- Total width	0,81 m
- Base	1,27 m
- Track width	0,70 m
- Turning radius Interior Exterior	3,81 cm 1,55 m
- Ground clearance	72,90 cm
- Weight of the machine (unloaded) (approx.)	1236 kg
- Total propulsion (proportional) Traction speed (platform raised) Traction speed (platform lowered)	0-0,74 km/h 0-3,38 km/h
- Raising/lowering speed (approx.)	17 seconds / 20 seconds
- Maximum gradeability	25% / 14 degrees
- Ground wheel pressure (max.)	6,13 bar
- Wind speed (max.)	0 km/h
- Tyres dimensions - standard (Super Terra Grip -Pneumatic)	355,6 x 114,3 mm
- Pressure of tyres (except foam tyres)	Not applicable
- Wheel T-nut torque	102-115 Nm
- Hydraulic pressure : Main circuit Lifting circuit Steering	190 bar 131 bar 62 bar
- Capacity of hydraulic fluid tank	11,36 litres
- Fuel tank capacity	Not applicable
- Electrical supply - voltage	24 volts DC
- Battery charger - Input Output	240 volts ca, 50 Hz, 5,6 Amps 24 volts DC, 15 Amps progressive, programmed stoppage
- Batteries	Four at 6 volts; 218 Amps/hours for 20 hours
- Electric motor	2,0 hp (1,49 kW) : 3000 rev/min



- A : Pressure limiter
- B : Elevation translation selector
- C : Manual repair
- D : Non-return valve
- E : Flow divider
- F : Steering system solenoid valve
- G : Steering system pressure limiter
- H : Brake solenoid valve
- I : Balancing valve
- J : Forward/reverse gear
- K : Retardation solenoid valve
- L : Flow regulator
- M : Anti-torque valve
- N : Flow divider
- O : Anti-torque valve
- P : Load holding valve





- 5. 2m contact info
- 7. Negative when the battery voltage  $\geq 18V$  (lifting cutout)
- 9. 3.7/3.8V at neutral at manipulator output. Target is 0 volt in both directions.

MICROMOS VARIATOR WIRING DETAILS



CLICK HERE TO **DOWNLOAD** THE COMPLETE MANUAL

- Thank you very much for reading the preview of the manual.
- You can download the complete manual from: [www.heydownloads.com](http://www.heydownloads.com) by clicking the link below



- Please note: If there is no response to CLICKING the link, please download this PDF first and then click on it.

CLICK HERE TO **DOWNLOAD** THE COMPLETE MANUAL