




**REPAIR MANUAL
MANUEL DE RÉPARATION
REPARATURANLEITUNG
MANUAL DE REPARACIÓN
MANUALE RIPARAZIONE**

This document has been printed from  **mye doc**



MANITOU BF

Head office: 430, Rue de l'Aubinière
44150 Ancenis - FRANCE
Share capital: 39,548,949 euros
857 802 508 RCS Nantes
Tel: +33 (0)2 40 09 10 11
www.manitou.com

CLICK HERE TO **DOWNLOAD** THE COMPLETE MANUAL

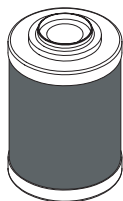
- Thank you very much for reading the preview of the manual.
- You can download the complete manual from: www.heydownloads.com by clicking the link below



- Please note: If there is no response to CLICKING the link, please download this PDF first and then click on it.

CLICK HERE TO **DOWNLOAD** THE COMPLETE MANUAL

FILTER ELEMENT



1

0-1-M.84

DESCRIPTION	REFERENCE	REPLACE
1 - Hydraulic return oil filter cartridge	599004	Every 900 H

LUBRICANTS

COMPONENTS TO BE LUBRICATED	CAPACITY	RECOMMENDATION	PACKAGING	REFERENCE
HYDRAULIC OIL RÉSERVOIR	12 Litres	MANITOU HYDRAULIC OIL ISO 46	20 L. 55 L. 209 L.	582 297 546 108 546 109
WHEEL MOTOR (EACH ONE)	0.8 Litre	SHELL SPIRAX OIL A90	2 L. 20 L. 50 L.	661 998 661 950 661 950
TURRET ROTATION MOTOR	1.5 Litres			
GENERAL GREASING		SHELL RETINAX HD GREASE	cartridge 400 Gr.	161 589
BEARING TURRET RING GREASING		SHELL ALVANIA EP LF 2 GREASE	1 Kg	545 836
TURRET RING TEETH LUBRICATION		SHELL MALLEUS GL 205 OIL	Aerosol	545 834

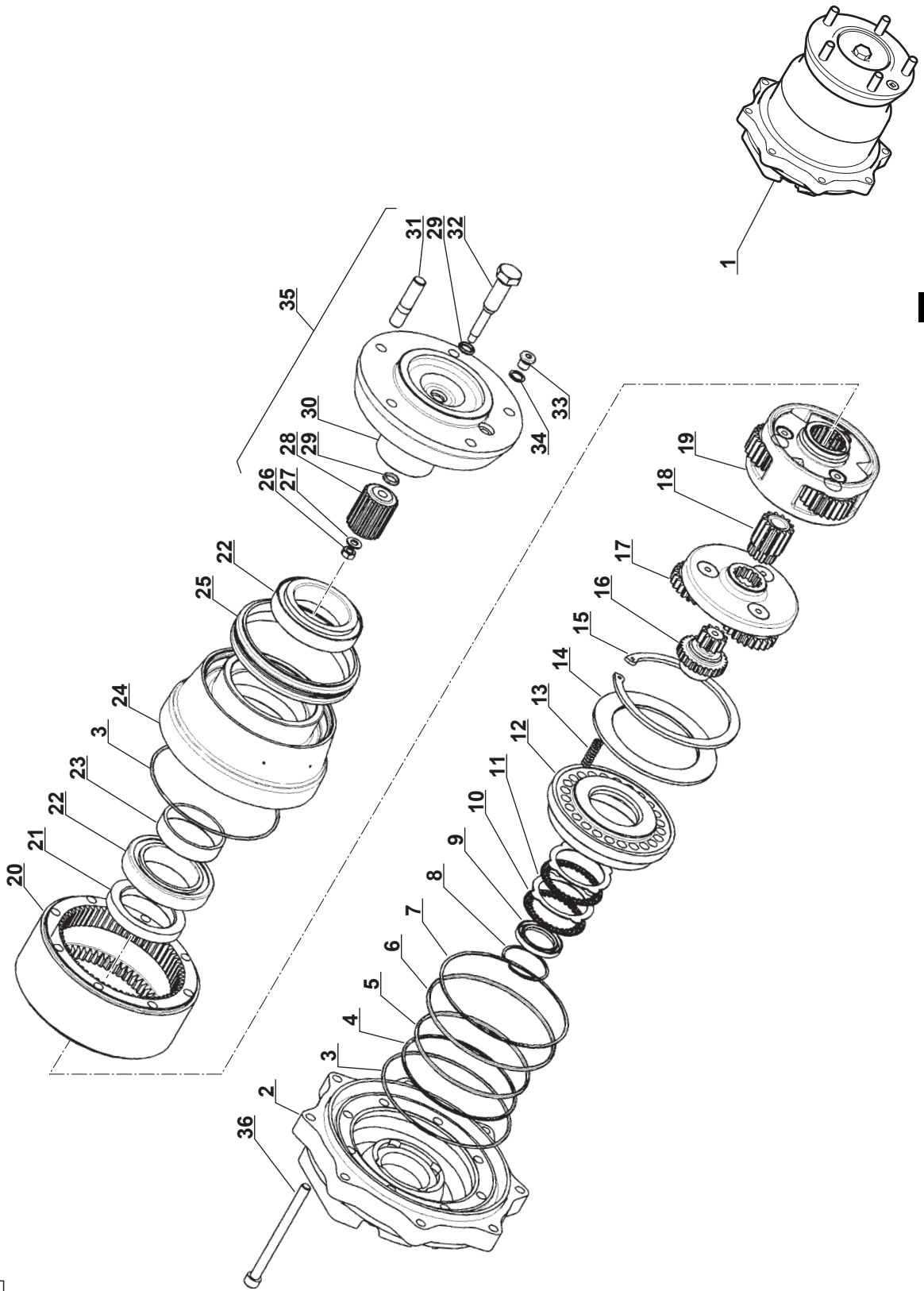
10 DC 46

120 AETJ

REDUCTEUR DE ROUES
RAD REDUKTION
REDUCTOR DE RUEDA
WHEEL REDUCING

A PARTIR DE LA MACHINE
AB DER MASCHINE
A PARTIR DE LA MAQUINA
FROM MACHINE

↳ N°: 505579



P.A.O

20/06/03

30-2-63-M.84



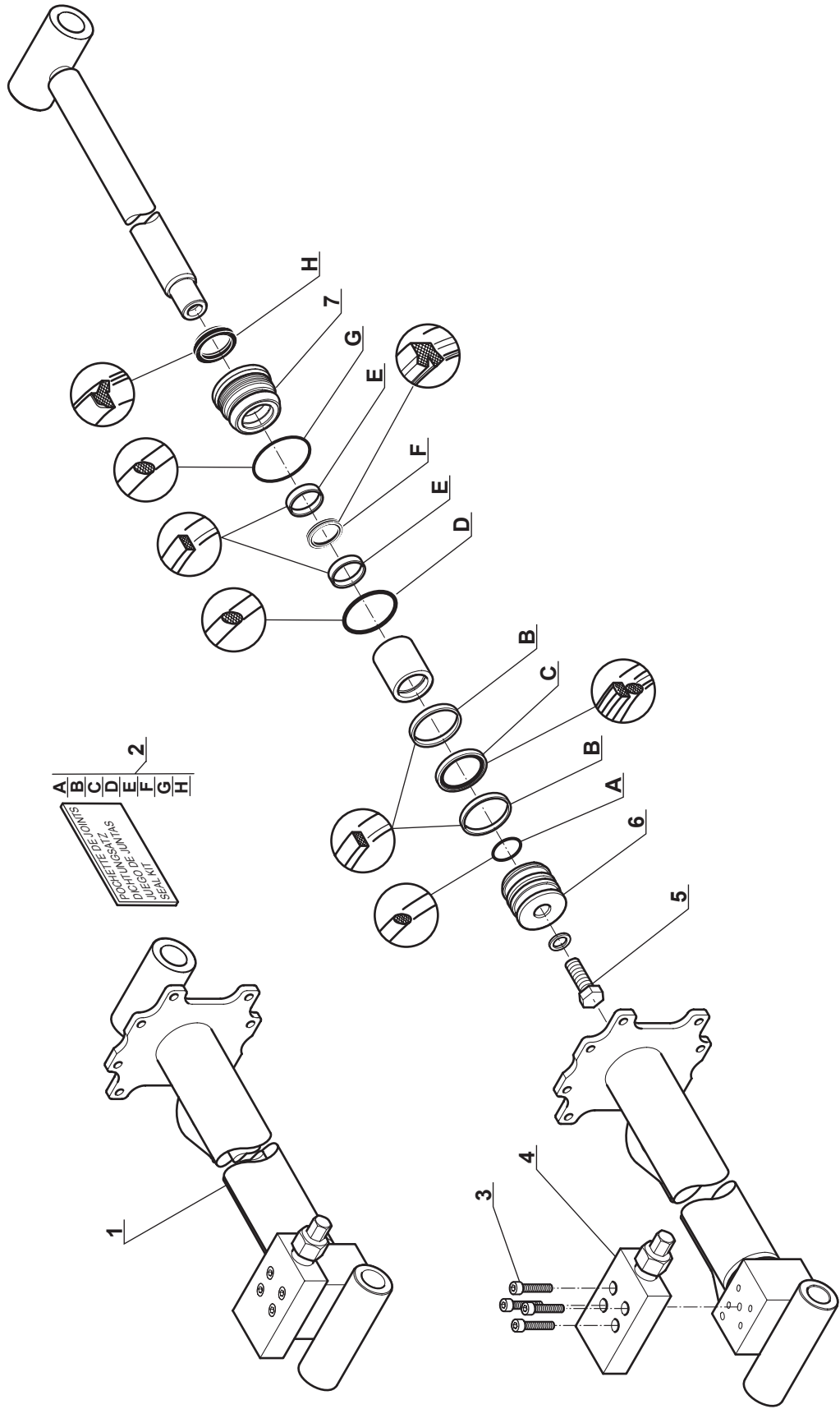
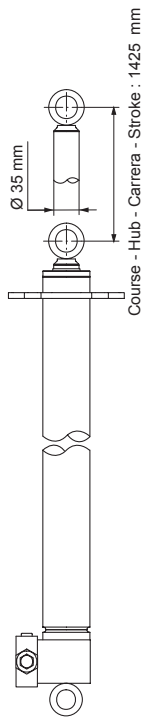
***REMOVING THE DISTRIBUTOR
ELEMENTS
120 AETJ
70-2-52-M.84 EN***

70-2-52-M.84

10 CC 82

120 AETJ

HYDRAULIQUE (Vérin de télescope)
HYDRAULIK (Zusammenstroll zylinder)
HYDRAULICO (Cilindro de telescopaje)
HYDRAULIC (Telescope cylinder)



CLICK HERE TO **DOWNLOAD** THE COMPLETE MANUAL

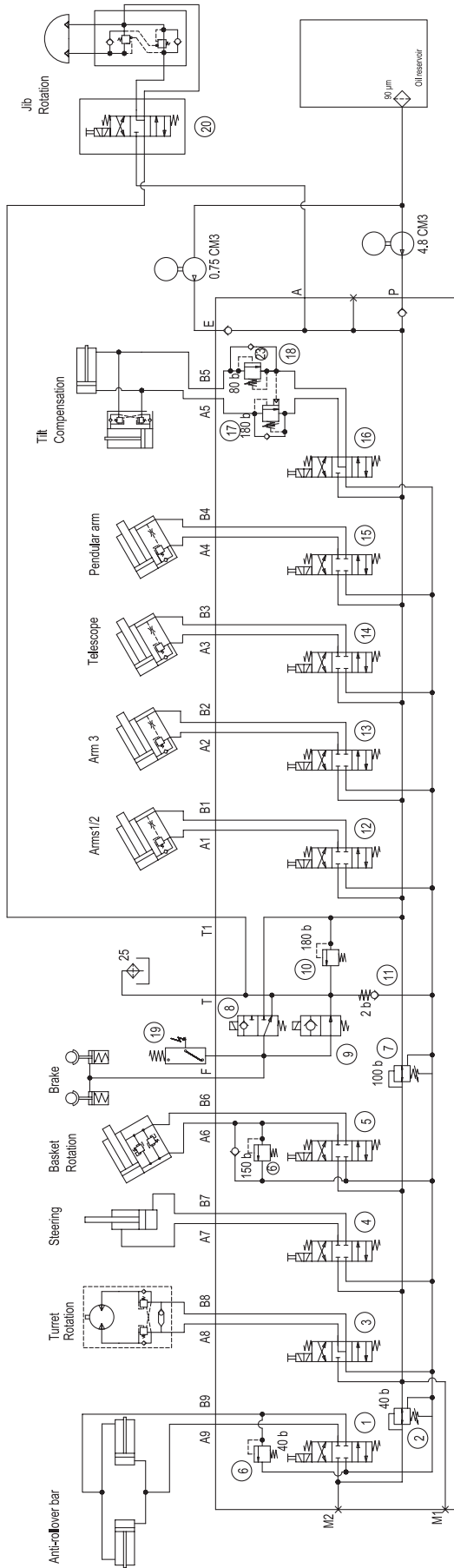
- Thank you very much for reading the preview of the manual.
- You can download the complete manual from: www.heydownloads.com by clicking the link below



- Please note: If there is no response to CLICKING the link, please download this PDF first and then click on it.

CLICK HERE TO **DOWNLOAD** THE COMPLETE MANUAL

HYDRAULIC LAYOUT



24-volt coils

△ P min throughout the block.

P, T --> 1/2

F, PF, M, M1, M2, --> 1/4

A1, B1, ..., A9, B9, A, E, T1 --> 3/8

14	4/3 valve + non-indexed manual control
15	4/3 valve + non-indexed manual control
16	4/3 valve + non-indexed manual control
17	Balancing valve
18	Sealed sequencing valve
19	NO pressure stat, 24V 20/40 Bars
20	4/3 valve + non-indexed manual control

FUNCTIONS	
1	4/3 valve + non-indexed manual control
2	Reducer
3	4/3 valve + non-indexed manual control
4	4/3 valve + non-indexed manual control
5	4/3 valve + non-indexed manual control
6	Pressure relief valve
7	Reducer
8	Sealed 3/2 valve
9	Sealed 3/2 valve
10	Main pressure relief valve
11	Non-return valve
12	4/3 valve + non-indexed manual control
13	4/3 valve + non-indexed manual control

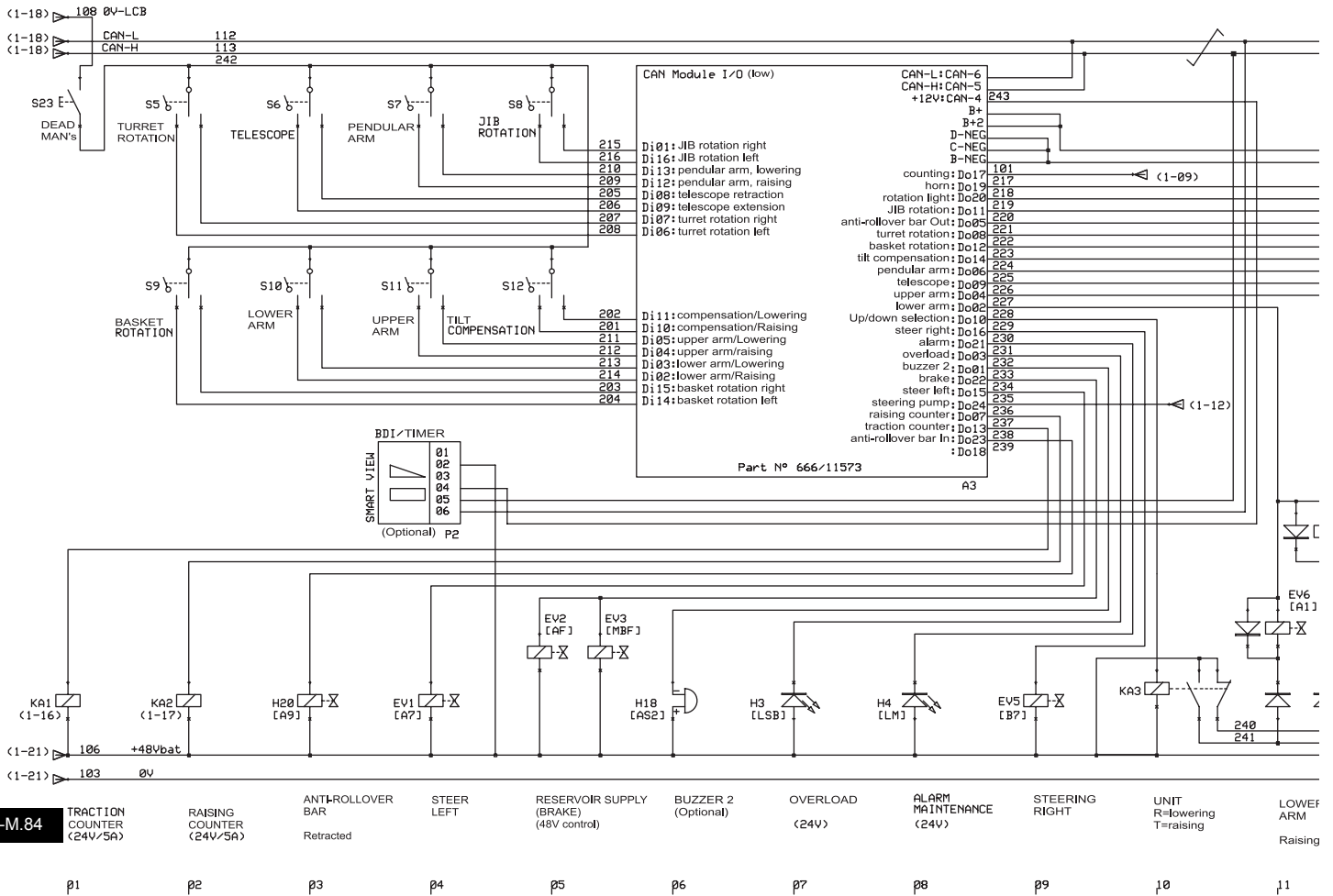
120 AETJ
CI 598813
version B

BASKET CONSOLE CABLE LOOM - CABLE ALLOCATION

CABLE	CONNECTION	COLOUR	DESCRIPTION
311	S13/D-IN-3	YELLOW	
309	S15/D-IN-10	YELLOW	
304	S19/D-IN-11	YELLOW	
303	S20/D-IN-12	YELLOW	
310	S14/D-IN-9	YELLOW	
305	S18/D-IN-13	YELLOW	
121	S18/S20	YELLOW	
121	S20/S19	YELLOW	
121	S19/S15	YELLOW	
121	S15/S13	YELLOW	
121	S13/S14	YELLOW	
302	S21/D-IN-16	YELLOW	
121	S21/S17	YELLOW	
121	S17/S17	YELLOW	
306	S17/D-IN-8	YELLOW	
307	S17/D-IN-15	YELLOW	
308	S17/D-IN14	YELLOW	
331	H6/D-OUT-14	YELLOW	
330	H7/D-OUT-16	YELLOW	
329	H8/D-OUT-13	YELLOW	
328	H9/D-OUT-2	YELLOW	
327	H10/D-OUT-3	YELLOW	
323	H14/D-OUT-7	YELLOW	
322	H15/D-OUT-4	YELLOW	
321	H16/D-OUT-5	YELLOW	
106	J4-106/H14	RED	
121	S18/S17	YELLOW	
106	H14/H16	RED	
106	H16/H15	RED	
106	H15/H10	RED	
106	H10/H8	RED	
106	H8/H9	RED	
106	H9/H6	RED	
106	H6/H7	RED	
320	H17/D-OUT-15	YELLOW	
106	H17/J4-106	RED	
106	J4-106/B+	RED	
316	D-IN-6/P CLIPS 6V-2	YELLOW	
317	D-IN-7/P CLIPS 6V-3	YELLOW	
318	A-IN-2/P CLIPS 6V-4	YELLOW	
319	D-IN-1/P CLIPS 3V	YELLOW	
103	NEG/P CLIPS 3V	WHITE	
106	B+/P CLIPS 3V	RED	
315	A-IN-1/P CLIPS 6V-1	YELLOW	
BRIDGE	S17/S17	YELLOW	

80-2-13-M.84

E - BASE CONTROL SECTION - DUAL MANIPULATOR



80-6-M.84

EPROM W598800.007	EPROM W598800.008
----------------------	----------------------

Calibrator Reference	CAN Name	Description	Minimum Value	Maximum Value	Step	Actual Value
1.8.1	31	Display Default Hours				Key
1.8.2	32	Display Status Type				Off
1.8.3	30	Display Contrast	0	127	1	30
1.8.4	27	FFD Indicator 1				Off
1.8.5	28	FFD Indicator 2				Off
1.8.6	29	Display Fault Messages				Off

Calibrator Reference	CAN Name	Description	Minimum Value	Maximum Value	Step	Actual Value
2.1.1	46	Pump I Max	50	350	10	350
2.1.2	47	Ramp Up Delay	0.1	5.0	0.1	3.0
2.1.3	48	Ramp Down Delay	0.1	0.5	0.1	0.5
2.1.4	49	Pump Creep Speed	0	25	1	19

Calibrator Reference	CAN Name	Description	Minimum Value	Maximum Value	Step	Actual Value		
						Without JIB	With JIB	With JIB
2.3.1	67	Boom 1 Up Speed (%)	0	100	1	90		100
2.3.2	68	Boom 1 Down Speed (%)	0	100	1	40		40
2.3.3	56	Boom 1 Cutback Speed (%)	0	100	1	100		100
2.3.4	69	Boom 2 Up Speed (%)	0	100	1	63		59
2.3.5	70	Boom 2 Down Speed (%)	0	100	1	39		35
2.3.6	57	Boom 2 Cutback Speed (%)	0	100	1	100		100
2.3.7	71	Jib Up Speed (%)	0	100	1	40		36
2.3.8	72	Jib Down Speed (%)	0	100	1	25		22
2.3.8A	103	Jib Rotate Left Speed (%)	0	100	1	1	32	30
2.3.8B	104	Jib Rotate Right Speed (%)	0	100	1	1	32	30
2.3.9	73	Tele In Speed (%)	0	100	1	100		100
2.3.10	74	Tele Out Speed (%)	0	100	1	100		100
2.3.11	75	Slew Left Speed (%)	0	100	1	32		26
2.3.12	76	Slew Right Speed (%)	0	100	1	32		26
2.3.13	98	Cage Rotate Left Speed (%)	0	100	1	32		20
2.3.14	99	Cage Rotate Right Speed (%)	0	100	1	32		20
2.3.15	96	Cage Level Forward Speed (%)	0	100	1	70		67
2.3.16	97	Cage Level Reverse Speed (%)	0	100	1	35		30
2.3.17	14	Y-Axis Forward Voltage (V)	0.00	5.00	0.02	4.06		4.48
2.3.18	15	Y-Axis Reverse Voltage (V)	0.00	5.00	0.02	0.52		0.52
2.3.19	50	X-Axis Left Voltage (V)	0.00	5.00	0.02	0.52		4.48
2.3.20	51	X-Axis Right Voltage (V)	0.00	5.00	0.02	4.06		0.52

80-8-11-M.84

Calibrator Reference	CAN Name	Description	Minimum Value	Maximum Value	Step	Actual Value
2.5.1	77	Boom 1 Up Speed (%)	0	100	1	100
2.5.2	78	Boom 1 Down Speed (%)	0	100	1	90
2.5.3	58	Boom 1 Cutback Speed (%)	0	100	1	100
2.5.4	79	Boom 2 Up Speed (%)	0	100	1	100
2.5.5	80	Boom 2 Down Speed (%)	0	100	1	70
2.5.6	59	Boom 2 Cutback Speed (%)	0	100	1	25
2.5.7	81	Jib Up Speed (%)	0	100	1	90
2.5.8	82	Jib Down Speed (%)	0	100	1	75
2.5.9	83	Tele In Speed (%)	0	100	1	100
2.5.10	84	Tele Out Speed (%)	0	100	1	100
2.5.11	85	Slew Left Speed (%)	0	100	1	60
2.5.12	86	Slew Right Speed (%)	0	100	1	60
2.5.13	87	Cage Level Forward Speed (%)	0	100	1	50
2.5.14	88	Cage Level Reverse Speed (%)	0	100	1	60
2.5.15	89	Cage Rotate Left Speed (%)	0	100	1	50
2.5.16	90	Cage Rotate Right Speed (%)	0	100	1	50
2.5.17	60	Overload Cutback Speed (%)	0	100	1	50

CLICK HERE TO **DOWNLOAD** THE COMPLETE MANUAL

- Thank you very much for reading the preview of the manual.
- You can download the complete manual from: www.heydownloads.com by clicking the link below



- Please note: If there is no response to CLICKING the link, please download this PDF first and then click on it.

CLICK HERE TO **DOWNLOAD** THE COMPLETE MANUAL