

E1 HYDRAULIC SYSTEMS

E2 REAR LIFT

E3 SPOOL VALVES

E4 STEERING

Technical support

Arion 630-610 C

Chapter E – Diagnostics

00 1137 920 0 – 10.2008 publication

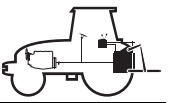
CLICK HERE TO **DOWNLOAD** THE COMPLETE MANUAL

- Thank you very much for reading the preview of the manual.
- You can download the complete manual from: www.heydownloads.com by clicking the link below



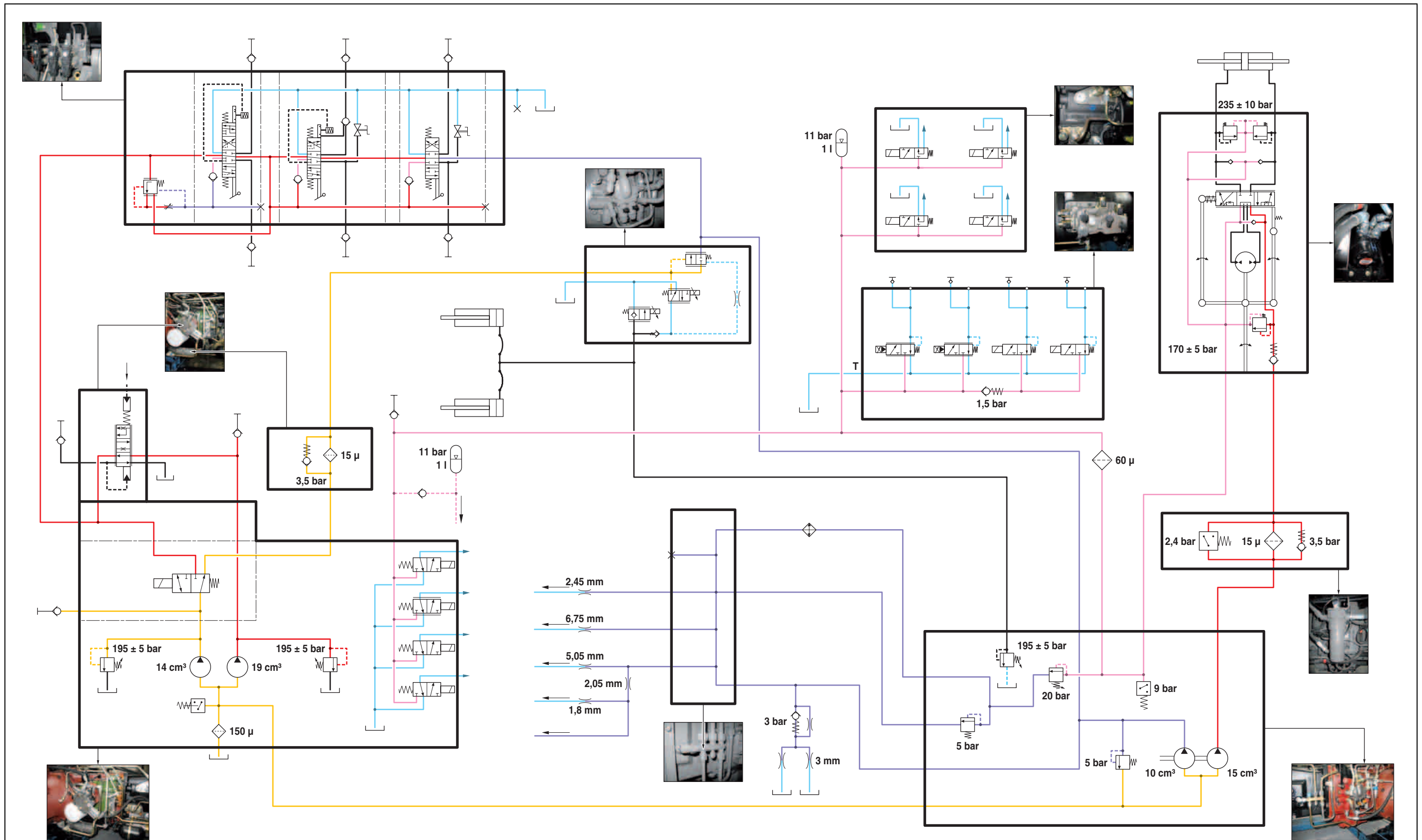
- Please note: If there is no response to CLICKING the link, please download this PDF first and then click on it.

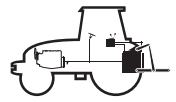
CLICK HERE TO **DOWNLOAD** THE COMPLETE MANUAL



Hydraulic diagram

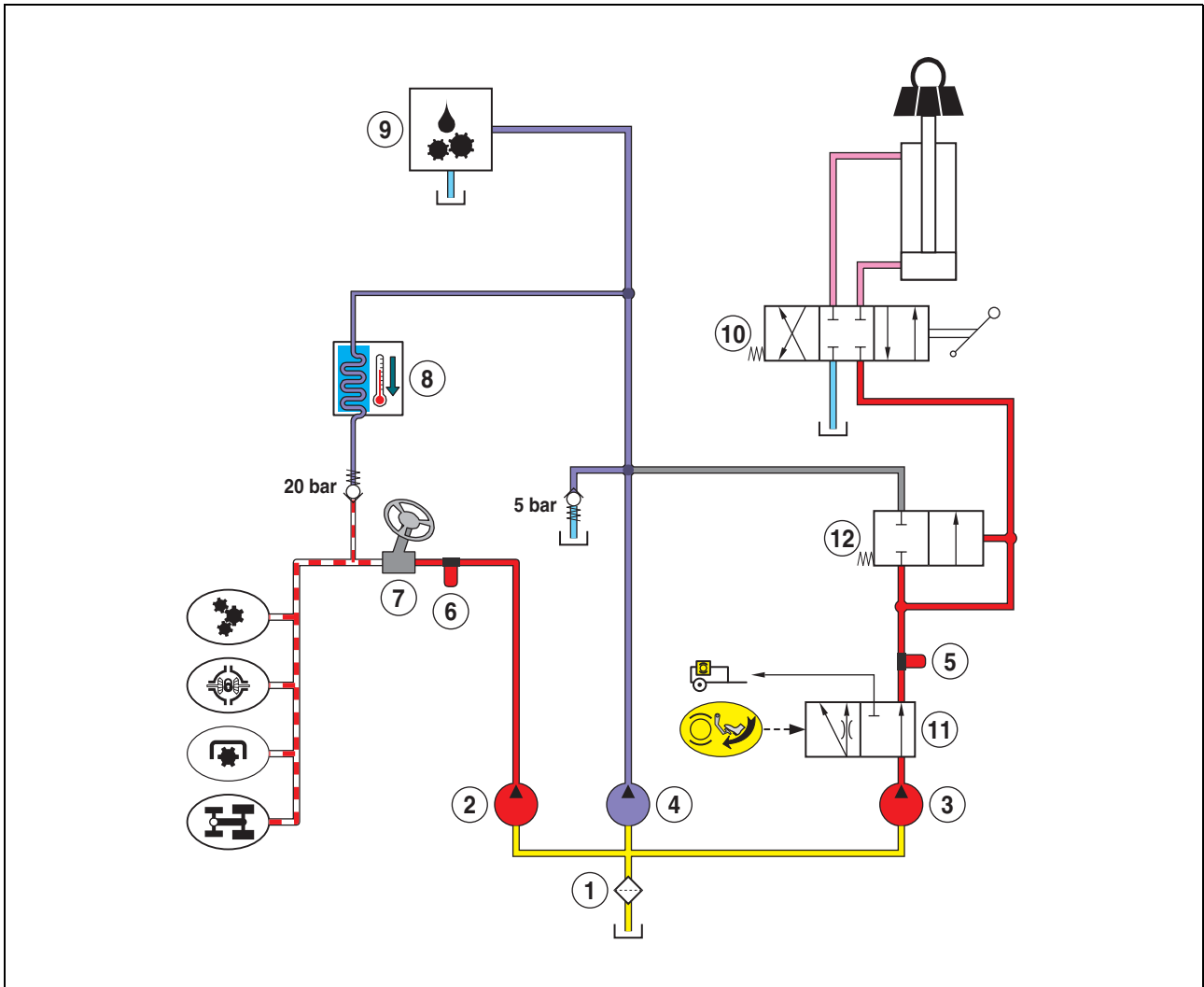
Localization of the components on the 98 L/min circuit





Hydraulics 60 l/min

Operation



394msm0s

Fig. 5

Description

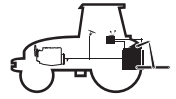
- | | |
|----------------------------|-----------------------------|
| 1 150 micron filter. | 7 Steering unit. |
| 2 15 cm ³ pump. | 8 Oil cooler. |
| 3 19 cm ³ pump. | 9 Transmission lubrication. |
| 4 10 cm ³ pump. | 10 Spool valve unit. |
| 5 15 micron filter. | 11 Trailer brake valve. |
| 6 15 micron filter. | 12 Pressure balance. |

This 60 l/min centre open circuit is characterised by 3 hydraulic pumps.

A 19 cm³ pump supplies the braking valve followed by the auxiliary and linkage spool valves.

A 15 cm³ pump supplies first the steering unit, then the 20 bar services.

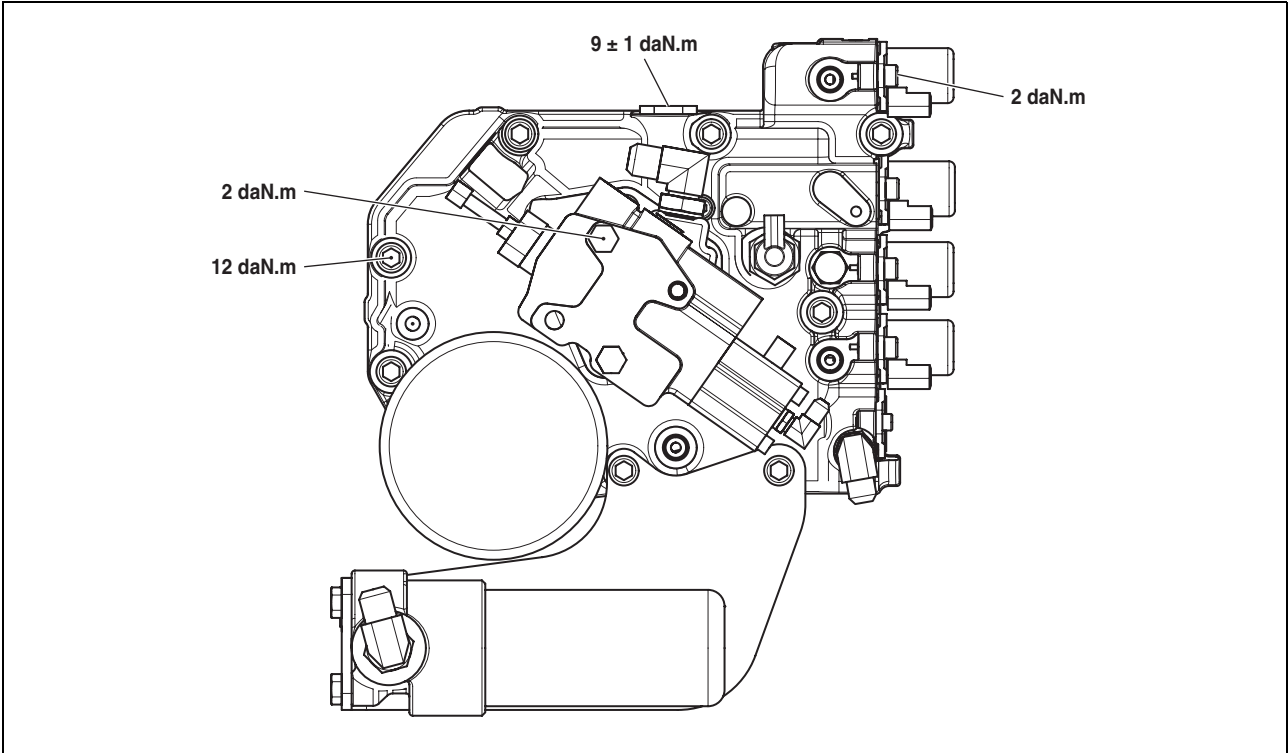
A 10 cm³ pump that continually lubricates the different transmission components.



Hydraulics 60 l/min

Torque settings

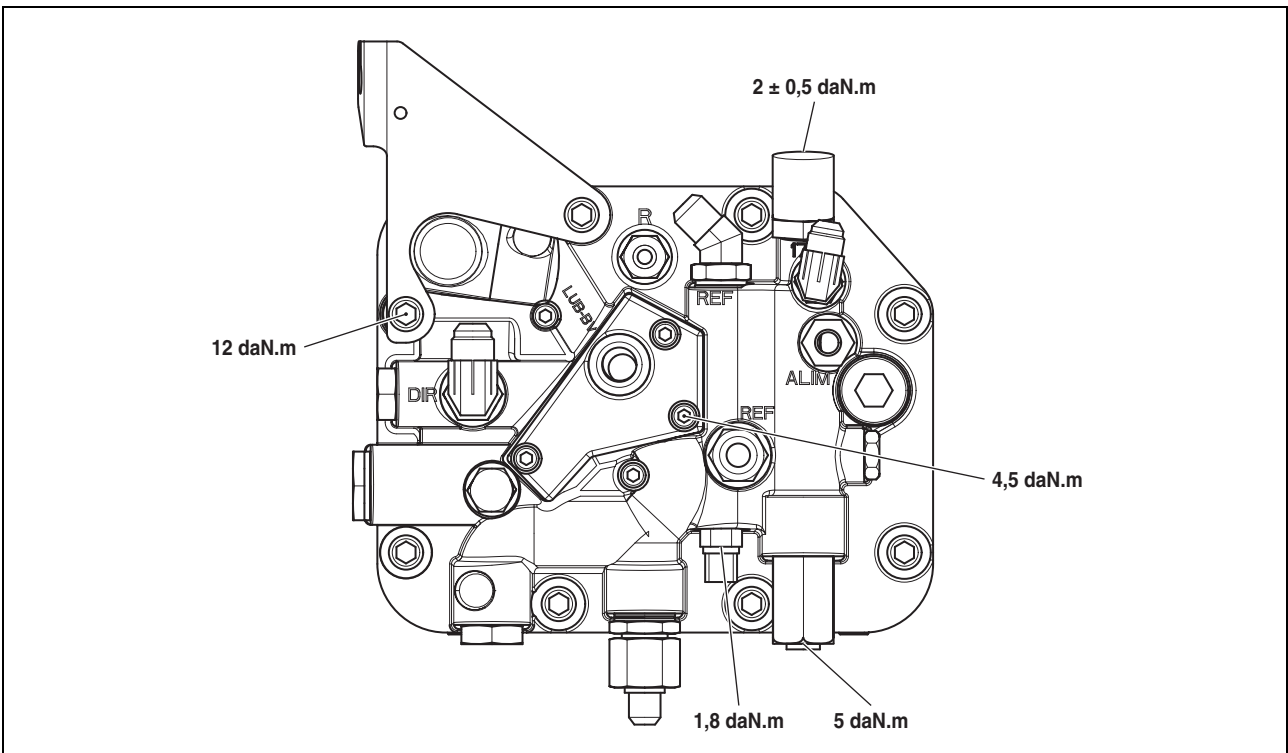
RH cover



394msm0b

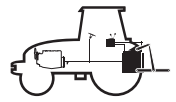
Fig. 16

LH cover

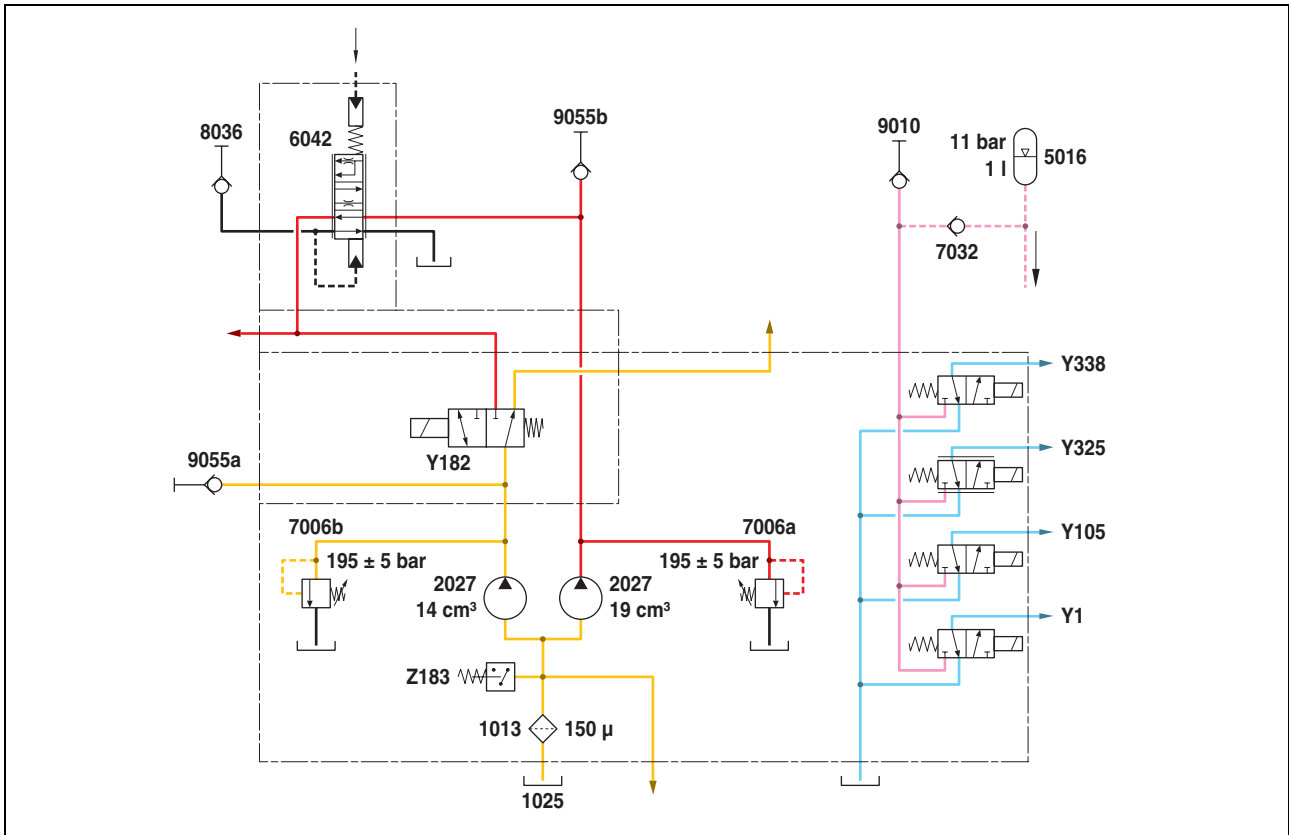


394msm0c

Fig. 17



Hydraulics 98 l/min



394msm0x

Fig. 25

Description

1013 Suction strainer, 150 µ.

1025 OIL SUMP.

1027 15 micron high pressure filter.

2027 14 cm³ and 19 cm³ pumps.

5016 Operating brake accumulator.

6042 Brake valve.

7006a 195 bar pressure restrictor of the 19 cm³ pump.

7006b 195 bar pressure restrictor of the 14 cm³ pump.

7032 Circuit breaker valve of the conjunctor/breaker.

8036 Trailer hydraulic brake coupling.

9010 Piloting pressure tap.

9055a High pressure connector (14 cm³ pump).

9055b High pressure connector (19 cm³ pump or 14 cm³ and 19 cm³ coupled pumps).

Y1 4-wheel drive solenoid valve.

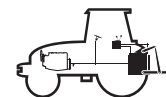
Y105 Differential lock solenoid valve.

Y182 Solenoid valve for coupling the hydraulic pumps.

Y325 Rear power take-off solenoid.

Y338 Power take off brake solenoid valve.

Z183 Suction circuit pressure switch.



Hydraulics 98 l/min

This sheet may be copied and should be completed for each operation on the tractor. If it has to be returned to the manufacturer's after sales department; the following must be included :

Tractor type :

The serial number :

Total operating hours :

Date of operation :

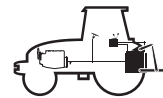
Note : These values are given as an indication only.

Checking the control pressure

Test conditions Oil temperature at 60°C	Pressure on the "9010" plug	Measured value
	(bar)	
Engine at 2 300 rpm	21	

Checking the accumulator rating pressure

Test conditions Oil temperature at 60°C	Pressure (bar)	Measured value (bar)
Tester connected to the nitrogen chamber of the accumulator	11	



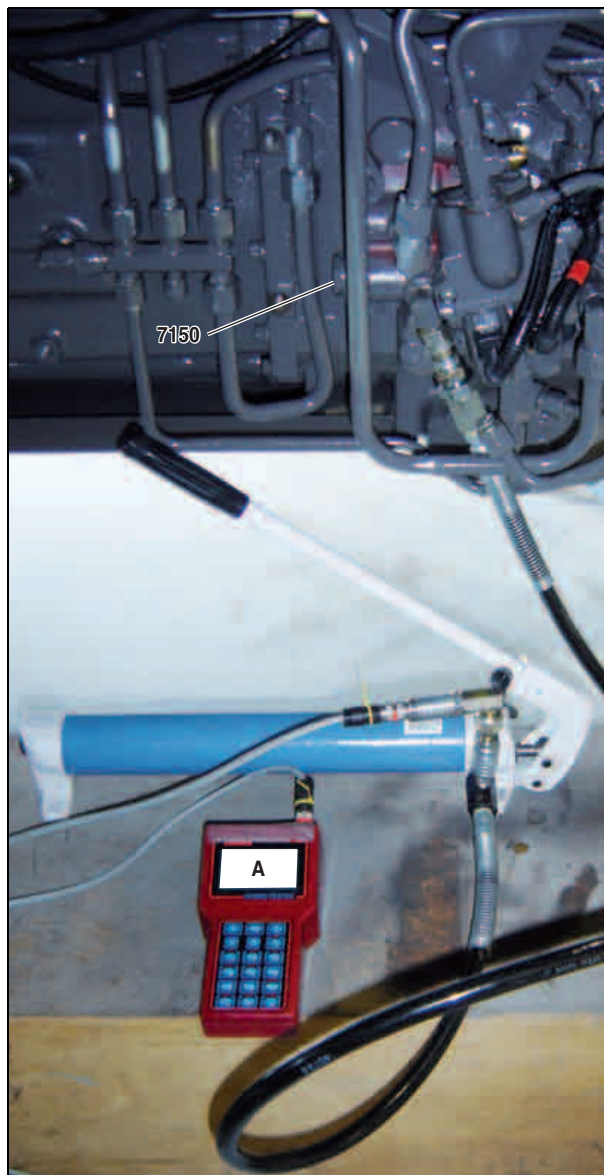
60 and 98 l/min rear lifting

Checking the opening pressure of the rear lifting “7150” shock valve

Test conditions:

- With the engine stopped.
- Connect a manual rating pump as shown in the picture.
- Apply pressure using the calibration pump and note the opening pressure.

The opening pressure (A) is 190 ± 2 bars.



326msm2z

Fig. 10

Distributor on 60 and 98 l/min

Torque settings



394msm0h

Fig. 4

Measurements and checks (60 l/min)

Auxiliary spool valve supply pressure check (19 cm³ pump)

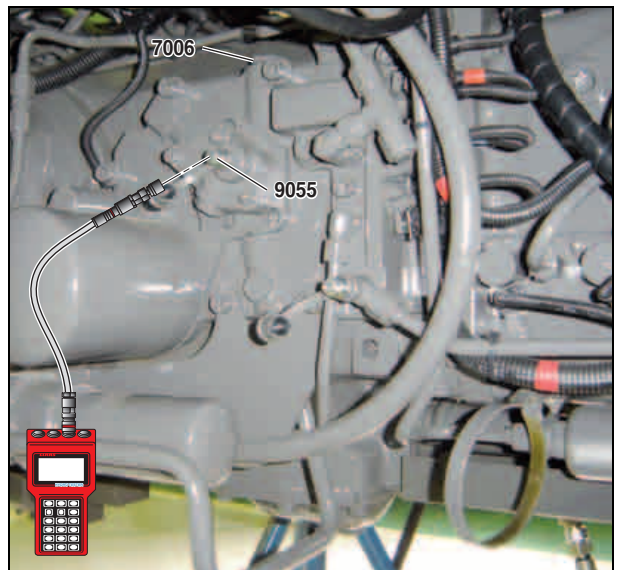
Test conditions:

- Engine running at 2 300 rpm.
- Oil temperature at 60°C.

- Connect test set n° 00 0178 310 0 to the pressure outlet "9055".

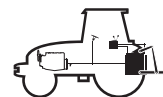
In neutral (no actuation), pressure is 17 bars.

When operating the spool valve, the pressure must be approximately 190 bar.



326msm3a

Fig. 5



E4 STEERING

CLICK HERE TO **DOWNLOAD** THE COMPLETE MANUAL

- Thank you very much for reading the preview of the manual.
- You can download the complete manual from: www.heydownloads.com by clicking the link below



- Please note: If there is no response to CLICKING the link, please download this PDF first and then click on it.

CLICK HERE TO **DOWNLOAD** THE COMPLETE MANUAL