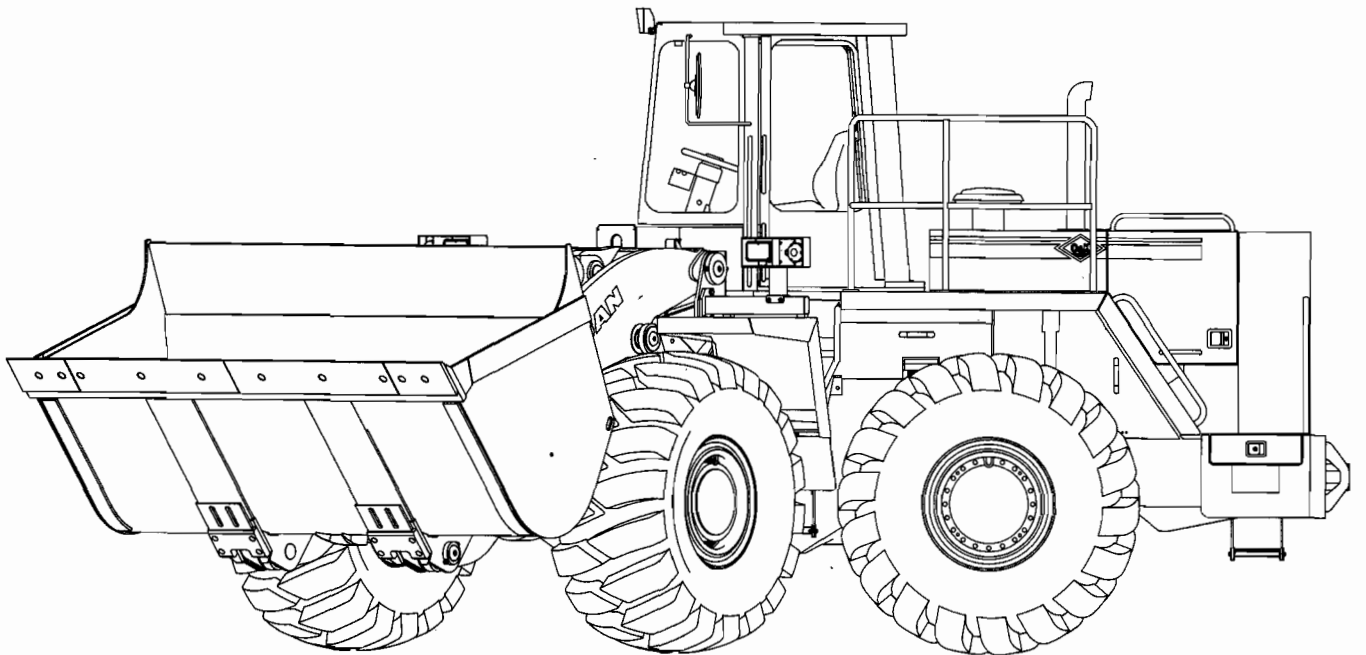




PARTS MANUAL AND OPERATING INSTRUCTIONS

MODEL 1900

Manual No. TB067



CLICK HERE TO **DOWNLOAD** THE COMPLETE MANUAL

- Thank you very much for reading the preview of the manual.
- You can download the complete manual from: www.heydownloads.com by clicking the link below



- Please note: If there is no response to CLICKING the link, please download this PDF first and then click on it.

CLICK HERE TO **DOWNLOAD** THE COMPLETE MANUAL

LIFT ARM CONTROL LEVER (16 Fig. 3)

1. Location: The lift arm control lever is the outer lever located to the right of the operator.
2. Purpose: The lift arm control lever has four positions. To raise the bucket, pull the lever back to the lift position. To hold the bucket at any height, move the lever forward one position to HOLD. To lower the bucket quickly and positively, move the lever forward one position to the DOWN position. Move the lever all the way forward to the FLOAT position to lower the bucket slowly, cushioned by hydraulic pressure, or to allow the bucket to move freely following the grade contour while back-grading.

OPTIONAL AIR SHIFT — REVERSE TO FORWARD

Shifting from reverse to forward can be accomplished easily by means of a special button built into the top of the lift arm control lever, second lever to the operators right. Depress button with thumb of right hand to operate.

Completing unloading the contents of the bucket, the operators left hand is positioned on the steering wheel spinner with his right hand controlling the movement of the lift arm and bucket linkage. The operator will then back his machine away from the unloading location, lowering the lift arms as he travels backwards.

Reaching a suitable location from which he can proceed forward, the operator need not remove his left hand from the steering wheel to shift from reverse to forward. The service brakes should be applied with the operator's left foot, bringing the machine to a stop. Depress the shifting button on top of the lift arm control lever with thumb of right hand.

Depressing the shifting button actuates an air solenoid mounted on the transmission control linkage bracket. A plunger inside the air cylinder moves against a lug mounted on the transmission linkage bellcrank causing the FNR lever and spool in the transmission control valve to move to the forward position.

CAUTION: Under no circumstances should the shifting button be operated while transporting a load from one location to another, while the machine is in motion or around ground crews.

OPTIONAL ETHER START KIT CONTROL (17 Fig. 3)

1. Location: The optional ether start kit control is positioned to the right of the operator's seat on the valve controls console.

2. Purpose: The ether start kit supplies a charge of ether to the intake manifold for starting in cold weather. To use kit, pull the control once, then immediately engage the starting motor. Refer to start-up procedure in cold weather (+40° F. and below).

ENGINE EMERGENCY STOP CONTROL (18 Fig. 3) (GM Diesel Only)

1. Location: The engine emergency stop control is located to the right of the operator's seat on the valve controls console.
2. Purpose: The engine emergency stop control is to be used only when normal engine stopping procedures fail. Pull the control to cut off all air flow to the engine and stop it immediately. When the engine is stopped by this method, it must not be restarted until the cause of trouble is repaired. (REFER TO MACHINE SHUT-DOWN PROCEDURES).

ENGINE SHUT-DOWN CONTROL (19 Fig. 3) (G.M. Diesel Only)

1. Location: The engine shut-down control is located to the right of the operator's seat on the extreme left of the valve controls console.
2. Purpose: Pull the engine shut-down control to shut-off the flow of fuel to the engine, stopping the engine. Hold until engine stops, then return to original position. Turn ignition switch to "Off Position." Refer to shut-down procedure.

SEAT ADJUSTMENT CONTROL (20 Fig. 3)

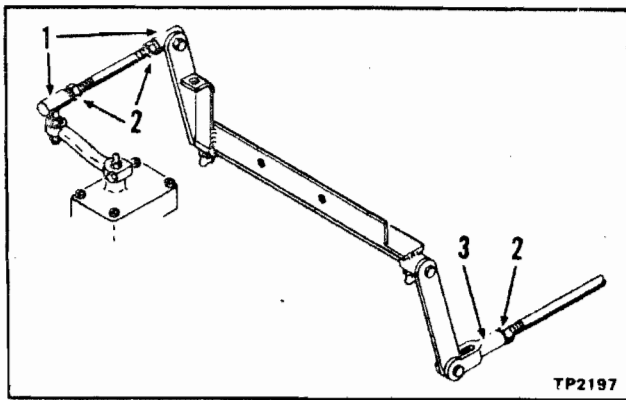
1. Location: The control lever is located on the seat base, to the left of the operator.
2. Purpose: Pull the lever upwards to release the catch; this permits the operator to tilt the seat backward or forward.

PARKING BRAKE LEVER (21 Fig. 3)

1. Location: The parking brake lever is located immediately to the left of the operator's seat.
2. Purpose: Pull the lever up to set the parking brake. Release the parking brake by moving the lever down before putting the machine in motion to prevent damage to drum and lining.

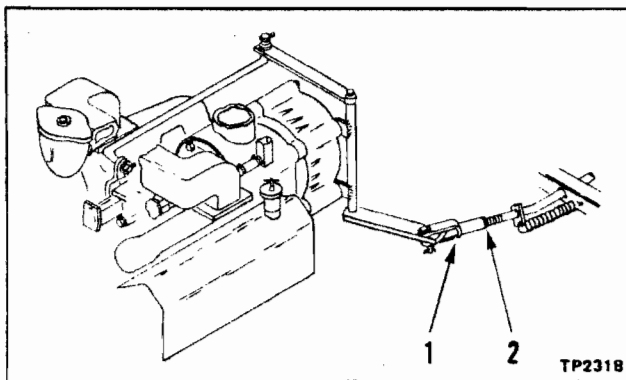
SEAT ADJUSTMENT CONTROL (22 Fig. 3)

1. Location: The seat adjustment control is located on the seat base, to the right and in front of the operator.
2. Purpose: Pull the seat adjustment control to the right to release the catch; this permits the operator to slide the seat backward or forward.



1. Balljoint 2. Nut 3. Clevis

Fig. 7. Accelerator Rod Adjustment (General Motors)



1. Clevis 2. Nut

Fig. 8. Accelerator Rod Adjustment (Cummins)

ENGINE DRIVE BELTS

Each 250 hours of operation, all engine drive belts should be checked for proper tension. Approximately $\frac{3}{4}$ " deflection is allowed under normal conditions. Check belts for wear and cracking. Replace if necessary.

LIGHTS

The front head lights may be adjusted to position the lights to fit a particular job application. Loosen the mounting nut and focus the light beam either up or down. Tighten mounting nut.

The head lamps and rear work lamps are easily removed from the outside of the machine for replacement. Press rubber cover from inside to outside. Lift out lamp and replace. The tail and stop lamps are included in a single, double-filament bulb. For bulb replacement, press rubber cover from inside out. Remove bulb and replace.

MAIN HYDRAULIC CONTROL VALVE ADJUSTMENTS

(For Machines Having Serial Number thru 19-1207)

The main hydraulic control valve incorporates two relief valves. The main relief valve can be adjusted manually. The bucket circuit relief valve is pre-set and non-adjustable.

Refer to Fig. 9 for individual relief valve locations. The valve illustration is viewed positioning the person who will be adjusting the valve between the valve and the control cables facing the front of the machine.

The main relief valve is located to the right of the bucket control spool. The bucket circuit relief valve is located above the bucket control spool. The pressure gauge port is located on the bottom of the main valve housing to the left of the serial number plate.

NOTE: All control valve pressures should be set when the temperature of the hydraulic oil is at operating temperature. Pressures taken with cold oil will drop when the oil reaches operating temperature.

Place the machine on level terrain. Raise the lift arms and place the bucket in tip-back position to relieve system pressure. Apply the parking brake and place the directional control lever in "N" neutral position. Have a helper block the lift arms in the interest of safety. Shut the engine down.

Slowly loosen the fill cap on the main hydraulic tank to release all pressure from the system. Remove the cap from the gauge fitting. Connect a 0-3000 PSI pressure gauge to the fitting. Re-tighten fill cap.

Remove the acorn nut, washer and loosen the jam nut on the main relief valve.

Start the engine. Have a helper remove the lift arm blocking. When the area is clear, run the engine at maximum speed. Push the hoist control lever forward into DOWN position, forcing the lift arms

POWER CLUSTER

Check level of brake fluid in each power cluster every 50 hours of operation. If necessary, add brake fluid to within 1/2 to 3/8 inch. Change fluid if it is materially darker in color than new fluid, if it is watery in consistency, if it is comparatively odorless, or if it fails to provide a thin lubricating film when rubbed between fingers. Use a super heavy brake fluid, SAE 70 R-3.

CAUTION: Never add mineral base oils to the brake hydraulic system. This will cause rapid deterioration of rubber parts in the system.

PROPELLER SHAFTS

There are three propeller shafts, located as follows: from torque converter to transmission, from transmission to rear axle, and from transmission to forward drive shaft. Each shaft has 3 points of lubrication, one on each spider and bearing assembly and one on the slip yoke assembly (total 9 points).

USE A HAND GUN AND APPLY MULTI-PURPOSE GREASE SPARINGLY.

FORWARD DRIVE SHAFT

The forward drive shaft and support assembly is located between the center propeller shaft and the front axle. There are two points of lubrication, one at the spider and bearing assembly and one at the roller bearing support.

USE A HAND GUN AND APPLY MULTI-PURPOSE GREASE SPARINGLY.

SERVICE EACH 200 HOURS OF OPERATION

AIR CLEANER

(See Filter Section).

SERVICE EACH 250 HOURS OF OPERATION

TRANSMISSION HYDRAULIC FILTER

Change the transmission oil filter each 250 hours of operation. (See Filter Section).

SERVICE EACH 500 HOURS OF OPERATION

MAIN HYDRAULIC SYSTEM FILTER

(See Filter Section).

TRANSMISSION HYDRAULIC SYSTEM

The transmission hydraulic system oil must be changed each 500 hours.

Draining is best accomplished immediately after the machine has been operated. The oil temperature should be between 180° and 200° F.

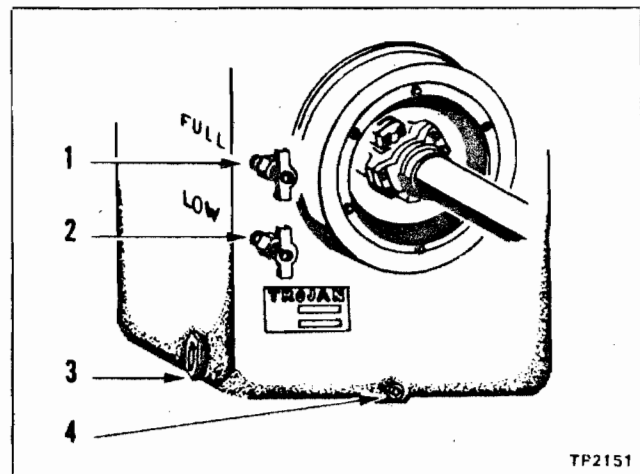
Remove and drain transmission filter. Replace using new element and gasket. Torque center bolt to 30 lbs. ft. torque. See Parts Listing for element part number.

Provide a suitable container and drain transmission sump. Remove sump screen. Clean thoroughly and replace using a new gasket.

Remove fill plug on converter and fill the transmission to the top drain valve. Start and run engine at idle speed with the transmission in the neutral range to charge the transmission clutches and torque converter. When the transmission oil temperature reaches 180° F., re-check oil level at the bottom drain valve. Add new make-up oil as necessary to bring level to full mark. (See Fig. 20).

Use Type "A" Suffix "A" AUTOMATIC Transmission Fluid or Dexron.

Close drain valve, install fill plug and operate.



- | | |
|-------------------------|----------------|
| 1. Drain Valve "Top" | 3. Sump Screen |
| 2. Drain Valve "Bottom" | 4. Drain Plug |

Fig. 20. Transmission Assembly

SERVICE EACH 1000 HOURS OF OPERATION

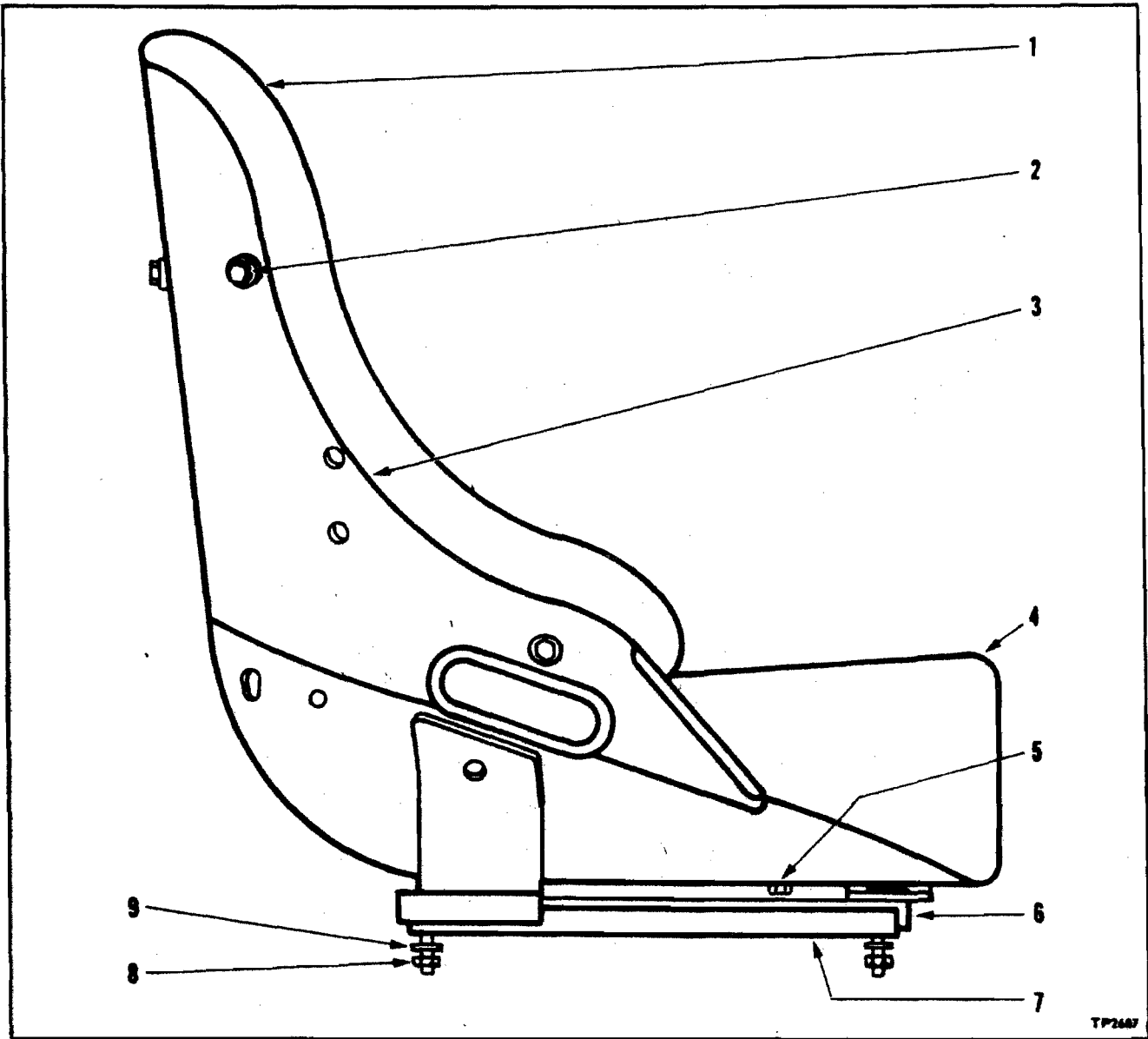
AXLES

Drain lubricant in each spiral and bevel differential (2 points) and planetary hubs (4 points) each 1000-hours.

Draining is best accomplished immediately after machine has been operated. The lubricant is then warm and will flow freely, allowing full drainage in minimum time. To drain differential, unscrew plug at bottom of housing bowl. To fill, reinstall bottom plug, remove rear filler plug, and fill until lubricant seeps out opening. Reinstall plug. To drain planetary hubs, rotate wheel until drain hole plug is at the bottom of axle.

Remove plug and allow ample time for the old oil to run out; reinstall plug. To fill, rotate wheel until embossed arrow on end cap is pointing up. Remove level plug and fill until lubricant seeps out opening. Reinstall plug. **DO NOT OVERFILL — SEE LUBE CHART FOR LEVEL PLUGS.**

UNDER NO CONDITIONS SHOULD MACHINE BE MOVED WITH NO LUBRICANT IN AXLES.



TP2687

SEAT ASSEMBLY

For Machines Having Serial Number 19-1179 & Higher

| Item | Part No. | Description | No. Req'd. |
|------|----------|--|------------|
| A | 2090196 | Seat Assy. (Incl. Items 1 thru 9) | 1 |
| 1 | 6952844 | Backrest Assy. | 1 |
| 2 | 2031472 | Cap screw | 7 |
| 2A | 2032960 | Washer | 7 |
| 3 | 6953707 | Shell Assy. | 1 |
| 4 | 6952845 | Cushion, Seat | 1 |
| 5 | 6953250 | Cap screw | 4 |
| 6 | 6953234 | Adjuster | 1 |
| 7 | 6953708 | Adjuster | 1 |
| 8 | 2031616 | Nut | 6 |
| 9 | 2031390 | Washer, Lock | 6 |

FRONT WINDSHIELD WIPER KIT

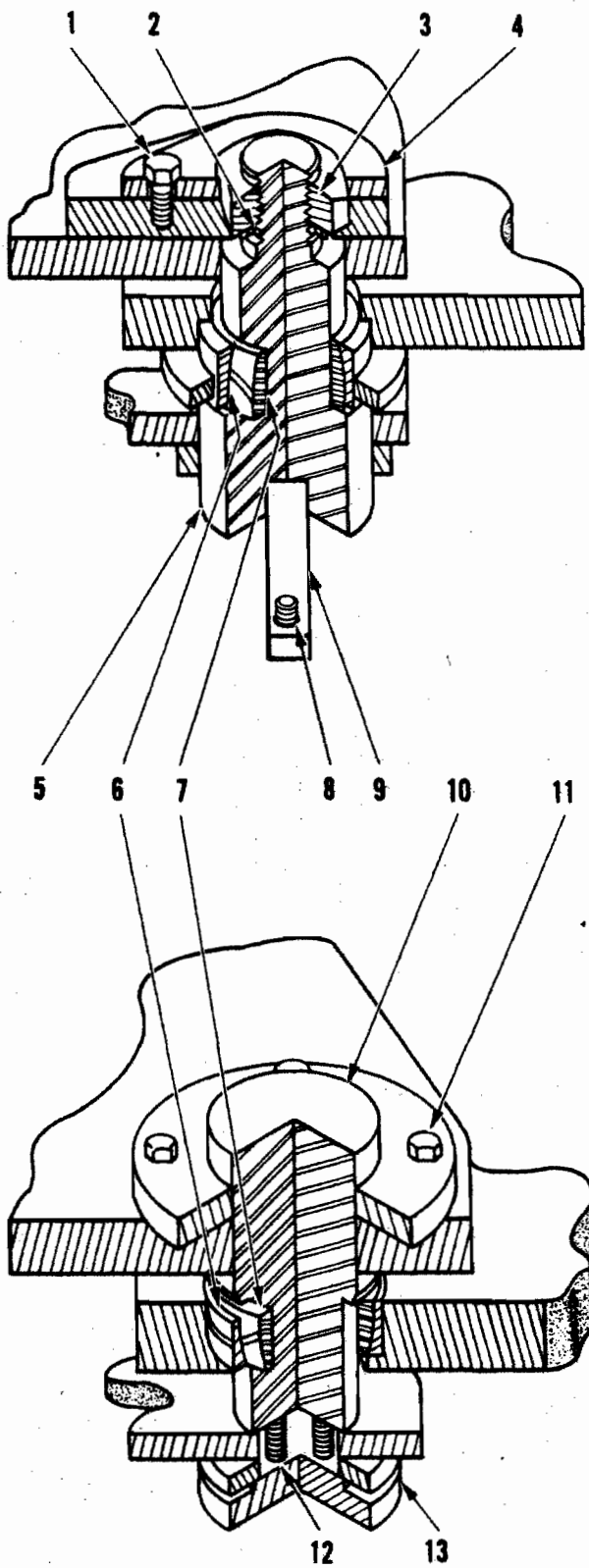
(ROPS)

| Item | Part No. | Description | No. Req'd. |
|------|----------|--|------------|
| 1 | 2089420 | Blade | 1 |
| 2 | 6952971 | Bolt | 1 |
| 2A | 6952972 | Nut | 1 |
| 3 | 2089419 | Arm, Wiper | 1 |
| 4 | 2030747 | Bolt | 2 |
| 4A | 2031389 | Washer, Lock | 2 |
| 5 | 6952962 | Nut | 1 |
| 5A | 2049429 | Washer | 1 |
| 6 | 6850709 | Nut | 1 |
| 6A | 6850708 | Washer (N.I.) | 1 |
| 7 | 6850707 | Driver | 1 |
| 8 | 6850706 | Cap, Rubber | 1 |
| 9 | 6850705 | Nut | 1 |
| 10 | 6850704 | Washer, Steel | 1 |
| 11 | 6850703 | Washer, Fiber | 1 |
| 12 | 2093617 | Spacer | 1 |
| 13 | 2080151 | Kit, Adapter (Incl. Items 5, 5A & 14) | 1 |
| 14 | 6952973 | Gasket | 1 |
| 15 | 2049952 | Wire | 1 |
| 16 | ---- | Switch, Ignition (See Pages 60 & 61) | |
| 17 | 2068352 | Connector | 1 |
| 18 | 2094352 | Wire | 1 |
| 19 | 2094254 | Switch, Wiper | 1 |
| 20 | 2050135 | Grommet | 1 |
| 21 | 2092478 | Motor, Wiper (Incl. Items 6 thru 11) | 1 |
| 22 | 2092474 | Pad, Mount | 1 |

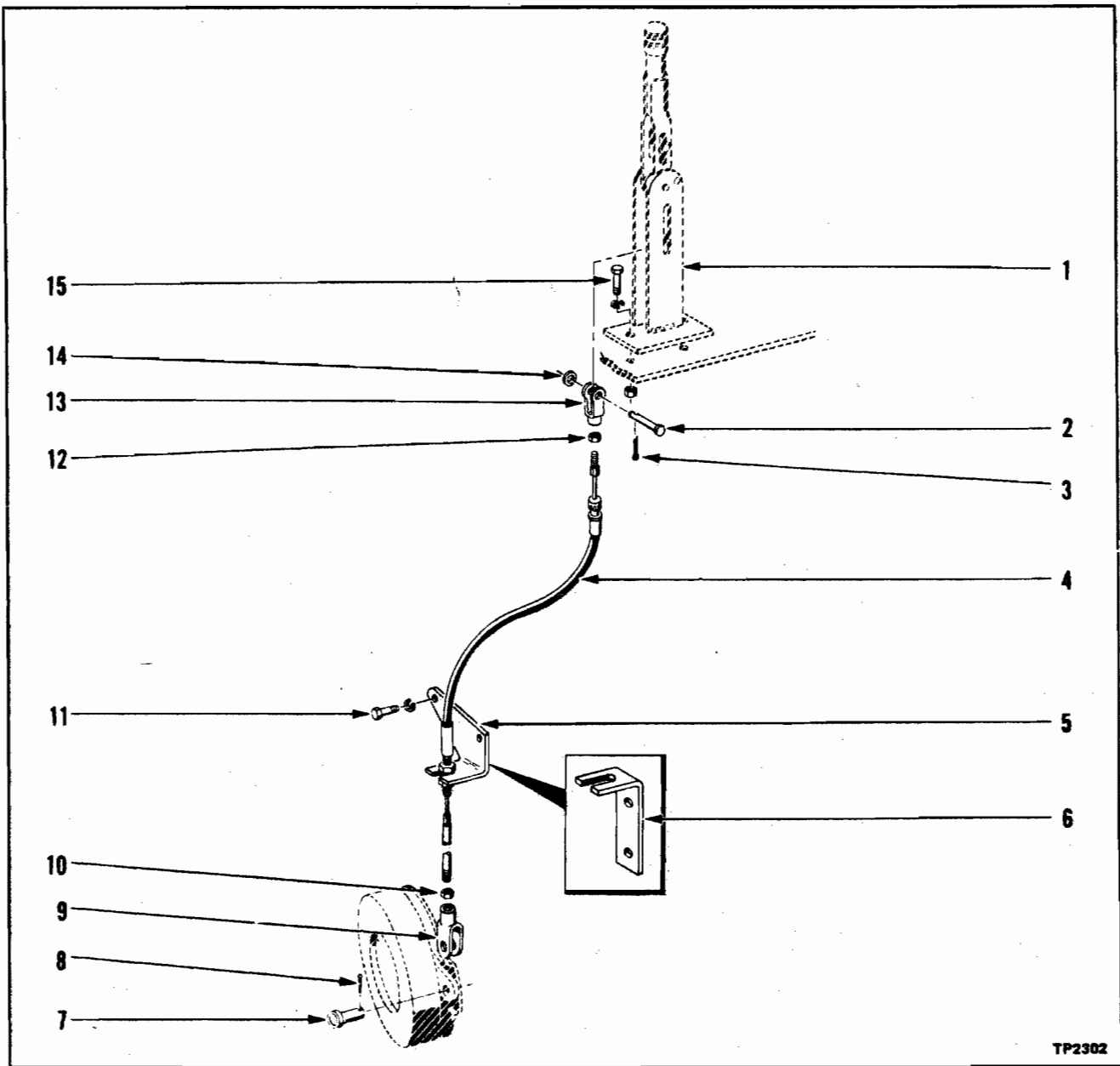
(N.I.) Not Illustrated

THINK
Stop machine to lubricate or adjust.

WHEN ORDERING PARTS ALWAYS FURNISH SERIAL NUMBER OF MACHINE



TP2345



TP2302

PARKING BRAKE AND LINKAGE

(For Machines Having Serial Number thru 19-1165.)

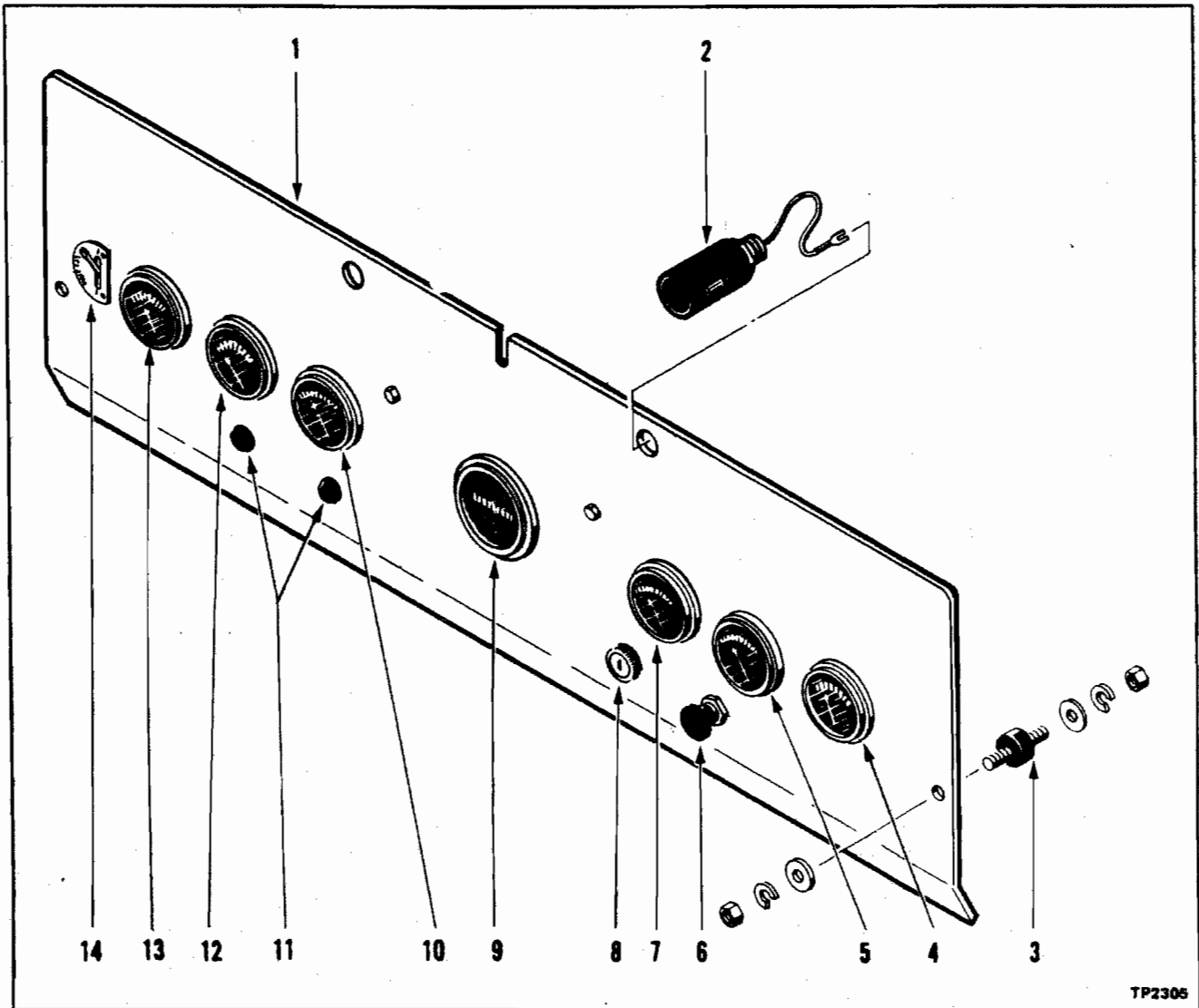
| Item | Part No. | Description | No. Req'd. | Item | Part No. | Description | No. Req'd. |
|------|----------|---|------------|------|----------|-------------------------|------------|
| 1 | ----- | Lever Assy., Parking Brake (See Page 53) | | 8 | 2031764 | Pin, Cotter | 1 |
| 2 | ----- | Pin, Clevis (Furn. W/Item 1) | 1 | 9 | 2031676 | Clevis | 1 |
| 3 | ----- | Pin, Cotter (Furn. W/Item 1) | 1 | 10 | 2033515 | Nut, Jam | 1 |
| 4 | 2078325 | Cable Assy., Parking Brake | 1 | | | Bolt | 2 |
| * 5 | ----- | Bracket, Cable Mount (See Note) | 1 | *11A | 2031391 | Washer, Lock | 2 |
| † 6 | 2081458 | Bracket, Cable Mount | 1 | 12 | 2033514 | Nut, Jam | 1 |
| † 6A | 2031577 | Bolt, Bracket to Transmission (N.I.) | 2 | 13 | 2031675 | Clevis | 1 |
| 7 | 2031662 | Pin, Clevis | 1 | 14 | ----- | Washer (Furn. W/Item 1) | 1 |
| | | | | 15 | 2031475 | Bolt | 2 |
| | | | | 15A | 2031391 | Washer, Lock | 2 |
| | | | | 15B | 2031617 | Nut | 2 |

*For Machines Having Serial Number Thru 19-1037.

†For Machines Having Serial Number 19-1038 & Higher.

NOTE: When replacing Item *5 service with new bracket and mounting bolts, Item †6 and †6A.

(N.I.) Not Illustrated



TP2305

INSTRUMENT PANEL

(For Machines Having Serial Number thru 19-1159)

| Item | Part No. | Description | No. Req'd. | Item | Part No. | Description | No. Req'd. |
|------|----------|--|------------|------|----------|---|------------|
| 1 | 2078314 | Panel, Instrument | 1 | 9 | 2062888 | Hourmeter | 1 |
| 2 | 2048705 | Lamp, Dash (Incl. Item 2A) | 2 | 10 | 2080408 | Ammeter (Super P/N 2078413) | 1 |
| 2A | 6950502 | Bulb | 2 | 11 | 2031413 | Button, Plug | 2 |
| 3 | 2048525 | Mount, Shock | 3 | 12 | 2078408 | Gauge, Engine Temperature | 1 |
| 3A | 2031390 | Washer, Lock | 6 | 13 | 2078411 | Gauge, Engine Oil Pressure | 1 |
| 3B | 2031616 | Nut | 6 | 14 | --- | Switch, Clutch Disconnect (See Page 129) | 1 |
| 4 | 2078412 | Gauge, Torque Converter Temperature | 1 | *15 | 2080841 | Light, Hydraulic Filter (N.I.) | 1 |
| 5 | 2078410 | Gauge, Clutch Pressure | 1 | *15A | 2080768 | Bulb (N.I.) | 1 |
| 6 | 2078634 | Switch, Light | 1 | *16 | 2033844 | Elbow, 45° (N.I.) | 1 |
| 7 | 2078409 | Gauge, Air Pressure | 1 | | | | |
| 8 | 2062644 | Switch, Ignition | 1 | | | | |

(N.I.) Not Illustrated

* For Machines Having Serial Number 19-1112 thru 19-1159.

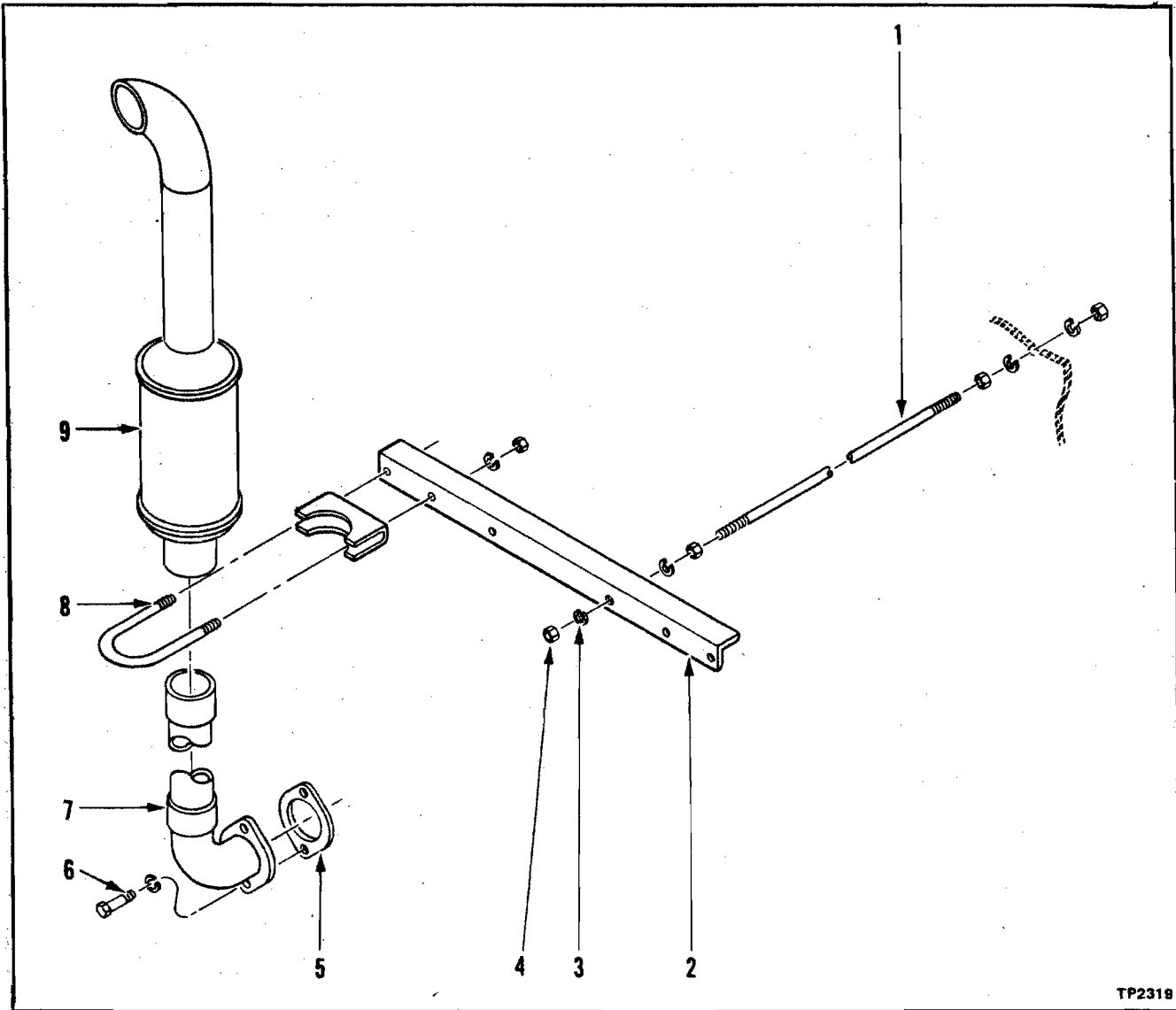
CLICK HERE TO **DOWNLOAD** THE COMPLETE MANUAL

- Thank you very much for reading the preview of the manual.
- You can download the complete manual from: www.heydownloads.com by clicking the link below



- Please note: If there is no response to CLICKING the link, please download this PDF first and then click on it.

CLICK HERE TO **DOWNLOAD** THE COMPLETE MANUAL



TP2319

EXHAUST SYSTEM (CD)

| Item | Part No. | Description | No. Req'd. |
|------|----------|------------------|------------|
| 1 | 2005016 | Rod | 2 |
| 2 | 2077643 | Support, Exhaust | 1 |
| 3 | 2031393 | Washer, Lock | 8 |
| 4 | 2031619 | Nut | 8 |
| 5 | 6952922 | Gasket | 2 |
| 6 | 2031477 | Bolt | 4 |
| 6A | 2031391 | Washer, Lock | 4 |
| 6B | 2031617 | Nut (N.I.) | 4 |
| 7 | 2078534 | Exhaust Assy. | 2 |
| 8 | 2034031 | Clamp, Muffler | 2 |
| 9 | 2078565 | Muffler Assy. | 2 |

(N.I.) Not Illustrated

MAIN CONTROL VALVE

(2 Spool)

(For Machines Having Serial Number 19-1208 thru 19-1285)

| Item | Part No. | Description | No. Req'd. | Item | Part No. | Description | No. Req'd. |
|------|----------|--|------------|------|----------|--|------------|
| A | ---- | Valve Assy., Main Control (Incl. Items 1 thru 50) (See Note) | 1 | 29 | 6752023 | Cap | 2 |
| 1 | 6752004 | Ball | 1 | 30 | 6751997 | Bolt | 4 |
| 2 | 6752003 | Guide | 1 | 31 | 6752022 | Extension, Spool (Hoist Spool) | 1 |
| 3 | 6752002 | Spring | 1 | 31 | 6752033 | Extension, Spool (Bucket Spool) (N.I.) | 1 |
| 4 | 6751740 | "O" Ring | 1 | 32 | 6752227 | Retainer, Spring (Hoist Spool) | 1 |
| 5 | 6751739 | Plug | 1 | 32 | 6752030 | Retainer, Spring (Bucket Spool) (N.I.) | 1 |
| 6 | 6752006 | Cap | 1 | 33 | 6752029 | Spring, Centering (Hoist Spool) | 1 |
| 7 | 6751740 | "O" Ring | 1 | 33 | 6752035 | Spring, Centering (Bucket Spool) (N.I.) | 1 |
| 8 | 6752007 | Spring | 1 | 34 | 6752020 | Sleeve, Limiting (Hoist Spool) | 1 |
| 9 | 6752005 | Valve Assy., Relief | 1 | 35 | 6752031 | Screw, Set | 2 |
| 10 | 6751999 | Plug | 1 | 36 | 6752030 | Retainer, Spring | 2 |
| 11 | 6752000 | Spring | 1 | 37 | 6752032 | Retainer, "O" Ring | 2 |
| 12 | 6751998 | Valve Assy., Relief | 1 | 38 | 6752014 | "O" Ring | 2 |
| 13 | 6752219 | Valve Assy., Relief | 1 | 39 | ---- | (See Items 14 thru 17) | |
| 14 | 6752001 | Spring | 1 | 40 | ---- | Body (N.S.S.) (Order Item A) | |
| 15 | 6752011 | Plug | 2 | 40A | 6752018 | Ball | 1 |
| 16 | 6752000 | "O" Ring | 2 | 41 | ---- | Spool, Hoist (N.S.S.) (Order Item A) | |
| 17 | 6752012 | Spring | 2 | 42 | 6752014 | "O" Ring | 2 |
| 18 | 6752013 | Poppet | 2 | 43 | 6752016 | Retainer | 2 |
| 19 | 2015466 | Plug, Gauge Port | 1 | 44 | 6752015 | "O" Ring | 2 |
| 20 | 6752009 | Plug | 1 | 45 | 6752017 | Plate | 2 |
| 21 | 6752010 | "O" Ring | 1 | 46 | 2031425 | Bolt | 4 |
| 22 | ---- | Check Assy., Anti-Cavitation (Order Items 1 thru 5) | | 47 | ---- | Spool, Bucket (N.S.S.) (Order Item A) | |
| 22 | 6752019 | Spacer (Hoist Spool) | 1 | 48 | 2015466 | Plug, Gauge Port | 1 |
| 22 | 6752036 | Spacer (Bucket Spool) (N.I.) .. | 1 | 49 | 6752261 | Plug | 1 |
| 23 | 6752021 | Ball | 12 | 50 | 6751539 | "O" Ring | 1 |
| 24 | 6752028 | Guide, Ball | 2 | | | | |
| 25 | 6752027 | Spring, Detent | 2 | | | | |
| 26 | 6752026 | Retainer, Ball | 2 | | | | |
| 27 | 6752025 | Body (Hoist Detent) | 1 | | | | |
| 27 | 6752034 | Body (Bucket Detent) (N.I.) | 1 | | | | |
| 28 | 6752024 | Clamp | 2 | | | | |

(N.I.) Not Illustrated

(N.S.S.) Not Serviced Separately

* For Machines Having Serial Number 19-1216 & Higher.

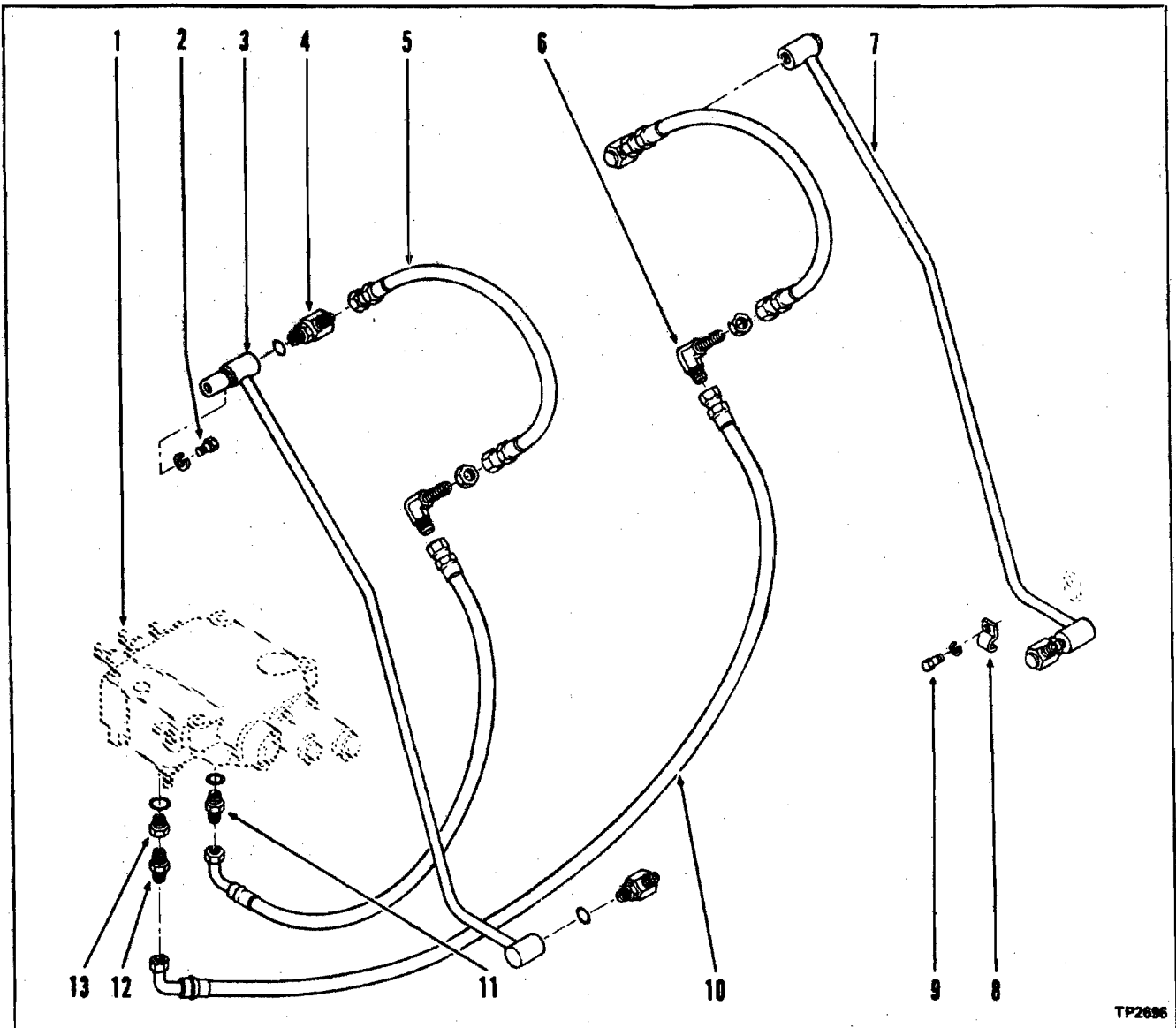
NOTE: For complete replacement of the Main Control Valve, order Eaton P/N 2094692.

This valve is interchangeable as a unit and is illustrated on Pages 77C and 77D.

THINK

Never leave operators seat with the engine running.

WHEN ORDERING PARTS ALWAYS FURNISH SERIAL NUMBER OF MACHINE



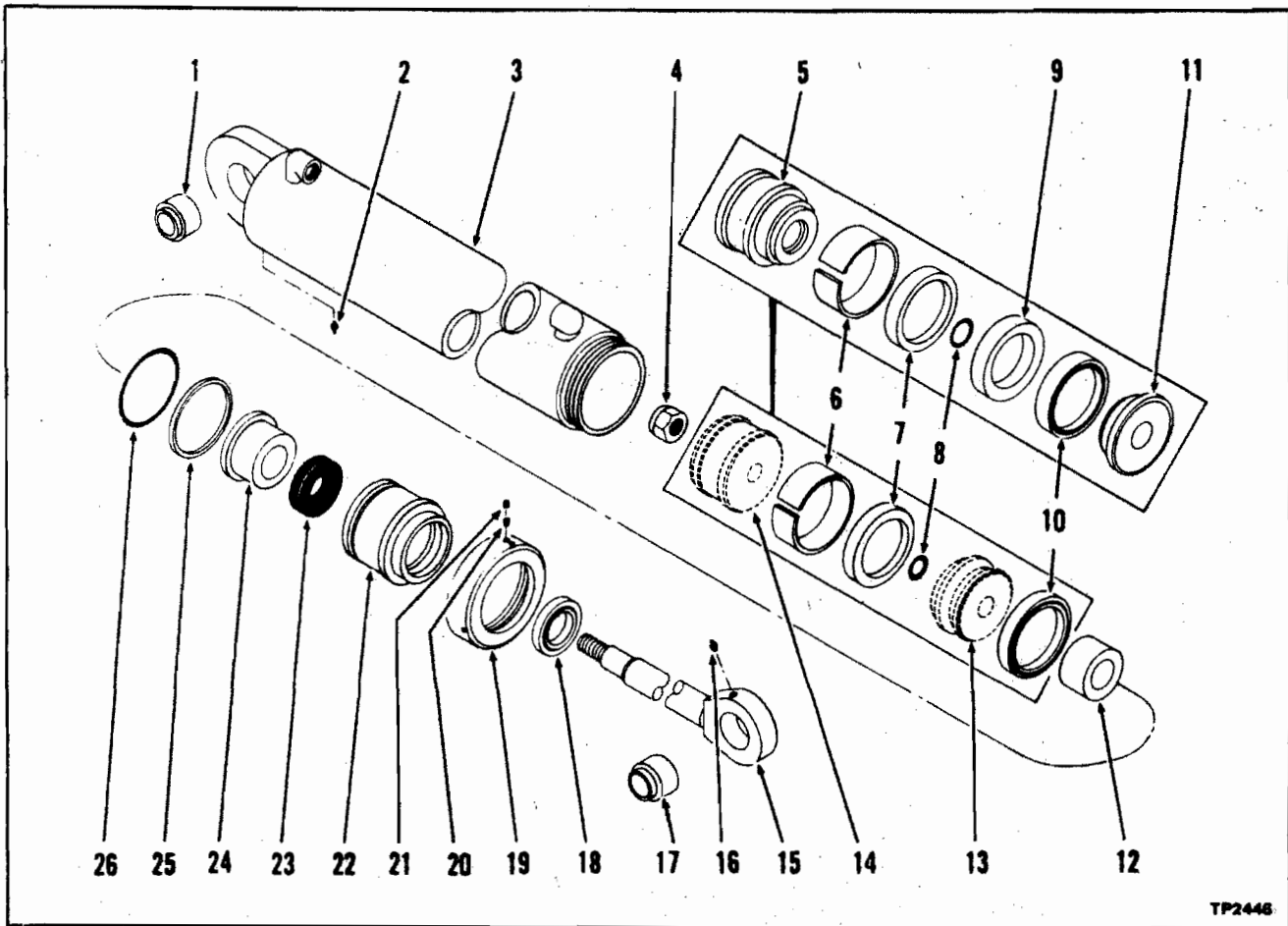
ACCESSORY HYDRAULIC PIPING

(3 Spool Valve)

| Item | Part No. | Description | No. Req'd. | Item | Part No. | Description | No. Req'd. |
|------|----------|---|------------|------|----------|--|------------|
| 1 | --- | Valve, Main Hydraulic (See Pages 77E thru 77H) | | 10 | 2063406 | Hose | 2 |
| 2 | 2031473 | Bolt | 2 | *11 | 2073569 | Adapter, Straight (Incl. Item *11A) | 1 |
| 2A | 2031391 | Washer, Lock | 2 | *11A | 2031963 | "O" Ring | 1 |
| 3 | 2080169 | Pipe Assy., R.H. | 1 | †11 | 2096230 | Adapter, Straight | 1 |
| 4 | 2051357 | Joint, 90° Swivel | 4 | †11A | 2031964 | "O" Ring | 1 |
| 5 | 2068608 | Hose | 2 | 12 | 2031990 | Connector | 1 |
| 6 | 2080351 | Elbow, 90° Bulkhead | 2 | 13 | 2063745 | Adapter, Straight (Incl. Item 13A) | 1 |
| 7 | 2080170 | Pipe Assy., L.H. | 1 | 13A | 2031963 | "O" Ring | 1 |
| 8 | 2080171 | Clamp | 4 | | | | |
| 9 | 2031471 | Bolt | 4 | | | | |
| 9A | 2031391 | Washer, Lock | 4 | | | | |

* For Machines Having Serial Number 19-1208 thru 19-1285.

† For Machines Having Serial Number 19-1286 & Higher.



TP2448

LIFT CYLINDER ASSEMBLY

(Two Cylinders Used Per Machine — Quantity Shown is for One Cylinder)

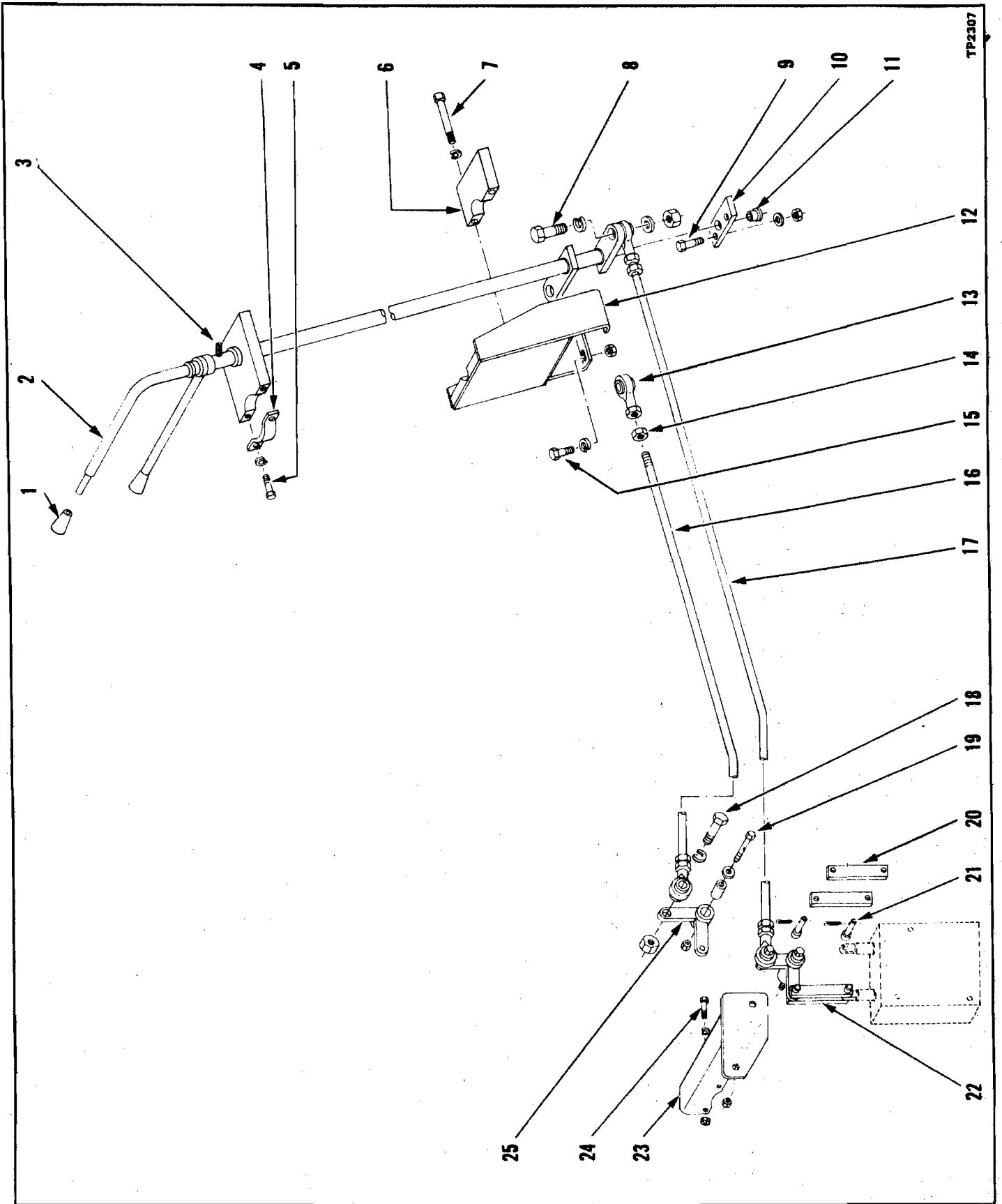
(For Machines Having Serial Number thru 19-1094)

| Item | Part No. | Description | No. Req'd. | Item | Part No. | Description | No. Req'd. |
|------|----------|---|------------|------|----------|---|------------|
| A | ---- | Cylinder Assy., Bucket (Incl. Items 1, 3, 4, 6 thru 8, 10, 12 thru 15 & 17 thru 26) (See Note) | 1 | 9 | 2083301 | Bearing, Piston | 1 |
| B | 6955445 | Kit, Service (Incl. Items 6 thru 8, 10, 18, & 23 thru 26) | 1 | 10 | 2081167 | Seal, Piston | 1 |
| C | 6955483 | Kit, Service (Incl. Items 3A, 6 thru 10, 18, & 23 thru 26) .. | 1 | 11 | 2083299 | Piston, Front Half | 1 |
| D | 6955502 | Kit, Piston (Incl. Items 5, 9, 11) | 1 | 12 | 2081153 | Spacer | 1 |
| 1 | 2077091 | Bushing | 1 | 13 | ---- | Piston, Front Half (N.S.S.) (Order Item D) | 1 |
| 2 | 2030225 | Fitting, Grease | 1 | 14 | ---- | Piston, Rear Half (N.S.S.) (Order Item D) | 1 |
| 3 | 6955446 | Body Assy. (Incl. Item 1) | 1 | 15 | 6955447 | Rod Assy. (Incl. Item 17) | 1 |
| 3A | 6700881 | "O" Ring (N.I.) | 1 | 16 | 2030225 | Fitting, Grease | 1 |
| 4 | 2040082 | Nut, Lock | 1 | 17 | 2064334 | Bushing | 1 |
| 5 | 2083300 | Piston, Rear Half | 1 | 18 | 2081131 | Wiper | 1 |
| 6 | 2081166 | Bearing, Piston | 1 | 19 | 2081168 | Nut, Cartridge | 1 |
| 7 | 2081167 | Seal, Piston | 1 | 20 | 6750221 | Plug, Nylon | 1 |
| 8 | 2033306 | "O" Ring (Super P/N 2072632) | 1 | 21 | 8700701 | Screw, Set | 1 |
| | | | | 22 | 2081163 | Stuffing Box | 1 |
| | | | | 23 | 2081130 | Seal | 1 |
| | | | | 24 | 2081129 | Bearing, Rod | 1 |
| | | | | 25 | 2040088 | Ring, Back-Up (Super P/N 6700698) | 1 |
| | | | | 26 | 2015774 | "O" Ring (Super P/N 6700699) | 1 |

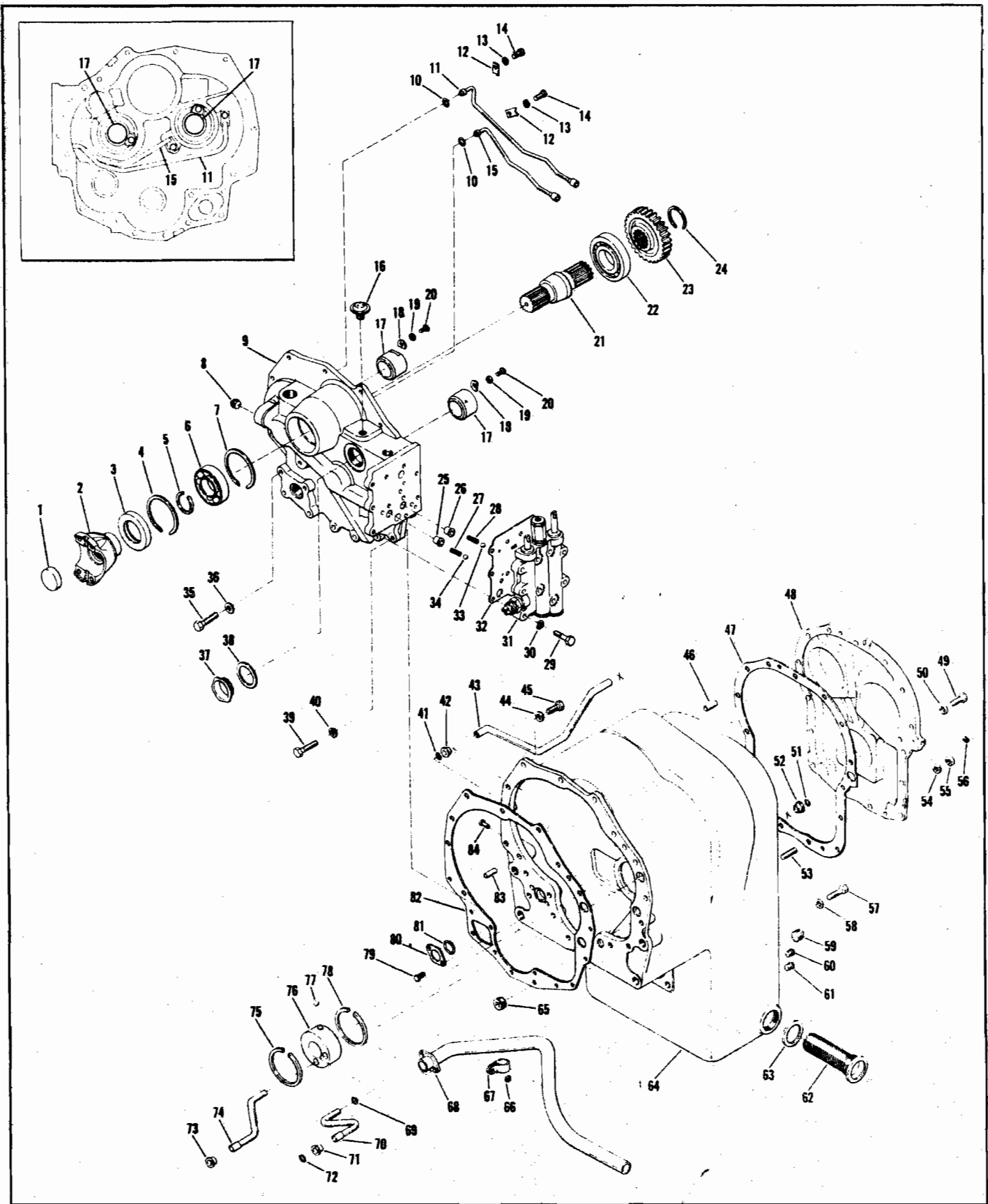
(N.S.S.) Not Serviced Separately.

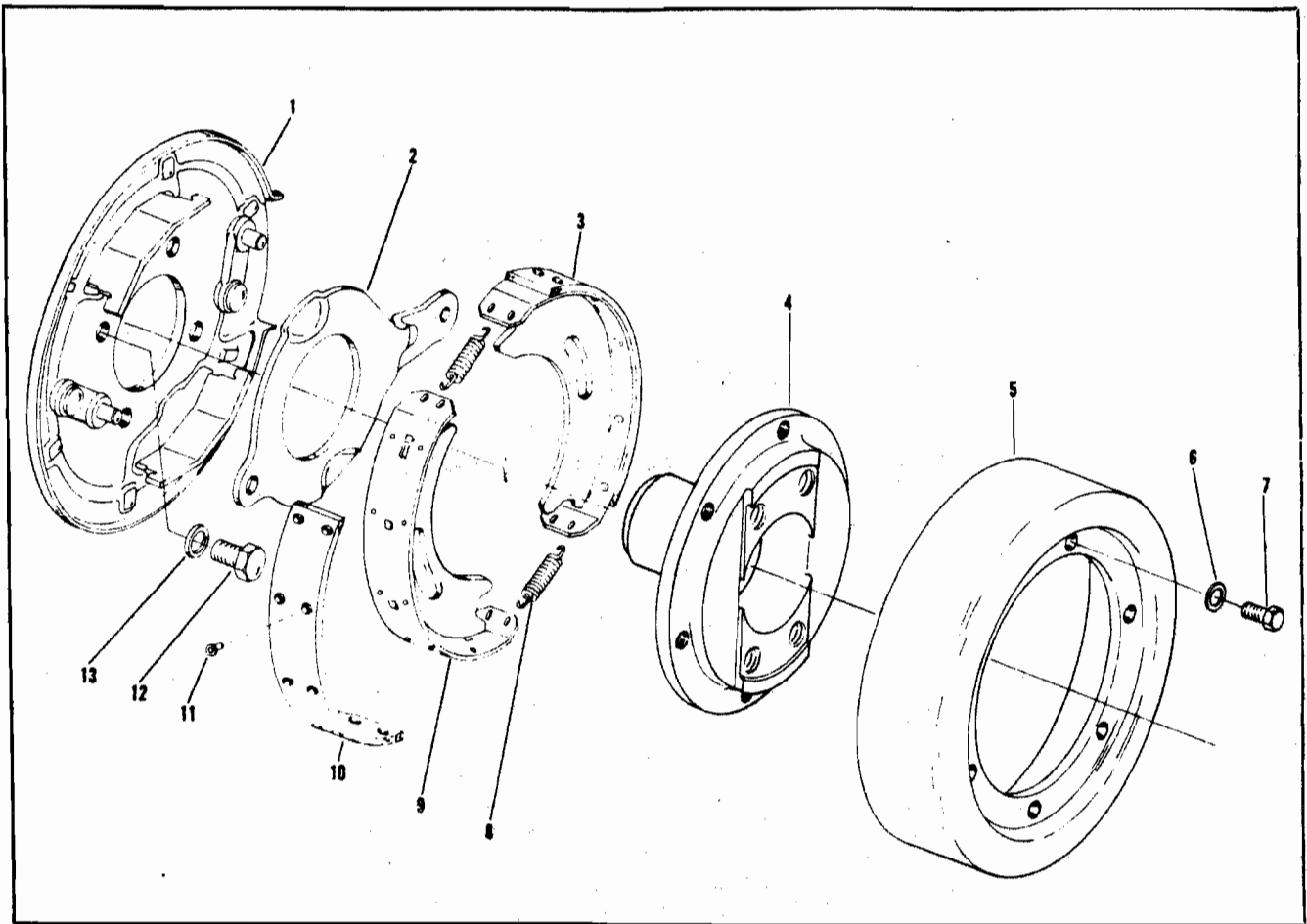
(N.I.) Not Illustrated

NOTE: When replacing complete Lift Cylinder Assy., order Eaton P/N 2083491. This new cylinder is completely interchangeable and is illustrated on Page 89. Accurate records must be retained for future parts replacement.



TP2307





PARKING BRAKE ASSEMBLY

| Item | Part No. | Description | No. Req'd. |
|------|----------|--|------------|
| A | 6901681 | Brake Assy., Parking (Incl. Items 1, 2, 3 & 6 thru 13) | 1 |
| 1 | 6901688 | Plate Assy., Backing | 1 |
| 2 | 6950113 | Lever, Actuating | 1 |
| 3 | 2040423 | Brake Shoe & Lining Assy. | 1 |
| 4 | 6901696 | Flange, Brake | 1 |
| 5 | 2039420 | Drum, Brake | 1 |
| 6 | 2030789 | Screw | 6 |
| 7 | 2031391 | Washer, Lock | 6 |
| 8 | 2040424 | Spring, Return | 2 |
| 9 | ----- | Shoe, Brake (N.S.S.) (Order Item 3) | |
| 10 | 6950114 | Kit, Brake Lining & Rivet | 1 |
| 11 | ----- | Rivet (N.S.S.) (Order Item 10) | |
| 12 | 2031536 | Screw | 4 |
| 13 | 6901669 | Washer, Lock | 4 |

(N.S.S.) Not Serviced Separately

AIR RESERVOIR AND COMPRESSOR PIPING

(GM)

(For Machines Having Serial Number 19-1160 & Higher)

| Item | Part No. | Description | No. Req'd. | Item | Part No. | Description | No. Req'd. |
|------|----------|--|------------|------|----------|---|------------|
| 1 | 2079291 | Hose | 1 | 36B | 2031617 | Nut | 4 |
| 2 | 2032038 | Clamp | 2 | 37 | 2090058 | Tank, Air | 1 |
| 3 | 2032820 | Clip | 1 | 38 | 2032011 | Elbow, 90° | 1 |
| 4 | 2031473 | Bolt | 1 | 39 | 2032295 | Elbow, 90° | 1 |
| 4A | 2031391 | Washer, Lock | 1 | 40 | 2054598 | Valve, Check | 1 |
| 5 | 2031988 | Adapter, Straight | 1 | 41 | 2082646 | Valve, Drain | 3 |
| 6 | 2046601 | Governor, Air (Furn. W/ Air Compressor) | 1 | 42 | 2038470 | Elbow, 90° | 1 |
| 7 | 2087535 | Hose | 1 | 43 | 2038544 | Elbow, 90° | 3 |
| 8 | 2031462 | Bolt | 2 | 44 | 2087443 | Hose Assy. (Incl. Item 44A) | 1 |
| 8A | 2031390 | Washer, Lock | 2 | 44A | 2087838 | Hose | 1 |
| 8B | 2031616 | Nut | 2 | 45 | 2089957 | Tee, Pipe | 1 |
| 9 | 2031996 | Elbow, 45° | 1 | 46 | 2032007 | Elbow, 90° | 1 |
| 10 | 2032008 | Elbow, 90° | 2 | 47 | 2034221 | Valve, Pressure Relief | 1 |
| 11 | 2032008 | Elbow, 90° | 1 | 48 | 2087441 | Hose Assy. (Incl. Item 48A) | 1 |
| 12 | 2089949 | Connector, Pipe | 2 | 48A | 2087442 | Hose | 1 |
| 13 | 2032311 | Tee, Pipe | 1 | 49 | 2089956 | Tee, Pipe | 2 |
| 14 | 2089995 | Hose Assy. (Incl. Item 14A) | 1 | 50 | 2087531 | Hose Assy. (Incl. Item 50A) | 1 |
| 14A | 2089996 | Hose | 1 | 50A | 2087532 | Hose | 1 |
| 15 | 2034287 | Plug, Pipe | 1 | 51 | 2090059 | Valve, Check | 2 |
| 16 | 2089951 | Adapter, Straight | 2 | 52 | 2032294 | Elbow, 90° | 1 |
| 17 | 2089954 | Tee, Adapter | 1 | 53 | 2031996 | Elbow, 45° | 1 |
| 18 | 2088167 | Valve, Inversion | 2 | 54 | 2088827 | Hose Assy. (Incl. Item 54A) | 1 |
| 19 | 2090060 | Valve, Bleeder | 2 | 54A | 2088848 | Hose | 1 |
| 20 | 2089952 | Tee, Pipe | 2 | 55 | 2012082 | Nipple, 45° Hose | 1 |
| 21 | 2033448 | Nipple | 1 | 56 | 2038470 | Elbow, 90° | 1 |
| 22 | 2053265 | Bushing, Reducer | 1 | 57 | ---- | Not Applicable | |
| 23 | 2005266 | Plug, Pipe | 3 | 58 | 2088780 | Hose Assy. (Incl. Item 58A) | 1 |
| 23 | 2038032 | Plug, Pipe | 1 | 58A | 2088908 | Hose | 1 |
| 24 | 2089953 | Tee, Pipe | 1 | 59 | 2031477 | Bolt | 4 |
| 25 | 2087525 | Hose Assy. (Incl. Item 25A) | 1 | 59A | 2031391 | Washer, Lock (N.I.) | 4 |
| 25A | 2087526 | Hose | 1 | 60 | 2049350 | Bracket | 1 |
| 26 | 2032000 | Elbow, 45° | 1 | 61 | 2031479 | Bolt | 4 |
| 27 | ---- | Valve, Brake (See Pages 127A & 127B) | | 61A | 2031391 | Washer, Lock | 4 |
| 28 | 2090994 | Hose Assy. (Incl. Item 28A) | 1 | 61B | 2031617 | Nut | 4 |
| 28A | 2090993 | Hose | 1 | 62 | 2049345 | Pulley Assy. (Incl. Items 62A & 62B) | 1 |
| 29 | 2032008 | Elbow, 90° | 1 | 62A | 2049192 | Hub (N.I.) | 1 |
| 30 | ---- | Gauge, Emergency Air Pressure (See Page 61) | | 62B | 2040012 | Pulley Assy., Half (N.I.) | 2 |
| 31 | 2089948 | Adapter, Straight | 2 | 62C | 2069862 | Belt, V (Matched Set of 2) (N.I.) | 1 |
| 32 | 2087517 | Hose Assy. (Incl. Item 32A) | 1 | 62D | 2030746 | Bolt (Pulley to Compressor) (N.I.) | 6 |
| 32A | 2087518 | Hose | 1 | 62E | 2031369 | Nut (N.I.) | 6 |
| 33 | 2087517 | Hose Assy. (Incl. Item 33A) | 1 | 62F | 2031389 | Washer, Lock (N.I.) | 6 |
| 33A | 2087518 | Hose | 1 | 63 | 2041163 | Compressor, Air (Incl. Item 63A) | 1 |
| 34 | ---- | Valve, Control (See Page 61) | | 63A | 2044107 | Gasket (N.I.) | 1 |
| 35 | ---- | Switch, Low Pressure (See Pages 70 & 71) | | 64 | 2032294 | Elbow, 90° | 1 |
| 36 | 2031475 | Bolt | 4 | 65 | 2031996 | Elbow, 45° | 1 |
| 36A | 2031391 | Washer, Lock | 4 | 66 | 2053266 | Bushing, Reducer | 1 |

(N.I.) Not Illustrated

BRAKE VALVE ASSEMBLY

(For Machines Having Serial Number 19-1160 & Higher)

| Item | Part No. | Description | No. Req'd. |
|------|----------|--|------------|
| A | 2090057 | Valve Assy., Brake (Incl. Items B & 2 thru 32) | 1 |
| B | 6750607 | Treadle Assy. (Incl. Items 1, 1A, 33 & 34) | 1 |
| 1 | 2054805 | Pin, Roller | 1 |
| 1A | 2031764 | Pin, Cotter | 1 |
| 2 | 6953277 | Spring | 1 |
| 3 | ----- | Body (N. S. S.) (Order Item A) .. | 1 |
| 4 | 6953283 | Retainer | 1 |
| 5 | 6953285 | Valve, Inlet & Exhaust | 1 |
| 6 | 6952194 | "O" Ring | 1 |
| 7 | 6953284 | Spring | 1 |
| 8 | 6953287 | "O" Ring | 1 |
| 9 | 6953286 | Seat | 1 |
| 10 | 6953291 | Spring | 1 |
| 11 | 6953288 | Diaphragm | 1 |
| 12 | 6953289 | Washer | 1 |
| 13 | 6953290 | Screw | 1 |
| 14 | ----- | Spacer | 1 |
| 15 | 6952200 | Ring, Retaining | 1 |
| 16 | 2031454 | Bolt | 4 |
| 16A | 2031390 | Washer, Lock (N.I.) | 4 |
| 16B | 2031616 | Nut (N.I.) | 4 |
| 17 | 2031449 | Bolt | 3 |
| 17A | 2031390 | Washer, Lock | 3 |
| 18 | ----- | Plate, Mounting (See Page 33) | 1 |
| 19 | 6953280 | Piston | 1 |
| 20 | 6952182 | "O" Ring | 1 |
| 21 | 6952204 | Spring, Rubber | 1 |
| 22 | 6952205 | Seat | 1 |
| 23 | 6952206 | Washer | 1 |
| 24 | 2031427 | Screw | 1 |
| 24A | 2031389 | Washer, Lock | 1 |
| 25 | 6952208 | Retainer | 1 |
| 26 | 2031451 | Bolt | 3 |
| 26A | 2331390 | Washer, Lock (N.I.) | 3 |
| 26B | 2031616 | Nut (N.I.) | 3 |
| 27 | 2054810 | Pin, Fulcrum | 1 |
| 28 | 2054809 | Pin, Roll | 1 |
| 29 | 2054808 | Plate, Mounting | 1 |
| 30 | 2054811 | Button, Stop | 1 |
| 31 | 2054806 | Plunger | 1 |
| 32 | 2054807 | Boot | 1 |
| 33 | 2054804 | Roller | 1 |
| 34 | 2020635 | Treadle | 1 |

(N.S.S.) Not Serviced Separately

(N.I.) Not Illustrated

PLANETARY HUB, REAR AXLE

(Two Groups Used Per Machine; Quantity Shown is for One)

| Item | Part No. | Description | No. Req'd. |
|------|----------|---|------------|
| 1 | 6601527 | Oil Seal and Retainer Assy. (Incl Item 2) (Super P/N 2016934) | 1 |
| 2 | --- | Seal, Oil (Use with 2016934) | 1 |
| 3 | 2034693 | Seal, Brake Drum | 1 |
| 4 | 2034695 | Spider & Cam Assy., Brake | 1 |
| 5 | 2032879 | Spindle, Wheel Bearing | 1 |
| 6 | 2032224 | Bolt, Spindle to Housing | 12 |
| 6A | 2032877 | Washer (N.I.) | 12 |
| 6B | 2034836 | Nut | 12 |
| 7 | 2016906 | Seal | 1 |
| 8 | 6600862 | Shaft | 1 |
| 9 | 2016930 | Cone, Inner Bearing | 1 |
| 10 | 2016914 | Cup, Inner Bearing | 1 |
| 11 | 2032876 | Bolt, Brake Drum to Hub | 10 |
| 12 | 2032878 | Drum, Brake | 1 |
| 13 | 6600835 | Slinger, Oil | 1 |
| 14 | 2017688 | Stud, Wheel | 12 |
| 15 | 2006506 | Plug, Oil Drain | 1 |
| 16 | 2034284 | Hub & Cup Assy. (Incl. Items 10, 17 & 19) | 1 |
| 17 | 6600860 | Stud, Spider to Hub | 12 |
| 18 | 2017694 | Nut, Wheel | 12 |
| 19 | 2016910 | Cup, Outer Bearing | 1 |
| 20 | 2018184 | Cone, Outer | 1 |
| 21 | 2016974 | Capscrew, Ring Gear Lock | 8 |
| 22 | 2044164 | Lock | 4 |
| 23 | 2016956 | Hub & Sleeve Assy., Ring Gear | 1 |
| 24 | 2016972 | Gear, Planetary Ring | 1 |
| 25 | 2016968 | Nut, Hub Bearing | 1 |
| 26 | 2016970 | Lock, Bearing, Nut | 2 |
| 27 | 2017602 | Washer & Pin Assy. | 1 |
| 28 | 2017534 | Gear, Planetary Sun | 1 |
| 29 | 2017608 | Ring, Retainer Snap | 1 |
| 30 | 6600249 | Washer, Inner Thrust | 3 |
| 31 | 2017614 | Pinion, Planetary | 3 |
| 32 | 2044167 | Washer, Outer Thrust | 3 |
| 33 | 2040505 | Gasket, Spider to Hub | 1 |
| 34 | 2017628 | Spider, Planetary Gear | 1 |
| 35 | 6600250 | Shaft, Planetary Pinion | 3 |
| 36 | 2017646 | Button, Thrust | 1 |
| 37 | 2019076 | Nut, Spider to Hub | 12 |
| 37A | 2031393 | Washer, Lock (N.I.) | 12 |
| 38 | 2017656 | Gasket, (Corr. P/N) | 1 |
| 39 | 2034308 | Cover & Thrust Button Assy. (Incl. Item 36) | 1 |
| 40 | 2034287 | Plug, Oil Filler | 1 |
| 41 | 2037635 | Capscrew, Spider Cover | 8 |
| 41A | 6600861 | Washer, Spider Cover | 8 |

(N.I.) Not Illustrated

THINK

Stop machine to lubricate or adjust.

WHEN ORDERING PARTS ALWAYS FURNISH SERIAL NUMBER OF MACHINE

CLICK HERE TO **DOWNLOAD** THE COMPLETE MANUAL

- Thank you very much for reading the preview of the manual.
- You can download the complete manual from: www.heydownloads.com by clicking the link below



- Please note: If there is no response to CLICKING the link, please download this PDF first and then click on it.

CLICK HERE TO **DOWNLOAD** THE COMPLETE MANUAL