

CONTENTS

MODEL : YM276(D) (R1573)

PC NO : Y00T2321

Fig.No.	GROUP NAME
	ENGINE(3T84HA/-F/-S)
1.	CYLINDER BLOCK
2.	GEAR HOUSING
3.	MAIN BEARING HOUSING
4.	LABELS(FOR ENGINE)
5.	CYLINDER HEAD
6.	BONNET & AIR BREATHER
7.	AIR CLEANER
8.	SILENCER
9.	CAMSHAFT
10.	CRANKSHAFT & FLYWHEEL
11.	PISTON & CONNECTING ROD
12.	LUBRICATING OIL PUMP
13.	LUBRICATING OIL LINES
14.	COOLING WATER PUMP
15.	RADIATOR
16.	COOLING WATER LINES
17.	FUEL INJECTION PUMP
18.	FUEL INJECTION VALVE
19.	FUEL STRAINER
20.	FUEL LINES
21.	GOVERNOR MECHANISM
22.	ELECTRIC EQUIPMENT
23.	THERMOSTART
24.	STARTER 12V-1.8KW(TYPE S12-77)
25.	GENERATOR
26.	REPAIR KIT (FOR ENGINE)
27.	GASKET KIT (FOR ENGINE)

Fig.No.	GROUP NAME
	CHASSIS(YM276,YM276D)
28.	UNDERSLUNG EXHAUST SILENCER
29.	THROTTLE(STANDARD)
30.	THROTTLE(ENGLAND)
31.	THROTTLE(SCANDINAVIA)
32.	FUEL TANK
33.	FRONT AXLE BRACKET(STANDARD)
34.	FRONT AXLE BRACKET(ENGLAND)
35.	FRONT AXLE BRACKET(SCANDINAVIA)
36.	FRONT AXLE (FOR YM276)
37.	PROPELLER SHAFT (FOR YM276D)
38.	1ST SHAFT & RING GEAR (YM276D)
39.	CASING OF FRONT AXLE (YM276D)
40.	SPINDLE OF FRONT AXLE (YM276D)
41.	STEERING(STANDARD)
42.	STEERING(SCANDINAVIA)
43.	CLUTCH HOUSING(STANDARD)
44.	CLUTCH HOUSING(SCANDINAVIA)
45.	TRANSMISSION HOUSING(STANDARD)
46.	TRANSMISSION HOUSING(SCANDINAVIA)
47.	CENTER PLATE & P.S.PUMP
48.	TRANSMISSION GEARS
49.	CYLINDER OF P.S.CLUTCH
50.	P.T.O.DRIVE SHAFT
51.	COLUMN SHIFT
52.	RANGE SHIFT
53.	FRONT DRIVE (FOR YM276D)
54.	DIFFERENTIAL GEARS
55.	REAR AXLE HOUSING (1)
56.	REAR AXLE HOUSING(2)(STANDARD)

CLICK HERE TO **DOWNLOAD** THE COMPLETE MANUAL

- Thank you very much for reading the preview of the manual.
- You can download the complete manual from: www.heydownloads.com by clicking the link below



- Please note: If there is no response to CLICKING the link, please download this PDF first and then click on it.

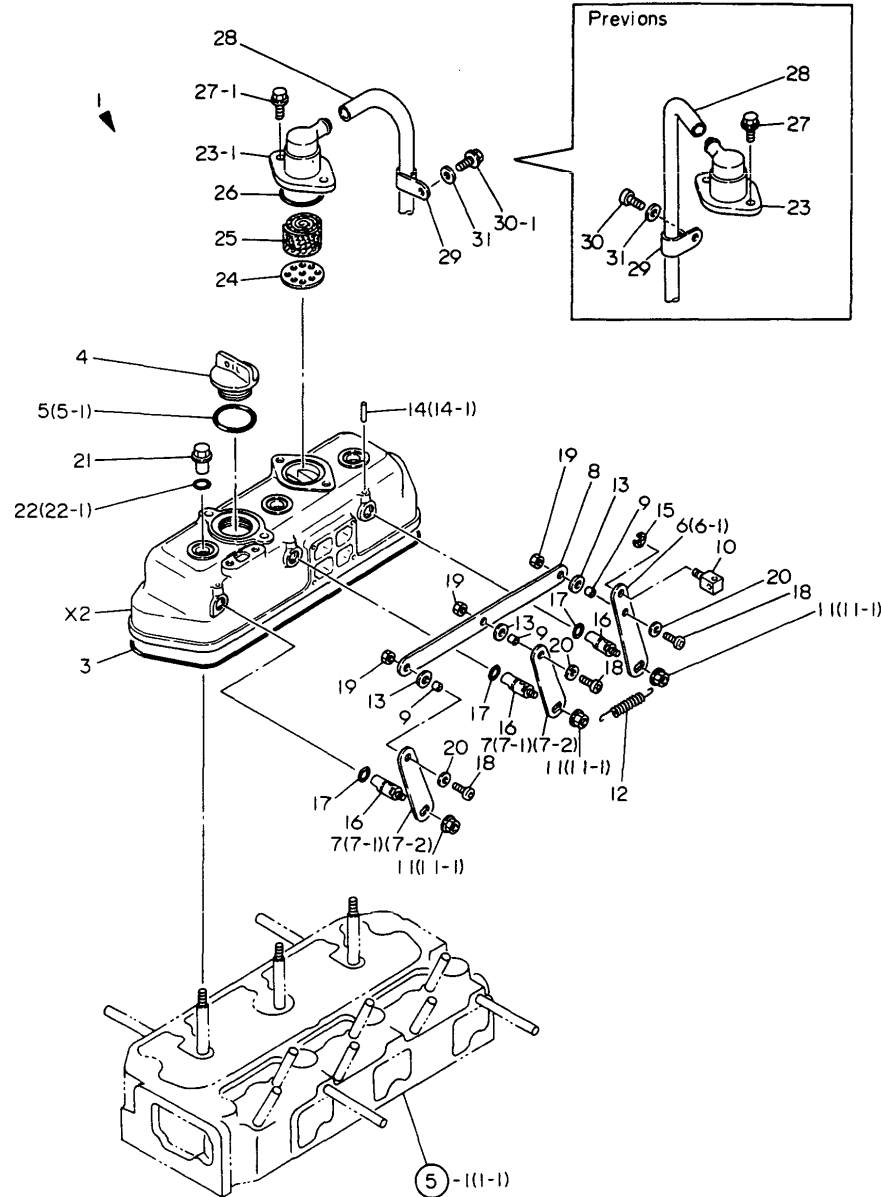
CLICK HERE TO **DOWNLOAD** THE COMPLETE MANUAL

Fig.6. BONNET & AIR BREATHER

(A)=3T84HA
(B)=3T84HA-F
(C)=3T84HA-S

(D)=
(E)=
(F)=

Fig. 6 BONNET & AIR BREATHER

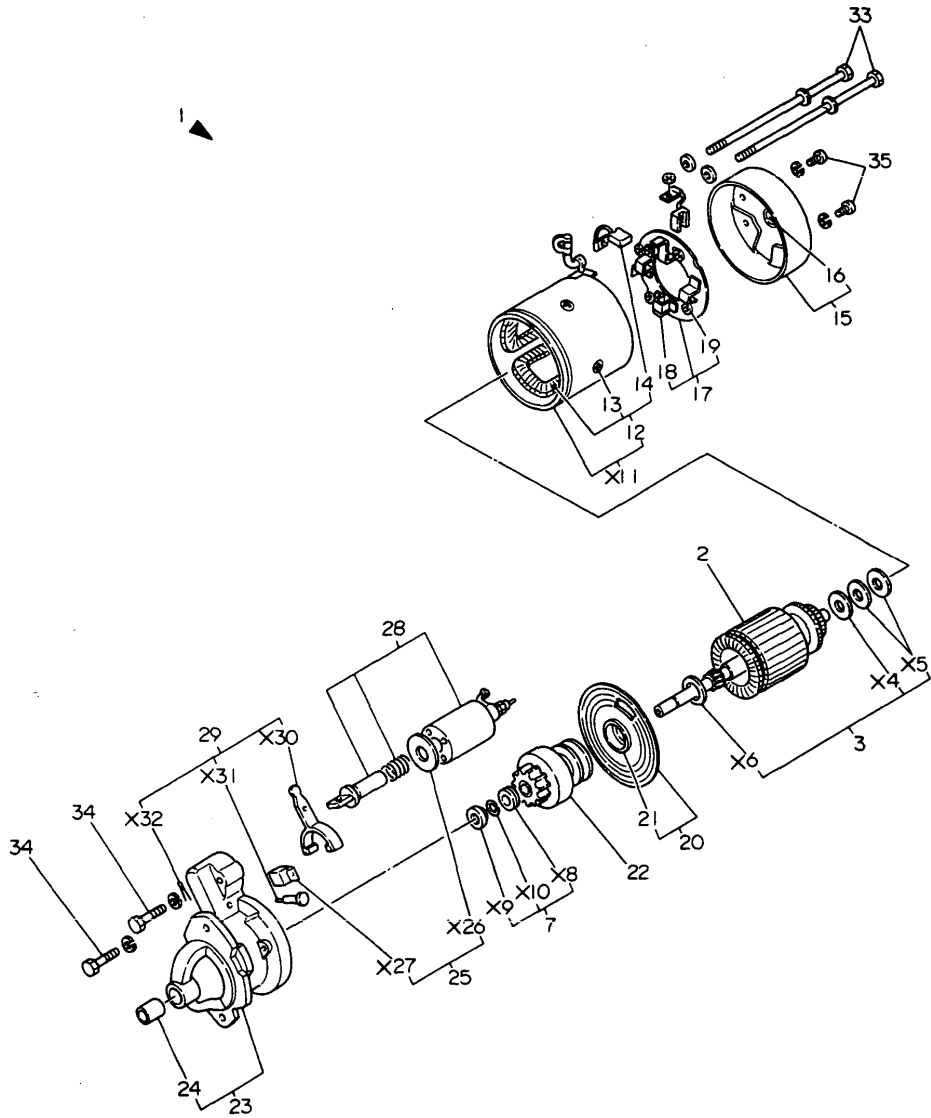


REF.	LEV.	PARTS NO.	DESCRIPTION	Q'TY						I	R
				(A)	(B)	(C)	(D)	(E)	(F)		
1	1	729350-11520-Z	BONNET ASSY, HEAD	1	1	1					
3	2	129350-11310	GASKET, BONNET	1	1	1					
4	2	124160-01751	CAP, LUB.OIL SUPPLY	1	1	1					
5	2	121420-01760	O-RING	1	1						
5-1	2	24311-000320	O-RING 1A P-32.0	1	1	1					N
		(A=E/# 99460) (B=E/# 99460)									
6	2	129350-03740	SHAFT, DECOMPRESSION	1	1						
6-1	2	124970-03740	LEVER, DECOMPRESSION	1	1	1					R
		(A=*1982.) (B=*1982.)									
7	2	121462-03740	LEVER, DECOMPRESSION	2							
7-1	2	129350-03750	LEVER, DECOMPRESSION	2	2						R
		(A=*)									
7-2	2	121462-03740	LEVER, DECOMPRESSION	2	2	2					R
		(A=*1980.) (B=*1980.)									
8	2	129350-03760	CONNECTOR	1	1	1					
9	2	121450-03770	COLLAR	3	3	3					
10	2	121250-03783	FITTING	1	1	1					
11	2	160260-01800	NUT	3	3						
11-1	2	26366-060002	NUT M 6	3	3	3					R
		(A=*) (B=*)									
12	2	104104-67300	SPRING, RETURN	1	1	1					
13	2	23418-080000	GASKET 8	3	3	3					
14	2	22312-030180	PARALLEL PIN 3X18	3	3						
14-1	2	22312-030180	PARALLEL PIN 3X18	2	2	2					K
		(A=*1982.) (B=*1982.)									
15	2	22272-000060	CIRCLIP E- 6	1	1	1					
16	2	121450-03610	SHAFT, DECOMPRESSION	3	3	3					
17	2	24311-000070	O-RING 1A P-7.0	3	3	3					
18	2	26557-050122	SCREW M 5X 12	3	3	3					
19	2	26756-050002	LOCK NUT M 5 PLATED	3	3	3					
20	2	22117-050000	WASHER 5	3	3	3					
21	1	124160-11360	KNOB	3	3	3					
22	1	24311-000140	O-RING 1A P-14.0	3	3						
22-1	1	24311-000120	O-RING 1A P 12.0	3	3	3					R
		(A=*) (B=*)									
23	1	121450-03011	BODY (A), BREATHER	1	1						
23-1	1	121450-03012	BODY (A), BREATHER	1	1	1					N
		(A=*1982.) (B=*1982.)									
24	1	121450-03020	BODY (B), BREATHER	1	1	1					
25	1	121450-03030	STEEL WOOLPD24W28T18	1	1	1					
26	1	24341-000400	O-RING 1A S-40.0	1	1	1					
27	1	121250-01710	BOLT M8X14	2	2						
27-1	1	26106-080162	BOLT M 8X 16 PLATED	2	2	2					N
		(A=E/# 95454) (B=E/# 95454)									
28	1	23065-130650	PIPE 13X 650	1	1	1					
29	1	124160-01650	CLAMP	1	1	1					
30	1	26557-080102	SCREW M 8X 10	1	1						
30-1	1	26106-080102	BOLT M 8X 10 PLATED	1	1	1					N
		(A=E/# 95454) (B=E/# 95454)									
31	1	22117-080000	WASHER 8	1	1	1					

N:Old ↔ New, Q:Old ↔ New, R:Old ↔ New, S:Old ↔ New, W:Add, Z:Discontinued, F:Set Change, K:Q'ty Change
(C)Copy Rights YANMAR CO.,LTD and YANMAR AGRICULTURAL EQUIPMENT CO.,LTD.

Fig.24. STARTER 12V-1.8KW(TYPE S12-77)

Fig. 24 STARTER 12V-1.8KW (TYPE S12-77)



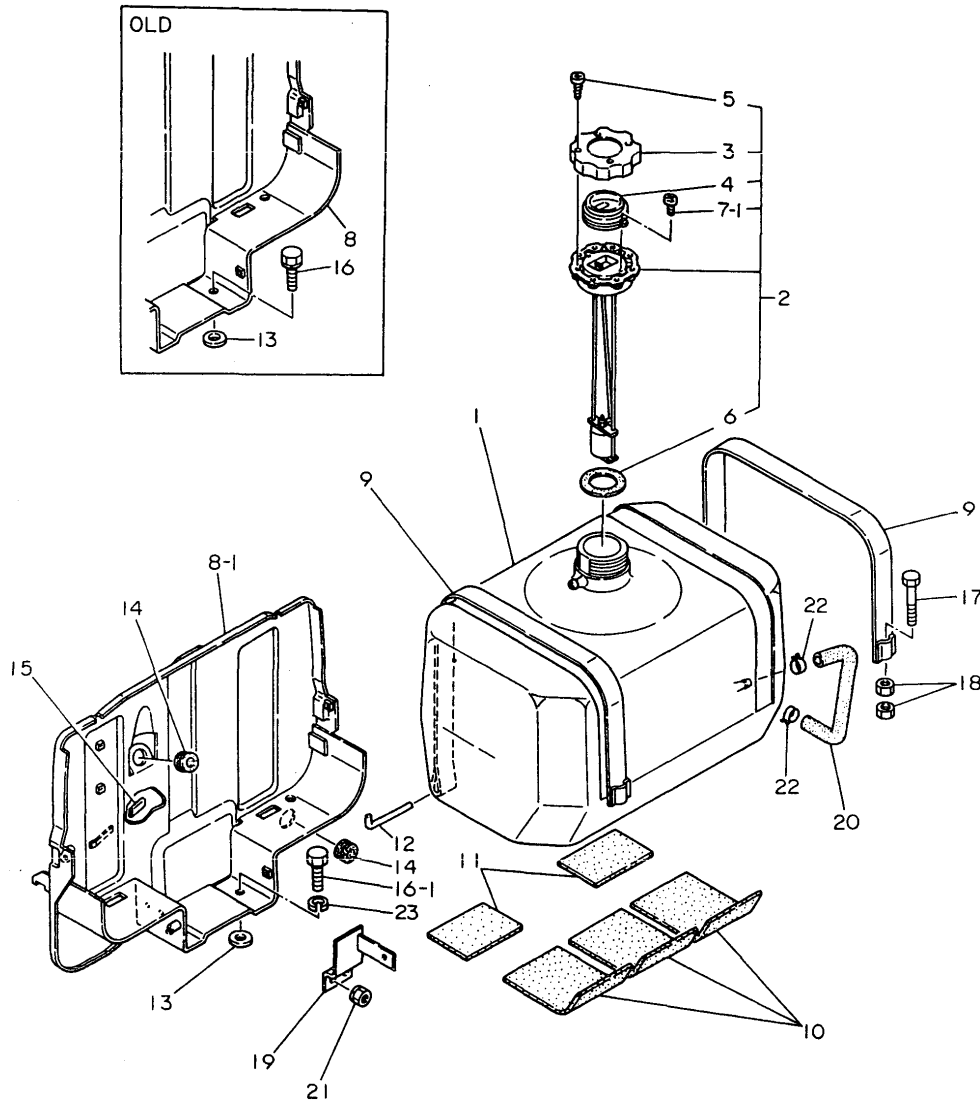
(A)=3T84HA
(B)=3T84HA-F
(C)=3T84HA-S

(D)=
(E)=
(F)=

REF.	LEV.	PARTS NO.	DESCRIPTION	Q'TY						I	R
				(A)	(B)	(C)	(D)	(E)	(F)		
		(A=E/# A4275) (B=E/# A4275) (C=E/# A4275)									
28	2	X212037002	SWITCH ASSY, MAGNET.	1	1	1					
28-1	2	124250-77310	SWITCH, MAGNETIC	1	1	1					R
		(A=E/# A4275) (B=E/# A4275) (C=E/# A4275)									
29	2	X21201605	LEVER SET	1	1	1					
29-1	2	124250-77270	LEVER SET, SHIFT	1	1	1					R
		(A=E/# A4275) (B=E/# A4275) (C=E/# A4275)									
33	2	X21204810	BOLT, THROUGH	2	2	2					
33-1	2	124250-77320	BOLT, THROUGH	2	2	2					R
		(A=E/# A4275) (B=E/# A4275) (C=E/# A4275)									
34	2	X21145866	BOLT	2	2	2					
34-1	2	26106-060322	BOLT M 6X 32 PLATED	2	2	2					R
		(A=E/# A4275) (B=E/# A4275) (C=E/# A4275)									
35	2	26557-040122	SCREW M 4X 12,PAN HD	2	2	2					

Fig.32. FUEL TANK

Fig. 32 FUEL TANK



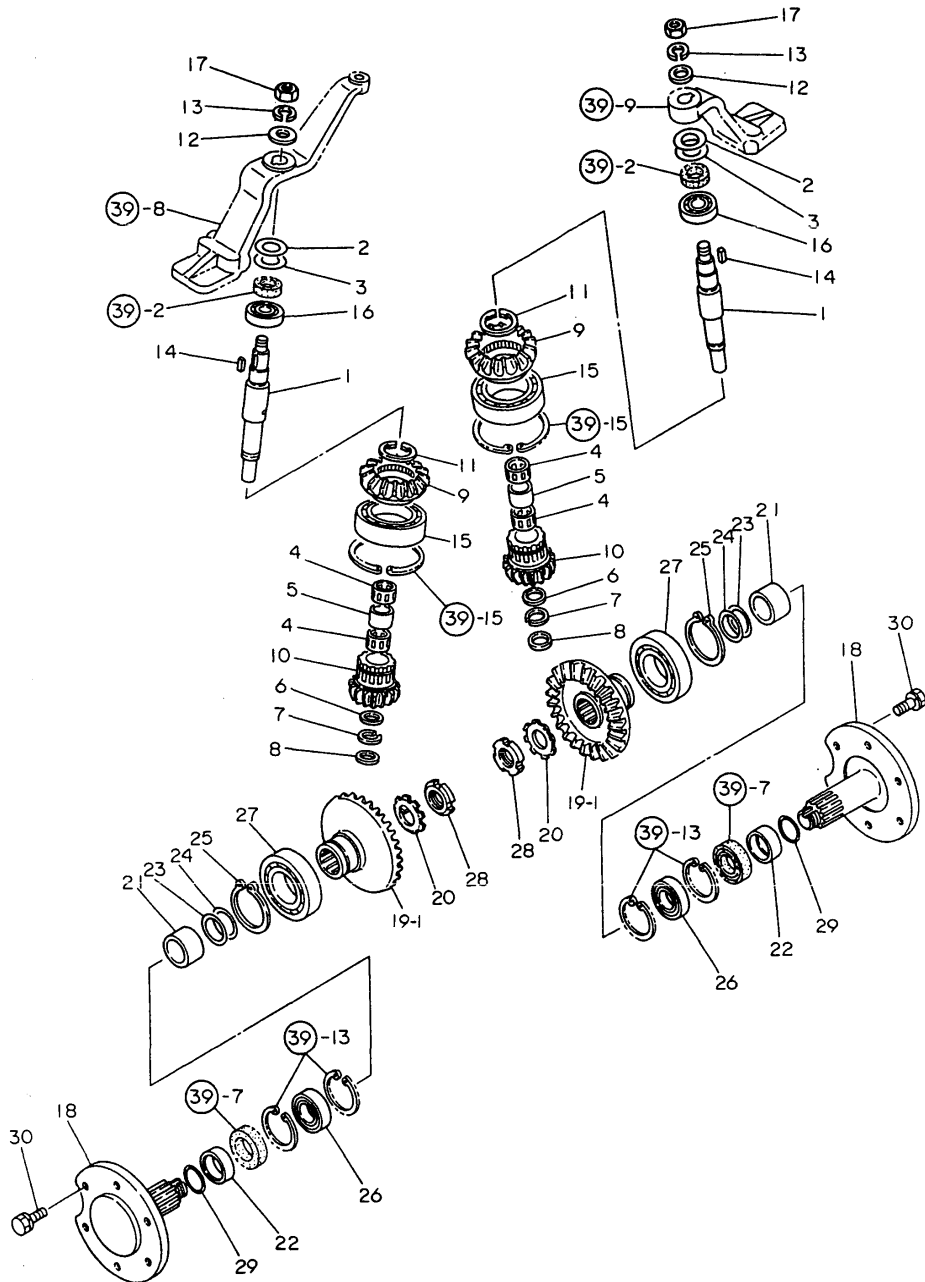
(A)=YM276
(B)=YM276D
(C)=

(D)=
(E)=
(F)=

REF.	LEV.	PARTS NO.	DESCRIPTION	Q'TY						I	R
				(A)	(B)	(C)	(D)	(E)	(F)		
1	1	194145-04112	TANK (32L), FUEL	1	1						
2	1	194145-04302	CAP W/GAUGE, F. TANK	1	1						
3	2	194145-04311	CAP, FUEL TANK	1	1						
4	2	194145-04351	LENS	1	1						
5	2	194145-04460	SCREW 4X12	4	4						
6	2	194145-04521	GASKET	1	1						
7-1	2	26557-030062	SCREW M 3X 6	2	2						
8	1	194170-04210-X	BRACKET, FUEL TANK	1	1						
8-1	1	194170-04211-X	BRACKET	1	1						N
(A=T/# 20430) (B=T/# 40844)											
9	1	194275-04251-U	BAND	2	2						
10	1	194151-04260	GASKET, RUBBER	3	3						
11	1	194130-04271	GASKET, FO-TANK	2	2						
12	1	194275-04280	PIN	2	2						
12-1	1	194275-04281	PIN	2	2						N
(A=*1982.01) (B=*1982.01)											
13	1	194145-04810	WASHER 10	2	2						
14	1	194162-58830	GROMMET 20	2	2						
15	1	23061-070035	PIPE 7X 35	1	1						
16	1	26013-100202	BOLT W/WASHER M10X20	2	2						
16-1	1	26116-100202	BOLT M10X 20 PLATED	2	2						N
(A=*1981.11) (B=*1981.11)											
17	1	26116-080502	BOLT M 8X 50 PLATED	2	2						
18	1	26716-080002	NUT M 8	4	4						
19	1	194170-04710-X	BRACKET	1	1						
20	1	194151-04720	PIPE, FUEL	1	1						
21	1	194990-22050	NUT W/WASHER 8	2	2						
22	1	124766-59050	CLAMP 12	2	2						
22-1	1	23080-012000	CLAMP 12	2	2						N
(A=T/# 20590) (B=T/# 41431)											
23	1	22217-100000	SPRING WASHER 10	2	2						W
(A=*1981.11) (B=*1981.11)											

Fig.40. SPINDLE OF FRONT AXLE (YM276D)

Fig. 40 2nd SHAFT & SPINDLE OF FRONT AXLE [For Model YM276D]



(A)=YM276
(B)=YM276D
(C)=

(D)=
(E)=
(F)=

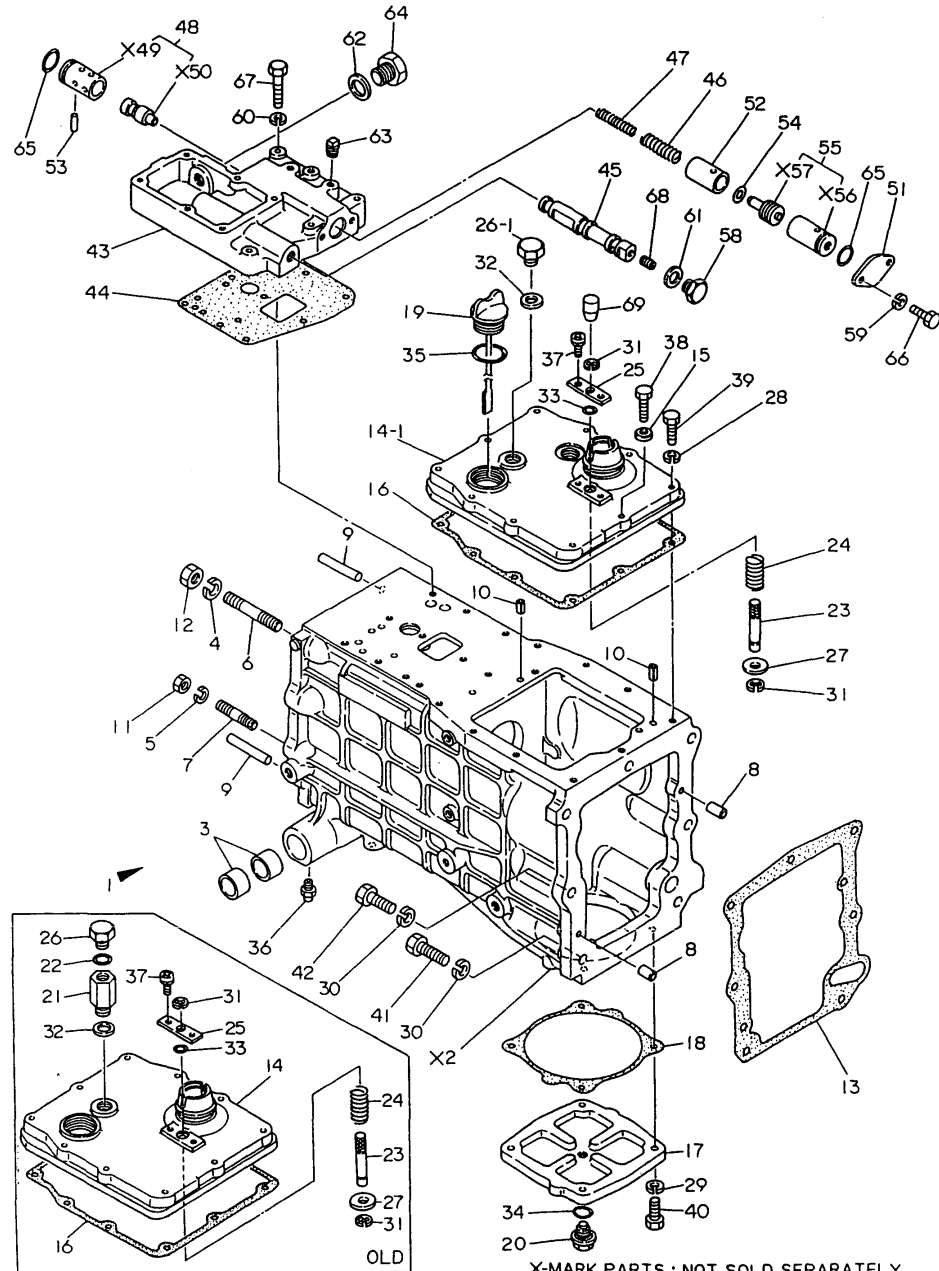
REF.	LEV.	PARTS NO.	DESCRIPTION	Q'TY						I	R
				(A)	(B)	(C)	(D)	(E)	(F)		
1	1	194311-13850	SHAFT (2ND), FRONT		2						
2	1	194311-13860	SHIM(A) T=1.0		2						2
3	1	194311-13870	SHIM(B) T=1.2		2						2
4	1	194311-13880	NEEDLE BEARING		4						
5	1	194311-13890	COLLAR 28X33.5X22.5		2						
6	1	194311-13910	WASHER 28X33.5X2		2						
7	1	194311-13920	CIRCLIP WR28		2						
8	1	194311-13930	SPACER 25X35X5		2						
9	1	194311-13940	GEAR, FRONT DRIVE		2						
10	1	194311-13950	PINION, FINAL		2						
11	1	194311-13960	CIRCLIP 50-S		2						
12	1	22137-160000	WASHER 16,POLISHED		2						
13	1	22217-160000	SPRING WASHER 16		2						
14	1	22512-070220	KEY 7X22,FEATHER		2						
15	1	24101-060134	BALL BEARING		2						
16	1	24101-062054	BEARING #6205		2						
17	1	26716-160002	NUT M16		2						
18	1	194241-14101-X	SPINDLE ASSY, FRONT		2						
18-1	1	194171-14110-X	SPINDLE, FRONT		2						S 1
		(B=T/# 41681)									
19-1	1	194311-14121	GEAR, FRONT FINAL		2						
19-2	1	194311-14122	GEAR, FRONT FINAL		2						N
		(B=T/# 41681)									
20	1	194311-14130	WASHER 35		2						Z
		(B=T/# 41681)									
21	1	194311-14161	COLLAR 48.6X41.6		2						
21-1	1	194171-14160	COLLAR 60.5X26.5		2						S 1
		(B=T/# 41681)									
22	1	194311-14172	SEAL COLLAR 40X50X21		2						
22-1	1	194171-14170	COLLAR 50X68X17.5		2						S 1
		(B=T/# 41681)									
23	1	194311-14180	SHIM(A) L=0.2		4						2
23-1	1	194171-14180	SHIM (A), FRONT		4						S 1
		(B=T/# 41681)									
24	1	194311-14190	SHIM(B) L=0.3		4						2
24-1	1	194171-14190	SHIM (B), FRONT FINA		4						S 1
		(B=T/# 41681)									
25	1	22242-000550	CIRCLIP 55		2						
26	1	24101-060084	BALL BEARING		2						
26-1	1	24101-062104	BALL BEARING		2						S 1
		(B=T/# 41681)									
27	1	24101-062114	BALL BEARING		2						
28	1	24211-035002	LOCK NUT M35		2						
28-1	1	194491-14190	NUT M30 SET		2						S 1
		(B=T/# 41681)									
29	1	24321-000400	O-RING 1A G-40.0		2						
29-1	1	24321-000500	O-RING 1A G-50.0		2						S 1
		(B=T/# 41681)									
30	1	26013-140252	BOLT M14X 25		12						
30-1	1	194180-12650	BOLT M14X 25		12						N
		(B=*1982.10)									

Fig.45. TRANSMISSION HOUSING(STANDARD)

(A)=YM276
(B)=YM276D
(C)=

(D)=
(E)=
(F)=

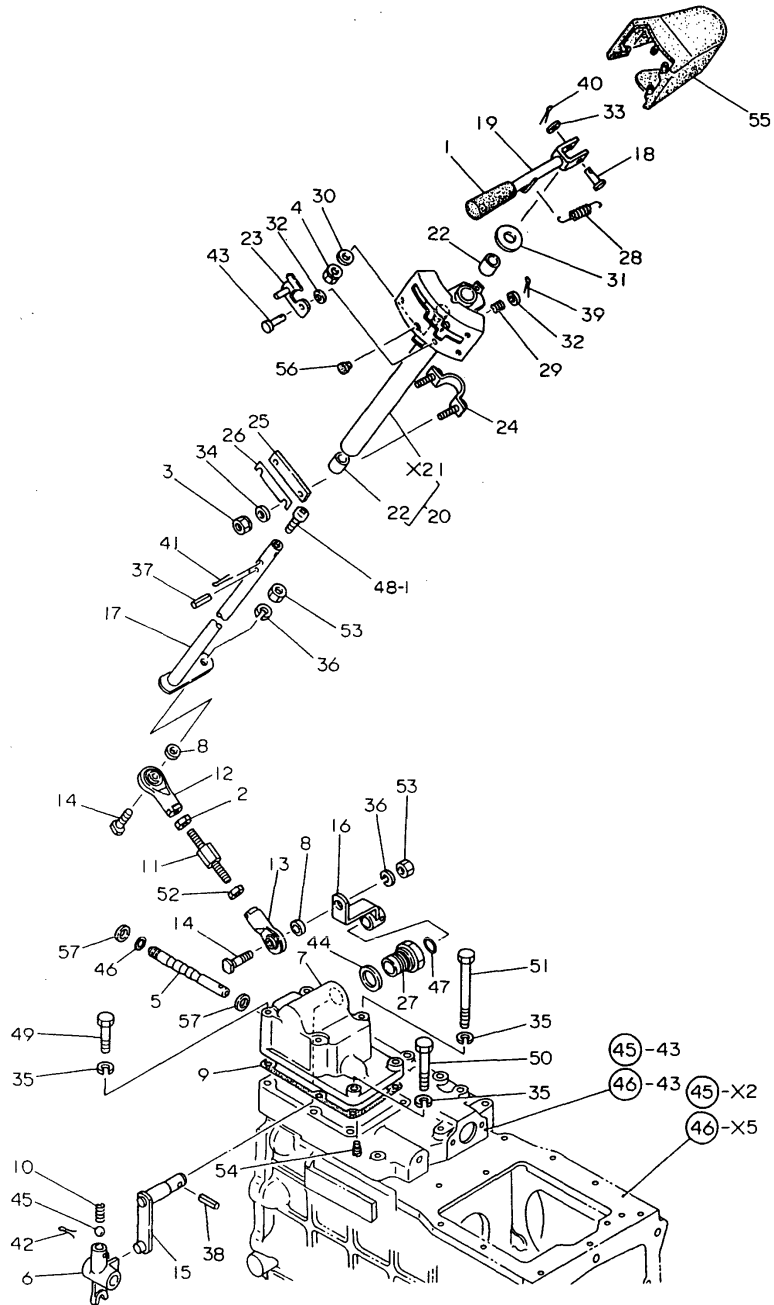
Fig. 45 TRANSMISSION HOUSING (STANDARD)



REF.	LEV.	PARTS NO.	DESCRIPTION	Q'TY						I	R
				(A)	(B)	(C)	(D)	(E)	(F)		
38-1	1	26116-080352	BOLT M 8X 35	1	1						S
		(A=*1982.08)	(B=*1982.08)								
39	1	26116-080352	BOLT M 8X 35	9	9						
40	1	26116-100302	BOLT M10X 30 PLATED	4							
41	1	26116-120352	BOLT M12X 35 PLATED	5	5						
42	1	26116-120452	BOLT M12X 45 PLATED	2	2						
43	1	194446-24500-X	CASE, REGULATOR	1	1						
44	1	194300-24511	GASKET, REGULATOR	1	1						
45	1	194310-24520	SPOOL, VALVE	1	1						
46	1	194446-24540	SPRING, RELIEF	1	1						
47	1	194446-24550	SPRING, RELIEF	1	1						
48	1	194446-24560	VALVE ASSY, RELIEF	1	1						
48-1	1	194446-24561	VALVE ASSY, RELIEF	1	1						N
		(A=*1981.11)	(B=*1981.11)								
51	1	194300-24571-X	PLATE, END	1	1						
52	1	194446-24580	HOLDER, SPRING	1	1						
53	1	194446-24610	PARALLEL PIN	1	1						
54	1	194446-24620	SHIM T=0.5	2	2						
55	1	194446-24630	VALVE ASSY, DRV	1	1						
58	1	194310-24660	PLUG M18	1	1						
59	1	22217-060000	SPRING WASHER 6	2	2						
60	1	22217-080000	SPRING WASHER 8	5	5						
61	1	23414-180000	GASKET 18, ROUND	1	1						
62	1	23414-220000	PACKING 22,ROUND	1	1						
63	1	23871-010000	PLUG PT1/8,SCREW	2	2						
64	1	23881-220002	PLUG 22	1	1						
65	1	24341-000224	O-RING 1A S-22.4	2	2						
66	1	26116-060122	BOLT M 6X 12	2	2						
67	1	26116-080452	BOLT M 8X 45 PLATED	5	5						
68	1	26911-080082	SCREW M 8X 8	1	1						
69	1	194550-27030	KNOB	1	1						W
		(A=*1981.11)	(B=*1981.11)								

Fig.51. COLUMN SHIFT

Fig. 51 COLUMN SHIFT



(A)=YM276
(B)=YM276D
(C)=

(D)=
(E)=
(F)=

REF.	LEV.	PARTS NO.	DESCRIPTION	Q'TY						I	R	
				(A)	(B)	(C)	(D)	(E)	(F)			
		(A=T/# 20627)	(B=T/# 41570)									
41	1	22417-300250	COTTER PIN 3.0X 25		1		1					
42	1	22417-300250	COTTER PIN 3.0X 25		1		1					
43	1	22487-040140	PIN 4X 14		1		1					
44	1	23414-220000	PACKING 22,ROUND		1		1					
45	1	24190-140001	BALL 7/16, STEEL		1		1					
46	1	24311-000090	O-RING 1A P-9.0		1		1					
47	1	24311-000140	O-RING 1A P-14.0		1		1					
48-1	1	26557-060082	SCREW M 6X 8		1		1					
49	1	26116-080602	BOLT M 8X 60 PLATED		2		2					
50	1	26116-080702	BOLT M 8X 70 PLATED		2		2					
51	1	26116-081052	BOLT M 8X105 PLATED		2		2					
52	1	26716-080002	NUT M 8		1		1					
53	1	26716-100002	NUT M10		2		2					
54	1	26921-080142	SCREW M 8X14		1		1					
55	1	194170-27340-X	COVER		1		1					
56	1	1C6053-26020	CAP, RUBBER		1		1					
57	1	22117-120000	WASHER 12		2		2					W
		(A=T/# 20409)	(B=T/# 40816)									

CLICK HERE TO **DOWNLOAD** THE COMPLETE MANUAL

- Thank you very much for reading the preview of the manual.
- You can download the complete manual from: www.heydownloads.com by clicking the link below

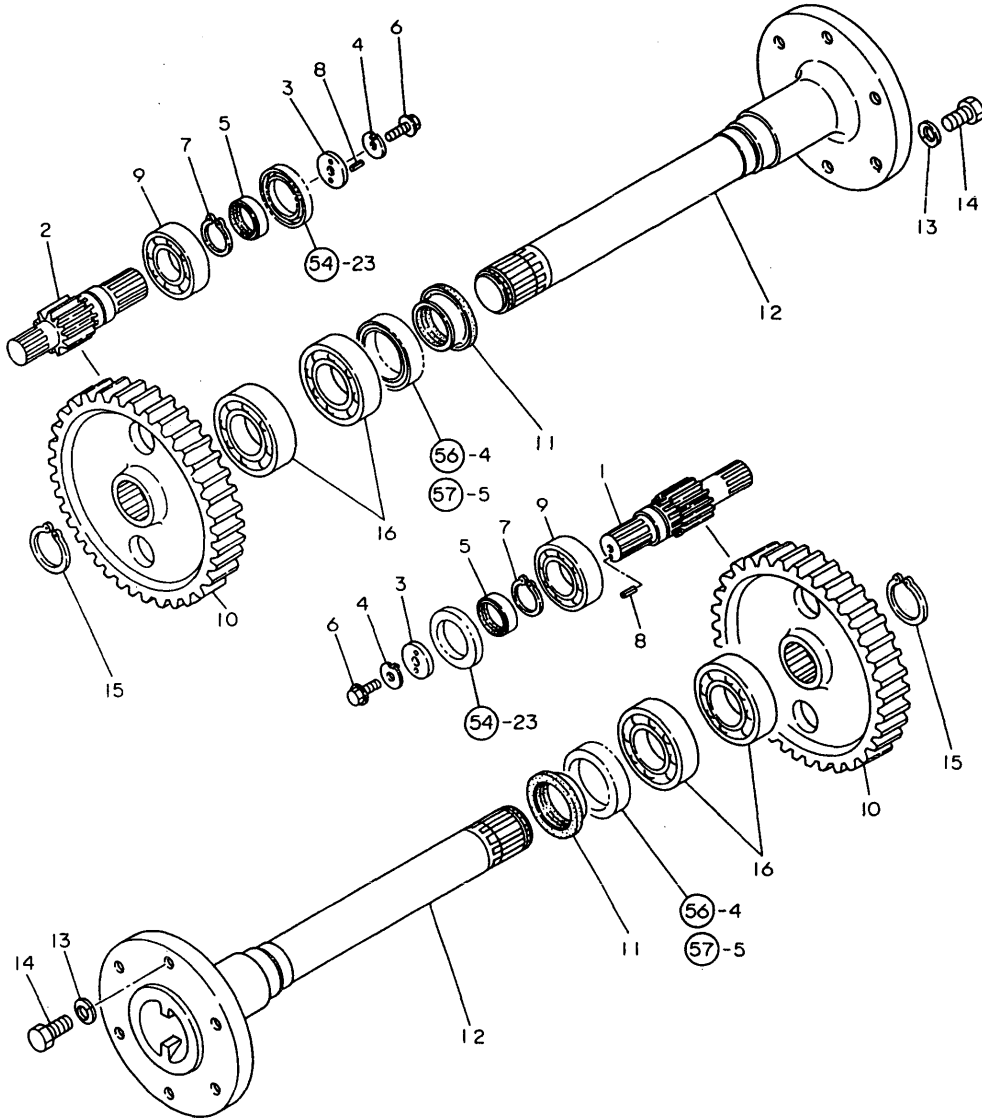


- Please note: If there is no response to CLICKING the link, please download this PDF first and then click on it.

CLICK HERE TO **DOWNLOAD** THE COMPLETE MANUAL

Fig.58. REAR AXLE SHAFT

Fig. 58 REAR AXLE SHAFT



(A)=YM276
(B)=YM276D
(C)=

(D)=
(E)=
(F)=

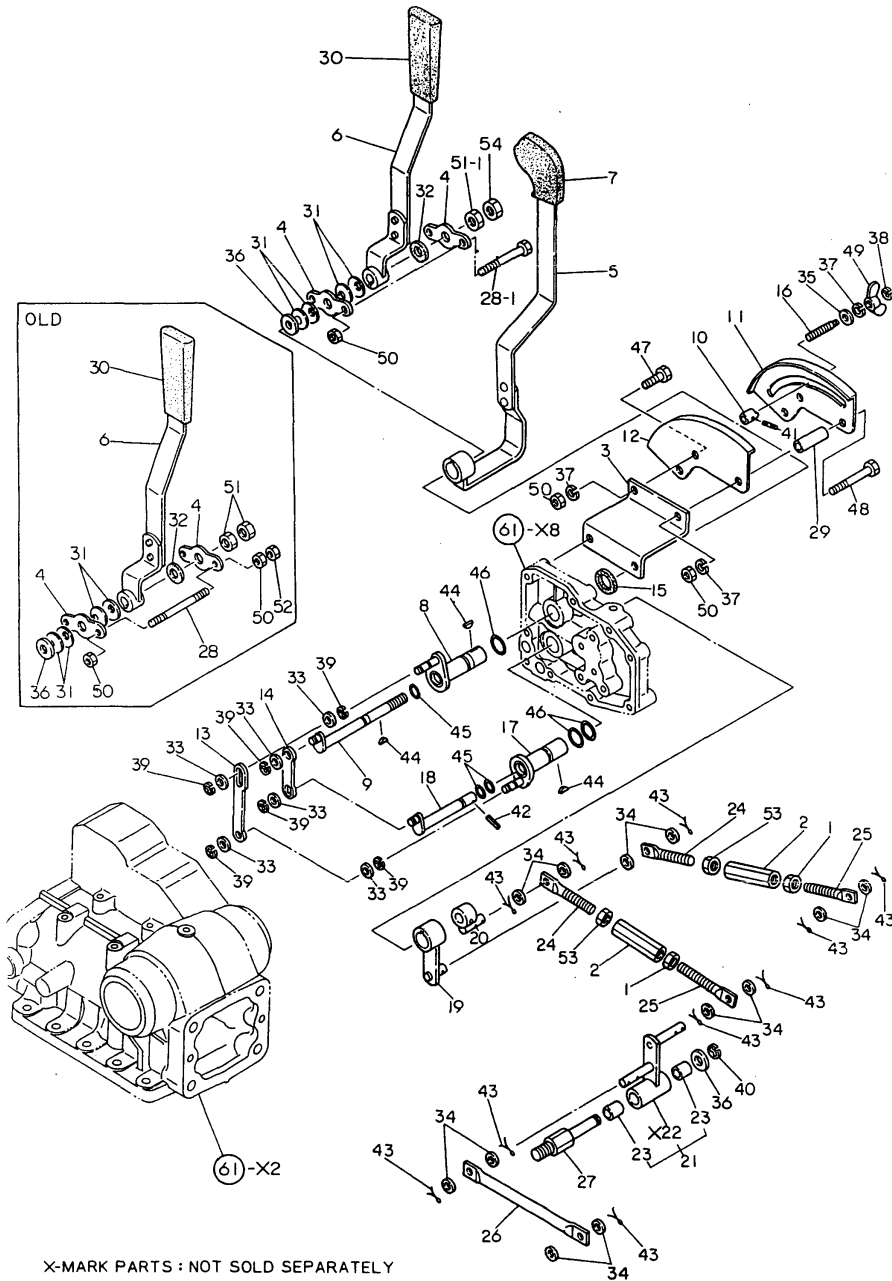
REF.	LEV.	PARTS NO.	DESCRIPTION	Q'TY						I	R
				(A)	(B)	(C)	(D)	(E)	(F)		
1	1	194312-33400	PINION, FINAL	1	1						
2	1	194312-33410	PINION, FINAL	1	1						
3	1	194130-33430	WASHER 10X40X6	2	2						
4	1	194130-33440	WASHER 10X27	2	2						
5	1	194312-33440	SLEEVE 40X45X12.5	2	2						
6	1	194145-36670	BOLT M10X25	2	2						
7	1	22242-000400	CIRCLIP 40	2	2						
8	1	22351-040014	SPRING PIN 4X14	2	2						
9	1	24104-062084	BALL BEARING	2	2						
9-1	1	24101-062084	BALL BEARING	2	2						N
		(A=T/# 20204) (B=T/# 40421)									
10	1	194312-33500	GEAR, FINAL	2	2						
11	1	194312-32670	SLEEVE 57X62X18	2	2						
12	1	194170-34100-X	SHAFT, REAR AXLE	2	2						
13	1	194280-34170	WASHER 16	12	12						
13-1	1	194065-34170	WASHER 16, LOCK	12	12						N
		(A=T/# 20608) (B=T/# 41534)									
14	1	194322-34180	BOLT M16X 30	12	12						
15	1	22242-000500	CIRCLIP 50	2	2						
16	1	24101-062104	BALL BEARING	4	4						

Fig.64. OIL PRESSURE CONTROL(STANDARD)

(A)=YM276
(B)=YM276D
(C)=

(D)=
(E)=
(F)=

Fig. 64 OIL PRESSURE CONTROL (STANDARD)



X-MARK PARTS : NOT SOLD SEPARATELY

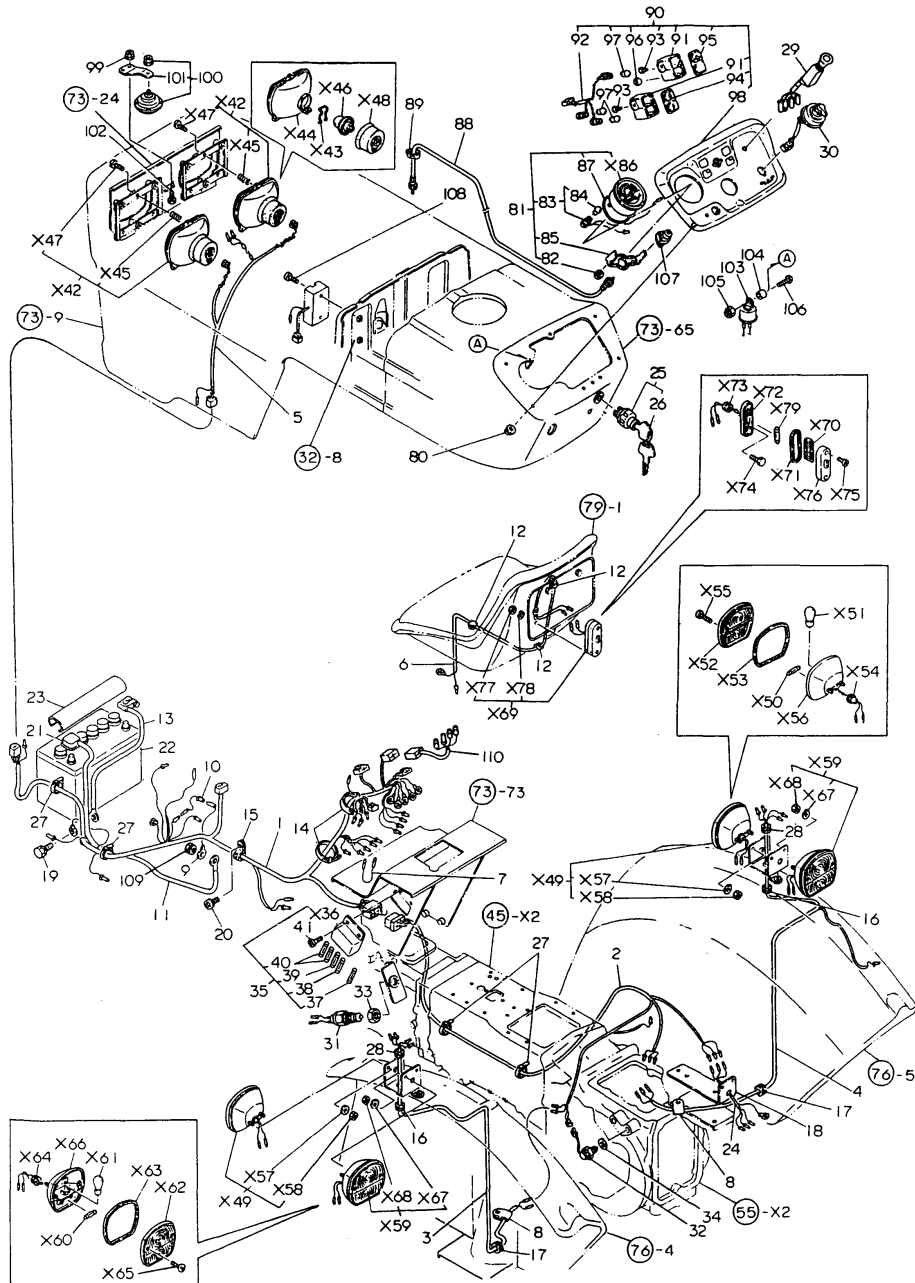
REF.	LEV.	PARTS NO.	DESCRIPTION	Q'TY						I	R
				(A)	(B)	(C)	(D)	(E)	(F)		
46	1	24311-000150	O-RING 1A P-15.0	3	3						
47	1	26116-080182	BOLT M 8X 18 PLATED	1	1						
47-1	1	26116-080162	BOLT M 8X 16 PLATED	1	1						N
		(A=*1982.12) (B=*1982.12)									
48	1	26116-080602	BOLT M 8X 60 PLATED	2	2						
49	1	26635-080002	WING NUT M 8	1	1						
50	1	26716-080002	NUT M 8	7	7						
50-1	1	26716-080002	NUT M 8	5	5						K
		(A=T/# 20179) (B=T/# 40235)									
51	1	26716-120002	NUT M12	2	2						
51-1	1	26716-120002	NUT M12	1	1						K
		(A=T/# 20179) (B=T/# 40235)									
52	1	26756-080002	LOCK NUT M 8 PLATED	2	2						Z
		(A=T/# 20179) (B=T/# 40235)									
53	1	26756-100002	LOCK NUT M10 PLATED	2	2						
54	1	26726-120002	NUT M12	1	1						W
		(A=T/# 20179) (B=T/# 40235)									
54-1	1	26716-120002	NUT M12	1	1						N
		(A=T/# 20450) (B=T/# 40907)									

Fig.69. ELECTRIC PARTS(EUROPE)

(A)=YM276
(B)=YM276D
(C)=

(D)=
(E)=
(F)=

Fig. 69 ELECTRIC PARTS (EUROPE)



X-MARK PARTS : NOT SOLD SEPARATELY

REF.	LEV.	PARTS NO.	DESCRIPTION	Q'TY						I	R
				(A)	(B)	(C)	(D)	(E)	(F)		
38	2	194145-52830	FUSE 10A	1	1						
38-1	2	29411-100000	FUSE (10A),CARTRIDGE	1	1						R
		(A=T/# 20627) (B=T/# 41570)									
39	2	194145-52840	FUSE 15A	1	1						
39-1	2	29411-150000	FUSE (15A),CARTRIDGE	1	1						R
		(A=T/# 20627) (B=T/# 41570)									
40	2	194145-52850	FUSE 20A	2	2						
40-1	2	29411-200000	FUSE (20A),CARTRIDGE	2	2						R
		(A=T/# 20627) (B=T/# 41570)									
41	1	26587-060202	SCREW M 6X 20	2	2						
42	1	194436-53100	LAMP ASSY, HEAD	2	2						1
43	2	194436-53120	CLIP	2	2						1
45	2	194436-53130	SPRING	6	6						1
46	2	194436-53110	BULB 12V-45/40	2	2						1
47	2	194436-53140	SCREW	6	6						1
48	2	194436-53150	BOOT, RUBBER	2	2						1
49	1	194436-53600	LAMP, CLEARANCE	2	2						1
50	2	194436-53650	BULB 12V-4W	2	2						1
51	2	194436-53640	BULB 12V-21W	2	2						1
52	2	194436-53630	LENS	2	2						1
53	2	194436-53610	GASKET	2	2						1
54	2	194436-53620	GROMMET	2	2						1
55	2	26557-040202	SCREW M 4X 20	4	4						1
56	2	194436-53660	BODY	2	2						1
57	2	194436-53670	WASHER 5	4	4						1
58	2	26716-050002	NUT M 5	4	4						1
59	1	194436-53700	LAMP, CLEARANCE	2	2						1
60	2	194436-53650	BULB 12V-4W	2	2						1
61	2	194436-53640	BULB 12V-21W	2	2						1
62	2	194436-53710	LENS	2	2						1
63	2	194436-53610	GASKET	2	2						1
64	2	194436-53620	GROMMET	2	2						1
65	2	26557-040202	SCREW M 4X 20	4	4						1
66	2	194436-53660	BODY	2	2						1
67	2	194436-53670	WASHER 5	4	4						1
68	2	26716-050002	NUT M 5	4	4						1
69	1	194436-53800	LAMP, LICENSE	1	1						1
70	2	*REF.69=69	LENS	1	1						1
71	2	*REF.69=69	GASKET	1	1						1
72	2	194436-53810	BODY	1	1						1
73	2	*REF.69=69	GROMMET	1	1						1
74	2	26116-050162	BOLT M 5X 16 PLATED	2	2						1
75	2	194436-53820	SCREW	2	2						1
76	2	*REF.69=69	COVER	1	1						1
77	2	26716-050002	NUT M 5	2	2						1
78	2	22217-050000	SPRING WASHER 5	2	2						1
79	2	194436-53650	BULB 12V-4W	1	1						1
80	1	194990-22030	NUT W/WASHER 5	6	6						
81	1	194170-56100	HOUR-METER ASSY	1	1						
82	2	194990-22030	NUT W/WASHER 5	2	2						
83	2	194170-56130	CORD W/BULB 12V-1.7W	1	1						

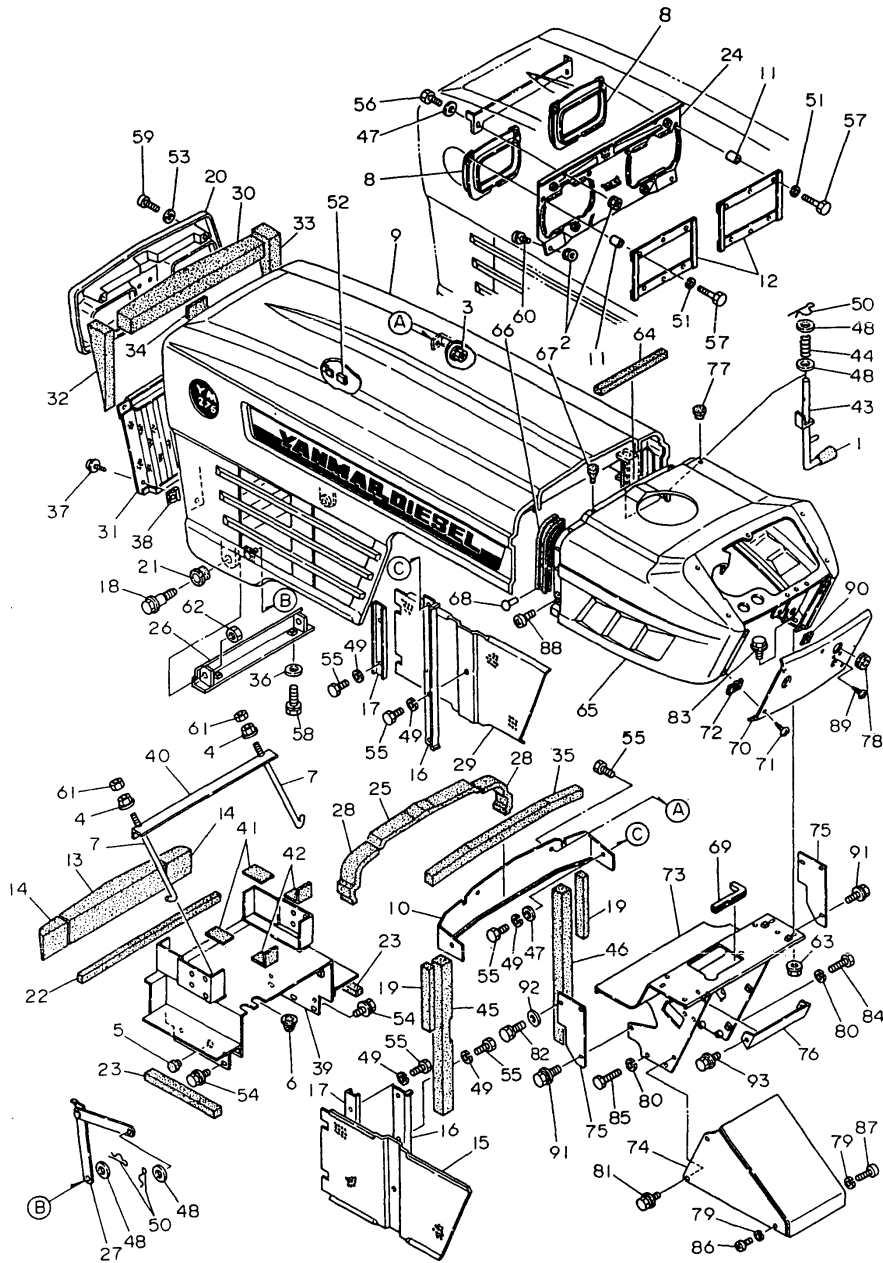
N:Old ↔ New, Q:Old ↔ New, R:Old ↔ New, S:Old ↔ New, W:Add, Z:Discontinued, F:Set Change, K:Q'ty Change

++ CONTINUE ++

(C)Copy Rights YANMAR CO.,LTD and YANMAR AGRICULTURAL EQUIPMENT CO.,LTD.

Fig.73. HOOD(FRANCE & EUROPE)

Fig. 73 HOOD (FRANCE & EUROPE)



(A)=YM276
(B)=YM276D
(C)=

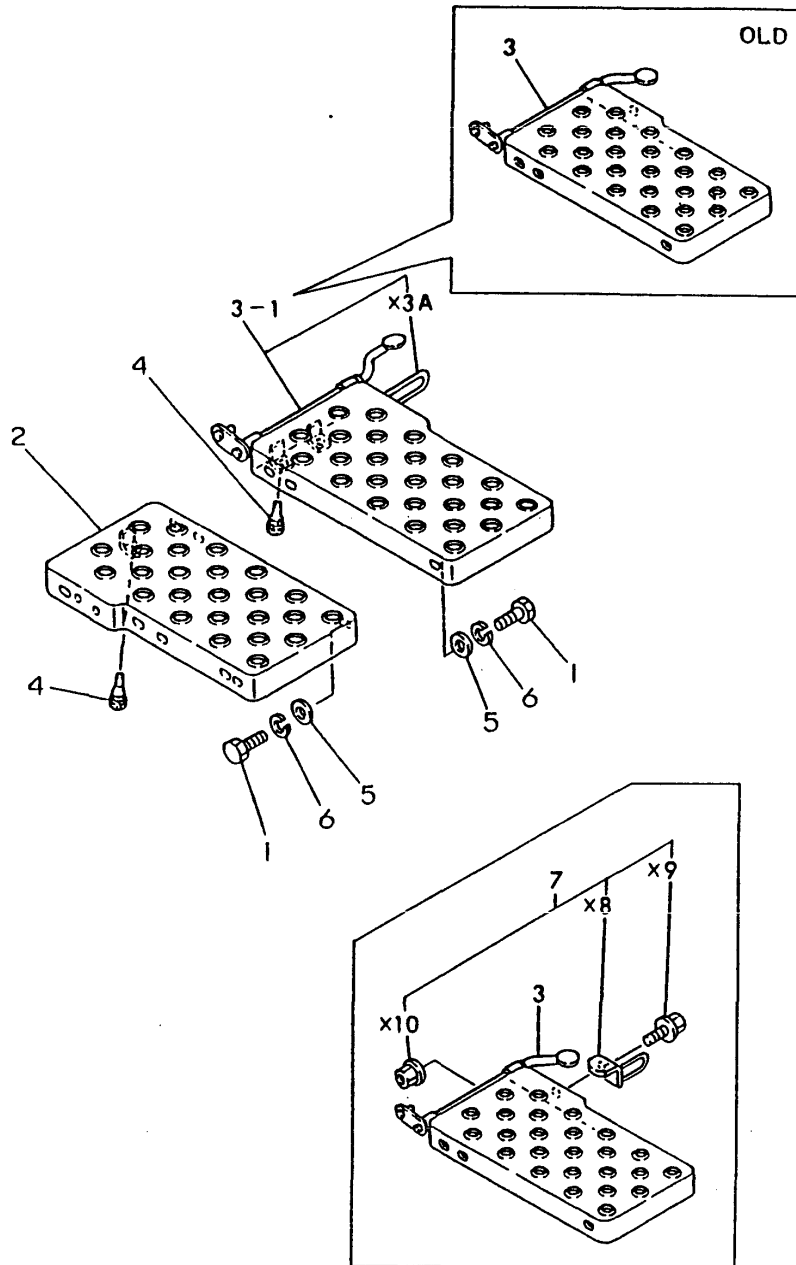
(D)=
(E)=
(F)=

REF.	LEV.	PARTS NO.	DESCRIPTION	Q'TY						I	R
				(A)	(B)	(C)	(D)	(E)	(F)		
1	1	194150-01190	KNOB, THROTTLE LEVER	2	2						
2	1	194990-22040	NUT W/WASHER 6	4	4						
3	1	194990-22130	NUT W/WASHER 6	2	2						
4	1	194990-22140	NUT W/WASHER 8	2	2						
5	1	192060-46110	CAP, RUBBER	1	1						
6	1	194170-51210	GROMMET 25	1	1						
7	1	194145-51570	ROD, BATTERY CLAMP	2	2						
8	1	194324-53350	HOOD, HEAD LAMP	2	2						
9	1	194170-61100-P	HOOD	1	1						
10	1	194145-61162	PLATE, AIR CUT	1	1						
11	1	194324-53370	COLLAR 6.5X10.5X26	6	6						
12	1	194324-53360-U	STAY, LAMP	2	2						
13	1	194322-61160	PAD	1	1						
13-1	1	194322-61360	PAD, (RUBBER)	1	1						N
(A=T/# 20493) (B=T/# 41002)											
14	1	194322-61181	PAD (RUBBER)	2	2						
14-1	1	194250-61480	PAD, (RUBBER)	2	2						N
(A=T/# 20493) (B=T/# 41002)											
15	1	194322-61190-P	SCREEN (L)	1	1						
16	1	194170-61210-P	RETAINER(C),SCREEN	2	2						
17	1	194145-61242	HOLDER, SCREEN	2	2						
18	1	194155-61241	BOLT, HINGE	2	2						
19	1	194167-61240	PAD, (RUBBER)	2	2						
20	1	194145-61252-P	GRILLE, FRONT	1	1						
21	1	194155-61251	BUSH, HINGE	2	2						
22	1	194322-61260	PAD, (RUBBER)	1	1						
23	1	194170-61270	PAD, (RUBBER)	2	2						
24	1	194324-61280-P	BRACKET	1	1						
25	1	194446-61940	PAD, (RUBBER)	1	1						
26	1	194145-61322-X	HINGE, HOOD	1	1						
27	1	194322-61330-U	STOPPER, HOOD	1	1						
28	1	194322-61340	PAD, (RUBBER)	2	2						
29	1	194322-61350-P	SCREEN (R)	1	1						
30	1	194322-61360	PAD, (RUBBER)	1	1						
31	1	194370-61371-P	GRILLE, FRONT	1	1						
32	1	194322-61380	PAD, (RUBBER)	1	1						
33	1	194322-61390	PAD, (RUBBER)	1	1						
34	1	194322-61430	PAD, (RUBBER)	1	1						
35	1	194170-61480	PAD, (RUBBER)	1	1						
36	1	194145-61570	WASHER 10	2	2						
37	1	194420-61640	SCREW M 5X 16	2	2						
38	1	194145-61650	NUT M5	2	2						
39	1	194170-61700-X	COVER, DUST	1	1						
40	1	194190-61750	CLAMP, BATTERY	1	1						
41	1	194190-61761	RUBBER, CUSHION	2	2						
42	1	194190-61780	RUBBER, CUSHION	2	2						
43	1	194145-61821	LEVER, LOCK	2	2						
44	1	194151-61831	SPRING	2	2						
45	1	194170-61980	PAD, (RUBBER)	1	1						
46	1	194446-61981	PAD, (RUBBER)	1	1						
47	1	22137-060000	WASHER 6, POLISHED	4	4						

N:Old ↔ New, Q:Old ↔ New, R:Old ↔ New, S:Old ↔ New, W:Add, Z:Discontinued, F:Set Change, K:Q'ty Change
++ CONTINUE ++ (C)Copy Rights YANMAR CO.,LTD and YANMAR AGRICULTURAL EQUIPMENT CO.,LTD.

Fig.78. STEP(PORTUGAL)

Fig. 78 STEPS (PORTUGAL)



Y00T2321 78. STEP(PORTUGAL)

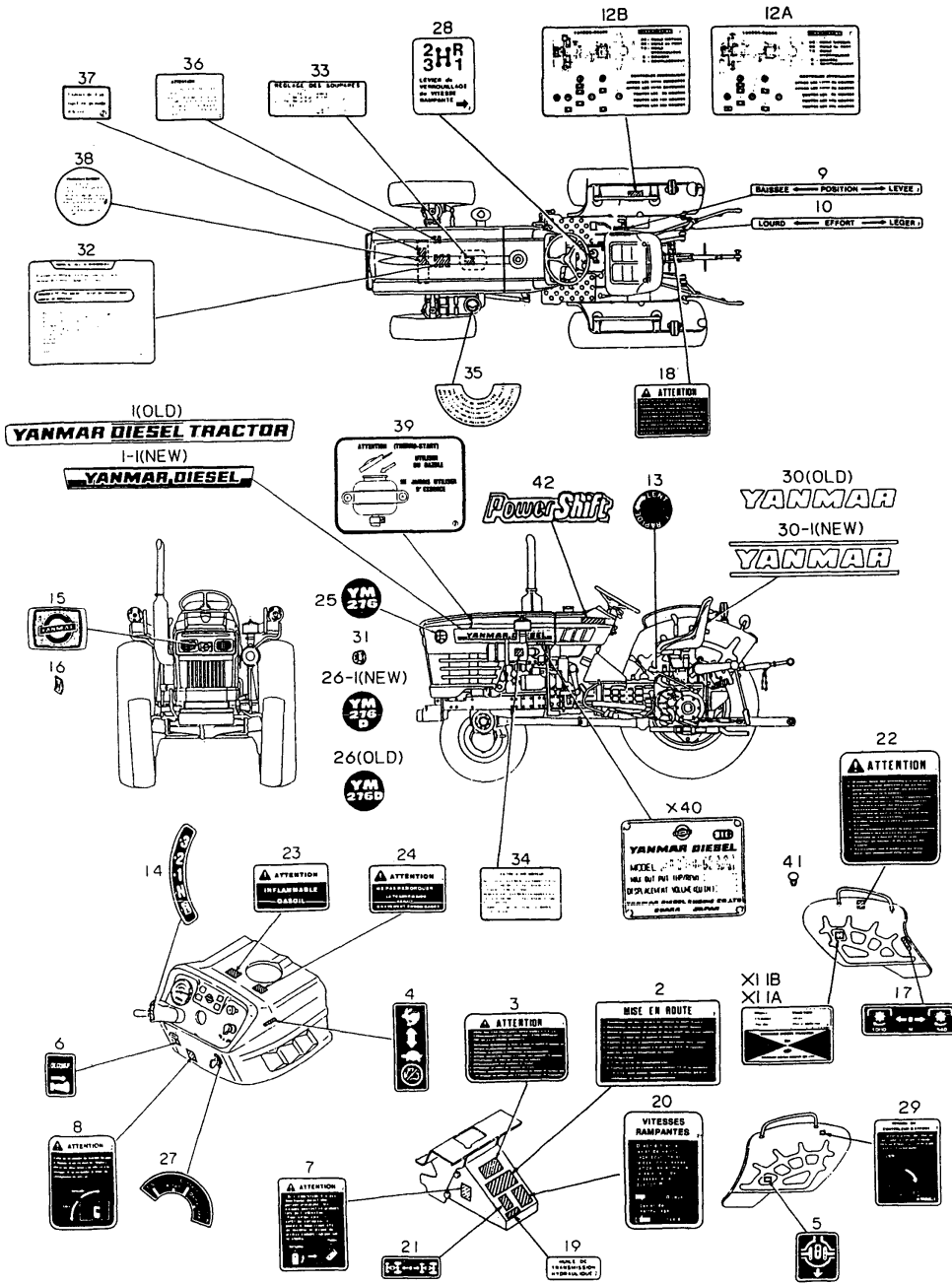
(A)=YM276
(B)=YM276D
(C)=

(D)=
(E)=
(F)=

REF.	LEV.	PARTS NO.	DESCRIPTION	Q'TY						I	R
				(A)	(B)	(C)	(D)	(E)	(F)		
1	1	194465-11930	BOLT M10X 28	4	4						
2	1	194170-62510-X	STEP (L)	1	1						
3	1	194172-62540-X	STEP (R)	1	1						
3-1	1	194172-62541-X	STEP (R)	1	1						N
		(A=T/# 20019) (B=T/# 40042)									
4	1	194330-62530	STOPPER, PEDAL	3	3						
5	1	22137-100000	WASHER 10,POLISHED	4	4						
6	1	22217-100000	SPRING WASHER 10	4	4						
7	1	794170-01400-X	STOPPER KIT, PEDAL	1	1						W 1
		(A=T/# 20019) (B=T/# 40042)									

Fig.86. LABEL(QUEBEC)

Fig. 86 LABELS (QUEBEC)



(A)=YM276
(B)=YM276D
(C)=

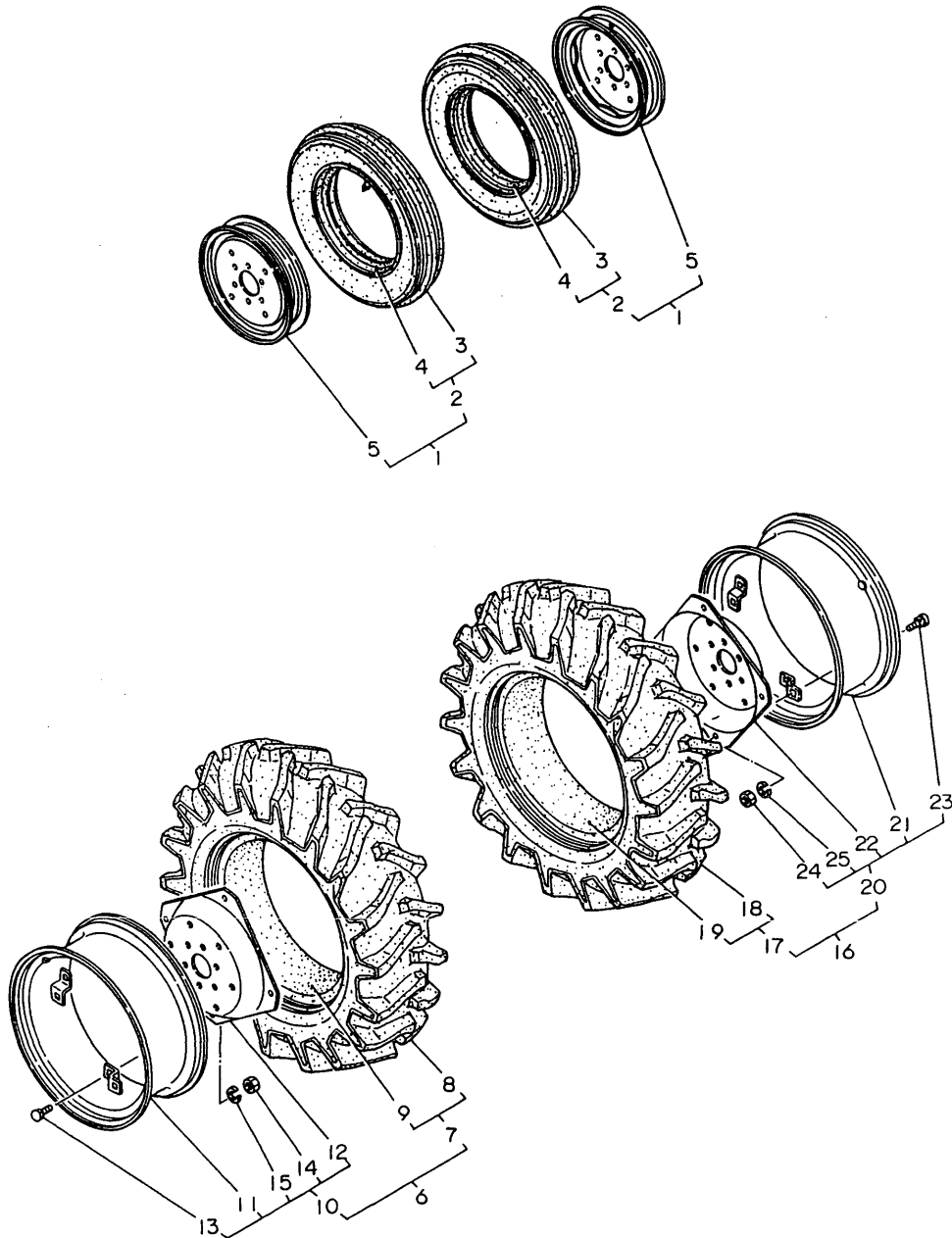
(D)=
(E)=
(F)=

REF.	LEV.	PARTS NO.	DESCRIPTION	Q'TY						I R
				(A)	(B)	(C)	(D)	(E)	(F)	
1	1	194371-64750	LABEL, MODEL	2	2					
1-1	1	194371-64751	LABEL, MODEL	2	2					N
		(A=*1981.11) (B=*1981.11)								
2	1	194448-65350	LABEL, ENG. STARTING	1	1					
3	1	194448-65360	LABEL, COLD STARTING	1	1					
4	1	194240-65432	LABEL, THROTTLE LEVER	1	1					
5	1	194240-65441	LABEL, DIFF. LOCK	1	1					
6	1	194370-65451	LABEL, DECOMPRESSION	1	1					
7	1	194240-98281	LABEL, CLUTCH	1	1					
8	1	194500-65470	LABEL, LEVER POSITION	1	1					
9	1	194172-65510	LABEL, P. INDICATION	1	1					
10	1	194172-65520	LABEL, D. INDICATION	1	1					
12A	1	194324-65560	LABEL, LUBRICATION	1						
12B	1	194325-65560	LABEL, LUBRICATION		1					
13	1	194172-65570	LABEL, SLOW RETURN	1	1					
14	1	194170-65580	LABEL, MAIN SHIFT	1	1					
15	1	194200-65601	EMBLEM, FRONT	1	1					
16	1	194200-65610	NUT 5	2	2					
17	1	194273-65611	LABEL, P.T.O. SHIFT	1	1					
18	1	194448-65620	LABEL, WARNING	1	1					
19	1	194448-65630	LABEL, GEAR OIL	1	1					
20	1	194172-65650	LABEL, CREEP LOCK	1	1					
21	1	194447-65621	LABEL, 4-DRIVE WHEEL		1					
22	1	194448-65660	LABEL, CAUTION	1	1					
23	1	194240-98221	LABEL, FUEL OIL	1	1					
24	1	194448-65680	LABEL, DO NOT TOW	1	1					
25	1	194170-65720	LABEL, SIDE MARK	2						
25-1	1	194170-65721	LABEL, SIDE MARK	2						N
		(A=*1981.11)								
26	1	194171-65720	LABEL, SIDE MARK		2					
26-1	1	194171-65721	LABEL, SIDE MARK		2					N
		(B=*1981.11)								
27	1	194240-98251	LABEL, KEY SWITCH	1	1					
28	1	194172-65730	LABEL, RANGE SHIFT	1	1					
29	1	194324-65860	LABEL, DRAFT LOCK	1	1					
30	1	194170-65890	LABEL, SEAT	1	1					
30-1	1	194170-65891	LABEL, SEAT	1	1					N
		(A=*1981.11) (B=*1981.11)								
31	1	194990-22120	NUT W/WASHER 5	4	4					W
		(A=*1981.11) (B=*1981.11)								
32	1	121241-07150	LABEL, WATER DRAIN	1	1					
33	1	124040-07160	LABEL, VALVE ADJUST.	1	1					
34	1	121440-12480	LABEL, AIR CLEANER(F)	1	1					
35	1	121440-12520	LABEL, PRE-CLEANER(F)	1	1					
36	1	124740-44810	LABEL, SUB-TANK	1	1					
37	1	124740-44920	LABEL, ANTI-FREEZING	1	1					
38	1	124740-44800	LABEL, RADIATOR	1	1					
39	1	124740-77980	LABEL, FUEL CAUTION	1	1					
41	1	102210-07990	RIVET	4	4					
42	1	194800-65350	LABEL, MAIN SHIFT	2	2					W
		(A=T/# 20493) (B=T/# 41002)								

N:Old ↔ New, Q:Old ↔ New, R:Old ↔ New, S:Old ↔ New, W:Add, Z:Discontinued, F:Set Change, K:Q'ty Change
(C)Copy Rights YANMAR CO.,LTD and YANMAR AGRICULTURAL EQUIPMENT CO.,LTD.

Fig.94. AG TIRES(FOR YM276,STANDARD)

Fig. 94 AG TIRES (STANDARD) [For Model YM276]



Y00T2321 94. AG TIRES(FOR YM276,STANDARD)

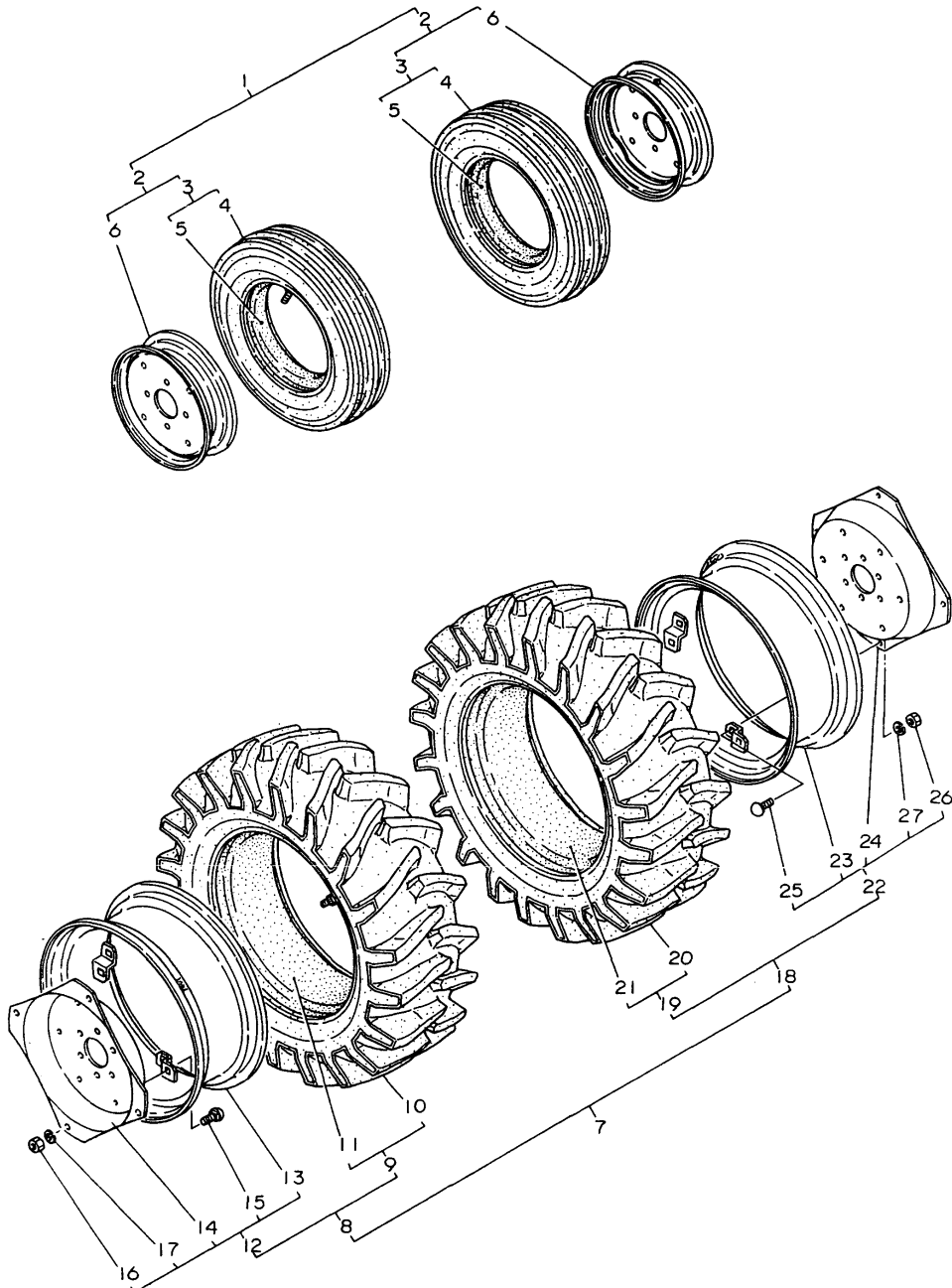
(A)=YM276
(B)=YM276D
(C)=

(D)=
(E)=
(F)=

REF.	LEV.	PARTS NO.	DESCRIPTION	Q'TY						I	R
				(A)	(B)	(C)	(D)	(E)	(F)		
1	1	194432-12900-Q	TIRE ASSY 5 X15	2							
2	2	794081-12950	TIRE W/TUBE 5.00-15	2							
3	3	194081-12960	TIRE 5 X15	2							
4	3	194081-12970	TUBE	2							
5	2	194275-12910-Q	WHEEL DC3.00-15	2							
6	1	194170-34700-Q	TIRE ASSY 12.4X24	1							
7	2	194170-34900	TIRE W/TUBE12.4X24	1							
8	3	194170-34910	TIRE 12.4X 24	1							
9	3	194170-34920	TUBE	1							
10	2	194170-34880-Q	WHEEL W10X 24W	1							
11	3	194170-34820-Q	WHEEL W10X 24W	1							
12	3	194130-34811-Q	DISC	1							
13	3	194130-34850	BOLT M16X 35	4							
14	3	194130-34840	NUT M16	4							
15	3	22217-160000	SPRING WASHER 16	4							
16	1	194170-34800-Q	TIRE ASSY 12.4X24	1							
17	2	194170-34900	TIRE W/TUBE12.4X24	1							
18	3	194170-34910	TIRE 12.4X 24	1							
19	3	194170-34920	TUBE	1							
20	2	194170-34880-Q	WHEEL W10X 24W	1							
21	3	194170-34820-Q	WHEEL W10X 24W	1							
22	3	194130-34811-Q	DISC	1							
23	3	194130-34850	BOLT M16X 35	4							
24	3	194130-34840	NUT M16	4							
25	3	22217-160000	SPRING WASHER 16	4							

Fig.104. AG TIRES(USA ONLY,FOR YM276)

Fig. 104 AG TIRES (FRONT & REAR) [For Model YM276]



(A)=YM276
(B)=YM276D
(C)=

(D)=
(E)=
(F)=

REF.	LEV.	PARTS NO.	DESCRIPTION	Q'TY						I	R	
				(A)	(B)	(C)	(D)	(E)	(F)			
1	1	YTI432-00100	TIRE WHEEL SET,FRONT	1							1	
2	2	YTI432-12900	TIRE ASSY,FRONT	2							1	
3	3	YTI432-12950	TIRE W/TUBE 6.00-14	2							1	
4	4	YTI432-12960	TIRE 6.00-14	2							1	
5	4	YTI432-12970	TUBE	2							1	
6	3	YTI432-12910	WHEEL 14X5KB	2							1	
7	1	YTI170-34950	TIRE WHEEL SET,REAR	1							1	
8	2	YTI170-34700	TIRE ASSY(L),REAR	1							1	
9	3	YTI170-34970	TIRE W/TUBE 12.4-24	1							1	
10	4	YTI170-34980	TIRE 12.4-24	1							1	
11	4	YTI170-34990	TUBE 12.4-24	1							1	
12	3	YTI170-34850	WHEEL ASSY 24-W10	1							1	
13	4	YTI170-34860	WHEEL 24-W10	1							1	
14	4	194130-34811-Q	DISC	1							1	
15	4	194130-34850	BOLT M16X 35	4							1	
15-1	4	194555-34850	BOLT M16X 35	4								R 1
		(A=T/# 20590)										
16	4	194130-34840	NUT M16	4							1	
16-1	4	194555-34210	NUT M16	4								R 1
		(A=T/# 20590)										
17	4	22217-160000	SPRING WASHER 16	4							1	
17-1	4	194555-34190	SPRING WASHER 16	4								R 1
		(A=T/# 20590)										
18	2	YTI170-34800	TIRE ASSY(R),REAR	1							1	
19	3	YTI170-34970	TIRE W/TUBE 12.4-24	1							1	
20	4	YTI170-34980	TIRE 12.4-24	1							1	
21	4	YTI170-34990	TUBE 12.4-24	1							1	
22	3	YTI170-34850	WHEEL ASSY 24-W10	1							1	
23	4	YTI170-34860	WHEEL 24-W10	1							1	
24	4	194130-34811-Q	DISC	1							1	
25	4	194130-34850	BOLT M16X 35	4							1	
25-1	4	194555-34850	BOLT M16X 35	4								R 1
		(A=T/# 20590)										
26	4	194130-34840	NUT M16	4							1	
26-1	4	194555-34210	NUT M16	4								R 1
		(A=T/# 20590)										
27	4	22217-160000	SPRING WASHER 16	4							1	
27-1	4	194555-34190	SPRING WASHER 16	4								R 1
		(A=T/# 20590)										

PARTS No. INDEX

PARTS No.	Fig.	Ref.No.
194170-34800-Q	94	16
	98	16
	99	21
194170-34820-Q	94	11
		21
	98	9
		19
	99	14
		24
194170-34880-Q	94	10
		20
	98	7
		17
	99	12
		22
194170-34900	94	7
		17
	98	13
		23
	99	18
		28
194170-34910	94	8
		18
	98	14
		24
	99	19
		29
194170-34920	94	9
		19
	98	15
		25
	99	20
		30
194170-37660-X	59	12
194170-41120-X	60	1
194170-42100-X	61	1
194170-42130	61	3
194170-42150	61	6
194170-42200-X	61	7
194170-42220	61	10
194170-43200-X	61	13
194170-43310	62	1
194170-43410	62	4
194170-44110	62	5
194170-44210	62	6
194170-44230	62	7
194170-44250	62	8
194170-44260	62	9
194170-44420-X	62	10
194170-44430-X	62	11

PARTS No.	Fig.	Ref.No.
194170-44510	62	13
194170-45100-X	63	1
194170-45101-X	63	1 -1
194170-45220	63	4
194170-45230	63	5
194170-45250	63	6
194170-45320	63	8
194170-45321	63	8 -1
194170-45330	63	9
194170-45350	63	10
194170-45360	63	11
194170-45370	63	12
194170-45410	63	31
194170-45430	63	30
194170-45440	63	14
194170-45520	63	16
194170-45530	63	17
194170-45550	63	19
194170-45560	63	20
194170-45570	63	21
194170-45600	61	40
194170-45610	61	36
194170-45620	61	38
194170-45630	61	39
194170-45700	61	41
194170-45710	61	42
194170-45720	61	43
194170-45730	61	44
194170-45740	61	45
194170-46300	61	49
194170-46620	61	50
194170-46630	61	51
194170-46650	61	53
194170-46651	61	53 -1
194170-46660	61	54
194170-46670	61	55
194170-47310-X	64	3
	65	2
194170-47320	64	4
	65	3
194170-47360-X	64	5
194170-47370-X	64	6
194170-47380	64	8
194170-47381	64	8 -1
	65	7
194170-47390	64	9
	65	8
194170-47400-X	64	11
	65	10
194170-47410-X	64	12

PARTS No.	Fig.	Ref.No.
194170-47410-X	65	11
194170-47420	64	13
	65	12
194170-47430	64	14
	65	13
194170-47440	64	15
	65	14
194170-47450	64	17
	65	16
194170-47460	64	18
	65	17
194170-47470-X	64	19
	65	18
194170-47480-X	64	20
	65	19
194170-47490-X	64	21
	65	20
194170-47510	64	26
	65	25
194170-47520	64	27
	65	26
194170-47530	64	28
194170-47540	64	29
	65	27
194170-47710-X	66	1
194170-47720-X	66	2
194170-47730-X	66	3
194170-47740-X	66	6
194170-47770	66	8
194170-47780	66	9
194170-47800	66	10
194170-48110-X	60	20
194170-48220-X	60	21
194170-48240-X	60	23
194170-48250	60	24
194170-48260-X	60	25
194170-48380-X	60	51
194170-48950	45	21
194170-51110	67	1
194170-51120	67	2
194170-51210	72	91
	73	6
	74	6
194170-52130	67	24
	68	31
	69	30
	70	30
	71	30
194170-55120	67	73
	68	54

PARTS No.	Fig.	Ref.No.
194170-55120	69	91
	70	104
	71	53
194170-55130	67	74
	68	55
	69	92
	70	105
	71	54
194170-55150	67	76
	68	56
	69	94
	70	106
	71	55
194170-55160	67	77
	68	57
	69	95
	70	107
	71	56
194170-55170	67	78
	68	58
	69	96
	70	108
	71	57
194170-56100	67	67
	68	44
	69	81
	70	94
	71	43
194170-56130	67	69
	68	47
	69	83
	70	97
	71	46
194170-56170	67	70 -1
	68	50
	69	85
	70	100
	71	49
194170-61100-P	73	9
194170-61100-R	72	9
194170-61210	72	14
194170-61210-P	73	16
194170-61210-R	72	14 -1
	74	14
194170-61270	72	21
	73	23
	74	21
194170-61480	72	33
	73	35
	74	33

CLICK HERE TO **DOWNLOAD** THE COMPLETE MANUAL

- Thank you very much for reading the preview of the manual.
- You can download the complete manual from: www.heydownloads.com by clicking the link below



- Please note: If there is no response to CLICKING the link, please download this PDF first and then click on it.

CLICK HERE TO **DOWNLOAD** THE COMPLETE MANUAL