

P R E F A C E

1. This Parts Catalog is the Revised Edition of Model YB201(U)
(Issue No. 0 0 0 Y 0 0 K 2 0 3 1)

Issue No. : 0 0 0 Y 0 0 K 2 0 3 2
Date of Issue: October, 1 9 9 1.

2. This Parts Catalog is listed up from engine number 0 0 5 0 3.
[History]

| | |
|---------------|-----------------------------------|
| 1 S T Edition | Issue No. 0 0 0 Y 0 0 K 2 0 3 0 |
| | Date of Issue: September, 1 9 8 5 |
| 2 n d Edition | Issue No. 0 0 0 Y 0 0 K 2 0 3 1 |
| | Date of Issue: October, 1 9 8 6 |
| 3 r d Edition | Issue No. 0 0 0 Y 0 0 K 2 0 3 2 |
| | Date of Issue: October, 1 9 9 1 |

(please disuse the old Parts catalog stated above)

3. The Mounted engine is Model 3 T 7 5 H-L T B S (1 7 1 0 6 7 N).

4. Paint Color
Old

| Paint Color | Munsel No. | Paint Code (16 ℓ) | Spray |
|-------------------------|------------|-------------------|--------------|
| YANMAR New Light Yellow | 10YR6.5/8 | 933110-91602 | 981101-06041 |
| YANMAR Cream | 2.5Y9/1 | 933110-91803 | 981101-06340 |
| YANMAR New Dark Olive | 5GY1/1 | 933110-91702 | 981101-05941 |

New (From Oct. 1987)

| Paint Color | Munsel No. | Paint Code (16 ℓ) | Spray |
|-------------------------|------------|-------------------|--------------|
| YANMAR New Light Yellow | 10YR6.5/8 | 933110-91602 | 981101-06041 |
| YANMAR Cream White | 5.0Y9/1 | 981101-09614 | 981101-10140 |
| YANMAR Dark Olive II | 7.5GY1/1 | 981101-09515 | 981101-10141 |

New (From Apr. 1989)

| Paint Color | Munsel No. | Paint Code (16 ℓ) | Spray |
|-----------------------|------------|-------------------|--------------|
| YANMAR Saffron Yellow | 1.0Y7.5/11 | 933110-91603 | 977620-30381 |
| YANMAR Cream White | 5.0Y9/1 | 981101-09614 | 981101-10140 |
| YANMAR Charcoal Gray | N2 | 981101-09516 | 977620-30371 |

CLICK HERE TO **DOWNLOAD** THE COMPLETE MANUAL

- Thank you very much for reading the preview of the manual.
- You can download the complete manual from: www.heydownloads.com by clicking the link below



- Please note: If there is no response to CLICKING the link, please download this PDF first and then click on it.

CLICK HERE TO **DOWNLOAD** THE COMPLETE MANUAL

Fig. 4 ソウコウドウソウチ
DRIVING WHEEL

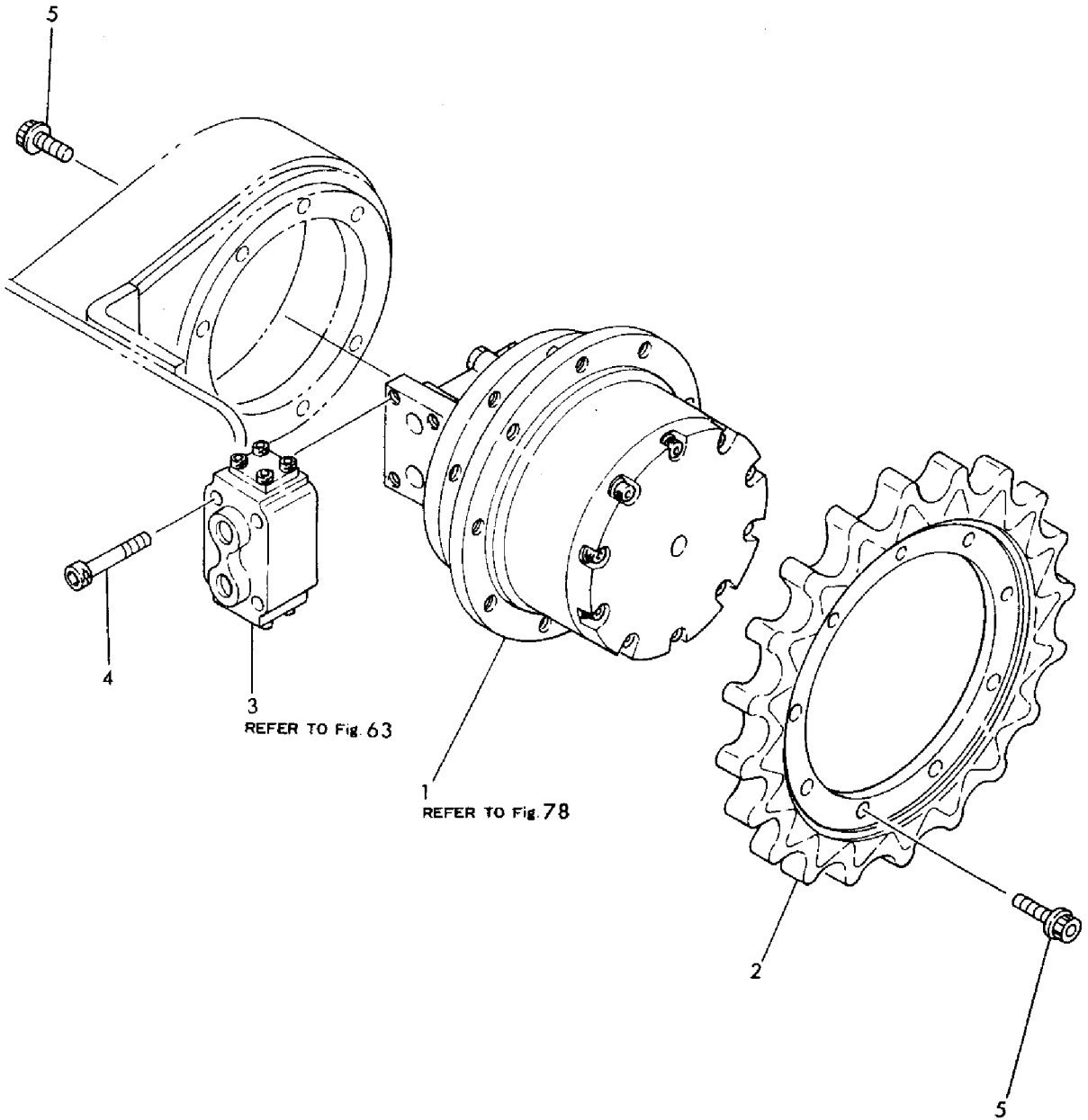


Fig. 9 ホンタイ (YB201 ヨウ)
MAIN FRAME (FOR MODEL YB201)

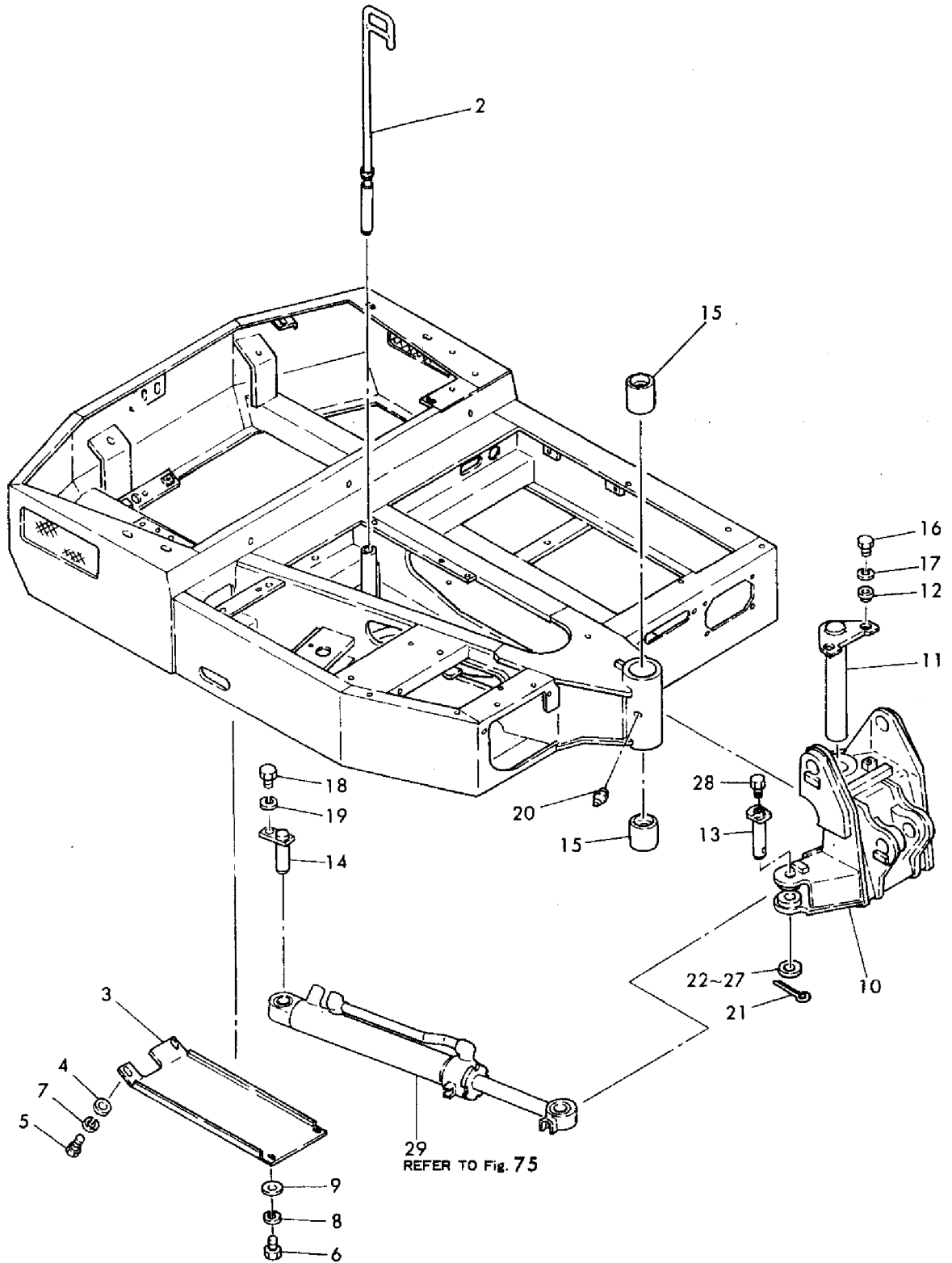


Fig. 14 コントロールレバー (走行用), YB201U(Z) ヨウ
 CONTROL LEVER (DRIVING), FOR MODEL YB201U (Z)

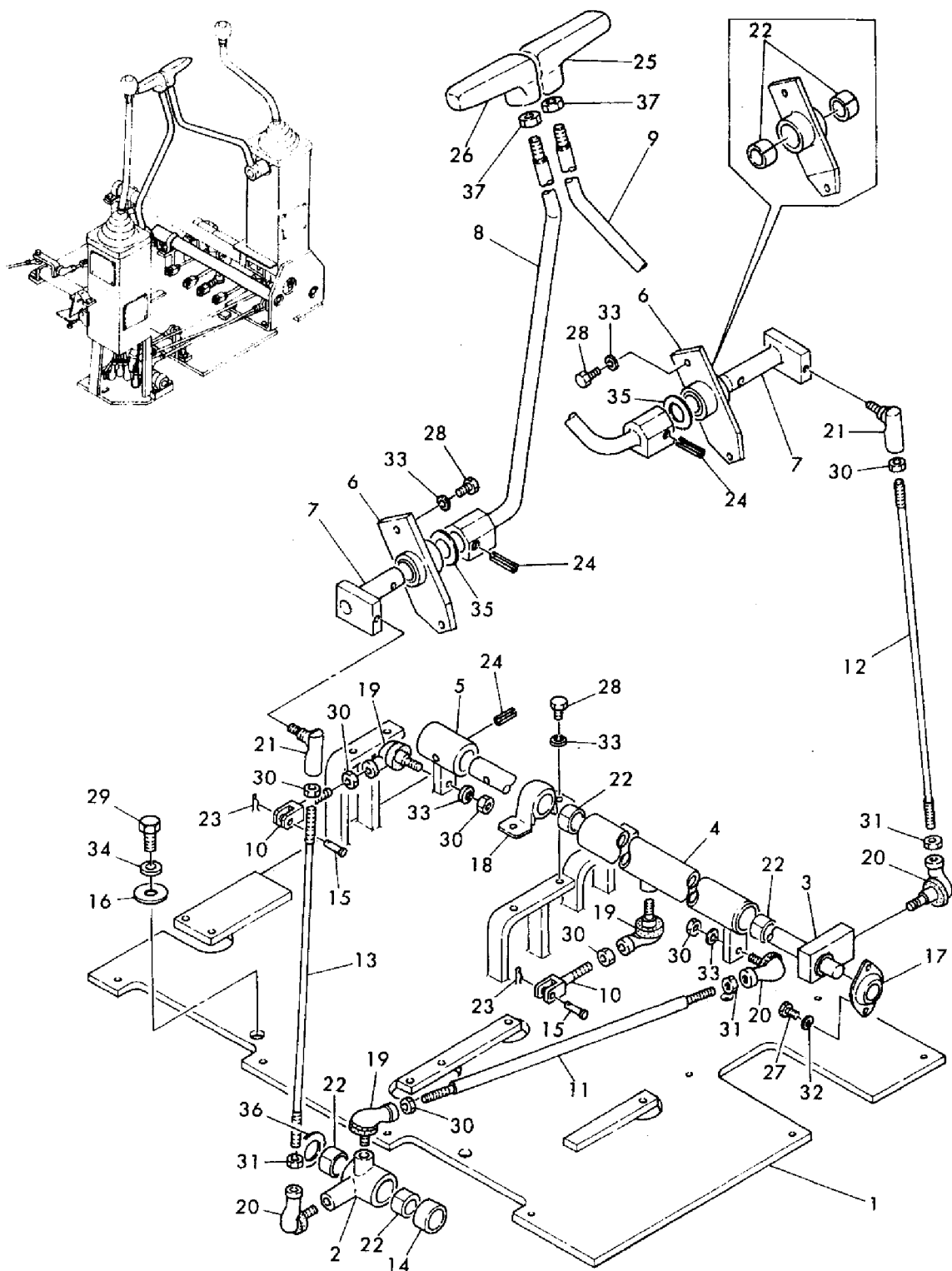


Fig. 19 スイングペダル, YB201 (Z) ヨウ
 SWING PEDAL, FOR MODEL YB201 (Z)

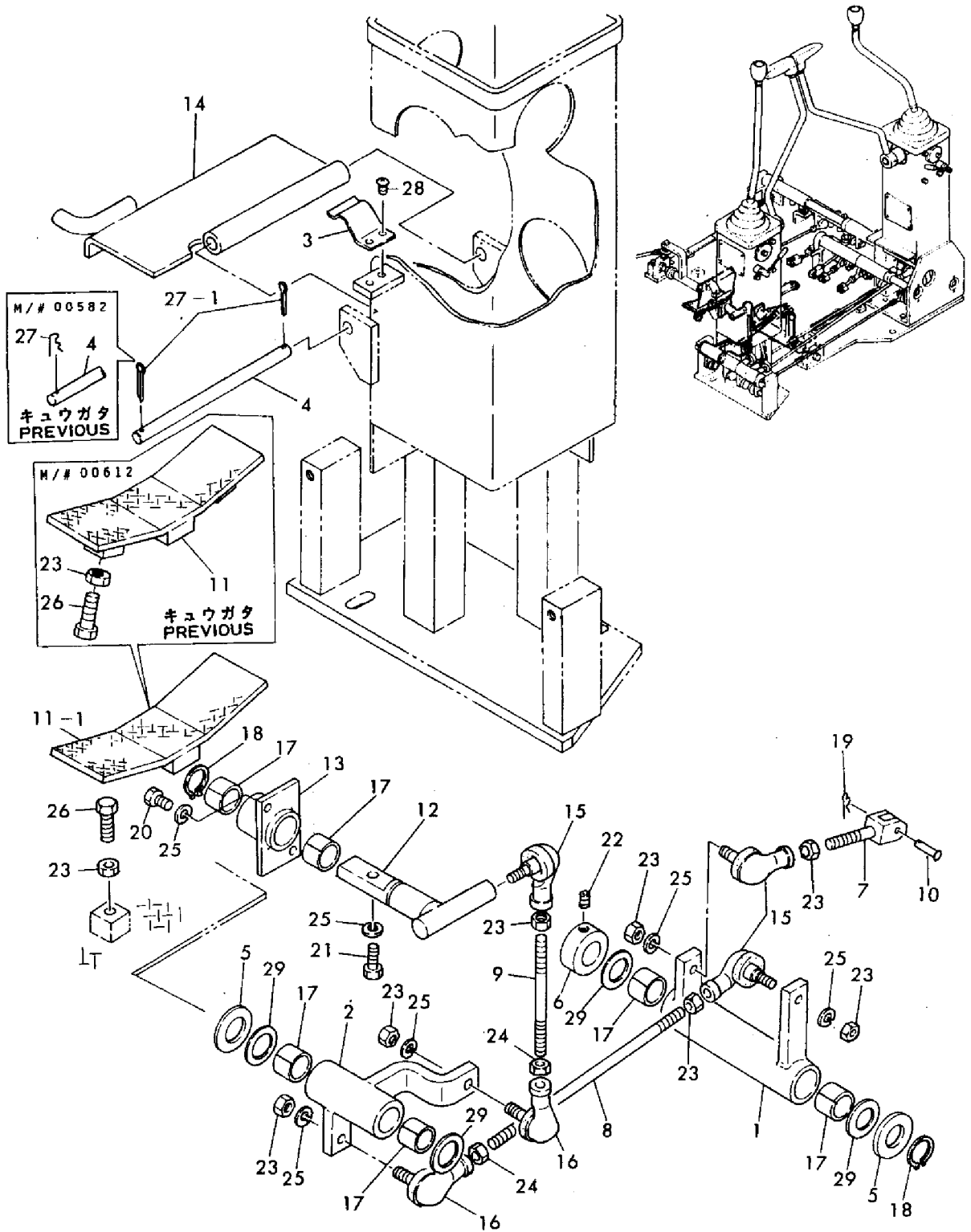


Fig. **24** エンジン関連装置 (エンジンマウント), YB201U (Z) ヨウ
 ENGINE RELATED DEVICE (ENG. MOUNT),
 FOR MODEL YB201U (Z)

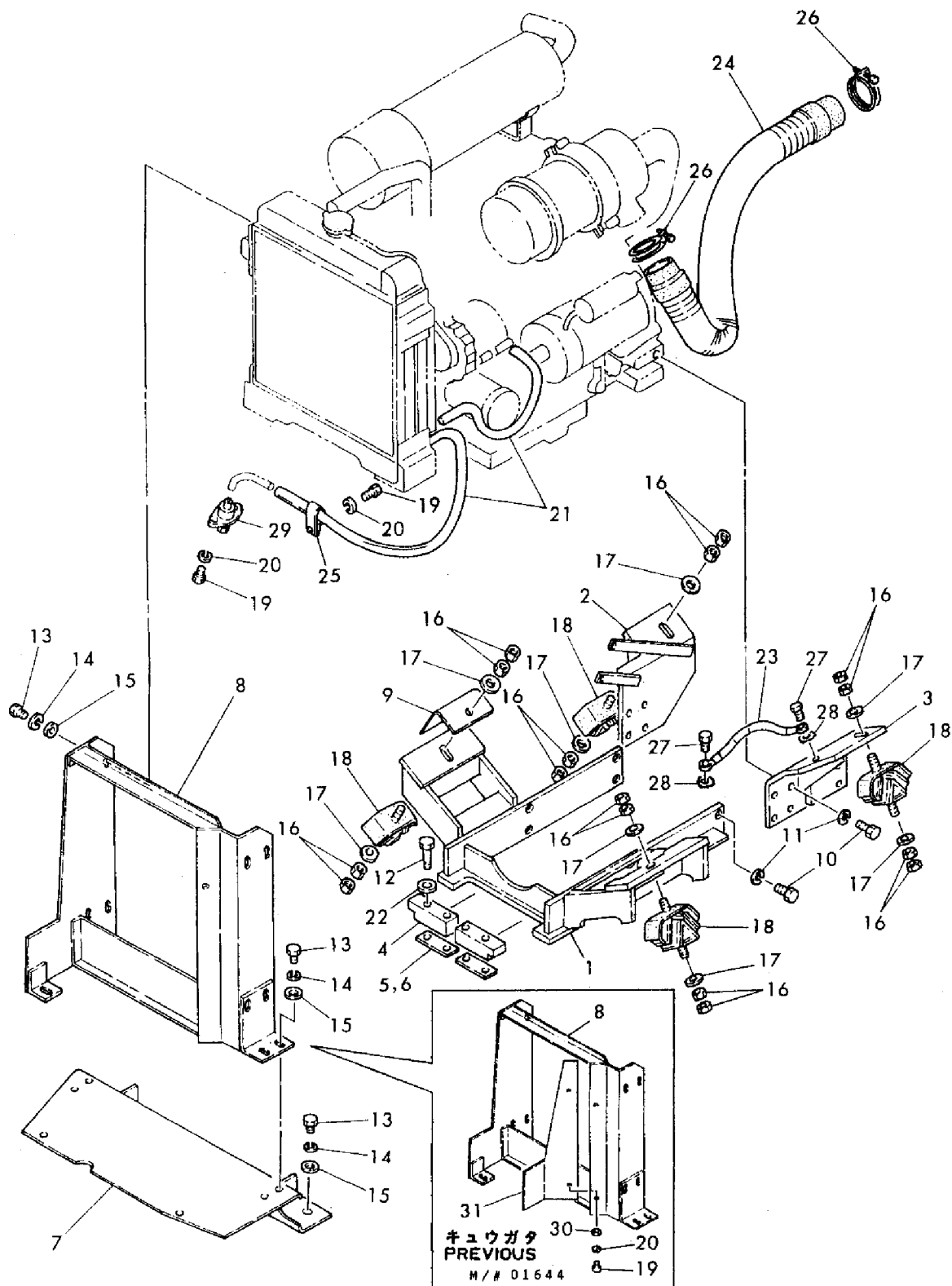


Fig. **29** グリース配管, YB201U (Z) ヨウ
GREASE PIPING, FOR MODEL YB201U (Z)

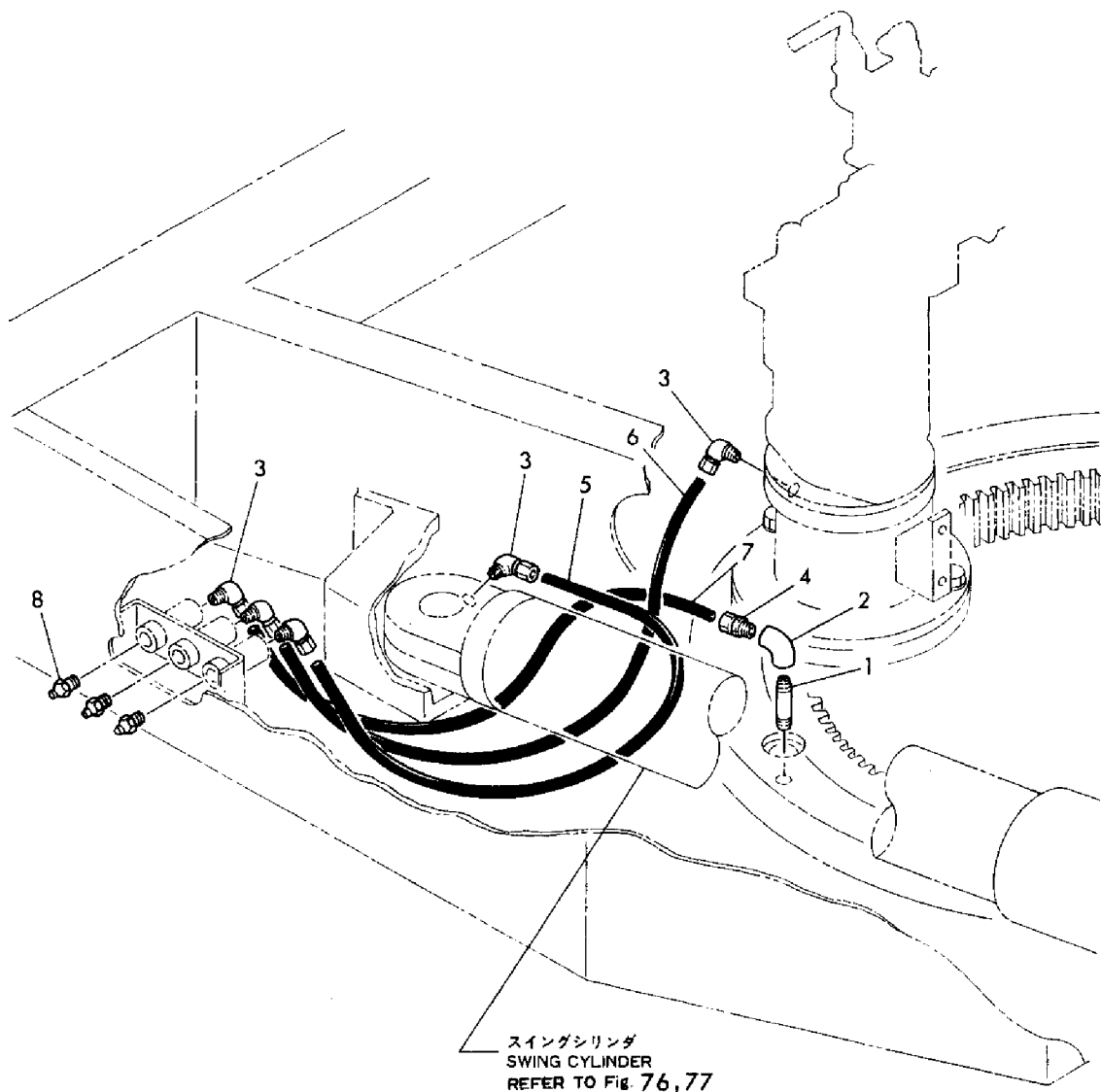


Fig. **34** 上部油圧配管 (2), YB201 (Z) ヨウ
 UPPER HYDRAULIC OIL PIPING (2), FOR MODEL YB201 (Z)

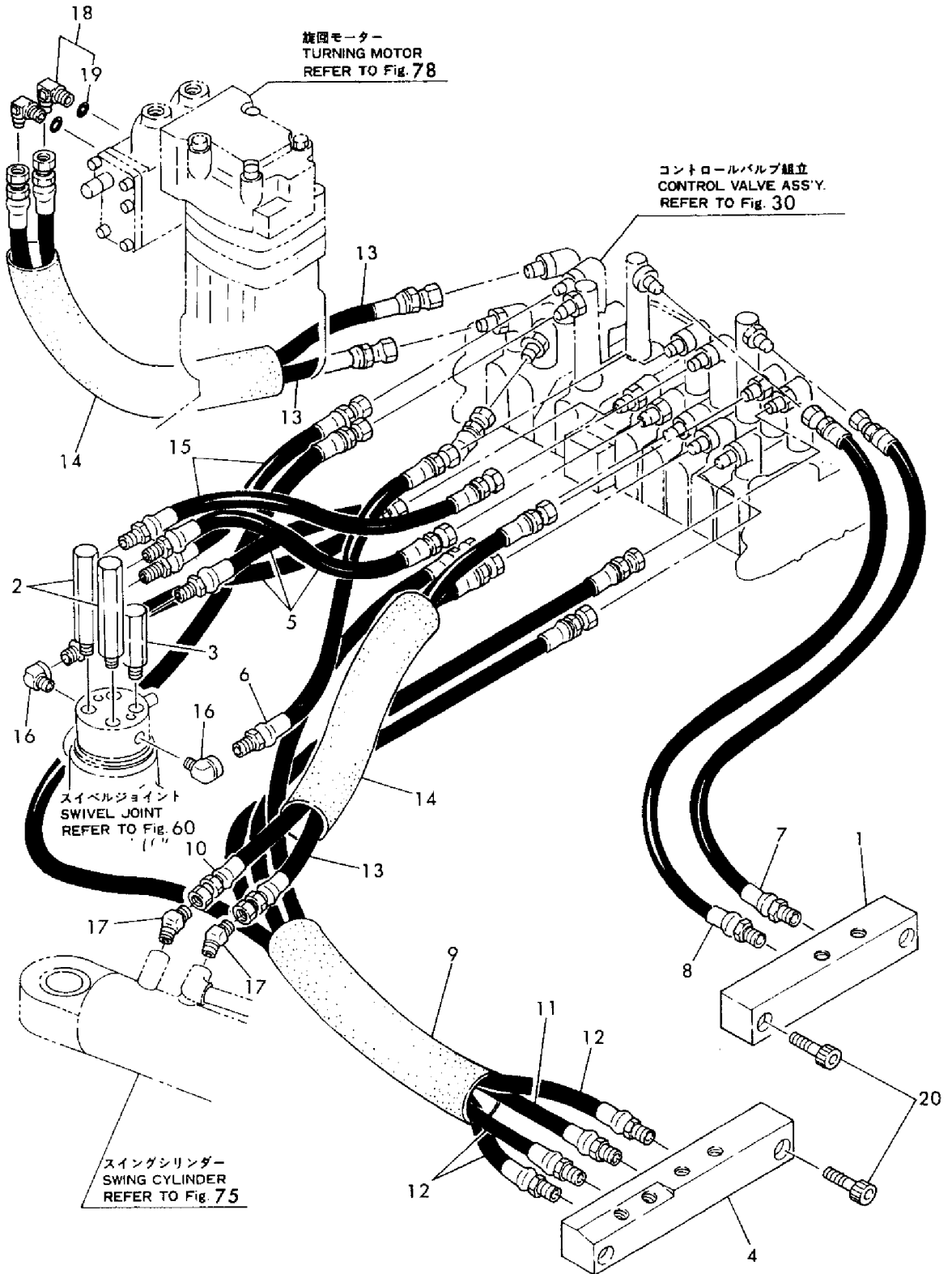


Fig. 39 ボンネット関係 (キャノピー仕様), YB201ヨウ
 BONNET RELATION (CANOPY SPEC.), FOR MODEL YB201

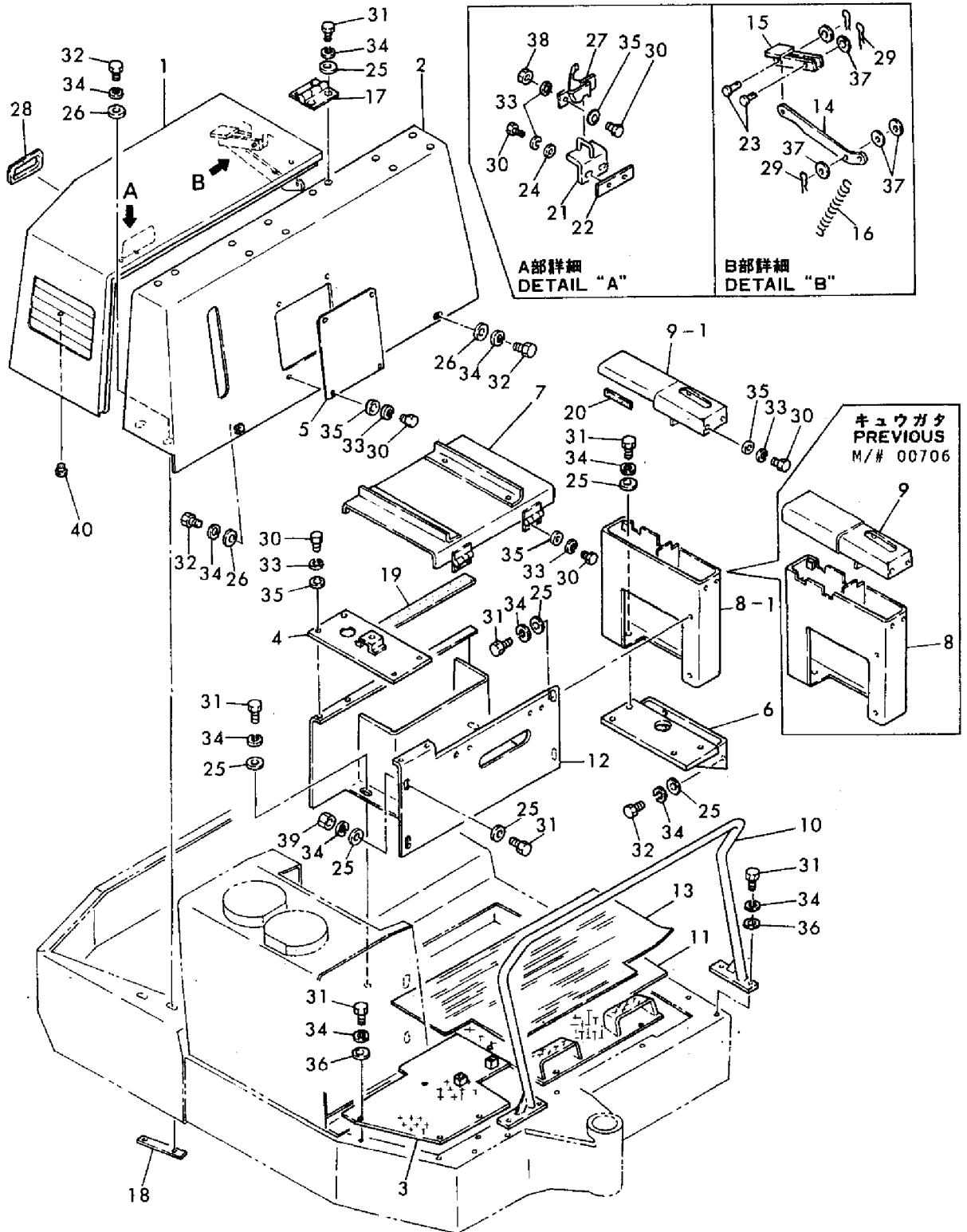
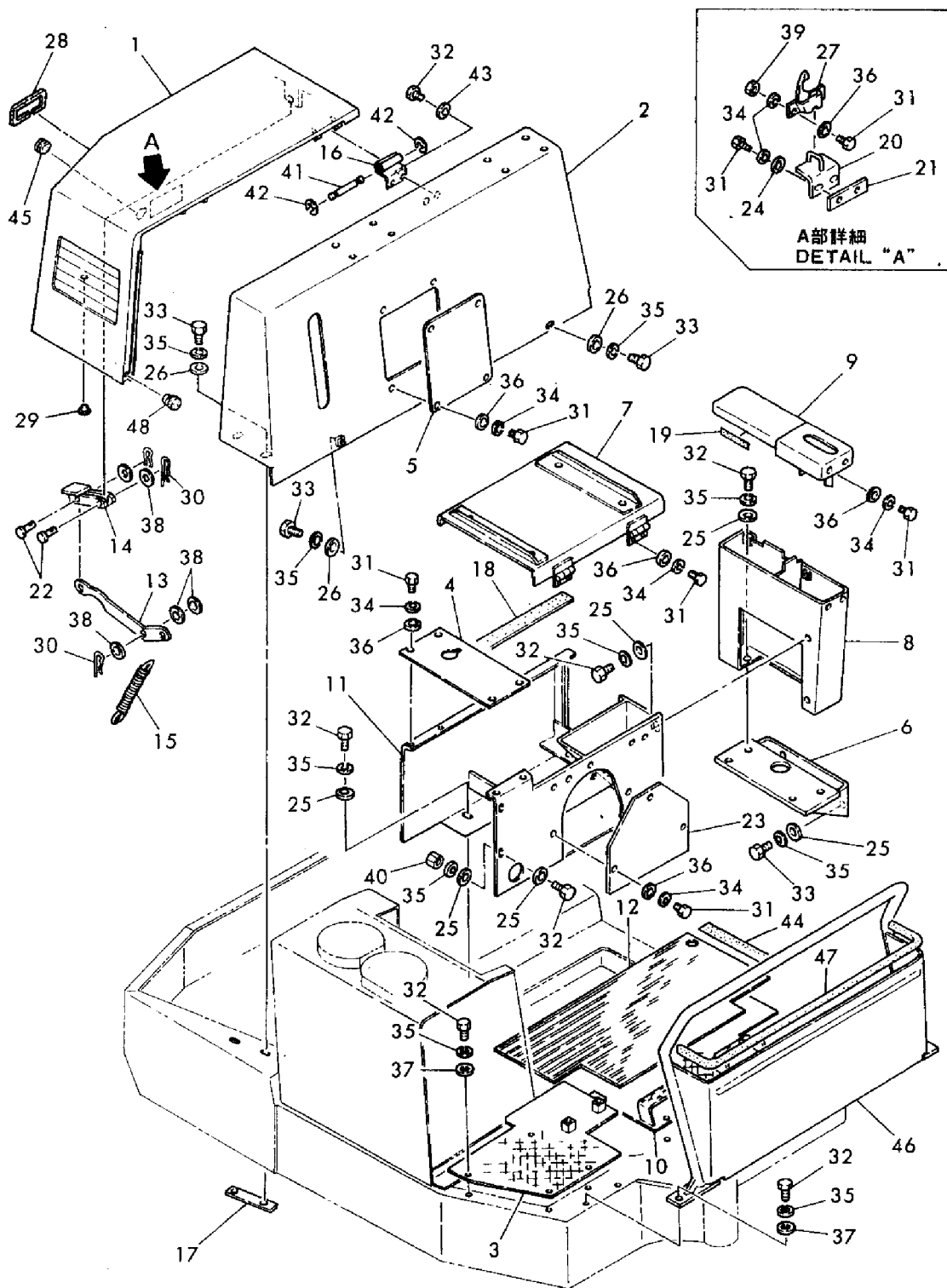


Fig. 44 ボンネット関係, YB201UZ ヨウ
 BONNET RELATION, FOR MODEL YB201UZ



CLICK HERE TO **DOWNLOAD** THE COMPLETE MANUAL

- Thank you very much for reading the preview of the manual.
- You can download the complete manual from: www.heydownloads.com by clicking the link below



- Please note: If there is no response to CLICKING the link, please download this PDF first and then click on it.

CLICK HERE TO **DOWNLOAD** THE COMPLETE MANUAL

Fig. 48 ブーム&アーム (YB201 ヨウ)
 BOOM & ARM (FOR MODEL YB201)

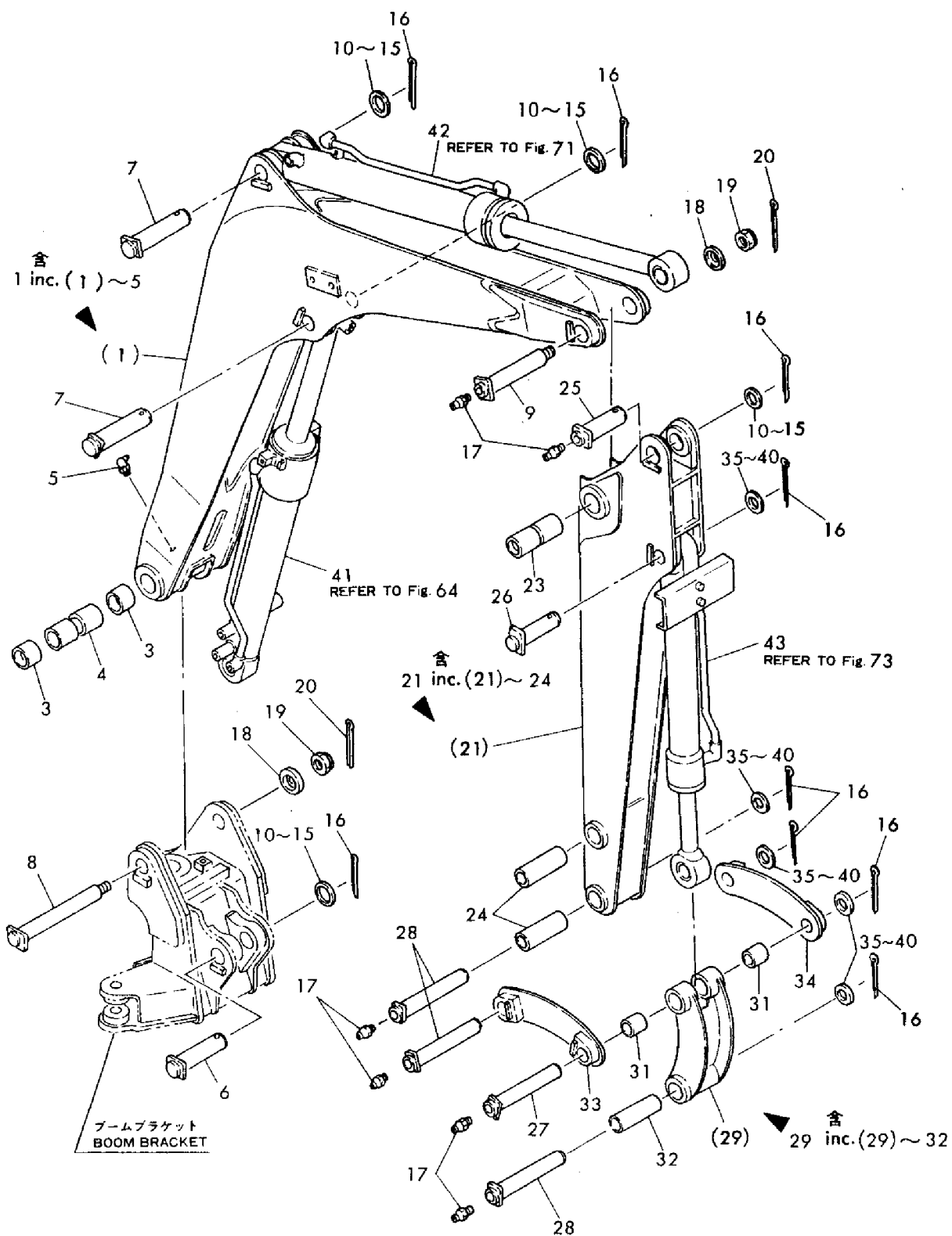


Fig. **53** 油圧配管 (ブーム & アーム), YB201 (Z) ヨウ
HYD. OIL PIPING (BOOM & ARM), FOR MODEL YB201 (Z)

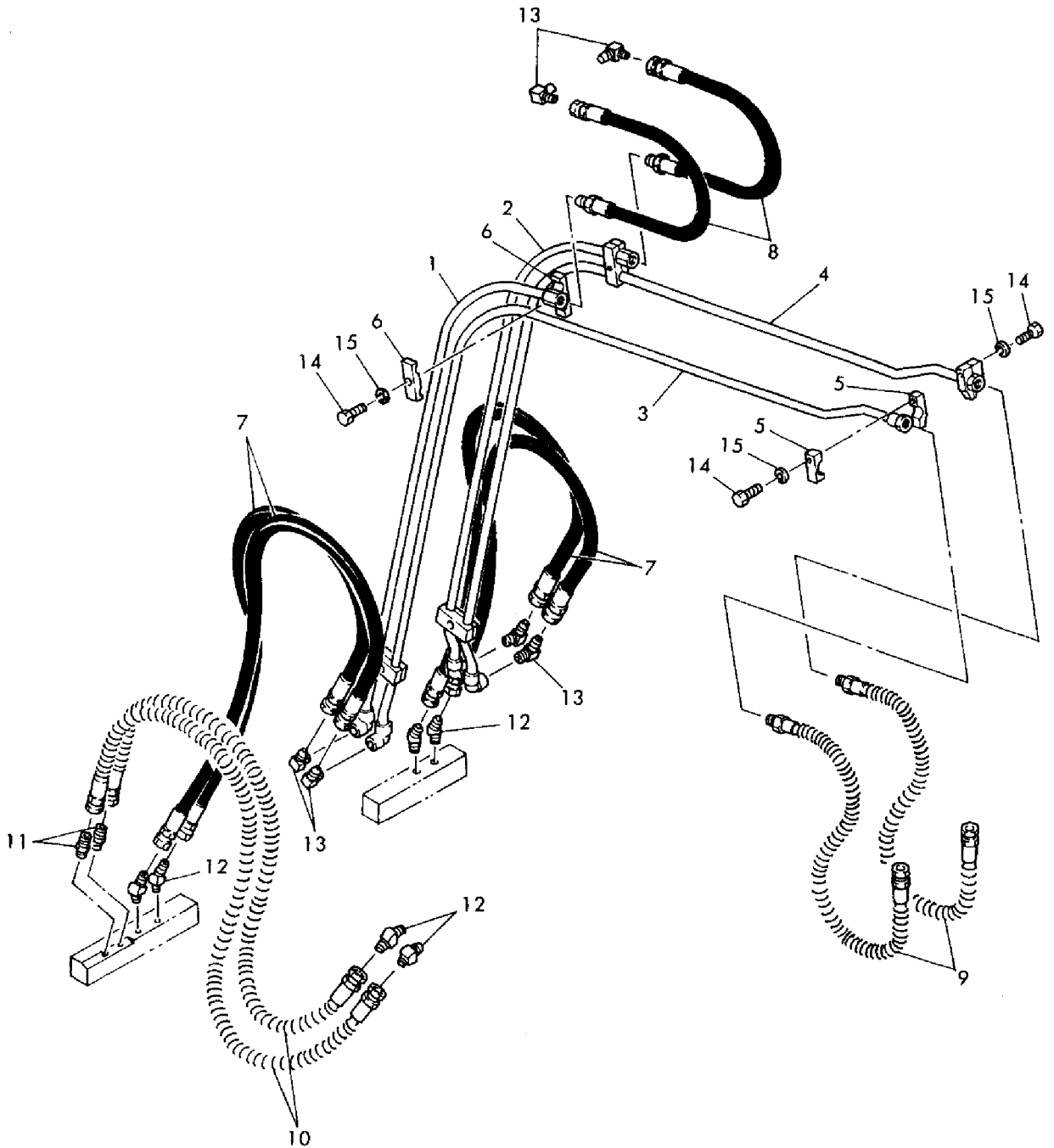
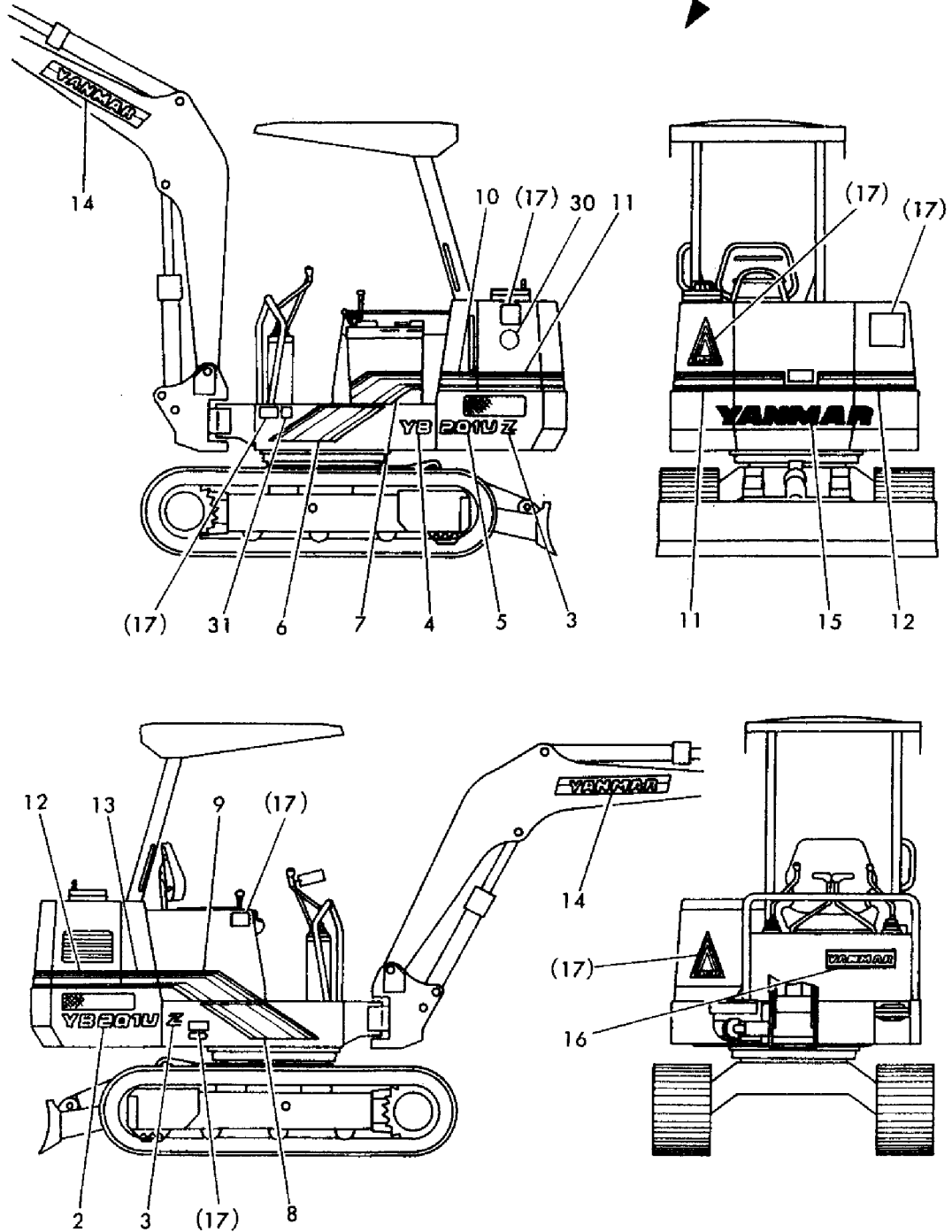


Fig. **58** 銘板 (YB201UZ ヨウ)
 LABEL (FOR MODEL YB201UZ)

含
 1 inc. 2 ~ 30



1,1,,E1901501100,, "VALVE,COUNT,BALANCE",2,2,2,2,,,,,,,,,,,,,
2,2,,E1420010070,, "O-RING 1B. P7",2,2,2,2,,,,,,,,,,,,,
3,2,,E1420110250,, "O-RING 1B. G25",4,4,4,4,,,,,,,,,,,,,
4,1,,E1901708500,, "VALVE, BRAKE",1,1,1,1,,,,,,,,,,,,,
5,2,,E1420000070,, "O-RING 1A, P7",2,2,2,2,,,,,,,,,,,,,
6,2,,E1420010090,, "O-RING 1B P 9.0",4,4,4,4,,,,,,,,,,,,,
7,2,,E1420010101,, "O-RING 1B, P10A",2,2,2,2,,,,,,,,,,,,,
8,2,,E1420110250,, "O-RING 1B. G25",2,2,2,2,,,,,,,,,,,,,

1,1,,E1900036300,, "CYLINDER, MAIN BOOM",,,1,,,,,,,,,,,,,
2,2,,E1900036399,, "SEAL KIT",,,1,,,,,,,,,,,,,
12,2,,E1410707520,, "WEARING SW-75-69-20",,,1,,,,,,,,,,,,,
13,2,,E1900036301,, "PISTON ROD",,,1,,,,,,,,,,,,,
14,2,,E1900004920,, BUSH,,,2,,,,,,,,,,,,,
15,2,,E1900036303,, "COVER,ROD",,,1,,,,,,,,,,,,,
16,2,,E1900036304,, RETAINER,,,1,,,,,,,,,,,,,
17,2,,E1900036305,, "CUSHION,ROD",,,1,,,,,,,,,,,,,
18,2,,E1900036350,, "HOLDER,GASKET",,,1,,,,,,,,,,,,,
19,2,,E1900036355,, "HOLDER,GASKET",,,1,,,,,,,,,,,,,
20,2,,E1900036306,, PISTON,,,1,,,,,,,,,,,,,
21,2,,E1900036307,, TUBE,,,1,,,,,,,,,,,,,
22,2,,E1900028509,, NUT,,,1,,,,,,,,,,,,,
23,2,,E1900036315,, SPACER,,,1,,,,,,,,,,,,,
24,2,,E1900036316,, "SEAL RING",,,1,,,,,,,,,,,,,
25,2,,E1333004530,, "DU-BUSH MB4530DU",,,1,,,,,,,,,,,,,
26,2,,E1210000655,, "COTTER PIN 6 X 55",,,1,,,,,,,,,,,,,
27,2,,E1560001000,, "NIPPLE,GREASE PT1/8",,,2,,,,,,,,,,,,,

1,1,,E1900024900,, "CYLINDER, BUCKET",1,1,1,1,,,,,,,,,,,,,
2,2,,E1900011199,, "SEAL KIT",1,1,1,1,,,,,,,,,,,,,
10,2,,E1410706316,, "WEARING SW-63.57.16",1,1,1,1,,,,,,,,,,,,,
11,2,,E1900024901,, "ROD,PISTON",1,1,1,1,,,,,,,,,,,,,
12,2,,E1900000502,, BUSH,2,2,2,2,,,,,,,,,,,,,
13,2,,E1900011103,, "COVER,ROD",1,1,1,1,,,,,,,,,,,,,
14,2,,E1900011150,, "PLATE, KEEP",1,1,1,1,,,,,,,,,,,,,
15,2,,E1900011155,, "HOLDER, GASKET",1,1,1,1,,,,,,,,,,,,,
16,2,,E1900011106,, PISTON,1,1,1,1,,,,,,,,,,,,,
17,2,,E1900023607,, TUBE,1,1,1,1,,,,,,,,,,,,,
18,2,,E1900011108,, "HOLDER,ROD GASKET",1,1,1,1,,,,,,,,,,,,,
19,2,,E1900000509,, "NUT M27",1,1,1,1,,,,,,,,,,,,,
20,2,,E1210000550,, "COTTER PIN 5X50",1,1,1,1,,,,,,,,,,,,,
21,2,,E1333004030,, BUSH,1,1,1,1,,,,,,,,,,,,,
22,2,,E1225620050,, "SNAP RING",1,1,1,1,,,,,,,,,,,,,
23,2,,E1221000058,, "CIRCLIP 58",1,1,1,1,,,,,,,,,,,,,
24,2,,E1560019000,, "GREASE NIPPLE PT1/8",2,2,2,2,,,,,,,,,,,,,
25,2,,E1511100003,, "ELBOW 90°",2,2,2,2,,,,,,,,,,,,,
26,2,,E1900023618,, COVER,1,1,1,1,,,,,,,,,,,,,
27,2,,E1100051025,, "BOLT M10X25",2,2,2,2,,,,,,,,,,,,,
28,2,,E1140010010,, "SPRING WASHER",2,2,2,2,,,,,,,,,,,,,

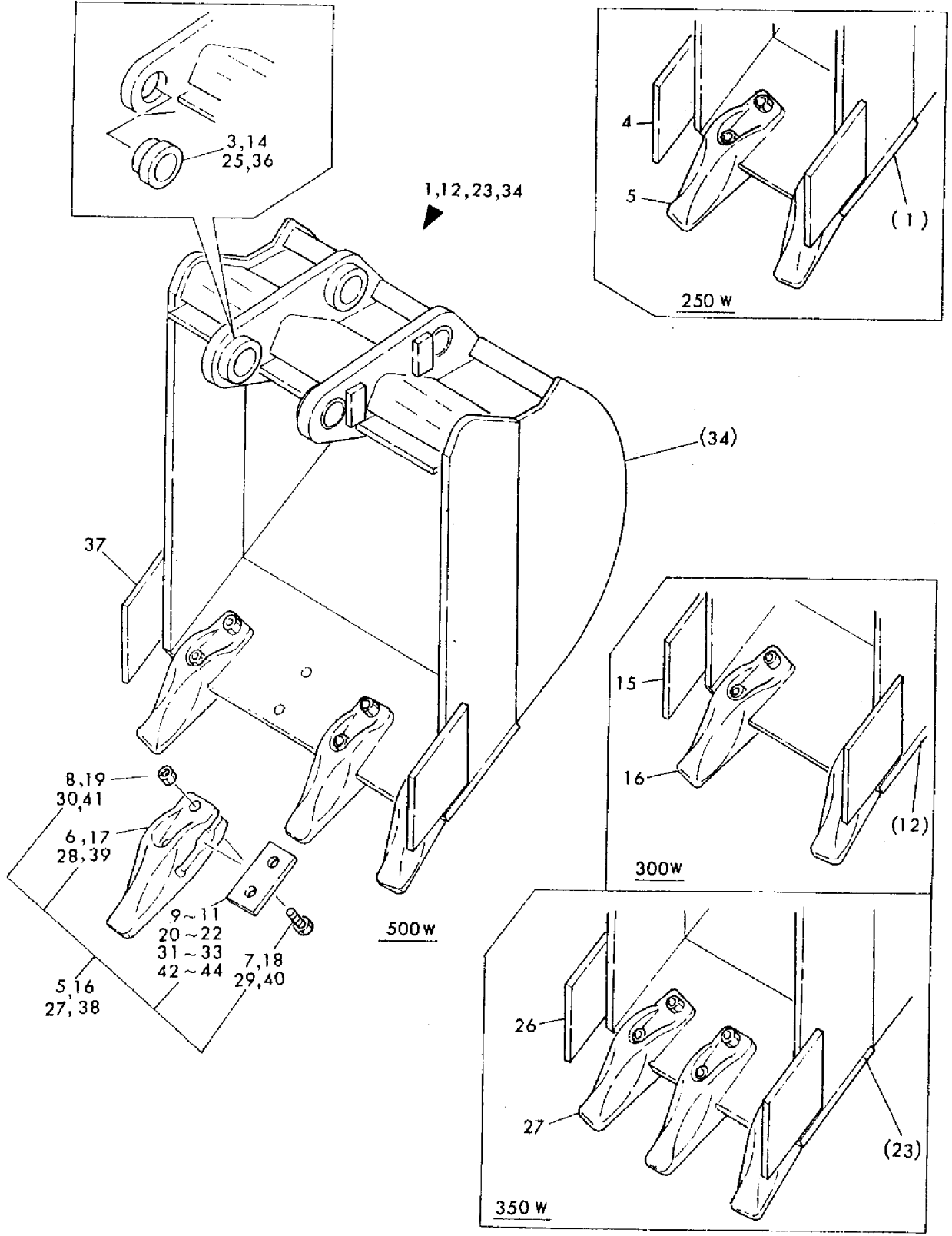
1,1,,E1903004300,, "MOTOR ASSY, DRIVE",2,2,2,2,,,,,,,,,,,,,
3,3,,E1912901399,, "SEAL KIT",2,2,2,2,,,,,,,,,,,,,
6,4,,E1903004307,, O-RING,2,2,2,2,,,,,,,,,,,,,
7,3,,E1903004302,, SEAL,2,2,2,2,,,,,,,,,,,,,
8,3,,E1903004304,, BEARING,4,4,4,4,,,,,,,,,,,,,
9,3,,E1912901306,, BUSH,2,2,2,2,,,,,,,,,,,,,
10,3,,E1903004308,, "DRIVE GEAR",2,2,2,2,,,,,,,,,,,,,
11,3,,E1912901310,, HOUSING,2,2,2,2,,,,,,,,,,,,,
12,3,,E1110051060,, "BOLT M10X60",6,6,6,6,,,,,,,,,,,,,
13,3,,E1903004320,, "PIECE, THRUST",2,2,2,2,,,,,,,,,,,,,
14,3,,E1903004321,, COVER,2,2,2,2,,,,,,,,,,,,,
15,3,,E1501810002,, "PLUG PT 1/4",4,4,4,4,,,,,,,,,,,,,
16,3,,E1110050620,, "BOLT M 6X 20",20,20,20,20,,,,,,,,,,,,,
17,3,,E1903004301,, "HOLDER ASS'Y.",2,2,2,2,,,,,,,,,,,,,
26,3,,E1903004399,, "SEAL SET",2,2,2,2,,,,,,,,,,,,,
33,1,,E1903004400,, "MOTRO ASSY, TURNING",1,1,1,1,,,,,,,,,,,,,
34,2,,E1903001799,, "SEAL KIT",1,1,1,1,,,,,,,,,,,,,
35,1,,E1912901301,, FLANGE,2,2,2,2,,,,,W,,,,,,,,,,,,

1,1,,E1903006700,, "MOTOR, DRIVING",2,2,2,2,,,,,,,,,,,,,
3,3,,E1912901399,, "SEAL KIT",2,2,2,2,,,,,,,,,,,,,
6,4,,E1903004307,, "O-RING",2,2,2,2,,,,,,,,,,,,,
7,3,,E1903004302,, "SEAL",2,2,2,2,,,,,,,,,,,,,
8,3,,E1903004304,, "BEARING",4,4,4,4,,,,,,,,,,,,,
9,3,,E1912901306,, "BUSH",2,2,2,2,,,,,,,,,,,,,
10,3,,E1903004308,, "DRIVE GEAR",2,2,2,2,,,,,,,,,,,,,
11,3,,E1912901310,, "HOUSING",2,2,2,2,,,,,,,,,,,,,
12,3,,E1110051060,, "BOLT M10X60",6,6,6,6,,,,,,,,,,,,,
13,3,,E1903004320,, "PIECE, THRUST",2,2,2,2,,,,,,,,,,,,,
14,3,,E1903004321,, "COVER",2,2,2,2,,,,,,,,,,,,,
15,3,,E1501810002,, "PLUG PT 1/4",4,4,4,4,,,,,,,,,,,,,
16,3,,E1110050620,, "BOLT M 6X 20",20,20,20,20,,,,,,,,,,,,,
17,3,,E1903004301,, "HOLDER ASS'Y.",2,2,2,2,,,,,,,,,,,,,
26,3,,E1903004399,, "SEAL SET",2,2,2,2,,,,,,,,,,,,,

1,1,,E0104290012,, "RADIO ASSY" ,,,1,,,,,,,,,,,,,
2,2,,E0104212400,, "COVER, RADIO" ,,,1,,,,,,,,,,,,,
3,2,,E0544301300,, STAY ,,,1,,,,,,,,,,,,,
4,2,,E0104212500,, WIRE ,,,1,,,,,,,,,,,,,
5,2,,E1705015601,, RADIO ,,,1,,,,,,,,,,,,,
6,2,,E1705015602,, "ANTENNA ASSY" ,,,1,,,,,,,,,,,,,
7,3,,E1122500514,, "SCREW M 5X 14" ,,,1,,,,,,,,,,,,,
8,3,,E1122700516,, "SCREW M 5X 16" ,,,1,,,,,,,,,,,,,
9,2,,E1705015605,, SPEAKER ,,,1,,,,,,,,,,,,,
10,3,,E1122500420,, "SCREW M 4X 20" ,,,4,,,,,,,,,,,,,
11,2,,E1100040812,, "BOLT M 8X12" ,,,3,,,,,,,,,,,,,
12,2,,E1140020008,, "SPRING WASHER 8" ,,,3,,,,,,,,,,,,,
13,2,,E1141110008,, "WASHER 8" ,,,3,,,,,,,,,,,,,
14,2,,E1100040612,, "BOLT M 6X12" ,,,1,,,,,,,,,,,,,
15,2,,E1140020006,, "SPRING WASHER 6" ,,,1,,,,,,,,,,,,,
16,2,,E1141110006,, WASHER ,,,1,,,,,,,,,,,,,
17,2,,E1120530510,, "SCREW M 5X10" ,,,1,,,,,,,,,,,,,
18,2,,E1140020005,, "SPRING WASHER 5" ,,,1,,,,,,,,,,,,,
19,2,,E1141110005,, "WASHER 5" ,,,1,,,,,,,,,,,,,
20,1,,E0104290003,, "WINDOW WASHER ASSY" ,,,1,,,,,,,,,,,,,
21,2,,E1711910010,, "WINDOW WASHER" ,,,1,,,,,,,,,,,,,
22,3,,E1711910011,, NOZZLE ,,,1,,,,,,,,,,,,,
23,3,,E1711910012,, CASE ,,,1,,,,,,,,,,,,,
24,3,,E1711910013,, HOSE ,,,1,,,,,,,,,,,,,
25,3,,E1711910015,, BRACKET ,,,1,,,,,,,,,,,,,
26,2,,E1120530508,, "SCREW M 5X 8" ,,,2,,,,,,,,,,,,,
27,2,,E1140020005,, "SPRING WASHER 5" ,,,2,,,,,,,,,,,,,
28,2,,E1141120005,, WASHER ,,,2,,,,,,,,,,,,,
29,1,,E0544202600,, "LIGHT PROTECTOR" ,,,1,,,,,,,,,,,,,
30,1,,E0144263400,, "HARNESS, BOOM LIGHT" ,,,1,,,,,,,,,,,,,
31,1,,E1100040816,, "BOLT M 8X 16" ,,,2,,,,,,,,,,,,,
32,1,,E1141110008,, "WASHER 8" ,,,2,,,,,,,,,,,,,
33,1,,E1140020008,, "SPRING WASHER 8" ,,,2,,,,,,,,,,,,,
34,1,,E1703000900,, "LAMP, BOOM" ,,,1,,,,,,,,,,,,,
35,2,,E1703000901,, BULB ,,,1,,,,,,,,,,,,,

1,1,,E0107014400,, "CLAMP, PIPING" ,,,1,1,,,,,,,,,,,,,
2,1,,E0097064500,, "CLAMP, PIPING" ,,,1,1,,,,,,,,,,,,,
3,1,,E0097062300,, "CLAMP, PIPING" ,,,1,1,,,,,,,,,,,,,
4,1,,E0097062400,, PIPING ,,,1,1,,,,,,,,,,,,,
5,1,,E0097064600,, PIPING ,,,1,1,,,,,,,,,,,,,
5-1,1,,E0097066900,, PIPING ,,,1,1,,,S,,,,,,M/#00670,,,,,
6,1,,E0097064700,, PIPING ,,,1,1,,,,,,,,,,,,,
7,1,,E0097062700,, PIPING ,,,1,1,,,,,,,,,,,,,
8,1,,E0097062800,, PIPING ,,,1,1,,,,,,,,,,,,,
9,1,,E0097062900,, PIPING ,,,1,1,,,,,,,,,,,,,
10,1,,E0097065100,, PIPING ,,,1,1,,,,,,,,,,,,,
11,1,,E0097065200,, PIPING ,,,1,1,,,,,,,,,,,,,
12,1,,E1100041018,, "BOLT M10" ,,,2,2,,,,,,,,,,,,,
13,1,,E1110040835,, "BOLT M 8X 35" ,,,4,4,,,,,,,,,,,,,
14,1,,E1140020010,, "SPRING WASHER 10" ,,,2,2,,,,,,,,,,,,,
15,1,,E1140020008,, "SPRING WASHER 8" ,,,3,3,,,,,,,,,,,,,
16,1,,E1100040830,, "BOLT M 8X 30" ,,,3,3,,,,,,,,,,,,,
17,1,,E0107014600,, PIPING ,,,1,1,,,,,,,,,,,,,
18,1,,E0107014800,, PIPING ,,,1,1,,,,,,,,,,,,,
19,1,,E0107014900,, PIPING ,,,1,1,,,,,,,,,,,,,
20,1,,E0107013800,, PIPING ,,,1,1,,,,,,,,,,,,,
21,1,,E0107013900,, PIPING ,,,1,1,,,,,,,,,,,,,
22,1,,E0107014700,, PIPING ,,,1,1,,,,,,,,,,,,,
23,1,,E1502701202,, NIPPLE ,,,2,2,,,W,,,,,,M/#XXX,,,,,
24,2,,E1420010110,, "O-RING P11-1B" ,,,2,2,,,W,,,,,,M/#XXX,,,,,

Fig. 97 バケット (オプション)
 BUCKETOPTIONAL



CLICK HERE TO **DOWNLOAD** THE COMPLETE MANUAL

- Thank you very much for reading the preview of the manual.
- You can download the complete manual from: www.heydownloads.com by clicking the link below



- Please note: If there is no response to CLICKING the link, please download this PDF first and then click on it.

CLICK HERE TO **DOWNLOAD** THE COMPLETE MANUAL