

P R E F A C E

1. This parts catalog is the 1st edition of Yanmar crawler backhoe B22 - 2B for PANAMA.

Pub. No. : 000Y00S3870

Published : May, 1999

2. Model name

SECTION	Column	Model name	Manufactured	M/#
I (Vehicle)	(A)	B22 - 2B	1999/3 ~	60633 ~
II (Engine)	(A)	3TNE78A - B1		

3. Your understanding is asking that this parts catalog is not a technical data manual setting forth as servicing procedures, This parts catalog is using simplified illustration. Be sure to use Yanmar Genuine Parts in your maintenance servicing of Yanmar products. Be careful not to use the simple parts available in the market ; otherwise their use in repairing causes such as an early breakage, for instance.

CLICK HERE TO **DOWNLOAD** THE COMPLETE MANUAL

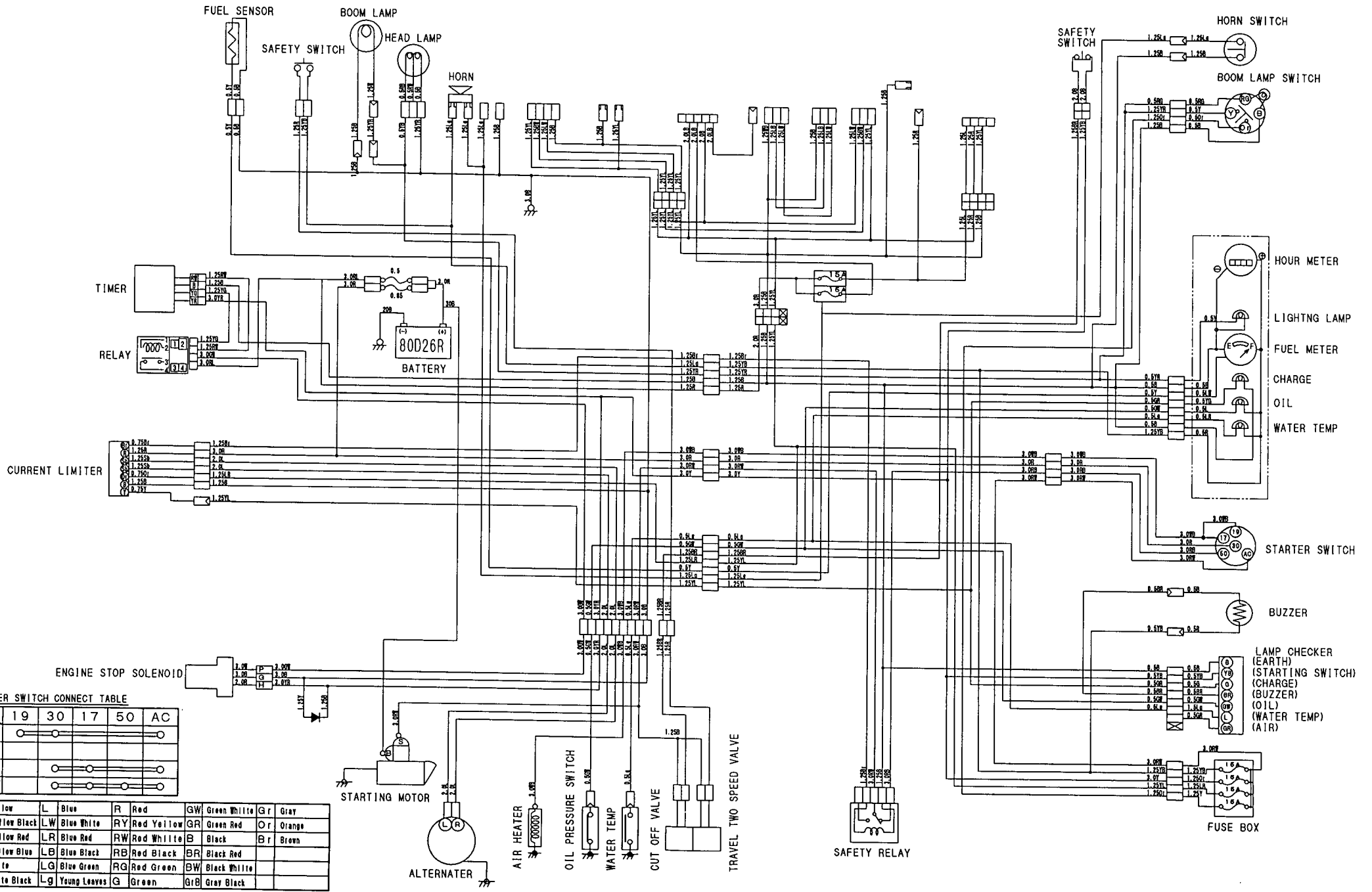
- Thank you very much for reading the preview of the manual.
- You can download the complete manual from: www.heydownloads.com by clicking the link below



- Please note: If there is no response to CLICKING the link, please download this PDF first and then click on it.

CLICK HERE TO **DOWNLOAD** THE COMPLETE MANUAL

WIRING DIAGRAM

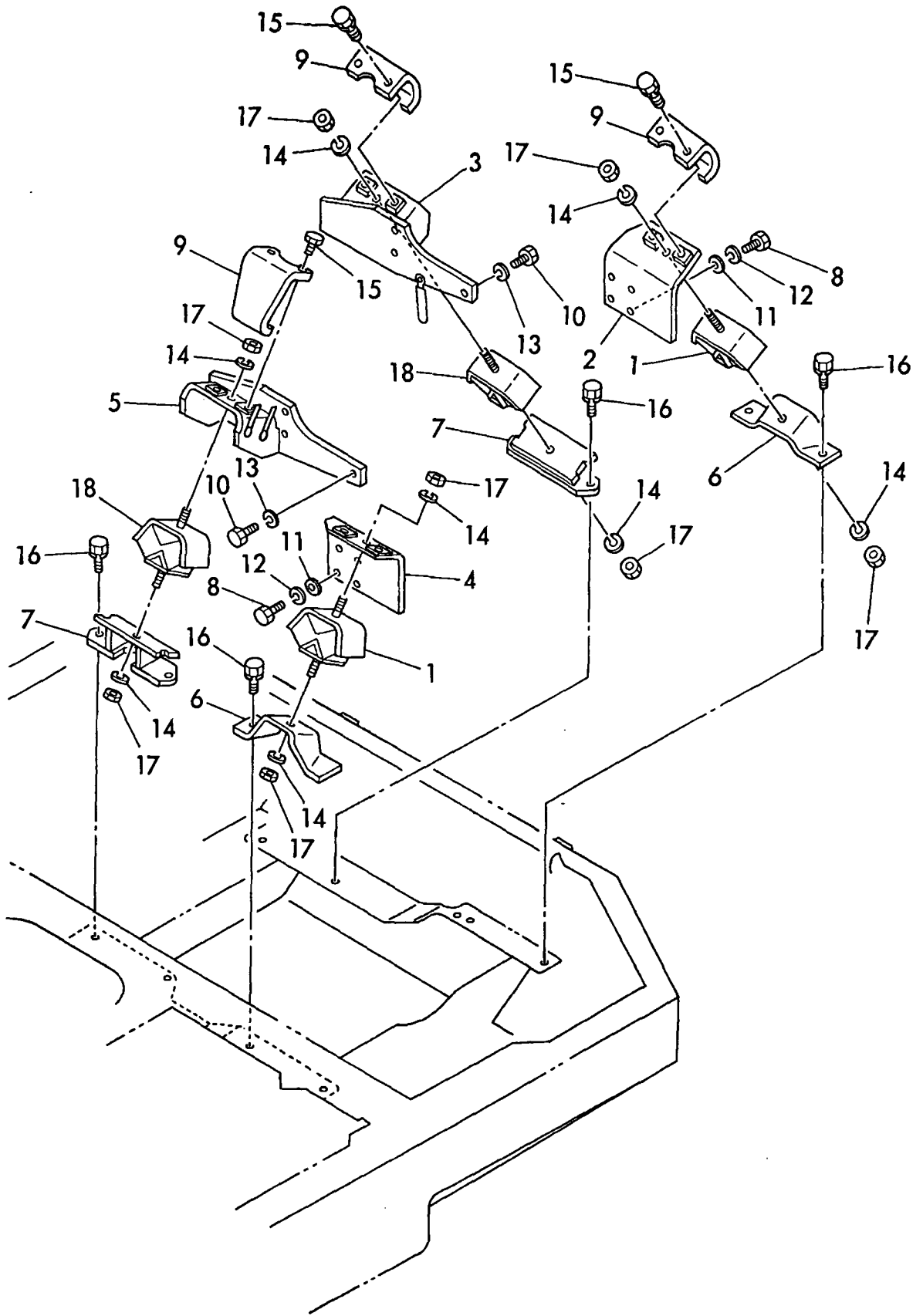


STARTER SWITCH CONNECT TABLE

	19	30	17	50	AC
HEAT	○	○	○	○	○
OFF					
ON	○	○	○	○	○
START	○	○	○	○	○

Y	Yellow	L	Blue	R	Red	GW	Green White	Gr	Gray
YB	Yellow Black	LW	Blue White	RY	Red Yellow	GR	Green Red	OR	Orange
YR	Yellow Red	LR	Blue Red	RW	Red White	B	Black	BR	Brown
YL	Yellow Blue	LB	Blue Black	RB	Red Black	BR	Black Red		
W	White	LG	Blue Green	RG	Red Green	BW	Black White		
WB	White Black	Lg	Young Leaves	G	Green	GrB	Gray Black		

Fig. 5 ENGINE MOUNT



1,1,,172137-16560,,BAND,5,,,,,,,,,,,,,
2,1,,172141-16561,, "WIRE, LAMP",1,,,,,,,,,,,,,
3,1,,172141-17201,, "LAMP, WORK",1,,,,,,,,,,,,,
4,2,,172141-17211,, "BULB 12V55W",1,,,,,,,,,,,,,
5,1,,172137-17401-4,, "COVER, WORK LAMP",1,,,,,,,,,,,,,
6,1,,26013-120252,, "BOLT M12X 25",1,,,,,,,,,,,,,
7,1,,933152-03700,, "WASHER, SIDE CLUTCH",1,,,,,,,,,,,,,
8,1,,22137-130000,, "WASHER 13",2,,,,,,,,,,,,,

1,1,,1A1040-45890,, "WASHER 10 36 4.5",1,,,,,,,,,,,,,,,,,,,,,
2,1,,172124-46200,, "O-RING 27X5.7",2,,,,,,,,,,,,,,,,,,,,,
3,1,,172165-46301,, "LINK W/BUSH",1,,,,,,,,,,,,,,,,,,,,,
5,2,,172141-41360,, "BUSH 1415",2,,,,,,,,,,,,,,,,,,,,,
6,1,,172165-46350,, "BRACKET, PEDAL",1,,,,,,,,,,,,,,,,,,,,,
7,1,,172146-41910,, "PIN 14-100",1,,,,,,,,,,,,,,,,,,,,,
8,1,,172168-46800,, "LINK W/BUSH, SWING",1,,,,,,,,,,,,,,,,,,,,,
10,2,,172141-41370,, "BUSH 2015",2,,,,,,,,,,,,,,,,,,,,,
11,1,,172168-46820,, "SHAFT",1,,,,,,,,,,,,,,,,,,,,,
12,1,,24311-000210,, "O-RING 1A P-21.0",2,,,,,,,,,,,,,,,,,,,,,
13,1,,24761-020000,, "NIPPLE PT1/8,GREASE",1,,,,,,,,,,,,,,,,,,,,,
14,1,,24761-050000,, "NIPPLE C,GREASE",1,,,,,,,,,,,,,,,,,,,,,
15,1,,26051-080002,, "NUT M 8",7,,,,,,,,,,,,,,,,,,,,,
16,1,,26013-100202,, "BOLT W/WASHER M10X20",2,,,,,,,,,,,,,,,,,,,,,
17,1,,26013-100252,, "BOLT W/WASHER M10X25",2,,,,,,,,,,,,,,,,,,,,,
18,1,,26116-100202,, "BOLT M10X 20 PLATED",1,,,,,,,,,,,,,,,,,,,,,
19,1,,172068-28490,, "SPRING 8",4,,,,,,,,,,,,,,,,,,,,,
20,1,,172157-45990,, "BOOTS, PEDAL",1,,,,,,,,,,,,,,,,,,,,,
21,1,,172165-46230,, "SHAFT, SWING",2,,,,,,,,,,,,,,,,,,,,,
22,1,,172165-46261,, "COVER, PEDAL",2,,,,,,,,,,,,,,,,,,,,,
23,1,,172165-46281,, "PEDAL ASSY, SWING",1,,,,,,,,,,,,,,,,,,,,,
24,1,,172165-46340,, "BOLT",2,,,,,,,,,,,,,,,,,,,,,
25,1,,22137-080000,, "WASHER 8, POLISHED",2,,,,,,,,,,,,,,,,,,,,,
26,1,,22351-040020,, "SPRING PIN 4X20",2,,,,,,,,,,,,,,,,,,,,,
27,1,,26116-080304,, "BOLT M8 X 30 PLATED",2,,,,,,,,,,,,,,,,,,,,,
28,1,,26716-080002,, "NUT M 8",2,,,,,,,,,,,,,,,,,,,,,
29,1,,26716-080002,, "NUT M 8",4,,,,,,,,,,,,,,,,,,,,,
30,1,,172122-46590,, "ELBALL 8",3,,,,,,,,,,,,,,,,,,,,,
31,1,,172168-46840,, "ROD 240",1,,,,,,,,,,,,,,,,,,,,,
32,1,,172168-46860,, "ROD 100",1,,,,,,,,,,,,,,,,,,,,,
33,1,,172122-47250,, "BALL 8, LINK",1,,,,,,,,,,,,,,,,,,,,,
34,1,,22137-080000,, "WASHER 8, POLISHED",4,,,,,,,,,,,,,,,,,,,,,
35,1,,22217-100000,, "SPRING WASHER 10",1,,,,,,,,,,,,,,,,,,,,,
36,1,,22351-040032,, "SPRING PIN 4X32",1,,,,,,,,,,,,,,,,,,,,,

CLICK HERE TO **DOWNLOAD** THE COMPLETE MANUAL

- Thank you very much for reading the preview of the manual.
- You can download the complete manual from: www.heydownloads.com by clicking the link below



- Please note: If there is no response to CLICKING the link, please download this PDF first and then click on it.

CLICK HERE TO **DOWNLOAD** THE COMPLETE MANUAL

1,1,,172165-62100,,STEP,1,,,,,,,,,,,,,,,,,,,,,
2,1,,172171-62100-4,,,"STEP A",1,,,,,,,,,,,,,,,,,,,,,
3,1,,172428-62600,,,"STEP C ASSY,SI",1,,,,,,,,,,,,,,,,,,,,,
4,1,,172168-62201,,,"MAT, FLOOR",1,,,,,,,,,,,,,,,,,,,,,
5,1,,172165-62800,,,"GROMMET 26",1,,,,,,,,,,,,,,,,,,,,,
6,1,,172165-62630,,,"RUBBER 90,EDGE",1,,,,,,,,,,,,,,,,,,,,,
7,1,,22217-100000,,,"SPRING WASHER 10",9,,,,,,,,,,,,,,,,,,,,,
8,1,,22217-100000,,,"SPRING WASHER 10",4,,,,,,,,,,,,,,,,,,,,,
9,1,,22217-100000,,,"SPRING WASHER 10",7,,,,,,,,,,,,,,,,,,,,,
10,1,,22411-300200,,,"COTTER PIN 3.0X20",1,,,,,,,,,,,,,,,,,,,,,
11,1,,26116-100202,,,"BOLT M10X 20 PLATED",9,,,,,,,,,,,,,,,,,,,,,
12,1,,26116-100202,,,"BOLT M10X 20 PLATED",4,,,,,,,,,,,,,,,,,,,,,
13,1,,26116-100202,,,"BOLT M10X 20 PLATED",7,,,,,,,,,,,,,,,,,,,,,
14,1,,172142-62300,,,"WING BOLT M10X15",1,,,,,,,,,,,,,,,,,,,,,
15,1,,172122-17190,,CLIP,5,,,,,,,,,,,,,,,,,,,,,
16,1,,172122-17190,,CLIP,4,,,,,,,,,,,,,,,,,,,,,
17,1,,172157-54850,,,"GROMMET 18",1,,,,,,,,,,,,,,,,,,,,,
18,1,,172151-62240,,GROMMET,2,,,,,,,,,,,,,,,,,,,,,
19,1,,172165-68250,,,"PLUG,RUBBER",1,,,,,,,,,,,,,,,,,,,,,
20,1,,172165-62300,,,"STEP D",1,,,,,,,,,,,,,,,,,,,,,
21,1,,172171-58800,,,"PIN, LOCK",1,,,,,,,,,,,,,,,,,,,,,
22,1,,26013-100202,,,"BOLT W/WASHER M10X20",3,,,,,,,,,,,,,,,,,,,,,
23,1,,172116-46630,,,"KNOB, LOCK LEVER",1,,,,,,,,,,,,,,,,,,,,,

Fig. 24 HYD. OIL PUMP & JOINT

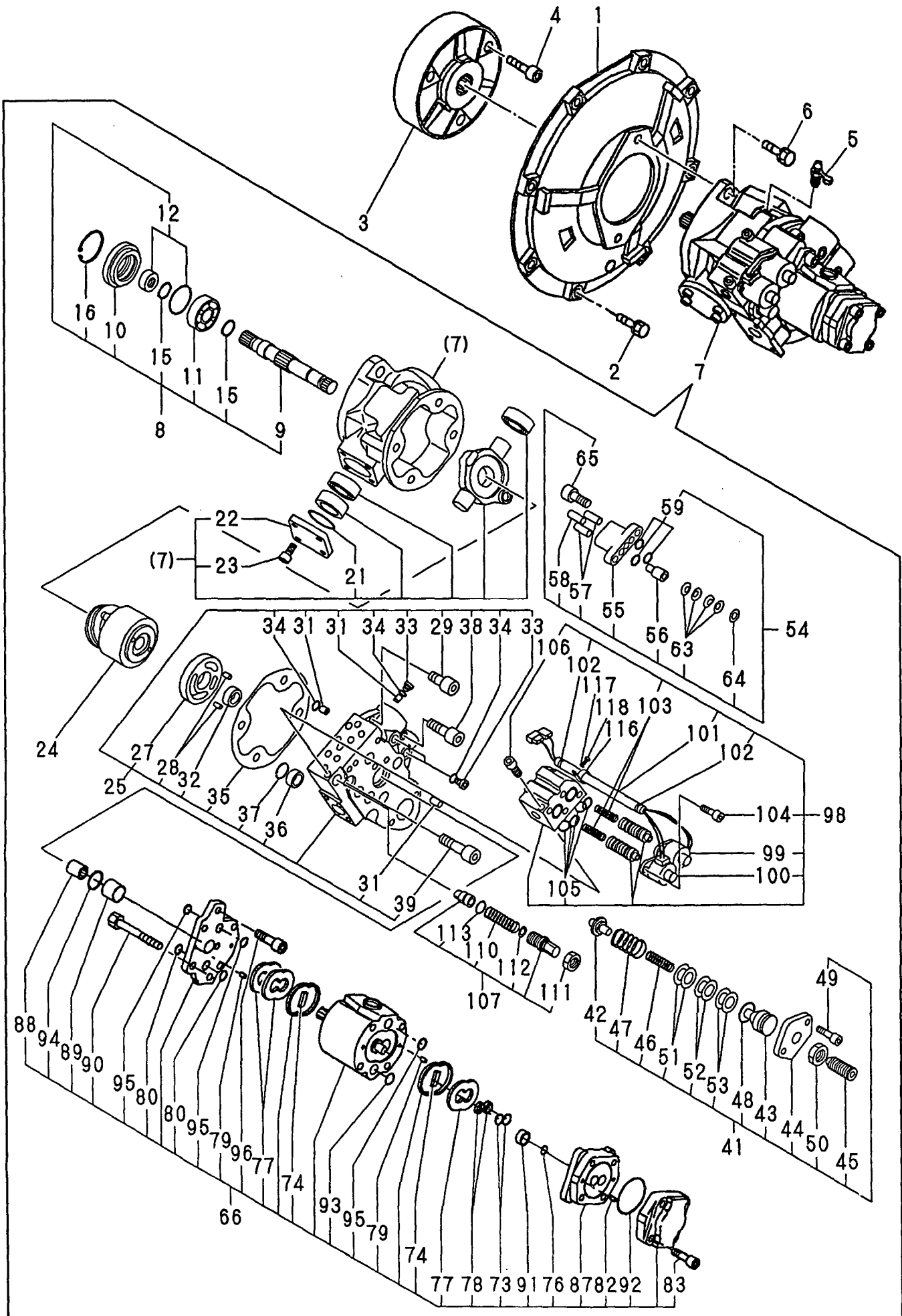


Fig. 29 BLADE CYLINDER

1 inc. 2 ~ 22

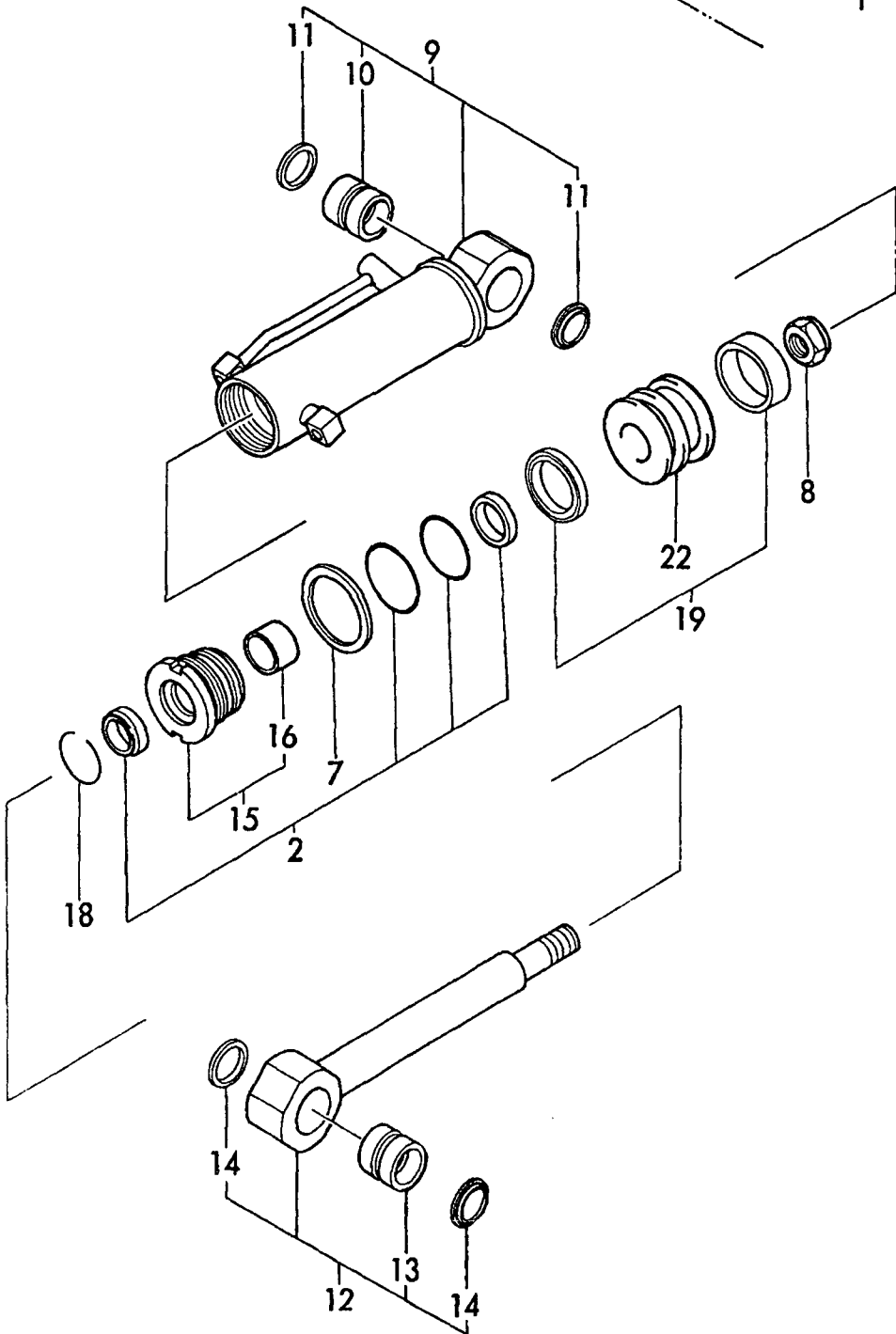
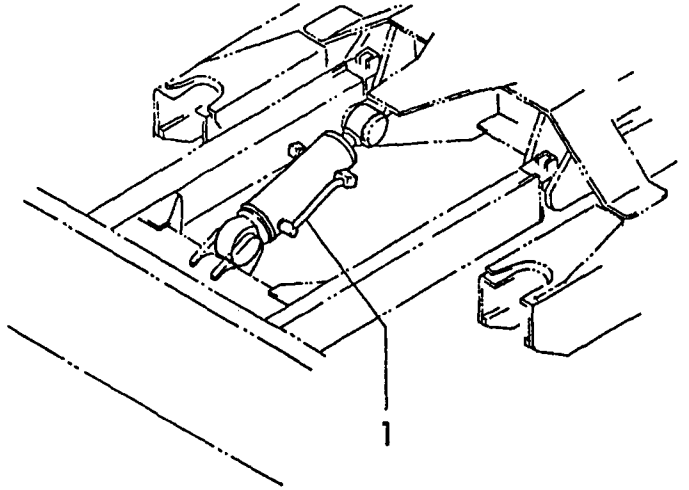


Fig. 34 CONTROL VALVE (TRAVEL)

CONTROL VALVE ASSY
(172171-74101)

Fig. 33 REF. No. 7

- inc. Fig. 33 REF. No. 8 ~ 33
- Fig. 34 REF. No. 1 ~ 22
- Fig. 35 REF. No. 1 ~ 39
- Fig. 36 REF. No. 1 ~ 22
- Fig. 37 REF. No. 1 ~ 15

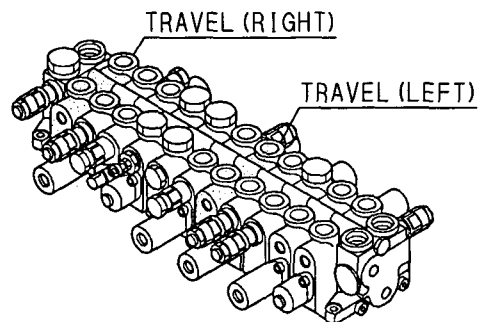
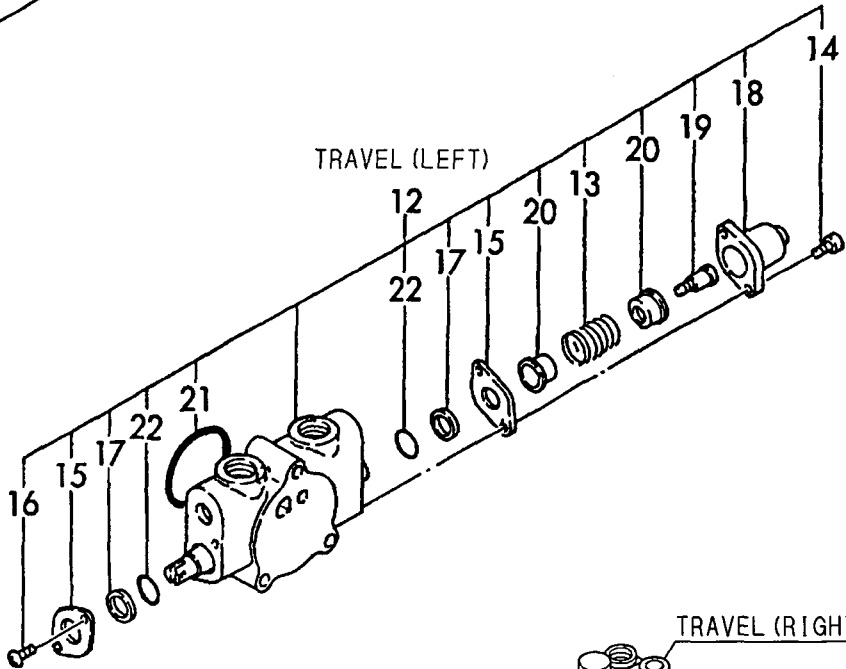
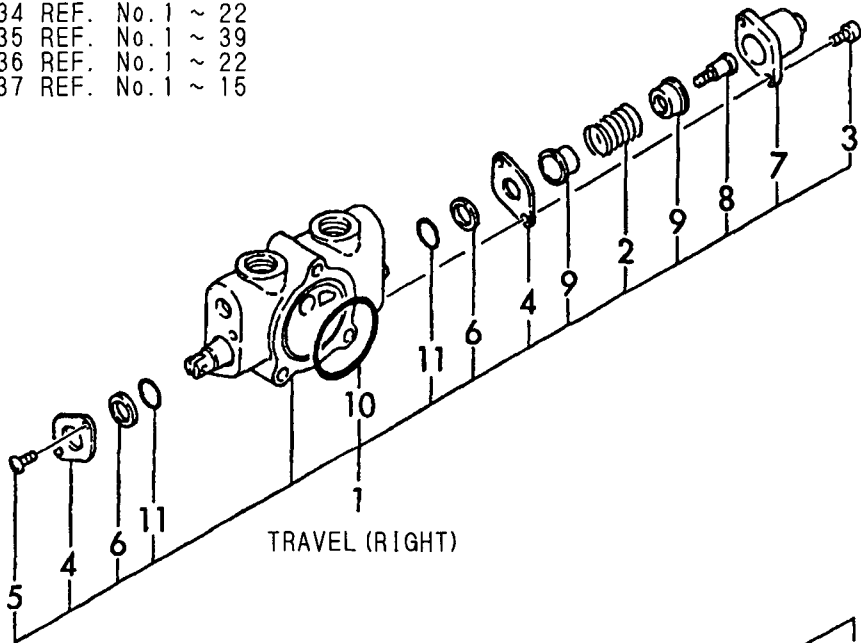


Fig. 39 HYD. OIL TANK

1 inc. (1) ~ 27

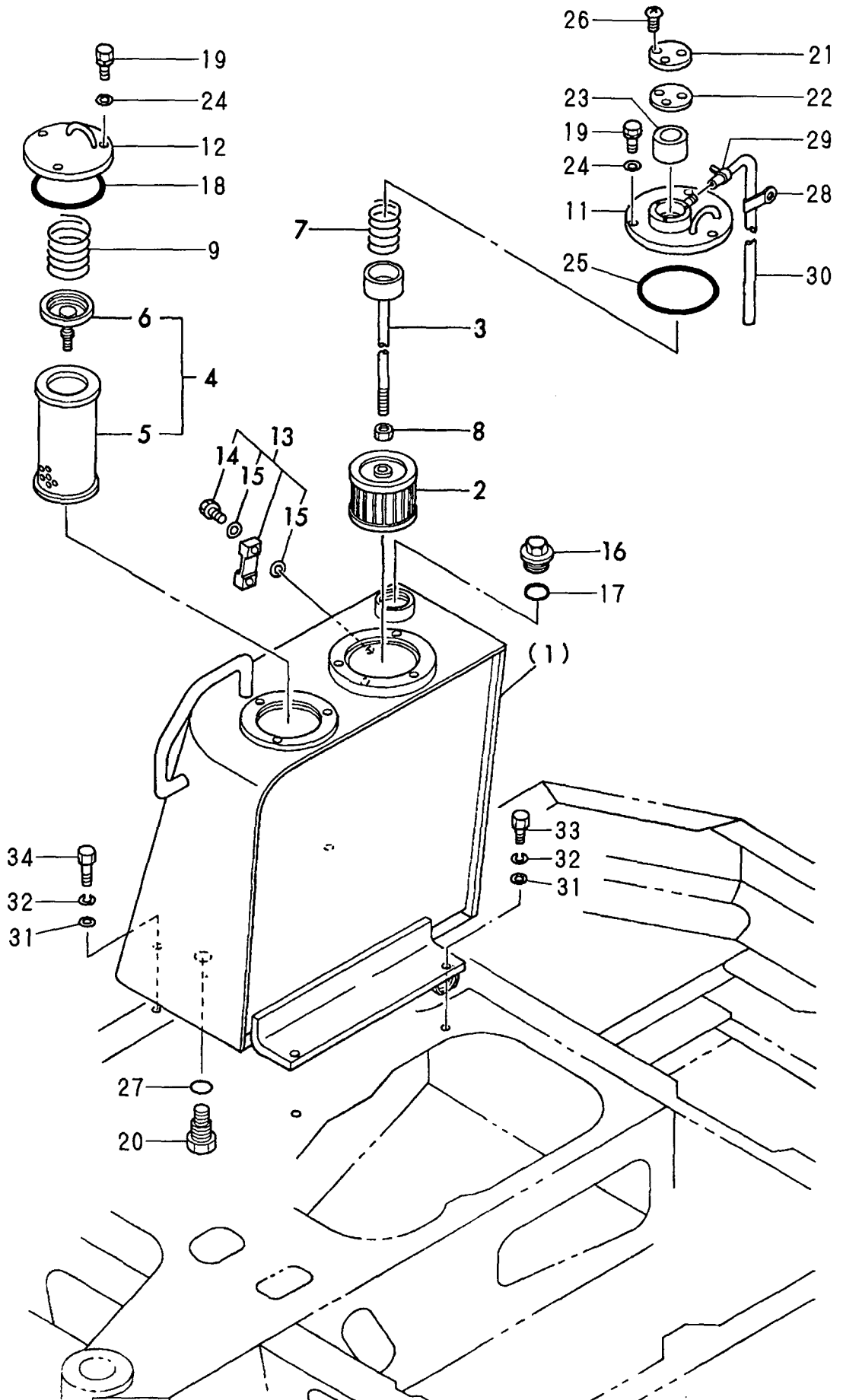
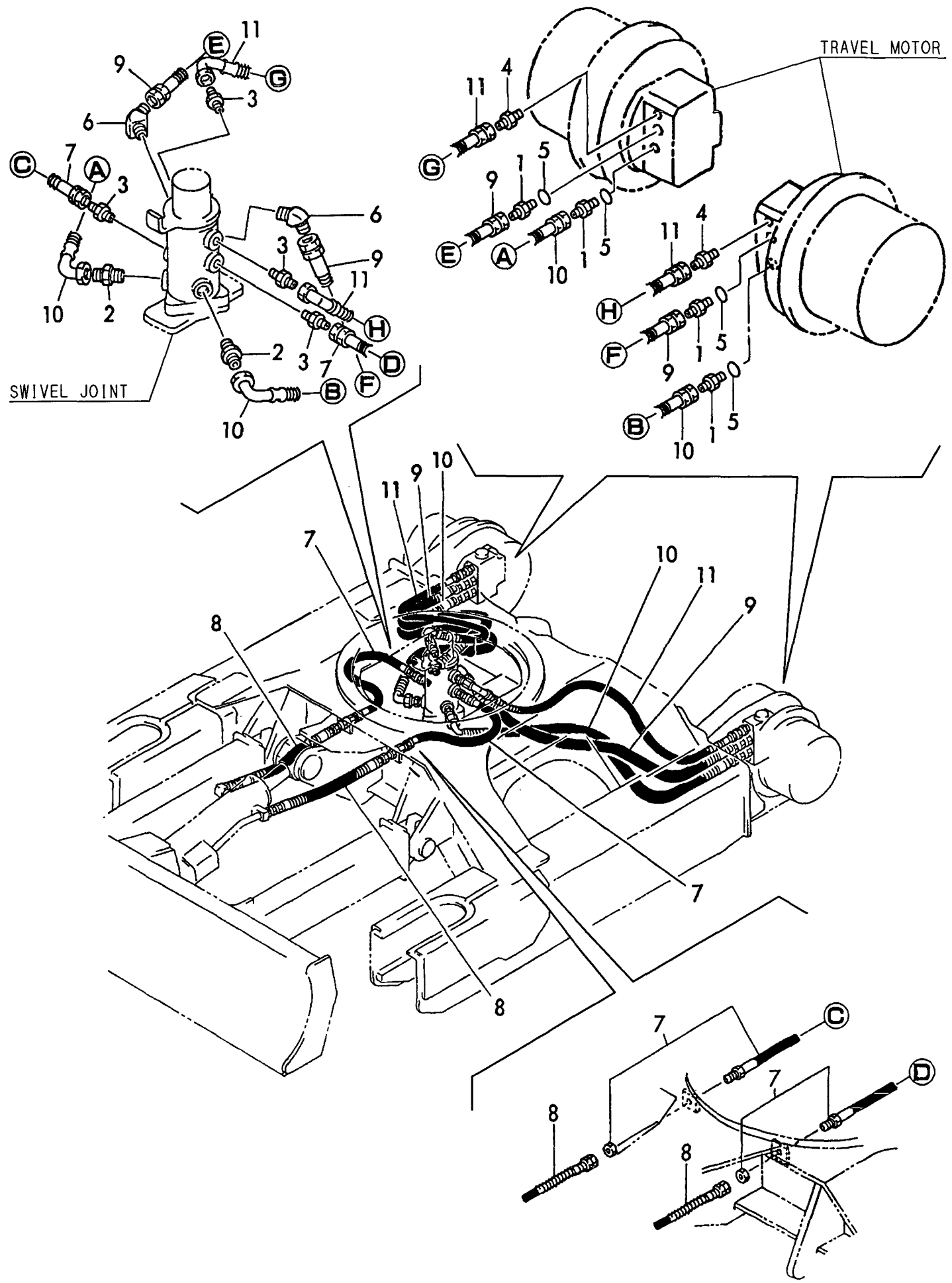


Fig. 44 HYD. OIL PIPING (TRAVEL)



CLICK HERE TO **DOWNLOAD** THE COMPLETE MANUAL

- Thank you very much for reading the preview of the manual.
- You can download the complete manual from: www.heydownloads.com by clicking the link below



- Please note: If there is no response to CLICKING the link, please download this PDF first and then click on it.

CLICK HERE TO **DOWNLOAD** THE COMPLETE MANUAL