



PARTS CATALOG

Published

2009/4 (Apr.)

0CR10-G43602

CLICK HERE TO **DOWNLOAD** THE COMPLETE MANUAL

- Thank you very much for reading the preview of the manual.
- You can download the complete manual from: www.heydownloads.com by clicking the link below

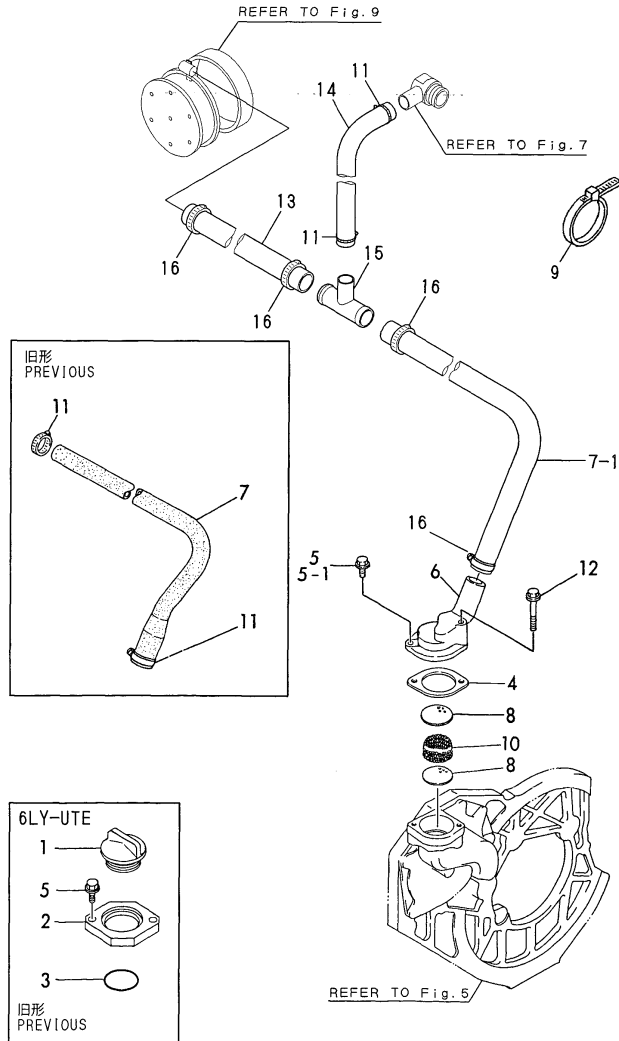


- Please note: If there is no response to CLICKING the link, please download this PDF first and then click on it.

CLICK HERE TO **DOWNLOAD** THE COMPLETE MANUAL

Fig.6. BREATHER

Fig.6 プリーザ
BREATHER



(A)=6LY-UTE
(B)=6LY-STE
(C)=6LYM-UTE

(D)=6LYM-STE
(E)=
(F)=

REF.	LEV.	PARTS NO.	DESCRIPTION	QTY						I	R
				(A)	(B)	(C)	(D)	(E)	(F)		
1	1	124160-01751 (A=E/#40204)	CAP, LUB.OIL SUPPLY	1							Z
2	1	119593-01770 (A=E/#40204)	FLANGE	1							Z
3	1	24311-000320 (A=E/#40204)	O-RING 1A P-32.0	1							Z
4	1	124411-03051	GASKET, (NON-ASB.)	1	1	1	1				
5	1	26106-060202	BOLT M 6X 20 PLATED	2							
5-1	1	26106-060202 (A=E/#40204)	BOLT M 6X 20 PLATED	1	1	1	1				K
6	1	119173-03030 (A=E/#40204)	COVER	1	1	1	1				W
7	1	119593-03092 (A=E/#40204)	PIPE	1	1	1	1				W
7-1	1	119593-03093 (A=E/#40204)	PIPE	1	1	1	1				S 1
8	1	121750-03080 (A=E/#40204)	PLATE, BAFFLE (A=*1999.03) (B=*1999.03) (C=E/#40817) (D=E/#50491)	2	2	2	2				W
9	1	121750-59890 (A=E/#40204)	CLAMP 140	2	2	2	2				W
I 9-1	1	194250-51660 (A=*1998.07) (B=*1998.07) (C=E/#40774) (D=E/#50462)	BAND 250	2	2	2	2				N
10	1	121850-03050 (A=E/#40204)	NET	1	1	1	1				W
11	1	23000-028000 (A=E/#40204)	CLAMP 28	2	2	2	2				W
12	1	26106-060402 (A=E/#40204)	BOLT M 6X 40 PLATED	1	1	1	1				W
13	1	119593-03120 (A=*1999.03) (B=*1999.03) (C=E/#40817) (D=E/#50491)	HOSE	1	1	1	1				W 1
14	1	119593-03130 (A=*1999.03) (B=*1999.03) (C=E/#40817) (D=E/#50491)	HOSE	1	1	1	1				W 1
15	1	119593-03140 (A=*1999.03) (B=*1999.03) (C=E/#40817) (D=E/#50491)	JOINT,BREATHER	1	1	1	1				W 1
16	1	23000-035000 (A=*1999.03) (B=*1999.03) (C=E/#40817) (D=E/#50491)	CLAMP 35	4	4	4	4				W 1

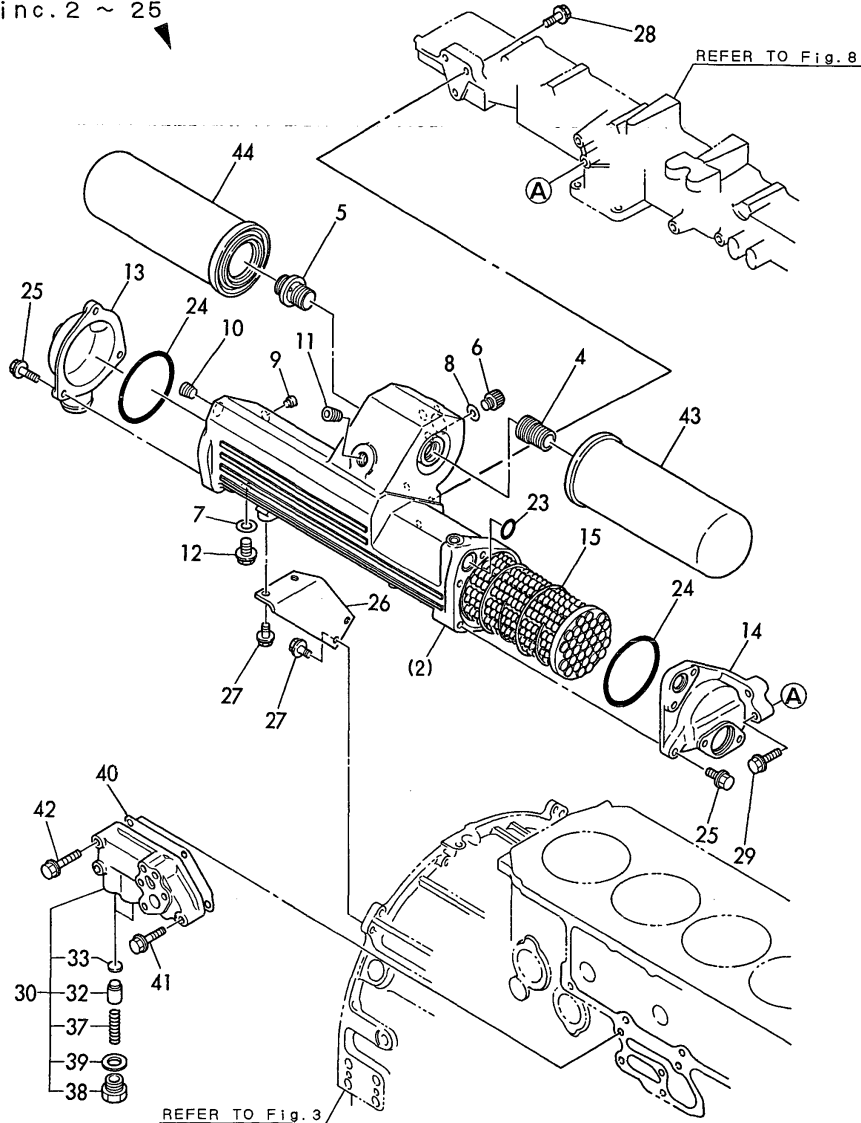
Remarks

(1)INTERCHANGEABLE BY SIMULTANEOUS REPLACEMENT WITH REFER NO.7-1, 13->16 & FIG7 REFER NO.51-2,61 & FIG9 REFER NO.13-2.

Fig.13. LUB.OIL COOLER & STRAINER

Fig. 13 潤滑油クーラ&潤滑油フィルタ
LUB.OIL COOLER & STRAINER

見出しNo. 1は、見出しNo. 2から25を含みます。
1 inc. 2 ~ 25



見出しNo. 2は、見出しNo. (2) から12を含みます。
2 inc. (2) ~ 12

(A)=6LY-UTE
(B)=6LY-STE
(C)=6LYM-UTE

(D)=6LYM-STE
(E)=
(F)=

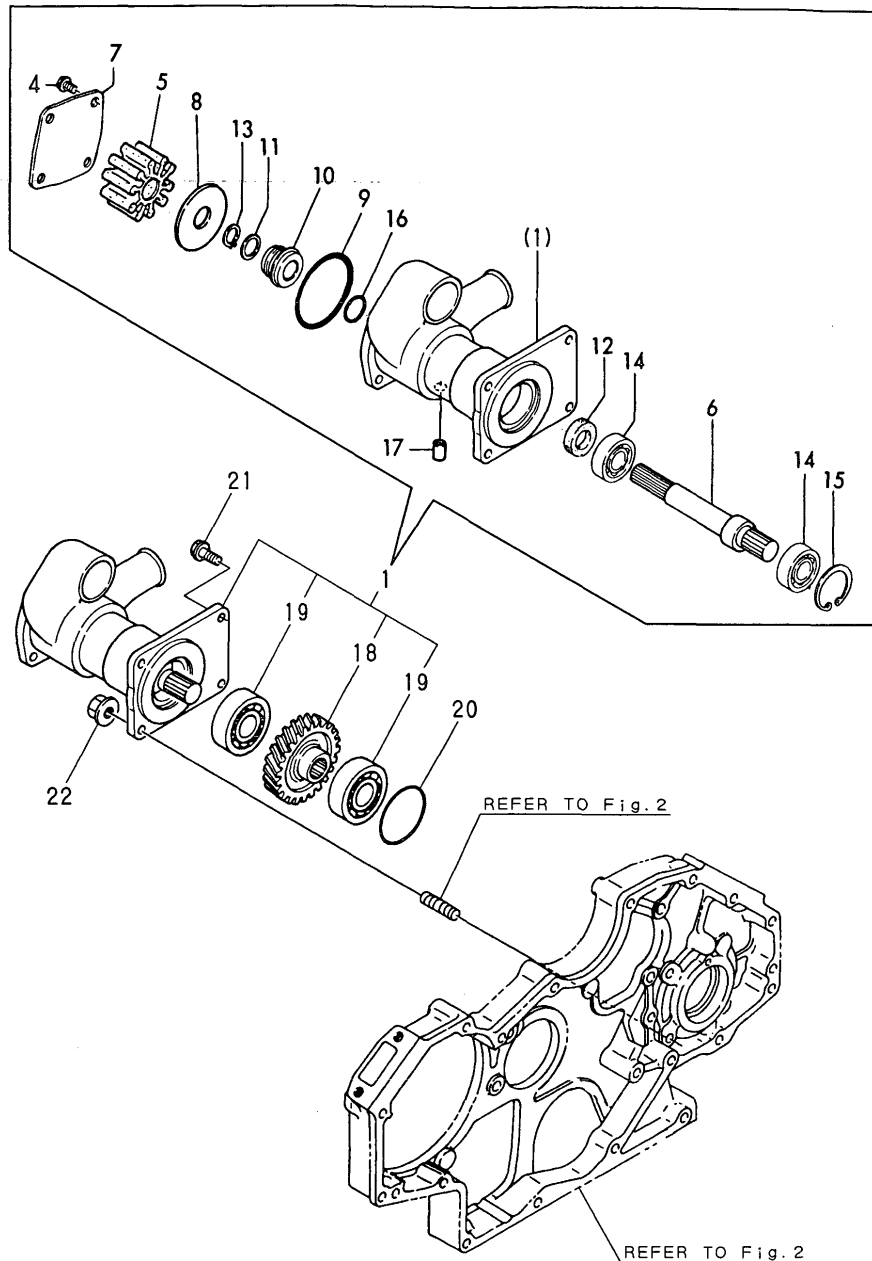
REF.	LEV.	PARTS NO.	DESCRIPTION	QTY						I	R
				(A)	(B)	(C)	(D)	(E)	(F)		
1	1	719593-33700	COOLER, LUB OIL	1							
1-1	1	719573-33700 (A=E/#40339)	COOLER ASSY,LUB. OIL	1	1	1	1				N
2	2	119593-33000	BODY, LUB.OIL COOLER	1							
2-1	2	119573-33000 (A=E/#40339)	BODY, LUB.OIL COOLER	1	1	1	1				N
4	3	119593-35150	STUD,LUB.OIL FILTER	1	1	1	1				
5	3	119593-35161 (A=E/#40339)	STUD,LUB.OIL FILTER	1							Z
6	3	23887-120002	PLUG 12,HEX.	1	1	1	1				
7	3	23414-100000	GASKET 10, ROUND	1	1	1	1				
8	3	43400-500450	SEAL WASHER 12S	1							
8-1	3	22190-120002 (A=E/#40283)	SEAL WASHER 12	1	1	1	1				N
9	3	23871-010000	PLUG PT1/8,SCREW	1	1	1	1				
I 9-1	3	23876-010000 (A=*1999.06) (B=*1999.06) (C=E/#40839) (D=E/#50499)	PLUG PT1/8,SCREW	1	1	1	1				N
10	3	23871-020000	PLUG PT1/4,SCREW	1	1	1	1				
I 10-1	3	23876-020000 (A=*1999.06) (B=*1999.06) (C=E/#40839) (D=E/#50499)	PLUG 1/4	1	1	1	1				N
11	3	23871-030000	PLUG PT3/8,SCREW	1	1	1	1				
I 11-1	3	23876-030000 (A=*1999.06) (B=*1999.06) (C=E/#40839) (D=E/#50499)	PLUG PT3/8,SCREW	1	1	1	1				N
12	3	26106-100162	BOLT M10X 16 PLATED	1	1	1	1				
13	2	119593-33100	COVER	1	1	1	1				
14	2	119593-33160	COVER	1	1	1	1				
15	2	119593-33190	CORE ASSY, COOLER	1	1	1	1				
23	2	24311-000200	O-RING 1A P-20.0	1	1	1	1				
24	2	24311-000900	O-RING 1A P-90.0	2	2	2	2				
25	2	26106-080252	BOLT M 8X 25 PLATED	5	5	5	5				
26	1	119593-33510	BRACKET	1	1	1	1				
27	1	26106-080162	BOLT M 8X 16 PLATED	4	4	4	4				
28	1	26106-080252	BOLT M 8X 25 PLATED	3	3	3	3				
29	1	26106-080352	BOLT M 8X 35 PLATED	2	2	2	2				
30	1	119593-34000	VALVE ASSY,CONTROL	1	1	1	1				
I 30-1	1	119593-34001 (A=E/#40696) (B=E/#50420) (C=E/#40721) (D=E/#50439)	VALVE ASSY,CONTROL	1	1	1	1				N
32	2	119000-34030	VALVE, OIL PRESS	2	2	2	2				
33	2	121850-35200	SHIM SET	2	2	2	2				
37	2	124411-35520	SPRING	2	2	2	2				
38	2	123672-84530	RETAINER	2	2	2	2				
39	2	23414-180000	GASKET 18, ROUND	2	2	2	2				
40	1	119593-34020	GASKET	1	1	1	1				
41	1	26106-080402	BOLT M 8X 40 PLATED	1	1	1	1				
42	1	26106-080452	BOLT M 8X 45 PLATED	4	4	4	4				
43	1	119593-35100	STRAINER (FF) CMP	1	1	1	1				
44	1	119593-35400 (A=E/#40339)	STRAINER (BP)	1							Z

Fig.23. COOLING SEA WATER PUMP

(A)=6LY-UTE
(B)=6LY-STE
(C)=6LYM-UTE

(D)=6LYM-STE
(E)=
(F)=

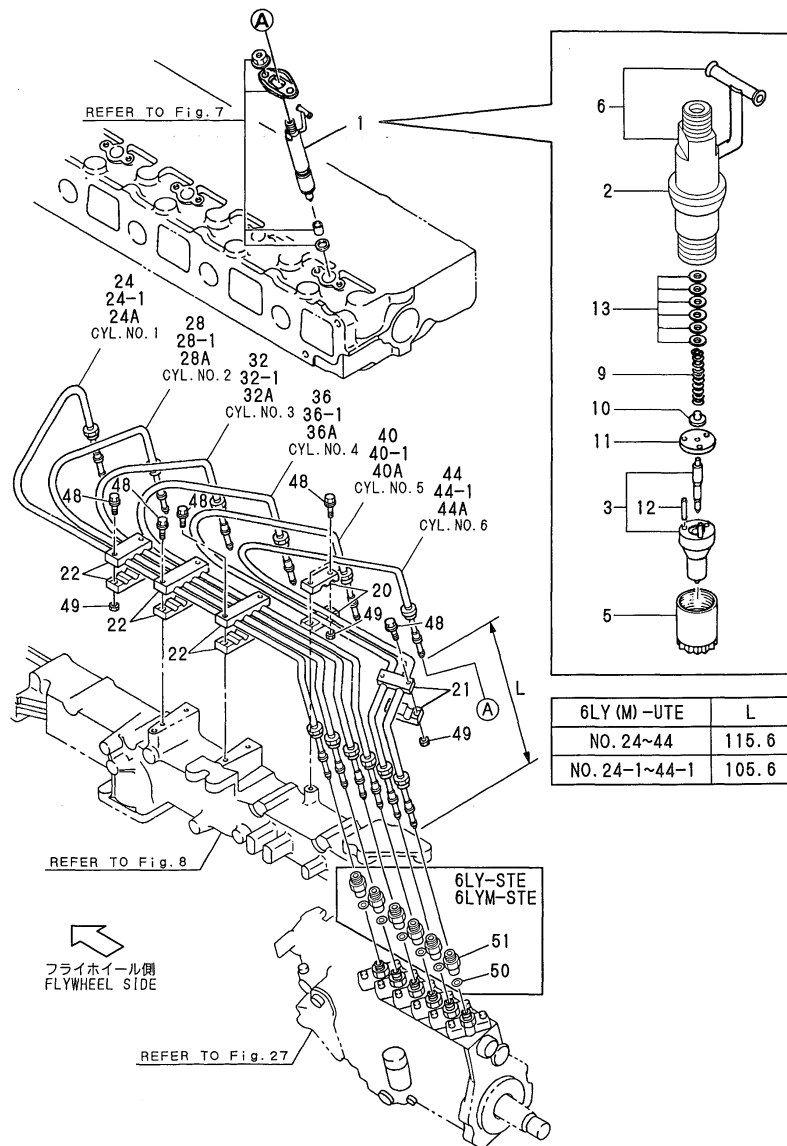
Fig. **23** 冷却水ポンプ (海水)
C. S. W. PUMP



REF.	LEV.	PARTS NO.	DESCRIPTION	QTY						I	R
				(A)	(B)	(C)	(D)	(E)	(F)		
1	1	719593-42700	PUMP ASSY, SEA WATER	1	1	1	1				
4	3	26113-060102	BOLT M 6X 10	4	4	4	4				
5	3	119593-42200	IMPELLER, C. WATER	1	1	1	1				
6	3	119593-42530	SHAFT, IMPELLER	1	1	1	1				
7	3	119171-42530	COVER	1	1	1	1				
8	3	119593-42540	PLATE	1	1	1	1				
9	3	24321-000700	O-RING 1A G-70.0	1	1	1	1				
10	3	123472-42060	SEAL, MECHANICAL	1	1	1	1				
11	3	119593-42550	COLLAR	1	1	1	1				
12	3	123472-42150	OIL SEAL	1	1	1	1				
13	3	22243-000200	CIRCLIP 20	1	1	1	1				
14	3	24104-062044	BALL BEARING	2	2	2	2				
15	3	22252-000470	CIRCLIP 47	1	1	1	1				
16	3	24311-000200	O-RING 1A P-20.0	1	1	1	1				
17	3	126650-42301	JOINT	1	1	1	1				
18	2	119100-26200	GEAR Z=27	1	1	1	1				
19	2	24101-060064	BALL BEARING	2	2	2	2				
20	1	24341-000800	O-RING 1A S-80.0	1	1	1	1				
21	1	26106-080202	BOLT M 8X 20 PLATED	2	2	2	2				
22	1	26366-080002	NUT M 8	2	2	2	2				

Fig.29. FUEL INJECTION VALVE & FUEL INJECTION PIPE

Fig.29 燃料噴射弁 & 燃料噴射パイプ
FUEL INJECTION VALVE & FUEL INJECTION PIPE



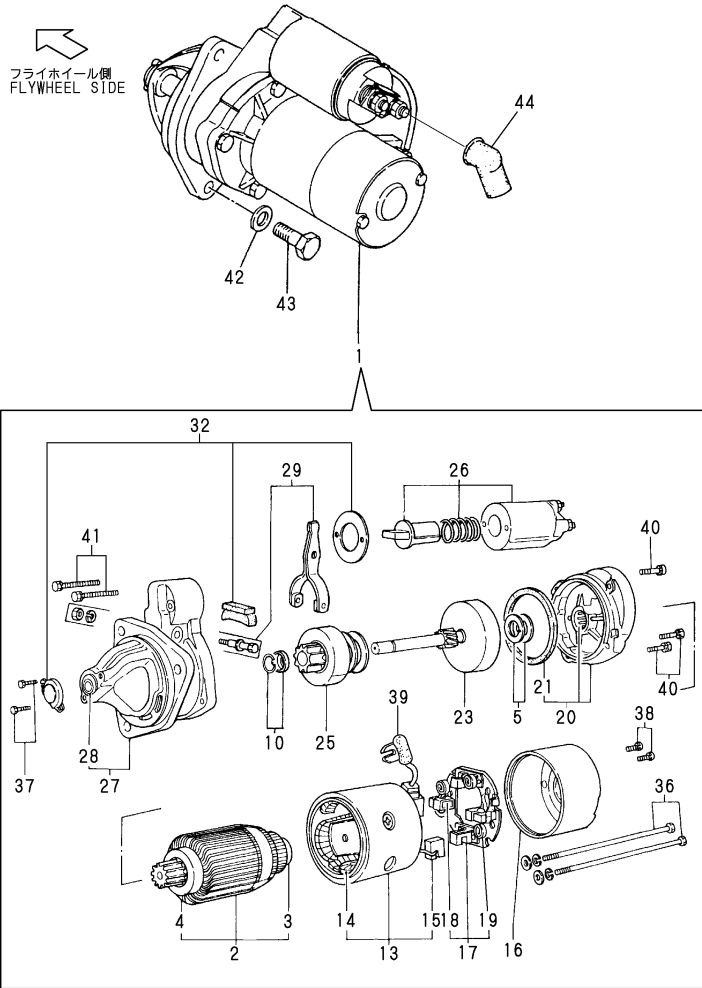
(A)=6LY-UTE (D)=6LYM-STE
(B)=6LY-STE (E)=
(C)=6LYM-UTE (F)=

REF.	LEV.	PARTS NO.	DESCRIPTION	QTY						I	R	
				(A)	(B)	(C)	(D)	(E)	(F)			
1	1	719588-53101	VALVE ASSY, F.INJECT	6		6						
1A	1	719574-53100	FUEL INJECTION VALVE		6		6					
2	2	129470-11920	GASKET	6	6	6	6					
3	2	119593-53000	NOZZLE ASSY	6								
3-1	2	119588-53001	VALVE W/CASE, F. I.	6		6					N	
(A=E/#40116)												
3A	2	119574-53000	NOZZLE ASSY		6		6					
5	2	119593-53080	NUT,NOZZLE CASE	6	6	6	6					
6	2	119593-53100	HOLDER ASSY	6		6						
6A	2	119594-53100	HOLDER ASSY		6		6					
9	2	119593-53120	SPRING	6	6	6	6					
10	2	119593-53130	RETAINER,SPRING	6	6	6	6					
11	2	119593-53140	PLATE,STOP	6	6	6	6					
12	2	114250-53210	PIN	12	12	12	12					
13	2	114250-53400	SHIM PACK	6	6	6	6					
20	1	122780-59100	RETAINER	2	2	2	2					
21	1	123372-59100	CLAMP	4	4	4	4					
22	1	123472-59120	BRACKET	4	4	4	4					
24	2	119593-59810	PIPE,FUEL INJECTION	1		1						
24-1	2	119593-59811	PIPE,FUEL INJECTION	1		1					S	1
(A=E/#40643) (C=E/#40672)												
24A	2	119594-59811	PIPE,FUEL INJECTION		1		1					
28	2	119593-59820	PIPE,FUEL INJECTION	1		1						
28-1	2	119593-59821	PIPE,FUEL INJECTION	1		1					S	1
(A=E/#40643) (C=E/#40672)												
28A	2	119594-59821	PIPE,FUEL INJECTION		1		1					
32	2	119593-59830	PIPE,FUEL INJECTION	1		1						
32-1	2	119593-59831	PIPE,FUEL INJECTION	1		1					S	1
(A=E/#40643) (C=E/#40672)												
32A	2	119594-59831	PIPE,FUEL INJECTION		1		1					
36	2	119593-59840	PIPE,FUEL INJECTION	1		1						
36-1	2	119593-59841	PIPE,FUEL INJECTION	1		1					S	1
(A=E/#40643) (C=E/#40672)												
36A	2	119594-59841	PIPE,FUEL INJECTION		1		1					
40	2	119593-59850	PIPE,FUEL INJECTION	1		1						
40-1	2	119593-59851	PIPE,FUEL INJECTION	1		1					S	1
(A=E/#40643) (C=E/#40672)												
40A	2	119594-59851	PIPE,FUEL INJECTION		1		1					
44	2	119593-59860	PIPE,FUEL INJECTION	1		1						
44-1	2	119593-59861	PIPE,FUEL INJECTION	1		1					S	1
(A=E/#40643) (C=E/#40672)												
44A	2	119594-59861	PIPE,FUEL INJECTION		1		1					
48	1	26106-060202	BOLT M 6X 20 PLATED	10	10	10	10					
49	1	26366-060002	NUT M 6	5	5	5	5					
50	1	119594-53290	GASKET		6		6					
51	1	119594-53301	CONNECTOR		6		6					

Remarks
(1) INTERCHANGEABLE BY SIMULTANEOUS
REPIACEMENT WITH FIG27 F.I. PUMP.

Fig.34. STARTING MOTOR

P/C NEWS No: Y00R4362-5
PUBLISHED: 2004/8



Remarks
(1)S13-68
(2)S13-68A
(3)S13-68C
(M)MISPRINT:REFER TO THE NEXT ITEM.

(A)=6LY-UTE
(B)=6LY-STE
(C)=6LYM-UTE
(D)=6LYM-STE
(E)=
(F)=

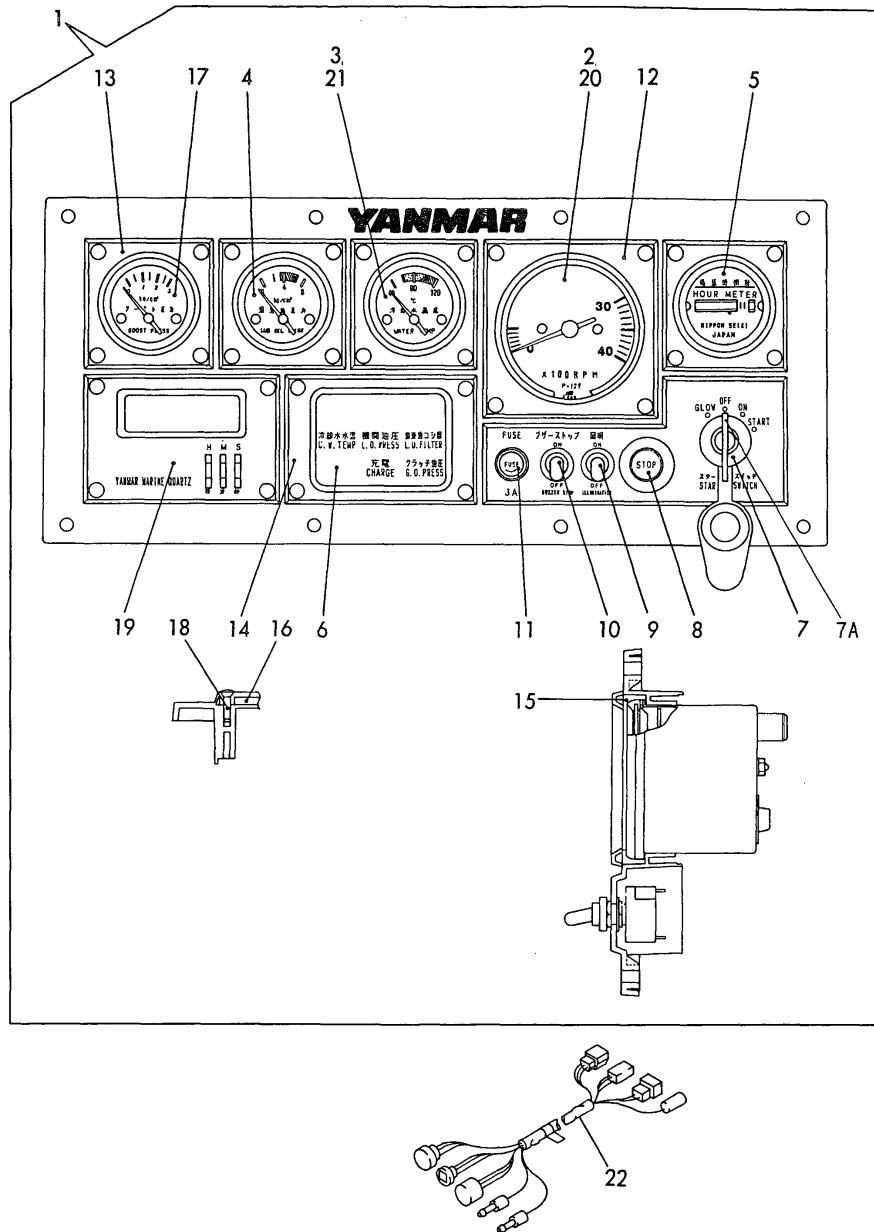
REF.	LEV.	PARTS NO.	DESCRIPTION	QTY						I	R
				(A)	(B)	(C)	(D)	(E)	(F)		
1	1	124610-77010	STARTER	1	1	1	1				1
I	1-1	124610-77010	STARTER	1	1	1	1				N 2
		(A=*1995.12) (B=*1995.12) (C=*1995.12) (D=*1995.12)									
I	1-2	124610-77019	STARTING MOTOR	1	1	1	1				N 3
		(A=*2000.06) (B=*2000.06) (C=*2000.06) (D=*2000.06)									
I	2	121254-77401	ARMATURE, (NON-ASB.)	1	1	1	1				
I	2-1	121254-77402	ARMATURE ASSY	1	1	1	1				S
		(A=*1995.12) (B=*1995.12) (C=*1995.12) (D=*1995.12)									
I	3	121254-77410	BALL BEARING	1	1	1	1				
I	4	121254-77420	BALL BEARING	1	1	1	1				
I	5	121254-77430	WASHER KIT, THRUST	1	1	1	1				
I	10	121254-77480	STOPPER KIT, PINION	1	1	1	1				
I	13	121254-77510	YORK ASSY	1	1	1	1				
I	13-1	121254-77511	COIL ASSY, FIELD	1	1	1	1				S
		(A=*1995.12) (B=*1995.12) (C=*1995.12) (D=*1995.12)									
I	14	121254-77520	COIL ASSY, FIELD	1	1	1	1				
I	14-1	121254-77521	COIL ASSY, FIELD	1	1	1	1				S
		(A=*1995.12) (B=*1995.12) (C=*1995.12) (D=*1995.12)									
I	15	121254-77540	BRUSH(+)	2	2	2	2				
I	15-1	121254-77541	BRUSH (+)	2	2	2	2				S
		(A=*1995.12) (B=*1995.12) (C=*1995.12) (D=*1995.12)									
I	16	124610-77550	REAR COVER ASSY	1	1	1	1				
I	17	121254-77570	HOLDER ASSY, BRUSH	1	1	1	1				
I	17-1	121254-77571	HOLDER	1	1	1	1				S
		(A=*1995.12) (B=*1995.12) (C=*1995.12) (D=*1995.12)									
I	18	121254-77580	BRUSH (-)	2	2	2	2				
I	18-1	121254-77581	BRUSH	2	2	2	2				S
		(A=*1995.12) (B=*1995.12) (C=*1995.12) (D=*1995.12)									
I	19	121254-77590	SPRING, BRUSH	4	4	4	4				
I	20	X21304400	BEARING ASSY, CENTER	1	1	1	1				
I	20-1	121254-77600	BEARING ASSY, CENTER	1	1	1	1				N
		(A=*1995.12) (B=*1995.12) (C=*1995.12) (D=*1995.12)									
I	21	119129-77210	SEAL, OIL	1	1	1	1				
I	21-1	121254-77610	SEAL, OIL	1	1	1	1				N
		(A=*1995.12) (B=*1995.12) (C=*1995.12) (D=*1995.12)									
I	23	121254-77640	SHAFT ASSY, GEAR	1	1	1	1				M
I	23-1	X22501113	SHAFT ASSY, GEAR	1	1	1	1				
I	23-2	124610-77640	SHAFT ASSY, GEAR	1	1	1	1				N
		(A=*1995.12) (B=*1995.12) (C=*1995.12) (D=*1995.12)									
I	25	121254-77661	PINION ASSY	1	1	1	1				M
I	25-1	X213035002	PINION ASSY	1	1	1	1				
I	25-2	124610-77660	PINION ASSY	1	1	1	1				N
		(A=*1995.12) (B=*1995.12) (C=*1995.12) (D=*1995.12)									
I	26	X213017001	SWITCH ASSY, MAGNET.	1	1	1	1				
I	26-1	121254-77670	SWITCH, MAGNETIC	1	1	1	1				N
		(A=*1995.12) (B=*1995.12) (C=*1995.12) (D=*1995.12)									
I	26-2	121254-77671	SWITCH, MAGNETIC	1	1	1	1				N
		(A=*2000.06) (B=*2000.06) (C=E/#40908) (D=E/#50521)									
I	27	121254-77681	CASE ASSY, GEAR	1	1	1	1				M
I	27-1	X213046003	HOUSING ASSY, GEAR	1	1	1	1				
I	28	121254-77690	METAL, GEAR CASE	1	1	1	1				

Fig.42. PANEL(D-TYPE,OPTIONAL)

(A)=6LY-UTE
(B)=6LY-STE
(C)=6LYM-UTE

(D)=6LYM-STE
(E)=
(F)=

Fig.42 計器盤 (D, オプション)
INSTRUMENT PANEL (D, OPTIONAL)

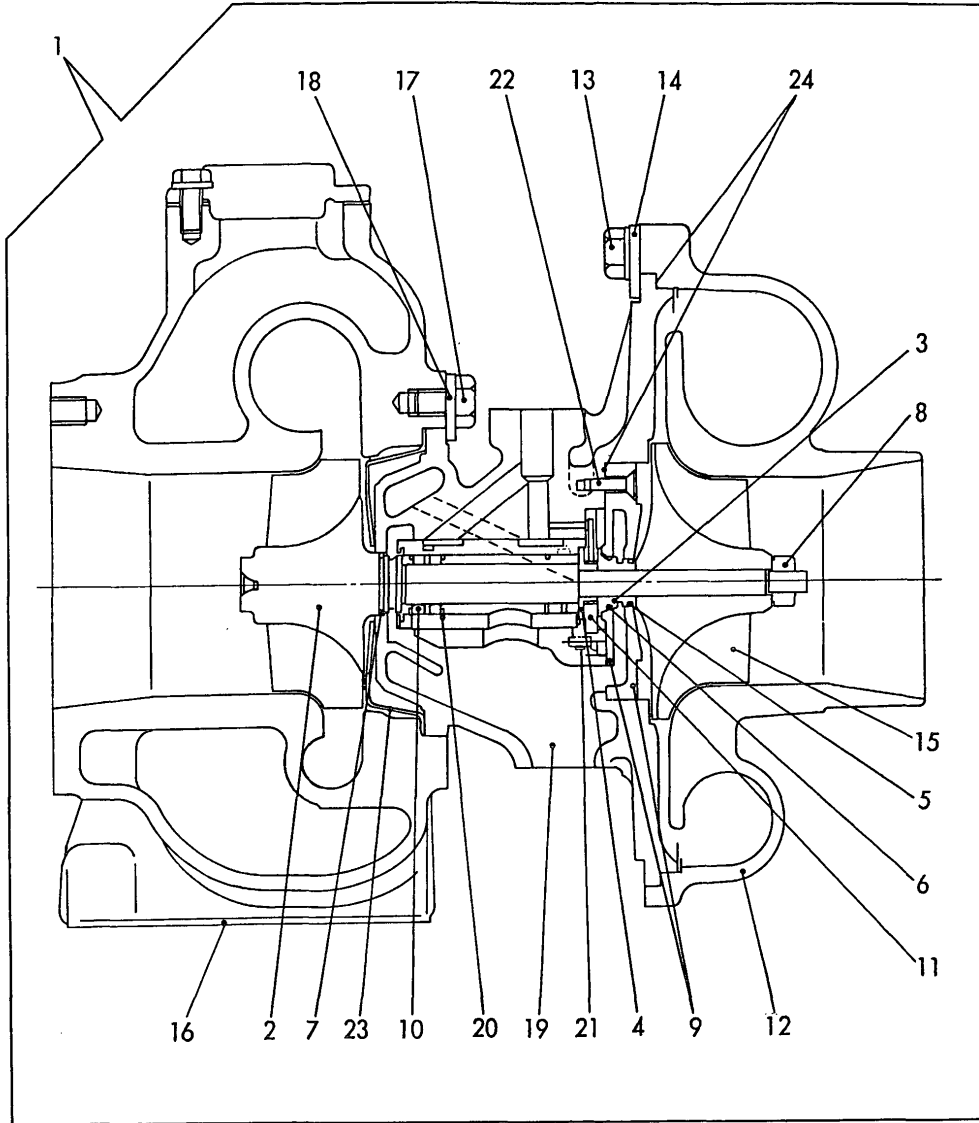


REF.	LEV.	PARTS NO.	DESCRIPTION	QTY						I	R
				(A)	(B)	(C)	(D)	(E)	(F)		
1	1	127675-91300	INSTRUMENT PANEL	1	1	1	1				
2	2	127675-91650	TACHOMETER	1	1	1	1				
3	2	124617-91840	THERMOMETER	1	1	1	1				
4	2	124617-91830	GAUGE, OIL PRESSURE	1	1	1	1				
5	2	124617-91820	HOURLMETER	1	1	1	1				
6	2	124617-91810	BOX ASSY, LAMP	1	1	1	1				
7	2	121575-91250	SWITCH W/KEY	1	1	1	1				
7A	2	123482-91291	KEY, SWITCH	2	2	2	2				
8	2	129470-91190	STOPPER	1	1	1	1				
9	2	127620-91790	SWITCH	1	1	1	1				
10	2	127620-91790	SWITCH	1	1	1	1				
11	2	46150-003610	BOX, FUSE	1	1	1	1				
12	2	127620-91410	BRACKET	1	1	1	1				
13	2	127620-91620	BRACKET	4	4	4	4				
14	2	127620-91730	BRACKET	1	1	1	1				
15	2	127620-91690	CUSHION	1	1	1	1				
16	2	127620-91720	GASKET	1	1	1	1				
17	2	127675-91700	GAUGE, BOOST	1	1	1	1				
18	2	127620-91630	SCREW	28	28	28	28				
19	2	127620-91240	TIMER	1	1	1	1				
20	2	124617-91920	BULB	4	4	4	4				
21	2	194555-55820	BULB 12V-1.7W	5	5	5	5				
22	1	129574-77860	HARNESS ADAPTER 12V	1	1	1	1				W

(A=E/#40179)

Fig.48. TURBOCHARGER COMPONENT PART

Fig.48 タービンインナーパーツ
TURBOCHARGER COMPONENT PART



Remarks
(1)NEW CODE NUMBERS FOR INTERNAL PARTS.

(A)=6LY-UTE
(B)=6LY-STE
(C)=6LYM-UTE

(D)=6LYM-STE
(E)=
(F)=

REF.	LEV.	PARTS NO.	DESCRIPTION	Q'TY						I	R
				(A)	(B)	(C)	(D)	(E)	(F)		
22	2	XNH193006	BOLT	4	4	4	4				
23	2	XNH178265	PLATE,INSULATION	1	1	1	1				
24	2	XNN193653	GASKET, RIQUID	1	1	1	1				

CLICK HERE TO **DOWNLOAD** THE COMPLETE MANUAL

- Thank you very much for reading the preview of the manual.
- You can download the complete manual from: www.heydownloads.com by clicking the link below



- Please note: If there is no response to CLICKING the link, please download this PDF first and then click on it.

CLICK HERE TO **DOWNLOAD** THE COMPLETE MANUAL