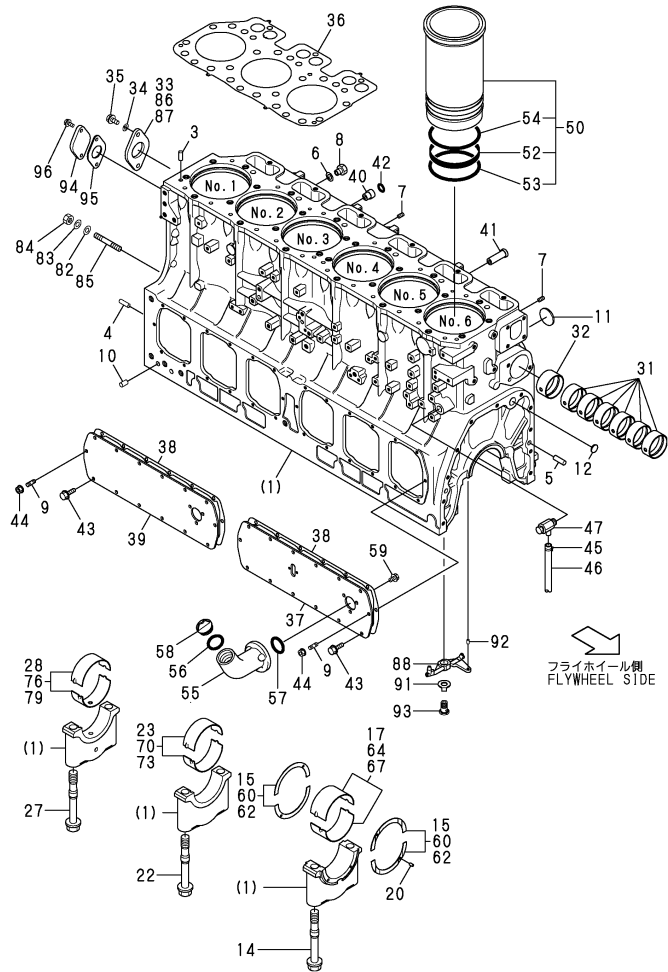


# Fig.1.CYLINDER BLOCK

1inc.(1) ~ 35



**Remarks**

- (1)OVER(O.S.=0.25)PART.(2)(O.S.=0.5)
- (3)UNDER(U.S.=0.25)PART.(4)(U.S.=0.5)
- (5)INTERCHANGEABLE BY SIMULTANEOUS REPLACEMENT WITH FIG.NO.4 REF. NO.1-1,4-1 FIG.NO.27 REF.NO.37-1
- (6)INTERCHANGEABLE BY SIMULTANEOUS REPLACEMENT WITH NO.1-2 AND NO.36-1.
- (7)INTERCHANGEABLE BY SIMULTANEOUS REPLACEMENT WITH REF.NO.1-3,50-1 & FIG.7 REF.NO.1-1.

# 1.CYLINDER BLOCK

(A)=6HAL2C  
(B)=6HAL2C-T  
(C)=6HAL2C-HT

(D)=6HAL2C-DT  
(E)=YPP180  
(F)=YPP240

REF.	LEV.	PARTS NO.	DESCRIPTION	Q'TY						I	R		
				(A)	(B)	(C)	(D)	(E)	(F)				
1	1	726660-01561	CYLINDER BLOCK ASSY				1	1					
1-1	1	726660-01562	CYLINDER BLOCK ASSY (C=*1999.05) (D=*1999.05)				1	1			S	5	
1-2	1	726660-01563	CYLINDER BLOCK ASSY (C=*2001.05) (D=*2001.05)				1	1			S	6	
1-3	1	726660-01564	BLOCK ASSY, CYLINDER (C=*2002.08) (D=*2002.08)				1	1	1	1	1	S	7
3	2	22312-100250	PARALLEL PIN 10X25	4	4	4	4	4	4				
4	2	22312-100320	PARALLEL PIN 10X32	2	2	2	2	2	2				
5	2	22312-120360	PARALLEL PIN 12X36	2	2	2	2	2	2				
6	2	23414-120016	GASKET 12	1	1	1	1	1	1				
7	2	23871-010000	PLUG PT1/8,SCREW			2	2						
7-1	2	23876-010000	PLUG PT1/8,SCREW (C=EXXX) (D=EXXX)	2	2	2	2	2	2	2		N	
8	2	23887-120002	PLUG M12-HEX	1	1	1	1	1	1				
9	2	26216-080162	STUD BOLT M8X16	4	4	4	4	4	4				
10	2	22312-120200	PARALLEL PIN 12X20	8	8	8	8	8	8				
11	2	27231-500000	PLUG 50	6	6	6	6	6	6				
12	2	27241-220000	PLUG 22	1	1	1	1	1	1				
14	2	126650-02070	BOLT	2	2	2	2	2	2				
15	2	126650-02190	METAL,THRUST	2	2	2	2	2	2				
17	2	126625-02450	MAIN METAL (BASE)	1	1	1	1	1	1				
20	2	22312-060080	PARALLEL PIN 6X8			2	2						
20-1	2	22312-060100	PIN 6X10,STRAIGHT (C=EXXX) (D=EXXX)	2	2	2	2	2	2	2		N	
22	2	126650-02070	BOLT	10	10	10	10	10	10				
23	2	126625-02460	MAIN METAL (CENTER)	5	5	5	5	5	5				
27	2	126650-02070	BOLT	2	2	2	2	2	2				
28	2	126625-02470	MAIN METAL (GEAR)	1	1	1	1	1	1				
31	2	126650-02400	BUSH, CAMSHAFT	6	6	6	6	6	6				
32	2	126650-02410	BUSH, CAMSHAFT	1	1	1	1	1	1				
33	2	126650-02420	METAL, THRUST	1	1	1	1	1	1				
34	2	22217-100000	SPRING WASHER 10	2	2	2	2	2	2				
35	2	26106-100222	BOLT M10X 22 PLATED	2	2	2	2	2	2				
36	1	126625-01331	GASKET, CYL. HEAD			2	2						
36-1	1	126629-01330	GASKET, CYL. HEAD (C=*2001.04) (D=*2001.04)	2	2	2	2	2	2	2		S	
37	1	41601-555000	COVER, CYL BLOCK	1	1	1	1	1	1				
38	1	126650-01411	GASKET, COVER	2	2	2	2	2	2				
39	1	126630-01400	SIDE COVER, CYLINDER			1	1						
39-1	1	126650-01420	COVER, CYL BLOCK (C=EXXX) (D=EXXX)	1	1	1	1	1	1	1		N	
40	1	123672-01850	CONNECTOR	2	2	2	2	2	2				
41	1	126650-01860	CONNECTOR	1	1	1	1	1	1				
42	1	24316-000290	O-RING 4D P-29.0	2	2	2	2	2	2				
43	1	26106-080162	BOLT M 8X 16 PLATED	24	24	24	24	24	24				
44	1	26366-080002	NUT M 8	4	4	4	4	4	4				
45	1	23010-017000	CLAMP 17	1	1	1	1	1	1				
46	1	23061-120500	PIPE 12X 500	1	1	1	1	1	1				
47	1	43600-500311	COCK 3/8	1	1	1	1	1	1				
50	1	726628-01860	LINER W/PACKING, CYL			6	6						

CLICK HERE TO **DOWNLOAD** THE COMPLETE MANUAL

- Thank you very much for reading the preview of the manual.
- You can download the complete manual from: [www.heydownloads.com](http://www.heydownloads.com) by clicking the link below



- Please note: If there is no response to CLICKING the link, please download this PDF first and then click on it.

CLICK HERE TO **DOWNLOAD** THE COMPLETE MANUAL

Fig.7.CYLINDER HEAD

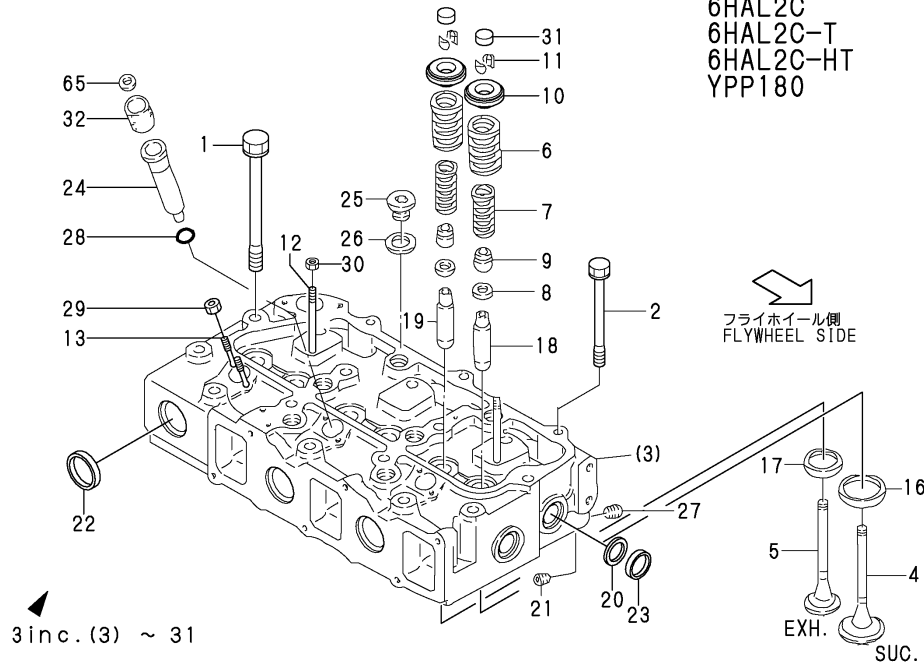
(A)=6HAL2C  
(B)=6HAL2C-T  
(C)=6HAL2C-HT

(D)=6HAL2C-DT  
(E)=YPP180  
(F)=YPP240

REF.	LEV.	PARTS NO.	DESCRIPTION	Q'TY						I	R	
				(A)	(B)	(C)	(D)	(E)	(F)			
38	2	126650-11280	BOLT (A)				6			6		
39	2	126634-11340	SEAL, VALVE STEM				24			24		
42	3	126634-11081	SEAT, SUCTION VALVE				12			12		
43	3	126634-11091	SEAT, EXHAUST VALVE				12			12		
44	3	126634-11161	GUIDE, VALVE				12			12		
45	3	126634-11170	GUIDE, VALVE				12			12		
46	3	128619-11530	GUIDE, BRIDGE				12			12		
47	3	123372-11720	TAPER PLUG PT1/4 SUS				6					Z
				(D=EXXX)								
48	3	126624-11850	SLEEVE				6			6		
49	3	148616-11860	GASKET				6			6		
50	3	126683-11940	PROTECTOR, NOZZLE				6			6		
51	3	128633-11951	INSULATOR				6					
51-1	3	126629-11920	INSULATOR				6			6		R
				(D=*1998.09)								
52	3	144626-11970	PLUG				16			16		
53	3	23414-250031	GASKET 25				16			16		
54	3	23871-030000	PLUG PT3/8,SCREW				6					
54-1	3	23876-030000	PLUG PT3/8,SCREW				6			6		N
				(D=EXXX)								
55	3	24316-000320	O-RING 4D P-32.0				12			12		
56	3	27231-250000	PLUG 25				6			6		
57	3	27241-250000	PLUG 25				6			6		
58	3	27241-400000	PLUG 40				8			8		
59	2	26706-100002	NUT M10				6			6		
60	2	26706-100002	NUT M10				4			4		
61	2	126684-11180	COTTER 10				24					
61-1	2	126684-11190	COTTER				48			48		N
				(D=EXXX)								
62	2	27320-100350	ROTATOR 10X35, VALVE				24			24		
63	1	126634-11800	RETAINER				6			6		
64	1	126634-11810	WASHER				6			6		
65	1	126650-11840	GASKET, T=1.5				6	6	6	6	6	
65A	1	148610-11930	GASKET, T=3.0				6					

6HAL2C  
6HAL2C-T  
6HAL2C-HT  
YPP180

6HAL2C-DT  
YPP240



33 inc. (33) ~ 62

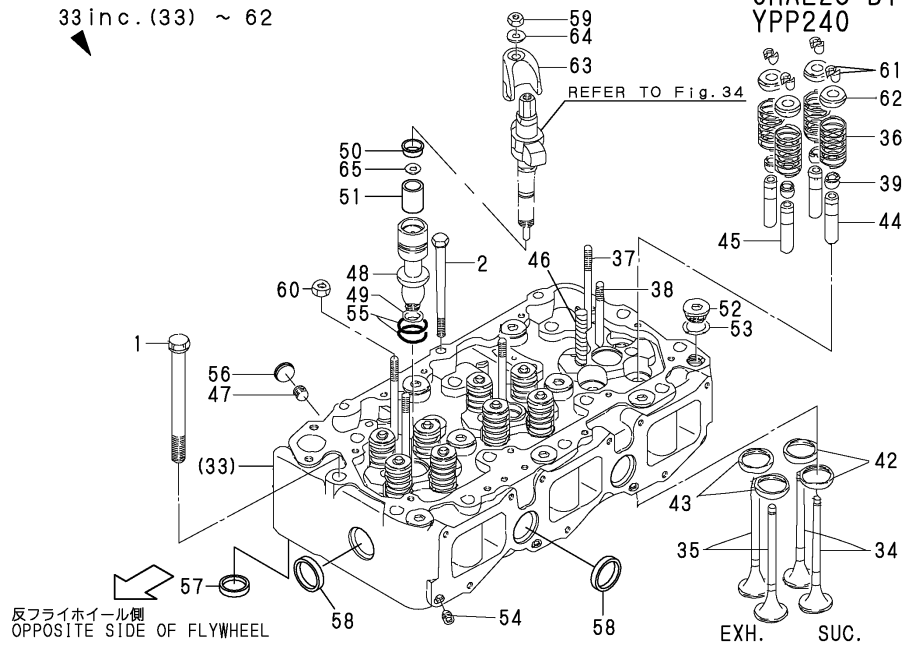


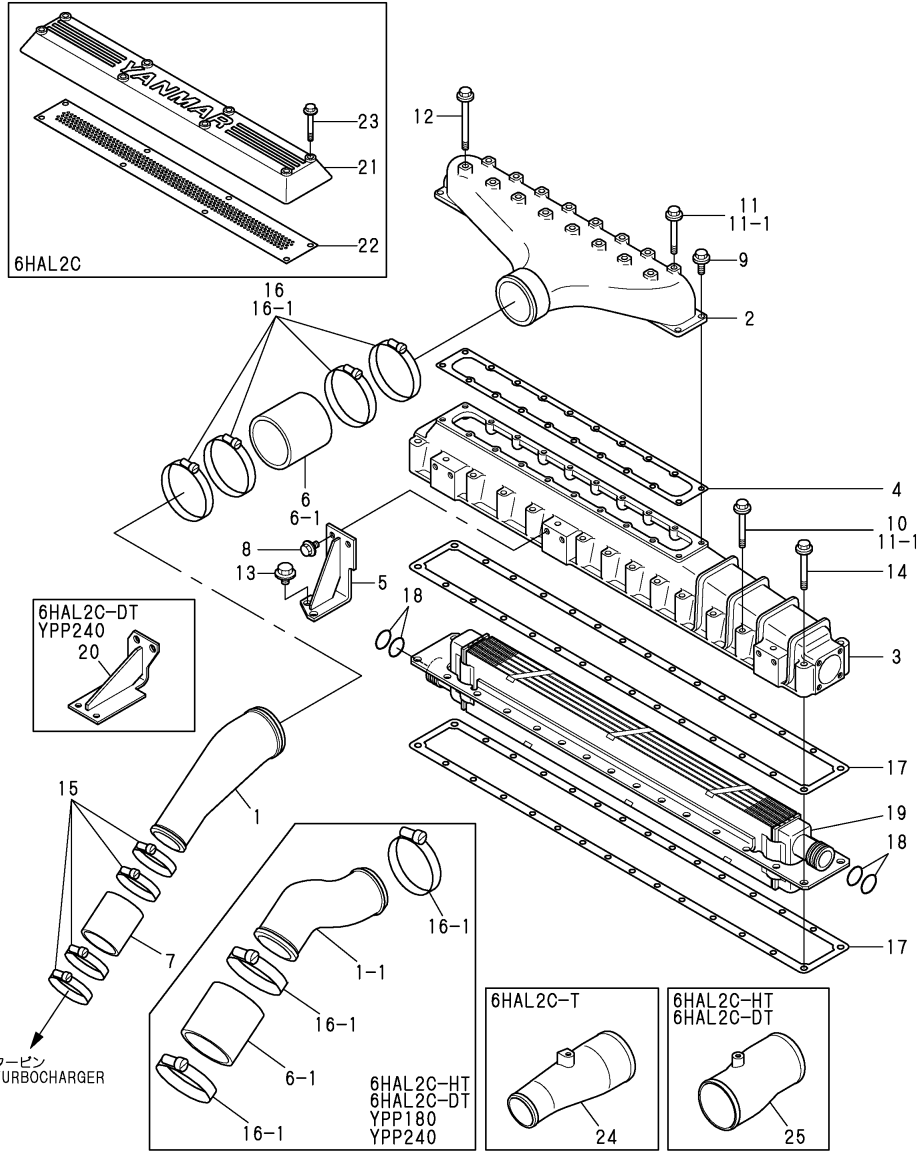
Fig.15.AIR COOLER & SUC.CONNECT PIPE

15.AIR COOLER & SUC.CONNECT PIPE

(A)=6HAL2C  
(B)=6HAL2C-T  
(C)=6HAL2C-HT

(D)=6HAL2C-DT  
(E)=YPP180  
(F)=YPP240

REF.	LEV.	PARTS NO.	DESCRIPTION	Q'TY						I	R	
				(A)	(B)	(C)	(D)	(E)	(F)			
1	1	126625-18121	AIR DUCT (A		1	1	1				1	
I	1-1	126624-18120	AIR DUCT(A			1	1	1	1	1	S	1
			(C=EXXX) (D=EXXX)									
2	1	126625-18131	DUCT (B), AIR		1	1	1	1	1			
3	1	126625-18141	DUCT C			1	1					
I	3-1	126625-18142	DUCT C		1	1	1	1	1	1	N	
			(C=EXXX) (D=EXXX)									
4	1	126625-18151	GASKET	1	1	1	1	1	1			
5	1	126625-18160	SUPPORT			2						
5-1	1	126625-18161	BRACKET(DUCT	2	2	2		2			N	
			(C=EXXX)									
6	1	126635-18201	PIPE,FLEXIBLE		1	1	1					
I	6-1	126635-18201	PIPE,FLEXIBLE			2	2	2	2		K	
			(C=EXXX) (D=EXXX)									
I	7	128627-18281	HOSE AIR DUCT RUBBER		1	1	1				Z	
			(C=EXXX) (D=EXXX)									
8	1	26106-080182	BOLT M 8X 18 PLATED	4	4	4	4	4	4			
9	1	26106-080222	BOLT M 8X 22 PLATED	4	4	4	4	4	4			
I	10	26106-080802	BOLT M 8X 80 PLATED			26	26				Z	
			(C=*2000.08) (D=*2000.08)									
11	1	26106-080852	BOLT M 8X 85 PLATED			8	8					
I	11-1	26106-080852	BOLT M 8X 85 PLATED	26	34	34	34	34	34		K	
			(C=*2000.08) (D=*2000.08)									
12	1	26106-081202	BOLT M 8X120 PLATED		8	8	8	8	8			
13	1	26106-100182	BOLT M10X 18 PLATED	4	4	4	4	4	4			
14	1	26106-100852	BOLT M10X 85 PLATED			4	4					
I	14-1	26106-100902	BOLT M10X 90 PLATED	4	4	4	4	4	4		N	
			(C=*2000.08) (D=*2000.08)									
I	15	43730-552181	CLIP 81 HOSE		4	4					Z	
			(C=EXXX)									
16	1	43730-552210	HOSE CRIP 112			4	4					
I	16-1	23001-115000	CLAMP 115 HOSE		4	8	8	8	8		S	
			(C=EXXX) (D=EXXX)									
I	16-2	126625-18200	HOSE CRIP		4	8	8	8	8		N	
			(B=EXXX) (C=EXXX) (D=EXXX) (E=EXXX) (F=EXXX)									
17	1	126625-18111	GASKET	2	2	2	2	2	2			
18	1	126625-18090	O-RING	4	4	4	4	4	4			
19	1	126625-18100	INTERCOOLER	1	1	1	1	1	1			
20	1	126624-18160	SUPPORT			2	2					
21	1	126660-12011	COVER	1								
22	1	126660-12070	SCREEN	1								
23	1	26106-080602	BOLT M 8X 60 PLATED	6								
24	1	126660-18121	AIR DUCT (A		1						2	
25	1	126664-18121	AIR DUCT A			1	1				2	

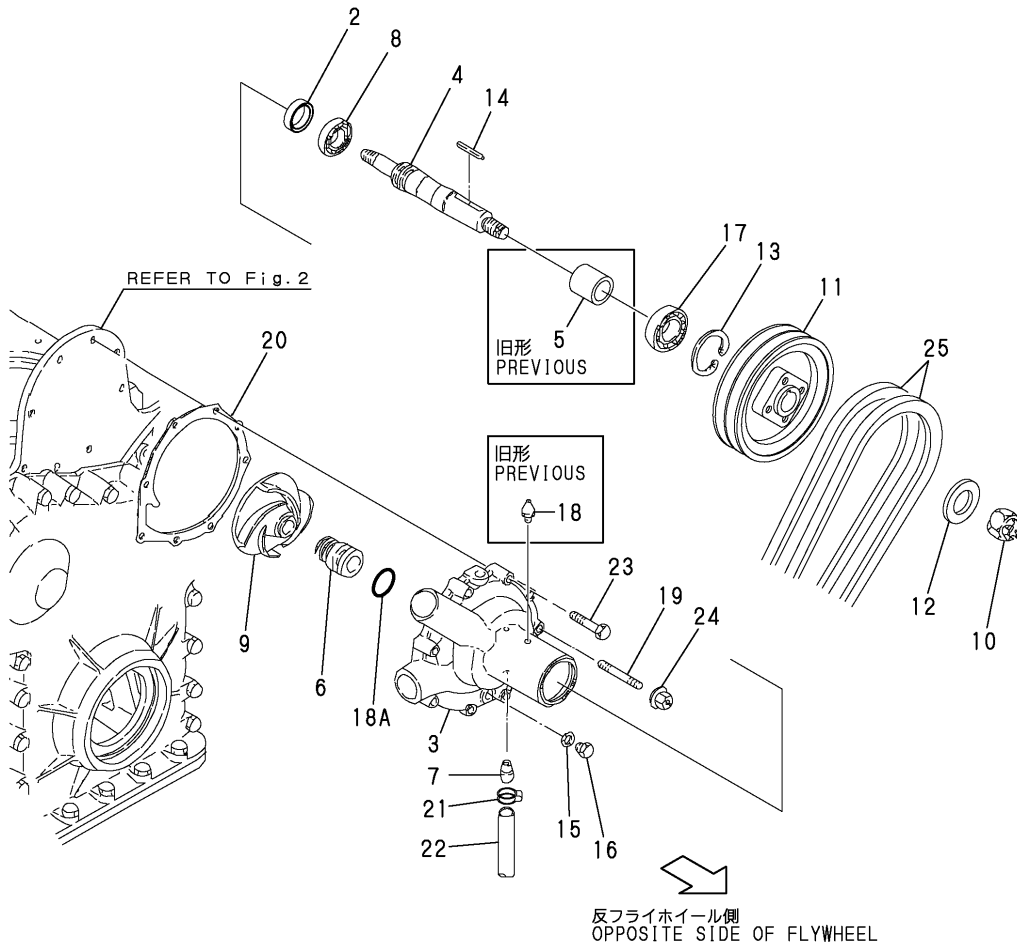


反フライホイール側  
OPPOSITE SIDE OF FLYWHEEL

Remarks  
(1)RADIATER COOLING SPEC.  
(2)1-LINE COOLINNG SYSTEM SPEC.

Fig.23.COOLING WATER PUMP

1,1-1inc.2 ~ 18A



Remarks  
(1)INTERCHANGEABLE BY SIMULTANEOUS REPLACEMENT.

23.COOLING WATER PUMP

(A)=6HAL2C  
(B)=6HAL2C-T  
(C)=6HAL2C-HT

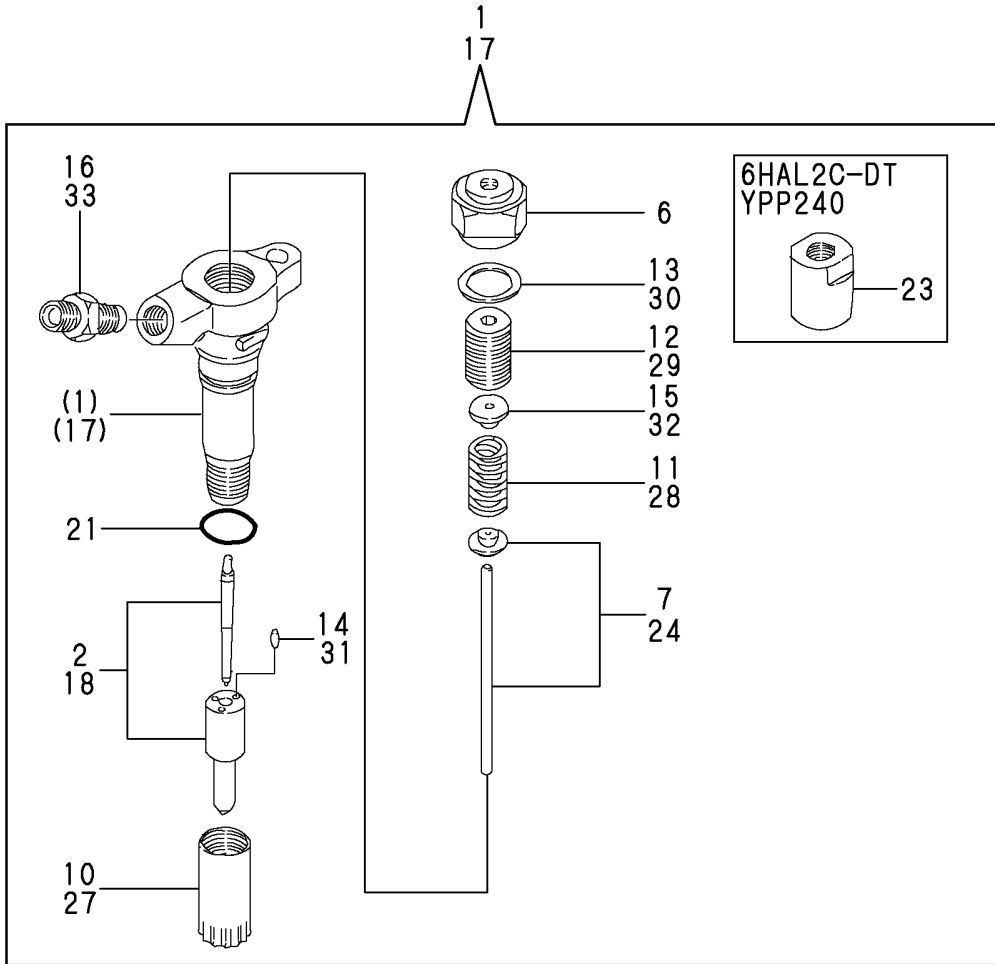
(D)=6HAL2C-DT  
(E)=YPP180  
(F)=YPP240

REF.	LEV.	PARTS NO.	DESCRIPTION	Q'TY						I	R	
				(A)	(B)	(C)	(D)	(E)	(F)			
1	1	126628-43100	PUMP ASSY,C.WATER			1	1					
1-1	1	126628-43101	PUMP ASSY, C. WATER (C=*2000.05) (D=*2000.05)			1	1					F 1
I	1-2	1	126628-43120	PUMP ASSY, C. WATER (C=*2000.12) (D=*2000.12)	1	1	1	1	1	1	1	N
2	2	125110-01830	OIL SEAL TC38-50-8			1	1					1
2-1	2	24421-304508	SEAL.TC30 45 08, OIL (C=*2000.05) (D=*2000.05)	1	1	1	1	1	1	1	1	S 1
3	2	126628-42010	BODY			1	1					
3-1	2	126628-42011	BODY (C=*2000.05) (D=*2000.05)			1	1					S 1
I	3-2	2	126628-43010	BODY (C=*2000.12) (D=*2000.12)	1	1	1	1	1	1	1	N
4	2	126650-42061	SHAFT, IMPELLER				1	1				
4-1	2	126628-42120	SHAFT (C=*2000.05) (D=*2000.05)	1	1	1	1	1	1	1	1	S 1
5	2	126650-42070	SPACER (C=*2000.05) (D=*2000.05)			1	1					Z 1
I	6-1	2	126650-42160	SEAL, MECHANICAL			1	1				
	2	126650-42161	SEAL, MECHANICAL (C=*2000.08) (D=*2000.08)	1	1	1	1	1	1	1	1	N
7	2	126650-42301	JOINT	1	1	1	1	1	1	1		
8	2	126650-42700	BEARING				1	1				
8-1	2	24104-062064	BALL BEARING (C=*2000.05) (D=*2000.05)	1	1	1	1	1	1	1	1	S 1
9	2	126618-43050	IMPELLER	1	1	1	1	1	1	1		
10	2	126616-43060	NUT	1	1	1	1	1	1	1		
11	2	126628-44770	V PULLEY				1	1				
11-1	2	126628-44771	V PULLEY (C=*2000.05) (D=*2000.05)	1	1	1	1	1	1	1	1	S 1
12	2	22137-200000	WASHER 20,POLISHED	1	1	1	1	1	1	1		
13	2	22252-000620	CIRCLIP 62(H)				1	1				
13-1	2	22252-000800	CIRCLIP 80 (C=*2000.05) (D=*2000.05)	1	1	1	1	1	1	1	1	S 1
14	2	22512-070500	KEY 7X50				1	1				
14-1	2	22512-070360	KEY 7X36 (C=*2000.05) (D=*2000.05)	1	1	1	1	1	1	1	1	S 1
15	2	23414-130000	GASKET 13, ROUND	1	1	1	1	1	1	1		
16	2	23897-020002	PLUG G1/4	1	1	1	1	1	1	1		
17	2	24102-062064	BALL BEARING 6206DU				1	1				
17-1	2	24104-063074	BALL BEARING (C=*2000.05) (D=*2000.05)				1	1				S 1
I	17-2	2	24104-063070	BALL BEARING (C=*2000.12) (D=*2000.12)	1	1	1	1	1	1	1	N
18	2	24764-010000	NIPPLE M6F, GREASE (C=*2000.05) (D=*2000.05)				1	1				Z 1
18A	2	24311-000220	O-RING 1A P-22.0 (C=*2000.05) (D=*2000.05)	1	1	1	1	1	1	1	1	W 1
19	1	126650-01950	STUD M8X65	3	3	3	3	3	3	3		
20	1	126650-42031	GASKET, PUMP	1	1	1	1	1	1	1		
21	1	23010-012000	CLAMP 12	1	1	1	1	1	1	1		

N:Old  $\xrightarrow{\text{Yes}}$  New, Q:Old  $\xrightarrow{\text{No}}$  New, R:Old  $\xrightarrow{\text{Yes}}$  New, S:Old  $\xrightarrow{\text{No}}$  New, W:Add, Z:Discontinued, F:Interchangeable by set, K:Q'ty Change  
++ CONTINUE ++ (C) Copy Rights YANMAR CO.,LTD.



Fig.34.FUEL INJECTION VALVE



34.FUEL INJECTION VALVE

(A)=6HAL2C  
(B)=6HAL2C-T  
(C)=6HAL2C-HT

(D)=6HAL2C-DT  
(E)=YPP180  
(F)=YPP240

REF.	LEV.	PARTS NO.	DESCRIPTION	Q'TY						I	R
				(A)	(B)	(C)	(D)	(E)	(F)		
1	1	726650-53200	FUEL INJECTION VALVE	6							
1A	1	726625-53200	FUEL INJECTION VALVE		6	6		6			
2	2	126650-53050	NOZZLE ASSY, F.I.	6							
2A	2	126625-53000	NOZZLE ASSY, F.INJECT		6	6		6			
6	2	126630-53190	CAP, SPRING	6	6	6		6			
7	2	126630-53250	INTER SPINDLE	6	6	6		6			
10	2	148616-53080	HOLDER, VALVE W/CASE	6	6	6		6			
11	2	144626-53120	SPRING, NOZZLE	6	6	6		6			
12	2	144626-53181	RETAINER	6	6	6		6			
13	2	144626-53200	GASKET	6	6	6		6			
14	2	103200-53210	KNOCK, VALVE	12	12	12		12			
15	2	144626-53301	RETAINER	6	6	6		6			
16	2	122410-53310	CASE, STRAINER	6	6	6		6			
17	1	726644-53210	FUEL INJECTION VALVE						6	6	
18	2	126644-53550	NOZZLE ASSY						6	6	
21	2	24311-000210	O-RING 1A P-21.0						6	6	
23	2	144626-53190	NUT						6	6	
24	2	144626-53110	SPINDLE ASSY, INTER						6	6	
27	2	148616-53080	HOLDER, VALVE W/CASE						6	6	
28	2	144626-53120	SPRING, NOZZLE						6	6	
29	2	144626-53181	RETAINER						6	6	
30	2	144626-53200	GASKET						6	6	
31	2	103200-53210	KNOCK, VALVE						12	12	
32	2	144626-53301	RETAINER						6	6	
33	2	122410-53310	CASE, STRAINER						6	6	

CLICK HERE TO **DOWNLOAD** THE COMPLETE MANUAL

- Thank you very much for reading the preview of the manual.
- You can download the complete manual from: [www.heydownloads.com](http://www.heydownloads.com) by clicking the link below



- Please note: If there is no response to CLICKING the link, please download this PDF first and then click on it.

CLICK HERE TO **DOWNLOAD** THE COMPLETE MANUAL