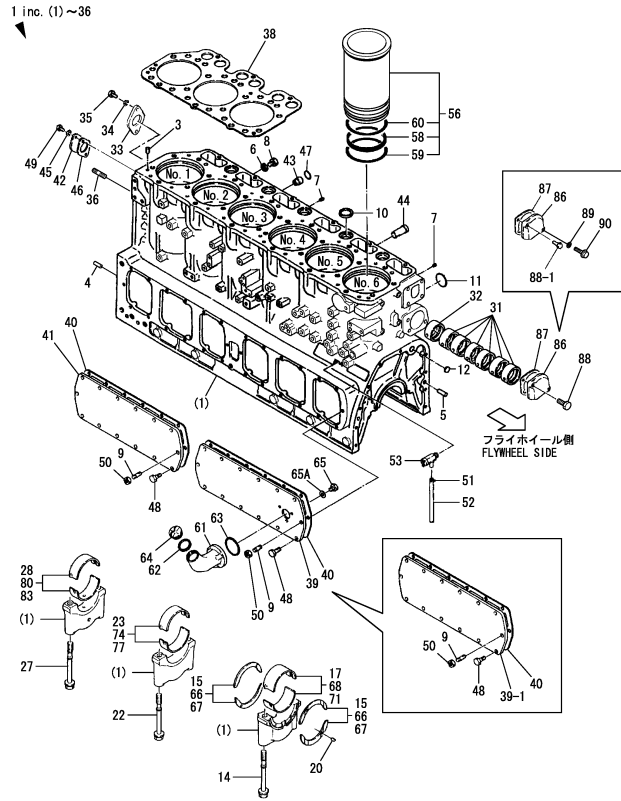


Fig.1.CYLINDER BLOCK



Remarks
 (1)O.S.=0.25 parts (2)O.S.=0.50 parts
 (3)U.S.=0.25 parts (4)U.S.=0.50 parts
 (5)Interchangeable by simultaneous replacement with No.58-1 & 59-1.
 (6)Interchangeable by simultaneous replacement with Fig.4 No.1-1,4-1 & Fig.31 No.36-1.
 (7)Interchangeable by simultaneous replacement with No.56-2 & Fig.7 No.1-1.
 (8)Interchangeable by simultaneous replacement with No.38-2.
 (9)LR(Parts number will be informed later.)
 (A)Interchangeable by simultaneous replacement with Fig.1 No.39-1 & Fig.3 No.1-1,15,16.

(A)=6HA2M-DTE
 (B)=6HA2M-HTE
 (C)=

(D)=
 (E)=
 (F)=

REF.	LEV.	PARTS NO.	DESCRIPTION	Q'TY						I	R
				(A)	(B)	(C)	(D)	(E)	(F)		
1	1	726660-01561	CYLINDER BLOCK ASSY	1	1						
1-1	1	726660-01562	CYLINDER BLOCK ASSY	1	1						S 6
		(A=*1999.05) (B=*1999.05)									
1-2	1	726660-01740	BLOCK ASSY, CYLINDER	1	1						S 8
		(A=*2001.05) (B=*2001.05)									
1-3	1	726660-01741	BLOCK ASSY, CYLINDER	1	1						S 7
		(A=*2002.08) (B=*2002.08)									
1A	1	XXXXX	BLOCK ASSY, CYLINDER	1	1						W 9
		(A=EZZZZZ) (B=EZZZZZ)									
3	2	22312-100250	PARALLEL PIN, M10X25	4	4						
4	2	22312-100320	PARALLEL PIN, M10X32	2	2						
5	2	22312-120360	PARALLEL PIN, M12X36	2	2						
6	2	23414-120016	GASKET 12	1	1						
6-1	2	23414-120000	GASKET 12, ROUND	1	1						N
		(A=EXXXXX) (B=EXXXXX)									
7	2	23871-010000	FLUG PT1/8, SCREW	2	2						
7-1	2	23876-010000	FLUG PT1/8, SCREW	2	2						N
		(A=EXXXXX) (B=EXXXXX)									
8	2	23887-120002	FLUG M12-HEX	1	1						
9	2	26216-080162	STUD BOLT M8X16	4	4						
10	2	27231-450000	FLUG 45	5	5						Z
		(A=EXXXXX) (B=EXXXXX)									
11	2	27231-500000	FLUG 50	6	6						
12	2	27241-220000	FLUG, 22	1	1						
14	2	126650-02070	BOLT	2	2						
15	2	126650-02190	METAL, THRUST	2	2						
17	2	126625-02450	MAIN METAL (BASE)	1	1						
20	2	22312-060080	PARALLEL PIN, M6X8	2	2						
20-1	2	22312-060100	PARALLEL PIN, M6X10	2	2						N
		(A=EXXXXX) (B=EXXXXX)									
22	2	126650-02070	BOLT	10	10						
23	2	126625-02460	MAIN METAL (CENTER)	5	5						
27	2	126650-02070	BOLT	2	2						
28	2	126625-02470	MAIN METAL (GEAR)	1	1						
31	2	126650-02400	BUSH, CAMSHAFT	6	6						
32	2	126650-02410	BUSH, CAMSHAFT	1	1						
33	2	126650-02420	METAL, THRUST	1	1						
33-1	2	126650-02421	BEARING, THRUST, CAM	1	1						R
		(A=EZZZZZ) (B=EZZZZZ)									
34	2	22217-100000	SPRING WASHER 10	2	2						
35	2	26106-100222	BOLT M10X22 PLATED	2	2						
36	2	26216-100402	STUD M12X40 PLATED	4	4						
36-1	2	26216-100452	STUD M10X45 PLATED	4	4						N
		(A=EXXXXX) (B=EXXXXX)									
38	1	126625-01330	GASKET, CYL HEAD	2	2						
38-1	1	126625-01331	GASKET, CYL HEAD	2	2						N
		(A=*1998.02) (B=*1998.02)									
38-2	1	126629-01330	GASKET, CYL HEAD	2	2						S
		(A=*2001.04) (B=*2001.04)									
39	1	126630-01400	SIDE COVER, CYLINDER	1	1						
39-1	1	126650-01420	COVER, CYL BLOCK	1	1						S A

CLICK HERE TO **DOWNLOAD** THE COMPLETE MANUAL

- Thank you very much for reading the preview of the manual.
- You can download the complete manual from: www.heydownloads.com by clicking the link below

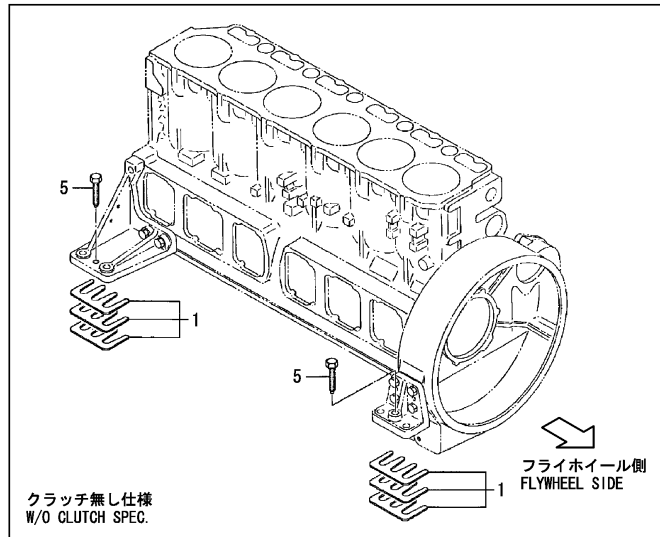
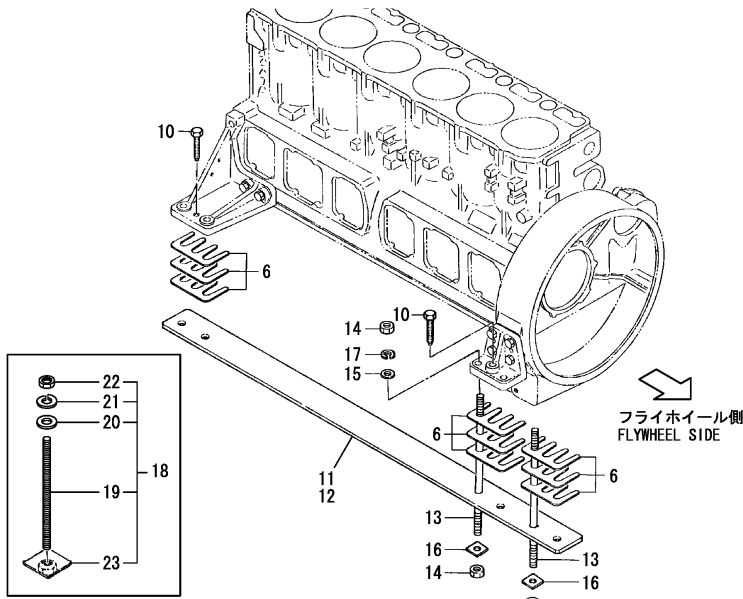


- Please note: If there is no response to CLICKING the link, please download this PDF first and then click on it.

CLICK HERE TO **DOWNLOAD** THE COMPLETE MANUAL

Fig.68.(6A)ENGINE BED

(A)=6HA2M-DTE
 (B)=6HA2M-HTE
 (C)=
 (D)=
 (E)=
 (F)=



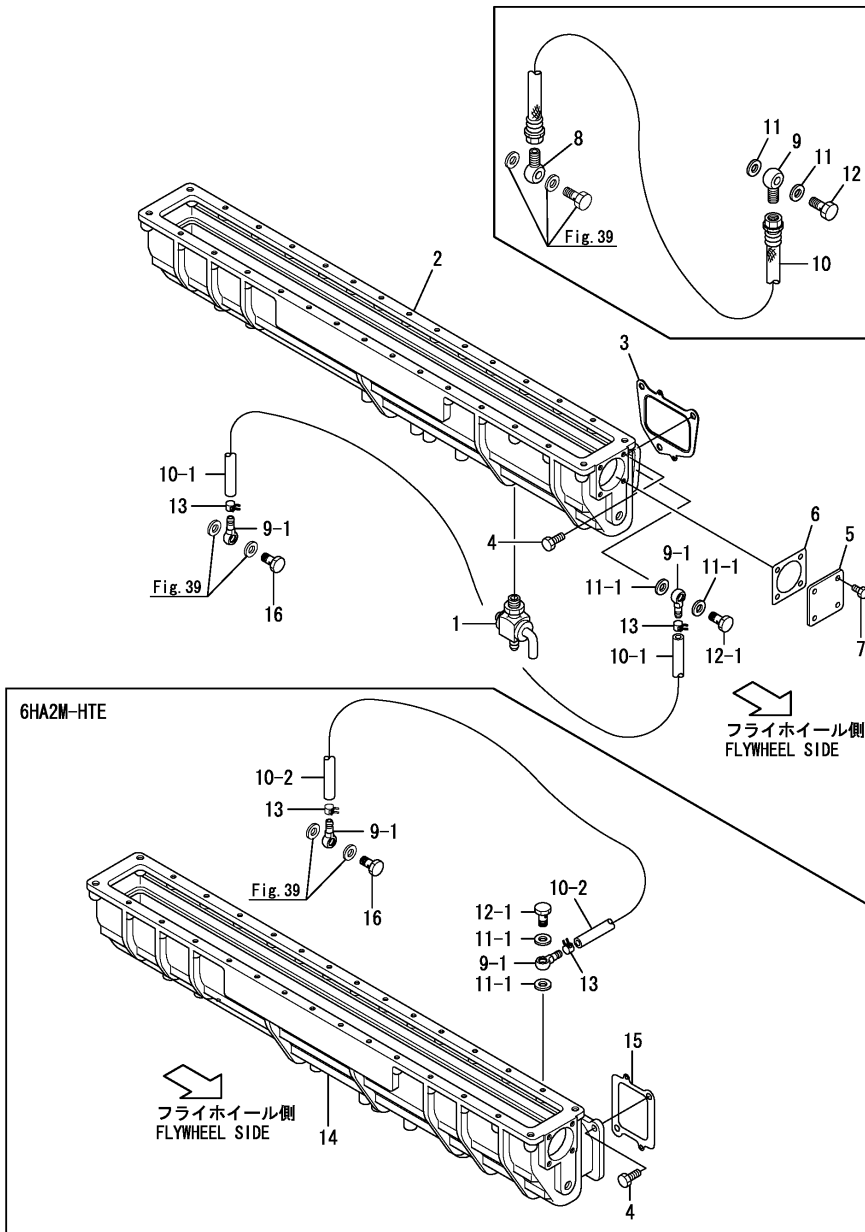
Remarks

- (1)W/O clutch spec.
- (2)YX-120 spec.
- (3)YX-120L spec.

REF.	LEV.	PARTS NO.	DESCRIPTION	Q'TY						I	R
				(A)	(B)	(C)	(D)	(E)	(F)		
1	1	126630-08150	SHIM SET	2	2						1
5	1	45521-004010	BOLT	4	4						1
5-1	1	144626-08190	BOLT	4	4						R 1
		(A=*1998.01) (B=*1998.01)									
6	1	126630-08150	SHIM SET	6	6						
10	1	45521-004010	BOLT	4	4						
10-1	1	144626-08190	BOLT	4	4						R
		(A=*1998.01) (B=*1998.01)									
11	1	126634-08210	PLATE	2	2						2
12	1	126634-08220	PLATE, FOUNDATION	2	2						W 3
		(A=EXXXXX) (B=EXXXXX)									
13	1	126410-92900	BOLT, FOUNDATION	12	12						Z
		(A=EZZZZZ) (B=EZZZZZ)									
14	1	135410-92930	NUT	24	24						Z
		(A=EZZZZZ) (B=EZZZZZ)									
15	1	22121-180000	WASHER 18	12	12						Z
		(A=EZZZZZ) (B=EZZZZZ)									
16	1	22161-180000	WASHER 18	12	12						Z
		(A=EZZZZZ) (B=EZZZZZ)									
17	1	22217-180000	SPRING WASHER 18	12	12						Z
		(A=EZZZZZ) (B=EZZZZZ)									
18	1	45521-566110	FOUNDATOIN BOLT(M18)	12	12						W
		(A=EZZZZZ) (B=EZZZZZ)									
19	2	126410-92900	BOLT, FOUNDATION	12	12						W
		(A=EZZZZZ) (B=EZZZZZ)									
20	2	22137-180000	WASHER 18	12	12						W
		(A=EZZZZZ) (B=EZZZZZ)									
21	2	22217-180000	SPRING WASHER 18	12	12						W
		(A=EZZZZZ) (B=EZZZZZ)									
22	2	26716-180002	NUT M18	12	12						W
		(A=EZZZZZ) (B=EZZZZZ)									
23	2	45511-552020	NUT	12	12						W
		(A=EZZZZZ) (B=EZZZZZ)									

Fig.11.SUCTION MANIFOLD

(A)=6HA2M-DTE
(B)=6HA2M-HTE
(C)=
(D)=
(E)=
(F)=



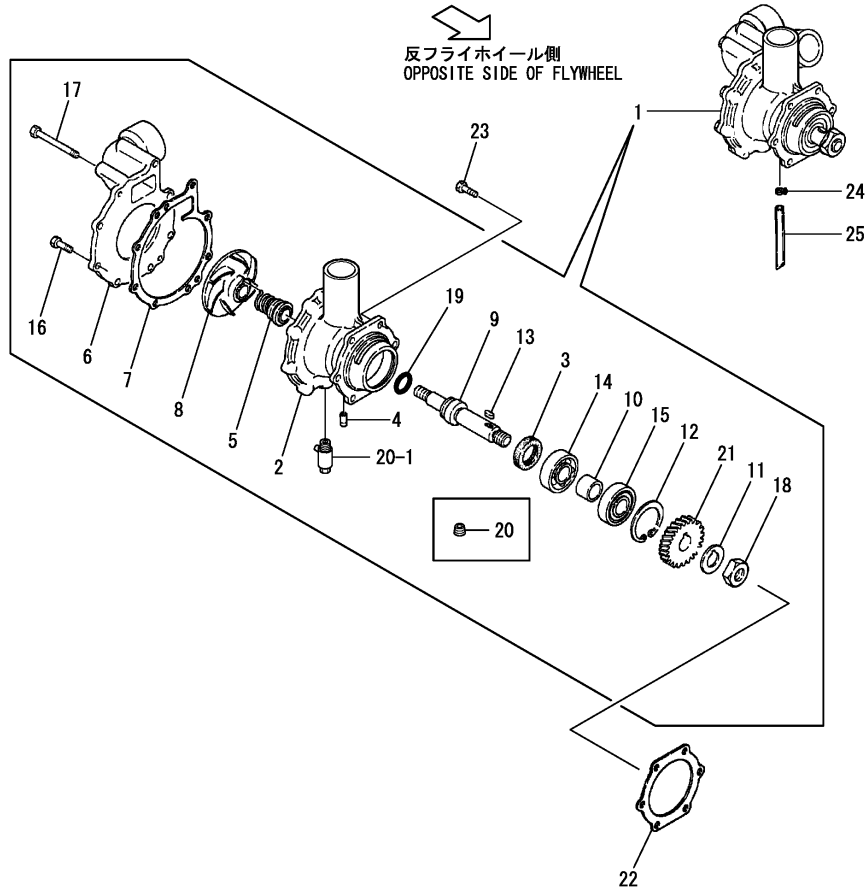
REF.	LEV.	PARTS NO.	DESCRIPTION	Q'TY						I	R
				(A)	(B)	(C)	(D)	(E)	(F)		
1	1	104200-11920	COCK	1	1						
2	1	126672-12100	MANIFOLD, AIR INTAKE	1							
3	1	126634-12131	GASKET	6							
4	1	26106-100252	BOLT M10X 25 PLATED	18	12						
5	1	126660-12110	COVER	1	1						
6	1	126660-49440	GASKET	1	1						
7	1	26106-080182	BOLT M 8X 18 PLATED	4	4						
8	1	148688-12610	JOINT PF1/4,BALL	1							Z
(A=*1997.07)											
9	1	126616-12620	JOINT PF1/4,BALL	1							
9-1	1	129590-18520	JOINT 10, PIPE	2	2						N
(A=*1997.07)											
9-2	1	148660-12610	JOINT 10, PIPE	2	2						N
(A=EZZZZZ) (B=EZZZZZ)											
10	1	126657-59010	PIPE, RUBBER	1							
10-1	1	119173-59120	PIPE	1							N
(A=*1997.07)											
10-2	1	129470-59540	PIPE, FUEL OIL	1	1						N
(A=*1997.10)											
10-3	1	119773-59121	PIPE FUEL	1	1						N
(A=*1997.12) (B=*1997.12)											
11	1	23414-120000	GASKET 12, ROUND	2							
11-1	1	23414-100000	GASKET 10, ROUND	2	2						N
(A=*1997.07)											
12	1	23857-060000	JOINT BOLT 6,PIPE	1							
12-1	1	124160-39140	BOLT, JOINT M10	1	1						N
(A=*1997.07)											
12-2	1	148660-12650	BOLT,JOINT10	1	1						N
(A=EZZZZZ) (B=EZZZZZ)											
13	1	23000-013000	CLAMP 13	2	2						W
(A=*1997.12)											
14	1	126671-12100	SUCTION MANIFOLD		1						
15	1	126635-12131	GASKET		6						
16	1	126677-12650	BOLT 10, PIPE JOINT	1	1						W
(A=EZZZZZ) (B=EZZZZZ)											

Fig.25.COOLING FRESH WATER PUMP

25.COOLING FRESH WATER PUMP

(A)=6HA2M-DTE
(B)=6HA2M-HTE
(C)=

(D)=
(E)=
(F)=



REF.	LEV.	PARTS NO.	DESCRIPTION	Q'TY						I	R
				(A)	(B)	(C)	(D)	(E)	(F)		
1	1	126660-43101	PUMP ASSY,C.F.W.	1	1						
1-1	1	126660-43102	PUMP ASSY, C. WATER	1	1						N
		(A=*1998.01) (B=*1998.01)									
1-2	1	126660-43103	PUMP ASSY, C. WATER	1	1						N
		(A=*2002.10) (B=*2002.10)									
2	2	126660-43010	BODY	1	1						
3	2	125110-01830	OIL SEAL TC38-50-8	1	1						
3-1	2	126665-43400	OIL SEAL	1	1						N
		(A=*2002.09) (B=*2002.09)									
4	2	120130-42130	PIPE	1	1						
5	2	126630-43160	SEAL, MECHANICAL	1	1						
5-1	2	126630-43161	SEAL, MECHANICAL	1	1						N
		(A=*2000.08) (B=*2000.08)									
6	2	126660-43020	COVER, C.W.PUMP BODY	1	1						
6-1	2	126660-43021	COVER, C.W.PUMP BODY	1	1						N
		(A=*1998.01) (B=*1998.01)									
7	2	126630-43110	GASKET, PUMP	1	1						
7-1	2	126630-43112	GASKET	1	1						N
		(A=*1998.03) (B=*1998.03)									
8	2	126660-43201	INPELLER	1	1						
9	2	126660-43241	SHAFT	1	1						
10	2	126630-43330	SPACER	1	1						
11	2	22137-200000	WASHER, 20	1	1						
12	2	22252-000620	CIRCLIP 62(H)	1	1						
13	2	22512-070140	KEY, 7X14	1	1						
14	2	24101-063054	BEARING #6305	1	1						
15	2	24101-063054	BEARING #6305	1	1						
16	2	26106-080252	BOLT M 8X 25 PLATED	5	5						
17	2	26106-080802	BOLT M 8X 80 PLATED	3	3						
18	2	26736-200002	NUT M20	1	1						
19	2	24311-000200	O-RING 1A P-20.0	1	1						
20	2	23871-020000	PLUG PT 1/4, SCREW	1	1						
20-1	2	119620-49290	COCK ASSY	1	1						N
		(A=*2002.10) (B=*2002.10)									
21	2	126630-43450	GEAR	1	1						W
		(A=*1998.03) (B=*1998.03)									
22	1	126660-01580	GASKET	1	1						
23	1	26106-080222	BOLT M 8X 22 PLATED	6	6						
24	1	23010-010000	CLAMP 10	1	1						
25	1	23061-070300	PIPE 7X 300	1	1						

CLICK HERE TO **DOWNLOAD** THE COMPLETE MANUAL

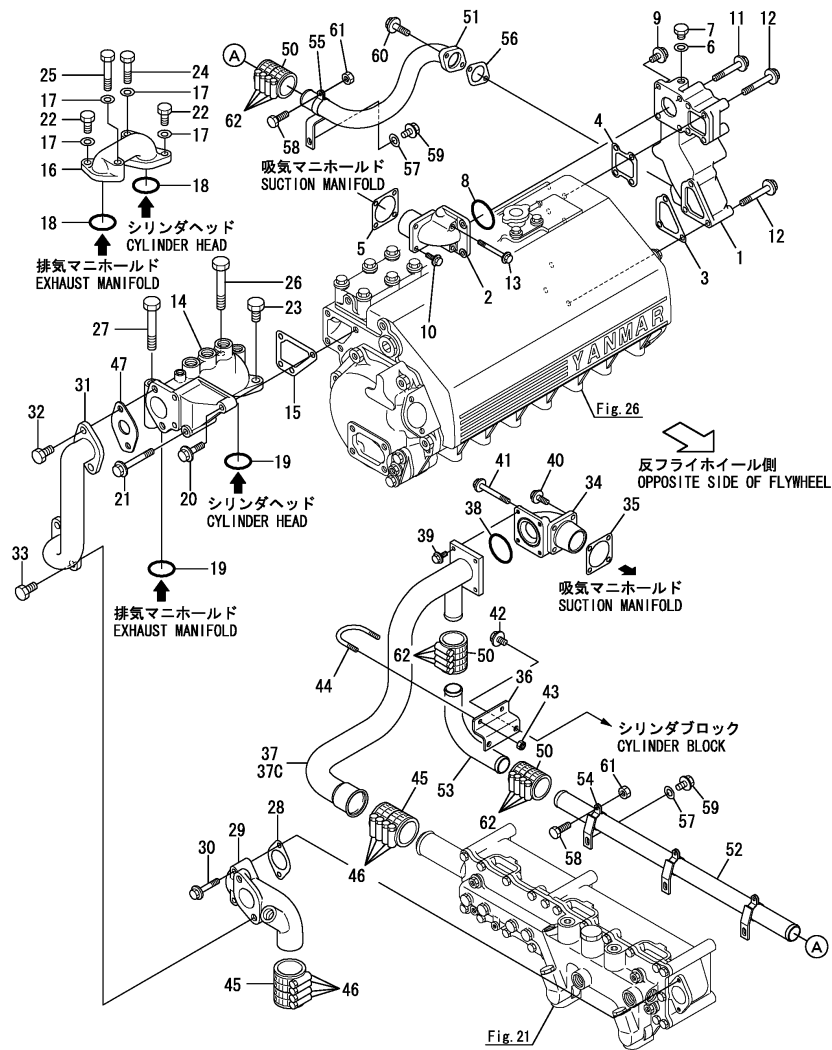
- Thank you very much for reading the preview of the manual.
- You can download the complete manual from: www.heydownloads.com by clicking the link below



- Please note: If there is no response to CLICKING the link, please download this PDF first and then click on it.

CLICK HERE TO **DOWNLOAD** THE COMPLETE MANUAL

Fig.31.COOLING FRESH WATER PIPE(HEAD)



Remarks
 (1)Not illustrated
 (2)Interchangeable by simultaneous replacement with Fig.1 No.1-1 & Fig.4 No.1-1,4-1.

31.COOLING FRESH WATER PIPE(HEAD)

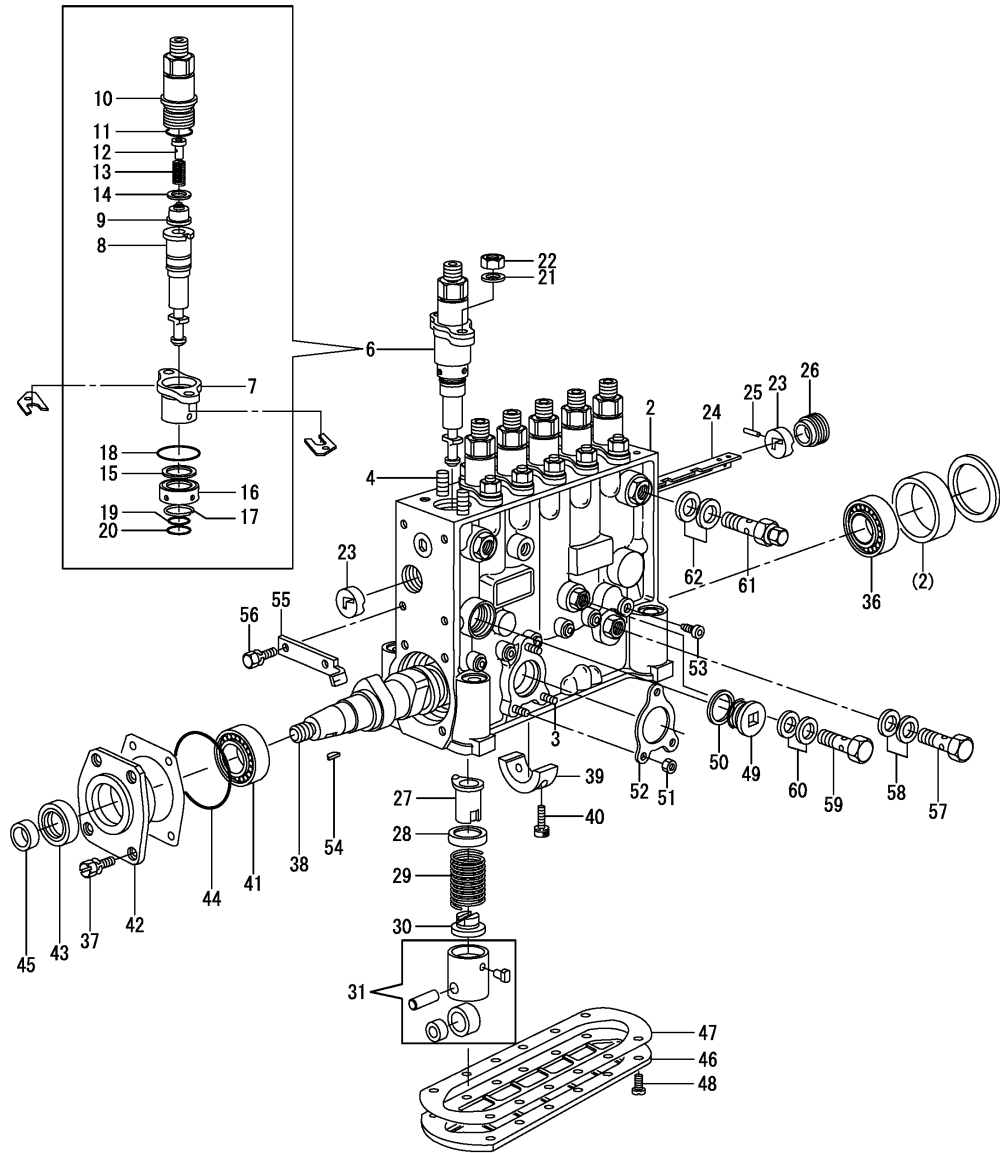
(A)=6HA2M-DTE
 (B)=6HA2M-HTE
 (C)=

(D)=
 (E)=
 (F)=

REF.	LEV.	PARTS NO.	DESCRIPTION	Q'TY						I	R	
				(A)	(B)	(C)	(D)	(E)	(F)			
		(A=*1997.11)										
37C	1	126665-49600	PIPE						1			
38	1	24321-000550	O-RING 1A G-55.0		1	1						
39	1	26106-080202	BOLT M 8X 20 PLATED		4	4						
40	1	26106-080252	BOLT M 8X 25 PLATED		2	2						
41	1	26106-080752	BOLT M 8X 75 PLATED		2	2						
42	1	26106-100162	BOLT M 10X 16 PLATED		2	2						
43	1	26346-080002	U-NUT, M8		2	2						
44	1	26464-040000	U-BOLT, E=40		1	1						
45	1	126630-49430	JOINT		2	2						
46	1	43730-552171	CLIP HOSE,71		8	8						
47	1	126664-49260	PLATE(CFW ADJ.)		1	1						
48	1	23161-040300	BUSH		1	1					W	1
		(A=*1998.03) (B=*1998.03)										
49	1	23876-040000	PLUG PT 1/2		1	1					W	1
		(A=*1998.03) (B=*1998.03)										
50	1	127420-49120	CONNECTOR		3						W	
		(A=*1997.11)										
50-1	1	126672-49630	RUBBER JOINT		3						N	
		(A=*1999.05)										
51	1	126672-49650	PIPE A		1						W	
		(A=*1997.11)										
52	1	126672-49670	PIPE B		1						W	
		(A=*1997.11)										
53	1	126672-49680	PIPE C		1						W	
		(A=*1997.11)										
54	1	126672-49690	SUPPORT		3						W	
		(A=*1997.11)										
55	1	126672-49700	SUPPORT		1						W	
		(A=*1997.11)										
56	1	126650-49731	GASKET, BEND		1						W	
		(A=*1997.11)										
56-1	1	126650-49732	GASKET, BEND		1						N	
		(A=EZZZZZ)										
57	1	22137-080000	WASHER 8, POLISHED		4						W	
		(A=*1997.11)										
58	1	26106-060162	BOLT M 6X 16 PLATED		4						W	
		(A=*1997.11)										
59	1	26106-080142	BOLT 8X 14 PLATED		4						W	
		(A=*1997.11)										
60	1	26106-080222	BOLT M 8X 22 PLATED		2						W	
		(A=*1997.11)										
61	1	26366-060002	NUT M 6		4						W	
		(A=*1997.11)										
62	1	43730-552161	CLIP HOSE,61		12						W	
		(A=*1997.11)										
63	1	26106-080162	BOLT M 8X 16 PLATED		4						W	1
		(A=EXXXXX)										
64	1	23421-440000	PACKING, OVAL 44X1.5		3	3					W	1
		(A=EXXXXX) (B=EXXXXX)										

N:Old $\begin{matrix} \leftarrow \text{Yes} \\ \text{No} \end{matrix}$ New, Q:Old $\begin{matrix} \leftarrow \text{No} \\ \text{Yes} \end{matrix}$ New, R:Old $\begin{matrix} \leftarrow \text{Yes} \\ \text{Yes} \end{matrix}$ New, S:Old $\begin{matrix} \leftarrow \text{No} \\ \text{No} \end{matrix}$ New, W:Add, Z:Discontinued, F:Interchangeable by set, K:Q'ty Change
 (C) Copy Rights YANMAR CO.,LTD.

Fig.61.(35B)F.I.PUMP COMPONENT PARTS



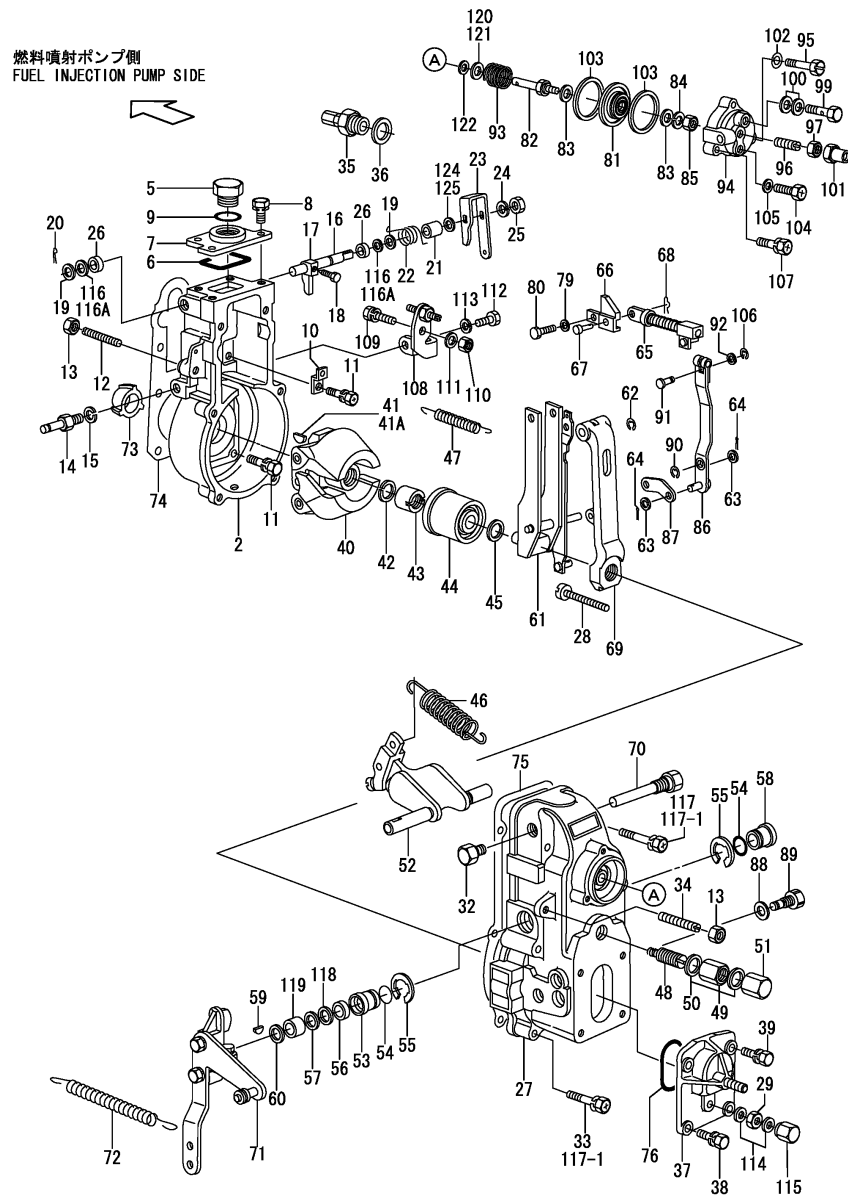
61.(35B)F.I.PUMP COMPONENT PARTS

(A)=6HA2M-DTE
(B)=6HA2M-HTE
(C)=

(D)=
(E)=
(F)=

REF.	LEV.	PARTS NO.	DESCRIPTION	Q'TY						I	R
				(A)	(B)	(C)	(D)	(E)	(F)		
58	2	X0265141840	GASKET		2						
59	2	X0297310120	EYE BOLT		1						
60	2	X0265101340	GASKET		2						
61	2	X1314241520	VALVE		1						
62	2	X0265141840	GASKET		2						

Fig.39.GOVERNOR COMPONENT PARTS(UP TO DEC.,1998)



Remarks
 (1)13mm
 (2)16mm

39.GOVERNOR COMPONENT PARTS(UP TO DEC.,1998)

(A)=6HA2M-DTE (D)=
 (B)=6HA2M-HTE (E)=
 (C)= (F)=

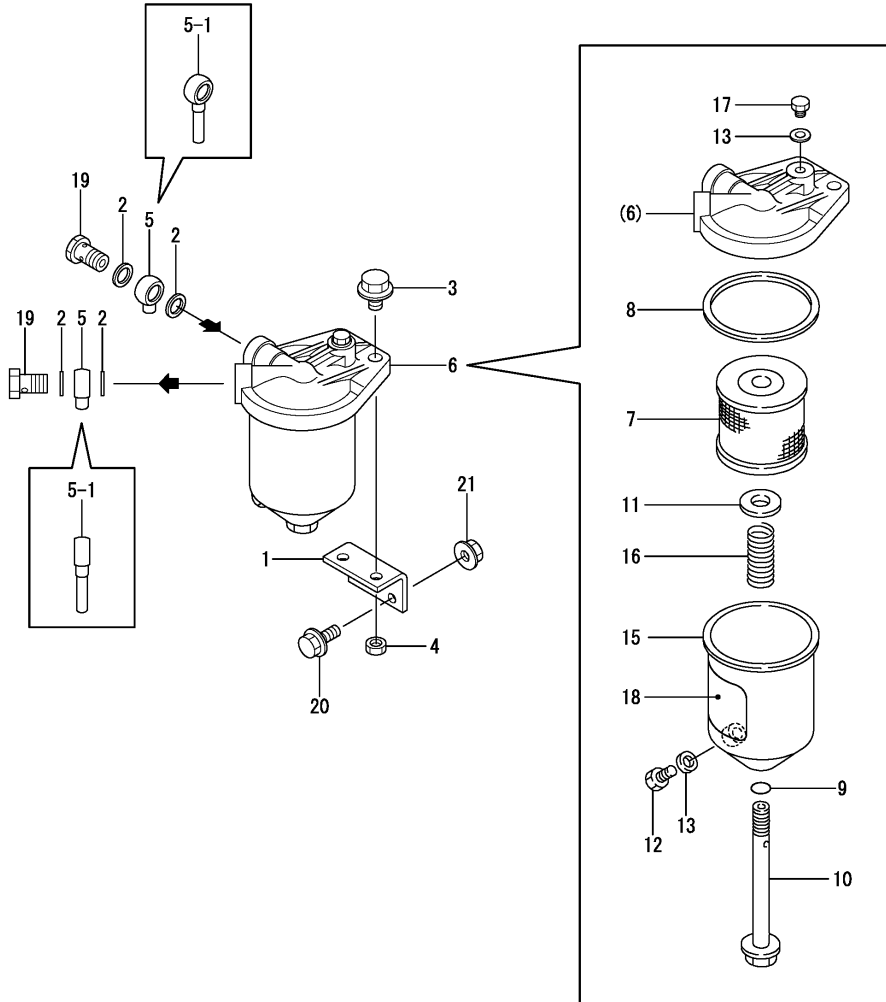
REF.	LEV.	PARTS NO.	DESCRIPTION	QTY						I	R
				(A)	(B)	(C)	(D)	(E)	(F)		
92	2	X0293004010	WASHER	1							
93	2	X1544026400	SPRING	1							
93-1	2	X1544029500	SPRING	1							N
(A=EXXXXX)											
94	2	X1544043900	COVER	1							
95	2	X0201062540	BOLT	2							
96	2	X1540341900	SCREW	1							
97	2	X0230406040	NUT	1							
99	2	X0297310180	EYE BOLT	1							
100	2	X0265101340	GASKET	2							
101	2	X1540350320	CAP NUT	1							
102	2	X0141106440	SPRING WASHER	1							
103	2	X1543520700	GASKET	2							
103-1	2	X1544132600	GASKET	2							N
(A=EXXXXX)											
104	2	X0290106010	PLUG	1							
105	2	X0265061040	GASKET	1							
106	2	X0160100440	SNAP RING	1							
107	2	X0290106310	BOLT	1							
108	2	X1543589420	BRACKET	1							
109	2	X0201181640	BOLT	1							
110	2	X1540111100	NUT	1							
111	2	X0293008320	SHIM	1							
112	2	X1540106100	SCREW	1							
113	2	X0141108440	SPRING WASHER	1							
114	2	X0265081140	GASKET	2							
115	2	X1540352000	CAP NUT	1							
116	2	X1393081000	WASHER	2							
116A	2	X1394081500	SHIM T0.5 D16/ 8	1							
117	2	X0201065040	BOLT	4							
117-1	2	X0201065040	BOLT	6							K
(A=EXXXXX)											
118	2	X0293111090	SHIM	1							
118-1	2	X0293111070	SHIM	1							N
(A=EXXXXX)											
119	2	X1542060200	WASHER	1							
120	2	X0293120180	SHIM T0.5 D25.5/20.0	1							
121	2	X0293120210	SHIM T0.2 D25.5/20.0	1							
122	2	X0293109080	SHIM	2							
124	3	X1394081400	SHIM T0.2 D16/ 8	1							W
(A=EXXXXX)											
125	3	X1394081500	SHIM T0.5 D16/ 8	1							W
(A=EXXXXX)											

Fig.42.OIL/WATER SEPARATOR

42.OIL/WATER SEPARATOR

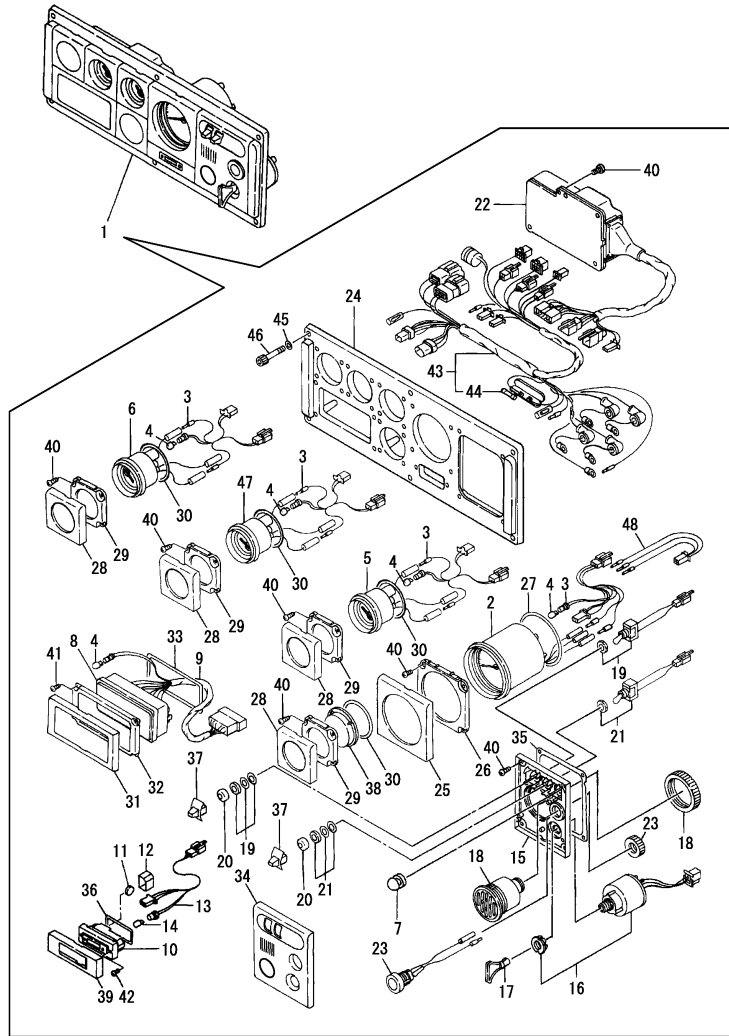
(A)=6HA2M-DTE
(B)=6HA2M-HTE
(C)=

(D)=
(E)=
(F)=



REF.	LEV.	PARTS NO.	DESCRIPTION	Q'TY						I	R
				(A)	(B)	(C)	(D)	(E)	(F)		
1	1	123672-55811	BRACKET	1	1						
2	1	23414-140000	GASKET 14, ROUND	4	4						
3	1	26106-100202	BOLT M10X 20 PLATED	2	2						
4	1	26706-100002	NUT M10	2	2						
5	1	43510-000400	JOINT 10	2	2						
5-1	1	43714-551500	PIPE,FUEL OIL	2	2						N
		(A=EXXXXX) (B=EXXXXX)									
6	1	120324-55750	SEPARATOR	1	1						
6-1	1	120324-55751	SEPARATOR ASSY	1	1						N
		(A=EZZZZZ) (B=EZZZZZ)									
7	2	120324-55760	ELEMENT,FUEL OIL	1	1						
8	2	X0582810173	GASKET	1	1						
9	2	X0680121073	O-RING 1A P 120	1	1						
10	2	X0311121522	CENTER BOLT	1	1						
11	2	X0300120414	SEAT, SPRING	1	1						
12	2	X0313080110	BOLT	1	1						Z
		(A=EZZZZZ) (B=EZZZZZ)									
12-1	2	X0313080922	BOLT	1	1						W
		(A=EZZZZZ) (B=EZZZZZ)									
13	2	X0588080273	GASKET	2	2						
15	2	X2540025002	CASE ASSY	1	1						
16	2	X0600160122	SPRING	1	1						
17	2	X0314080110	PLUG	1	1						
18	2	X0993070671	LABEL	1	1						Z
		(A=EZZZZZ) (B=EZZZZZ)									
18-1	2	X0993071171	CAUTION MARK	1	1						W
		(A=EZZZZZ) (B=EZZZZZ)									
19	1	23857-080000	JOINT BOLT 8,PIPE	2	2						
20	1	26106-080202	BOLT M 8X 20 PLATED	2	2						
21	1	26366-080002	NUT M 8	2	2						

Fig.54.INSTRUMENT PANEL



Remarks
 *Parts of this figure are executed to the following engine number.
 *(A)=EZZZZZ (B)=EZZZZZ
 *Please refer to Fig.54A since above-mentioned engine number.
 (1)Interchangeability is <S> with Fig.54A No.1.

54.INSTRUMENT PANEL

(A)=6HA2M-DTE
 (B)=6HA2M-HTE
 (C)=

(D)=
 (E)=
 (F)=

REF.	LEV.	PARTS NO.	DESCRIPTION	Q'TY						I	R
				(A)	(B)	(C)	(D)	(E)	(F)		
1	1	126618-91190	PANEL ASSY, INSTRUM.	1	1						
1-1	1	126618-91191	PANEL ASSY, INSTRUM.	1	1						N
		(A=EXXXXX) (B=EXXXXX)									
1-2	1	126618-91191	PANEL ASSY, INSTRUM.	1	1						Z 1
		(A=EXXXXX) (B=EXXXXX)									
2	2	126617-91200	TACHOMETER/P142	1	1						
2-1	2	126617-91201	METER, TACHO/HOUR	1	1						N
		(A=EXXXXX) (B=EXXXXX)									
3	2	129574-91870	WIRE	4	4						
4	2	127620-91660	BULB	11	11						
5	2	127692-91210	METER	1	1						
6	2	127692-91310	METER	1	1						
6-1	2	127692-91311	METER, BOOST	1	1						N
		(A=EXXXXX) (B=EXXXXX)									
7	2	129170-91810	COVER, SWITCH	1	1						
8	2	127692-91260	BOX, ALARM	1	1						
9	2	127692-91860	HARNES	1	1						
10	2	129574-91240	CLOCK	1	1						
11	2	127620-91250	CELL	1	1						
12	2	129574-91490	HOLDER	1	1						
13	2	129574-91880	WIRE	1	1						
14	2	127687-91760	BULB	1	1						
15	2	129574-91410	BRACKET, SWITCH	1	1						
16	2	121575-91250	SWITCH W/KEY	1	1						
17	2	123482-91291	KEY, SWITCH	1	1						
18	2	127692-91350	BUZZER	1	1						
19	2	129574-91800	SWITCH ASSY	1	1						
20	2	129574-91780	CAP, RUBBER	2	2						
21	2	129574-91790	SWITCH	1	1						
22	2	127692-91270	CIRCUIT, ALARM	1	1						
23	2	129470-91190	STOPPER	1	1						
24	2	129574-91930	PANEL	1	1						
25	2	129574-91620	COVER	1	1						
26	2	129574-91420	BRACKET	1	1						
27	2	129574-91720	GASKET	1	1						
28	2	129574-91630	COVER	4	4						
29	2	129574-91430	BRACKET	4	4						
30	2	129574-91730	GASKET	4	4						
31	2	129574-91640	COVER	1	1						
32	2	129574-91440	BRACKET	1	1						
33	2	129574-91740	GASKET	1	1						
34	2	129170-91610	COVER	1	1						
35	2	129574-91710	GASKET	1	1						
36	2	129574-91750	GASKET	1	1						
37	2	129574-91770	KNOB, SWITCH	2	2						
38	2	129574-91600	COVER	1	1						
39	2	129574-91650	COVER	1	1						
40	2	127692-91410	SCREW	27	27						
41	2	127692-91440	SCREW	4	4						
42	2	127692-91450	SCREW	2	2						
43	2	127692-91850	HARNES, WIRE	1	1						

CLICK HERE TO **DOWNLOAD** THE COMPLETE MANUAL

- Thank you very much for reading the preview of the manual.
- You can download the complete manual from: www.heydownloads.com by clicking the link below



- Please note: If there is no response to CLICKING the link, please download this PDF first and then click on it.

CLICK HERE TO **DOWNLOAD** THE COMPLETE MANUAL