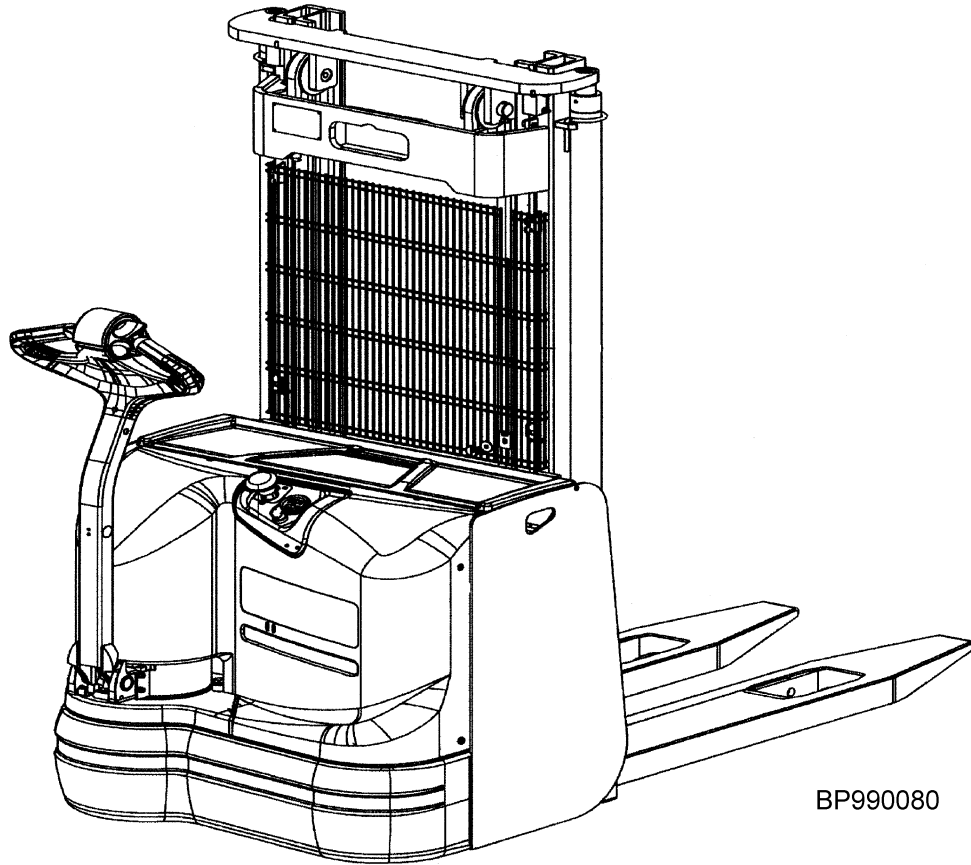


## MS14 MS16 MS14 MS16 (C852)



BP990080

CLICK HERE TO **DOWNLOAD** THE COMPLETE MANUAL

- Thank you very much for reading the preview of the manual.
- You can download the complete manual from: [www.heydownloads.com](http://www.heydownloads.com) by clicking the link below



- Please note: If there is no response to CLICKING the link, please download this PDF first and then click on it.

CLICK HERE TO **DOWNLOAD** THE COMPLETE MANUAL

---

**PUBLICATIONS**

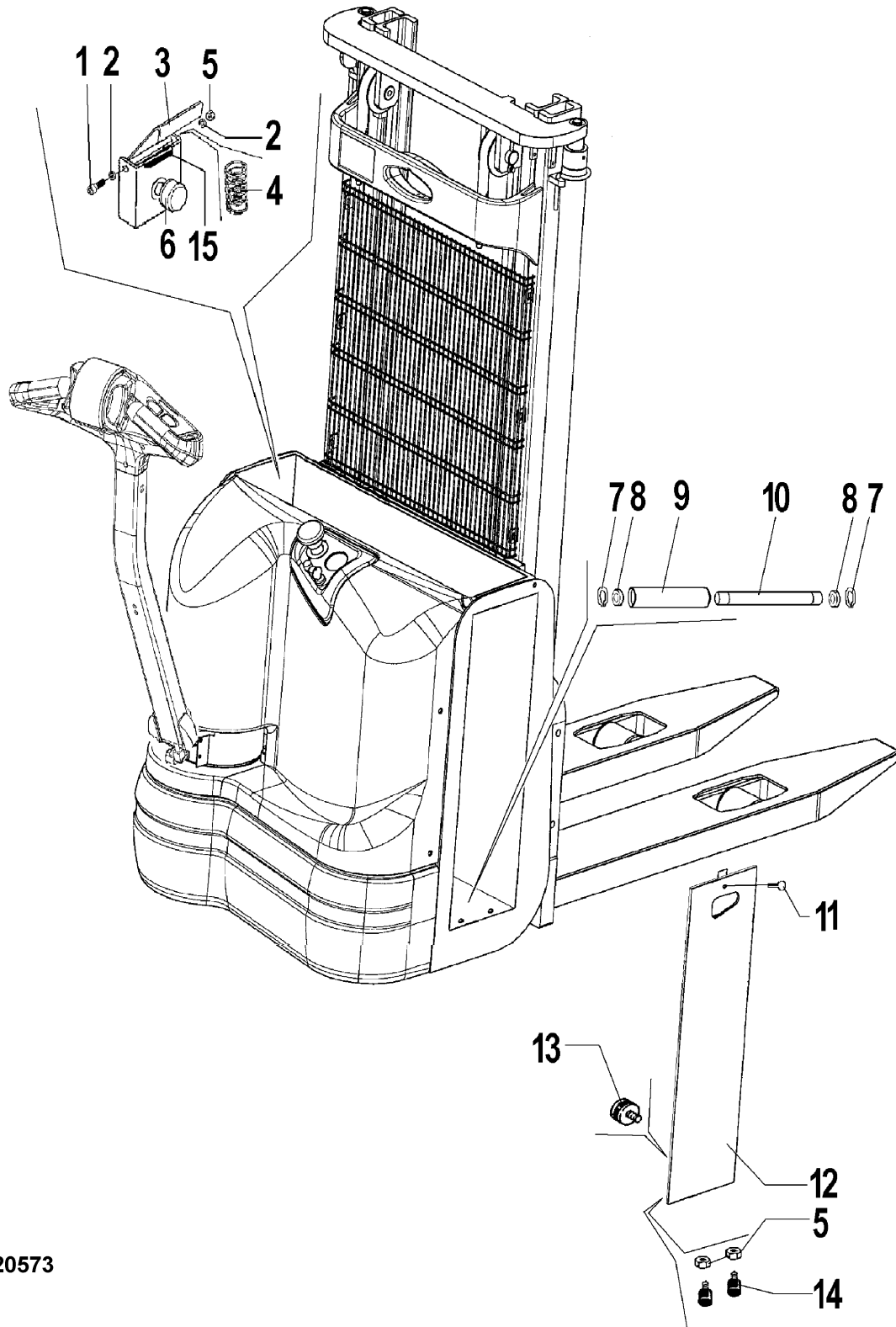
Every new lift truck is provided with an OPERATING MANUAL. This manual has information that the operator must know for inspection and operation of the lift truck.

SERVICE MAINTENANCE MANUALS, which provide service and overhaul procedures, and PARTS

MANUALS with complete replacement part identification, are available at a nominal fee from your Yale dealer to assist users in effectively maintaining Yale lift trucks in a safe, useful condition. See the list below for information on ordering specific publications for this model lift truck.

---

<b>PUBLICATION</b>	<b>YALE PART NUMBER</b>
Operating Manual.....	524301672
Service Manual (Complete).....	524301698
Parts Manual.....	524336822



BP120573

**ELECTROMAGNETIC BRAKE**

<b>ITEM</b>	<b>PART NO.</b>	<b>DESCRIPTION</b>	<b>QTY</b>
1	580081696	Brake Assy .....	1
2	580011872	Capscrew .....	3
3	580081695	Coil .....	1
4	580035385	Coil (Hub) .....	1
5	272034900	Disk .....	1
6	580077043	Disk .....	1
7	524148447	Band .....	1
8	524213453	Dust Cap .....	1

**POWER CABLES DIAGRAM**

ITEM	PART NO.	DESCRIPTION	QTY
1	580039028	Battery Connector .....	1
2	580039025	Battery Connector Housing .....	1
3	580039027	Battery Cable .....	1
4	580039026	Battery Cable .....	1
5	580039032	Cable Assy .....	1
6	580039029	Battery Connector Housing .....	1
7	580039031	Battery Cable .....	1
8	580039030	Battery Cable .....	1
9	580092138	Switch .....	1
10	580013300	Battery Charger .....	1
11	580077549	Fuse (300 Amp) .....	1
12	580093316	Power Cable .....	1
13	580093317	Power Cable .....	1
14	580093318	Power Cable .....	1
15	580093320	Power Cable .....	1
16	580093319	Power Cable .....	1
17	580093537	Power Cable .....	1
18	580093321	Power Cable .....	1

CLICK HERE TO **DOWNLOAD** THE COMPLETE MANUAL

- Thank you very much for reading the preview of the manual.
- You can download the complete manual from: [www.heydownloads.com](http://www.heydownloads.com) by clicking the link below



- Please note: If there is no response to CLICKING the link, please download this PDF first and then click on it.

CLICK HERE TO **DOWNLOAD** THE COMPLETE MANUAL



**HYDRAULIC CYLINDER  
3 STAGE**

ITEM	PART NO.	DESCRIPTION	QTY
1	580015734	Cylinder Assy h=4025mm .....	2
1	580015735	Cylinder Assy h=4325mm .....	2
1	<b>a</b> 580015736	Cylinder Assy h=4625mm .....	2
1	<b>a</b> 580017810	Cylinder Assy h=4795mm .....	2
1	<b>a</b> 580017811	Cylinder Assy h=5095mm .....	2
1	<b>a</b> 580017812	Cylinder Assy h=5395mm .....	2
2	580016918	Kit-Seal .....	2
3	580016919	Kit-Seal .....	1
4	580015694	Cylinder Assy h=4025mm .....	1
4	580015693	Cylinder Assy h=4325mm .....	1
4	<b>a</b> 580015696	Cylinder Assy h=4625mm .....	1
4	<b>a</b> 580015697	Cylinder Assy h=4795mm .....	1
4	<b>a</b> 580017914	Cylinder Assy h=5095mm .....	1
4	<b>a</b> 580015698	Cylinder Assy h=5395mm .....	1
5	580015508	Flow Valve .....	1
6	580015507	Flow Valve .....	2

**FOOTNOTES:**

**a** only for 1,6ton

**MAST 2 STAGE**  
**HI VI**

ITEM	PART NO.	DESCRIPTION	QTY
1	580012914	Pin .....	2
2	273066000	Pulley .....	2
3	272065300	Washer .....	2
4	449025027	Cotter Pin .....	10
5	272101200	Pin .....	4
6	272101300	Anchor .....	2
7	449015107	Locknut .....	2
8	580014113	Chain h=2830mm .....	2
8	580014114	Chain h=3030mm .....	2
8	580014115	Chain h=3230mm .....	2
8	580014116	Leaf Chain - Fixed Length h=3430mm .....	2
8	580014117	Leaf Chain - Fixed Length h=3830mm .....	2
8	580014118	Leaf Chain - Fixed Length h=4230mm .....	2
9	500227904	Snap Ring .....	2
10	449021042	Washer .....	2
11	580024912	Seal .....	2
12	580012892	Brace .....	2
13	272465600	Wear Plate (3,05 mm) .....	100
13	272014200	Wear Plate (4,06 mm) .....	100
13	272014400	Wear Plate (5,08 mm) .....	100
13	272014500	Wear Plate (5,334 mm) .....	100
14	504235265	Capscrew .....	8
15	580012896	Load Roller (Inner Mast) Ø70,1mm .....	6
15	580012912	Load Roller (Carriage) ø70,5mm .....	6
16	015915600	Snap Ring .....	6
17	272328600	Damper .....	2
18	580012894	Bracket (RH) .....	1
19	580012895	Bracket (LH) .....	1
20	449022041	Lockwasher .....	2
21	311323023	Capscrew .....	2
22	015425100	Cotter Pin .....	2
23	449022018	Washer .....	6
24	272328700	Screw .....	6
25	580014669	Screw .....	2
26	449021003	Washer .....	100
27	449015135	Nut .....	2
28	580014670	Pin .....	2
29	580015115	Snap Ring .....	2
30	580026201	Label .....	1

---

**SECTION 6**  
**MAST-THREE STAGE FULL FREE-LIFT**

---

<b>DESCRIPTION</b>	<b>PAGE</b>
FORK 3 STAGE	
FFL .....	6-6
MAST 3 STAGE	
FFL .....	6-2
WIRE NET .....	6-8

---

7

OPTIONS

**LEXAN GUARD  
3 STAGE FFL**

ITEM	PART NO.	DESCRIPTION	QTY
1	580090243	Guard h3=4027mm .....	1
1	580090244	Guard h3=4327mm .....	1
1	<b>a</b> 580090245	Guard h3=4627-4797mm .....	1
1	<b>a</b> 580090246	Guard h3=5097mm .....	1
1	<b>a</b> 580090247	Guard h3=5397mm .....	1
2	580057830	Nut .....	2
3	580065307	Washer .....	2
4	580058551	Screw .....	2

**FOOTNOTES:**

**a** only for 1,6t

CLICK HERE TO **DOWNLOAD** THE COMPLETE MANUAL

- Thank you very much for reading the preview of the manual.
- You can download the complete manual from: [www.heydownloads.com](http://www.heydownloads.com) by clicking the link below



- Please note: If there is no response to CLICKING the link, please download this PDF first and then click on it.

CLICK HERE TO **DOWNLOAD** THE COMPLETE MANUAL