

**NISSAN
FORKLIFT**

by **UNICARRIERS**

BARRETT

by **UNICARRIERS**

PARTS MANUAL

MODEL 2W1

Platinum WPX Series Walkie Pallet
24V AC Powered
6,000-8,000 lb. Capacities

UNICARRIERS
A Lifetime of Trusted Value



PARTS

©UniCarriers Americas Corporation
240 N. Prospect Street, Marengo, IL 60152 USA
Tel: +1-815-568-0061 Fax: +1-815-568-0179
www.unicarriersamericas.com

PART NUMBER: CF820-UBOOK
PRINTING: OCTOBER 2013

CLICK HERE TO **DOWNLOAD** THE COMPLETE MANUAL

- Thank you very much for reading the preview of the manual.
- You can download the complete manual from: www.heydownloads.com by clicking the link below



- Please note: If there is no response to CLICKING the link, please download this PDF first and then click on it.

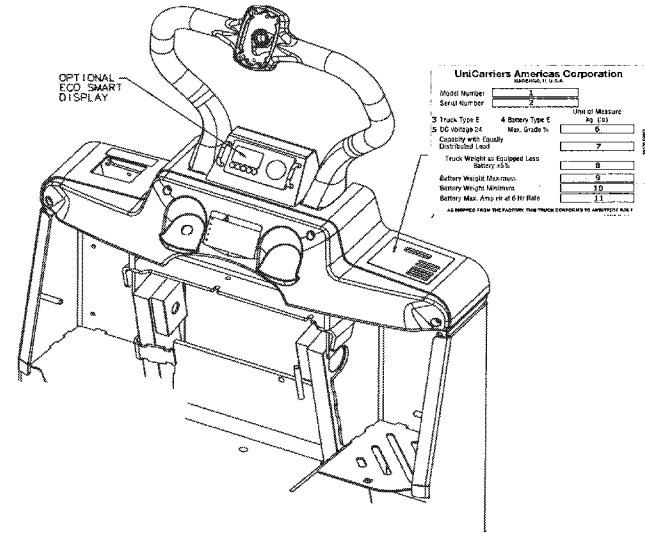
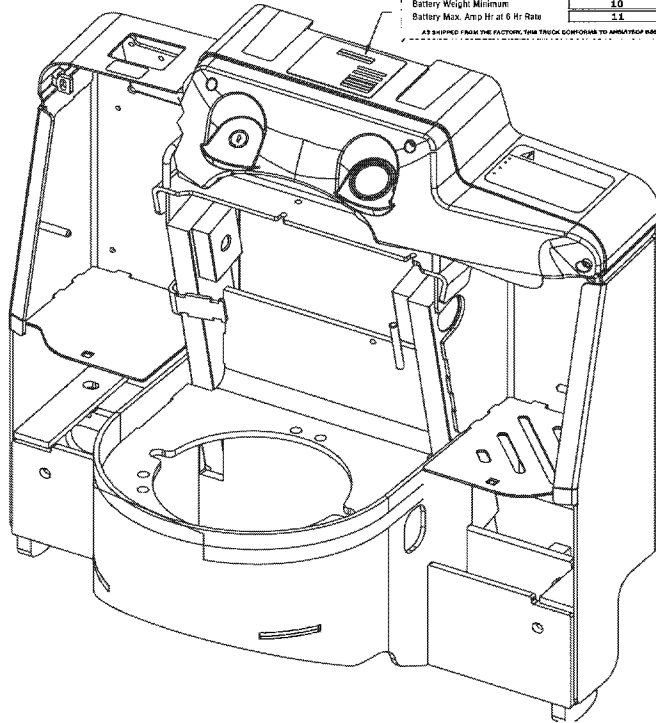
CLICK HERE TO **DOWNLOAD** THE COMPLETE MANUAL

CHASSIS SERIAL NUMBER

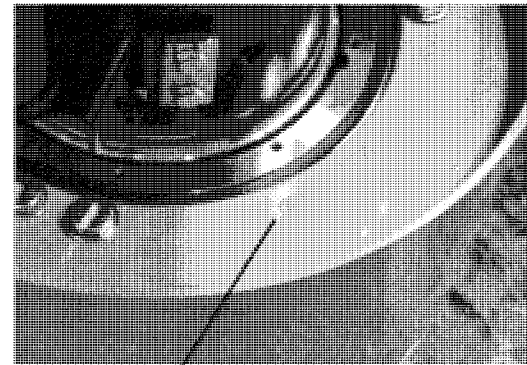
To choose correct parts always refer to the data plate, which is located above the meter panel area. On units with the Optional ECO Smart Display see illustration at right for location.

UniCarriers Americas Corporation MARIETTA, U.S.A.		
Model Number	1	
Serial Number	2	
3 Truck Type E	4 Battery Type E	Unit of Measure kg. (lb)
5 DC voltage 24	Max. Grade %	6
Capacity with Equally Distributed Load		7
Truck Weight as Equipped Less Battery +3%		8
Battery Weight Maximum		9
Battery Weight Minimum		10
Battery Max. Amp Hr. at 6 Hr. Rate		11

AS SHIPPED FROM THE FACTORY, THIS TRUCK CONFORMS TO APPROVED S&L.

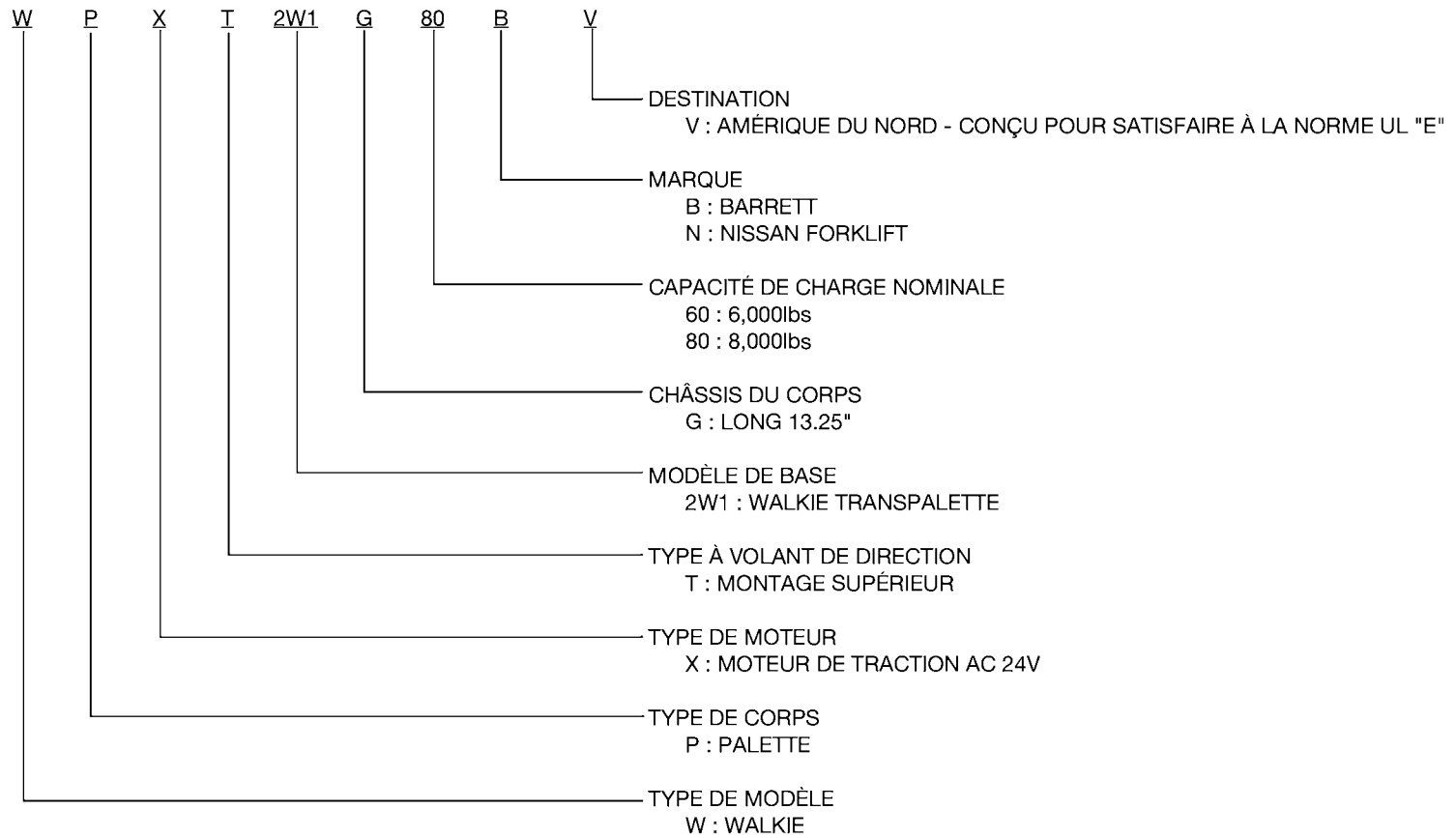


Chassis serial number is stamped in the frame by the transmission.



TRUCK SERIAL NUMBER IS ON CENTER PORTION OF FRAME

MODÈLE VARIATION (LONG CODE DE MODÈLE) VENTILATION



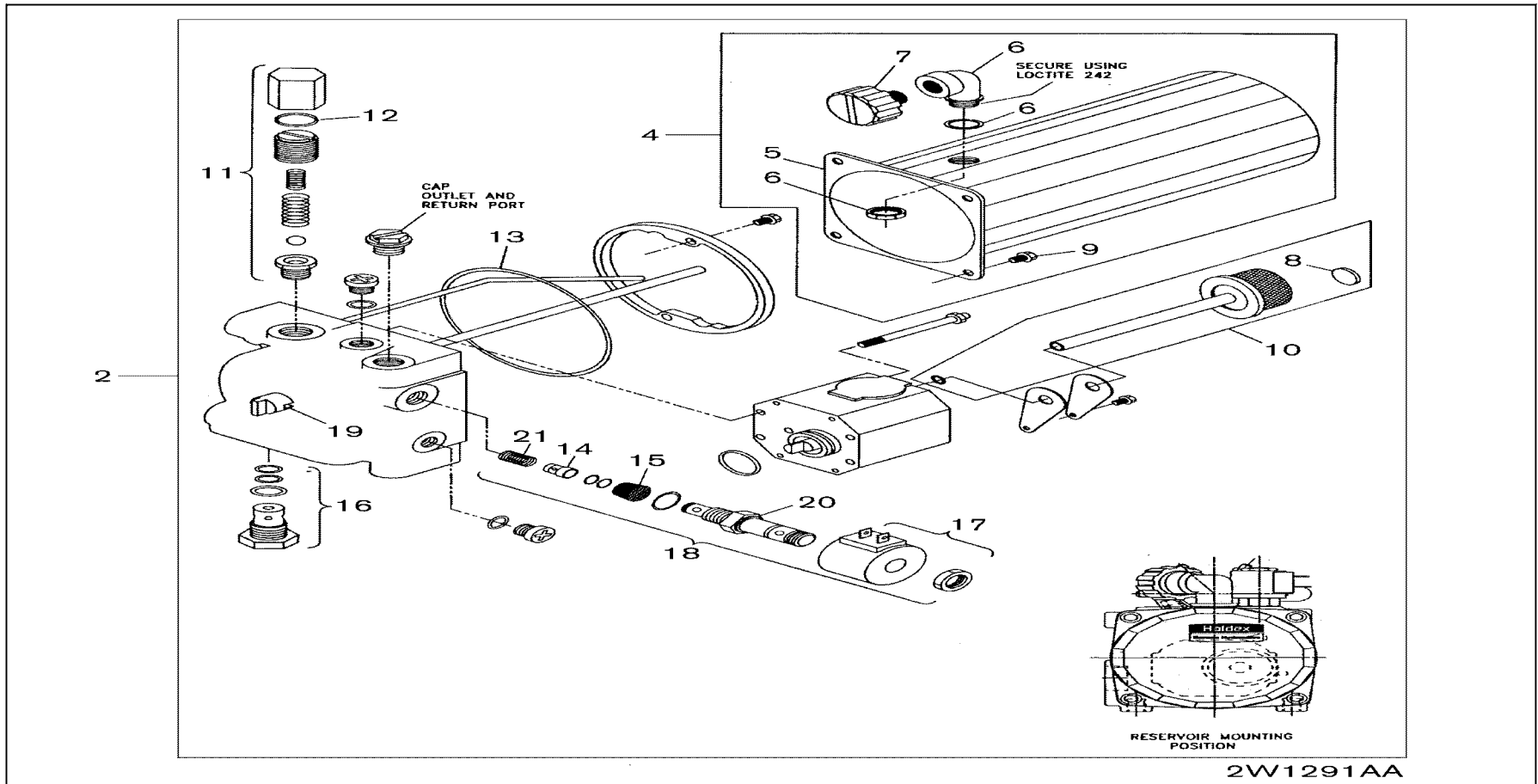
SEC. 291A

HYDRAULIC PUMP & MOTOR (JUNE 2010 UPTO JULY 2012)

BOMBA HIDRÁULICA Y MOTOR

BOMBA HIDRÁULICA & MOTOR

POMPE HYDRAULIQUE & MOTEUR



291A-1

SEC. 240A

LEGEND (STANDARD)

LEYENDA

LEGENDA

LÉGENDE

LEGEND

CONNECTORS - MULTIPLE POSITION

CONNECTIONS - GENERAL

RELAY AND CONTACTOR CONTACTS

SWITCH CONTACTS

CIRCUITS

**2W1 (WPX) MODEL - STANDARD
ZAP1 COMBI AC1 CONTROLLER
CAN BUSS CONTROL PCB IN HANDLE
NO DIRECTION SWITCHES - HALL SENSOR VOLTAGES DETERMINE
DIRECTION AND SPEED
3 PHASE AC TRACTION MOTOR
ELECTRIC BRAKE
NO LIFT LIMIT SWITCH - TIMED PUMP OPERATION**

CONNECTOR APPLICATION

NO.	J	P	APPLICATION
A	X		ZAP1 COMBI AC1 CONTROLLER
A		X	TRUCK HARNESS
B	X		BRAKE JUMPER 0712-
B		X	TRUCK HARNESS 0712-
C2	X		HANDLE CONTROL PCB
C2		X	STEERHANDLE HARNESS
4	X		TRUCK HARNESS
4		X	BRAKE/COAST/ENC/TS/PCB HARNESS
5	X		BRAKE/COAST/ENC/TS/PCB HARNESS
5		X	INTERLOCK SW. (BRAKE)
6	X		ZAP1 MDI DISPLAY
6		X	TRUCK HARNESS MDI EXTENSION
9	X		BRAKE/COAST/ENC/TS/PCB HARNESS
9		X	ELECTRIC BRAKE
10	X		HANDLE CONTROL PCB
10		X	LIFT SWITCH - STEERHANDLE - RIGHT
11	X		HANDLE CONTROL PCB
11		X	COAST ENGAGE SW. - LEFT (NOT USED)
12	X		HANDLE CONTROL PCB
12		X	LOWER SWITCH - STEERHANDLE - RIGHT
13	X		HANDLE CONTROL PCB
13		X	SPARE INPUT (NOT USED)
14	X		HANDLE CONTROL PCB
14		X	LIFT SWITCH - STEERHANDLE - LEFT
15	X		HANDLE CONTROL PCB
15		X	LOWER SWITCH - STEERHANDLE - LEFT
16	X		HANDLE CONTROL PCB
16		X	PICK SW. - LEFT (NOT USED)
17	X		HANDLE CONTROL PCB
17		X	PICK SW. - RIGHT (NOT USED)
19	X		TRUCK HARNESS
19		X	TRUCK HARNESS MDI EXTENSION
20	X		HANDLE CONTROL PCB
20		X	COAST ENGAGE SW. - RIGHT (NOT USED)
21	X		HANDLE CONTROL PCB
21		X	SPARE INPUT (NOT USED)
22	X		TRUCK HARNESS
22		X	BRAKE/COAST/ENC/TS/PCB HARNESS
23	X		TRUCK HARNESS
23		X	FAN M3
24	X		TRUCK HARNESS
24		X	FAN M4
25	X		BRAKE/COAST/ENC/TS/PCB HARNESS
25		X	ENCODER
26	X		STEERHANDLE HARNESS
26		X	BRAKE/COAST/ENC/TS/PCB HARNESS
30	X		BRAKE/COAST/ENC/TS/PCB HARNESS
30		X	TEMPERATURE SENSOR - TRACTION MOTOR

CONTACTORS AND RELAYS

NO.	APPLICATION
K1	LINE CONTACTOR

FUSES

NO.	APPLICATION
F1	TRACTION/PUMP MOTOR
F2	CONTROL CIRCUITS
F3	COMPONENT CIRCUITS

MOTORS

NO.	APPLICATION
M1	TRACTION MOTOR
M2	LIFT PUMP
M3	FAN

SWITCHES

NO.	APPLICATION
S2	EMERGENCY REVERSE - (ON HANDLE CONTROL PCB)
S3	HORN - STEERHEAD - (ON HANDLE CONTROL PCB)
S4	KEY SW.
S5	INTERLOCK SW. (BRAKE)
S6	LIFT SW. - STEERHANDLE - RIGHT
S7	LIFT SW. - STEERHANDLE - LEFT
S8	LOWER SW. - STEERHANDLE - RIGHT
S9	LOWER SW. - STEERHANDLE - LEFT

MISCELLANEOUS

NO.	APPLICATION
AC1	ZAP1 COMBI CONTROLLER
PCB1	HANDLE CONTROL PCB
IC1	SPEED/DIRECTION SENSOR (ON HANDLE CONTROL PCB)
IC2	SPEED/DIRECTION SENSOR (ON HANDLE CONTROL PCB)
IC3	ENCODER - MOTOR SPEED/DIRECTION
RT1	TEMPERATURE SENSOR - TRACTION MOTOR
E1	ZAP1 MULTIFUNCTION DIGITAL INDICATOR (HOURS/BDI)
H1	HORN

SOLENOIDS

NO.	APPLICATION
L1	K1 LINE CONTACTOR COIL
L3	BRAKE
L4	LOWERING VALVE COIL

2W1240AA

CLICK HERE TO **DOWNLOAD** THE COMPLETE MANUAL

- Thank you very much for reading the preview of the manual.
- You can download the complete manual from: www.heydownloads.com by clicking the link below



- Please note: If there is no response to CLICKING the link, please download this PDF first and then click on it.

CLICK HERE TO **DOWNLOAD** THE COMPLETE MANUAL

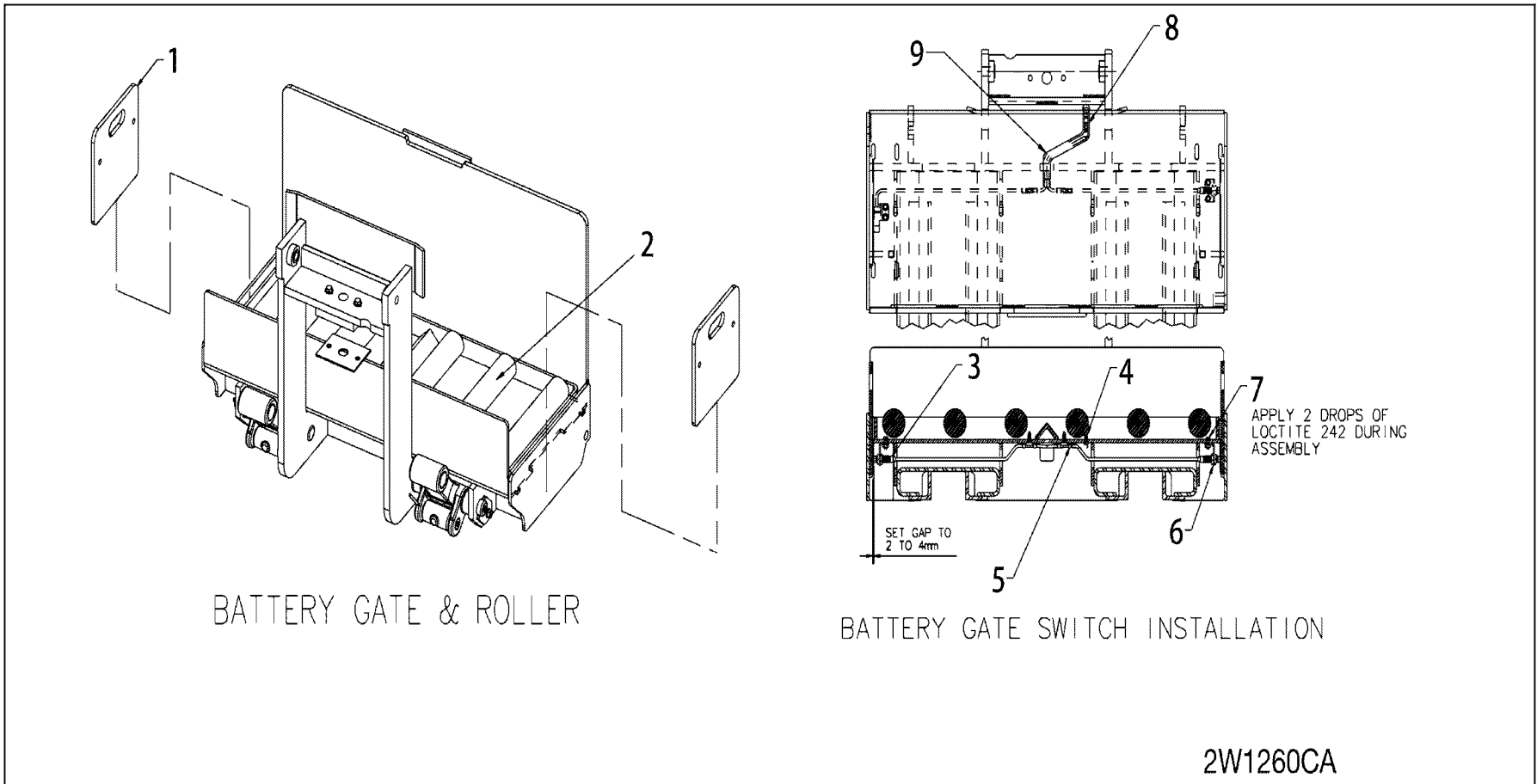
SEC. 260C

BATTERY GATE & ROLLER W/SWITCH

PUERTA DE LA BATERÍA

TAMPA DA BATERIA

LA PORTE DE LA BATTERIE



260C-1

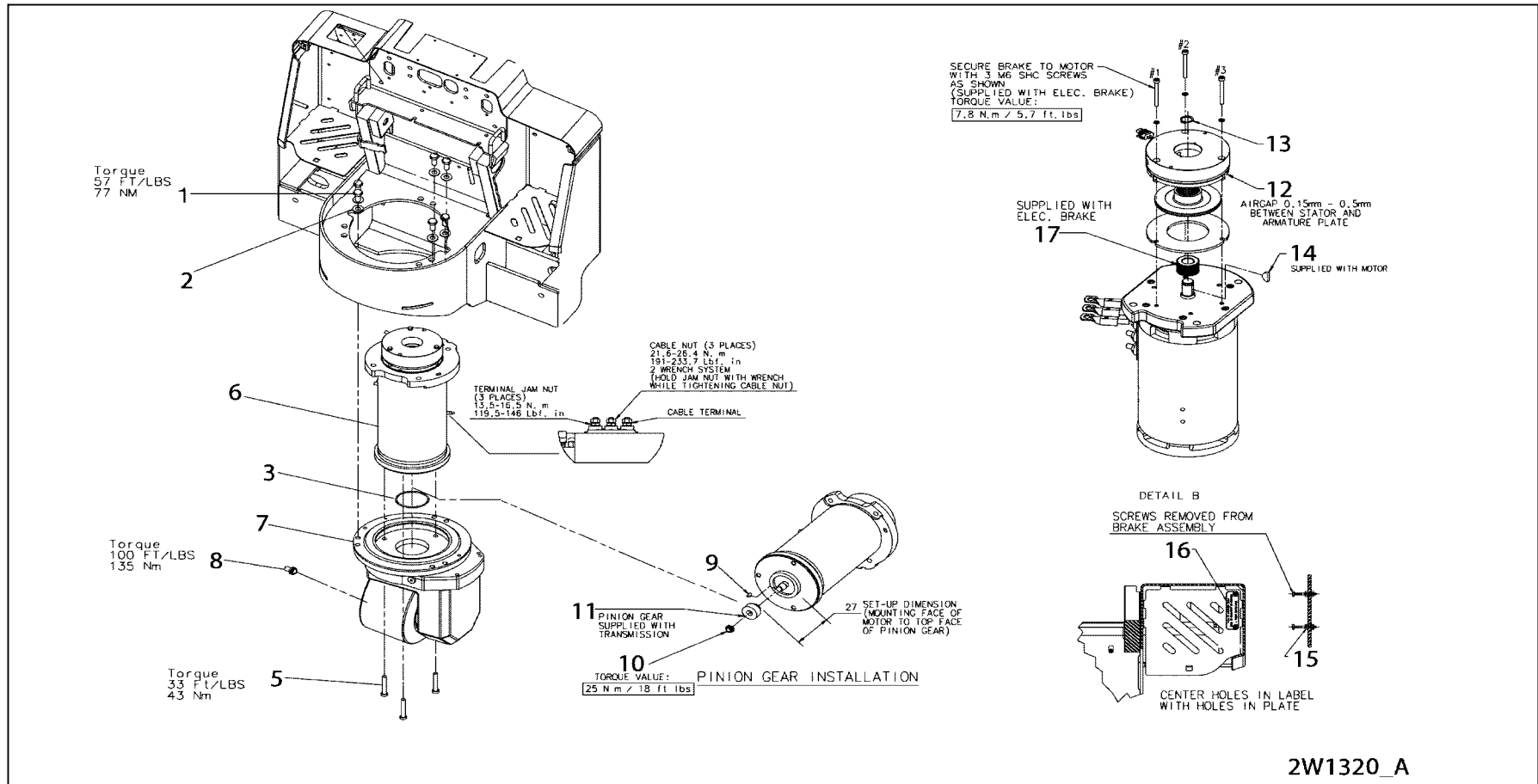
SEC. 320

TRANSMISSION & MOTOR MOUNTING

LA TRANSMISIÓN Y EL MONTAJE DEL MOTOR

MONTAGEM DO MOTOR E TRANSMISSÃO

TRANSMISSION ET MONTAGE DU MOTEUR



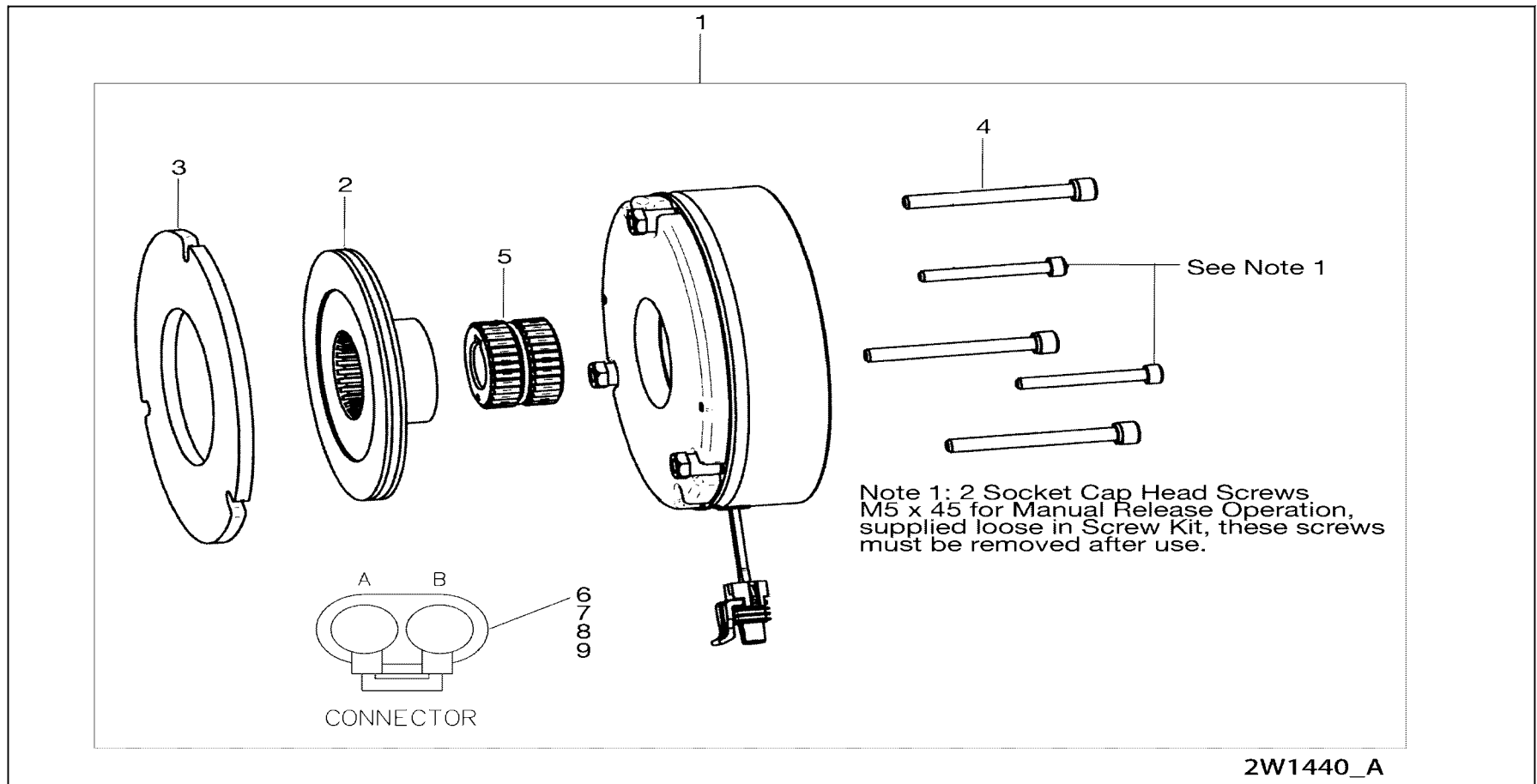
SEC. 440

BRAKE ASSEMBLY

CONJUNTO DE FRENO

CONJUNTO DE FREIO

ENSEMBLE DE FREIN



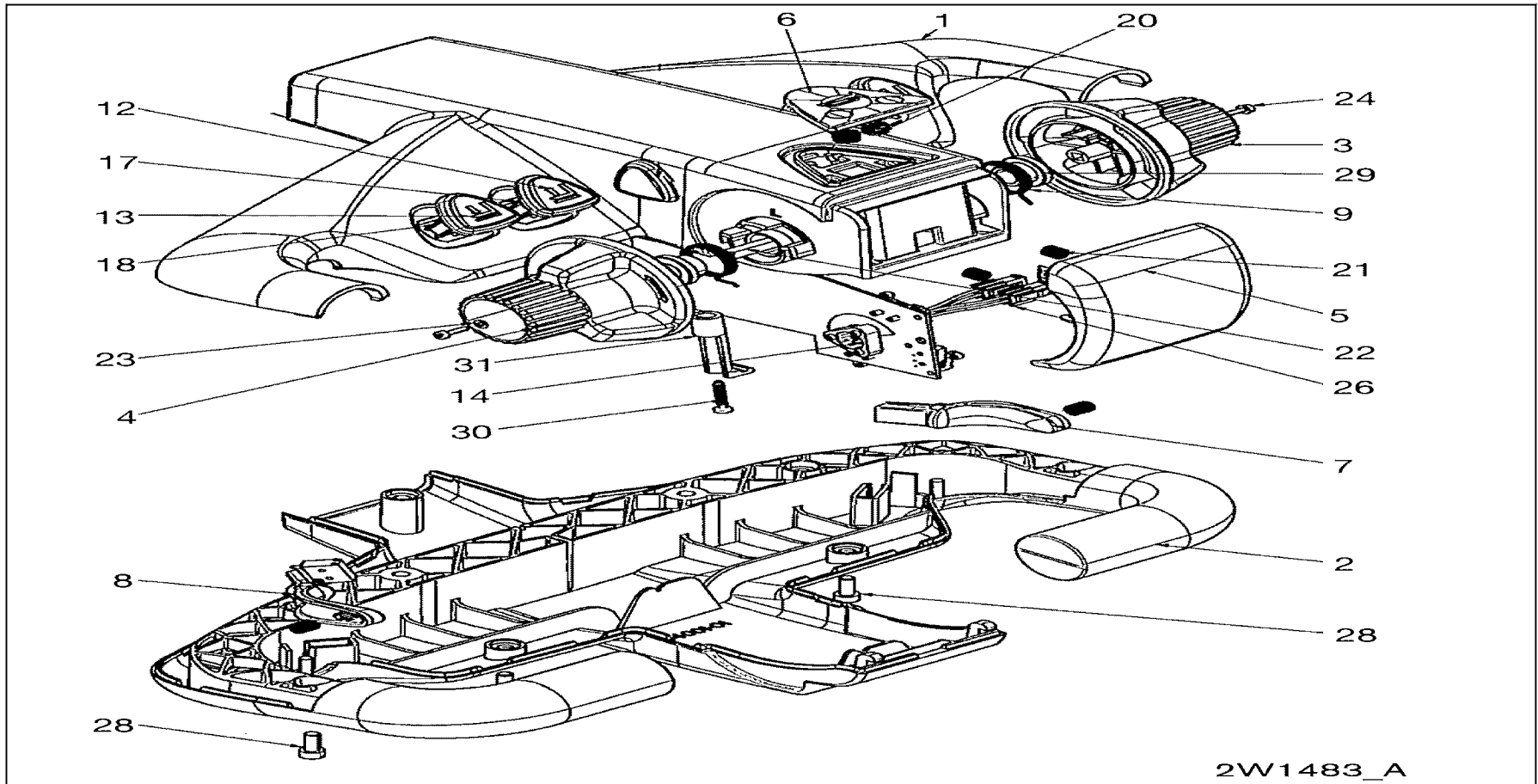
SEC. 483

STEER HANDLE ASSEMBLY

CONJUNTO DE PALANCA DE DIRECCIÓN

CONJUNTO ALÇA DIREÇÃO

STEER ENSEMBLE DE POIGNÉE



2W1483_A

483-1

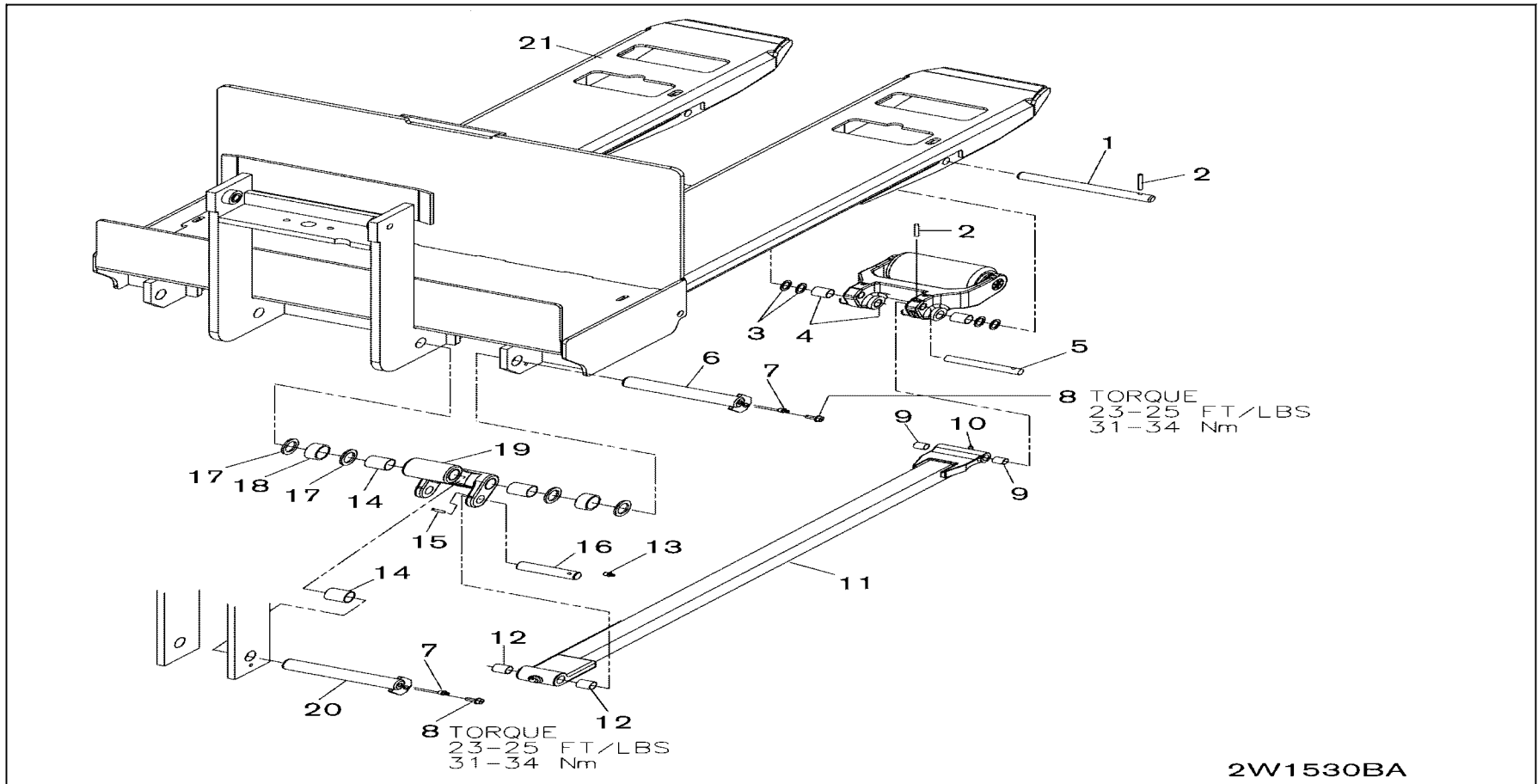
SEC. 530B

LIFT LINKAGE -LOWER

VARILLAJE DE ELEVACIÓN

ARTICULAÇÃO DE ELEVAÇÃO

TRINGLERIE DE RELEVAGE



530B-1

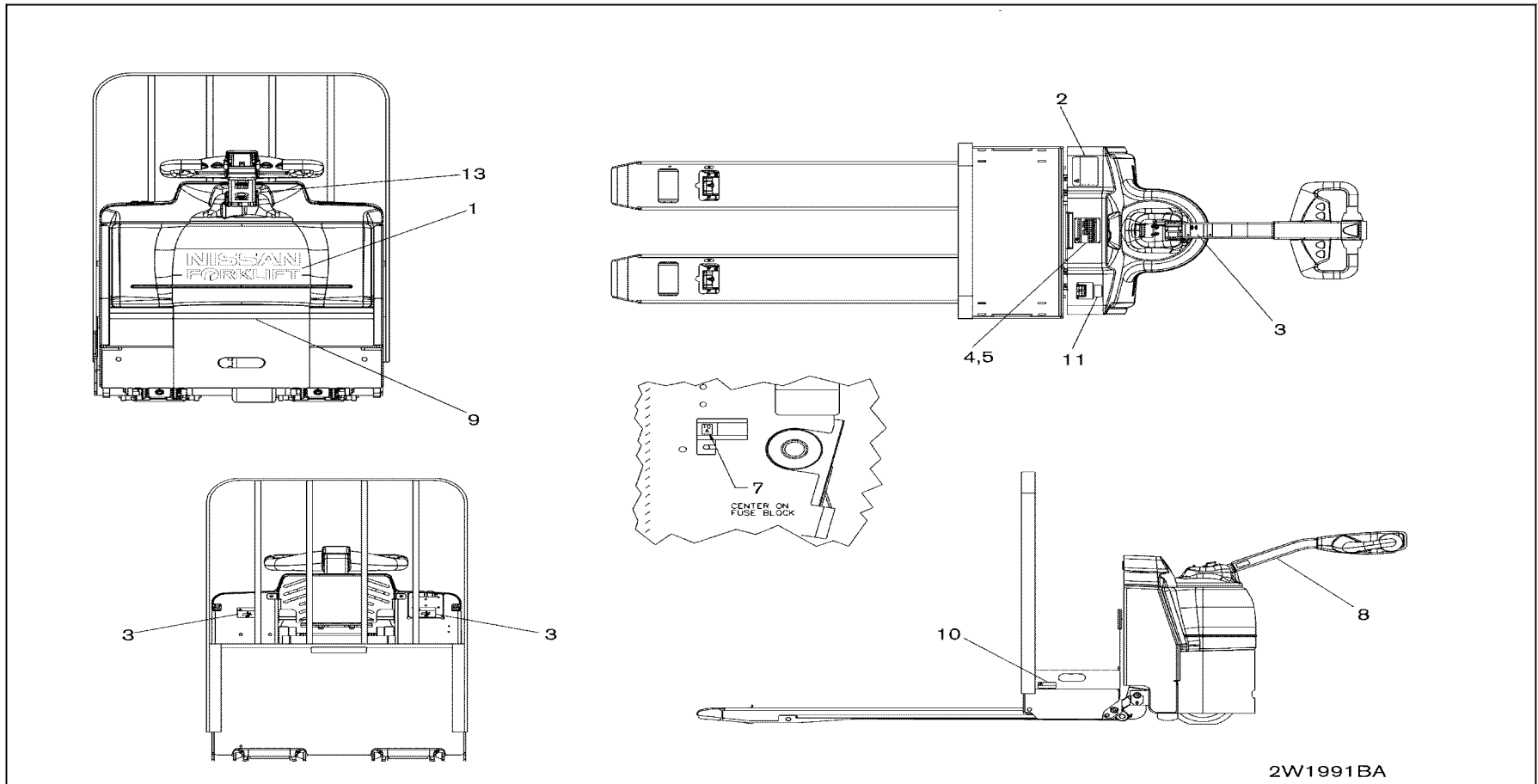
SEC. 991B

DECALS -NISSAN FORKLIFT

LAS ETIQUETAS

OS ADESIVOS

AUTOCOLLANTS



991B-1

CLICK HERE TO **DOWNLOAD** THE COMPLETE MANUAL

- Thank you very much for reading the preview of the manual.
- You can download the complete manual from: www.heydownloads.com by clicking the link below



- Please note: If there is no response to CLICKING the link, please download this PDF first and then click on it.

CLICK HERE TO **DOWNLOAD** THE COMPLETE MANUAL