

TOYOTA

INDUSTRIAL EQUIPMENT PARTS CATALOG

MODEL	8 F G	
FRAME NO.	8 F G	
LIFTING HEIGHT	, m m	

8FGCU20,25,30,32
8FGU15,18,20,25,30,32

No.G851-1

MANUFACTURED BY
TOYOTA INDUSTRIAL EQUIPMENT MFG., INC.
08511-89500-71

4Y-ATM 07/01

D E S C R I P T I O N

	UL-TYPE GS
	UL-TYPE LP
	UL-TYPE LPS
	UL-TYPE G/LP
	UPSWEPT EXHAUST
	LPG DRAIN COCK
	CYCLONE A/C(DUAL ELEMENT)
	PRE-CLEANER
	LPG WARNING INDICATOR
	ENGINE OIL QUICK DRAIN
	T/C INTERLOCK
	WET BRAKE
	MINI LEVER
	AUTO SPEED CONTROL
	STATIC STRAP

TOYOTA Material Handling Company
A Division of TOYOTA INDUSTRIES CORPORATION

CLICK HERE TO **DOWNLOAD** THE COMPLETE MANUAL

- Thank you very much for reading the preview of the manual.
- You can download the complete manual from: www.heydownloads.com by clicking the link below



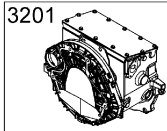
- Please note: If there is no response to CLICKING the link, please download this PDF first and then click on it.

CLICK HERE TO **DOWNLOAD** THE COMPLETE MANUAL

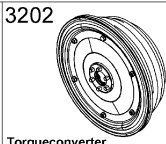
FIG.INDEX

ILLUSTRATED INDEX
INDEX ILLUSTRE

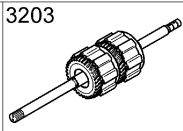
INDIOE ILLUSTRADO
ILLUSTRIRTES INHALTSVERZEICHNIS



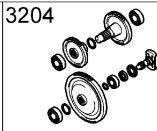
3201 Torqueconverter Housing



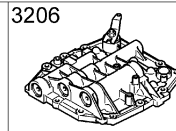
3202 Torqueconverter



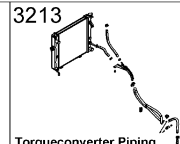
3203 Torqueconverter Clutch



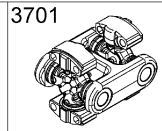
3204 Torqueconverter Gear



3206 Control Valve



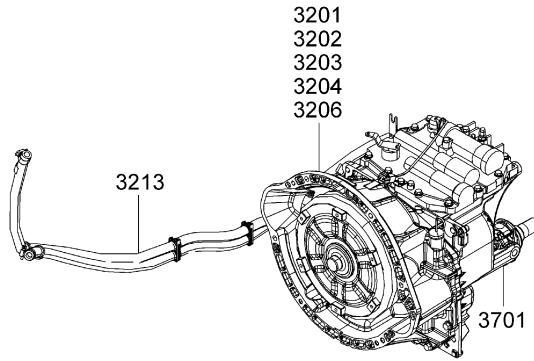
3213 Torqueconverter Piping



3701 Propeller Shaft

CHASSIS GROUP (1/3)

[ATM]

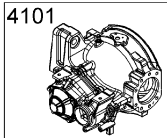


0000-A21
0000-A21_

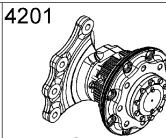
FIG.INDEX

ILLUSTRATED INDEX
INDEX ILLUSTRE

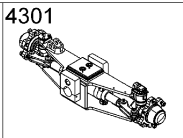
INDIOE ILLUSTRADO
ILLUSTRIRTES INHALTSVERZEICHNIS



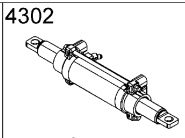
4101 Differential



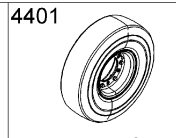
4201 Front Axle Shaft



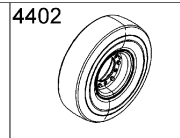
4301 Rear Axle & Tie-Rod



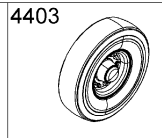
4302 Rear Axle Cylinder



4401 Front Wheel & Tire (Single)

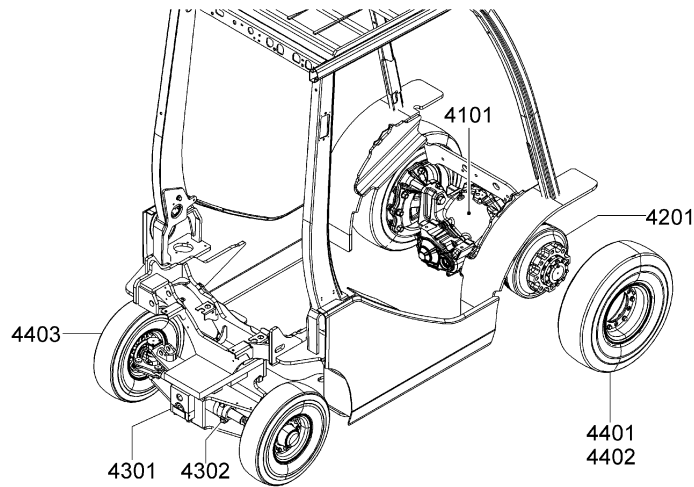


4402 Front Wheel & Tire (Double)



4403 Rear Wheel & Tire

CHASSIS GROUP (2/3)



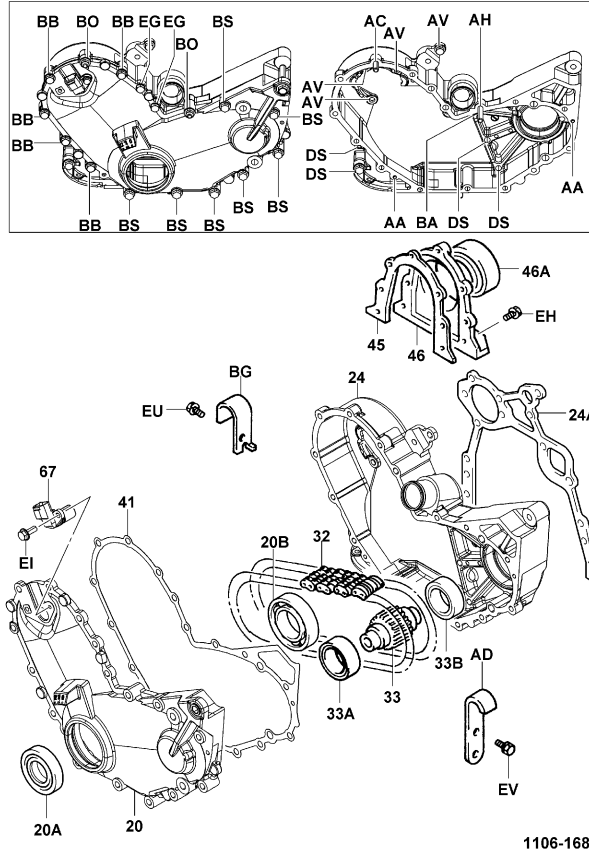
0000-A22
0000-A22_

1106

TIMING GEAR COVER & END PLATE
PLAQUE D'EXTR. & CACHE D'ENGR DE DISTR

STEUERDECKEL & ABDECKPLATTE
PLACA Y CUBIERTA DE ENGRANAJE DE DISTRIB.

4Y



1106-168B

1106

TIMING GEAR COVER & END PLATE
PLAQUE D'EXTR. & CACHE D'ENGR DE DISTR

STEUERDECKEL & ABDECKPLATTE
PLACA Y CUBIERTA DE ENGRANAJE DE DISTRIB.

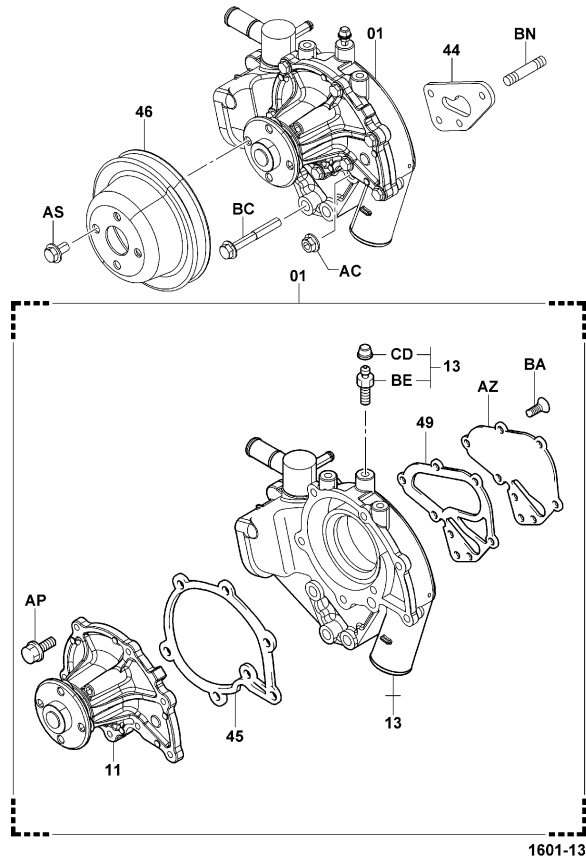
PART NAME CODE	PART NAME	QTY	PART NAME CODE	PART NAME	QTY
1106-20	COVER SUB-ASSY, TIMING GEAR (OR CHAIN) SOUS-ENS. DE COUVERCLE DECKEL-TEILGRUPPE SUBCONJUNTO DE CUBIERTA	1	1106-45	GASKET, REAR OIL SEAL RETAINER JOINT DICHTUNG EMPAQUETADURA	1
1106-20A	SEAL, OIL (FOR TIMING GEAR COVER) JOINT ABDICHTUNG SELLO	1	1106-46	RETAINER, REAR OIL SEAL ARRETOIR SEEGERRING RETENEDOR	1
1106-20B	BEARING (FOR TIMING GEAR COVER) ROULEMENT LAGER COJINETE	1	1106-46A	SEAL, ENGINE REAR OIL JOINT ABDICHTUNG SELLO	1
1106-24	CASE, TIMING CHAIN CARTER GEHAUSE CAJA	1	1106-67	SENSOR, CRANK POSITION DETECTEUR SENSOR SENSOR	1
1106-24A	GASKET, TIMING CHAIN CASE JOINT DICHTUNG EMPAQUETADURA	1	1106-AA	PIN, STRAIGHT GOUPILLE STIFT PASADOR	2
1106-32	CHAIN SUB-ASSY SOUS-ENS. DE CHAINE KETTEN-TEILGRUPPE SUBCONJUNTO DE LA CADENA	1	1106-AC	BOLT, STUD BOULON SCHRAUBE PERNO	1
1106-33	SPROCKET, HYDRAULIC PUMP DRIVE PIGNON DE CHAINE KETTENRAD RUEDA DENTADA	1	1106-AD	HANGER, ENGINE BRIDE DE SUPPORT AUFHANGUNG COLGADOR	1
1106-33A	BEARING (FOR DRIVE SPROCKET) ROULEMENT LAGER COJINETE	1	1106-AH	BOLT, STUD BOULON SCHRAUBE PERNO	1
1106-33B	BEARING (FOR DRIVE SPROCKET) ROULEMENT LAGER COJINETE	1	1106-AV	BOLT BOULON SCHRAUBE PERNO	4
1106-41	GASKET, TIMING GEAR (OR CHAIN) COVER JOINT DICHTUNG EMPAQUETADURA	1	1106-BA	BOLT BOULON SCHRAUBE PERNO	1

1601

WATER PUMP
POMPE A EAU

WASSERPUMPE
BOMBA DE AGUA

4Y



1601-131_

1601

WATER PUMP
POMPE A EAU

WASSERPUMPE
BOMBA DE AGUA

PART NAME CODE	PART NAME	QTY	PART NAME CODE	PART NAME	QTY
1601-01	PUMP ASSY, WATER ENS. DE POMPE PUMPENAGGREGAT CONJUNTO DE LA BOMBA	1	1601-AZ	PLATE, WATER PUMP PLAQUE PLATTE PLACA	1
1601-11	PUMP ASSY, WATER, L/BODY ENS. DE POMPE PUMPENAGGREGAT CONJUNTO DE LA BOMBA	1	1601-BA	SCREW VIS SCHRAUBE TORNILLO	4
1601-13	BODY ASSY, WATER PUMP ENS. DE CARROSSERIE KAROSSERIE, VOLLST. CONJUNTO DE LA CARROCERIA	1	1601-BC	BOLT BOULON SCHRAUBE PERNO	2
1601-44	GASKET, WATER PUMP JOINT DICHTUNG EMPAQUETADURA	1	1601-BE	PLUG BOUCHON STOPFEN TAPON	1
1601-45	GASKET, WATER PUMP COVER JOINT DICHTUNG EMPAQUETADURA	1	1601-BN	BOLT, STUD BOULON SCHRAUBE PERNO	2
1601-46	PULLEY, FAN POULIE RIEMENSCHIEBE POLEA	1	1601-CD	CAP CAPUCHON KAPPE TAPA	1
1601-49	GASKET, WATER PUMP, NO.2 JOINT DICHTUNG EMPAQUETADURA	1			
1601-AC	NUT ECROU MUTTER TUERCA	2			
1601-AP	BOLT BOULON SCHRAUBE PERNO	7			
1601-AS	BOLT BOULON SCHRAUBE PERNO	2			

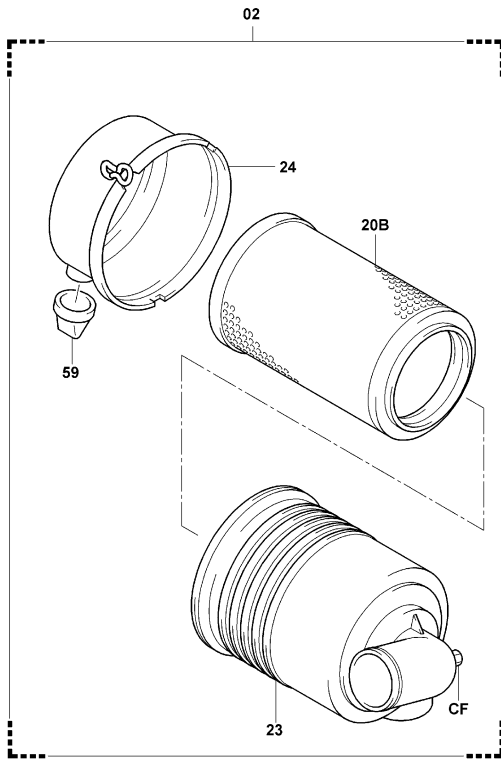
1703

**AIR CLEANER
FILTRE A AIR**

**LUFTFILTER
FILTRO DE AIRE**

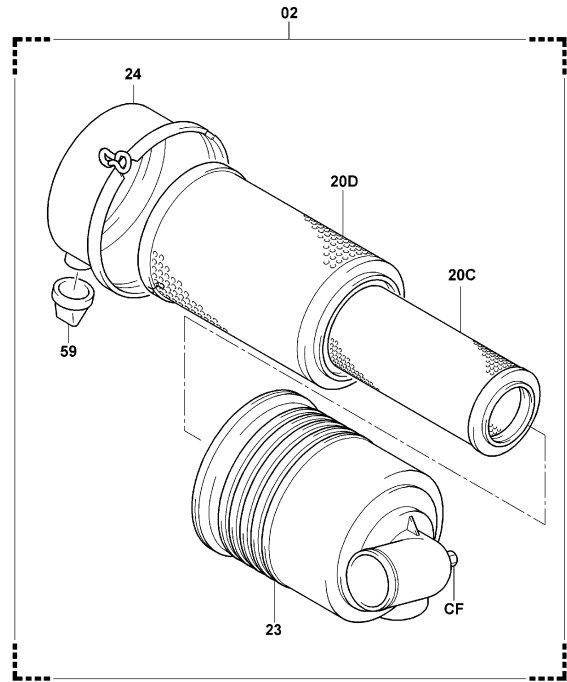
4Y [AIR CLEANER ELEMENT]

4Y (CYCLONE DOUBLE) [AIR CLEANER ELEMENT]



1703-501

1703-501_



1703-502

1703-502_

1703

**AIR CLEANER
FILTRE A AIR**

**LUFTFILTER
FILTRO DE AIRE**

PART NAME CODE	PART NAME	QTY	PART NAME CODE	PART NAME	QTY
1703-02	CLEANER ASSY, CYCLONE AIR ENS. DE EPURATEUR REINIGER, VOLLST. CONJUNTO DEL FILTRO	1	1703-44A	CLAMP (FOR AIR CLEANER OUTLET NO.1 HOSE) PINSE KLEMME ABRAZADERA	1
1703-11	PRECLEANER ASSY ENS. DE PRE-EPURATEUR VORREINIGER, VOLLST. CONJUNTO DEL FILTRO PREVIO	1	1703-53	HOSE, AIR CLEANER, NO.2 FLEXIBLE SCHLÄUCH MANGUERA	1
1703-20B	ELEMENT SUB-ASSY, CYCLONE AIR CLEANER SOUS-ENS. DE D'ELEMENT ELEMENT-TEILGRÜPPE SUBCONJUNTO DEL ELEMENTO	1	1703-57	LOUVER, AIR INLET DISPOSITIF D'AERATION LEITBLECH LUMBRERA	1
1703-20C	ELEMENT SUB-ASSY, CYCLONE AIR CLEANER, INNER SOUS-ENS. DE D'ELEMENT ELEMENT-TEILGRÜPPE SUBCONJUNTO DEL ELEMENTO	1	1703-59	VALVE SUB-ASSY SOUS-ENS. DE SOUPAPE VENTIL-TEILGRÜPPE SUBCONJUNTO DE VALVULA	1
1703-20D	ELEMENT SUB-ASSY, CYCLONE AIR CLEANER, OUTER SOUS-ENS. DE D'ELEMENT ELEMENT-TEILGRÜPPE SUBCONJUNTO DEL ELEMENTO	1	1703-CF	NIPPLE GRAISSEUR NIPPEL NIPLÉ	1
1703-24	CAP SUB-ASSY, AIR CLEANER SOUS-ENS. DE CAPUCHON KÄPPEN-TEILGRÜPPE SUBCONJUNTO DE LA TAPA	1	1703-CP	BOLT BOULON SCHRÄUBE PERNO	2
1703-30	SWITCH ASSY, VACUUM ENS. DE INTERRUPTEUR SCHÄLTER, VOLLST. CONJUNTO DEL INTERRUPTOR	1	1703-DN	BOLT BOULON SCHRÄUBE PERNO	2
1703-43	HOSE, AIR CLEANER, INLET FLEXIBLE SCHLÄUCH MANGUERA	1	1703-EP	SPONGE EPONGE SCHWÄMM ESPONJA	1
1703-43A	CLAMP (FOR AIR CLEANER INLET HOSE) PINSE KLEMME ABRAZADERA	1	1703-FH	NUT ECROU MÜTTER TUERCA	2
1703-44	HOSE, AIR CLEANER, OUTLET NO.1 FLEXIBLE SCHLÄUCH MANGUERA	1	1703-GG	SEAL JOINT ÄBDICHTUNG SELLO	1

1910		CONTROLLER CONTROLEUR		STEUERTEIL CONTROLADOR	
PART NAME CODE	PART NAME	QTY	PART NAME CODE	PART NAME	QTY
1910-13	CONTROLLER ASSY, ECS ----- ENS. DE CONTROLEUR STEUERTEIL, VOLLST. CONJUNTO DEL CONTROLADOR	1			
1910-17	CONTROLLER ASSY, SAS/OPS ----- ENS. DE CONTROLEUR STEUERTEIL, VOLLST. CONJUNTO DEL CONTROLADOR	1			
1910-BS	BOLT ----- BOULON SCHRAUBE PERNO	3			
1910-BT	BRACKET SUB-ASSY ----- SOUS-ENS. DE SUPPORT TRÄGER-TEILGRUPPE SUBCONJUNTO DE LA SOPORTE	1			
1910-BV	BOLT ----- BOULON SCHRAUBE PERNO	3			

1910		CONTROLLER CONTROLEUR		STEUERTEIL CONTROLADOR	
PART NAME CODE	PART NAME	QTY	PART NAME CODE	PART NAME	QTY

2311		LPG FUEL PIPE CONDUITE DE COMBUSTIBLE GPL	LPG-LEITUNG TUBO DE COMBUSTIBLE LPG		
PART NAME CODE	PART NAME	QTY	PART NAME CODE	PART NAME	QTY
2311-17	VALVE ASSY, RELIEF, LPG ENS. DE SOUPAPE VENTIL, VOLLST. CONJUNTO DE VALVULA	1	2311-66	CASE CARTER GEHAUSE CAJA	1
2311-18	COUPLING ASSY, LPG ENS. D'ACCOUPEMENT KUPPLUNGS, VOLLST. CONJUNTO DE ACOPLAMIENTO	1	2311-68	VALVE ASSY, RELIEF, CNG ENS. DE SOUPAPE VENTIL, VOLLST. CONJUNTO DE VALVULA	1
2311-22	SWITCH ASSY, LPG ENS. DE INTERRUPTEUR SCHALTER, VOLLST. CONJUNTO DEL INTERRUPTOR	1	2311-69	SENSOR ASSY, PRESSURE ENS. DE DETECTEUR SENSOR, VOLLST. CONJUNTO DEL SENSOR	1
2311-29	VALVE ASSY, SOLENOID ENS. DE SOUPAPE VENTIL, VOLLST. CONJUNTO DE VALVULA	1	2311-70	VALVE ASSY, RELIEF, CNG ENS. DE SOUPAPE VENTIL, VOLLST. CONJUNTO DE VALVULA	1
2311-43	HOSE, FUEL SLOW (REGULATOR TO CARBURETOR) FLEXIBLE SCHLAUCH MANGUERA	1	2311-71	FILTER ASSY, CNG ENS. DE FILTRE FILTER, VOLLST. CONJUNTO DEL FILTRO	1
2311-43A	CLAMP, HOSE PINSE KLEMME ABRAZADERA	2	2311-AD	CLAMP PINSE KLEMME ABRAZADERA	2
2311-45	HOSE, WATER, NO.1 FLEXIBLE SCHLAUCH MANGUERA	1	2311-AF	UNION RACCORD ROHRVERSCHRAUBUNG UNION	1
2311-46	HOSE, WATER, NO.2 FLEXIBLE SCHLAUCH MANGUERA	1	2311-AH	CLAMP PINSE KLEMME ABRAZADERA	1
2311-47	HOSE, VACUUM FLEXIBLE SCHLAUCH MANGUERA	1	2311-AK	ELBOW COUDE KRUMMER ACODADO	2
2311-48	HOSE, HIGH PRESSURE FLEXIBLE SCHLAUCH MANGUERA	1	2311-AL	CLAMP PINSE KLEMME ABRAZADERA	1

2311		LPG FUEL PIPE CONDUITE DE COMBUSTIBLE GPL	LPG-LEITUNG TUBO DE COMBUSTIBLE LPG		
PART NAME CODE	PART NAME	QTY	PART NAME CODE	PART NAME	QTY
2311-AN	UNION RACCORD ROHRVERSCHRAUBUNG UNION	1	2311-CD	CLAMP PINSE KLEMME ABRAZADERA	2-3
2311-AQ	CLAMP PINSE KLEMME ABRAZADERA	1	2311-CE	CONNECTOR CONNECTEUR STECKVERBINDER CONECTOR	2
2311-BA	UNION RACCORD ROHRVERSCHRAUBUNG UNION	1	2311-CG	CLAMP PINSE KLEMME ABRAZADERA	2
2311-BB	UNION RACCORD ROHRVERSCHRAUBUNG UNION	1	2311-CK	ELBOW COUDE KRUMMER ACODADO	1
2311-BC	CLAMP PINSE KLEMME ABRAZADERA	1-2	2311-CL	BOLT BOULON SCHRAUBE PERNO	2
2311-BJ	CLAMP PINSE KLEMME ABRAZADERA	1	2311-CM	BRACKET SUB-ASSY, REGULATOR SET SOUS-ENS. DE SUPPORT TRAGER-TEILGRUPPE SUBCONJUNTO DE LA SOPORTE	1
2311-BK	ELBOW COUDE KRUMMER ACODADO	1	2311-CW	GASKET JOINT DICHTUNG EMPAQUETADURA	2
2311-BL	NUT ECROU MUTTER TUERCA	2	2311-CY	FITTING RACCORD ANSCHLUSSTUCK ACOPLADOR	1
2311-BQ	UNION RACCORD ROHRVERSCHRAUBUNG UNION	1	2311-CZ	PLUG BOUCHON STOPFEN TAPON	1
2311-CC	BOLT BOULON SCHRAUBE PERNO	2	2311-DA	FITTING RACCORD ANSCHLUSSTUCK ACOPLADOR	1

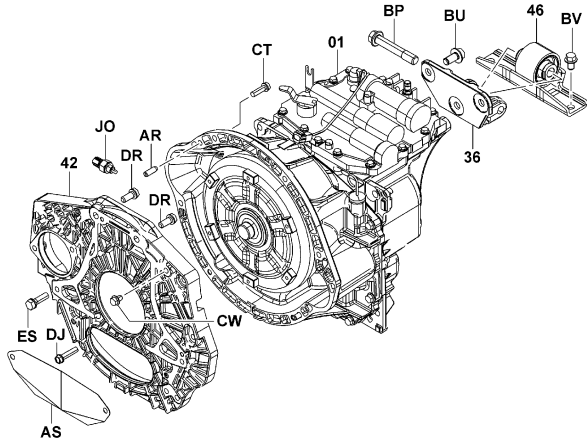
3201

TORQUECONVERTER HOUSING
CARTER DE CONVERTISSEUR DE COUPLE

DREHMOMENTWANDLER, GEHÄUSE
ENVOLTURA DEL CONVERTIDOR DE PAR

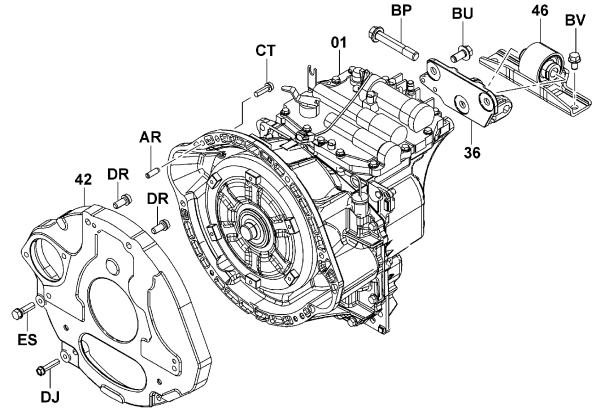
1DZ

1DZ (WET BRAKE)



3201-236

3201-236_



3201-237

3201-237_

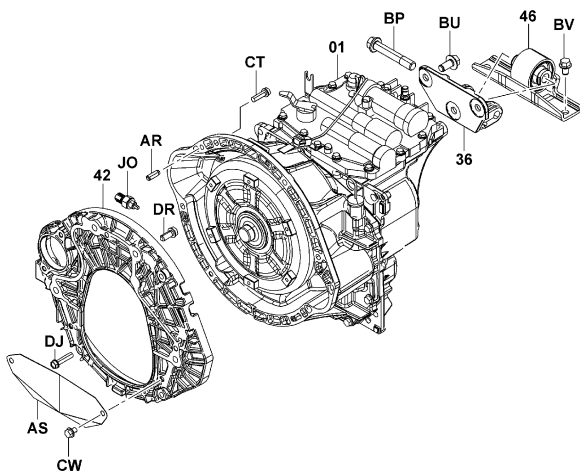
3201

TORQUECONVERTER HOUSING
CARTER DE CONVERTISSEUR DE COUPLE

DREHMOMENTWANDLER, GEHÄUSE
ENVOLTURA DEL CONVERTIDOR DE PAR

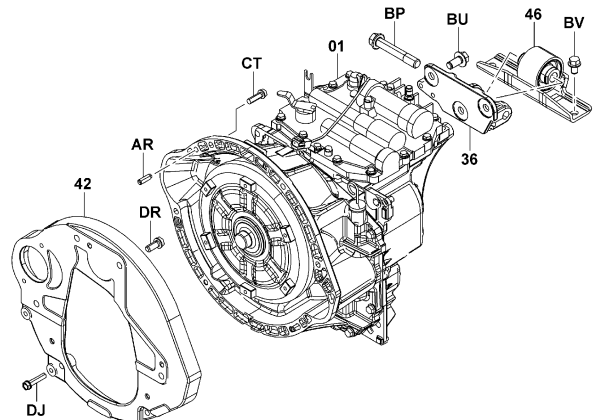
4Y

4Y (WET BRAKE)



3201-238

3201-238_



3201-239

3201-239_

3203		TORQUECONVERTER CLUTCH EMBAYAGE DE CONVERTISSEUR DE COUPLE		DREHMOMENTWANDLER, KUPPLUNG EMGRAGUE DEL CONVERTIDOR DE PAR	
PART NAME CODE	PART NAME	QTY	PART NAME CODE	PART NAME	QTY
3203-AO	RING, HOLE SNAP ----- ANNEAU RING ANILLO	2			
3203-AQ	SPACER ----- ENTRETOISE DISTANZSTUCK SEPARADOR	1			
3203-AT	SPACER ----- ENTRETOISE DISTANZSTUCK SEPARADOR	1			
3203-BS	SHIM ----- CALE AUSGLEICHSCHEIBE CALCE	1			
3203-CN	RING, SNAP ----- ANNEAU RING ANILLO	1			
3203-CP	WASHER ----- RODELLE UNTERLEGSCHIEBE ARANDELA	1			

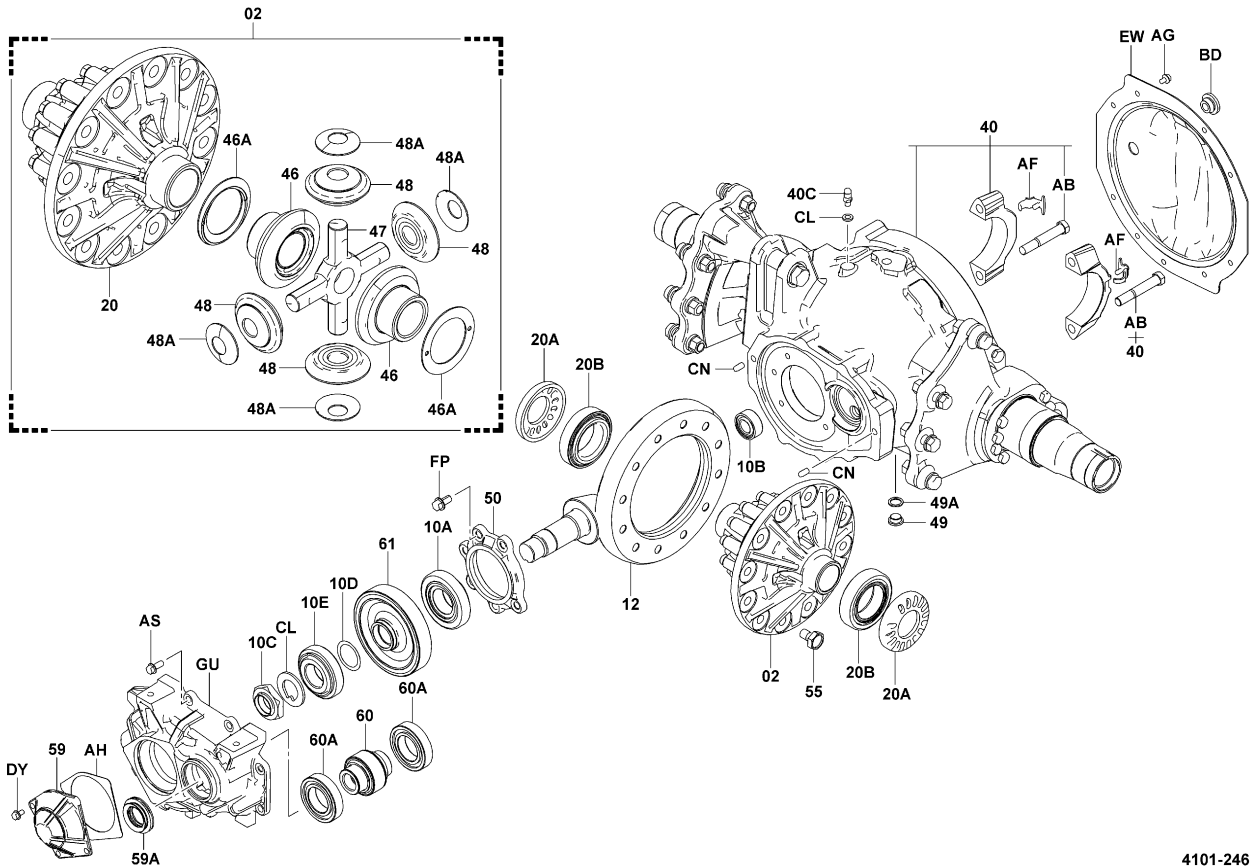
3203		TORQUECONVERTER CLUTCH EMBAYAGE DE CONVERTISSEUR DE COUPLE		DREHMOMENTWANDLER, KUPPLUNG EMGRAGUE DEL CONVERTIDOR DE PAR	
PART NAME CODE	PART NAME	QTY	PART NAME CODE	PART NAME	QTY

4101

DIFFERENTIAL
DIFFERENTIEL

DIFFERENTIAL
DIFERENCIAL

30,32



4101-246

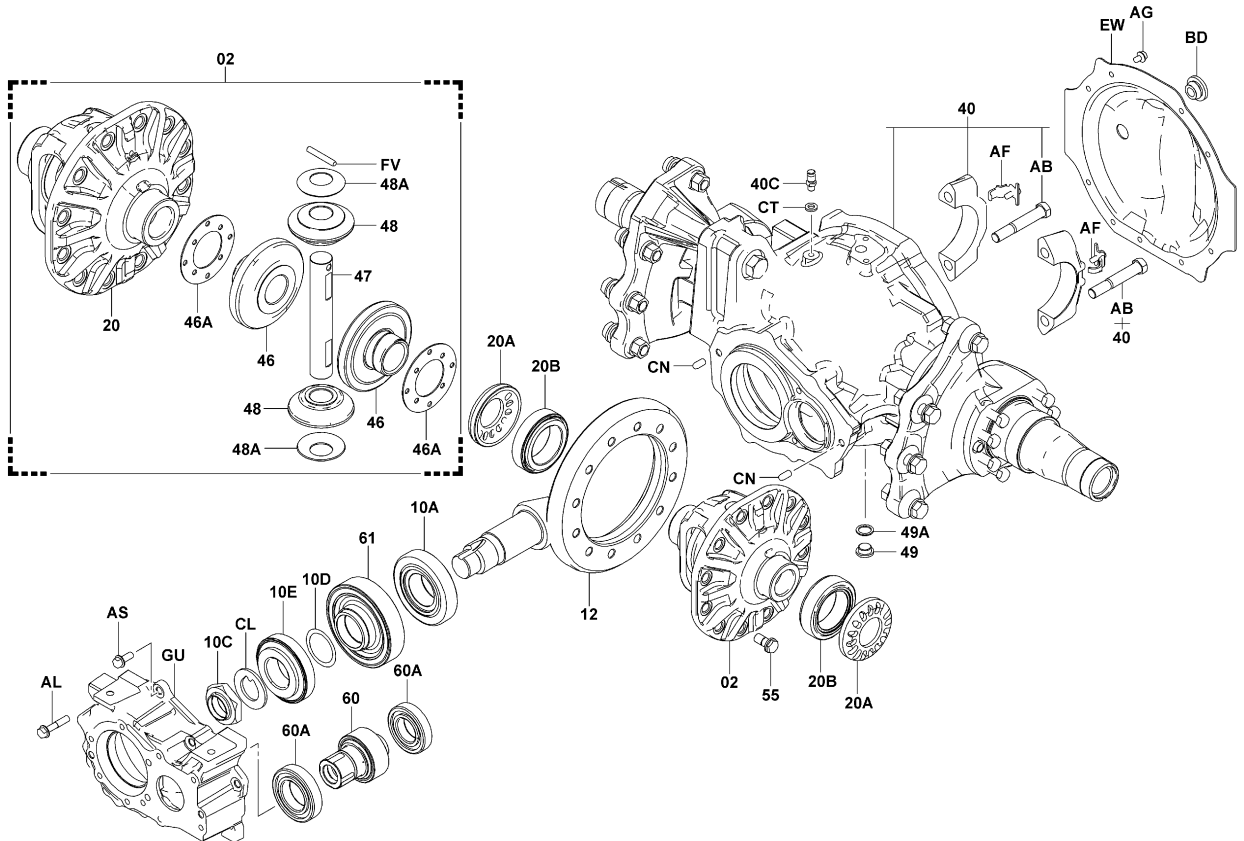
4101-246_

4101

DIFFERENTIAL
DIFFERENTIEL

DIFFERENTIAL
DIFERENCIAL

20,25,C20,C25,C30,C32 (WET BRAKE)



4101-247

4101-247_

4502		STEERING POST		LENKSÄULE	
		MONTANT DE DIRECTION		PUNTAL DE LA DIRECCION	
PART NAME CODE	PART NAME	QTY	PART NAME CODE	PART NAME	QTY
4502-HM	BRACKET ----- SUPPORT TRAGER SOPORTE	1			
4502-JR	BRACKET SUB-ASSY ----- SOUS-ENS. DE SUPPORT TRAGER-TEILGRUPPE SUBCONJUNTO DE LA SOPORTE	1			
4502-JU	SPONGE ----- EPONGE SCHWAMM ESPONJA	1			
4502-KZ	LEVER ----- LEVIER HEBEL PALANCA	1			

4502		STEERING POST		LENKSÄULE	
		MONTANT DE DIRECTION		PUNTAL DE LA DIRECCION	
PART NAME CODE	PART NAME	QTY	PART NAME CODE	PART NAME	QTY

4701		BRAKE PEDAL PEDALE DE FREIN		BREMSPEDAL PEDAL DEL FRENO	
PART NAME CODE	PART NAME	QTY	PART NAME CODE	PART NAME	QTY
4701-12	WIRE ASSY, INCHING ENS. DE FIL DRAHT, VOLLST. CONJUNTO DE ALAMBRE	1	4701-43	SPRING, TORSION (FOR PEDAL RETURN) RESSORT FEDER RESORTE	1
4701-20	PEDAL SUB-ASSY, BRAKE SOUS-ENS. DE PEDALE PEDAL-TEILGRUPPE SUBCONJUNTO DEL PEDAL	1	4701-52	PAD, INCHING PEDAL TAMPON KLOTZ ALMOHADILLA	1
4701-20A	BUSHING (FOR BRAKE PEDAL) BAGE BUCHSE MANGUITO	2-4	4701-57	SPRING, TORSION (FOR PEDAL RETURN) RESSORT FEDER RESORTE	1
4701-21	LINK SUB-ASSY, BRAKE, NO.1 SOUS-ENS. DE TRINGLE GELENKTEIL-TEILGRUPPE SUBCONJUNTO DE LA ARTICULACION	1	4701-AA	SPACER ENTRETOISE DISTANZSTUCK SEPARADOR	1
4701-21A	BUSHING (FOR BRAKE LINK) BAGE BUCHSE MANGUITO	2	4701-AD	PIN, W/HOLE GOUPILLE STIFT PASADOR	1
4701-34	PEDAL SUB-ASSY, INCHING BRAKE SOUS-ENS. DE PEDALE PEDAL-TEILGRUPPE SUBCONJUNTO DEL PEDAL	1	4701-AE	SPACER ENTRETOISE DISTANZSTUCK SEPARADOR	1
4701-34A	BUSHING (FOR INCHING BRAKE PEDAL) BAGE BUCHSE MANGUITO	2	4701-AF	NUT ECROU MUTTER TUERCA	2
4701-39	LINK SUB-ASSY SOUS-ENS. DE TRINGLE GELENKTEIL-TEILGRUPPE SUBCONJUNTO DE LA ARTICULACION	1	4701-AJ	PIN, W/HOLE GOUPILLE STIFT PASADOR	1
4701-39A	BUSHING BAGE BUCHSE MANGUITO	2	4701-AK	PIN, W/HOLE GOUPILLE STIFT PASADOR	1
4701-40	PAD, PEDAL TAMPON KLOTZ ALMOHADILLA	1	4701-AQ	BOLT BOULON SCHRAUBE PERNO	1

4701		BRAKE PEDAL PEDALE DE FREIN		BREMSPEDAL PEDAL DEL FRENO	
PART NAME CODE	PART NAME	QTY	PART NAME CODE	PART NAME	QTY
4701-AV	BOLT BOULON SCHRAUBE PERNO	1	4701-CV	BOLT BOULON SCHRAUBE PERNO	1
4701-AW	WASHER, PLATE RODELLE UNTERLEGSSCHEIBE ARANDELA	1	4701-EL	BOLT BOULON SCHRAUBE PERNO	1
4701-AZ	BUSHING BAGUE BUCHSE BUJE	1-3	4701-EQ	PIN, COTTER GOUPILLE STIFT PASADOR	1
4701-BD	BUSHING BAGUE BUCHSE BUJE	1	4701-ER	CLAMP PINSE KLEMME ABRAZADERA	1
4701-BQ	BOLT BOULON SCHRAUBE PERNO	2	4701-ES	CLAMP PINSE KLEMME ABRAZADERA	1
4701-BV	NUT ECROU MUTTER TUERCA	1	4701-ET	SPACER ENTRETOISE DISTANZSTUCK SEPARADOR	1
4701-BW	CUSHION COUSSIN POLSTER ALMOHADILLA	1	4701-FX	LINK TRINGLE GELENKTEIL ARTICULACION	1
4701-CF	BOLT BOULON SCHRAUBE PERNO	1	4701-GG	CLIP AGRAFE CLIP FIJADOR	1
4701-CR	PIN, COTTER GOUPILLE STIFT PASADOR	1	4701-GV	WASHER, PLATE RODELLE UNTERLEGSSCHEIBE ARANDELA	1
4701-CS	WASHER RODELLE UNTERLEGSSCHEIBE ARANDELA	1	4701-GW	WASHER, PLATE RODELLE UNTERLEGSSCHEIBE ARANDELA	1

CLICK HERE TO **DOWNLOAD** THE COMPLETE MANUAL

- Thank you very much for reading the preview of the manual.
- You can download the complete manual from: www.heydownloads.com by clicking the link below



- Please note: If there is no response to CLICKING the link, please download this PDF first and then click on it.

CLICK HERE TO **DOWNLOAD** THE COMPLETE MANUAL

4714		BRAKE PIPE TUYAUTERIE DE FREIN		BREMSROHRLEITUNG TUBO DEL FRENO	
PART NAME CODE	PART NAME	QTY	PART NAME CODE	PART NAME	QTY
4714-QL	FITTING RACCORD ANSCHLUSSTUCK ACOPLADOR	1	4714-RN	BOLT BOULON SCHRAUBE PERNO	2
4714-QM	FITTING RACCORD ANSCHLUSSTUCK ACOPLADOR	1	4714-RP	BOLT BOULON SCHRAUBE PERNO	3
4714-QN	FITTING RACCORD ANSCHLUSSTUCK ACOPLADOR	1	4714-RS	HOSE FLEXIBLE SCHLAUCH MANGUERA	1
4714-QP	FITTING RACCORD ANSCHLUSSTUCK ACOPLADOR	1	4714-RW	BOLT BOULON SCHRAUBE PERNO	4
4714-QV	BOLT BOULON SCHRAUBE PERNO	2	4714-RY	VALVE ASSY ENS. DE SOUPAPE VENTIL, VOLLST. CONJUNTO DE VALVULA	1
4714-RA	BOLT BOULON SCHRAUBE PERNO	1	4714-SC	HOSE FLEXIBLE SCHLAUCH MANGUERA	1
4714-RB	BOLT BOULON SCHRAUBE PERNO	1	4714-SX	HOSE FLEXIBLE SCHLAUCH MANGUERA	1
4714-RC	HOSE, HIGH PRESSURE FLEXIBLE SCHLAUCH MANGUERA	1	4714-SZ	BOLT BOULON SCHRAUBE PERNO	4
4714-RJ	FITTING RACCORD ANSCHLUSSTUCK ACOPLADOR	1	4714-TH	HOSE FLEXIBLE SCHLAUCH MANGUERA	1
4714-RL	BOLT BOULON SCHRAUBE PERNO	4	4714-TI	HOSE FLEXIBLE SCHLAUCH MANGUERA	1

4714		BRAKE PIPE TUYAUTERIE DE FREIN		BREMSROHRLEITUNG TUBO DEL FRENO	
PART NAME CODE	PART NAME	QTY	PART NAME CODE	PART NAME	QTY
4714-TJ	BOLT BOULON SCHRAUBE PERNO	1	4714-UG	RING, O ANNEAU RING ANILLO	1
4714-TK	HOSE FLEXIBLE SCHLAUCH MANGUERA	1	4714-UH	RING, O ANNEAU RING ANILLO	6
4714-TR	HOSE FLEXIBLE SCHLAUCH MANGUERA	1	4714-UI	RING, O ANNEAU RING ANILLO	1
4714-TY	FILTER FILTRE FILTER FILTRO	1	4714-UM	FITTING RACCORD ANSCHLUSSTÜCK ACOPLADOR	1
4714-UA	PIPE SUB-ASSY SOUS-ENS. DE TUYAU ROHR-TEILGRUPPE SUBCONJUNTO DE TUBO	1	4714-UN	HOSE, LOW PRESSURE FLEXIBLE SCHLAUCH MANGUERA	1
4714-UB	PIPE SUB-ASSY SOUS-ENS. DE TUYAU ROHR-TEILGRUPPE SUBCONJUNTO DE TUBO	1-2	4714-UQ	CLAMP PINSE KLEMME ABRAZADERA	2
4714-UC	TANK, OIL RESERVOIR TANK DEPOSITO	1	4714-UR	BOLT BOULON SCHRAUBE PERNO	1
4714-UD	PACKING CALE DICHTUNG EMPAQUETADURA	1	4714-US	PIPE SUB-ASSY SOUS-ENS. DE TUYAU ROHR-TEILGRUPPE SUBCONJUNTO DE TUBO	1
4714-UE	HOSE, BRAKE FLEXIBLE SCHLAUCH MANGUERA	1			
4714-UF	FITTING RACCORD ANSCHLUSSTÜCK ACOPLADOR	1			

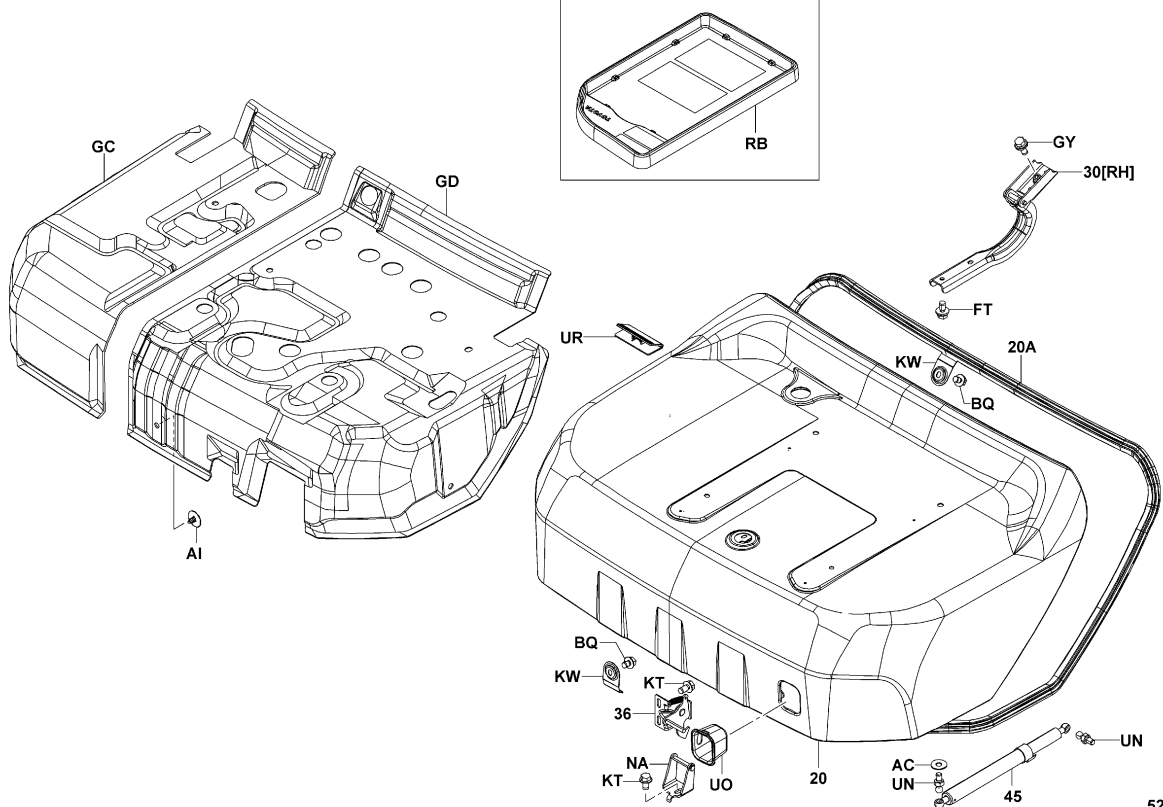
5201

HOOD & HINGE
CAPOT & CHARNIERE

HAUBE & SCHARNIER
CAPO Y BISAGRA

[HOOD]

(MINI LEVER, JOY STICK, DOCUMENT BOX)



5201-301

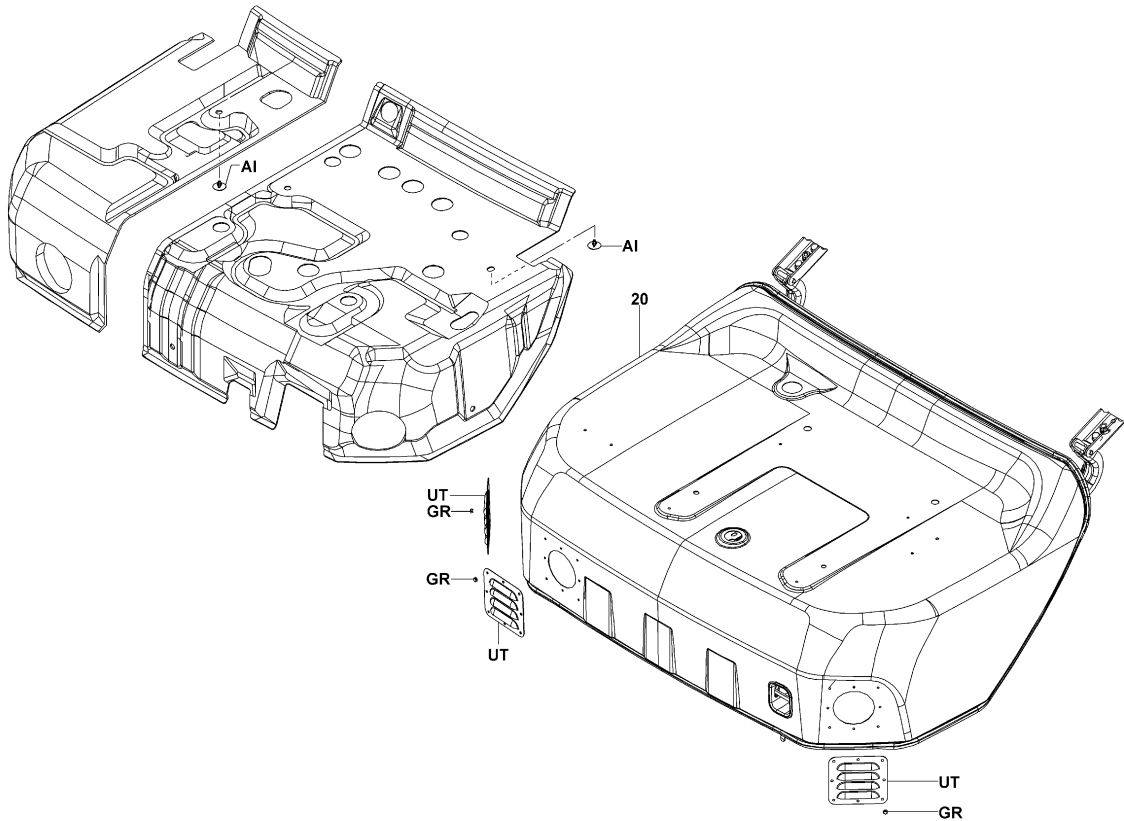
5201-301_

5201

HOOD & HINGE
CAPOT & CHARNIERE

HAUBE & SCHARNIER
CAPO Y BISAGRA

(VENTILATION PAC, HOOD VENTILATOR) [HOOD]



5201-302

5201-302_

5401		HEAD GUARD & ACCESSORY GARDE AVANT & ACCESSOIRE		FAHRER SCHUTZDACH & ZUBEHÖR PROTECTOR Y ACCESORIOS DE PARTE SUPERIOR	
PART NAME CODE	PART NAME	QTY	PART NAME CODE	PART NAME	QTY
5401-FH	COVER COUVERCLE DECKEL CUBIERTA	1	5401-MP	HOOK CROCHET HAKEN GANCHO	1
5401-FO	NUT ECROU MUTTER TUERCA	2	5401-MQ	WINCH SUB-ASSY SOUS-ENS. DE TREUIL WINDEN-TEILGRUPPE SUBCONJUNTO DE GRUA	1
5401-HL	PLUG, HOLE BOUCHON STOPFEN TAPON	2	5401-PL	BOLT BOULON SCHRAUBE PERNO	4
5401-HM	PLUG, HOLE BOUCHON STOPFEN TAPON	1	5401-QF	PLUG SUB-ASSY SOUS-ENS. D'BOUCHON STOPFEN-TEILGRUPPE SUBCONJUNTO DEL TAPON	2
5401-HX	BRACKET SUPPORT TRAGER SOPORTE	1	5401-QZ	BOLT BOULON SCHRAUBE PERNO	4
5401-JT	CLAMP PINSE KLEMME ABRAZADERA	1	5401-RA	NUT ECROU MUTTER TUERCA	1
5401-KH	BOLT BOULON SCHRAUBE PERNO	2	5401-RB	HOLDER ASSY, PENCIL ENS. DE SUPPORT DUSENSTOOCR, VOLLST. CONJUNTO DE PORTABOQUILLAS	1
5401-KM	WASHER, PLATE RODELLE UNTERLEGSSCHEIBE ARANDELA	2	5401-RE	WASHER, PLATE RODELLE UNTERLEGSSCHEIBE ARANDELA	2
5401-KU	BOLT BOULON SCHRAUBE PERNO	4	5401-RT	NUT ECROU MUTTER TUERCA	2
5401-MN	CAP CAPUCHON KAPPE TAPA	2	5401-SP	NUT ECROU MUTTER TUERCA	2

5401		HEAD GUARD & ACCESSORY GARDE AVANT & ACCESSOIRE		FAHRER SCHUTZDACH & ZUBEHÖR PROTECTOR Y ACCESORIOS DE PARTE SUPERIOR	
PART NAME CODE	PART NAME	QTY	PART NAME CODE	PART NAME	QTY
5401-TA	BOLT BOULON SCHRAUBE PERNO	2			
5401-VQ	GRIP ASSY, RR ASSIST W/HORN SW COUVERCLE DECKEL CUBIERTA	1			
5401-VV	WASHER, PLATE RODELLE UNTERLEGSSCHEIBE ARANDELA	4			

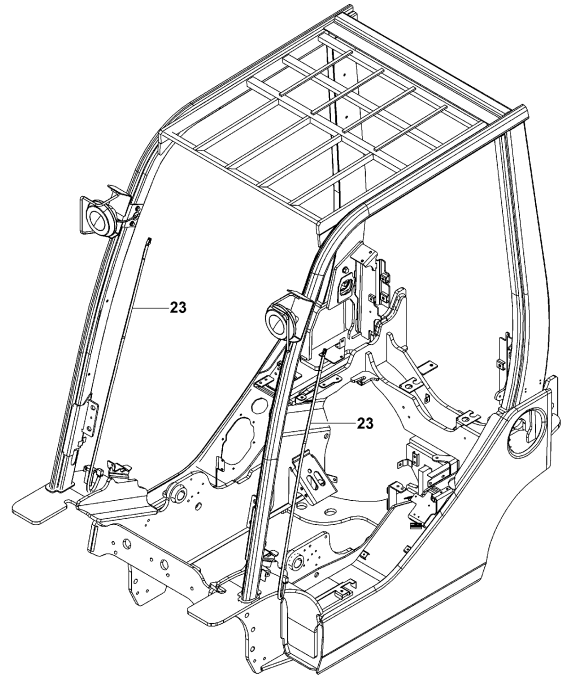
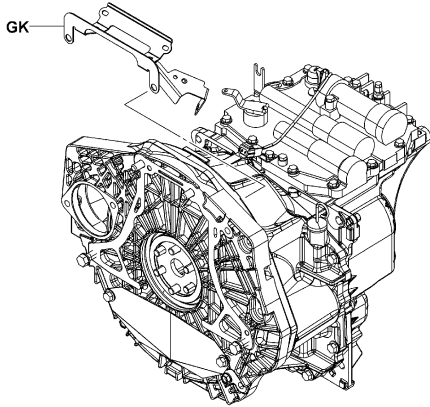
5601

WIRING & CLAMP
CABLAGE & COLLIER

KABEL & KABELKLEMMEN
CABLES Y ABRAZADERA

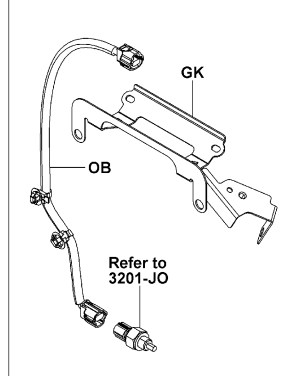
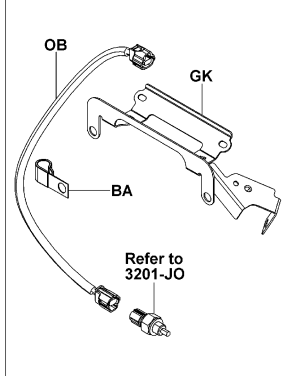
[TORCON HEAT GAGE WIRE]

[FRONT LAMP HARNESS]



(MULTI DISPLAY)

(WET BRAKE)



5601-394

5601-455

5601-394_

5601-455_

5601

WIRING & CLAMP
CABLAGE & COLLIER

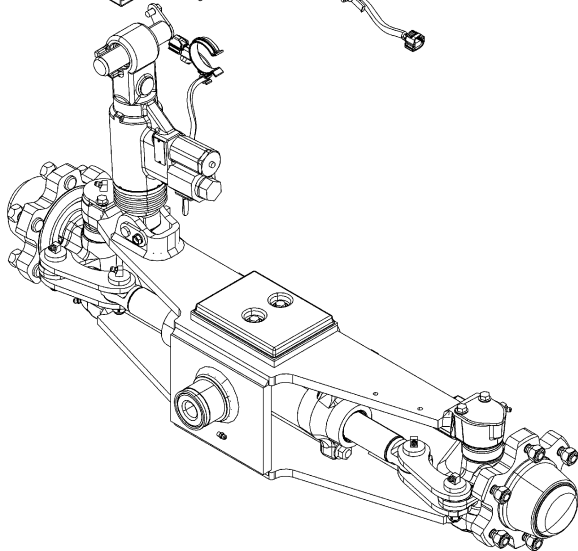
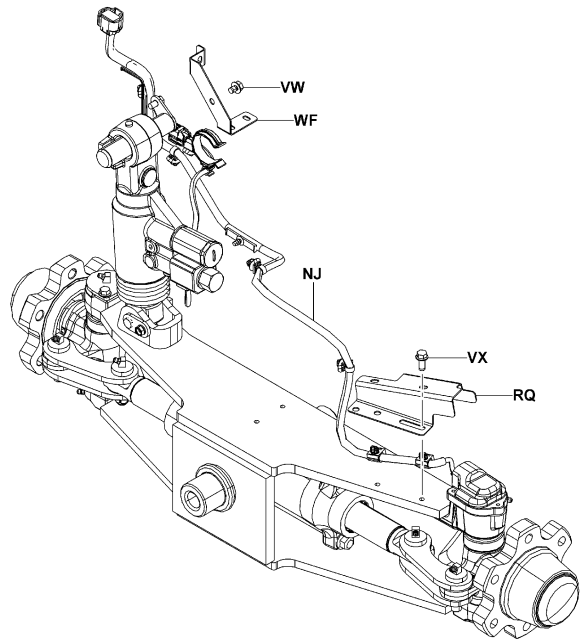
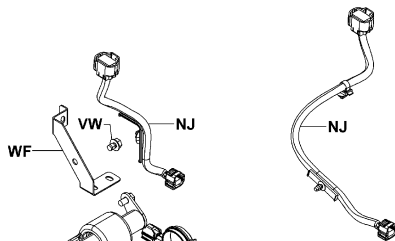
KABEL & KABELKLEMMEN
CABLES Y ABRAZADERA

[REAR AXLE WIRE]

[JOY STICK, MINI LEVER] [REAR AXLE WIRE]

[15,18,C20,C25,C30,C32]

[20,25,30,32]



5601-458

5601-410

5601-458_

5601-410_

5611		LAMP LAMPE	LAMPE LAMPARA		
PART NAME CODE	PART NAME	QTY	PART NAME CODE	PART NAME	QTY
5611-AL	SCREW ----- VIS SCHRAUBE TORNILLO	5			
5611-AM	SCREW ----- VIS SCHRAUBE TORNILLO	2			
5611-CJ	LAMP ASSY, PILOT ----- ENS. DE LAMPE LAMPEN, VOLLST. CONJUNTO DE LA LAMPARA	1			
5611-FP	RESISTOR ----- RESISTANCE WIDERSTAND RESIDTOR	1			
5611-TW	LAMP, STROBE ----- LAMPE LAMPE LAMPARA	1			
5611-TY	RING, O ----- ANNEAU RING ANILLO	1			

5611		LAMP LAMPE	LAMPE LAMPARA		
PART NAME CODE	PART NAME	QTY	PART NAME CODE	PART NAME	QTY

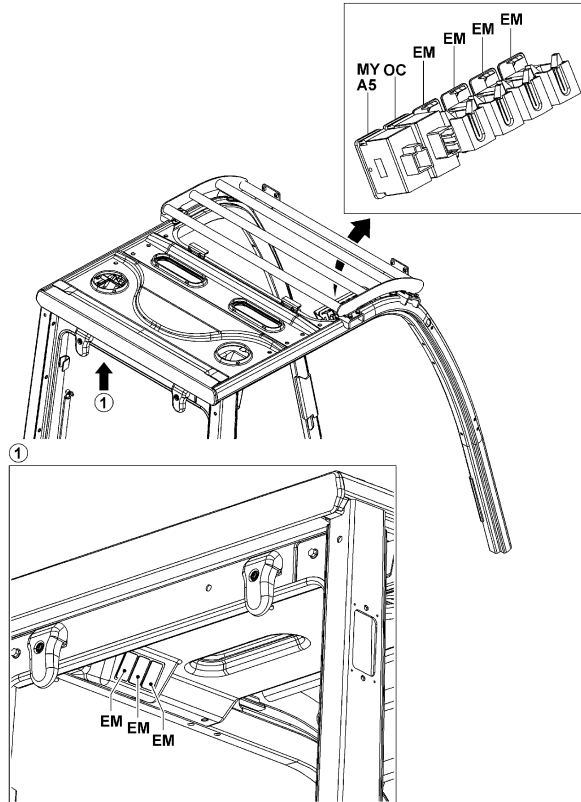
5701

METER & SWITCH
INDICATEUR & COMMUTATEUR

INSTRUMENTE & SCHALTER
MEDIDOR E INTERRUPTOR

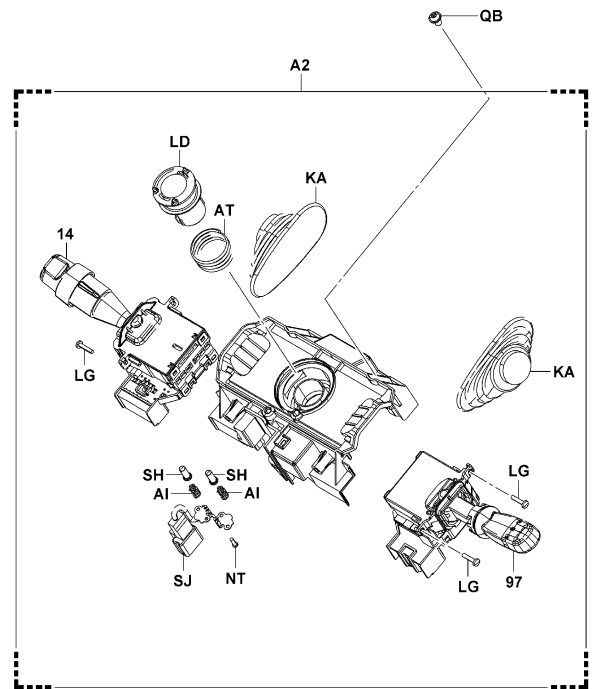
(STEEL CABIN, CABIN W/O DOOR)

[COMBINATION SW]



5701-547

5701-547_



5701-511A

5701-511A

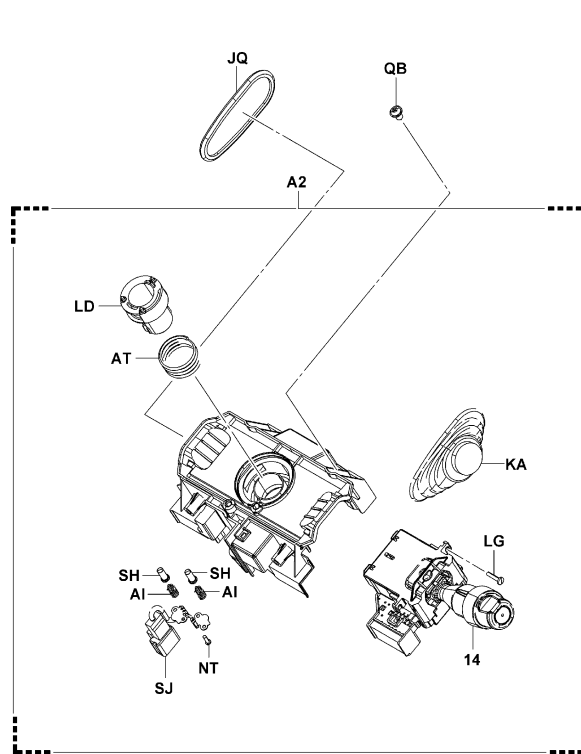
5701

METER & SWITCH
INDICATEUR & COMMUTATEUR

INSTRUMENTE & SCHALTER
MEDIDOR E INTERRUPTOR

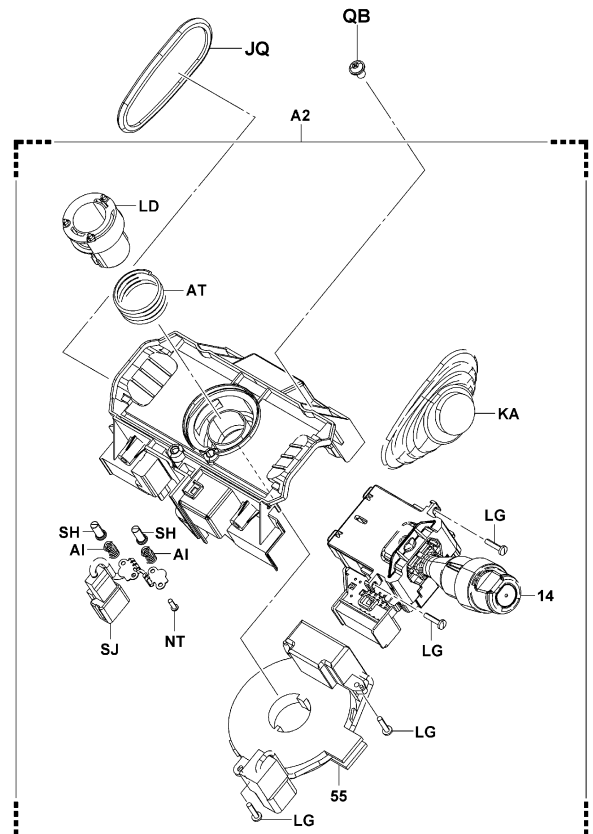
(EZ PEDAL) [COMBINATION SW]

(MINI LEVER, JOY STICK) [COMBINATION SW]



5701-512A

5701-512A



5701-508A

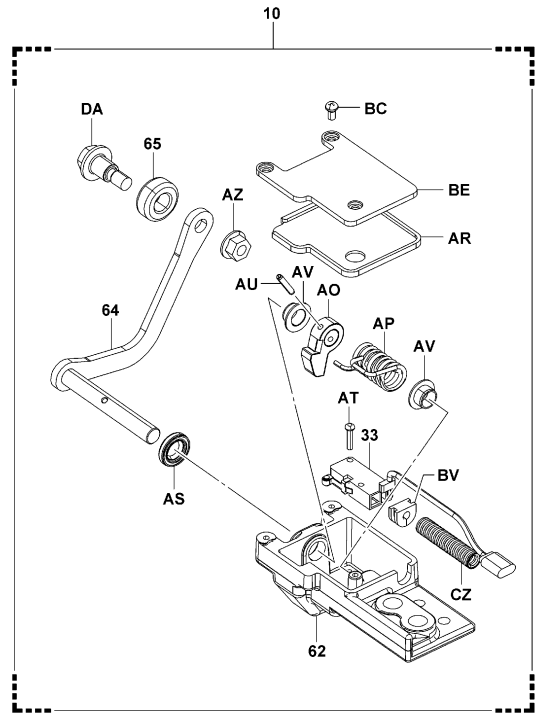
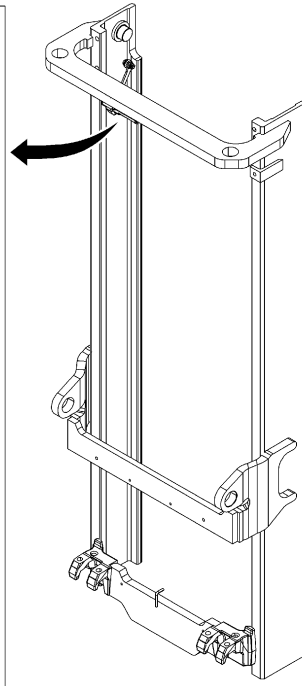
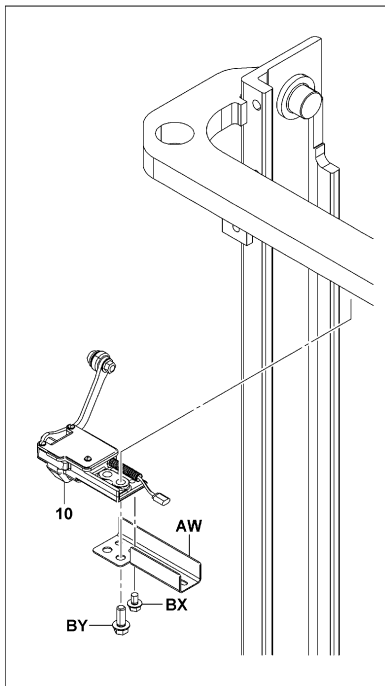
5701-508A

5803

SENSOR
DETECTEUR

SENSOR
SENSOR

FV [HEIGHT]



5803-174

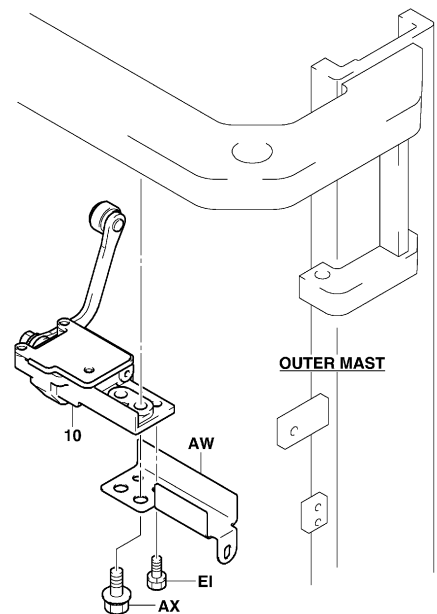
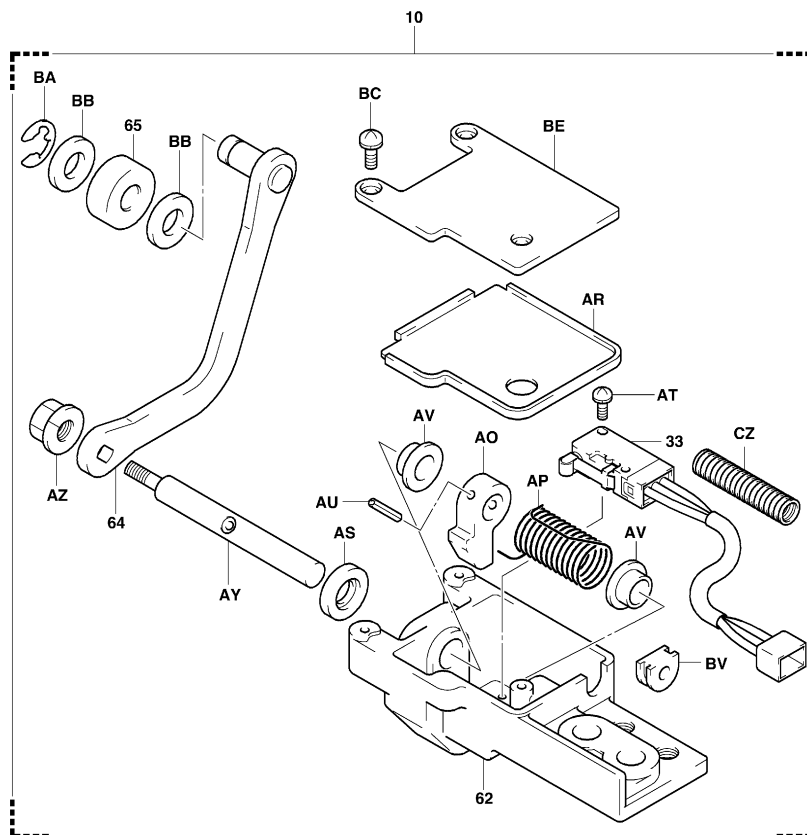
5803-174

5803

SENSOR
DETECTEUR

SENSOR
SENSOR

QFV [HEIGHT]



5803-060B

5803-060B

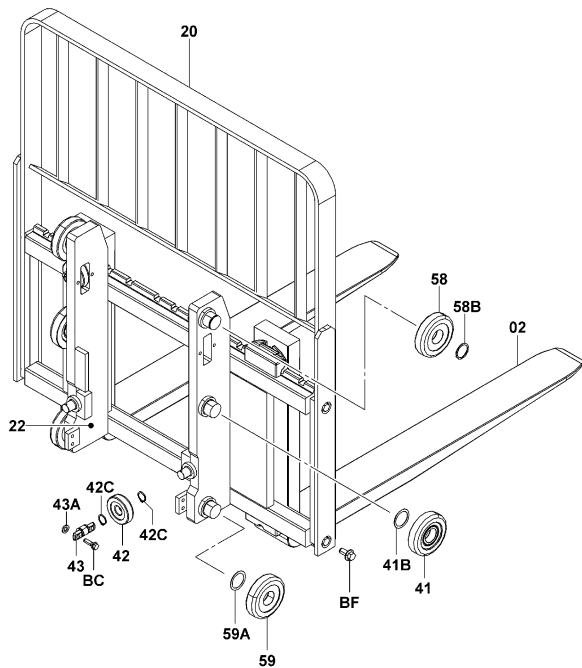
6301

LIFT BRACKET & FORK
FOURCHE & SUPPORT DE LEVEE

GABELTRÄGER & GABEL
HORQUILLA Y MENSULA DE ELEVACION

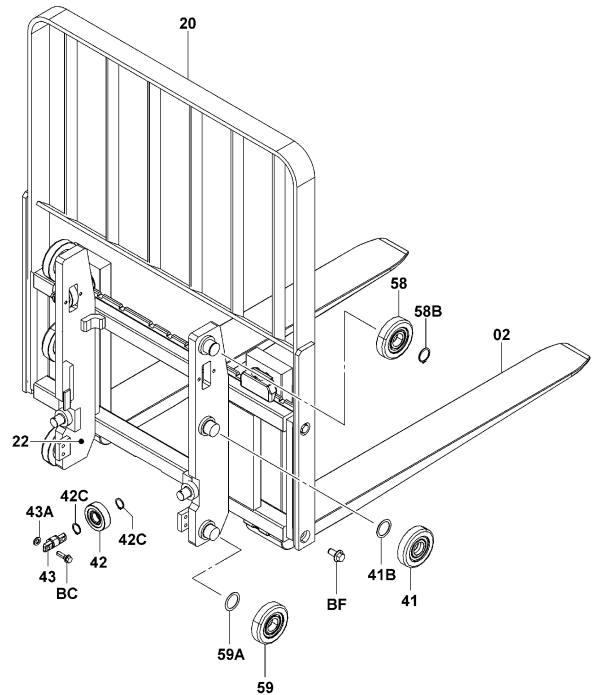
V..30,32

V..C20,C25,C30,C32



6301-690

6301-690_



6301-691

6301-691_

6301

LIFT BRACKET & FORK
FOURCHE & SUPPORT DE LEVEE

GABELTRÄGER & GABEL
HORQUILLA Y MENSULA DE ELEVACION

PART NAME CODE	PART NAME	QTY	PART NAME CODE	PART NAME	QTY
6301-02	FORK ASSY ENS. DE FOURCHE GABEL, VOLLST. CONJUNTO DE LA HORQUILLA	2	6301-43	SHAFT, SIDE ROLLER ARBRE WELLE EJE	2
6301-20	BACKREST SUB-ASSY SOUS-ENS. DE DOSSIER RÜCKENLEHNE-TEILGRUPPE SUBCONJUNTO DEL RESPALDO DEL ASIENTO	1	6301-43A	SHIM (FOR SIDE ROLLER SHAFT) CALE AUSGLEICHSCHEIBE CALCE	99
6301-22	BRACKET SUB-ASSY, LIFT SOUS-ENS. DE SUPPORT TRÄGER-TEILGRUPPE SUBCONJUNTO DE LA SOPORTE	1	6301-58	ROLLER, LIFT (UPPER) GALET ROLLE RODILLO	2
6301-40A	RING, SHAFT SNAP (UPPER, LOWER) ANNEAU RING ANILLO	2	6301-58B	RING, SHAFT SNAP (UPPER) ANNEAU RING ANILLO	2
6301-40B	SHIM, LIFT ROLLER CALE AUSGLEICHSCHEIBE CALCE	99	6301-59	ROLLER, LIFT (LOWER) GALET ROLLE RODILLO	2
6301-41	ROLLER, LIFT (CENTER) GALET ROLLE RODILLO	2	6301-59A	SHIM, LIFT ROLLER CALE AUSGLEICHSCHEIBE CALCE	99
6301-41A	RING, SHAFT SNAP (CENTER) ANNEAU RING ANILLO	2	6301-AE	BOLT BOULON SCHRAUBE PERNO	4
6301-41B	SHIM (CENTER) CALE AUSGLEICHSCHEIBE CALCE	99	6301-BB	WASHER RODELLE UNTERLEGSCHIEBE ARANDELA	2
6301-42	ROLLER, SIDE GALET ROLLE RODILLO	2	6301-BC	BOLT BOULON SCHRAUBE PERNO	4
6301-42C	RING, SHAFT SNAP (FOR SIDE ROLLER) ANNEAU RING ANILLO	4	6301-BF	BOLT BOULON SCHRAUBE PERNO	2-4

6503		REAR LIFT CYLINDER CYLINDRE DE LEVEE ARRIERE		HINTERER HUBZYLINDER CILINDRO DE ELEVACION TRASERO	
PART NAME CODE	PART NAME	QTY	PART NAME CODE	PART NAME	QTY
6503-01	CYLINDER ASSY, LIFT, RH ENS. DE CYLINDRE ZYLINDER, VOLLST. CONJUNTO DEL CILINDRO	1	6503-AA	RING, WEAR ANNEAU RING ANILLO	1-2
6503-02	CYLINDER ASSY, LIFT, LH ENS. DE CYLINDRE ZYLINDER, VOLLST. CONJUNTO DEL CILINDRO	1	6503-AB	PACKING, U CALE DICHTUNG EMPAQUETADURA	1-2
6503-11	VALVE ASSY, SAFETY DOWN ENS. DE SOUPAPE VENTIL, VOLLST. CONJUNTO DE VALVULA	1	6503-AC	RING, BACK UP ANNEAU RING ANILLO	2
6503-20	CYLINDER SUB-ASSY, LIFT, RH SOUS-ENS. DE CYLINDRE ZYLINDER-TEILGRUPPE SUBCONJUNTO DEL CILINDRO	1	6503-AD	RING, O ANNEAU RING ANILLO	2
6503-21	CYLINDER SUB-ASSY, LIFT, LH SOUS-ENS. DE CYLINDRE ZYLINDER-TEILGRUPPE SUBCONJUNTO DEL CILINDRO	1	6503-AE	PACKING, U CALE DICHTUNG EMPAQUETADURA	2
6503-22	ROD SUB-ASSY, LIFT CYLINDER, RH SOUS-ENS. DE BIELLE STANGEN-TEILGRUPPE SUBCONJUNTO DE LA VARILLA	1-2	6503-AF	RING, O ANNEAU RING ANILLO	2
6503-23	ROD SUB-ASSY, LIFT CYLINDER, LH SOUS-ENS. DE BIELLE STANGEN-TEILGRUPPE SUBCONJUNTO DE LA VARILLA	1-2	6503-AG	SEAL, DUST JOINT ABDICHTUNG SELLO	2
6503-30	GUIDE SUB-ASSY, LIFT CYLINDER ROD, RH SOUS-ENS. DE GUIDE FUHRUNGS-TEILGRUPPE SUBCONJUNTO DE GUIA	1	6503-AH	RING, O ANNEAU RING ANILLO	1
6503-33	COVER SUB-ASSY, LIFT CYLINDER SOUS-ENS. DE COUVERCLE DECKEL-TEILGRUPPE SUBCONJUNTO DE CUBIERTA	2	6503-AI	SHIM CALE AUSGLEICHSCHIEBE CALCE	99
6503-41	COVER, LIFT CYLINDER COUVERCLE DECKEL CUBIERTA	2	6503-AK	BRACKET SUB-ASSY, LIFT CYLINDER SOUS-ENS. DE SUPPORT TRAGER-TEILGRUPPE SUBCONJUNTO DE LA SOPORTE	2

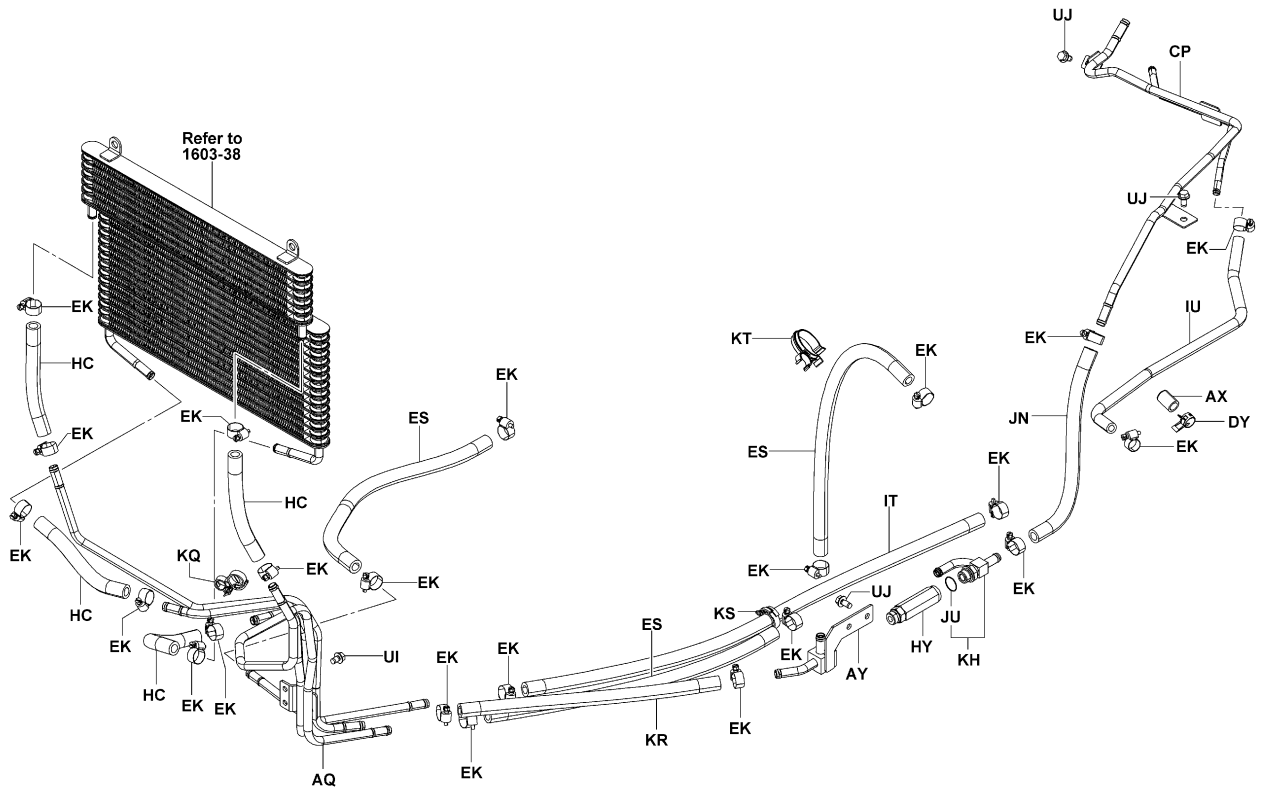
6503		REAR LIFT CYLINDER CYLINDRE DE LEVEE ARRIERE		HINTERER HUBZYLINDER CILINDRO DE ELEVACION TRASERO	
PART NAME CODE	PART NAME	QTY	PART NAME CODE	PART NAME	QTY
6503-AM	SPACER ENTRETOISE Distanzstuck SEPARADOR	2	6503-CA	NUT ECROU MUTTER TUERCA	2
6503-AN	SHIM CALE AUSGLEICHSCHIEBE CALCE	99	6503-CJ	BOLT BOULON SCHRAUBE PERNO	2-4
6503-AW	BOLT BOULON SCHRAUBE PERNO	2	6503-CP	PLATE PLAQUE PLATTE PLACA	2
6503-AY	RUBBER CAOUTCHOUC GUMMI GOMA	2	6503-DT	WASHER, PLATE RODELLE UNTERLEGSCHIEBE ARANDELA	4
6503-BE	BOLT, STOPPER BOULON SCHRAUBE PERNO	2			
6503-BK	COLLAR COLLIER BUCHSE COLLAR	2			
6503-BP	PLATE PLAQUE PLATTE PLACA	2			
6503-BQ	RUBBER CAOUTCHOUC GUMMI GOMA	4			
6503-BY	INSULATOR ISOLATEUR ISOLATOR AISLADOR	4			
6503-BZ	PIPE TUYAU ROHR TUBO	2			

6801

BODY PIPING
TUYAUTERIE DE CARROSSERIE

KAROSSERIE, LEITUNGEN
TUBOS DE CARROCERIA

LES..20,25,30,32 (WET BRAKE..COOLING PACKAGE) []



6801-660

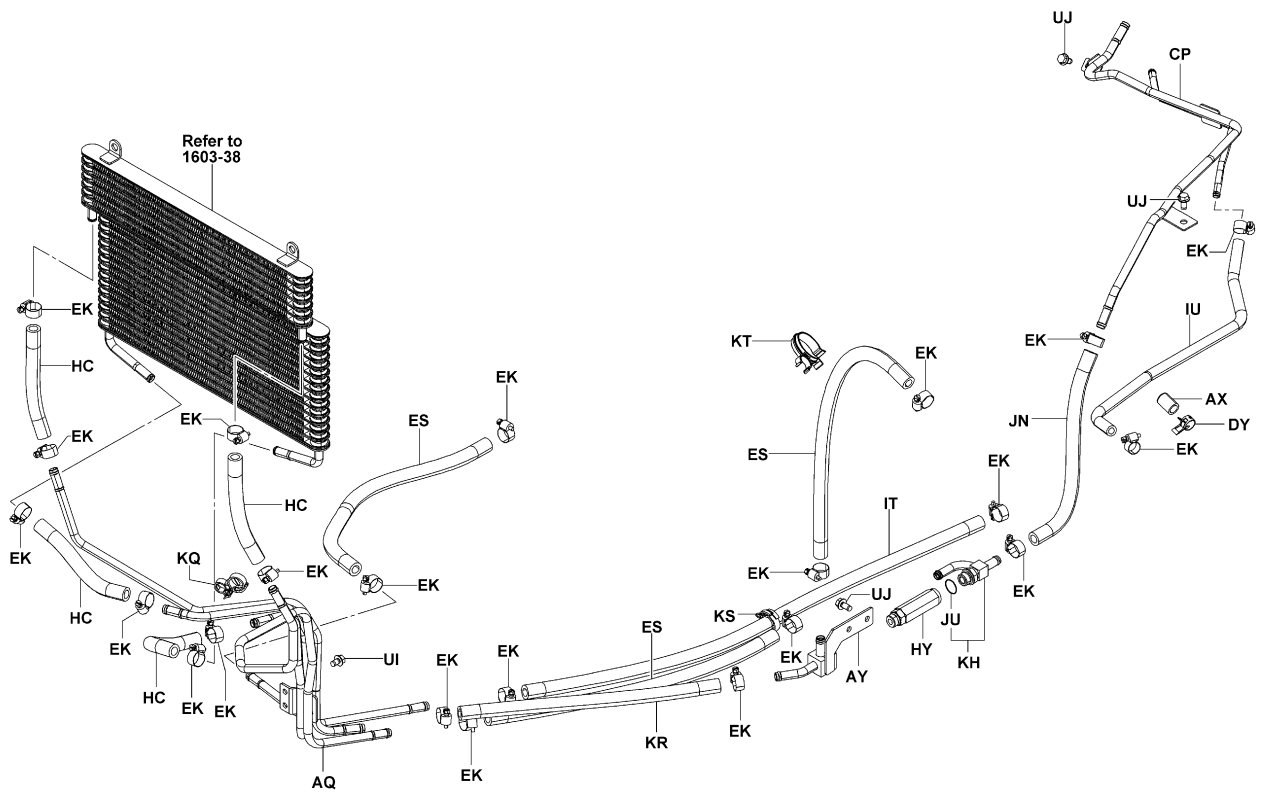
6801-660_

6801

BODY PIPING
TUYAUTERIE DE CARROSSERIE

KAROSSERIE, LEITUNGEN
TUBOS DE CARROCERIA

LES..20,25,30,32 (WET BRAKE..VENTILATION PAC) []



6801-660

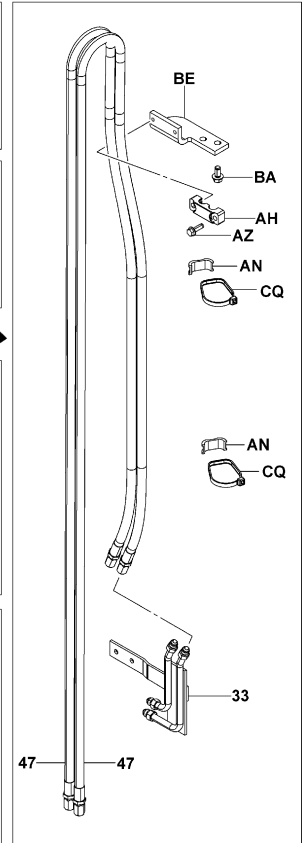
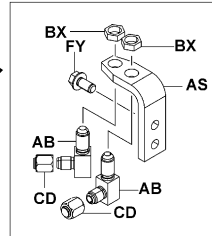
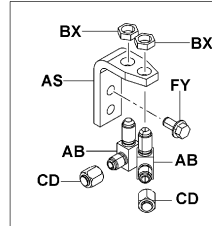
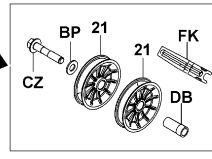
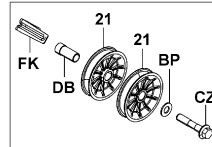
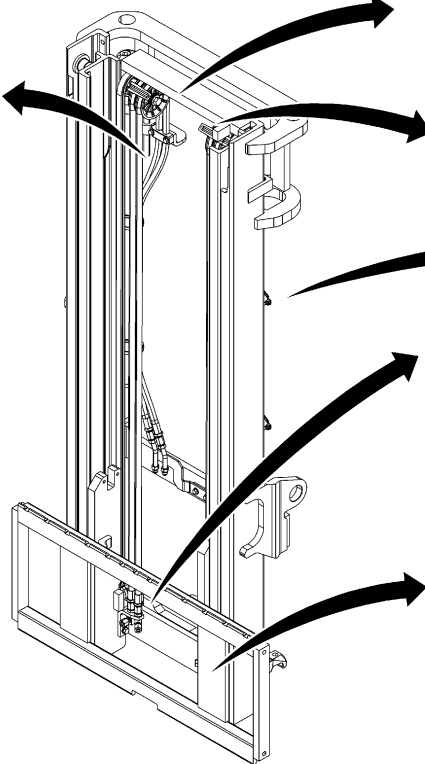
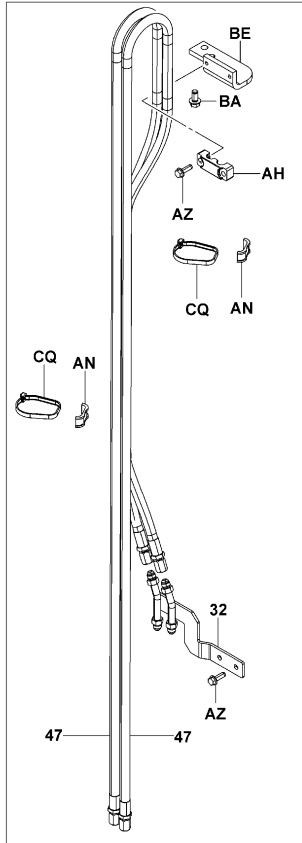
6801-660_

6802

MAST PIPING
TUYAUTERIE DE MAT

MASTLEITUNGEN
TUBOS DEL MASTIL

A450,A467..V [MAST PIPING]



6802-658

6802-658

6802

MAST PIPING
TUYAUTERIE DE MAT

MASTLEITUNGEN
TUBOS DEL MASTIL

PART NAME CODE	PART NAME	QTY	PART NAME CODE	PART NAME	QTY
6802-06	ACCUMULATOR ASSY ENS. D'ACCUMULATEUR AKKUMULATOR-VOLLST. CONJUNTO DEL ACUMULADOR	1	6802-41	HOSE, HIGH PRESSURE, NO.1 (FRONT LIFT) FLEXIBLE SCHLAUCH MANGUERA	1
6802-20	PULLEY SUB-ASSY, HOSE GUIDE, NO.1 SOUS-ENS. DE POULIE RIEMENSCHLEIBEN-TEILGRUPPE SUBCONJUNTO DE LA POLEA	1	6802-42	HOSE, HIGH PRESSURE, NO.2 (FRONT LIFT) FLEXIBLE SCHLAUCH MANGUERA	1
6802-21	PULLEY SUB-ASSY, HOSE GUIDE, NO.2 SOUS-ENS. DE POULIE RIEMENSCHLEIBEN-TEILGRUPPE SUBCONJUNTO DE LA POLEA	2-4	6802-45	HOSE, HIGH PRESSURE, NO.1 (FOR ATTACHMENT) FLEXIBLE SCHLAUCH MANGUERA	1
6802-28	BRACKET SUB-ASSY, PULLEY SOUS-ENS. DE SUPPORT TRAGER-TEILGRUPPE SUBCONJUNTO DE LA SOPORTE	1	6802-47	HOSE, HIGH PRESSURE (FOR ATTACHMENT PULLEY) FLEXIBLE SCHLAUCH MANGUERA	2-4
6802-30	PIPE SUB-ASSY, NO.1 (FRONT LIFT) SOUS-ENS. DE TUYAU ROHR-TEILGRUPPE SUBCONJUNTO DE TUBO	1	6802-48	FITTING (FOR FRONT LIFT CYLINDER) RACCORD ANSCHLUSSTUCK ACOPLADOR	1
6802-31	PIPE SUB-ASSY, NO.2 (FRONT LIFT) SOUS-ENS. DE TUYAU ROHR-TEILGRUPPE SUBCONJUNTO DE TUBO	1	6802-49	HOSE, HIGH PRESSURE FLEXIBLE SCHLAUCH MANGUERA	1
6802-32	PIPE SUB-ASSY SOUS-ENS. DE TUYAU ROHR-TEILGRUPPE SUBCONJUNTO DE TUBO	1	6802-50	HOSE, LOW PRESSURE (FRONT LIFT OVERFLOW) FLEXIBLE SCHLAUCH MANGUERA	2
6802-33	PIPE SUB-ASSY SOUS-ENS. DE TUYAU ROHR-TEILGRUPPE SUBCONJUNTO DE TUBO	1	6802-76	VALVE ASSY, SAFETY DOWN ENS. DE SOUPAPE VENTIL. VOLLST. CONJUNTO DE VALVULA	1
6802-38	PIPE SUB-ASSY SOUS-ENS. DE TUYAU ROHR-TEILGRUPPE SUBCONJUNTO DE TUBO	1	6802-AB	FITTING RACCORD ANSCHLUSSTUCK ACOPLADOR	1-4
6802-40	HOSE, HIGH PRESSURE (FRONT LIFT PULLEY) FLEXIBLE SCHLAUCH MANGUERA	1	6802-AC	RING, O ANNEAU RING ANILLO	1

CLICK HERE TO **DOWNLOAD** THE COMPLETE MANUAL

- Thank you very much for reading the preview of the manual.
- You can download the complete manual from: www.heydownloads.com by clicking the link below



- Please note: If there is no response to CLICKING the link, please download this PDF first and then click on it.

CLICK HERE TO **DOWNLOAD** THE COMPLETE MANUAL