



**PARTS MANUAL**

**T300-1**

Revised: May 2006

12261-280

CLICK HERE TO **DOWNLOAD** THE COMPLETE MANUAL

- Thank you very much for reading the preview of the manual.
- You can download the complete manual from: [www.heydownloads.com](http://www.heydownloads.com) by clicking the link below



- Please note: If there is no response to CLICKING the link, please download this PDF first and then click on it.

CLICK HERE TO **DOWNLOAD** THE COMPLETE MANUAL

## See Page 2.2

REF.	PART NO.	DESCRIPTION	QTY.	REF.	PART NO.	DESCRIPTION	QTY.
	714A1387	Fender & Deck Assembly					
1	714 1132	Fender, Left Front.....	1	26	372 1242	Striker.....	1
	219114	Y-Strut, Left.....	1		1202-6	Screw, #10-24NC x .75.....	2
2	714 0303	Battery Box.....	1		1230-6	Nut.....	2
3	714 1086	Deck, LH.....	1	27	712 0509	Gas Spring.....	1
4	714 0302	Fender Left Rear.....	1		712 0595	Stud, Ball.....	2
5	714 0304	Fender, RH Rear.....	1		712 0596	Clip, Retaining.....	2
6	714 0632	Deck, RH.....	1		340 2119	Locknut, 5/16-18NC.....	2
7	714 0311	Cover, Reservoir.....	1		380 1801	Flatwasher, 5/16.....	2
8	714 1133	Fender, Right Front.....	1	28	714 0310	Step.....	2
	219115	Y-Strut, Right.....	1	29	714F0715	Bracket.....	4
9	714 0628	Step.....	2	30	714 0770	Bumper.....	12
10	712F0068	Step.....	1		1209-2	Flatwasher.....	12
11	Page 27,14	Housing, Engine.....	1		1205-13	Locknut, 1/4-20 NC.....	12
12	714 0307	Cover, Pump.....	1	31	1200-328	Capscrew, 7/16-14NC x 1.25.....	8
13	12439-1-27"	Foam.....	2		1209-5	Flatwasher, 7/16.....	8
14	709 7454	Foam.....	1	32	712 0224	Tube.....	2
15	714 1231	Panel, Valence - Left.....	1	33	1200-31	Capscrew, 5/16NC x 1.00.....	2
16	714 1232	Panel, Valence - Right.....	1		340 2119	Locknut, 5/16-18NC.....	4
17	1200-59	Capscrew, 3/8-16 x 1.....	4		380 1801	Flatwasher, 5/16.....	4
	1209-4	Flatwasher, 3/8.....	4	34	1200-57	Capscrew, 3/8-16NC x 0.75.....	4
18	200B2007-25	Clamp.....	2		1205-45	Nut, 3/8-16NC.....	4
	1200-31	Capscrew, 5/16NC x 1.00.....	2	35	1200-69	Capscrew, 3/8-16NC x 2.25.....	8
	340 2119	Locknut, 5/16-18NC.....	2	36	1221-125	Mount, Rubber.....	4
	380 1801	Flatwasher, 5/16.....	2		1200-33	Capscrew, 5/16NC x 1.25.....	8
19	707F7694	Hook.....	1		340 2119	Locknut, 5/16-18NC.....	8
	714 1234	Pin.....	1		1205-45	Nut, 3/8-16NC.....	8
	1200-3	Capscrew, 1/2-13NC x 1.00.....	2		1200-69	Capscrew, 3/8-16NC x 2.25.....	4
	1209-6	Flatwasher, 1/2.....	4	37	707 7489	Bracket.....	2
	1210-26	Lockwasher, 1/2.....	2	38	707 7516	Tube.....	6
20	714 0630	Handle, Grab.....	2	39	714 0618	Bracket.....	2
	1203-255	Screw, Panhead 5/16-18 NC SS.....	4	40	707 7490	Bracket.....	2
	340 2119	Locknut, 5/16-18NC.....	4	41	1200-31	Capscrew, 5/16NC x 1.00.....	18
	380 1801	Flatwasher, 5/16.....	4		340 2119	Locknut, 5/16-18NC.....	18
21	1203-255	Screw, Panhead 5/16-18 NC SS.....	6		380 1801	Flatwasher, 5/16.....	18
	380 1801	Flatwasher, 5/16.....	6	42	707 7511	RH Bracket.....	3
22	372 1241	Catch.....	1		707 7512	LH Bracket.....	3
	1202-6	Screw, #10-24NC x .75.....	2	43	1222-339	Pin, Safety Snap.....	4
	1230-6	Nut.....	2		12219-17	Cable, 1/8 " x 17".....	4
23	717 0556	Mirror Post.....	1		1222-225	Sleeve, Cable.....	4
	1203-273	Screw, Panhead 5/16-18 NC SS.....	3	44	707 7750	Cover.....	1
	340 2119	Locknut, 5/16-18NC.....	3		1211-34	Screw, Tapping 1/4-20NC x .75..	4
	380 1801	Flatwasher, 5/16.....	3				
24	708 8352	Mirror.....	1				
25	1200-108	Capscrew, 1/2-13 NC x 1.50.....	6				
	1209-6	Flatwasher, 1/2.....	6				
	1205-67	Locknut, 1/2-13NC.....	6				

WHEN ORDERING PARTS, SPECIFY MODEL NUMBER, SERIAL NUMBER AND DESCRIPTION OF PART REQUIRED



### FENDERS & DECKS

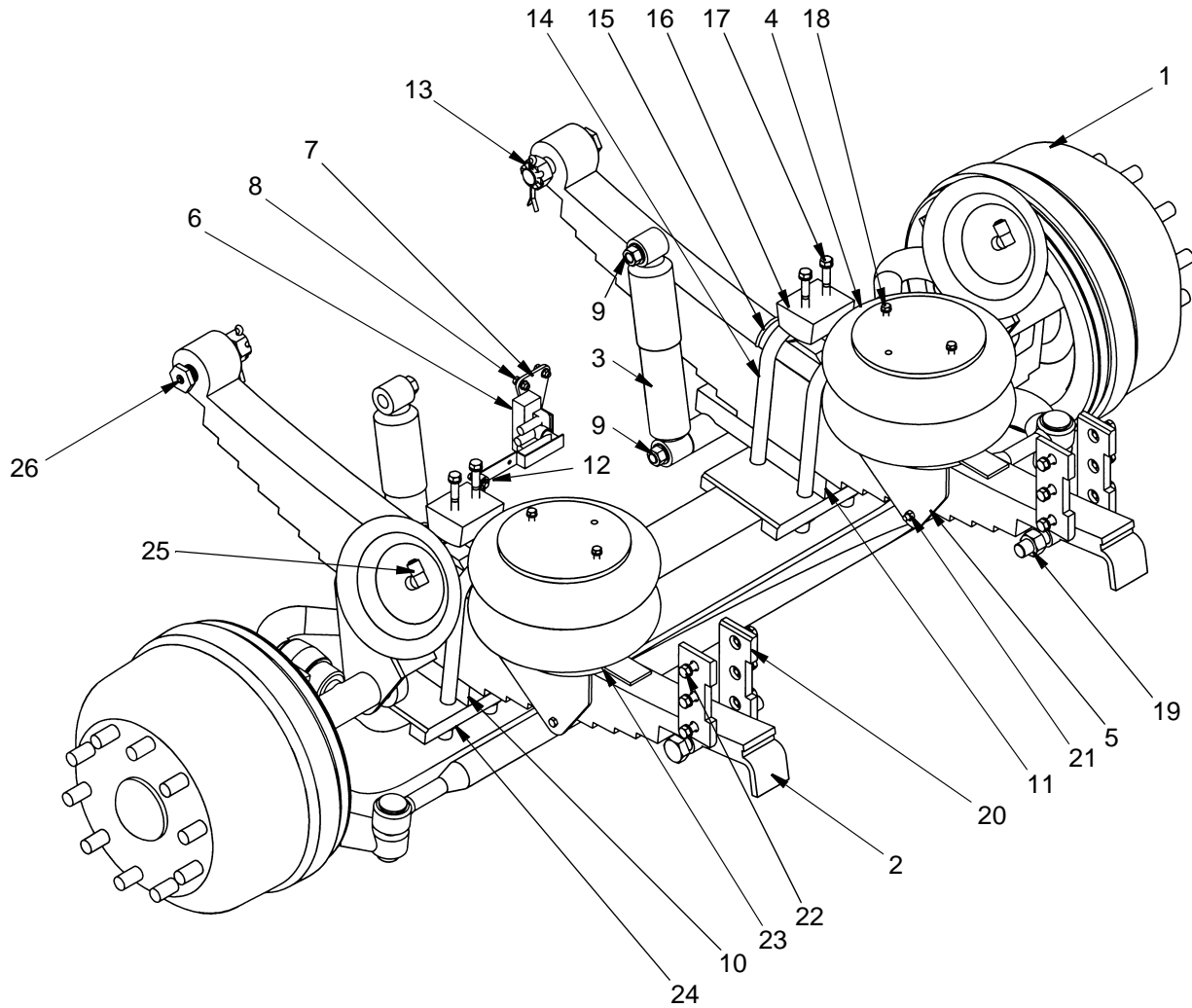
DATE: Revised 5-2005

MODEL: T300-1

PAGE 2.3

**GROUP**

**2**



REF.	PART.NO.	DESCRIPTION	QTY.	REF.	PART.NO.	DESCRIPTION	QTY.
	714A1367	Axle Assembly - Front .....	1				
1	714 1224	Axle.....	1	15	707 7032	Spring, Top Plate.....	2
2	714 1291	Spring .....	2	16	1221-93	Stop, Axle .....	2
3	707 7639	Shock.....	2	17	1200-112	Bolt, 1/2-13NC x 3.00 .....	2
4	714 1082	Air Bag.....	2		1210-26	Lockwasher, 1/2 .....	2
5	714F0778	Mount, Air Bag - Lower.....	2	18	1200-59	Bolt, 3/8-16NC x 1.00 .....	2
6	714 1083	Valve, Ride Height.....	1		1210-19	Lockwasher, 3/8 .....	2
	1200-1	Bolt, 1/4-20NC x .75 .....	2	19	714 0932	Spcaer .....	2
	1205-23	Locknut, 1/4-20.....	2		1229-189	Bolt, 1-14NF x 7.5.....	2
7	714 0775	Bracket .....	1		1205-123	Locknut, 1-14NF .....	2
8	1200-31	Bolt, 5/16-18NC x 1.00 .....	2	20	709 7269	Pad, Wear.....	4
	1205-34	Nut, Flange 5/16-18NC.....	2	21	714 1368	Spacer .....	2
9	1209-9	Washer .....	2		1200-409	Bolt, 3/8-16NC x 4.25 .....	2
	1205-102	Nut, Hex.....	2		1205-43	Locknut, 1-14NF .....	2
10	712F0097	Bracket .....	1	22	1200-98	Bolt, 1/2-13NC x 1.25 .....	2
11	712F0098	Bracket .....	1		1210-26	Lockwasher, 1/2 .....	2
12	714 1084	Rod, Control .....	1	23	1203-154	Flathead Screw, 3/8-16NC x 1.00 .....	4
13	44342	Spring, Pin .....	2	24	1205-123	Locknut, 1-14NF .....	8
	1205-163	Nut, Slotted 1.25 -12NF .....	2	25	12019-314	Fitting.....	2
	1207-58	Pin, Cotter 5/16 x 2.75.....	2	26	1213-9	Grease Fitting, 1/8 NPT.....	2
14	707 4224	U-Bolt.....	4				

WHEN ORDERING PARTS, SPECIFY MODEL NUMBER, SERIAL NUMBER AND DESCRIPTION OF PART REQUIRED



## FRONT AXLE ASSEMBLY

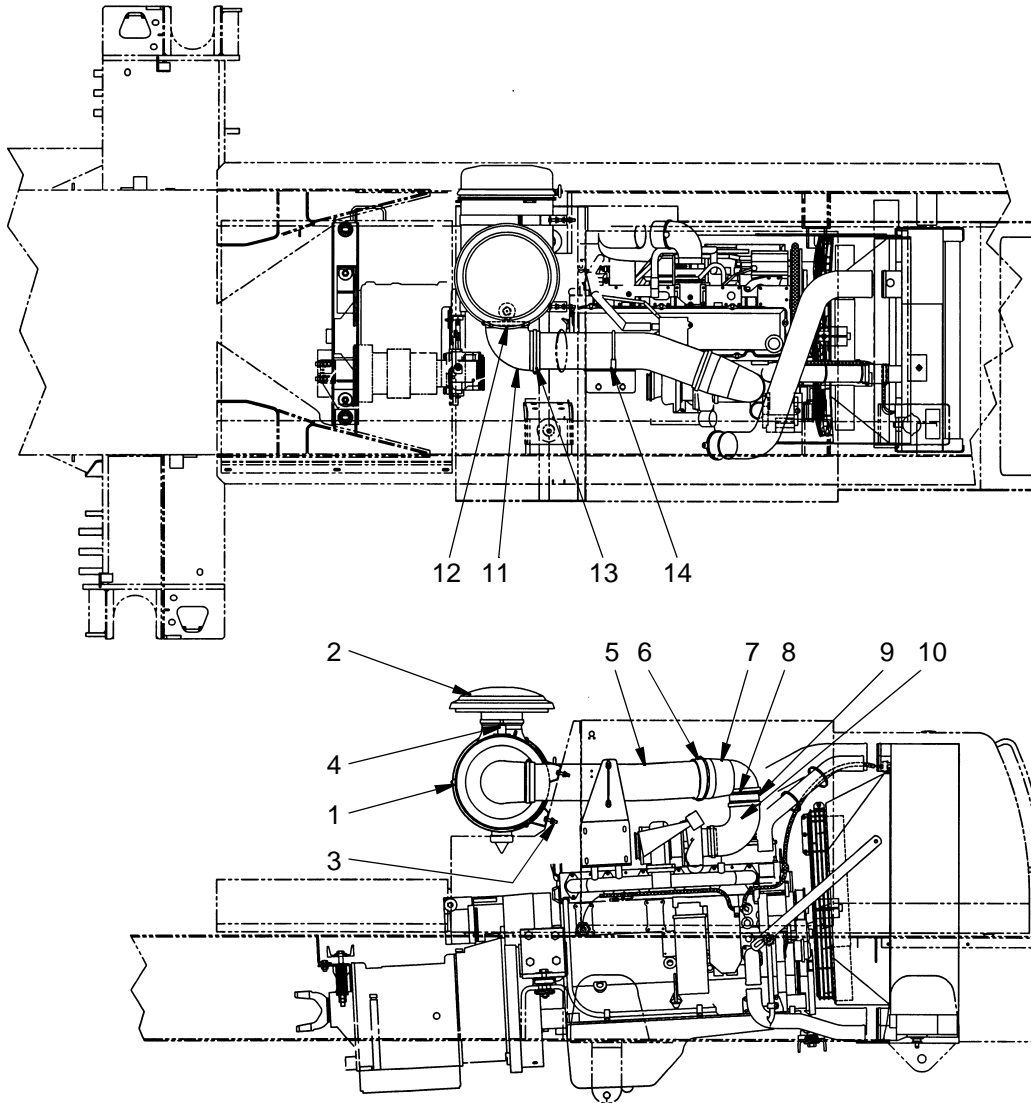
DATE: Revised 4-2005

MODEL: T300-1

PAGE 5.1

GROUP

**5**



REF.	PART NO.	DESCRIPTION	QTY
	714A1386	Air Cleaner Assembly	
1	1243-164	Air Cleaner.....	1
2	1243-165	Rain Cap.....	1
3	1200-69	Capscrew, .38 x 4.00.....	4
	334 2653	Washer, Nylon .38.....	8
	1205-45	Nut, .38.....	4
<b>4</b>	<b>1243-50</b>	<b>Filter, Indicator.....</b>	<b>1</b>
5	714 1385	Tube, Air Intake.....	1
6	1240-103	Clamp, H.D. Band.....	1
7	1221-86	Elbow.....	1
8	1240-81	Clamp.....	3
9	709 4563	Tube.....	1
10	360 2221	Elbow.....	1
11	1243-166	Elbow.....	1
12	1240-285	Clamp, H.D. Band.....	1
13	1240-103	Clamp, H.D. Band.....	1
14	1240-253	Clamp.....	1
	1209-4	Flatwasher, .38.....	2

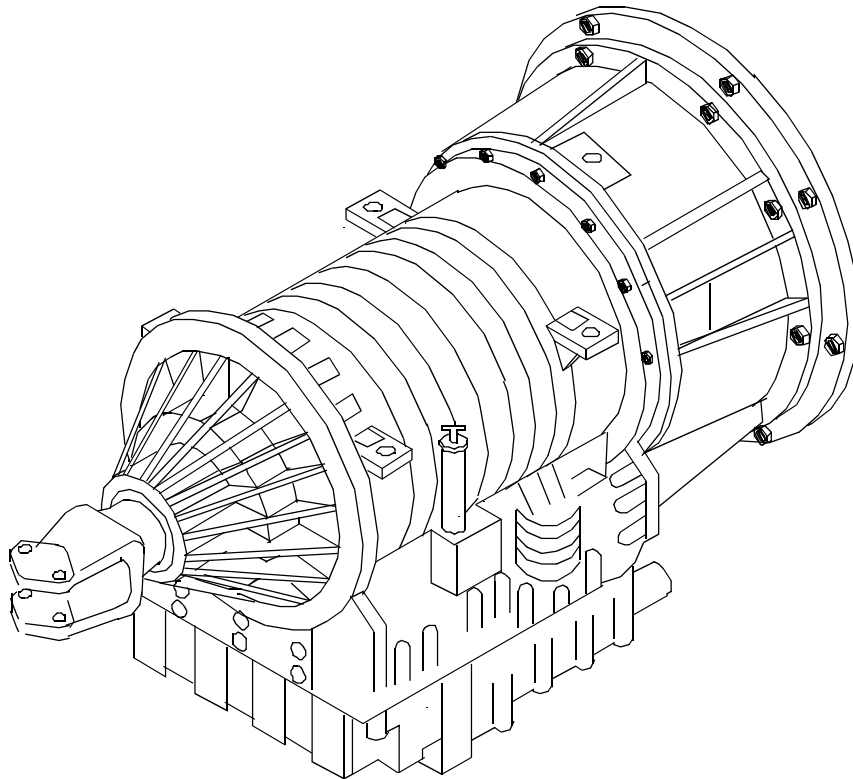
WHEN ORDERING PARTS, SPECIFY MODEL NUMBER, SERIAL NUMBER AND DESCRIPTION OF PART REQUIRED



**AIR CLEANER**  
Cummins - ISC300 / Manual

DATE: Revised 5-2005  
MODEL: T300-1  
PAGE 6.7

GROUP  
**6**



**Refer to Allison for Parts & Service**

REF.	PART.NO.	DESCRIPTION	QTY.
1	714 0828	Transmission .....	1
		(Allison MD3560 & TC-418 Torque Converter)	
	7140828-1	Transmission w/Secondary Shifter .....	1
		(For Electric Remote Control Option)	
	217163	Kit, Filter	

**WHEN ORDERING PARTS, SPECIFY MODEL NUMBER, SERIAL NUMBER AND DESCRIPTION OF PART REQUIRED**

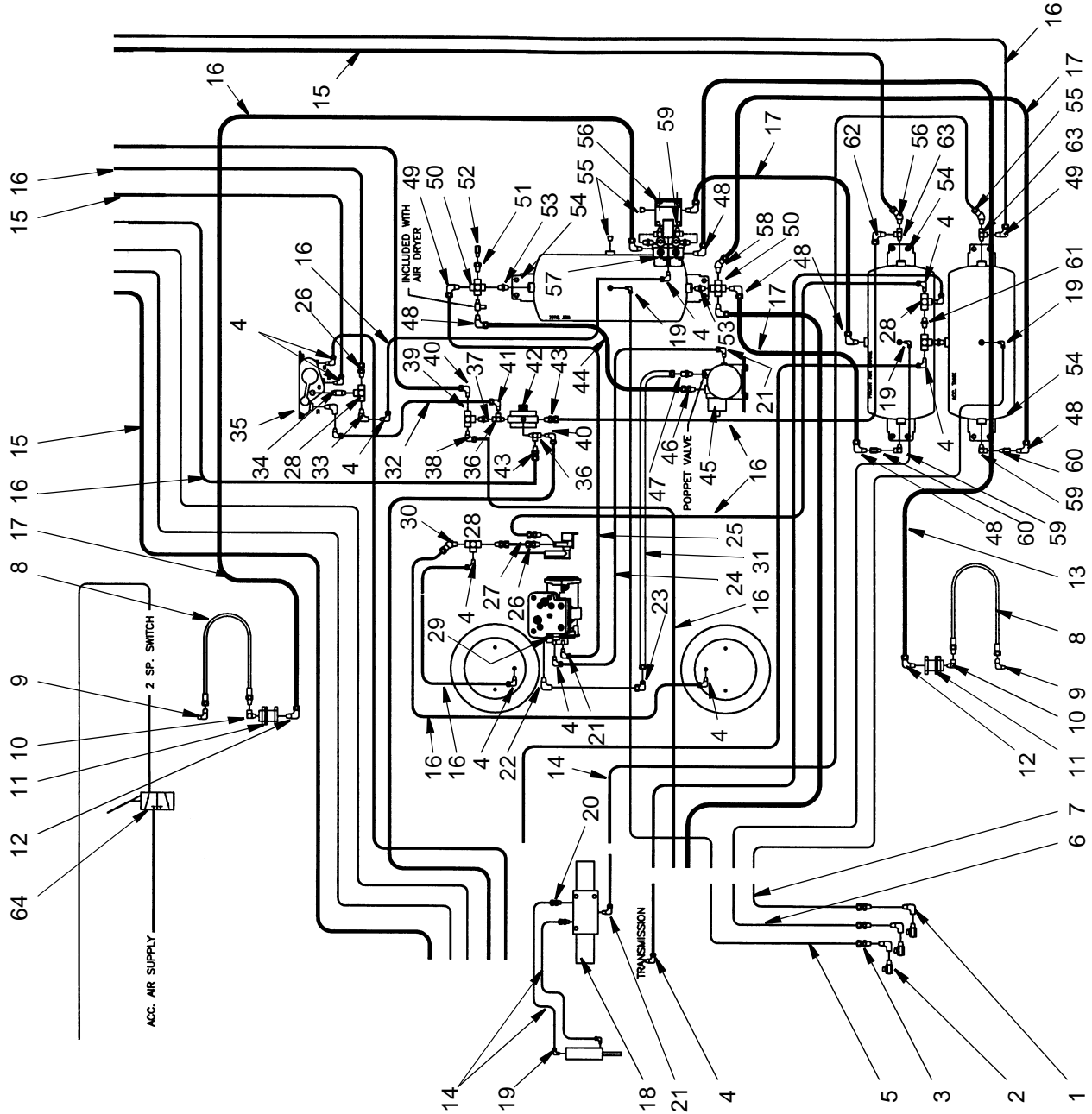


**TRANSMISSION**  
Allison MD3560 / TC-418

DATE:	Revised 4-2005
MODEL:	T300-1
PAGE	7A.1

**GROUP**  
**7A**

See Page 10.5



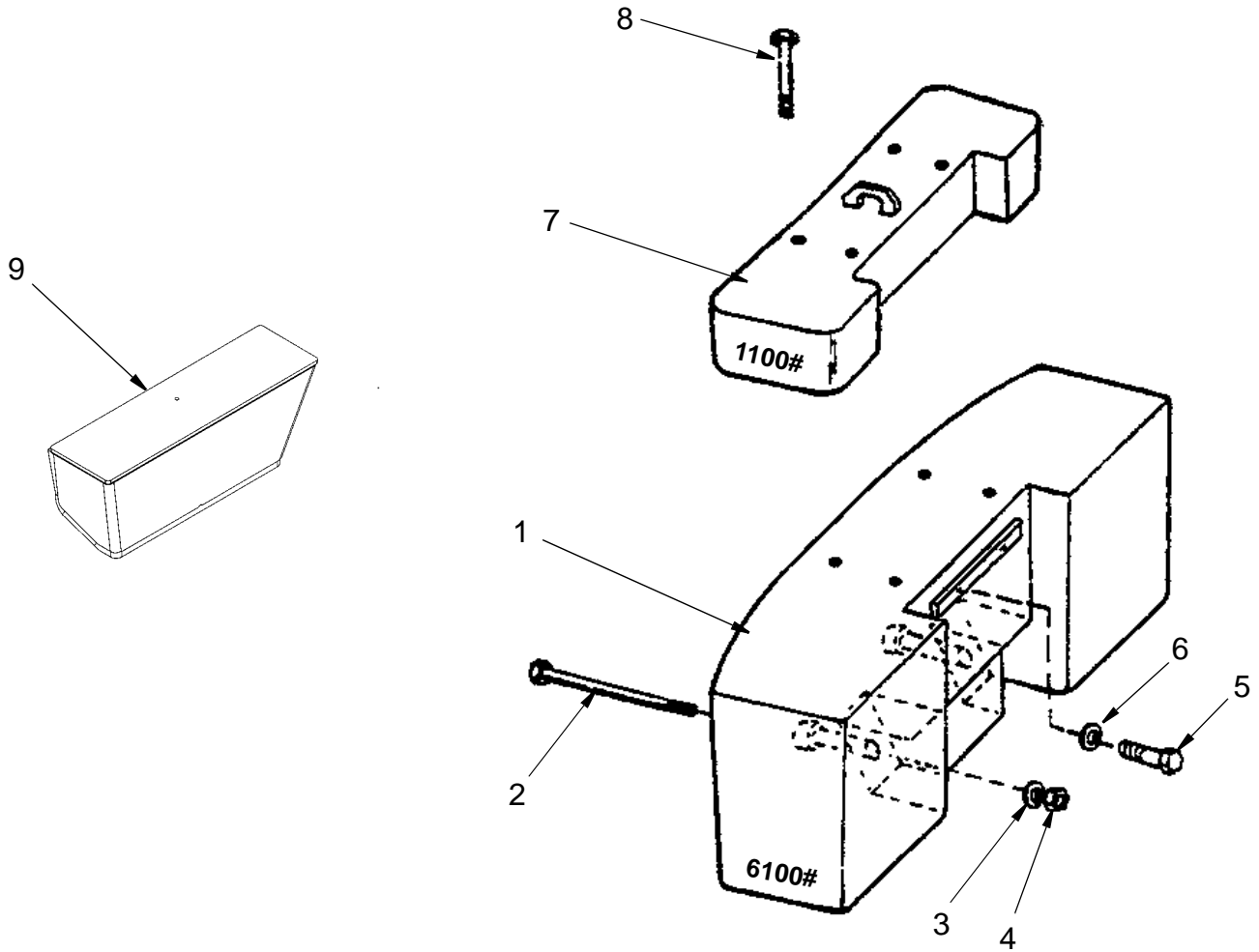
WHEN ORDERING PARTS, SPECIFY MODEL NUMBER, SERIAL NUMBER AND DESCRIPTION OF PART REQUIRED



**AIR BRAKES**  
Front

DATE: Revised 5-2005  
 MODEL: T300-1  
 PAGE 10.4

GROUP  
**10**



REF.	PART NO.	DESCRIPTION	QTY
	714A1190	6100# Counterweight Ass'y..... Opt (For Booms w/ Aux. Winch and Bumper Weight)	-
	714A1191	7200# Counterweight Ass'y..... (For Booms w/o Aux. Winch and with Bumper Weight)	1
1	714 0428	Counterweight (6100#) .....	1 1
2	1235-383	Bolt, 1 1/4C x 12 .....	2 2
3	42395	Flatwasher .....	2 2
4	1204-25	Nut, 1 1/4C Elastic .....	2 2
5	1200-206	Capscrew, 3/4 C x 4 1/2 .....	2 2
6	1209-9	Flatwasher, 3/4" .....	2 2
	1210-38	Lockwasher, 3/4" .....	2 2
7	711 0148	1100# Counterweight.....	- 1
8	1200-298	Capscrew, 1/8 x 8 GR5.....	- 4
9	714F1242	Counterweight, Front .....	1 1
10	714 1137	Deck, Front (Not Shown) .....	1 1
11	714 1219	Bolt, Eye (Not Shown) .....	1 1

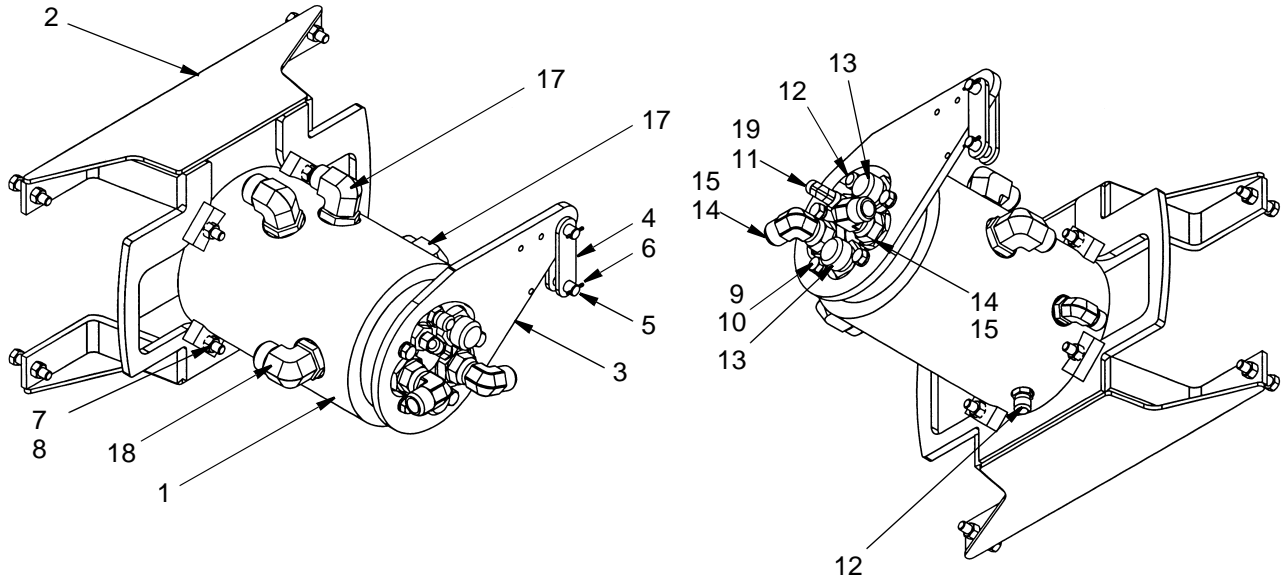
WHEN ORDERING PARTS, SPECIFY MODEL NUMBER, SERIAL NUMBER AND DESCRIPTION OF PART REQUIRED



**COUNTERWEIGHT**  
6100#/7200#

DATE: Issued 9-2004  
MODEL: T300-1  
PAGE 13.1

GROUP  
**13**



REF.	PART.NO.	DESCRIPTION	QTY.
	714A1401	Swivel Assembly	
1	Page 25.3	Rotary Manifold.....	1
2	714F0374	Support.....	1
3	708 5824	Torque Arm .....	1
4	37169	Link.....	2
5	1474	Pin.....	2
6	1207-12	Pin.....	2
7	1200-106	Capscrew, 1/2-13NC x 2.25.....	8
8	1205-67	Locknut, 1/2-13 .....	6
9	1210-26	Lockwasher, 1/2 .....	4
10	1200-98	Capscrew, 1/2-13NC x 1.25.....	4
11	1219-691	Adapter, 12 O-Ring x 8 MJIC Str .....	1
12	1219-446	Adapter, 8 O-Ring x 10 MJIC Str .....	2
13	1219-661	Adapter, 20 O-Ring x 20 MJIC Str .....	2
14	1219-957	Adapter, 16 FMJIC x 16 MJIC 90° .....	1
15	1219-659	Adapter, 20 O-Ring x 16 MJIC Str .....	2
16	1219-802	Adapter, 12 O-Ring x 12 MJIC 90°.....	1
17	12019-122	Adapter, 20 O-Ring x 16 MJIC 90°.....	2
18	1219-686	Adapter, 20 O-Ring x 20 MJIC 90°.....	2
19	1219-570	Adapter, 8 FMJIC x 8 MJIC 90° .....	1

WHEN ORDERING PARTS, SPECIFY MODEL NUMBER, SERIAL NUMBER AND DESCRIPTION OF PART REQUIRED



## HYDRAULIC SWIVEL ASSEMBLY

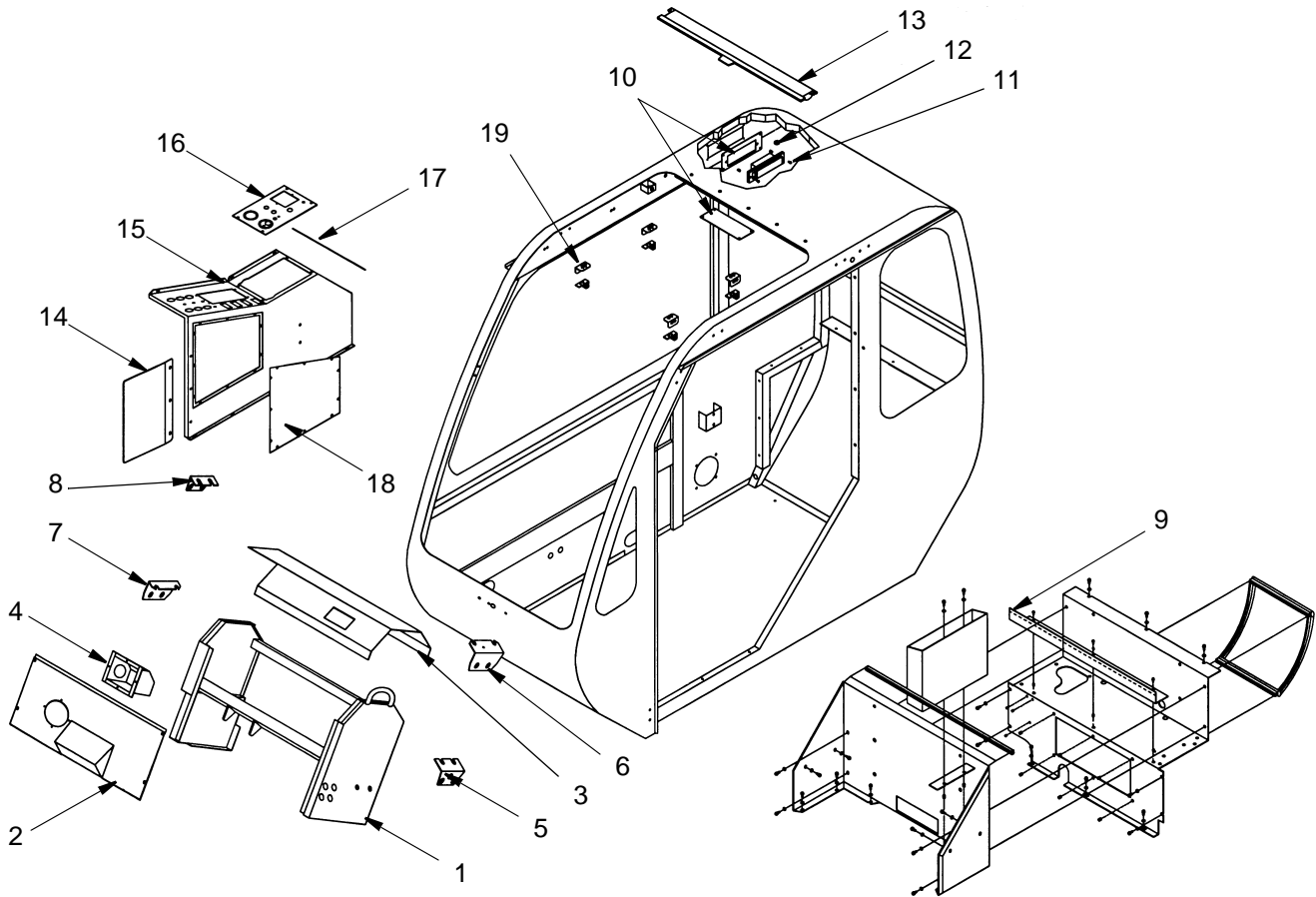
DATE: Revised 5-2005

MODEL: T300-1

PAGE 25.2

GROUP

**25**



REF.	PART.NO.	DESCRIPTION	QTY.	REF.	PART.NO.	DESCRIPTION	QTY.
	719A0105	Cab, Crane (Cont.)					
1	219096	Dash Wrapper Weldment.....	1	11	215615	Dome Light, w/ Switch .....	1
	215211	Screw, 5/16-18 x 3/4" .....	8		216855	Terminal, Heat Shrink.....	1
	215225	Hexnut, 5/16-18 .....	8		216885	Splice, Butt .....	1
	215224	Lockwasher, 5/16".....	8		216377	Screw, #8 x 5/8, PHIL MS .....	2
	215223	Flatwasher, 5/16" .....	8	12	216411	Grommet, 3/8" Dia Hole.....	1
2	216413	Dash Cover Weldment.....	1		216395	Insert, 1/4-20 .....	2
	215215	Screw, 1/4-20 x 3/4 .....	4	13	216423	Blind, Roller-Corbeau Mat .....	1
	216928	Flatwasher, 1/4" .....	4		215217	Screw, 10-24 x 1/2.....	2
3	219096	Dash Wrapper.....	1		216911	Insert, 10-24 .....	2
	215215	Screw, 1/4-20 x 3/4" .....	5	14	216422	Vanity Cover, Console.....	1
	216928	Flatwasher, 1/4" .....	4		215217	Screw, 10-24 x 1/2.....	3
4	216414	Defroster Plenum .....	1		216911	Insert, 10-24 .....	3
	215217	Screw, 10-24 x 1/2 .....	4	15	219099	Console Weldment .....	1
5	216415	Bracket, Dash LH Lower .....	1		215217	Screw, 10-24 x 1/2.....	12
	215211	Screw, 5/16-18 x 3/4" .....	3		216911	Insert, 10-24 .....	4
6	216416	Bracket, Dash LH Upper.....	1	16	219101	Cover, Console.....	1
	215211	Screw, 5/16-18 x 3/4" .....	2		215217	Screw, 10-24 x 1/2.....	4
7	216417	Bracket, Dash RH Lower .....	1		216911	Insert, 10-24 .....	4
	215211	Screw, 5/16-18 x 3/4" .....	3	17	219102	Cover, Console - Rear.....	1
8	216418	Bracket, Dash RH Upper .....	1		215217	Screw, 10-24 x 1/2.....	4
	215211	Screw, 5/16-18 x 3/4" .....	2		216911	Insert, 10-24 .....	4
9	Page 27.9	Shelf Assembly, A/C .....	1	18	219100	Cover, Console - Side .....	1
10	219098	Cover, Access - Dome Light .....	1		215217	Screw, 10-24 x 1/2.....	11
	216421	Cover, Access - Wire .....	1		216911	Insert, 10-24 .....	16
	215238	Screw, 8-32 x 1/2".....	8	19	216424	Bracket Assembly, Shade Clips .....	4
	216427	Insert, 8-32.....	8		215217	Screw, 10-24 x 1/2.....	8
					216911	Insert, 10-24 .....	16

WHEN ORDERING PARTS, SPECIFY MODEL NUMBER, SERIAL NUMBER AND DESCRIPTION OF PART REQUIRED



## OPERATOR'S CAB

DATE: Revised 5-2005

MODEL: T300-1

PAGE 27.5

GROUP

**27**

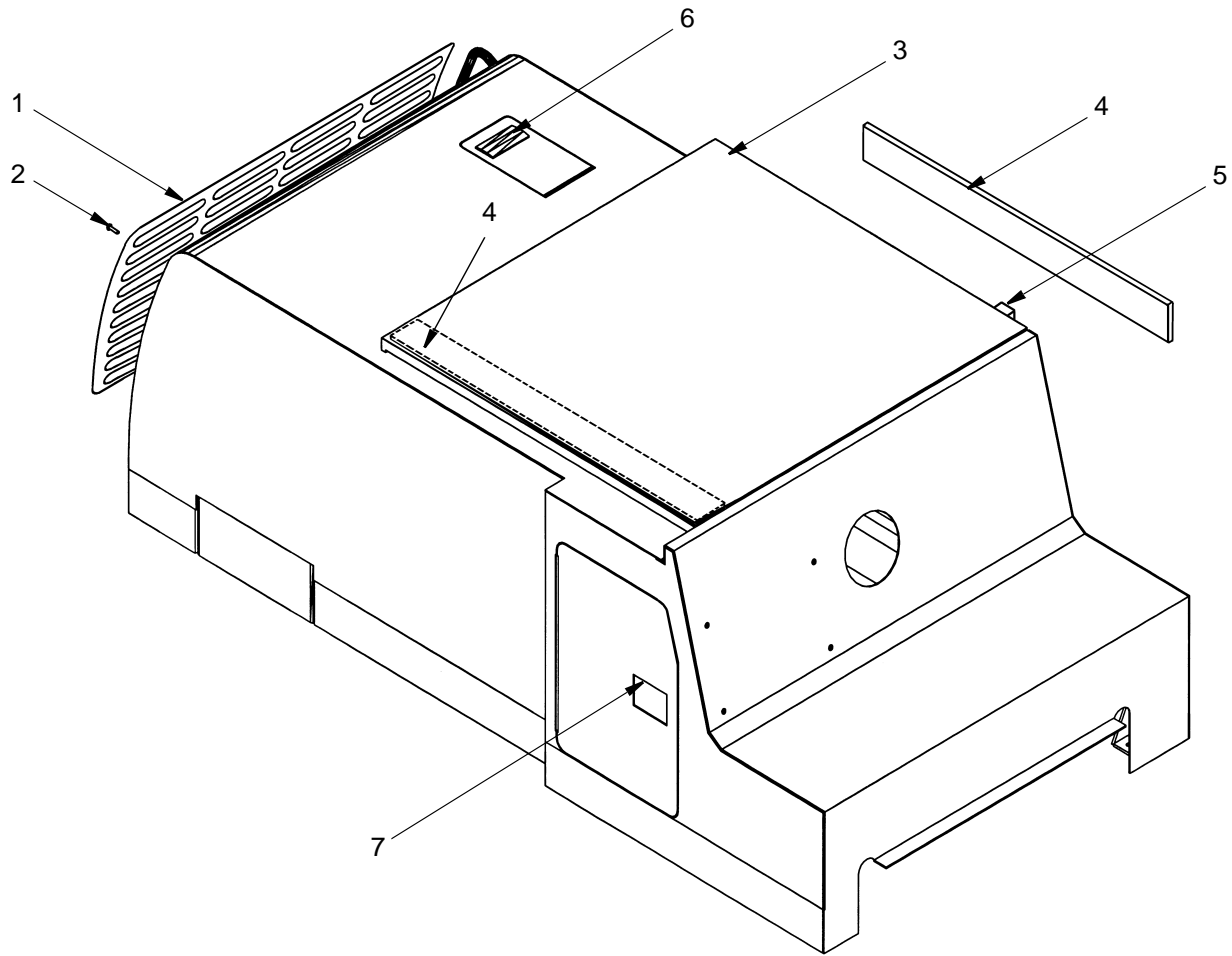
CLICK HERE TO **DOWNLOAD** THE COMPLETE MANUAL

- Thank you very much for reading the preview of the manual.
- You can download the complete manual from: [www.heydownloads.com](http://www.heydownloads.com) by clicking the link below



- Please note: If there is no response to CLICKING the link, please download this PDF first and then click on it.

CLICK HERE TO **DOWNLOAD** THE COMPLETE MANUAL



REF.	PART.NO.	DESCRIPTION	QTY.
	714 1344	Housing, Engine	
1	219177	Grill.....	1
2	219068	Screw, Torx 5/16-18 x 3/4 .....	12
3	219077	Door Sliding.....	1
4	219075	Slide .....	2
5	219056	Handle, Push Button .....	1
	219071	Latch, Rotary .....	1
	219072	Pin, Striker.....	1
6	219188	Door, Upper - Small.....	1
	219057	Latch.....	1
7	219119	Door, Left Side .....	1
	219080	Latch, Paddle .....	1

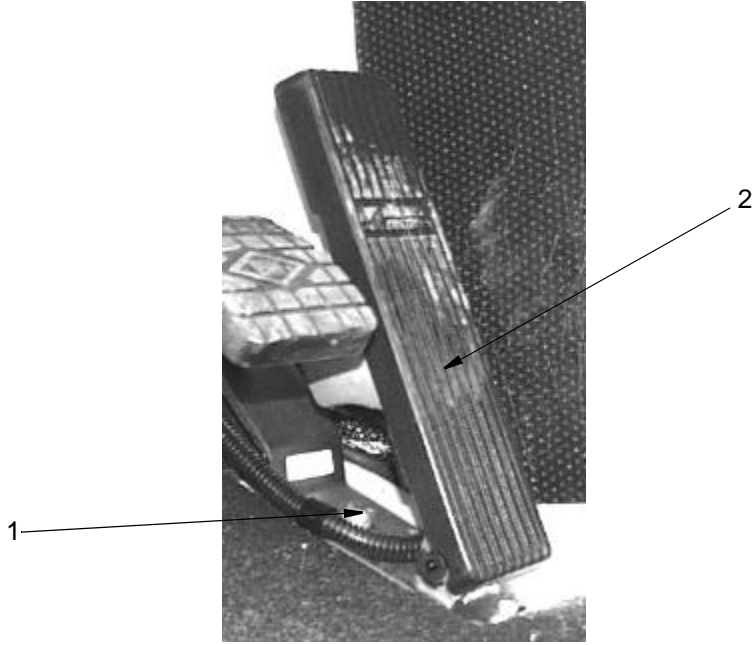
WHEN ORDERING PARTS, SPECIFY MODEL NUMBER, SERIAL NUMBER AND DESCRIPTION OF PART REQUIRED



## ENGINE HOUSING

DATE: Revised 5-2005  
 MODEL: T300-1  
 PAGE 27.15

GROUP  
**27**



REF.	PART NO.	DESCRIPTION	QTY.
		Carrier Throttle Control	
1	1200-31	Capscrew .....	2
	12310-17	Lockwasher .....	2
	1205-25	Nut.....	2
2	714 0810	Foot Pedal.....	1

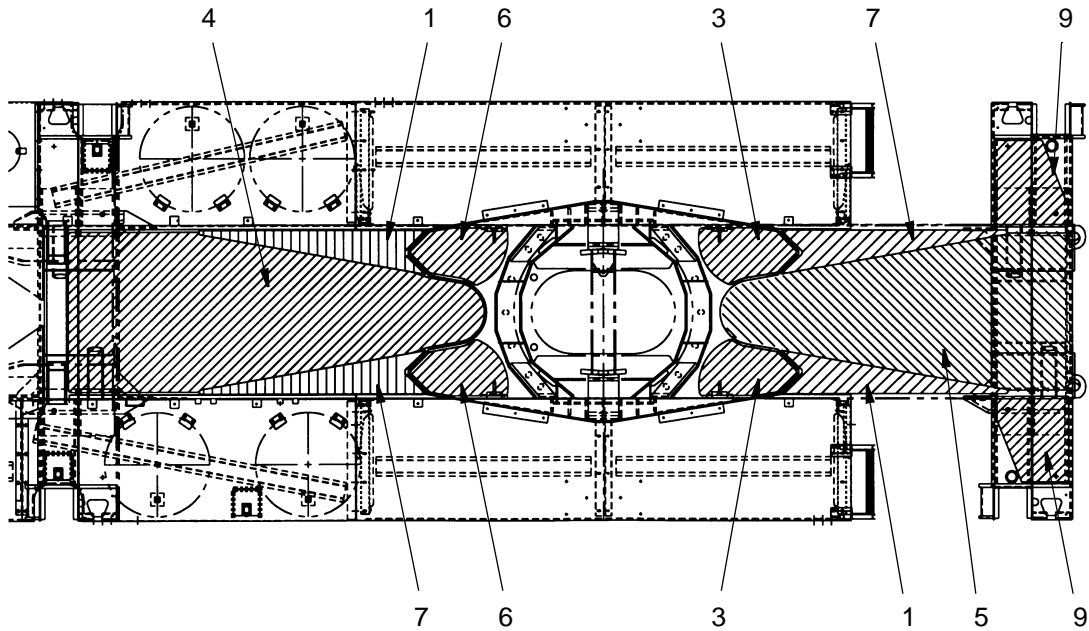
WHEN ORDERING PARTS, SPECIFY MODEL NUMBER, SERIAL NUMBER AND DESCRIPTION OF PART REQUIRED



**THROTTLE CONTROLS**  
Lower

DATE:	Revised 5-2005
MODEL:	T300-1
PAGE	28.6

**GROUP**  
**28**



REF.	PART.NO.	DESCRIPTION	QTY.
	714A0626	Kit, Anti-Slip Tape ..... 1 (Includes Items 1 Through 12)	
1	714 0890	Anti-Slip Tape-Plate ..... 1	
2	712 0766	Anti-Slip Tape-Plate ..... 1	
3	712 0767	Anti-Slip Tape-Plate ..... 2	
4	714 0891	Anti-Slip Tape-Wrapper LH ..... 1	
5	714 0876	Anti-Slip Tape-Wrapper RH ..... 1	
6	712 0770	Anti-Slip Tape-Plate ..... 2	
7	714 0889	Anti-Slip Tape-Plate LH..... 1	
8	712 0780	Anti-Slip Tape-Plate LH..... 1	
9	712 0781	Anti-Slip Tape-Plate ..... 2	
10	714 0622	Upper Door Jam, Anti-Slip Tape ..... 2	
11	714 0623	Upper Foot Pedals, Anti-Slip Tape..... 2	
12	714 0624	Lower Door Jam, Anti-Slip Tape ..... 1	

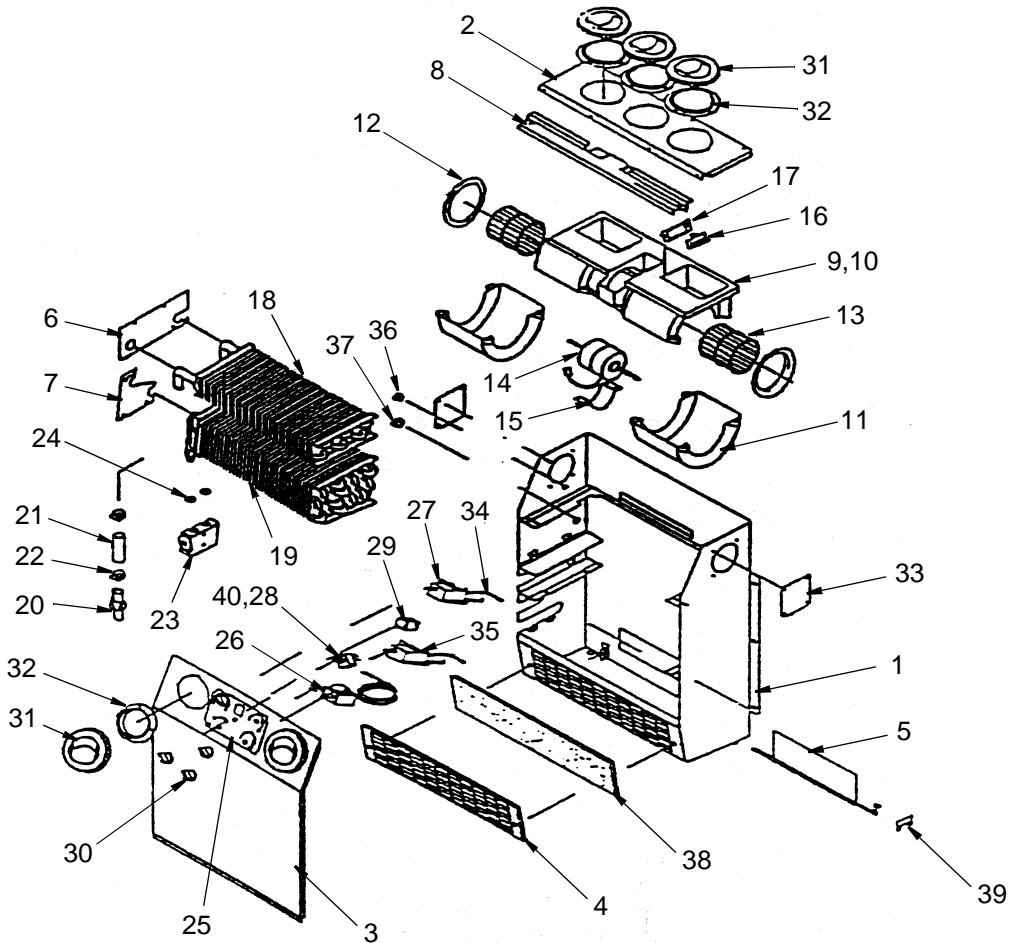
WHEN ORDERING PARTS, SPECIFY MODEL NUMBER, SERIAL NUMBER AND DESCRIPTION OF PART REQUIRED



### MARKING DECALS

DATE: Revised 5-2005  
 MODEL: T300-1  
 PAGE 30.4

GROUP  
**30**



REF.	PART NO.	DESCRIPTION	QTY.	REF.	PART NO.	DESCRIPTION	QTY.
	711 0224	Kit, Heater-AC					
1	215816	Casing		22	215837	Gear Clamp	
2	215817	Top Cover		23	215838	Block Valve	
3	215818	Front Cover		24	215839	O-Ring, #8	
4	215819	Filter Holder		25	215840	Overlay	
5	215820	Flapper		26	215841	Thermostat	
6	215821	H.C. Cover Plate		27	215842	Rotary Control	
7	215822	E.C. Cover Plate		28	215843	Switch, 12V	
8	215823	Blower Bracket		29	215844	Switch, Fan	
9	215824	Blower, 12V		30	215845	Knob	
10	215825	Blower Housing		31	215846	Louver	
11	215826	Blower Housing Top		32	215847	Adapter	
12	215827	Venturi		33	215848	Cover Plate	
13	215828	Blower Wheel		34	215857	Master Toggle Switch	
14	215829	Motor, 12V		35	215858	Oil Heat Thermostat	
15	215830	Motor Mount		36	215851	Grommet	
16	215831	Resistor, 12V		37	215852	Grommet	
17	215832	Mounting Plate		38	215853	Filter	
18	215856	Heater Coil		39	215854	Flapper Holder (Not Used)	
19	215834	Evaporator Coil		40	215855	Wiring Harness (not shown)	
20	215835	Heater Valve (Not Used)		41	215859	Relay, 12V	
21	215836	Heater Hose, 5/8" (Not Used)					

WHEN ORDERING PARTS, SPECIFY MODEL NUMBER, SERIAL NUMBER AND DESCRIPTION OF PART REQUIRED



**HEATER / AC**  
Kenway LRCR004

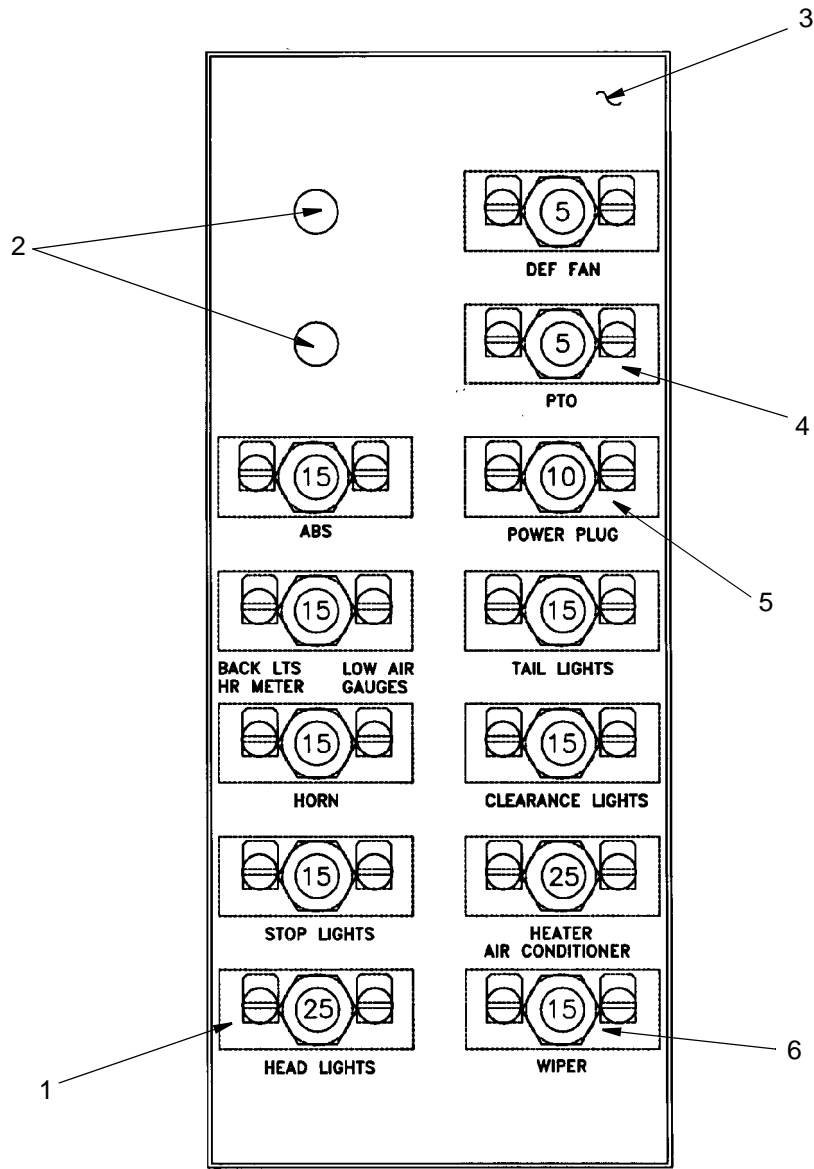
DATE: Issued 9-2004

MODEL: T300-1

PAGE 31.10

GROUP

**31**



REF.	PART NO.	DESCRIPTION	QTY.
1	442 2399	Seal .....	2
	441 4123	Circuit Breaker, 25 Amp .....	2
2	1222-205	Plug, Button .....	2
3	12400-848	Decal, Circuit Breaker.....	1
4	441 4025	Circuit Breaker, 5 Amp .....	2
	442 2399	Seal .....	2
5	441 4024	Circuit Breaker, 10 Amp .....	1
	442 2399	Seal .....	1
6	441 4023	Circuit Breaker, 15 Amp .....	7
	442 2399	Seal .....	7

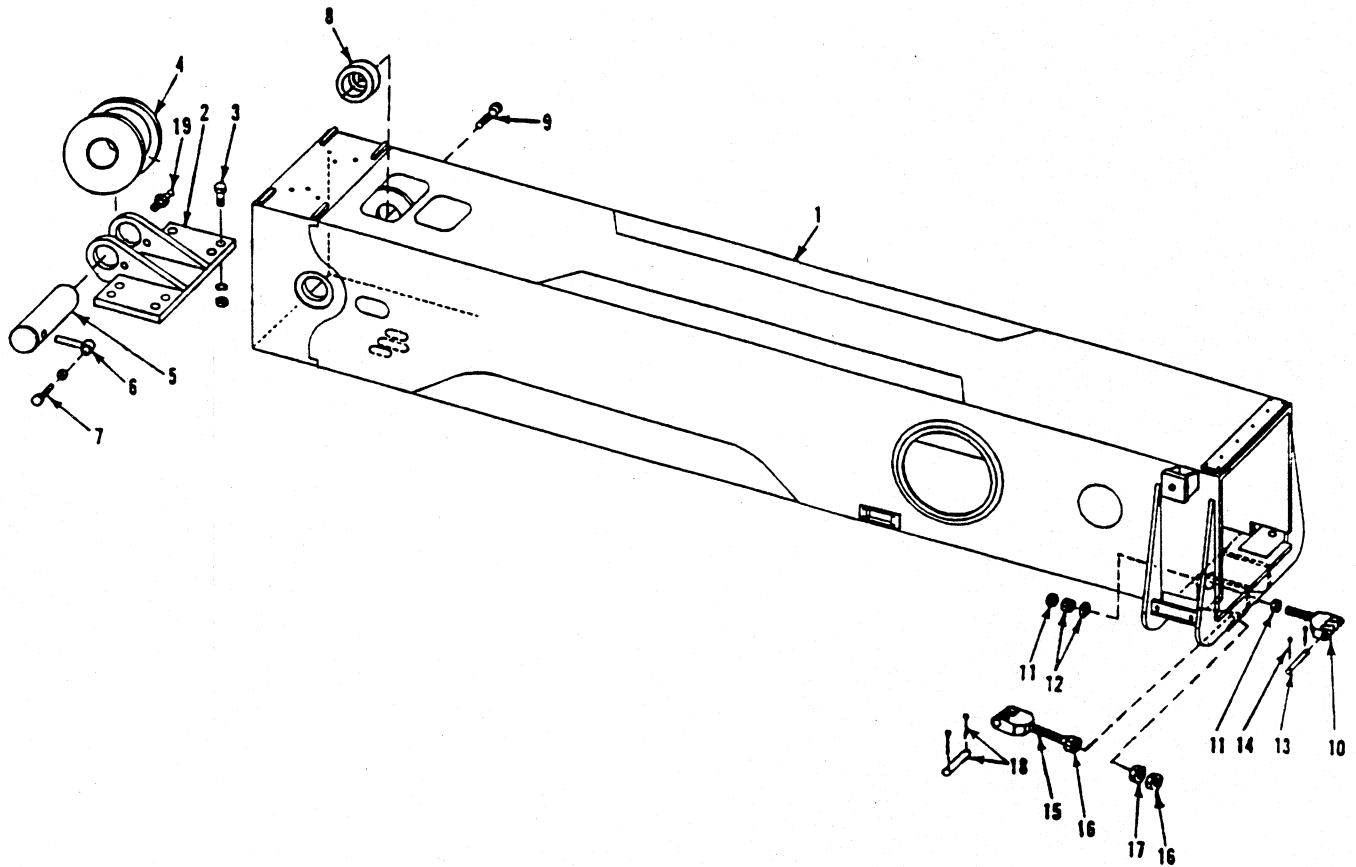
WHEN ORDERING PARTS, SPECIFY MODEL NUMBER, SERIAL NUMBER AND DESCRIPTION OF PART REQUIRED



**CIRCUIT BREAKER**  
Lower

DATE: Issued 9-2004  
MODEL: T300-1 Series  
PAGE 33.5

GROUP  
**33**



REF.	PART NO.	DESCRIPTION	QTY.
1	714F1029	#2 Boom Section .....	1
2	709F7218	Bracket, Sheave .....	1
3	316 3124	Capscrew, 5/8C x 2-1/4 Gr 8.....	8
	1209-48	Flatwasher, 5/8 HT.....	8
	340 3125	Nut, 5/8C Deformed Thd.....	8
4	709A6806	Sheave w/Bearing .....	1
	709 5998	Bearing.....	1
5	709 4009	Pin .....	1
6	709 4255	Rod End .....	1
7	1242-45	Capscrew, 5/8C x 1-1/2 Gr 8.....	2
8	709 7261	Pin, Eccentric .....	2
9	316 3339	Capscrew, 3/4C x 2 Gr 8.....	2
	1209-58	Flatwasher.....	2
10	709 7090	Link.....	1
11	1205-140	Locknut, 1-1/2C.....	2
12	340 4522	Locknut, 1-1/2C.....	1
	U334 3701	Flatwasher, HT.....	1
13	709 7089	Pin .....	1
14	091 703 04	Pin, Cotter .....	2
15	709 7199	Link.....	1
16	1205-96	Nut, 3/4C Jam .....	2
17	1205-198	Nut, 3/4C Gr 8.....	1
18	709 7198	Pin .....	1
	091 703 04	Pin, Cotter .....	2
19	364 0002	Zerk, Grease .....	1

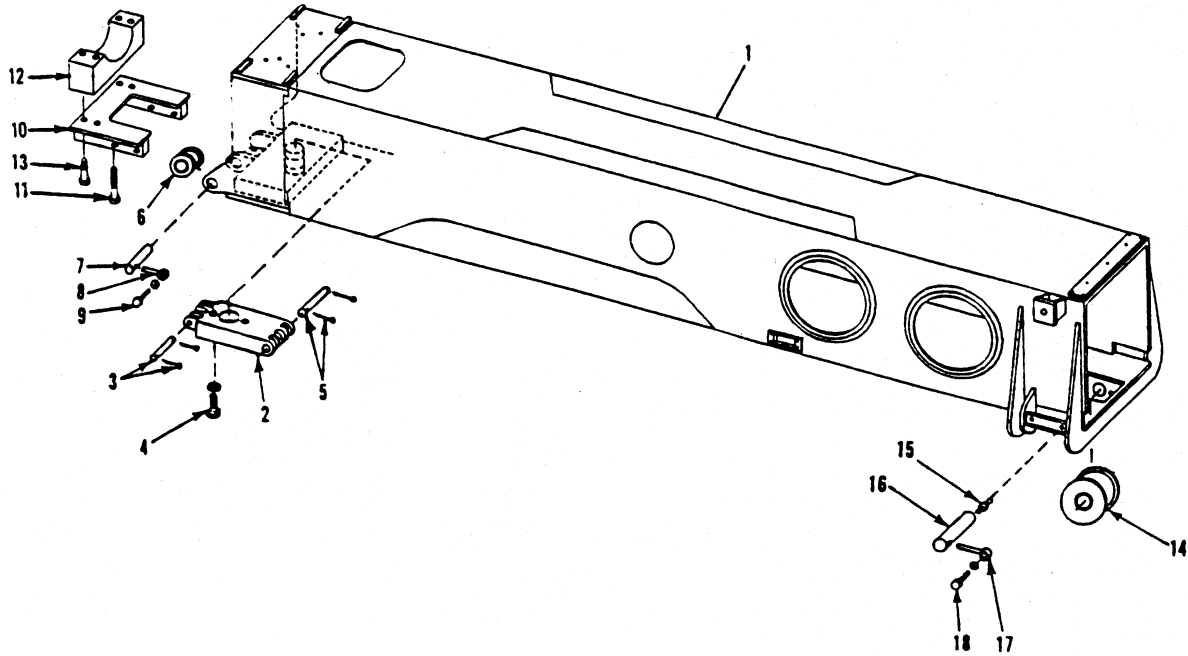
WHEN ORDERING PARTS, SPECIFY MODEL NUMBER, SERIAL NUMBER AND DESCRIPTION OF PART REQUIRED



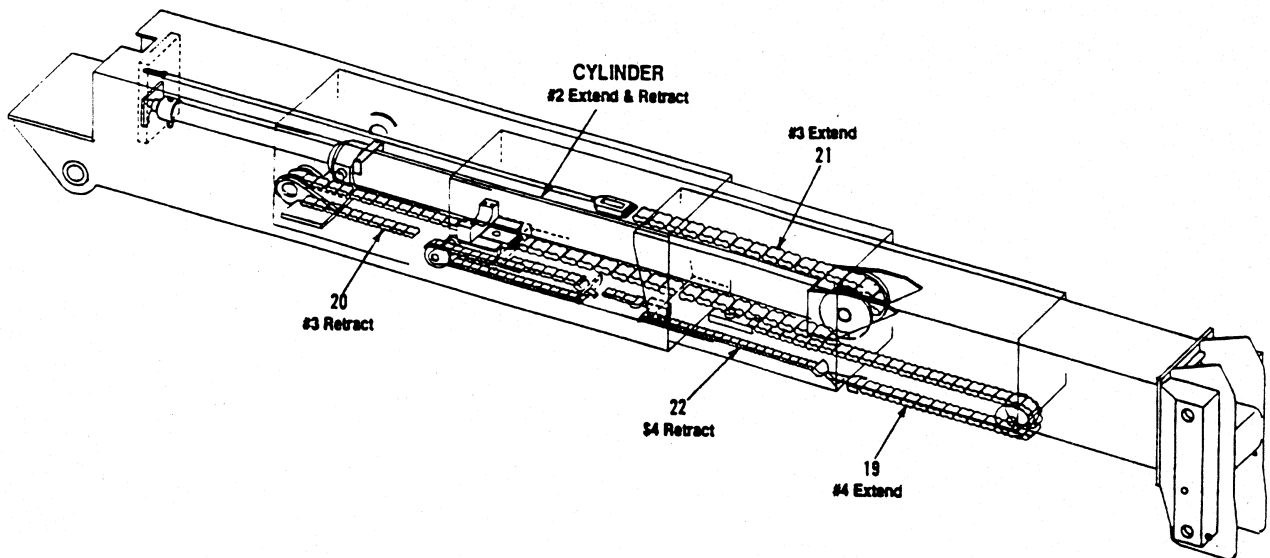
**105' BOOM**  
#2 Section

DATE: Revised 5-2005  
MODEL: T300-1  
PAGE 39.3

GROUP  
**39**



REF.	PART NO.	DESCRIPTION	QTY.	REF.	PART NO.	DESCRIPTION	QTY.
1	709F7175	#3 Boom Section.....	1	11	1200-166	Capscrew, 5/8C x 4-1/2.....	4
2	709 5972	Link .....	1		1209-48	Flatwasher, 5/8 HT.....	4
3	709 4029	Pin.....	1	12	709 7273	Pad, Wear.....	1
	091 703 04	Pin, Cotter .....	2	13	1242-144	Capscrew, 1/2C x 1-1/4 Gr 8.....	4
4	1242-140	Capscrew, 3/4C x 4-1/2 Gr 8.....	2		334 2205	Flatwasher, 1/2 HT.....	4
	1209-58	Flatwasher .....	2	14	709A7095	Sheave w/Bearing.....	1
5	709 6045	Pin.....	1		709 7823	Bearing.....	1
	1207-13	Pin, Cotter .....	2	15	364 0002	Zerk, Grease .....	2
6	709A7226	Sheave w/Bushing .....	1	16	709 7110	Pin.....	1
	401 4707	Bushing.....	1	17	709 4255	Rod Eye .....	1
7	709 7225	Pin.....	1	18	1242-45	Capscrew, 5/8C x 1-1/2 Gr 8.....	1
8	709 1573	Rod Eye .....	1	19	709 7055	Chain .....	1
9	1242-21	Capscrew, 7/16C x 1-1/4 Gr 8.....	2	20	709 7056	Chain .....	1
	1209-59	Flatwasher .....	2	21	709 7057	Chain .....	1
10	709F7266	Bracket.....	1	22	709 7197	Chain.....	1



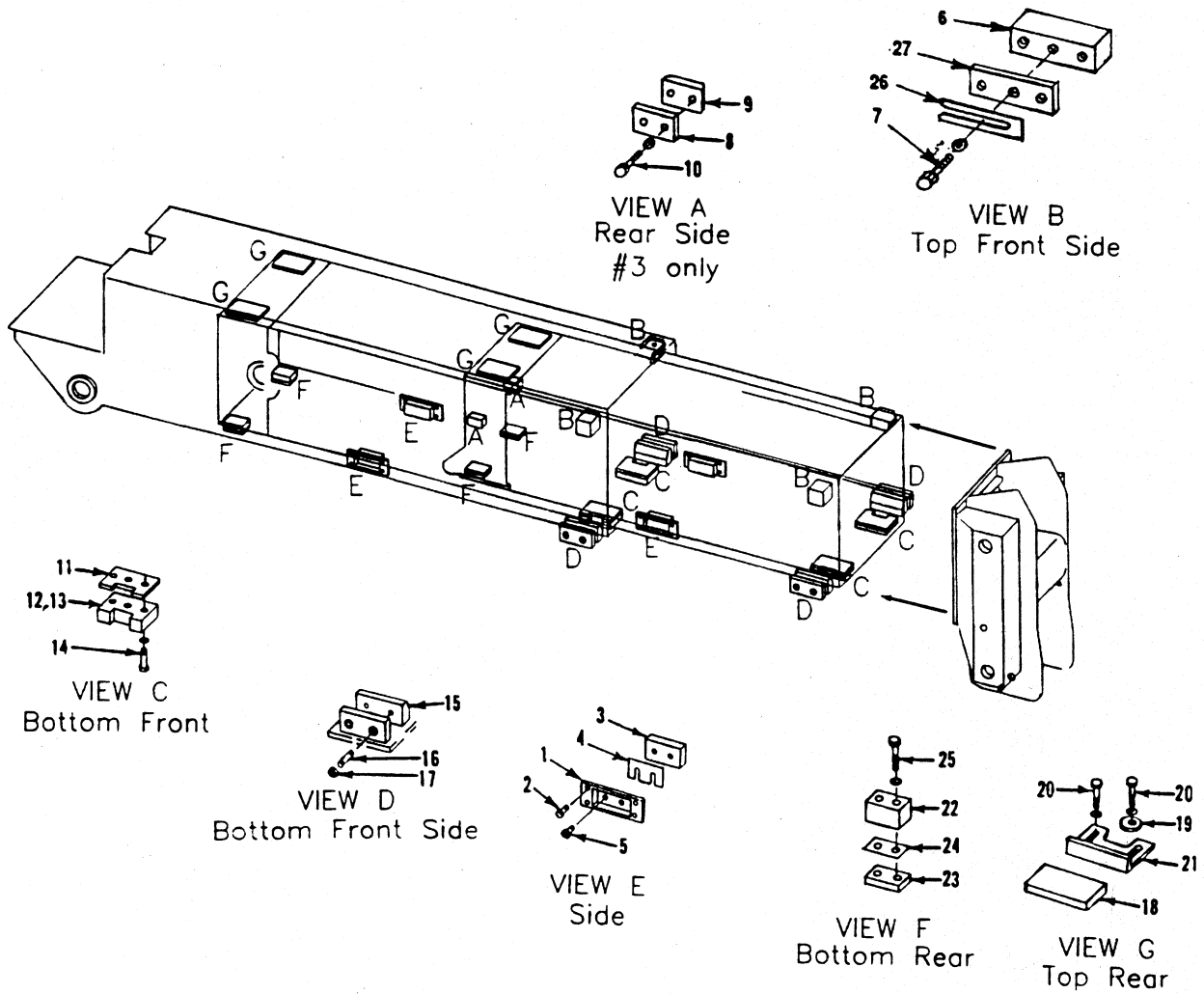
WHEN ORDERING PARTS, SPECIFY MODEL NUMBER, SERIAL NUMBER AND DESCRIPTION OF PART REQUIRED



**94' BOOM**  
#3 Section / Chains

DATE: Revised 5-2005  
MODEL: T300-1  
PAGE 39A.4

GROUP  
**39A**



REF.	PART NO.	DESCRIPTION	QTY.	REF.	PART NO.	DESCRIPTION	QTY.
1	709 7774	Cover (#1,#2,#3 Sections).....	4	16	312 3318	Setscrew, 3/4C x 2-1/2 .....	8
2	1200-315	Capscrew, 3/8C x 5/8 .....	16	17	1205-96	Nut, 3/4C Jam .....	8
3	709 7257	Pad, Wear.....	4	18	709 7279	Pad, Wear .....	6
4	709 7258	Shim .....	AR	19	709 6310	Round.....	6
5	1200-57	Capscrew, 3/8C x 3/4 .....	8	20	1200-95	Capscrew, 1/2C x 1.....	18
6	712 0086	Pad, Wear (#1 & #3 Sections) .....	4	334 2205	Washer, Hardened .....	18	
7	712 0087	Pad, Wear - Beveled (#2 Section) .....	2	21	709F6311	Bracket .....	6
7	1200-67	Capscrew, 3/8C x 2 .....	1	22	709 7529	Spacer, 1" (#2 section) .....	2
8	1209-89	Flatwasher.....	18	709 7527	Spacer, 3/8" (#3 section) .....	2	
8	706 8617	Block.....	2	23	708 0162	Pad, Wear .....	4
9	706 8502	Pad .....	2	24	707 8828	Shim, 16 ga. ....	8
10	1200-108	Capscrew, 1/2C x 2-1/2 .....	4	25	1200-35	Capscrew, 5/16C x 1-1/2(#3,#4) .....	2
10	334 2205	Flatwasher, 1/2 HT .....	4	1200-39	Capscrw, 5/16C x 2 (#2).....	2	
11	709 7269	Pad, Wear.....	4	1210-17	Lockwasher .....	4	
12	709 7236	Spacer, 1/4" (#2 Section).....	2	26	712 0093	Shim .....	66
13	709 7235	Spacer, 1-1/8" (#1 Section).....	2	27	712 0094	Plate (#1 & #3 Sections).....	4
14	1200-95	Capscrew, 1/2C x 1(#2).....	6	712 0095	Plate (#2 Section).....	2	
14	1200-106	Capscrew, 1/2C x 2-1/4(#1).....	6	712 0393	Shim (#1 Section).....	6	
14	334 2205	Flatwasher.....	12				
15	7097767	Bar, Wear .....	4				

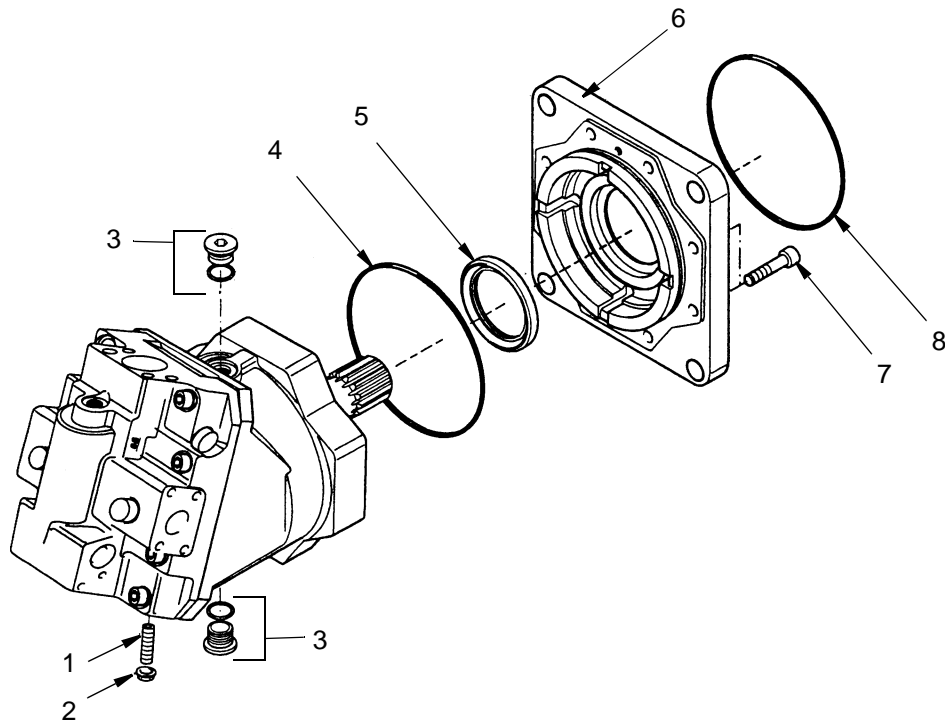
WHEN ORDERING PARTS, SPECIFY MODEL NUMBER, SERIAL NUMBER AND DESCRIPTION OF PART REQUIRED



**81' BOOM**  
Slide Pads

DATE: Revised 5-2005  
MODEL: T300-1  
PAGE 39B.5

GROUP  
**39B**



REF.	PART.NO.	DESCRIPTION	QTY.
	218989	Motor, Winch	
	219082	Kit Seal (Includes Items 4, 5 and 8)	
1	219030	Screw, Headless.....	1
2	219031	Seal, Locknut.....	1
3	219024	Plug Assembly.....	2
4	219028	O-Ring.....	1
5	219027	Seal, Shaft.....	1
6	219026	Flange.....	1
7	219020	Screw.....	8
8	219025	O-ring.....	1

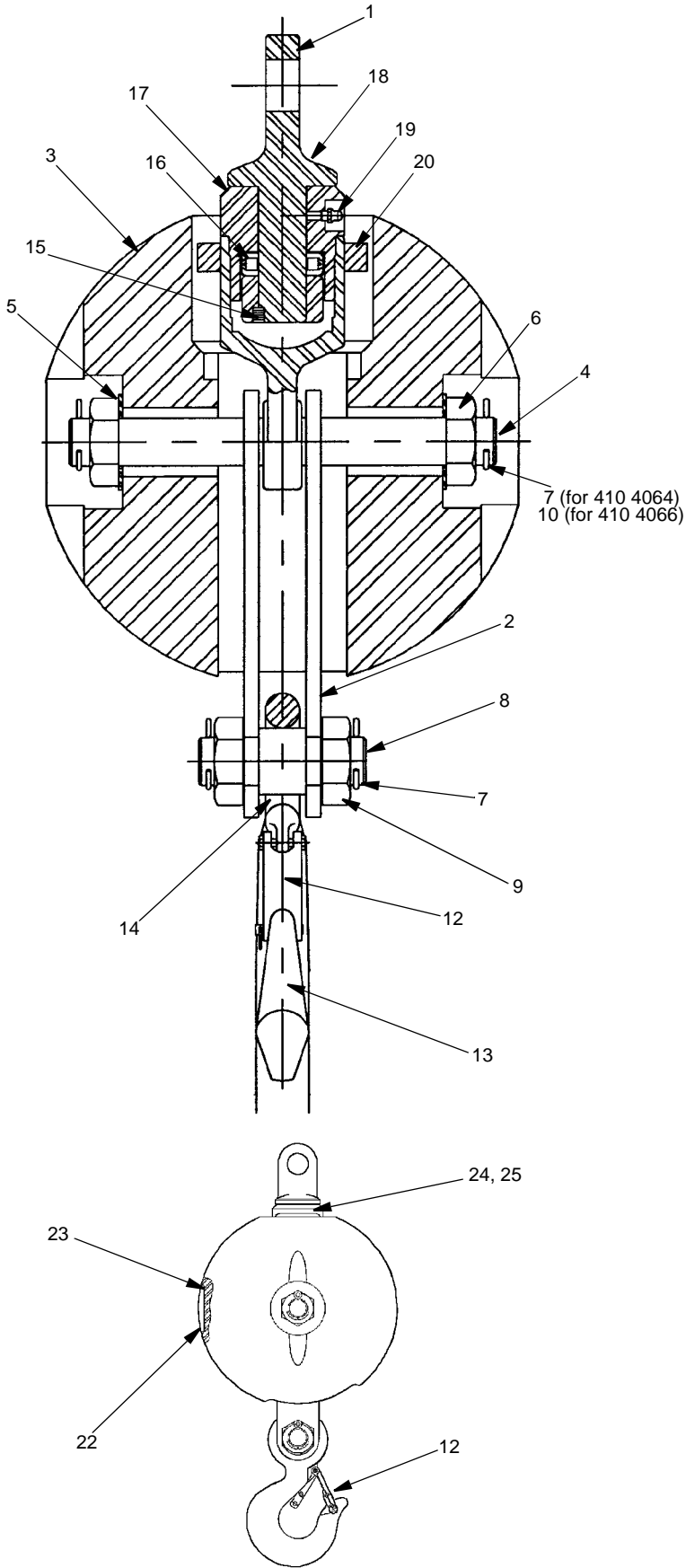
WHEN ORDERING PARTS, SPECIFY MODEL NUMBER, SERIAL NUMBER AND DESCRIPTION OF PART REQUIRED



## WINCH MOTOR

DATE: Revised 5-2005  
 MODEL: T300-1  
 PAGE 40.2

GROUP  
**40**



REF.	PART.NO.	DESCRIPTION	QTY.
	410 4064	Overhaul Ball, 12 Ton, 240#, 5/8"	
1	215396	Swivel.....	1
2	215397	Adapter Bar 3/8.....	2
3	215394	Overhaul Ball .....	1
4	215395	Ball Latch Pin .....	2
5	215386	Washer.....	2
6	215387	Jam Nut 1-1/4 .....	2
7	215398	Cotter Pin 1/4 .....	2
8	215399	Hook Latch Pin.....	1
9	215400	Jam Nut 1-5/8 .....	2
10	215388	Cotter Pin 3/16.....	2
12	215401	Replacement Hook Latch Kit .....	1
13	215402	Eye Hook .....	1
14	215403	Spacer 1-1/4 .....	1

REF.	PART.NO.	DESCRIPTION	QTY.
	410 4066	Overhaul Ball, 7 Ton, 250#, 5/8"	
2	215393	Adapter Bar 3/8.....	2
3	216949	Overhaul Ball .....	1
4	215395	Ball Latch Pin .....	2
5	215386	Washer.....	2
6	215387	Jam Nut 1-1/4 .....	2
8	215389	Hook Latch Pin .....	1
9	215387	Jam Nut 1-1/4 .....	2
10	215388	Cotter Pin 3/16.....	4
12	215390	Replacement Hook Latch Kit .....	1
13	215391	Eye Hook .....	1
14	215392	Spacer 1-1/4 .....	1
15	215959	Screw 5/16.....	2
16	216958	Bearing .....	1
17	216952	Housing.....	1
18	216950	Eye & Nut.....	1
19	215286	Fitting .....	1
20	216951	Ring .....	1
21	216953	Top with Eye .....	1
22	216954	Name Plate .....	1
23	216955	Screw .....	8
24	216956	Name Plate .....	1
25	216957	Caution Plate .....	1

WHEN ORDERING PARTS, SPECIFY MODEL NUMBER, SERIAL NUMBER AND DESCRIPTION OF PART REQUIRED



**OVERHAUL BALL**  
240# / 250#

DATE: Issued 9-2004  
MODEL: T300-1  
PAGE 44.7

GROUP  
**44**

CLICK HERE TO **DOWNLOAD** THE COMPLETE MANUAL

- Thank you very much for reading the preview of the manual.
- You can download the complete manual from: [www.heydownloads.com](http://www.heydownloads.com) by clicking the link below



- Please note: If there is no response to CLICKING the link, please download this PDF first and then click on it.

CLICK HERE TO **DOWNLOAD** THE COMPLETE MANUAL