

unit: 636

Engine Sr.no: 46558270

Winch parts book
is included



Equipment Sr.no: 14063



PARTS MANUAL

RT700

Revised: November 2005

12261-264

CLICK HERE TO **DOWNLOAD** THE COMPLETE MANUAL

- Thank you very much for reading the preview of the manual.
- You can download the complete manual from: www.heydownloads.com by clicking the link below



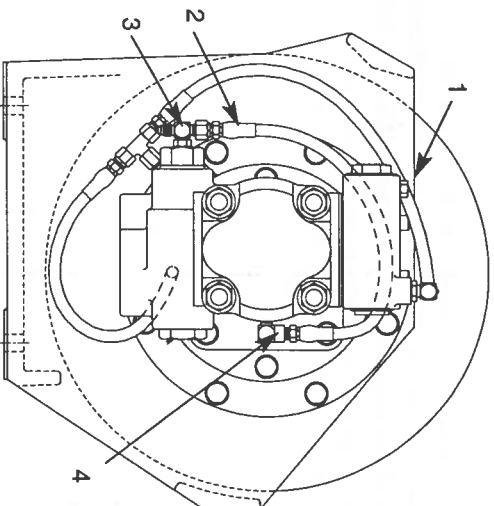
- Please note: If there is no response to CLICKING the link, please download this PDF first and then click on it.

CLICK HERE TO **DOWNLOAD** THE COMPLETE MANUAL

- Install a case drain hose for the tee directly to the reservoir. Minimum hose size is -6, 3/8 in. (9.5 mm). Maximum drain line back pressure is 100 PSI (7 Kg/cm²) measured at the motor case drain port.

Parts needed for modification:

Item	Qty	P/N	Description
1	1	25663	Plug -4 (Aerquip 900598-4S)
2	1	13707	Hose 17 in. OAL (-4 JIC Fml SW/-4 Hose / 1/8 NPT ml)
3	1	29078	Tee -4 (Aerquip 203003-4-4S)



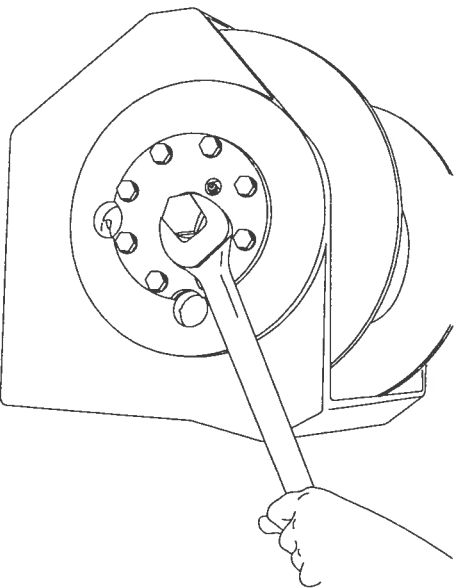
PREVENTIVE MAINTENANCE

A regular program of preventive maintenance for your planetary winch is strongly recommended to minimize the need for emergency servicing and promote safe, reliable winch operation.

Field experience, supported by engineering tests, indicate the three (3) service procedures listed below are the **MOST** critical to safe, reliable winch operation and must be observed.

- **Regular Gear Oil Changes** – every 1000 hours or six (6) months
- **Use of Proper Gear Oil** – recommended type for prevailing ambient temperature
- **Annual Disassembly and Inspection of All Wear Items** – in compliance with American National Standards Institute (ANSI) specification B30.5c 1987 and American Petroleum Institute (API) recommended practice RP 2D section 3.

The following minimum service intervals are specified for operating hours of the prime mover.

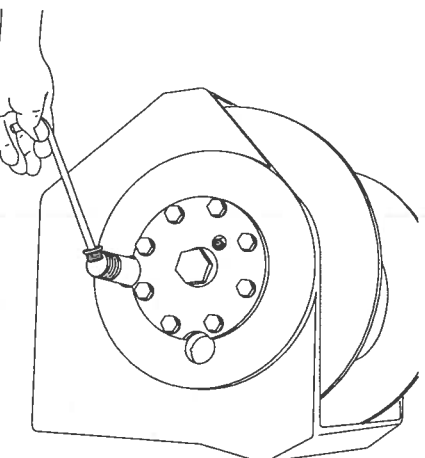


1. Oil Level

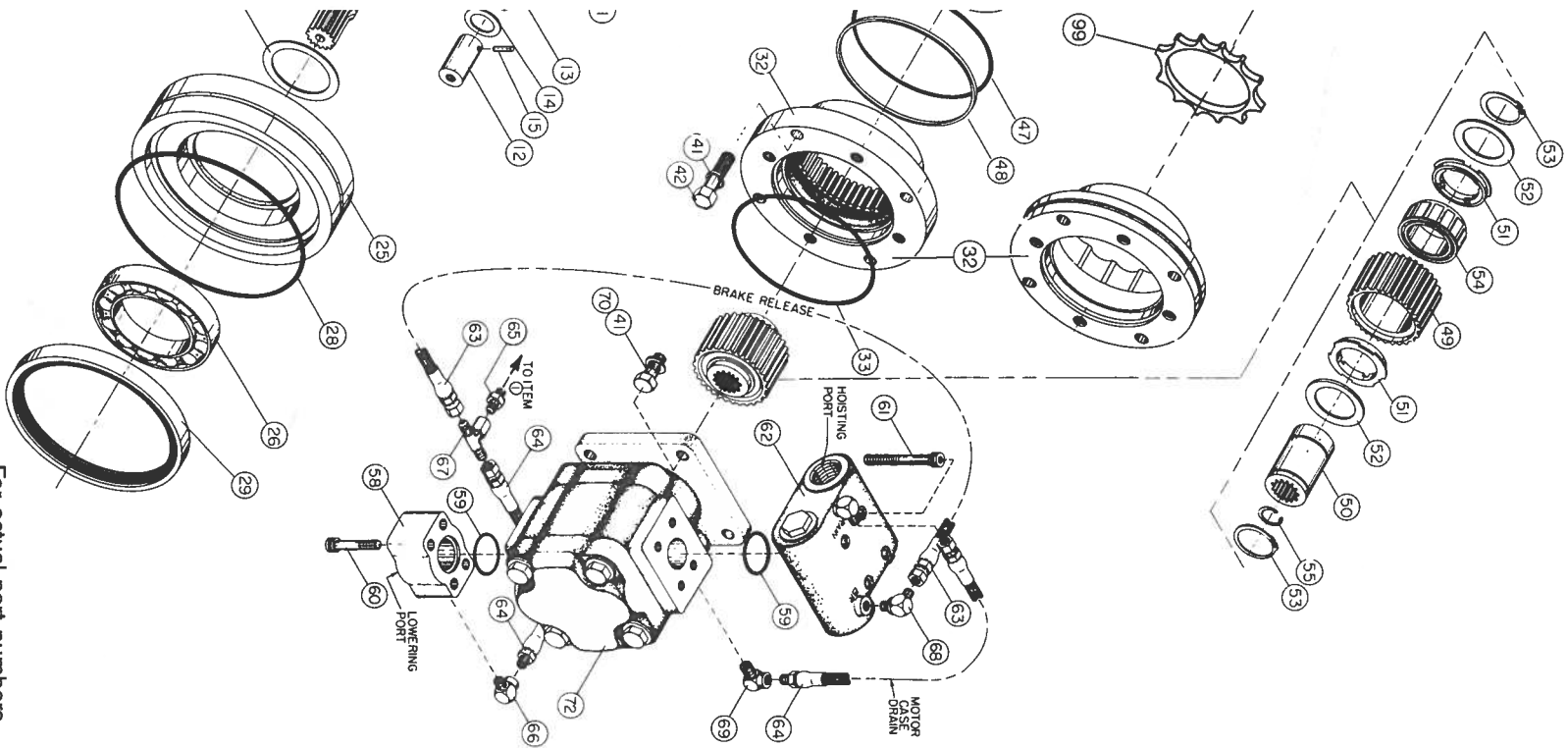
The gear oil level should be checked every 500 operating hours or three (3) months, whichever occurs first. To check the oil level, remove the large plug located in the center of the drum support. The oil should be level with the bottom of this opening. If additional oil is needed, refer to "Recommended Planetary Gear Oil".

2. Oil Change

The gear oil should be changed after the first one hundred (100) hours of operation, then every 1,000 operating hours or six (6) months, whichever occurs first. The gear oil must be changed to remove wear particles that impede the reliable and safe operation of the brake clutch and erode bearings, gears and seals. Failure to change gear oil at these suggested minimum intervals may contribute to intermittent brake slippage which could result in property damage, severe personal injury or death.



The gear oil should also be changed whenever the ambient temperature changes significantly and an oil from a different temperature range would be more appropriate. Oil viscosity with regard to ambient temperature is critical to reliable brake



For actual part numbers,
refer to PD12C Material List
Publication Number PB-109,
or PD15B Material List
Publication Number PB-229.

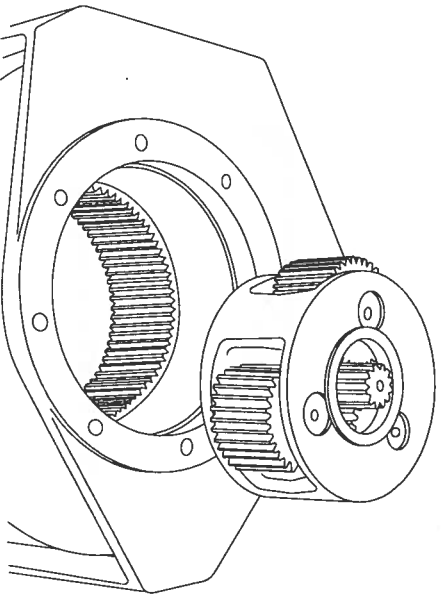
PD12C/PD15B PARTS KEY

ITEM	QUANTITY	DESCRIPTION
1	1	Brake Cylinder
2	1	Piston Seal
3	1	Pressure Plate
4	1	Piston Back-up Ring
5	12	Spring
6	7	Disc-friction
7	8	Disc-brake
10	1	Primary Planet Carrier
11	3	Primary Planet Gear
12	3	Primary Planet Gear Shaft
13	3	Roller Bearing
14	6	Thrust Washer
15	6	Spiral Pin
16	1	Output Planet Carrier
17	3	Output Planet Gear
18	3	Output Planet Gear Shaft
19	6	Roller Bearing
20	3	Bearing Spacer
21	6	Thrust Washer
22	1	Base
23	1	Bearing Support
24	1	Cable Drum
25	1	Cable Drum Closure
26	2	Ball Bearing
27	1	Oil Seal
28	1	O-Ring
29	1	Oil Seal
30	1	Retaining Ring
31	1	Thrust Washer
32	1	Motor Support
33	1	O-ring
34	1	Output Sun Gear
35	1	Primary Sun Gear
36	2	Spacer
37	1	Primary Thrust Plate
38	1	Output Thrust Plate
40	16	Cap screw
41	24	Lockwasher
42	4	Cap screw
43	4	Thrust Washer
44	1	Plug — Hex. Head
45	1	Plug — Flush
46	1	Vent Plug
47	1	O-ring
48	1	Back-up Ring
49	1	Brake Race — Outer
50	1	Brake Race — Inner
51	2	Sprag Bushing
52	2	Sprag Bushing Retainer
53	2	Retaining Ring
54	1	Sprag Clutch
55	1	Retaining Ring
57	1	Cable Clamp
58	1	Mainflid
59	2	O-ring
60	4	Cap screw — Socket Head
61	4	Cap screw — Socket Head
62	1	Brake Valve
63	1	Hose Assembly
64	2	Hose Assembly — 12 In.
65	1	Adapter — Straight
66	1	Elbow
67	1	Swivel Tee
68	1	Elbow
69	1	Reducer Elbow
70	4	Cap screw
72	1	Hydraulic Motor
90	1	Base Plate
91	1	Side Plate (bearing support end)
92	1	Side Plate (motor end)
93	16	Cap screw (special)
94	16	Washer
95	1/2	Tie Bar
96	2/4	Cap screw
97	2/4	Lockwasher
99	1	Spring Spacer

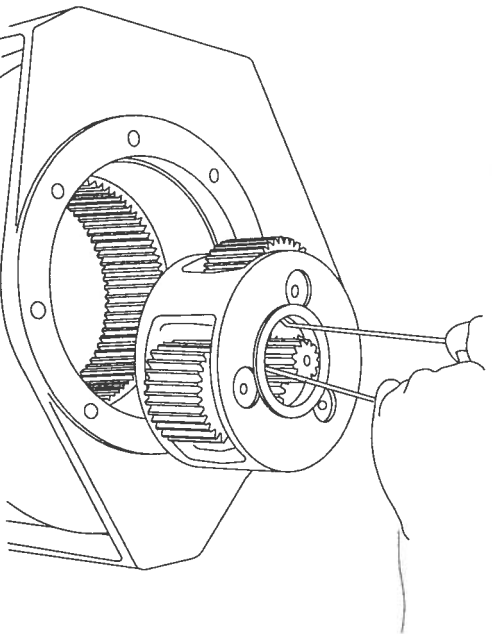
⚠ CAUTION ⚠

Be sure the vent plug is located above the horizontal centerline for the intended application. Oil leakage may occur if vent is positioned incorrectly.

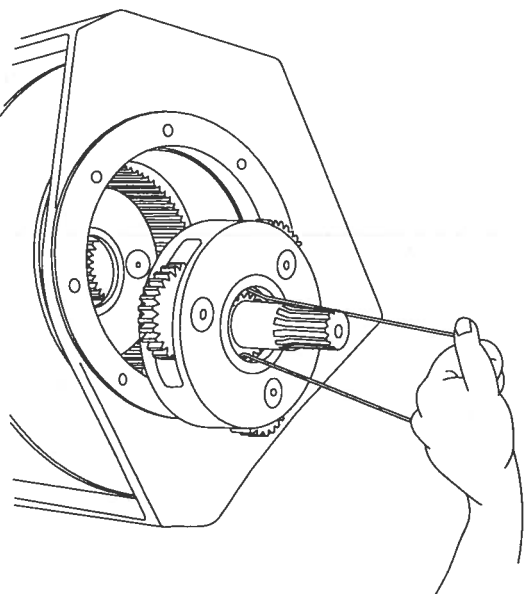
4. Tighten the bearing support cap screws to the recommended torque.



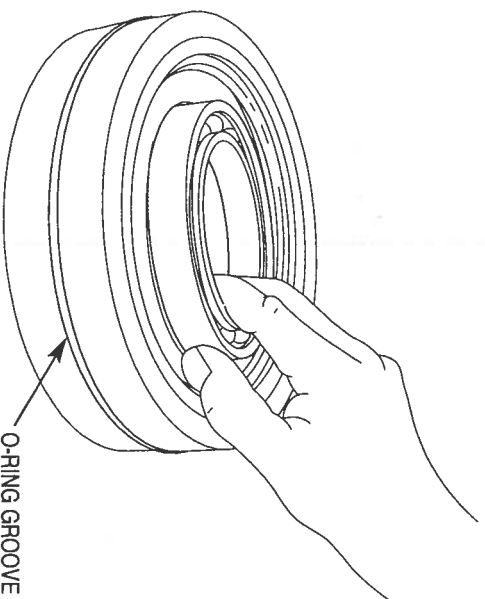
5. Stand winch on bearing support end. Install the output sun gear and bearing thrust washer into output planet carrier.



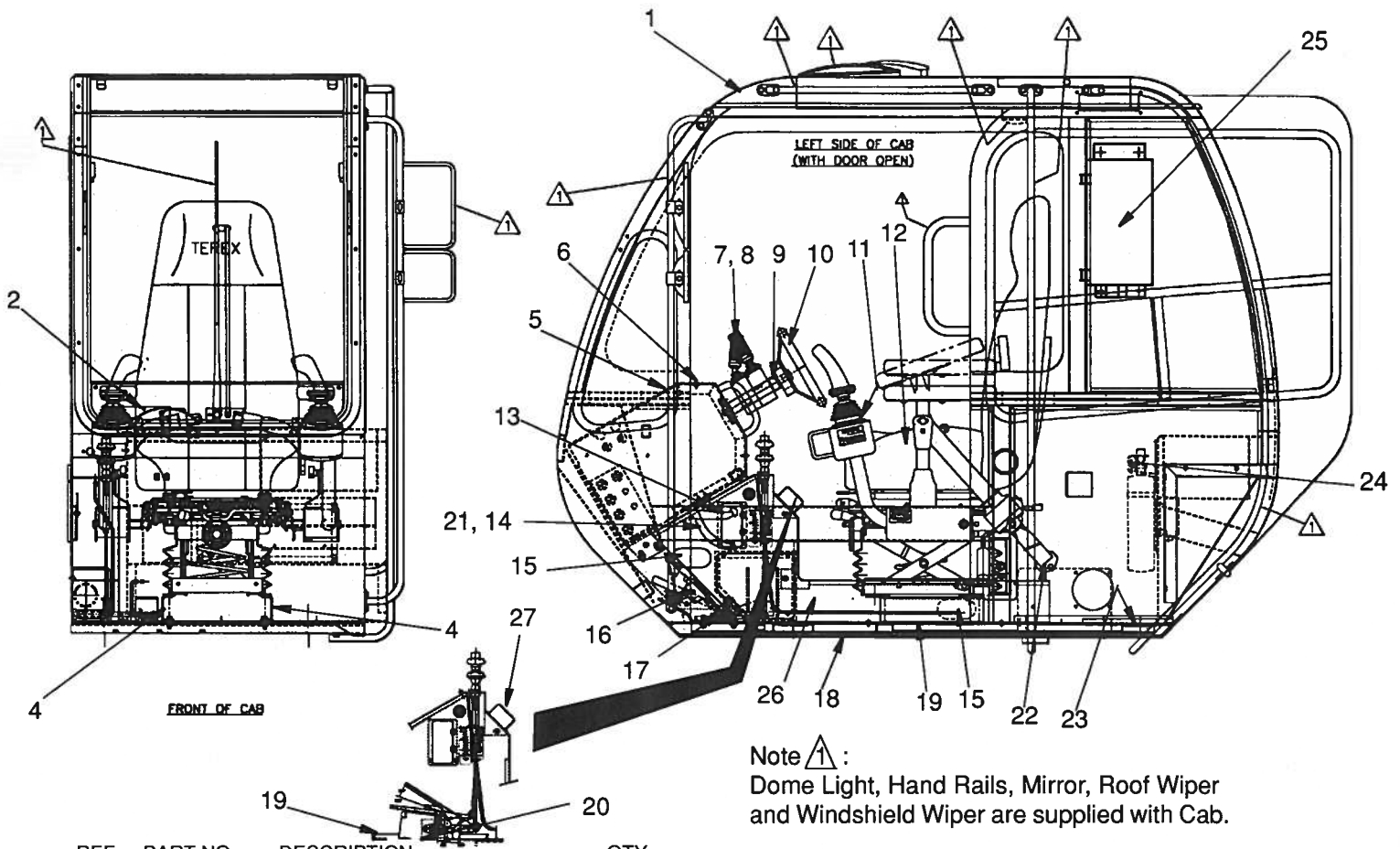
6. Install the output planet carrier into the drum while meshing the planet gears with the ring gear and the planet housing with the bearing support.
7. Install the primary sun gear and thrust washer into the primary planet carrier.



8. Install the primary planet carrier, meshing the planet gears with the ring gear and the planet housing with the output sun gear.



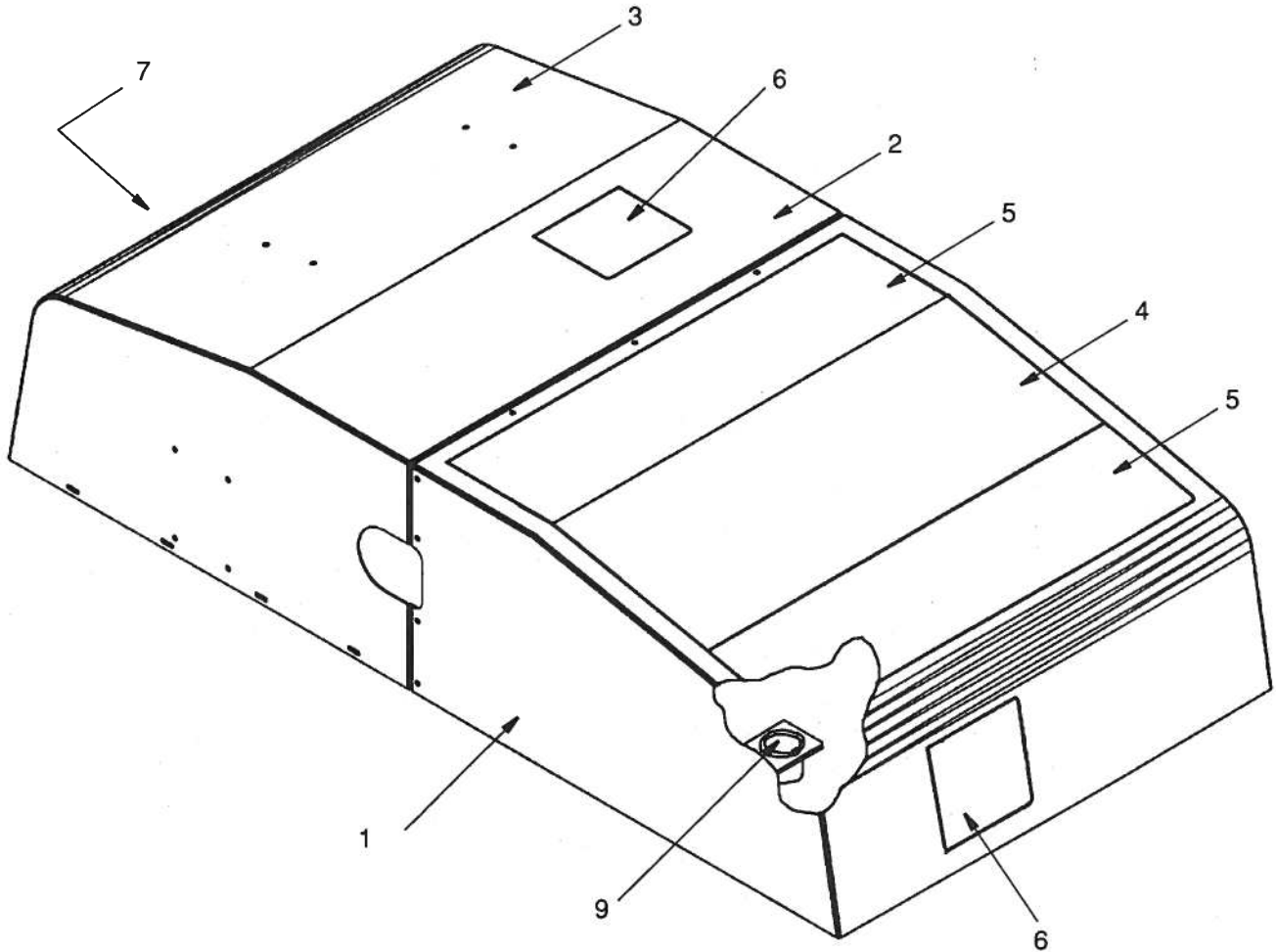
9. Install a new bearing in the drum closure as required. Use sealant on the outside surface of the oil seal. Install with spring side of the seal toward bearing, using a flat plate to avoid distortion. Install a new O-ring in the groove on the O.D. of the drum closure.



REF.	PART.NO.	DESCRIPTION	QTY.
	721A0262	Cab, Crane	
1	Page 27.2	Cab - 719A0105.....	1
2	1202-6	Capscrew, #10 x .75.....	4
	1205-5	Nut, #10.....	4
4	1200-31	Capscrew, .31C x 1.00.....	4
	1209-2	Flatwasher.....	4
	1210-17	Lockwasher.....	4
	1205-25	Nut.....	4
	714 0497	Support, Seat.....	2
5	Page 33.1	Upper Dash Assembly.....	1
	1203-271	Screw, 1/4-20 x .63.....	8
6	1245-62	Level.....	1
	MK62603	Screw, #6C x 1.00.....	3
	1205-1	Nut.....	3
7	Page 28.1	Directional Signal - 718 0742.....	1
	718 0749	Clamp.....	1
8	Page 28.2	Transmission Shifter - 718 0741.....	1
	718 0746	Clamp Assembly.....	1
9	Page 11.1	Steering Assembly - 718A0720.....	1
10	718 0721	Column, Steering.....	1
	719 0711	Wheel, Steering.....	1
	719 0712	Pad, Horn.....	1
	1203-289	Capscrew, 20mm.....	2
	1203-290	Capscrew, 25mm.....	2
11	1203-271	BHCS, 1/4-20 x .63.....	8
12	1200-31	Capscrew, .31C x 1.00.....	4
	1209-2	Flatwasher.....	4
	1210-17	Lockwasher.....	4
	1205-25	Nut.....	4
	Page 27.10	Slimline Seat - 719 0200.....	1
13	Page 28.3	Swing Brake Assembly - 721A0261.....	1

REF.	PART.NO.	DESCRIPTION	QTY.
14	Page 10.5	Air Brake Kit - 709A6754-1.....	1
15	12147-12	U-Channel.....	3
16	Page 28.6	Cab Throttle Control - 719A0408.....	1
17	1209-2	Flatwasher.....	2
	1210-17	Lockwasher.....	1
	1205-25	Nut.....	2
	719F0604	Telescope Pedal Support.....	1
18	1200-31	Capscrew, .31c x 1.00.....	1
	1210-17	Lockwasher.....	1
	1205-25	Nut.....	1
	1223-387	Horn.....	1
	1219-77	Adapter.....	2
	1200-63	Capscrew.....	2
19	719 0104	Floormat, Front.....	1
20	719 0602	Telescope Foot Pedal.....	1
	1200-3	Capscrew, 1/4-20 x 1.0.....	8
	1209-44	Flatwasher, 1/4.....	8
	1210-14	Lockwasher, 1/4.....	8
	1205-13	Hex Nut, 1/4-20.....	8
21	707 7712	Spacer.....	2
	1200-63	Capscrew, .38C X 1.50.....	2
22	Page 27.10	Seatbelt with Tether (45528).....	1
23	719 0103	Floormat, Rear.....	1
24	12186-48	Chain.....	1
	1222-217	Fire Extinguisher.....	1
25	Page 28.8	Controller Module (720 0163).....	1
26	Page 27.9	Cableway Assembly - 719A0409.....	1
27	Page 31.3	Heater Control.....	Ref

WHEN ORDERING PARTS, SPECIFY MODEL NUMBER, SERIAL NUMBER AND DESCRIPTION OF PART REQUIRED



REF.	PART.NO.	DESCRIPTION	QTY.	REF.	PART.NO.	DESCRIPTION	QTY.
	720A0289	Engine Housing					
1	217832	Front Housing Weldment.....	1	5	217836	Hinge, Long	2
	217843	Washer	9		217837	Door, Large	2
	217844	Lockwasher	9		217838	Latch	2
	217845	Bolt	9		217846	Nut	16
2	217833	Center Housing Skin	1	6	217839	Hinge, Short.....	2
3	217834	Rear Housing Skin	1		217840	Door, Small	2
	217843	Washer	7		217841	Latch	2
	217844	Lockwasher	7		217846	Nut	4
	217845	Bolt	7	7	217842	Panel, Grill	1
4	217835	Panel	1		217843	Washer.....	9
	217843	Washer	4		217844	Lockwasher.....	9
	217846	Nut.....	4		217845	Bolt.....	9
				8	217847	Rubber Bumper	18
				9	1245-162	Hourmeter	1

WHEN ORDERING PARTS, SPECIFY MODEL NUMBER, SERIAL NUMBER AND DESCRIPTION OF PART REQUIRED

TEREX  **CRANES**

ENGINE HOUSING

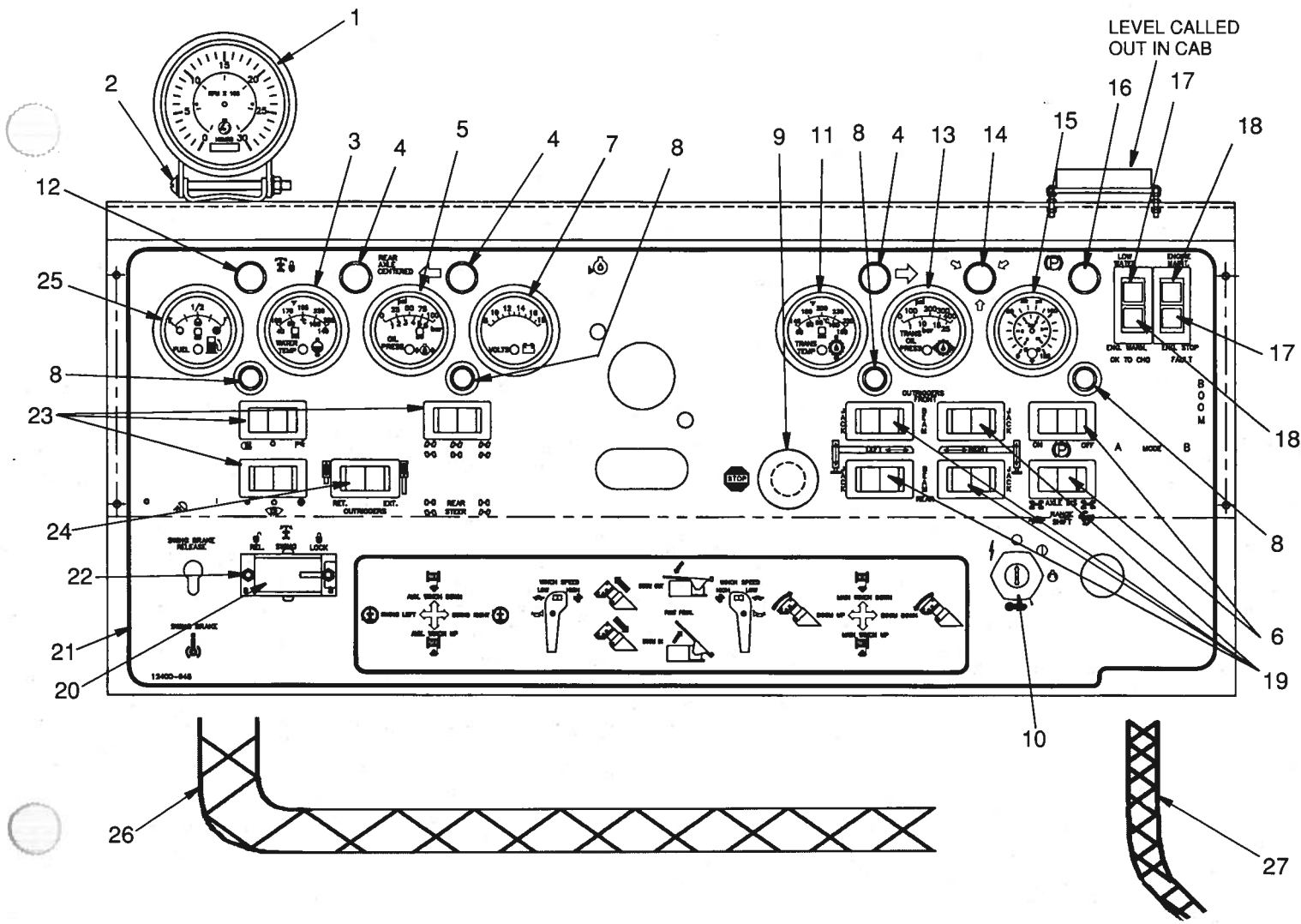
DATE: Issued 9-2003

MODEL: RT700

PAGE 27.11

GROUP

27



REF.	PART NO.	DESCRIPTION	QTY.	REF.	PART NO.	DESCRIPTION	QTY.
	720A0293	Dash Assembly					
1	1245-130	Tachometer.....	1	16	445 0111	Indicator, Light.....	1
2	1245-84	Mounting Kit.....	1		1223-693	Lens, Park Brake.....	1
3	1245-183	Water Temp. Gauge.....	1	17	1223-910	Insert, Reflector.....	2
4	445 0111	Indicator, Light.....	3		1223-884	Lamp, Pilot.....	2
	1223-710	Lens, Green.....	3		1223-946	Lens, Red.....	2
5	1245-179	Gauge, Oil Pressure.....	1	18	1223-910	Insert, Reflector.....	2
6	1223-880	Switch, Rocker.....	2		1223-884	Lamp, Pilot.....	2
7	1245-177	Voltmeter.....	1		1223-948	Lens, Yellow.....	2
8	1223-743	Lamp, Dash.....	4	19	1223-917	Switch.....	4
	1223-627	Bulb.....	4	20	719 0201	Switch, Swing Lock.....	1
9	1223-981	Switch, Push-Pull.....	1	21	12400-948	Decal, Dash.....	1
10	1223-858	Switch, Ignition.....	1	22	1200-309	Capscrew.....	2
11	1245-188	Gauge, Trans. Temp.....	1		1210-14	Lockwasher.....	2
12	445 0111	Indicator, Light.....	1	23	1223-879	Switch.....	3
	1223-708	Lens, Red.....	1	24	1223-878	Switch.....	1
13	1245-189	Gauge, Transmission Pressure.....	1	25	1245-178	Gauge, Fuel Level.....	1
14	445 0111	Indicator, Light.....	1	26	719 0805	Harness, Dash.....	1
15	1245-190	Gauge, Air Dual Pressure.....	1	27	719 0813	Harness.....	1

WHEN ORDERING PARTS, SPECIFY MODEL NUMBER, SERIAL NUMBER AND DESCRIPTION OF PART REQUIRED

TEREX  **CRANES**

DASH ASSEMBLY

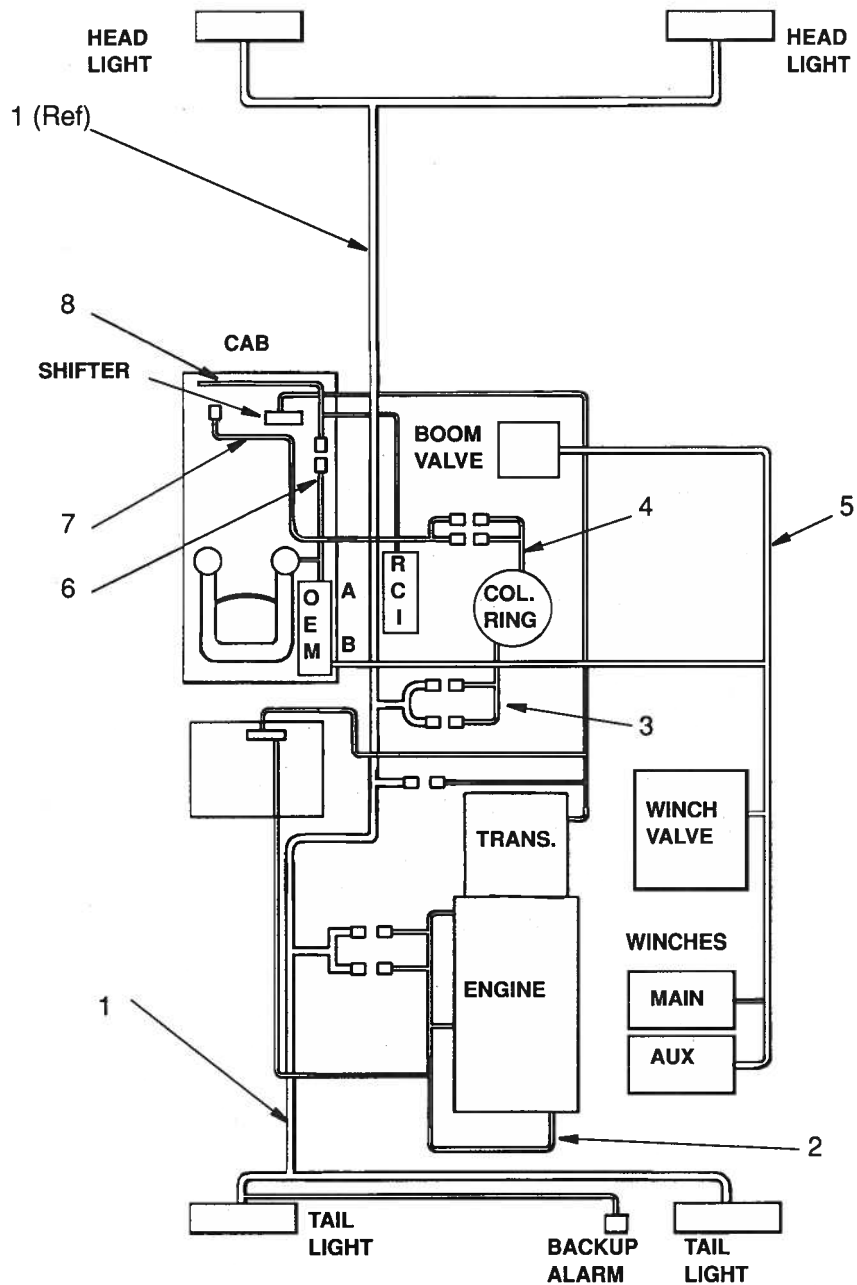
DATE: Issued 9-2003

MODEL: RT700

PAGE 33.1

GROUP

33



REF.	PART NO.	DESCRIPTION	QTY
1	720 0139	Harness, Lower Main	1
2	218515	Harness, Cummins QSB	1
3	720 0193	Harness, Lower Collector Ring	1
4	720 0194	Harness, Upper Collector Ring	1
5	720 0165	Harness, OEM	1
6	720 0164	Harness, OEM - Seat & Cab	1
7	719 0805	Harness, Dash	1
8	719 0813	Harness, RCI	1

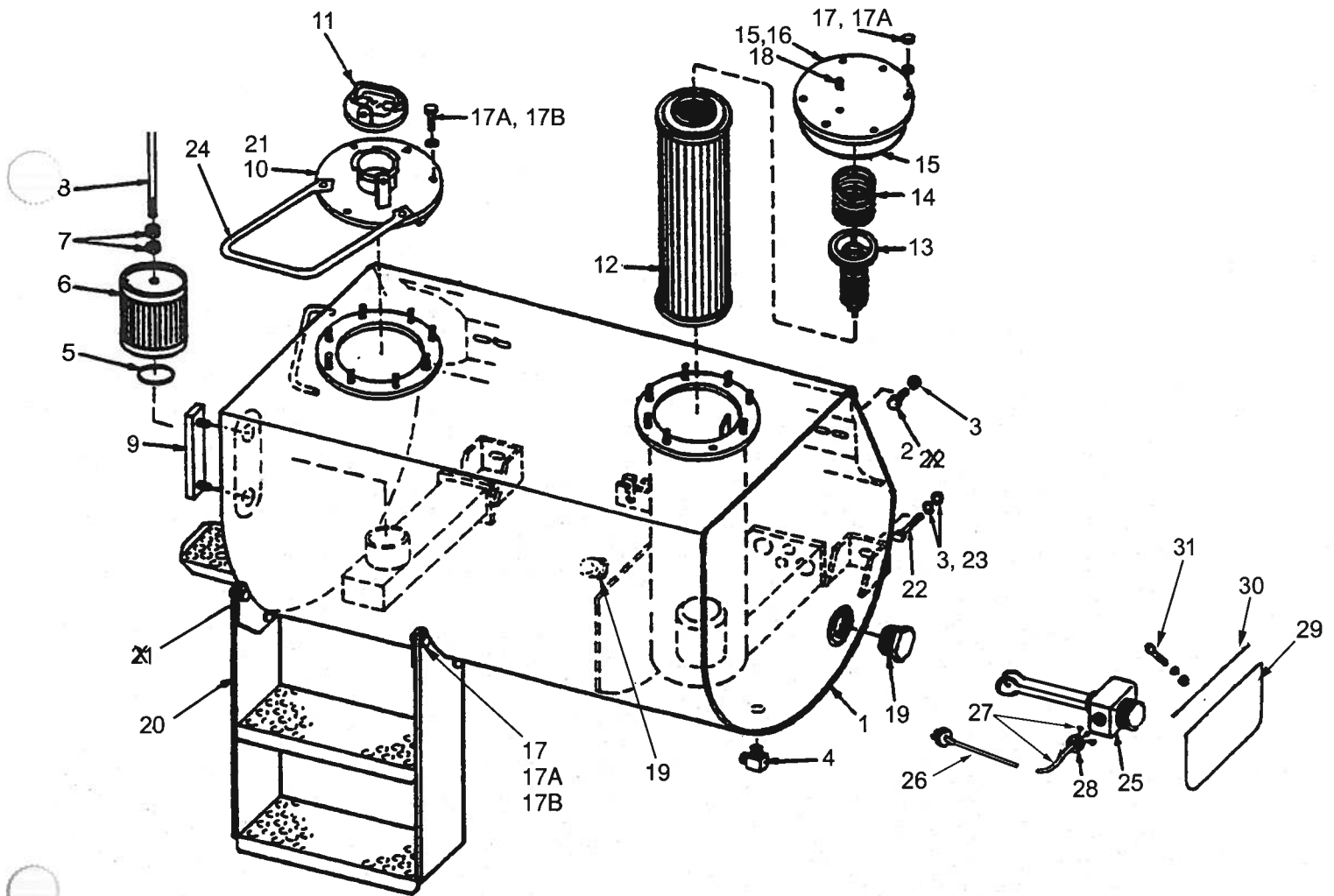
WHEN ORDERING PARTS, SPECIFY MODEL NUMBER, SERIAL NUMBER AND DESCRIPTION OF PART REQUIRED

See Page 31A.2

REF.	PART NO.	DESCRIPTION	QTY.	REF.	PART NO.	DESCRIPTION	QTY.
	719 0219	Heater, Propane - Suburban					
2	219199	Screw, #10 x 3/4	2	37	219215	Screw, #8 x 3/8	9
5	219200	Cabinet	1	38	219226	Wheel, Combustion Air	1
6	219201	Duct Cover	1	39	219227	Nut, 10-32 Hex Lock	2
7	219202	Bushing, Snap	1	40	219228	Washer, Flat	2
8	219203	Tube Assembly, Intake	1	41	219229	Housing, Comb Air (Inside)	1
9	219204	Vent Cap and Exhaust Tube	1	42	219230	Grommet	1
10	219205	Screw, #10 x 3/4	6	43	219231	Gasket, Motor	1
11	219206	Bracket, Microswitch Mounting	1	44	219232	Motor	1
11A	219207	Screw, #2-56 x 5/8	2	45	219233	Impeller, Room Air	1
12	219208	Microswitch Assembly	1	46	219234	Bracket, Comb Air Hous Mount	1
13	219209	Nut, #2-56	2	48	219235	Screw, #8-32 Self Tapping	2
14	219210	Combustion Chamber	1	49	219236	Electrode	1
15	219211	Screw, #10 x 1/2 Serrated Head	1	50	219237	Gasket, Electrode	1
16	219212	Bushing, Snap	1	51	219211	Screw, #10 x 1/2 Serrated Head	4
17	219213	Screw, #8 x 1/4	1	52	219223	Nut, 10-24 Hex Lock w/ Washer	2
18	219214	Limit Switch	1	53	219215	Screw, #8 x 3/8	1
19	219215	Screw, #8 x 3/8	2	54	219238	Door, Burner Access	1
20	219216	Screw, #6 x 1/4	2	55	219239	Gasket, Burner Access Door	1
21	219217	Splicer	1	56	219240	Bracket, Switch Mounting	1
22	219215	Screw, #8 x 3/8	1	57	219241	Switch, ON/OFF	1
22A	219215	Screw, #8 x 3/8	2	58	219242	Elbow, 90°	1
23	219218	Bushing, Snap	1	60	219211	Screw, #10 x 1/2	1
24	219211	Screw, #10 x 1/2 Serrated Head	1	61	219243	Gasket, Pipe Inlet	1
26	219219	Module Board	1	62	219244	Pipe, Gas Inlet Cover	1
27	219220	Nut, 6-32 Hex Lock	2	63	219245	Pipe, Gas Inlet	1
29	219221	Bracket, Comb. Air Hous Mount	1	64	219246	Valve	1
31	219222	Gasket, Burner Tunnel	1	67	219247	Manifold Assembly	1
32	219223	Nut, 10-24 Hex Lock w/ Washer	2	68	219248	Screw, #8 x 1/2	4
33	219215	Screw, #8 x 3/8	2	69	219249	Orifice, Main Burner	1
34	219224	Gasket, Combustion Air Box	1	70	219250	Gasket, Manifold	1
35	219215	Screw, #8 x 3/8	2	71	219251	Burner Assembly	1
36	219225	Housing, Comb Air (Outside)	1				

WHEN ORDERING PARTS, SPECIFY MODEL NUMBER, SERIAL NUMBER AND DESCRIPTION OF PARTS REQUIRED

	PROPANE HEATER Suburban NT-20S-TC	DATE: Issued 11-2005	GROUP 31A
		MODEL: RT700	
		PAGE 31A.3	



REF.	PART NO.	DESCRIPTION	QTY.	REF.	PART NO.	DESCRIPTION	QTY.
	721A0209	Reservoir Assembly (Includes Items 1 Through 24)					
1	721F0189	Reservoir	1	20	721F0215	Step	1
2	1200-93	Capscrew, 1/2C x 3/4	2	21	375 6203	Disconnect, Quick	1
3	334 2205	Washer, Hardened	6		12019-558	Cap, Dust	1
4	12019-517	Elbow	1	22	1200-104	Capscrew	2
5	460 0319	O-Ring	1	23	1205-67	Nut, Lock, .50C	2
6	709 7783	Filter, Suction	1	24	709F6170	Handle	1
7	1205-194	Nut, 3/8C	2				
8	721 0214	Rod	1				
9	434 4020	Gauge, Oil Level	1		A38556	Immersion Heater Assembly	Opt.
10	713F0118	Cover	1			(Includes Items 25 Through 31)	
	1218-89	O-Ring	1				
11	37542	Cap, Fill	1	25	442 0316	Heater	1
12	708 6449	Filter	1	26	1223-478	Plug	1
13	22919	Valve, By-Pass	1	27	12239-36	Cord, 3 Wire	1
14	22920	Spring, Hold-Down	1		1223-54	Terminal	3
15	460 0436	O-Ring	1	28	1223-819	Connector, 3/4" Screw	1
16	709F7778	Cover	1	29	709 2487	Guard, Mud	1
17	1205-194	Nut, 3/8C	12	30	709 2486	Strap	1
17A	1209-4	Flatwasher	18	31	1200-59	Capscrew, 3/8C x 1	4
17B	1200-59	Capscrew	10		1210-20	Lockwasher	4
18	1219-763	Plug	1		1205-36	Nut, 3/8C	4
19	1219-869	Plug, 2 npt	2				

WHEN ORDERING PARTS, SPECIFY MODEL NUMBER, SERIAL NUMBER AND DESCRIPTION OF PART REQUIRED

TEREX  **CRANES**

LOWER HYDRAULICS
Hydraulic Reservoir

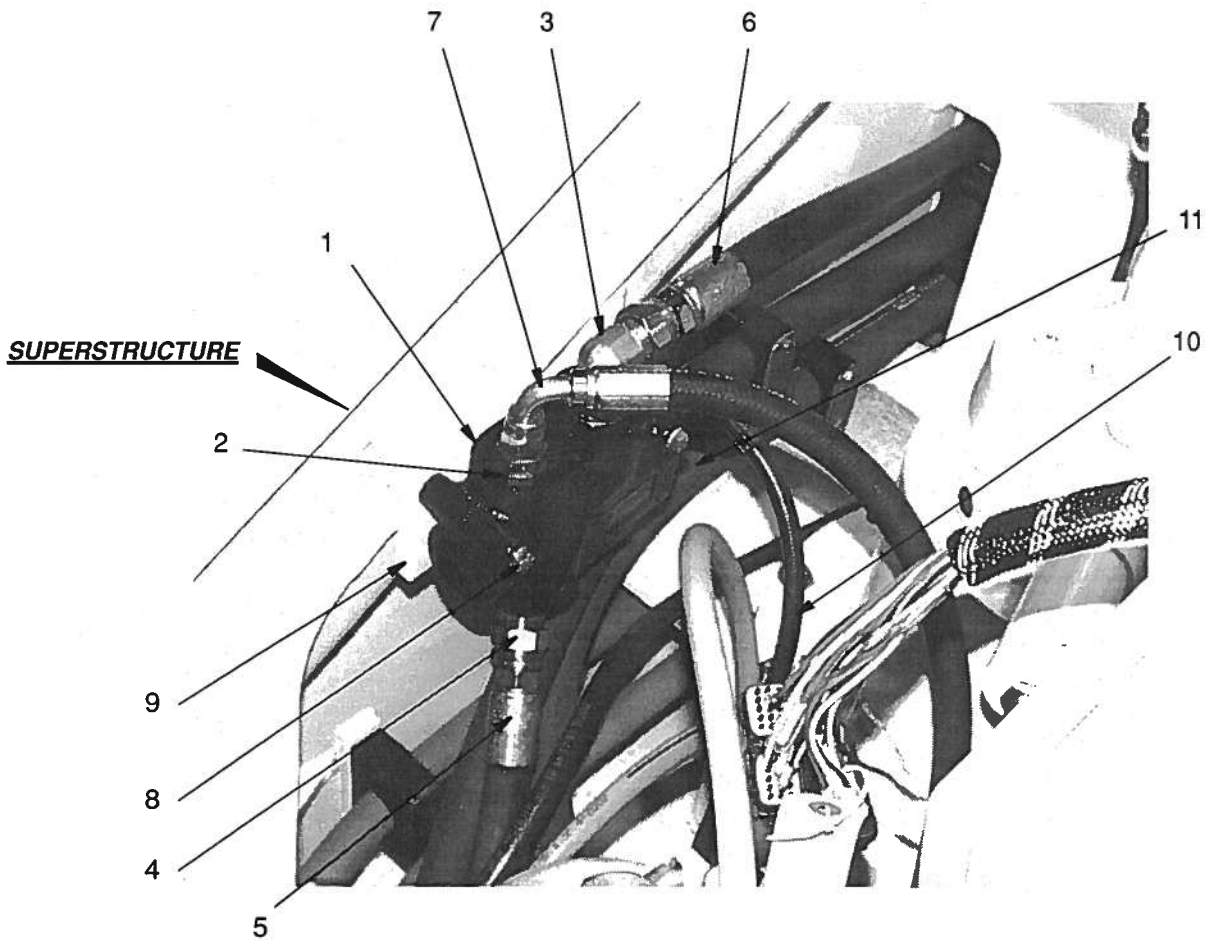
DATE: Issued 9-2003

MODEL: RT700

PAGE 25.1

GROUP

25



REF.	PART.NO.	DESCRIPTION	QTY.
1	708 2350	Valve, Priority	1
2	1219-441	Adapter, Str.....	1
3	1219-802	Adapter, 90°.....	1
4	1219-663	Adapter, 45°.....	1
5	721 0253-23.5	Hose, -12.....	1
6	721 0253-28	Hose, -12.....	1
7	721 0254-87	Hose, -8.....	1
8	1200-47	Capscrew, 5/16C x 3	2
	1200-17	Lockwasher, 5/16	2
	1209-3	Washer, Flat, .31	2
9	709 5241	Plate	1
10	718 0678-77	Hose, -4.....	1
	1219-959	Adapter	1
11	1219-763	Plug	1

WHEN ORDERING PARTS, SPECIFY MODEL NUMBER, SERIAL NUMBER AND DESCRIPTION OF PART REQUIRED

TEREX  **CRANES**

PRIORITY VALVE

DATE: Issued 9-2003

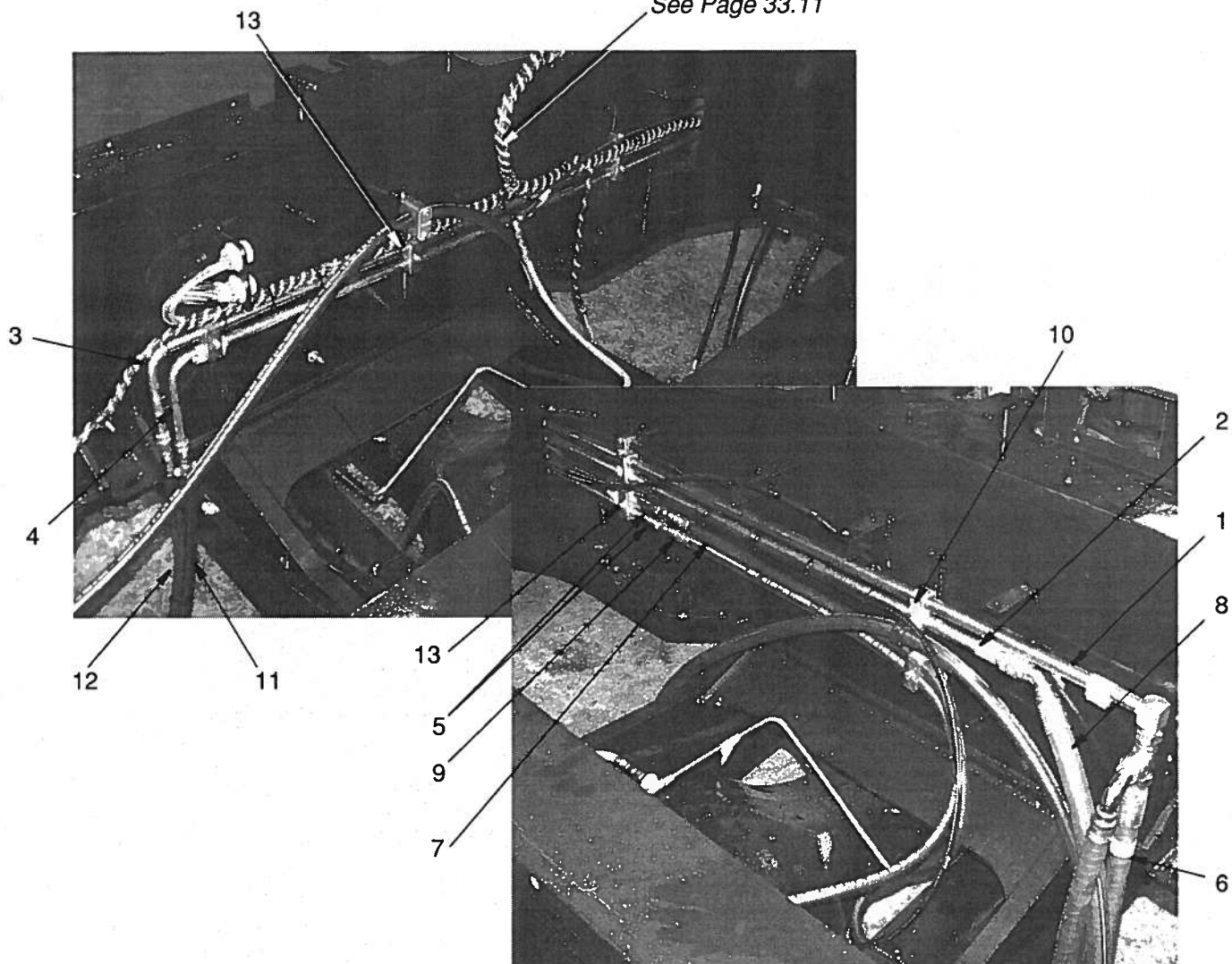
MODEL: RT700

PAGE 25.11

GROUP

25

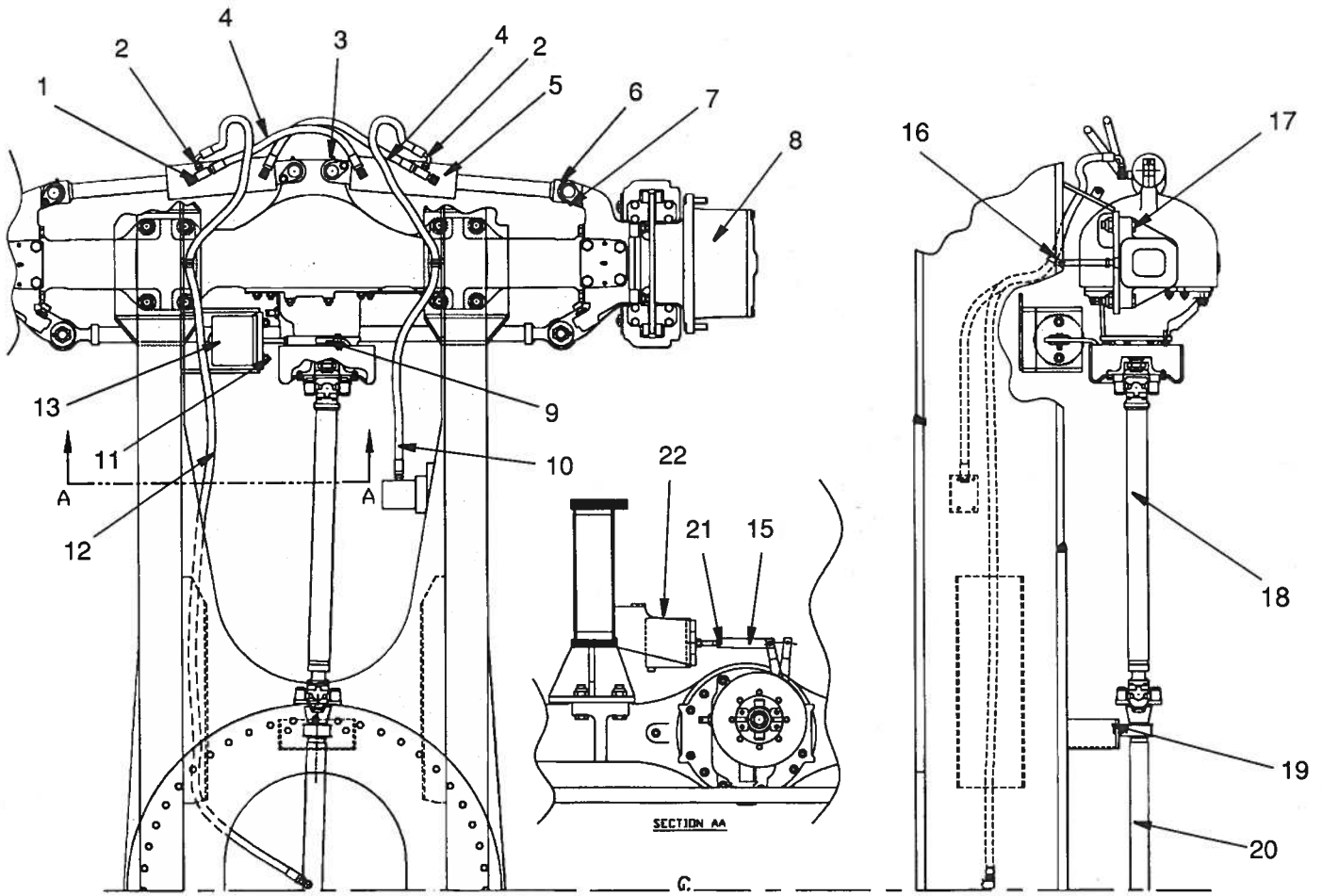
See Page 33.11



REF.	PART.NO.	DESCRIPTION	QTY.	REF.	PART.NO.	DESCRIPTION	QTY.
1	720 0117	Tube	1	10	1240-171	Clamp, Half.....	2
2	720 0116	Tube	1		1240-154	Plate, Cover.....	1
3	709 6804	Tube	1		1240-153	Nut, Rail.....	2
4	709 6803	Tube	1		1200-39	Capscrew, .31C x 2.00.....	2
5	708 2095	Tube	2	11	707 4337-26	Hose	1
6	709 1265-44	Hose	1	12	707 4079-80	Hose	1
7	720 0317-75	Hose	1		707 4079-61	Hose	1
8	720 0325-41	Hose	1	13	1240-152	Clamp, Half.....	2
9	707 4079-52	Hose	1		1240-154	Plate, Cover.....	1
					1240-153	Nut, Rail.....	2
					1200-39	Capscrew, .31C x 2.00.....	2

WHEN ORDERING PARTS, SPECIFY MODEL NUMBER, SERIAL NUMBER AND DESCRIPTION OF PART REQUIRED

	<h2>FRAME HYDRAULIC TUBES</h2>	DATE: Issued 9-2003	GROUP 25
		MODEL: RT700	
		PAGE 25.21	



REF.	PART.NO.	DESCRIPTION	QTY.	REF.	PART.NO.	DESCRIPTION	QTY.
	720A0272	Front Axle Assembly	Ref				
1	1219-470	Adapter, 90°	4	13	710A0409	Parking Brake Actuator.....	1
2	1219-800	Tee	2	14	1205-90	Nut.....	2
3	1213-1	Zerk, Grease (Straight)	2	15	710 0410	Yoke	1
4	707 4077-24	Hose	2	16	1240-53	Clamp	2
5	Group 11	Cylinder, Steering - 710 0367	2		1209-4	Washer	2
6	710F0412	Pin	4		1205-43	Locknut.....	2
7	1200-95	Capscrew, 1/2C x 1	2	17	1200-282	Capscrew.....	8
	1209-29	Flatwasher.....	4		1209-70	Washer	16
8	Group 5	Front Axle - 710 0319.....	1		1205-197	Locknut.....	8
9	1200-65	Capscrew	1	18	Page 9.1	Drive Shaft - 709 6606.....	1
	1205-45	Nut.....	1	19	1200-98	Capscrew.....	2
10	707 4078-56	Hose	1		1209-6	Washer	4
11	1209-8	Flatwasher.....	2		340 2728	Locknut.....	2
	1205-90	Nut.....	2	20	Page 9.1	Drive Shaft, Rear 720 0185.....	1
12	707 4078-122	Hose.....	1	21	1205-85	Locknut.....	1
				22	710A0409	Actuator, Air.....	1

WHEN ORDERING PARTS, SPECIFY MODEL NUMBER, SERIAL NUMBER AND DESCRIPTION OF PART REQUIRED

TEREX  **CRANES**

FRONT AXLE ASSEMBLY

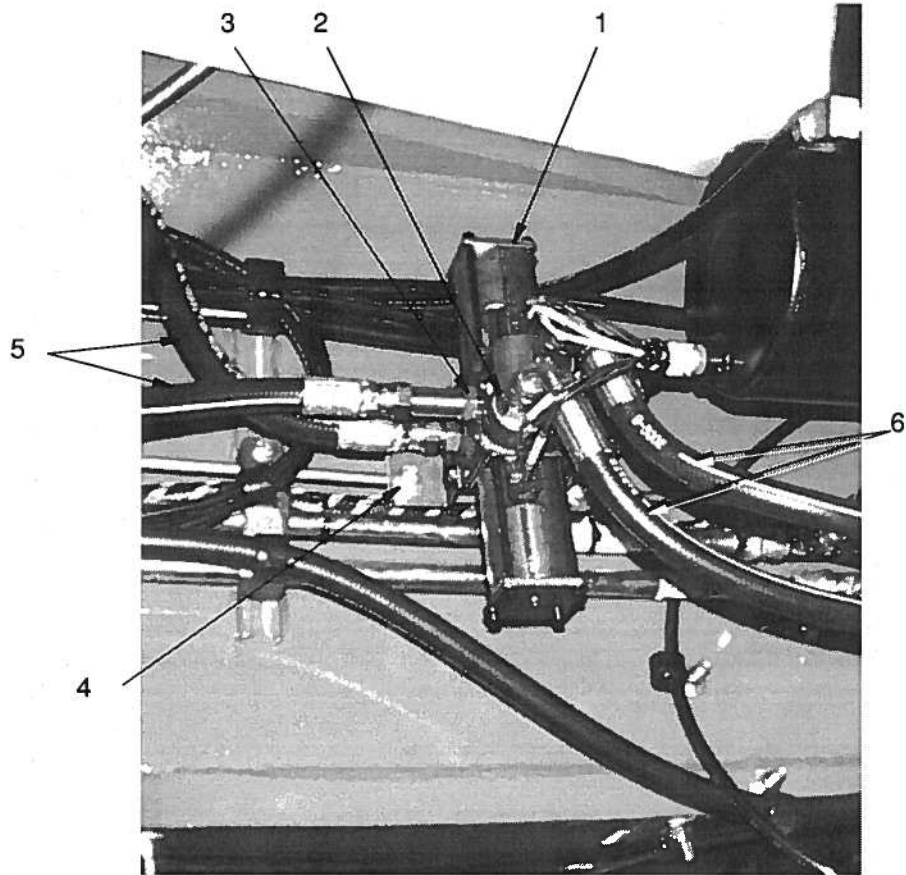
DATE: Issued 9-2003

MODEL: RT700

PAGE 2.3

GROUP

2



REF.	PART NO.	DESCRIPTION	QTY
Outrigger Ext/Ret Valve Hydraulics			
1	Page 3.6	Valve, Solenoid (708 2211)	1
2	1219-441	Adapter, Str	3
3	1219-596	Adapter, Str	1
4	1200-59	Capscrew, .38C x 1	4
	1209-4	Flatwasher, .38	4
	1210-20	Lockwasher, .38	4
	1205-36	Nut, .38	4
5	707 4078-19	Hose	2
6	720 0318-20	Hose	2

WHEN ORDERING PARTS, SPECIFY MODEL NUMBER, SERIAL NUMBER AND DESCRIPTION OF PART REQUIRED

TEREX  **CRANES**

**OUTRIGGER EXT/RET VALVE
HYDRAULICS**

DATE: Issued 9-2003

MODEL: RT700

PAGE 3.5

GROUP

3

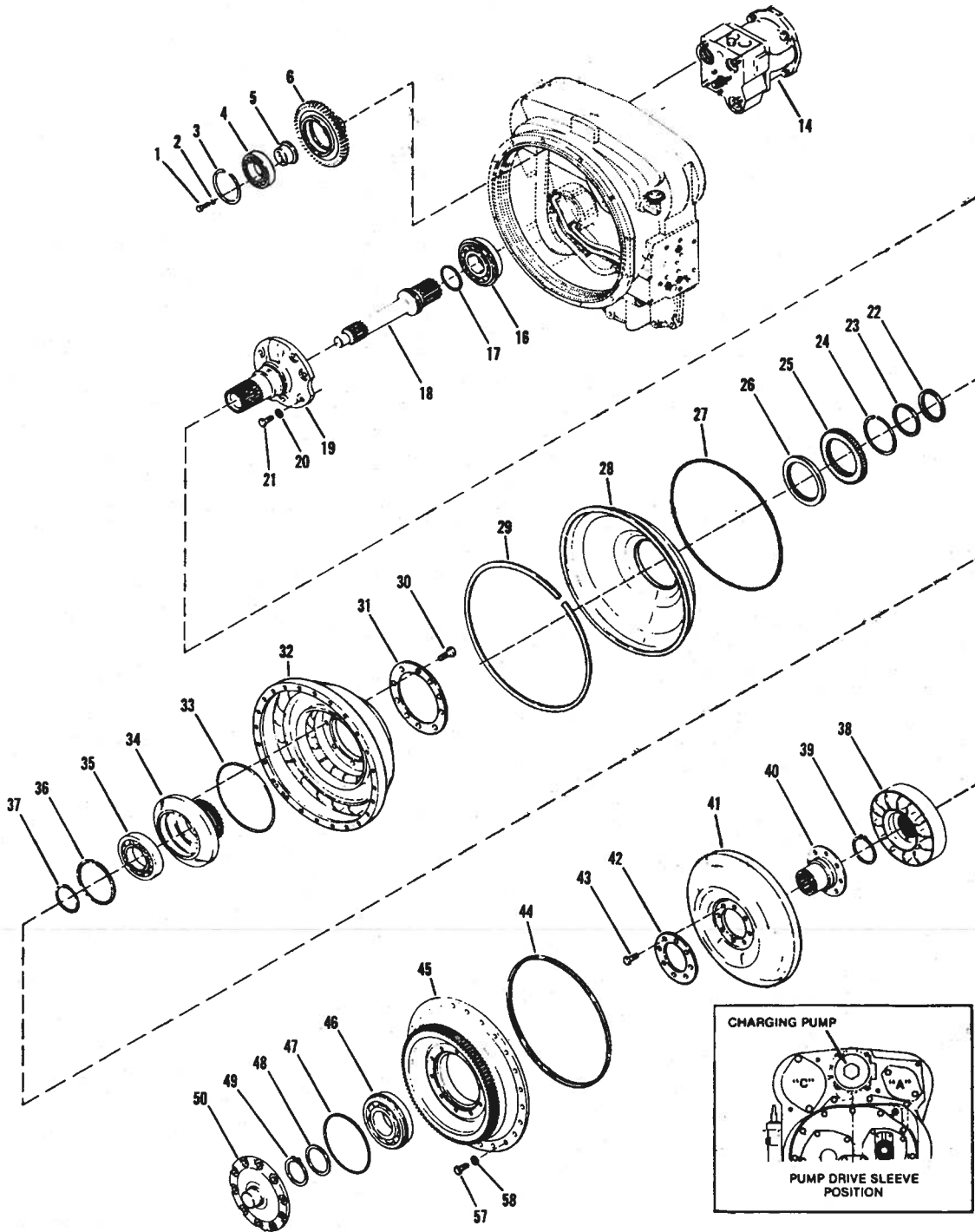
See Page 5.6

REF.	PART.NO.	DESCRIPTION	QTY
	217288	Hub & Shaft Group - Front	
	217290	Hub & Shaft Group - Rear	
	Front Axle	Rear Axle	
18	217310	217318 Spindle Assembly.....	1
19	217311	217319 Spindle.....	1
20	217312	Bushing.....	1
21	217313	Oil Seal Assembly.....	1
22	217320	217341 Washer.....	36
23	217321	217342 Capscrew.....	36
24	217322	Capscrew.....	32
25	217323	Washer, Hardened.....	32
26		217343 Capscrew.....	24
27		217320 Washer, Flat.....	24
28	217324	217333 Rotor, Disc Brake.....	2
29	217325	Oil Seal Assembly.....	2
30	217326	217344 Cone, Bearing, Inner.....	2
31	217327	217345 Hub & Cup Assembly.....	2
32	217328	217345 Cup, Bearing.....	1
33	217329	217346 Hub.....	1
34	217330	217347 Cone, Bearing, Outer.....	1
35	217331	217349 Stud, Wheel.....	46
36	247332	Protector, Shipping.....	46
37	217334	217350 Cone Bearing, Outer.....	2
38	217335	217351 Hub-Planetary Ring Gear.....	2
39	217336	217352 Gear-Planetary Ring.....	2
40	217337	Nut.....	2
41	217338	Screw.....	2
42	217339	Loctite.....	AR
43	217340	217364 Thrustwasher.....	2
44	217353	217365 Gear, Planetary Sun.....	2
45	217354	Snap Ring.....	2
46	217269	Silastic.....	AR
47	217356	217366 Spider Assembly, Planetary.....	2
48	217357	217367 Spider Assembly.....	1
49	217358	217368 Spider, Planetary Gear.....	1
50		217265 Permatex.....	AR
51	217360	Button, Thrust.....	3
52	217361	Button, Thrust.....	1
53	217362	Thrustwasher, Inner.....	3
54	217363	Pinion, Planetary.....	3
55		217369 Gear, Spur.....	3
56	217370	Thrustwasher, Outer.....	3
57	217373	217371 Pinion Shaft Assembly.....	3
58	217374	217372 Shaft, Pinion.....	1
59	217355	O-Ring.....	1
60	217359	Setscrew.....	3
61	217375	Flatwasher.....	60
62	217376	217381 Capscrew.....	60
63		217359 Washer, Hardened.....	60
64	217267	Plug.....	2
65	217273	Plug, Shipping.....	2
66	217377	217382 Tie Rod Assembly.....	1
67	217378	217383 Rod Assembly, Clamp & Tie.....	1
68	217379	217384 End Assembly, Tie Rod.....	1
69	217380	217381 End Assembly, Tie Rod.....	1
70	217386	Nut, Slotted.....	2
71	217387	Cotter Pin.....	2

WHEN ORDERING PARTS, SPECIFY MODEL NUMBER, SERIAL NUMBER AND DESCRIPTION OF PART REQUIRED

	HUB & SHAFT GROUP	DATE: Revised 9-2003	GROUP 5
		MODEL: RT700 Series	
		PAGE 5.7	

See Page 7.3 for Details



WHEN ORDERING PARTS, SPECIFY MODEL NUMBER, SERIAL NUMBER AND DESCRIPTION OF PART REQUIRED

TEREX  **CRANES**

TRANSMISSION Converter Group

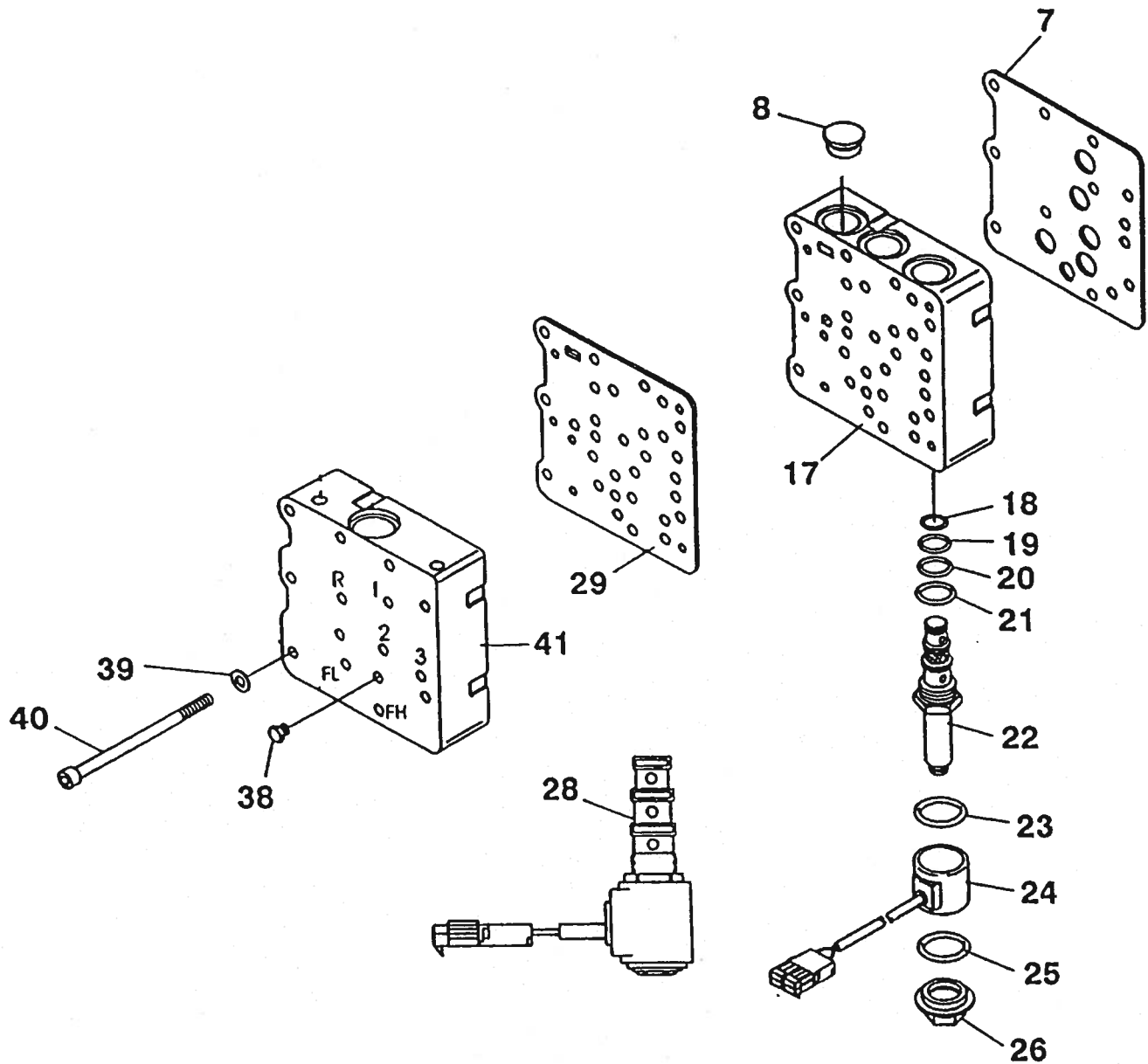
DATE: Issued 9-2003

MODEL: RT700 Series

PAGE 7.2

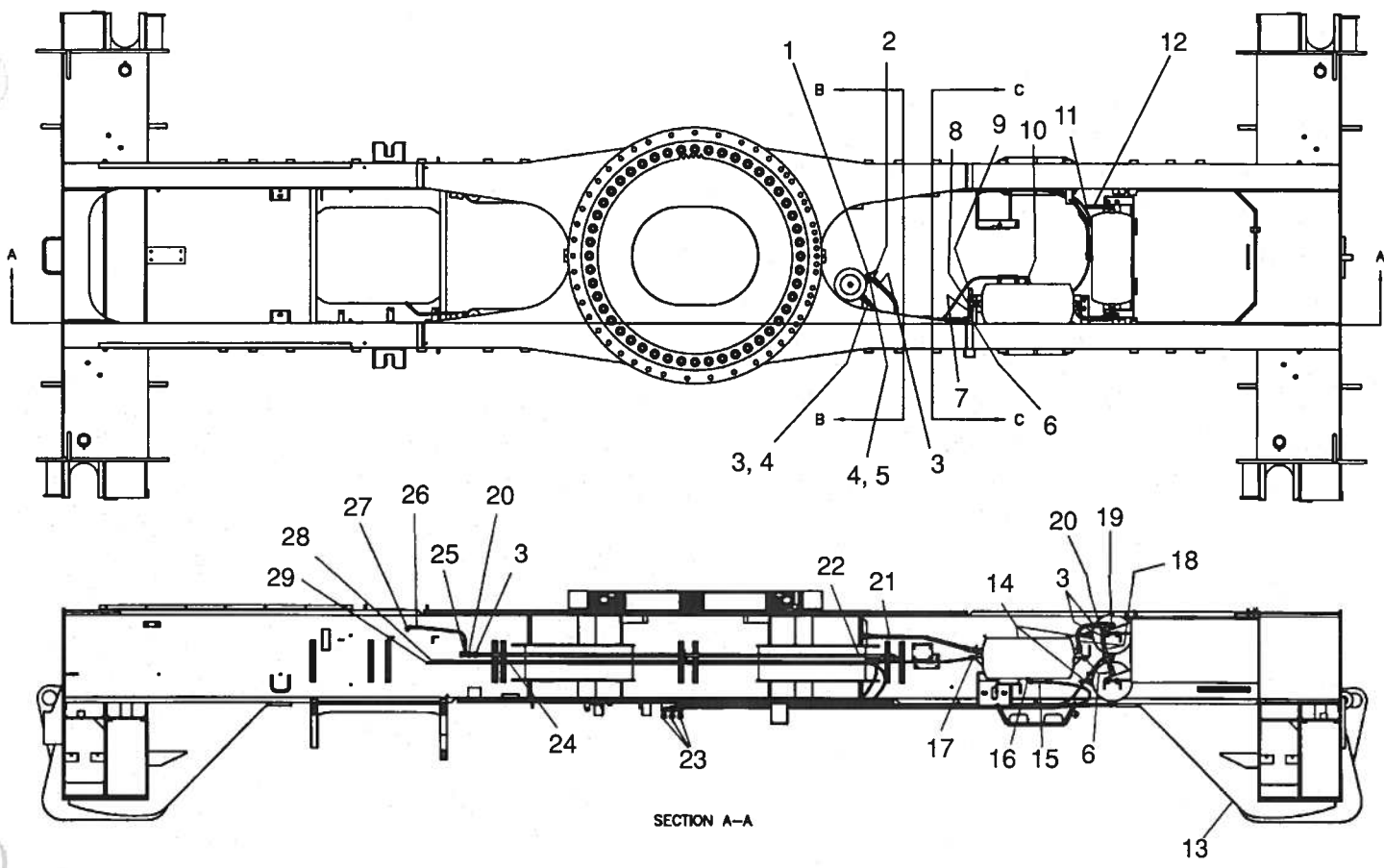
GROUP

7



REF.	PART.NO.	DESCRIPTION	QTY.	REF.	PART.NO.	DESCRIPTION	QTY.
		Control Valve Assembly	Ref				
7	217696	Gasket	1	24	217705	Solenoid Coil	5
8	217697	Modulator Pressure Regulator Plug	1	25	217706	Solenoid Nut to Coil O-Ring	5
17	217698	Control Valve Housing Assy	1	26	217707	Solenoid Coil Nut	5
		Includes Items 8, 28, 29 & 41		28	217708	Spool Type Solenoid Cartridge Assy	5
18	217699	Cartridge O-Ring	5			Includes Items 18 thru 26	
19	217700	Cartridge O-Ring	5	29	217709	Gasket	1
20	217701	Cartridge O-Ring	5	38	217710	Clutch Pressure Port Plug	6
21	217702	Cartridge O-Ring	5	39	217711	Washer	9
22	217703	Valve Cartridge-4 way	5	40	217712	Screw	9
		Includes Items 18 thru 21		41	217713	Control Valve Cover Assy	1
23	217704	Solenoid Coil to Cartridge O-Ring	5			Includes Item 38	
				42	217714	Electric Control Valve Assy	1
						Includes Items 17, 29 & 41	

WHEN ORDERING PARTS, SPECIFY MODEL NUMBER, SERIAL NUMBER AND DESCRIPTION OF PART REQUIRED

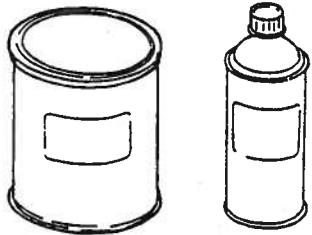


REF.	PART NO.	DESCRIPTION	QTY.	REF.	PART NO.	DESCRIPTION	QTY.
	720A0347	Air Supply System Assembly					
1	1219-215	Plug	1	17	1200-31	Capscrew	2
2	12019-404	Elbow	2		1210-17	Lockwasher	2
3	12019-400	Connector	5		1209-4	Flatwasher	2
4	1219-90	Bushing	2		1205-25	Locknut	2
5	430 9960	Valve, Relay	1	18	12202-14	Tube	2
6	12019-409	Elbow	5	19	12019-837	Elbow	1
7	12019-96	Valve, Check	1	20	1219-961	Tee	1
8	1219-816	Nipple, Male	1	21	12205-27	Tube, .63	1
	1219-961	Tee	1	22	12205-140	Tube, .63	1
9	1219-213	Valve, Relief	1	23	12019-411	Elbow	3
	1219-97	Bushing	1		1219-217	Drain Cock	3
10	12019-418	Elbow	1		1219-848	Elbow	3
	12019-181	Bushing	1	24	1200-5	Capscrew	6
11	12205-83	Tube	1		1240-157	Nut	6
12	12205-76	Tube	1		1240-160	Clamp Half	6
13	720F0005	Frame	1		1240-162	Top Plate	3
14	52239	Reservoir	3	25	12019-393	Connector	3
15	12202-150	Tube	1	26	12203-200	Tube, .38	1
16	12019-418	Elbow	1	27	12019-406	Elbow	1
				28	12202-180	Tube, .25	1
				29	12202-170	Tube, .25	1

WHEN ORDERING PARTS, SPECIFY MODEL NUMBER, SERIAL NUMBER AND DESCRIPTION OF PART REQUIRED

	<h2>AIR SUPPLY ASSEMBLY</h2>	DATE: Issued 9-2003	GROUP 10
		MODEL: RT700	
		PAGE 10.3	

REF.	PART.NO.	DESCRIPTION	QTY.
	706A8760	Tool Kit.....	Opt
1	706A8760KIT	Tool Kit.....	1
2	1226-54	Wrench	1
3	1226-11	Wrench for Disc Wheels	1
4	32179	Handle	1
5	706F8697	Wrench	1
	706A8760KIT	Tool Kit.....	Opt
1	1226-32	Hammer, Ball Pein	1
2	1226-55	Wrench, Set/Campbell.....	1
3	1226-56	Socket, Set	1
4	1226-57	Handle, Flex	1
5	1226-59	Socket.....	1
6	1226-60	Universal.....	1
7	1226-61	Spanner	1
8	1226-62	Punch	1
9	1226-63	Tool Box.....	1



GALLON	AEROSOL	PAINT
218536	218538	Terex White
218535	218539	Terex Gray
218537		Primer

WHEN ORDERING PARTS, SPECIFY MODEL NUMBER, SERIAL NUMBER AND DESCRIPTION OF PART REQUIRED

TEREX  **CRANES**

TOOLS / PAINT

DATE: Issued 9-2003

MODEL: RT700

PAGE 29.1

GROUP

29

DIVIDER

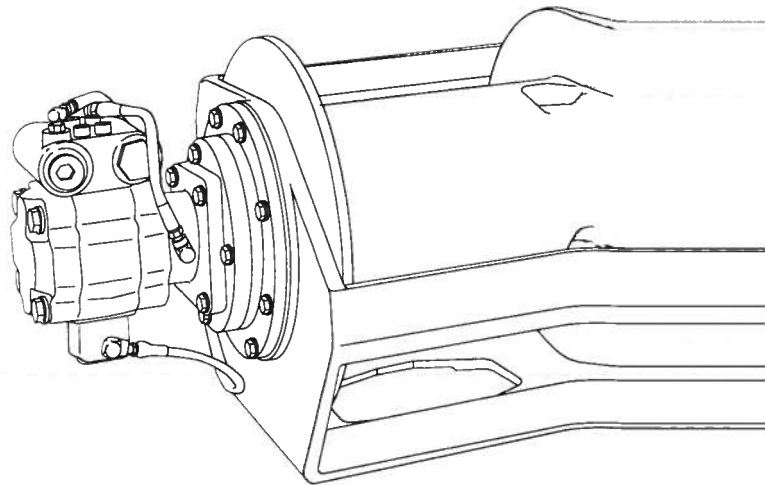
SERIES

PD12C

PD15B

PD17A

HYDRAULIC WING



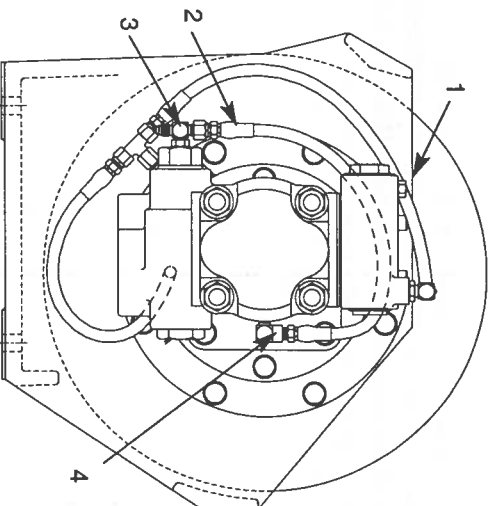
INSTALLATION, MAINTENANCE AND SERVICE MANUAL

PACCAR WING
P.O. BOX 547 BROKEN ARROW
PHONE (918) 251-8511 FAX (918) 251-8512

- Install a case drain hose for the tee directly to the reservoir. Minimum hose size is -6, 3/8 in. (9.5 mm). Maximum drain line back pressure is 100 PSI (7 Kg/cm²) measured at the motor case drain port.

Parts needed for modification:

Item	Qty	P/N	Description
1	1	25663	Plug -4 (Aerquip 900598-4S)
2	1	13707	Hose 17 in. OAL (-4 JIC Fml SW/-4 Hose / 1/8 NPT ml)
3	1	29078	Tee -4 (Aerquip 203003-4-4S)



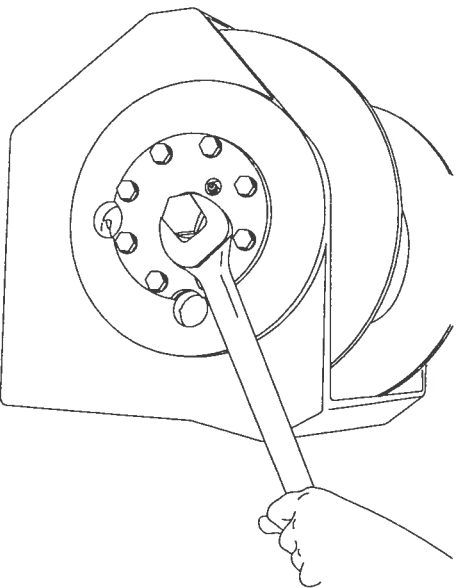
PREVENTIVE MAINTENANCE

A regular program of preventive maintenance for your planetary winch is strongly recommended to minimize the need for emergency servicing and promote safe, reliable winch operation.

Field experience, supported by engineering tests, indicate the three (3) service procedures listed below are the **MOST** critical to safe, reliable winch operation and must be observed.

- **Regular Gear Oil Changes** – every 1000 hours or six (6) months
- **Use of Proper Gear Oil** – recommended type for prevailing ambient temperature
- **Annual Disassembly and Inspection of All Wear Items** – in compliance with American National Standards Institute (ANSI) specification B30.5c 1987 and American Petroleum Institute (API) recommended practice RP 2D section 3.

The following minimum service intervals are specified for operating hours of the prime mover.

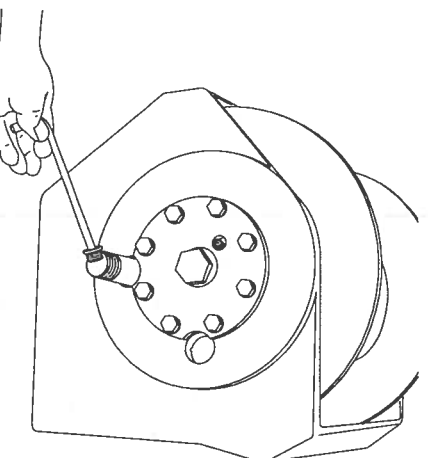


1. Oil Level

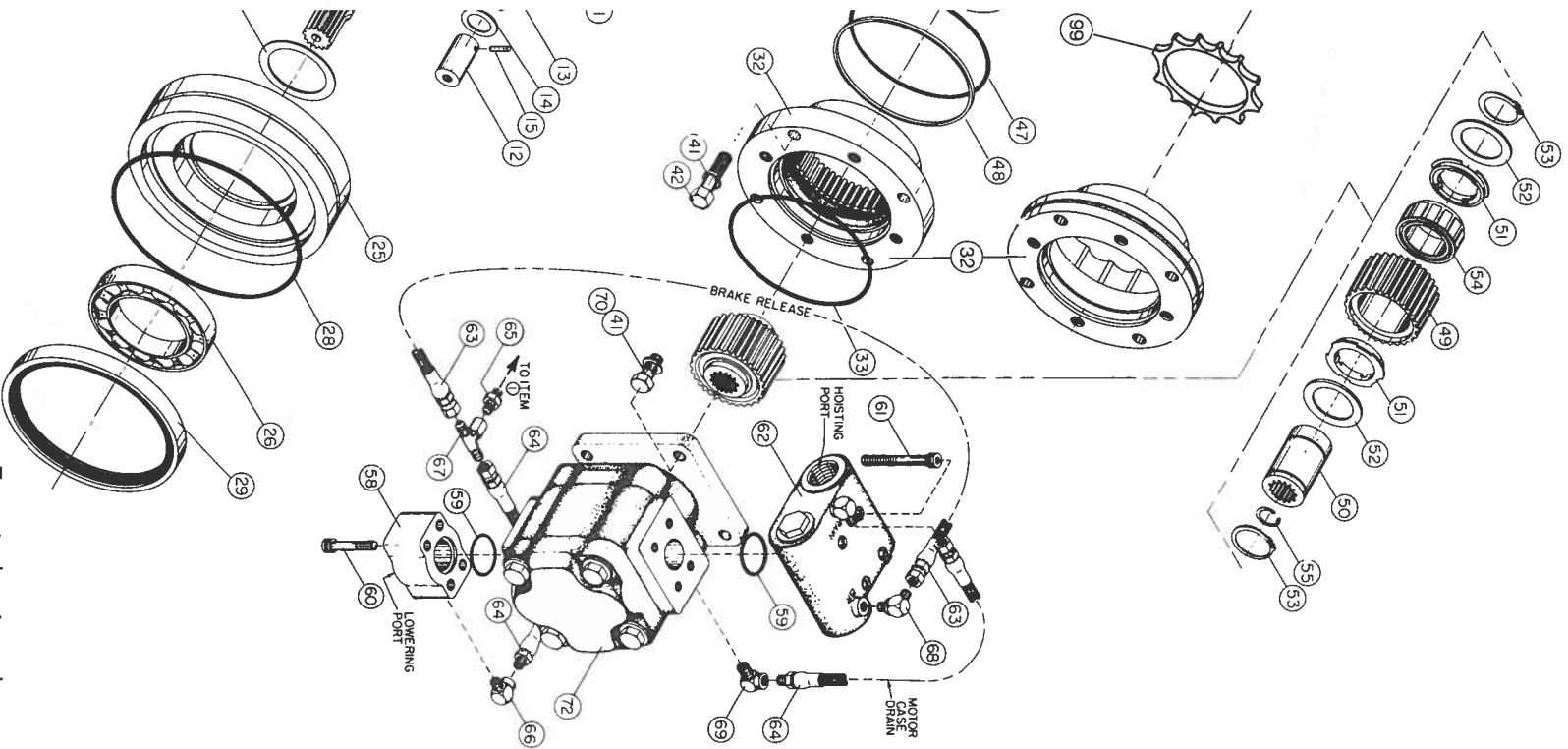
The gear oil level should be checked every 500 operating hours or three (3) months, whichever occurs first. To check the oil level, remove the large plug located in the center of the drum support. The oil should be level with the bottom of this opening. If additional oil is needed, refer to "Recommended Planetary Gear Oil".

2. Oil Change

The gear oil should be changed after the first one hundred (100) hours of operation, then every 1,000 operating hours or six (6) months, whichever occurs first. The gear oil must be changed to remove wear particles that impede the reliable and safe operation of the brake clutch and erode bearings, gears and seals. Failure to change gear oil at these suggested minimum intervals may contribute to intermittent brake slippage which could result in property damage, severe personal injury or death.



The gear oil should also be changed whenever the ambient temperature changes significantly and an oil from a different temperature range would be more appropriate. Oil viscosity with regard to ambient temperature is critical to reliable brake



For actual part numbers,
refer to PD12C Material List
Publication Number PB-109,
or PD15B Material List
Publication Number PB-229.

PD12C/PD15B PARTS KEY

ITEM	QUANTITY	DESCRIPTION
1	1	Brake Cylinder
2	1	Piston Seal
3	1	Pressure Plate
4	1	Piston Back-up Ring
5	12	Spring
6	7	Disc-friction
7	8	Disc-brake
10	1	Primary Planet Carrier
11	3	Primary Planet Gear
12	3	Primary Planet Gear Shaft
13	3	Roller Bearing
14	6	Thrust Washer
15	6	Spiral Pin
16	1	Output Planet Carrier
17	3	Output Planet Gear
18	3	Output Planet Gear Shaft
19	6	Roller Bearing
20	3	Bearing Spacer
21	6	Thrust Washer
22	1	Base
23	1	Bearing Support
24	1	Cable Drum
25	1	Cable Drum Closure
26	2	Ball Bearing
27	1	Oil Seal
28	1	O-Ring
29	1	Oil Seal
30	1	Retaining Ring
31	1	Thrust Washer
32	1	Motor Support
33	1	O-ring
34	1	Output Sun Gear
35	1	Primary Sun Gear
36	2	Spacer
37	1	Primary Thrust Plate
38	1	Output Thrust Plate
40	16	Cap screw
41	24	Lockwasher
42	4	Cap screw
43	4	Thrust Washer
44	1	Plug — Hex. Head
45	1	Plug — Flush
46	1	Vent Plug
47	1	O-ring
48	1	Back-up Ring
49	1	Brake Race — Outer
50	1	Brake Race — Inner
51	2	Sprag Bushing
52	2	Sprag Bushing Retainer
53	2	Retaining Ring
54	1	Sprag Clutch
55	1	Retaining Ring
57	1	Cable Clamp
58	1	Mainfield
59	2	O-ring
60	4	Cap screw — Socket Head
61	4	Cap screw — Socket Head
62	1	Brake Valve
63	1	Hose Assembly
64	2	Hose Assembly — 12 In.
65	1	Adapter — Straight
66	1	Elbow
67	1	Swivel Tee
68	1	Elbow
69	1	Reducer Elbow
70	4	Cap screw
72	1	Hydraulic Motor
90	1	Base Plate
91	1	Side Plate (bearing support end)
92	1	Side Plate (motor end)
93	16	Cap screw (special)
94	16	Washer
95	1/2	Tie Bar
96	2/4	Cap screw
97	2/4	Lockwasher
99	1	Spring Spacer

CLICK HERE TO **DOWNLOAD** THE COMPLETE MANUAL

- Thank you very much for reading the preview of the manual.
- You can download the complete manual from: www.heydownloads.com by clicking the link below



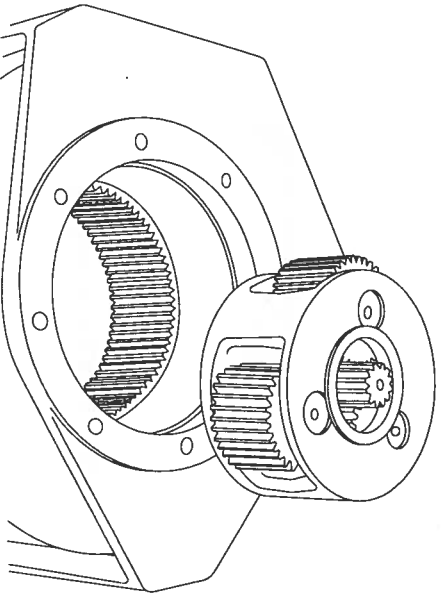
- Please note: If there is no response to CLICKING the link, please download this PDF first and then click on it.

CLICK HERE TO **DOWNLOAD** THE COMPLETE MANUAL

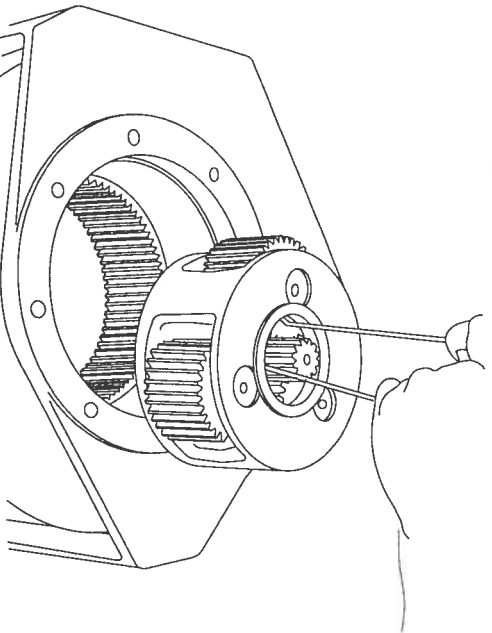
⚠ CAUTION ⚠

Be sure the vent plug is located above the horizontal centerline for the intended application. Oil leakage may occur if vent is positioned incorrectly.

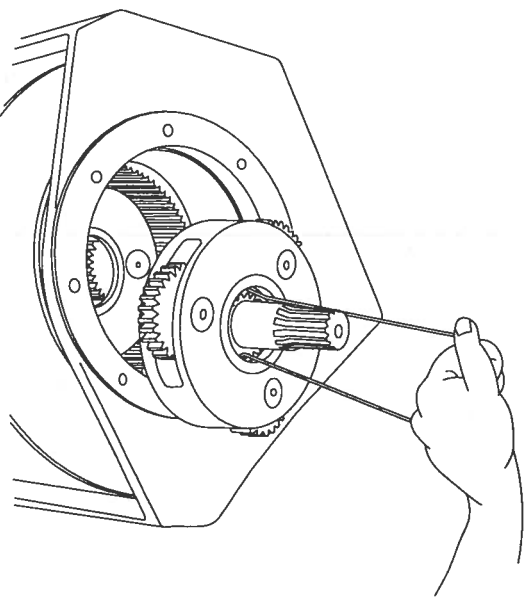
4. Tighten the bearing support cap screws to the recommended torque.



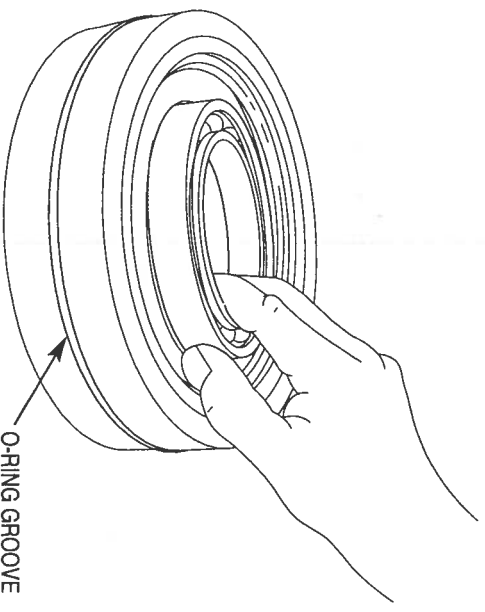
5. Stand winch on bearing support end. Install the output sun gear and bearing thrust washer into output planet carrier.



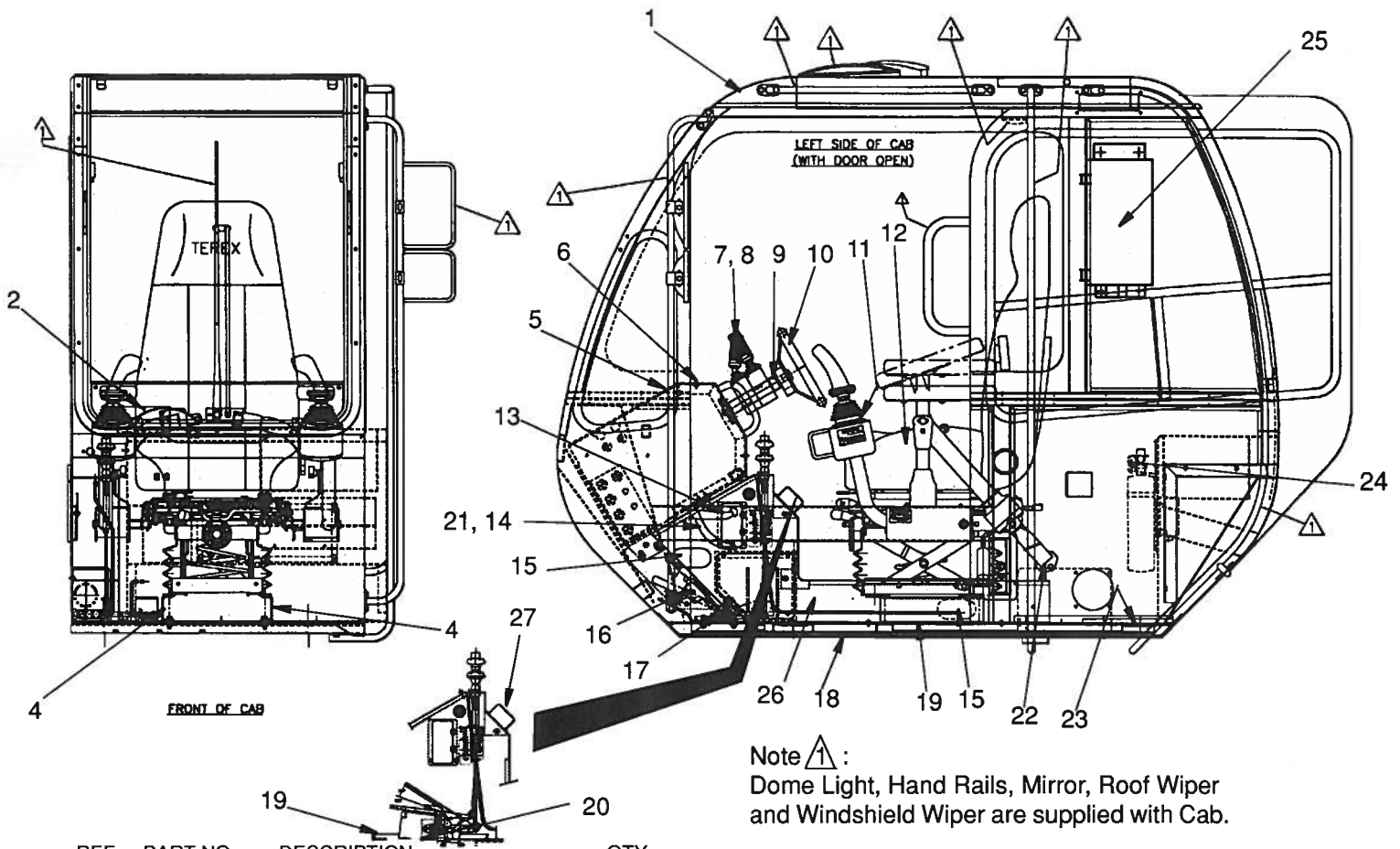
6. Install the output planet carrier into the drum while meshing the planet gears with the ring gear and the planet housing with the bearing support.
7. Install the primary sun gear and thrust washer into the primary planet carrier.



8. Install the primary planet carrier, meshing the planet gears with the ring gear and the planet housing with the output sun gear.



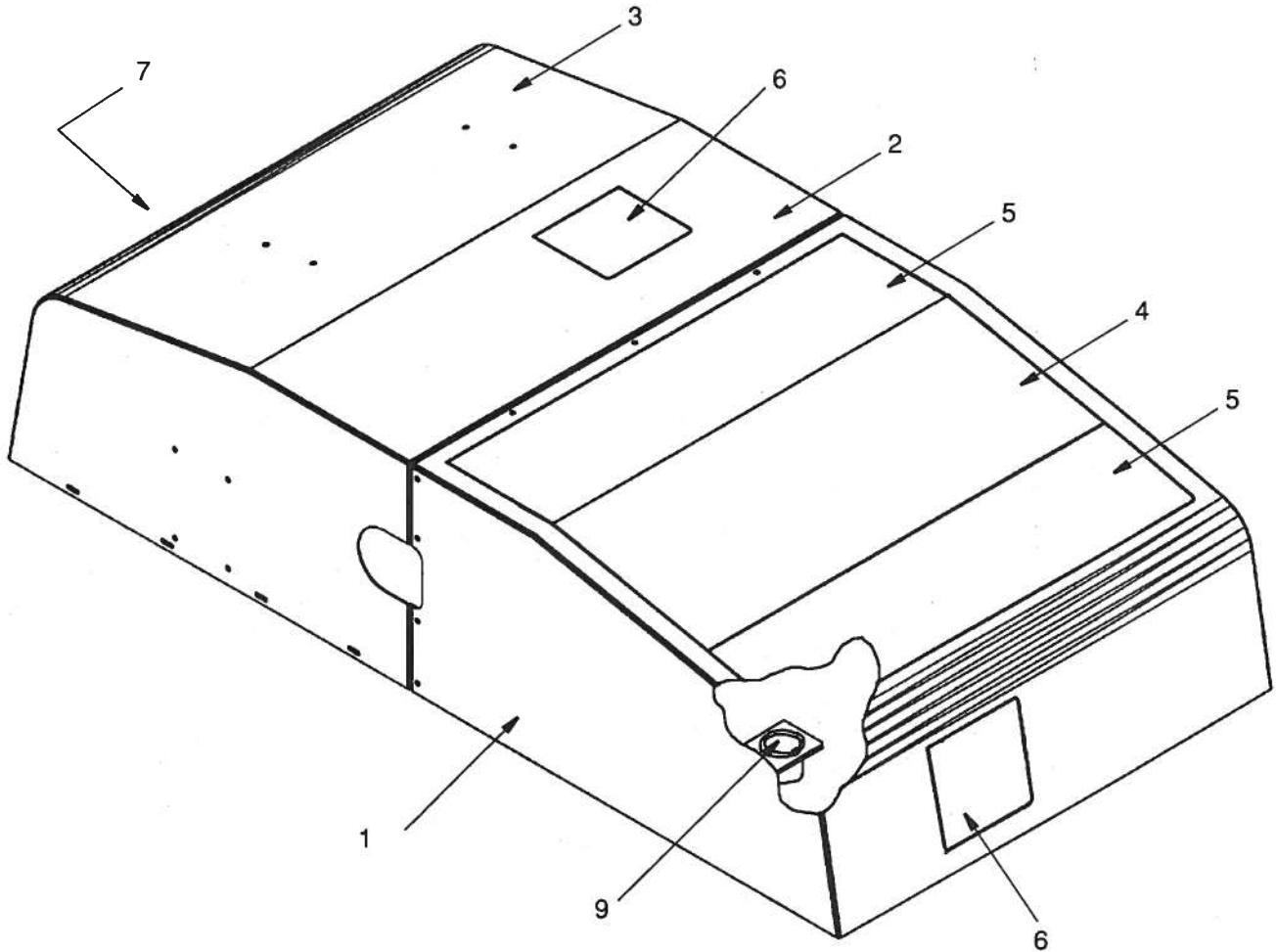
9. Install a new bearing in the drum closure as required. Use sealant on the outside surface of the oil seal. Install with spring side of the seal toward bearing, using a flat plate to avoid distortion.
- Install a new O-ring in the groove on the O.D. of the drum closure.



REF.	PART.NO.	DESCRIPTION	QTY.
	721A0262	Cab, Crane	
1	Page 27.2	Cab - 719A0105	1
2	1202-6	Capscrew, #10 x .75	4
	1205-5	Nut, #10	4
4	1200-31	Capscrew, .31C x 1.00	4
	1209-2	Flatwasher	4
	1210-17	Lockwasher	4
	1205-25	Nut	4
	714 0497	Support, Seat	2
5	Page 33.1	Upper Dash Assembly	1
	1203-271	Screw, 1/4-20 x .63	8
6	1245-62	Level	1
	MK62603	Screw, #6C x 1.00	3
	1205-1	Nut	3
7	Page 28.1	Directional Signal - 718 0742	1
	718 0749	Clamp	1
8	Page 28.2	Transmission Shifter - 718 0741	1
	718 0746	Clamp Assembly	1
9	Page 11.1	Steering Assembly - 718A0720	1
10	718 0721	Column, Steering	1
	719 0711	Wheel, Steering	1
	719 0712	Pad, Horn	1
	1203-289	Capscrew, 20mm	2
	1203-290	Capscrew, 25mm	2
11	1203-271	BHCS, 1/4-20 x .63	8
12	1200-31	Capscrew, .31C x 1.00	4
	1209-2	Flatwasher	4
	1210-17	Lockwasher	4
	1205-25	Nut	4
	Page 27.10	Slimline Seat - 719 0200	1
13	Page 28.3	Swing Brake Assembly - 721A0261	1

REF.	PART.NO.	DESCRIPTION	QTY.
14	Page 10.5	Air Brake Kit - 709A6754-1	1
15	12147-12	U-Channel	3
16	Page 28.6	Cab Throttle Control - 719A0408	1
17	1209-2	Flatwasher	2
	1210-17	Lockwasher	1
	1205-25	Nut	2
	719F0604	Telescope Pedal Support	1
18	1200-31	Capscrew, .31c x 1.00	1
	1210-17	Lockwasher	1
	1205-25	Nut	1
	1223-387	Horn	1
	1219-77	Adapter	2
	1200-63	Capscrew	2
19	719 0104	Floormat, Front	1
20	719 0602	Telescope Foot Pedal	1
	1200-3	Capscrew, 1/4-20 x 1.0	8
	1209-44	Flatwasher, 1/4	8
	1210-14	Lockwasher, 1/4	8
	1205-13	Hex Nut, 1/4-20	8
21	707 7712	Spacer	2
	1200-63	Capscrew, .38C X 1.50	2
22	Page 27.10	Seatbelt with Tether (45528)	1
23	719 0103	Floormat, Rear	1
24	12186-48	Chain	1
	1222-217	Fire Extinguisher	1
25	Page 28.8	Controller Module (720 0163)	1
26	Page 27.9	Cableway Assembly - 719A0409	1
27	Page 31.3	Heater Control	Ref

WHEN ORDERING PARTS, SPECIFY MODEL NUMBER, SERIAL NUMBER AND DESCRIPTION OF PART REQUIRED



REF.	PART.NO.	DESCRIPTION	QTY.	REF.	PART.NO.	DESCRIPTION	QTY.
	720A0289	Engine Housing					
1	217832	Front Housing Weldment.....	1	5	217836	Hinge, Long	2
	217843	Washer	9		217837	Door, Large	2
	217844	Lockwasher	9		217838	Latch	2
	217845	Bolt	9		217846	Nut	16
2	217833	Center Housing Skin	1	6	217839	Hinge, Short.....	2
3	217834	Rear Housing Skin	1		217840	Door, Small	2
	217843	Washer	7		217841	Latch	2
	217844	Lockwasher	7		217846	Nut	4
	217845	Bolt	7	7	217842	Panel, Grill	1
4	217835	Panel	1		217843	Washer.....	9
	217843	Washer	4		217844	Lockwasher.....	9
	217846	Nut.....	4		217845	Bolt.....	9
				8	217847	Rubber Bumper	18
				9	1245-162	Hourmeter	1

WHEN ORDERING PARTS, SPECIFY MODEL NUMBER, SERIAL NUMBER AND DESCRIPTION OF PART REQUIRED

TEREX  **CRANES**

ENGINE HOUSING

DATE: Issued 9-2003

MODEL: RT700

PAGE 27.11

GROUP

27

unit: 636

Engine Sr.no: 46558270

Winch parts book
is included



Equipment Sr.no: 14063

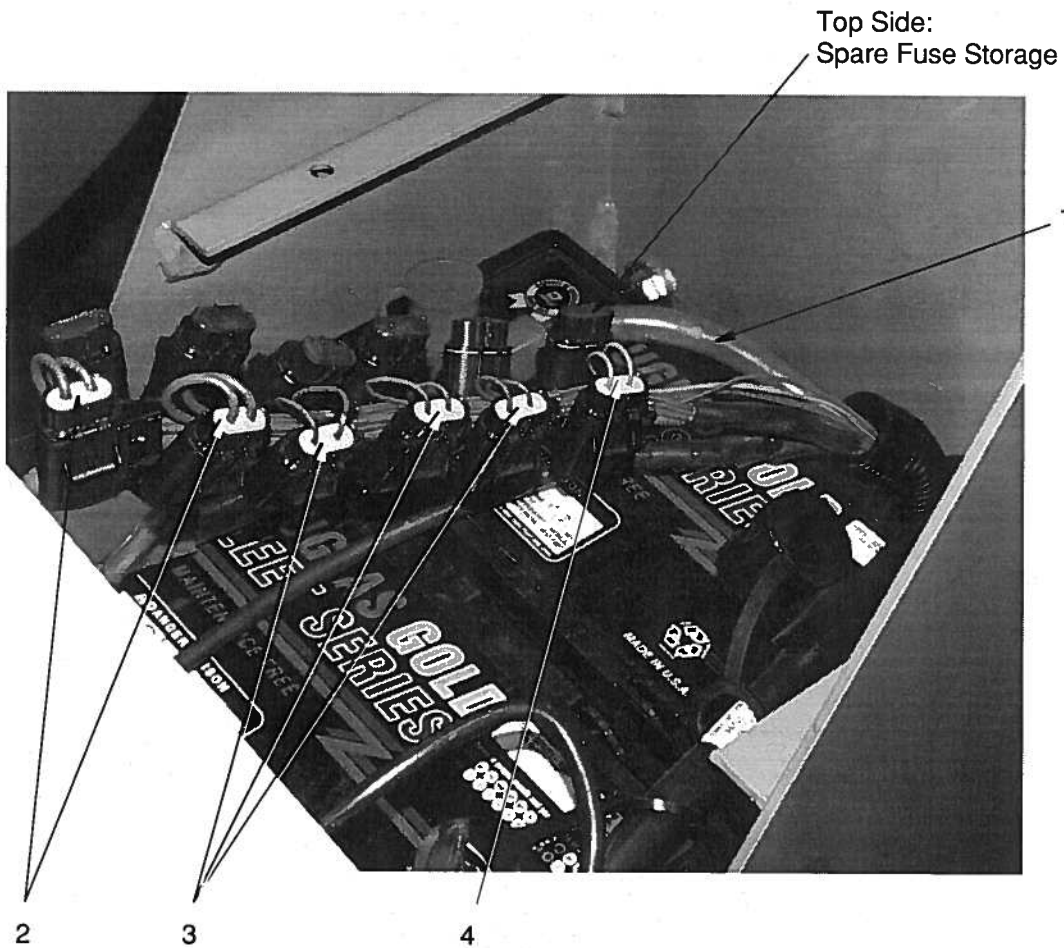


PARTS MANUAL

RT700

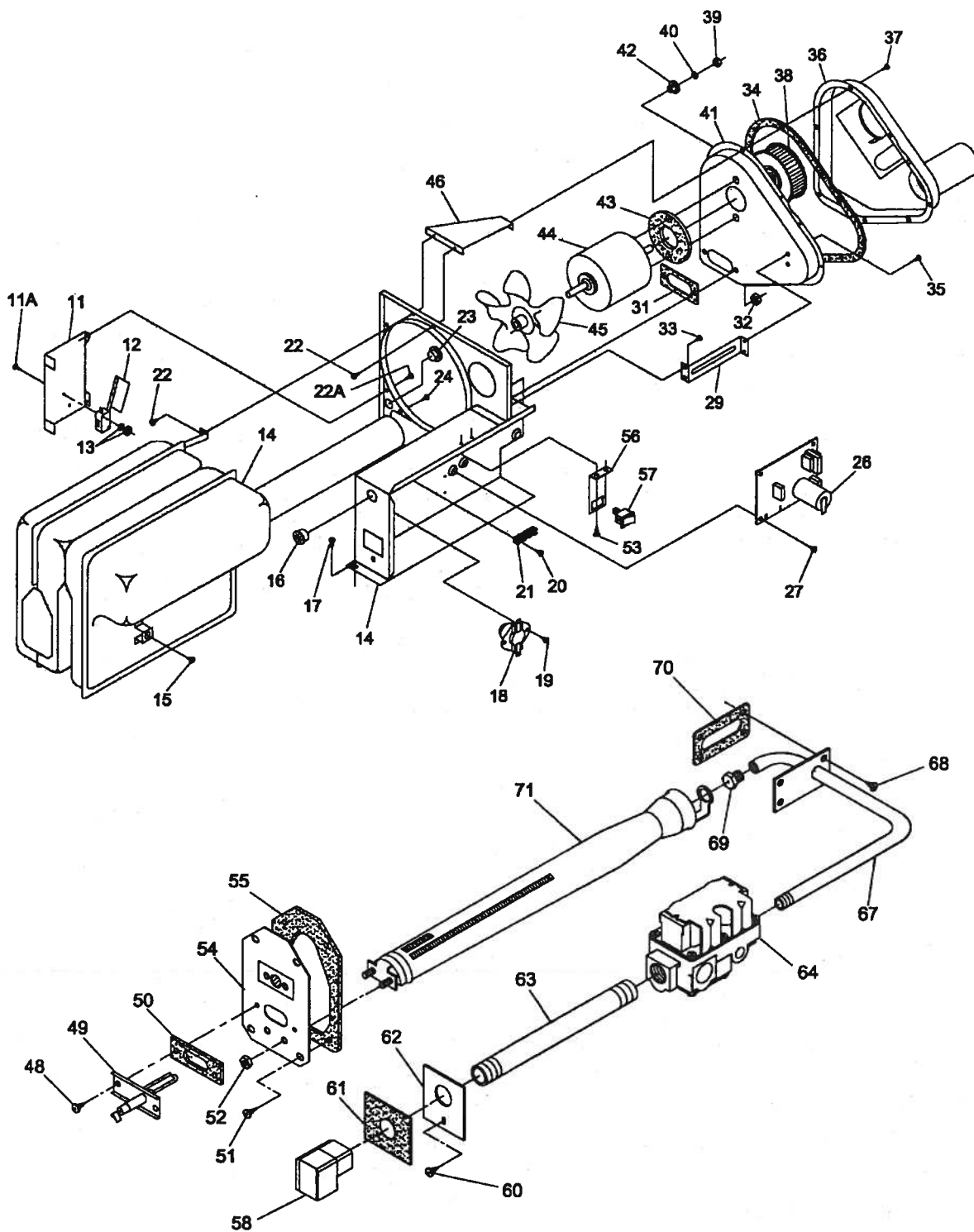
Revised: November 2005

12261-264



REF.	PART NO.	DESCRIPTION	QTY
1	218515	Harness, Cummins QSB.....	1
2	N/A	Standard Auto Fuse, 10 Amp.....	2
3	N/A	Standard Auto Fuse, 7.5 Amp.....	3
4	N/A	Standard Auto Fuse, 5 Amp.....	1
	723A0030	Battery Disconnect Assy.....	Opt
		Note: Mammoet has Battery Disconnect Option on the Negative Cable	
	1223-975	Switch, Battery Disconnect.....	1
	1223-976	Lockout Lever Kit.....	1
	1223-977	Battery Cable.....	1
	1223-978	Battery Cable.....	1

WHEN ORDERING PARTS, SPECIFY MODEL NUMBER, SERIAL NUMBER AND DESCRIPTION OF PART REQUIRED



See Page 31A.3

WHEN ORDERING PARTS, SPECIFY MODEL NUMBER, SERIAL NUMBER AND DESCRIPTION OF PARTS REQUIRED



PROPANE HEATER
Suburban NT-20S-TC

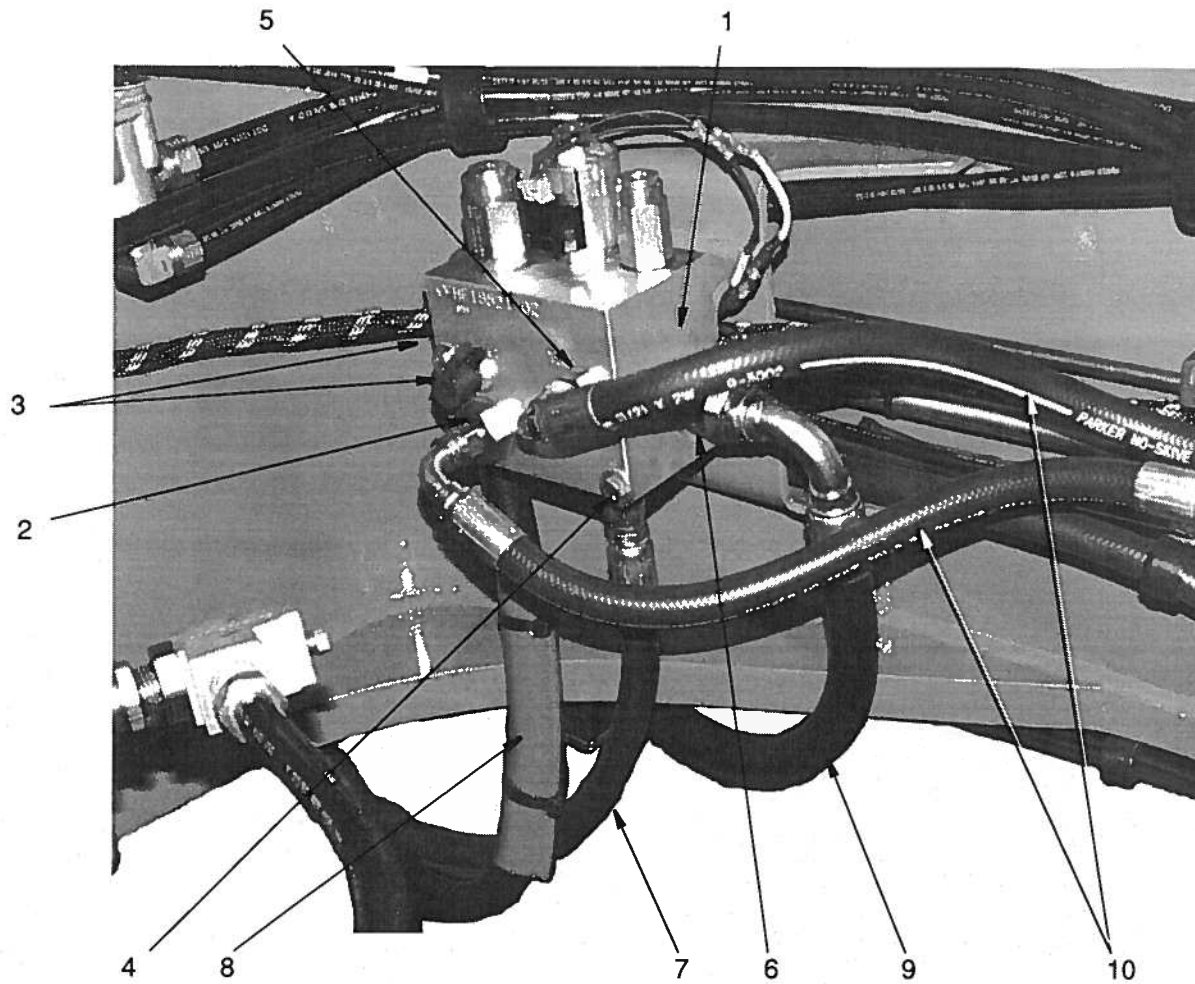
DATE: Issued 11-2005

MODEL: RT700

PAGE 31A.2

GROUP

31A



REF.	PART.NO.	DESCRIPTION	QTY.
1	720 0282	Valve, Diverter	1
2	1219-691	Adapter, Str.....	1
3	375 0400	Coupling	2
4	1200-53	Capscrew, .31C x 3.75	2
5	1219-441	Adapter, Str.....	1
6	1219-389	Adapter, Str.....	1
7	1219-691	Adapter, Str.....	1
8	709 5664-66	Hose	1
	1219-802	Adapter, 90°.....	1
	720 0299-99	Hose	1
	12389-xx	Protective Sleeve	1
9	720 0298-63	Hose	1
10	707 4078-19	Hose	2

WHEN ORDERING PARTS, SPECIFY MODEL NUMBER, SERIAL NUMBER AND DESCRIPTION OF PART REQUIRED

TEREX  **CRANES**

LOWER HYDRAULICS
Diverter Valve

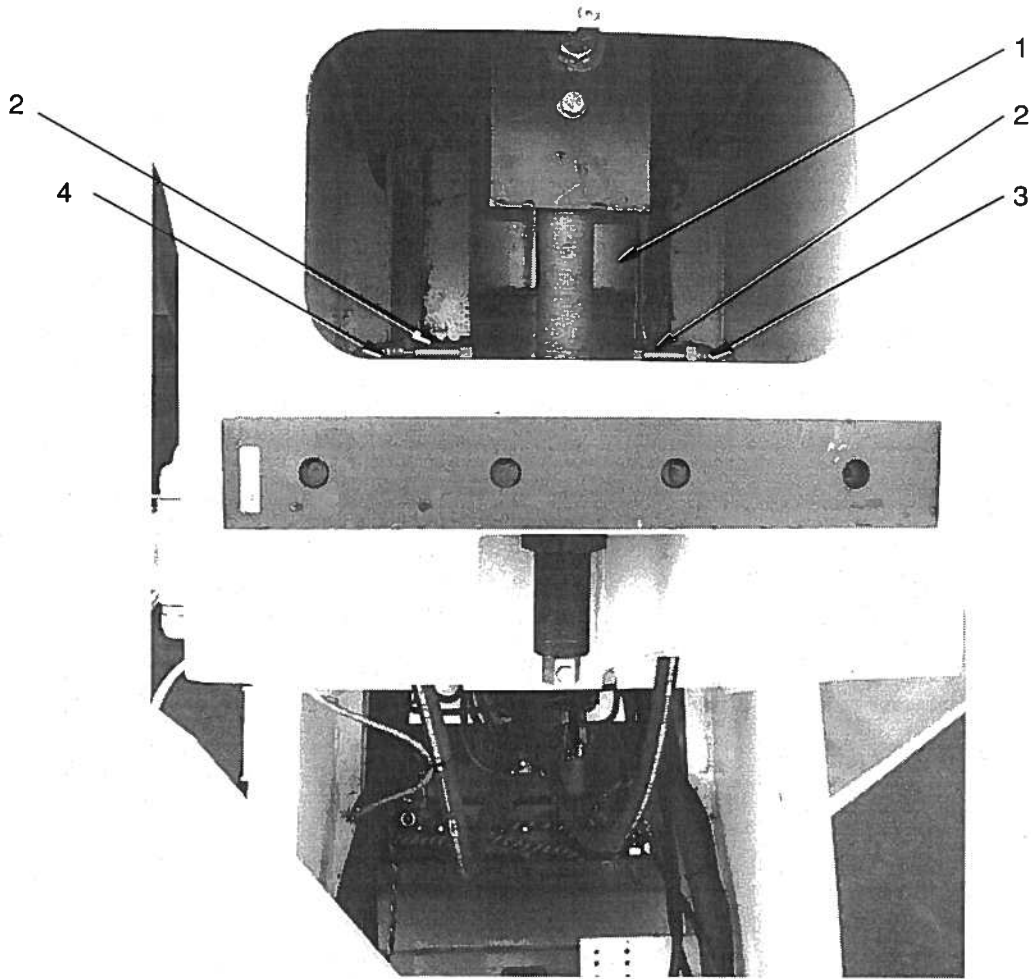
DATE: Issued 9-2003

MODEL: RT700

PAGE 25.10

GROUP

25



REF.	PART.NO.	DESCRIPTION	QTY.
1	Page 39.6	Cylinder, Extend	Ref
2	12019-366	Adapter, Str.....	2
3	200B2585-78	Hose, -12	1
4	200B2585-75	Hose, -12	1

WHEN ORDERING PARTS, SPECIFY MODEL NUMBER, SERIAL NUMBER AND DESCRIPTION OF PART REQUIRED

TEREX  **CRANES**

**UPPER HYDRAULIC ASSEMBLY
EXTEND CYLINDER**

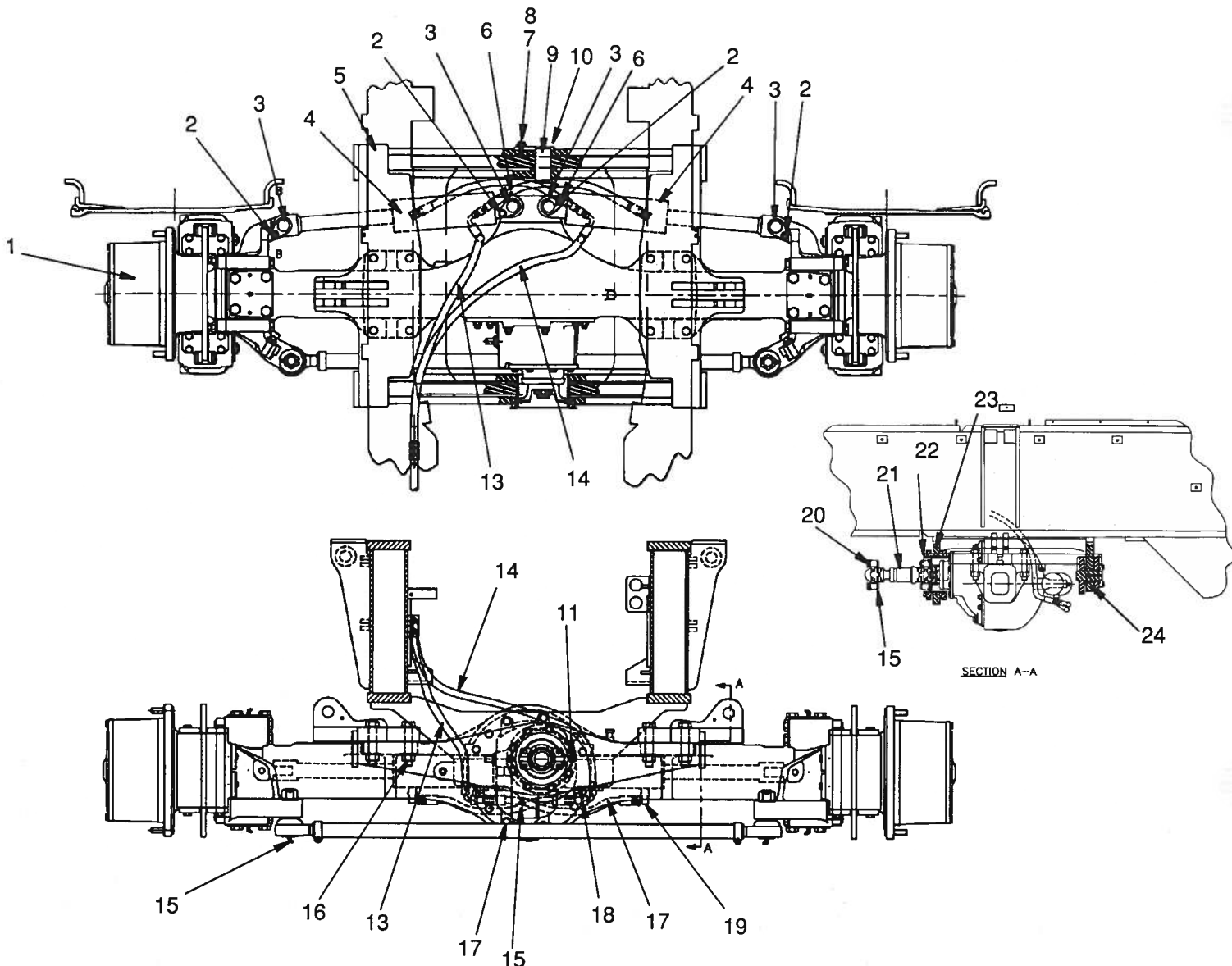
DATE: Issued 9-2003

MODEL: RT700

PAGE 25.20

GROUP

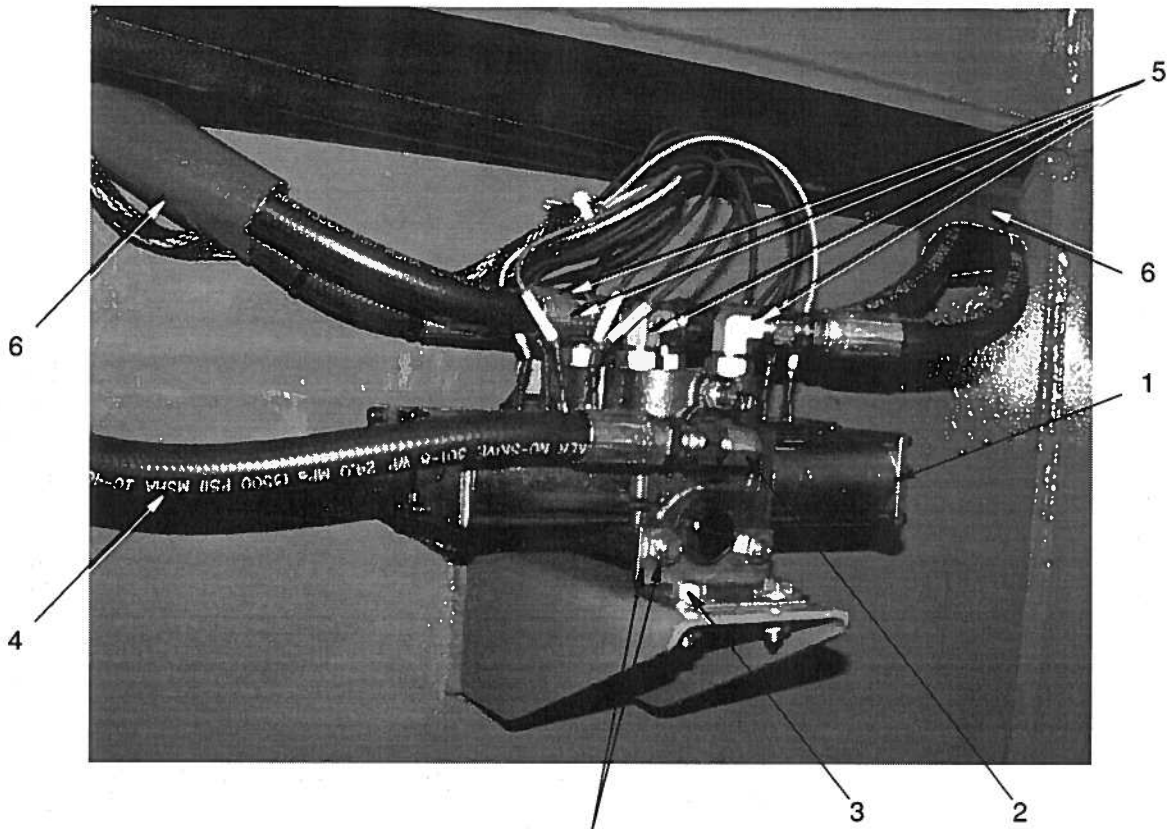
25



REF.	PART.NO.	DESCRIPTION	QTY.	REF.	PART.NO.	DESCRIPTION	QTY.
	720A0271	Rear Axle Assembly.....	Ref				
1	Group 5	Axle - 720 0001	1	12	1219-688	Reducer	2
2	1200-95	CapscREW, 1 x 1.00	4	13	707 4078-56	Hose	1
	1209-29	Washer	4	14	707 4077-68	Hose	1
3	710F0412	Pin, Pivot	4	15	1213-3	Zerk, Grease (45°).....	2
4	Group 11	Cylinder, Steering - 710 0367	2	16	1209-70	Washer	16
5	720F0038	Bracket, Rear Axle	1		1203-276	CapscREW.....	8
6	1213-6	Zerk, Grease	2		1205-197	Nut.....	8
7	709 9564	Plate	1	17	707 4077-24	Hose	1
8	1200-100	CapscREW, .5 x 1.50	1	18	1219-768	Tee	1
	200B2004-103	Spacer.....	2	19	1219-470	Adapter, 90°.....	2
9	1213-1	Zerk, Grease	4	20	310 2860	CapscREW.....	4
10	707F4532	Pin, Rear Axle	2	21	Page 9.1	Driveshaft - 709 5648	1
11	1209-29	Flatwasher.....	4	22	709 5450	Sleeve.....	1
	1200-100	CapscREW	4	23	707 4332	Bushing.....	1
				24	1208-59	Bushing, Machinery.....	8

WHEN ORDERING PARTS, SPECIFY MODEL NUMBER, SERIAL NUMBER AND DESCRIPTION OF PART REQUIRED

	<h2>REAR AXLE ASSEMBLY</h2>	DATE: Issued 9-2003	GROUP 2
		MODEL: RT700	
		PAGE 2.2	



Note: Part of Valve

REF.	PART NO.	DESCRIPTION	QTY
Front/Rear Outrigger Valve Hydraulics			
1	Page 3.6	Valve, Solenoid (708 2210)	1
2	1219-470	Adapter, 90°	1
3	1200-59	Cap screw, .38C x 1	2
	1210-20	Lockwasher, .38	2
	1205-36	Nut, .38.....	2
4	707 4079-52	Hose.....	1
5	716 0222-150	Hose.....	4
	1219-441	Adapter.....	4
6	12389-24	Protective Sleeve, Red 2".....	2

WHEN ORDERING PARTS, SPECIFY MODEL NUMBER, SERIAL NUMBER AND DESCRIPTION OF PART REQUIRED

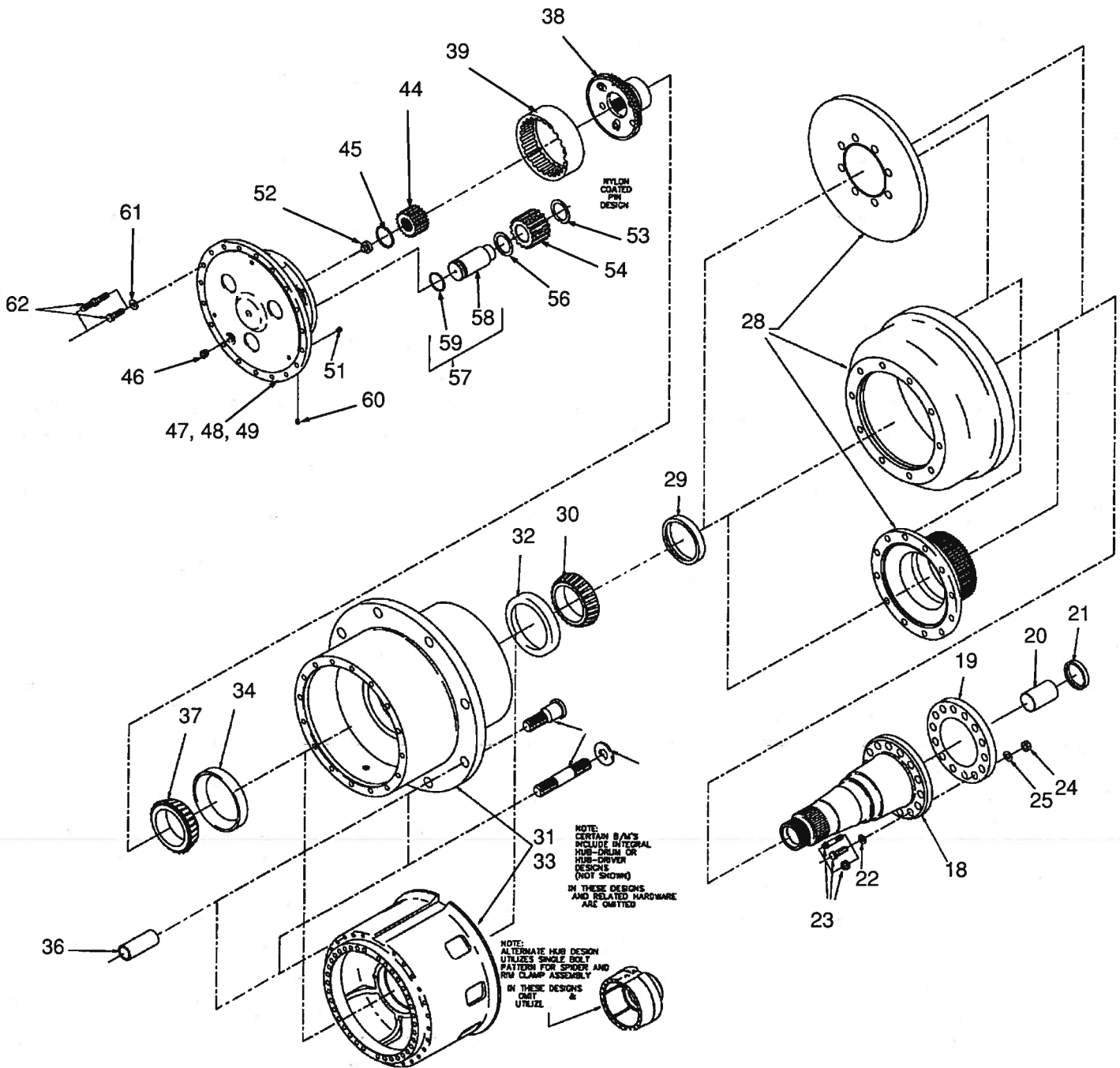
TEREX  **CRANES**

**OUTRIGGER VALVE
HYDRAULICS**

DATE: Issued 9-2003
 MODEL: RT700
 PAGE 3.4

GROUP
3

See Page 5.7



WHEN ORDERING PARTS, SPECIFY MODEL NUMBER, SERIAL NUMBER AND DESCRIPTION OF PART REQUIRED

TEREX  **CRANES**

HUB & SHAFT GROUP

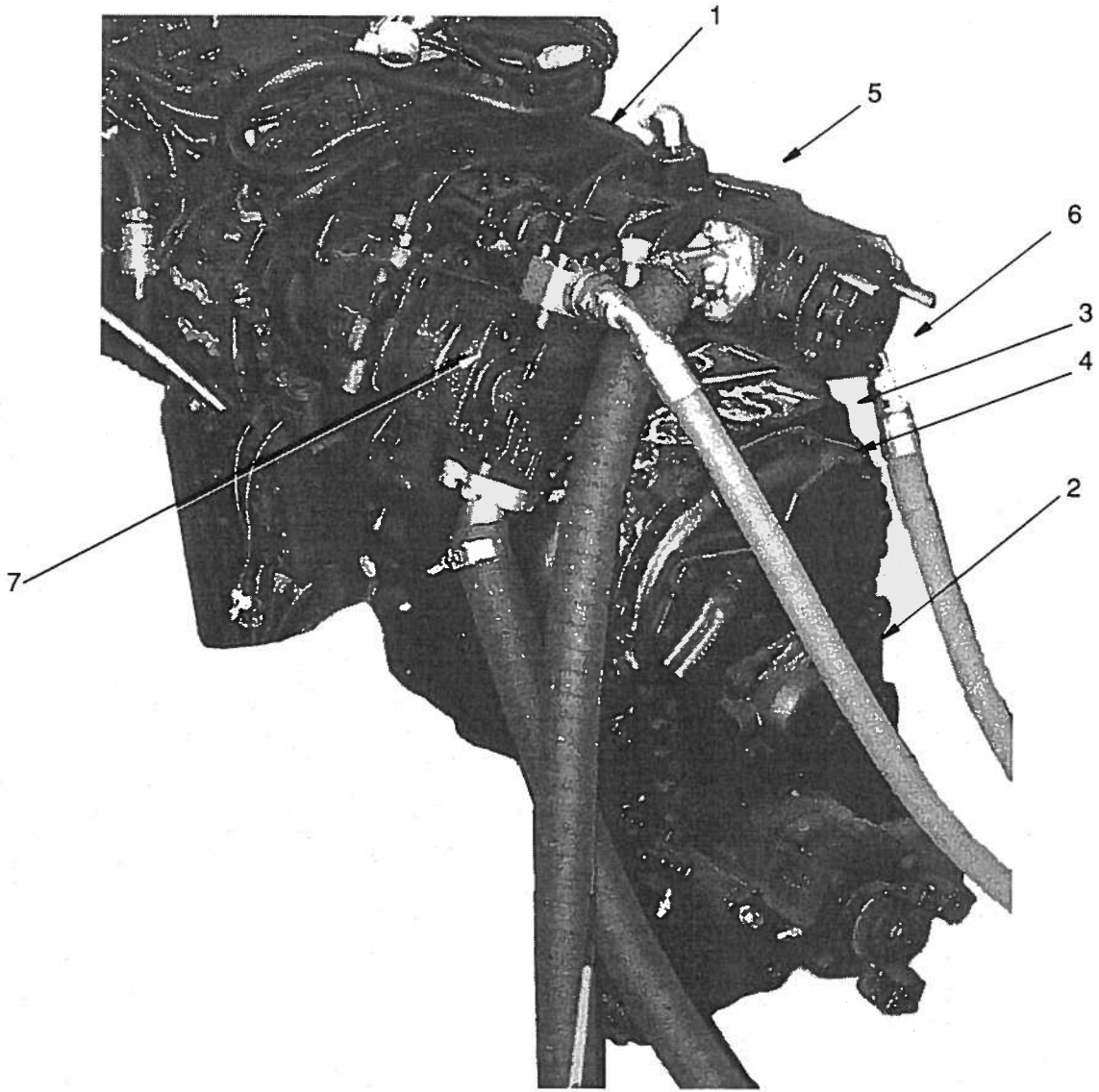
DATE: Revised 9-2003

MODEL: RT700 Series

PAGE 5.6

GROUP

5



REF.	PART.NO.	DESCRIPTION	QTY.
	710 0321	Transmission	1
1	Page 7.3	Converter Group.....	Ref
2	Page 7.5	Converter & Transmission Case Group.....	Ref
3	Page 7.7	Clutch Group, Rev, 3rd Forward & 2nd	Ref
4	Page 7.9	1st Clutch Group.....	Ref
5	Page 7.11	Pressure Regulator, Pump & Oil Filter.....	Ref
6	Page 7.12	Control Valve Assembly.....	Ref
7	Page 7.15	Pump Disconnect	Ref
8	Page 7.13	Hi & Low Shift Control - Not Shown.....	Ref
9	Page 7.14	Pump Adapter - Not Shown.....	Ref
10	Page 7.16	Drive Plate Group - Not Shown	Ref

WHEN ORDERING PARTS, SPECIFY MODEL NUMBER, SERIAL NUMBER AND DESCRIPTION OF PART REQUIRED

TEREX  **CRANES**

TRANSMISSION
Dana

DATE: Issued 9-2003
MODEL: RT700 Series
PAGE 7.1

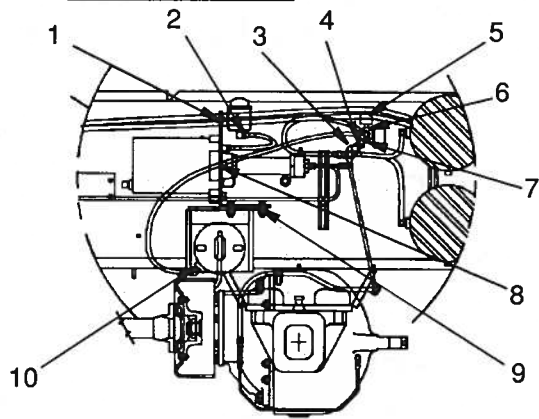
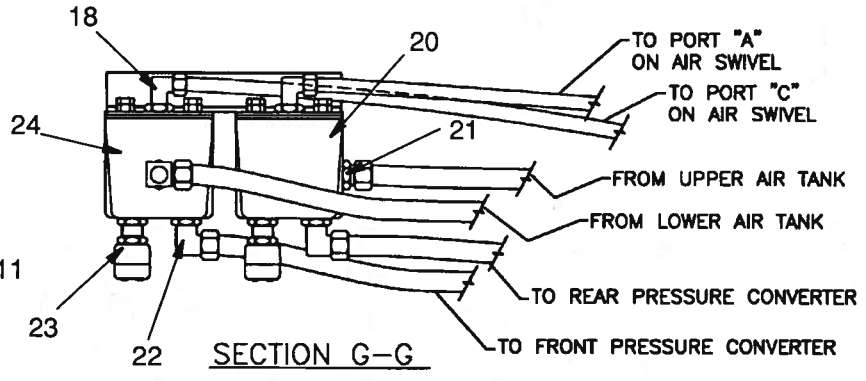
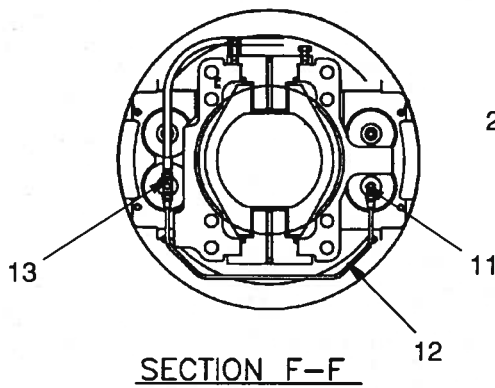
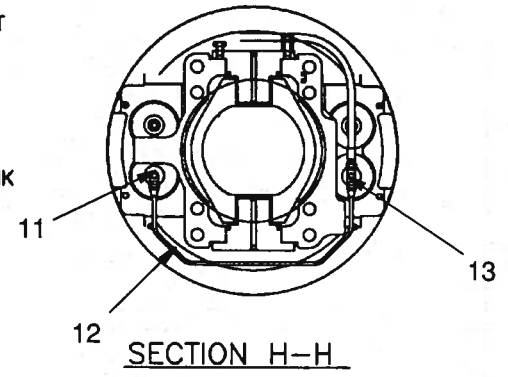
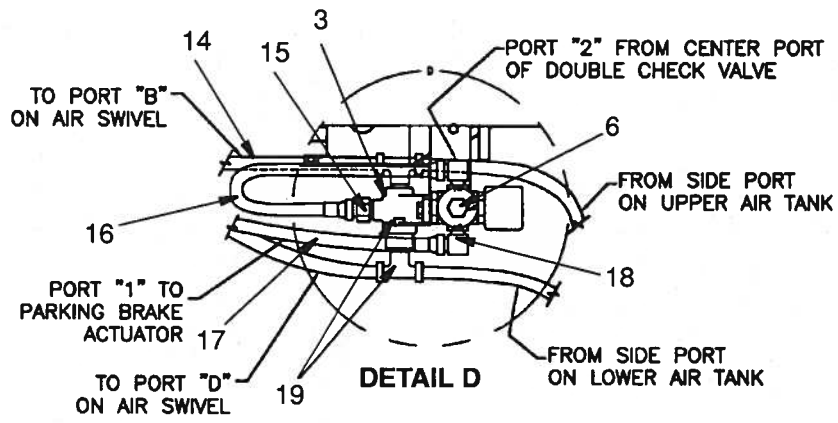
GROUP
7

See Page 7.10 for Details

REF.	PART.NO.	DESCRIPTION	QTY.	REF.	PART.NO.	DESCRIPTION	QTY.
Pressure Valve, Pump & Oil Filter Group .Ref							
1	217521	Charging Pump Drive Sleeve.....	1	27	217545	Valve to Housing Stud Nut.....	4
2	217522	Pump Sleeve Snap Ring	1	28	217546	Thrust Plate & Bearing Assembly.....	2
3	217523	Valve to Housing Gasket.....	1	29	217547	Wave Spring	2
4	217524	Valve Body O-Ring.....	1	30	217548	Pump Shaft Seal.....	2
5	217525	Valve Body O-Ring.....	1	31	217549	Pump to Filter Adaptor Locwasher	4
6	217526	Pipe Plug	1	32	217550	Pump to Filter Adapter Screw.....	4
7	217527	Safety Valve Seat.....	1	33	217551	Pump Drive Shaft Assembly.....	1
8	217528	Safety Valve Spacer	1	34	217552	Pump Drive Shaft Oil Seal.....	1
9	217529	Safety Valve Plunger	1	35	217553	Pressure Regulator Valve.....	1
10	217530	Safety Valve Spring.....	1			Includes Items 6-19, 34, 36	
11	217531	Valve Stop O-Ring	1	36	217554	Valve Body Roll Pin	3
12	217532	Valve Stop	1	37	217555	Valve Body O-Ring	1
13	217533	Valve Stop Roll Pin.....	1	38	217556	Pump to Filter Gasket.....	1
14	217533	Valve Stop Roll Pin.....	1	50		Cover, Pump.....	1
15	217534	Valve Stop	1	51	218263	Adapter, Filter	1
16	217535	Valve Stop O-Ring.....	1	52	218025	Filter.....	1
17	217536	Valve Piston.....	1	53	217568	Charging Pump & Oil Filter Assy	Ref.
18	217537	Valve Spring - Inner.....	1			Includes Items 22-25, 28-33, 38-49	
19	217538	Valve Spring - Outer.....	1				
20	217539	Valve to Converter Housing Stud	4				
21	217540	Valve Body to Pump Gasket.....	1				
22	217541	Pump Body Snap Ring	1				
23	217542	Thrust Plate & Bearing Assembly.....	2				
24	217543	Pump Driven Shaft Assembly.....	1				
25	217544	Charging Pump Housing	1				
		Includes Items 22-24, 28-30, 33					
26	217431	Valve to Housing Stud Lockwasher	4				

WHEN ORDERING PARTS, SPECIFY MODEL NUMBER, SERIAL NUMBER AND DESCRIPTION OF PART REQUIRED

	<h3 style="margin: 0;">TRANSMISSION</h3> <p style="margin: 0;">Pressure Valve, Pump & Oil Filter</p>	DATE: Issued 9-2003 MODEL: RT700 Series PAGE 7.11	GROUP 7
---	--	---	---

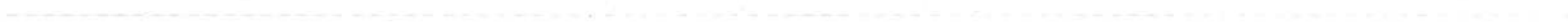


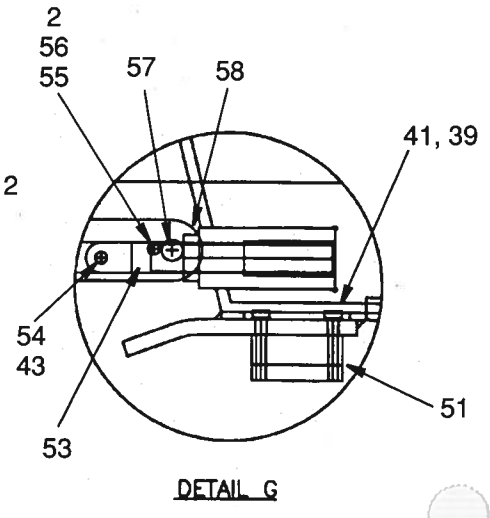
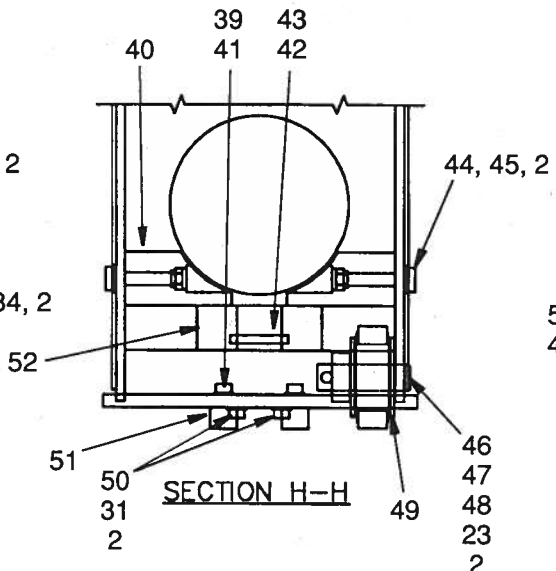
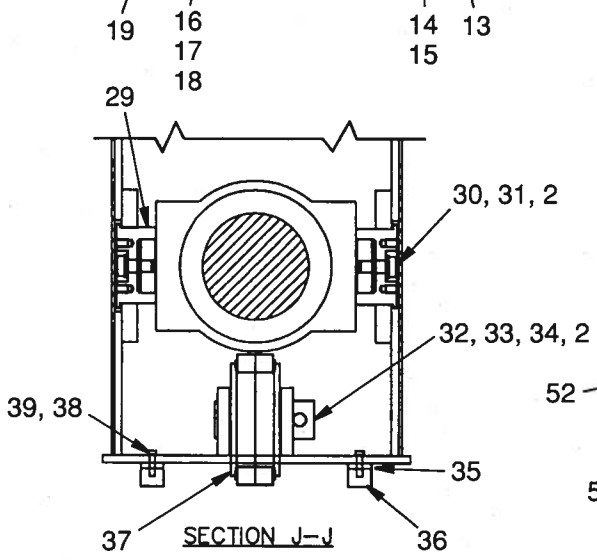
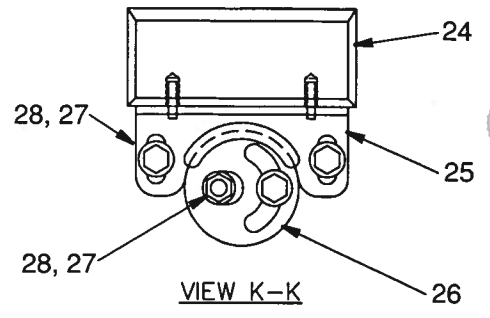
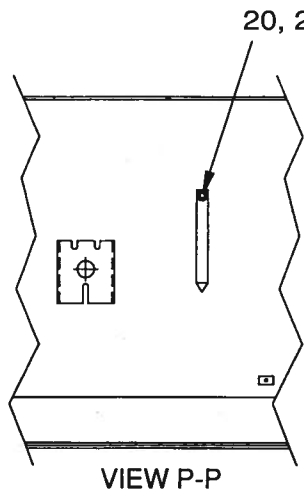
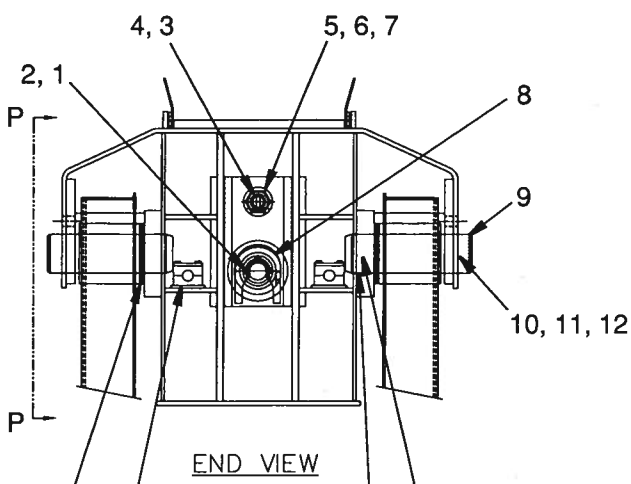
DETAIL E

REF.	PART NO.	DESCRIPTION	QTY.
	720A0104	Brake Line System Assembly	
1	1200-59	Capscrew	1
	1210-20	Lockwasher	1
	1205-36	Locknut	1
2	12019-85	Elbow	1
3	1219-212	Valve, Double Check	1
4	1200-31	Capscrew	1
	1210-17	Lockwasher	1
	1205-25	Locknut	1
5	1213-30	Breather	1
6	708 2899	Valve	1
7	311 1563	Capscrew	1
	1210-7	Lockwasher	1
	1209-1	Flatwasher	1

REF.	PART NO.	DESCRIPTION	QTY.
8	1200-145	Capscrew	1
	1210-32	Lockwasher	1
9	1200-100	Capscrew	1
	1209-5	Washer	1
	1205-67	Locknut	1
10	12019-413	Elbow	1
11	12019-139	Adapter	4
	1219-887	Elbow	2
12	710 0386	Tube Assembly	2
13	12019-720	Branch Tee	2
	12019-139	Adapter	2
	12203-110	Tube	1
15	12019-398	Adapter	1
16	12203-24	Tube	1
	12019-139	Adapter	4
17	12203-30	Tube	1
18	12019-406	Elbow	2
19	362 3647	Tee	2
20	430 4127	Valve, Relay, Rear	1
21	12019-400	Connector	1
22	12019-525	Elbow	1
23	12019-181	Reducer	2
	445 1074	Switch, Stop Light	2
24	12019-526	Valve, Relay, Front	1

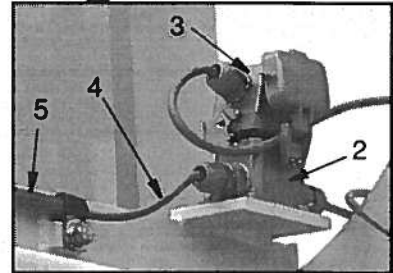
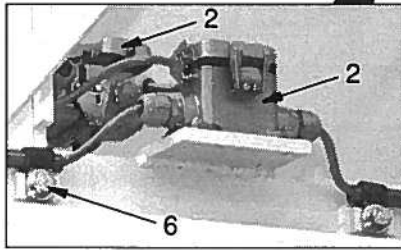
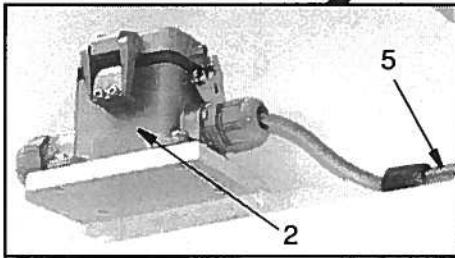
WHEN ORDERING PARTS, SPECIFY MODEL NUMBER, SERIAL NUMBER AND DESCRIPTION OF PART REQUIRED





REF.	PART NO.	DESCRIPTION	QTY.	REF.	PART NO.	DESCRIPTION	QTY.
1	1200-307	Capscrew, .44C X 1.50	3	37	721A0092	Sheave, 1066 Chain	1
2	511 2057	Loctite	AR	38	1200-37	Capscrew, .31C X 1.75	4
3	1200-65	Capscrew, .38C X 1.75	1	39	1210-17	Washer, Lock, .31	12
4	1205-45	Nut, Lock, .38C	1	40	721 0021	Pad, Cyl Cradle	2
5	1204-53	Nut, 2.25C, Grd 8	1	41	1200-33	Capscrew, .31C X 1.25	8
6	1204-54	Nut, Jam, 2.25C	2	42	709 4029	Pin, 1066 Chain	2
7	334 4501	Washer, Flat, 2.25 HT	2	43	091 703 04	Cotter Pin	4
8	718 0753	Keeper, Cyl Rod	1	44	1200-166	Capscrew, .62C X 4.50	4
9	721 0162	Pin, Boom Pivot	2	45	1209-48	Washer, Flat, .62 HT	4
10	718 0058	Rod End, 1.25 X 6.00	2	46	1222-348	Rod Eye, .5 X 2.75	1
11	1242-74	Capscrew, 1.25C X 3.00	2	47	709 7225	Pin, 844 Sheave	1
12	1210-62	Washer, Lock, 1.25	2	48	1242-21	Capscrew, .44C X 1.25, Grd 8	1
13	1213-1	Zerk	4	49	721A0094	Sheave, 844	1
14	1206-34	Screw, Set, .50	2	50	1242-140	Capscrew, .75C X 4.50, Grd 8	4
15	1205-61	Nut, Jam, .50	2	51	721 0240	Wear Pad, Lower Rear	4
16	1240-215	Clamp, Half	4	52	721 0029	Link, 1688/1066 Static	1
17	1240-195	Plate, Clamp Cover	2	53	720 0310	Link, 844 Chain	1
18	1200-73	Capscrew, .38C X 2.75	4	54	717 0402	Pin, 844 Chain	1
19	718 0576	Shim	20	55	1200-335	Capscrew, .38C X .50	2
20	729-02578	Pointer, Boom Angle	1	56	1209-89	Washer, .38 Wide "B"	2
21	1205-47	Nut, .44C	1	57	721 0031	Pin, 1688 Chain	1
22	1200-328	Capscrew, .44C X 1.25	1	58	1205-118	Nut, Jam, 1.00C	1
23	1209-59	Washer, .44 HT	2				
24	709 7279	Wear Pad, Top Rear	6				
25	721F0295	Bracket, Wear Pad	6				
26	721F0299	Bracket, Eccentric Pad	6				
27	1242-29	Capscrew, .50C X 1.00, Grd 8	18				
28	334 2205	Washer, Flat, .50 HT	18				
29	717 0353	Pin, Eccentric Cyl Mount	2				
30	316 3339	Capscrew, .75C X 2.00, Grd 8	2				
31	1209-58	Washer, .75 HT	6				
32	1242-45	Capscrew, .62C X 1.50, Grd 8	2				
33	709 4255	Rod Eye	2				
34	709 4009	Pin, 1066 Sheave	1				
35	709 7527	Spacer, .38 Rear Pad	2				
36	721 0240	Wear Pad, Lower Rear	2				

WHEN ORDERING PARTS, SPECIFY MODEL NUMBER, SERIAL NUMBER AND DESCRIPTION OF PART REQUIRED



REF.	PART NO.	DESCRIPTION	QTY.
	708A0282	Anti-Two Block Assembly, Jibs	
1	709 7827	Counterweight, w/ Chain [Not Shown]..	1
	709 7821	Switch.....	1
2	708 0271	Receptacle.....	3
	706 8189	Plate.....	3
	708 2982	VCI-Pad, 1 x 1	3
3	708 0272	Plug	1
4	12422-672	Cable	1
5	708 0313	Tube	1
6	1240-68	Clamp	4
	1200-57	Capscrew, 3/8NC x 3/4.....	4
	1210-20	Lockwasher, 3/8	4
	1209-4	Flatwasher, 3/8	4

WHEN ORDERING PARTS, SPECIFY MODEL NUMBER, SERIAL NUMBER AND DESCRIPTION OF PART REQUIRED

TEREX  **CRANES**

ANTI-TWO BLOCK
Jib

DATE: Issued 9-2003

MODEL: RT700

PAGE 39A.4

GROUP

39A

CLICK HERE TO **DOWNLOAD** THE COMPLETE MANUAL

- Thank you very much for reading the preview of the manual.
- You can download the complete manual from: www.heydownloads.com by clicking the link below



- Please note: If there is no response to CLICKING the link, please download this PDF first and then click on it.

CLICK HERE TO **DOWNLOAD** THE COMPLETE MANUAL