



# TEREX

## RT600 TIER 3 EXPORT & RT600-1 TIER 4i



# RT600 & RT600-1 PARTS MANUAL

Revised: April 2012

12261-261

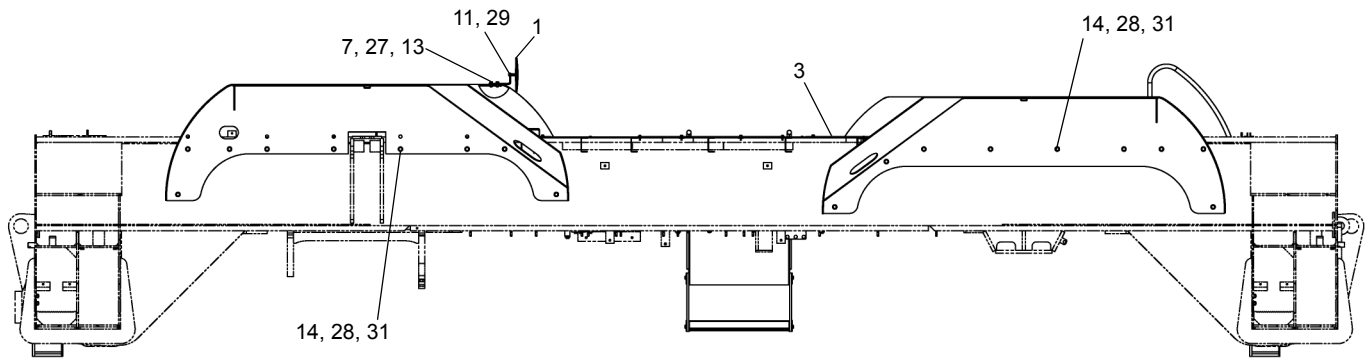
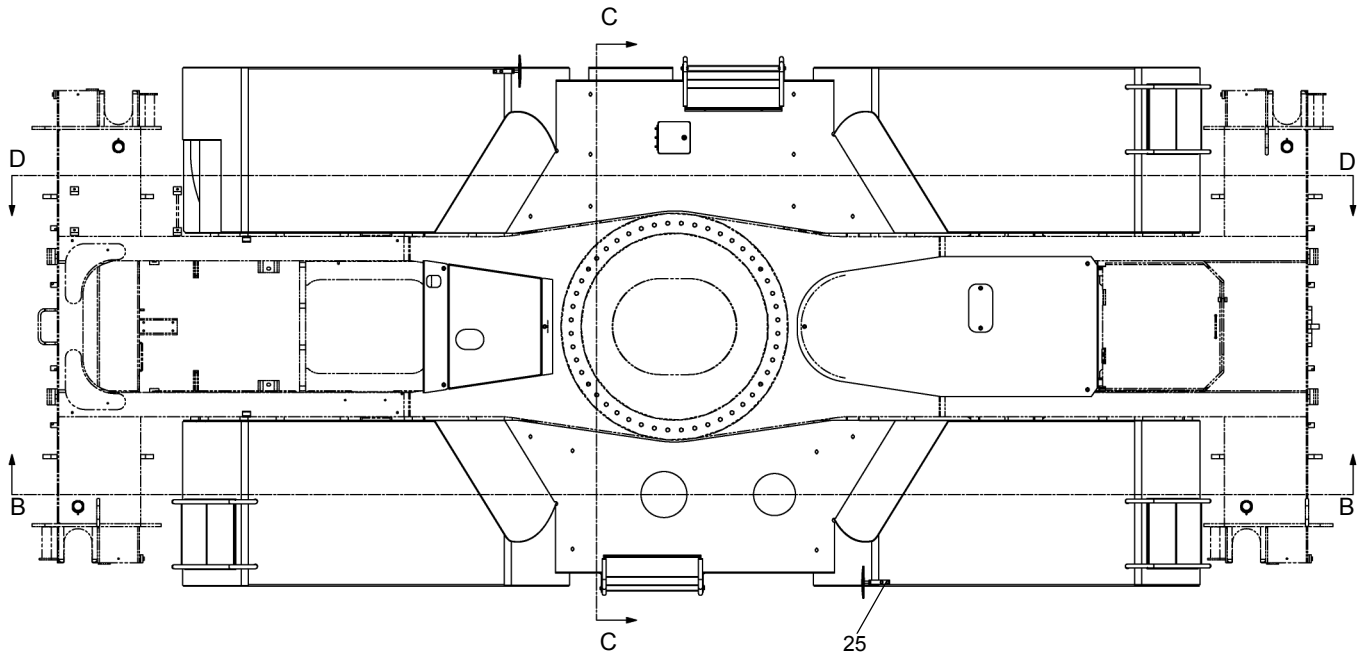
CLICK HERE TO **DOWNLOAD** THE COMPLETE MANUAL

- Thank you very much for reading the preview of the manual.
- You can download the complete manual from: [www.heydownloads.com](http://www.heydownloads.com) by clicking the link below

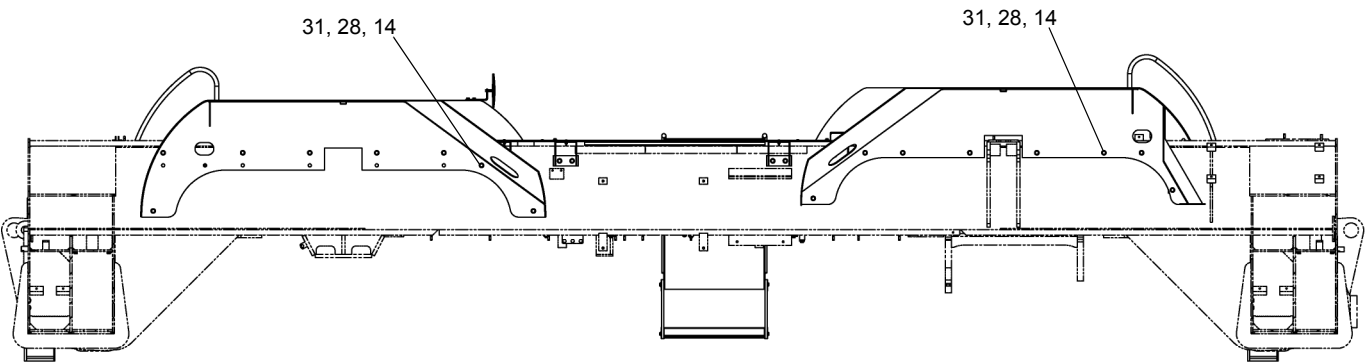


- Please note: If there is no response to CLICKING the link, please download this PDF first and then click on it.

CLICK HERE TO **DOWNLOAD** THE COMPLETE MANUAL



SECTION B - B



SECTION D - D

**SEE PAGE 2.5**

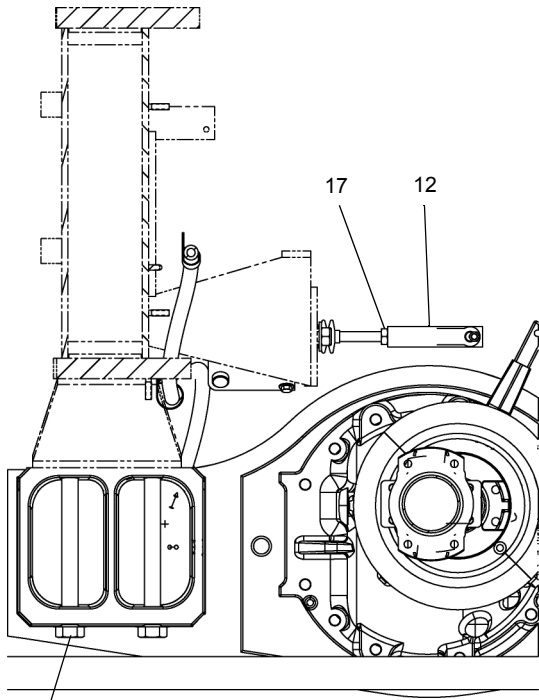
WHEN ORDERING PARTS, SPECIFY MODEL NUMBER, SERIAL NUMBER AND DESCRIPTION OF PARTS REQUIRED



**FENDER & DECK ASSY**

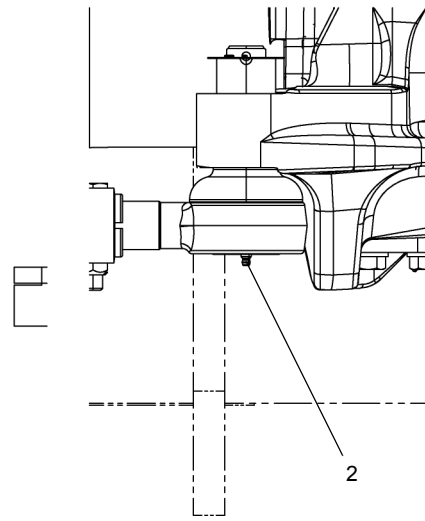
DATE: Revised 01-2010  
MODEL: RT600-1  
PAGE 2.3

**GROUP**  
**2**

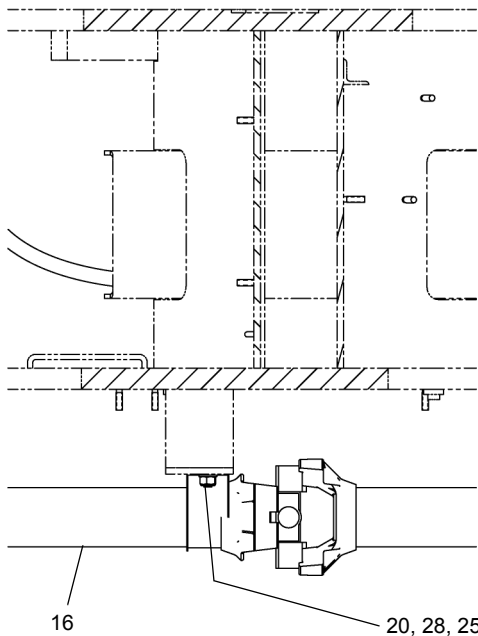


18, 27, 23

SECTION D-D



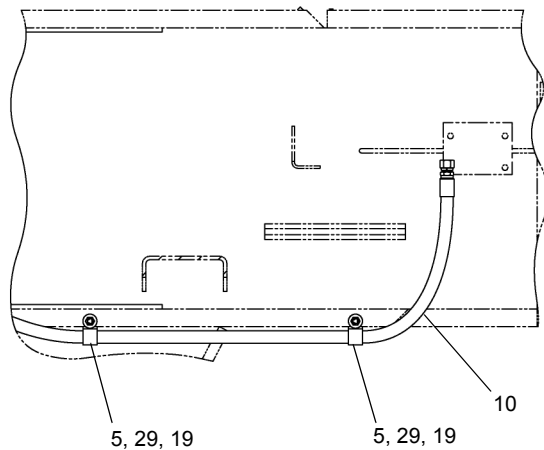
SECTION E-E



16

20, 28, 25

SECTION C-C



5, 29, 19

5, 29, 19

10

SECTION B-B

**SEE PAGE 2.14**

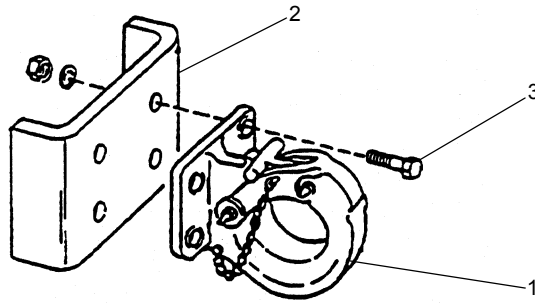
WHEN ORDERING PARTS, SPECIFY MODEL NUMBER, SERIAL NUMBER AND DESCRIPTION OF PARTS REQUIRED



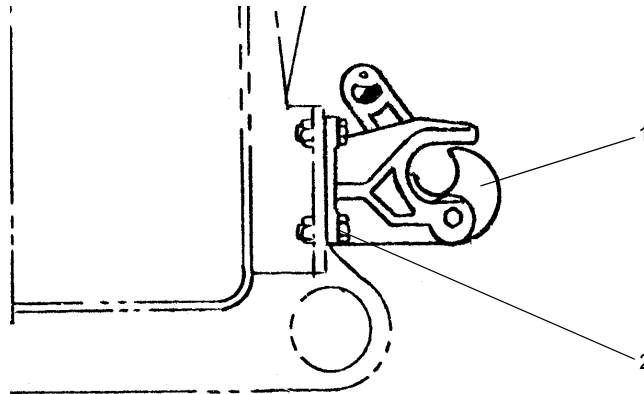
**FRONT AXLE ASSEMBLY**

DATE: Revised 01-2010  
 MODEL: RT600-1  
 PAGE 2.13

**GROUP**  
**2**



REF	PART NO.	DESCRIPTION	QTY
	720A0454	Front Pintle Hook Assembly.....	Opt
1	3100P57F2	Rear Pintle Hook Assembly .....	1
2	720 0093	Bracket .....	1
3	0825M16065	Capscrew HEX PLT M16 x 65 .....	4
	18Z2070D7	Washer HRD .177 x 1.313"O x .688"l..	8
	2104M016	Nut HEX M16 .....	4



REF	PART NO.	DESCRIPTION	QTY
	3100P57F2	Rear Pintle Hook Assembly .....	Opt
1	8Z206	Coupler, Automatic Truck.....	1
2	0825M16065	Capscrew, M16 x 65 .....	4
	18Z2070D7	Washer .....	8
	2104M016	Nut, Hex M16 .....	4

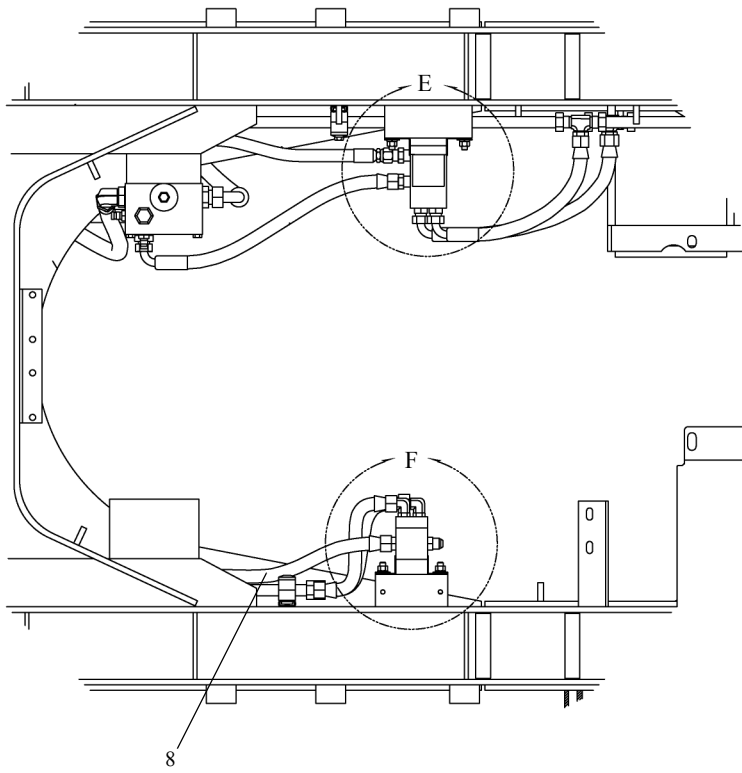
WHEN ORDERING PARTS, SPECIFY MODEL NUMBER, SERIAL NUMBER AND DESCRIPTION OF PARTS REQUIRED



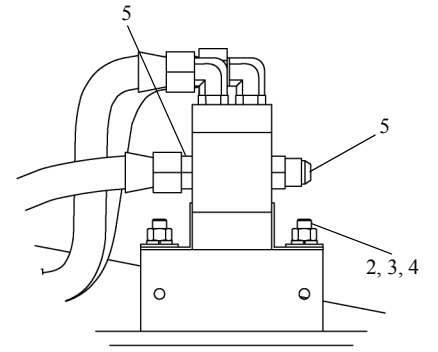
**PINTLE HOOK**

DATE: Revised 09-2010  
 MODEL:RT600 & RT600-1  
 PAGE 2.23

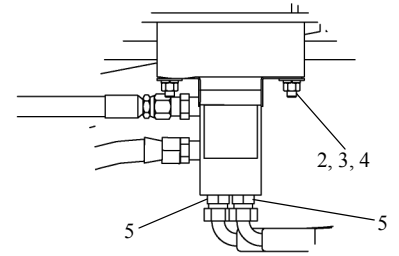
**GROUP**  
**2**



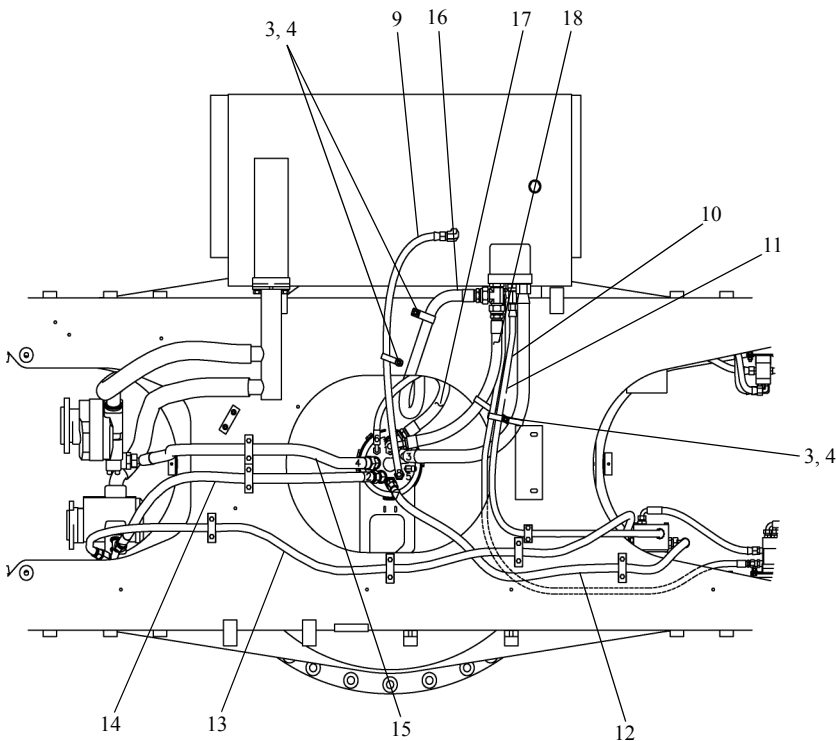
DETAIL A



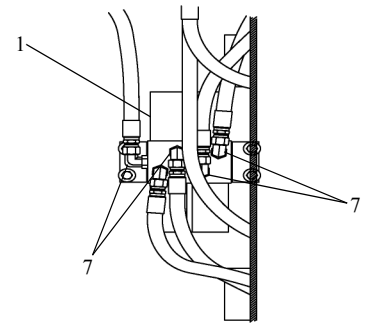
DETAIL F



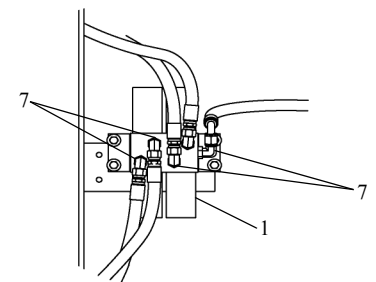
DETAIL E



DETAIL B



DETAIL C



DETAIL D

**SEE PAGE 3.6**

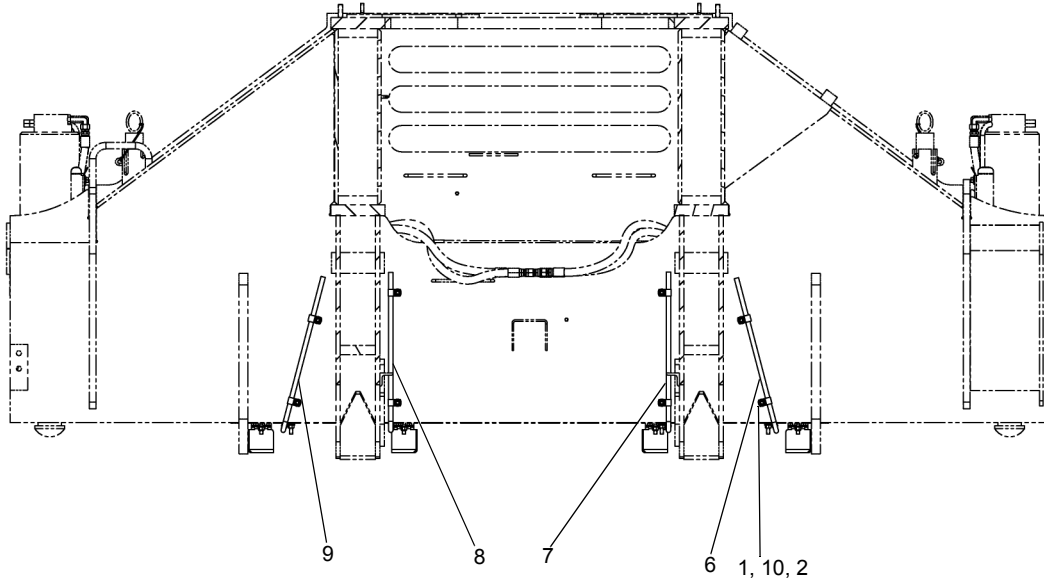
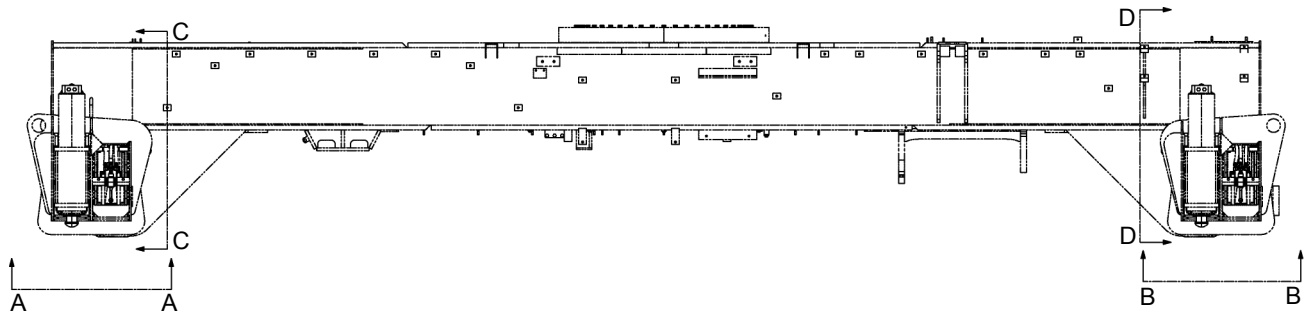
WHEN ORDERING PARTS, SPECIFY MODEL NUMBER, SERIAL NUMBER AND DESCRIPTION OF PARTS REQUIRED



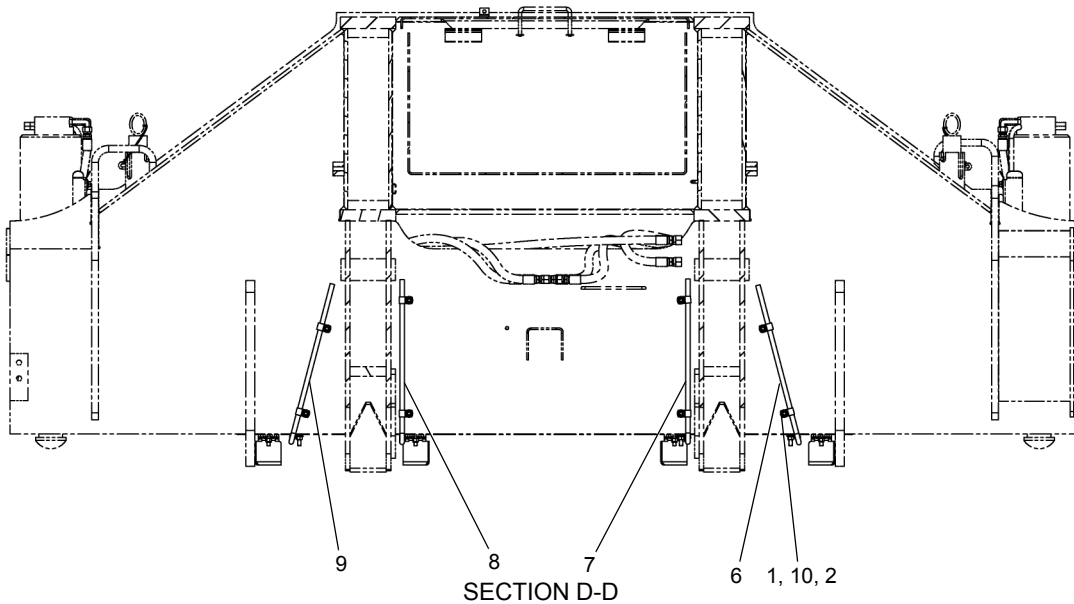
**OUTRIGGER VALVE  
HYDRAULICS**

DATE: Revised 09-2010  
 MODEL: RT600  
 PAGE 3.5

**GROUP  
3**



SECTION C-C



SECTION D-D

**SEE PAGE 3.16**

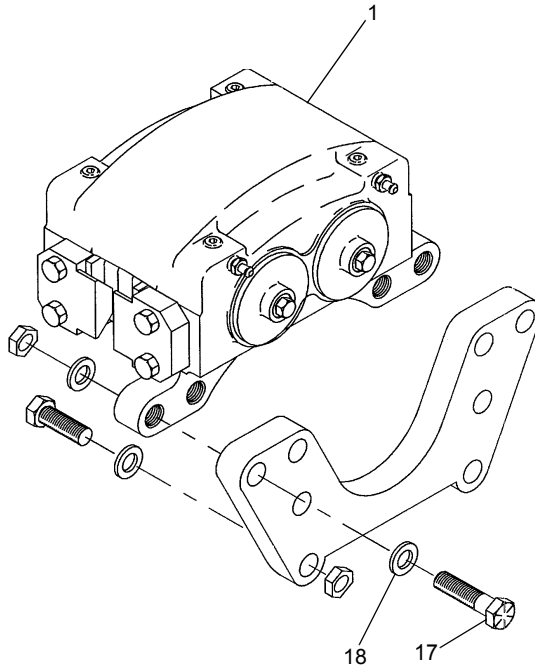
WHEN ORDERING PARTS, SPECIFY MODEL NUMBER, SERIAL NUMBER AND DESCRIPTION OF PARTS REQUIRED



**OUTRIGGER SENSOR  
INSTALLATION**

DATE: Released 10-2011  
 MODEL: RT600  
 PAGE 3.15

GROUP  
**3**



<u>REF</u>	<u>PART NO</u>	<u>DESCRIPTION</u>	<u>QTY</u>
	221684	Group-Brake (Axle Tech)	
1	221685	Brake ASSY-Disc.....	4
2*	220263	Caliper Finish-Disc Brake .....	4
3*	220264	Ring - Backup .....	16
4*	220265	O-Ring 5.33 X 75.56 .....	16
5*	220266	Seal Wiper .....	16
6*	220267	Piston Fin .....	16
7*	220268	O Ring 3.53 X 75.79 .....	8
8*	220269	Cap - Cylinder Head .....	8
9*	220270	Plug / O Ring Hex .500-20 UNF .....	8
10*	220271	Bleeder Screw .438-20 UNF .....	8
11*	221687	Cap - Bleeder.....	8
12*	220273	Brake Pad Assembly.....	8
13*	220077	Plate-+Lining Retainer .....	16
14*	220076	.62-11UNC X 1.50/1.50 HHCS .....	32
15*	220276	Grease ( OLS ).....	4
16*	220277	Label - Mineral Oil.....	4
17	221688	.88-9UNCX7.50/2.25 HHCS .....	16
18	221171	.91X1.50X.12 WSHR .....	16
19*	220459	Name Plate -Generic Commercial .....	1
20*	220460	Name Plate - Blank.....	1
21*	220461	Screw .....	2
22*	221689	Plug 3/8 -18 PTF, SQ Head .....	1
23*	221690	Stool-Shipping, Cradle .....	1

\* ITEMS (2 TO 16 & 19 TO 23) ARE NOT SHOWN IN ILLUSTRATION

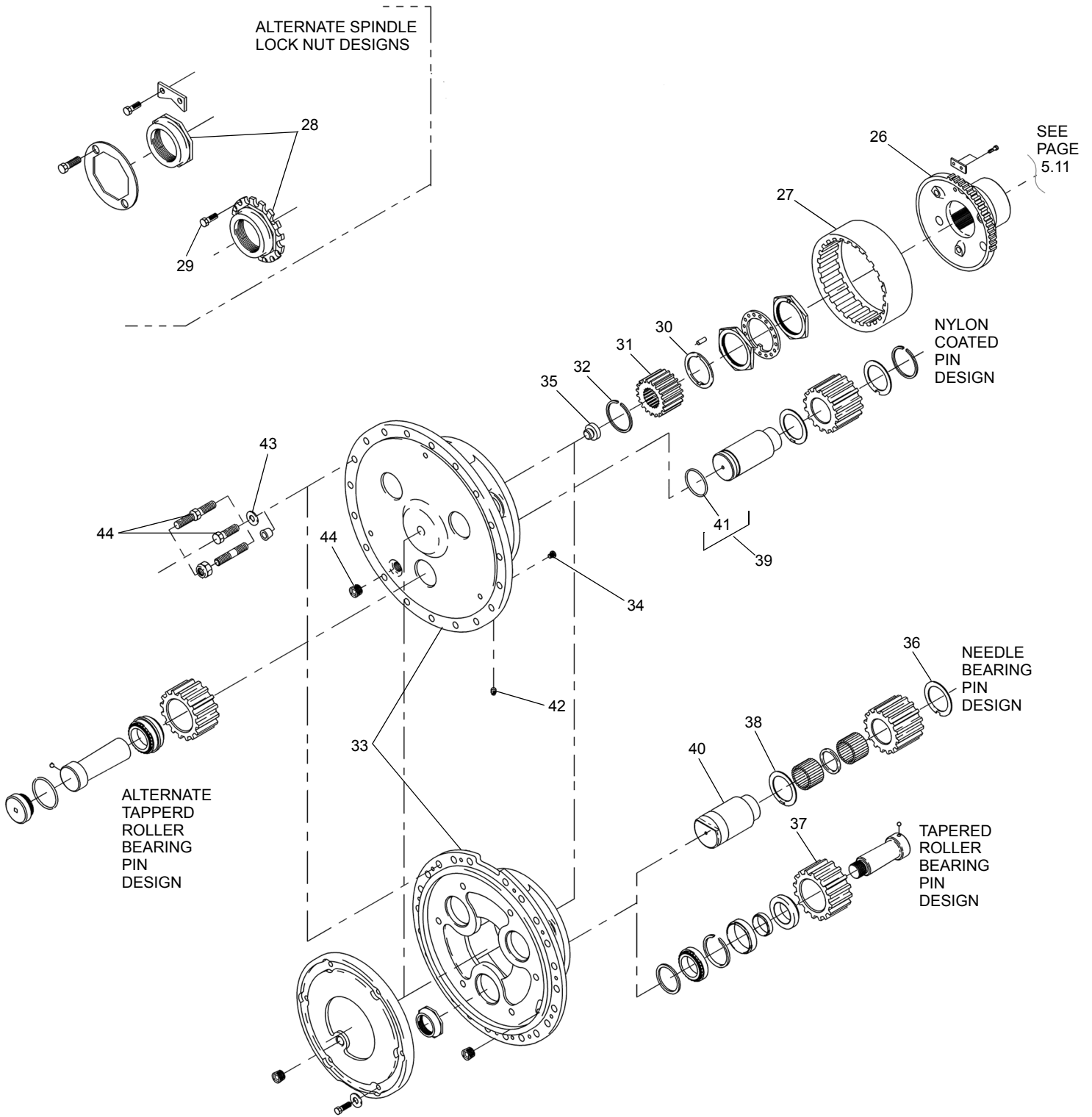
WHEN ORDERING PARTS, SPECIFY MODEL NUMBER, SERIAL NUMBER AND DESCRIPTION OF PARTS REQUIRED



**BRAKE GROUP - REAR AXLE  
(AXLE TECH)**

DATE: Revised 08-2011  
 MODEL: RT600  
 PAGE 5.7

**GROUP  
5**



**SEE PAGE 5.19**

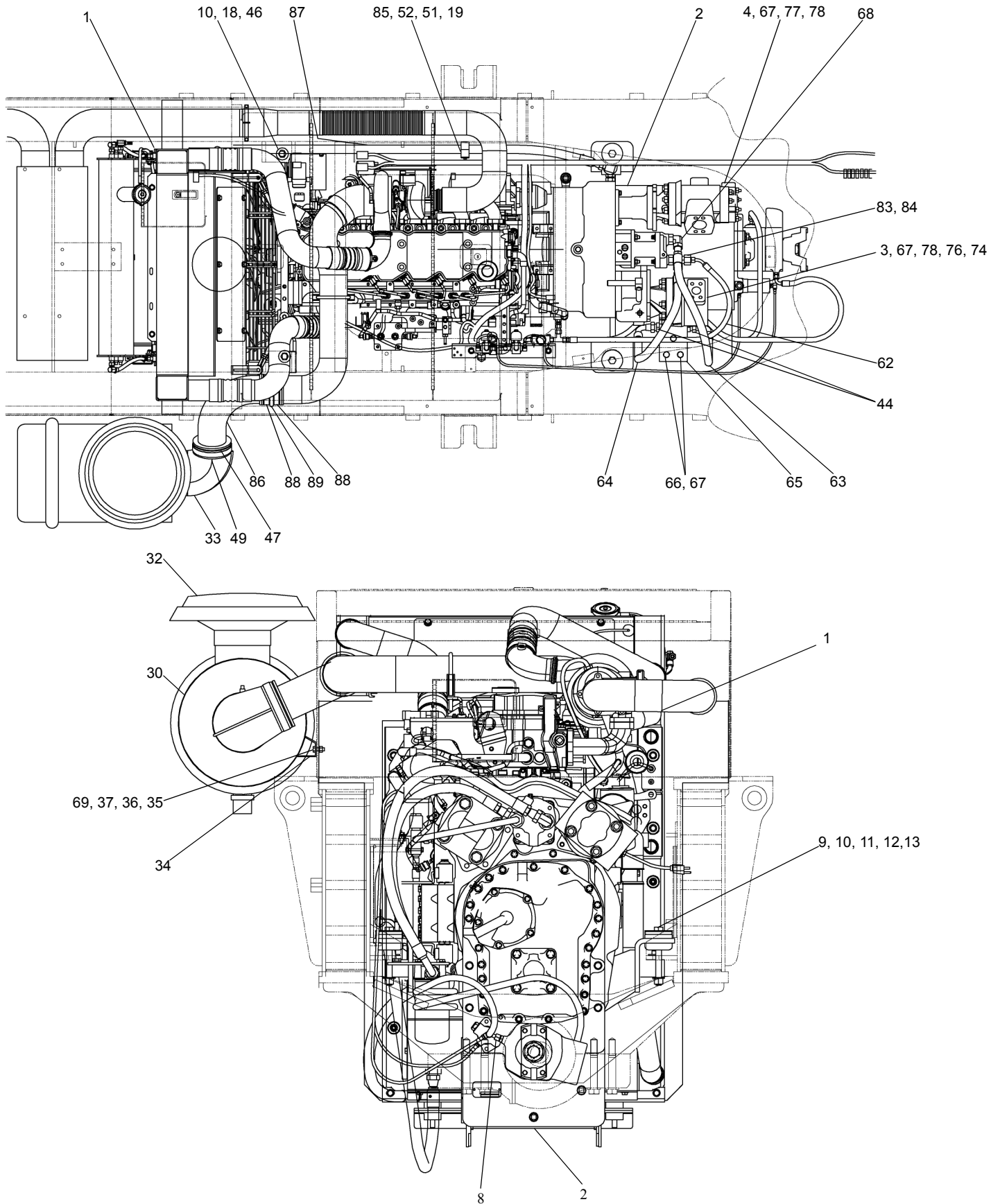
WHEN ORDERING PARTS, SPECIFY MODEL NUMBER, SERIAL NUMBER AND DESCRIPTION OF PARTS REQUIRED



**HUB & SHAFT GROUP  
REAR AXLE (AXLE TECH)**

DATE: Revised 08-2011  
MODEL: RT600  
PAGE 5.17

**GROUP  
5**



SEE PAGE 6.5

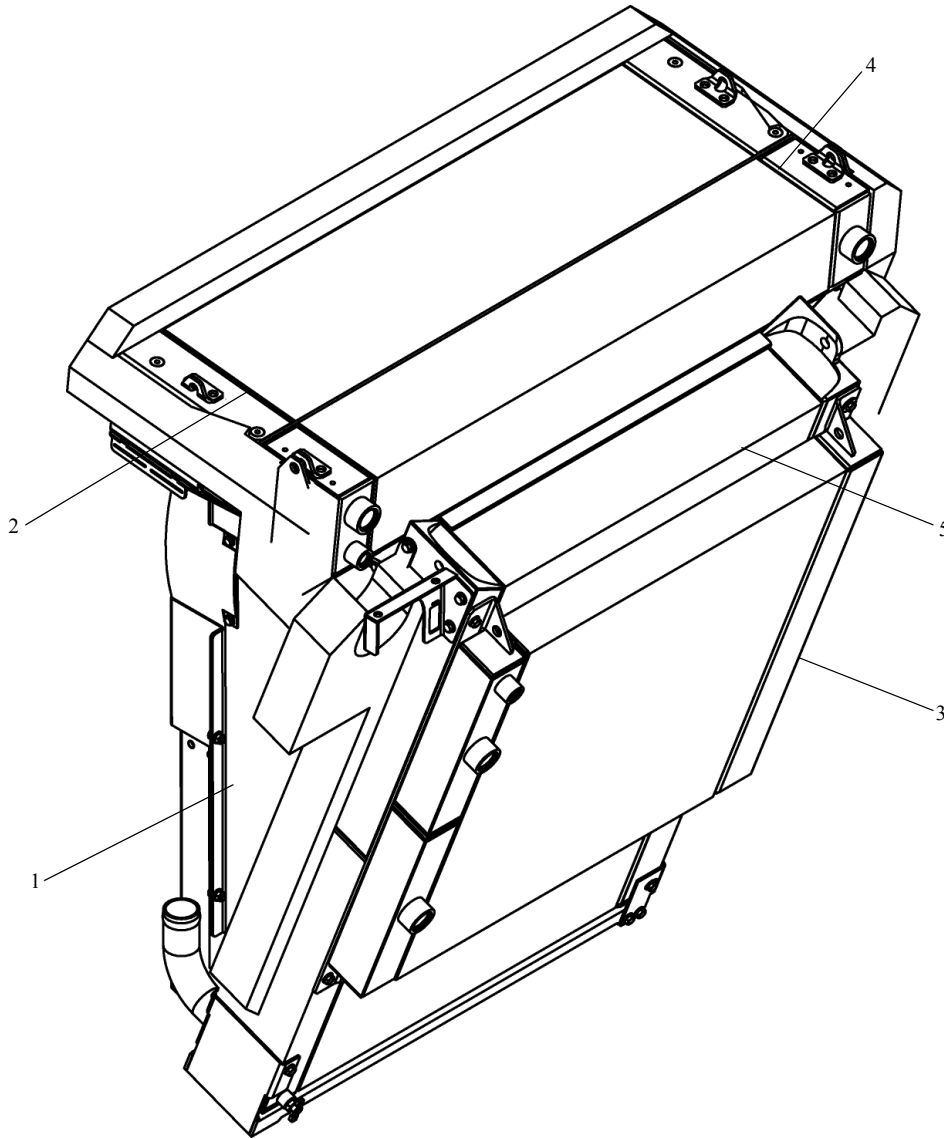
WHEN ORDERING PARTS, SPECIFY MODEL NUMBER, SERIAL NUMBER AND DESCRIPTION OF PARTS REQUIRED



**ENGINE INSTALLATION  
CUMMINS**

DATE: Revised 08-2011  
 MODEL: RT600  
 PAGE 6.3

**GROUP  
6**



<u>REF</u>	<u>PART NO</u>	<u>DESCRIPTION</u>	<u>QTY</u>
	T105163 (Rev A)	<i>Cooling Package</i>	
1	T105163-01	Fan Shroud.....	1
2	T105168	Charged Air Cooler.....	1
3	T105186	Transmission Oil Cooler.....	1
4	T105197	HYD Oil Cooler.....	1
5	T105233	Radiator.....	1

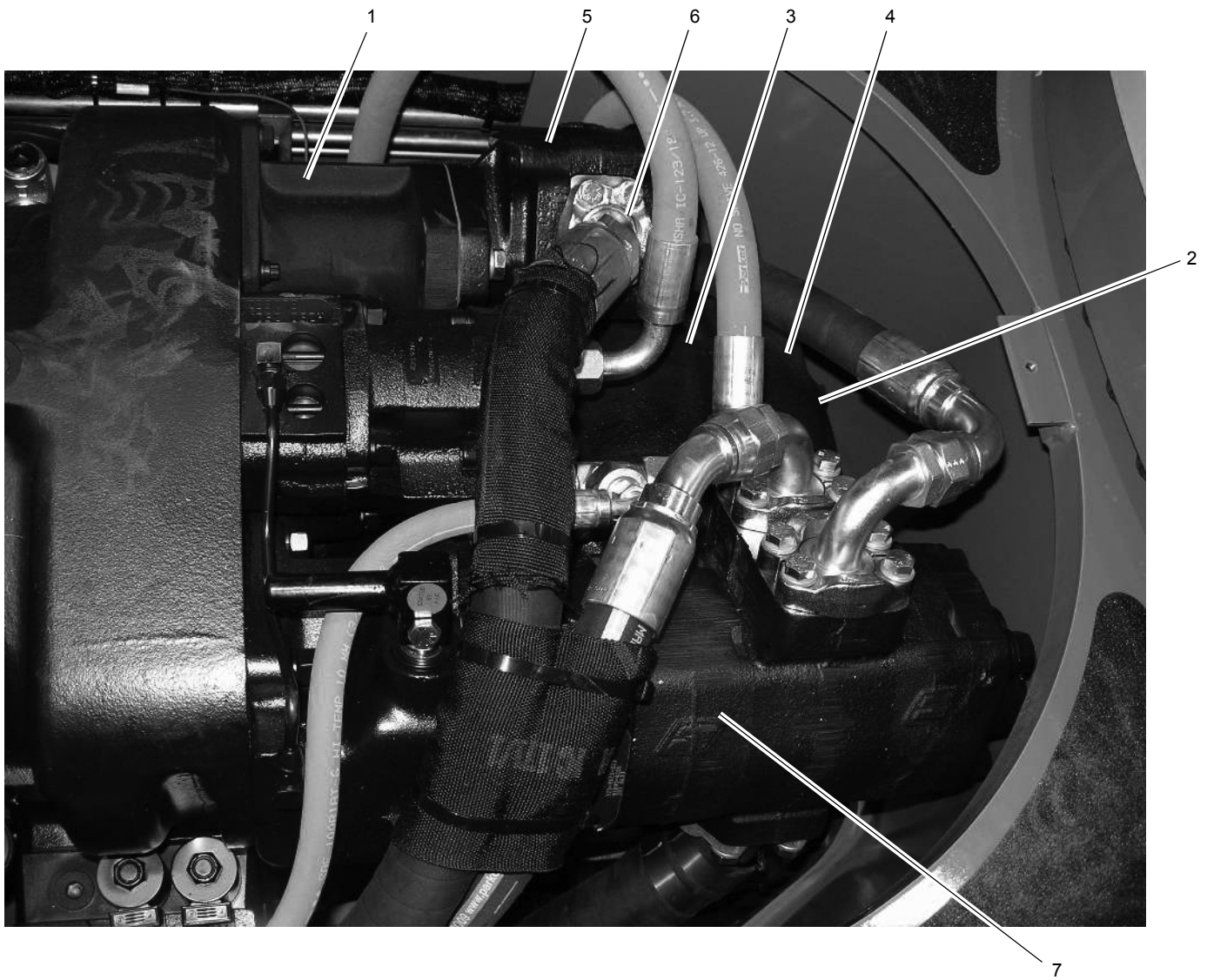
WHEN ORDERING PARTS, SPECIFY MODEL NUMBER, SERIAL NUMBER AND DESCRIPTION OF PARTS REQUIRED



**COOLING PACKAGE**

DATE: Released 08-2011  
 MODEL: Non-North America & RT600-1  
 PAGE 6A.7

**GROUP**  
**6A**



<u>REF</u>	<u>PART NO</u>	<u>DESCRIPTION</u>	<u>QTY.</u>
	710 0321	Transmission.....	1
1	Page 7.2	Converter Group.....	Ref
2	Page 7.4	Converter & Transmission Case Group.....	Ref
3	Page 7.6	Clutch Group, Rev, 3rd Forward & 2nd.....	Ref
4	Page 7.8	1st Clutch Group.....	Ref
5	Page 7.10	Pressure Regulator, Pump & Oil Filter.....	Ref
6	Page 7.12	Control Valve Assembly.....	Ref
7	Page 7.15	Pump Disconnect .....	Ref
8	Page 7.13	Hi & Low Shift Control - Not Shown.....	Ref
9	Page 7.14	Pump Adapter - Not Shown.....	Ref
10	Page 7.16	Drive Plate Group - Not Shown .....	Ref

WHEN ORDERING PARTS, SPECIFY MODEL NUMBER, SERIAL NUMBER AND DESCRIPTION OF PARTS REQUIRED



**TRANSMISSION  
DANA**

DATE: Revised 01-2010  
 MODEL: RT600 & RT600-1  
 PAGE 7.1

**GROUP  
7**

## SEE PAGE 7.10

<u>REF.</u>	<u>PART NO</u>	<u>DESCRIPTION</u>	<u>QTY.</u>	<u>REF.</u>	<u>PART NO</u>	<u>DESCRIPTION</u>	<u>QTY.</u>
<i>Pressure Valve, Pump &amp; Oil Filter Group.Ref</i>							
1	217521	Charging Pump Drive Sleeve .....	1	24	217543	Pump Driven Shaft Assembly .....	1
2	217522	Pump Sleeve Snap Ring .....	1	25	217544	Charging Pump Housing .....	1
3	217523	Valve to Housing Gasket .....	1			Includes Items 22-24, 28-30, 33	
4	217524	Valve Body O-Ring .....	1	26	217431	Valve to Housing Stud Lockwasher .....	4
5	217525	Valve Body O-Ring .....	1	27	217545	Valve to Housing Stud Nut .....	4
6	217526	Pipe Plug .....	1	28	217546	Thrust Plate & Bearing Assembly .....	2
7	217527	Safety Valve Seat .....	1	29	217547	Wave Spring .....	2
8	217528	Safety Valve Spacer .....	1	30	217548	Pump Shaft Seal .....	2
9	217529	Safety Valve Plunger .....	1	31	217549	Pump to Filter Adaptor Locwasher .....	4
10	217530	Safety Valve Spring .....	1	32	217550	Pump to Filter Adapter Screw .....	4
11	217531	Valve Stop O-Ring .....	1	33	217551	Pump Drive Shaft Assembly .....	1
12	217532	Valve Stop .....	1	34	217552	Pump Drive Shaft Oil Seal .....	1
13	217533	Valve Stop Roll Pin .....	1	35	217553	Pressure Regulator Valve .....	1
14	217533	Valve Stop Roll Pin .....	1			Includes Items 6-19, 34, 36	
15	217534	Valve Stop .....	1	36	217554	Valve Body Roll Pin .....	3
16	217535	Valve Stop O-Ring .....	1	37	217555	Valve Body O-Ring .....	1
17	217536	Valve Piston .....	1	38	217556	Pump to Filter Gasket .....	1
18	217537	Valve Spring - Inner .....	1	50		Cover, Pump .....	1
19	217538	Valve Spring - Outer .....	1	51	218263	Adapter, Filter .....	1
20	217539	Valve to Converter Housing Stud .....	4	52	218025	Filter .....	1
21	217540	Valve Body to Pump Gasket .....	1	53	217568	Charging Pump & Oil Filter Assy .....	Ref.
22	217541	Pump Body Snap Ring .....	1			Includes Items 22-25, 28-33, 38-49	
23	217542	Thrust Plate & Bearing Assembly .....	2				

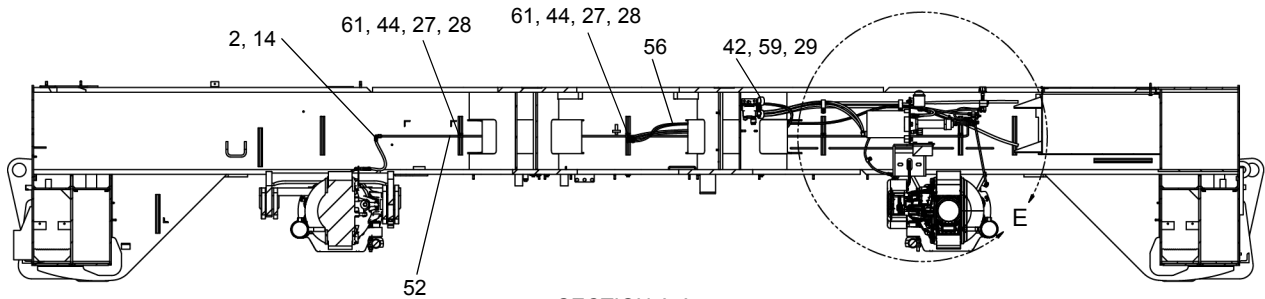
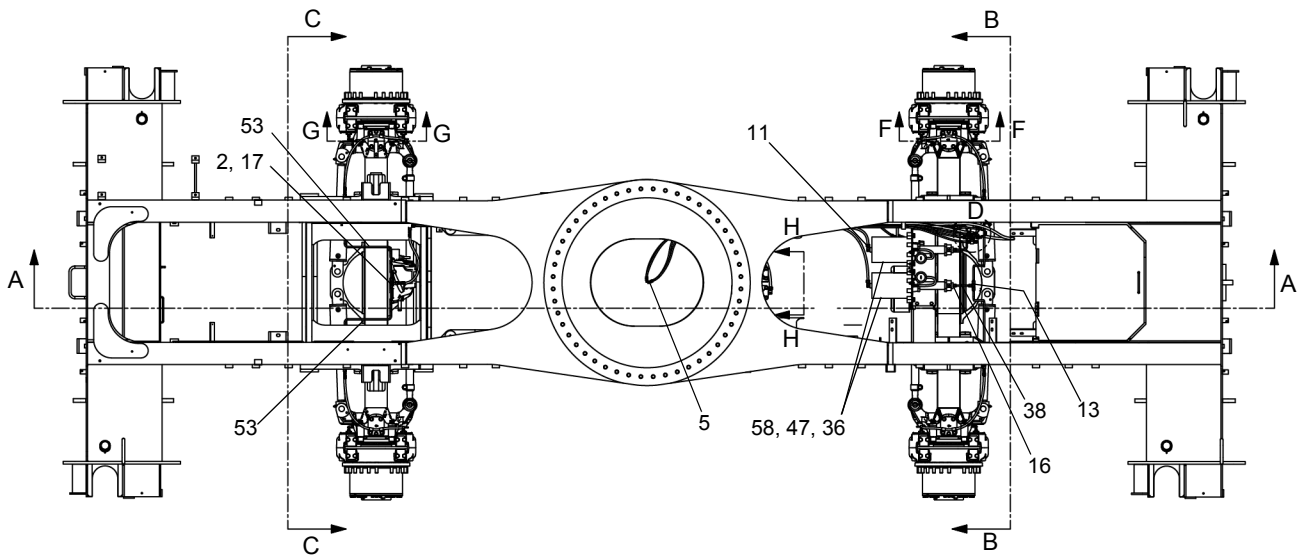
WHEN ORDERING PARTS, SPECIFY MODEL NUMBER, SERIAL NUMBER AND DESCRIPTION OF PARTS REQUIRED



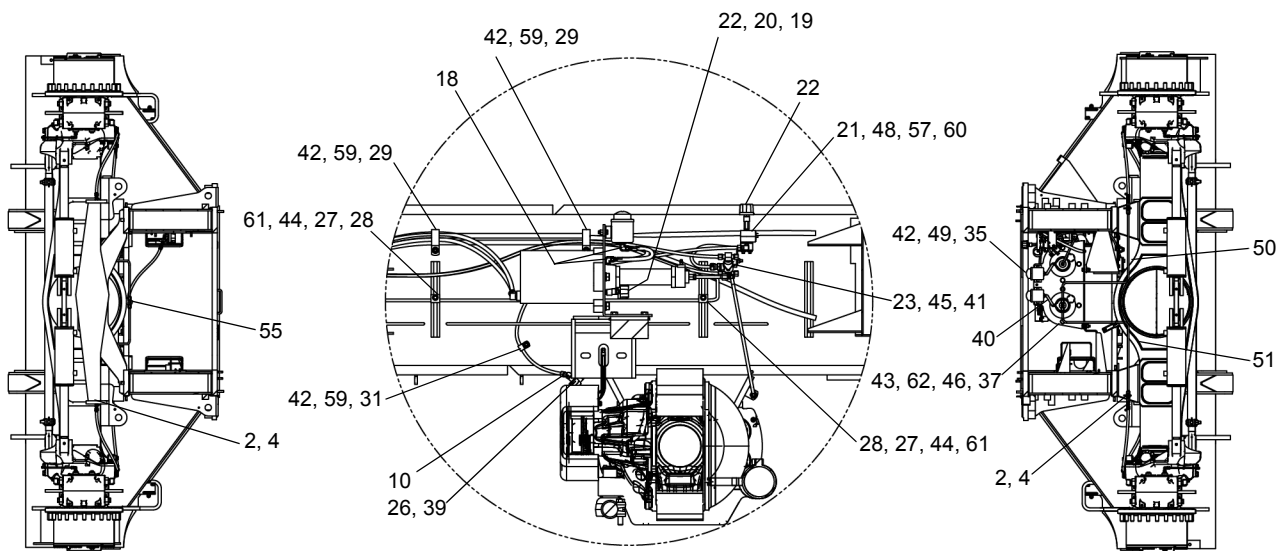
### TRANSMISSION PRESSURE VALVE, PUMP &

DATE: Revised 03-2003  
MODEL: RT600 & RT600-1  
PAGE 7.11

**GROUP**  
**7**



SECTION A-A



SECTION C-C

DETAIL E

SECTION B-B

**SEE PAGE 10.5**

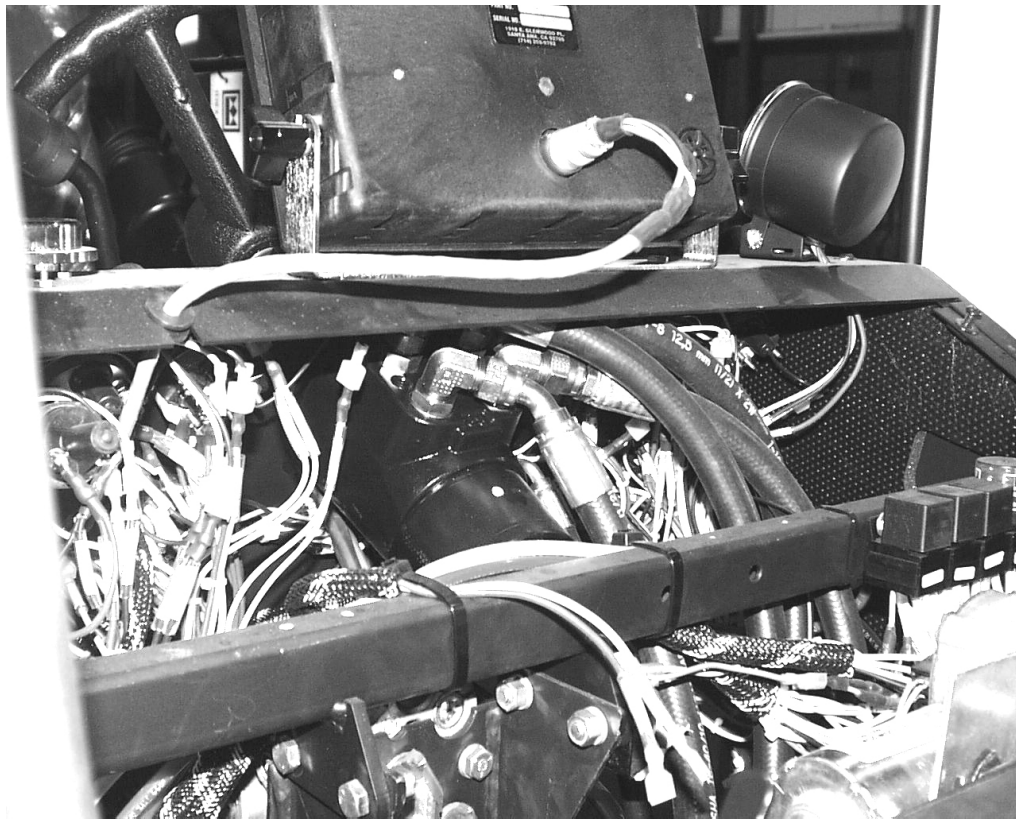
WHEN ORDERING PARTS, SPECIFY MODEL NUMBER, SERIAL NUMBER AND DESCRIPTION OF PARTS REQUIRED



**BRAKE LINE SYSTEM**

DATE: Revised 08-2011  
 MODEL: RT600-1  
 PAGE 10.3

**GROUP**  
**10**



REF	PART NO	DESCRIPTION	QTY	REF	PART NO	DESCRIPTION	QTY
	718 0722 (Rev A)	Orbitrol Control Unit.....	1				
	218014	Kit, Seal ..... (Includes Items 8,17,18,20,22)	1				
1	217999	Drive .....	1	13	218001	Sleeve/Spool .....	1
2		Spacer .....	1	14	218004	Spring, Centering.....	6
3	217998	Plate.....	1	15		Pin, Centering.....	1
4	217997	Gerotor.....	1	17		Seal .....	3
5	217995	Cap, End.....	1	19	218006	Bearing, Race.....	2
6	217994	Capscrew.....	7		218007	Bearing, Needle Thrust.....	1
9		Setscrew .....	1	20		Seal .....	1
10		Seat, Check .....	1	21		Bushing, Seal Gland.....	1
10A		Seal.....	1	22		Seal .....	1
11	218012	Ball.....	1	23		Ring, Retaining .....	1
12		Retainer, Ball .....	1	24	218012	Nameplate .....	1

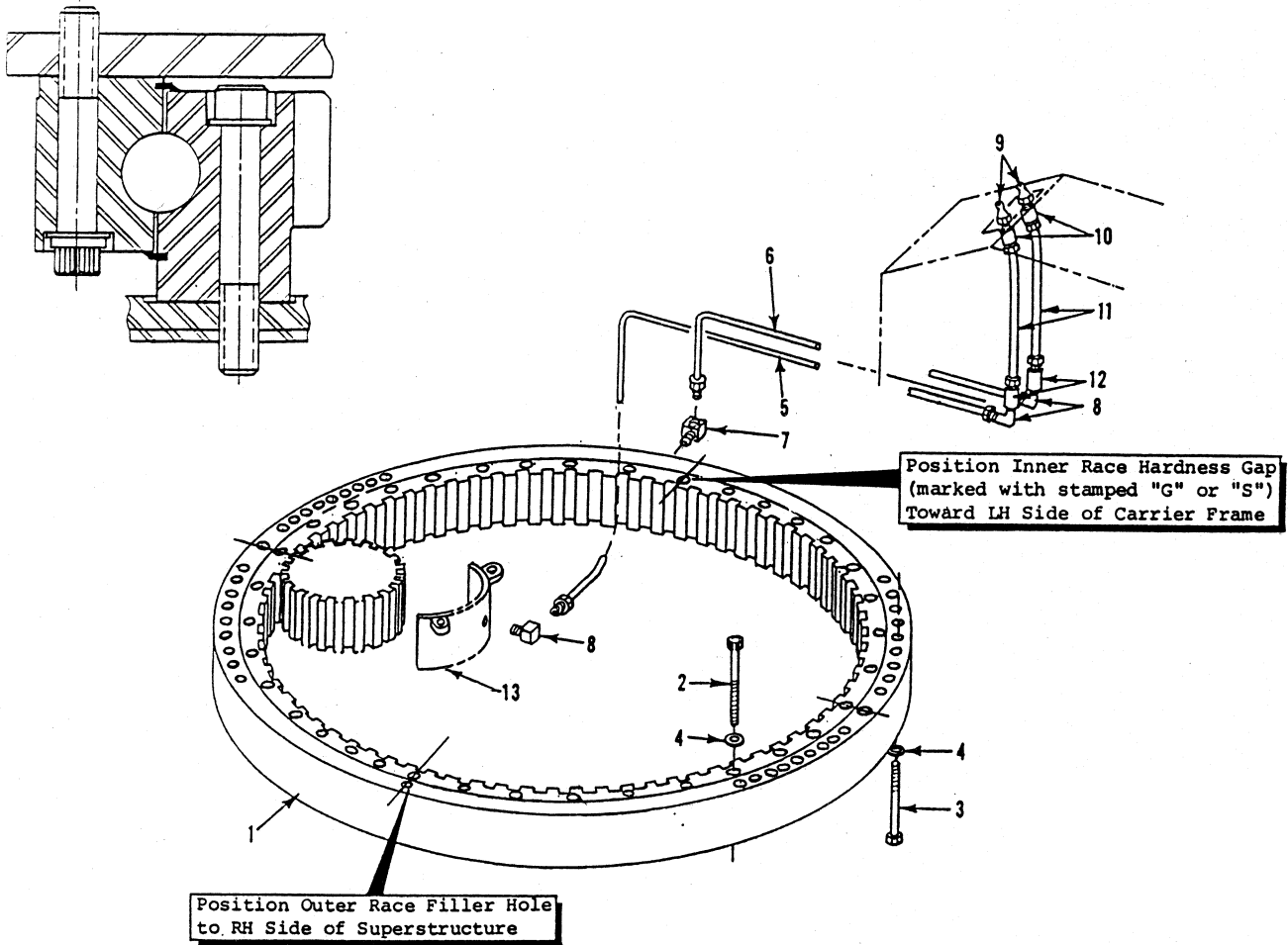
WHEN ORDERING PARTS, SPECIFY MODEL NUMBER, SERIAL NUMBER AND DESCRIPTION OF PARTS REQUIRED



## STEERING CONTROL UNIT

DATE: Revised 07-2002  
 MODEL: RT600 & RT600-1  
 PAGE 11.3

GROUP  
**11**



REF	PART NO	DESCRIPTION	QTY
	717A0587 (Rev D)	Swing Bearing Assembly (Includes Items 1 Through 4)	
1	717 0013	Bearing, Swing.....	1
		Seal, Upper.....	1
		Seal, Lower.....	1
2	1203-249	Capscrew, Ferrycap.....	48
3	1203-241	Capscrew, 7/8C x 5 12 Point Gr 8.....	44
4	1209-61	Washer, Hardened.....	92
5	720 0400	Tube.....	1
6	720 0399	Tube.....	1
7	1219-40	Elbow.....	1
8	1219-40	Elbow.....	1
9	1213-1	Fitting, Grease.....	2
10	1219-77	Connector.....	2
11	719 0106	Tube.....	2
12	1219-757	Connector.....	2
13	42689	Cup, Lubrication.....	1
	1200-100	Capscrew, .50 x 1.50.....	2
	1210-26	Lockwasher, .50.....	2

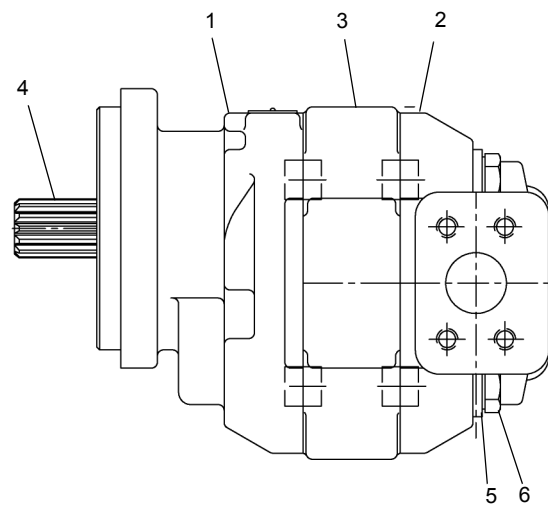
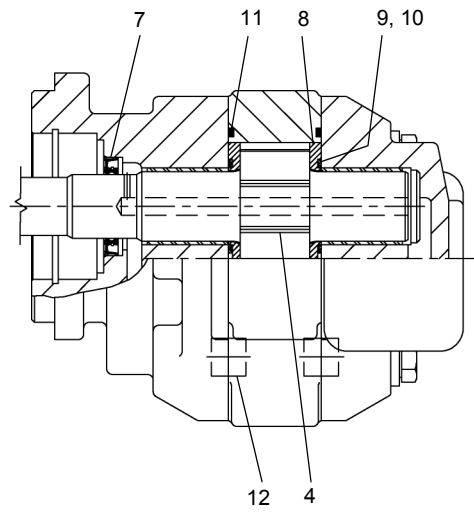
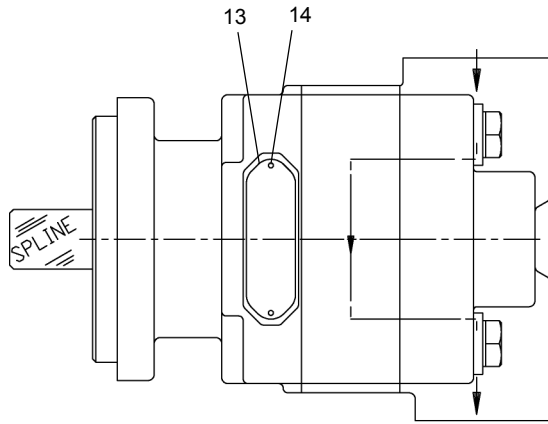
WHEN ORDERING PARTS, SPECIFY MODEL NUMBER, SERIAL NUMBER AND DESCRIPTION OF PARTS REQUIRED



## SWING BEARING

DATE: Revised 3-2003  
 MODEL: RT600 & RT600-1  
 PAGE 12.5

GROUP  
**12**



REF	PART NO	DESCRIPTION	QTY
	720 0169	Pump.....	1
1	217927	Housing, SEC .....	1
2	217928	Housing, PEC .....	1
3	217929	Housing, Gear.....	1
4	217930	Set, Gear Shaft .....	1
5	217931	Washer.....	4
6	217932	Capscrew .....	4
7	217933	Lip Seal .....	1
8	217934	THRPL .....	2
9	217935	Seal, CHAN.....	2
10	217936	Back-Up Seal.....	2
11	217937	Seal, O-R .....	2
12	217938	Pin, Dowel.....	8
13	221315	Name Plate .....	1
14	221316	Screw, Drive.....	2

WHEN ORDERING PARTS, SPECIFY MODEL NUMBER, SERIAL NUMBER AND DESCRIPTION OF PARTS REQUIRED



## HYDRAULIC PUMP WINCH

DATE: Revised 08-2011  
 MODEL: RT 600  
 PAGE 24.3

GROUP  
**24**

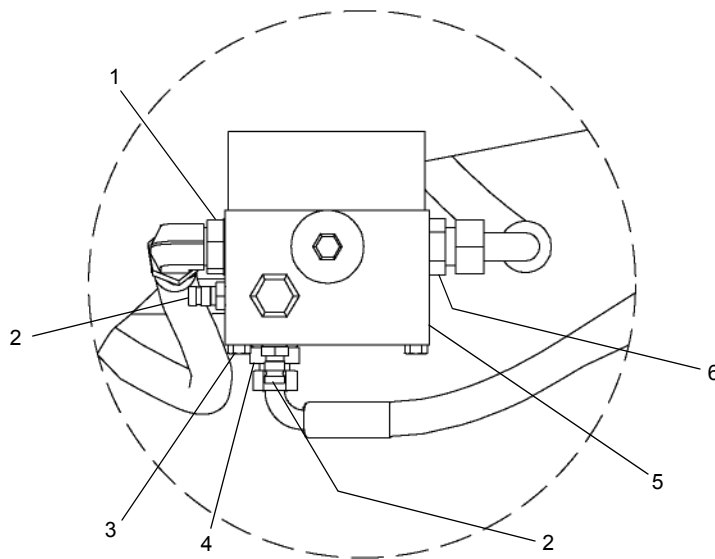
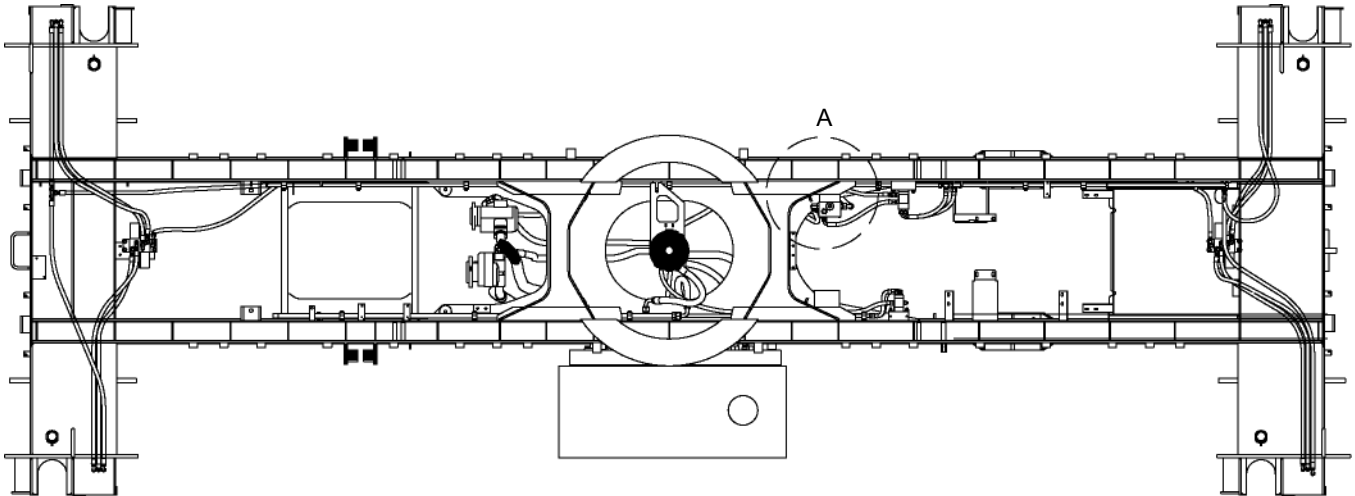
CLICK HERE TO **DOWNLOAD** THE COMPLETE MANUAL

- Thank you very much for reading the preview of the manual.
- You can download the complete manual from: [www.heydownloads.com](http://www.heydownloads.com) by clicking the link below



- Please note: If there is no response to CLICKING the link, please download this PDF first and then click on it.

CLICK HERE TO **DOWNLOAD** THE COMPLETE MANUAL



DETAIL A

<u>REF.</u>	<u>PART NO.</u>	<u>DESCRIPTION</u>	<u>QTY.</u>
	720A0283 (Rev J)	<i>Lower Hydraulic Assembly (Contd..)</i>	
1	1219-802	Adapter, 90°.....	1
2	375 0400	Coupling .....	2
3	1200-53	Capscrew, .31C x 3.75 .....	2
4	1219-691	Adapter, STR.....	1
5	720 0441	Diverter Valve .....	1
6	1219-389	Adapter, STR.....	1

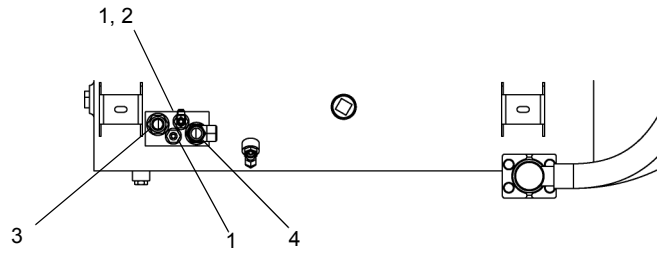
WHEN ORDERING PARTS, SPECIFY MODEL NUMBER, SERIAL NUMBER AND DESCRIPTION OF PARTS REQUIRED



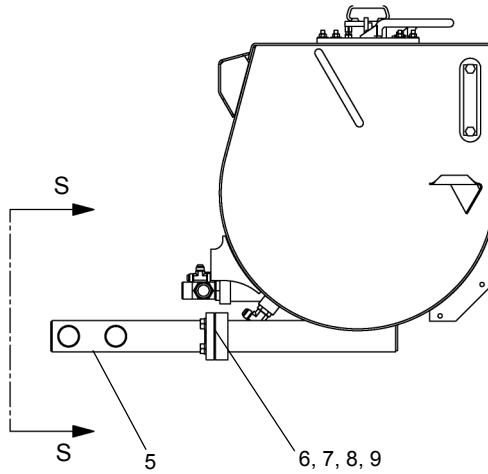
**LOWER HYDRAULICS  
DIVERTER VALVE**

DATE: Revised 01-2010  
MODEL:RT600  
PAGE 25.7

**GROUP  
25**



SECTION S - S



REF.	PART NO.	DESCRIPTION	QTY.
	T109821 (Rev B)	Lower Hydraulic Assembly	
1	1219-691	Adapter, 12 O-RingX8 MJIC, STR.....	4
2	1219-800	Tee .....	1
3	1219-661	Adapter, STR, -20.....	1
4	1219-975	Tee .....	1
5	720-0292	720.....	1
6	1219-393	Clamp, 3" SPlit Flange.....	2
7	1218-61	O-Ring .....	1
8	W07-625X000-20	WSH, LCK, MED SPLT 0.625, ST Z .....	4
9	S01-625CA75-25	SCR, HHCS 0.625-11X1.75, ST Z GR5....	4

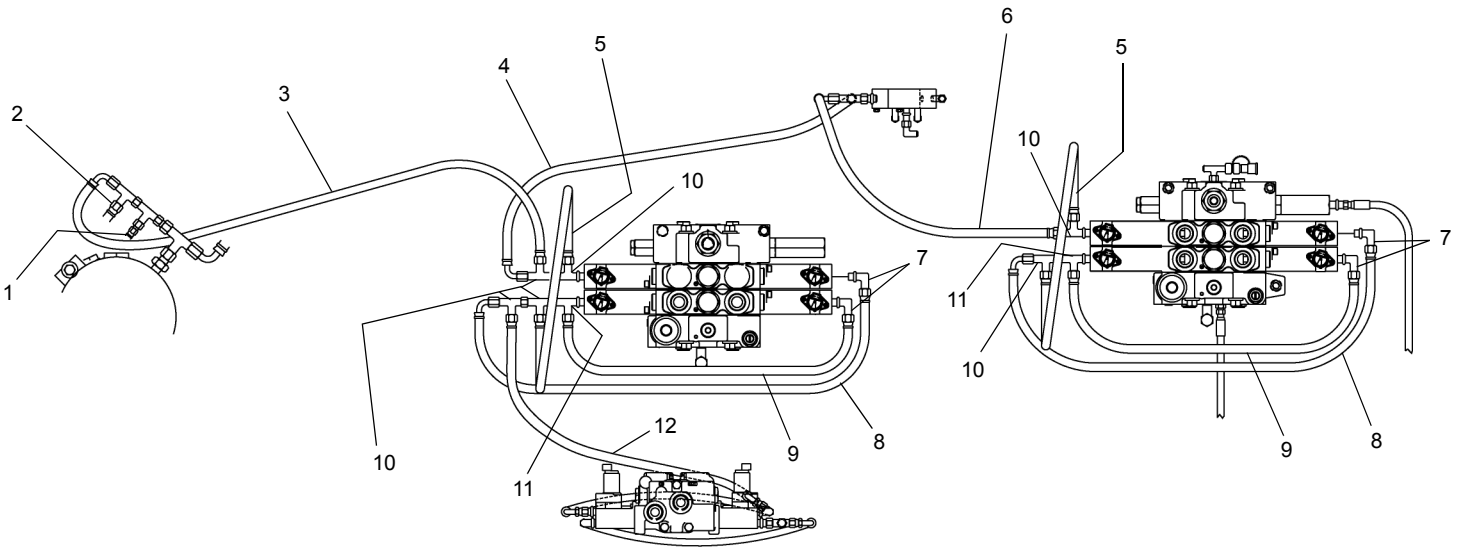
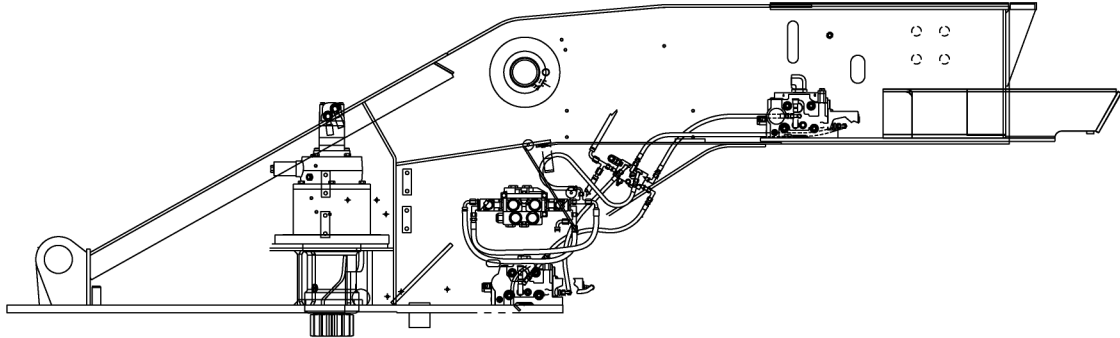
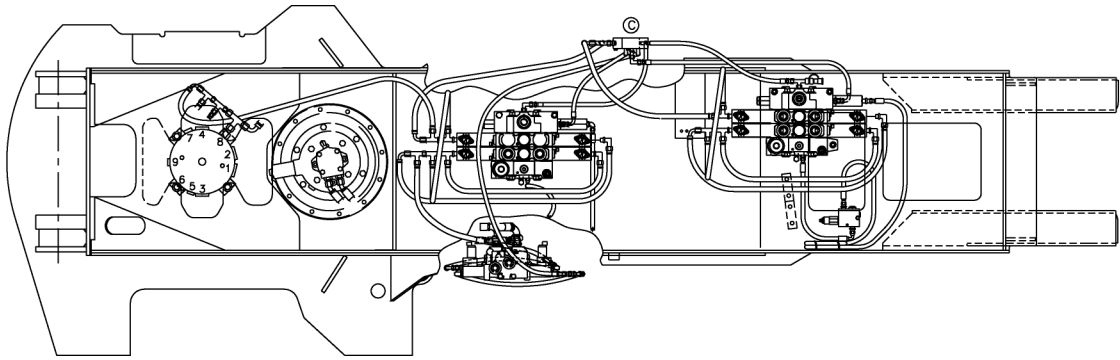
WHEN ORDERING PARTS, SPECIFY MODEL NUMBER, SERIAL NUMBER AND DESCRIPTION OF PARTS REQUIRED



**LOWER HYDRAULICS  
HYDRAULIC RESERVIOR**

DATE: Released 08-2011  
MODEL:RT600-1  
PAGE 25.17

**GROUP  
25**



**SEE PAGE 25.28**

WHEN ORDERING PARTS, SPECIFY MODEL NUMBER, SERIAL NUMBER AND DESCRIPTION OF PARTS REQUIRED

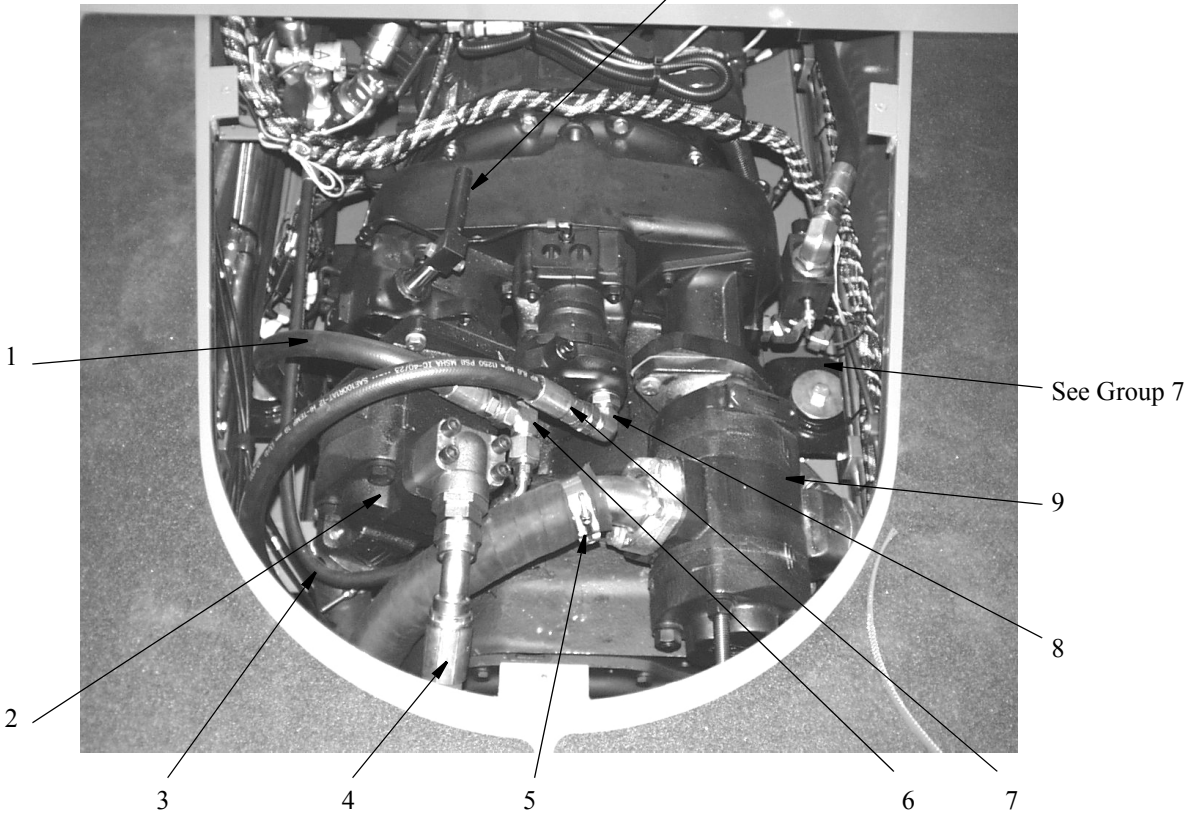


**UPPER HYDRAULICS  
BOOM, WINCH, & SWING VALVE  
PILOT DRAINS**

DATE: Revised 09-2010  
MODEL: RT600 & RT600-1  
PAGE 25.27

**GROUP  
25**

Disconnect Lever  
See Page 7.15



REF.	PART.NO.	DESCRIPTION	QTY.
1	717 0624-31	Hose Assembly.....	1
2	Group 24	Pump, Winch .....	1
	1200-100	Capscrew 1/2C x 1 1/2 .....	1
	1203-288	Capscrew 1/2C-13 x 1 1/2 .....	1
	1210-26	Lockwasher, 1/2 .....	2
	1239-12	Gasket .....	2
3	720 0300-33	Hose Assembly.....	1
4	718 0680-51	Hose .....	1
5	435 3211-35	Hose .....	1
	378 0301	Clamp .....	1
6	1219-716	Reducer.....	1
	1219-714	Tee, 12 OR x 12 JIC x 12 JIC.....	1
7	717 0624-34	Hose Assembly.....	1
8	1219-802	Adapter, 90°.....	1
9	Group 24	Pump, Attachment & Swing .....	1
	1210-26	Lockwasher, 1/2 .....	2
	1200-100	Capscrew 1/2C x 1 1/2 .....	2
	1239-40	Gasket .....	1

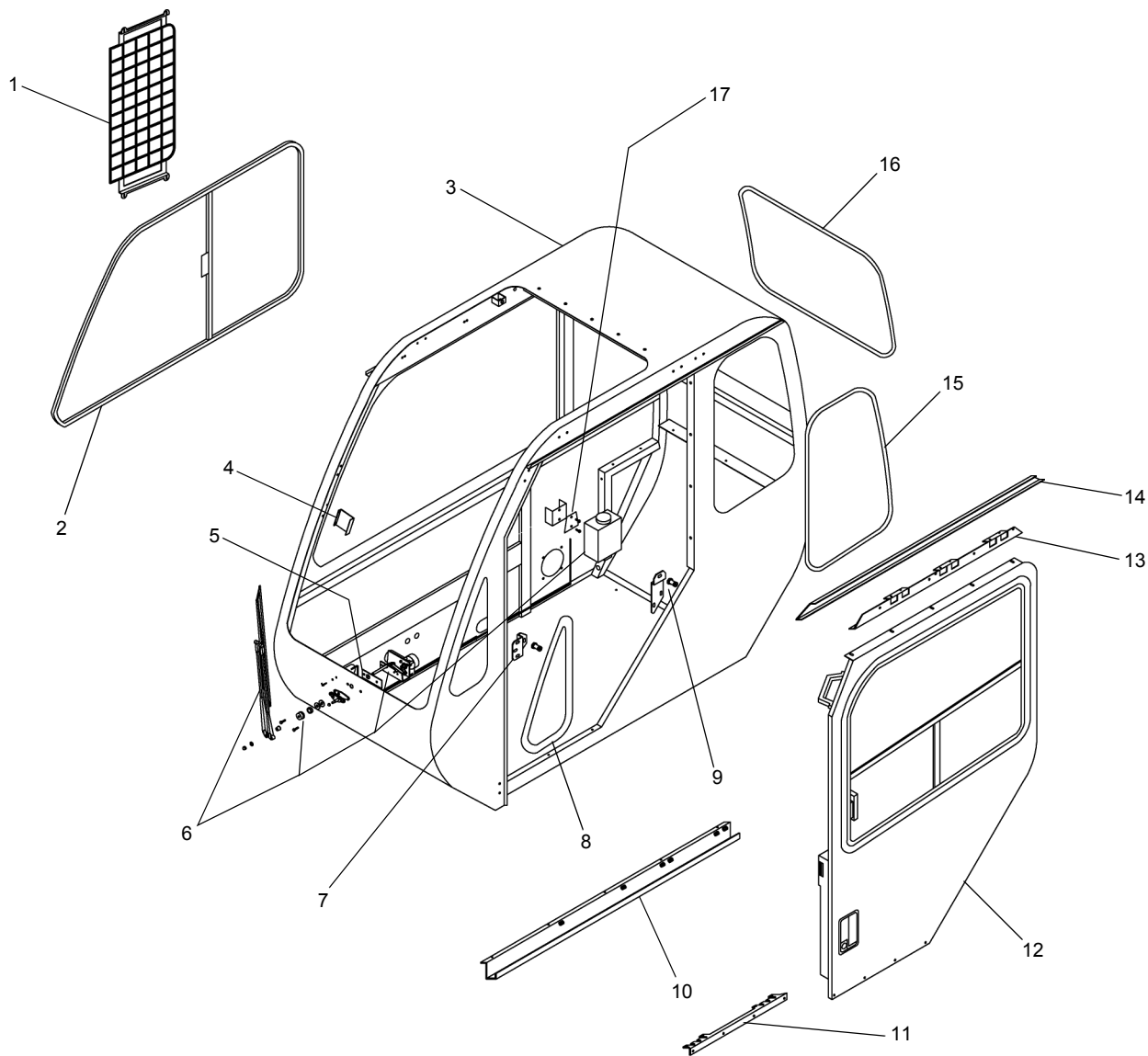
WHEN ORDERING PARTS, SPECIFY MODEL NUMBER, SERIAL NUMBER AND DESCRIPTION OF PARTS REQUIRED



**HYDRAULIC PUMP**

DATE: Revised 03-2003  
MODEL:RT600 & RT600-1  
PAGE 25.37

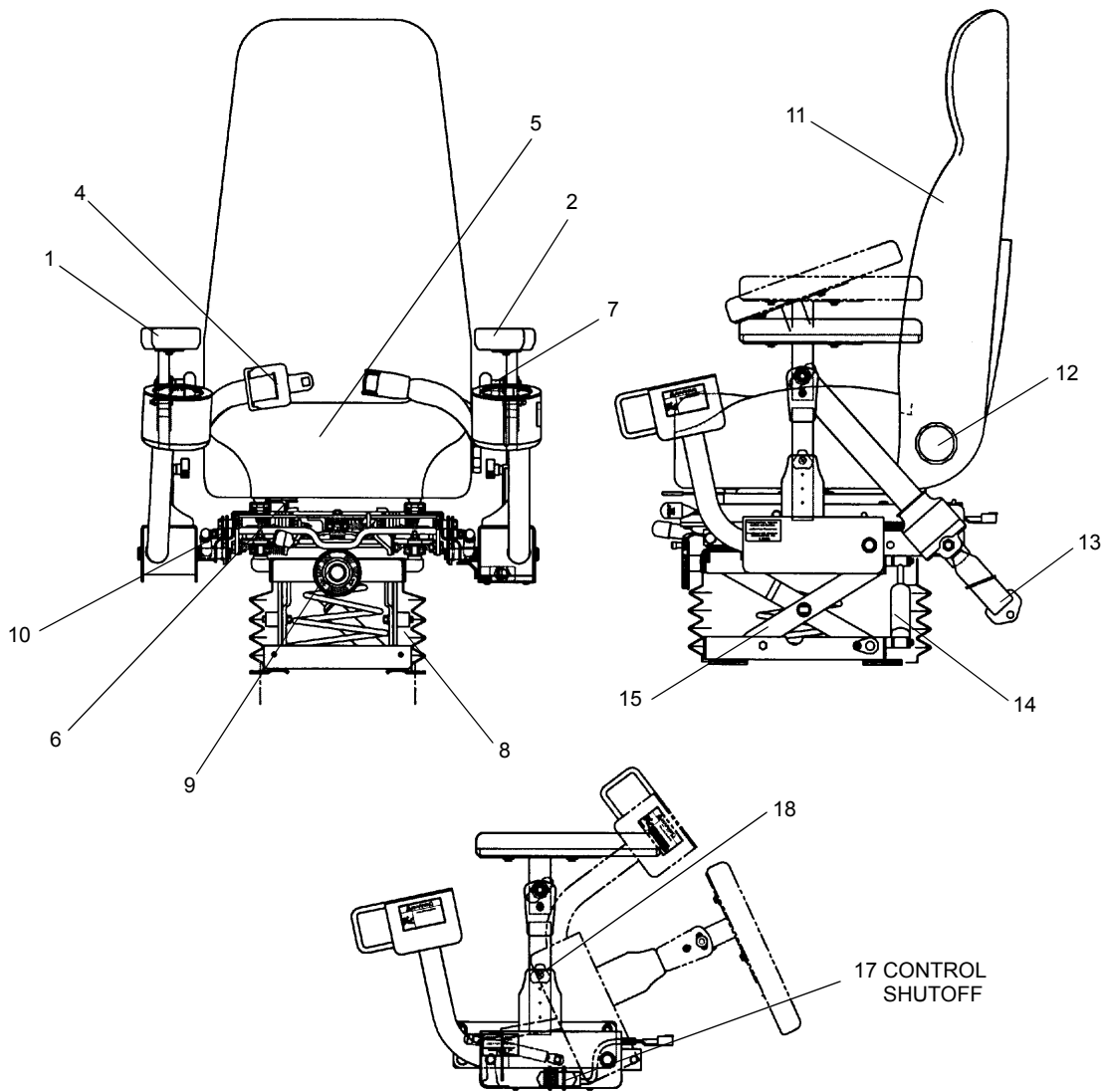
**GROUP**  
**25**



REF.	PART NO.	DESCRIPTION	QTY	REF.	PART NO.	DESCRIPTION	QTY
	719A0116	<i>Cab Assembly</i>		10	219089	Track, Lower Roller .....	1
1	220606	Guard, Window.....	1		216374	Screw, 3/8-16 X 3/4".....	5
	216904	Screw, #10-24 X 1/2.....	4	11	220581	Washer, Flat, 3/8.....	5
2	219108	Window, Sliding RH.....	1		219092	Bracket, Lower Roller.....	1
	215595	Seal, Windshield Large.....	18'		219091	Bearing, Sealed Roller.....	8
3	220607	Cab Weldment.....	1		216374	Screw, 3/8-16 X 3/4".....	4
4	216370	Wiper Blade Rest.....	1		220581	Washer, Flat, 3/8.....	4
	215217	Screw, 10-24 X 1/2".....	2		216438	Screw, SHLDR, 3/8Ø X 3/8 Long.....	8
5	216869	Shim - Front Wiper .....	1	12	219087	Door Assembly .....	1
6	Page 27.11			13	219088	Bracket, Upper Roller.....	1
	Page 27.12				219091	Bearing, Sealed Roller.....	11
7	219282	Wiper Kit, Front.....	1		216378	Screw, 1/4-20 X 1/2".....	5
	216372	Striker Bolt Bracket.....	1		216438	Screw, SHLDR, 3/8Ø X 3/8 Long.....	11
	216393	Internal Thread Striker.....	1	14	219090	Track, Upper Roller .....	1
	215223	Screw, 3/8-16 X 3/4".....	1		215115	Nut, Lock, 10-32.....	5
	215975	Washer, 5/16.....	3		215212	Washer, Flat, #10.....	5
8	215975	Screw, 5/16-18 X 3/4".....	3	15	216360	Glass, LH Rear.....	1
	216363	Glass, LH Front .....	1		216874	Windshield Seal, Small.....	9'
	215595	Seal, Windshield Large.....	18'	16	216871	Glass, Rear.....	1
9	216373	Striker Bolt Bracket, Rear.....	1		215596	Window Seal (1/8" Offset).....	9'
	216372	Internal Thread Striker.....	1	17	215217	Screw, 10-24 X 1/2".....	2
	216393	Screw, 3/8-16 X 3/4".....	1		215212	Washer, Flat, #10, YZ.....	2
	215975	Screw, 5/16-18 X 3/4".....	2	18*	216377	Screw, S/M, #8 X 5/8", PHPA, Zinc.....	4
	215223	Washer, 5/16.....	3	19*	215226	Insert, 10-24, AKS4-1024-13.....	4

\* ITEMS (18, 19) NOT SHOWN IN ILLUSTRATION

WHEN ORDERING PARTS, SPECIFY MODEL NUMBER, SERIAL NUMBER AND DESCRIPTION OF PARTS REQUIRED



<u>REF.</u>	<u>PART.NO.</u>	<u>DESCRIPTION</u>	<u>QTY.</u>
	719 0200 (Rev C)	<i>Slimline Seat</i>	
1	217777	Right Hand Arm Pad .....	1
2	217778	Left Hand Arm Pad.....	1
3	217779	Set of Arm Pad - Not Shown.....	1
4	217780	Lap Belt.....	1
5	217781	Cushion Cover .....	1
6	217782	Set Adjustment Tracks Set.....	1
7	217783	Arm Pivot Adj. Knob .....	1
8	217784	Bellows.....	1
9	217785	Weight Adj. Knob .....	1
10	217786	Mechanical Height Riser.....	1
11	217787	Back Cover.....	1
12	217788	Recliner Knob.....	1
13	217789	Tether Kit .....	1
14	217790	Heavy Duty Shock Absorber.....	1
15	217791	Lower Profile Suspension .....	1
16	217792	Gas Springs .....	1
17	217793	Switch.....	1
18	217794	Arm Adjustment Knob .....	1

WHEN ORDERING PARTS, SPECIFY MODEL NUMBER, SERIAL NUMBER AND DESCRIPTION OF PARTS REQUIRED



JOY STICK- RIGHT HAND



JOY STICK- LEFT HAND

<u>PART NO</u>	<u>DESCRIPTION</u>	<u>QTY</u>
719A0920 (Rev A)	<i>Single Lever-Dual Axis</i>	
719 0919	Control Box.....	1
719 0947	Singl Lever Dual Axis Joystick LH See Page 28.13.....	1
719 0948	Singl Lever Dual Axis Joystick RH See Page 28.12.....	1
724 0264	Controller RH Dual Axis .....	1
724 0265	Controller LH Dual Axis .....	1

<u>PART NO</u>	<u>DESCRIPTION</u>	<u>QTY</u>
719A0921 (Rev 00)	<i>Dual Lever-Single Axis</i>	
12400-967	Decal, Overlay .....	1
719 0922	Joystick Right, Dual Lever See Page 28.10 ....	1
719 0923	Joystick Left, Dual Lever See Page 28.11 .....	1
719 0924	Control Box .....	1

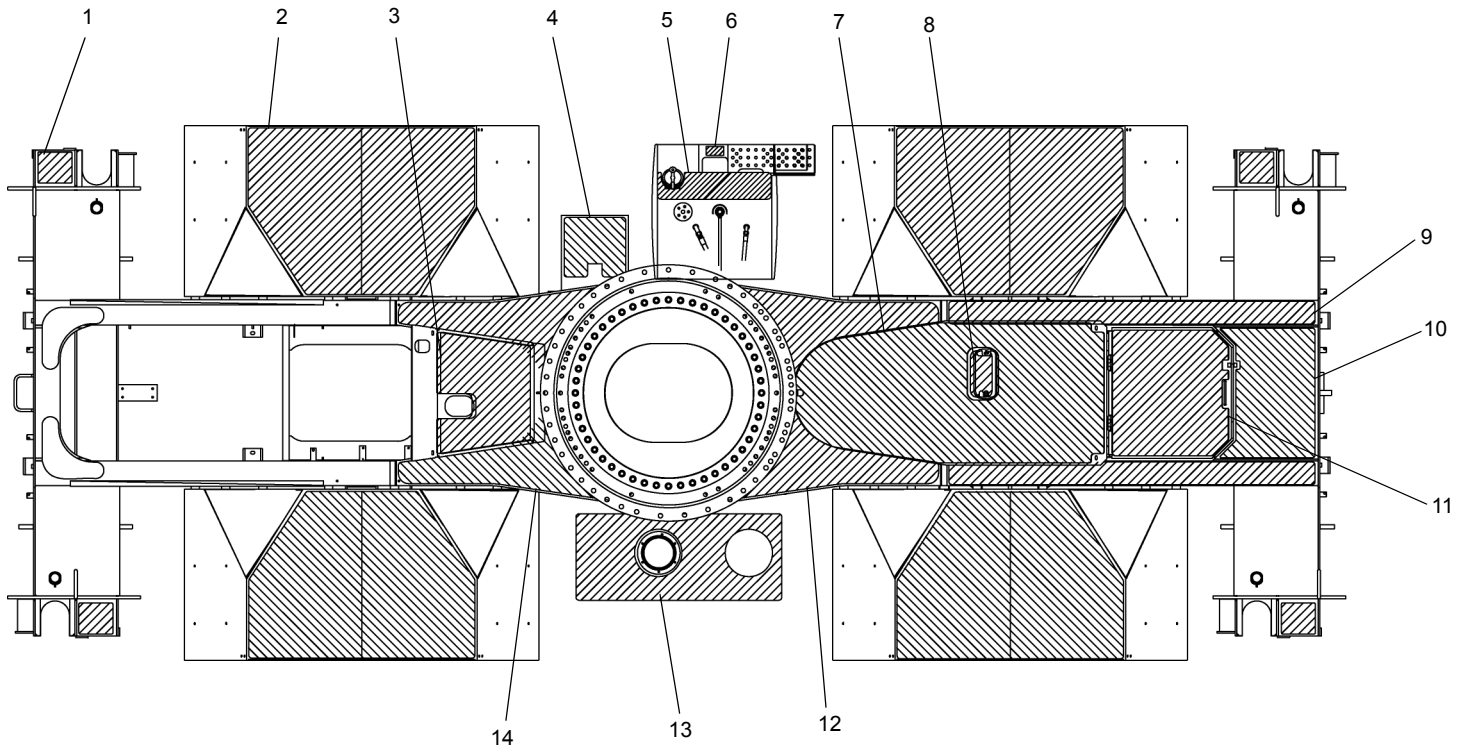
WHEN ORDERING PARTS, SPECIFY MODEL NUMBER, SERIAL NUMBER AND DESCRIPTION OF PARTS REQUIRED



**ARM MODULE ASSEMBLIES**

DATE: Revised 08-2011  
 MODEL: RT600 & RT600-1  
 PAGE 28.9

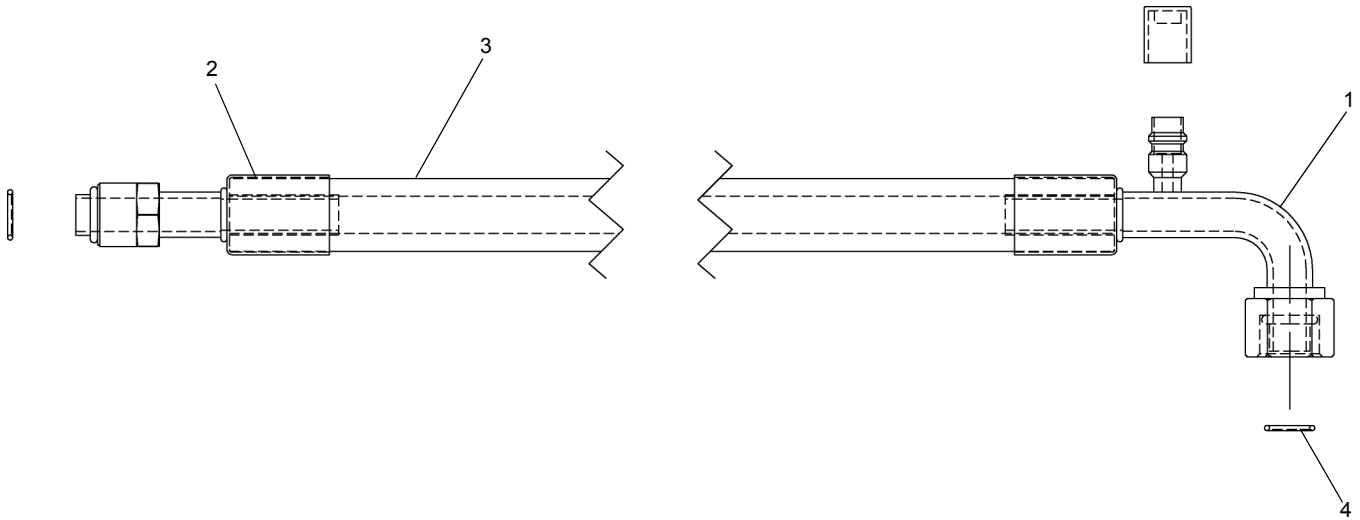
**GROUP**  
**28**



<u>REF.</u>	<u>PART NO.</u>	<u>DESCRIPTION</u>	<u>QTY</u>
	720A0191-1 (Rev W)	<i>Paint &amp; Marking Decals</i>	
1	720 0199	Anti-Slip Tape, Jack .....	4
2	720 0196	Anti-Slip Tape, Fender .....	4
3	720 0349	Anti-Slip Tape, Rear Deck .....	1
4	710 0218	Anti-Slip Tape, Battery Box .....	1
5	721 0232	Anti-Slip Tape, Fuel Tank .....	1
6	714 0203-9	Anti-Slip Tape, Fuel Tank .....	1
7	720 0218	Anti-Slip Tape, Front Deck .....	1
8	720 0278	Anti-Slip Tape, Front Lid .....	1
9	720 0213	Anti-Slip Tape, Front Frame Rail .....	2
10	720 0200	Anti-Slip Tape, Front Top .....	1
11	720 0212	Anti-Slip Tape, Front Cover .....	1
12	720 0214	Anti-Slip Tape, Base Plate .....	2
13	710 0226	Anti-Slip Tape, Reservoir .....	1
14	720 0215	Anti-Slip Tape, Base Plate .....	2
15*	714 0622	Anti-Slip Tape, Upper Door Jamb .....	2

\* ITEM NO 15 IS NOT SHOWN IN THE ILLUSTRATION.

WHEN ORDERING PARTS, SPECIFY MODEL NUMBER, SERIAL NUMBER AND DESCRIPTION OF PARTS REQUIRED



REF	PART NO	DESCRIPTION	QTY
	219830 (Rev 00)	Hose ASSY. EVAP. COMP.	
1	222332	FTG, AC FOR #10 90-3 (SB1323-3).....	1
2	222333	FTG, AC MOR #10 STR (SB1403).....	1
3	222334	Hose, REFRIG #10 .....	1
4	220107	O-Ring #10 R-12/R134A .....	2

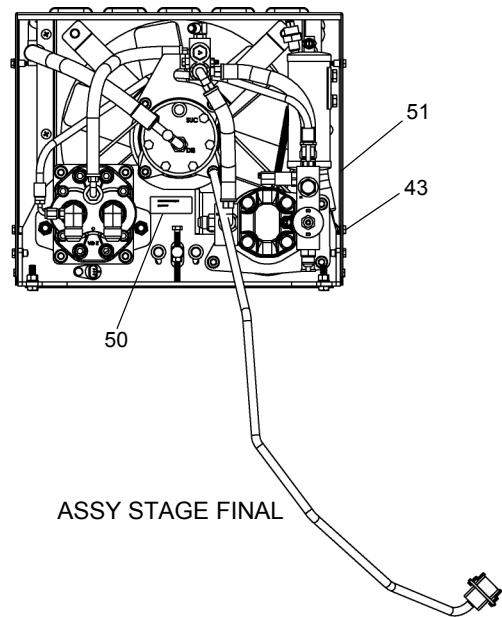
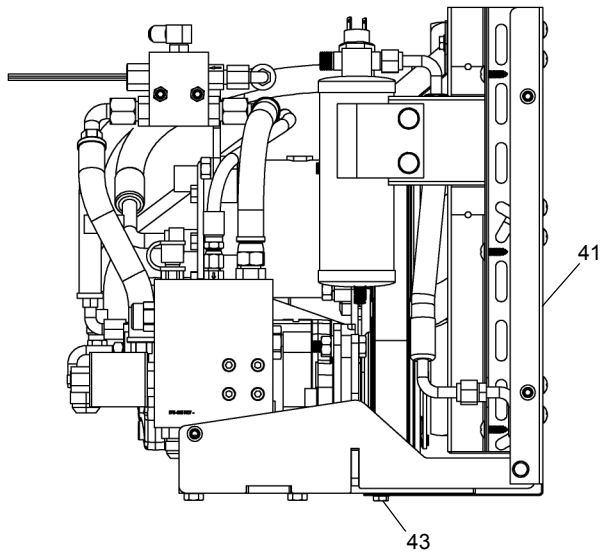
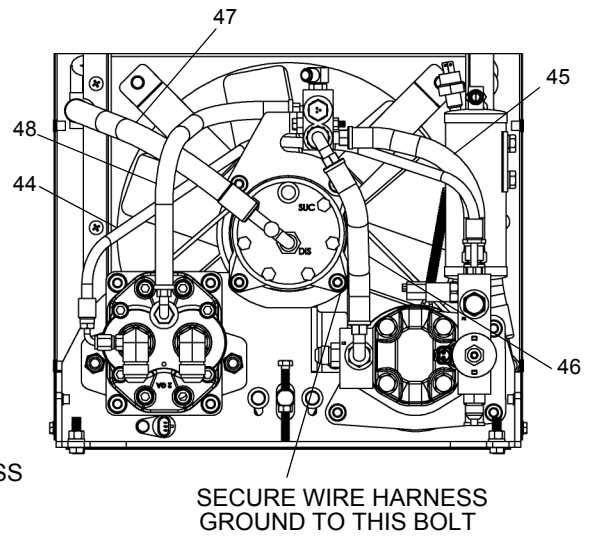
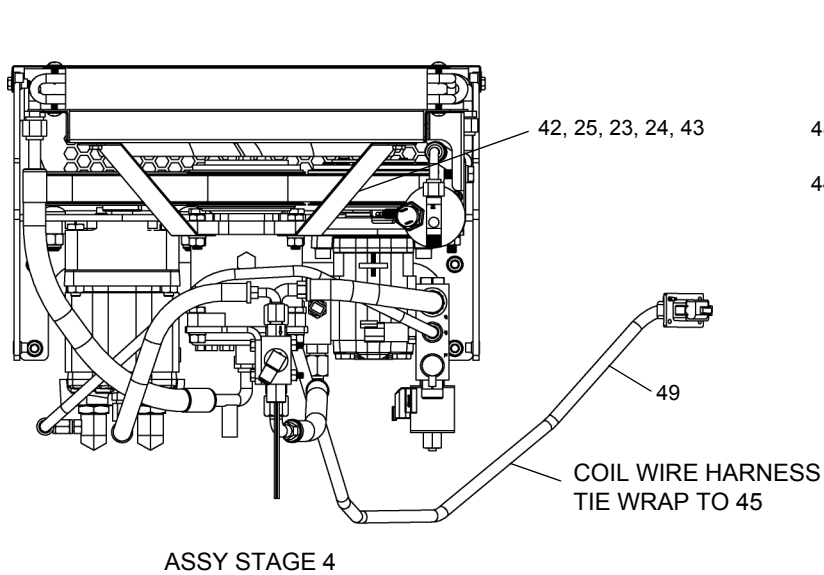
WHEN ORDERING PARTS, SPECIFY MODEL NUMBER, SERIAL NUMBER AND DESCRIPTION OF PARTS REQUIRED



**HOSE ASSY. EVAP. COMP.**

DATE: Released 03-2011  
 MODEL: RT600 & RT600-1  
 PAGE 31.7

GROUP  
**31**



**SEE PAGE 31.18**

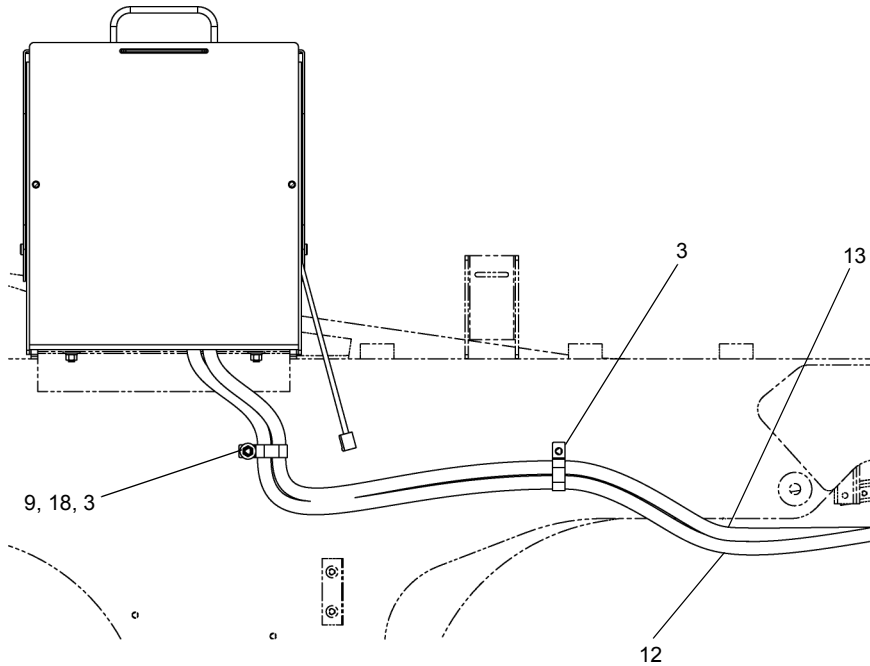
WHEN ORDERING PARTS, SPECIFY MODEL NUMBER, SERIAL NUMBER AND DESCRIPTION OF PARTS REQUIRED

 **TEREX**  
P/N 12261-261

**HYDRAULIC DRIVE UNIT**

DATE: Released 03-2011  
MODEL: RT600 & RT600-1  
PAGE 31.17

**GROUP**  
**31**



SECTION B - B

**SEE PAGE 33.6**

<u>REF</u>	<u>PART NO.</u>	<u>DESCRIPTION</u>	<u>QTY</u>
	T112487 (Rev 01)	Battery Assy	
1*	12182-12	Trim Lock.....	1
2	1223-824	Battery .....	2
3	200B2007-67	Clamp-Medium Duty.....	2
4	707-4375	Rod .....	2
5	MK212541	Angle .....	1
6	N04-312C000-25	Nut, HEX 0.3125-18, ST Z GR5 .....	4
7	N04-375C000-25	Nut, HEX 0.375-16, ST Z GR5 .....	2
8	NYL-312C000-25	Nut, HEX NYL -INS 0.312-18, ST Z G5.....	2
9	NYL-375C000-25	Nut, HEX NYL -INS 0.375-16, ST Z G5.....	1
10	SHF-375CA00-25	SCR, HHCS FT 0.375-16X1.00, ST Z G5 .....	2
11	T109957	Battery Box ASSY .....	1
12	T112280	Battery Cable .....	1
13	T112281	Battery Cable .....	1
14	W07-312X000-20	WSH, LCK, MED SPLT 0.3125, ST Z .....	2
15	W07-375X000-20	WSH, LCK, MED SPLT 0.375, ST Z .....	2
16	WAW-37WX000-20	WSH, FL TYPA-W1D 0.375, ST Z.....	4
17	WFD-312X875-E8	WSH,FNDR 0.312X0.875, SSS18-8 .....	2
18	WMF-012X000-20	WSH, FLAT M12 DIN125, ST Z .....	1

\* ITEM 1 IS NOT SHOWN IN ILLUSTRATION

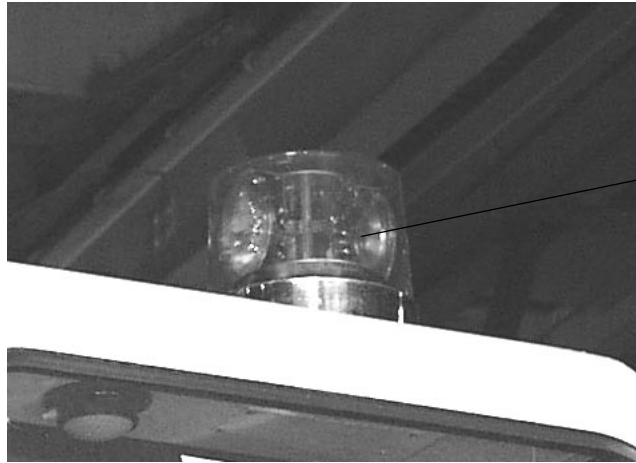
WHEN ORDERING PARTS, SPECIFY MODEL NUMBER, SERIAL NUMBER AND DESCRIPTION OF PARTS REQUIRED



**BATTERY ASSEMBLY**

DATE: Released 08-2011  
 MODEL: RT600-1 & Non-North America  
 PAGE 33.7

**GROUP**  
**33**



<u>REF</u>	<u>PART NO.</u>	<u>DESCRIPTION</u>	<u>QTY</u>
	706A8705	<i>Revolving Amber Light (Items 1 to 3)</i>	
	719A0941	<i>Yellow Light Strobe Assembly (Items 4 &amp; 5)</i>	
1	1223-903	Switch, Rocker.....	1
2	12262-603	Decal.....	1
3	1223-505	Light, Amber .....	1
3	1223-880	SWITCH.....	1
4	1223-691	Circuit Breaker.....	1
5	420 4974	Light, Yellow Strobe.....	1

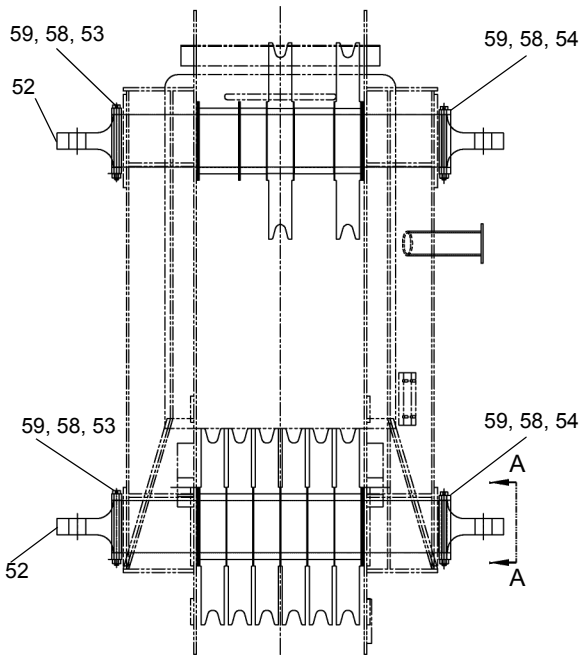
WHEN ORDERING PARTS, SPECIFY MODEL NUMBER, SERIAL NUMBER AND DESCRIPTION OF PARTS REQUIRED



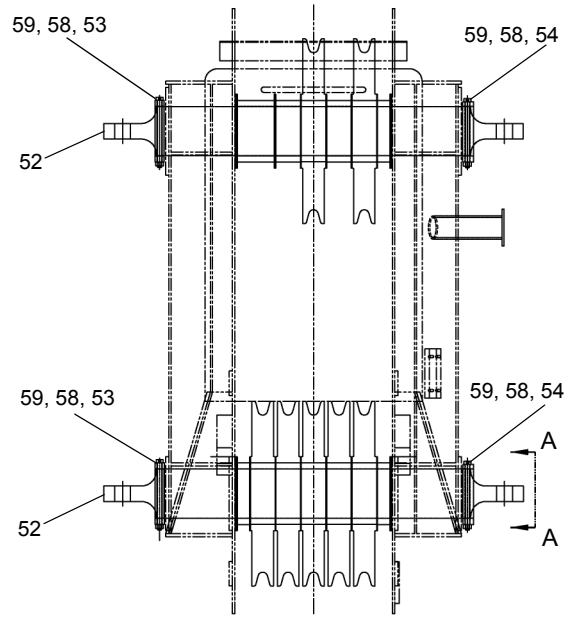
**OPTIONAL LIGHTS  
STROBE LIGHT, YELLOW  
REVOLVING AMBER LIGHT**

DATE: Revised 08-2011  
MODEL: RT600 & RT600-1  
PAGE 33.17

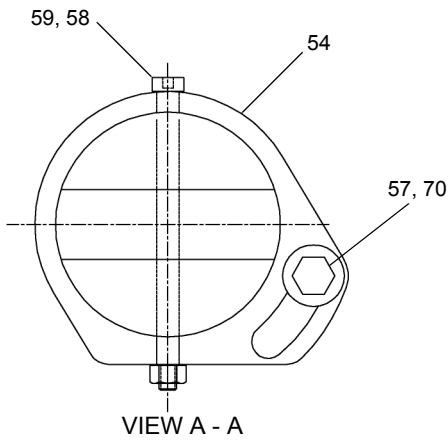
**GROUP  
33**



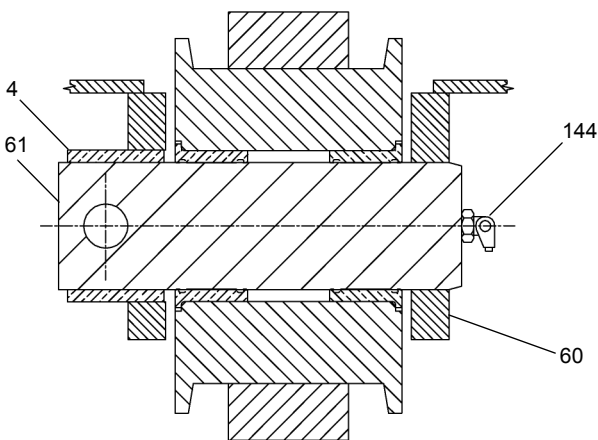
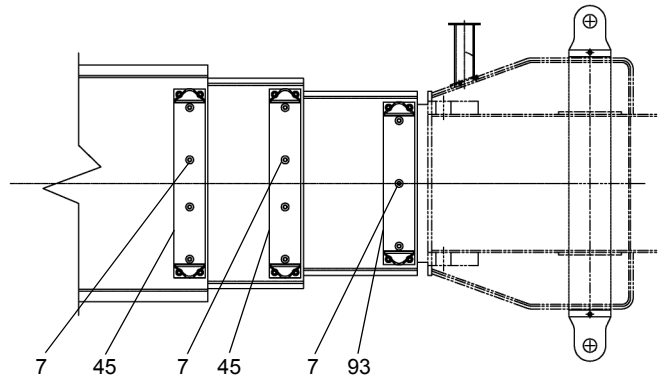
DETAIL OF 6 SHEAVE HEAD OPTION



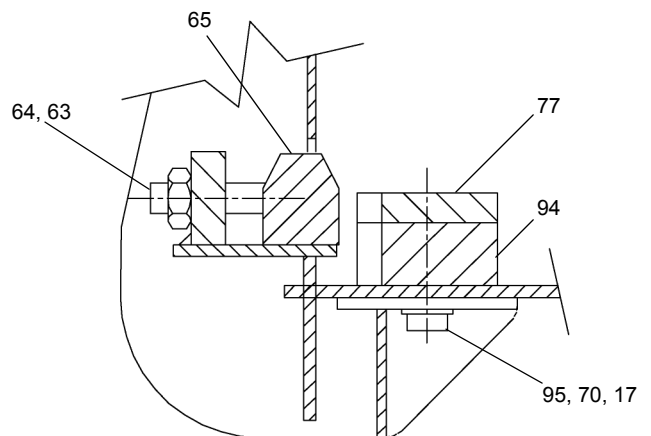
DETAIL OF 5 SHEAVE HEAD OPTION



VIEW A - A



SECTION B - B



SECTION B - B

**SEE PAGES 39.6 & 39.7**

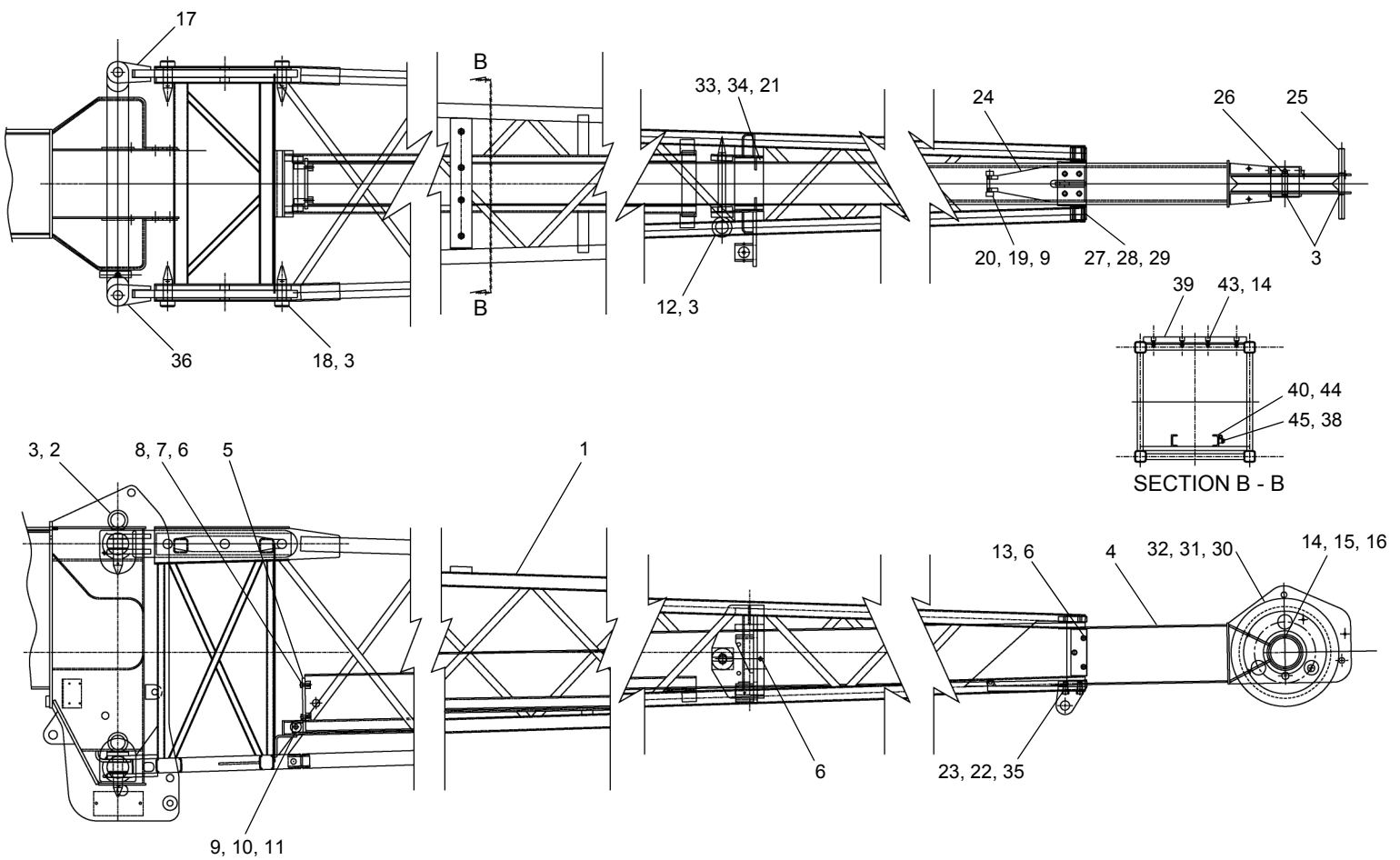
WHEN ORDERING PARTS, SPECIFY MODEL NUMBER, SERIAL NUMBER AND DESCRIPTION OF PARTS REQUIRED



**111' BOOM**

DATE: Revised 08-2011  
 MODEL: RT600 & RT600-1  
 PAGE 39.3

**GROUP**  
**39**



REF	PART NO.	DESCRIPTION	QTY	REF	PART NO.	DESCRIPTION	QTY
720A0526 (Rev E) <i>Offsettable Jib Assembly, 33'-57'</i>							
1	717F0543	Jib .....	1	24	709F7154	Bracket.....	1
2	707F8530	Pin .....	4	25	718 0242	Pin.....	1
3	1222-239	Pin, Cotter Hair .....	13	26	718 0243	Pin.....	1
4	T118522	Stinger .....	1	27	709 7296	Plate.....	2
5	709F6690	Bracket .....	1	28	709 7298	Shim.....	6
6	1210-20	Washer, Lock 0.38 .....	16	29	709 7297	Shim.....	2
7	1209-4	Washer, Plain 0.38.....	9	30	718 0197	Spacer.....	2
8	1200-61	Capscrew, 0.38UNCX1.25.....	10	31	718A0226	Sheave.....	1
9	1213-11	Fitting, Grease .....	4	32	1213-3	Zerk, Grease.....	1
10	1217-349	Roller, Cam Ø1.50X0.88THK .....	2	33	710 0052	Shim.....	2
11	1205-91	Locknut, 0.62-18 ESNA .....	2	34	707 8525	Plate.....	2
12	707F8527	Pin .....	1	35	1203-279	Capscrew 0.62X1.00 .....	4
13	1200-67	Capscrew, 0.38X2.00 .....	6	36	714F0335	Link .....	1
14	1205-45	Locknut, 0.38-16 ESNA .....	5	37*	1240-68	Clamp .....	7
15	718 0239	Shaft .....	1	38	1210-23	Washer, Lock 0.38 .....	5
16	1200-87	Capscrew, 0.38X5.00 .....	1	39	709 7304	Wear Bar.....	1
17	714F0336	Link .....	1	40	720 0541	Tube, 197" .....	1
18	709 7290	Pin .....	4	41*	720A0525	Jib Stowage Assembly.....	1
19	1205-55	Locknut, 0.44-20 ESNA.....	2	42*	708A0282	Anti-Two Block Assembly .....	1
20	1217-49	Roller, Cam Ø1.00X0.62 THK .....	2	43	1203-165	Flat SOC 0.38 X 1.25.....	4
21	707 8788	Shim 16 GA. ....	2	44	720 0542	Tube, 68" .....	1
22	1210-32	Washer, Lock 0.62.....	4	45	1200-57	Capscrew.....	12
23	708 0260	Shim .....	6				

\* ITEMS 37, 41 & 42 ARE NOT SHOWN IN ILLUSTRATION

WHEN ORDERING PARTS, SPECIFY MODEL NUMBER, SERIAL NUMBER AND DESCRIPTION OF PARTS REQUIRED



## OFFSETTABLE JIB ASSEMBLY 33' - 57'

DATE: Revised 08-2011  
MODEL: RT600 & RT600-1  
PAGE 39A.1

GROUP  
**39A**

**SEE PAGE 40.4**

<u>REF</u>	<u>PART NO.</u>	<u>DESCRIPTION</u>	<u>QTY</u>	<u>REF</u>	<u>PART NO.</u>	<u>DESCRIPTION</u>	<u>QTY</u>
	104337	<i>Winch Motor (Braden)</i>					
3		Control Kit .....	1	31	215684	Center Pin.....	1
4	215667	Check Valve Kit.....	1	32	215685	Pistons.....	7
4	215668	Plug Kit.....	1	33	215686	Piston Rings .....	3
5		Shuttle Orifice		34	215687	Retaining Plate .....	1
6	215669	Stroking Piston Cover (w/ Flushing).....	1	35	215688	Torx Head Screw .....	14
6	215670	Stroking Piston Cover (w/o Flushing)...	1	36	215689	Pressure Spring .....	1
7	215671	Plug (7/8-14) .....	1	37		Preload Shim	
	215672	O-Ring (75 Duro FPM Tube PRP-910)	1	38	215690	Barrel.....	1
8		Disp. Stop Screw.....		39	215691	Control Lens .....	1
9	215673	Seal Nut (M12).....	2	41	215692	Threaded pin .....	1
10	215674	Orifice Seat - Outer .....	1	42	215693	Square Ring (M25x1.5x1.5 DIN 34110)	1
11	215675	Orifice Seat - Inner .....	1	43	215694	Piston.....	1
12	215676	Housing.....	1	44	215695	Stroking Piston.....	1
13	215677	Plug ( 1 1/16-12) .....	1	47	215696	Capscrew (M12 x 65 DIN 912-8.8).....	8
	215678	O-Ring (75 Duro FPM Tube PRP-912)	1	48	215697	Port Block (AA6VM 80/63).....	1
15	215679	O-Ring (75 Duro FPM PRP-258) .....	1	49	215698	Dowel Pin (M10 x 20 DIN 7).....	2
18	215680	Snap Ring (M72 x 2.5 DIN 472).....	1	50	215699	Lens Pin.....	1
21	215681	Shaft Seal (50 x 72 x 7 - FPM).....	1	51	215700	O-Ring (90 Duro FPM PRP-011) .....	6
22	215682	Shim (M56 x 72 x 3.0 DIN 988).....	1	52	215701	Capscrew (M12 x 25 DIN 6912-8.8).....	1
30	215683	Hydraulic Rotary Group (Includes Items 31 Through 39)					

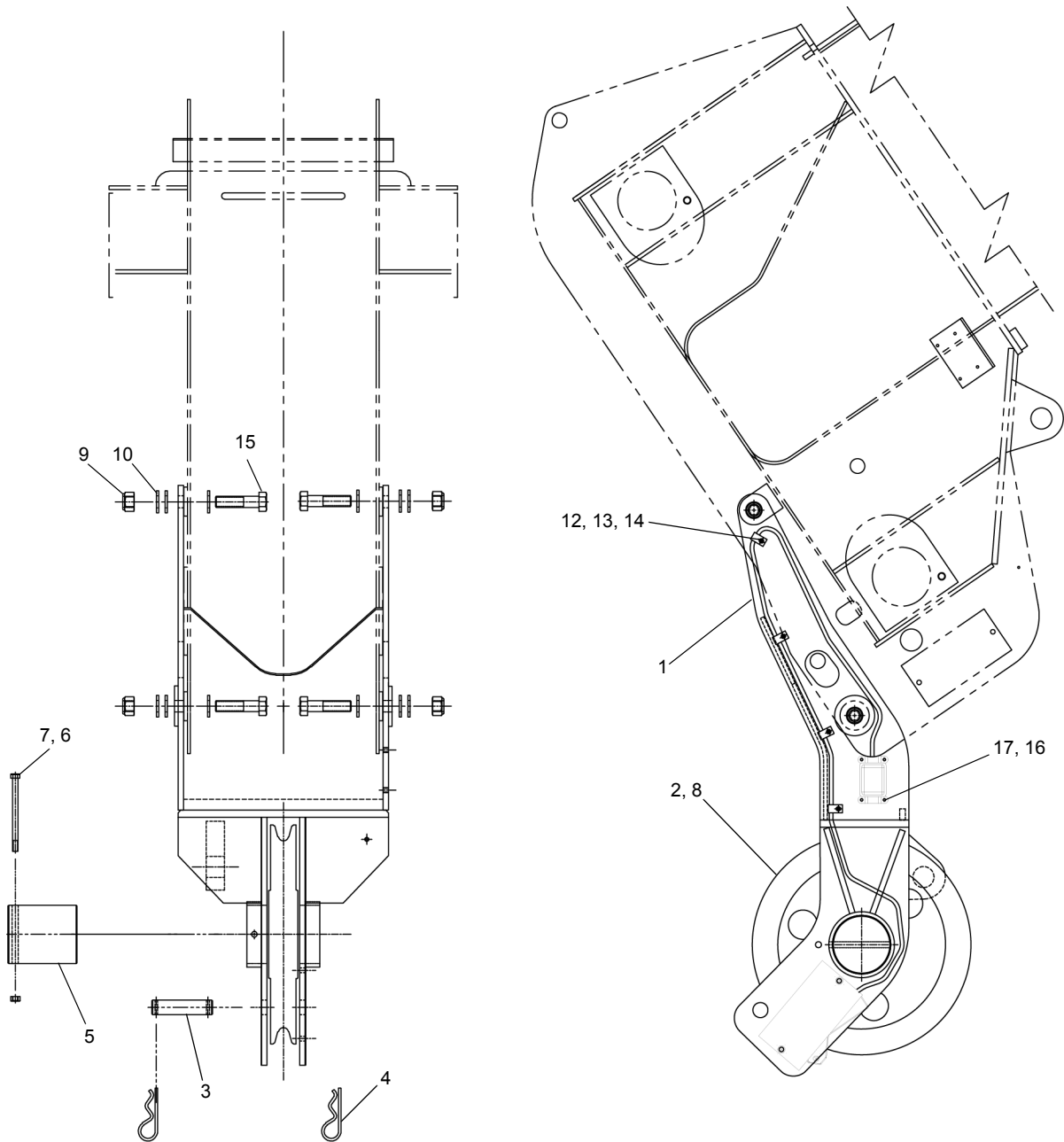
WHEN ORDERING PARTS, SPECIFY MODEL NUMBER, SERIAL NUMBER AND DESCRIPTION OF PARTS REQUIRED



**WINCH MOTOR  
9 PISTON REXROTH**

DATE: Revised 09-2010  
MODEL: RT600 & RT600-1  
PAGE 40.5

**GROUP  
40**



**SEE PAGE 50.4**

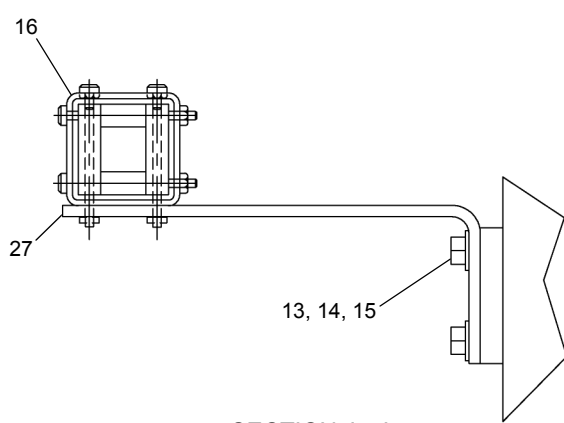
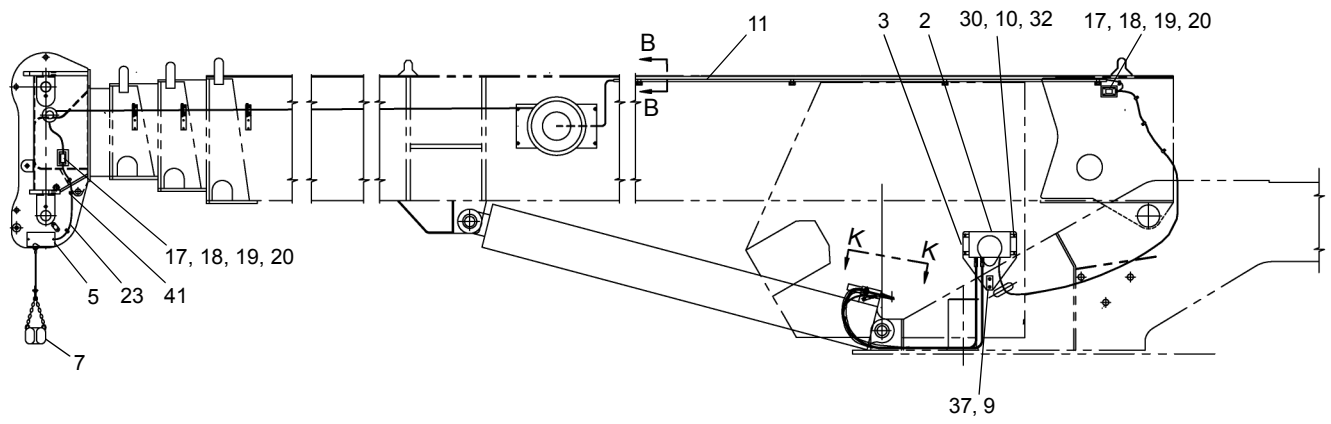
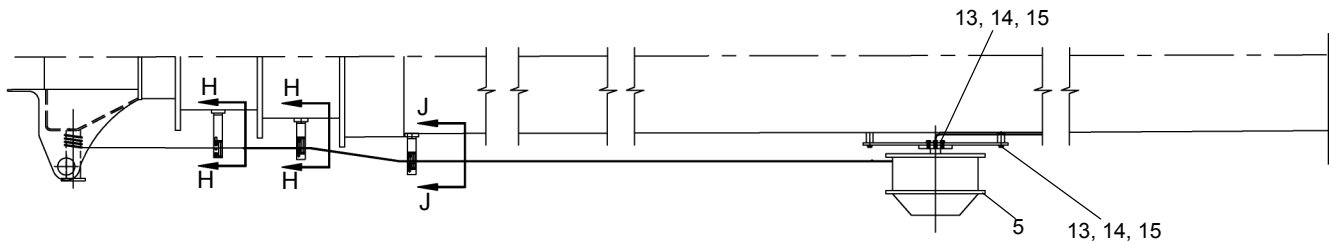
WHEN ORDERING PARTS, SPECIFY MODEL NUMBER, SERIAL NUMBER AND DESCRIPTION OF PARTS REQUIRED



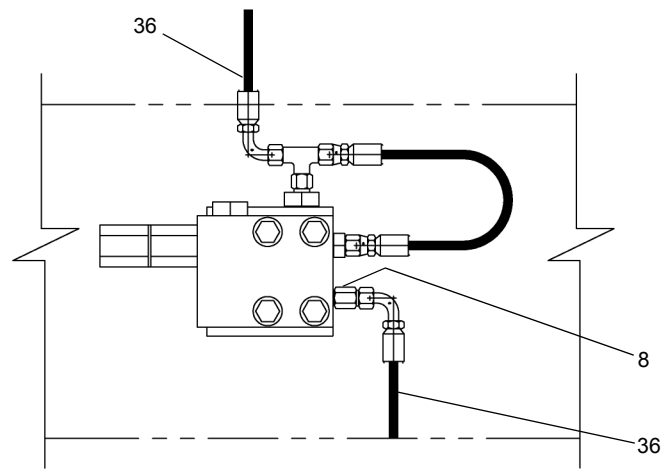
**AUXILIARY BOOM HEAD SHEAVE**

DATE: Revised 08-2011  
 MODEL: RT600 & RT600-1  
 PAGE 50.3

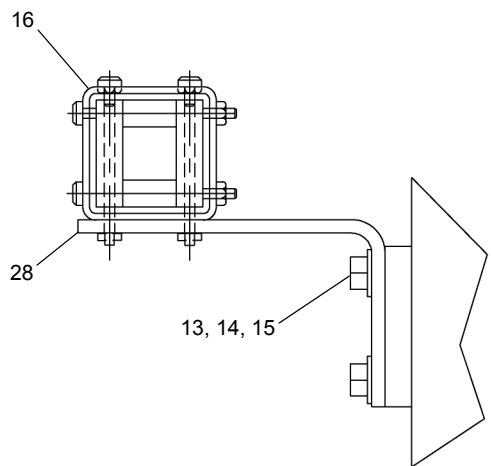
**GROUP**  
**50**



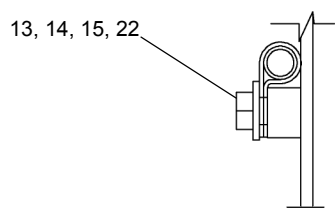
SECTION J - J



VIEW K - K



SECTION H - H



SECTION B - B

**SEE PAGE 52.8**

WHEN ORDERING PARTS, SPECIFY MODEL NUMBER, SERIAL NUMBER AND DESCRIPTION OF PARTS REQUIRED



**GREER RCI 510  
RCI ASSEMBLY (Option)**

DATE: Revised 08-2011  
MODEL: RT600 & RT600-1  
PAGE 52.7

**GROUP  
52**

CLICK HERE TO **DOWNLOAD** THE COMPLETE MANUAL

- Thank you very much for reading the preview of the manual.
- You can download the complete manual from: [www.heydownloads.com](http://www.heydownloads.com) by clicking the link below



- Please note: If there is no response to CLICKING the link, please download this PDF first and then click on it.

CLICK HERE TO **DOWNLOAD** THE COMPLETE MANUAL