



PARTS MANUAL

RT500

Revised: June 2012

12261-269

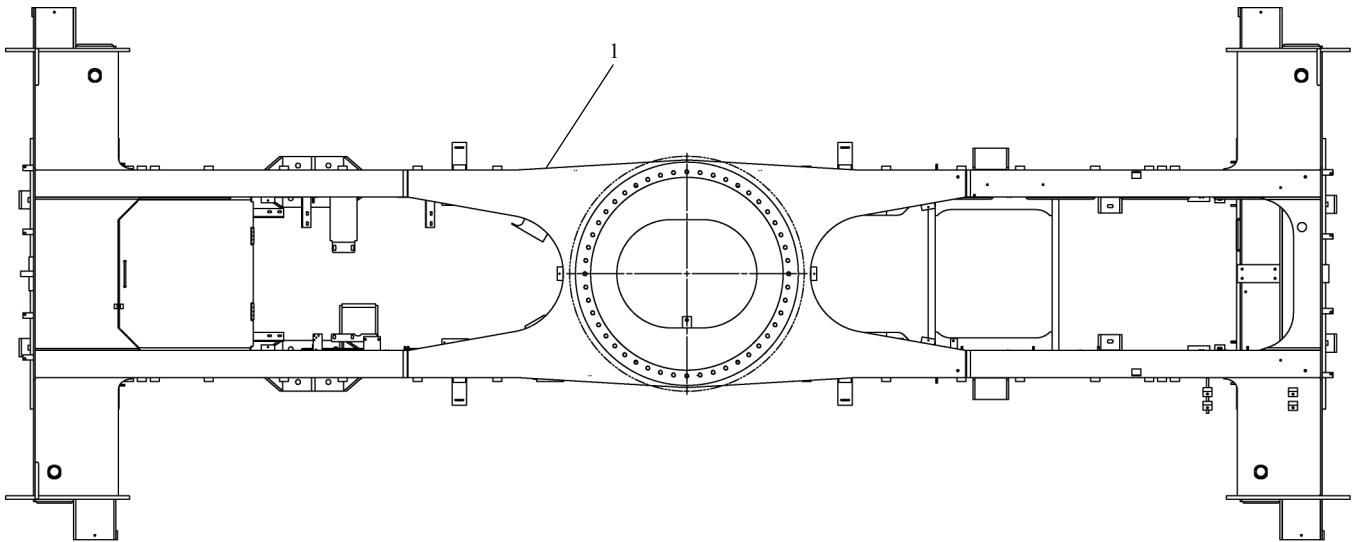
CLICK HERE TO **DOWNLOAD** THE COMPLETE MANUAL

- Thank you very much for reading the preview of the manual.
- You can download the complete manual from: www.heydownloads.com by clicking the link below



- Please note: If there is no response to CLICKING the link, please download this PDF first and then click on it.

CLICK HERE TO **DOWNLOAD** THE COMPLETE MANUAL



<u>REF</u>	<u>PART NO.</u>	<u>DESCRIPTION</u>	<u>QTY.</u>
	T121004 (Rev A)	Frame, Machining	
1	T121005	Frame Weldment.....	1

WHEN ORDERING PARTS, SPECIFY MODEL NUMBER, SERIAL NUMBER AND DESCRIPTION OF PARTS REQUIRED



FRAME MACHINING

DATE: Revised 10-2011
 MODEL: RT500-1
 PAGE 2.4

GROUP
2

SEE PAGE 2.13

REF	PART NO.	DESCRIPTION	QTY.
T121007 (Rev A) <i>Frame W/Outriggers</i>			
1	720 0199	Jack, Anti-Slip Tape	4
2	710 0221	Front Top, Anti-Slip Tape	1
3	710 0224	Front Cover, Anti-Slip Tape.....	1
4	710 0223	Front Rail, Anti-Slip Tape	2
5	710 0325	Base Plate, Anti-Slip Tape	1
6	710 0622	Base Plate, Anti-Slip Tape	1
7	T121249	Outrigger Beam ASSY	4
8	1209-61	Washer Per B/P Zinc Plate.....	48
9	T121202	Frame.....	1
10	1205-34	Locknut HEX 5/16-18 ESNA	8
11	1200-41	HHCS 5/16NC X 2 1/4 GR5 ZIN	8
12	1208-17	Bush Mach 1 X 11/2 X 14GA	16
13	714 0611	Wear Pad	4
14	1210-14	Washer Lock 1/4 MED Zinc.....	4
15	1200-3	HHCS 1/4 NC X 1 GR5 Zinc	4
16	706 8587	Pin	4
17	723F0083	Pin WeldMent & Shoulder Screw	4
18	1203-249	Capscrew Ferrycap 12pt 7/8 X 5.5..	48
19	721 0361	Base Plate, Anti-Slip Tape	1
20	721 0362	Base Plate, Anti-Slip Tape	1
21	707 4078-48	Hose Assembly	1
22	707 4078-66	Hose Assembly	5
23	707 4079-61	Hose Assembly	1
24	707 4078-62	Hose Assembly	4
25	707 4079-80	Hose Assembly	1

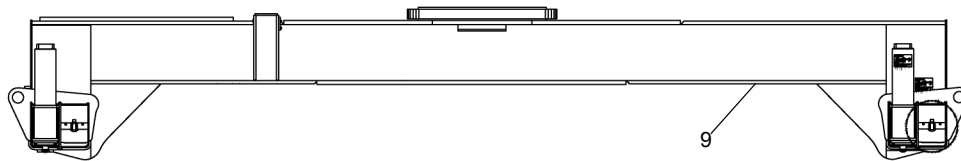
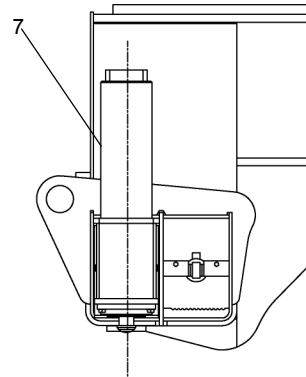
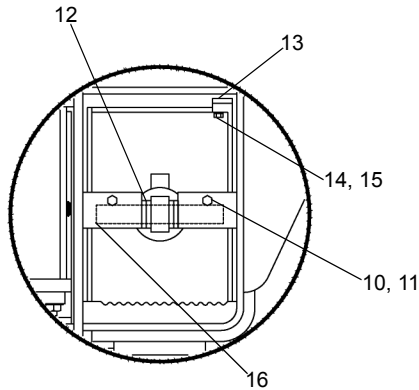
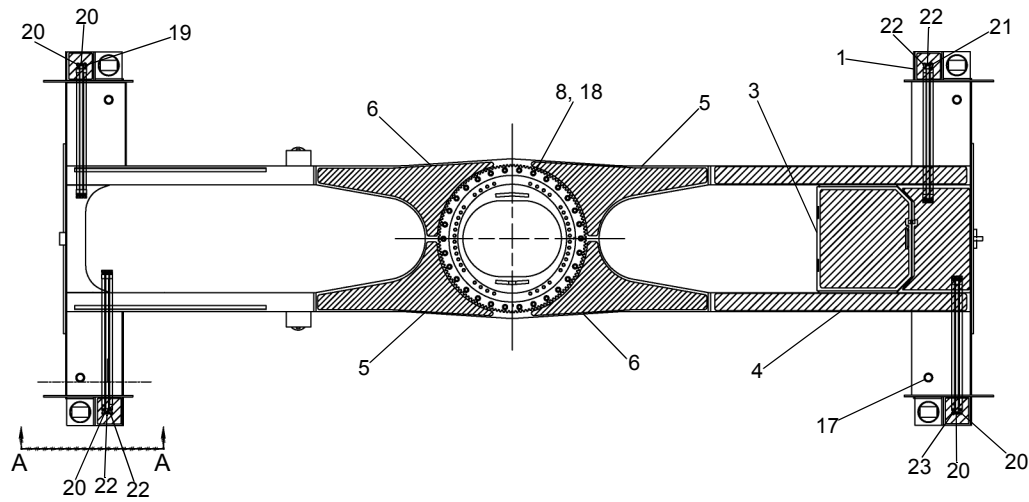
WHEN ORDERING PARTS, SPECIFY MODEL NUMBER, SERIAL NUMBER AND DESCRIPTION OF PARTS REQUIRED



FRAME W/OUTRIGGERS

DATE: Released 09-2011
MODEL: RT500
PAGE 2.14

GROUP
2



REF	PART NO.	DESCRIPTION	QTY	REF	PART NO.	DESCRIPTION	QTY
T121981 (Rev B) <i>Frame W/Outriggers</i>							
1	720 0199	Jack, Anti-Slip Tape.....	4	13	714 0611	Wear Pad.....	4
2	710 0221	Front Top, Anti-Slip Tape	1	14	1210-14	Washer Lock 1/4 MED Zinc.....	4
3	710 0224	Front Cover Anti-Slip Tape	1	15	1200-3	HHCS 1/4 NC X GR5 Zinc.....	4
4	710 0223	Front Rail, Anti-Slip Tape	2	16	706 8587	Pin.....	4
5	710 0228	Base Plate, Anti-Slip Tape.....	2	17	723F0083	Pin Weldment & Shoulder Screw...4	4
6	710 0229	Base Plate, Anti-Slip Tape.....	2	18	713 0048	Screw 12-point 7/8 X 4.5	30
7	T121249	Outrigger Beam Assembly.....	4	19	707 4078-48	Hose Assembly.....	1
8	1209-61	Washer Per B/P Zinc Plate.....	30	20	707 4078-66	Hose Assembly.....	5
9	T121006	Frame	1	21	707 4079-61	Hose Assembly.....	1
10	1205-34	Locknut HEX 5/16-18 ESNA.....	8	22	707 4078-62	Hose Assembly.....	4
11	1200-41	HHCS 5/16NCX2 1/4 GR5 ZIN.....	8	23	707 4079-80	Hose Assembly.....	1
12	1208-17	Bush MACH 1 X 1 1/2 X 14GA.....	16				

WHEN ORDERING PARTS, SPECIFY MODEL NUMBER, SERIAL NUMBER AND DESCRIPTION OF PARTS REQUIRED



FRAME WITH OUTRIGGERS

DATE: Released 10-2011
 MODEL: RT500
 PAGE 3.8


GROUP
3

SEE PAGE 5.5

REF	PART NO	DESCRIPTION	QTY	REF	PART NO	DESCRIPTION	QTY
	221692	Carrier Assembly, Differential-Front Axle					
	221177	CARR ASSY-DIFF,STD DIFF					
1	221189	Kit-Minor	1				
	221395	Shim.....	1	26	221197	M16X1.50-6H Nut.....	12
	221396	Shim.....	2	27	221190	Gear & Pinion ASSY.....	1
	221397	Shim.....	3	28	221179	1.56X2.36X.12 Washer-Hardened.....	1
	221398	Shim.....	1	29	221178	M39X1.50-6H Nut.....	1
2	221187	Cup-Bearing Inner	1	30	221184	Washer-Hardened	16
3	221183	Cup-Bearing Outer.....	1	31	221206	M12X1.75X90/30-12.9 HHCS.....	16
4	221181	Cone-Bearing Outer.....	1	32	221360	Differential Kit	1
5	221188	Cone-Bearing Inner.....	1	33	221200	Washer-Thrust	2
6	221180	Seal Assy-Oil 3.003X4.944X1.00	1	34	221202	Washer-Thrust	4
7	220444	Bearing-Roller.....	1	35	221694	Adapter-Brake, FIN.....	1
8	220443	Snap-Ring E 34.65X1.57 CS	1	36	221695	.62-11UNC-2AX1.63/1.50 HHCS.....	4
9	221186	Kit-Service Shim/Spacer.....	1	37	221696	Yoke ASSY	1
10	221207	Cone-Bearing Left Hand.....	1		221697	Yoke	1
11	221196	Cone-Bearing Right Hand.....	1	38	221698	Drum-Brake,FIN.....	1
12	221208	Cup-Bearing Left Hand	1	39	221699	.41X.75X.09 Washer.....	8
13	221195	Cup-Bearing Right Hand.....	1	40	221700	.38-24UNFX1.00/1.00 HHCS.....	8
14	221191	Carrier & Cap ASSY	1	41*	221701	Brake ASSY.....	1
15	221209	Ring-BRG ADJ, FIN Left Hand	1	42*	221269	Sealer(OZS).....	0.1
16	221194	Ring-BRG ADJ, FIN Right Hand.....	1	43*	221270	Grease (OZS)	0.1
17	221210	M8X1.25X30/30-10.9 SHCS.....	2	44*	221277	Case ASSY-DIFF.....	1
18	221193	M22X1.50X103/81.5 Thrust Screw.....	1	45*	221268	Loctite (CCS) 518 Red.....	0.1
19	221192	M22X1.50-6H Nut.....	1	46*	221271	Adhesive (OZS) 271 Red Loctite	0.1
20	221399	Cage ASSY-Pinion.....	1	47*	221274	Gear Set	1
21	221184	Washer-Hardened	8	48*	221275	HDWR Kit	1
22	221182	M12X1.75X45/30-10.9 HHCS.....	8	49*	220483	Lubricant (OZS)	3
23	221357	Kit-MISC Hardware.....	1	50*	220459	Name Plate -Generic Commercial.....	1
24	221199	M16X1.50X58/35-10.9 HHCS.....	12	51*	220460	Name Plate - Blank.....	1
25	221681	.66X1.06X.09 WSHR.....	12	52*	220461	Screw.....	2
				53*	221276	Case-DIFF, & Nest ASSY	1
				54*	221358	Loctite 271 Red	0.1
				55*	221693	Protector/ Bag-Shipping.....	1

* ITEMS (41 TO 55) ARE NOT SHOWN IN ILLUSTRATION

WHEN ORDERING PARTS, SPECIFY MODEL NUMBER, SERIAL NUMBER AND DESCRIPTION OF PARTS REQUIRED

 <p>TEREX P/N 12261-269</p>	<p>CARRIER ASSEMBLY Differential Front Axle</p>	DATE: Revised 08-2010	<p>GROUP 5</p>
		MODEL: RT500	
		PAGE 5.6	

SEE PAGE 5.13, 5.14, 5.15

<u>REF</u>	<u>PART NO</u>	<u>DESCRIPTION</u>	<u>QTY</u>	<u>REF</u>	<u>PART NO</u>	<u>DESCRIPTION</u>	<u>QTY</u>
	221740	<i>Hub & Shaft Group - Rear</i>					
1	221742	Knuckle-Steering, FIN Left Hand.....	1	26	220317	Gear-Planetary Ring, FIN.....	26
	221741	Knuckle-Steering, FIN Rig Hand.....	1	27	221730	3.38-12 UN-2B Nut.....	2
2	221709	.88-14UNF-2AX3.50/3.50 SS.....	1	28	221731	.38-16UNCX.50/.50 SHCS.....	2
3	220282	.88-14 3B Nut.....	1	29	221732	Washer-Thrust.....	2
4	221743	Cap-King Pin Lower.....	2	30	221752	Gear-Planetary Sun, FIN.....	2
	221784	Cap-King Pin Upper.....	2	31	220323	Ring-Snap.....	2
5	221713	Seal-Grease.....	4	32	220326	Spider-Planetary Gear,FIN.....	2
6	221714	Shim-.003.....	12	33	220328	Button-Thrust.....	6
	221715	Shim-.005.....	8	34	220329	Button-Thrust.....	2
	221716	Shim-.020-Use As REQD.....	4	35	220331	Washer-Thrust Inner.....	6
7	220289	.88-14UNFX2.00/2.00 HHCS.....	16	36	220332	Gear-Spur,FIN.....	6
8	221171	.91X1.50X.12 WSHR.....	16	37	220333	Washer-Thrust Outer.....	6
9	220290	Fitting ASSY-Grease.....	4	38	220334	Shaft ASSY-Pinion.....	6
	220291	Fitting-Grease.....	43	39	220336	Ring-O.....	6
10	221744	Joint ASSY-Universal Right Hand.....	1	40	220337	.38-16UNC-3AX.50/.50 SS.....	6
	221745	Joint ASSY-Universal Right Hand.....	1	41	220338	.53X.88X.09 WSHR.....	60
11	221746	Spindle ASSY.....	2	42	220339	.50-13UNCX1.75/1.25 HHCS.....	60
12	220362	Bushing- Spindle/ Housing.....	2	43	220340	Plug-Fill/Drain Magnetic.....	2
13	220301	Seal ASSY-Oil 2.25X2.996X.433.....	2	44	221753	Rod ASSY-Tie.....	1
14	220302	.59X1.03X.12 WSHR.....	36	45	221754	End ASSY-Tie Rod Right Hand.....	1
15	221747	.56-12UNCX1.50/1.38 HHCS.....	36	46	221755	End ASSY-Tie Rod Left Hand.....	1
16	221748	.75-10UNCX2.25/1.75 HHCS.....	24	47	220347	Cotter.....	2
17	221279	.78X1.25X.12 WSHR.....	24	48*	220292	Cap.....	4
18	221749	Disc-Brake, FIN.....	2	49*	220295	Kit-Center Parts.....	1
19	220306	Seal ASSY-Oil 5.62X7.19X.92.....	2	50*	221758	Shaft-Universal Joint Outer.....	1
20	220307	Cone-Bearing Inner.....	2	51*	221227	Shaft-Universal Joint Inner.....	1
21	220311	Cup-Bearing Inner.....	2	52*	221759	Shaft-Universal Joint Inner.....	1
22	220313	Cup-Bearing Outer.....	2	53*	221760	Hub ASSY -Service.....	2
23	221750	.75-16NFX1.31/2.38 Stud.....	46	54*	220308	Protector-Shiping.....	46
24	220315	Cone-Bearing Outer.....	2	55*	220325	Spider ASSY-Planetary.....	2
25	221751	Hub-Planetary Ring Gear,FIN.....	2	56*	221761	Rod ASSY-Tie.....	1

* ITEMS (48 TO 56) ARE NOT SHOWN IN THE ILLUSTRATION

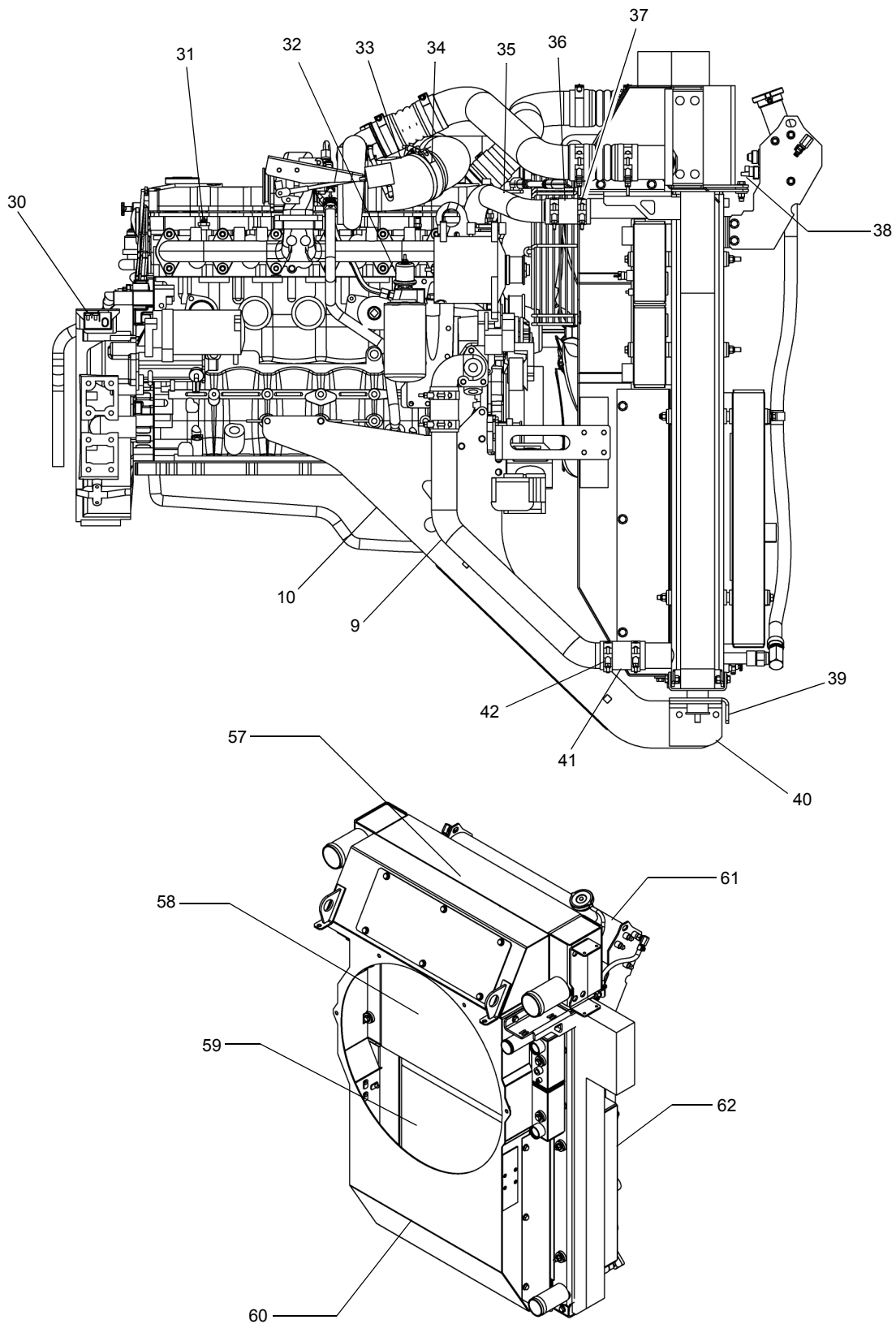
WHEN ORDERING PARTS, SPECIFY MODEL NUMBER, SERIAL NUMBER AND DESCRIPTION OF PARTS REQUIRED



HUB & SHAFT GROUP
Rear Axle

DATE: Revised 08-2010
MODEL: RT500
PAGE 5.16

GROUP
5



SEE PAGES 6.9, 6.10, 6.7

WHEN ORDERING PARTS, SPECIFY MODEL NUMBER, SERIAL NUMBER AND DESCRIPTION OF PARTS REQUIRED

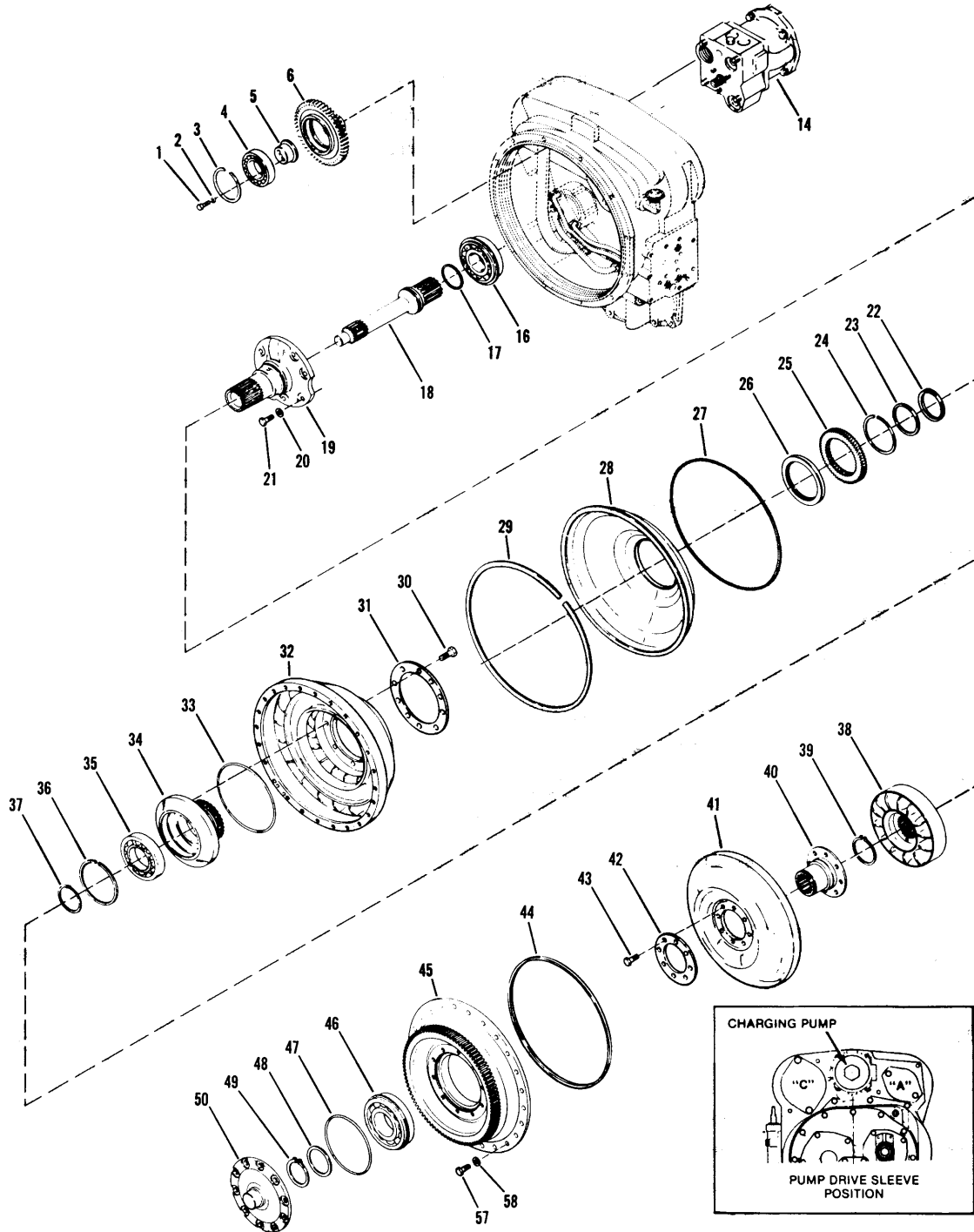


ENGINE INSTALLATION
Cooling Assembly

DATE: Revised: 11-2009
MODEL: RT500
PAGE 6.8

GROUP
6

See Page 7.3 for Details



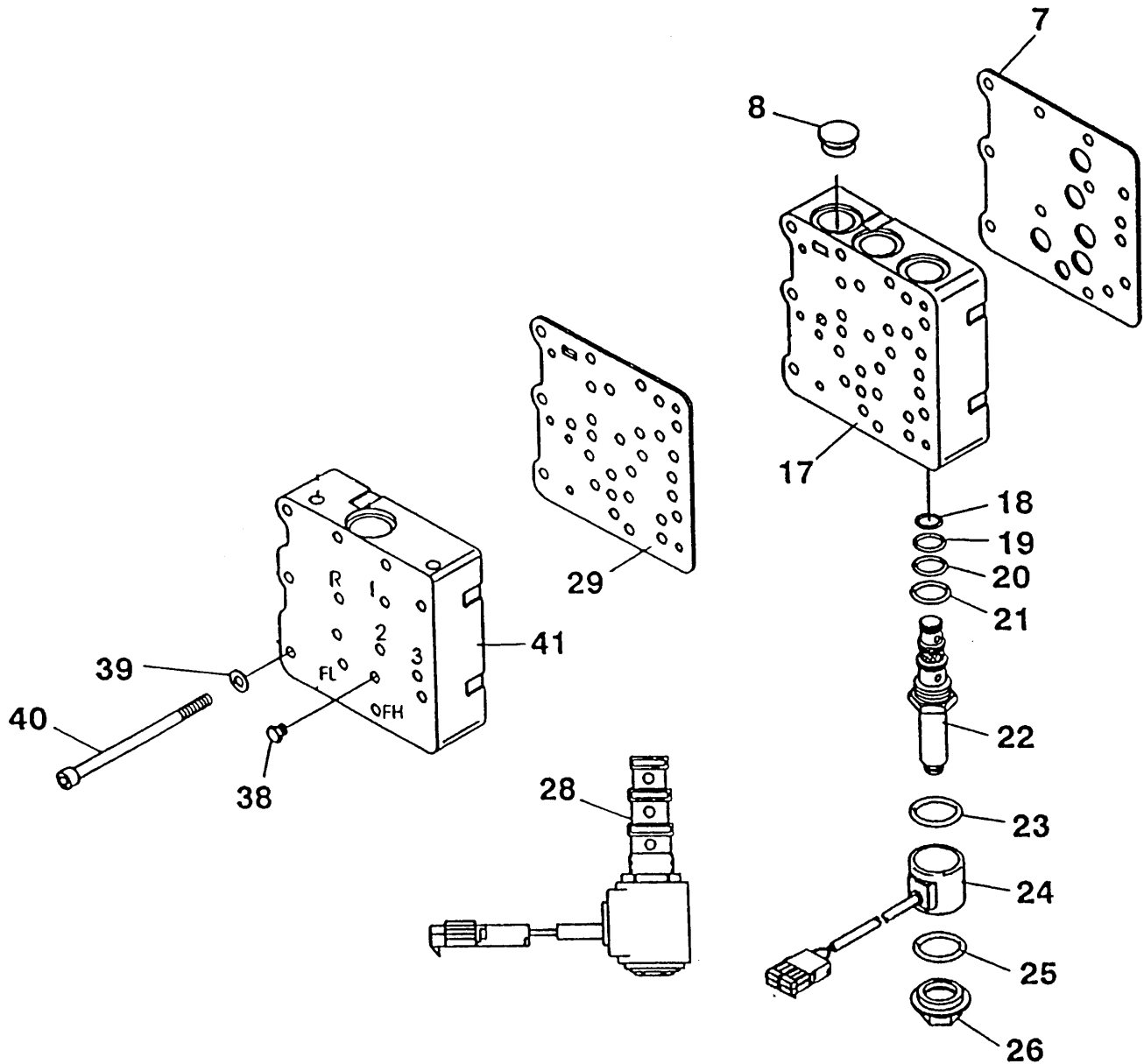
WHEN ORDERING PARTS, SPECIFY MODEL NUMBER, SERIAL NUMBER AND DESCRIPTION OF PARTS REQUIRED



TRANSMISSION Converter Group

DATE: Issued 7-2003
MODEL: RT500
PAGE 7.2

GROUP
7



REF	PART NO	DESCRIPTION	QTY.	REF	PART NO	DESCRIPTION	QTY.
		Control Valve Assembly	Ref				
7	217696	Gasket	1	24	217705	Solenoid Coil	5
8	217697	Modulator Pressure Regulator Plug	1	25	217706	Solenoid Nut to Coil O-Ring	5
17	217698	Control Valve Housing Assy	1	26	217707	Solenoid Coil Nut	5
		Includes Items 8, 28, 29 & 41		28	217708	Spool Type Solenoid Cartridge Assy	5
18	217699	Cartridge O-Ring	5			Includes Items 18 thru 26	
19	217700	Cartridge O-Ring	5	29	217709	Gasket	1
20	217701	Cartridge O-Ring	5	38	217710	Clutch Pressure Port Plug	6
21	217702	Cartridge O-Ring	5	39	217711	Washer	9
22	217703	Valve Cartridge-4 way	5	40	217712	Screw	9
		Includes Items 18 thru 21		41	217713	Control Valve Cover Assy	1
23	217704	Solenoid Coil to Cartridge O-Ring	5			Includes Item 38	
				42	217714	Electric Control Valve Assy	1
						Includes Items 17, 29 & 41	

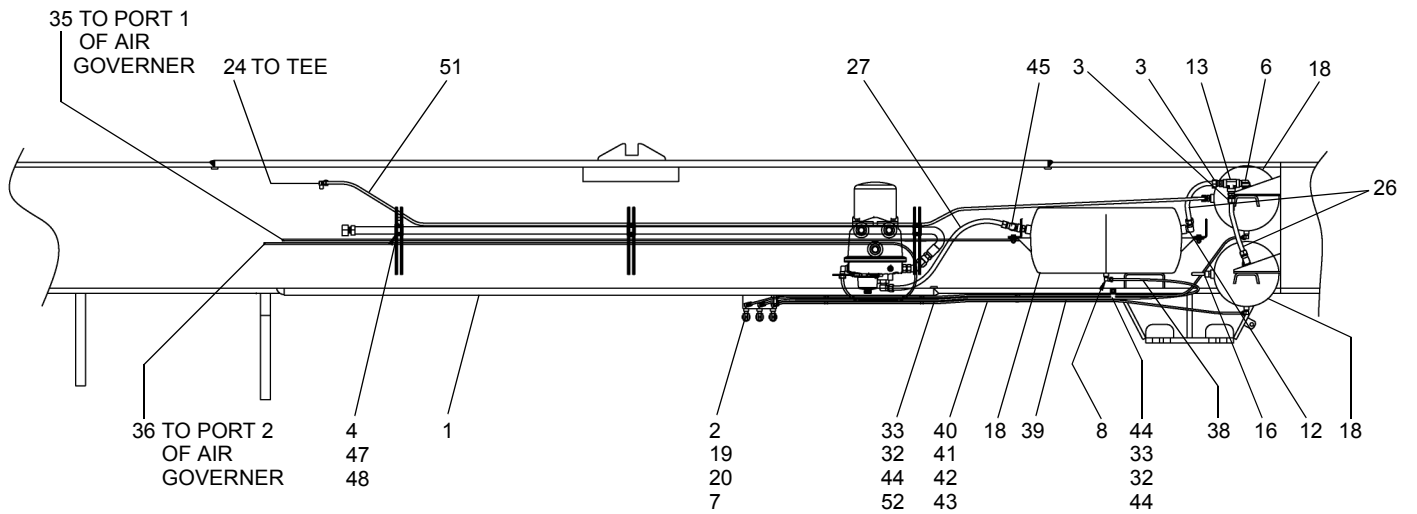
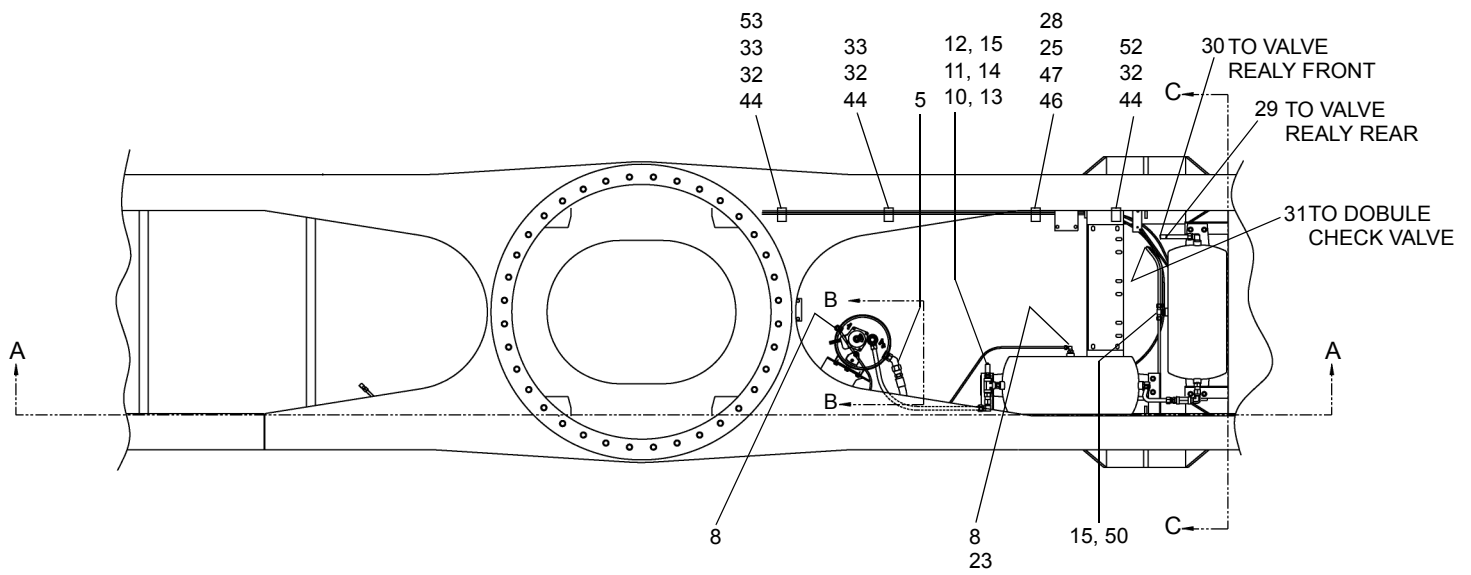
WHEN ORDERING PARTS, SPECIFY MODEL NUMBER, SERIAL NUMBER AND DESCRIPTION OF PARTS REQUIRED



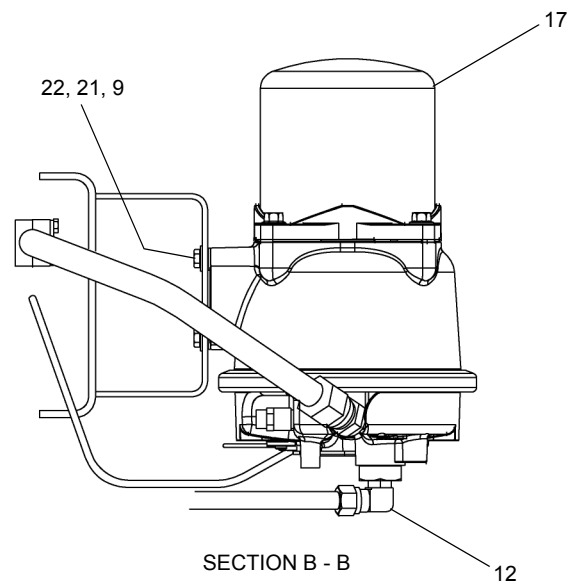
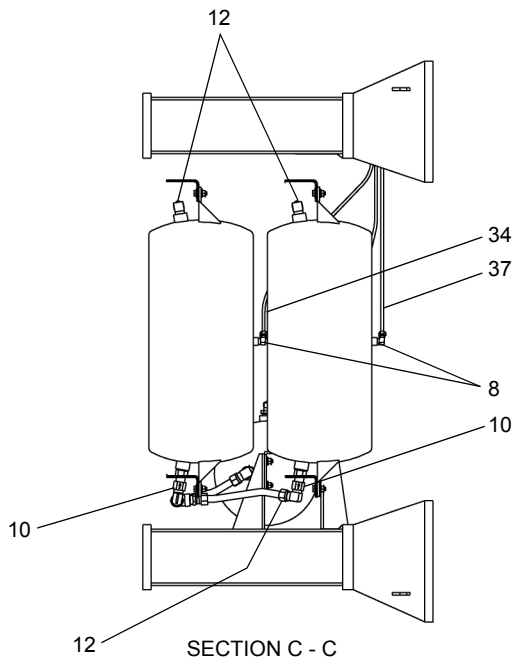
TRANSMISSION
Control Valve Assembly

DATE: Issued 7-2003
MODEL: RT500
PAGE 7.12

GROUP
7



SECTION A - A



SEE PAGE 10.5

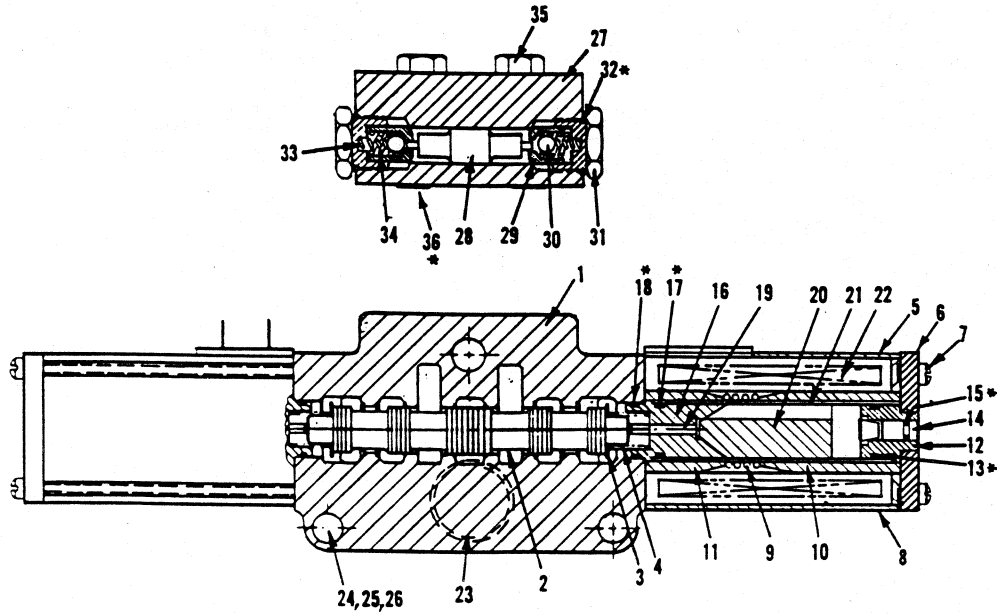
WHEN ORDERING PARTS, SPECIFY MODEL NUMBER, SERIAL NUMBER AND DESCRIPTION OF PARTS REQUIRED



AIR SUPPLY ASSEMBLY

DATE: Revised 11-2009
MODEL: RT500
PAGE 10.4

GROUP
10



REF.	PART NO.	DESCRIPTION	QTY	REF.	PART NO.	DESCRIPTION	QTY
49018		Valve Assembly (Includes Items 1 Through 36)					
A29309		Kit, Seal (Includes items shown with asterisk*)					
1	26860	Body	1	20	29605	Plunger	2
2	26840	Spool	1	21	29607	Tube, Guide	2
3	26841	Washer	2	22	24263	Coil, Solenoid	2
4	26842	Spring	2	23	26845	O-Ring	1
5	26843	Solenoid Assembly	2	24	26844	Bracket, Mounting	2
		(Includes Items 6 Through 21, less coil)		25		Bolt, 3/8F x 3 1/4	3
6	26808	Plate, End	2	26		Nut, 3/8F	3
7	29595	Screw	8		26859	Lock Valve Assembly	1
8	29596	Case	2			(Includes Items 27 Through 36)	
9	26802	Spring	2	27		Body	1
10	29597	Sleeve, Outer Flux	2	28		Piston	1
11	29598	Sleeve, Inner Flux	2	29		Poppet	2
12	29599	Guide, Push Pin	2	30		Ball	2
*13	29311	O-Ring	2	31		Plug	2
14	29624	Pin, Push	2	*32	26857	O-Ring	2
*15	29310	Ring, Quad	2	33		Spring, Small	2
16	29602	Cone, Female	2	34		Spring, Large	2
*17	29311	O-Ring	2	35		Capscrew	2
*18	29312	O-Ring	2	*36	23290	O-Ring	2
19	29602	Pin, Push	2				

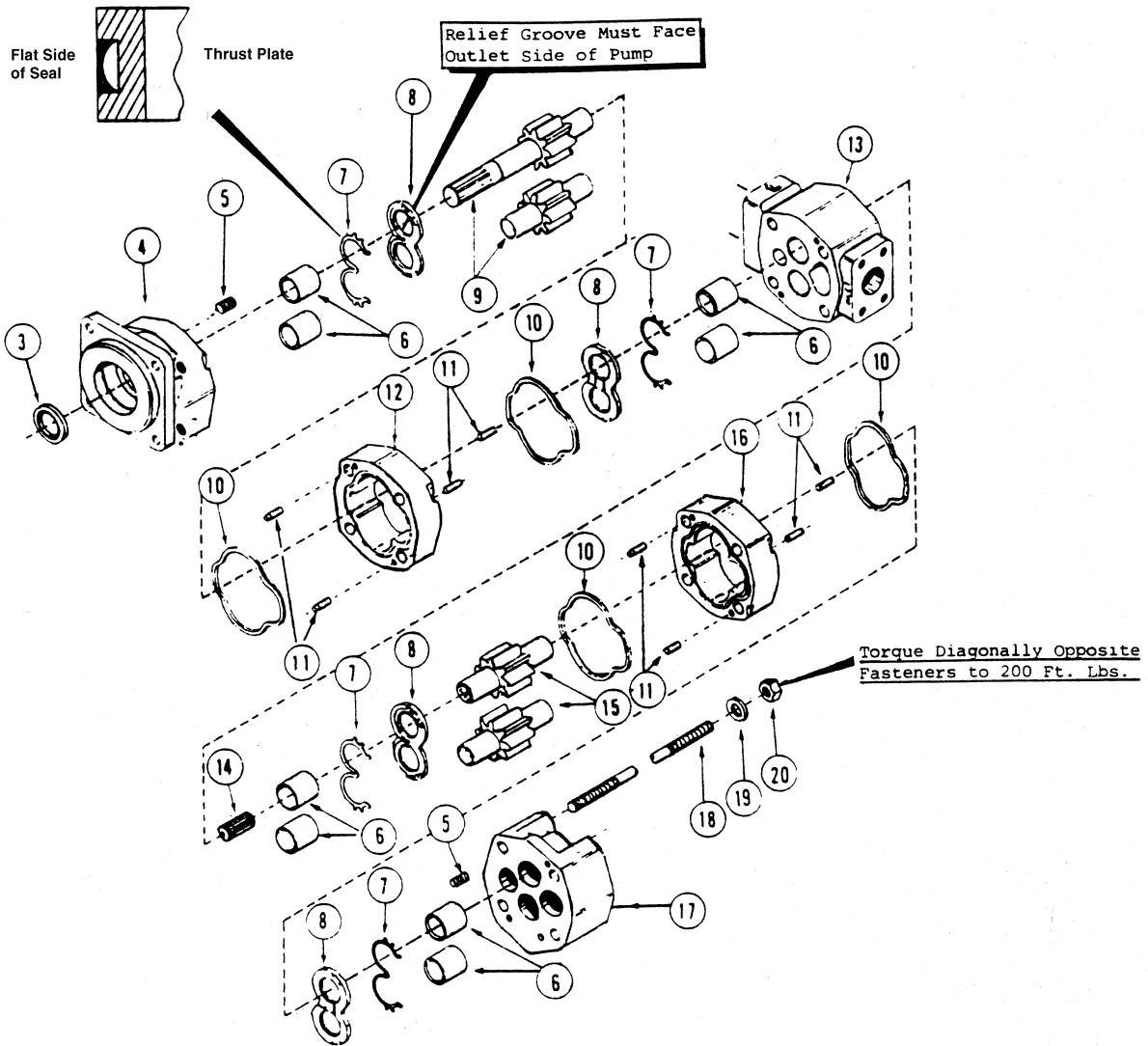
WHEN ORDERING PARTS, SPECIFY MODEL NUMBER, SERIAL NUMBER AND DESCRIPTION OF PARTS REQUIRED



STEERING VALVE

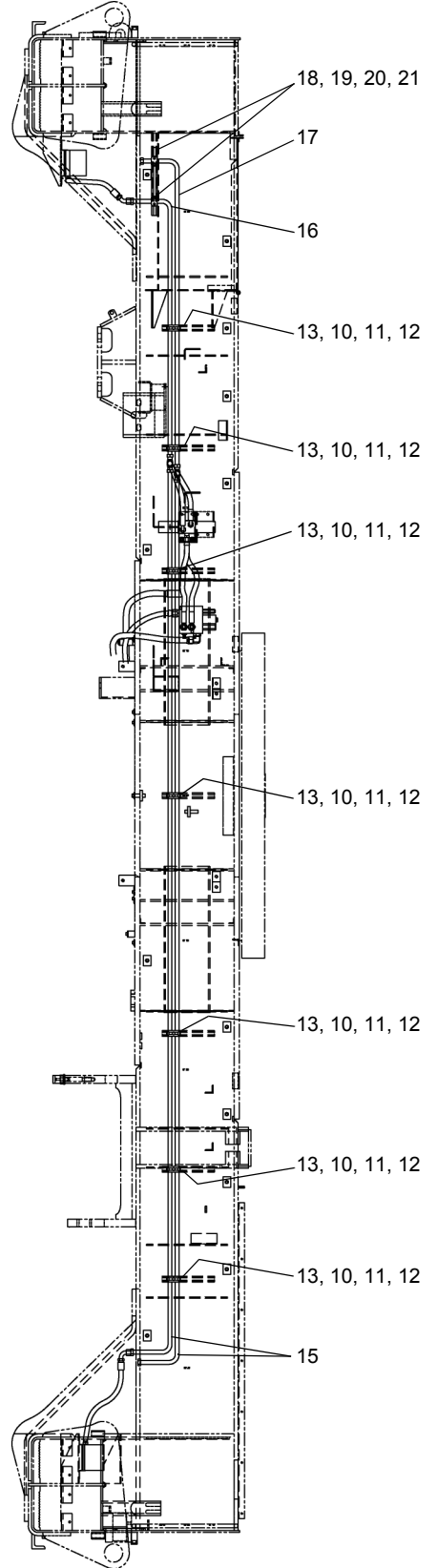
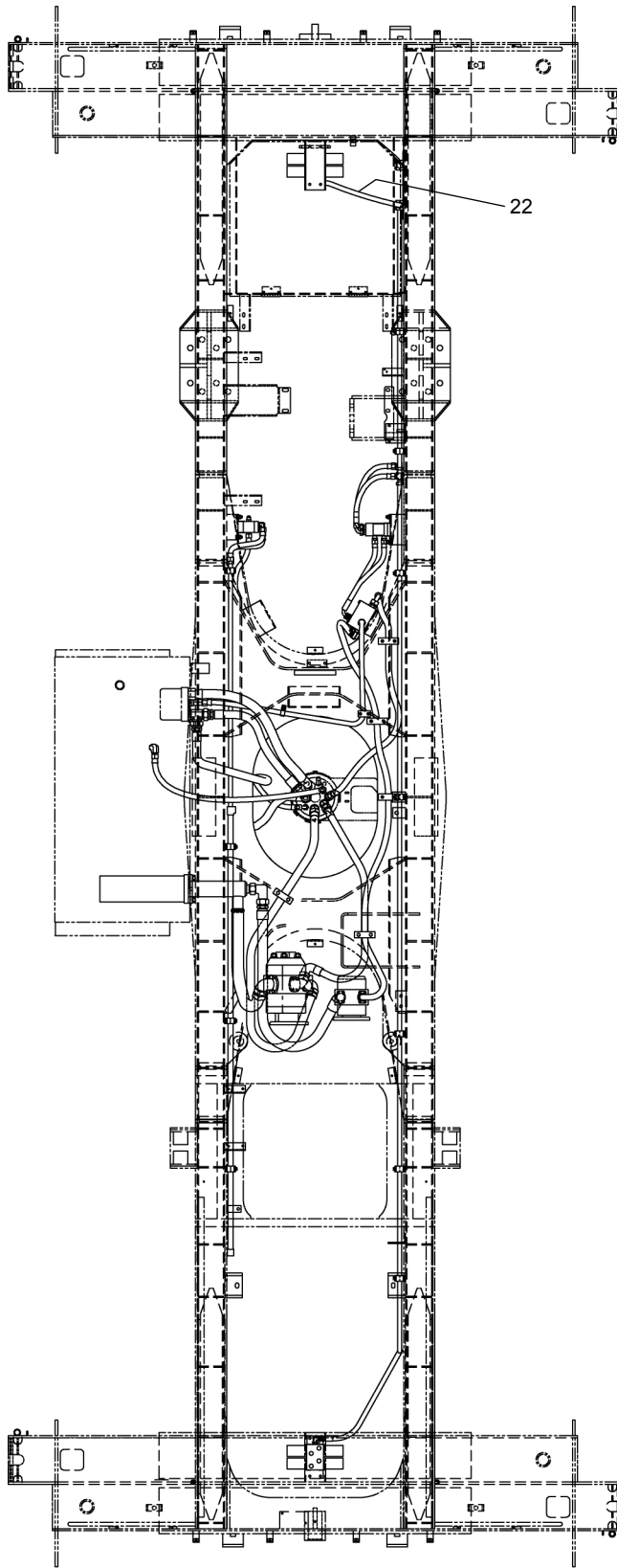
DATE: Issued 7-2003
 MODEL: RT500
 PAGE 11.6

GROUP
11



REF	PART NO.	DESCRIPTION	QTY
	707 4633	Pump (Includes Items 3 Through 20)	
	A205120	Kit, Seal (Includes Items 3,7,10)	
3	205105	Seal.....	1
4	205106	Cover, Shaft End.....	1
5	24674	Plug.....	1
6	205107	Bushing.....	8
7	205108	Seal, Channel.....	4
8	205109	Plate, Thrust.....	4
9	208031	Drive Shaft & Gear Set.....	1
10	205111	Seal, Gasket.....	4
11	28006	Pin, Dowel.....	8
12	208032	Housing, Gear.....	1
13	205113	Carrier, Bearing.....	1
14	205114	Shaft, Connecting.....	1
15	205115	Gear Set.....	1
16	205116	Housing, Gear.....	1
17	205117	Cover, Port End.....	1
18	205612	Studs.....	4
19	23666	Washer.....	4
20	205119	Nut.....	4

WHEN ORDERING PARTS, SPECIFY MODEL NUMBER, SERIAL NUMBER AND DESCRIPTION OF PARTS REQUIRED



SEE PAGE 25.9

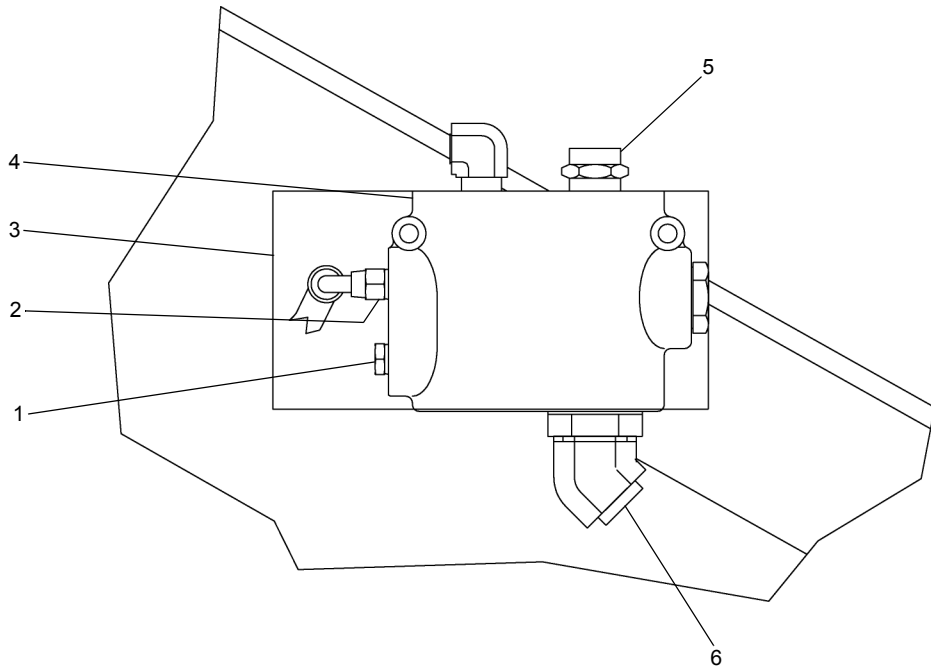
WHEN ORDERING PARTS, SPECIFY MODEL NUMBER, SERIAL NUMBER AND DESCRIPTION OF PARTS REQUIRED



LOWER HYDRAULICS
Outrigger Valves

DATE: Revised 11-2009
MODEL: RT500
PAGE 25.8

GROUP
25



<u>REF</u>	<u>PART NO.</u>	<u>DESCRIPTION</u>	<u>QTY</u>
1	1219-763	Plug, -4	1
2	1219-959	Adapter, STR, -4.....	1
3	709 5241	Plate	1
4	708 2350	Valve, Steering Priority	1
5	1219-442	Adapter, STR, -10-8	3.
6	1219-663	Adapter, 45°, -12	2

WHEN ORDERING PARTS, SPECIFY MODEL NUMBER, SERIAL NUMBER AND DESCRIPTION OF PARTS REQUIRED



PRIORITY VALVE

DATE: Revised 11-2009
 MODEL: RT500
 PAGE 25.18

GROUP
25

CLICK HERE TO **DOWNLOAD** THE COMPLETE MANUAL

- Thank you very much for reading the preview of the manual.
- You can download the complete manual from: www.heydownloads.com by clicking the link below



- Please note: If there is no response to CLICKING the link, please download this PDF first and then click on it.

CLICK HERE TO **DOWNLOAD** THE COMPLETE MANUAL

SEE PAGE 25.27

REF	PART NO.	DESCRIPTION	QTY
	723A0008 (Rev H)	<i>Swivel Assembly</i>	
1	12019-112	Tee, SW Nut Run, -6	2
2	12019-124	Adapter, 90°, -8 -10	1
3	12019-144	Adapter, 90°, -16-20	1
4	12019-158	Reducer, STR, -6-4	1
5	12019-171	Adapter, STR, -10 -12	1
6	12019-241	Adapter, 90° JIC SWV/JIC.....	1
7	12019-303	Adapter, 45, -16.....	1
8	12019-457	Reducer, STR, -10-6	1
9	12019-464	Tee, SW Nut Branch, -10.....	1
10	12019-784	Union, STR, -16.....	1
11	12019-785	Check Valve, -16	1
12	1219-282	Adapter, STR, -16	2
13	1219-290	Adapter, 45 SW NUT, -12	1
14	1219-386	Adapter, 20-16.....	2
15	1219-441	Adapter, STR, -8	3
16	1219-446	Adapter, STR, -8-10	2
17	1219-470	Adapter, 90, -8.....	2
18	1219-680	Adapter, 90, -16.....	1
19	1219-843	Tee,SW Nut Run, -16	1
20	1219-958	Adapter, 45 SW NUT, -16	1
21	360-3521	Elbow, -16-16	1
22	708A2388	Swivel, Hydraulic	1
23	709-5069	Spacer	2
24	709-8076	Bracket, Anti-Rotation	1
25	714-0523	Bracket-Air Swivel, Upper	1
26	723F0010	Torque Arm	1
27	N05-625C000-25	Nut, HEX Jam 0.625-11, ST Z GR5	2
28	NYT-500C000-22	Nut, NYLK HVYTHN 0.50-13, ST Z G2.....	4
29	S01-500CB75-25	SCR, HHCS 0.50-13 x 2.75, ST Z GR5	2
30	S01-500CC75-25	SCR, HHCS 0.50-13 x 3.75, ST Z GR5	2
31	S32-625CB00-20	SCR, SSS CPT 0.625 - 11 x 2.00, ST Z.....	2
32	SHF-250C625-25	SCR, HHCS FT 0.25-20 x 0.625, STZ G5.....	1
33	SHF-375C750-25	SCR, HHCS FT 0.375-16 x 0.75, STZ G5.....	3
34	T121306	Slip Ring, 53 Circuit W/AIR	1
35	W07-250X000-20	WSH, LCK, MED SPLT 0.25, ST Z	1
36	W07-375X000-20	WSH, LCK, MED SPLT 0.375, ST Z	3
37	W07-500X000-20	WSH, LCK, MED SPLT 0.50, ST Z	4
38	W07-625X000-20	WSH, LCK, MED SPLT 0.625, ST Z	2
39	WAN-25NX000-20	WSH, FL TYPA-NRW 0.25, ST Z.....	1
40	WAN-50NX000-20	WSH, FL TYPA-NRW 0.50, ST Z.....	4

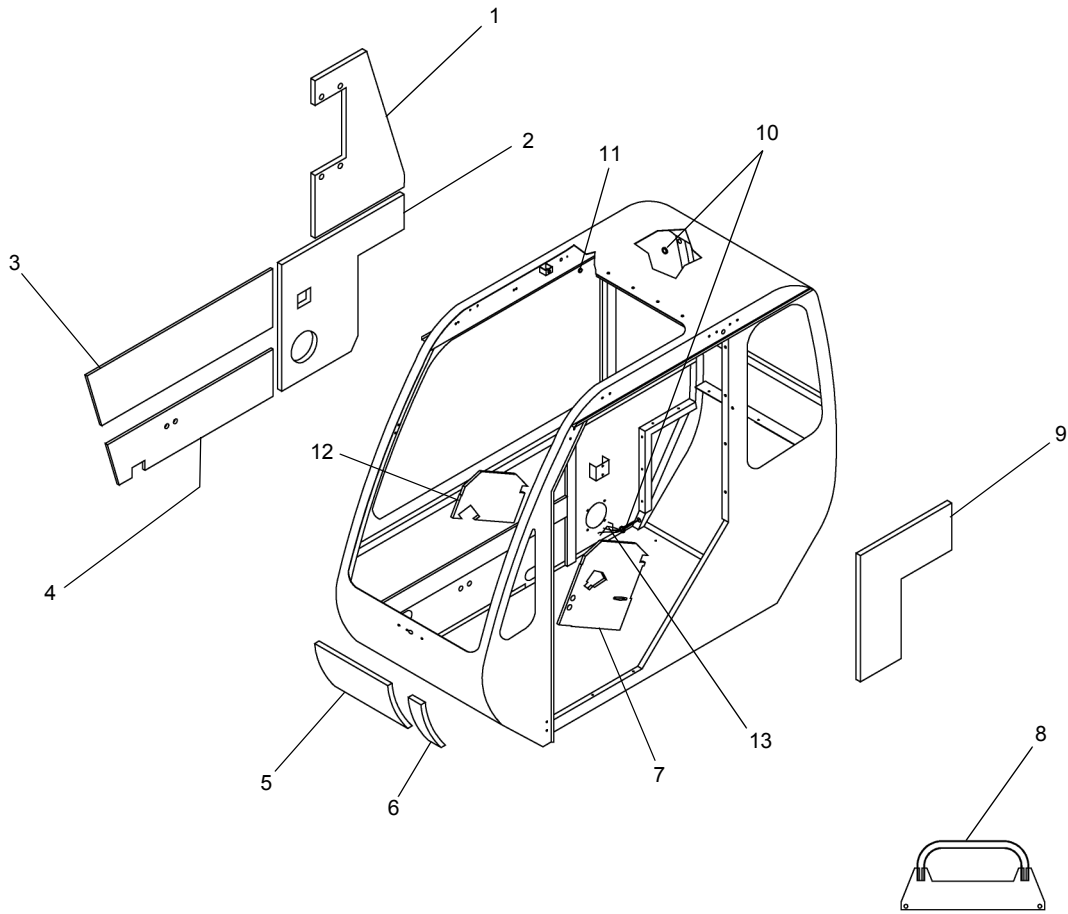
WHEN ORDERING PARTS, SPECIFY MODEL NUMBER, SERIAL NUMBER AND DESCRIPTION OF PARTS REQUIRED



SWIVEL ASSEMBLY (Option)

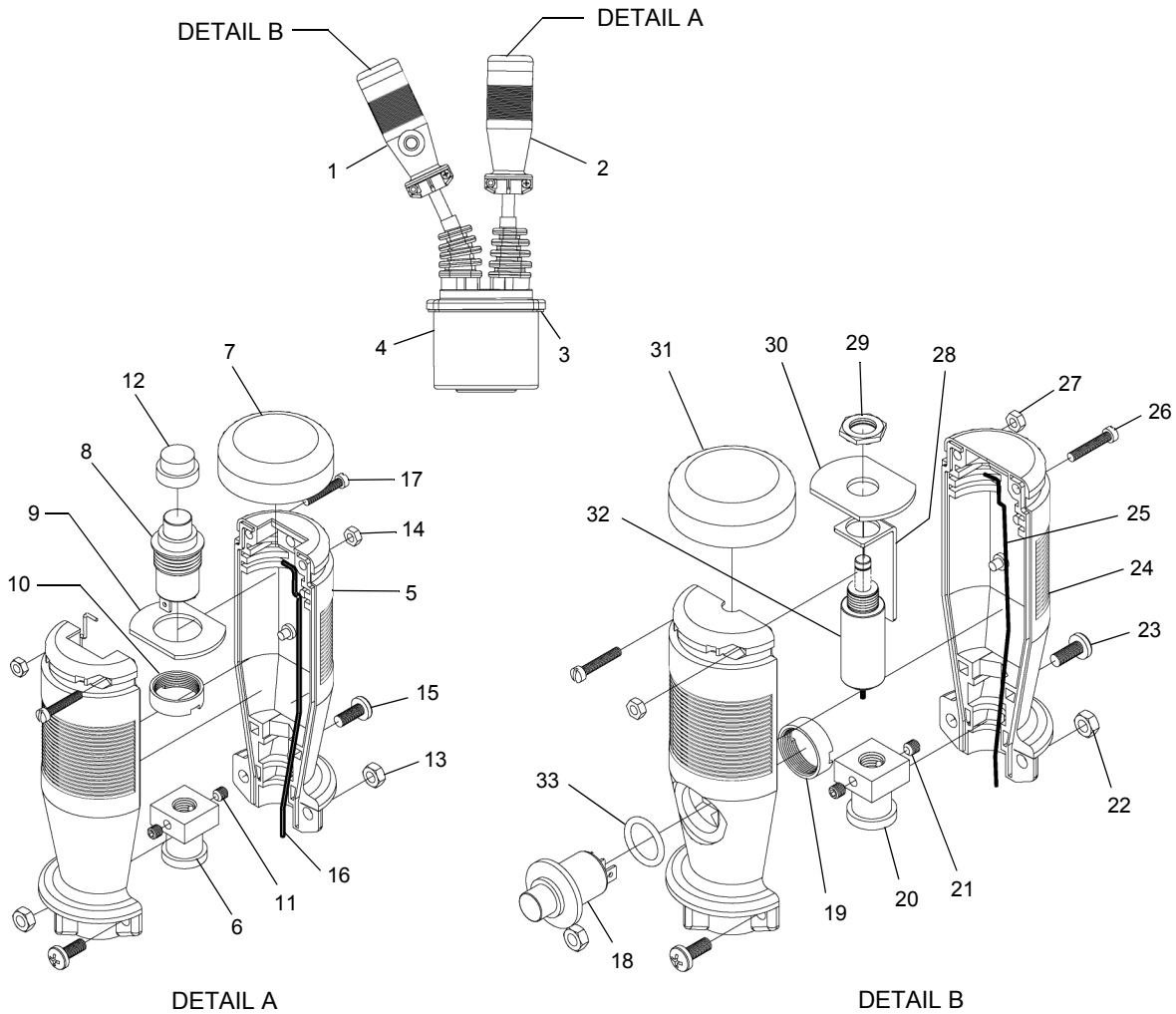
DATE: Released 09-2011
MODEL: RT500
PAGE 25.28

GROUP
25



<u>REF.</u>	<u>PART NO.</u>	<u>DESCRIPTION</u>	<u>QTY.</u>
<i>Cab, Crane</i>			
1	216398	Foam, RH, Rear, Upper	1
2	220609	Foam, RH, Rear, Lower	1
3	220610	Foam, RH, Above Console	1
4	216404	Foam, RH, Lower	1
5	216400	Foam - Front, RH	1
6	216402	Foam - Front, LH	1
7	216408	Foam - Dash, LH	1
8	219095	Grab Handle	1
	215975	Screw, 5/16-18 x 3/4"	2
9	216403	Foam - LH, Rear, Lower	1
10	215613	Grommet, 5/8" Diameter Hole	2
11	216411	Grommet, 3/8" Diameter Hole	1
12	216407	Foam, Dash RH	1
13	216409	Wiring Harness	1

WHEN ORDERING PARTS, SPECIFY MODEL NUMBER, SERIAL NUMBER AND DESCRIPTION OF PARTS REQUIRED



REF	PART NO.	DESCRIPTION	QTY	REF	PART NO.	DESCRIPTION	QTY
719 0923 (Rev 00) <i>Left Arm Assembly - Single Axis</i>							
1	220652	Handle ASSY	1	220653	<i>Handle ASSY</i>		
2	220653	Handle ASSY	1				
3	220635	Can Gasket	1	18	220665	Push Button	1
4	220654	Can	1	19	220667	Push Button Nut	1
	220652	<i>Handle ASSY</i>		20	220655	Coupling	1
5	220660	Handle	2	21	220656	Set Screw	2
6	220655	Coupling	1	22	220658	Nut	2
7	220663	Boot	1	23	220659	Screw	2
8	220665	Push Button	1	24	220668	Handle Set	2
9	220666	Disc Top Push Button	1	25	220657	Gasket	2
10	220667	Push Button Nut	1	26	220662	Screw	2
11	220656	Set Screws	2	27	220661	Nut	2
12	220664	P.B. Knob	1	28	220669	Thumper Bracket	1
13	220658	Nut	2	29	220670	Nut	1
14	220661	Nut	2	30	220671	Plate	1
15	220659	Screw	2	31	220663	Boot	1
16	220657	Gasket	2	32	219978	Solenoid Assembly	1
17	220662	Screw	2	33	220672	"O" Ring	2

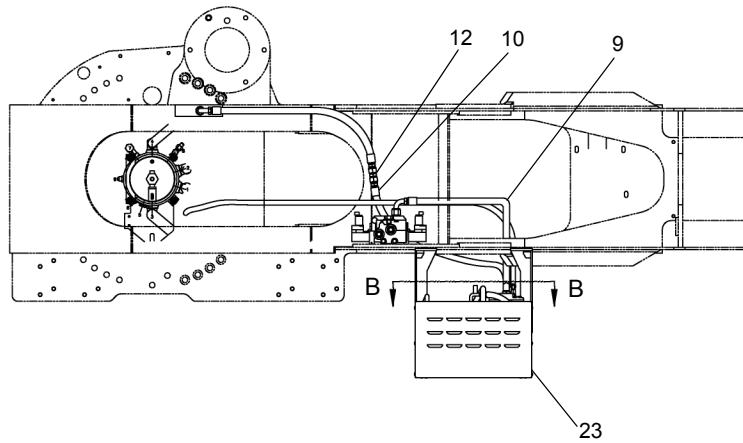
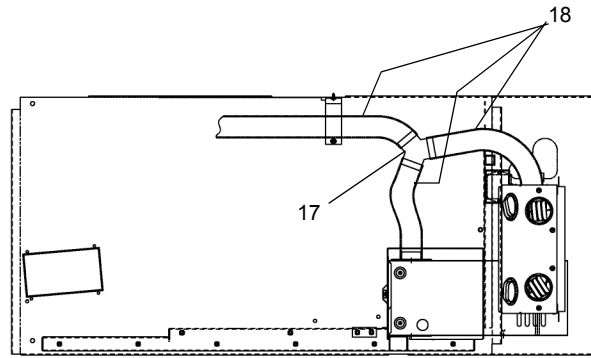
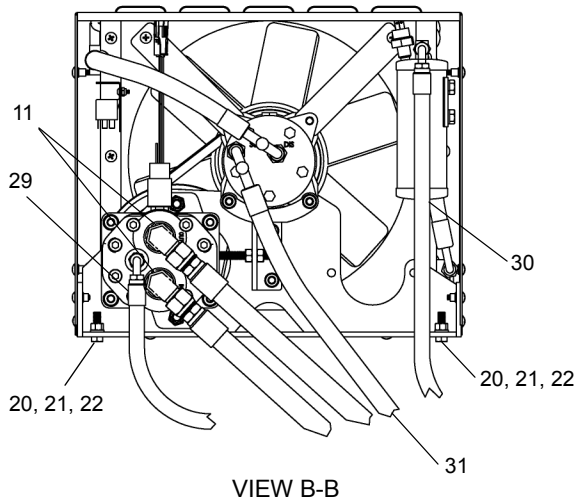
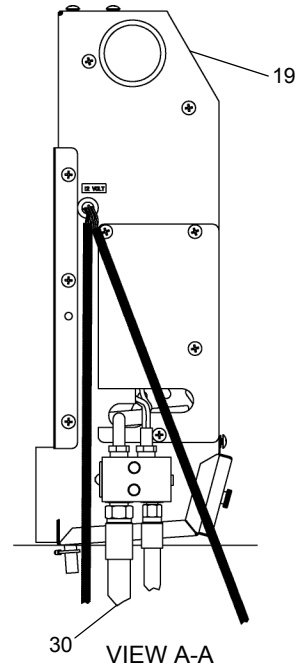
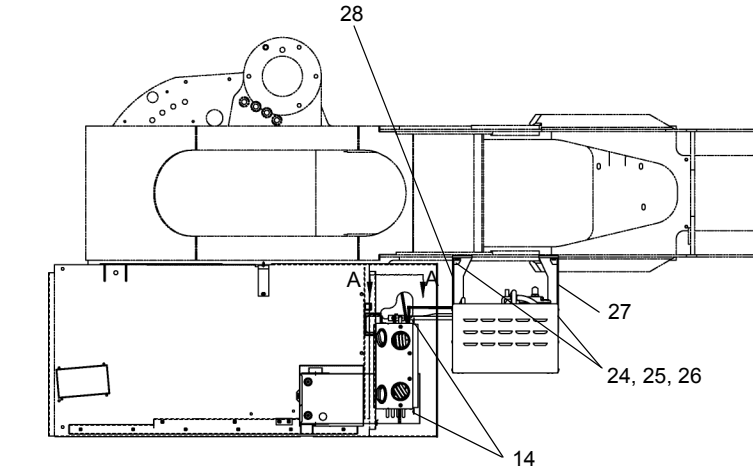
WHEN ORDERING PARTS, SPECIFY MODEL NUMBER, SERIAL NUMBER AND DESCRIPTION OF PARTS REQUIRED



LEFT ARM ASSEMBLY Single Axis

DATE: Revised 11-2010
 MODEL: RT500
 PAGE 28.10

GROUP
28



SEE PAGE 31.4

WHEN ORDERING PARTS, SPECIFY MODEL NUMBER, SERIAL NUMBER AND DESCRIPTION OF PARTS REQUIRED



HYDRAULIC A/C & L.P HEATER
(Option 1)

DATE: Released 03-2011
MODEL: RT500
PAGE 31.2

GROUP
31

SEE PAGE 31.11

<u>REF</u>	<u>PART NO.</u>	<u>DESCRIPTION</u>	<u>QTY</u>
	719A0113 (Rev K)	<i>Suburban Assembly Heater</i>	
1	719 0223	Suburban Propane Heater.....	1
2	719A0930	Hose ASS'Y & FTG	1
3	12400-1048	Heater Decal.....	1
4	1223-1076	Slope Alert Tilt Sensor.....	1
5*	719 0227	L.P. Regulator.....	1
6*	441 6828	Relay	1
7*	1221-147	Silicone Sealant.....	1
8	719 0471	Heater Cover	1
9	12019-62	3/8 Pipe to -6 JIC.....	1
10	719F0482	Adapter Flange	1
11	719 0476	Slope Alert Mounting Panel.....	1
12	719A0440	LP Bracket Kit.....	1
13	1233-75	1/2-13 x 3 1/2 LG. Carriage Bolt.....	1
14	1219-641	3/8 X 90 Pipe Elbow	1
15	1219-199	3/8 X 2 1/2 Pipe Nipple.....	1
16	200B2007-3	P-Clamp.....	1
17	220-7007-5	1/4-20 X 0.75 LG. FLG/HD	2
18	719 0479	Kenway Remote Spacer Box.....	1
19	719A0225	Thermostat Assembly.....	1
20	1236-6	#8 X 3/4" Sheet Metal Screw.....	5
21	1200-416	1/4-20 X 3/4 Flangre Head Bolt.....	2
22	1233-69	Screw Machine	4
23	1230-6	Nut.....	4
24	1240-291	Clamp	2
25	1233-78	#6-32 X 3.00 LG. R.H.M.S.....	2

* ITEMS 5, 6 & 7 ARE NOT SHOWN IN ILLUSTRATION

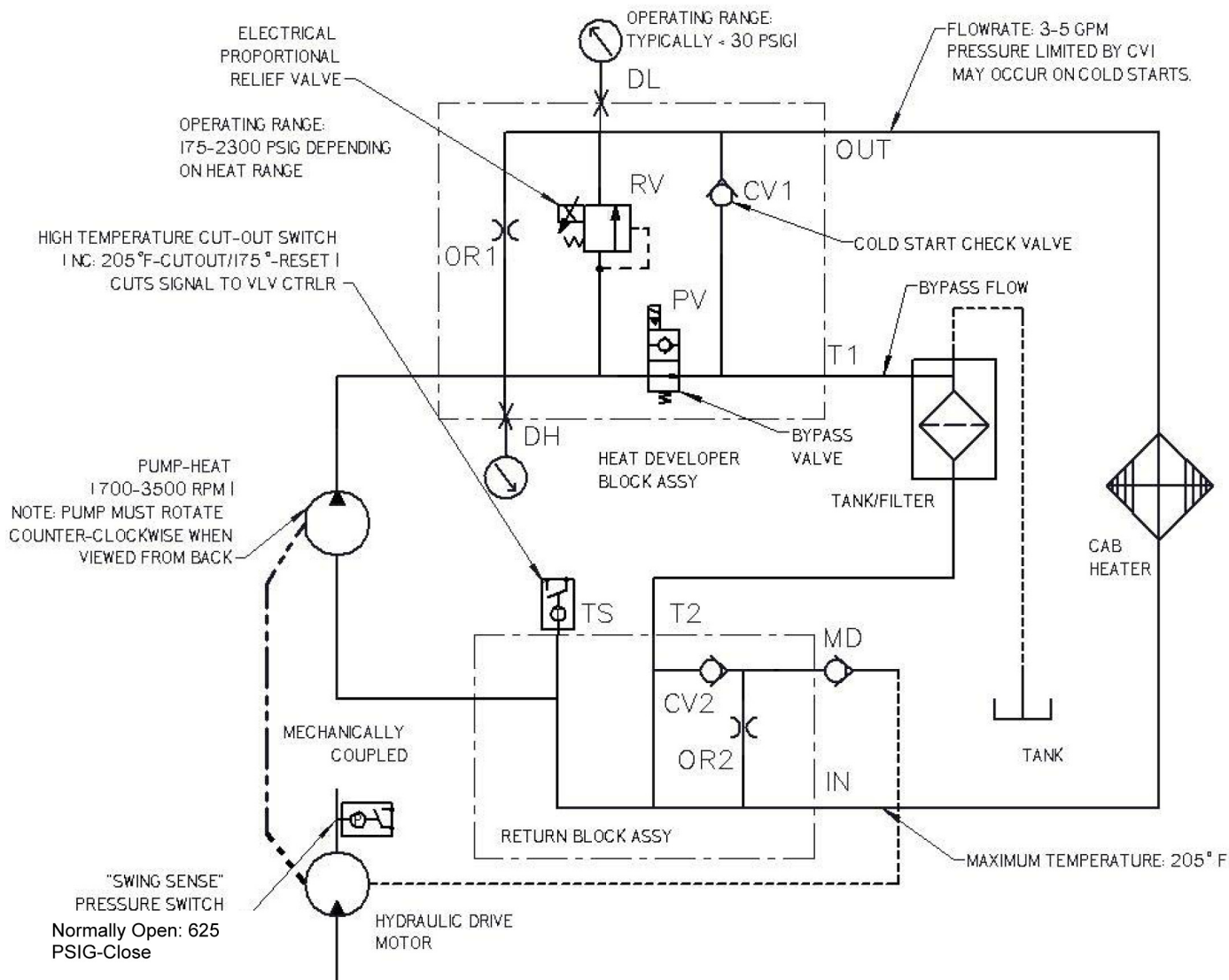
WHEN ORDERING PARTS, SPECIFY MODEL NUMBER, SERIAL NUMBER AND DESCRIPTION OF PARTS REQUIRED



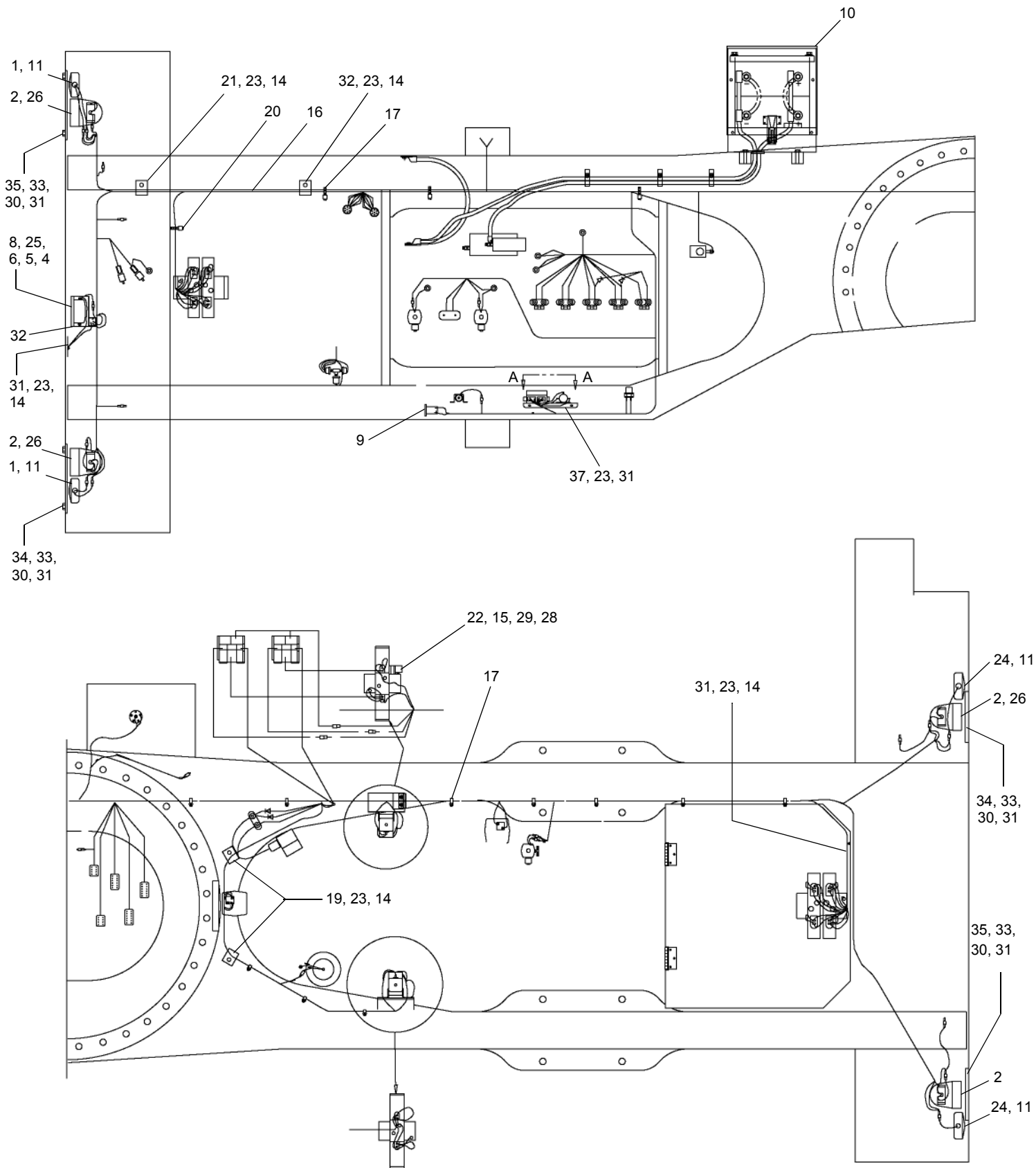
**SUBURBAN ASSEMBLY
HEATER (Option 2)**

DATE: Released 03-2011
MODEL: RT500
PAGE 31.12

**GROUP
31**



WHEN ORDERING PARTS, SPECIFY MODEL NUMBER, SERIAL NUMBER AND DESCRIPTION OF PARTS REQUIRED



SEE PAGE 33.12

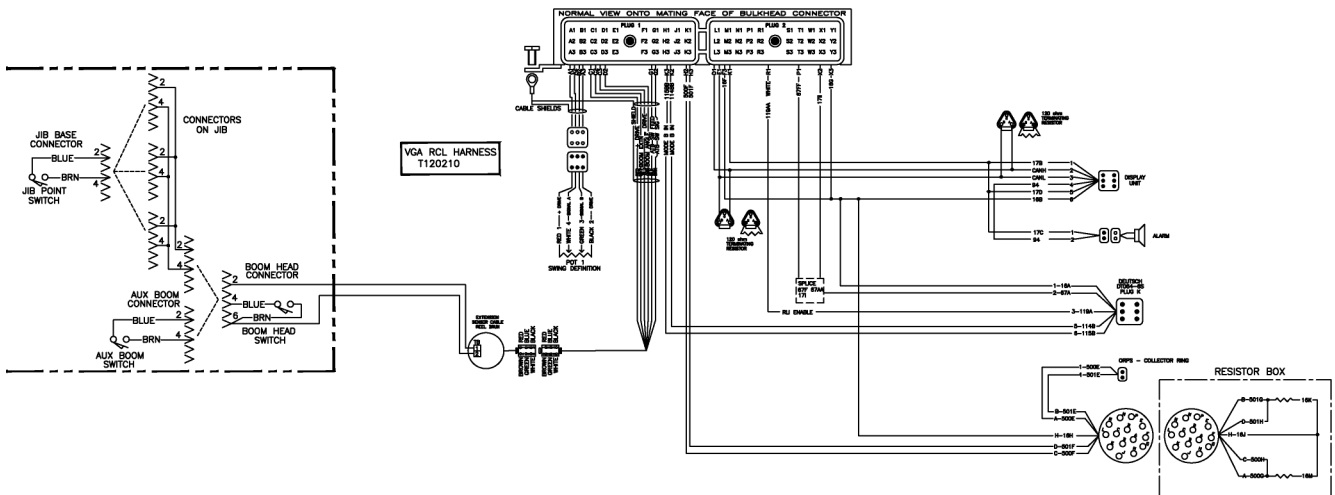
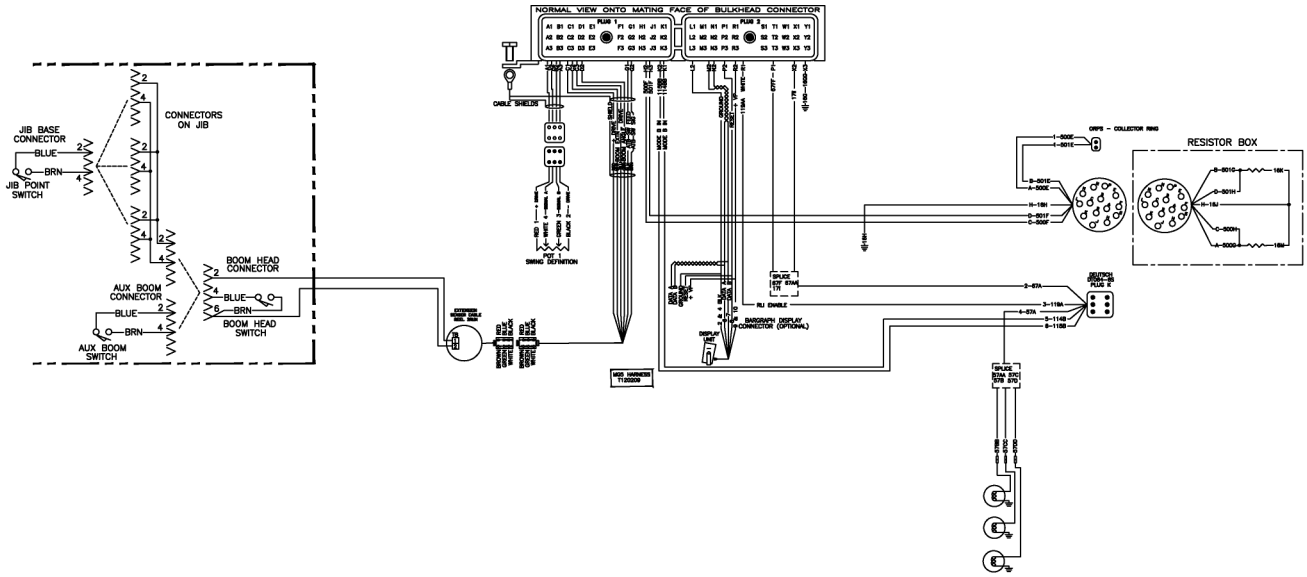
WHEN ORDERING PARTS, SPECIFY MODEL NUMBER, SERIAL NUMBER AND DESCRIPTION OF PARTS REQUIRED



ELECTRICAL SYSTEM
Lights & Relay Panel

DATE: Revised 03-2012
MODEL: RT500
PAGE 33.10

GROUP
33



SEE PAGE 33.31

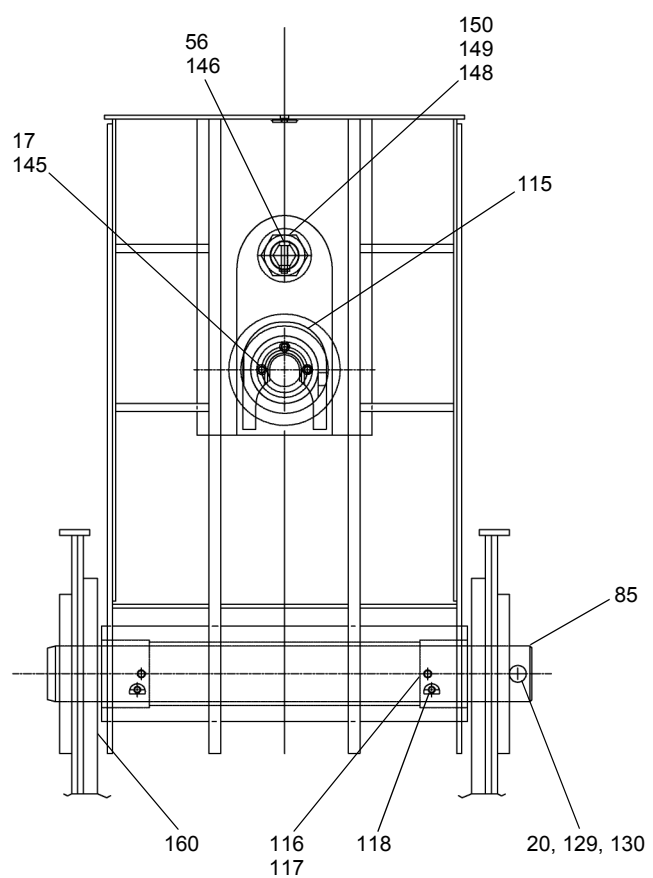
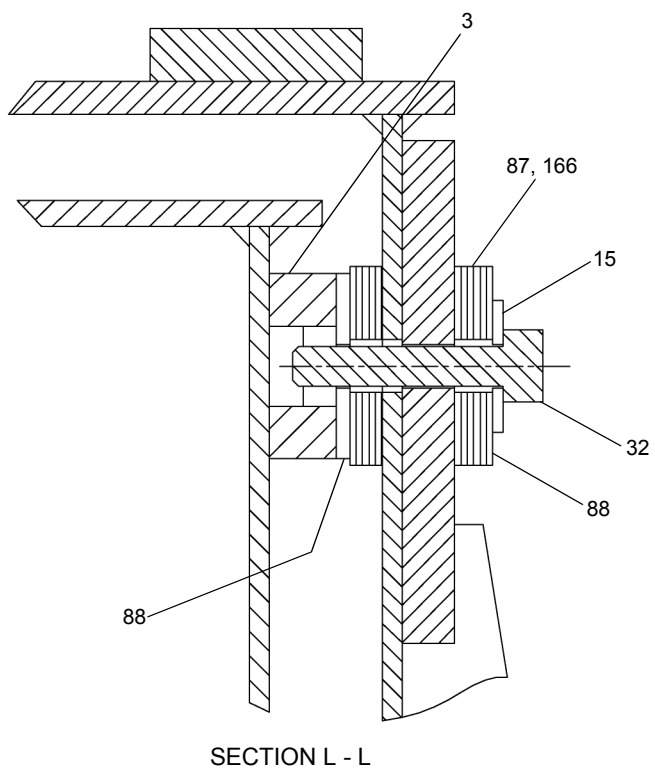
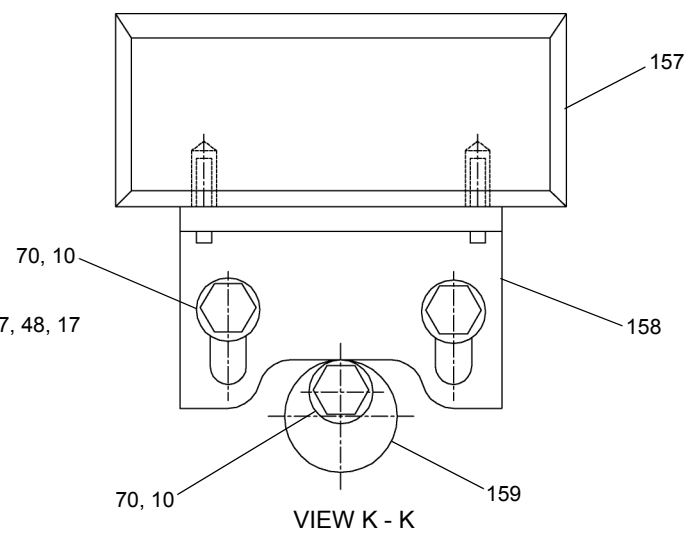
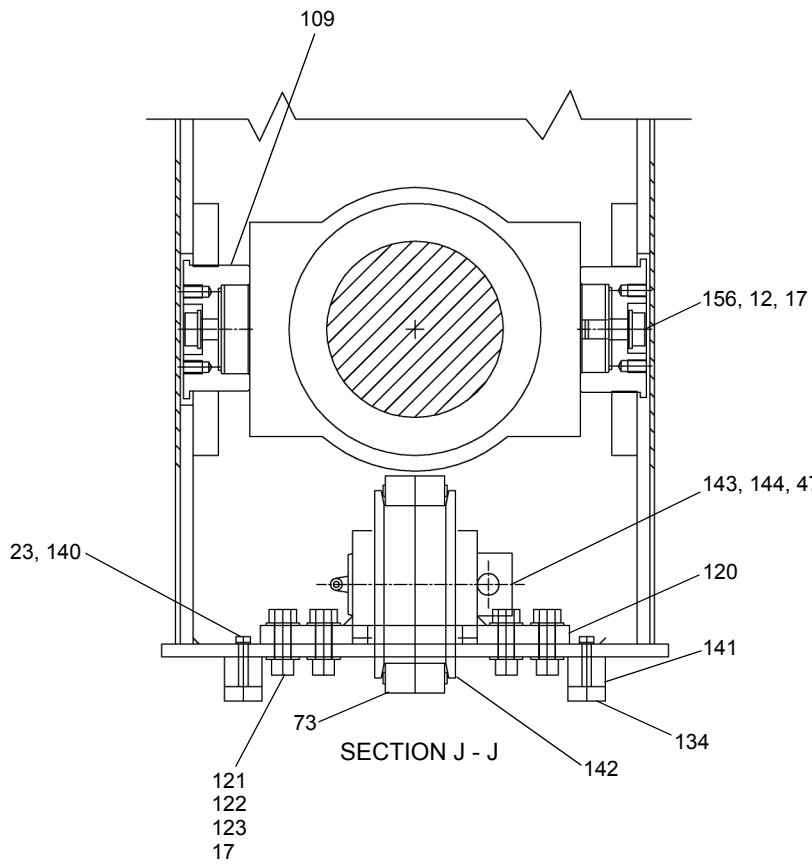
WHEN ORDERING PARTS, SPECIFY MODEL NUMBER, SERIAL NUMBER AND DESCRIPTION OF PARTS REQUIRED



UPPER SCHEMATIC
 (Option)

DATE: Revised 09-2011
 MODEL: RT500
 PAGE 33.30

GROUP
33



SEE PAGES 39.6 & 39.7

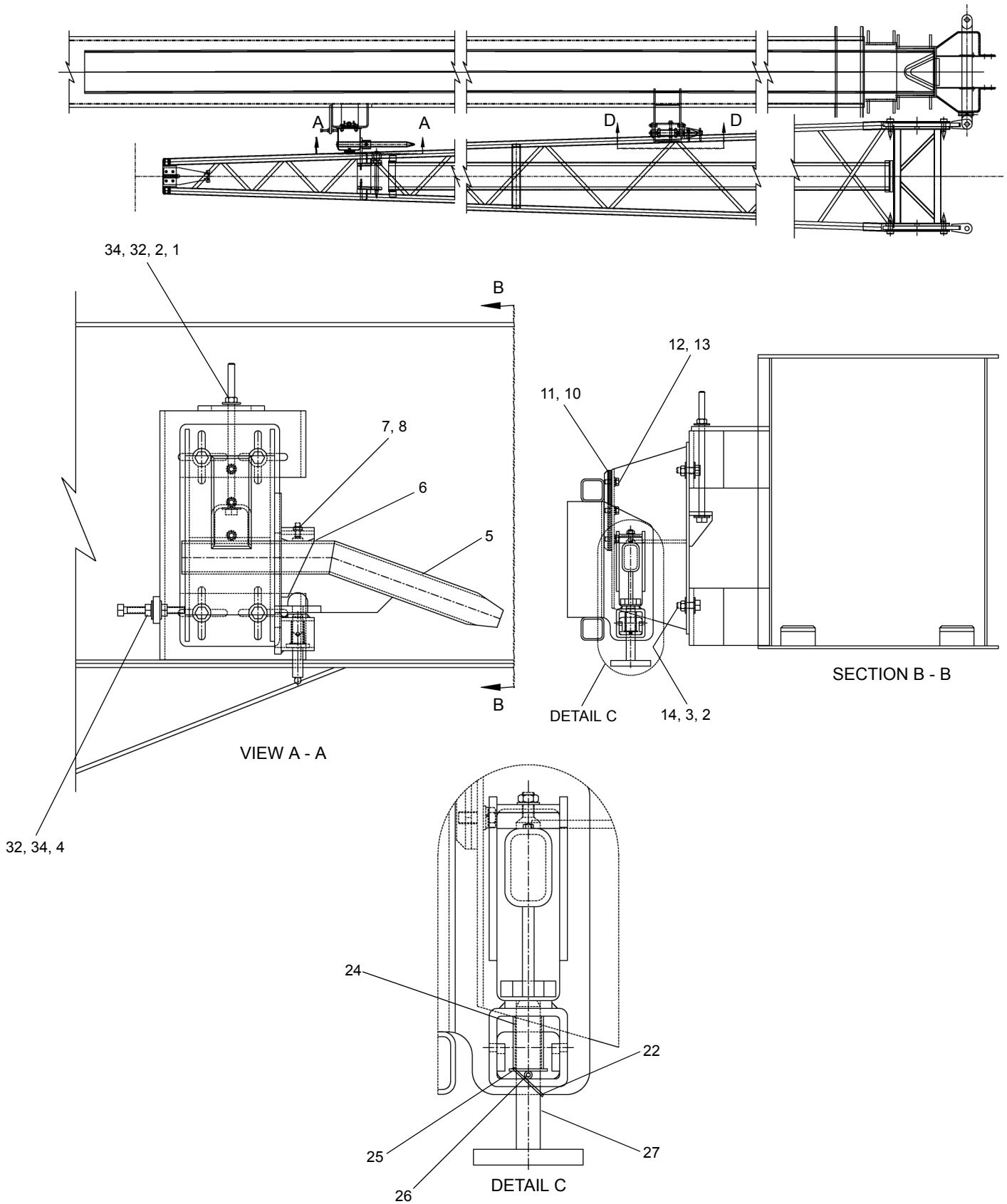
WHEN ORDERING PARTS, SPECIFY MODEL NUMBER, SERIAL NUMBER AND DESCRIPTION OF PARTS REQUIRED



110' BOOM

DATE: Revised 11-2009
 MODEL: RT500
 PAGE 39.5

GROUP
39



SEE PAGE 39A.6

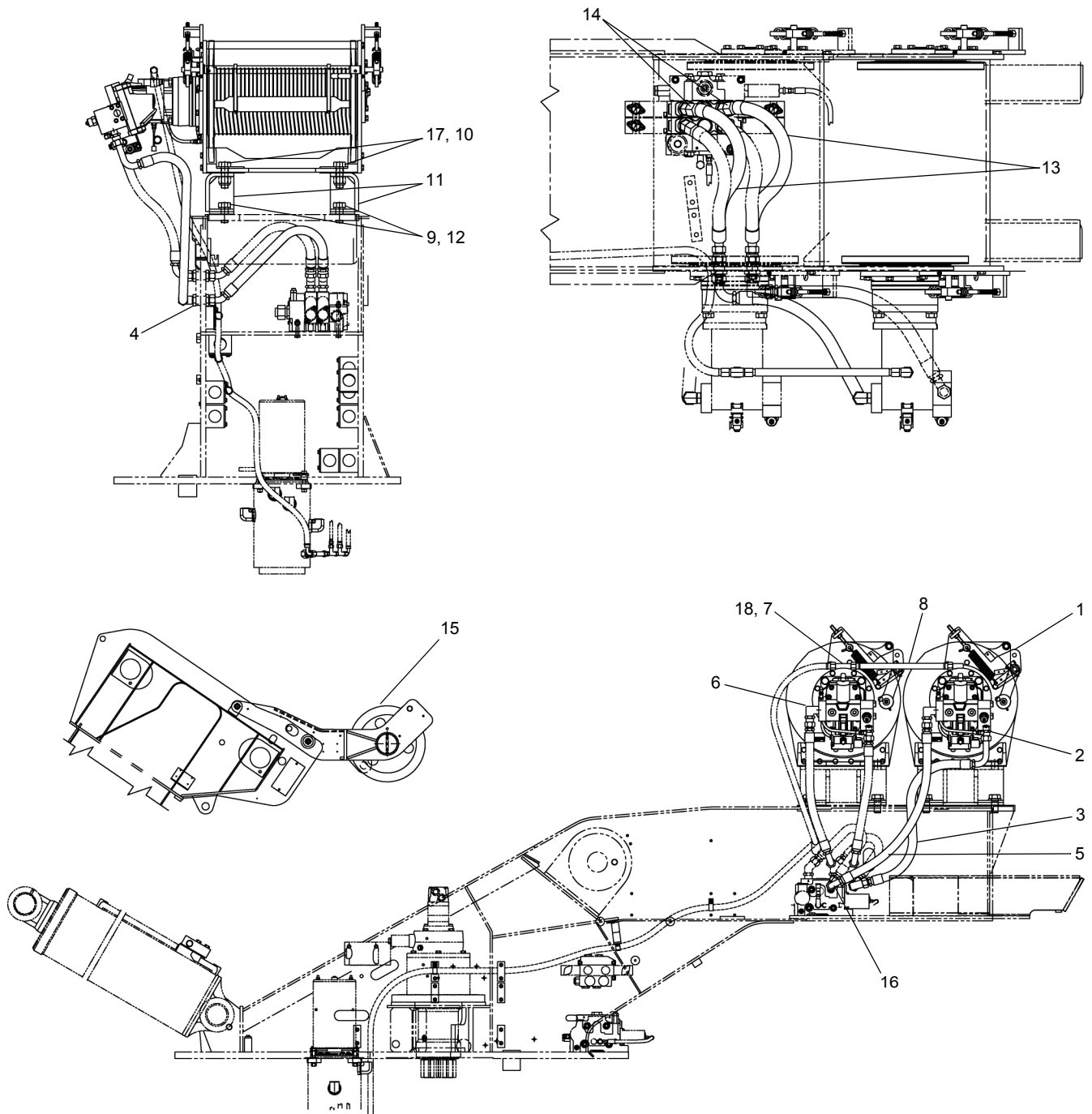
WHEN ORDERING PARTS, SPECIFY MODEL NUMBER, SERIAL NUMBER AND DESCRIPTION OF PARTS REQUIRED



JIB STOWAGE ASSEMBLY

DATE: Revised 11-2009
 MODEL: RT500
 PAGE 39A.5

GROUP
39A



REF	PART NO.	DESCRIPTION	QTY	REF	PART NO.	DESCRIPTION	QTY
723A0009 (Rev E) Auxiliary Winch Assembly				9	1200-347	Capscrew, 1.12C X 2.50.....	4
1	717 1155	Winch, Braden.....	1	10	1205-204	Nut, Lock, 1.12.....	4
2	1219-556	Adpater, STR, -12 -16.....	1	11	709F6596	Spacer, AUX Winch.....	2
3	723 0054-43	Hose, -16.....	1	12	1210-57	Washer, Lock, 1.12.....	4
4	1219-917	Bulkhead Fitting, STR, -16.....	2	13	707 4097-29	Hose, -16.....	2
5	707 4100-44	Hose, -16.....	1	14	12019-303	Adapter, 45°, -16.....	2
6	12019-193	Adapter, 90°, -12 -16.....	1	15	709A8019	AUX. Sheave ASSY.....	1
7	12019-464	Tee, Branch.....	1	16	1219-957	Adapter, 90° SW Nut, -16.....	1
8	707 4094-21	Hose, -10.....	1	17	1200-418	Capscrew, 1.12 x 3.50.....	4
				18	1219-810	Adapter.....	1

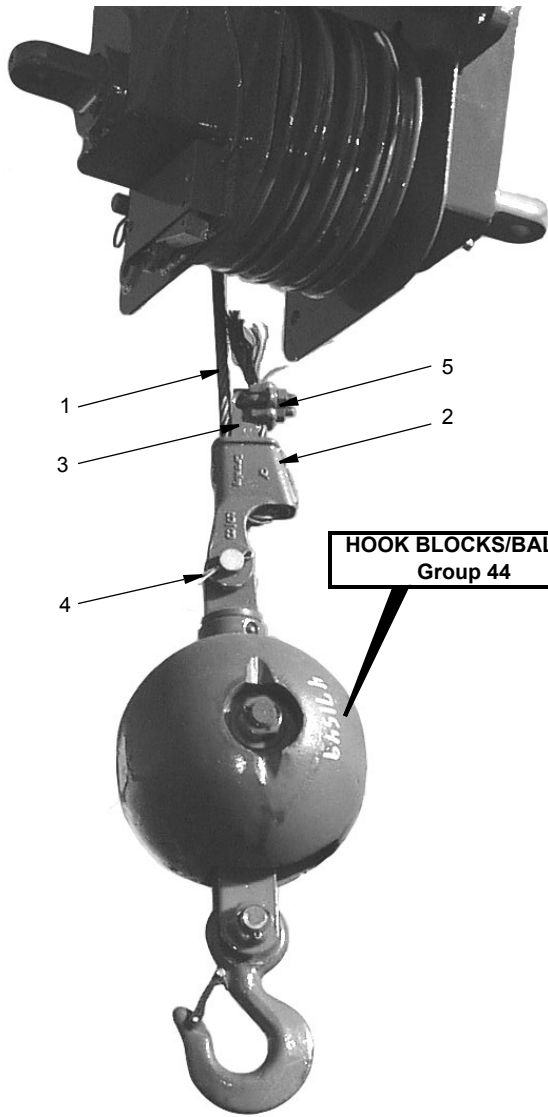
WHEN ORDERING PARTS, SPECIFY MODEL NUMBER, SERIAL NUMBER AND DESCRIPTION OF PARTS REQUIRED



AUXILIARY WINCH WINCH

DATE: Revised: 11-2009
 MODEL: RT500
 PAGE 40A.1

GROUP
40A



UNDER NO CONDITION CAN ANY OTHER SIZE, TYPE, OR LENGTH OF WIRE ROPE BE USED ON THIS EQUIPMENT SINCE IT CONSTITUTES A SAFETY HAZARD.

- WIRE ROPE -
 6X19 OR 6X37 CLASS, I.P.S., I.W.R.C. REGULAR LAY PREFORMED
 5/8" - 41,200 Lbs. Minimum Breaking Strength

- WIRE ROPE -
OPTIONAL
 18X19 OR 19X19 ROTATION RESISTANT COMPACTED STRAND
 5/8" - 56,420 Lbs. Minimum Breaking Strength

REF	PART NO.	DESCRIPTION	QTY
	717A0841	Cable, 5/8 x 500' Regular Lay	
	710A0572	Cable, 5/8 x 500' Rotation Resistant	
	710A0574	Cable, 5/8 x 600' Regular Lay	
	710A0573	Cable, 5/8 x 600' Rotation Resistant	
1	12151-500	Rope, Wire	1
	12516-500	Rope, Wire	1
	12151-600	Rope, Wire	1
	12516-600	Rope, Wire	1
	1234-18	Wedge & Socket Assembly, 5/8".....1 (Includes Items 2 Through 5)	1 1 1
2	1234-18	Socket	1 1 1
3	1234-19	Wedge	1 1 1
4	1207-42	Pin, Cotter 1/4 x 2.....	1 1 1
5	1240-45	Clamp, "U" Bolt Type 5/8.....	1 1 1

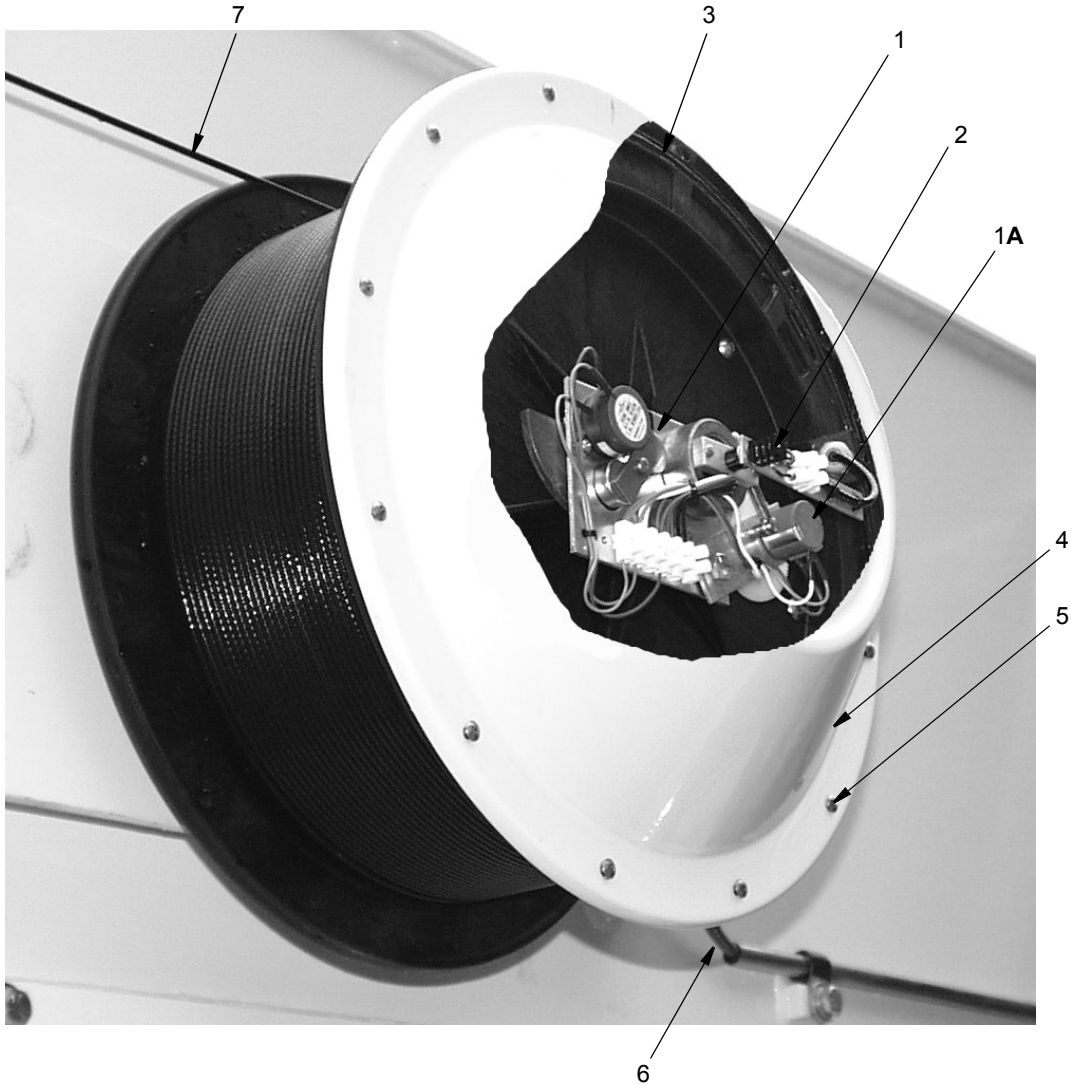
WHEN ORDERING PARTS, SPECIFY MODEL NUMBER, SERIAL NUMBER AND DESCRIPTION OF PARTS REQUIRED



WIRE ROPE

DATE: Revised 11-2009
 MODEL: RT500-1
 PAGE 45.1

GROUP
45



<u>REF</u>	<u>PART NO.</u>	<u>DESCRIPTION</u>	<u>QTY</u>
	717 0778	Reeling Drum, RCI 510	
1	216651	Base Plate Assembly	1
1A	216652	Potentiometer, Extension	1
2	216653	Slip Ring	1
3	216654	O-Ring	1
4	216655	Cover Assembly	1
5	216656	Screw	12
6	216657	Cable, Tail	1
7	216658	Ext. Cable Assembly	1

WHEN ORDERING PARTS, SPECIFY MODEL NUMBER, SERIAL NUMBER AND DESCRIPTION OF PARTS REQUIRED



GREER RCI 510
Reel

DATE: Revised 10-2011
MODEL: RT500
PAGE 52.7

GROUP
52

CLICK HERE TO **DOWNLOAD** THE COMPLETE MANUAL

- Thank you very much for reading the preview of the manual.
- You can download the complete manual from: www.heydownloads.com by clicking the link below



- Please note: If there is no response to CLICKING the link, please download this PDF first and then click on it.

CLICK HERE TO **DOWNLOAD** THE COMPLETE MANUAL