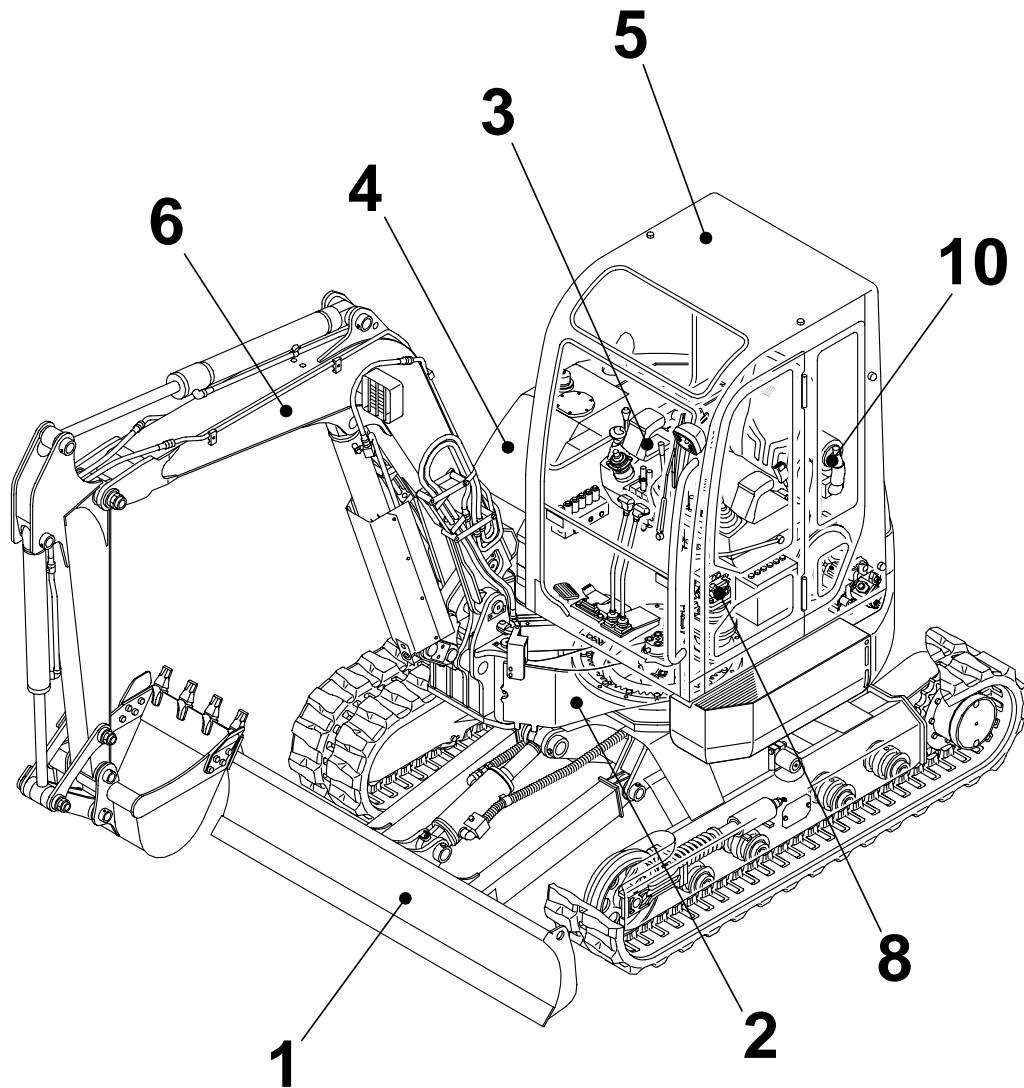


TB138FR

Book No. BG5Z002
Serial No.13810003-



TAKEUCHI

CLICK HERE TO **DOWNLOAD** THE COMPLETE MANUAL

- Thank you very much for reading the preview of the manual.
- You can download the complete manual from: www.heydownloads.com by clicking the link below



- Please note: If there is no response to CLICKING the link, please download this PDF first and then click on it.

CLICK HERE TO **DOWNLOAD** THE COMPLETE MANUAL

CARRIER ROLLER

| Item | Part number | Description | Q'ty | Chan. | Serial No. | Serv. | Remarks |
|------|-------------------|----------------------|------|-------|------------|-------|----------------|
| | | ROLLER ASSY, carrier | | | | | X03712-00000-1 |
| 0-1 | 0371200100 | ROLLER SUB ASSY | 2 | | | | |
| 1 | 0371200110 | ▪ ROLLER | 1 | | | | |
| 2 | 0431200200 | ▪ SHAFT | 1 | | | | |
| 3 | 0431200300 | ▪ COVER | 1 | | | | |
| 4 | 1431202552 | ▪ SEAL | 1 | | | | |
| 5 | 1300006205 | ▪ BEARING | 2 | | | | |
| 6 | 1221000052 | ▪ RING, snap | 1 | | | | |
| 7 | 1501820001 | ▪ PLUG | 1 | | | | |
| 8 | 1100041060 | BOLT | 2 | | | | |
| 9 | 1130040010 | NUT | 2 | | | | |
| | G4a100 | | | | | | |

SLEW BEARING

| Item | Part number | Description | Q'ty | Chan. | Serial No. | Serv. | Remarks |
|------|-------------------|--------------------|------|-------|------------|-------|----------------|
| | | BEARING ASSY, slew | | | | | X03720-00000-1 |
| 1 | 1913003700 | BEARING | 1 | | | | |
| 1-1 | 1913003709 | • SEAL | 1 | | | | |
| 2 | 0432300100 | BATH, grease | 1 | | | | |
| 3 | 0352000100 | BOLT | 1 | | | | |
| 4 | 1101051265 | BOLT | 31 | | | | |
| 5 | 1141540012 | WASHER | 16 | | | | |
| 6 | 1100040816 | BOLT | 8 | | | | |
| 7 | 1140020008 | WASHER, spring | 8 | | | | |
| | G4a060 | | | | | | |

| TURNTABLE | | | | | | |
|-----------|-------------|------------------|------|-------|------------|-------------------|
| Item | Part number | Description | Q'ty | Chan. | Serial No. | Serv. Remarks |
| | | TURNTABLE ASSY | | | | X03730-14000-2 |
| 1 | X ***** | TURNTABLE | 1 | | | |
| 2 | 0373014200 | COUNTERWEIGHT | 1 | | | |
| 3 | 0373014300 | ANGLE | 1 | | | |
| 4 | 0373014410 | COVER | 1 | | | |
| 5 | 0373014320 | GUARD | 1 | | | |
| 6 | 0373014420 | NET | 1 | | | |
| 8 | 1101141625 | BOLT | 2 | | | |
| 9 | 0003000010 | WASHER | 3 | | | |
| 10 | 1101041650 | BOLT | 2 | | | |
| 11 | 1140020016 | WASHER, spring | 2 | | | |
| 12 | 1101041240 | BOLT | 2 | | | |
| 13 | 1140020012 | WASHER, spring | 2 | | | |
| 14 | 0003600024 | WASHER | 2 | | | |
| 15 | 1100041020 | BOLT | 2 | | | |
| 16 | 1100041025 | BOLT | 3 | | | |
| 17 | 1140020010 | WASHER, spring | 5 | | | |
| 18 | 1141110010 | WASHER | 5 | | | |
| 19 | 0007210026 | BUSHING | 1 | | | |
| 20 | 1532520601 | CONNECTOR | 1 | | | |
| 21 | 1532020681 | TUBE | 1 | | | sold by the meter |
| 22 | 1560001675 | FITTING, grease | 1 | | | |
| 23 | 1532620601 | ELBOW | 1 | | | |
| 24 | 0393014200 | PLATE | 1 | | | |
| 25 | 1100040820 | BOLT | 4 | | | |
| 26 | 1140020008 | WASHER, spring | 4 | | | |
| 27 | 1141110008 | WASHER | 4 | | | |
| 28 | 1654314028 | SPONGE | 1 | | | |
| 29 | 0373014430 | ABSORBENT, noise | 1 | | | |
| 30 | 0003600198 | WASHER | 1 | | | |
| 31 | 0373014440 | ABSORBENT, noise | 1 | | | |
| 32 | 1652533016 | CAP | 2 | | | |
| 33 | 1652533021 | CAP | 2 | | | |
| 34 | 0373014450 | ABSORBENT, noise | 1 | | | |
| | G5b021 | | | | | |

DOZER BLADE LEVER

| Item | Part number | Description | Q'ty | Chan. | Serial No. | Serv. | Remarks |
|------|-------------------|----------------------------|------|-------|------------|-------|----------------|
| | | LEVER ASSY, blade (cab) | | | | | X03773-01500-1 |
| | | LEVER ASSY, blade (canopy) | | | | | X03773-01600-1 |
| 1 | 0393301150 | BRACKET | 1 | | | | |
| 2 | 0393301160 | LEVER | 1 | | | | |
| 2-4 | 1333002025 | • BUSHING | 1 | | | | |
| 3 | 0393301180 | COVER | 1 | | | | cab |
| 4 | 1630776280 | CABLE, control | 1 | | | | |
| 5 | 1650153655 | GRIP | 1 | | | | |
| 6 | 0004006017 | PIN | 2 | | | | |
| 7 | 0005506024 | YOKE | 2 | | | | |
| 8 | 0093208300 | WASHER | 2 | | | | |
| 9 | 1100090612 | BOLT | 2 | | | | |
| 10 | 1100040625 | BOLT | 2 | | | | |
| 11 | 1100040816 | BOLT | 2 | | | | |
| 12 | 1130040006 | NUT | 2 | | | | |
| 13 | 1140090006 | WASHER, spring | 2 | | | | |
| 14 | 1140020008 | WASHER, spring | 2 | | | | |
| 15 | 1141190006 | WASHER | 2 | | | | |
| 16 | 1141110008 | WASHER | 2 | | | | |
| 17 | 1214000006 | PIN, snap | 2 | | | | |
| 18 | 1220000020 | RING, retaining | 1 | | | | |
| 19 | 1225000005 | WASHER | 2 | | | | |
| 21 | 0334120100 | BOOT | 1 | | | | |
| 22 | 1700000038 | SWITCH | 1 | | | | |
| 23 | 0393301190 | COVER | 1 | | | | canopy |
| 24 | 1711900059 | LIGHTER | 1 | | | | cab |
| | G5b050 | | | | | | |

PIPING; OPERATION LEVER (1/2) (ISO-JCB pattern)

| Item | Part number | Description | Q'ty | Chan. | Serial No. | Serv. | Remarks |
|------|---------------|-----------------------------------|------|-------|------------|-------|-------------------|
| | | PIPING ASSY | | | | | X03771-20500-5 |
| | | PIPING ASSY (1st aux. proportion) | | | | | X03771-20700-5 |
| 1 | 0377120010 | HOSE ASSY | 1 | | | | 19348-22135 |
| 3 | 0377120030 | HOSE ASSY | 1 | | | | 19348-22088 |
| 4 | 0377120040 | HOSE ASSY | 1 | | | | 19348-22180 |
| 5 | 0377120050 | HOSE ASSY | 1 | | | | 19348-22160 |
| 6 | 0377120060 | HOSE ASSY | 1 | | | | 19348-52130 |
| 7 | 0377120070 | HOSE ASSY | 1 | | | | 19348-22190 |
| 9 | 0377120090 | HOSE ASSY | 1 | | | | 19348-22160 |
| 11 | 0377120110 | HOSE ASSY | 1 | | | | 19348-52170 |
| 12 | 0377120120 | HOSE ASSY | 1 | | | | 19348-52165 |
| 25 | 0377120250 | HOSE ASSY | 1 | | | | 19348-22145 |
| 26 | 0377120260 | HOSE ASSY | 1 | | | | 19348-22145 |
| 27 | 0377120270 | HOSE ASSY | 1 | | | | 19348-22150 |
| 28 | 0377120280 | HOSE ASSY | 1 | | | | 19348-22150 |
| 29 | 0377120290 | HOSE ASSY | 1 | | | | 19348-22080 |
| 30 | 0377120300 | HOSE ASSY | 1 | | | | 19348-22060 |
| 31 | 0377120310 | HOSE ASSY | 1 | | | | 19348-52080 |
| 32 | 0377120320 | HOSE ASSY | 1 | | | | 19348-22050 |
| 35 | 0567149490 | PLATE | 1 | | | | |
| 36 | 1531645030 | PROTECTOR | 1 | | | | sold by the meter |
| 37 | 1567523870 | PROTECTOR | 1 | | | | sold by the meter |
| 38 | 1567523855 | PROTECTOR | 1 | | | | sold by the meter |
| 39 | 1652200007 | BAND | 4 | | | | |
| 41 | 1515012040 | ELBOW | 8 | | | | |
| | 1420010110 | · O-RING | 1 | | | | |
| 42 | 1654601010 | TRIM | 1 | | | | sold by the meter |
| 43 | 1901730500 | VALVE, selector | 1 | | | | |
| 44 | 1100040650 | BOLT | 2 | | | | |
| 45 | 1140020006 | WASHER, spring | 2 | | | | |
| 46 | 1100041225 | BOLT | 2 | | | | |
| 47 | 1140020012 | WASHER, spring | 2 | | | | |
| 48 | 1141110012 | WASHER | 2 | | | | |
| | G5b091 | | | | | | |

AIR CLEANER (for double element)

| Item | Part number | Description | Q'ty | Chan. | Serial No. | Serv. | Remarks |
|------|------------------------------------|------------------------------|------|-------|------------|-------|--------------------------------------|
| 1 | 1911102772 G4c150 | CLEANER ASSY, air ELEMENT | 1 | | | | X03740-07500-0 Donaldson P82-2858 |

ELECTRICAL (1/2)

| Item | Part number | Description | Q'ty | Chan. | Serial No. | Serv. | Remarks |
|-------|-------------------|------------------------|------|-------|------------|-------|----------------------------------|
| | | ELECTRICAL ASSY | | | | | X03742-15000-2 |
| 1 | 0374213760 | HARNESS ASSY, wiring | 1 | | | | |
| 1-1 | 1701310010 | • FUSE | 3 | | | | 10A |
| 1-2 | 1701310015 | • FUSE | 2 | | | | 15A |
| 1-3 | 1701310020 | • FUSE | 6 | | | | 20A |
| 1-4 | 1701310030 | • FUSE | 3 | | | | 30A |
| 1-5 | 1701200002 | • BOX, fuse | 1 | | | | |
| 1-6 | 1730500008 | • DIODE (3A, yellow) | 7 | | | | |
| 2 | 0374213960 | BOX ASSY | 1 | | | | |
| 2-1 | 0374213975 | • BOX | 1 | | | | |
| 2-3 | 0374213885 | • HARNESS ASSY, wiring | 1 | | | | |
| 2-3-1 | 1730500008 | • • DIODE (3A, yellow) | 5 | | | | |
| 2-4 | 0354213650 | • RESISTER ASSY | 2 | | | | |
| 2-5 | 1711900042 | • RELAY | 6 | | | | |
| 2-6 | 1120530612 | • SCREW | 9 | | | | |
| 2-7 | 1140020006 | • WASHER, spring | 11 | | | | |
| 2-9 | 0872433150 | • TUBE | 2 | | | | |
| 2-10 | 1653916012 | • TRIM | 1 | | | | sold by the meter |
| 2-11 | 1711900131 | • DETECTOR | 1 | | | | |
| 2-12 | 1100040616 | • BOLT | 1 | | | | |
| 2-13 | 1141110006 | • WASHER | 2 | | | | |
| 2-14 | 1130040006 | • NUT | 1 | | | | |
| 8 | 0564243540 | HARNESS, wiring | 1 | | | | |
| 14 | 1711900042 | RELAY | 2 | | | | |
| 17 | 1652022506 | GROMMET | 1 | | | | |
| 19 | 0007300003 | CLAMP | 3 | | | | |
| 22 | 1100040835 | BOLT | 4 | | | | 1st or 2nd aux. proportion |
| | 1100040835 | BOLT | 8 | | | | 1st & 2nd aux. proportion |
| 23 | 1100040816 | BOLT | 8 | | | | |
| 24 | 1140020008 | WASHER, spring | 16 | | | | |
| 25 | 1100040610 | BOLT | 2 | | | | |
| 26 | 1140020006 | WASHER, spring | 2 | | | | |
| 30 | 1141110008 | WASHER | 16 | | | | |
| 34 | 0354221600 | HARNESS, wiring | 1 | | | | |
| 41 | 0374213850 | HARNESS, wiring | 1 | | | | 1st & 2nd aux. proportion |
| 42 | 0374213860 | HARNESS, wiring | 1 | | | | 1st or 2nd aux. proportion |
| 43 | 1730140730 | CONTROLLER | 2 | | | | 1st & 2nd aux. proportion |
| | 1730140730 | CONTROLLER | 1 | | | | 1st or 2nd aux. proportion |
| 44 | 0374213890 | PLATE | 1 | | | | 1st & 2nd aux. proportion |
| 45 | 0374213790 | HARNESS, wiring | 1 | | | | 1st or 1st & 2nd aux. proportion |
| | G5c131 | | | | | | |

| RADIO | | | | | | |
|-------|---------------------|--|------|-------|------------|---------------------------|
| Item | Part number | Description | Q'ty | Chan. | Serial No. | Serv. Remarks |
| | | RADIO ASSY (for Europe, Asia, Oceania) | | | | X03747-05500-0 |
| | | RADIO ASSY (for America) | | | | X03747-05600-0 |
| | | RADIO ASSY (for JAPAN) | | | | X03747-05700-0 |
| 1 | 0374705510 | COVER | 1 | | | |
| 2 | X 0334704200 | CASSETTE STEREO ASSY | 1 | | | for Europe, Asia, Oceania |
| | X 0334704300 | CASSETTE STEREO ASSY | 1 | | | for America |
| | X 0334704400 | CASSETTE STEREO ASSY | 1 | | | for JAPAN |
| 2-1 | 1705003600 | • CASSETTE STEREO | 1 | | | for Europe, Asia, Oceania |
| | 1705003700 | • CASSETTE STEREO | 1 | | | for America |
| | 1705003800 | • CASSETTE STEREO | 1 | | | for JAPAN |
| 2-2 | 1702700002 | • SOCKET | 1 | | | |
| 2-3 | 1702700004 | • SLEEV | 1 | | | |
| 6 | 1110040625 | SCREW, cap | 3 | | | |
| 7 | 1140020006 | WASHER, spring | 3 | | | |
| 8 | 1141110006 | WASHER | 3 | | | |
| 9 | 1652520006 | NUT | 3 | | | |
| 10 | 1705003650 | COVER | 1 | | | |
| 11 | 1122500412 | SCREW | 4 | | | |
| 12 | 1141110004 | WASHER | 4 | | | |
| 13 | 1652231100 | BAND | 1 | | | |
| 14 | 0872433150 | TUBE | 2 | | | |

G5c110

VALVE & ACCESSORIES (2/2)

| Item | Part number | Description | Q'ty | Chan. | Serial No. | Serv. | Remarks |
|------|-------------|---|------|-------|------------|-------|---------------------|
| 0 | X ***** | VALVE ASSY, control | 1 | | | | X03750-20010-0 |
| | X ***** | VALVE ASSY, control (with 2nd aux. lines) | 1 | | | | X03750-20020-0 |
| 1 | 1901044400 | • VALVE, control | 1 | | | | |
| 2 | 1901044500 | • VALVE, control | 1 | | | | with 2nd aux. lines |
| 4 | 0007224013 | • ADAPTOR | 1 | | | | |
| 5 | 0007224006 | • ADAPTOR | 1 | | | | |
| | 1420010180 | • • O-RING | 1 | | | | |
| 6 | 0007203021 | • ADAPTOR | 9 | | | | |
| | 0007203021 | • ADAPTOR | 10 | | | | with 2nd aux. lines |
| | 1420010140 | • • O-RING | 1 | | | | |
| 7 | 0007213016 | • BUSHING | 2 | | | | |
| | 1420010140 | • • O-RING | 1 | | | | |
| 8 | 0007213064 | • BUSHING | 1 | | | | |
| 10 | 1515010131 | • ELBOW | 4 | | | | |
| | 1420010140 | • • O-RING | 1 | | | | |
| 11 | 1515010051 | • ELBOW | 1 | | | | |
| | 1420010180 | • • O-RING | 1 | | | | |
| 12 | 1512374002 | • ADAPTOR | 1 | | | | |
| | 1420010180 | • • O-RING | 1 | | | | |
| 13 | 1515600201 | • ADAPTOR | 7 | | | | |
| | 1515600201 | • ADAPTOR | 8 | | | | with 2nd aux. lines |
| | 1420010140 | • • O-RING | 1 | | | | |
| 14 | 1512370011 | • TEE | 1 | | | | |
| | 1420010110 | • • O-RING | 1 | | | | |
| 15 | 1515012510 | • ELBOW | 1 | | | | |
| | 1420010110 | • • O-RING | 1 | | | | |
| 16 | 1515600200 | • ADAPTOR | 11 | | | | |
| | 1515600200 | • ADAPTOR | 13 | | | | with 2nd aux. lines |
| | 1420010110 | • • O-RING | 1 | | | | |
| 17 | 1515012040 | • ELBOW | 9 | | | | |
| | 1420010110 | • • O-RING | 1 | | | | |
| 19 | 1420010290 | • O-RING | 1 | | | | |
| 20 | 1420010180 | • O-RING | 1 | | | | |
| 21 | 1420010140 | • O-RING | 12 | | | | |
| | 1420010140 | • O-RING | 13 | | | | with 2nd aux. lines |
| | G5d020 | | | | | | |

PIPING; UPPER (2/3) (1st aux. proportional cont.)

| Item | Part number | Description | Q'ty | Chan. | Serial No. | Serv. | Remarks |
|------|-------------------|--|------|-------|------------|-------|-------------------|
| | | PIPING ASSY, upper | | | | | X03750-17000-4 |
| | | PIPING ASSY, upper (with 2nd aux. lines) | | | | | X03750-16900-4 |
| 9 | 0377016090 | HOSE ASSY | 1 | | | | 18019-21185 |
| 10 | 0377016100 | HOSE ASSY | 1 | | | | 18019-21165 |
| 11 | 0377016110 | HOSE ASSY | 1 | | | | 18019-21175 |
| 12 | 0377016120 | HOSE ASSY | 1 | | | | 18019-21155 |
| 13 | 0377016130 | HOSE ASSY | 1 | | | | 18015-21060 |
| 14 | 0377016140 | HOSE ASSY | 1 | | | | 18015-21060 |
| 15 | 0377016150 | HOSE ASSY | 1 | | | | 18015-21060 |
| 16 | 0377016160 | HOSE ASSY | 1 | | | | 18015-21050 |
| 17 | 0377016170 | HOSE ASSY | 1 | | | | 18019-21145 |
| 18 | 0377016180 | HOSE ASSY | 1 | | | | 18019-21160 |
| 19 | 0377016190 | HOSE ASSY | 1 | | | | 18019-21163 |
| 20 | 0377016200 | HOSE ASSY | 1 | | | | 18019-21118 |
| 21 | 0377016210 | HOSE ASSY | 1 | | | | 18019-40146 |
| 22 | 0377016220 | HOSE ASSY | 1 | | | | 18015-41040 |
| 23 | 0377016230 | HOSE ASSY | 1 | | | | 18019-40155 |
| 24 | 0377016240 | HOSE ASSY | 1 | | | | 18017-21075 |
| 25 | 0377016250 | HOSE ASSY | 1 | | | | 18017-21068 |
| 26 | 0377016260 | HOSE ASSY | 1 | | | | 18015-21051 |
| 27 | 0377016270 | HOSE ASSY | 1 | | | | 18015-21050 |
| 55 | 1531335070 | PROTECTOR | 1 | | | | sold by the meter |
| 56 | 1652201008 | BAND | 6 | | | | |
| 65 | 0377017020 | HOSE ASSY | 1 | | | | 19348-22085 |
| 66 | 0377017030 | HOSE ASSY | 1 | | | | 19348-22140 |
| 67 | 0377017040 | HOSE ASSY | 1 | | | | 19348-52095 |
| 69 | 1531345015 | PROTECTOR | 1 | | | | sold by the meter |
| 70 | 1531325030 | PROTECTOR | 2 | | | | sold by the meter |
| | G5d131 | | | | | | |

BOOM & ARM EMERGENCY SHUT-OFF VALVE (2/2)

| Item | Part number | Description | Q'ty | Chan. | Serial No. | Serv. | Remarks |
|------|-------------------|--------------------------------|------|-------|------------|-------|----------------|
| 0 | 0375019700 | VALVE ASSY, emergency shut-off | 1 | | | | X03750-19700-3 |
| 24 | 1100041030 | • BOLT | 2 | | | | |
| 29 | 1140020010 | • WASHER, spring | 2 | | | | |
| 31 | 1140020006 | • WASHER, spring | 2 | | | | |
| 32 | 1141110010 | • WASHER | 2 | | | | |
| 34 | 1141110006 | • WASHER | 2 | | | | |
| 35 | 1652201005 | • BAND | 2 | | | | |
| 37 | 0007300030 | • CLAMP | 1 | | | | |
| 39 | 1901745200 | • VALVE, emergency shut-off | 1 | | | | |
| 40 | 1801720113 | • HOSE ASSY | 1 | | | | |
| 41 | 0375019740 | • HOSE ASSY | 1 | | | | 18010-22112 |
| 43 | 0375019760 | • HOSE ASSY | 1 | | | | 18010-79375 |
| 47 | 0375019310 | • TEE | 1 | | | | |
| 48 | 0375019330 | • BAND | 1 | | | | |
| 49 | 0375019340 | • BAND | 1 | | | | |
| 50 | 1515600572 | • ADAPTOR | 1 | | | | |
| | 1420010140 | • • O-RING | 1 | | | | |
| 51 | 1515600577 | • ADAPTOR | 1 | | | | |
| | 1420010180 | • • O-RING | 1 | | | | |
| 52 | 0007236041 | • ADAPTOR | 1 | | | | |
| | 1420010180 | • • O-RING | 1 | | | | |
| 53 | 1515012040 | • ELBOW | 1 | | | | |
| | 1420010110 | • • O-RING | 1 | | | | |
| 54 | 1515600200 | • ELBOW | 1 | | | | |
| | 1420010110 | • • O-RING | 1 | | | | |
| 55 | 1100040645 | • BOLT | 1 | | | | |
| | G5d160 | | | | | | |

COVER (2/3) (engine hood)

| Item | Part number | Description | Q'ty | Chan. | Serial No. | Serv. | Remarks |
|------|-------------------|--------------------|------|-------|------------|-------|-------------------|
| 0-1 | 0378218500 | HOOD ASSY, engine | 1 | | | | X03782-18500-0 |
| 1 | 0378218510 | ▪ HOOD, engine | 1 | | | | |
| 2 | 0378218160 | ▪ PLATE | 1 | | | | |
| 4 | 0378218570 | ▪ ABSORBENT, noise | 2 | | | | |
| 6 | 0378218571 | ▪ ABSORBENT, noise | 1 | | | | |
| 7 | 0378218572 | ▪ ABSORBENT, noise | 1 | | | | |
| 9 | 1100040816 | ▪ BOLT | 2 | | | | |
| 10 | 1140020008 | ▪ WASHER, spring | 2 | | | | |
| 11 | 1141110008 | ▪ WASHER | 2 | | | | |
| 13 | 1654605113 | ▪ RUBBER | 1 | | | | sold by the meter |
| 14 | 1654605086 | ▪ RUBBER | 1 | | | | sold by the meter |
| 15 | 1654605040 | ▪ RUBBER | 1 | | | | sold by the meter |
| | G5e020 | | | | | | |

FLOOR MAT

| Item | Part number | Description | Q'ty | Chan. | Serial No. | Serv. | Remarks |
|------|-------------------|--------------------------|------|-------|------------|-------|----------------|
| | | MAT ASSY, floor (cab) | | | | | X05635-32600-0 |
| | | MAT ASSY, floor (canopy) | | | | | X03935-24100-0 |
| 1 | 0563532610 | MAT, floor | 1 | | | | cab |
| | 0393524110 | MAT, floor | 1 | | | | canopy |
| 3 | 0573500225 | SPONGE | 1 | | | | |
| 4 | 1652533013 | CAP | 1 | | | | |
| 5 | 1652533002 | CAP | 4 | | | | |
| | G5e070 | | | | | | |

| | | | | | | | | CAB (1/7) |
|---------------|-------------------|---------------------------|------|-------|------------|-------|-------------------|-----------|
| Item | Part number | Description | Q'ty | Chan. | Serial No. | Serv. | Remarks | |
| 0 | 0378605100 | CAB ASSY | 1 | | | | X03786-05100-0 | |
| 1 | X ***** | • CAB | 1 | | | | X03786-05200-0 | |
| 2 | 0378605300 | • DOOR ASSY | 1 | | | | see page (4/7) | |
| 3 | 0378605400 | • ASSIST ASSY, front sash | 1 | | | | see page (5/7) | |
| 4 | 0378601300 | • SASH ASSY, side | 1 | | | | | |
| 4-2 | 0378601320 | • • GLASS | 1 | | | | | |
| 4-3 | 0378601330 | • • GLASS | 1 | | | | | |
| 4-8 | 0338630650 | • • LOCK ASSY | 2 | | | | | |
| 5 | 0378601600 | • GLASS ASSY, front | 1 | | | | | |
| 5-1 | 0378601610 | • • GLASS | 1 | | | | | |
| 5-2 | 1654010900 | • • RETAINER | 2 | | | | | |
| 5-3 | 1654011100 | • • PACKING | 4 | | | | | |
| 5-4 | 1654011000 | • • PLATE | 2 | | | | | |
| 5-5 | 1122410412 | • • SCREW | 4 | | | | | |
| 6 | 0378605110 | • GLASS | 1 | | | | | |
| 7 | 0378605120 | • GLASS | 1 | | | | | |
| 8 | 0358605300 | • GLASS | 1 | | | | | |
| 13 | 0398619500 | • GUARD | 1 | | | | | |
| 14 | 1100040825 | • BOLT | 6 | | | | | |
| 15 | 1141110008 | • WASHER | 10 | | | | | |
| 22 | 0378605130 | • SPONGE | 1 | | | | | |
| 23 | 0378605140 | • SPONGE | 1 | | | | | |
| 32 | 0438601770 | • SPACER | 7 | | | | | |
| 33 | 0568634100 | • SEAL | 1 | | | | | |
| 35 | 0378603400 | • GROMMET | 1 | | | | | |
| 45 | 1653303010 | • CAP | 2 | | | | | |
| 64 | 1100040820 | • BOLT | 4 | | | | | |
| 73 | 1654636140 | • TRIM | 1 | | | | sold by the meter | |
| 74 | 1654636275 | • TRIM | 1 | | | | sold by the meter | |
| 76 | 1653916222 | • TRIM | 1 | | | | sold by the meter | |
| 77 | 1654605326 | • RUBBER | 1 | | | | sold by the meter | |
| 78 | 1654520374 | • RUBBER | 1 | | | | sold by the meter | |
| 79 | 1654605033 | • RUBBER | 2 | | | | sold by the meter | |
| 80 | 1653930355 | • TRIM | 1 | | | | sold by the meter | |
| 81 | 1654615216 | • DAM | 1 | | | | sold by the meter | |
| 82 | 1654231320 | • H-RUBBER | 1 | | | | sold by the meter | |
| 83 | 1654231325 | • H-RUBBER | 1 | | | | sold by the meter | |
| 87 | 1100040814 | • BOLT | 6 | | | | | |
| 88 | 1140090008 | • WASHER, spring | 6 | | | | | |
| 89 | 1654620350 | • TAPE | 1 | | | | sold by the meter | |
| G5e200 | | | | | | | | |

CAB (6/7) (assist)

| Item | Part number | Description | Q'ty | Chan. | Serial No. | Serv. | Remarks |
|------|-------------------|---------------------|------|-------|------------|-------|----------------|
| 0-3 | 0378605600 | ASSIST ASSY (R.H.) | 1 | | | | X03786-05600-0 |
| | 0378605700 | ASSIST ASSY (L.H.) | 1 | | | | X03786-05700-0 |
| 1 | 0568652720 | ▪ LINK ASSY (R.H.) | 1 | | | | |
| | 0568652770 | ▪ LINK ASSY (L.H.) | 1 | | | | |
| 2 | 0358601840 | ▪ PLATE | 1 | | | | |
| 3 | 1653900063 | ▪ SPRING, gas | 1 | | | | |
| 4 | 0378605610 | ▪ ARM ASSY (R.H.) | 1 | | | | |
| | 0378605710 | ▪ ARM ASSY (L.H.) | 1 | | | | |
| 4-5 | 1333001512 | ▪ ▪ BUSHING | 1 | | | | |
| 5 | 0378603760 | ▪ PLATE ASSY (R.H.) | 1 | | | | |
| | 0378603780 | ▪ PLATE ASSY (L.H.) | 1 | | | | |
| 5-5 | 1333001515 | ▪ ▪ BUSHING | 2 | | | | |
| 6 | 1106690616 | ▪ BOLT | 1 | | | | |
| 7 | 1654011756 | ▪ WASHER | 2 | | | | |
| 8 | 1100090820 | ▪ BOLT | 1 | | | | |
| 9 | 1654011705 | ▪ WASHER | 2 | | | | |
| 10 | 1214000006 | ▪ PIN, snap | 1 | | | | |
| 11 | 1654011712 | ▪ WASHER | 1 | | | | |
| 12 | 1210002015 | ▪ PIN, split | 1 | | | | |
| 13 | 1141190008 | ▪ WASHER | 1 | | | | |
| 14 | 0578600401 | ▪ WASHER | 1 | | | | |
| 15 | 0083252100 | ▪ WASHER | 2 | | | | |
| | G5e250 | | | | | | |

AIR CONDITIONER (1/7) (compressor)

| Item | Part number | Description | Q'ty | Chan. | Serial No. | Serv. | Remarks |
|------|--------------|-----------------------|------|-------|------------|-------|-------------------|
| | | CONDITIONER ASSY, air | | | | | X03746-03000-0 |
| 0 | X 0374603100 | COMPRESSOR ASSY | 1 | | | | X03746-03100-4 |
| 1 | 0374603110 | ▪ BRACKET | 1 | | | | |
| 2 | 0374600250 | ▪ SHAFT | 1 | | | | |
| 3 | 0374601101 | ▪ PULLEY | 1 | | | | |
| 4 | 0374602630 | ▪ BRACKET | 1 | | | | |
| 5 | 0374603120 | ▪ GUARD | 1 | | | | |
| 6 | 0564619240 | ▪ COLLAR | 1 | | | | |
| 7 | 0374603130 | ▪ GUARD | 1 | | | | |
| 10 | 1911505700 | ▪ PULLEY | 1 | | | | |
| 11 | 1621071057 | ▪ V-BELT | 1 | | | | |
| 12 | 1911506010 | ▪ COMPRESSOR | 1 | | | | |
| 13 | 1100040816 | ▪ BOLT | 5 | | | | |
| 14 | 1100040820 | ▪ BOLT | 2 | | | | |
| 15 | 1100040835 | ▪ BOLT | 1 | | | | |
| 16 | 0394602010 | ▪ BOLT | 1 | | | | |
| 17 | 1110040820 | ▪ SCREW, cap | 2 | | | | |
| 18 | 1100041020 | ▪ BOLT | 3 | | | | |
| 19 | 1100041025 | ▪ BOLT | 3 | | | | |
| 20 | 1100141005 | ▪ BOLT | 2 | | | | |
| 21 | 1140020008 | ▪ WASHER, spring | 10 | | | | |
| 22 | 1140020010 | ▪ WASHER, spring | 10 | | | | |
| 23 | 1140020012 | ▪ WASHER, spring | 1 | | | | |
| 24 | 1141110008 | ▪ WASHER | 5 | | | | |
| 25 | 1141110012 | ▪ WASHER | 1 | | | | |
| 26 | 1130040008 | ▪ NUT | 3 | | | | |
| 27 | 1130040010 | ▪ NUT | 2 | | | | |
| 28 | 1130040012 | ▪ NUT | 1 | | | | |
| 29 | 0003600222 | ▪ SHIM | AR | | | | t=0.2mm |
| 30 | 0003600223 | ▪ SHIM | AR | | | | t=0.3mm |
| 31 | 1652231250 | ▪ BAND | 5 | | | | |
| 32 | 1652201005 | ▪ BAND | 1 | | | | |
| 33 | 1703210723 | ▪ TUBE | 1 | | | | sold by the meter |
| 34 | 1919055000 | ▪ GAS | 8 | | | | |
| | G5e132 | | | | | | |

CLICK HERE TO **DOWNLOAD** THE COMPLETE MANUAL

- Thank you very much for reading the preview of the manual.
- You can download the complete manual from: www.heydownloads.com by clicking the link below



- Please note: If there is no response to CLICKING the link, please download this PDF first and then click on it.

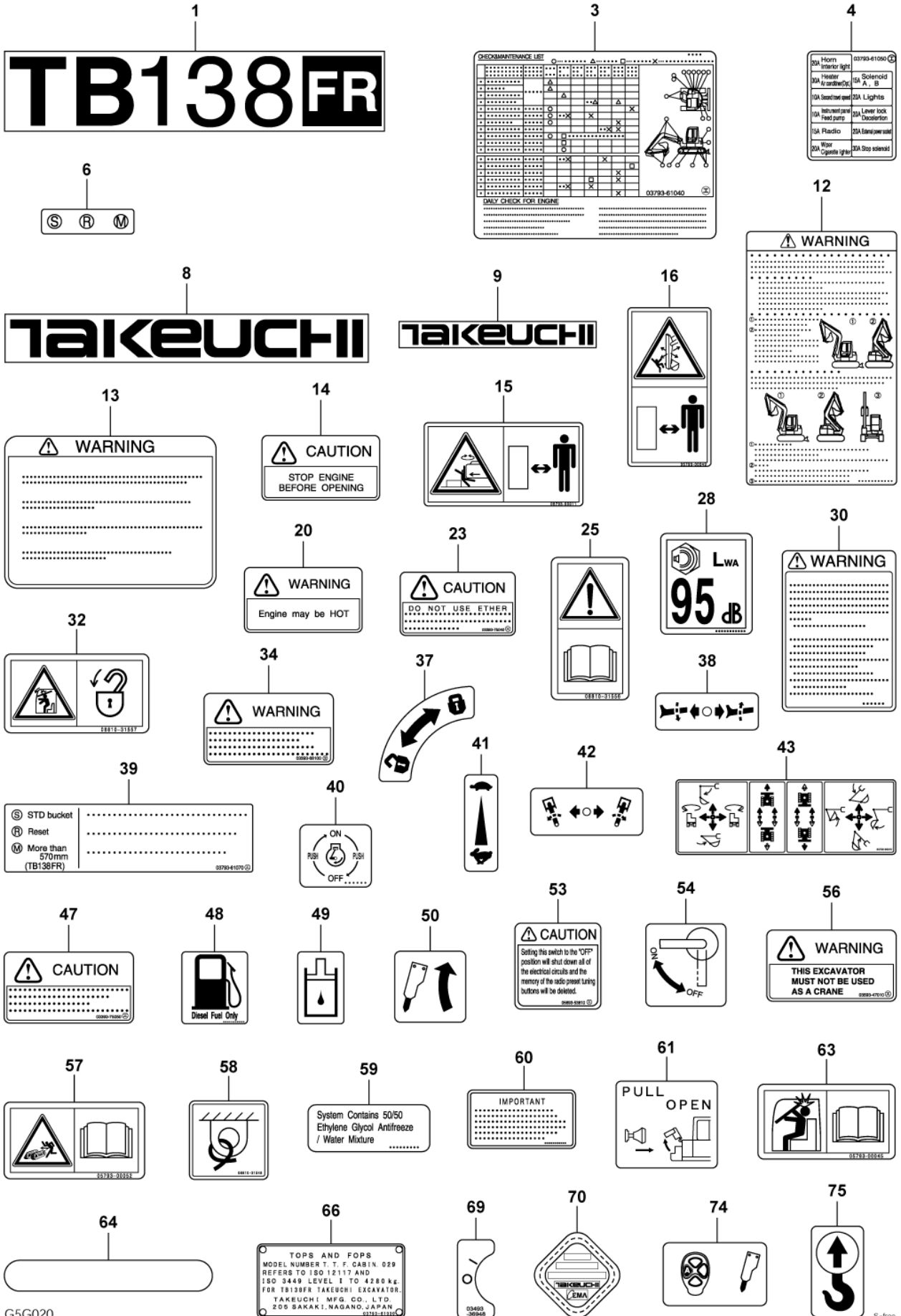
CLICK HERE TO **DOWNLOAD** THE COMPLETE MANUAL

AIR CONDITIONER (5/7) (air conditioner unit)

| Item | Part number | Description | Q'ty | Chan. | Serial No. | Serv. | Remarks |
|-------|-------------|------------------------------|------|-------|------------|-------|-------------------|
| | | CONDITIONER ASSY, air | | | | | X03746-03000-0 |
| 0 | X ***** | UNIT ASSY | 1 | | | | X03746-03700-2 |
| 5 | 0374603750 | · COVER ASSY | 1 | | | | |
| 5-1 | 0374603780 | · · COVER | 1 | | | | |
| 5-2 | 0374603781 | · · INSULATOR | 1 | | | | |
| 5-3 | 0374603782 | · · INSULATOR | 1 | | | | |
| 5-4 | 0374603783 | · · INSULATOR | 1 | | | | |
| 5-5 | 0374603784 | · · INSULATOR | 1 | | | | |
| 5-6 | 1654304017 | · · SPONGE | 2 | | | | sold by the meter |
| 5-7 | 0374603770 | · · COVER | 1 | | | | |
| 5-8 | 1100040816 | · · BOLT | 2 | | | | |
| 5-9 | 1140020008 | · · WASHER, spring | 2 | | | | |
| 5-10 | 1141110008 | · · WASHER | 2 | | | | |
| 5-11 | 1654606018 | · · RUBBER | 1 | | | | sold by the meter |
| 5-12 | 1654304019 | · · SPONGE | 1 | | | | sold by the meter |
| 5-13 | 1654304009 | · · SPONGE | 1 | | | | sold by the meter |
| 5-14 | 1654304004 | · · SPONGE | 1 | | | | sold by the meter |
| 11 | 0374631240 | · UNIT ASSY, air conditioner | 1 | | | | |
| 11-1 | 1911509230 | · UNIT, air conditioner | 1 | | | | see page (7/7) |
| 11-2 | 0564631113 | · · INSULATOR | 1 | | | | |
| 11-3 | 0564631102 | · · INSULATOR | 1 | | | | |
| 11-4 | 0564631114 | · · INSULATOR | 1 | | | | |
| 11-5 | 0564631116 | · · INSULATOR | 1 | | | | |
| 11-6 | 0564631117 | · · INSULATOR | 1 | | | | |
| 11-7 | 0564631106 | · · INSULATOR | 1 | | | | |
| 11-8 | 0564631107 | · · URETHANE | 1 | | | | |
| 11-9 | 0564631115 | · · URETHANE | 1 | | | | |
| 11-10 | 0564631109 | · · INSULATOR | 1 | | | | |
| 11-11 | 0564631110 | · · INSULATOR | 1 | | | | |
| 11-12 | 0564631111 | · · INSULATOR | 1 | | | | |
| 11-13 | 0564631112 | · · INSULATOR | 1 | | | | |
| 11-14 | 1653916022 | · · TRIM | 1 | | | | sold by the meter |
| | G5e172 | | | | | | |

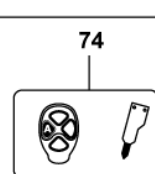
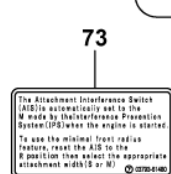
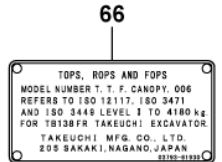
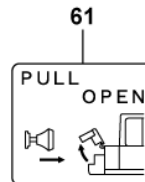
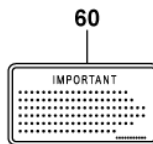
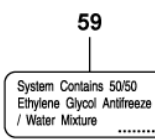
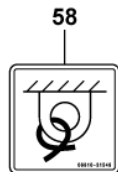
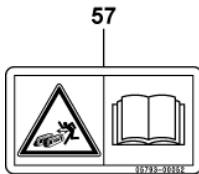
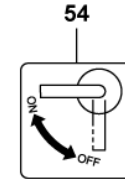
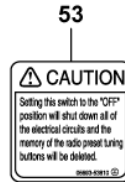
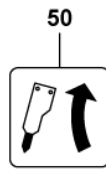
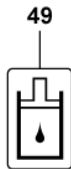
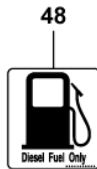
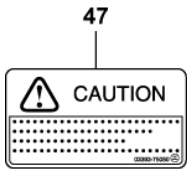
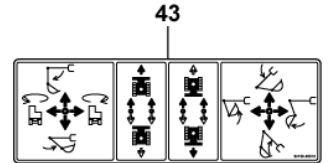
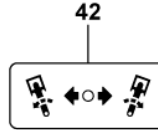
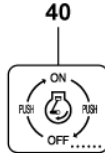
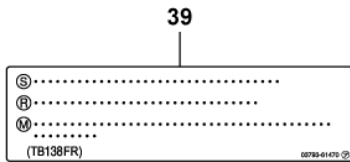
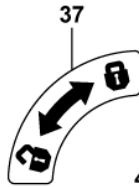
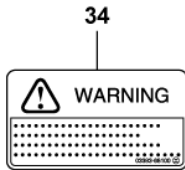
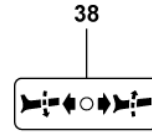
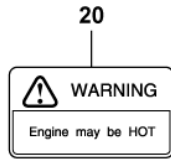
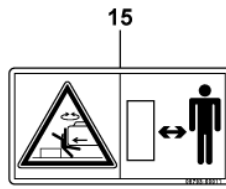
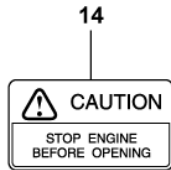
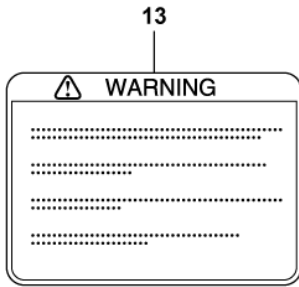
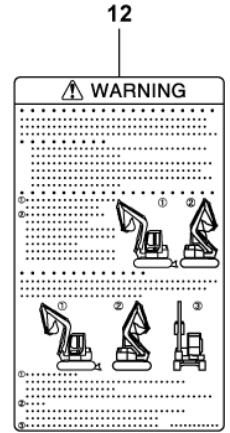
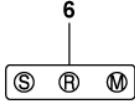
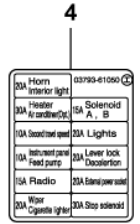
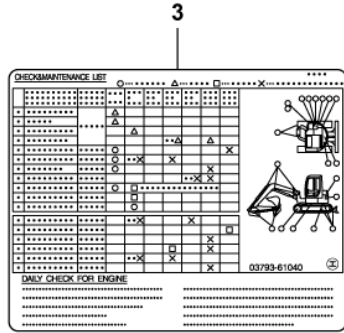
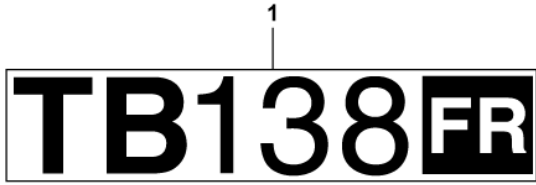
INTERFERENCE SENSOR

| Item | Part number | Description | Q'ty | Chan. | Serial No. | Serv. | Remarks |
|------|---------------|-------------------|------|-------|------------|-------|----------------|
| | | SWITCH ASSY, boom | | | | | X03760-14900-0 |
| 1 | 0356018910 | BOX, switch | 1 | | | | |
| 2 | 0356018820 | COVER | 1 | | | | |
| 3 | 0376014910 | PLATE | 1 | | | | |
| 4 | 0356015840 | PLATE | 4 | | | | |
| 5 | 0356015850 | PIN | 1 | | | | |
| 6 | 0356015860 | PIN | 2 | | | | |
| 7 | 0356015870 | RUBBER | 1 | | | | |
| 8 | 0356018940 | COLLAR | 1 | | | | |
| 11 | 0336032130 | COLLAR | 4 | | | | |
| 14 | 0336032160 | PIN | 4 | | | | |
| 16 | 0143283500 | SPRING | 2 | | | | |
| 18 | 1700000014 | SWITCH | 2 | | | | |
| 19 | 1214000008 | PIN, snap | 6 | | | | |
| 20 | 1100040616 | BOLT | 1 | | | | |
| 21 | 1100040816 | BOLT | 5 | | | | |
| 22 | 1110040616 | SCREW, cap | 2 | | | | |
| 23 | 1140020006 | WASHER, spring | 1 | | | | |
| 24 | 1140020008 | WASHER, spring | 5 | | | | |
| 25 | 1140420006 | WASHER, spring | 2 | | | | |
| 26 | 1141110006 | WASHER | 1 | | | | |
| 27 | 1141110008 | WASHER | 2 | | | | |
| 28 | 0003600011 | WASHER | 3 | | | | |
| | G5f030 | | | | | | |



G5G020

| DECAL (cab) | | | | | | | |
|-------------|-------------|----------------------------|------|-------|------------|-------|--------------------------|
| Item | Part number | Description | Q'ty | Chan. | Serial No. | Serv. | Remarks |
| 0 | 0379361000 | DECAL SET (English) | 1 | | | | X03793-61000-2 |
| | 0379361100 | DECAL SET (German) | 1 | | | | X03793-61100-2 |
| | 0379361200 | DECAL SET (French) | 1 | | | | X03793-61200-2 |
| | 0379361300 | DECAL SET (Italian) | 1 | | | | X03793-61300-2 |
| | 0379361400 | DECAL SET (U. S. TAKEUCHI) | 1 | | | | X03793-61400-2 |
| | 0379361500 | DECAL SET (Spanish) | 1 | | | | X03793-61500-2 |
| | 0379361600 | DECAL SET (Russian) | 1 | | | | X03793-61600-2 |
| | 0379361700 | DECAL SET (Dutch) | 1 | | | | X03793-61700-2 |
| | 0379361800 | DECAL SET (U. K. TAKEUCHI) | 1 | | | | X03793-61800-2 |
| 1 | 0379361010 | • DECAL | 2 | | | | |
| 2 | X ***** | • DECAL | 1 | | | | |
| 3 | 0379361040 | • DECAL (English) | 1 | | | | |
| | 0379361140 | • DECAL (German) | 1 | | | | |
| | 0379361240 | • DECAL (French) | 1 | | | | |
| | 0379361340 | • DECAL (Italian) | 1 | | | | |
| | 0379361540 | • DECAL (Spanish) | 1 | | | | |
| | 0379361640 | • DECAL (Russian) | 1 | | | | |
| 4 | 0379361050 | • DECAL (English) | 1 | | | | |
| | 0379361150 | • DECAL (German) | 1 | | | | |
| | 0379361250 | • DECAL (French) | 1 | | | | |
| | 0379361350 | • DECAL (Italian) | 1 | | | | |
| | 0379361550 | • DECAL (Spanish) | 1 | | | | |
| | 0379361650 | • DECAL (Russian) | 1 | | | | |
| 6 | 0379361060 | • DECAL | 1 | | | | |
| 8 | 0359306300 | • DECAL | 2 | | | | |
| 9 | 0569321400 | • DECAL | 1 | | | | |
| 12 | 0569352506 | • DECAL (English) | 1 | | | | |
| | 0569352206 | • DECAL (German) | 1 | | | | |
| | 0569352306 | • DECAL (French) | 1 | | | | |
| | 0569352406 | • DECAL (Italian) | 1 | | | | |
| | 0399358190 | • DECAL (Spanish) | 1 | | | | |
| | 0379361680 | • DECAL (Russian) | 1 | | | | |
| 13 | 0359313700 | • DECAL (English) | 1 | | | | |
| | 0359314700 | • DECAL (German) | 1 | | | | |
| | 0359315700 | • DECAL (French) | 1 | | | | |
| | 0359316700 | • DECAL (Italian) | 1 | | | | |
| | 0359365323 | • DECAL (Spanish) | 1 | | | | |
| | 0579300606 | • DECAL (Russian) | 1 | | | | |
| 14 | 0359307400 | • DECAL (English) | 2 | | | | |
| | 0359314400 | • DECAL (German) | 2 | | | | |
| | 0359315400 | • DECAL (French) | 2 | | | | |
| | 0359316400 | • DECAL (Italian) | 2 | | | | |
| | 0339364200 | • DECAL (Spanish) | 2 | | | | |
| | 0579300602 | • DECAL (Russian) | 2 | | | | |
| 15 | 0579300011 | • DECAL | 2 | | | | |
| 16 | 0579300049 | • DECAL | 2 | | | | |
| 20 | 0569321980 | • DECAL (English) | 1 | | | | |
| 23 | 0339375040 | • DECAL (English) | 1 | | | | |
| | 0339375240 | • DECAL (German) | 1 | | | | |
| | 0339375440 | • DECAL (French) | 1 | | | | |
| | 0339375640 | • DECAL (Italian) | 1 | | | | |
| | 0339375840 | • DECAL (Spanish) | 1 | | | | |
| | 0579300611 | • DECAL (Russian) | 1 | | | | |
| 25 | 0881031556 | • DECAL | 1 | | | | |
| 28 | X ***** | • DECAL | 1 | | | | except for U.S. TAKEUCHI |
| 30 | 0379337300 | • DECAL (English) | 1 | | | | |
| | 0379338300 | • DECAL (German) | 1 | | | | |
| | 0379339300 | • DECAL (French) | 1 | | | | |
| | 0379340300 | • DECAL (Italian) | 1 | | | | |
| | 0379354200 | • DECAL (Spanish) | 1 | | | | |
| | 0399356004 | • DECAL (Russian) | 1 | | | | |
| 32 | 0881031557 | • DECAL | 1 | | | | |
| 34 | 0339368100 | • DECAL (English) | 1 | | | | |
| | 0339369100 | • DECAL (German) | 1 | | | | |
| | 0339370100 | • DECAL (French) | 1 | | | | |
| | 0339371100 | • DECAL (Italian) | 1 | | | | |
| | 0399355820 | • DECAL (Spanish) | 1 | | | | |
| | 0329365506 | • DECAL (Russian) | 1 | | | | |



| DECAL (canopy) | | | | | | | |
|----------------|-------------|--------------------------|------|-------|------------|-------|---------|
| Item | Part number | Description | Q'ty | Chan. | Serial No. | Serv. | Remarks |
| 73 | 0379361480 | • DECAL (U. S. TAKEUCHI) | 1 | | | | |
| 74 | 0379336800 | • DECAL | 1 | | | | |
| 75 | 0399300500 | • DECAL | 3 | | | | |
| | G5g101 | | | | | | |

TOOL & ACCESSORIES

| Item | Part number | Description | Q'ty | Chan. | Serial No. | Serv. | Remarks |
|------|-------------------|-----------------------|------|-------|------------|-------|----------------|
| | | TOOL ASSY (for Japan) | | | | | X03792-07500-0 |
| | | TOOL ASSY | | | | | X03792-07600-0 |
| 0 | 0379207010 | TOOL ASSY | 1 | | | | |
| 1 | 1910047081 | • SPANNER | 1 | | | | Y28110-100120 |
| 2 | 1910047082 | • SPANNER | 1 | | | | Y28110-140170 |
| 3 | 1910006112 | • SCREWDRIVER | 1 | | | | Y104200-92350 |
| 4 | 1910065081 | • WRENCH, filter | 1 | | | | Y119640-92750 |
| 6 | 1690400250 | • WRENCH, monkey | 1 | | | | |
| 7 | 1690001922 | • SPANNER | 1 | | | | |
| 8 | 1690002427 | • SPANNER | 1 | | | | |
| 9 | 1690100013 | • SPANNER | 1 | | | | |
| 10 | 1690100041 | • SPANNER | 1 | | | | |
| 11 | 1690900026 | • SPANNER | 1 | | | | |
| 12 | 1690500200 | • PLIER | 1 | | | | |
| 13 | 1690300330 | • HAMMER | 1 | | | | |
| 15 | 1690600400 | • WRENCH, hex. | 1 | | | | |
| 16 | 1690600500 | • WRENCH, hex. | 1 | | | | |
| 17 | 1690600600 | • WRENCH, hex. | 1 | | | | |
| 18 | 1690600800 | • WRENCH, hex. | 1 | | | | |
| 19 | 1690601000 | • WRENCH, hex. | 1 | | | | |
| 20 | 1690601400 | • WRENCH, hex. | 1 | | | | |
| 21 | 1691400001 | • CASE, tool | 1 | | | | |
| 23 | 1691900001 | • CASE | 1 | | | | |
| 24 | 1691060600 | GUN, grease | 1 | | | | |
| | 1691010800 | GUN, grease | 1 | | | | for Japan |
| 25 | 1554512601 | TUBE | 1 | | | | for EU |
| 26 | 0359325160 | PLATE | 1 | | | | for Japan |
| | G5g170 | | | | | | |

BLOCK ASSY; No. 2

| Item | Part number | Description | Q'ty | Chan. | Serial No. | Serv. | Remarks |
|------|-------------------|------------------|------|-------|------------|-------|---------|
| 0 | 1901044411 | BLOCK ASSY; No.2 | 1 | | | | boom |
| 1 | 1901031752 | ▪ HOLDER, spring | 2 | | | | |
| 2 | 1901042657 | ▪ SPRING | 2 | | | | |
| 3 | 1901038851 | ▪ HOLDER, spring | 2 | | | | |
| 4 | 1901038866 | ▪ CAP | 1 | | | | |
| 5 | 1420500220 | ▪ O-RING | 2 | | | | |
| 6 | 1110020518 | ▪ SCREW, cap | 2 | | | | |
| 7 | 1901038826 | ▪ PLUNGER | 1 | | | | |
| 8 | 1901038857 | ▪ SPRING | 1 | | | | |
| 9 | 1901038890 | ▪ PLUG | 1 | | | | |
| 10 | 1420010110 | ▪ O-RING | 2 | | | | |
| 11 | 1901042660 | ▪ PLUNGER | 1 | | | | |
| 12 | 1901042659 | ▪ SPRING | 1 | | | | |
| 13 | 1901042658 | ▪ SPACER | 1 | | | | |
| 14 | 1421020110 | ▪ RING, back-up | 1 | | | | |
| 15 | 1420010070 | ▪ O-RING | 2 | | | | |
| 16 | 1901044498 | ▪ VALVE ASSY | 1 | | | | |
| 17 | 1901038893 | ▪ PLUG ASSY | 2 | | | | |
| 18 | 1110020660 | ▪ SCREW, cap | 5 | | | | |
| 19 | 1901038881 | ▪ O-RING | 1 | | | | |

G5h030

BLOCK ASSY; No. 7

| Item | Part number | Description | Q'ty | Chan. | Serial No. | Serv. | Remarks |
|------|-------------------|------------------|------|-------|------------|-------|---------|
| 0 | 1901044402 | BLOCK ASSY; No.7 | 1 | | | | offset |
| 1 | 1901031752 | ▪ HOLDER, spring | 2 | | | | |
| 2 | 1901042657 | ▪ SPRING | 2 | | | | |
| 3 | 1901038851 | ▪ HOLDER, spring | 2 | | | | |
| 4 | 1901038866 | ▪ CAP | 2 | | | | |
| 5 | 1420500220 | ▪ O-RING | 2 | | | | |
| 6 | 1110020518 | ▪ SCREW, cap | 4 | | | | |
| 7 | 1901038826 | ▪ PLUNGER | 1 | | | | |
| 8 | 1901038857 | ▪ SPRING | 1 | | | | |
| 9 | 1901038890 | ▪ PLUG | 1 | | | | |
| 10 | 1420010110 | ▪ O-RING | 1 | | | | |
| 11 | 1901038881 | ▪ O-RING | 1 | | | | |
| | G5h080 | | | | | | |

BLOCK ASSY; No. 12

| Item | Part number | Description | Q'ty | Chan. | Serial No. | Serv. | Remarks |
|------|-------------------|-------------------|------|-------|------------|-------|---------|
| 0 | 1901044420 | BLOCK ASSY; No.12 | 1 | | | | |
| 1 | 1901031752 | ▪ HOLDER, spring | 1 | | | | |
| 2 | 1901038859 | ▪ SPRING | 1 | | | | |
| 3 | 1901038851 | ▪ HOLDER, spring | 1 | | | | |
| 4 | 1901038866 | ▪ CAP | 1 | | | | |
| 5 | 1420500220 | ▪ O-RING | 2 | | | | |
| 6 | 1110020518 | ▪ SCREW, cap | 4 | | | | |
| 7 | 1901038869 | ▪ CAP | 1 | | | | |
| 8 | 1901042672 | ▪ FILTER | 1 | | | | |
| 9 | 1901042673 | ▪ WASHER | 1 | | | | |
| 10 | 1901038893 | ▪ PLUG ASSY | 1 | | | | |
| 11 | 1901038881 | ▪ O-RING | 1 | | | | |
| | G5h130 | | | | | | |

PILOT VALVE

| Item | Part number | Description | Q'ty | Chan. | Serial No. | Serv. | Remarks |
|------|-------------|-------------------|------|-------|------------|-------|---------|
| 0 | 1901745600 | VALVE ASSY, pilot | 1 | | | | |
| 1 | 1901745702 | ▪ PLATE | 1 | | | | |
| 2 | 1901710912 | ▪ PLUG | 4 | | | | |
| 3 | 1901710911 | ▪ ROD | 2 | | | | |
| 4 | 1901719012 | ▪ ROD | 2 | | | | |
| 5 | 1901710914 | ▪ SEAL | 4 | | | | |
| 6 | 1420010200 | ▪ O-RING | 4 | | | | |
| 7 | 1901745709 | ▪ HOLDER | 2 | | | | |
| 8 | 1901745710 | ▪ HOLDER | 2 | | | | |
| 9 | 1901710917 | ▪ ROD | 4 | | | | |
| 10 | 1901745612 | ▪ SPRING | 4 | | | | |
| 11 | 1901742614 | ▪ SPRING | 2 | | | | |
| 12 | 1901742615 | ▪ SPRING | 2 | | | | |
| 13 | 1901720232 | ▪ JOINT | 1 | | | | |
| 14 | 1901743620 | ▪ PLATE | 1 | | | | |
| 15 | 1901703222 | ▪ NUT | 1 | | | | |
| 16 | 1901735630 | ▪ BUSHING | 1 | | | | |
| | G4h300 | | | | | | |

REMOTE CONTROL VALVE (for travel)

| Item | Part number | Description | Q'ty | Chan. | Serial No. | Serv. | Remarks |
|------|---------------------|----------------------------|------|-------|------------|-------|---------|
| 0 | 1901739100 | VALVE ASSY, remote control | 1 | | | | |
| 0-1 | 1901739199 | • KIT, seal | 1 | | | | |
| 1 | X 1901728523 | • • U-PACKING | 4 | | | | |
| 2 | X 1420010080 | • • O-RING | 1 | | | | |
| 3 | X 1420010110 | • • O-RING | 1 | | | | |
| 4 | X 1420510460 | • • O-RING | 2 | | | | |
| 5 | 1901739101 | • SHIM | 4 | | | | |
| 6 | 1901739102 | • ORIFICE | 4 | | | | |
| 7 | 1901739103 | • SHIM | 4 | | | | |
| 8 | 1901739104 | • ORIFICE | 4 | | | | |
| 9 | 1901729706 | • PIN | 2 | | | | |
| 10 | 1901729708 | • BOOT | 2 | | | | |
| 11 | 1901739108 | • COVER | 2 | | | | |
| 12 | 1901739129 | • CAM | 2 | | | | |
| 13 | 1901739113 | • PUSHER | 4 | | | | |
| 14 | 1901739114 | • RETAINER | 4 | | | | |
| 15 | 1901739115 | • SHIM | 4 | | | | |
| 16 | 1901739116 | • WASHER | 4 | | | | |
| 17 | 1901739118 | • HOLDER | 4 | | | | |
| 18 | 1901739119 | • SPRING | 4 | | | | |
| 19 | 1901739120 | • SPRING | 4 | | | | |
| 20 | 1901729618 | • PLUG | 1 | | | | |
| 21 | 1901720720 | • PLUG | 1 | | | | |
| 22 | 1110050816 | • SCREW, cap | 4 | | | | |
| 23 | 1121040606 | • SET-SCREW | 2 | | | | |
| 24 | 1213040306 | • PIN, spring | 4 | | | | |
| 25 | 1221000020 | • RING, snap | 4 | | | | |
| 26 | 1390020020 | • BALL, steel | 8 | | | | |
| 27 | 1390020500 | • BALL, steel | 4 | | | | |
| | L5h050 | | | | | | |

ARM CYLINDER

| Item | Part number | Description | Q'ty | Chan. | Serial No. | Serv. | Remarks |
|------|---------------------|---------------------|------|-------|------------|-------|---------|
| 0 | 1900091400 | CYLINDER ASSY | 1 | | | | arm |
| 0-1 | 1900091499 | • KIT, seal | 1 | | | | |
| 1 | X 1900005912 | • • PACKING, rod | 1 | | | | |
| 2 | X 1900075133 | • • SEAL, dust | 1 | | | | |
| 3 | X 1420110750 | • • O-RING | 1 | | | | |
| 4 | X 1900088727 | • • RING, back-up | 1 | | | | |
| 5 | X 1420110800 | • • O-RING | 1 | | | | |
| 6 | X 1900047231 | • • PACKING, piston | 1 | | | | |
| 7 | 1900091498 | • TUBE ASSY | 1 | | | | |
| 8 | 1900045602 | • • BUSHING | 1 | | | | |
| 9 | 1900091497 | • ROD ASSY, piston | 1 | | | | |
| 10 | 1900045602 | • • BUSHING | 1 | | | | |
| 11 | 1900091403 | • COVER, rod | 1 | | | | |
| 12 | 1333004525 | • BUSHING | 1 | | | | |
| 13 | 1900091406 | • PISTON | 1 | | | | |
| 14 | 1900090626 | • RING, slide | 2 | | | | |
| 15 | 1121050508 | • SET-SCREW | 1 | | | | |
| 16 | 1390020350 | • BALL, steel | 1 | | | | |
| 17 | 1900091405 | • CUSHION, rod | 1 | | | | |
| 18 | 1900047122 | • STOPPER | 2 | | | | |
| 19 | 1900076335 | • SEAL, cushion | 1 | | | | |
| 20 | 1900047114 | • RING, snap | 1 | | | | |
| 21 | 1560001675 | • FITTING, grease | 1 | | | | |
| 22 | 1560001900 | • FITTING, grease | 1 | | | | |
| 23 | 1900091433 | • SEAL, dust | 4 | | | | |
| | G4h163 | | | | | | |

TRAVEL MOTOR (2/3) (motor sec.)

| Item | Part number | Description | Q'ty | Chan. | Serial No. | Serv. | Remarks |
|------|---------------------|--------------------------|------|-------|------------|-------|---------------------|
| 0 | 1903125700 | MOTOR ASSY, travel | 1 | | | | |
| 0-4 | 1903907200 | · MOTOR, hydraulic | 1 | | | | |
| 0-5 | 1903907299 | · · KIT, seal | 1 | | | | |
| 1 | X 1420111250 | · · · O-RING | 1 | | | | |
| 2 | X 1420010070 | · · · O-RING | 2 | | | | |
| 3 | X 1903101819 | · · · SEAL, oil | 1 | | | | |
| 4 | X 1420111100 | · · · O-RING | 1 | | | | |
| 5 | X 1420111000 | · · · O-RING | 1 | | | | |
| 6 | X 1421131100 | · · · RING, back-up | 1 | | | | |
| 7 | X 1421131000 | · · · RING, back-up | 1 | | | | |
| 0-6 | 1903907298 | · · KIT, body 1 | 1 | | | | |
| 0-7 | X ***** | · · · BODY ASSY | 1 | | | | |
| 8 | 1300006201 | · · · BEARING | 1 | | | | |
| 9 | 1213000512 | · · · PIN, spring | 1 | | | | |
| 0-8 | 1903907297 | · · KIT, body 2 | 1 | | | | |
| 0-9 | 1903904498 | · · BARREL KIT, cylinder | 1 | | | | |
| 10 | 1221000028 | · · · RING, snap | 1 | | | | |
| 11 | 1903907296 | · · SHAFT ASSY | 1 | | | | |
| 12 | 1300006205 | · · · BEARING | 1 | | | | |
| 13 | 1903907210 | · · PLATE | 1 | | | | FZD-4500-11-10-2211 |
| 14 | 1390021000 | · · BALL, steel | 2 | | | | |
| 15 | 1110021025 | · · SCREW, cap | 7 | | | | |
| 16 | 1212010815 | · · PIN | 1 | | | | |
| 17 | 1903904425 | · · PLATE | 1 | | | | |
| 18 | 1903904426 | · · PLATE | 2 | | | | |
| 19 | 1903904427 | · · PISTON, brake | 1 | | | | |
| 20 | 1903904428 | · · SPACER | 1 | | | | |
| 21 | 1903904429 | · · SPRING | 10 | | | | |
| | G4h350 | | | | | | |

LOWER FRAME

| Item | Part number | Description | Q'ty | Chan. | Serial No. | Serv. | Remarks |
|------|-------------|-------------------|------|-------|------------|-------|----------------|
| Item | Part number | •" •j -¼ 0 | ? | Chan. | Serial No. | Mod. | Remarks |
| | | FRAME ASSY, lower | | | | | X03710-17500-0 |
| 1 | X ***** | FRAME | 1 | | | | |
| 2 | 0351006010 | COVER | 2 | | | | |
| 3 | 0431003600 | COVER | 1 | | | | |
| 4 | 0331018600 | COVER | 2 | | | | |
| 5 | 1100040816 | BOLT | 4 | | | | |
| 6 | 1100041020 | BOLT | 10 | | | | |
| 7 | 1140020008 | WASHER, spring | 4 | | | | |
| 8 | 1140020010 | WASHER, spring | 10 | | | | |
| 9 | 1141110008 | WASHER | 4 | | | | |
| 10 | 1141110010 | WASHER | 10 | | | | |
| 11 | 1652533019 | CAP | 2 | | | | |
| | G5a010 | | | | | | |

¼ØÝÁÍÄÄ & ÍÞÝËÄÄ CYLINDER HEAD & BONNET

| REF NO. | PARTS NO. | Description | Q'ty | I | R | "õ |
|---------|-----------------------------|---------------------|------|---|---|-------------------|
| 1 | Y129900-07900 | LIFTER, ENGINE | 2 | | | |
| 2 | Y26106-080142 | BOLT 8X 14 PLATED | 4 | | | |
| I 2-1 | Y26106-080162 (A=E03990) | BOLT M 8X 16 PLATED | 4 | N | | |
| 3 | Y129004-11241 | SHAFT ASSY, ROCKER | 1 | | | |
| 4 | Y129004-11251 | SHAFT, ROCKER ARM | 1 | | | |
| 6 | Y119802-11260 | SUPPORT, ROCKER ARM | 2 | | | |
| 7 | Y119802-11270 | SUPPORT, ROCKER ARM | 2 | | | |
| 8 | Y119802-11280 | STUD | 3 | | | |
| 9 | Y129150-11280 | SPRING | 3 | | | |
| 10 | Y129004-11650 | ARM ASSY, ROCKER | 6 | | | |
| 11 | Y129150-11230 | SCREW, VALVE | 6 | | | |
| 13 | Y129150-11750 | NUT M8XP1.0 | 6 | | | |
| 14 | Y129150-11370 | CAP, VALVE | 6 | | | |
| 15 | Y129004-11700 | HEAD ASSY, CYLINDER | 1 | | | |
| 19 | Y120130-11860 | GUIDE, VALVE | 3 | | | (1) ÌÖ³ÍÞËÝÄÞ½ |
| 21 | Y129150-11810 | GUIDE, VALVE | 3 | | | (1) ÌÖ³ÍÞËÝÄÞ½ |
| 23 | Y27241-400000 | PLUG 40 | 2 | | | |
| 24 | Y129004-11100 | VALVE, INTAKE | 3 | | | |
| I 24-1 | Y129004-11130 (A=E03990) | VALVE, INTAKE | 3 | R | | |
| 25 | Y129100-11110 | VALVE, EXHAUST | 3 | | | |
| I 25-1 | Y129100-11111 (A=E03989) | VALVE, EXHAUST | 3 | R | | |
| I 25-2 | Y129100-11112 (A=E03990) | VALVE, EXHAUST | 3 | R | | |
| 26 | Y129795-11120 | SPRING, VALVE | 6 | | | |
| 27 | Y129795-11180 | RETAINER, SPRING | 6 | | | |
| 28 | Y121400-11340 | SEAL, VALVE STEM | 3 | | | |
| 29 | Y124460-11340 | SEAL, VALVE STEM | 3 | | | |
| 30 | Y27310-080001 | COTTER 8 | 6 | | | |
| 32 | Y119802-11870 | PROTECTOR, NOZZLE | 3 | | | |
| 33 | Y119625-11880 | SEAT, NOZZLE | 3 | | | |
| 34 | Y129004-11900 | RETAINER, NOZZLE | 3 | | | |
| 35 | Y120270-54410 | WASHER | 3 | | | |
| 36 | Y22351-060012 | SPRING PIN 6X12 | 2 | | | |
| 37 | Y26106-080252 | BOLT M 8X 25 PLATED | 2 | | | |
| 38 | Y26106-080352 | BOLT M 8X 35 PLATED | 3 | | | |
| 39 | Y26106-080502 | BOLT M 8X 50 PLATED | 6 | | | |
| 40 | Y124160-01751 | COVER, FILLER | 1 | | | |
| 41 | Y129004-11350 | BONNET ASSY, HEAD | 1 | | | |
| 42 | Y129004-03010 | PLATE, BAFFLE | 1 | | | |
| 43 | Y129150-03070 | BAFFLE, BREATHER | 1 | | | |
| 44 | Y119802-03110 | PLATE, DIAPHRAGM | 1 | | | |
| 45 | Y119802-03120 | COVER, DIAPHRAGM | 1 | | | |
| I 45-1 | Y119802-03121 (A=E03989) | COVER, DIAPHRAGM | 1 | N | | |
| 46 | Y119802-03130 | DIAPHRAGM | 1 | | | |
| 47 | Y119802-03140 | SPRING, DIAPHRAGM | 1 | | | |
| I 47-1 | Y119802-03141 (A=E03989) | SPRING, DIAPHRAGM | 1 | N | | |
| 50 | Y129004-11310 | GASKET, BONNET | 1 | | | |
| 51 | Y22857-500100 | SCREW 5X10, TAPPING | 4 | | | |
| 52 | Y22857-500100 | SCREW 5X10, TAPPING | 4 | | | |
| 53 | Y124160-11360 | KNOB | 3 | | | |
| 54 | Y24311-000120 | O-RING 1A P 12.0 | 3 | | | |
| 55 | Y24311-000320 | O-RING 1A P-32.0 | 1 | | | |
| I 63 | Y977770-1207F | GASKET, LIQUID | 1 | | | (2) ìÍ¼@Ý ÍÞËÝÄÞ½ |

LO 1/2" LUB.OIL SYSTEM

| REF NO. | PARTS NO. | Description | Q'ty | I | R |
|---------|-----------------------------|----------------------|------|---|---|
| 1 | Y129602-34800 | DIPSTICK, LUB.OIL | 1 | | |
| I 1-1 | Y129005-34802 (A=EXXXXX) | DIPSTICK, LUB.OIL | 1 | N | |
| 2 | Y119260-34810 | GUIDE, DIPSTICK | 1 | | |
| I 2-1 | Y121520-34810 (A=EXXXXX) | GUIDE, DIPSTICK | 1 | N | |
| I 3 | Y119802-34850 (A=EXXXXX) | GUIDE, DIPSTICK | 1 | Z | |
| I 4 | Y24311-240100 (A=EXXXXX) | O-RING 1A P-10A | 1 | Z | |
| I 5 | Y26106-080162 (A=EXXXXX) | BOLT M 8X 16 PLATED | 1 | Z | |
| 6 | Y129150-35041 | GASKET, (NON-ASB.) | 1 | | |
| I 6-1 | 129150-35042 (A=E03990) | GASKET, (NON-ASB.) | 1 | N | |
| 7 | Y129150-35091 | PIPE ASSY, OIL INLET | 1 | | |
| 11 | Y26106-080352 | BOLT M 8X 35 PLATED | 2 | | |
| 12 | Y119802-35100 | BRACKET ASSY, FILTER | 1 | | |
| 13 | Y119802-35110 | BRACKET, FILTER | 1 | | |
| 14 | Y129100-35140 | STUD | 1 | | |
| 15 | Y129150-35111 | GASKET, (NON-ASB.) | 1 | | |
| 16 | Y129150-35151 | FILTER 80X80L | 1 | | |
| I 16-1 | Y129150-35160 (A=E03990) | FILTER 80X80L | 1 | R | |
| 17 | Y26106-080202 | BOLT M 8X 20 PLATED | 3 | | |
| 18 | Y114250-39450 | SWITCH,(0.5KG)L.O. | 1 | | |
| 19 | Y124160-39140 | BOLT 10, PIPE JOINT | 1 | | |
| 20 | Y119802-39450 | PIPE ASSY, LUB. OIL | 1 | | |
| 21 | Y129005-59830 | BOLT ASSY, JOINT | 1 | | |
| 22 | Y23857-030000 | JOINT BOLT 3 | 1 | | |
| 23 | Y22190-080002 | SEAL WASHER 8S | 1 | | |
| 24 | Y22190-100002 | SEAL WASHER 10S | 2 | | |
| 25 | Y22190-080002 | SEAL WASHER 8S | 1 | | |
| 26 | Y26366-060002 | NUT M 6 | 1 | | |

| REF NO. | PARTS NO. | Description | Q'ty | I | R | Other |
|---------|-----------------------------|----------------------|------|---|---|-------|
| 1 | Y129004-55610 | BRACKET, FILTER | 1 | | | |
| I 1-1 | Y129004-55611 (A=E03989) | BRACKET, FILTER | 1 | R | | |
| I 1-2 | Y129004-55612 (A=E03990) | BRACKET, FUEL FILTER | 1 | R | | |
| 2 | Y119802-55800 | FILTER, FUEL | 1 | | | |
| I 2-1 | Y119802-55801 (A=E03990) | FILTER, FUEL | 1 | R | | |
| 3 | Y26106-080302 | BOLT M 8X 30 PLATED | 2 | | | |
| 4 | Y129044-59010 | PIPE, FUEL | 1 | | | |
| 5 | Y124766-59050 | • CLAMP 12 | 2 | | | |
| 6 | Y129044-59100 | • PROTECTOR, PIPE 15 | 1 | | | |
| 8 | Y129950-59311 | PIPE, FUEL | 1 | | | |
| 9 | Y124766-59050 | • CLAMP 12 | 2 | | | |
| 10 | Y129961-59110 | • TUBE | 1 | | | |
| 11 | Y105025-59580 | • PIPE, FUEL OIL | 1 | | | |
| 12 | Y121750-59890 | CLAMP 140 | 1 | | | |
| 13 | Y119225-52102 | PUMP ASSY, FUEL FEED | 1 | | | |
| I 13-1 | Y129612-52100 (A=E03413) | FUEL PUMP | 1 | | N | |
| 14 | Y129906-55700 | SEPARATOR ASSY | 1 | | | |
| 15 | Y119802-55710 | • ELEMENT | 1 | | | |
| 16 | Y129100-55690 | • RING, RETAINING | 1 | | | |
| 17 | Y24321-000650 | • O-RING 1A G-65.0 | 1 | | | |
| 18 | Y24311-000160 | • O-RING 1A P-16.0 | 1 | | | |
| I 19 | Y119840-59601 (A=EXXXXX) | BEND ASSY | 1 | | Z | |
| I 20 | Y124766-59050 (A=EXXXXX) | • CLAMP 12 | 2 | Z | | |
| I 21 | Y119840-59611 (A=EXXXXX) | • BEND, RETURN | 1 | Z | | |
| I 22 | Y119840-59621 (A=EXXXXX) | • JOINT | 1 | Z | | |

CLICK HERE TO **DOWNLOAD** THE COMPLETE MANUAL

- Thank you very much for reading the preview of the manual.
- You can download the complete manual from: www.heydownloads.com by clicking the link below



- Please note: If there is no response to CLICKING the link, please download this PDF first and then click on it.

CLICK HERE TO **DOWNLOAD** THE COMPLETE MANUAL