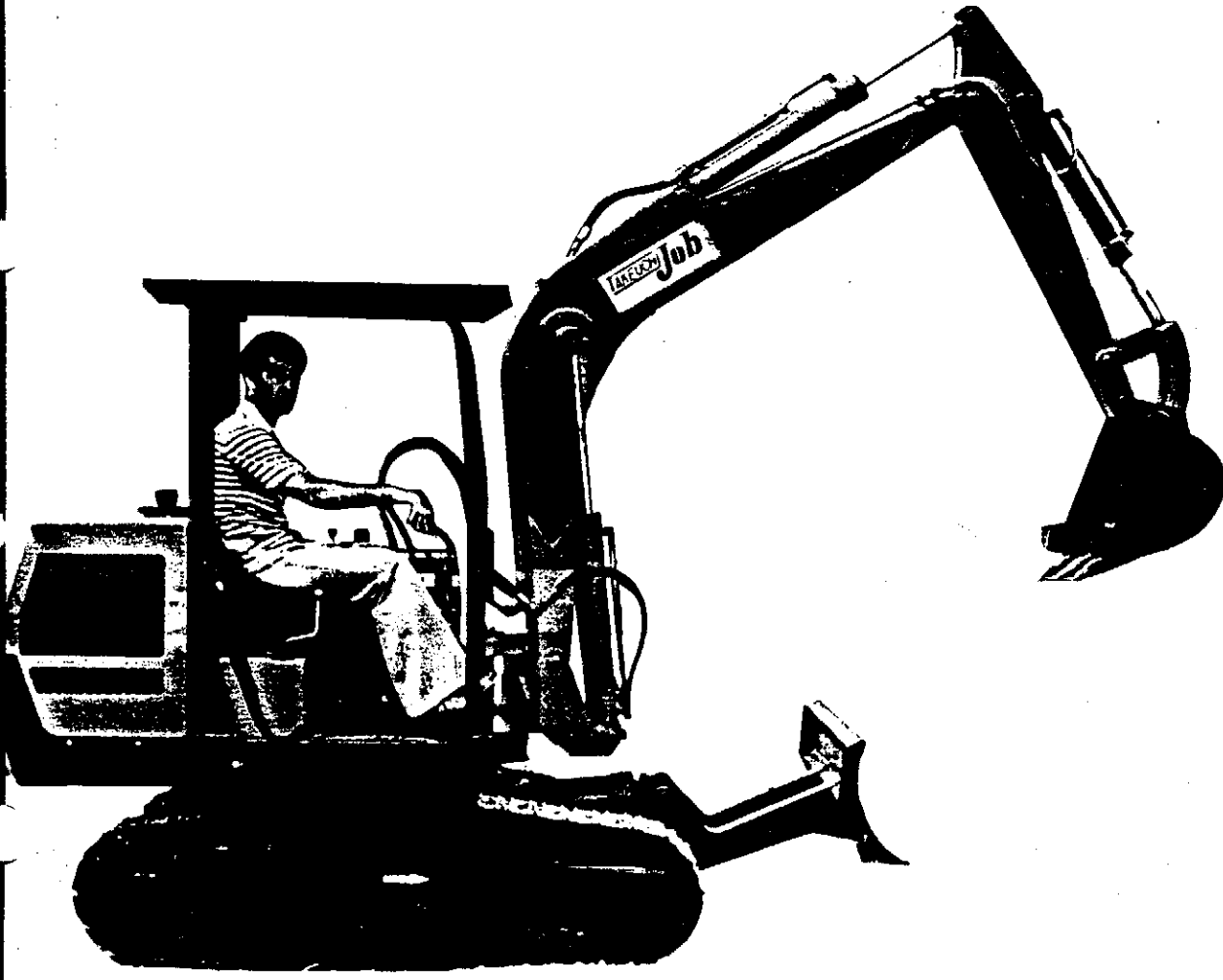


Takeuchi Job TB1200 AL

Compact Excavator with Dozer Blade

PARTS CATALOG New



Takeuchi Mfg. (U.S.), Ltd.
East Atlanta Industrial Park
1000 E Bankers Circle
Atlanta, GA. 30360
(404) 447-6670

CLICK HERE TO **DOWNLOAD** THE COMPLETE MANUAL

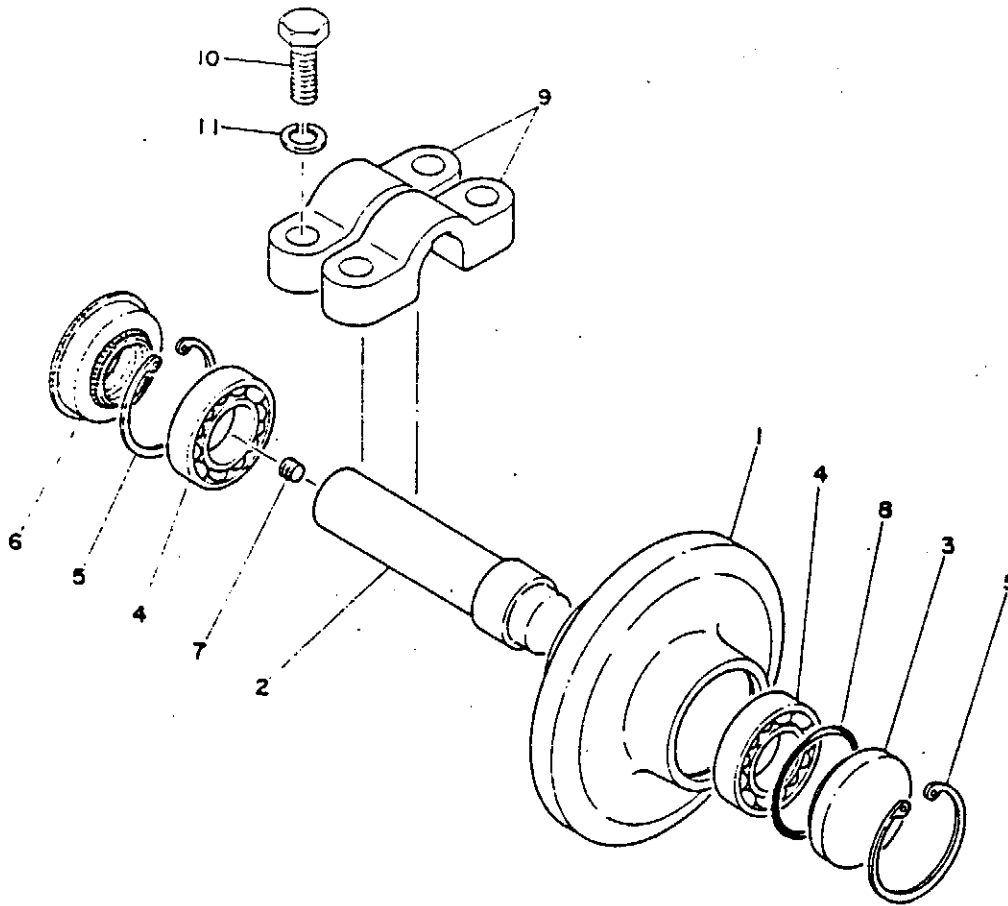
- Thank you very much for reading the preview of the manual.
- You can download the complete manual from: www.heydownloads.com by clicking the link below



- Please note: If there is no response to CLICKING the link, please download this PDF first and then click on it.

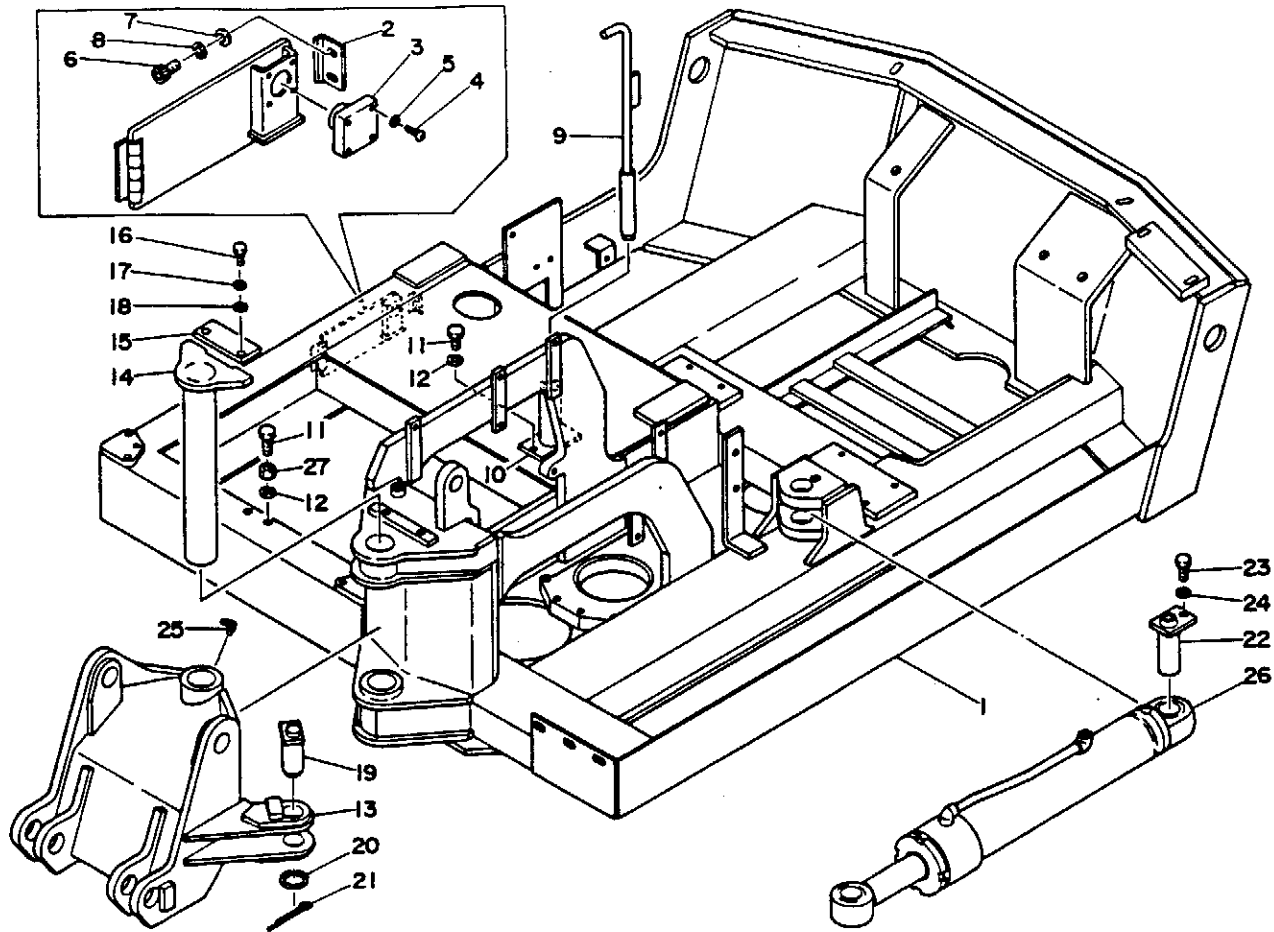
CLICK HERE TO **DOWNLOAD** THE COMPLETE MANUAL

FIG. 03 CARRIER ROLLER



Qty	PARTS NUMBER	DESCRIPTION	Qty	REMARKS
01	01612-90000	ROLLER ASSY. Carrier	4	
1	01612-09100	*ROLLER	1	
2	01612-99290	*SHAFT	1	
3	01612-99300	*COVER	1	
4	13000-06306	*BEARING	2	
5	12210-00055	*RING, Snap	2	
6	14310-03055	*SEAL, Oil	1	
7	15018-20001	*PLUG	1	
8	14030-10490	*O-RING	1	
9	01613-08300	BRACKET	4	
10	11010-51235	BOLT	8	
11	11400-10012	WASHER, Spring	8	

FIG. 11 TURNTABLE

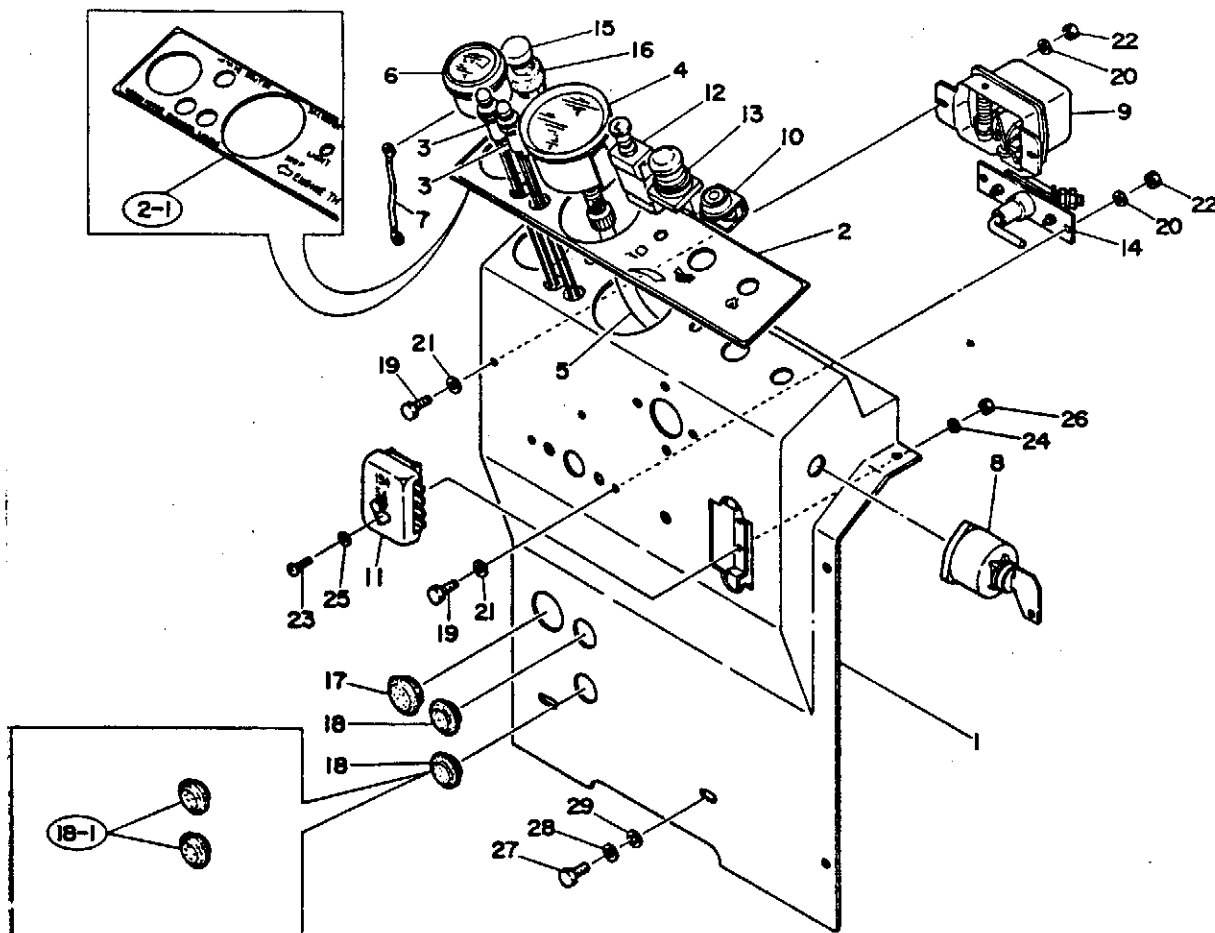


Item	PARTS NUMBER	DESCRIPTION	Qty	REMARKS	Item	PARTS NUMBER	DESCRIPTION	Qty	REMARKS
1	01530-20000	TURNTABLE	1		25	15600-01900	NIPPLE, Grease	2	
2	01530-20800	*PLATE	1		26	19000-00100	CYLINDER, Swing	1	
3	16570-03200	*LOCK	1	#27~#190	27	11300-50010	NUT	2	
3-1	16533-13400	*LOCK	1	#200 ~					
4	11205-30315	*SCREW, Pan head	4						
5	11400-20003	*WASHER, Spring	4						
6	11100-50815	*BOLT, Socket	2						
7	11415-40008	*WASHER	2						
8	11400-20008	*WASHER, Spring	2						
9	01522-10300	PIN, Lock	1						
10	01522-10200	BRACKET	1						
11	11000-51025	BOLT	4						
12	11400-10010	WASHER, Spring	4						
13	01331-10100	BRACKET, Boom	1						
14	00019-00013	SHAFT	1						
15	01331-10200	PLATE	1						
16	11010-51225	BOLT	2						
17	11400-10012	WASHER, Spring	2						
18	11411-00012	WASHER, Plain	2						
19	00010-40111	PIN	1						
20	00030-40005	COLLAR	1						
21	12100-00860	PIN, Split	1						
22	00019-00003	PIN	1						
23	11000-51030	BOLT	1						
24	11400-10010	WASHER, Spring	1						

NOTE

Item 1 has both old type with serial number #27~#252 and new type with serial number #253 ~

FIG. 16 CONTROL BOX

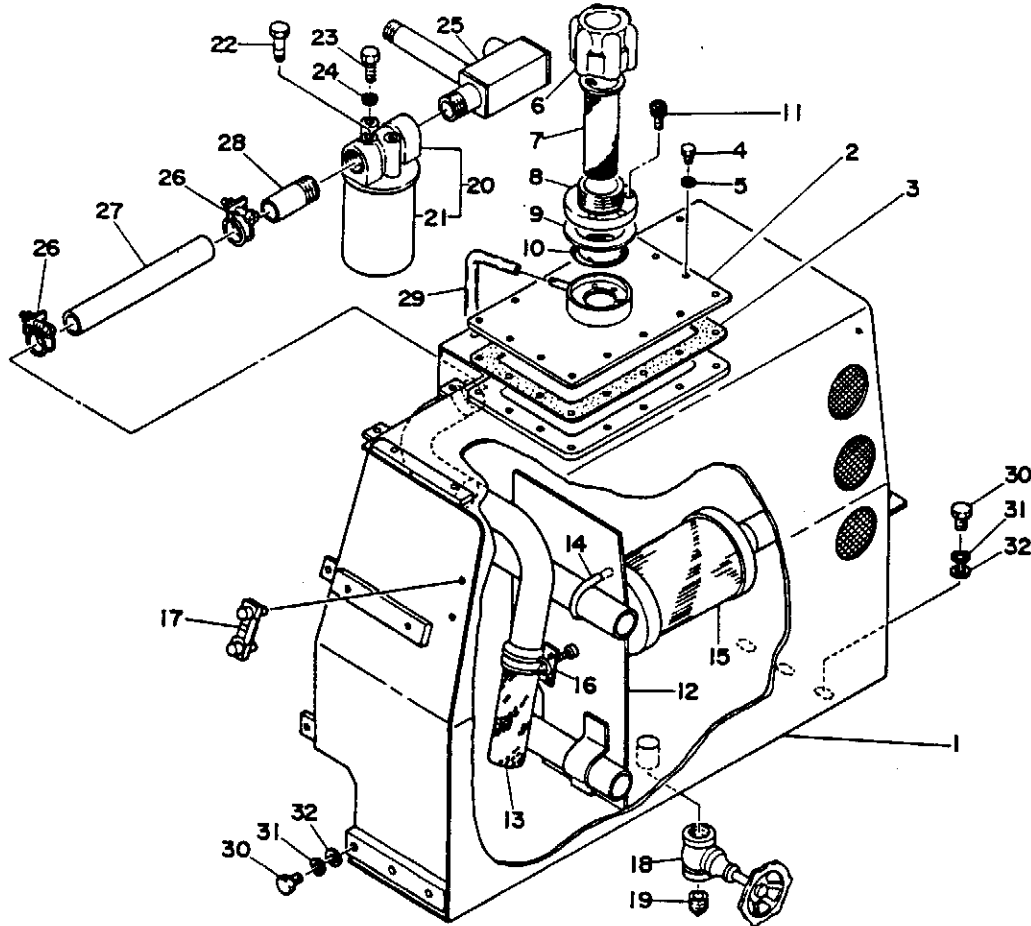


Item	PARTS NUMBER	DESCRIPTION	Qty	REMARKS	Item	PARTS NUMBER	DESCRIPTION	Qty	REMARKS
1	01543-00100	BOX, Control	1		23	11205-30520	SCREW, Pan head	2	
2	01543-01200	PANEL, Control	1		24	11400-20005	WASHER, Spring	2	
	01543-00200	PANEL, Control	1		25	11411-10005	WASHER, Plain	4	
3	19100-01013	LAMP, Pilot	2		26	11300-30005	NUT	2	
4	19100-01011	TACHOMETER	1		27	11000-40820	BOLT	2	
5	19100-01012	SHAFT, Flexible	1		28	11400-20008	WASHER, Spring	2	
6	19100-01010	THERMOMETER	1	#27~#391	29	11411-10008	WASHER, Plain	2	
	19100-19019	THERMOMETER	1	#392 ~					
7	02642-00500	WIRE, Earth	1	#392 ~					
8	19100-01007	SWITCH, Starter	1						
9	19100-01009	REGULATOR	1						
10	19100-01008	SIGNAL, Glow	1						
11	19100-02009	BOX, Fuse	1						
12	17010-00102	SWITCH, Light	1						
13	17000-01211	SWITCH, Horn	1						
14	17011-00500	SWITCH, Main	1						
15	19100-08002	CABLE	1						
16	00079-00008	COVER	1						
17	16520-02802	GROMMET	1						
18	16580-01902	GROMMET	2						
	16520-52800	GROMMET	2						
19	11000-30620	BOLT	4						
20	11400-20006	WASHER, Spring	4						
21	11411-10006	WASHER, Plain	4						
22	11300-30006	NUT	4						

NOTE

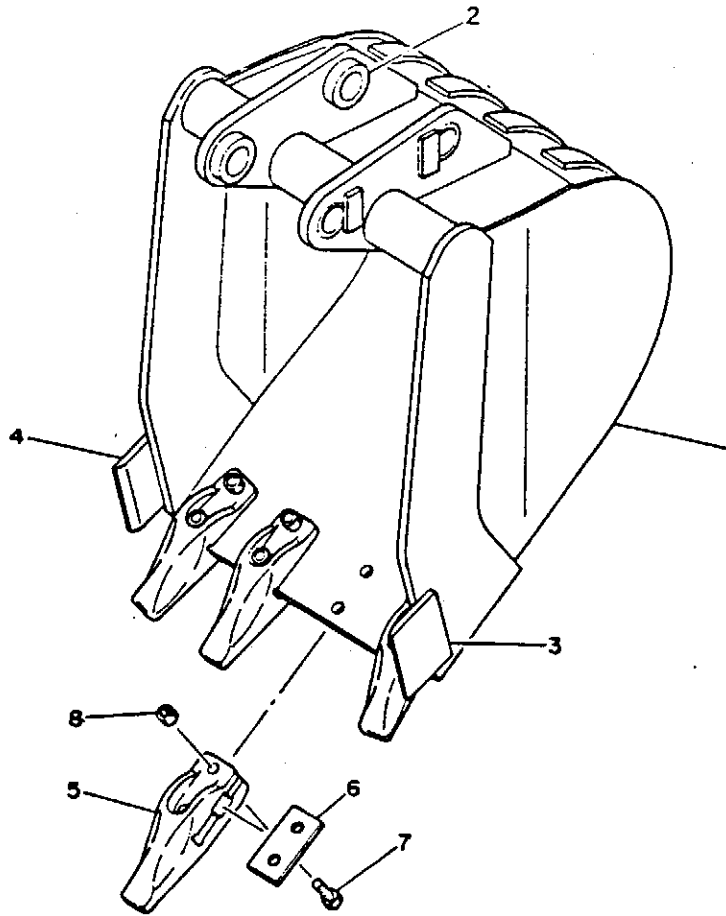
Item 6 (19100-19019) + Item 7 → Item 6 (19100-01010) ... Interchangeable

FIG. 25 HYDRAULIC TANK



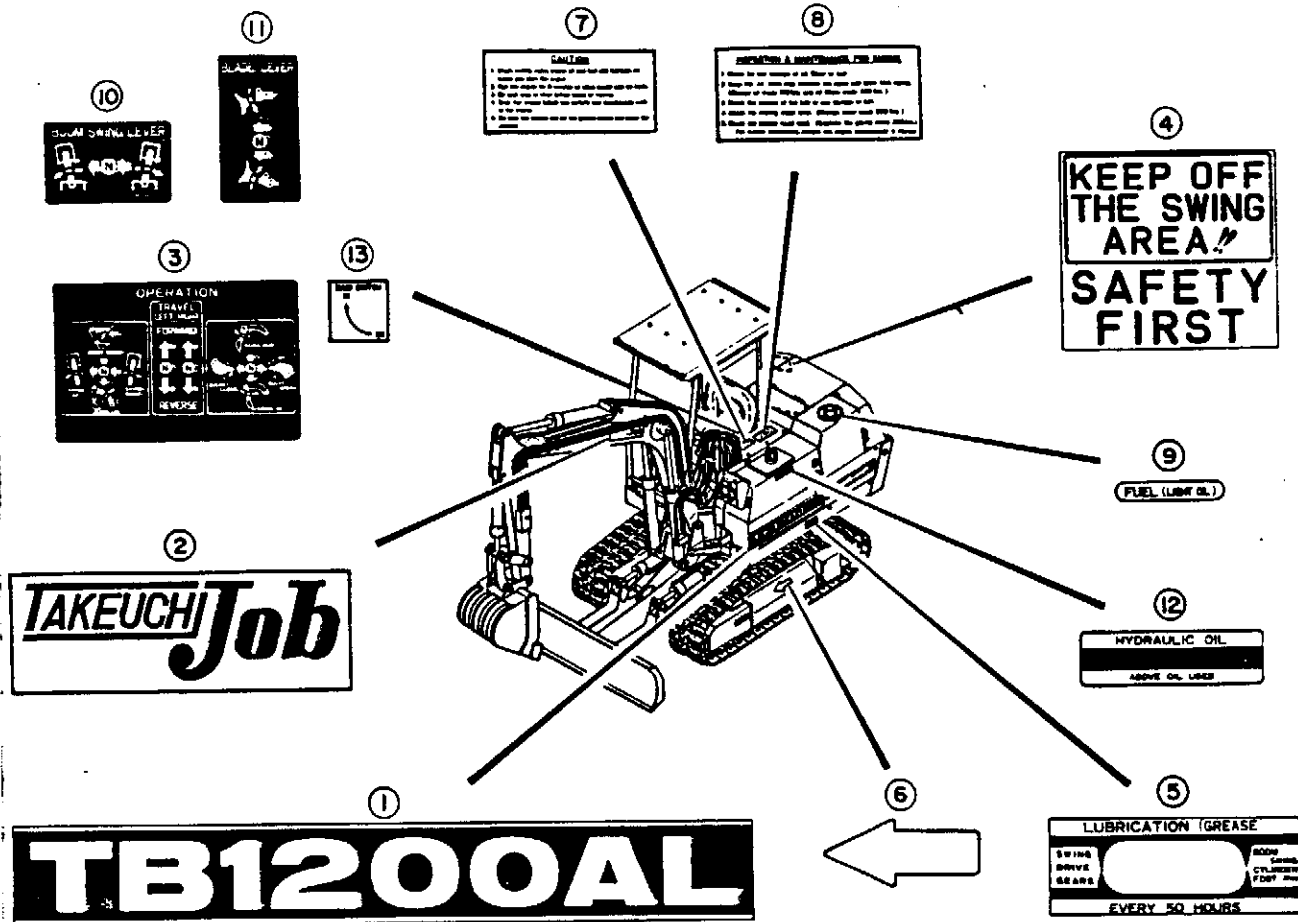
Item	PARTS NUMBER	DESCRIPTION	Qty	REMARKS	Item	PARTS NUMBER	DESCRIPTION	Qty	REMARKS
0-1	01380-90000	TANK ASSY. Hyd.	1		23	11000-51035	BOLT	2	
1	01380-10100	*TANK. Hyd.	1		24	11400-20010	WASHER. Spring	2	
2	01380-10200	*COVER	1		25	01580-20600	MANIFOLD	1	
3	01680-05200	*PACKING	1		26	15330-01045	CLAMP	2	
4	11000-50814	*BOLT	14		27	15305-33026	HOSE	1	
5	11400-20008	*WASHER. Spring	14		28	00090-10080	NIPPLE	1	
0-2	15520-10301	*BREATHER ASSY. Air	1		29	15311-10000	HOSE	1	
6	15520-01301	**CAP	1		30	11000-51020	BOLT	6	
7	15520-02301	**STRAINER	1		31	11400-10010	WASHER. Spring	6	
8	15520-13301	**FLANGE	1		32	00036-12004	WASHER	6	
9	15520-14301	**PACKING	1						
10	14204-02045	*O-RING	1						
11	11100-50510	*BOLT. Socket	4						
12	01380-10300	*PLATE. Baffle	1						
13	01680-05600	*DIFFUSER	1						
14	15332-00010	*U-BOLT ASSY	1						
15	15500-00012	*FILTER	1						
16	15530-01038	*CLAMP	1						
17	15530-10050	*GAUGE	1	Old Type					
	15530-20650	*GAUGE	1	New Type					
18	15200-00010	*VALVE	1						
19	15087-00010	*PLUG	1						
20	15510-45110	FILTER ASSY	1						
21	15510-35110	*CARTRIDGE	1						
22	01380-10700	*PLUG	1						

FIG. 31 BUCKET



QTY	PARTS NUMBER	DESCRIPTION	QTY	REMARKS
01	01362-12500	BUCKET ASSY	1	
1	01362-12600	*BUCKET	1	
2	90029-00003	**BUSHING	4	
3	01162-10612	**CUTTER. Side (RH)	1	
4	01162-10613	**CUTTER. Side (LH)	1	
5	01362-09900	*TOOTH	4	
6	01362-99801	*SHIM	4	
	01362-93802	*SHIM	4	
	01362-07803	*SHIM	4	
7	11010-51245	*BOLT	3	
8	11305-50012	*NUT	3	

FIG. 34-2 STICKERS

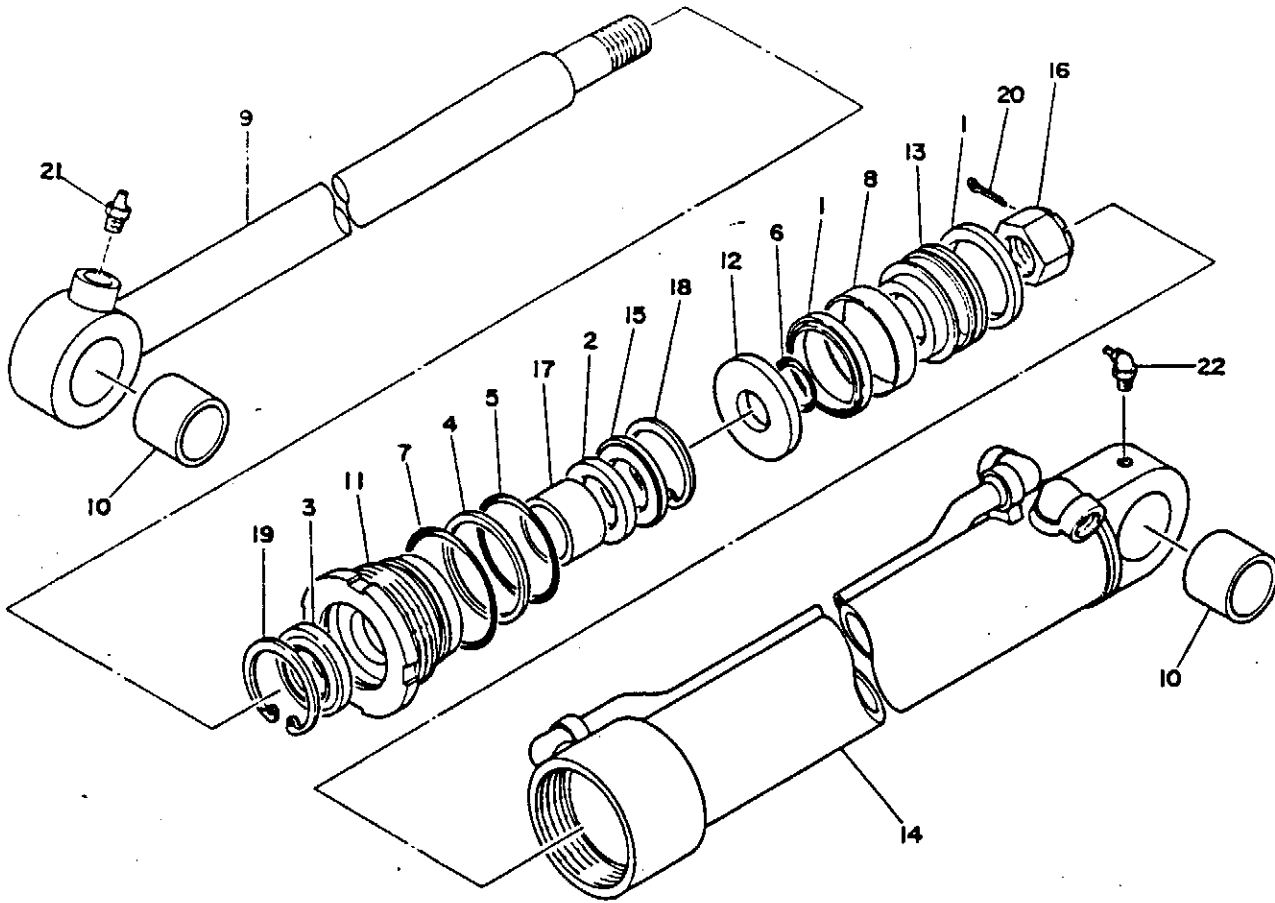


Item	PARTS NUMBER	DESCRIPTION	Qty	REMARKS
0-1	01593-90200	STICKER SET	1	
1	01593-00100	*STICKER	1	
2	01593-20200	*STICKER	3	
3	01593-20400	*STICKER	1	
4	01593-20500	*STICKER	1	
5	01793-12000	*STICKER	1	
6	01393-02500	*SYMBOL MARK	2	
7	01793-10800	*STICKER	1	
8	01793-10900	*STICKER	1	
9	01793-12100	*STICKER	1	
10	01793-12300	*STICKER	1	
11	01793-12400	*STICKER	1	
12	01793-12500	*STICKER	1	
13	01793-12200	*STICKER	1	

NOTE

For U.S.A

FIG. 42 BUCKET CYLINDER



Item	PARTS NUMBER	DESCRIPTION	Qty	REMARKS
01	19000-04000	CYLINDER ASSY	1	
02	19000-00599	*KIT. Seal	1	
1	14100-70606	**PACKING. Piston	2	
2	14110-00040	**PACKING. Rod	1	
3	14111-00040	**SEAL. Dust	1	
4	14211-20700	**RING. Back-up	1	
5	14201-10700	**O-RING	1	
6	14200-10280	**O-RING	1	
7	14201-10800	**O-RING	1	
8	14107-07016	**WEARING	1	
9	19000-04001	*ROD. Piston	1	
10	19000-00502	*BUSHING	2	
11	19000-00503	*COVER. Rod	1	
12	19000-00550	*HOLDER. Packing	1	
13	19000-90506	*PISTON	1	
14	19000-04007	*TUBE	1	
15	19000-00508	*PACKING HOLDER. Rod	1	
16	19000-00509	*NUT	1	
17	19000-04030	*BUSHING	1	
18	12210-00055	*RING. Snap	1	
19	12210-00058	*RING. Snap	1	
20	12100-00555	*PIN. Split	1	
21	15600-01000	*NIPPLE. Grease	1	
22	15600-01000	*NIPPLE. Grease	1	

144

CLICK HERE TO **DOWNLOAD** THE COMPLETE MANUAL

- Thank you very much for reading the preview of the manual.
- You can download the complete manual from: www.heydownloads.com by clicking the link below



- Please note: If there is no response to CLICKING the link, please download this PDF first and then click on it.

CLICK HERE TO **DOWNLOAD** THE COMPLETE MANUAL