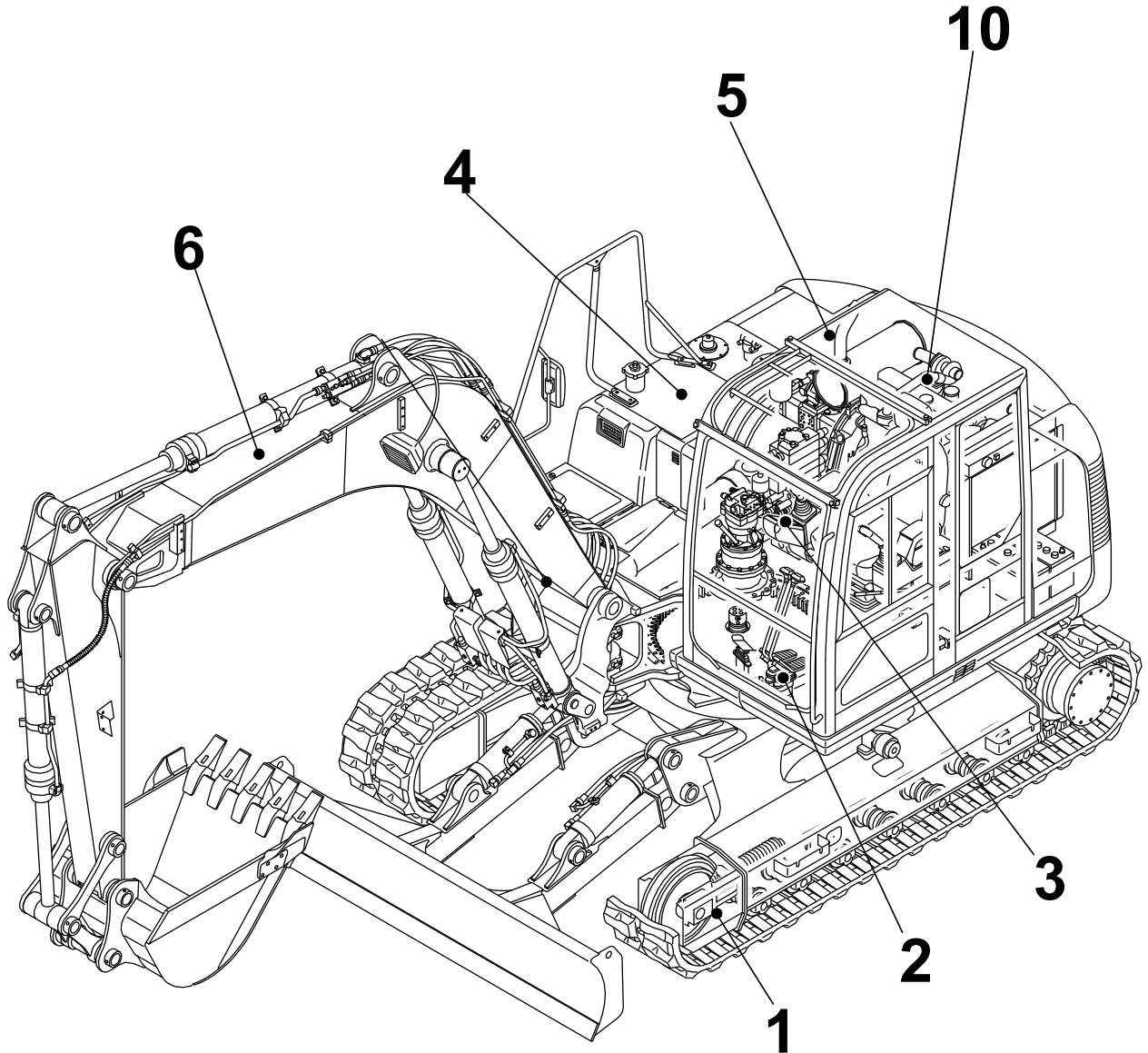


TB1140

Book No. BN0Z008
Serial No. 51400005-



TAKEUCHI

CLICK HERE TO **DOWNLOAD** THE COMPLETE MANUAL

- Thank you very much for reading the preview of the manual.
- You can download the complete manual from: www.heydownloads.com by clicking the link below



- Please note: If there is no response to CLICKING the link, please download this PDF first and then click on it.

CLICK HERE TO **DOWNLOAD** THE COMPLETE MANUAL

CARRIER ROLLER

Item	Part number	Description	Q'ty	Chan.	Serial No.	Serv.	Remarks
0	HIT4S00516	ROLLER ASSY, carrier	2				
1	HIT9134794	· BRACKET	1				
2	HIT4176379	· SEAL	1				
3	HIT4282841	· WASHER	1				
4	HITM351020	· SCREW, cap	2				
5	HIT3068629	· COVER	1				
6	HIT942011	· PLUG	1				
7	HIT9196026	· ROLLER ASSY	1				
7-1	X *****	· · ROLLER	1				
7-2	HIT4327613	· · BUSHING	1				
8	HITJ931235	BOLT	8				
	N0a033						

TRAVEL DEVICE

Item	Part number	Description	Q'ty	Chan.	Serial No.	Serv.	Remarks
1	HIT9232930	MOTOR, travel	2				
2	HIT4228795	BOLT	28				
3	HITJ222016	WASHER	28				
	N0a082						

PIPING; LOWER (dozer blade)

Item	Part number	Description	Q'ty	Chan.	Serial No.	Serv.	Remarks
1	HIT4432764	HOSE ASSY	1				
2	HIT4432763	HOSE ASSY	1				
3	HIT4432765	HOSE ASSY	1				
4	HIT4432766	HOSE ASSY	2				
5	HITA 852433	TEE	2				
5-1	HIT0443802	• O-RING	2				
6	HIT4334566	BUSHING	1				
7	HIT4201986	BUSHING	2				
	N0a132						

DOZER BLADE LEVER

Item	Part number	Description	Q'ty	Chan.	Serial No.	Serv.	Remarks
		LEVER ASSY, blade					X05733-00000-10
1	0573300010	LEVER	1				
2	0573300020	BRACKET	1				
3	0573300030	COVER	1				
4	1901745400	VALVE, remote control	1				
5	1513370046	ADAPTOR (with filter)	1				
	1420010110	• O-RING	1				
6	1515600571	ADAPTOR	2				
	1420010110	• O-RING	1				
7	1515010130	ELBOW	2				
	1420010110	• O-RING	1				
9	1100040814	BOLT	2				
10	1100040820	BOLT	2				
11	1100090835	BOLT	4				
13	1140020008	WASHER, spring	4				
14	1140090008	WASHER, spring	6				
16	1700000019	SWITCH, rotary	2				
17	0007213028	BUSHING	2				
18	1650153655	GRIP	1				
20	1652533019	CAP	1				
21	1100090816	BOLT	2				
22	1141190008	WASHER	2				
23	0872433150	TUBE	10				
24	1700550031	LAMP, pilot	1				
25	1420010110	O-RING	2				
26	1730140490	BUZZER	1				
27	1150420408	SCREW	2				
30	1711900049	RELAY	2		51400408~		
31	1130040006	NUT	2		51400408~		
32	1700550024	ORNAMENT	1		51400408~		
33	1140020006	WASHER, spring	2		51400408~		
34	1100560612	BOLT	2				
	N0b055						

ARM REST

Item	Part number	Description	Q'ty	Chan.	Serial No.	Serv.	Remarks
		REST ASSY, arm					X05636-00000-2
3	0563600300	REST, arm	1				
5	1110090820	SCREW, cap	3				
6	1140490008	WASHER, spring	3				
7	1141190008	WASHER	3				
	L3b090						

PIPING; OPERATION LEVER (1/2) (A-G pattern; 51400060-)

Item	Part number	Description	Q'ty	Chan.	Serial No.	Serv.	Remarks
		PIPING ASSY					X05771-06000-7
		PIPING ASSY (with 2nd aux. line)					X05771-06500-7
1	0577101010	BRACKET	1		51400060~51400524		
	0577105010	BRACKET	1		51400525~		
2	0577102020	MANIFOLD ASSY	1				standerd
	0577101020	MANIFOLD ASSY	1				with 2nd aux. line
2-1	0577101021	· MANIFOLD	1				
2-2	1515010041	· ELBOW	4				
	1420010140	· · O-RING	1				
2-3	1515600201	· ADAPTOR	8				standerd
	1420010140	· · O-RING	1				
	1515600201	· ADAPTOR	10				with 2nd aux. line
	1420010140	· · O-RING	1				
2-4	1501750003	· PLUG	2				standerd
	1420010140	· · O-RING	1				
3	0577101030	ADAPTOR	1				
4	0577105040	HOSE ASSY	1				18010-23175
5	0577103050	HOSE ASSY	1				18010-23205
6	0577105060	HOSE ASSY	1				18010-23175
7	0577103070	HOSE ASSY	1				18010-23195
8	0577101080	HOSE ASSY	1				18010-23132
9	0577101090	HOSE ASSY	1				18010-23134
10	0577101100	HOSE ASSY	1				18010-23165
11	0577103110	HOSE ASSY	1				18010-23155
12	0577101120	HOSE ASSY	1				18010-23165
13	0577103130	HOSE ASSY	1				18010-23190
14	0577101140	HOSE ASSY	1				18010-23112
15	0577101150	HOSE ASSY	1				18010-23114
38	0577101550	HOSE ASSY	1				
39	0577101560	HOSE ASSY	1				
40	0577101570	HOSE ASSY	1				
42	0577101420	HOSE ASSY	1				
43	0577101430	HOSE ASSY	1				
44	0577101440	HOSE ASSY	1				
45	0577101450	HOSE ASSY	1				
46	0577101460	HOSE ASSY	1				18010-23138
56	1901744700	VALVE, shock-less	1				
57	0007200154	NUT	8				
59	1100041060	BOLT	2				
60	1100041016	BOLT	2				
62	1141110010	WASHER	2				
63	1140020010	WASHER, spring	4				
65	1531350030	PROTECTOR	1				sold by the meter
66	1531350050	PROTECTOR	1				sold by the meter
69	1567526545	PROTECTOR	2				sold by the meter
70	1567536500	CUFF	1				
72	1531350080	PROTECTOR	1				sold by the meter
73	1531360100	PROTECTOR	2				sold by the meter
75	1141110018	WASHER	8				
76	X *****	VALVE ASSY, selector	1				X05771-03760-0
76-1	1901730500	· VALVE, selector	1				
76-2	1515010130	· ELBOW	5				
	1420010110	· · O-RING	1				
76-3	1515600571	· ADAPTOR	3				
	1420010110	· · O-RING	1				
77	0577103770	HOSE ASSY	1				18010-53032
78	0577103780	HOSE ASSY	1				18010-23031
79	0577103790	HOSE ASSY	1				18010-23054
80	0577103800	HOSE ASSY	1				18010-53034
81	0377103300	PLATE	1				
82	1100040650	BOLT	2				
83	1100040820	BOLT	2				
84	1140020006	WASHER, spring	2				
85	1140020008	WASHER, spring	2				
86	1141110006	WASHER	2				
87	1141110008	WASHER	2				

N0b142

ENGINE & ACCESSORIES (1/3) (51400417-)

Item	Part number	Description	Q'ty	Chan.	Serial No.	Serv.	Remarks
		ENGINE ASSY					X05740-02000-8
1	0574000100	FOOT, engine (F.L.)	1				
2	0574000110	FOOT, engine (F.R.)	1				
3	0574000120	BRACKET	1				
4	0574000130	BRACKET	1				
5	0574000140	BRACKET	1				
6	0574000150	U-BOLT	2				
12	0574000540	HOOK	1				
14	0574002230	HOSE	1				
15	0574000240	HOSE	1				
16	0574000250	HOSE	1				
17	0574002240	PIPE	1				
22	0574000310	PIPE	1				
31	0007300063	CLAMP	1				
35	0574000440	HOSE ASSY	1				
36	0574000700	1/2± 1/4	1			M	
39	0564017460	STOPPER	4				
40	0564017470	STOPPER	4				
41	1910219001	ENGINE	1	A	51400417~51400887		ISUZU BB-4BG1TRE
	1910255001	ENGINE	1	a	51400888~	M	ISUZU BB-4BG1TRE
42-1	0574002250	SHROUD	1	a	51400888~		
44	1910219005	SILENCER	1				ISUZU F-10807004-F
45	1910188007	CLEANER, air	1				ISUZU F-10507005-F
47	0574002270	GUARD	1	a	51400888~		
48	1910188032	FILTER, oil	1				ISUZU 8-97324386-0
51	1533700081	BAND	1				
52	1533700096	BAND	2				
53	1533700113	BAND	2				
54	1910188030	GASKET	1				ISUZU 8-94369021-0
55	1533300063	CLAMP	1				
58	1651030010	RUBBER, cushion	8				
66	1515010043	ELBOW	4				
	1420010240	· O-RING	1				
71	1100040820	BOLT	5				
74	1100041025	BOLT	2				
75	1101041025	BOLT	9				
77	1140330010	WASHER	1				
78	1100141010	BOLT	2				
79	1100141040	BOLT	2				
80	1101141640	BOLT	2				
81	1101141670	BOLT	1				
82	0860131400	BOLT	1				
83	1100041030	BOLT	4				
85	1140020008	WASHER, spring	7				
86	1140020010	WASHER, spring	25				
88	1140020016	WASHER, spring	2				
89	1141110008	WASHER	1				
90	1141110010	WASHER	4				
91	1130540010	NUT	1				
93	0003600020	WASHER	6				
94	1130040010	NUT	9				
96	1130540016	NUT	4				
98	1130040008	NUT	3				
103	0003600198	WASHER	4				
108	1141550016	WASHER	2				
112	0003600167	SHIM	2				

<<NOTE>>
 "A" is interchangeable
 with SET "a".

N0c204

CONTROL BOX (L.H.)

Item	Part number	Description	Q'ty	Chan.	Serial No.	Serv.	Remarks
		BOX ASSY, control (L.H.)					X05643-30000-1
1	0564319100	COVER (L.H.)	1				
2	0564328100	COVER	1				
3	0564319300	CLAMP	1				
4	1150420816	BOLT, sems	4				
5	1150120412	SCREW	4				
6	1652231100	BAND	1				
7	0872433150	CLAMP	4				
	L3c061						

ELECTRICAL (2/3) (51400005-51400044)

Item	Part number	Description	Q'ty	Chan.	Serial No.	Serv.	Remarks
		ELECTRICAL ASSY					X05742-00000-2
3	0574200030	HARNES, wiring	1				
3-1	1730500023	· DIODE	6				3A
3-2	1701330045	· LINK, fusible	2				45A
3-3	1701330075	· LINK, fusible	1				75A
4	0574200040	HARNES, wiring	1				
7	1703500624	HORN	1				
8	0574200081	GROMMET	2		51400027~		
11	1652231250	BAND	13				
12	1711900076	CLAMP	3				
15	1140330010	WASHER	1				
16	1130040010	NUT	1				
17	1140020010	WASHER, spring	1				
18	1100041016	BOLT	3				
19	1140020008	WASHER, spring	2				
25	1100040816	BOLT	4				
27	0872433150	TUBE	36				
28	0437200100	GUARD	1				
29	1531360010	PROTECTOR	1				sold by the meter
	N0c100						

ELECTRICAL (with high pressure 3rd aux. lines; 51400654-)

Item	Part number	Description	Q'ty	Chan.	Serial No.	Serv.	Remarks
		ELECTRICAL ASSY					X05742-01400-0
1	0574201410	HARNESS, wiring	1				
2	1652900006	CLAMP	1				
3	1652231250	BAND	6				
4	1140330008	WASHER	1				
5	0872433900	RELAY ASSY	1				
5-1	1711900049	• RELAY	1				
5-2	1654305002	• SPONGE	1				sold by the meter
6	1141110006	WASHER	1				
7	1140020006	WASHER, spring	1				
8	1130040006	NUT	1				
	N0c270						

BATTERY (51400417-)

Item	Part number	Description	Q'ty	Chan.	Serial No.	Serv.	Remarks
		BATTERY ASSY					X05744-00200-1
1	0574400110	CLAMP	1				
2	0574400220	BRACKET	1				
3	0574400030	COVER	1				
4	0574400120	SHEET	1				
5	1702050141	BATTERY	2				
6	1910188125	RELAY, battery	1				ISUZU 8-94379543-0
7	1910188112	RELAY, heater	1				ISUZU 8-94258014-0
8	1702560030	CABLE, battery	1				
9	1702560170	CABLE, battery	1				
10	1702660028	CABLE, battery	1				
11	1702260030	CABLE, earth	1				
12	1702330000	TERMINAL	1				
13	1702920080	COVER	1				
15	1702920002	COVER	1				
16	1702901283	CAP	1				
17	1702108210	BOLT	1				
18	1711900072	CLAMP	3				
22	1703211520	PROTECTOR	2				sold by the meter
24	1703221516	PROTECTOR	1				sold by the meter
25	1531325160	PROTECTOR	1				sold by the meter
27	1100040820	BOLT	4				
28	1100041020	BOLT	5				
29	1140020008	WASHER, spring	6				
30	1140020010	WASHER, spring	8				
31	1141110006	WASHER	2				
32	1141110008	WASHER	6				
33	1141110010	WASHER	4				
34	1140020006	WASHER, spring	2				
35	1130040008	NUT	8				
36	1130040006	NUT	2				
37	1130040010	NUT	3				
39	1140330010	WASHER	1				
44	1121530816	BOLT, wing	2				
46	1653916035	TRIM	1				sold by the meter
47	0574400080	BOLT	1				
48	1652040730	GROMMET	1				
	N0c241						

RADIO (51400870-)						
Item	Part number	Description	Q'ty	Chan.	Serial No.	Serv. Remarks
		RADIO ASSY (Japan)				X05747-00500-0
		RADIO ASSY (America)				X05747-00400-0
		RADIO ASSY (Europe, Asia, Oceania)				X05747-00300-0
1	0574700330	COVER (L.H.)	1			M
2	0574700340	COVER (R.H.)	1			M
3	0564708720	BRACKET	2			
4	1705003900	CASSETTE STEREO (Europe, Asia, Oceania)	1			
	1705004000	CASSETTE STEREO (America)	1			
	1705004100	CASSETTE STEREO (Japan)	1			
5	1705002150	SPEAKER	2			
7	1100290820	BOLT	7			
8	1120530520	SCREW	4			
9	1120730420	SCREW	8			
10	1140020005	WASHER, spring	4			
11	1140090008	WASHER, spring	7			
12	1140330005	WASHER	1			
13	1141110005	WASHER	7			
14	1141190008	WASHER	7			
15	1652520005	NUT, rubber	4			
16	1652231100	BAND	2			
17	0872433150	TUBE	8			
18	1705003660	COVER	1			
19	0574700335	CLOTH	1			M
20	0574700345	CLOTH	1			M
	N1c110					

WATER TEMPERATURE CONTROLLER

Item	Part number	Description	Q'ty	Chan.	Serial No.	Serv.	Remarks
		CONTROLLER ASSY, water temp.					X05742-02700-3
1	1730141540	DRIVER, meter	1			M	
2	0574201330	HARNESS ASSY, wiring	1			M	
3	0574400400	HARNESS ASSY, wiring	1			M	
4	1652231250	BAND	2				
8	1140330010	WASHER	2				
	N0c290						

VALVE & ACCESSORIES (3/3) (51400005-51400038)

Item	Part number	Description	Q'ty	Chan.	Serial No.	Serv.	Remarks
38	1420010110	• • O-RING	1				
39	1700100069	• SWITCH, pressure	1				
39	1420010110	• • O-RING	1				
40	1512340001	• ELBOW	1				
40	1420010110	• • O-RING	1				
41	1700100065	• SWITCH, pressure	1		51400007~		
41	1420010110	• • O-RING	1				
42	0007213042	• BUSHING	1		51400007~		
43	0007213058	• BUSHING	1		51400007~		
	N0d040						

VALVE & ACCESSORIES (2/3) (51400039-)

Item	Part number	Description	Q'ty	Chan.	Serial No.	Serv.	Remarks
		VALVE ASSY, control					X05750-02600-3
		VALVE ASSY, control (with 2nd aux. line)					X05750-02700-3
		VALVE ASSY, control (with 3rd aux. line)					X05750-02800-3
		VALVE ASSY, control (with 4rd aux. line)					X05750-02900-3
		VALVE ASSY, control (with 2nd aux. line and without accumulator)					X05750-03000-3
		VALVE ASSY, control (with high press. 3rd aux. line)			51400654~		X05750-03600-3
2	X *****	VALVE ASSY, stop	1				X05750-00250-1
2-1	1512373015	• TEE	1				
	1420010290	• • O-RING	1				
2-2	1513350020	• ELBOW	1				
	1420010290	• • O-RING	1				
2-3	1901744200	• VALVE, stop	1				
2-4	1420310021	• O-RING	2				
3	X *****	MANIFOLD ASSY	1				X05750-00300-1
3-1	0565029610	• MANIFOLD	1				
3-2	1511061604	• ADAPTOR	4				
	1420010180	• • O-RING	1				
3-3	1511061906	• ADAPTOR	2				
	1420010240	• • O-RING	1				
3-4	1420310016	• O-RING	4				
3-5	1420310018	• O-RING	2				
4	X *****	VALVE ASSY, solenoid	1				X05750-00350-1
	X *****	VALVE ASSY, solenoid	2				with 2nd, 3rd, 4th aux. line
4-1	1515600571	• ADAPTOR	2				
	1420010110	• • O-RING	1				
4-2	1515010130	• ELBOW	2				
	1420010110	• • O-RING	1				
4-4	1901738500	• VALVE, proportional control	1				
4-5	1513370046	• ADAPTOR (with filter)	1				
	1420010110	• • O-RING	1				
6	X *****	FILTER ASSY	1				X05750-00450-0
6-1	1551200600	• FILTER	1				
6-1-1	1551200601	• • ELEMENT	1				
6-1-2	1551200602	• • COVER, head	1				
6-1-3	1551200603	• • CASE	1				
6-1-4	1551200604	• • O-RING	1				
6-2	1515010042	• ELBOW	1				
	1420010180	• • O-RING	1				
6-3	1515010051	• ELBOW	1				
	1420010180	• • O-RING	1				
10	0575000520	BRACKET	1				
13	0575000560	BRACKET	1				
16	1100040820	BOLT	4				with 2nd, 3rd, 4th aux. line
17	1100040816	BOLT	2				
	1100040816	BOLT	4				with 2nd, 3rd, 4th aux. line
19	1100040870	BOLT	2				
22	1100041025	BOLT	2				
23	1100041080	BOLT	6				
24	1100141000	BOLT	2				
28	1140020008	WASHER, spring	4				
	1140020008	WASHER, spring	6				with 2nd aux. line
	1140020008	WASHER, spring	10				with 2nd, 3rd, 4th aux. line
29	1140020010	WASHER, spring	10				
	1140020010	WASHER, spring	14				with 4th aux. line
33	1141110008	WASHER	2				
	1141110008	WASHER	6				with 2nd, 3rd, 4th aux. line
34	1141110010	WASHER	4				
36	1141550010	WASHER	4				
41	1700100064	SWITCH, foot	1				with 2nd, 3rd, 4th aux. line
43	0575002610	VALVE ASSY, solenoid	1				with 4th aux. line
43-1	1515012510	• ELBOW	1				with 4th aux. line
	1420010110	• • O-RING	1				with 4th aux. line

PIPING; UPPER (2/4) (51400005-51400053)

Item	Part number	Description	Q'ty	Chan.	Serial No.	Serv.	Remarks
		PIPING ASSY, upper					X05770-01000-1
		PIPING ASSY, upper (with 2nd aux. line)					X05770-01300-1
		PIPING ASSY, upper (with 3rd aux. line)					X05770-01500-1
6	0577000060	HOSE ASSY	1				18010-24066
8	0577000080	HOSE ASSY	1				18010-52124
9	0577000090	HOSE ASSY	1				18010-52110
11	0577000110	HOSE ASSY	1				18010-24080
32	0577000320	HOSE ASSY	1				18010-53110
34	0577000340	HOSE ASSY	1				18010-56072
35	0577000350	HOSE ASSY	1				18010-22040
36	0577000360	HOSE ASSY	1				18010-52032
39	0577000390	HOSE ASSY	1				18010-53038
40	0577000405	HOSE ASSY	1				18010-23200
41	0577000410	HOSE ASSY	1				18010-52132
42	0577000420	HOSE ASSY	1				18010-22090
43	0577000430	HOSE ASSY	1				18010-23135
45	0577000450	HOSE ASSY	1				18010-53048
46	0577000460	HOSE ASSY	1				18010-52084
49	0577000490	HOSE ASSY	1				18010-23045
52	0577000520	HOSE ASSY	1				18010-23056
53	0577000535	HOSE ASSY	1				18010-53144
54	0577000540	HOSE ASSY	1				18010-23220
60	0577000600	HOSE ASSY	1				18010-52040
96	0577000960	HOSE ASSY	1				18010-22100
99	1531350050	PROTECTOR	1				sold by the meter
100	1652201007	BAND	3				
	N0d061						

PIPING; UPPER (1/5) (51400417-)							
Item	Part number	Description	Q'ty	Chan.	Serial No.	Serv.	Remarks
		PIPING ASSY, upper					X05770-02600-5
		PIPING ASSY, upper (with 2nd aux. line)					X05770-02700-5
		PIPING ASSY, upper (with 3rd aux. line)					X05770-02800-5
		PIPING ASSY, upper (with 4th aux. line)					X05770-02900-5
		PIPING ASSY, upper (with high press. 3rd aux. line)			51400654~		X05770-03400-5
1	0577000010	PIPE	1				
2	0577002620	PIPE	1				
3	0577002630	PIPE	1				
10	0577000100	HOSE	1				sold by the meter
33	1530541033	HOSE	1				sold by the meter
38	1530534075	HOSE	1				sold by the meter
47	1534200032	COUPLING	1				
63	1530541033	HOSE	1				sold by the meter
64	1530541028	HOSE	1				sold by the meter
65	1530541017	HOSE	1				sold by the meter
66	1533700115	BAND	4				
67	1533700060	BAND	20				
68	1533700048	BAND	4				
72	1140020010	WASHER, spring	8				
78	1140020008	WASHER, spring	2				
80	1100041020	BOLT	2				
82	1530741045	HOSE	1				sold by the meter
87	0577000870	SUPPORT	1				
88	1533201012	U-BOLT	1				
89	1100041025	BOLT	7				
90	1130040008	NUT	2				
91	1141110010	WASHER	3				
95	0003600025	WASHER	4				
	N0d213						

PIPING; UPPER (5/5) (with 4th aux. Lines; 51400417-)

Item	Part number	Description	Q'ty	Chan.	Serial No.	Serv.	Remarks
		PIPING ASSY, upper (with 4th aux. line)					X05770-02900-5
103	0577002910	HOSE ASSY	1				18027-42085
104	0577002920	HOSE ASSY	1				18027-42090
105	0577002930	HOSE ASSY	1				18010-22050
106	0577002940	HOSE ASSY	1				
107	0577002950	HOSE ASSY	1				
108	0577002960	HOSE ASSY	1				18025-21265
109	0577002970	HOSE ASSY	1				18025-21265
	N0d253						

FUEL SUPPLY PUMP (51400005-51400482)

Item	Part number	Description	Q'ty	Chan.	Serial No.	Serv.	Remarks
	0578101000	PUMP ASSY, fuel supply	1				X05781-01000-5
1	0578101100	· BLOCK ASSY, relay	1				X05781-01100-0
1-1	0578101110	· · COVER	1				
1-2	0872433900	· · RELAY ASSY	4				
1-2-1	1711900049	· · · RELAY	1				
1-2-2	1654305002	· · · SPONGE	1				sold by the meter
1-3	1700000008	· · SWITCH	1				
1-4	0564227700	· · RESISTOR	1				
1-5	1140020005	· · WASHER, spring	2				
1-6	1100040510	· · BOLT	2				
1-7	1134830635	· · NUT	2				
1-8	1140020006	· · WASHER, spring	4				
1-9	1141110006	· · WASHER	4				
1-10	1100040616	· · BOLT	2				
1-11	1653916007	· · TRIM	1				sold by the meter
1-12	0872433150	· · TUBE	2				
3	0568121700	· HARNESS, wiring	1				
3-1	1730500008	· · DIODE (3A yellow)	3				
4	1919901730	· HOSE	1			M	
6	1711910200	· PUMP	1				
7	1552001100	· STRAINER	1				
8	0568121400	· PLUG	1				
9	0568120500	· SWITCH, level	1				
9-1	1703210725	· · PROTECTOR	1				sold by the meter
10	1513350018	· ELBOW	1				
	1420010290	· · O-RING	1				
11	1531207030	· HOSE	1				sold by the meter
12	1533120012	· CLAMP	1				
13	1653916008	· TRIM	1				sold by the meter
14	1653916020	· TRIM	1				sold by the meter
15	0568121020	· RUBBER	1				
16	1110040512	· SCREW, cap	4				
17	1140020005	· WASHER, spring	4				
18	1100040816	· BOLT	4				
19	1140020008	· WASHER, spring	4				
20	1141110008	· WASHER	4				
21	1100041020	· BOLT	4				
22	1140020010	· WASHER, spring	4				
23	1141110010	· WASHER	4				
24	0872433150	· TUBE	10				
25	0578101500	· BRACKET	1				
26	1703210730	· BOOT	1				
27	0578101250	· BRACKET	1				
29	1711910208	· COVER	1				
	N0d112						

COVER (3/9) (front engine hood; 51400005-51400011)

Item	Part number	Description	Q'ty	Chan.	Serial No.	Serv.	Remarks
0-1	0578200100	FRONT HOOD ASSY, engine	1				X05782-00100-5
1	0578200110	• COVER, engine	1				
2	0578200120	• COVER	1				
3	0578200113	• SPONGE	1				
4	1651101224	• STOPPER	1				
5	1100040612	• BOLT	4				
6	1653611836	• LOCK	1				
6-1	1700100019	• KYE	1				
7	1654606145	• RUBBER	1				sold by the meter
8	1130040012	• NUT	1				
9	1141110012	• WASHER	1				
10	1140020006	• WASHER, spring	4				
14	0568247131	• PLATE	1				
15	1141110010	• WASHER	6				
16	1224010009	• RING, retaining	2				
17	0568247130	• BRACKET (R.H.)	1				
18	0568247140	• BRACKET (L.H.)	1				
19	1130040008	• NUT	4				
20	1140020008	• WASHER, spring	6				
21	1100040816	• BOLT	6				
22	0578200122	• COVER	1				
23	1100041016	• BOLT	4				
24	1140020010	• WASHER, spring	4				
25	0578200125	• RUBBER	1				
26	0578200126	• ABSORBENT, noise	1				
27	0578200127	• ABSORBENT, noise	1				
29	0578200129	• ABSORBENT, noise	1				
30	0578200130	• ABSORBENT, noise	1				
31	0578200131	• ABSORBENT, noise	1				
32	0578200132	• ABSORBENT, noise	1				
33	0578200133	• ABSORBENT, noise	1				
34	0578200134	• ABSORBENT, noise	1				
35	0578200135	• ABSORBENT, noise	2				
36	0578200136	• ABSORBENT, noise	1				
37	0578200111	• PLATE	1				
38	1140020006	• WASHER, spring	4				
39	0578200139	• ABSORBENT, noise	1				
40	0578200146	• ABSORBENT, noise	1				
41	0578200147	• SPONGE	1				
	N0e030				51400007~		

COVER (7/9) (front cover)

Item	Part number	Description	Q'ty	Chan.	Serial No.	Serv.	Remarks
0-5	0578200500	COVER ASSY, front	1				X05782-00500-0
1	0578200510	· COVER	1				
2	0568243410	· COVER	1				
3	0568243480	· SEAL	1				
4	1653602395	· LOCK	1				
4-1	1700100019	· KEY	1				
5	1703003700	· LAMP	1				
5-1	1703003701	· · BULB	1				
6	0568243505	· PLATE	1				
7	1100040820	· BOLT	5				
8	1140020008	· WASHER, spring	5				
9	1141110008	· WASHER	5				
11	0378206310	· PLATE	1				
12	0880841210	· RUBBER	1				
13	1654613006	· PACKING	1				sold by the meter
14	1141110010	· WASHER	2				
15	1224010009	· RING, snap	2				
	N0e070						

FLOOR PLATE (5140045-)

Item	Part number	Description	Q'ty	Chan.	Serial No.	Serv.	Remarks
		PLATE ASSY, floor					X05735-00000-9
1	0573500010	PLATE	1				
2	0573500040	MAT, floor	1		51400045~51400416		
3	0573500060	COVER	1				
7	0563513400	MOUNT	6				
8	1140020012	WASHER, spring	24				
9	1101041240	BOLT	24				
10	1130040016	NUT	3				
11	1140020016	WASHER, spring	3				
12	1141110016	WASHER	3				
13	0573500080	STOPPER	6				
14	1652533010	CAP	1		51400045~51400416		
15	1100040820	BOLT	5				
16	1140020008	WASHER, spring	5				
17	1652030007	BUSHING	2				
19	1652030002	GROMMET	1				
20	0563515300	COVER ASSY	1				
20-1	0563515310	COVER	1				
20-2	0563515320	RUBBER	1				
24	0563517300	PIPE	1				
25	1141110008	WASHER	5				
26	0003600121	WASHER	6				t=1.2mm
27	0437200100	GUARD	1				
28	1654629007	TRIM	1				sold by the meter
29	0003600062	WASHER	6				t=3.2mm
30	0573500090	STOPPER	2				
31	0573500110	SPACER	2				
32	1130540020	NUT	2				
33	1141110020	WASHER	2				
34	1100560612	BOLT	2				
	N0e333						

SEAT (2/3) (with air suspension)

Item	Part number	Description	Q'ty	Chan.	Serial No.	Serv.	Remarks
0-2	1914100096	SEAT ASSY	1		51400005~51401259		
1	1914101096	▪ CUSHION	1				
2	1914102071	▪ CUSHION	1				
3	1914103096	▪ SCREW	9				
4	1100040816	▪ BOLT	4				
5	1914104096	▪ BACKREST	1				
6	1914105096	▪ HANDLE	1				
7	1141140008	▪ WASHER	4				
8	1141140008	▪ WASHER	6				
9	1914111096	▪ COVER	1				
10	1914114096	▪ PAN, seat	1				
11	1914118096	▪ COVER	1				
12	1914115072	▪ BACKREST	1				
13	1914116072	▪ BUSHING	2				
14	1914121096	▪ SUPPORT KIT, lumbar	1				
15	1914118072	▪ MOUNTING KIT	1				
16	1914121072	▪ COVER (PVC)	1				
17	1130040008	▪ NUT	4				
18	1914139096	▪ RAIL KIT, slide	1				
19	1914123072	▪ BELT, seat	1				
	N0e390						

CAB (2/6) (51400005-51400869)

Item	Part number	Description	Q'ty	Chan.	Serial No.	Serv.	Remarks
0	0578601300	CAB ASSY	1		51400005~51400044		X05786-01300-0
	057860100	CAB ASSY	1	(H)	51400045~		X05786-00100-6
19	0578600119	· COVER	1				
20	1150420616	· SCREW	4				
21	0578600121	· LEVER	1				
22	0578600122	· SEAL	2				
23	0007000096	· SPRING	1				
24	0438601760	· COVER	2				
25	1654011708	· STRIKER	1				
26	0578600126	· SHIM	AR				
31	1654004800	· HANGER	1				
32	1122400416	· SCREW	4				
33	0578600550	· COVER	1				
34	1150420510	· SCREW	14				
35	0578600135	· PLATE	1				
36	1110091025	· BOLT	2				
37	1652102320	· RUBBER	2				sold by the meter
38	1654011720	· LOCK	1				
39	1100040820	· BOLT	4				
40	1141110008	· WASHER	4				
41	0578600560	· COVER	1				
45	0578600145	· COVER	1				
54	1654004900	· RUBBER	6				
59	0578600570	· BRACKET	2				
60	0578600160	· SHIM	AR				
61	1100040616	· BOLT	4				
65	0578600580	· COVER	1				
66	1150420612	· SCREW	6				
67	0578600167	· ABSORBENT, noise	1				
68	0578600168	· ABSORBENT, noise	1				
69	0578600169	· ABSORBENT, noise	1				
83	1654010800	· PIN	1				
84	1131283006	· NUT	1				
85	0578600590	· COVER	1				
86	0578600600	· COVER	1				
89	1653916005	· TRIM	2				sold by the meter
90	1653916007	· TRIM	2				sold by the meter
92	1654011710	· CAP	2				
	N0e145						

CAB (1/6) (51400870-)

Item	Part number	Description	Q'ty	Chan.	Serial No.	Serv.	Remarks
0	0578602100	CAB ASSY	1			M	X05786-02100-1
1	X *****	• CAB	1				
2	0578602300	• DOOR ASSY	1			M	see page (4/6)
3	0578602400	• ADJUST ASSY, front sash	1			M	see page (5/6)
8	0578602520	• GUARD, roof	1			M	
9	1100041225	• BOLT	4				
10	1141110012	• WASHER	4				
11	1100041016	• BOLT	3				
12	1141110010	• WASHER	3				
13	0578602530	• SASH ASSY, side	1			M	
13-1	0578602531	• • FRAME	1			M	
13-2	0578602532	• • GLASS	1			M	
13-3	0578602533	• • GLASS	1			M	
13-4	0880865424	• • LOCK ASSY	2			M	
14	0578600610	• GLASS ASSY, front	1				
14-1	0578600611	• • GLASS	1				
14-2	1654010900	• • RETAINER	2				
14-3	1654011100	• • PACKING	4				
14-4	1654011000	• • PLATE	2				
14-5	1122410412	• • SCREW	4				
15	0578602115	• GLASS	1			M	
16	0578600116	• GLASS	1				
17	0578602117	• GLASS	1			M	
18	0578602118	• GLASS	1			M	
46	1654231295	• H-RUBBER	1				sold by the meter
47	0880865139	• H-RUBBER	1				
48	1654605385	• RUBBER	1			M	sold by the meter
49	1654605165	• RUBBER	1				sold by the meter
50	1654615335	• DAM	1				sold by the meter
51	1654615350	• DAM	1			M	sold by the meter
52	1654615320	• DAM	1				sold by the meter
53	1654615265	• DAM	1				sold by the meter
62	1651101042	• STOPPER	2				
63	1130090010	• NUT	2				
70	0578600170	• SEAL	1				
71	0578600171	• SEAL	1				
72	0578600172	• SEAL	1				
73	0578602173	• SEAL	1			M	
77	0578600177	• PLATE	1				
78	1653916175	• TRIM	1				sold by the meter
79	1654605150	• SEAL	1				sold by the meter
82	0568626600	• GROMMET	1				
87	1653303010	• CAP	11				
88	1653916098	• TRIM	4			M	sold by the meter
91	1653916004	• TRIM	2				sold by the meter
93	0578600193	• SPACER	4				
	N1e221						

CLICK HERE TO **DOWNLOAD** THE COMPLETE MANUAL

- Thank you very much for reading the preview of the manual.
- You can download the complete manual from: www.heydownloads.com by clicking the link below



- Please note: If there is no response to CLICKING the link, please download this PDF first and then click on it.

CLICK HERE TO **DOWNLOAD** THE COMPLETE MANUAL

CAB (6/6) (front sash; 51400870-)

Item	Part number	Description	Q'ty	Chan.	Serial No.	Serv.	Remarks
0-4	0578602410	SASH ASSY, front	1			M	X05786-02410-0
1	0578602450	▪ FRAME	1			M	
2	0578602403	▪ GLASS	1			M	
4	1704044424	▪ MOTOR, wiper	1				
5	1704100100	▪ ARM, wiper	1				
6	1704200530	▪ BLADE	1				
7	0578600470	▪ ROLLER	2				
8	1704400002	▪ COVER	1			M	
9	1652221050	▪ BAND	8				
10	0578600408	▪ SEAL	1				
11	0578600406	▪ BOLT	2				
12	1130090010	▪ NUT	2				
13	0578600480	▪ HANDLE	1				
14	0578600490	▪ HANDLE	1				
16	1120800616	▪ SCREW	4				
17	1654615081	▪ DAM	2				sold by the meter
18	1654005460	▪ MIRROR, room	1				
19	1122400510	▪ SCREW	4				
	N1e270						

CONSOLE BOX (51400005-51400869)

Item	Part number	Description	Q'ty	Chan.	Serial No.	Serv.	Remarks
		BOX ASSY, console					X05748-00000-4
1	0574800050	BOX	1				
2	0574800010	COVER	1				
3	0574800080	COVER (R.H.)	1				
4	0574800070	COVER	1				
5	0574800060	COVER	1				
6	1653321500	LATCH	1				
8	1150420308	SCREW	4				
9	1120590410	SCREW	5				
10	1652760001	KNOB	1				
11	1100040816	BOLT	19				
13	1140090004	WASHER, spring	5				
15	1140020008	WASHER, spring	19				
17	1141190004	WASHER	9				
19	1141110008	WASHER	19				
20	1134230004	NUT	4				
21	1652001002	GROMMET	1				
25	0574800090	BRACKET	1				
26	0574800004	ABSORBENT, noise	1				
27	0574800005	ABSORBENT, noise	1				
28	0574800006	ABSORBENT, noise	1				
29	1653917016	TRIM	1				sold by the meter
30	1653917012	TRIM	1				sold by the meter
	N0e182						

OUT SIDE REARVIEW MIRROR (R.H.)

Item	Part number	Description	Q'ty	Chan.	Serial No.	Serv.	Remarks
1	1656500010 L3e180	MIRROR ASSY MIRROR	1				X05687-00000-0

AIR CONDITIONER (3/7) (condenser; 51400005-51400417)

Item	Part number	Description	Q'ty	Chan.	Serial No.	Serv.	Remarks
0-2	0574600200	CONDENSER ASSY	1				X05746-00200-4
2	0574600240	▪ BRACKET	2				
3	0574600250	▪ COLLAR	4				
5	1100040612	▪ BOLT	2				
6	1100040635	▪ BOLT	4				
8	1140020006	▪ WASHER, spring	6				
10	1141110006	▪ WASHER	6				
12	1911506620	▪ CONDENSER	1				
13	1911506630	▪ DRYER	1				
14	1911506640	▪ HOSE ASSY	1				
	1911505601	▪ ▪ O-RING	2				RD-5-4017-011
15	1911506650	▪ HOSE ASSY	1				
	1911505602	▪ ▪ O-RING	2				RD-5-4017-013
16	1911506655	▪ HOSE ASSY	1				
	1911505602	▪ ▪ O-RING	2				RD-5-4017-013
18	1130040006	▪ NUT	4				
19	1130040008	▪ NUT	4				
20	1140020008	▪ WASHER, spring	4				
21	1141110008	▪ WASHER	4				
	N0e233						

AIR CONDITIONER (7/7)

Item	Part number	Description	Q'ty	Chan.	Serial No.	Serv.	Remarks
0-4	1911506700	UNIT, air conditioner	1				
1	1911506705	• COVER	1				
2	1911506706	• COVER	1				
3	1911506708	• EVAPORATOR	1				
4	1911506710	• HEATER	1				
5	1911506713	• KNOB	2				
6	1911506716	• MOTOR	1				
7	1911506721	• BOX	1				
8	1911506727	• THERMOSTAT	1				
9	1911505690	• VALVE	1				
10	1911506736	• FILTER	1				
11	1911506707	• BAND	2				
12	1911506709	• ORIFICE	1				
13	1911506711	• ADAPTOR	4				
14	1911506701	• HARNESS ASSY, wire	1		51400005~5140#		not shown
	1911506702	• HARNESS ASSY, wire	1		5140#~	M	not shown
0-5	1911505760	PANEL ASSY	1				
15	1911505767	• SWTCH, air con.	1				
16	1911505763	• KNOB	3				
17	1911505761	• CONVERTER, cable control	1				
18	1911505762	• CONVERTER, cable control	1				
19	1911505768	• ROTARY SWITCH, 3-speed	1				
	N0e302						

BOOM (4/5) (arm cylinder; 51400005-51400416)

Item	Part number	Description	Q'ty	Chan.	Serial No.	Serv.	Remarks
0	X *****	CYLINDER ASSY, arm	1				X05760-00530-0
1	1900091800	· CYLINDER, arm	1				
2	0576000560	· PIPE	1				
3	0576000570	· BAND	1				
4	0576000066	· BAND	1				
5	1100041055	· BOLT	1				
6	1100041035	· BOLT	2				
7	1140020010	· WASHER, spring	3				
8	1141110010	· WASHER	2				
9	1534100273	· CLAMP	1				
10	1420010300	· O-RING	1				
11	1110041060	· SCREW, cap	4				

Nof091

BOOM (3/5) (boom cylinder; 51400417-)

Item	Part number	Description	Q'ty	Chan.	Serial No.	Serv.	Remarks
0	X *****	CYLINDER ASSY, boom	1				X05760-01800-1
1	1900097300	▪ CYLINDER, boom (R.H.)	1				
2	0576001820	▪ PIPE (R.H.)	1				
3	0576001830	▪ PIPE (L.H.)	1				
4	1110040845	▪ SCREW, cap	8				
5	1110040840	▪ SCREW, cap	8				
6	1420010240	▪ O-RING	4				
7	0576000370	▪ PIPE	1				
8	0576000380	▪ PIPE	1				
9	0576001270	▪ BAND (R.H.)	1				
10	0576001280	▪ BAND (L.H.)	1				
11	0576001240	▪ BAND	4				
12	1100041035	▪ BOLT	8				
13	1140020010	▪ WASHER, spring	10				
14	1534000022	▪ CLAMP	2				
15	1100041050	▪ BOLT	2				
16	1900097400	▪ CYLINDER, boom (L.H.)	1				
	N0f181						

ARM (51400005-51400416)

Item	Part number	Description	Q'ty	Chan.	Serial No.	Serv.	Remarks
		ARM ASSY					X05761-00000-6
		ARM ASSY, long					X05761-01000-6
1	0576100200	ARM	1				
	0576101100	ARM, long	1				for long arm
1-18	0576100118	• BUSHING	4				
1-19	0576100119	• BUSHING	2				
1-20	1432200065	• SEAL, dust	4				
1-21	1432200075	• SEAL, dust	2				
2	0576100300	ARM, link	1				
2-6	0576100118	• BUSHING	2				
2-7	0576100207	• BUSHING	2				
2-8	1432200065	• SEAL, dust	6				
3	0576100050	LINK, guide (R.H.)	1				
4	0576100060	LINK, guide (L.H.)	1				
5	0576100080	PIN	2				
6	0576100070	PIN	1				
7	0576100090	PIN	1				
8	0576100008	PIN	1				
9	0576100009	PIN	1				
10	1100141630	BOLT	3				
11	1100141640	BOLT	3				
12	1130040016	NUT	12				
13	1560001000	FITTING, grease	4				
14	1560001675	FITTING, grease	1				
16	1420001250	O-RING	4				
17	1900091900	CYLINDER, bucket	1				
18	1803605092	HOSE ASSY	2				
19	1803605116	HOSE ASSY	2				for long arm
20	0003600209	SHIM	AR				t=0.2mm
	0003600210	SHIM	AR				t=0.5mm
	0003600211	SHIM	AR				t=1.0mm
21	0003600206	SHIM	AR				t=0.2mm
	0003600207	SHIM	AR				t=0.5mm
	0003600208	SHIM	AR				t=1.0mm
22	1652533017	CAP	2				
23	1652533016	CAP	2				
25	1141110016	WASHER	4				
26	0576100310	PIPE	1				
27	0576100320	PIPE	1				
28	1420310016	O-RING	4				
29	0576100029	BAND	2				
	0576100029	BAND	1				for long arm
30	0576100160	BAND	2				
	0576100160	BAND	1				for long arm
31	1534100218	CLAMP	2				
	1534100218	CLAMP	1				for long arm
32	1100041045	BOLT	2				
	1100041045	BOLT	1				for long arm
33	1100041030	BOLT	4				
	1100041030	BOLT	2				for long arm
34	1140020010	WASHER, spring	5				
	1140020010	WASHER, spring	3				for long arm
35	0576100530	PIPE	1				for long arm
36	0576100540	PIPE	1				for long arm
37	1420010240	O-RING	2				
38	0003600214	SHIM	AR				t=0.2mm
	0003600215	SHIM	AR				t=0.5mm
	0003600216	SHIM	AR				t=1.0mm
39	1110040845	SCREW, cap	8				
	1110040845	SCREW, cap	4				for long arm
40	1110040825	SCREW, cap	4				for long arm

N0f041

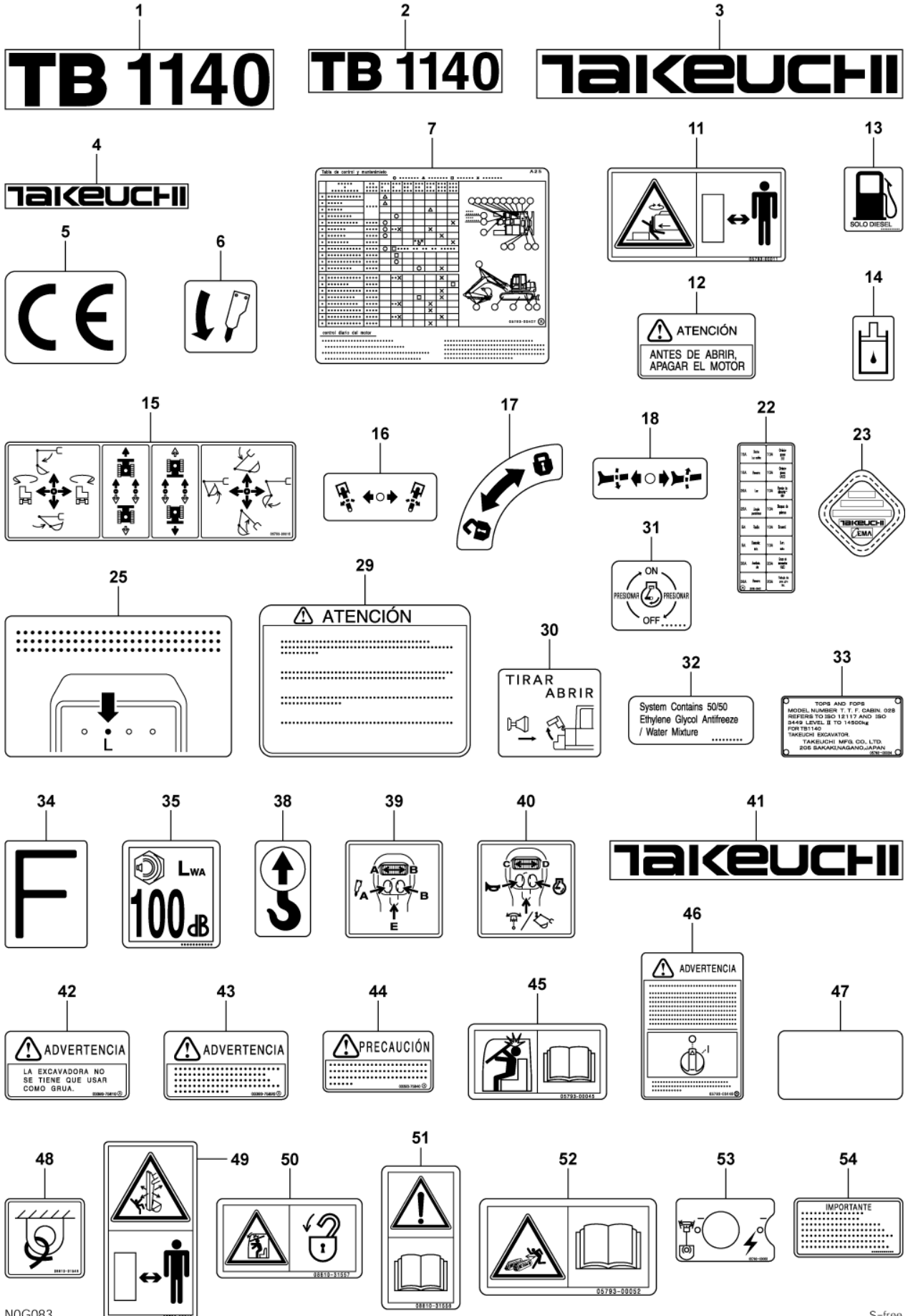
AUXILIARY LINE (51400005-51400416)

Item	Part number	Description	Q'ty	Chan.	Serial No.	Serv.	Remarks
0	0577302000	AUXILIARY LINE ASSY	1				X05773-02000-1
	0577302500	AUXILIARY LINE ASSY (for long arm)	1				X05773-02500-1
	0577302700	AUXILIARY LINE ASSY (for middle arm)	1				X05773-02700-1
1	0577300050	• PIPE (R.H.)	1				
2	0577300150	• PIPE (L.H.)	1				
3	0577300250	• PIPE	2				for long arm
4	1901744200	• VALVE, stop	2				
5	1100041260	• BOLT	10				
	1100041260	• BOLT	12				for long arm
6	1100041080	• BOLT	4				
7	1140010012	• WASHER, spring	10				
	1140010012	• WASHER, spring	12				for long arm
8	1140010010	• WASHER, spring	4				
9	1511062310	• ADAPTOR	2				except for long arm
	1420010290	• • O-RING	1				except for long arm
10	1534102063	• CLAMP	10				
	1534102063	• CLAMP	12				for long arm
11	1501750010	• PLUG	2				
	1420010290	• • O-RING	1				
12	1804107134	• HOSE ASSY	2		51400005~51400006		
	1804127140	• HOSE ASSY	2		51400005~51400006		for long arm
	1804117156	• HOSE ASSY	2	(H)	51400007~		except for middle arm
13	1420010290	• O-RING	2				for long arm
14	1420310021	• O-RING	6				
15	1804117178	• HOSE ASSY	2				for middle arm

N0f111

3RD AUXILIARY LINES (51400417-)

Item	Part number	Description	Q'ty	Chan.	Serial No.	Serv.	Remarks
0	0577307000	LINE ASSY, 3rd auxiliary	1				X05773-07000-2
	0577307300	LINE ASSY, 3rd auxiliary (for middle arm)	1				X05773-07300-2
	0577307700	LINE ASSY, 3rd auxiliary (for long arm)	1				X05773-07700-2
1	0577307010	• PIPE (R.H.)	1				
2	0577307020	• PIPE (L.H.)	1				
3	0577307100	• CLAMP	8				
4	1501750003	• PLUG	2				
	1420010140	• • O-RING	1				
5	1100040830	• BOLT	8				
6	1140010008	• WASHER, spring	8				
7	0567336130	• DECAL	1				
8	0577307030	• PIPE	2				except for long arm
9	0577307040	• PIPE	2				for long arm
10	1802620125	• HOSE ASSY	2				standerd
11	1802620140	• HOSE ASSY	2				except for standerd
13	1534100273	• CLAMP	4				
14	1100041050	• BOLT	4				
15	1140010010	• WASHER, spring	4				
16	1515012041	• ELBOW	2				
	1420010140	• • O-RING	1				
	N0f261						



Item	Part number	Description	DECAL (air conditioner)			Remarks
			Q'ty	Chan.	Serial No. Serv.	
1	0569348600	DECAL SET	1			X05693-48600-0
	0564623910	• DECAL	1			
	L3g130					

CONTROL VALVE

Item	Part number	Description	Q'ty	Chan.	Serial No.	Serv.	Remarks
57	1420010240	• • O-RING	1				
58	1901042207	• BOLT	2				
59	1901042232	• NUT	2				
60	1901042208	• BOLT	2				
61	1901042233	• NUT	2				
62	1901042218	• BLOCK ASSY; No.1	1				swing
63	1901042203	• HOUSING ASSY, inlet	1				
64	1901042235	• VALVE, relief	1				
64	1420310912	• • O-RING	1				
65	1901042205	• BLOCK ASSY; No.2	1				2nd. aux.
66	1901025493	• PLUG ASSY	1				
66	1420010180	• • O-RING	1				
67	1901042217	• BLOCK ASSY; No.3	1				blade
68	1901042851	• HOLDER, spring	20				
69	1901042856	• SPRING	8				
70	1901042831	• END, spool	10				
71	1901042857	• SPRING	2				
	N0h022						

OUTLET HOUSING ASSY

Item	Part number	Description	Q'ty	Chan.	Serial No.	Serv.	Remarks
0	1901042204	HOUSING ASSY, outlet	1				
1	1901042284	· HOUSING	1				
2	1901036678	· PLUG ASSY	1				
	N0h310						

SOLENOID VALVE; 1 BLOCKS (with 4th aux. Lines)

Item	Part number	Description	Q'ty	Chan.	Serial No.	Serv.	Remarks
0	1901748300	VALVE ASSY, solenoid (1-blocks)	1				
1	1901748301	▪ COIL	1				
2	1901748320	▪ NUT ASSY	1				
3	1901748321	▪ ▪ NUT	1				
4	1901748322	▪ ▪ O-RING	1				
5	1901748323	▪ ▪ O-RING	1				
6	1901748306	▪ TUBE KIT	1				
7	1901748307	▪ BODY	1				
8	1901748309	▪ SPRING	1				
9	1901748310	▪ PLUG	1				
	L3h541						

REMOTE CONTROL VALVE (swing)

Item	Part number	Description	Q'ty	Chan.	Serial No.	Serv.	Remarks
0	1901735000	VALVE ASSY, remote-control	1				swing
0-1	1901745499	· KIT, seal	1				
1	X 1901745404	· · PACKING	2				
2	X 1420300017	· · O-RING	2				
3	X 1420010110	· · O-RING	1				
4	1901745402	· COVER	1				
5	1901745403	· PLUG	2				
6	1901745406	· ROD	2				
7	1901745407	· SHIM	2				
8	1501750002	· PLUG	1				
	1420010110	· · O-RING	1				
9	1110020616	· SCREW, cap	2				
10	1901745412	· HOLDER	2				
11	1901745413	· WASHER	2				
12	1901745414	· SPRING	2				
13	1901735015	· SPRING	2				
14	1901745416	· SHAFT	1	A	old type		
	1901735016	· SHAFT	1	a(H)	new type		No. 23759
15	1901745417	· BUSHING	2				
16	1901745418	· CAM ASSY	1	A	old type		
	1901735018	· CAM ASSY	1	a(H)	new type		No. 23759
17	1901745420	· SET-SCREW	1	A	old type		
	1121040606	· SET-SCREW	1	a(H)	new type		No. 23759
18	1901735001	· BOOT	1				

<<NOTE>>

SET "A" is interchangeable with SET "a".

L3h151

SHUT-OFF VALVE (arm)

Item	Part number	Description	Q'ty	Chan.	Serial No.	Serv.	Remarks
0	1901744400	VALVE ASSY, shut-off	1				arm
0-1	1901744499	• KIT, seal	1				
1	1420300118	• • O-RING	1				
2	1420300014	• • O-RING	1				
3	1901742911	• • RING, back-up	1				
4	1901742902	• PLUG KIT	1				
5	1901742901	• CAP	1				
6	1901744305	• PLUG ASSY	2				
7	1420010110	• • O-RING	1				
8	1901744404	• VALVE, relief	1				
9	1901742909	• PLUG	1				
10	1901742910	• CAP	1				
11	1901742907	• SCREW	1				
12	1901742906	• SEAL	1				
	N0h370						

REVERSAL PREVENTION VALVE

Item	Part number	Description	Q'ty	Chan.	Serial No.	Serv.	Remarks
0	1901744900	VALVE ASSY, revesal prevention	1				
1	1901738851	▪ PLUG	4				
2	1420010220	▪ O-RING	2				
3	1901744904	▪ VALVE, revesal prevention	2				
4	1420010160	▪ O-RING	2				
5	1421120160	▪ RING, back-up	2				
6	1901744907	▪ VALVE, solenoid	1				
7	1420300013	▪ O-RING	1				
8	1420300014	▪ O-RING	1				
9	1420300015	▪ O-RING	1				
10	1420010200	▪ O-RING	1				
	N0h110						

DOZER BLADE CYLINDER

Item	Part number	Description	Q'ty	Chan.	Serial No.	Serv.	Remarks
0	1900090000	CYLINDER ASSY (R.H.)	1				blade
	1900090100	CYLINDER ASSY (L.H.)	1				
0-1	1900090099	• KIT, seal	1				
1	X 1900089519	• • RING, seal	1				
2	X 1900083436	• • PACKING, rod	1				
3	X 1900071832	• • SEAL, dust	1				
4	X 1420111100	• • O-RING	1				
5	X 1900090037	• • RING, back-up	1				
6	X 1420111150	• • O-RING	1				
7	X 1900067331	• • PACKING, piston	1				
8	1900090098	• TUBE KIT (R.H.)	1				
	1900090198	• TUBE KIT (L.H.)	1				
9	1900090002	• • BUSHING	1				
10	1900090097	• ROD KIT, piston	1				
11	1900090002	• • BUSHING	1				
12	1900090003	• COVER, rod	1				
13	1900089513	• BUSHING	1				
14	1900083431	• RING, retaining	1				
15	1900090006	• PISTON	1				
16	1900090026	• RING, wear	2				
17	1900086809	• NUT	1				
18	1121051212	• SET-SCREW	1				
19	1390020450	• BALL, steel	1				
20	1900090042	• SEAL, dust	4				
21	1900090028	• NIPPLE	1				
22	1900090010	• PIPE ASSY (R.H.)	1				
	1900090110	• PIPE ASSY (L.H.)	1				
23	1900090029	• PLUG	1				
24	1420010220	• O-RING	2				
25	1900090017	• HOLDER	1				
26	1900087819	• BOLT	1				
27	1560001000	• FITTING, grease	1				
28	1560001675	• FITTING, grease	1				
	N0h180						

SLEW MOTOR (1/3) (reduction sec.)

Item	Part number	Description	Q'ty	Chan.	Serial No.	Serv.	Remarks
0	HIT9996422	MOTOR ASSY, slew	1				reduction sec.
1	HIT2044629	· SHAFT	1				
2	HIT3083710	· SLEEVE	1				
3	HITA811095	· O-RING	1				
4	HIT4430041	· BEARING	1				
5	HIT4411143	· SEAL, oil	1				
6	HIT1027901	· HOUSING	1				
7	HIT4408119	· BEARING	1				
8	HIT3083674	· NUT	1				
9	HIT4407745	· PLATE	1				
10	HITJ901016	· BOLT	2				
11	HIT2042965	· CARRIER	1				
12	HIT4176070	· PLATE, thrust	1				
13	HIT4408102	· PIN	3				
14	HIT4414855	· BEARING	3				
15	HIT3084940	· GEAR	3				
16	HIT4414833	· PLATE, thrust	6				
17	HIT4116308	· PIN, spring	6				
18	HIT3092035	· GEAR	1				
19	HIT2045146	· GEAR	1				
20	HITM341440	· SCREW, cap	12				
21	HIT2042964	· CARRIER	1				
22	HIT4244904	· PLATE, thrust	1				
23	HIT4408122	· PIN	3				
24	HIT4430040	· BEARING	3				
25	HIT3083741	· GEAR	3				
26	HIT4408002	· PLATE, thrust	3				
27	HIT3083740	· GEAR	1				
28	HIT3087949	· PIPE	1				
29	HIT942012	· PLUG	1				
30	X *****	· MOTOR, oil	1				
31	HIT927488	· RING, retaining	1				
32	HIT4298608	· CAP	1				
33	HITM341025	· SCREW, cap	7				
34	X *****	· PLATE, name	1				
35	X *****	· SCREW	2				
36	HIT4449144	· PIPE	1				
37	HIT3090862	· GAUGE, level	1				
38	HIT4449182	· PIPE	1				
	N0h222						

HYDRAULIC PUMP (3/3)

Item	Part number	Description	Q'ty	Chan.	Serial No.	Serv.	Remarks
0-4	1902910900	PUMP ASSY, SUB	1				
1	1902910998	▪ CASE ASSY, gear	1				
2	1902910997	▪ POPPET ASSY	1				
3	1902910904	▪ SPRING	1				
4	1902910905	▪ SCREW	1				
5	1902910906	▪ NUT	1				
6	1902910910	▪ FILTER	1				
7	1111550840	▪ SCREW, cap	2				
8	1111550855	▪ SCREW, cap	2				
9	1111551035	▪ SCREW, cap	2				
10	1501750002	▪ PLUG	1				
	1420010110	▪ ▪ O-RING	1				
11	1902910916	▪ RING	1				
12	1420110800	▪ O-RING	1				
13	1420010110	▪ O-RING	1				
14	1420010160	▪ O-RING	1				
15	1221000018	▪ RING, snap	1				
	N0h390						

**Engine for TB1140 BB-4BG1-TRE (ISUZU)
CYLINDER BLOCK**

Item	Part No	Description	Qty
1	I8-97123-9542	BLOCK ASM; CYL	1
2	I5-87814-6611	LINER SET; ENG CYL (GRADE=1)	4
	I5-87814-6621	LINER SET; ENG CYL (GRADE=2)	4
	I5-87814-6631	LINER SET; ENG CYL (GRADE=3)	4
	I5-87814-6641	LINER SET; ENG CYL (GRADE=4)	4
4	I1-11261-3821	LINER; C/BL (OD GRD=1, ID GRD=AX)	4
	I1-11261-3831	LINER; C/BL (OD GRD=1, ID GRD=CX)	4
	I1-11261-3841	LINER; C/BL (OD GRD=2, ID GRD=AX)	4
	I1-11261-3851	LINER; C/BL (OD GRD=2, ID GRD=CX)	4
	I1-11261-3861	LINER; C/BL (OD GRD=3, ID GRD=AX)	4
	I1-11261-3871	LINER; C/BL (OD GRD=3, ID GRD=CX)	4
	I1-11261-3881	LINER; C/BL (OD GRD=4, ID GRD=AX)	4
	I1-11261-3891	LINER; C/BL (OD GRD=4, ID GRD=CX)	4
8	I1-09000-4692	BOLT; BRG CAP	10
13	I8-94148-0790	DOWEL; C/BL TO HD	2
15(A)	I9-99205-5170	PLUG; OIL GALLERY	1
15(B)	I5-09605-0180	PLUG; OIL GALLERY	7
23	I5-11219-0140	CUP; SEALING, C/BL FRT & RR (OD=28)	1
25(A)	I9-11611-0480	METAL; CM/SHF	1
25(B)	I9-11613-0350	METAL; CM/SHF	2
34	I8-97023-3390	VALVE; OIL RELIEF	1
35	I5-09623-0350	GASKET; RELIEF VLV	1
37	I1-09605-0681	PLUG; OIL GALLERY	2
38	I1-09740-0780	PIN; TIMING GEAR CASE	1
40	I8-94344-4620	CUP; SEALING, C/BL RR (OD=67)	3
45(A)	I1-82410-0082	SWITCH; OIL PRESSURE	1
56	I1-13342-1320	JET; OIL, PISTON COOLING	4
70	I1-09600-0521	CUP; SEALING, FRT & RR (OD=60)	2
72(C)	I8-97222-1041	COVER; TAPPET CHAMBER	1
73(A)	I1-11290-2541	COVER ASM; TAPPET CHAMBER	1
74(A)	I8-94367-5301	BOLT; COVER TO C/BL (8X56 FLANGE)	2
	I8-94429-9951	BOLT; COVER TO C/BL (8X84)	2
76	I1-09623-4650	GASKET; COVER TO C/BL	1
77	I0-28680-8200	BOLT; COVER TO C/BL	2
	I0-28650-8200	BOLT; COVER TO C/BL (2006, 01-)	2
80	I1-09600-0122	CUP; SEALING, TAPPET CHAMBER	2
83	I9-08151-0180	PIN; FLYWHEEL HSG	2
128	I9-08160-8160	PIN; STRAIGHT, OIL SEAL RET	2
130	I5-11257-0011	DOWEL; BRG CAP	1
132	I1-13161-0120	VALVE; CHECK, OIL	4
135	I1-11219-1291	COVER; OIL PUMP	1
136	I5-11224-0040	BUSHING; DRIVE SHAFT, OIL PUMP	1
137(B)	I5-09680-0110	COCK; DRAIN, WATER	1
140	I5-09660-0330	NIPPLE; INJ PUMP	1
162(B)	I9-09914-7010	HOSE; WATER DRAIN, C/BL	1
179	I9-09572-0080	GASKET; COVER TO BOLT	4
200	I9-99202-3140	PLUG; OIL GALLERY	1
218	I9-09572-0140	GASKET; PLUG, C/BL SIDE	1
236	I1-09300-0550	STUD; ENG FOOT	1
267	I5-09707-0041	CLIP; DRAIN HOSE	1

**Engine for TB1140 BB-4BG1-TRE (ISUZU)
MANIFOLD**

Item	Part No	Description	Qty
1	I8-97248-8530	MANIFOLD; INL	1
2	I8-97235-7881	GASKET; INL MANIF TO HD	2
	I1-14115-1040	GASKET; INL MANIF TO HD (2003, 06-)	2
3	I8-94370-6760	GASKET; INT DUCT	1
4	I0-91150-1080	NUT; INL MANIF	4
	I0-91180-1080	NUT; INL MANIF (2006, 03-)	4
5	I0-28080-8250	BOLT; BRKT FIX	4
	I0-28050-8250	BOLT; BRKT FIX (2006, 01-)	4
6	I8-94366-0210	MANIFOLD; EXHAUST	1
7	I8-94404-6100	GASKET; EXH MANIF TO HD	2
8	I8-94318-5540	BOLT; EXH MANIF (M8X63 W/PL WASHER)	2
	I8-94318-5550	BOLT; EXH MANIF (M8X75 W/PL WASHER)	2
9	I8-94141-7731	STUD; MANIF TO TURBOCHARGER	4
	I8-97378-0610	STUD; MANIF TO TURBOCHARGER (2004, 02-)	4
10	I8-97061-4011	NUT; EXH PIPE	4

**Engine for TB1140 BB-4BG1-TRE (ISUZU)
TURBOCHARGER SYSTEM**

Item	Part No	Description	Qty
1	I8-97223-4280	TURBOCHARGER ASM	1
2	I8-94369-0230	GASKET; TURBOCHARGER TO EXH MANIF	1
12	I8-94476-2820	STUD; TURBOCHARGER	3
20	I8-97223-4342	PIPE; INL, TURBOCHARGER OUT	1
77	I0-28781-0250	BOLT; INL DUCT	2
	I0-28751-0250	BOLT; INL DUCT (2006, 01-)	2
97	I8-94316-9910	CLIP; HOSE, TURBOCHARGER, INL	2
133(A)	I8-97222-1210	PIPE; OIL DRAIN, TURBOCHARGER	1
	I8-97306-8770	PIPE; OIL DRAIN, TURBOCHARGER (2003, 11-)	1
134(A)	I8-94369-0220	GASKET; OIL PIPE, TURBOCHARGER DRAIN	1
134(B)	I8-94370-6630	GASKET; OIL PIPE, TURBOCHARGER DRAIN	1
148	I1-09360-7820	HOSE; TURBOCHARGER, INL	1
	I1-09360-7820	HOSE; TURBOCHARGER, INL (2006, 06-)	1
150	I8-97061-4011	NUT; INL DUCT	4
401	I0-28080-6160	BOLT; OIL PIPE, TURBO	2
	I0-28050-6160	BOLT; OIL PIPE, TURBO (2006, 01-)	2
461	I9-04110-8220	STUD; OIL PIPE, TURBO	2
	I0-41010-8220	STUD; OIL PIPE, TURBO (2006, 05-)	2
462	I0-91150-1080	NUT; OIL PIPE, TURBO	2
	I0-91180-1080	NUT; OIL PIPE, TURBO (2006, 03-)	2

**Engine for TB1140 BB-4BG1-TRE (ISUZU)
OIL COOLER & OIL FILTER**

Item	Part No	Description	Qty
2(C)	I1-13240-2322	ELEMENT; OIL FILTER	1
12	I5-11288-0020	VALVE ASM; BYPASS	1
89	I0-28080-8160	BOLT; ELEMENT TO CASE	4
90	I1-21729-0430	GASKET; BOLT, OIL COOLER	4
102	I8-97020-0372	COOLER ASM; OIL	1
105	I8-94217-2270	STUD; OIL COOLER	2
109	I0-50040-8250	BOLT; OIL COOLER TO BODY (M8X25 W/LK WASHER)	11
	I0-50540-8250	BOLT; OIL COOLER TO BODY (M8X25 W/LK WASHER) (2006, 01-)	11
	I0-50040-8200	BOLT; OIL COOLER TO BODY (M8X20 W/LK WASHER)	2
	I8-94205-9861	BOLT; OIL COOLER TO BODY (M8X65 W/LK WASHER)	1
	I0-50040-8450	BOLT; OIL COOLER TO BODY (M8X65 W/LK WASHER)	6
111	I8-97032-0250	CORE; OIL COOLER	1
112	I8-97128-1500	PLUG; OIL COOLER CASE	1
113(A)	I9-09565-2250	GASKET; PLUG, OIL COOLER CASE	1
195	I9-09571-6200	GASKET; OIL COOLER	1
267	I0-91150-2080	NUT; OIL COOLER	2
	I0-91180-2080	NUT; OIL COOLER (2006, 03-)	2
321	I8-94370-6700	GASKET; OIL FILTER TO C/BL	1
323	I8-97223-4300	COVER; OIL PORT	1
324	I0-28081-0900	BOLT; COVER, OIL PORT	4
	I0-28051-0900	BOLT; COVER, OIL PORT (2006, 01-)	4
444	I5-11282-0110	GASKET; ELEMENT TO BODY	2
469	I8-97233-3022	GASKET; OIL COOLER TO C/BL	1
496(F)	I8-97324-3861	FILTER ASM; OIL	1
557	I8-97222-1250	NIPPLE; OIL FILTER	1
558	I8-94310-9170	PLUG; COVER, OIL PORT	1
559	I9-09571-4200	GASKET; PLUG, OIL PORT COVER	1
560	I1-13260-0980	VALVE; RELIEF, OIL PORT COVER	1

**Engine for TB1140 BB-4BG1-TRE (ISUZU)
GENERATOR**

Item	Part No	Description	Qty
1	I1-81214-3670	COVER ASM; RR, GEN	1
2	I1-81221-1020	ROTOR; GEN	1
3(A)	I1-81229-7690	BEARING; ROTOR, GEN	1
3(B)	I1-81229-7700	BEARING; ROTOR, GEN	1
4(C)	I1-81229-8390	TERMINAL; BRUSH, GEN	1
6	I1-81260-0170	REGULATOR ASM; VOLTAGE, GEN	1
10	I1-81229-8330	RECTIFIER; GEN	1
16	I1-81229-7710	TERMINAL ASM; RECTIFIER, GEN	1
17	I1-81213-1010	COVER ASM; FRT, GEN	1
19	I1-81222-1301	PULLEY; GEN	1
	I1-81222-1790	PULLEY; GEN (2006, 02-)	1
22	I1-81211-1290	STATOR; GEN	1
23	I1-81212-0160	COIL; ROTOR GEN	1
27(B)	I1-81229-7720	NUT; RECTIFIER, GEN	1
36	I1-81229-7680	SCREW; FRT COVER	1
43(A)	I1-81229-7740	SCREW; RR END COVER	1
43(B)	I1-81229-8320	SCREW; RR END COVER	1
43(C)	I1-81229-7730	SCREW; RR END COVER	1
69	I1-81229-8360	CLIP; WIRE, GEN	1
86	I8-97178-1340	NUT SET; PULLEY, GEN	1
127	I1-81229-7670	BOLT SET; GEN	1

**Engine for TB1140 BB-4BG1-TRE (ISUZU)
FEED PUMP; INJECTION PUMP**

Item	Part No	Description	Qty
1	I8-97121-9100	PUMP ASM; FUEL FEED, INJ PUMP	1
2	I1-15761-0060	PUMP; PRIMING, FUEL FEED PUMP	1
3	I1-19623-0160	GASKET; PRIMING PUMP, FUEL FEED PUMP	1
4	I9-81351-7020	SPRING; VLV, FUEL FEED PUMP	2
5	I1-15755-0020	VALVE; FUEL FEED PUMP	2
7	I1-19623-0160	GASKET; PLUG, FUEL FEED PUMP	1
8	I1-15619-0820	BOLT; EYE, FUEL OUTLET, FEED PUMP	1
9	I1-15759-0010	GASKET; EYE BOLT, OUTLET, FUEL FEED PUMP	2
10	I1-15759-0030	ADAPTER; EYE BOLT, FUEL FEED PUMP	1
11	I5-15759-0270	BOLT; EYE, FUEL INL, FEED PUMP	1
12	I1-15759-0010	GASKET; EYE BOLT, INL, FUEL FEED PUMP	2
13	I9-81355-0250	RING; SNAP, TAPPET, FUEL FEED PUMP	1
15	I5-15751-0120	HOUSING; FUEL FEED PUMP	1
16	I9-81351-2050	PISTON; FUEL FEED PUMP	1
17	I9-81351-3020	SPRING; PISTON, FUEL FEED PUMP	1
18	I9-81355-0350	GASKET; PISTON PLUG, FUEL FEED PUMP	1
19	I8-94171-1850	PLUG; PISTON SPRING, FUEL FEED PUMP	1
28	I5-15754-0010	TAPPET ASM; FUEL FEED PUMP	1
29	I9-81351-4030	ROLLER; TAPPET, FUEL FEED PUMP	1
30	I9-81351-4100	PIN; TAPPET ROLLER, FUEL FEED PUMP	1
31	I1-15759-0020	GUIDE; TAPPET, FUEL FEED PUMP	2

CLICK HERE TO **DOWNLOAD** THE COMPLETE MANUAL

- Thank you very much for reading the preview of the manual.
- You can download the complete manual from: www.heydownloads.com by clicking the link below



- Please note: If there is no response to CLICKING the link, please download this PDF first and then click on it.

CLICK HERE TO **DOWNLOAD** THE COMPLETE MANUAL