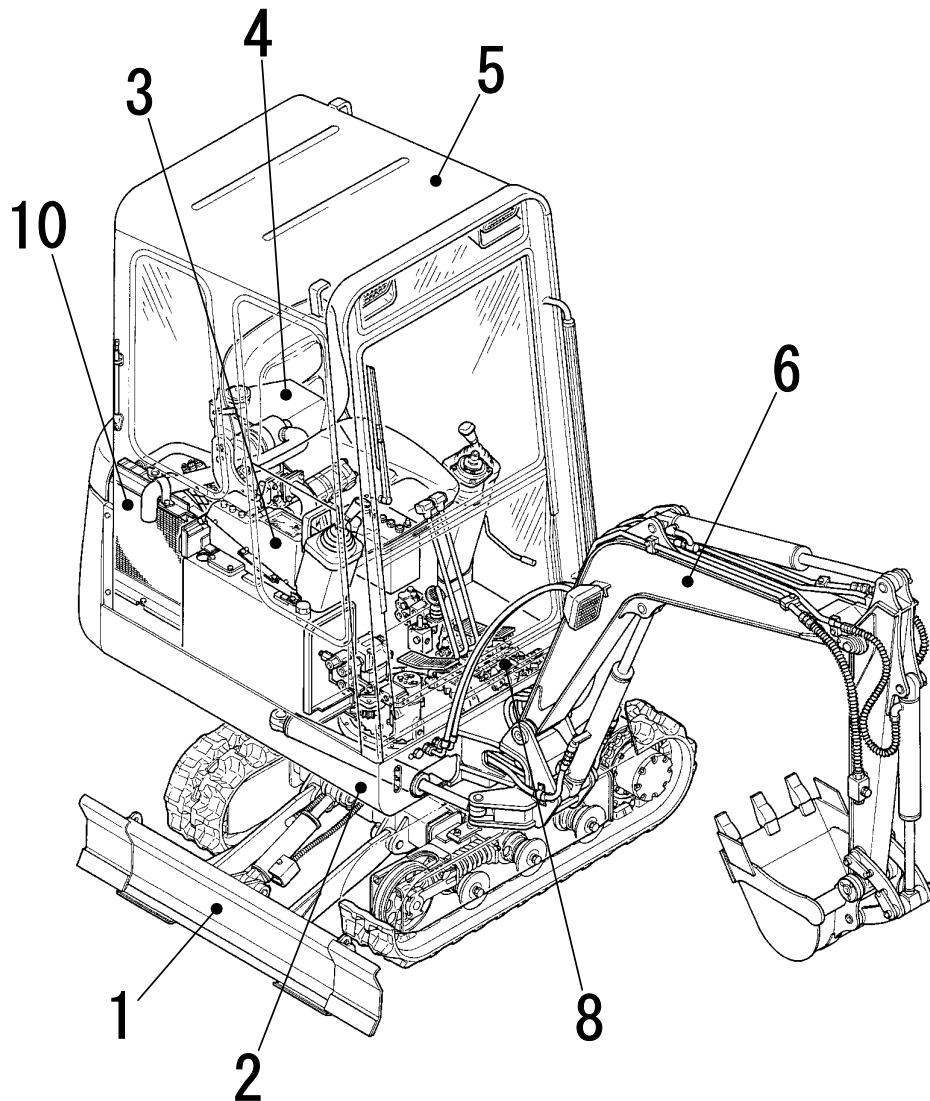


TB015

Book No. PC3-101Z6

Serial No. 1153001-



TAKEUCHI

CLICK HERE TO **DOWNLOAD** THE COMPLETE MANUAL

- Thank you very much for reading the preview of the manual.
- You can download the complete manual from: www.heydownloads.com by clicking the link below



- Please note: If there is no response to CLICKING the link, please download this PDF first and then click on it.

CLICK HERE TO **DOWNLOAD** THE COMPLETE MANUAL

FRONT IDLER

Item	Part number	Description	Q'ty	Chan.	Serial No.	Remarks
1	0421401200	IDLER ASSY, front	2			
2	0421401100	▪ IDLER	1			
3	0421400200	▪ SHAFT	1			
4	1300006206	▪ BEARING	2			
5	1431203055	▪ SEAL, oil	1			
6	1431203062	▪ SEAL, oil	1			
7	1221000062	▪ RING, snap	1			
8	1501810001	▪ PLUG	1			
9	1213000670	PIN, spring	4			
10	0421400300	YOKE, slide (R.H.)	2			
11	0421400400	YOKE, slide (L.H.)	2			

SLEWING DEVICE

Item	Part number	Description	Q'ty	Chan.	Serial No.	Remarks
1	0422312100	COVER	1			
2	1903112800	MOTOR ASSY	1	(L)	1153001~1155455	with P.B.
	1903117100	MOTOR ASSY	1		1155456~	with P.B.
	1903112700	MOTOR ASSY	1		1153001~1155260	without P.B.
	1903116900	MOTOR ASSY	1	(H) ≪	1155261~1155455	without P.B.
	1903117000	MOTOR ASSY	1		1155456~	without P.B.
3	1101041235	BOLT	4			
4	1141550012	WASHER	4			
5	1515010050	ELBOW	2		1153001~1155455	
	1515010050	ELBOW	1		1155456~	
6	1513350003	ELBOW	1			
7	1420010140	O-RING	1			
8	1420010110	O-RING	4			with P.B.
	1420010110	O-RING	2			without P.B.
9	1512370008	ADAPTOR	1			with P.B.
10	0007263004	ADAPTOR, cross	1			
11	1110040610	BOLT	2			
12	1140020006	WASHER, spring	2			
13	1515011040	ELBOW	1		1153001~1153994	with P.B.
	1515010040	ELBOW	1		1153995~	with P.B.
14	0332312100	JOINT	1			without P.B.
15	0332312200	PLATE	1			without P.B.
16	1100040830	BOLT	2			without P.B.
17	1140020008	WASHER, spring	2			without P.B.
18	1515600576	ADAPTOR	1		1155456~	

Item	Part number	Description	STAND (canopy)		Serial No.	Remarks
			Q'ty	Chan.		
1	0333218100	BRACKET	1			
2	0333219100	STAND	1			
3	0333218500	COVER	1			
	0333222600	COVER	1			A-B pattern
4	0333219200	LEVER	1			
	0333222100	LEVER	1		1153001~1154972	for Japan
5	0333219300	LEVER	1			
6	0333216400	PIN	1			
7	0333219400	HANDLE	2	A	1153001~1155011	
	0333222200	HANDLE	2	A (H)	1155012~1155255	
	0333222300	HANDLE	2	a (H)	1155256~	
8	0335113600	PLATE	1			
9	0333219600	COVER	1		1153001~1156811	
	0333219750	COVER	1	(H)	1156812~	
10	0333217300	PIN	1			
11	0007000074	SPRING	1			
12	0007000030	SPRING	1			
13	1332051214	MINI-PILLOW	2			
14	1213000520	PIN, spring	1			
15	0333218950	RUBBER, cushion	1			
16	1141110012	WASHER	1			
17	1130020006	NUT	4			
18	1650202300	GRIP	2			
19	1140020006	WASHER, spring	25			
20	1100240610	BOLT	6			
21	1100240816	BOLT	1			
22	1140020008	WASHER, spring	6			
23	1120540510	SCREW	2			
24	1140040005	WASHER, spring	2			
25	1100240620	BOLT	2			
26	1120540610	SCREW	4			
27	0335113100	BRACKET	1		1153001~1154084	
	0335117100	BRACKET	1	(H)	1154085~	
28	0335111200	LEVER	1			
29	0335111300	HOOK	1			
30	0335111400	PLATE	1			
31	0335111500	COVER	1			
32	0335111900	LEATHER	1		1153001~1153006	
33	0335111700	LEATHER	1		1153001~1153006	
34	0335111800	LEATHER	1		1153001~1153006	
35	0425105100	SPRING	1			
36	0335113200	BRACKET	1		1153001~1154084	
	0335117200	BRACKET	1	(H)	1154085~	
37	0335113300	HINGE ASSY	2			
38	1333001020	· BUSHING	1			
39	0335113400	PIN	1			
40	1332001214	MINI-PILLOW	2			
41	0004008021	PIN	2			
42	1214000006	PIN, snap	2			
43	1100040616	BOLT	13			
44	1100040816	BOLT	5			
45	1700003502	SWITCH, limit	2		1153001~1153736	NC pattern
	1700003512	SWITCH, limit	2		1153737~	NO pattern
46	1653900026	SPRING, gas	1			
47	1651101224	STOPPER	1			
48	1130040012	NUT	1			
49	0333222400	PLATE	2	a	1155256~	

PIPING; OPERATION LEVER
(JCB pattern, without parking brake)

Item	Part number	Description	Q'ty	Chan.	Serial No.	Remarks
1	1934872055	HOSE ASSY	1			
2	1934822215	HOSE ASSY	1			
3	1934822170	HOSE ASSY	1			
4	1934822100	HOSE ASSY	1			
5	1934822105	HOSE ASSY	1		1153001~1154150	
	1934852130	HOSE ASSY	1		1154151~	
6	1934822195	HOSE ASSY	1			
7	1934822150	HOSE ASSY	1			
8	1934822087	HOSE ASSY	2			
9	1934822125	HOSE ASSY	1			
10	1934822110	HOSE ASSY	2		1153001~1154150	
	1934822110	HOSE ASSY	1		1154151~	
11	1934822130	HOSE ASSY	1		1154151~	
12	1531335032	PROTECTOR	2			sold by the meter
13	1531345020	PROTECTOR	1			sold by the meter
14	1531335020	PROTECTOR	2			sold by the meter
15	1652201005	BAND	3			
16	1531645030	PROTECTOR	1			sold by the meter

ENGINE & ACCESSORIES 2

Item	Part number	Description	Q'ty	Chan.	Serial No.	Remarks
1	0424004600	PIPE	1		1153001~1153031	
	0334012000	PIPE	1		1153032~	
2	0334010600	ABSORBENT	1			
3	0064017000	BAND	2			
4	1531407038	TUBE	1			sold by the meter
5	1533120011	BAND	4			
6	1100040820	BOLT	4			
7	1100040616	BOLT	2			
8	1100040816	BOLT	1			
9	1130040010	NUT	3			
10	1130040008	NUT	10			
11	1140020008	WASHER, spring	13			
12	1140020006	WASHER, spring	2			
13	1141110006	WASHER	2			
14	0007300030	CLAMP	1			
15	1910056024	HOSE	1			
16	1910056025	HOSE	1			
17	1910056020	TANK, sub	1			
18	1910011047	VALVE	1			
19	1910096005	SILENCER	1			Y 119232-13500
20	1910096051	PIPE	1			
21	1910006015	GASKET	1			
22	1910051022	GASKET	2			
23	1910006013	BAND	4			
24	1910065024	HOSE	1			
25	1533120011	BAND	1			
26	0334011500	CLAMP	1			
27	0334011600	ABSORBENT	1			
28	0334011700	ABSORBENT	1			
29	0334011800	ABSORBENT	1		1153001~1154150	
	0334012100	ABSORBENT	1	(H)	1154151~	
30	0334011810	ABSORBENT	1		1153001~1153742	canopy
31	0334011820	ABSORBENT	1			
32	1531115040	HOSE	1			sold by the meter
33	1140020010	WASHER, spring	3			
34	1531407055	TUBE	1			sold by the meter
35	1554502250	PLUG	1			for EU
36	1541400722	WASHER	1			for EU
37	1554512601	TUBE	1			for EU

ELECTRICAL 3

(cab)

(1153001~1153715)

Item	Part number	Description	Q'ty	Chan.	Serial No.	Remarks
1	0338810100	HARNESS, wiring	1			
2	0398802200	HARNESS, wiring	1			
3	1704300007	SWITCH, wiper	1			
4	1652002202	GROMMET	1			
5	1120590512	SCREW	11			
6	1652221050	BAND	6			
7	1140330005	WASHER	2			
8	1140090005	WASHER, spring	5			
9	1711910021	CASE	1			
10	1711910023	HOSE	1			sold by the meter
11	1711910040	NOZZLE	1			
12	1652001002	GROMMET	2			
13	0394701100	COVER	1			
14	1705015701	RADIO	1			AM radio
	1705001400	RADIO	1			FM radio
15	1705015702	SPEAKER	1			
16	1705015602	ANTENNA	1			
17	1120590412	SCREW	2			
18	1140090004	WASHER, spring	2			
19	0398612300	BRACKET	1			
20	1704051212	MOTOR, wiper	1			
21	1704140350	ARM, wiper	1			
22	1704206400	BLADE, wiper	1			
23	1141110006	WASHER	2			
24	1703001700	LAMP ASSY	1			
25	1703001900	LAMP ASSY	2			
26	1703001901	• BULB	1			
27	1122500408	SCREW	2			
28	1100090812	BOLT	2			
29	1141110004	WASHER	2			
30	1140090008	WASHER, spring	2			
31	1100040615	BOLT	2			
32	1140020006	WASHER, spring	2			
33	1130040006	NUT	2			
34	0338911100	BOLT	2			

VALVE & ACCESSORIES 1

(1153001~1154150)

Item	Part number	Description	Q'ty	Chan.	Serial No.	Remarks
1	1901030500	VALVE, control	1		1153001~1153838	
	1901032200	VALVE, control	1	(H)	1153839~	
2	1515600200	ADAPTOR	10			
3	1515010040	ELBOW	6			
4	1515010041	ELBOW	1			
5	1515010511	ELBOW	1			
6	1512340009	ELBOW	3			
7	1501750002	PLUG	3			
8	0007213016	BUSHING	1			
9	0007203034	ADAPTOR	8			
10	1513350006	ELBOW	1			
11	1420010110	O-RING	27			
12	1420010140	O-RING	7			
13	1420010180	O-RING	1			
14	1100040825	BOLT	2			
15	1140020008	WASHER, spring	2			
16	1100041025	BOLT	2			
17	1140020010	WASHER, spring	2			
18	0007213015	BUSHING	1			

PUMP DRIVE

Item	Part number	Description	Q'ty	Chan.	Serial No.	Remarks
1	0425202100	HOUSING	1			
2	0065215200	BOSS, coupling	1			
3	0065216200	PLATE	1			
4	1602000080	COUPLING, flex	1			
5	1902011900	PUMP ASSY	1			
6	1400403217	SEAL,oil	1			
7	1110041030	SCREW, cap	3			
8	1110041040	SCREW, cap	3			
9	1100041025	BOLT	5			
10	1100041030	BOLT	1			
11	1140020010	WASHER, spring	4			
12	1141110010	WASHER	2			
13	1213000408	PIN, spring	9			
14	0007223005	NIPPLE	2			
15	1515010041	ELBOW	3			
16	1420010240	O-RING	2			
17	1420010140	O-RING	3			

FUEL PIPING

Item	Part number	Description	Q'ty	Chan.	Serial No.	Remarks
1	1910030033	SEPARATOR	1			Y 128355-55700
2	1910047033	PUMP, feed	1			
3	1910065047	HOSE	1			Y 119840-59601
4	1531207022	HOSE	1			sold by the meter
5	1531207078	HOSE	1			sold by the meter
6	1531207020	HOSE	1			sold by the meter
7	1533120012	BAND	9			
8	1100040865	BOLT	1			
9	1100040616	BOLT	2			
10	1140020008	WASHER, spring	1			
11	1140020006	WASHER, srping	2			
12	1531115015	PROTECTOR	1			sold by the meter
13	1531115068	PROTECTOR	1			sold by the meter
14	1531207025	HOSE	1			sold by the meter

Item	Part number	Description	Q'ty	SEAT		
				Chan.	Serial No.	Remarks
1	1914100031	SEAT ASSY	1			
2	1130540010	NUT	4			
3	1140020010	WASHER, spring	4			

CAB 3

Item	Part number	Description	Q'ty	Chan.	Serial No.	Remarks
1	0338621500	PLATE	1			
2	0398607600	PLATE	1			
3	0338620600	SEAL	1			
4	0398603400	GROMMET	1			
5	0468601600	SHIM	1			
6	0468601700	SHIM	1			
7	0468602100	SEAL	1			
8	0568614300	SPACER	2			
9	1653614389	HANGER	1		1153001~#	
	1654004800	HANGER	1		#~	
10	1651101224	STOPPER	2			
11	1653691970	ASHTRAY	1			
12	1653691460	CATCHER ASSY	1			
13	0068620500	STRIKER	1			
14	1653691350	POCKET ASSY	1			
15	0468601800	HINGE	2			
16	1122500408	SCREW	3			
17	1122500510	SCREW	6		1153001~#	
	1122500510	SCREW	4		#~	
18	1120590508	SCREW	18			
19	1120590525	SCREW	6			
20	1100090812	BOLT	2			
21	1140090005	WASHER, spring	26			
22	1140090008	WASHER, spring	2			
23	1130140012	NUT	2			
24	1652103824	RUBBER	2			
25	1120630816	SCREW	2			
26	1141190005	WASHER	14			
27	1140330008	WASHER	2			
28	0398608800	COVER	1			
29	0398608900	COVER	1			
30	1140020004	WASHER, spring	2			
31	1120530408	SCREW	2			
32	1652051200	GROMMET	1			
33	1122500412	SCREW	2		#~	

CLICK HERE TO **DOWNLOAD** THE COMPLETE MANUAL

- Thank you very much for reading the preview of the manual.
- You can download the complete manual from: www.heydownloads.com by clicking the link below



- Please note: If there is no response to CLICKING the link, please download this PDF first and then click on it.

CLICK HERE TO **DOWNLOAD** THE COMPLETE MANUAL

Item	Part number	Description	HOE		Serial No.	Remarks
			Q'ty	Chan.		
1	0336012100	BOOM ASSY	1			
2	X *****	• BOOM	1			
3	0002330040	• BUSHING	2			
4	1432200030	SEAL, dust	2			
5	0426009300	COVER	1			
6	0011571009	PIN	1			
7	0011901005	PIN	1			
8	0011601130	PIN	2			
9	0011611002	PIN	1			
10	1100040816	BOLT	1			
11	1103040855	BOLT	2			
12	1103040865	BOLT	1			
13	1103040875	BOLT	1			
14	1130240008	NUT	12			
15	1140020008	WASHER, spring	1			
16	0003608003	WASHER	1			
17	1225121016	SPRING, conical	1			
18	1560001000	NIPPLE, grease	5			
19	1900061200	CYLINDER, boom	1			
20	1900061400	CYLINDER, arm	1			
21	0426109800	SHIM	AR			t=1.0mm
22	1132630024	NUT	3			
23	0003900012	WASHER	3			
24	1210010545	PIN, split	3			
25	0336111100	ARM ASSY	1			
26	X *****	• ARM	1			930mm long
	X *****	• ARM, long	1			1130mm long
27	0002330040	• BUSHING	6			
28	1560001675	• NIPPLE, grease	1			
29	1432200030	SEAL, dust	6			
30	0336111300	LINK ARM ASSY	1			
31	X *****	• LINK ARM	1			
32	0002130022	• BUSHING	2			
33	0002330040	• BUSHING	2			
34	1432200030	SEAL, dust	6			
35	0336111400	PLATE	1			
36	0426109600	PLATE	1			
37	0001671001	PIN	2		1153001~1153631	
	0001691009	PIN	2	(H)	1153632~1157186	
	0001521002	PIN	2	(H)	1157187~	
38	0011901004	PIN	2			
39	0011601100	PIN	1			
40	0011601095	PIN	1			
41	1103040860	BOLT	2			
42	1432900045	O-RING	4			
43	1900061500	CYLINDER, bucket	1			
44	0426106100	PIN	2			
45	0426106200	RING	2			
46	0003600045	SHIM	AR			t=0.5mm
47	0003600044	SHIM	AR			t=0.2mm

PIPING; HOE 2

(auxiliary line)

Item	Part number	Description	Q'ty	Chan.	Serial No.	Remarks
1	0337390000	PIPING ASSY	1			
2	0337320100	· PIPE	1			
3	0337320200	· PIPE	1			
4	0337390009	· CLAMP ASSY	2			
5	X *****	· · CLAMP	1			
6	X *****	· · CLAMP	1			
7	0347301400	· CLAMP ASSY	1			
8	0427390029	· CLAMP ASSY	2			
9	X *****	· · CLAMP	1			
10	X *****	· · CLAMP	1			
11	0347302100	· PLATE	2			
12	1531419003	· HOSE	6			
13	1945812137	· HOSE ASSY	2			
14	1935132060	· HOSE ASSY	2			
	1935132078	· HOSE ASSY	2			long arm
15	1515600202	· ADAPTOR	2			
16	1420010180	· O-RING	6			
17	1515600502	· PLUG	2			
18	1901719800	· VALVE, stop	2			
19	1100040816	· BOLT	4			
20	1100040835	· BOLT	5			
21	1140020008	· WASHER, spring	9			

Item	Part number	Description	Q'ty	DECAL		Serial No.	Remarks
				(canopy)	(English)		
0	0339390040	DECAL SET	1			1153001~1155082	English
	0339310000	DECAL SET	1	(H)		1155083~	English
	0339390110	DECAL SET	1				U.S. TAKEUCHI
1	0339310100	• DECAL	2				
2	0359306100	• DECAL	1				
3	0359306200	• DECAL	1				
4	0359306300	• DECAL	2				
5	0359306400	• DECAL	1				
5-1	0569321400	• DECAL	1				
6	0359306500	• DECAL	4				
7	0359307400	• DECAL	1				
8	0359306600	• SYMBOL MARK	1				
9	0359306700	• SYMBOL MARK	1				
10	0339310300	• DECAL	1			1153001~1155082	
10-1	0329360080	• DECAL	1	(H)		1155083~	
11	0359307000	• DECAL	1			1153001~1155082	JCB G
11-1	0359313800	• DECAL	1	(H)		1155083~	JCB G
11-2	0349318100	• DECAL	1			1153001~1155082	ISO A
11-3	0359325240	• DECAL	1	(H)		1155083~	ISO A
12	0339310200	• DECAL	1				
13	0359301100	• DECAL	2				
14	0439301400	• DECAL	1			1153001~1155082	
	0339318300	• DECAL	1	(H)		1155083~	
15	0569322100	• DECAL	1			1153001~1155082	
	0359325190	• DECAL	1	(H)		1155083~	
24	0339310400	• DECAL	1				
25	0359306800	• DECAL	1			1153001~1155082	
25-1	0359325220	• DECAL	1	(H)		1155083~	
29	0569321980	• DECAL	1				
30	0359313700	• DECAL	1				
31	0359325170	• DECAL	1				
32	0359325180	• DECAL	1				
33	0329352300	• SYMBOL MARK	2				
34	0329352400	• SYMBOL MARK	1				
35	0359313900	• DECAL	1				U.S. TAKEUCHI

SWIVEL JOINT

Item	Part number	Description	Q'ty	Chan.	Serial No.	Remarks
1	1904007100	JOINT, swivel	1			
2	1904007099	• KIT, seal	1			
3	X 1904006416	• • SEAL, sliper	8			
4	X 1420010600	• • O-RING	1			
5	X 1420010090	• • O-RING	2			
6	X 1420010050	• • O-RING	1			
7	X 1420310040	• • O-RING	1			
8	X 1421030600	• • RING, back-up	1			
9	X 1904001695	• • SEAL, dust	1			
10	X *****	• HUB	1			
11	X *****	• SHAFT	1			
12	X *****	• FLANGE	1			
13	X *****	• WASHER, thrust	1			
14	1220000055	• RING, snap	1			
15	1501810002	• PLUG	2			
16	1501810001	• PLUG	3			
17	1501810000	• PLUG	1			
18	1100050825	• BOLT	4			
19	1140010008	• WASHER, spring	4			
20	1904100200	• SELECTOR ASSY	1			
21	X *****	• • COVER	1			
22	X *****	• • COVER	1			
23	X *****	• • SPRING	2			
24	1420010220	• • O-RING	2			
25	1420000100	• • O-RING	1			
26	1421020100	• • RING, back-up	1			
27	1390010350	• • BALL, steel	2			
28	1110040555	• • SCREW, cap	4			
29	1110040530	• • SCREW, cap	4			
30	1110040516	• • SCREW, cap	4			
31	1501810000	• • PLUG	2			
32	X *****	• • BODY	1			

SUB VALVE
(1153314~)

Item	Part number	Description	Q'ty	Chan.	Serial No.	Remarks
1	1901723500	VALVE, sub	1		1153314~1153736	
	1901724200	VALVE, sub	1	(H)	1153737~1154084	
	1901725600	VALVE, sub	1	(H)	1154085~	
2	1901723503	· SPRING	1			
3	1901718904	· PLUG	2			
4	1420010140	· O-RING	3			
5	1901717107	· PISTON	1			
6	1901717108	· SPRING	1			
7	1901717109	· PLUG	1			
8	1420000220	· O-RING	2			
9	1901717123	· PLUG	1			
10	1901717113	· PLUG	1			
11	1420010110	· O-RING	2			
12	1501810001	· PLUG	1			
13	1901717117	· PLUG	5			
14	1420100550	· O-RING	1			
15	1901719916	· PLATE	1			
16	1901719417	· VALVE ASSY	1			
17	1901717112	· SPRING	1			
18	1901719419	· PLUG	1			
19	1901719429	· PLUG	1			
20	1420010100	· O-RING	1			
21	1110050880	· SCREW, cap	3			
22	1901719423	· PLATE	1			
23	1110050816	· SCREW, cap	2			
24	1901716900	· VALVE, solenoid	1		1153314~1153736	
	1901718100	· VALVE, solenoid	1	(H)	1153737~	
25	1901717105	· PLUG	1			
26	1420010180	· O-RING	1			
27	1901723529	· PLUG	1			
28	1901725602	· SPOOL	1			

BOOM CYLINDER

Item	Part number	Description	Q'ty	Chan.	Serial No.	Remarks
1	1900061200	CYLINDER ASSY	1			
2	1900061299	• KIT, seal	1			
3	X 1900051932	• • PACKING, piston	1			
4	X 1410530408	• • PACKING, rod	1			
5	X 1900051931	• • SEAL, dust	1			
6	X 1421130300	• • RING, back-up	1			
7	X 1421130500	• • RING, back-up	2			
8	X 1420110500	• • O-RING	1			
9	X 1420110450	• • O-RING	1			
10	X 1420110550	• • O-RING	1			
11	1900061201	• ROD, piston	1			
12	1900024720	• BUSHING	2			19000-61402
13	1900058803	• COVER, rod	1			
14	1900058816	• CUSHION, rod	1			
15	1900053506	• PISTON	1			
16	1900061207	• TUBE	1			
17	1900058616	• RING, cushion	1			
18	1900058615	• SPACER	1			
19	1900058626	• STOPPER	1			
20	1900051926	• RING, wear	2			
21	1333003025	• BUSHING	1			
22	1390010250	• BALL, steel	1			
23	1121040605	• SET-SCREW	1			
24	1432200030	• SEAL, dust	4			
25	1560001000	• NIPPLE, grease	1			
26	1560001675	• NIPPLE, grease	1			

SWING CYLINDER

Item	Part number	Description	Q'ty	Chan.	Serial No.	Remarks
1	1900057700	CYLINDER ASSY	1			
2	1900053399	• KIT, seal	1			
3	X 1410535458	• • PACKING, rod	1			
4	X 1900033533	• • SEAL, dust	1			
5	X 1411245352	• • RING, back-up	1			
6	X 1421130550	• • RING, back-up	2			
7	X 1420110550	• • O-RING	1			
8	X 1420110500	• • O-RING	1			
9	X 1420110600	• • O-RING	1			
10	X 1900053331	• • PACKING, piston	1			
11	1900053601	• ROD, piston	1			
12	1900046320	• BUSHING	1			19000-00202
13	1900046302	• BUSHING	1			19000-43320
14	1900053303	• COVER, rod	1			
15	1900057705	• CUSHON, rod	1			
16	1900053306	• PISTON	1			
17	1900057707	• TUBE	1			
18	1900048815	• SPACER	1			
19	1900046316	• RING, cushion	1			
20	1900048826	• STOPPER	1			
21	1900053326	• RING, wear	2			
22	1333003525	• BUSHING	1			
23	1390010250	• BALL, steel	1			
24	1121050607	• SET-SCREW	1			
25	1432200030	• SEAL, dust	4			
26	1560001000	• NIPPLE, grease	1			

TRAVEL MOTOR (3/3)
(with parking brake)

Item	Part number	Description	Q'ty	Chan.	Serial No.	Remarks
1	1901807300	• • VALVE ASSY	1			
2	1901807399	• • KIT, seal	1			
3	X 1420010180	• • O-RING	2			
4	X 1420010070	• • O-RING	2			
5	X 1420010240	• • O-RING	2			
6	X 1420360903	• • O-RING	2			
7	X 1420010060	• • O-RING	3			
8	X *****	• • HOUSING	1			
9	X *****	• • SPOOL	1			
10	1901807203	• • SPRING	1			
11	1901807204	• • SPRING	1			
12	1901807205	• • PLUG	1			
13	1901807207	• • ADAPTOR	1			
14	1901807208	• • ORIFICE	4			
15	X *****	• • SPOOL	1			
16	1901807310	• • POPPET	2			
17	1901807211	• • SPRING	2			
18	X *****	• • SPRING	2			
19	1901807213	• • PLUG	2			
20	X *****	• • PLUG	2			
21	1901807215	• • WASHER	2			
22	1903103641	• • PLUG	2			
23	1390010400	• • BALL, steel	2			
24	1501810002	• • PLUG	2			
25	1501810001	• • PLUG	4			
26	1901807223	• • PLUG	1			

SLEW MOTOR (2/4)
(with parking brake)

Item	Part number	Description	Q'ty	Chan.	Serial No.	Remarks
1	X *****	• • GEAR ASSY, pinion	1			
2	1903104799	• • KIT, seal	1	(L)	1153001~1155455	
	1912904999	• • KIT, seal	1		1155456~	
3	X 1420310155	• • • O-RING	1			
4	X 1420110950	• • • O-RING	1			
5	X 1420110800	• • • O-RING	1			
6	X 1903104713	• • • O-RING	1			
7	X 1903104712	• • • RING, back-up	1			
8	X 1903104711	• • • X-RING	1			
9	X 1903104710	• • • SEAL, dust	1			
10	1912903001	• • HOUSING	1			
11	1912903002	• • GEAR	1			
12	1903104706	• • BEARING	1			
13	1903104707	• • BEARING	1			
14	1903103008	• • RETAINER	1			
15	1110050616	• • SCREW, cap	8			
16	1903104714	• • GEAR	1			
17	1220000040	• • RING, snap	1			
18	1903104716	• • PLATE	1			
19	1903104717	• • PLATE	6			
20	1903104718	• • PLATE	6			
21	1903103019	• • PISTON	1			
22	1110051240	• • SCREW, cap	4			
23	1140010012	• • WASHER, spring	4			
24	1903104723	• • FRANGE	1		1155456~	
25	1903104724	• • SPRING	12		1155456~	
26	1432900017	• • SEAL, shaft face	1		1155456~	

SLEW MOTOR (2/3)
(without parking brake)

Item	Part number	Description	Q'ty	Chan.	Serial No.	Remarks
1	1912902900	· · · GEAR ASSY, pinion	1			
2	1903104899	· · · KIT, seal	1			
3	X 1903104805	· · · X-RING	1			
4	X 1903104806	· · · RING, back-up	1			
5	X 1420310155	· · · O-RING	1			
6	X 1903104839	· · · SEAL, dust	1			
7	1912902801	· · · HOUSING	1			
8	1912902902	· · · GEAR	1			
9	1903102612	· · · BEARING	1			
10	1300006308	· · · BEARING	1			
11	1220000040	· · · RING, snap	1			
12	1903102604	· · · SPACER	1			
13	1110051240	· · · SCREW, cap	4			
14	1140010012	· · · WASHER, spring	4			
15	1221000090	· · · RING, snap	1			

INDEX

Item	PARTS NO.	Description	Q'ty	I	R	Remarks
1		CYLINDER BLOCK				
2		GEAR HOUSING				
3		MOUNTING FLANGE & OIL SUMP				
4		CYLINDER HEAD & BONNET				
5		SUCTION MANIFOLD & AIR CLEANER				
6		EXHAUST MANIFOLD & SILENCER				
7		CAMSHAFT & DRIVE GEAR				
8		CRANKSHAFT & PISTON				
9		LUB. OIL SYSTEM				
10		COOLING WATER SYSTEM				
11		FUEL INJECTION PUMP				
12		GOVERNOR				
13		FUEL INJECTION VALVE				
14		FUEL PIPES				
15		STARTING MOTOR				
16		GENERATOR				
17		GASKET SET (OPTIONAL)				

FIG 5 SUC.MANIFOLD & AIR CLEANER

Item	PARTS NO.	Description	Q'ty	I	R	Remarks
1	Y119645-12100	MANIFOLD, AIR INTAKE	1			
2	Y119620-12111	GASKET, (NON-ASB.)	1			
3	Y26106-060202	BOLT M 6X 20 PLATED	6			
4	Y119632-12520	AIR CLEANER CMP	1			
5	Y124066-12510	· AIR FILTER	1			
6	Y119632-12530	· BODY, AIR CLEANER	1			
7	Y121024-12660	· PAN ASSY, DUST	1			
8	Y124064-12680	· BOLT, WING	1			
9	Y124064-12690	· WASHER	1			
10	Y121465-12700	· RETAINER	1			
11	Y121262-12800	· INDICATOR	1			
12	Y119632-12551	PIPE, SUCTION	1			
13	Y119632-12590	SUPPORT, AIR CLEANER	1			
15	Y119640-12580	· FELT, SUPPORT	2			
16	Y23000-060000	CLAMP 60	2			
17	Y26014-080202	BOLT M 8X 20	4			
18	Y26366-080002	NUT M 8	1			
19	Y119632-12211	PIPE, AIR INTAKE	1			
20	Y23000-060000	CLAMP 60	1			

FIG 10 COOLING WATER SYSTEM

Item	PARTS NO.	Description	Q'ty	I	R	Remarks
1	Y119660-42004	PUMP ASSY, CW(NON-ASB)	1			
10	Y119620-42320	· O-RING	1			
11	Y23871-030000	· PLUG PT3/8, SCREW	1			
13	Y119620-42020	GASKET, C.W. PUMP	1			
14	Y26106-080452	BOLT M 8X 45 PLATED	4			
15	Y119656-42291	V-BELT (36-INCH)	1			
16	Y119660-42350	V-PULLEY, C.W. PUMP	1			
17	Y121450-44740	FAN, COOLING	1			
18	Y124574-44761	SPACER	1			
19	Y26014-060252	BOLT M 6X 25	4			
20	Y129350-49530	COVER, THERMOSTAT	1			
21	Y129350-49541	GASKET, (NON-ASB.)	1			
22	Y129350-49800	THERMOSTAT (71 C)	1			
23	Y26106-080202	BOLT M 8X 20 PLATED	2			
24	Y121250-44901	SWITCH, THERMO (110 C)	1			
25	Y124465-44950	GASKET 16	1			
26	Y171056-49351	SENER	1			
27	Y129150-49360	GASKET 10	1			
27-1	Y129150-49360	GASKET 10	3			
28	Y121468-44510	SUB-TANK ASSY	1			
30	Y121450-44531	· CAP	1			
31	Y121468-44540	· PLUG, SUB-TANK	1			
32	Y124450-44560	· CLAMP	1			
33	Y121470-44581	· GASKET	1			
34	Y23065-070130	· PIPE 7X 130	1			
35	Y119632-44520	RADIATOR CMP	1			
36	Y129107-44590	· CAP	1			
37	Y119688-49010	PIPE (A), C. WATER	1			
38	Y119632-49020	PIPE (B), C. WATER	1			
39	Y23010-038000	CLAMP 38	4			
40	Y121450-49110	COCK ASSY, 3-WAY	1			
42	Y121250-49121	· PLUG	1			
43	Y24311-000160	· O-RING 1A P-16.0	1			

CLICK HERE TO **DOWNLOAD** THE COMPLETE MANUAL

- Thank you very much for reading the preview of the manual.
- You can download the complete manual from: www.heydownloads.com by clicking the link below



- Please note: If there is no response to CLICKING the link, please download this PDF first and then click on it.

CLICK HERE TO **DOWNLOAD** THE COMPLETE MANUAL