

TS-55M-1-00002 UPPER

PB1000188-01 HYDRAULIC PRESSURE GENERATING SYSTEM
PC1000142-01 OUTRIGGER SYSTEM
PD1000175-01 SWING SYSTEM
PE1000173-01 ELEVATING SYSTEM
PF1000165-01 WINCH SYSTEM
PG1000167-01 TELESCOPING SYSTEM
PH1000162-02 SAFETY DEVICES
PK1000181-02 FRAME
PL1000178-01 CONTROL DEVICES
PM1000032-01 LUBRICATION DEVICES
PN1000002-00 ELECTRIC EQUIPMENT
PO1000114-01 INDICATION PLATES
PY1000158-01 OPTIONS
ASSEMBLY

CLICK HERE TO **DOWNLOAD** THE COMPLETE MANUAL

- Thank you very much for reading the preview of the manual.
- You can download the complete manual from: www.heydownloads.com by clicking the link below



- Please note: If there is no response to CLICKING the link, please download this PDF first and then click on it.

CLICK HERE TO **DOWNLOAD** THE COMPLETE MANUAL

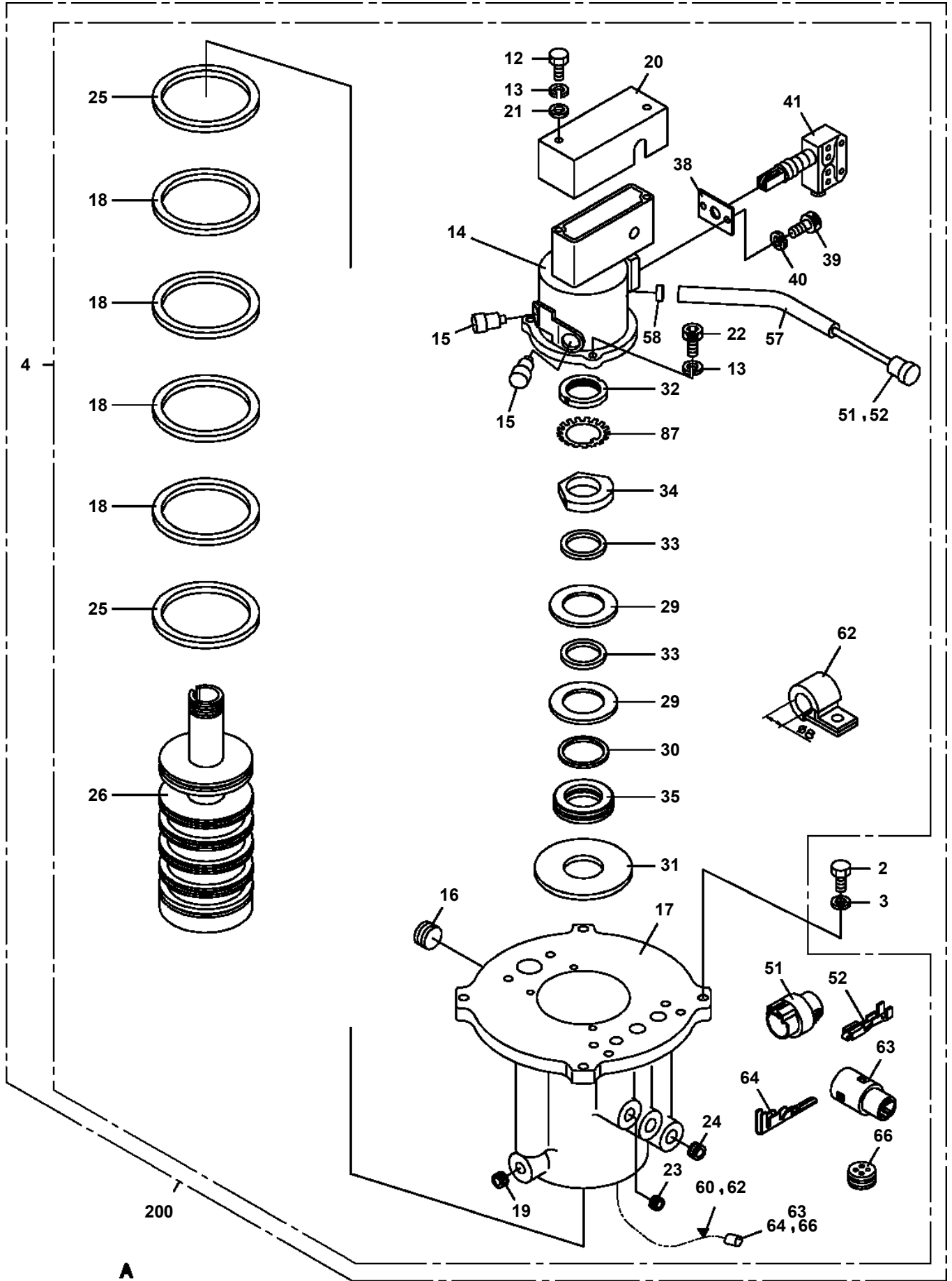
TS-55M-1-00002 UPPER

Pos No.	Parts No	Parts Name	Qty	Unit	Technical Data	Serial No (Start)	Serial No
1	36093180000	HOOK (MAIN)	1				
2	36092260000	HOOK (AUXILIARY)	1				
3	37001802560	ROPE,WIRE	1				212099
	37001804190	ROPE,WIRE	1			212100	
4	(*****)	SOCKET,ROPE	1				
5	(*****)	OPERATION SYSTEM, WINCH BRAKE	1				211798
	(*****)	OPERATION SYSTEM, WINCH BRAKE	1			211799	
6	(*****)	OPERATION SYSTEM, CLUTCH	1				
7	(*****)	MOUNT,WINCH	1				211828
	(*****)	MOUNT,WINCH	1			211829	
101	36071750000	WINCH	1				211828
	36071860000	WINCH	1			211829	
102	36310050000	CLUTCH,WINCH	1				211828
	36310050000	CLUTCH,WINCH	1			212188	
	36310200000	CLUTCH,WINCH	1			211829	212187
103	32330120030	BAND,WINCH BRAKE	1				
104	36634170000	VALVE,CLUTCH	1				
105	36661350000	MOTOR,HYDRAULIC (WINCH)	1			211829	
	36071685210	MOTOR,HYDRAULIC (AUXILIARY WINCH)	1				211828
106	36602570000	VALVE,COUNTERBALANCE (WINCH)	1			211829	
	36071687000	VALVE,COUNTERBALANCE (AUX. WINCH)	1				211828

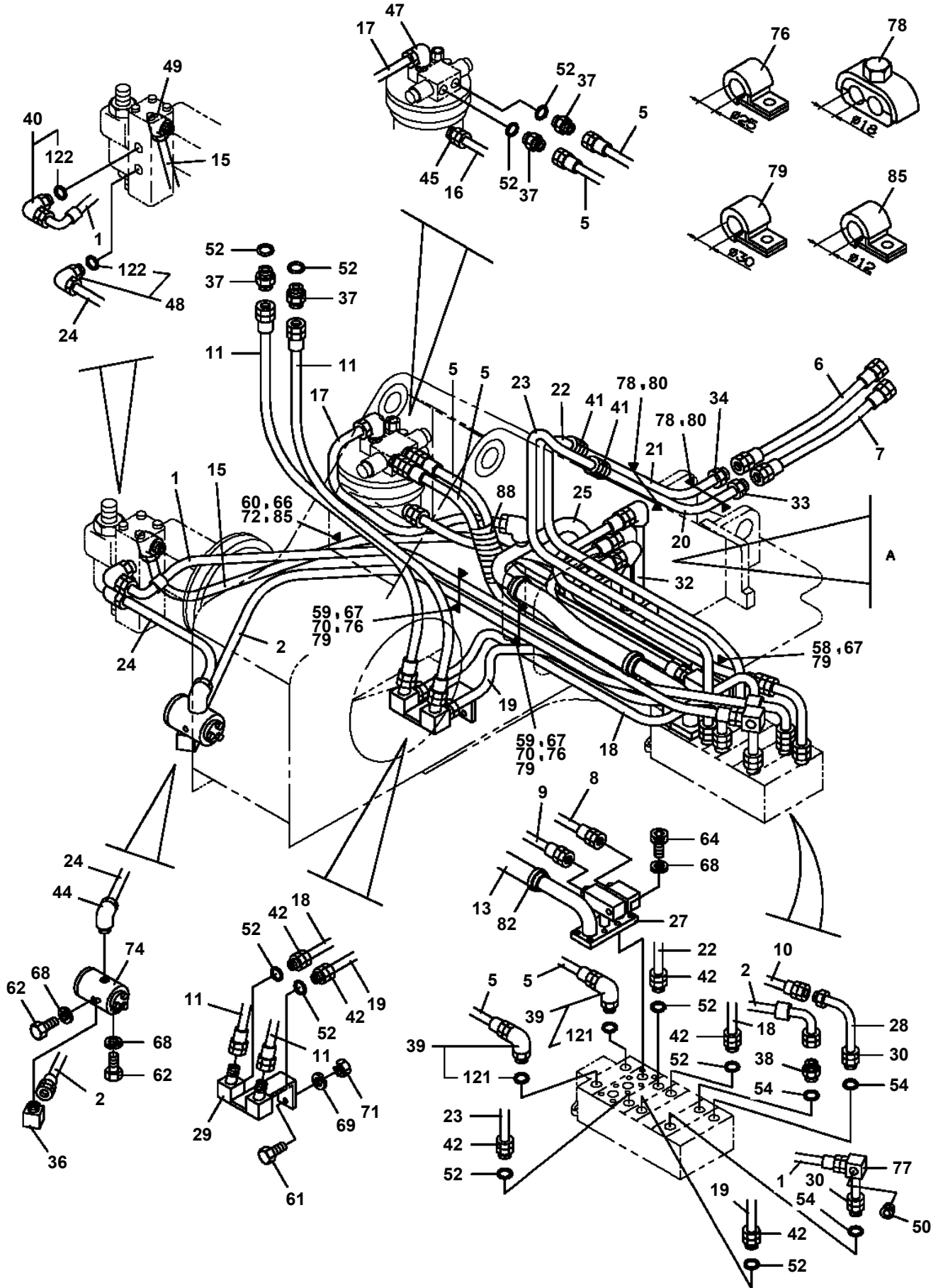
TS-55M-1-00002 UPPER

Pos No.	Parts No	Parts Name	Qty	Unit	Technical Data	Serial No (Start)	Serial No (End)	Remarks	Pages
1	(***** *****)	PARTS,GREASING	1			211799			000112
	(***** *****)	PARTS,GREASING	1				211798		000111

TS-55M-1-00002 UPPER
PB1300105-01 JOINT, ROTARY



TS-55M-1-00002 UPPER
PB1400109-00 PIPING, HYDRAULIC UPPER



TS-55M-1-00002 UPPER

Pos No.	Parts No	Parts Name	Qty	Unit	Technical Data	Serial No (Start)	Serial No (End)	Remarks
82	91803600500	CLIP	4		D=35-50			
85	82100002008	CLAMP	1		WR12		211831	
86	90101510055	BOLT	4		M10X55			
87	82100001413	TUBE, SPIRAL	1	M	SE-15BK			
88	82100002535	TUBE, SPIRAL	1	M	SE-29BK			
91	91002801800	O-RING	2		1B P18			
101	91002802400	O-RING	1		1B P24	211829	211831	

TS-55M-1-00002 UPPER

Pos No.	Parts No	Parts Name	Qty	Unit	Technical Data	Serial No (Start)	Serial No (End)	Remarks
1	32610000040	SPACER	4		L=12			
2	32610430010	COVER	2					
3	90101208016	BOLT	4		M8X16			
4	90302040801	WASHER,SPRING	4		8			
5	37000104370	PIN	2					
6	80601110350	RING,RITAINING	4		S35			
7	36622940000	VALVE,PILOT CHECK	2					
8	90131510025	BOLT,HEXAGON SOCKET	4		M10X25			
10	32610521000	CASE,INNER	2					
11	36032660000	CYLINDER,JACK	2					
12	37000114790	PIN	2					
13	80136332036	PIN,SPLIT	4		3.2X36			
14	37000108140	PIN	2					
15	37002412710	HOSE,TWIN	2		L=2240 TO 2145			
16	36041300000	CYLINDER,EXTENSION	1					
17	32610522000	CASE,INNER	2					
19	37000123840	PIN	2					
20	80601110280	RING,RITAINING	4		S28			
22	80136350036	PIN,SPLIT	4		5X36			
23	36041290000	CYLINDER,EXTENSION	1					
24	37000127590	PIN	2					
31	32610439510	FLOAT ASSY	2					

TS-55M-1-00002 UPPER

Pos No.	Parts No	Parts Name	Qty	Unit	Technical Data	Serial No (Start)	Serial No (End)	Remarks	Pages
1	90201202400	NUT	1		M24				
2	90302042401	WASHER,SPRING	1		24				
3	91684007001	PACKING	2						
4	91431205701	RING,BACKUP	2						
5	91002802400	O-RING	1		1B P24				
6	91302207000	BEARING,PLAIN	2						
7	36032180010	PISTON	1						
8	36032660100	ROD	1						
9	36032660200	CYLINDER	1						
10	91002906500	O-RING	1		1B G65				
11	91694004500	PACKING	1						
12	91410204502	RING,BACKUP	1						
13	91660004501	SEAL,DUST	1						
14	36032180040	COVER,ROD	1						
51	36032999900	PACKING SET	1		45X70				
100	36032660000	CYLINDER,JACK	1						

TS-55M-1-00002 UPPER

Pos No.	Parts No	Parts Name	Qty	Unit	Technical Data	Serial No (Start)	Serial No (End)
1	36634140000	VALVE,MANUAL CONTROL (OUTRIGGER)	1				
2	37000105610	PIN	10		L=18		
3	80136320010	PIN,SPLIT	10		2X10		
4	90101208030	BOLT	3		M8X30		
5	90302040801	WASHER,SPRING	4		8		
6	90201200800	NUT	3		M8		
7	32700730010	LEVER	1				211798
	32700930100	LEVER	1			211799	212112
8	32700930200	LEVER	1			211799	212112
	32700730020	LEVER	1				211798
9	32700930300	LEVER	1			211799	212112
	32700000040	LEVER	1				211798
10	32700930400	LEVER	2			211799	212112
	32700730030	LEVER	2				211798
11	31320020010	KNOB (BLACK)	4				
12	31320020020	KNOB (RED)	1				
13	32700007000	LEVEL ASSY	1				212135
	32700007500	LEVEL	1			212136	
14	90131506020	BOLT,HEXAGON SOCKET	2		M6X20		
15	90302040601	WASHER,SPRING	2		6		
16	90303070601	WASHER,PLAIN	2		6		
17	32700000070	SUPPORT	1				
18	32700000080	LEVER	1				
19	90102208035	BOLT	1		M8X35		
20	90201400800	NUT	1		M8		
21	90303100801	WASHER,PLAIN	2		8		
22	32700930101	LEVER	1			212113	
23	32700930201	LEVER	1			212113	
24	32700930301	LEVER	1			212113	
25	32700930401	LEVER	1			212113	
26	32700930500	LEVER	1			212113	
27	80456950401	JOINT,SELF SEALING (COUPLER)	1			212175	
31	32700007100	COVER	1				212135
32	82400000303	LEVEL	1				212135
33	32700007200	SUPPORT	1				212135
34	90201200500	NUT	6		M5		212135
35	80183306016	SCREW,MACHINE	1		M6X16		212135
36	90302040601	WASHER,SPRING	1		6		212135
37	90303070601	WASHER,PLAIN	1		6	212125	212135

TS-55M-1-00002 UPPER

Pos No.	Parts No	Parts Name	Qty	Unit	Technical Data	Serial No (Start)	Serial No (End)	Remarks
1	37002302050	BEARING,SWING (KOYO)	1					
	37002301990	BEARING,SWING (NSK)	1					
	37002302040	BEARING,SWING (IZUMI)	1					
2	36080690000	REDUCER,SWING SPEED	1					
3	32300101000	COVER	1					
4	90171112040	BOLT	6		M12X40			
5	90302041201	WASHER,SPRING	6		12			
6	90101210020	BOLT	8		M10X20			
7	90302041001	WASHER,SPRING	8		10			
8	90303071001	WASHER,PLAIN	8		10			
9	32300141000	COVER	1					

TS-55M-1-00002 UPPER

Pos No.	Parts No	Parts Name	Qty	Unit	Technical Data	Serial No (Start)	Serial No (End)	Remarks
1	80561100100	NUT	1		AN10			
2	80562100100	WASHER (LOCK)	1		AW10			
3	36070305170	BOSS (CLUTCH)	1					
4	80602111000	RING,RITAINING	1		R100			
5	80516006211	BEARING,BALL	2					
6	36071755010	DRUM,SHAFT	1					
7	36070305160	DRUM	1					
8	91206070002	SEAL,OIL	1					
9	80500006014	BEARING,BALL	2					
10	36071685010	SHAFT (OUTPUT)	1					
11	80602111100	RING,RETAINING	1		110			
12	36070845050	PLUG	1		R1/2XR1/8			
13	36070845230	RING,THRUST	1					
14	36071865120	CARRIER ASSY (B)	1					
15	36071685160	GEAR,INTERNAL	1					
16	36071865110	CARRIER ASSY (A)	1					
17	36080515100	RING,THRUST	3					
18	36080515390	GEAR,PLANETARY	3					
19	36080515130	BEARING,NEEDLE	3		K20X26X12			
20	36071685220	RING,RETAINING	3		ISTW-20			
21	36071865030	BRACKET	1					
23	36071865040	GEAR,SUN (A)	1					
24	36071685190	BEARING,BALL	1					
25	36071685080	SPACER (A)	1					
26	36071865050	GEAR,SUN (B)	1					
27	36071865060	SPACER	1					
28	36071685230	RING,RETAINING	3		ISTW-25			
29	36071865070	GEAR,PLANETARY	3					
30	36080515040	BEARING,NEEDLE	3		K25X30X20S			
31	36070845250	RING,THRUST	3					
33	80316090040	PLUG SOCKET	2		R1/4			
34	90131710030	BOLT,HEXAGON SOCKET	8		M10X30			
100	36071860000	WINCH	1					

TS-55M-1-00002 UPPER

Pos No.	Parts No	Parts Name	Qty	Unit	Technical Data	Serial No (Start)	Serial No (End)	Remarks	Pages
1	37001802560	ROPE,WIRE	1						

TS-55M-1-00002 UPPER

Pos No.	Parts No	Parts Name	Qty	Unit	Technical Data	Serial No (Start)	Serial No (End)	Remarks	Pa
4	32330012220	LINING	1						
5	32330012210	LINING	6						
14	32330014500	RIVET	36		5X9X10				
15	32330014510	RIVET	4		5X9X15				
20	32330120030	BAND,WINCH BRAKE	1						

TS-55M-1-00002 UPPER

Pos No.	Parts No	Parts Name	Qty	Unit	Technical Data	Serial No (Start)	Serial No (End)	Rema
1	36071860000	WINCH	1					
2	90101510030	BOLT	8		M10X30			
3	90302041001	WASHER,SPRING	8		10			
4	32310150500	SPACER	2					
5	32310150201	SUPPORT	1					
6	32310150301	SUPPORT	1					
7	90101516045	BOLT	2		M16X45			
8	90302041601	WASHER,SPRING	2		16			
9	90101512050	BOLT	3		M12X50			
10	90302041201	WASHER,SPRING	7		12			
11	33310611010	PLATE	1				212155	
	33310660300	PLATE	1			212156		
12	33310611020	PLATE	1					
13	32310150400	SUPPORT	1					
14	13643002000	WEDGE	1					
15	36310200000	CLUTCH,WINCH	1				212187	
16	80313010060	PACKING (COPPER 14)	1					
17	80516006309	BEARING,BALL	1					
18	37000307070	SPACER	2		L=3			
19	80601110450	RING,RITAINING	2		S45			
20	91002801800	O-RING	1		1B P18			
21	90194514028	BOLT	6		M14X28			
22	90302051401	WASHER,SPRING (14)	6					
23	36672739510	JOINT,WINCH ROTARY	1					
24	80731100036	PIN	2					
25	14123000400	BREATHER	1		PT1/8			
26	36661350000	MOTOR,HYDRAULIC (WINCH)	1					
27	91001213000	O-RING	1		1A G130			
28	90101512040	BOLT	4		M12X40			
30	59457138000	PLUG ASSY	1					
32	36102363000	TANK	1			212163		
33	36310050000	CLUTCH,WINCH	1			212188		
40	32310198010	SUPPORT ASSY	1					

TS-55M-1-00002 UPPER

Pos No.	Parts No	Parts Name	Qty	Unit	Technical Data	Serial No (Start)	Serial No (End)	F
1	32360005010	CASE	1					
2	32360005021	PLATE (BASE)	1					
3	32360005031	SHAFT	1					
4	36130335010	DRUM ASSY	1					
5	82100002281	CONNECTOR	1					
6	82100002282	CONNECTOR	1					
7	80515006200	BEARING,BALL	1					
8	80602110300	RING,RITAINING	1		R30			
9	80601110100	RING,RITAINING	1		S10			
10	32360005070	CASE (BEARING)	1					
11	36130335040	REDUCER	1					
12	32360005100	GEAR	2					
13	32360005110	BRACKET	1					
14	32360005120	POTENTIOMETER (5K)	1					
15	36130015070	SPRING	1					
16	32360005140	COVER	1					
17	32360005150	CLIP (NYLON)	1					
18	36130045090	CLIP (NYLON)	1					
19	32360005170	CLAMP (CORD)	1					
22	82100001155	CONNECTOR	1					
23	32360005190	GUIDE (CORD)	1					
24	32360005200	PACKING	1					
25	32360005210	PACKING	1					
26	32360005220	PACKING	1					
27	33371277520	CONTACTOR ASSY	1					
28	36130335020	RING ASSY (CONTACT)	1					
33	82100002328	PLUG	2					
46	82100001406	CONNECTOR (SEAL)	1					
47	36130605020	CABLE ASSY (WITH CONNECTOR)	1		L=500			
48	82100002356	TERMINAL (GOLD)	1					
49	82100002355	TERMINAL (GOLD)	1					
50	82100000080	CORD (1-LINE)	18	M				
60	36130730000	DETECTOR,BOOM LENGTH	1					

CLICK HERE TO **DOWNLOAD** THE COMPLETE MANUAL

- Thank you very much for reading the preview of the manual.
- You can download the complete manual from: www.heydownloads.com by clicking the link below



- Please note: If there is no response to CLICKING the link, please download this PDF first and then click on it.

CLICK HERE TO **DOWNLOAD** THE COMPLETE MANUAL

TS-55M-1-00002 UPPER

Pos No.	Parts No	Parts Name	Qty	Unit	Technical Data	Serial No (Start)	Serial No (End)	Remarks	Pages
1	90101210025	BOLT	5		M10X25				
2	90302041001	WASHER,SPRING	5		10				
3	32950140100	CAM	1						
4	32950100100	SWITCH ASSY	1						
5	90101208014	BOLT	3		M8X14				
6	32950000030	SUPPORT	1						
7	32950100200	SUPPORT	1						
8	80161305035	SCREW	4		M5X35				
9	90302040501	WASHER,SPRING	4		5				
10	32950000050	SHIM	6						
11	90303070801	WASHER,PLAIN	3		8				

TS-55M-1-00002 UPPER

Pos No.	Parts No	Parts Name	Qty	Unit	Technical Data	Serial No (Start)	Serial No (End)	Remarks	Pages
1	82100001758	LAMP (ORANGE)	1						
2	82100001921	LAMP (RED)	1						
3	80171304012	SCREW,MACHINE	4		M4X12				
4	90302040401	WASHER,SPRING	4		4				
5	90303070401	WASHER,PLAIN	4		4				
6	90201200400	NUT	4		M4				
7	32470610010	SUPPORT	1						
8	90101208025	BOLT	3		M8X25				
9	90302040801	WASHER,SPRING	3		8				
10	90303070801	WASHER,PLAIN	6		8				
11	19228107000	FLASHER UNIT	1						
12	80182306012	SCREW,MACHINE	1		M6X12				
13	90302040601	WASHER,SPRING	1		6				
21	82100002550	BULB,LAMP	2		24V 20W				

TS-55M-1-00002 UPPER

Pos No.	Parts No	Parts Name	Qty	Unit	Technical Data	Serial No (Start)	Serial No (End)
1	36661360000	MOTOR ASSY (WINCH)	1				
2	36602570000	VALVE,COUNTERBALANCE (WINCH)	1				
3	36661355010	BUSHING (WITH O-RING)	1				
11	91002801100	O-RING	1		1B P11		
21	36661365010	ROTARY GROUP	1				
25	36661365020	O-RING	1				
27	36661365030	O-RING	1				
28	90131508025	BOLT,HEXAGON SOCKET	6		M8X25		
29	90302040801	WASHER,SPRING	6		8		
37	36661365040	CASE	1				
42	80602110800	RING,RITAINING	1		R80		
46	36661365050	O-RING	1				
47	36650115050	SEAL,OIL	1				
53	36661365060	KEY	1				
70	36661350000	MOTOR,HYDRAULIC (WINCH)	1				

TS-55M-1-00002 UPPER

Pos No.	Parts No	Parts Name	Qty	Unit	Technical Data	Serial No (Start)	Serial No (End)	Remarks	Pages
1	36642925100	VALVE ASSY	1						
2	36651835130	PLUG	2		3/8				
3	36603925030	PLUG	2						
4	36642925010	FILTER	2						
5	36642925020	SPRING	2						
6	91002801400	O-RING	2		1B P14				
7	91002800800	O-RING	2		1B P8				
8	36652145040	PLUG	5						
9	80560058000	BALL,STEEL	2		9/32				
30	36642930000	VALVE,SOLENOID	1						00008
50	36642920000	VALVE,SOLENOID	1						

TS-55M-1-00002 UPPER

Pos No.	Parts No	Parts Name	Qty	Unit	Technical Data	Serial No (Start)	Serial No
3	91002801800	O-RING	2		1B P18		
7	91002802200	O-RING	2		1B P22		
8	91411002200	RING,BACKUP	4		P22.4		
9	91002801400	O-RING	2		1B P14		
15	90131508045	BOLT,HEXAGON SOCKET	8		M8X45		
16	36071687010	COVER	2				
17	36071687020	BUSH	1				
21	91002903500	O-RING	2		1B G35		
24	36071687030	SPRING (MAIN)	1				
25	36071687040	WASHER	1				
32	36071687050	BUSH (SPACER)	1				
33	36071687060	BUSH	1				
34	36071687070	PLUG (THROTTLE)	2				
35	91002902500	O-RING	2		1B G25		
36	90131508075	BOLT,HEXAGON SOCKET	8		M8X75		
41	36071687080	VALVE,RELIEF	2				
50	36071687000	VALVE,COUNTERBALANCE (AUX. WINCH)	1				

TS-55M-1-00002 UPPER

Pos No.	Parts No	Parts Name	Qty	Unit	Technical Data	Serial No (Start)	Serial No (End)	Remarks	Page
1	36681260000	GAUGE,PRESSURE	1						

TS-55M-1-00002 UPPER

Pos No.	Parts No	Parts Name	Qty	Unit	Technical Data	Serial No (Start)	Serial No (End)	Remarks	Pages
1	32250171000	FRAME	1						
2	32250140100	COVER	1						
3	32250170100	COVER	1				211831		
	32250170101	COVER	1			211832			
4	32250140300	COVER	1				211831		
	32250140301	COVER	1			211832			
5	32250170300	COVER	1						
6	32250170400	COVER	1						
9	90101208020	BOLT	3		M8X20	211799			
10	90302040801	WASHER,SPRING	36		8	211799			
11	90303070801	WASHER,PLAIN	34		8	211799			
12	90201200800	NUT	5		M8				
13	34250007100	SEAT,OPERATOR	1						000102
14	37001506190	BOLT,BUTTON	28			211799			

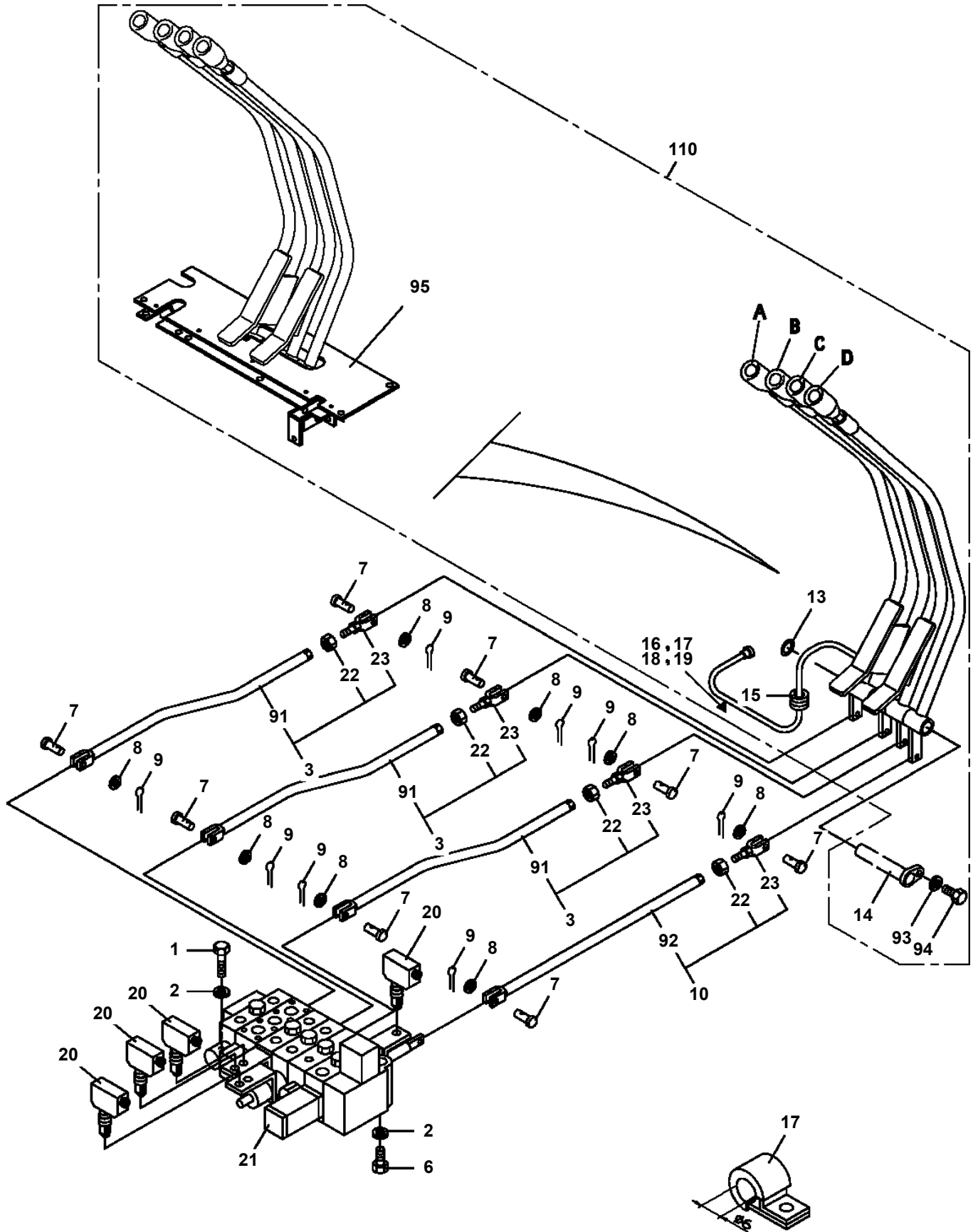
TS-55M-1-00002 UPPER

Pos No.	Parts No	Parts Name	Qty	Unit	Technical Data	Serial No (Start)	Serial No (End)
2	32260257510	GLASS (FRONT)	1				
3	32260257520	RUBBER (H,FRONT GLASS)	1				
4	32260257530	WEDGE (FRONT GLASS)	1				
5	32260227800	PACKING (DOOR)	1				
6	32260227810	GLASS (DOOR)	1				
7	32260227720	GLASS (REAR RIGHT)	1				
8	32260227950	RUBBER (H)	1				
9	32260227990	WEDGE (REAR RIGHT GLASS)	1				
10	32260227730	SASH ASSY (GLASS)	1				
11	32260227920	RUBBER (U)	1				
12	32260257540	GLASS (ROOF)	1				
13	32260227930	ADHESIVE (AUTO DAIN/ TAPEX4,TUBEX1)	1				
14	32260257550	GLASS (REAR)	1				
15	32260257560	WATER STRIP (REAR GLASS)	1				
16	34260237810	HANDLE ASSY (GLASS)	1				
17	34260237830	HOLDER ASSY (GLASS/REAR)	2				
18	32260227580	MOTOR,WIPER	1				
19	32260257570	ARM,WIPER	1				
20	32260227560	BLADE,WIPER	1				
21	32260257580	MOTOR (ROOF WIPER)	1				
22	32260228030	TRIM	1				
23	32260227830	RAIL (LOWER)	1				
24	32260227610	DOOR ASSY	1				
25	32260227550	HANDLE ASSY	1				
26	32260227700	COVER (HANDLE)	1				
27	32260227780	ROLLER ASSY	2				
28	32260227790	CATCH ASSY (BALL)	1				
29	32260227600	SASH ASSY (WITH GLASS)	1				
30	32260228050	RUBBER (U/SASH GLASS)	1				
31	32260227710	GLASS (DOOR)	1				
32	32260227960	RUBBER (H)	1				
33	32260228000	WEDGE (DOOR GLASS)	1				
34	32260227820	STRIKER ASSY	1				
35	32260228040	COVER ASSY (LOWER RAIL)	1				
36	32260227840	GRIP ASSY (FRONT)	1				
38	32260227860	TRIM (DOOR)	1				
39	32260227870	TRIM (ROOF)	1				
40	32260227620	LAMP,ROOM	1				
41	82100000786	BULB,LAMP	1		24V 10W		
42	32260227900	COVER ASSY	1				
43	32260227890	PLATE	6				
44	32260227560	BLADE,WIPER	1				
45	32260257570	ARM,WIPER	1				
51	32260227670	GLASS (FRONT)	1				
52	32260227680	GLASS (REAR)	1				
61	32260227750	GLASS (FRONT)	1				
62	32260227740	GLASS (REAR)	1				
63	32260015690	WEATHER STRIP	1		L=555		
65	32260228100	RUN CHANNEL	2		L=3090		
66	32260015380	GUIDE (BUSH)	7				
67	32260228070	LOCK ASSY (FRONT)	1				
68	32260228110	LOCK ASSY (REAR)	1				
69	32260228120	STRIKER (FRONT)	1				
70	32260228130	STRIKER (REAR)	1				
71	32260015430	SUPPORT (STRIKER)	1				
72	32260015440	STOPPER	2				
81	32260015460	SCREW,MACHINE	6		M4X7		
82	32260015470	SCREW,MACHINE	2		M4X10		
83	32260015480	SCREW,MACHINE	2		M3X10		
84	32260015490	RIVET	2		3X18		
85	32260015500	RIVET	7		2X7		
86	32260015510	SCREW,MACHINE	1		M3X8		
101	32260228280	DOOR ROCK ASSY	1				

TS-55M-1-00002 UPPER

Pos No.	Parts No	Parts Name	Qty	Unit	Technical Data	Serial No (Start)	Serial No (
1	(*****)	ELECTRICAL PARTS,CAB	1				
2	32260227590	GLASS (FRONT)	1				
3	32260227940	RUBBER (H,FRONT)	1				
4	32260227970	WEDGE (H RUBBER/FRONT)	1				
5	32260227800	PACKING (DOOR)	1				
6	32260227710	GLASS (DOOR)	2				
7	32260227720	GLASS (REAR RIGHT)	1				
8	32260227950	RUBBER (H)	1				
9	32260227990	WEDGE (REAR RIGHT GLASS)	1				
10	32260227730	SASH ASSY (GLASS)	1				
11	32260227920	RUBBER (U)	1				
12	32260227510	GLASS (ROOF)	1				
13	32260227930	ADHESIVE (AUTO DAIN/ TAPEX4,TUBEX1)	1				
14	32260227630	GLASS (REAR)	1				
15	32260227660	STRIP,WATER	1				
16	34260237810	HANDLE ASSY (GLASS)	1				
17	34260237830	HOLDER ASSY (GLASS/REAR)	2				
18	33260545020	BLADE,WIPER	2				
19	32260227570	ARM,WIPER	2				
20	32260227580	MOTOR,WIPER	1				
21	32260227520	MOTOR (ROOF WIPER)	1				
22	32260228030	TRIM	1				
23	32260227830	RAIL (LOWER)	1				
24	32260227610	DOOR ASSY	1				
25	32260227550	HANDLE ASSY	1				
26	32260227700	COVER (HANDLE)	1				
27	32260227780	ROLLER ASSY	2				
28	32260227790	CATCH ASSY (BALL)	1				
29	32260227600	SASH ASSY (WITH GLASS)	1				
30	32260228050	RUBBER (U/SASH GLASS)	1				
32	32260227960	RUBBER (H)	1				
33	32260228000	WEDGE (DOOR GLASS)	1				
34	32260227820	STRIKER ASSY	1				
35	32260228040	COVER ASSY (LOWER RAIL)	1				
36	32260227840	GRIP ASSY (FRONT)	1				
37	32260227850	COVER ASSY (REAR)	1				
38	32260227860	TRIM (DOOR)	1				
39	32260227870	TRIM (ROOF)	1				
40	32260227620	LAMP,ROOM	1				
41	82100000786	BULB,LAMP	1		24V 10W		
42	32260227900	COVER ASSY	1				
43	32260227890	PLATE	6				
44	32260237550	PACKING	6				
51	32260227670	GLASS (FRONT)	1				
52	32260227680	GLASS (REAR)	1				
53	32260015700	WEATHER STRIP (L=607/FRAME SET)	1				
55	32260228160	RUN CHANNEL	2		L=2450		
56	32260228170	SUPPORT (STRIKER)	1				
57	32260228180	LOCK ASSY	1				
58	32260228190	STRIKER (FRONT)	1				
59	32260228200	STOPPER	1				
61	32260227750	GLASS (FRONT)	1				
62	32260227740	GLASS (REAR)	1				
63	32260015690	WEATHER STRIP	1		L=555		
65	32260228100	RUN CHANNEL	2		L=3090		
66	32260015380	GUIDE (BUSH)	7				
67	32260228070	LOCK ASSY (FRONT)	1				
68	32260228110	LOCK ASSY (REAR)	1				
69	32260228120	STRIKER (FRONT)	1				
71	32260228280	DOOR ROCK ASSY	1				
72	32260228290	INSIDE HANDLE	1				
74	32260228300	OUTER HANDLE ASSY	1				
76	32260228310	CYLINDER ASSY (DOOR KEY)	1				

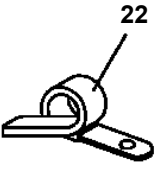
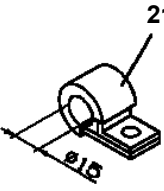
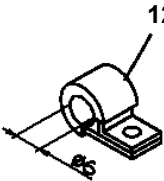
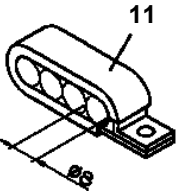
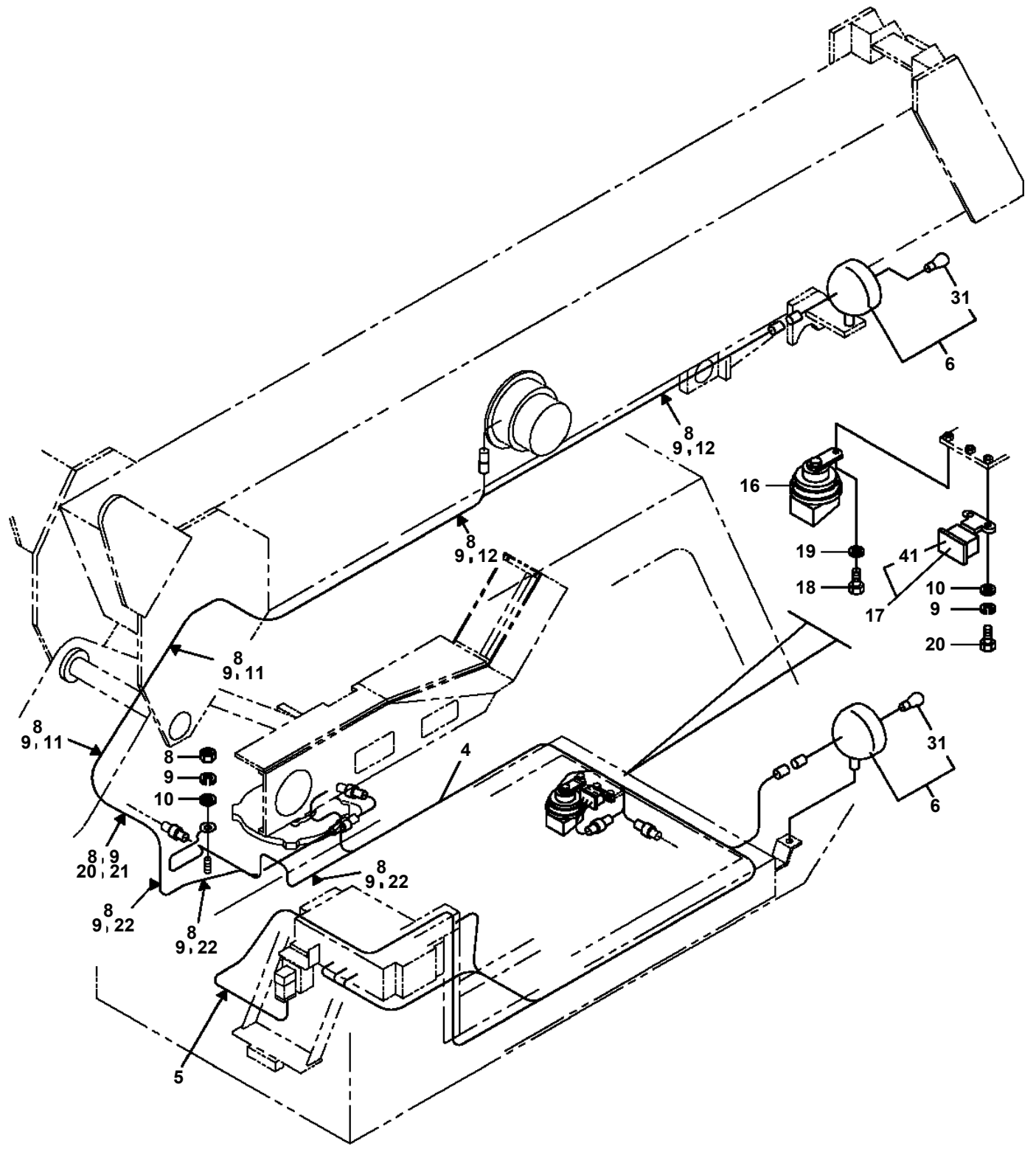
TS-55M-1-00002 UPPER
PL1010319-01 OPERATION SYSTEM, CONTROL VALVE



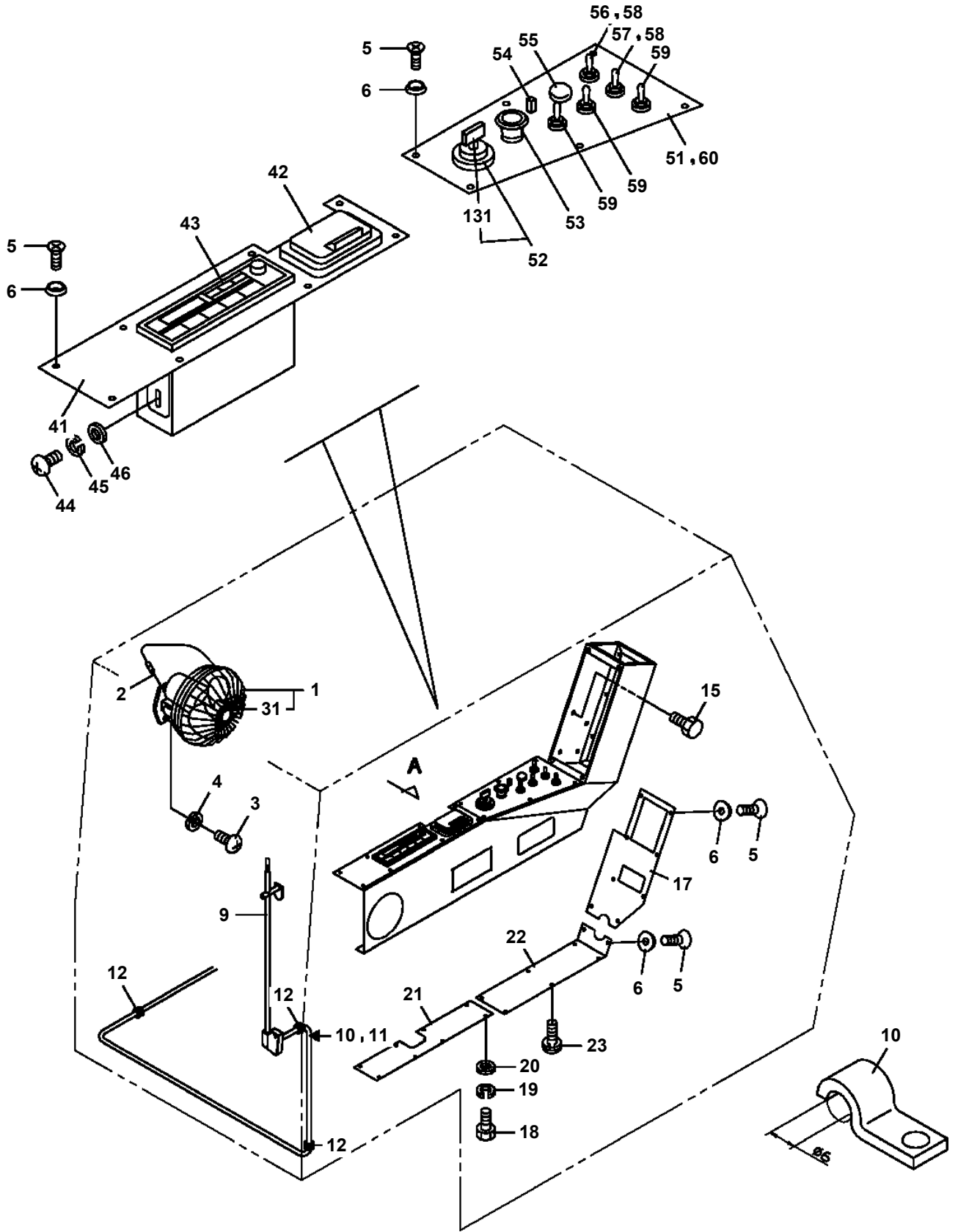
TS-55M-1-00002 UPPER

Pos No.	Parts No	Parts Name	Qty	Unit	Technical Data	Serial No (Start)	Serial No (End)	Remarks	Pages
1	16314010000	SPRING	1						
3	37000104920	PIN	1						
4	90303071201	WASHER,PLAIN	6		12				
5	80136332025	PIN,SPLIT	5		3.2X25				
6	32330102050	PEDAL	1						
7	32330020170	LEVER ASSY	1						
8	90102210050	BOLT	2		M10X50				
9	90203201000	NUT	2		M10				
11	80720104032	PIN,SPRING	2		4X32				
12	32330102000	LEVER	1						
13	32330320100	LEVER	1						
14	32330131000	ROD ASSY	1						
18	32330020060	ROD	1						
19	32330102040	SUPPORT	1						
20	90101210025	BOLT	2		M10X25				
21	90302041001	WASHER,SPRING	2		10				
22	90303071001	WASHER,PLAIN	2		10				
23	32330320200	SHAFT	1						
24	82400000075	GROMMET	1						
25	32330020110	LEVER	1						
26	37000400510	BEARING,PLAIN	3						
27	32330020120	END	1						
28	90303070601	WASHER,PLAIN	1		6				
29	80720102012	PIN,SPRING	1		2X12				
30	32330320300	ROD	1						
31	37000105730	PIN	1						
32	90303070801	WASHER,PLAIN	2		8				
33	80136320016	PIN,SPLIT	2		2X16				
42	37000400510	BEARING,PLAIN	5						
51	32330025260	KNOB	1						
52	90203201200	NUT	1		M12				
53	90258901200	NUT,WING	1		M12				
61	32330022130	ROD	1						

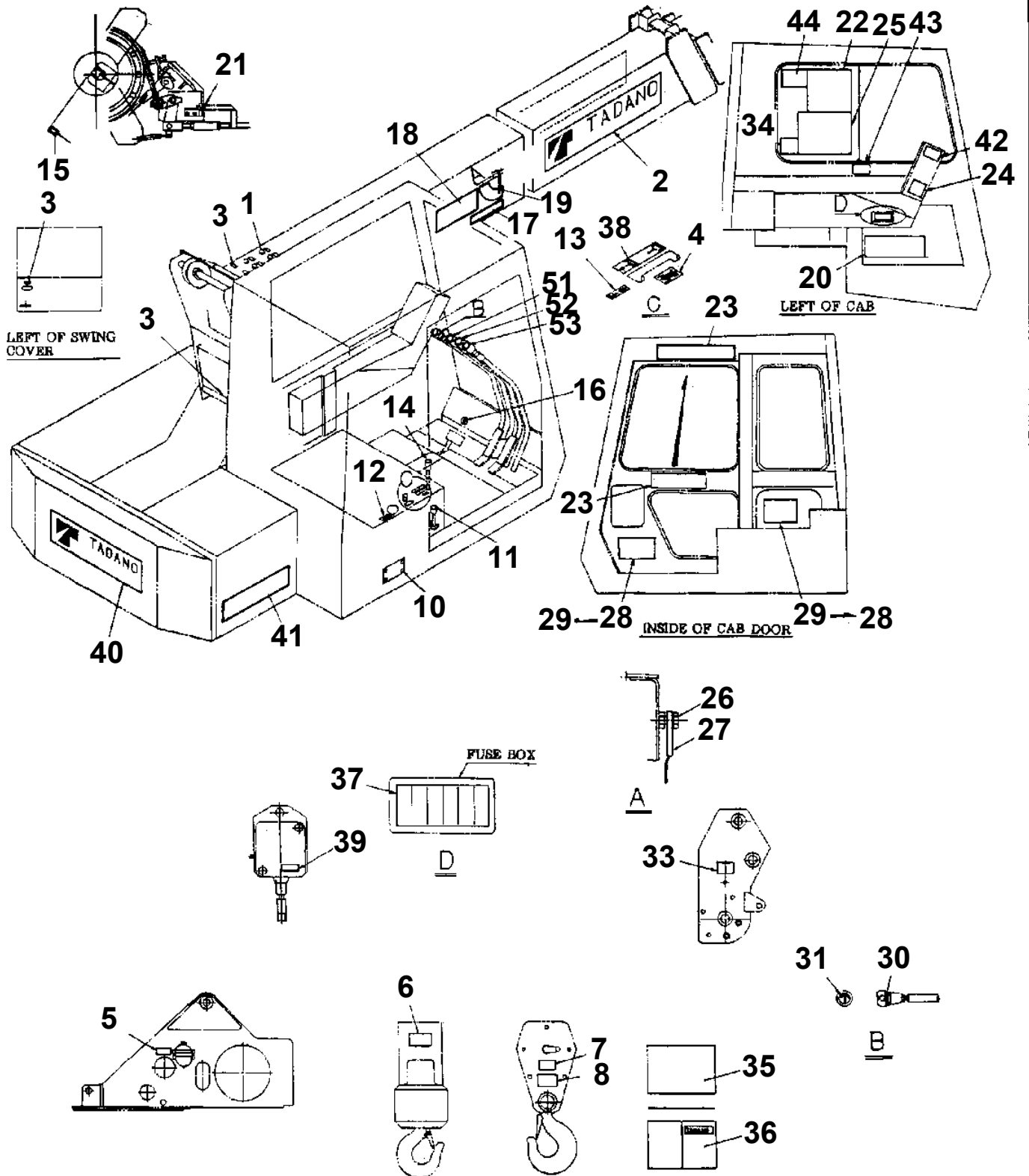
TS-55M-1-00002 UPPER
PN1010716-01 ELECTRICAL ACCESSORIES



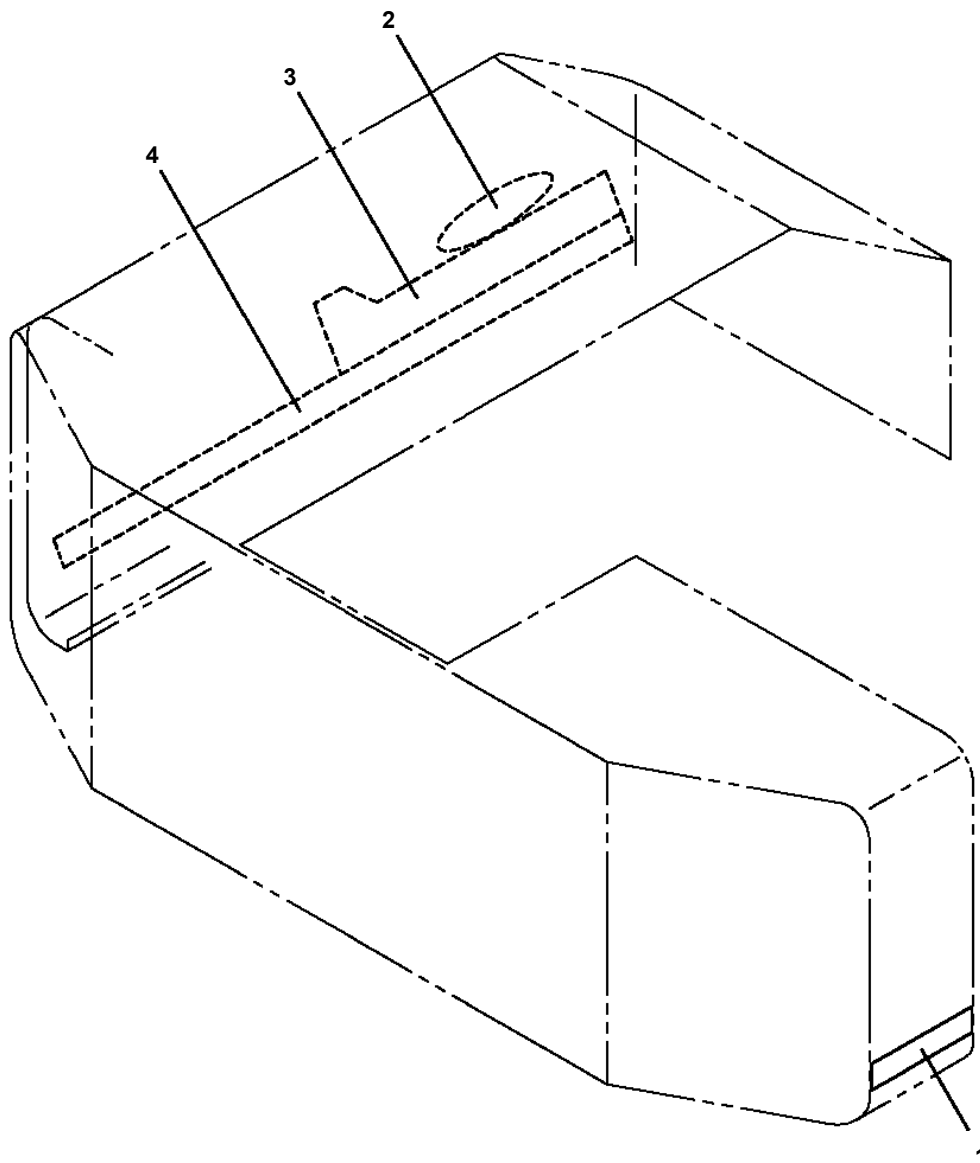
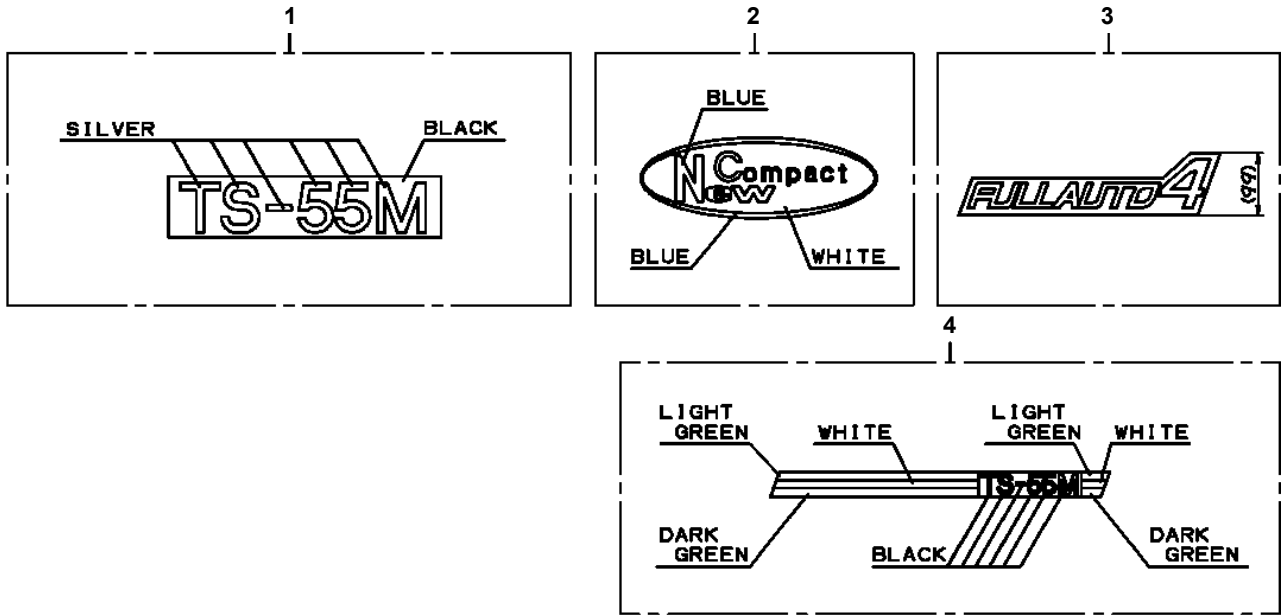
**TS-55M-1-00002 UPPER
PN1050115-01 ELECTRICAL PARTS,CAB**



**TS-55M-1-00002 UPPER
PO1010764-05 PLATE,INDICATION**



TS-55M-1-00002 UPPER
PO1013016-00 PLATE,INDICATION



CLICK HERE TO **DOWNLOAD** THE COMPLETE MANUAL

- Thank you very much for reading the preview of the manual.
- You can download the complete manual from: www.heydownloads.com by clicking the link below



- Please note: If there is no response to CLICKING the link, please download this PDF first and then click on it.

CLICK HERE TO **DOWNLOAD** THE COMPLETE MANUAL