

TR-80M-1-00101 5 BOOM,H,4.9T,1M2D

**PB1000258-03 HYDRAULIC PRESSURE GENERATING SYSTEM
PC1000197-02 OUTRIGGER SYSTEM
PD1000243-01 SWING SYSTEM
PE1000242-01 ELEVATING SYSTEM
PF1000225-02 WINCH SYSTEM
PG1000237-02 TELESCOPING SYSTEM
PH1000222-03 SAFETY DEVICES
PK1000251-02 FRAME
PL1000248-02 CONTROL DEVICES
PM1000032-01 LUBRICATION DEVICES
PN1000208-02 ELECTRIC EQUIPMENT
PO1000114-01 INDICATION PLATES
PQ1000077-02 DRIVING POWER GENERATING SYSTEM
PR1000049-02 DRIVING POWER TRANSMISSION SYSTEM
PS1000067-02 STEERING SYSTEM
PT1000057-02 BRAKE SYSTEM
PU1000049-01 SUSPENSION
PW1000097-02 ACCESSORIES & TOOLS
PX1000257-00 MOUNTING PARTS
PY1000229-03 OPTIONS
ASSEMBLY**

CLICK HERE TO **DOWNLOAD** THE COMPLETE MANUAL

- Thank you very much for reading the preview of the manual.
- You can download the complete manual from: www.heydownloads.com by clicking the link below



- Please note: If there is no response to CLICKING the link, please download this PDF first and then click on it.

CLICK HERE TO **DOWNLOAD** THE COMPLETE MANUAL

TR-80M-1-00101 5 BOOM,H,4.9T,1M2D

Pos No.	Parts No	Parts Name	Qty	Unit	Technical Data	Serial No (Start)	Serial M
1	36093490001	HOOK (MAIN)	1				
2	36092260000	HOOK (AUXILIARY)	1				
3	37001803800	ROPE,WIRE	1				
4	37001803810	ROPE,WIRE	1				
5	(*****)	SOCKET,ROPE	2				
6	(*****)	OPERATION SYSTEM, WINCH BRAKE	1				
7	(*****)	OPERATION SYSTEM, CLUTCH	1				
8	(*****)	PIPING,WINCH	1				
9	(*****)	PIPING,WINCH BRAKE	1				
10	(*****)	DETECTOR,DRUM ROTATION (OPTION)(TDN)	1				
	(*****)	DETECTOR,DRUM ROTATION (OP./ISO)	1				
12	(*****)	MOUNT,WINCH (1M 2D)	1				
101	36072030000	WINCH	1				
103	36310220000	CLUTCH,WINCH	2				
104	34311123000	BAND,WINCH BRAKE	2				
105	36634330000	VALVE,CLUTCH	1				
107	36662060000	MOTOR,HYDRAULIC	1				
108	36061550000	CYLINDER,MASTER	2				
109	36100250000	RESERVOIR,OIL	1				
110	36643370000	VALVE,HYDRAULIC	1				
111	36643370000	VALVE,HYDRAULIC	1				
112	36603850000	VALVE,COUNTERBALANCE	1				

TR-80M-1-00101 5 BOOM,H,4.9T,1M2D

Pos No.	Parts No	Parts Name	Qty	Unit	Technical Data	Serial No (Start)	Serial No (End)	Rem
1	(*****)	PIPING,GREASE (UPPER)	1					
2	(*****)	CENTRAL LUBRICATION SYSTEM	1					

TR-80M-1-00101 5 BOOM,H,4.9T,1M2D

Pos No.	Parts No	Parts Name	Qty	Unit	Technical Data	Serial No (Start)	Serial No (End)
1	(*****)	PIPING,STEERING (CAB)	1				
2	(*****)	PIPING,STEERING (UPPER)	1				
3	(*****)	PIPING,STEERING (LOWER)	1				
4	(*****)	CYLINDER,STEERING INSTALLATION	1				
101	(*****)	OPE.ASSY,STEERING	1				
102	34720911100	WHEEL,STEERING	1				
103	34720911300	SHAFT,STEERING	1				
104	36635290000	ORBITROL	1				
105	36062050000	CYLINDER,STEERING	4				
106	36610920000	VALVE,PRIORITY	1				
107	36643220000	VALVE,SOLENOID	1				
108	36643430000	VALVE,SOLENOID	1				
109	36643460000	VALVE,SOLENOID	1				

TR-80M-1-00101 5 BOOM,H,4.9T,1M2D

Pos No.	Parts No	Parts Name	Qty	Unit	Technical Data	Serial No (Start)	Se
1	(*****)	SINGLE TOP	1				
2	(*****)	HEATER SYSTEM	1				
3	(*****)	PIPING,COOLER	1				
4	(*****)	ELECTRICAL PARTS, OIL COOLER	1				
5	(*****)	RADIO INSTALLATION	1				
6	(*****)	FAN INSTALLATION	1				
7	(*****)	INFLATOR,AIR	1				
9	(*****)	COOLER,CAB (MOUNT)	1				FA
	(*****)	COOLER,CAB (MOUNT)	1			FA0704	
10	(*****)	COOLER,CAB	1				FA
	(*****)	COOLER,CAB	1			FA0704	
11	(*****)	EVAPORATOR INSTALLATION,AIR CONDITIONER	1				
12	(*****)	PIPING,AIR CONDITIONER	1				
13	34477500000	TABLE,LUNCH	1				
101	(*****)	HEATER SYSTEM (DEFROSTER)	1				
102	36290310000	HEATER (KEROSENE)	1				
103	36690140000	COOLER,OIL	1				FA
	36690140001	COOLER,OIL	1			FA1199	
104	34470003000	FAN,DEFROSTER	1				
105	36320170001	EVAPORATOR ASSY	1				FA
	36320212070	EVAPORATOR ASSY	1			FA0215	FA
	36320332070	EVAPORATOR ASSY	1			FA0704	
106	36320212060	COMPRESSOR ASSY	1				FA
	36320332060	COMPRESSOR ASSY	1			FA0704	
107	36662210000	MOTOR,HYDRAULIC (AIR CONDITIONER)	1				
108	36642760000	VALVE,SOLENOID	1				

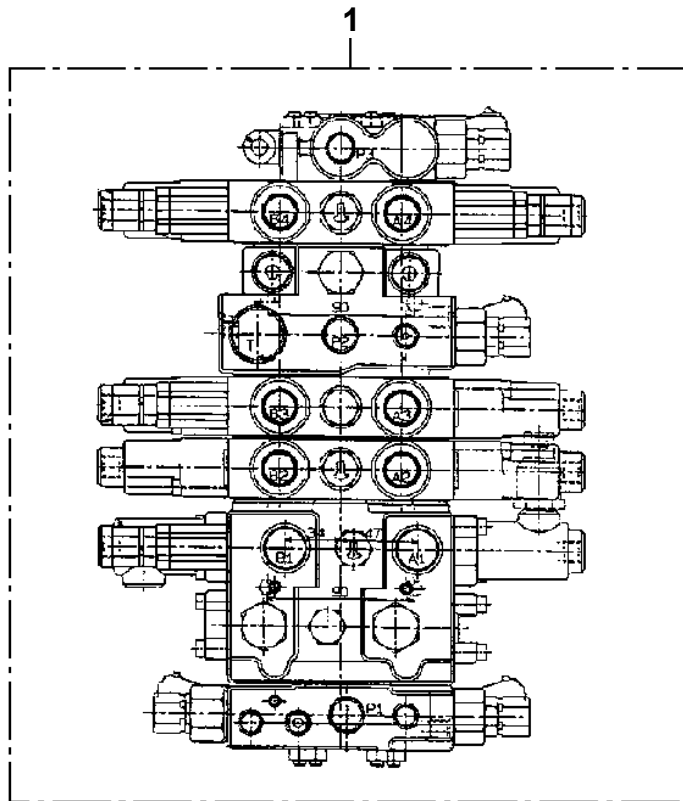
TR-80M-1-00101 5 BOOM,H,4.9T,1M2D

Pos No.	Parts No	Parts Name	Qty	Unit	Technical Data	Serial No (Start)	Serial No (End)	Rema
2	34660181100	GAUGE,OIL	1					
3	90101508016	BOLT	10		M8X16			
4	90302040801	WASHER,SPRING	10		8			
5	36101300050	COVER	1					
6	91001212500	O-RING	1		1A G125			
7	53156005000	BREATHER ASSY (OB-10T)	1					
8	91001216000	O-RING	1		1A G160			
9	36671590000	FILTER,OIL	1					
10	36100965020	COVER	1					
11	80316080060	PLUG	1					
22	33660005040	BOLT	2		M12X35X1.75			
23	34660131130	PACKING	4				FA0856	
	34660131140	PACKING	4			FA0857		
31	36671310050	ELEMENT	1					
41	53156005010	ELEMENT (OB-10T & OB-10B)	1					
42	53156005020	PACKING SET	1					
50	34660180001	TANK,OIL	1					

TR-80M-1-00101 5 BOOM,H,4.9T,1M2D

Pos No.	Parts No	Parts Name	Qty	Unit	Technical Data	Serial No (Start)	Serial No (End)	Rema
65	80460004100	JOINT	1		S,7/8-14UNF-G1/2			
66	91000591000	O-RING	1		AS568-910			
67	37000711130	CLAMP ASSY	1		18X2			
68	90303071001	WASHER,PLAIN	4		10			
82	34340021700	FILTER	1					
91	91002801100	O-RING	1		1B P11			
101	36671970100	JOINT	1					

TR-80M-1-00101 5 BOOM,H,4.9T,1M2D
PB1320496-00 VALVE,MANUAL CONTROL

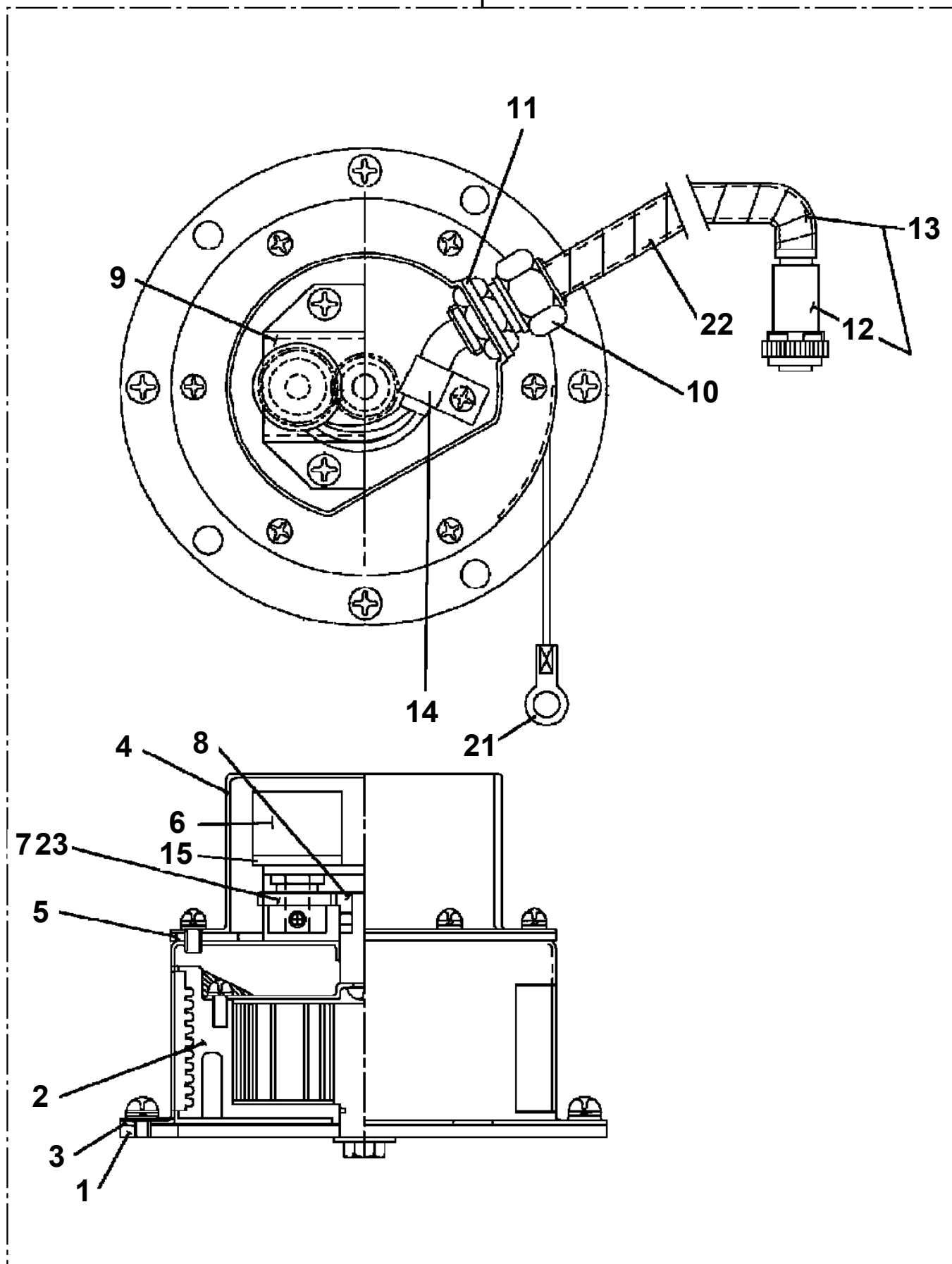


TR-80M-1-00101 5 BOOM,H,4.9T,1M2D

Pos No.	Parts No	Parts Name	Qty	Unit	Technical Data	Serial No (Start)	Serial No (End)	Remarks	Pages
1	36033151000	CYLINDER	1						
2	80720105025	PIN,SPRING	1		5X25				
3	91302209000	BEARING,PLAIN	2						
4	91684009001	PACKING	2						
5	91411207502	RING,BACKUP	2						
6	91002805000	O-RING	1		1B P50				
7	36031030020	PISTON	1						
8	36033152000	ROD	1						
9	36033153000	COVER,ROD	1						
10	91002908500	O-RING	1		1B G85				
11	91251100700	RING,DAMPER	1						
12	91694007001	PACKING	1						
13	91410207001	RING,BACKUP	1						
14	91660007000	SEAL,DUST	1						
15	36033154000	STOPPER	1						
16	90101210030	BOLT	2		M10X30				
17	90302041001	WASHER,SPRING	6		10				
18	90101210022	BOLT	4		M10X22				
20	80316030020	PLUG	1		PT1/8				
32	80612110760	RING,RITAINING	1		AR76				
33	37000401730	BEARING,PLAIN	1						
40	36033159900	PACKING SET	1		70X90				
50	36033150000	CYLINDER,JACK	1						

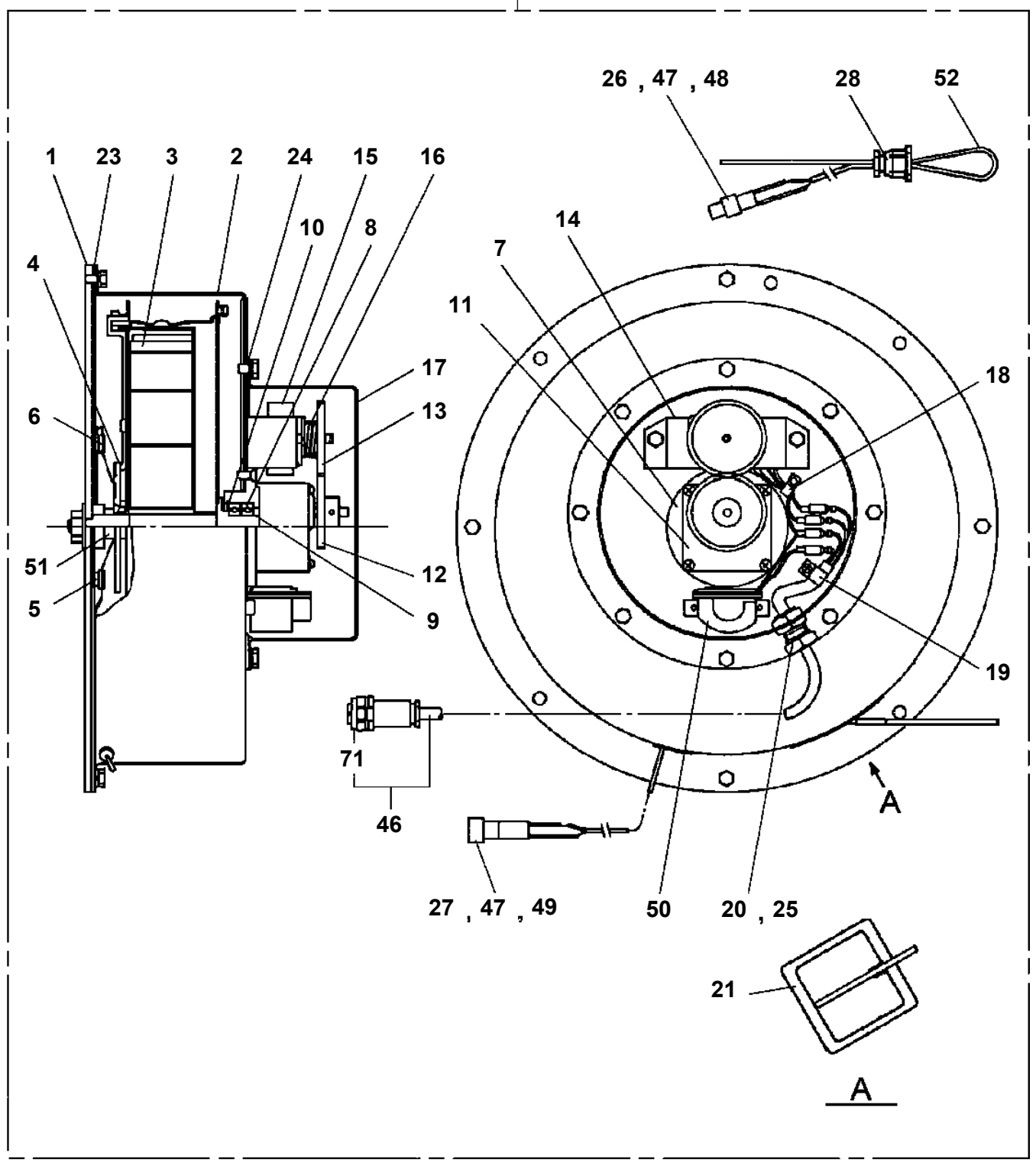
TR-80M-1-00101 5 BOOM,H,4.9T,1M2D
PC1380008-04 DETECTOR,OUTRIGGER LENGTH

30

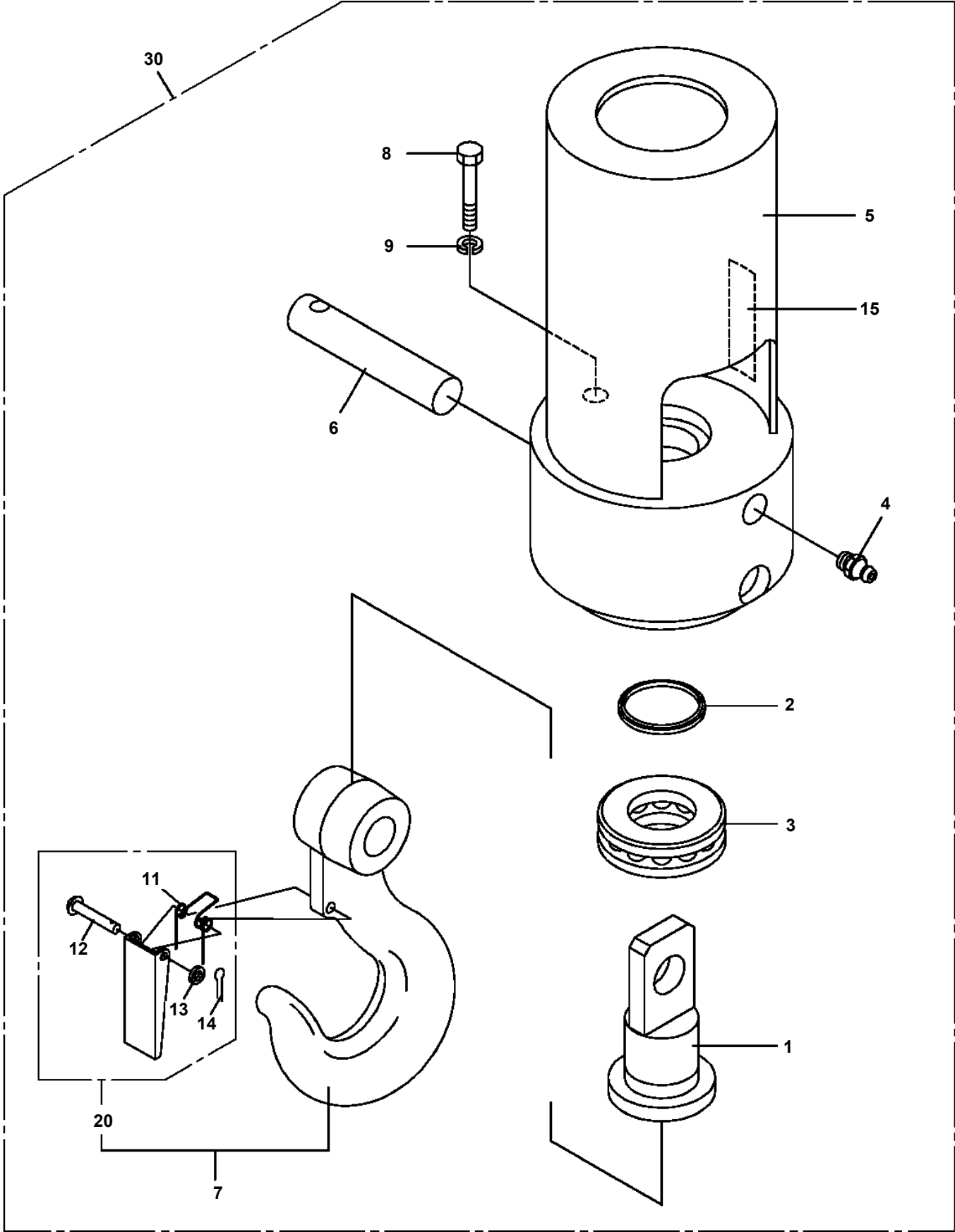


TR-80M-1-00101 5 BOOM,H,4.9T,1M2D
PD5080042-00 DETECTOR ASSY,LENGTH (BOOM)

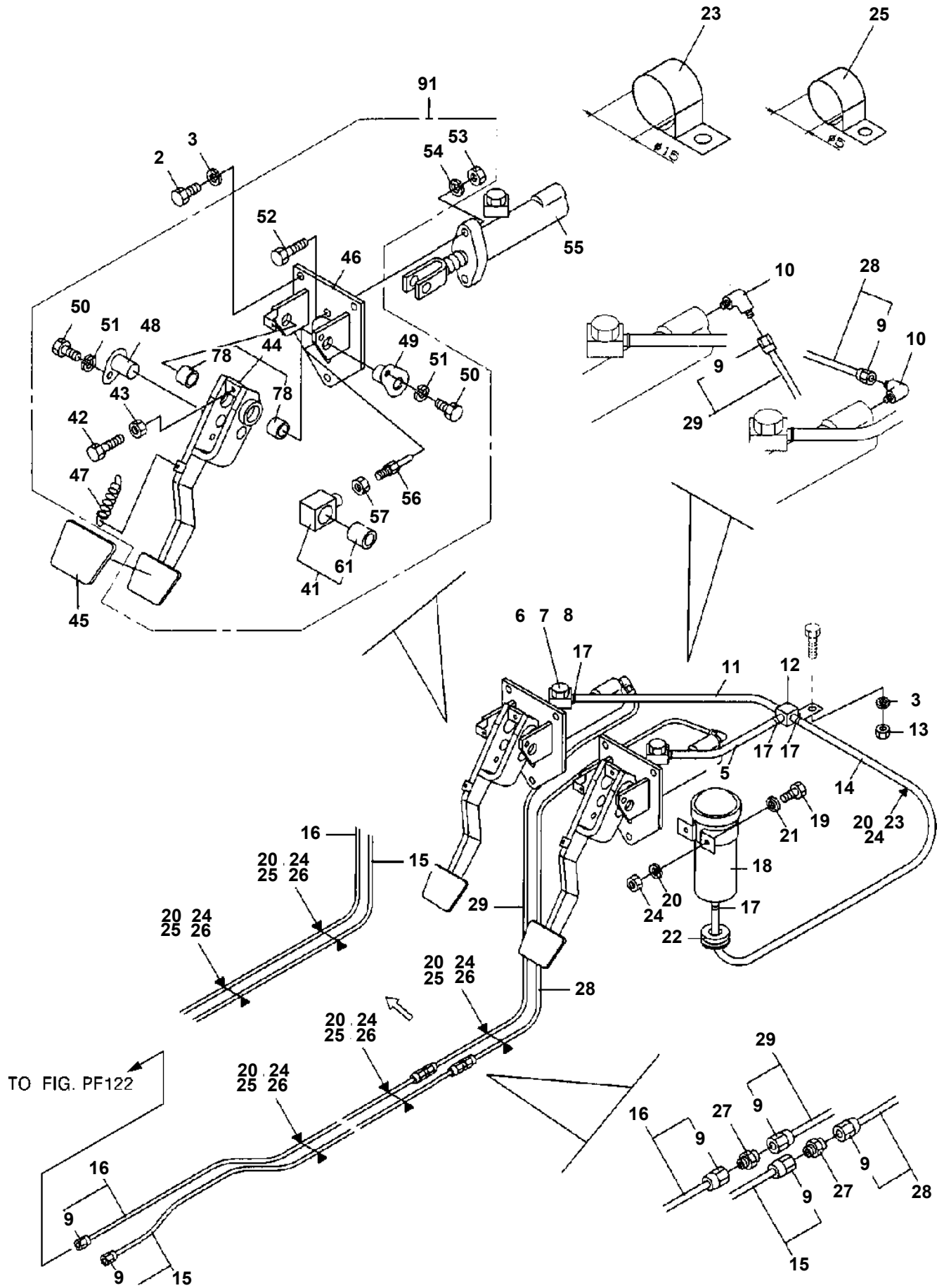
100



TR-80M-1-00101 5 BOOM,H,4.9T,1M2D
PF1050119-02 HOOK (AUXILIARY)



**TR-80M-1-00101 5 BOOM,H,4.9T,1M2D
PF1110052-03 OPERATION SYSTEM, WINCH BRAKE**



TR-80M-1-00101 5 BOOM,H,4.9T,1M2D

Pos No.	Parts No	Parts Name	Qty	Unit	Technical Data	Serial No (Start)	Serial No (End)	Remarks	Pages
1	80430620400	JOINT	4						
2	37000300720	SLEEVE	7		12-10				
3	37000711080	CLAMP ASSY	5		12-2				
4	37000514600	PLATE	4						
5	37000554630	SUPPORT	1						
6	37000711690	CLAMP ASSY	1						
7	37002441450	HOSE	2		L=500				
8	37002421680	HOSE	2		L=400				
9	80320010075	FITTING	2		KUD12-020N				
10	80320010050	FITTING	2		KUD10-020N				
11	80301010100	FITTING	2		KUA12-000N				
12	81408000130	PIPE,STEEL	1	M	10X1.8T				
13	81408000160	PIPE,STEEL	1	M	12X1.4T				
14	81408000130	PIPE,STEEL	1	M	10X1.8T				
15	81408000160	PIPE,STEEL	1	M	12X1.4T				
16	80320020050	FITTING	2		KUF10-020N				
17	37002447060	HOSE,BRAKE	2		L=530				
18	81408000130	PIPE,STEEL	1	M	10X1.8T				
19	81408000130	PIPE,STEEL	2	M	10X1.8T				
20	80303130141	FITTING,ELBOW	1		KLO12-020E				
21	80302090141	FITTING	1		KCO12-020N				
22	91002801100	O-RING	1		1B P11				
23	81408000160	PIPE,STEEL	2	M	12X1.4T				
24	81408000160	PIPE,STEEL	2	M	12X1.4T				
26	37000711000	CLAMP ASSY	1		12-1				
27	37000507080	PLATE	1						
28	80301010080	FITTING	2		KUA10-000E				
29	37001601160	NUT	2		M10				
30	90304111001	WASHER,TOOTH	2		10				
31	37000507090	PLATE	1						
41	91002801100	O-RING	5		1B P11				

TR-80M-1-00101 5 BOOM,H,4.9T,1M2D

Pos No.	Parts No	Parts Name	Qty	Unit	Technical Data	Serial No (Start)	Serial No (End)	Remarks	P
1	36672739510	JOINT,WINCH ROTARY	1						

TR-80M-1-00101 5 BOOM,H,4.9T,1M2D

Pos No.	Parts No	Parts Name	Qty	Unit	Technical Data	Serial No (Start)	Serial No (End)	Rem
56	82455106000	NIPPLE,GREASE	6		A-M6F FE		FA0726	
	82455106000	NIPPLE,GREASE	12		A-M6F FE	FA0727		
57	90101506012	BOLT	10		M6X12			
58	37000123060	PIN	2					
59	37001004930	SHEAVE ASSY	2					
60	37000138590	PIN	2					
61	80601110450	RING,RITAINING	3		S45			
62	37000303560	SPACER	4		L=3			
63	37001004870	SHEAVE ASSY	2					
64	34200760400	SHIM	N		T=2.3			
66	90131510065	BOLT,HEXAGON SOCKET	4		M10X65			
67	37000540070	PLATE	2					
68	37000306550	SPACER	2		L=18			
69	37000138540	PIN	1					
71	90101210014	BOLT	3		M10X14		FA0024	
	90101210014	BOLT	7		M10X14	FA0025		
72	37002006460	PLATE,SLIDE	2					
73	37000138550	PIN	2		30			
74	90101210012	BOLT	2		M10X12			
75	37000301260	SPACER	4		L=5.5			
76	37001004910	SHEAVE ASSY	2					
77	80602110450	RING,RITAINING	4		R45			
78	37000138510	PIN	2		45			
79	33700350010	PLATE	2					
80	90131510020	BOLT,HEXAGON SOCKET	2		M10X20			
81	32200180300	SUPPORT	1					
82	90201201800	NUT	8		M18			
83	37000154950	PIN	2					
84	82456101000	NIPPLE,GREASE	1		A-PT1/8			
85	37000400640	BEARING,PLAIN	2					
86	37000154960	PIN	1					
87	80602110350	RING,RITAINING	2		R35			
88	37000145590	PIN	2					
89	31200030530	PLATE	4					
90	37000300990	SPACER	2		L=3			
91	37000302220	SPACER	2					
92	37000138520	PIN	3		16,L=215			
93	37000200590	PIN,SNAP	1				FA0908	
94	37000304230	SPACER	2					
95	37001005140	SHEAVE ASSY	2					
96	80620110160	PIN,SNAP	2					
	80620110160	PIN,SNAP	3			FA0909		
97	37000507400	PLATE	1					
98	37000136960	PIN	1					
99	37001601700	NUT	2					
100	37001006450	SHEAVE ASSY	2					
102	90303071201	WASHER,PLAIN	6		12			
103	34200886500	ROLLER ASSY	1					
104	90101208012	BOLT	4		M8X12			
105	90302040801	WASHER,SPRING	10		8			
106	34200880900	COVER	1					
107	90101206010	BOLT	4		M6X1.0			
108	90302040601	WASHER,SPRING	4		6			
109	37001006680	SHEAVE ASSY	1					
110	37000309280	SPACER	1					
111	34200886200	GUIDE	1					
112	32210101300	GUARD	1					
113	80185308014	SCREW,MACHINE	2		M8X14			
114	37000138410	PIN	1					
115	80601110500	RING,RITAINING	2		S50			
116	37000540000	PLATE	2					
117	37002001210	PLATE,SLIDE	4		75X25XT15			
118	33220225200	SHIM	N		T=1			

TR-80M-1-00101 5 BOOM,H,4.9T,1M2D

Pos No.	Parts No	Parts Name	Qty	Unit	Technical Data	Serial No (Start)	Serial No (End)	Remarks
1	36710545040	BRACKET	1					
2	36710545051	SHAFT	1					
3	36710545060	DRUM (RIGHT)	1					
4	36710545070	DRUM (LEFT)	1					
5	36710545080	DISK	2					
6	36710545090	PIN	2					
7	36710545100	SPRING	2					
8	36710545111	HOUSING	2					
9	36710475060	JOINT,ELBOW	2					
10	36710545140	BEARING,BALL	2					
11	80516006008	BEARING,BALL	2		6008ZZ			
12	36710545150	BEARING,BALL	2					
13	36710545160	O-RING	4					
14	91410003500	RING,BACKUP	4		P35			
15	80601110350	RING,RITAINING	2		S35			
16	90101206075	BOLT	6		M6X75			
17	90131506025	BOLT,HEXAGON SOCKET	4		M6X25			
18	90101205010	BOLT	8		M5X10			
19	90302040601	WASHER,SPRING	10		6			
20	90302040501	WASHER,SPRING	8		5			
21	90303070601	WASHER,PLAIN	6		6			
22	36710545030	COVER	2					
50	36710540000	REEL,HOSE	1					

TR-80M-1-00101 5 BOOM,H,4.9T,1M2D

Pos No.	Parts No	Parts Name	Qty	Unit	Technical Data	Serial No (Start)	Serial No (End)	Remarks	Pages
1	37000522840	PLATE	2						
2	33370020610	SUPPORT	1						
3	37000525790	PLATE	6						
4	34200884710	PIN	1						

TR-80M-1-00101 5 BOOM,H,4.9T,1M2D

Pos No.	Parts No	Parts Name	Qty	Unit	Technical Data	Serial No (Start)
1	34372682600	SUPPORT	1			
2	32370002110	GASKET	1			
3	32370002121	COVER	1			
4	80172303025	SCREW,MACHINE	2		M3X25	
5	90302040301	WASHER,SPRING	2		3	
6	82104102010	SWITCH,LIMIT	1			
7	32370002131	ROD	1			
8	14148373001	SPRING	1			
9	80601110180	RING,RITAINING	1		S18	
10	34371314400	SUPPORT	1			
11	90303070301	WASHER,PLAIN	2		3	
12	82100002505	CONNECTOR (CN-6)	1			
13	82100002506	CONNECTOR	1			
14	32370154070	CORD	1			
15	32370154080	CORD	1			
16	82100000592	TERMINAL (M40.3 TO 1.25)	2			
17	89630201000	HOSE,VINYL	1		6X8,1M	
18	14148375000	GROMMET	1			
19	90101208045	BOLT	2		M8X45	
20	90302040801	WASHER,SPRING	2		8	
21	82100001220	INSULATOR	2			
22	82400000201	GROMMET	1		KG-016	
30	32370009512	ROD ASSY	1			
31	32370002150	SPACER	1		L=12 TO 11	
32	80720103014	PIN,SPRING	1		3X14	
50	34372682500	SWITCH,OVER WIND DETECTOR (JIB & SINGLETOP)	1			

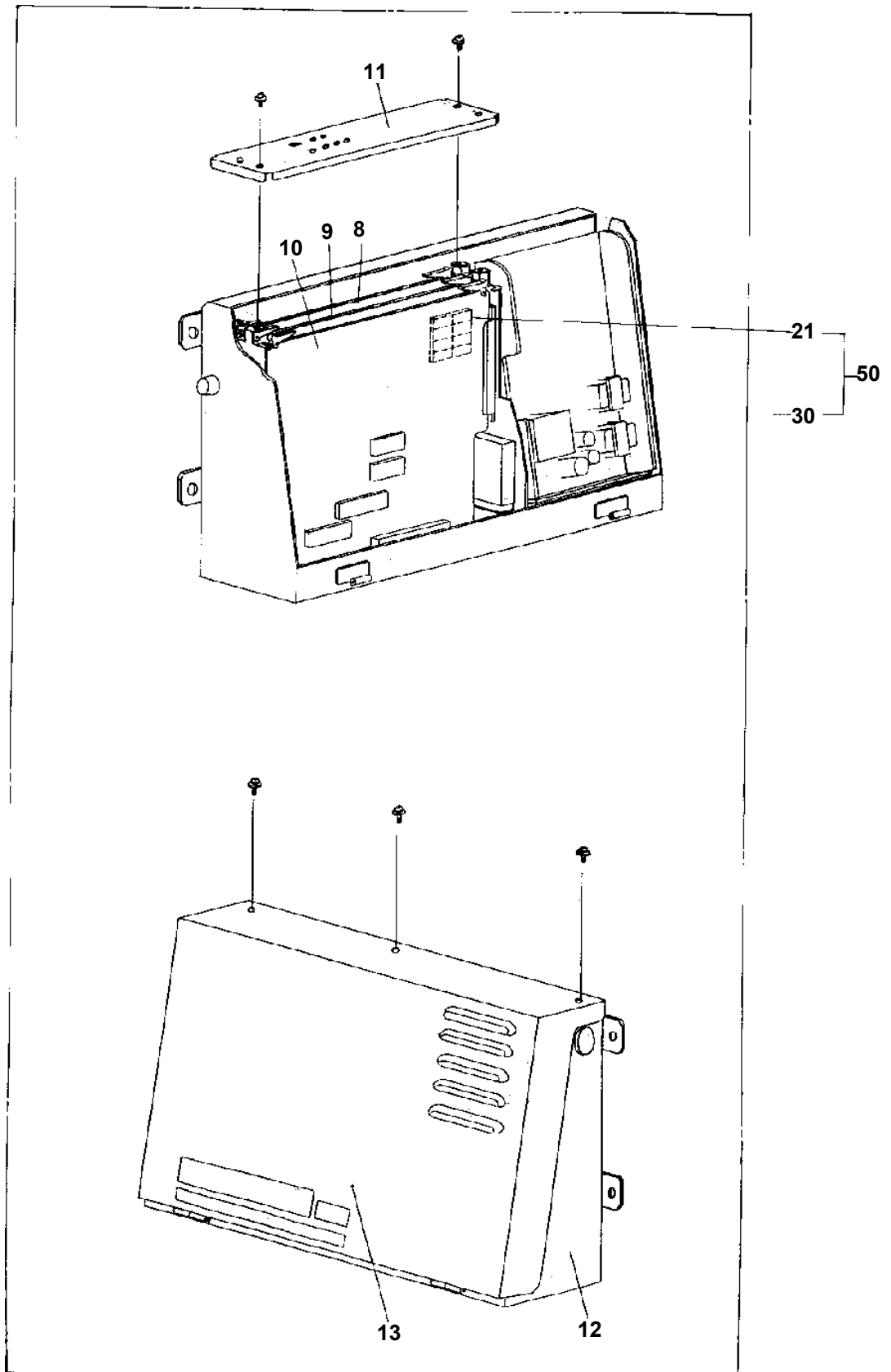
TR-80M-1-00101 5 BOOM,H,4.9T,1M2D

Pos No.	Parts No	Parts Name	Qty	Unit	Technical Data	Serial No (Start)	Serial No (End)	Remark
1	91810130250	FASTENER	8					
2	82100002019	CLAMP	2		WR40			
3	90101208016	BOLT	6		M8X16			
4	90302040801	WASHER,SPRING	6		8			
5	90303070801	WASHER,PLAIN	2		8			
6	82100002014	CLAMP	11		WR20			
7	90190000008	BOLT,STUD	2		M6X20			
8	90201200600	NUT	18		M6		FA0743	
	90201200600	NUT	17		M6	FA0744		
9	90302040601	WASHER,SPRING	18		6		FA0743	
	90302040601	WASHER,SPRING	17		6	FA0744		
10	90303070601	WASHER,PLAIN	14		6		FA0743	
	90303070601	WASHER,PLAIN	13		6	FA0744		
11	82100002010	CLAMP	4		WR15			
12	34475240200	SPEAKER (WITH HARNESS)	1					
13	82100000711	CLAMP	2					
14	34361271100	HARNESS	1					
15	91810132530	FASTENER	1					
16	82100002006	CLAMP	3		WR10		FA0743	
	82100002006	CLAMP	2		WR10	FA0744		
17	91810130230	FASTENER	1					

TR-80M-1-00101 5 BOOM,H,4.9T,1M2D

Pos No.	Parts No	Parts Name	Qty	Unit	Technical Data	Serial No (Start)	Serial No (End)
1	36114706010	AMPLIFIER ASSY	2				
2	36114706110	CHASSIS ASSY (WITH MATHER BOARD)	1				
5	36114706020	FUSE	1		8A		
6	36114706030	BOARD,POWER	1				
7	36114706040	TUNER ASSY	1				
8	36114706050	BOARD,CPU	1		1 MEGA.X8		
9	36114706060	BOARD,ANALOG	1				
10	36114706070	BOARD (VIDEO)	1				
11	36114706080	PLATE	1				
12	36114706090	CASE	1				
13	36114706100	COVER ASSY (CHASSIS)	1				
15	36114704050	CABLE	1		L=3000		
21	(*****)	P-ROM (1 MEGA.X8)	1				
30	36114704000	CONTROLLER(WITHOUT ROM/WITH TV)	1				
50	36115931000	CONTROL UNIT,MULTI-DISPLAY (WITH TUNER)	1				

TR-80M-1-00101 5 BOOM,H,4.9T,1M2D
PH1720002-02 CONTROL UNIT,MULTI-DISPLAY (NON-TUNER)



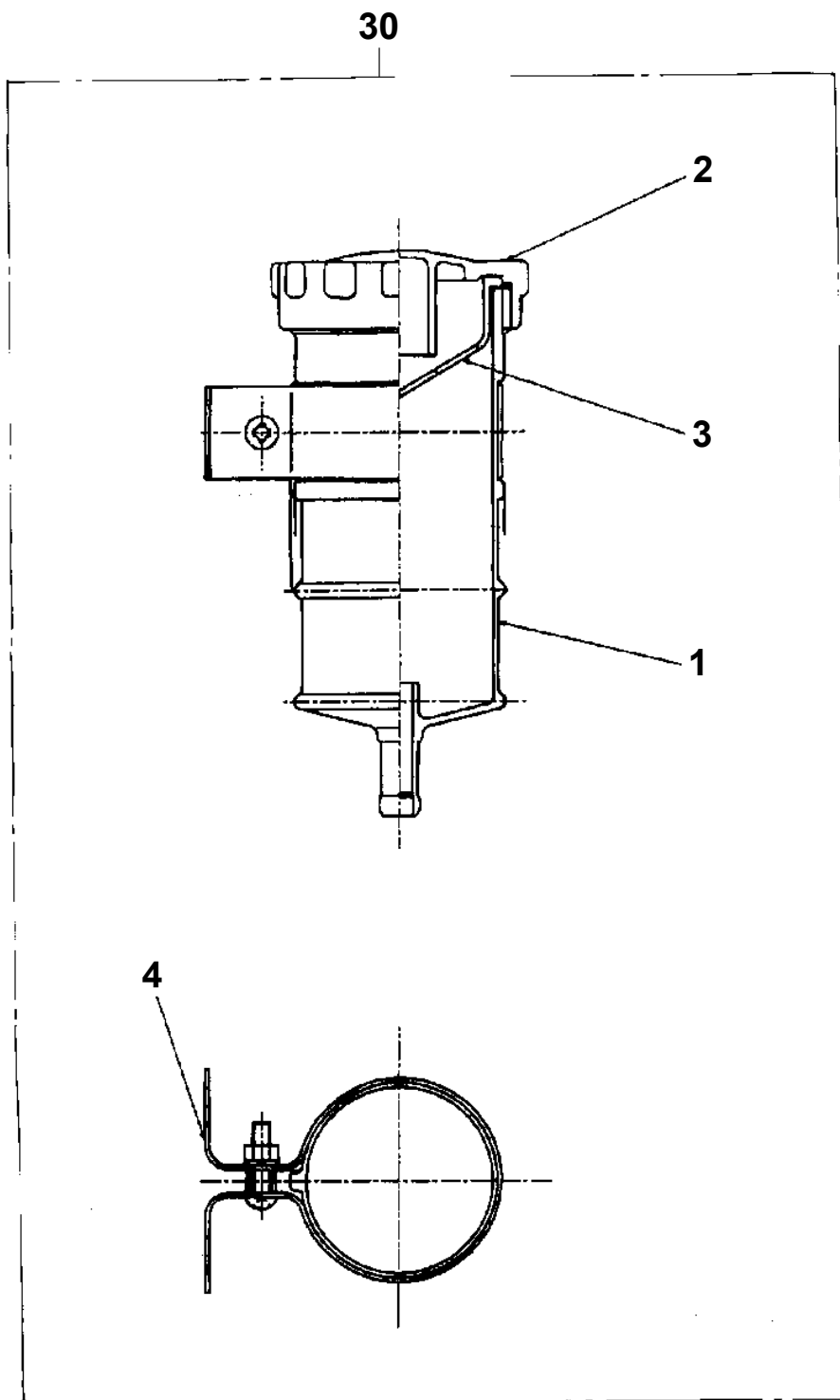
TR-80M-1-00101 5 BOOM,H,4.9T,1M2D

Pos No.	Parts No	Parts Name	Qty	Unit	Technical Data	Serial No (Start)	Serial No (End)	Rema
1	36662175130	HOUSING	1					
2	36662175010	PISTON	1					
3	36662175020	RING	1					
4	36662175030	PLATE	1					
5	36651685150	SEAL,OIL	1					
6	36662175040	SPRING	10					
7	80730080020	PIN (STRAIGHT)	3		8X20			
8	36662175140	SHAFT ASSY	1					
9	36662175050	ROTARY GROUP	1					
10	36662175160	COVER ASSY	1					
11	80602110620	RING,RITAINING	1		R62			
12	80602110520	RING,RITAINING	1		R52			
13	91001209500	O-RING	1		1A G95			
14	91001211000	O-RING	2		1A G110			
15	91001211500	O-RING	1		1A G115			
16	90131510030	BOLT,HEXAGON SOCKET	6		M10X30			
21	36662175070	SHAFT	1					
22	36662175080	BEARING	1					
23	80601110350	RING,RITAINING	2		S35			
31	36662175100	COVER	1					
32	36662175110	BEARING	1					
33	36662175120	PLATE (CONTROL)	1					
50	36662170000	MOTOR,HYDRAULIC (SWING)	1					

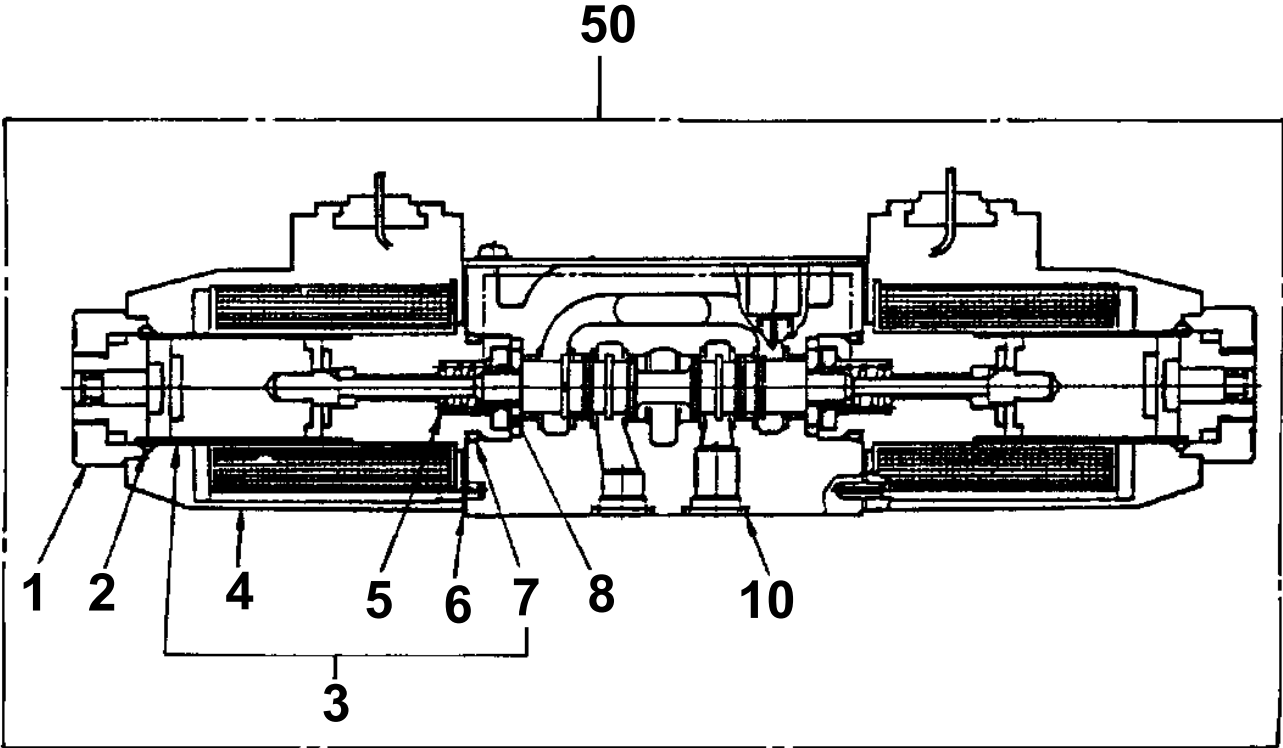
TR-80M-1-00101 5 BOOM,H,4.9T,1M2D

PI1050002-00 RESERVOIR,OIL

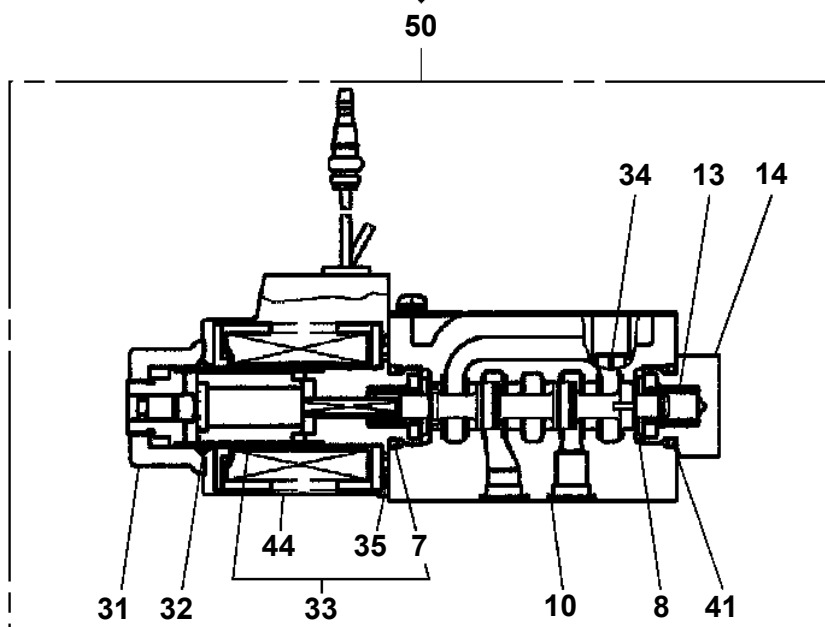
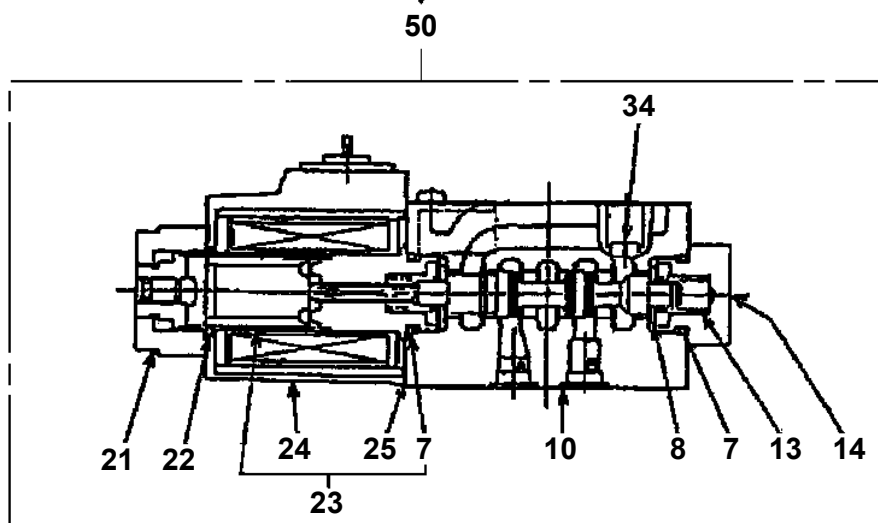
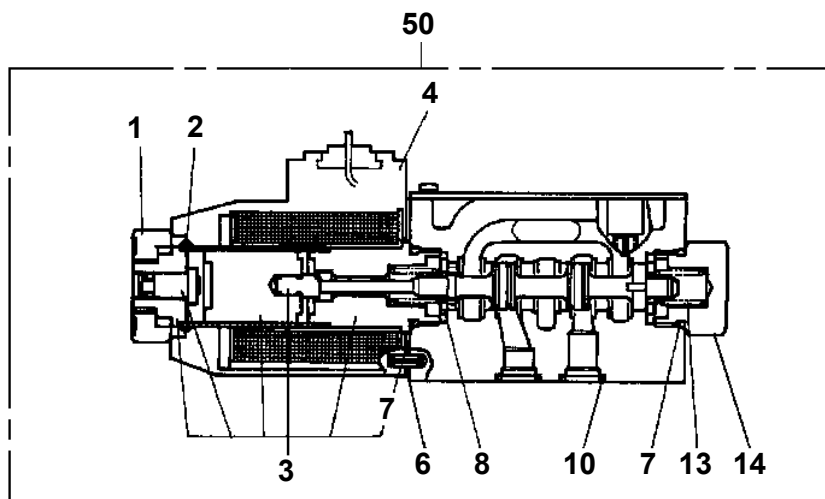
Assembly 104110 RESERVOIR, OIL



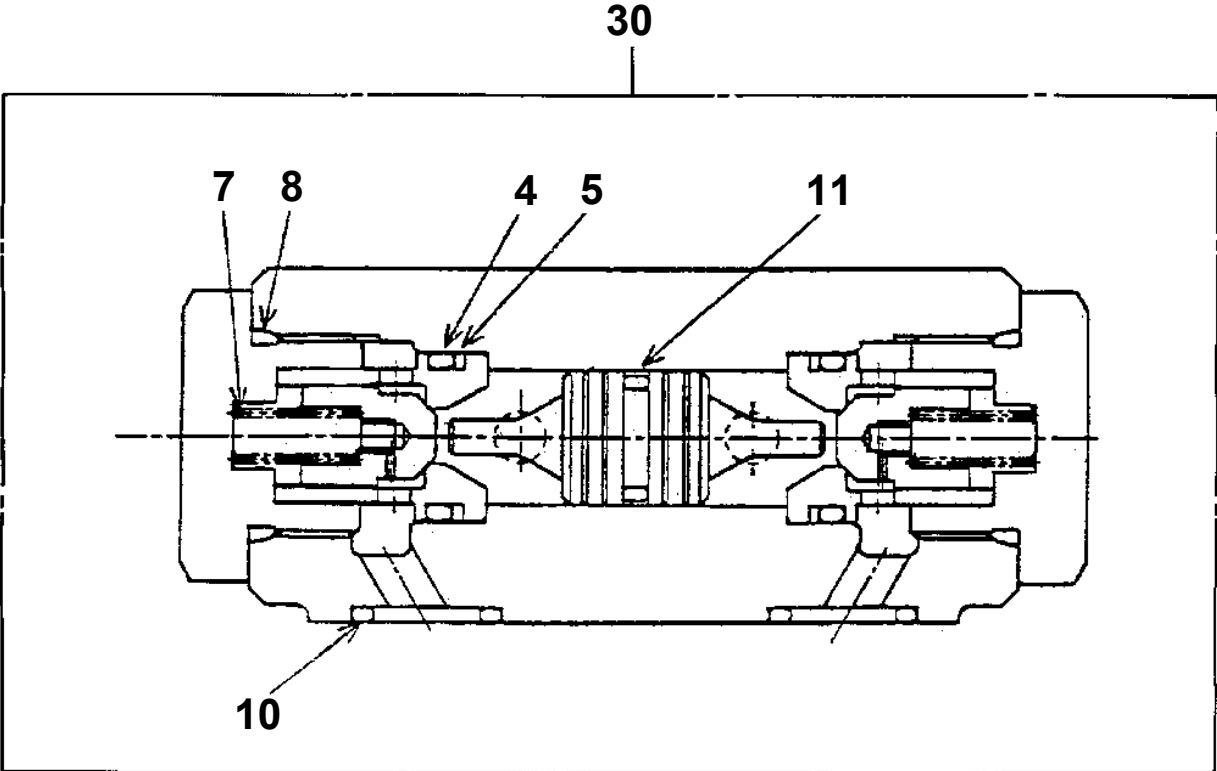
TR-80M-1-00101 5 BOOM,H,4.9T,1M2D
PI1120122-00 VALVE,SOLENOID



TR-80M-1-00101 5 BOOM,H,4.9T,1M2D
PI1120241-01 VALVE,SOLENOID

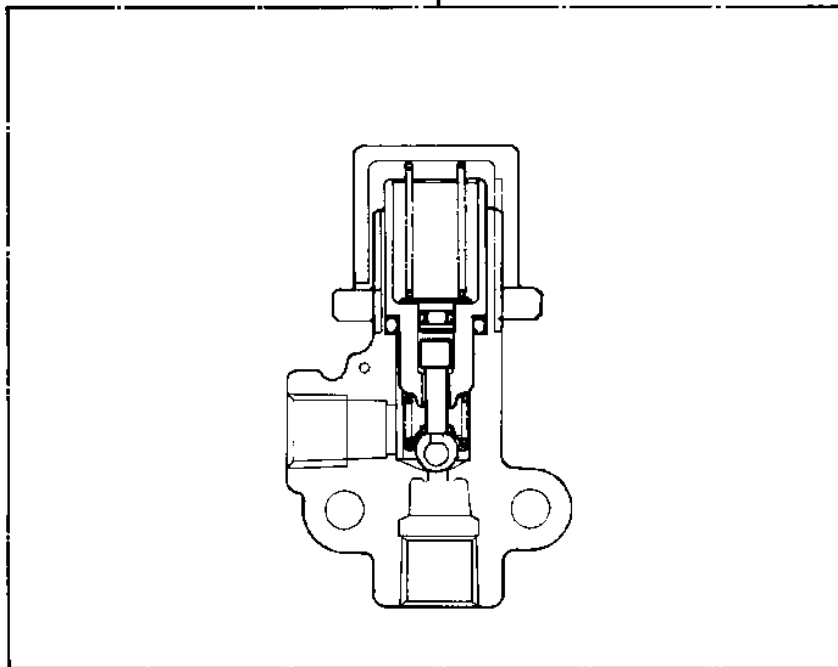


TR-80M-1-00101 5 BOOM,H,4.9T,1M2D
PI1140069-00 VALVE,CHECK

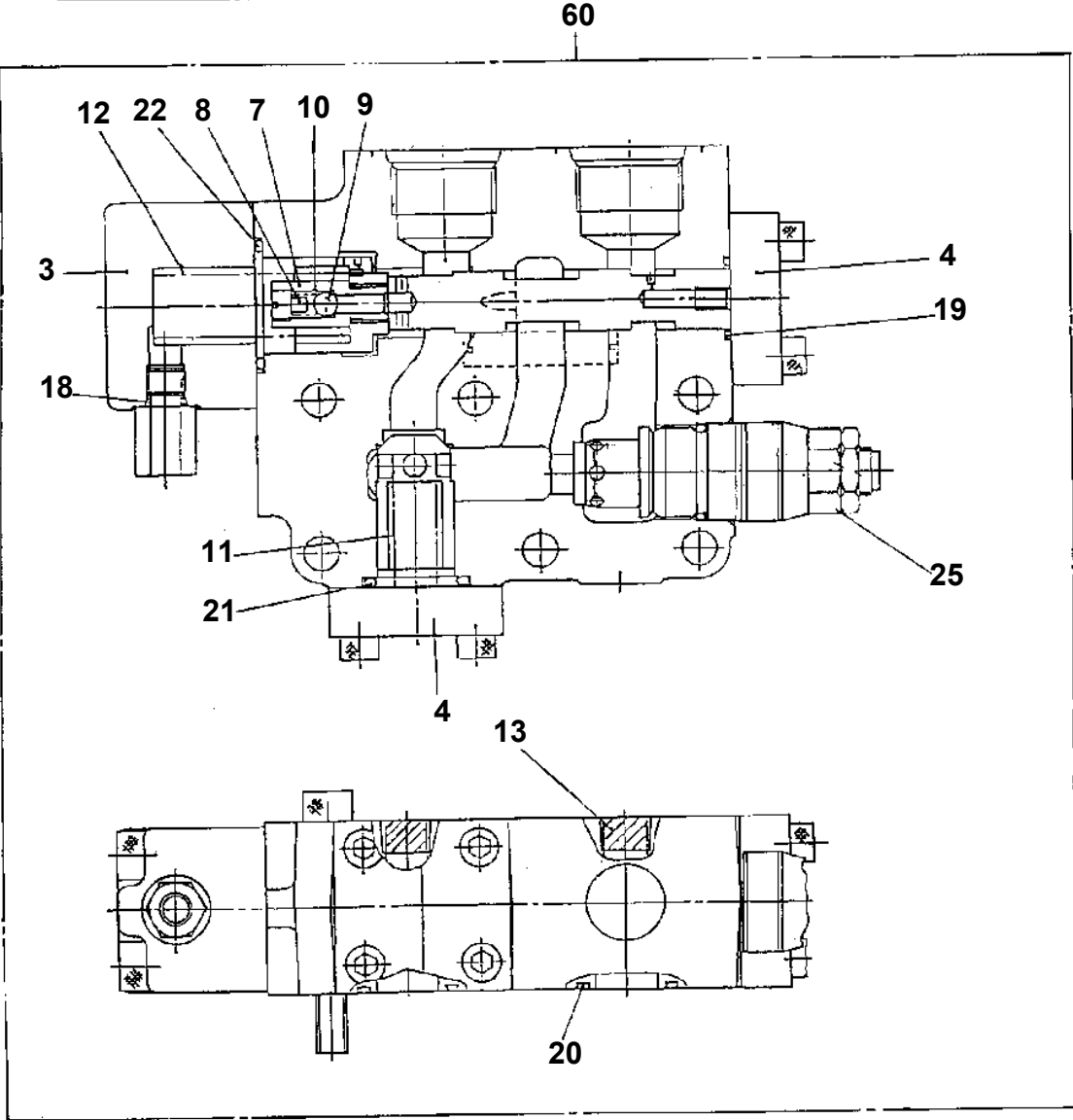
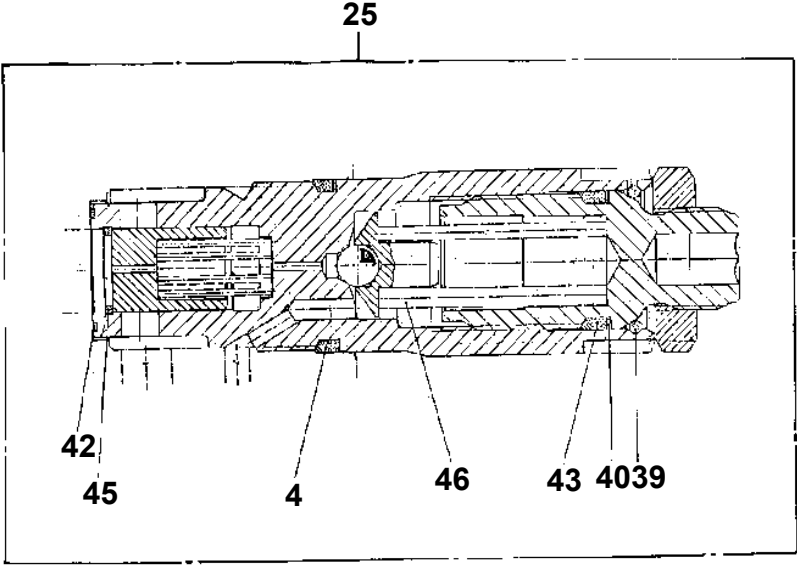


TR-80M-1-00101 5 BOOM,H,4.9T,1M2D
PI1210000-01 VALVE,PRESSURE PROTECTION

10



TR-80M-1-00101 5 BOOM,H,4.9T,1M2D
PI1250075-01 VALVE,COUNTERBALANCE



TR-80M-1-00101 5 BOOM,H,4.9T,1M2D

Pos No.	Parts No	Parts Name	Qty	Unit	Technical Data	Serial No (Start)	Serial No (End)
1	34250713000	SEAT,OPERATOR	1				
2	34250361800	COVER	2				
3	34250710100	SUPPORT	1				
4	34250710200	PANEL	1				
5	34250710300	PANEL	1				
6	34250710350	COVER	1				
7	34250710401	PANEL	1				
8	34250710600	COVER	1				
9	34250710701	SUPPORT	1				
10	34250591800	LEVEL	1				
11	34250711000	SUPPORT	1				
12	34250592100	SUPPORT	1				
13	34250711900	COVER	1				
14	82100000957	GROMMET	1		SG-38A		
15	34250712000	COVER	1				
16	82100000953	GROMMET	1				
17	82100000819	GROMMET	1		SG-22A		
18	34250711100	COVER	1				
19	34250711200	COVER	1				
20	34250711300	COVER	1				
21	34250711400	COVER	1				
22	34250711500	SUPPORT	1				
23	34250711600	COVER	1				FA0158
	34250711601	COVER	1			FA0159	
24	34250711700	COVER	1				FA0158
	34250711701	COVER	1			FA0159	
25	37000551250	PLATE	2				
26	82400000180	TRAY,ASH	1				
27	34250360200	BELT	1				
28	34250711800	COVER	1				FA0096
	34250711800	COVER	2			FA0097	
29	34250123000	SUPPORT	1				
30	34250121300	SUPPORT	1				
31	34250380200	SUPPORT	1				
32	34250121100	COVER	1				
33	34250121200	COVER	1				
34	90175206014	BOLT	4		M6X14		
35	90303360601	WASHER,PLAIN	2		6		
36	34250712100	SUPPORT	1				
38	80176405016	SCREW,MACHINE	25		M5X16		
39	90101208020	BOLT	24		M8X20		FA0158
	90101208020	BOLT	20		M8X20	FA0159	
43	90101210022	BOLT	12		M10X22		FA0096
	90101210022	BOLT	14		M10X22	FA0097	
44	90302041001	WASHER,SPRING	12		10		FA0096
	90302041001	WASHER,SPRING	14		10	FA0097	
45	90303071001	WASHER,PLAIN	15		10		FA0158
	90303071001	WASHER,PLAIN	11		10	FA0159	
46	90302040801	WASHER,SPRING	24		8		FA0158
	90302040801	WASHER,SPRING	20		8	FA0159	
48	37000512320	PLATE	12				
49	80192486014	SCREW,MACHINE (WITH WASHER)	12		M6X14		
50	80176404012	SCREW,MACHINE	12		M4X12		
51	80176405012	SCREW,MACHINE	15		M5X12		
52	80182406010	SCREW,MACHINE	5		M6X10		
53	90302350601	WASHER,SPRING (6)	7				
54	90101206014	BOLT	14		M6X14		
55	90302040601	WASHER,SPRING	14		6		
56	37001200180	SPRING	3				
57	90201200500	NUT	3		M5		
58	90240200500	NUT,CAP	3		M5		
59	90303360501	WASHER,PLAIN	3		5		
60	90305260401	WASHER	12		4		

CLICK HERE TO **DOWNLOAD** THE COMPLETE MANUAL

- Thank you very much for reading the preview of the manual.
- You can download the complete manual from: www.heydownloads.com by clicking the link below



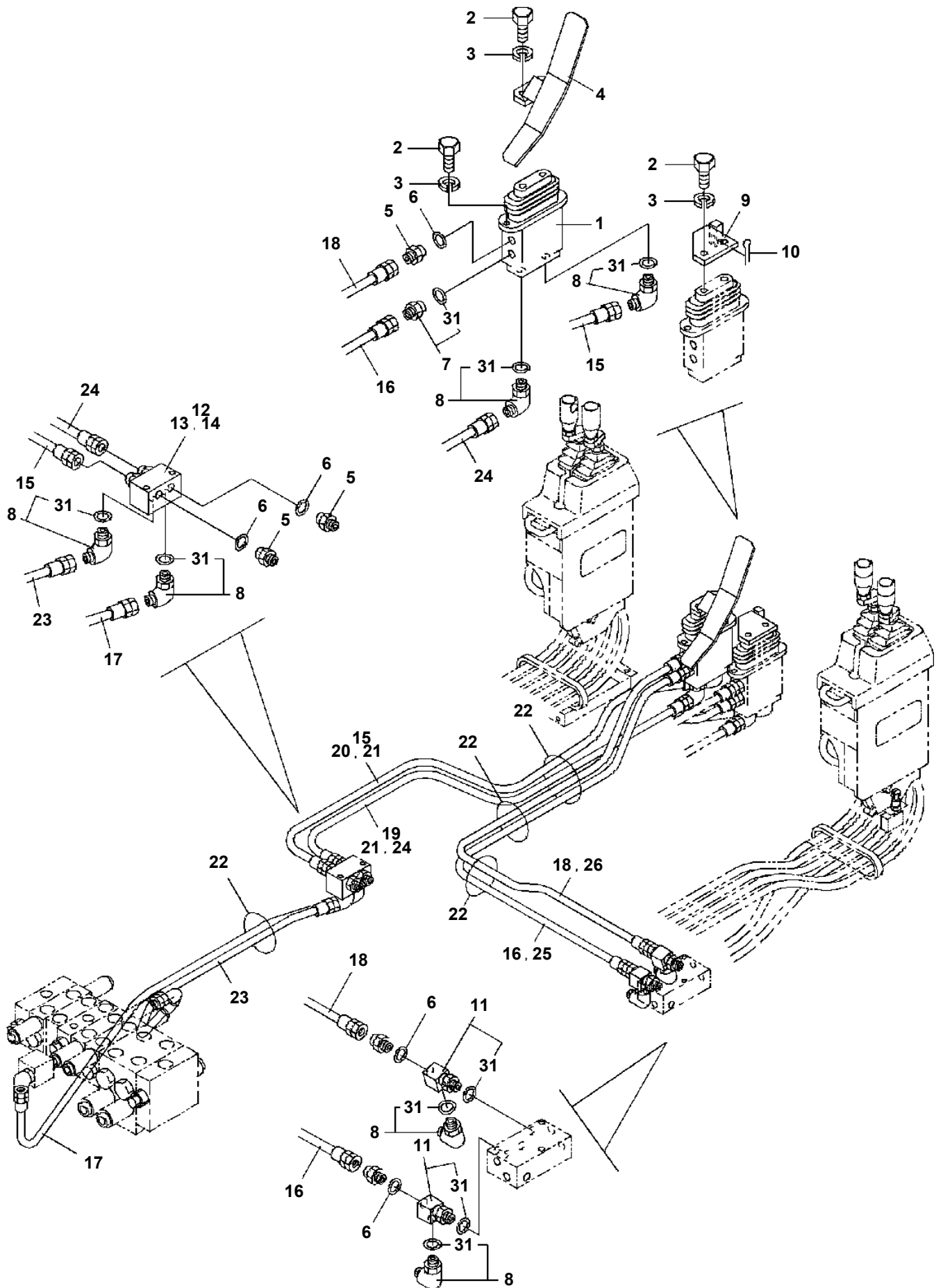
- Please note: If there is no response to CLICKING the link, please download this PDF first and then click on it.

CLICK HERE TO **DOWNLOAD** THE COMPLETE MANUAL

TR-80M-1-00101 5 BOOM,H,4.9T,1M2D

Pos No.	Parts No	Parts Name	Qty	Unit	Technical Data	Serial No (Start)	S
242	33260495150	PACKING	2				
243	33260015170	NUT (WITH RUBBER)	4		M6		
244	33260495130	PACKING	4				
245	80192486012	SCREW,MACHINE	4		M6X12		
246	80192484016	SCREW,MACHINE	8		M4X16		
247	33260495160	PACKING	2				

TR-80M-1-00101 5 BOOM,H,4.9T,1M2D
PL1010479-00 OPE.ASSY,CONT.VALVE (TDN)



TR-80M-1-00101 5 BOOM,H,4.9T,1M2D

Pos No.	Parts No	Parts Name	Qty	Unit	Technical Data	Serial No (Start)	Serial No (End)	Remarks	F
2	37001702000	CABLE,CONTROL	1				FA0798		
	37001705690	CABLE,CONTROL	1			FA0799			
3	34710600200	SUPPORT	1				FA0743		
	34710813001	SUPPORT	1			FA0744			
4	90101208020	BOLT	1		M8X20		FA0743		
	90101208020	BOLT	2		M8X20	FA0744			
5	90302040801	WASHER,SPRING	6		8		FA0743		
	90302040801	WASHER,SPRING	7		8	FA0744			
6	90303070801	WASHER,PLAIN	5		8		FA0743		
	90303070801	WASHER,PLAIN	6		8	FA0744			
7	37001601180	NUT	1		M8				
8	90101206014	BOLT	2		M6X14				
9	90201200600	NUT	2		M6				
10	90302040601	WASHER,SPRING	2		6				
11	82100002040	CLAMP	2		WE15				
12	90303070601	WASHER,PLAIN	1		6		FA0798		
15	37000904830	NUT,FLARE	4		M16				
16	91810132530	FASTENER	1						
17	37000904230	FITTING,ELBOW	1		L,R1/4-M16				
19	90303102001	WASHER,PLAIN	1		20				
20	34710898020	PIPE ASSY	1						
21	34710898030	PIPE ASSY	1						
22	90191208030	BOLT	3		M8X30				
23	37000105720	PIN	1				FA0798		
24	80136320010	PIN,SPLIT	1		2X10		FA0798		
25	34710270100	END	1				FA0798		
26	90101208014	BOLT	2		M8X14				
27	90304111601	WASHER,TOOTH	2		16				
28	90211201600	NUT	2		M16				
29	37002446830	HOSE,AIR	1		L=1060				
31	80430410450	JOINT	1						
32	37000922030	FITTING	2						
33	37000711430	CLAMP ASSY	2		18X4		FA0003		
	37000711420	CLAMP ASSY	2			FA0004			
34	37000300720	SLEEVE	4		12-10				
35	37000903930	FITTING	1		S,R1/4-M16				
38	80430470450	JOINT	1						
51	90101208014	BOLT	1		M8X14		FA0798		
60	34710748010	PEDAL ASSY	1				FA0798		
	34710898040	PEDAL ASSY	1			FA0799			
71	37000117490	PIN	1						
72	90303071001	WASHER,PLAIN	2		10		FA0798		
	90303071001	WASHER,PLAIN	2		10	FA0799			
73	80136332016	PIN,SPLIT	2		3.2X16		FA0798		
	80136332016	PIN,SPLIT	2		3.2X16	FA0799			
74	37000110320	PIN	1						
75	90102208050	BOLT	1		M8X50		FA0798		
76	90201200800	NUT	2		M8				
77	34330161100	ROLLER	1						
78	34710741100	PEDAL	1				FA0798		
79	82400000011	COVER (PEDAL)	1						
80	36601020001	VALVE,ACCELERATOR	1						
81	90102208035	BOLT	1		M8X35		FA0798		
	90102208035	BOLT	2		M8X35	FA0799			
82	90201201000	NUT	1		M10				
83	90102210040	BOLT	1		M10X40				
92	80804010010	BEARING,PLAIN	1						
101	34710891100	PEDAL	1			FA0799			
102	34710891200	LEVER	1			FA0799			

TR-80M-1-00101 5 BOOM,H,4.9T,1M2D

Pos No.	Parts No	Parts Name	Qty	Unit	Technical Data	Serial No (Start)	Serial No (End)	Remarks
8	36601025010	SPRING (RETURN)	1					
9	36601025021	PISTON ASSY	1					
25	36601025030	PLUNGER	1					
31	36600515010	VALVE KIT (REPAIR KIT)	1					
40	36601020001	VALVE,ACCELERATOR	1					

TR-80M-1-00101 5 BOOM,H,4.9T,1M2D

Pos No.	Parts No	Parts Name	Qty	Unit	Technical Data	Serial No (Start)	Serial No (End)
2	34930273200	COVER	1				
3	34930274000	TRANSMITTER,MULTI. DATA (LOWER)	1				
4	90101208014	BOLT	6		M8X14		
5	90302040801	WASHER,SPRING	8		8		
6	90303070801	WASHER,PLAIN	8		8		
7	90101208020	BOLT	2		M8X20		
8	34930094030	COVER	1				
9	82100002019	CLAMP	1		WR40		
10	90101206012	BOLT	1		M6X12		
11	90302040601	WASHER,SPRING	1		6		
12	90303070601	WASHER,PLAIN	1		6		
13	82400000204	GROMMET	1		L=320		
22	82161201010	RELAY	4				
23	80182306010	SCREW,MACHINE	8		M6X10		FA1291
	80182306010	SCREW,MACHINE	9		M6X10	FA1292	
24	90302040601	WASHER,SPRING	8		6		FA1291
	90302040601	WASHER,SPRING	9		6	FA1292	
25	90303070601	WASHER,PLAIN	8		6		FA1291
	90303070601	WASHER,PLAIN	9		6	FA1292	
26	82100002597	RELAY	1				
27	82100002596	RELAY	3				FA1291
	82100002596	RELAY	4			FA1292	
29	80172303016	SCREW,MACHINE	2		M3X16		
30	90302040301	WASHER,SPRING	6		3		
31	90303070301	WASHER,PLAIN	6		3		
37	34930273310	DIODE ASSY	1				
38	34351571350	RELAY ASSY (WITH CONNECTOR)	2				
39	80172303012	SCREW,MACHINE	4		M3X12		
51	34650000140	RELAY	2				
57	82100000266	DIODE	2				

TR-80M-1-00101 5 BOOM,H,4.9T,1M2D

Pos No.	Parts No	Parts Name	Qty	Unit	Technical Data	Serial No (Start)	Serial No (End)	Remarks	Pa
1	34351497100	WASHER,WINDOW	1						
2	90101206020	BOLT	2		M6X20				
3	90302040601	WASHER,SPRING	10		6				
4	90303070601	WASHER,PLAIN	2		6				
5	19218101010	VALVE,CHECK	2						
6	89630102000	HOSE,VINYL	1		4X6,2M				
7	89630105000	HOSE,VINYL	1		4X6,5M				
8	89630101000	HOSE,VINYL	1		4X6,1M				
9	89630101000	HOSE,VINYL	1		4X6,1M				
10	82100001801	TUBE,CORRUGATE	1	M	7				
11	82100002008	CLAMP	8		WR12				
12	90101206010	BOLT	8		M6X1.0		FA0610		
	80182306010	SCREW,MACHINE	8		M6X10	FA0611			
13	34351697200	JOINT	2						
14	89630101000	HOSE,VINYL	1		4X6,1M				
15	89630101000	HOSE,VINYL	1		4X6,1M				
16	90201200600	NUT	2		M6				
32	34351497620	MOTOR & PUMP ASSY	2						
34	34351497610	CAP (WHITE)	1				FA1246		
	34351497611	CAP (BLACK)	1			FA1247			

TR-80M-1-00101 5 BOOM,H,4.9T,1M2D

Pos No.	Parts No	Parts Name	Qty	Unit	Technical Data	Serial No (Start)	Serial No (End)	R
1	82151010041	BATTERY (PANASONIC/100E41R)	1					

TR-80M-1-00101 5 BOOM,H,4.9T,1M2D

Pos No.	Parts No	Parts Name	Qty	Unit	Technical Data	Serial No (Start)	Serial No (End)
1	34393552100	PLATE ASSY,NAME (80PRO,SKY BLUE/BLACK)	1				

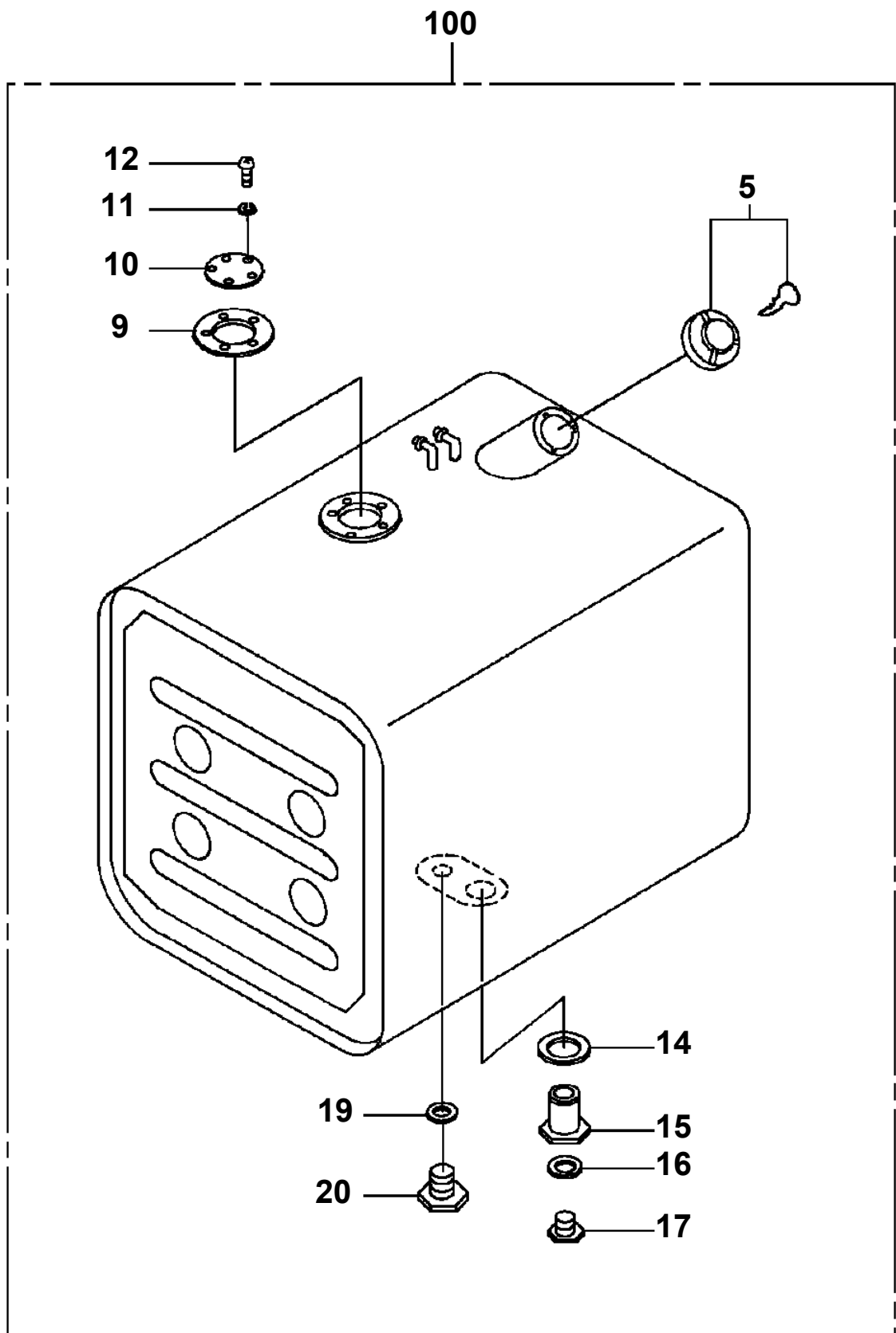
TR-80M-1-00101 5 BOOM,H,4.9T,1M2D

Pos No.	Parts No	Parts Name	Qty	Unit	Technical Data	Serial No (Start)	Serial No (End)	Remarks	Pa
1	32360110020	PLATE,NAME (WHITE)	3						

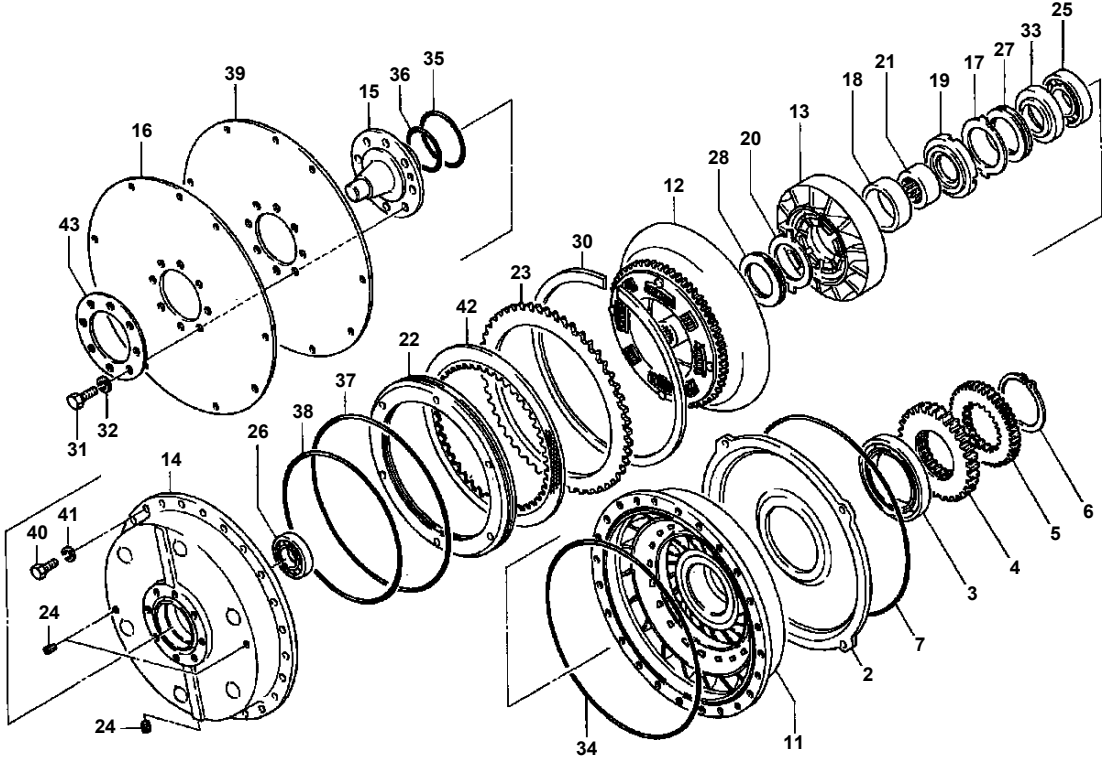
TR-80M-1-00101 5 BOOM,H,4.9T,1M2D

Pos No.	Parts No	Parts Name	Qty	Unit	Technical Data	Serial No (Start)	Serial No (End)	Remarks	Pages
2	36360705070	CAP	1						
5	36360705050	HOSE	1		L=620				
7	36360705060	CLAMP	3						
30	36360702120	TANK,RESERVE	1						

TR-80M-1-00101 5 BOOM,H,4.9T,1M2D
PQ1100011-02 TANK,FUEL (200L)



TR-80M-1-00101 5 BOOM,H,4.9T,1M2D
PR1120008-01 CIRCUIT,TORQUE CONVERTER



TR-80M-1-00101 5 BOOM,H,4.9T,1M2D

Pos No.	Parts No	Parts Name	Qty	Unit	Technical Data	Serial No (Start)	Serial No (End)
1	36350365010	R.CLUTCH PACK, TRANSMISSION	1				FA0469
	36350365011	R.CLUTCH PACK, TRANSMISSION	1			FA0470	
2	36350365020	F.CLUTCH PACK, TRANSMISSION	1				FA0469
	36350365021	F.CLUTCH PACK, TRANSMISSION	1			FA0470	
3	36350365030	HI-LOW CLUTCH PACK, TRANSMISSION	1				FA0469
	36350365031	HI-LOW CLUTCH PACK, TRANSMISSION	1			FA0470	
4	90103516040	BOLT	3		M16X40		
5	90302041601	WASHER,SPRING	1		16		
6	36370207300	WASHER	1				FA1095
	36370355130	WASHER	1			FA1096	
7	91067103000	O-RING	1		4E P30		
8	36350365050	FLANGE	1				
9	36370208550	SEAL,OIL	1				
10	36350365060	GEAR	1				
11	36370207620	SENSOR	1				
15	90720008120	SCREW,SET	1		M8X12		
16	36350365070	HOUSING (FRONT)	1				
17	36350365080	GASKET	1				
18	90101510030	BOLT	42		M10X30		FA1095
	90171110030	BOLT	42		M10X30	FA1096	
19	90302051001	WASHER,SPRING	72		10		
20	36350275520	BOLT	16				FA1095
	90171110055	BOLT	16		M10X55	FA1096	
24	36350365120	GASKET	2				
25	36350365130	COVER (D)	2				
26	80560055000	BALL,STEEL	2		3/16		
27	80601110450	RING,RITAINING	2		S45		
28	36350297070	BEARING,BALL	1				
29	36350365140	SPACER (A)	1				
30	36350365150	GEAR	1		42T,A		
31	36350365160	SPACER (B)	1				
32	36350365170	GEAR (A)	1				
33	36350365180	PLATE	2				
34	36350365190	SHAFT	1				
35	36350365200	GEAR	1		57T,A		
36	36370208110	BEARING,BALL	1				
37	36350365210	GASKET (C)	1				
38	36350365220	COVER	1				
40	36350365230	SEAL,OIL	2				
41	80205000600	PLUG	1		PT3/4		
43	36350365250	CHOKE	1				
50	80205000100	PLUG	23		PT1/8		
51	36350365260	SHAFT (OUTPUT)	1				
52	36350365270	BEARING,ROLLER	1				
53	36350365280	SPACER (D)	1				
54	36350365290	GEAR (C)	1				FA0301
	36350365291	GEAR (C)	1			FA0302	
55	80500006211	BEARING,BALL	1				
56	80602111000	RING,RITAINING	1		R100		
57	36350365320	WASHER	1				
58	36350365330	GEAR	1				
59	80500006212	BEARING,BALL	1				
60	80602111100	RING,RETAINING	1		110		
61	80601110600	RING,RITAINING	2		S60		
62	36350365340	GASKET (E)	1				
63	36350365350	COVER (E)	1				
64	36350365360	SEAL,OIL	2				
65	36350365370	GEAR (B)	1				
66	36350365380	GEAR,DRIVEN	1				
67	36350365390	BUSH (SPEED-METER)	1				
69	36350265710	SEAL,OIL	1				
70	36350365400	BOLT	9				
71	36350365410	GEAR,SPEEDOMETER	1				

TR-80M-1-00101 5 BOOM,H,4.9T,1M2D

Pos No.	Parts No	Parts Name	Qty	Unit	Technical Data	Serial No (Start)	Serial No (End)	R
1	36350366151	SHAFT ASSY	1					
2	36350365950	RING,SEAL	2					
3	36350267140	RING,SEAL	2					
4	36350365960	PISTON ASSY	2					
5	36350365971	WASHER	4					
6	36350445220	SPRING	2					
7	80601110400	RING,RITAINING	2		S40			
12	36370208060	RING,RETAINING	2					
13	36350366030	GEAR	1		36T,B			
14	80500006008	BEARING,BALL	2					
15	80602110680	RING,RITAINING	2		R68			
16	36350366060	SPACER	2					
17	80500006208	BEARING,BALL	2					
18	36350366161	SPACER	1					
	36350366160	SPACER	1					
19	80500006307	BEARING,BALL	1					
20	36350366180	WASHER	3					
21	80601110350	RING,RITAINING	2		S35			
22	36350366190	GEAR (D)	1					
23	36350366080	SPACER	1					
24	36350366200	BEARING,BALL	1					
25	36350366120	RING,SEAL	3					
26	36350366131	SPACER	1					
31	36350365990	PLATE (CONICAL DRIVE)	2					
32	36350366000	DISK ASSY	12					
33	36350366010	PLATE (DRIVE)	10					
	36350445230	PLATE (DRIVE)	10			FA1096	FA1095	
34	36350366020	PLATE (BACK)	2					
50	36350366580	DISK KIT	1					
100	36350365021	F.CLUTCH PACK, TRANSMISSION	1					

TR-80M-1-00101 5 BOOM,H,4.9T,1M2D

Pos No.	Parts No	Parts Name	Qty	Unit	Technical Data	Serial No (Start)	Serial No (End)	Rem
1	36300965010	SPIDER ASSY	2					
2	36301745010	YOKE ASSY	1					
3	36300045040	BOLT	16		NF3/8X44X24			
4	36300045050	WASHER,SPRING	16					
11	59236000010	NIPPLE,GREASE (UNF1/4X35A)	2					
20	36301745000	PROPELLER SHAFT,DRIVING	1					
21	36300965050	CAP (RETAINER)	1					
22	36301745020	WASHER (RETAINER)	2					
23	36301745030	WASHER,FELT	1					
24	59236000020	NIPPLE,GREASE	1		NPTF 1/8A			

TR-80M-1-00101 5 BOOM,H,4.9T,1M2D

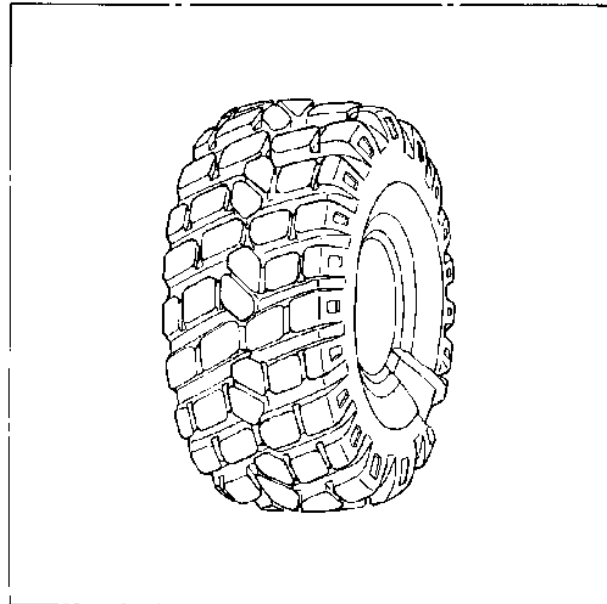
Pos No.	Parts No	Parts Name	Qty	Unit	Technical Data	Serial No (Start)	Serial
2	36381155020	BREATHER,AIR	1				
3	36381155030	HOUSING (AXLE)	1				
4	36381155040	RING,SNAP	2				
5	36381155050	SHIM	N				
6	36381155060	WASHER,THRUST	2				
7	36381155070	PIN,KING (UPPER)	2				
8	36381155080	BOLT	16		M16X1.5X35		
9	36381155090	SPINDLE	2				
10	36381155100	OIL (CATCHER)	2				
11	36381155110	BOLT	16		M18X1.5X45		
13	36381155120	HUB	1				
15	36381155130	NUT (WHEEL/ RIGHT HAND SCREW)	8				
16	36381155140	NUT (WHEEL/ LEFT HAND SCREW)	8				
18	36381155150	FLANGE (AXLE SHAFT)	2				
19	36381155160	BOLT	12		M8X1.25		
20	36381155170	COVER (AXLE SHAFT)	2				
21	36381155180	BOLT	6		M6X1.0		
22	36381155190	WASHER (LOCK)	2				
23	36381155200	NUT,BEARING	2				
24	36381155210	BEARING (HUB)	2				
25	36381155220	BEARING (HUB,INNER)	2				
26	36381155230	SEAL,OIL	2				
27	36381155240	BRAKE,DISK	2				
28	36381155250	GUIDE (DISK BRAKE)	2				
30	36381155260	BUSH (SPINDLE)	2				
31	36381155270	SEAL,OIL	2				
33	36381155280	SHAFT (AXLE)	2				
34	36381155290	SEAL,OIL	2				
35	36381156720	BRAKE,DISK (FRONT-LEFT)	1				
36	36381156740	BRAKE,DISK (FRONT-RIGHT)	1				
37	36381155320	BOLT	8		M20X2.5		
38	36381156670	SPIDER ASSY	2				
39	36381155330	BOLT	2		M24X2.0X65		
40	36381155340	NUT	2		M24X2.0		
42	36381155800	BOLT	8		M16X2		
43	36381155350	TIE ROD	1				
44	36381155810	BOLT (CARRIER)	8		M14X1.5		
45	36381155820	BOLT (CARRIER)	4		M14X1.5		
46	36381155830	WASHER	12		14		
47	36381155360	YOKE (AXLE SHAFT)	2				
48	36381156680	NIPPLE,GREASE	2				
49	36381155370	BEARING	8				
50	36381155380	COVER (UNIVERSAL JOINT)	8				
51	36381155390	BOLT	16		M8X1.25		
52	36381155400	PLATE (LOCK)	8				
53	36381155410	SPIDER	2				
54	36381155420	PLATE,NAME	1				
55	36381155430	RIVET	4				
56	36381155440	YOKE (AXLE SHAFT)	2				
59	36381155450	BEARING,THRUST	2				
60	36381155840	BOLT	2		M8X1.25		
61	36381155850	NUT	2		M8X1.25		
63	36381155460	KNUCKLE (F/R,R/L)	1				
64	36381155470	KNUCKLE (F/R,R/R)	1				
67	36381155480	PIN,KING	1				
68	36381155490	JOINT,ELBOW	2				
69	36381155500	JOINT,ELBOW	2				
70	36381155510	PLUG	2		PT1/2		
71	36381155520	PIN (WHEEL RIGHT HAND SCREW)	8				
72	36381155530	BRAKE PIPE ASSY (FRONT-LEFT,REAR-RIGHT)	1				
73	36381155540	BRAKE PIPE ASSY (FRONT-RIGHT,REAR-LEFT)	1				
74	36381155550	JOINT ASSY	2				
75	36381155560	BOLT	4		M10X1.25		

TR-80M-1-00101 5 BOOM,H,4.9T,1M2D

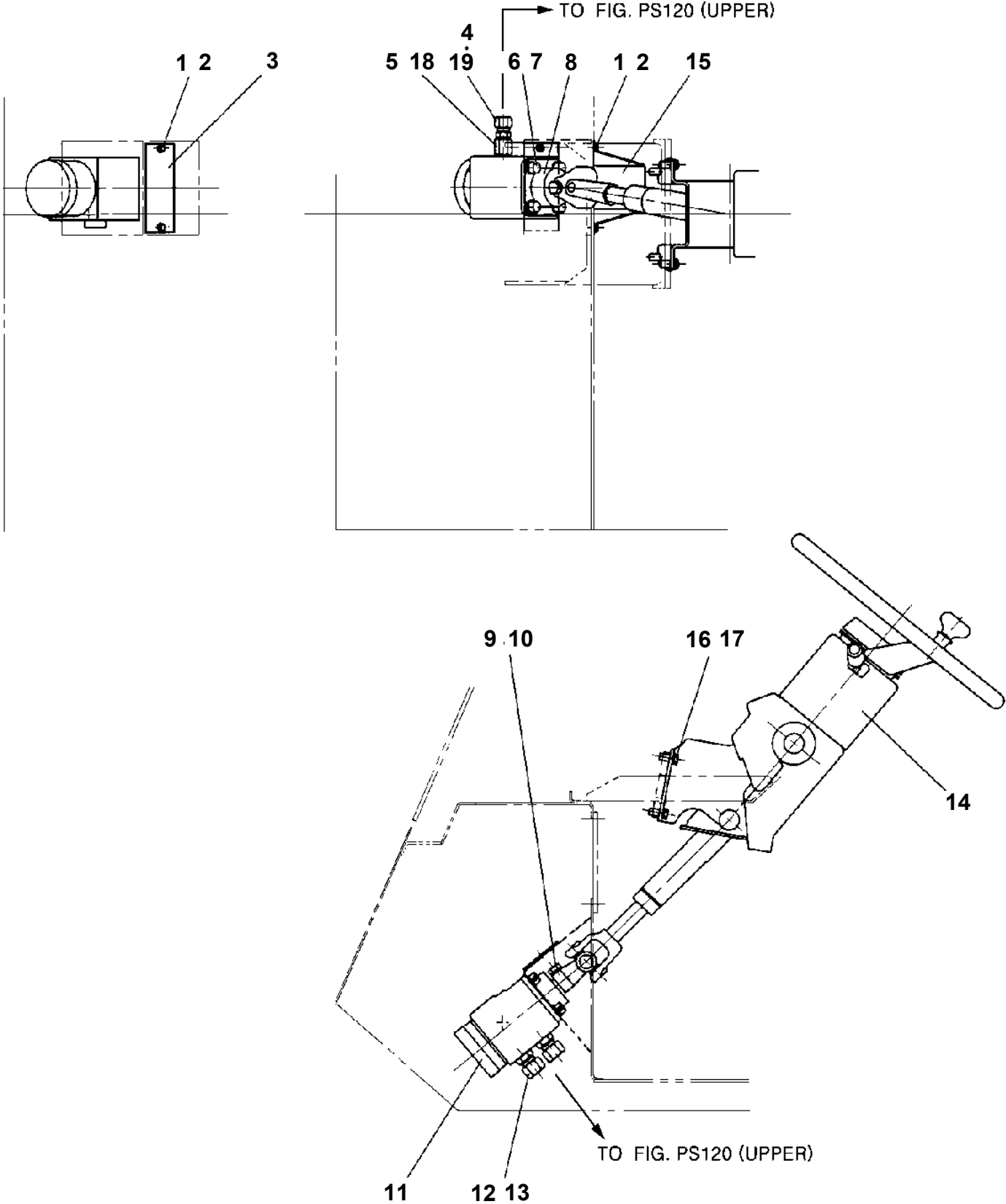
Pos No.	Parts No	Parts Name	Qty	Unit	Technical Data	Serial No (Start)	Serial No (End)
164	36381156480	SCREW (BREATHER)	2				
165	36381156490	CALIPER	1				
166	36381156500	CAP	2				
167	36381156510	PLUG	2				
168	36381156520	CLIP	4				
169	36381156530	PIN (PAD)	4				
170	36381156540	SEAL,CALIPER	4				
171	36381156770	SPRING (M)	2				
175	36381156290	CALIPER	1				
180	36381165010	DIFFERENTIAL ASSY (REAR)	1				
181	36381156790	CARRIER ASSY (CAG)	1				
182	36381156320	GEAR SET (PINION)	1				
191	36381156710	CAP (VINYL)	1				
200	36381160001	AXLE,DRIVING (REAR)	1				

TR-80M-1-00101 5 BOOM,H,4.9T,1M2D
PR1800001-00 TIRE

1



**TR-80M-1-00101 5 BOOM,H,4.9T,1M2D
PS1200089-01 PIPING,STEERING (CAB)**



TR-80M-1-00101 5 BOOM,H,4.9T,1M2D

Pos No.	Parts No	Parts Name	Qty	Unit	Technical Data	Serial No (Start)	Serial No (End)	Remarks	Pa
1	36062250000	CYLINDER,AIR	1						
2	90101208020	BOLT	6		M8X20				
3	90302040801	WASHER,SPRING	6		8				
4	34721060200	PLATE	1						
5	90209701000	NUT	1		M10				
6	37005400120	END	1						
7	37000124910	PIN	1						
8	80136332020	PIN,SPLIT	1		3.2X20				
9	90303071001	WASHER,PLAIN	1		10				
10	34721060100	PIN	1						
11	90236202008	NUT,CASTLE	8		M20X1.5				
12	80136340040	PIN,SPLIT	8		4X40				
13	37001506870	BOLT	8						
14	37000309000	SPACER	16						
15	82100002654	SWITCH	1						
16	34721060300	SUPPORT	1						
17	36062050000	CYLINDER,STEERING	4						00
18	90302041201	WASHER,SPRING	4		12				
19	90193712030	BOLT	4		M12X30				
20	34721060400	SUPPORT	1						
21	90303070801	WASHER,PLAIN	2		8				
31	36062835010	SWITCH	2						
	36062195030	SWITCH	2						
32	36062255010	CYLINDER,AIR	1						

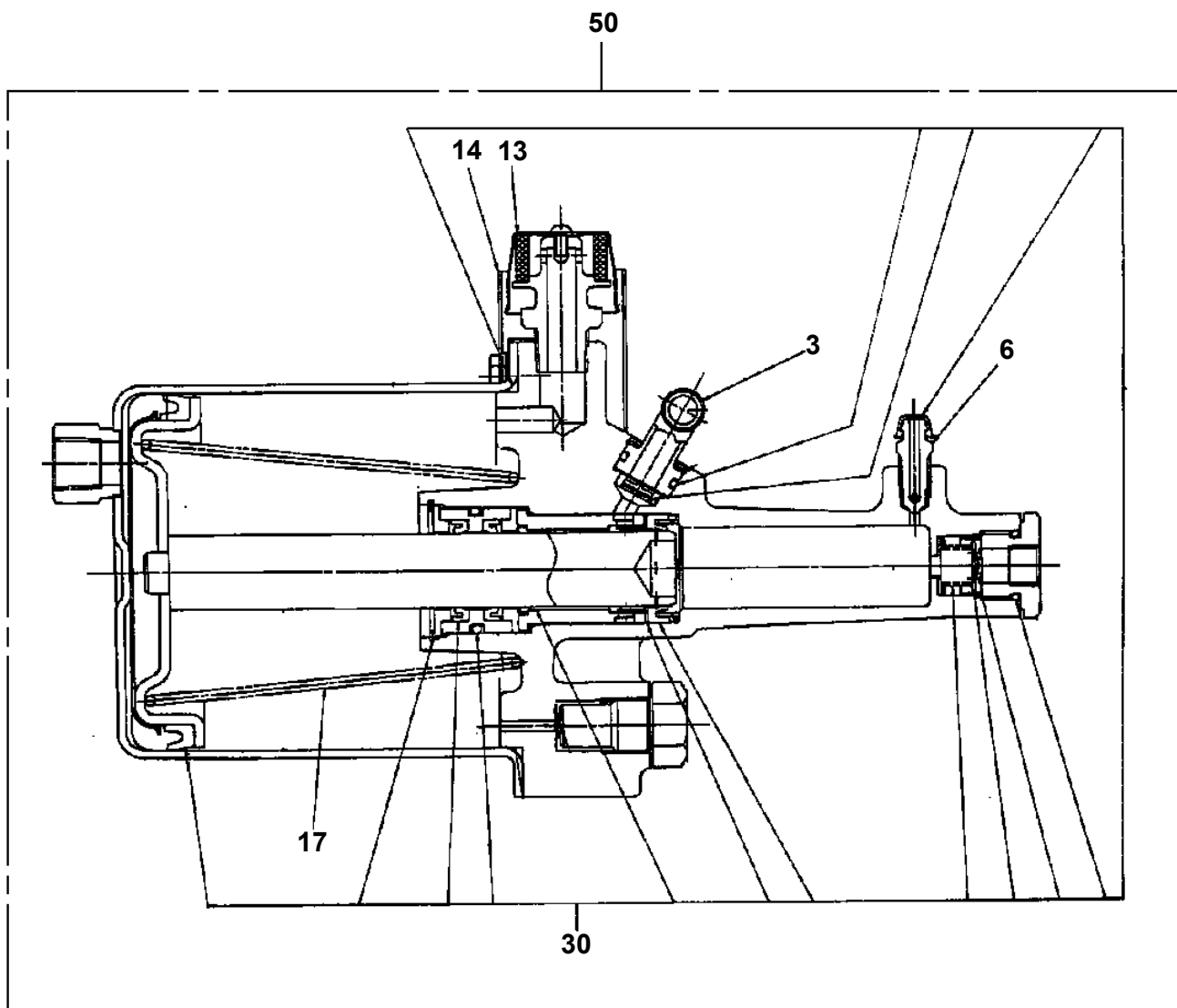
TR-80M-1-00101 5 BOOM,H,4.9T,1M2D

Pos No.	Parts No	Parts Name	Qty	Unit	Technical Data	Serial No (Start)	Serial No (End)	Remarks
1	37000904830	NUT,FLARE	16		M16			
2	37000711080	CLAMP ASSY	1		12-2			
4	37000711180	CLAMP ASSY	1		18X3			
5	37000538850	PLATE	1					
6	37000904030	FITTING	3		S,M16-M16			
7	36610210000	PLUG (DRAIN COCK)	2					
8	90201200800	NUT	4		M8			
9	34340290300	BAND	2					
10	36101600000	TANK,AIR	1					
11	37000907760	JOINT	1		T,PT3/8-PT1/4-M16			
12	37000903930	FITTING	5		S,R1/4-M16			
13	56076813000	JOINT	1		T,PT1/2-PT3/8-PT1/4			
14	59451304000	VALVE,CHECK	2					
15	37000903420	FITTING	1		S,R3/8-M16			
16	59459001000	JOINT	1		L,PT1/2-PT3/8			
17	34342391000	SUPPORT	1					
18	37000921360	JOINT (WITH FILTER)	1		L,PT1/2M16			
19	82187901010	SENDER,PRESSURE	1					
20	34342392000	JOINT	1					
21	34342398020	PIPE ASSY	1					
22	34342398100	PIPE ASSY	1					
23	34342398110	PIPE ASSY	1					
24	90101208025	BOLT	2		M8X25			
25	90302040801	WASHER,SPRING	2		8			
26	34342398050	PIPE ASSY	1					
27	34342398060	PIPE ASSY	1					
28	34342398070	PIPE ASSY	1					
30	36600940000	VALVE,REDUCING	1					
31	90101206016	BOLT	2		M6X16			
32	90302040601	WASHER,SPRING	2		6			
33	80316050080	PLUG	1		NTN/PGCPT1/2			
34	34342398080	PIPE ASSY	1					
35	34342398090	PIPE ASSY	1					
36	37000300730	SLEEVE	3		18-10			
37	37000300720	SLEEVE	2		12-10			
38	91002801600	O-RING	1		1B P16			
52	34340021700	FILTER	1					

TR-80M-1-00101 5 BOOM,H,4.9T,1M2D

Pos No.	Parts No	Parts Name	Qty	Unit	Technical Data	Serial No (Start)	Serial No (End)
61	37000904840	NUT,FLARE	8		M20		
62	59159035000	FITTING,ELBOW	2		L,R1/2-M20		
63	36870190000	DRIER,AIR	1				
64	90103210020	BOLT	3		M10X20		
65	90303071001	WASHER,PLAIN	15		10		
66	90302041001	WASHER,SPRING	9		10		
67	34921028180	PIPE ASSY	1				
68	34921028360	PIPE ASSY	1				
69	90101208020	BOLT	3		M8X20		
70	90211202000	NUT	1		M20		
71	90304112001	WASHER (LOCK)	1		20		
72	37002444740	HOSE,AIR (L=550 TO 400>	1				
73	37002444730	HOSE,AIR (L=500 TO 350>	1				
74	37000922100	FITTING	1				
75	37000922110	FITTING	1				
76	59451305000	VALVE,SAFETY (ASSY ONLY)	1				
77	34921028190	PIPE ASSY	1				
78	34921028200	PIPE ASSY	1				
79	36620450000	VALVE,PRESSURE PROTECTION	1				
80	90302040601	WASHER,SPRING	4		6		
81	90101206045	BOLT	2		M6X45		
82	37000904040	FITTING	2		S,M20-M20		
83	37000920620	JOINT,BUSHING	1				
84	34921028640	PIPE ASSY	1				
85	34921028650	PIPE ASSY	1				
86	34921023200	COVER	1				
87	36101620000	TANK,AIR	1				FA0075
	36101790000	TANK,AIR	1			FA0076	
88	59451304000	VALVE,CHECK	1				
89	56076813000	JOINT	1		T,PT1/2-PT3/8-PT1/4		
90	36610210000	PLUG (DRAIN COCK)	1				
91	34921028230	PIPE ASSY	1				
92	37000302720	SLEEVE	25		12-6.35		
93	37000904230	FITTING,ELBOW	3		L,R1/4-M16		
94	37000300710	SLEEVE	10		12-8		
95	34921028660	PIPE ASSY	1				
96	34921028670	PIPE ASSY	1				
97	34921028260	PIPE ASSY	1				
98	37000903930	FITTING	2		S,R1/4-M16		
99	90101206016	BOLT	2		M6X16		
100	36602520000	VALVE,REDUCING	1				
101	37000910330	FITTING,ELBOW	5		L,R1/4-8		FA0463
	37000910330	FITTING,ELBOW	4		L,R1/4-8	FA0464	
102	34921028270	PIPE ASSY	1				
103	59159047000	FITTING,TEE	2				
104	34921028470	PIPE ASSY	1				FA0463
	34921028750	PIPE ASSY	1			FA0464	
105	34921028480	PIPE ASSY	1				FA0463
	34921028710	PIPE ASSY	1			FA0464	
106	34921028490	PIPE ASSY	1				FA0463
	34921028720	PIPE ASSY	1			FA0464	
107	34921028500	PIPE ASSY	1				FA0463
	34921028730	PIPE ASSY	1			FA0464	
108	34921028510	PIPE ASSY	1				
109	59159039000	JOINT,NIPPLE	2				FA0463
	59159039000	JOINT,NIPPLE	3			FA0464	
110	37000904210	FITTING,ELBOW	2				FA0463
111	37000601310	CUSHION	2				
112	36621760000	VALVE,SHUTTLE	1				
113	36642260000	VALVE,SOLENOID	1				FA0463
	36644590000	VALVE,SOLENOID	1			FA0464	
114	80172304016	SCREW,MACHINE	2		M4X16		FA0463
115	90302040401	WASHER,SPRING	2		4		FA0463

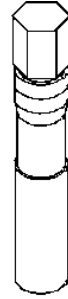
TR-80M-1-00101 5 BOOM,H,4.9T,1M2D
PT1420009-01 BOOSTER



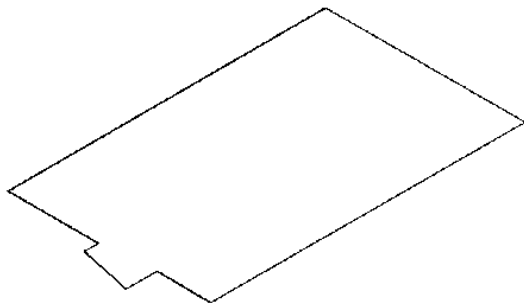
**TR-80M-1-00101 5 BOOM,H,4.9T,1M2D
PW1010217-00 ACCESSORIES**



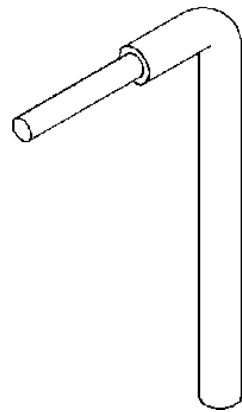
2



3



4



5

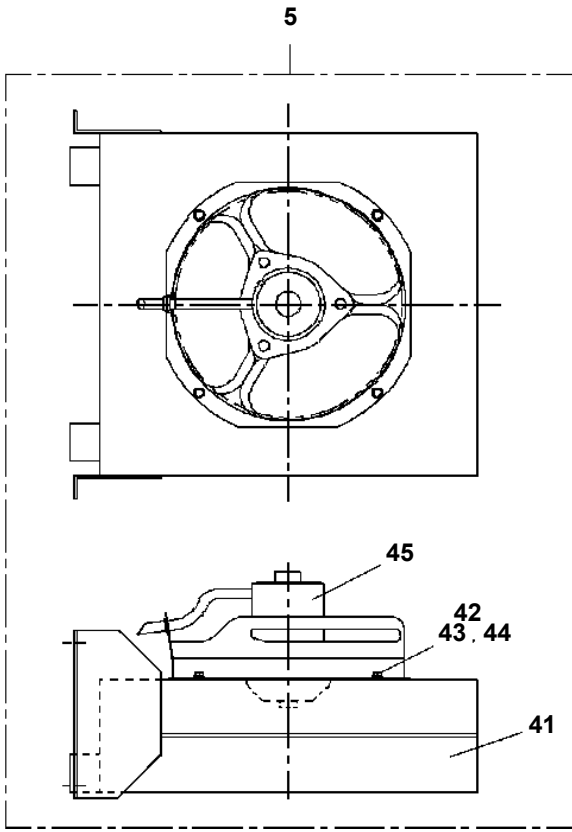
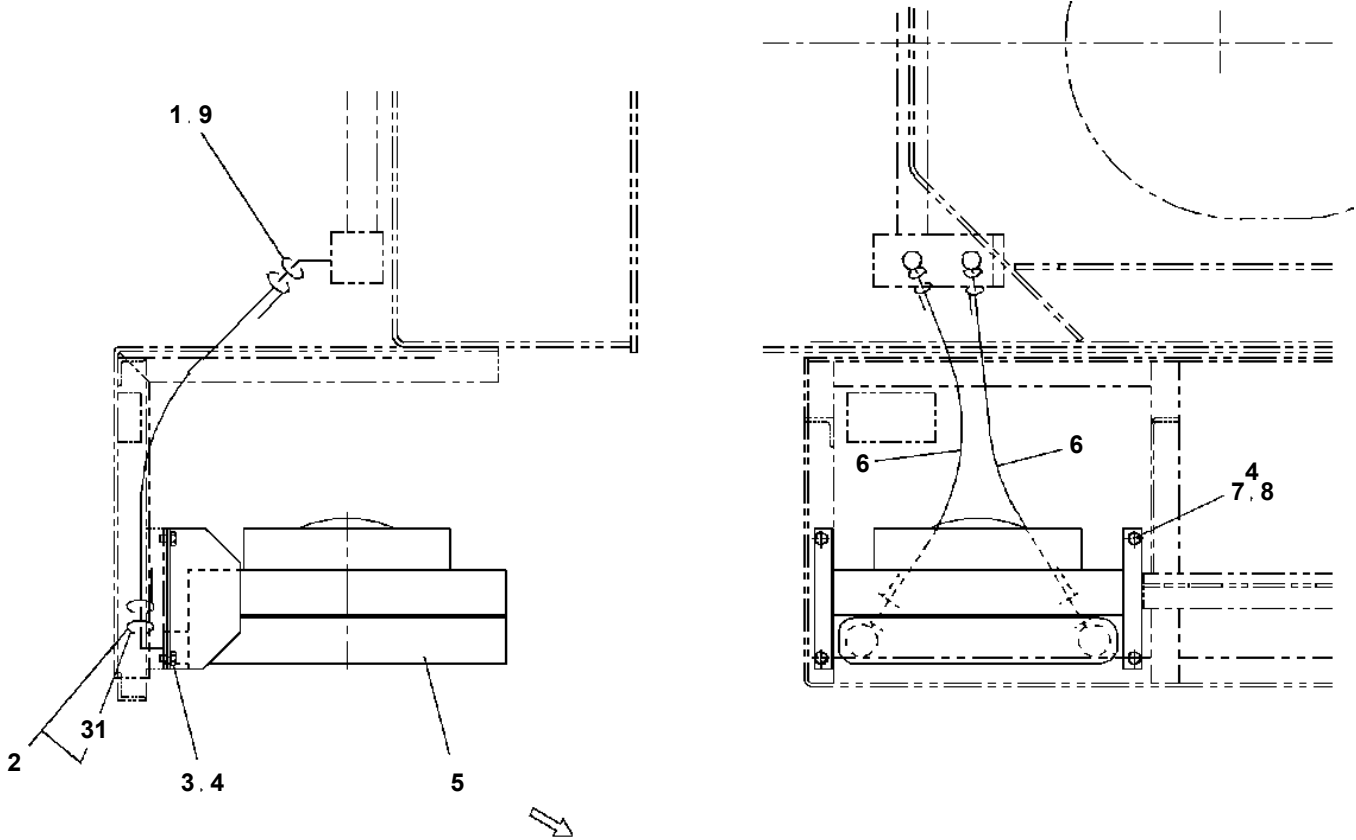
TR-80M-1-00101 5 BOOM,H,4.9T,1M2D

Pos No.	Parts No	Parts Name	Qty	Unit	Technical Data	Serial No (Start)	Serial No (End)	Remarks	Pa
1	34691160100	COVER	1						
2	34691160300	COVER (L)	1						
3	34691160400	COVER	1						
4	34691160500	COVER	1						
5	34691160701	COVER	1						
6	90101210020	BOLT	14		M10X20				
7	90302041001	WASHER,SPRING	18		10				
8	90303071001	WASHER,PLAIN	18		10				
9	34691160800	COVER	1						
10	34691160901	SUPPORT (R)	1						
11	34691161001	SUPPORT (R)	1						
12	34691161101	COVER	1						
13	90101208016	BOLT	12		M8X16				
14	90302040801	WASHER,SPRING	18		8				
15	90303070801	WASHER,PLAIN	16		8				
16	82466301450	INSULATOR	2						
17	80172304030	SCREW,MACHINE	2		M4X30				
18	37000505950	PLATE	4		T=3.2				
19	82400000390	INSULATOR	4						
20	90101206016	BOLT	8		M6X16				
21	90302040601	WASHER,SPRING	8		6				
22	37000555270	PLATE	4						
23	13622510070	CATCH	2						
24	82400000384	CATCH	4						
25	80172305010	SCREW,MACHINE	12		M5X10		FA0007		
26	90302040501	WASHER,SPRING	12		5		FA0007		
	90302040501	WASHER,SPRING	20		5	FA0008			
27	34691161200	WEATHER STRIP	2						
28	34690753200	SUPPORT	4						
29	34691161300	INSULATOR (R)	1						
30	34691161400	SUPPORT (UNDER)	2						
31	34691161500	INSULATOR (UNDER)	2						
32	34691161600	INSULATOR (L)	1						
33	34691161701	COVER (UNDER)	1						
34	34691161800	COVER (R)	1						
35	34691161900	INSULATOR	2						
36	90101210018	BOLT	4		M10X18				
37	80183308016	SCREW,MACHINE	6		M8X16				
38	90201200500	NUT	20		M5	FA0008	FA0008		
	34691162000	PLATE	4			FA0009			
39	90303070501	WASHER,PLAIN	20		5	FA0008	FA0008		
	34691162100	PLATE	4			FA0009			
40	80172305012	SCREW,MACHINE	20		M5X12	FA0008			
54	90201200800	NUT	6		M8				
55	90302040801	WASHER,SPRING	6		8				
56	34690923600	HINGE	2						
57	90101208020	BOLT	6		M8X20				

TR-80M-1-00101 5 BOOM,H,4.9T,1M2D

Pos No.	Parts No	Parts Name	Qty	Unit	Technical Data	Serial No (Start)	Serial No (End)	Remarks	Pages
1	34761174400	SUPPORT	1				FA0688		
	34761174401	SUPPORT	1			FA0689	FA0908		
	34761174402	SUPPORT	1			FA0909			
2	56260423000	NUT,WING	2						
3	90303072001	WASHER,PLAIN	2		20				
4	56560217000	BLOCK,WOOD	4				FA0688		
	33731351000	BLOCK	4		500X500,H=90	FA0689			
5	34761174300	BAR	2						
6	90303071601	WASHER,PLAIN	2		16				
7	80136332028	PIN,SPLIT	2		3.2X28				
8	90101210016	BOLT	8		M10X16				
9	90302041001	WASHER,SPRING	8		10				
10	37000555910	PLATE	4						
11	34761174500	SUPPORT	1				FA0688		
	34761174501	SUPPORT	1			FA0689	FA0908		
	34761174502	SUPPORT	1			FA0909			
12	80136332022	PIN,SPLIT	2		3.2X22				

TR-80M-1-00101 5 BOOM,H,4.9T,1M2D
PY1200048-02 PIPING,COOLER



TR-80M-1-00101 5 BOOM,H,4.9T,1M2D

Pos No.	Parts No	Parts Name	Qty	Unit	Technical Data	Serial No (Start)	Serial No (End)	Remark
1	34470020100	ANTENNA (WITH HARNESS)	1					
2	80175304016	SCREW,MACHINE	1		M4X16			
3	82100002001	CLAMP	1		WR5		FA0743	
4	14148375000	GROMMET	1					
5	90201200600	NUT	1		M6		FA0743	
6	90302040601	WASHER,SPRING	5		6		FA0743	
	90302040601	WASHER,SPRING	4		6	FA0744		
7	90303070601	WASHER,PLAIN	5		6		FA0743	
	90303070601	WASHER,PLAIN	4		6	FA0744		
8	80172304020	SCREW,MACHINE	3		M4X20			
9	34475240300	SUPPORT	2				FA0510	
	34475240301	SUPPORT	2			FA0511		
10	90101206012	BOLT	4		M6X12			
11	34475240100	RADIO (WITH HARNESS)	1				FA0510	
	34475240500	RADIO (WITH HARNESS)	1			FA0511		
12	34475240200	SPEAKER (WITH HARNESS)	1					
13	90101205010	BOLT	4		M5X10			
14	90302040501	WASHER,SPRING	4		5			
15	91810130250	FASTENER	1					

TR-80M-1-00101 5 BOOM,H,4.9T,1M2D

Pos No.	Parts No	Parts Name	Qty	Unit	Technical Data	Serial No (Start)	Serial No (End)	Remarks
1	36320175010	EVAPORATOR ASSY	1					
2	36320175020	CASE ASSY (UNIT)	1					
3	36320175030	CASE ASSY (UNIT)	1					
4	36320175040	MOTOR ASSY	1					
5	36320175050	FAN,BLOWER	1					
6	36320175060	FAN,BLOWER	1					
7	36320175070	WASHER	2					
8	36320335230	NET,WIRE	1					
9	36320335240	PACKING	1					
10	36320195570	NUT	2					
11	36320175080	VALVE (EXPANSION)	1					
12	36320175090	HOLDER (REMOTE VALVE)	1					
13	36320175100	RESISTOR	1					
14	36320175110	THERMISTOR	1					
15	36320195980	HOLDER (THERMISTOR)	1					
16	36320335260	PACKING	1					
17	36320335270	PACKING	1					
18	36320335280	PACKING	2					
19	36320335290	PACKING	2					
20	36320335300	INSULATOR (PIPING)	1					
21	36320335310	INSULATOR (PIPING)	2					
22	36320335320	SCREW,TAPPING	1					
23	36320335330	BOLT (WITH WASHER)	6					
24	36320335340	BOLT (WITH WASHER)	2					
25	36320335350	SCREW,TAPPING	8					
26	36320175120	GROMET	1					
27	36320215110	CAP	1					
28	36320335360	SCREW,PAN TAPPING	3					
29	36320175130	GRILLE ASSY,AIR OUTLET	1					
30	36320175140	WIRE (AIRCONDITONE)	1					
31	36320335370	SCREW,TAPPING	1					
32	36320335380	BOLT (WITH WASHER)	1					
33	36320175150	CLAMP	2					
34	36320335340	BOLT (WITH WASHER)	1					
35	36320335390	CLIP	1					
50	36320212070	EVAPORATOR ASSY	1					

TR-80M-1-00101 5 BOOM,H,4.9T,1M2D

Pos No.	Parts No	Parts Name	Qty	Unit	Technical Data	Serial No (Start)	Serial No (End)	Remarks	Pages
1	90201200600	NUT	2		M6		FA0743		
2	90302040601	WASHER,SPRING	2		6		FA0743		
3	82100002002	CLAMP	2		WR6		FA0743		
4	90303070601	WASHER,PLAIN	1		6				
5	37000511420	PLATE	1						
6	90101210025	BOLT	3		M10X25		FA0599		
	90101210020	BOLT	3		M10X20	FA0600			
7	90302041001	WASHER,SPRING	3		10				
9	90101208025	BOLT	3		M8X25				
10	90201200800	NUT	3		M8				
11	90302040801	WASHER,SPRING	3		8				
12	82100002015	CLAMP	3		WRC20				
13	82100002017	CLAMP	1		WR30				
14	82100002011	CLAMP	1		WRC15		FA0112		
	82100002010	CLAMP	2		WR15	FA0113			
15	91810130250	FASTENER	5						
16	82100002016	CLAMP	2		WR25				
17	91810130270	FASTENER	2						
18	37000535690	PLATE	2						
19	90925040101	SCREW,TAPPING	2		M4X10	FA0113			
20	90302040401	WASHER,SPRING	2		4	FA0113			
21	90303070401	WASHER,PLAIN	2		4	FA0113			

CLICK HERE TO **DOWNLOAD** THE COMPLETE MANUAL

- Thank you very much for reading the preview of the manual.
- You can download the complete manual from: www.heydownloads.com by clicking the link below



- Please note: If there is no response to CLICKING the link, please download this PDF first and then click on it.

CLICK HERE TO **DOWNLOAD** THE COMPLETE MANUAL