

TR-300-4-00102 4 BOOM + 2 JIB, 1M1D

PB1000632-00 HYDRAULIC PRESSURE GENERATING SYSTEM
PC1000525-00 OUTRIGGER SYSTEM
PD1000544-00 SWING SYSTEM
PE1000548-00 ELEVATING SYSTEM
PF1000516-00 WINCH SYSTEM
PG1000503-01 TELESCOPING SYSTEM
PH1000537-00 SAFETY DEVICES
PK1000594-00 FRAME
PL1000574-00 CONTROL DEVICES
PM1000032-01 LUBRICATION DEVICES
PN1000477-00 ELECTRIC EQUIPMENT
PO1000150-00 INDICATION PLATES
PQ1000190-01 DRIVING POWER GENERATING SYSTEM
PR1000113-00 DRIVING POWER TRANSMISSION SYSTEM
PS1000142-00 STEERING SYSTEM
PT1000121-00 BRAKE SYSTEM
PU1000115-00 SUSPENSION
PW1000097-02 ACCESSORIES & TOOLS
PX1000767-00 MOUNTING PARTS
PY1000808-00 OPTIONS
ASSEMBLY

CLICK HERE TO **DOWNLOAD** THE COMPLETE MANUAL

- Thank you very much for reading the preview of the manual.
- You can download the complete manual from: www.heydownloads.com by clicking the link below



- Please note: If there is no response to CLICKING the link, please download this PDF first and then click on it.

CLICK HERE TO **DOWNLOAD** THE COMPLETE MANUAL

TR-300-4-00102 4 BOOM + 2 JIB, 1M1D

Pos No.	Parts No	Parts Name	Qty	Unit	Technical Data	Serial No (Start)	Serial No (End)	Remarks
1	37001805280	ROPE,WIRE (KISWIRE)	1					
	37001800060	ROPE,WIRE (TESAC)	1					
3	(*****)	SOCKET,ROPE	1					
5	(*****)	PIPING,WINCH (MAIN)	1					
6	(*****)	PIPING,WINCH (FOR 1M1D)	1					
7	(*****)	MOUNT,WINCH (MAIN)	1					

TR-300-4-00102 4 BOOM + 2 JIB, 1M1D

Pos No.	Parts No	Parts Name	Qty	Unit	Technical Data	Serial No (Start)	Serial No (End)	Remarks	Pages
1	(*****)	PARTS,GREASING	1						000187

TR-300-4-00102 4 BOOM + 2 JIB, 1M1D

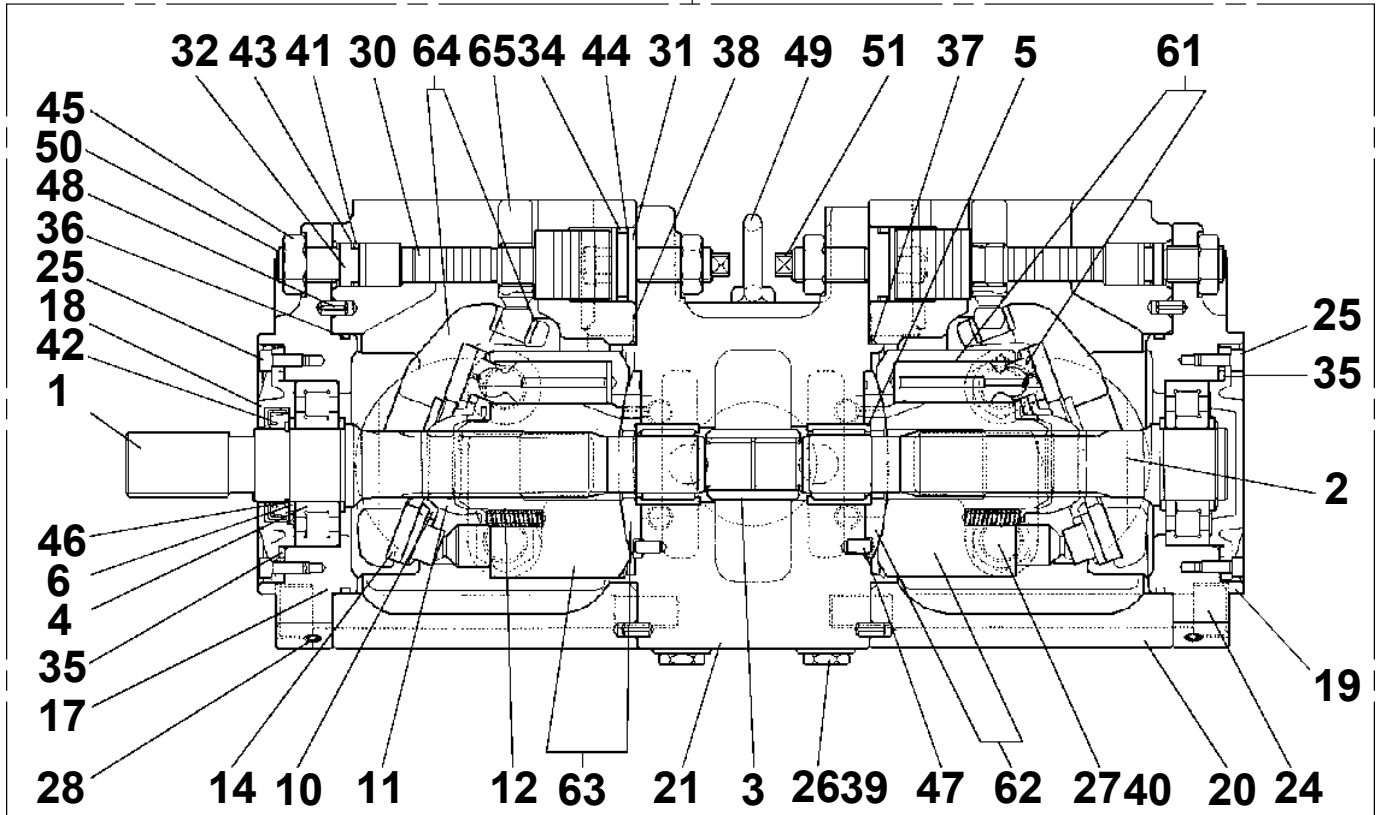
Pos No.	Parts No	Parts Name	Qty	Unit	Technical Data	Serial No (Start)	Serial No (End)
1	(*****)	WHEEL,STEERING (CAB)	1				
2	(*****)	PIPING,STEERING (UPPER)	1				
3	(*****)	PIPING,STEERING (LOWER)	1				
4	(*****)	CYLINDER,STEERING INSTALLATION	1				

TR-300-4-00102 4 BOOM + 2 JIB, 1M1D

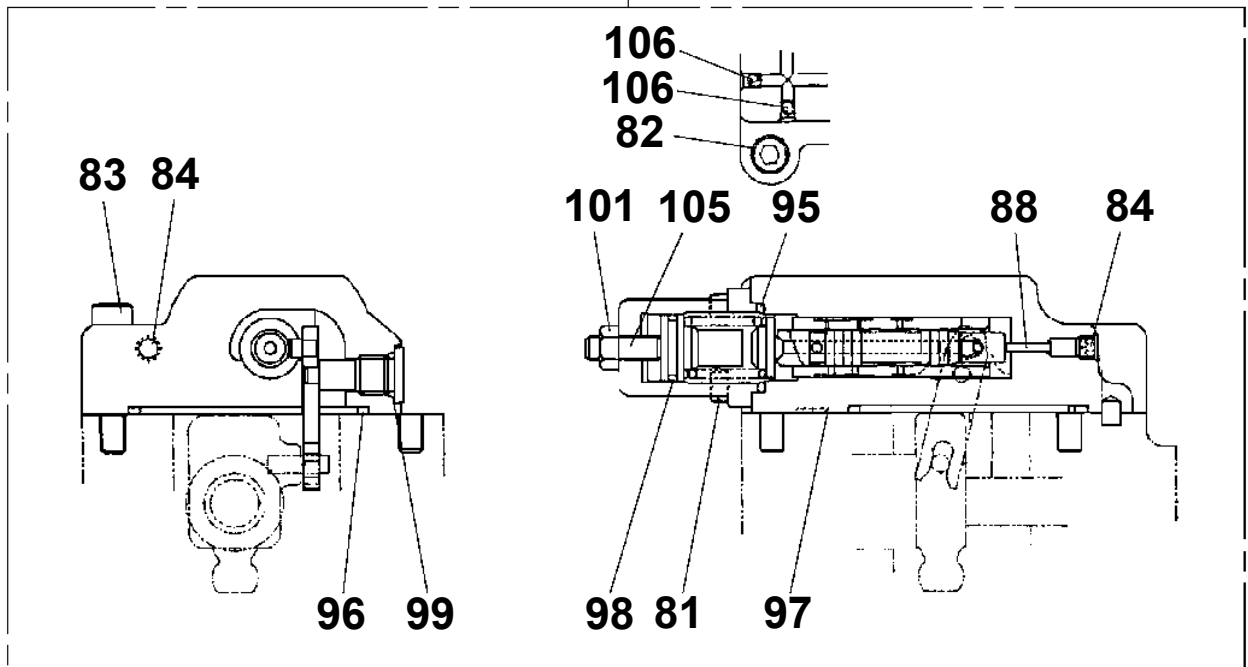
Pos No.	Parts No	Parts Name	Qty	Unit	Technical Data	Serial No (Start)	Serial No
1	(*****)	DETECTOR,DISORDERLY WIND (MAIN)	1				
3	(*****)	SINGLE TOP	1				
4	(*****)	DETECTOR,DRUM ROTATION (MAIN)	1				
6	(*****)	PIPING,STEERING (EMERGENCY)	1				
	(*****)	PIPING,STEERING (EMERGENCY)	1				
7	(*****)	FAN	1				
8	(*****)	INFLATOR,AIR	1				
9	(*****)	NON-SLIP PLATE (SEAL)	1				
12	(*****)	TOOL BOX INSTALLATION (IRON)	1				
15	37001907000	ROPE,WIRE (STOWING FOR MAIN HOOK)	1				
17	(*****)	HOUR METER (MOUNT)	1				
18	(*****)	ACCESSORIES (COLDPROOF SEAL)	1				
19	(*****)	OPE.ASSY,CONT.VALVE (PEDAL NEUTRAL)	1				
20	(*****)	BELT,SEAT (MOUNT)	1				
21	(*****)	GUARD (PROPELLER SHAFT)	1				
31	(*****)	MOUNT ASSY,COMPRESSOR	1				
32	(*****)	EVAPORATOR (MOUNT)	1				
33	(*****)	AIR CONDITIONER SYSTEM	1				
34	(*****)	PIPING (HOT WATER)	1				
36	36320690000	AIR CONDITIONER	1				
41	36095250000	HOOK (AUXILIARY)	1				
42	(*****)	MOUNT,HOOK (AUX.)	1				
43	(*****)	PLATE ASSY,NAME (AUX. HOOK)	1				

TR-300-4-00102 4 BOOM + 2 JIB, 1M1D
PB1100238-00 PUMP, HYDRAULIC

200



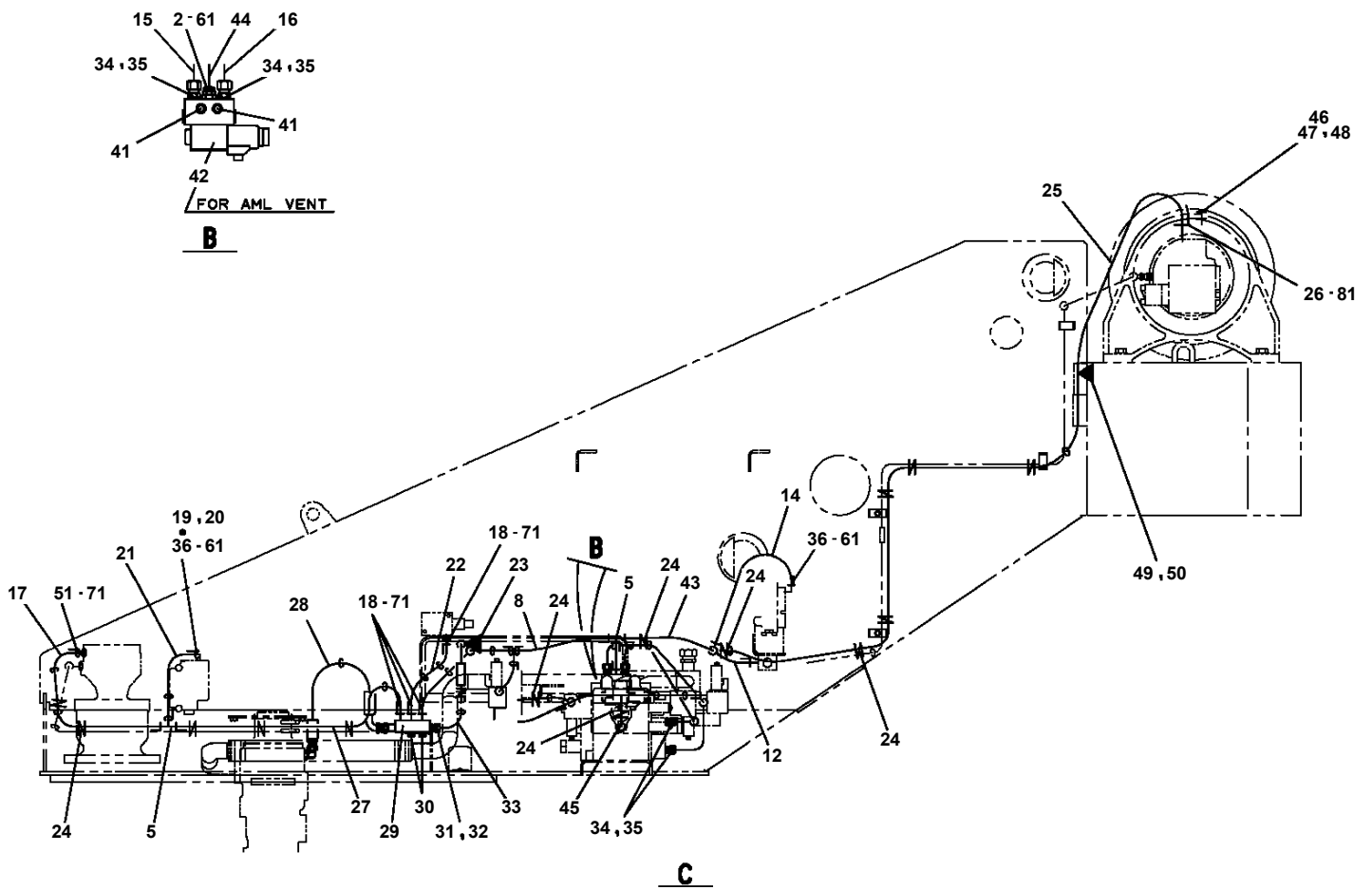
71



TR-300-4-00102 4 BOOM + 2 JIB, 1M1D

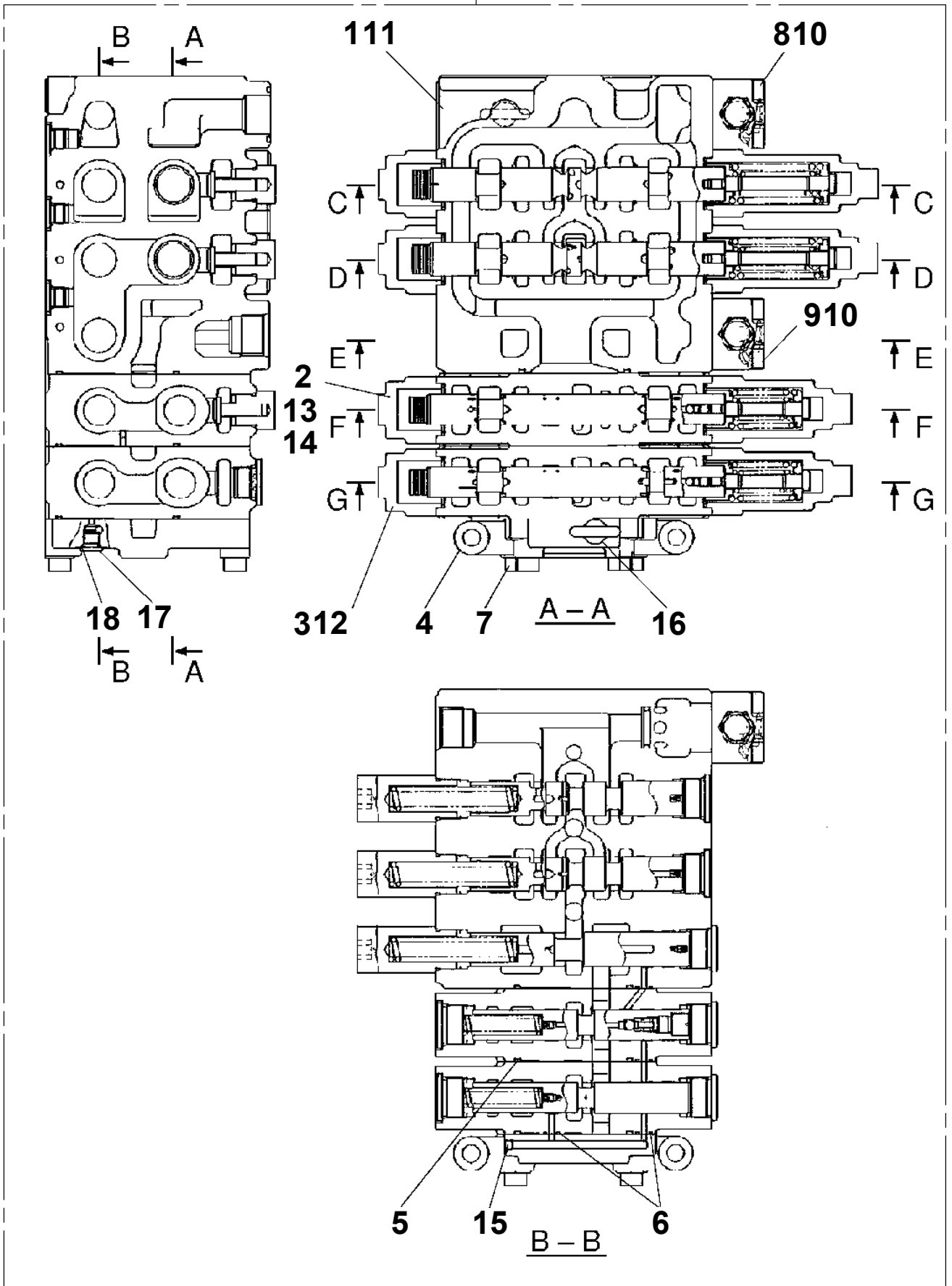
Pos No.	Parts No	Parts Name	Qty	Unit	Technical Data	Serial No (Start)	Serial No (End)	Rem
1	80430620400	JOINT	1					
2	37002473250	HOSE	1		L=580			
3	81408000160	PIPE,STEEL	1	M	12X1.4T			
4	81408000160	PIPE,STEEL	2	M	12X1.4T			
5	80400160127	JOINT	3					
6	91002801100	O-RING	14		1B P11			
7	36730150000	VALVE,SOLENOID	1					
8	90186208014	BOLT,FLANGE	5		M8X14			
9	37002484540	HOSE	1		L=600			
10	81408000160	PIPE,STEEL	1	M	12X1.4T			
11	81408000160	PIPE,STEEL	1	M	12X1.4T			
12	37000925320	JOINT (FILTER,WITH O-RING)	4		T,3-G1/4			
13	80481102030	JOINT	1		L G1/4-G3/8			
14	37002478080	HOSE	1		L=300			
15	80400160212	JOINT	1		T,12XG1/4XG1/4			
16	81408000160	PIPE,STEEL	1	M	12X1.4T			
17	37002478100	HOSE	1		L=475			
18	91810130250	FASTENER	1					
19	80302090141	FITTING	8		KCO12-020N			
20	36623690000	VALVE,SHUTTLE	1					
21	82100002017	CLAMP	1		WR30			
22	37000711000	CLAMP ASSY	1		12-1			
23	37000919380	JOINT (ORIFICE)	1					
24	37002478130	HOSE	2		L=620			
25	37000927620	JOINT	1				560819	
	80481002030	JOINT	1		S,G1/4-G3/8	560820		
27	82135901901	BAND,MARK (1)	2					
28	82135901902	BAND,MARK (2)	2					
29	82135901903	BAND,MARK (3)	4					
30	82135901904	BAND,MARK (4)	4					
33	82135901954	BAND,MARK (D)	4					
34	82135901970	BAND,MARK (T)	8					
35	82135901966	BAND,MARK (P)	2					
36	37002477980	HOSE	1		L=650			
51	91002801100	O-RING	5		1B P11			

TR-300-4-00102 4 BOOM + 2 JIB, 1M1D
PB1270153-00 PIPING,DRAIN



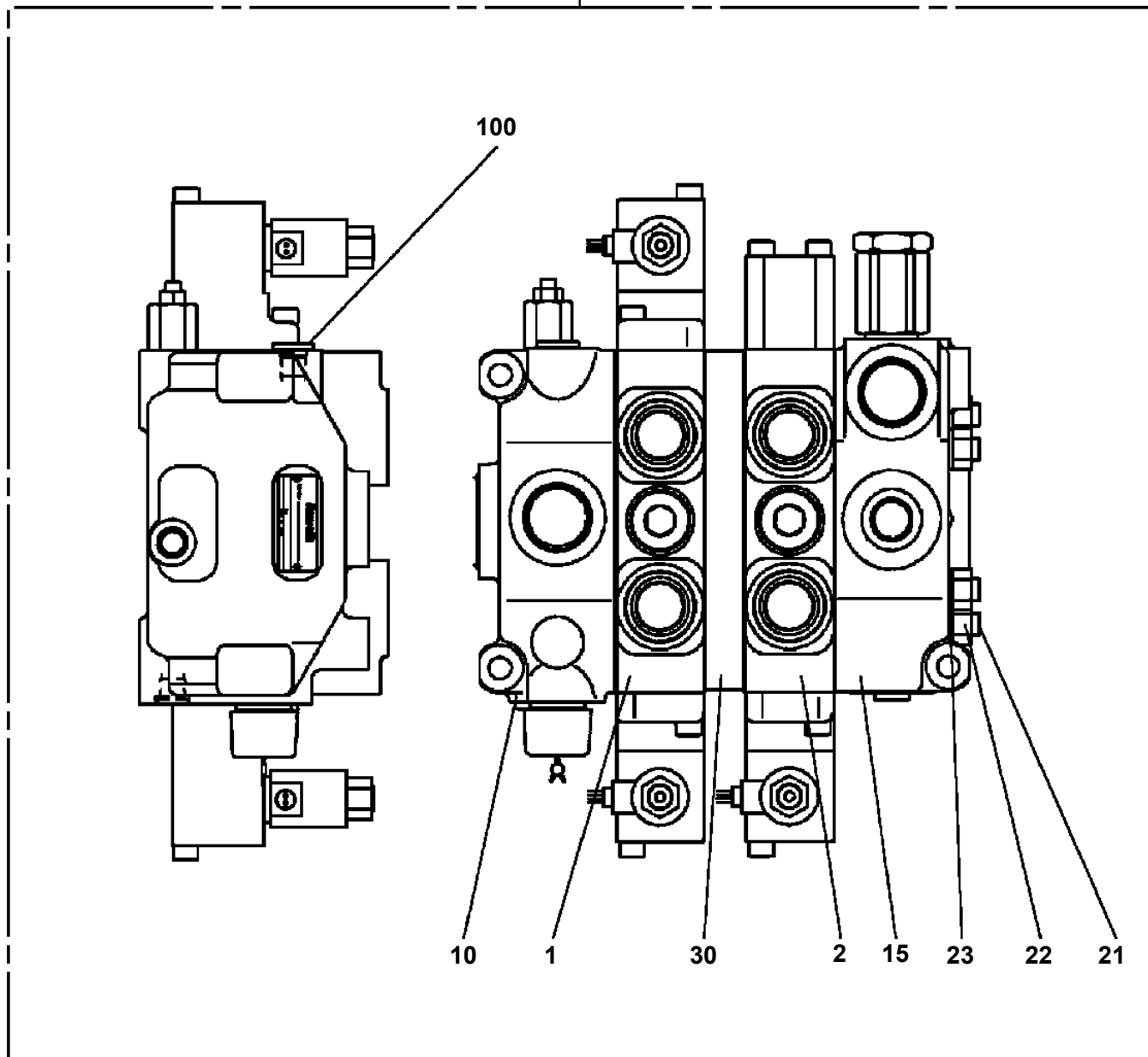
TR-300-4-00102 4 BOOM + 2 JIB, 1M1D
PB1350014-00 VALVE,PILOT OPERATED CONTROL

200



TR-300-4-00102 4 BOOM + 2 JIB, 1M1D
PB1350031-00 VALVE,PILOT OPERATED CONTROL

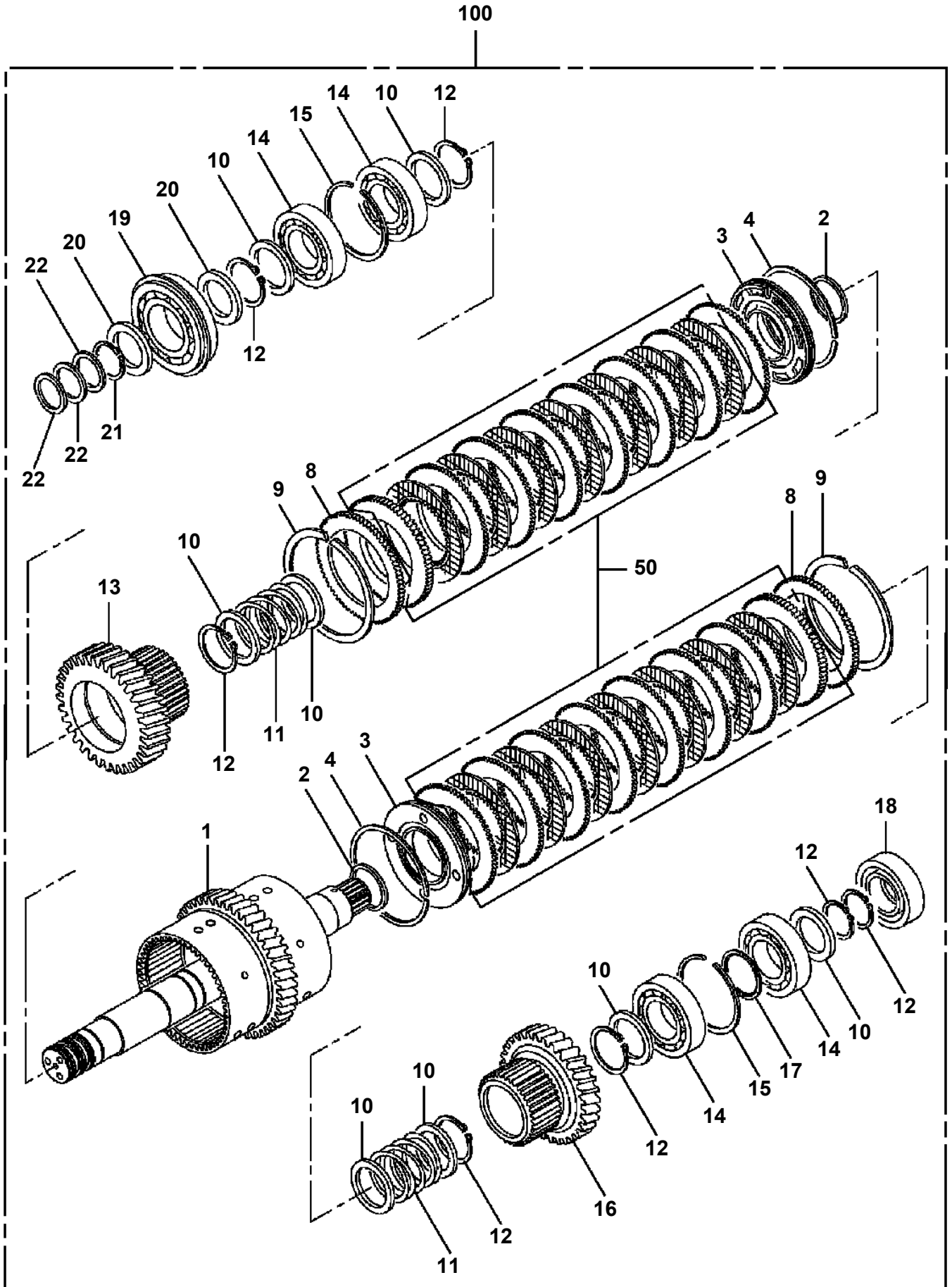
999



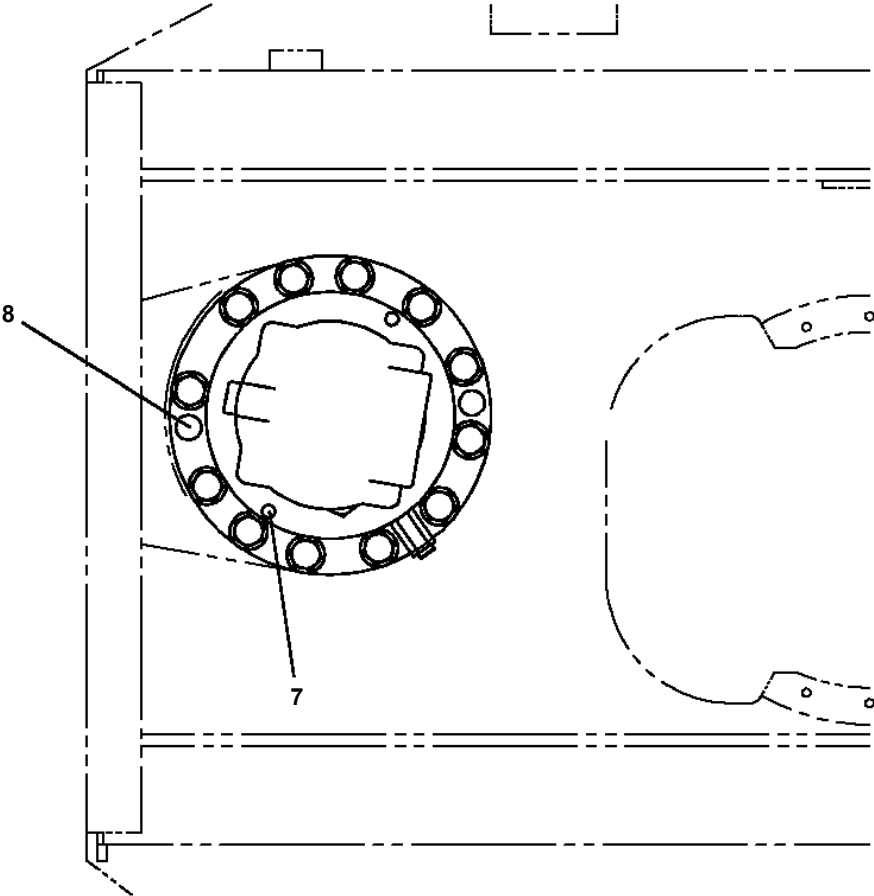
TR-300-4-00102 4 BOOM + 2 JIB, 1M1D

Pos No.	Parts No	Parts Name	Qty	Unit	Technical Data	Serial No (Start)	Serial No (End)	Remarks	Pages
1	36032631000	CYLINDER	1						
2	80720105040	PIN,SPRING	1		5X40		560722		
	80720105036	PIN,SPRING	1		5X36	560723	561231		
3	36031043000	PISTON	1				561231		
	36036381000	PISTON	1			561232			
4	91684013000	PACKING	2						
5	91411211501	RING,BACKUP	2						
6	91002807500	O-RING	1		1B P75				
7	91411007500	RING,BACKUP	1						
8	91332213000	BEARING,PLAIN	2						
9	36033782000	ROD	1				561231		
	36033784000	ROD	1			561232			
10	36033783000	COVER,ROD	1						
11	91002912500	O-RING	1		1B G125				
12	91251101103	RING,DAMPER	1				562076		
13	91694111000	PACKING	1						
14	91410211002	RING,BACKUP	1						
15	91660011001	SEAL,DUST	1						
17	90101510040	BOLT	2		M10X40				
18	90302041001	WASHER,SPRING	2		10				
20	90730008140	SCREW,SET	1		M8X14	561232			
31	80612111180	RING,RITAINING	1		AR118				
52	36032349902	PACKING SET	1		110X130		562076		
53	36033789902	PACKING SET	1		110X130	562077			
63	37000400020	BEARING,PLAIN	1						
100	36033780000	CYLINDER,JACK	1						

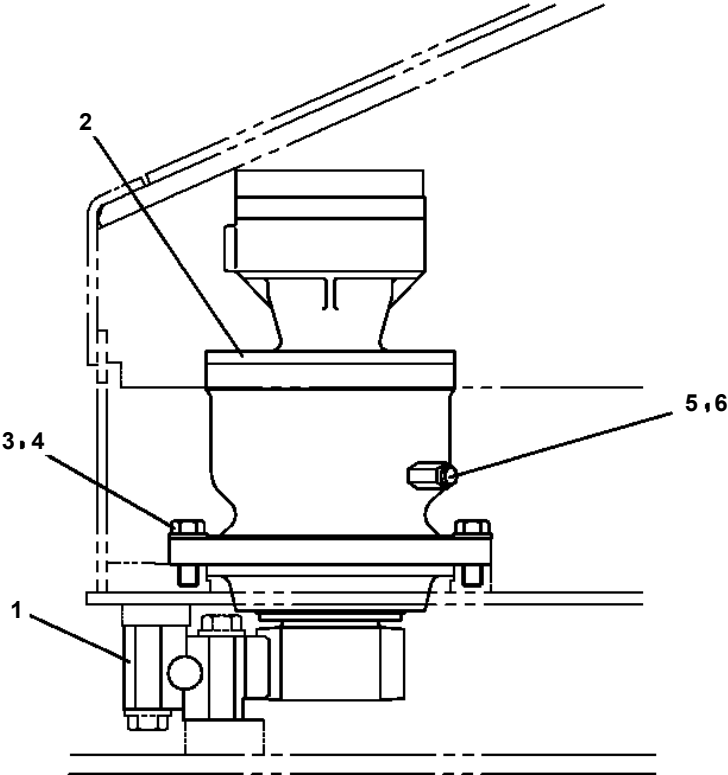
TR-300-4-00102 4 BOOM + 2 JIB, 1M1D
PC5310003-00 CLUTCH PACK, TRANSMISSION



TR-300-4-00102 4 BOOM + 2 JIB, 1M1D
PD1020056-00 SWING UNIT



FRONT ←



TR-300-4-00102 4 BOOM + 2 JIB, 1M1D

Pos No.	Parts No	Parts Name	Qty	Unit	Technical Data	Serial No (Start)	Serial No (End)
1	36131235010	PLATE (BASE)	1				
2	36131905010	CASE	1				
3	36132335010	DRUM ASSY	1				
4	36130515020	RING ASSY (CONTACT)	1				
5	33370025170	CONTACTOR ASSY (70)	1				
6	32360005060	CONTACTOR ASSY	1				
7	36132215020	CASE (BEARING)	2				
11	36132215030	REDUCER	1				
12	36130045090	CLIP (NYLON)	2				
13	36130045050	GEAR	2				
14	36132215040	BRACKET	1				
15	36130945010	POTENTIOMETER	1				
16	36131905020	SPRING	1				
17	36131455040	COVER	1				
18	32360005150	CLIP (NYLON)	1				
19	36131455070	SUPPORT	1				
20	36130235100	CLAMP (CORD)	2				
21	36130015080	GUIDE (CORD)	1				
22	36131455080	COLLAR	3				
23	36130045110	PACKING	1				
24	36131455050	PACKING	1				
25	32360005220	PACKING	2				
26	82114102020	CONNECTOR	1				
27	82114101020	CONNECTOR (2P,MALE)	1				
28	36131935020	LOCK (CORD)	1				
33	36130335030	WASHER	1				
44	36132215050	STOPPER	12				
45	36161385020	CORD	32	M			
46	36132265010	CABLE ASSY (WITH CONNECTOR)	1				
47	82121102020	HOLDER	2				
48	82111101510	TERMINAL	2				
49	82111101010	TERMINAL	2				
50	36131455060	DETECTOR,ANGLE	1				
51	82121101085	PLUG (AVS0.85)	4				
52	36131135060	COLLAR	1				
59	36131905050	COLLAR	3				
60	31370005070	GROMMET	1				
100	36132330001	DETECTOR ASSY,LENGTH (BOOM)	1				

TR-300-4-00102 4 BOOM + 2 JIB, 1M1D

Pos No.	Parts No	Parts Name	Qty	Unit	Technical Data	Serial No (Start)	Serial No (End)	Remarks	Pages
2	34510702620	PACKING	1						
3	34510702630	PACKING	1				560929		
	34510702650	PACKING	1			560930			
100	34510702600	DUCT	1						

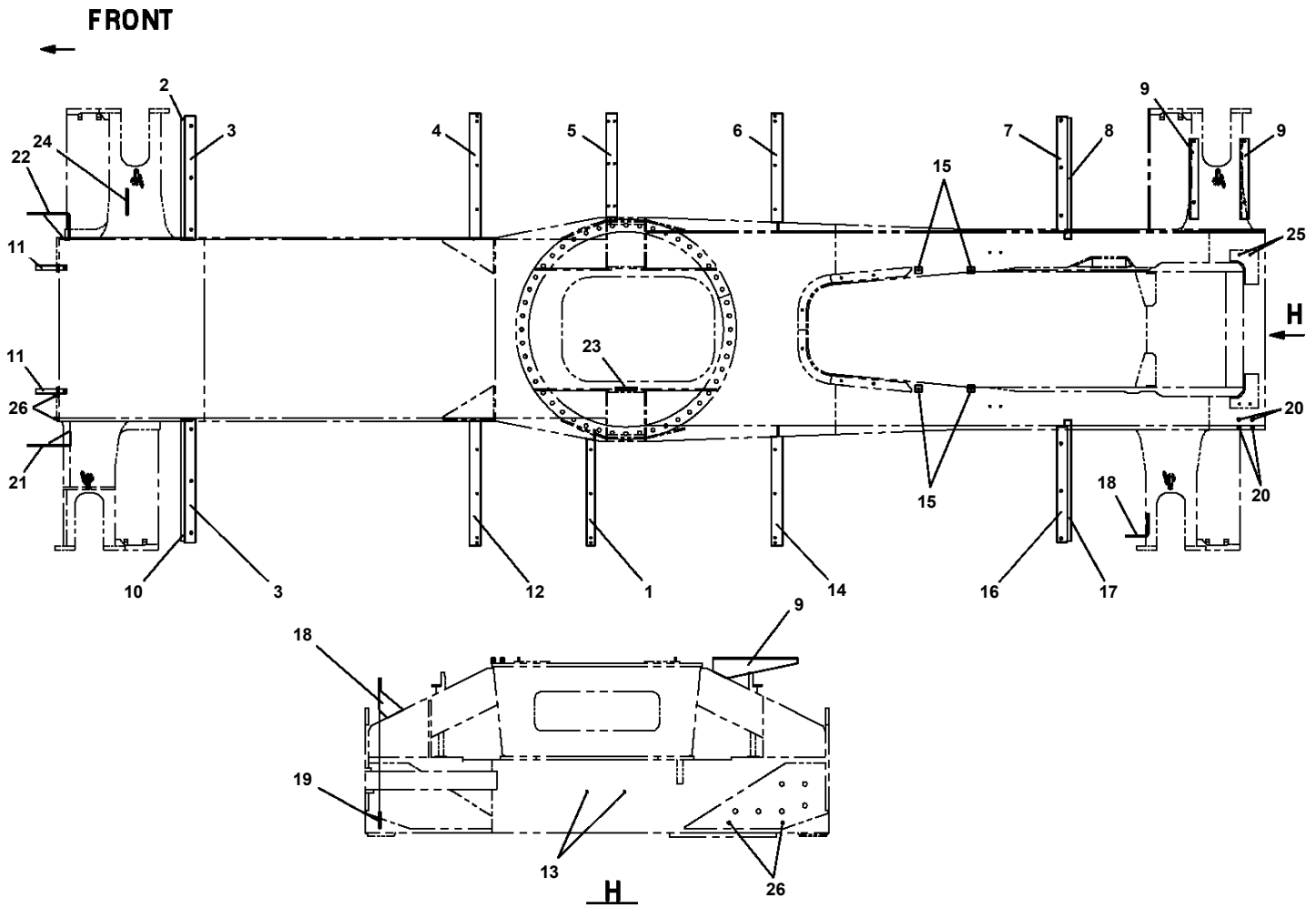
TR-300-4-00102 4 BOOM + 2 JIB, 1M1D

Pos No.	Parts No	Parts Name	Qty	Unit	Technical Data	Serial No (Start)	Serial No (End)	Remarks	Pages
1	(*****)	EVAPORATOR ASSY	1				561762		000067
21	(*****)	EVAPORATOR ASSY	1			561763			000068

TR-300-4-00102 4 BOOM + 2 JIB, 1M1D

Pos No.	Parts No	Parts Name	Qty	Unit	Technical Data	Serial No (Start)	Serial No (End)	Remarks	Page
1	36095251000	ADAPTER	1						
2	36091432001	SHAFT	1				560715		
	36095252000	SHAFT	1			560716			
3	91250000080	SEAL,RING	1						
4	36091433000	BEARING,PLAIN	1						
5	80500051118	BEARING,BALL	1						
6	37000527210	PLATE	2						
7	82456101000	NIPPLE,GREASE	2		A-PT1/8				
8	37000124471	PIN	1						
9	37001505260	BOLT	1						
10	90302041401	WASHER,SPRING	1		14				
11	37000105190	PIN	1						
12	37001400030	SPRING	1						
13	90303070801	WASHER,PLAIN	1		8				
14	80136320015	PIN,SPLIT	1		2X15				
17	36092470060	PLATE	1						
30	36091429510	STOPPER ASSY	1						
40	36091429520	HOOK ASSY	1						
100	36095250000	HOOK (AUXILIARY)	1						

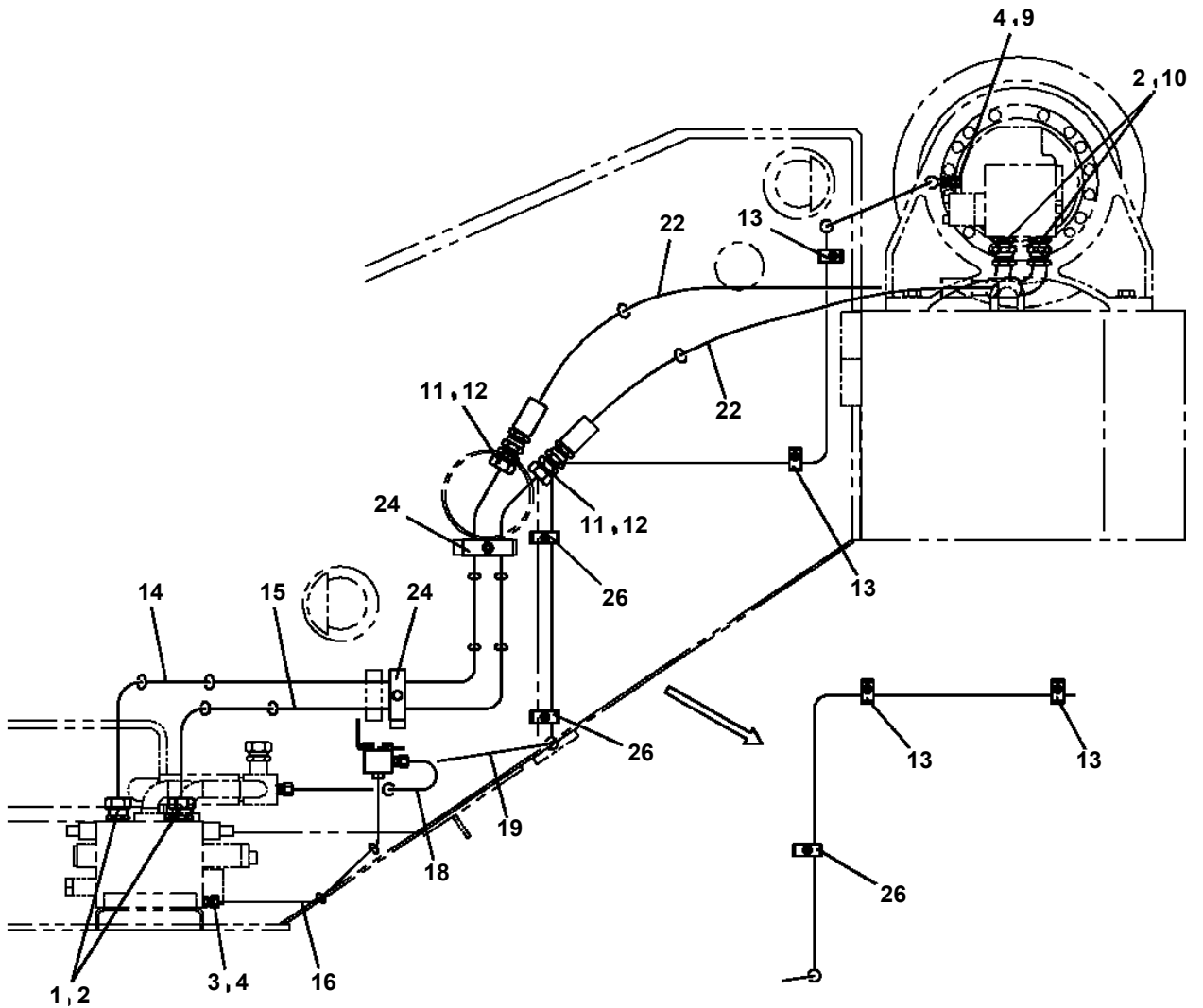
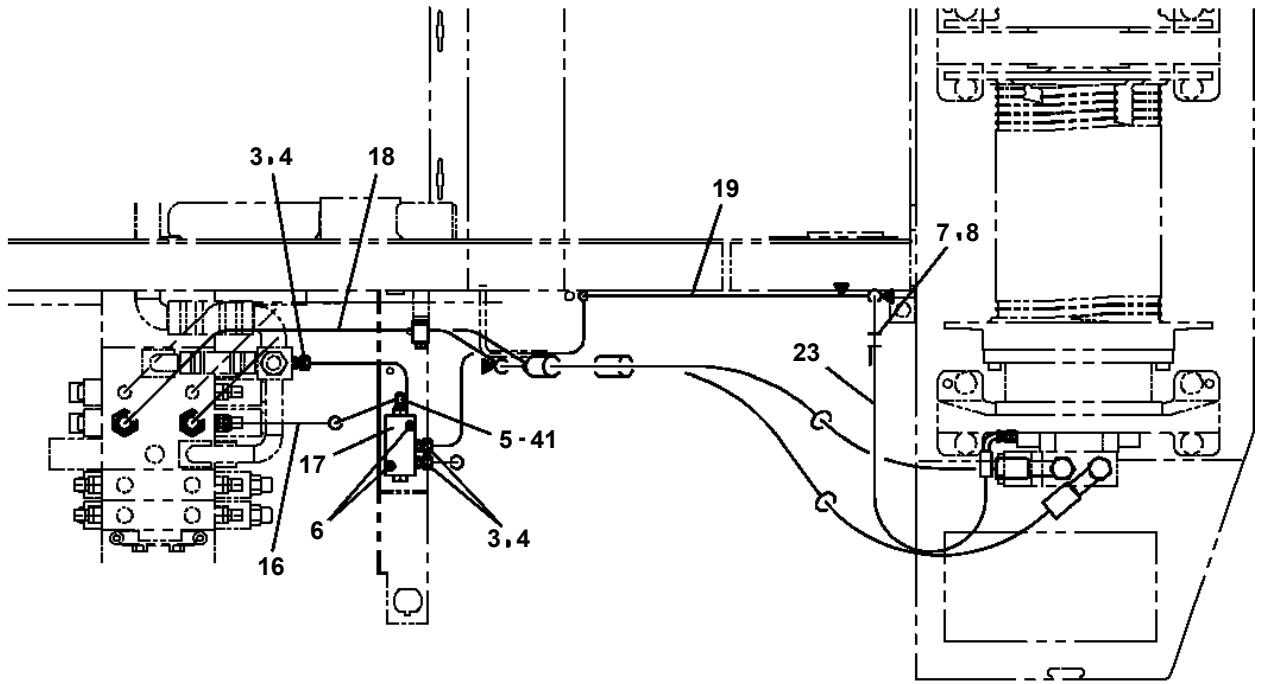
TR-300-4-00102 4 BOOM + 2 JIB, 1M1D
PF1080049-00 SUPPORT (FENDER)



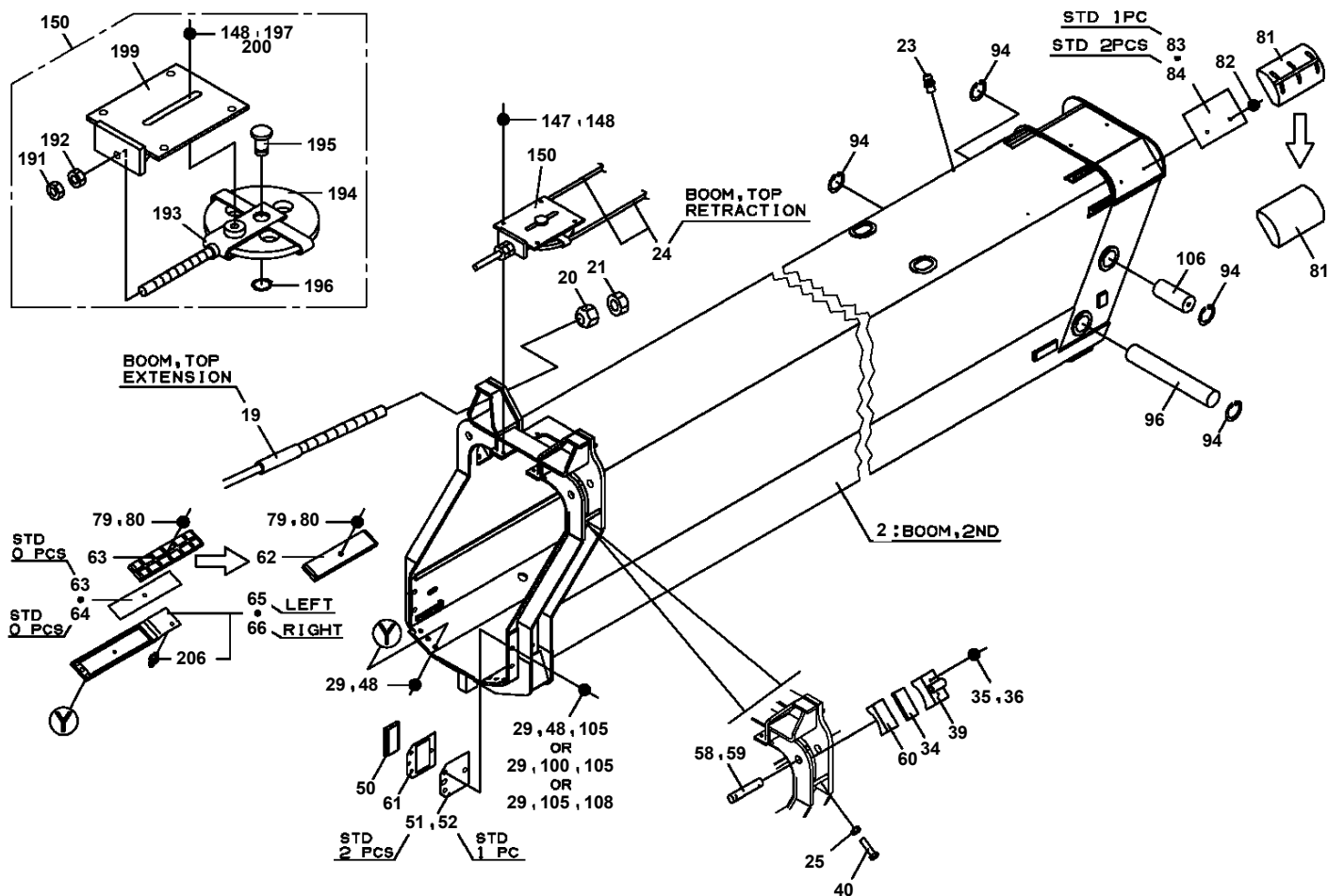
TR-300-4-00102 4 BOOM + 2 JIB, 1M1D

Pos No.	Parts No	Parts Name	Qty	Unit	Technical Data	Serial No (Start)	Serial No (End)	Rema
1	34443941100	SUPPORT	1					
2	34260955200	SUPPORT	1					
3	34443941500	SUPPORT	2					
6	34381550300	SUPPORT	1					
7	34230760101	SUPPORT (PLATE WORKING)	1					
8	37000514500	PLATE	1					
9	37000513560	PLATE	2					
10	34443941700	SUPPORT	1					
11	34443941800	STEP	3					

TR-300-4-00102 4 BOOM + 2 JIB, 1M1D
PF1200379-01 PIPING,WINCH (MAIN)

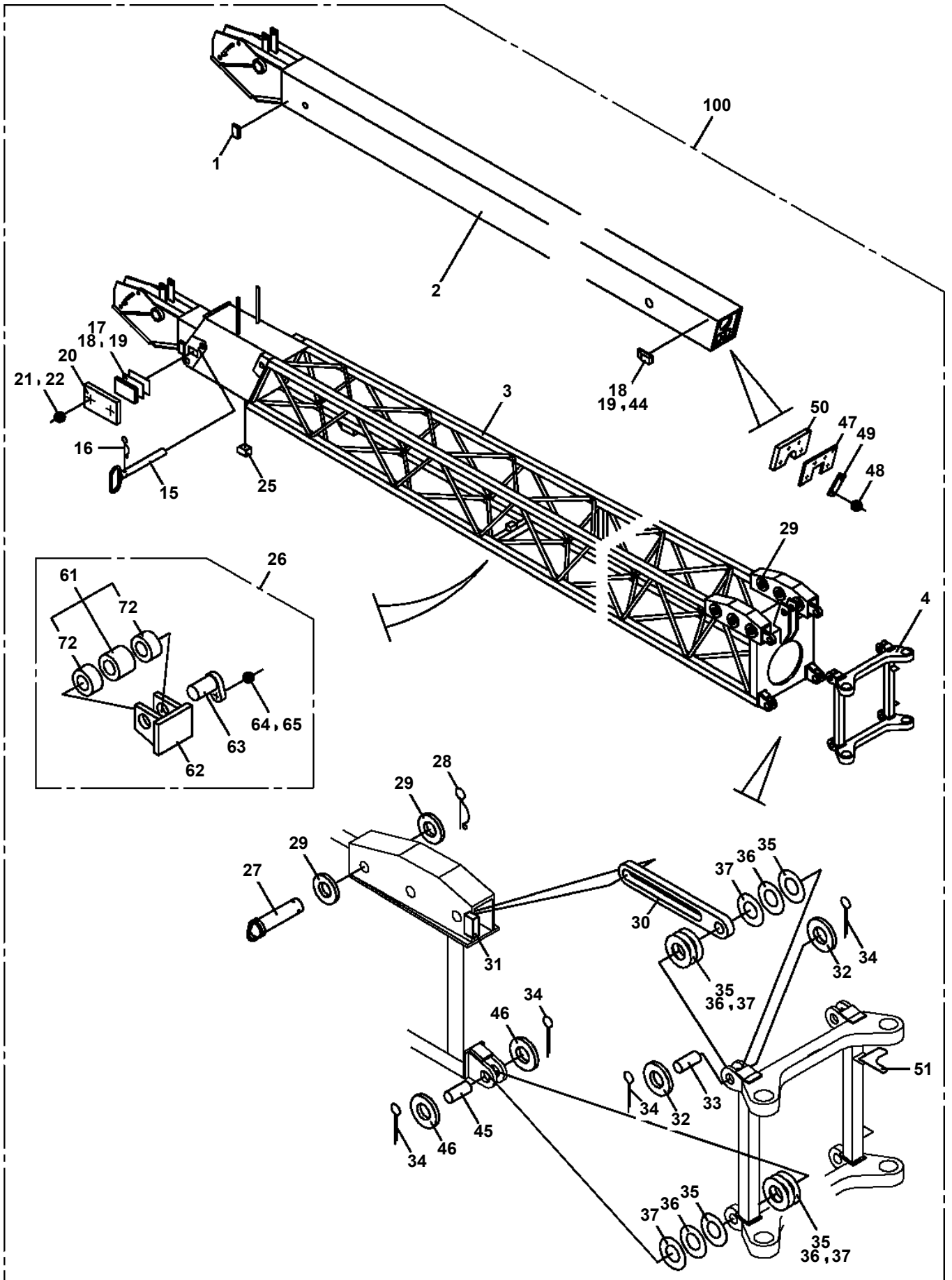


TR-300-4-00102 4 BOOM + 2 JIB, 1M1D
 PG1010857-06 BOOM

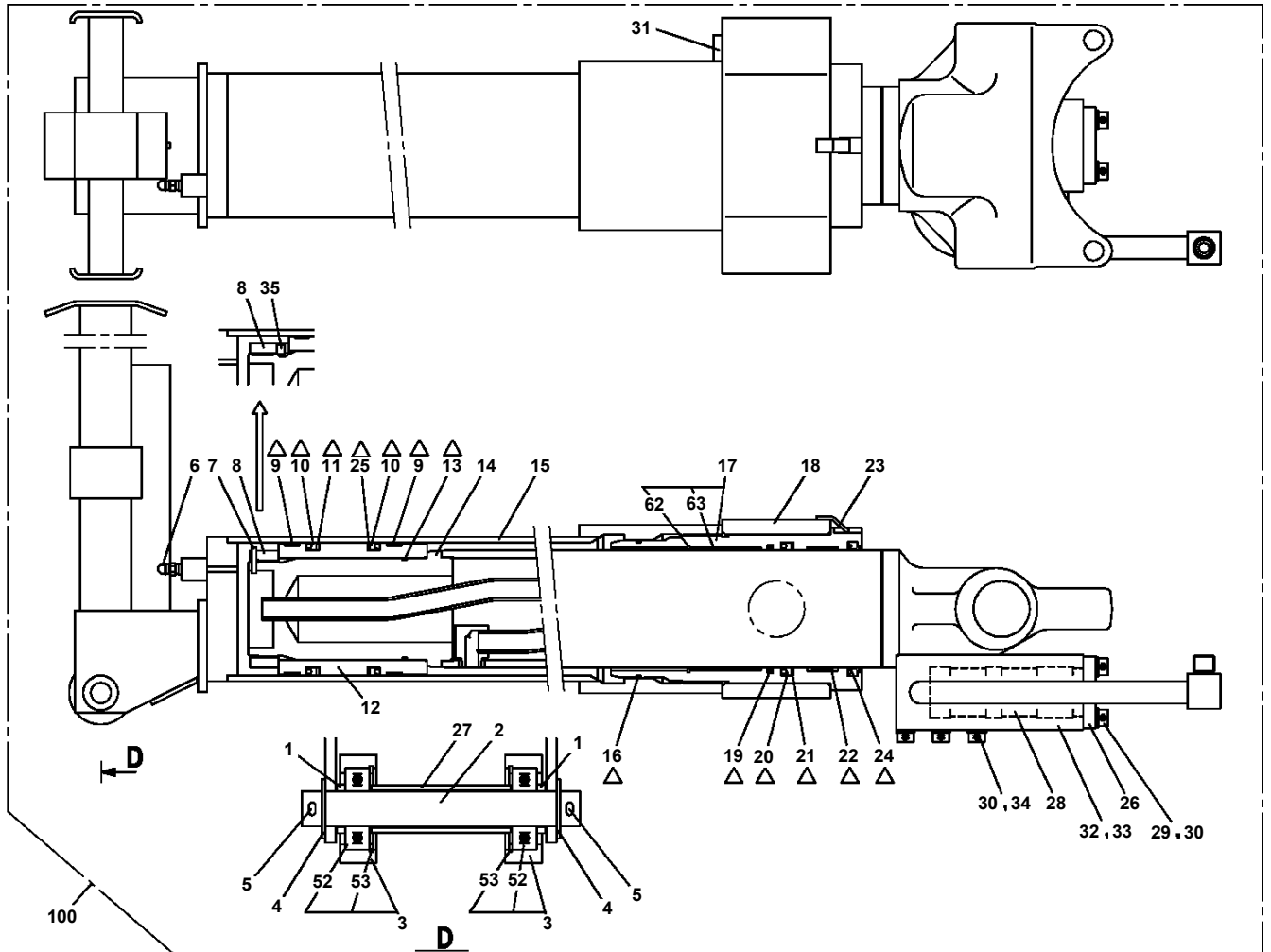


図中の左右の表示は、ブーム後端から先端を見たものです。
 THE RIGHT AND LEFT IN FIGURE ARE THE EXPRESSION THAT SEES FROM BOOM END TO TOP.

TR-300-4-00102 4 BOOM + 2 JIB, 1M1D
PG1040315-00 JIB



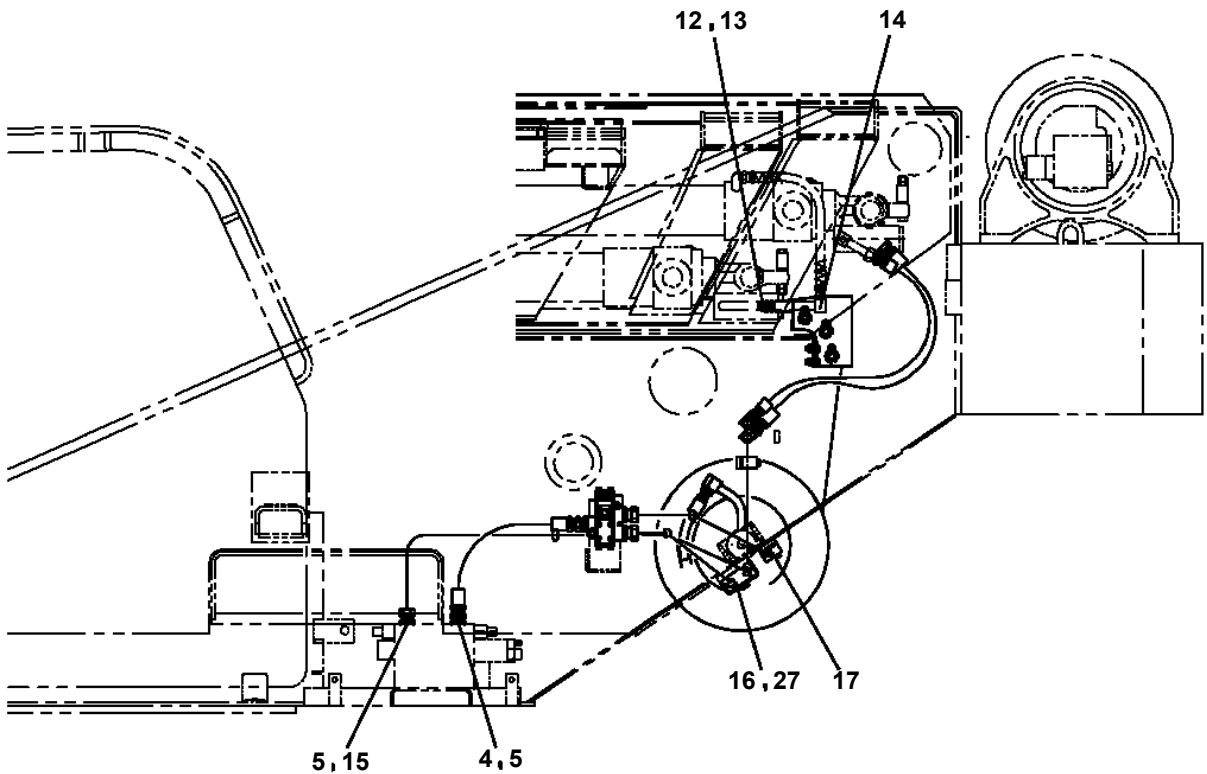
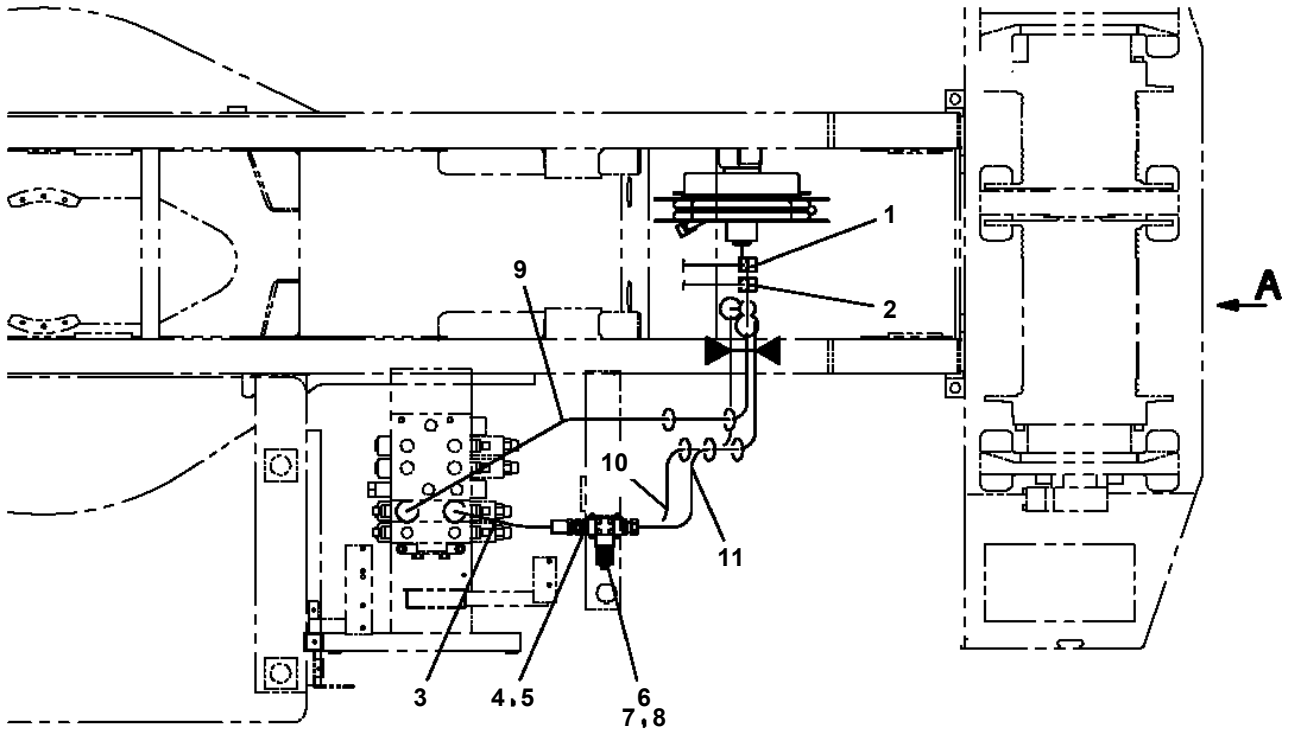
TR-300-4-00102 4 BOOM + 2 JIB, 1M1D
PG1050603-01 CYLINDER,TELESCOPING (NO.2)



Δ:PACKING SET KEY NO.80 (KEY NO.9,10,11,13,16,19,20,21,22,24,25)

TR-300-4-00102 4 BOOM + 2 JIB, 1M1D
PG1200192-01 PIPING,TELESCOPING

FRONT ←



展開図有
ILLUSTRATED BREAKDOWN NO. 14

TR-300-4-00102 4 BOOM + 2 JIB, 1M1D

Pos No.	Parts No	Parts Name	Qty	Unit	Technical Data	Serial No (Start)	Serial No (End)	Re
1	34372351300	SUPPORT	1					
2	32370002110	GASKET	1					
3	32370002121	COVER	1					
4	80172303025	SCREW,MACHINE	2		M3X25			
5	90302040301	WASHER,SPRING	2		3			
6	82104102010	SWITCH,LIMIT	1					
7	34372351200	ROD	1					
8	14148373001	SPRING	1					
9	80601110180	RING,RITAINING	1		S18			
10	34371314400	SUPPORT	1					
11	90303070301	WASHER,PLAIN	2		3			
12	82114101020	CONNECTOR (2P,MALE)	1					
13	82111101010	TERMINAL	2					
14	32370005200	CORD	1					
15	32370005210	CORD	1					
16	82100000592	TERMINAL (M40.3 TO 1.25)	2					
17	89630201000	HOSE,VINYL	1		6X8,1M			
18	14148375000	GROMMET	1					
19	90101208045	BOLT	2		M8X45			
20	90302040801	WASHER,SPRING	2		8			
21	82121102020	HOLDER	1					
22	82100001220	INSULATOR	2					
23	82121101085	PLUG (AVS0.85)	2					
24	82400000201	GROMMET	1		KG-016			
30	34372359510	ROD ASSY	1					
42	32370002150	SPACER	1		L=12 TO 11			
43	80720103014	PIN,SPRING	1		3X14			
100	34372351101	SWITCH,OVER WIND DETECTOR	1					

TR-300-4-00102 4 BOOM + 2 JIB, 1M1D

Pos No.	Parts No	Parts Name	Qty	Unit	Technical Data	Serial No (Start)	Serial No (End)
1	36119671500	BOARD ASSY (ANALOGUE)	1				
2	36119671200	BOARD ASSY (CONNECTOR)	1				
3	36190061300	BOARD ASSY (DISPLAY)	1				
4	36119671100	BOARD ASSY (POWER)	1				
5	36119671600	BOARD ASSY (OUT PUT)	1				
6	36119671400	BOARD	1				560736
	36119671401	BOARD	1			560737	
8	36119675010	COVER (BUTTON)	1				
9	(*****)	P-ROM	1				
10	36119675020	ESCUTCHEON	1				
11	36190475010	PANEL	1				
21	36190061000	MOMENT LIMITER (L2C/WITHOUT P-ROM)	1				
31	36119675040	FUSE	5		250V 2A		
32	36119675050	FUSE	5		250V 3A		
50	36192040000	MOMENT LIMITER (AML-L2C)	1				

TR-300-4-00102 4 BOOM + 2 JIB, 1M1D

Pos No.	Parts No	Parts Name	Qty	Unit	Technical Data	Serial No (Start)	Serial No (End)	Remarks	Page
1	36320762200	HARNESS (MAIN A)	1						

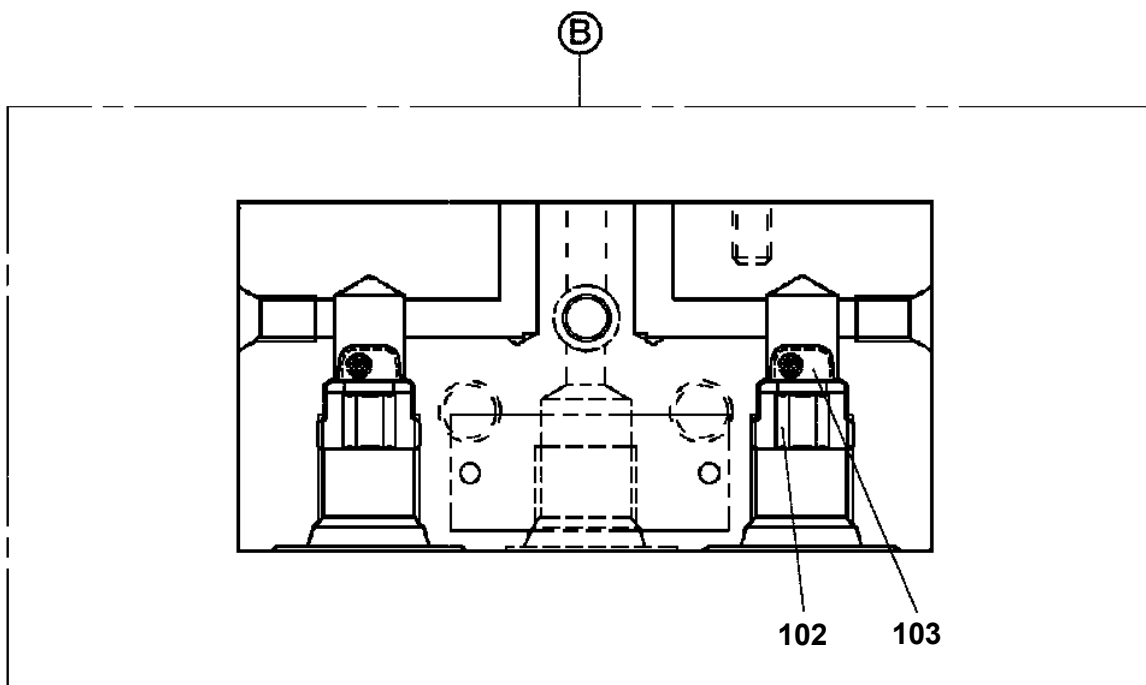
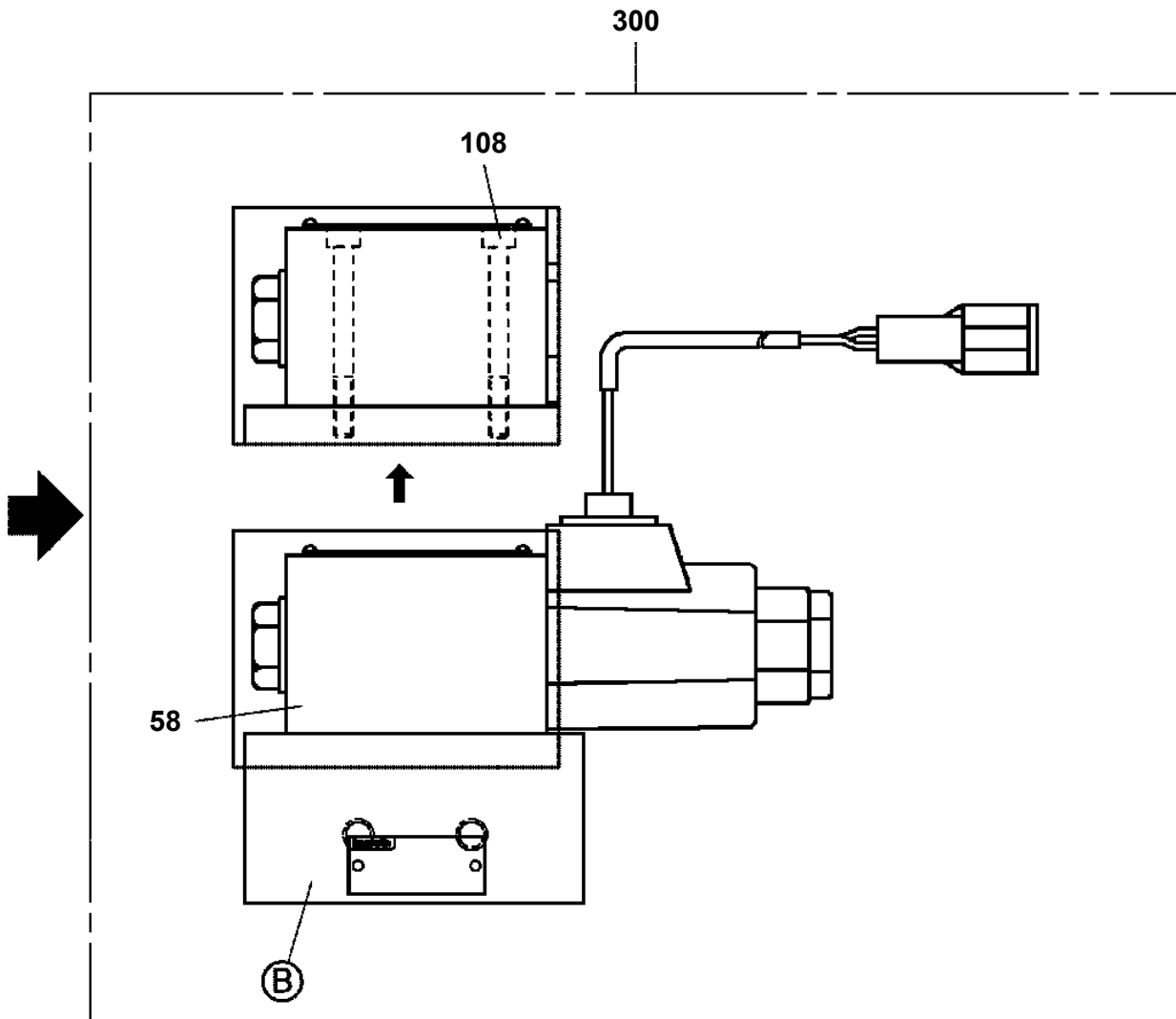
TR-300-4-00102 4 BOOM + 2 JIB, 1M1D

Pos No.	Parts No	Parts Name	Qty	Unit	Technical Data	Serial No (Start)	Serial No (End)	Re
100	34353412021	HARNESS (SWING FRAME,LEFT)	1					

TR-300-4-00102 4 BOOM + 2 JIB, 1M1D

Pos No.	Parts No	Parts Name	Qty	Unit	Technical Data	Serial No (Start)	Serial No (End)	Remarks
301	36663665420	BODY KIT	1				560937	
305	36663665430	ORIFICE	1					
306	36663665440	STOPPER	1					
307	36663665450	COVER	1				561984	
	36664105030	COVER	1			561985		
308	36663665460	PLUG	1					
309	36663665470	PLUG	1					
310	36663665480	SPRING	1					
311	36663925100	SPRING	1					
313	36663665500	VALVE	1					
314	36663665510	PLUG	1					
315	36663665520	SPRING	1					
316	91002800800	O-RING	1		1B P8			
317	91002802200	O-RING	1		1B P22			
318	91002804200	O-RING	1		1B P42			
319	91002903000	O-RING	2		1B G30			
320	90172110075	BOLT,HEXAGON SOCKET	6		M10X75			
321	90172110065	BOLT,HEXAGON SOCKET	4		M10X65			
322	90302041001	WASHER,SPRING	4		10		561984	
323	91002802600	O-RING	1		1B P26			
401	36663685130	FLANGE SET	1					
411	36663685120	FLANGE ASSY	1					
421	36663665210	PLUG	1					
438	91002801400	O-RING	1		1B P14			
441	80730050012	PIN	2		5X12			
443	90172114040	BOLT,HEXAGON SOCKET	8		M14X40			
450	36663685160	SEAL KIT	1					
464	36663685140	PLUG	1					
465	91002801800	O-RING	1		1B P18			
469	36663665240	PLUG	2					
470	91002801100	O-RING	2		1B P11			
471	36663685150	SPOOL	1					
500	36663680000	MOTOR,HYDRAULIC	1					

TR-300-4-00102 4 BOOM + 2 JIB, 1M1D
PI1120138-04 VALVE,SOLENOID



TR-300-4-00102 4 BOOM + 2 JIB, 1M1D

Pos No.	Parts No	Parts Name	Qty	Unit	Technical Data	Serial No (Start)	Serial No (End)	Remark
109	36642935060	O-RING	2				561310	
	36646085020	O-RING	2			561311		
115	90131505050	BOLT,HEXAGON SOCKET	4		M5X50		561310	
	36642935070	BOLT,HEXAGON SOCKET	4		M5X30	561311		
160	36640085015	RETAINER	2					
171	36640085025	SPRING	2					
213	36642935040	RING	4					
256	36602555010	O-RING	2					
257	36646085031	SOLENOID	2					
259	36649855100	O-RING	2					
263	36647895010	PROTECTOR	1				561310	
	36611665190	PLATE	1			561311		
300	36647890000	VALVE,SOLENOID (UCHIDA)	1					

TR-300-4-00102 4 BOOM + 2 JIB, 1M1D

Pos No.	Parts No	Parts Name	Qty	Unit	Technical Data	Serial No (Start)	Serial No (End)	Remarks
8	36642935040	RING	4					
9	36646085020	O-RING	2					
12	36646085031	SOLENOID	1					
15	90131505050	BOLT,HEXAGON SOCKET	4		M5X50			
101	36602555010	O-RING	1					
102	36649855100	O-RING	1					
200	36646085011	VALVE,SOLENOID	1					

TR-300-4-00102 4 BOOM + 2 JIB, 1M1D

Pos No.	Parts No	Parts Name	Qty	Unit	Technical Data	Serial No (Start)	Serial No (End)	Remarks	Page
3	36646725020	PLUG	1						
4	36646725030	PLUG	1						
5	36641605030	SPRING	1						
6	91002801800	O-RING	2		1B P18				
11	36740655010	SPOOL & BODY	1						
100	36740650000	VALVE, HYDRAULIC	1						

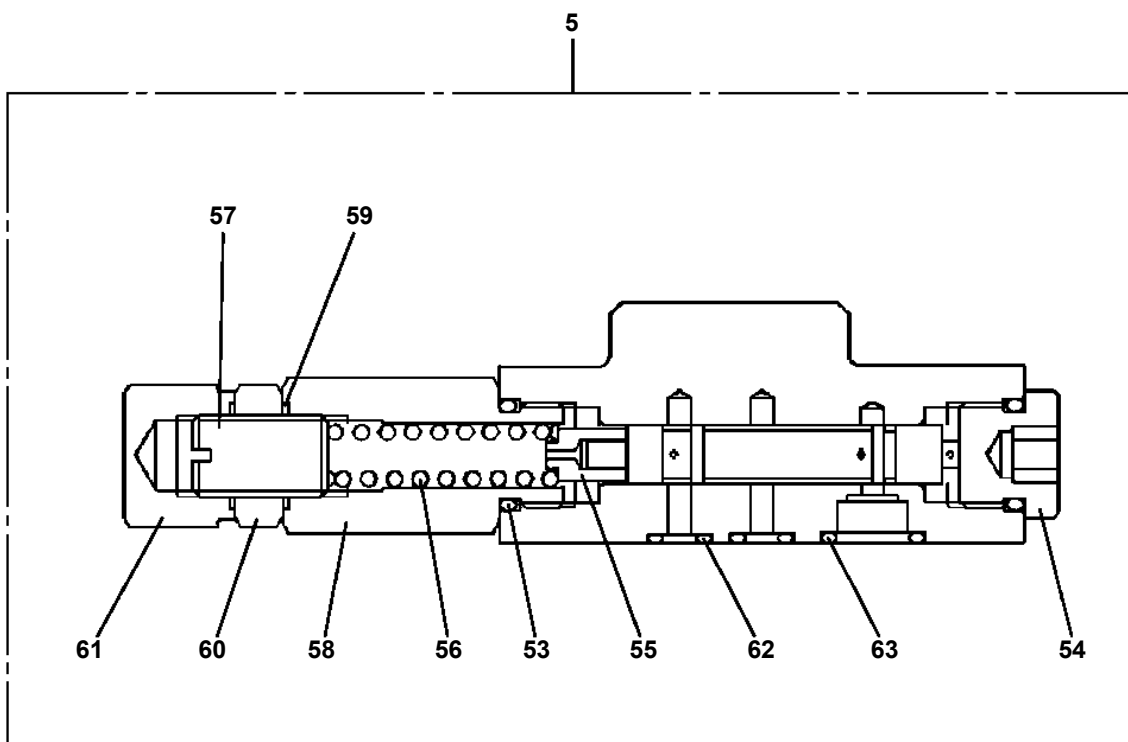
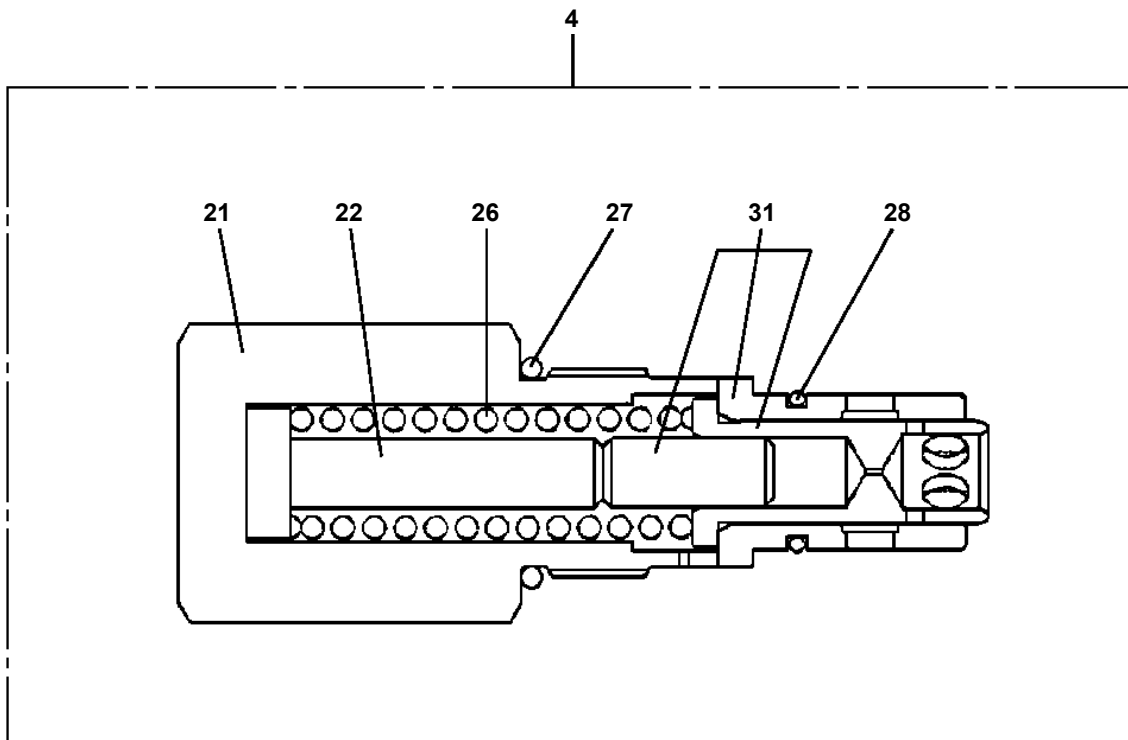
TR-300-4-00102 4 BOOM + 2 JIB, 1M1D

Pos No.	Parts No	Parts Name	Qty	Unit	Technical Data	Serial No (Start)	Serial No (End)	Remarks	Pages
1	36624535100	BODY	1						
2	36624525200	VALVE,CHECK	1						
3	36624525300	SPRING	1						
4	91002801800	O-RING	1		1B P18				
5	36624525500	PLUG	1						
6	36624525600	COLLAR	1						
30	36624530000	VALVE,CHECK	1						

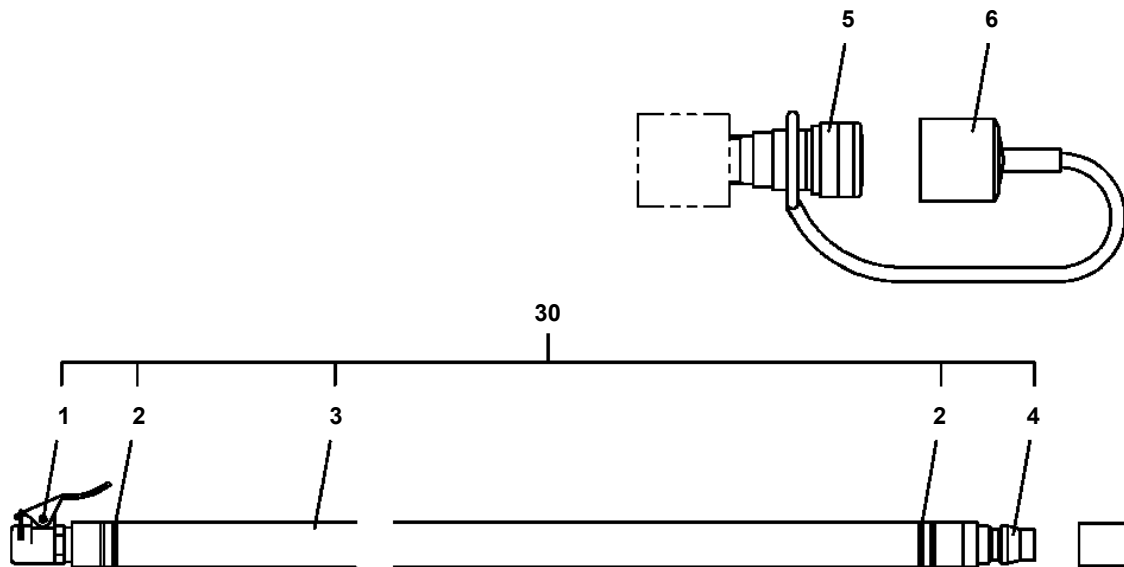
TR-300-4-00102 4 BOOM + 2 JIB, 1M1D

Pos No.	Parts No	Parts Name	Qty	Unit	Technical Data	Serial No (Start)	Serial No (End)	Remarks	Pages
2	36624085200	PLUG	3						
4	36621305020	SPRING	3						
5	91002801600	O-RING	3		1B P16				
7	36646127500	PLUG	1						
8	91002801100	O-RING	1		1B P11				
50	36625120000	VALVE,CHECK	1						

TR-300-4-00102 4 BOOM + 2 JIB, 1M1D
PI1270012-01 VALVE,SEQUENCE



TR-300-4-00102 4 BOOM + 2 JIB, 1M1D
PI5140001-00 INFLATOR,AIR



CLICK HERE TO **DOWNLOAD** THE COMPLETE MANUAL

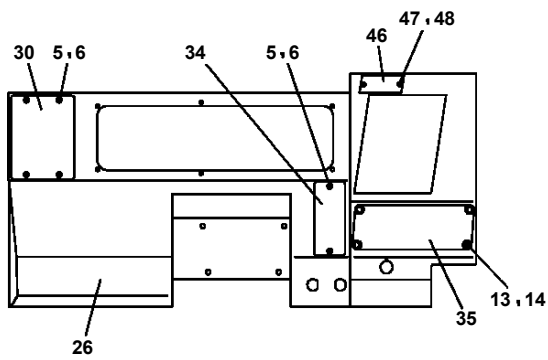
- Thank you very much for reading the preview of the manual.
- You can download the complete manual from: www.heydownloads.com by clicking the link below



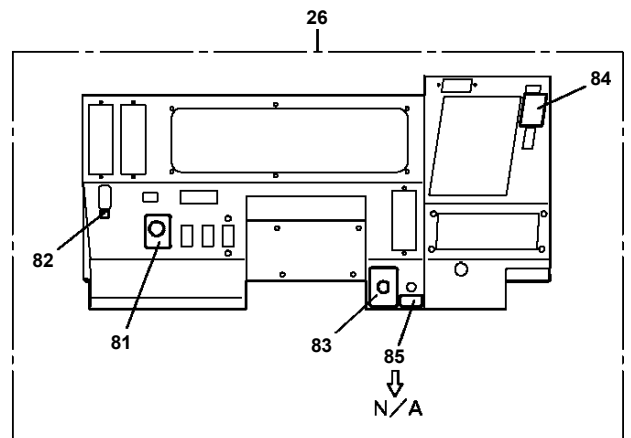
- Please note: If there is no response to CLICKING the link, please download this PDF first and then click on it.

CLICK HERE TO **DOWNLOAD** THE COMPLETE MANUAL

TR-300-4-00102 4 BOOM + 2 JIB, 1M1D
PK1120221-01 SWING TABLE



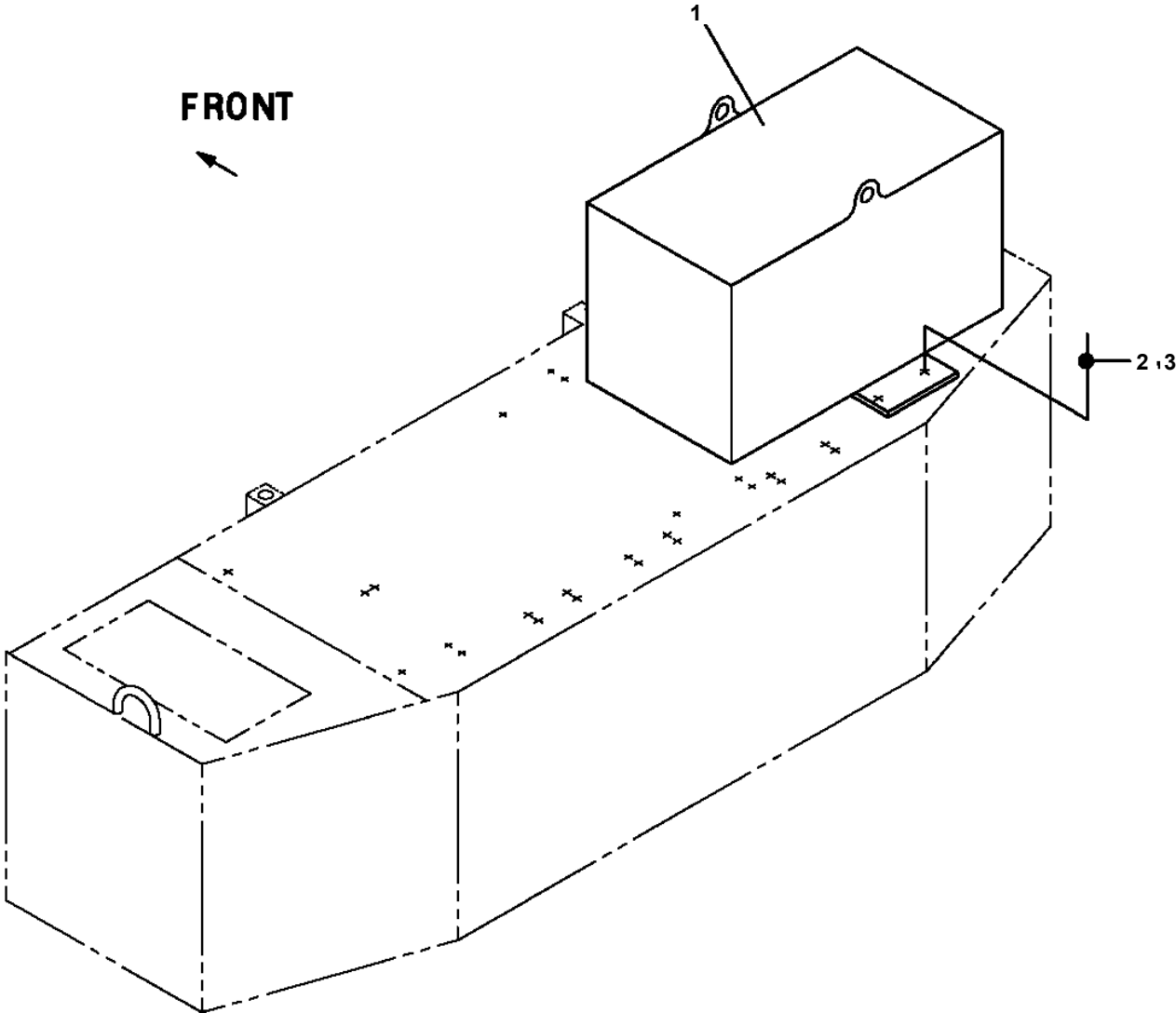
A



TR-300-4-00102 4 BOOM + 2 JIB, 1M1D

Pos No.	Parts No	Parts Name	Qty	Unit	Technical Data	Serial No (Start)	Serial
1	34260957530	COVER (FRONT)	1				
2	34260639130	SCREW	4				
3	34260957540	RAIL ASSY (REAR)	1				
4	34260957770	INNER (REAR RAIL)	1				
5	34260957771	GUIDE	1				
6	90131906016	BOLT,HEXAGON SOCKET	2		M6X16		
7	90303130601	WASHER,PLAIN	2		6		
8	90302040601	WASHER,SPRING	2		6		
9	90131908020	BOLT,HEXAGON SOCKET	5		M8X20		
10	90303130801	WASHER,PLAIN	5		8		
11	90302040801	WASHER,SPRING	5		8		
12	34260957550	LINER (REAR RAIL)	1				
13	34260957772	SEAL,FASTENER	5				
14	90240200600	NUT,CAP	5		M6		
15	34260957560	LINER (LOWER RAIL)	1				
16	34260957772	SEAL,FASTENER	6				
17	90240200600	NUT,CAP	6		M6		
18	34260957570	COVER	1				
19	34260957773	COVER (FUSE BOX)	1				
20	90305000601	WASHER	14		6		
21	80186406016	SCREW,MACHINE	14		M6X16		
22	34260957580	HANGER	1				
23	80192488020	SCREW,MACHINE	2		M8X20		
24	34260957590	LAMP ASSY (ROOM)	2				
25	34261817540	SCREW,MACHINE	4		M5X20		
26	34260952350	WEATHER STRIP	1				
27	34260952180	GLASS (FRONT)	1				
28	34260957774	TRIM (FRONT,T=6.8)	1				
29	34260957775	WEDGE (FRONT)	1				
30	34260952190	GLASS (ROOF)	1				
31	34260957776	TRIM (ROOF,T=10)	1				
32	34260957777	WEDGE (ROOF)	1				
33	34260952200	GLASS (LEFT-FRONT)	1				
34	34260957778	TRIM (LEFT-FRONT,T=4)	1				
35	34260957779	WEDGE (LEFT-FRONT)	1				
36	34260952210	GLASS (LEFT REAR)	1				
37	34260957780	TRIM (LEFT-REAR,T=4)	1				
38	34260957781	WEDGE (LEFT-REAR)	1				
39	34260952220	GLASS (REAR)	1				
40	34260957782	TRIM (REAR T=4)	1				
41	34260957783	WEDGE (REAR)	1				
42	34260952230	SASH	1				56152
43	34260957784	RUBBER (U)	1				
44	34260361200	MOTOR,WIPER	1				56122
	34260361200	MOTOR,WIPER	2			561222	
45	34260657640	SCREW,MACHINE (WITH SW,PW)	4		M6X16		56122
	34260657640	SCREW,MACHINE (WITH SW,PW)	8		M6X16	561222	
46	34260313210	ARM ASSY (WIPER)	1				
47	34260233220	BLADE,WIPER	1				56108
	34260233221	BLADE,WIPER	2			561085	
48	34260957610	SUPPORT	1				
49	99172106016	BOLT,TAPPING	2		M6X16		
50	34260233200	MOTOR,WIPER (WITH/LINK)	1				56122
51	34260657640	SCREW,MACHINE (WITH SW,PW)	4		M6X16		56122
52	34260313210	ARM ASSY (WIPER)	1				
53	34260233220	BLADE,WIPER	1				56108
54	34260581210	NOZZLE	2				
55	19218101010	VALVE,CHECK	2				
56	34260637950	TUBE	2		6X4,L=3000		
57	34260035230	SUSPENDER,SLIDE	2				
58	80192488016	SCREW,MACHINE	2		M8X16		
59	82100000537	SWITCH (DOOR)	1				56098
	34260957830	SWITCH (DOOR)	1			560987	

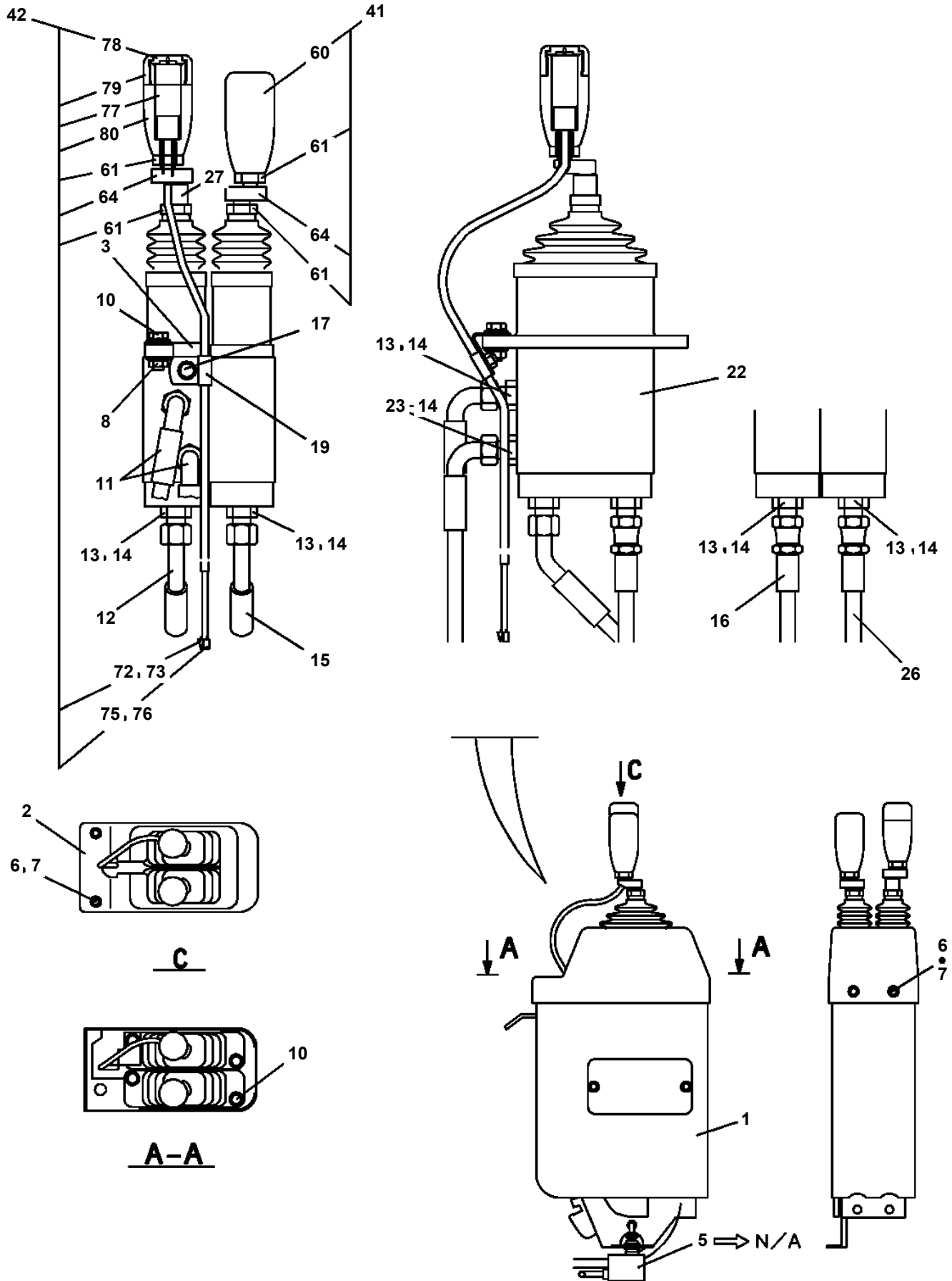
TR-300-4-00102 4 BOOM + 2 JIB, 1M1D
PK1230082-00 WEIGHT (AUX.WINCH,BALANCE)



TR-300-4-00102 4 BOOM + 2 JIB, 1M1D

Pos No.	Parts No	Parts Name	Qty	Unit	Technical Data	Serial No (Start)	Serial No (End)	Rem
1	99171108020	BOLT,TAPPING	10		M8X20		560905	
	99171108020	BOLT,TAPPING	8		M8X20	560906		
2	34320902700	CLAMP	7					
3	80400160127	JOINT	6					
4	91002801100	O-RING	9		1B P11			
5	80441010906	FITTING	1					
7	89640102000	HOSE	1		880-NFK,2M			
8	34322233000	ROD ASSY	1					
9	34322233500	ROD ASSY	1					
10	80441030904	FITTING,ELBOW (WITH O-RING)	1		L,G1/4-12.7			
11	80430620400	JOINT	4				560805	
	80430620400	JOINT	3			560806		
12	34321966000	PEDAL ASSY	2					
13	90180208020	BOLT,BUTTON	4		M8X20			
14	80186406016	SCREW,MACHINE	7		M6X16			
15	90305260601	WASHER	7		B1-6			
16	34322383000	SUPPORT	2					
17	90186208020	BOLT,FLANGE	20		M8X20			
18	34322235000	COVER	1					
19	(*****)	BOX,OPERATION	1					
20	90101208055	BOLT	2		M8X55			
21	90302040801	WASHER,SPRING	6		8			
22	34320903000	JOINT	1					
23	99172108020	BOLT,TAPPING	8		M8X20			
24	34322235500	LEVER ASSY	1					
25	34322236001	SUPPORT	1					
26	36638060000	VALVE,CONTROL	1					
27	91810130250	FASTENER	1				560905	
	91810130250	FASTENER	2			560906		
28	(*****)	BOX,OPERATION	1					
29	34322234500	COVER	1					
32	37000105730	PIN	4					
33	80136320016	PIN,SPLIT	4		2X16			
34	90303070801	WASHER,PLAIN	12		8			
35	37000582110	PLATE	4					
36	34321025100	CLAMP	2				560905	
	34321025100	CLAMP	3			560906		
37	82135901901	BAND,MARK (1)	6					
38	82135901902	BAND,MARK (2)	6					
39	82135901903	BAND,MARK (3)	2					
40	82135901904	BAND,MARK (4)	2					
41	82135901954	BAND,MARK (D)	4					
42	82135901966	BAND,MARK (P)	6					
43	82135901969	BAND,MARK (S)	4					
44	82135901970	BAND,MARK (T)	4					
45	82135901973	BAND,MARK (W)	8					
46	34320902600	GROMMET	2					
47	36672530000	FILTER (WITH O-RING)	2				560805	
	36672530000	FILTER (WITH O-RING)	3			560806		
48	37000919390	JOINT (ORIFICE)	1		1.0			
49	37002448610	HOSE	1		L=1250			
50	82100002039	CLAMP	1					
51	90280200800	NUT,FLANGE	5		M8			
53	37000302040	SPACER	4		L=10			
54	80481002030	JOINT	2		S,G1/4-G3/8			
55	90186208025	BOLT,FLANGE	4		M8X25		560905	
	90186208025	BOLT,FLANGE	6		M8X25	560906		
56	42352500030	CONNECTOR	1			560698		
71	91002801400	O-RING	1		1B P14			
91	80565000082	END	2					
92	90291200800	NUT	2		M8			
93	90302040801	WASHER,SPRING	4		8			
95	90201200800	NUT	4		M8			

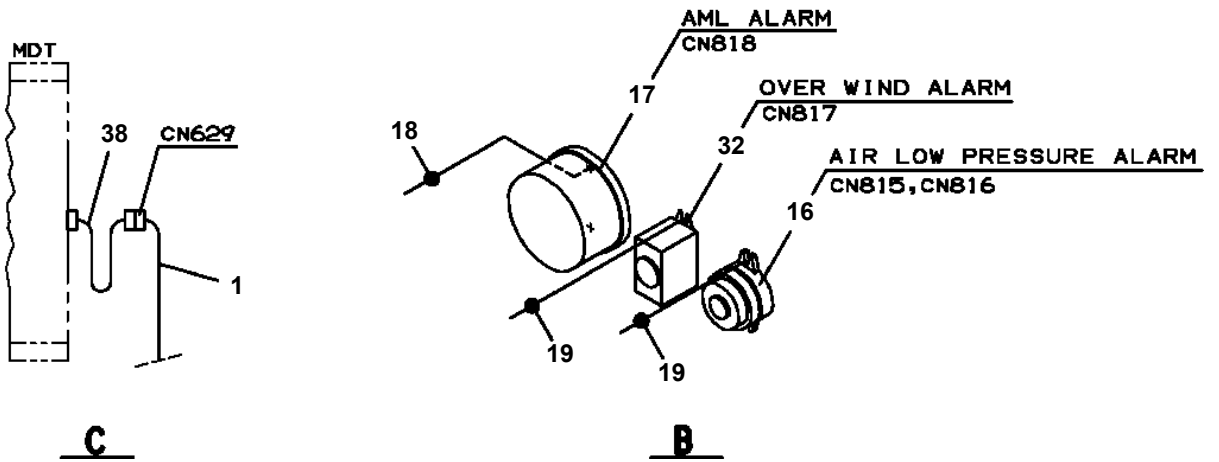
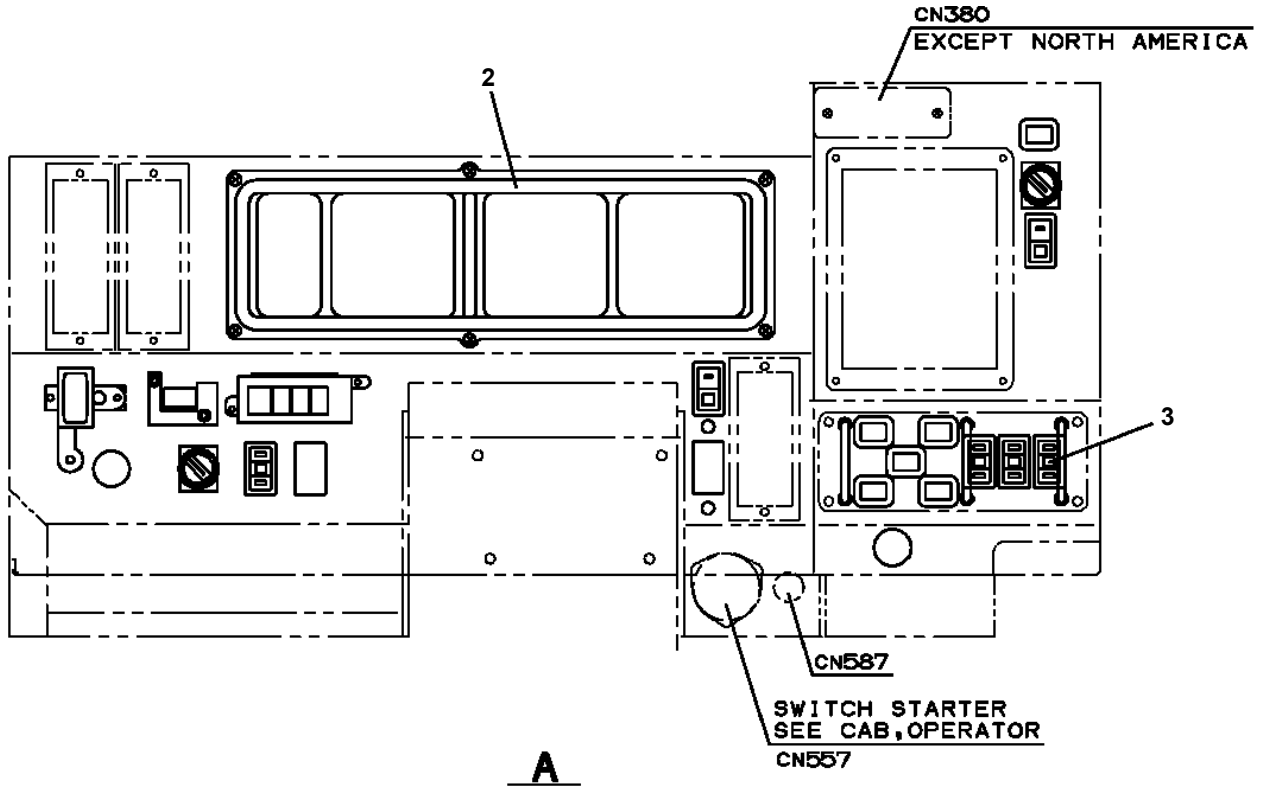
**TR-300-4-00102 4 BOOM + 2 JIB, 1M1D
 PL1100243-00 BOX, OPERATION**



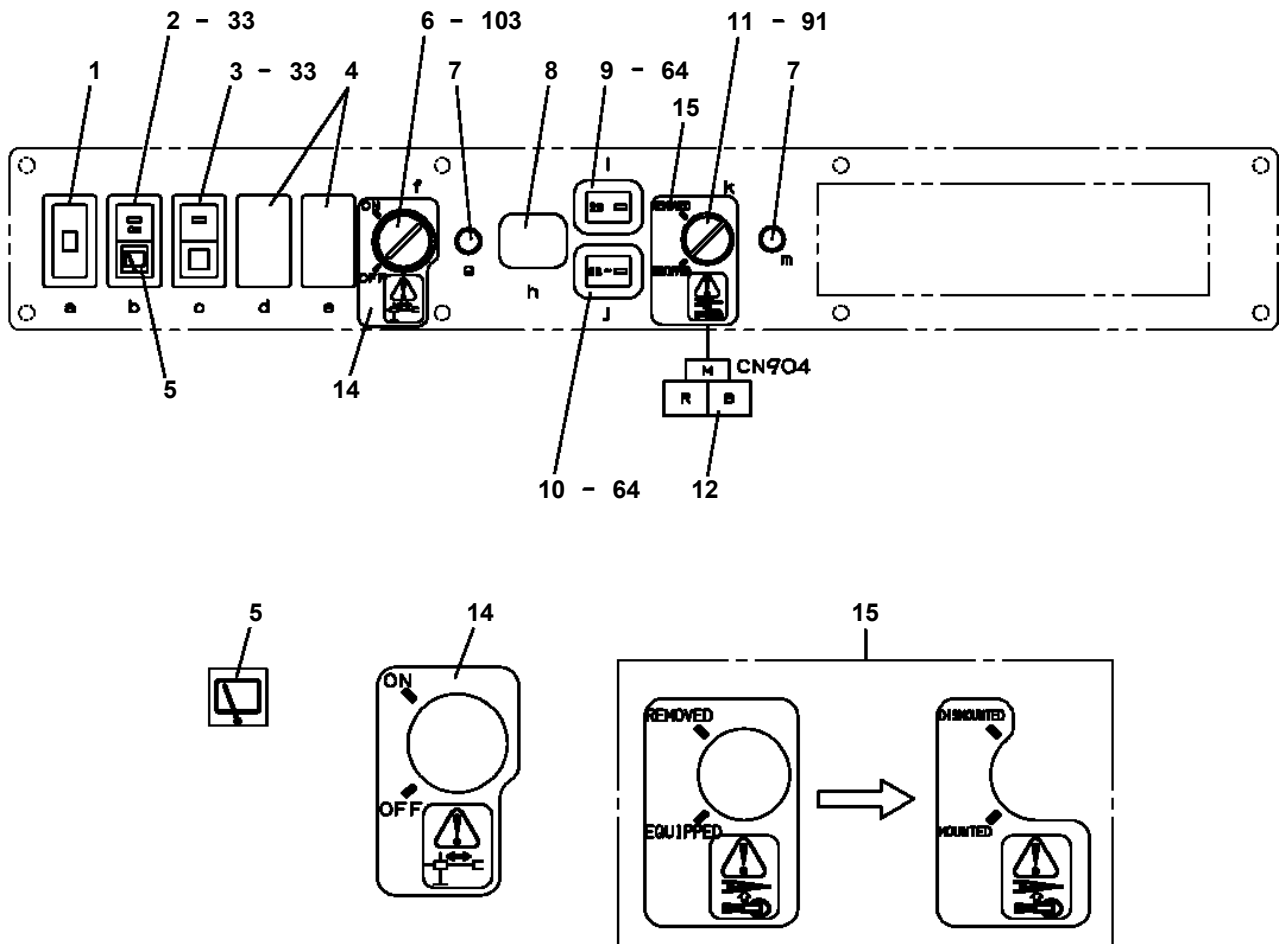
TR-300-4-00102 4 BOOM + 2 JIB, 1M1D

Pos No.	Parts No	Parts Name	Qty	Unit	Technical Data	Serial No (Start)	Serial No (End)
1	34353411010	HARNESS	1				
2	(*****)	SWITCH PANEL (1)	1				
3	(*****)	SWITCH PANEL (2)	1				
4	(*****)	SWITCH PANEL (3)	1				
8	(*****)	RELAY ASSY	1				
10	82100001883	RELAY (INTERMIT WIPER)	1				560785
11	82100002311	RELAY (FLASHER UNIT)	1				
12	82183901010	CONDENSER	4				
16	34351490300	BUZZER ASSY (WITH HARNESS)	1				
17	34352181600	BUZZER ASSY	1				
18	80175304010	SCREW,MACHINE	2		M4X10		
19	80192484010	SCREW,MACHINE	4		M4X10		
22	90280200600	NUT,FLANGE	10		M6		
23	99172106016	BOLT,TAPPING	18		M6X16		560785
	99172106016	BOLT,TAPPING	16		M6X16	560786	
24	42433932200	SWITCH ASSY (WITH HARNESS,1 SW)	1				
25	82100002019	CLAMP	1		WR40		
26	82100002017	CLAMP	5		WR30		
27	82100002016	CLAMP	8		WR25		
28	82100002014	CLAMP	1		WR20		
30	82100002006	CLAMP	1		WR10		
32	34350850530	BUZZER ASSY (WITH HARNESS)	1				
33	34351501100	CONVERTER (DC-DC)	1				
34	80172304020	SCREW,MACHINE	6		M4X20		
35	90302040401	WASHER,SPRING	6		4		
36	90303100401	WASHER,PLAIN	6		4		
37	91810130240	FASTENER	1			560792	

TR-300-4-00102 4 BOOM + 2 JIB, 1M1D
 PN1014548-01 ELEC.ASSY (CAB)

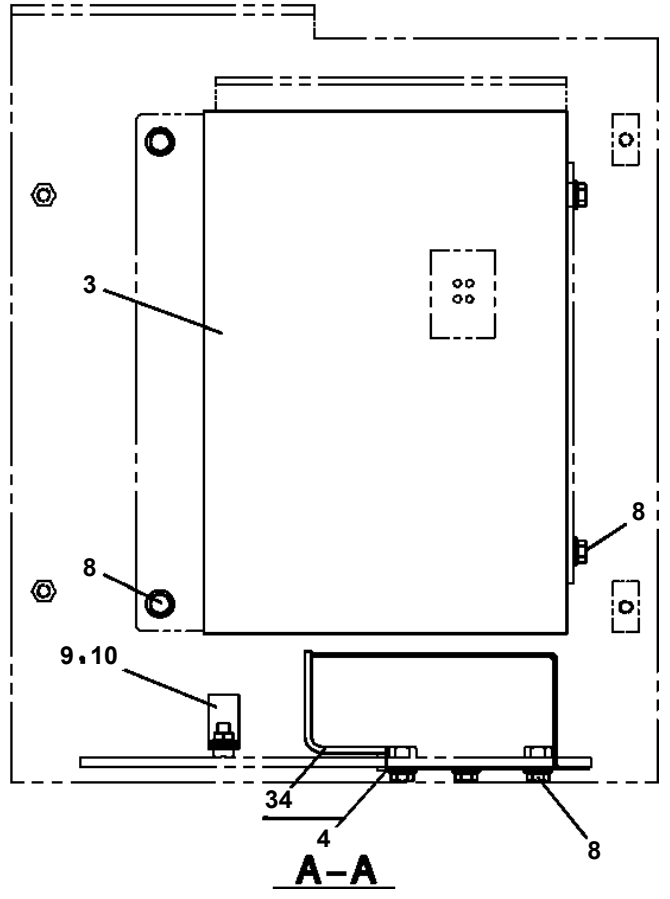
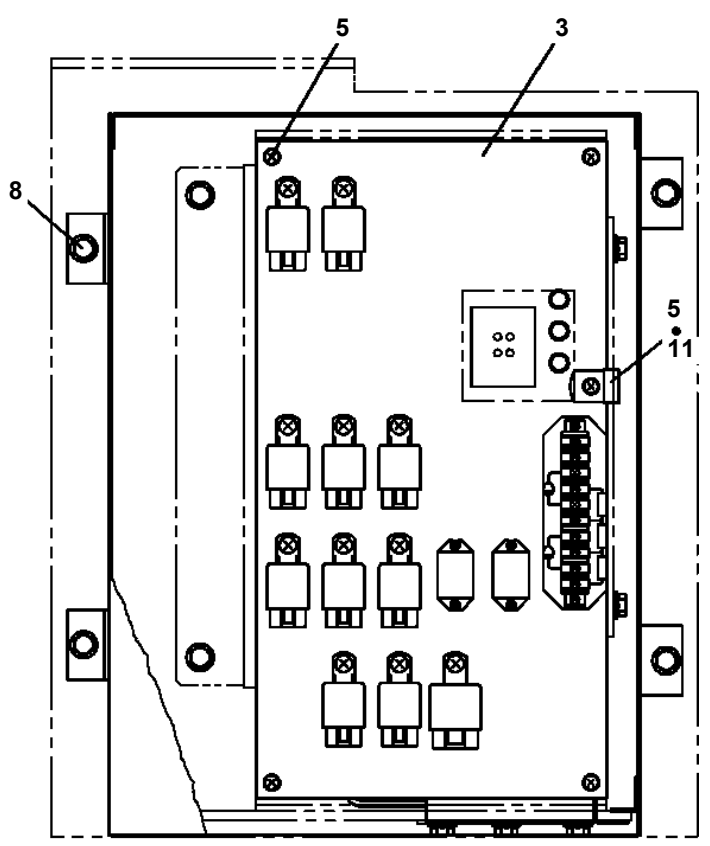
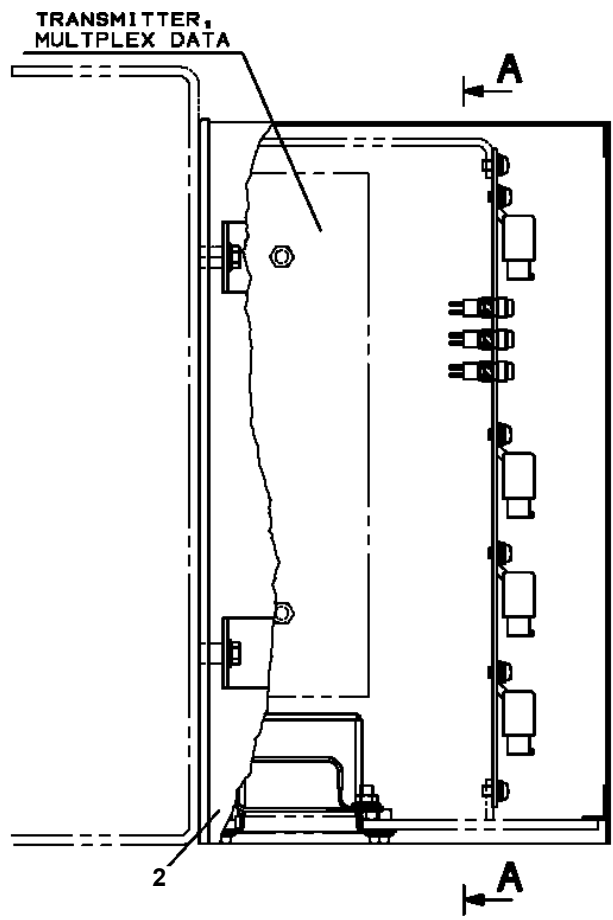


**TR-300-4-00102 4 BOOM + 2 JIB, 1M1D
PN1060202-02 SWITCH PANEL (3)**



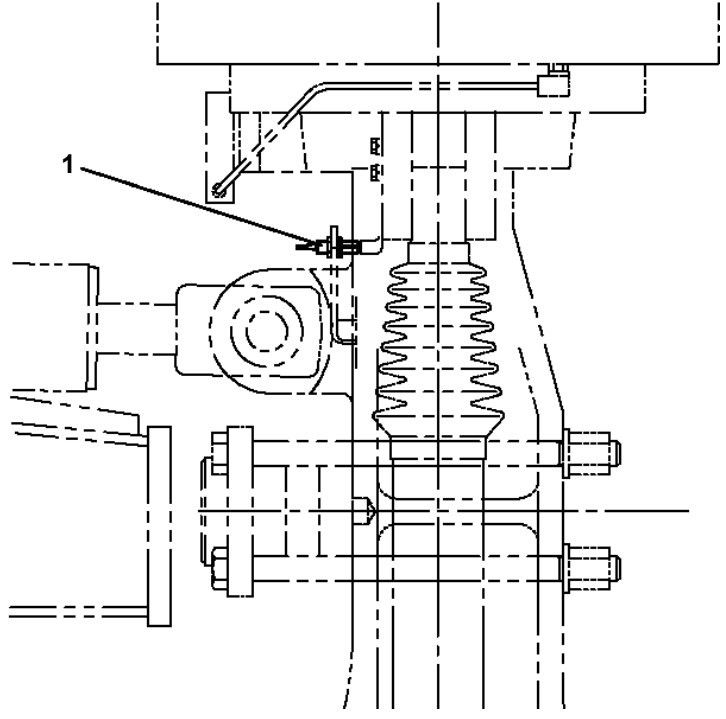
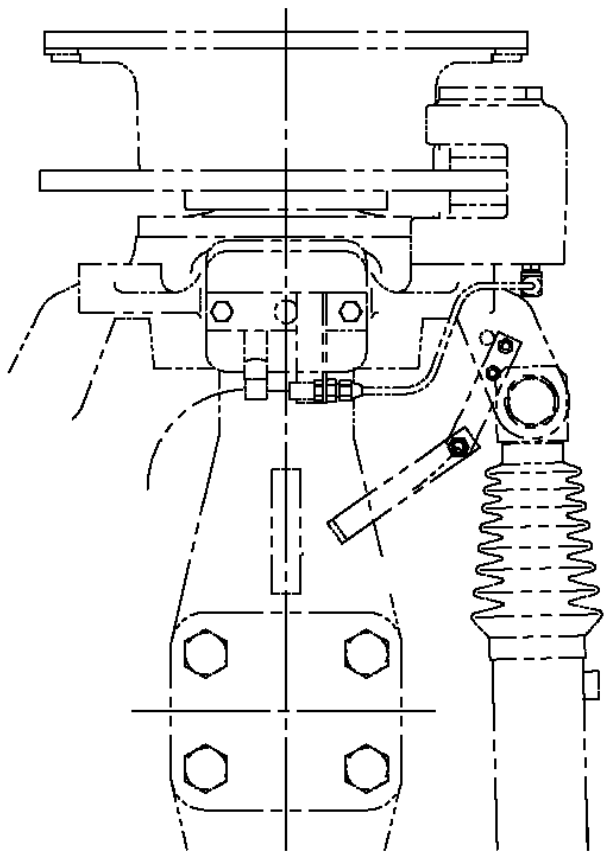
MARK	NAME	CN. NO
a	ROOF WASHER	(CN495)
b	ROOF WIPER	CN468
c	WORKING LAMP	CN470
d	CAP	-
e	CAP	-
f	OUTRIGGER STATE EMERGENCY REGISTER	CN907
g	OUTRIGGER STATE EMERGENCY REGISTER INDICATOR LAMP	(CN908) (CN909)
h	CAP	(CN939)
i	2ND BOOM EMERGENCY TELESCOPING	(CN504)
j	3RD/TOP BOOM EMERGENCY TELESCOPING	(CN503)
k	JIB STATE	CN904
m	JIB STATE LAMP	(CN905) (CN906)

TR-300-4-00102 4 BOOM + 2 JIB, 1M1D
 PN1110396-00 RELAY ASSY



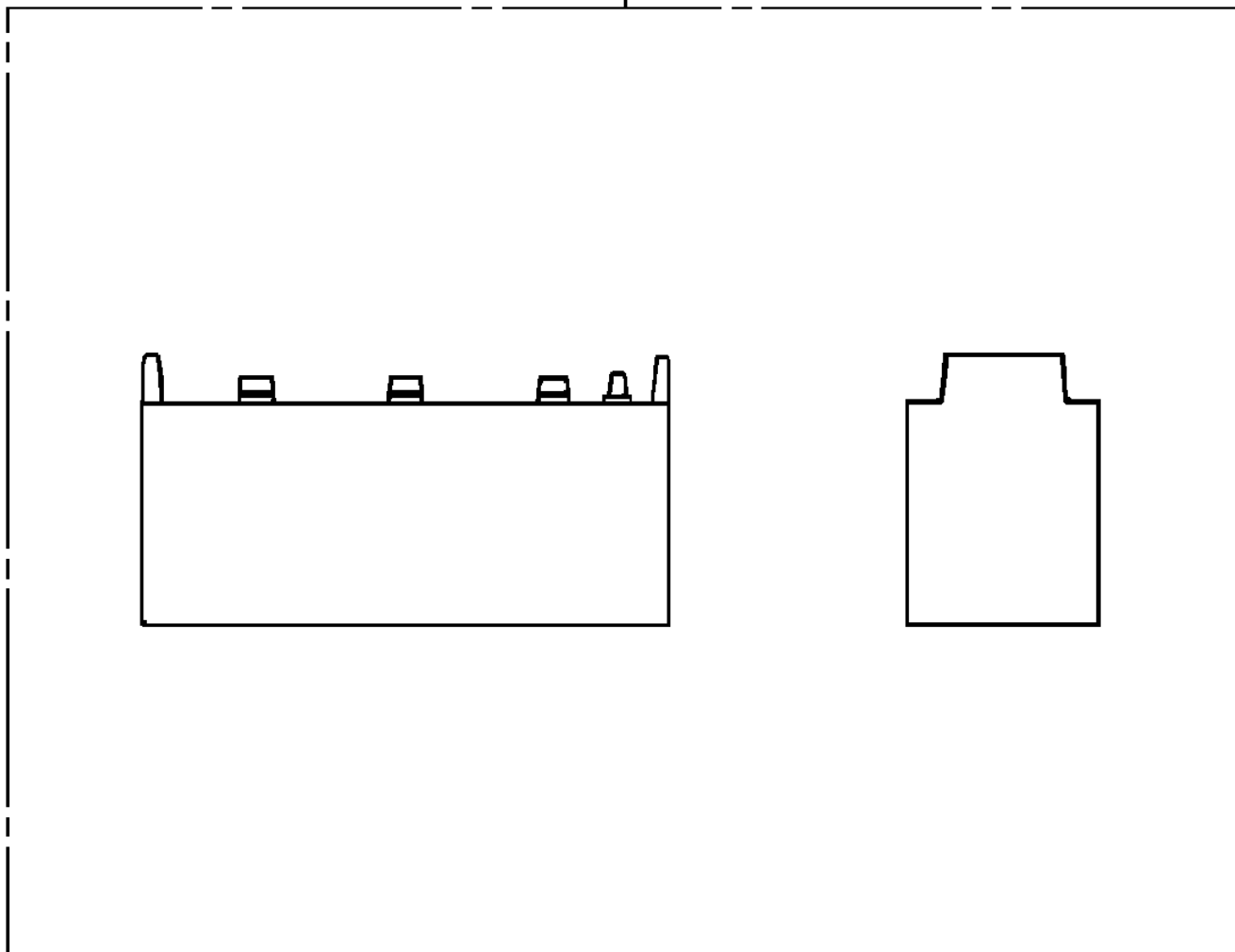
**TR-300-4-00102 4 BOOM + 2 JIB, 1M1D
PN1140068-00 SWITCH,DETECTOR (STRAIGHT FORWARD)**

←
FRONT

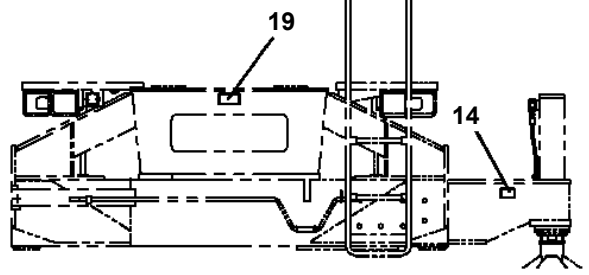
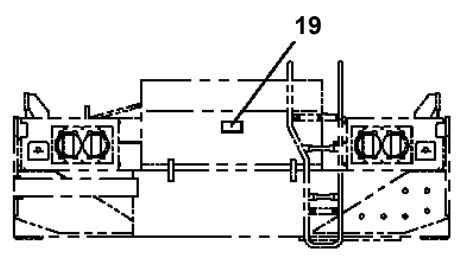
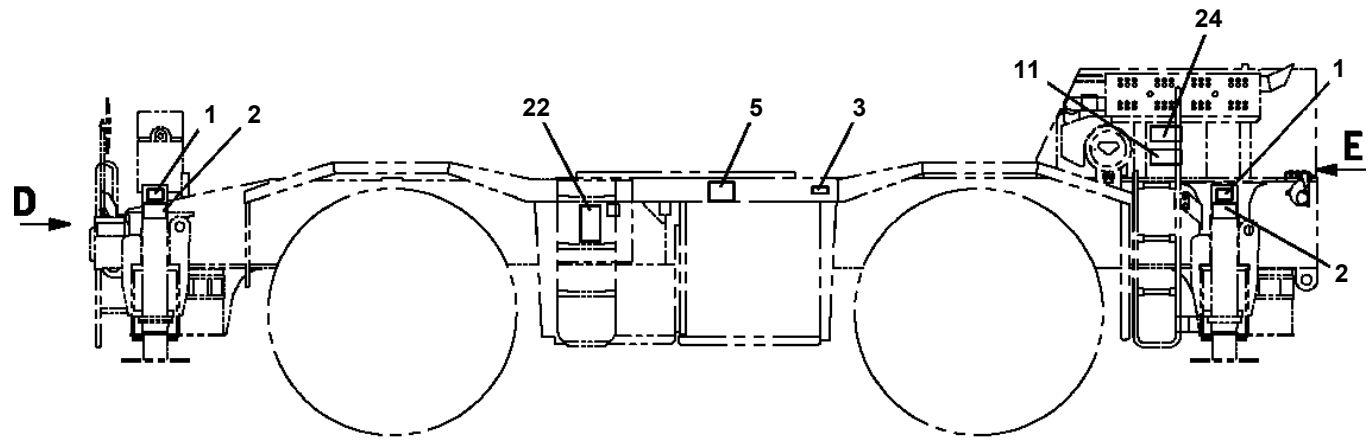
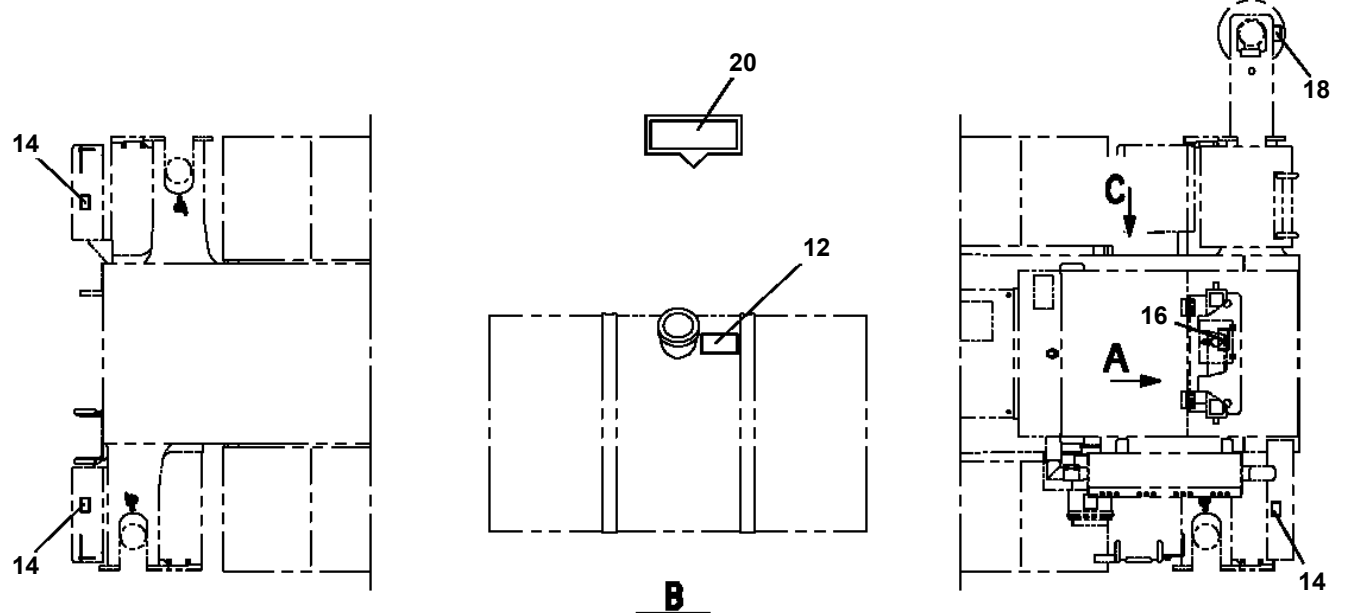
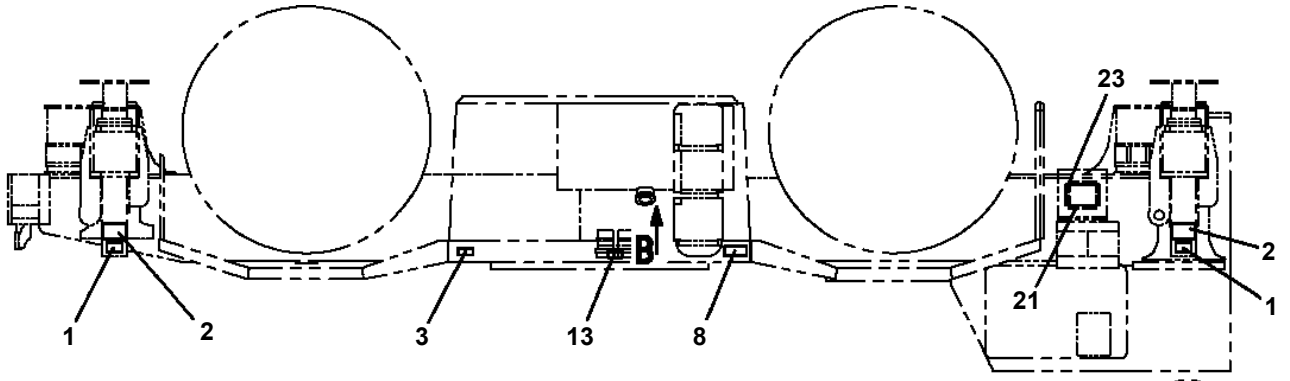


TR-300-4-00102 4 BOOM + 2 JIB, 1M1D
PN1370123-00 BATTERY (YUASA,145F51)

1



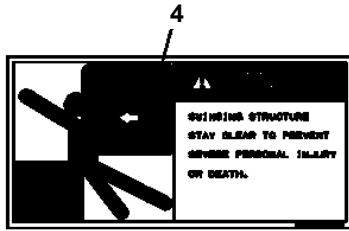
TR-300-4-00102 4 BOOM + 2 JIB, 1M1D
 PO1014192-00 PLATE ASSY,NAME (LOWER)



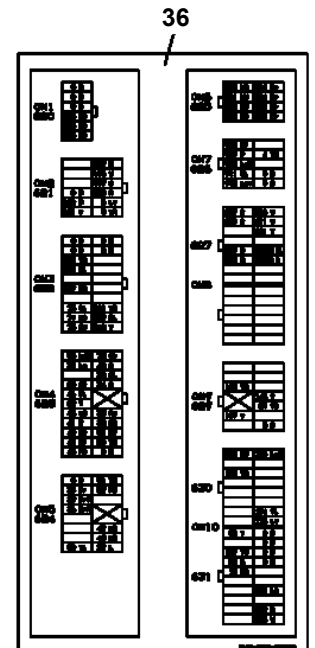
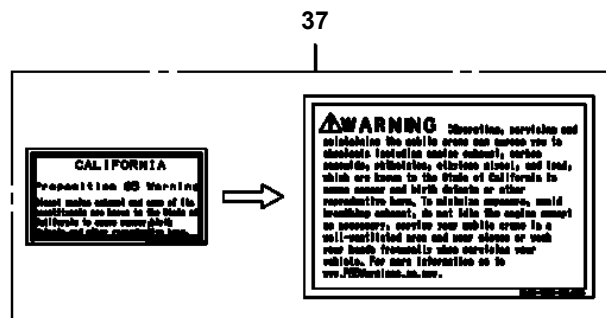
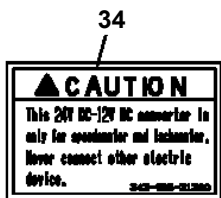
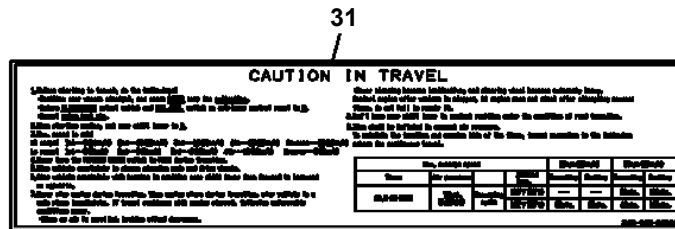
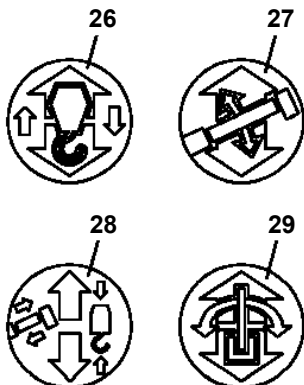
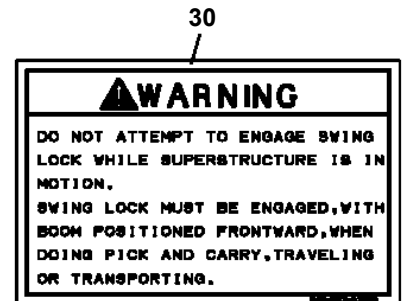
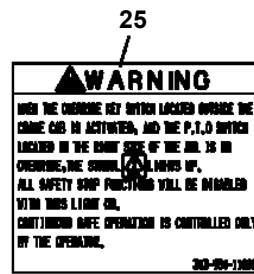
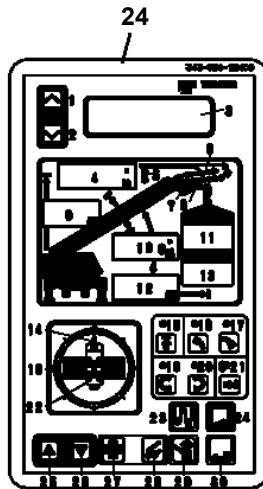
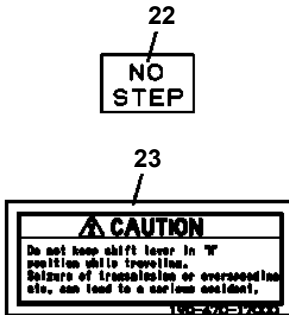
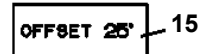
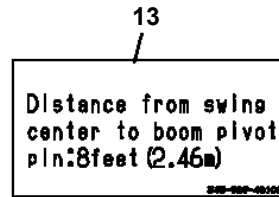
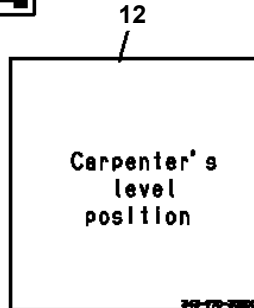
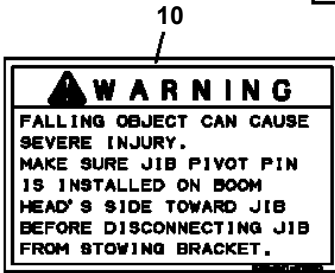
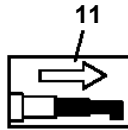
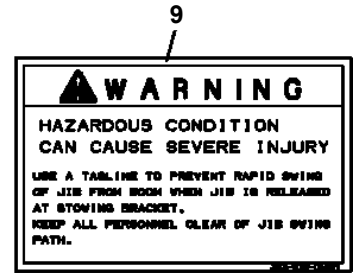
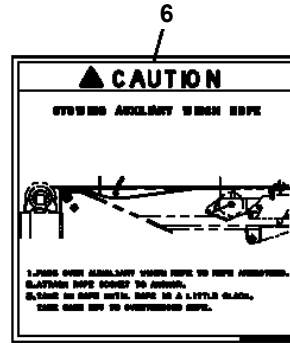
D

E

TR-300-4-00102 4 BOOM + 2 JIB, 1M1D
 PO1014729-02 PLATE ASSY,NAME (UPPER,FOR CANADA)



TR-300XL



TR-300-4-00102 4 BOOM + 2 JIB, 1M1D

Pos No.	Parts No	Parts Name	Qty	Unit	Technical Data	Serial No (Start)	Serial No (End)	Remarks	Pages
1	34394243100	PLATE,NAME	1						

TR-300-4-00102 4 BOOM + 2 JIB, 1M1D PO1060131-00 LOAD CHART BOOKLET

13

TR-300KL RATED LIFTING CAPACITIES (IN METRIC TONS)
ON OUTRIGGERS AND EXTENDED 2.0x SPEED
JIB SECTION

JIB LENGTH (m)	JIB WEIGHT (kg)				JIB CENTER OF GRAVITY (m)			
	4.5m	6.0m	7.5m	9.0m	1.5m	2.0m	3.0m	4.0m
1.5	1.0	1.5	2.0	2.5	0.5	0.7	1.0	1.3
3.0	2.0	3.0	4.0	5.0	1.0	1.4	2.0	2.7
4.5	3.0	4.5	6.0	7.5	1.5	2.1	3.0	4.0
6.0	4.0	6.0	8.0	10.0	2.0	2.8	4.0	5.3
7.5	5.0	7.5	10.0	12.5	2.5	3.5	5.0	6.7
9.0	6.0	9.0	12.0	15.0	3.0	4.2	6.0	8.0

343-969-41140

TR-300KL RATED LIFTING CAPACITIES (IN METRIC TONS)
ON OUTRIGGERS AND EXTENDED 2.0x SPEED
JIB SECTION

JIB LENGTH (m)	JIB WEIGHT (kg)				JIB CENTER OF GRAVITY (m)			
	4.5m	6.0m	7.5m	9.0m	1.5m	2.0m	3.0m	4.0m
1.5	1.0	1.5	2.0	2.5	0.5	0.7	1.0	1.3
3.0	2.0	3.0	4.0	5.0	1.0	1.4	2.0	2.7
4.5	3.0	4.5	6.0	7.5	1.5	2.1	3.0	4.0
6.0	4.0	6.0	8.0	10.0	2.0	2.8	4.0	5.3
7.5	5.0	7.5	10.0	12.5	2.5	3.5	5.0	6.7
9.0	6.0	9.0	12.0	15.0	3.0	4.2	6.0	8.0

343-969-41150

14

TR-300KL RATED LIFTING CAPACITIES (IN METRIC TONS)
ON OUTRIGGERS AND EXTENDED 2.0x SPEED
JIB SECTION

JIB LENGTH (m)	JIB WEIGHT (kg)				JIB CENTER OF GRAVITY (m)			
	4.5m	6.0m	7.5m	9.0m	1.5m	2.0m	3.0m	4.0m
1.5	1.0	1.5	2.0	2.5	0.5	0.7	1.0	1.3
3.0	2.0	3.0	4.0	5.0	1.0	1.4	2.0	2.7
4.5	3.0	4.5	6.0	7.5	1.5	2.1	3.0	4.0
6.0	4.0	6.0	8.0	10.0	2.0	2.8	4.0	5.3
7.5	5.0	7.5	10.0	12.5	2.5	3.5	5.0	6.7
9.0	6.0	9.0	12.0	15.0	3.0	4.2	6.0	8.0

343-969-41160

TR-300KL RATED LIFTING CAPACITIES (IN METRIC TONS)
ON OUTRIGGERS AND EXTENDED 2.0x SPEED
JIB SECTION

JIB LENGTH (m)	JIB WEIGHT (kg)				JIB CENTER OF GRAVITY (m)			
	4.5m	6.0m	7.5m	9.0m	1.5m	2.0m	3.0m	4.0m
1.5	1.0	1.5	2.0	2.5	0.5	0.7	1.0	1.3
3.0	2.0	3.0	4.0	5.0	1.0	1.4	2.0	2.7
4.5	3.0	4.5	6.0	7.5	1.5	2.1	3.0	4.0
6.0	4.0	6.0	8.0	10.0	2.0	2.8	4.0	5.3
7.5	5.0	7.5	10.0	12.5	2.5	3.5	5.0	6.7
9.0	6.0	9.0	12.0	15.0	3.0	4.2	6.0	8.0

343-969-41170

15

TR-300KL RATED LIFTING CAPACITIES (IN METRIC TONS)
ON OUTRIGGERS AND EXTENDED 2.0x SPEED
JIB SECTION

JIB LENGTH (m)	JIB WEIGHT (kg)				JIB CENTER OF GRAVITY (m)			
	4.5m	6.0m	7.5m	9.0m	1.5m	2.0m	3.0m	4.0m
1.5	1.0	1.5	2.0	2.5	0.5	0.7	1.0	1.3
3.0	2.0	3.0	4.0	5.0	1.0	1.4	2.0	2.7
4.5	3.0	4.5	6.0	7.5	1.5	2.1	3.0	4.0
6.0	4.0	6.0	8.0	10.0	2.0	2.8	4.0	5.3
7.5	5.0	7.5	10.0	12.5	2.5	3.5	5.0	6.7
9.0	6.0	9.0	12.0	15.0	3.0	4.2	6.0	8.0

343-969-41180

WEIGHT REDUCTIONS FOR AUXILIARY LOAD HANDLING EQUIPMENT

Equipment	Weight (kg)	CG (m)
Winch	100	1.0
Hoist	200	1.5
Block	50	0.5
Hook	20	0.2

HOISTING PERFORMANCE

Load (kg)	Speed (m/min)
1000	10
2000	5
3000	3
4000	2

343-969-41190

16

TR-300KL WORKING RANGE CHART

343-969-41200

WARNINGS AND OPERATING INSTRUCTIONS (I)

1. Read and understand all warnings and operating instructions before operating the crane.
2. Only qualified personnel should operate the crane.
3. Do not exceed the rated lifting capacity of the crane.
4. Do not use the crane for purposes other than those intended.
5. Do not use the crane in adverse weather conditions.
6. Do not use the crane on uneven or unstable ground.
7. Do not use the crane in the presence of high winds.
8. Do not use the crane in the presence of lightning.
9. Do not use the crane in the presence of other cranes.
10. Do not use the crane in the presence of power lines.
11. Do not use the crane in the presence of other hazards.
12. Do not use the crane in the presence of other equipment.
13. Do not use the crane in the presence of other personnel.
14. Do not use the crane in the presence of other loads.
15. Do not use the crane in the presence of other risks.

343-969-41210

TR-300-4-00102 4 BOOM + 2 JIB, 1M1D

Pos No.	Parts No	Parts Name	Qty	Unit	Technical Data	Serial No (Start)	Serial No (End)	Remarks	Page
30	36361280001	ENGINE (CUMMINS)	1						

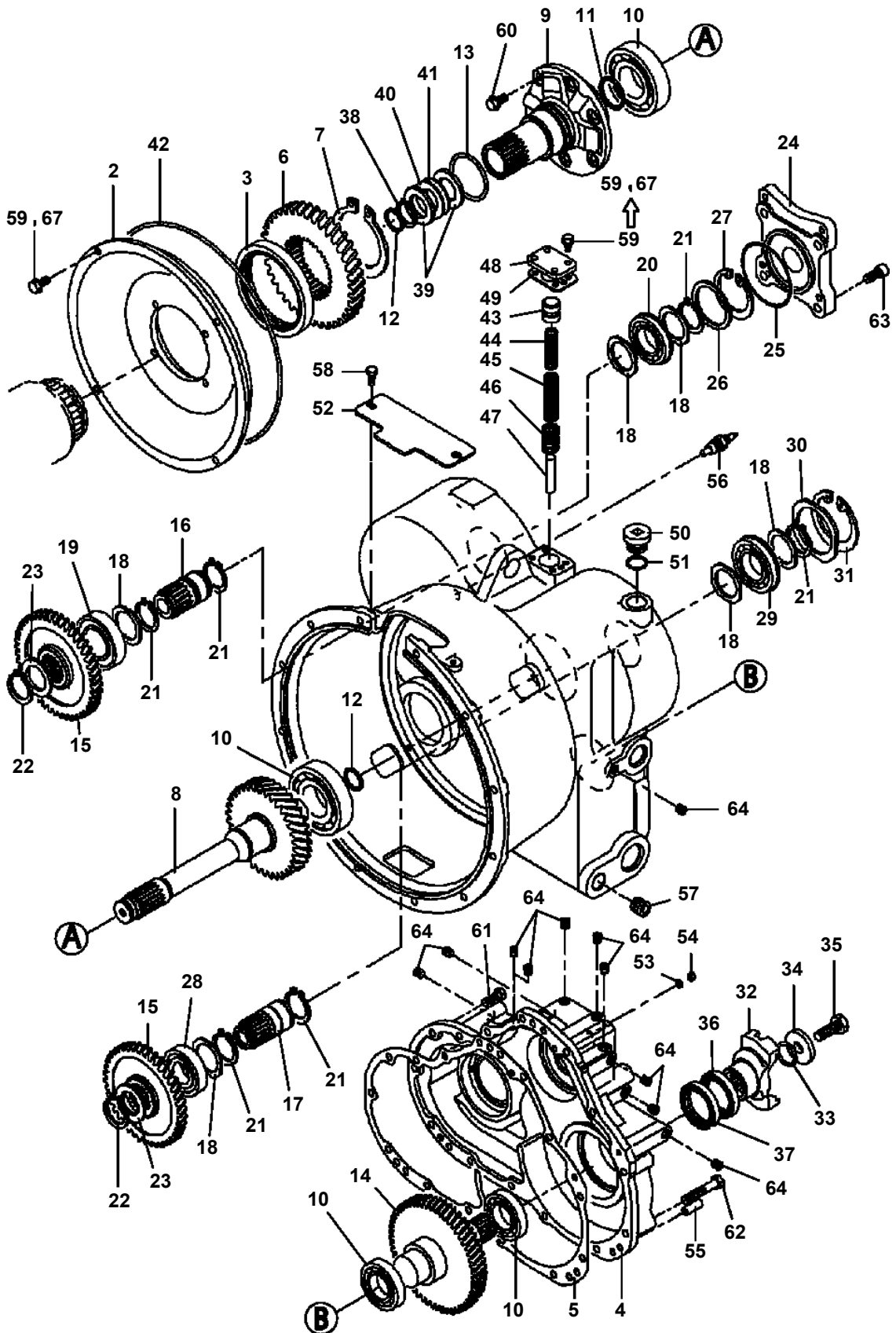
TR-300-4-00102 4 BOOM + 2 JIB, 1M1D

Pos No.	Parts No	Parts Name	Qty	Unit	Technical Data	Serial No (Start)	Serial No (End)	Remarks	Page
2	34782027510	ELEMENT	1						
3	34782027520	COVER ASSY	1						
4	44421467540	VALVE (VACUATOR)	1						
5	34782027530	O-RING	1						
6	34782027540	ADAPTER	1						
7	33420261070	INDICATOR	1						
8	34782027550	PLATE,NAME	1						
100	34782021000	CLEANER,AIR	1						

TR-300-4-00102 4 BOOM + 2 JIB, 1M1D

Pos No.	Parts No	Parts Name	Qty	Unit	Technical Data	Serial No (Start)	Serial No (End)
1	34721631000	SWITCH ASSY	1				
2	80192485014	SCREW,MACHINE (WITH WASHER)	4		M5X14		

TR-300-4-00102 4 BOOM + 2 JIB, 1M1D
PR1130031-01 MISSION, TORQUE CONVERTER



TR-300-4-00102 4 BOOM + 2 JIB, 1M1D

Pos No.	Parts No	Parts Name	Qty	Unit	Technical Data	Serial No (Start)	Serial No (End)	Ren
126	36350455440	BOLT (WITH FLANGE)	2				561041	
	36370615140	BOLT (WITH FLANGE)	2			561042		
127	36350555390	BOLT,HEXAGON SOCKET	13					
128	36350555400	BOLT,HEXAGON SOCKET	14					
129	36350485670	BOLT,HEXAGON SOCKET	4		M10X35			
130	36350555410	BOLT,HEXAGON SOCKET	2					
131	90201200800	NUT	2		M8			
132	36350456060	PLUG	21					
133	36350456070	PLUG	1					
134	36370415290	PLUG	2					
135	36370415280	PLUG	2					
137	36370295040	BAND,MARK (0)	3					
138	36370295100	BAND,MARK (1)	3					
139	36370295050	BAND,MARK (2)	2					
140	36370295110	BAND,MARK (3)	7					
141	36350455520	BAND,MARK	2					
142	36370295060	BAND,MARK (5)	1					
143	36350455530	BAND,MARK	1					
144	36370295120	BAND,MARK	1					
151	80601110800	RING,RITAINING	1		S80			
152	36350525170	CHOKE	1					
300	36350550000	TRANSMISSION	1					

TR-300-4-00102 4 BOOM + 2 JIB, 1M1D

Pos No.	Parts No	Parts Name	Qty	Unit	Technical Data	Serial No (Start)	Serial No (End)	Rem
1	36302955010	SPIDER ASSY	2					
2	36302975010	YOKE ASSY	1					
3	36302115030	BOLT	16		M12X53X1.25			
4	36302115040	WASHER,SPRING	16					
21	59236000010	NIPPLE,GREASE (UNF1/4X35A)	2					
31	59236000020	NIPPLE,GREASE	1		NPTF 1/8A			
100	36302971000	PROPELLER SHAFT, DRIVING	1					

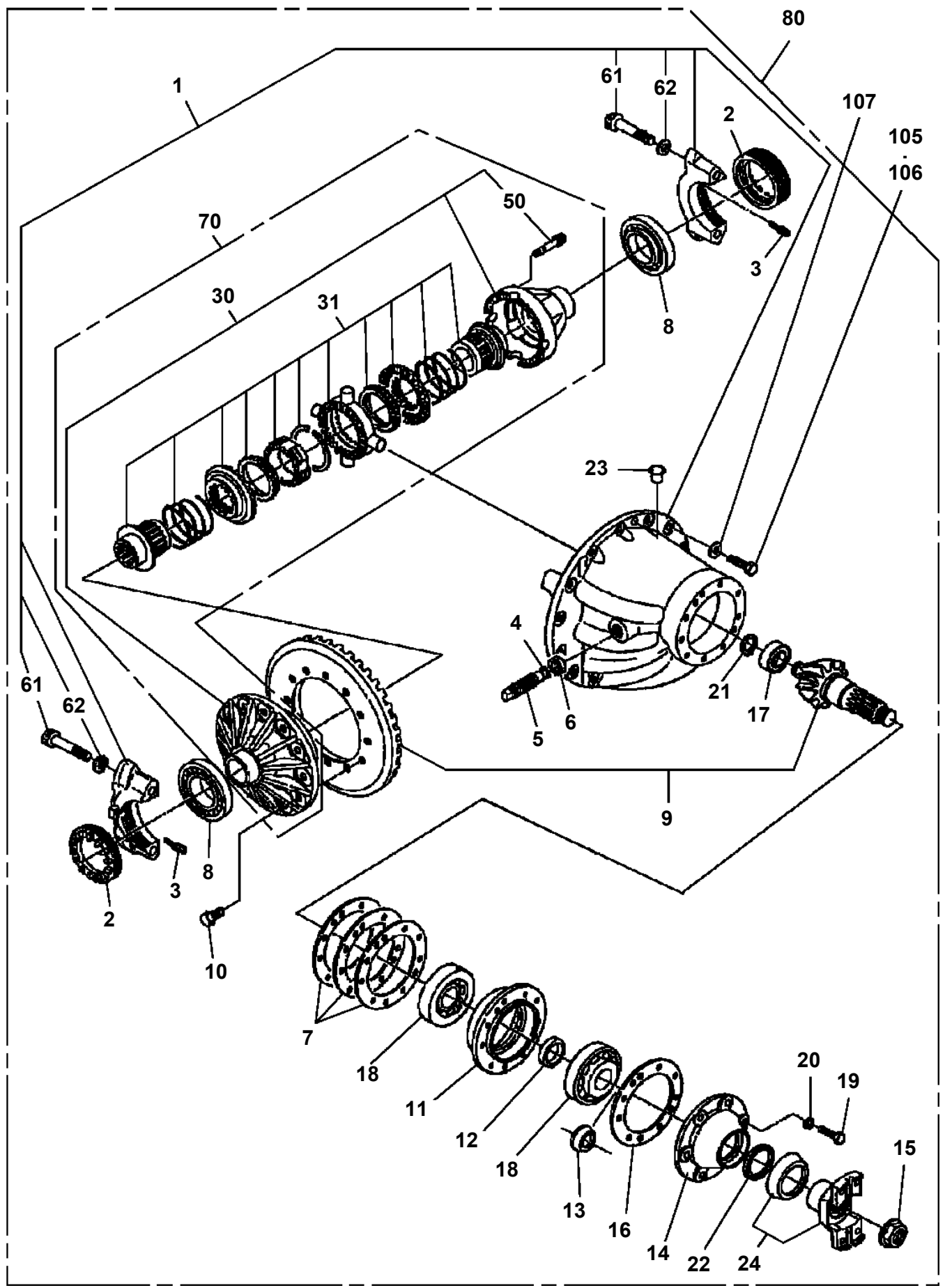
TR-300-4-00102 4 BOOM + 2 JIB, 1M1D

Pos No.	Parts No	Parts Name	Qty	Unit	Technical Data	Serial No (Start)	Serial No (End)
1	37003899010	VALVE (TRJ650+ ADAPTER(AD-1)+CAP)	1				
10	37003803130	TIRE (WITH VALVE)	1				

TR-300-4-00102 4 BOOM + 2 JIB, 1M1D

Pos No.	Parts No	Parts Name	Qty	Unit	Technical Data	Serial No (Start)	Serial No (End)
1	36381395020	CARRIER SET	1				
2	34680005170	NUT,RING	2				
3	59172010040	PIN	2				
4	34680005180	PLUG (THRUST)	1				
5	34680005190	BOLT (M24,THRUST)	5				
6	34680005220	NUT	1		M24		
7	36381395030	SHIM SET	1				
8	34680005320	BEARING,ROLLER	2				
9	36381805020	GEAR SET	1				
10	34680005210	BOLT	16		M16X34		
11	34680005100	CAGE,BEARING	1				
12	34680005080	PIECE,DISTANCE	1				
13	36380875030	COLLAR (SPIRAL PINION)	1				
14	34680005110	CASE (OIL SEAL)	1				
15	34680005230	NUT	1		M30		
16	34680005280	PACKING	1				
17	34680005290	BEARING,ROLLER	1				
18	34680005330	BEARING,ROLLER	2				
19	90191512050	BOLT	6		M12X50		
20	90302041201	WASHER,SPRING	6		12		
21	80601110300	RING,RITAINING	1		S30		
22	34680005310	SEAL,OIL	1				
23	36380215350	COVER	2				
24	36381395040	YOKE ASSY	1				
30	36381805040	CASE SET (DIFFERENTIAL)	1				
31	36381115020	DIFFERENTIAL ASSY (NO-SPIN)	1				
50	59172010080	BOLT	12				
61	90171116095	BOLT (DACRO)	4		M16X95		
62	34680005240	WASHER	4				
70	36381825020	GEAR ASSY (DIFFERENTIAL)	1				
80	36381905010	CARRIER,DIFFERENTIAL	1				
101	36381505010	HOUSING (COMPLETE)	1				
102	59172030270	BUSH,KING PIN	4				
104	59172030030	BREATHER,AIR	1				
105	90103512030	BOLT	8		M12X30		
106	90103712040	BOLT	4		M12X40		
107	90302041201	WASHER,SPRING	12		12		
108	36380705280	PLUG	1				
109	59172081020	PLUG,MAGNET	1		PT3/4		
110	36381125030	BUSH (AXLE HOUSING)	2				
112	36381905020	KNUCKLE (3,R/L)	1				
113	36381905030	KNUCKLE (4,R/R)	1				
114	36380675212	SPINDLE,KNUCKLE	2				
115	34680005680	BOLT	40				
116	36380675220	SEAL,OIL	2				
117	34680005561	PIN,KING	2				
118	36380105370	WASHER,THRUST	2				
119	34680005661	PIN,KING	2				
120	59172071080	BEARING,THRUST	2				
121	36381245100	SHIM SET	1				
122	36380215350	COVER	8				
123	90103720050	BOLT	16		M20X50		
124	36380105381	BOOT,RUBBER (SPINDLE)	2				560794
	36380105382	BOOT,RUBBER (KNUCKLE)	2			560795	
126	36380105390	PLATE (LOCK RUBBER BOOT)	4				
127	36380435010	BOLT (WITH WASHER)	24				
129	36381015070	BOLT,STOPPER	2				
130	90211702400	NUT	2		M24		
131	36380675231	TIE ROD	1				
132	36380875131	END,TIE ROD (RIGHT HAND SCREW)	1				
133	36380875141	END,TIE ROD (LEFT HAND SCREW)	1				
134	36380675261	BUSHING (TIE ROD END)	2				
135	36380675270	PIN	2				

TR-300-4-00102 4 BOOM + 2 JIB, 1M1D
PR2010107-00 AXLE (REAR)



TR-300-4-00102 4 BOOM + 2 JIB, 1M1D

Pos No.	Parts No	Parts Name	Qty	Unit	Technical Data	Serial No (Start)	Serial No (End)	Remark
1	80460004080	JOINT	1		S,3/4-16UNF-G1/2			
2	91000590800	O-RING	1		AS568-908			
3	82100001819	TUBE, SPIRAL	4	M	SE-18BK			
4	37000601630	CLAMP	2		65			
5	80460006120	JOINT	1		S,1 1/16-12UNF-G3/4			
6	91000591200	O-RING	1		AS568-912			
7	37002433850	HOSE	1		L=2000			
8	36611420000	VALVE, PRIORITY	1					
9	37002457340	HOSE	1		L=2240			
10	37002477920	HOSE	1		L=770			
11	90101208075	BOLT	2		M8X75			
12	90302040801	WASHER, SPRING	2		8			
13	36672530000	FILTER (WITH O-RING)	1					
15	91000590400	O-RING	1		AS568-904			
16	37000921090	JOINT	1		S,7/16-20UNF-PF1/4			
17	82100001819	TUBE, SPIRAL	1	M	SE-18BK			
18	90280200800	NUT, FLANGE	1		M8			
19	37002459540	HOSE	1		L=2250			
20	37002476850	HOSE	1		L=1600			
21	37002459550	HOSE	1		L=1800			
22	37000601600	CLAMP	1		WR54			
41	91002801100	O-RING	1		1B P11			

TR-300-4-00102 4 BOOM + 2 JIB, 1M1D

Pos No.	Parts No	Parts Name	Qty	Unit	Technical Data	Serial No (Start)	Serial No (End)	Remarks
1	19045106030	SEAL,DUST	1					
2	19045106040	RING,RETAINING	1					
3	19045106050	BUSHING (GRAND SEAL)	1					
4	19045106060	O-RING	1					
5	19045106070	SEAL,OIL	1					
7	19045106090	RACE (BEARING)	2					
8	19045106100	BEARING,NEEDLE	1					
10	19045106080	BEARING ASSY (NEEDLL)	1					
13	36631495030	O-RING	2					
14	36635275020	O-RING	1					
16	36635275010	SEAL KIT	1					
23	36631645010	SPRING	6					
50	36631640000	ORBITROL	1					

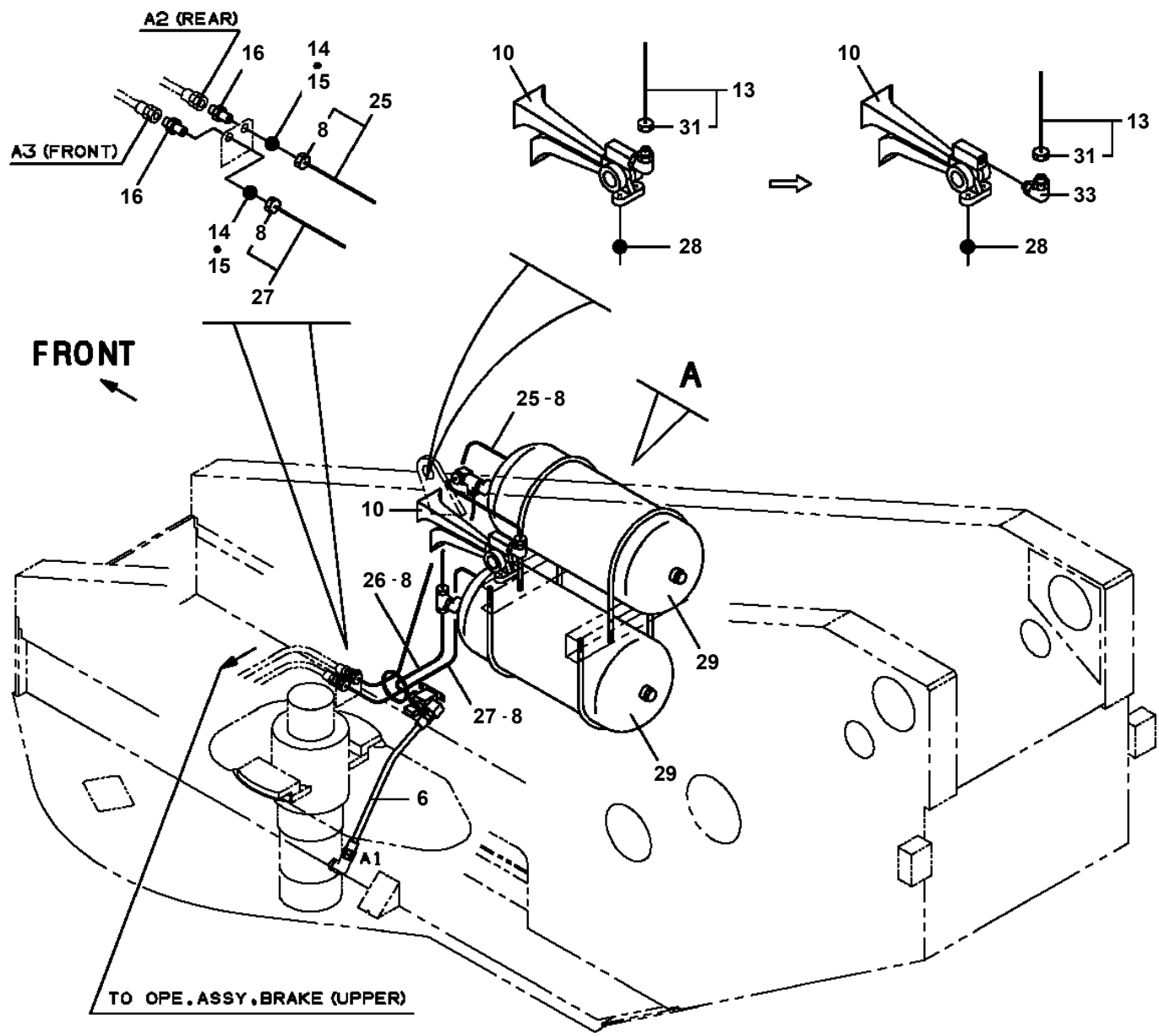
TR-300-4-00102 4 BOOM + 2 JIB, 1M1D

Pos No.	Parts No	Parts Name	Qty	Unit	Technical Data	Serial No (Start)	Serial No (End)	Re
1	34721987510	BRACKET (COLUMN)	1					
2	34721987520	COLUMN ASSY	1					
3	34721427570	JOINT ASSY(UNIVERSAL JOINT)	1					
4	34721987530	NUT	1					
5	34721987540	PIN (LOCK)	1					
6	34721987550	LEVER	1					
7	34721987560	SCREW,MACHINE	1		M6X30			
8	34721987570	WASHER,TOOTH	1		M6			
9	34721987580	PIN	1					
10	34721987590	NUT	1		M10			
11	34721987600	U-NUT	1					
12	34721987610	GRIP	1					
13	34721987620	SCREW,MACHINE	2		M5X10			
14	34721987630	SPRING	2					
17	34721987650	SPRING	1					
18	34721987660	SPACER	1					
19	34721987670	WASHER,THRUST	1					
35	34721427550	BOLT	2					
36	34721427560	WASHER,SPRING	2					
51	34721987640	RACK (WITH PLATE)	1					
500	34721422301	SHAFT ASSY (STEERING)	1					

TR-300-4-00102 4 BOOM + 2 JIB, 1M1D

Pos No.	Parts No	Parts Name	Qty	Unit	Technical Data	Serial No (Start)	Serial No (End)	Remarks	Pages
5	34510703250	PACKING	1						
6	34510703260	PACKING	1						
100	34510703200	SUPPORT	1						

**TR-300-4-00102 4 BOOM + 2 JIB, 1M1D
PT1200112-00 PIPING, BRAKE (UPPER)**



TR-300-4-00102 4 BOOM + 2 JIB, 1M1D

Pos No.	Parts No	Parts Name	Qty	Unit	Technical Data	Serial No (Start)	Serial No (End)	Remarks	Page
5	36101800041	CAP	1						
6	36101945060	RING (SLIDE)	1						
7	36101945070	COVER (RING)	1						
8	34921317510	DIAPHRAGM	1						
9	34921317530	BRACKET	1						
50	34921313000	TANK,BRAKE FLUID	1						

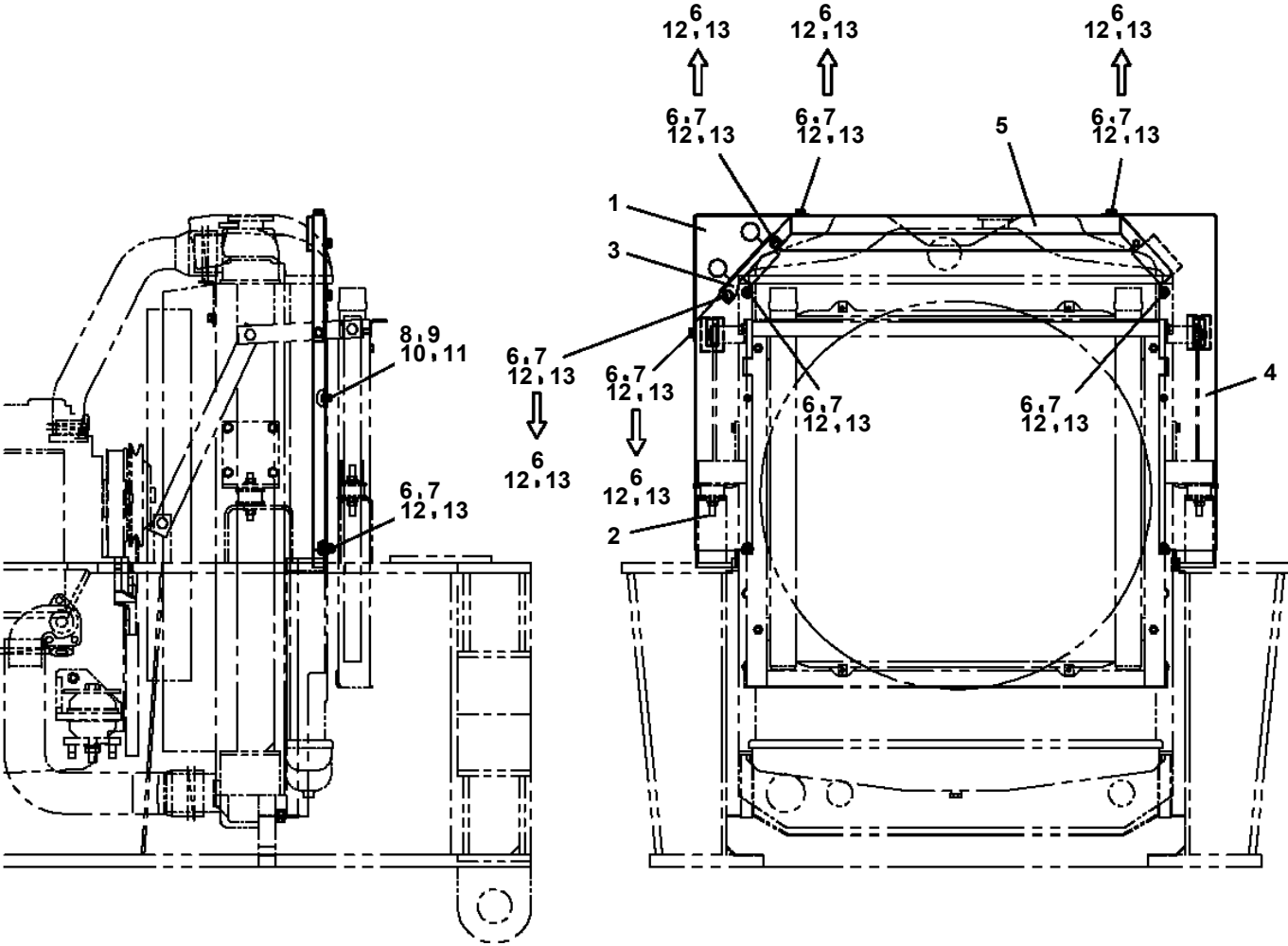
TR-300-4-00102 4 BOOM + 2 JIB, 1M1D

Pos No.	Parts No	Parts Name	Qty	Unit	Technical Data	Serial No (Start)	Serial No (End)	Remarks
1	36060950000	CYLINDER,SPRING LOCK	2					
2	36060940000	CYLINDER,SPRING LOCK	2					
3	37000186640	PIN	8					
4	80136380056	PIN,SPLIT	8		8X56			
5	59160526000	PLATE	16					
6	34790102001	SUPPORT	4					
7	36410080003	SPRING ASSY (LEAF)	4					
8	37001504720	BOLT	16		M24X390			
9	90303502401	WASHER,PLAIN	16		24			
10	37001600190	NUT	16		M24			
11	37001501070	BOLT	4		M20X155			
12	37001506450	BOLT	8		M16X155		561833	
	90171316035	BOLT	8		M16X35	561834		
13	90302041601	WASHER,SPRING	8		16		561833	
14	37000300550	SPACER	4		L=91			
15	90236202009	NUT,CASTLE	4		M20			
16	80136340035	PIN,SPLIT	4		4X35			
17	90303072001	WASHER,PLAIN	4		20			
18	59160536000	SPACER	8					
19	37000112020	PIN	4					
20	59160552001	BOLT	4		M12X85			
21	90210201200	NUT	4		M12		562161	
	90217201200	NUT	4		M12X1.5	562162		
22	90302041201	WASHER,SPRING	4		12			
23	34790104000	PLATE,SLIDE	4				561833	
	34763606100	PLATE,SLIDE	4			561834		
24	37000520710	PLATE	4					
41	36410085012	SPRING (LEAF NO.1)	4					
42	36410085022	SPRING (LEAF NO.2)	4					
43	36410085032	SPRING (LEAF NO.3)	4					
44	36410025050	BOLT (CENTER)	4					
45	36410025060	NUT (CENTER BOLT)	4					
46	36410025070	BUSH	4					
48	36410085050	SPACER (CENTER)	12					

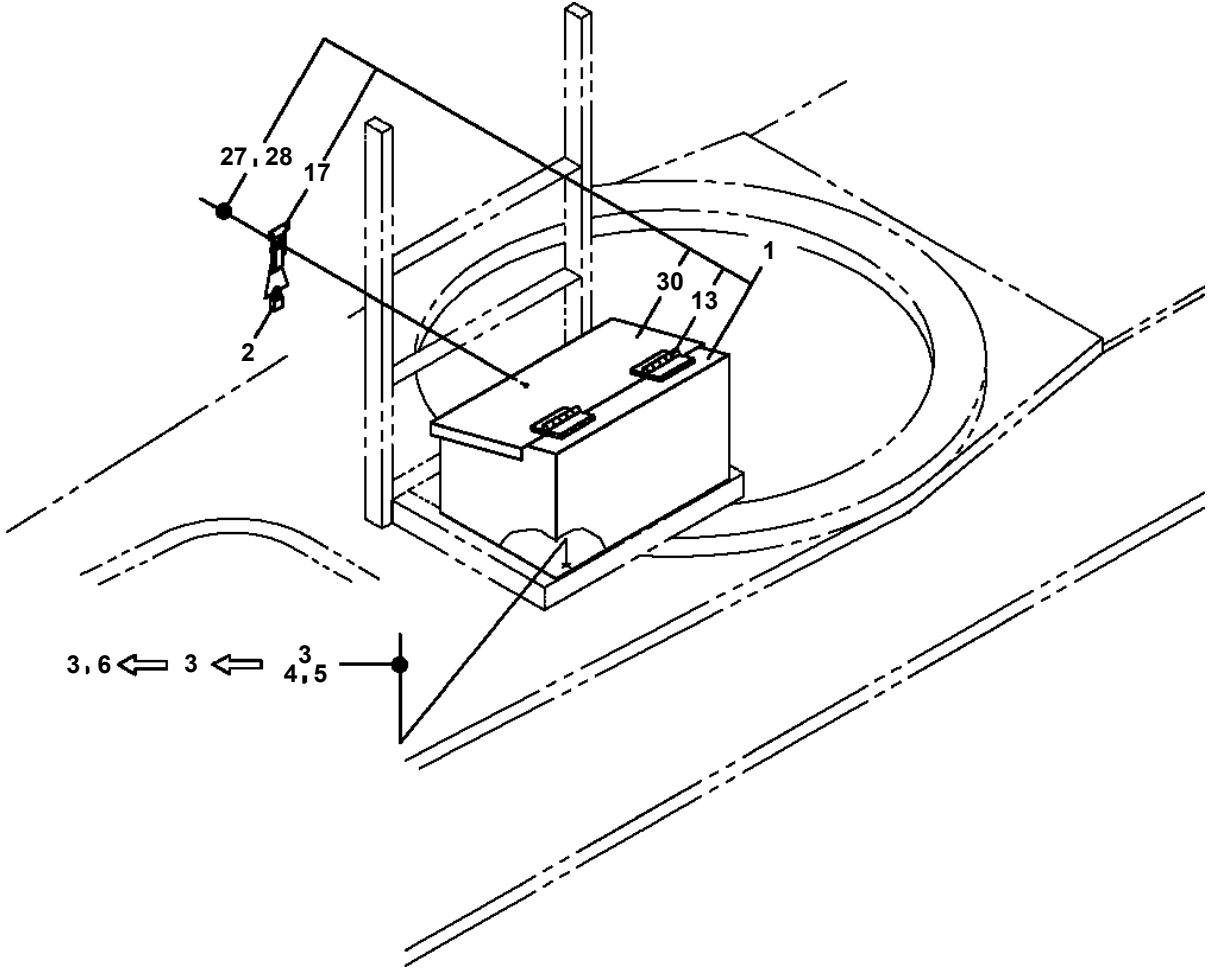
TR-300-4-00102 4 BOOM + 2 JIB, 1M1D

Pos No.	Parts No	Parts Name	Qty	Unit	Technical Data	Serial No (Start)	Serial No (End)
1	34721421100	WHEEL,STEERING	1				
2	34721722100	COVER	1				
3	34721422200	COVER	1				
4	82100002051	CLAMP	1		WS-A55		
5	80182306010	SCREW,MACHINE	3		M6X10		
6	90302040601	WASHER,SPRING	3		6		
7	82100002039	CLAMP	2				
8	90209201200	NUT	1		M12		
9	90302041201	WASHER,SPRING	1		12		
10	90303071201	WASHER,PLAIN	1		12		
11	34721422301	SHAFT ASSY (STEERING)	1				
12	80172305010	SCREW,MACHINE	3		M5X10		
13	90302040501	WASHER,SPRING	7		5		
14	90131505020	BOLT,HEXAGON SOCKET	4		M5X20		
15	90303070501	WASHER,PLAIN	4		5		
16	34720912600	SHIM	1				
17	34721182400	ADAPTER	1				
18	90201200500	NUT	4		M5		
19	34720911200	SWITCH ASSY (COMBINATION)	1				
20	90982050145	SCREW,TAPPING	4				
21	80192488016	SCREW,MACHINE	1		M8X16		
22	80192486014	SCREW,MACHINE (WITH WASHER)	2		M6X14		
23	82420503212	TRIM	1	M			

TR-300-4-00102 4 BOOM + 2 JIB, 1M1D
PX1050129-01 ROOM,ENGINE (RADIATOR)



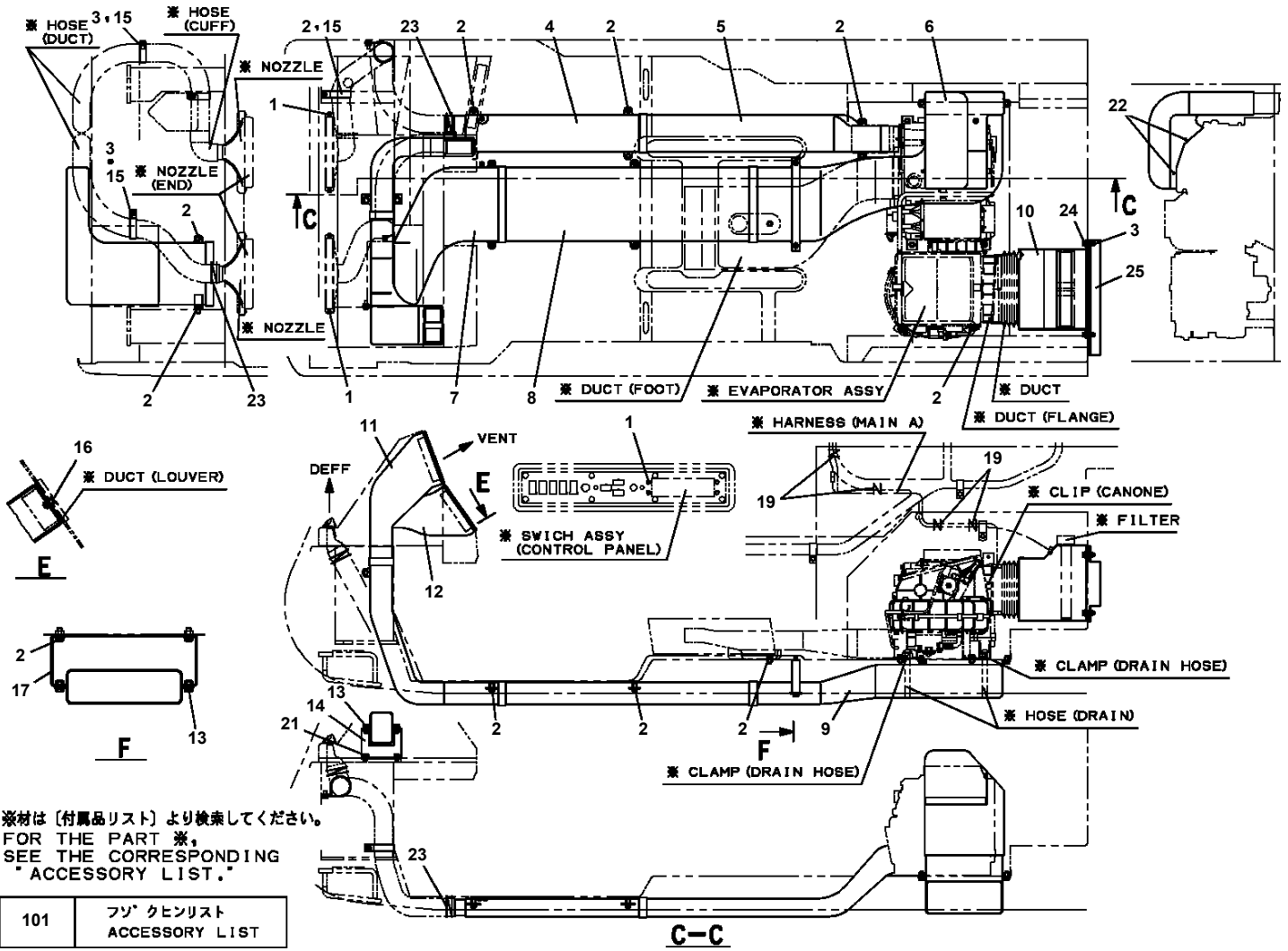
TR-300-4-00102 4 BOOM + 2 JIB, 1M1D
PX1350106-03 TOOL BOX INSTALLATION (IRON)



TR-300-4-00102 4 BOOM + 2 JIB, 1M1D
PX1940126-00 MOUNT (SWING FRAME SUPPORT)

1	サポ ート (キャブ/ガイソウ/センカイロック) SUPPORT (CAB/COVER, FRAME/SWING LOCK)
2	サポ ート (ユアツブヒン) SUPPORT (HYDRAULIC PARTS)

**TR-300-4-00102 4 BOOM + 2 JIB, 1M1D
PY1370025-02 EVAPORATOR (MOUNT)**

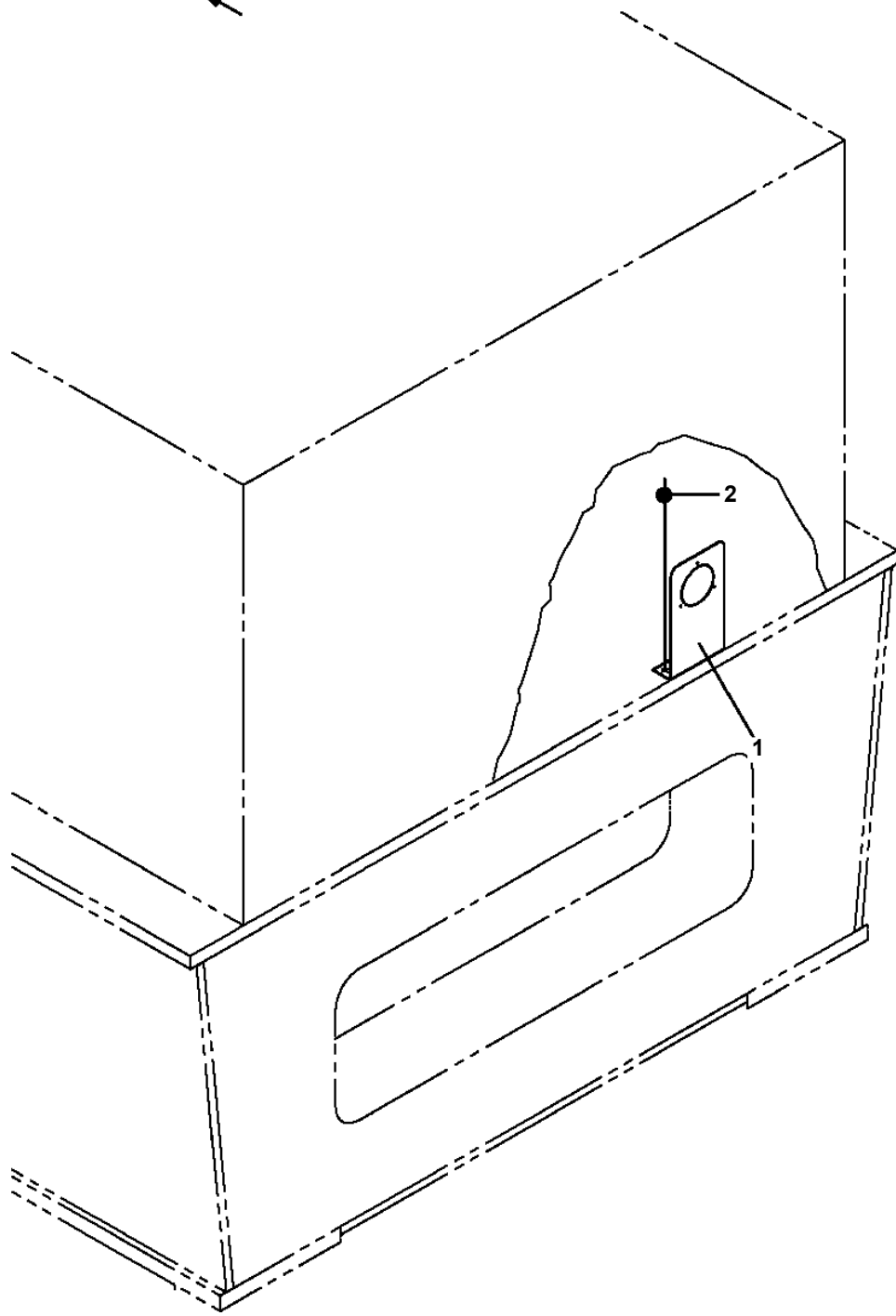


※材は【付属品リスト】より検索してください。
FOR THE PART ※,
SEE THE CORRESPONDING
"ACCESSORY LIST."

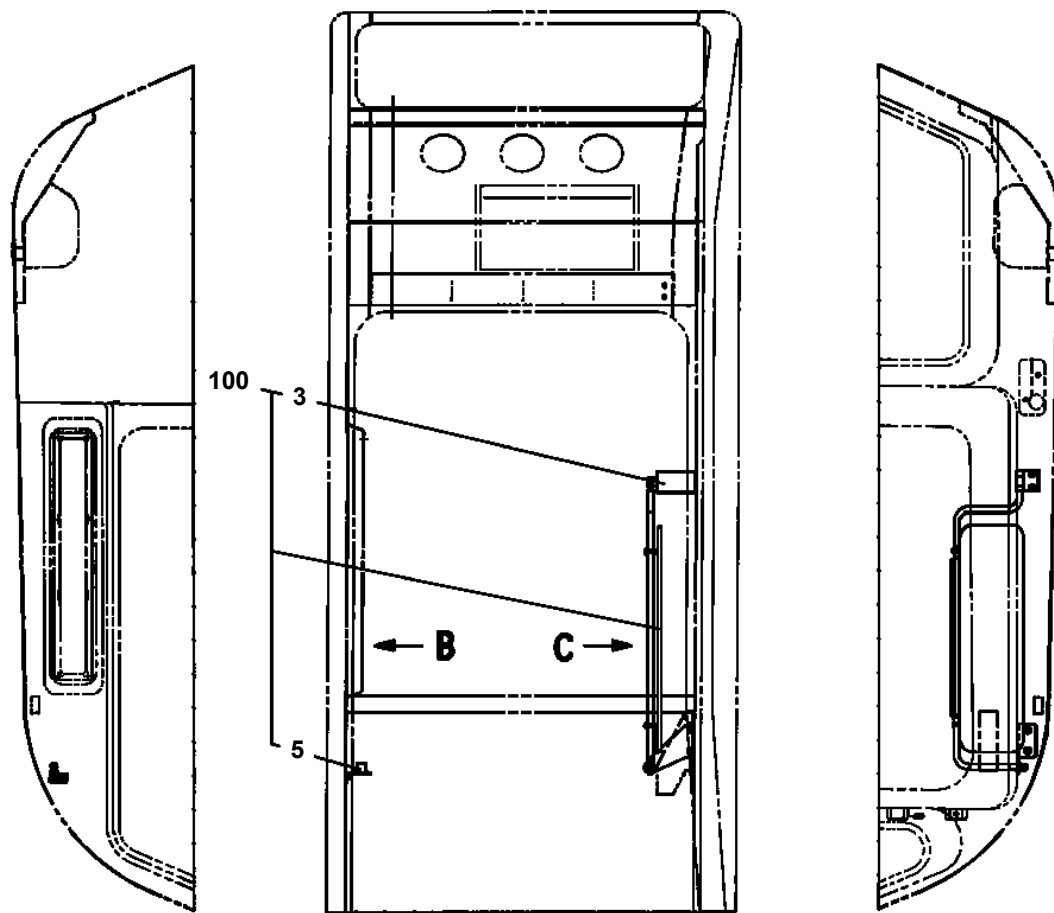
101	フソ [®] タヒンリスト ACCESSORY LIST
-----	--

TR-300-4-00102 4 BOOM + 2 JIB, 1M1D
PY1510052-00 HOUR METER (MOUNT)

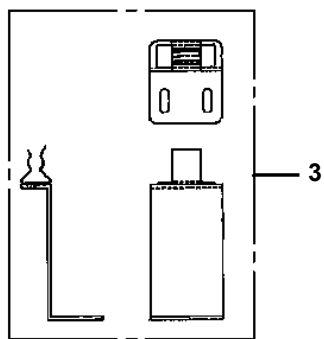
FRONT



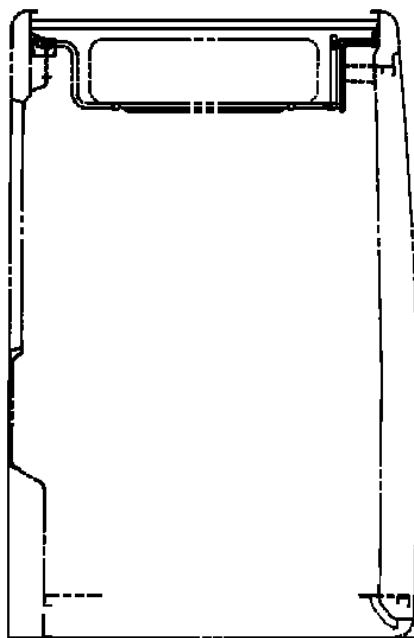
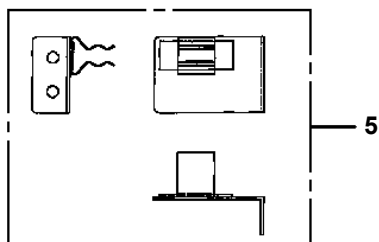
TR-300-4-00102 4 BOOM + 2 JIB, 1M1D
PY2320001-03 SUN VISOR (FRONT)



B



C



CLICK HERE TO **DOWNLOAD** THE COMPLETE MANUAL

- Thank you very much for reading the preview of the manual.
- You can download the complete manual from: www.heydownloads.com by clicking the link below



- Please note: If there is no response to CLICKING the link, please download this PDF first and then click on it.

CLICK HERE TO **DOWNLOAD** THE COMPLETE MANUAL