

## **TR-250E-3-00103 4 BOOM + JIB, 2M2D**

**PB1000664-00 HYDRAULIC PRESSURE GENERATING SYSTEM**  
**PC1000557-00 OUTRIGGER SYSTEM**  
**PD1000388-01 SWING SYSTEM**  
**PE1000571-00 ELEVATING SYSTEM**  
**PF1000573-00 WINCH SYSTEM**  
**PG1000351-01 TELESCOPING SYSTEM**  
**PH1000571-00 SAFETY DEVICES**  
**PK1000401-01 FRAME**  
**PL1000411-01 CONTROL DEVICES**  
**PM1000035-00 LUBRICATION DEVICES**  
**PN1000517-00 ELECTRIC EQUIPMENT**  
**PO1000123-00 INDICATION PLATES**  
**PQ1000127-01 DRIVING POWER GENERATING SYSTEM**  
**PR1000073-01 DRIVING POWER TRANSMISSION SYSTEM**  
**PS1000156-00 STEERING SYSTEM**  
**PT1000081-01 BRAKE SYSTEM**  
**PU1000074-01 SUSPENSION**  
**PW1000109-01 ACCESSORIES & TOOLS**  
**PX1000886-00 MOUNTING PARTS**  
**PY1001082-00 OPTIONS**  
**ASSEMBLY**

CLICK HERE TO **DOWNLOAD** THE COMPLETE MANUAL

- Thank you very much for reading the preview of the manual.
- You can download the complete manual from: [www.heydownloads.com](http://www.heydownloads.com) by clicking the link below



- Please note: If there is no response to CLICKING the link, please download this PDF first and then click on it.

CLICK HERE TO **DOWNLOAD** THE COMPLETE MANUAL

# TR-250E-3-00103 4 BOOM + JIB, 2M2D

Pos No.	Parts No	Parts Name	Qty	Unit	Technical Data	Serial No (Start)	Serial N
1	(*****)	HOOK (MAIN,WITH SHEAVE COVER,OPTION)	1				
2	(*****)	HOOK (AUXILIARY)	1				
4	37001800810	ROPE,WIRE (TESAC)	1				
	37001807290	ROPE,WIRE (TSK)	1				
5	37001802090	ROPE,WIRE (TESAC)	1				
	37001807310	ROPE,WIRE (TSK)	1				
6	(*****)	SOCKET,ROPE	1				
7	(*****)	SOCKET,ROPE (SEIZING )	1				
12	(*****)	PIPING,WINCH	1				
13	(*****)	PIPING,WINCH BRAKE	1				
14	(*****)	MOUNT,WINCH	1				

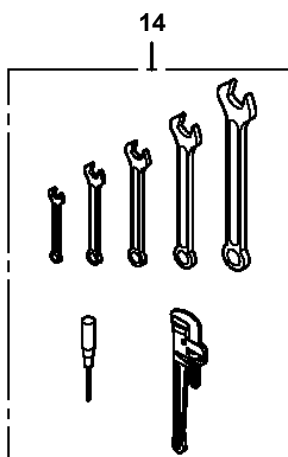
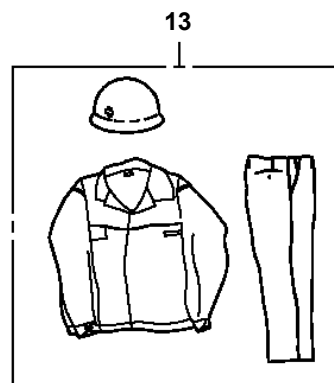
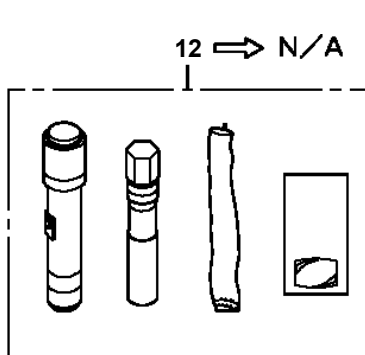
# TR-250E-3-00103 4 BOOM + JIB, 2M2D

Pos No.	Parts No	Parts Name	Qty	Unit	Technical Data	Serial No (Start)	Serial No (End)	Remarks	Pages
1	(*****)	PARTS,GREASING	1						000138

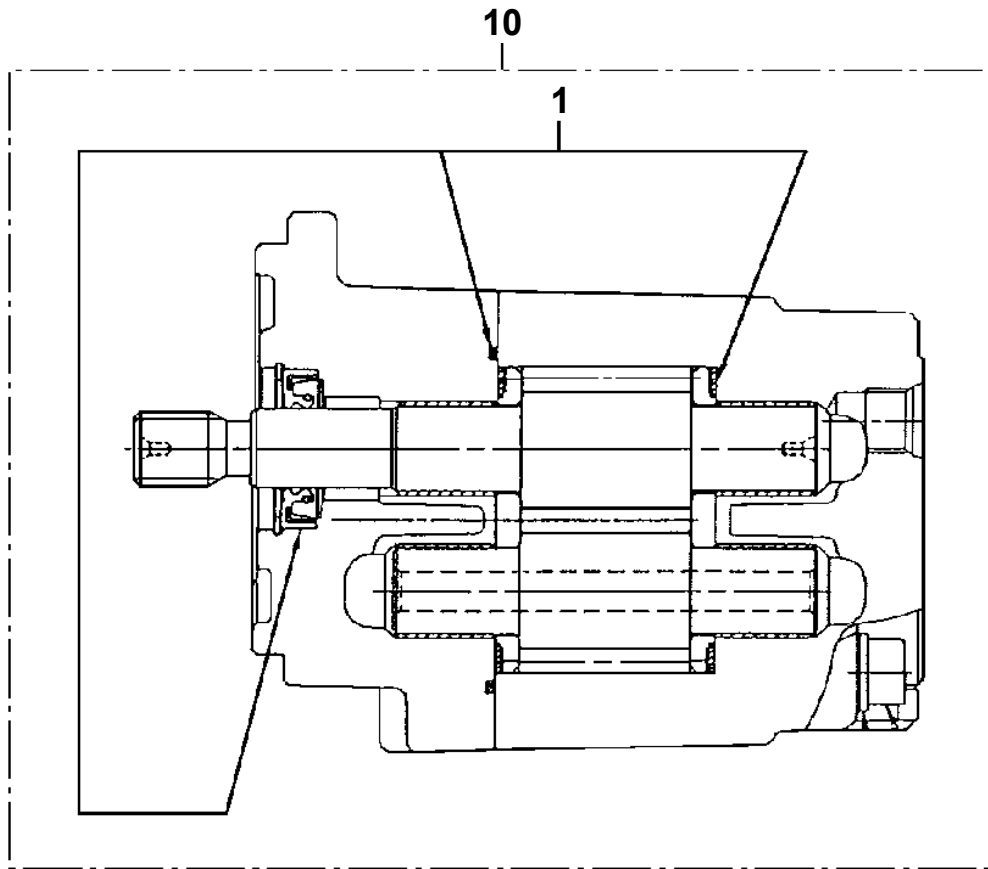
# TR-250E-3-00103 4 BOOM + JIB, 2M2D

Pos No.	Parts No	Parts Name	Qty	Unit	Technical Data	Serial No (Start)	Serial No (End)
1	(*****)	PIPING,STEERING (UPPER)	1				
2	(*****)	PIPING,STEERING (LOWER)	1				
3	(*****)	PIPING,STEERING (CAB)	1				
4	(*****)	CYLINDER,STEERING INSTALLATION	1				

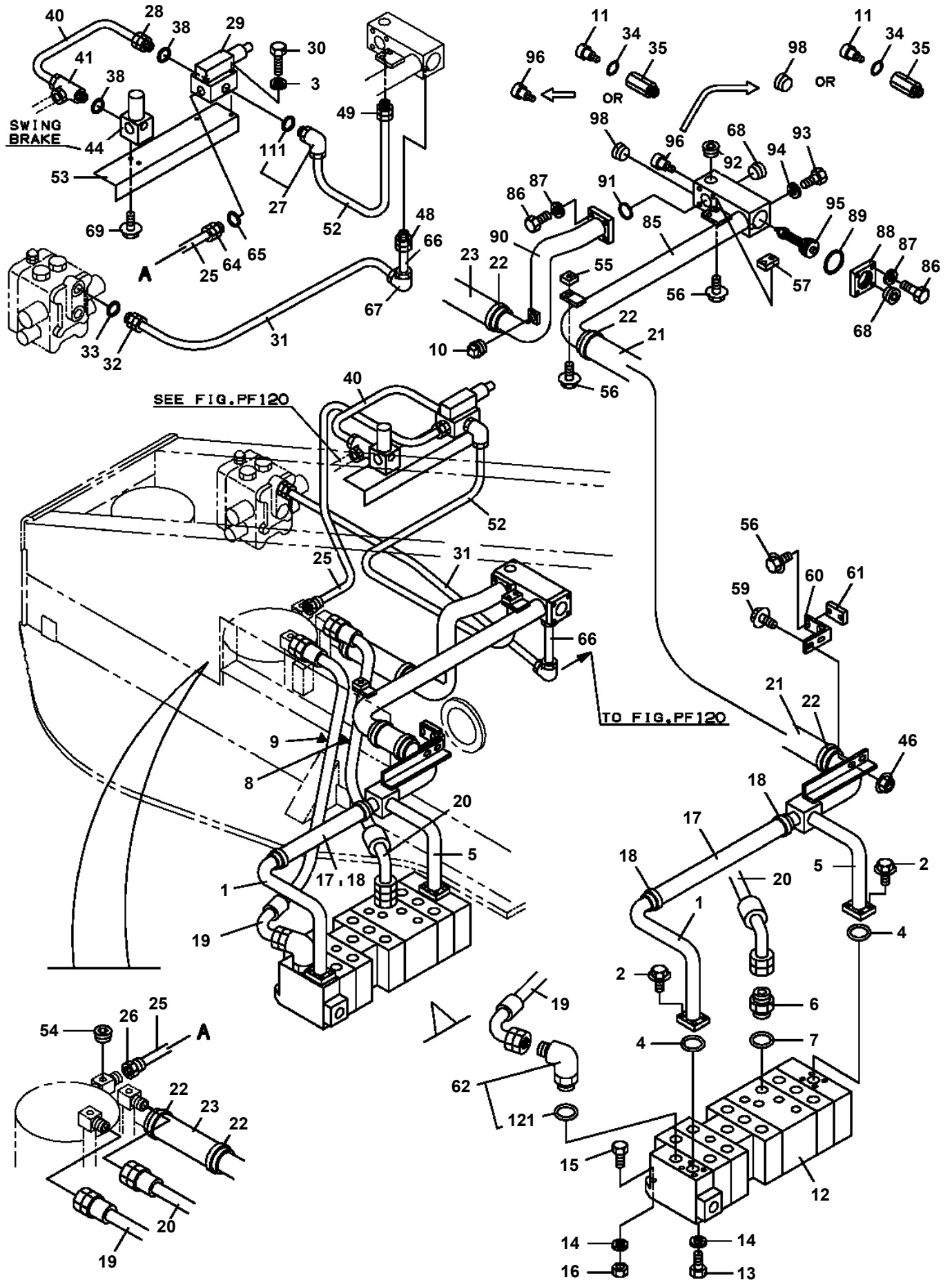
TR-250E-3-00103 4 BOOM + JIB, 2M2D  
PY1001082-00 OPTIONS



**TR-250E-3-00103 4 BOOM + JIB, 2M2D**  
**PB1100175-00 PUMP, HYDRAULIC (EMERGENCY STEERING)**



**TR-250E-3-00103 4 BOOM + JIB, 2M2D  
PB1260175-01 PIPING, UPPER RETURN**

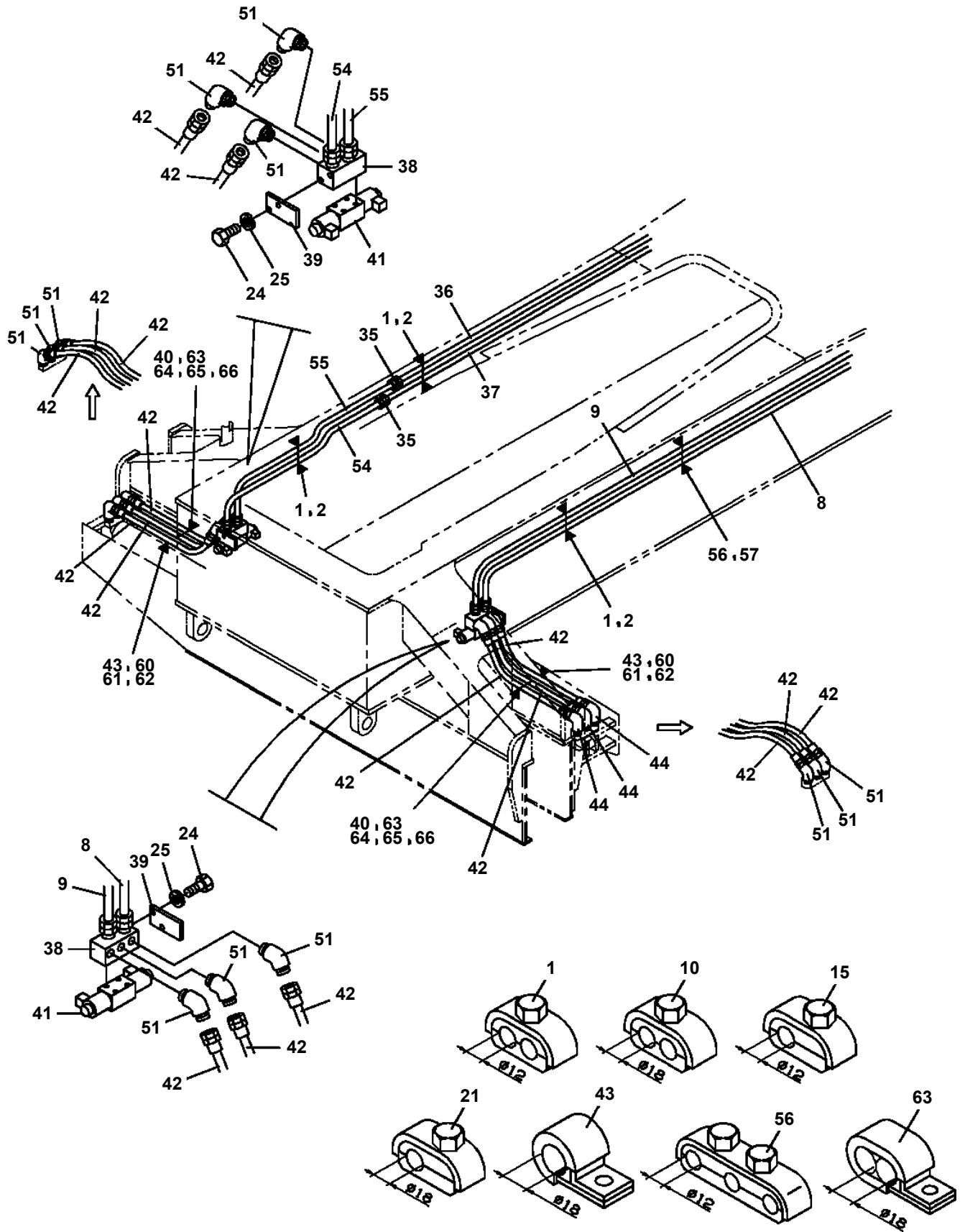




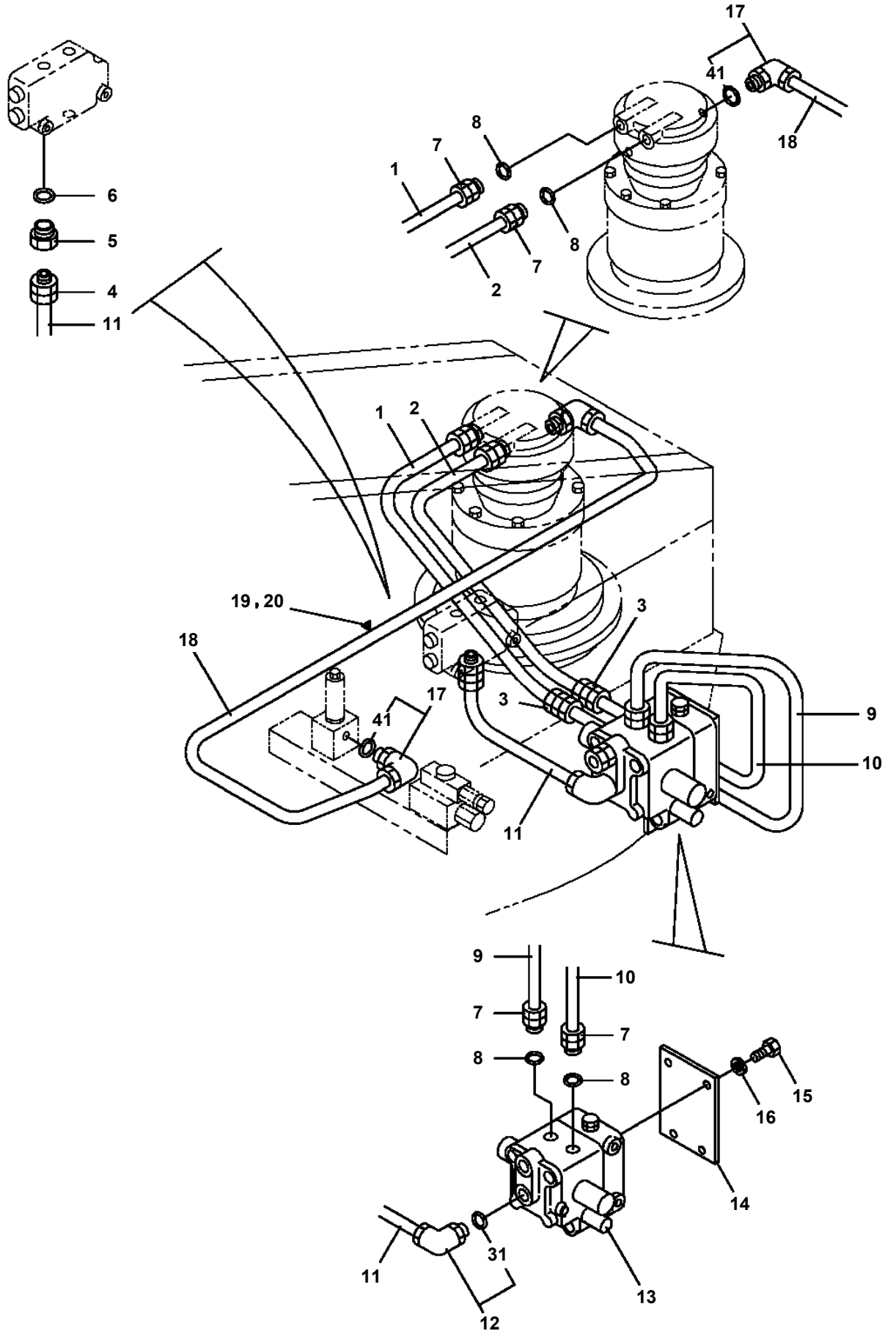
# TR-250E-3-00103 4 BOOM + JIB, 2M2D

Pos No.	Parts No	Parts Name	Qty	Unit	Technical Data	Serial No (Start)	Serial No (End)
1	36634285012	VALVE,CONTROL (SWING)	1				
2	36632605101	VALVE,RELIEF	1				
3	36632605011	MANIFOLD ASSY	1				
7	16623320390	TUBE (SEAL)	1				
8	36632425010	TUBE (SEAL)	1				
14	80560065000	BALL,STEEL	6		1/2		
15	16691120010	SPRING	2				
16	16623320280	SEAL,CAP	2				
17	91002801000	O-RING	9		1B P10		
19	16623320320	PLATE	2				
20	16623320290	SEAT,SPRING (RETURN)	2				
21	36632605190	SPRING (RETURN)	1				
22	16623320380	SPACER	1				
23	16623320300	SPOOL (SUB)	1				
24	16623320330	CAP (RETURN SPRING)	2				
27	80602110100	RING,RITAINING	1		R10		
28	36633245050	SPRING (BACK PRESSURE)	1				
29	91001202500	O-RING	1		1A G25		
30	36644780600	PLATE	1				
31	90302040601	WASHER,SPRING	4		6		
32	90131506012	BOLT,HEXAGON SOCKET	4		M6X12		
36	36632605130	SPRING (FREE-LOCK VALVE)	1				
37	19415107230	CAP	1				
38	91002802100	O-RING	2		1B P21		
39	19415107240	SCREW (ADJUSTING)	1				
40	91002800500	O-RING	1		1B P5		
41	90203201200	NUT	1		M12		
43	36630695020	PLATE	1				
45	11615111050	SPRING	1				
47	19415107320	STOPPER	1				
48	19415107330	SPRING (STOPPER)	1				
49	19415107340	ROD,PUSH	1				
50	91001101800	O-RING	6		1A P18		
51	36634285020	SOLENOID	1				
52	90302040401	WASHER,SPRING	6		4		
53	80172304010	SCREW,MACHINE	6		M4X10		
55	36644115150	SPRING (CHECK)	3				
56	36632605061	GUIDE	2				
57	36632605071	SEAT	2				
58	91002903000	O-RING	2		1B G30		
59	91002802600	O-RING	2		1B P26		
60	36632605081	PLUG	2				
61	13224511040	PLUG	1				
62	13224511030	CAP	1				
63	13224511050	TERMINAL	1				
65	80316030020	PLUG	7		PT1/8		
66	80316030040	PLUG	2		PT1/4		
68	36632605151	SEAT	1				
69	90302041401	WASHER,SPRING	4		14		
70	90131514090	BOLT,HEXAGON SOCKET	2		M14X90		
71	18335116940	BREATHING,AIR	1				
72	90131506016	BOLT,HEXAGON SOCKET	4		M6X16		
73	59451302360	CAP (AIR BLEEDER SCREW)	1				
74	36632605200	COVER (FOR O-RING)	2				
75	91001002900	O-RING	2		S29		
76	91001102200	O-RING	2		1A P22		
77	36632605210	SEAL,DUST	2				
83	91001000400	O-RING	1		S4		
84	12635101140	SPRING	1				
88	12635101110	SPRING (RETURN)	1				
90	91001102600	O-RING	1		1A P26		
94	18335118030	SCREW (ADJUSTING)	1				
95	90203201600	NUT	2		M16		

**TR-250E-3-00103 4 BOOM + JIB, 2M2D  
PC1200132-01 PIPING,OUTRIGGER**

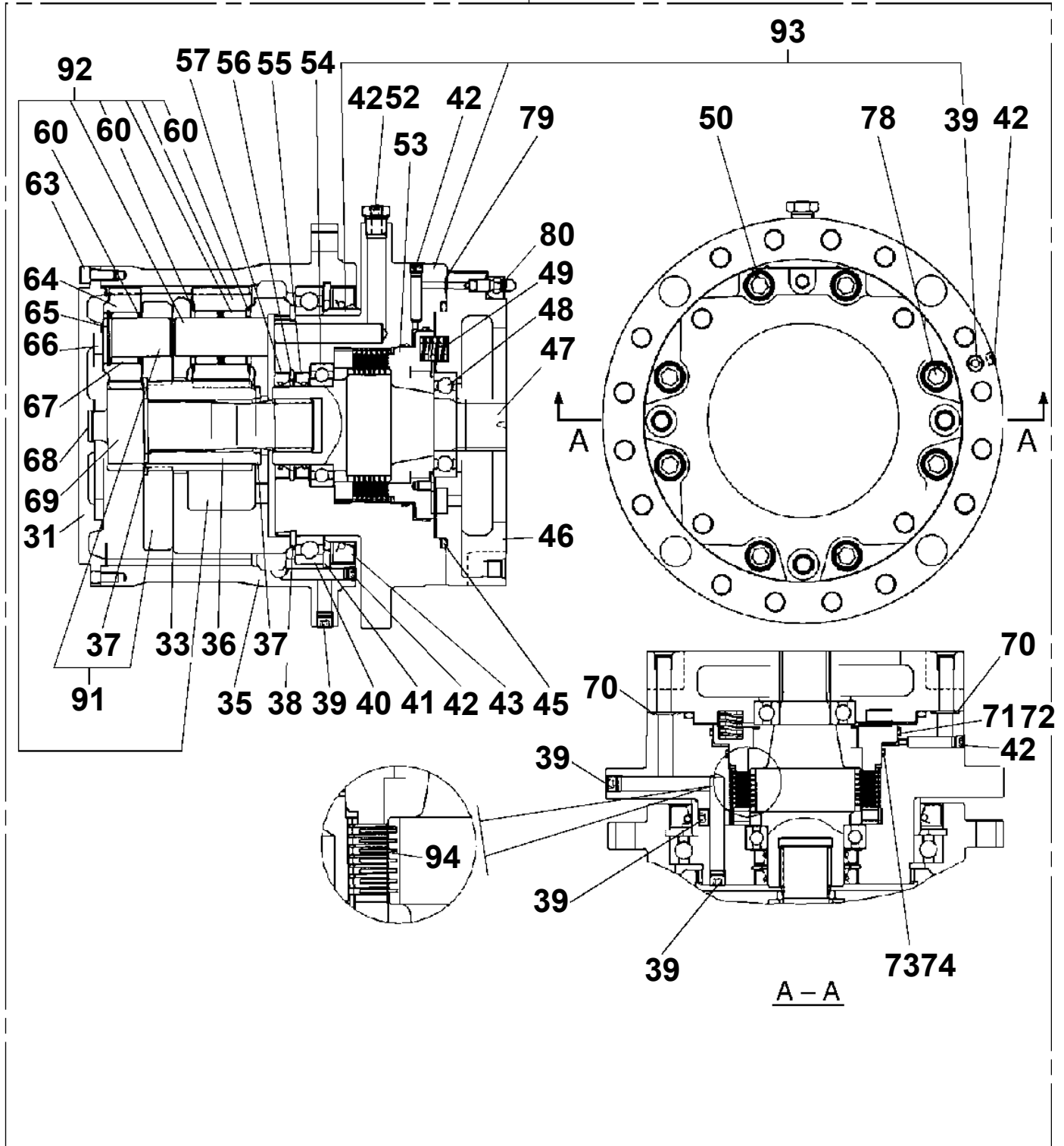


TR-250E-3-00103 4 BOOM + JIB, 2M2D  
PD1200147-00 PIPING, SWING



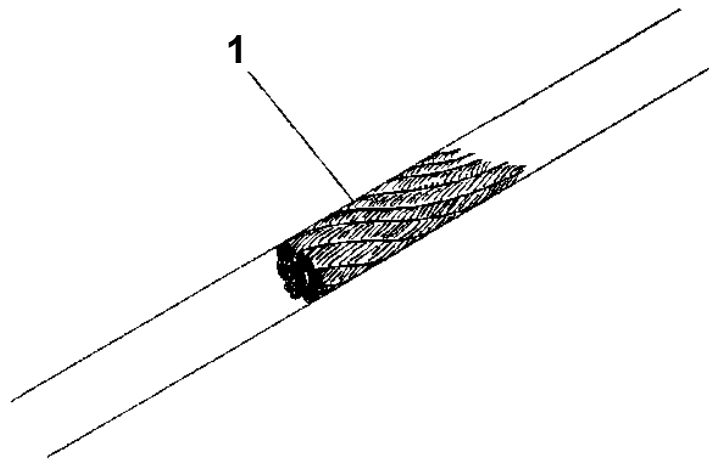
TR-250E-3-00103 4 BOOM + JIB, 2M2D  
PF1010199-00 WINCH

2

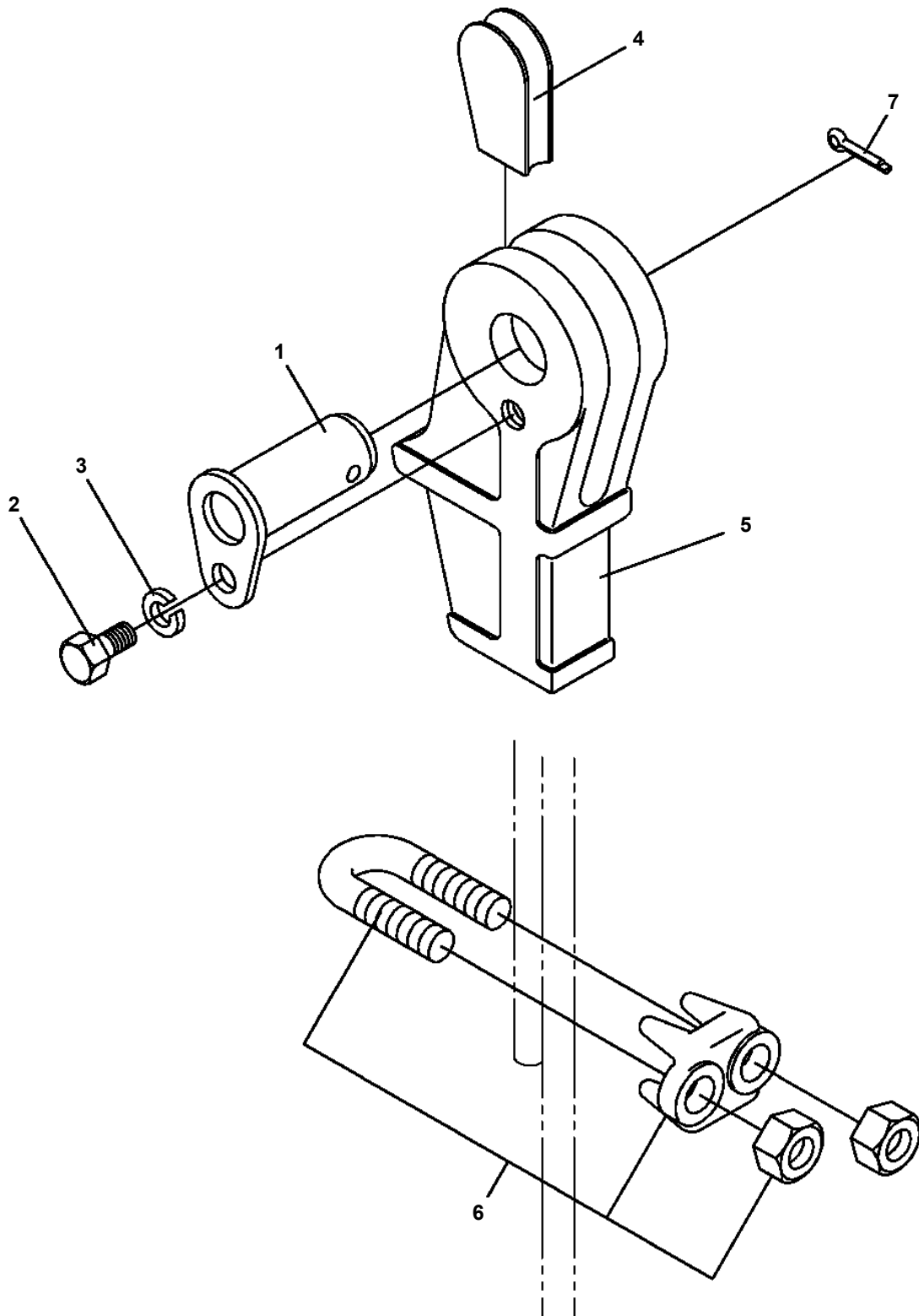


TR-250E-3-00103 4 BOOM + JIB, 2M2D  
PF1070031-00 ROPE, WIRE (TESAC)

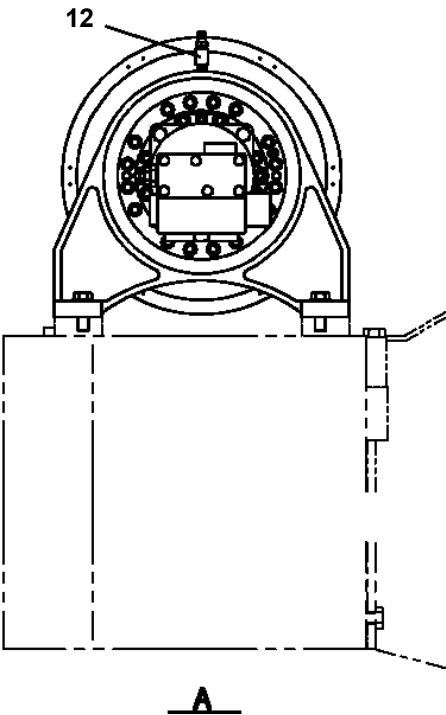
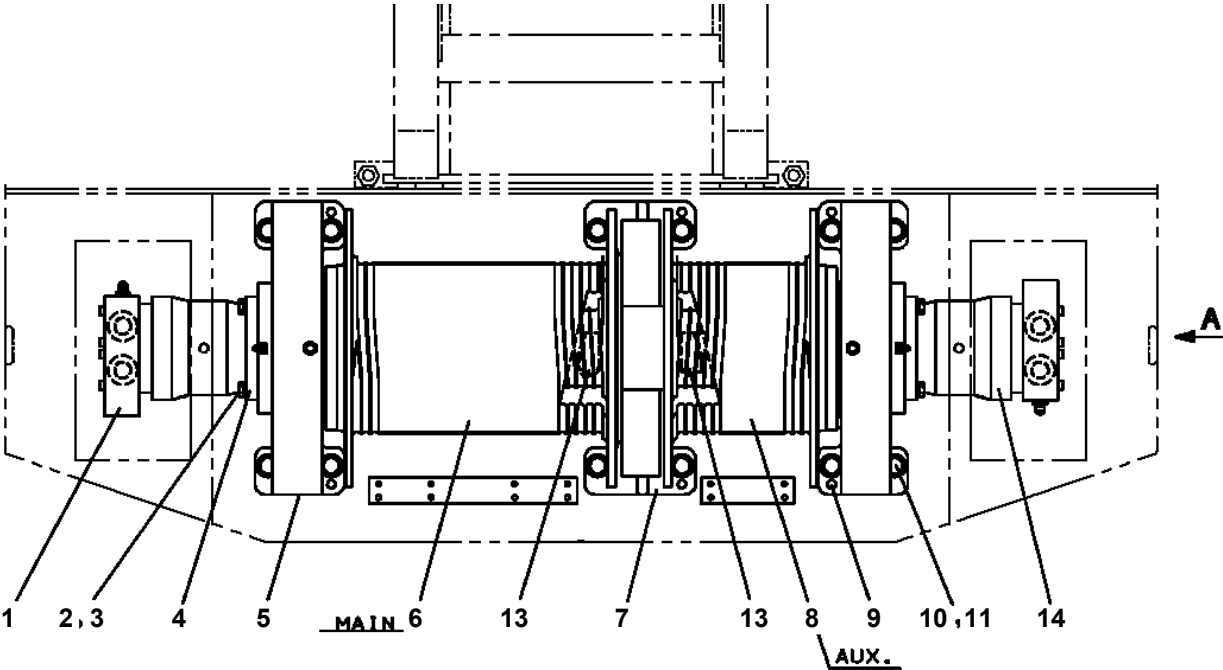
---



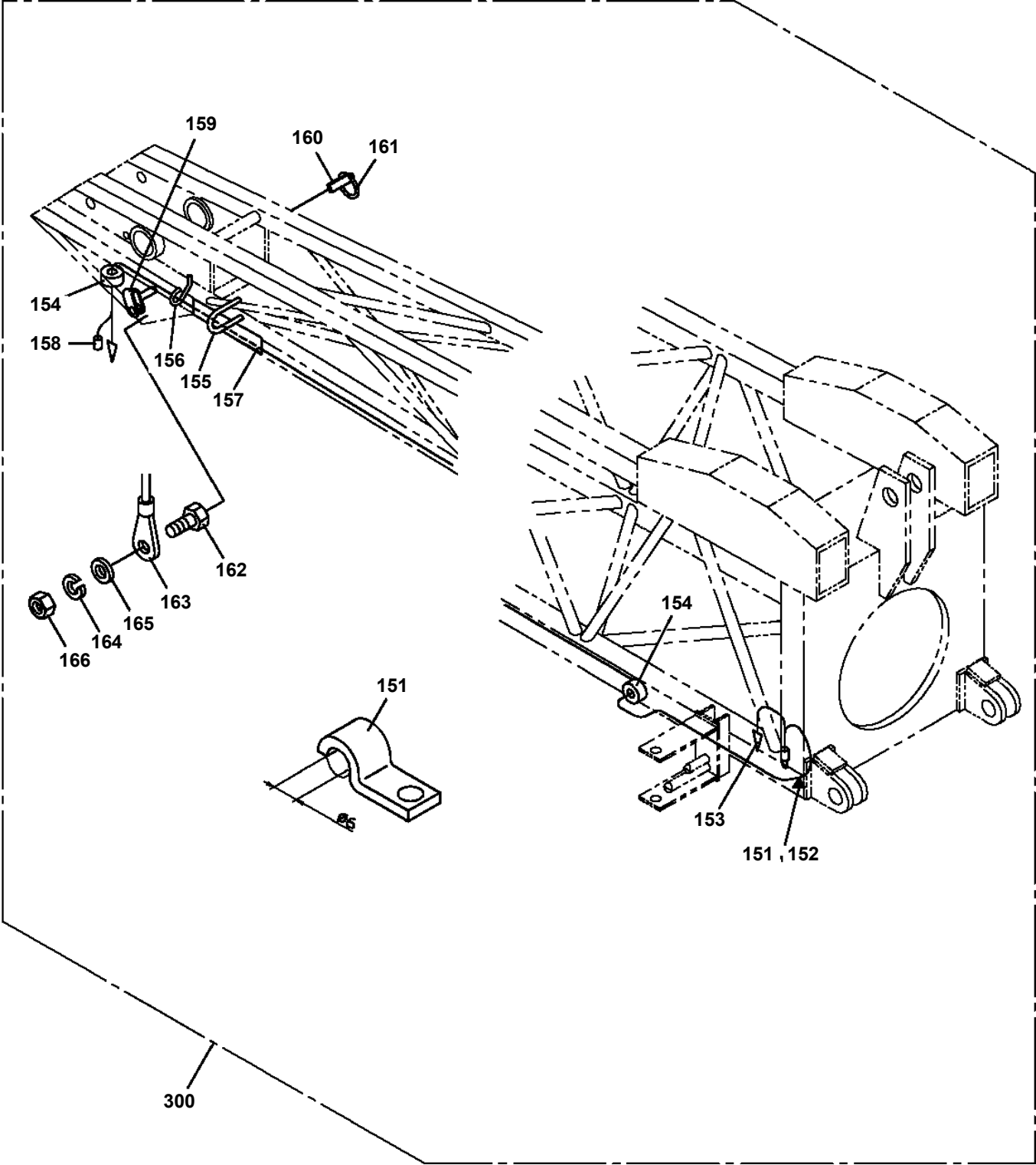
TR-250E-3-00103 4 BOOM + JIB, 2M2D  
PF1090006-01 SOCKET,ROPE



TR-250E-3-00103 4 BOOM + JIB, 2M2D  
PF1400307-00 MOUNT,WINCH



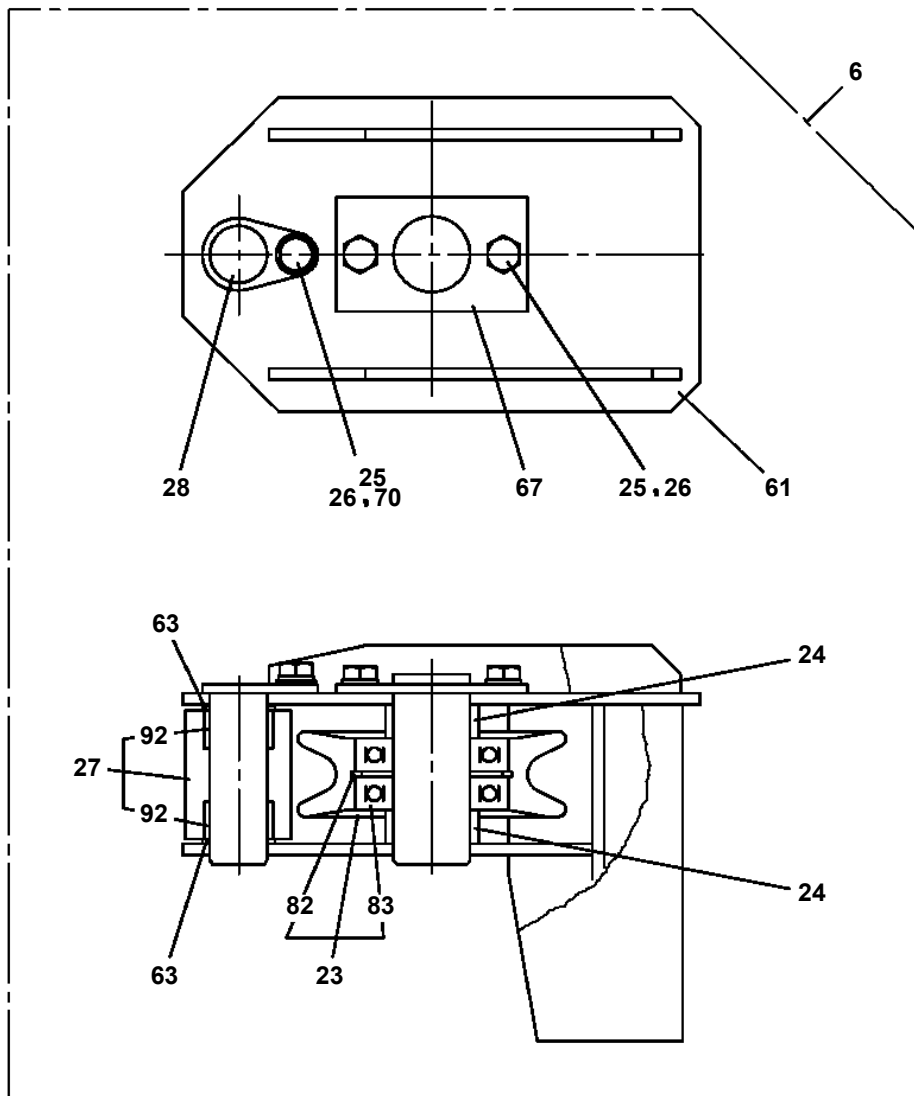
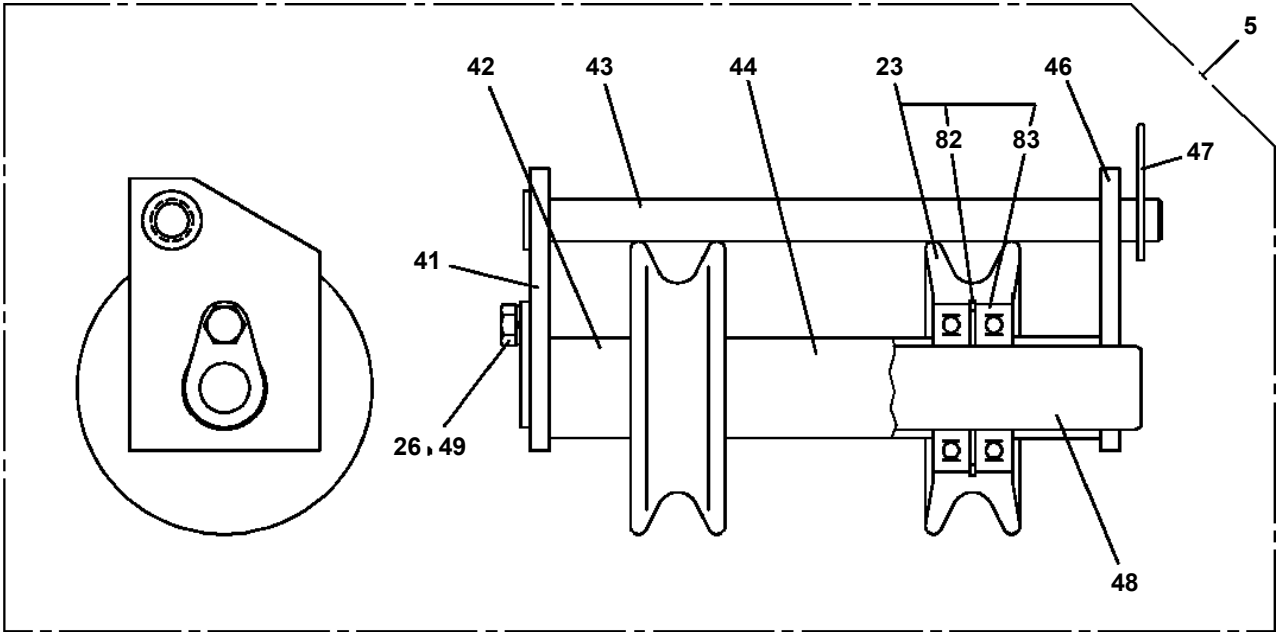
TR-250E-3-00103 4 BOOM + JIB, 2M2D  
PG1040146-02 JIB



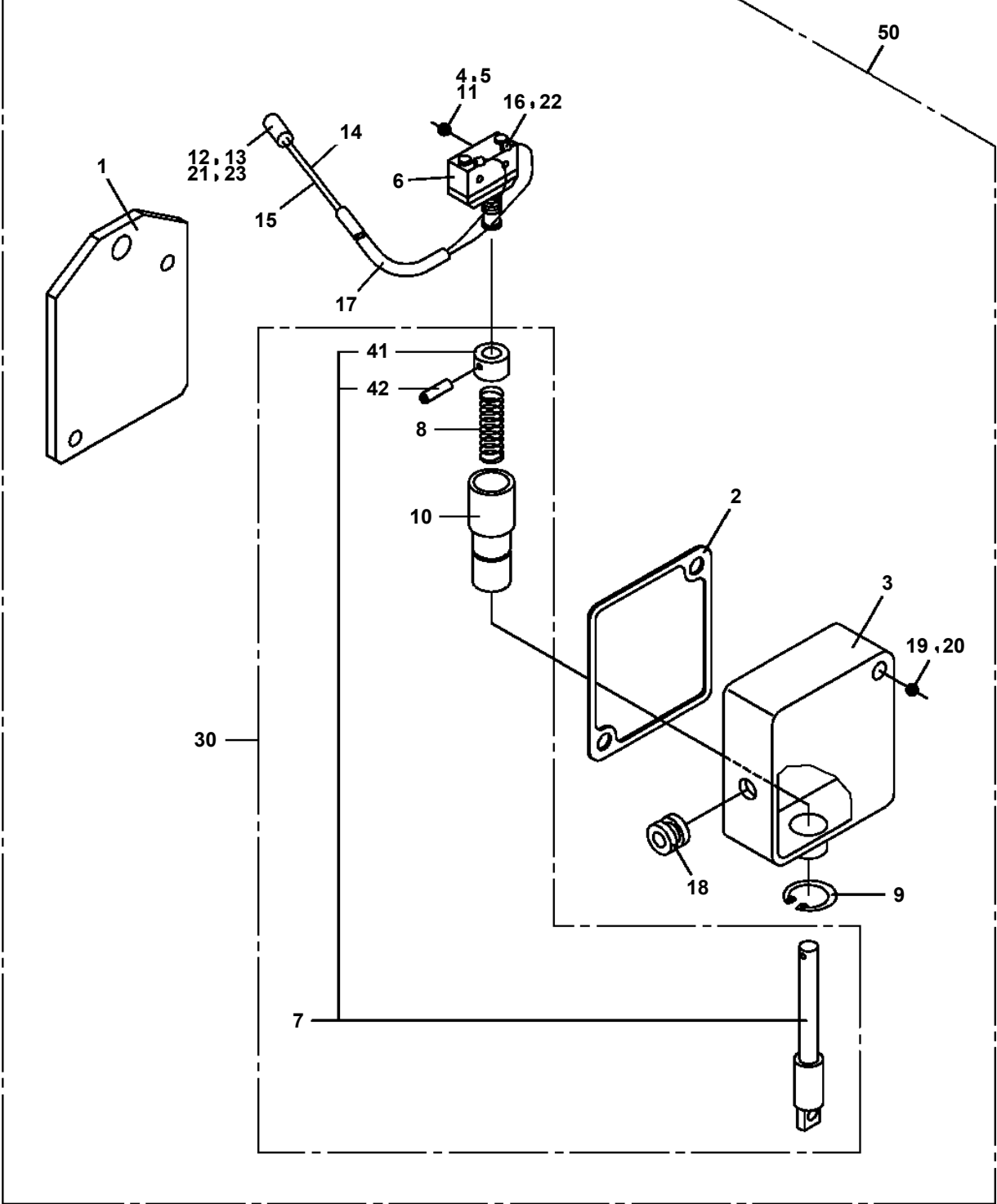
## TR-250E-3-00103 4 BOOM + JIB, 2M2D

Pos No.	Parts No	Parts Name	Qty	Unit	Technical Data	Serial No (Start)	Serial No (End)	Remarks	Pages
1	36670545011	REEL,HOSE	1						
2	80515006007	BEARING,BALL	1						
3	80601110350	RING,RITAINING	1		S35				
4	16246595020	RING ASSY (RL)	2						
6	80515006008	BEARING,BALL	1						
7	90201200600	NUT	6		M6				
8	90302040601	WASHER,SPRING	6		6				
9	36670545021	PIN	1						
10	16246574000	RING,FELT	1						
11	90102208016	BOLT	4		M8X16				
12	90302040801	WASHER,SPRING	4		8				
14	36670545030	SPRING	1						
15	36670124001	CASE	1						
16	16246577000	PLATE	1						
17	36670545040	PLATE	1						
18	16246581000	RUBBER	1						
20	36670545051	SPACER	1						
21	36670545060	SEAL,OIL	1						
22	90710005080	SCREW,SET	1		M5X8				
23	91001203000	O-RING	1		1A G30				
24	36670545070	SEAL,OIL	1						
25	80602110700	RING,RITAINING	1		R70				
26	36671410050	RING,RETAINING	1						
50	36670540001	REEL,HOSE	1						
60	37002405350	HOSE	1		L=8500				
70	34420102000	REEL,HOSE	1						

TR-250E-3-00103 4 BOOM + JIB, 2M2D  
PG1360207-00 WIRE GUIDE (MAIN)

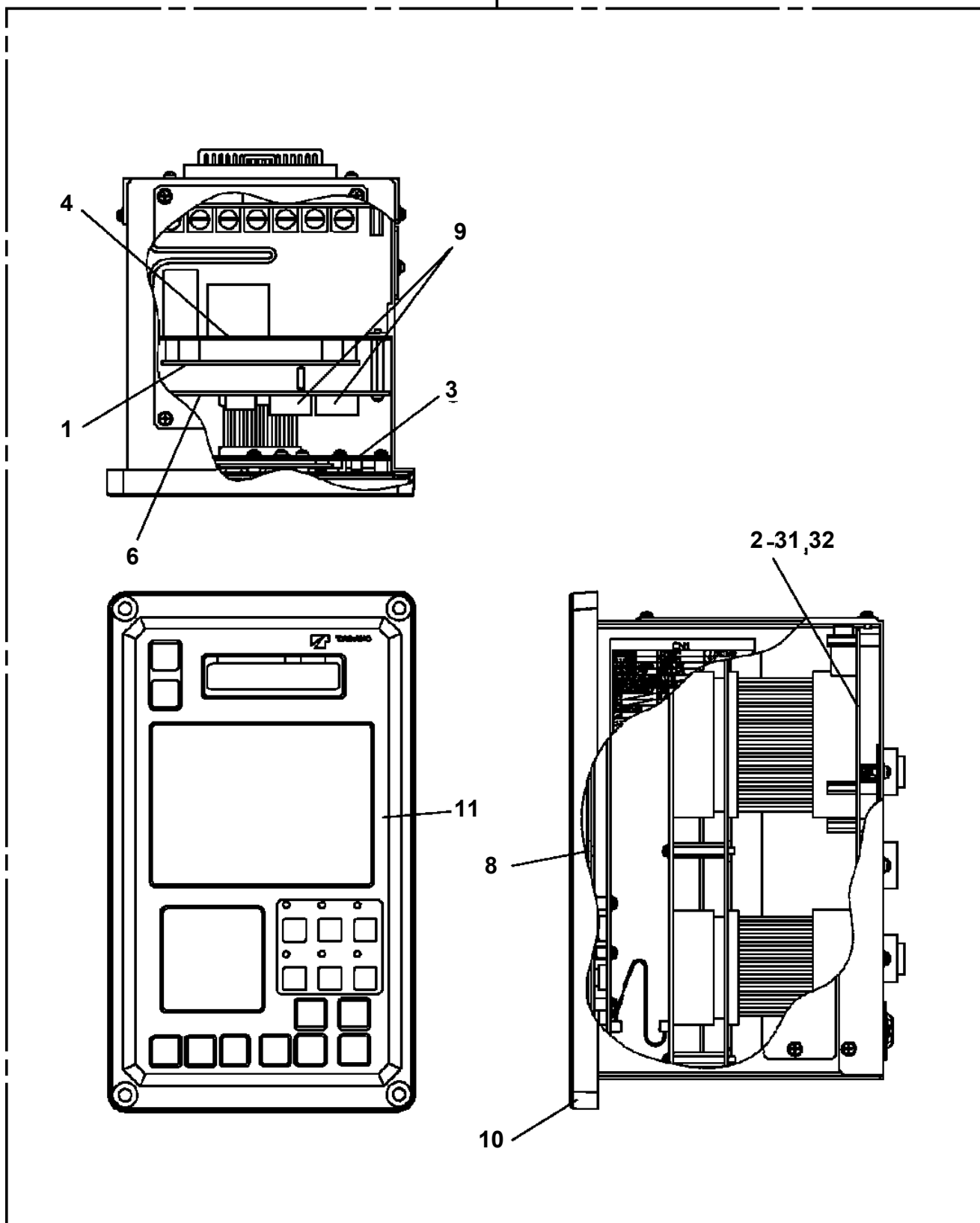


TR-250E-3-00103 4 BOOM + JIB, 2M2D  
PH1070013-02 SWITCH, OVER WIND DETECTOR (BOOM)

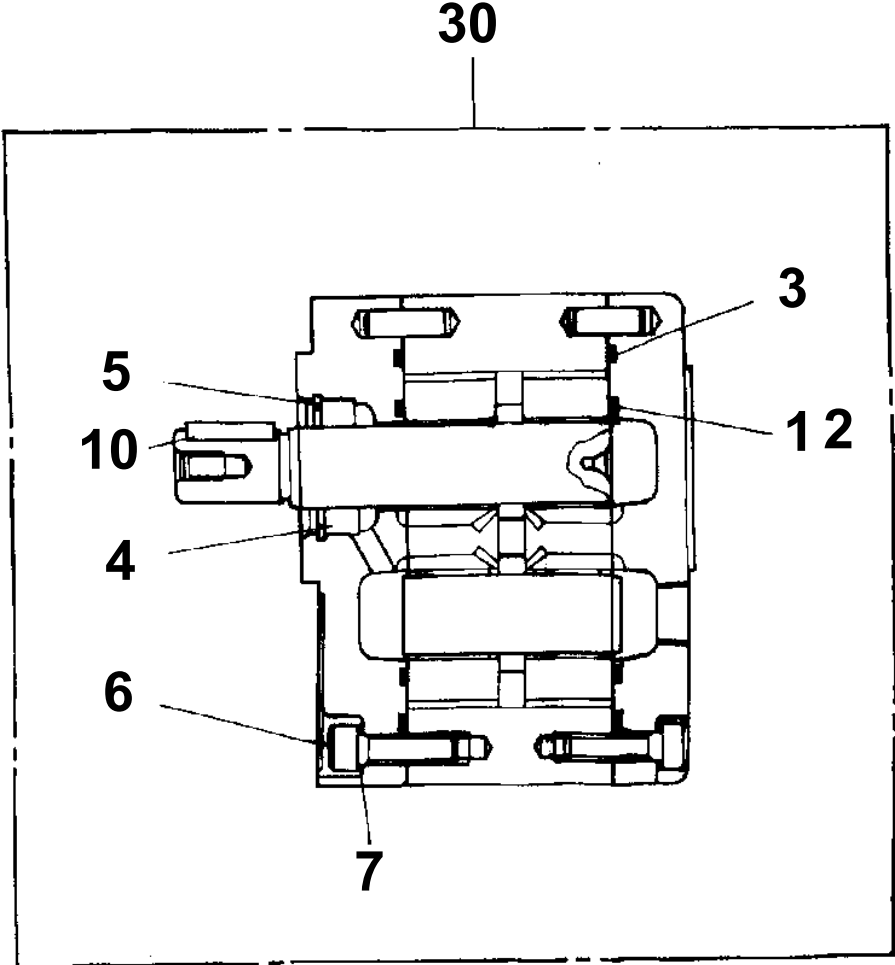


TR-250E-3-00103 4 BOOM + JIB, 2M2D  
PH1250085-02 MOMENT LIMITER

100)



TR-250E-3-00103 4 BOOM + JIB, 2M2D  
PI1010124-00 MOTOR, HYDRAULIC (COOLER, OIL)



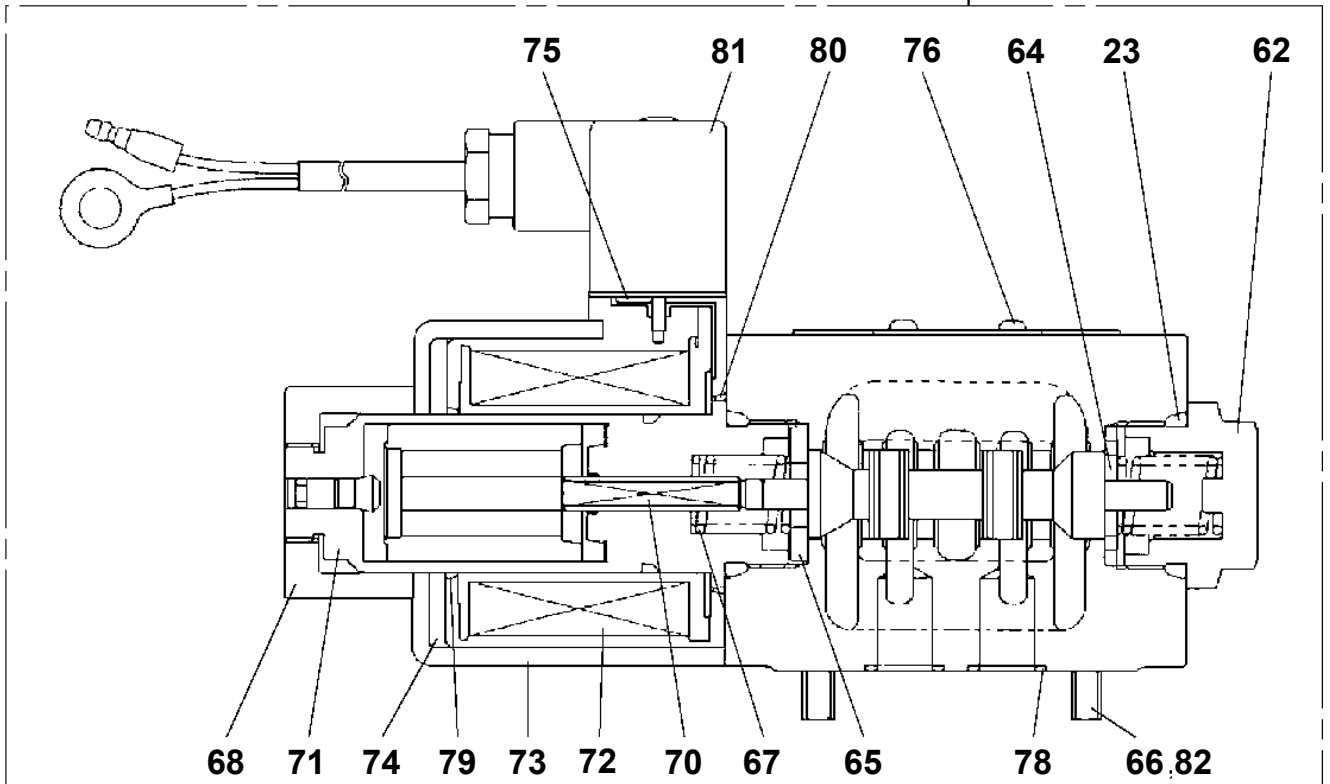
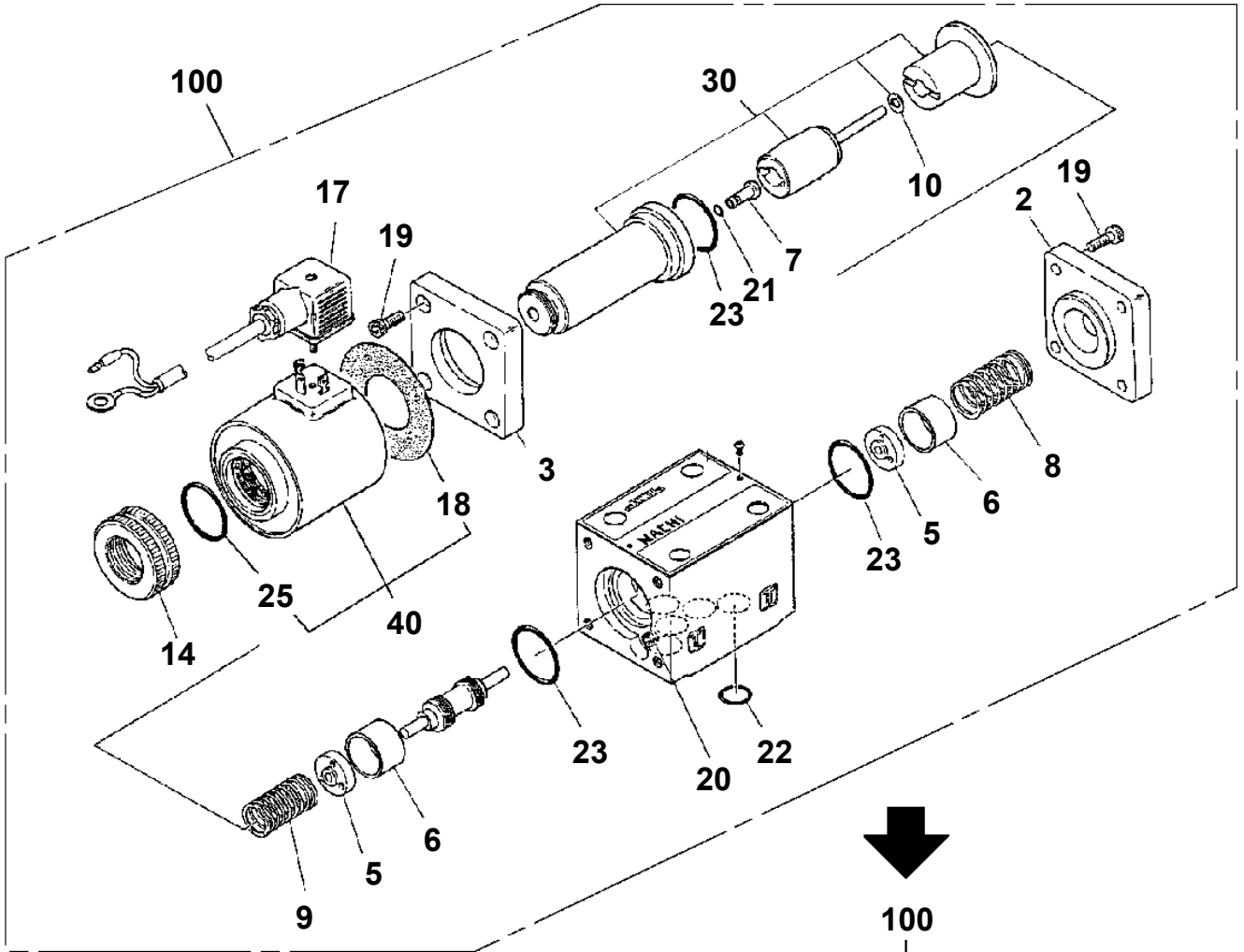
# TR-250E-3-00103 4 BOOM + JIB, 2M2D

Pos No.	Parts No	Parts Name	Qty	Unit	Technical Data	Serial No (Start)	Serial No (End)	Remarks	Page
1	36060715010	TUBE	1						
2	36060935010	ROD	1						
3	36060935040	RETAINER (SPRING)	1						
4	36061125010	CYLINDER (A)	1						
5	36060935020	PISTON (B)	1						
6	36060715060	BEARING,PLAIN	2						
7	36060715070	PACKING	1						
8	36060715080	PACKING	2						
9	80801001210	BEARING,PLAIN	1						
10	91001203500	O-RING	2		1A G35				
11	36060935050	COVER,ROD	1						
12	36060715100	PACKING	1						
13	90101208016	BOLT	4		M8X16				
14	90302040801	WASHER,SPRING	8		8				
15	90203201000	NUT	1		M10				
16	36060715110	END,ROD	1						
17	37001200510	SPRING	1						
18	91001001200	O-RING	1		1A S12				
19	36060715130	PISTON (A)	1						
20	90201201200	NUT	1		M12				
21	36060715140	COVER,HEAD	1						
22	90201200800	NUT	4		M8				
23	36060715150	BOLT	2		M8X152				
	36061125020	BOLT	2		M8X164				
24	90302041201	WASHER,SPRING	1		12				
30	36061120000	CYLINDER,AIR	1						
35	36061125030	PACKING SET	1						

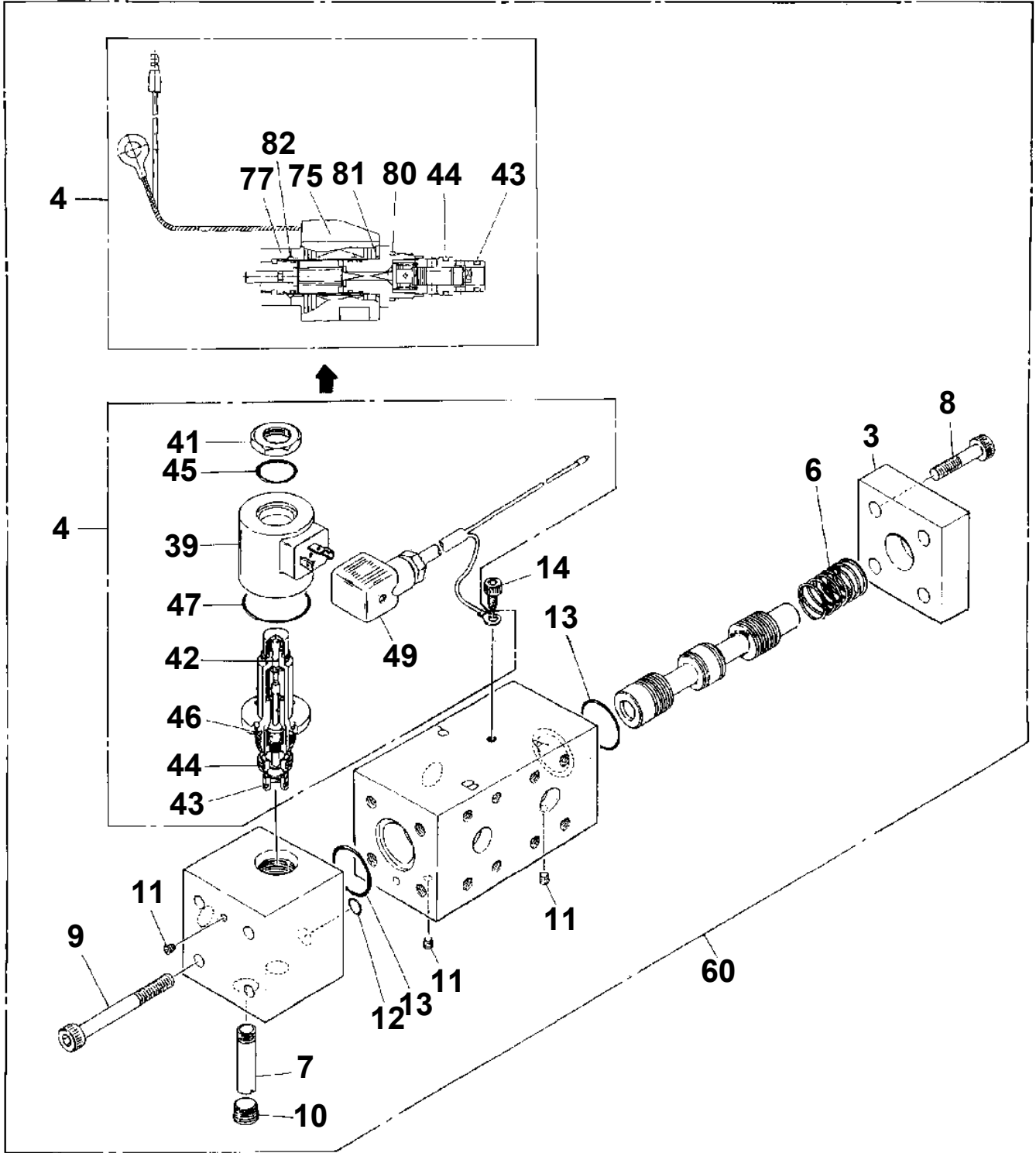
## TR-250E-3-00103 4 BOOM + JIB, 2M2D

Pos No.	Parts No	Parts Name	Qty	Unit	Technical Data	Serial No (Start)	Serial No (End)	Remarks
4	36640085015	RETAINER	2					
5	36640085025	SPRING	2					
7	91000501700	O-RING	2				530580	
	36642935060	O-RING	2			530581		
8	36642935040	RING	4					
12	36642935021	SOLENOID	1				530580	
	36642935022	SOLENOID	1			530581		
13	90131505050	BOLT,HEXAGON SOCKET	4		M5X50			
22	36642935030	PLUG	1				530580	
	36642935050	PLUG	1			530581		
26	36602555010	O-RING	1			530581		
27	36649855100	O-RING	1			530581		
50	36642930000	VALVE,SOLENOID	1					

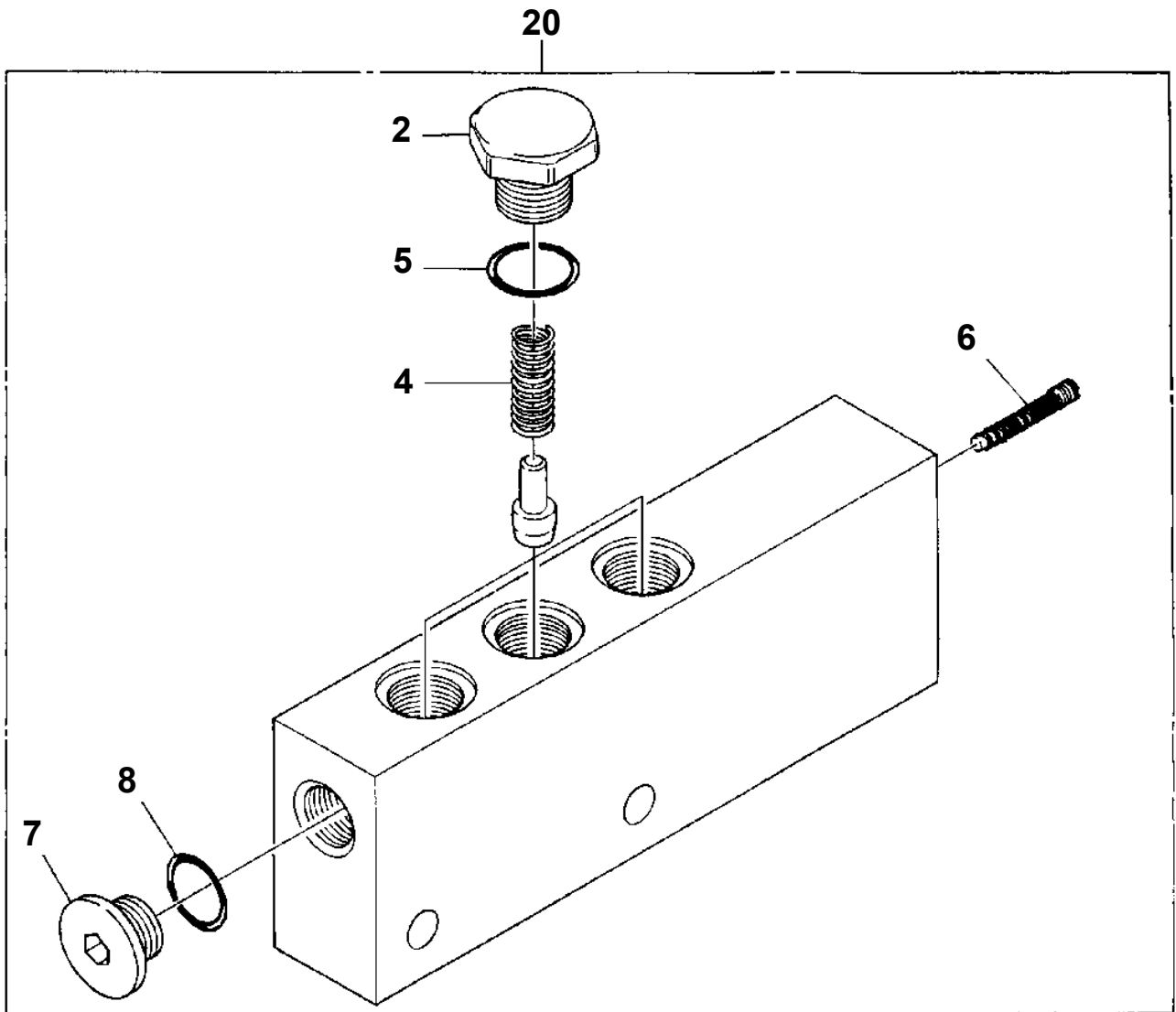
**TR-250E-3-00103 4 BOOM + JIB, 2M2D  
PI1120210-02 VALVE,SOLENOID**



TR-250E-3-00103 4 BOOM + JIB, 2M2D  
PI1130029-00 VALVE, HYDRAULIC

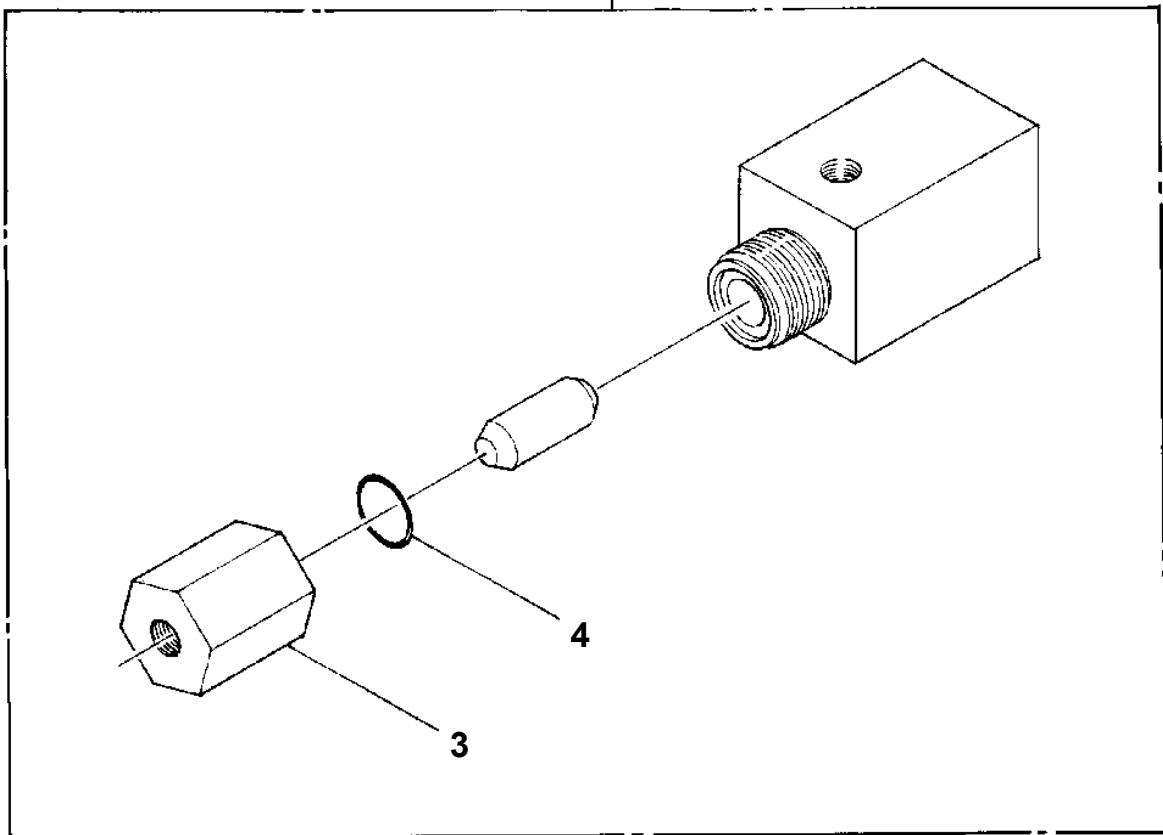


TR-250E-3-00103 4 BOOM + JIB, 2M2D  
PI1140100-00 VALVE,CHECK



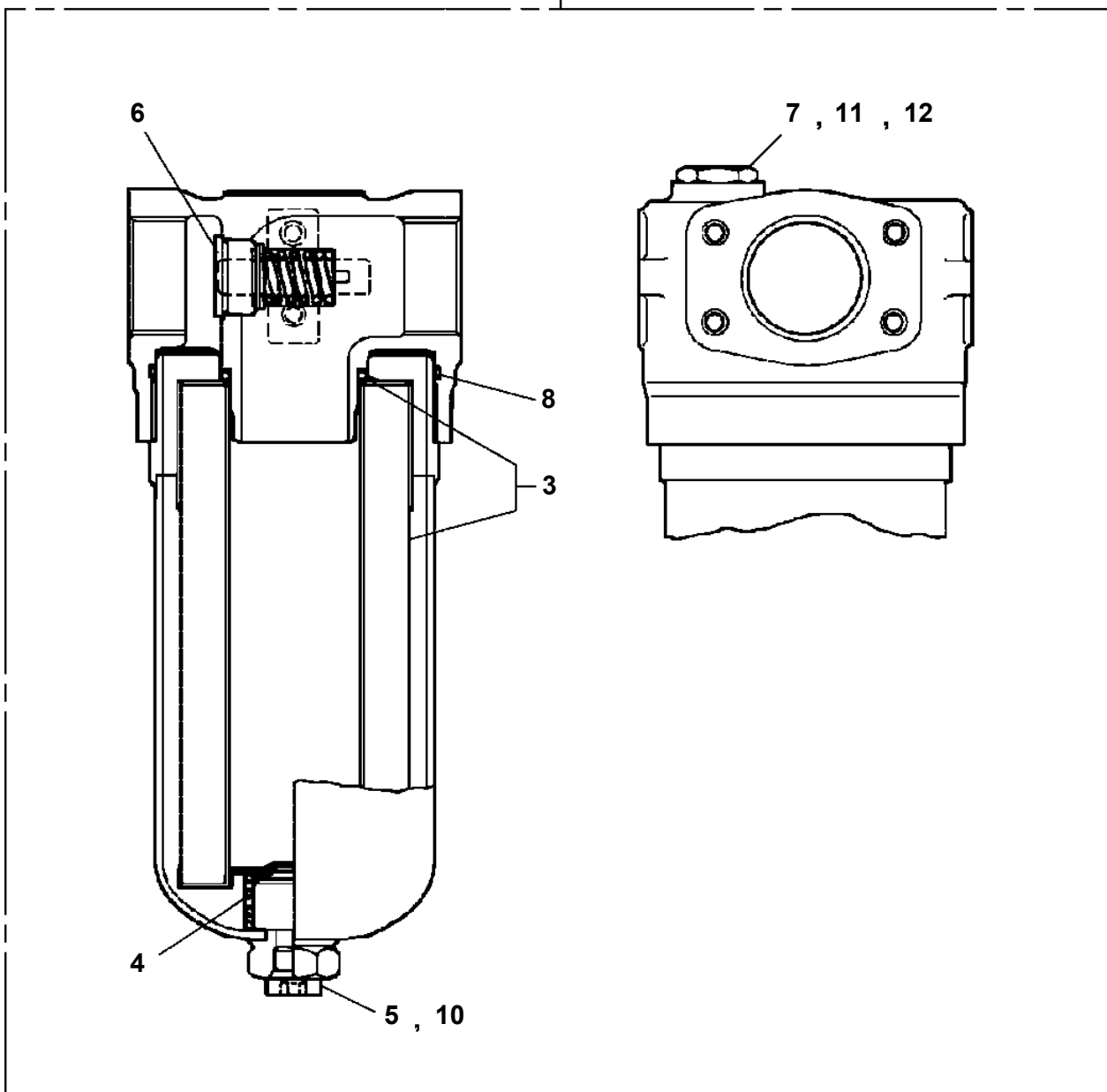
TR-250E-3-00103 4 BOOM + JIB, 2M2D  
PI1230000-00 VALVE,SHUTTLE

10

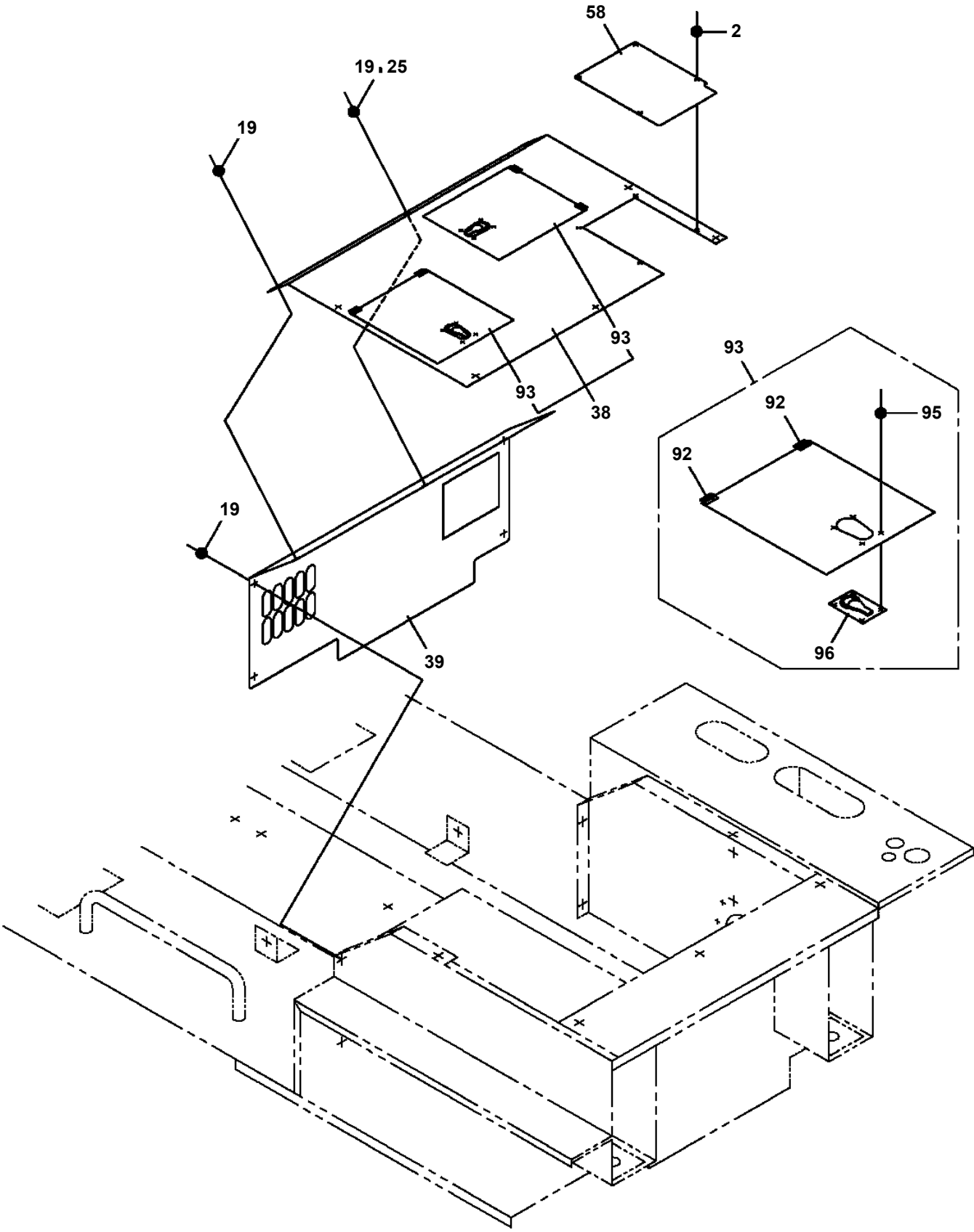


TR-250E-3-00103 4 BOOM + JIB, 2M2D  
PI1300013-03 FILTER,OIL (TORQUE CONVERTER)

20

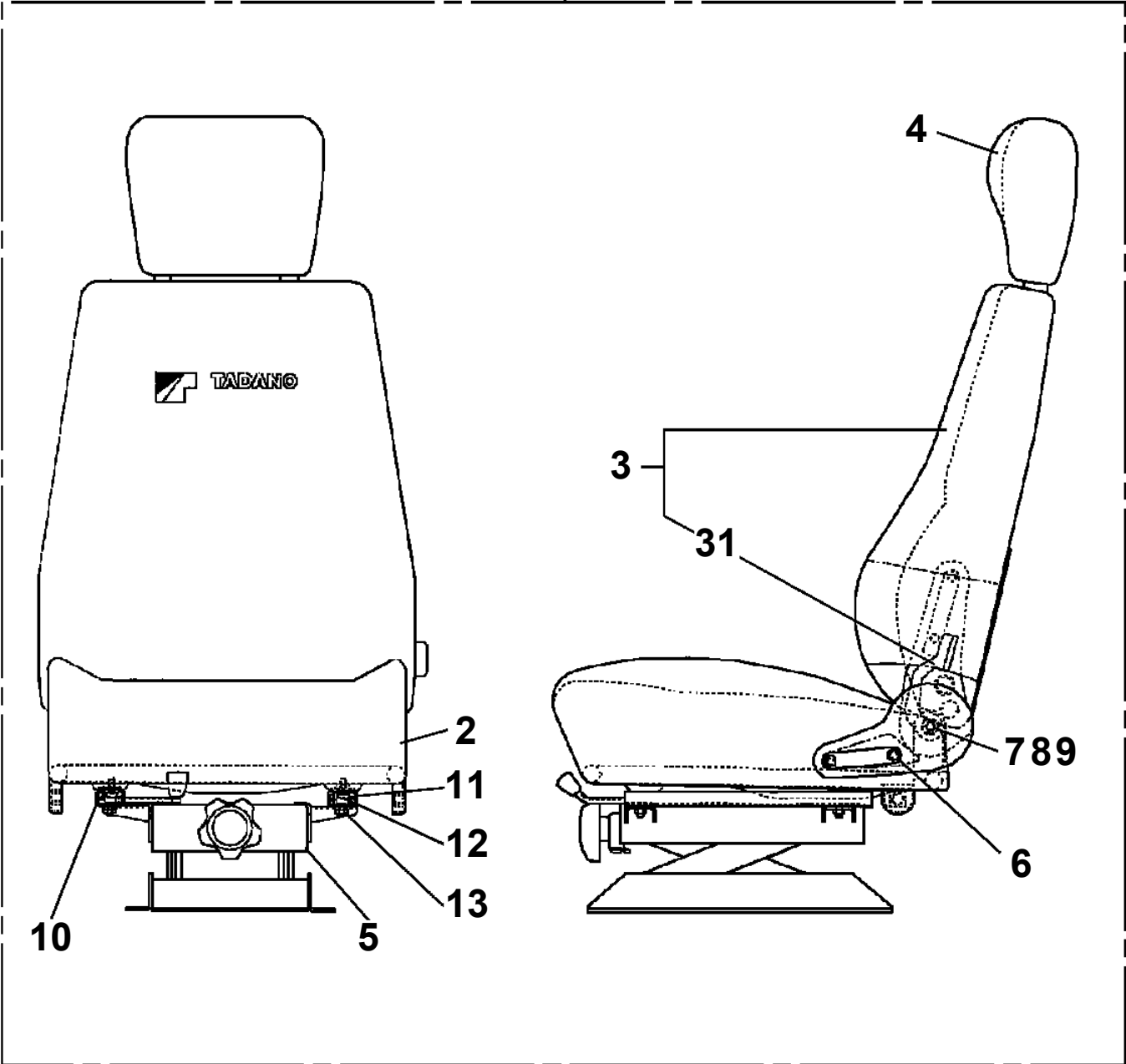


TR-250E-3-00103 4 BOOM + JIB, 2M2D  
PK1120208-00 SWING TABLE



TR-250E-3-00103 4 BOOM + JIB, 2M2D  
PK1150029-01 SEAT, OPERATOR

50



CLICK HERE TO **DOWNLOAD** THE COMPLETE MANUAL

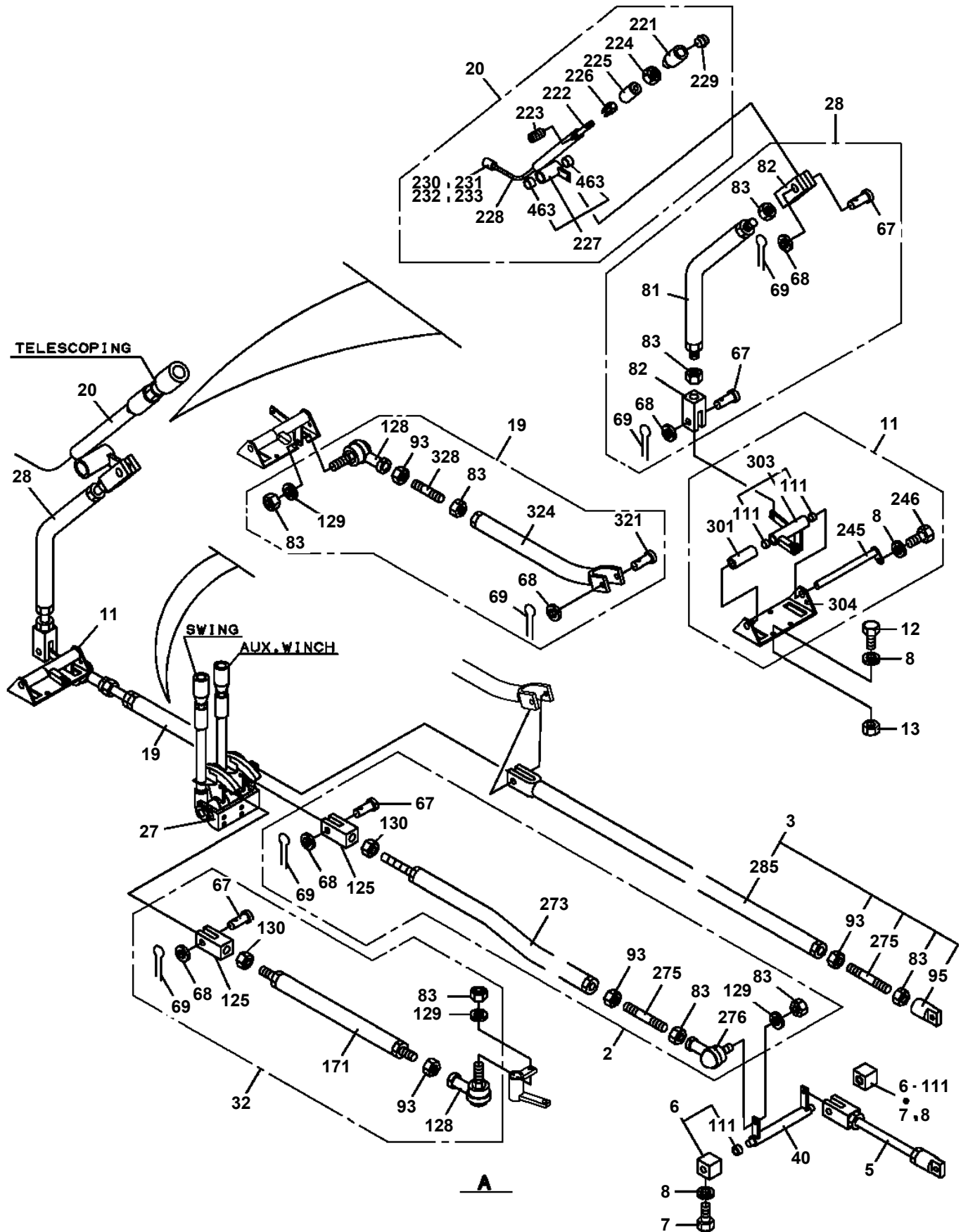
- Thank you very much for reading the preview of the manual.
- You can download the complete manual from: [www.heydownloads.com](http://www.heydownloads.com) by clicking the link below



- Please note: If there is no response to CLICKING the link, please download this PDF first and then click on it.

CLICK HERE TO **DOWNLOAD** THE COMPLETE MANUAL

**TR-250E-3-00103 4 BOOM + JIB, 2M2D**  
**PL1010822-01 OPE.ASSY,CONT.VALVE (ISO)**



# TR-250E-3-00103 4 BOOM + JIB, 2M2D

Pos No.	Parts No	Parts Name	Qty	Unit	Technical Data	Serial No (Start)	Serial No (End)	Remarks	Pages
156	80565000101	END	2						
171	34320691100	SUPPORT	1						
172	34320691200	LEVER	1						
173	37000146900	PIN	2						
176	34320691300	PEDAL	1						
194	34320690600	ROD	1						
214	34320690800	ROD	1						
216	37001503680	BOLT	2						
231	37000130280	PIN	1						
234	34320362301	ROD	1						
251	34320693100	SUPPORT	1						
252	34320693200	LEVER	1						
253	37000515600	PLATE	1		T=1.0				
254	80601110200	RING,RITAINING	1		S20				
261	34320063301	ROD	1						
262	34320060400	END	2						
283	34320365101	PIN	2						
291	37004201750	ROD	1						
311	37001503650	BOLT	1						
332	80804020010	BEARING,PLAIN	3						
342	80804016010	BEARING,PLAIN	8						
349	80720108050	PIN,SPRING	1		8X50				

## TR-250E-3-00103 4 BOOM + JIB, 2M2D

Pos No.	Parts No	Parts Name	Qty	Unit	Technical Data	Serial No (Start)	Serial No (End)	Remarks
1	90201200800	NUT	4		M8			
2	34710610460	SUPPORT	1					
3	90201201000	NUT	3		M10			
4	34710610450	BOLT	1					
5	90302041001	WASHER,SPRING	12		10			
6	90303070601	WASHER,PLAIN	7		6			
7	80136320010	PIN,SPLIT	5		2X10			
8	37000157770	PIN	1					
9	34710611000	LEVER	1					
10	34711031300	PLATE	1					
11	37000307020	SPACER	4		L=4			
12	37001508840	BOLT	4					
13	90302040801	WASHER,SPRING	10		8			
14	90172108022	BOLT,HEXAGON SOCKET	4		M8X22			
15	34711142000	SUPPORT	1					
16	90101706016	BOLT	2		M6X16			
17	90302040601	WASHER,SPRING	4		6			
18	34710611100	LEVER	1					
19	90201201200	NUT	1		M12			
20	90302041201	WASHER,SPRING	1		12			
21	90303071201	WASHER,PLAIN	1		12			
22	90303071601	WASHER,PLAIN	2		16			
23	36061120000	CYLINDER,AIR	1					
24	37001500260	BOLT	4		M10X115			
25	34711141001	SUPPORT	1					
26	37001508790	BOLT	4					
27	34710612200	LINK	2					
28	90201200600	NUT	1		M6			
29	80182306040	SCREW,MACHINE	1					
30	34710610501	SUPPORT	1					
31	90101210025	BOLT	4		M10X25			
32	34710610301	ROD ASSY	1					
33	19214410000	SPRING	1					
34	90101206012	BOLT	2		M6X12			
35	34711143000	SUPPORT	1					
36	56444812000	BOLT	1					
37	80172304025	SCREW,MACHINE	2		M4X25			
38	90302040401	WASHER,SPRING	2		4			
39	90303070401	WASHER,PLAIN	2		4			
40	37001508830	BOLT	1		M6X35			
41	59440017000	CYLINDER,AIR	1					
42	59440015000	NUT	2		M26			
43	90272100600	NUT	4					
44	90303071001	WASHER,PLAIN	3		10			
45	34711141100	PLATE	1					
46	34711140100	LEVER	1					
61	36360352010	SWITCH (IDLING)	1					
71	34710618010	SUPPORT ASSY	1					
81	90201200600	NUT	1		M6			
91	90201200800	NUT	3		M8			
92	90302040801	WASHER,SPRING	2		8			
93	80565000082	END	1					
94	90291200800	NUT	1		M8			
96	80565000081	END	1					
121	80804014015	BEARING,PLAIN	1					
133	80804016015	BEARING,PLAIN	3					

**TR-250E-3-00103 4 BOOM + JIB, 2M2D**

Pos No.	Parts No	Parts Name	Qty	Unit	Technical Data	Serial No (Start)	Serial No (End)	Rem
1	8210000384	LAMP,BACKUP	1					
2	44960012000	BUZZER ASSY	1					
3	90101208016	BOLT	1		M8X16			
4	90201200800	NUT	13		M8			
5	90302040801	WASHER,SPRING	16		8			
6	90303070801	WASHER,PLAIN	12		8			
7	90101208035	BOLT	6		M8X35			
8	34930090500	LAMP,COMBINATION (RIGHT)	1					
9	34930090600	LAMP,COMBINATION (LEFT)	1					
10	34930361200	LAMP,HEAD (RIGHT)	1					
11	90101210016	BOLT	3		M10X16			
12	90201201000	NUT	3		M10			
13	90302041001	WASHER,SPRING	3		10			
14	34650001301	CABLE (BATTERY)	1		L=400			
15	34930110200	CABLE,BATTERY	1					
16	34650001401	CABLE,BATTERY	1					
17	34650000090	SENDER,THERMO(WATER)	1				530581	
	36180180000	SENDER,THERMO	1			530582		
18	59281001000	SENDER,THERMO (OIL)	1				530581	
	36180210000	SENDER,THERMO	1			530582		
19	82100002040	CLAMP	1		WE15			
20	34930640200	SUPPORT ASSY	1					
21	91062014011	O-RING	1		1B			
22	59481546000	CLAMP	1					
25	90101206010	BOLT	2		M6X1.0			
26	90302040601	WASHER,SPRING	87		6			
27	34930400200	RELAY (FOR HEAD LAMP)	1					
28	34930630200	PLATE	1					
29	91810130270	FASTENER	2					
30	34930090900	SUPPORT	1					
31	80172305012	SCREW,MACHINE	8		M5X12			
32	90302040501	WASHER,SPRING	20		5			
33	34930090300	LAMP,COMBINATION (RIGHT)	1					
34	34930090400	LAMP,COMBINATION (LEFT)	1					
35	34930361300	LAMP,HEAD (LEFT)	1					
36	36180150000	SENDER,PRESSURE	1					
37	80182306010	SCREW,MACHINE	8		M6X10			
38	34930160200	CABLE	1					
40	34930550300	SUPPORT ASSY	1					
41	90101208012	BOLT	6		M8X12			
42	(*****)	RELAY ASSY (BOX)	1					
43	37002705650	CABLE (EARTH,ALTERNATOR)	1					
44	33430162080	CABLE (STARTER MOTOR)	1					
45	34930860100	HARNESS (MAIN)	1					
46	90925035121	SCREW,TAPPING	4		3.5X12			
47	34930450100	HARNESS (FOR IDLING SW)	1					
48	82100001173	CLAMP ASSY	59		L=65			
49	82100002002	CLAMP	7		WR6			
50	82100002004	CLAMP	12		WR8			
51	82100002006	CLAMP	9		WR10			
52	82100002008	CLAMP	11		WR12			
53	82100002010	CLAMP	11		WR15			
54	82100002014	CLAMP	4		WR20			
55	82100002016	CLAMP	21		WR25			
56	82100002018	CLAMP	1		WR35			
57	36180030000	SENSOR,SPEED	1					
58	90303070601	WASHER,PLAIN	23		6			
59	90201200600	NUT	79		M6			
60	90190000008	BOLT,STUD	74		M6X20			
61	82100001412	TUBE,SPIRAL	1	M	SE-12BK			
62	90101206060	BOLT	1		M6X60			
64	82100002563	LAMP,LICENSE	1					
66	37000707750	CLAMP ASSY	2					

# TR-250E-3-00103 4 BOOM + JIB, 2M2D

Pos No.	Parts No	Parts Name	Qty	Unit	Technical Data	Serial No (Start)	Serial No (End)	Remarks	Pa
1	34930631100	BOX	1						
2	34930111200	COVER	1						
3	34930861200	RELAY ASSY	1						000
6	82100002017	CLAMP	1		WR30				
10	82174103527	FUSE	1		65A				
12	34930631300	BOX ASSY	1						
14	90101208012	BOLT	5		M8X12				
15	90302040801	WASHER,SPRING	7		8				
18	90101208025	BOLT	2		M8X25				
19	90303070801	WASHER,PLAIN	2		8				
22	80182306014	SCREW,MACHINE	8		M6X14				
23	90303070601	WASHER,PLAIN	8		6				
24	90302040601	WASHER,SPRING	12		6				
25	80182306010	SCREW,MACHINE	4		M6X10				
26	34930110600	HARNESS	1		15B L=250				
27	82161901050	RELAY	1						
51	36360592010	RELAY,SAFETY	1						
52	36360952010	RELAY (AIR HEATER)	1						
72	82400000202	GROMMET	3						
73	16912234000	GROMMET	1						
81	34930346100	SUPPORT	1						
82	34930346200	BOX ASSY (FUSE)	1						
83	80182306012	SCREW,MACHINE	4		M6X12				
84	90302040601	WASHER,SPRING	4		6				
85	90303070601	WASHER,PLAIN	4		6				
86	34930431300	BOX ASSY (FUSE)	1						
91	34351562510	BOX,FUSE	2						
92	34930346210	HARNESS	1						
93	82100001837	FUSE	16		5A				
102	34930431310	HARNESS	1						
104	82100001839	FUSE	7		10A.RED				
105	82100001840	FUSE	3		15A,BLUE				
106	82100001841	FUSE	2		20A,YELLOW				

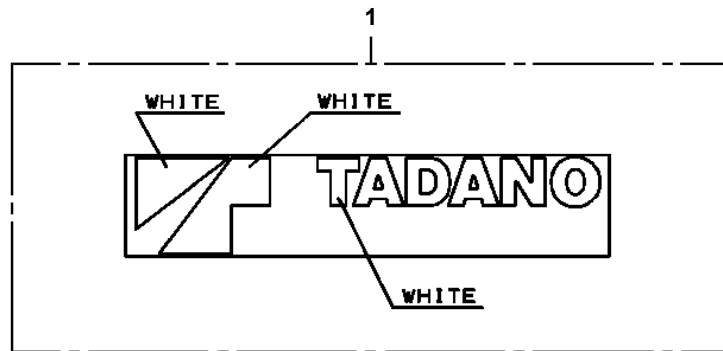
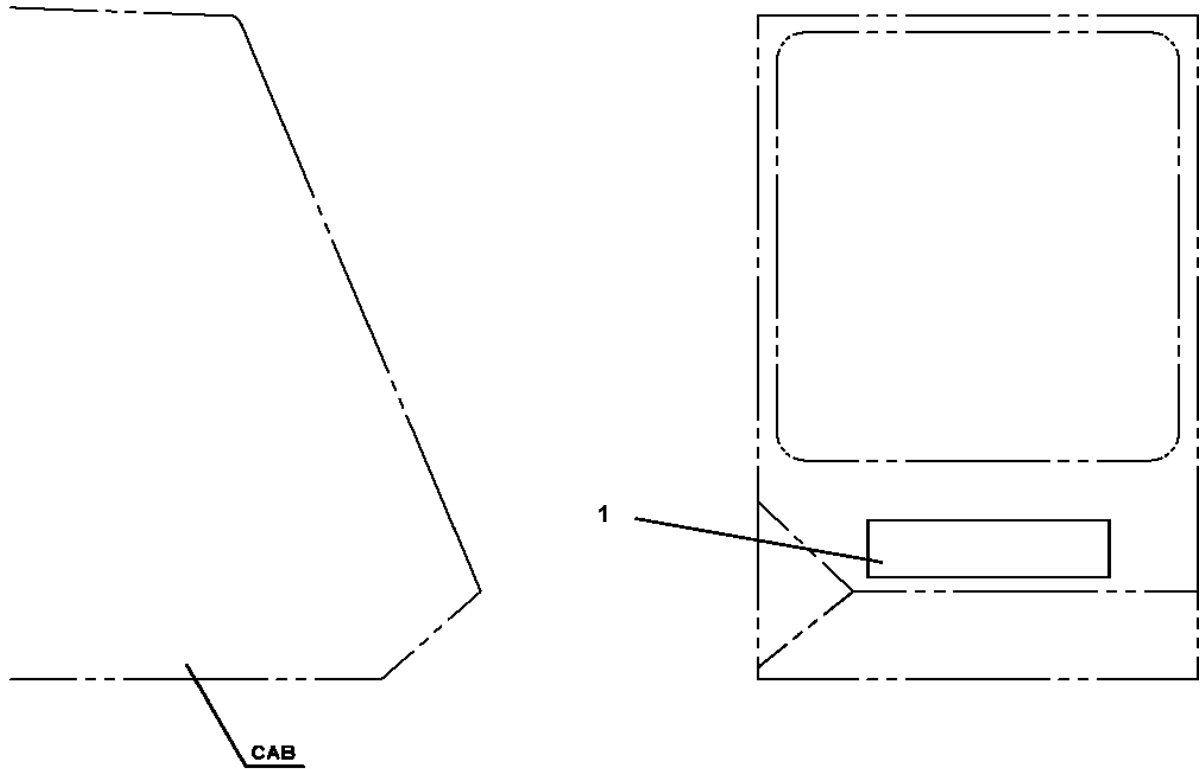
# TR-250E-3-00103 4 BOOM + JIB, 2M2D

Pos No.	Parts No	Parts Name	Qty	Unit	Technical Data	Serial No (Start)	Serial No (End)	Remarks
1	34930096000	BATTERY (YUASA,170F51)	1					

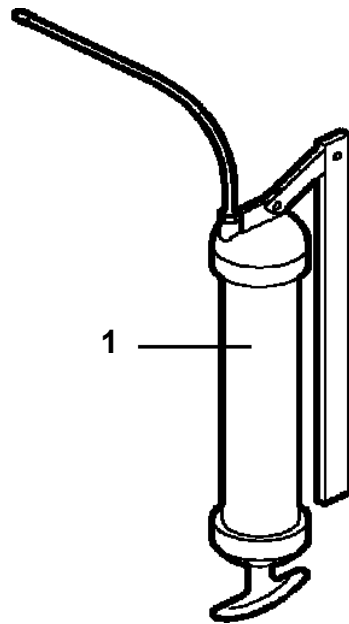
# TR-250E-3-00103 4 BOOM + JIB, 2M2D

Pos No.	Parts No	Parts Name	Qty	Unit	Technical Data	Serial No (Start)	Serial No (End)	Re
1	37002219500	PLATE,CAUTION (OIL/FOR EXP.)	1					

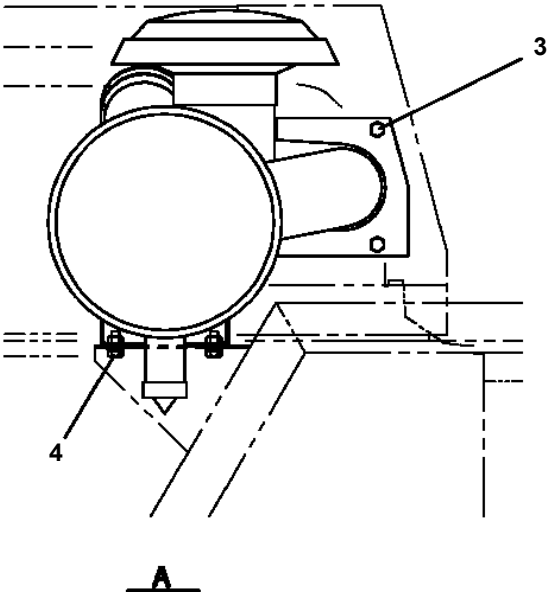
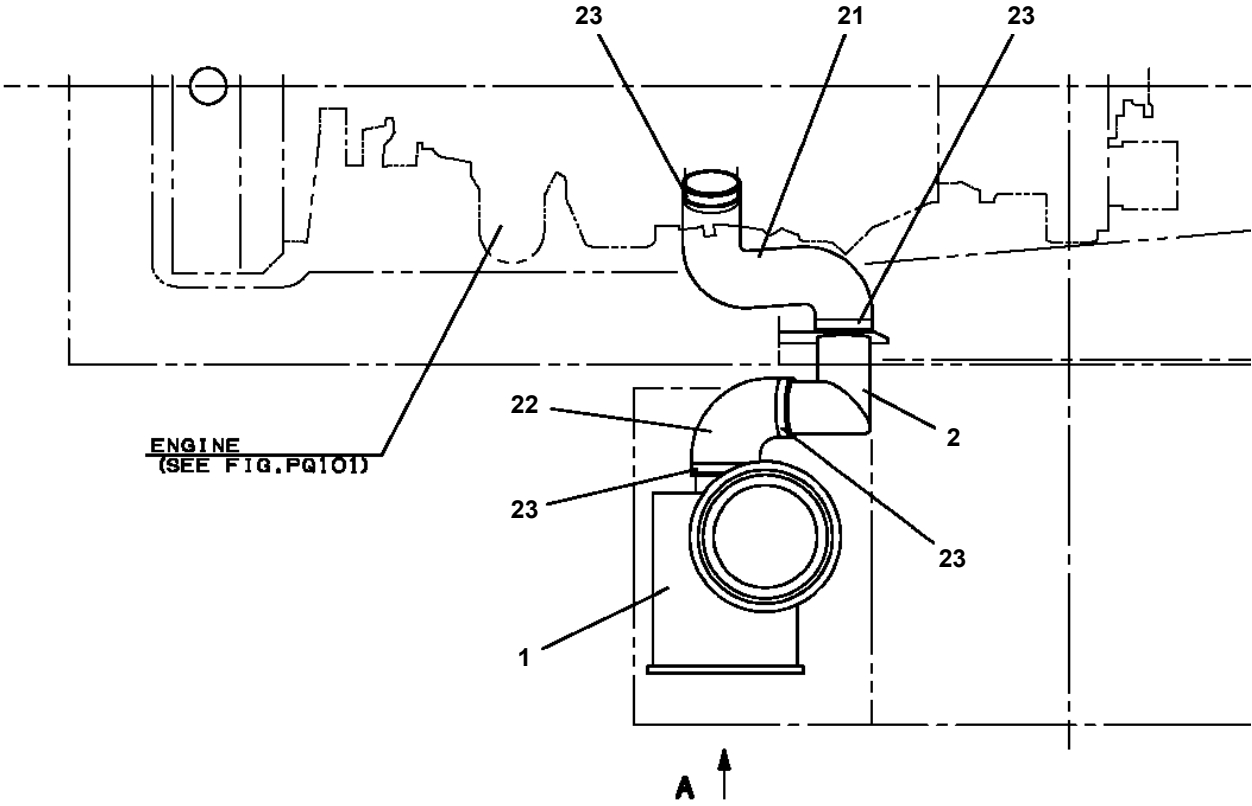
TR-250E-3-00103 4 BOOM + JIB, 2M2D  
PO1030006-00 TADANO (CAB,WHITE/WHITE)



TR-250E-3-00103 4 BOOM + JIB, 2M2D  
PP5450003-00 PUMP, GREASE (240CC)



TR-250E-3-00103 4 BOOM + JIB, 2M2D  
PQ1060031-00 AIR INTAKE INSTALLATION



# TR-250E-3-00103 4 BOOM + JIB, 2M2D

Pos No.	Parts No	Parts Name	Qty	Unit	Technical Data	Serial No (Start)	Serial No (End)	Remarks	Pages
2	36290115160	FILTER	1						
3	36290115041	CAP	1						
4	36102355010	CLAMP	2						
5	36102355020	TUBE	1						
6	36102355030	NUT,UNION	1						
7	36102355040	NIPPLE (UNION)	1						
8	36102355050	PIPE,FUEL	1						
9	36102355060	PLUG	1						
21	36290115170	ELEMENT,FILTER	1						
50	36102350000	TANK,FUEL	1						

## TR-250E-3-00103 4 BOOM + JIB, 2M2D

Pos No.	Parts No	Parts Name	Qty	Unit	Technical Data	Serial No (Start)	Serial No (End)	Remark
126	36370165441	PUMP	1					
127	36370055590	BOLT,STUD	2					
128	90264201000	NUT	2		M10			
129	36370285090	HOUSING	1					
130	80316030020	PLUG	1		PT1/8			
131	80316030100	PLUG	1		PT3/4			
132	80316030100	PLUG	1		PT3/4			
133	80316030020	PLUG	1		PT1/8			
134	36370055680	PLUG,TAPER	1					
135	36370285100	O-RING	1					
136	90131510050	BOLT,HEXAGON SOCKET	6		M10X50			
137	36370285110	PIPE ASSY	1					
138	36370045410	BAND	1					
139	90302041001	WASHER,SPRING	12		10			
140	36350025650	WASHER	12					
150	36370275050	SEAL,OIL	1					
200	36370310000	TORQUE CONVERTER	1					

## TR-250E-3-00103 4 BOOM + JIB, 2M2D

Pos No.	Parts No	Parts Name	Qty	Unit	Technical Data	Serial No (Start)	Serial No (E
1	36350205610	BEARING,ROLLER	2				
2	36350205620	WASHER	1				
3	36350205630	WASHER,THRUST	4				
4	36350205640	BEARING,THRUST NEEDLE	4				
5	36350245340	WASHER,THRUST	4				
6	36350205660	BEARING,NEEDLE	2				
7	36350245350	GEAR ASSY (D)	1				
8	59433020040	PLATE,SINTER	2				
9	36350205680	PLATE (BACK)	2				
10	36350205690	PLATE,SINTER	14				
11	36350205700	PLATE (STEEL)	12				
12	36350205710	RING,RETAINING	2				
13	36350205720	SPRING	2				
14	36350345360	PISTON (CLUTCH)	2				
15	59133120100	RING,OIL SEAL	2				
16	59433040110	RING,OIL SEAL	2				
17	36350345350	SHAFT (CLUTCH)	1				
18	36350205790	GEAR (H)	1				
19	36350205760	WASHER	1				
20	36350205550	SHIM SET	1				
21	36350205770	RING,OIL SEAL	3				
50	36350346050	CLUTCH PACK, TRANSMISSION (F3&F1)	1				

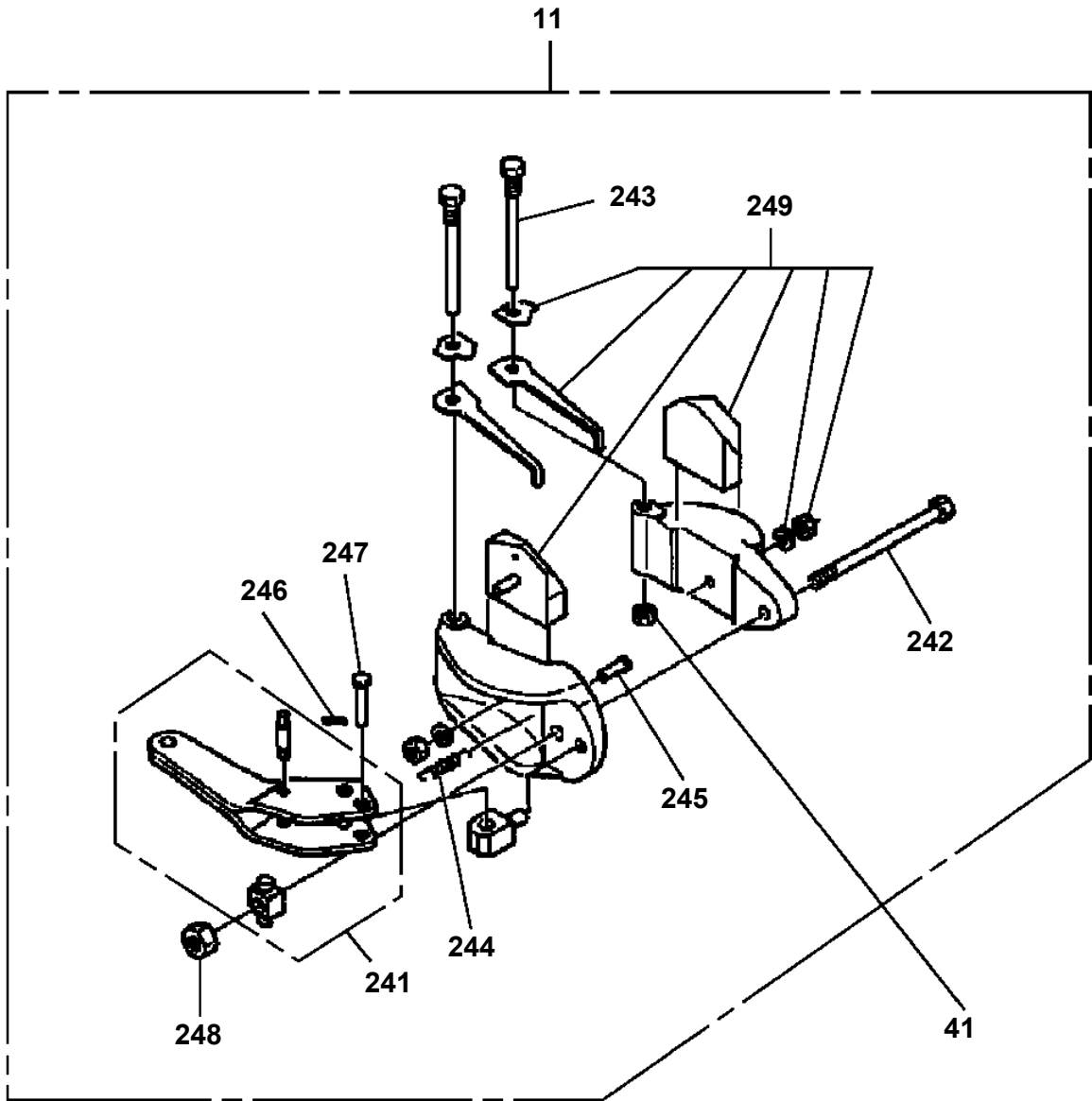
# TR-250E-3-00103 4 BOOM + JIB, 2M2D

Pos No.	Parts No	Parts Name	Qty	Unit	Technical Data	Serial No (Start)	Ser
3	36350206070	SPRING	1				
4	59233070130	PACKING (COPPER)	1				
5	36350025690	PLUG	1				
7	36350245440	SPRING	1				
9	36350245460	SPRING	1				
10	36350245470	SPRING	1				
11	36350245480	SPRING	1				
13	36350185660	SPRING	1				
14	36350185650	SPRING	1				
15	36350185640	SPRING	1				
17	36350036520	SPRING	1				
19	36350345240	PACKING	1				
20	36350345250	COVER	1				
22	90101510030	BOLT	10		M10X30		
23	36350345260	PACKING	1				
24	36350245540	WASHER	1				
25	36350025650	WASHER	1				
30	36350345131	PRESSURE REGULATOR VALVE,TRANSMISSION	1				

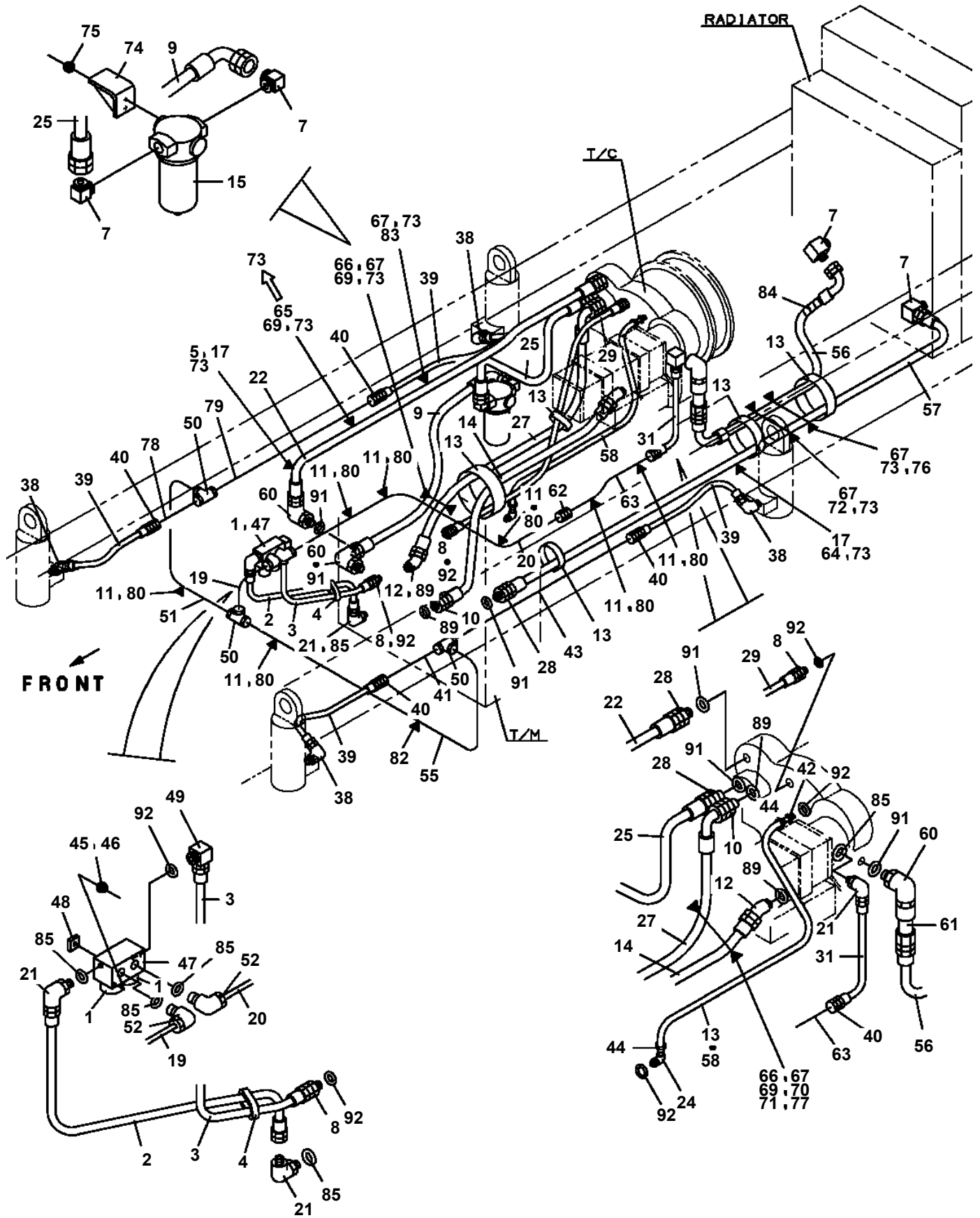
# TR-250E-3-00103 4 BOOM + JIB, 2M2D

Pos No.	Parts No	Parts Name	Qty	Unit	Technical Data	Serial No (Start)	Serial No (End)
2	36350036450	SPRING	1				
4	36350036590	RETAINER (SPRING)	1				
5	36350036600	SPRING	1				
6	36350026720	PACKING (COPPER)	1				
7	36350036780	PLUG	1				
8	36350345280	PACKING	1				
9	36350345290	VALVE,SOLENOID (TRANSMISSION)	1				
20	36350345110	VALVE,LOCK UP (TRANSMISSION)	1				

TR-250E-3-00103 4 BOOM + JIB, 2M2D  
PR1620034-03 AXLE,DRIVING (FRONT)



**TR-250E-3-00103 4 BOOM + JIB, 2M2D  
PR1700069-01 PIPING, CONVERTER**



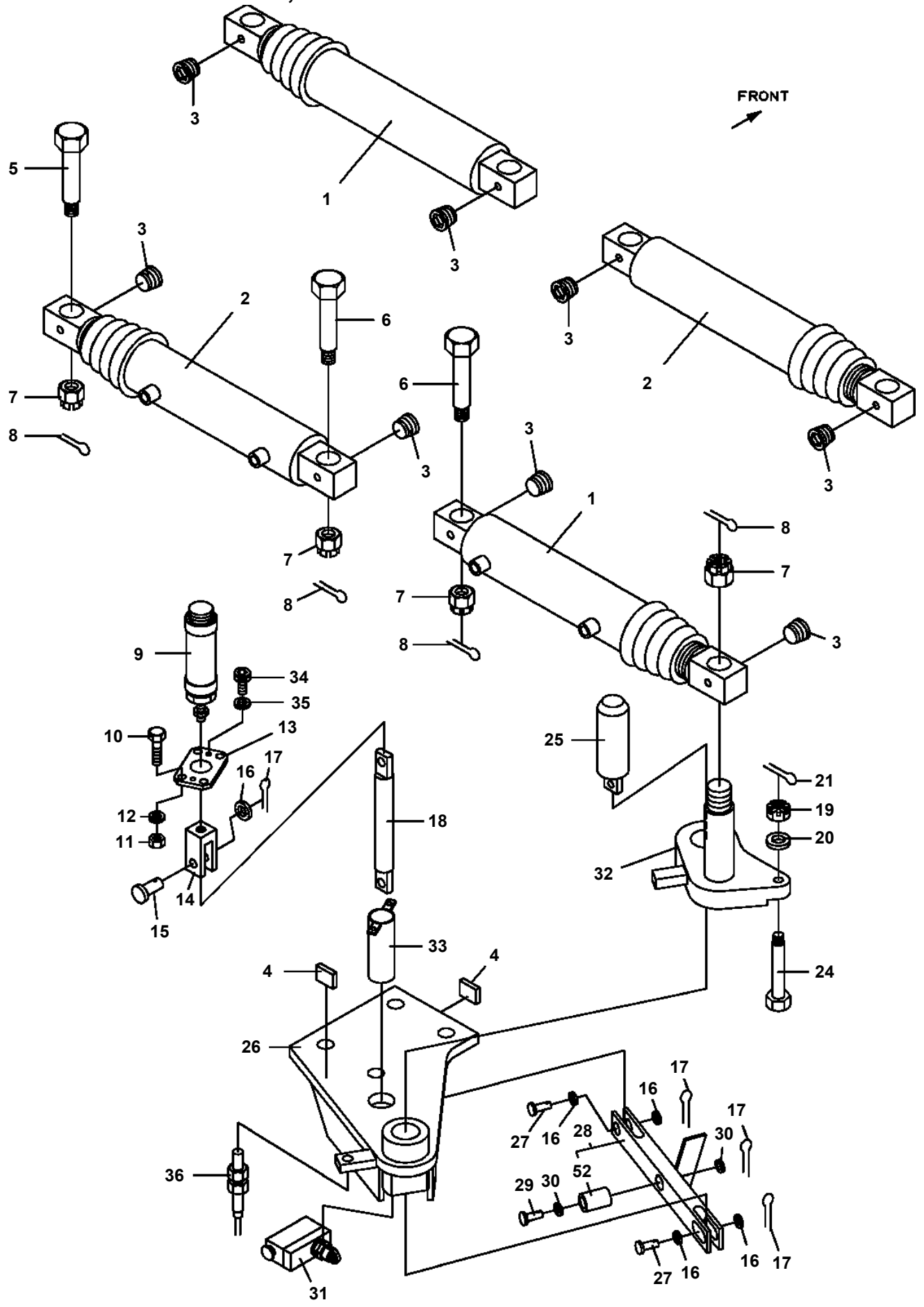
# TR-250E-3-00103 4 BOOM + JIB, 2M2D

Pos No.	Parts No	Parts Name	Qty	Unit	Technical Data	Serial No (Start)	Serial No (End)	Remarks	Pages
1	37003900410	WHEEL,TIRE	1						

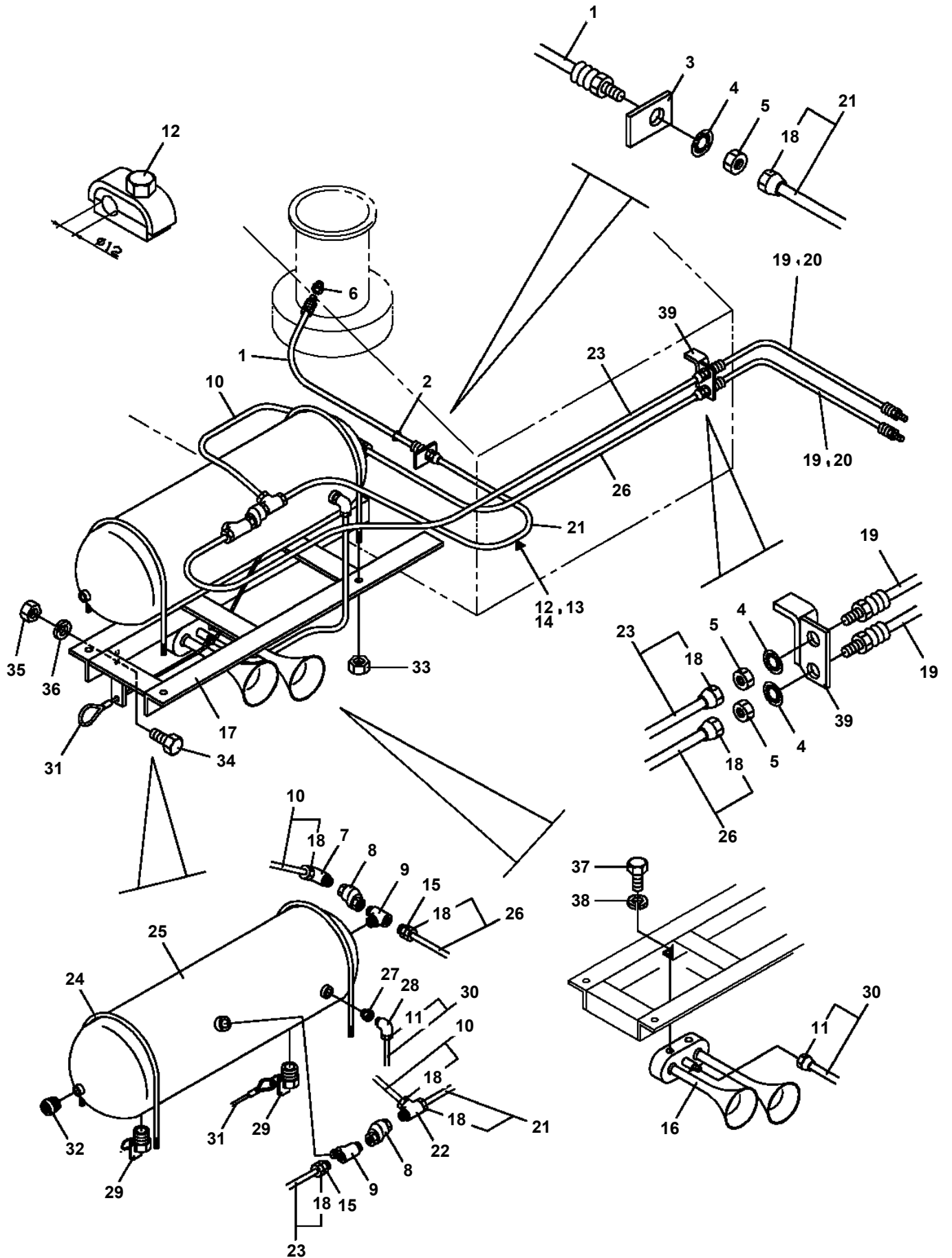
**TR-250E-3-00103 4 BOOM + JIB, 2M2D**

Pos No.	Parts No	Parts Name	Qty	Unit	Technical Data	Serial No (Start)	Serial No (End)	Remarks
1	37000711010	CLAMP ASSY	8		18X1			
2	37000502350	PLATE	2					
3	80316030040	PLUG	1		PT1/4			
4	36621830000	VALVE,CHECK	4					
5	90131508065	BOLT,HEXAGON SOCKET	16		M8X65			
6	90302040801	WASHER,SPRING	22		8			
7	80430470650	JOINT	4					
8	36610770000	VALVE,FLOW CONTROL	1					
9	90101208060	BOLT	2		M8X60			
10	80302090281	FITTING	1		KCO22-060N			
11	91002802400	O-RING	1		1B P24			
12	80302090241	FITTING	8		KCO18-040N			
13	91002801800	O-RING	8		1B P18			
14	80301010160	FITTING	3		KUA18-000N			
15	81408000241	PIPE,STEEL	1	M	18X1.9T			
16	81408000241	PIPE,STEEL	1	M	18X1.9T			
17	37000900120	JOINT	5					
18	37002421470	HOSE	1		L=600			
19	37000511360	PLATE	6					
20	37000503230	SUPPORT	1					
21	37002421480	HOSE	4		L=375			
22	37000711080	CLAMP ASSY	8		12-2			
23	37000529230	PLATE	8					
24	37000711030	CLAMP ASSY	2		22X1			
25	80320010080	FITTING	4		KUD12-030N			
26	81408000160	PIPE,STEEL	1	M	12X1.4T			
27	80330004900	FITTING,TEE	2		KTR12X18X12			
28	80301010200	FITTING	1		KUA22-000N			
29	81408000160	PIPE,STEEL	2	M	12X1.4T			
30	81408000241	PIPE,STEEL	1	M	18X1.9T			
31	81408000241	PIPE,STEEL	2	M	18X1.9T			
32	44340061170	JOINT	1					
33	37000511350	PLATE	4					
34	81408000241	PIPE,STEEL	1	M	18X1.9T			
35	37002407870	HOSE	1		L=530			
36	37002424470	HOSE	1		L=560			
37	34640441300	CAP	1					
39	91803600400	CLIP	2		D=27-40			
41	34640362220	GUARD	1					
42	37000906820	JOINT	2		L,G1/2-18			
43	37000711090	CLAMP ASSY	4		18X2			
45	37002421490	HOSE	4		L=600			
46	80430450650	JOINT	4					
47	37002421190	HOSE	4		L=630			
51	81408000290	PIPE,STEEL	1	M	22X2.5T			
52	81408000241	PIPE,STEEL	1	M	18X1.9T			
53	81408000241	PIPE,STEEL	1	M	18X1.9T			
54	81408000241	PIPE,STEEL	1	M	18X1.9T			
55	81408000241	PIPE,STEEL	1	M	18X1.9T			
56	81408000241	PIPE,STEEL	1	M	18X1.9T			
57	90131510030	BOLT,HEXAGON SOCKET	4		M10X30			
58	80430410850	JOINT	1					
59	81408000290	PIPE,STEEL	2	M	22X2.5T			
60	36641830000	VALVE,SOLENOID	1					
61	90101208080	BOLT	4		M8X80			
62	90201200800	NUT	4		M8			
63	81408000241	PIPE,STEEL	1	M	18X1.9T			
66	90302041001	WASHER,SPRING	4		10			
71	81408000241	PIPE,STEEL	3	M	18X1.9T			
72	81408000241	PIPE,STEEL	2	M	18X1.9T			
73	37000900130	JOINT	1					
74	37002437220	HOSE	1		L=530			
75	34640362400	SUPPORT	1					

**TR-250E-3-00103 4 BOOM + JIB, 2M2D**  
**PS1350016-00 CYLINDER,STEERING INSTALLATION**



TR-250E-3-00103 4 BOOM + JIB, 2M2D  
PT1200047-00 PIPING, BRAKE (UPPER)



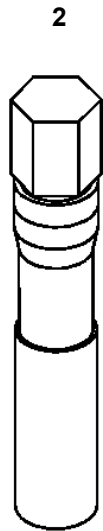
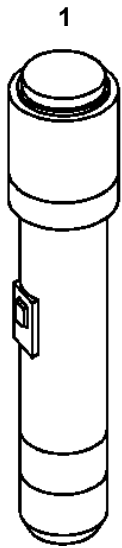
# TR-250E-3-00103 4 BOOM + JIB, 2M2D

Pos No.	Parts No	Parts Name	Qty	Unit	Technical Data	Serial No (Start)	Serial No (End)	Rema
135	80430450450	JOINT	1		YL502			
137	90303070601	WASHER,PLAIN	2		6			
138	82100002010	CLAMP	1		WR15			
139	90101206040	BOLT	2		M6X40			
151	34920731100	SUPPORT	1					
152	34920731200	SUPPORT	1					
154	34920731400	SUPPORT	1					
155	34920620310	SUPPORT	1					
156	37000527070	PLATE	1					
157	37000527060	PLATE	1					
158	34920731800	SUPPORT	1					
161	37000534130	PLATE	1					
162	37000534090	PLATE	1					
163	37000500290	PLATE	5					
164	37000903500	JOINT	1					
171	36360352020	VALVE,PRESSURE CONTROL	1					

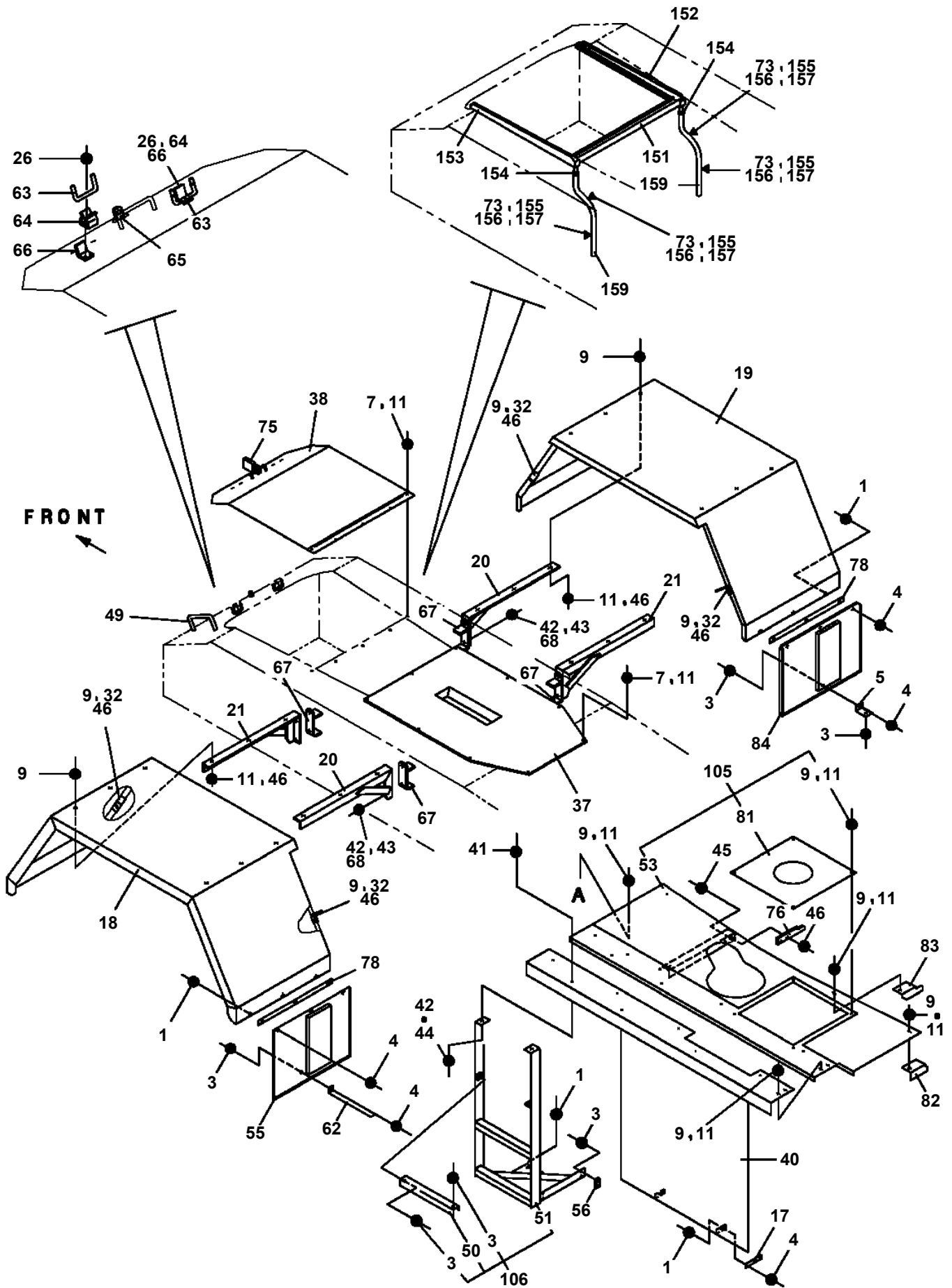
# TR-250E-3-00103 4 BOOM + JIB, 2M2D

Pos No.	Parts No	Parts Name	Qty	Unit	Technical Data	Serial No (Start)	Serial No (End)	Remarks	Pag
1	36410055040	BUSHING	1						
2	36410115040	BOLT (CENTER)	1						
3	36410065060	NUT	1						
4	36410055060	SPACER	1						
11	36410165010	SPRING (LEAF NO.1)	1						
12	36410165020	SPRING (LEAF NO.2)	1						
13	36410165030	SPRING (LEAF(NO.3)	1						
20	36410160000	SPRING,LEAF	1						

**TR-250E-3-00103 4 BOOM + JIB, 2M2D**  
**PW1010145-00 ACCESSORIES (FOR EMERGENCY)**



TR-250E-3-00103 4 BOOM + JIB, 2M2D  
PX1030385-01 FENDER



## TR-250E-3-00103 4 BOOM + JIB, 2M2D

Pos No.	Parts No	Parts Name	Qty	Unit	Technical Data	Serial No (Start)	Serial No (End)	Remarks	Pa
2	37001504870	BOLT	4						
3	37001504590	BOLT	16		M24X120				
4	37001504600	BOLT	16		M24X145				
5	90201702400	NUT	16		M24				
6	90303502401	WASHER,PLAIN	36		24				
7	90101512030	BOLT	6		M12X30				
8	90303501201	WASHER,PLAIN	6		12				
9	34760004300	SUPPORT	1						
10	90269202200	NUT	2		M22				
11	37001500890	BOLT	1						
12	80530000095	END	1						
13	90302042201	WASHER,SPRING (22)	1						

# TR-250E-3-00103 4 BOOM + JIB, 2M2D

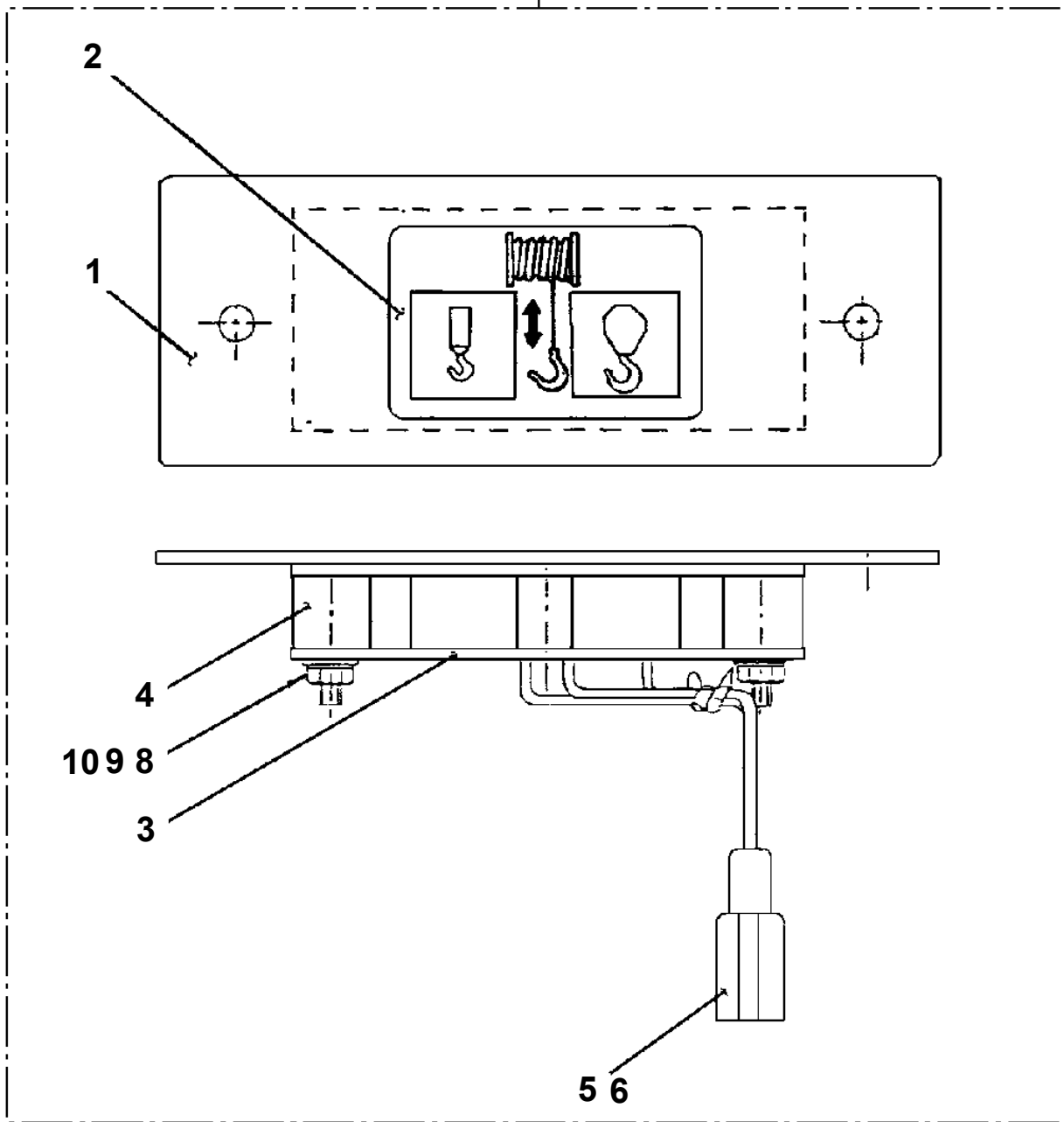
Pos No.	Parts No	Parts Name	Qty	Unit	Technical Data	Serial No (Start)	Serial No (End)	Remarks	Pages
1	34474891100	SUPPORT	1						
2	34474891200	SUPPORT	1						
3	34474891300	SUPPORT	1						
4	34474891400	SUPPORT	1						

**TR-250E-3-00103 4 BOOM + JIB, 2M2D**

Pos No.	Parts No	Parts Name	Qty	Unit	Technical Data	Serial No (Start)	Serial No (End)	Rema
1	36290665320	BLOWER ASSY	1					
2	36290665330	COMBUSTION (AIR BLOWER)	1					
3	36290665340	CHAMBER	1					
4	36290665350	PLATE (SWIRLER)	1					
5	36290665360	HOLDER (GLOW PLUG)	1					
6	36290665420	HOUSING	1					
7	36290665430	CONDENSER	1					
8	36290665440	PACKING	1					
9	36290665450	GASKET	1					
10	36290665460	WASHER	1					
11	36290665490	SHIM (T=0.3)	N					
	36290665480	SHIM (T=0.2)	N					
	36290665470	SHIM (T=0.1)	N					
12	36290665500	SCREW,SET	1					
13	36290665510	NUT	1					
14	36290665520	PLUG	1					
15	36290665530	RING	1					
16	36290665540	PLATE	1					
17	36290665550	COLLAR	1					
18	36290665560	FLANGE	1					
19	36290665570	BASE ASSY	1					
20	36290665600	CASE (UPPER)	1					
21	36290665610	CASE (LOWER)	1					
22	36290665620	HOUSING (VENT ASSY)	1					
23	36290665630	COVER	1					
24	36290665640	COVER (A)	1					
25	36290665650	CAP	1					
26	36290665660	CLIP	9					
28	36290665670	COVER	1					
29	36290665680	PACKING	1					
30	36290665690	PACKING	4					
31	36290665700	PACKING	1					
32	36290665720	SHIM (T=0.2)	N					
	36290665730	SHIM (T=0.3)	N					
	36290665710	SHIM (T=0.1)	N					
33	36290665740	RING (E)	1					
34	36290665750	CLAMP	1					
35	36290655090	PLUG,GLOW	1					
36	36290665760	MOTOR ASSY	1					
37	36290665770	RESISTOR ASSY	1					
38	36290665780	THERMOSTAT ASSY	1					
39	36290665790	HOLDER (THERMOSTAT)	1					
40	36290665800	CLAMP	1					
41	36290665810	THERMOSTAT ASSY	1					
42	36290665820	CABLE ASSY	1					
43	36290665840	CABLE ASSY	1					
44	36290665850	CABLE ASSY	1					
45	36290665860	GROMMET	1					
46	36290665870	CAP	1					
47	36290665880	INLET ASSY	1					
49	36290665890	BOLT	3					
50	36290665900	BOLT	4					
51	80171304012	SCREW,MACHINE	5		M4X12			
52	36290665910	SCREW	4					
53	36290665920	PIPE,EXHAUST	1					
54	36290665930	BRANCH ASSY	1					
55	36290665940	THERMOSTAT ASSY	1					
61	36290665370	PACKING	1					
62	36290665380	GROMMET	1					
63	36290665390	RUBBER	1					
64	36290665400	ORIFICE	1					
65	36290665410	O-RING	1					
71	36290665580	PACKING	2					

TR-250E-3-00103 4 BOOM + JIB, 2M2D  
PY1180244-00 LAMP,PILOT (FAMOTH)

30

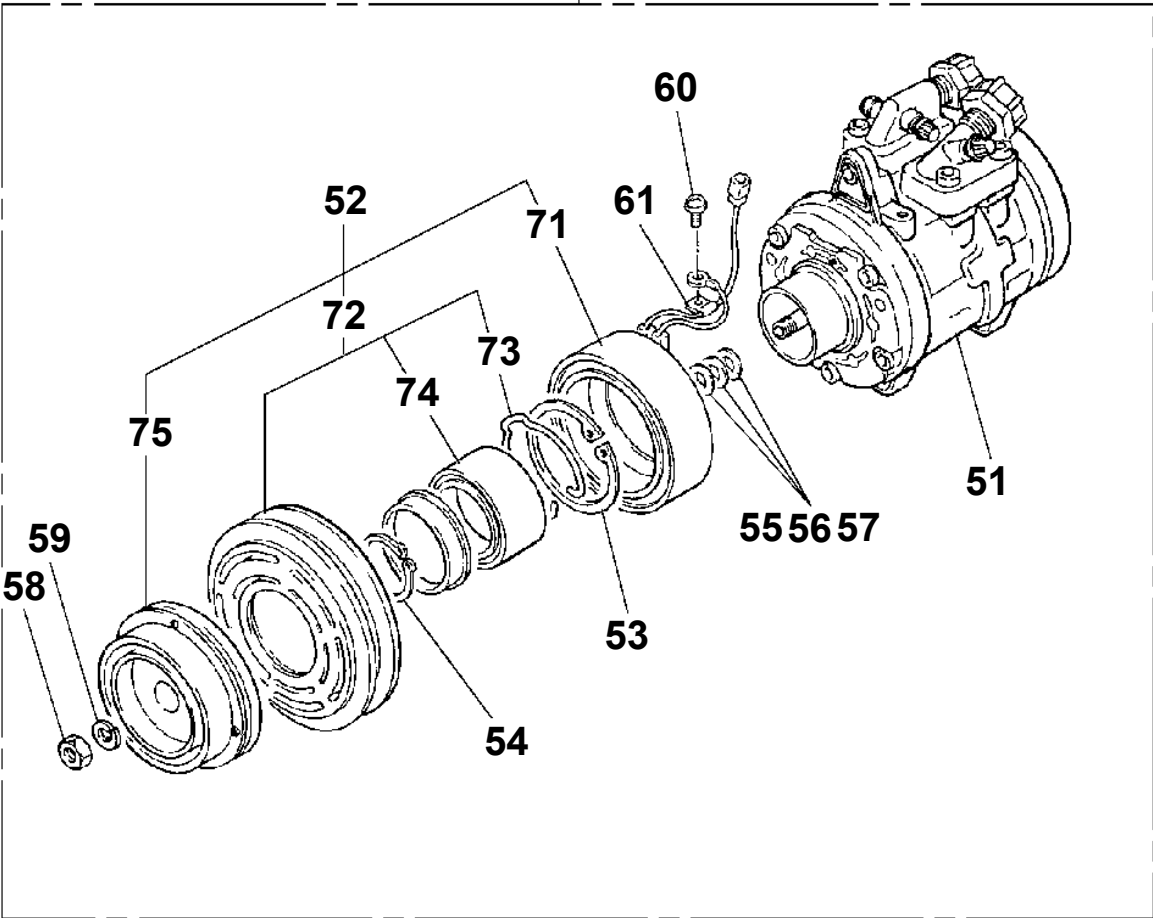


# TR-250E-3-00103 4 BOOM + JIB, 2M2D

Pos No.	Parts No	Parts Name	Qty	Unit	Technical Data	Serial No (Start)	Serial No (End)	Remarks	Pages
1	36690122600	COOLER,OIL	1						
2	36690123000	DUCT	1						
3	36690121020	FAN	1						
4	90101210020	BOLT	4		M10X20				
5	90303071001	WASHER,PLAIN	4		10				
10	36690121000	COOLER,OIL	1						

**TR-250E-3-00103 4 BOOM + JIB, 2M2D  
PY1380036-02 COMPRESSOR ASSY**

12



CLICK HERE TO **DOWNLOAD** THE COMPLETE MANUAL

- Thank you very much for reading the preview of the manual.
- You can download the complete manual from: [www.heydownloads.com](http://www.heydownloads.com) by clicking the link below



- Please note: If there is no response to CLICKING the link, please download this PDF first and then click on it.

CLICK HERE TO **DOWNLOAD** THE COMPLETE MANUAL