

TM-ZX500 41050601264A FRAME

PB0000386-00 SYSTEM (ZX500SL,DOMESTIC)

ASSEMBLY

CLICK HERE TO **DOWNLOAD** THE COMPLETE MANUAL

- Thank you very much for reading the preview of the manual.
- You can download the complete manual from: www.heydownloads.com by clicking the link below



- Please note: If there is no response to CLICKING the link, please download this PDF first and then click on it.

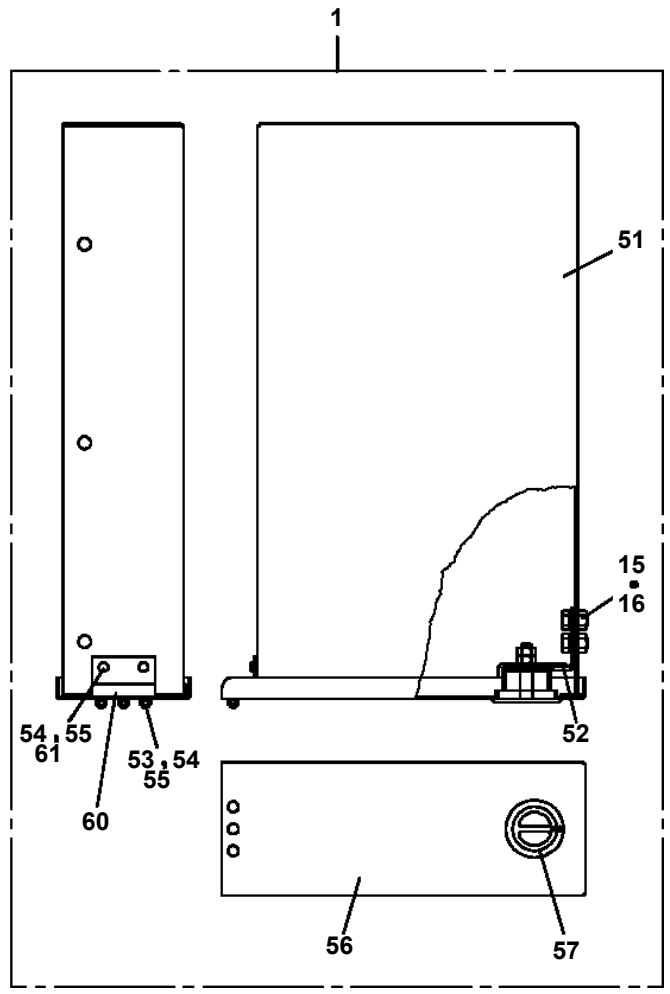
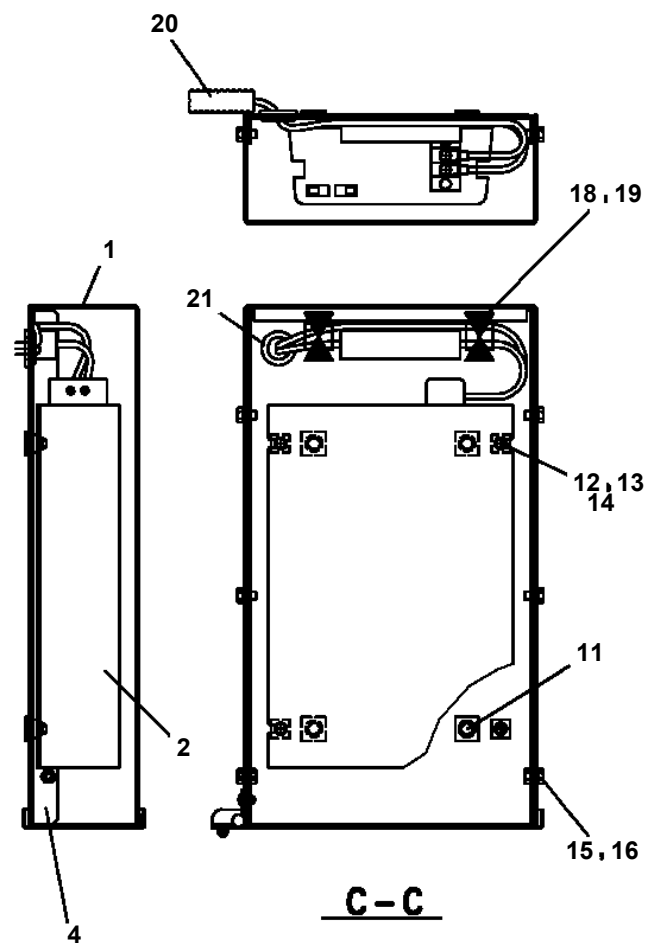
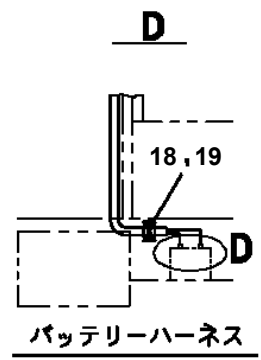
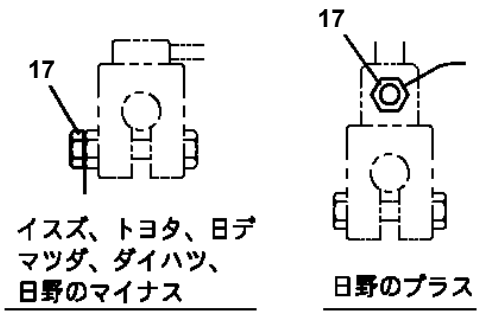
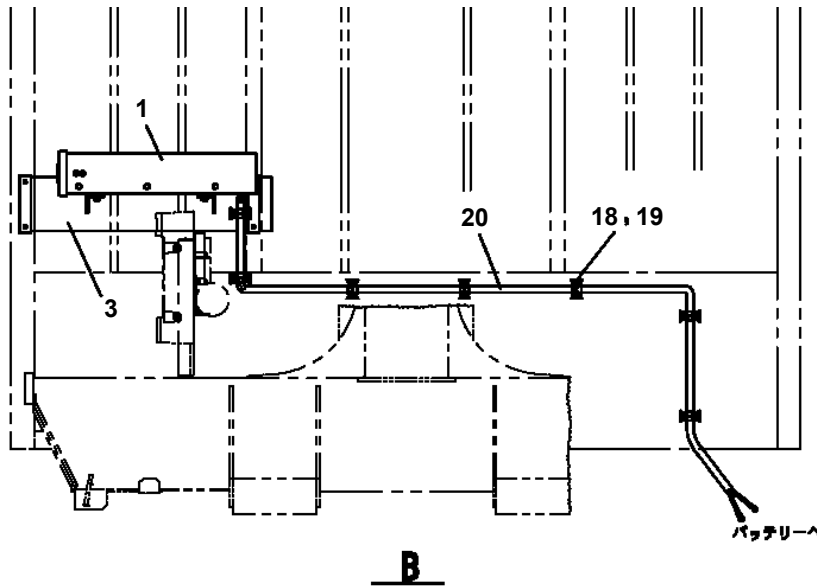
CLICK HERE TO **DOWNLOAD** THE COMPLETE MANUAL

TM-ZX500 41050601264A FRAME

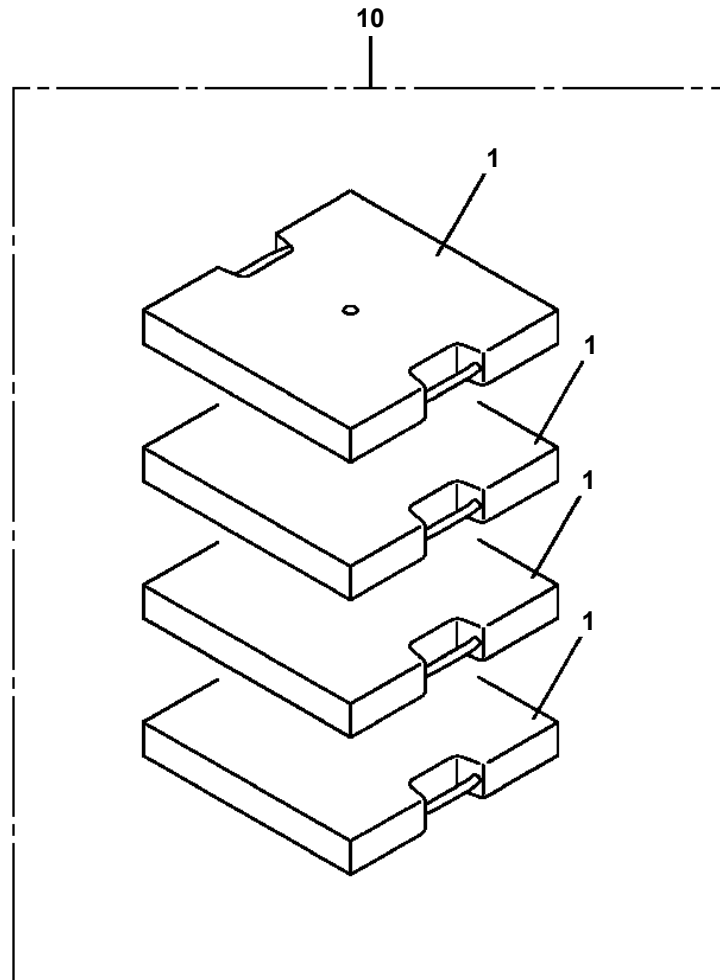
Pos No.	Parts No	Parts Name	Qty	Unit	Technical Data	Serial No (Start)	Serial No (End)	Remark
81	36651645010	SEAL KIT	1					
100	36654340000	PUMP,HYDRAULIC (52CC:R)	1					

TM-ZX500 41050601264A FRAME

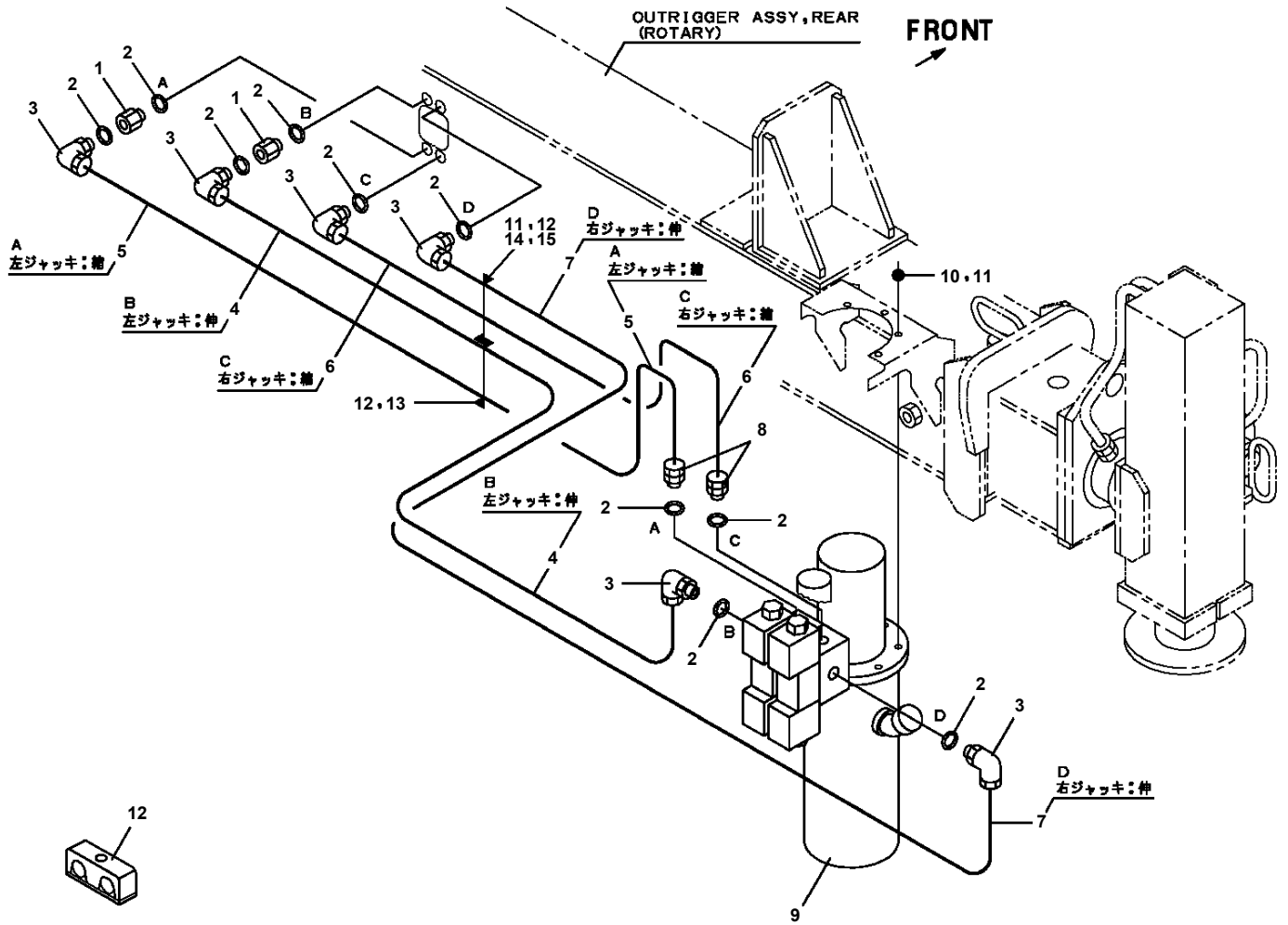
PB1380332-03 POWER SUPPLY (100V POWER SOURCE/1500W)



TM-ZX500 41050601264A FRAME
PB5110004-00 BLOCK (4 PIECE SET:PLATE,500X500,H=90)



**TM-ZX500 41050601264A FRAME
PC1230023-03 PIPING,REAR JACK (ROTARY TYPE)**



TM-ZX500 41050601264A FRAME

Pos No.	Parts No	Parts Name	Qty	Unit	Technical Data	Serial No (Start)	Serial No (End)
1	91850310405	CLAMP (BLACK)	9				
2	91810130240	FASTENER	18				
3	91810130250	FASTENER	8				
5	31657280200	COVER	2				
6	90186208020	BOLT,FLANGE	8		M8X20		
7	90280200800	NUT,FLANGE	8		M8		
8	31653470100	SUPPORT	1				
9	31653470200	SUPPORT	1				
10	90186206010	BOLT,FLANGE	15		M6X10		
11	31611822200	HARNESS	1		L=13000		
12	82100001371	TERMINAL	1				
13	82100001227	INSULATOR	1				
14	31478092100	HARNESS	1				
17	82100000192	TERMINAL	1				
18	82100000182	INSULATOR	1				
28	31478092400	COVER ASSY	1				
29	31478092600	HARNESS	1				
36	31478092500	COVER	1				
37	31478092301	COVER ASSY	1				
41	31653322200	SWITCH ASSY (WITH HARNESS,2-SW)	2				
42	82199514013	CAP	4				
43	82199504017	NUT	4		AT-401N		
44	31657282100	SUPPORT	2				
45	31656331200	PLATE,NAME	2				

TM-ZX500 41050601264A FRAME

Pos No.	Parts No	Parts Name	Qty	Unit	Technical Data	Serial No (Start)	Serial No (End)	Remarks
1	31652991700	PLUG (4-POLES,FEMALE)	1					
3	91810130250	FASTENER	3					
4	91850700101	CLAMP	1		L=208			

TM-ZX500 41050601264A FRAME

Pos No.	Parts No	Parts Name	Qty	Unit	Technical Data	Serial No (Start)	Serial No (End)	Remarks
1	31506121100	HARNESS	1					
2	34354781710	RELAY (WITH BRACKET)	1					
3	90280200600	NUT,FLANGE	1		M6			
4	80197586012	SCREW,MACHINE	1		M6X12			
5	91810130250	FASTENER	6					

TM-ZX500 41050601264A FRAME

Pos No.	Parts No	Parts Name	Qty	Unit	Technical Data	Serial No (Start)	Serial No (End)	Remarks
1	31734142100	SWITCH ASSY	1					
2	31656340100	SUPPORT	1					
3	91810130240	FASTENER	N					
4	91850310405	CLAMP (BLACK)	8					
5	31734142200	HARNESS	1					
6	90186208020	BOLT,FLANGE	3		M8X20			
7	90280200800	NUT,FLANGE	3		M8			
8	91850100802	CLAMP	3					
9	90101206025	BOLT	3		M6X25			
10	37000576020	PLATE	1					
11	90186206014	BOLT,FLANGE	4		M6X14			
12	31653740500	SWITCH ASSY	1					
14	90186208016	BOLT,FLANGE	2		M8X16			
16	31656101200	PLUG (2-POLES,FEMALE)	1					
31	80161302014	SCREW,MACHINE	2		M2X14			
32	90303070201	WASHER,PLAIN	2		2			
33	90302040201	WASHER,SPRING (2)	2					
34	90201200200	NUT	2		M2			
35	31652231120	SWITCH	1					
36	31653740510	SUPPORT	1					
37	31653740520	SUPPORT	1					
51	80197586012	SCREW,MACHINE	2		M6X12			
52	90280200600	NUT,FLANGE	2		M6			
53	34354781710	RELAY (WITH BRACKET)	2					
55	31658673100	COVER	1					
56	37002227560	PLATE,NAME (BLACK)	2		D=16			

TM-ZX500 41050601264A FRAME

Pos No.	Parts No	Parts Name	Qty	Unit	Technical Data	Serial No (Start)	Serial No (End)	Remarks
1	36072815010	CASE,GEAR	1					
2	36072815020	COVER	1					
3	36072815030	RETAINER (BEARING)	1					
4	36072815040	FRAME	1					
5	36072815050	FRAME	1					
6	36072815060	FLANGE (MOTOR)	1					
7	36072815070	WORM	1					
8	36072815080	WHEEL,WORM	1					
9	36072815090	DRUM,SHAFT	1					
10	36072815100	DRUM	1					
11	36072815110	CLUTCH	1					
12	36072815120	CLUTCH	1					
13	36072815130	COLLAR	1					
14	36072815140	COLLAR	1					
15	36072815150	COLLAR	1					
16	36072815160	PLATE (SHIM)	1					
17	36072815170	ROLLER	1					
18	36072815180	SHAFT (ROLLER)	1					
19	36072815190	ARM (ROLLER)	2					
20	36072815200	SPRING	2					
21	36072815210	BOLT (TENSION)	2					
22	36072815220	GUIDE (WIRE)	1					
23	36072815230	STAND (ROLLAR)	1					
24	36072815240	FORK (CHENGE)	1					
25	36072815250	SHAFT	1					
26	36072815260	GUIDE,BLOCK	1					
27	36072815270	COVER	1					
28	36072815280	PLATE	1					
29	36072815290	CASE	1					
30	36072815300	PLATE	1					
31	36072815310	COVER	1					
32	36072815320	GEAR	1					
33	36072815330	KEY	2					
34	36072815340	KEY	1					
35	36072815350	FACING	1					
36	80500006212	BEARING,BALL	1					
37	80500006012	BEARING,BALL	1					
38	80516006208	BEARING,BALL	1					
39	80516006202	BEARING,BALL	2					
40	36070525350	BEARING,ROLLER	1					
41	36070525360	BEARING,ROLLER	1					
42	91206060003	SEAL,OIL	1					
43	36072815360	SEAL,OIL	1					
44	36072815370	PACKING (SEAT)	1					
45	36072815380	SEAL,DUST	1					
46	36072815390	RING	1					
47	91001207000	O-RING	1		1A G70			
48	91001205500	O-RING	1		1A G55			
49	80601110400	RING,RITAINING	1		S40			
50	90151200100	BOLT,EYE	1		M10			
51	82400000478	BREATHER	1					
52	36070525390	PLUG	1		PT1/2X1/8			
53	80205000300	PLUG	1		PT3/8			
54	90172110060	BOLT,HEXAGON SOCKET	8		M10X60			
55	90172110040	BOLT,HEXAGON SOCKET	6		M10X40			
56	90302041001	WASHER,SPRING	14		10			
57	90101508025	BOLT	12		M8X25			
58	90171112030	BOLT	4		M12X30			
59	90171116035	BOLT	4		M16X35			
60	90171110045	BOLT	2		M10X45			
61	90171106010	BOLT,HEXAGON SOCKET	4		M6X10			
62	36072815400	PIN (PARALLEL)	2					
63	80205000200	PLUG	1		PT1/4			

TM-ZX500 41050601264A FRAME

Pos No.	Parts No	Parts Name	Qty	Unit	Technical Data	Serial No (Start)	Serial No (End)	Remarks
1	31310647530	GEAR,SPUR	1					
2	31310647540	PIN	2					
3	31310687520	DRUM	1					
4	80516006306	BEARING,BALL	1					
5	80516006206	BEARING,BALL	1					
6	90172410025	BOLT,HEXAGON SOCKET	4		M10X25			
7	90302041001	WASHER,SPRING	4		10			
100	31310680300	DRUM,WINCH (Y.G.TEC)	1					

TM-ZX500 41050601264A FRAME

Pos No.	Parts No	Parts Name	Qty	Unit	Technical Data	Serial No (Start)	Serial No (End)	Remarks	Pages
1	53037260000	HOOK	1						000051
2	83151211401	CLIP	1						
3	83151111401	CLIP	1						
4	37001806200	ROPE,WIRE	1		14X30M				
5	37002600230	WEDGE	1		14				

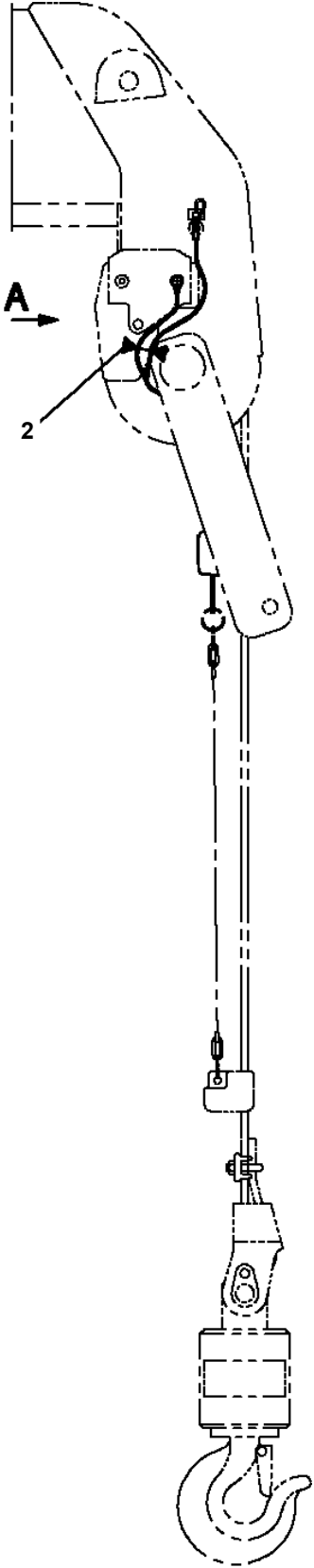
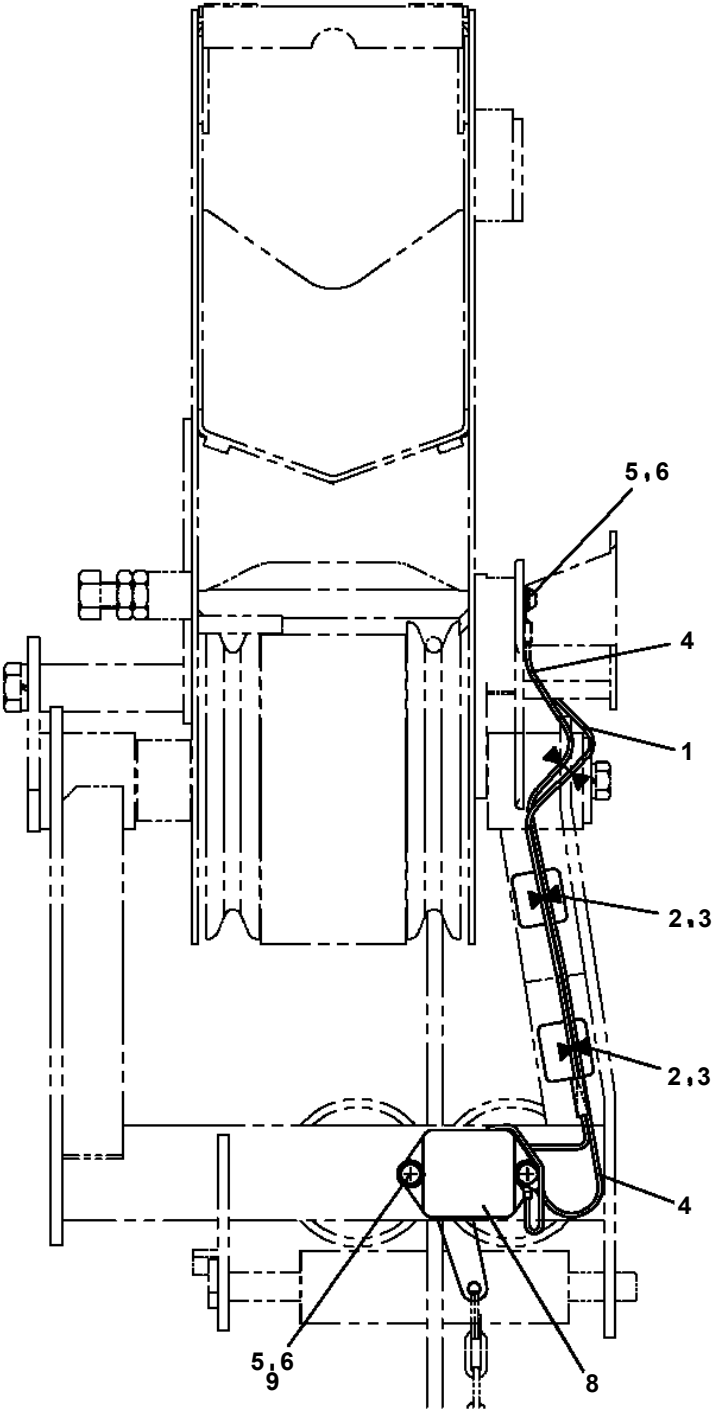
TM-ZX500 41050601264A FRAME

Pos No.	Parts No	Parts Name	Qty	Unit	Technical Data	Serial No (Start)	Serial No (End)	Remarks
1	90191510020	BOLT,HEXAGON SOCKET	8		M10X20			
2	90302041001	WASHER,SPRING	8		10			
3	90303071001	WASHER,PLAIN	4		10			
4	36093860021	BODY	1					
5	36093860042	SUPPORT	1					
6	37001008670	SHEAVE ASSY	2					
7	80720105056	PIN,SPRING	1		5X56			
9	36093860031	BODY	1					
10	36093860080	COVER	2					
12	80500051207	BEARING,BALL	1					
13	36093860071	TRUNNION	1					
21	36095155020	HOOK ASSY	1					
32	36093861100	BEARING,BALL	2					
40	36095150050	TRIGGER SET	1					
100	36095150000	HOOK (LOCKING)	1					

TM-ZX500 41050601264A FRAME

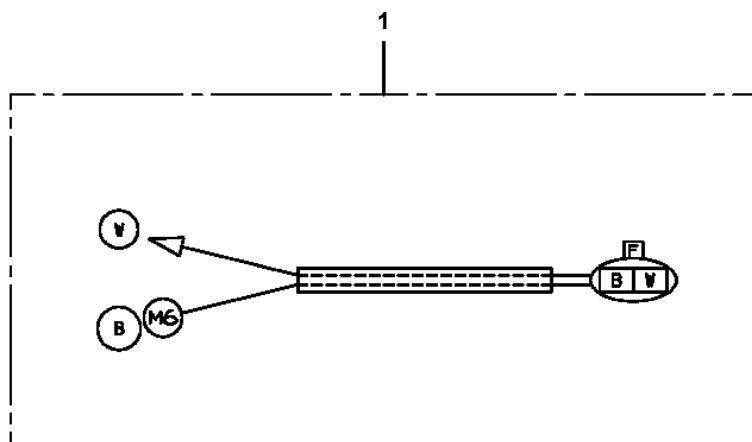
Pos No.	Parts No	Parts Name	Qty	Unit	Technical Data	Serial No (Start)	Serial No (End)	Remarks
1	36662650000	MOTOR,HYDRAULIC	1					
2	90302041201	WASHER,SPRING	6		12			
3	90172112035	BOLT,HEXAGON SOCKET	2		M12X35			
4	36072800000	WINCH (SELF)	1					
5	31311131000	GUARD	1					
6	90171116045	BOLT	8		M16X45			
7	90302041601	WASHER,SPRING	8		16			
8	91000515200	O-RING	1		AS568-152			
10	14124015000	BOLT	3					
11	90201201200	NUT	6		M12			
12	90101212020	BOLT	4		M12X20			
13	37000136790	PIN ASSY	1					
14	90303071201	WASHER,PLAIN	2		12			
15	80136340020	PIN,SPLIT	1		4X20			
16	31322224200	PLATE	2		L=1			
17	37001300250	SPRING	3					
31	31311139520	SUPPORT ASSY	1					
32	31311139510	ROLLER ASSY	1					
33	31311130530	PIN	1					
34	80516006203	BEARING,BALL	2					
41	80136340020	PIN,SPLIT	1		4X20			
42	37000136800	PIN	1					

TM-ZX500 41050601264A FRAME
PH1060491-01 DETECTOR,OVERWIND

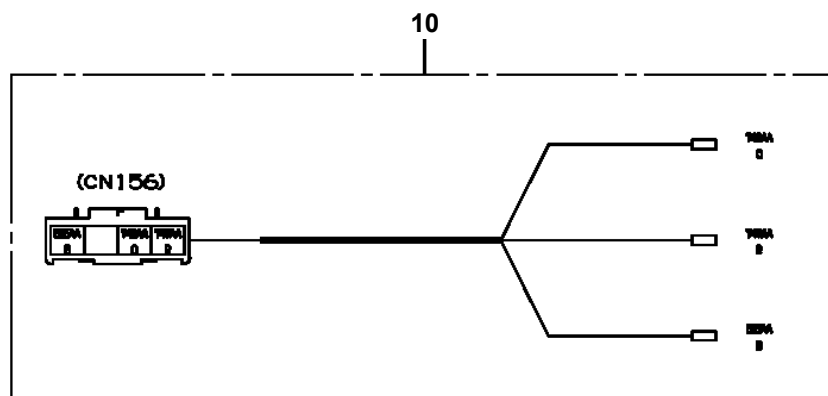


A

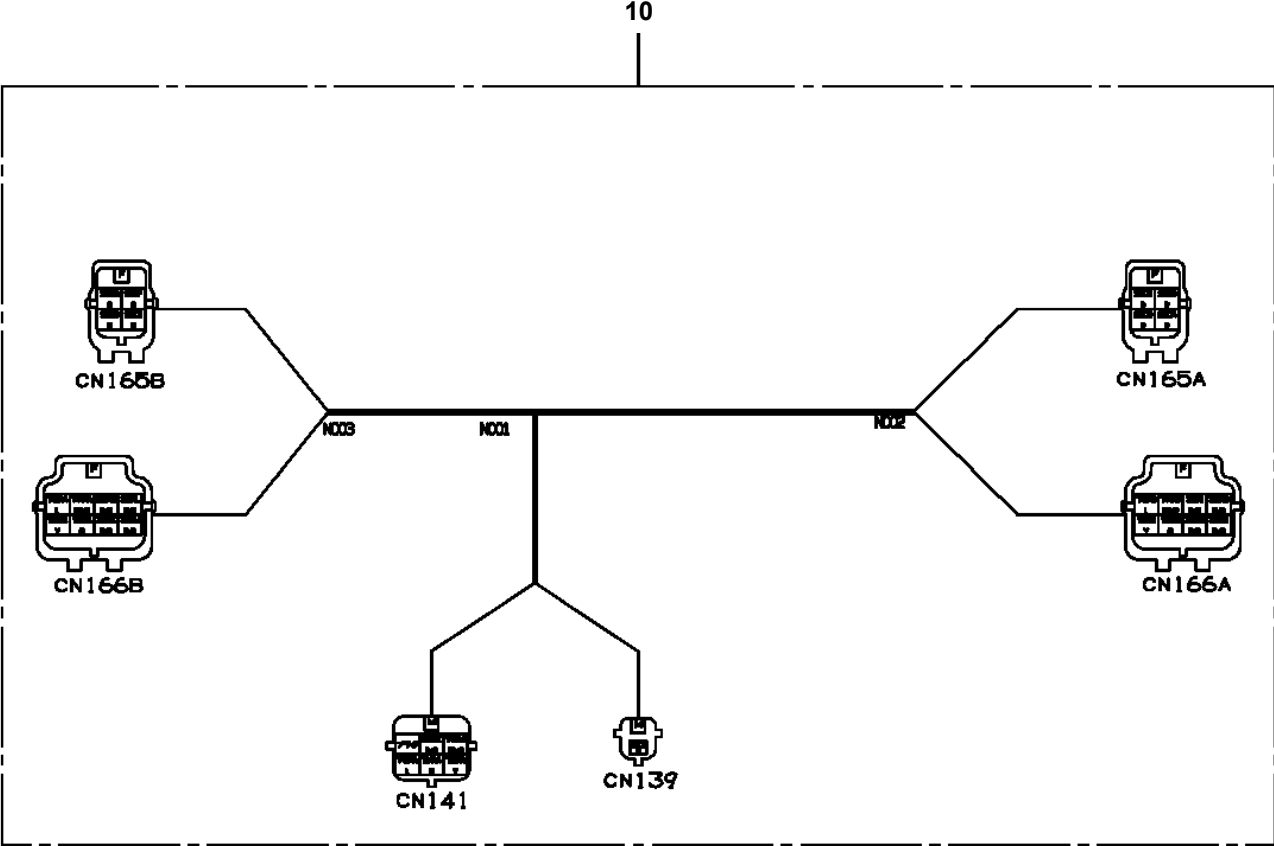
TM-ZX500 41050601264A FRAME
PH5033592-00 HARNESS



**TM-ZX500 41050601264A FRAME
PH5034112-00 HARNESS**

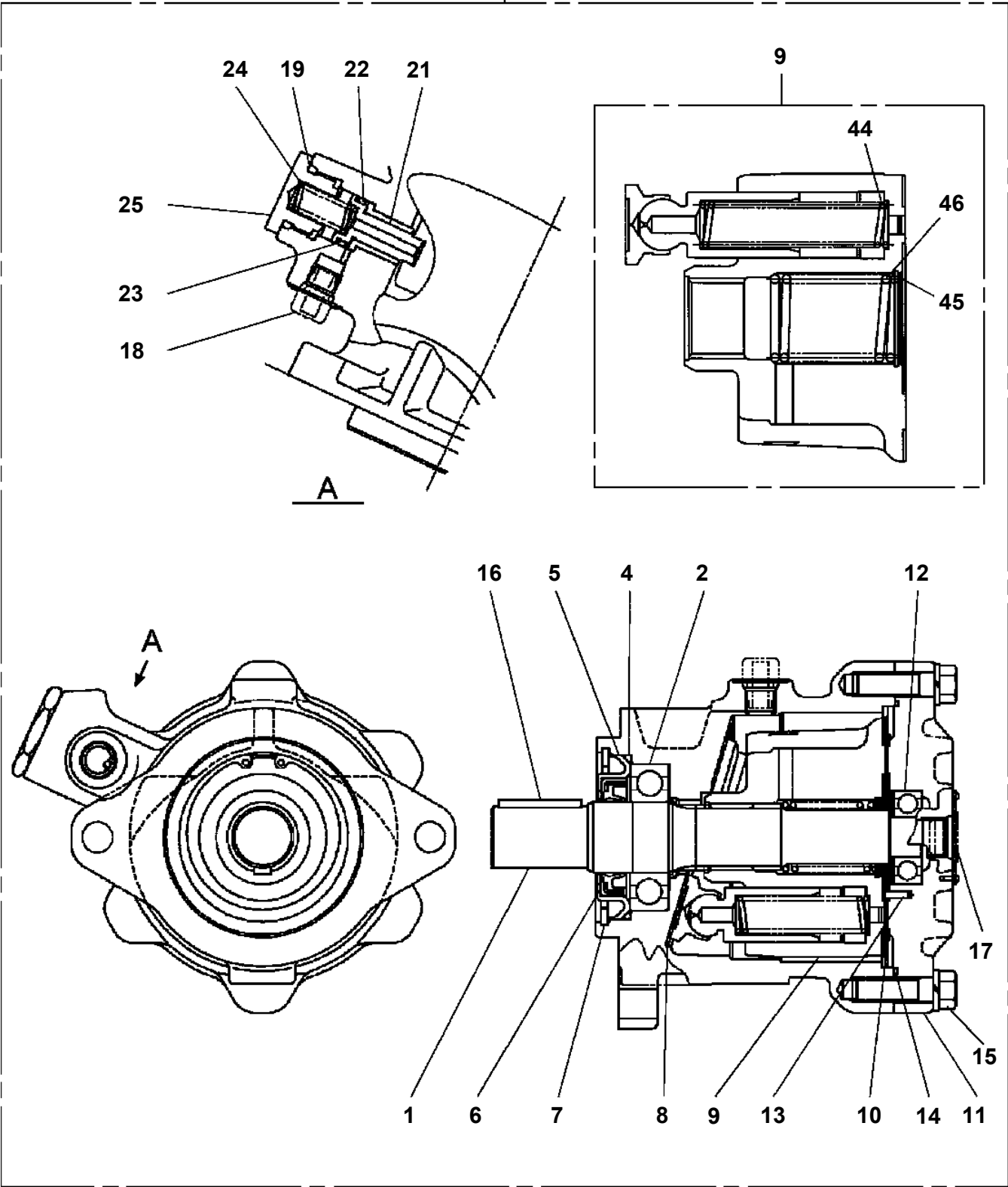


TM-ZX500 41050601264A FRAME
PH5034489-00 HARNESS

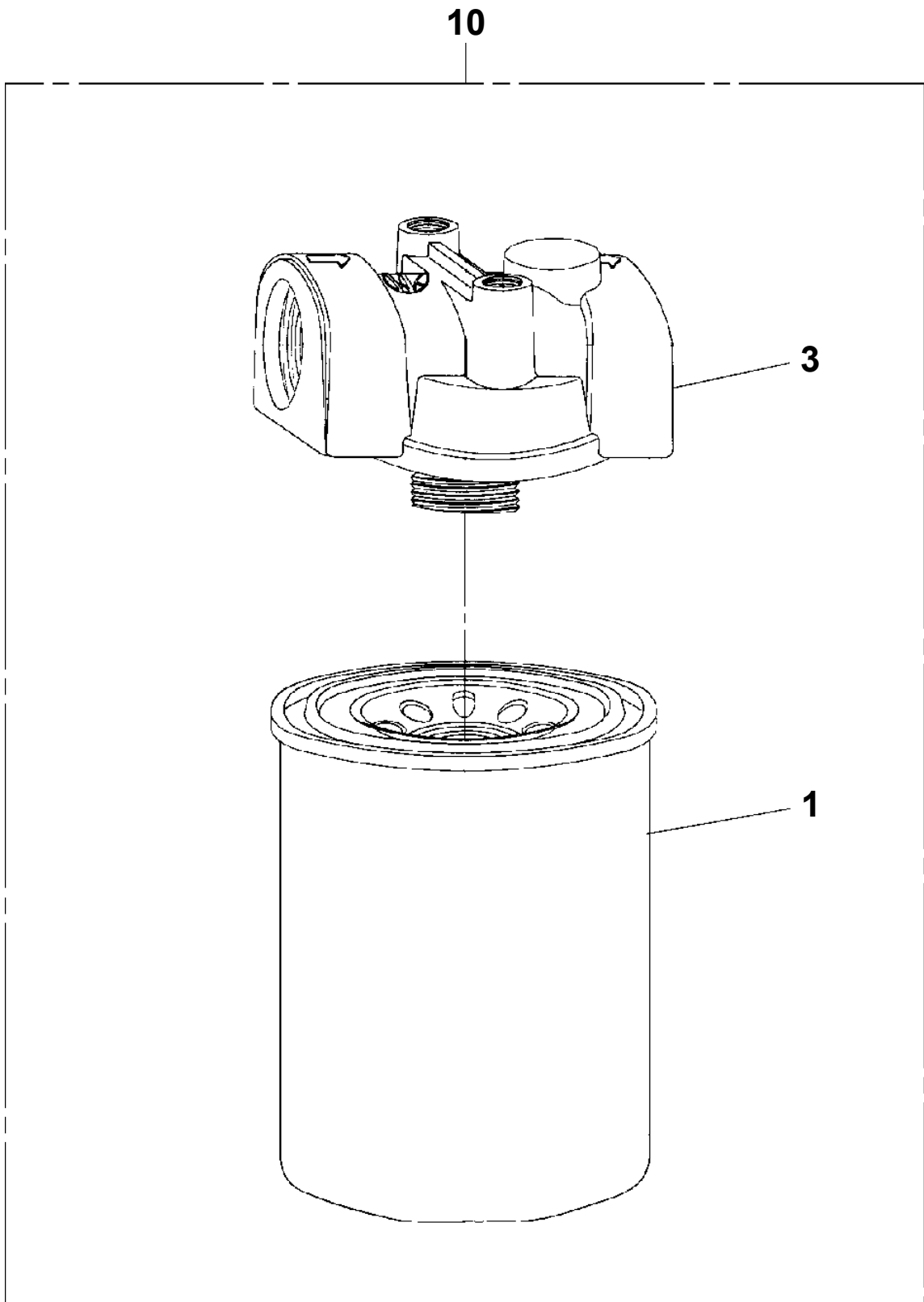


TM-ZX500 41050601264A FRAME
PI1010223-01 MOTOR, HYDRAULIC

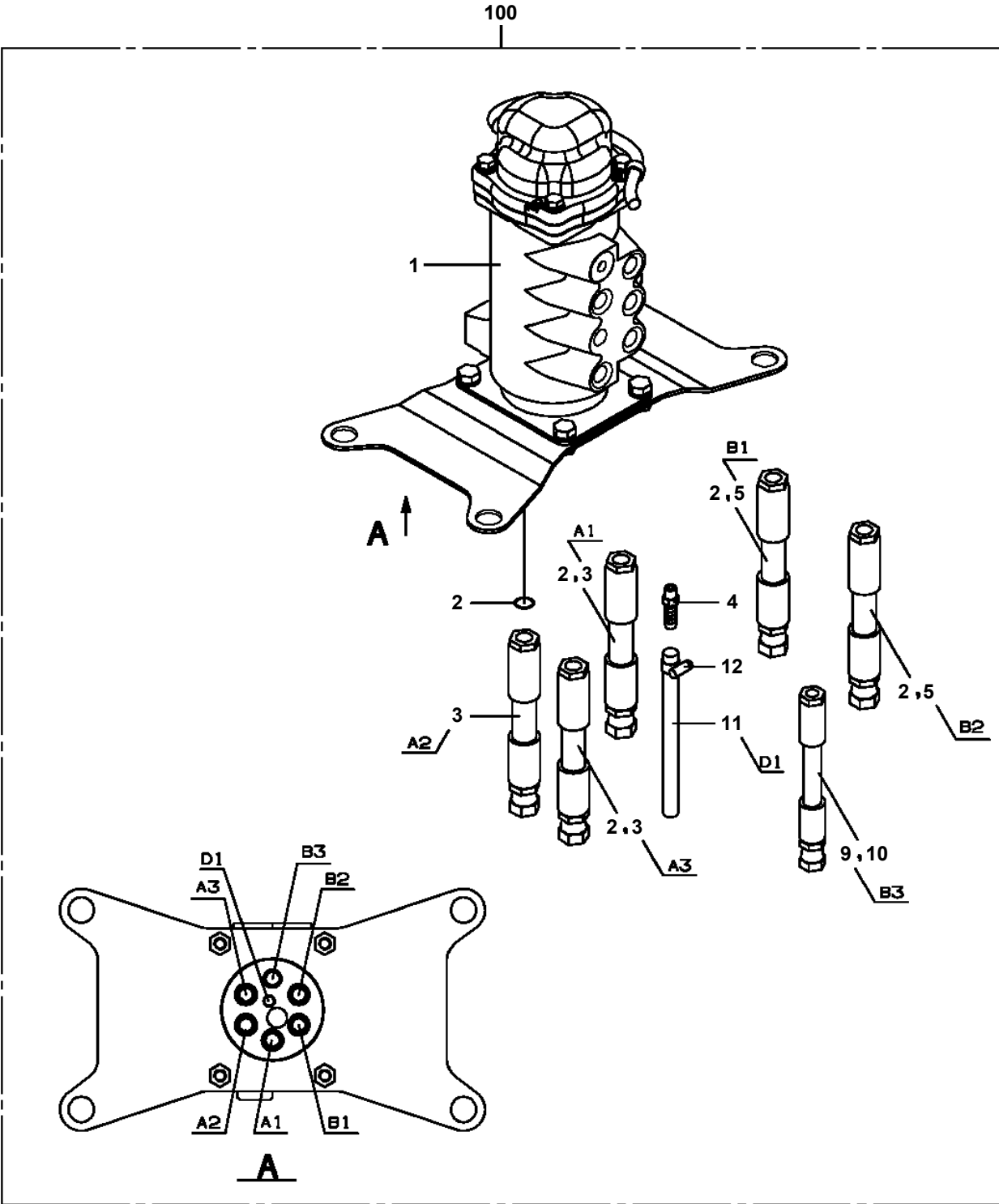
200



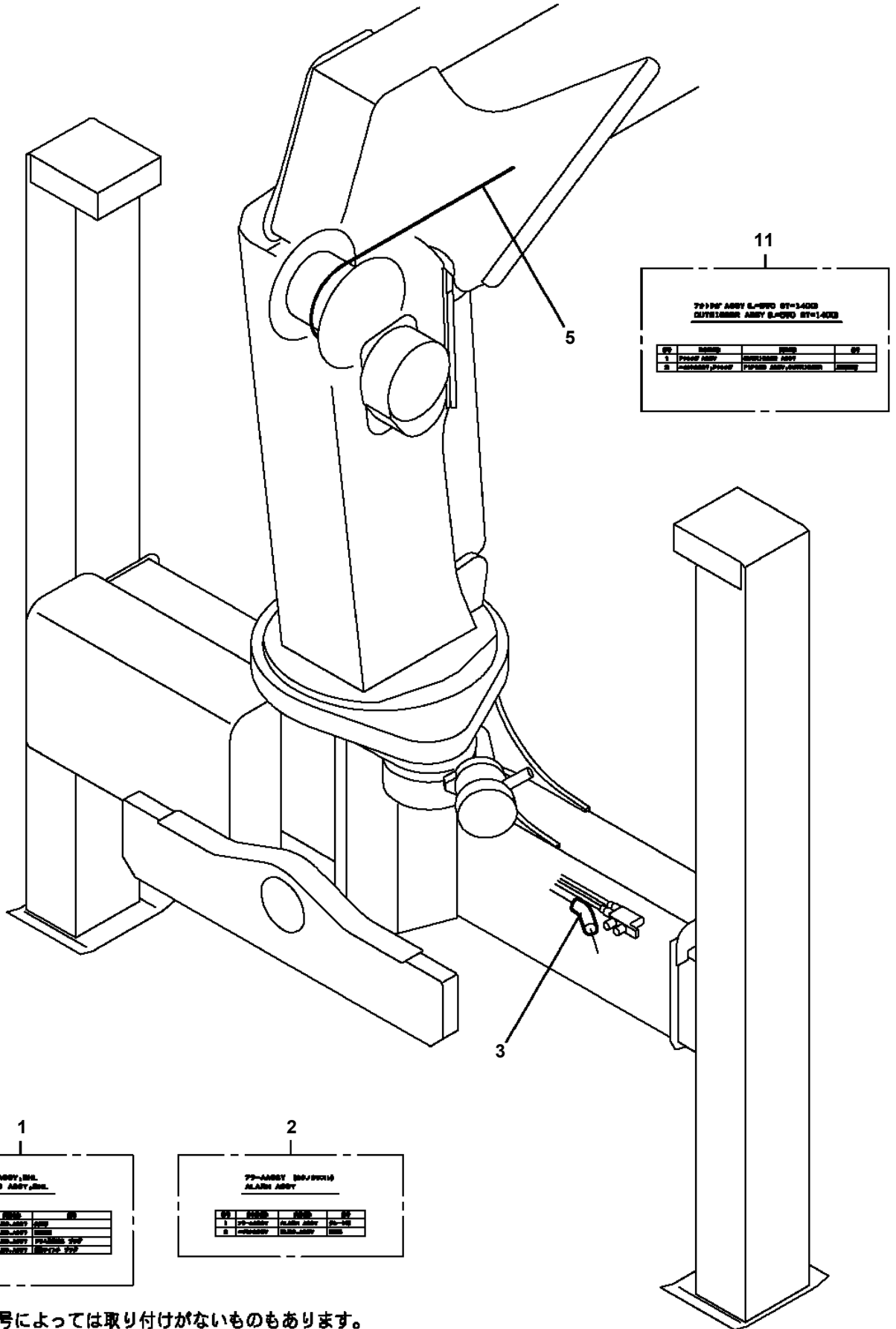
**TM-ZX500 41050601264A FRAME
PI1300026-01 FILTER,OIL (WAKO)**



TM-ZX500 41050601264A FRAME
PJ5090137-00 JOINT ASSY, SWIVEL



**TM-ZX500 41050601264A FRAME
PK2002534-00 FRAME UNIT (SPEC. DISTINCTION)**



11

791007 ASSY S-4000 BT=3400
CUTSLASER ASSY S-4000 BT=1400

QTY	NAME	UNIT	QTY
1	791007 ASSY	CUTSLASER ASSY	
2	791007 ASSY	791007 ASSY	

1

791007 ASSY
PARTS ASSY

QTY	NAME	UNIT	QTY
1	791007 ASSY	791007 ASSY	
2	791007 ASSY	791007 ASSY	
3	791007 ASSY	791007 ASSY	
4	791007 ASSY	791007 ASSY	

2

791007 ASSY
791007 ASSY

QTY	NAME	UNIT	QTY
1	791007 ASSY	791007 ASSY	
2	791007 ASSY	791007 ASSY	

適用製造番号によっては取り付けがないものもあります。

MACHINES OF SOME SERIAL NO. ARE NOT EQUIPPED WITH THESE PARTS.

TM-ZX500 41050601264A FRAME
PL5020226-00 LAMP ASSY (BOOM/24V-20W)

ランプ ASSY (フーム/24V-20W)
LAMP ASSY (BOOM/24V-20W)

フーム取付けタイプ
ランプ仕様：24V-20W

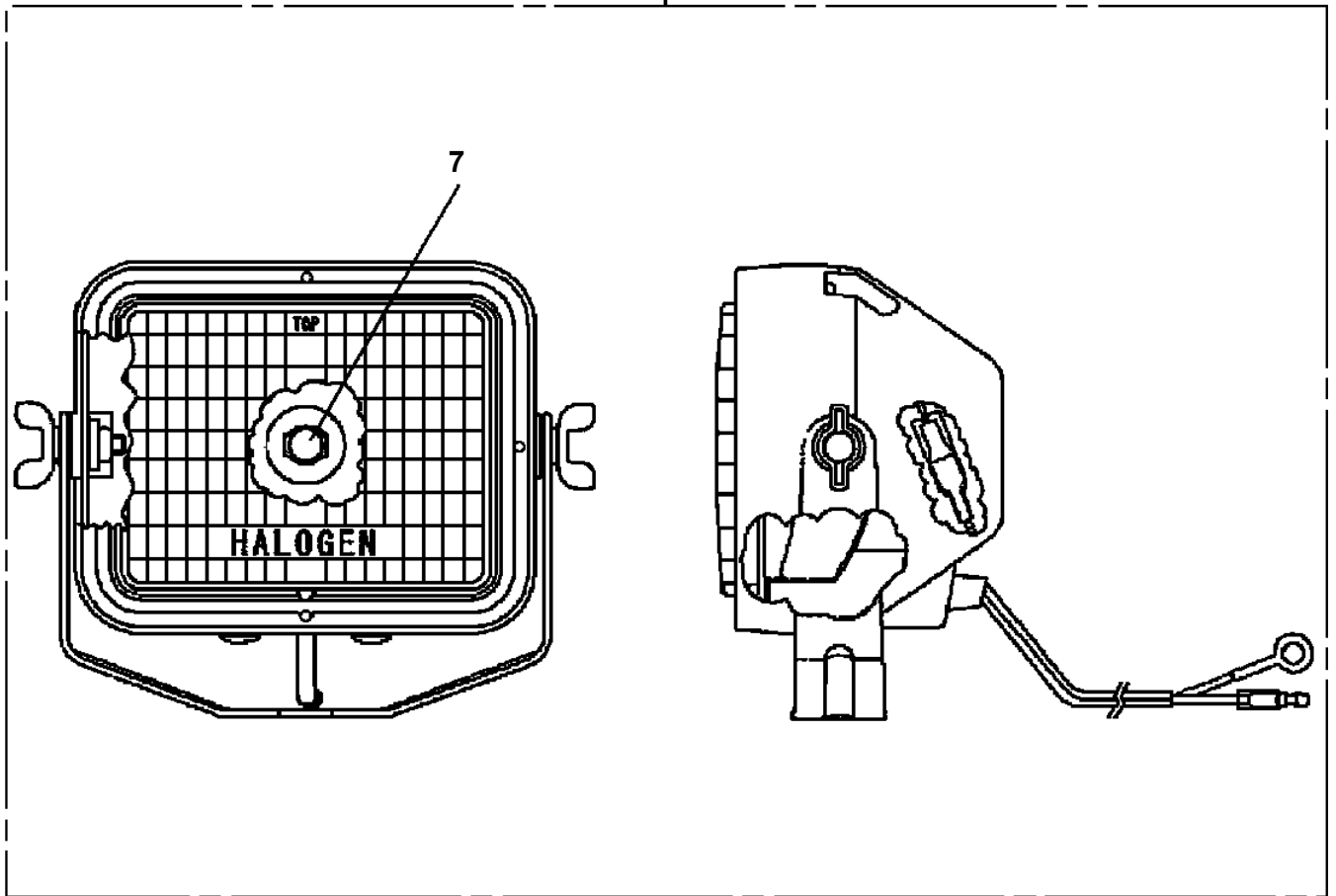
符号	日本語名称	英語名称	備考
2	ハイセンASSY	ELEC.ASSY	ホースト部
3	ハイセンASSY	ELEC.ASSY	フーム部 (LED20W)

適用製造番号によっては取り付けがないものもあります。

MACHINES OF SOME SERIAL NO. ARE NOT EQUIPPED WITH THESE PARTS.

TM-ZX500 41050601264A FRAME
PL5330004-00 LAMP

100



CLICK HERE TO **DOWNLOAD** THE COMPLETE MANUAL

- Thank you very much for reading the preview of the manual.
- You can download the complete manual from: www.heydownloads.com by clicking the link below



- Please note: If there is no response to CLICKING the link, please download this PDF first and then click on it.

CLICK HERE TO **DOWNLOAD** THE COMPLETE MANUAL

TM-ZX500 41050601264A FRAME

Pos No.	Parts No	Parts Name	Qty	Unit	Technical Data	Serial No (Start)	Serial No (End)
1	82105501003	SWITCH,TOGGLE	2				
10	31653322200	SWITCH ASSY (WITH HARNESS,2-SW)	1				

TM-ZX500 41050601264A FRAME

Pos No.	Parts No	Parts Name	Qty	Unit	Technical Data	Serial No (Start)	Serial No (End)
100	31595751000	NAME PLATE ASSY (KNOB:TDN-LAYOUT)	1				

TM-ZX500 41050601264A FRAME

Pos No.	Parts No	Parts Name	Qty	Unit	Technical Data	Serial No (Start)	Serial No (End)	Remarks	Pages
1	(*****)	PLATE,NAME	1						000168

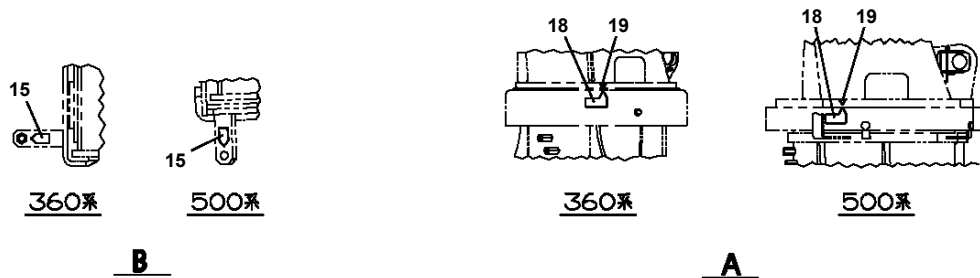
TM-ZX500 41050601264A FRAME

Pos No.	Parts No	Parts Name	Qty	Unit	Technical Data	Serial No (Start)	Serial No (End)	Remarks	Pages
1	37002241750	PLATE,NAME	2						

TM-ZX500 41050601264A FRAME

Pos No.	Parts No	Parts Name	Qty	Unit	Technical Data	Serial No (Start)	Serial No (End)	Remarks	Pages
1	37002243900	PLATE,NAME	1						

TM-ZX500 41050601264A FRAME PN5012387-00 NAME PLATE ASSY (OUTRIGGER CAUTION PLATE ETC.)



12

注 記/アウトリガ取扱い

クレーン作動

- 本機を真をがら水平面上に機体を水平に設置してください。
- アウトリガは最大範囲で展開してください。
- アウトリガロックがロック状態であることを確認した後、ジャッキを調整してください。
- ジャッキは傾斜が強く揺動する程度までおぼしてください。

本機移動作動

- 本機は水平面上で停ってください。
- 本機移動作動はアウトリガを収縮しないでください。
- 本機移動作動中のクレーン作動は厳禁としないでください。
- ジャッキを延長し、接地面または荷台面が接地した時点で止めてください。このとき後部が傾斜から戻っていないことを確認してください。

ジャッキ作動

- ジャッキ作動後は、ジャッキ降下止装置の無バネが内部に引っ掛かっていることを確認してください。
- 走行する際に、ジャッキを全開しアウトリガを巻戻してください。アウトリガロックがロック状態であることを確認してください。

ロック状態 (アウトリガロック)

13

WARNING

RISK OF INJURY

Keep feet clear when outrigger operation.

警告

足先の恐れ

アウトリガ操作中は足を入れず。

14

WARNING

PINCH POINT

Keep fingers away.

警告

指はまれの恐れ 指も入れず。

1

STOP

2

ロー・フレックは取付け時の
方向にのみ回転してください。

16

クレーン吊り装置のフェーシングは3年毎に交換してください。

次回の交換は
年 月です

18

旋回格納位置

20

ロック

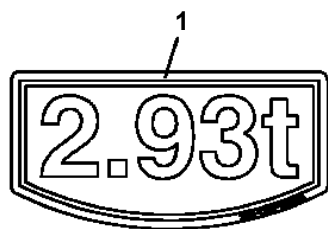
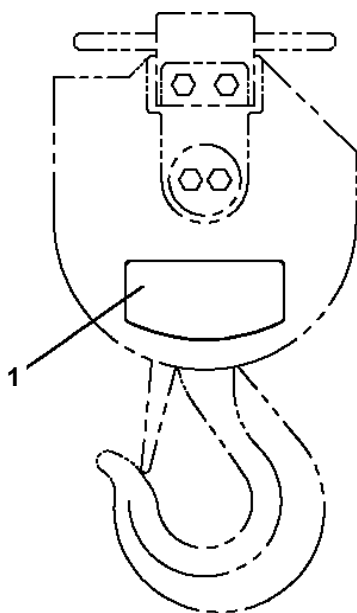
21

ロック

22

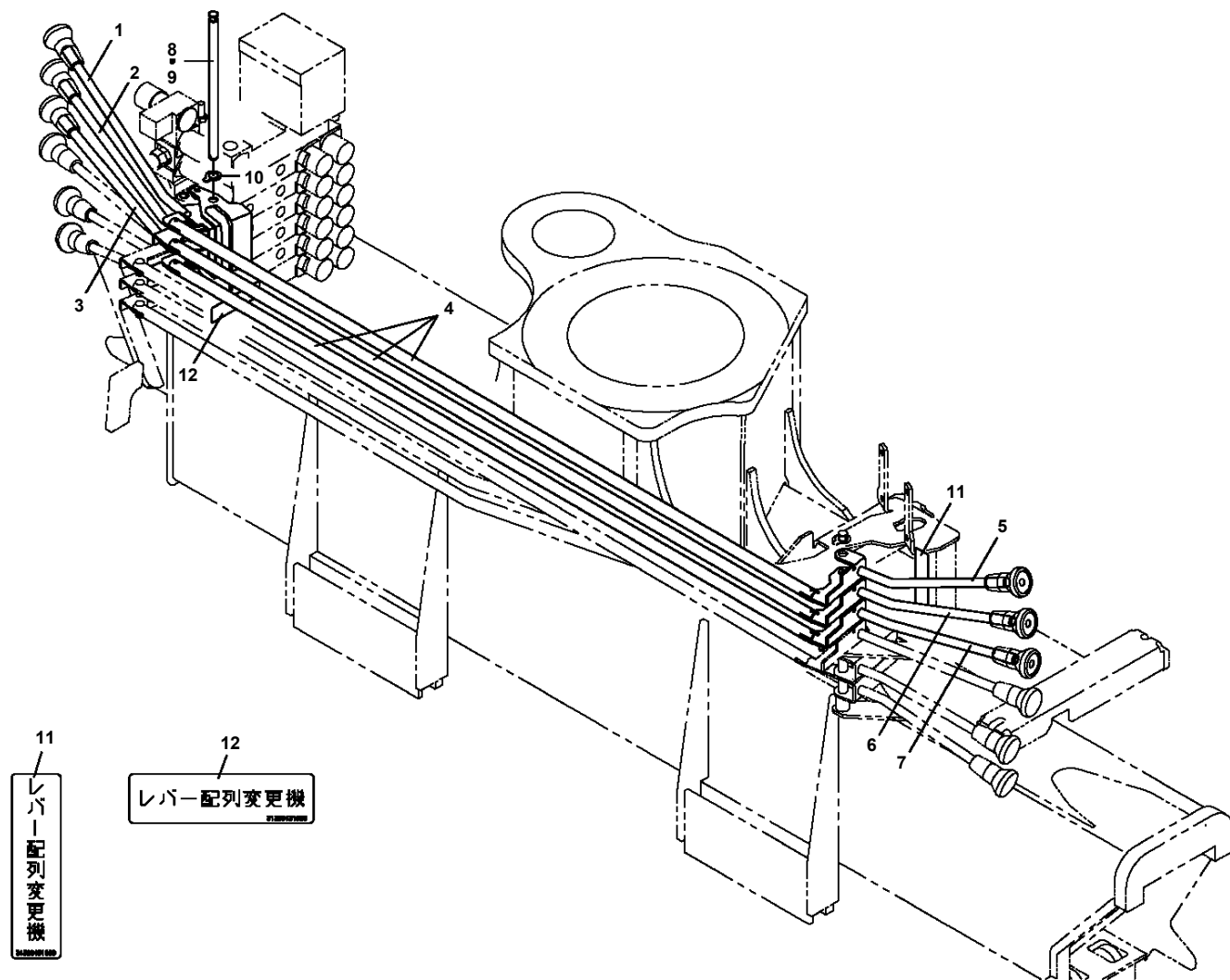
取付け部品取付表 (出荷時)			
品名	取付品	品名	取付品
ブームスライドプレート	PA	パネルスイッチ	PC
操作レバーノブ	EVAC, ABS	ブレーコクタボックス	ABS
操作パネル	ABS	上巻機物巻	PC
巻取カバー	PE	下巻機物巻	PC, PBT
ケーブル・ホース取付部	FP	巻取ユニット	PC, PBT
アウトリガロックレバー	ABS	巻取巻	PC, PBT
スリッパリング	PC		
パネル巻取巻	PC		

TM-ZX500 41050601264A FRAME
PO1015371-01 PLATE ASSY,NAME (HOOK)



TM-ZX500 41050601264A FRAME

PO5080312-01 OPE.ASSY,CONT.VALVE (ELEVATING,WINCH,TELESCOPING/U)



TM-ZX500 41050601264A FRAME
PO5270469-00 OUTRIGGER ASSY (L=60,ST=1400/REVERSE L-TYPE)

アウトリガ ASSY (L=60,ST=1400/キ ャクLカ ッタ)
OUTRIGGER ASSY (L=60,ST=1400/REVERSE L-TYPE)

符号	日本語名称	英語名称	備考
1	アウトリガ ASSY	OUTRIGGER ASSY	
2	ハイカンASSY,アウトリガ	PIPING ASSY,OUTRIGGER	逆L型アウトリガ用追加部品、 および交換部品
3	ハイカンASSY,アウトリガ	PIPING ASSY,OUTRIGGER	SL用ハイカンASSY
4	カイソウ ASSY	MODIFICATION ASSY	

適用製造番号によっては取り付けがないものもあります。

MACHINES OF SOME SERIAL NO. ARE NOT EQUIPPED WITH THESE PARTS.

TM-ZX500 41050601264A FRAME
PP5150047-00 PARTS ASSY,RADIO CONTROLLER (U)

パーツASSY,ラジコン (キノウシヤラジコン/Uヨウ)
PARTS ASSY,RADIO CONTROLLER (U)

符号	日本語名称	英語名称	備考
1	パーツASSY,ラジコン	PARTS ASSY,RADIO CONTROLLER	既納車ラジコン
2	ネームプレートASSY	NAME PLATE ASSY	送信機給板 (U社配列用)

適用製造番号によっては取り付けがないものもあります。

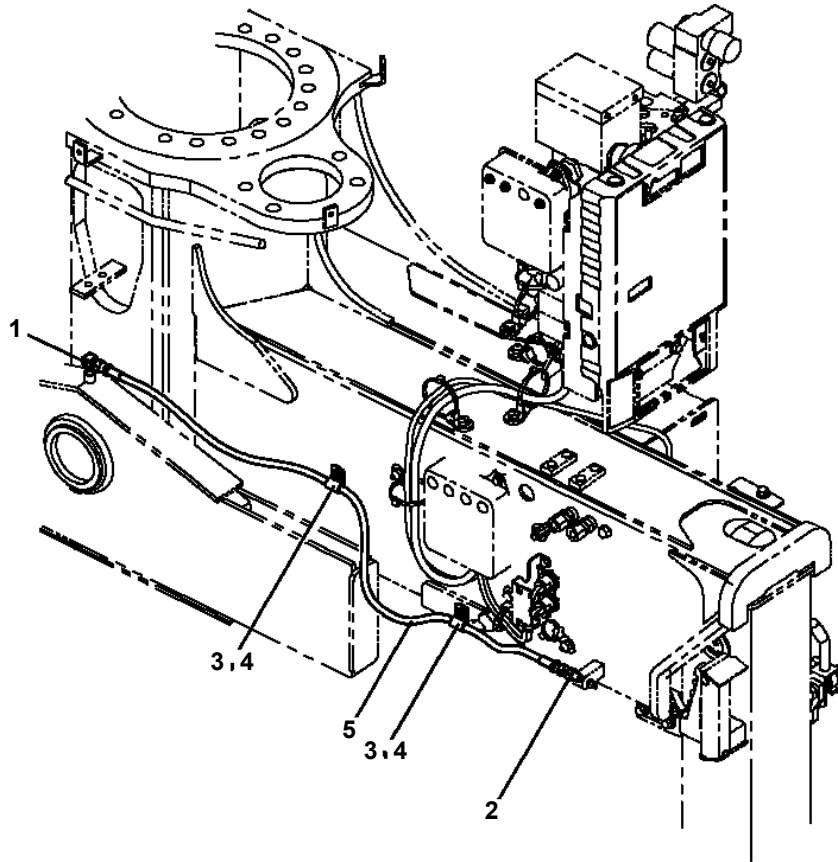
MACHINES OF SOME SERIAL NO. ARE NOT EQUIPPED WITH THESE PARTS.

TM-ZX500 41050601264A FRAME
PP5240027-00 PLATE,NAME (JCAS)

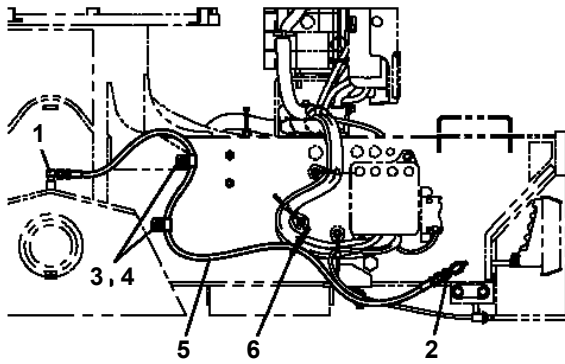
当銘板については、弊社出先サービス員経由で御用命ください。

FOR THIS NAMEPLATE, CONTACT
TADANO DISTRIBUTOR OR DEALER.

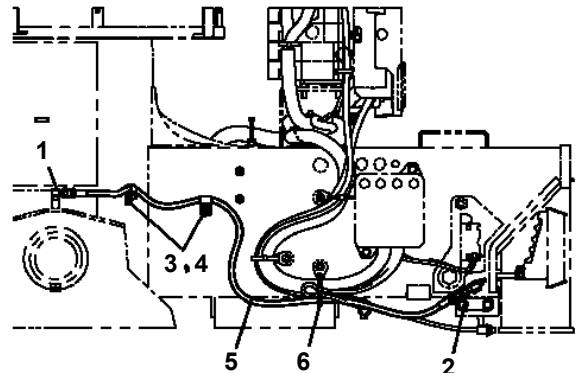
**TM-ZX500 41050601264A FRAME
PP6160004-02 PIPING ASSY, GREASE**



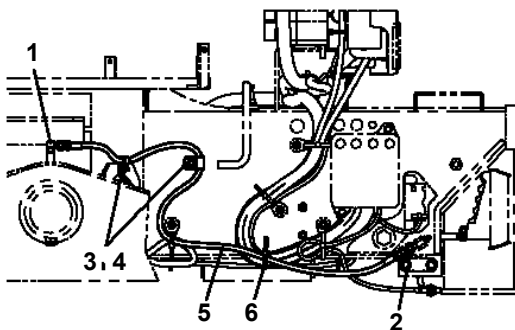
TM-30Z-7、TM-36Z-6 (STD/SL) の場合



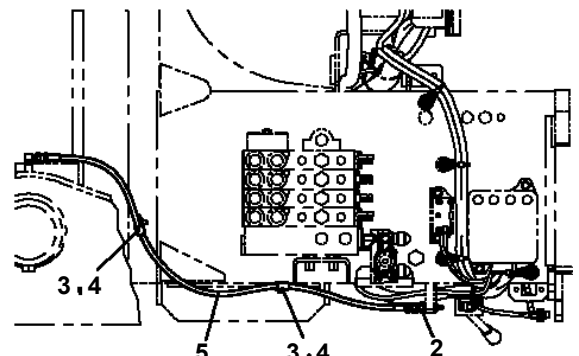
TM-29Z-7 (STD/SL) の場合



TM-26Z-6 (STD/SL) の場合

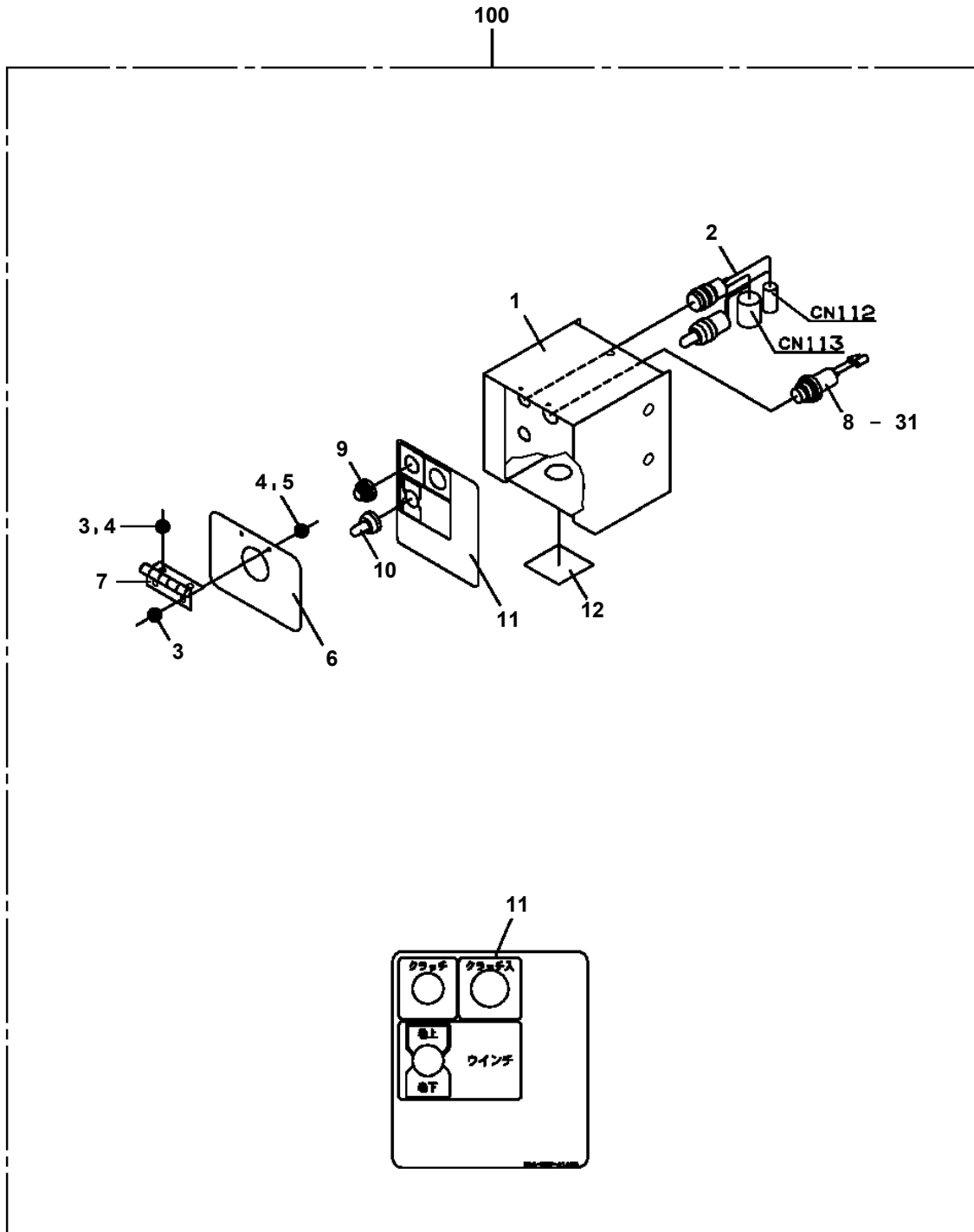


TM-25Z-4の場合

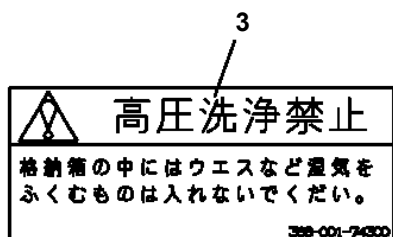
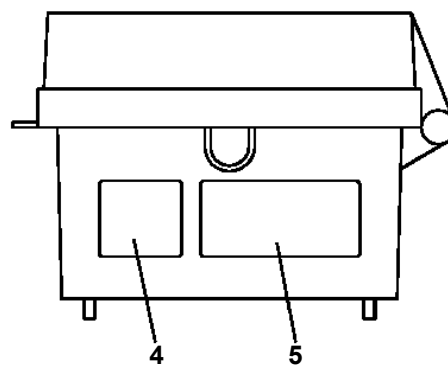
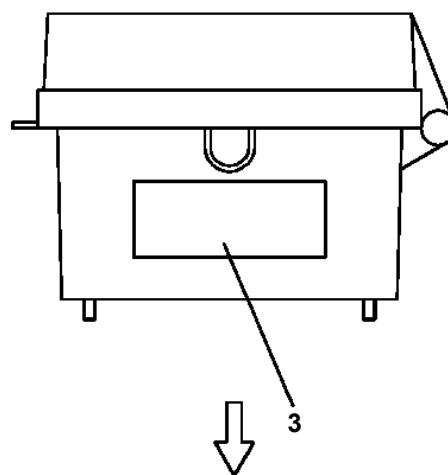
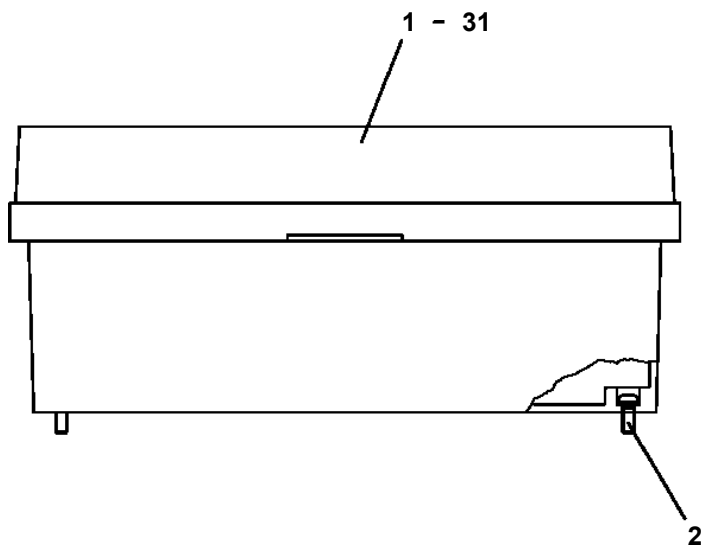


TM-50Z-6 (STD/SL) の場合

TM-ZX500 41050601264A FRAME
PS5530467-00 SWITCH ASSY



TM-ZX500 41050601264A FRAME
 PV1250011-02 STOWING BOX (BAG,REMOTE CONTROL)

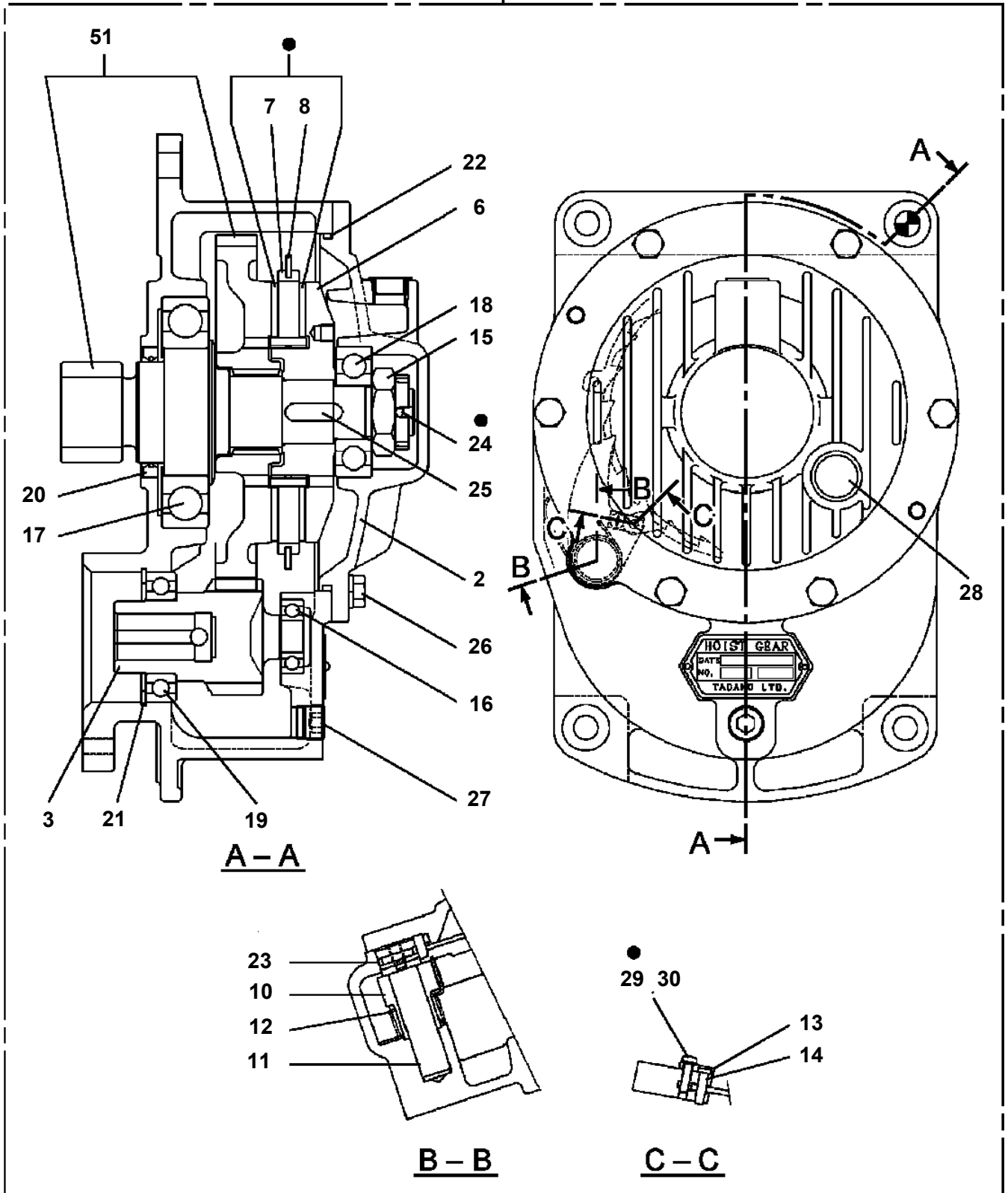


TM-ZX500 41050601264A FRAME



Pos No.	Parts No	Parts Name	Qty	Unit	Technical Data	Serial No (Start)	Serial No (End)	R
1	36645095040	COVER (BOTTOM)	1					
2	36645875070	BOLT,TIE	4					
3	36648860041	VALVE,CONTROL	1					
4	36648230051	VALVE,CONTROL	1					
5	36743410050	VALVE,CONTROL	1					
6	36742990040	VALVE,CONTROL	1					
7	36740850030	COVER (FRONT)	1					
8	90201200800	NUT	5		M8			
9	80720104012	PIN,SPRING	1		4X12			
10	36645875080	BOLT,TIE (C)	1					
11	36645495080	JOINT	1					
12	36743410080	VALVE ASSY,RELIEF	1					
13	36645615230	C-BOLT	4		5X12			
14	91001101100	O-RING	4		1A P11			
15	36644115130	PLUG	4					
16	36742995010	HARNESS	1					
17	36649585260	HARNESS	1					
18	36644015110	CONNECTOR	2					
19	36644015130	TUBE	2					
20	11615111410	BAND	8					
21	82114203040	CONNECTOR (CAP)	2					
22	82121502040	PLATE	2					
23	82121502030	PLATE	1					
24	36646875090	TUBE	2		10B			
25	36646875100	TUBE	1		15			
26	36740765040	BAND	2					
27	36062635030	FASTENER	2					
28	80172304010	SCREW,MACHINE	2		M4X10			
31	36741985040	PLUG	3					
32	36741985050	PLUG	8					
33	36640755070	CAP	4					
34	90303070401	WASHER,PLAIN	2		4			
102	36646865190	PISTON	2					
103	91001102000	O-RING	2		1A P20			
104	91001000800	O-RING	2		S8			
105	36646865200	SPOOL (SUB)	2					
106	36648365110	FLANGE	2					
107	91001002240	O-RING	2		S22.4			
108	91650001400	SCRAPER	2					
109	36645495210	SEAT,SPRING (RETURN)	4					
110	36645845060	SPRING (RETURN)	2					
111	36646865210	SPACER	2					
112	36640625550	PLATE (D)	2					
113	36633365070	ADAPTER	2					
114	36645615230	C-BOLT	2		5X12			
115	36633365100	SEAL,OIL	2					
116	36645845050	LINK	1					
117	36645615250	C-BOLT	4		M5X25			
118	36633365090	CAP (CHECK VALVE)	2					
119	12635101360	SPOOL	2					
120	12635101190	SPRING	2					
126	91001002200	O-RING	4		S22			
129	91001100600	O-RING	13		1A P6			
130	91002905500	O-RING	3		1B G55			
131	91001101400	O-RING	7		1A P14			
164	36645615260	C-BOLT	2		M5X8			
166	36633365060	PLATE (B)	1					
204	36740765050	PLUG	3					
205	36740765060	SPRING	1					
207	36640625210	CAP	1					
208	91001101800	O-RING	1		1A P18			
209	36649585170	FILTER	1					
210	91001002600	O-RING	2		S26			

TM-ZX500 41050601264A FRAME
 PW5060005-01 WINCH ASSY (Y.G.TEC)

100



- : FACING KIT KEY NO 101 (JAPANESE)
- : FACING KIT KEY NO. 102 (ENGLISH)

-  ● Protective seal
-  ● Replacement interval name plate

TM-ZX500 41050601264A FRAME

Pos No.	Parts No	Parts Name	Qty	Unit	Technical Data	Serial No (Start)	Serial No (End)	Ren
1	(***** *****)	ALARM ASSY (CRANE)	1					
2	(***** *****)	ELEC.ASSY (MOUNTING VEHICLE)	1					

TM-ZX500 41050601264A FRAME

Pos No.	Parts No	Parts Name	Qty	Unit	Technical Data	Serial No (Start)	Serial No (End)	Remarks
1	36150080000	DETECTOR ASSY,MOMENT	1					
2	36150100000	DETECTOR ASSY,MOMENT	1					
3	91850700101	CLAMP	2		L=208			
4	91810130250	FASTENER	2					

TM-ZX500 41050601264A FRAME

Pos No.	Parts No	Parts Name	Qty	Unit	Technical Data	Serial No (Start)	Serial No (End)	Remarks	Pages
1	31507211100	HARNESS	1						

TM-ZX500 41050601264A FRAME

Pos No.	Parts No	Parts Name	Qty	Unit	Technical Data	Serial No (Start)	Serial No (End)	Remarks	Page
1	31616227200	JOINT	1						
2	36180380000	SENDER,PRESSURE	1						000
3	36180460000	SENDER,PRESSURE	1						000
12	80316030040	PLUG	2		PT1/4				
100	31616227100	JOINT ASSY	1						

TM-ZX500 41050601264A FRAME

Pos No.	Parts No	Parts Name	Qty	Unit	Technical Data	Serial No (Start)	Serial No (End)
1	31614260110	COVER	1				
2	90186208014	BOLT,FLANGE	2		M8X14		
3	37000166270	PIN	1				
4	80601110350	RING,RITAINING	2		S35		
5	90171110020	BOLT	4		M10X20		
6	31612800010	PLATE	2				
7	31612800020	SPRING	2				
8	31616272000	CASE,OUTER (LEFT)	1				
9	31614280500	CASE,INNER	1				
10	(*****)	OUTRIGGER ASSY	1				
11	37000108350	PIN	1				
12	80602110350	RING,RITAINING	2		R35		
13	31201770100	PLATE,SLIDE	8		T=3.0		
14	37000104130	PIN	1				
15	31200030530	PLATE	1				
16	90191210020	BOLT	2		M10X20		
17	90302041001	WASHER,SPRING	6		10		
18	31616279000	FLOAT ASSY	1				
19	82401800100	PLUG (FOR M10)	1				
20	31611300600	PLATE,NAME (YELLOW)	2				
21	31615754100	PLATE,NAME (BLUE)	2				
22	36044310000	CYLINDER ASSY,EXTENSION (LEFT)	1				
23	37000135640	PIN	1				
24	80601110200	RING,RITAINING	2		S20		
25	37002240310	PLATE,CAUTION	2				
26	37000150360	PIN	1				
27	80601110150	RING,RITAINING	2		15		
28	31620582020	BEARING,BALL (KOYO)	2				
29	37002246200	PLATE,NAME	1				
41	31610055010	TRUNNION	1				
100	31616270201	OUTRIGGER ASSY (LEFT)	1				

TM-ZX500 41050601264A FRAME

Pos No.	Parts No	Parts Name	Qty	Unit	Technical Data	Serial No (Start)	Serial No (End)	Remarks	Pages
1	(*****)	MOUNT ASSY	1						000221
2	(*****)	PIPING ASSY	1						000222
3	(*****)	ELEC.ASSY	1						000223

TM-ZX500 41050601264A FRAME

Pos No.	Parts No	Parts Name	Qty	Unit	Technical Data	Serial No (Start)	Serial No (End)
1	(*****)	MOUNT,WINCH (3T SELF)	1				
2	(*****)	OPE.ASSY,CLUTCH (SL WINCH,RADIO CONTROL)	1				
4	(*****)	ELEC.ASSY (SELF)	1				
5	(*****)	NAME PLATE ASSY (SELF)	1				
7	(*****)	HOOK (SELF, 3TONX1-PART LINE)	1				

TM-ZX500 41050601264A FRAME

Pos No.	Parts No	Parts Name	Qty	Unit	Technical Data	Serial No (Start)	Serial No (End)	Remarks
1	36062820000	CYLINDER,ACCELERATOR	1					
2	37002425550	HOSE	2		L=1600			
3	37012410120	HOSE	2		L=1200			
4	80481702020	JOINT	2		L,G1/4-G1/4			
5	37000926950	JOINT	1					
6	91002801100	O-RING	4		1B P11			
7	90101208065	BOLT	2		M8X65			
8	90302040801	WASHER,SPRING	2		8			
9	80430720400	JOINT (WITH O-RING)	4		L,G1/4-G1/4			
10	91810150020	FASTENER	2		L=488			
11	91810130270	FASTENER	2					
12	82100001413	TUBE,SPIRAL	N		SE-15BK			
13	80471020502	JOINT	2					
34	91002801100	O-RING	4		1B P11			

TM-ZX500 41050601264A FRAME

Pos No.	Parts No	Parts Name	Qty	Unit	Technical Data	Serial No (Start)	Serial No (End)	Remarks	Pages
1	(*****)	ELEC.ASSY	1						000045
3	(*****)	ELEC.ASSY	1						000236
4	(*****)	ELEC.ASSY	1						000238

CLICK HERE TO **DOWNLOAD** THE COMPLETE MANUAL

- Thank you very much for reading the preview of the manual.
- You can download the complete manual from: www.heydownloads.com by clicking the link below



- Please note: If there is no response to CLICKING the link, please download this PDF first and then click on it.

CLICK HERE TO **DOWNLOAD** THE COMPLETE MANUAL