

TM-ZX500 41050601144A FRAME

PB0000385-00 SYSTEM (ZX500,DOMESTIC)

ASSEMBLY

CLICK HERE TO **DOWNLOAD** THE COMPLETE MANUAL

- Thank you very much for reading the preview of the manual.
- You can download the complete manual from: www.heydownloads.com by clicking the link below



- Please note: If there is no response to CLICKING the link, please download this PDF first and then click on it.

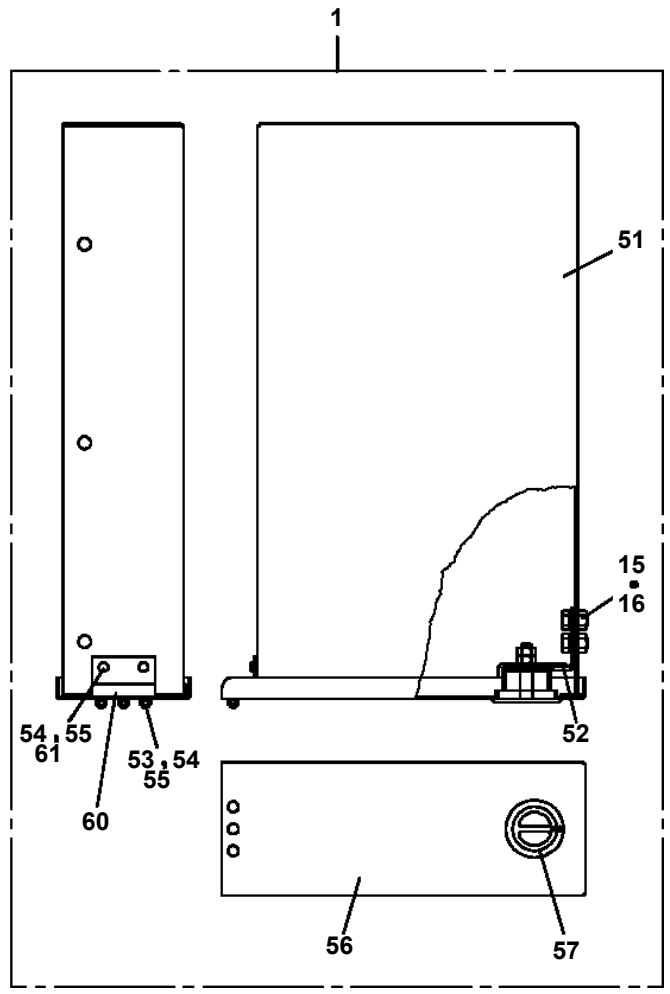
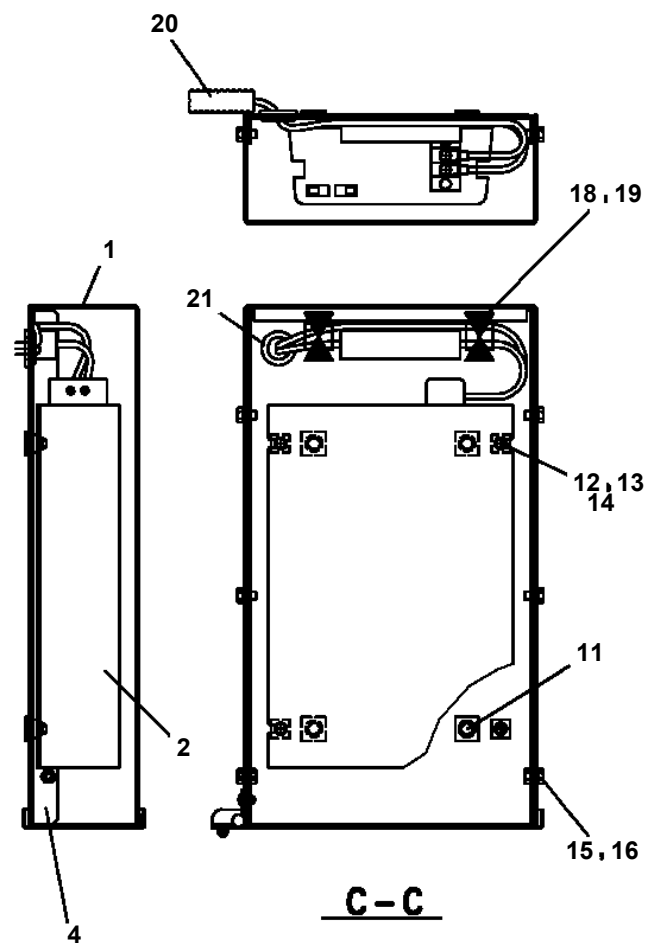
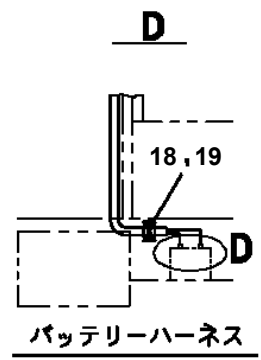
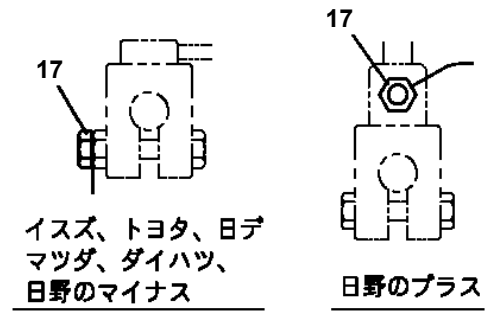
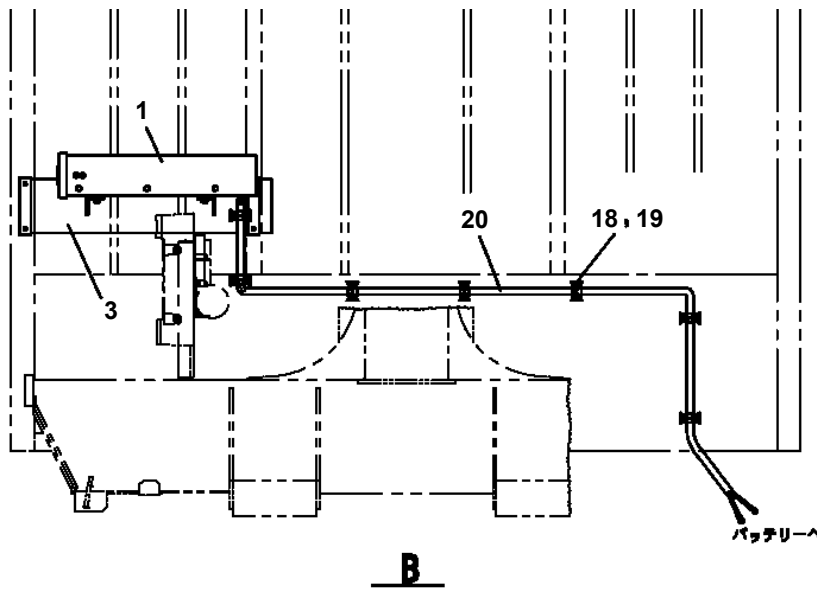
CLICK HERE TO **DOWNLOAD** THE COMPLETE MANUAL

TM-ZX500 41050601144A FRAME

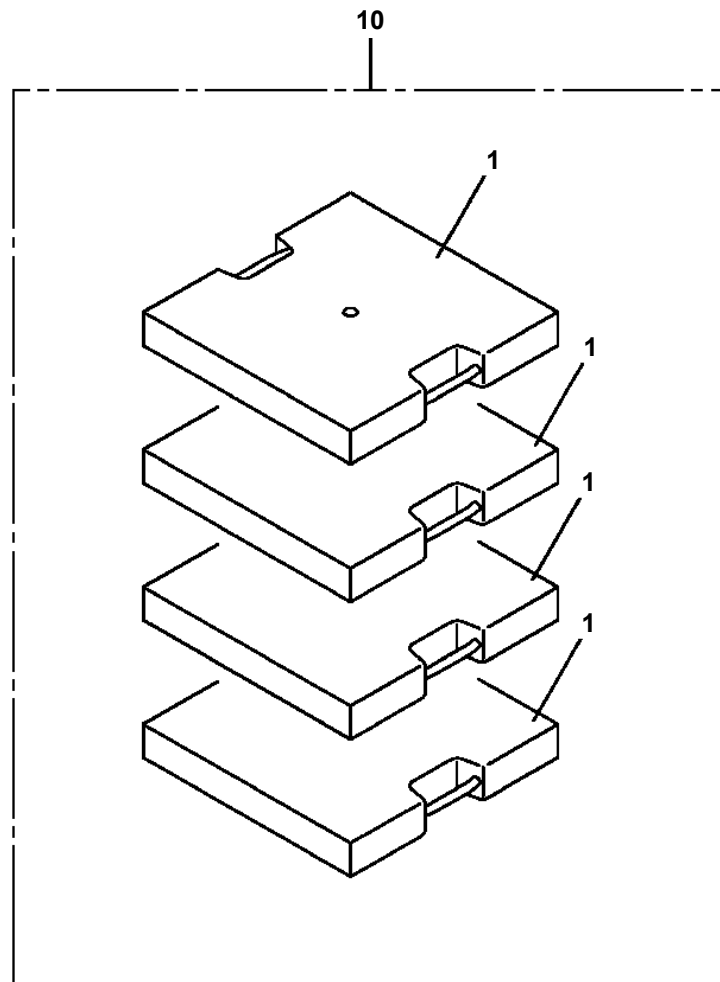
Pos No.	Parts No	Parts Name	Qty	Unit	Technical Data	Serial No (Start)	Serial No (End)	Remark
81	36651645010	SEAL KIT	1					
100	36654340000	PUMP,HYDRAULIC (52CC:R)	1					

TM-ZX500 41050601144A FRAME

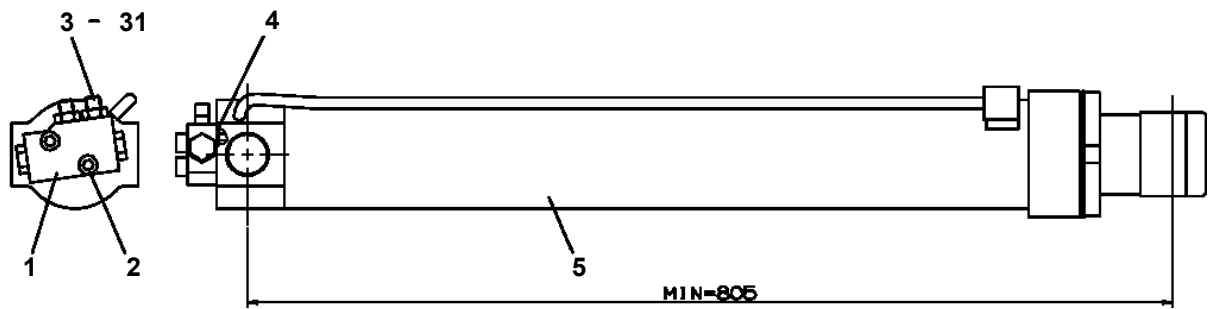
PB1380332-03 POWER SUPPLY (100V POWER SOURCE/1500W)



TM-ZX500 41050601144A FRAME
PB5110004-00 BLOCK (4 PIECE SET:PLATE,500X500,H=90)

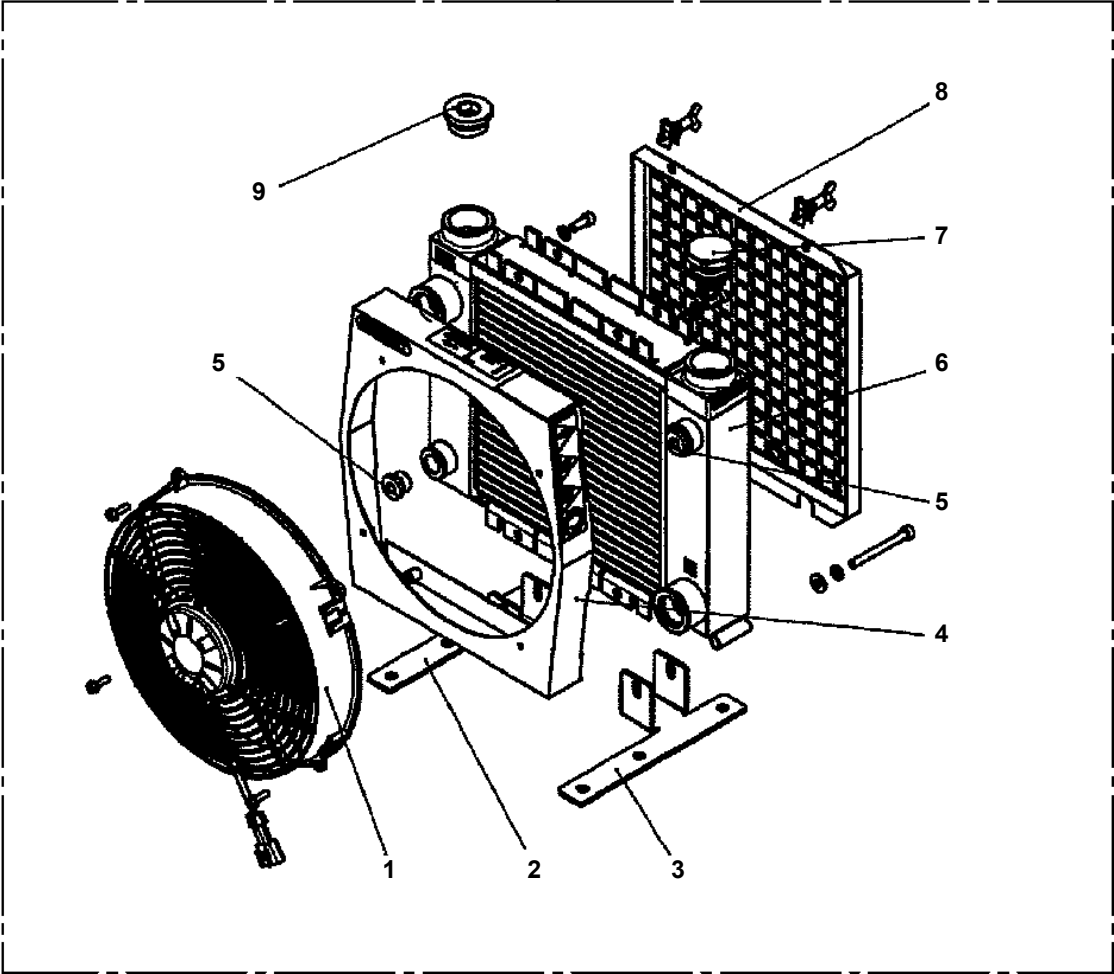


TM-ZX500 41050601144A FRAME
PC1030314-02 CYLINDER,JACK (STROKE 550)

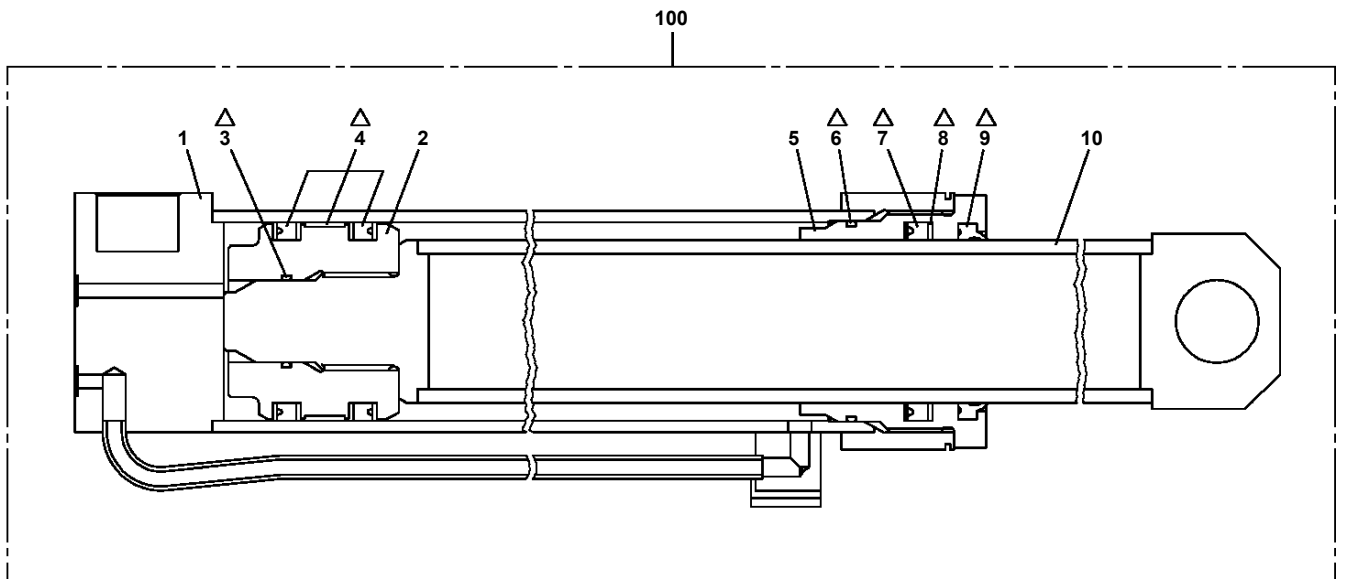


TM-ZX500 41050601144A FRAME
PC5490027-00 COOLER ASSY,OIL

100



**TM-ZX500 41050601144A FRAME
PC6390039-01 CYLINDER ASSY,JACK**



Δ:PACKING SET KEY NO.20 (KEY NO.3,4,6,7,8,9)

TM-ZX500 41050601144A FRAME

Pos No.	Parts No	Parts Name	Qty	Unit	Technical Data	Serial No (Start)	Serial No (End)
1	91850310405	CLAMP (BLACK)	9				
2	91810130240	FASTENER	18				
3	91810130250	FASTENER	8				
5	31657280200	COVER	2				
6	90186208020	BOLT,FLANGE	8		M8X20		
7	90280200800	NUT,FLANGE	8		M8		
8	31653470100	SUPPORT	1				
9	31653470200	SUPPORT	1				
10	90186206010	BOLT,FLANGE	15		M6X10		
11	31611822200	HARNESS	1		L=13000		
12	82100001371	TERMINAL	1				
13	82100001227	INSULATOR	1				
14	31478092100	HARNESS	1				
17	82100000192	TERMINAL	1				
18	82100000182	INSULATOR	1				
28	31478092400	COVER ASSY	1				
29	31478092600	HARNESS	1				
36	31478092500	COVER	1				
37	31478092301	COVER ASSY	1				
41	31653322200	SWITCH ASSY (WITH HARNESS,2-SW)	2				
42	82199514013	CAP	4				
43	82199504017	NUT	4		AT-401N		
44	31657282100	SUPPORT	2				
45	31656331200	PLATE,NAME	2				

TM-ZX500 41050601144A FRAME

Pos No.	Parts No	Parts Name	Qty	Unit	Technical Data	Serial No (Start)	Serial No (End)	Remark
2	31475352100	PLATE,NAME	1					
4	31380174000	LAMP ASSY (ASSY ONLY)	1					
5	82100000192	TERMINAL	4					
6	82100000182	INSULATOR	4					
7	91810130250	FASTENER	10					
8	82115001002	CONNECTOR	3					
9	82100001400	TERMINAL	3					
10	31476362700	PLATE,CAUTION	1					
11	31380292600	SUPPORT	1					
12	80172305020	SCREW,MACHINE	2		M5X20			
13	90302040501	WASHER,SPRING	2		5			
14	90303070501	WASHER,PLAIN	2		5			
15	82100001220	INSULATOR	3					
18	90928040101	SCREW,TAPPING	3		M4X10			
19	82115001005	CONNECTOR	3					
24	31477472300	HARNESS	1		L=1000			
25	31505222102	ALARM ASSY (ASSY ONLY)	1					

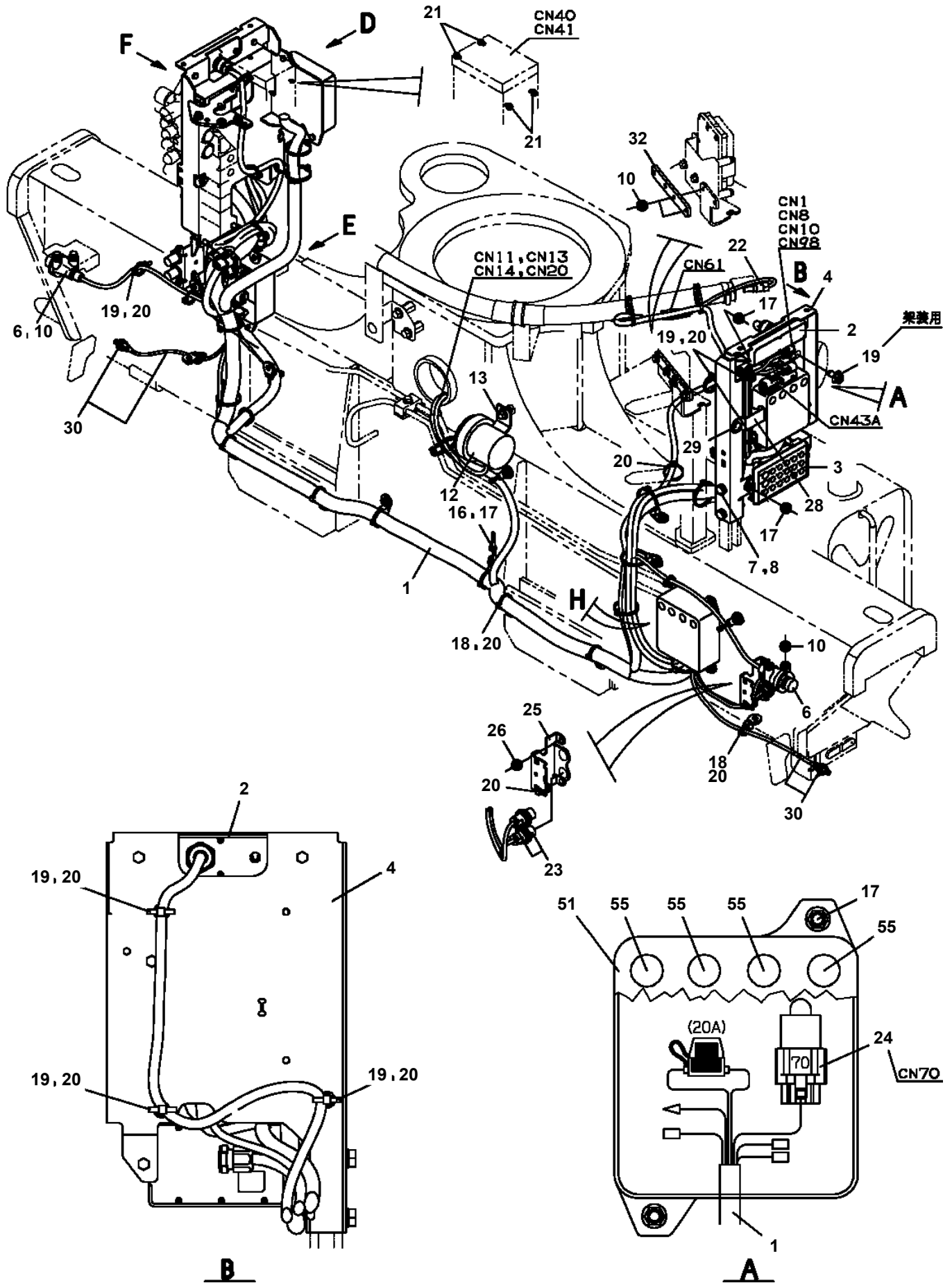
TM-ZX500 41050601144A FRAME

Pos No.	Parts No	Parts Name	Qty	Unit	Technical Data	Serial No (Start)	Serial No (End)	Remarks
1	31506121100	HARNESS	1					
2	34354781710	RELAY (WITH BRACKET)	1					
3	90280200600	NUT,FLANGE	1		M6			
4	80197586012	SCREW,MACHINE	1		M6X12			
5	91810130250	FASTENER	6					

TM-ZX500 41050601144A FRAME

Pos No.	Parts No	Parts Name	Qty	Unit	Technical Data	Serial No (Start)	Serial No (End)	Remarks
1	91810130250	FASTENER	11					
2	31733763200	HARNESS	1					
3	31658780900	HARNESS	1					
4	34354781710	RELAY (WITH BRACKET)	1					
5	90280200600	NUT,FLANGE	1		M6			
6	80197586012	SCREW,MACHINE	1		M6X12			
7	91850700101	CLAMP	1		L=208			
8	91850310405	CLAMP (BLACK)	1					

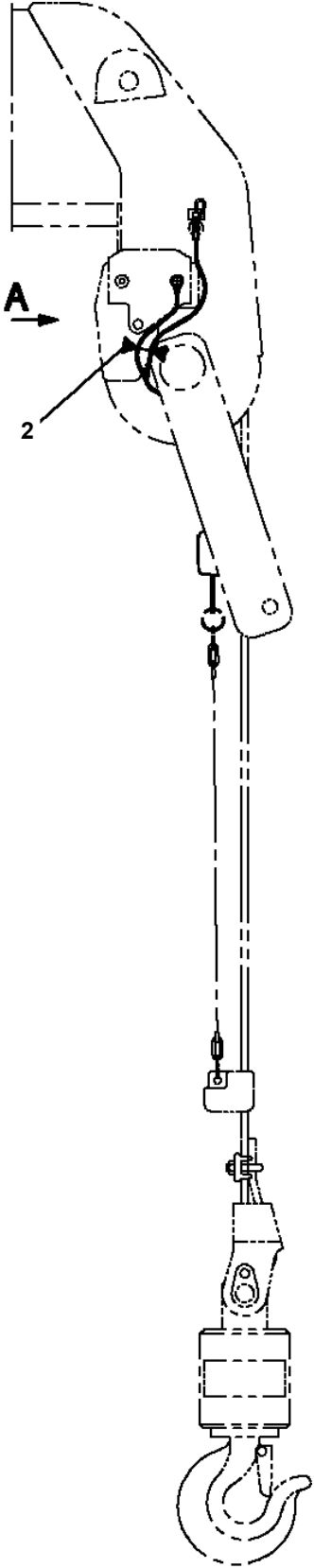
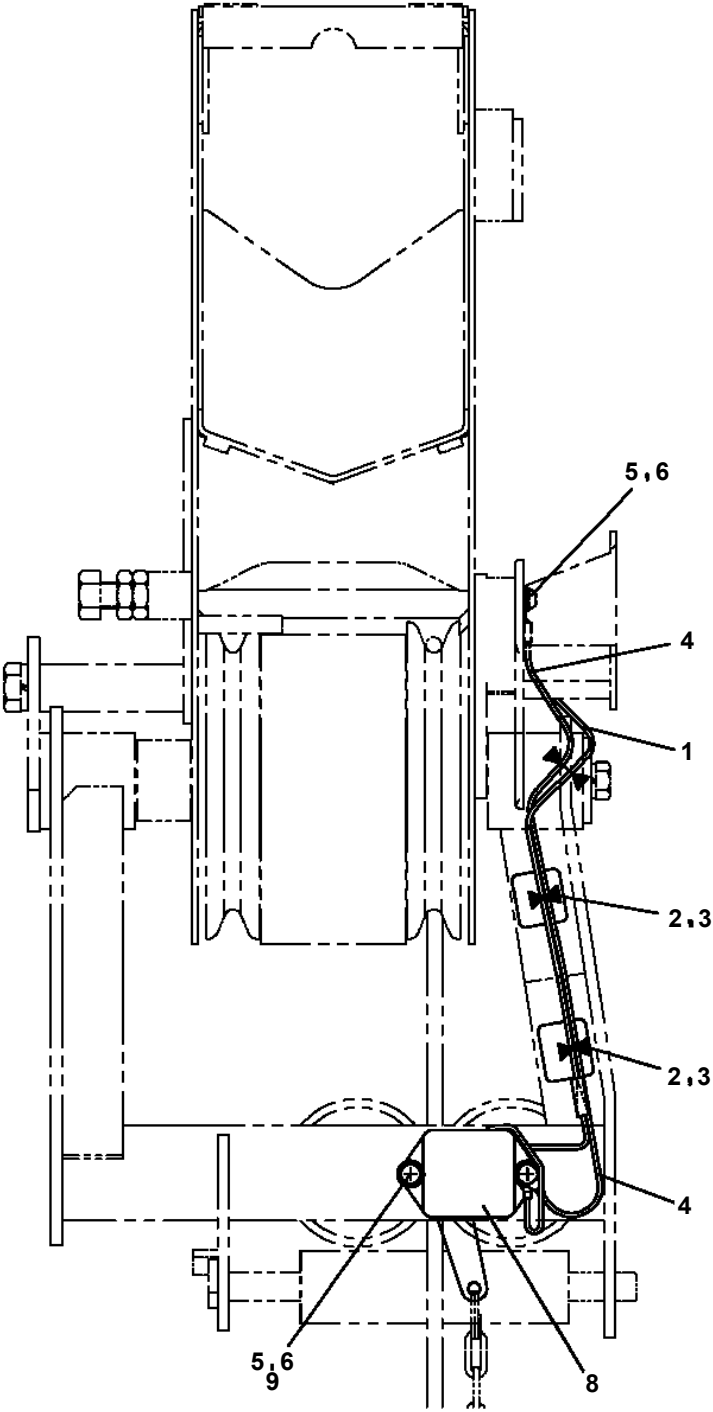
TM-ZX500 41050601144A FRAME
 PE5021430-00 ELEC.ASSY



TM-ZX500 41050601144A FRAME

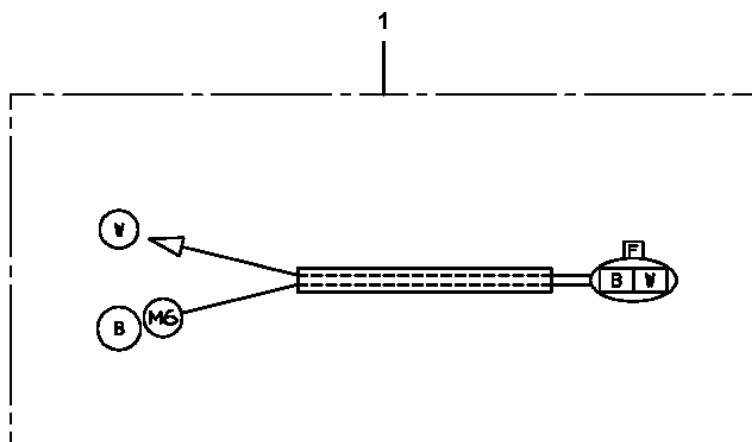
Pos No.	Parts No	Parts Name	Qty	Unit	Technical Data	Serial No (Start)	Serial No (End)	Remarks	Pages
1	31440250100	ROLLER ASSY	1						
2	37000105740	PIN	2						
3	80136332020	PIN,SPLIT	2		3.2X20				
4	90303071001	WASHER,PLAIN	4		10				
5	37001300000	SPRING	2						
21	37001107470	ROLLER ASSY	2						
22	37001108310	ROLLER ASSY	1						
23	31440250300	PIN	1						
24	31440250150	SUPPORT	1						
25	31440150350	WASHER,PLAIN	2						
26	90286001007	NUT	2		M10 P=1.25				
31	80516006001	BEARING,BALL	4						
43	80602110280	RING,RITAINING	2		R28				

TM-ZX500 41050601144A FRAME
PH1060491-01 DETECTOR,OVERWIND

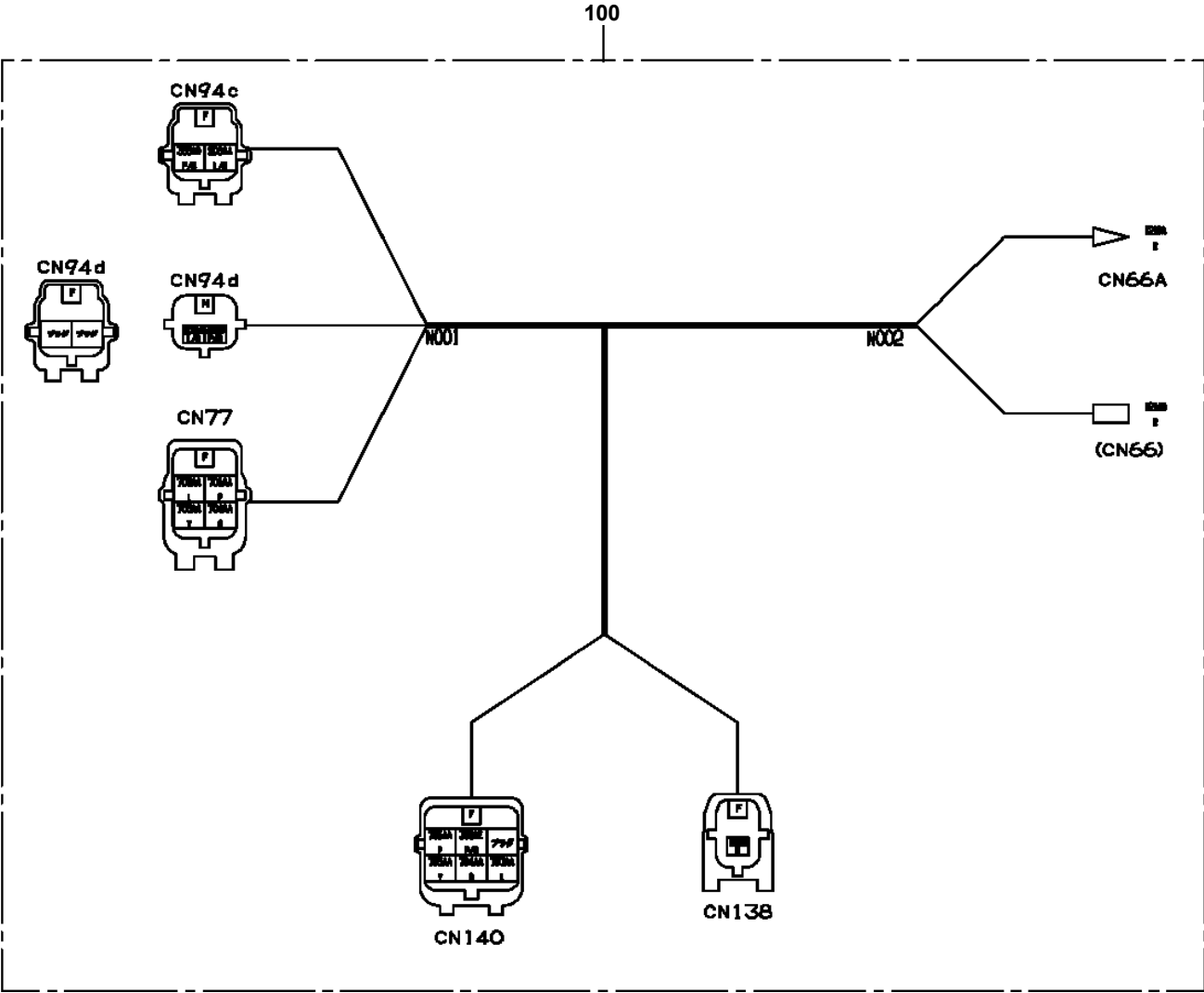


A

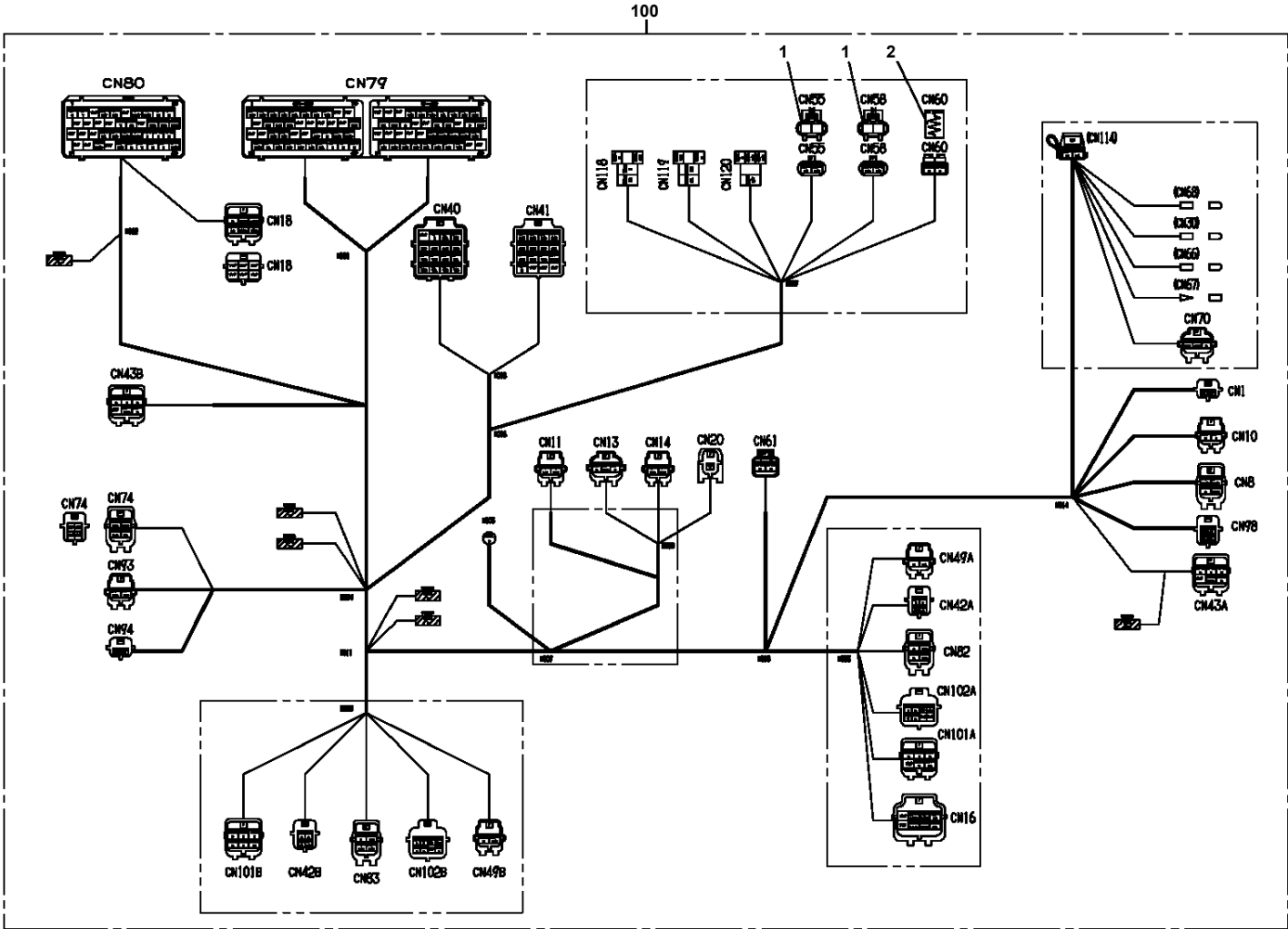
TM-ZX500 41050601144A FRAME
PH5033592-00 HARNESS



TM-ZX500 41050601144A FRAME
PH5033871-00 HARNESS

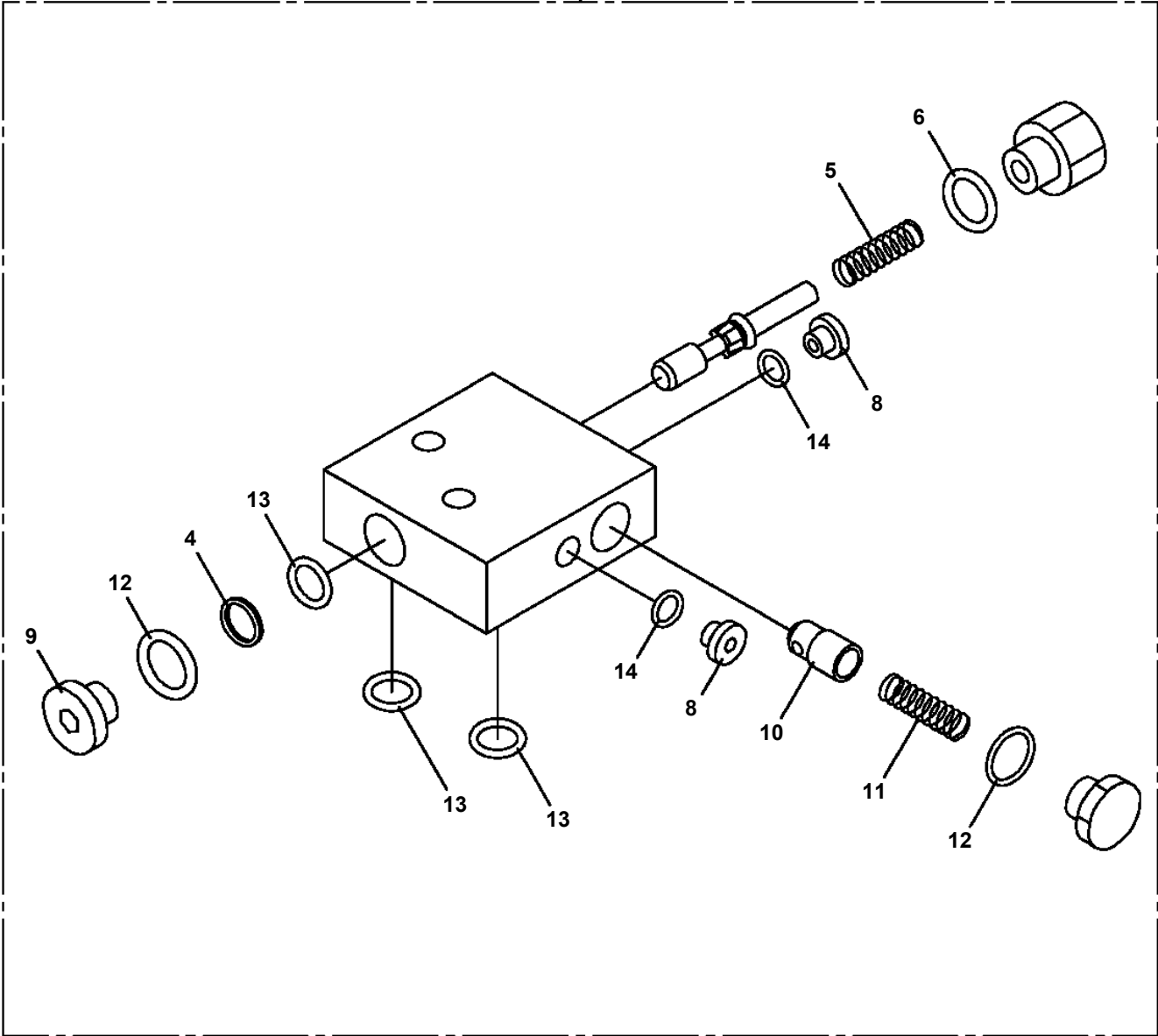


TM-ZX500 41050601144A FRAME
PH5034439-00 HARNESS (CRANE)

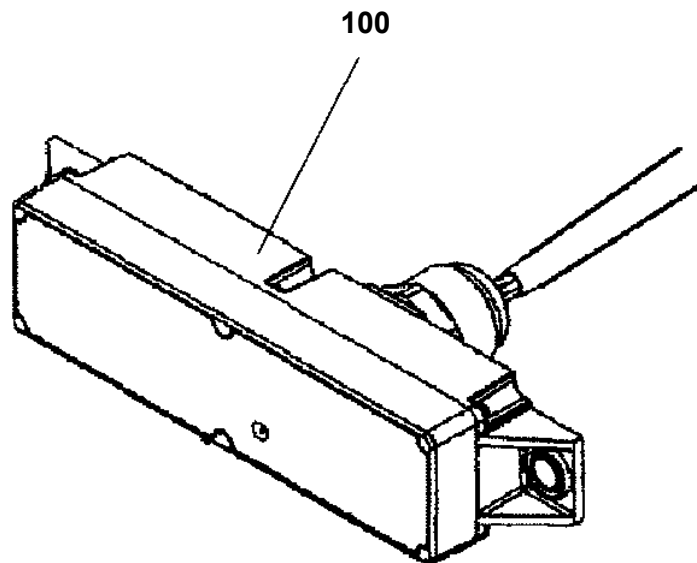


TM-ZX500 41050601144A FRAME
PI1250160-02 VALVE,COUNTERBALANCE

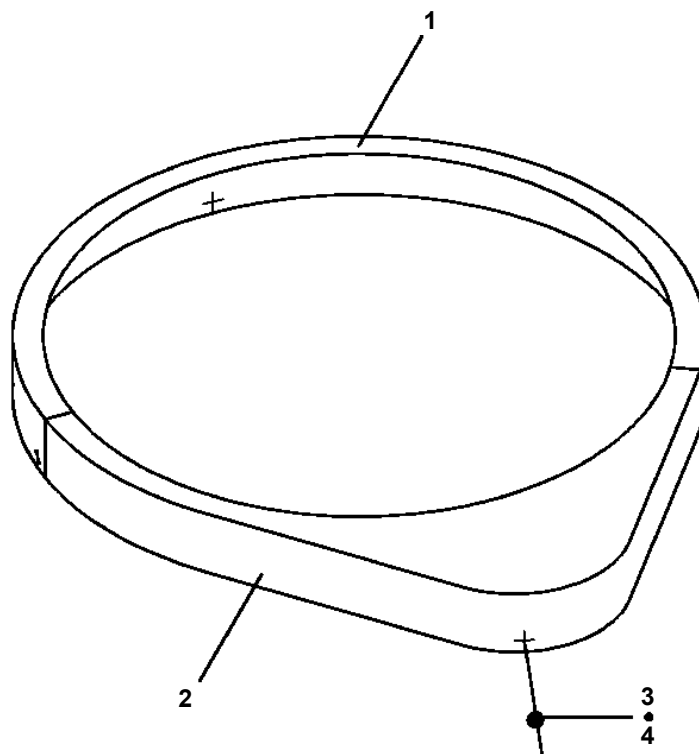
50



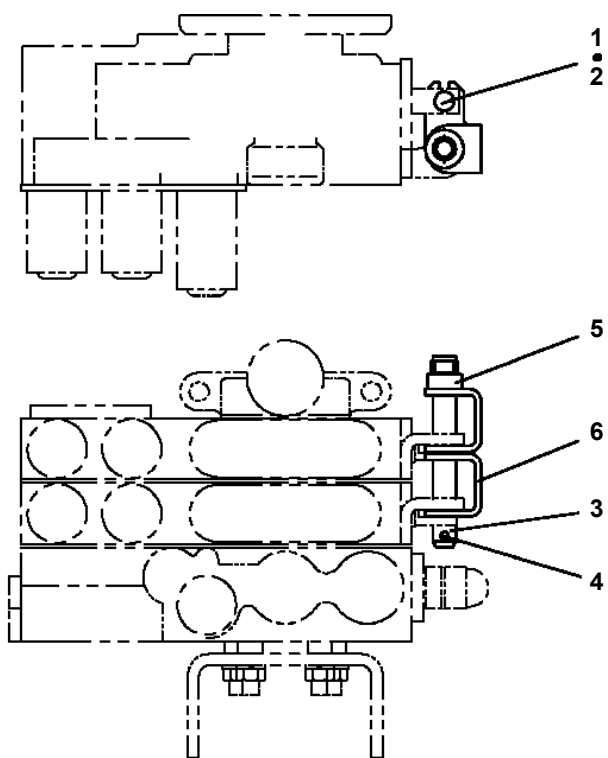
TM-ZX500 41050601144A FRAME
PI5200001-00 INDICATOR



TM-ZX500 41050601144A FRAME
PK1130007-00 COVER,BEARING



TM-ZX500 41050601144A FRAME
PL1010863-00 OPE.ASSY,CONT.VALVE (REMOCON)



TM-ZX500 41050601144A FRAME
PL5020226-00 LAMP ASSY (BOOM/24V-20W)

ランプ ASSY (フーム/24V-20W)
LAMP ASSY (BOOM/24V-20W)

フーム取付けタイプ
ランプ仕様：24V-20W

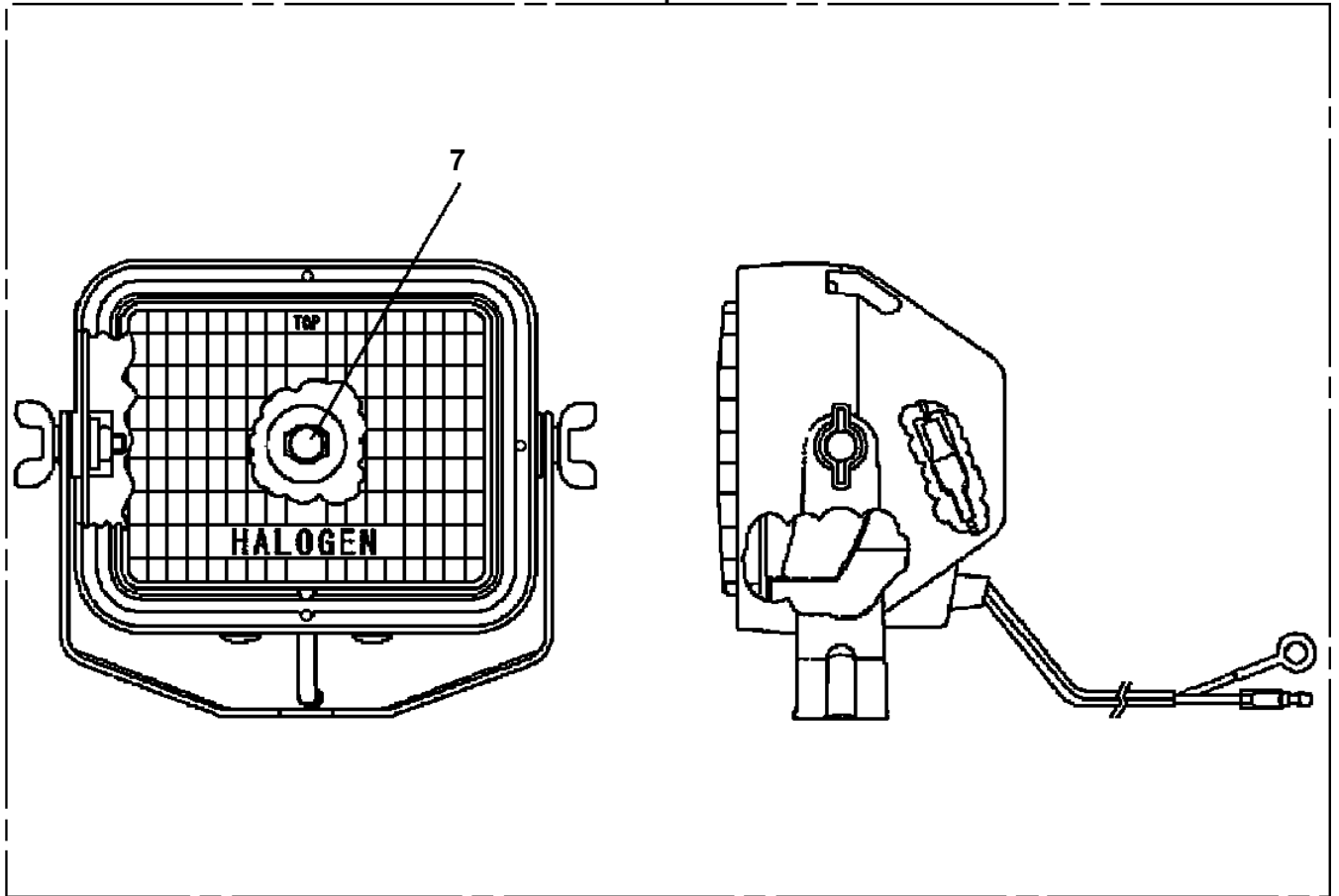
符号	日本語名称	英語名称	備考
2	ハイセンASSY	ELEC.ASSY	ホースト部
3	ハイセンASSY	ELEC.ASSY	フーム部 (LED20W)

適用製造番号によっては取り付けがないものもあります。

MACHINES OF SOME SERIAL NO. ARE NOT EQUIPPED WITH THESE PARTS.

**TM-ZX500 41050601144A FRAME
PL5330004-00 LAMP**

100



CLICK HERE TO **DOWNLOAD** THE COMPLETE MANUAL

- Thank you very much for reading the preview of the manual.
- You can download the complete manual from: www.heydownloads.com by clicking the link below



- Please note: If there is no response to CLICKING the link, please download this PDF first and then click on it.

CLICK HERE TO **DOWNLOAD** THE COMPLETE MANUAL

TM-ZX500 41050601144A FRAME
PN5012013-01 NAME PLATE ASSY (FRAME:U-LAYOUT)

ネームプレートASSY (フレーム:Uハイレッツ)
NAME PLATE ASSY (FRAME:U-LAYOUT)

符号	日本語名称	英語名称	備考
1	ネームプレートASSY	NAME PLATE ASSY	ノブ銘板:U社配列
4	ネームプレートASSY	NAME PLATE ASSY	タンク油量銘板:共通
5	ネームプレートASSY	NAME PLATE ASSY	フック銘板:2.93t
6	ネームプレートASSY	NAME PLATE ASSY	O/R注意銘板等
7	ネームプレートASSY	NAME PLATE ASSY	定期自主検査銘板

適用製造番号によっては取り付けがないものもあります。

MACHINES OF SOME SERIAL NO. ARE NOT EQUIPPED WITH THESE PARTS.

TM-ZX500 41050601144A FRAME

Pos No.	Parts No	Parts Name	Qty	Unit	Technical Data	Serial No (Start)	Serial No (End)	Remarks
1	37002241980	PLATE,NAME	2					
2	37002243710	PLATE,NAME	1					
12	31595693010	PLATE,NAME	2					
13	37002240210	PLATE,CAUTION	2					
14	37002240110	PLATE,CAUTION	2					
15	37002206490	PLATE,NAME (GREASE)	6					
16	37002224400	PLATE,NAME	1					
17	37002224440	PLATE,NAME	1					
18	37002220450	PLATE,NAME	1					
19	37002200320	PLATE,NAME	1					
20	37002240090	PLATE,NAME	1					

TM-ZX500 41050601144A FRAME

Pos No.	Parts No	Parts Name	Qty	Unit	Technical Data	Serial No (Start)	Serial No (End)	Remarks	Pages
1	37002241800	PLATE,NAME	2						

TM-ZX500 41050601144A FRAME

Pos No.	Parts No	Parts Name	Qty	Unit	Technical Data	Serial No (Start)	Serial No (End)	Remarks	Pages
1	(*****)	PLATE,NAME (JCAS)	1						00016

TM-ZX500 41050601144A FRAME

Pos No.	Parts No	Parts Name	Qty	Unit	Technical Data	Serial No (Start)	Serial No (End)	Remarks
1	31506446100	PLATE,NAME	2					
2	31506446200	PLATE,NAME	1					
3	31506446400	PLATE,NAME	1					
4	31393180100	REFLECTOR (RED)	4					
5	31615754100	PLATE,NAME (BLUE)	4					
6	37002213970	PLATE,NAME (MARKING)	2					
7	37002240210	PLATE,CAUTION	2					
8	37002240110	PLATE,CAUTION	2					

TM-ZX500 41050601144A FRAME

Pos No.	Parts No	Parts Name	Qty	Unit	Technical Data	Serial No (Start)	Serial No (End)	Remarks	Pages
2	90451700100	SCREW,TAPPING	4		M4X6.4				

TM-ZX500 41050601144A FRAME

Pos No.	Parts No	Parts Name	Qty	Unit	Technical Data	Serial No (Start)	Serial No (End)	Remarks	Pages
1	31326322101	LEVER	2						
2	31326322201	LEVER	2						
3	31326322301	LEVER	2						
4	31324867000	ROD	3						

TM-ZX500 41050601144A FRAME

Pos No.	Parts No	Parts Name	Qty	Unit	Technical Data	Serial No (Start)	Serial No (End)
1	(*****)	OUTRIGGER ASSY (L=722,CASE:L=1050)	1				
2	(*****)	LOCK ASSY (OUTRIGGER)	1				
3	(*****)	PIPING ASSY,OUTRIGGER	1				
4	(*****)	STOPPER ASSY (OUTRIGGER)	1				

TM-ZX500 41050601144A FRAME

Pos No.	Parts No	Parts Name	Qty	Unit	Technical Data	Serial No (Start)	Serial No (End)
1	80189305008	SCREW,MACHINE	1		M5X8		
2	31613570500	COVER	1				
3	90180208016	BOLT,BUTTON	2		M8X16		
4	90302040801	WASHER,SPRING	2		8		
5	31611640150	SPRING	1				
6	(*****)	OPE.ASSY,OUTRIGGER	1				
7	37000150360	PIN	1				
8	80601110150	RING,RITAINING	2		15		
9	31620582020	BEARING,BALL (KOYO)	2				
10	37000164980	PIN	2				
11	80602110350	RING,RITAINING	4		R35		
12	31616214000	CASE,OUTER	1		L=920		
13	31614243000	CASE,INNER	1				
15	37000165280	PIN	1				
16	31201770100	PLATE,SLIDE	2		T=3.0		
17	31612772100	PLATE	1				
18	90186206012	BOLT,FLANGE	2		M6X12		
19	31611643000	FLOAT	1				
47	31621963200	SUPPORT	1				
71	36623930000	VALVE,PILOT CHECK	1				
72	90172110040	BOLT,HEXAGON SOCKET	2		M10X40		
73	80491002020	JOINT (WITH O-RING)	2				
74	91002801000	O-RING	2		1B P10		
75	36036630000	CYLINDER ASSY,JACK	1				
91	31615754100	PLATE,NAME (BLUE)	2				
92	31611300600	PLATE,NAME (YELLOW)	2				
107	31616214200	SUPPORT	1				
110	31614694000	SUPPORT	1				
121	91002801100	O-RING	2		1B P11		
200	31616210200	OUTRIGGER ASSY (CASE:L=920,MIN=785)	1				

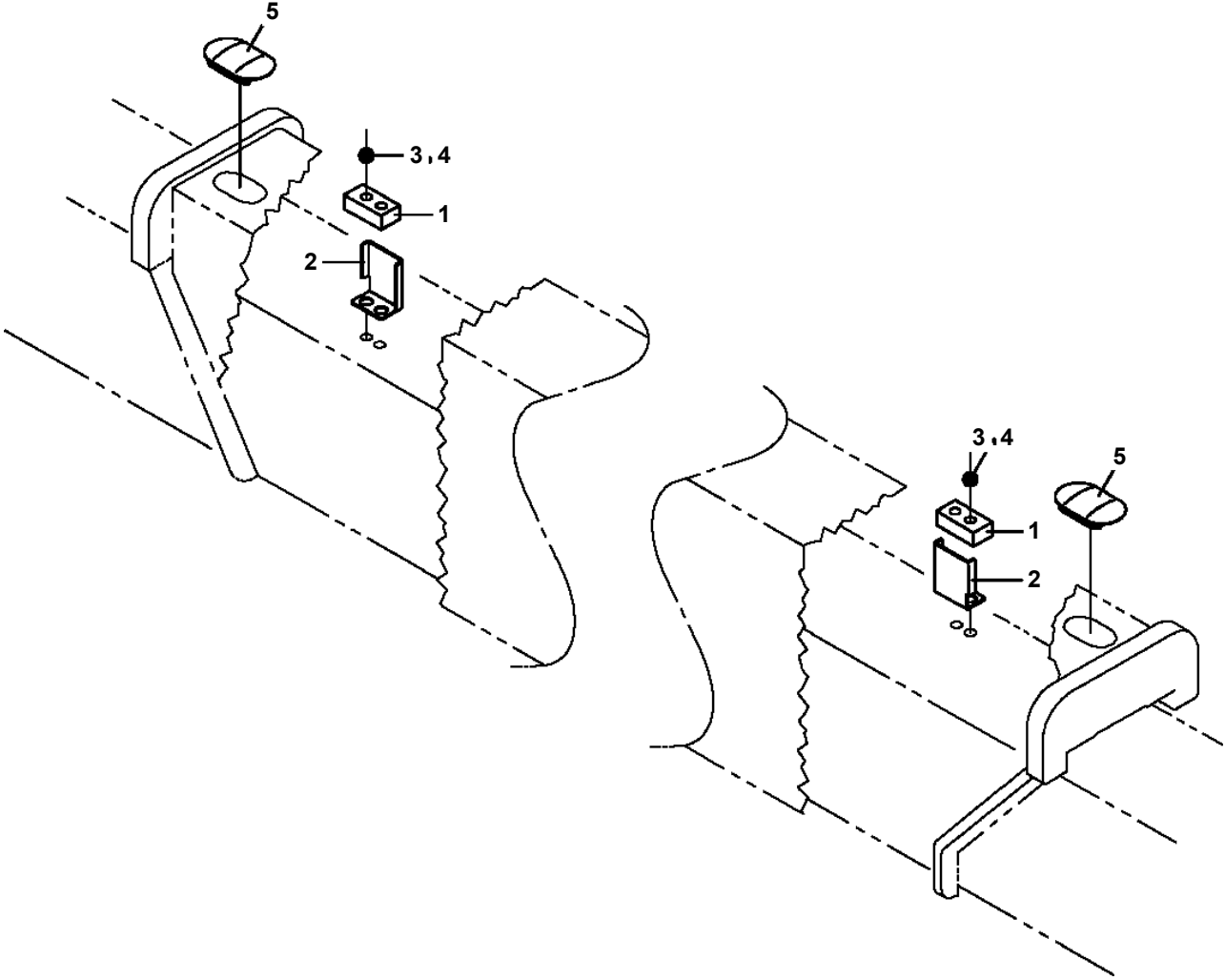
TM-ZX500 41050601144A FRAME

Pos No.	Parts No	Parts Name	Qty	Unit	Technical Data	Serial No (Start)	Serial No (End)	Rema
2	36806962000	ANTENNA UNIT (ASSY ONLY)	1					
3	36806963000	BOX,OPERATION	1					
5	(***** *****)	ELEC.ASSY (ANTENNA UNIT)	1					
6	36804914000	BOX,STOWING	1					
9	36806961000	CONTROL UNIT (ASSY ONLY)	1					

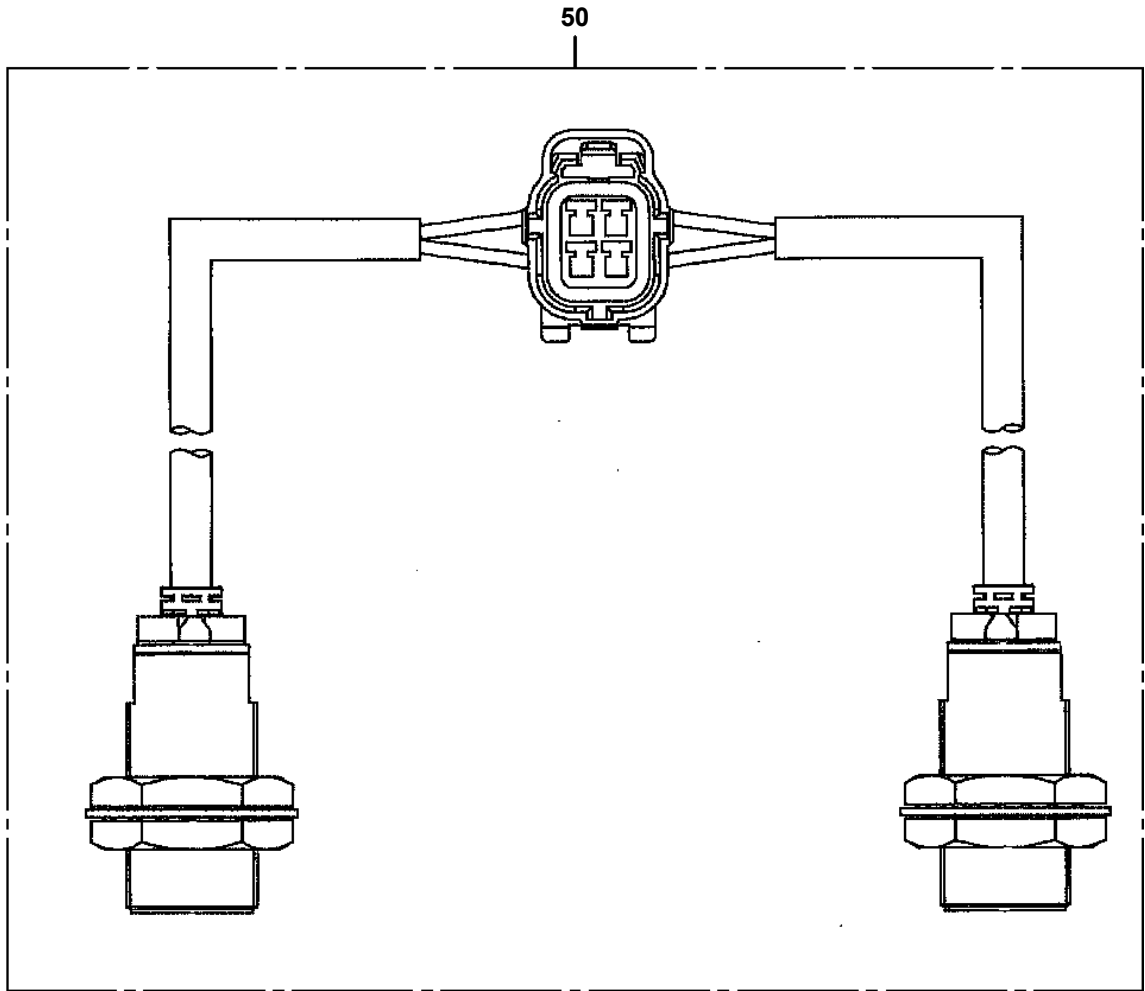
TM-ZX500 41050601144A FRAME

Pos No.	Parts No	Parts Name	Qty	Unit	Technical Data	Serial No (Start)	Serial No (End)	Remarks	Pages
1	31597973500	PLATE,CAUTION	2						
2	31597973600	PLATE,NAME	1						

TM-ZX500 41050601144A FRAME
PS5380001-00 STOPPER ASSY (OUTRIGGER)

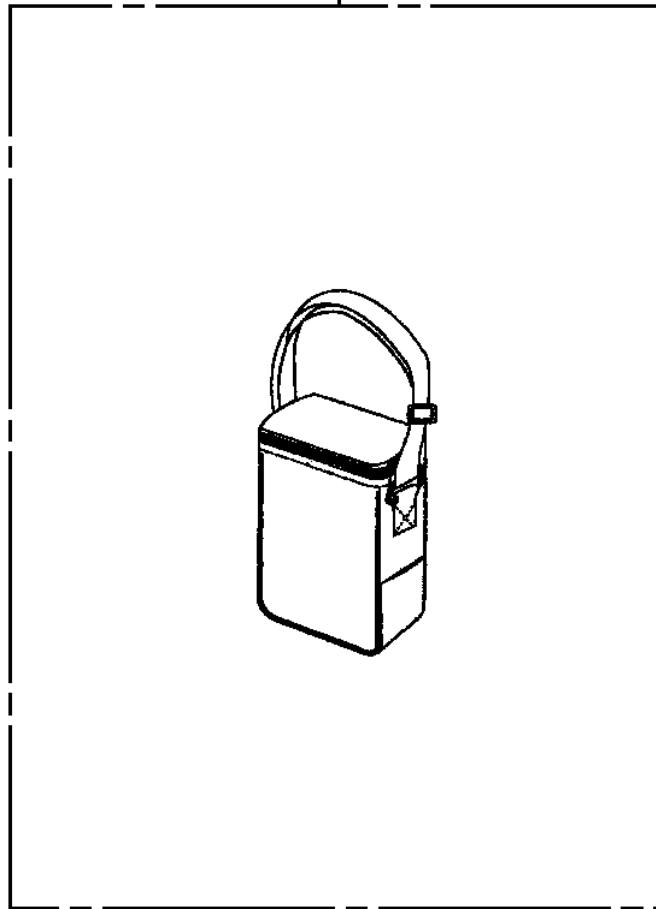


**TM-ZX500 41050601144A FRAME
PS5540020-00 SWITCH (S/W 2PC'S)**



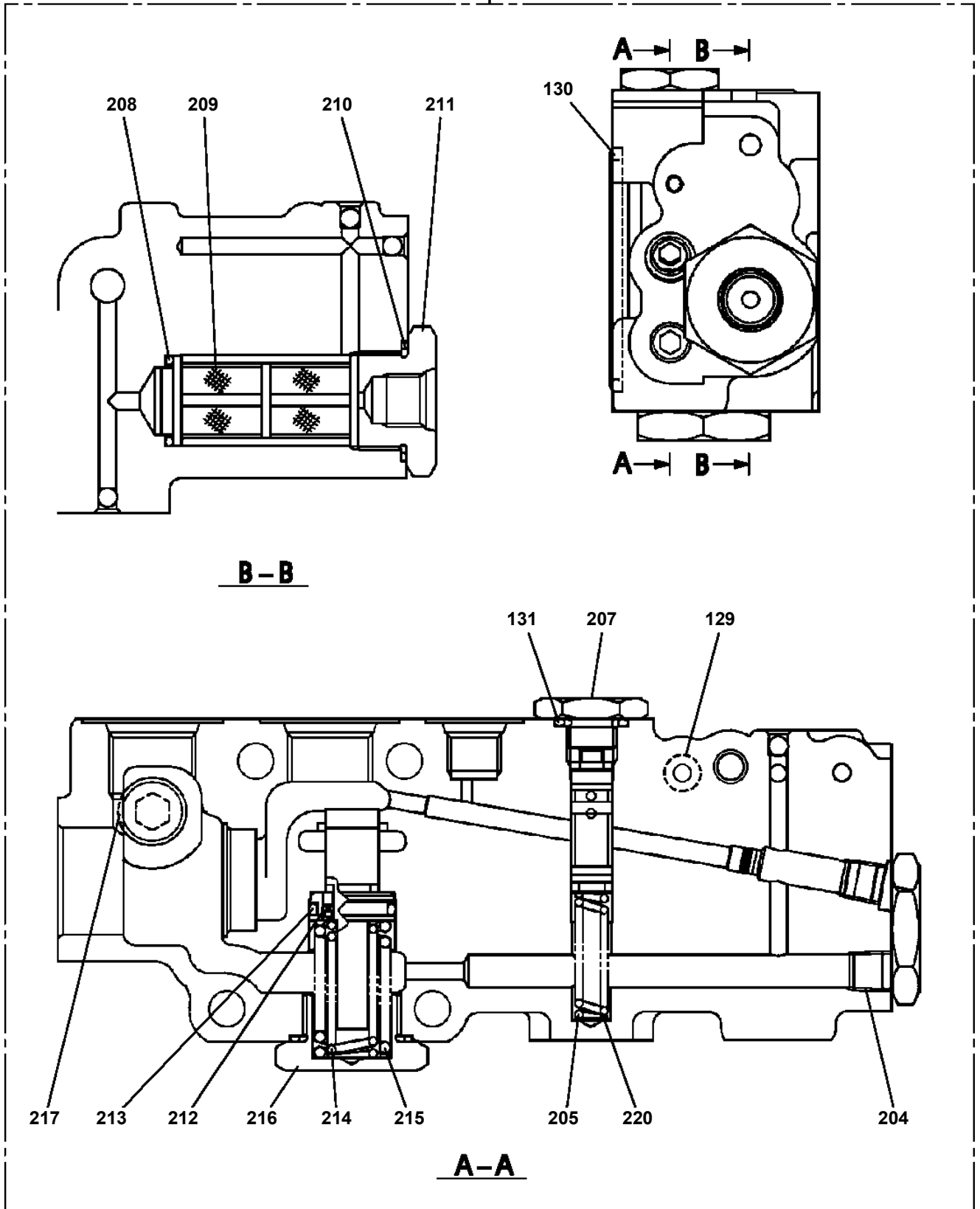
TM-ZX500 41050601144A FRAME
PV1250013-00 BOX,STOWING

10



TM-ZX500 41050601144A FRAME
PV5150053-00 VALVE ASSY,REMOTE CONTROL

4



TM-ZX500 41050601144A FRAME

Pos No.	Parts No	Parts Name	Qty	Unit	Technical Data	Serial No (Start)	Serial No (End)	Rema
1	37001500000	BOLT	1					
2	90302041201	WASHER,SPRING	1		12			
3	90303101201	WASHER,PLAIN	1		12			
4	90172110025	BOLT,HEXAGON SOCKET	3		M10X25			
5	90302041001	WASHER,SPRING	3		10			
6	90303071001	WASHER,PLAIN	3		10			
7	36073810000	WINCH ASSY (Y.G.TEC)	1					
8	82401800080	PLUG (FOR M8)	2					
9	31310610500	BREATHER,AIR	1					
10	90172108025	BOLT,HEXAGON SOCKET	2		M8X25			
11	90302040801	WASHER,SPRING	6		8			
12	36663100000	MOTOR,HYDRAULIC (WINCH)	1					
13	91001206000	O-RING	1		1A G60			
14	37000177560	PIN	1					
15	90186210014	BOLT,FLANGE	2		M10X14			
16	37000300350	SPACER	1		L=18.5			
17	31310391000	COVER	1					
18	31311250100	DRUM,WINCH (HARTYS)	1					
	31311250300	DRUM,WINCH (Y.G.TEC)	1					
19	37002600190	WEDGE	1		8			
20	37000312690	SPACER	1		L=26.5			
21	90101208030	BOLT	4		M8X30			
22	31311210200	PLATE	1					
23	31311250500	SPACER	4		L=14			
24	31311250200	PLATE	3		T=1			

**TM-ZX500 41050601144A FRAME
PZ0000000-00 ELEC.ASSY (UPPER/COMMON)**

販売部品 検討中につき、イラストはありません。

**Parts for sale : Under consideration now.
Therefore not illustrated.**

**TM-ZX500 41050601144A FRAME
PZ0000000-00 PARTS ASSY,REMOTE CONTROL**

販売部品 検討中につき、イラストはありません。

**Parts for sale : Under consideration now.
Therefore not illustrated.**

**TM-ZX500 41050601144A FRAME
PZ0000000-00 HARNESS**

販売部品 検討中につき、イラストはありません。

**Parts for sale : Under consideration now.
Therefore not illustrated.**

**TM-ZX500 41050601144A FRAME
PZ0000000-00 HARNESS**

販売部品 検討中につき、イラストはありません。

**Parts for sale : Under consideration now.
Therefore not illustrated.**

TM-ZX500 41050601144A FRAME

PZ0000000-00 MOUNT ASSY (POWER SUPPLY,SERVICE PORT)

販売部品 検討中につき、イラストはありません。

**Parts for sale : Under consideration now.
Therefore not illustrated.**

**TM-ZX500 41050601144A FRAME
PZ0000000-00 PIPING ASSY**

販売部品 検討中につき、イラストはありません。

**Parts for sale : Under consideration now.
Therefore not illustrated.**

CLICK HERE TO **DOWNLOAD** THE COMPLETE MANUAL

- Thank you very much for reading the preview of the manual.
- You can download the complete manual from: www.heydownloads.com by clicking the link below



- Please note: If there is no response to CLICKING the link, please download this PDF first and then click on it.

CLICK HERE TO **DOWNLOAD** THE COMPLETE MANUAL