

TM-ZX500 41050601133A FRAME

PB0000385-00 SYSTEM (ZX500,DOMESTIC)

ASSEMBLY

CLICK HERE TO **DOWNLOAD** THE COMPLETE MANUAL

- Thank you very much for reading the preview of the manual.
- You can download the complete manual from: www.heydownloads.com by clicking the link below



- Please note: If there is no response to CLICKING the link, please download this PDF first and then click on it.

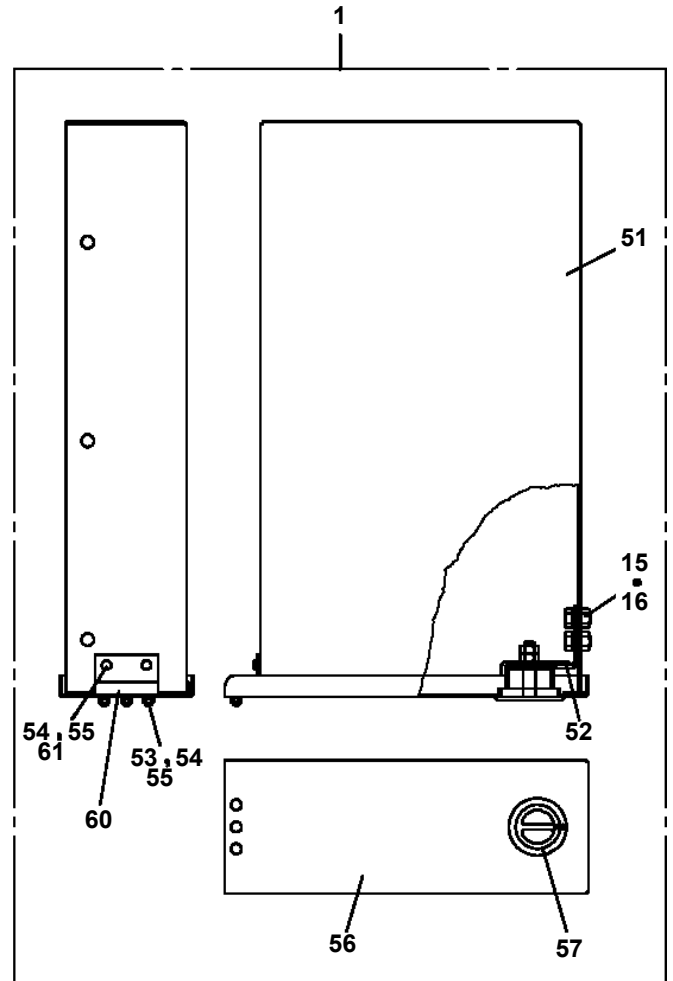
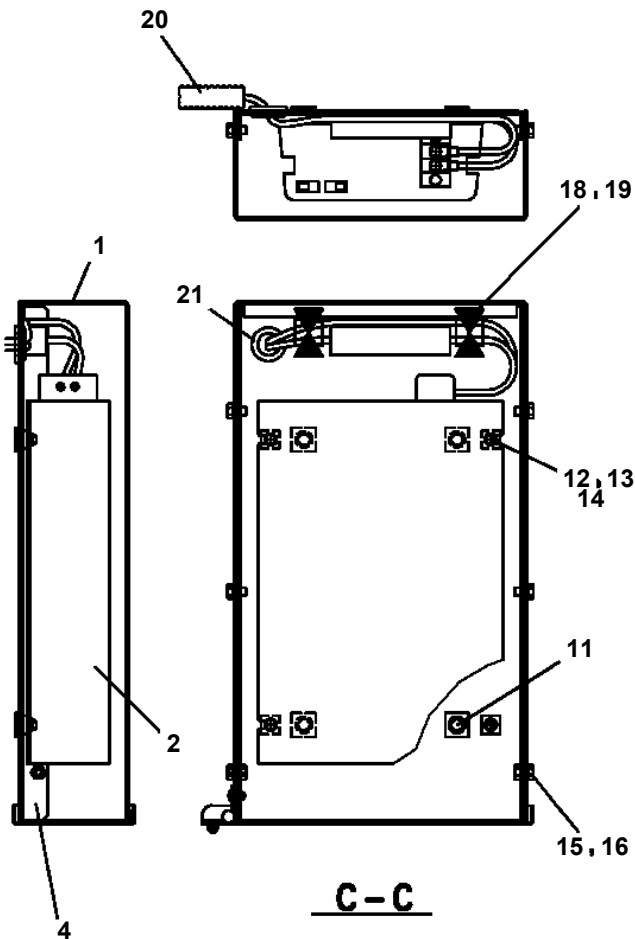
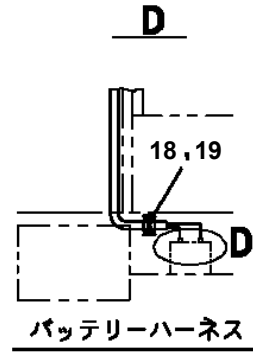
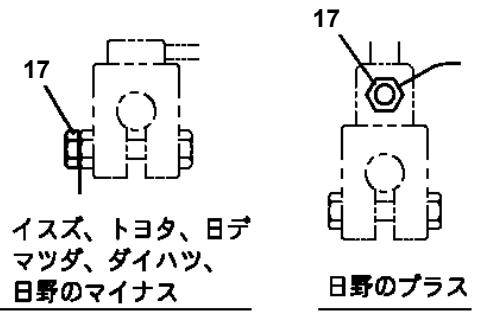
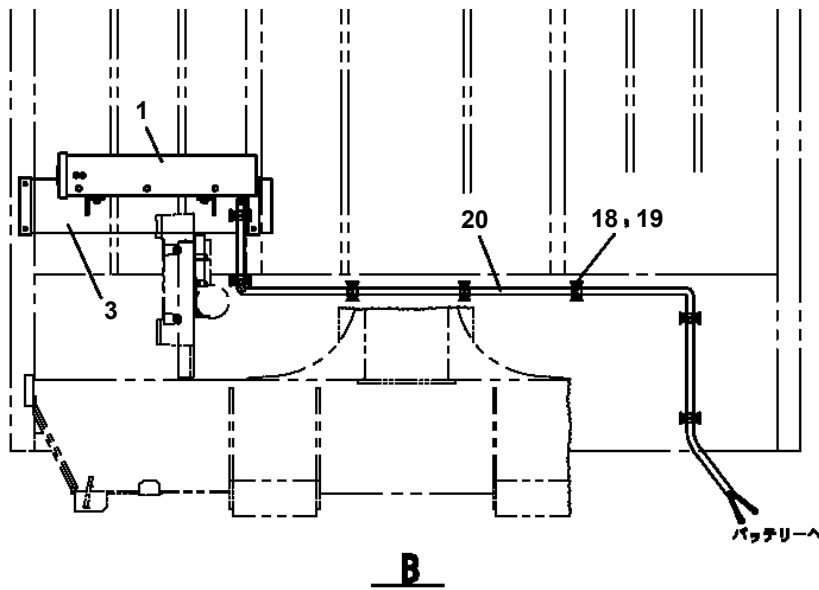
CLICK HERE TO **DOWNLOAD** THE COMPLETE MANUAL

TM-ZX500 41050601133A FRAME

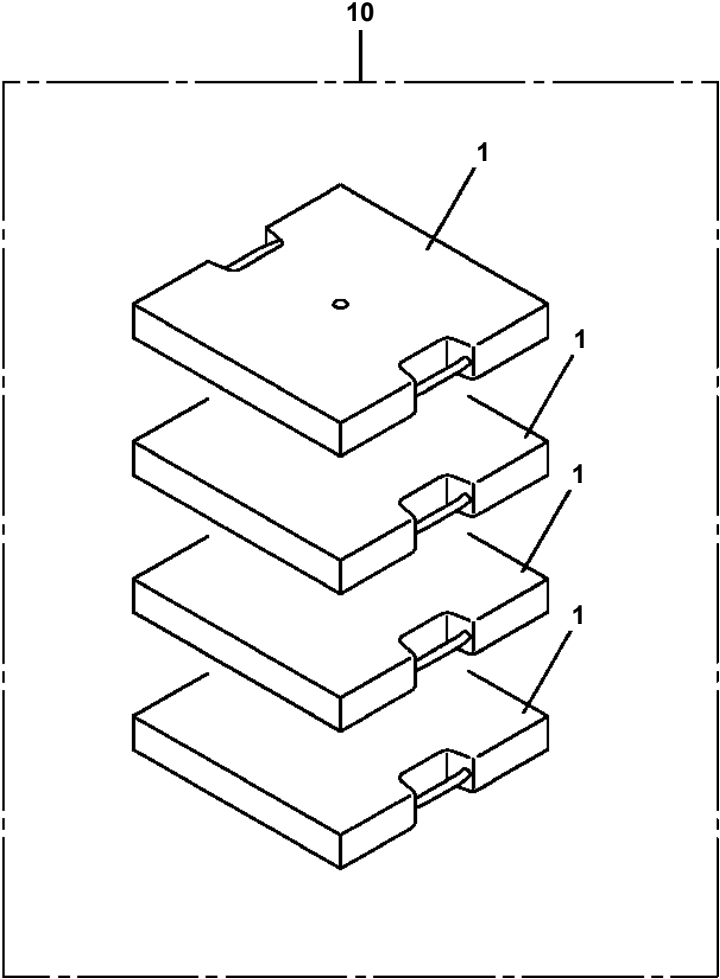
Pos No.	Parts No	Parts Name	Qty	Unit	Technical Data	Serial No (Start)	Serial No (End)	Remark
81	36651645010	SEAL KIT	1					
100	36654340000	PUMP,HYDRAULIC (52CC:R)	1					

TM-ZX500 41050601133A FRAME

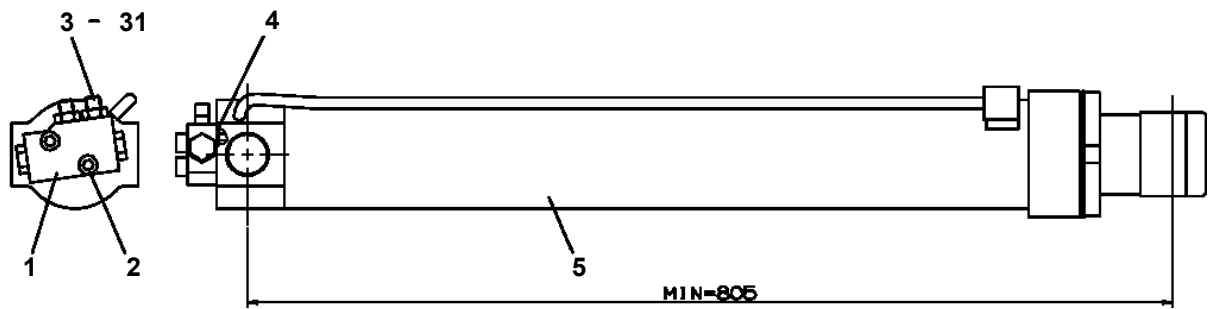
PB1380332-03 POWER SUPPLY (100V POWER SOURCE/1500W)



TM-ZX500 41050601133A FRAME
PB5110004-00 BLOCK (4 PIECE SET:PLATE,500X500,H=90)

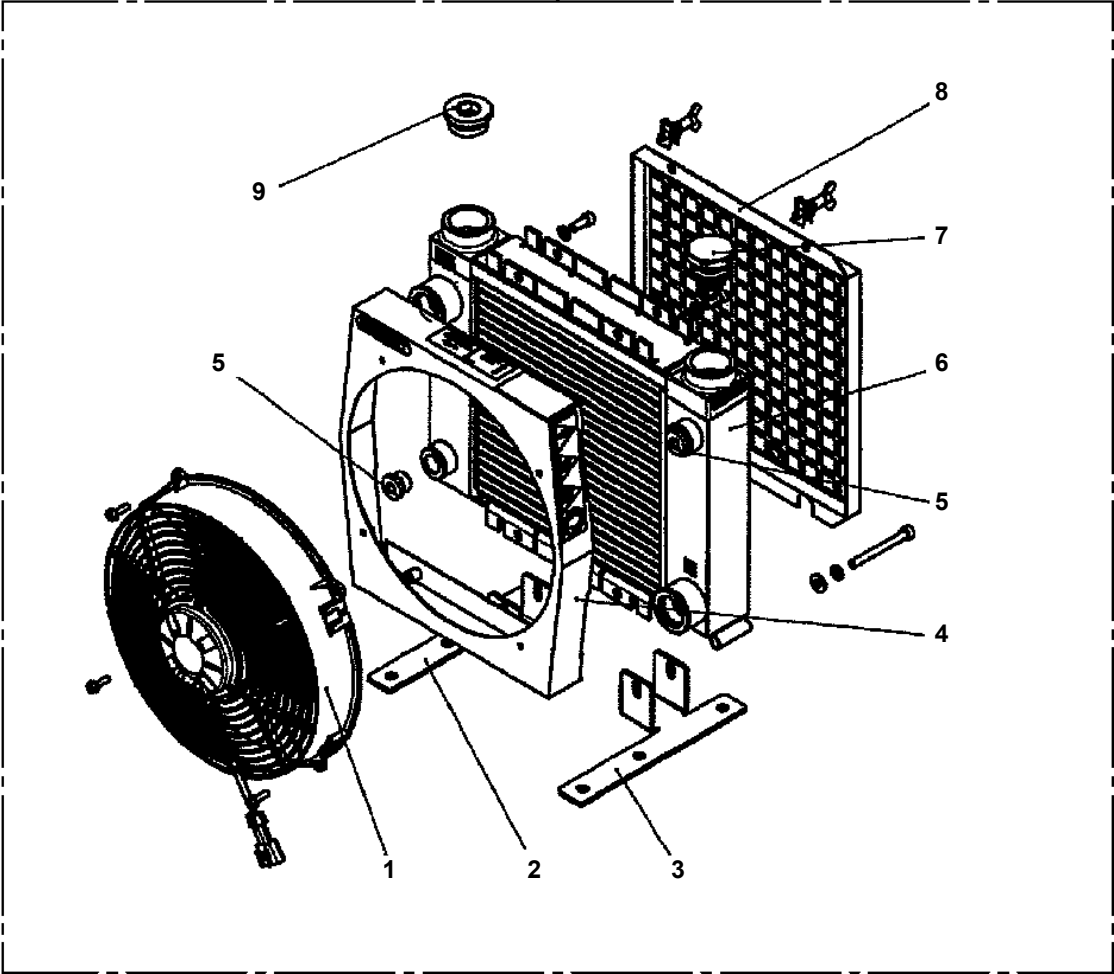


TM-ZX500 41050601133A FRAME
PC1030314-02 CYLINDER,JACK (STROKE 550)



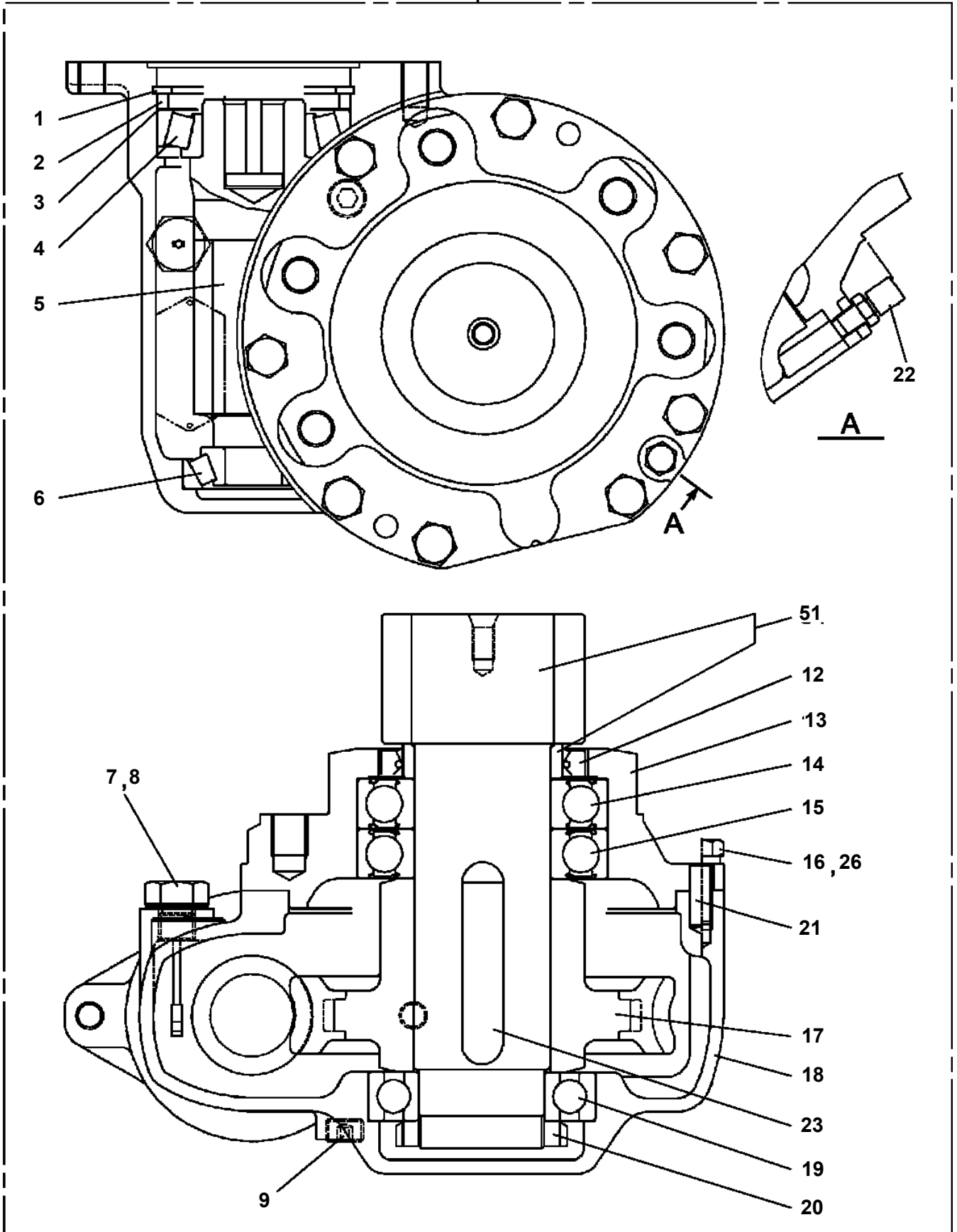
TM-ZX500 41050601133A FRAME
PC5490027-00 COOLER ASSY,OIL

100



TM-ZX500 41050601133A FRAME
PD1010184-00 REDUCER, SWING SPEED

100



TM-ZX500 41050601133A FRAME

Pos No.	Parts No	Parts Name	Qty	Unit	Technical Data	Serial No (Start)	Serial No (End)	Remark
1	31501192100	SUPPORT	1					
2	31501192200	PLATE	1					
3	90186210016	BOLT,FLANGE	2		M10X16			
4	31650690400	SUPPORT	1					
5	90813108020	BOLT,WING	1		M8X20			
6	90309331205	WASHER,CONICAL SPRING	2		L12			
7	90303071201	WASHER,PLAIN	1		12			
8	90236201200	NUT,CASTLE	1		2H M12			
9	80136325025	PIN,SPLIT	1		2.5X25			
10	31650690500	LEVER	1					
11	82165700020	LAMP (ASSY ONLY)	1					
12	90280201000	NUT,FLANGE	1		M10			
13	90186206010	BOLT,FLANGE	1		M6X10			
14	90280200600	NUT,FLANGE	1		M6			
15	82401600504	CLAMP	3		D=4.5			
16	91810130240	FASTENER	2					
17	90813108016	BOLT,WING	2		M8X16			
18	90302040801	WASHER,SPRING	2		8			
19	42507690100	SUPPORT	1					
20	90303070801	WASHER,PLAIN	2		8			
21	31503072100	HARNESS	1					
22	37002212770	PLATE,NAME (DC24V,0.1A)	1					

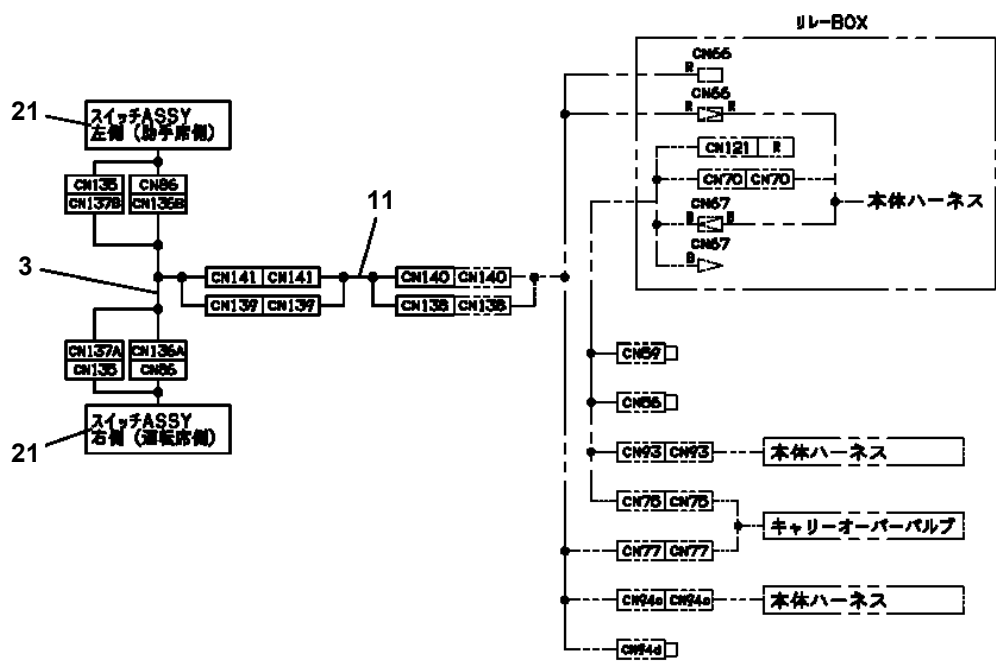
TM-ZX500 41050601133A FRAME

Pos No.	Parts No	Parts Name	Qty	Unit	Technical Data	Serial No (Start)	Serial No (End)	Remarks	Pages
1	31361042300	PLUG	1						
2	91810130250	FASTENER	2						

TM-ZX500 41050601133A FRAME

Pos No.	Parts No	Parts Name	Qty	Unit	Technical Data	Serial No (Start)	Serial No (End)	Remarks	Page
1	82199100026	LAMP	1		24V 60W				
2	31501292101	SUPPORT	1						
3	37000588420	PLATE	1						
4	90186210020	BOLT,FLANGE	2		M10X20				
5	31473744700	HARNESS (L=1000)	2						0000
6	91850310305	CLAMP	4						
7	91810130240	FASTENER	9						
8	90288110020	NUT	2		M10				
21	82100000054	BULB,LAMP	1		24V 60W				

TM-ZX500 41050601133A FRAME
 PE5021343-00 ELEC.ASSY (R/J)



ハーネス経路

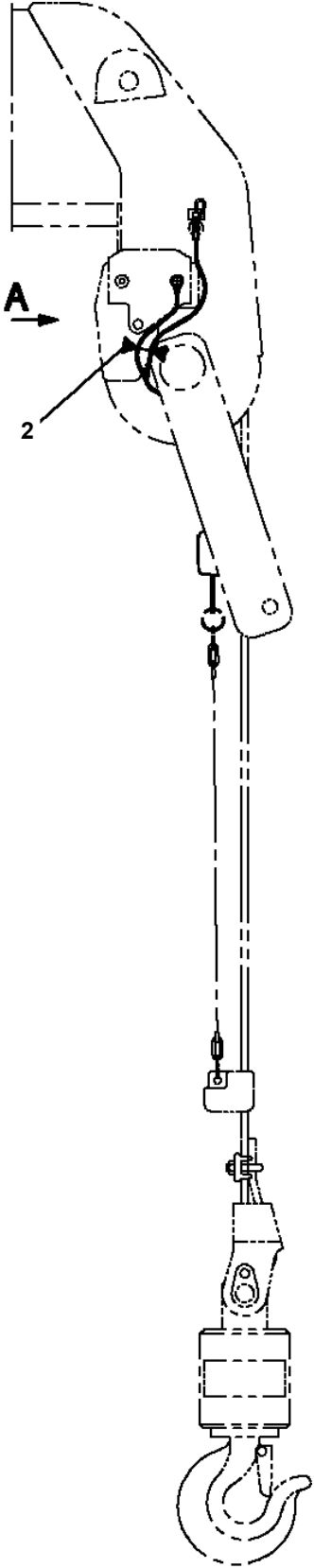
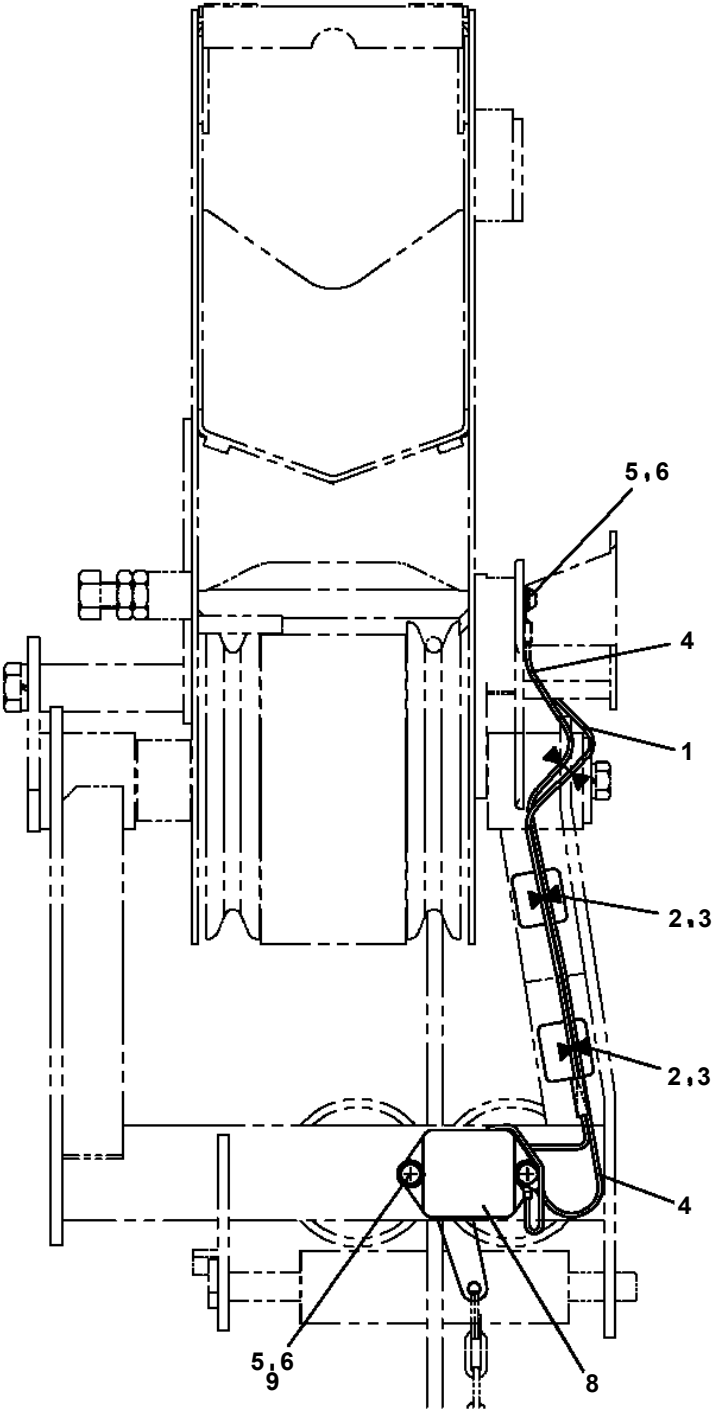
TM-ZX500 41050601133A FRAME

Pos No.	Parts No	Parts Name	Qty	Unit	Technical Data	Serial No (Start)	Serial No (End)
1	31659410101	HARNESS (CRANE)	1				
2	31658912100	INDICATOR	2				
3	31658770300	SWITCH ASSY	2				
4	31659170400	SUPPORT	1				
5	31659170500	SUPPORT	1				
6	31658770600	SWITCH ASSY (EMERGENCY STOP)	2				
7	90171110016	BOLT	3		M10X16		
8	90302041001	WASHER,SPRING	3		10		
9	90280200800	NUT,FLANGE	2		M8		
10	90186208014	BOLT,FLANGE	8		M8X14		
12	31657170700	SPEAKER (ASSY ONLY)	1				
13	90186210020	BOLT,FLANGE	1		M10X20		
16	90303070601	WASHER,PLAIN	1		6		
17	90280200600	NUT,FLANGE	17		M6		
18	91850100802	CLAMP	19				
19	91850700101	CLAMP	12		L=208		
20	91810130250	FASTENER	46				
21	80192483006	SCREW,MACHINE	4		M3X6		
22	36180350000	SENDER,THERMO	1				
23	31659410300	SWITCH (S/W 2PC'S)	2				
24	31350010240	HARNESS	1				
25	31659180700	SUPPORT	2				
26	90186206010	BOLT,FLANGE	8		M6X10		
28	31659170700	SUPPORT	1				
29	82400000702	CLIP	1				
30	82108501440	SWITCH	2				
32	31659410200	SUPPORT	1				
51	31656011200	COVER	2				
52	34354781710	RELAY (WITH BRACKET)	3				
53	80197586012	SCREW,MACHINE	3		M6X12		
54	90280200600	NUT,FLANGE	3		M6		
55	37002227560	PLATE,NAME (BLACK)	13		D=16		
91	31659171100	COVER	2				

TM-ZX500 41050601133A FRAME

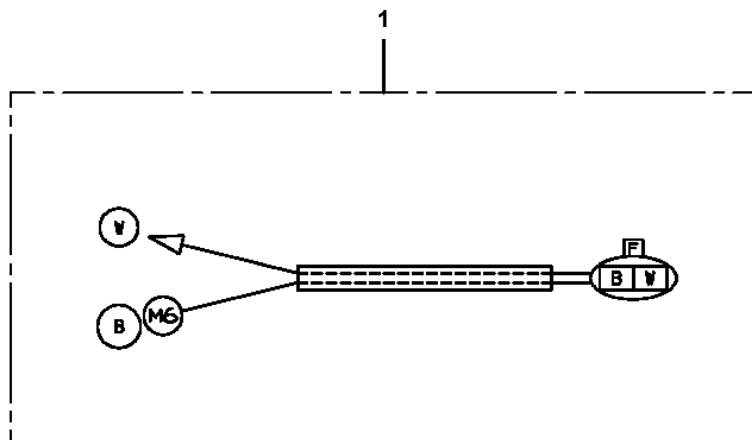
Pos No.	Parts No	Parts Name	Qty	Unit	Technical Data	Serial No (Start)	Serial No (End)	Remarks	Pages
1	31440250100	ROLLER ASSY	1						
2	37000105740	PIN	2						
3	80136332020	PIN,SPLIT	2		3.2X20				
4	90303071001	WASHER,PLAIN	4		10				
5	37001300000	SPRING	2						
21	37001107470	ROLLER ASSY	2						
22	37001108310	ROLLER ASSY	1						
23	31440250300	PIN	1						
24	31440250150	SUPPORT	1						
25	31440150350	WASHER,PLAIN	2						
26	90286001007	NUT	2		M10 P=1.25				
31	80516006001	BEARING,BALL	4						
43	80602110280	RING,RITAINING	2		R28				

TM-ZX500 41050601133A FRAME
PH1060491-01 DETECTOR,OVERWIND

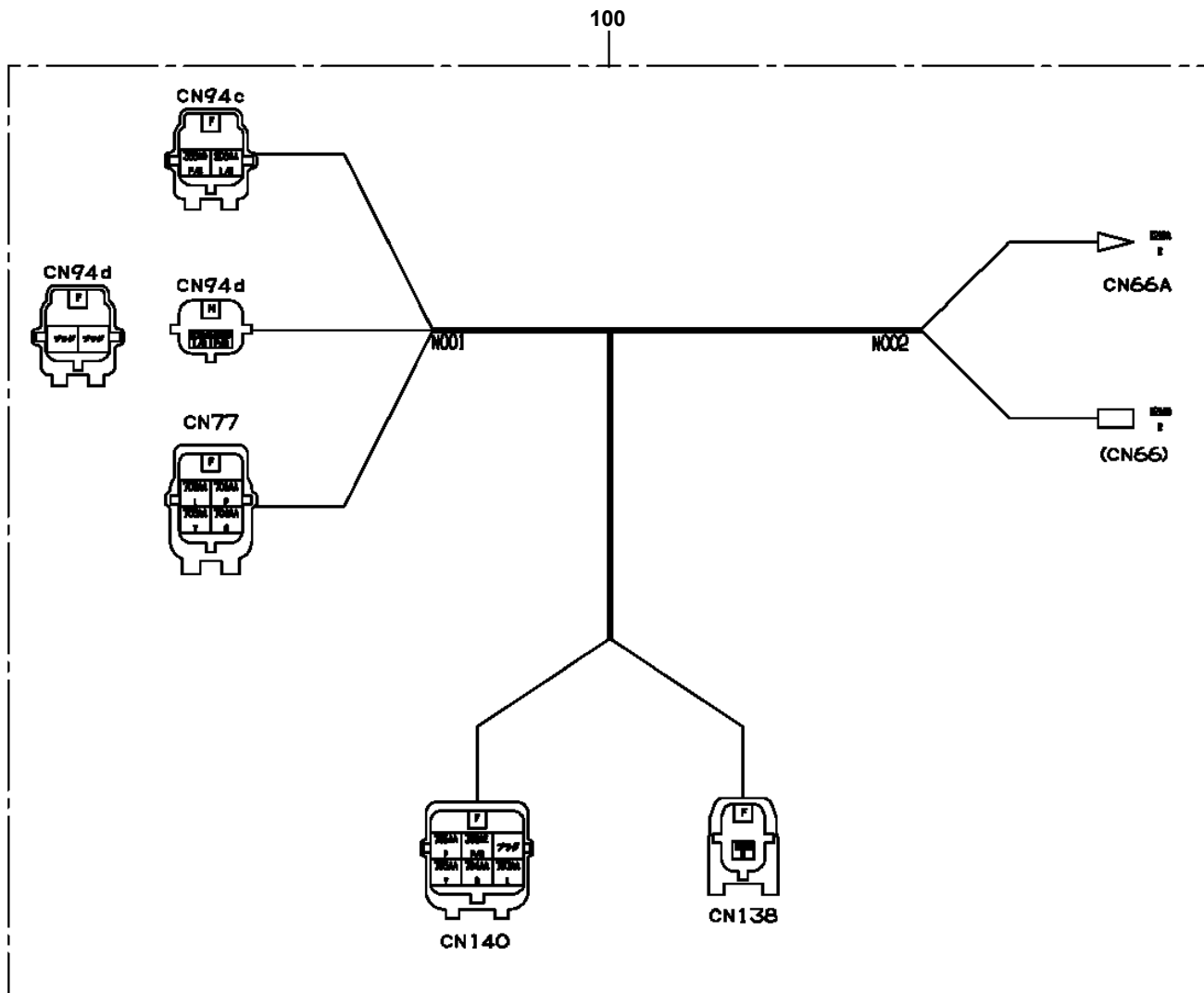


A

TM-ZX500 41050601133A FRAME
PH5033592-00 HARNESS

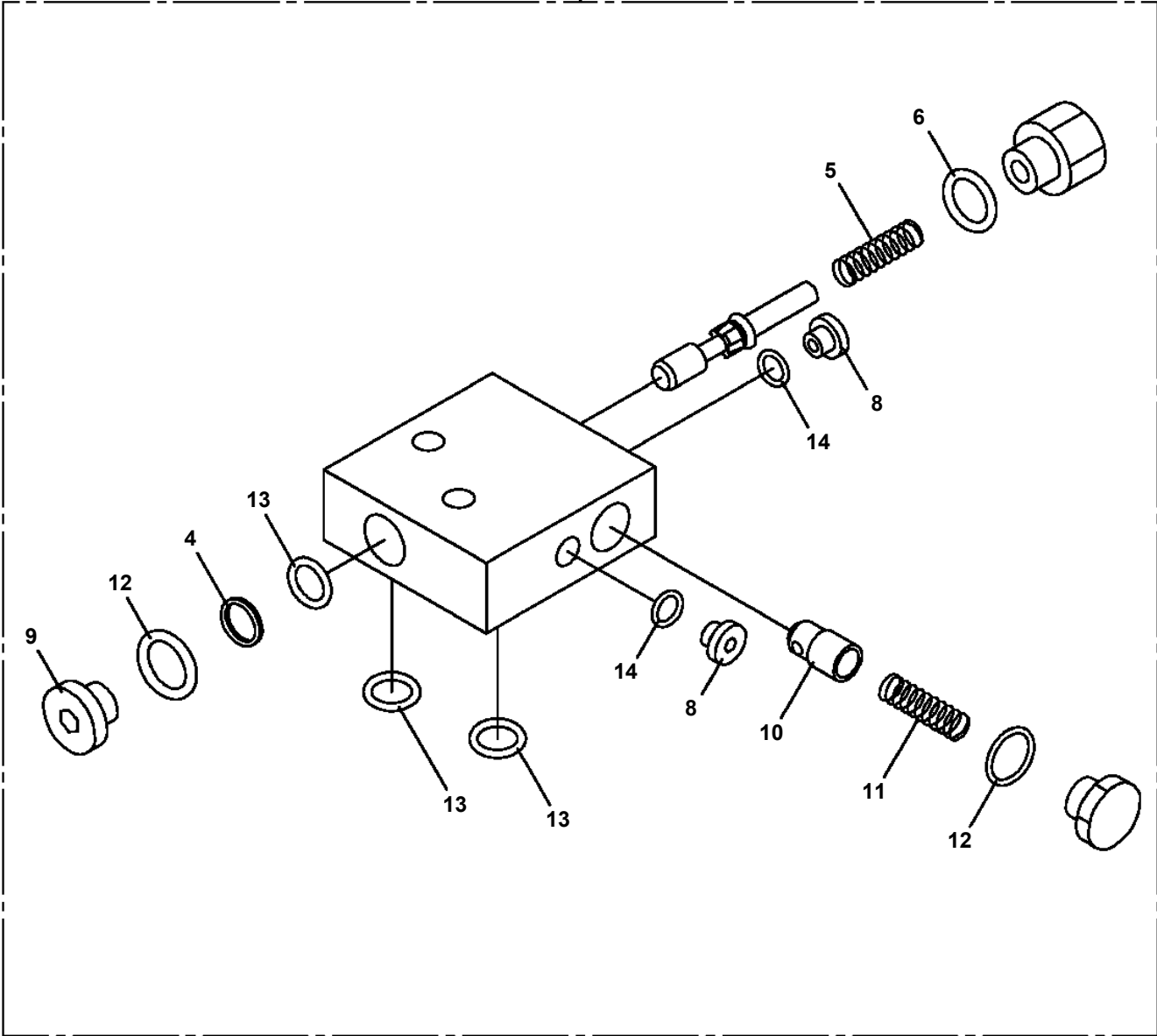


TM-ZX500 41050601133A FRAME
PH5033871-00 HARNESS

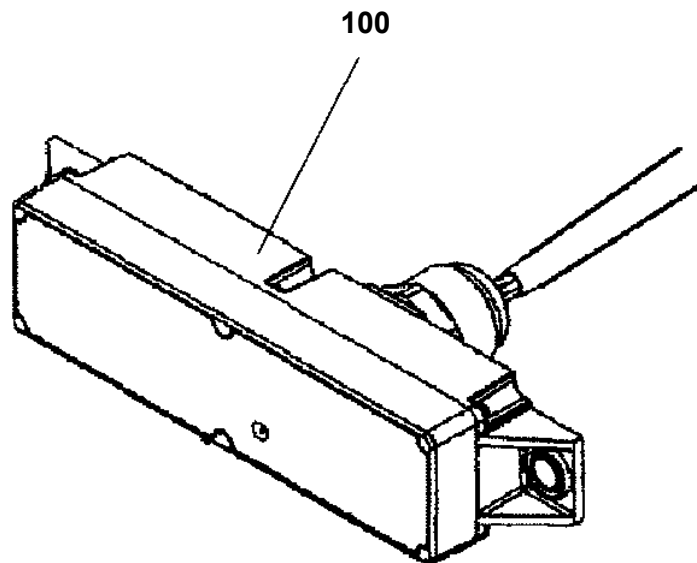


TM-ZX500 41050601133A FRAME
PI1250160-02 VALVE,COUNTERBALANCE

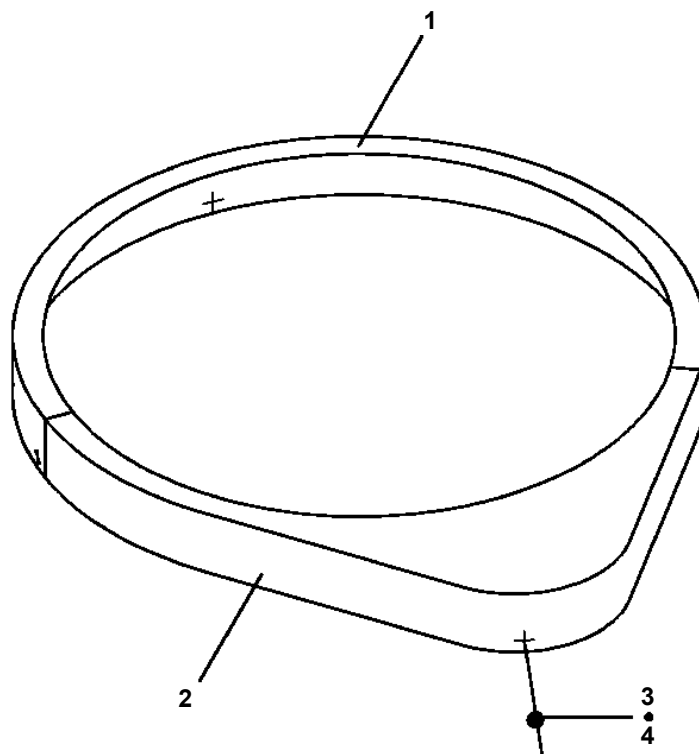
50



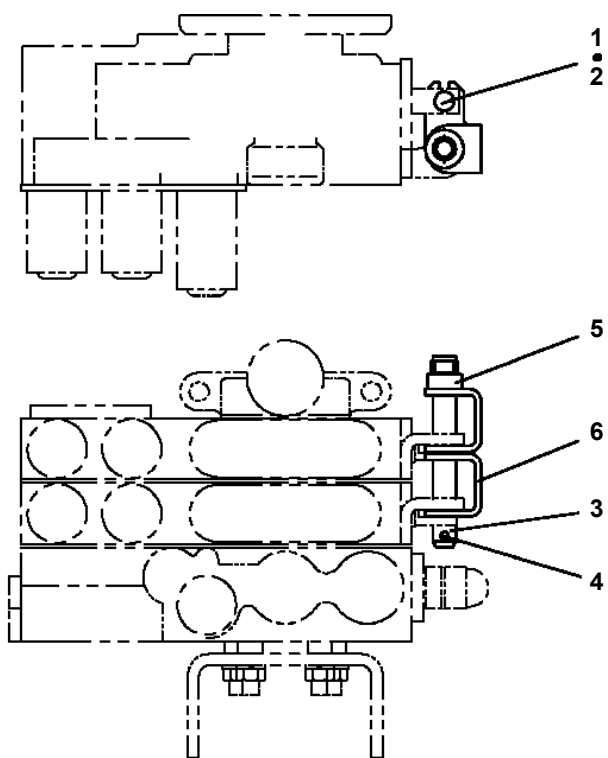
TM-ZX500 41050601133A FRAME
PI5200001-00 INDICATOR



TM-ZX500 41050601133A FRAME
PK1130007-00 COVER,BEARING



TM-ZX500 41050601133A FRAME
PL1010863-00 OPE.ASSY,CONT.VALVE (REMOCON)



TM-ZX500 41050601133A FRAME
PL5020226-00 LAMP ASSY (BOOM/24V-20W)

ランプ ASSY (フーム/24V-20W)
LAMP ASSY (BOOM/24V-20W)

フーム取付けタイプ
ランプ仕様：24V-20W

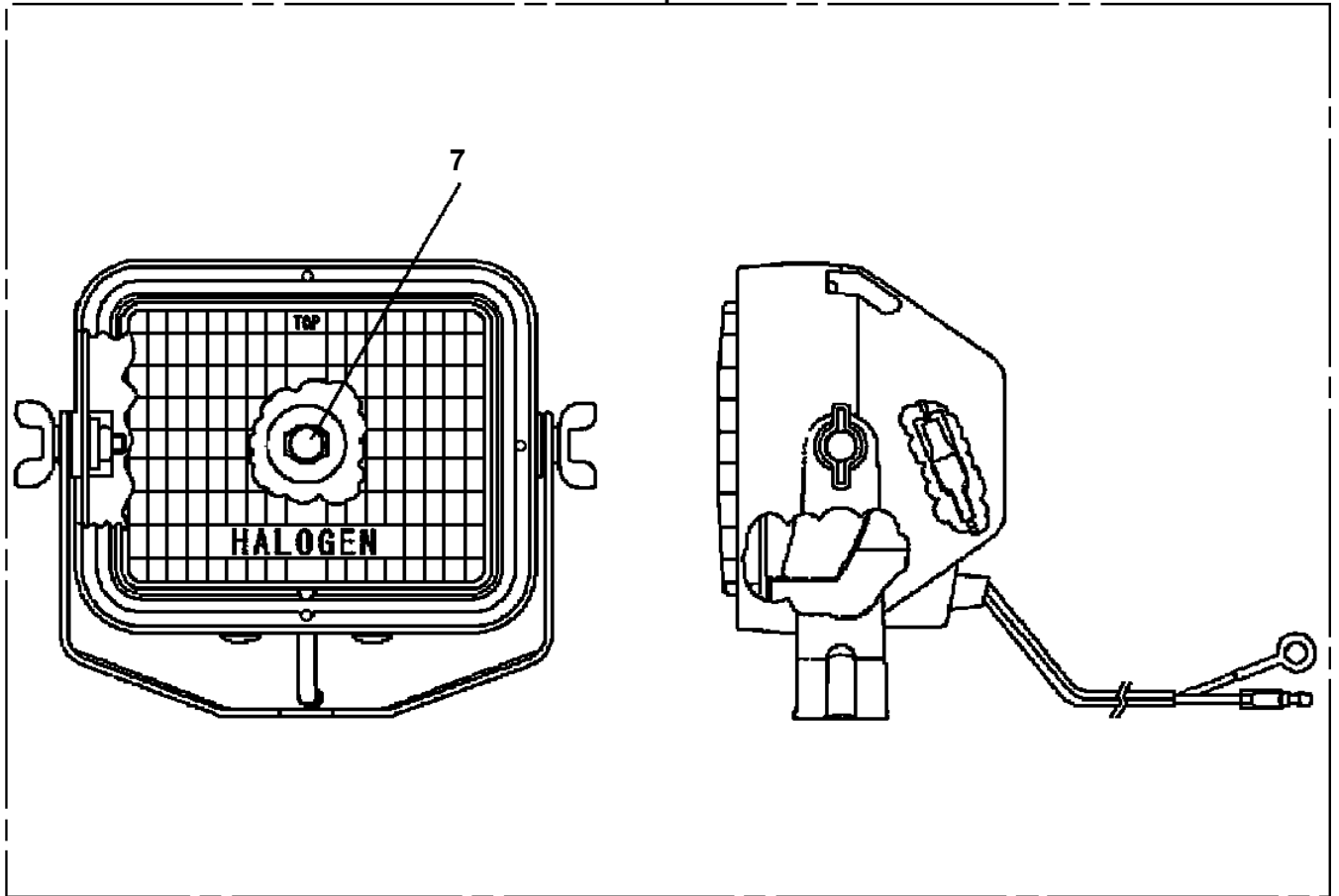
符号	日本語名称	英語名称	備考
2	ハイセンASSY	ELEC.ASSY	ホースト部
3	ハイセンASSY	ELEC.ASSY	フーム部 (LED20W)

適用製造番号によっては取り付けがないものもあります。

MACHINES OF SOME SERIAL NO. ARE NOT EQUIPPED WITH THESE PARTS.

**TM-ZX500 41050601133A FRAME
PL5330004-00 LAMP**

100



CLICK HERE TO **DOWNLOAD** THE COMPLETE MANUAL

- Thank you very much for reading the preview of the manual.
- You can download the complete manual from: www.heydownloads.com by clicking the link below



- Please note: If there is no response to CLICKING the link, please download this PDF first and then click on it.

CLICK HERE TO **DOWNLOAD** THE COMPLETE MANUAL

TM-ZX500 41050601133A FRAME
PN5012013-01 NAME PLATE ASSY (FRAME:U-LAYOUT)

ネームプレートASSY (フレーム:Uハイレッツ)
NAME PLATE ASSY (FRAME:U-LAYOUT)

符号	日本語名称	英語名称	備考
1	ネームプレートASSY	NAME PLATE ASSY	ノブ銘板:U社配列
4	ネームプレートASSY	NAME PLATE ASSY	タンク油量銘板:共通
5	ネームプレートASSY	NAME PLATE ASSY	フック銘板:2.93t
6	ネームプレートASSY	NAME PLATE ASSY	O/R注意銘板等
7	ネームプレートASSY	NAME PLATE ASSY	定期自主検査銘板

適用製造番号によっては取り付けがないものもあります。

MACHINES OF SOME SERIAL NO. ARE NOT EQUIPPED WITH THESE PARTS.

TM-ZX500 41050601133A FRAME

Pos No.	Parts No	Parts Name	Qty	Unit	Technical Data	Serial No (Start)	Serial No (End)	Remarks
1	37002241980	PLATE,NAME	2					
2	37002243710	PLATE,NAME	1					
12	31595693010	PLATE,NAME	2					
13	37002240210	PLATE,CAUTION	2					
14	37002240110	PLATE,CAUTION	2					
15	37002206490	PLATE,NAME (GREASE)	6					
16	37002224400	PLATE,NAME	1					
17	37002224440	PLATE,NAME	1					
18	37002220450	PLATE,NAME	1					
19	37002200320	PLATE,NAME	1					
20	37002240090	PLATE,NAME	1					

TM-ZX500 41050601133A FRAME

Pos No.	Parts No	Parts Name	Qty	Unit	Technical Data	Serial No (Start)	Serial No (End)	Remarks	Pages
1	37002241800	PLATE,NAME	2						

TM-ZX500 41050601133A FRAME

Pos No.	Parts No	Parts Name	Qty	Unit	Technical Data	Serial No (Start)	Serial No (End)	Remarks	Pages
1	(*****)	PLATE,NAME (JCAS)	1						00016

TM-ZX500 41050601133A FRAME

Pos No.	Parts No	Parts Name	Qty	Unit	Technical Data	Serial No (Start)	Serial No (End)	Remarks
1	31506446100	PLATE,NAME	2					
2	31506446200	PLATE,NAME	1					
3	31506446400	PLATE,NAME	1					
4	31393180100	REFLECTOR (RED)	4					
5	31615754100	PLATE,NAME (BLUE)	4					
6	37002213970	PLATE,NAME (MARKING)	2					
7	37002240210	PLATE,CAUTION	2					
8	37002240110	PLATE,CAUTION	2					

TM-ZX500 41050601133A FRAME

Pos No.	Parts No	Parts Name	Qty	Unit	Technical Data	Serial No (Start)	Serial No (End)	Remarks	Pages
2	90451700100	SCREW,TAPPING	4		M4X6.4				

TM-ZX500 41050601133A FRAME

Pos No.	Parts No	Parts Name	Qty	Unit	Technical Data	Serial No (Start)	Serial No (End)	Remarks	Pages
1	31326322101	LEVER	2						
2	31326322201	LEVER	2						
3	31326322301	LEVER	2						
4	31324867000	ROD	3						

TM-ZX500 41050601133A FRAME

Pos No.	Parts No	Parts Name	Qty	Unit	Technical Data	Serial No (Start)	Serial No (End)
1	(*****)	OUTRIGGER ASSY (L=722,CASE:L=1050)	1				
2	(*****)	LOCK ASSY (OUTRIGGER)	1				
3	(*****)	PIPING ASSY,OUTRIGGER	1				
4	(*****)	STOPPER ASSY (OUTRIGGER)	1				

TM-ZX500 41050601133A FRAME

Pos No.	Parts No	Parts Name	Qty	Unit	Technical Data	Serial No (Start)	Serial No (End)
1	80189305008	SCREW,MACHINE	1		M5X8		
2	31613570500	COVER	1				
3	90180208016	BOLT,BUTTON	2		M8X16		
4	90302040801	WASHER,SPRING	2		8		
5	31611640150	SPRING	1				
6	(*****)	OPE.ASSY,OUTRIGGER	1				
7	37000150360	PIN	1				
8	80601110150	RING,RITAINING	2		15		
9	31620582020	BEARING,BALL (KOYO)	2				
10	37000164980	PIN	2				
11	80602110350	RING,RITAINING	4		R35		
12	31616214000	CASE,OUTER	1		L=920		
13	31614243000	CASE,INNER	1				
15	37000165280	PIN	1				
16	31201770100	PLATE,SLIDE	2		T=3.0		
17	31612772100	PLATE	1				
18	90186206012	BOLT,FLANGE	2		M6X12		
19	31611643000	FLOAT	1				
47	31621963200	SUPPORT	1				
71	36623930000	VALVE,PILOT CHECK	1				
72	90172110040	BOLT,HEXAGON SOCKET	2		M10X40		
73	80491002020	JOINT (WITH O-RING)	2				
74	91002801000	O-RING	2		1B P10		
75	36036630000	CYLINDER ASSY,JACK	1				
91	31615754100	PLATE,NAME (BLUE)	2				
92	31611300600	PLATE,NAME (YELLOW)	2				
107	31616214200	SUPPORT	1				
110	31614694000	SUPPORT	1				
121	91002801100	O-RING	2		1B P11		
200	31616210200	OUTRIGGER ASSY (CASE:L=920,MIN=785)	1				

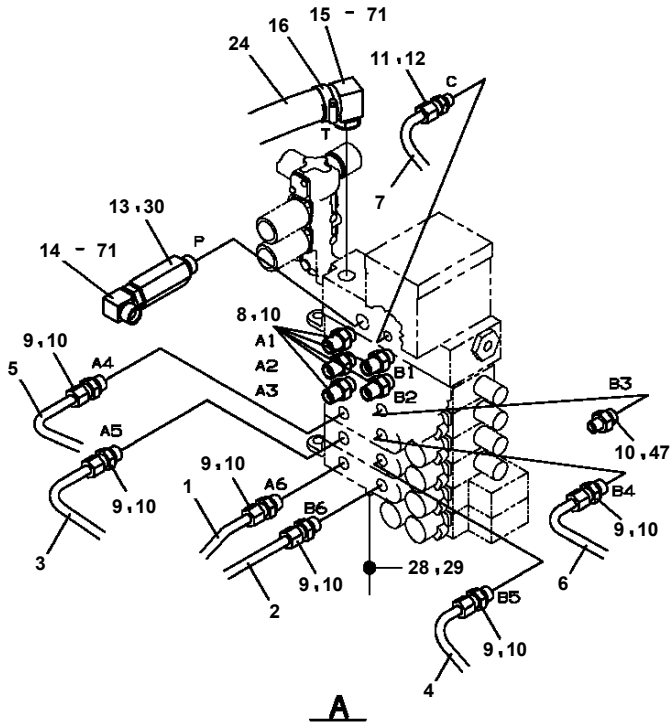
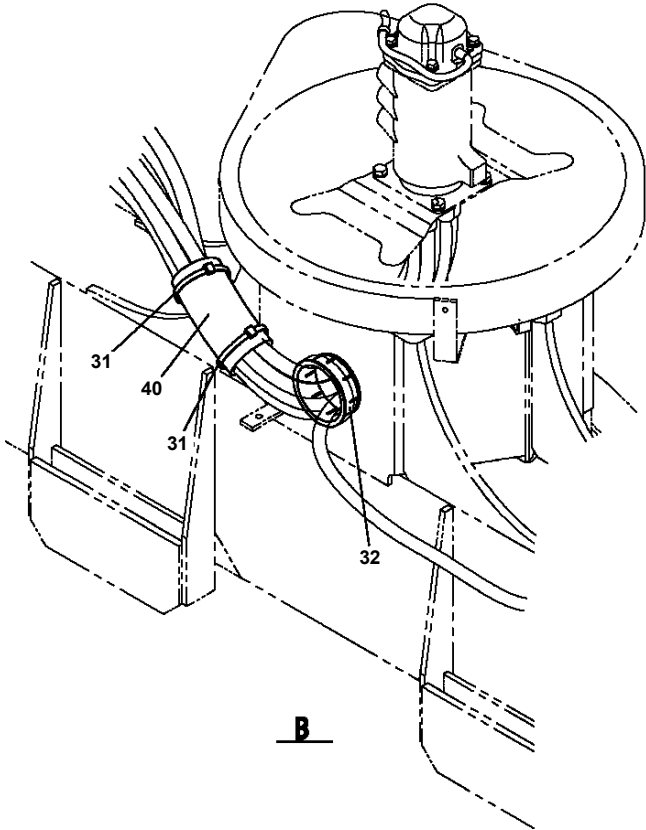
TM-ZX500 41050601133A FRAME

Pos No.	Parts No	Parts Name	Qty	Unit	Technical Data	Serial No (Start)	Serial No (End)	Rema
2	36806962000	ANTENNA UNIT (ASSY ONLY)	1					
3	36806963000	BOX,OPERATION	1					
5	(*****)	ELEC.ASSY (ANTENNA UNIT)	1					
6	36804914000	BOX,STOWING	1					
9	36806961000	CONTROL UNIT (ASSY ONLY)	1					

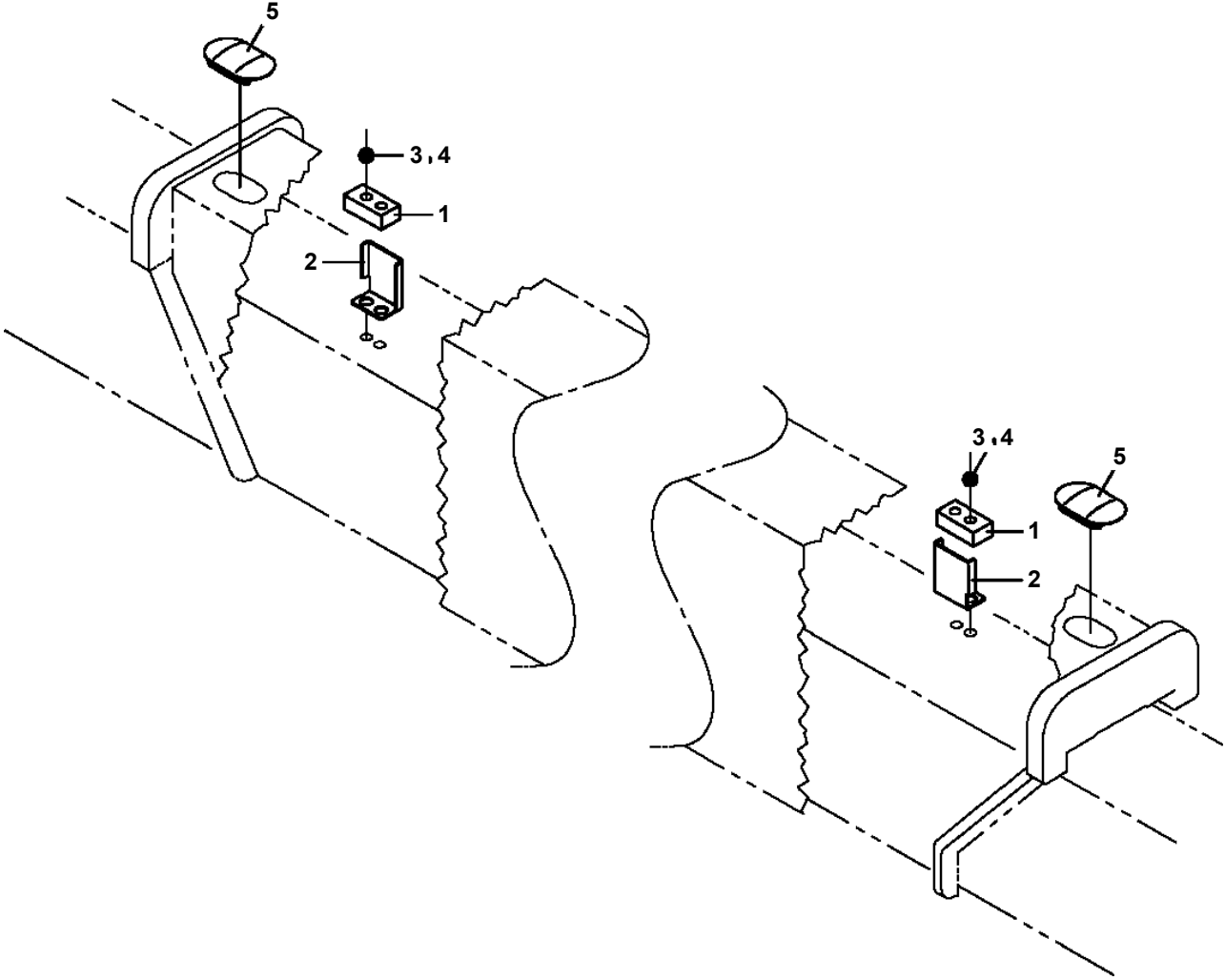
TM-ZX500 41050601133A FRAME

Pos No.	Parts No	Parts Name	Qty	Unit	Technical Data	Serial No (Start)	Serial No (End)	Remarks	Pages
1	31597963500	PLATE,CAUTION	2						
2	31597963600	PLATE,NAME	1						

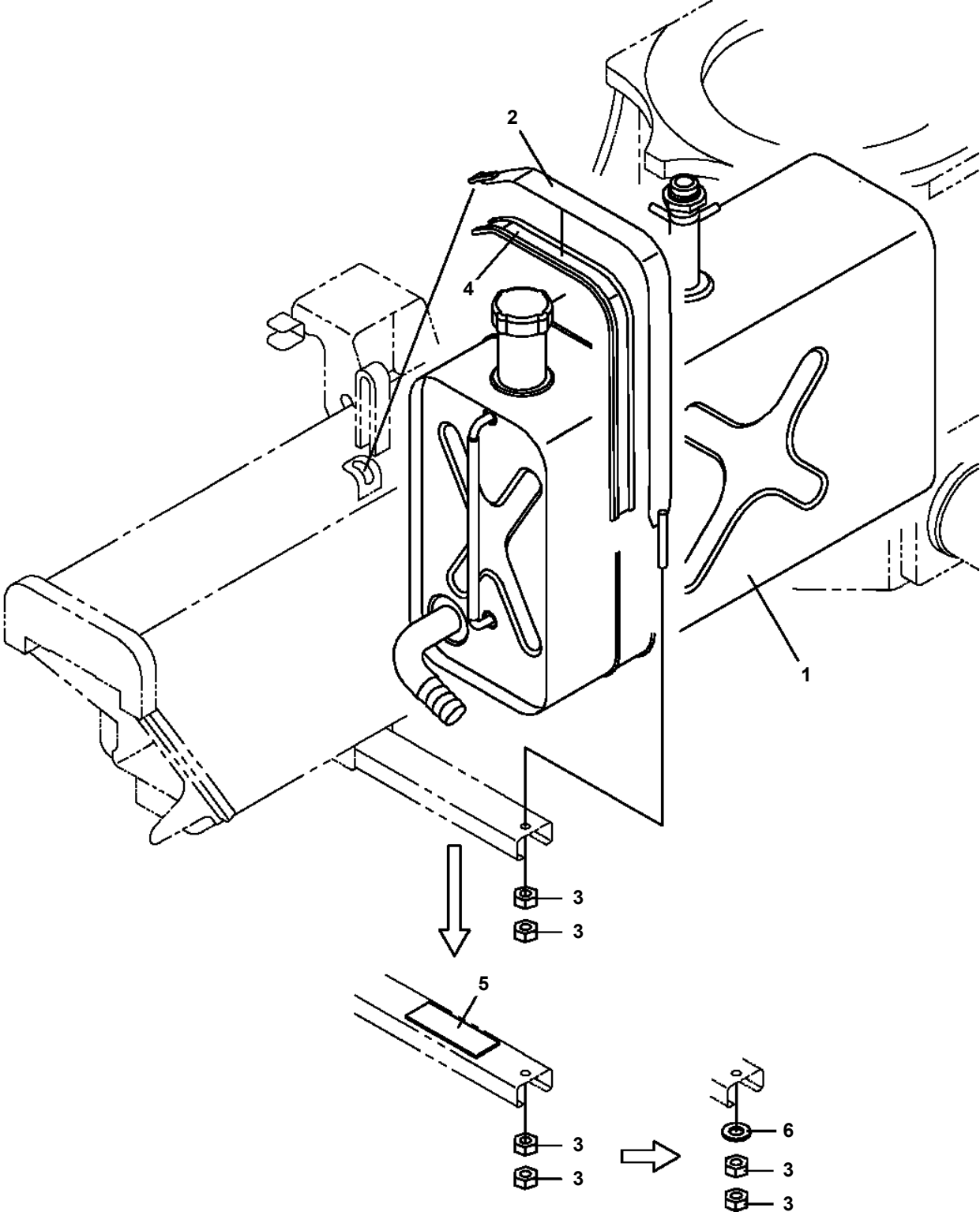
**TM-ZX500 41050601133A FRAME
PP6010601-00 PIPING ASSY (LOWER)**



TM-ZX500 41050601133A FRAME
PS5380001-00 STOPPER ASSY (OUTRIGGER)

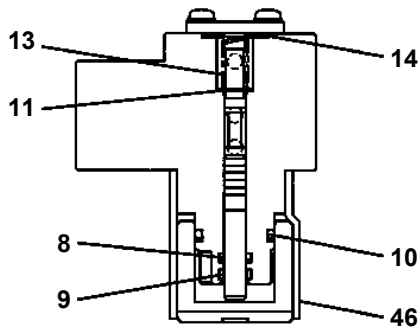
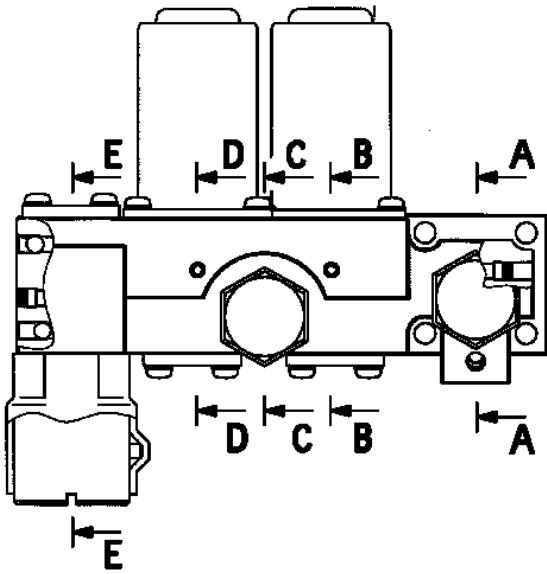
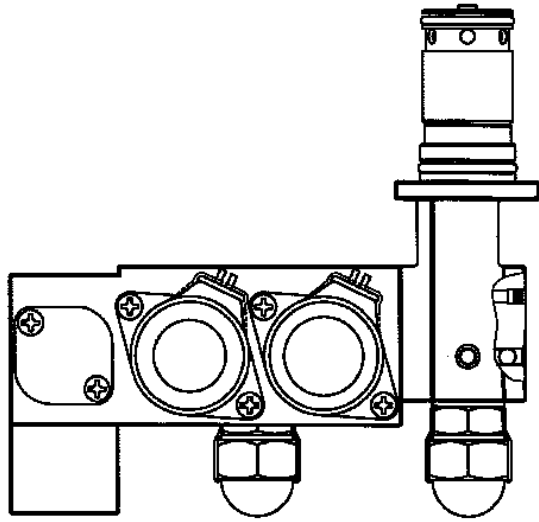


TM-ZX500 41050601133A FRAME
PT5060008-01 TANK ASSY

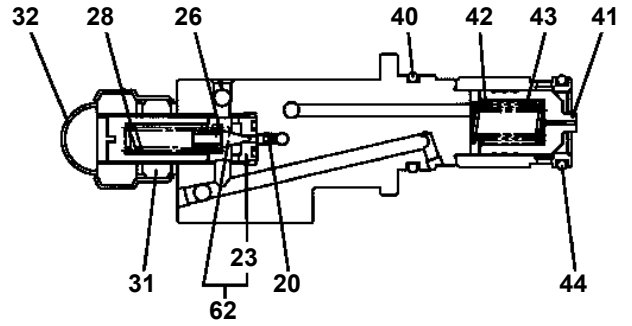


**TM-ZX500 41050601133A FRAME
PV5140032-02 VALVE ASSY,RELIEF**

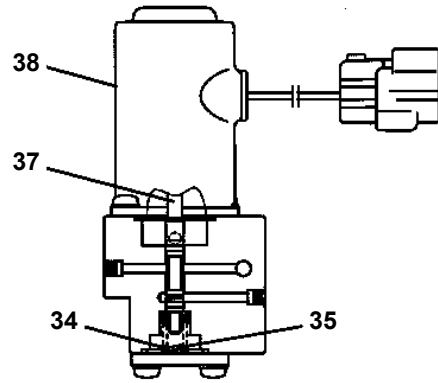
100



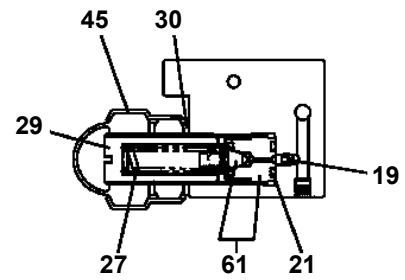
E-E



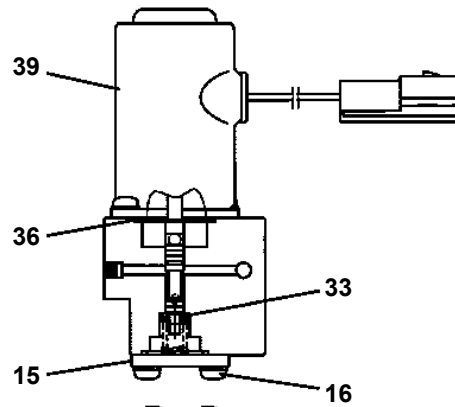
A-A



B-B

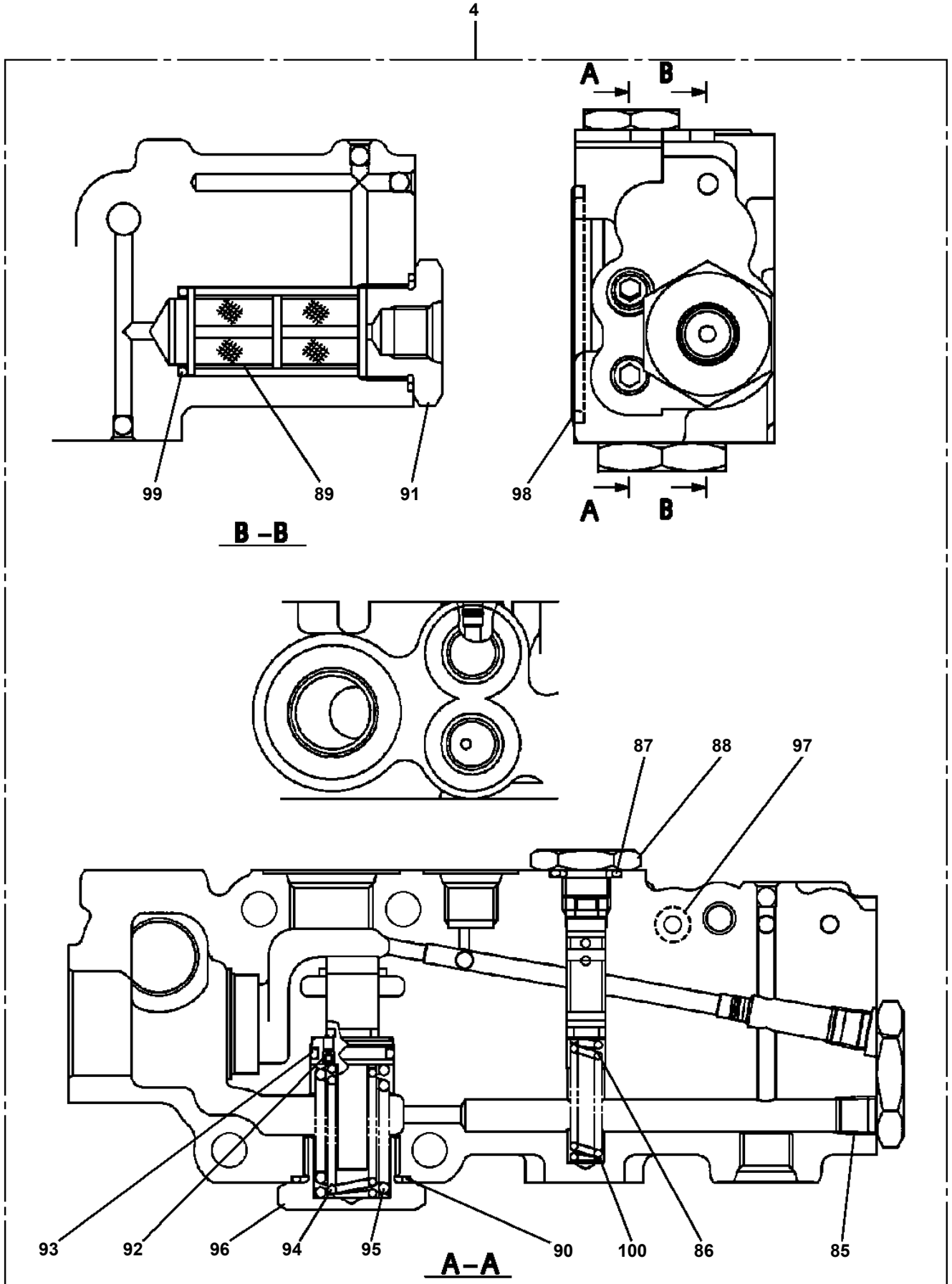


C-C



D-D

TM-ZX500 41050601133A FRAME
PV5150062-00 VALVE ASSY,REMOTE CONTROL



**TM-ZX500 41050601133A FRAME
PY2000300-00 OPTION UNIT,2 (COMMON)**

オプションユニット,2 (キョウツウ)
OPTION UNIT,2 (COMMON)

符号	日本語名称	英語名称	備考
1	フックASSY	HOOK ASSY	車乗フック
2	ガイド ASSY	GUIDE ASSY	風塵防止 (車乗フック含)
3	フックASSY	HOOK ASSY	ロッキング フック
4	ブロック	BLOCK	2個セット 敷板 (□355×t80)
5	ブロック	BLOCK	4個セット 敷板 (□355×t80)
6	ブロック	BLOCK	2個セット 敷板 (□500×t90)
7	ブロック	BLOCK	4個セット 敷板 (□500×t90)
8	ストッパ ,タイヤ	STOPPER,TIRE	出荷部品
9	ジョイントASSY,セルフシール	JOINT ASSY,SELF SEAL	サービ スポ ート用カフ ラー
10	マウントASSY {ハ ワーサフ ライ}	MOUNT ASSY	サービ スポ ート
11	パワーサフ ライ	POWER SUPPLY	AC100V電源取出し (1500W)
13	フロートASSY	FLOAT ASSY	小型フロート
14	パーツASSY,ラジ コン	PARTS ASSY,RADIO CONTROLLER	既納車ラジ コン
15	パーツASSY,ラジ コン	PARTS ASSY,RADIO CONTROLLER	既納車ラジ コン (U社配列用)
16	バッテリーチャージヤ	BATTERY CHARGER	車三電池充電器 (ニッケル水素電池8個含)
19	ディテクタ,ディソータリワインディング	DETECTOR,DISORDERLY WINDING	乱巻防止ローラ
20	ケーブルASSY	CABLE ASSY	ラジ コンアンテナユニット移設用 延長ハーネス (2m) (ラジ コン装着機のみ)
21	パーツASSY,リモコン	PARTS ASSY,REMOTE CONTROL	ZX用リモコン
22	ストーイング ボックス	STOWING BOX	リモコン用ボックス
24	オペ .ASSY,ソウサハ ルブ	OPE .ASSY,CONT .VALVE	U社配列交換キット
25	ランプ ASSY	LAMP ASSY	ハロゲン55Wフ ーム作業灯
26	ランプ ASSY	LAMP ASSY	ハット 球60Wホ スト作業灯
27	ランプ ASSY	LAMP ASSY	LED20Wフ ーム作業灯
28	ランプ ASSY	LAMP ASSY	LED20Wホ スト作業灯

適用製造番号によっては取り付けがないものもあります。

MACHINES OF SOME SERIAL NO. ARE NOT EQUIPPED WITH THESE PARTS.

TM-ZX500 41050601133A FRAME

Pos No.	Parts No	Parts Name	Qty	Unit	Technical Data	Serial No (Start)	Serial No
1	31351381103	HARNESS	1				
2	36120740000	TRANSMITTER ASSY,SIGNAL (ASSY ONLY)	1				
3	91810130250	FASTENER	16				
4	82108501340	SWITCH	1				
5	90186206010	BOLT,FLANGE	9		M6X10		
7	91850700101	CLAMP	9		L=208		
21	31659171100	COVER	2				
22	37002227560	PLATE,NAME (BLACK)	8		D=16		

TM-ZX500 41050601133A FRAME

Pos No.	Parts No	Parts Name	Qty	Unit	Technical Data	Serial No (
1	31506041000	BOX,OPERATION	1			
2	(*****)	ELEC.ASSY (COMMUNICATION UNIT CONNECTION CABLE)	1			
3	(*****)	NAME PLATE ASSY	1			
5	(*****)	NAME PLATE ASSY	1			

TM-ZX500 41050601133A FRAME

Pos No.	Parts No	Parts Name	Qty	Unit	Technical Data	Serial No (Start)	Serial No (End)	Remarks	Pages
100	31671291101	HARNESS	1						

TM-ZX500 41050601133A FRAME

Pos No.	Parts No	Parts Name	Qty	Unit	Technical Data	Serial No (Start)	Serial No (End)	Remarks	Pages
100	31734503200	HARNESS	1						

TM-ZX500 41050601133A FRAME

Pos No.	Parts No	Parts Name	Qty	Unit	Technical Data	Serial No (Start)	Serial No (E
1	(*****)	PIPING ASSY (CRANE)	1				
2	(*****)	OPE.ASSY,CONT.VALVE (POWER SUPPLY)	1				
3	(*****)	PLATE ASSY,NAME (POWER SUPPLY)	1				

TM-ZX500 41050601133A FRAME

Pos No.	Parts No	Parts Name	Qty	Unit	Technical Data	Serial No (Start)	Serial No (End)	R
1	36743390000	VALVE ASSY,REMOTE CONTROL	1					
2	90201780800	NUT	4		M8			
3	90302040801	WASHER,SPRING	4		8			
4	91860100022	CLAMP	1		KCR-W22			
5	90186208020	BOLT,FLANGE	1		M8X20			
6	90280200800	NUT,FLANGE	1		M8			
7	37002490440	HOSE	1		L=900			
8	37002521580	HOSE	1		L=1150			
9	80400160205	JOINT (WITH O-RING)	1					
10	91803930440	CLIP	2		32-45			
11	80400160182	JOINT (WITH O-RING)	2					
12	82100001413	TUBE,SPIRAL	1	M	SE-15BK			
13	91810150020	FASTENER	2		L=488			
14	80471020504	JOINT	1		HL205-04			
15	80316070060	PLUG	4		PF3/8			
16	91002801400	O-RING	4		1B P14			
17	91002801800	O-RING	4		1B P18			
18	37000924070	JOINT	2		S,G1/2-G1/2			
19	37000924110	JOINT	1		S,G1/2-G1/2			
20	80430620800	JOINT	1					
41	91002801800	O-RING	4		1B P18			

CLICK HERE TO **DOWNLOAD** THE COMPLETE MANUAL

- Thank you very much for reading the preview of the manual.
- You can download the complete manual from: www.heydownloads.com by clicking the link below



- Please note: If there is no response to CLICKING the link, please download this PDF first and then click on it.

CLICK HERE TO **DOWNLOAD** THE COMPLETE MANUAL