

TM-ZX500 41050601123A FRAME

PB0000385-00 SYSTEM (ZX500,DOMESTIC)

ASSEMBLY

CLICK HERE TO **DOWNLOAD** THE COMPLETE MANUAL

- Thank you very much for reading the preview of the manual.
- You can download the complete manual from: www.heydownloads.com by clicking the link below



- Please note: If there is no response to CLICKING the link, please download this PDF first and then click on it.

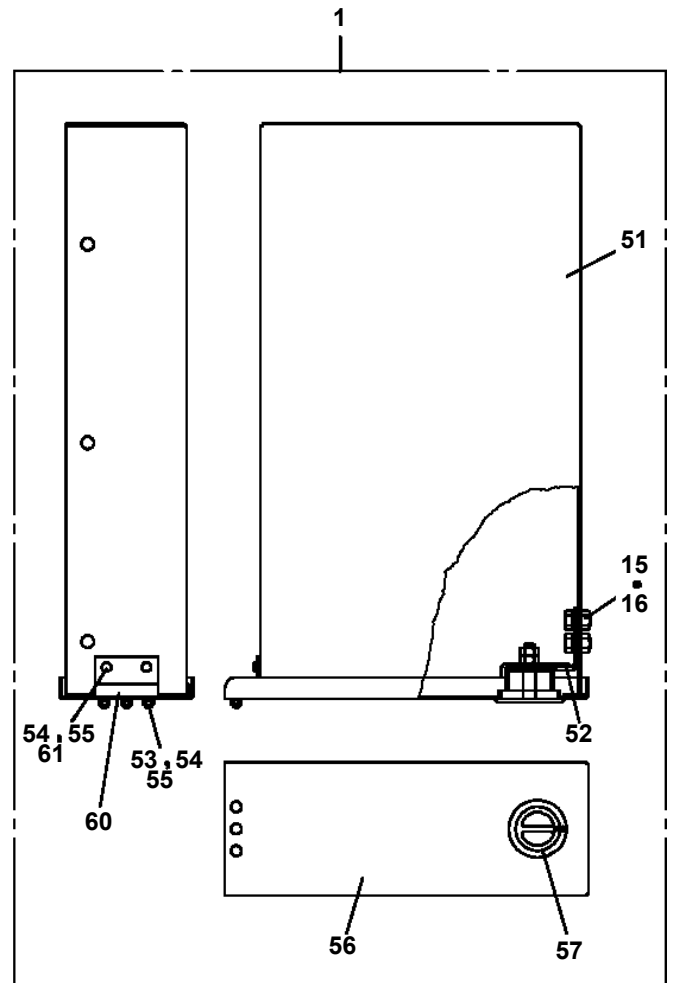
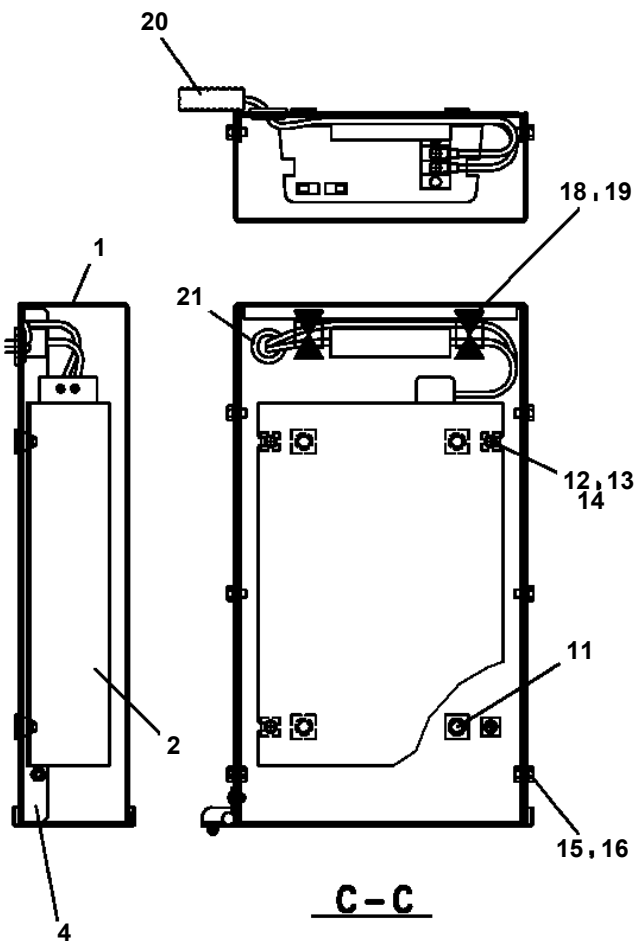
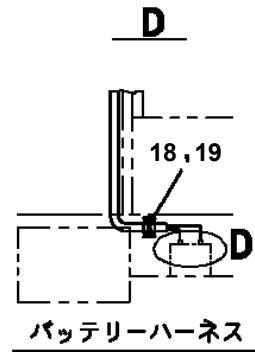
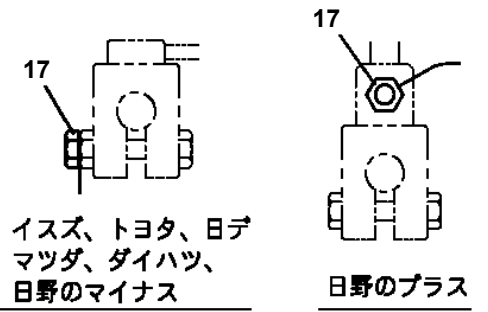
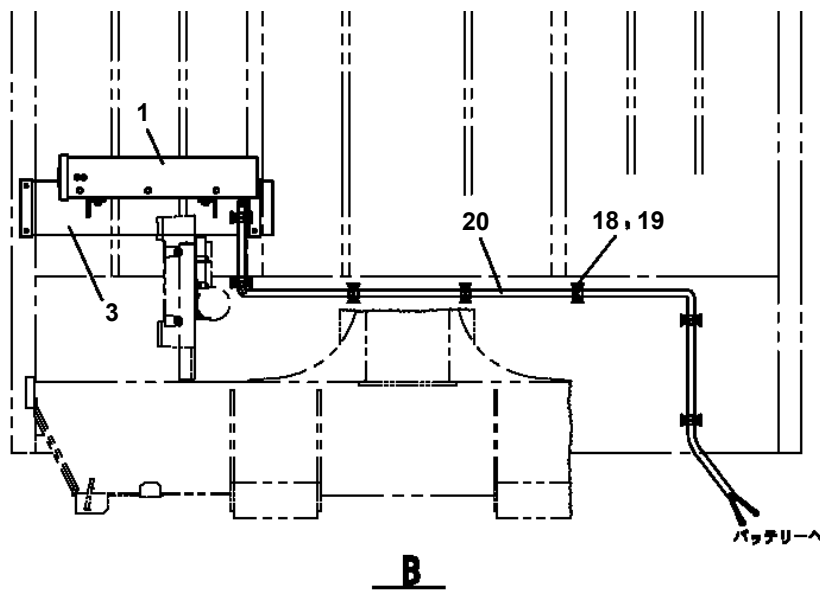
CLICK HERE TO **DOWNLOAD** THE COMPLETE MANUAL

TM-ZX500 41050601123A FRAME

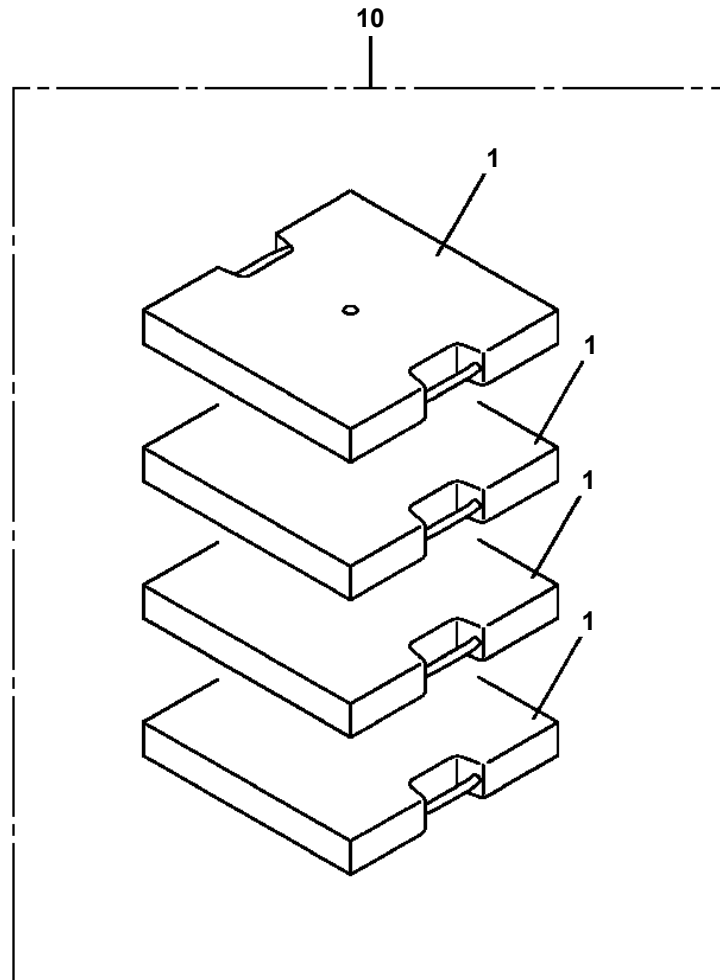
Pos No.	Parts No	Parts Name	Qty	Unit	Technical Data	Serial No (Start)	Serial No (End)	Remark
81	36651645010	SEAL KIT	1					
100	36654340000	PUMP,HYDRAULIC (52CC:R)	1					

TM-ZX500 41050601123A FRAME

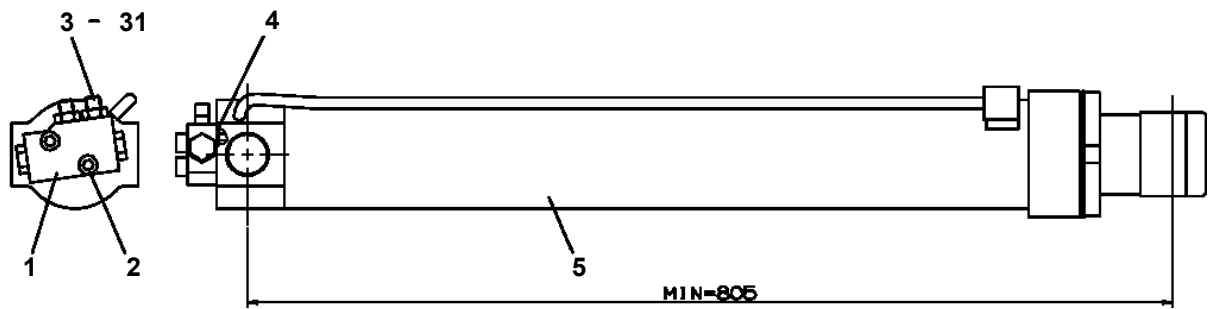
PB1380332-03 POWER SUPPLY (100V POWER SOURCE/1500W)



TM-ZX500 41050601123A FRAME
PB5110004-00 BLOCK (4 PIECE SET:PLATE,500X500,H=90)

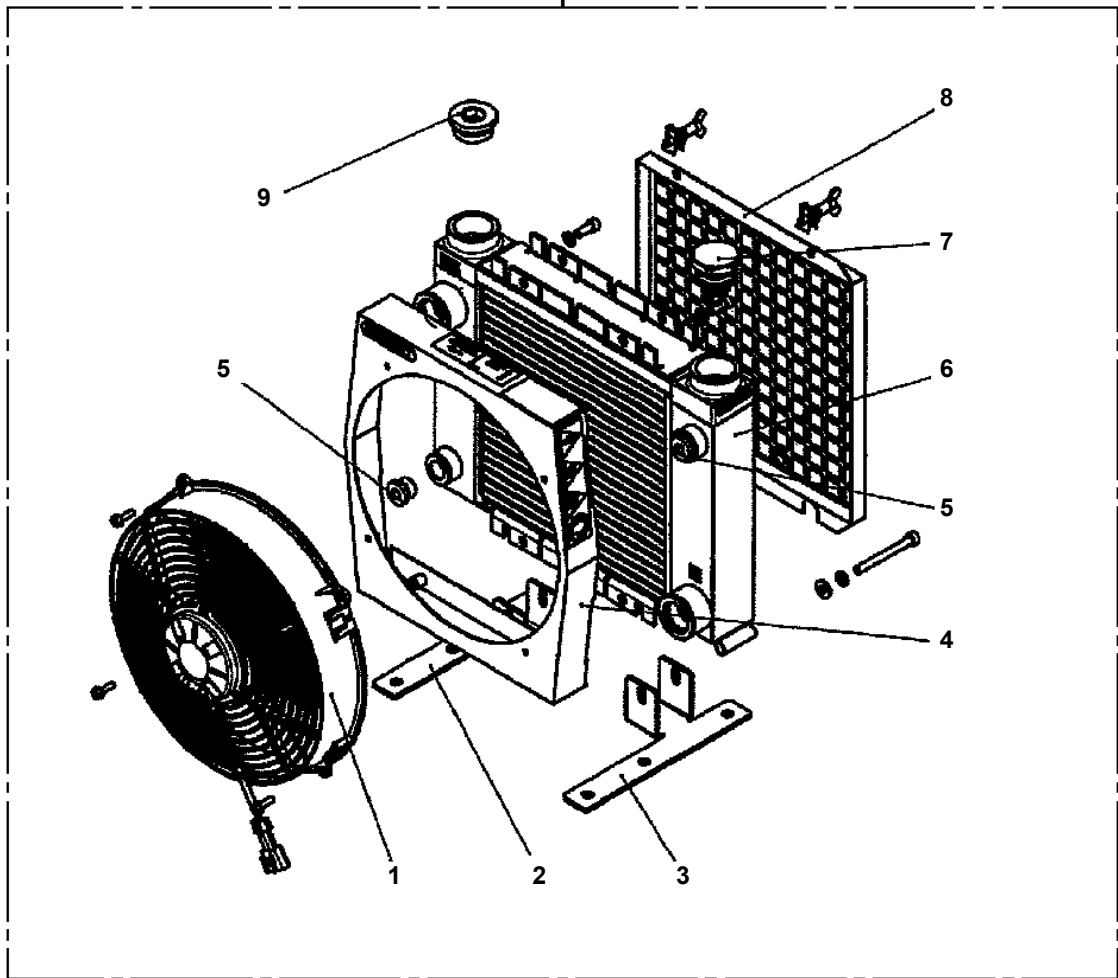


TM-ZX500 41050601123A FRAME
PC1030314-02 CYLINDER,JACK (STROKE 550)



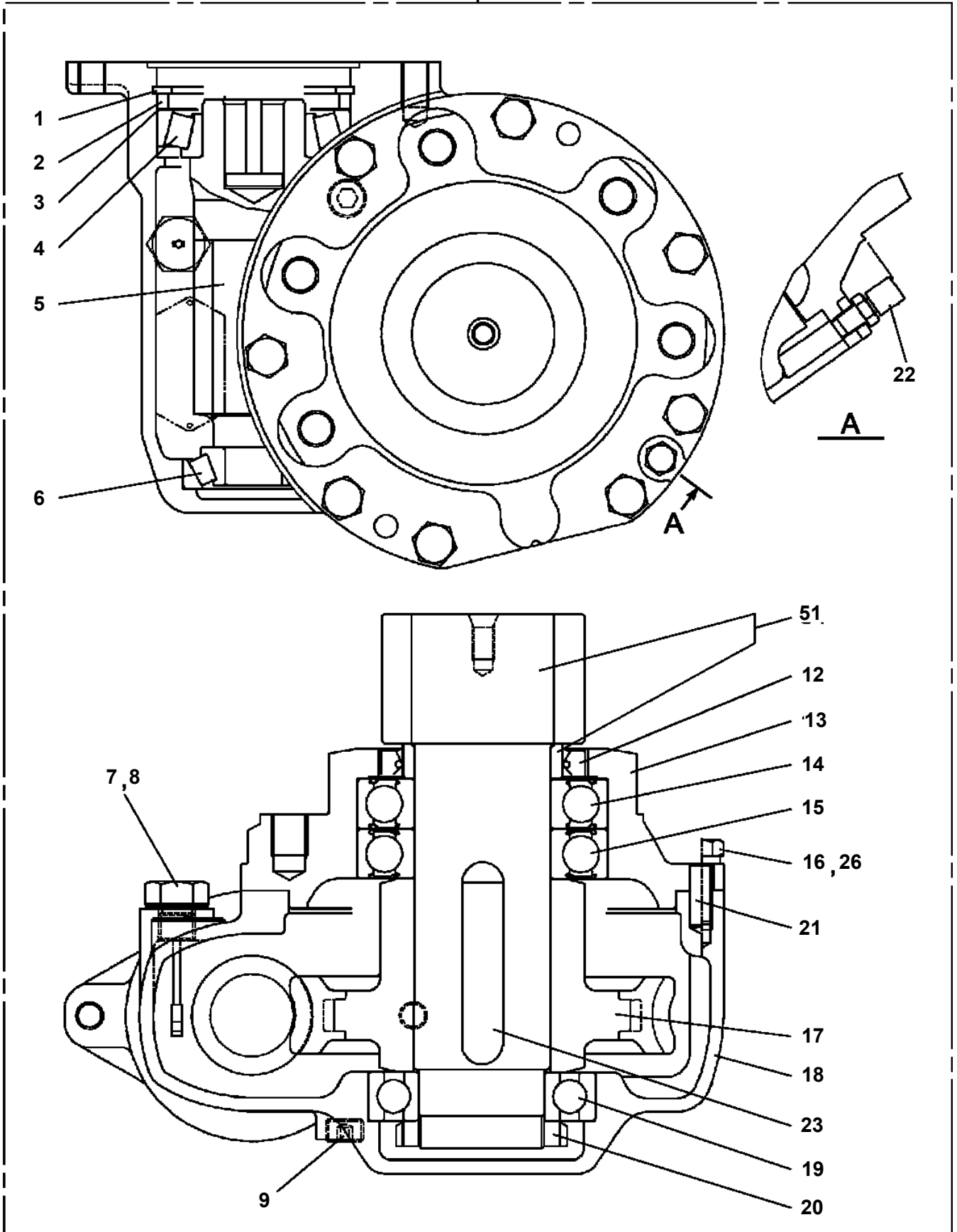
TM-ZX500 41050601123A FRAME
PC5490027-00 COOLER ASSY,OIL

100



TM-ZX500 41050601123A FRAME
PD1010184-00 REDUCER, SWING SPEED

100



TM-ZX500 41050601123A FRAME

Pos No.	Parts No	Parts Name	Qty	Unit	Technical Data	Serial No (Start)	Serial No (End)	Remark
1	31501192100	SUPPORT	1					
2	31501192200	PLATE	1					
3	90186210016	BOLT,FLANGE	2		M10X16			
4	31650690400	SUPPORT	1					
5	90813108020	BOLT,WING	1		M8X20			
6	90309331205	WASHER,CONICAL SPRING	2		L12			
7	90303071201	WASHER,PLAIN	1		12			
8	90236201200	NUT,CASTLE	1		2H M12			
9	80136325025	PIN,SPLIT	1		2.5X25			
10	31650690500	LEVER	1					
11	82165700020	LAMP (ASSY ONLY)	1					
12	90280201000	NUT,FLANGE	1		M10			
13	90186206010	BOLT,FLANGE	1		M6X10			
14	90280200600	NUT,FLANGE	1		M6			
15	82401600504	CLAMP	3		D=4.5			
16	91810130240	FASTENER	2					
17	90813108016	BOLT,WING	2		M8X16			
18	90302040801	WASHER,SPRING	2		8			
19	42507690100	SUPPORT	1					
20	90303070801	WASHER,PLAIN	2		8			
21	31503072100	HARNESS	1					
22	37002212770	PLATE,NAME (DC24V,0.1A)	1					

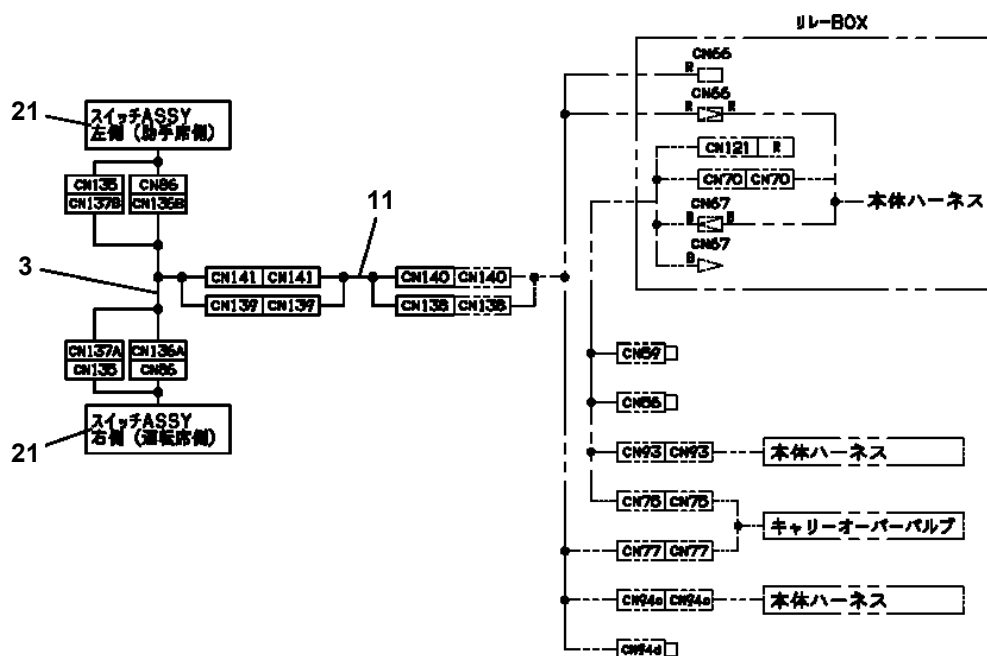
TM-ZX500 41050601123A FRAME

Pos No.	Parts No	Parts Name	Qty	Unit	Technical Data	Serial No (Start)	Serial No (End)	Remarks	Pages
1	31361042300	PLUG	1						
2	91810130250	FASTENER	2						

TM-ZX500 41050601123A FRAME

Pos No.	Parts No	Parts Name	Qty	Unit	Technical Data	Serial No (Start)	Serial No (End)	Remarks	Page
1	82199100026	LAMP	1		24V 60W				
2	31501292101	SUPPORT	1						
3	37000588420	PLATE	1						
4	90186210020	BOLT,FLANGE	2		M10X20				
5	31473744700	HARNESS (L=1000)	2						0000
6	91850310305	CLAMP	4						
7	91810130240	FASTENER	9						
8	90288110020	NUT	2		M10				
21	82100000054	BULB,LAMP	1		24V 60W				

TM-ZX500 41050601123A FRAME
 PE5021343-00 ELEC.ASSY (R/J)



ハーネス経路

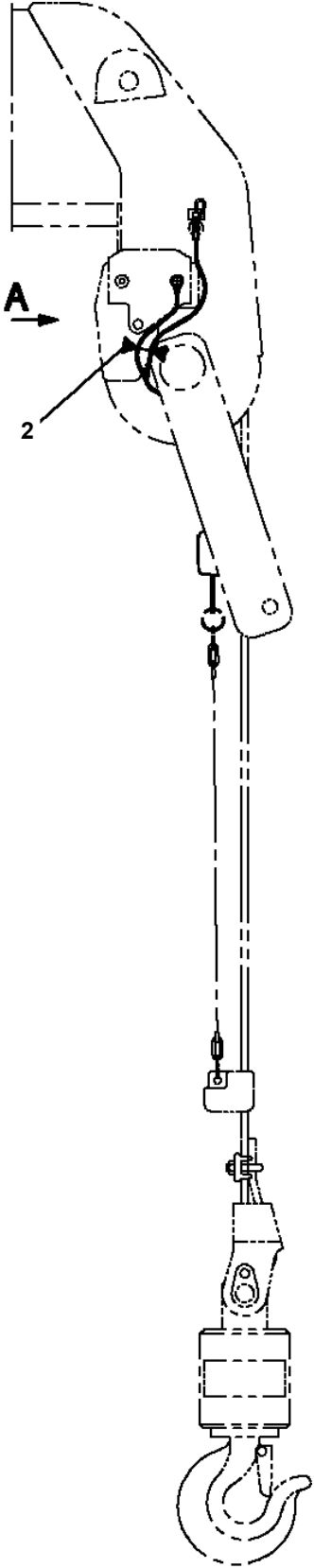
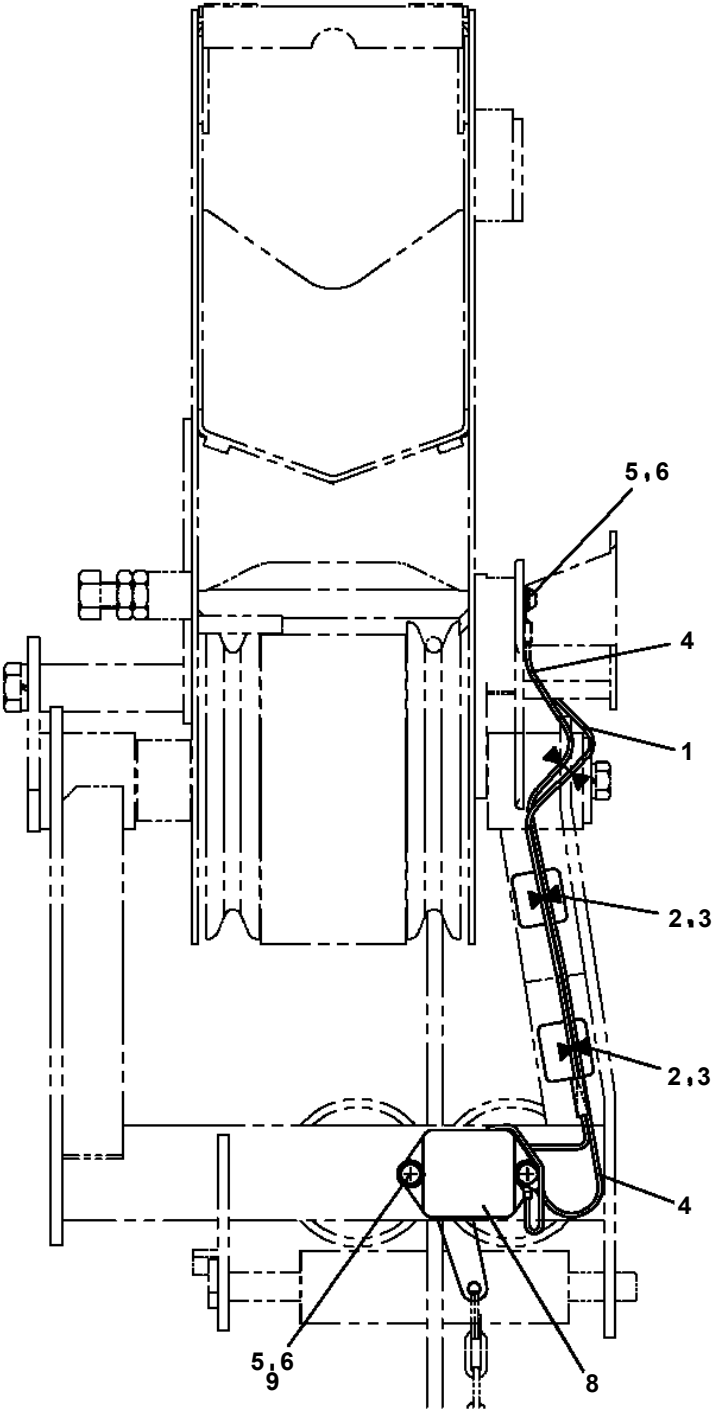
TM-ZX500 41050601123A FRAME

Pos No.	Parts No	Parts Name	Qty	Unit	Technical Data	Serial No (Start)	Serial No (End)
1	31659410101	HARNESS (CRANE)	1				
2	31658912100	INDICATOR	2				
3	31658770300	SWITCH ASSY	2				
4	31659170400	SUPPORT	1				
5	31659170500	SUPPORT	1				
6	31658770600	SWITCH ASSY (EMERGENCY STOP)	2				
7	90171110016	BOLT	3		M10X16		
8	90302041001	WASHER,SPRING	3		10		
9	90280200800	NUT,FLANGE	2		M8		
10	90186208014	BOLT,FLANGE	8		M8X14		
12	31657170700	SPEAKER (ASSY ONLY)	1				
13	90186210020	BOLT,FLANGE	1		M10X20		
16	90303070601	WASHER,PLAIN	1		6		
17	90280200600	NUT,FLANGE	17		M6		
18	91850100802	CLAMP	19				
19	91850700101	CLAMP	12		L=208		
20	91810130250	FASTENER	46				
21	80192483006	SCREW,MACHINE	4		M3X6		
22	36180350000	SENDER,THERMO	1				
23	31659410300	SWITCH (S/W 2PC'S)	2				
24	31350010240	HARNESS	1				
25	31659180700	SUPPORT	2				
26	90186206010	BOLT,FLANGE	8		M6X10		
28	31659170700	SUPPORT	1				
29	82400000702	CLIP	1				
30	82108501440	SWITCH	2				
32	31659410200	SUPPORT	1				
51	31656011200	COVER	2				
52	34354781710	RELAY (WITH BRACKET)	3				
53	80197586012	SCREW,MACHINE	3		M6X12		
54	90280200600	NUT,FLANGE	3		M6		
55	37002227560	PLATE,NAME (BLACK)	13		D=16		
91	31659171100	COVER	2				

TM-ZX500 41050601123A FRAME

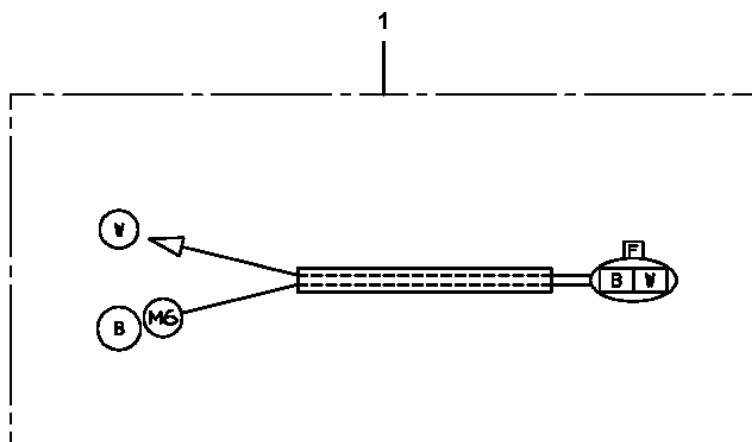
Pos No.	Parts No	Parts Name	Qty	Unit	Technical Data	Serial No (Start)	Serial No (End)	Remarks	Pages
1	31440250100	ROLLER ASSY	1						
2	37000105740	PIN	2						
3	80136332020	PIN,SPLIT	2		3.2X20				
4	90303071001	WASHER,PLAIN	4		10				
5	37001300000	SPRING	2						
21	37001107470	ROLLER ASSY	2						
22	37001108310	ROLLER ASSY	1						
23	31440250300	PIN	1						
24	31440250150	SUPPORT	1						
25	31440150350	WASHER,PLAIN	2						
26	90286001007	NUT	2		M10 P=1.25				
31	80516006001	BEARING,BALL	4						
43	80602110280	RING,RITAINING	2		R28				

TM-ZX500 41050601123A FRAME
PH1060491-01 DETECTOR,OVERWIND

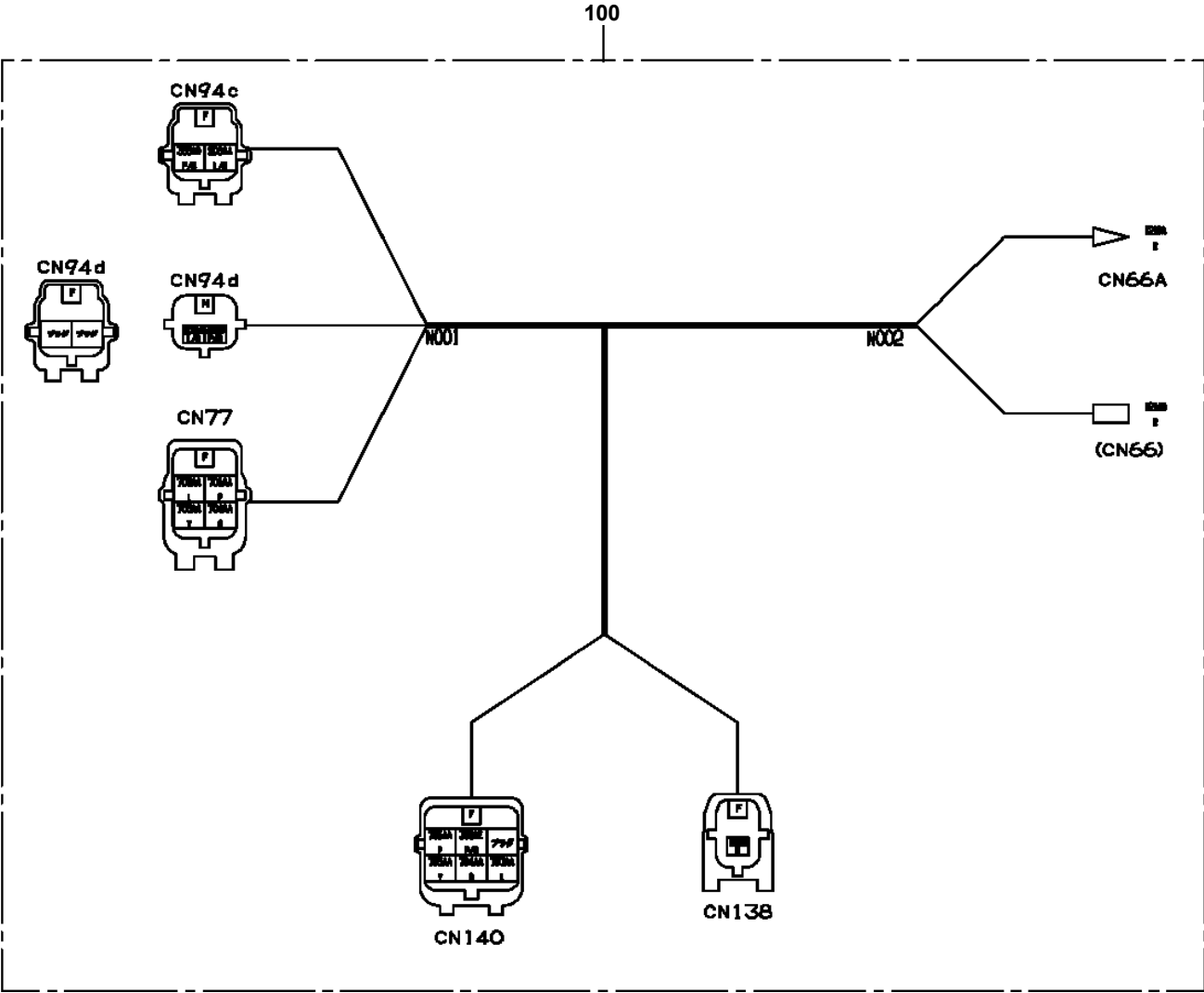


A

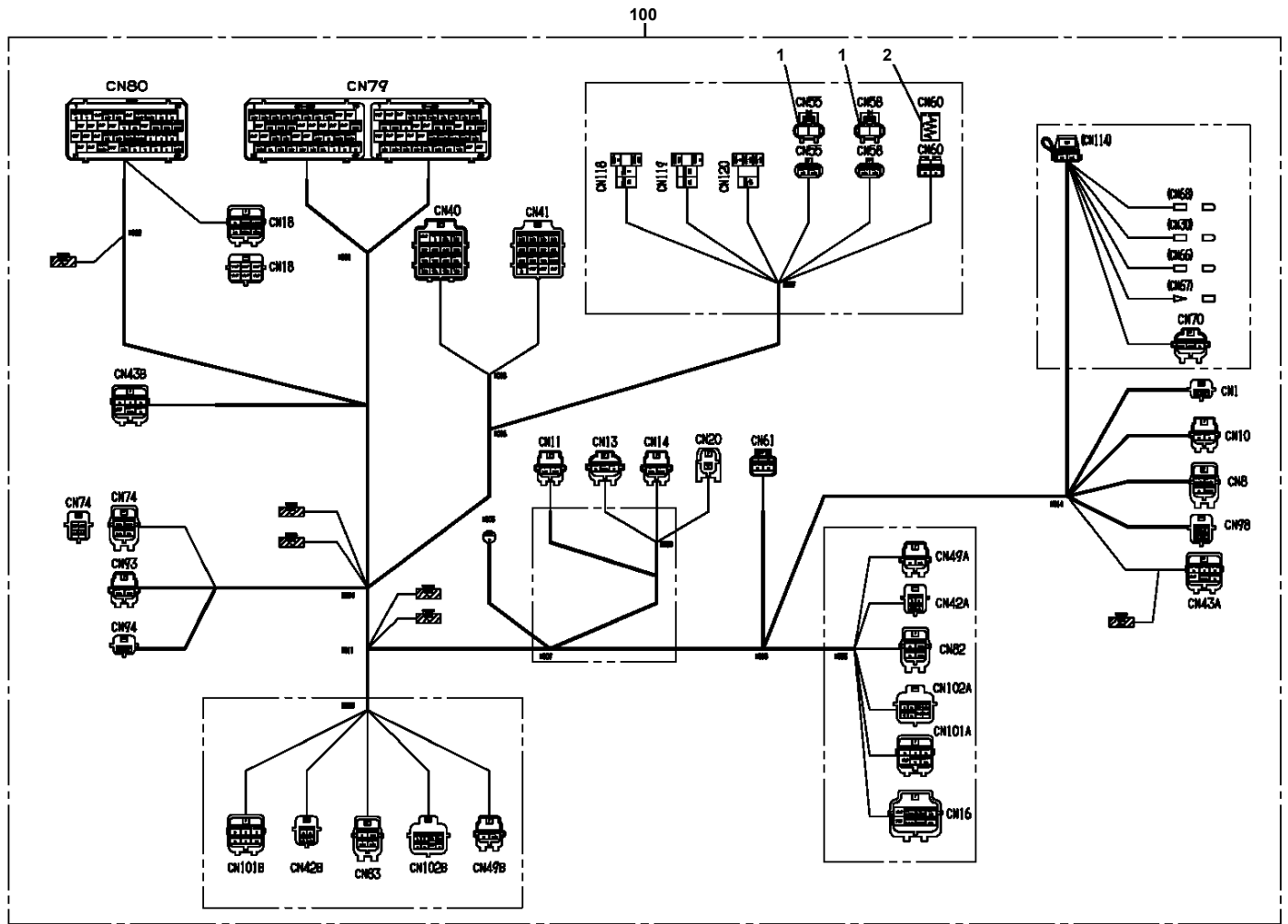
TM-ZX500 41050601123A FRAME
PH5033592-00 HARNESS



TM-ZX500 41050601123A FRAME
PH5033871-00 HARNESS

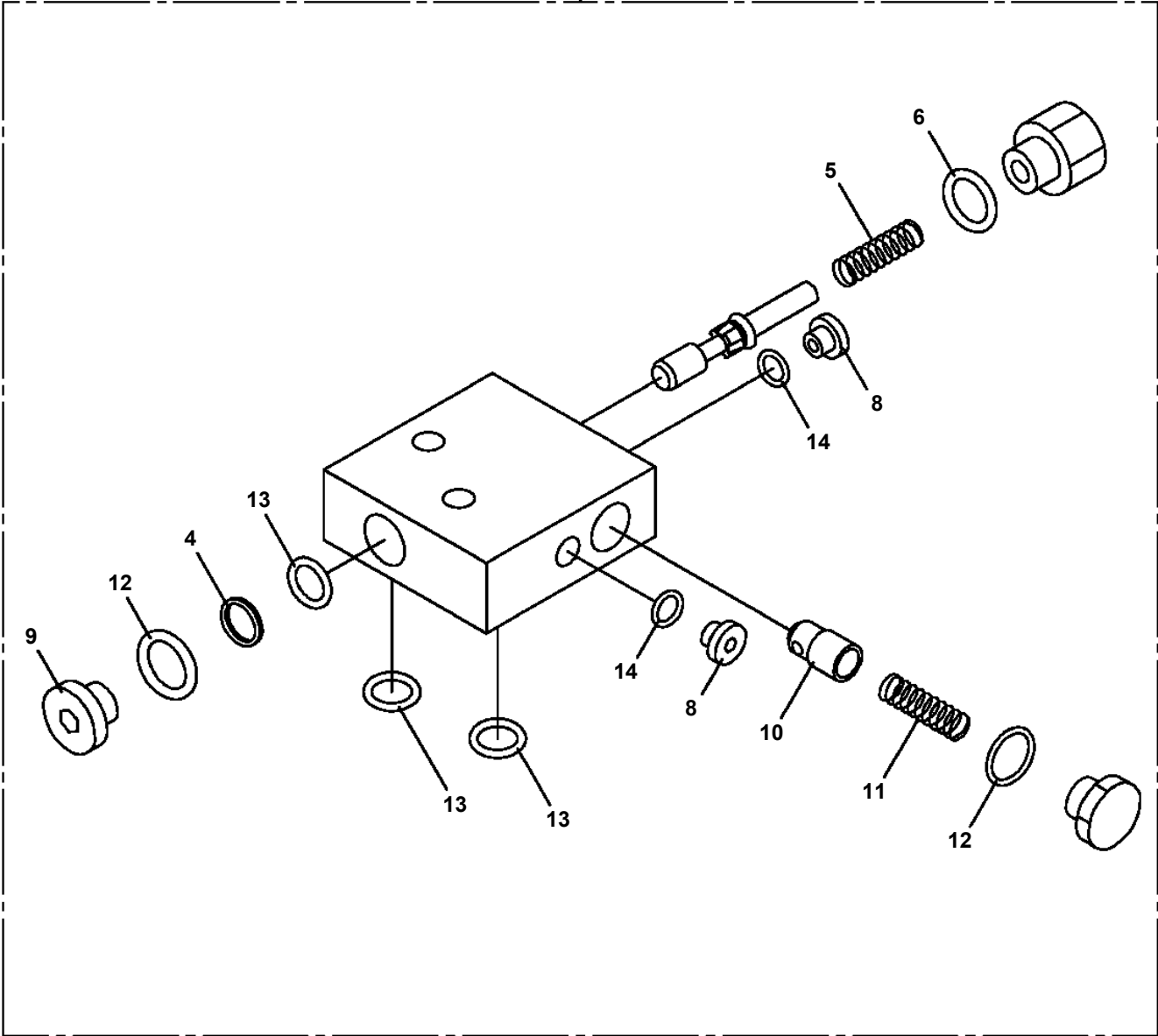


TM-ZX500 41050601123A FRAME
PH5034439-00 HARNESS (CRANE)

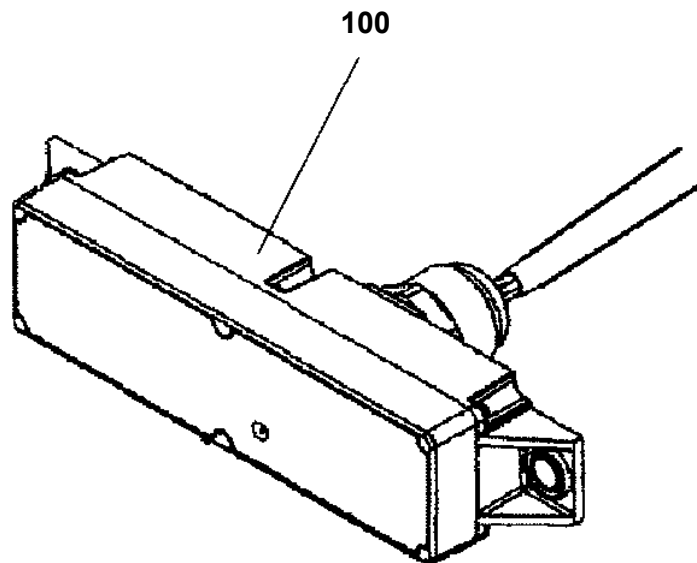


TM-ZX500 41050601123A FRAME
PI1250160-02 VALVE,COUNTERBALANCE

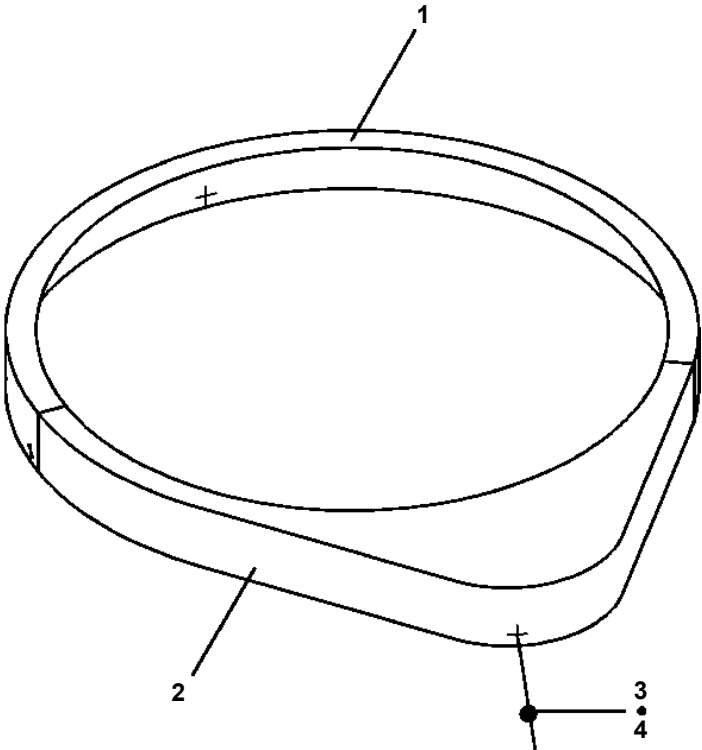
50



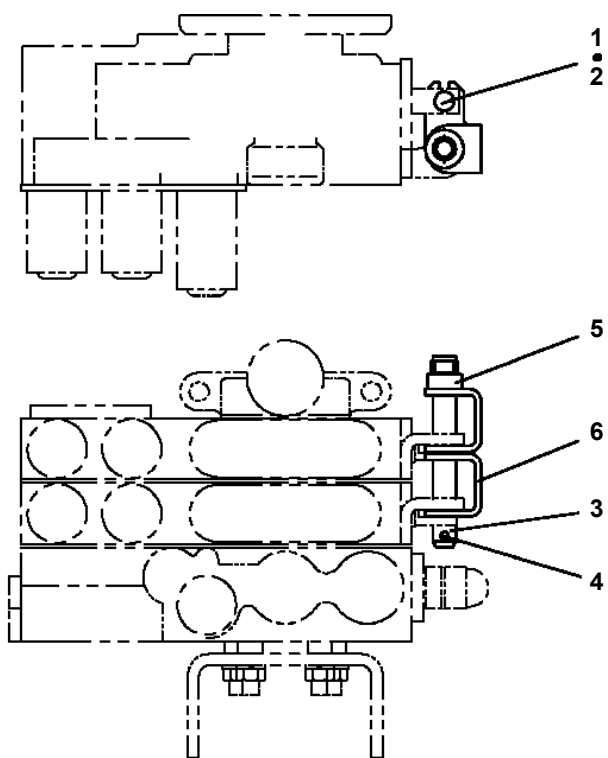
TM-ZX500 41050601123A FRAME
PI5200001-00 INDICATOR



TM-ZX500 41050601123A FRAME
PK1130007-00 COVER,BEARING



TM-ZX500 41050601123A FRAME
PL1010863-00 OPE.ASSY,CONT.VALVE (REMOCON)



TM-ZX500 41050601123A FRAME
PL5020226-00 LAMP ASSY (BOOM/24V-20W)

ランプ ASSY (フーム/24V-20W)
LAMP ASSY (BOOM/24V-20W)

フーム取付けタイプ
ランプ仕様：24V-20W

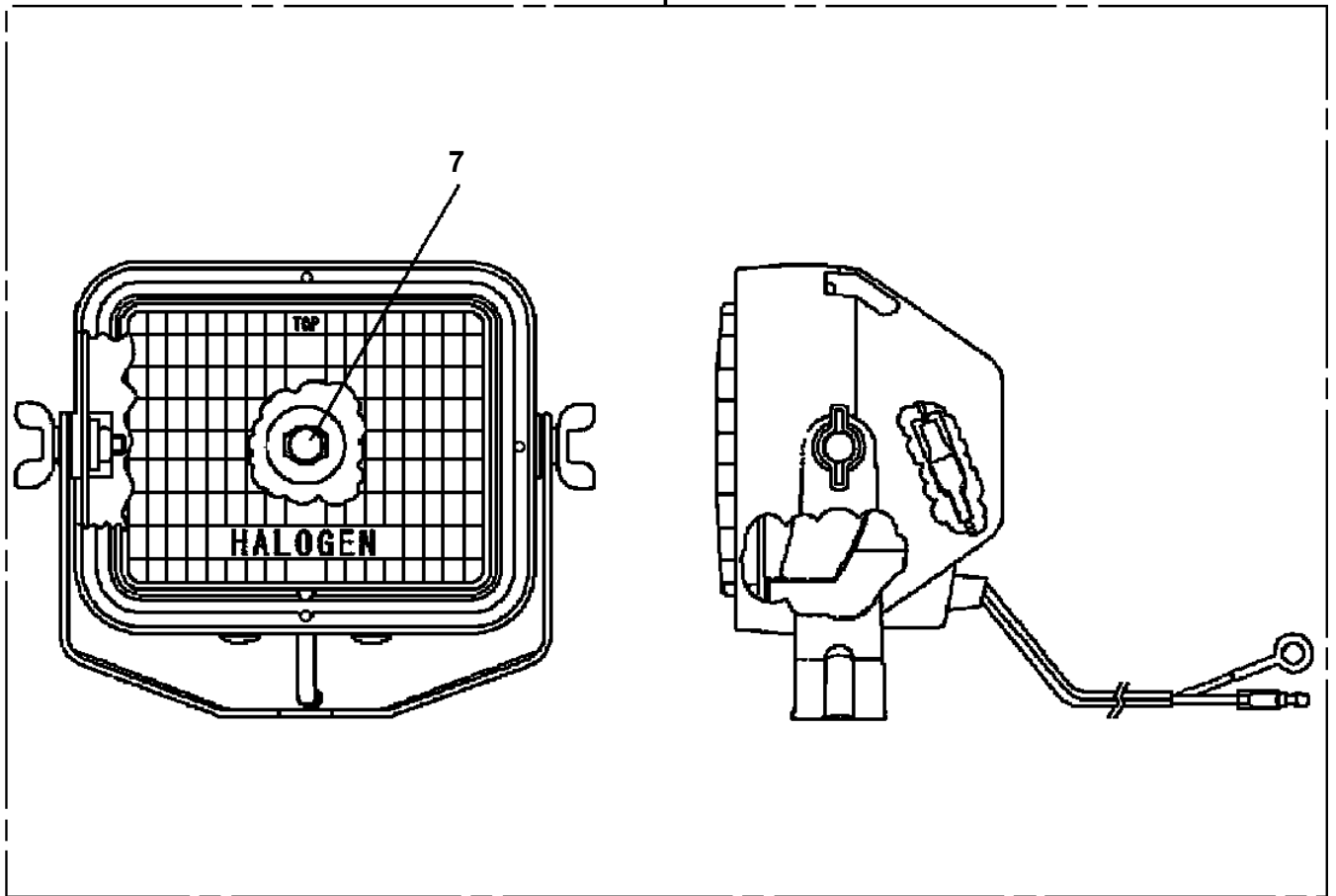
符号	日本語名称	英語名称	備考
2	ハイセンASSY	ELEC.ASSY	ホースト部
3	ハイセンASSY	ELEC.ASSY	フーム部 (LED20W)

適用製造番号によっては取り付けがないものもあります。

MACHINES OF SOME SERIAL NO. ARE NOT EQUIPPED WITH THESE PARTS.

**TM-ZX500 41050601123A FRAME
PL5330004-00 LAMP**

100



TM-ZX500 41050601123A FRAME

Pos No.	Parts No	Parts Name	Qty	Unit	Technical Data	Serial No (Start)	Serial No (End)	Remarks	Pag
10	31501220100	CHARGER,BATTERY	1						

CLICK HERE TO **DOWNLOAD** THE COMPLETE MANUAL

- Thank you very much for reading the preview of the manual.
- You can download the complete manual from: www.heydownloads.com by clicking the link below



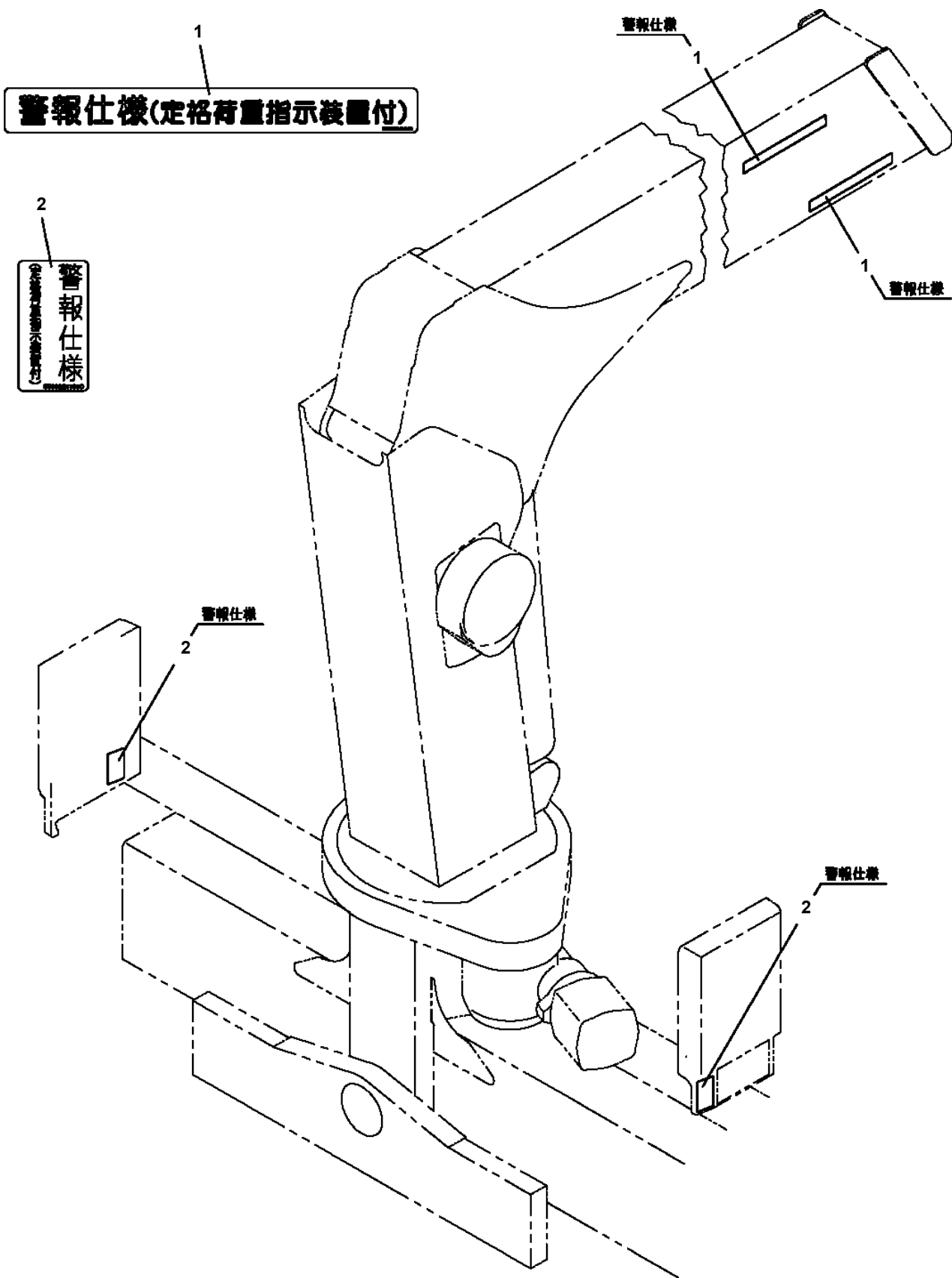
- Please note: If there is no response to CLICKING the link, please download this PDF first and then click on it.

CLICK HERE TO **DOWNLOAD** THE COMPLETE MANUAL

TM-ZX500 41050601123A FRAME

Pos No.	Parts No	Parts Name	Qty	Unit	Technical Data	Serial No (Start)	Serial No (End)	Remarks	Pages
1	31595692010	PLATE,NAME	1						
2	37002244310	PLATE,CAUTION	1						

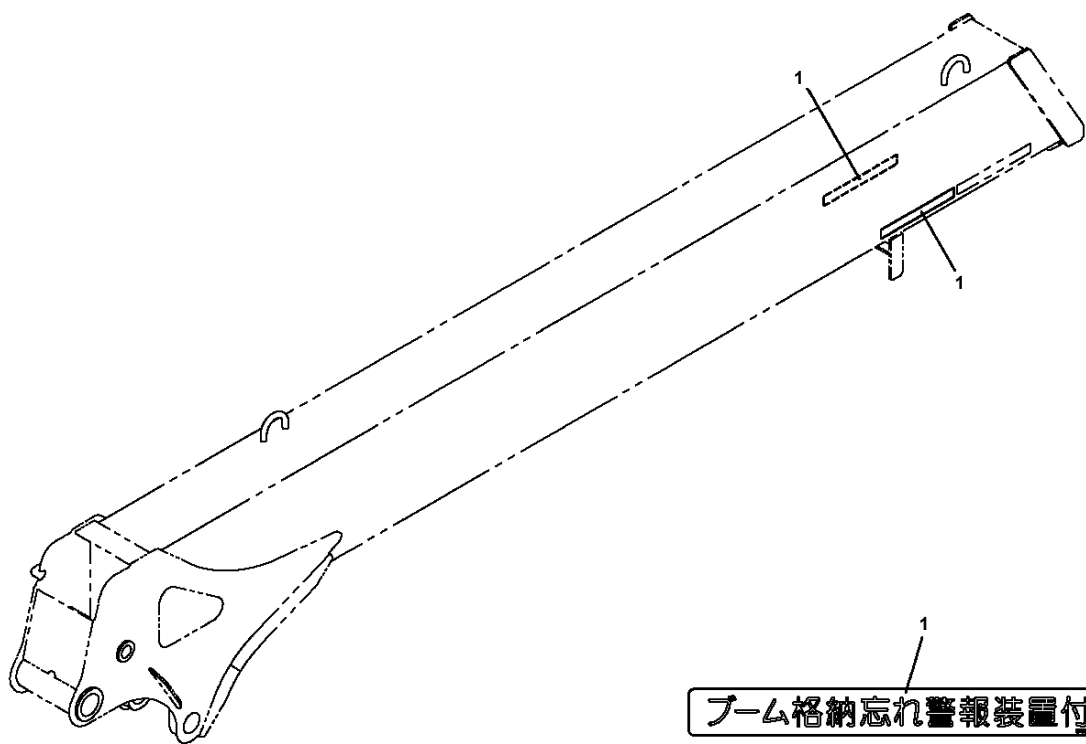
TM-ZX500 41050601123A FRAME
PN5012097-01 NAME PLATE ASSY



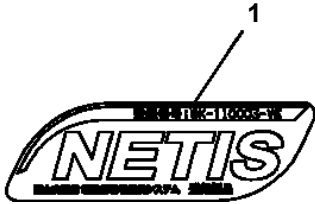
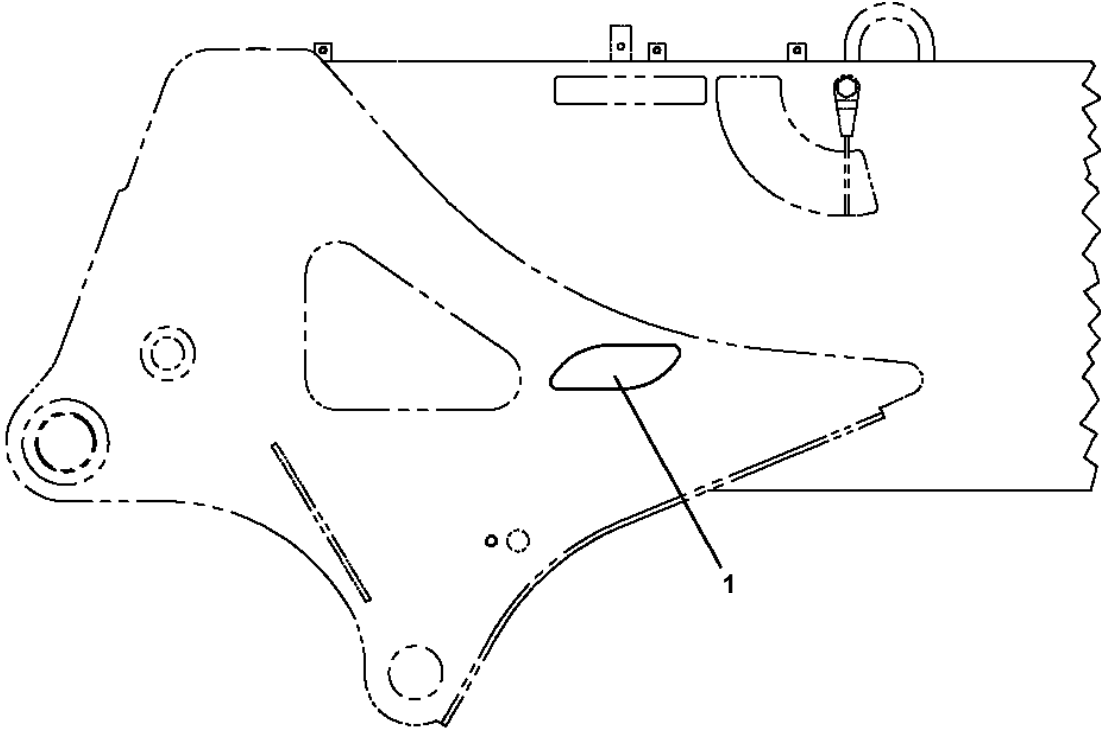
注 意：本図は参考用に掲載しており、形状などは実機と異なります。

NOTE: THE ABOVE FIGURE IS FOR REFERENCE AND MAY DIFFER FROM THE ACTUAL APPEARANCE OF YOUR MACHINE.

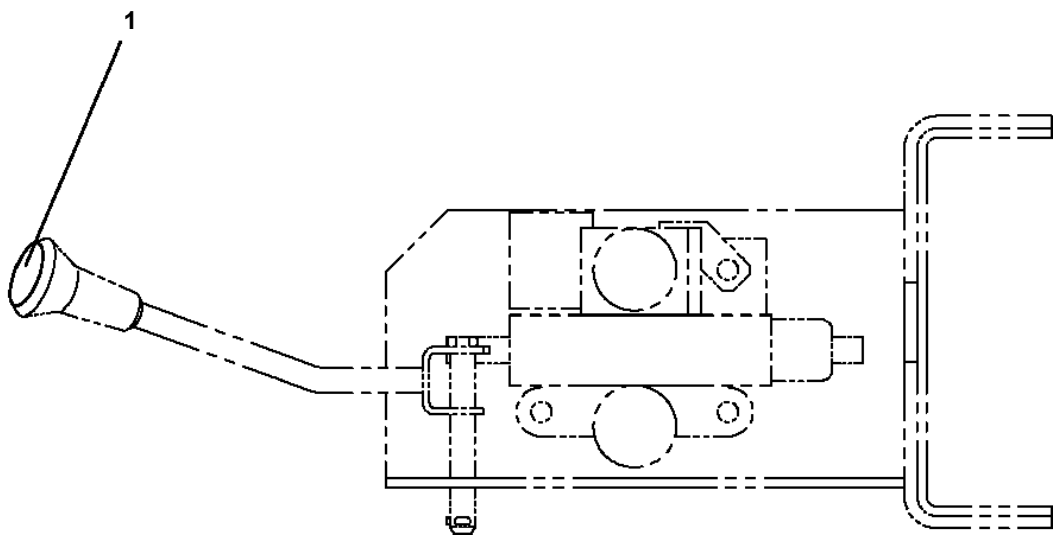
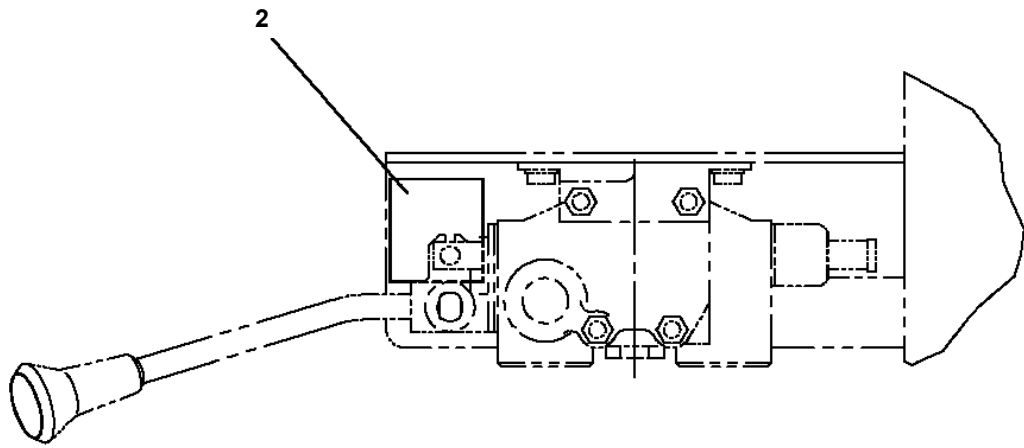
TM-ZX500 41050601123A FRAME
PN5012126-00 NAME PLATE ASSY



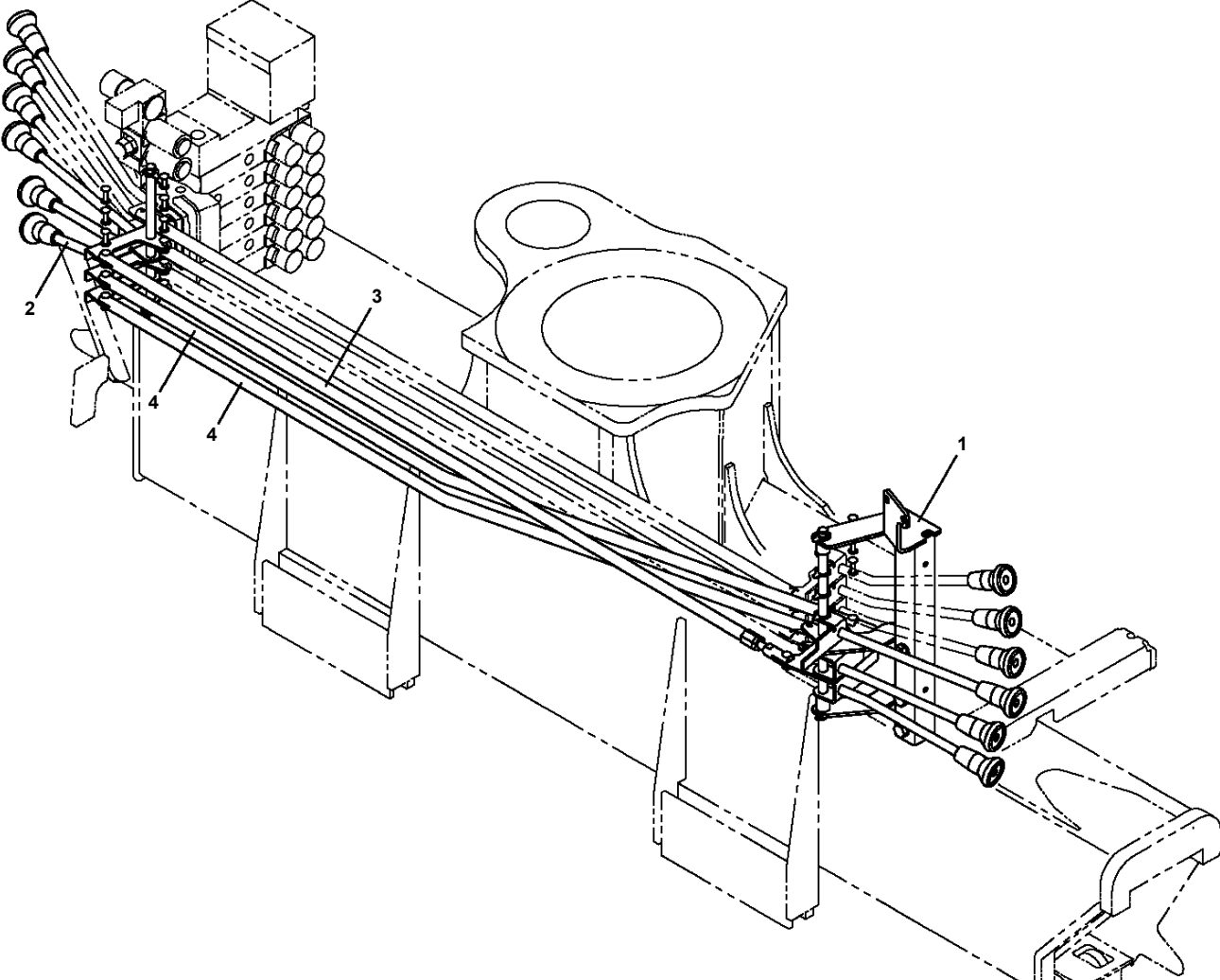
TM-ZX500 41050601123A FRAME
PN5012194-00 NAME PLATE ASSY (NETIS/S-SIZE)



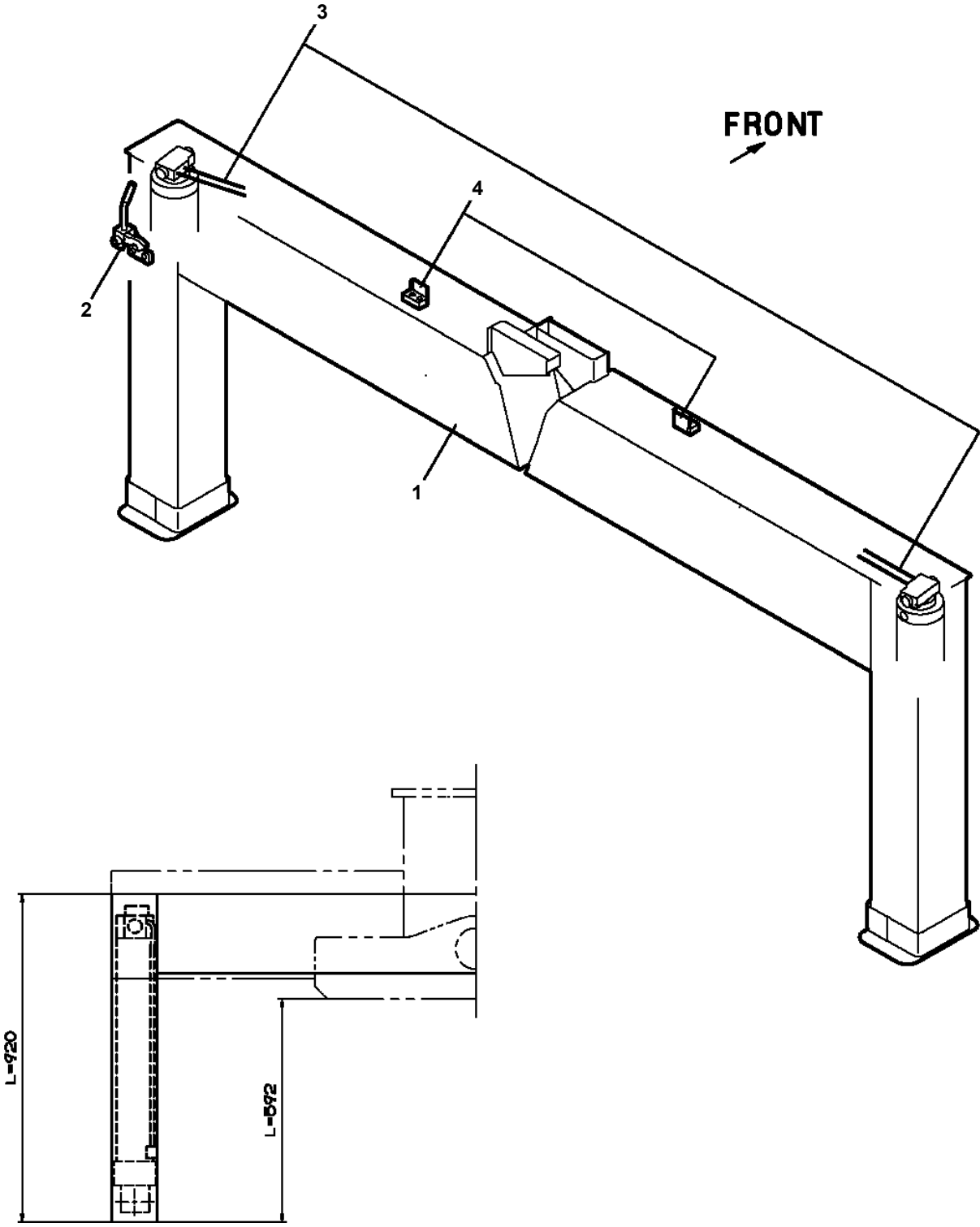
TM-ZX500 41050601123A FRAME
PO1012608-00 PLATE ASSY,NAME (POWER SUPPLY)



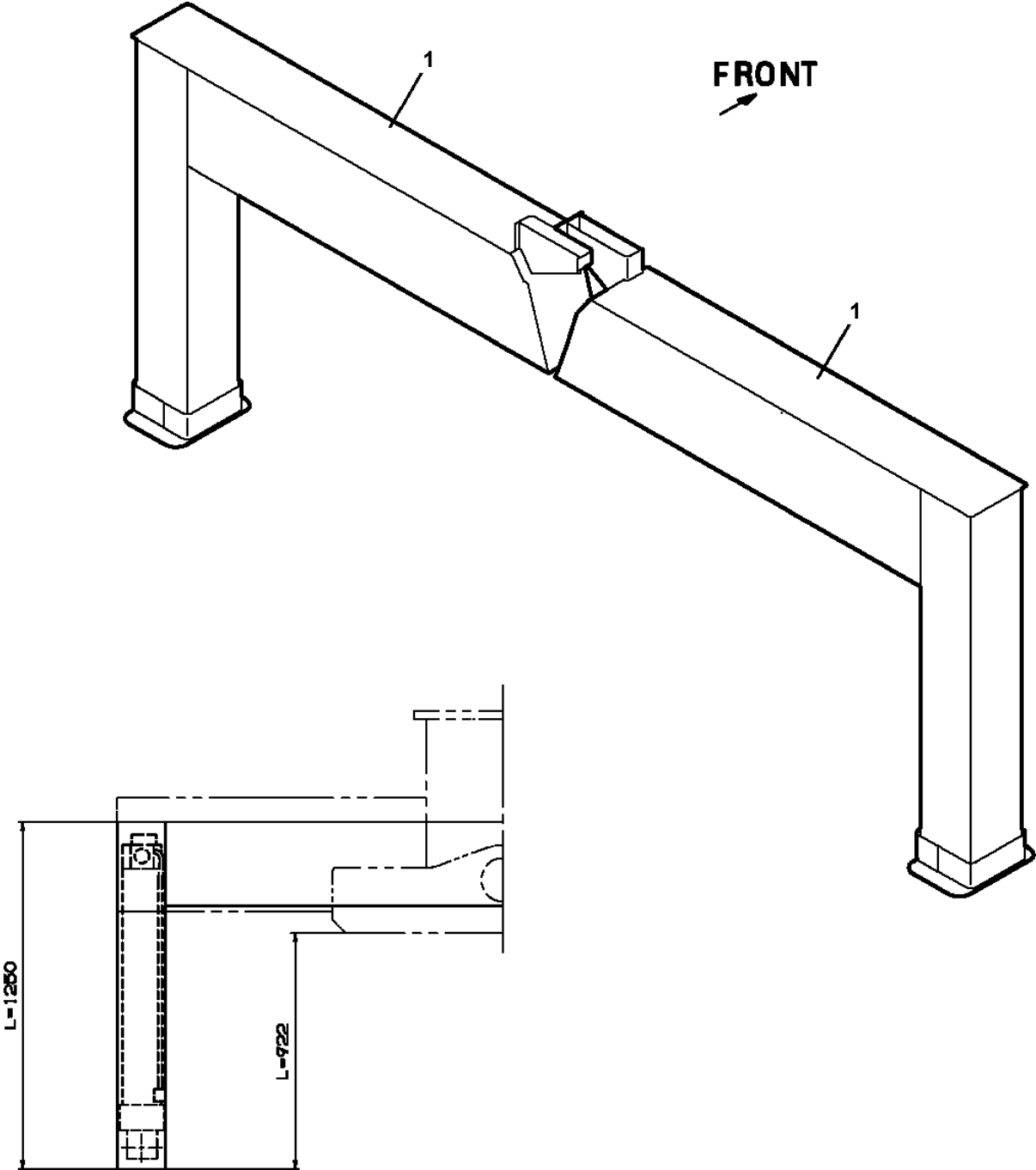
TM-ZX500 41050601123A FRAME
PO5080298-01 OPE.ASSY,CONT.VALVE (JACK,SWING)



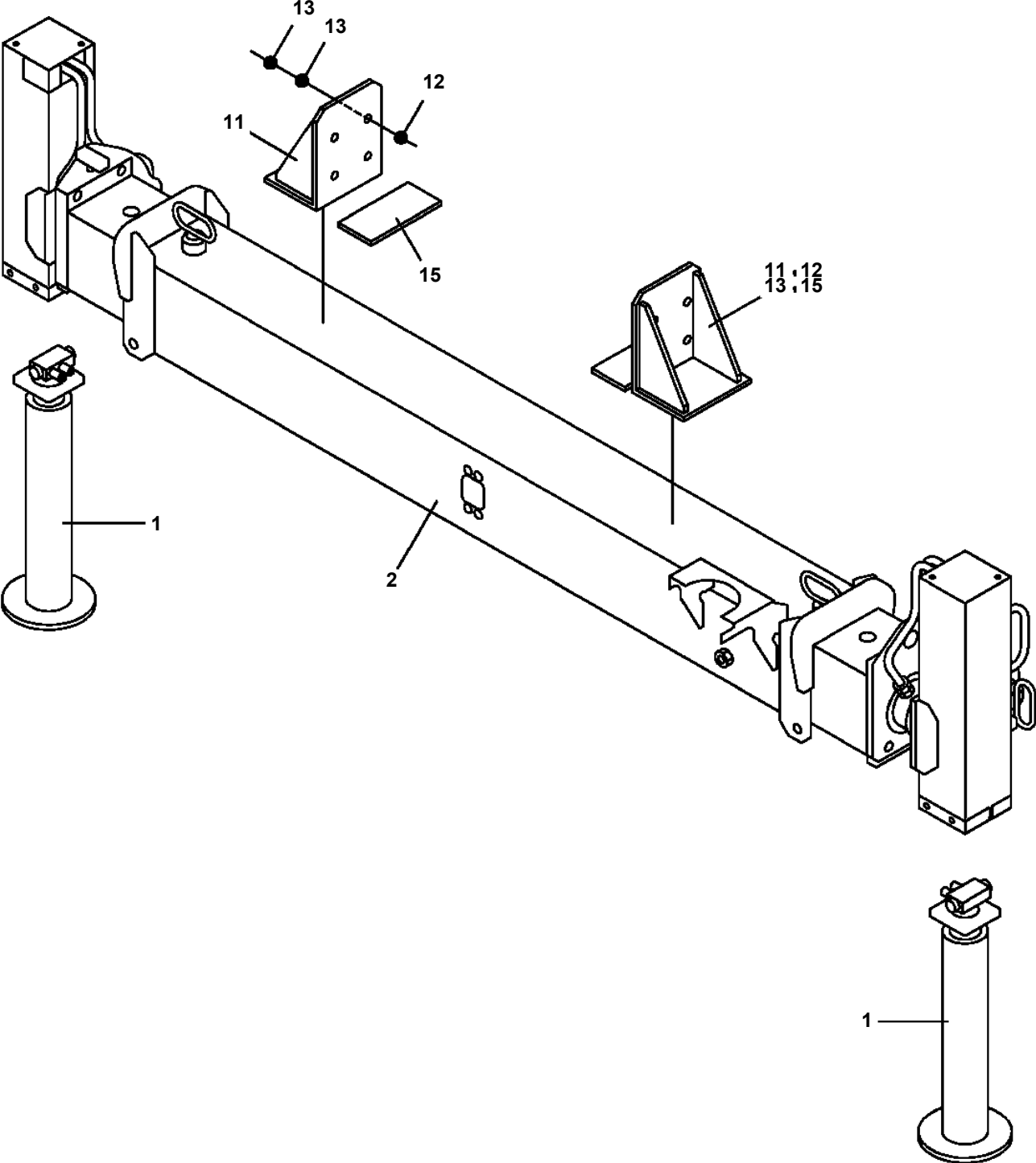
TM-ZX500 41050601123A FRAME
PO5270445-00 OUTRIGGER ASSY (L=592)



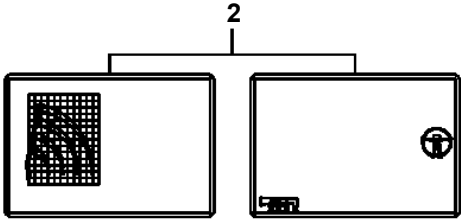
TM-ZX500 41050601123A FRAME
PO5270450-00 OUTRIGGER ASSY (L=922,CASE:L=1250)



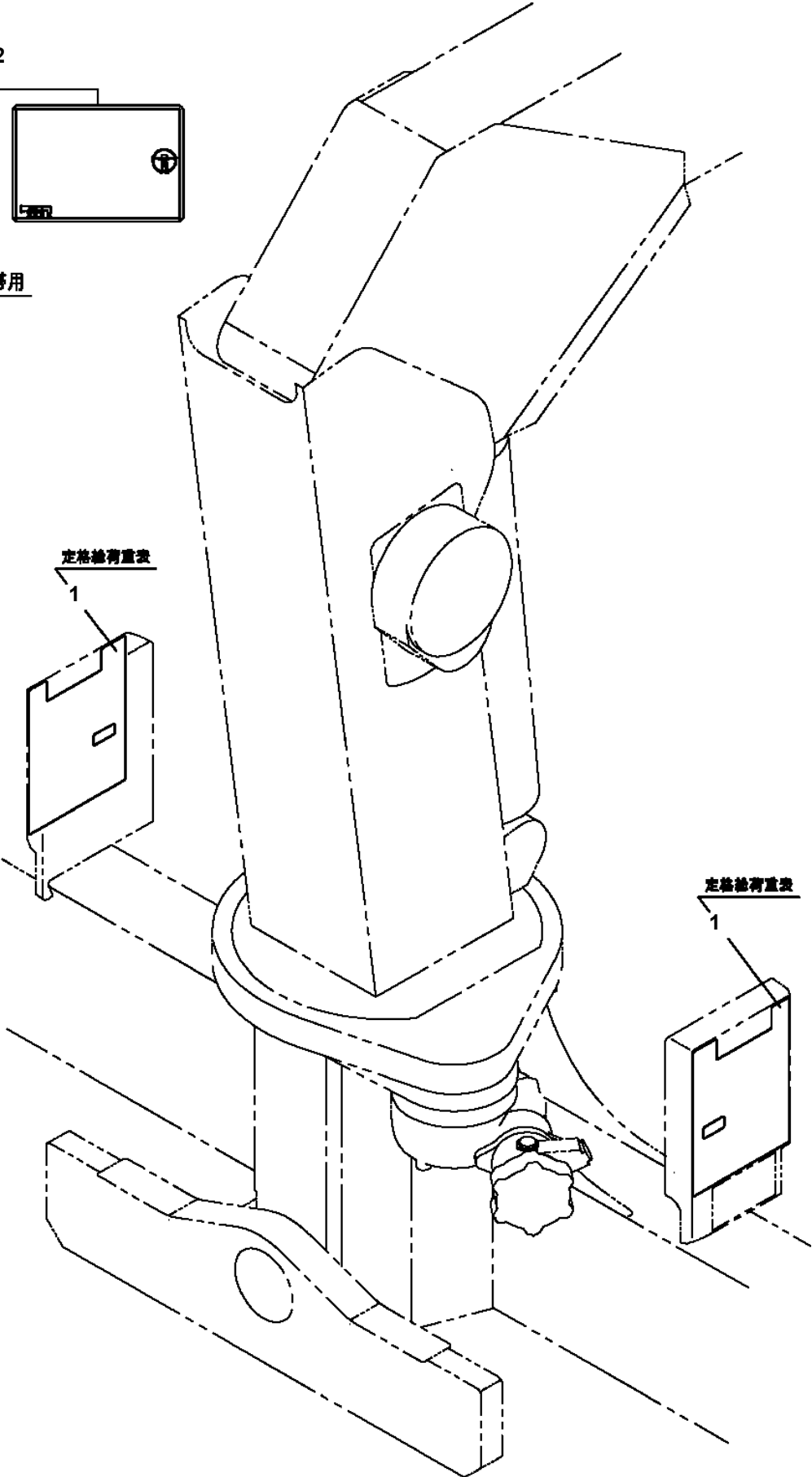
TM-ZX500 41050601123A FRAME
PO5290016-00 OUTRIGGER ASSY,REAR



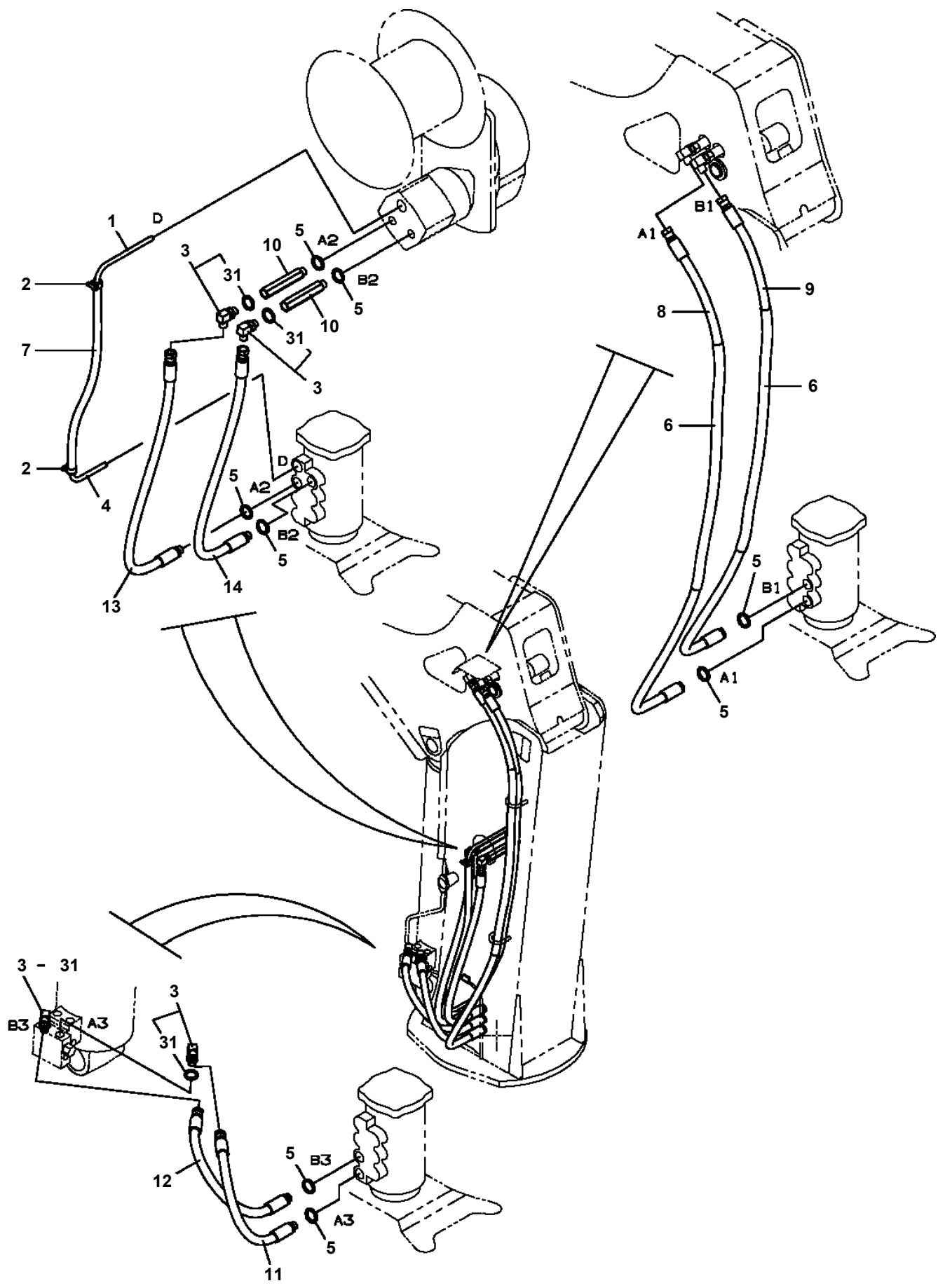
TM-ZX500 41050601123A FRAME
PP5200770-00 PERFORMANCE DATA (B)



携帯用



TM-ZX500 41050601123A FRAME
PP6010511-00 PIPING ASSY (UPPER)



TM-ZX500 41050601123A FRAME

Pos No.	Parts No	Parts Name	Qty	Unit	Technical Data	Serial No (Start)	Serial No (End)	Remarks	P
1	37001803260	ROPE,WIRE (KISWIRE)	1						

TM-ZX500 41050601123A FRAME

Pos No.	Parts No	Parts Name	Qty	Unit	Technical Data	Serial No (Start)	Serial No (End)	Remarks	P
1	31658777510	CASE SET (JAPANESE)	1						
100	31658770300	SWITCH ASSY	1						

TM-ZX500 41050601123A FRAME

Pos No.	Parts No	Parts Name	Qty	Unit	Technical Data	Serial No (Start)	Serial No (End)	Remarks	Pages
1	36800174100	BOX	1						
2	80182306016	SCREW,MACHINE	4		M6X16				
4	36803244100	PLATE,NAME	1						
5	37002243770	PLATE,NAME	1						
31	36800175090	COVER (UPPER)	1						

TM-ZX500 41050601123A FRAME

Pos No.	Parts No	Parts Name	Qty	Unit	Technical Data	Serial No (Start)	Serial No (End)	R
1	36645095040	COVER (BOTTOM)	1					
2	36646225020	BOLT,TIE	4					
3	36648860041	VALVE,CONTROL	2					
4	36740850030	COVER (FRONT)	1					
5	90201200800	NUT	5		M8			
6	80720104012	PIN,SPRING	1		4X12			
7	36647615050	BOLT,TIE (C)	1					
8	36645495080	JOINT	1					
9	36743390050	VALVE ASSY,RELIEF	1					
10	36645615230	C-BOLT	4		5X12			
11	91001101100	O-RING	4		1A P11			
12	36644115130	PLUG	4					
13	36743225010	HARNESS	1					
14	36644015110	CONNECTOR	1					
15	36644015130	TUBE	1					
16	11615111410	BAND	5					
17	82114203040	CONNECTOR (CAP)	1					
18	82121502040	PLATE	1					
19	82121502030	PLATE	1					
20	36646875090	TUBE	2		10B			
21	36062635050	TUBE,CORRUGATE	1		10			
22	36740765040	BAND	1					
23	36062635030	FASTENER	2					
24	80172304010	SCREW,MACHINE	2		M4X10			
27	36741985040	PLUG	3					
28	36741985050	PLUG	4					
29	36640755070	CAP	4					
30	90303070401	WASHER,PLAIN	2		4			
102	36646865190	PISTON	2					
103	91001102000	O-RING	2		1A P20			
104	91001000800	O-RING	2		S8			
105	36646865200	SPOOL (SUB)	2					
106	36648365110	FLANGE	2					
107	91001002240	O-RING	2		S22.4			
108	91650001400	SCRAPER	2					
109	36645495210	SEAT,SPRING (RETURN)	4					
110	36645845060	SPRING (RETURN)	2					
111	36646865210	SPACER	2					
112	36640625550	PLATE (D)	2					
113	36633365070	ADAPTER	2					
114	36645615230	C-BOLT	4		5X12			
115	36633365100	SEAL,OIL	2					
116	36645845050	LINK	2					
117	36645615250	C-BOLT	4		M5X25			
118	36633365090	CAP (CHECK VALVE)	2					
119	12635101360	SPOOL	2					
120	12635101190	SPRING	2					
126	91001002200	O-RING	4		S22			
129	91001100600	O-RING	13		1A P6			
130	91002905500	O-RING	3		1B G55			
131	91001101400	O-RING	7		1A P14			
204	36740765050	PLUG	3					
205	36740765060	SPRING	1					
207	36640625210	CAP	1					
208	91001101800	O-RING	1		1A P18			
209	36649585170	FILTER	1					
210	91001002600	O-RING	2		S26			
211	36647395150	PLUG	1		M24			
212	36646875130	ORIFICE	1		M3			
213	91001101600	O-RING	1		1A P16			
214	36646265090	SPRING (B)	1					
215	36646265080	SPRING (A)	1					
216	36645615210	PLUG	1		24			

TM-ZX500 41050601123A FRAME

Pos No.	Parts No	Parts Name	Qty	Unit	Technical Data	Serial No (Start)	Serial No (End)	Remarks
7	91001000800	O-RING	1		S8			
8	36646865190	PISTON	1					
9	91001102000	O-RING	1		1A P20			
10	36648365110	FLANGE	1					
11	91001002240	O-RING	1		S22.4			
12	91650001400	SCRAPER	1					
13	36645495210	SEAT,SPRING (RETURN)	2					
14	36648365120	SPOOL (SUB)	1					
15	36645845060	SPRING (RETURN)	1					
16	36644015260	ADAPTER	1					
17	36648365130	SPACER	1					
18	36645405090	PLATE (D)	1					
19	36645615250	C-BOLT	2		M5X25			
20	36633365100	SEAL,OIL	1					
21	36633365060	PLATE (B)	1					
22	36645615260	C-BOLT	2		M5X8			
23	12635101360	SPOOL	1					
24	36635735150	SPRING (CHECK VALVE)	1					
25	36633365090	CAP (CHECK VALVE)	1					
27	91001002200	O-RING	2		S22			
29	36740745140	SCREW,MACHINE	4		M4X12			
30	91001100600	O-RING	5		1A P6			
31	91002905500	O-RING	1		1B G55			
51	36740745150	VALVE,SOLENOID (KIT)	2					
100	36743030051	VALVE,CONTROL	1					

TM-ZX500 41050601123A FRAME

Pos No.	Parts No	Parts Name	Qty	Unit	Technical Data	Serial No (Start)	Serial No (End)	Remarks
2	36073085020	COVER	1					
3	36073815010	GEAR,SPUR	1					
6	36073085061	BRAKE,DISK	1					
7	36073085072	WHEEL,RATCHET	1					
8	36073085080	RING (C)	1					
10	36073085090	RATCHET	1					
11	36073085100	SHAFT	1					
12	36073085111	SPRING	1					
13	36073085120	CAP	1					
14	36073085130	PIN	1					
15	36073085140	NUT	1					
16	80500006202	BEARING,BALL	1					
17	80500006211	BEARING,BALL	1					
18	80500006305	BEARING,BALL	1					
19	80500006007	BEARING,BALL	1					
20	36073085150	SEAL,OIL	1					
21	80602110620	RING,RITAINING	1		R62			
22	36071195200	O-RING	1					
23	91001101500	O-RING	1		1A P15			
24	80136340040	PIN,SPLIT	1		4X40			
25	36073085160	KEY	2					
26	36073085180	BOLT (WITH SW)	6					
27	36073085200	PLUG	1					
28	36073085170	GAUGE,OIL	1					
29	80172304015	SCREW,MACHINE	1		M4X15			
30	90302040401	WASHER,SPRING	1		4			
51	36073085603	GEAR ASSY	1					
100	36073810000	WINCH ASSY (Y.G.TEC)	1					
101	36070441000	FACING KIT(JAPANESE)	1					
102	36070442000	FACING KIT (ENGLISH)	1					

**TM-ZX500 41050601123A FRAME
PZ0000000-00 DERRICK ASSY (WITH CV)**

販売部品 検討中につき、イラストはありません。

**Parts for sale : Under consideration now.
Therefore not illustrated.**

販売部品 検討中につき、イラストはありません。

Parts for sale : Under consideration now.
Therefore not illustrated.

**TM-ZX500 41050601123A FRAME
PZ0000000-00 JOINT ASSY**

販売部品 検討中につき、イラストはありません。

**Parts for sale : Under consideration now.
Therefore not illustrated.**

販売部品 検討中につき、イラストはありません。

Parts for sale : Under consideration now.
Therefore not illustrated.

**TM-ZX500 41050601123A FRAME
PZ0000000-00 PIPING ASSY**

販売部品 検討中につき、イラストはありません。

**Parts for sale : Under consideration now.
Therefore not illustrated.**

**TM-ZX500 41050601123A FRAME
PZ0000000-00 MOUNT ASSY**

販売部品 検討中につき、イラストはありません。

**Parts for sale : Under consideration now.
Therefore not illustrated.**

**TM-ZX500 41050601123A FRAME
PZ0000000-00 PIPING ASSY (CRANE)**

販売部品 検討中につき、イラストはありません。

**Parts for sale : Under consideration now.
Therefore not illustrated.**

CLICK HERE TO **DOWNLOAD** THE COMPLETE MANUAL

- Thank you very much for reading the preview of the manual.
- You can download the complete manual from: www.heydownloads.com by clicking the link below



- Please note: If there is no response to CLICKING the link, please download this PDF first and then click on it.

CLICK HERE TO **DOWNLOAD** THE COMPLETE MANUAL