

TM-ZX300 41044701383A FRAME

PB0000353-00 SYSTEM (ZX300SL,DOMESTIC)

ASSEMBLY

CLICK HERE TO **DOWNLOAD** THE COMPLETE MANUAL

- Thank you very much for reading the preview of the manual.
- You can download the complete manual from: www.heydownloads.com by clicking the link below



- Please note: If there is no response to CLICKING the link, please download this PDF first and then click on it.

CLICK HERE TO **DOWNLOAD** THE COMPLETE MANUAL

TM-ZX300 41044701383A FRAME

Pos No.	Parts No	Parts Name	Qty	Unit	Technical Data	Serial No (Start)	Serial No (End)	Remarks	Page
1	31792380000	POWER TAKE OFF	1						00003
	36401040000	POWER TAKE OFF	1						00001
	31790780000	POWER TAKE OFF	1						00001
	31790770000	POWER TAKE OFF	1						00001
	36400940000	POWER TAKE OFF	1						00001
	31790810000	POWER TAKE OFF	1						00001
	36400950000	POWER TAKE OFF	1						00001
	31791000000	POWER TAKE OFF	1						00002
	31791970000	POWER TAKE OFF	1						00001
	31792360000	POWER TAKE OFF	1						00003
	31792370000	POWER TAKE OFF	1						00003
2	31790690000	POWER TAKE OFF	1						00000
	31790930000	POWER TAKE OFF	1						00002
	31790920000	POWER TAKE OFF	1						00002
	31792040000	POWER TAKE OFF	1						00002
	31791650000	POWER TAKE OFF	1						00000
	31790940000	POWER TAKE OFF	1						00002
	31791140000	POWER TAKE OFF	1						00003
	31791300000	POWER TAKE OFF	1						00000
	31792050000	POWER TAKE OFF	1						00003
	31792510000	POWER TAKE OFF	1						00004
	31791060000	POWER TAKE OFF	1						00003
3	31790960000	POWER TAKE OFF	1						00002
	31792010000	POWER TAKE OFF	1						00003
	31791270000	POWER TAKE OFF	1						00003
	31791240000	POWER TAKE OFF	1						00003
	31790980000	POWER TAKE OFF	1						00002
4	31790910000	POWER TAKE OFF	1						00002
	31791020000	POWER TAKE OFF	1						00002
	31790830000	POWER TAKE OFF	1						00001
	31790750000	POWER TAKE OFF	1						00000
	31790840000	POWER TAKE OFF	1						00002
	31790850000	POWER TAKE OFF	1						00001
	31791950000	POWER TAKE OFF	1						00001
31790740000	POWER TAKE OFF	1						00000	

TM-ZX300 41044701383A FRAME

Pos No.	Parts No	Parts Name	Qty	Unit	Technical Data	Serial No (Start)	Serial No (End)	Remarks	Pages
1	36400785010	CASE	1						
2	36400765020	GEAR	1						
3	36400775010	SHAFT	1						
4	36400765040	SLEEVE	1						
5	36400095100	SHIFTER ASSY	1						
6	36400095110	PACKING	1						
7	80500006006	BEARING,BALL	1						
8	36400765050	BEARING,NEEDLE	1						
9	36400765060	BEARING	1						
10	36400765070	BEARING	1						
11	91206030005	SEAL,OIL	1						
12	36400095070	COVER (BEARING)	1						
13	36400095080	PACKING (COVER)	1						
14	36400095090	SHIM	N						
15	90191208014	BOLT	3		M8X14				
16	90302040801	WASHER,SPRING	7		8				
17	90191208020	BOLT	4		M8X20				
18	90193512090	BOLT	2						
19	90302041201	WASHER,SPRING	4		12				
20	36400785020	BOLT,STUD	2						
21	90267401200	NUT	2						
22	36400765110	PACKING (CASE)	1						
23	36400795010	PLATE,NAME	1						
25	31790680100	SUPPORT	1						
50	36400790000	POWER TAKE OFF	1						
100	31790740000	POWER TAKE OFF	1						

TM-ZX300 41044701383A FRAME

Pos No.	Parts No	Parts Name	Qty	Unit	Technical Data	Serial No (Start)	Serial No (End)	Remark
2	36400956010	CASE (P.T.O)	1					
3	51630103020	SHAFT (POWER TAKE OFF)	1					
4	51630103030	BEARING,NEEDLE	1					
6	36400955010	GEAR	1					
7	51630103050	WASHER	2					
8	51630103060	PIN,SPRING	1					
9	36400955020	SHAFT (OUTPUT)	1					
10	51630103080	BEARING,NEEDLE	2					
12	51630103090	GEAR,OUTPUT	1					
13	51630103100	WASHER	1					
15	51630103110	SLEEVE	1					
16	80500006206	BEARING,BALL	3					
17	52630106230	COVER (FRONT)	1					
18	36400955030	ADAPTER	1					
19	51630103140	GASKET	2					
20	51630103150	BOLT	4					
21	36400956020	BOLT	4		M8X1.25X30			
22	36400955050	SEAL,OIL	1					
25	51630103170	SHAFT	1					
26	51630103180	FORK	1					
27	51630103190	BOLT	1					
28	36400956030	PIN	1					
29	52630106190	SPRING	1					
30	51630103200	PLUG	1					
31	51630103210	PLUG	1					
32	51630103220	SEAL,OIL	1					
33	51630103230	BOLT	1					
35	51630103240	NUT	1					
36	51630103250	GASKET	1					
37	51630103260	GASKET	1					
38	36400315040	BOLT	6					
40	36400955060	COUPLING	1					
41	36400955070	RING,STOP	1					
50	36400950000	POWER TAKE OFF	1					

TM-ZX300 41044701383A FRAME

Pos No.	Parts No	Parts Name	Qty	Unit	Technical Data	Serial No (Start)	Serial No (End)	Remarks	Pages
1	36400915010	CASE	1						
2	36400915020	GEAR	1						
3	36400915030	SHAFT	1						
4	36400915040	GEAR	1						
5	36400395050	SHAFT	1						
6	36400095100	SHIFTER ASSY	1						
7	36400095110	PACKING	1						
8	36400095070	COVER (BEARING)	1						
9	36400095080	PACKING (COVER)	1						
10	36400095090	SHIM	1						
11	36400675030	COLLAR	1						
12	80500006206	BEARING,BALL	2						
13	36400915050	BEARING	2						
14	80602110620	RING,RITAINING	2		R62				
15	91206030005	SEAL,OIL	1						
16	90191206012	BOLT	1		M6X12				
17	36400095130	WASHER	1						
18	90191208014	BOLT	3		M8X14				
19	90191208020	BOLT	4		M8X20				
20	90302040801	WASHER,SPRING	7		8				
21	36400915060	PACKING	1						
22	36400435120	BOLT,STUD	6						
23	90267401200	NUT	6						
24	90302041201	WASHER,SPRING	6		12				
27	31790670100	SUPPORT	1						
50	36400910000	POWER TAKE OFF	1						
100	31791950000	POWER TAKE OFF	1						

TM-ZX300 41044701383A FRAME

Pos No.	Parts No	Parts Name	Qty	Unit	Technical Data	Serial No (Start)	Serial No (End)	Remarks	Pages
1	36401365010	CASE	1						
2	36401355010	GEAR	1						
3	36401355020	SHAFT	1						
4	36400095040	SHAFT	1						
5	36400095050	COLLAR	1						
6	36401355030	GEAR	1						
7	36400095070	COVER (BEARING)	1						
8	36400095080	PACKING (COVER)	1						
9	36400095090	SHIM	1						
10	36400095100	SHIFTER ASSY	1						
11	36400095110	PACKING	1						
12	80500006206	BEARING,BALL	2						
13	36400095120	BEARING	2						
14	80602110520	RING,RITAINING	2		R52				
15	91206030005	SEAL,OIL	1						
16	90101206012	BOLT	1		M6X12				
17	36400095130	WASHER	1						
18	90191208020	BOLT	4		M8X20				
19	90191208014	BOLT	3		M8X14				
20	90302040801	WASHER,SPRING	7		8				
21	36400345010	SPACER	1						
22	36400335030	SHIM	1						
23	90191210035	BOLT	4		M10X35				
24	36401355040	BOLT	4						
25	90267201000	NUT	4		M10				
26	90302041001	WASHER,SPRING	8		10				
28	31790680100	SUPPORT	1						
29	90191208025	BOLT	2		M8X25				
50	36401350000	POWER TAKE OFF	1						
100	31790930000	POWER TAKE OFF	1						

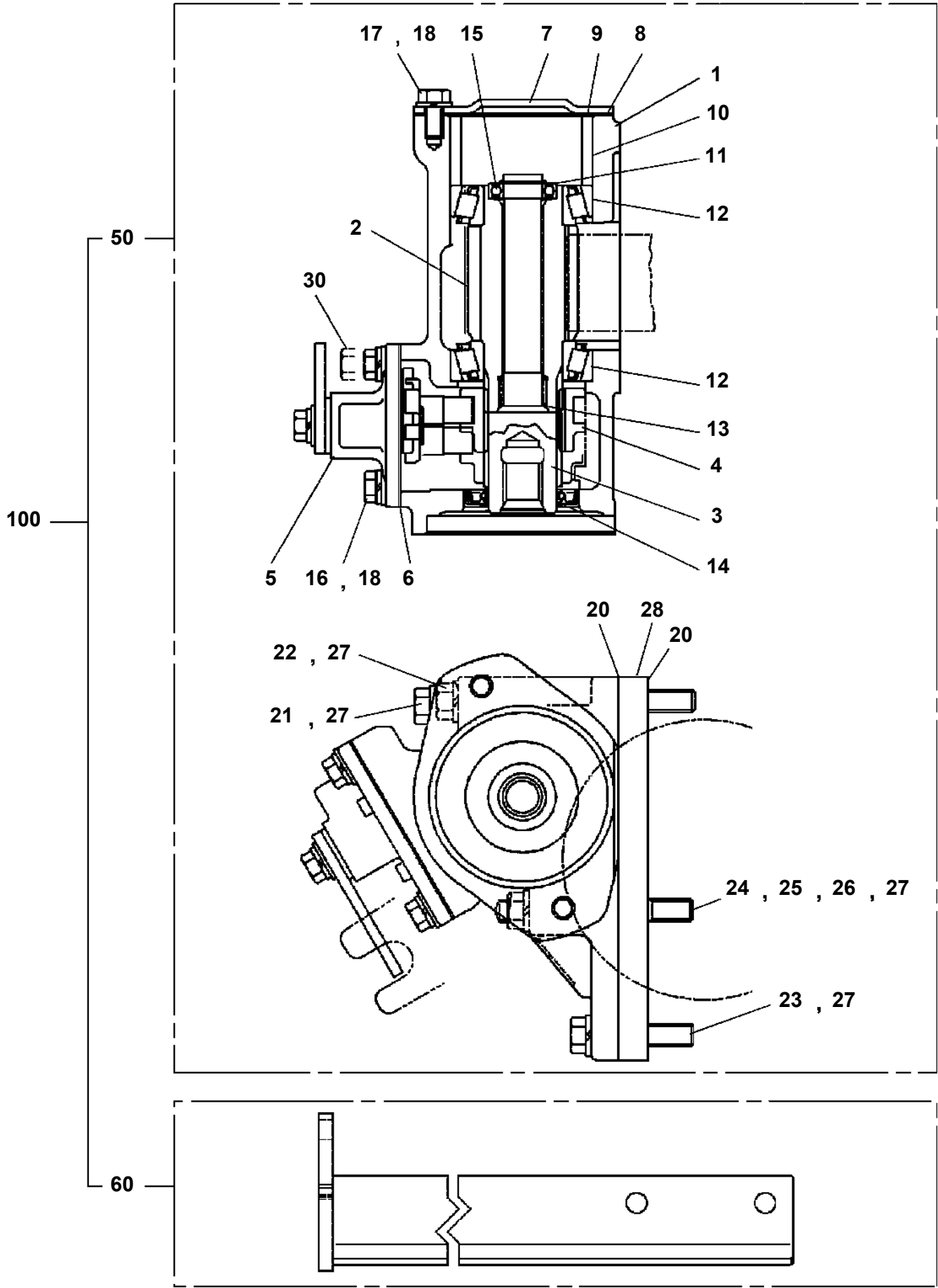
TM-ZX300 41044701383A FRAME

Pos No.	Parts No	Parts Name	Qty	Unit	Technical Data	Serial No (Start)	Serial No (End)	Remarks	Page
1	36400895010	CASE	1						
2	36401115010	GEAR	1						
3	36400895030	SHAFT	1						
4	36401115020	GEAR	1						
5	36400415050	SHAFT	1						
6	36400415060	COLLAR	1						
7	36400215070	COLLAR	2						
8	36400225110	SHIFTER SET	1						
9	36400095110	PACKING	1						
10	36400095070	COVER (BEARING)	1						
11	36400095080	PACKING (COVER)	1						
12	36400095090	SHIM	N						
13	80500006206	BEARING,BALL	2						
14	36400415090	BEARING,NEEDLE	2						
15	91206030005	SEAL,OIL	1						
16	91001102100	O-RING	1		1A P21				
17	90710006120	SCREW,SET	1		M6X12				
18	90191208014	BOLT	3		M8X14				
19	90191208020	BOLT	4		M8X20				
20	90302040801	WASHER,SPRING	7		8				
23	36400415100	PACKING (CASE)	1						
24	90191210030	BOLT	6		M10X30				
25	36400095150	BOLT,STUD	2		M10X1.25/1.5X43				
26	90267201000	NUT	2		M10				
27	90302041001	WASHER,SPRING	8		10				
28	31790720100	SUPPORT	1						
29	90191208025	BOLT	2		M8X25				
49	36400225160	SEAL,OIL	1						
50	36401500000	POWER TAKE OFF	1						
100	31791020000	POWER TAKE OFF	1						

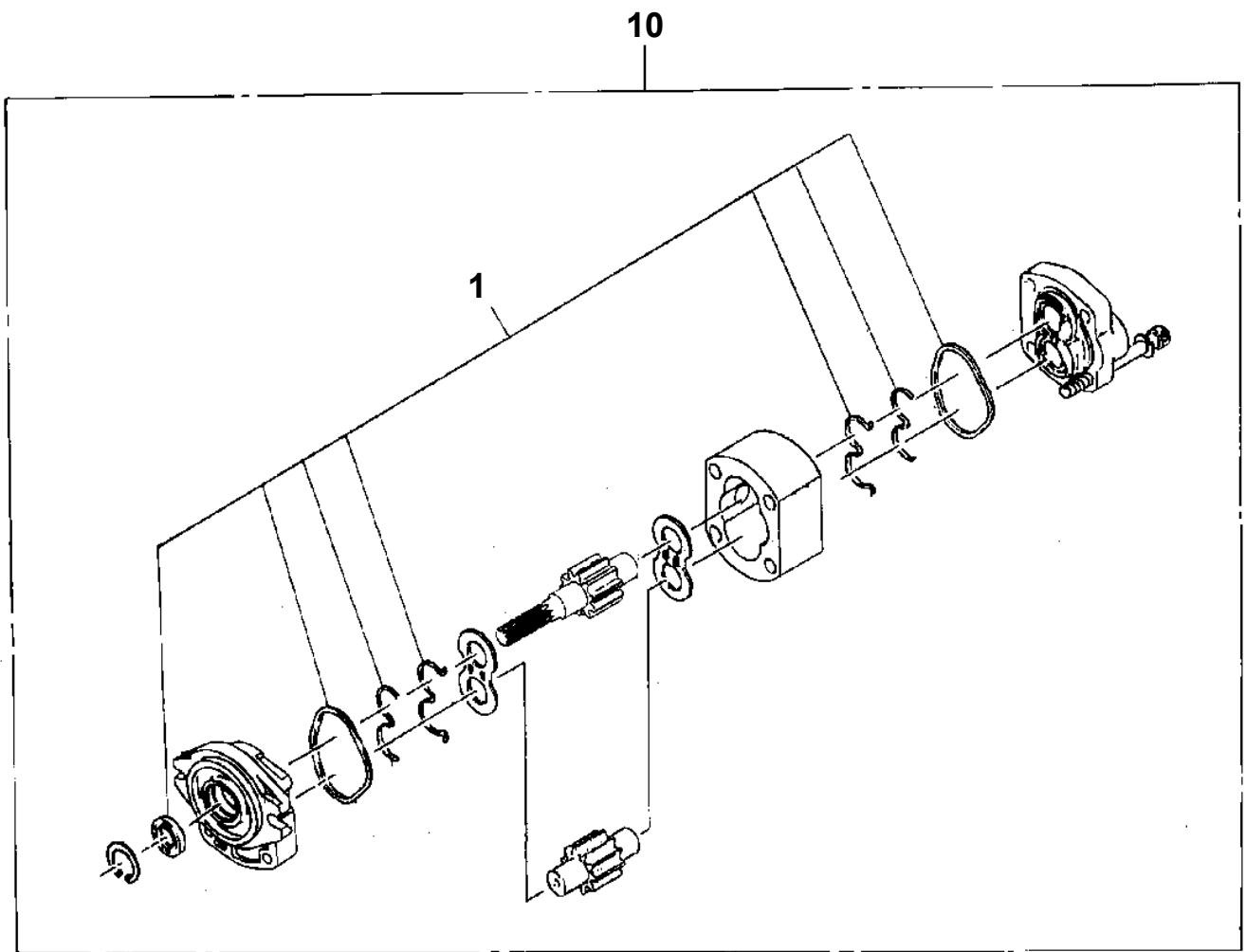
TM-ZX300 41044701383A FRAME

Pos No.	Parts No	Parts Name	Qty	Unit	Technical Data	Serial No (Start)	Serial No (End)	Remarks	Page
10	36401840001	POWER TAKE OFF	1						00003
20	31791140100	SUPPORT	1						
100	31791140000	POWER TAKE OFF	1						

TM-ZX300 41044701383A FRAME
PB1030235-01 POWER TAKE OFF

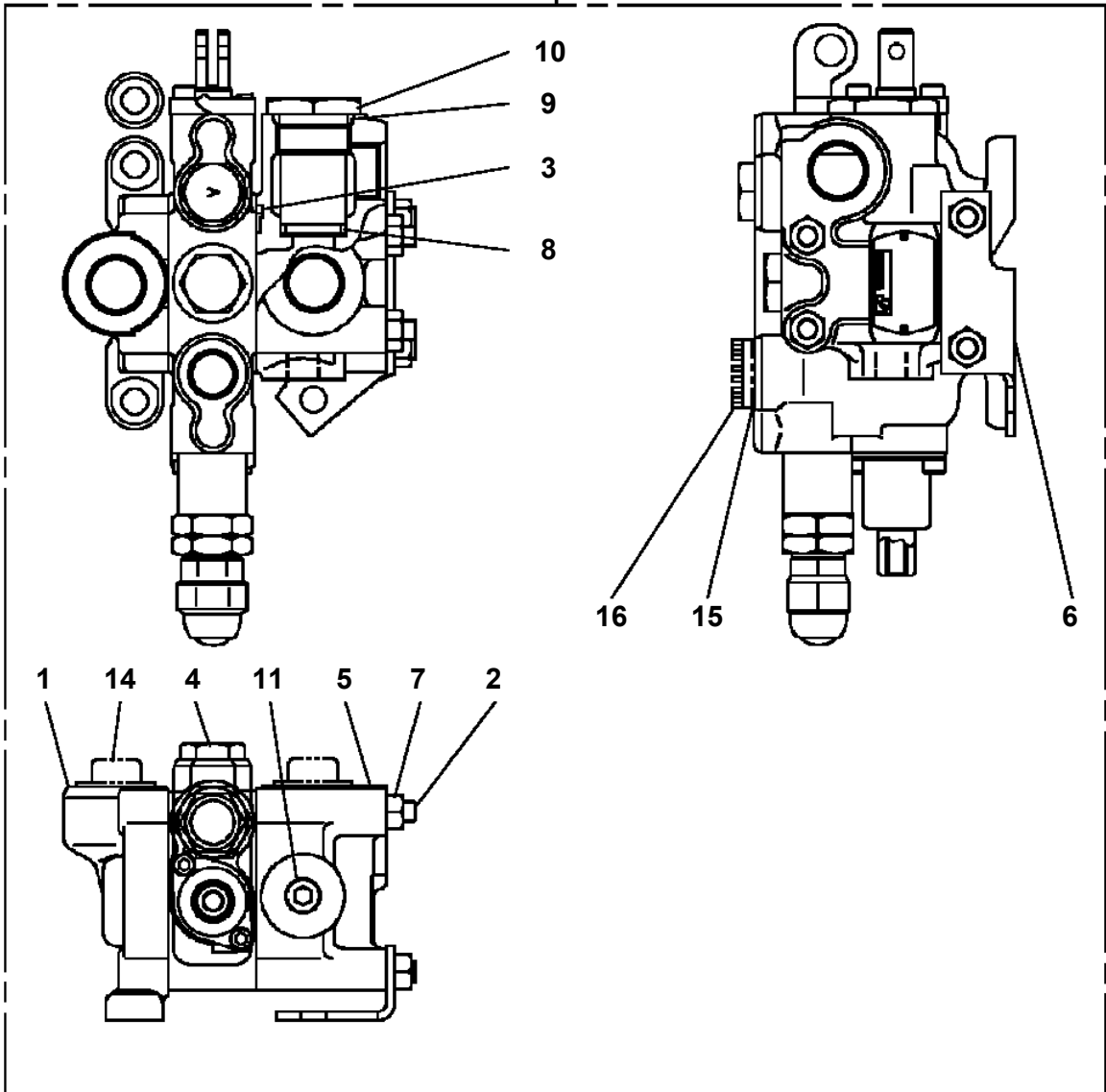


TM-ZX300 41044701383A FRAME
PB1100162-00 PUMP, HYDRAULIC (SGP2-36)

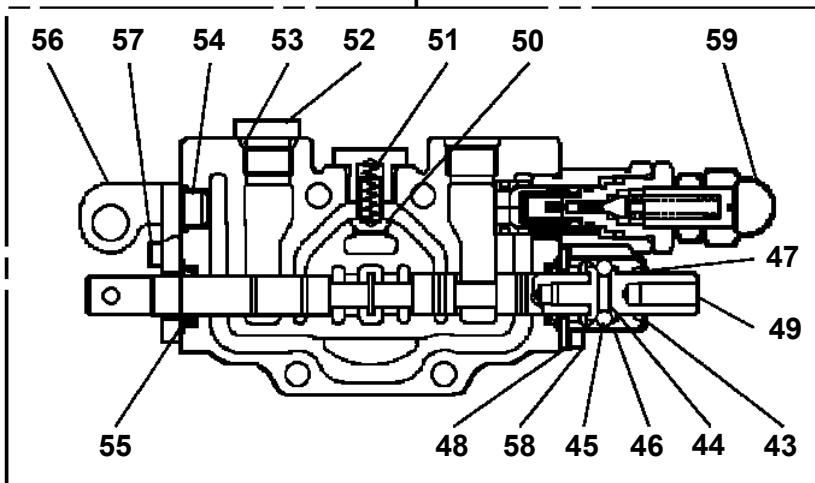


**TM-ZX300 41044701383A FRAME
PB1320631-00 VALVE,MANUAL CONTROL**

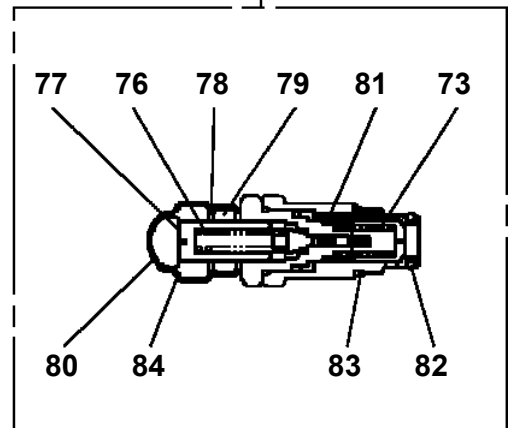
100



4



59



TM-ZX300 41044701383A FRAME

Pos No.	Parts No	Parts Name	Qty	Unit	Technical Data	Serial No (Start)	Serial No (End)
1	(*****)	POWER TAKE OFF ASSY (SELECTION)	1				
2	(*****)	PUMP ASSY (SELECTION)	1				

TM-ZX300 41044701383A FRAME

Pos No.	Parts No	Parts Name	Qty	Unit	Technical Data	Serial No (Start)	Serial No (End)	Remarks	F
1	31624981000	CASE,OUTER	1						
2	31624982000	CASE,INNER	1						
3	31624983000	CASE,INNER	1						
4	31622004000	SUPPORT (LEFT)	1						
5	31622005000	SUPPORT (RIGHT)	1						
6	31621510100	SUPPORT	2						
8	31622000100	SUPPORT	4						
9	90186208014	BOLT,FLANGE	8		M8X14				
10	90186208010	BOLT,FLANGE	12		M8X10				
11	82456101000	NIPPLE,GREASE	2		A-PT1/8				
12	31622000200	COVER	2						
13	90203201600	NUT	2		M16				
15	90142714025	BOLT,STUD	8						
16	90302041401	WASHER,SPRING	8		14				
17	90201481400	NUT	8		M14				
18	82458102000	NIPPLE,GREASE	2		B-PT1/8				
19	80601110150	RING,RITAINING	4		15				
20	31620582020	BEARING,BALL (KOYO)	6						
21	37000134180	PIN	2						
22	82400000459	CAP	4						
23	37003100030	GRIP	2						
24	37000309980	SPACER	2		L=60				
25	37000161010	PIN	2						
26	31621962100	SUPPORT	4						
27	31621962200	PLATE	12		T=0.5				
28	31621340200	PIN	2						
29	37001200720	SPRING	2						
34	90720716450	SCREW,SET	2		M16X45				
42	31620580100	PIN ASSY	2						
53	31623679510	SUPPORT ASSY	2						

TM-ZX300 41044701383A FRAME

Pos No.	Parts No	Parts Name	Qty	Unit	Technical Data	Serial No (Start)	Serial No (End)	Remarks	Pages
1	31732450100	HARNESS	1						000155

TM-ZX300 41044701383A FRAME

Pos No.	Parts No	Parts Name	Qty	Unit	Technical Data	Serial No (Start)	Serial No (End)
1	82456101000	NIPPLE,GREASE	2		A-PT1/8		
2	37000403580	BEARING,PLAIN (DAIDO METAL)	4				
3	36027691000	PISTON	1				
4	91350213500	BEARING,PLAIN (WITH PACKINGX2)	1				
5	91002808500	O-RING	1		1B P85		
6	36029029511	CYLINDER ASSY	1				
7	36025869520	ROD ASSY	1				
8	37000403700	BEARING,PLAIN	1				
9	91002812500	O-RING	1		1B P125		
10	36027699520	COVER,ROD	1				
11	91694009000	PACKING	1				
12	91410209000	RING,BACKUP	1				
13	91660009000	SEAL,DUST	1				
14	80622000900	RING,RITAINING	1		SP90		
15	80612110980	RING,RITAINING	1		AR98		
16	80316100010	PLUG	1		GPF1/8		
17	91002800800	O-RING	1		1B P8		
18	37000926070	ORIFICE	1		M8,0.6		
80	36027699900	PACKING SET	1		90X135		
100	36029020001	CYLINDER ASSY,DERRICK	1				

TM-ZX300 41044701383A FRAME

Pos No.	Parts No	Parts Name	Qty	Unit	Technical Data	Serial No (Start)	Serial No (End)	Remarks
13	91002801100	O-RING	1		1B P11			
100	36150100000	DETECTOR ASSY,MOMENT	1					

TM-ZX300 41044701383A FRAME

Pos No.	Parts No	Parts Name	Qty	Unit	Technical Data	Serial No (Start)	Serial No (End)	Remarks	Page
1	91810130250	FASTENER	4						
2	31658780500	SWITCH (S/W 2PC'S)	1						0003

TM-ZX300 41044701383A FRAME

Pos No.	Parts No	Parts Name	Qty	Unit	Technical Data	Serial No (Start)	Serial No
1	31351381102	HARNESS	1				
2	36120740000	TRANSMITTER ASSY,SIGNAL (ASSY ONLY)	1				
3	91810130250	FASTENER	14				
4	82108501340	SWITCH	1				
5	90186206010	BOLT,FLANGE	9		M6X10		
7	91850700101	CLAMP	9		L=208		
21	31659171100	COVER	2				
22	37002227560	PLATE,NAME (BLACK)	8		D=16		

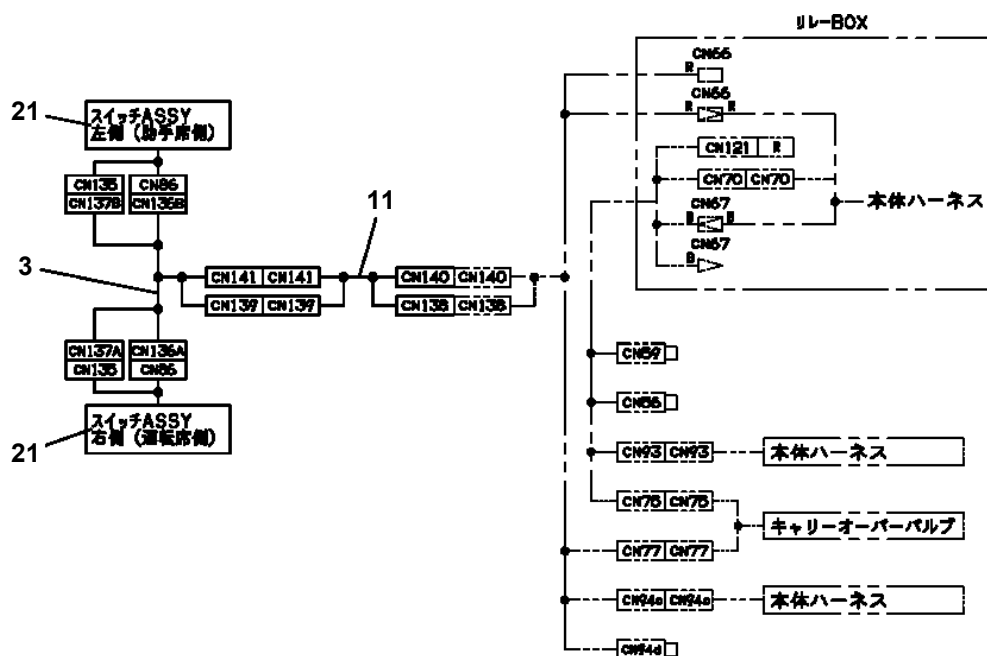
TM-ZX300 41044701383A FRAME

Pos No.	Parts No	Parts Name	Qty	Unit	Technical Data	Serial No (Start)	Serial No (End)	Remarks
1	31506151100	HARNESS	1					
2	34354781710	RELAY (WITH BRACKET)	2					
3	90280200600	NUT,FLANGE	2		M6			
4	80197586012	SCREW,MACHINE	2		M6X12			
5	91810130250	FASTENER	6					

TM-ZX300 41044701383A FRAME

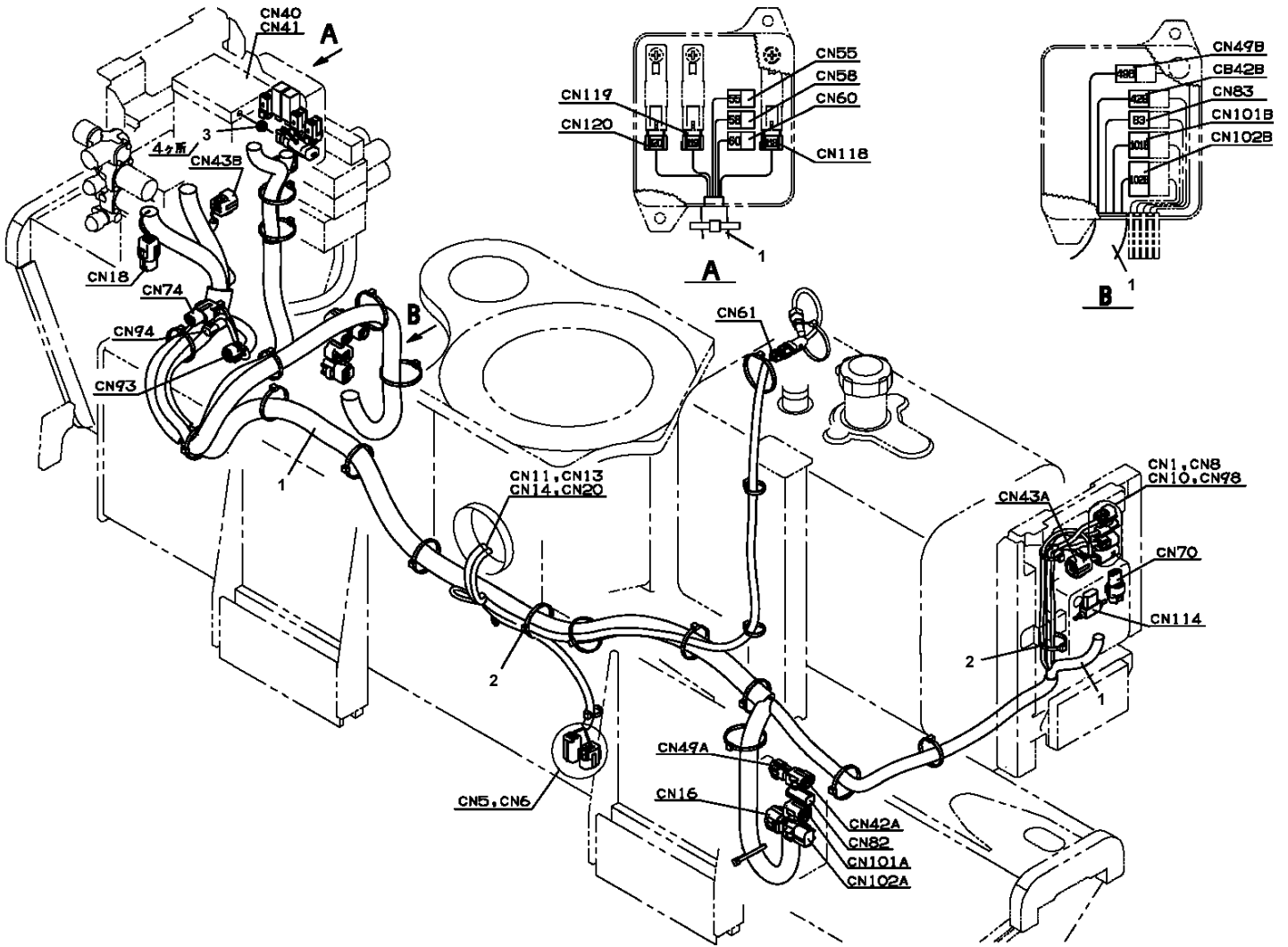
Pos No.	Parts No	Parts Name	Qty	Unit	Technical Data	Serial No (Start)	Serial No (End)	Remarks	Pages
1	31361312100	HARNESS	1						000134

TM-ZX300 41044701383A FRAME
 PE5021343-00 ELEC.ASSY (R/J)

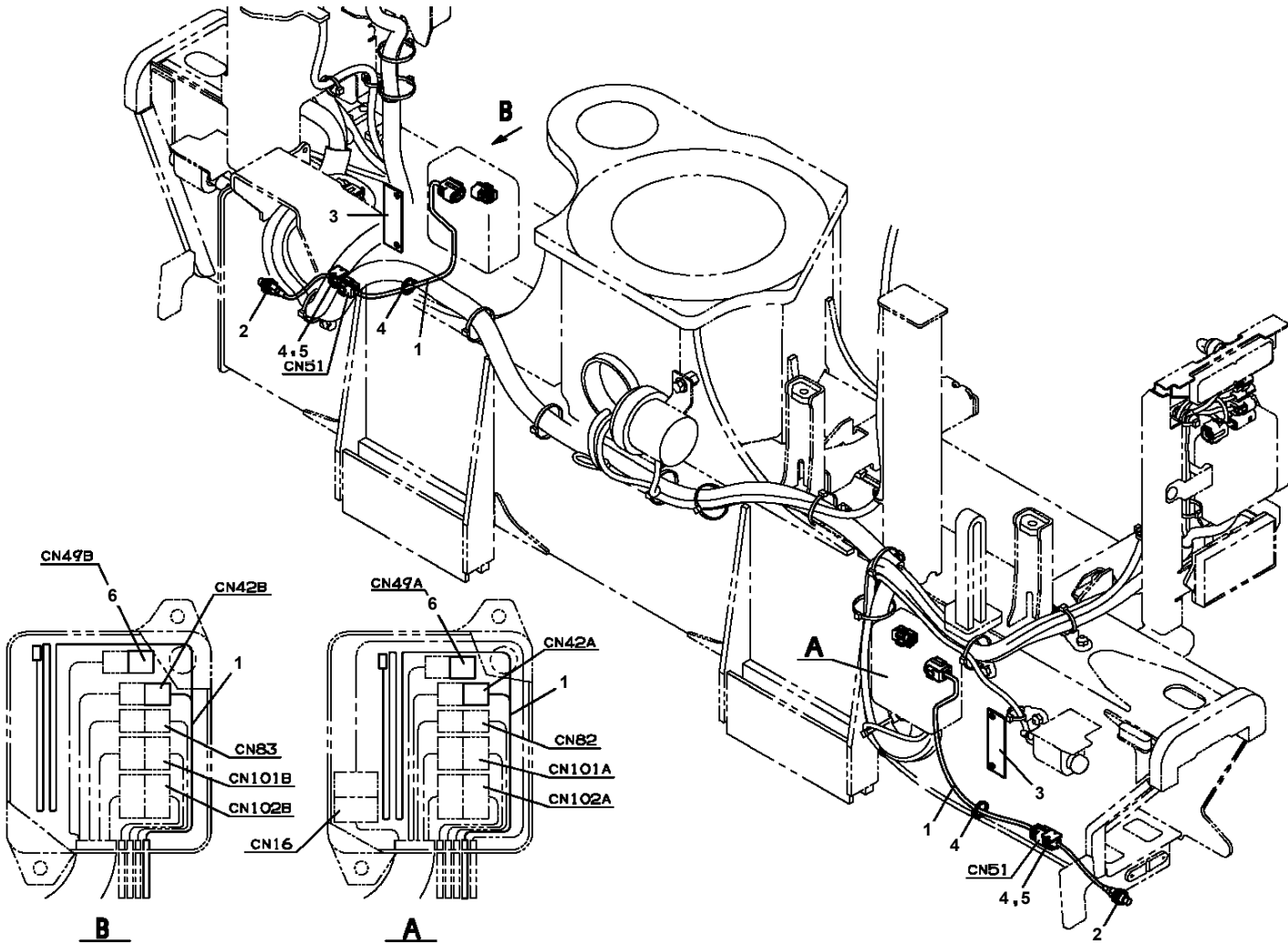


ハーネス経路

TM-ZX300 41044701383A FRAME
PE5021353-00 ELEC.ASSY

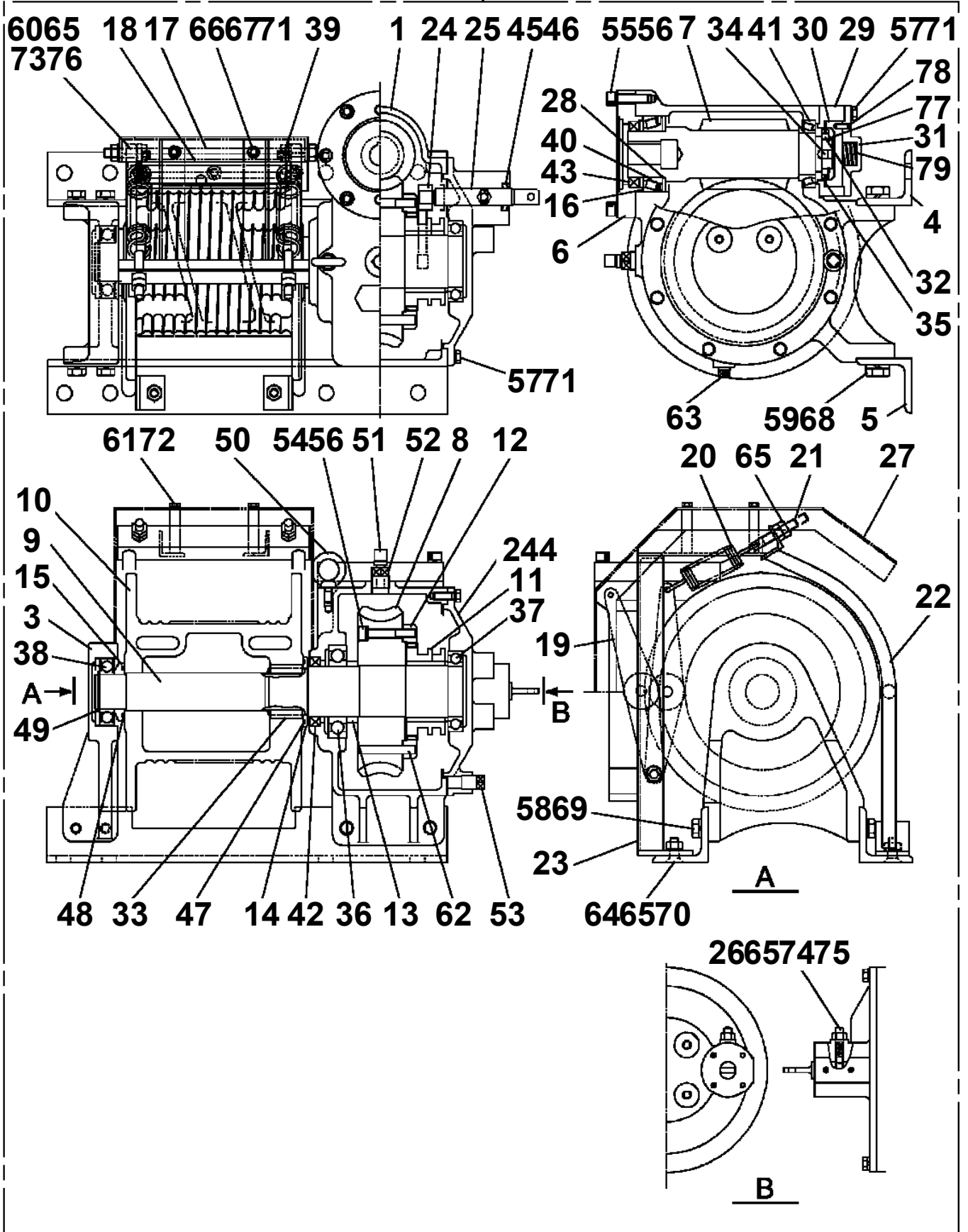


**TM-ZX300 41044701383A FRAME
PE5021393-00 ELEC.ASSY**



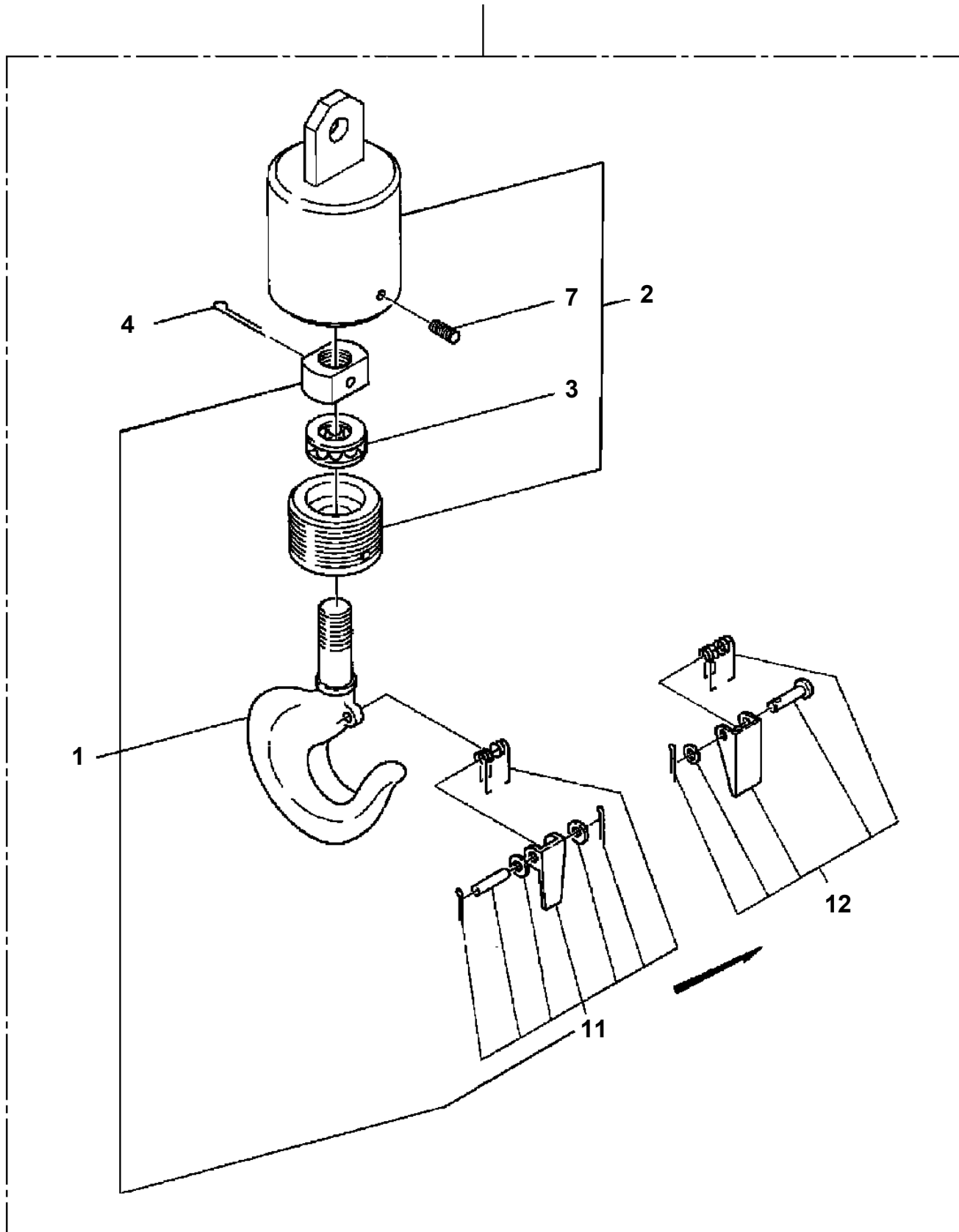
TM-ZX300 41044701383A FRAME
PF1010207-00 WINCH (HARTYS)

100

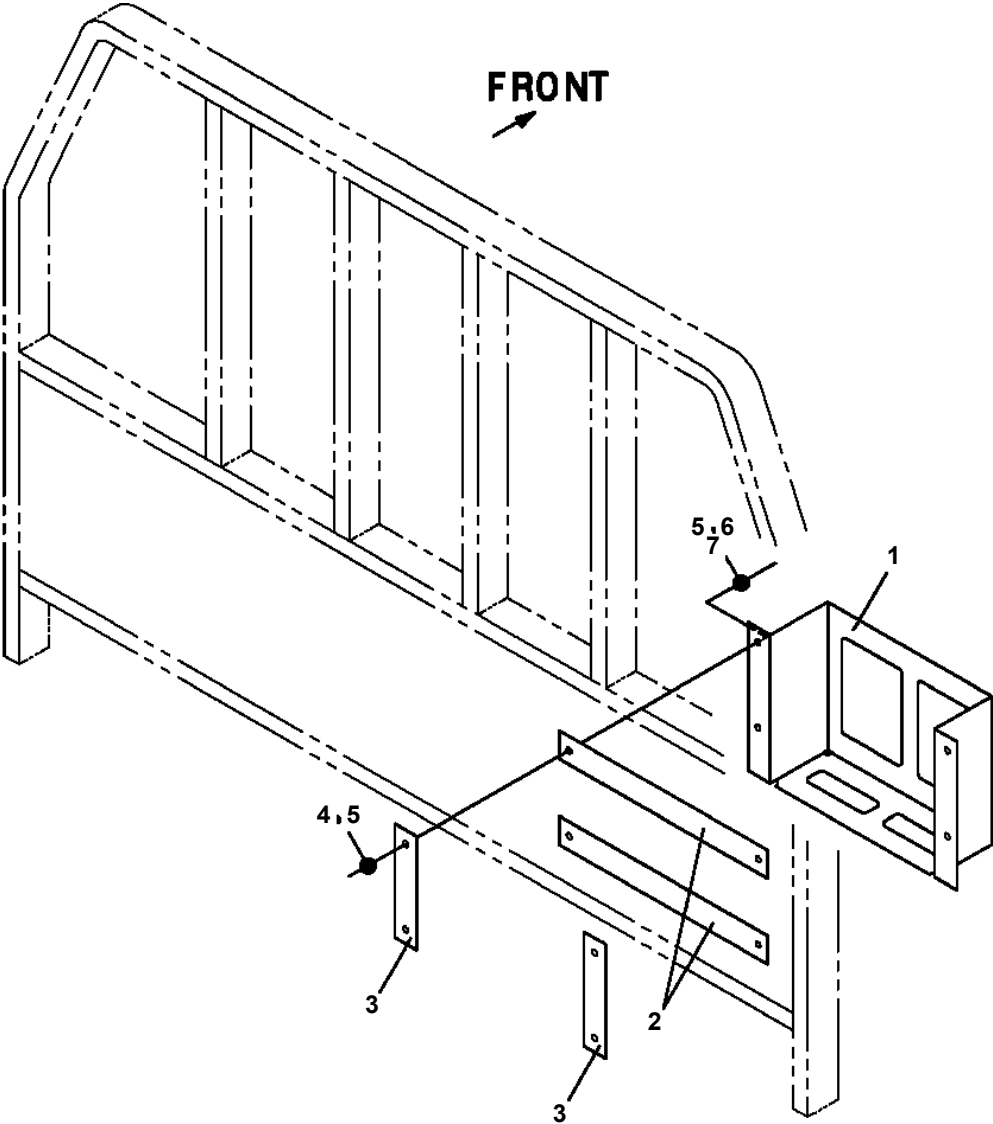


TM-ZX300 41044701383A FRAME
PF1050161-03 HOOK (1-PART LINE ,OPTION)

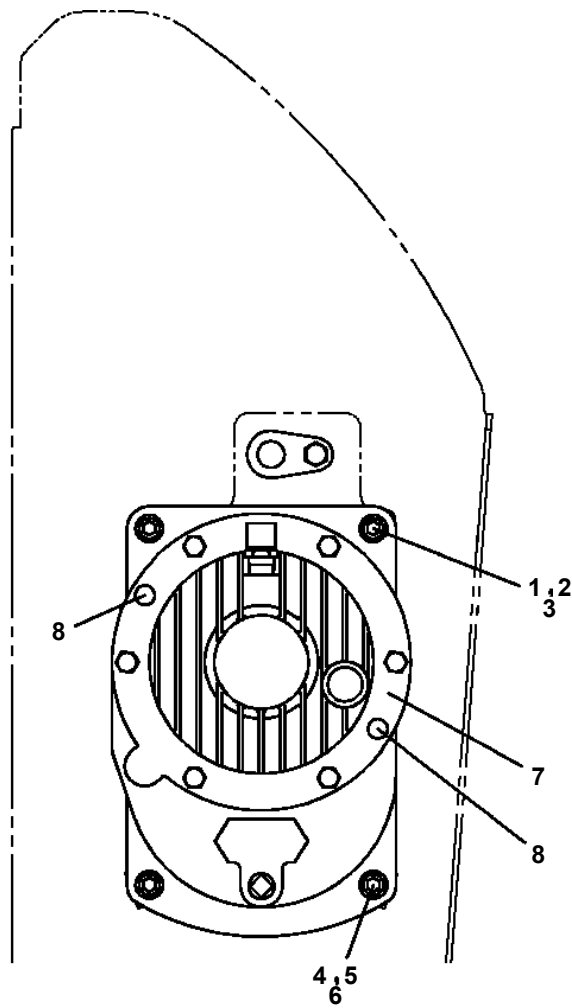
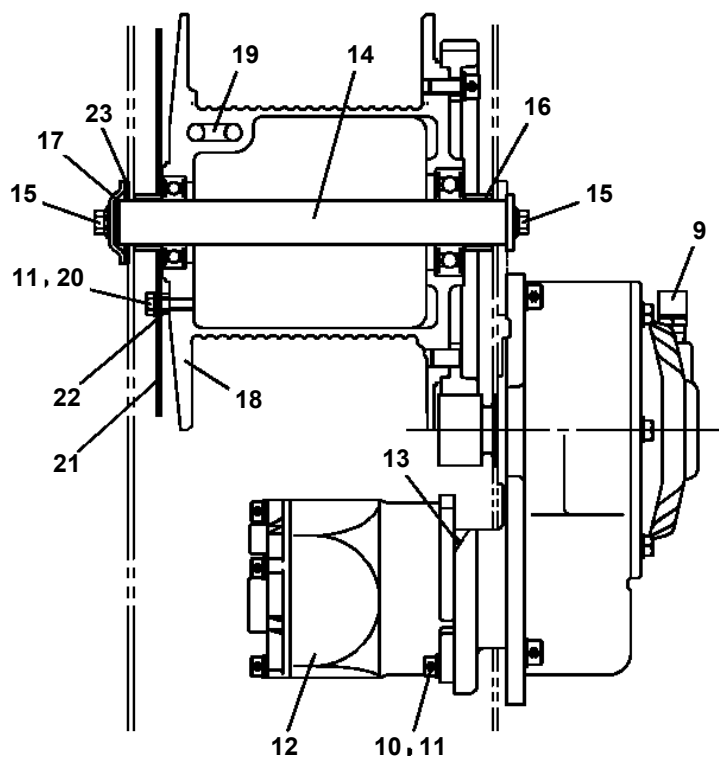
20



TM-ZX300 41044701383A FRAME
PF1080287-00 SUPPORT



TM-ZX300 41044701383A FRAME
PF1400437-00 MOUNT,WINCH



TM-ZX300 41044701383A FRAME
PG5240017-00 GUIDE ASSY (RETAINING WIRE ROPE)

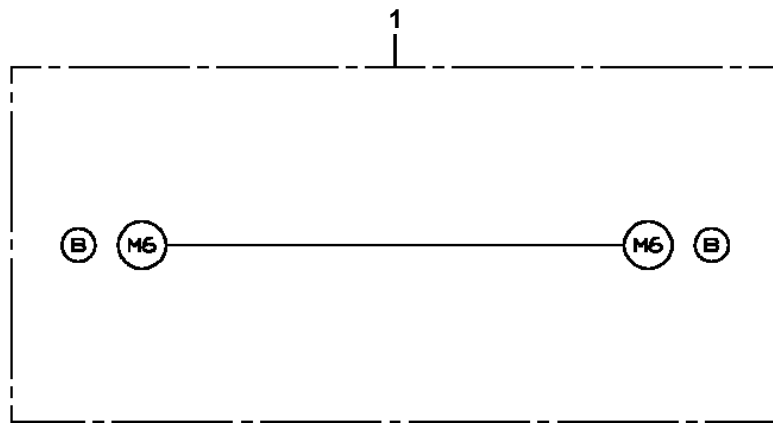
ガイド ASSY (タツサクホウシ)
GUIDE ASSY (RETAINING WIRE ROPE)

符号	日本語名称	英語名称	備考
1	フックASSY	HOOK ASSY	0.47t
2	ネームプレートASSY	NAME PLATE ASSY	ウインチ操作の注記
3	インジケータASSY,カマキ	INDICATOR ASSY,OVERWIND	巻過防止用ウエイト位置変更
4	ガイド ASSY	GUIDE ASSY	塵埃防止

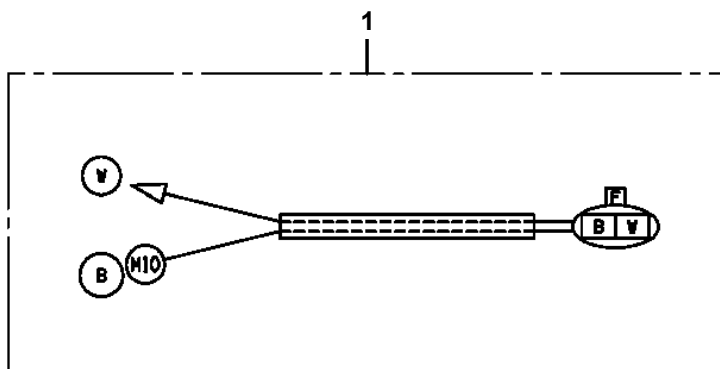
適用製造番号によっては取り付けがないものもあります。

MACHINES OF SOME SERIAL NO. ARE NOT EQUIPPED WITH THESE PARTS.

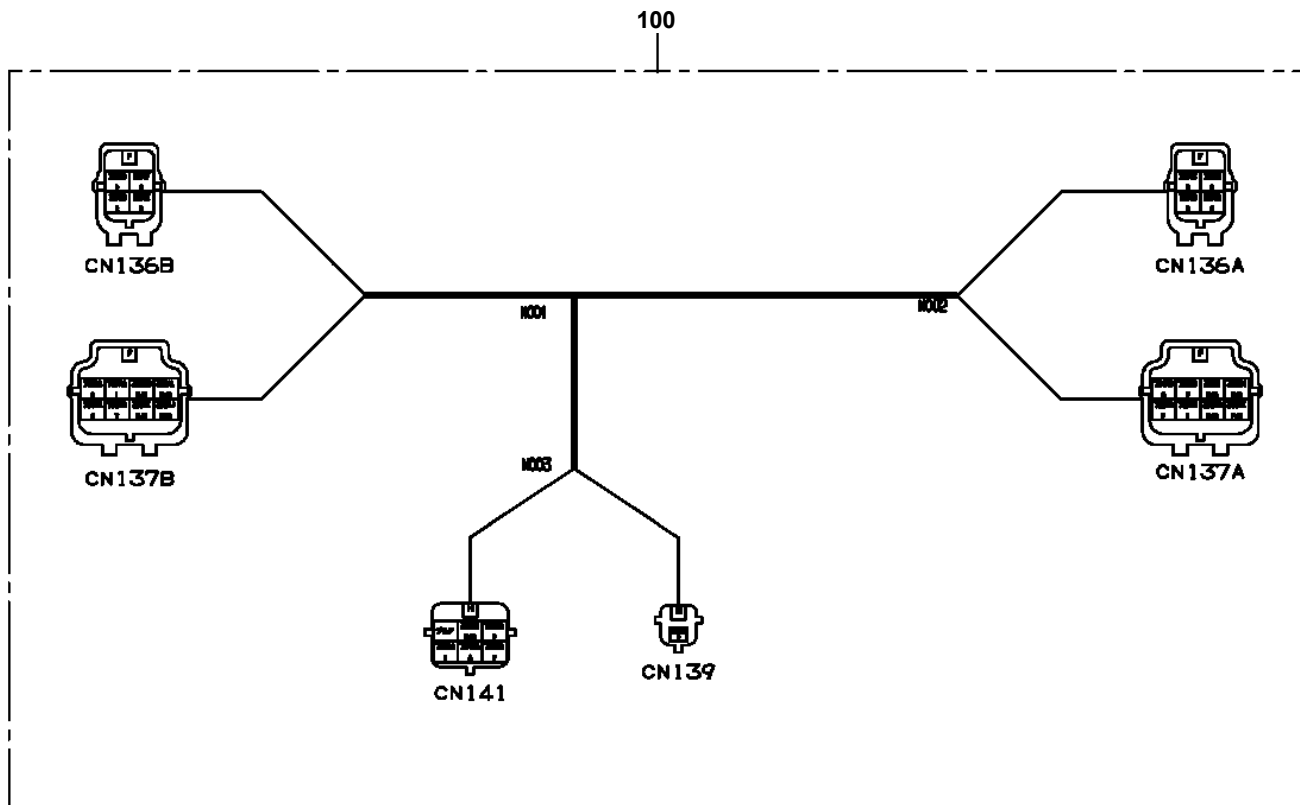
**TM-ZX300 41044701383A FRAME
PH5032072-00 HARNESS (L=50)**



TM-ZX300 41044701383A FRAME
PH5033594-00 HARNESS

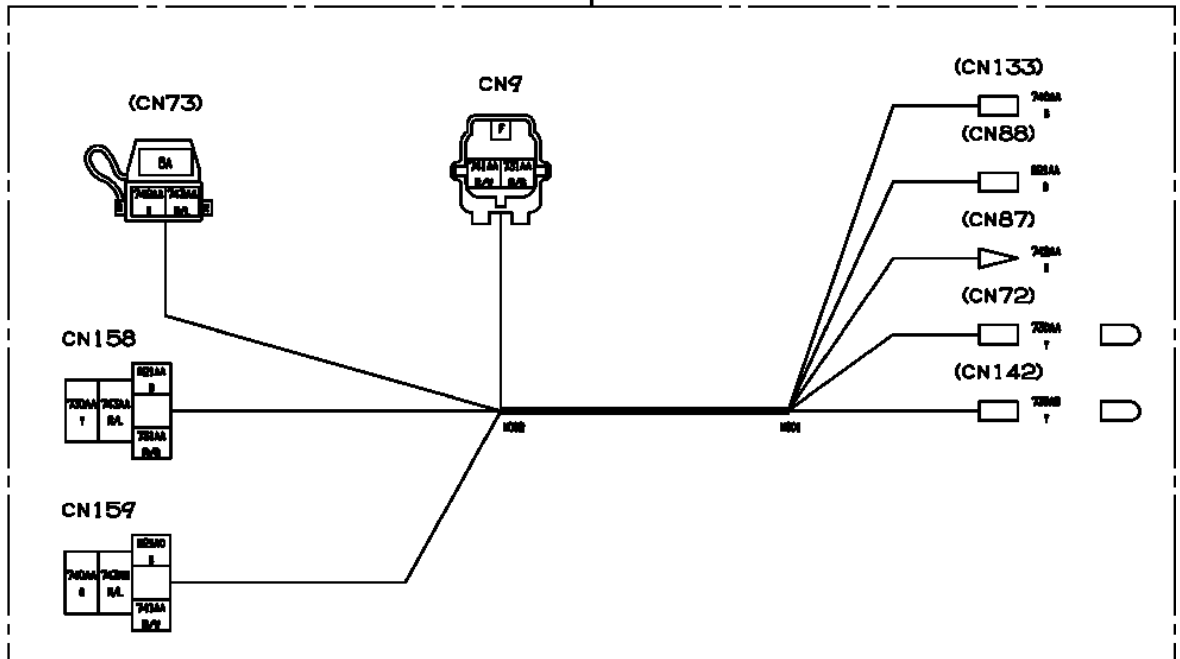


TM-ZX300 41044701383A FRAME
PH5033870-00 HARNESS



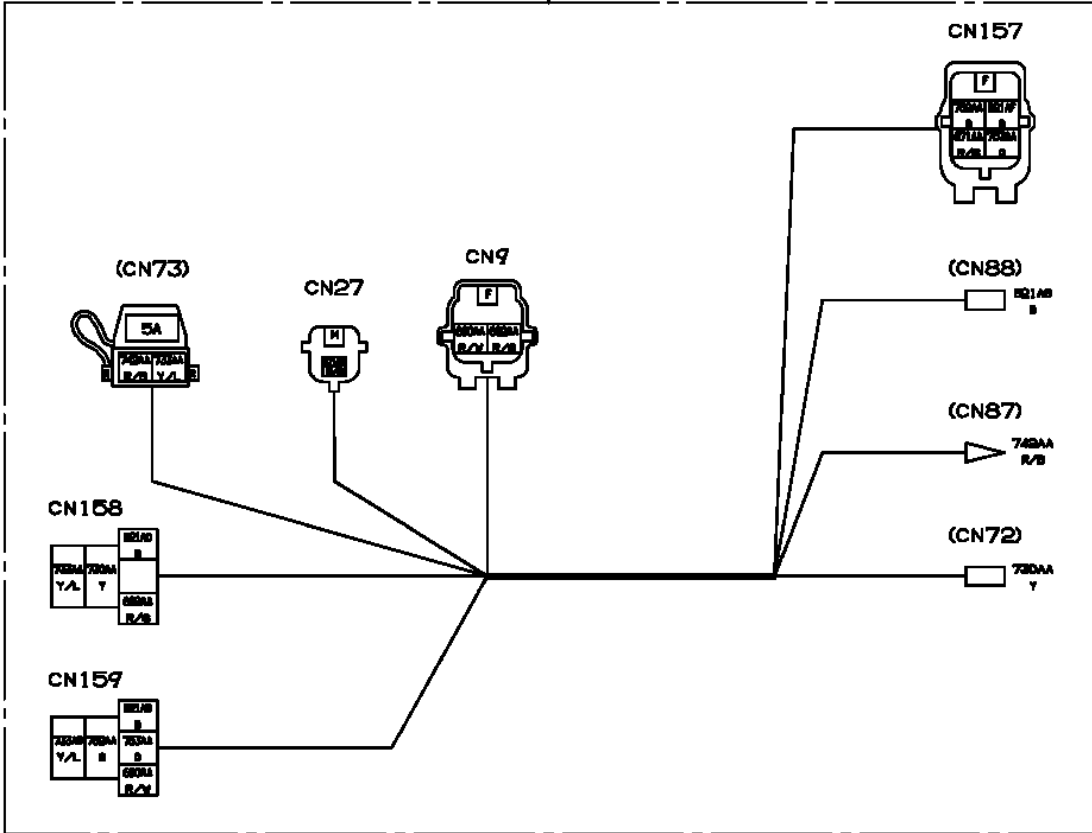
TM-ZX300 41044701383A FRAME
PH5034113-00 HARNESS

10

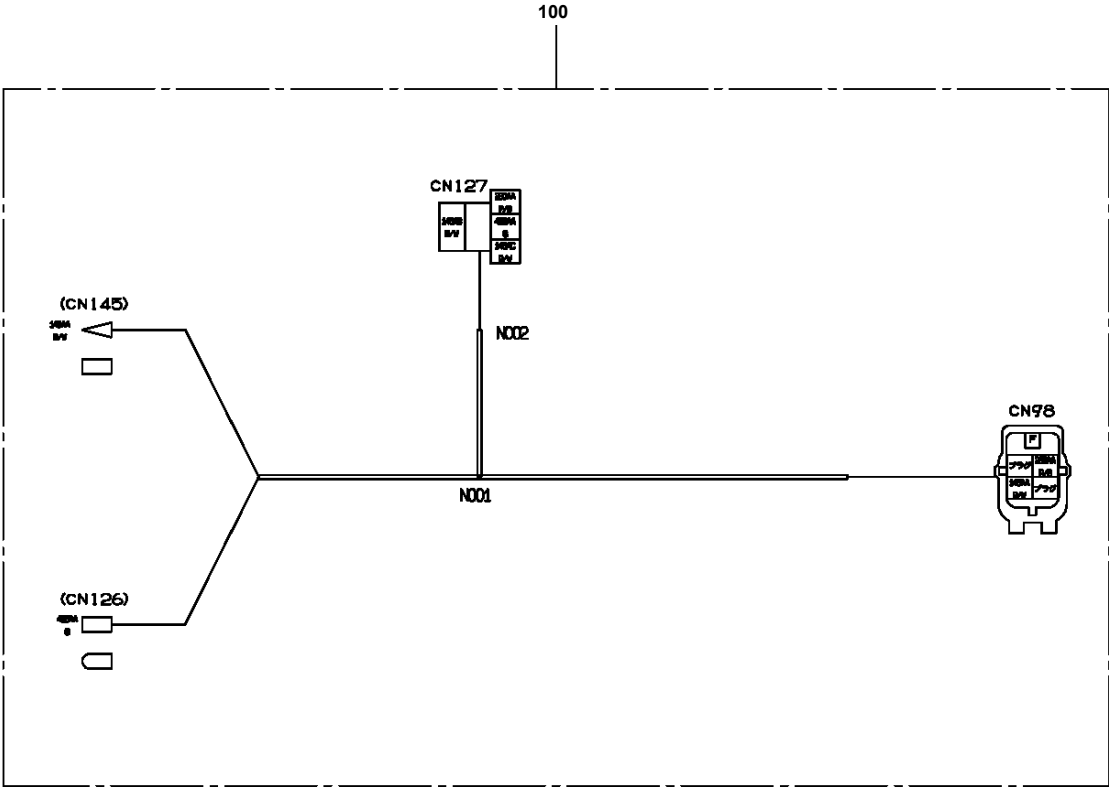


TM-ZX300 41044701383A FRAME
PH5034223-00 HARNESS

10

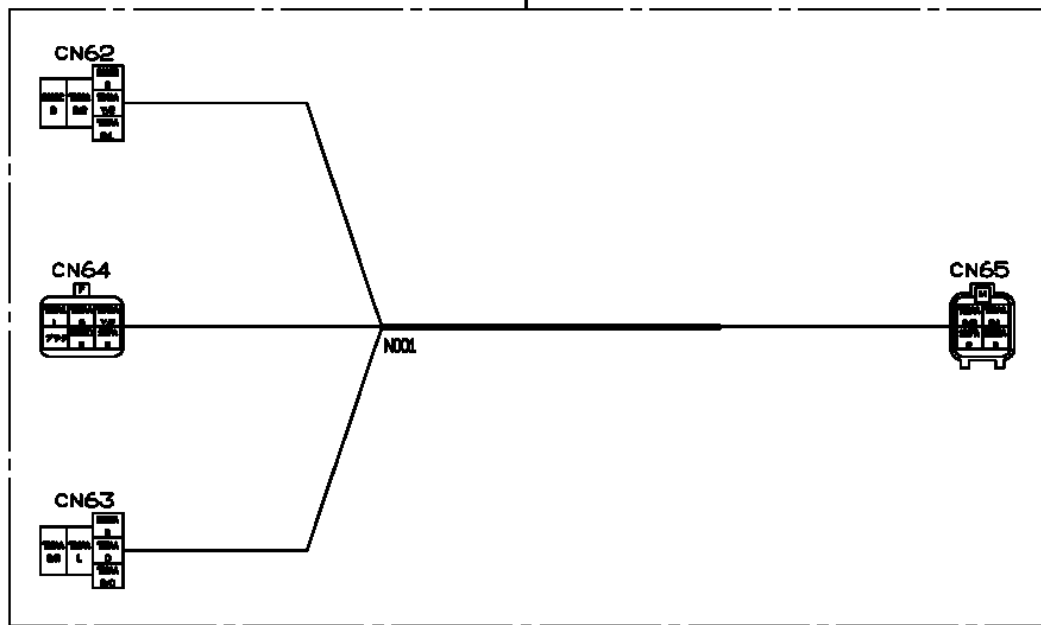


TM-ZX300 41044701383A FRAME
PH5034330-00 HARNESS

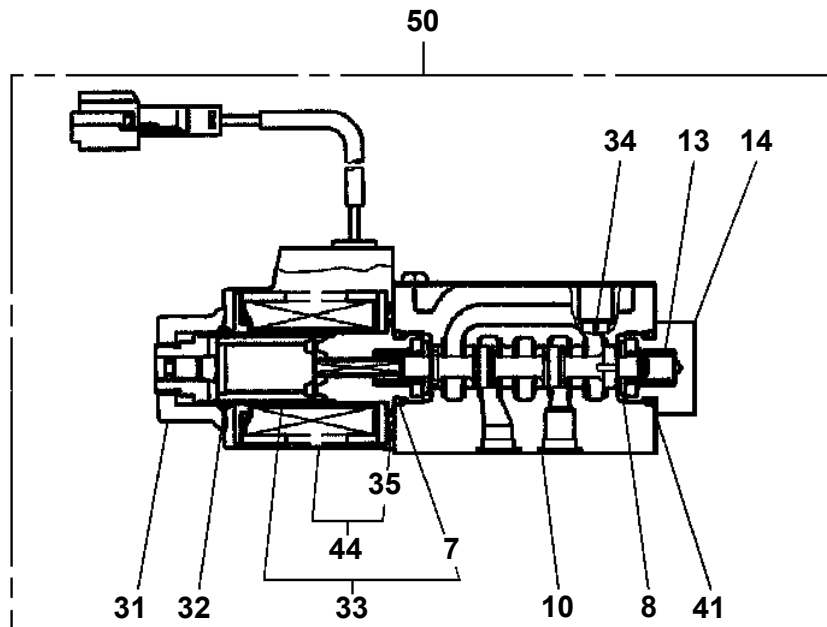
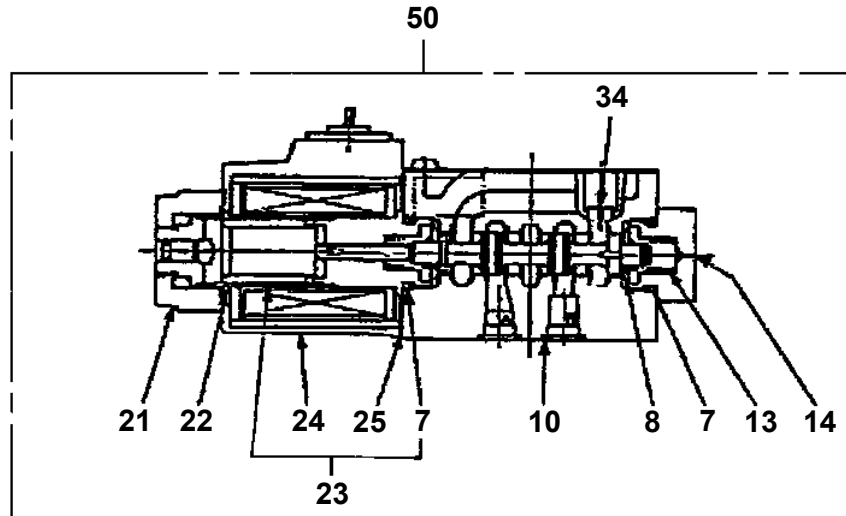
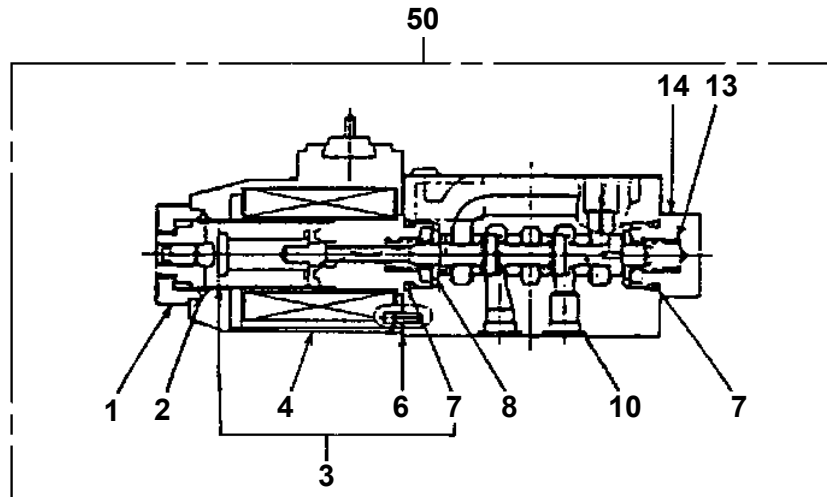


TM-ZX300 41044701383A FRAME
PH5034488-00 HARNESS

10

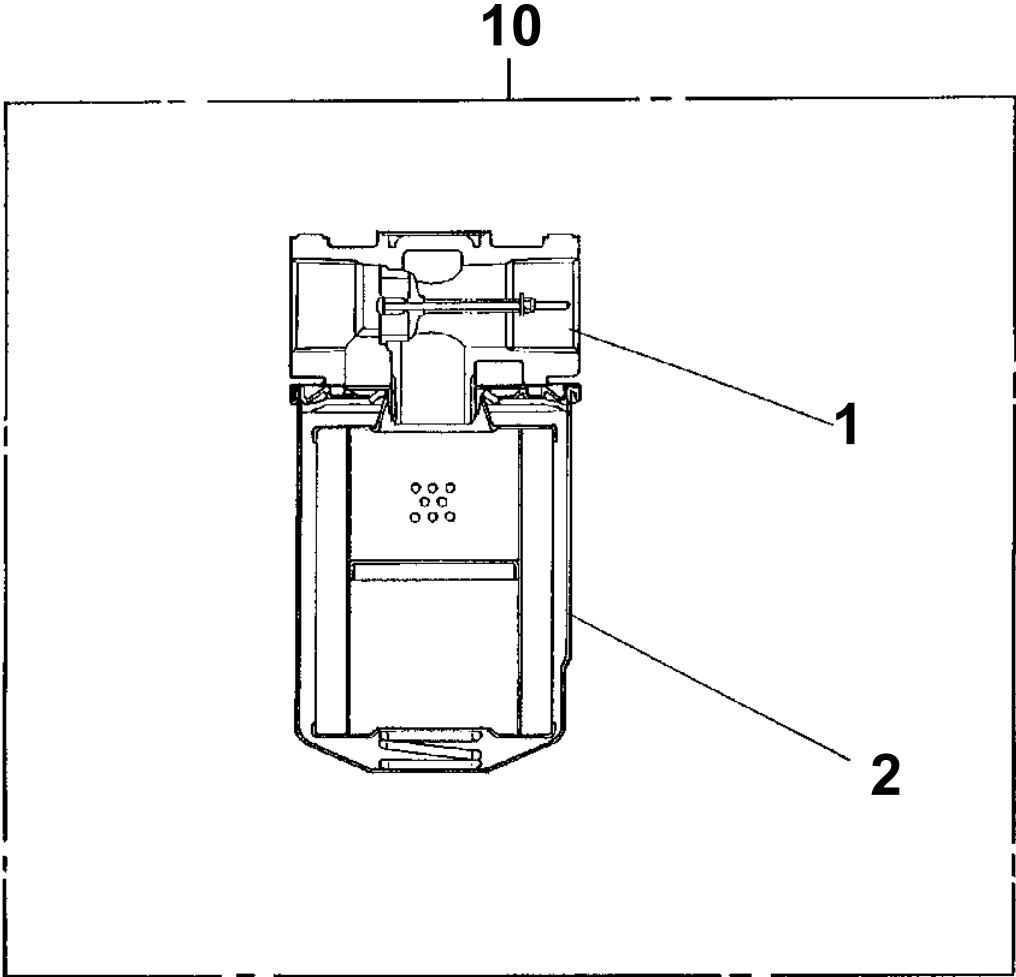


TM-ZX300 41044701383A FRAME
PI1120142-02 VALVE,SOLENOID

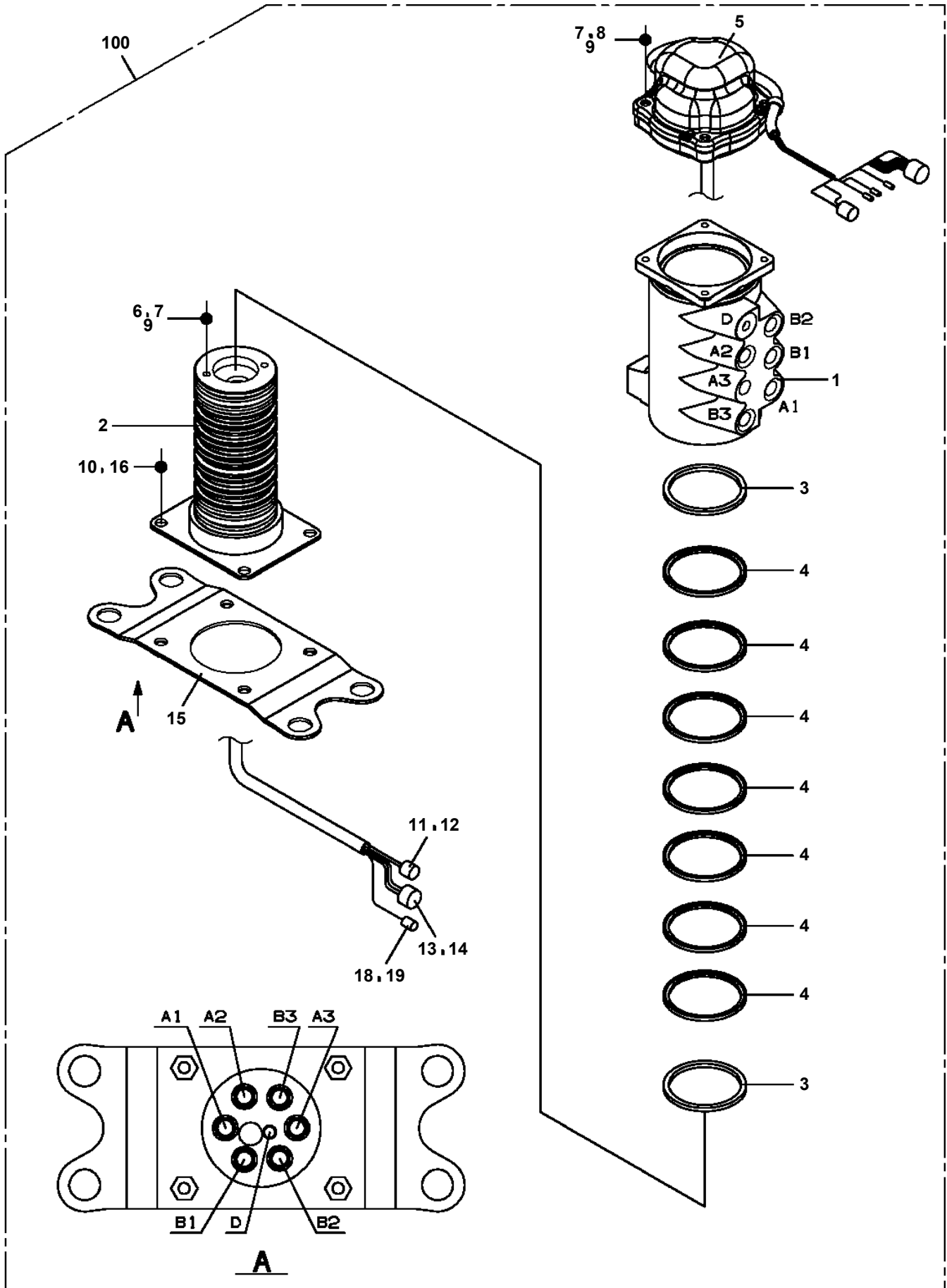


TM-ZX300 41044701383A FRAME
PI1300061-02 FILTER,OIL (YAMASHIN)

Assembly Name FILTER, OIL



TM-ZX300 41044701383A FRAME
PJ5090124-00 JOINT ASSY, SWIVEL



CLICK HERE TO **DOWNLOAD** THE COMPLETE MANUAL

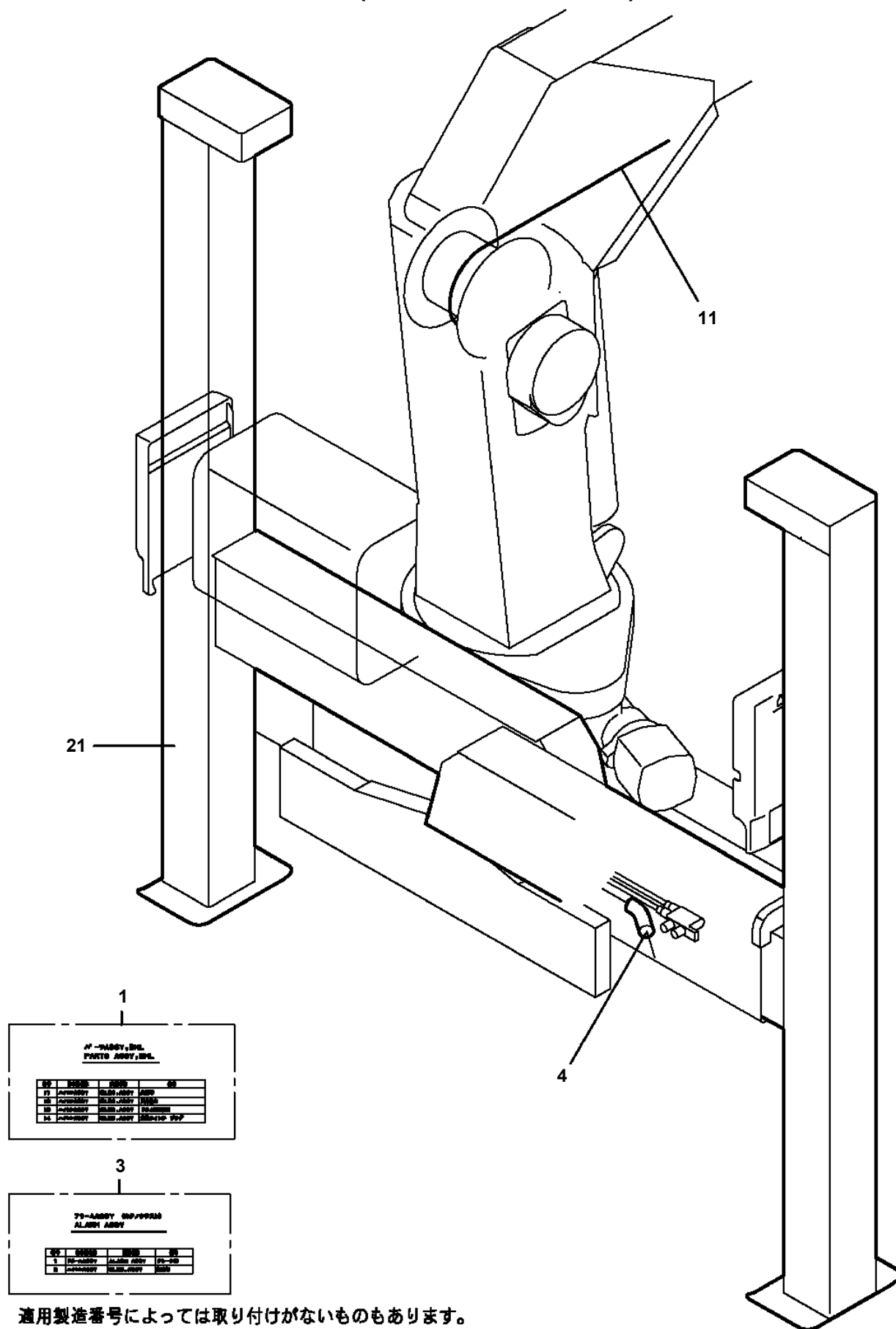
- Thank you very much for reading the preview of the manual.
- You can download the complete manual from: www.heydownloads.com by clicking the link below



- Please note: If there is no response to CLICKING the link, please download this PDF first and then click on it.

CLICK HERE TO **DOWNLOAD** THE COMPLETE MANUAL

**TM-ZX300 41044701383A FRAME
PK2002267-00 FRAME UNIT (SPEC. DISTINCTION)**



1

70-ASSEMBLY, PWRTS ASSEMBLY, ETC.			
NO	DESCRIPTION	PART NO.	QTY
1	70-ASSEMBLY, PWRTS ASSEMBLY, ETC.	41044701383A	1
2	70-ASSEMBLY, PWRTS ASSEMBLY, ETC.	41044701383A	1
3	70-ASSEMBLY, PWRTS ASSEMBLY, ETC.	41044701383A	1
4	70-ASSEMBLY, PWRTS ASSEMBLY, ETC.	41044701383A	1

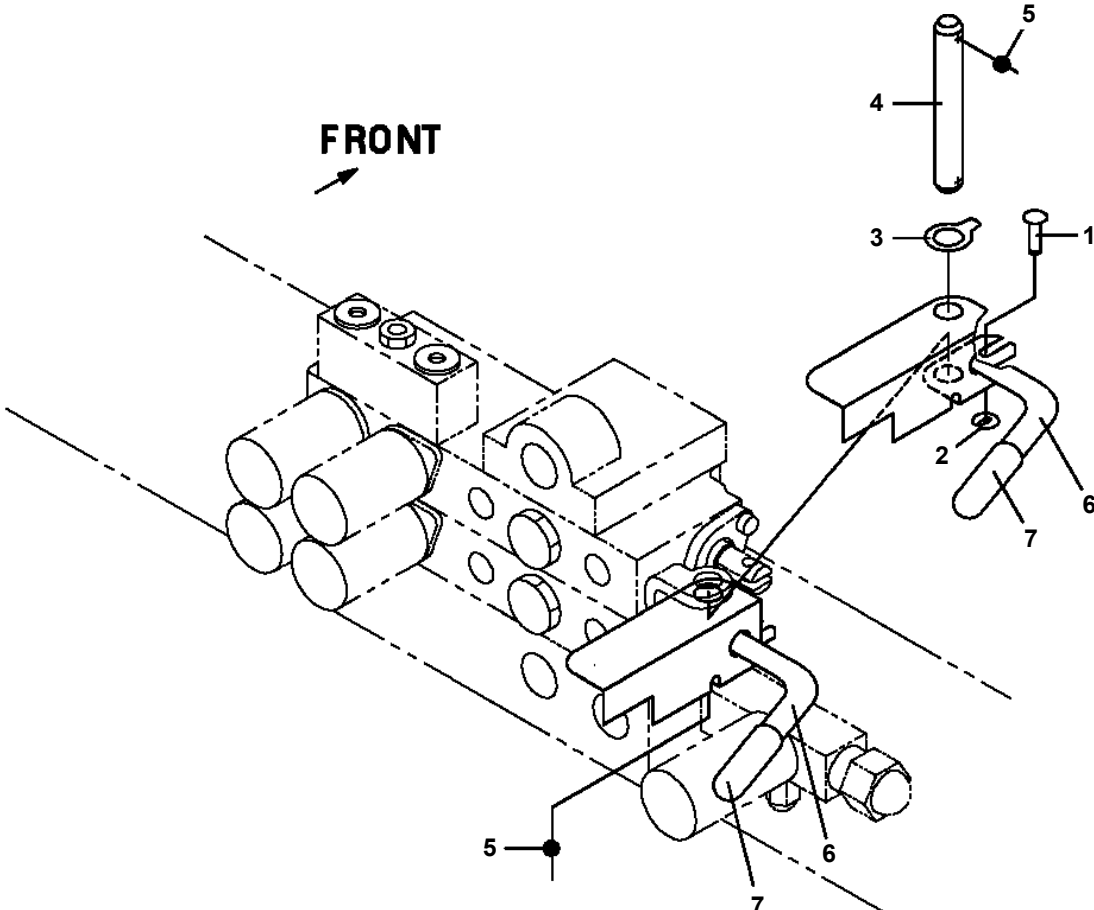
3

70-ASSEMBLY, MP/PPRSM ALARM ASSEMBLY			
NO	DESCRIPTION	PART NO.	QTY
1	70-ASSEMBLY, MP/PPRSM ALARM ASSEMBLY	41044701383A	1
2	70-ASSEMBLY, MP/PPRSM ALARM ASSEMBLY	41044701383A	1

適用製造番号によっては取り付けがないものもあります。

MACHINES OF SOME SERIAL NO. ARE NOT EQUIPPED WITH THESE PARTS.

TM-ZX300 41044701383A FRAME
PL1011157-00 OPE.ASSY,CONT.VALVE



TM-ZX300 41044701383A FRAME
PL5020226-00 LAMP ASSY (BOOM/24V-20W)

ランプ ASSY (フーム/24V-20W)
LAMP ASSY (BOOM/24V-20W)

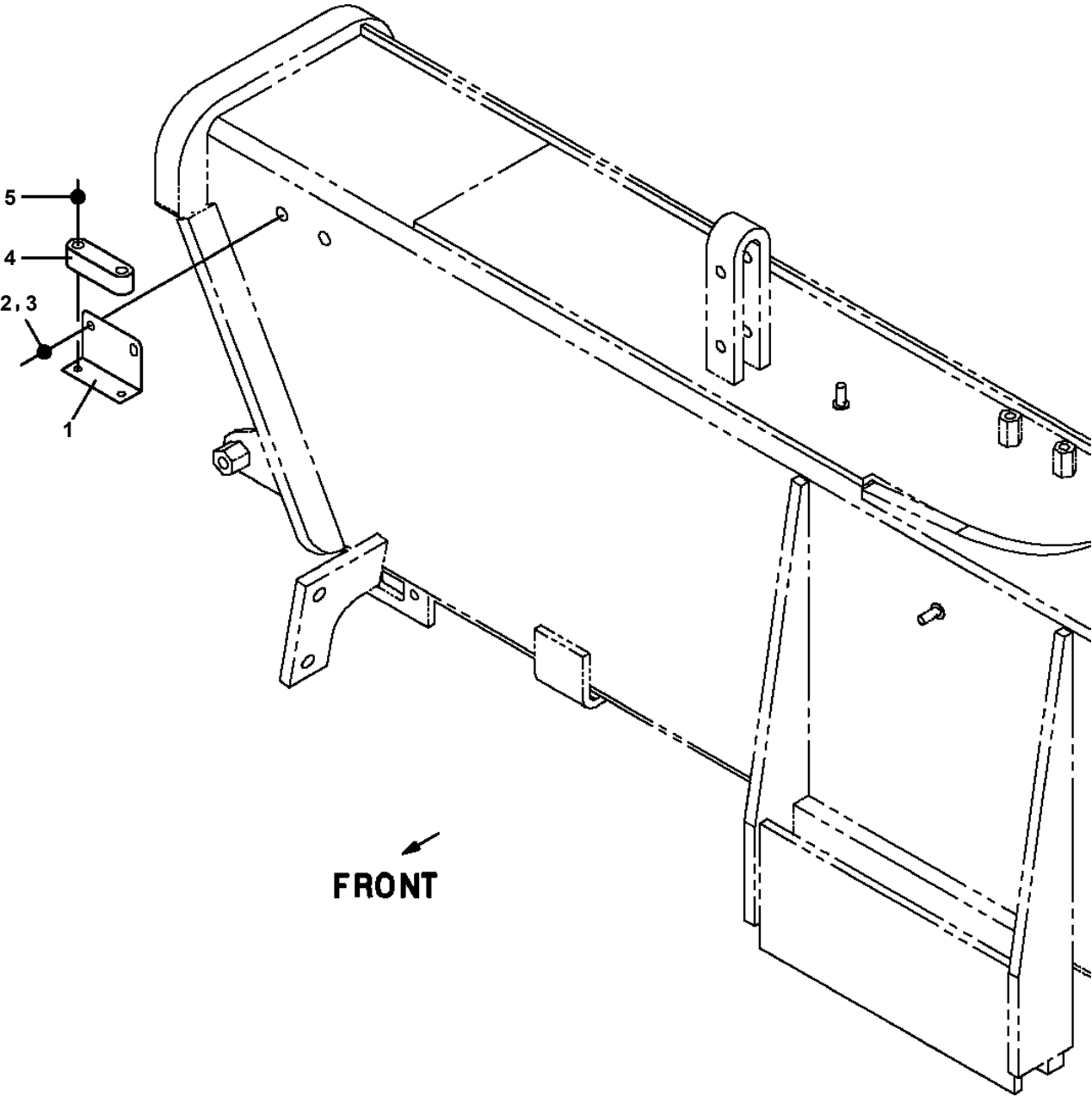
フーム取付けタイプ
ランプ仕様：24V-20W

符号	日本語名称	英語名称	備考
2	ハイセンASSY	ELEC.ASSY	ホースト部
3	ハイセンASSY	ELEC.ASSY	フーム部 (LED20W)

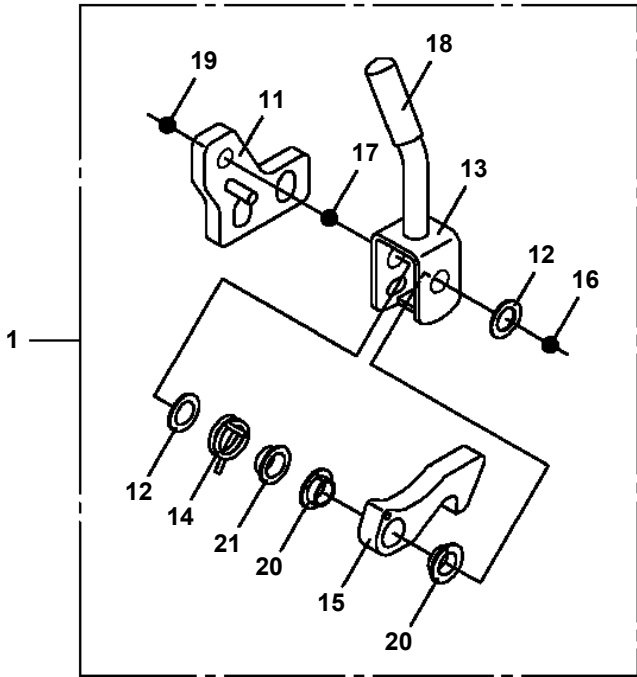
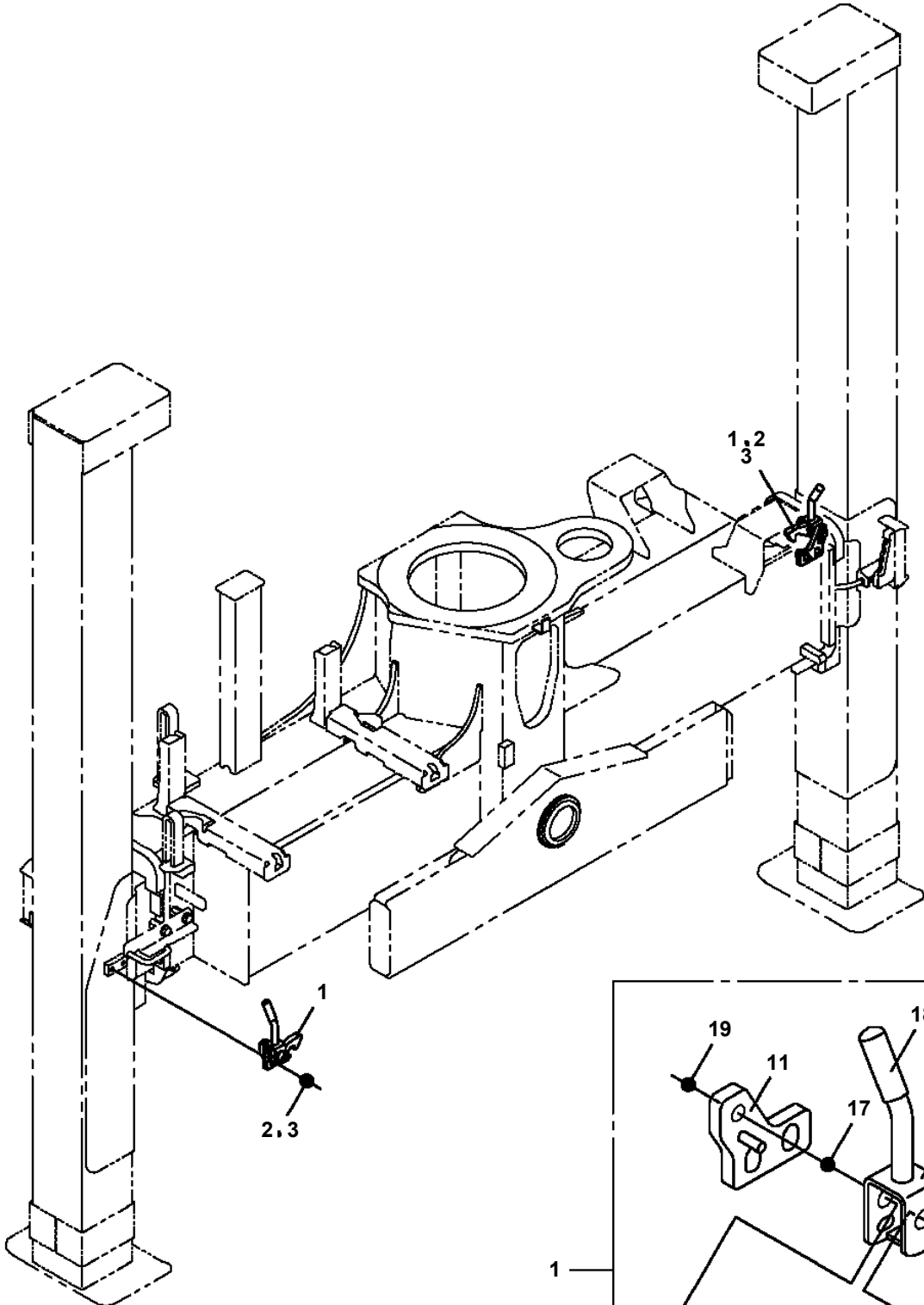
適用製造番号によっては取り付けがないものもあります。

MACHINES OF SOME SERIAL NO. ARE NOT EQUIPPED WITH THESE PARTS.

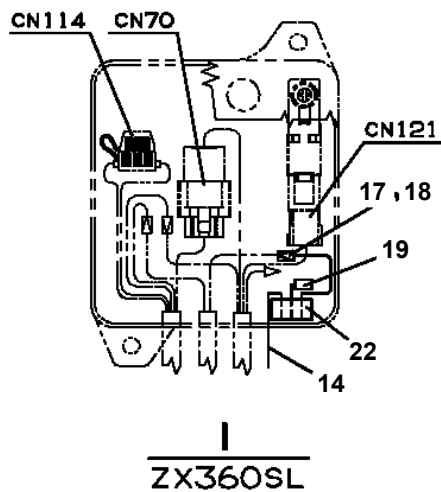
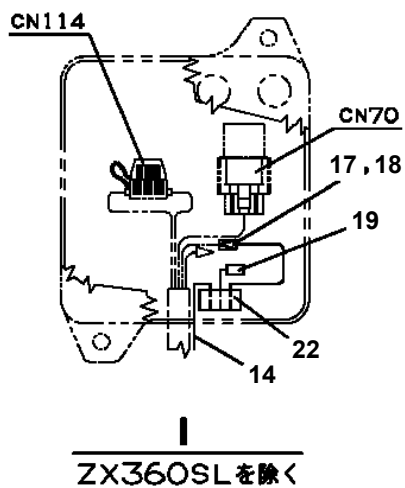
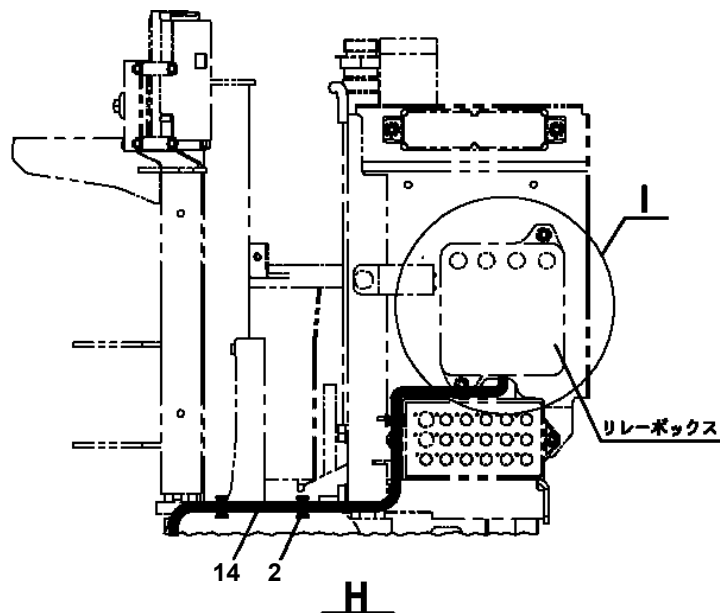
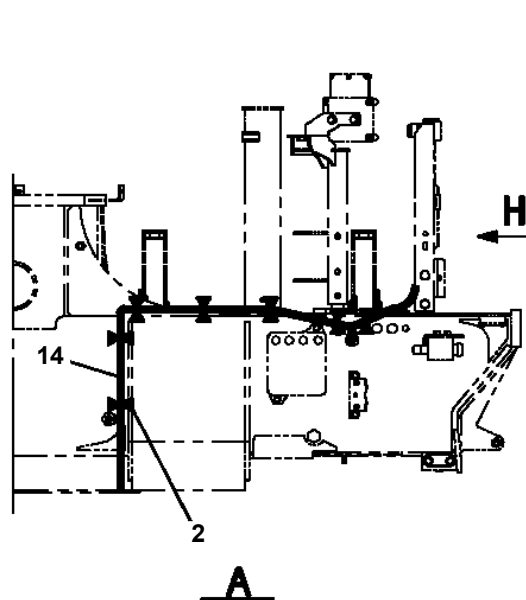
**TM-ZX300 41044701383A FRAME
PL5150003-00 LEVEL ASSY**



TM-ZX300 41044701383A FRAME
PL5270041-00 LOCK ASSY (OUTRIGGER)



TM-ZX300 41044701383A FRAME
 PN1014685-04 ELEC.ASSY



ZXの場合

**TM-ZX300 41044701383A FRAME
PN5012002-01 NAME PLATE ASSY (FRAME:TDN-LAYOUT)**

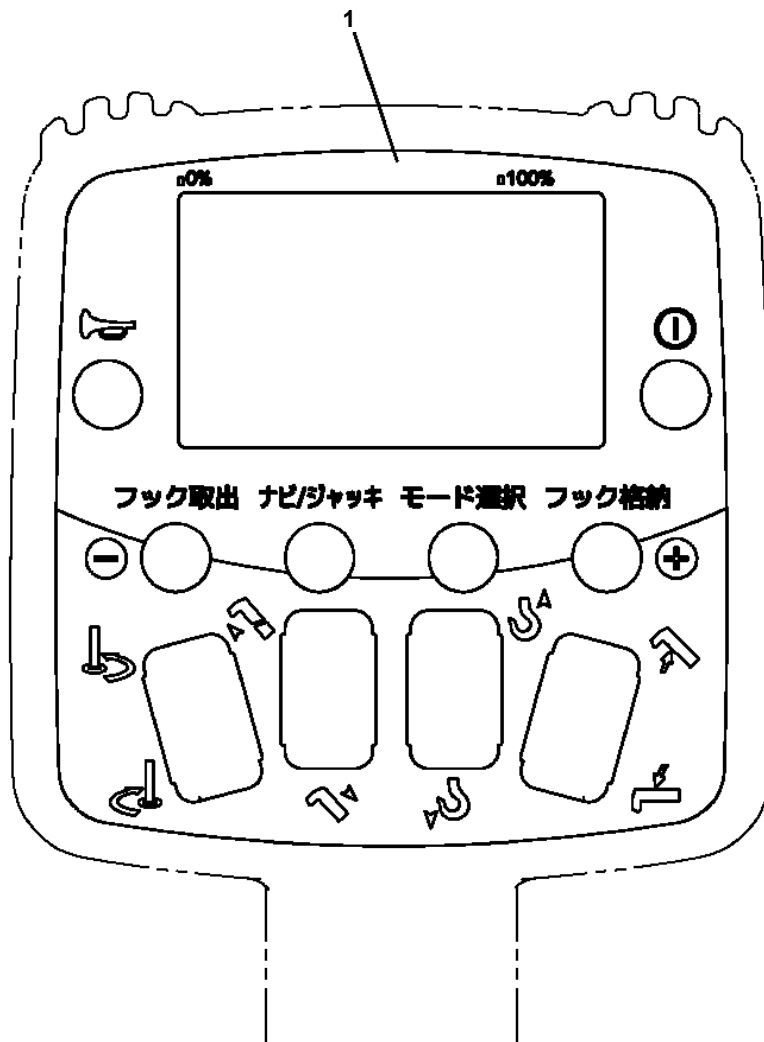
ネームプレートASSY (フレーム:タタノハイレッツ)
NAME PLATE ASSY (FRAME:TDN-LAYOUT)

符号	日本語名称	英語名称	備考
1	ネームプレートASSY	NAME PLATE ASSY	ノブ銘板:タダノ配列 (SL)
4	ネームプレートASSY	NAME PLATE ASSY	タンク油量銘板:共通
5	ネームプレートASSY	NAME PLATE ASSY	フック銘板:共通
6	ネームプレートASSY	NAME PLATE ASSY	O/R注意銘板等
7	ネームプレートASSY	NAME PLATE ASSY	定期自主検査銘板
8	ネームプレートASSY	NAME PLATE ASSY	ノブ銘板 SLジャッキ

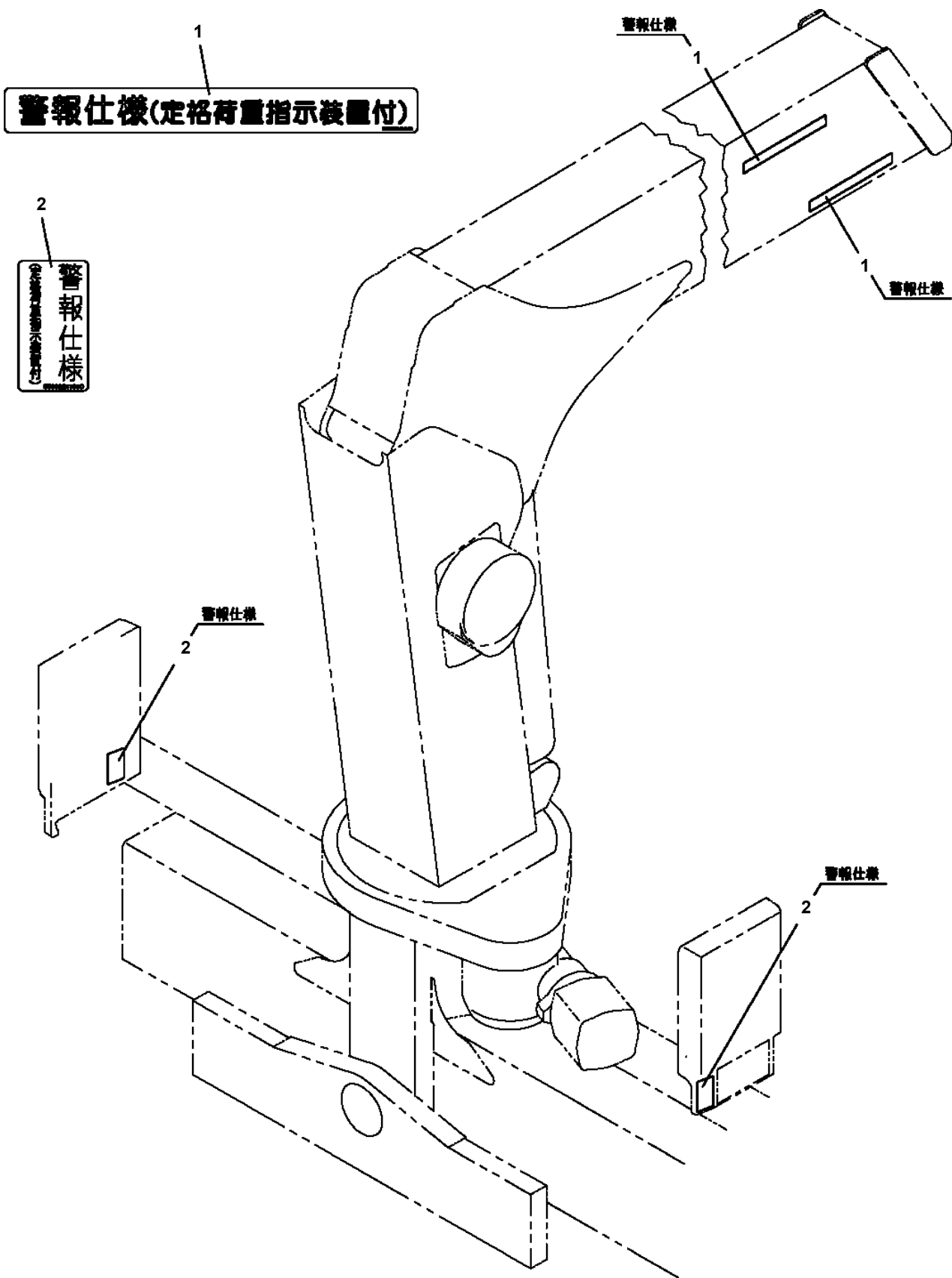
適用製造番号によっては取り付けがないものもあります。

MACHINES OF SOME SERIAL NO. ARE NOT EQUIPPED WITH THESE PARTS.

TM-ZX300 41044701383A FRAME
PN5012046-00 PLATE ASSY,NAME (SWITCH,BOX/U)



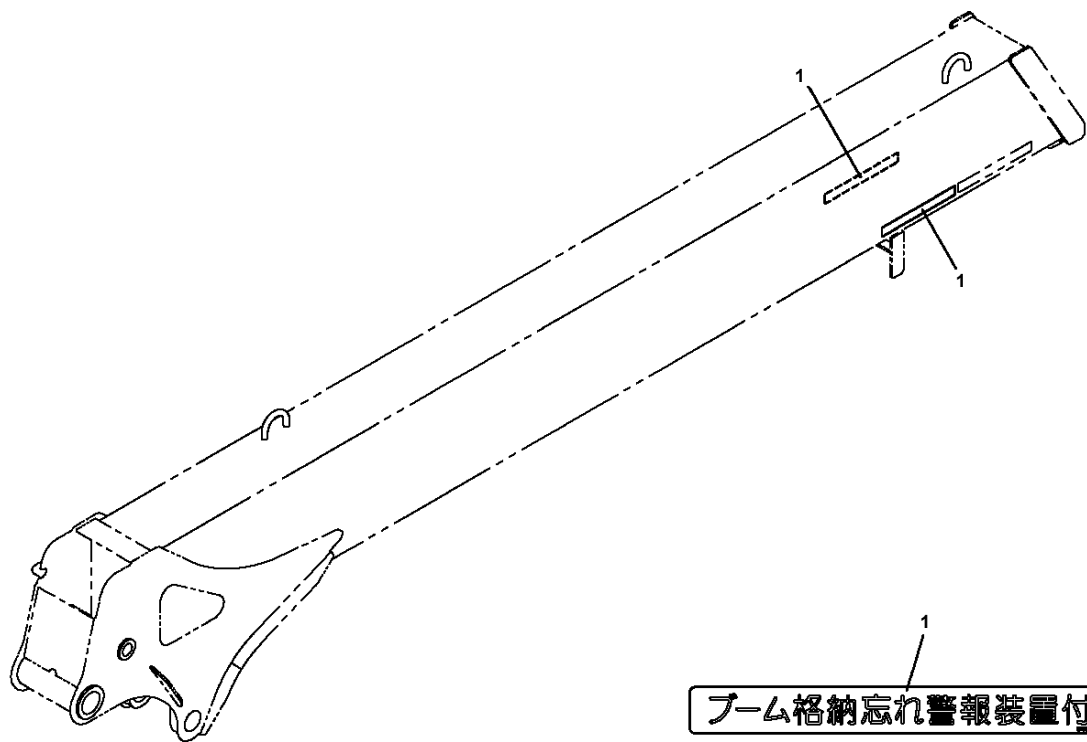
TM-ZX300 41044701383A FRAME
PN5012097-01 NAME PLATE ASSY



注 意：本図は参考用に掲載しており、形状などは実機と異なります。

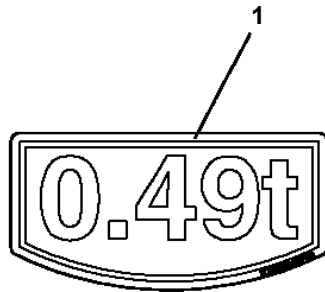
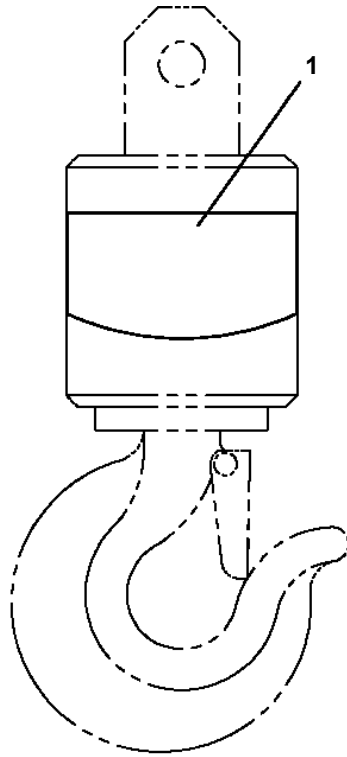
NOTE: THE ABOVE FIGURE IS FOR REFERENCE AND MAY DIFFER FROM THE ACTUAL APPEARANCE OF YOUR MACHINE.

TM-ZX300 41044701383A FRAME
PN5012126-00 NAME PLATE ASSY

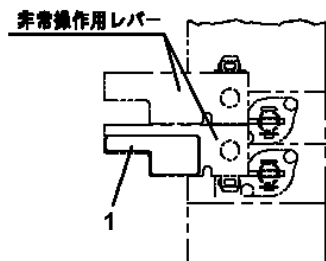


ブーム格納忘れ警報装置付

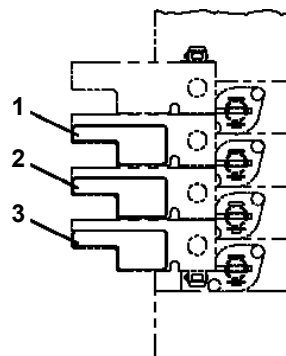
TM-ZX300 41044701383A FRAME
PN5012189-00 NAME PLATE ASSY (0.49T)



TM-ZX300 41044701383A FRAME
 PN5012227-00 NAME PLATE ASSY (EMERGENCY CONTROL)

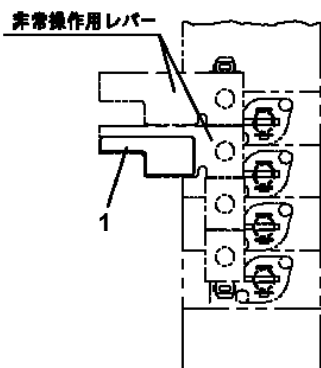


電磁2連バルブの場合
 (セルフウインチ)

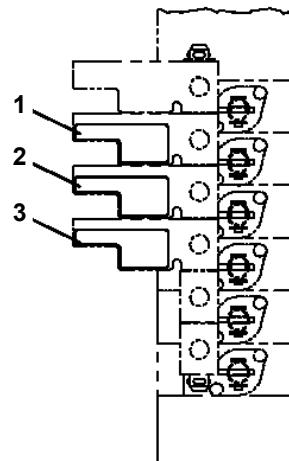


電磁4連バルブの場合
 (セルフウインチ
 +
 リヤアウトリガ (電磁バルブ))

300SL
 キャリーオーバーバルブ操作部

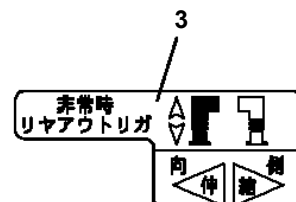
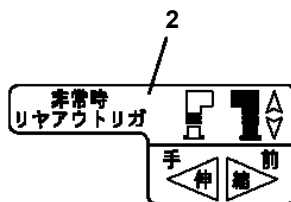
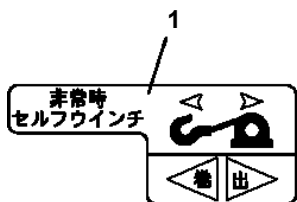


電磁4連バルブの場合
 (セルフウインチ)



電磁6連バルブの場合
 (セルフウインチ
 +
 リヤアウトリガ (電磁バルブ))

360SL
 キャリーオーバーバルブ操作部

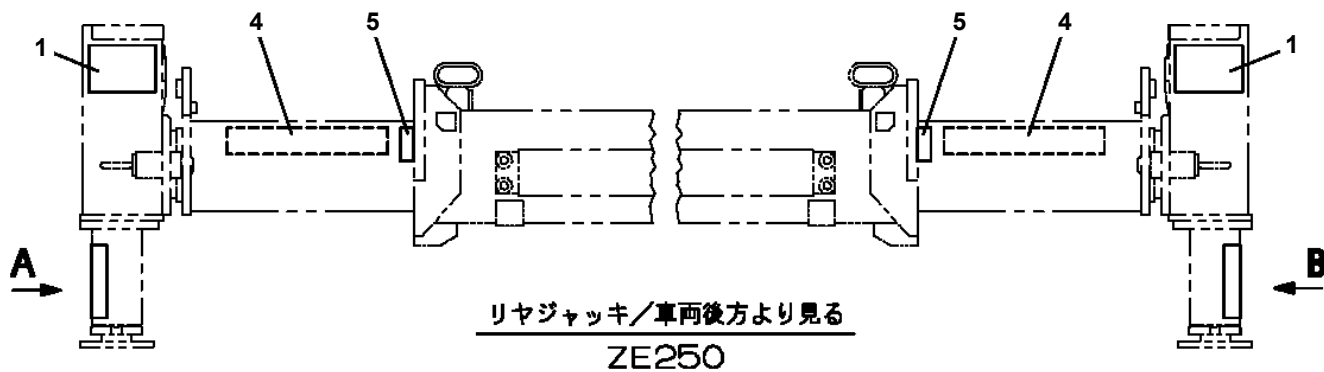


TM-ZX300 41044701383A FRAME
PO1000186-00 INDICATION PLATES

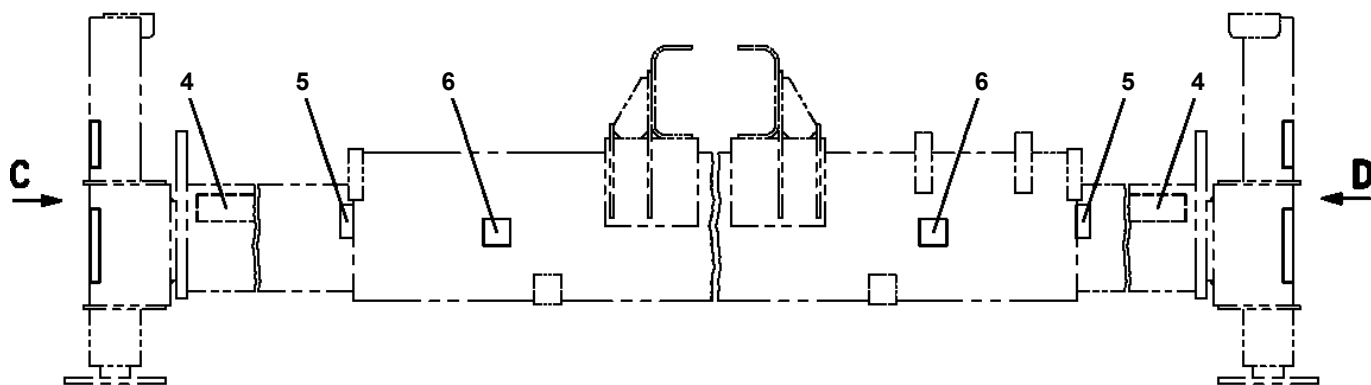
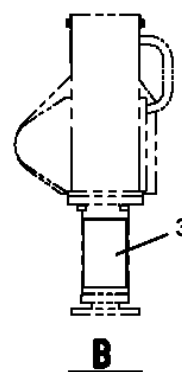
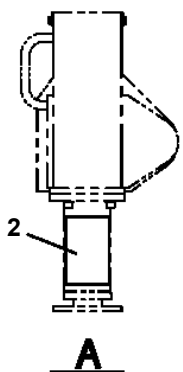
メイバン
INDICATION PLATES

〔組立名称一覧〕より選択してください。
SEE THE CORRESPONDING "ASSEMBLY NAME" LIST.

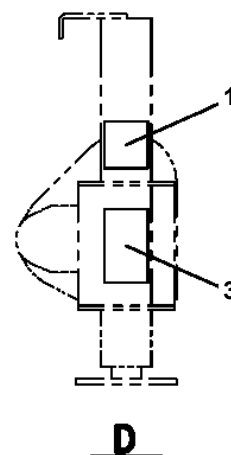
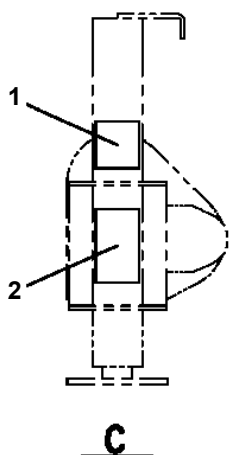
TM-ZX300 41044701383A FRAME
 PO1015106-03 PLATE ASSY,NAME (REAR OUTRIGGER)



リヤジャッキ/車両後方より見る
 ZE250



リヤジャッキ/車両後方より見る
 ZE300, ZE360



TM-ZX300 41044701383A FRAME

Pos No.	Parts No	Parts Name	Qty	Unit	Technical Data	Serial No (Start)	Serial No (End)
1	(*****)	OPE.ASSY,CONT.VALVE	1				
2	(*****)	PLATE ASSY,NAME (SL WINCH)	1				
3	(*****)	PLATE ASSY,NAME (REAR OUTRIGGER)	1				

TM-ZX300 41044701383A FRAME

Pos No.	Parts No	Parts Name	Qty	Unit	Technical Data	Serial
1	(*****)	OPE.ASSY,CONT.VALVE (ELEVATING,WINCH,TELESCOPING/U)	1			
2	31595701000	NAME PLATE ASSY (KNOB:U-LAYOUT)	1			
4	31323330100	KNOB (BLACK)	6			

TM-ZX300 41044701383A FRAME

Pos No.	Parts No	Parts Name	Qty	Unit	Technical Data	Serial No (Start)	Serial No (End)
1	31615860100	OUTRIGGER ASSY (RIGHT,CYLINDER:MIN.1440)	1				
	31615860101	OUTRIGGER ASSY (RIGHT,CYLINDER:MIN.1440)	1			KE2489	KE2489
2	31615860200	OUTRIGGER ASSY (LEFT,CYLINDER:MIN.1440)	1				
	31615860201	OUTRIGGER ASSY (LEFT,CYLINDER:MIN.1440)	1			KE2489	KE2489

TM-ZX300 41044701383A FRAME

Pos No.	Parts No	Parts Name	Qty	Unit	Technical Data	Serial No (Start)	Serial
1	37000161720	PIN	1				
2	80601110350	RING,RITAINING	2		S35		
3	31615874000	CASE,OUTER	1		L=2069		
4	31611922001	CASE,INNER	1				
5	(*****)	OUTRIGGER ASSY (MIN=1440)	1				
6	37000104130	PIN	1				
7	31610055000	FLOAT ASSY	1				
8	90191210020	BOLT	2		M10X20		
9	90302041001	WASHER,SPRING	4		10		
10	31200030530	PLATE	1				
11	37000161730	PIN	1				
12	80602110350	RING,RITAINING	2		R35		
13	90186208014	BOLT,FLANGE	2		M8X14		
14	31614880500	COVER	1				
15	31201770100	PLATE,SLIDE	8		T=3.0		
16	(*****)	OPE.ASSY,OUTRIGGER	1				
17	31620582020	BEARING,BALL (KOYO)	2				
18	80601110150	RING,RITAINING	2		15		
19	37000150360	PIN	1				
20	82401800100	PLUG (FOR M10)	1				
22	90171110020	BOLT	2		M10X20		
23	50822014000	PLATE	1				
24	37001400200	SPRING	1				
38	31621963200	SUPPORT	1				
48	31614694000	SUPPORT	1				
53	31613692800	SUPPORT (STEEL CAST)	1				
	31613692200	SUPPORT (WELDED)	1				
65	37002240310	PLATE,CAUTION	1				
71	31610055010	TRUNNION	1				
81	31615754100	PLATE,NAME (BLUE)	2				
82	31611300600	PLATE,NAME (YELLOW)	2				
100	31615870200	OUTRIGGER ASSY (LEFT,CYLINDER:MIN.1440)	1				

TM-ZX300 41044701383A FRAME

Pos No.	Parts No	Parts Name	Qty	Unit	Technical Data	Serial No (Start)	Serial No (End)
1	90172110090	BOLT,HEXAGON SOCKET	4		M10X90		
2	31648540101	JOINT	1				
3	36034070000	CYLINDER,JACK	1				
4	36624690000	VALVE,PILOT CHECK	1				
5	91002801200	O-RING	2		1B P12		
6	36180380000	SENDER,PRESSURE	2				
21	36034071000	CYLINDER	1				
23	90211203000	NUT	1		M30X3/2		
24	36032110300	PISTON	1				
25	91350207500	BEARING,PLAIN (WITH PACKINGX2)	1				
26	91002903000	O-RING	1		1B G30		
27	36033523000	COVER,ROD	1				
28	91002907000	O-RING	1		1B G70		
29	91694006000	PACKING	1				
30	91410206002	RING,BACKUP	1				
31	91660006001	SEAL,DUST	1				
32	36034072000	ROD	1				
40	36034079900	PACKING SET	1		60X75		
52	80316030040	PLUG	2		PT1/4		

TM-ZX300 41044701383A FRAME

Pos No.	Parts No	Parts Name	Qty	Unit	Technical Data	Serial No (Start)	Serial No (End)
1	37000161720	PIN	1				
2	80601110350	RING,RITAINING	2		S35		
3	31615862001	CASE,OUTER (RIGHT)	1				
4	31611302001	CASE,INNER	1				
5	(*****)	OUTRIGGER ASSY (MIN=1440)	1				
6	37000104130	PIN	1				
7	31610055000	FLOAT ASSY	1				
8	90191210020	BOLT	2		M10X20		
9	90302041001	WASHER,SPRING	4		10		
10	31200030530	PLATE	1				
11	37000161730	PIN	1				
12	80602110350	RING,RITAINING	2		R35		
13	90186208014	BOLT,FLANGE	2		M8X14		
14	31614880500	COVER	1				
15	31201770100	PLATE,SLIDE	8		T=3.0		
16	(*****)	OPE.ASSY,OUTRIGGER	1				
17	31620582020	BEARING,BALL (KOYO)	2				
18	80601110150	RING,RITAINING	2		15		
19	37000150360	PIN	1				
20	82401800100	PLUG (FOR M10)	1				
22	90171110020	BOLT	2		M10X20		
23	50822014000	PLATE	1				
24	37001400200	SPRING	1				
25	37002240310	PLATE,CAUTION	1				
38	31621963200	SUPPORT	1				
48	31614694000	SUPPORT	1				
53	31613692200	SUPPORT (WELDED)	1				
	31613692800	SUPPORT (STEEL CAST)	1				
71	31610055010	TRUNNION	1				
81	31615754100	PLATE,NAME (BLUE)	2				
82	31611300600	PLATE,NAME (YELLOW)	2				
100	31615860101	OUTRIGGER ASSY (RIGHT,CYLINDER:MIN.1440)	1				

TM-ZX300 41044701383A FRAME

Pos No.	Parts No	Parts Name	Qty	Unit	Technical Data	Serial No (Start)	Serial No (End)	Rema
2	36806962000	ANTENNA UNIT (ASSY ONLY)	1					
3	36806963000	BOX,OPERATION	1					
5	(***** *****)	ELEC.ASSY (ANTENNA UNIT)	1					
6	36804914000	BOX,STOWING	1					
9	36806961000	CONTROL UNIT (ASSY ONLY)	1					

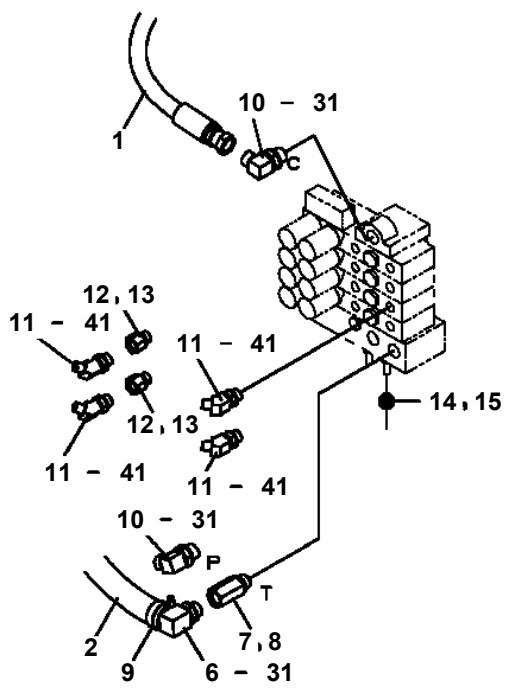
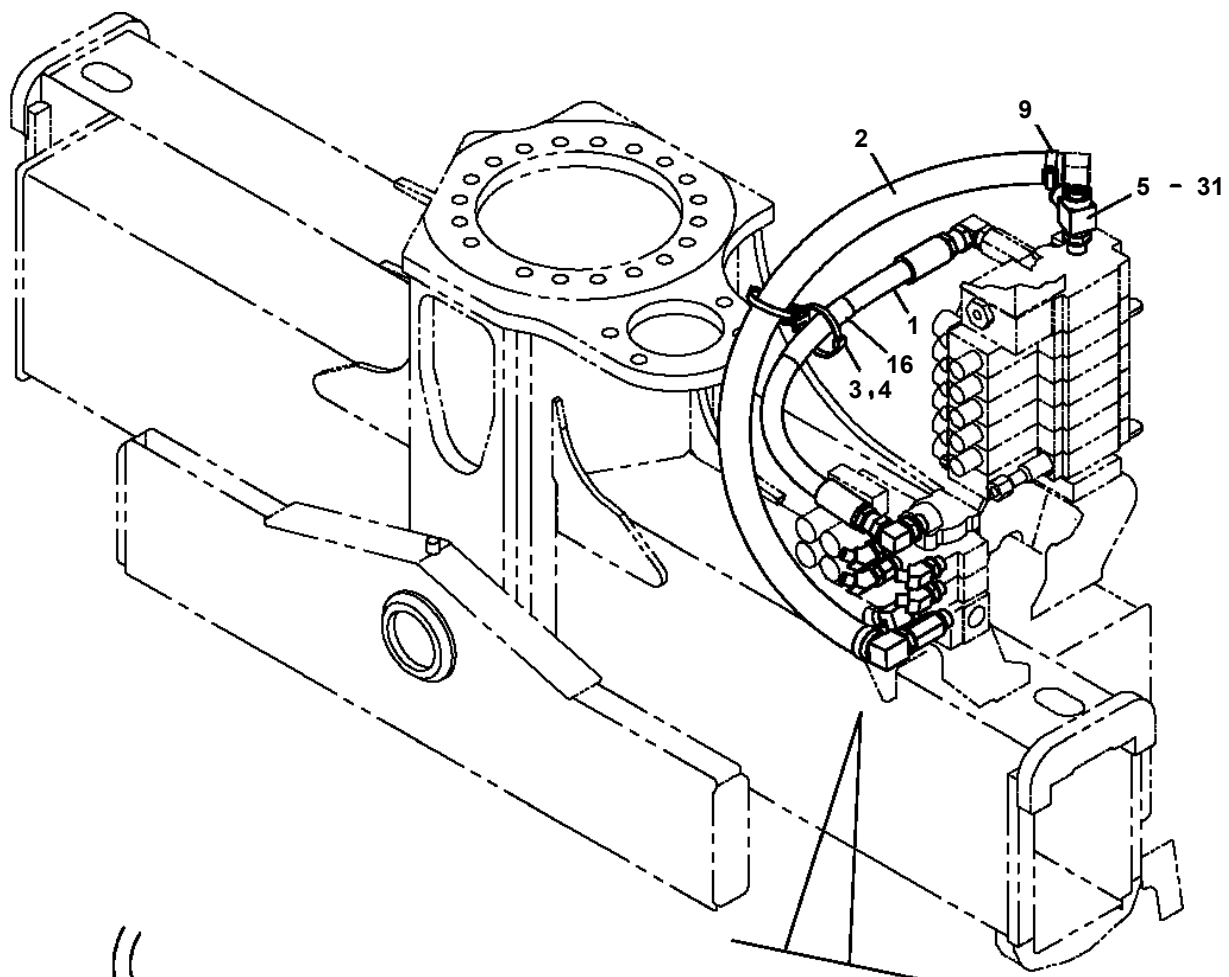
TM-ZX300 41044701383A FRAME

Pos No.	Parts No	Parts Name	Qty	Unit	Technical Data	Serial No (Start)	Serial No (End)	Remarks	Pages
1	31596281500	PLATE,CAUTION	2						
2	31596281600	PLATE,NAME	1						

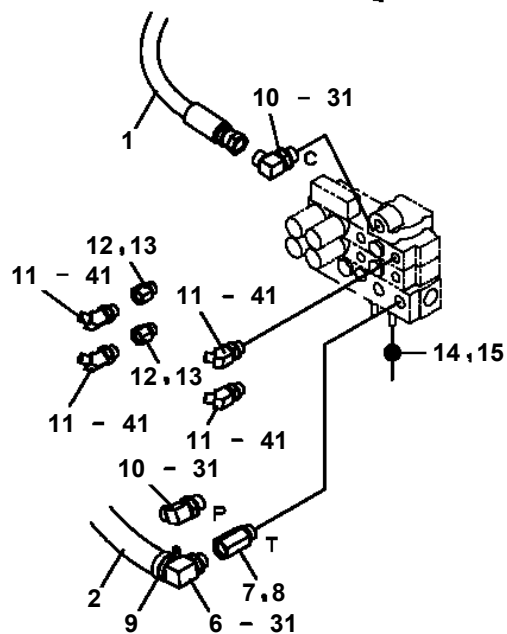
TM-ZX300 41044701383A FRAME

Pos No.	Parts No	Parts Name	Qty	Unit	Technical Data	Serial No (Start)	Serial No (End)	Remarks	Pages
1	31231890100	POST	3						
2	37000202780	PIN (WELDING)	3						
	37000205240	PIN (MACHINING)	3						
3	80136363080	PIN,SPLIT	3		6.3X80				
4	37000202270	PIN (WELDING)	1				KE1943		
	37000205260	PIN (MACHINING)	1				KE1943		
	37000209230	PIN	2						
	37000209230	PIN	2						
	37000209230	PIN	1			KE1944			
5	31230412000	COVER	3						
6	37000527860	PLATE	3		T=1.5				
7	90101210016	BOLT	6		M10X16				
21	31230580220	SUPPORT	6						

**TM-ZX300 41044701383A FRAME
PP6010561-01 PIPING ASSY (VALVE)**

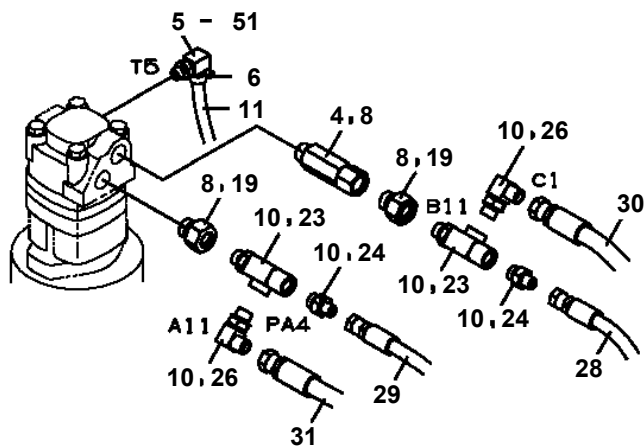


4連バルブ
リヤアウトリガ、セルフウインチ

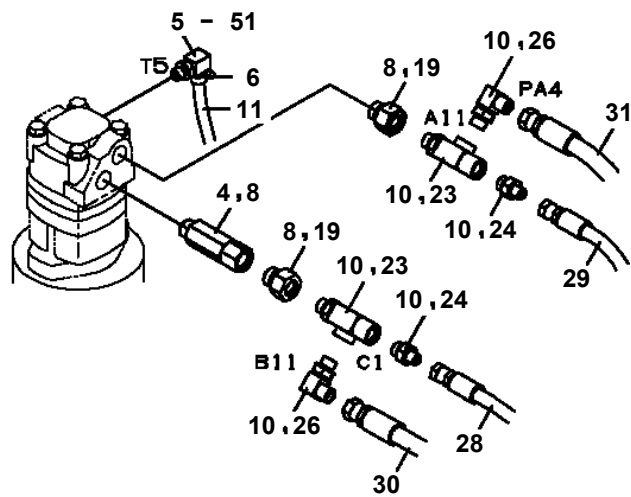


2連バルブ
リヤアウトリガ、セルフウインチ

**TM-ZX300 41044701383A FRAME
PP6390056-00 PIPING ASSY,WINCH (SELF)**

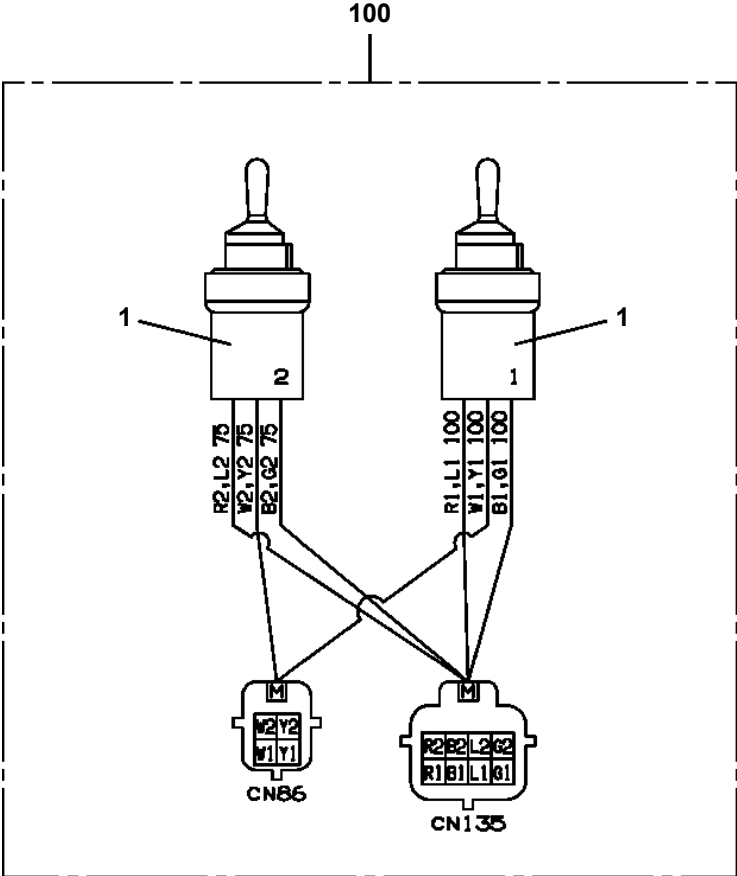


ワイヤ上出し時の場合

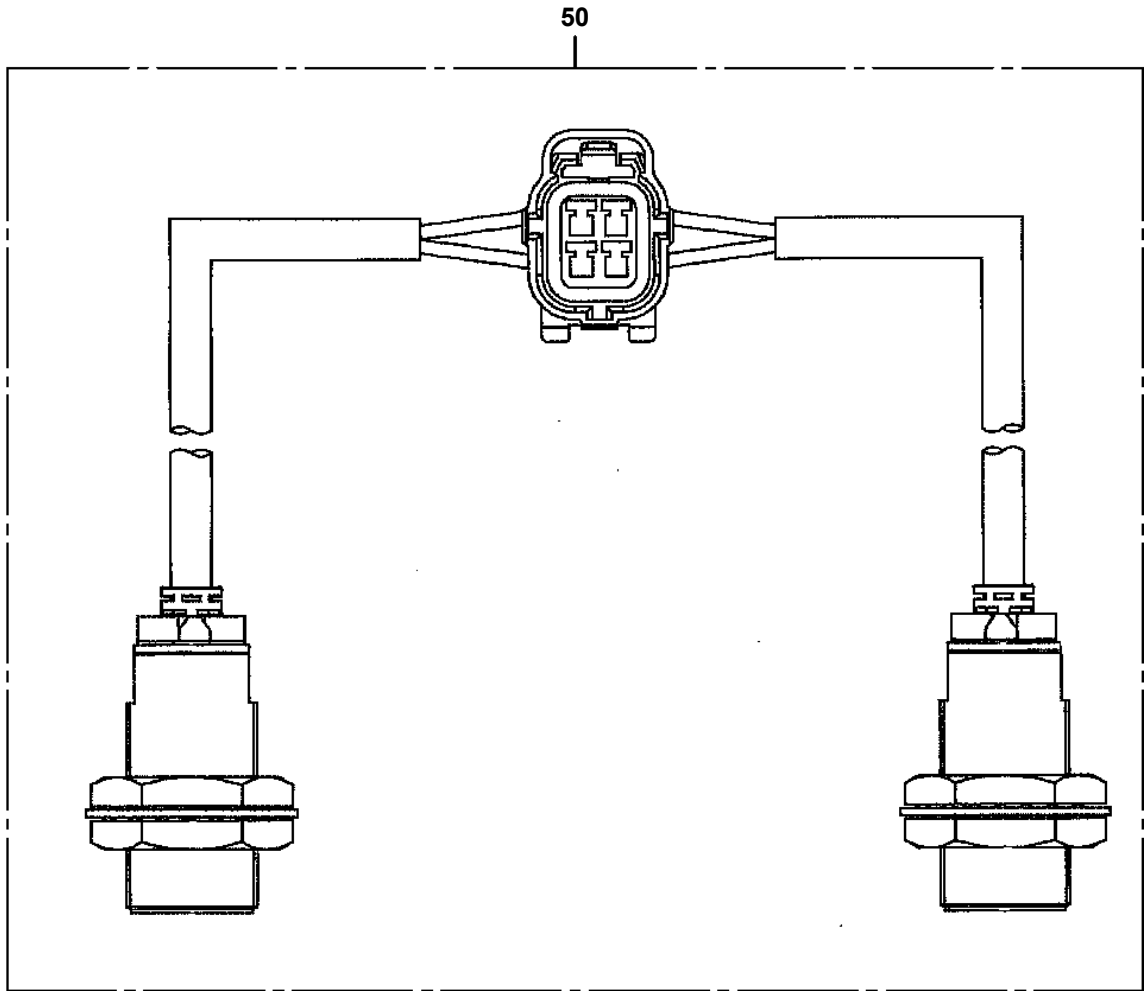


ワイヤ下出し時の場合

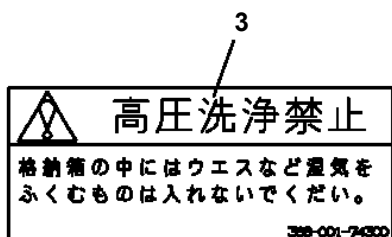
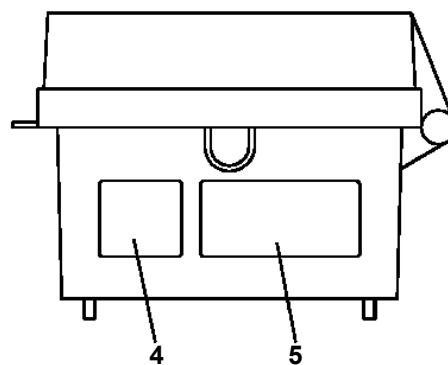
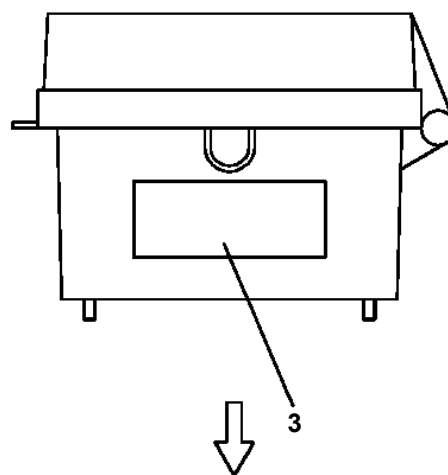
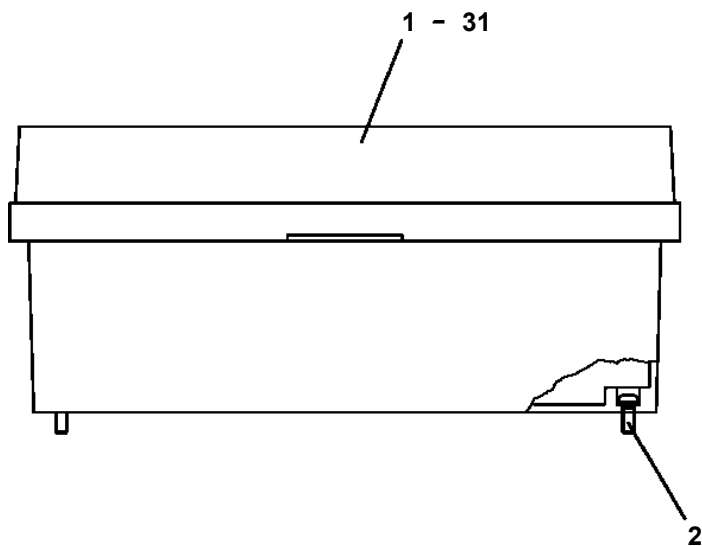
TM-ZX300 41044701383A FRAME
PS5530447-00 SWITCH ASSY



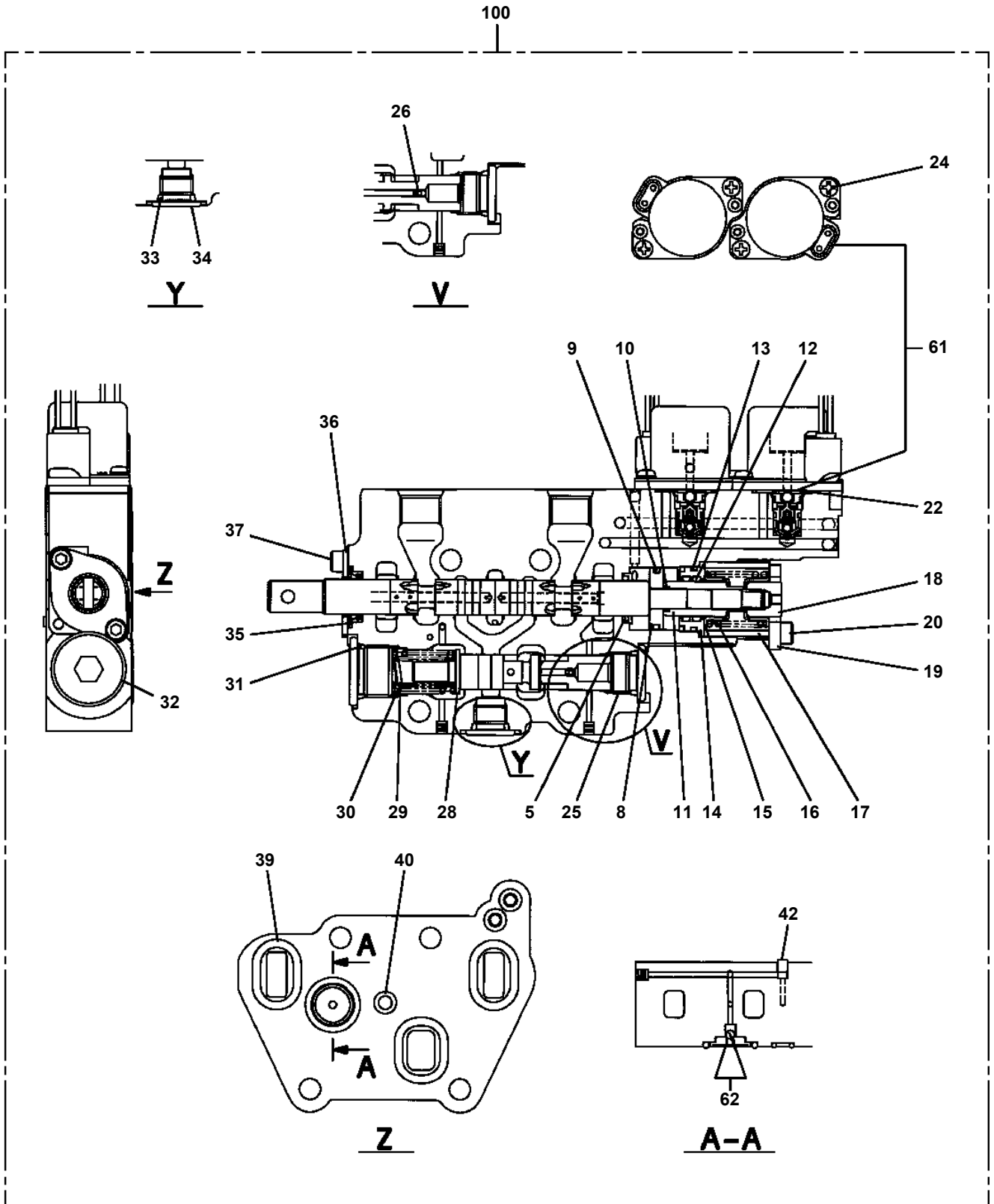
**TM-ZX300 41044701383A FRAME
PS5540020-00 SWITCH (S/W 2PC'S)**



TM-ZX300 41044701383A FRAME
 PV1250011-02 STOWING BOX (BAG,REMOTE CONTROL)

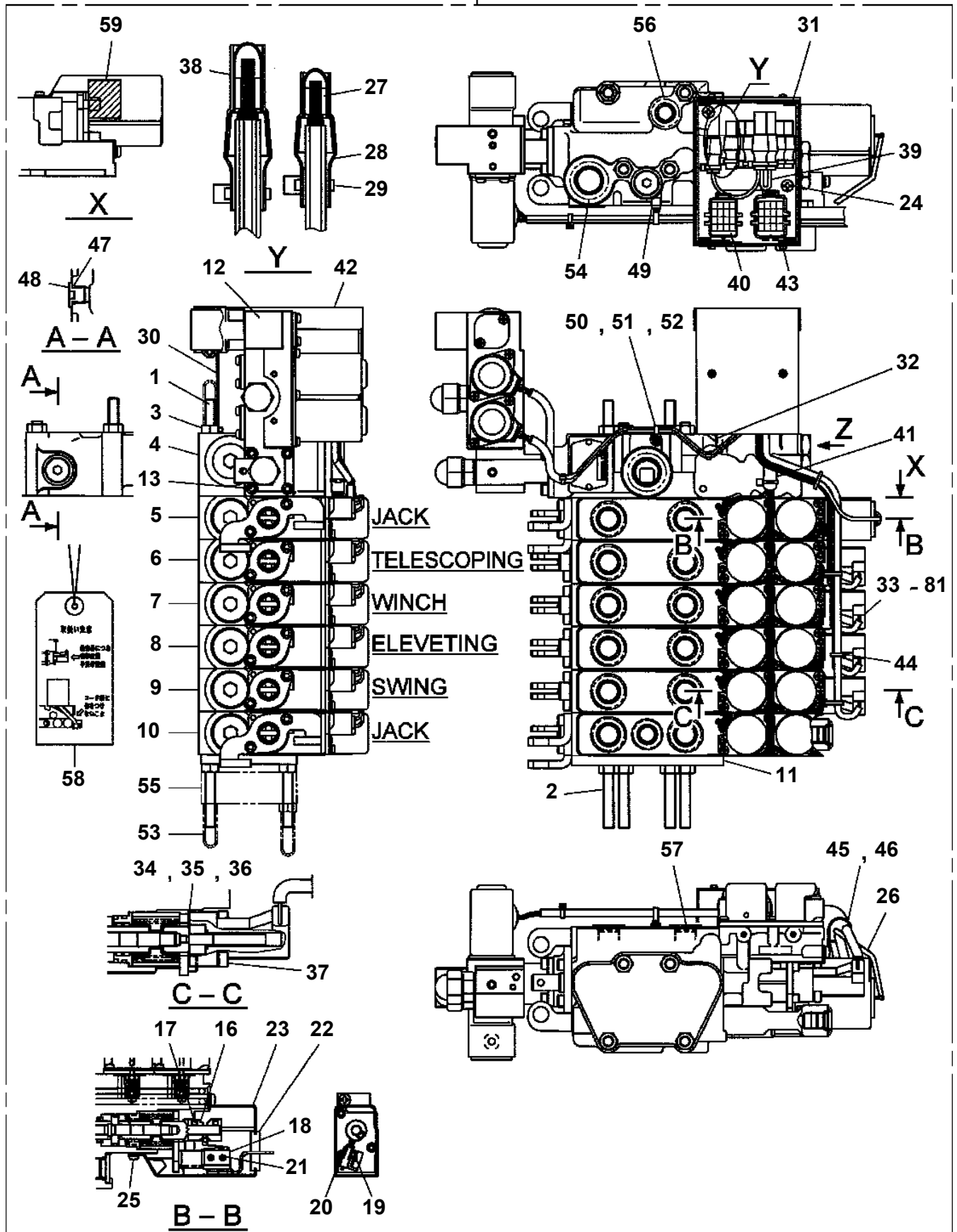


TM-ZX300 41044701383A FRAME
PV5060055-01 VALVE ASSY,CONTROL



**TM-ZX300 41044701383A FRAME
PV5150044-01 VALVE ASSY,REMOTE CONTROL**

500



TM-ZX300 41044701383A FRAME

Pos No.	Parts No	Parts Name	Qty	Unit	Technical Data	Serial No (Start)	Serial No (End)	R
1	36645095040	COVER (BOTTOM)	1					
2	36645875070	BOLT,TIE	4					
3	36648860041	VALVE,CONTROL	2					
4	36648230051	VALVE,CONTROL	2					
5	36740850030	COVER (FRONT)	1					
6	90201200800	NUT	5		M8			
7	80720104012	PIN,SPRING	1		4X12			
8	36645875080	BOLT,TIE (C)	1					
9	36645495080	JOINT	1					
10	36743390050	VALVE ASSY,RELIEF	1					
11	36645615230	C-BOLT	4		5X12			
12	91001101100	O-RING	4		1A P11			
13	36644115130	PLUG	4					
14	36743225010	HARNESS	1					
15	36649585260	HARNESS	1					
16	36644015110	CONNECTOR	2					
17	36644015130	TUBE	2					
18	11615111410	BAND	7					
19	82114203040	CONNECTOR (CAP)	2					
20	82121502040	PLATE	2					
21	82121502030	PLATE	1					
22	36646875090	TUBE	2		10B			
23	36646875100	TUBE	1		15			
24	36740765040	BAND	2					
25	36062635030	FASTENER	2					
26	80172304010	SCREW,MACHINE	2		M4X10			
29	36741985040	PLUG	3					
30	36741985050	PLUG	8					
31	36640755070	CAP	4					
32	90303070401	WASHER,PLAIN	2		4			
112	36646865190	PISTON	4					
113	91001102000	O-RING	4		1A P20			
114	91001000800	O-RING	4		S8			
115	36646865200	SPOOL (SUB)	4					
116	36648365110	FLANGE	4					
117	91001002240	O-RING	4		S22.4			
118	91650001400	SCRAPER	4					
119	36645495210	SEAT,SPRING (RETURN)	8					
120	36645845060	SPRING (RETURN)	4					
121	36646865210	SPACER	4					
122	36640625550	PLATE (D)	4					
123	36633365070	ADAPTER	4					
124	36645615230	C-BOLT	4		5X12			
125	36633365100	SEAL,OIL	4					
126	36645845050	LINK	2					
127	36645615250	C-BOLT	8		M5X25			
128	36633365090	CAP (CHECK VALVE)	4					
129	12635101360	SPOOL	4					
130	12635101190	SPRING	4					
135	36740745140	SCREW,MACHINE	16		M4X12			
136	91001002200	O-RING	8		S22			
139	91001100600	O-RING	23		1A P6			
140	91002905500	O-RING	5		1B G55			
141	91001101400	O-RING	13		1A P14			
142	36740855030	VALVE,SOLENOID (KIT)	8					
164	36645615260	C-BOLT	4		M5X8			
166	36633365060	PLATE (B)	2					
194	36740765050	PLUG	3					
195	36740765060	SPRING	1					
197	36640625210	CAP	1					
198	91001101800	O-RING	1		1A P18			
199	36649585170	FILTER	1					
200	91001002600	O-RING	2		S26			

**TM-ZX300 41044701383A FRAME
PW5060110-00 WINCH ASSY (SELF)**

ウインチASSY (セルフ)
WINCH ASSY (SELF)

セルフウインチ (3t×1本掛け) フルラジ* コン仕様+回転式R/J

符号	日本語名称	英語名称	備考
1	ウインチASSY	WINCH ASSY	セルフウインチ装置
2	オペ* ASSY,クラッチ	OPE. ASSY,CLUTCH	クラッチ部
3	ハイカンASSY,ウインチ	PIPING ASSY,WINCH	セルフウインチ部
4	ハイセンASSY	ELEC. ASSY	セルフウインチ部
5	ネームプレートASSY	NAME PLATE ASSY	セルフウインチ銘板 (警告、ノブ*)
7	ツリク* ASSY	LIFTING DEVICE ASSY	3tセルフウインチ用 1本掛フック (φ12)
10	オペ* ASSY,ソウザハ* ルフ*	OPE. ASSY,CONT. VALVE	キャリーオーバー* ハ* ルフ* 部
12	ハ* ルフ* ASSY,リモコン	VALVE ASSY,REMOTE CONTROL	4速電磁ハ* ルフ* (株)三輪精機製
13	ハイカンASSY	PIPING ASSY	キャリーオーバー* ハ* ルフ* 部
15	ハイカンASSY	PIPING ASSY	R/J部
16	ネームプレートASSY	NAME PLATE ASSY	R/J銘板
17	ハイセンASSY	ELEC. ASSY	R/J (クレーン部)
19	ハイセンASSY	ELEC. ASSY	R/J (SW部)
31	フレームASSY {リヤ}	FRAME ASSY	回転式
32	ロックASSY {リヤアウトリカ* }	LOCK ASSY	
33	アウトリカ* ASSY	OUTRIGGER ASSY	シ* ャツキシリンタ*
34	ハイカンASSY,アウトリカ*	PIPING ASSY,OUTRIGGER	

適用製造番号によっては取り付けがないものもあります。

MACHINES OF SOME SERIAL NO. ARE NOT EQUIPPED WITH THESE PARTS.

TM-ZX300 41044701383A FRAME PY2000295-02 OPTION UNIT,2 (COMMON)

オプションユニット,2 (キョウツウ)
OPTION UNIT,2 (COMMON)

符号	日本語名称	英語名称	備考
1	フックASSY	HOOK ASSY	単索フック
2	ガイド ASSY	GUIDE ASSY	脱索防止 (単索フック金)
3	フックASSY	HOOK ASSY	ロッキング フック
4	ブロック	BLOCK	2個セット 敷板 (□355×t80)
5	ブロック	BLOCK	4個セット 敷板 (□355×t80)
6	ストップパッド,タイヤ	STOPPER,TIRE	出荷部品
7	ジョイントASSY,セルフシール	JOINT ASSY,SELF SEAL	サービースポーツ用カプラー
8	マウントASSY (パワーサフライ)	MOUNT ASSY	サービースポーツ
9	パワーサフライ	POWER SUPPLY	AC100V電源取出し (1500W)
10	パーツASSY,ラジコン	PARTS ASSY,RADIO CONTROLLER	既納車ラジコン
11	パーツASSY,ラジコン	PARTS ASSY,RADIO CONTROLLER	既納車ラジコン (U社配列用)
12	カイツウASSY	MODIFICATION ASSY	敷板入れ (ホイールベアース間取付用) (□355×t80敷板用)
13	サポート	SUPPORT	敷板入れ、木脚連続レンタル用 日野小型車の東洋ポデー製ポデー及び日野中型車用
14	カイツウASSY	MODIFICATION ASSY	敷板入れ (リヤオーバーハング取付用) (□355×t80敷板用)
15	チャージャ,バッテリー	CHARGER,BATTERY	単三電池充電器 (ニッケル水素電池8個金)
16	アウトリカ ASSY,リヤ (回転式)	OUTRIGGER ASSY,REAR	回転式リヤリヤッキ (パワーハブ ツケージ)
17	ディテクタ,ディソータリウインド	DETECTOR,DISORDERLY WIND	乱巻防止ローラ
18	レベルASSY	LEVEL ASSY	消防向け水準器追加 (両側対向)
19	ケーブルASSY	CABLE ASSY	ラジコンアンテナユニット移動用 延長ハーネス (2m) (ラジコン装着機のみ)
20	パーツASSY,ラジコン	PARTS ASSY,RADIO CONTROLLER	照明併用向け 予備用送信機 (RCS-FT3)
21	アラームASSY	ALARM ASSY	リヤアウトリカ 格納忘れ警報装置追加パーツ (ZE/ZX300・360用、アウトリカ格納忘れ警報装置付用)
22	パーツASSY,リモコン	PARTS ASSY,REMOTE CONTROL	ZX用リモコン
23	ボックス,ストローイング	BOX,STOWING	リモコン用ボックス
24	マウントASSY (アクセル)	MOUNT ASSY	メカ式パワーハブ専用エンジンコントロール
25	オペレーションASSY,ソウサハバルブ	OPE. ASSY,CONT. VALVE	U社配列交換キット
26	ボックス,オペレーション	BOX,OPERATION	LCD液晶機 (リモコン:20m)

適用製造番号によっては取り付けがないものもあります。

MACHINES OF SOME SERIAL NO. ARE NOT EQUIPPED WITH THESE PARTS.

TM-ZX300 41044701383A FRAME

Pos No.	Parts No	Parts Name	Qty	Unit	Technical Data	Serial No (Start)	Serial No (End)	Remarks	Pages
2	91810130250	FASTENER	13						
4	31505221300	SUPPORT	2						
5	90186208014	BOLT,FLANGE	4		M8X14				
8	31505222202	HARNESS	1						000139

TM-ZX300 41044701383A FRAME

Pos No.	Parts No	Parts Name	Qty	Unit	Technical Data	Serial No (Start)	Serial No (End)	Remarks	Pages
100	31351641100	HARNESS	1						

TM-ZX300 41044701383A FRAME

Pos No.	Parts No	Parts Name	Qty	Unit	Technical Data	Serial No (Start)	Serial N
1	(*****)	ELEC.ASSY (POST)	1				
2	(*****)	ELEC.ASSY (UPPER/WORKING LAMP)	1				
3	(*****)	MOUNT ASSY (HEIGHT LIMITER/ALARM LAMP)	1				
4	(*****)	ELEC.ASSY (BOOM)	1				
5	(*****)	ELEC.ASSY	1				
6	(*****)	ELEC.ASSY	1				
13	(*****)	ELEC.ASSY	1				

TM-ZX300 41044701383A FRAME

Pos No.	Parts No	Parts Name	Qty	Unit	Technical Data	Serial No (Start)	Serial No (End)
1	31615860102	OUTRIGGER ASSY (RIGHT,CYLINDER:MIN.1440)	1				
2	31615860202	OUTRIGGER ASSY (LEFT,CYLINDER:MIN.1440)	1				

TM-ZX300 41044701383A FRAME

Pos No.	Parts No	Parts Name	Qty	Unit	Technical Data	Serial No (Start)	Serial
1	37000161720	PIN	1				
2	80601110350	RING,RITAINING	2		S35		
3	31616174001	CASE,OUTER (LEFT)	1				
4	31616173000	CASE,INNER	1				
5	(*****)	OUTRIGGER ASSY (MIN=1440)	1				
6	37000104130	PIN	1				
7	31610055000	FLOAT ASSY	1				
8	90191210020	BOLT	2		M10X20		
9	90302041001	WASHER,SPRING	4		10		
10	31200030530	PLATE	1				
11	37000161730	PIN	1				
12	80602110350	RING,RITAINING	2		R35		
13	90186208014	BOLT,FLANGE	2		M8X14		
14	31614880500	COVER	1				
15	31201770100	PLATE,SLIDE	8		T=3.0		
16	(*****)	OPE.ASSY,OUTRIGGER	1				
17	31620582020	BEARING,BALL (KOYO)	2				
18	80601110150	RING,RITAINING	2		15		
19	37000150360	PIN	1				
20	82401800100	PLUG (FOR M10)	1				
21	31611300600	PLATE,NAME (YELLOW)	2				
22	90171110020	BOLT	2		M10X20		
23	50822014000	PLATE	1				
24	37001400200	SPRING	1				
25	37002240310	PLATE,CAUTION	1				
26	31615754100	PLATE,NAME (BLUE)	2				
48	31621963200	SUPPORT	1				
61	31610055010	TRUNNION	1				
78	31614694000	SUPPORT	1				
83	31613692200	SUPPORT (WELDED)	1				
	31613692800	SUPPORT (STEEL CAST)	1				
100	31616170202	OUTRIGGER ASSY (LEFT,CYLINDER:MIN.1440)	1				

CLICK HERE TO **DOWNLOAD** THE COMPLETE MANUAL

- Thank you very much for reading the preview of the manual.
- You can download the complete manual from: www.heydownloads.com by clicking the link below



- Please note: If there is no response to CLICKING the link, please download this PDF first and then click on it.

CLICK HERE TO **DOWNLOAD** THE COMPLETE MANUAL