

TM-ZX300 41044701163A FRAME

PB0000351-00 SYSTEM (ZX300,DOMESTIC)

ASSEMBLY

CLICK HERE TO **DOWNLOAD** THE COMPLETE MANUAL

- Thank you very much for reading the preview of the manual.
- You can download the complete manual from: www.heydownloads.com by clicking the link below



- Please note: If there is no response to CLICKING the link, please download this PDF first and then click on it.

CLICK HERE TO **DOWNLOAD** THE COMPLETE MANUAL

TM-ZX300 41044701163A FRAME

Pos No.	Parts No	Parts Name	Qty	Unit	Technical Data	Serial No (Start)	Serial No (End)	Remarks	Page
1	31792380000	POWER TAKE OFF	1						00003
	31791000000	POWER TAKE OFF	1						00002
	31790810000	POWER TAKE OFF	1						00001
	31790780000	POWER TAKE OFF	1						00001
	36400940000	POWER TAKE OFF	1						00001
	36400950000	POWER TAKE OFF	1						00001
	31792370000	POWER TAKE OFF	1						00003
	31790770000	POWER TAKE OFF	1						00001
	31792360000	POWER TAKE OFF	1						00003
	31791970000	POWER TAKE OFF	1						00001
	36401040000	POWER TAKE OFF	1						00001
2	31792040000	POWER TAKE OFF	1						00002
	31790690000	POWER TAKE OFF	1						00000
	31792050000	POWER TAKE OFF	1						00003
	31790930000	POWER TAKE OFF	1						00002
	31792510000	POWER TAKE OFF	1						00004
	31790940000	POWER TAKE OFF	1						00002
	31791300000	POWER TAKE OFF	1						00000
	31790960000	POWER TAKE OFF	1						00002
	31791060000	POWER TAKE OFF	1						00003
	31791140000	POWER TAKE OFF	1						00003
	31791650000	POWER TAKE OFF	1						00000
3	31790920000	POWER TAKE OFF	1						00002
	31791270000	POWER TAKE OFF	1						00003
	31790910000	POWER TAKE OFF	1						00002
	31792010000	POWER TAKE OFF	1						00003
	31790980000	POWER TAKE OFF	1						00002
4	31791020000	POWER TAKE OFF	1						00002
	31791240000	POWER TAKE OFF	1						00003
	31790840000	POWER TAKE OFF	1						00002
	31791950000	POWER TAKE OFF	1						00001
	31790850000	POWER TAKE OFF	1						00001
	31790830000	POWER TAKE OFF	1						00001
	31790750000	POWER TAKE OFF	1						00000
	31790740000	POWER TAKE OFF	1						00000

TM-ZX300 41044701163A FRAME

Pos No.	Parts No	Parts Name	Qty	Unit	Technical Data	Serial No (Start)	Serial No (End)	Remarks	Pages
1	36400785010	CASE	1						
2	36400765020	GEAR	1						
3	36400775010	SHAFT	1						
4	36400765040	SLEEVE	1						
5	36400095100	SHIFTER ASSY	1						
6	36400095110	PACKING	1						
7	80500006006	BEARING,BALL	1						
8	36400765050	BEARING,NEEDLE	1						
9	36400765060	BEARING	1						
10	36400765070	BEARING	1						
11	91206030005	SEAL,OIL	1						
12	36400095070	COVER (BEARING)	1						
13	36400095080	PACKING (COVER)	1						
14	36400095090	SHIM	N						
15	90191208014	BOLT	3		M8X14				
16	90302040801	WASHER,SPRING	7		8				
17	90191208020	BOLT	4		M8X20				
18	90193512090	BOLT	2						
19	90302041201	WASHER,SPRING	4		12				
20	36400785020	BOLT,STUD	2						
21	90267401200	NUT	2						
22	36400765110	PACKING (CASE)	1						
23	36400795010	PLATE,NAME	1						
25	31790680100	SUPPORT	1						
50	36400790000	POWER TAKE OFF	1						
100	31790740000	POWER TAKE OFF	1						

TM-ZX300 41044701163A FRAME

Pos No.	Parts No	Parts Name	Qty	Unit	Technical Data	Serial No (Start)	Serial No (End)	Remark
2	36400956010	CASE (P.T.O)	1					
3	51630103020	SHAFT (POWER TAKE OFF)	1					
4	51630103030	BEARING,NEEDLE	1					
6	36400955010	GEAR	1					
7	51630103050	WASHER	2					
8	51630103060	PIN,SPRING	1					
9	36400955020	SHAFT (OUTPUT)	1					
10	51630103080	BEARING,NEEDLE	2					
12	51630103090	GEAR,OUTPUT	1					
13	51630103100	WASHER	1					
15	51630103110	SLEEVE	1					
16	80500006206	BEARING,BALL	3					
17	52630106230	COVER (FRONT)	1					
18	36400955030	ADAPTER	1					
19	51630103140	GASKET	2					
20	51630103150	BOLT	4					
21	36400956020	BOLT	4		M8X1.25X30			
22	36400955050	SEAL,OIL	1					
25	51630103170	SHAFT	1					
26	51630103180	FORK	1					
27	51630103190	BOLT	1					
28	36400956030	PIN	1					
29	52630106190	SPRING	1					
30	51630103200	PLUG	1					
31	51630103210	PLUG	1					
32	51630103220	SEAL,OIL	1					
33	51630103230	BOLT	1					
35	51630103240	NUT	1					
36	51630103250	GASKET	1					
37	51630103260	GASKET	1					
38	36400315040	BOLT	6					
40	36400955060	COUPLING	1					
41	36400955070	RING,STOP	1					
50	36400950000	POWER TAKE OFF	1					

TM-ZX300 41044701163A FRAME

Pos No.	Parts No	Parts Name	Qty	Unit	Technical Data	Serial No (Start)	Serial No (End)	Remarks	Pages
1	36400915010	CASE	1						
2	36400915020	GEAR	1						
3	36400915030	SHAFT	1						
4	36400915040	GEAR	1						
5	36400395050	SHAFT	1						
6	36400095100	SHIFTER ASSY	1						
7	36400095110	PACKING	1						
8	36400095070	COVER (BEARING)	1						
9	36400095080	PACKING (COVER)	1						
10	36400095090	SHIM	1						
11	36400675030	COLLAR	1						
12	80500006206	BEARING,BALL	2						
13	36400915050	BEARING	2						
14	80602110620	RING,RITAINING	2		R62				
15	91206030005	SEAL,OIL	1						
16	90191206012	BOLT	1		M6X12				
17	36400095130	WASHER	1						
18	90191208014	BOLT	3		M8X14				
19	90191208020	BOLT	4		M8X20				
20	90302040801	WASHER,SPRING	7		8				
21	36400915060	PACKING	1						
22	36400435120	BOLT,STUD	6						
23	90267401200	NUT	6						
24	90302041201	WASHER,SPRING	6		12				
27	31790670100	SUPPORT	1						
50	36400910000	POWER TAKE OFF	1						
100	31791950000	POWER TAKE OFF	1						

TM-ZX300 41044701163A FRAME

Pos No.	Parts No	Parts Name	Qty	Unit	Technical Data	Serial No (Start)	Serial No (End)	Remarks	Pages
1	36401365010	CASE	1						
2	36401355010	GEAR	1						
3	36401355020	SHAFT	1						
4	36400095040	SHAFT	1						
5	36400095050	COLLAR	1						
6	36401355030	GEAR	1						
7	36400095070	COVER (BEARING)	1						
8	36400095080	PACKING (COVER)	1						
9	36400095090	SHIM	1						
10	36400095100	SHIFTER ASSY	1						
11	36400095110	PACKING	1						
12	80500006206	BEARING,BALL	2						
13	36400095120	BEARING	2						
14	80602110520	RING,RITAINING	2		R52				
15	91206030005	SEAL,OIL	1						
16	90101206012	BOLT	1		M6X12				
17	36400095130	WASHER	1						
18	90191208020	BOLT	4		M8X20				
19	90191208014	BOLT	3		M8X14				
20	90302040801	WASHER,SPRING	7		8				
21	36400345010	SPACER	1						
22	36400335030	SHIM	1						
23	90191210035	BOLT	4		M10X35				
24	36401355040	BOLT	4						
25	90267201000	NUT	4		M10				
26	90302041001	WASHER,SPRING	8		10				
28	31790680100	SUPPORT	1						
29	90191208025	BOLT	2		M8X25				
50	36401350000	POWER TAKE OFF	1						
100	31790930000	POWER TAKE OFF	1						

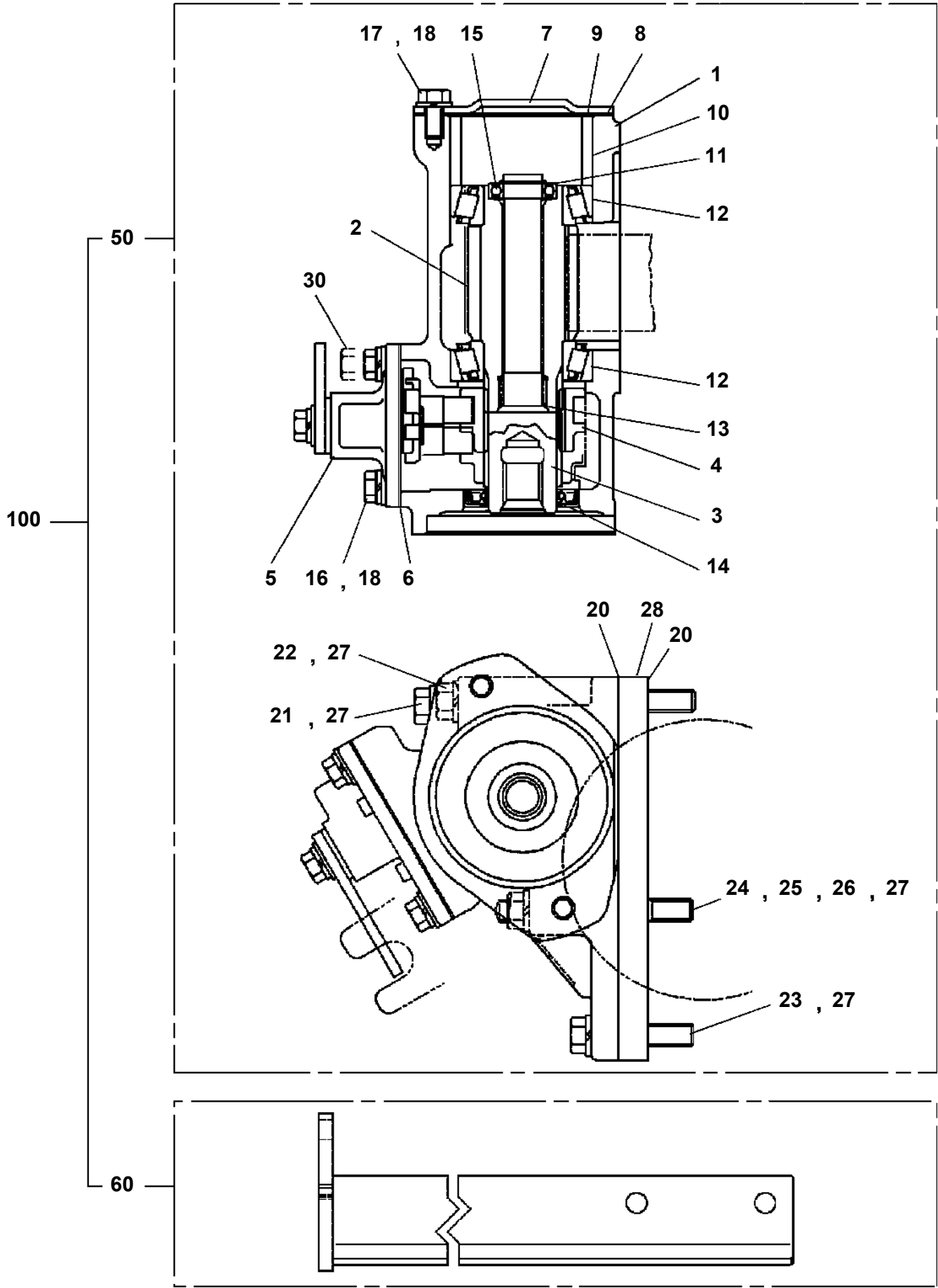
TM-ZX300 41044701163A FRAME

Pos No.	Parts No	Parts Name	Qty	Unit	Technical Data	Serial No (Start)	Serial No (End)	Remarks	Page
1	36400895010	CASE	1						
2	36401115010	GEAR	1						
3	36400895030	SHAFT	1						
4	36401115020	GEAR	1						
5	36400415050	SHAFT	1						
6	36400415060	COLLAR	1						
7	36400215070	COLLAR	2						
8	36400225110	SHIFTER SET	1						
9	36400095110	PACKING	1						
10	36400095070	COVER (BEARING)	1						
11	36400095080	PACKING (COVER)	1						
12	36400095090	SHIM	N						
13	80500006206	BEARING,BALL	2						
14	36400415090	BEARING,NEEDLE	2						
15	91206030005	SEAL,OIL	1						
16	91001102100	O-RING	1		1A P21				
17	90710006120	SCREW,SET	1		M6X12				
18	90191208014	BOLT	3		M8X14				
19	90191208020	BOLT	4		M8X20				
20	90302040801	WASHER,SPRING	7		8				
23	36400415100	PACKING (CASE)	1						
24	90191210030	BOLT	6		M10X30				
25	36400095150	BOLT,STUD	2		M10X1.25/1.5X43				
26	90267201000	NUT	2		M10				
27	90302041001	WASHER,SPRING	8		10				
28	31790720100	SUPPORT	1						
29	90191208025	BOLT	2		M8X25				
49	36400225160	SEAL,OIL	1						
50	36401500000	POWER TAKE OFF	1						
100	31791020000	POWER TAKE OFF	1						

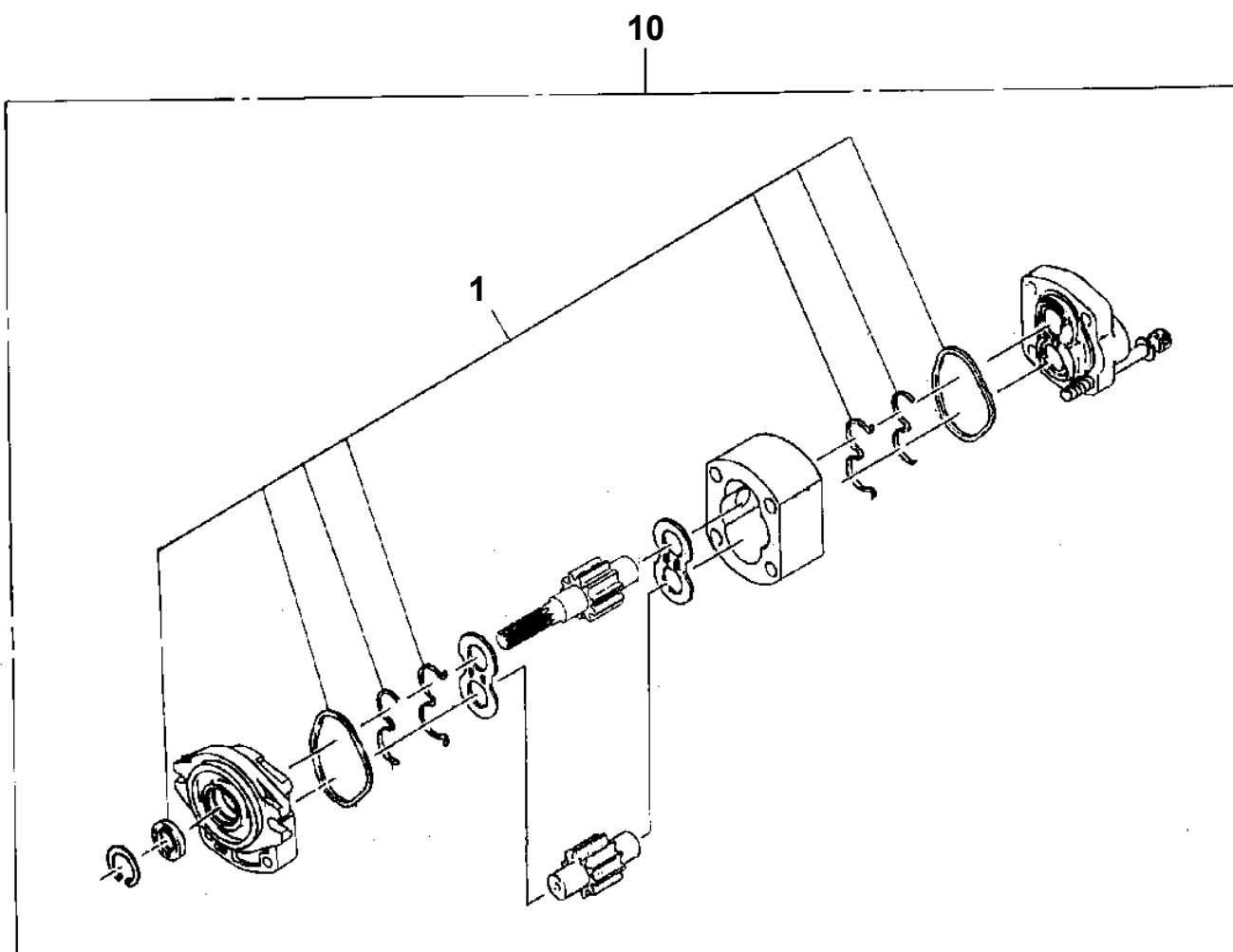
TM-ZX300 41044701163A FRAME

Pos No.	Parts No	Parts Name	Qty	Unit	Technical Data	Serial No (Start)	Serial No (End)	Remarks	Page
10	36401840001	POWER TAKE OFF	1						00003
20	31791140100	SUPPORT	1						
100	31791140000	POWER TAKE OFF	1						

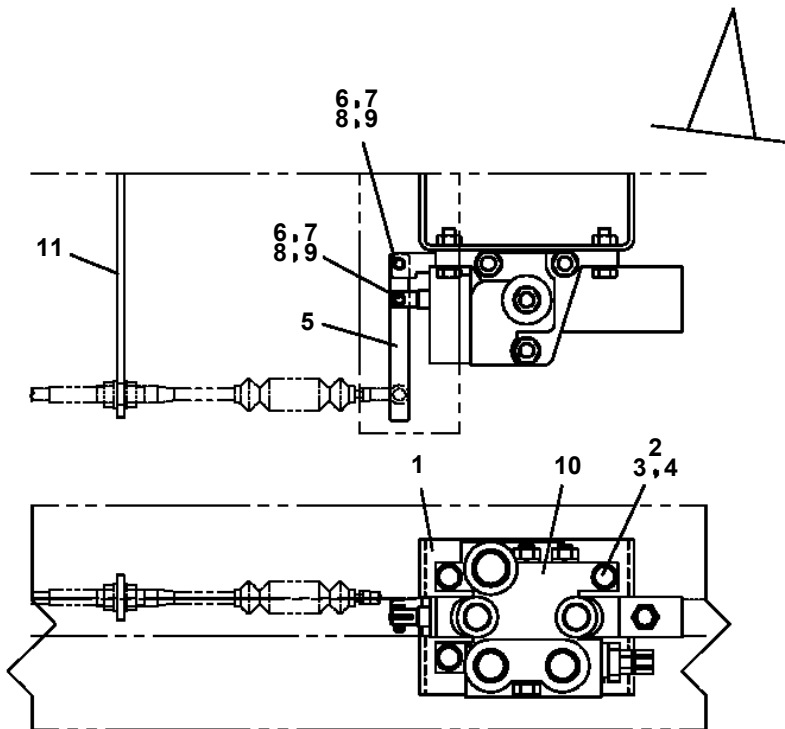
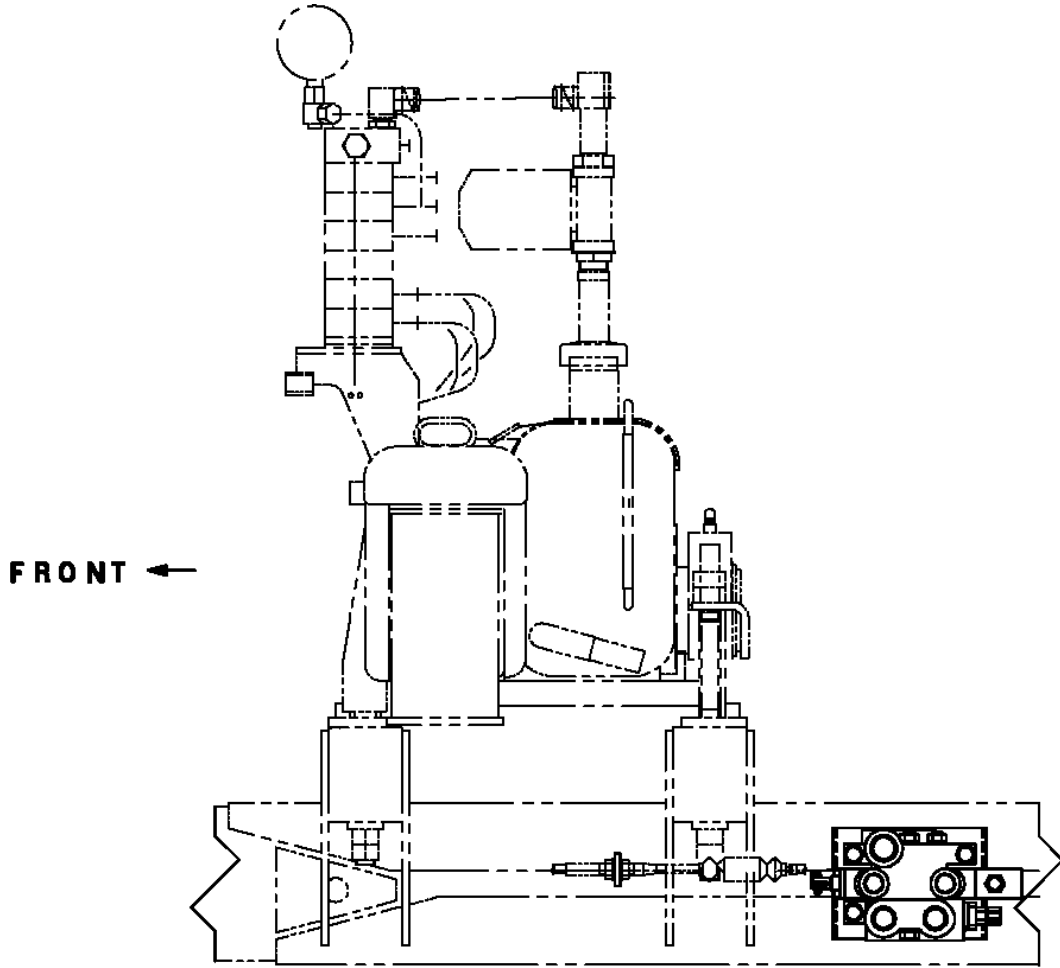
TM-ZX300 41044701163A FRAME
PB1030235-01 POWER TAKE OFF



TM-ZX300 41044701163A FRAME
PB1100162-00 PUMP, HYDRAULIC (SGP2-36)

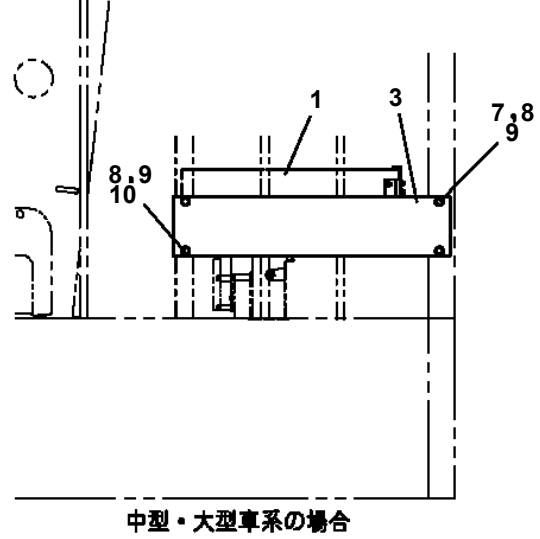
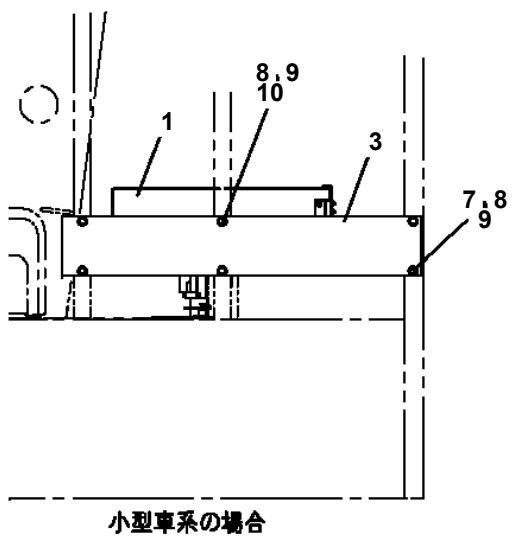
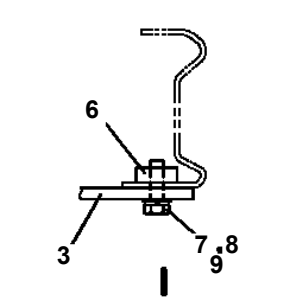
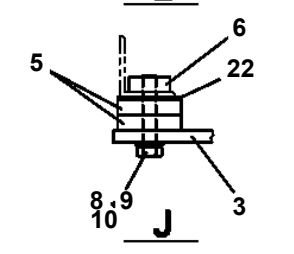
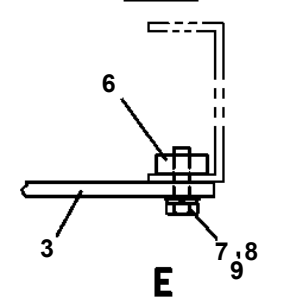
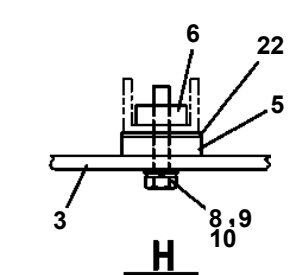
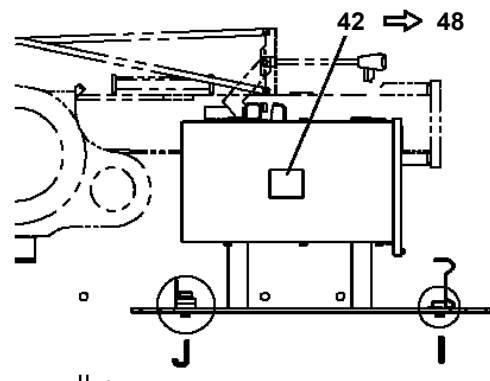
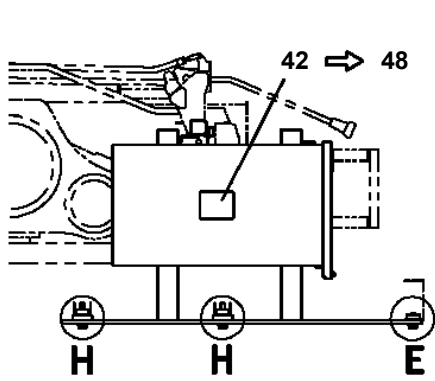
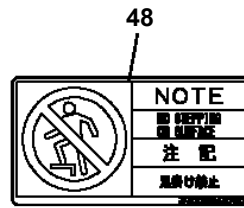
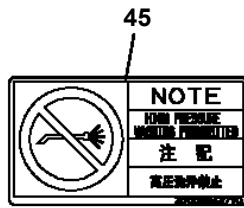
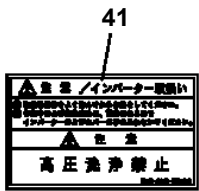
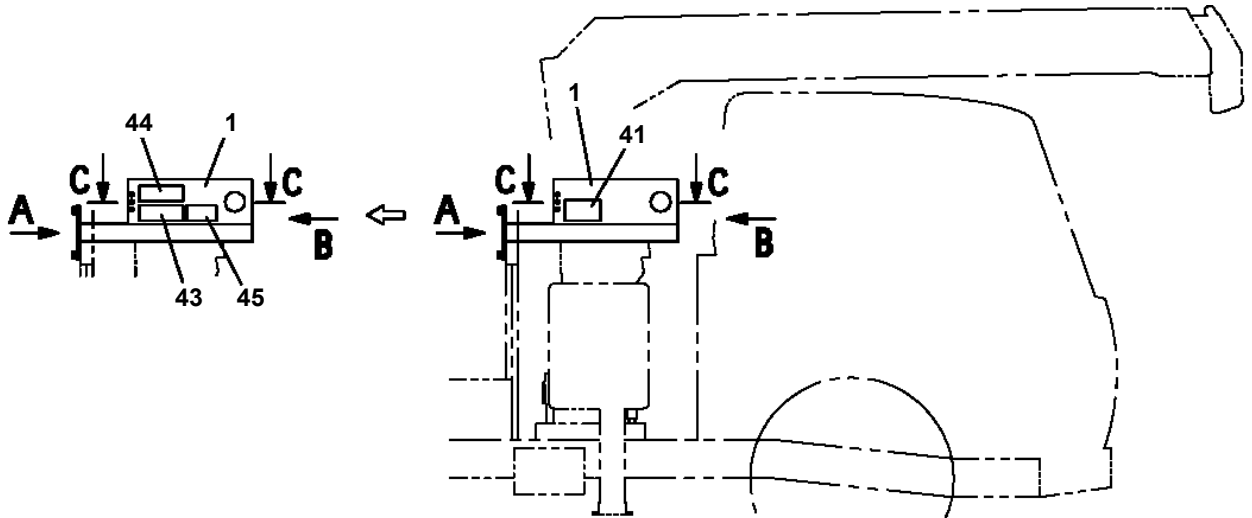


TM-ZX300 41044701163A FRAME
PB1320516-00 VALVE, MANUAL CONTROL (DUMP/NIHON SPINDLE)



TM-ZX300 41044701163A FRAME

PB1380332-03 POWER SUPPLY (100V POWER SOURCE/1500W)



TM-ZX300 41044701163A FRAME

Pos No.	Parts No	Parts Name	Qty	Unit	Technical Data	Serial No (Start)	Serial No
1	42474201000	BLOCK	4		355X355,H=80		
10	31506350000	BLOCK (4 PIECE SET:PLATE,355X355,H=80)	1				

TM-ZX300 41044701163A FRAME

Pos No.	Parts No	Parts Name	Qty	Unit	Technical Data	Serial No (Start)	Serial No (End)	Remarks	Pages
4	31642730100	SUPPORT	2						
5	90186208014	BOLT,FLANGE	12		M8X14				
7	90303071201	WASHER,PLAIN	2		12				
8	37000924770	FITTING,ELBOW	4						
21	37002417360	HOSE	2		L=1800				
22	37002450860	HOSE	2		L=1760				
23	31642730300	CLAMP ASSY	2						
24	31642730200	CLAMP ASSY	2						
29	91810130240	FASTENER	6						

TM-ZX300 41044701163A FRAME

Pos No.	Parts No	Parts Name	Qty	Unit	Technical Data	Serial No (Start)	Serial No (End)	Remarks	Pages
1	31271863200	COVER	2						
2	82400000702	CLIP	8						

TM-ZX300 41044701163A FRAME

Pos No.	Parts No	Parts Name	Qty	Unit	Technical Data	Serial No (Start)
1	36036830100	CYLINDER	1			
2	91350208501	BEARING,PLAIN(PACKINGX2+BEARING,PLAINX1)	1			
3	36033920200	PISTON	1			
4	91002903500	O-RING	1		1B G35	
5	36035981000	ROD	1			
6	36035980200	COVER,ROD	1			
7	91002908000	O-RING	1		1B G80	
8	91694007003	PACKING	1			
9	91410207003	RING,BACKUP	1			
10	91660007001	SEAL,DUST	1			
50	36035989900	PACKING SET	1		70X85	
100	36036830000	CYLINDER ASSY,JACK (MIN.718/PISTON WRB ASSY)	1			

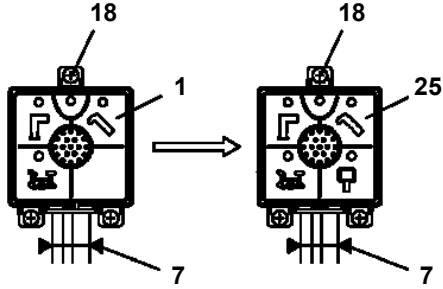
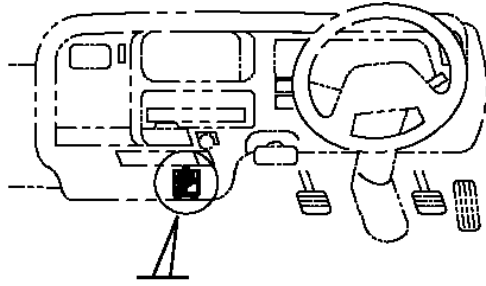
TM-ZX300 41044701163A FRAME

Pos No.	Parts No	Parts Name	Qty	Unit	Technical Data	Serial No (Start)	Serial No (End)	Remarks
1	91002801400	O-RING	1		1B P14			
100	36150080000	DETECTOR ASSY,MOMENT	1					

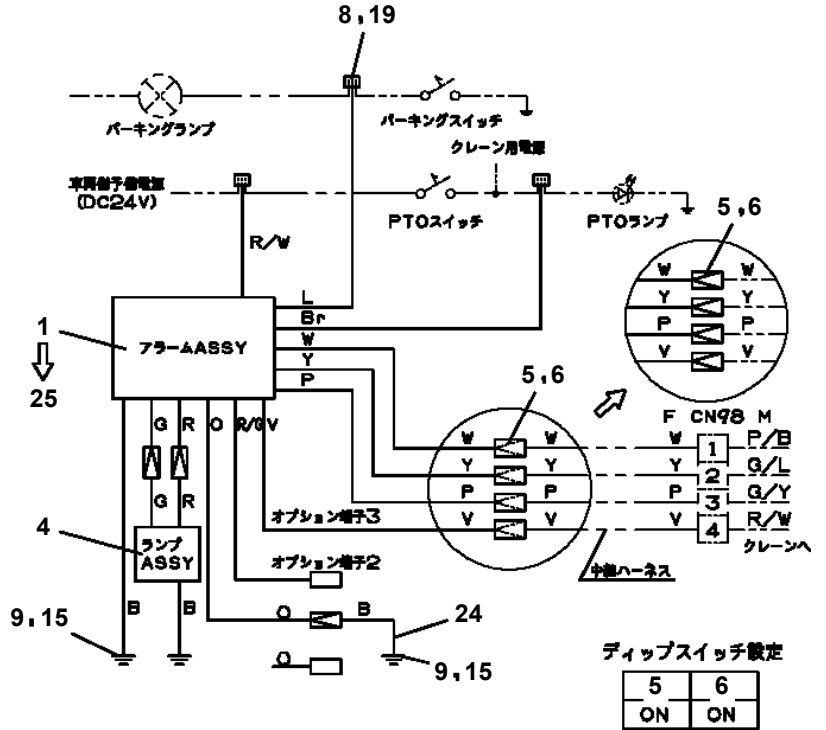
TM-ZX300 41044701163A FRAME

Pos No.	Parts No	Parts Name	Qty	Unit	Technical Data	Serial No (Start)	Serial No (End)	Remarks
1	31502991101	HARNESS	2					
2	34354781710	RELAY (WITH BRACKET)	2					
3	82115001005	CONNECTOR	1					
4	82100000191	TERMINAL	2					
5	82100000183	INSULATOR	2					
6	91810130240	FASTENER	10					

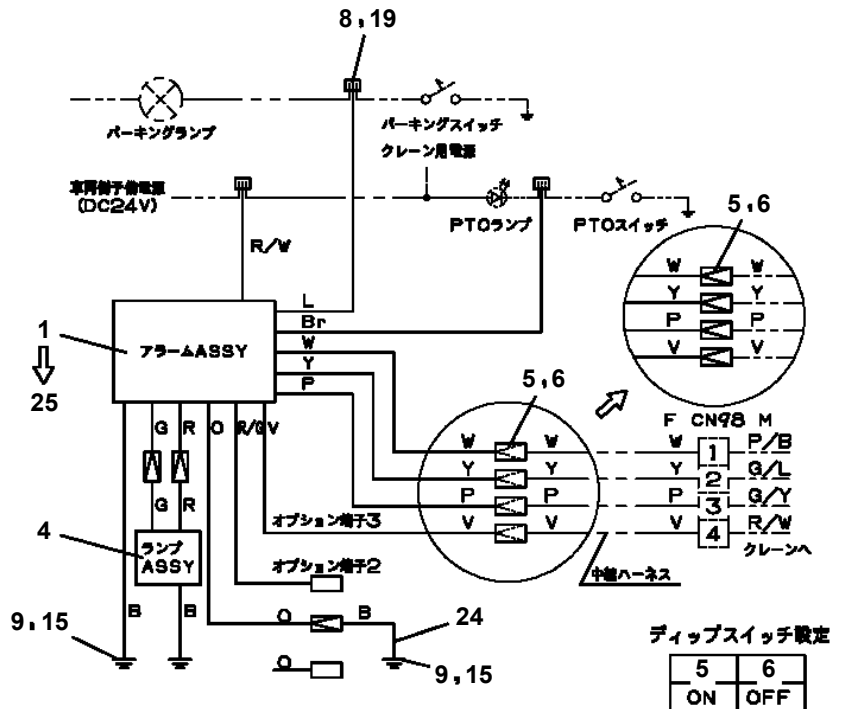
TM-ZX300 41044701163A FRAME
PE5021239-02 ELEC.ASSY (MOUNTING VEHICLE)



アラームASSY取付



パーキングランプの下流にパーキングスイッチがあり、PTOランプの上流にPTOスイッチがある場合



パーキングランプの下流にパーキングスイッチがあり、PTOランプの下流にPTOスイッチがある場合

TM-ZX300 41044701163A FRAME

Pos No.	Parts No	Parts Name	Qty	Unit	Technical Data	Serial No (Start)	Serial No (End)	Remarks	Pages
1	31361042300	PLUG	1						
2	91810130250	FASTENER	2						

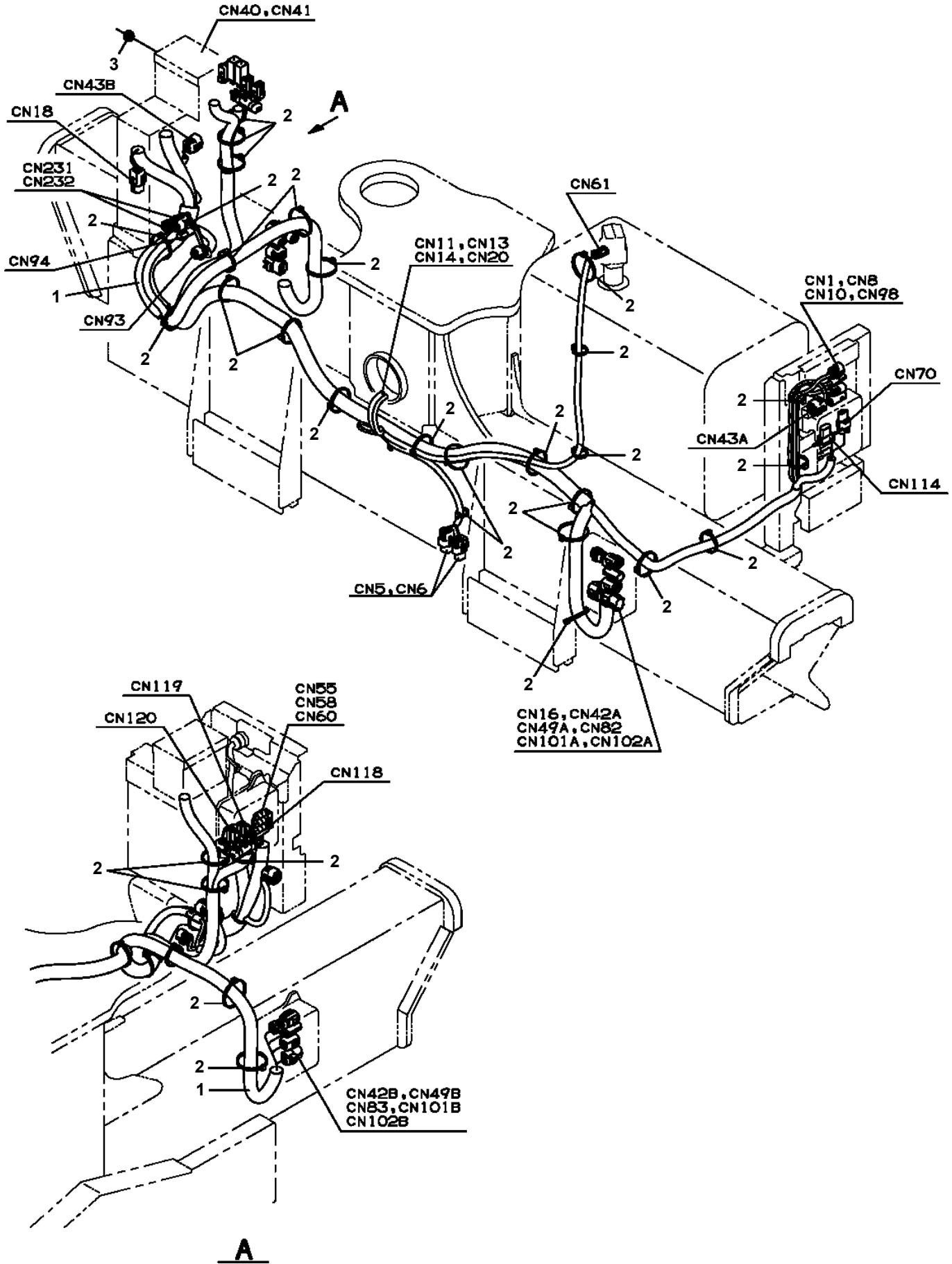
TM-ZX300 41044701163A FRAME

Pos No.	Parts No	Parts Name	Qty	Unit	Technical Data	Serial No (Start)	Serial No (End)	Remarks
1	31506121100	HARNESS	1					
2	34354781710	RELAY (WITH BRACKET)	1					
3	90280200600	NUT,FLANGE	1		M6			
4	80197586012	SCREW,MACHINE	1		M6X12			
5	91810130250	FASTENER	6					

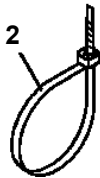
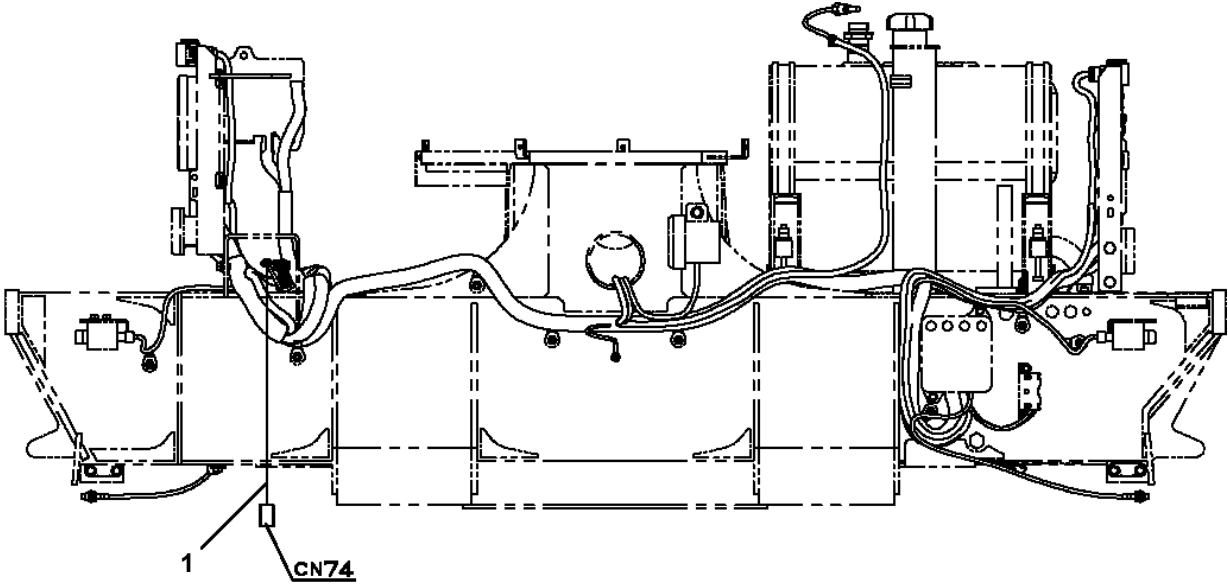
TM-ZX300 41044701163A FRAME

Pos No.	Parts No	Parts Name	Qty	Unit	Technical Data	Serial No (Start)	Serial No (End)	Remarks	Pages
1	31506291100	HARNESS	1						000156
2	91810130250	FASTENER	11						

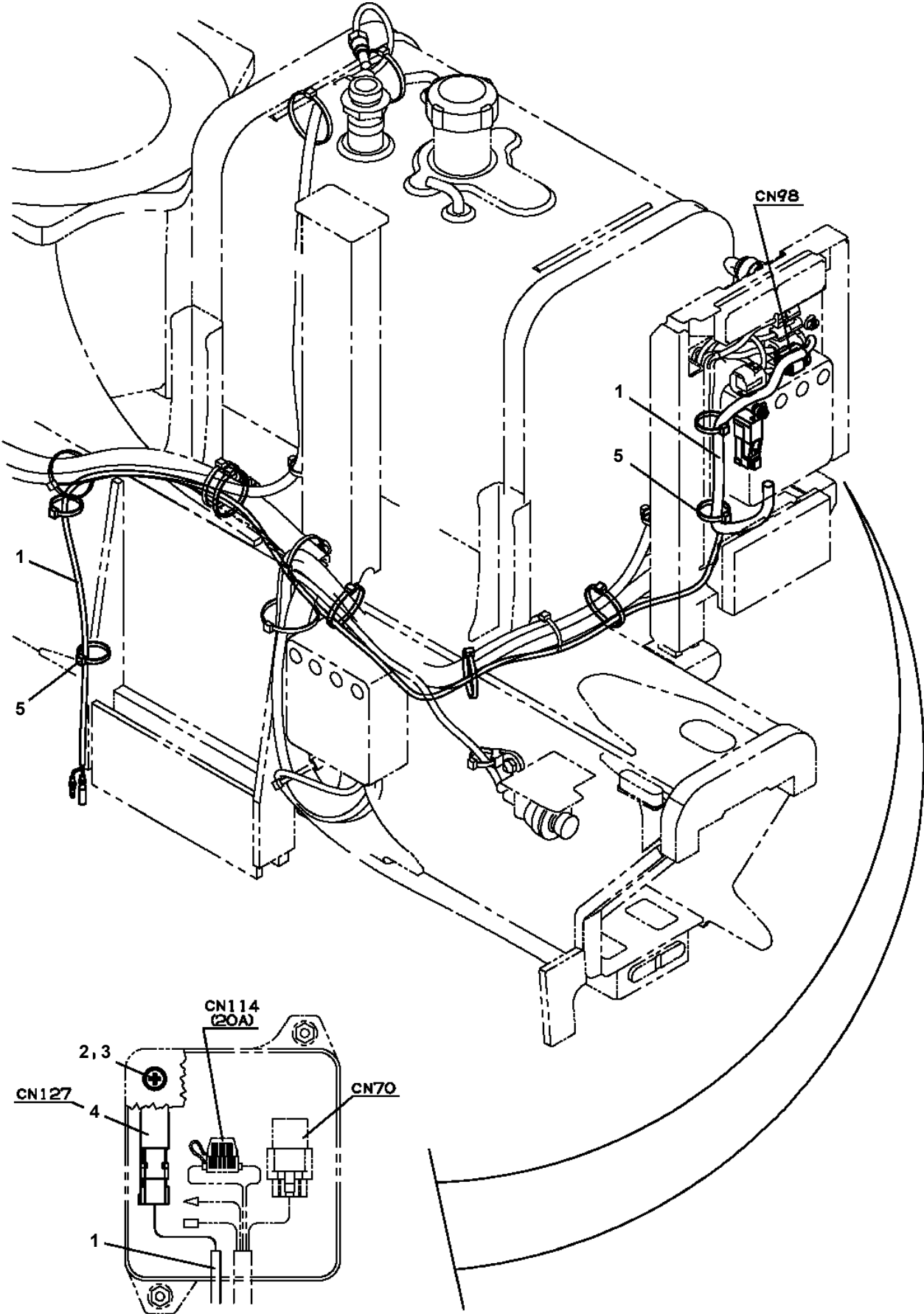
**TM-ZX300 41044701163A FRAME
PE5021347-00 ELEC.ASSY**



TM-ZX300 41044701163A FRAME
PE5021379-00 ELEC.ASSY



TM-ZX300 41044701163A FRAME
PE5021406-00 ELEC.ASSY



TM-ZX300 41044701163A FRAME

Pos No.	Parts No	Parts Name	Qty	Unit	Technical Data	Serial No (Start)	Serial No (End)	Remarks	Pages
1	(*****)	ELEC.ASSY	1						000103
2	(*****)	ELEC.ASSY	1						000118

TM-ZX300 41044701163A FRAME

Pos No.	Parts No	Parts Name	Qty	Unit	Technical Data	Serial No (Start)	Serial No (End)	Remarks
1	31310617530	GEAR,SPUR	1					
2	31310617540	PIN	2					
3	31310617550	DRUM	1					
4	80516006306	BEARING,BALL	1					
5	80516006206	BEARING,BALL	1					
6	90172410025	BOLT,HEXAGON SOCKET	4		M10X25			
7	90302041001	WASHER,SPRING	4		10			
100	31310610300	DRUM,WINCH (Y.G.TEC)	1					

TM-ZX300 41044701163A FRAME

Pos No.	Parts No	Parts Name	Qty	Unit	Technical Data	Serial No (Start)	Serial No (End)	Remarks	Pages
1	31440830100	ROLLER ASSY	1						
2	37000105740	PIN	2						
3	80136332020	PIN,SPLIT	2		3.2X20				
4	90303071001	WASHER,PLAIN	4		10				
5	37001300000	SPRING	2						
21	37001107470	ROLLER ASSY	1						
22	37001112450	ROLLER ASSY	1						
23	31440830300	PIN	1						
24	31440830150	SUPPORT	1						
25	31440150350	WASHER,PLAIN	1						
26	90286001007	NUT	1		M10 P=1.25				
27	90303070801	WASHER,PLAIN	1		8				
28	90267200800	NUT	1		M10				
29	37001112430	ROLLER ASSY	1						
42	80516006001	BEARING,BALL	4						
43	80602110280	RING,RITAINING	2		R28				

TM-ZX300 41044701163A FRAME

Pos No.	Parts No	Parts Name	Qty	Unit	Technical Data	Serial No (Start)	Serial No (End)	Remarks	Pages
1	90203201400	NUT	2		M14				
2	37000574030	PLATE	1						
3	31477171100	GUIDE ASSY	1						
4	90101214020	BOLT	1		M14X20				
5	37000532240	PLATE	1						
6	31471731600	PIN	1						
7	90101214035	BOLT	1		M14X35				
8	31477171500	SUPPORT	2						
9	90302041401	WASHER,SPRING	1		14				
10	37000303800	SPACER	1		L=48				
11	37000304020	SPACER	1		L=6				
32	80620210160	PIN,SNAP	1						
33	31471731200	PIN	1						
34	37001102960	ROLLER ASSY	1						
35	80601110150	RING,RITAINING	2		15				
36	80804035050	BUSH	2						
37	31471731500	SHEAVE ASSY	2						
38	80601110200	RING,RITAINING	2		S20				
52	80516006004	BEARING,BALL	2						
53	80602110420	RING,RITAINING	2		R42				
61	31477171201	GUIDE	1						
72	80516006002	BEARING,BALL	2						

TM-ZX300 41044701163A FRAME

Pos No.	Parts No	Parts Name	Qty	Unit	Technical Data	Serial No (Start)	Serial No (End)	Remarks	Pages
1	31360741200	HARNESS	1						

TM-ZX300 41044701163A FRAME

Pos No.	Parts No	Parts Name	Qty	Unit	Technical Data	Serial No (Start)	Serial No (End)	Remarks	Pages
1	31733584100	HARNESS	1						

TM-ZX300 41044701163A FRAME

Pos No.	Parts No	Parts Name	Qty	Unit	Technical Data	Serial No (Start)	Serial No (End)	Remarks	Pages
100	31351381102	HARNESS	1						

TM-ZX300 41044701163A FRAME

Pos No.	Parts No	Parts Name	Qty	Unit	Technical Data	Serial No (Start)	Serial No (End)	Remarks	Pages
100	31733763200	HARNESS	1						

TM-ZX300 41044701163A FRAME

Pos No.	Parts No	Parts Name	Qty	Unit	Technical Data	Serial No (Start)	Serial No (End)	Remarks	Pages
10	31506291100	HARNESS	1						

TM-ZX300 41044701163A FRAME

Pos No.	Parts No	Parts Name	Qty	Unit	Technical Data	Serial No (Start)	Serial No (End)	Remarks	Pages
10	31506172100	HARNESS	1						

CLICK HERE TO **DOWNLOAD** THE COMPLETE MANUAL

- Thank you very much for reading the preview of the manual.
- You can download the complete manual from: www.heydownloads.com by clicking the link below



- Please note: If there is no response to CLICKING the link, please download this PDF first and then click on it.

CLICK HERE TO **DOWNLOAD** THE COMPLETE MANUAL

TM-ZX300 41044701163A FRAME

Pos No.	Parts No	Parts Name	Qty	Unit	Technical Data	Serial No (Start)	Serial No (End)	Remarks	Pages
12	82100001841	FUSE	1		20A,YELLOW				
100	31734513100	HARNESS	1						

TM-ZX300 41044701163A FRAME

Pos No.	Parts No	Parts Name	Qty	Unit	Technical Data	Serial No (Start)	Serial No (End)	Remarks	Page
1	82181500090	RESISTANCE	1						
100	31734631200	HARNESS (CRANE)	1						

TM-ZX300 41044701163A FRAME

Pos No.	Parts No	Parts Name	Qty	Unit	Technical Data	Serial No (Start)	Serial No (End)	Rema
13	36662185010	KEY (FEATHER)	1					
40	36662415020	SEAL KIT	1					
50	36663100000	MOTOR,HYDRAULIC (WINCH)	1					

TM-ZX300 41044701163A FRAME

Pos No.	Parts No	Parts Name	Qty	Unit	Technical Data	Serial No (Start)	Serial No (End)	Remarks	Pages
1	31362166100	SUPPORT	1						
2	82108501450	SWITCH	1						
3	90201200600	NUT	2		M6				
4	90101206014	BOLT	2		M6X14				
5	91850310405	CLAMP (BLACK)	4						
6	91810130240	FASTENER	8						

TM-ZX300 41044701163A FRAME

Pos No.	Parts No	Parts Name	Qty	Unit	Technical Data	Serial No (Start)	Serial No (End)	Remarks
1	36671635010	JOINT,SELF SEALING	1					
2	36671635020	JOINT,SELF SEALING	1					
10	36671630000	JOINT ASSY,SELF SEAL	1					

TM-ZX300 41044701163A FRAME

Pos No.	Parts No	Parts Name	Qty	Unit	Technical Data	Serial No (Start)	Serial No (End)	Remarks	Pages
1	31701750100	SUPPORT	1						
2	37000147840	PIN	1						
3	80620210050	PIN,SNAP	1						
4	37000165020	PIN	1						
5	80136340020	PIN,SPLIT	1		4X20				
7	31701580801	LEVER	1						
8	31322224200	PLATE	1		L=1				
9	31323330100	KNOB (BLACK)	1						

TM-ZX300 41044701163A FRAME

Pos No.	Parts No	Parts Name	Qty	Unit	Technical Data	Serial No (Start)	Serial No (End)	Rema
2	(*****)	ELEC.ASSY (POST)	1					
3	(*****)	ELEC.ASSY (POST/HEAD BULB)	1					

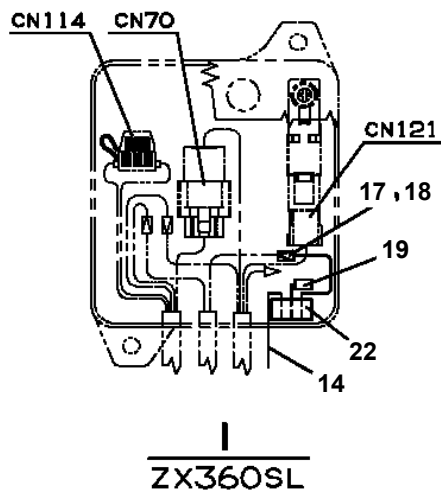
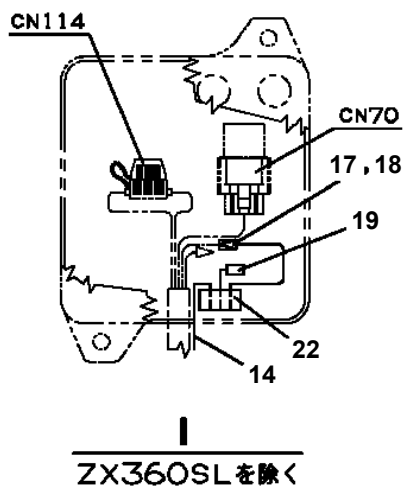
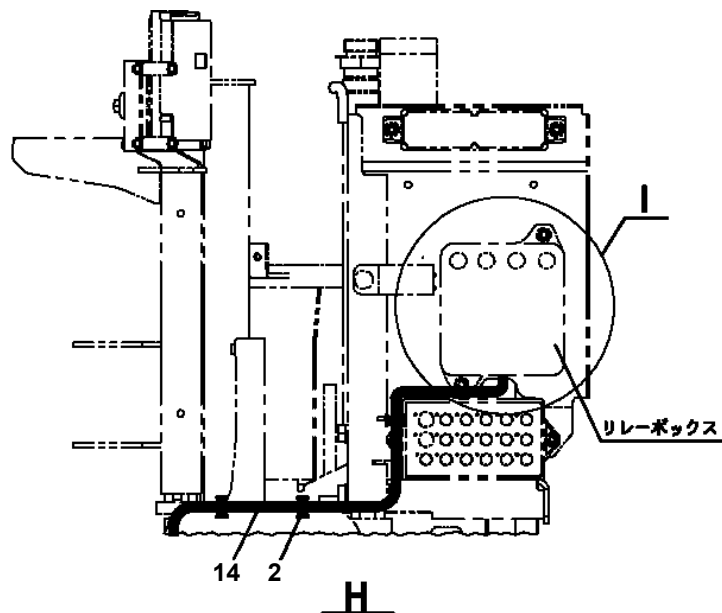
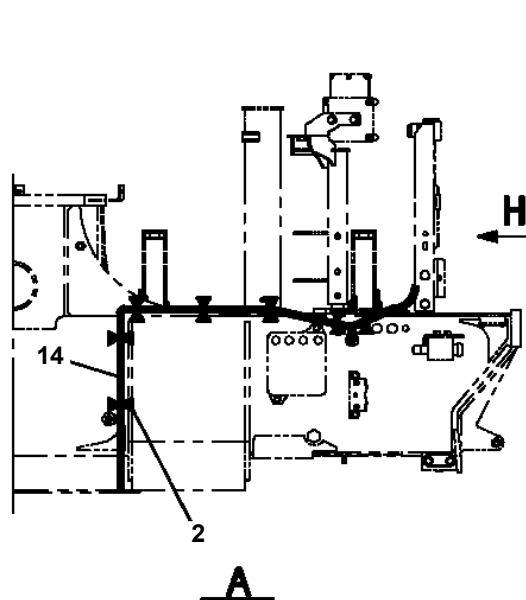
TM-ZX300 41044701163A FRAME

Pos No.	Parts No	Parts Name	Qty	Unit	Technical Data	Serial No (Start)	Serial No (End)	Remarks
1	31734642100	SUPPORT	1					
2	31734632200	HARNESS	1					
4	90101208025	BOLT	4		M8X25			
5	90302040801	WASHER,SPRING	4		8			
6	90303070801	WASHER,PLAIN	4		8			
7	90201200800	NUT	4		M8			
8	34495510102	LAMP ASSY (ASSY ONLY)	1					
9	37002243770	PLATE,NAME	1					
10	91810130250	FASTENER	6					
11	91850700101	CLAMP	3		L=208			
12	90186206016	BOLT,FLANGE	2		M6X16			
13	91850310405	CLAMP (BLACK)	1					
14	91850100802	CLAMP	1					
28	82400000203	GROMMET	1		L=250			
41	31659171100	COVER	1					
42	37002227560	PLATE,NAME (BLACK)	2		D=16			
43	34354781710	RELAY (WITH BRACKET)	2					
44	90280200600	NUT,FLANGE	2		M6			
45	80197586012	SCREW,MACHINE	2		M6X12			

TM-ZX300 41044701163A FRAME

Pos No.	Parts No	Parts Name	Qty	Unit	Technical Data	Serial No (Start)	Serial No (End)	Remarks	Page
7	82165904190	BULB,LAMP	1		HALOGEN 24V 55W H3				
100	82165904160	LAMP	1						

TM-ZX300 41044701163A FRAME
 PN1014685-04 ELEC.ASSY



ZXの場合

**TM-ZX300 41044701163A FRAME
PN5012012-01 NAME PLATE ASSY (FRAME:TDN-LAYOUT)**

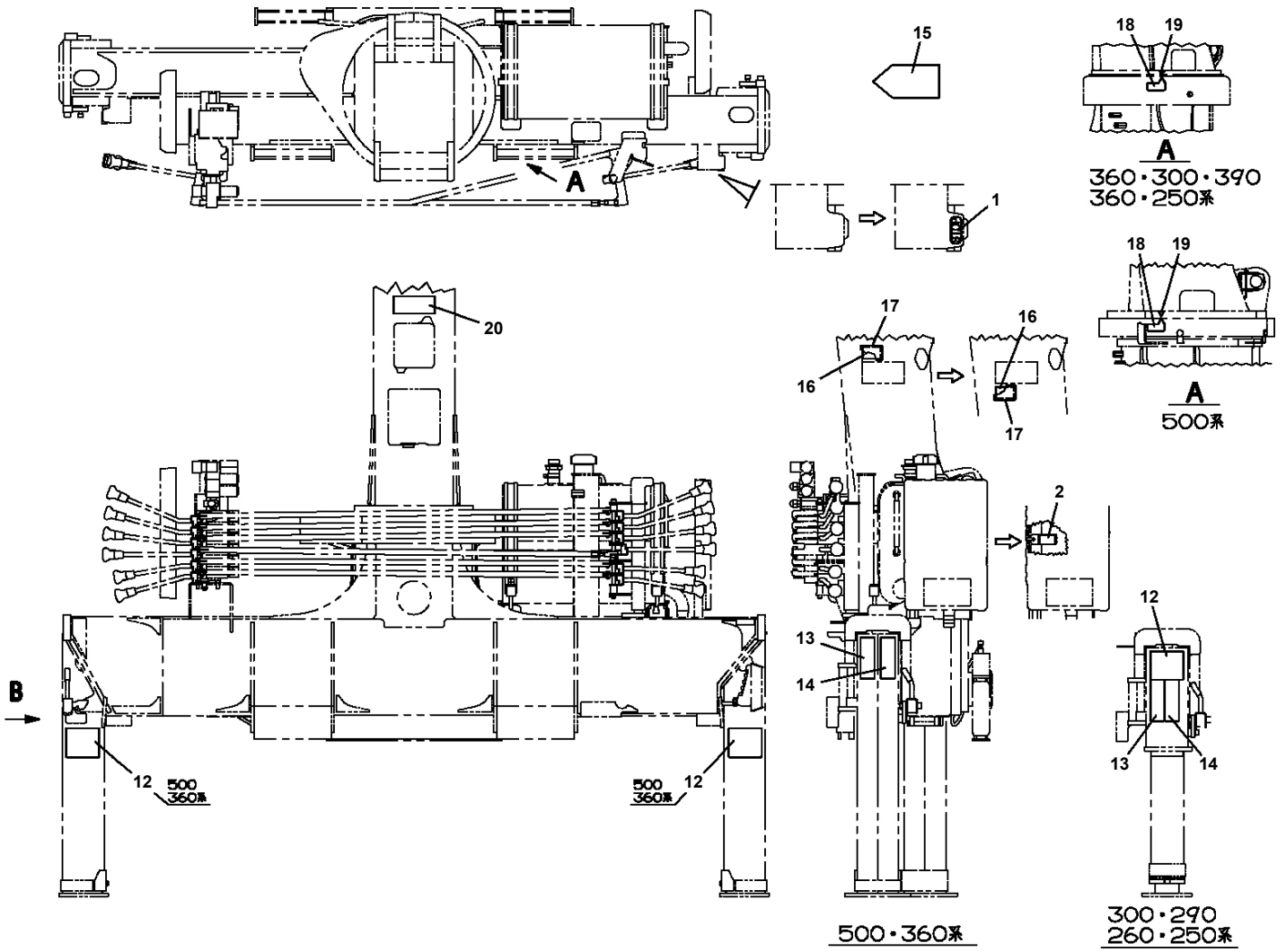
ネームプレートASSY (フレーム:タタノハイレッツ)
NAME PLATE ASSY (FRAME:TDN-LAYOUT)

符号	日本語名称	英語名称	備考
1	ネームプレートASSY	NAME PLATE ASSY	ノブ銘板:タタノ配列
4	ネームプレートASSY	NAME PLATE ASSY	タンク油量銘板:共通
5	ネームプレートASSY	NAME PLATE ASSY	フック銘板:2.93t
6	ネームプレートASSY	NAME PLATE ASSY	O/R注意銘板等
7	ネームプレートASSY	NAME PLATE ASSY	定期自主検査銘板

適用製造番号によっては取り付けがないものもあります。

MACHINES OF SOME SERIAL NO. ARE NOT EQUIPPED WITH THESE PARTS.

**TM-ZX300 41044701163A FRAME
PN5012021-02 NAME PLATE ASSY (OUTRIGGER CAUTION PLATE ETC.)**



TM-ZX300 41044701163A FRAME

Pos No.	Parts No	Parts Name	Qty	Unit	Technical Data	Serial No (Start)	Serial No (End)	Remarks	Pages
1	37002241840	PLATE,NAME	2						
2	37002241610	PLATE,NAME	2						

TM-ZX300 41044701163A FRAME

Pos No.	Parts No	Parts Name	Qty	Unit	Technical Data	Serial No (Start)	Serial No (End)	Remarks	Pages
1	37002241810	PLATE,NAME	2						

TM-ZX300 41044701163A FRAME

Pos No.	Parts No	Parts Name	Qty	Unit	Technical Data	Serial No (Start)	Serial No (End)	Remarks	Pages
1	37002243900	PLATE,NAME	1						

TM-ZX300 41044701163A FRAME

Pos No.	Parts No	Parts Name	Qty	Unit	Technical Data	Serial No (Start)	Serial No (End)	Remarks	Pages
1	31506043100	PLATE,NAME	2						
2	36806846100	PLATE,CAUTION	1						

TM-ZX300 41044701163A FRAME

Pos No.	Parts No	Parts Name	Qty	Unit	Technical Data	Serial No (Start)	Serial No (End)	Remarks	Pages
2	90451700100	SCREW,TAPPING	4		M4X6.4				

TM-ZX300 41044701163A FRAME

Pos No.	Parts No	Parts Name	Qty	Unit	Technical Data	Serial No (Start)	Serial No (End)	Remarks	Pages
1	31326322101	LEVER	2						
2	31326322201	LEVER	2						
3	31326322301	LEVER	2						
4	31324867000	ROD	3						

TM-ZX300 41044701163A FRAME

Pos No.	Parts No	Parts Name	Qty	Unit	Technical Data	Serial No (Start)
1	91002801000	O-RING	2		1B P10	
2	90172110040	BOLT,HEXAGON SOCKET	2		M10X40	
3	36623930000	VALVE,PILOT CHECK	1			
4	36036830000	CYLINDER ASSY,JACK (MIN.718/PISTON WRB ASSY)	1			
5	80491002020	JOINT (WITH O-RING)	2			
21	91002801100	O-RING	2		1B P11	

TM-ZX300 41044701163A FRAME

Pos No.	Parts No	Parts Name	Qty	Unit	Technical Data	Serial No (Start)	Serial No (E
1	31624970000	FRAME ASSY (R/O:WITH LOCK ASSY)	1				KE3053
	31624970001	FRAME ASSY(R/O:WITH LOCK ASSY)	1			KE3054	
2	(*****)	PIPING,REAR JACK (1)	1				
3	(*****)	ELEC.ASSY	1				
4	(*****)	NAME PLATE ASSY (REAR OUTRIGGER)	1				

TM-ZX300 41044701163A FRAME

Pos No.	Parts No	Parts Name	Qty	Unit	Technical Data	Serial No (Start)	Serial No (End)	F
1	(*****)	PARTS ASSY,RADIO CONTROLLER	1					
2	(*****)	PLATE ASSY,NAME (SWITCH,BOX/U)	1					

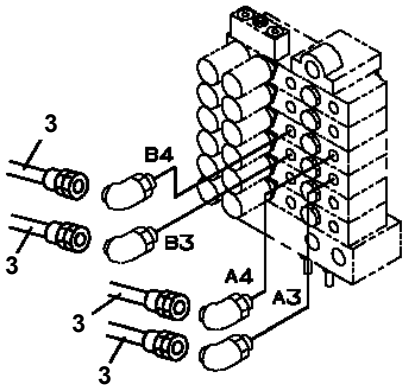
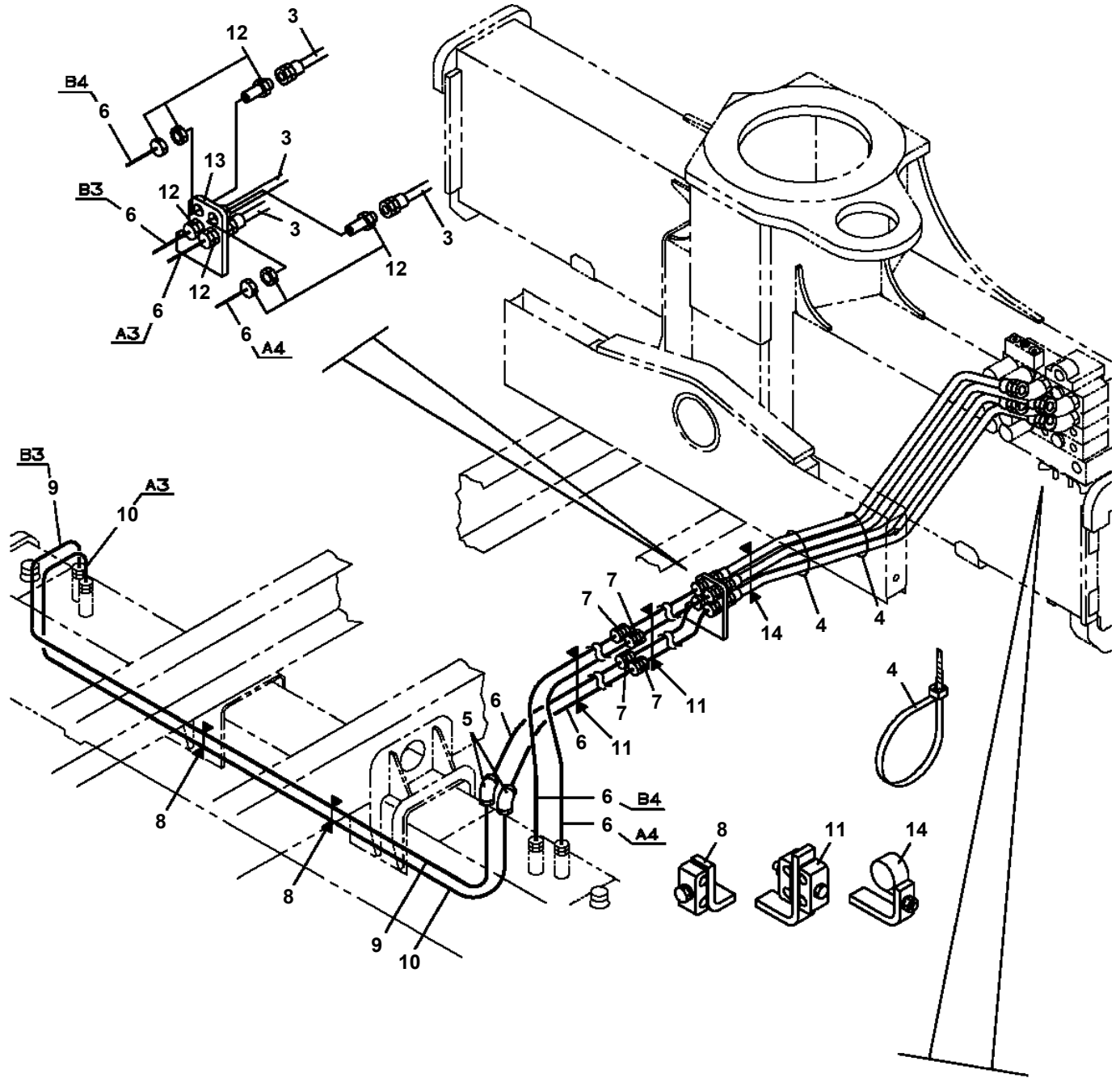
TM-ZX300 41044701163A FRAME

Pos No.	Parts No	Parts Name	Qty	Unit	Technical Data	Serial No (Start)	Serial No (End)	Remarks	Pages
1	31596223500	PLATE,CAUTION	2						
2	31596223600	PLATE,NAME	1						

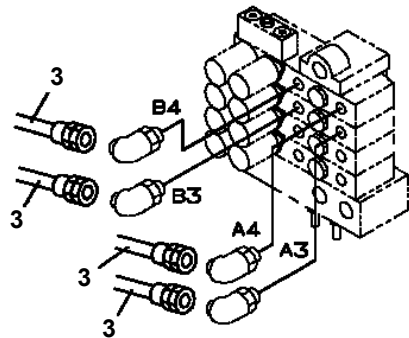
TM-ZX300 41044701163A FRAME

Pos No.	Parts No	Parts Name	Qty	Unit	Technical Data	Serial No (Start)	Serial No (End)	Remarks	Pa
1	37002465150	HOSE	1		L=425				
2	37002471640	HOSE	1		L=360				
3	91002801400	O-RING	8		1B P14				
5	91803600200	CLIP	2		D=13-20				
6	37002459330	HOSE	1		L=1360				
7	37002459320	HOSE	1		L=1300				
8	37002513360	HOSE	1		L=450				
9	80430620600	JOINT (WITH O-RING)	4		L,G3/8-G3/8				
10	37000920990	JOINT	2						
11	37002448850	HOSE	1		L=600				
	37002480680	HOSE	1		L=600				
12	37002448860	HOSE	1		L=560				
	37002480670	HOSE	1		L=560				
13	37000801760	JOINT	1						
14	82100001412	TUBE, SPIRAL	N		SE-12BK				
15	37000804580	JOINT	1						
31	91002801400	O-RING	4		1B P14				

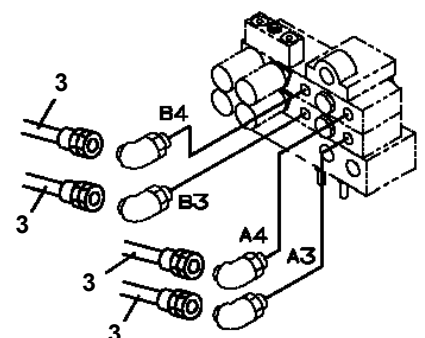
**TM-ZX300 41044701163A FRAME
PP6010560-00 PIPING ASSY (VALVE - REAR JACK)**



(6連バルブの場合)
 パワスラ, リヤアウトリガ
 セルフウィンチ, サービスポート



(4連バルブの場合)
 パワスラ, リヤアウトリガ



(2連バルブの場合)
 リヤアウトリガ

**TM-ZX300 41044701163A FRAME
PP6010611-00 PIPING ASSY**

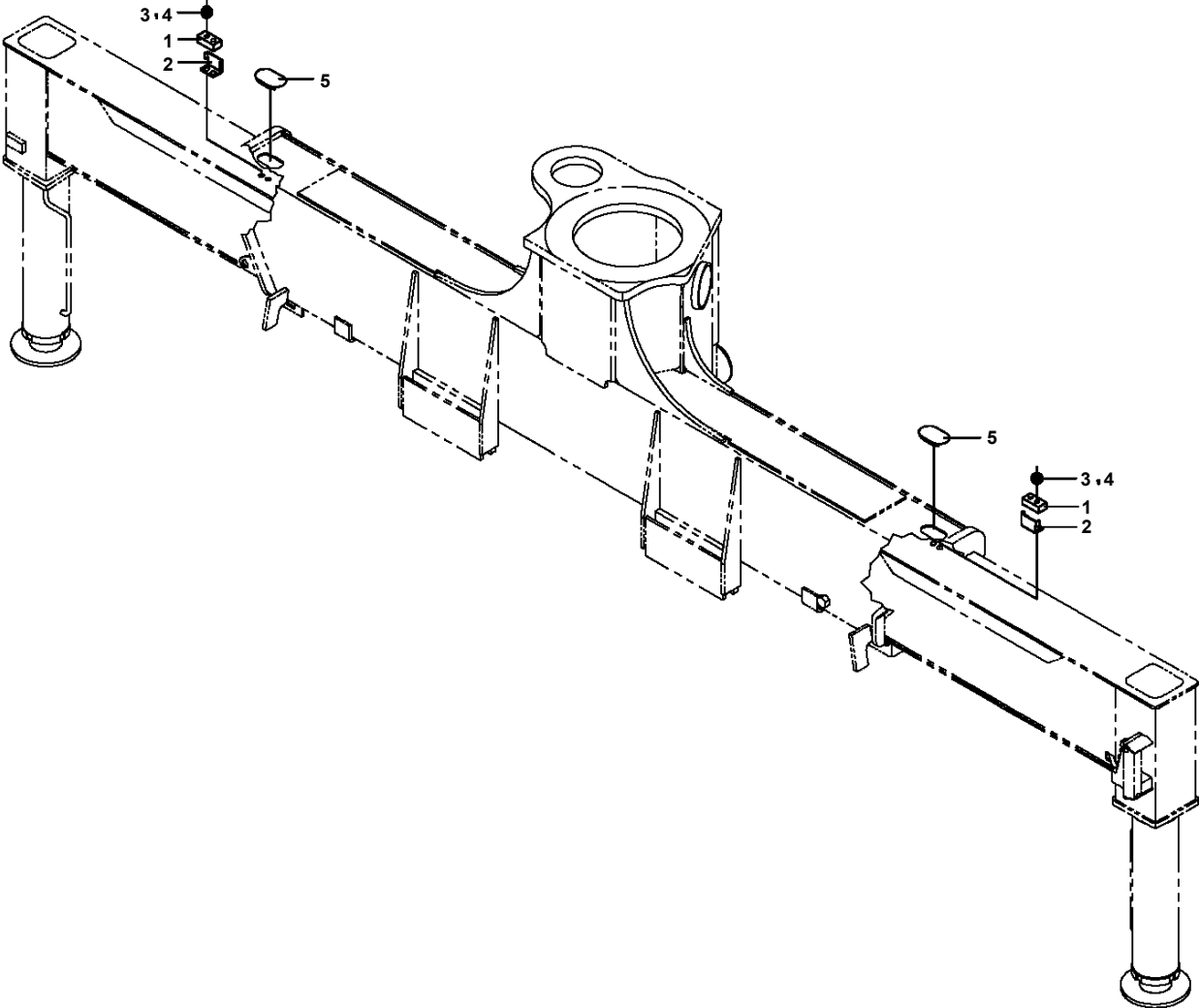
ハイカンASSY
PIPING ASSY

符号	日本語名称	英語名称	備考
3	ハイセンASSY	ELEC. ASSY	本体部
4	オペ . ASSY , ソウサバ ^レ ルフ ^レ	OPE. ASSY , CONT. VALVE	
5	ネームフ ^レ レートASSY	NAME PLATE ASSY	
8	ハイセンASSY	ELEC. ASSY	スイッチ部
12	バ ^レ ルフ ^レ ASSY , リモコン	VALVE ASSY , REMOTE CONTROL	2選 (サンク)
13	ハイカンASSY	PIPING ASSY	本体部
14	サホ ^レ トASSY	SUPPORT ASSY	300STD、360STD系バルブ台
15	ハイカンASSY	PIPING ASSY	プラグ

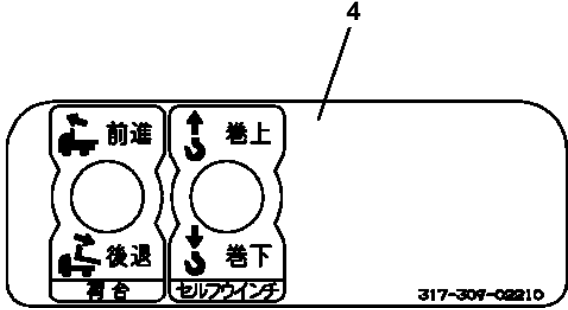
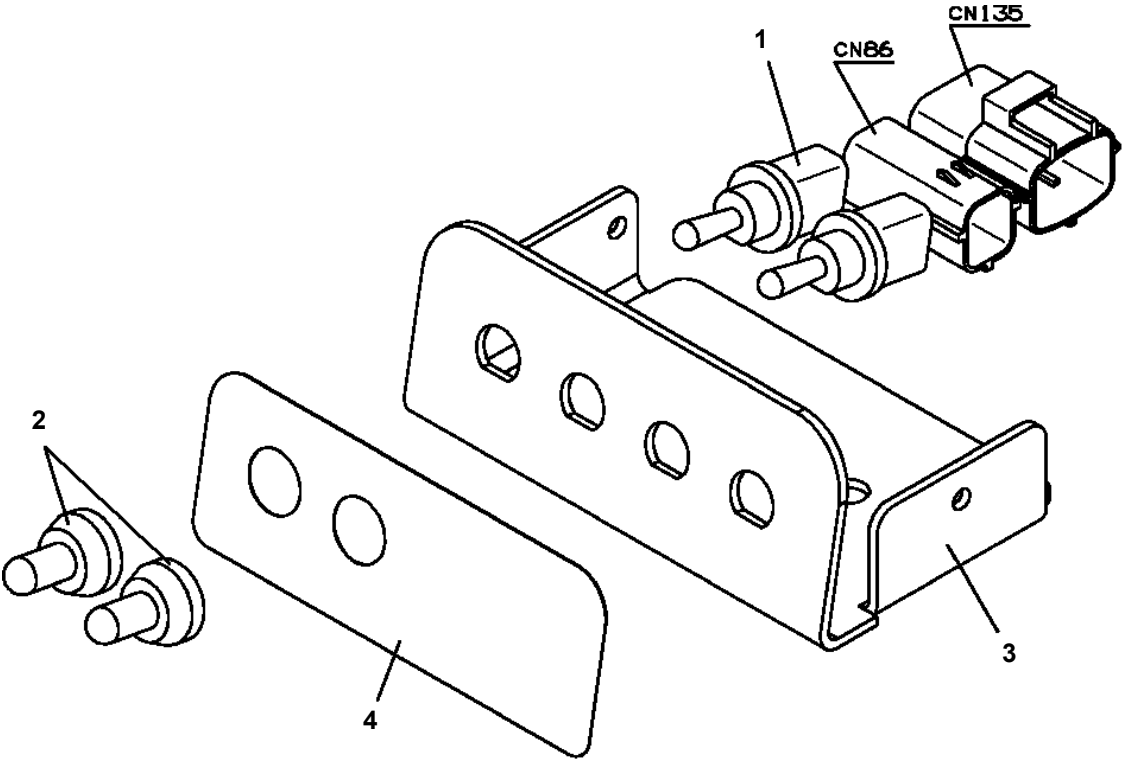
適用製造番号によっては取り付けがないものもあります。

MACHINES OF SOME SERIAL NO. ARE NOT EQUIPPED WITH THESE PARTS.

TM-ZX300 41044701163A FRAME
PS5380009-00 STOPPER ASSY (OUTRIGGER)



**TM-ZX300 41044701163A FRAME
PS5530495-00 SWITCH ASSY**



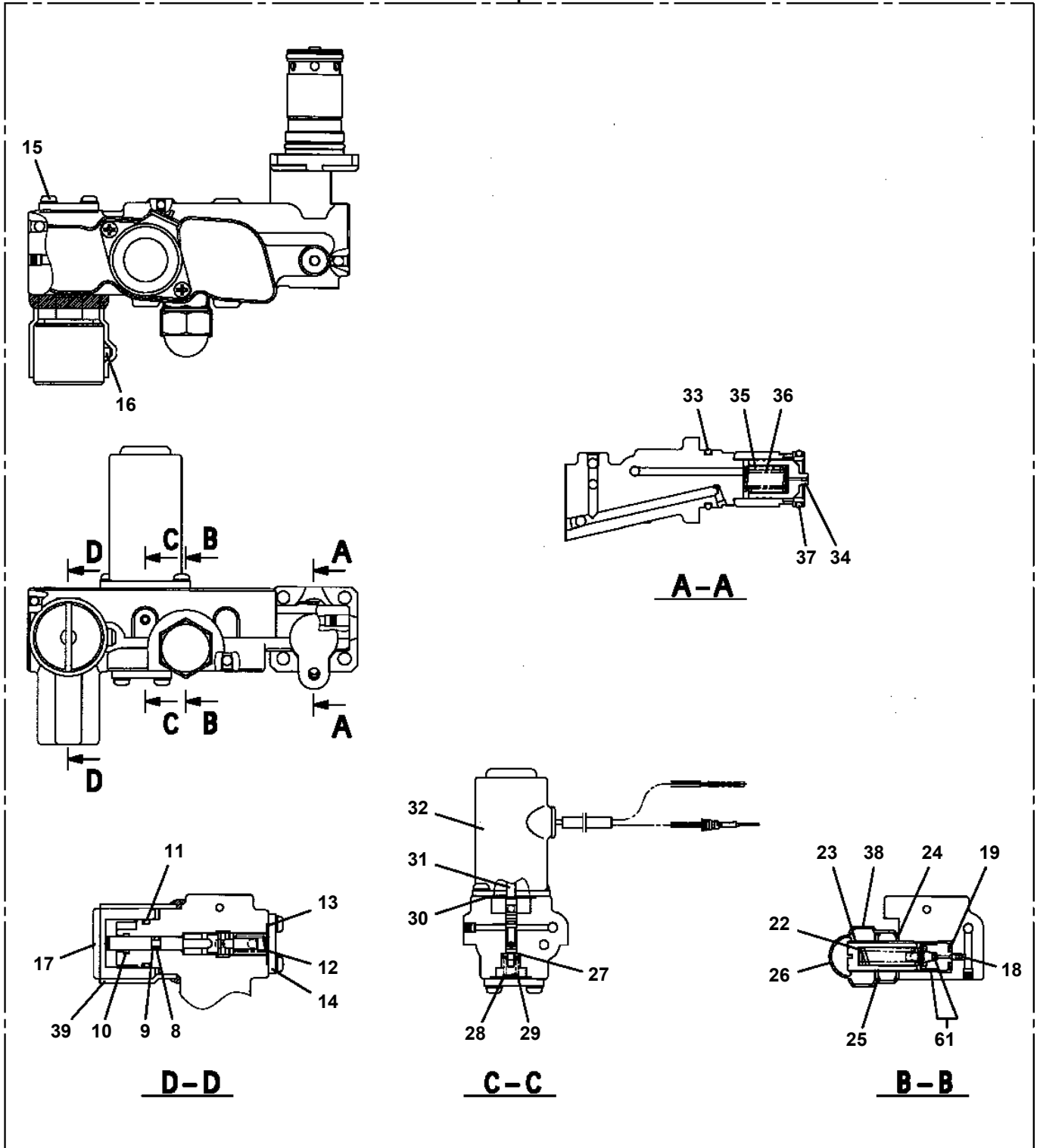
**TM-ZX300 41044701163A FRAME
PV1000145-00 REMOTE CONTROL SYSTEM**

リモート コントロール システム
REMOTE CONTROL SYSTEM

〔組立名称一覧〕より選択してください。
SEE THE CORRESPONDING "ASSEMBLY NAME" LIST.

TM-ZX300 41044701163A FRAME
PV5140039-00 VALVE ASSY,RELIEF

100

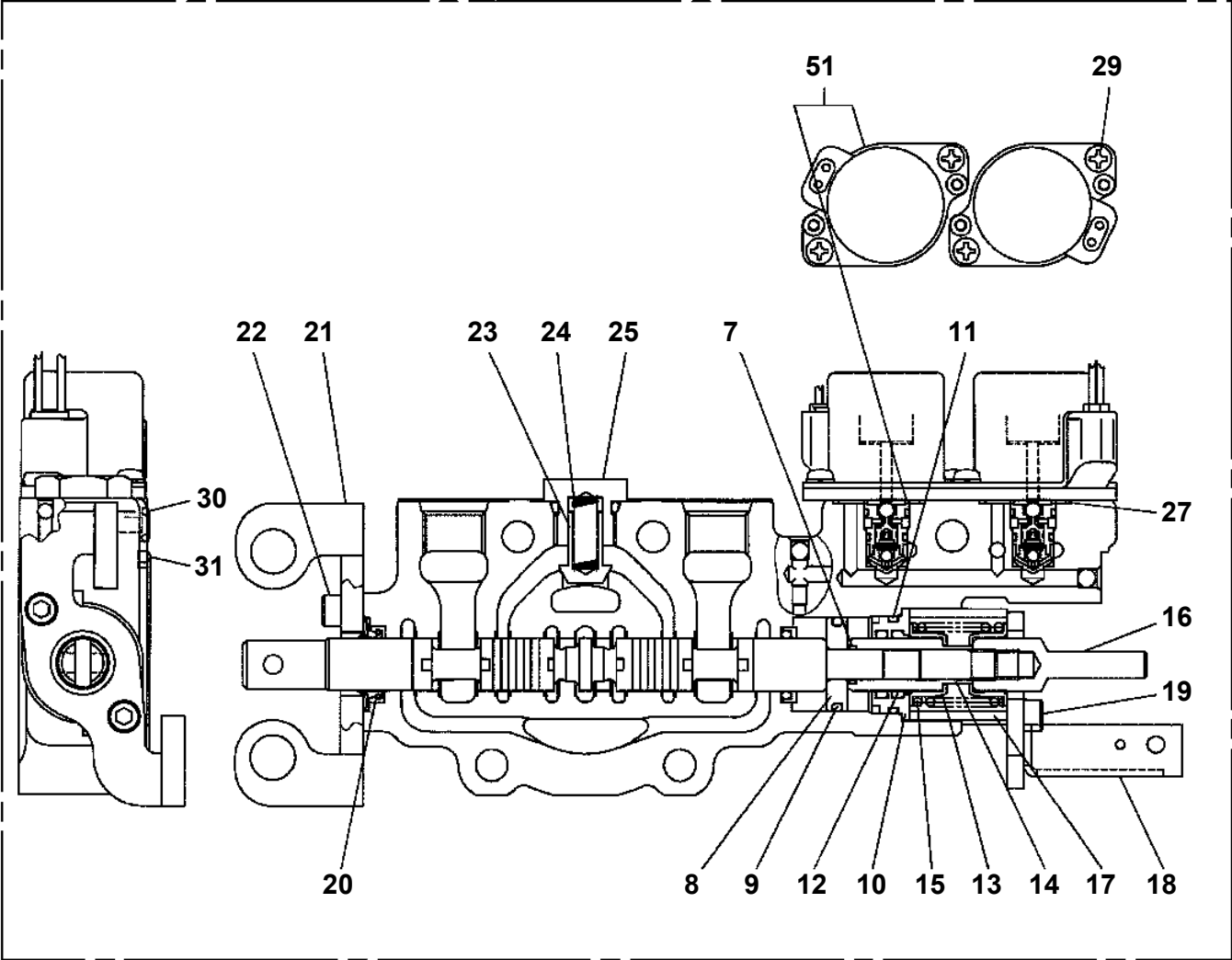


TM-ZX300 41044701163A FRAME

Pos No.	Parts No	Parts Name	Qty	Unit	Technical Data	Serial No (Start)	Serial No (End)	R
1	36645095040	COVER (BOTTOM)	1					
2	36646225020	BOLT,TIE	4					
3	36648860041	VALVE,CONTROL	2					
4	36740850030	COVER (FRONT)	1					
5	90201200800	NUT	5		M8			
6	80720104012	PIN,SPRING	1		4X12			
7	36647615050	BOLT,TIE (C)	1					
8	36645495080	JOINT	1					
9	36743390050	VALVE ASSY,RELIEF	1					
10	36645615230	C-BOLT	4		5X12			
11	91001101100	O-RING	4		1A P11			
12	36644115130	PLUG	4					
13	36743225010	HARNESS	1					
14	36644015110	CONNECTOR	1					
15	36644015130	TUBE	1					
16	11615111410	BAND	5					
17	82114203040	CONNECTOR (CAP)	1					
18	82121502040	PLATE	1					
19	82121502030	PLATE	1					
20	36646875090	TUBE	2		10B			
21	36062635050	TUBE,CORRUGATE	1		10			
22	36740765040	BAND	1					
23	36062635030	FASTENER	2					
24	80172304010	SCREW,MACHINE	2		M4X10			
27	36741985040	PLUG	3					
28	36741985050	PLUG	4					
29	36640755070	CAP	4					
30	90303070401	WASHER,PLAIN	2		4			
102	36646865190	PISTON	2					
103	91001102000	O-RING	2		1A P20			
104	91001000800	O-RING	2		S8			
105	36646865200	SPOOL (SUB)	2					
106	36648365110	FLANGE	2					
107	91001002240	O-RING	2		S22.4			
108	91650001400	SCRAPER	2					
109	36645495210	SEAT,SPRING (RETURN)	4					
110	36645845060	SPRING (RETURN)	2					
111	36646865210	SPACER	2					
112	36640625550	PLATE (D)	2					
113	36633365070	ADAPTER	2					
114	36645615230	C-BOLT	4		5X12			
115	36633365100	SEAL,OIL	2					
116	36645845050	LINK	2					
117	36645615250	C-BOLT	4		M5X25			
118	36633365090	CAP (CHECK VALVE)	2					
119	12635101360	SPOOL	2					
120	12635101190	SPRING	2					
126	91001002200	O-RING	4		S22			
129	91001100600	O-RING	13		1A P6			
130	91002905500	O-RING	3		1B G55			
131	91001101400	O-RING	7		1A P14			
204	36740765050	PLUG	3					
205	36740765060	SPRING	1					
207	36640625210	CAP	1					
208	91001101800	O-RING	1		1A P18			
209	36649585170	FILTER	1					
210	91001002600	O-RING	2		S26			
211	36647395150	PLUG	1		M24			
212	36646875130	ORIFICE	1		M3			
213	91001101600	O-RING	1		1A P16			
214	36646265090	SPRING (B)	1					
215	36646265080	SPRING (A)	1					
216	36645615210	PLUG	1		24			

**TM-ZX300 41044701163A FRAME
PV5460056-00 VALVE,CONTROL**

100



**TM-ZX300 41044701163A FRAME
PX5010637-00 MOUNT ASSY (ACCELERATOR/MECHANICAL GOVERNOR)**

マウントASSY (アクセル/メカシキカ^o ハ^o ナシヤ, エンジ^o ンコントロール)
MOUNT ASSY (ACCELERATOR/MECHANICAL GOVER)

符号	日本語名称	英語名称	備考
1	オペ . ASSY, アクセル	OPE . ASSY, ACCELERATOR	
2	ハイセンASSY	ELEC . ASSY	
3	ハイカンASSY	PIPING ASSY	

適用製造番号によっては取り付けがないものもあります。

MACHINES OF SOME SERIAL NO. ARE NOT EQUIPPED WITH THESE PARTS.

TM-ZX300 41044701163A FRAME

Pos No.	Parts No	Parts Name	Qty	Unit	Technical Data	Serial No (Start)	Serial No (End)
1	(*****)	OUTRIGGER ASSY,REAR (ROTARY)	1				
2	(*****)	MOUNT ASSY (DUMP SELECT)	1				
3	(*****)	ELEC.ASSY	1				
5	(*****)	ELEC.ASSY	1				
6	(*****)	PARTS ASSY,REMOTE CONTROL	1				
7	(*****)	ELEC.ASSY	1			KE0377	
8	(*****)	COOLER ASSY,OIL	1				
9	(*****)	PERFORMANCE DATA (15T TROCCO/K)	1			KE1474	
10	(*****)	LAMP ASSY,AML	1				
11	(*****)	PIPING ASSY	1				

TM-ZX300 41044701163A FRAME

Pos No.	Parts No	Parts Name	Qty	Unit	Technical Data	Serial No (Start)	Serial No
1	31351381103	HARNESS	1				
2	36120740000	TRANSMITTER ASSY,SIGNAL (ASSY ONLY)	1				
3	91810130250	FASTENER	16				
4	82108501340	SWITCH	1				
5	90186206010	BOLT,FLANGE	9		M6X10		
7	91850700101	CLAMP	9		L=208		
21	31659171100	COVER	2				
22	37002227560	PLATE,NAME (BLACK)	8		D=16		

TM-ZX300 41044701163A FRAME

Pos No.	Parts No	Parts Name	Qty	Unit	Technical Data	Serial No (Start)	Serial No (End)	Remarks	Pages
100	31506041000	BOX,OPERATION	1						

TM-ZX300 41044701163A FRAME

Pos No.	Parts No	Parts Name	Qty	Unit	Technical Data	Serial No (Start)	Serial No (End)	Remarks	Pages
1	31507211100	HARNESS	1						000334
2	31506042100	SUPPORT	1						
3	90186208016	BOLT,FLANGE	4		M8X16				
4	91810130250	FASTENER	18						
5	80172303010	SCREW,MACHINE	8		M3X10				
6	82100002490	CAP	2						
8	31506042200	SUPPORT	1						
9	31506042300	SUPPORT	2						
10	90302040301	WASHER,SPRING	8		3				
11	90303070301	WASHER,PLAIN	6		3				

CLICK HERE TO **DOWNLOAD** THE COMPLETE MANUAL

- Thank you very much for reading the preview of the manual.
- You can download the complete manual from: www.heydownloads.com by clicking the link below



- Please note: If there is no response to CLICKING the link, please download this PDF first and then click on it.

CLICK HERE TO **DOWNLOAD** THE COMPLETE MANUAL