

TM-ZX290 41047701384A FRAME

PB0000365-00 SYSTEM (ZX290SL,DOMESTIC)

ASSEMBLY

CLICK HERE TO **DOWNLOAD** THE COMPLETE MANUAL

- Thank you very much for reading the preview of the manual.
- You can download the complete manual from: www.heydownloads.com by clicking the link below



- Please note: If there is no response to CLICKING the link, please download this PDF first and then click on it.

CLICK HERE TO **DOWNLOAD** THE COMPLETE MANUAL

TM-ZX290 41047701384A FRAME

Pos No.	Parts No	Parts Name	Qty	Unit	Technical Data	Serial No (Start)	Serial No (End)	R
5	36401600001	POWER TAKE OFF	1					
	36401600000	POWER TAKE OFF	1					
	52230314000	POWER TAKE OFF	1					
	31790870000	POWER TAKE OFF	1					
	36401650000	POWER TAKE OFF	1					
6	52230314000	POWER TAKE OFF	1					
	31790860000	POWER TAKE OFF	1					
	36401650000	POWER TAKE OFF	1					
	52230312000	POWER TAKE OFF (WITH TURBO)	1					
	36401600000	POWER TAKE OFF	1					
7	31790760000	POWER TAKE OFF	1					
	31790720000	POWER TAKE OFF	1					

TM-ZX290 41047701384A FRAME

Pos No.	Parts No	Parts Name	Qty	Unit	Technical Data	Serial No (Start)	Serial No (End)	Remarks	Pages
1	36400565010	CASE	1						
2	36400565020	GEAR	1						
3	36400235040	SHAFT	1						
4	36400565030	GEAR	1						
5	36400095040	SHAFT	1						
6	36400095050	COLLAR	1						
7	36400095100	SHIFTER ASSY	1						
8	36400095110	PACKING	2						
9	36400235050	COVER (FRONT)	1						
10	36400235060	COVER (REAR)	1						
11	36400235070	PACKING	2						
12	36400095090	SHIM	N						
13	80500006305	BEARING,BALL	2						
14	36400095120	BEARING	2						
15	91206025005	SEAL,OIL	1						
16	36400095130	WASHER	1						
17	90101206012	BOLT	1		M6X12				
18	80602110520	RING,RITAINING	2		R52				
19	90191210016	BOLT	8		M10X16				
20	90302041001	WASHER,SPRING	14		10				
21	90191208030	BOLT	4		M8X30				
22	90302040801	WASHER,SPRING	4		8				
23	36400135120	COUPLING	1						
24	36400135100	KEY	1						
25	36400135150	NUT	1		M4X1.5				
26	36400135160	WASHER,PLAIN	1						
27	36400135090	WASHER	1						
30	36400075140	COVER (1)	1						
31	90193210025	BOLT	3		M10X25				
32	36400195030	BOLT,STUD	3						
33	90267201000	NUT	3		M10				
35	31790670100	SUPPORT	1						
36	90191208025	BOLT	2		M8X25				
50	36400560000	POWER TAKE OFF	1						
100	31790730000	POWER TAKE OFF	1						

TM-ZX290 41047701384A FRAME

Pos No.	Parts No	Parts Name	Qty	Unit	Technical Data	Serial No (Start)	Serial No (End)	Remarks	Page
1	36401165010	CASE	1						
2	36401135060	GEAR (TO)	1						
3	36401165020	SHAFT	1						
4	36401125040	SLEEVE	1						
5	36401125050	SHIFTER SET	1						
6	36400095110	PACKING	1						
7	36400095070	COVER (BEARING)	1						
8	36400095080	PACKING (COVER)	1						
9	36400095090	SHIM	1						
10	36401135070	COLLAR	1						
11	80500006903	BEARING,BALL	1						
12	36401125080	BEARING,ROLLER	2						
13	36401125090	BEARING,NEEDLE	1						
14	91206030005	SEAL,OIL	1						
15	36401165030	NUT	1						
16	36401165040	WASHER	1						
17	90191208020	BOLT	4		M8X20				
18	90191208014	BOLT	3		M8X14				
19	90302040801	WASHER,SPRING	7		8				
20	36400135120	COUPLING	1						
21	36400135100	KEY	1						
22	36401165050	NUT	1		M14X1.5				
23	36400135080	WASHER,PLAIN	1						
24	36400135090	WASHER	1						
26	36401125120	PACKING (CASE)	1						
27	90191210100	BOLT	1		M10X100				
28	90191210090	BOLT	1		M10X90				
29	90191210030	BOLT	2		M10X30				
30	36400095150	BOLT,STUD	1		M10X1.25/1.5X43				
31	36401125140	BOLT	1						
32	90267201000	NUT	2		M10				
33	90302041001	WASHER,SPRING	6		10				
34	31790880100	SUPPORT	1						
35	90191208025	BOLT	2		M8X25				
50	36401160000	POWER TAKE OFF	1						
100	31790900000	POWER TAKE OFF	1						

TM-ZX290 41047701384A FRAME

Pos No.	Parts No	Parts Name	Qty	Unit	Technical Data	Serial No (Start)	Serial No (
1	36401655010	CASE,GEAR	1				
3	52230312180	BOLT (WITH WASHER)	8		M8X1.25		
4	52230312160	WASHER,SPRING	1				
5	52230308050	COVER (CASE)	1				
6	80500006305	BEARING,BALL	2				
7	52230312021	SHAFT (OUTPUT)	1				
8	36401595020	COLLAR (THRUST)	1				
9	52230312140	ROD (SHAFT)	1				
10	52230312030	SEAL,OIL	1				
11	52230308100	SHAFT (IDLE)	1				
13	52230312190	COVER (UPPER)	1				
14	52230312200	PACKING (COVER)	1				
15	52230308130	PIN,SPRING	1		4X24		
16	36401595030	ARM (SHAFT)	1				
17	52230312220	SLEEVE	1				
18	52230308170	PLUG (SHAFT)	1				
19	52230312051	SEAL,OIL	1				
20	52230312120	BOLT,STUD	2				
21	90302041001	WASHER,SPRING	2		10		
22	90267201000	NUT	2		M10		
23	52230312290	GEAR ASSY	1				
27	52230312250	GEAR	1				
28	52230312230	BOLT (WITH WASHER)	4		M8X1.25		
29	52230312090	BEARING,NEEDLE	2				
30	52230312280	BOLT	4		M8X1.25		
31	52230312270	BOLT,HEXAGON SOCKET	1		M8X1.25		
32	52230308160	SPRING (LOCK)	1				
33	52230312150	PIN (LOCK)	1				
34	52230307020	COUPLING	1				
35	52230312260	PIN,SPRING	1				
36	52230312060	ADAPTER	1				
50	36401659510	POWER TAKE OFF (WITHOUT COUPLING)	1				
100	36401650000	POWER TAKE OFF	1				

TM-ZX290 41047701384A FRAME

Pos No.	Parts No	Parts Name	Qty	Unit	Technical Data	Serial No (Start)	Serial No (End)	Remarks	Pages
1	36401725010	CASE	1						
2	36401725020	GEAR	1						
3	36401725030	SHAFT	1						
4	36400095040	SHAFT	1						
5	36400095050	COLLAR	1						
6	36401725040	GEAR	1						
7	36400095100	SHIFTER ASSY	1						
8	36400095120	BEARING	2						
9	80500006206	BEARING,BALL	2						
10	91206030005	SEAL,OIL	1						
11	36400095070	COVER (BEARING)	1						
12	36400095080	PACKING (COVER)	1						
13	36400095090	SHIM	N						
14	90101206012	BOLT	1		M6X12				
15	36400095130	WASHER	1						
16	90191208014	BOLT	3		M8X14				
17	90302040801	WASHER,SPRING	7		8				
18	36400095110	PACKING	1						
19	90191208020	BOLT	4		M8X20				
20	80602110520	RING,RITAINING	2		R52				
22	36400055070	PACKING	1						
23	36400195030	BOLT,STUD	4						
24	90267201000	NUT	4		M10				
25	90193210025	BOLT	2		M10X25				
26	90302041001	WASHER,SPRING	8		10				
27	36401725070	SUPPORT (PUMP)	1						
28	36401725080	BOLT	2		M10X35				
30	31791100100	SUPPORT	1						
31	90191208025	BOLT	2		M8X25				
50	36401730000	POWER TAKE OFF	1						
100	31791110000	POWER TAKE OFF	1						

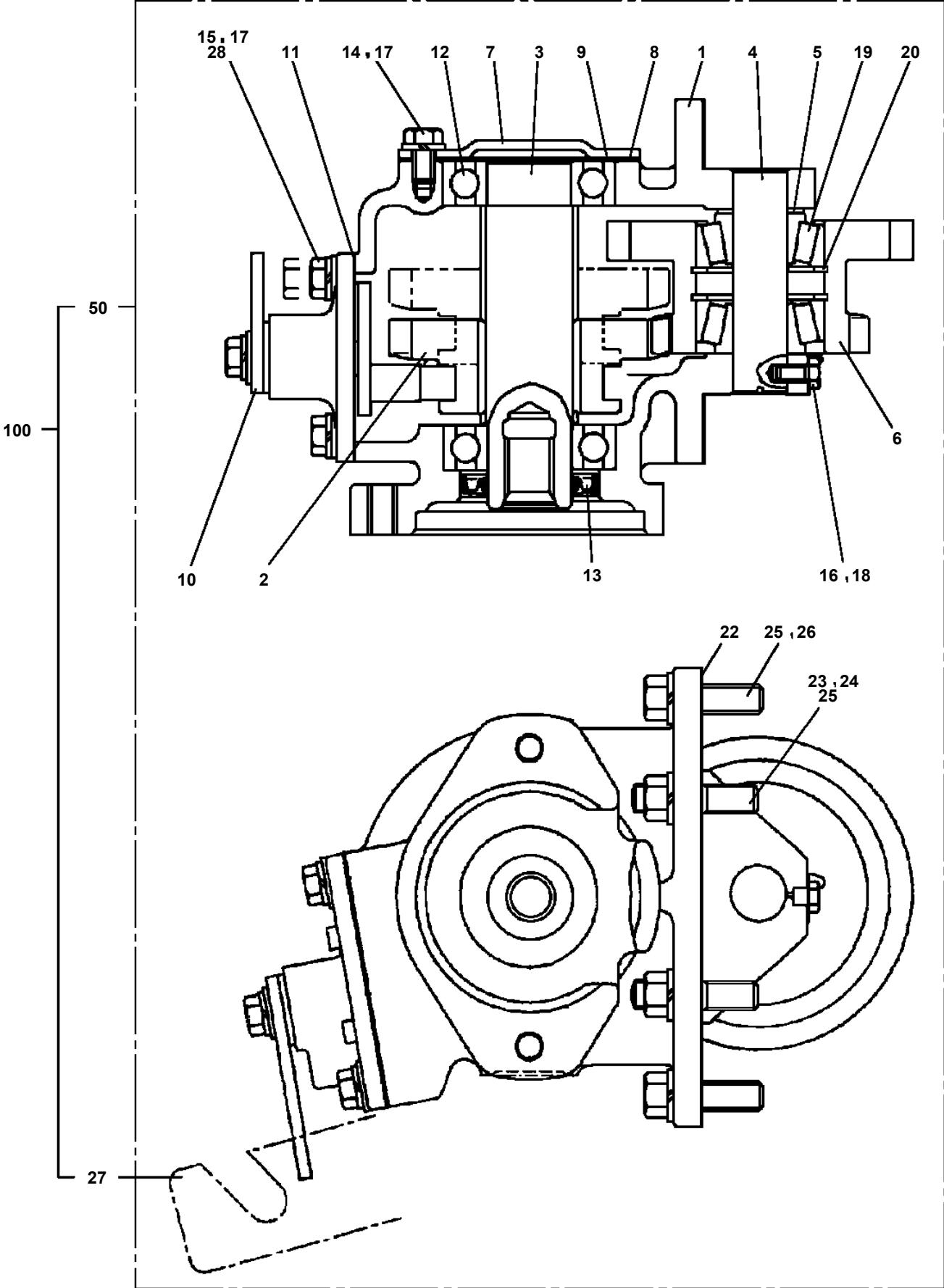
TM-ZX290 41047701384A FRAME

Pos No.	Parts No	Parts Name	Qty	Unit	Technical Data	Serial No (Start)	Serial No (End)	Remarks
1	36401885010	CASE	1					
2	36401885020	GEAR	1					
3	36402515010	SHAFT	1					
4	36401885030	GEAR	1					
5	36400415050	SHAFT	1					
6	36400675030	COLLAR	1					
7	36401725050	SHIFTER ASSY	1					
8	36400095110	PACKING	1					
9	36400095070	COVER (BEARING)	1					
10	36400095080	PACKING (COVER)	1					
11	36400095090	SHIM	N					
12	80500006206	BEARING,BALL	2					
13	91206030005	SEAL,OIL	1					
14	91001102100	O-RING	1		1A P21			
15	90710006200	SCREW,SET	1		M6X20			
16	90191208020	BOLT	4		M8X20			
17	90191208014	BOLT	3		M8X14			
18	90302040801	WASHER,SPRING	7		8			
19	36400135070	BEARING	2					
20	80602110620	RING,RITAINING	2		R62			
22	36401885040	PACKING	1					
23	36400095150	BOLT,STUD	2		M10X1.25/1.5X43			
24	90191210030	BOLT	6		M10X30			
25	90267201000	NUT	2		M10			
26	90302041001	WASHER,SPRING	8		10			
27	90191208025	BOLT	2		M8X25			
28	31790670100	SUPPORT	1					
50	36402510000	POWER TAKE OFF ASSY	1					
100	31792480000	POWER TAKE OFF	1					

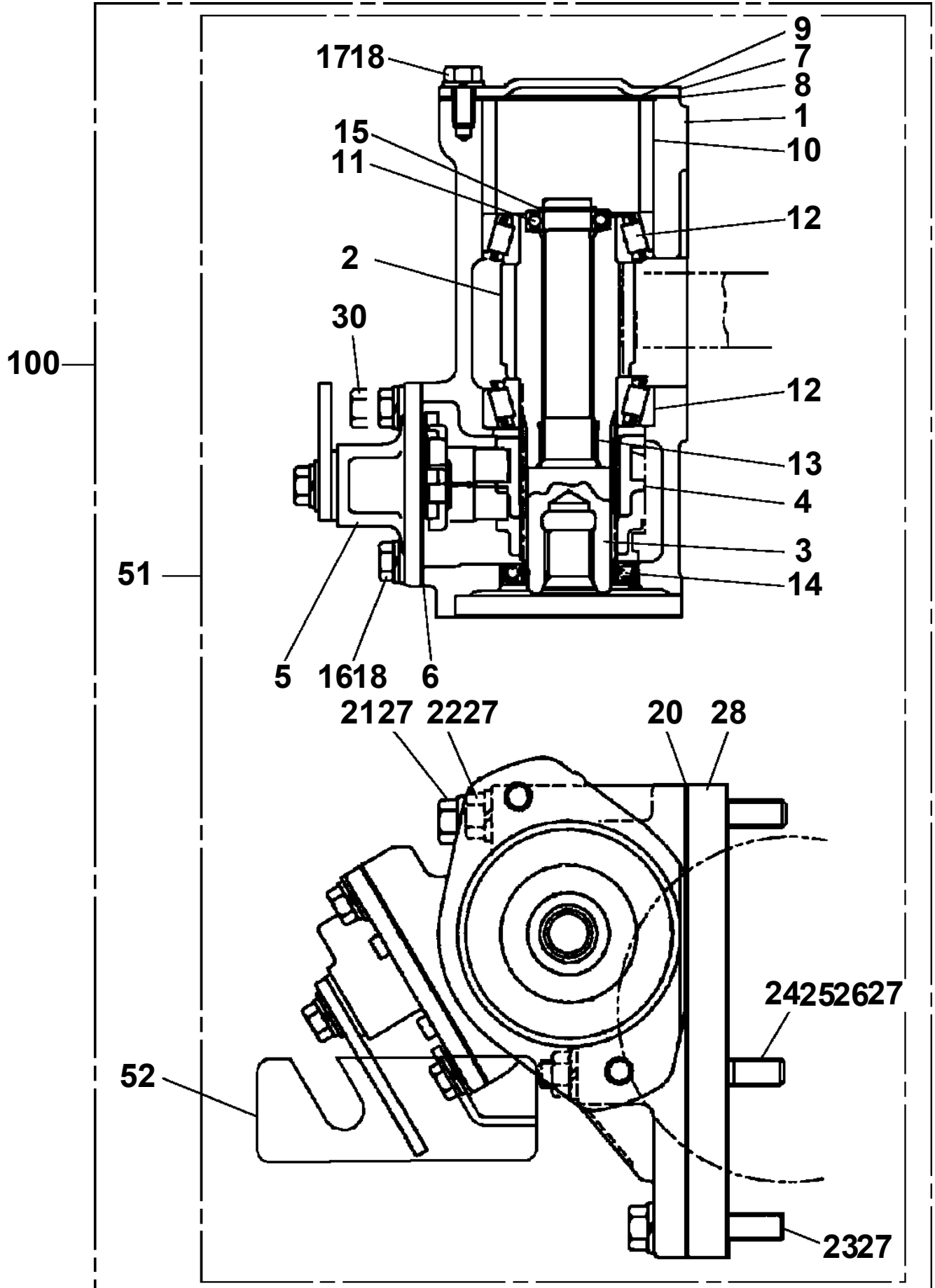
TM-ZX290 41047701384A FRAME

Pos No.	Parts No	Parts Name	Qty	Unit	Technical Data	Serial No (Start)	Serial No (End)	Remarks	Pages
1	36401420000	POWER TAKE OFF	1						00001
2	31790990100	SUPPORT	1						
50	31790990000	POWER TAKE OFF	1						

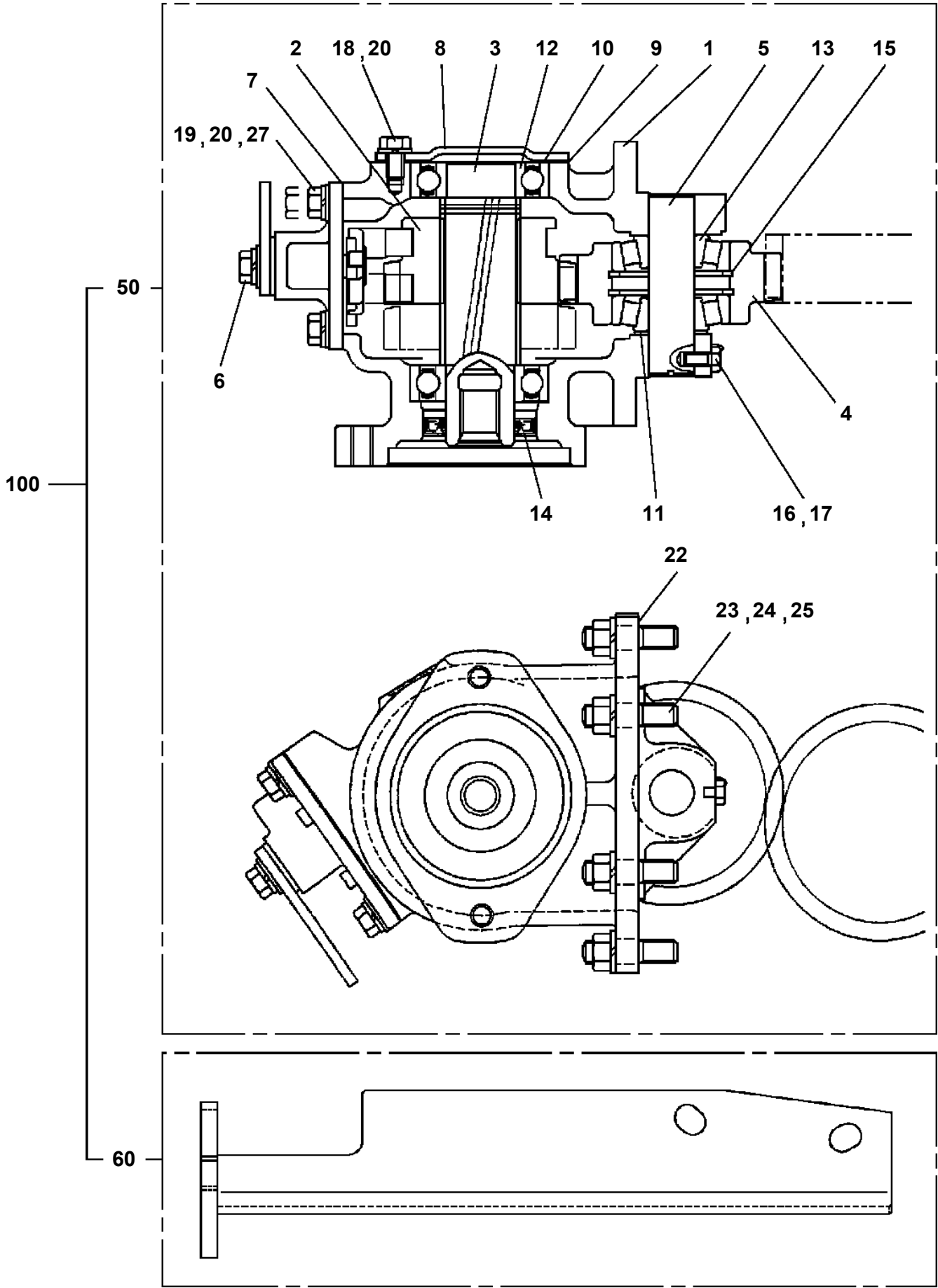
**TM-ZX290 41047701384A FRAME
PB1030209-01 POWER TAKE OFF**



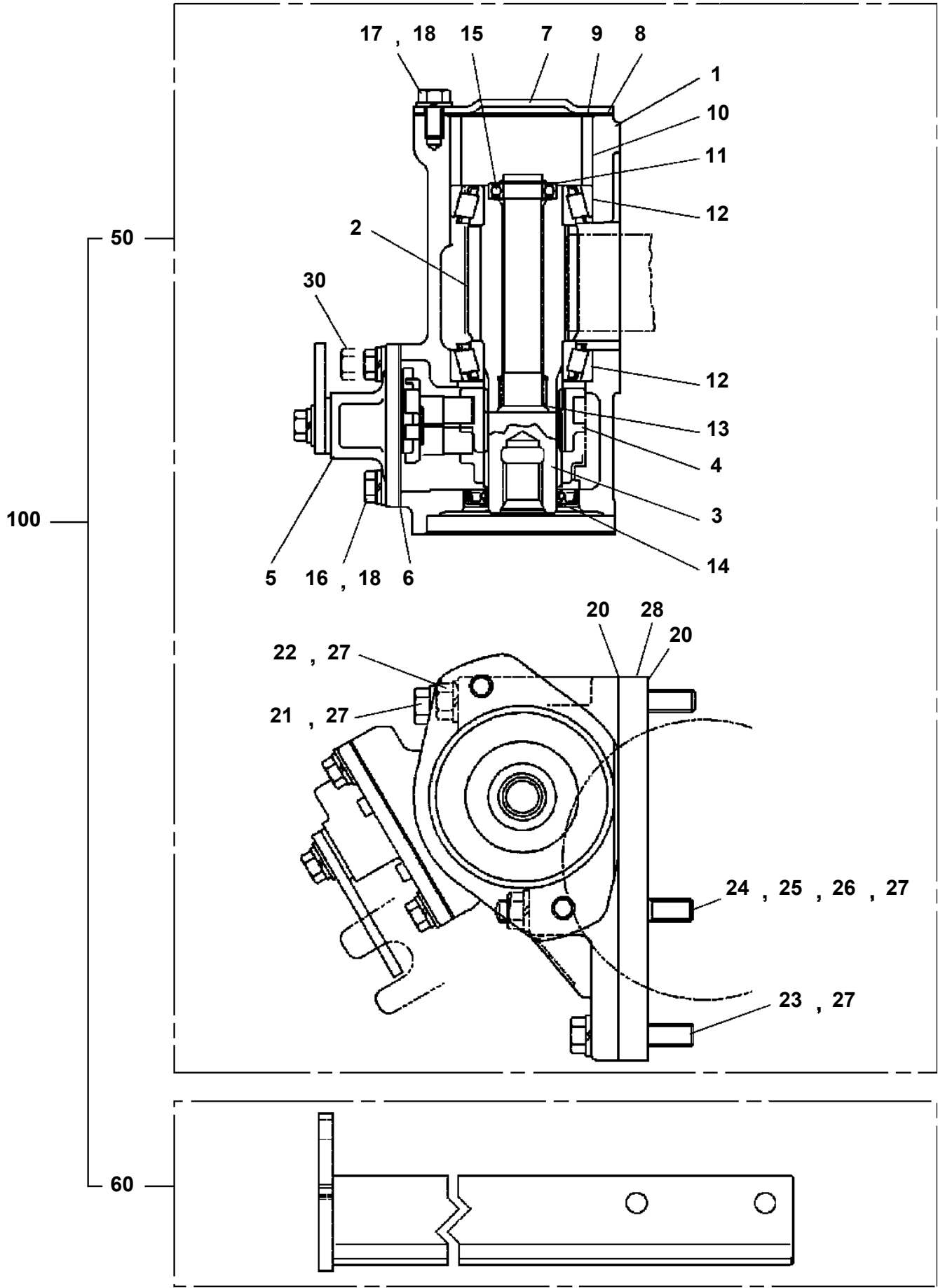
TM-ZX290 41047701384A FRAME
PB1030222-00 POWER TAKE OFF



TM-ZX290 41047701384A FRAME
PB1030228-00 POWER TAKE OFF

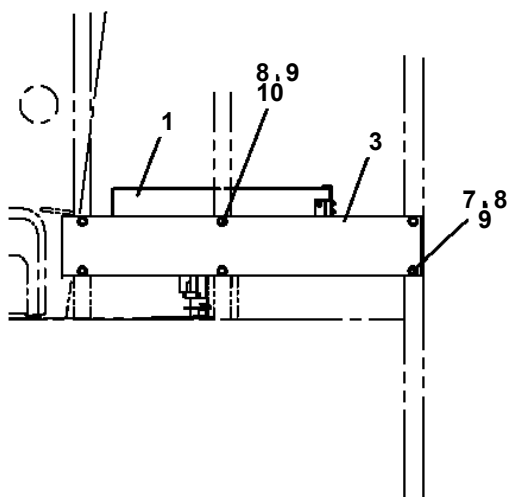
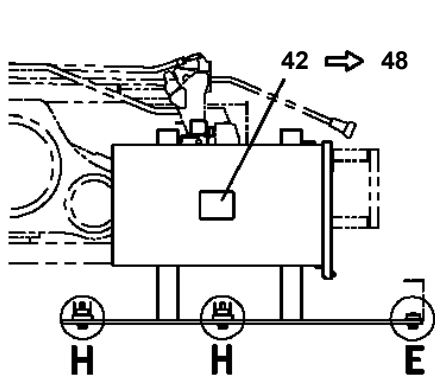
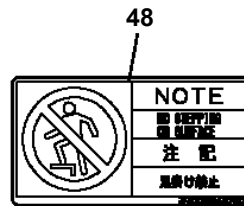
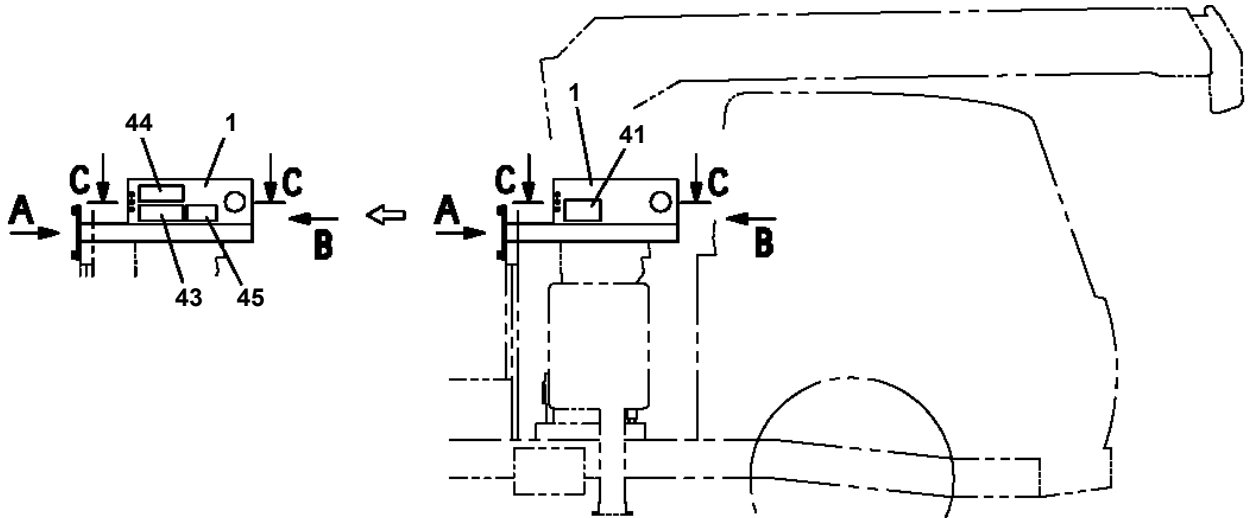


TM-ZX290 41047701384A FRAME
PB1030235-01 POWER TAKE OFF

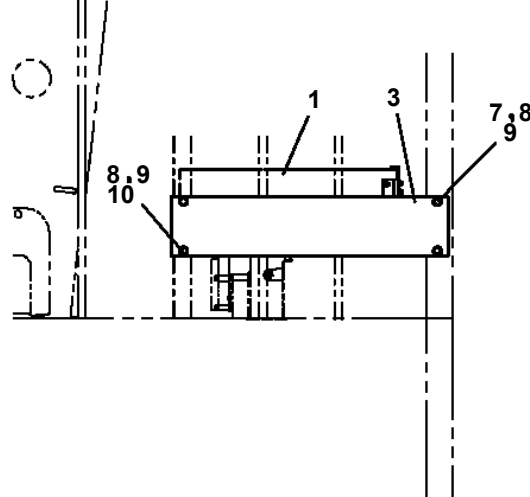
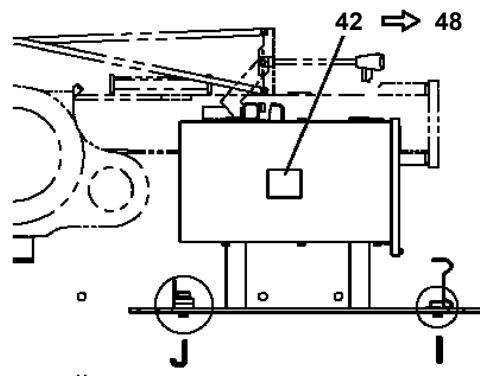


TM-ZX290 41047701384A FRAME

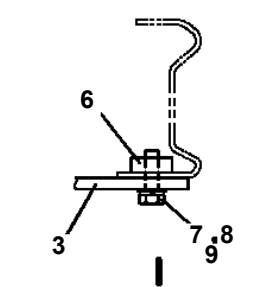
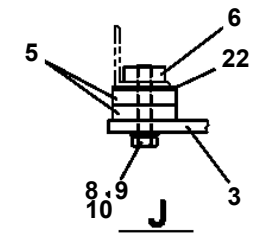
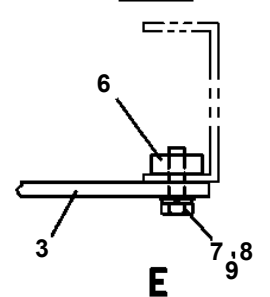
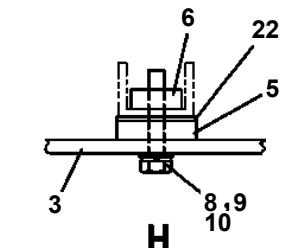
PB1380332-03 POWER SUPPLY (100V POWER SOURCE/1500W)



小型車系の場合



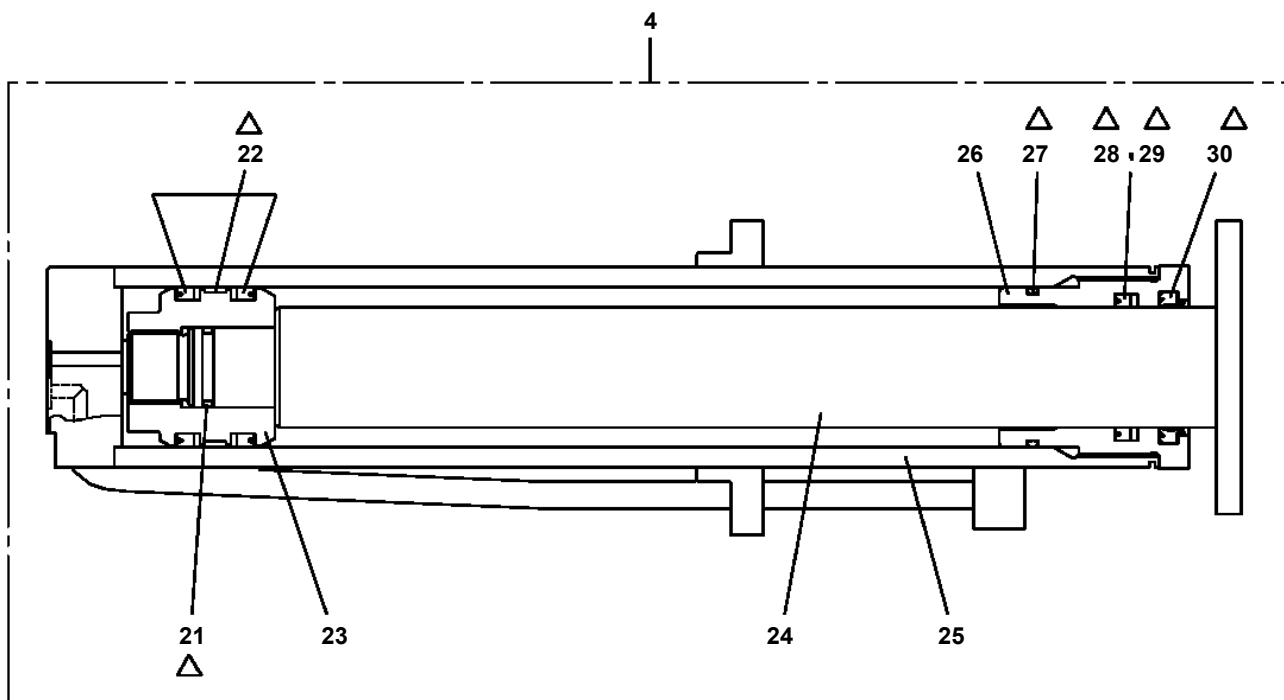
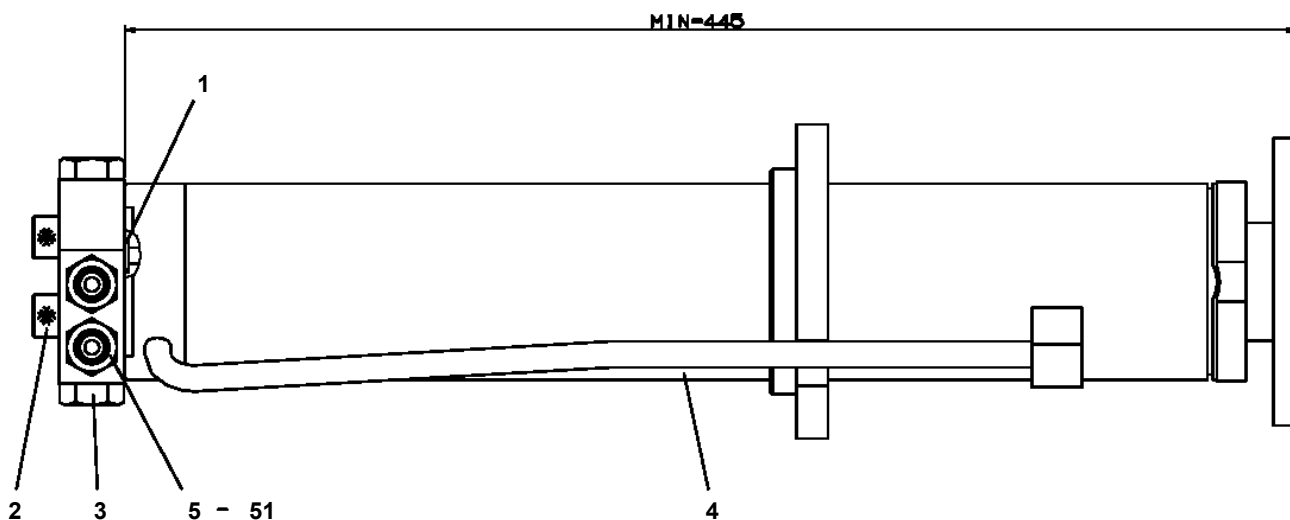
中型・大型車系の場合



TM-ZX290 41047701384A FRAME

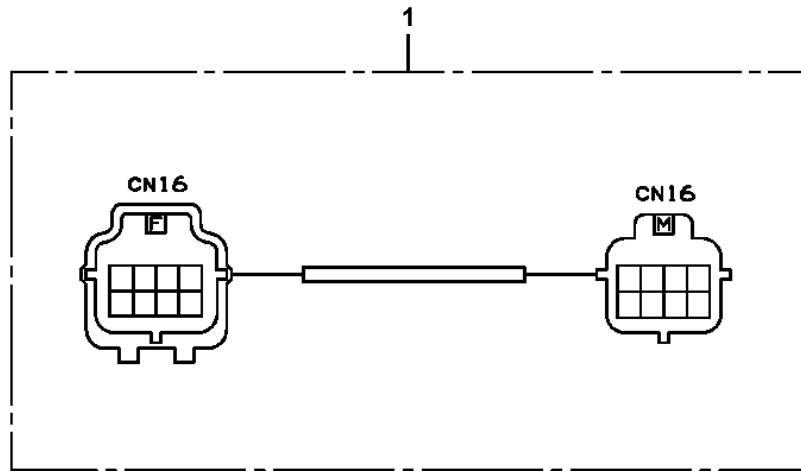
Pos No.	Parts No	Parts Name	Qty	Unit	Technical Data	Serial No (Start)	Serial No
1	42474201000	BLOCK	4		355X355,H=80		
10	31506350000	BLOCK (4 PIECE SET:PLATE,355X355,H=80)	1				

**TM-ZX290 41047701384A FRAME
PC1030185-04 CYLINDER,JACK (REAR)**

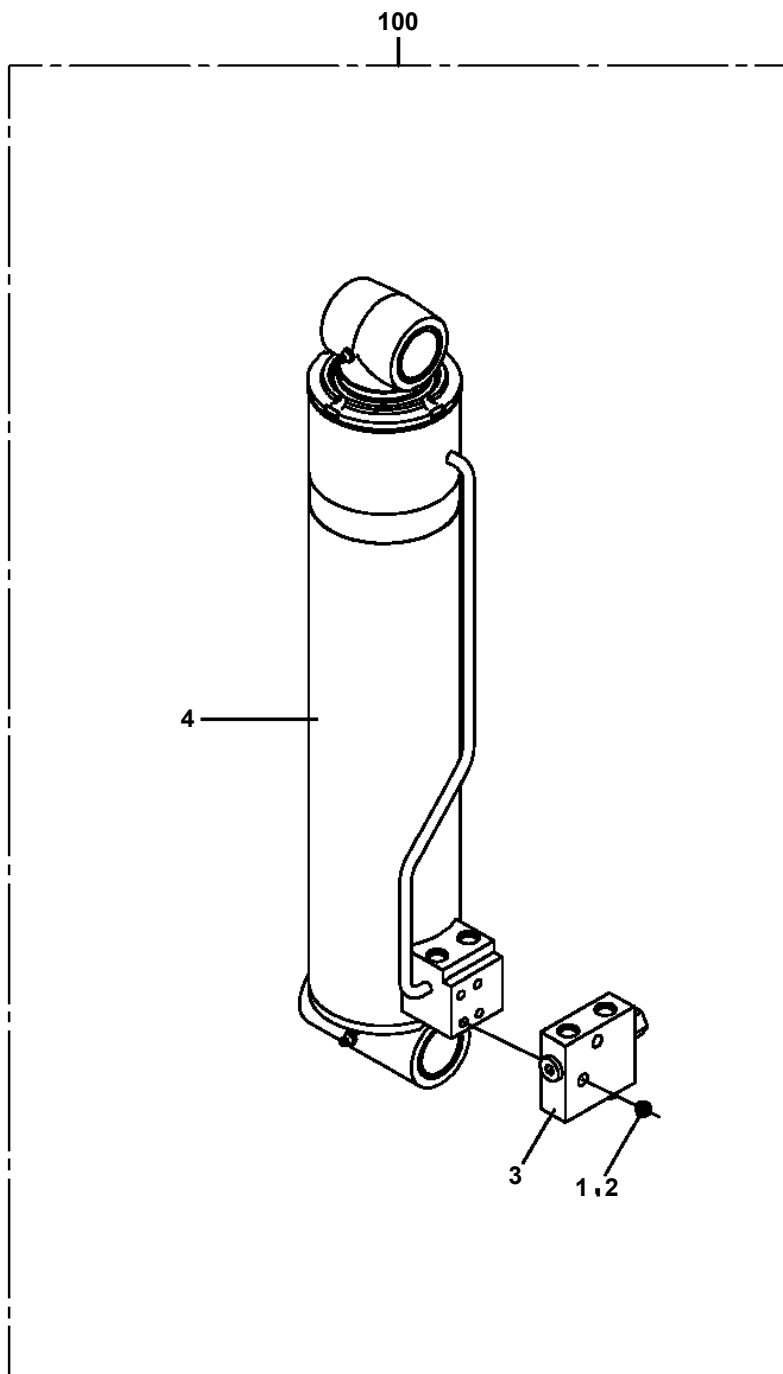


△:PACKING SET KEY NO.41 (KEY NO.21,22,27,28,29,30)

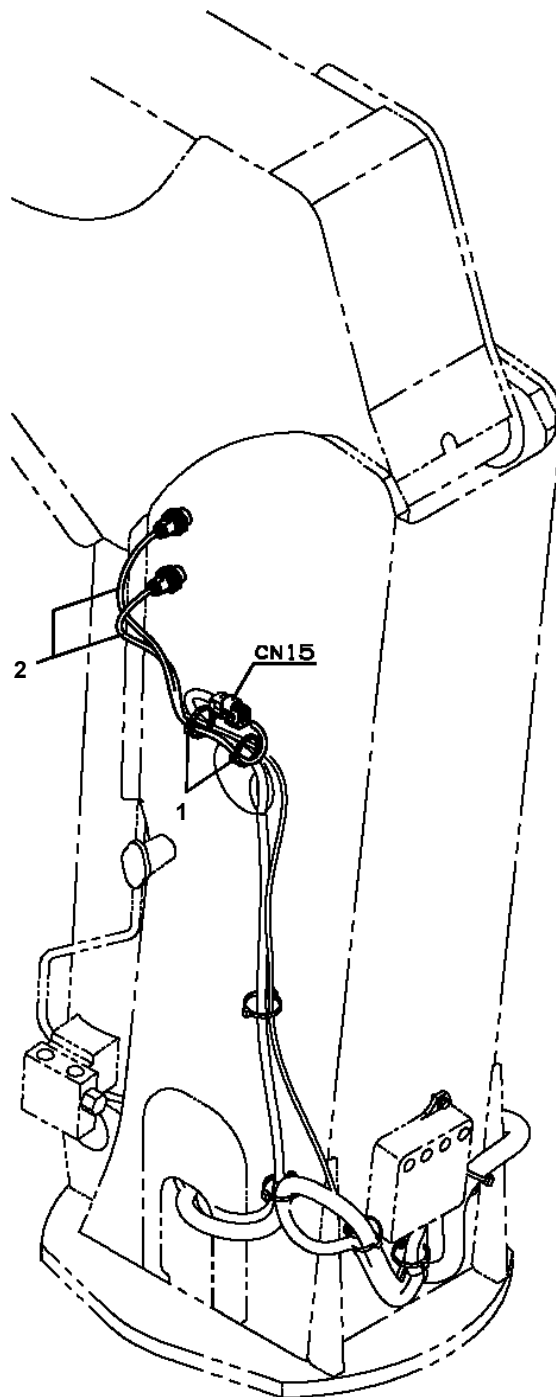
TM-ZX290 41047701384A FRAME
PC5020014-00 CABLE ASSY



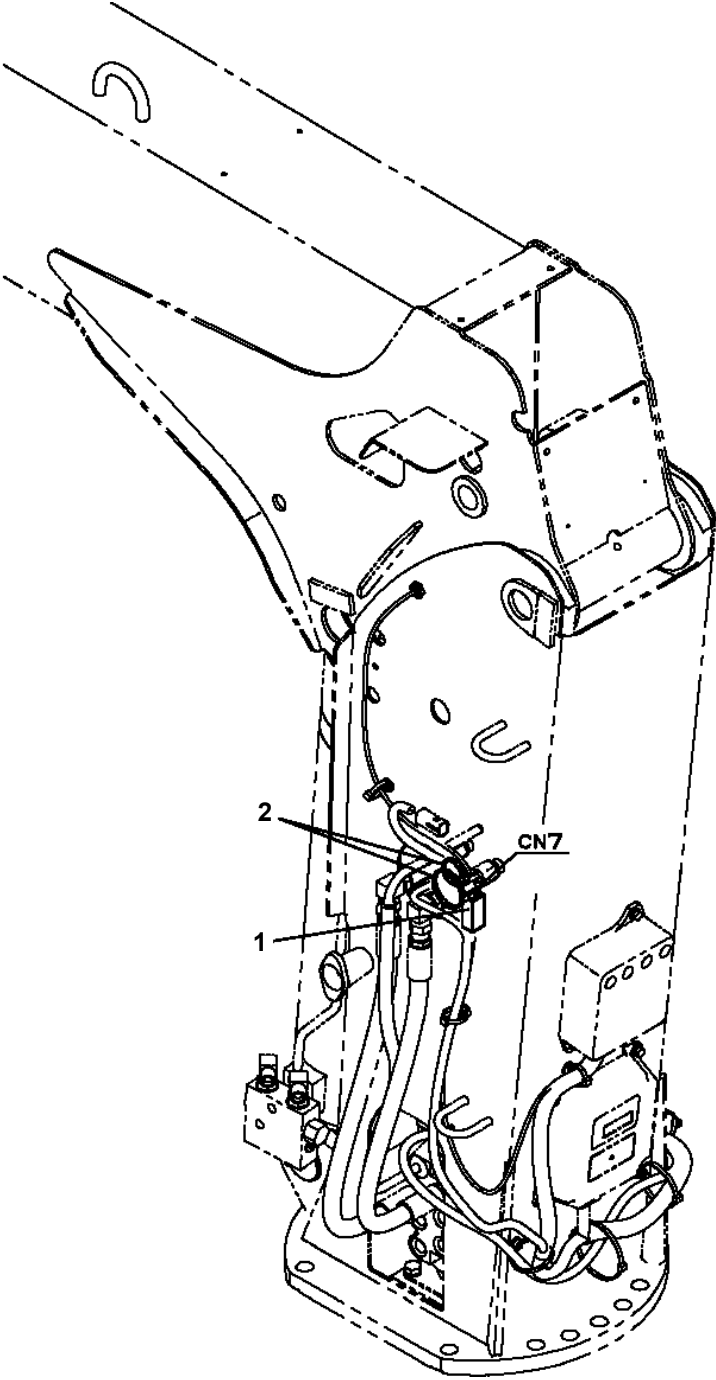
TM-ZX290 41047701384A FRAME
PD5020060-00 DERRICK ASSY



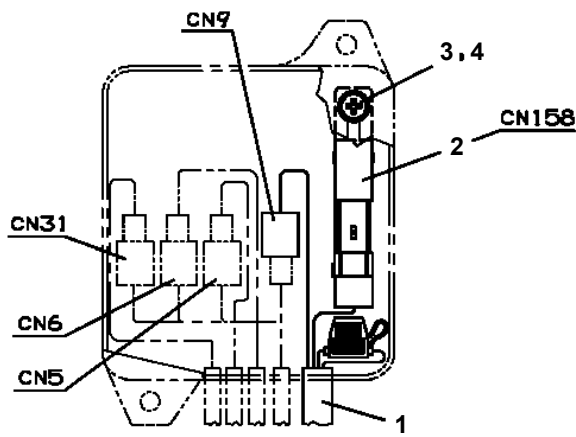
TM-ZX290 41047701384A FRAME
PE5021221-00 ELEC.ASSY (DRUM ROTARY DETECTION)



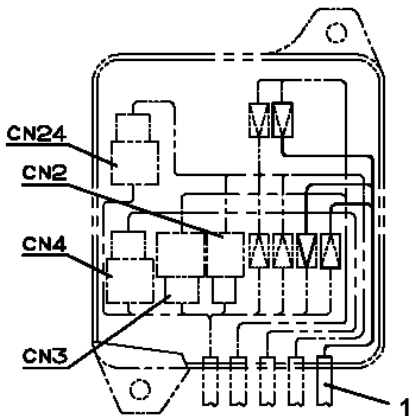
TM-ZX290 41047701384A FRAME
PE5021244-00 ELEC.ASSY



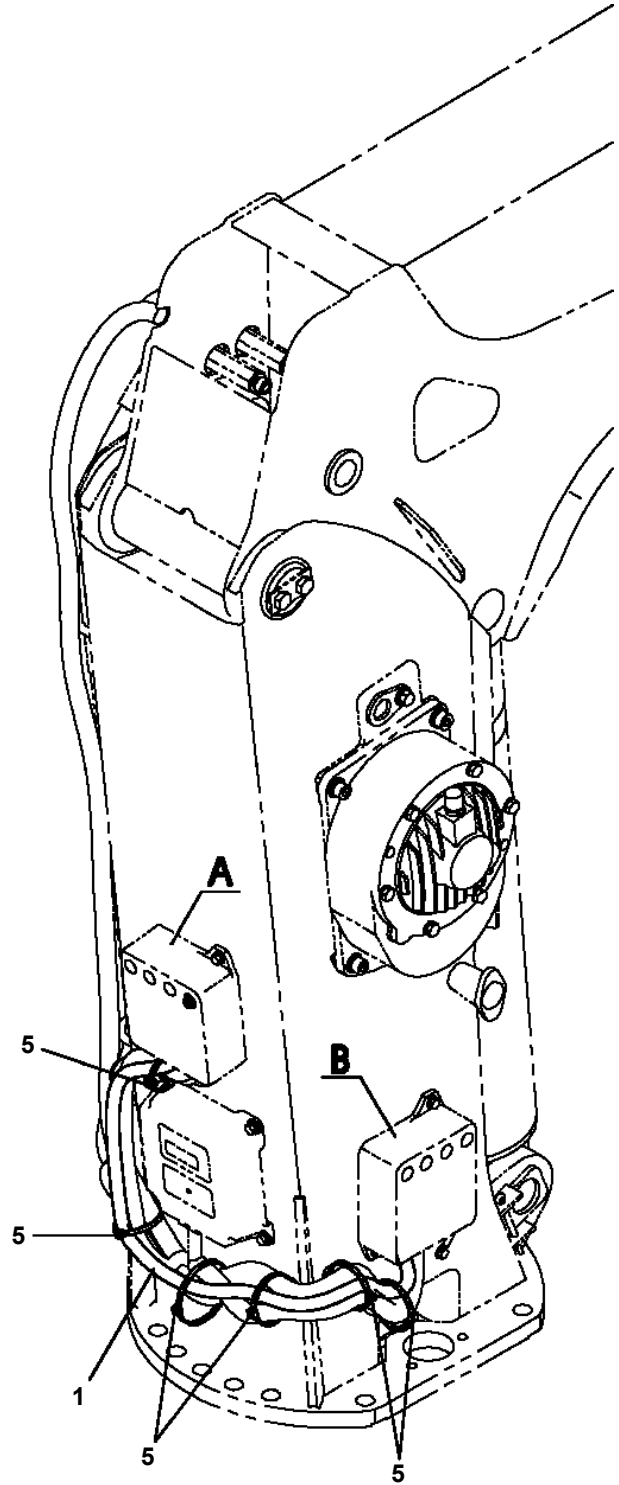
TM-ZX290 41047701384A FRAME
PE5021335-00 ELEC.ASSY (POST)



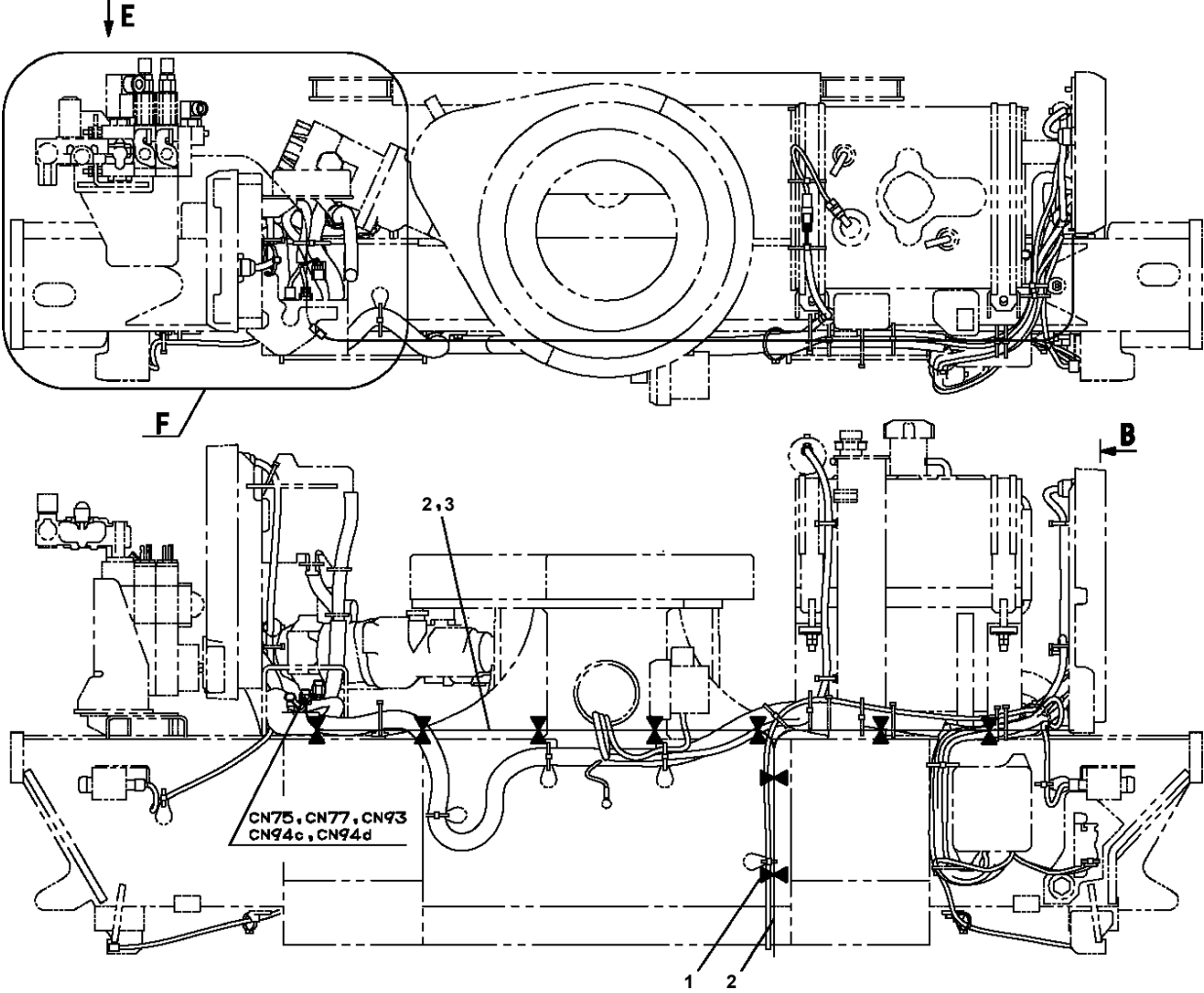
A



B



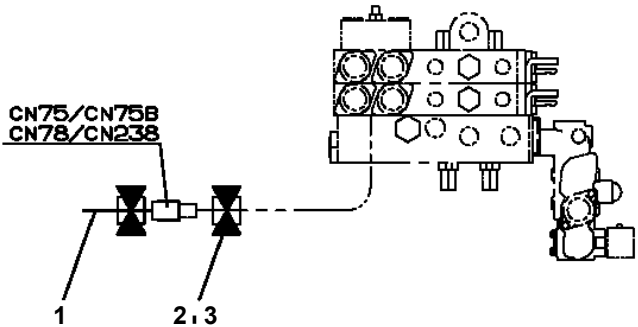
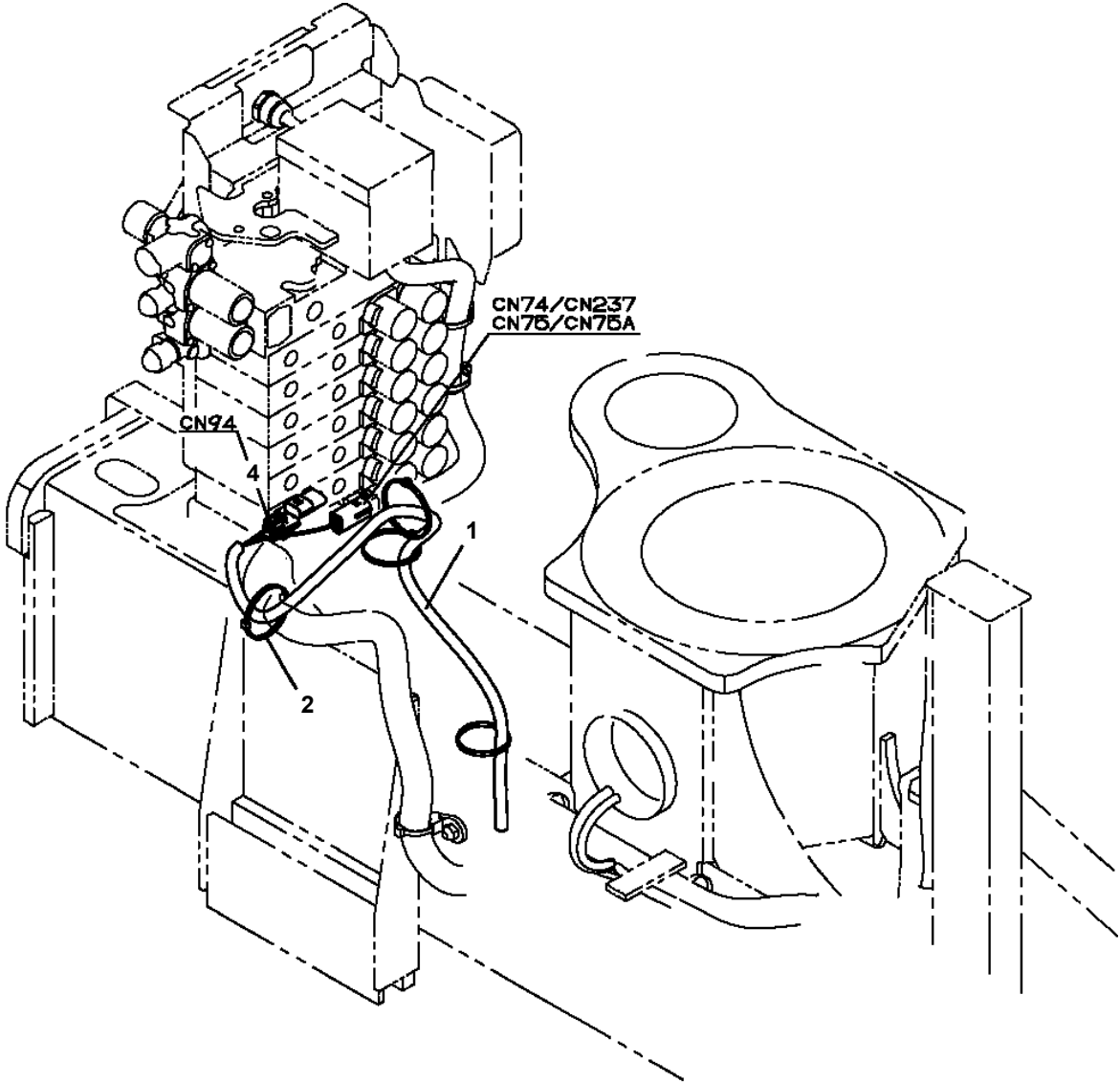
TM-ZX290 41047701384A FRAME
PE5021342-00 ELEC.ASSY



TM-ZX290 41047701384A FRAME

Pos No.	Parts No	Parts Name	Qty	Unit	Technical Data	Serial No (Start)	Serial No (End)	Remarks	Page
1	31734231101	HARNESS	1				LB8420		0001
	31734631200	HARNESS (CRANE)	1			LB8421			0001
2	91810130250	FASTENER	27						
3	80192483006	SCREW,MACHINE	4		M3X6				

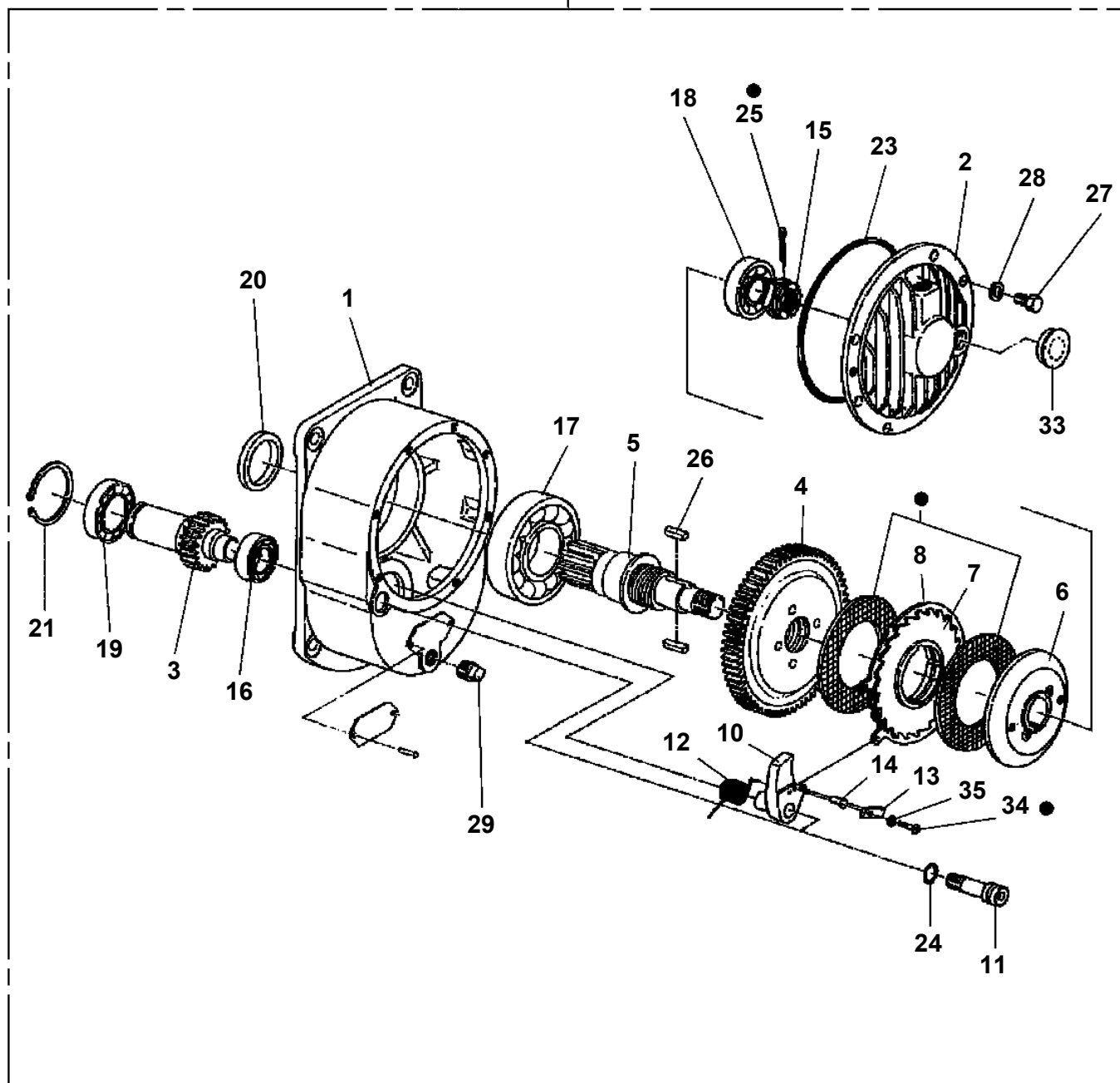
TM-ZX290 41047701384A FRAME
PE5021373-00 ELEC.ASSY



バルブ部

**TM-ZX290 41047701384A FRAME
PF1010167-02 WINCH (HARTYS)**

100



● : FACING KIT KEY NO.101 (JAPANESE)

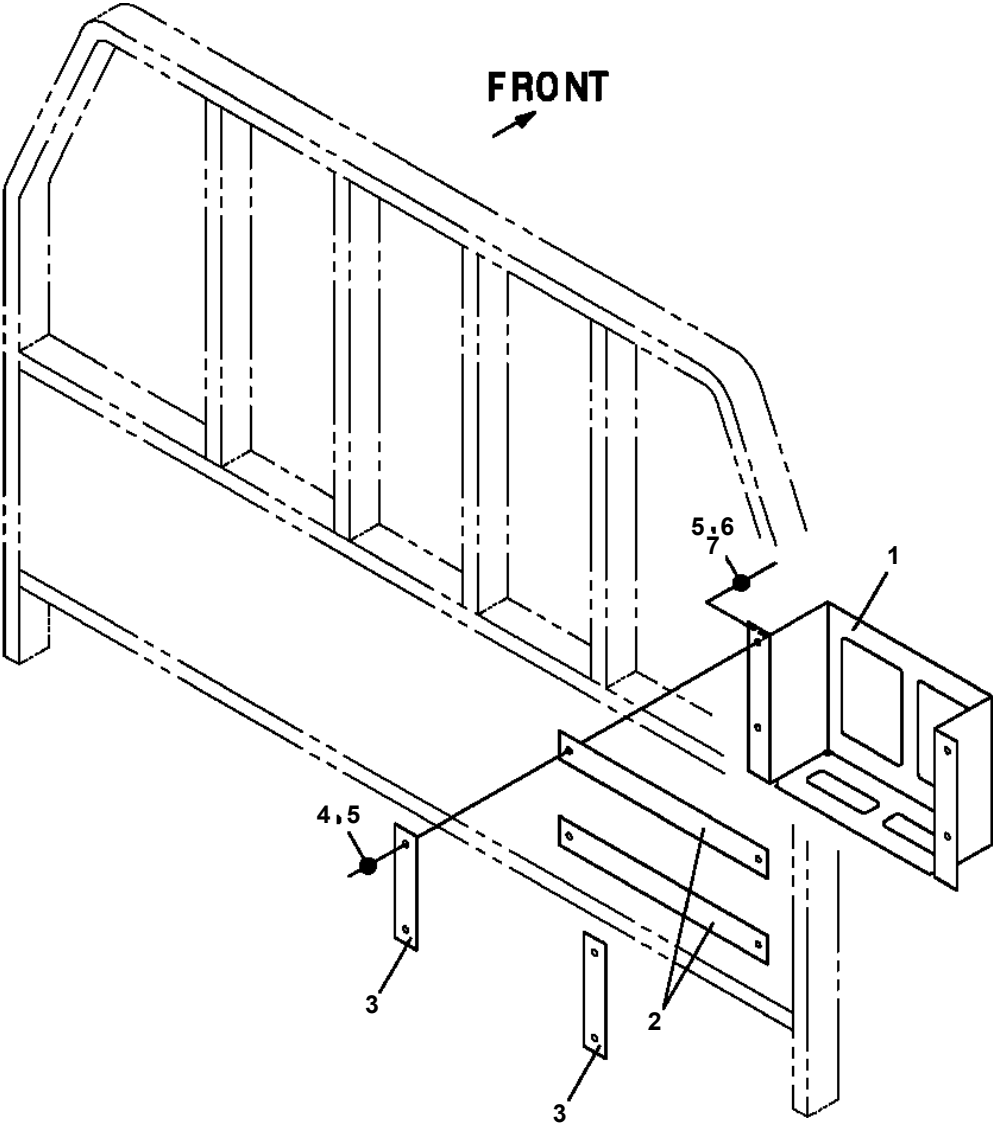
● : FACING KIT KEY NO.102 (ENGLISH)



● Protective seal

● Replacement interval name plate

TM-ZX290 41047701384A FRAME
PF1080287-00 SUPPORT



TM-ZX290 41047701384A FRAME

Pos No.	Parts No	Parts Name	Qty	Unit	Technical Data	Serial No (Start)	Serial No (End)	Remarks
7	36662810000	MOTOR,HYDRAULIC	1					
8	90172112030	BOLT,HEXAGON SOCKET	2		M12X30			
9	90171114035	BOLT	2		M14X35			
10	90302041401	WASHER,SPRING	2		14			
11	90171112035	BOLT	4		M12X35			
12	90302041201	WASHER,SPRING	4		12			
13	90101210020	BOLT	2		M10X20			
14	90302041001	WASHER,SPRING	2		10			
15	90303071001	WASHER,PLAIN	2		10			
16	31322050510	KNOB (BLACK)	1					
17	31311183000	LEVER	1					
18	90303070801	WASHER,PLAIN	4		8			
19	80136825015	PIN,SPLIT	2		2.5X15			
21	36073040000	WINCH	1					

TM-ZX290 41047701384A FRAME

Pos No.	Parts No	Parts Name	Qty	Unit	Technical Data	Serial No (Start)	Serial No (End)	Remarks	Pages
1	90203201400	NUT	2		M14				
2	37000574030	PLATE	1						
3	31477171100	GUIDE ASSY	1						
4	90101214020	BOLT	1		M14X20				
5	37000532240	PLATE	1						
6	31471731600	PIN	1						
7	90101214035	BOLT	1		M14X35				
8	31477171500	SUPPORT	2						
9	90302041401	WASHER,SPRING	1		14				
10	37000303800	SPACER	1		L=48				
11	37000304020	SPACER	1		L=6				
32	80620210160	PIN,SNAP	1						
33	31471731200	PIN	1						
34	37001102960	ROLLER ASSY	1						
35	80601110150	RING,RITAINING	2		15				
36	80804035050	BUSH	2						
37	31471731500	SHEAVE ASSY	2						
38	80601110200	RING,RITAINING	2		S20				
52	80516006004	BEARING,BALL	2						
53	80602110420	RING,RITAINING	2		R42				
61	31477171201	GUIDE	1						
72	80516006002	BEARING,BALL	2						

TM-ZX290 41047701384A FRAME

Pos No.	Parts No	Parts Name	Qty	Unit	Technical Data	Serial No (Start)	Serial No (End)	Remarks	Pages
1	31360741200	HARNESS	1						

TM-ZX290 41047701384A FRAME

Pos No.	Parts No	Parts Name	Qty	Unit	Technical Data	Serial No (Start)	Serial No (End)	Remarks	Pages
1	31503851100	HARNESS	1						

TM-ZX290 41047701384A FRAME

Pos No.	Parts No	Parts Name	Qty	Unit	Technical Data	Serial No (Start)	Serial No (End)	Remarks	Pages
100	31733763400	HARNESS	1						

TM-ZX290 41047701384A FRAME

Pos No.	Parts No	Parts Name	Qty	Unit	Technical Data	Serial No (Start)	Serial No (End)	Remarks	Pages
10	31506291100	HARNESS	1						

TM-ZX290 41047701384A FRAME

Pos No.	Parts No	Parts Name	Qty	Unit	Technical Data	Serial No (Start)	Serial No (End)	Remarks	Pages
1	82182809623	DIODE	2						
2	82181500090	RESISTANCE	1						
100	31734231101	HARNESS	1						

TM-ZX290 41047701384A FRAME

Pos No.	Parts No	Parts Name	Qty	Unit	Technical Data	Serial No (Start)	Serial No (End)	Rema
13	36662185010	KEY (FEATHER)	1					
40	36662415020	SEAL KIT	1					
50	36663100000	MOTOR,HYDRAULIC (WINCH)	1					

CLICK HERE TO **DOWNLOAD** THE COMPLETE MANUAL

- Thank you very much for reading the preview of the manual.
- You can download the complete manual from: www.heydownloads.com by clicking the link below



- Please note: If there is no response to CLICKING the link, please download this PDF first and then click on it.

CLICK HERE TO **DOWNLOAD** THE COMPLETE MANUAL

TM-ZX290 41047701384A FRAME

Pos No.	Parts No	Parts Name	Qty	Unit	Technical Data	Serial No (Start)	Serial No (End)	Remarks	Pa
2	91002801400	O-RING	2		1B P14				
6	91002800700	O-RING	1		1B P7				
50	36623930000	VALVE,PILOT CHECK	1						

TM-ZX290 41047701384A FRAME

Pos No.	Parts No	Parts Name	Qty	Unit	Technical Data	Serial No (Start)	Serial No (End)	Remarks	Pages
100	31658912100	INDICATOR	1						

TM-ZX290 41047701384A FRAME

Pos No.	Parts No	Parts Name	Qty	Unit	Technical Data	Serial No (Start)	Serial No (End)	Remarks
1	36671635010	JOINT,SELF SEALING	1					
2	36671635020	JOINT,SELF SEALING	1					
10	36671630000	JOINT ASSY,SELF SEAL	1					

TM-ZX290 41047701384A FRAME

Pos No.	Parts No	Parts Name	Qty	Unit	Technical Data	Serial No (Start)	Serial No (End)	Remarks	Pages
1	31701750100	SUPPORT	1						
2	37000147840	PIN	1						
3	80620210050	PIN,SNAP	1						
4	37000165020	PIN	1						
5	80136340020	PIN,SPLIT	1		4X20				
7	31701580801	LEVER	1						
8	31322224200	PLATE	1		L=1				
9	31323330100	KNOB (BLACK)	1						

TM-ZX290 41047701384A FRAME

Pos No.	Parts No	Parts Name	Qty	Unit	Technical Data	Serial No (Start)	Serial No (End)	Rema
2	(*****)	ELEC.ASSY (POST)	1					
3	(*****)	ELEC.ASSY (POST/HEAD BULB)	1					

TM-ZX290 41047701384A FRAME

Pos No.	Parts No	Parts Name	Qty	Unit	Technical Data	Serial No (Start)	Serial No (End)	Remarks	Pages
1	31326641700	SUPPORT	1						
2	31326322401	LEVER	1						
3	31326322501	LEVER	1						
4	31323330100	KNOB (BLACK)	4						
5	31323330200	KNOB (RED)	1						
6	37010101670	PIN	1						
7	80136840020	PIN,SPLIT	1		4X20				
8	31322224200	PLATE	4		L=1				
9	37000311500	SPACER	1		L=24.5				
10	37000105040	PIN	5						
11	80650100030	RING,RETAINING	5						
12	90171110016	BOLT	3		M10X16				
13	90302041001	WASHER,SPRING	3		10				
14	37000311600	SPACER	1		L=50				
15	37000313030	SPACER	2		L=7				

TM-ZX290 41047701384A FRAME

Pos No.	Parts No	Parts Name	Qty	Unit	Technical Data	Serial No (
1	31783930400	SUPPORT	2			
2	31783930200	SUPPORT	2			
3	56560009000	PIN	2			
4	80136330025	PIN,SPLIT	2			
5	31783930300	SUPPORT	2			
6	31783090300	SUPPORT	2			
7	31200791030	PLATE	2			
8	32460251300	CHAIN	2		L=386	
9	82400000543	HOOK	2			
10	31783090500	PLATE,CAUTION	2			
100	31783930000	MODIFICATION ASSY (PLANKING CASE:FOR WHEEL BASE)	1			

TM-ZX290 41047701384A FRAME

Pos No.	Parts No	Parts Name	Qty	Unit	Technical Data	Serial No (Start)	Serial No (End)	Remark
1	31501192100	SUPPORT	1					
2	31501192200	PLATE	1					
3	90186210016	BOLT,FLANGE	2		M10X16			
4	31650690400	SUPPORT	1					
5	90813108020	BOLT,WING	1		M8X20			
6	90309331205	WASHER,CONICAL SPRING	2		L12			
7	90303071201	WASHER,PLAIN	1		12			
8	90236201200	NUT,CASTLE	1		2H M12			
9	80136325025	PIN,SPLIT	1		2.5X25			
10	31650690500	LEVER	1					
11	82165904160	LAMP	1					
12	90280201000	NUT,FLANGE	1		M10			
13	90186206010	BOLT,FLANGE	1		M6X10			
14	90280200600	NUT,FLANGE	1		M6			
15	82401600504	CLAMP	3		D=4.5			
16	91810130240	FASTENER	1					
17	37002212770	PLATE,NAME (DC24V,0.1A)	1					

TM-ZX290 41047701384A FRAME

Pos No.	Parts No	Parts Name	Qty	Unit	Technical Data	Serial No (Start)	Serial No (End)
100	31595701000	NAME PLATE ASSY (KNOB:U-LAYOUT)	1				

TM-ZX290 41047701384A FRAME

Pos No.	Parts No	Parts Name	Qty	Unit	Technical Data	Serial No
1	31595761000	NAME PLATE ASSY (KNOB:U-LAYOUT)	1			
4	(*****)	NAME PLATE ASSY (TANK)	1			
5	(*****)	PLATE ASSY,NAME (HOOK)	1			
6	(*****)	NAME PLATE ASSY (CONT.,O/R,CAUTION)	1			
7	(*****)	NAME PLATE ASSY (PERIODICAL VOLUNTARY INSPECTION)	1			
8	31595753000	NAME PLATE ASSY (KNOB,SL JACK)	1			

TM-ZX290 41047701384A FRAME

Pos No.	Parts No	Parts Name	Qty	Unit	Technical Data	Serial No (Start)	Serial No (End)	Remarks	Pages
1	37002241800	PLATE,NAME	2						

TM-ZX290 41047701384A FRAME

Pos No.	Parts No	Parts Name	Qty	Unit	Technical Data	Serial No (Start)	Serial No (End)	Remarks	Pages
1	(*****)	PLATE,NAME (JCAS)	1						00024

TM-ZX290 41047701384A FRAME

Pos No.	Parts No	Parts Name	Qty	Unit	Technical Data	Serial No (Start)	Serial No (End)	Remarks	Page
1	(*****)	PLATE,NAME (NETIS)	2						00022

TM-ZX290 41047701384A FRAME

Pos No.	Parts No	Parts Name	Qty	Unit	Technical Data	Serial No (Start)	Serial No (End)	Remarks	Pages
1	37002241840	PLATE,NAME	1						

TM-ZX290 41047701384A FRAME

Pos No.	Parts No	Parts Name	Qty	Unit	Technical Data	Serial No (Start)	Serial No (End)
1	31360746300	PLATE,NAME (FRAME SERIAL NO.)	2				

TM-ZX290 41047701384A FRAME

Pos No.	Parts No	Parts Name	Qty	Unit	Technical Data	Serial No (Start)	Serial No (End)	Remarks	Pages
1	(*****)	LEVER ASSY	1						000181
2	(*****)	LEVER ASSY	1						000182
3	31324993000	ROD	1						
4	31326644300	ROD ASSY	1						
5	(*****)	LEVER ASSY	1						000183

TM-ZX290 41047701384A FRAME

Pos No.	Parts No	Parts Name	Qty	Unit	Technical Data	Serial No (Start)	Serial No (End)
1	37000163600	PIN	1				
2	80601110300	RING,RITAINING	2		S30		
3	31616032000	CASE,OUTER	1		L=1537		
4	31611592000	CASE,INNER	1				
5	(*****)	OUTRIGGER ASSY (MIN.1149)	1				
6	37000112060	PIN	1				
7	80602110300	RING,RITAINING	2		R30		
8	37000112070	PIN	1				
9	31611594000	FLOAT ASSY	1				
10	31201770100	PLATE,SLIDE	4		T=3.0		
11	31200030530	PLATE	1				
12	90191210020	BOLT	2		M10X20		
13	90302041001	WASHER,SPRING	4		10		
14	90186208014	BOLT,FLANGE	2		M8X14		
15	31614060110	COVER	1				
16	31611300600	PLATE,NAME (YELLOW)	2				
17	31615754100	PLATE,NAME (BLUE)	2				
18	(*****)	OPE.ASSY,OUTRIGGER	1				
19	50822014000	PLATE	1				
20	37001400200	SPRING	1				
21	37002240310	PLATE,CAUTION	1				
22	37000150360	PIN	1				
23	80601110150	RING,RITAINING	2		15		
24	37000310360	SPACER	1		L=15		
26	90171110020	BOLT	2		M10X20		
27	31615754200	PLATE,NAME (RED)	2				
42	31621963200	SUPPORT	1				
55	31615912500	SUPPORT	1				
60	31616049510	SUPPORT	1				
71	31620582020	BEARING,BALL (KOYO)	1				
82	31610175010	TRUNNION	1				
100	31616030100	OUTRIGGER ASSY (RIGHT,CYLINDER:MIN.1149)	1				

TM-ZX290 41047701384A FRAME

Pos No.	Parts No	Parts Name	Qty	Unit	Technical Data	Serial No (Start)	Serial No (End)
1	31625090000	FRAME ASSY	1				
3	(*****)	ELEC.ASSY	1				
4	(*****)	OPE.ASSY,CONT.VALVE (REMOCON)	1				
5	(*****)	NAME PLATE ASSY	1				
8	(*****)	ELEC.ASSY (R/J)	1				
11	(*****)	OUTRIGGER,REAR (FRAME)	1				
12	(*****)	LOCK ASSY	1				
21	(*****)	PIPING ASSY (REAR,JACK)	1				
22	36743500000	VALVE ASSY,REMOTE CONTROL	1				
23	(*****)	PIPING ASSY	1				
24	(*****)	SUPPORT ASSY	1				

TM-ZX290 41047701384A FRAME

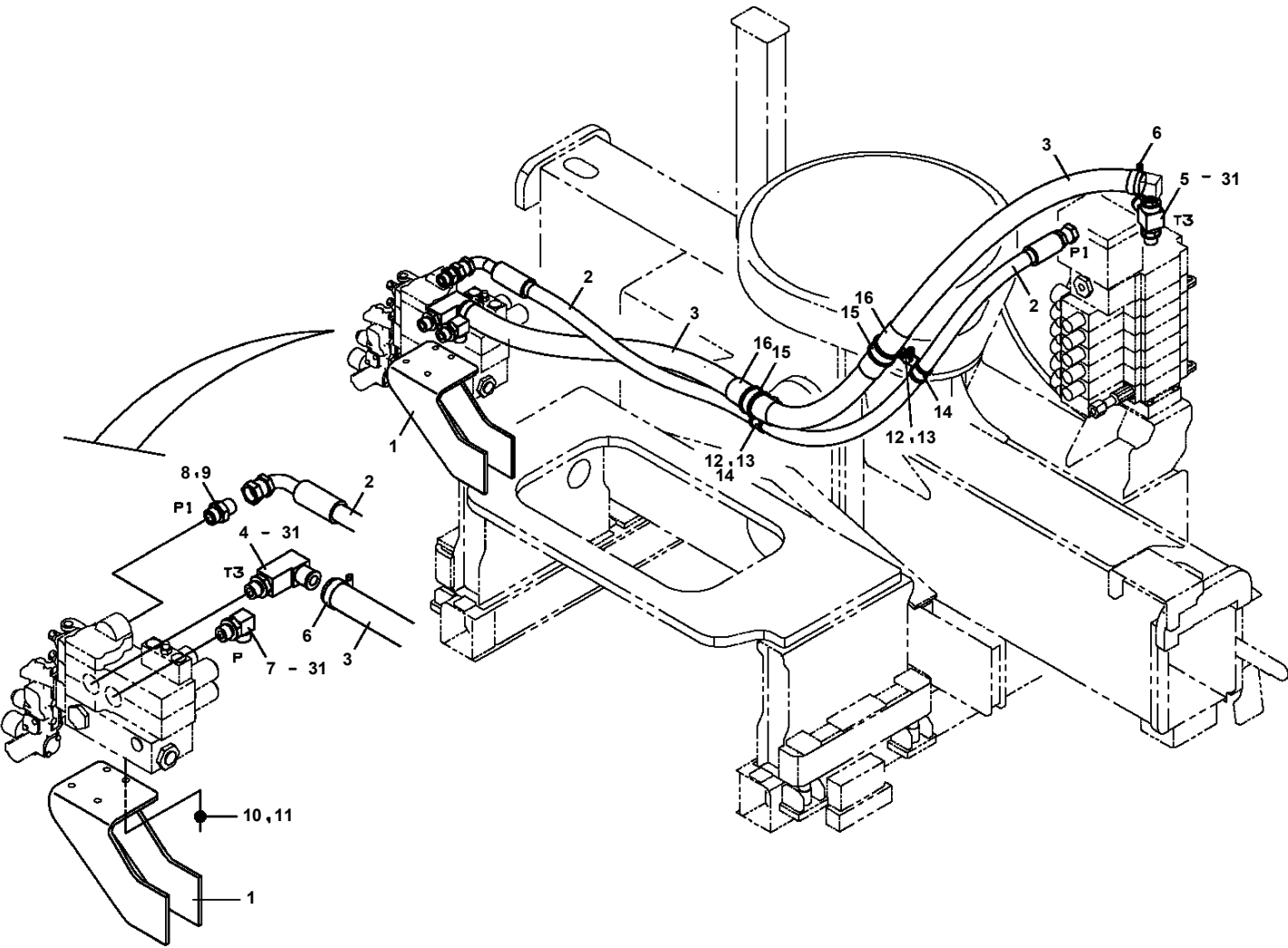
Pos No.	Parts No	Parts Name	Qty	Unit	Technical Data	Serial No (Start)	Serial No (End)
1	31506041000	BOX,OPERATION	1				
2	(*****)	ELEC.ASSY	1				
3	(*****)	NAME PLATE ASSY	1				
5	(*****)	PLATE ASSY,NAME (SWITCH,BOX/U)	1				

TM-ZX290 41047701384A FRAME

Pos No.	Parts No	Parts Name	Qty	Unit	Technical Data	Serial No (Start)	Serial No (End)	Remarks	Pages
50	36652335010	GASKET	2						
51	36652335020	GASKET	2						
54	53063551010	SEAL,OIL	1						
55	80602110360	RING,RITAINING	1		R36				
100	36652840000	PUMP,OIL (32CC:L)	1						

TM-ZX290 41047701384A FRAME

PP6010571-00 PIPING ASSY (CARRY- VER, OPTION VALVE-MAIN VALVE)



TM-ZX290 41047701384A FRAME

Pos No.	Parts No	Parts Name	Qty	Unit	Technical Data	Serial No (Start)	Serial No (End)	Remarks	Pa
3	90186210014	BOLT,FLANGE	2		M10X14				
4	37000924350	FITTING	4						
5	91002801100	O-RING	4		1B P11				
10	80491002020	JOINT (WITH O-RING)	4						
11	91810130240	FASTENER	6						
12	82100002039	CLAMP	4						
13	90240200800	NUT,CAP	8		M8				
14	90302040801	WASHER,SPRING	8		8				
15	37000600920	CLAMP	2		L=90				
16	31671433000	SUPPORT	2						
17	31671434000	SUPPORT	2						
18	90180208012	BOLT,BUTTON	8		M8X12				
41	37002406530	HOSE (TWIN)	2		L=3050				
42	80491002020	JOINT (WITH O-RING)	4						
43	31644591450	JOINT	2						
44	31671601100	HARNESS	2						
45	91810130240	FASTENER	14						
46	31648501300	CLAMP	2						
61	91002801100	O-RING	8		1B P11				

TM-ZX290 41047701384A FRAME

Pos No.	Parts No	Parts Name	Qty	Unit	Technical Data	Serial No (Start)	Serial No
1	80561100080	NUT	1		AN08		
2	80602110800	RING,RITAINING	1		R80		
3	36080495210	SPACER	1				
4	80500006208	BEARING,BALL	1				
5	36080495220	WORM	1				
6	36080755030	BEARING,NEEDLE	1		BK3020+IR25*30*18		
7	36080495090	GAUGE,OIL	1				
8	36080235080	WASHER,SEAL	1		M16		
9	80316090060	PLUG	1		KKT PT3/8		
10	80561100070	NUT	1		AN07		
15	91206055002	SEAL,OIL	1				
16	36080495042	CASE,GEAR	1				
17	80513006308	BEARING,BALL	1				
18	36080495050	BOLT,SEMS (M10X25,WITH WASHER)	6				
19	36080015000	PIN	2				
20	36080495060	KEY	1				
21	36080495070	WHEEL,WORM	1				
22	36080495230	CASE,GEAR	1				
23	80500006207	BEARING,BALL	1				
51	36081775500	GEAR,SPUR	1				
100	36081770001	SWING ASSY	1				

TM-ZX290 41047701384A FRAME

Pos No.	Parts No	Parts Name	Qty	Unit	Technical Data	Serial No (Start)	Serial No (End)	Remarks	Page
50	31659410300	SWITCH (S/W 2PC'S)	1						

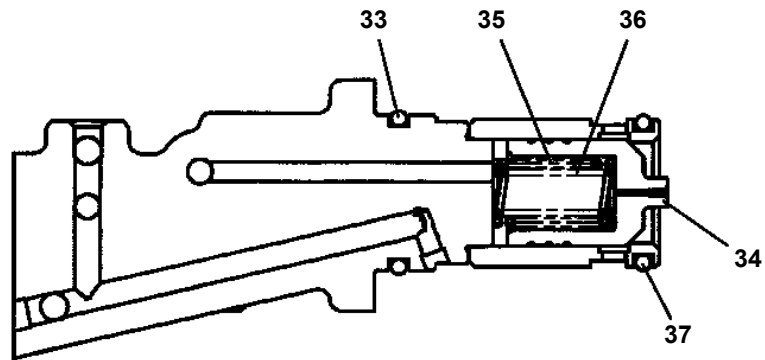
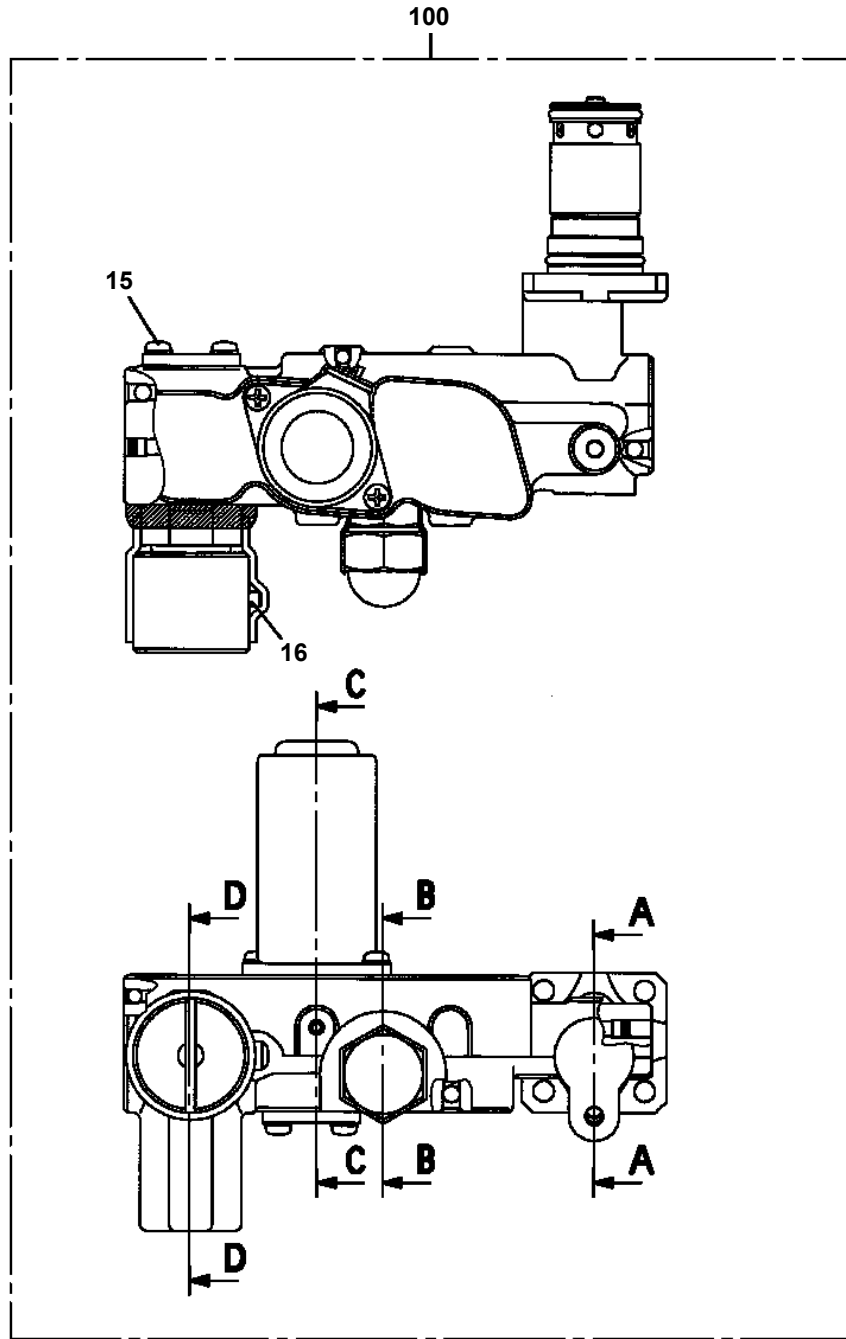
TM-ZX290 41047701384A FRAME

Pos No.	Parts No	Parts Name	Qty	Unit	Technical Data	Serial No (Start)	Serial No (End)	Remark
1	36062745010	BODY	1					
2	36062825010	ROD ASSY	1					
3	36062745030	SPRING (A)	1					
4	36062745040	SPRING (B)	1					
5	36062745050	COVER (SEAL)	1					
6	80602110380	RING,RITAINING	1		R38			
7	36648375020	BALL,STEEL	9		3/16			
8	36648375030	BALL,STEEL	5		5/32			
9	91001101400	O-RING	2		1A P14			
10	91001102800	O-RING	1		1A P28			
11	91001003200	O-RING	1		1A S32			
12	91001003150	O-RING	1		1A S31.5			
13	91001002200	O-RING	2		S22			
14	91650001400	SCRAPER	2					
15	36062445011	LVDT ASSY (A/WITH CORE,)	1					
16	36644015220	SHIM (T=0.2)	2					
17	36644015230	SHIM (T=0.3)	2					
18	36062745060	FLANGE	1					
19	80172105008	SCREW,MACHINE	2		M5X8			
21	36062635050	TUBE,CORRUGATE	1		10			
22	80172104010	SCREW,MACHINE	5		M4X10			
25	36081315130	PROTECTOR (THREAD)	2					
27	36645405100	BOLT	2		M4X22			
28	36062635030	FASTENER	1					
29	90303070401	WASHER,PLAIN	1		4			
30	36645405110	SHIM (T=1.0)	1					
31	36062745090	VALVE ASSY,SOLENOID	1					
100	36062820000	CYLINDER,ACCELERATOR	1					

TM-ZX290 41047701384A FRAME

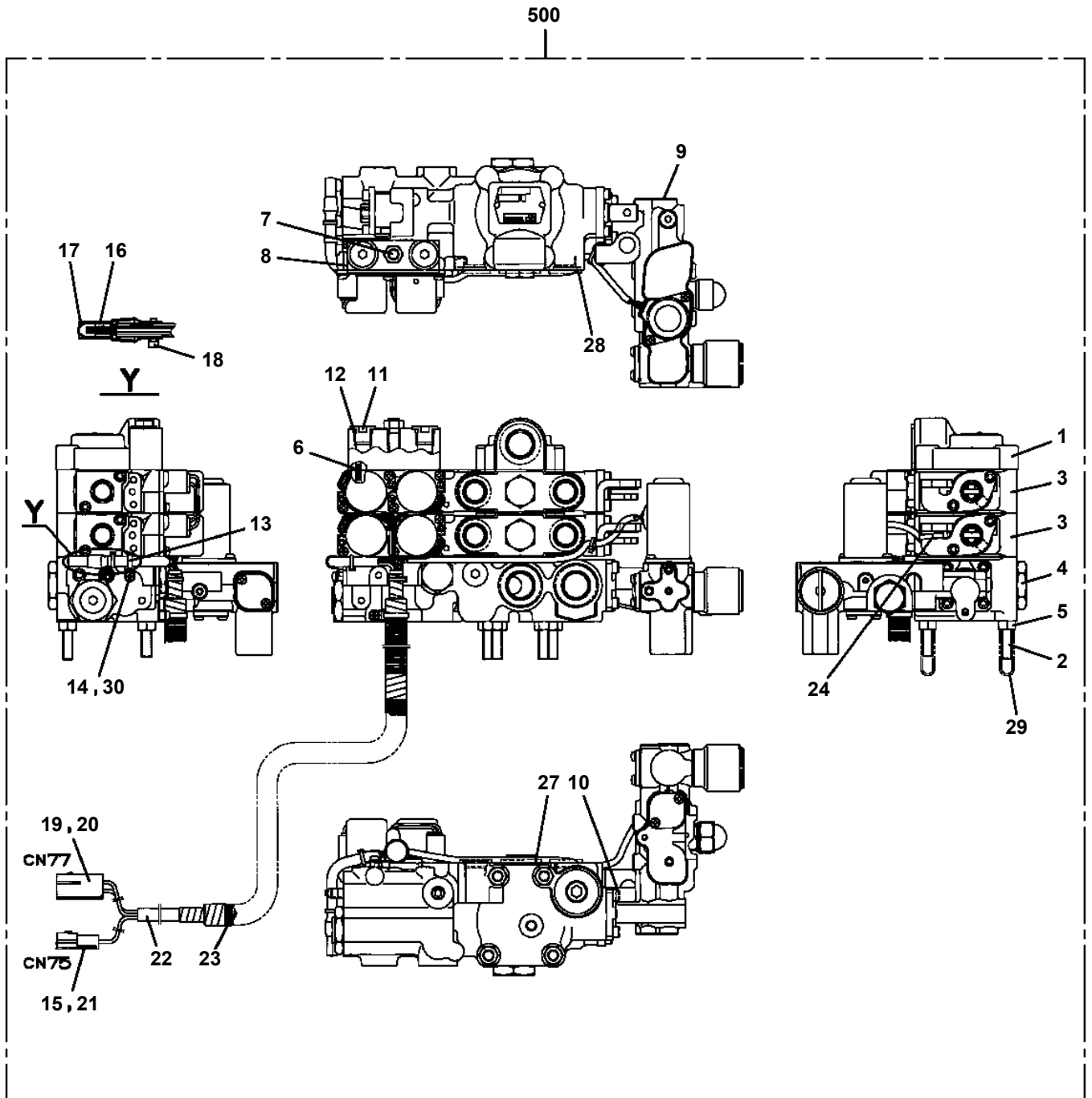
Pos No.	Parts No	Parts Name	Qty	Unit	Technical Data	Serial No (Start)	Serial No (End)	Remarks
8	36646865190	PISTON	1					
9	91001102000	O-RING	1		1A P20			
10	91001000800	O-RING	1		S8			
11	36648365120	SPOOL (SUB)	1					
12	91650001400	SCRAPER	1					
13	91001002240	O-RING	1		S22.4			
14	36648365110	FLANGE	1					
15	36645495210	SEAT,SPRING (RETURN)	2					
16	36645845060	SPRING (RETURN)	1					
17	36648365130	SPACER	1					
18	36645495220	ADAPTER	1					
19	36648385080	BRACKET	1					
20	36645615250	C-BOLT	2		M5X25			
22	91001002200	O-RING	2		S22			
24	36740745140	SCREW,MACHINE	4		M4X12			
25	36649585130	PLUG	1		G3/8			
26	12635101360	SPOOL	1					
27	12635101190	SPRING	1					
28	91001101800	O-RING	2		1A P18			
29	36743005130	PLUG (A)	1					
30	91001101100	O-RING	1		1A P11			
31	36644115130	PLUG	1					
32	36633365100	SEAL,OIL	1					
33	36743005110	LINK	1					
34	36645615230	C-BOLT	2		5X12			
36	91001102100	O-RING	3		1A P21			
37	91001100600	O-RING	3		1A P6			
39	36743005050	PIN	1					
61	36740745150	VALVE,SOLENOID (KIT)	2					
62	36649585240	SEAT	1					
100	36743040081	VALVE ASSY,CONTROL	1					

TM-ZX290 41047701384A FRAME
PV5140040-00 VALVE ASSY,RELIEF



A-A

TM-ZX290 41047701384A FRAME
 PV5150059-00 VALVE ASSY,REMOTE CONTROL



展開圖有
 ILLUSTRATED BREAKDOWN NO.3,4

TM-ZX290 41047701384A FRAME

Pos No.	Parts No	Parts Name	Qty	Unit	Technical Data	Serial No (S
1	(*****)	MOUNT,WINCH	1			
2	3674338000	VALVE ASSY,REMOTE CONTROL	1			
3	(*****)	PIPING ASSY (CARRY- VER, OPTION VALVE-MAIN VALVE)	1			
4	(*****)	PIPING,WINCH	1			
5	(*****)	NAME PLATE ASSY	1			
7	31292491000	ROPE ASSY (WITH HOOK)	1			
10	(*****)	OPE.ASSY,CONT.VALVE (REMOCON)	1			
12	(*****)	ELEC.ASSY (SELF WINCH)	1			
14	(*****)	ELEC.ASSY (CARRY OVER VALVE)	1			

TM-ZX290 41047701384A FRAME
 PY2000290-02 OPTION UNIT,2 (COMMON)

オプションユニット,2 (キョウツウ)
 OPTION UNIT,2 (COMMON)

符号	日本語名称	英語名称	備考
28	ハイセンASSY	ELEC. ASSY	作業灯2灯取付用ハーネス ホース部(LED) + フーム部(LED又はハロゲン) に適合
29	ハイセンASSY	ELEC. ASSY	差巻確保装置 (ハーネス付)
30	ハイセンASSY	ELEC. ASSY	警報仕様 (定格荷重指示装置)
31	ハイセンASSY	ELEC. ASSY	停止仕様 (定格荷重制限装置)
32	ハイセンASSY	ELEC. ASSY	送信機 (FT3) 置忘れ警報装置
33	ネームプレートASSY	NAME PLATE ASSY	フーム・シヤッキインターロック装置付
34	ネームプレートASSY	NAME PLATE ASSY	フーム格納忘れ警報装置付
35	ネームプレートASSY	NAME PLATE ASSY	アウトリカ格納忘れ警報装置付
36	ネームプレートASSY	NAME PLATE ASSY	フーム・アウトリカ格納忘れ警報装置付
37	ネームプレートASSY	NAME PLATE ASSY	高さ制限装置付
39	ネームプレートASSY	NAME PLATE ASSY	NETIS銘板 SK-110003-VE Sサイズ
40	マウントASSY	MOUNT ASSY	フームヘッドカバー取付ブラケット (ニッケン向) 3段,4段のみ
41	カバーASSY	COVER ASSY	フームヘッドカバー 3段,4段のみ
42	ネームプレートASSY	NAME PLATE ASSY	警報仕様銘板 (アクティオ向け)
43	ネームプレートASSY	NAME PLATE ASSY	停止仕様銘板 (アクティオ向け)
44	ハイセンASSY	ELEC. ASSY	警報仕様 (定格荷重指示装置) OEM用
45	ハイセンASSY	ELEC. ASSY	停止仕様 (定格荷重制限装置) OEM用
46	ハイセンASSY	ELEC. ASSY	差巻確保装置 (ハーネス付) 製番KE2466以降

適用製造番号によっては取り付けがないものもあります。

MACHINES OF SOME SERIAL NO. ARE NOT EQUIPPED WITH THESE PARTS.

**TM-ZX290 41047701384A FRAME
PZ0000000-00 HARNESS**

販売部品 検討中につき、イラストはありません。

**Parts for sale : Under consideration now.
Therefore not illustrated.**

販売部品 検討中につき、イラストはありません。

Parts for sale : Under consideration now.
Therefore not illustrated.

TM-ZX290 41047701384A FRAME

PZ0000000-00 OUTRIGGER ASSY (L=402,CYLINDER:MIN.1149)

販売部品 検討中につき、イラストはありません。

Parts for sale : Under consideration now.
Therefore not illustrated.

**TM-ZX290 41047701384A FRAME
PZ0000000-00 HARNESS**

販売部品 検討中につき、イラストはありません。

**Parts for sale : Under consideration now.
Therefore not illustrated.**

CLICK HERE TO **DOWNLOAD** THE COMPLETE MANUAL

- Thank you very much for reading the preview of the manual.
- You can download the complete manual from: www.heydownloads.com by clicking the link below



- Please note: If there is no response to CLICKING the link, please download this PDF first and then click on it.

CLICK HERE TO **DOWNLOAD** THE COMPLETE MANUAL