

TM-ZX290 41047701373A FRAME

PB0000365-00 SYSTEM (ZX290SL,DOMESTIC)

ASSEMBLY

CLICK HERE TO **DOWNLOAD** THE COMPLETE MANUAL

- Thank you very much for reading the preview of the manual.
- You can download the complete manual from: www.heydownloads.com by clicking the link below



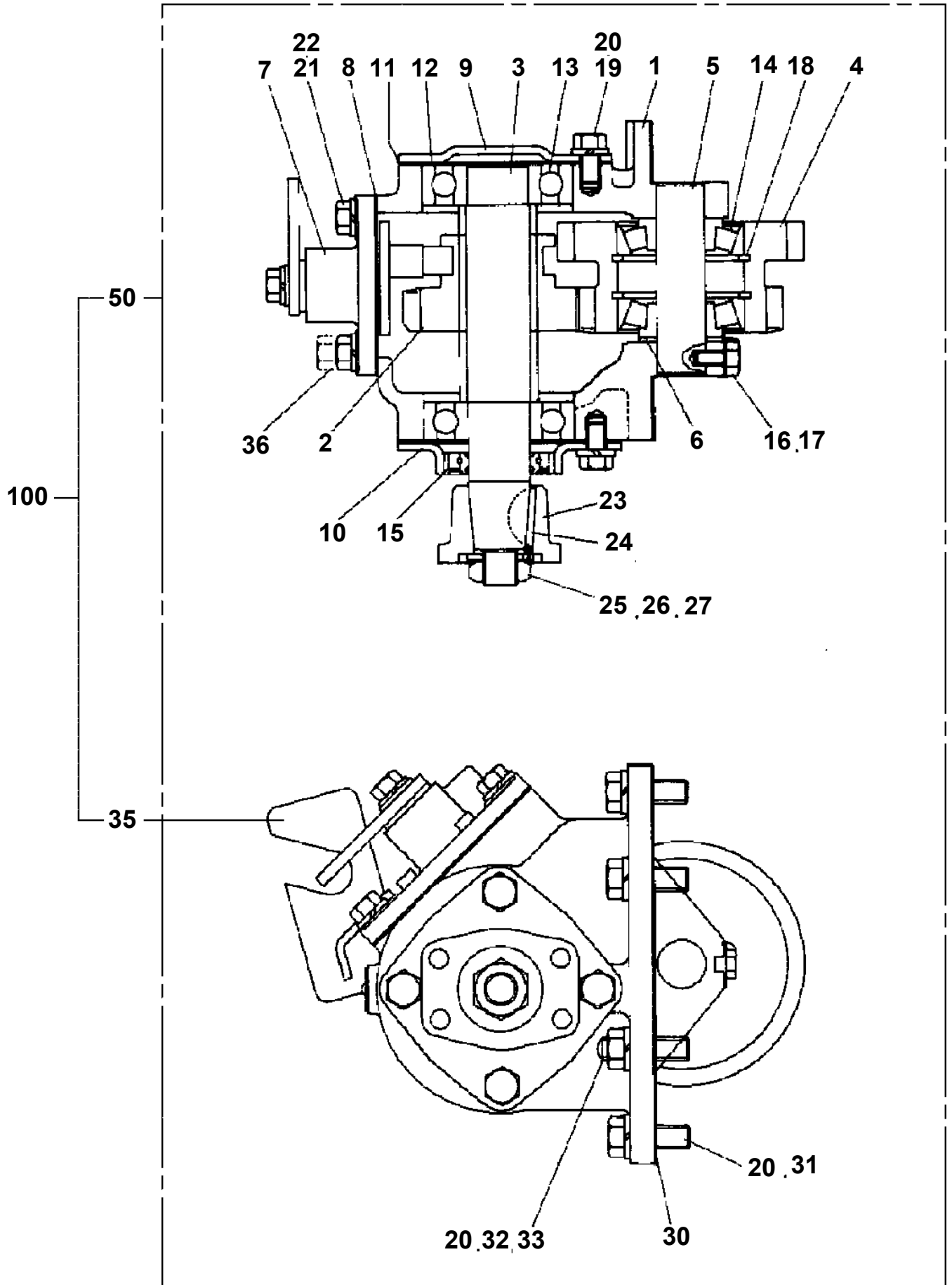
- Please note: If there is no response to CLICKING the link, please download this PDF first and then click on it.

CLICK HERE TO **DOWNLOAD** THE COMPLETE MANUAL

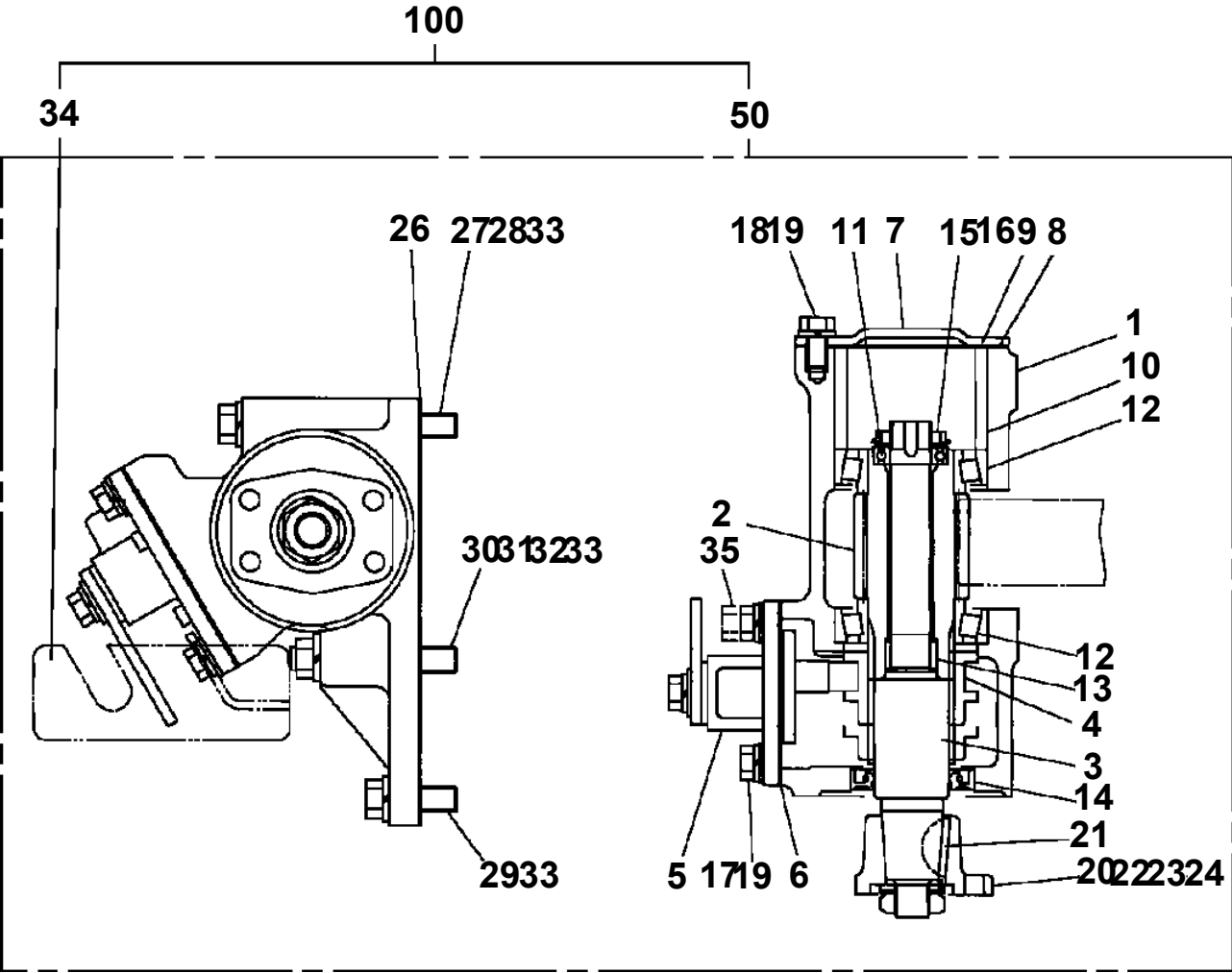
TM-ZX290 41047701373A FRAME

Pos No.	Parts No	Parts Name	Qty	Unit	Technical Data	Serial No (Start)	Serial No (End)	R	
1	31792150000	POWER TAKE OFF	1						
	31790880000	POWER TAKE OFF	1						
	31792380000	POWER TAKE OFF	1						
	31790900000	POWER TAKE OFF	1						
	31792260000	POWER TAKE OFF	1						
	31792080000	POWER TAKE OFF	1						
	31792100000	POWER TAKE OFF	1						
	31790890000	POWER TAKE OFF	1						
	31790990000	POWER TAKE OFF	1						
	31792370000	POWER TAKE OFF	1						
	31792270000	POWER TAKE OFF	1						
	31792090000	POWER TAKE OFF	1						
	2	31791110000	POWER TAKE OFF	1					
		31791080000	POWER TAKE OFF	1					
		31791090000	POWER TAKE OFF	1					
		31791100000	POWER TAKE OFF	1					
		31792230000	POWER TAKE OFF	1					
		31792240000	POWER TAKE OFF	1					
		31792250000	POWER TAKE OFF	1					
31792480000		POWER TAKE OFF	1						
31791130000		POWER TAKE OFF	1						
31791170000		POWER TAKE OFF	1						
31791190000		POWER TAKE OFF	1						
31791180000		POWER TAKE OFF	1						
31791620000		POWER TAKE OFF	1						
31790710000		POWER TAKE OFF	1						
31790730000		POWER TAKE OFF	1						
31791120000		POWER TAKE OFF	1						
31792120000		POWER TAKE OFF	1						
31792220000		POWER TAKE OFF	1						
31792490000		POWER TAKE OFF	1						
3		31791570000	POWER TAKE OFF	1					
	31791610000	POWER TAKE OFF	1						
	31791220000	POWER TAKE OFF	1						
	31791240000	POWER TAKE OFF	1						
	31790970000	POWER TAKE OFF	1						
	31791180000	POWER TAKE OFF	1						
	31791240000	POWER TAKE OFF	1						
	31791570000	POWER TAKE OFF	1						
	31791120000	POWER TAKE OFF	1						
	31791110000	POWER TAKE OFF	1						
	31792250000	POWER TAKE OFF	1						
	31792120000	POWER TAKE OFF	1						
	31791620000	POWER TAKE OFF	1						
	31791610000	POWER TAKE OFF	1						
	31791100000	POWER TAKE OFF	1						
	31792240000	POWER TAKE OFF	1						
	31790730000	POWER TAKE OFF	1						
	31791090000	POWER TAKE OFF	1						
	31792220000	POWER TAKE OFF	1						
	31791220000	POWER TAKE OFF	1						
31790970000	POWER TAKE OFF	1							
31791190000	POWER TAKE OFF	1							
31790710000	POWER TAKE OFF	1							
31791170000	POWER TAKE OFF	1							
31791130000	POWER TAKE OFF	1							
31792230000	POWER TAKE OFF	1							
31791080000	POWER TAKE OFF	1							
31791050000	POWER TAKE OFF	1							
4	31790710000	POWER TAKE OFF	1						
	31790730000	POWER TAKE OFF	1						
5	52230312000	POWER TAKE OFF (WITH TURBO)	1						
	52230314000	POWER TAKE OFF	1						

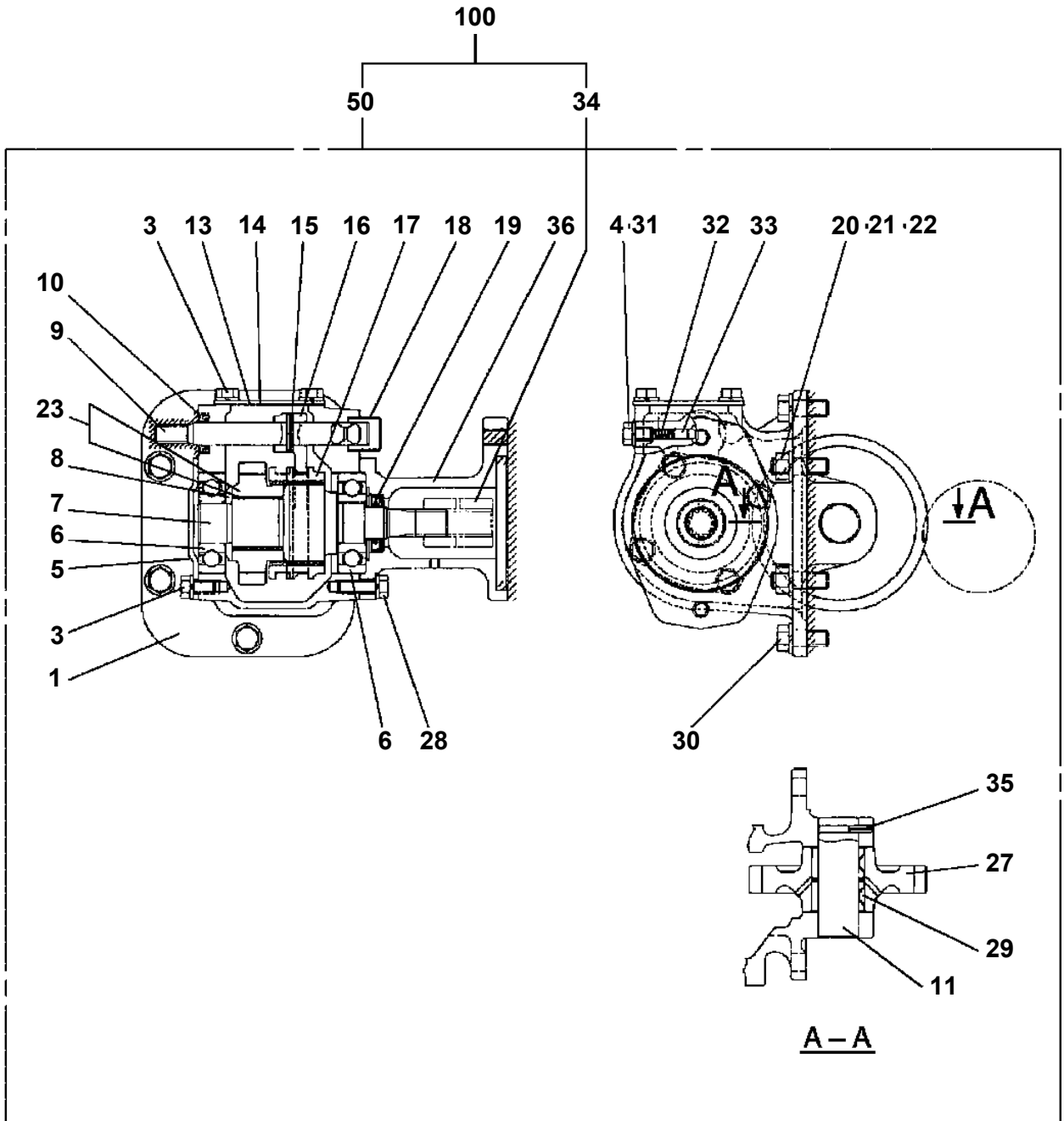
TM-ZX290 41047701373A FRAME
PB1030063-02 POWER TAKE OFF



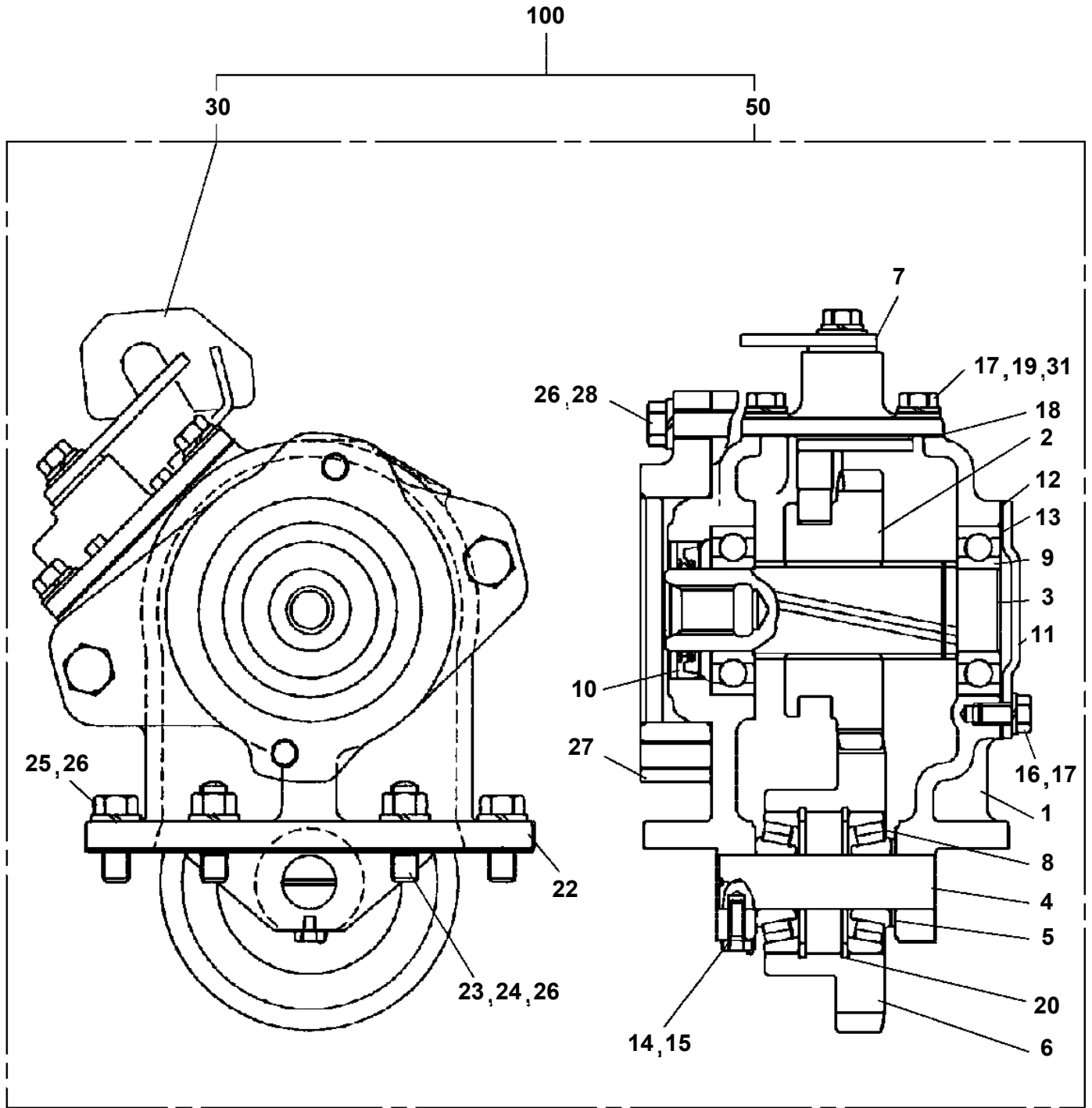
**TM-ZX290 41047701373A FRAME
PB1030131-01 POWER TAKE OFF**



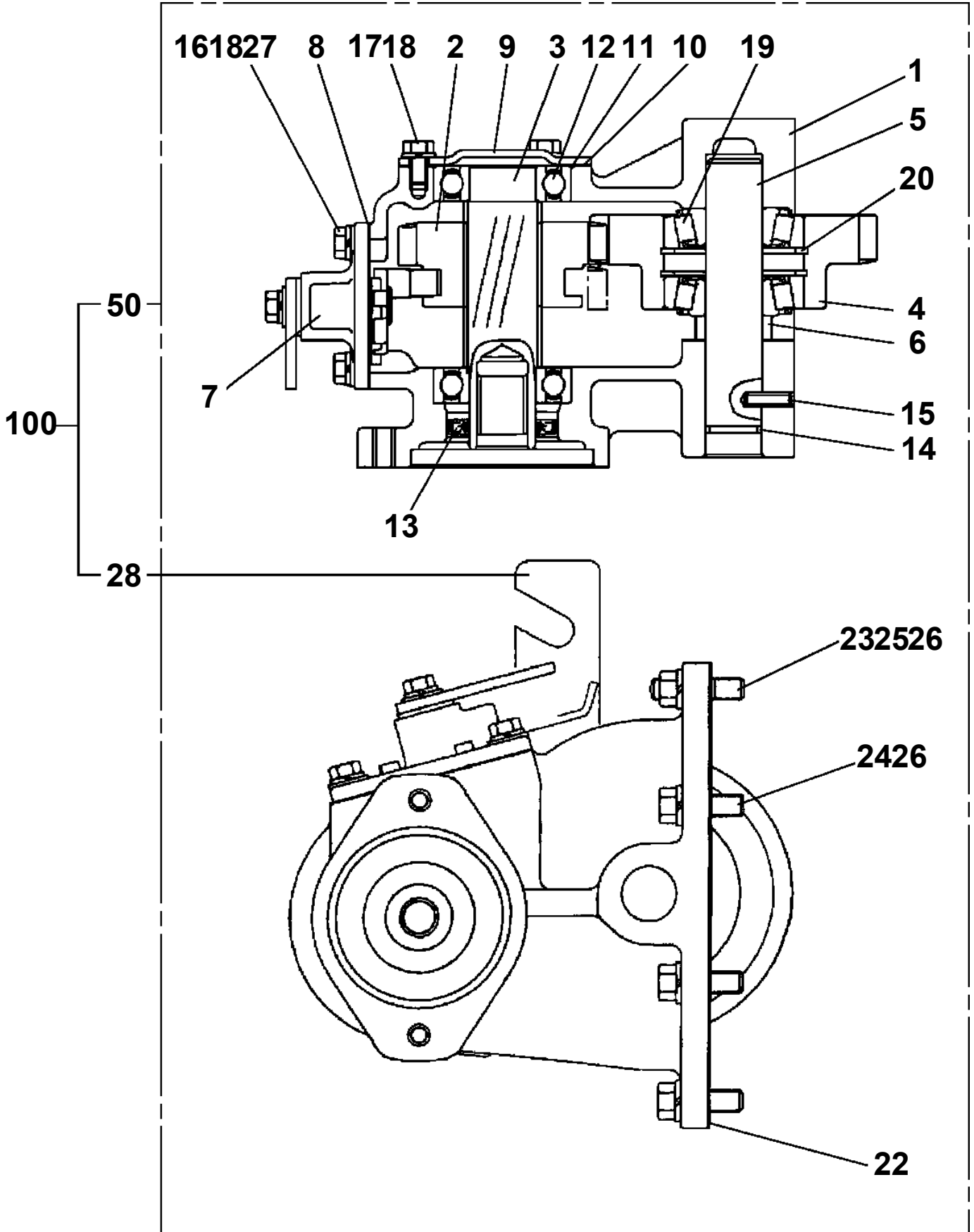
TM-ZX290 41047701373A FRAME
PB1030163-02 POWER TAKE OFF



TM-ZX290 41047701373A FRAME
PB1030171-02 POWER TAKE OFF

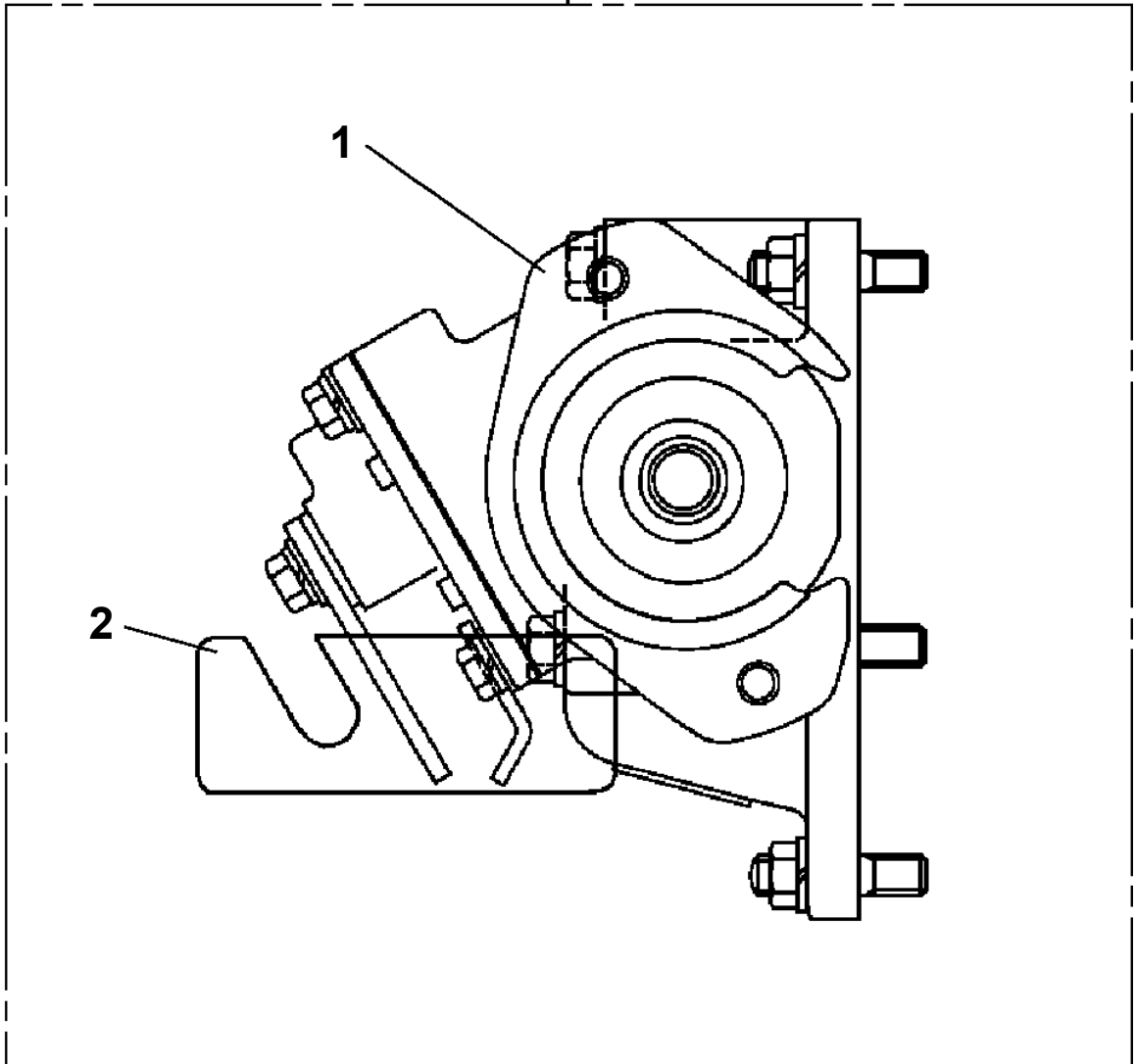


TM-ZX290 41047701373A FRAME
PB1030192-01 POWER TAKE OFF



TM-ZX290 41047701373A FRAME
PB1030204-00 POWER TAKE OFF

50



TM-ZX290 41047701373A FRAME

Pos No.	Parts No	Parts Name	Qty	Unit	Technical Data	Serial No (Start)	Serial No (End)	Remarks
1	36401895070	CASE	1					
2	36401885020	GEAR	1					
3	36400915030	SHAFT	1					
4	36401885030	GEAR	1					
5	36400415050	SHAFT	1					
6	36400675030	COLLAR	1					
7	36400095100	SHIFTER ASSY	1					
8	36400095110	PACKING	1					
9	36400095070	COVER (BEARING)	1					
10	36400095080	PACKING (COVER)	1					
11	36400095090	SHIM	N					
12	80500006206	BEARING,BALL	2					
13	91206030005	SEAL,OIL	1					
14	91001102100	O-RING	1		1A P21			
15	90710006200	SCREW,SET	1		M6X20			
16	90191208020	BOLT	4		M8X20			
17	90191208014	BOLT	3		M8X14			
18	90302040801	WASHER,SPRING	7		8			
19	36400135070	BEARING	2					
20	80602110620	RING,RITAINING	2		R62			
22	36401885050	PACKING	1					
24	90191210030	BOLT	6		M10X30			
25	90267201000	NUT	2		M10			
26	90302041001	WASHER,SPRING	8		10			
28	31790670100	SUPPORT	1					
29	90191208025	BOLT	2		M8X25			
60	36402100000	POWER TAKE OFF ASSY	1					
61	36401695040	BOLT,STUD	2		M10X1.25/1.5X47			
100	31791240000	POWER TAKE OFF	1					

TM-ZX290 41047701373A FRAME

Pos No.	Parts No	Parts Name	Qty	Unit	Technical Data	Serial No (Start)	Serial No (End)	Remarks	Pages
1	36401135050	CASE	1						
2	36401135060	GEAR (TO)	1						
3	36401125030	SHAFT (TO)	1						
4	36401125040	SLEEVE	1						
5	36401125050	SHIFTER SET	1						
6	36400095110	PACKING	1						
7	36400095070	COVER (BEARING)	1						
8	36400095080	PACKING (COVER)	1						
9	36400095090	SHIM	N						
10	36401135070	COLLAR	1						
11	80500006903	BEARING,BALL	1						
12	36401125080	BEARING,ROLLER	2						
13	36401125090	BEARING,NEEDLE	1						
14	91206030005	SEAL,OIL	1						
15	36401125100	RING,RETAINING	1						
16	90191208020	BOLT	4		M8X20				
17	90191208014	BOLT	3		M8X14				
18	90302040801	WASHER,SPRING	7		8				
20	36402015020	PACKING	2						
21	36402025030	BOLT	1		M10X1.5X115				
22	36402015040	BOLT	1		M10X1.5X105				
23	90191210045	BOLT	2		M10X45				
24	36402015010	BOLT,STUD	1						
25	36402025010	BOLT,STUD	1						
26	90267201000	NUT	2		M10				
27	90302041001	WASHER,SPRING	6		10				
28	36402025020	SPACER	1						
30	90191208025	BOLT	2		M8X25				
51	36402020000	POWER TAKE OFF	1						
52	31790880100	SUPPORT	1						
100	31792090000	POWER TAKE OFF	1						

TM-ZX290 41047701373A FRAME

Pos No.	Parts No	Parts Name	Qty	Unit	Technical Data	Serial No (Start)	Serial No (End)	Remarks
1	36401995010	CASE	1					
2	36401995020	GEAR	1					
3	36402125010	SHAFT	1					
4	36400095040	SHAFT	1					
5	36400095050	COLLAR	1					
6	36401995040	GEAR	1					
7	36400095070	COVER (BEARING)	1					
8	36400095080	PACKING (COVER)	1					
9	36400095090	SHIM	N					
10	36401995050	SHIFTER ASSY	1					
11	36400095110	PACKING	1					
12	80500006206	BEARING,BALL	2					
13	91206030005	SEAL,OIL	1					
14	90191208014	BOLT	3		M8X14			
15	90191208020	BOLT	4		M8X20			
16	90101206012	BOLT	1		M6X12			
17	90302040801	WASHER,SPRING	7		8			
18	36400095130	WASHER	1					
19	36401745060	BEARING	2					
20	80602110470	RING,RITAINING	2		R47			
22	36400055070	PACKING	1					
23	36401995060	BOLT	4					
24	90267401000	NUT	4		M10			
25	90302041001	WASHER,SPRING	6		10			
26	90193510035	BOLT	2		M10X35			
28	90191208025	BOLT	2		M8X25			
50	36402120000	POWER TAKE OFF ASSY	1					
60	31791160100	SUPPORT	1					
100	31792240000	POWER TAKE OFF	1					

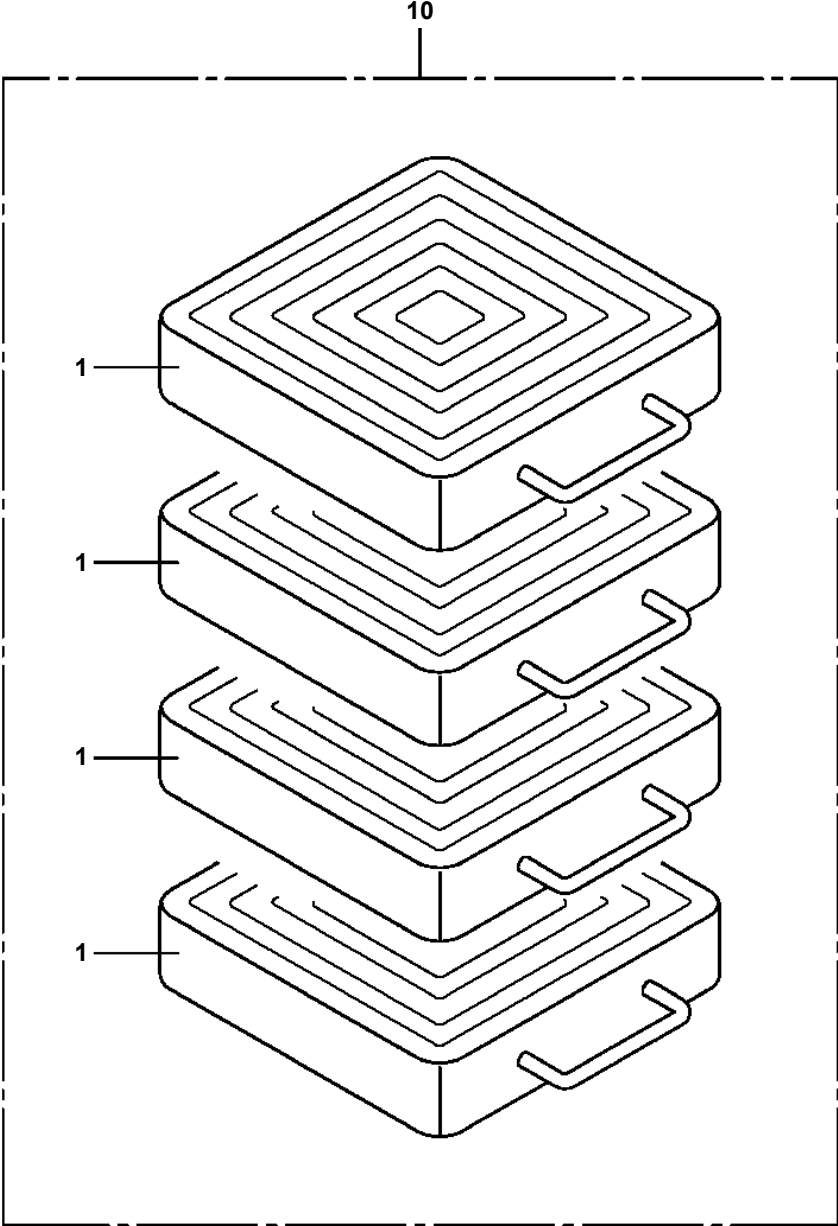
TM-ZX290 41047701373A FRAME

Pos No.	Parts No	Parts Name	Qty	Unit	Technical Data	Serial No (Start)	Serial No (End)	Remarks
1	36402470510	CASE	1					
2	36402470520	GEAR	1					
3	36402470530	SHAFT	1					
4	36401125040	SLEEVE	1					
5	36401125050	SHIFTER SET	1					
6	36400095110	PACKING	1					
7	36400095070	COVER (BEARING)	1					
8	36400095080	PACKING (COVER)	1					
9	36400095090	SHIM	N					
10	36402470540	COLLAR	1					
11	80500006903	BEARING,BALL	1					
12	36401125080	BEARING,ROLLER	2					
13	36401125090	BEARING,NEEDLE	1					
14	91206030005	SEAL,OIL	1					
15	36401125100	RING,RETAINING	1					
16	90191208020	BOLT	4		M8X20			
17	90191208014	BOLT	3		M8X14			
18	90302040801	WASHER,SPRING	7		8			
20	36402015020	PACKING	2					
21	36402035040	BOLT	1		M10X1.5X120			
22	36402035050	BOLT	1		M10X1.5X110			
23	90191210050	BOLT	2		M10X50			
24	36402035010	BOLT,STUD	1					
25	36402035020	BOLT,STUD	1					
26	90267201000	NUT	2		M10			
27	90302041001	WASHER,SPRING	6		10			
28	36402470550	SPACER	1					
30	90191208025	BOLT	2		M8X25			
50	36402470000	POWER TAKE OFF ASSY	1					
60	31790990100	SUPPORT	1					
100	31792370000	POWER TAKE OFF	1					

TM-ZX290 41047701373A FRAME

Pos No.	Parts No	Parts Name	Qty	Unit	Technical Data	Serial No (Start)	Serial No (End)	Remarks	P
1	31611617510	ADAPTER ASSY	1						
7	31611617590	MOTOR ASSY	1						
12	31611617530	TANK	1						
14	31611617540	CAP (OIL FILLER)	1						
18	44550417860	GASKET (WITH O-RING)	1						
30	31611617550	VALVE ASSY	1						
41	31611617560	VALVE,SOLENOID	2						
44	31611617570	MANIFOLD	1						
47	31611617580	O-RING	2						
100	31611613101	POWER SUPPLY	1						

TM-ZX290 41047701373A FRAME
PB5110002-01 BLOCK (4 PIECE SET:PLATE,355X355,H=80)



TM-ZX290 41047701373A FRAME

Pos No.	Parts No	Parts Name	Qty	Unit	Technical Data	Serial No (Start)	Serial No (End)	Re
1	31625101001	CASE, OUTER	1					
2	31625102000	CASE, INNER	1					
3	31625103000	CASE, INNER	1					
4	31622149510	SUPPORT ASSY	1					
5	31622149520	SUPPORT ASSY	1					
6	31622140100	COVER	2					
7	90101206010	BOLT	6		M6X1.0			
8	90302040601	WASHER, SPRING	6		6			
9	90172110025	BOLT, HEXAGON SOCKET	8		M10X25			
10	90302041001	WASHER, SPRING	8		10			
11	(*****)	CYLINDER, JACK (REAR)	2					
12	90201201600	NUT	2		M16			
13	90720716400	SCREW, SET	2		M16X40			
14	31622140200	COVER	4					
15	31622140300	PLATE	4					
16	90191208014	BOLT	8		M8X14			
17	90302040801	WASHER, SPRING	8		8			
18	82455106000	NIPPLE, GREASE	4		A-M6F FE			
19	31622140400	PIN	2					
20	37001200720	SPRING	2					
21	37003100020	GRIP	2					
22	80136332025	PIN, SPLIT	4		3.2X25			
23	31620582020	BEARING, BALL (KOYO)	6					
24	37000157880	PIN	2					
25	82400000459	CAP	4					
26	90171210030	BOLT	2		M10X30			
27	90203201000	NUT	2		M10			
28	31622140640	PLATE	2					
29	(*****)	PIPING, REAR JACK (2, ROTARY)	1					
30	31622140501	SUPPORT	2					
31	31622140601	SUPPORT	2					
32	31622140700	SUPPORT	2					
33	31621962100	SUPPORT	4					
34	31621962200	PLATE	12		T=0.5			
35	37000161010	PIN	2					
36	37000309980	SPACER	2		L=60			
37	90186208010	BOLT, FLANGE	8		M8X10			
42	31622141200	PIN ASSY	2					
44	82400000204	GROMMET	4		L=320			

TM-ZX290 41047701373A FRAME

Pos No.	Parts No	Parts Name	Qty	Unit	Technical Data	Serial No (Start)	Serial No (End)	Remarks
1	31649130010	PIPE	1					
2	31649130020	PIPE	1					
3	31649130030	PIPE	1					
4	31649130040	PIPE	1					
5	80303130101	FITTING,ELBOW	6		KLO10-020E			
6	80302090101	FITTING	2		KCO10-020N			
7	31611613101	POWER SUPPLY	1					
8	90172108018	BOLT,HEXAGON SOCKET	4		M8X18			
9	90302040801	WASHER,SPRING	6		8			
10	91002801100	O-RING	2		1B P11			
11	31645360100	SUPPORT	1					
12	90186210014	BOLT,FLANGE	4		M10X14			
13	37005700130	CLAMP	2		10X2			
14	90101208035	BOLT	2		M8X35			
15	90303070801	WASHER,PLAIN	2		8			
31	91002801100	O-RING	6		1B P11			

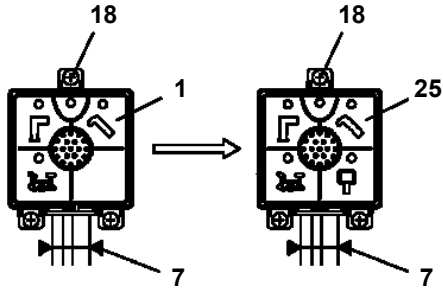
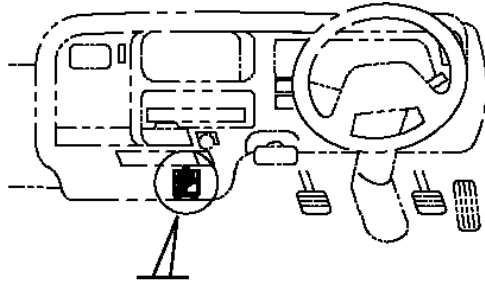
TM-ZX290 41047701373A FRAME

Pos No.	Parts No	Parts Name	Qty	Unit	Technical Data	Serial No (Start)	Serial No (End)
1	37000403070	BEARING,PLAIN	4				
2	36024671000	PISTON	1				
3	91350211500	BEARING,PLAIN (WITH PACKINGX2)	1				
4	91002907500	O-RING	1		1B G75		
5	36029199511	CYLINDER ASSY	1				
6	36025969520	ROD ASSY	1				
7	91002911000	O-RING	1		1B G110		
8	36024671500	COVER,ROD	1				
9	91694008001	PACKING	1				
10	91410208001	RING,BACKUP	1				
11	91660008000	SEAL,DUST	1				
12	80622000800	RING,RITAINING	1		SP80		
13	82456101000	NIPPLE,GREASE	2		A-PT1/8		
14	80316100010	PLUG	1		GPF1/8		
15	91002800800	O-RING	1		1B P8		
16	37000926070	ORIFICE	1		M8,0.6		
80	36024679900	PACKING SET	1		80X115		
100	36029190001	CYLINDER ASSY,DERRICK	1				

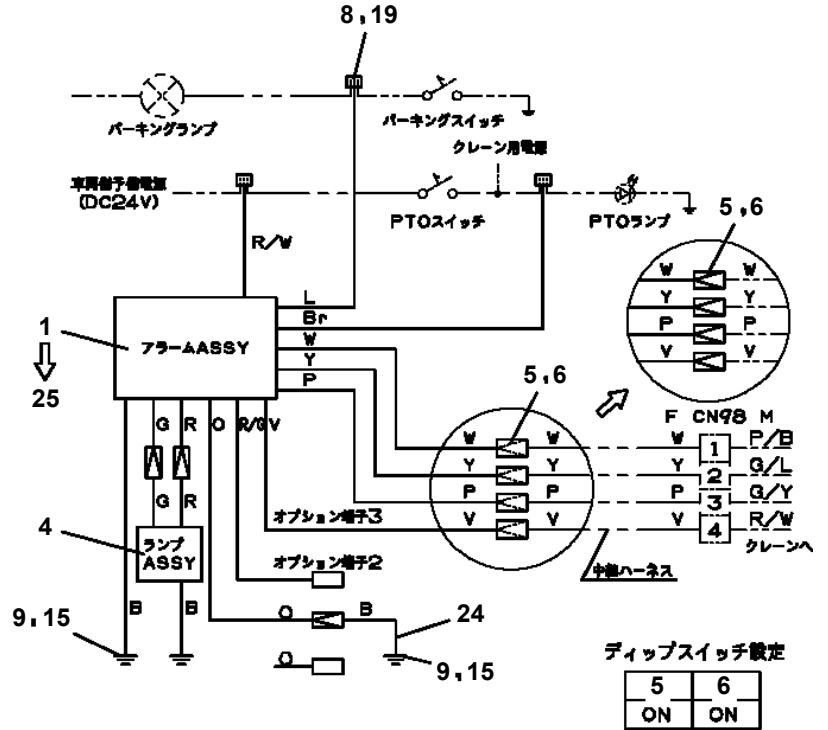
TM-ZX290 41047701373A FRAME

Pos No.	Parts No	Parts Name	Qty	Unit	Technical Data	Serial No (Start)	Serial No (End)	Remarks
13	91002801100	O-RING	1		1B P11			
100	36150100000	DETECTOR ASSY,MOMENT	1					

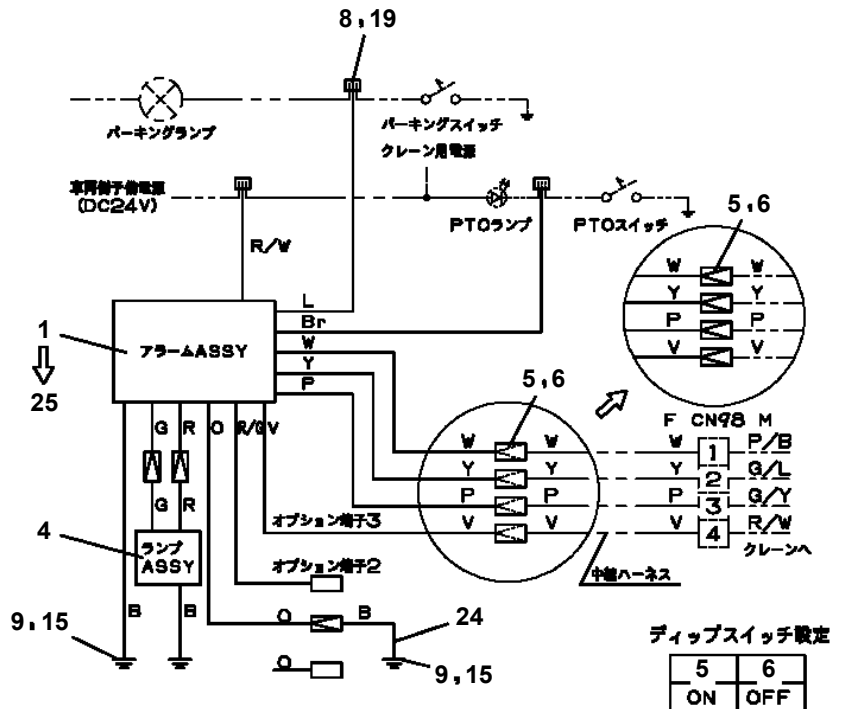
TM-ZX290 41047701373A FRAME
PE5021239-02 ELEC.ASSY (MOUNTING VEHICLE)



アラームASSY取付



パーキングランプの下流にパーキングスイッチがあり、
PTOランプの上流にPTOスイッチがある場合



パーキングランプの下流にパーキングスイッチがあり、
PTOランプの下流にPTOスイッチがある場合

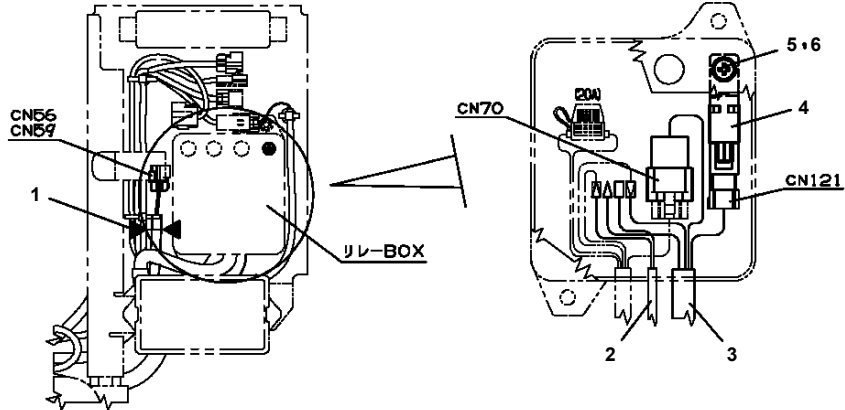
TM-ZX290 41047701373A FRAME

Pos No.	Parts No	Parts Name	Qty	Unit	Technical Data	Serial No (Start)	Serial No (End)	Remarks	Pages
1	31361042300	PLUG	1						
2	91810130250	FASTENER	2						

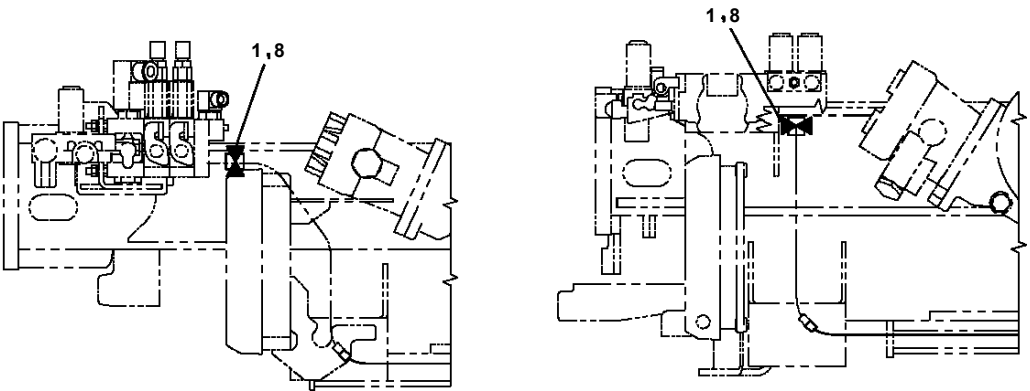
TM-ZX290 41047701373A FRAME

Pos No.	Parts No	Parts Name	Qty	Unit	Technical Data	Serial No (Start)	Serial No (End)	Remarks
1	31506121100	HARNESS	1					
2	34354781710	RELAY (WITH BRACKET)	1					
3	90280200600	NUT,FLANGE	1		M6			
4	80197586012	SCREW,MACHINE	1		M6X12			
5	91810130250	FASTENER	6					

**TM-ZX290 41047701373A FRAME
PE5021342-00 ELEC.ASSY**



B



(ZX290)

(ZX300,360)

F

TM-ZX290 41047701373A FRAME
PE5021363-00 ELEC.ASSY (OVER-UNWINDING CUTOUT DEVICE WITH HARNESS)

ハイセンASSY (ステマキテイシソウチ,ハーネスツキ)
ELEC.ASSY (OVER-UNWINDING CUTOUT DEVICE, WITH HARNESS)

符号	日本語名称	英語名称	備考
1	ハイセンASSY	ELEC. ASSY	上部ハーネス
2	ローラASSY	ROLLER ASSY	捨巻検出用
3	インジケータASSY	INDICATOR ASSY	捨巻検出器

適用製造番号によっては取り付けがないものもあります。

MACHINES OF SOME SERIAL NO. ARE NOT EQUIPPED WITH THESE PARTS.

TM-ZX290 41047701373A FRAME

Pos No.	Parts No	Parts Name	Qty	Unit	Technical Data	Serial No (Start)	Serial No (End)	Remarks
1	31734212100	HARNESS	1					
2	91810130240	FASTENER	17					
3	91850310405	CLAMP (BLACK)	13					
4	31656101200	PLUG (2-POLES,FEMALE)	1					

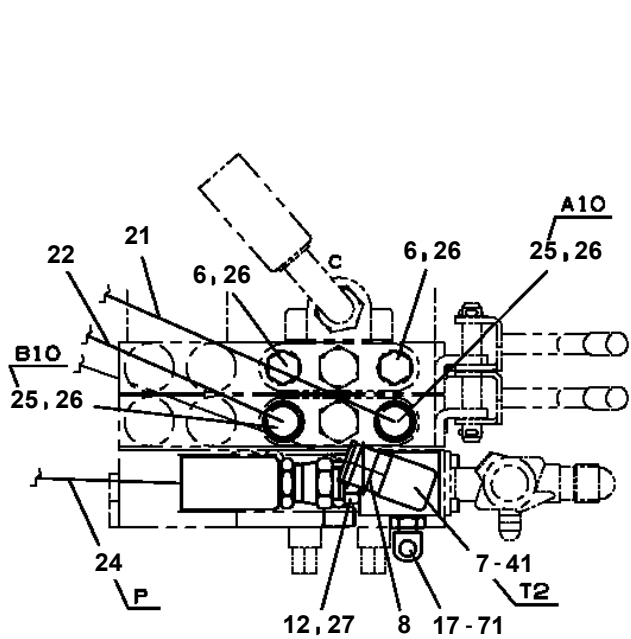
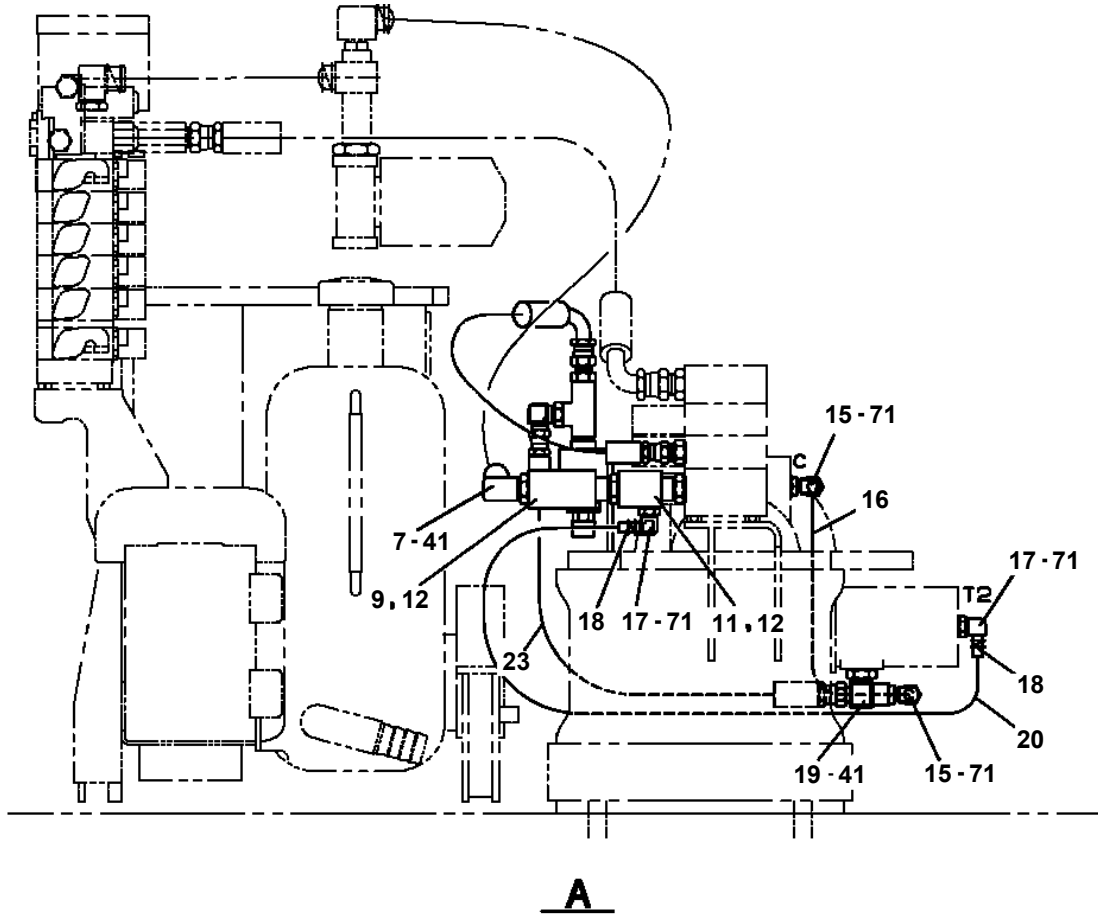
TM-ZX290 41047701373A FRAME

Pos No.	Parts No	Parts Name	Qty	Unit	Technical Data	Serial No (Start)	Serial No (End)	P
1	36072625080	CASE,GEAR	1					
2	36072625020	CASE,GEAR	1					
3	36072625030	GEAR,SPUR	1					
4	36072625100	GEAR,SPUR	1					
5	36072625050	GEAR,SPUR	1					
6	36072625110	BRAKE,DISK	1					
7	36072625120	WHEEL,RATCHET (BUSH L=17MM)	1					
8	36071195080	LINK (RATCHET CONTROL)	1					
10	36071195100	RATCHET	1					
11	36072625090	SHAFT	1					
12	36071195120	SPRING	1					
13	36071195130	CAP	1					
14	36071195140	PIN	1					
15	36071195150	NUT	1					
16	80500006202	BEARING,BALL	1					
17	80500006212	BEARING,BALL	1					
18	80500006305	BEARING,BALL	1					
19	80500006007	BEARING,BALL	1					
20	91206048001	SEAL,OIL	1					
21	80602110620	RING,RITAINING	1		R62			
23	36071195200	O-RING	1					
24	36071195170	O-RING	1		P15			
25	80136340040	PIN,SPLIT	1		4X40			
26	36072625070	KEY	2					
27	90101208018	BOLT	6		M8X18			
28	90302040801	WASHER,SPRING	6		8			
29	80316030060	PLUG	1		PT3/8			
33	36071195190	GAUGE,OIL	1					
34	80172304015	SCREW,MACHINE	1		M4X15			
35	90302040401	WASHER,SPRING	1		4			
100	36072620000	WINCH (HARTYS)	1					
101	36070441000	FACING KIT(JAPANESE)	1					
102	36070442000	FACING KIT (ENGLISH)	1					

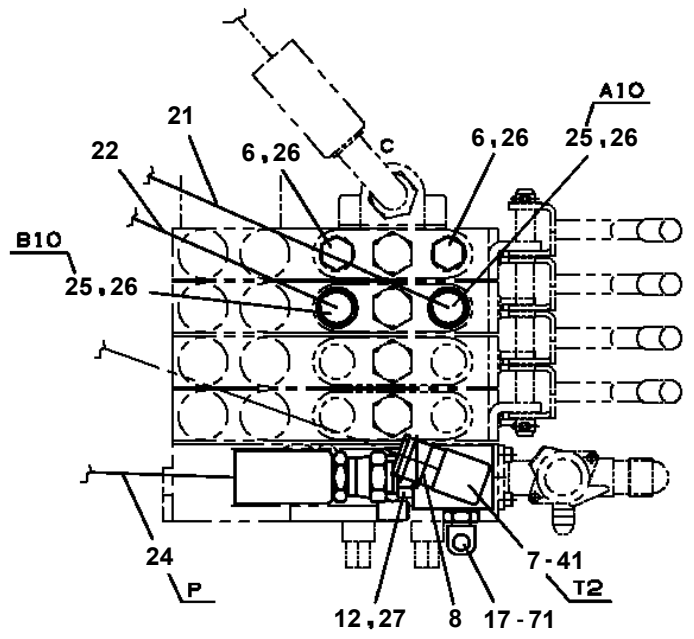
TM-ZX290 41047701373A FRAME

Pos No.	Parts No	Parts Name	Qty	Unit	Technical Data	Serial No (Start)	Serial No (End)	Remarks
1	90191510020	BOLT,HEXAGON SOCKET	8		M10X20			
2	90302041001	WASHER,SPRING	8		10			
3	90303071001	WASHER,PLAIN	4		10			
4	36093860021	BODY	1					
5	36093860042	SUPPORT	1					
6	37001008670	SHEAVE ASSY	2					
7	80720105056	PIN,SPRING	1		5X56			
9	36093860031	BODY	1					
10	36093860080	COVER	2					
12	80500051207	BEARING,BALL	1					
13	36093860071	TRUNNION	1					
21	36095155020	HOOK ASSY	1					
32	36093861100	BEARING,BALL	2					
40	36095150050	TRIGGER SET	1					
100	36095150000	HOOK (LOCKING)	1					

TM-ZX290 41047701373A FRAME
 PF1200456-00 PIPING,WINCH



(2連バルブの場合、セルフウインチ)



(4連バルブの場合、セルフウインチ、リヤアウトリガ)

E

TM-ZX290 41047701373A FRAME

Pos No.	Parts No	Parts Name	Qty	Unit	Technical Data	Serial No (Start)	Serial No (End)	Remarks	F
1	31626300101	FRAME ASSY	1				LB8938		
	31626300102	FRAME ASSY	1			LB8939			
2	82456101000	NIPPLE,GREASE	1		A-PT1/8				
4	31625064002	FRAME	1						
5	37000520580	PLATE	1						
6	80601110950	RING,RITAINING	1		S95				
7	31620582020	BEARING,BALL (KOYO)	4						
8	37000588820	PLATE	1						
	90203201600	NUT	2		M16				
9	90101216045	BOLT	2		M16X45				
10	90186208010	BOLT,FLANGE	8		M8X10				
11	31623080300	INSULATOR	2						
12	31621962100	SUPPORT	4						
13	31621962200	PLATE	4		T=0.5				
14	31624750500	PLATE	4		T=1				
15	37000161010	PIN	2						
16	37000309980	SPACER	2		L=60				
17	82401800080	PLUG (FOR M8)	3						
18	31622202200	SHIM	4		T=1.6				
19	31622042200	SPACER	4						
20	31622042300	SHIM	8		T=0.5				
21	90186208020	BOLT,FLANGE	8		M8X20				
22	82400000536	LEVEL	1		SF55				
	82400000499	LEVEL	1		SM250				
23	80175803020	SCREW,MACHINE	2		M3X20				
41	90190000008	BOLT,STUD	15		M6X20		LB7054		
	90190000008	BOLT,STUD	15		M6X20		LB8938		
	90190000008	BOLT,STUD	15		M6X20		LB8938		
	90190000008	BOLT,STUD	15		M6X20	LB7055			
	90190000008	BOLT,STUD	15		M6X20	LB7055			
42	90288108015	NUT	5		M8,H=15		LB7054		
	90288108015	NUT	5		M8,H=15		LB8938		
	90288108015	NUT	5		M8,H=15		LB8938		
	90288108015	NUT	5		M8,H=15	LB7055			
	90288108015	NUT	5		M8,H=15	LB7055			
43	31626272101	SUPPORT	1				LB8938		
	31626272101	SUPPORT	1				LB7054		
	31626272101	SUPPORT	1				LB8938		
	31626272101	SUPPORT	1			LB7055			
	31626272101	SUPPORT	1			LB7055			
44	31626082401	SUPPORT	1				LB8938		
	31626082401	SUPPORT	1				LB8938		
	31626082401	SUPPORT	1				LB7054		
	31626082401	SUPPORT	1			LB7055			
	31626082401	SUPPORT	1			LB7055			
45	31626272200	SUPPORT	1				LB7054		
	31626272200	SUPPORT	1				LB8938		
	31626272200	SUPPORT	1				LB8938		
	31626272200	SUPPORT	1			LB7055			
	31626272200	SUPPORT	1			LB7055			
46	31625062100	SUPPORT	1				LB7054		
	31625062100	SUPPORT	1				LB8938		
	31625062100	SUPPORT	1				LB8938		
	31625062100	SUPPORT	1			LB7055			
	31625062100	SUPPORT	1			LB7055			
47	31625062200	SUPPORT	2				LB8938		
	31625062200	SUPPORT	2				LB8938		
	31625062200	SUPPORT	2				LB7054		
	31625062200	SUPPORT	2			LB7055			
	31625062200	SUPPORT	2			LB7055			
48	37000588820	PLATE	1				LB8938		
	37000588820	PLATE	1				LB7054		
	37000588820	PLATE	1				LB8938		

TM-ZX290 41047701373A FRAME

Pos No.	Parts No	Parts Name	Qty	Unit	Technical Data	Serial No (Start)	Serial No (End)	Remarks	Pages
1	36806845100	HARNESS	1						

TM-ZX290 41047701373A FRAME

Pos No.	Parts No	Parts Name	Qty	Unit	Technical Data	Serial No (Start)	Serial No (End)	Remarks	Pages
1	31361312100	HARNESS	1						

TM-ZX290 41047701373A FRAME

Pos No.	Parts No	Parts Name	Qty	Unit	Technical Data	Serial No (Start)	Serial No (End)	Remarks	Pages
100	31505222202	HARNESS	1						

TM-ZX290 41047701373A FRAME

Pos No.	Parts No	Parts Name	Qty	Unit	Technical Data	Serial No (Start)	Serial No (End)	Remarks	Pages
100	31671601100	HARNESS	1						

TM-ZX290 41047701373A FRAME

Pos No.	Parts No	Parts Name	Qty	Unit	Technical Data	Serial No (Start)	Serial No (End)	Remarks	Pages
1	82182809623	DIODE	2						
2	82181500090	RESISTANCE	1						
100	31734231100	HARNESS	1						

TM-ZX290 41047701373A FRAME

Pos No.	Parts No	Parts Name	Qty	Unit	Technical Data	Serial No (Start)	Serial No (End)	Remarks	Pages
1	82182809623	DIODE	2						
2	82181500090	RESISTANCE	1						
100	31734231101	HARNESS	1						

CLICK HERE TO **DOWNLOAD** THE COMPLETE MANUAL

- Thank you very much for reading the preview of the manual.
- You can download the complete manual from: www.heydownloads.com by clicking the link below



- Please note: If there is no response to CLICKING the link, please download this PDF first and then click on it.

CLICK HERE TO **DOWNLOAD** THE COMPLETE MANUAL

TM-ZX290 41047701373A FRAME

Pos No.	Parts No	Parts Name	Qty	Unit	Technical Data	Serial No (Start)	Serial No (End)	Rema
13	36662185010	KEY (FEATHER)	1					
40	36662415020	SEAL KIT	1					
50	36663100000	MOTOR,HYDRAULIC (WINCH)	1					

TM-ZX290 41047701373A FRAME

Pos No.	Parts No	Parts Name	Qty	Unit	Technical Data	Serial No (Start)	Serial No (End)	Remarks	Pa
2	91002801400	O-RING	2		1B P14				
6	91002800700	O-RING	1		1B P7				
50	36623930000	VALVE,PILOT CHECK	1						

TM-ZX290 41047701373A FRAME

Pos No.	Parts No	Parts Name	Qty	Unit	Technical Data	Serial No (Start)	Serial No (End)	Remarks	Pages
100	31658912100	INDICATOR	1						

TM-ZX290 41047701373A FRAME

Pos No.	Parts No	Parts Name	Qty	Unit	Technical Data	Serial No (Start)	Serial No (End)	Remarks
1	36671635010	JOINT,SELF SEALING	1					
2	36671635020	JOINT,SELF SEALING	1					
10	36671630000	JOINT ASSY,SELF SEAL	1					

TM-ZX290 41047701373A FRAME

Pos No.	Parts No	Parts Name	Qty	Unit	Technical Data	Serial No (Start)	Serial No (End)	Remarks	Pages
1	31701750100	SUPPORT	1						
2	37000147840	PIN	1						
3	80620210050	PIN,SNAP	1						
4	37000165020	PIN	1						
5	80136340020	PIN,SPLIT	1		4X20				
7	31701580801	LEVER	1						
8	31322224200	PLATE	1		L=1				
9	31323330100	KNOB (BLACK)	1						

TM-ZX290 41047701373A FRAME

Pos No.	Parts No	Parts Name	Qty	Unit	Technical Data	Serial No (Start)	Serial No (End)	Rema
2	(*****)	ELEC.ASSY (POST)	1					
3	(*****)	ELEC.ASSY (POST/HEAD BULB)	1					

TM-ZX290 41047701373A FRAME

Pos No.	Parts No	Parts Name	Qty	Unit	Technical Data	Serial No (Start)	Serial No (End)	Remarks	Pages
1	31326641700	SUPPORT	1						
2	31326322401	LEVER	1						
3	31326322501	LEVER	1						
4	31323330100	KNOB (BLACK)	4						
5	31323330200	KNOB (RED)	1						
6	37010101670	PIN	1						
7	80136840020	PIN,SPLIT	1		4X20				
8	31322224200	PLATE	4		L=1				
9	37000311500	SPACER	1		L=24.5				
10	37000105040	PIN	5						
11	80650100030	RING,RETAINING	5						
12	90171110016	BOLT	3		M10X16				
13	90302041001	WASHER,SPRING	3		10				
14	37000311600	SPACER	1		L=50				
15	37000313030	SPACER	2		L=7				

TM-ZX290 41047701373A FRAME

Pos No.	Parts No	Parts Name	Qty	Unit	Technical Data	Serial No (
1	31783930400	SUPPORT	2			
2	31783930200	SUPPORT	2			
3	56560009000	PIN	2			
4	80136330025	PIN,SPLIT	2			
5	31783930300	SUPPORT	2			
6	31783090300	SUPPORT	2			
7	31200791030	PLATE	2			
8	32460251300	CHAIN	2		L=386	
9	82400000543	HOOK	2			
10	31783090500	PLATE,CAUTION	2			
100	31783930000	MODIFICATION ASSY (PLANKING CASE:FOR WHEEL BASE)	1			

TM-ZX290 41047701373A FRAME

Pos No.	Parts No	Parts Name	Qty	Unit	Technical Data	Serial No (Start)	Serial No (End)	Remark
1	31501192100	SUPPORT	1					
2	31501192200	PLATE	1					
3	90186210016	BOLT,FLANGE	2		M10X16			
4	31650690400	SUPPORT	1					
5	90813108020	BOLT,WING	1		M8X20			
6	90309331205	WASHER,CONICAL SPRING	2		L12			
7	90303071201	WASHER,PLAIN	1		12			
8	90236201200	NUT,CASTLE	1		2H M12			
9	80136325025	PIN,SPLIT	1		2.5X25			
10	31650690500	LEVER	1					
11	82165904160	LAMP	1					
12	90280201000	NUT,FLANGE	1		M10			
13	90186206010	BOLT,FLANGE	1		M6X10			
14	90280200600	NUT,FLANGE	1		M6			
15	82401600504	CLAMP	3		D=4.5			
16	91810130240	FASTENER	1					
17	37002212770	PLATE,NAME (DC24V,0.1A)	1					

TM-ZX290 41047701373A FRAME

Pos No.	Parts No	Parts Name	Qty	Unit	Technical Data	Serial No (Start)	Serial No (End)
100	31595701000	NAME PLATE ASSY (KNOB:U-LAYOUT)	1				

TM-ZX290 41047701373A FRAME

Pos No.	Parts No	Parts Name	Qty	Unit	Technical Data	Serial No
1	31595761000	NAME PLATE ASSY (KNOB:U-LAYOUT)	1			
4	(*****)	NAME PLATE ASSY (TANK)	1			
5	(*****)	PLATE ASSY,NAME (HOOK)	1			
6	(*****)	NAME PLATE ASSY (CONT.,O/R,CAUTION)	1			
7	(*****)	NAME PLATE ASSY (PERIODICAL VOLUNTARY INSPECTION)	1			
8	31595753000	NAME PLATE ASSY (KNOB,SL JACK)	1			

TM-ZX290 41047701373A FRAME

Pos No.	Parts No	Parts Name	Qty	Unit	Technical Data	Serial No (Start)	Serial No (End)	Remarks	Pages
1	37002241800	PLATE,NAME	2						

TM-ZX290 41047701373A FRAME

Pos No.	Parts No	Parts Name	Qty	Unit	Technical Data	Serial No (Start)	Serial No (End)	Remarks	Pages
1	(*****)	PLATE,NAME (JCAS)	1						00025

TM-ZX290 41047701373A FRAME

Pos No.	Parts No	Parts Name	Qty	Unit	Technical Data	Serial No (Start)	Serial No (End)	Remarks	Page
1	(*****)	PLATE,NAME (NETIS)	2						00023

TM-ZX290 41047701373A FRAME

Pos No.	Parts No	Parts Name	Qty	Unit	Technical Data	Serial No (Start)	Serial No (End)	Remarks	Pages
1	37002241840	PLATE,NAME	1						

TM-ZX290 41047701373A FRAME

Pos No.	Parts No	Parts Name	Qty	Unit	Technical Data	Serial No (Start)	Serial No (End)
1	31360746300	PLATE,NAME (FRAME SERIAL NO.)	2				

TM-ZX290 41047701373A FRAME

Pos No.	Parts No	Parts Name	Qty	Unit	Technical Data	Serial No (Start)	Serial No (End)	Remarks	Pages
1	(*****)	LEVER ASSY	1						000190
2	(*****)	LEVER ASSY	1						000191
3	31324993000	ROD	1						
4	31326644300	ROD ASSY	1						
5	(*****)	LEVER ASSY	1						000192

TM-ZX290 41047701373A FRAME

Pos No.	Parts No	Parts Name	Qty	Unit	Technical Data	Serial No (Start)	Serial No (End)
1	37000163600	PIN	1				
2	80601110300	RING,RITAINING	2		S30		
3	31616032000	CASE,OUTER	1		L=1537		
4	31611592000	CASE,INNER	1				
5	(*****)	OUTRIGGER ASSY (MIN.1149)	1				
6	37000112060	PIN	1				
7	80602110300	RING,RITAINING	2		R30		
8	37000112070	PIN	1				
9	31611594000	FLOAT ASSY	1				
10	31201770100	PLATE,SLIDE	4		T=3.0		
11	31200030530	PLATE	1				
12	90191210020	BOLT	2		M10X20		
13	90302041001	WASHER,SPRING	4		10		
14	90186208014	BOLT,FLANGE	2		M8X14		
15	31614060110	COVER	1				
16	31611300600	PLATE,NAME (YELLOW)	2				
17	31615754100	PLATE,NAME (BLUE)	2				
18	(*****)	OPE.ASSY,OUTRIGGER	1				
19	50822014000	PLATE	1				
20	37001400200	SPRING	1				
21	37002240310	PLATE,CAUTION	1				
22	37000150360	PIN	1				
23	80601110150	RING,RITAINING	2		15		
24	37000310360	SPACER	1		L=15		
26	90171110020	BOLT	2		M10X20		
27	31615754200	PLATE,NAME (RED)	2				
42	31621963200	SUPPORT	1				
55	31615912500	SUPPORT	1				
60	31616049510	SUPPORT	1				
71	31620582020	BEARING,BALL (KOYO)	1				
82	31610175010	TRUNNION	1				
100	31616030100	OUTRIGGER ASSY (RIGHT,CYLINDER:MIN.1149)	1				

TM-ZX290 41047701373A FRAME

Pos No.	Parts No	Parts Name	Qty	Unit	Technical Data	Serial No (Start)	Serial No (End)
1	31625090000	FRAME ASSY	1				
3	(*****)	ELEC.ASSY	1				
4	(*****)	OPE.ASSY,CONT.VALVE (REMOCON)	1				
5	(*****)	NAME PLATE ASSY	1				
8	(*****)	ELEC.ASSY (R/J)	1				
11	(*****)	OUTRIGGER,REAR (FRAME)	1				
12	(*****)	LOCK ASSY	1				
21	(*****)	PIPING ASSY (REAR,JACK)	1				
22	36743500000	VALVE ASSY,REMOTE CONTROL	1				
23	(*****)	PIPING ASSY	1				LB7104
	(*****)	PIPING ASSY	1			LB7105	
24	(*****)	SUPPORT ASSY	1			LB7105	

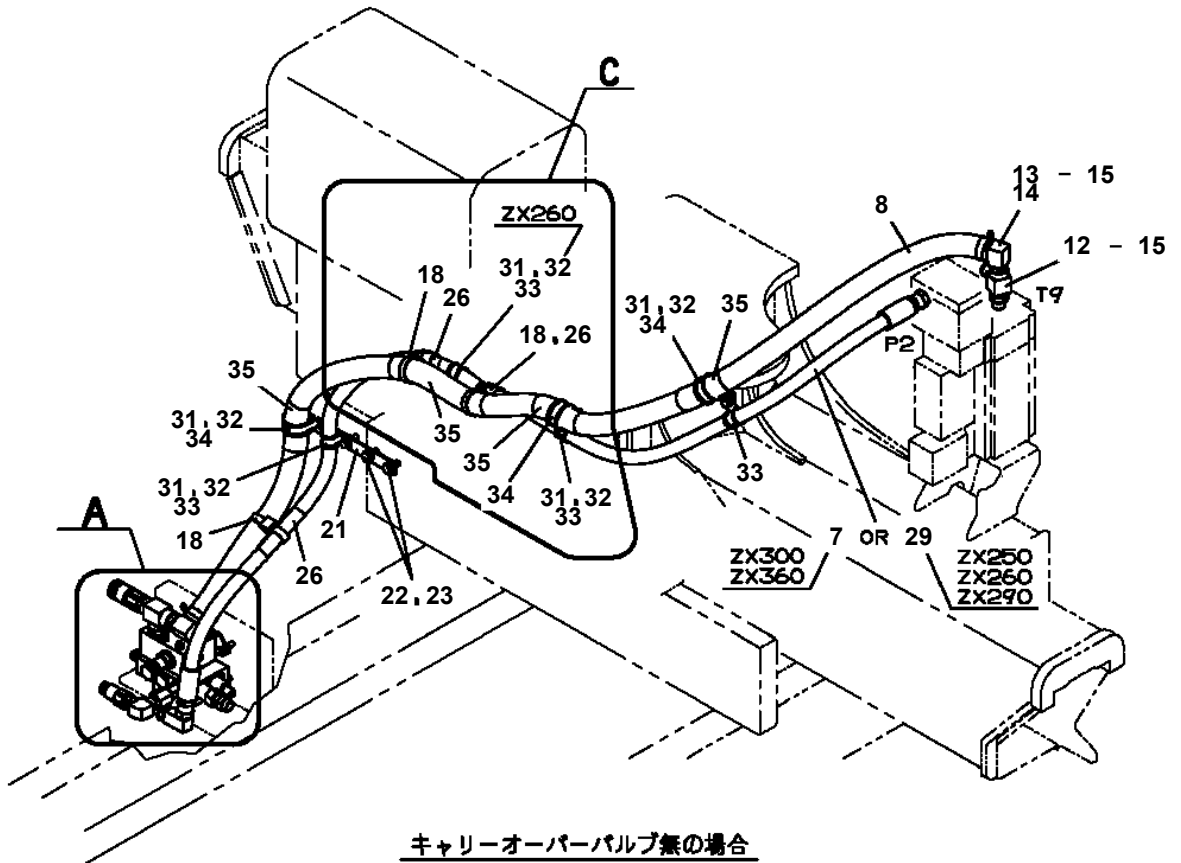
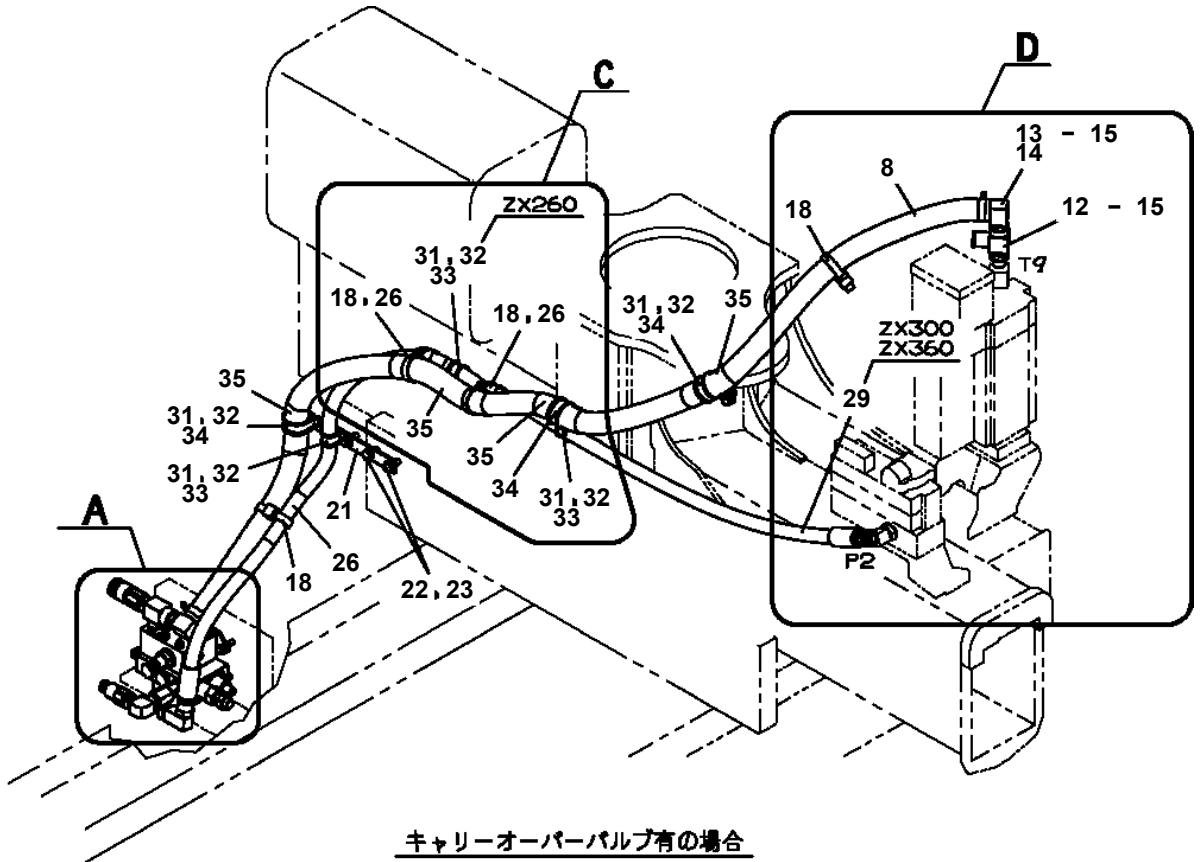
TM-ZX290 41047701373A FRAME

Pos No.	Parts No	Parts Name	Qty	Unit	Technical Data	Serial No (Start)	Serial No (End)	F
1	(*****)	PARTS ASSY,RADIO CONTROLLER	1					
2	(*****)	PLATE ASSY,NAME (SWITCH,BOX/U)	1					

TM-ZX290 41047701373A FRAME

Pos No.	Parts No	Parts Name	Qty	Unit	Technical Data	Serial No (Start)	Serial No (End)	Remarks	Pages
1	31232030100	POST	1						
2	37000205480	PIN	1						
	37000203090	PIN	1						
3	80136363071	PIN,SPLIT	1		6.3X71				
4	37000205900	PIN	1				LB6670		
	37000205500	PIN	1				LB6670		
	37000209220	PIN	1			LB6671			
5	31230592000	COVER	1						
6	37000539450	PLATE	1		T=1.5				
7	90101210016	BOLT	2		M10X16				
21	31230580220	SUPPORT	2						

TM-ZX290 41047701373A FRAME
 PP6010544-00 PIPING ASSY



TM-ZX290 41047701373A FRAME

Pos No.	Parts No	Parts Name	Qty	Unit	Technical Data	Serial No (Start)	Serial No (End)	Remarks	Page
1	31733762100	SUPPORT	1						
2	37002404910	HOSE	1		L=600				
3	37002512660	HOSE	1		L=850				
5	80400160205	JOINT (WITH O-RING)	1						
7	91803930440	CLIP	2		32-45				
8	80430620800	JOINT	1						
9	37000934370	JOINT	1						
12	90201780800	NUT	8		M8				
13	90302040801	WASHER,SPRING	8		8				
14	90101208020	BOLT	4		M8X20				
15	90303070801	WASHER,PLAIN	4		8				
18	80481103020	JOINT	4		PF3/8-PF1/4				
19	91002801400	O-RING	10		1B P14				
20	82100001413	TUBE,SPIRAL	1	M	SE-15BK				
23	91810150020	FASTENER	1		L=488				
27	37000925030	JOINT	2		PF3/8-PF3/8				
28	80481104046	JOINT	1						
29	91002801800	O-RING	2		1B P18				
30	37000926260	JOINT	2						
31	37000932150	JOINT	2		S,G3/8-G3/8				
32	37000925740	JOINT	1		S G1/2-G1/2				
51	91002801800	O-RING	3		1B P18				

TM-ZX290 41047701373A FRAME

Pos No.	Parts No	Parts Name	Qty	Unit	Technical Data	Serial No (Start)	Serial No (End)	Remarks	Pag
1	91002801400	O-RING	1		1B P14				
100	36180380000	SENDER,PRESSURE	1						

TM-ZX290 41047701373A FRAME

Pos No.	Parts No	Parts Name	Qty	Unit	Technical Data	Serial No (Start)	Serial No (End)
1	31658474100	PANEL	1				
2	31734203110	SWITCH ASSY (WITH CONNECTOR)	1				
3	80171303008	SCREW,MACHINE	4		M3X8		
4	90302040301	WASHER,SPRING	4		3		
5	90201200300	NUT	2		M3		
6	31653741300	COVER	1				
7	82464104601	HINGE	1				
8	42650551130	LAMP ASSY (GREEN)	1				
9	82197518119	CAP (PLUS ONE MFG./BLACK)	1				
	82197518114	CAP (MATSUSHITA/BLACK)	1				
10	31731155200	PLATE,NAME	1				
11	37002213970	PLATE,NAME (MARKING)	1				
21	82100005005	LENS (GREEN)	1				
100	31734203100	SWITCH ASSY	1				

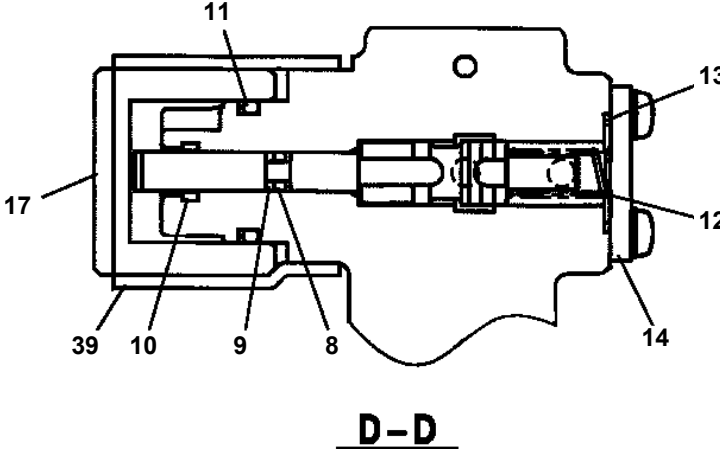
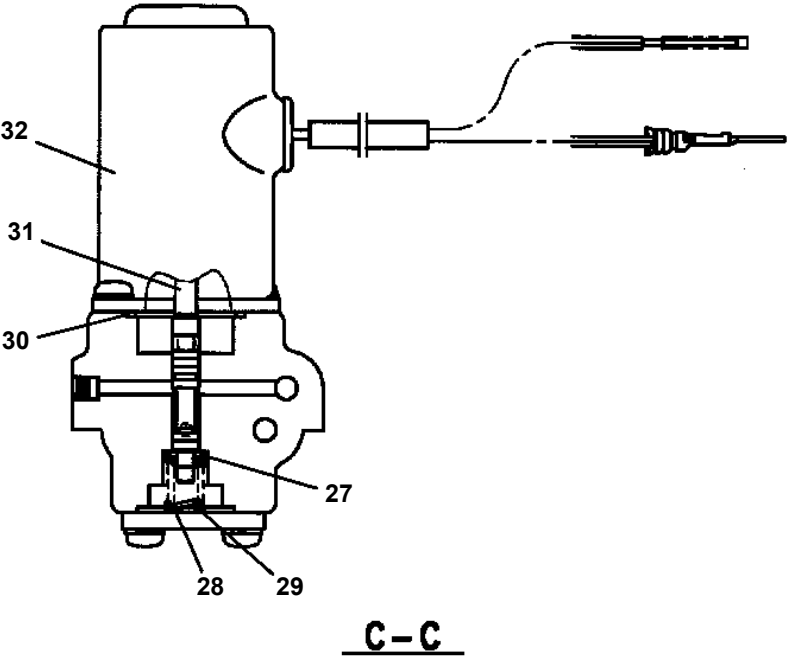
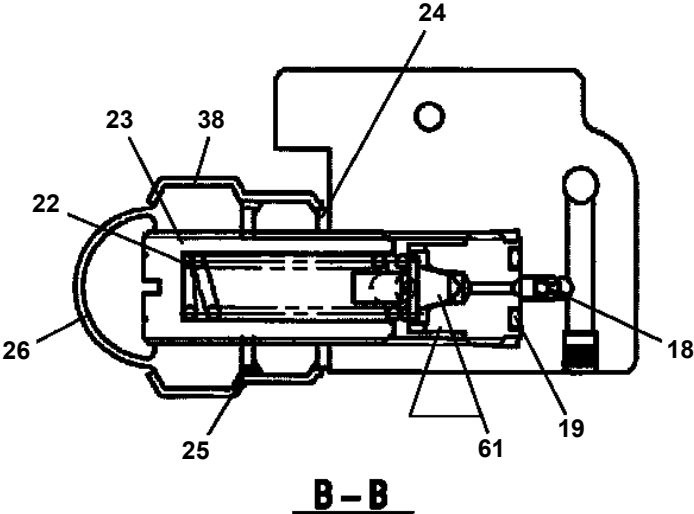
TM-ZX290 41047701373A FRAME

Pos No.	Parts No	Parts Name	Qty	Unit	Technical Data	Serial No (Start)	Serial No (End)	Rema
2	36101895020	BREATHER ASSY (OB-10B)	1					
3	36103485010	GAUGE,OIL	1					
4	36102790010	PLUG	1					
5	91803880070	CLIP	2		D=13.1-16.2			
8	90303392001	WASHER	1		M20			
9	36103485020	SPACER	2					
12	36103485030	SPACER	2					
21	53156005010	ELEMENT (OB-10T & OB-10B)	1					
22	36101895030	RETAINER ASSY	1					
100	36103480000	TANK	1					

TM-ZX290 41047701373A FRAME

Pos No.	Parts No	Parts Name	Qty	Unit	Technical Data	Serial No (Start)	Ser
7	91001000800	O-RING	1		S8		
8	36646865190	PISTON	1				
9	91001102000	O-RING	1		1A P20		
10	36648365110	FLANGE	1				
11	91001002240	O-RING	1		S22.4		
12	91650001400	SCRAPER	1				
13	36645495210	SEAT,SPRING (RETURN)	2				
14	36648365120	SPOOL (SUB)	1				
15	36645845060	SPRING (RETURN)	1				
16	36645495220	ADAPTER	1				
17	36648365130	SPACER	1				
18	36648385080	BRACKET	1				
19	36645615250	C-BOLT	2		M5X25		
20	36633365100	SEAL,OIL	1				
21	36743005110	LINK	1				
22	36645615230	C-BOLT	2		5X12		
23	12635101360	SPOOL	1				
24	12635101190	SPRING	1				
25	36633365090	CAP (CHECK VALVE)	1				
27	91001002200	O-RING	2		S22		
29	36740745140	SCREW,MACHINE	4		M4X12		
30	91001100600	O-RING	5		1A P6		
31	91002905500	O-RING	1		1B G55		
51	36740745150	VALVE,SOLENOID (KIT)	2				
100	36743010081	VALVE ASSY,CONTROL (JACK,SIMULTANEOUS)	1				

**TM-ZX290 41047701373A FRAME
PV5140040-00 VALVE ASSY,RELIEF**



TM-ZX290 41047701373A FRAME

Pos No.	Parts No	Parts Name	Qty	Unit	Technical Data	Serial No (Start)	Serial No (End)	R
1	36645095040	COVER (BOTTOM)	1					
2	36646225020	BOLT,TIE	4					
3	36742960031	VALVE,CONTROL	1					
4	36740850041	VALVE,CONTROL (JACK)	1					
5	36740850030	COVER (FRONT)	1					
6	90201200800	NUT	5		M8			
7	80720104012	PIN,SPRING	1		4X12			
8	36647615050	BOLT,TIE (C)	1					
9	36645495080	JOINT	1					
10	36743380060	VALVE ASSY,RELIEF	1					
11	36645615230	C-BOLT	4		5X12			
12	91001101100	O-RING	4		1A P11			
13	36644115130	PLUG	4					
14	36743225010	HARNESS	1					
15	36644015110	CONNECTOR	1					
16	36644015130	TUBE	1					
17	11615111410	BAND	5					
18	82114203040	CONNECTOR (CAP)	1					
19	82121502040	PLATE	1					
20	82121502030	PLATE	1					
21	36646875090	TUBE	2		10B			
22	36062635050	TUBE,CORRUGATE	1		10			
23	36740765040	BAND	1					
24	36062635030	FASTENER	2					
25	80172304010	SCREW,MACHINE	2		M4X10			
28	36741985040	PLUG	3					
29	36741985050	PLUG	4					
30	36640755070	CAP	4					
31	90303070401	WASHER,PLAIN	2		4			
104	91001101400	O-RING	4		1A P14			
107	91001000800	O-RING	1		S8			
108	36646865190	PISTON	1					
109	91001102000	O-RING	1		1A P20			
110	36648365110	FLANGE	1					
111	91001002240	O-RING	1		S22.4			
112	91650001400	SCRAPER	1					
113	36645495210	SEAT,SPRING (RETURN)	2					
114	36646865200	SPOOL (SUB)	1					
115	36645845060	SPRING (RETURN)	1					
116	36633365070	ADAPTER	1					
117	36646865210	SPACER	1					
118	36640625550	PLATE (D)	1					
119	36645615250	C-BOLT	2		M5X25			
120	36633365100	SEAL,OIL	1					
121	36645615240	LINK	1					
122	36645615230	C-BOLT	2		5X12			
123	12635101360	SPOOL	1					
124	12635101190	SPRING	1					
125	36633365090	CAP (CHECK VALVE)	1					
127	91001002200	O-RING	2		S22			
129	36740745140	SCREW,MACHINE	4		M4X12			
130	91001100600	O-RING	8		1A P6			
131	91002905500	O-RING	2		1B G55			
151	36740855030	VALVE,SOLENOID (KIT)	2					
164	36740765050	PLUG	3					
165	36740765060	SPRING	1					
167	36640625210	CAP	1					
168	91001101800	O-RING	1		1A P18			
169	36649585170	FILTER	1					
170	91001002600	O-RING	2		S26			
171	36647395150	PLUG	1		M24			
172	36646875130	ORIFICE	1		M3			
173	91001101600	O-RING	1		1A P16			

TM-ZX290 41047701373A FRAME

Pos No.	Parts No	Parts Name	Qty	Unit	Technical Data	Serial No (Start)	Serial No (End)	Remarks
7	91001000800	O-RING	1		S8			
8	36646865190	PISTON	1					
9	91001102000	O-RING	1		1A P20			
10	36648365110	FLANGE	1					
11	91001002240	O-RING	1		S22.4			
12	91650001400	SCRAPER	1					
13	36645495210	SEAT,SPRING (RETURN)	2					
14	36648365120	SPOOL (SUB)	1					
15	36645845060	SPRING (RETURN)	1					
16	36644015260	ADAPTER	1					
17	36648365130	SPACER	1					
18	36645405090	PLATE (D)	1					
19	36645615250	C-BOLT	2		M5X25			
20	36633365100	SEAL,OIL	1					
21	36633365060	PLATE (B)	1					
22	36645615260	C-BOLT	2		M5X8			
23	12635101360	SPOOL	1					
24	36635735150	SPRING (CHECK VALVE)	1					
25	36633365090	CAP (CHECK VALVE)	1					
27	91001002200	O-RING	2		S22			
29	36740745140	SCREW,MACHINE	4		M4X12			
30	91001100600	O-RING	5		1A P6			
31	91002905500	O-RING	1		1B G55			
51	36740745150	VALVE,SOLENOID (KIT)	2					
100	36743030051	VALVE,CONTROL	1					

TM-ZX290 41047701373A FRAME

Pos No.	Parts No	Parts Name	Qty	Unit	Technical Data	Serial No (Start)	Serial No (E
1	(*****)	PIPING ASSY	1				
2	(*****)	OPE.ASSY,CONT.VALVE (POWER SUPPLY)	1				
3	(*****)	PLATE ASSY,NAME (POWER SUPPLY)	1				

TM-ZX290 41047701373A FRAME
PY5170080-00 ALARM ASSY

アラームASSY (カクノウワスレ)
ALARM ASSY

符号	日本語名称	英語名称	備考
1	アラームASSY	ALARM ASSY	クレーン部
2	ハイゼンASSY	ELEC. ASSY	架装部

適用製造番号によっては取り付けがないものもあります。

MACHINES OF SOME SERIAL NO. ARE NOT EQUIPPED WITH THESE PARTS.

**TM-ZX290 41047701373A FRAME
PZ0000000-00 HARNESS**

販売部品 検討中につき、イラストはありません。

**Parts for sale : Under consideration now.
Therefore not illustrated.**

**TM-ZX290 41047701373A FRAME
PZ0000000-00 JOINT ASSY**

販売部品 検討中につき、イラストはありません。

**Parts for sale : Under consideration now.
Therefore not illustrated.**

TM-ZX290 41047701373A FRAME
PZ0000000-00 FRAME ASSY(R/O:WITH LOCK ASSY)

販売部品 検討中につき、イラストはありません。

**Parts for sale : Under consideration now.
Therefore not illustrated.**

CLICK HERE TO **DOWNLOAD** THE COMPLETE MANUAL

- Thank you very much for reading the preview of the manual.
- You can download the complete manual from: www.heydownloads.com by clicking the link below



- Please note: If there is no response to CLICKING the link, please download this PDF first and then click on it.

CLICK HERE TO **DOWNLOAD** THE COMPLETE MANUAL