

# **TM-ZX290 41047701365A FRAME**

**PB0000365-00 SYSTEM (ZX290SL,DOMESTIC)**

**ASSEMBLY**

CLICK HERE TO **DOWNLOAD** THE COMPLETE MANUAL

- Thank you very much for reading the preview of the manual.
- You can download the complete manual from: [www.heydownloads.com](http://www.heydownloads.com) by clicking the link below



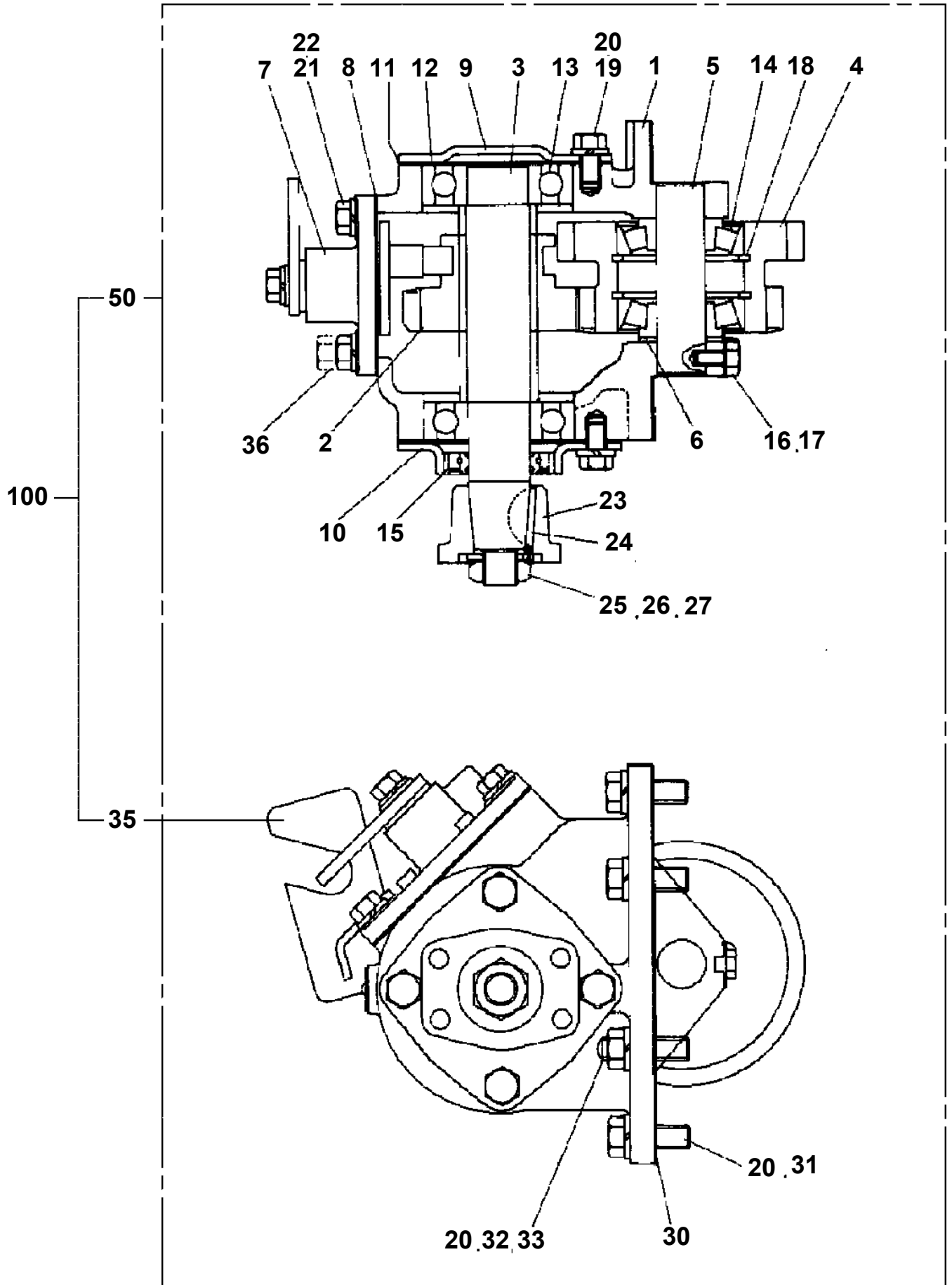
- Please note: If there is no response to CLICKING the link, please download this PDF first and then click on it.

CLICK HERE TO **DOWNLOAD** THE COMPLETE MANUAL

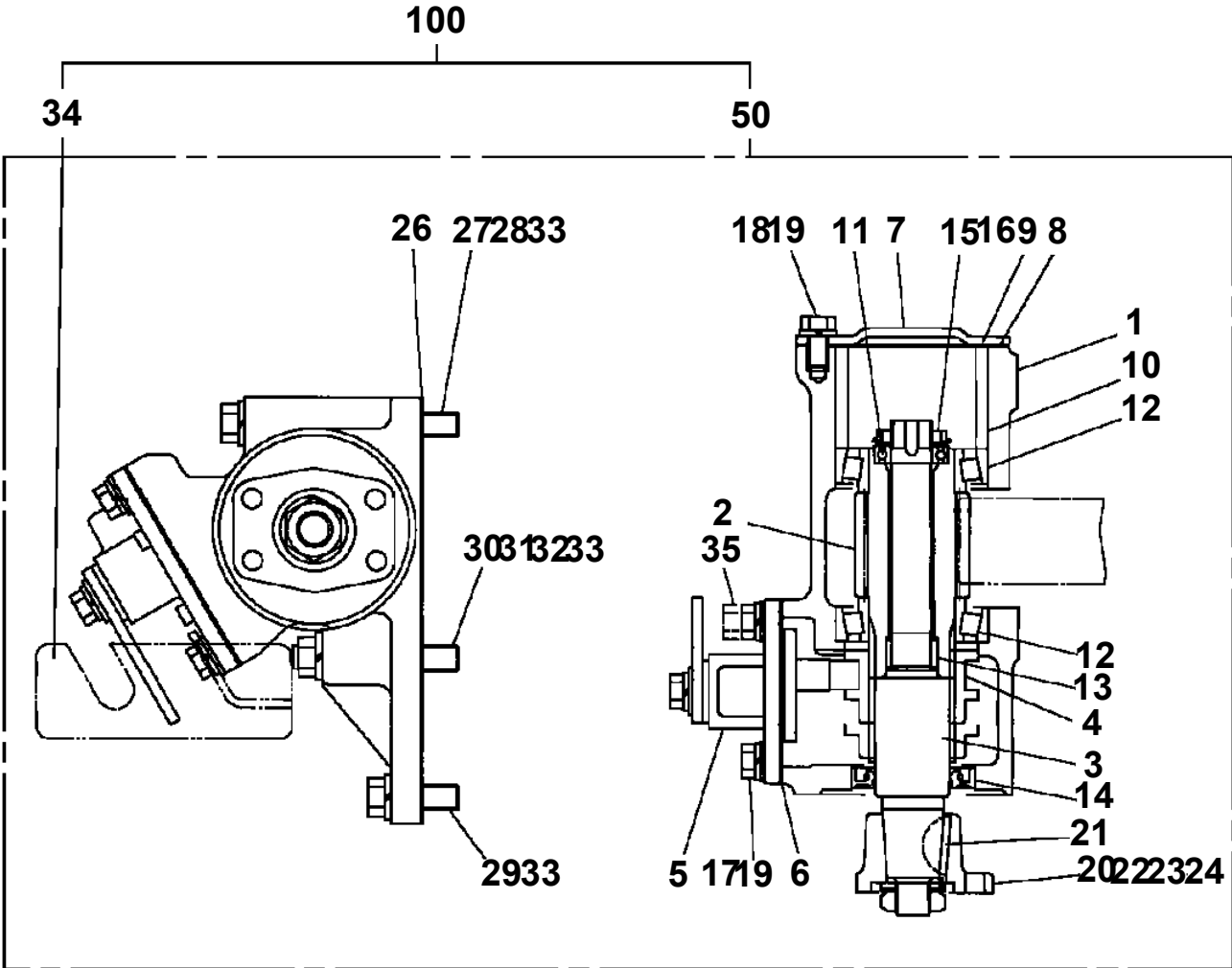
# TM-ZX290 41047701365A FRAME

Pos No.	Parts No	Parts Name	Qty	Unit	Technical Data	Serial No (Start)	Serial No (End)	R	
1	31790900000	POWER TAKE OFF	1						
	31792270000	POWER TAKE OFF	1						
	31792370000	POWER TAKE OFF	1						
	31792080000	POWER TAKE OFF	1						
	31790990000	POWER TAKE OFF	1						
	31792380000	POWER TAKE OFF	1						
	31792150000	POWER TAKE OFF	1						
	31790890000	POWER TAKE OFF	1						
	31790880000	POWER TAKE OFF	1						
	31792100000	POWER TAKE OFF	1						
	31792090000	POWER TAKE OFF	1						
	31792260000	POWER TAKE OFF	1						
	2	31791570000	POWER TAKE OFF	1					
		31791190000	POWER TAKE OFF	1					
		31791100000	POWER TAKE OFF	1					
		31790730000	POWER TAKE OFF	1					
		31790710000	POWER TAKE OFF	1					
31791220000		POWER TAKE OFF	1						
31792230000		POWER TAKE OFF	1						
31792220000		POWER TAKE OFF	1						
31791610000		POWER TAKE OFF	1						
31791620000		POWER TAKE OFF	1						
31792120000		POWER TAKE OFF	1						
31792490000		POWER TAKE OFF	1						
31791090000		POWER TAKE OFF	1						
31792240000		POWER TAKE OFF	1						
31791170000		POWER TAKE OFF	1						
31791130000		POWER TAKE OFF	1						
31791120000		POWER TAKE OFF	1						
31791110000		POWER TAKE OFF	1						
31791240000		POWER TAKE OFF	1						
31791080000		POWER TAKE OFF	1						
31790970000		POWER TAKE OFF	1						
31792480000		POWER TAKE OFF	1						
31792250000		POWER TAKE OFF	1						
31791180000	POWER TAKE OFF	1							
3	31790970000	POWER TAKE OFF	1						
	31791090000	POWER TAKE OFF	1						
	31792230000	POWER TAKE OFF	1						
	31791100000	POWER TAKE OFF	1						
	31791620000	POWER TAKE OFF	1						
	31791110000	POWER TAKE OFF	1						
	31790710000	POWER TAKE OFF	1						
	31790730000	POWER TAKE OFF	1						
	31791080000	POWER TAKE OFF	1						
	31792220000	POWER TAKE OFF	1						
	31792120000	POWER TAKE OFF	1						
	31791180000	POWER TAKE OFF	1						
	31791170000	POWER TAKE OFF	1						
	31791130000	POWER TAKE OFF	1						
	31791120000	POWER TAKE OFF	1						
	31791220000	POWER TAKE OFF	1						
	31791570000	POWER TAKE OFF	1						
	31791240000	POWER TAKE OFF	1						
	31791610000	POWER TAKE OFF	1						
	31792250000	POWER TAKE OFF	1						
	31791190000	POWER TAKE OFF	1						
	31791050000	POWER TAKE OFF	1						
	31792240000	POWER TAKE OFF	1						
4	31790710000	POWER TAKE OFF	1						
	31790730000	POWER TAKE OFF	1						
5	52230312000	POWER TAKE OFF (WITH TURBO)	1						
	52230314000	POWER TAKE OFF	1						

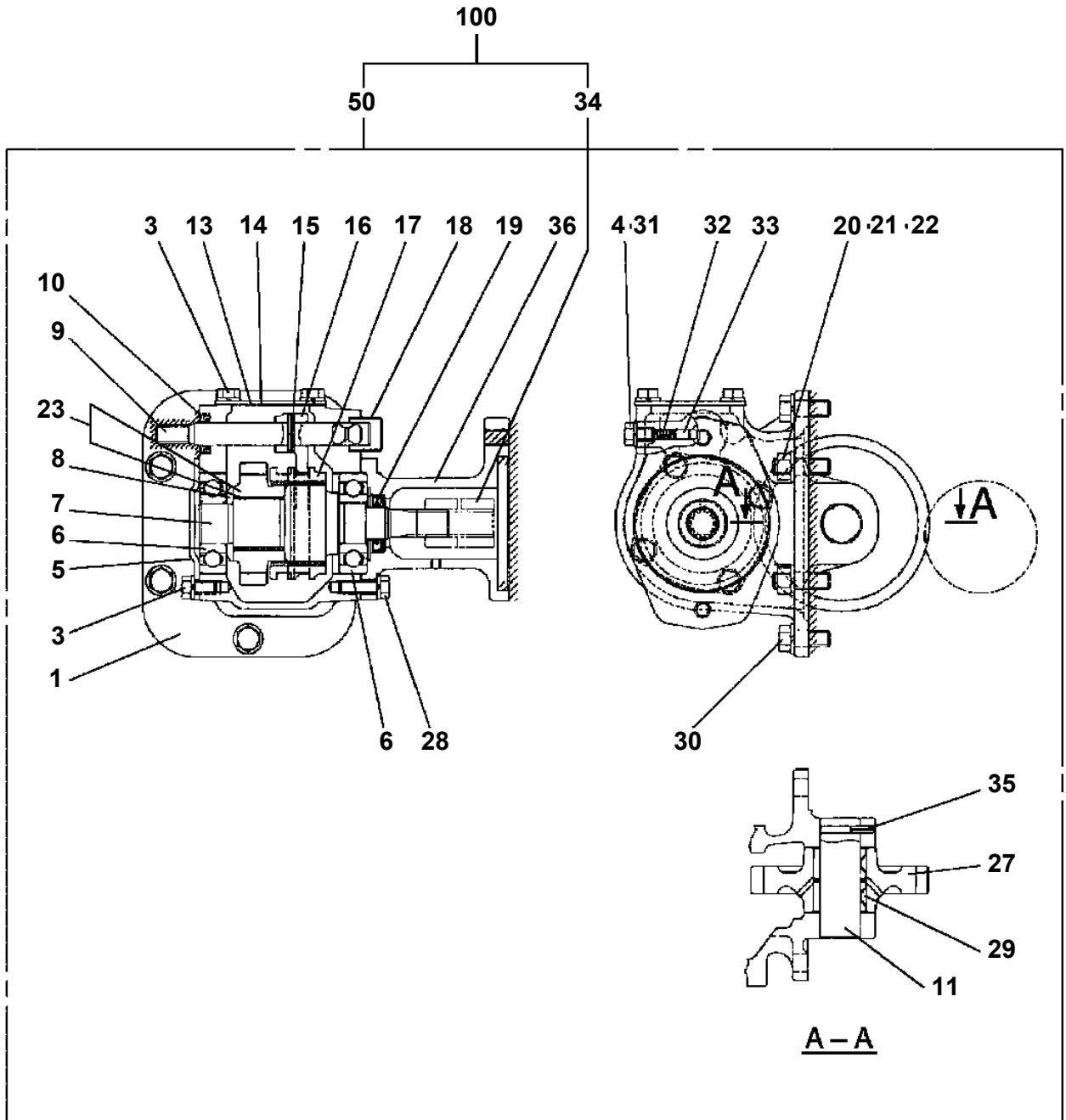
TM-ZX290 41047701365A FRAME  
PB1030063-02 POWER TAKE OFF



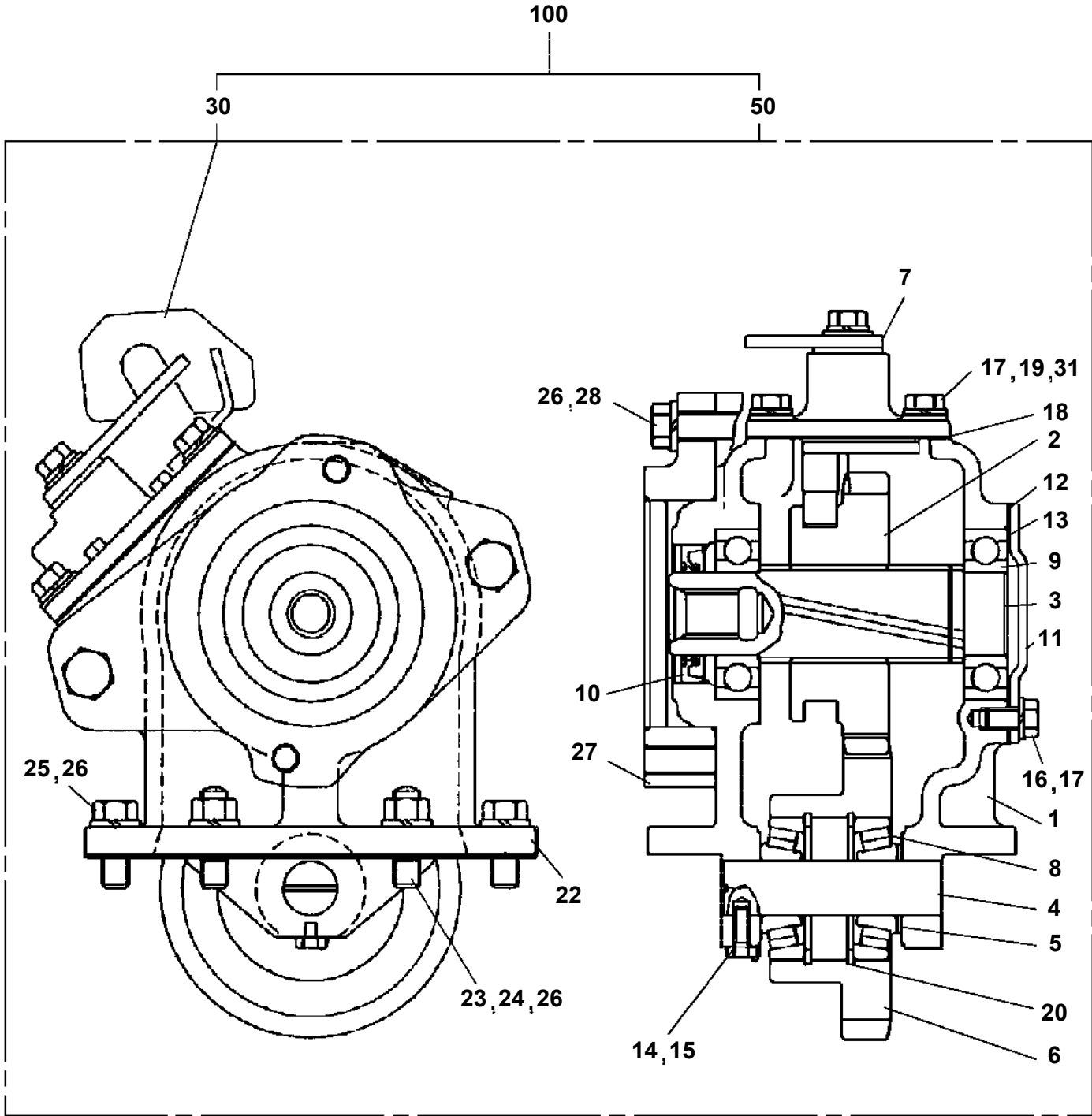
**TM-ZX290 41047701365A FRAME  
PB1030131-01 POWER TAKE OFF**



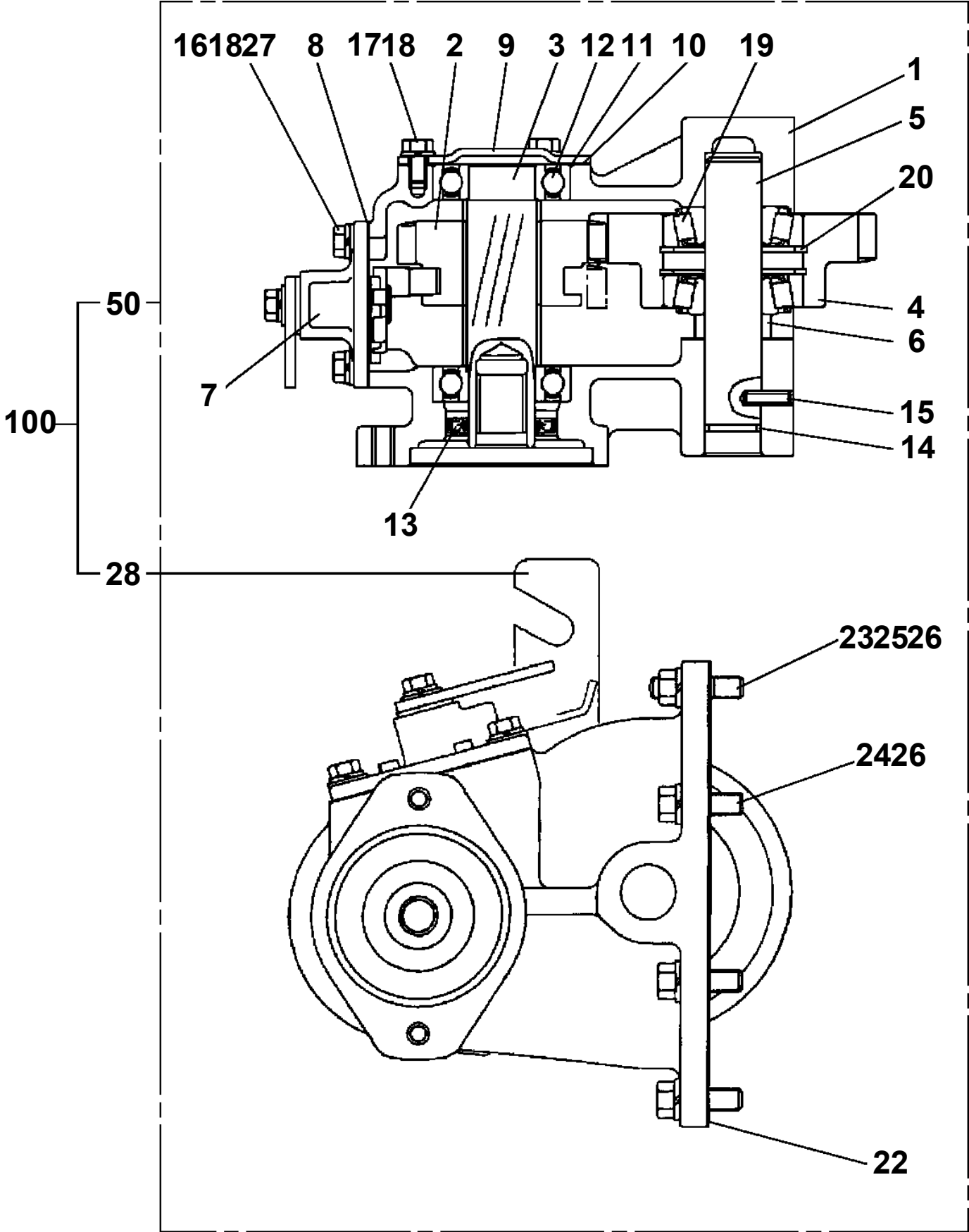
TM-ZX290 41047701365A FRAME  
PB1030163-02 POWER TAKE OFF



TM-ZX290 41047701365A FRAME  
PB1030171-02 POWER TAKE OFF

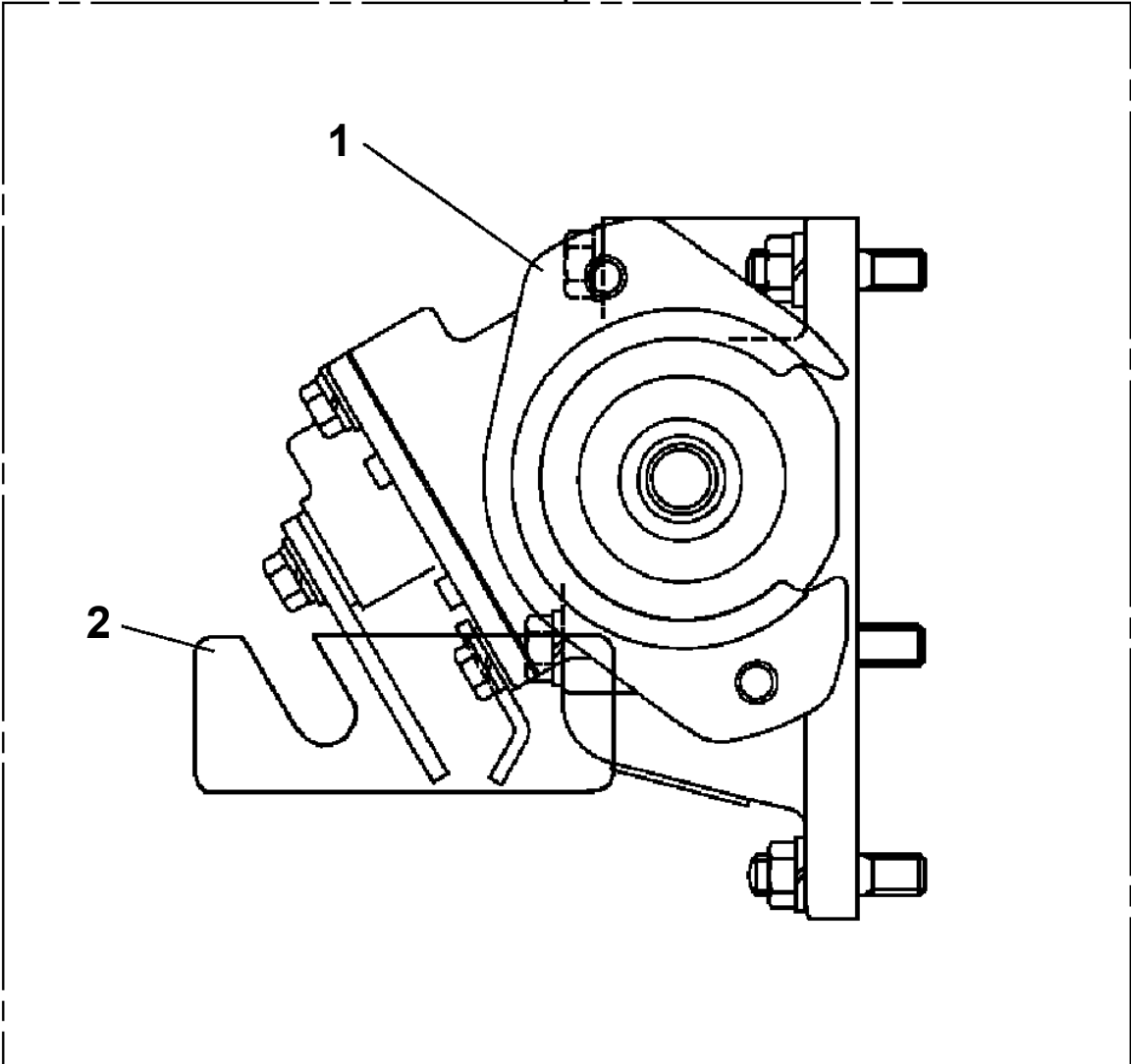


TM-ZX290 41047701365A FRAME  
PB1030192-01 POWER TAKE OFF



**TM-ZX290 41047701365A FRAME  
PB1030204-00 POWER TAKE OFF**

50



# TM-ZX290 41047701365A FRAME

Pos No.	Parts No	Parts Name	Qty	Unit	Technical Data	Serial No (Start)	Serial No (End)	Remarks
1	36401895070	CASE	1					
2	36401885020	GEAR	1					
3	36400915030	SHAFT	1					
4	36401885030	GEAR	1					
5	36400415050	SHAFT	1					
6	36400675030	COLLAR	1					
7	36400095100	SHIFTER ASSY	1					
8	36400095110	PACKING	1					
9	36400095070	COVER (BEARING)	1					
10	36400095080	PACKING (COVER)	1					
11	36400095090	SHIM	N					
12	80500006206	BEARING,BALL	2					
13	91206030005	SEAL,OIL	1					
14	91001102100	O-RING	1		1A P21			
15	90710006200	SCREW,SET	1		M6X20			
16	90191208020	BOLT	4		M8X20			
17	90191208014	BOLT	3		M8X14			
18	90302040801	WASHER,SPRING	7		8			
19	36400135070	BEARING	2					
20	80602110620	RING,RITAINING	2		R62			
22	36401885050	PACKING	1					
24	90191210030	BOLT	6		M10X30			
25	90267201000	NUT	2		M10			
26	90302041001	WASHER,SPRING	8		10			
28	31790670100	SUPPORT	1					
29	90191208025	BOLT	2		M8X25			
60	36402100000	POWER TAKE OFF ASSY	1					
61	36401695040	BOLT,STUD	2		M10X1.25/1.5X47			
100	31791240000	POWER TAKE OFF	1					

# TM-ZX290 41047701365A FRAME

Pos No.	Parts No	Parts Name	Qty	Unit	Technical Data	Serial No (Start)	Serial No (End)	Remarks	Pages
1	36401135050	CASE	1						
2	36401135060	GEAR (TO)	1						
3	36401125030	SHAFT (TO)	1						
4	36401125040	SLEEVE	1						
5	36401125050	SHIFTER SET	1						
6	36400095110	PACKING	1						
7	36400095070	COVER (BEARING)	1						
8	36400095080	PACKING (COVER)	1						
9	36400095090	SHIM	N						
10	36401135070	COLLAR	1						
11	80500006903	BEARING,BALL	1						
12	36401125080	BEARING,ROLLER	2						
13	36401125090	BEARING,NEEDLE	1						
14	91206030005	SEAL,OIL	1						
15	36401125100	RING,RETAINING	1						
16	90191208020	BOLT	4		M8X20				
17	90191208014	BOLT	3		M8X14				
18	90302040801	WASHER,SPRING	7		8				
20	36402015020	PACKING	2						
21	36402025030	BOLT	1		M10X1.5X115				
22	36402015040	BOLT	1		M10X1.5X105				
23	90191210045	BOLT	2		M10X45				
24	36402015010	BOLT,STUD	1						
25	36402025010	BOLT,STUD	1						
26	90267201000	NUT	2		M10				
27	90302041001	WASHER,SPRING	6		10				
28	36402025020	SPACER	1						
30	90191208025	BOLT	2		M8X25				
51	36402020000	POWER TAKE OFF	1						
52	31790880100	SUPPORT	1						
100	31792090000	POWER TAKE OFF	1						

# TM-ZX290 41047701365A FRAME

Pos No.	Parts No	Parts Name	Qty	Unit	Technical Data	Serial No (Start)	Serial No (End)	Remarks
1	36401995010	CASE	1					
2	36401995020	GEAR	1					
3	36402125010	SHAFT	1					
4	36400095040	SHAFT	1					
5	36400095050	COLLAR	1					
6	36401995040	GEAR	1					
7	36400095070	COVER (BEARING)	1					
8	36400095080	PACKING (COVER)	1					
9	36400095090	SHIM	N					
10	36401995050	SHIFTER ASSY	1					
11	36400095110	PACKING	1					
12	80500006206	BEARING,BALL	2					
13	91206030005	SEAL,OIL	1					
14	90191208014	BOLT	3		M8X14			
15	90191208020	BOLT	4		M8X20			
16	90101206012	BOLT	1		M6X12			
17	90302040801	WASHER,SPRING	7		8			
18	36400095130	WASHER	1					
19	36401745060	BEARING	2					
20	80602110470	RING,RITAINING	2		R47			
22	36400055070	PACKING	1					
23	36401995060	BOLT	4					
24	90267401000	NUT	4		M10			
25	90302041001	WASHER,SPRING	6		10			
26	90193510035	BOLT	2		M10X35			
28	90191208025	BOLT	2		M8X25			
50	36402120000	POWER TAKE OFF ASSY	1					
60	31791160100	SUPPORT	1					
100	31792240000	POWER TAKE OFF	1					

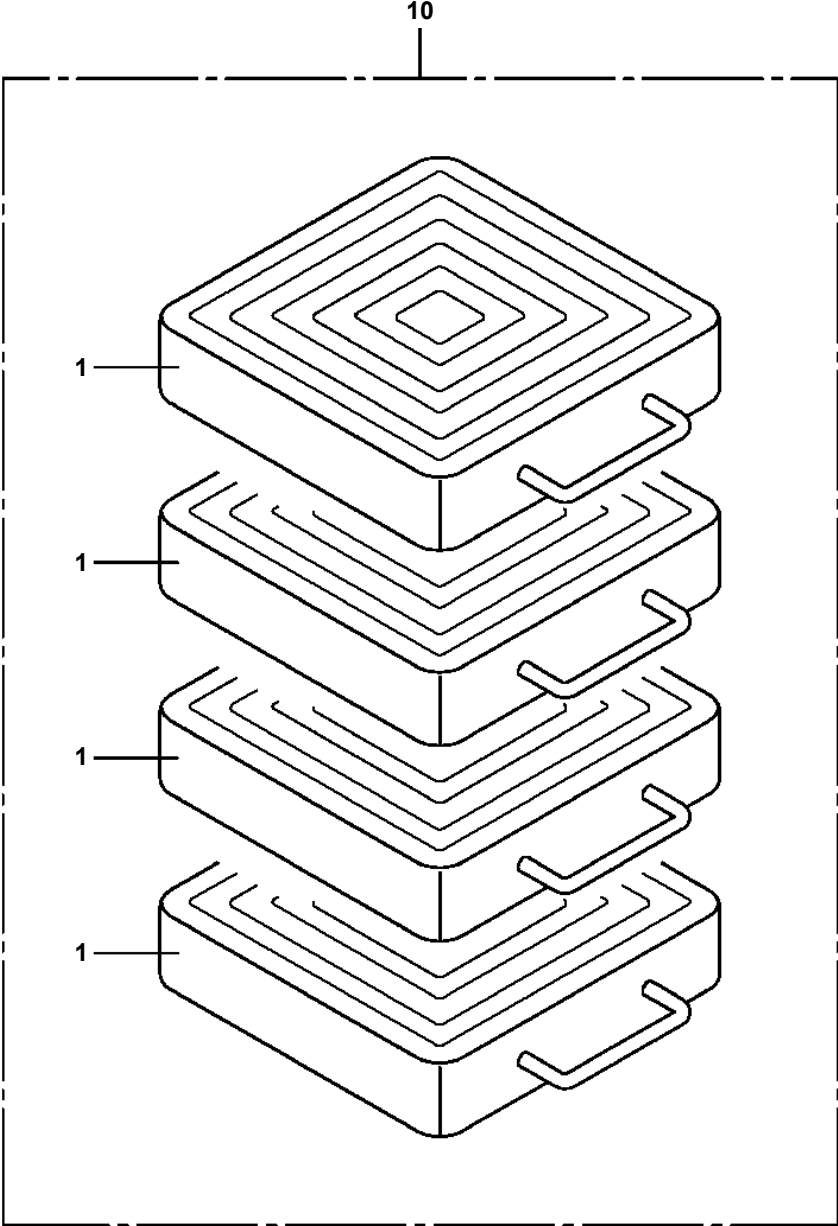
# TM-ZX290 41047701365A FRAME

Pos No.	Parts No	Parts Name	Qty	Unit	Technical Data	Serial No (Start)	Serial No (End)	Remarks
1	36402470510	CASE	1					
2	36402470520	GEAR	1					
3	36402470530	SHAFT	1					
4	36401125040	SLEEVE	1					
5	36401125050	SHIFTER SET	1					
6	36400095110	PACKING	1					
7	36400095070	COVER (BEARING)	1					
8	36400095080	PACKING (COVER)	1					
9	36400095090	SHIM	N					
10	36402470540	COLLAR	1					
11	80500006903	BEARING,BALL	1					
12	36401125080	BEARING,ROLLER	2					
13	36401125090	BEARING,NEEDLE	1					
14	91206030005	SEAL,OIL	1					
15	36401125100	RING,RETAINING	1					
16	90191208020	BOLT	4		M8X20			
17	90191208014	BOLT	3		M8X14			
18	90302040801	WASHER,SPRING	7		8			
20	36402015020	PACKING	2					
21	36402035040	BOLT	1		M10X1.5X120			
22	36402035050	BOLT	1		M10X1.5X110			
23	90191210050	BOLT	2		M10X50			
24	36402035010	BOLT,STUD	1					
25	36402035020	BOLT,STUD	1					
26	90267201000	NUT	2		M10			
27	90302041001	WASHER,SPRING	6		10			
28	36402470550	SPACER	1					
30	90191208025	BOLT	2		M8X25			
50	36402470000	POWER TAKE OFF ASSY	1					
60	31790990100	SUPPORT	1					
100	31792370000	POWER TAKE OFF	1					

# TM-ZX290 41047701365A FRAME

Pos No.	Parts No	Parts Name	Qty	Unit	Technical Data	Serial No (Start)	Serial No (End)	Remarks	P
1	31611617510	ADAPTER ASSY	1						
7	31611617590	MOTOR ASSY	1						
12	31611617530	TANK	1						
14	31611617540	CAP (OIL FILLER)	1						
18	44550417860	GASKET (WITH O-RING)	1						
30	31611617550	VALVE ASSY	1						
41	31611617560	VALVE,SOLENOID	2						
44	31611617570	MANIFOLD	1						
47	31611617580	O-RING	2						
100	31611613101	POWER SUPPLY	1						

**TM-ZX290 41047701365A FRAME**  
**PB5110002-01 BLOCK (4 PIECE SET:PLATE,355X355,H=80)**



# TM-ZX290 41047701365A FRAME

Pos No.	Parts No	Parts Name	Qty	Unit	Technical Data	Serial No (Start)	Serial No (End)	Re
1	31625101001	CASE, OUTER	1					
2	31625102000	CASE, INNER	1					
3	31625103000	CASE, INNER	1					
4	31622149510	SUPPORT ASSY	1					
5	31622149520	SUPPORT ASSY	1					
6	31622140100	COVER	2					
7	90101206010	BOLT	6		M6X1.0			
8	90302040601	WASHER, SPRING	6		6			
9	90172110025	BOLT, HEXAGON SOCKET	8		M10X25			
10	90302041001	WASHER, SPRING	8		10			
11	(*****)	CYLINDER, JACK (REAR)	2					
12	90201201600	NUT	2		M16			
13	90720716400	SCREW, SET	2		M16X40			
14	31622140200	COVER	4					
15	31622140300	PLATE	4					
16	90191208014	BOLT	8		M8X14			
17	90302040801	WASHER, SPRING	8		8			
18	82455106000	NIPPLE, GREASE	4		A-M6F FE			
19	31622140400	PIN	2					
20	37001200720	SPRING	2					
21	37003100020	GRIP	2					
22	80136332025	PIN, SPLIT	4		3.2X25			
23	31620582020	BEARING, BALL (KOYO)	6					
24	37000157880	PIN	2					
25	82400000459	CAP	4					
26	90171210030	BOLT	2		M10X30			
27	90203201000	NUT	2		M10			
28	31622140640	PLATE	2					
29	(*****)	PIPING, REAR JACK (2, ROTARY)	1					
30	31622140501	SUPPORT	2					
31	31622140601	SUPPORT	2					
32	31622140700	SUPPORT	2					
33	31621962100	SUPPORT	4					
34	31621962200	PLATE	12		T=0.5			
35	37000161010	PIN	2					
36	37000309980	SPACER	2		L=60			
37	90186208010	BOLT, FLANGE	8		M8X10			
42	31622141200	PIN ASSY	2					
44	82400000204	GROMMET	4		L=320			

## TM-ZX290 41047701365A FRAME

Pos No.	Parts No	Parts Name	Qty	Unit	Technical Data	Serial No (Start)	Serial No (End)	Remarks
1	31649130010	PIPE	1					
2	31649130020	PIPE	1					
3	31649130030	PIPE	1					
4	31649130040	PIPE	1					
5	80303130101	FITTING,ELBOW	6		KLO10-020E			
6	80302090101	FITTING	2		KCO10-020N			
7	31611613101	POWER SUPPLY	1					
8	90172108018	BOLT,HEXAGON SOCKET	4		M8X18			
9	90302040801	WASHER,SPRING	6		8			
10	91002801100	O-RING	2		1B P11			
11	31645360100	SUPPORT	1					
12	90186210014	BOLT,FLANGE	4		M10X14			
13	37005700130	CLAMP	2		10X2			
14	90101208035	BOLT	2		M8X35			
15	90303070801	WASHER,PLAIN	2		8			
31	91002801100	O-RING	6		1B P11			

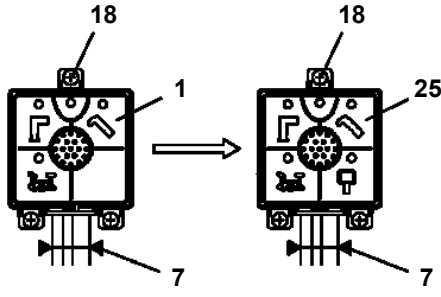
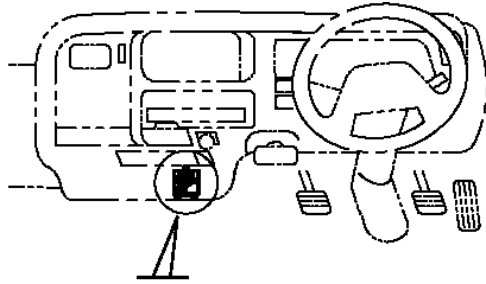
# TM-ZX290 41047701365A FRAME

Pos No.	Parts No	Parts Name	Qty	Unit	Technical Data	Serial No (Start)	Serial No (End)
1	37000403070	BEARING,PLAIN	4				
2	36024671000	PISTON	1				
3	91350211500	BEARING,PLAIN (WITH PACKINGX2)	1				
4	91002907500	O-RING	1		1B G75		
5	36029199511	CYLINDER ASSY	1				
6	36025969520	ROD ASSY	1				
7	91002911000	O-RING	1		1B G110		
8	36024671500	COVER,ROD	1				
9	91694008001	PACKING	1				
10	91410208001	RING,BACKUP	1				
11	91660008000	SEAL,DUST	1				
12	80622000800	RING,RITAINING	1		SP80		
13	82456101000	NIPPLE,GREASE	2		A-PT1/8		
14	80316100010	PLUG	1		GPF1/8		
15	91002800800	O-RING	1		1B P8		
16	37000926070	ORIFICE	1		M8,0.6		
80	36024679900	PACKING SET	1		80X115		
100	36029190001	CYLINDER ASSY,DERRICK	1				

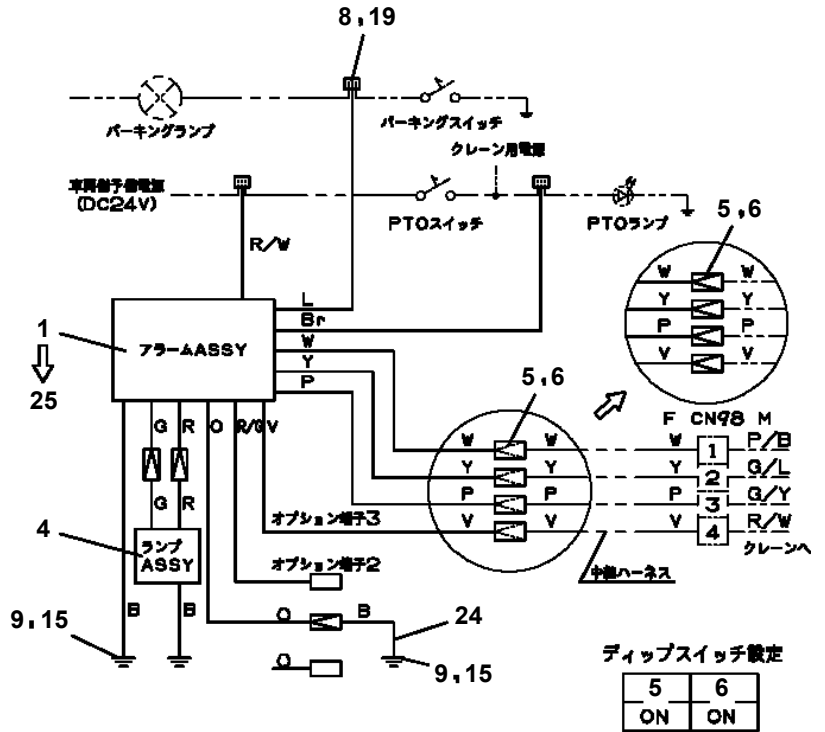
# TM-ZX290 41047701365A FRAME

Pos No.	Parts No	Parts Name	Qty	Unit	Technical Data	Serial No (Start)	Serial No (End)	Remarks
13	91002801100	O-RING	1		1B P11			
100	36150100000	DETECTOR ASSY,MOMENT	1					

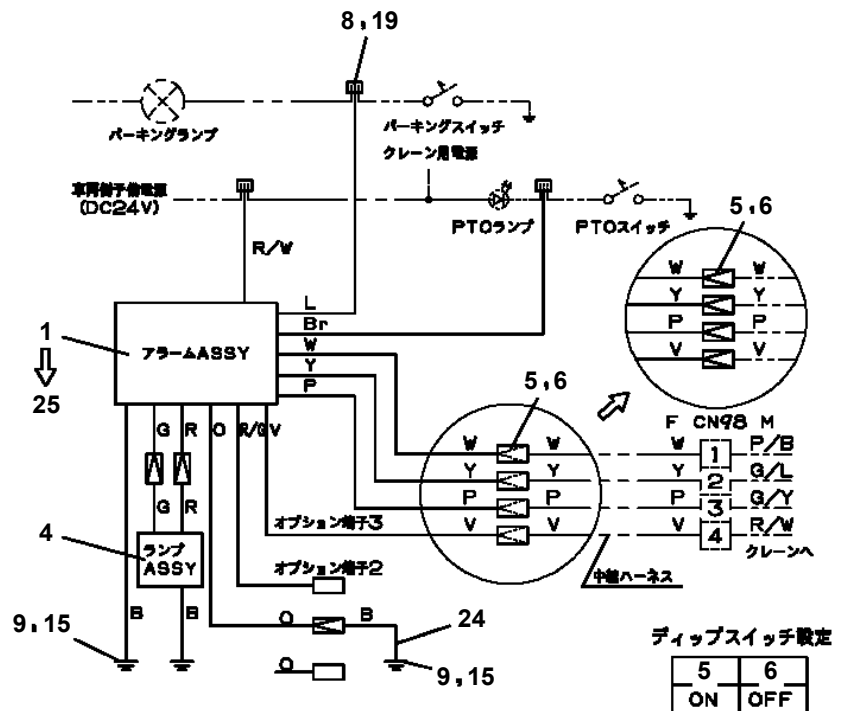
TM-ZX290 41047701365A FRAME  
PE5021239-02 ELEC.ASSY (MOUNTING VEHICLE)



アラームASSY取付



パーキングランプの下流にパーキングスイッチがあり、  
PTOランプの上流にPTOスイッチがある場合



パーキングランプの下流にパーキングスイッチがあり、  
PTOランプの下流にPTOスイッチがある場合

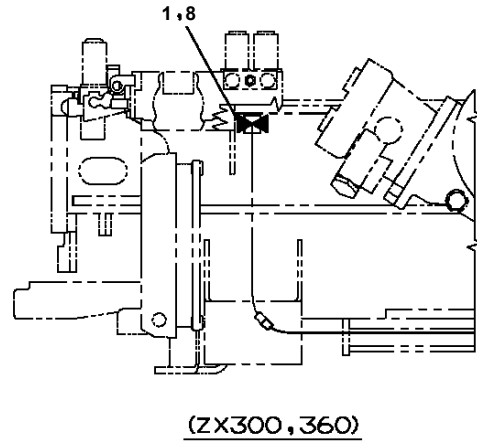
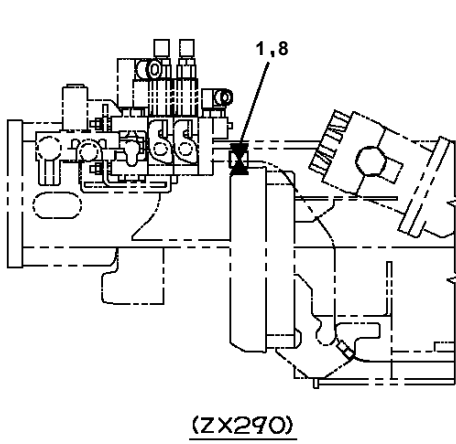
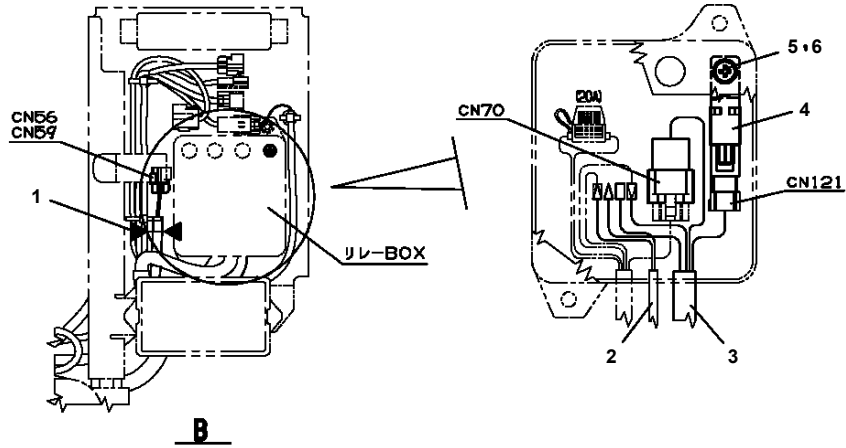
# TM-ZX290 41047701365A FRAME

Pos No.	Parts No	Parts Name	Qty	Unit	Technical Data	Serial No (Start)	Serial No (End)	Remarks	Pages
1	31361042300	PLUG	1						
2	91810130250	FASTENER	2						

# TM-ZX290 41047701365A FRAME

Pos No.	Parts No	Parts Name	Qty	Unit	Technical Data	Serial No (Start)	Serial No (End)	Remarks
1	31506121100	HARNESS	1					
2	34354781710	RELAY (WITH BRACKET)	1					
3	90280200600	NUT,FLANGE	1		M6			
4	80197586012	SCREW,MACHINE	1		M6X12			
5	91810130250	FASTENER	6					

TM-ZX290 41047701365A FRAME  
PE5021342-00 ELEC.ASSY



F

**TM-ZX290 41047701365A FRAME  
PE5021363-00 ELEC.ASSY (OVER-UNWINDING CUTOUT DEVICewith HARNESS)**

ハイセンASSY (ステマキテイシソウチ,ハーネスツキ)  
ELEC.ASSY (OVER-UNWINDING CUTOUT DEVICE,WITH HARNESS)

---

符号	日本語名称	英語名称	備考
1	ハイセンASSY	ELEC.ASSY	上部ハーネス
2	ローラASSY	ROLLER ASSY	捨巻検出用
3	インジケータASSY	INDICATOR ASSY	捨巻検出器

適用製造番号によっては取り付けがないものもあります。

MACHINES OF SOME SERIAL NO. ARE NOT EQUIPPED WITH THESE PARTS.

# TM-ZX290 41047701365A FRAME

Pos No.	Parts No	Parts Name	Qty	Unit	Technical Data	Serial No (Start)	Serial No (End)	Remarks
1	31734212100	HARNESS	1					
2	91810130240	FASTENER	17					
3	91850310405	CLAMP (BLACK)	13					
4	31656101200	PLUG (2-POLES,FEMALE)	1					

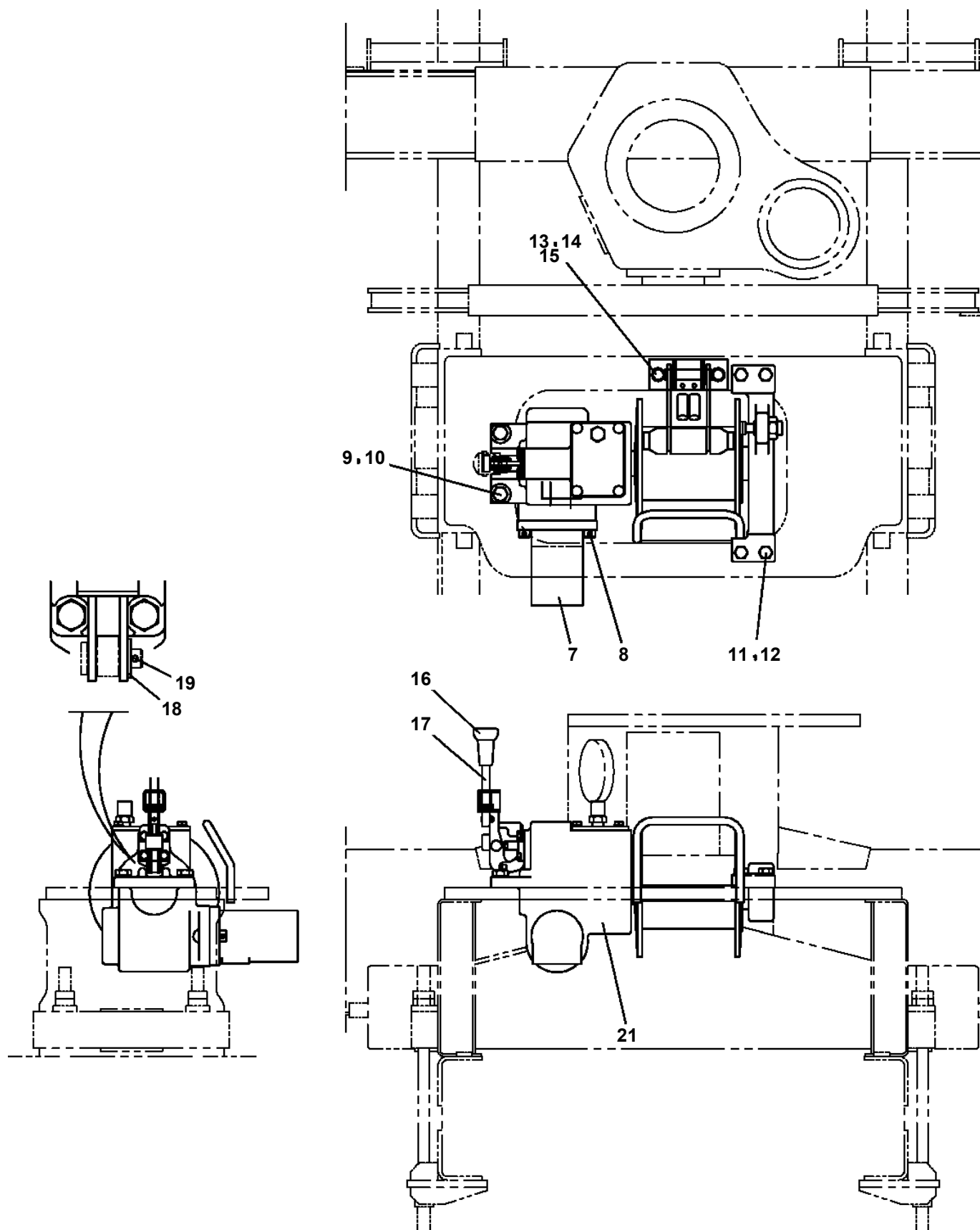
# TM-ZX290 41047701365A FRAME

Pos No.	Parts No	Parts Name	Qty	Unit	Technical Data	Serial No (Start)	Serial No (End)	P
1	36072625080	CASE,GEAR	1					
2	36072625020	CASE,GEAR	1					
3	36072625030	GEAR,SPUR	1					
4	36072625100	GEAR,SPUR	1					
5	36072625050	GEAR,SPUR	1					
6	36072625110	BRAKE,DISK	1					
7	36072625120	WHEEL,RATCHET (BUSH L=17MM)	1					
8	36071195080	LINK (RATCHET CONTROL)	1					
10	36071195100	RATCHET	1					
11	36072625090	SHAFT	1					
12	36071195120	SPRING	1					
13	36071195130	CAP	1					
14	36071195140	PIN	1					
15	36071195150	NUT	1					
16	80500006202	BEARING,BALL	1					
17	80500006212	BEARING,BALL	1					
18	80500006305	BEARING,BALL	1					
19	80500006007	BEARING,BALL	1					
20	91206048001	SEAL,OIL	1					
21	80602110620	RING,RITAINING	1		R62			
23	36071195200	O-RING	1					
24	36071195170	O-RING	1		P15			
25	80136340040	PIN,SPLIT	1		4X40			
26	36072625070	KEY	2					
27	90101208018	BOLT	6		M8X18			
28	90302040801	WASHER,SPRING	6		8			
29	80316030060	PLUG	1		PT3/8			
33	36071195190	GAUGE,OIL	1					
34	80172304015	SCREW,MACHINE	1		M4X15			
35	90302040401	WASHER,SPRING	1		4			
100	36072620000	WINCH (HARTYS)	1					
101	36070441000	FACING KIT(JAPANESE)	1					
102	36070442000	FACING KIT (ENGLISH)	1					

## TM-ZX290 41047701365A FRAME

Pos No.	Parts No	Parts Name	Qty	Unit	Technical Data	Serial No (Start)	Serial No (End)	Remarks
1	90191510020	BOLT,HEXAGON SOCKET	8		M10X20			
2	90302041001	WASHER,SPRING	8		10			
3	90303071001	WASHER,PLAIN	4		10			
4	36093860021	BODY	1					
5	36093860042	SUPPORT	1					
6	37001008670	SHEAVE ASSY	2					
7	80720105056	PIN,SPRING	1		5X56			
9	36093860031	BODY	1					
10	36093860080	COVER	2					
12	80500051207	BEARING,BALL	1					
13	36093860071	TRUNNION	1					
21	36095155020	HOOK ASSY	1					
32	36093861100	BEARING,BALL	2					
40	36095150050	TRIGGER SET	1					
100	36095150000	HOOK (LOCKING)	1					

TM-ZX290 41047701365A FRAME  
PF1400422-01 MOUNT,WINCH



# TM-ZX290 41047701365A FRAME

Pos No.	Parts No	Parts Name	Qty	Unit	Technical Data	Serial No (Start)	Serial No (End)	Remarks	F
62	31622072000	SUPPORT	3				LB7054		
	31622072000	SUPPORT	2				LB8938		
	31622072000	SUPPORT	2			LB7055			
	31622072000	SUPPORT	2			LB7055			
63	90288110020	NUT	1		M10		LB8938		
	90288110020	NUT	1		M10		LB8938		
	90288110020	NUT	1		M10		LB7054		
	90288110020	NUT	1		M10	LB7055			
	90288110020	NUT	1		M10	LB7055			
64	90101206014	BOLT	3		M6X14		LB7054		
	90101206014	BOLT	3		M6X14		LB8938		
	90101206014	BOLT	3		M6X14		LB8938		
	90101206014	BOLT	3		M6X14	LB7055			
	90101206014	BOLT	3		M6X14	LB7055			
65	90288110040	NUT	2				LB8938		
	90288110040	NUT	2				LB7054		
	90288110040	NUT	2				LB8938		
	90288110040	NUT	2			LB7055			
	90288110040	NUT	2			LB7055			
66	31626292700	SUPPORT	1				LB7054		
	31626292700	SUPPORT	1				LB8938		
	31626292700	SUPPORT	1				LB8938		
	31626292700	SUPPORT	1			LB7055			
	31626292700	SUPPORT	1			LB7055			
67	31626292600	SUPPORT	2				LB7054		
	31626292600	SUPPORT	2				LB8938		
	31626292600	SUPPORT	2				LB8938		
	31626292600	SUPPORT	2			LB7055			
68	31626292600	SUPPORT	2			LB7055			
	31626312600	PLATE	1				LB7054		
	31626312600	PLATE	1				LB8938		
	31626312600	PLATE	1				LB8938		
	31626312600	PLATE	1			LB7055			
109	31626312600	PLATE	1			LB7055			
	31626302100	SUPPORT	1				LB8938		
	31626302100	SUPPORT	1				LB8938		
	31626302100	SUPPORT	1			LB7055			
	31626302100	SUPPORT	1			LB7055			

# TM-ZX290 41047701365A FRAME

Pos No.	Parts No	Parts Name	Qty	Unit	Technical Data	Serial No (Start)	Serial No (End)	Remarks	Pages
1	31656330200	HARNESS	1						

# TM-ZX290 41047701365A FRAME

Pos No.	Parts No	Parts Name	Qty	Unit	Technical Data	Serial No (Start)	Serial No (End)	Remarks	Pages
1	31503072100	HARNESS	1						

# TM-ZX290 41047701365A FRAME

Pos No.	Parts No	Parts Name	Qty	Unit	Technical Data	Serial No (Start)	Serial No (End)	Remarks	Pages
1	82182809623	DIODE	2						
100	31658780900	HARNESS	1						

# TM-ZX290 41047701365A FRAME

Pos No.	Parts No	Parts Name	Qty	Unit	Technical Data	Serial No (Start)	Serial No (End)	Remarks	Pages
10	31506521200	HARNESS	1						

# TM-ZX290 41047701365A FRAME

Pos No.	Parts No	Parts Name	Qty	Unit	Technical Data	Serial No (Start)	Serial No (End)	Remarks	Pages
1	82182809623	DIODE	2						
100	31734203200	HARNESS	1						

# TM-ZX290 41047701365A FRAME

Pos No.	Parts No	Parts Name	Qty	Unit	Technical Data	Serial No (Start)	Serial No (End)	Remarks	Pages
10	31350010240	HARNESS	1						

CLICK HERE TO **DOWNLOAD** THE COMPLETE MANUAL

- Thank you very much for reading the preview of the manual.
- You can download the complete manual from: [www.heydownloads.com](http://www.heydownloads.com) by clicking the link below



- Please note: If there is no response to CLICKING the link, please download this PDF first and then click on it.

CLICK HERE TO **DOWNLOAD** THE COMPLETE MANUAL

# TM-ZX290 41047701365A FRAME

Pos No.	Parts No	Parts Name	Qty	Unit	Technical Data	Serial No (Start)	Serial No (End)	Remark
6	36072725250	CAP (END)	1					
7	36072725260	PLATE (SPACER)	1					
8	36072725270	FLANGE	1					
9	36660375050	RACE (BEARING)	1					
11	36072725280	HOUSING	1					
12	36660375170	PLUG (HOUSING)	1					
13	36660375060	BEARING,THRUST NEEDLE	1					
14	36661585030	SCREW	4					
23	36660375160	PLUG (CAP)	1					
31	36661835010	SEAL KIT	1					
41	91000515200	O-RING	1		AS568-152			
100	36662810000	MOTOR,HYDRAULIC	1					

# TM-ZX290 41047701365A FRAME

Pos No.	Parts No	Parts Name	Qty	Unit	Technical Data	Serial No (Start)	Serial No (End)	Remarks	Pa
5	50815054503	PACKING	2						
6	50815054603	SPRING	2						
7	91002801800	O-RING	2		1B P18				
8	50815054703	PIN (STOP)	2						
9	36623835900	PLUG	2						
10	91002801200	O-RING	2		1B P12				
11	36623825200	CAP (SEAL)	1						
100	36624690000	VALVE,PILOT CHECK	1						

## TM-ZX290 41047701365A FRAME

Pos No.	Parts No	Parts Name	Qty	Unit	Technical Data	Serial No (Start)	Serial No (End)	Remarks
1	31950472000	LOCK ASSY	1					
2	90203201000	NUT	2		M10			
3	90172110055	BOLT,HEXAGON SOCKET	2		M10X55			
4	90172110020	BOLT,HEXAGON SOCKET	4		M10X20			
5	31950492000	LOCK ASSY	1					
6	90303071001	WASHER,PLAIN	4		10			
21	31950300402	SUPPORT	1					
	31950300460	SUPPORT (STEEL CAST)	1					
22	37000537270	PLATE	4					
23	31950491100	LEVER	2					
24	37001400341	SPRING	1					
25	31950300602	HOOK	2					
26	37001510080	BOLT,HEXAGON SOCKET	2					
27	90303071201	WASHER,PLAIN	2		12			
28	82400000527	CAP	2					
29	90203201200	NUT	2		M12			
30	37000400510	BEARING,PLAIN	4					
31	80824001206	BEARING,PLAIN	2					
41	31950330720	SUPPORT (STEEL CAST)	1					
	31950330702	SUPPORT	1					
44	37001400351	SPRING	1					

# TM-ZX290 41047701365A FRAME

Pos No.	Parts No	Parts Name	Qty	Unit	Technical Data	Serial No (Start)	Serial No (End)	Remarks	Pages
1	31361946100	COVER	2						

# TM-ZX290 41047701365A FRAME

Pos No.	Parts No	Parts Name	Qty	Unit	Technical Data	Serial No (Start)	Serial No (End)	Remarks	Pages
1	37000105610	PIN	2		L=18				
2	80620210050	PIN,SNAP	2						
3	37000165020	PIN	1						
4	80136840020	PIN,SPLIT	1		4X20				
5	37000311190	SPACER	1		L=16				
6	31322160150	FORK	2						

# TM-ZX290 41047701365A FRAME

Pos No.	Parts No	Parts Name	Qty	Unit	Technical Data	Serial No (Start)	Serial No (End)	Remarks
2	(*****)	ELEC.ASSY (POST)	1					
3	(*****)	ELEC.ASSY (BOOM/LED LAMP)	1					

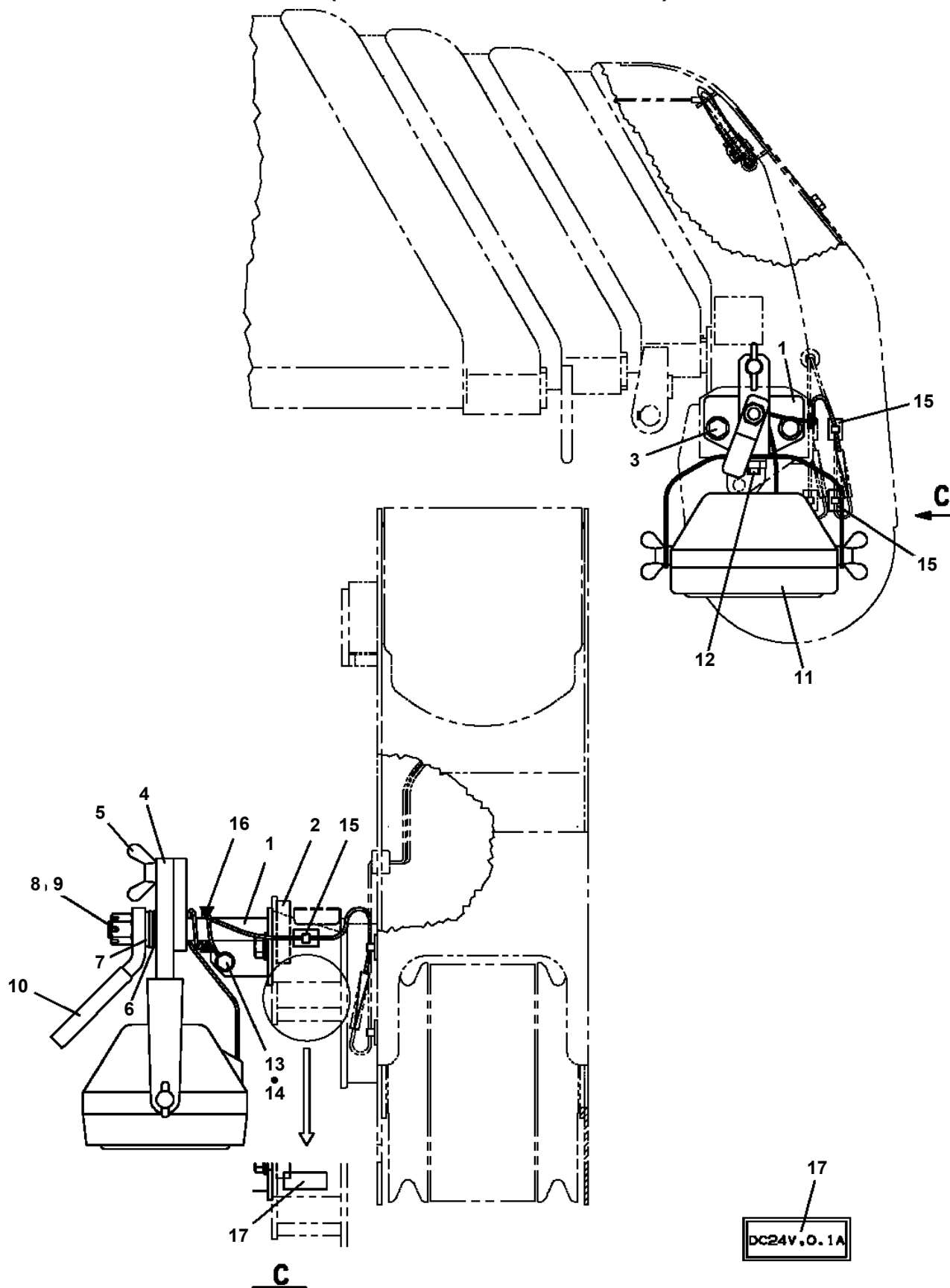
# TM-ZX290 41047701365A FRAME

Pos No.	Parts No	Parts Name	Qty	Unit	Technical Data	Serial No (Start)	Serial No (End)	Remarks	Pages
2	31326322401	LEVER	1						
3	31326322501	LEVER	1						
5	31323330100	KNOB (BLACK)	4						
6	31323330200	KNOB (RED)	1						
7	37010103590	PIN	1						
8	80136840020	PIN,SPLIT	1		4X20				
9	37000105040	PIN	5						
10	80650100030	RING,RETAINING	11						
11	37000105050	PIN	6						
12	31322224200	PLATE	1		L=1				

# TM-ZX290 41047701365A FRAME

Pos No.	Parts No	Parts Name	Qty	Unit	Technical Data	Serial No (
1	31783950100	SUPPORT	2			
2	31783950200	SUPPORT	2			
3	31783950300	SUPPORT	2			
4	31783950400	SUPPORT	2			
5	37001603150	NUT,FLANGE	8		M10	
6	37001510640	BOLT,FLANGE	8		M10X35	
7	90171310030	BOLT	8		M10X30	
8	90303071001	WASHER,PLAIN	8		10	
9	90302041001	WASHER,SPRING	8		10	
10	90209781000	NUT	8		M10	
11	31783930300	SUPPORT	2			
12	32460251300	CHAIN	2		L=386	
13	82400000543	HOOK	2			
14	31200791030	PLATE	2			
15	31783090500	PLATE,CAUTION	2			
16	90303501005	WASHER,PLAIN	4		10	
100	31783950000	MODIFICATION ASSY (PLANKING CASE:REAR OVERHANG)	1			

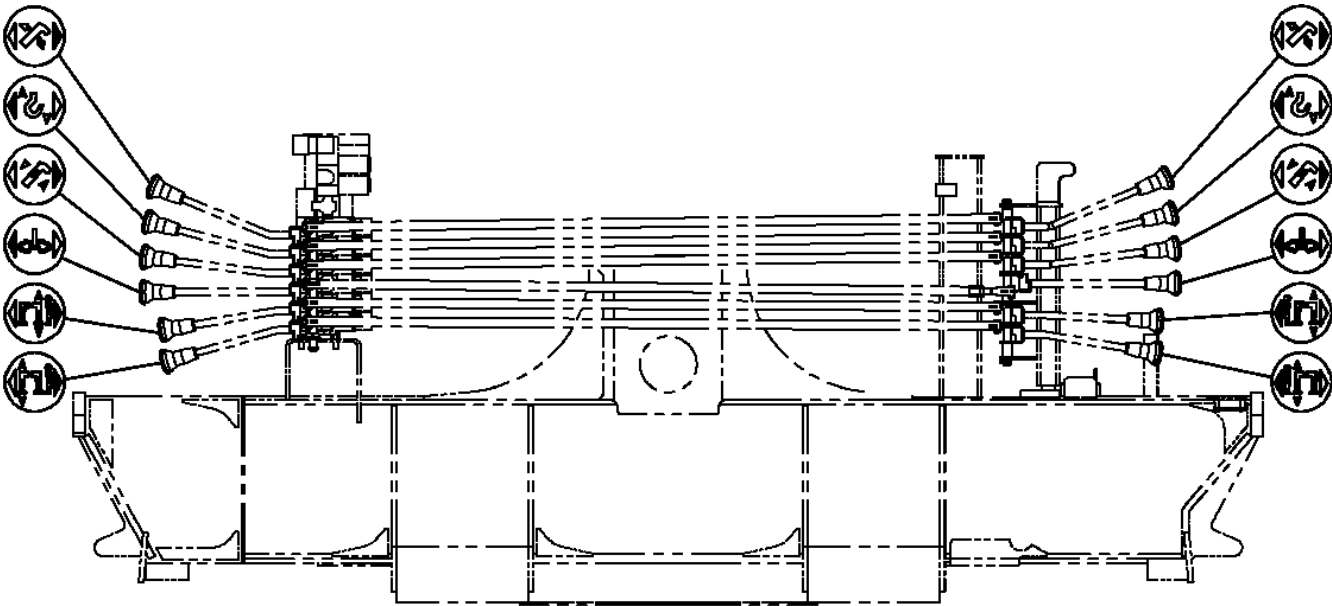
**TM-ZX290 41047701365A FRAME  
PN1014687-03 ELEC.ASSY (UPPER/WORKING LAMP)**



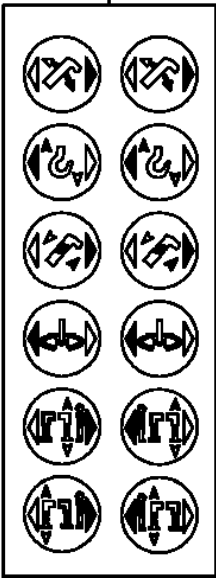
注 意：本図は参考用に掲載しており、形状などは実機と異なります。

NOTE: THE ABOVE FIGURE IS FOR REFERENCE AND MAY DIFFER FROM THE ACTUAL APPEARANCE OF YOUR MACHINE.

TM-ZX290 41047701365A FRAME  
PN5012017-01 NAME PLATE ASSY (KNOB:U-LAYOUT)



100



**TM-ZX290 41047701365A FRAME**  
**PN5012051-01 NAME PLATE ASSY (FRAME:U-LAYOUT)**

ネームプレートASSY (フレーム:Uシヤハイレッツ)  
NAME PLATE ASSY (FRAME:U-LAYOUT)

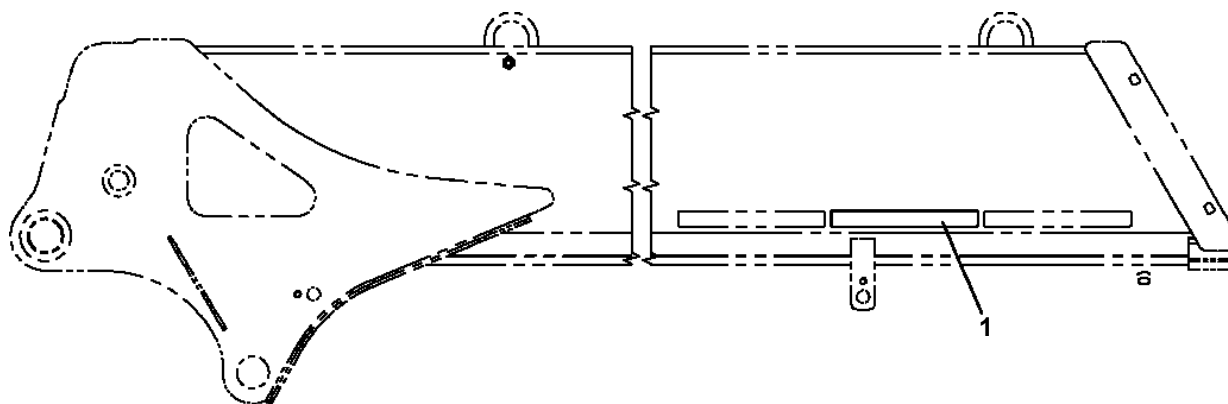
---

符号	日本語名称	英語名称	備考
1	ネームプレートASSY	NAME PLATE ASSY	ノブ銘板:U社配列(SL)
4	ネームプレートASSY	NAME PLATE ASSY	タンク油量銘板:共通
5	ネームプレートASSY	NAME PLATE ASSY	フック銘板:共通
6	ネームプレートASSY	NAME PLATE ASSY	O/R注意銘板等
7	ネームプレートASSY	NAME PLATE ASSY	定期自主検査銘板
8	ネームプレートASSY	NAME PLATE ASSY	ノブ銘板 SLジャッキ

適用製造番号によっては取り付けがないものもあります。

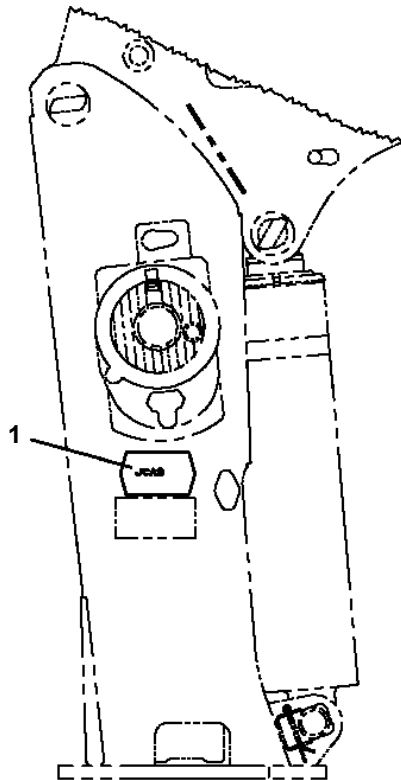
MACHINES OF SOME SERIAL NO. ARE NOT EQUIPPED WITH THESE PARTS.

TM-ZX290 41047701365A FRAME  
PN5012122-00 NAME PLATE ASSY



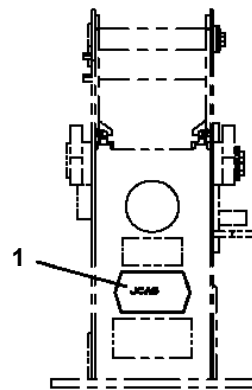
1  
フォークジャッキ インターロック装置付

TM-ZX290 41047701365A FRAME  
 PN5012165-01 NAME PLATE ASSY (JSAS)

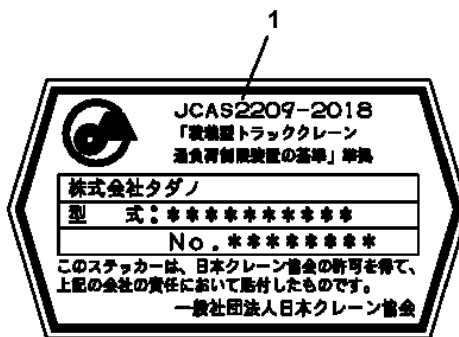


ZX250, ZX260, ZX290  
 ZX300, ZX360  
 ZS500, ZS580  
 ZX500

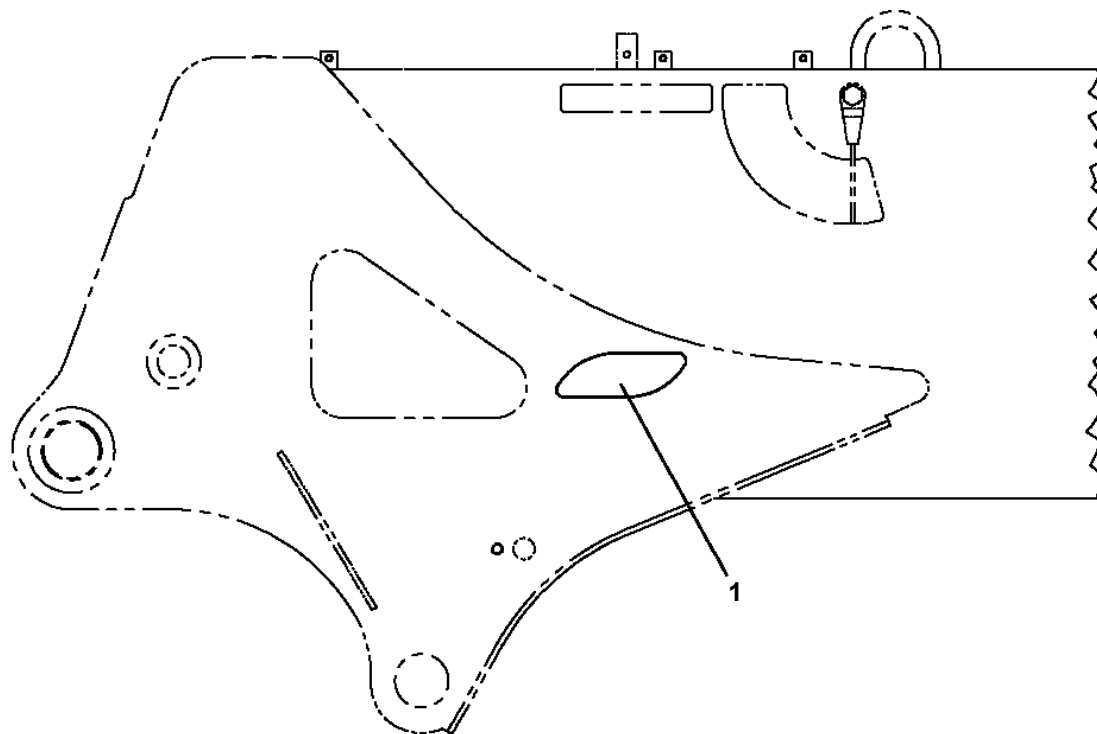
ポスト側面



ZS220  
 ポスト前面



**TM-ZX290 41047701365A FRAME**  
**PN5012194-00 NAME PLATE ASSY (NETIS/S-SIZE)**



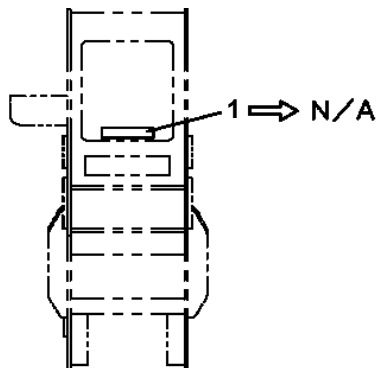
TM-ZX290 41047701365A FRAME  
PN5012296-00 NAME PLATE ASSY

1

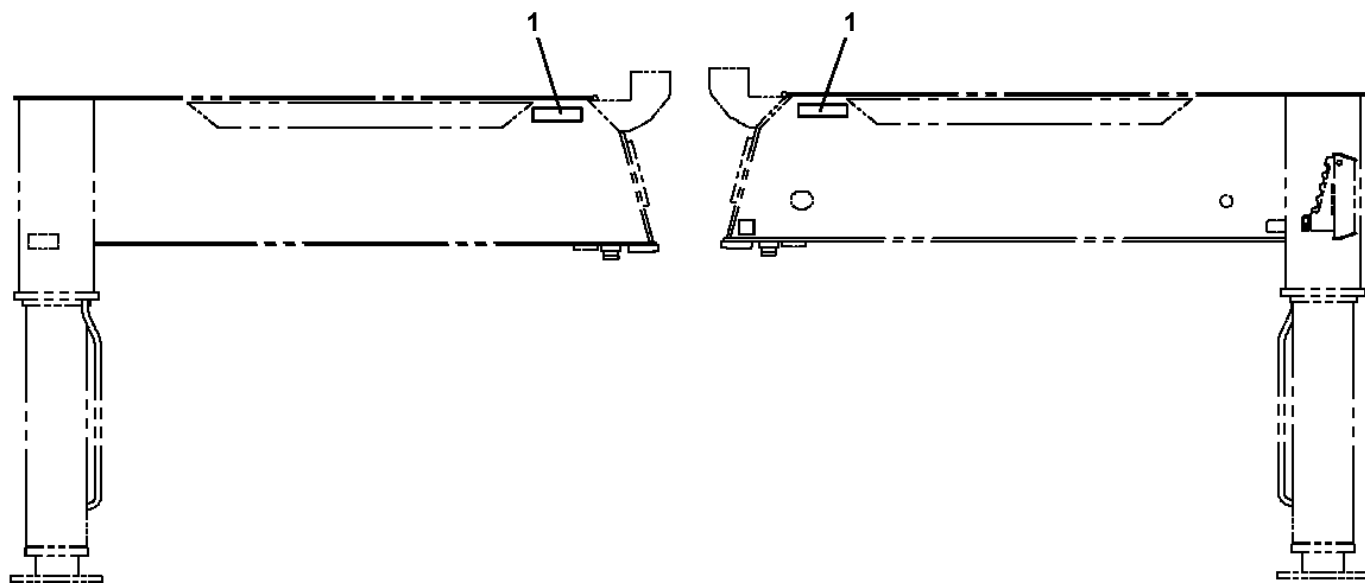
警報仕様(定格荷重指示装置付)

27002941.040

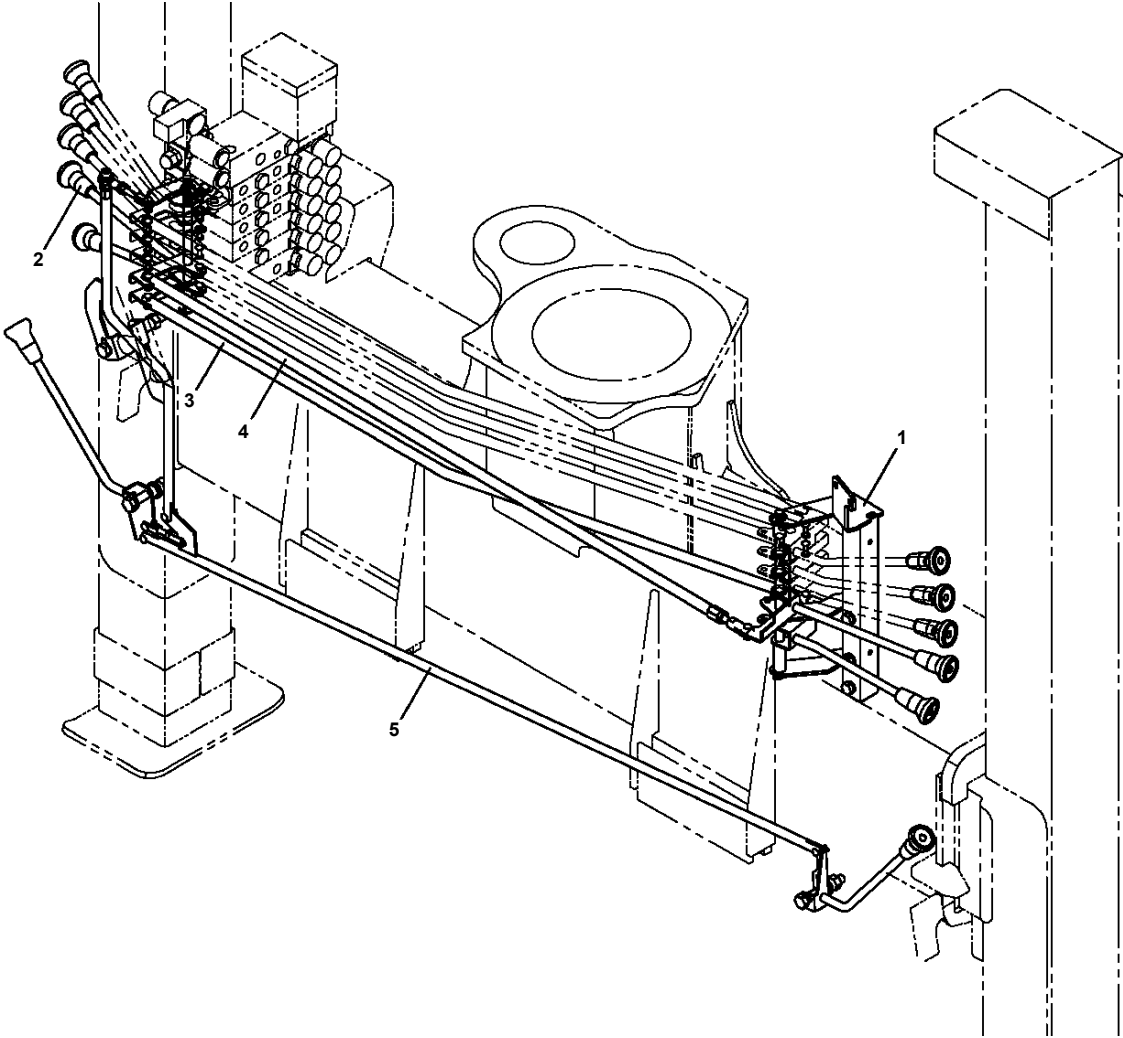
TM-ZX290 41047701365A FRAME  
PO1015028-02 PLATE ASSY,NAME (FRAME SERIAL NO.)



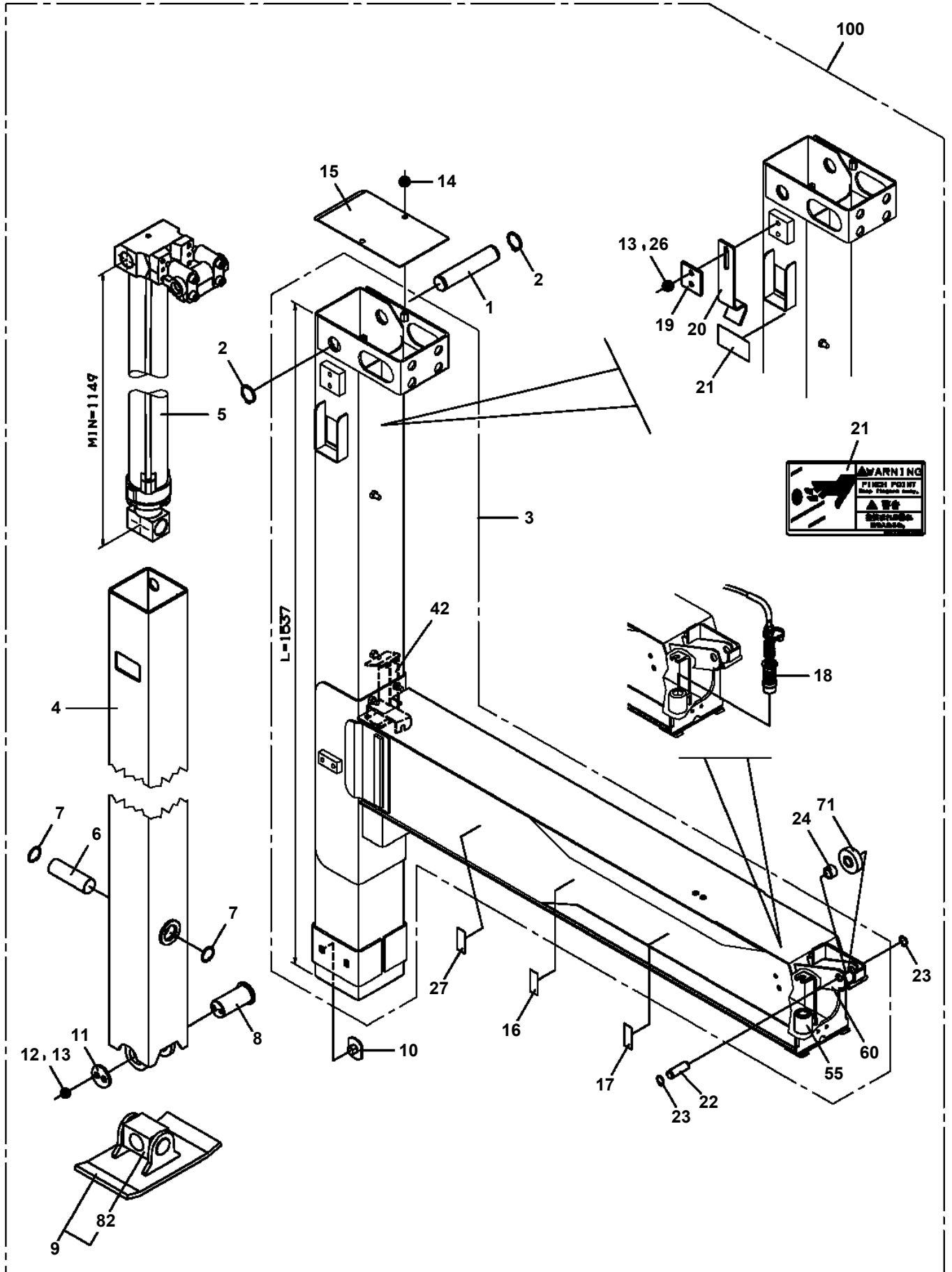
ブーム後端  
BOOM END



**TM-ZX290 41047701365A FRAME**  
**PO5080311-01 OPE.ASSY,CONT.VALVE (JACK,SWING)**



TM-ZX290 41047701365A FRAME  
PO5270372-00 OUTRIGGER ASSY (RIGHT,CYLINDER:MIN.1149)



**TM-ZX290 41047701365A FRAME  
PO5290107-01 OUTRIGGER ASSY,REAR (ROTARY,SOL.VALVE)**

アウトリガ` ASSY,リヤ (カイト` ンシキ,テ` ンジ` ハ` ルフ` )  
OUTRIGGER ASSY,REAR (ROTARY,SOL.VALVE)

符号	日本語名称	英語名称	備考
1	フレームASSY	FRAME ASSY	回転式 突出幅2400mm ストローク270mm
11	アウトリガ` ,リヤ	OUTRIGGER,REAR	回転式
12	ロックASSY {リヤアウトリガ` }	LOCK ASSY	
3	ハイセンASSY	ELEC.ASSY	本体部
4	オペ` .ASSY,ソウサハ` ルフ`	OPE.ASSY,CONT.VALVE	
5	ネームプ` レートASSY	NAME PLATE ASSY	
8	ハイセンASSY	ELEC.ASSY	接続部
21	ハイカンASSY	PIPING ASSY	トラックシャシ部分
22	ハ` ルフ` ASSY,リモコン	VALVE ASSY,REMOTE CONTROL	2選 (サンワ)
23	ハイカンASSY	PIPING ASSY	クレーン本体部分
24	サホ` ートASSY	SUPPORT ASSY	290系用

適用製造番号によっては取り付けがないものもあります。

MACHINES OF SOME SERIAL NO. ARE NOT EQUIPPED WITH THESE PARTS.

**TM-ZX290 41047701365A FRAME**  
**PP5150047-00 PARTS ASSY,RADIO CONTROLLER (U)**

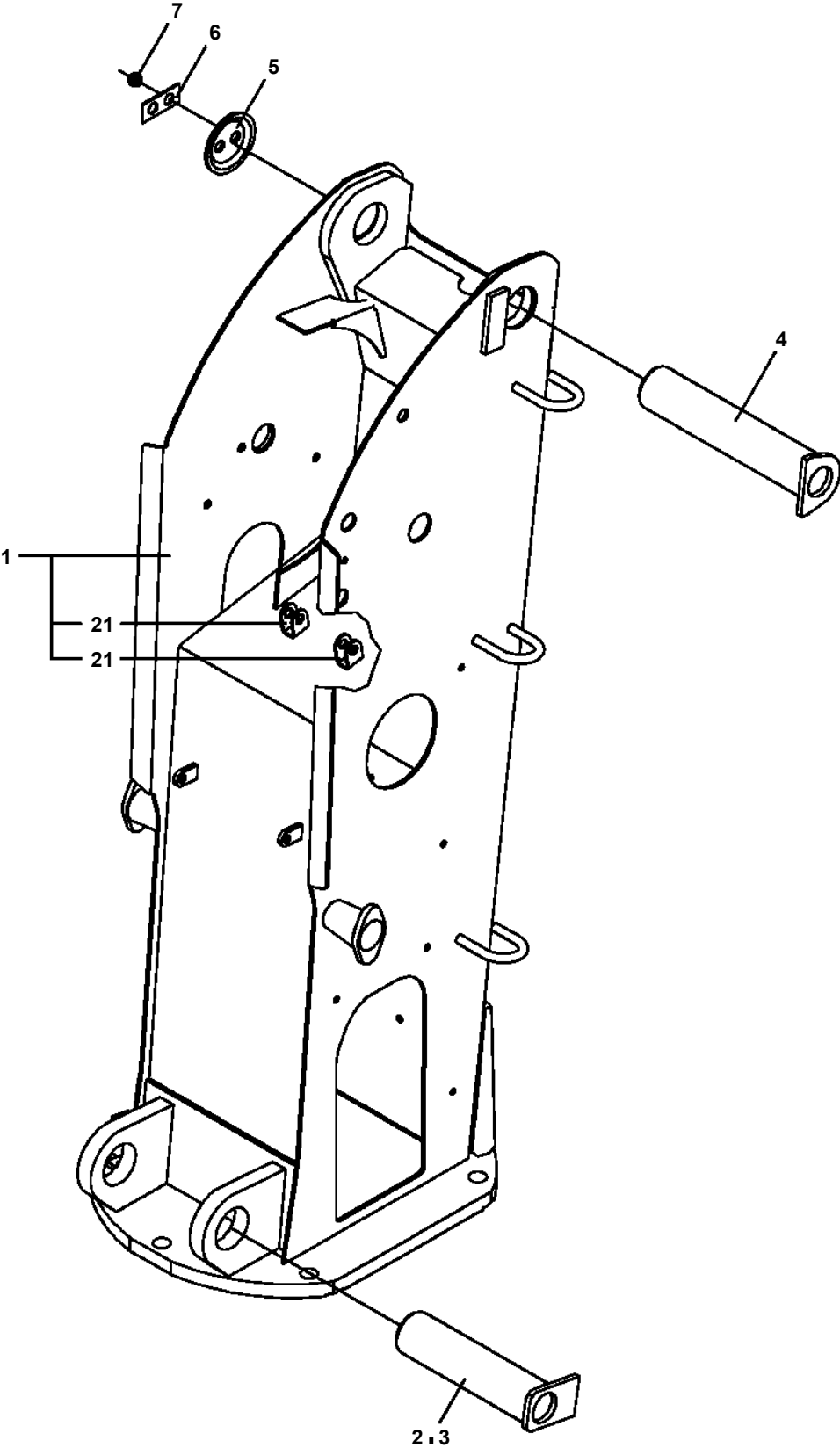
パーツASSY,ラジコン (キノウシヤラジコン/Uヨウ)  
PARTS ASSY,RADIO CONTROLLER (U)

符号	日本語名称	英語名称	備考
1	パーツASSY,ラジコン	PARTS ASSY,RADIO CONTROLLER	既納車ラジコン
2	ネームプレートASSY	NAME PLATE ASSY	送信機給板 (U社配列用)

適用製造番号によっては取り付けがないものもあります。

MACHINES OF SOME SERIAL NO. ARE NOT EQUIPPED WITH THESE PARTS.

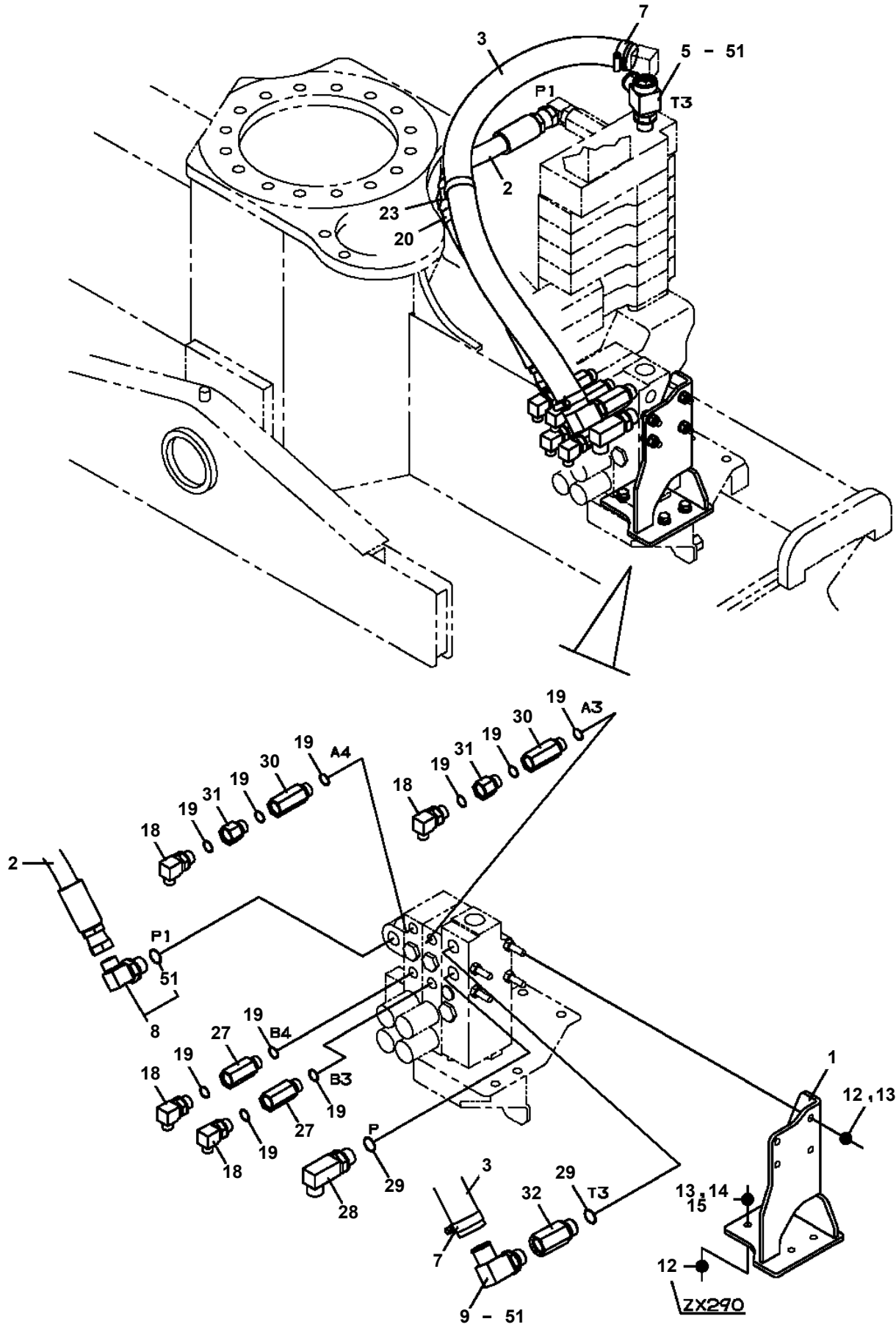
TM-ZX290 41047701365A FRAME  
PP5300023-00 POST ASSY



# TM-ZX290 41047701365A FRAME

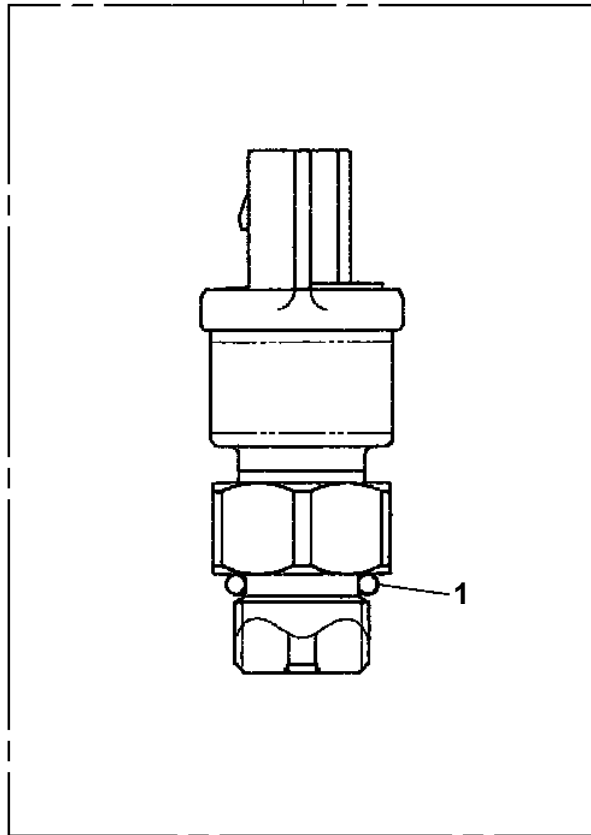
Pos No.	Parts No	Parts Name	Qty	Unit	Technical Data	Serial No (Start)	Serial No (End)	Rem
1	81408000100	PIPE,STEEL	1	M	10X1.2T			
2	81408000100	PIPE,STEEL	1	M	10X1.2T			
3	81408000100	PIPE,STEEL	1	M	10X1.2T			
4	81408000100	PIPE,STEEL	1	M	10X1.2T			
5	81408000100	PIPE,STEEL	1	M	10X1.2T			
6	81408000100	PIPE,STEEL	1	M	10X1.2T			
7	81408000100	PIPE,STEEL	1	M	10X1.2T			
8	80400160129	JOINT	6					
9	80302090121	FITTING	9		KCO10-030N			
10	91002801400	O-RING	17		1B P14			
11	80302090101	FITTING	3		KCO10-020N			
12	91002801100	O-RING	3		1B P11			
13	80430620800	JOINT	1					
14	37002511130	HOSE	1		L=260			
15	80400160182	JOINT (WITH O-RING)	1					
16	91803930440	CLIP	4		32-45			
17	37002512650	HOSE	1		L=770			
18	36672390000	FILTER,OIL (WAKO)	1					
19	91002802900	O-RING	2		1B P29			
20	91803880070	CLIP	2		D=13.1-16.2			
21	37002508820	HOSE	1				LB7532	
	37002521070	HOSE	1		L=1950	LB7533		
22	37000800740	JOINT	1					
23	37005700130	CLAMP	1		10X2			
24	31671581200	SUPPORT	1					
25	90280200800	NUT,FLANGE	1		M8			
26	90186208035	BOLT,FLANGE	1		M8X35			
27	91810130250	FASTENER	10				LB7145	
	91810130250	FASTENER	9			LB7146		
28	90201780800	NUT	4		M8			
29	90302040801	WASHER,SPRING	4		8			
30	91803600200	CLIP	1		D=13-20			
31	91810130270	FASTENER	2					
32	31644591400	COVER	1					
33	80400160202	JOINT (FOR RETURN FILTER)	1					
34	37000923230	JOINT	1		S,G1-G1/2			
35	42642770950	JOINT	1					
36	91002801800	O-RING	2		1B P18			
37	31671401300	JOINT	1					
38	90186210016	BOLT,FLANGE	7		M10X16			
40	31642181000	COVER	1					
41	37000924110	JOINT	1		S,G1/2-G1/2			
42	36611670000	VALVE,FLOW CONTROL	1					
43	80303130121	FITTING,ELBOW (WITH O-RING)	1		KLO10-030E			
44	80305120100	FITTING	2					
45	80305010080	FITTING,TEE	1		KTA10-000N			
46	81408000100	PIPE,STEEL	1	M	10X1.2T			
47	81408000100	PIPE,STEEL	1	M	10X1.2T			
48	81408000100	PIPE,STEEL	1	M	10X1.2T			
49	81408000100	PIPE,STEEL	1	M	10X1.2T			
50	81408000100	PIPE,STEEL	1	M	10X1.2T			
51	90172106032	BOLT,HEXAGON SOCKET	3		M6X32		LB7145	
	90172106030	BOLT,HEXAGON SOCKET	3		M6X30	LB7146		
52	31671581100	SUPPORT	1					
53	91860100040	CLAMP	1		KCR-W40			
54	82100002535	TUBE,SPIRAL	1	M	SE-29BK			
55	90186208020	BOLT,FLANGE	1		M8X20			
57	91850700101	CLAMP	1		L=208			
81	91002801800	O-RING	2		1B P18			
91	91002802900	O-RING	1		1B P29			
101	91002801400	O-RING	1		1B P14			

**TM-ZX290 41047701365A FRAME**  
**PP6010593-00 PIPING ASSY**

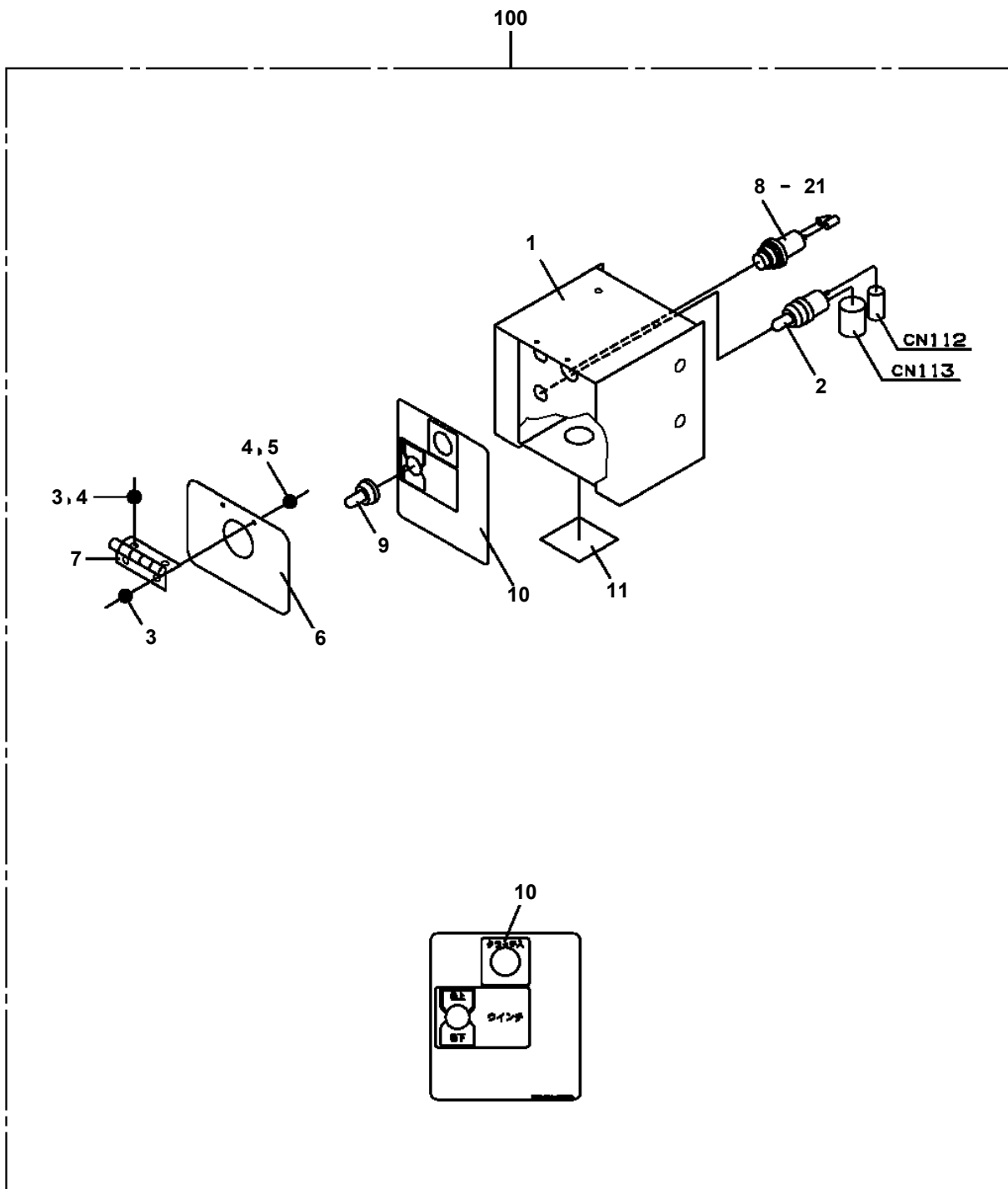


**TM-ZX290 41047701365A FRAME**  
**PS5100001-00 SENDER,PRESSURE**

100

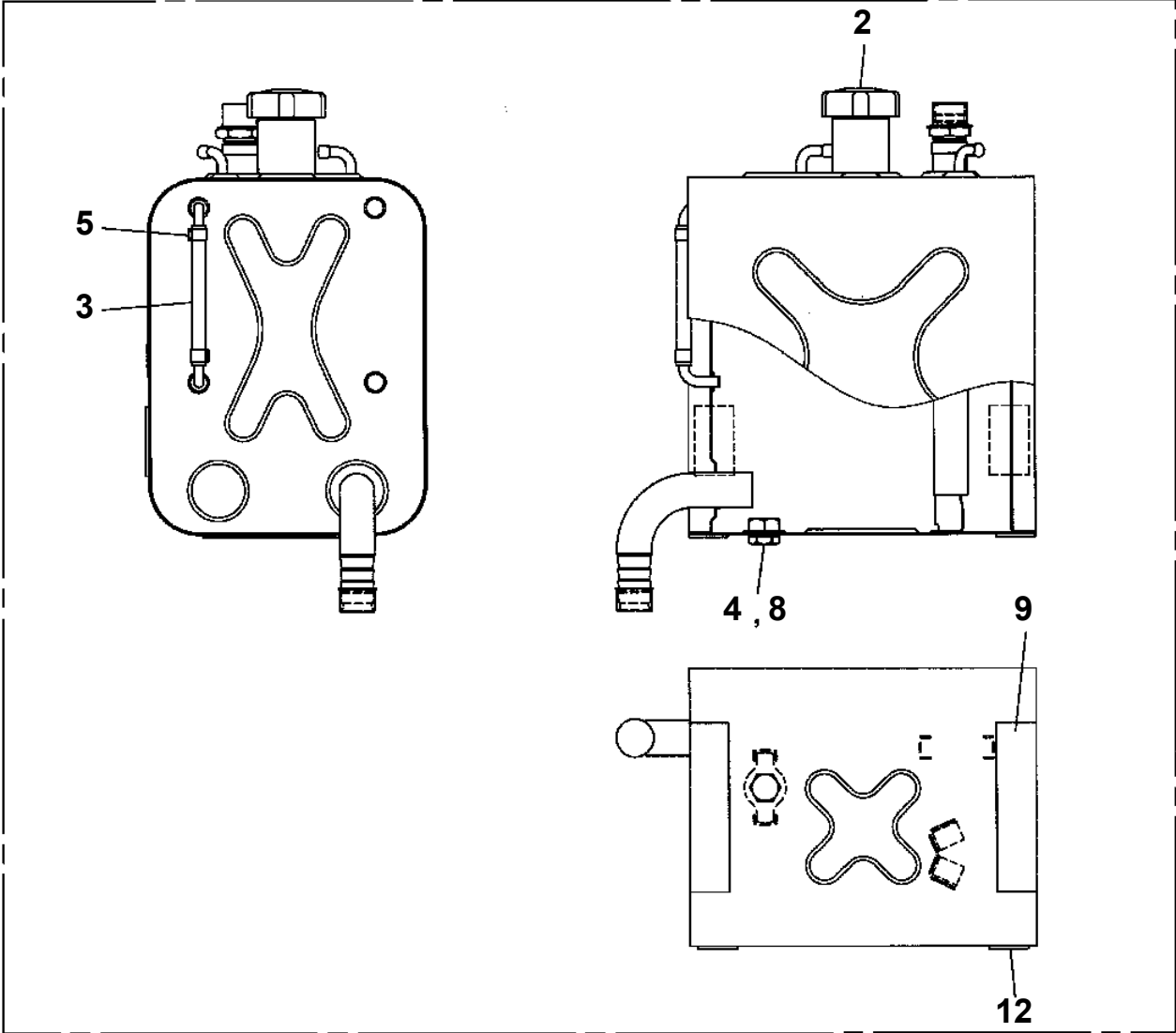


TM-ZX290 41047701365A FRAME  
PS5530471-00 SWITCH ASSY

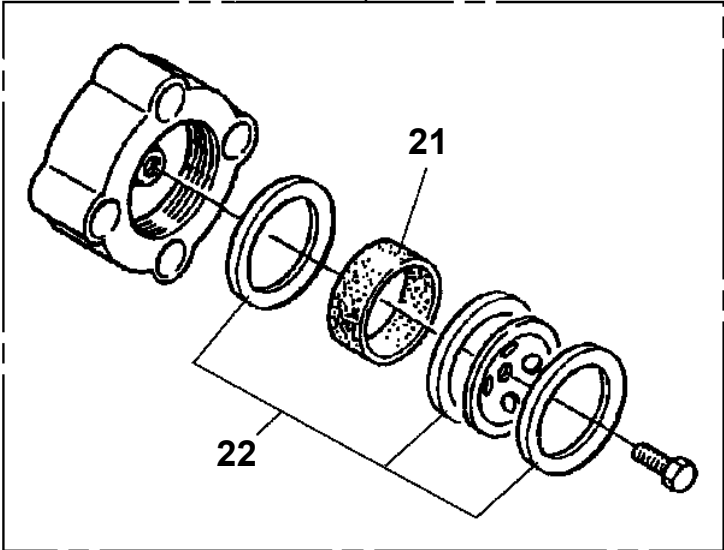


TM-ZX290 41047701365A FRAME  
PT5390005-00 TANK

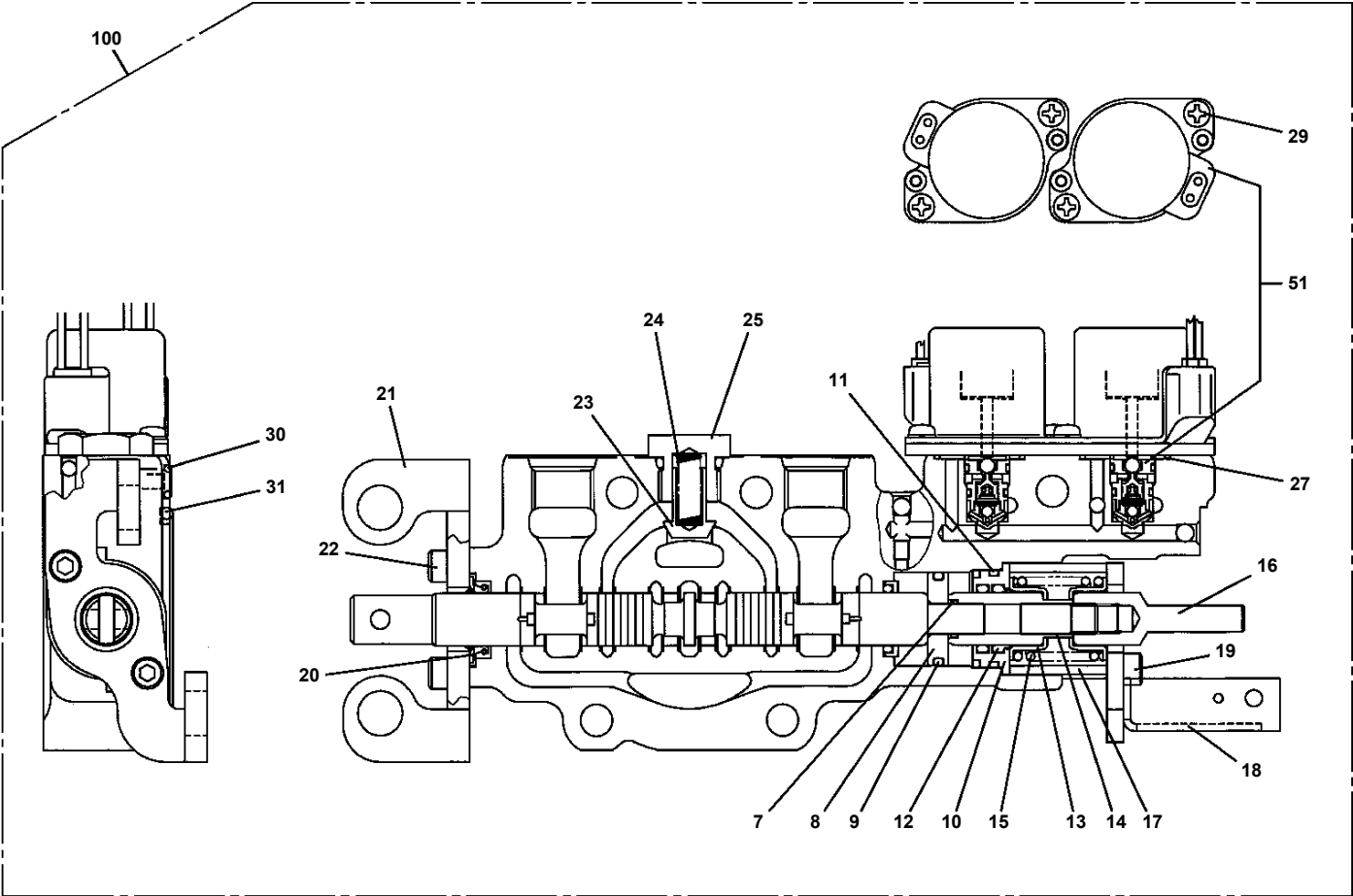
100



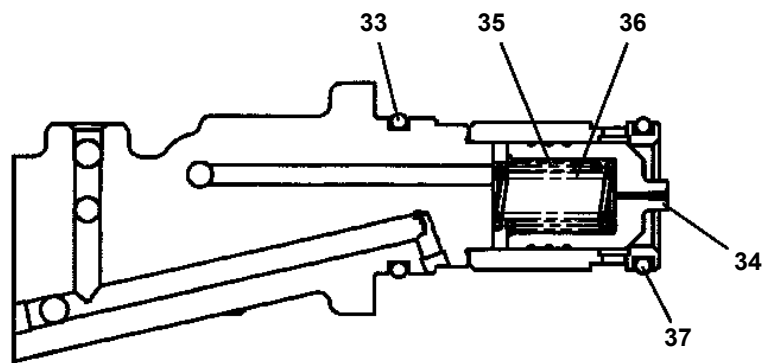
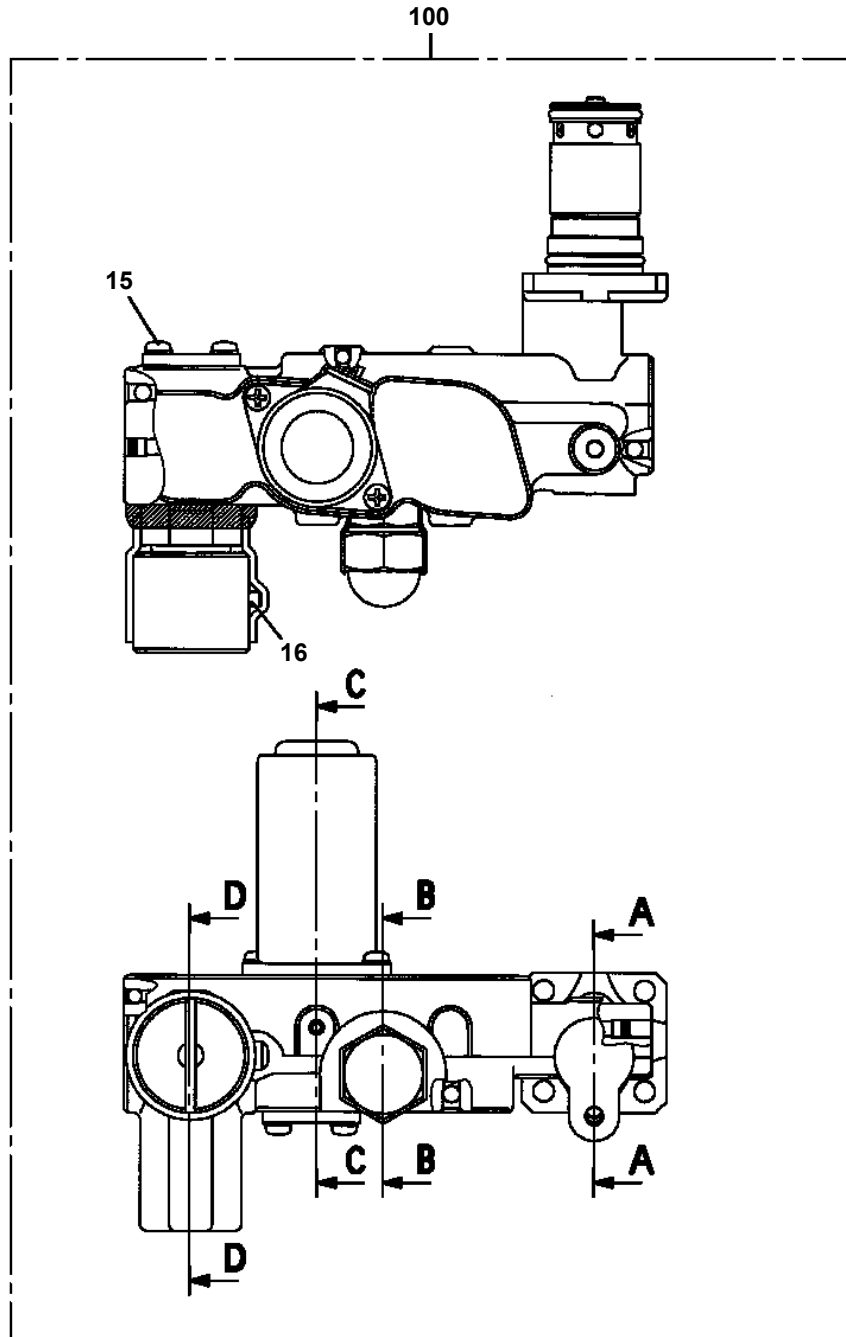
2



**TM-ZX290 41047701365A FRAME  
PV5060059-00 VALVE ASSY,CONTROL (JACK,SIMULTANEOUS)**



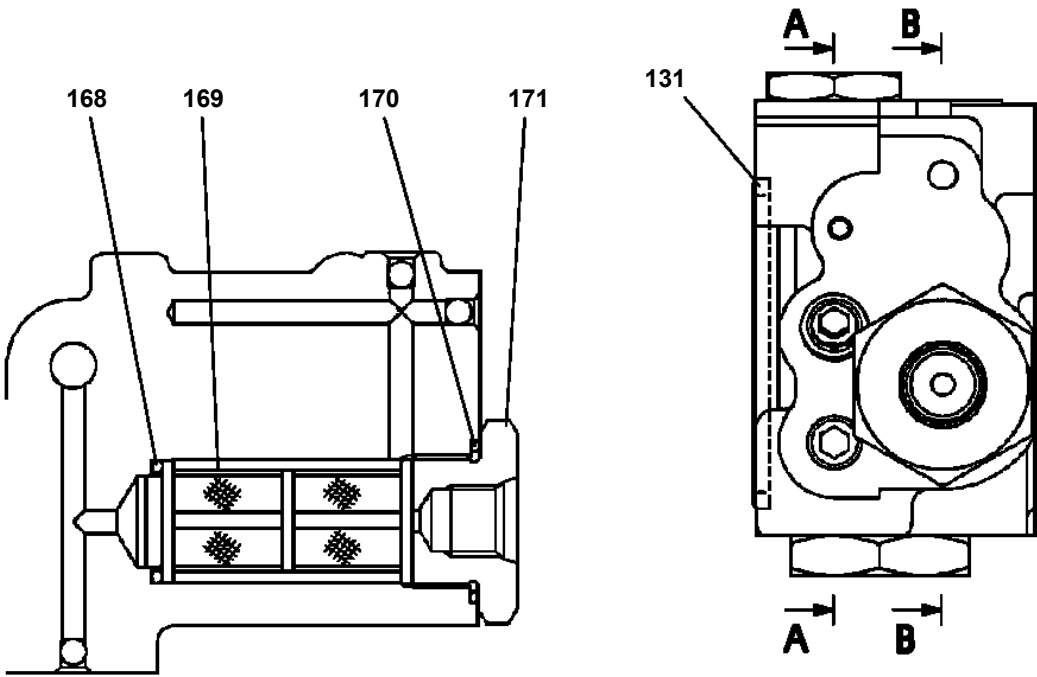
TM-ZX290 41047701365A FRAME  
PV5140040-00 VALVE ASSY,RELIEF



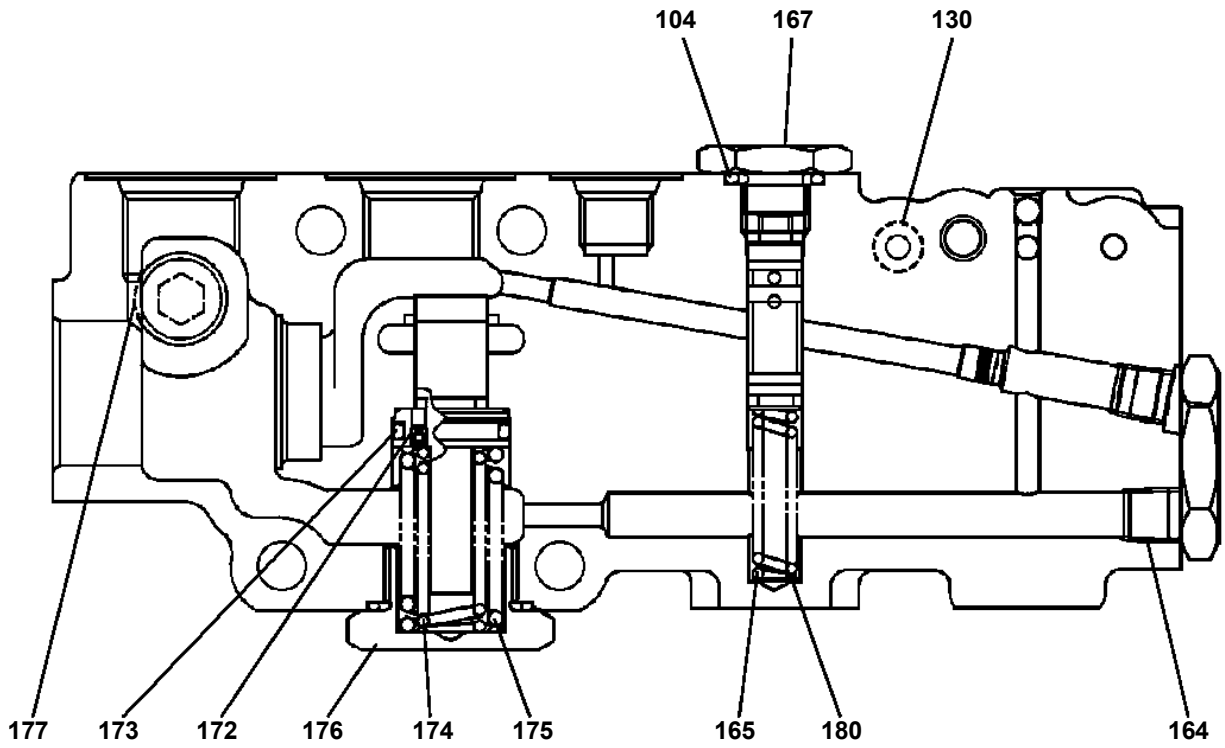
A-A

TM-ZX290 41047701365A FRAME  
PV5150057-00 VALVE ASSY,REMOTE CONTROL

5



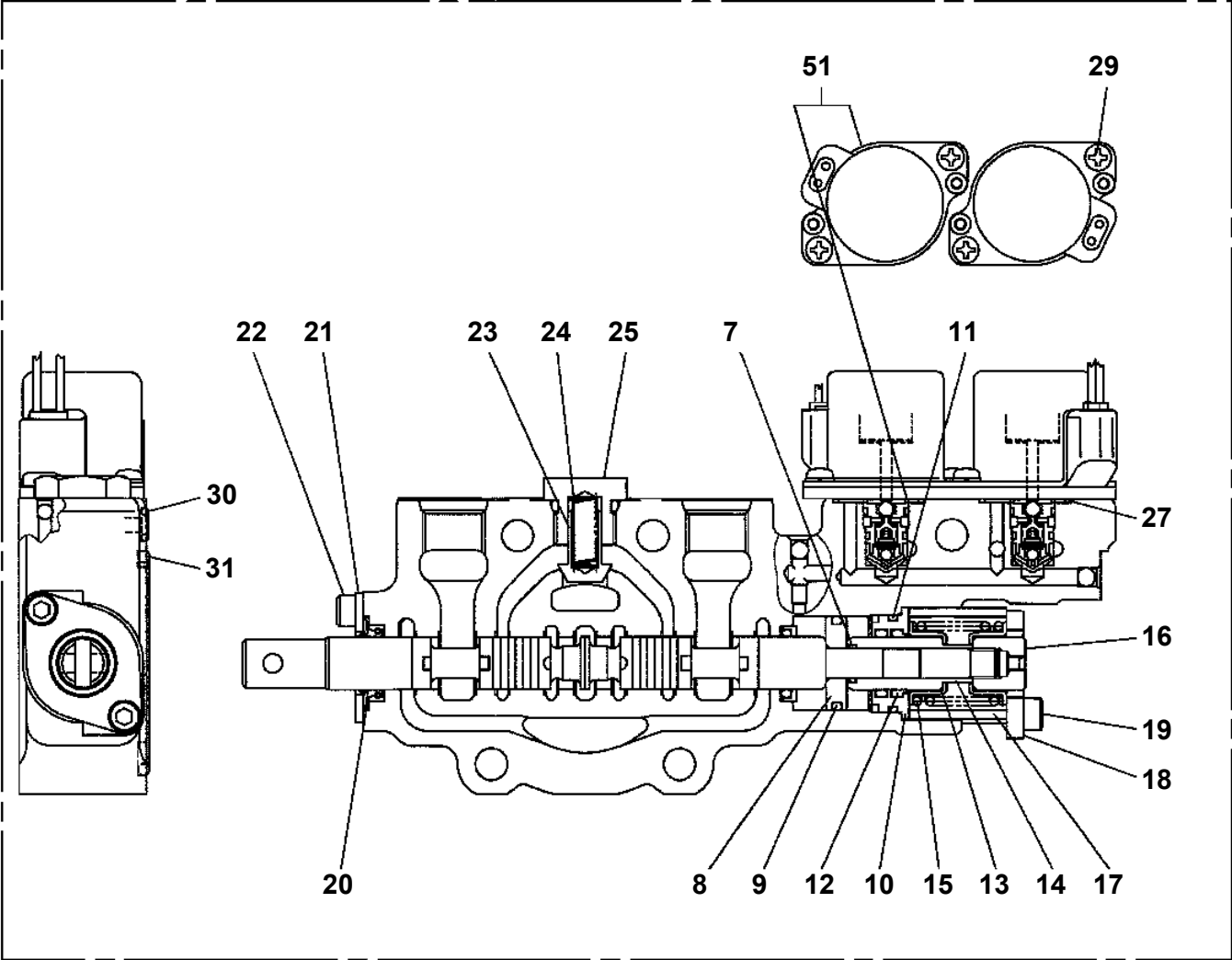
B-B



A-A

**TM-ZX290 41047701365A FRAME  
PV5460053-00 VALVE,CONTROL**

100



**TM-ZX290 41047701365A FRAME  
PX5010636-00 MOUNT ASSY (POWER SUPPLY, SERVICE PORT)**

マウントASSY (パワサプライ, サービスポート)  
MOUNT ASSY (POWER SUPPLY, SERVICE PORT)

---

符号	日本語名称	英語名称	備考
1	パイカンASSY	PIPING ASSY	
2	オペ. ASSY, ソウサハ. ルブ	OPE. ASSY, CONT. VALVE	
3	ネームプレートASSY	NAME PLATE ASSY	

適用製造番号によっては取り付けがないものもあります。

MACHINES OF SOME SERIAL NO. ARE NOT EQUIPPED WITH THESE PARTS.

# TM-ZX290 41047701365A FRAME

Pos No.	Parts No	Parts Name	Qty	Unit	Technical Data	Serial
1	(*****)	OUTRIGGER ASSY,REAR (ROTARY/POWER PACKAGE)	1			
2	(*****)	OUTRIGGER ASSY,REAR (ROTARY,SOL.VALVE)	1			
3	(*****)	OUTRIGGER ASSY,REAR (ROTARY/MEDIUM-SIZE)	1			
4	(*****)	WINCH ASSY (SELF,2.5TONX1:FULL-RADIO CONTROL)	1			
5	(*****)	WINCH ASSY (SELF,2.5TONX1 :FULL-RADIO CONTROL/NO WINCH)	1			
6	(*****)	LAMP ASSY,AML	1			

# TM-ZX290 41047701365A FRAME

Pos No.	Parts No	Parts Name	Qty	Unit	Technical Data	Serial No (Start)	Serial No (End)	Remarks
1	36150080000	DETECTOR ASSY,MOMENT	1					
2	36150100000	DETECTOR ASSY,MOMENT	1					
3	91850700101	CLAMP	2		L=208			
4	91810130250	FASTENER	2					

# TM-ZX290 41047701365A FRAME

Pos No.	Parts No	Parts Name	Qty	Unit	Technical Data	Serial No (Start)	Se
1	(*****)	ELEC.ASSY	1				
2	(*****)	ROLLER ASSY (FOR OVER-UNWINDING DETECTOR)	1				
3	(*****)	INDICATOR ASSY	1				

# TM-ZX290 41047701365A FRAME

Pos No.	Parts No	Parts Name	Qty	Unit	Technical Data	Serial No (Start)	Serial No (End)
1	90172110090	BOLT,HEXAGON SOCKET	4		M10X90		
2	31615618100	JOINT ASSY	1				
3	36036610000	CYLINDER,JACK (FRICTION WELDING)	1				
	36033690000	CYLINDER ASSY,JACK (WELDED STRUCTURE)	1				
4	82440901030	PLUG	1				
5	36624690000	VALVE,PILOT CHECK	1				
6	91002801200	O-RING	2		1B P12		

CLICK HERE TO **DOWNLOAD** THE COMPLETE MANUAL

- Thank you very much for reading the preview of the manual.
- You can download the complete manual from: [www.heydownloads.com](http://www.heydownloads.com) by clicking the link below



- Please note: If there is no response to CLICKING the link, please download this PDF first and then click on it.

CLICK HERE TO **DOWNLOAD** THE COMPLETE MANUAL