

TM-ZX260 41008601323A FRAME

PB0000361-00 SYSTEM (ZX260SL,DOMESTIC)

ASSEMBLY

CLICK HERE TO **DOWNLOAD** THE COMPLETE MANUAL

- Thank you very much for reading the preview of the manual.
- You can download the complete manual from: www.heydownloads.com by clicking the link below



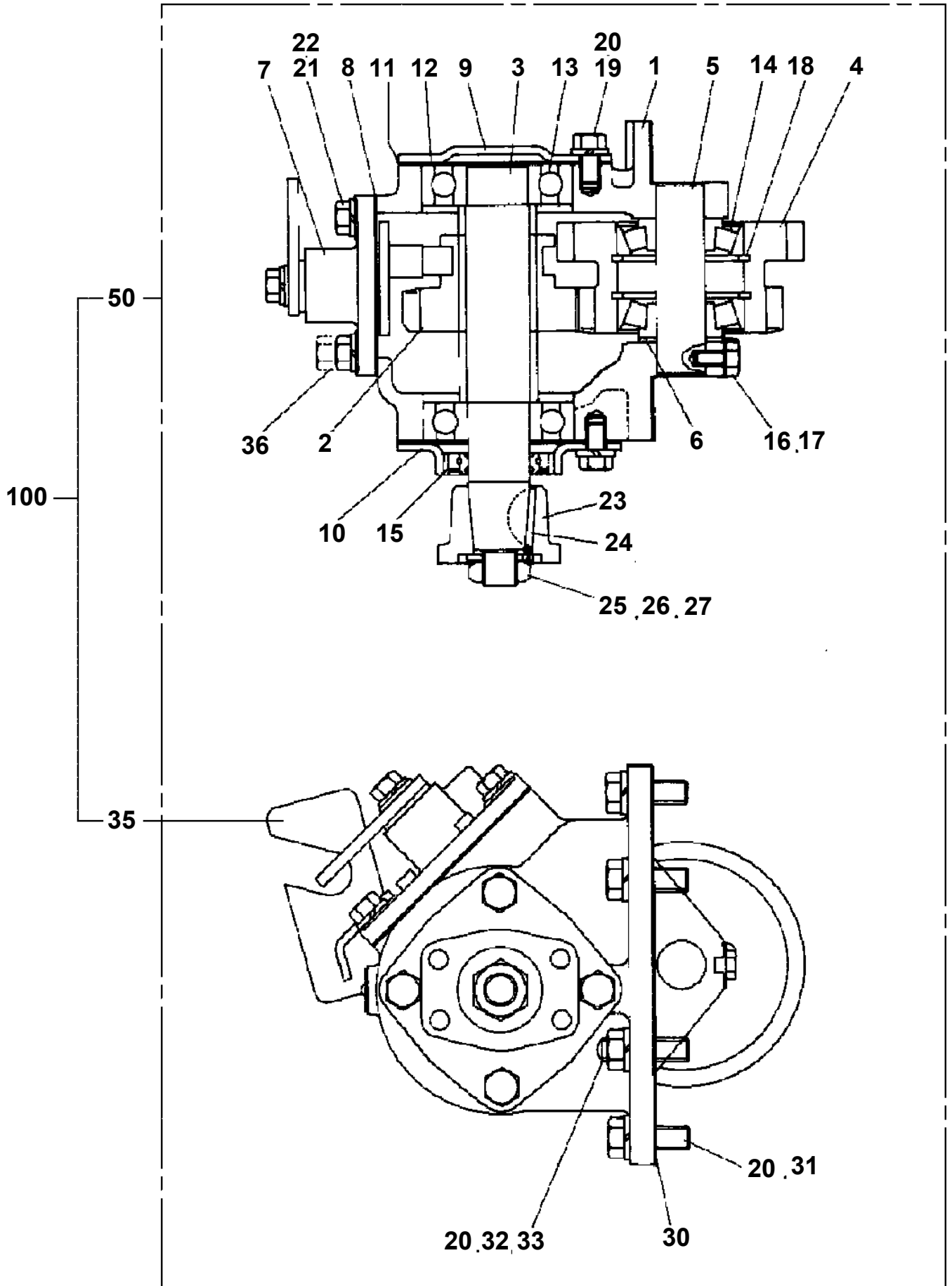
- Please note: If there is no response to CLICKING the link, please download this PDF first and then click on it.

CLICK HERE TO **DOWNLOAD** THE COMPLETE MANUAL

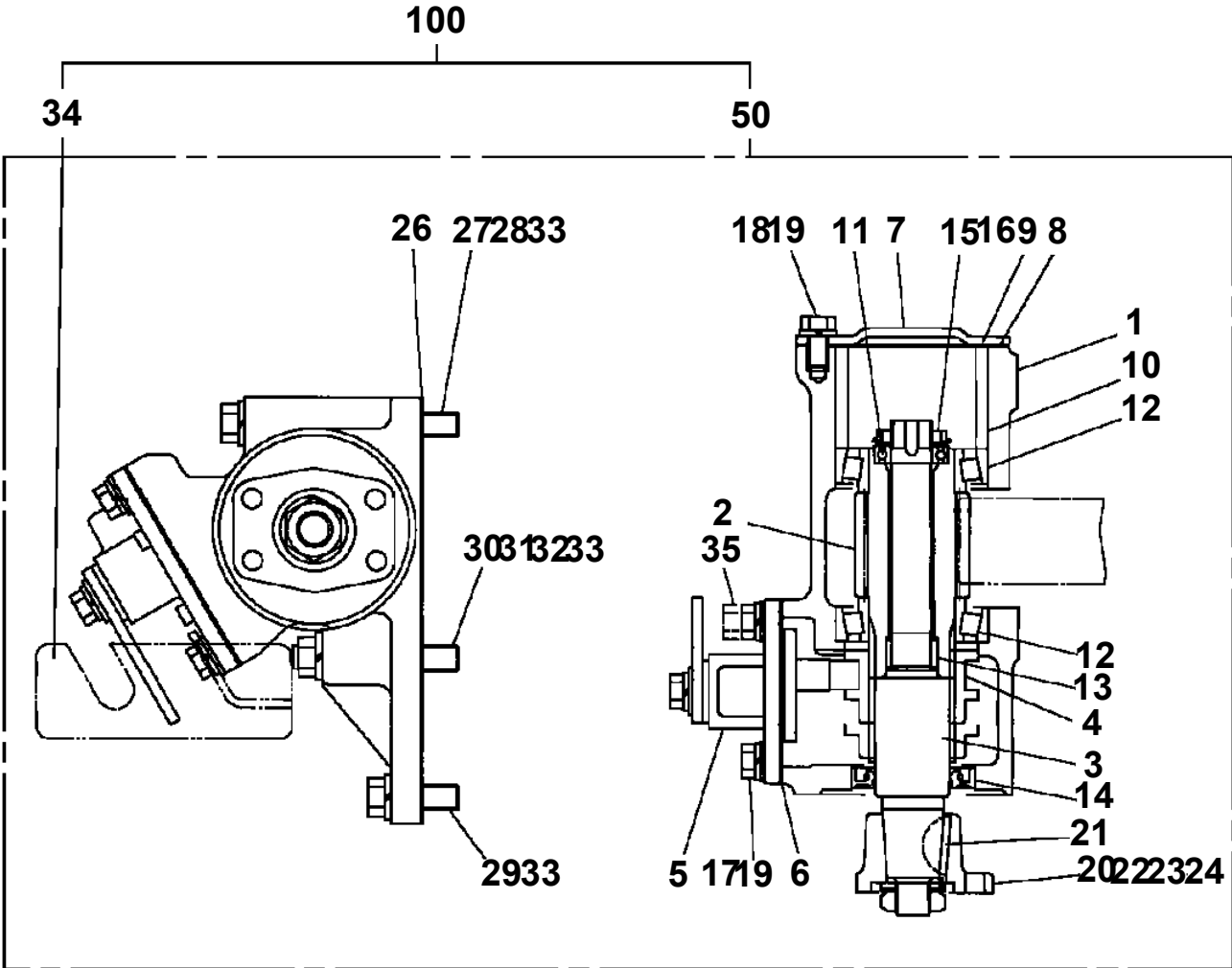
TM-ZX260 41008601323A FRAME

Pos No.	Parts No	Parts Name	Qty	Unit	Technical Data	Serial No (Start)	Serial No (End)	R
1	31790990000	POWER TAKE OFF	1					
	31792380000	POWER TAKE OFF	1					
	31792370000	POWER TAKE OFF	1					
	31792270000	POWER TAKE OFF	1					
	31792080000	POWER TAKE OFF	1					
	31790890000	POWER TAKE OFF	1					
	31792260000	POWER TAKE OFF	1					
	31792150000	POWER TAKE OFF	1					
	31790880000	POWER TAKE OFF	1					
	31792090000	POWER TAKE OFF	1					
	31792100000	POWER TAKE OFF	1					
	31790900000	POWER TAKE OFF	1					
	2	31792230000	POWER TAKE OFF	1				
31791130000		POWER TAKE OFF	1					
31790730000		POWER TAKE OFF	1					
31791120000		POWER TAKE OFF	1					
31790970000		POWER TAKE OFF	1					
31791220000		POWER TAKE OFF	1					
31792240000		POWER TAKE OFF	1					
31791190000		POWER TAKE OFF	1					
31791570000		POWER TAKE OFF	1					
31791090000		POWER TAKE OFF	1					
31791240000		POWER TAKE OFF	1					
31792250000		POWER TAKE OFF	1					
31792120000		POWER TAKE OFF	1					
31790710000		POWER TAKE OFF	1					
31792220000		POWER TAKE OFF	1					
31791080000		POWER TAKE OFF	1					
31791110000		POWER TAKE OFF	1					
31791620000		POWER TAKE OFF	1					
31791610000		POWER TAKE OFF	1					
31791180000		POWER TAKE OFF	1					
31791170000		POWER TAKE OFF	1					
31792490000		POWER TAKE OFF	1					
31792480000		POWER TAKE OFF	1					
31791100000	POWER TAKE OFF	1						
3	31791190000	POWER TAKE OFF	1					
	31791090000	POWER TAKE OFF	1					
	31791100000	POWER TAKE OFF	1					
	31791110000	POWER TAKE OFF	1					
	31791220000	POWER TAKE OFF	1					
	31791240000	POWER TAKE OFF	1					
	31791570000	POWER TAKE OFF	1					
	31790970000	POWER TAKE OFF	1					
	31792220000	POWER TAKE OFF	1					
	31791080000	POWER TAKE OFF	1					
	31791050000	POWER TAKE OFF	1					
	31791180000	POWER TAKE OFF	1					
	31791620000	POWER TAKE OFF	1					
	31792120000	POWER TAKE OFF	1					
	31792250000	POWER TAKE OFF	1					
	31792230000	POWER TAKE OFF	1					
	31792240000	POWER TAKE OFF	1					
	31791120000	POWER TAKE OFF	1					
	31791170000	POWER TAKE OFF	1					
	31791610000	POWER TAKE OFF	1					
31790710000	POWER TAKE OFF	1						
31790730000	POWER TAKE OFF	1						
31791130000	POWER TAKE OFF	1						
4	31790710000	POWER TAKE OFF	1					
	31790730000	POWER TAKE OFF	1					
5	36401650000	POWER TAKE OFF	1					
	52230312000	POWER TAKE OFF (WITH TURBO)	1					

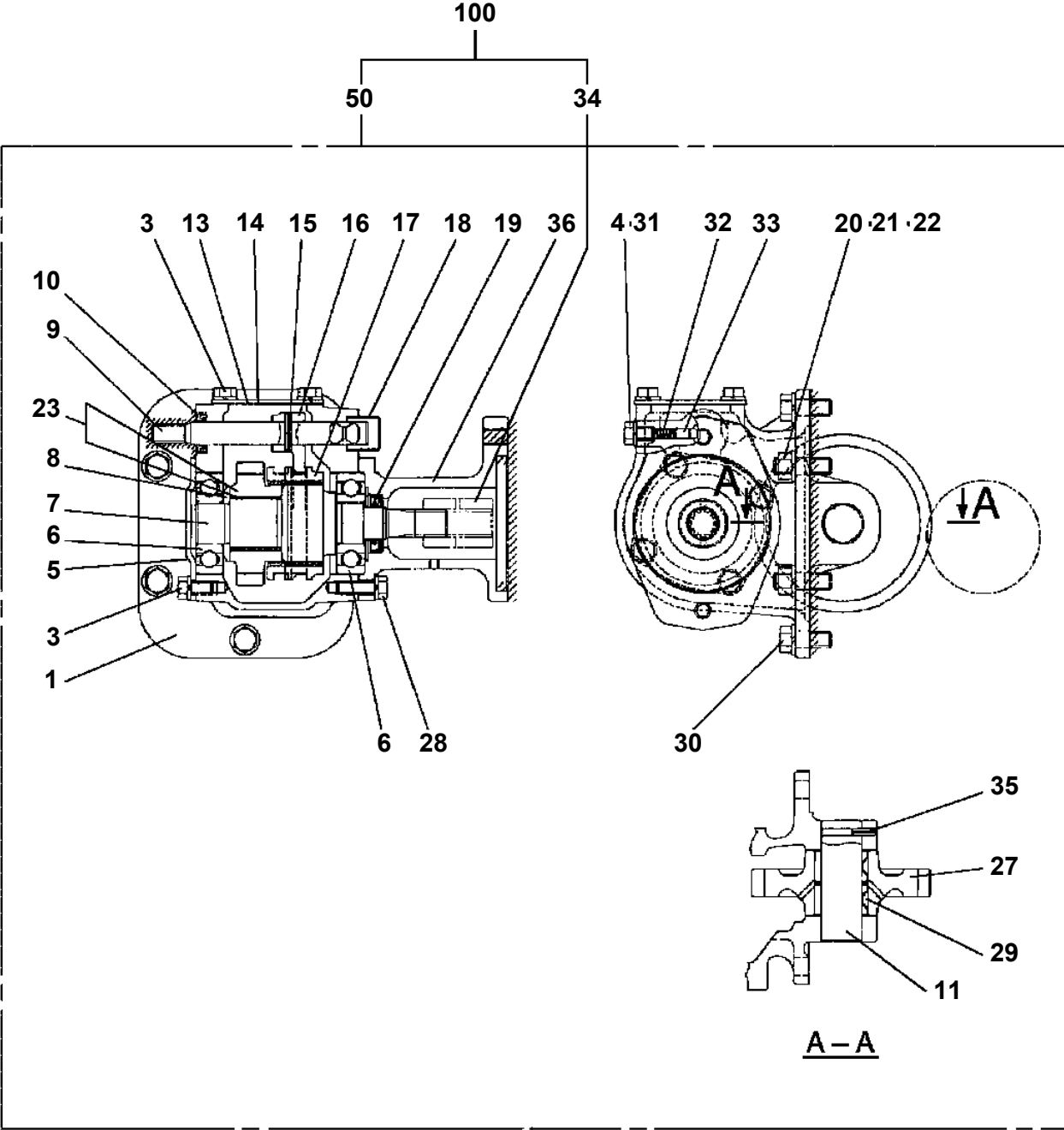
TM-ZX260 41008601323A FRAME
PB1030063-02 POWER TAKE OFF



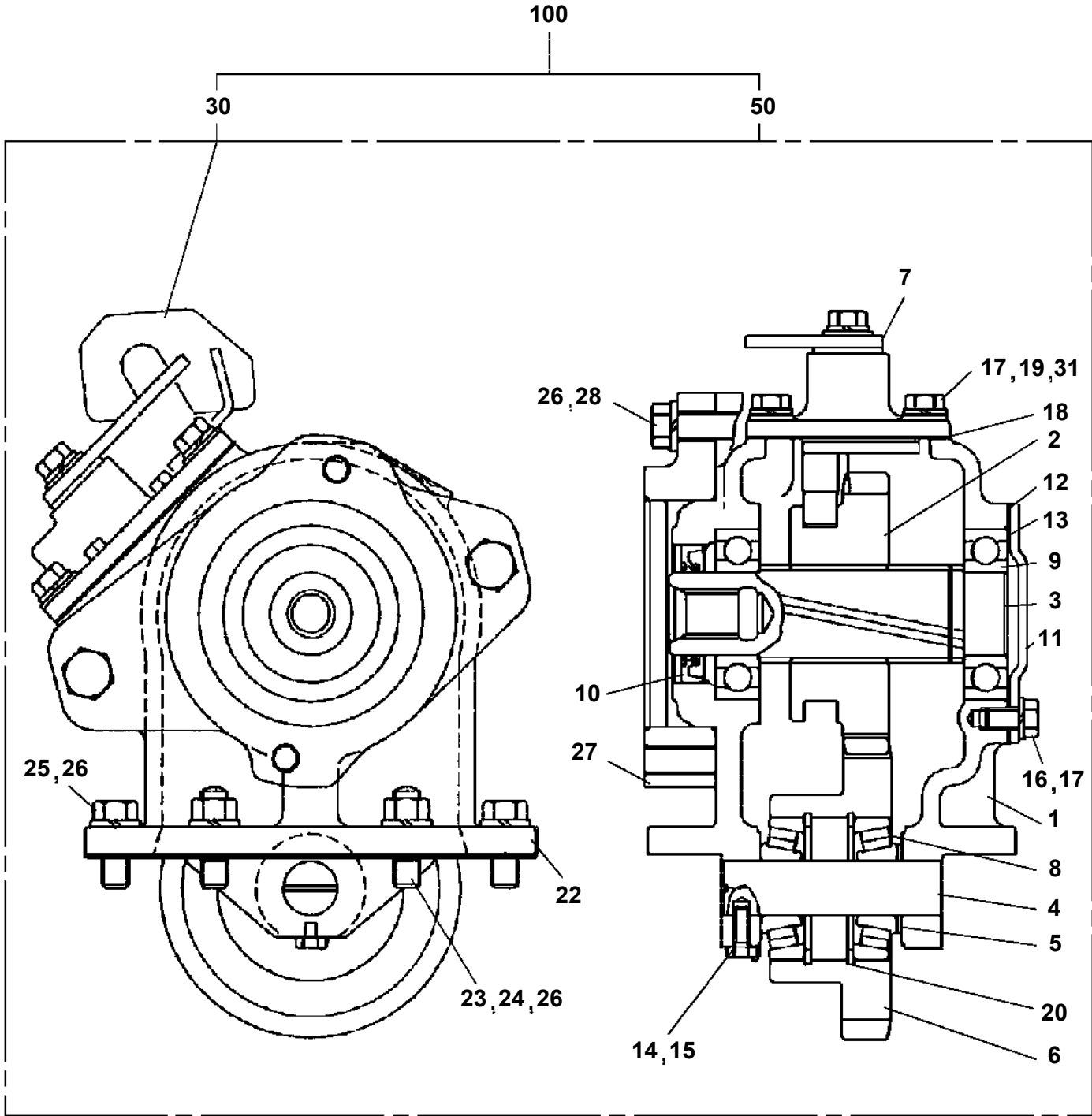
**TM-ZX260 41008601323A FRAME
PB1030131-01 POWER TAKE OFF**



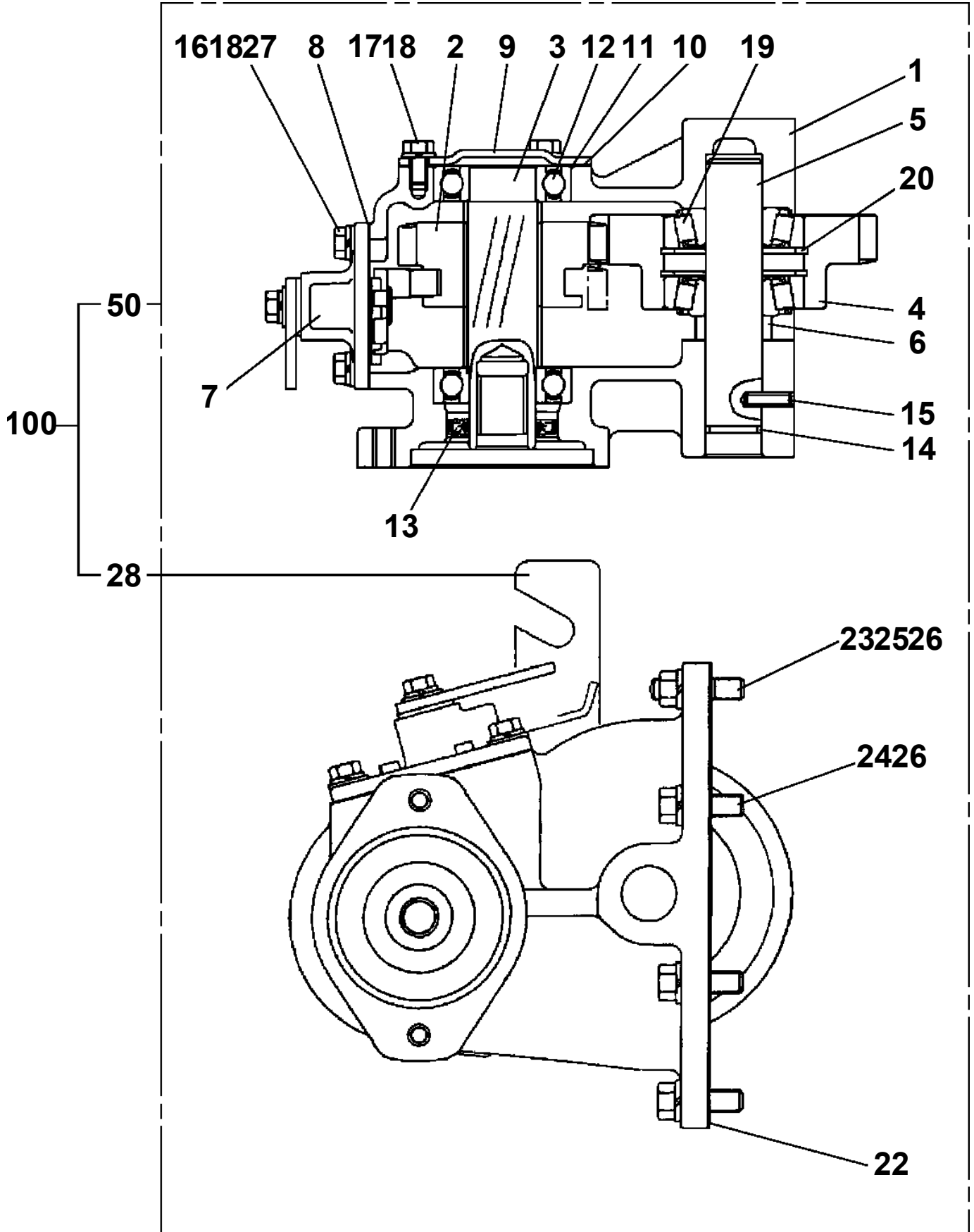
**TM-ZX260 41008601323A FRAME
PB1030163-02 POWER TAKE OFF**



TM-ZX260 41008601323A FRAME
PB1030171-02 POWER TAKE OFF

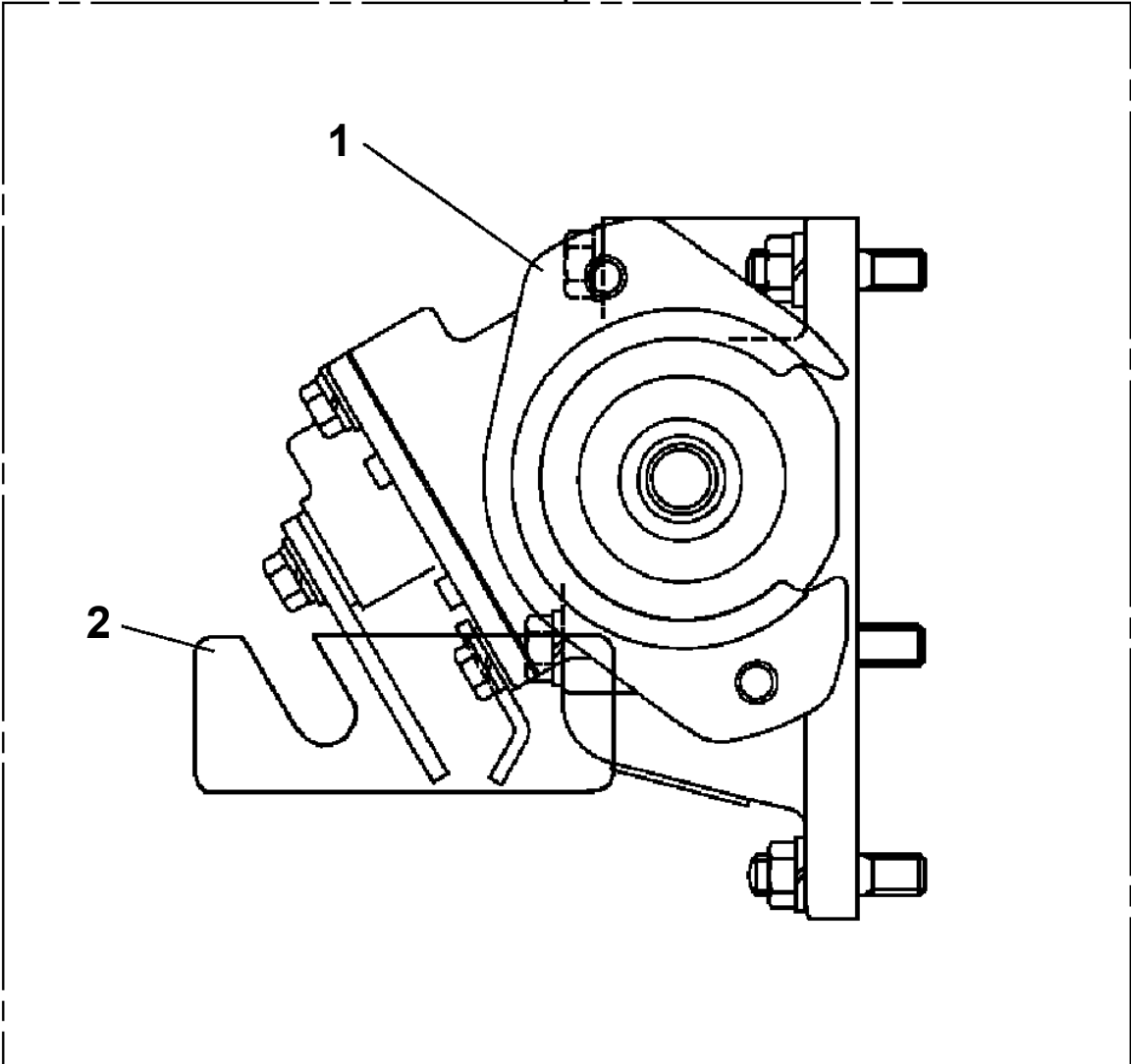


TM-ZX260 41008601323A FRAME
PB1030192-01 POWER TAKE OFF



TM-ZX260 41008601323A FRAME
PB1030204-00 POWER TAKE OFF

50



TM-ZX260 41008601323A FRAME

Pos No.	Parts No	Parts Name	Qty	Unit	Technical Data	Serial No (Start)	Serial No (End)	Remarks
1	36401895070	CASE	1					
2	36401885020	GEAR	1					
3	36400915030	SHAFT	1					
4	36401885030	GEAR	1					
5	36400415050	SHAFT	1					
6	36400675030	COLLAR	1					
7	36400095100	SHIFTER ASSY	1					
8	36400095110	PACKING	1					
9	36400095070	COVER (BEARING)	1					
10	36400095080	PACKING (COVER)	1					
11	36400095090	SHIM	N					
12	80500006206	BEARING,BALL	2					
13	91206030005	SEAL,OIL	1					
14	91001102100	O-RING	1		1A P21			
15	90710006200	SCREW,SET	1		M6X20			
16	90191208020	BOLT	4		M8X20			
17	90191208014	BOLT	3		M8X14			
18	90302040801	WASHER,SPRING	7		8			
19	36400135070	BEARING	2					
20	80602110620	RING,RITAINING	2		R62			
22	36401885050	PACKING	1					
24	90191210030	BOLT	6		M10X30			
25	90267201000	NUT	2		M10			
26	90302041001	WASHER,SPRING	8		10			
28	31790670100	SUPPORT	1					
29	90191208025	BOLT	2		M8X25			
60	36402100000	POWER TAKE OFF ASSY	1					
61	36401695040	BOLT,STUD	2		M10X1.25/1.5X47			
100	31791240000	POWER TAKE OFF	1					

TM-ZX260 41008601323A FRAME

Pos No.	Parts No	Parts Name	Qty	Unit	Technical Data	Serial No (Start)	Serial No (End)	Remarks	Pages
1	36401135050	CASE	1						
2	36401135060	GEAR (TO)	1						
3	36401125030	SHAFT (TO)	1						
4	36401125040	SLEEVE	1						
5	36401125050	SHIFTER SET	1						
6	36400095110	PACKING	1						
7	36400095070	COVER (BEARING)	1						
8	36400095080	PACKING (COVER)	1						
9	36400095090	SHIM	N						
10	36401135070	COLLAR	1						
11	80500006903	BEARING,BALL	1						
12	36401125080	BEARING,ROLLER	2						
13	36401125090	BEARING,NEEDLE	1						
14	91206030005	SEAL,OIL	1						
15	36401125100	RING,RETAINING	1						
16	90191208020	BOLT	4		M8X20				
17	90191208014	BOLT	3		M8X14				
18	90302040801	WASHER,SPRING	7		8				
20	36402015020	PACKING	2						
21	36402025030	BOLT	1		M10X1.5X115				
22	36402015040	BOLT	1		M10X1.5X105				
23	90191210045	BOLT	2		M10X45				
24	36402015010	BOLT,STUD	1						
25	36402025010	BOLT,STUD	1						
26	90267201000	NUT	2		M10				
27	90302041001	WASHER,SPRING	6		10				
28	36402025020	SPACER	1						
30	90191208025	BOLT	2		M8X25				
51	36402020000	POWER TAKE OFF	1						
52	31790880100	SUPPORT	1						
100	31792090000	POWER TAKE OFF	1						

TM-ZX260 41008601323A FRAME

Pos No.	Parts No	Parts Name	Qty	Unit	Technical Data	Serial No (Start)	Serial No (End)	Remarks
1	36401995010	CASE	1					
2	36401995020	GEAR	1					
3	36402125010	SHAFT	1					
4	36400095040	SHAFT	1					
5	36400095050	COLLAR	1					
6	36401995040	GEAR	1					
7	36400095070	COVER (BEARING)	1					
8	36400095080	PACKING (COVER)	1					
9	36400095090	SHIM	N					
10	36401995050	SHIFTER ASSY	1					
11	36400095110	PACKING	1					
12	80500006206	BEARING,BALL	2					
13	91206030005	SEAL,OIL	1					
14	90191208014	BOLT	3		M8X14			
15	90191208020	BOLT	4		M8X20			
16	90101206012	BOLT	1		M6X12			
17	90302040801	WASHER,SPRING	7		8			
18	36400095130	WASHER	1					
19	36401745060	BEARING	2					
20	80602110470	RING,RITAINING	2		R47			
22	36400055070	PACKING	1					
23	36401995060	BOLT	4					
24	90267401000	NUT	4		M10			
25	90302041001	WASHER,SPRING	6		10			
26	90193510035	BOLT	2		M10X35			
28	90191208025	BOLT	2		M8X25			
50	36402120000	POWER TAKE OFF ASSY	1					
60	31791160100	SUPPORT	1					
100	31792240000	POWER TAKE OFF	1					

TM-ZX260 41008601323A FRAME

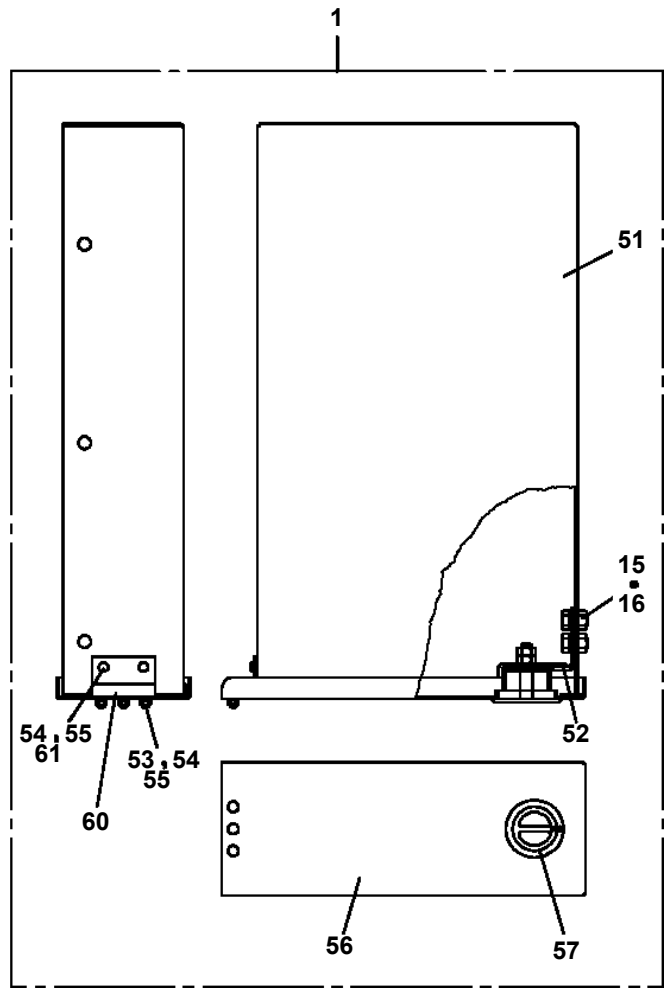
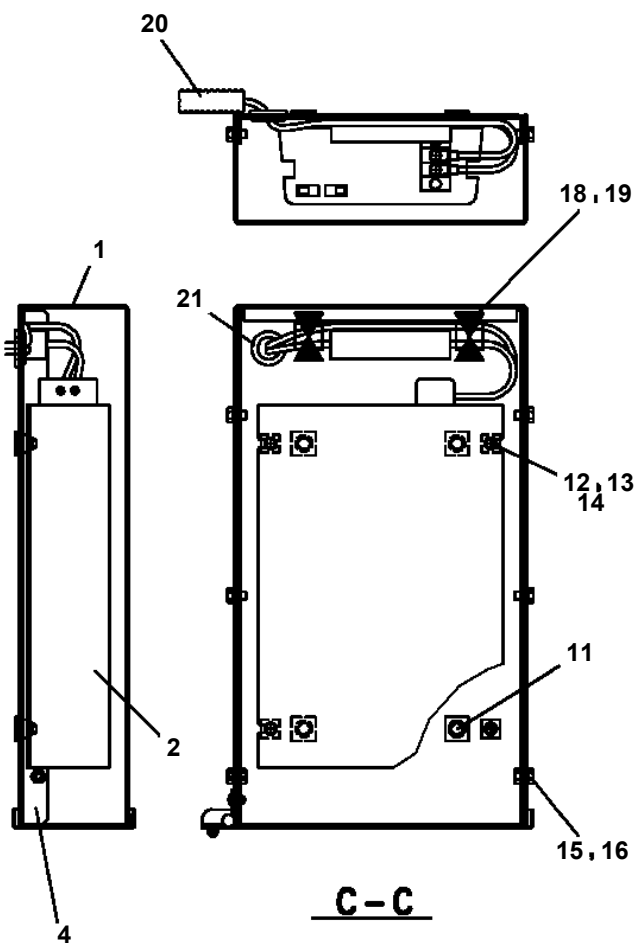
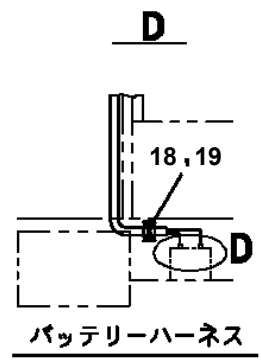
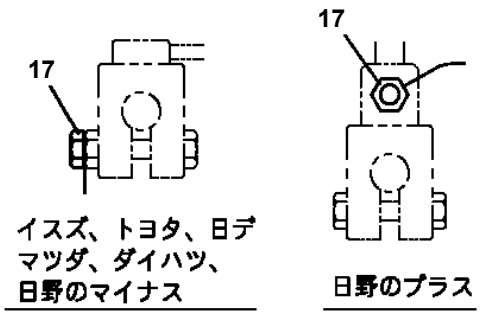
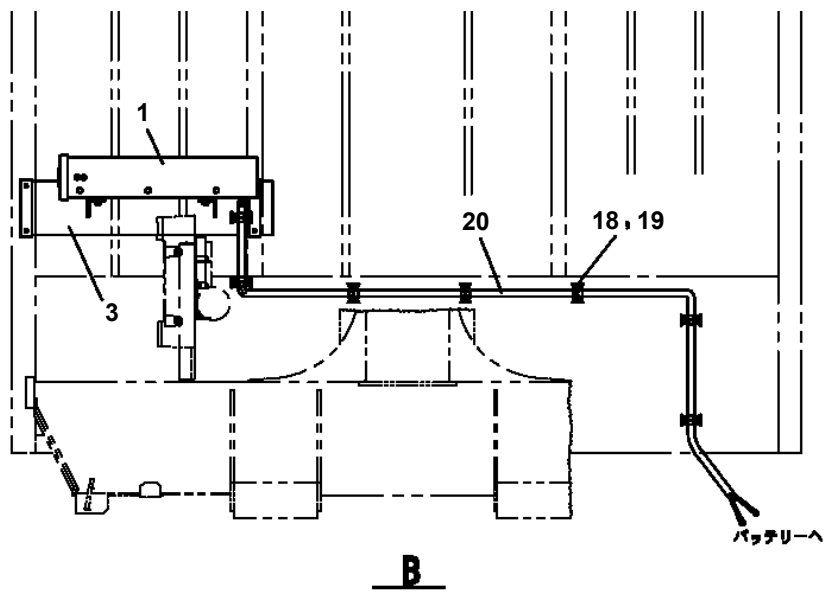
Pos No.	Parts No	Parts Name	Qty	Unit	Technical Data	Serial No (Start)	Serial No (End)	Remarks
1	36402470510	CASE	1					
2	36402470520	GEAR	1					
3	36402470530	SHAFT	1					
4	36401125040	SLEEVE	1					
5	36401125050	SHIFTER SET	1					
6	36400095110	PACKING	1					
7	36400095070	COVER (BEARING)	1					
8	36400095080	PACKING (COVER)	1					
9	36400095090	SHIM	N					
10	36402470540	COLLAR	1					
11	80500006903	BEARING,BALL	1					
12	36401125080	BEARING,ROLLER	2					
13	36401125090	BEARING,NEEDLE	1					
14	91206030005	SEAL,OIL	1					
15	36401125100	RING,RETAINING	1					
16	90191208020	BOLT	4		M8X20			
17	90191208014	BOLT	3		M8X14			
18	90302040801	WASHER,SPRING	7		8			
20	36402015020	PACKING	2					
21	36402035040	BOLT	1		M10X1.5X120			
22	36402035050	BOLT	1		M10X1.5X110			
23	90191210050	BOLT	2		M10X50			
24	36402035010	BOLT,STUD	1					
25	36402035020	BOLT,STUD	1					
26	90267201000	NUT	2		M10			
27	90302041001	WASHER,SPRING	6		10			
28	36402470550	SPACER	1					
30	90191208025	BOLT	2		M8X25			
50	36402470000	POWER TAKE OFF ASSY	1					
60	31790990100	SUPPORT	1					
100	31792370000	POWER TAKE OFF	1					

TM-ZX260 41008601323A FRAME

Pos No.	Parts No	Parts Name	Qty	Unit	Technical Data	Serial No (Start)	Serial No (End)
1	31760460100	SUPPORT	1				
2	90101210035	BOLT	3		M10X35		
3	90302041001	WASHER,SPRING	3		10		
4	90201201000	NUT	3		M10		
5	31760460200	LINK	1				
6	90101204020	BOLT	2		M4X20		
7	90201200400	NUT	2		M4		
8	90303070401	WASHER,PLAIN	4		4		
9	90302040401	WASHER,SPRING	2		4		
10	36637040001	VALVE,MANUAL CONTROL (DUMP)	1				
11	52243104000	SUPPORT	1				

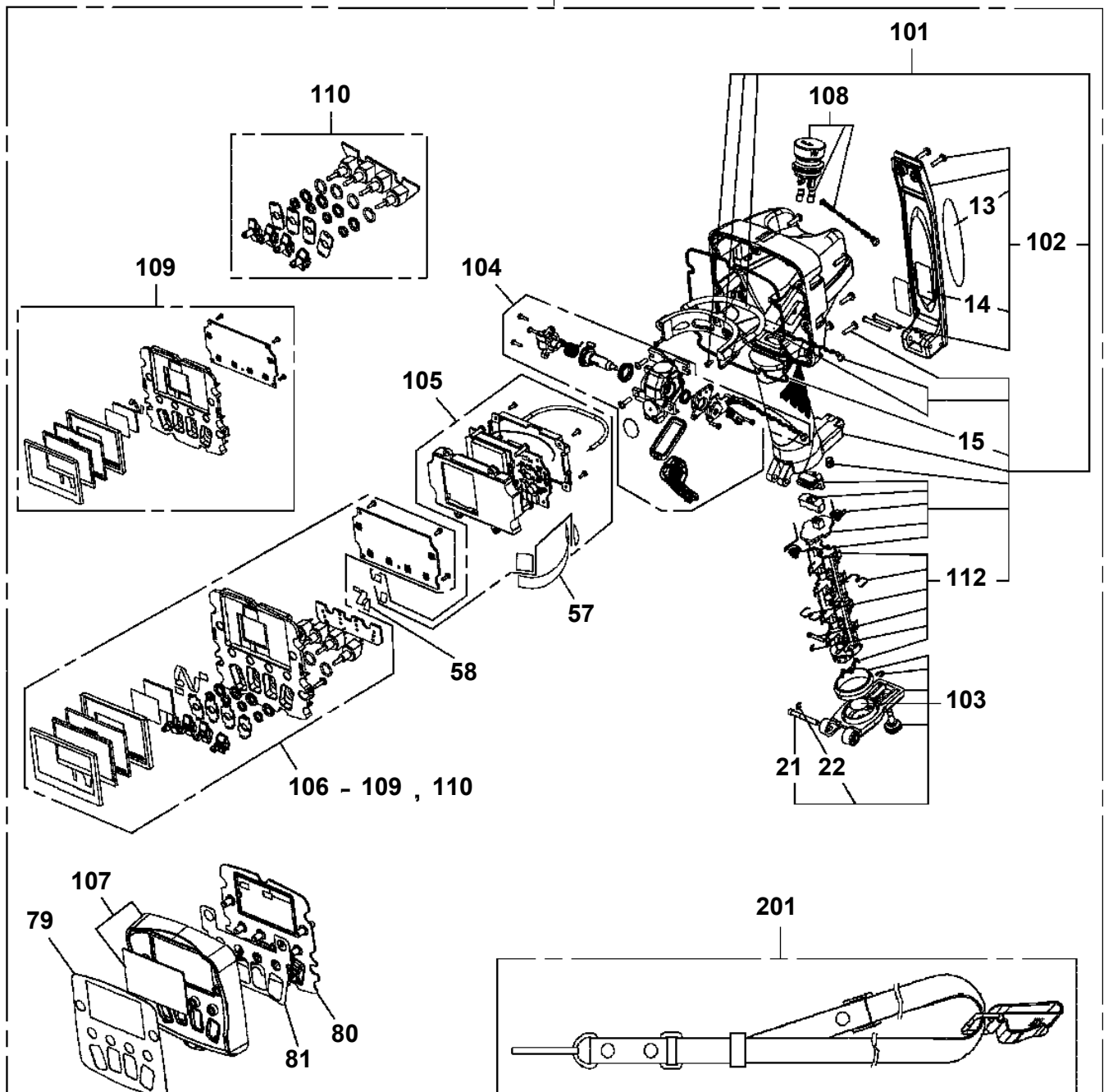
TM-ZX260 41008601323A FRAME

PB1380332-03 POWER SUPPLY (100V POWER SOURCE/1500W)



TM-ZX260 41008601323A FRAME
PB5280017-00 BOX,OPERATION

900



注意

1. 本体分解時には、指示番号15の「Oリング（ケース）」を併せて注文ください。
2. 「RF ASSY」を交換する場合は、指示番号14の「ラベル（コクイン）」も併せて注文ください。
3. お送りする「ラベル（コクイン）」には製造番号は印字されていないので記入してください。

NOTICE

1. When disassembling the main unit, order a key No.15 「O-RING(CASE)」 beforehand.
2. When replacing 「RF ASSY」 order a Key No.14 「LABEL(SELIAL)」 beforehand.
3. Serial No.is not stamped on the 「LABEL(SELIAL)」 before shipment. Fill in the blank by yourself.

TM-ZX260 41008601323A FRAME

Pos No.	Parts No	Parts Name	Qty	Unit	Technical Data	Serial No (Start)	Serial No (End)	Re
1	90172110035	BOLT,HEXAGON SOCKET	2		M10X35			
2	36623930000	VALVE,PILOT CHECK	1					
3	80491002020	JOINT (WITH O-RING)	2					
4	36034730001	CYLINDER ASSY,JACK (MIN.550)	1					
5	91002801000	O-RING	2		1B P10			
6	42610020510	CHOKE	1					
21	91002801100	O-RING	2		1B P11			

TM-ZX260 41008601323A FRAME

Pos No.	Parts No	Parts Name	Qty	Unit	Technical Data	Serial No (Start)	Serial No (End)	Remarks	Pages
1	31732450100	HARNESS	1						000156

TM-ZX260 41008601323A FRAME

Pos No.	Parts No	Parts Name	Qty	Unit	Technical Data	Serial No (Start)	Serial No (End)	Remarks
1	91002801400	O-RING	1		1B P14			
100	36150080000	DETECTOR ASSY,MOMENT	1					

TM-ZX260 41008601323A FRAME

Pos No.	Parts No	Parts Name	Qty	Unit	Technical Data	Serial No (Start)	Serial No (End)	Remarks	Pa
1	31653600500	PLUG (8POLES,MALE)	1						
2	31474661600	PLUG (2-POES,MALE)	1						

TM-ZX260 41008601323A FRAME

Pos No.	Parts No	Parts Name	Qty	Unit	Technical Data	Serial No (Start)	Serial No (End)	Remark
2	31475352100	PLATE,NAME	1					
4	31380174000	LAMP ASSY (ASSY ONLY)	1					
5	82100000192	TERMINAL	4					
6	82100000182	INSULATOR	4					
7	91810130250	FASTENER	10					
8	82115001002	CONNECTOR	3					
9	82100001400	TERMINAL	3					
10	31476362700	PLATE,CAUTION	1					
11	31380292600	SUPPORT	1					
12	80172305020	SCREW,MACHINE	2		M5X20			
13	90302040501	WASHER,SPRING	2		5			
14	90303070501	WASHER,PLAIN	2		5			
15	82100001220	INSULATOR	3					
18	90928040101	SCREW,TAPPING	3		M4X10			
19	82115001005	CONNECTOR	3					
24	31477472300	HARNESS	1		L=1000			
25	31505222102	ALARM ASSY (ASSY ONLY)	1					

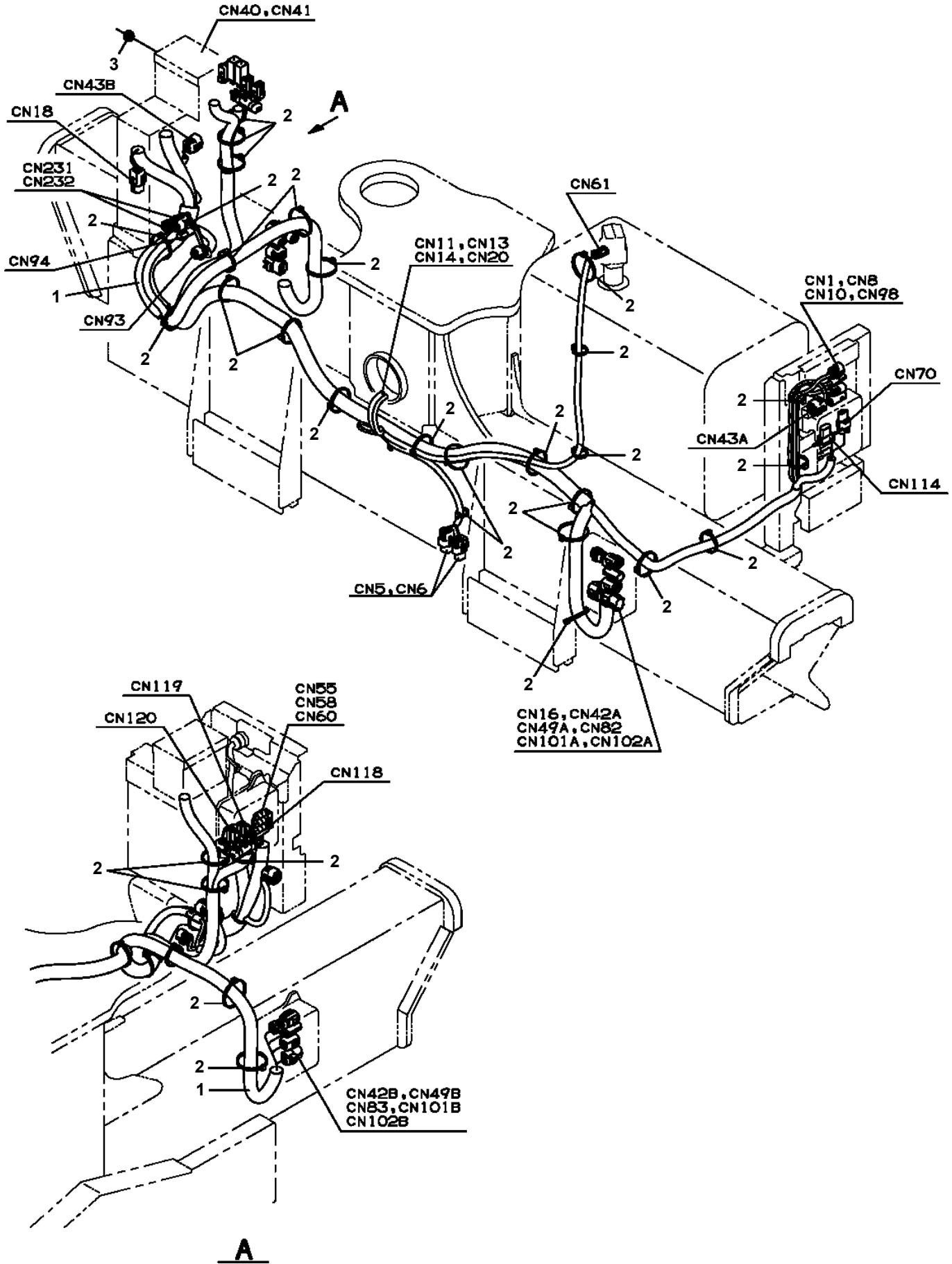
TM-ZX260 41008601323A FRAME

Pos No.	Parts No	Parts Name	Qty	Unit	Technical Data	Serial No (Start)	Serial No (End)	Remarks
1	31506151100	HARNESS	1					
2	34354781710	RELAY (WITH BRACKET)	2					
3	90280200600	NUT,FLANGE	2		M6			
4	80197586012	SCREW,MACHINE	2		M6X12			
5	91810130250	FASTENER	6					

TM-ZX260 41008601323A FRAME

Pos No.	Parts No	Parts Name	Qty	Unit	Technical Data	Serial No (Start)	Serial No (End)	Remarks	Pages
1	31361312100	HARNESS	1						000143

TM-ZX260 41008601323A FRAME
PE5021347-00 ELEC.ASSY



**TM-ZX260 41008601323A FRAME
PE5021366-00 ELEC.ASSY (SS COMBINATION, FOR SS-38:ZX260/290)**

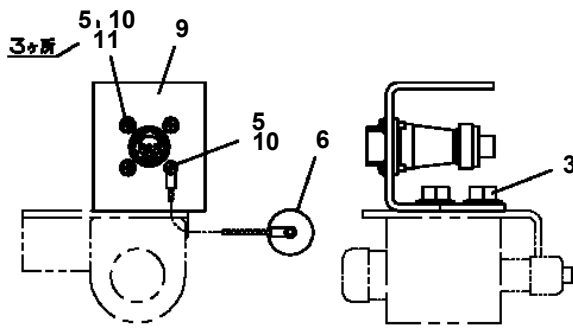
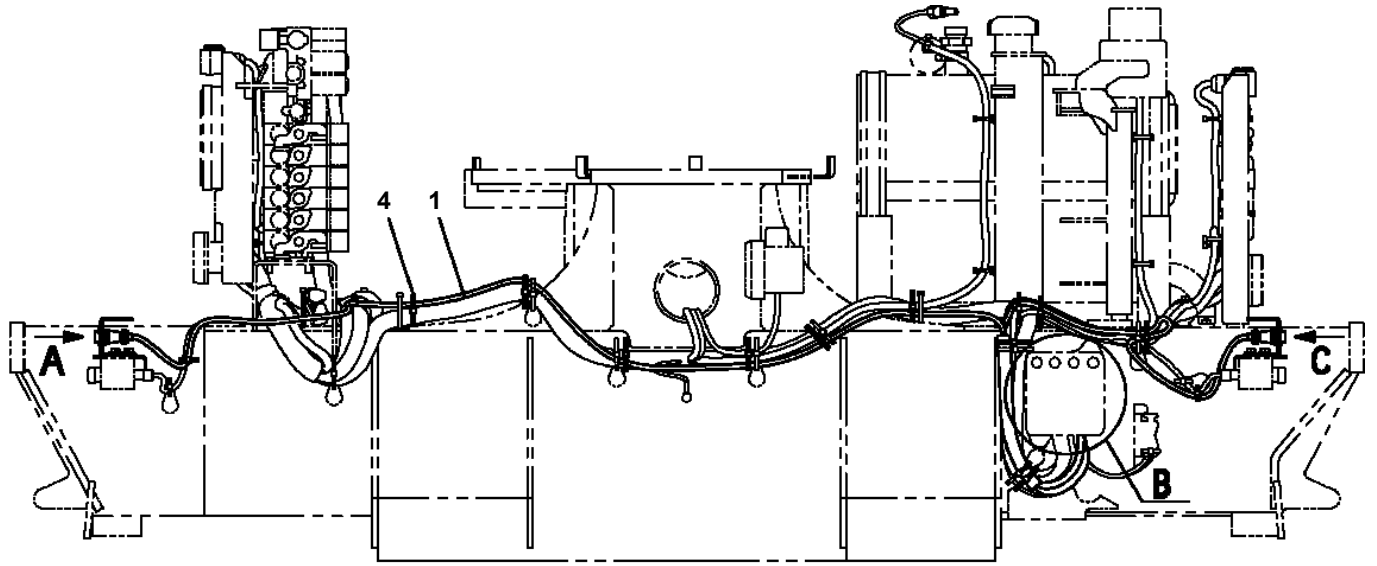
ハイセンASSY (SSハイヨウ, SS-38ヨウ; ZX260/290)
ELEC.ASSY (SS COMBINATION, FOR SS-38:ZX260/290)

符号	日本語名称	英語名称	備考
1	ハイセンASSY	ELEC.ASSY	本体部
2	ハイセンASSY	ELEC.ASSY	接続部
3	ネームプレートASSY	NAME PLATE ASSY	一旦前進
7	ハイセンASSY	ELEC.ASSY	SS作業灯部
8	ハイセンASSY	ELEC.ASSY	SSラジコン取り外し

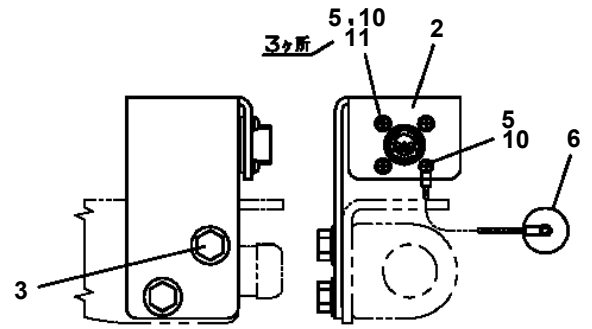
適用製造番号によっては取り付けがないものもあります。

MACHINES OF SOME SERIAL NO. ARE NOT EQUIPPED WITH THESE PARTS.

TM-ZX260 41008601323A FRAME
PE5021401-00 ELEC.ASSY

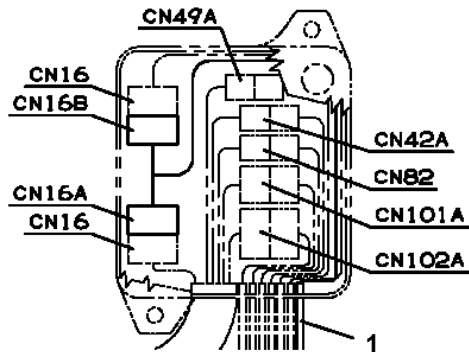


ZX300/360SL 以外の場合

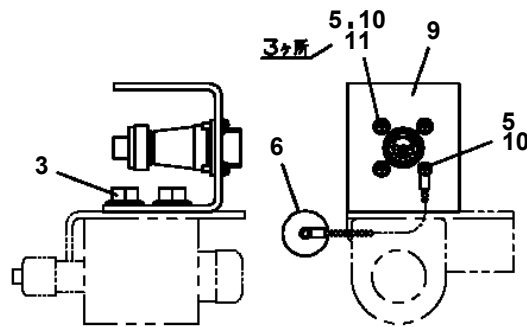


ZX300/360SL の場合

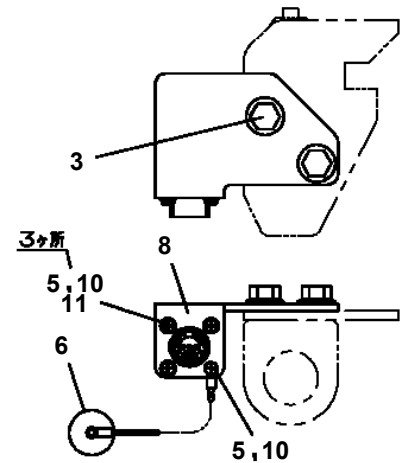
A



B



ZX300/360SL 以外の場合



ZX300/360SL の場合

C

TM-ZX260 41008601323A FRAME
PE5021471-00 ELEC.ASSY

ハイセンASSY
ELEC.ASSY

符号	日本語名称	英語名称	備考
1	ハイセンASSY	ELEC.ASSY	本体部
2	ハイセンASSY	ELEC.ASSY	接続部

適用製造番号によっては取り付けがないものもあります。

MACHINES OF SOME SERIAL NO. ARE NOT EQUIPPED WITH THESE PARTS.

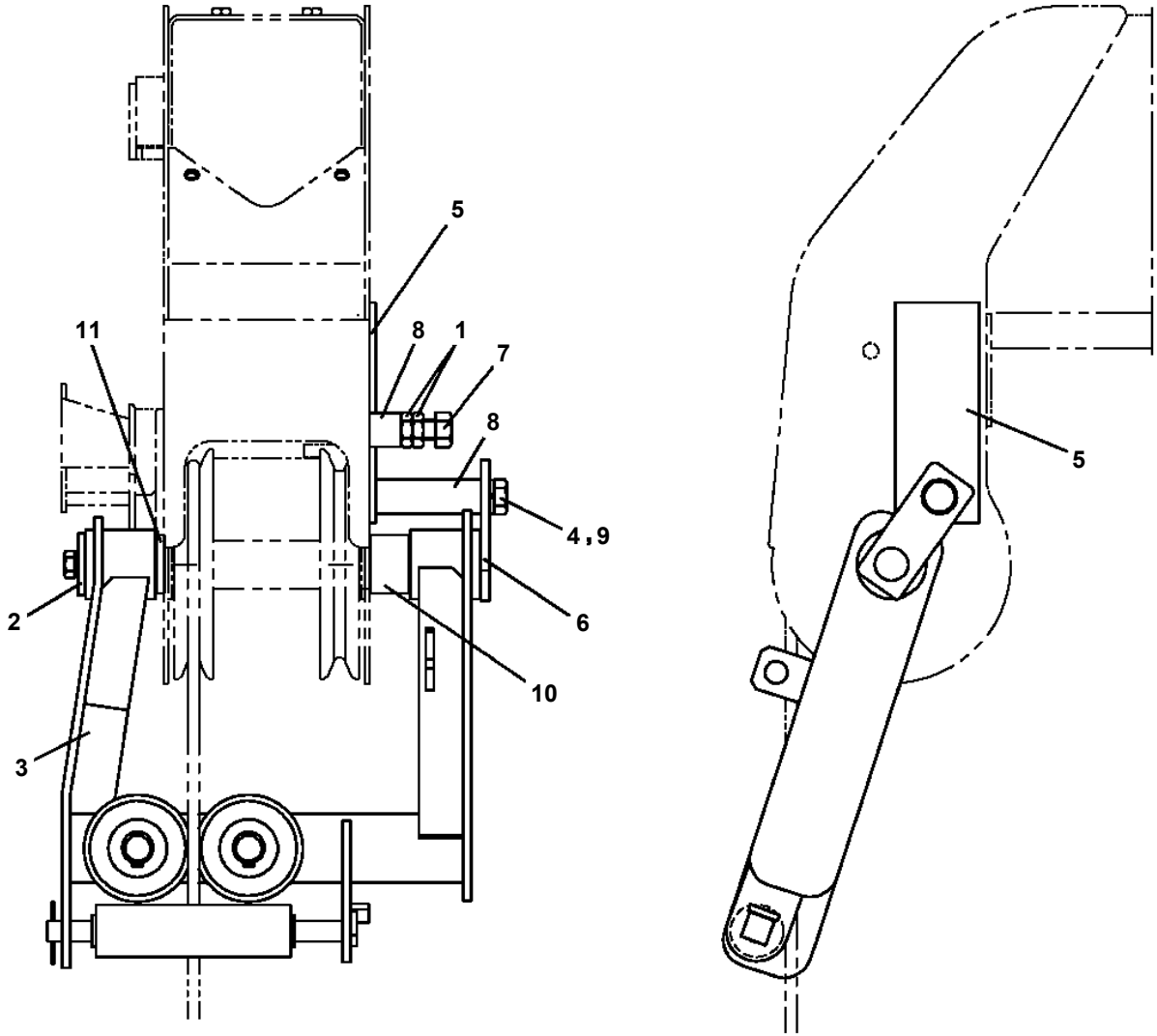
TM-ZX260 41008601323A FRAME

Pos No.	Parts No	Parts Name	Qty	Unit	Technical Data	Serial No (Start)	Serial No (End)	Remarks
1	36072255010	CASING	1					
2	36072255020	COVER	1					
3	36072255030	GEAR (1)	1					
6	36073425030	DISK	1					
7	36073425020	WHEEL,RATCHET	1					
8	36073425040	BUSH	1					
9	36072255091	RING,SLIP	1					
10	36072255101	RATCHET	1					
11	36072255110	PIN	1					
12	36072255120	SPRING	1					
13	36072255130	PIN	1					
14	36072255140	PLATE (LOCK)	1					
15	80172304010	SCREW,MACHINE	1		M4X10			
17	36072255160	BOLT (WITH WASHER)	6		M8X25			
19	36072255180	GAUGE,OIL	1					
20	36072255240	PLUG	1					
21	80500006004	BEARING,BALL	1					
22	80500006212	BEARING,BALL	1					
23	80500006305	BEARING,BALL	1					
24	80500006007	BEARING,BALL	1					
25	36072255190	KEY	2		7X7X20			
26	36072255250	O-RING	1					
27	91001101500	O-RING	1		1A P15			
28	36072255210	SEAL,OIL	1					
29	36072255220	NUT,CASTLE	1		M24			
30	80136350035	PIN,SPLIT	1		5X35			
31	80602110620	RING,RITAINING	1		R62			
41	36073435011	GEAR SET	1					
50	36073430000	WINCH (OOKUBO)	1					
101	36072251000	FACING KIT(JAPANESE)	1					
102	36072252000	FACING KIT (ENGLISH)	1					

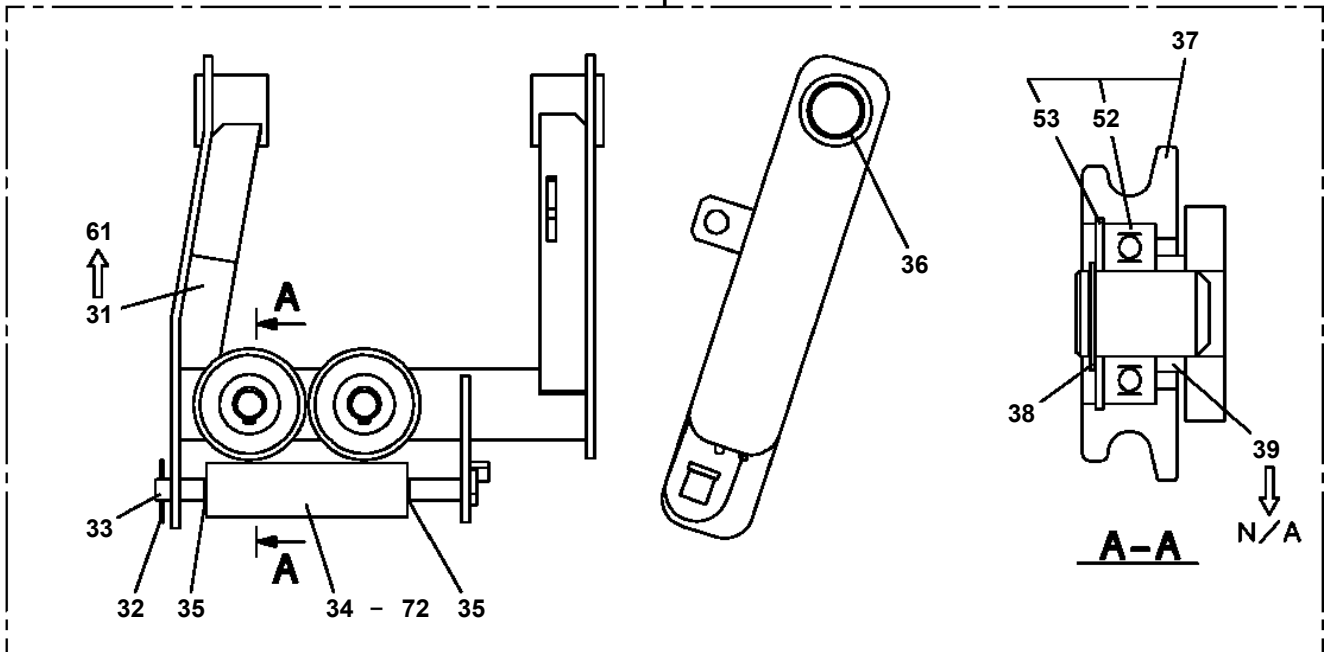
TM-ZX260 41008601323A FRAME

Pos No.	Parts No	Parts Name	Qty	Unit	Technical Data	Serial No (Start)	Serial No (End)	Remarks	Pages
1	31783100100	SUPPORT	1						
2	31783100200	PLATE	2						
3	31783100300	PLATE	2						
4	90102208045	BOLT	4		M8X45				
5	90303070801	WASHER,PLAIN	8		8				
6	90201200800	NUT	4		M8				
7	90302040801	WASHER,SPRING	4		8				

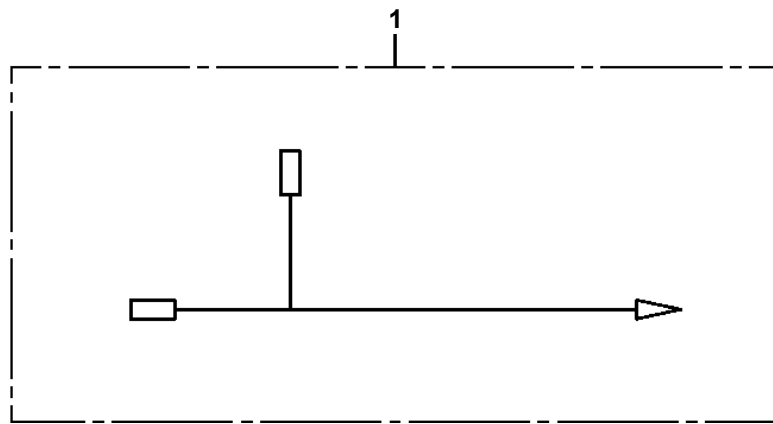
**TM-ZX260 41008601323A FRAME
PG1020006-03 GUIDE,ROPE**



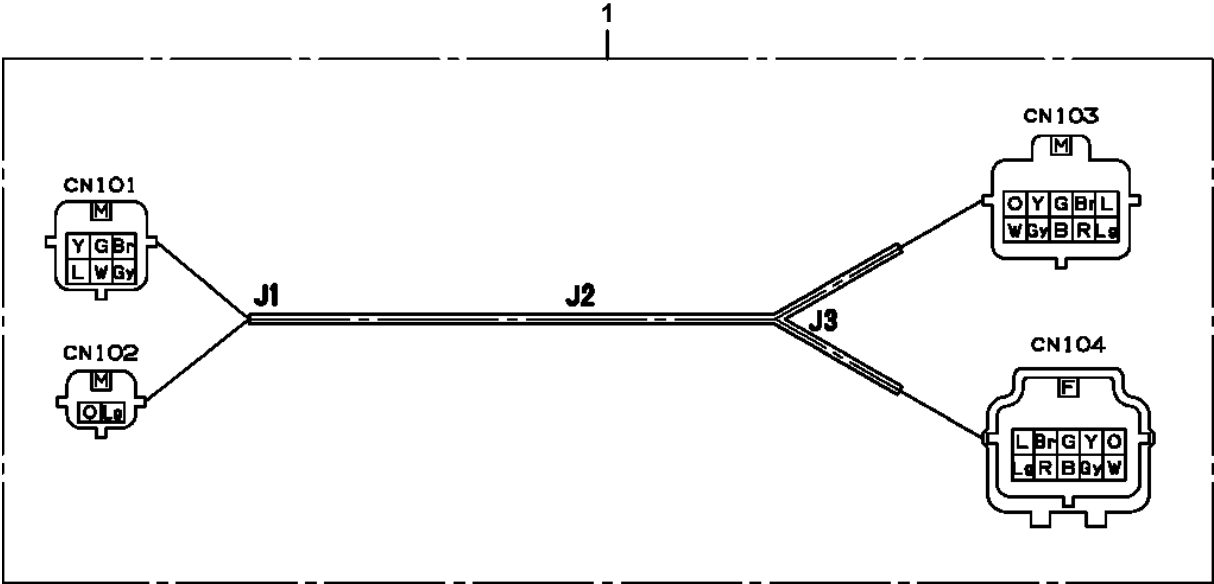
3



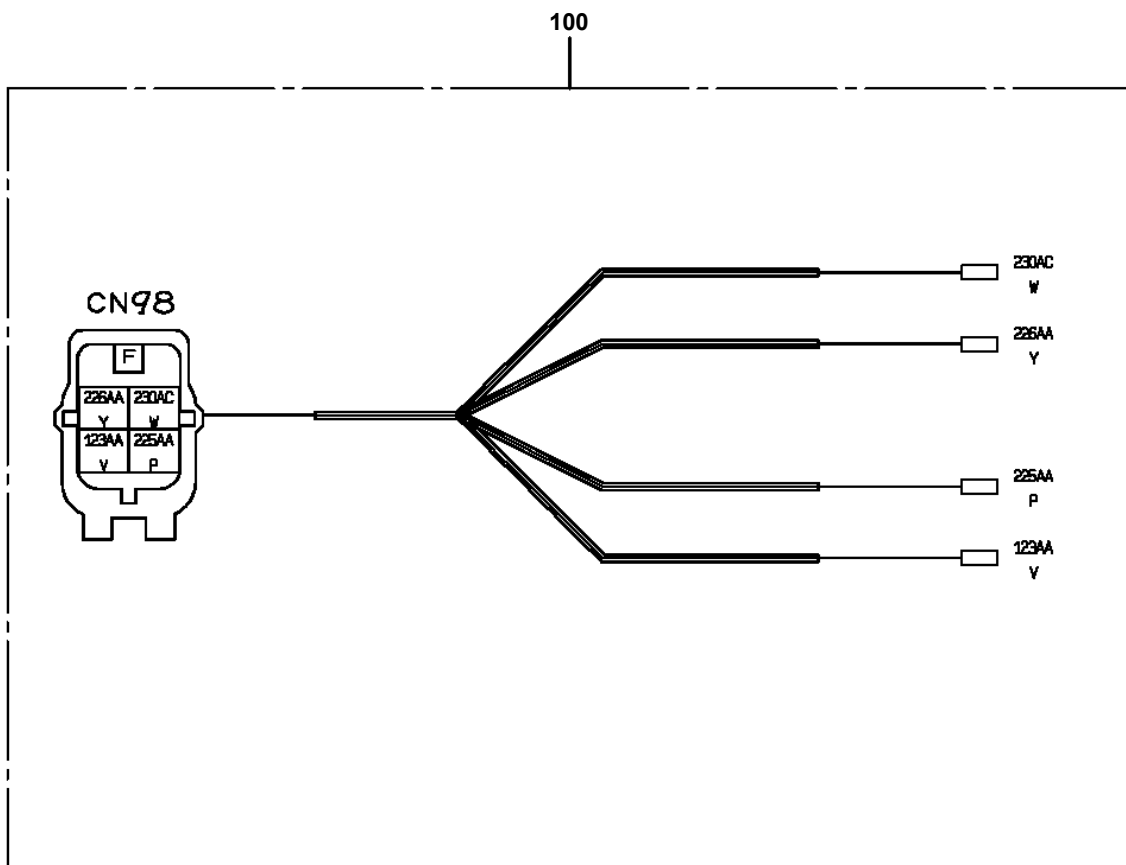
**TM-ZX260 41008601323A FRAME
PH5032071-00 HARNESS**



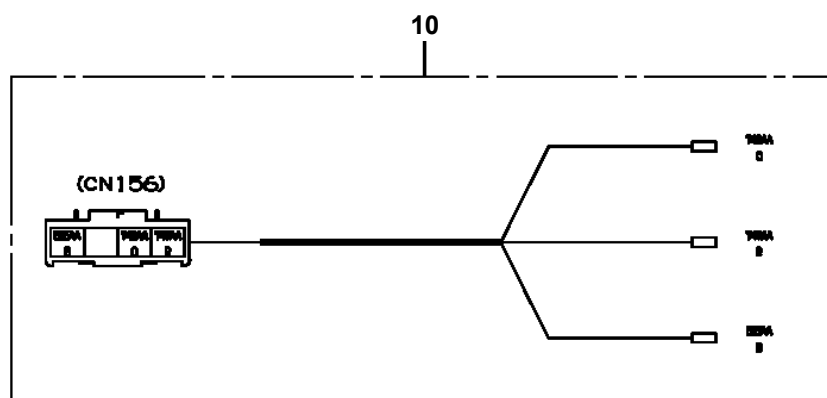
TM-ZX260 41008601323A FRAME
PH5033282-00 HARNESS



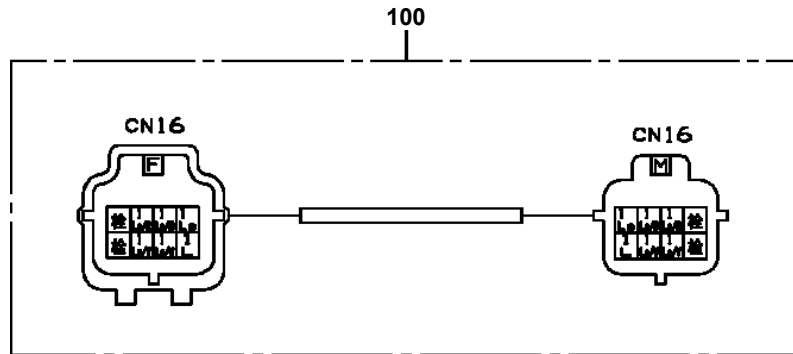
TM-ZX260 41008601323A FRAME
PH5033823-01 HARNESS



**TM-ZX260 41008601323A FRAME
PH5034112-00 HARNESS**



**TM-ZX260 41008601323A FRAME
PH5034305-00 HARNESS**



CLICK HERE TO **DOWNLOAD** THE COMPLETE MANUAL

- Thank you very much for reading the preview of the manual.
- You can download the complete manual from: www.heydownloads.com by clicking the link below

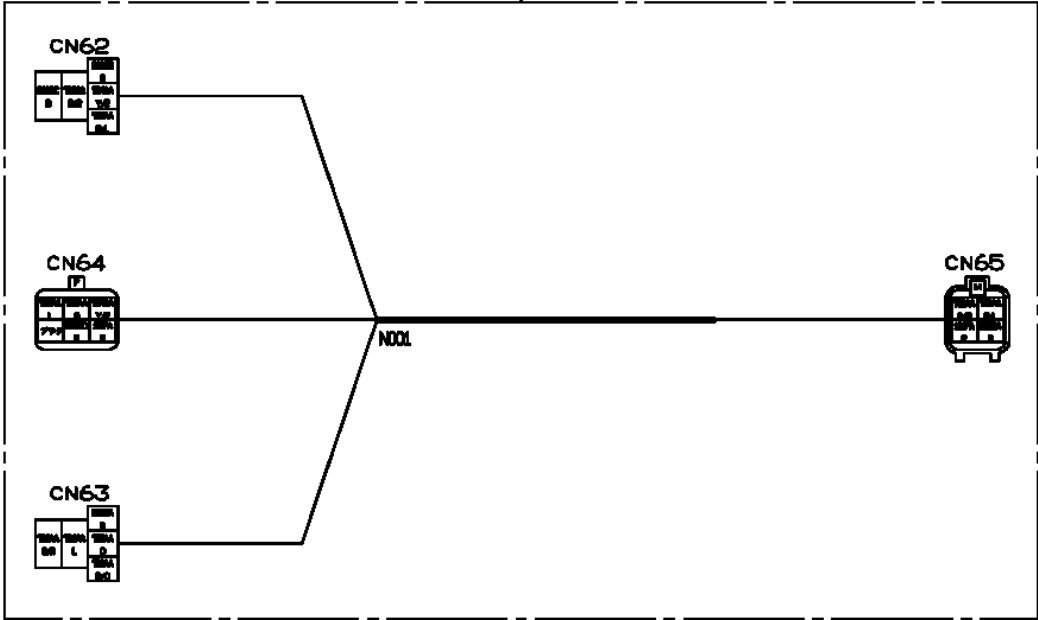


- Please note: If there is no response to CLICKING the link, please download this PDF first and then click on it.

CLICK HERE TO **DOWNLOAD** THE COMPLETE MANUAL

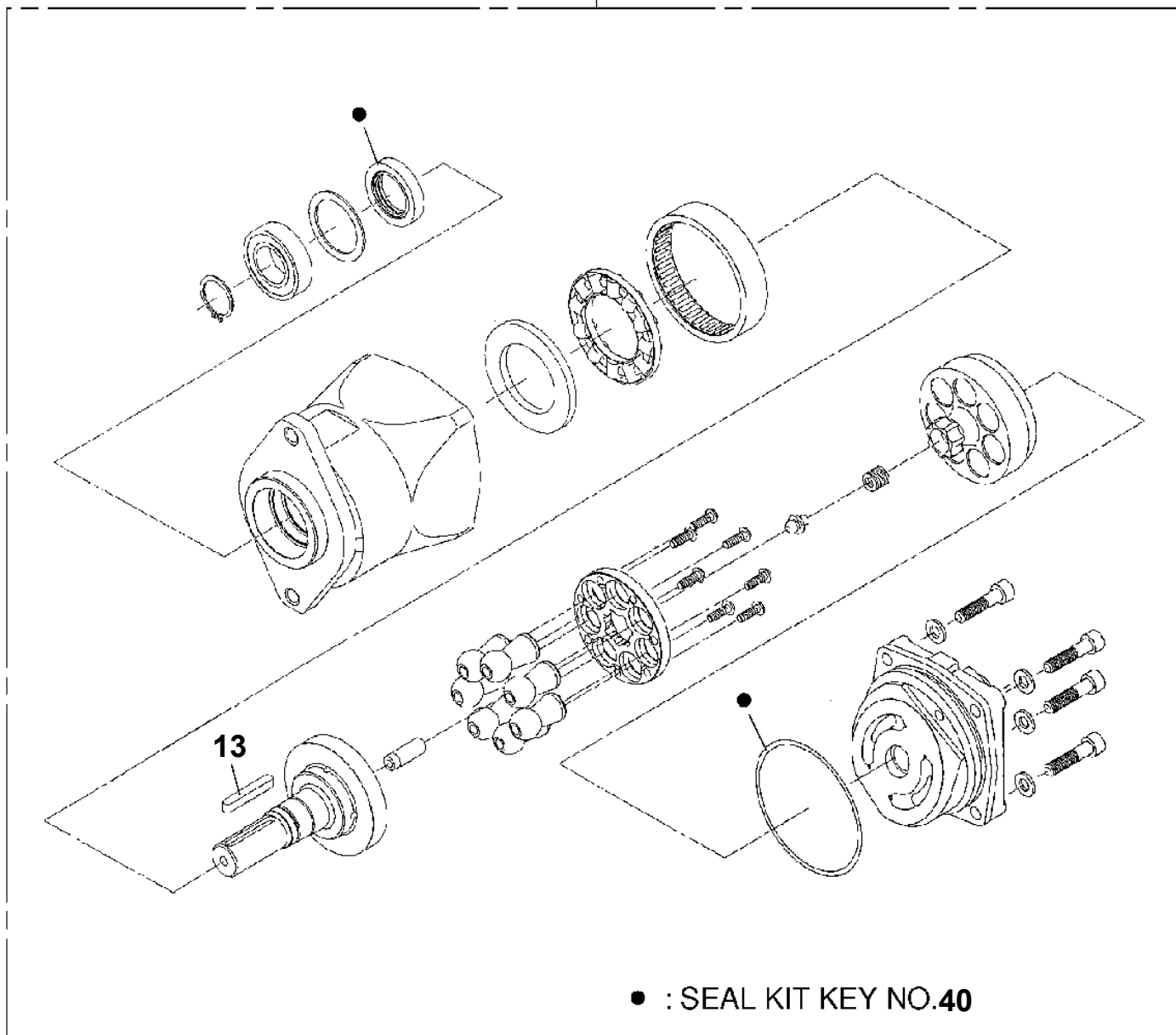
TM-ZX260 41008601323A FRAME
PH5034488-00 HARNESS

10

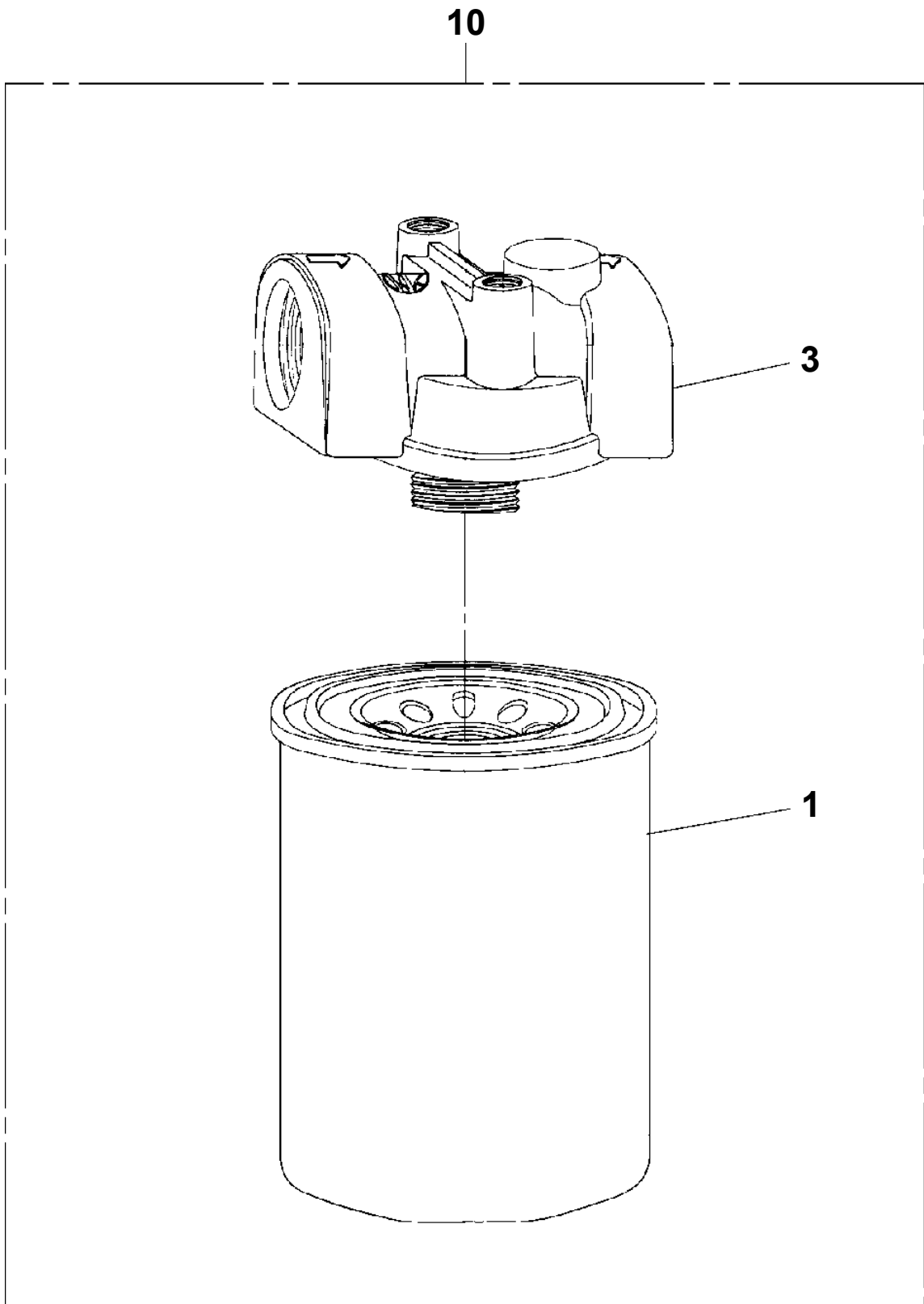


TM-ZX260 41008601323A FRAME
PI1010152-00 MOTOR, HYDRAULIC (WINCH)

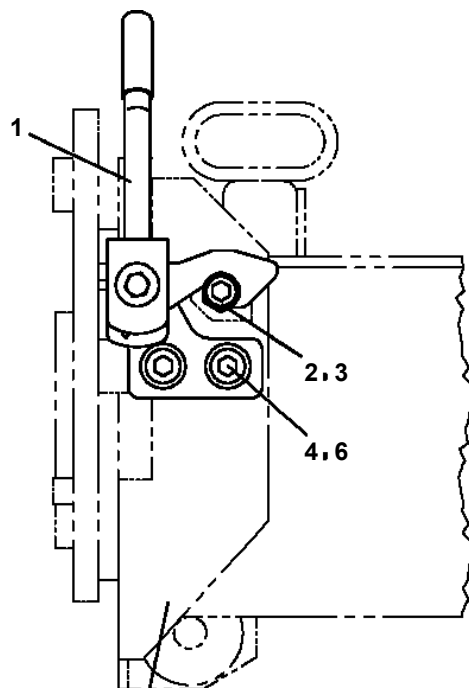
50



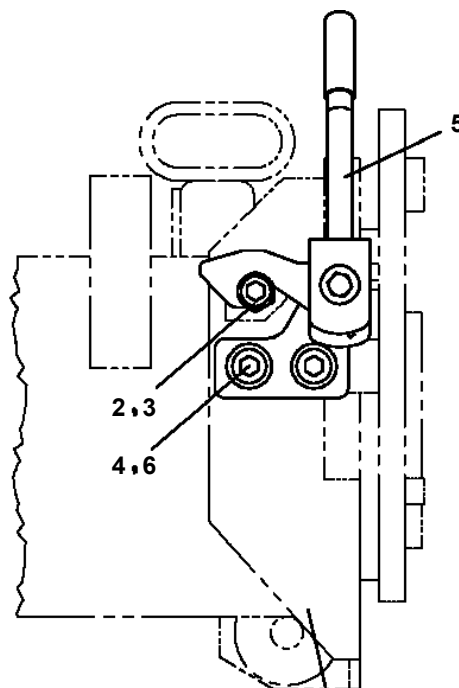
TM-ZX260 41008601323A FRAME
PI1300026-01 FILTER,OIL (WAKO)



**TM-ZX260 41008601323A FRAME
PJ3410036-02 LOCK ASSY**

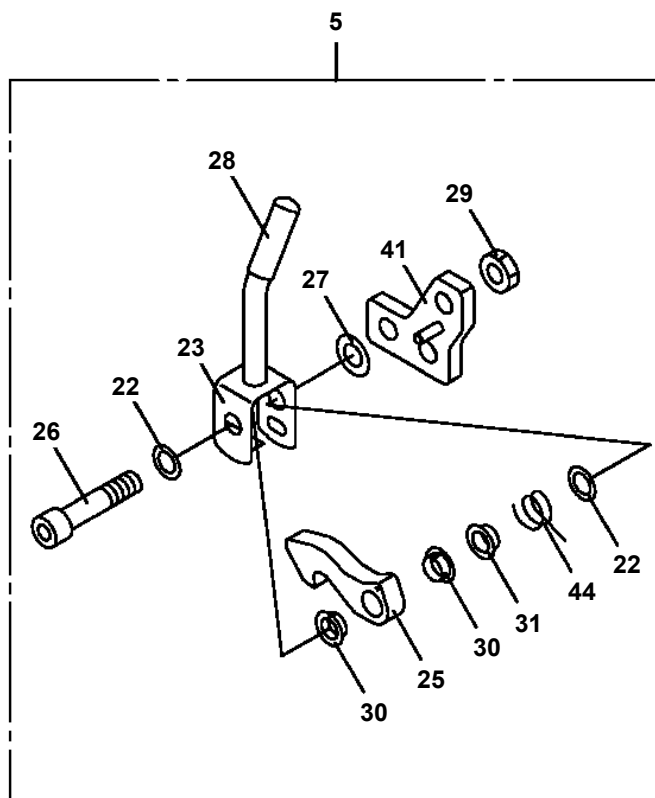
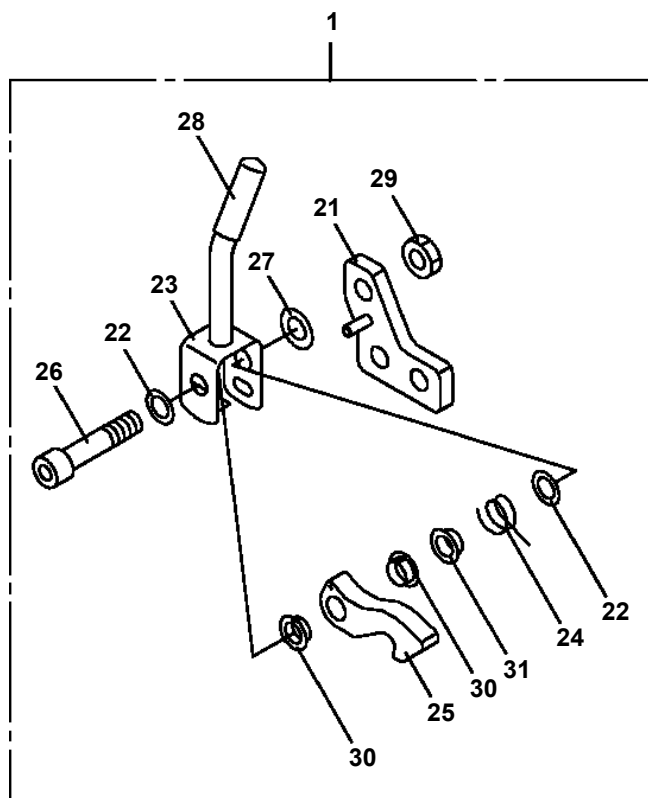


左リアアウトリガ
REAR OUTRIGGER
LEFT SIDE

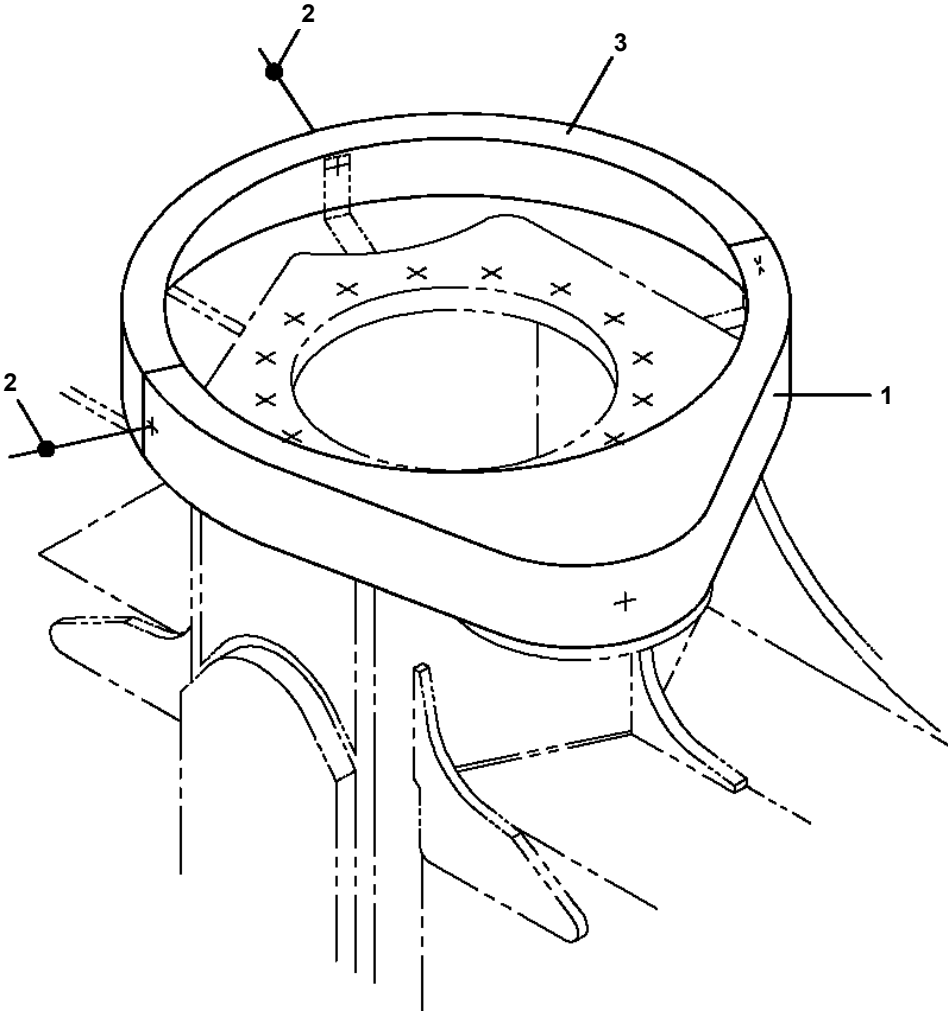


右リアアウトリガ
REAR OUTRIGGER
RIGHT SIDE

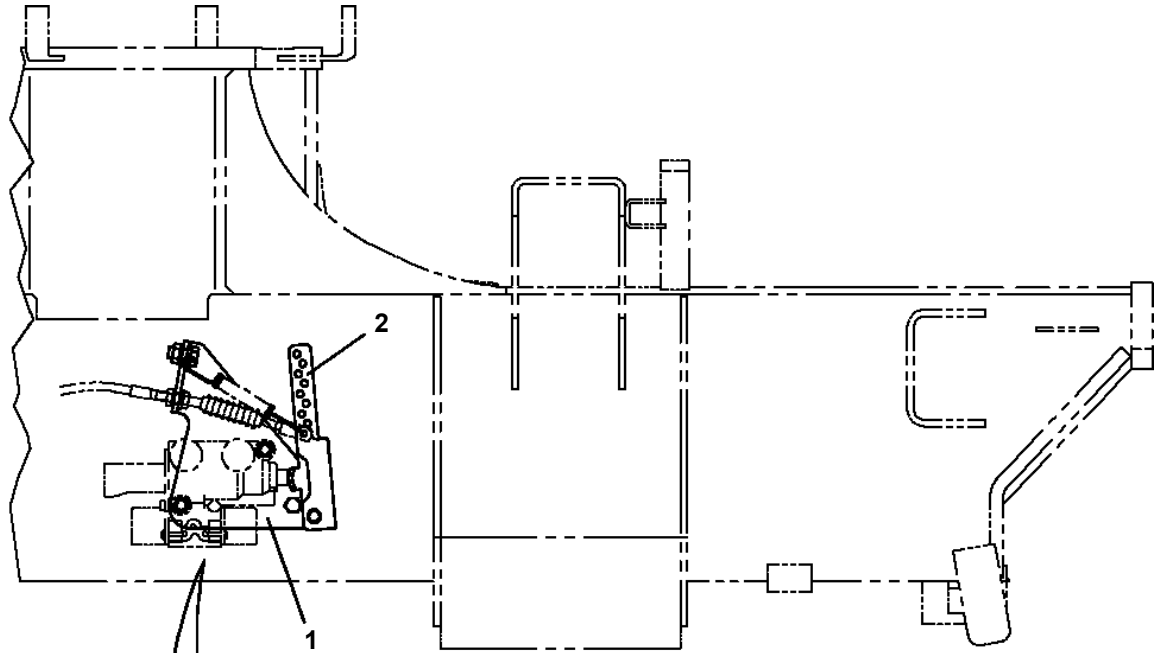
車両後端より見る
VIEWED FROM REAR
OF VEHICLE



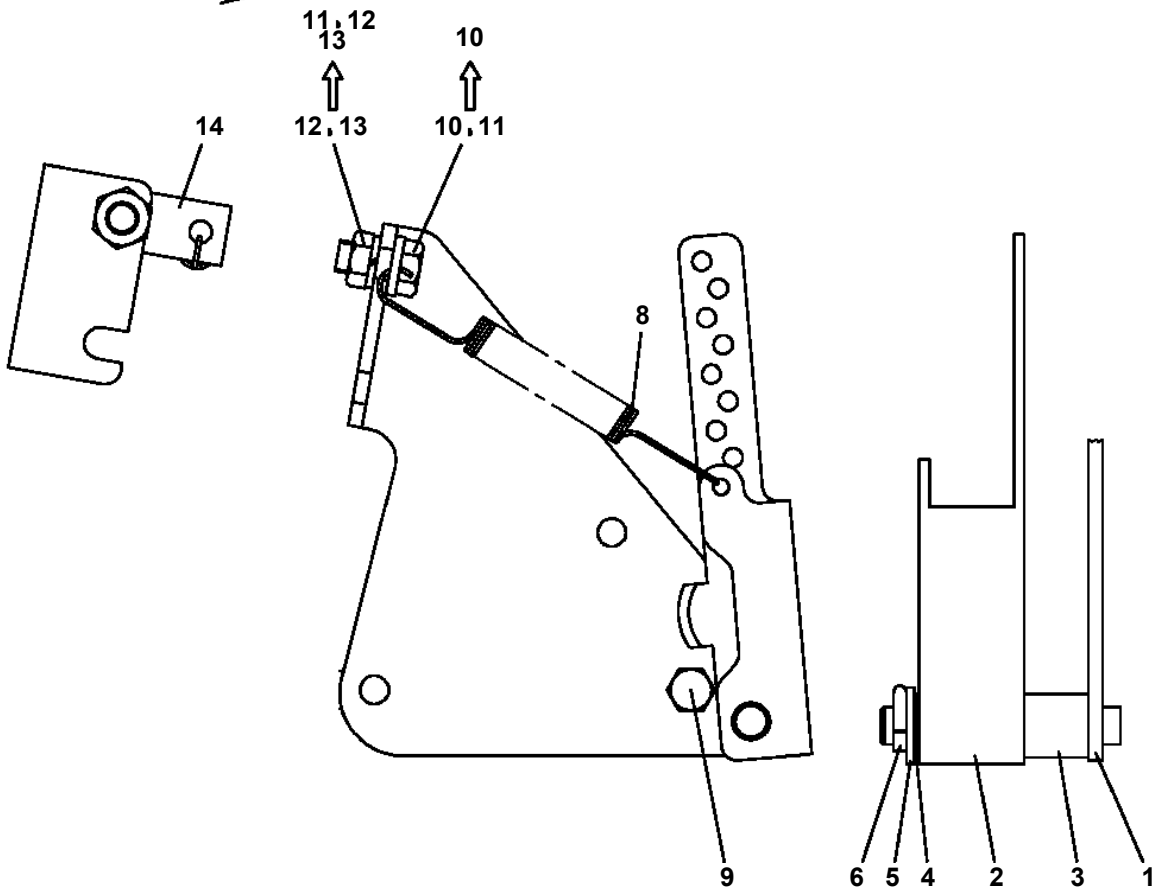
TM-ZX260 41008601323A FRAME
PK1330438-00 COVER (SWING)



TM-ZX260 41008601323A FRAME
PL1031164-02 OPE.ASSY,ACCELERATOR



車両前方から見る
VIEWED FROM FRONT
OF VEHICLE



TM-ZX260 41008601323A FRAME
PL5020227-00 LAMP ASSY (POST/24V-20W)

ランプ ASSY (ホスト/24V-20W)
LAMP ASSY (POST/24V-20W)

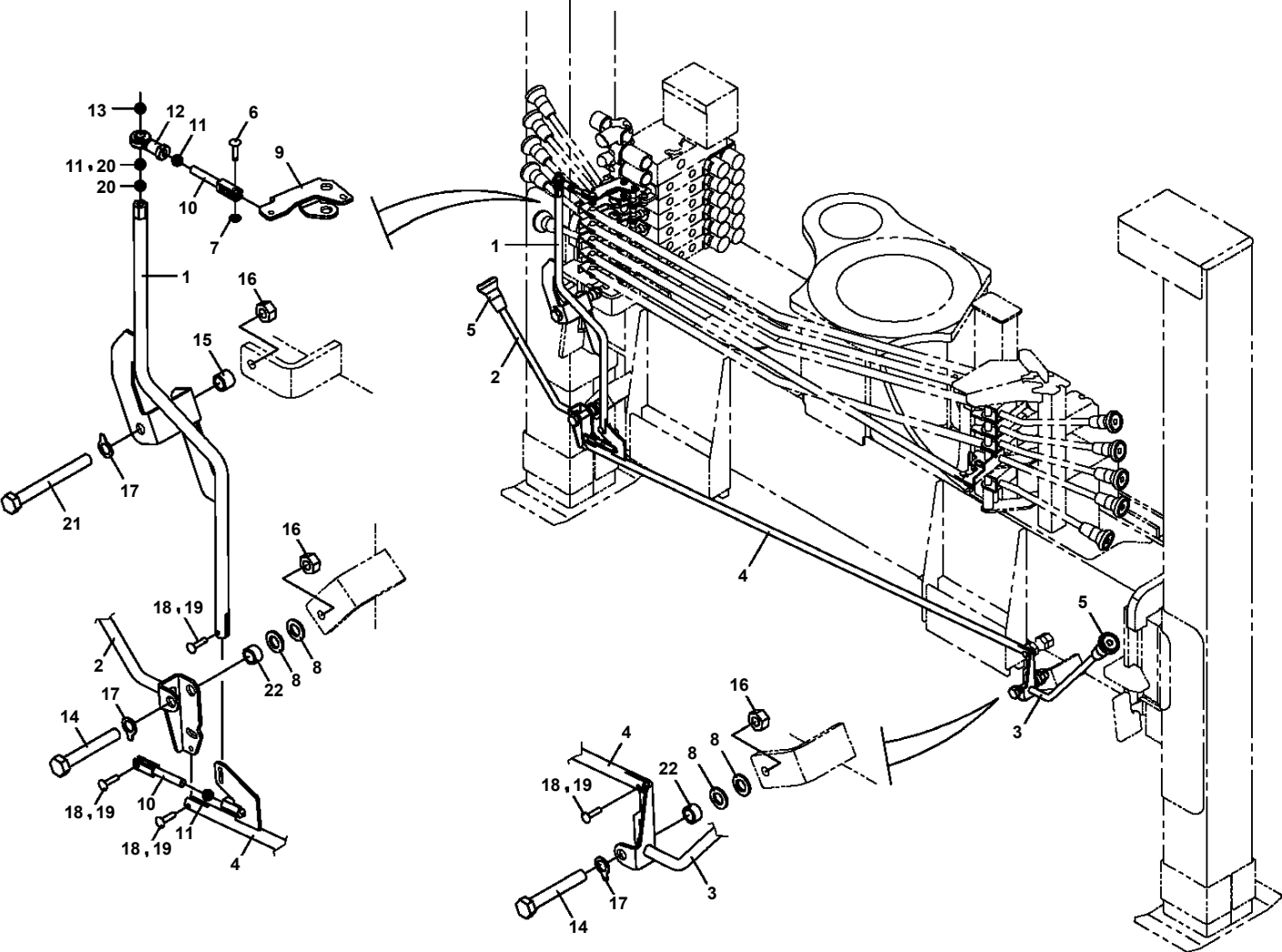
ポスト取付けタイプ
ランプ仕様：24V-20W

符号	日本語名称	英語名称	備考
2	ハイセンASSY	ELEC. ASSY	ホスト部
3	ハイセンASSY	ELEC. ASSY	ホスト部 (LED20W)

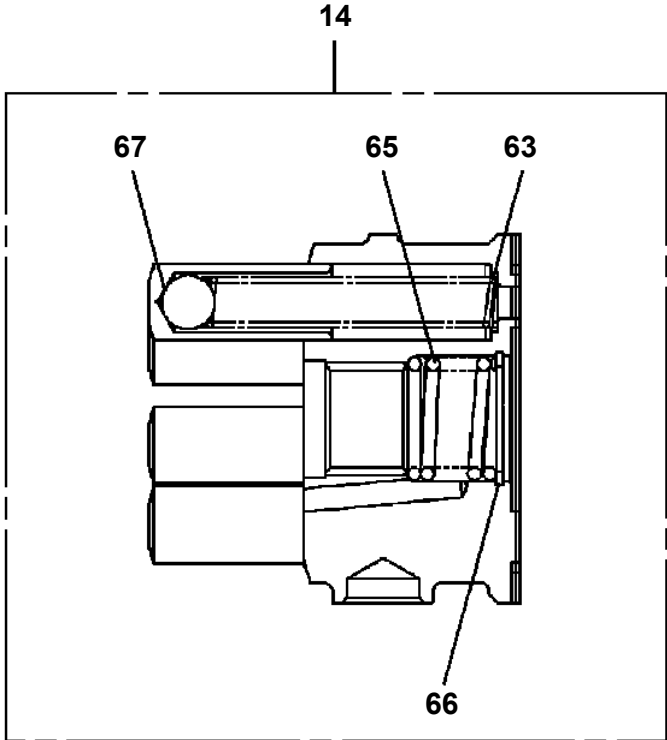
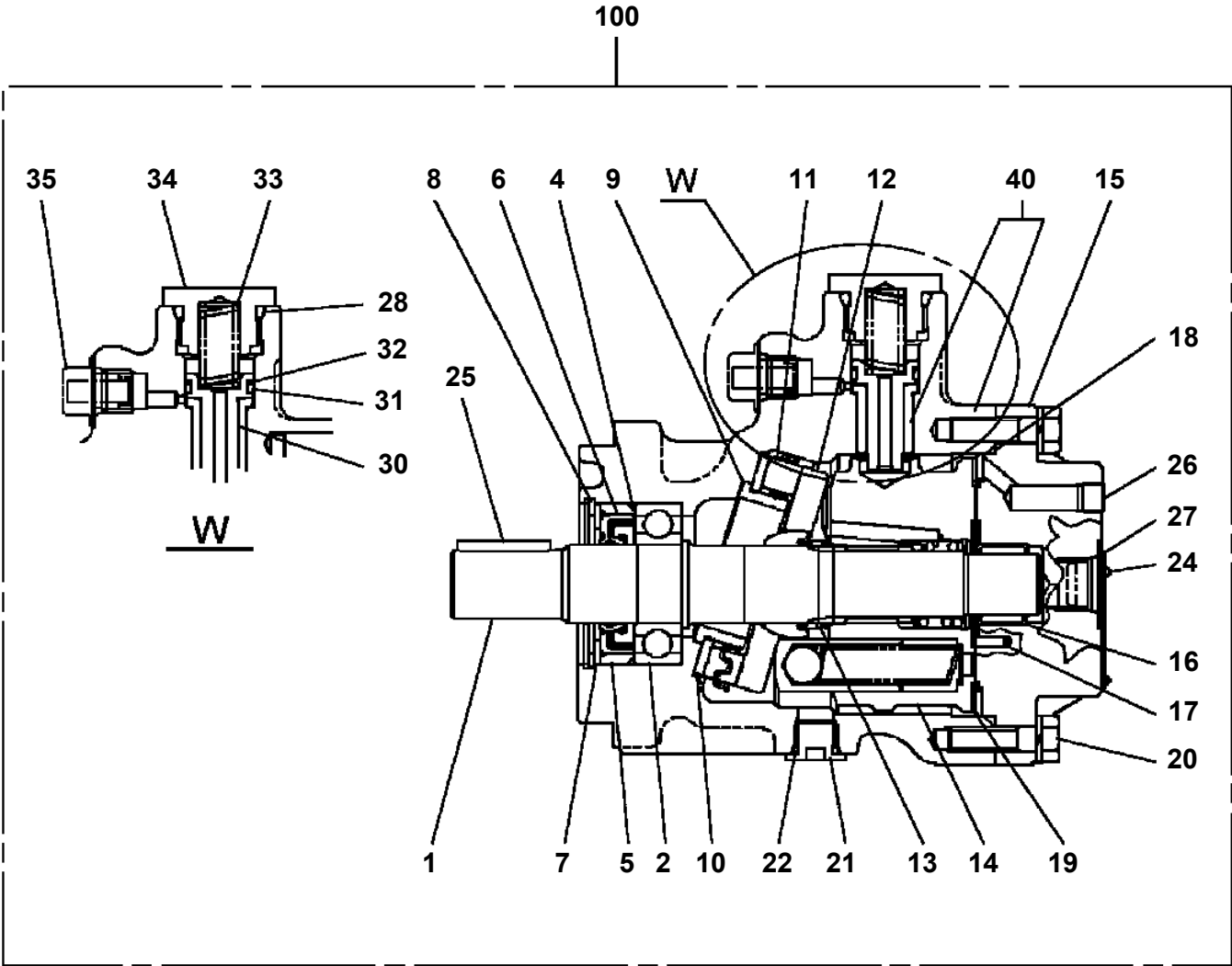
適用製造番号によっては取り付けがないものもあります。

MACHINES OF SOME SERIAL NO. ARE NOT EQUIPPED WITH THESE PARTS.

TM-ZX260 41008601323A FRAME
PL5190013-00 LEVER ASSY



TM-ZX260 41008601323A FRAME
PM5230002-00 MOTOR,OIL



TM-ZX260 41008601323A FRAME

Pos No.	Parts No	Parts Name	Qty	Unit	Technical Data	Serial No (Start)	Serial No (End)	Remark
1	31501192100	SUPPORT	1					
2	31501192200	PLATE	1					
3	90186210016	BOLT,FLANGE	2		M10X16			
4	31650690400	SUPPORT	1					
5	90813108020	BOLT,WING	1		M8X20			
6	90309331205	WASHER,CONICAL SPRING	2		L12			
7	90303071201	WASHER,PLAIN	1		12			
8	90236201200	NUT,CASTLE	1		2H M12			
9	80136325025	PIN,SPLIT	1		2.5X25			
10	31650690500	LEVER	1					
11	82165904160	LAMP	1					
12	90280201000	NUT,FLANGE	1		M10			
13	90186206010	BOLT,FLANGE	1		M6X10			
14	90280200600	NUT,FLANGE	1		M6			
15	82401600504	CLAMP	3		D=4.5			
16	91810130240	FASTENER	1					
17	37002212770	PLATE,NAME (DC24V,0.1A)	1					

TM-ZX260 41008601323A FRAME

Pos No.	Parts No	Parts Name	Qty	Unit	Technical Data	Serial No (Start)	Serial No (End)
100	31595751000	NAME PLATE ASSY (KNOB:TDN-LAYOUT)	1				

TM-ZX260 41008601323A FRAME

Pos No.	Parts No	Parts Name	Qty	Unit	Technical Data	Serial No
1	31595751000	NAME PLATE ASSY (KNOB:TDN-LAYOUT)	1			
4	(*****)	NAME PLATE ASSY (TANK)	1			
5	(*****)	PLATE ASSY,NAME (HOOK)	1			
6	(*****)	NAME PLATE ASSY (CONT.,O/R,CAUTION)	1			
7	(*****)	NAME PLATE ASSY (PERIODICAL VOLUNTARY INSPECTION)	1			
8	31595753000	NAME PLATE ASSY (KNOB,SL JACK)	1			

TM-ZX260 41008601323A FRAME

Pos No.	Parts No	Parts Name	Qty	Unit	Technical Data	Serial No (Start)	Serial No (End)	Remarks	Pages
1	37002241800	PLATE,NAME	2						

TM-ZX260 41008601323A FRAME

Pos No.	Parts No	Parts Name	Qty	Unit	Technical Data	Serial No (Start)	Serial No (End)	Remarks	Pages
1	(*****)	PLATE,NAME (JCAS)	1						00025

TM-ZX260 41008601323A FRAME

Pos No.	Parts No	Parts Name	Qty	Unit	Technical Data	Serial No (Start)	Serial No (End)	Remarks	Page
1	(*****)	PLATE,NAME (NETIS)	2						00024

TM-ZX260 41008601323A FRAME

Pos No.	Parts No	Parts Name	Qty	Unit	Technical Data	Serial No (Start)	Serial No (End)	Remarks	Pages
1	37002241840	PLATE,NAME	1						

TM-ZX260 41008601323A FRAME

Pos No.	Parts No	Parts Name	Qty	Unit	Technical Data	Serial No (Start)	Serial No (End)
1	31360746300	PLATE,NAME (FRAME SERIAL NO.)	2				

TM-ZX260 41008601323A FRAME

Pos No.	Parts No	Parts Name	Qty	Unit	Technical Data	Serial No (Start)	Serial No (End)	Remarks	Pages
1	(*****)	LEVER ASSY	1						000194
2	(*****)	LEVER ASSY	1						000195
3	31324993000	ROD	1						
4	31326644300	ROD ASSY	1						
5	(*****)	LEVER ASSY	1						000196

TM-ZX260 41008601323A FRAME

Pos No.	Parts No	Parts Name	Qty	Unit	Technical Data	Serial No (Start)	Serial No (End)
1	31624970001	FRAME ASSY(R/O:WITH LOCK ASSY)	1				
3	(*****)	ELEC.ASSY	1				
4	(*****)	OPE.ASSY,CONT.VALVE (REMOCON)	1				
5	(*****)	NAME PLATE ASSY	1				
8	(*****)	ELEC.ASSY (R/J)	1				
21	(*****)	PIPING ASSY (REAR,JACK)	1				
22	36743500000	VALVE ASSY,REMOTE CONTROL	1				
23	(*****)	PIPING ASSY	1				
24	(*****)	SUPPORT ASSY	1				

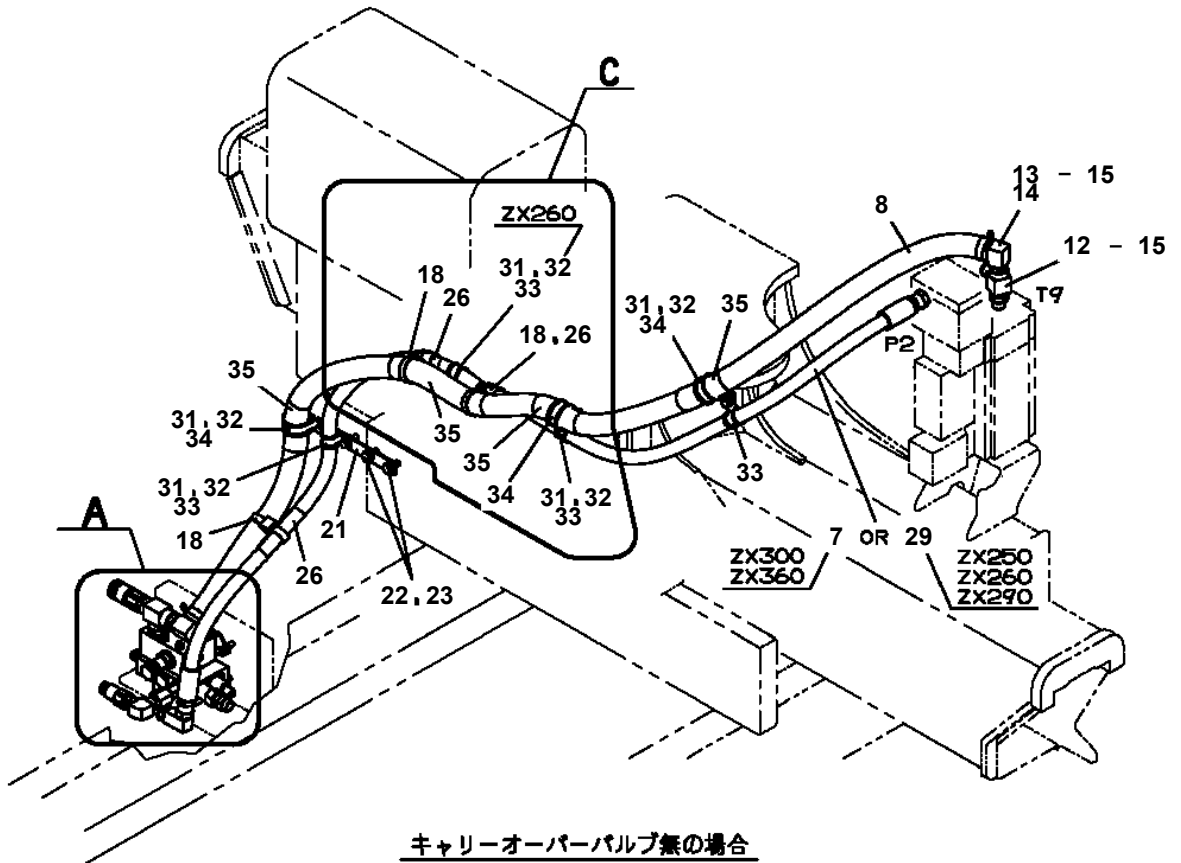
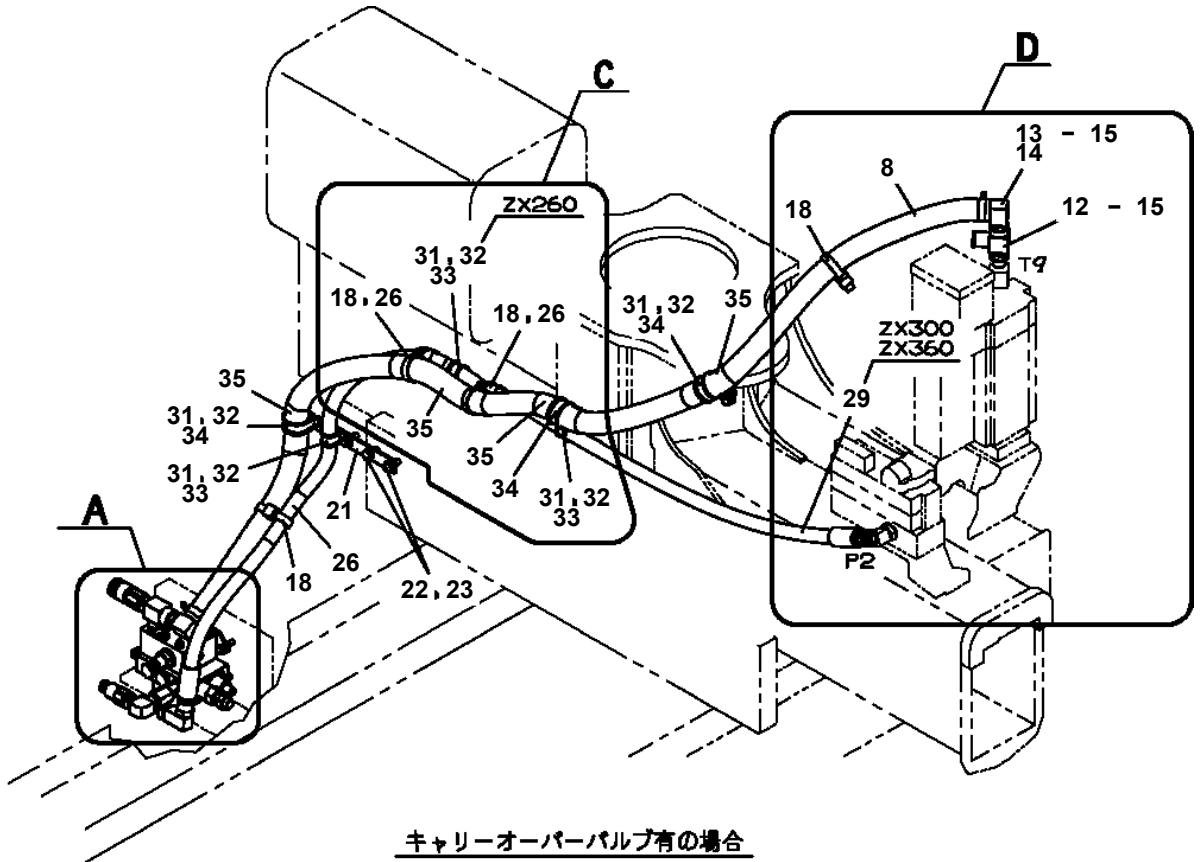
TM-ZX260 41008601323A FRAME

Pos No.	Parts No	Parts Name	Qty	Unit	Technical Data	Serial No (Start)	Serial No (End)
1	31506041000	BOX,OPERATION	1				
2	(*****)	ELEC.ASSY	1				
3	(*****)	NAME PLATE ASSY	1				
5	(*****)	PLATE ASSY,NAME (SWITCH,BOX/U)	1				

TM-ZX260 41008601323A FRAME

Pos No.	Parts No	Parts Name	Qty	Unit	Technical Data	Serial No (Start)	Serial No (End)	Remarks	Page
50	36652335010	GASKET	2						
51	36652335020	GASKET	2						
54	53063551010	SEAL,OIL	1						
55	80602110360	RING,RITAINING	1		R36				
100	36652840000	PUMP,OIL (32CC:L)	1						

TM-ZX260 41008601323A FRAME
 PP6010544-00 PIPING ASSY



TM-ZX260 41008601323A FRAME

Pos No.	Parts No	Parts Name	Qty	Unit	Technical Data	Serial No (Start)	Serial No (End)	Remarks	Page
1	31733762100	SUPPORT	1						
2	37002404910	HOSE	1		L=600				
3	37002512660	HOSE	1		L=850				
5	80400160205	JOINT (WITH O-RING)	1						
7	91803930440	CLIP	2		32-45				
8	80430620800	JOINT	1						
9	37000934370	JOINT	1						
12	90201780800	NUT	8		M8				
13	90302040801	WASHER,SPRING	8		8				
14	90101208020	BOLT	4		M8X20				
15	90303070801	WASHER,PLAIN	4		8				
18	80481103020	JOINT	4		PF3/8-PF1/4				
19	91002801400	O-RING	10		1B P14				
20	82100001413	TUBE,SPIRAL	1	M	SE-15BK				
23	91810150020	FASTENER	1		L=488				
27	37000925030	JOINT	2		PF3/8-PF3/8				
28	80481104046	JOINT	1						
29	91002801800	O-RING	2		1B P18				
30	37000926260	JOINT	2						
31	37000932150	JOINT	2		S,G3/8-G3/8				
32	37000925740	JOINT	1		S G1/2-G1/2				
51	91002801800	O-RING	3		1B P18				

TM-ZX260 41008601323A FRAME

Pos No.	Parts No	Parts Name	Qty	Unit	Technical Data	Serial No (Start)	Serial No (End)	Remarks	Pag
1	91002801400	O-RING	1		1B P14				
100	36180380000	SENDER,PRESSURE	1						

TM-ZX260 41008601323A FRAME

Pos No.	Parts No	Parts Name	Qty	Unit	Technical Data	Serial No (Start)	Serial No (End)	Remarks	Pages
1	82105501003	SWITCH,TOGGLE	2						
100	31658781100	SWITCH ASSY	1						

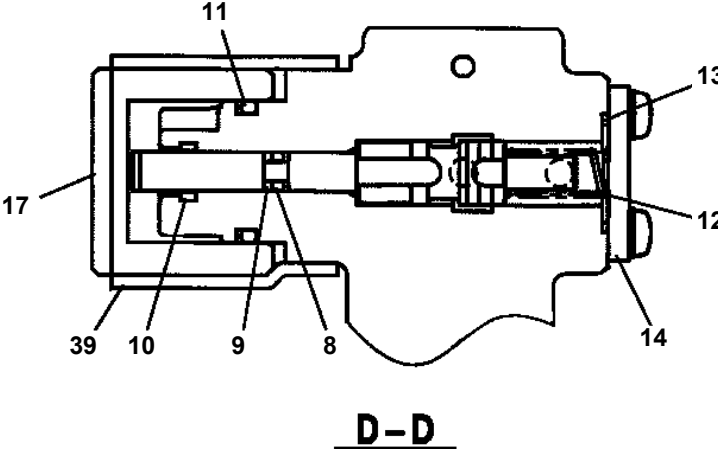
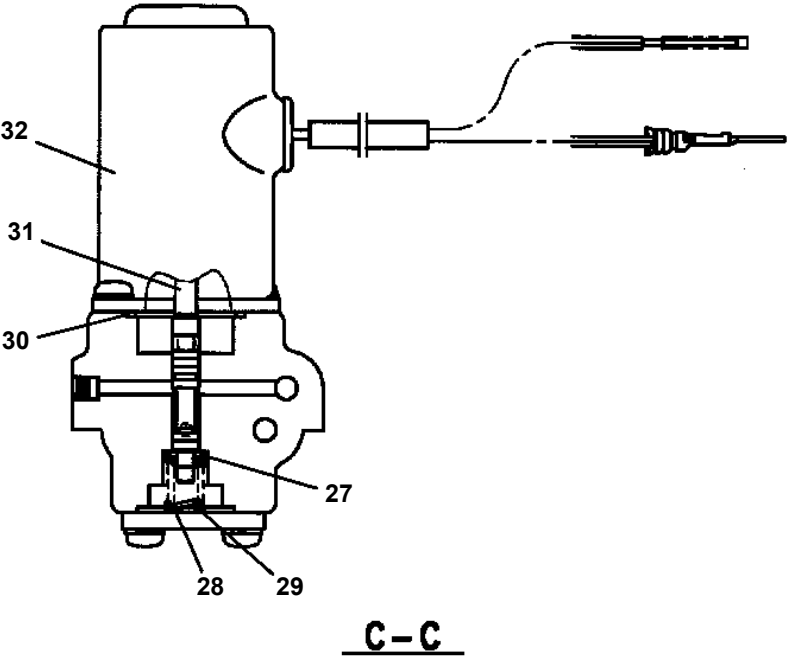
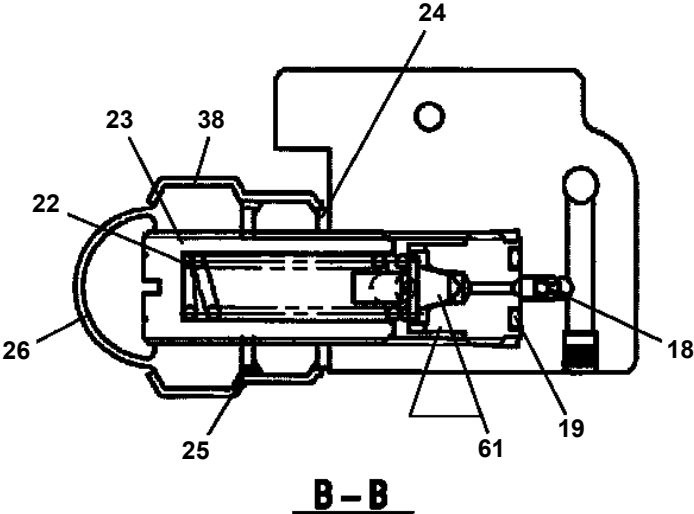
TM-ZX260 41008601323A FRAME

Pos No.	Parts No	Parts Name	Qty	Unit	Technical Data	Serial No (Start)	Serial No (End)	Rema
2	36101895020	BREATHER ASSY (OB-10B)	1					
3	36103485010	GAUGE,OIL	1					
4	36102790010	PLUG	1					
5	91803880070	CLIP	2		D=13.1-16.2			
8	90303392001	WASHER	1		M20			
9	36103485020	SPACER	2					
12	36103485030	SPACER	2					
21	53156005010	ELEMENT (OB-10T & OB-10B)	1					
22	36101895030	RETAINER ASSY	1					
100	36103480000	TANK	1					

TM-ZX260 41008601323A FRAME

Pos No.	Parts No	Parts Name	Qty	Unit	Technical Data	Serial No (Start)	Ser
7	91001000800	O-RING	1		S8		
8	36646865190	PISTON	1				
9	91001102000	O-RING	1		1A P20		
10	36648365110	FLANGE	1				
11	91001002240	O-RING	1		S22.4		
12	91650001400	SCRAPER	1				
13	36645495210	SEAT,SPRING (RETURN)	2				
14	36648365120	SPOOL (SUB)	1				
15	36645845060	SPRING (RETURN)	1				
16	36645495220	ADAPTER	1				
17	36648365130	SPACER	1				
18	36648385080	BRACKET	1				
19	36645615250	C-BOLT	2		M5X25		
20	36633365100	SEAL,OIL	1				
21	36743005110	LINK	1				
22	36645615230	C-BOLT	2		5X12		
23	12635101360	SPOOL	1				
24	12635101190	SPRING	1				
25	36633365090	CAP (CHECK VALVE)	1				
27	91001002200	O-RING	2		S22		
29	36740745140	SCREW,MACHINE	4		M4X12		
30	91001100600	O-RING	5		1A P6		
31	91002905500	O-RING	1		1B G55		
51	36740745150	VALVE,SOLENOID (KIT)	2				
100	36743010081	VALVE ASSY,CONTROL (JACK,SIMULTANEOUS)	1				

**TM-ZX260 41008601323A FRAME
PV5140040-00 VALVE ASSY,RELIEF**

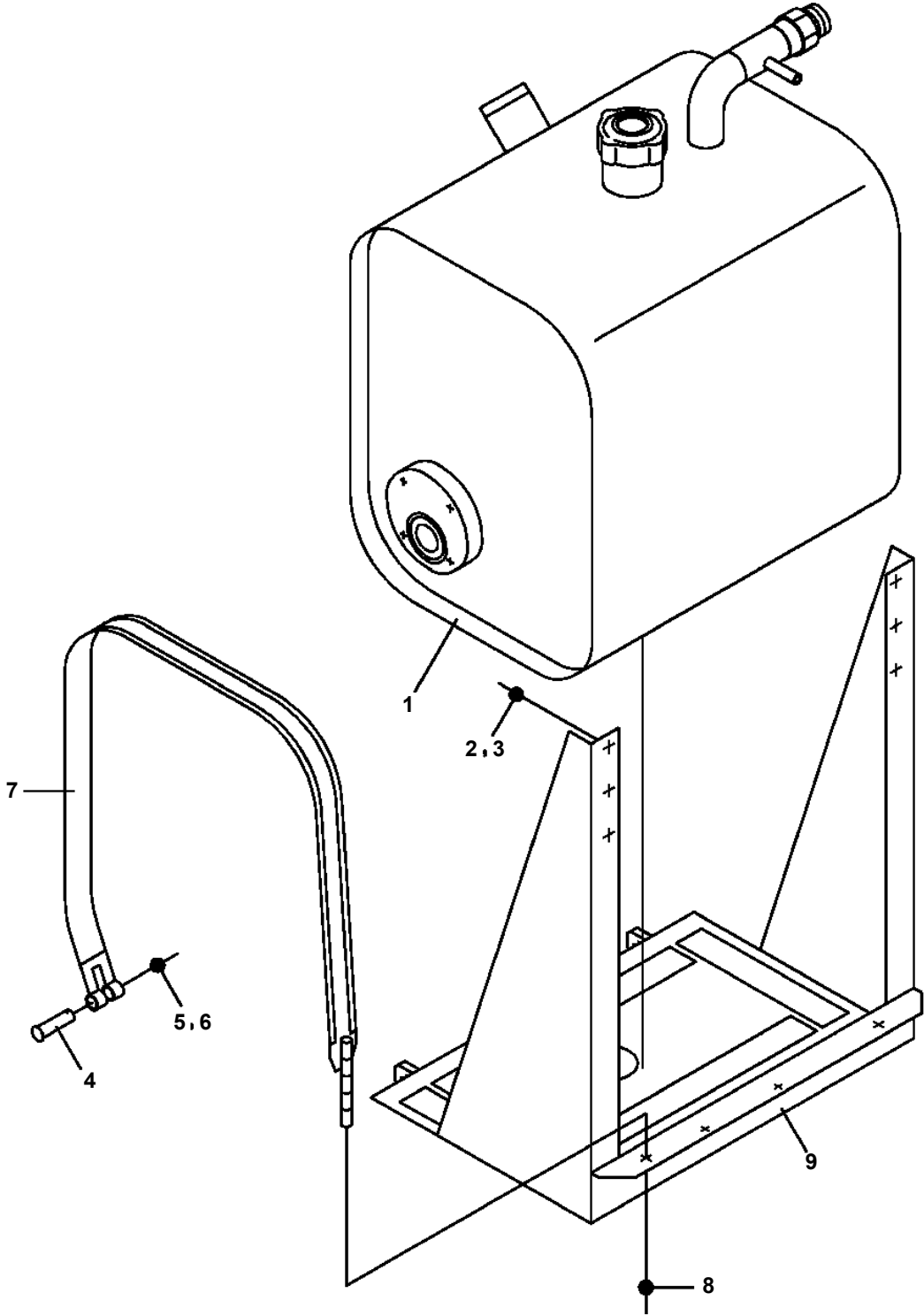


TM-ZX260 41008601323A FRAME

Pos No.	Parts No	Parts Name	Qty	Unit	Technical Data	Serial No (Start)	Serial No (End)	R
1	36645095040	COVER (BOTTOM)	1					
2	36646225020	BOLT,TIE	4					
3	36740850041	VALVE,CONTROL (JACK)	2					
4	36740850030	COVER (FRONT)	1					
5	90201200800	NUT	5		M8			
6	80720104012	PIN,SPRING	1		4X12			
7	36647615050	BOLT,TIE (C)	1					
8	36645495080	JOINT	1					
9	36743380060	VALVE ASSY,RELIEF	1					
10	36645615230	C-BOLT	4		5X12			
11	36644115130	PLUG	4					
12	91001101100	O-RING	4		1A P11			
13	36062635030	FASTENER	2					
14	80172104010	SCREW,MACHINE	2		M4X10			
15	36743225010	HARNES	1					
16	36644015110	CONNECTOR	1					
17	36644015130	TUBE	1					
18	11615111410	BAND	5					
19	82114203040	CONNECTOR (CAP)	1					
20	82121502040	PLATE	1					
21	82121502030	PLATE	1					
22	36646875090	TUBE	2		10B			
23	36062635050	TUBE,CORRUGATE	1		10			
24	36740765040	BAND	1					
27	36741985040	PLUG	3					
28	36741985050	PLUG	4					
29	36640755070	CAP	4					
30	90303070401	WASHER,PLAIN	2		4			
102	36646865190	PISTON	2					
103	91001102000	O-RING	2		1A P20			
104	91001000800	O-RING	2		S8			
105	36646865200	SPOOL (SUB)	2					
106	36648365110	FLANGE	2					
107	91001002240	O-RING	2		S22.4			
108	91650001400	SCRAPER	2					
109	36645495210	SEAT,SPRING (RETURN)	4					
110	36645845060	SPRING (RETURN)	2					
111	36646865210	SPACER	2					
112	36640625550	PLATE (D)	2					
113	36633365070	ADAPTER	2					
114	36645615230	C-BOLT	4		5X12			
115	36633365100	SEAL,OIL	2					
116	36645615240	LINK	2					
117	36645615250	C-BOLT	4		M5X25			
118	36633365090	CAP (CHECK VALVE)	2					
119	12635101360	SPOOL	2					
120	12635101190	SPRING	2					
125	36740745140	SCREW,MACHINE	8		M4X12			
126	91001002200	O-RING	4		S22			
129	91001100600	O-RING	13		1A P6			
130	91002905500	O-RING	3		1B G55			
131	91001101400	O-RING	7		1A P14			
161	36740855030	VALVE,SOLENOID (KIT)	4					
204	36740765050	PLUG	3					
205	36740765060	SPRING	1					
207	36640625210	CAP	1					
208	91001101800	O-RING	1		1A P18			
209	36649585170	FILTER	1					
210	91001002600	O-RING	2		S26			
211	36647395150	PLUG	1		M24			
212	36646875130	ORIFICE	1		M3			
213	91001101600	O-RING	1		1A P16			
214	36646265090	SPRING (B)	1					

TM-ZX260 41008601323A FRAME
PX1100239-01 TANK SUPPORT

FRONT
↙



TM-ZX260 41008601323A FRAME
 PY2000290-02 OPTION UNIT,2 (COMMON)

オプションユニット,2 (キョウツウ)
 OPTION UNIT,2 (COMMON)

符号	日本語名称	英語名称	備考
1	フックASSY	HOOK ASSY	単乗フック
2	ガイド ASSY	GUIDE ASSY	塵埃防止 (単乗フック金)
3	フックASSY	HOOK ASSY	ロッキンク フック
4	ブロック	BLOCK	2個セット 敷板 (□355×t80)
5	ブロック	BLOCK	4個セット 敷板 (□355×t80)
6	ストッパー,タイヤ	STOPPER,TIRE	出荷部品
7	ジョイントASSY,セルフシール	JOINT ASSY,SELF SEAL	サービ スポ ート用カプ ラー
8	マウントASSY {パワーサブ ライ}	MOUNT ASSY	サービ スポ ート
9	パワーサブ ライ	POWER SUPPLY	AC100V電圧取出し (1500W)
10	パーツASSY,ラジコン	PARTS ASSY,RADIO CONTROLLER	既納車ラジコン
11	パーツASSY,ラジコン	PARTS ASSY,RADIO CONTROLLER	既納車ラジコン (U社配列用)
12	カイズ ASSY	MODIFICATION ASSY	敷板入れ (ホイールベ ース取付用) (□355×t80敷板用)
13	サポ ート	SUPPORT	敷板入れ、太陽建機レンタル向 日野小型車の東洋ポデー製ポデー及び日野中型車用
14	サポ ート	SUPPORT	敷板入れ、太陽建機レンタル向 日野小型車の日野内作ホ ード一用
15	カイズ ASSY	MODIFICATION ASSY	敷板入れ (リヤオーバ ーハンク 取付用) (□355×t80敷板用)
16	バッテリーチャージ ング	BATTERY CHARGER	単三電池充電器 (ニッケル水素電池適合)
17	ディテクタ,ディソ ーダリ ウインド	DETECTOR,DISORDERLY WIND	乱進防止ローラ
18	ケーブル ASSY	CABLE ASSY	ラジコンアンテナユニット取付用 延長ハーネス (2m) (ラジコン装着機のみ)
19	パーツASSY,リモコン	PARTS ASSY,REMOTE CONTROL	ZX用リモコン
20	ボックス,スト ーイング	BOX,STOWING	リモコン用ホ ードボックス
21	マウントASSY {アケル}	MOUNT ASSY	メカ式カ ー ナ車用エンジンコントロール
22	オペレータ ASSY,ソウサバ ーバルブ	OPER. ASSY,CONT. VALVE	U社配列交換キット 小型系
23	ランプ ASSY	LAMP ASSY	ハロゲン55Wフ ード作業灯
24	ランプ ASSY	LAMP ASSY	ヘッド 球60Wホ ード作業灯
25	ランプ ASSY	LAMP ASSY	LED20Wフ ード作業灯
26	ランプ ASSY	LAMP ASSY	高さ制限ランプ
27	ランプ ASSY	LAMP ASSY	LED20Wホ ード作業灯

適用製造番号によっては取り付けがないものもあります。

MACHINES OF SOME SERIAL NO. ARE NOT EQUIPPED WITH THESE PARTS.

TM-ZX260 41008601323A FRAME

Pos No.	Parts No	Parts Name	Qty	Unit	Technical Data	Serial No (Start)	Serial No
1	31351381103	HARNESS	1				
2	36120740000	TRANSMITTER ASSY,SIGNAL (ASSY ONLY)	1				
3	91810130250	FASTENER	16				
4	82108501340	SWITCH	1				
5	90186206010	BOLT,FLANGE	9		M6X10		
7	91850700101	CLAMP	9		L=208		
21	31659171100	COVER	2				
22	37002227560	PLATE,NAME (BLACK)	8		D=16		

TM-ZX260 41008601323A FRAME

Pos No.	Parts No	Parts Name	Qty	Unit	Technical Data	Serial No (Start)	Serial No (End)	Remarks	Pages
100	31506041000	BOX,OPERATION	1						

TM-ZX260 41008601323A FRAME

Pos No.	Parts No	Parts Name	Qty	Unit	Technical Data	Serial No (Start)	Serial No (End)
1	37000163600	PIN	1				
2	80601110300	RING,RITAINING	2		S30		
3	31616042000	CASE,OUTER	1		L=1537		
4	31611592000	CASE,INNER	1				
5	(*****)	OUTRIGGER ASSY (MIN.1149)	1				
6	37000112060	PIN	1				
7	80602110300	RING,RITAINING	2		R30		
8	37000112070	PIN	1				
9	31611594000	FLOAT ASSY	1				
10	31201770100	PLATE,SLIDE	4		T=3.0		
11	31200030530	PLATE	1				
12	90191210020	BOLT	2		M10X20		
13	90302041001	WASHER,SPRING	4		10		
14	90186208014	BOLT,FLANGE	2		M8X14		
15	31614060110	COVER	1				
16	50822014000	PLATE	1				
17	37001400200	SPRING	1				
18	37002240310	PLATE,CAUTION	1				
19	31611300600	PLATE,NAME (YELLOW)	2				
20	31615754100	PLATE,NAME (BLUE)	2				
21	(*****)	OPE.ASSY,OUTRIGGER	1				
22	37000150360	PIN	1				
23	80601110150	RING,RITAINING	2		15		
24	37000310360	SPACER	1		L=15		
25	31620582020	BEARING,BALL (KOYO)	1				
26	90171110020	BOLT	2		M10X20		
47	31621963200	SUPPORT	1				
62	31610175010	TRUNNION	1				
75	31615912500	SUPPORT	1				
80	31616049510	SUPPORT	1				
100	31616040101	OUTRIGGER ASSY (RIGHT,CYLINDER:MIN.1149)	1				

TM-ZX260 41008601323A FRAME

Pos No.	Parts No	Parts Name	Qty	Unit	Technical Data	Serial No (Start)	Serial No (End)	Remarks	Pa
3	90186210014	BOLT,FLANGE	2		M10X14				
4	37000924350	FITTING	4						
5	91002801100	O-RING	4		1B P11				
10	80491002020	JOINT (WITH O-RING)	4						
11	91810130240	FASTENER	6						
12	82100002039	CLAMP	4						
13	90240200800	NUT,CAP	8		M8				
14	90302040801	WASHER,SPRING	8		8				
15	37000600920	CLAMP	2		L=90				
16	31671433000	SUPPORT	2						
17	31671434000	SUPPORT	2						
18	90180208012	BOLT,BUTTON	8		M8X12				
41	37002402090	HOSE,TWIN	2						
42	80491002020	JOINT (WITH O-RING)	4						
43	31644591450	JOINT	2						
44	31671591101	HARNESS	2						000
45	91810130240	FASTENER	10						
46	31648501300	CLAMP	2						
61	91002801100	O-RING	8		1B P11				

CLICK HERE TO **DOWNLOAD** THE COMPLETE MANUAL

- Thank you very much for reading the preview of the manual.
- You can download the complete manual from: www.heydownloads.com by clicking the link below



- Please note: If there is no response to CLICKING the link, please download this PDF first and then click on it.

CLICK HERE TO **DOWNLOAD** THE COMPLETE MANUAL