

# **TM-ZX260 41008601153A FRAME**

**PB0000359-00 SYSTEM (ZX260,DOMESTIC)**

**ASSEMBLY**

CLICK HERE TO **DOWNLOAD** THE COMPLETE MANUAL

- Thank you very much for reading the preview of the manual.
- You can download the complete manual from: [www.heydownloads.com](http://www.heydownloads.com) by clicking the link below



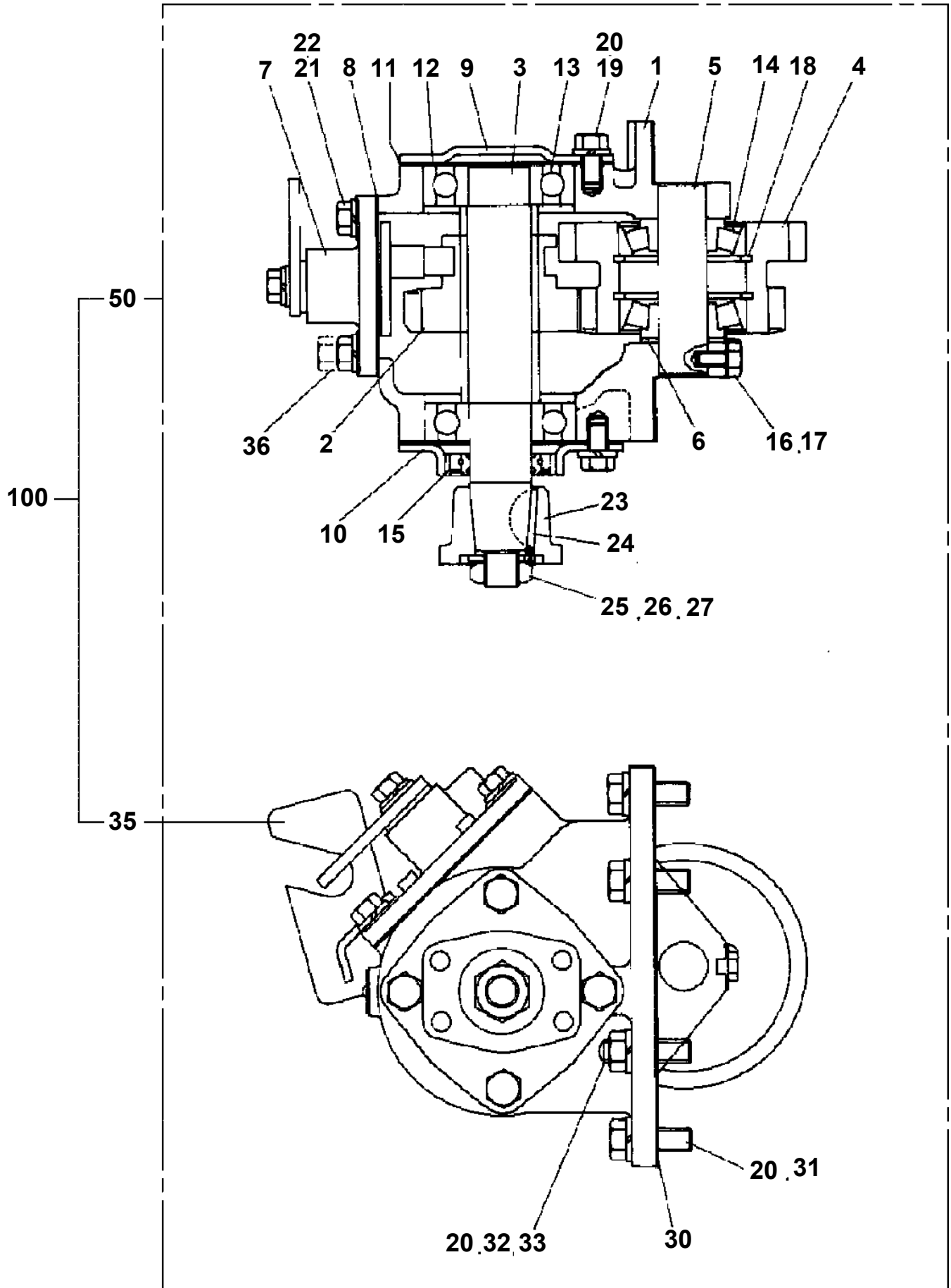
- Please note: If there is no response to CLICKING the link, please download this PDF first and then click on it.

CLICK HERE TO **DOWNLOAD** THE COMPLETE MANUAL

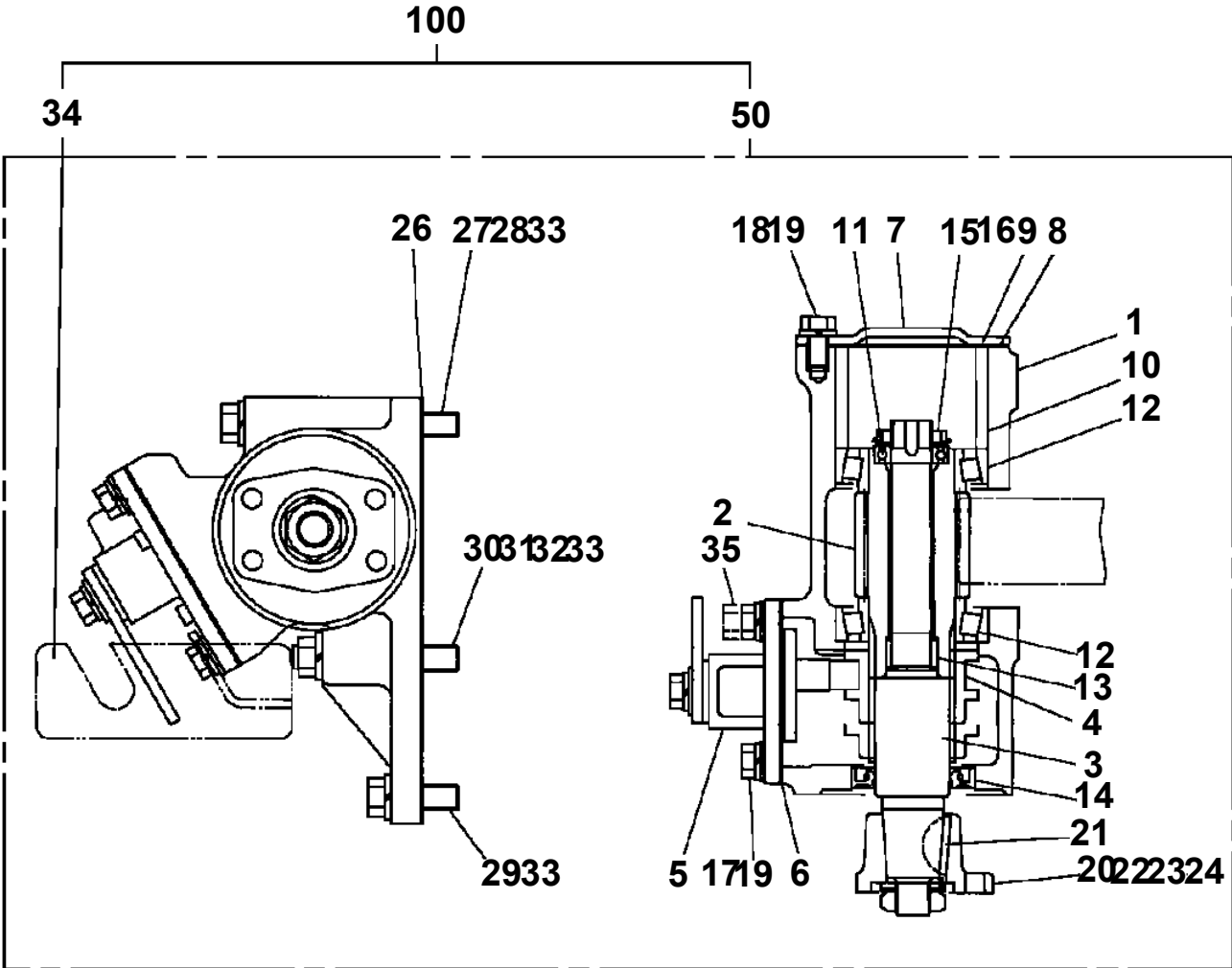
# TM-ZX260 41008601153A FRAME

Pos No.	Parts No	Parts Name	Qty	Unit	Technical Data	Serial No (Start)	Serial No (End)	R	
1	31792150000	POWER TAKE OFF	1						
	31792100000	POWER TAKE OFF	1						
	31792260000	POWER TAKE OFF	1						
	31792270000	POWER TAKE OFF	1						
	31792080000	POWER TAKE OFF	1						
	31792090000	POWER TAKE OFF	1						
	31792370000	POWER TAKE OFF	1						
	31790890000	POWER TAKE OFF	1						
	31790900000	POWER TAKE OFF	1						
	31790990000	POWER TAKE OFF	1						
	31790880000	POWER TAKE OFF	1						
	31792380000	POWER TAKE OFF	1						
	2	31791120000	POWER TAKE OFF	1					
		31792230000	POWER TAKE OFF	1					
		31790710000	POWER TAKE OFF	1					
		31791130000	POWER TAKE OFF	1					
		31791110000	POWER TAKE OFF	1					
31791180000		POWER TAKE OFF	1						
31792490000		POWER TAKE OFF	1						
31791090000		POWER TAKE OFF	1						
31790730000		POWER TAKE OFF	1						
31791100000		POWER TAKE OFF	1						
31791080000		POWER TAKE OFF	1						
31791170000		POWER TAKE OFF	1						
31791240000		POWER TAKE OFF	1						
31790970000		POWER TAKE OFF	1						
31791190000		POWER TAKE OFF	1						
31791570000		POWER TAKE OFF	1						
31792250000		POWER TAKE OFF	1						
31791220000		POWER TAKE OFF	1						
31791610000		POWER TAKE OFF	1						
31791620000		POWER TAKE OFF	1						
31792120000		POWER TAKE OFF	1						
31792240000		POWER TAKE OFF	1						
31792220000		POWER TAKE OFF	1						
31792480000	POWER TAKE OFF	1							
3	31791100000	POWER TAKE OFF	1						
	31792220000	POWER TAKE OFF	1						
	31792240000	POWER TAKE OFF	1						
	31792250000	POWER TAKE OFF	1						
	31791620000	POWER TAKE OFF	1						
	31792120000	POWER TAKE OFF	1						
	31790730000	POWER TAKE OFF	1						
	31791110000	POWER TAKE OFF	1						
	31791120000	POWER TAKE OFF	1						
	31791130000	POWER TAKE OFF	1						
	31791180000	POWER TAKE OFF	1						
	31790710000	POWER TAKE OFF	1						
	31790970000	POWER TAKE OFF	1						
	31792230000	POWER TAKE OFF	1						
	31791240000	POWER TAKE OFF	1						
	31791220000	POWER TAKE OFF	1						
	31791610000	POWER TAKE OFF	1						
	31791050000	POWER TAKE OFF	1						
	31791080000	POWER TAKE OFF	1						
	31791090000	POWER TAKE OFF	1						
	31791170000	POWER TAKE OFF	1						
	31791190000	POWER TAKE OFF	1						
	31791570000	POWER TAKE OFF	1						
4	31790730000	POWER TAKE OFF	1						
	31790710000	POWER TAKE OFF	1						
5	36401600000	POWER TAKE OFF	1						
	52230312000	POWER TAKE OFF (WITH TURBO)	1						

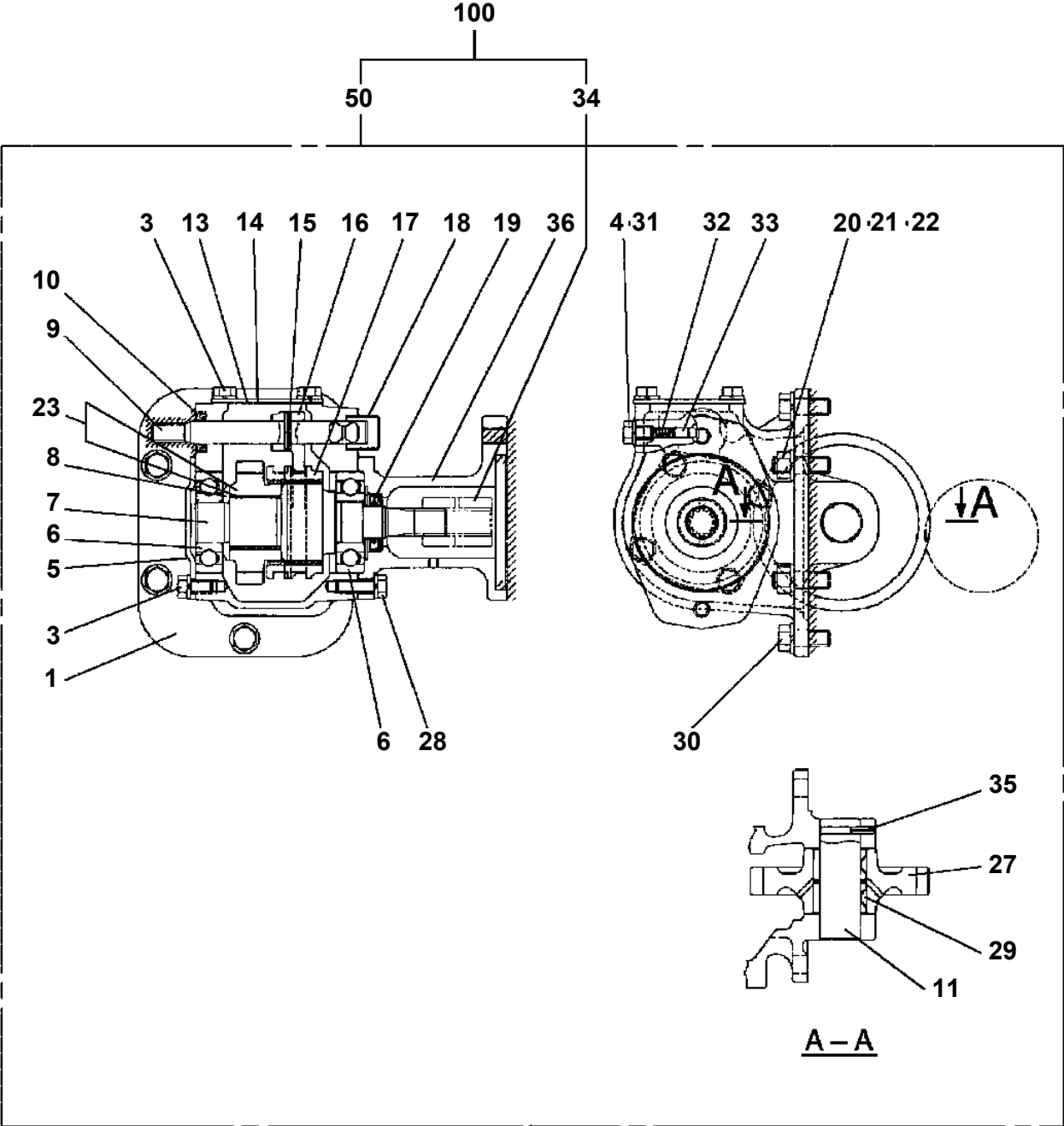
TM-ZX260 41008601153A FRAME  
PB1030063-02 POWER TAKE OFF



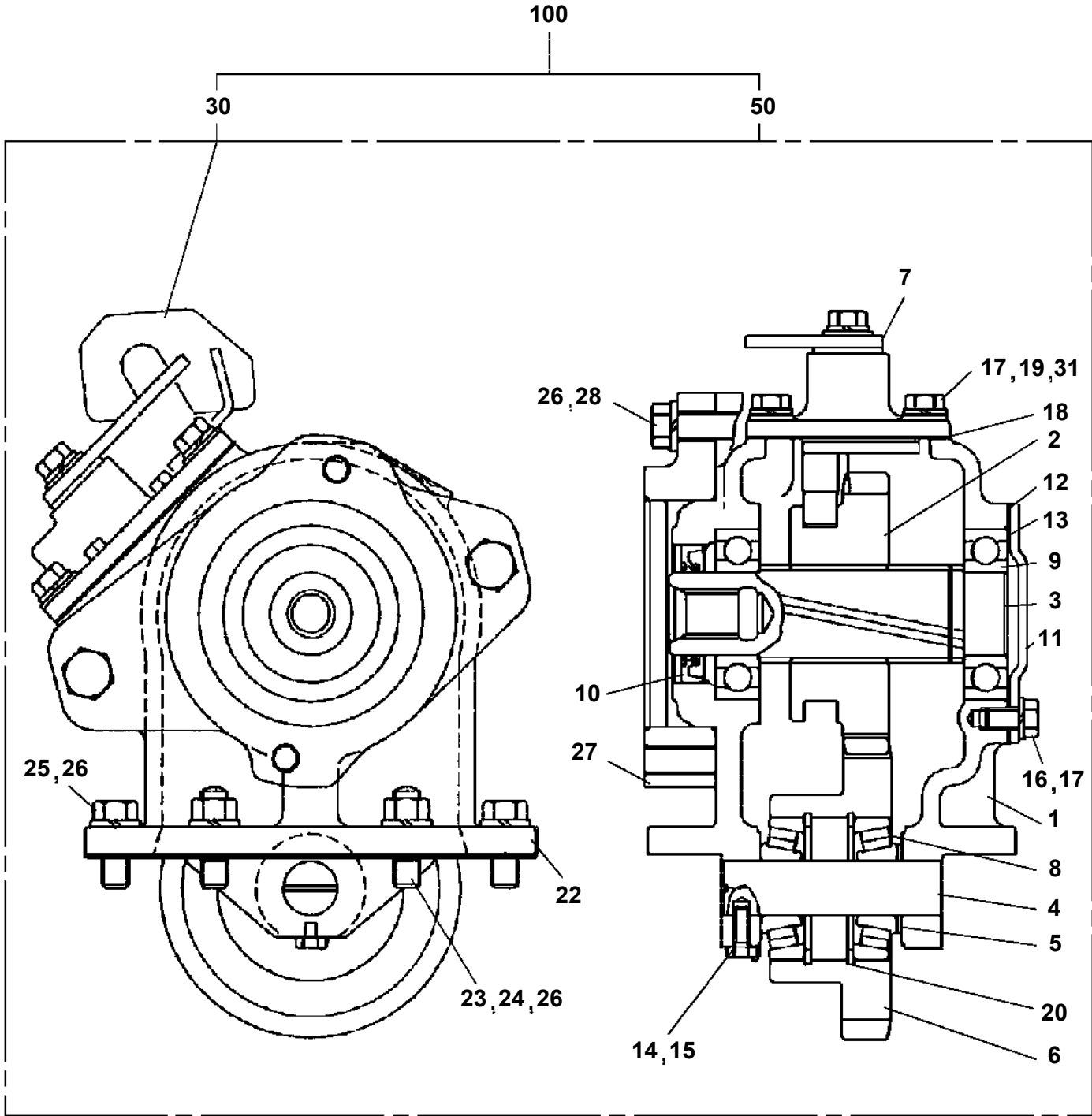
**TM-ZX260 41008601153A FRAME  
PB1030131-01 POWER TAKE OFF**



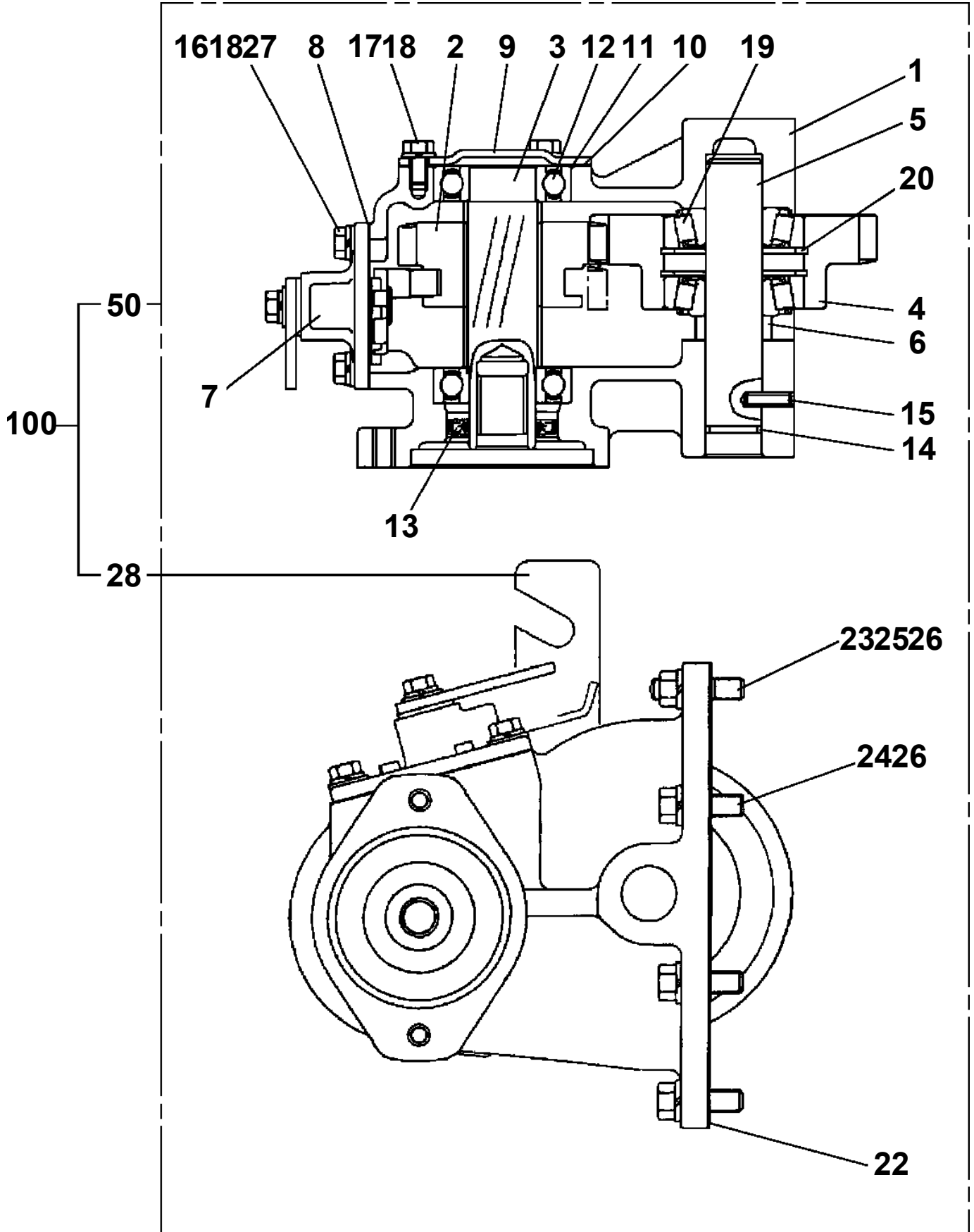
TM-ZX260 41008601153A FRAME  
PB1030163-02 POWER TAKE OFF



TM-ZX260 41008601153A FRAME  
PB1030171-02 POWER TAKE OFF

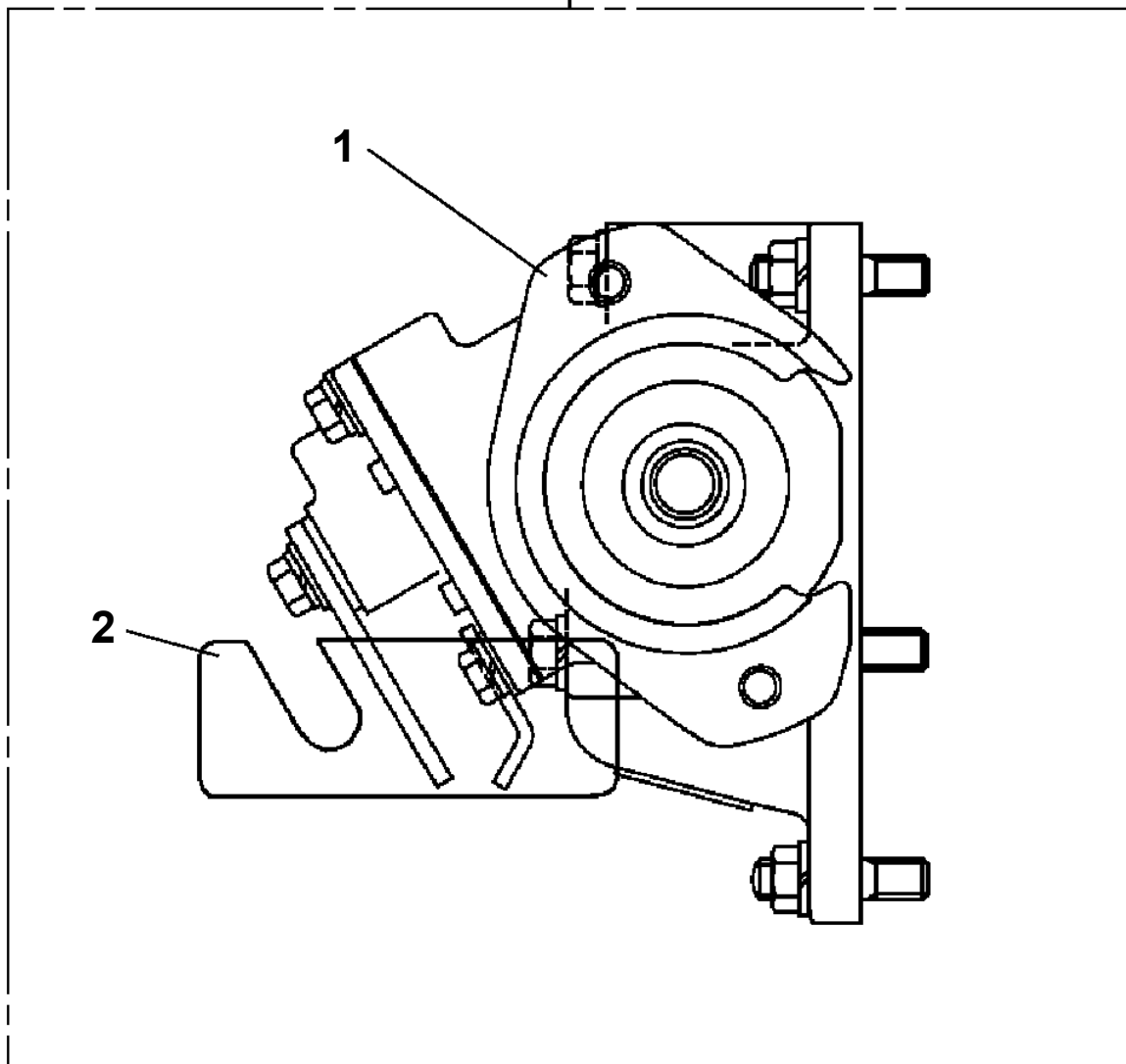


TM-ZX260 41008601153A FRAME  
PB1030192-01 POWER TAKE OFF



TM-ZX260 41008601153A FRAME  
PB1030204-00 POWER TAKE OFF

50



# TM-ZX260 41008601153A FRAME

Pos No.	Parts No	Parts Name	Qty	Unit	Technical Data	Serial No (Start)	Serial No (End)	Remarks
1	36401895070	CASE	1					
2	36401885020	GEAR	1					
3	36400915030	SHAFT	1					
4	36401885030	GEAR	1					
5	36400415050	SHAFT	1					
6	36400675030	COLLAR	1					
7	36400095100	SHIFTER ASSY	1					
8	36400095110	PACKING	1					
9	36400095070	COVER (BEARING)	1					
10	36400095080	PACKING (COVER)	1					
11	36400095090	SHIM	N					
12	80500006206	BEARING,BALL	2					
13	91206030005	SEAL,OIL	1					
14	91001102100	O-RING	1		1A P21			
15	90710006200	SCREW,SET	1		M6X20			
16	90191208020	BOLT	4		M8X20			
17	90191208014	BOLT	3		M8X14			
18	90302040801	WASHER,SPRING	7		8			
19	36400135070	BEARING	2					
20	80602110620	RING,RITAINING	2		R62			
22	36401885050	PACKING	1					
24	90191210030	BOLT	6		M10X30			
25	90267201000	NUT	2		M10			
26	90302041001	WASHER,SPRING	8		10			
28	31790670100	SUPPORT	1					
29	90191208025	BOLT	2		M8X25			
60	36402100000	POWER TAKE OFF ASSY	1					
61	36401695040	BOLT,STUD	2		M10X1.25/1.5X47			
100	31791240000	POWER TAKE OFF	1					

# TM-ZX260 41008601153A FRAME

Pos No.	Parts No	Parts Name	Qty	Unit	Technical Data	Serial No (Start)	Serial No (End)	Remarks	Pages
1	36401135050	CASE	1						
2	36401135060	GEAR (TO)	1						
3	36401125030	SHAFT (TO)	1						
4	36401125040	SLEEVE	1						
5	36401125050	SHIFTER SET	1						
6	36400095110	PACKING	1						
7	36400095070	COVER (BEARING)	1						
8	36400095080	PACKING (COVER)	1						
9	36400095090	SHIM	N						
10	36401135070	COLLAR	1						
11	80500006903	BEARING,BALL	1						
12	36401125080	BEARING,ROLLER	2						
13	36401125090	BEARING,NEEDLE	1						
14	91206030005	SEAL,OIL	1						
15	36401125100	RING,RETAINING	1						
16	90191208020	BOLT	4		M8X20				
17	90191208014	BOLT	3		M8X14				
18	90302040801	WASHER,SPRING	7		8				
20	36402015020	PACKING	2						
21	36402025030	BOLT	1		M10X1.5X115				
22	36402015040	BOLT	1		M10X1.5X105				
23	90191210045	BOLT	2		M10X45				
24	36402015010	BOLT,STUD	1						
25	36402025010	BOLT,STUD	1						
26	90267201000	NUT	2		M10				
27	90302041001	WASHER,SPRING	6		10				
28	36402025020	SPACER	1						
30	90191208025	BOLT	2		M8X25				
51	36402020000	POWER TAKE OFF	1						
52	31790880100	SUPPORT	1						
100	31792090000	POWER TAKE OFF	1						

# TM-ZX260 41008601153A FRAME

Pos No.	Parts No	Parts Name	Qty	Unit	Technical Data	Serial No (Start)	Serial No (End)	Remarks
1	36401995010	CASE	1					
2	36401995020	GEAR	1					
3	36402125010	SHAFT	1					
4	36400095040	SHAFT	1					
5	36400095050	COLLAR	1					
6	36401995040	GEAR	1					
7	36400095070	COVER (BEARING)	1					
8	36400095080	PACKING (COVER)	1					
9	36400095090	SHIM	N					
10	36401995050	SHIFTER ASSY	1					
11	36400095110	PACKING	1					
12	80500006206	BEARING,BALL	2					
13	91206030005	SEAL,OIL	1					
14	90191208014	BOLT	3		M8X14			
15	90191208020	BOLT	4		M8X20			
16	90101206012	BOLT	1		M6X12			
17	90302040801	WASHER,SPRING	7		8			
18	36400095130	WASHER	1					
19	36401745060	BEARING	2					
20	80602110470	RING,RITAINING	2		R47			
22	36400055070	PACKING	1					
23	36401995060	BOLT	4					
24	90267401000	NUT	4		M10			
25	90302041001	WASHER,SPRING	6		10			
26	90193510035	BOLT	2		M10X35			
28	90191208025	BOLT	2		M8X25			
50	36402120000	POWER TAKE OFF ASSY	1					
60	31791160100	SUPPORT	1					
100	31792240000	POWER TAKE OFF	1					

# TM-ZX260 41008601153A FRAME

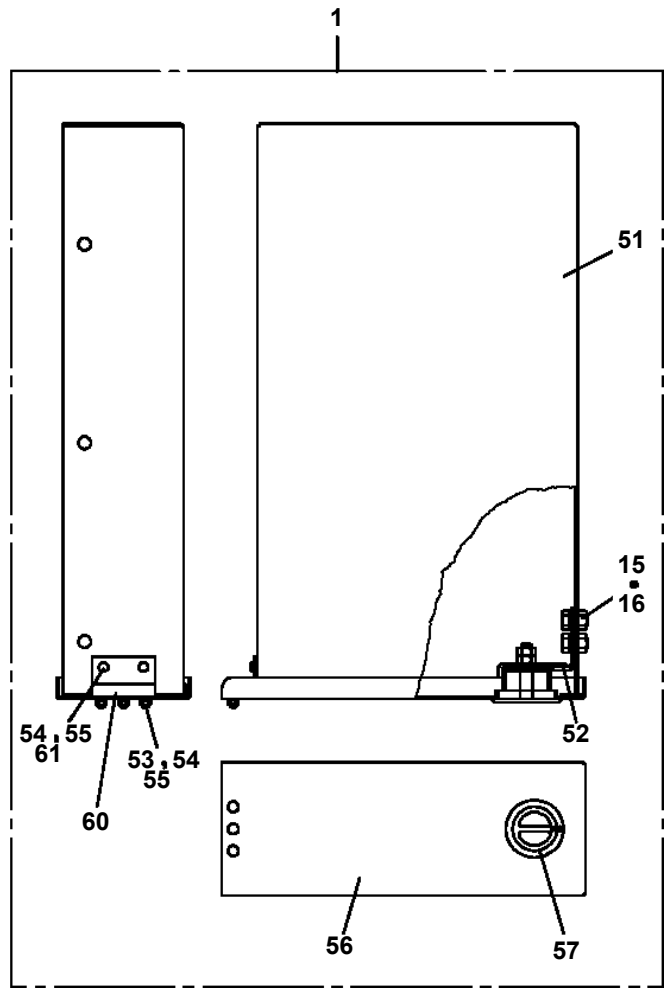
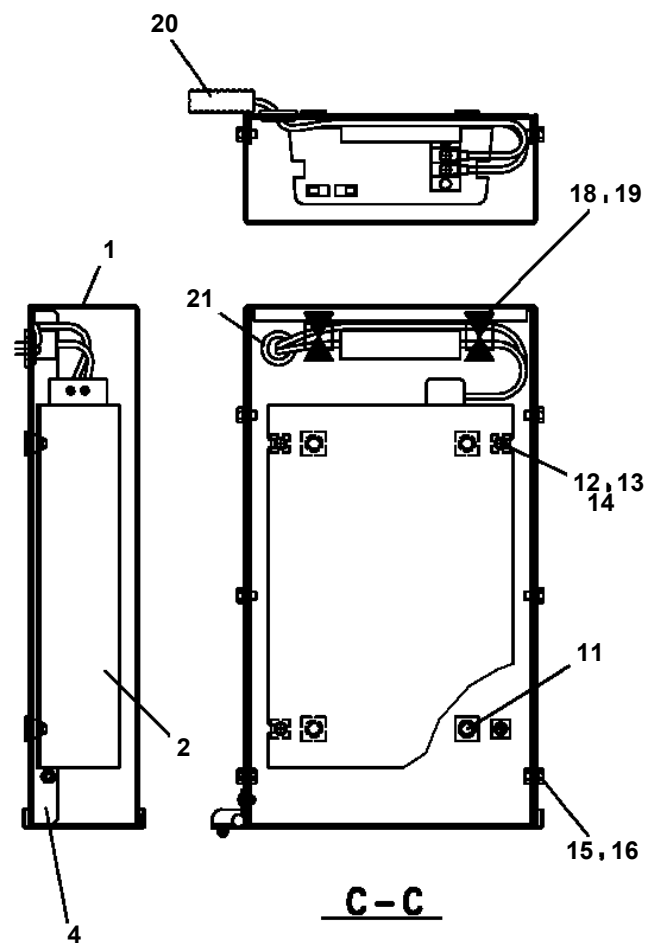
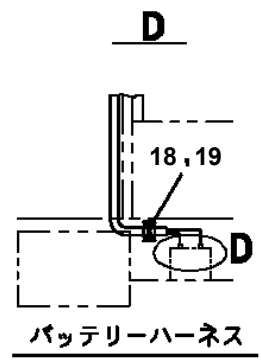
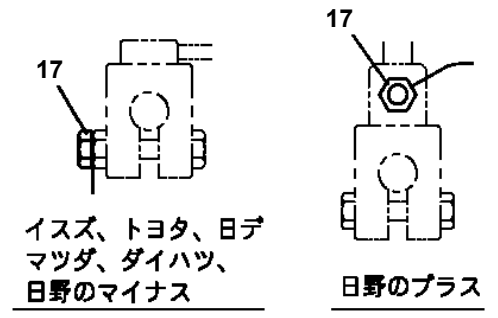
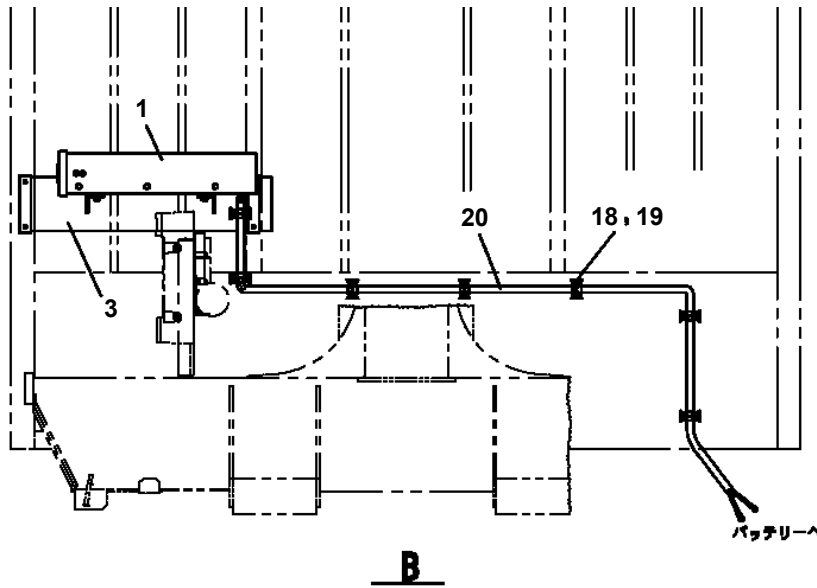
Pos No.	Parts No	Parts Name	Qty	Unit	Technical Data	Serial No (Start)	Serial No (End)	Remarks
1	36402470510	CASE	1					
2	36402470520	GEAR	1					
3	36402470530	SHAFT	1					
4	36401125040	SLEEVE	1					
5	36401125050	SHIFTER SET	1					
6	36400095110	PACKING	1					
7	36400095070	COVER (BEARING)	1					
8	36400095080	PACKING (COVER)	1					
9	36400095090	SHIM	N					
10	36402470540	COLLAR	1					
11	80500006903	BEARING,BALL	1					
12	36401125080	BEARING,ROLLER	2					
13	36401125090	BEARING,NEEDLE	1					
14	91206030005	SEAL,OIL	1					
15	36401125100	RING,RETAINING	1					
16	90191208020	BOLT	4		M8X20			
17	90191208014	BOLT	3		M8X14			
18	90302040801	WASHER,SPRING	7		8			
20	36402015020	PACKING	2					
21	36402035040	BOLT	1		M10X1.5X120			
22	36402035050	BOLT	1		M10X1.5X110			
23	90191210050	BOLT	2		M10X50			
24	36402035010	BOLT,STUD	1					
25	36402035020	BOLT,STUD	1					
26	90267201000	NUT	2		M10			
27	90302041001	WASHER,SPRING	6		10			
28	36402470550	SPACER	1					
30	90191208025	BOLT	2		M8X25			
50	36402470000	POWER TAKE OFF ASSY	1					
60	31790990100	SUPPORT	1					
100	31792370000	POWER TAKE OFF	1					

# TM-ZX260 41008601153A FRAME

Pos No.	Parts No	Parts Name	Qty	Unit	Technical Data	Serial No (Start)	Serial No (End)
1	31760460100	SUPPORT	1				
2	90101210035	BOLT	3		M10X35		
3	90302041001	WASHER,SPRING	3		10		
4	90201201000	NUT	3		M10		
5	31760460200	LINK	1				
6	90101204020	BOLT	2		M4X20		
7	90201200400	NUT	2		M4		
8	90303070401	WASHER,PLAIN	4		4		
9	90302040401	WASHER,SPRING	2		4		
10	36637040001	VALVE,MANUAL CONTROL (DUMP)	1				
11	52243104000	SUPPORT	1				

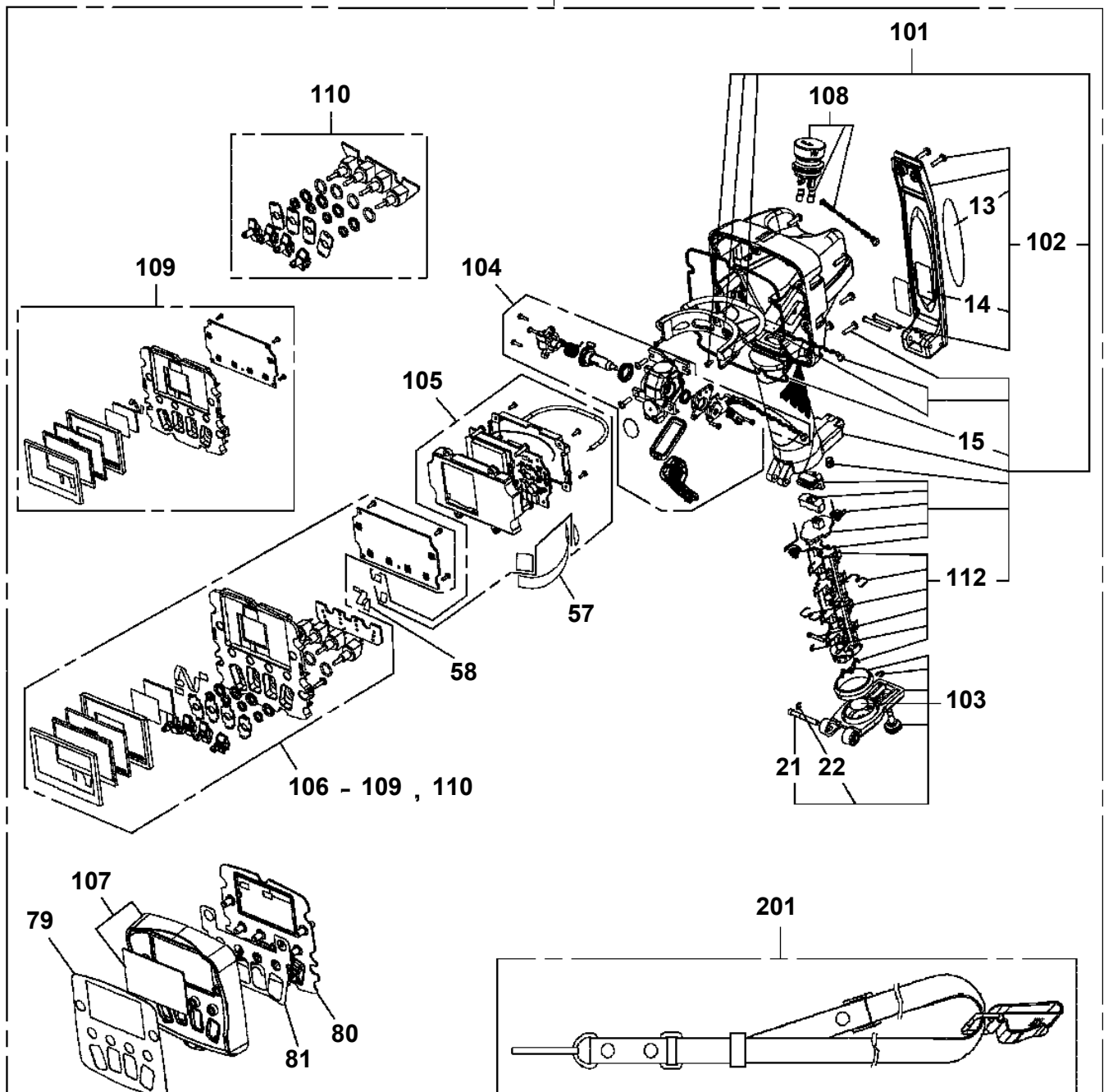
TM-ZX260 41008601153A FRAME

PB1380332-03 POWER SUPPLY (100V POWER SOURCE/1500W)



TM-ZX260 41008601153A FRAME  
PB5280017-00 BOX,OPERATION

900



注意

1. 本体分解時には、指示番号15の「Oリング（ケース）」を併せて注文ください。
2. 「RF ASSY」を交換する場合は、指示番号14の「ラベル（コクイン）」も併せて注文ください。
3. お送りする「ラベル（コクイン）」には製造番号は印字されていないので記入してください。

NOTICE

1. When disassembling the main unit, order a key No.15 「O-RING(CASE)」 beforehand.
2. When replacing 「RF ASSY」 order a Key No.14 「LABEL(SELIAL)」 beforehand.
3. Serial No.is not stamped on the 「LABEL(SELIAL)」 before shipment. Fill in the blank by yourself.

# TM-ZX260 41008601153A FRAME

Pos No.	Parts No	Parts Name	Qty	Unit	Technical Data	Serial No (Start)	Serial No (End)	Re
1	90172110035	BOLT,HEXAGON SOCKET	2		M10X35			
2	36623930000	VALVE,PILOT CHECK	1					
3	80491002020	JOINT (WITH O-RING)	2					
4	36034730001	CYLINDER ASSY,JACK (MIN.550)	1					
5	91002801000	O-RING	2		1B P10			
6	42610020510	CHOKE	1					
21	91002801100	O-RING	2		1B P11			

# TM-ZX260 41008601153A FRAME

Pos No.	Parts No	Parts Name	Qty	Unit	Technical Data	Serial No (Start)
1	91002801000	O-RING	2		1B P10	
2	90172110040	BOLT,HEXAGON SOCKET	2		M10X40	
3	36623930000	VALVE,PILOT CHECK	1			
4	80491002020	JOINT (WITH O-RING)	2			
5	36036480000	CYLINDER ASSY,JACK (FRICTION-WELDED,MIN.638)	1			
11	91002801100	O-RING	2		1B P11	

# TM-ZX260 41008601153A FRAME

Pos No.	Parts No	Parts Name	Qty	Unit	Technical Data	Serial No (Start)	Serial No (End)	Remarks
1	31649130010	PIPE	1					
2	31649130020	PIPE	1					
3	31649130030	PIPE	1					
4	31649130040	PIPE	1					
5	80303130101	FITTING,ELBOW	6		KLO10-020E			
6	80302090101	FITTING	2		KCO10-020N			
7	31611613101	POWER SUPPLY	1					
8	90172108018	BOLT,HEXAGON SOCKET	4		M8X18			
9	90302040801	WASHER,SPRING	6		8			
10	91002801100	O-RING	2		1B P11			
11	31645360100	SUPPORT	1					
12	90186210014	BOLT,FLANGE	4		M10X14			
13	37005700130	CLAMP	2		10X2			
14	90101208035	BOLT	2		M8X35			
15	90303070801	WASHER,PLAIN	2		8			
31	91002801100	O-RING	6		1B P11			

# TM-ZX260 41008601153A FRAME

Pos No.	Parts No	Parts Name	Qty	Unit	Technical Data	Serial No (Start)	Serial No (End)
1	37001601420	NUT	1		M27X2		
2	91002902500	O-RING	1		1B G25		
3	91350206000	BEARING,PLAIN (WITH PACKINGX2)	1				
4	36013823000	PISTON	1				
5	36033162000	ROD	1				
6	36034731002	CYLINDER	1				
7	36013823200	COVER,ROD	1				
8	91002905500	O-RING	1		1B G55		
9	91694004500	PACKING	1				
10	91410204502	RING,BACKUP	1				
11	91660004501	SEAL,DUST	1				
50	36033169910	PACKING SET	1		45X60		
100	36034730001	CYLINDER ASSY,JACK (MIN.550)	1				

# TM-ZX260 41008601153A FRAME

Pos No.	Parts No	Parts Name	Qty	Unit	Technical Data	Serial No (Start)	Serial No (End)	Remarks	Pages
1	31653230100	SUPPORT	1						
2	90186208014	BOLT,FLANGE	2		M8X14				
4	90101206040	BOLT	4		M6X40				
5	90280200600	NUT,FLANGE	4		M6				
6	90303070601	WASHER,PLAIN	4		6				

# TM-ZX260 41008601153A FRAME

Pos No.	Parts No	Parts Name	Qty	Unit	Technical Data	Serial No (Start)	Serial No (End)	Remarks	Pages
1	91810130250	FASTENER	2						

# TM-ZX260 41008601153A FRAME

Pos No.	Parts No	Parts Name	Qty	Unit	Technical Data	Serial No (Start)	Serial No (End)	Remarks	Page
1	(***** )	ELEC.ASSY (VEHICLE)	1						0000

# TM-ZX260 41008601153A FRAME

Pos No.	Parts No	Parts Name	Qty	Unit	Technical Data	Serial No (Start)	Serial No (End)	Remarks	Page
1	82199100026	LAMP	1		24V 60W				
2	31501292101	SUPPORT	1						
3	37000588420	PLATE	1						
4	90186210020	BOLT,FLANGE	2		M10X20				
5	31473744700	HARNES (L=1000)	2						00014
6	91850310305	CLAMP	4						
7	91810130240	FASTENER	9						
8	90288110020	NUT	2		M10				
21	82100000054	BULB,LAMP	1		24V 60W				

# TM-ZX260 41008601153A FRAME

Pos No.	Parts No	Parts Name	Qty	Unit	Technical Data	Serial No (Start)	Serial No (End)	Remarks
1	91810130250	FASTENER	12					
2	31733763200	HARNESS	1					
3	31658780900	HARNESS	1					
4	34354781710	RELAY (WITH BRACKET)	1					
5	90280200600	NUT,FLANGE	1		M6			
6	80197586012	SCREW,MACHINE	1		M6X12			
7	91850700101	CLAMP	1		L=208			
8	91850310405	CLAMP (BLACK)	1					

**TM-ZX260 41008601153A FRAME**  
**PE5021364-00 ELEC.ASSY**

ハイセンASSY (メイパ ン/テイシ)  
ELEC. ASSY

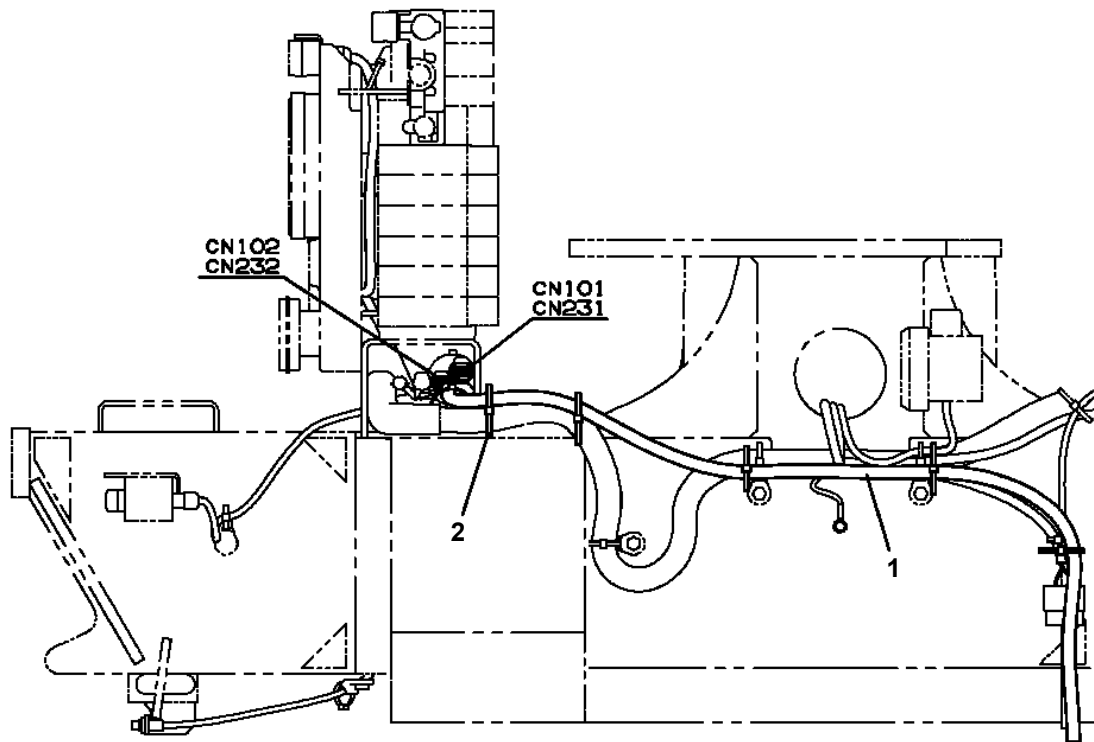
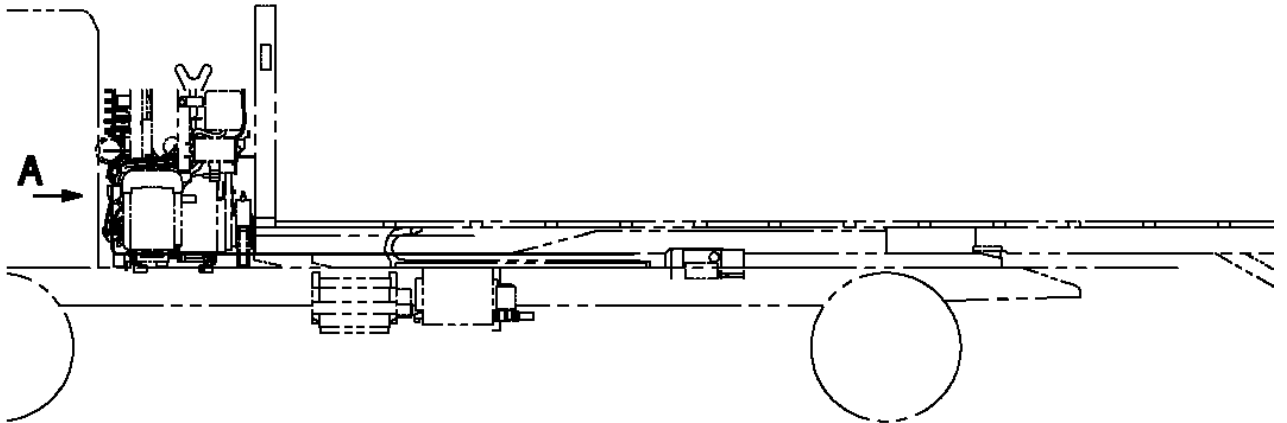
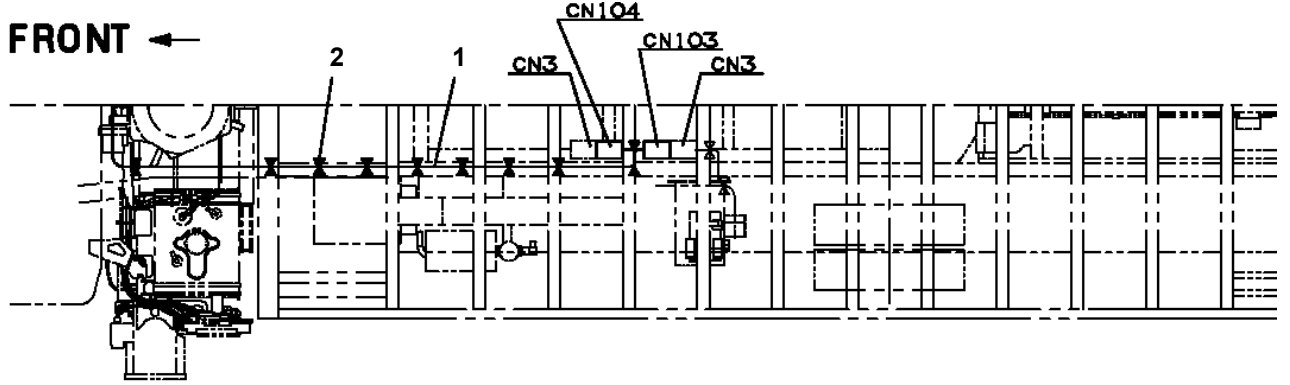
---

符号	日本語名称	英語名称	備考
11	ネームプレートASSY (停止仕様)	NAME PLATE ASSY	停止仕様銘板貼付
12	ネームプレートASSY	NAME PLATE ASSY	JCAS銘板貼付

適用製造番号によっては取り付けがないものもあります。

MACHINES OF SOME SERIAL NO. ARE NOT EQUIPPED WITH THESE PARTS.

TM-ZX260 41008601153A FRAME  
PE5021369-00 ELEC.ASSY (CONNECTION)



A

**TM-ZX260 41008601153A FRAME**  
**PE5021466-00 ELEC.ASSY**

ハイセンASSY (メイパ ン/ケイホウ)  
ELEC. ASSY

---

符号	日本語名称	英語名称	備考
1	ネームプレートASSY (警報仕様)	NAME PLATE ASSY	警報仕様 純板

適用製造番号によっては取り付けがないものもあります。

MACHINES OF SOME SERIAL NO. ARE NOT EQUIPPED WITH THESE PARTS.

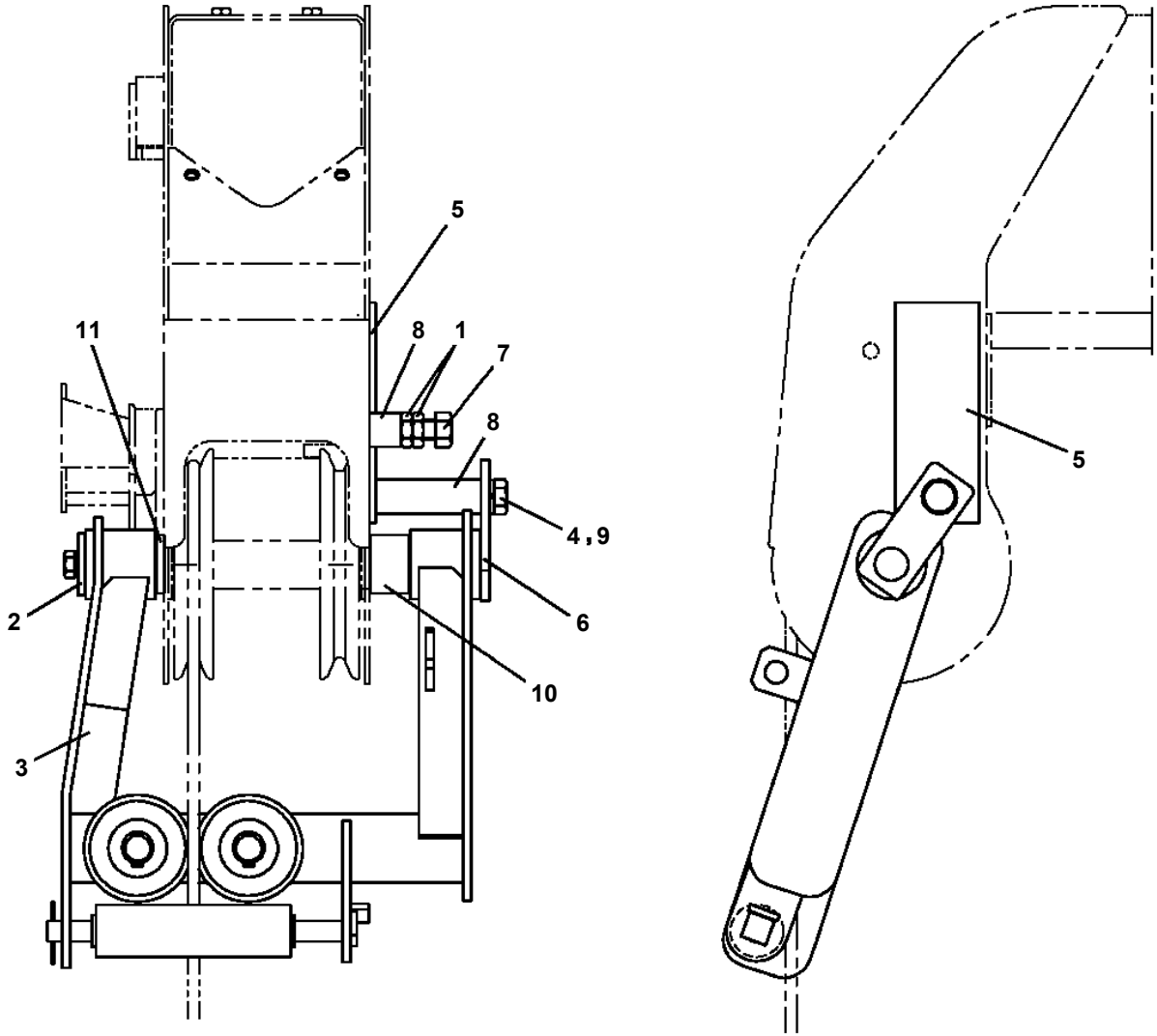
# TM-ZX260 41008601153A FRAME

Pos No.	Parts No	Parts Name	Qty	Unit	Technical Data	Serial No (Start)	Serial No (End)	Remarks
1	91810130250	FASTENER	11					
2	31734603200	HARNESS	1					
3	31658780900	HARNESS	1					
4	34354781710	RELAY (WITH BRACKET)	1					
5	90280200600	NUT,FLANGE	1		M6			
6	80197586012	SCREW,MACHINE	1		M6X12			
7	91850700101	CLAMP	1		L=208			
8	91850310405	CLAMP (BLACK)	1					

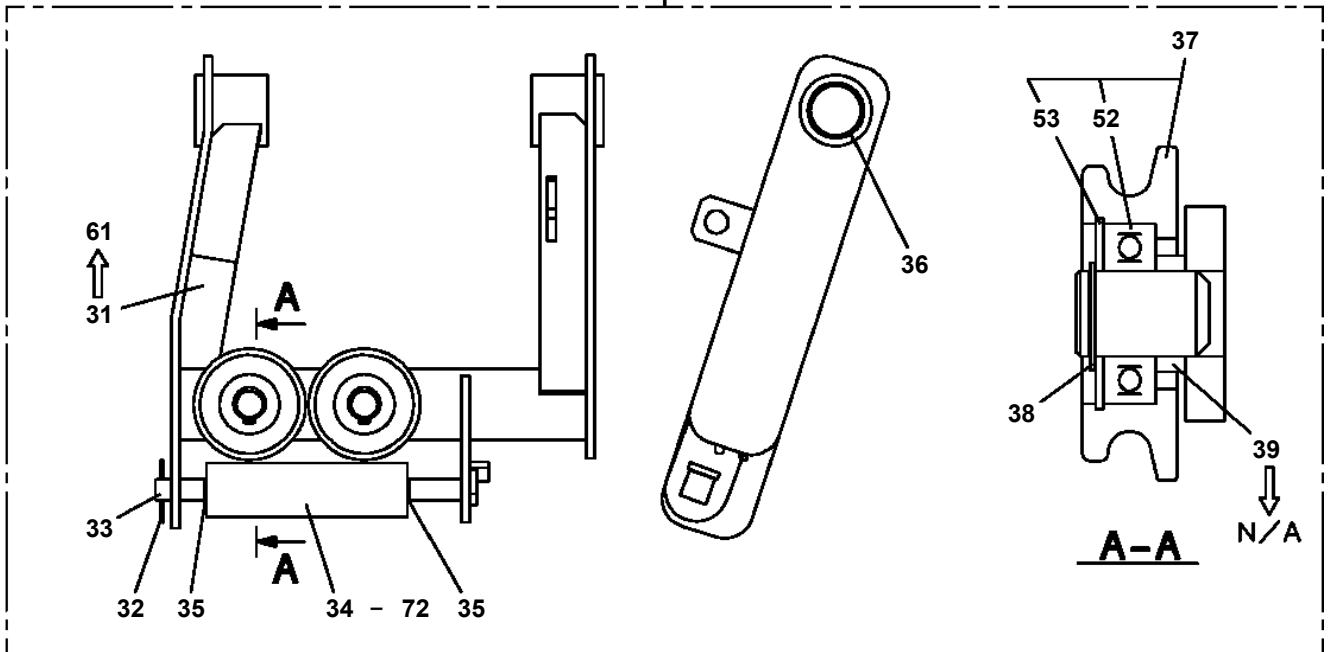
## TM-ZX260 41008601153A FRAME

Pos No.	Parts No	Parts Name	Qty	Unit	Technical Data	Serial No (Start)	Serial No (End)	Remarks
1	90191510020	BOLT,HEXAGON SOCKET	8		M10X20			
2	90302041001	WASHER,SPRING	8		10			
3	90303071001	WASHER,PLAIN	4		10			
4	36093860021	BODY	1					
5	36093860042	SUPPORT	1					
6	37001008670	SHEAVE ASSY	2					
7	80720105056	PIN,SPRING	1		5X56			
9	36093860031	BODY	1					
10	36093860080	COVER	2					
12	80500051207	BEARING,BALL	1					
13	36093860071	TRUNNION	1					
21	36095155020	HOOK ASSY	1					
32	36093861100	BEARING,BALL	2					
40	36095150050	TRIGGER SET	1					
100	36095150000	HOOK (LOCKING)	1					

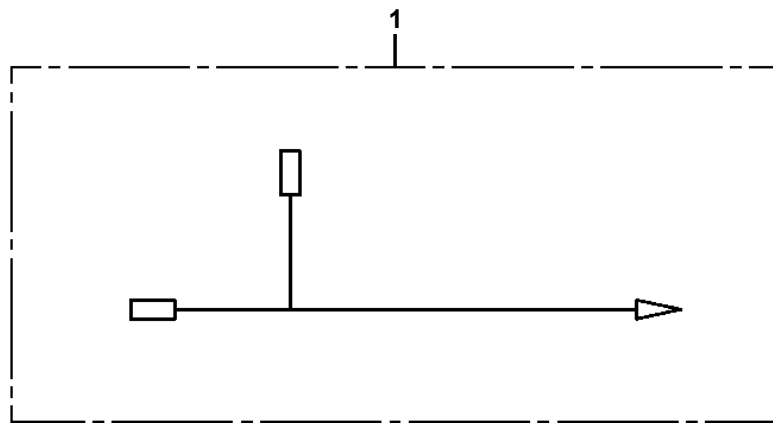
**TM-ZX260 41008601153A FRAME  
PG1020006-03 GUIDE,ROPE**



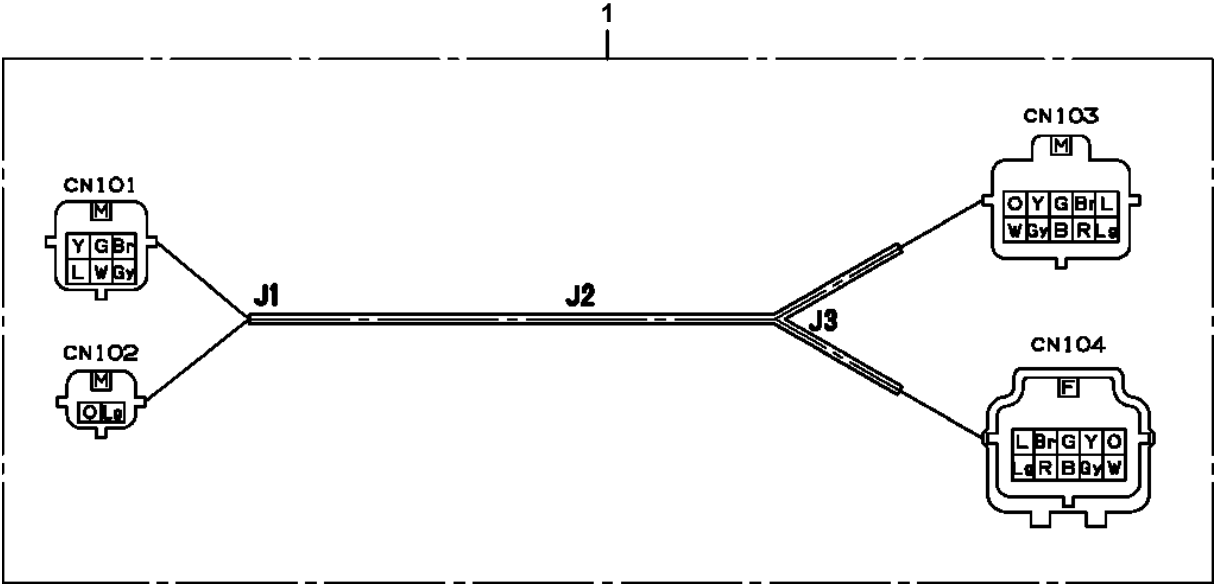
3



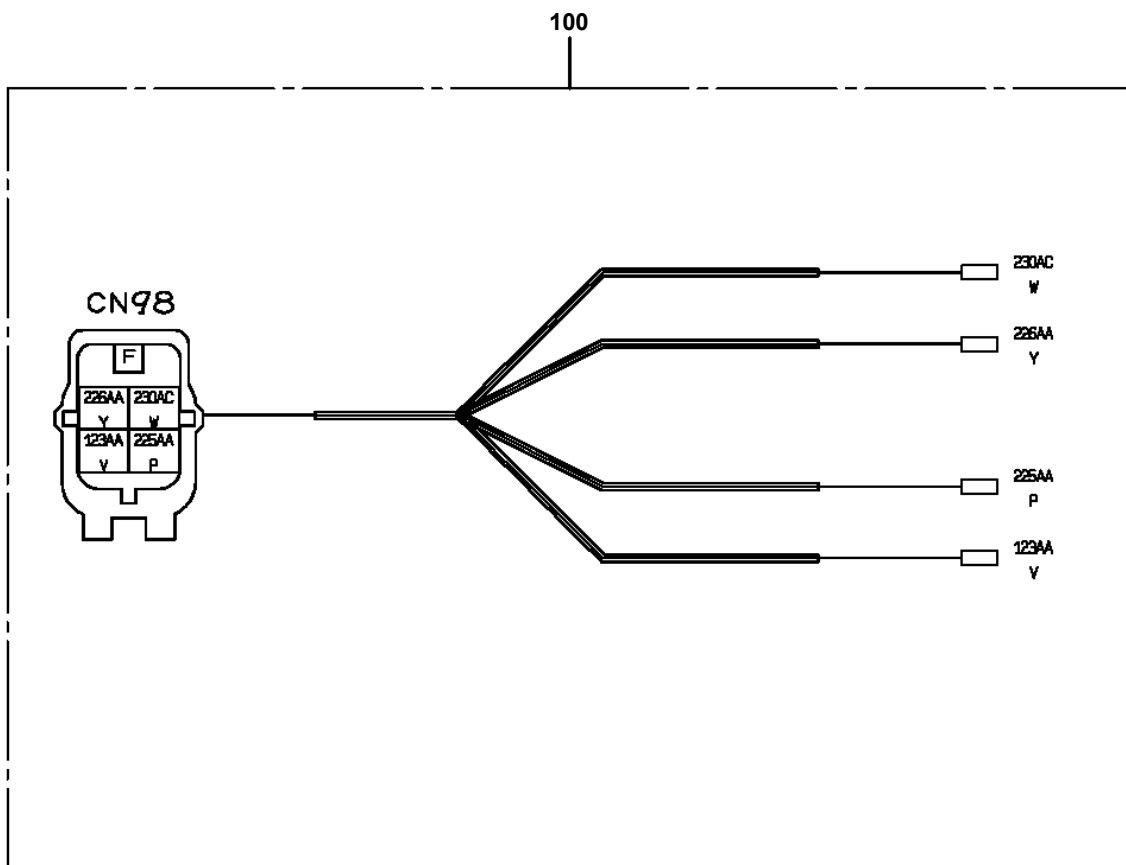
**TM-ZX260 41008601153A FRAME  
PH5032071-00 HARNESS**



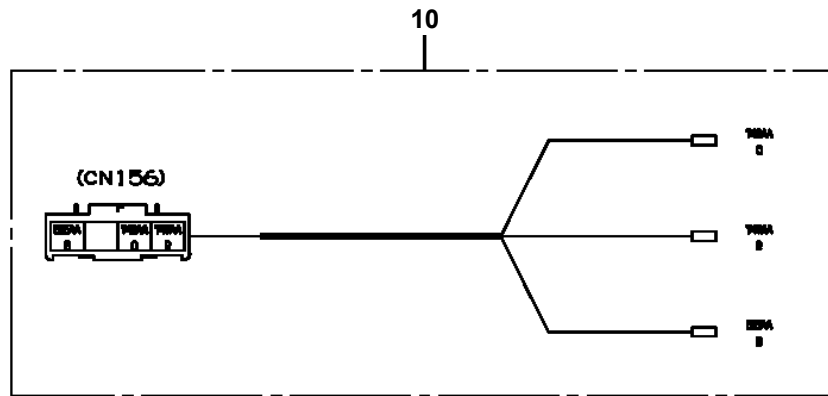
TM-ZX260 41008601153A FRAME  
PH5033282-00 HARNESS



TM-ZX260 41008601153A FRAME  
PH5033823-01 HARNESS



**TM-ZX260 41008601153A FRAME  
PH5034112-00 HARNESS**



CLICK HERE TO **DOWNLOAD** THE COMPLETE MANUAL

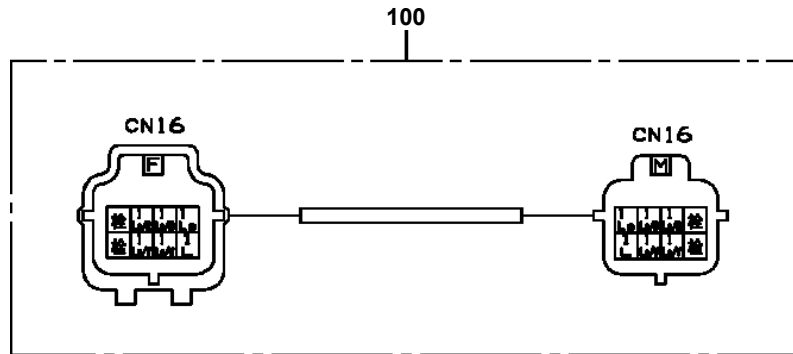
- Thank you very much for reading the preview of the manual.
- You can download the complete manual from: [www.heydownloads.com](http://www.heydownloads.com) by clicking the link below



- Please note: If there is no response to CLICKING the link, please download this PDF first and then click on it.

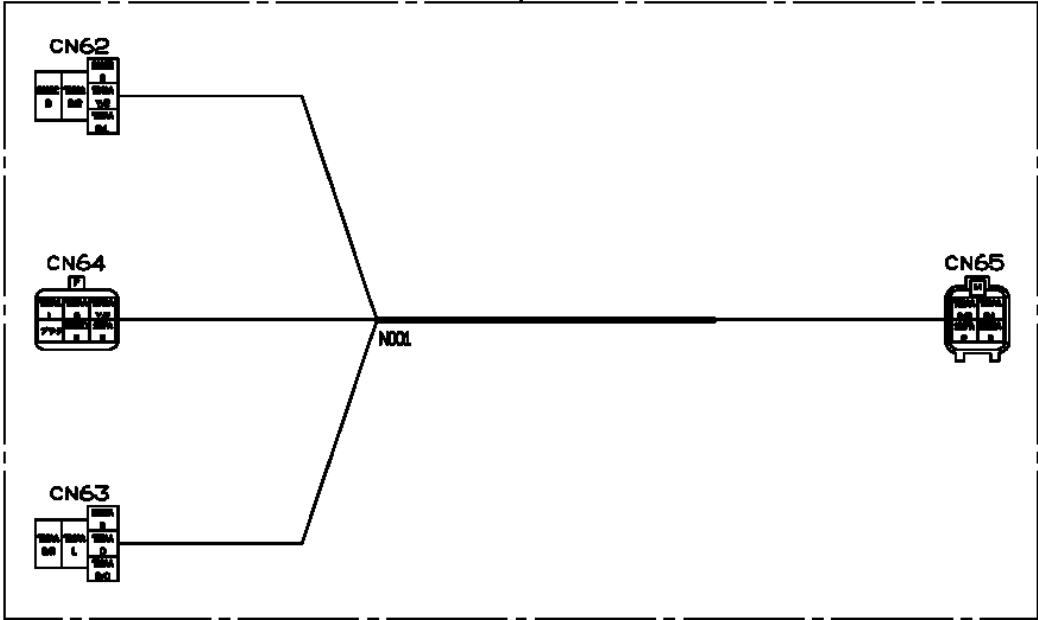
CLICK HERE TO **DOWNLOAD** THE COMPLETE MANUAL

**TM-ZX260 41008601153A FRAME  
PH5034305-00 HARNESS**



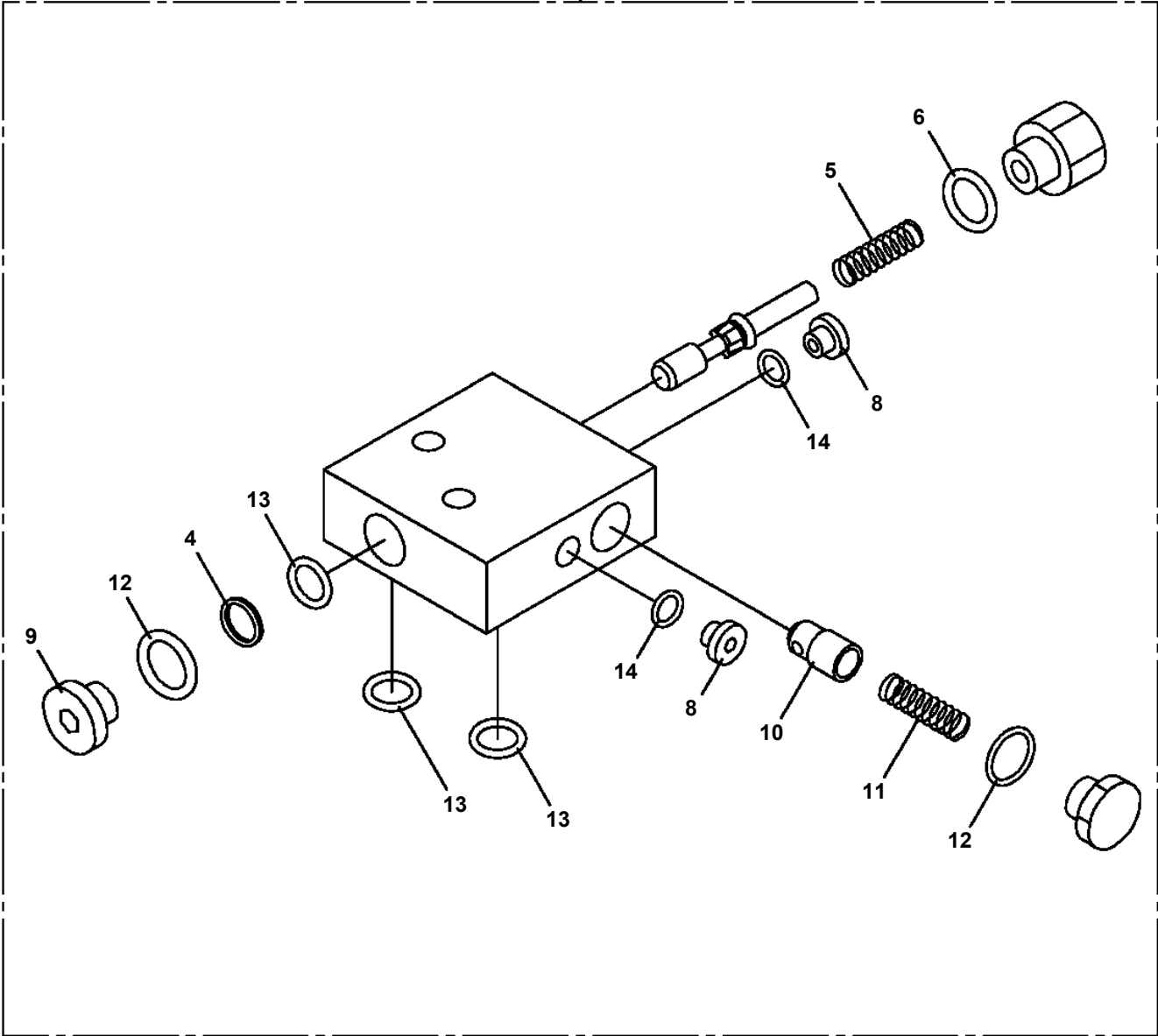
TM-ZX260 41008601153A FRAME  
PH5034488-00 HARNESS

10

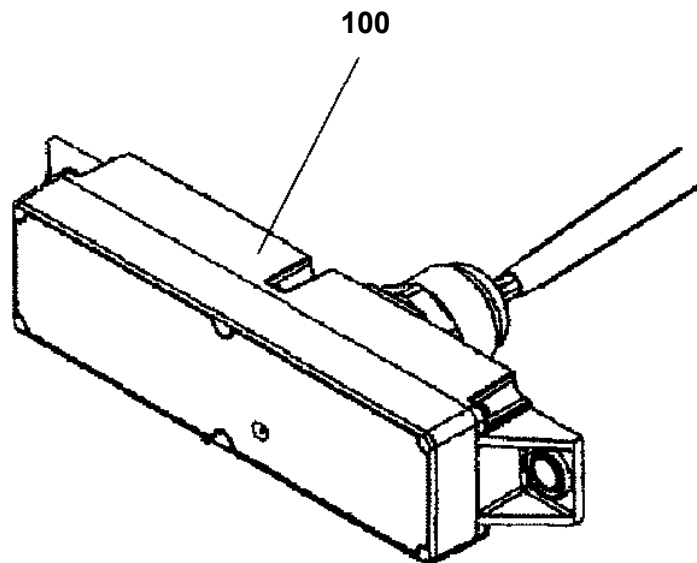


TM-ZX260 41008601153A FRAME  
PI1250160-02 VALVE,COUNTERBALANCE

50

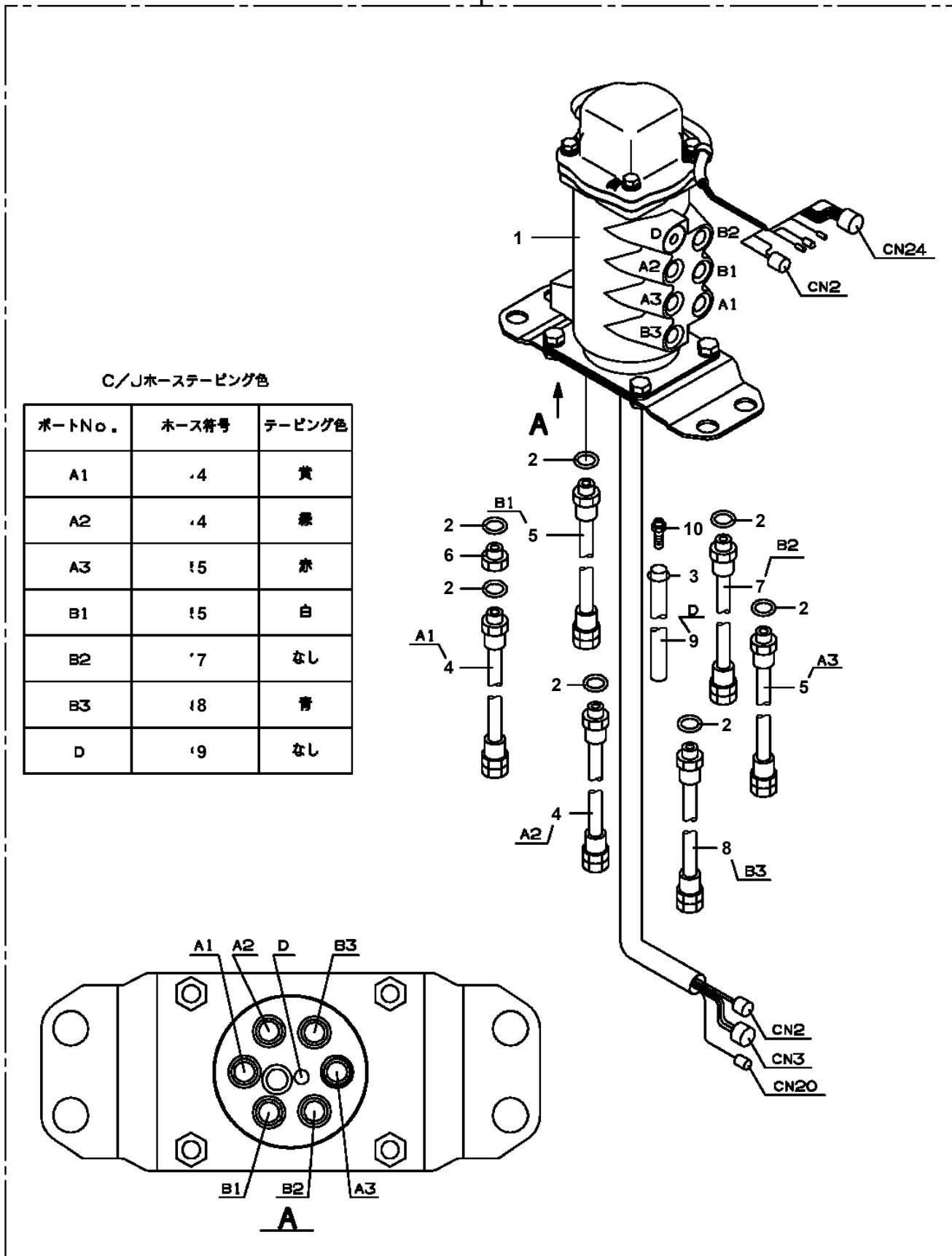


**TM-ZX260 41008601153A FRAME**  
**PI5200001-00 INDICATOR**



TM-ZX260 41008601153A FRAME  
 PJ5090126-00 JOINT ASSY, SWIVEL

100



# TM-ZX260 41008601153A FRAME

Pos No.	Parts No	Parts Name	Qty	Unit	Technical Data	Serial
1	(*****)	FRAME ASSY	1			
2	(*****)	TANK ASSY (MOUNT)	1			
3	(*****)	SWING ASSY	1			
5	31632350000	JOINT ASSY,SWIVEL	1			
6	(*****)	STOPPER,ROTARY JOINT	1			
7	(*****)	POST ASSY	1			
8	31241800000	DERRICK ASSY	1			
9	(*****)	WINCH ASSY (MOUNT)	1			
10	(*****)	PIPING ASSY (UPPER)	1			
11	(*****)	OPE.ASSY,CONT.VALVE (JACK,SWING)	1			
13	(*****)	ELEC.ASSY	1			
16	(*****)	PIPING ASSY,GREASE	1			
21	(*****)	OPE.ASSY,CONT.VALVE (ELE,WINCH,TELE/TDN)	1			
	(*****)	OPE.ASSY,CONT.VALVE (ELEVATING,WINCH,TELESCOPING/U)	1			
32	(*****)	COVER (SWING)	1			
33	(*****)	COVER ASSY (SWITCH PANEL)	1			
41	(*****)	PIPING ASSY (LOWER)	1			
42	36743180000	VALVE ASSY,REMOTE CONTROL	1			
51	(*****)	OUTRIGGER ASSY	1			
52	(*****)	LOCK ASSY	1			
53	(*****)	PIPING ASSY,OUTRIGGER	1			
54	(*****)	OUTRIGGER (STOPPER ASSY)	1			

# TM-ZX260 41008601153A FRAME

Pos No.	Parts No	Parts Name	Qty	Unit	Technical Data	Serial No (Start)	Serial No (End)	Remarks	Pages
1	(*****)	ELEC.ASSY (POST)	1						000100
2	(*****)	ELEC.ASSY (LAMP)	1						000206
3	(*****)	NAME PLATE ASSY	1						000225
5	(*****)	NAME PLATE ASSY	1						000222

# TM-ZX260 41008601153A FRAME

Pos No.	Parts No	Parts Name	Qty	Unit	Technical Data	Serial No (Start)	Serial No (End)	Remarks	Pages
1	(*****)	ELEC.ASSY	1						000120
2	(*****)	LAMP ASSY,AML	1						000196
3	(*****)	SUPPORT ASSY	1						000275

# TM-ZX260 41008601153A FRAME

Pos No.	Parts No	Parts Name	Qty	Unit	Technical Data	Serial No (
1	31783930400	SUPPORT	2			
2	31783930200	SUPPORT	2			
3	56560009000	PIN	2			
4	80136330025	PIN,SPLIT	2			
5	31783930300	SUPPORT	2			
6	31783090300	SUPPORT	2			
7	31200791030	PLATE	2			
8	32460251300	CHAIN	2		L=386	
9	82400000543	HOOK	2			
10	31783090500	PLATE,CAUTION	2			
100	31783930000	MODIFICATION ASSY (PLANKING CASE:FOR WHEEL BASE)	1			

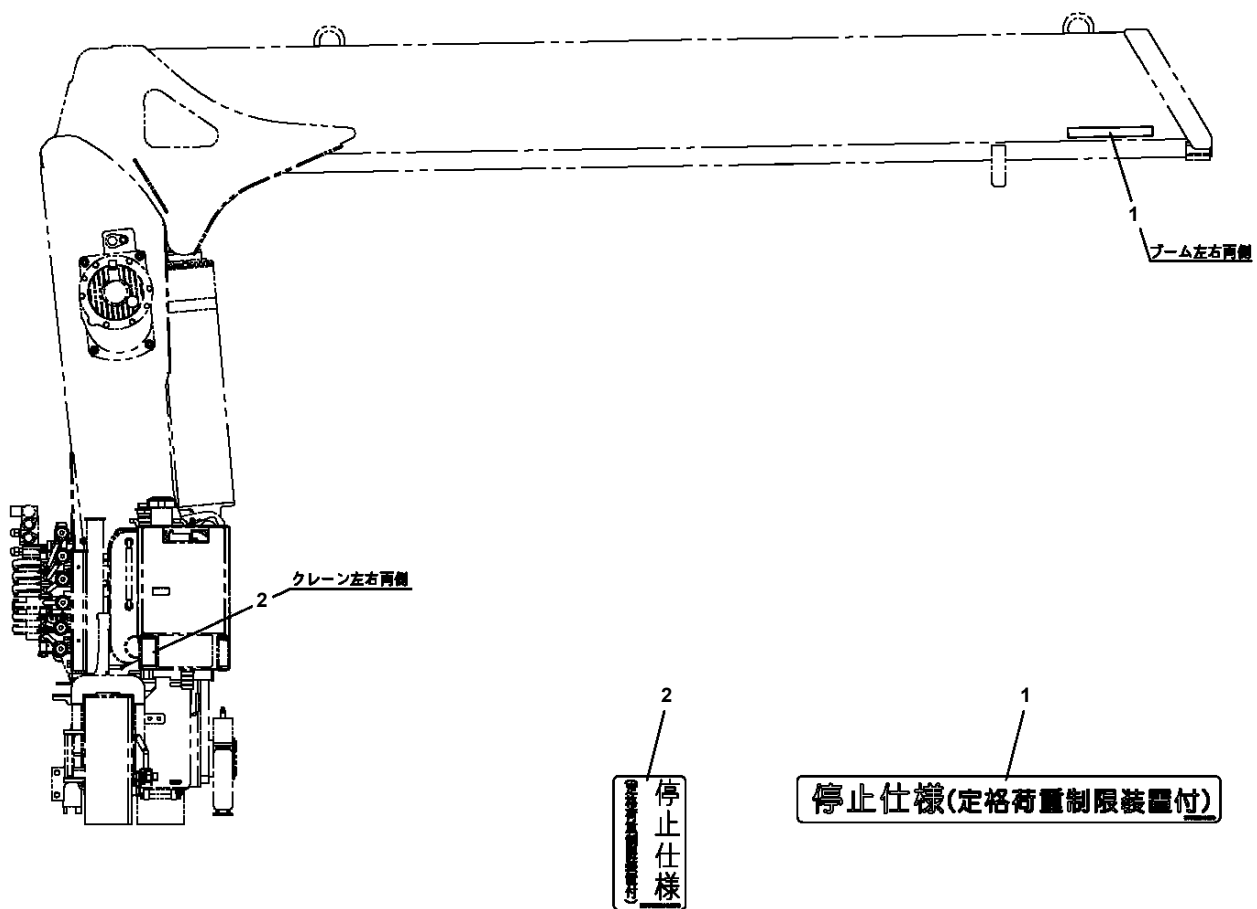
# TM-ZX260 41008601153A FRAME

Pos No.	Parts No	Parts Name	Qty	Unit	Technical Data	Serial No (Start)	Serial No (End)
1	91850310405	CLAMP (BLACK)	7				
2	91810130240	FASTENER	20				
3	91810130250	FASTENER	5				
5	31657280200	COVER	2				
6	90186208020	BOLT,FLANGE	8		M8X20		
7	90280200800	NUT,FLANGE	8		M8		
8	31653470100	SUPPORT	1				
9	31653470200	SUPPORT	1				
10	90186206010	BOLT,FLANGE	12		M6X10		
11	31611614300	HARNESS	1		L=10000		
12	82100002503	TERMINAL	1				
13	82100001226	INSULATOR	1				
14	31656330200	HARNESS	1				
15	31611614500	COVER	1				
16	31611614400	COVER	1				
17	82100000192	TERMINAL	1				
18	82100000182	INSULATOR	1				
19	31478092200	HARNESS	1		L=100		
22	82115001005	CONNECTOR	1				
41	31653322200	SWITCH ASSY (WITH HARNESS,2-SW)	2				
42	82199514013	CAP	4				
43	82199504017	NUT	4		AT-401N		
44	31657282100	SUPPORT	2				
45	31656331200	PLATE,NAME	2				

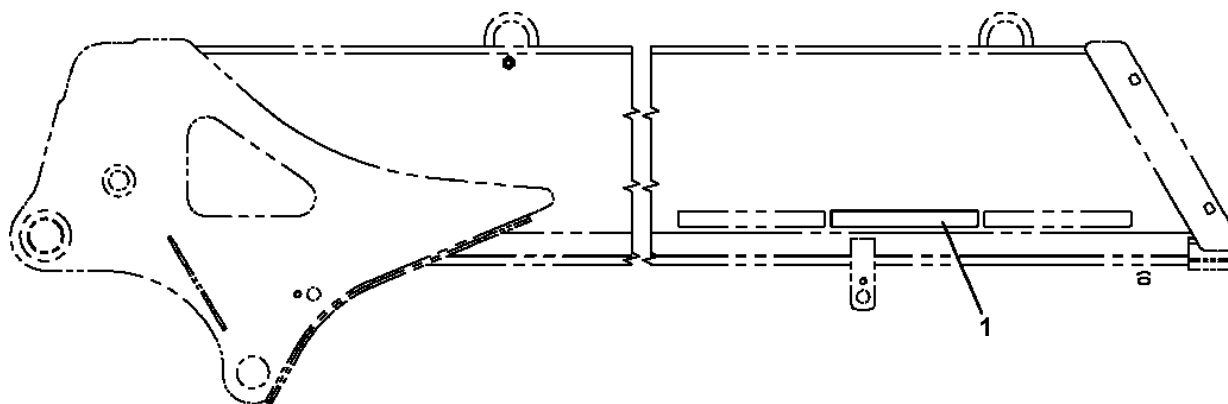
# TM-ZX260 41008601153A FRAME

Pos No.	Parts No	Parts Name	Qty	Unit	Technical Data	Serial No (Start)	Serial No (
100	31595691000	NAME PLATE ASSY (KNOB:TDN-LAYOUT)	1				

TM-ZX260 41008601153A FRAME  
PN5012063-00 NAME PLATE ASSY

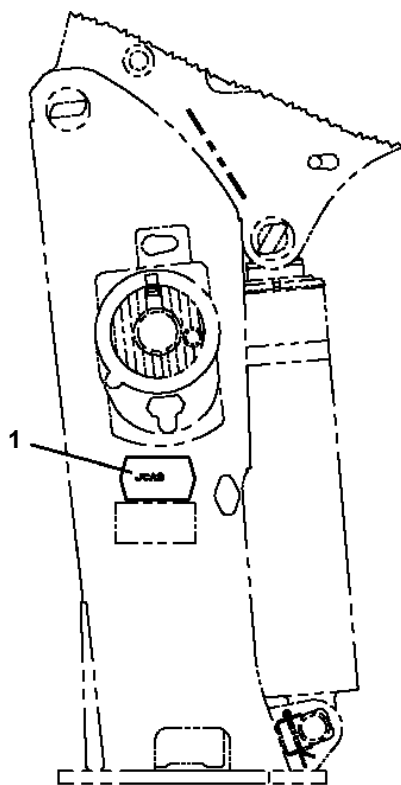


TM-ZX260 41008601153A FRAME  
PN5012122-00 NAME PLATE ASSY



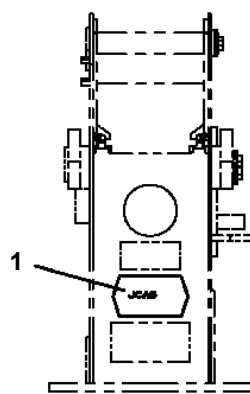
1  
フーム・ジャッキ インターロック装置付

TM-ZX260 41008601153A FRAME  
 PN5012165-01 NAME PLATE ASSY (JSAS)

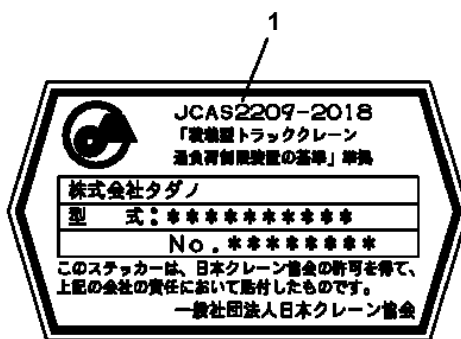


ZX250, ZX260, ZX290  
 ZX300, ZX360  
 ZS500, ZS580  
 ZX500

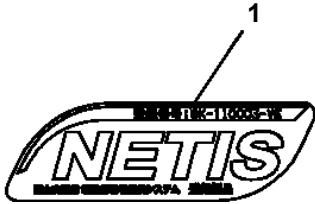
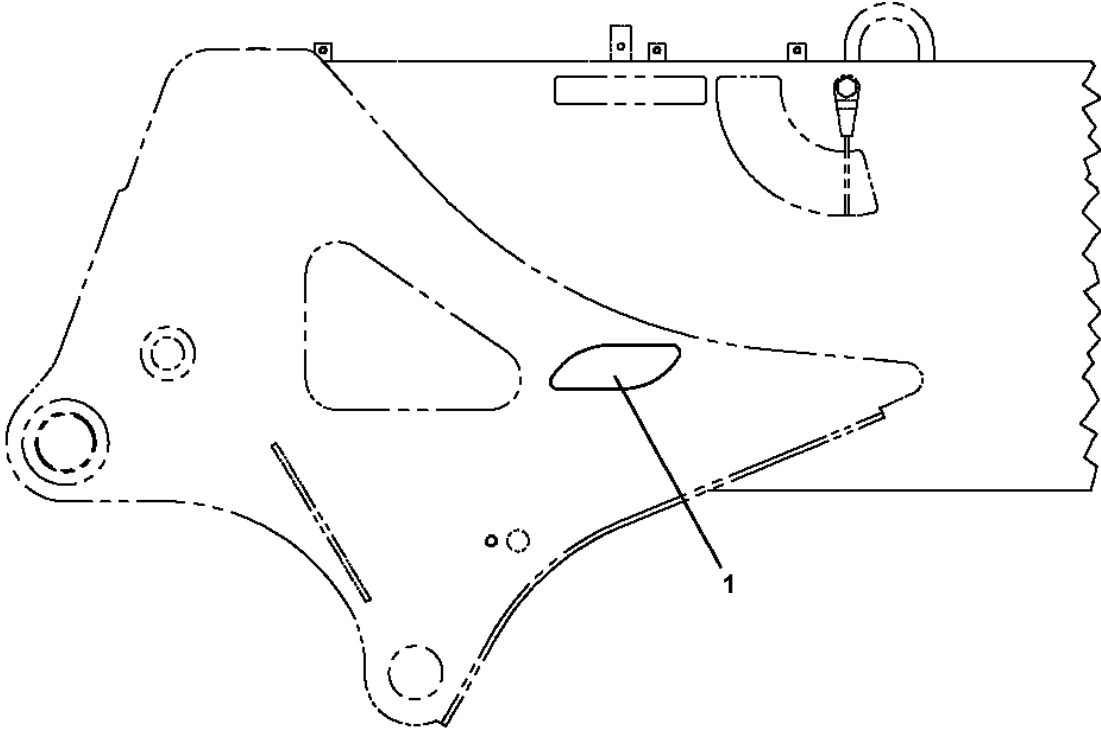
ポスト側面



ZS220  
 ポスト前面



TM-ZX260 41008601153A FRAME  
PN5012194-00 NAME PLATE ASSY (NETIS/S-SIZE)



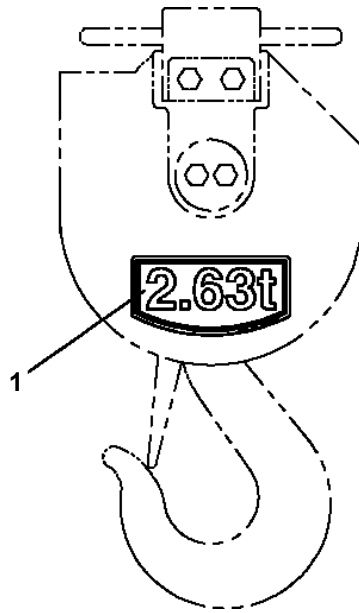
TM-ZX260 41008601153A FRAME  
PN5012297-00 NAME PLATE ASSY

1

停止仕様(定格荷重制限装置付)

27002041.000

**TM-ZX260 41008601153A FRAME**  
**PO1015478-01 PLATE ASSY,NAME (HOOK)**



**TM-ZX260 41008601153A FRAME**  
**PO5080313-00 OPE.ASSY,CONT.VALVE (ELEVATING,WINCH,TELESCOPING/U)**

オペ .ASSY,ソウサハ` ルフ` (キフク,ウインチ,シンシユク/Uハイレッツ)  
OPE.ASSY,CONT.VALVE (ELEVATING,WINCH,TELESCOPING/U)

---

符号	日本語名称	英語名称	備考
1	オペ .ASSY,ソウサハ` ルフ`	OPE.ASSY,CONT.VALVE	
2	ネームプ` レ-トASSY	NAME PLATE ASSY	

適用製造番号によっては取り付けがないものもあります。

MACHINES OF SOME SERIAL NO. ARE NOT EQUIPPED WITH THESE PARTS.

**TM-ZX260 41008601153A FRAME  
PO5290102-01 OUTRIGGER ASSY,REAR (ROTARY/MEDIUM-SIZEVEHICLE)**

アウトリカ<sup>®</sup> ASSY, リヤ (カイテンシキ/チユウカ<sup>®</sup> タキヨウ)  
OUTRIGGER ASSY, REAR (ROTARY/MEDIUM-SIZE VEHICLE)

符号	日本語名称	英語名称	備考
1	フレームASSY	FRAME ASSY	回転式 張出幅2800mm ストローク360mm
3	ハイセンASSY	ELEC. ASSY	クレーン部
4	オペ <sup>®</sup> . ASSY, ソウサバ <sup>®</sup> ルブ <sup>®</sup>	OPE. ASSY, CONT. VALVE	
5	ネームプレートASSY	NAME PLATE ASSY	
8	ハイセンASSY	ELEC. ASSY	車両部
21	ハイカンASSY	PIPING ASSY	トラックシャシ部分
22	バルブ ASSY, リモコン	VALVE ASSY, REMOTE CONTROL	2進 (サンワ)
23	ハイカンASSY	PIPING ASSY	クレーン本体部分
24	サポートASSY	SUPPORT ASSY	250, 260系用バルブ台

適用製造番号によっては取り付けがないものもあります。

MACHINES OF SOME SERIAL NO. ARE NOT EQUIPPED WITH THESE PARTS.

**TM-ZX260 41008601153A FRAME  
PP5170009-00 PARTS ASSY,REMOTE CONTROL**

**パーツASSY,リモコン  
PARTS ASSY,REMOTE CONTROL**

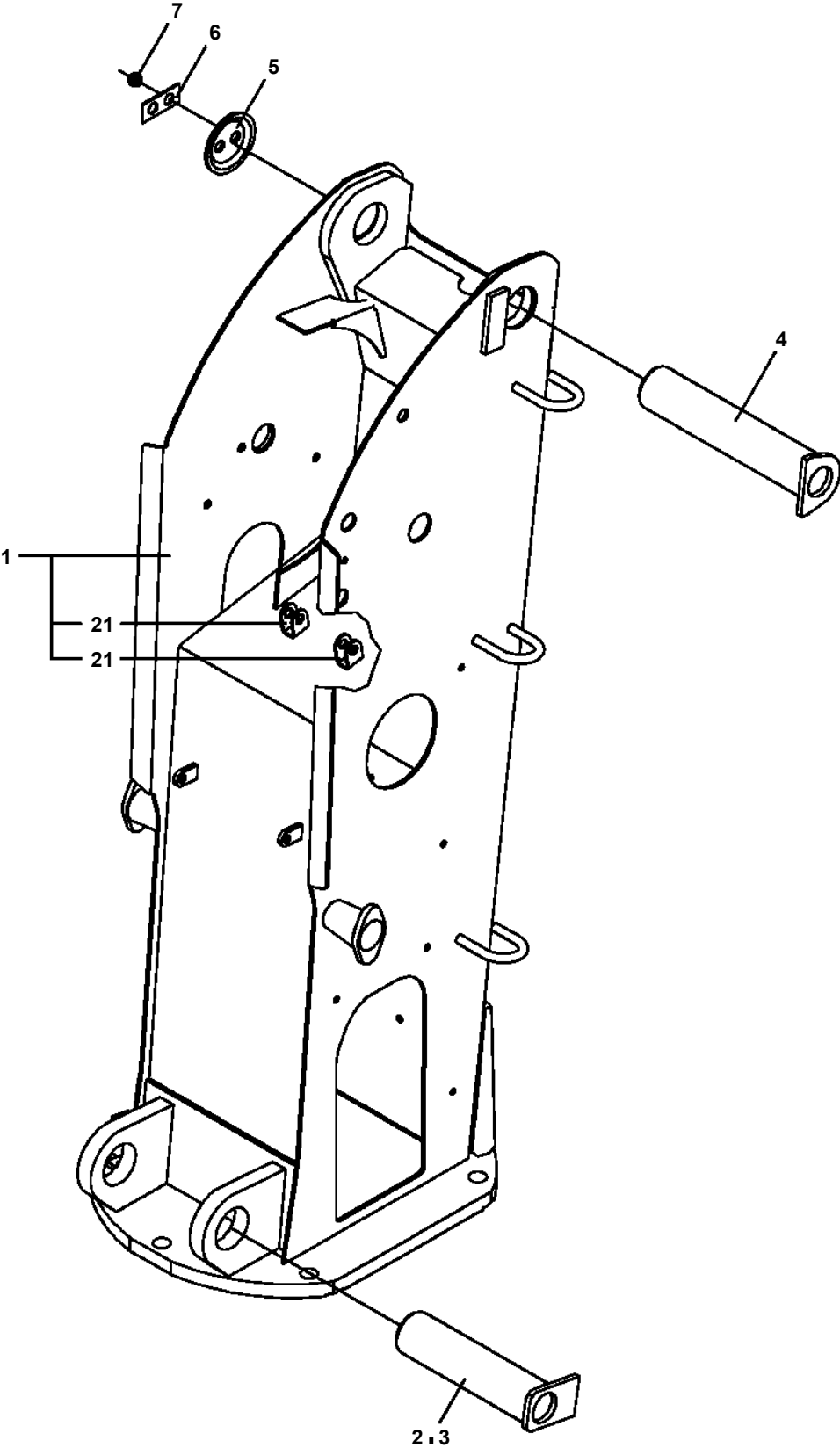
---

符号	日本語名称	英語名称	備考
1	ボックス、オペレーション	BOX,OPERATION	LCD送信機 (リモコン:10m)
2	ハイセンASSY	ELEC.ASSY	送信ユニット接続ケーブル
3	ネームプレートASSY	NAME PLATE ASSY	リモコン取扱注意
5	ネームプレートASSY	NAME PLATE ASSY	送信機基板 (U社配列) 必要に応じて使用

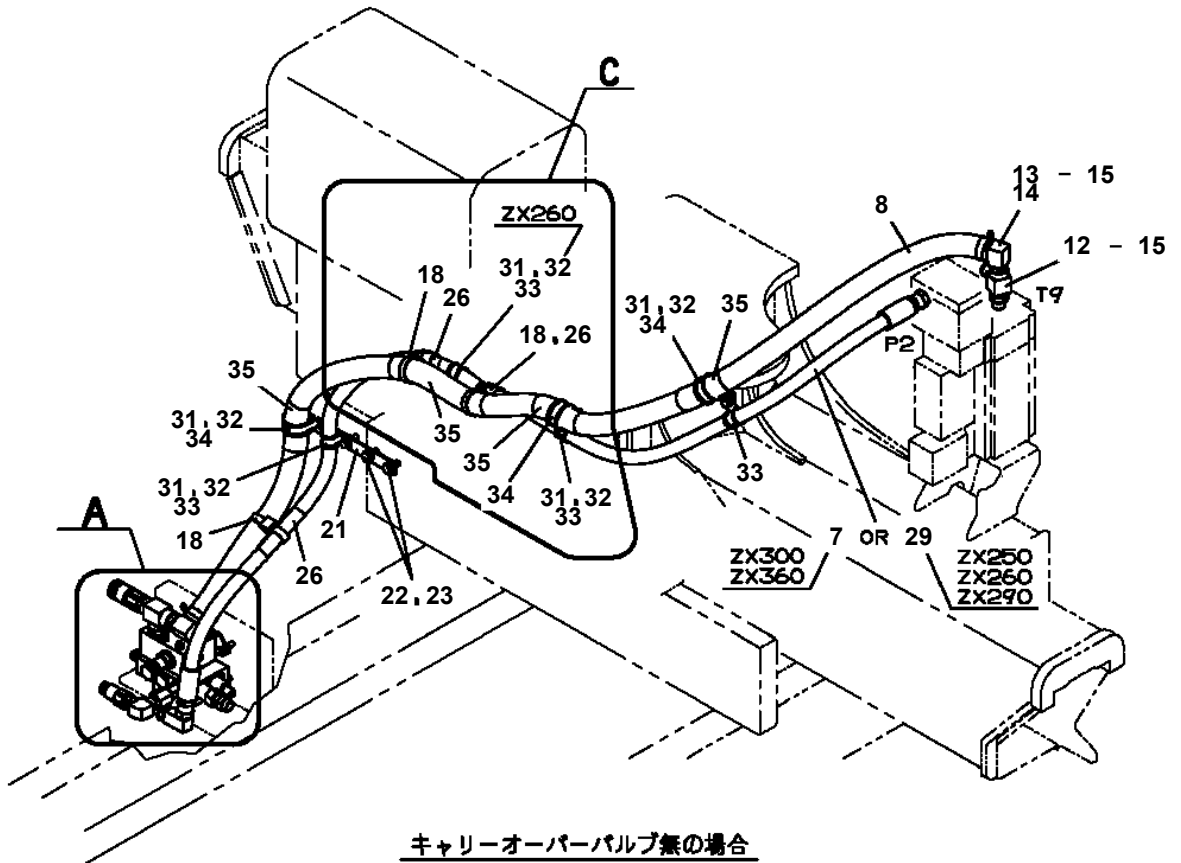
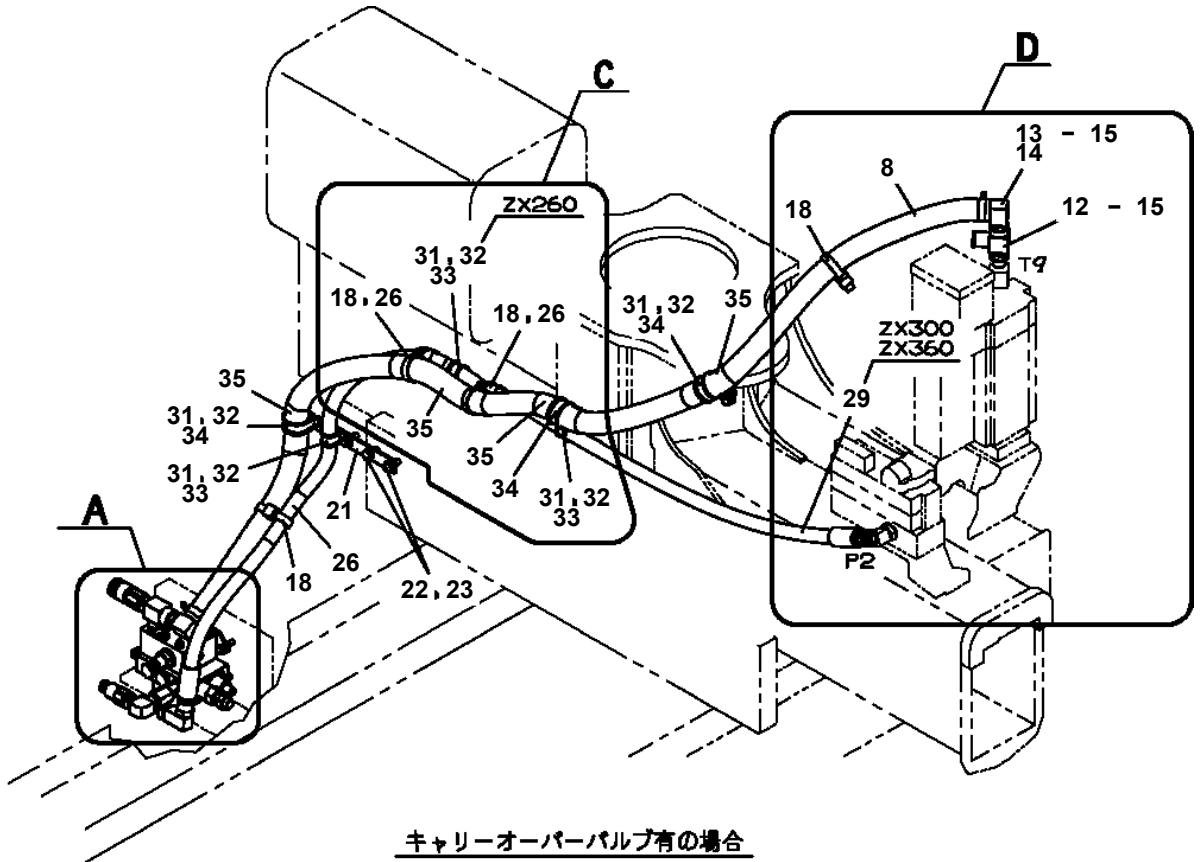
適用製造番号によっては取り付けがないものもあります。

MACHINES OF SOME SERIAL NO. ARE NOT EQUIPPED WITH THESE PARTS.

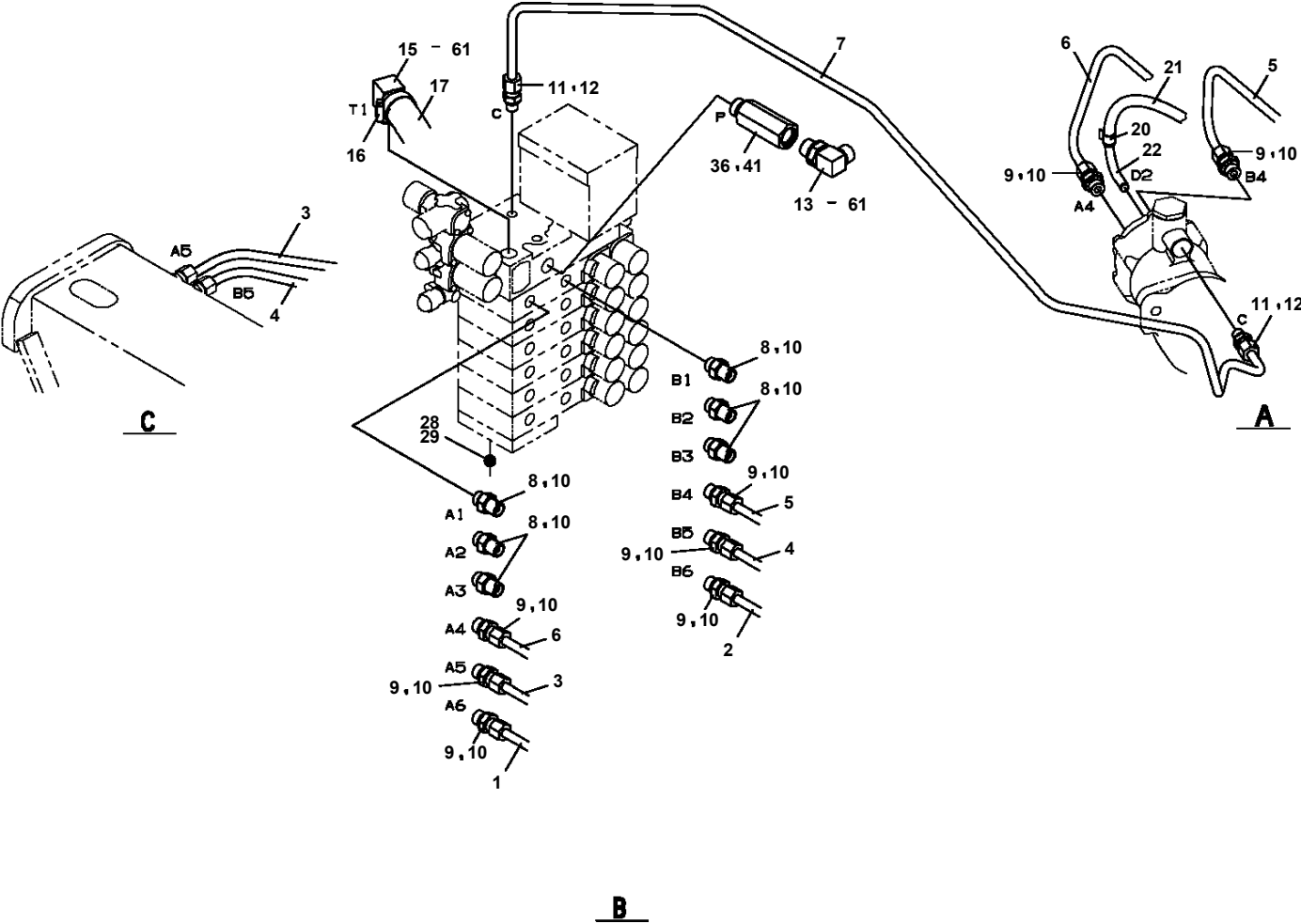
TM-ZX260 41008601153A FRAME  
PP5300023-00 POST ASSY



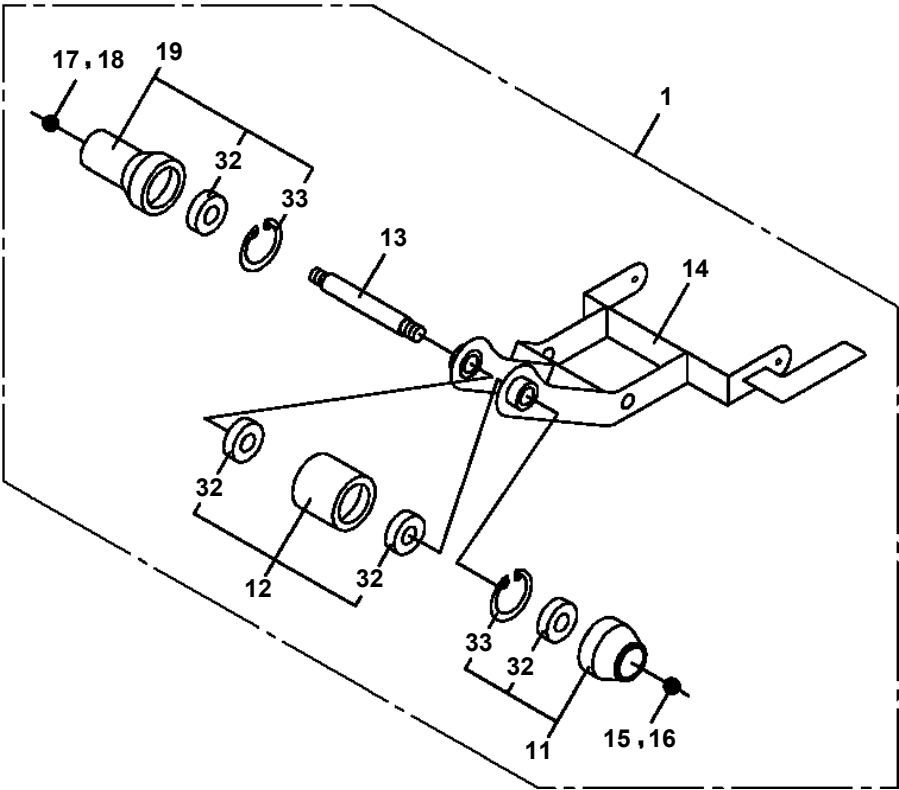
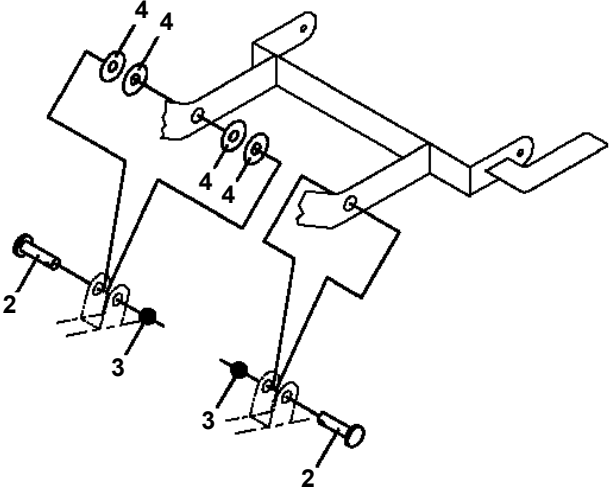
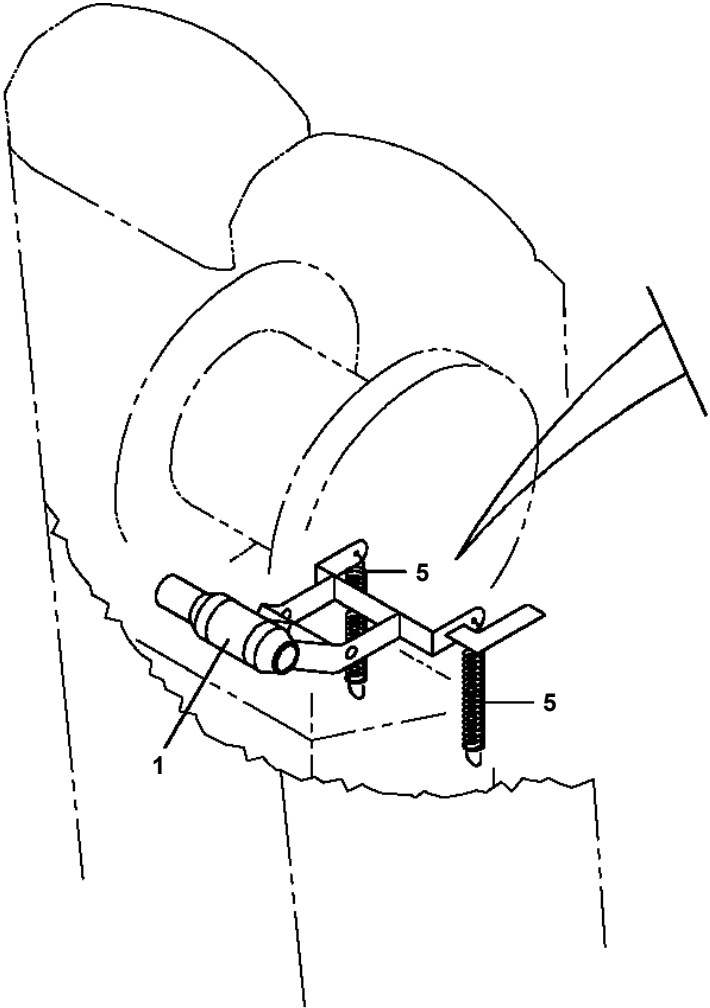
TM-ZX260 41008601153A FRAME  
 PP6010544-00 PIPING ASSY



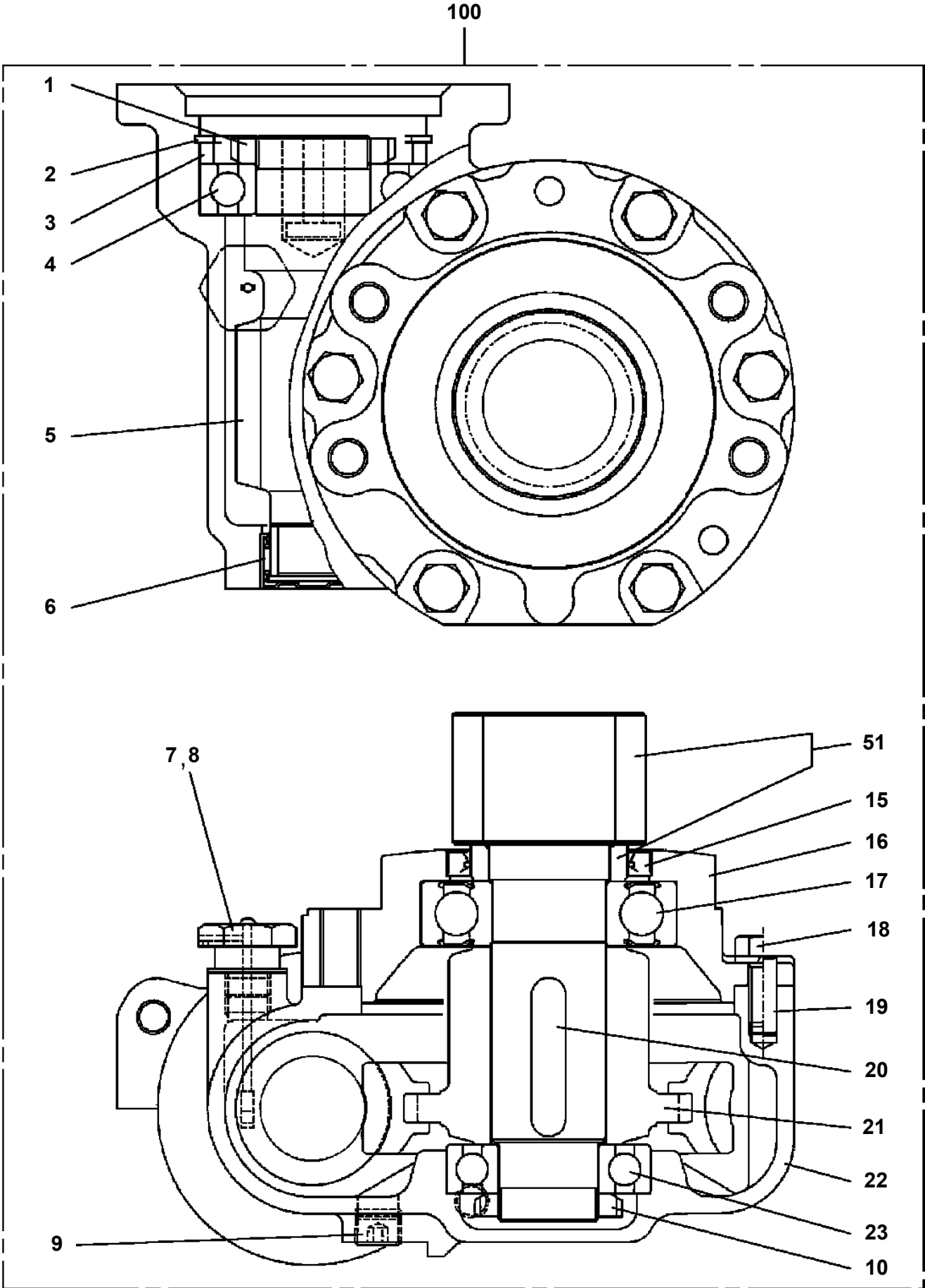
**TM-ZX260 41008601153A FRAME  
PP6010572-00 PIPING ASSY (LOWER)**



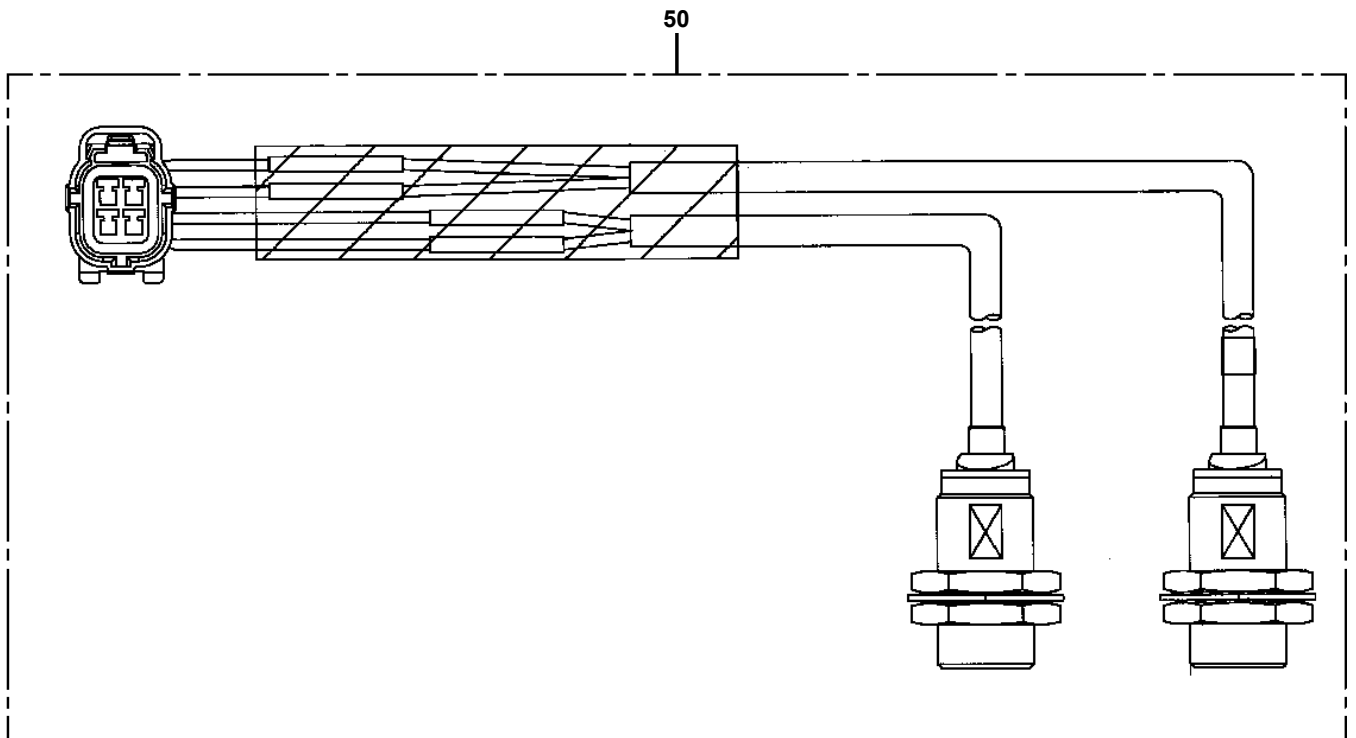
**TM-ZX260 41008601153A FRAME  
PR5150001-00 ROLLER ASSY (FOR OVER-UNWINDING DETECTOR)**



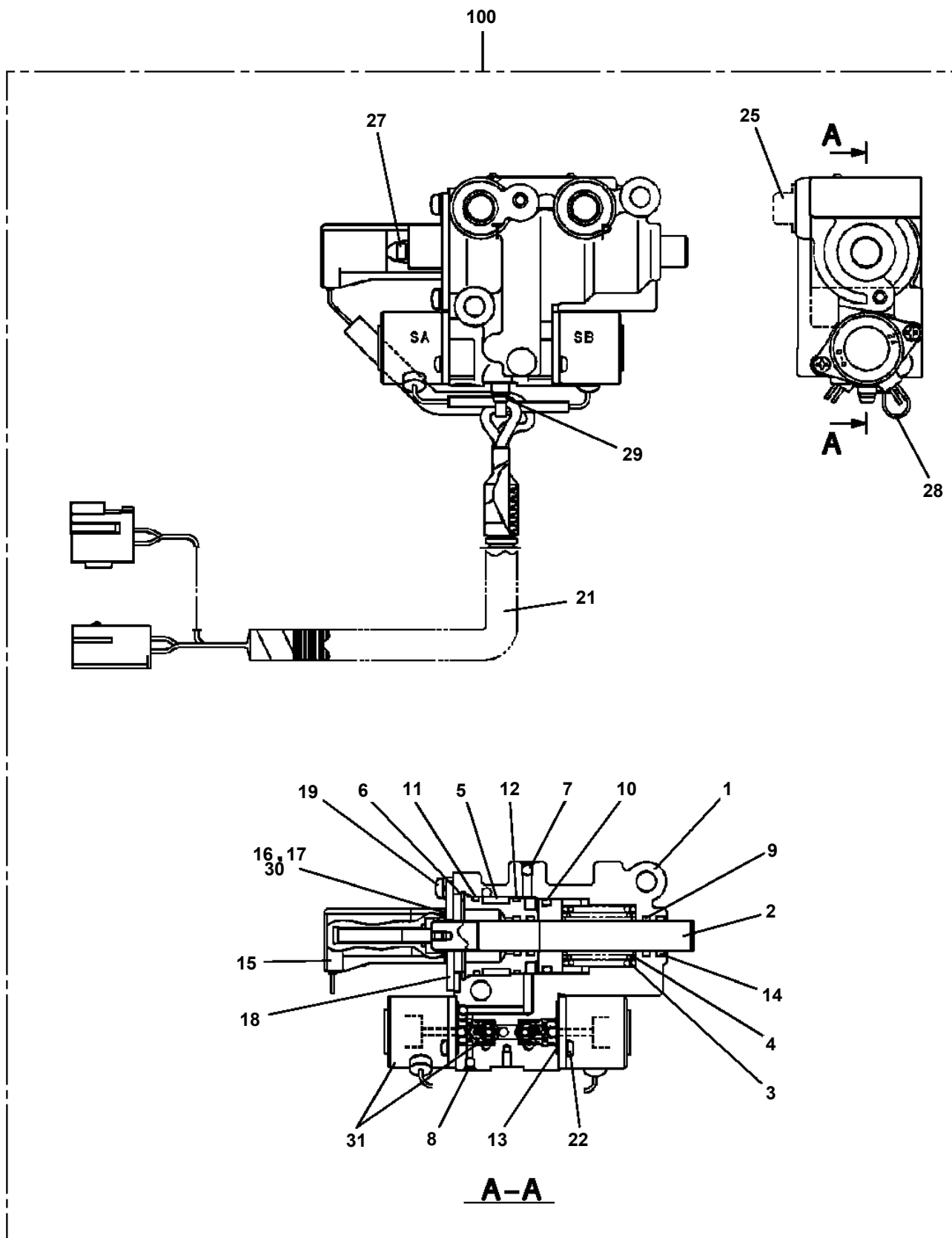
TM-ZX260 41008601153A FRAME  
PS5500016-00 SWING ASSY



**TM-ZX260 41008601153A FRAME**  
**PS5540019-00 SWITCH (S/W 2PC'S)**

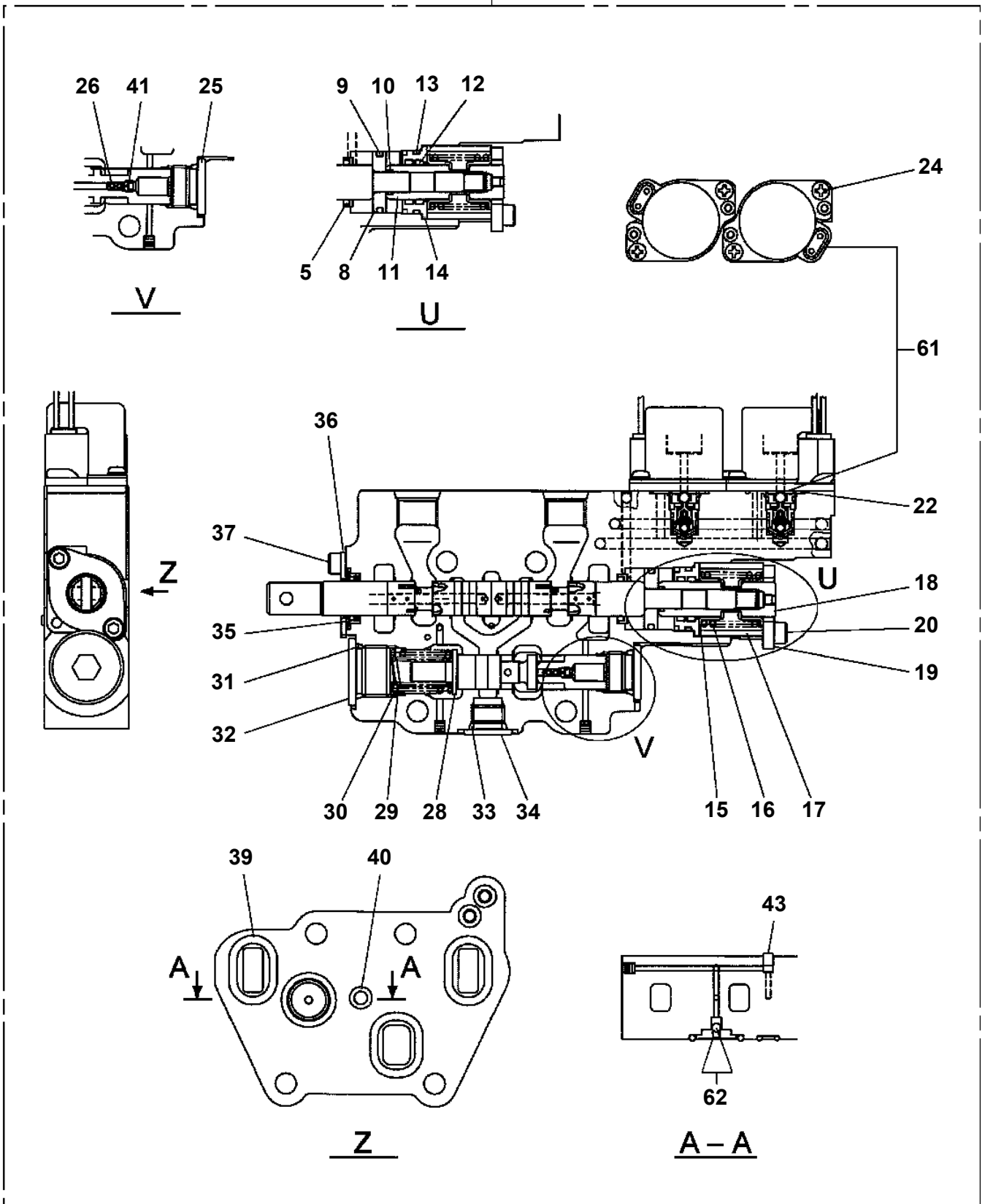


TM-ZX260 41008601153A FRAME  
PV1050013-02 CYLINDER,ACCELERATOR

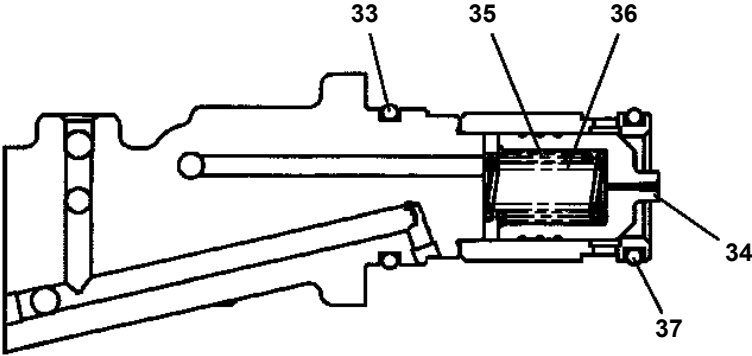
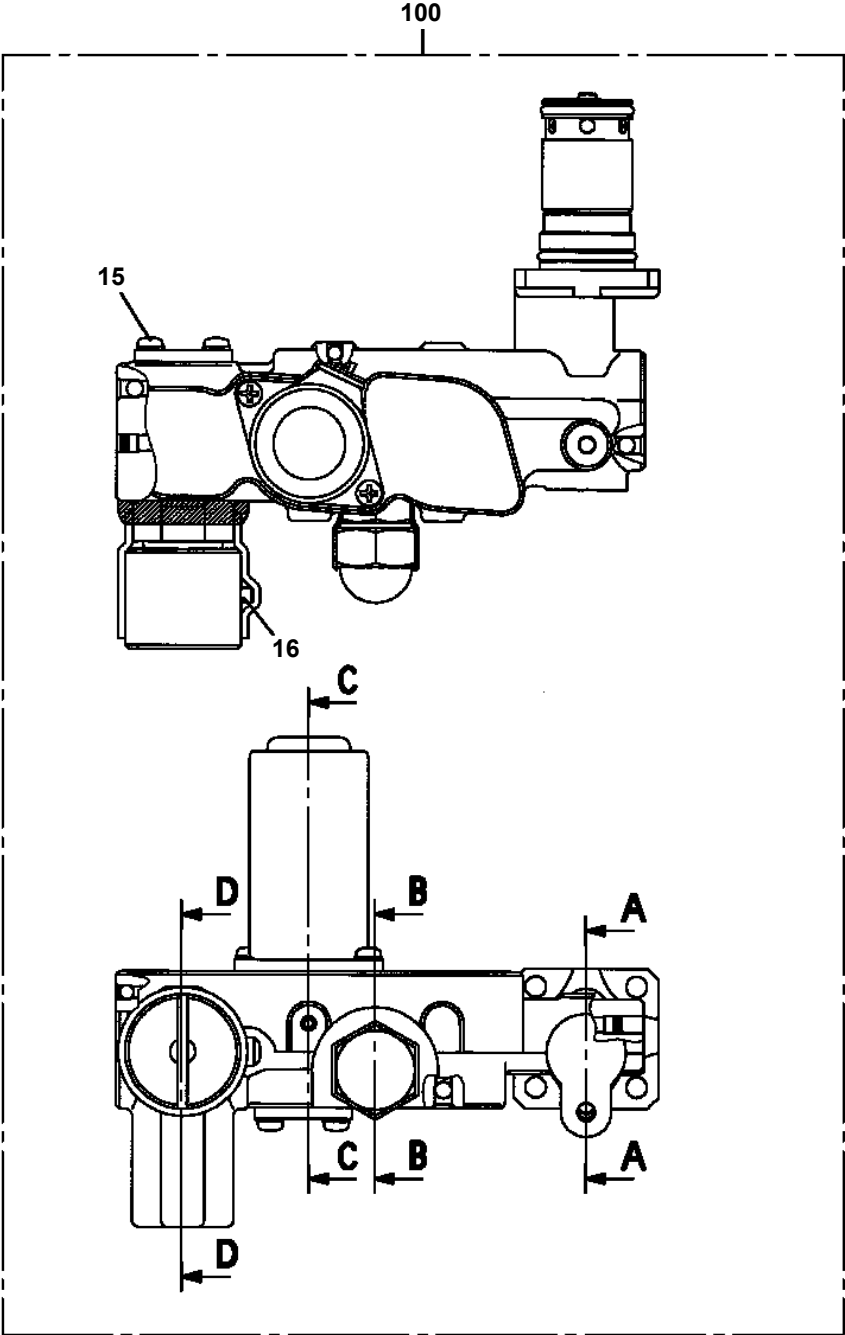


TM-ZX260 41008601153A FRAME  
PV5060048-00 VALVE ASSY,CONTROL (ELEVATING)

100

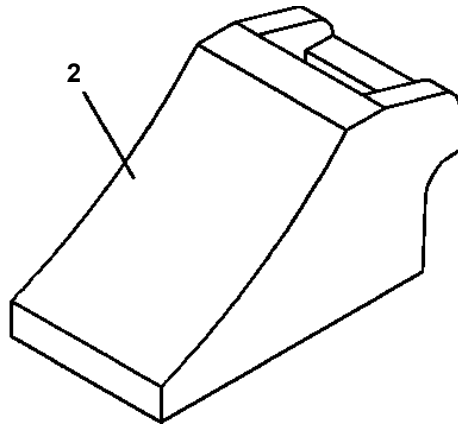


TM-ZX260 41008601153A FRAME  
PV5140040-00 VALVE ASSY,RELIEF



A-A

**TM-ZX260 41008601153A FRAME**  
**PW1050011-00 STOPPER,TIRE**



**TM-ZX260 41008601153A FRAME  
PX5010638-00 MOUNT ASSY (DUMP SELECT)**

マウントASSY (ダンプ・ハイヨウハ・ルプ)  
MOUNT ASSY (DUMP SELECT)

---

符号	日本語名称	英語名称	備考
1	マウントASSY (ダンプ・セレクト)	MOUNT ASSY	車両側
2	パイカンASSY	PIPING ASSY	クレーン側

適用製造番号によっては取り付けがないものもあります。

MACHINES OF SOME SERIAL NO. ARE NOT EQUIPPED WITH THESE PARTS.

# TM-ZX260 41008601153A FRAME

Pos No.	Parts No	Parts Name	Qty	Unit	Technical Data	Serial No (Sta
1	(*****)	OUTRIGGER ASSY,REAR (ROTARY/POWER PACKAGE)	1			
2	(*****)	OUTRIGGER ASSY,REAR (ROTARY,SOL.VALVE)	1			
3	(*****)	OUTRIGGER ASSY,REAR (ROTARY/MEDIUM-SIZEVEHICLE)	1			
4	(*****)	MOUNT ASSY (DUMP SELECT)	1			
5	(*****)	ELEC.ASSY	1			
6	(*****)	ELEC.ASSY (SS COMBINATION, FOR SS-38:ZX260/290)	1			
7	(*****)	ELEC.ASSY(SS COMBINATION, SS-28:ZX260/290)	1			
8	(*****)	PIPING ASSY	1			
9	(*****)	ELEC.ASSY	1			
10	(*****)	LAMP ASSY,AML (LIMIT INDICATOR LAMP)	1			
11	(*****)	PIPING ASSY	1			

# TM-ZX260 41008601153A FRAME

Pos No.	Parts No	Parts Name	Qty	Unit	Technical Data	Serial No (Start)	Serial No (End)	Remarks
1	36150080000	DETECTOR ASSY,MOMENT	1					
2	36150100000	DETECTOR ASSY,MOMENT	1					
3	91850700101	CLAMP	2		L=208			
4	91810130250	FASTENER	2					

# TM-ZX260 41008601153A FRAME

Pos No.	Parts No	Parts Name	Qty	Unit	Technical Data	Serial No (Start)	Se
1	(*****)	ELEC.ASSY	1				
2	(*****)	ROLLER ASSY (FOR OVER-UNWINDING DETECTOR)	1				
3	(*****)	INDICATOR ASSY	1				

CLICK HERE TO **DOWNLOAD** THE COMPLETE MANUAL

- Thank you very much for reading the preview of the manual.
- You can download the complete manual from: [www.heydownloads.com](http://www.heydownloads.com) by clicking the link below



- Please note: If there is no response to CLICKING the link, please download this PDF first and then click on it.

CLICK HERE TO **DOWNLOAD** THE COMPLETE MANUAL