

TM-ZX250 41048401133A FRAME

PB0000357-00 SYSTEM (ZX250,DOMESTIC)

ASSEMBLY

CLICK HERE TO **DOWNLOAD** THE COMPLETE MANUAL

- Thank you very much for reading the preview of the manual.
- You can download the complete manual from: www.heydownloads.com by clicking the link below



- Please note: If there is no response to CLICKING the link, please download this PDF first and then click on it.

CLICK HERE TO **DOWNLOAD** THE COMPLETE MANUAL

TM-ZX250 41048401133A FRAME

Pos No.	Parts No	Parts Name	Qty	Unit	Technical Data	Serial No (Start)	Serial No (End)	R
5	36401650000	POWER TAKE OFF	1					
	31790860000	POWER TAKE OFF	1					
	31790870000	POWER TAKE OFF	1					
	36401600000	POWER TAKE OFF	1					
	36401600001	POWER TAKE OFF	1					
6	52230314000	POWER TAKE OFF	1					
	36401600000	POWER TAKE OFF	1					
	31790860000	POWER TAKE OFF	1					
	52230312000	POWER TAKE OFF (WITH TURBO)	1					
	36401650000	POWER TAKE OFF	1					
7	31790760000	POWER TAKE OFF	1					
	31790720000	POWER TAKE OFF	1					

TM-ZX250 41048401133A FRAME

Pos No.	Parts No	Parts Name	Qty	Unit	Technical Data	Serial No (Start)	Serial No (End)	Remarks	Pages
1	36400565010	CASE	1						
2	36400565020	GEAR	1						
3	36400235040	SHAFT	1						
4	36400565030	GEAR	1						
5	36400095040	SHAFT	1						
6	36400095050	COLLAR	1						
7	36400095100	SHIFTER ASSY	1						
8	36400095110	PACKING	2						
9	36400235050	COVER (FRONT)	1						
10	36400235060	COVER (REAR)	1						
11	36400235070	PACKING	2						
12	36400095090	SHIM	N						
13	80500006305	BEARING,BALL	2						
14	36400095120	BEARING	2						
15	91206025005	SEAL,OIL	1						
16	36400095130	WASHER	1						
17	90101206012	BOLT	1		M6X12				
18	80602110520	RING,RITAINING	2		R52				
19	90191210016	BOLT	8		M10X16				
20	90302041001	WASHER,SPRING	14		10				
21	90191208030	BOLT	4		M8X30				
22	90302040801	WASHER,SPRING	4		8				
23	36400135120	COUPLING	1						
24	36400135100	KEY	1						
25	36400135150	NUT	1		M4X1.5				
26	36400135160	WASHER,PLAIN	1						
27	36400135090	WASHER	1						
30	36400075140	COVER (1)	1						
31	90193210025	BOLT	3		M10X25				
32	36400195030	BOLT,STUD	3						
33	90267201000	NUT	3		M10				
35	31790670100	SUPPORT	1						
36	90191208025	BOLT	2		M8X25				
50	36400560000	POWER TAKE OFF	1						
100	31790730000	POWER TAKE OFF	1						

TM-ZX250 41048401133A FRAME

Pos No.	Parts No	Parts Name	Qty	Unit	Technical Data	Serial No (Start)	Serial No (End)	Remarks	Page
1	36401165010	CASE	1						
2	36401135060	GEAR (TO)	1						
3	36401165020	SHAFT	1						
4	36401125040	SLEEVE	1						
5	36401125050	SHIFTER SET	1						
6	36400095110	PACKING	1						
7	36400095070	COVER (BEARING)	1						
8	36400095080	PACKING (COVER)	1						
9	36400095090	SHIM	1						
10	36401135070	COLLAR	1						
11	80500006903	BEARING,BALL	1						
12	36401125080	BEARING,ROLLER	2						
13	36401125090	BEARING,NEEDLE	1						
14	91206030005	SEAL,OIL	1						
15	36401165030	NUT	1						
16	36401165040	WASHER	1						
17	90191208020	BOLT	4		M8X20				
18	90191208014	BOLT	3		M8X14				
19	90302040801	WASHER,SPRING	7		8				
20	36400135120	COUPLING	1						
21	36400135100	KEY	1						
22	36401165050	NUT	1		M14X1.5				
23	36400135080	WASHER,PLAIN	1						
24	36400135090	WASHER	1						
26	36401125120	PACKING (CASE)	1						
27	90191210100	BOLT	1		M10X100				
28	90191210090	BOLT	1		M10X90				
29	90191210030	BOLT	2		M10X30				
30	36400095150	BOLT,STUD	1		M10X1.25/1.5X43				
31	36401125140	BOLT	1						
32	90267201000	NUT	2		M10				
33	90302041001	WASHER,SPRING	6		10				
34	31790880100	SUPPORT	1						
35	90191208025	BOLT	2		M8X25				
50	36401160000	POWER TAKE OFF	1						
100	31790900000	POWER TAKE OFF	1						

TM-ZX250 41048401133A FRAME

Pos No.	Parts No	Parts Name	Qty	Unit	Technical Data	Serial No (Start)	Serial No (End)
1	36401655010	CASE,GEAR	1				
3	52230312180	BOLT (WITH WASHER)	8		M8X1.25		
4	52230312160	WASHER,SPRING	1				
5	52230308050	COVER (CASE)	1				
6	80500006305	BEARING,BALL	2				
7	52230312021	SHAFT (OUTPUT)	1				
8	36401595020	COLLAR (THRUST)	1				
9	52230312140	ROD (SHAFT)	1				
10	52230312030	SEAL,OIL	1				
11	52230308100	SHAFT (IDLE)	1				
13	52230312190	COVER (UPPER)	1				
14	52230312200	PACKING (COVER)	1				
15	52230308130	PIN,SPRING	1		4X24		
16	36401595030	ARM (SHAFT)	1				
17	52230312220	SLEEVE	1				
18	52230308170	PLUG (SHAFT)	1				
19	52230312051	SEAL,OIL	1				
20	52230312120	BOLT,STUD	2				
21	90302041001	WASHER,SPRING	2		10		
22	90267201000	NUT	2		M10		
23	52230312290	GEAR ASSY	1				
27	52230312250	GEAR	1				
28	52230312230	BOLT (WITH WASHER)	4		M8X1.25		
29	52230312090	BEARING,NEEDLE	2				
30	52230312280	BOLT	4		M8X1.25		
31	52230312270	BOLT,HEXAGON SOCKET	1		M8X1.25		
32	52230308160	SPRING (LOCK)	1				
33	52230312150	PIN (LOCK)	1				
34	52230307020	COUPLING	1				
35	52230312260	PIN,SPRING	1				
36	52230312060	ADAPTER	1				
50	36401659510	POWER TAKE OFF (WITHOUT COUPLING)	1				
100	36401650000	POWER TAKE OFF	1				

TM-ZX250 41048401133A FRAME

Pos No.	Parts No	Parts Name	Qty	Unit	Technical Data	Serial No (Start)	Serial No (End)	Remarks	Pages
1	36401725010	CASE	1						
2	36401725020	GEAR	1						
3	36401725030	SHAFT	1						
4	36400095040	SHAFT	1						
5	36400095050	COLLAR	1						
6	36401725040	GEAR	1						
7	36400095100	SHIFTER ASSY	1						
8	36400095120	BEARING	2						
9	80500006206	BEARING,BALL	2						
10	91206030005	SEAL,OIL	1						
11	36400095070	COVER (BEARING)	1						
12	36400095080	PACKING (COVER)	1						
13	36400095090	SHIM	N						
14	90101206012	BOLT	1		M6X12				
15	36400095130	WASHER	1						
16	90191208014	BOLT	3		M8X14				
17	90302040801	WASHER,SPRING	7		8				
18	36400095110	PACKING	1						
19	90191208020	BOLT	4		M8X20				
20	80602110520	RING,RITAINING	2		R52				
22	36400055070	PACKING	1						
23	36400195030	BOLT,STUD	4						
24	90267201000	NUT	4		M10				
25	90193210025	BOLT	2		M10X25				
26	90302041001	WASHER,SPRING	8		10				
27	36401725070	SUPPORT (PUMP)	1						
28	36401725080	BOLT	2		M10X35				
30	31791100100	SUPPORT	1						
31	90191208025	BOLT	2		M8X25				
50	36401730000	POWER TAKE OFF	1						
100	31791110000	POWER TAKE OFF	1						

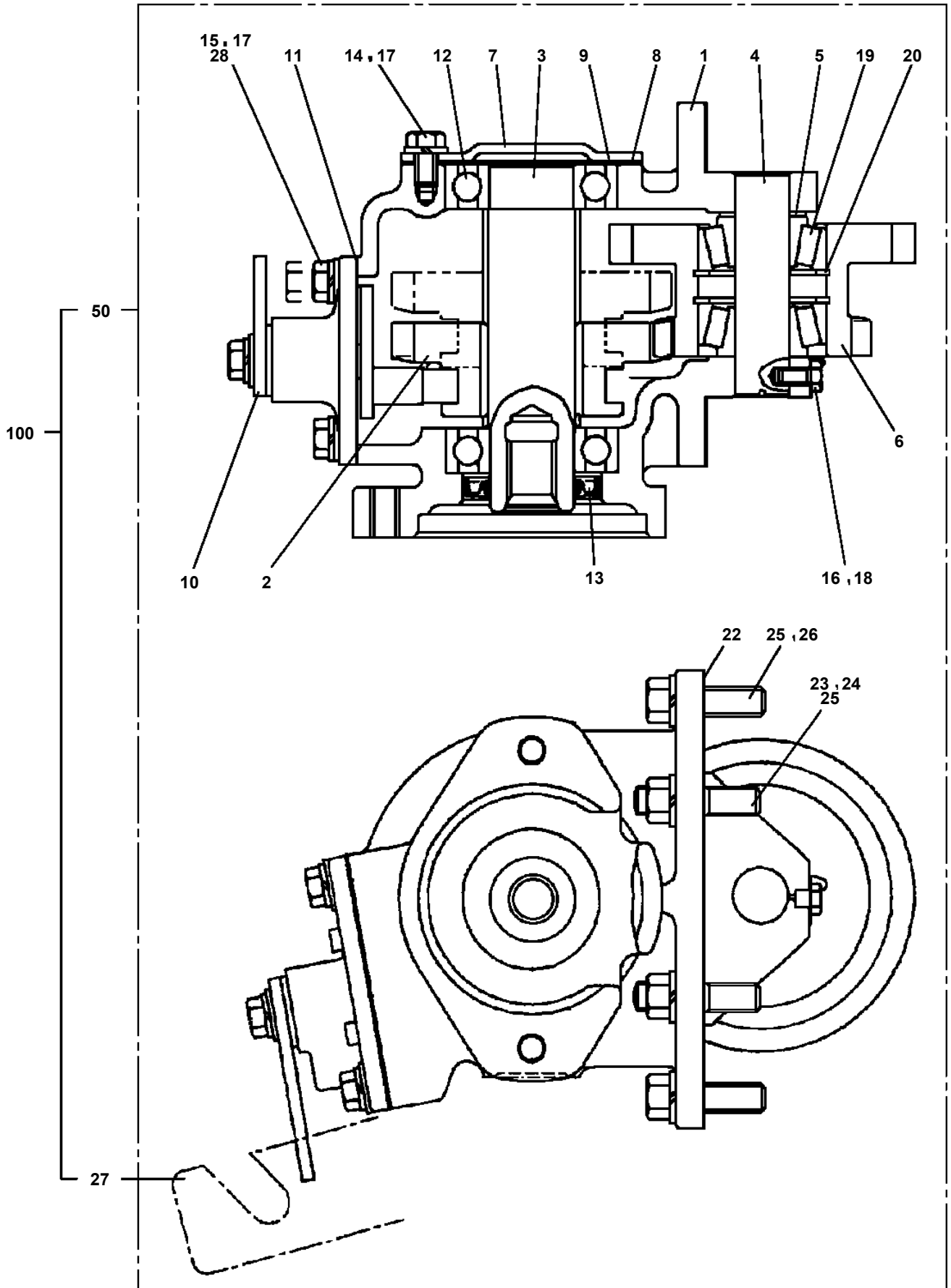
TM-ZX250 41048401133A FRAME

Pos No.	Parts No	Parts Name	Qty	Unit	Technical Data	Serial No (Start)	Serial No (End)	Remarks
1	36401885010	CASE	1					
2	36401885020	GEAR	1					
3	36402515010	SHAFT	1					
4	36401885030	GEAR	1					
5	36400415050	SHAFT	1					
6	36400675030	COLLAR	1					
7	36401725050	SHIFTER ASSY	1					
8	36400095110	PACKING	1					
9	36400095070	COVER (BEARING)	1					
10	36400095080	PACKING (COVER)	1					
11	36400095090	SHIM	N					
12	80500006206	BEARING,BALL	2					
13	91206030005	SEAL,OIL	1					
14	91001102100	O-RING	1		1A P21			
15	90710006200	SCREW,SET	1		M6X20			
16	90191208020	BOLT	4		M8X20			
17	90191208014	BOLT	3		M8X14			
18	90302040801	WASHER,SPRING	7		8			
19	36400135070	BEARING	2					
20	80602110620	RING,RITAINING	2		R62			
22	36401885040	PACKING	1					
23	36400095150	BOLT,STUD	2		M10X1.25/1.5X43			
24	90191210030	BOLT	6		M10X30			
25	90267201000	NUT	2		M10			
26	90302041001	WASHER,SPRING	8		10			
27	90191208025	BOLT	2		M8X25			
28	31790670100	SUPPORT	1					
50	36402510000	POWER TAKE OFF ASSY	1					
100	31792480000	POWER TAKE OFF	1					

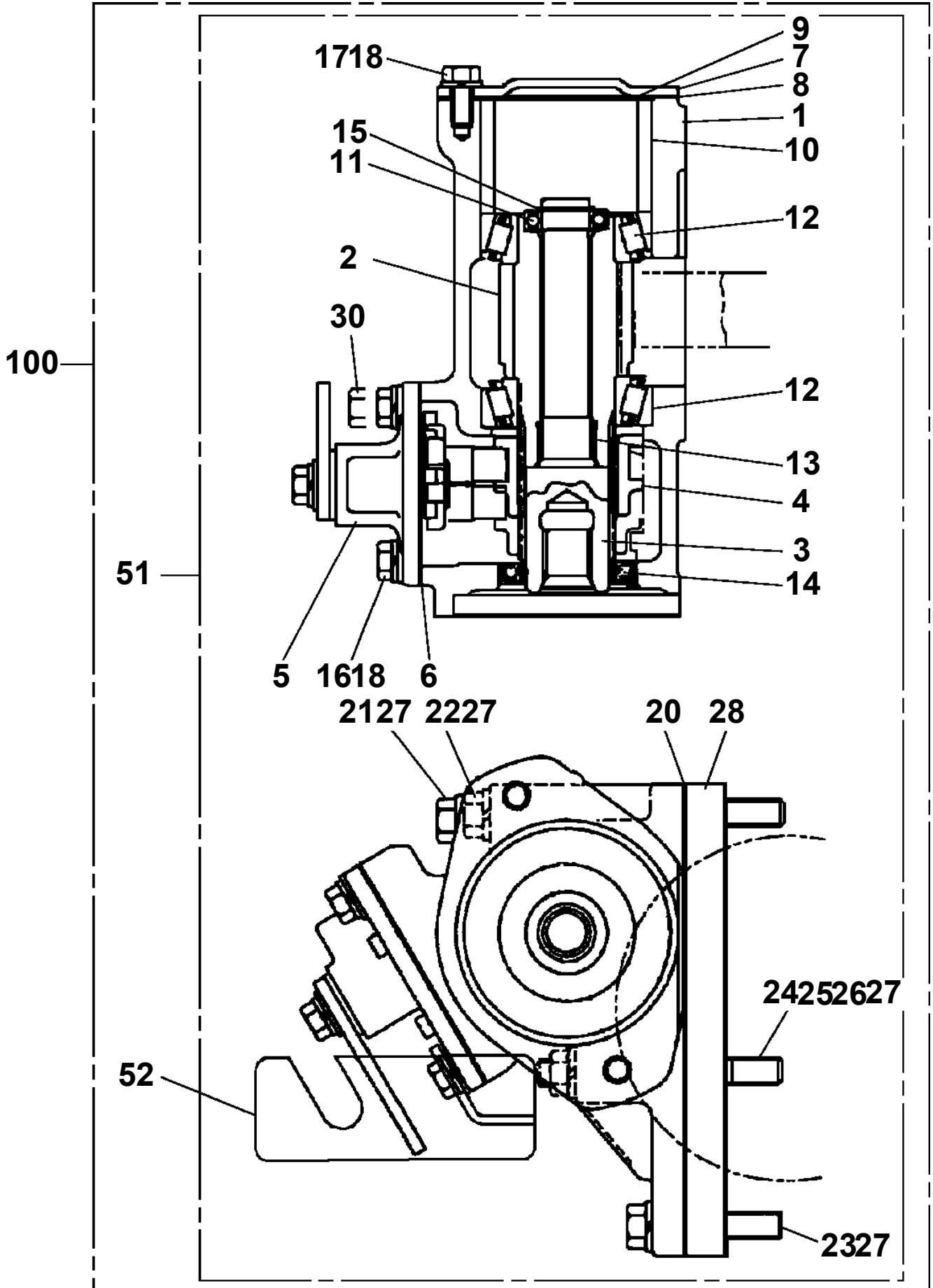
TM-ZX250 41048401133A FRAME

Pos No.	Parts No	Parts Name	Qty	Unit	Technical Data	Serial No (Start)	Serial No (End)	Remarks	Page
1	36401420000	POWER TAKE OFF	1						00001
2	31790990100	SUPPORT	1						
50	31790990000	POWER TAKE OFF	1						

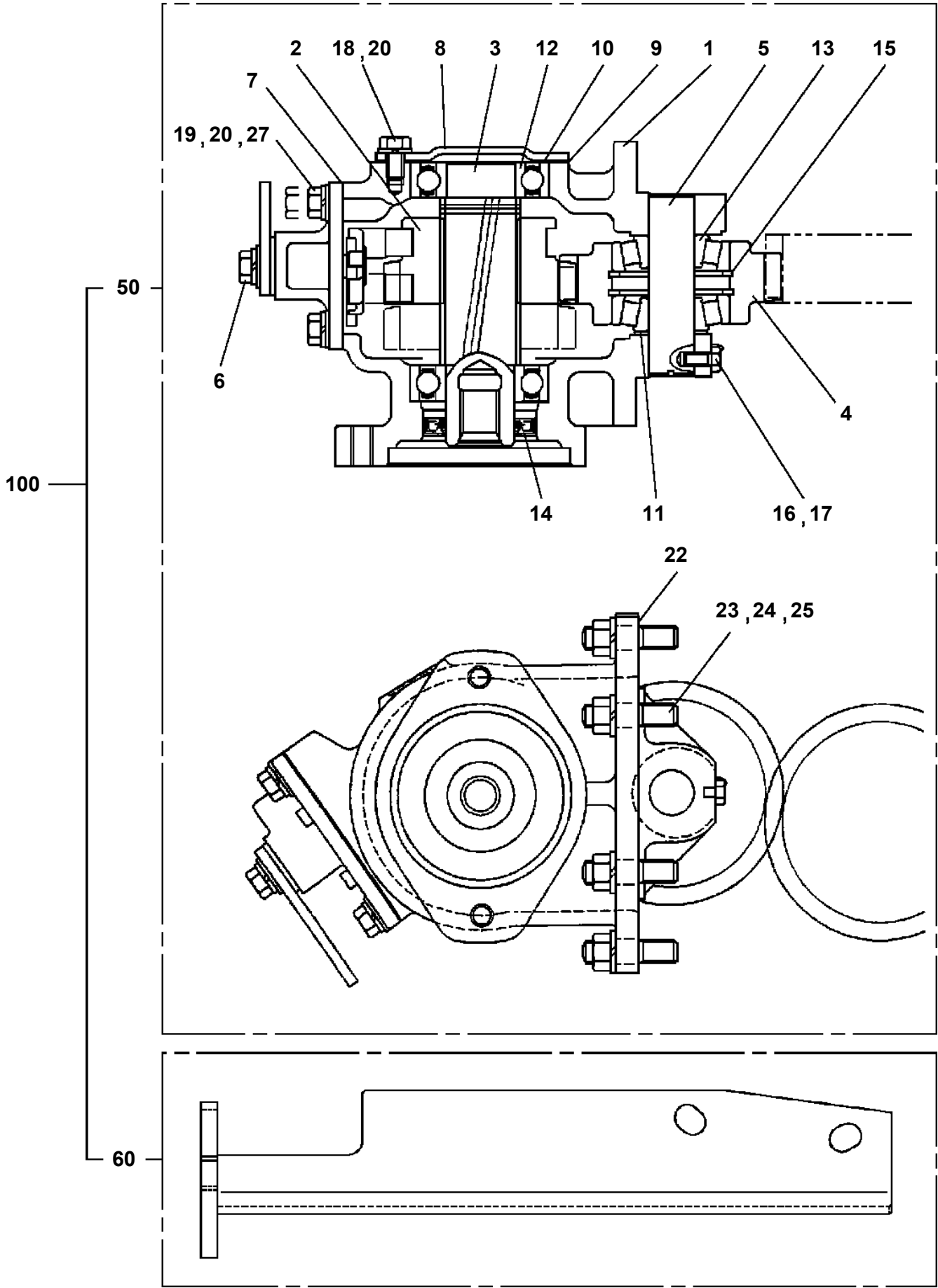
TM-ZX250 41048401133A FRAME
PB1030209-01 POWER TAKE OFF



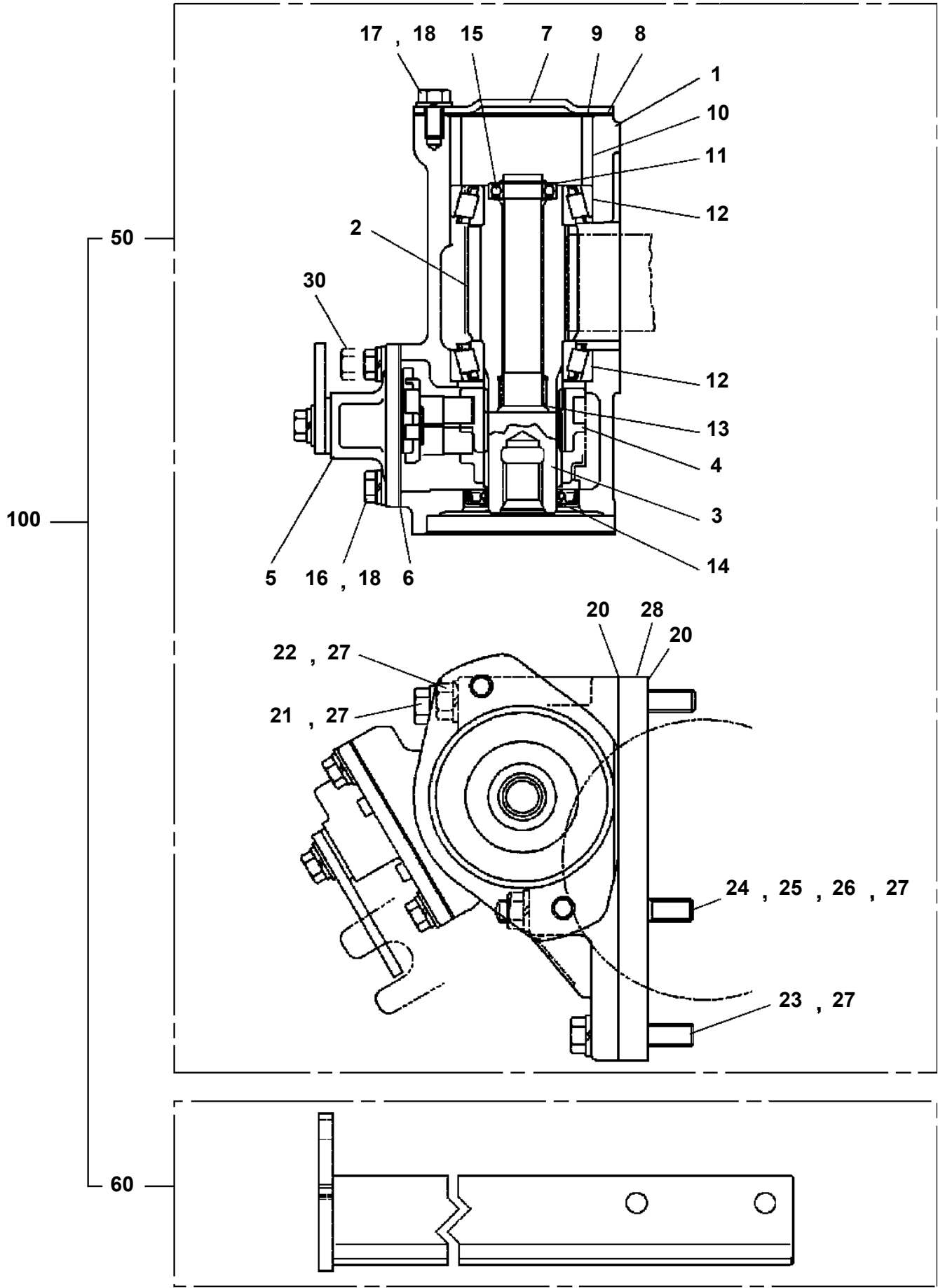
TM-ZX250 41048401133A FRAME
PB1030222-00 POWER TAKE OFF



TM-ZX250 41048401133A FRAME
PB1030228-00 POWER TAKE OFF

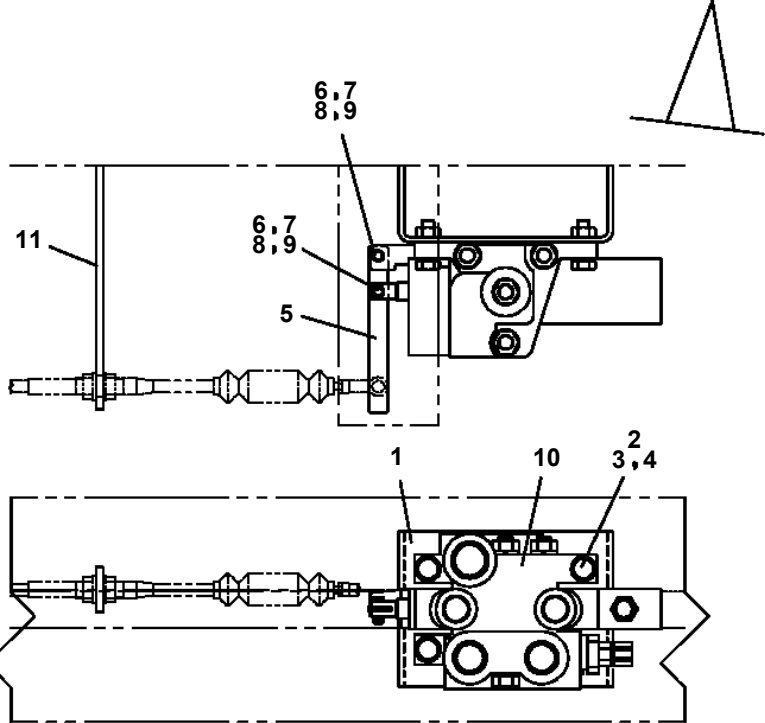
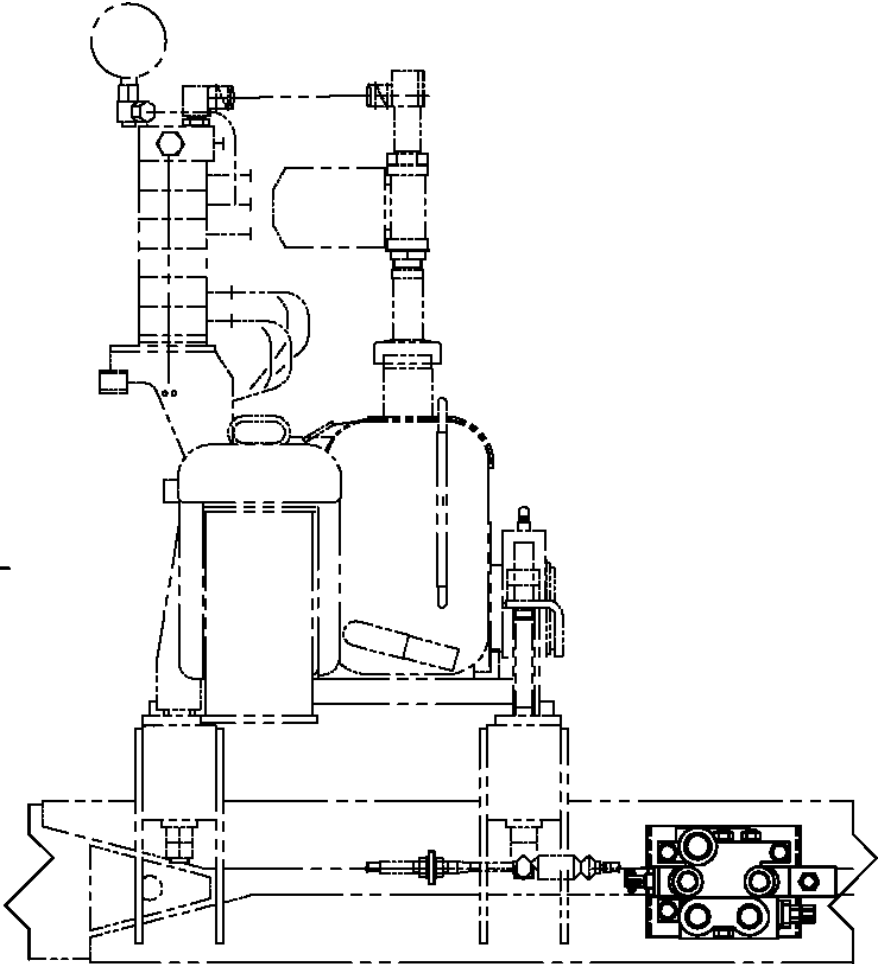


TM-ZX250 41048401133A FRAME
PB1030235-01 POWER TAKE OFF



TM-ZX250 41048401133A FRAME
PB1320516-00 VALVE,MANUAL CONTROL(DUMP/NIHON SPINDLE)

FRONT ←



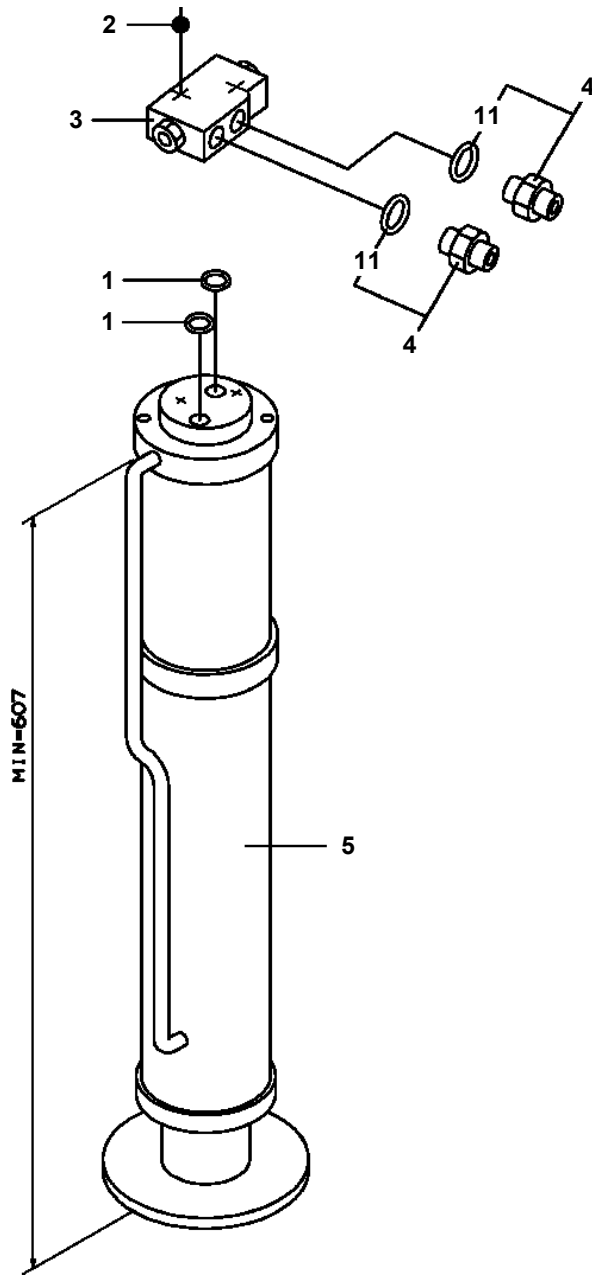
TM-ZX250 41048401133A FRAME

Pos No.	Parts No	Parts Name	Qty	Unit	Technical Data	Serial No (Start)	Ser
1	31501332000	COVER ASSY	1				
2	31501201200	INVERTER (ASSY ONLY)	1				
3	31501331100	SUPPORT	1				
4	31501331200	SUPPORT	1				
5	37000588250	PLATE	2				
6	37000588260	PLATE	3				
7	90101210035	BOLT	2		M10X35		
8	90302041001	WASHER,SPRING	6		10		
9	90303071001	WASHER,PLAIN	6		10		
10	90101210055	BOLT	4		M10X55		
11	90186208025	BOLT,FLANGE	4		M8X25		
12	80182306016	SCREW,MACHINE	4		M6X16		
13	90302040601	WASHER,SPRING	4		6		
14	90303070601	WASHER,PLAIN	4		6		
15	90101208014	BOLT	8		M8X14		
16	90302040801	WASHER,SPRING	8		8		
17	90201200600	NUT	2		M6		
18	91850310405	CLAMP (BLACK)	10				
19	91810130240	FASTENER	10				
20	31501331300	COVER	1		L=2600		
21	82100000920	GROMMET	1				
22	37000569940	PLATE	8				
43	37002243810	PLATE,CAUTION (BURN HAZARD DO NOT TOCH)	1				
44	37002235810	PLATE,CAUTION(MAJOR ACCIDENT HAZARD)	1				
45	37002243770	PLATE,NAME	1				
48	37002243780	PLATE,NAME	1				
51	31501332100	COVER	1				
52	31501203200	SUPPORT	1				
53	80175305010	SCREW,MACHINE	3		M5X10		
54	90240200500	NUT,CAP	5		M5		
55	90302040501	WASHER,SPRING	5		5		
56	42736781200	COVER	1				
57	82460005300	HANDLE	1				
60	82464100201	HINGE	1				
61	80172305010	SCREW,MACHINE	2		M5X10		

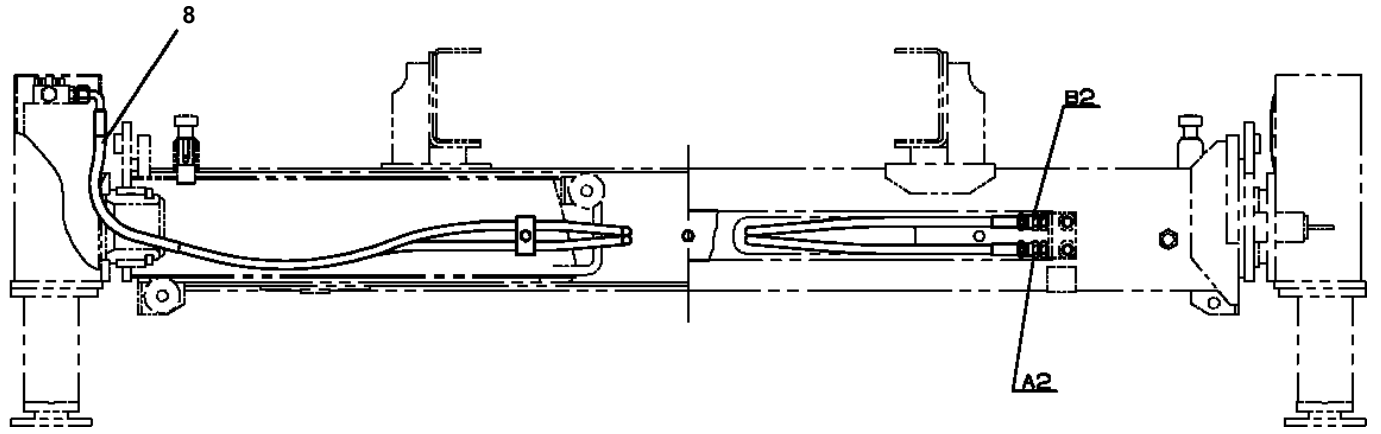
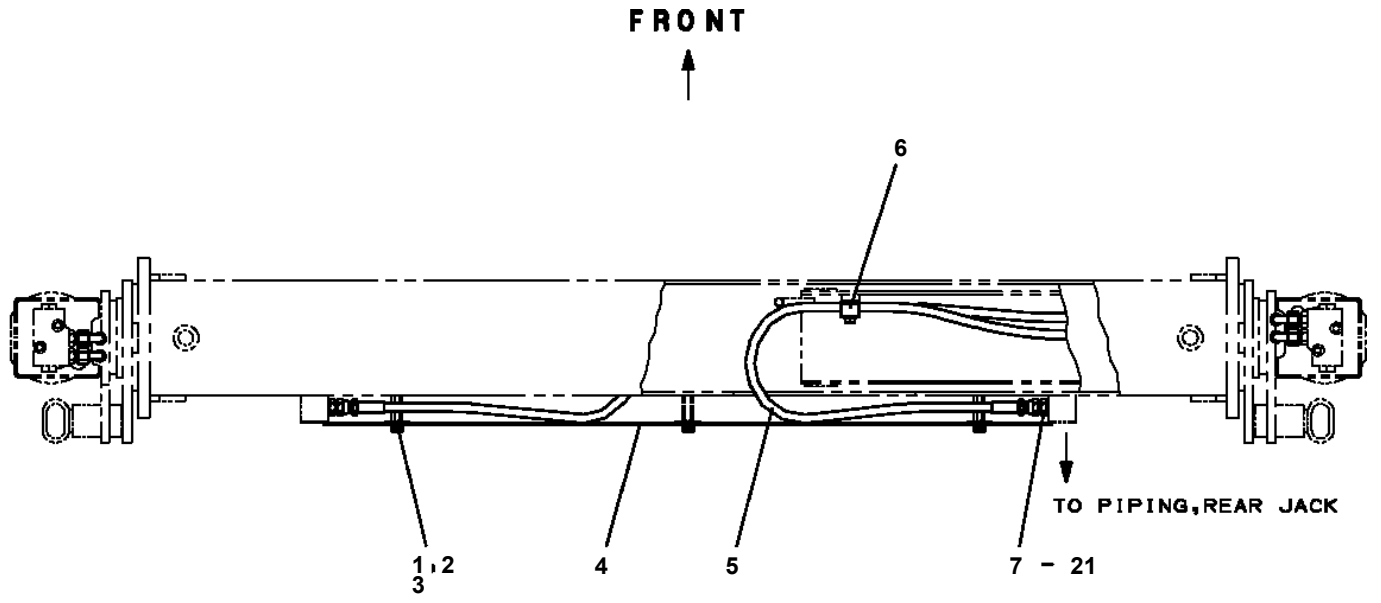
TM-ZX250 41048401133A FRAME

Pos No.	Parts No	Parts Name	Qty	Unit	Technical Data	Serial No (Start)	Serial No (End)	Remarks
1	37000588860	PLATE	2					
2	31950360100	SUPPORT	2					
3	90172110035	BOLT,HEXAGON SOCKET	4		M10X35			
4	90302041001	WASHER,SPRING	4		10			
5	31950360200	CAP	2					

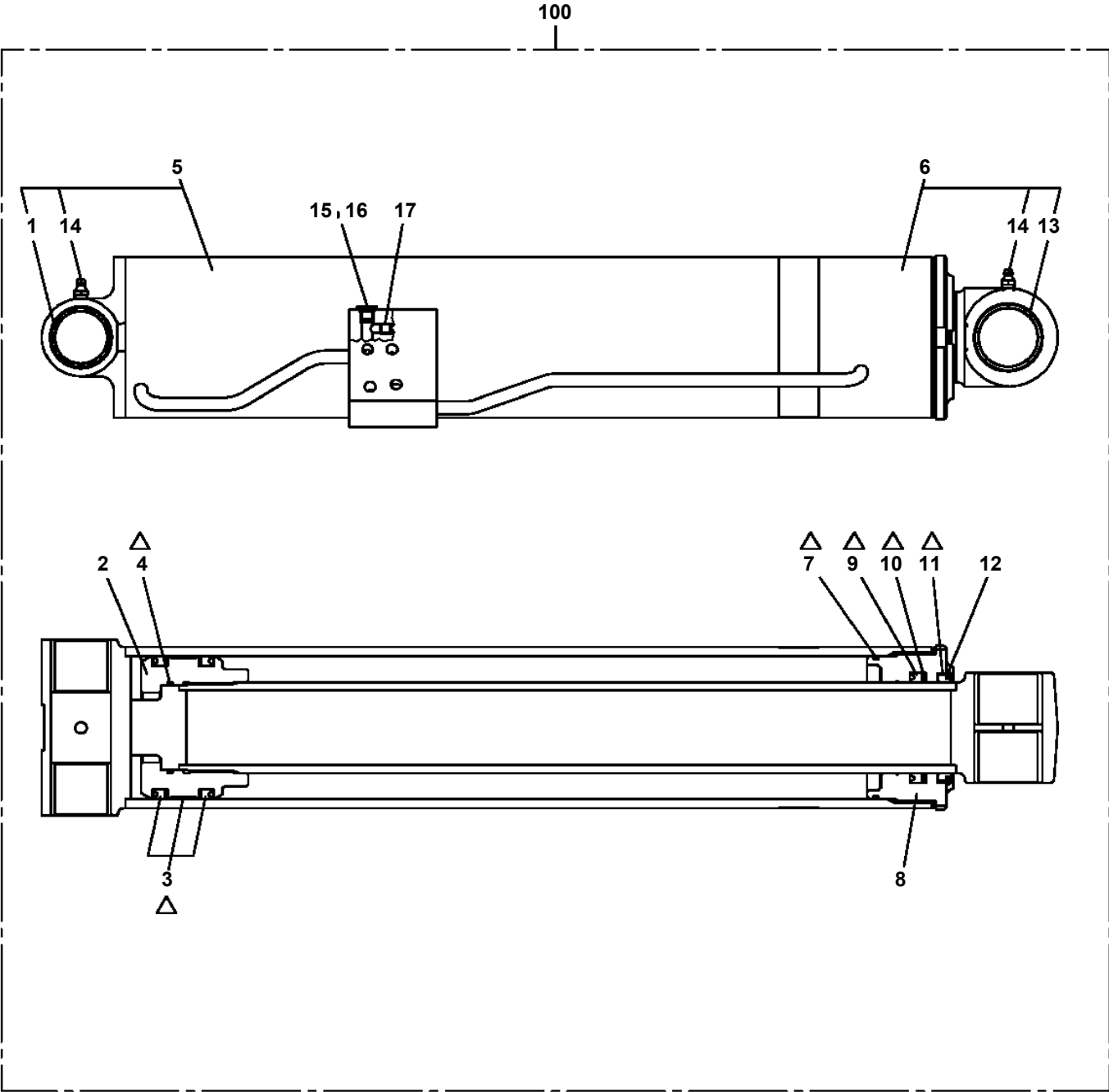
TM-ZX250 41048401133A FRAME
PC1030467-01 CYLINDER,JACK (MIN.607:WITH FLOAT)



TM-ZX250 41048401133A FRAME
PC1230019-01 PIPING,REAR JACK (2,ROTARY)

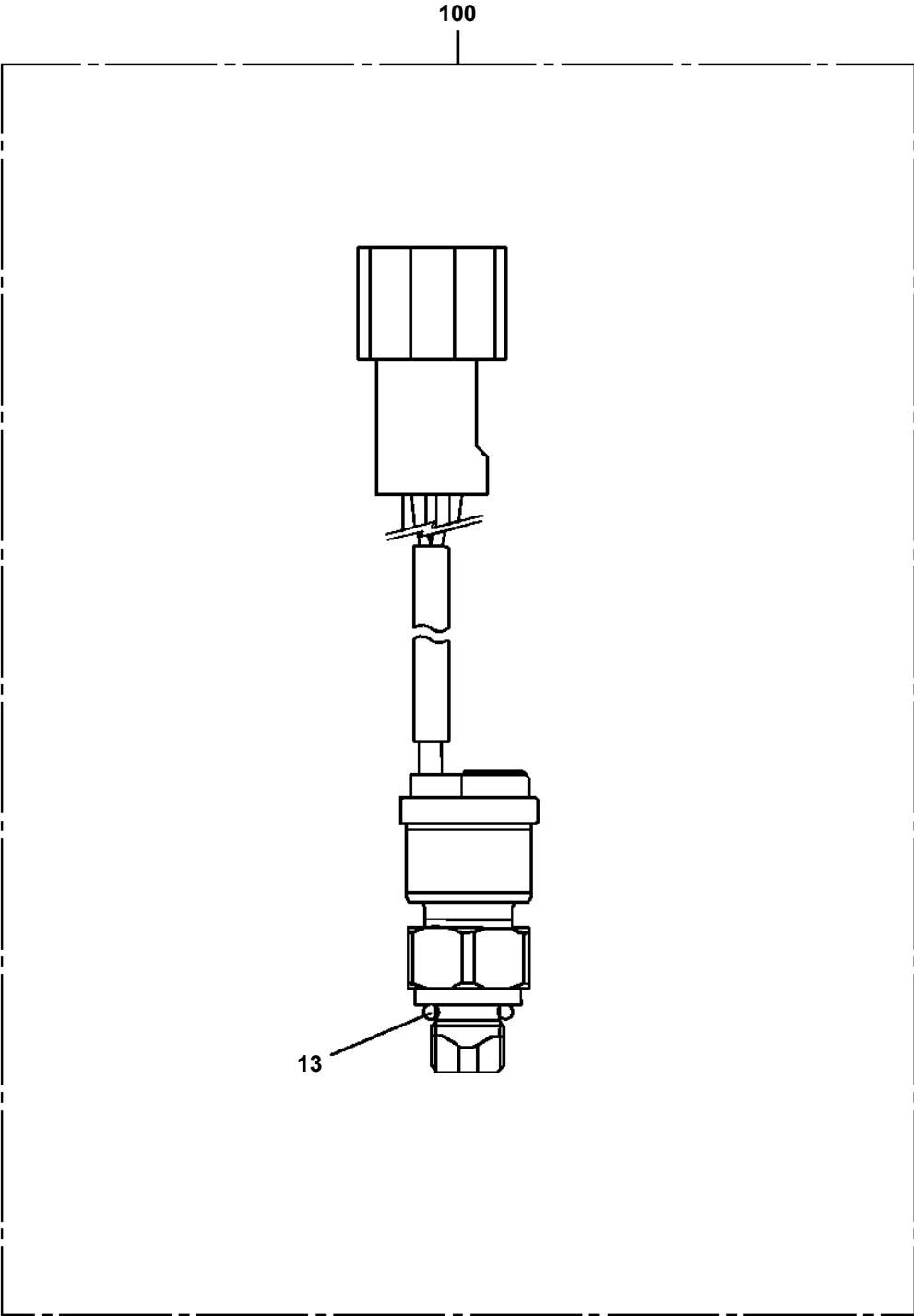


**TM-ZX250 41048401133A FRAME
PC6370065-00 CYLINDER ASSY,DERRICK**

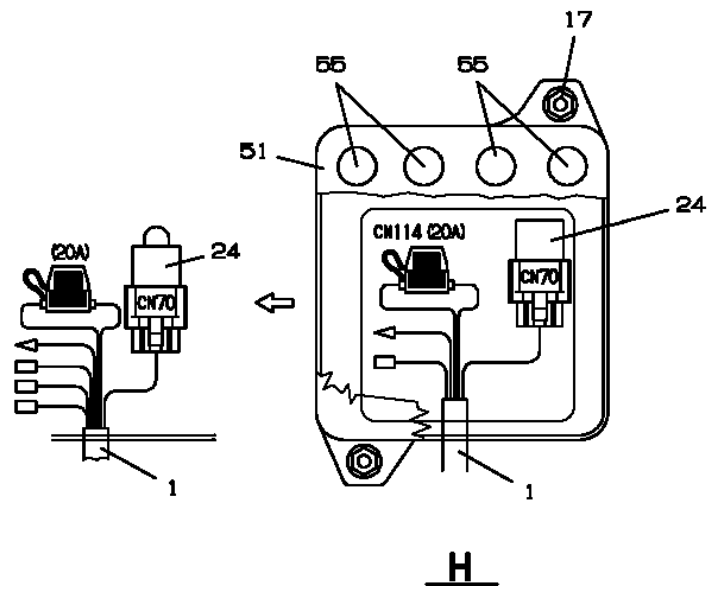
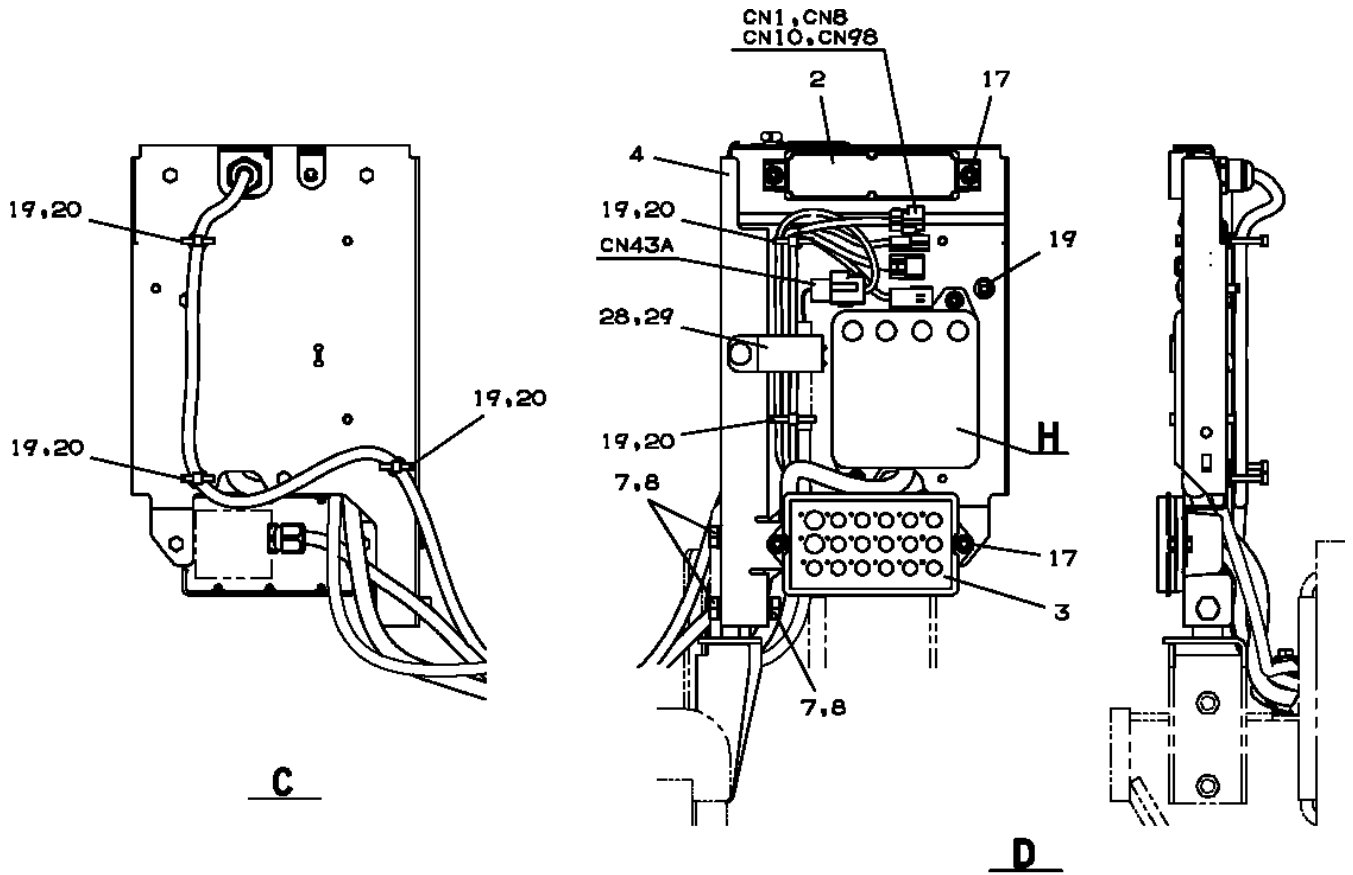


△:PACKING SET KEY NO.80 (KEY NO.3,4,7,9,10,11)

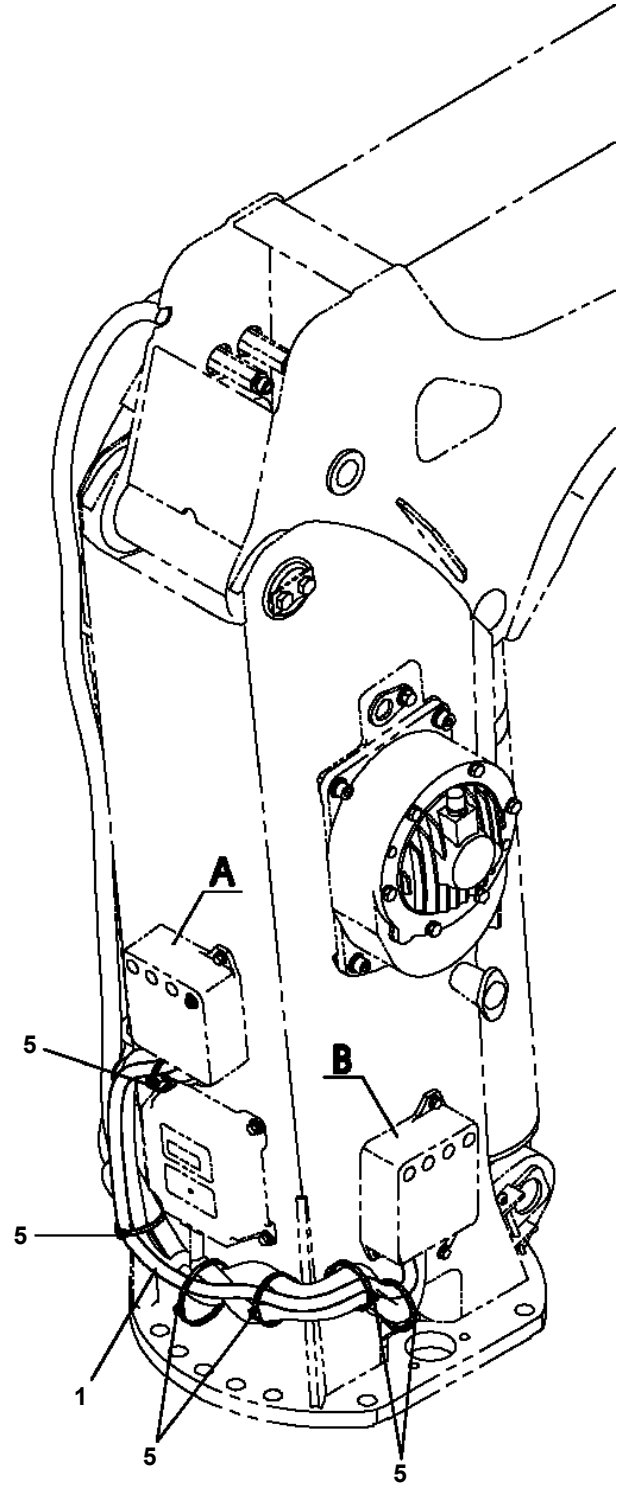
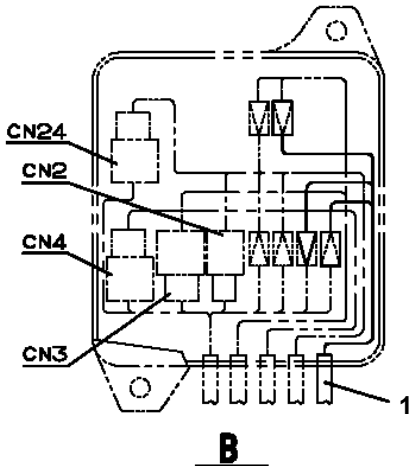
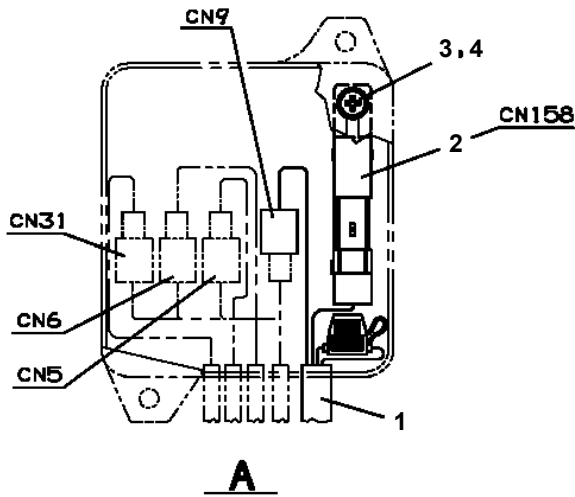
TM-ZX250 41048401133A FRAME
PD5120003-00 DETECTOR ASSY,MOMENT



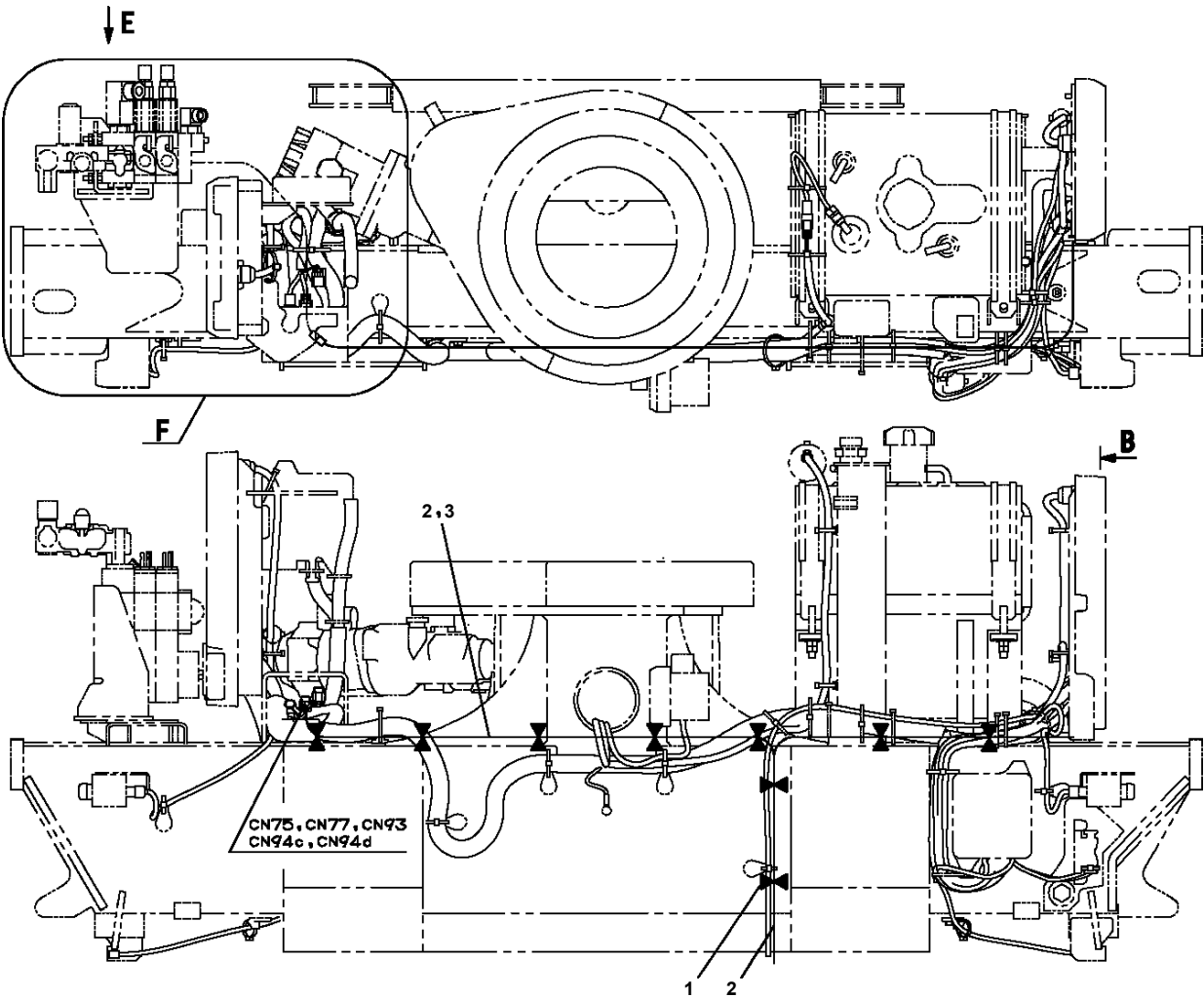
**TM-ZX250 41048401133A FRAME
PE5021248-03 ELEC.ASSY**



TM-ZX250 41048401133A FRAME
PE5021335-00 ELEC.ASSY (POST)



TM-ZX250 41048401133A FRAME
PE5021342-00 ELEC.ASSY



TM-ZX250 41048401133A FRAME

Pos No.	Parts No	Parts Name	Qty	Unit	Technical Data	Serial No (Start)	Se
1	(*****)	ELEC.ASSY	1				
2	(*****)	ROLLER ASSY (FOR OVER-UNWINDING DETECTOR)	1				
3	(*****)	INDICATOR ASSY	1				

TM-ZX250 41048401133A FRAME

Pos No.	Parts No	Parts Name	Qty	Unit	Technical Data	Serial No (Start)	Serial No (End)	Remarks	Pages
1	(*****)	NAME PLATE ASSY	1						000197

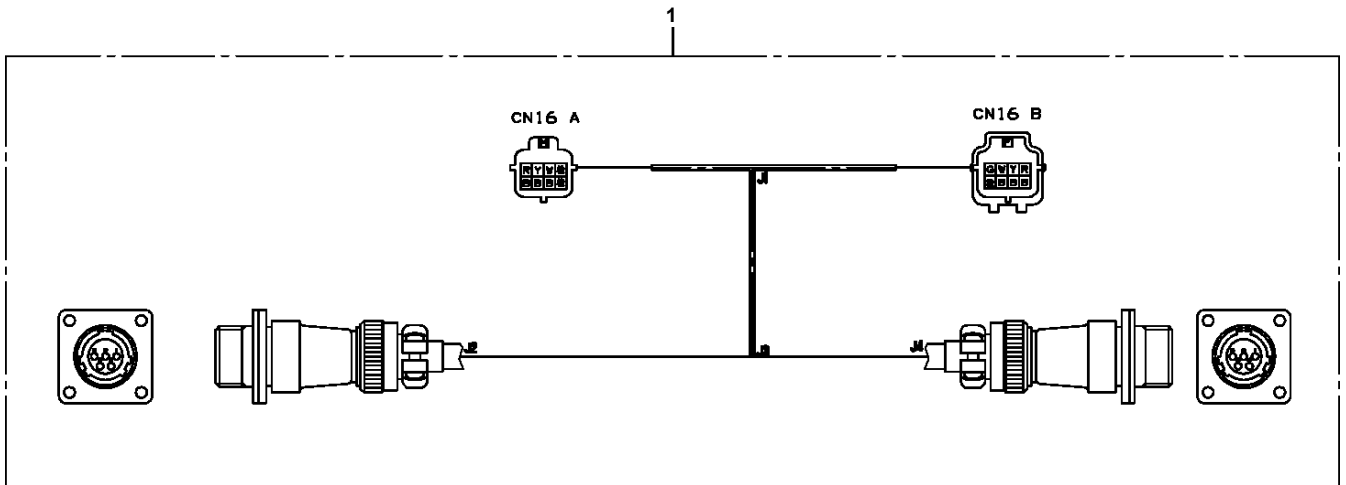
TM-ZX250 41048401133A FRAME

Pos No.	Parts No	Parts Name	Qty	Unit	Technical Data	Serial No (Start)	Serial No (End)	Rema
1	14211695513	HOOK ASSY	1					
2	36090239510	BODY ASSY	1					
3	80500051205	BEARING,BALL	1					
4	80136350060	PIN,SPLIT	1		5X60			
7	90710008200	SCREW,SET	1		M8X20			
12	36094049510	STOPPER ASSY	1					
20	36090230000	HOOK (1-PART LINE ,OPTION)	1					

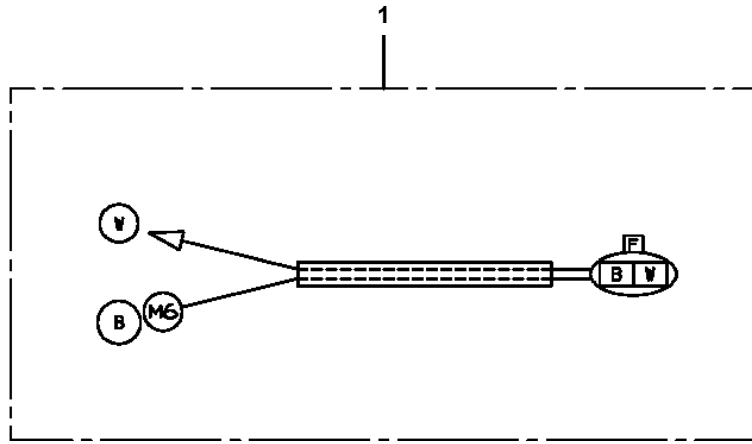
TM-ZX250 41048401133A FRAME

Pos No.	Parts No	Parts Name	Qty	Unit	Technical Data	Serial No (Start)	Serial No (End)	Rema
1	37001500000	BOLT	1					
2	90302041201	WASHER,SPRING	1		12			
3	90303101201	WASHER,PLAIN	1		12			
4	90172110028	BOLT,HEXAGON SOCKET	3		M10X28			
5	90302041001	WASHER,SPRING	3		10			
6	90303071001	WASHER,PLAIN	3		10			
7	36072620000	WINCH (HARTYS)	1					
8	82401800080	PLUG (FOR M8)	2					
9	31310610500	BREATHER,AIR	1					
10	90172108025	BOLT,HEXAGON SOCKET	2		M8X25			
11	90302040801	WASHER,SPRING	2		8			
12	36663100000	MOTOR,HYDRAULIC (WINCH)	1					
13	91001206000	O-RING	1		1A G60			
14	37000137550	PIN	1					
15	90186210014	BOLT,FLANGE	2		M10X14			
16	37000306110	SPACER	1		L=16 TO 16.5			
17	31310391000	COVER	1					
18	31310641300	DRUM,WINCH (Y.G.TEC)	1					
	31310641000	DRUM,WINCH (HARTYS)	1					
19	37002600190	WEDGE	1		8			
20	37000306550	SPACER	1		L=18			

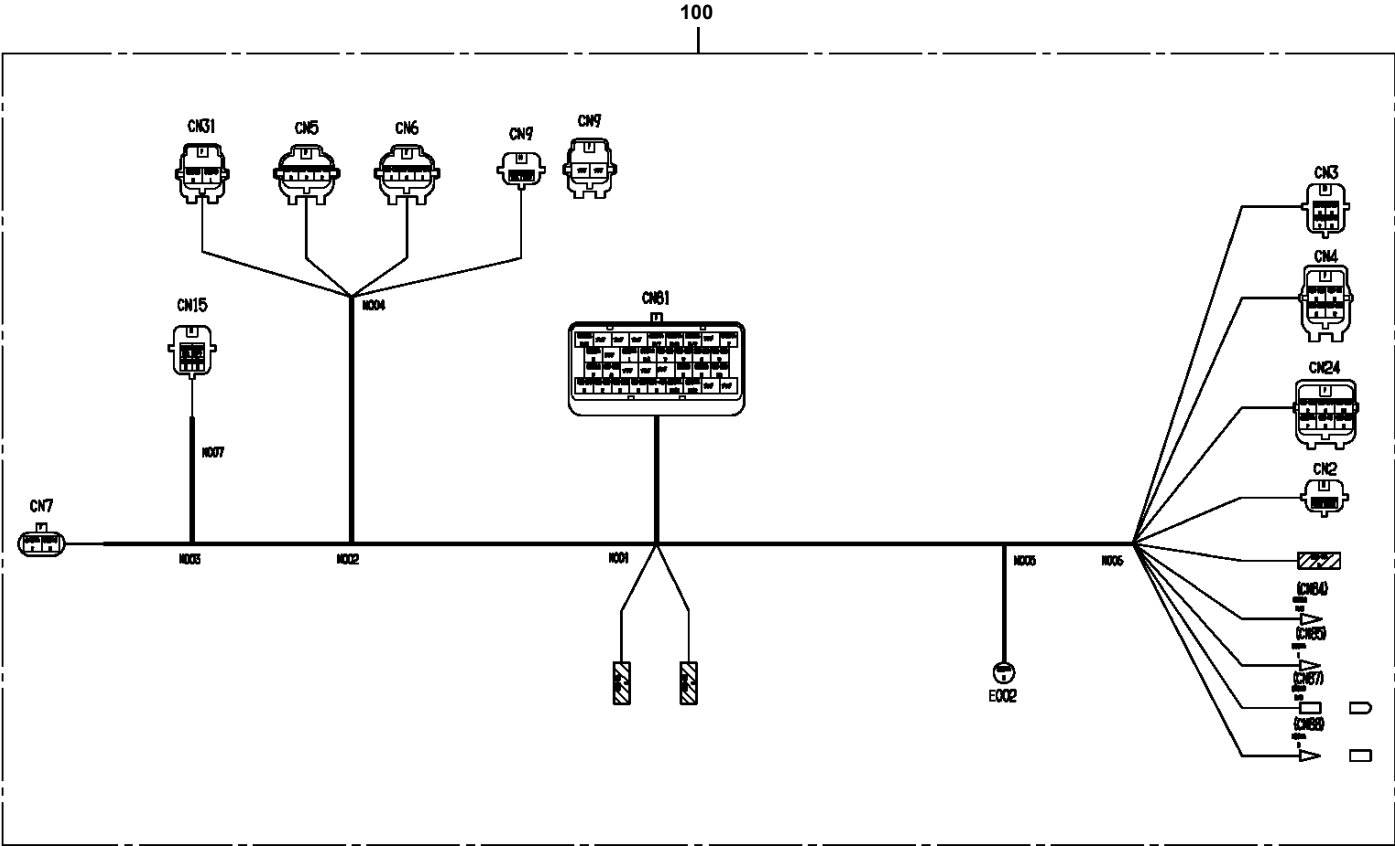
TM-ZX250 41048401133A FRAME
PH5031204-00 HARNESS



TM-ZX250 41048401133A FRAME
PH5033592-00 HARNESS



TM-ZX250 41048401133A FRAME
PH5033821-00 HARNESS



CLICK HERE TO **DOWNLOAD** THE COMPLETE MANUAL

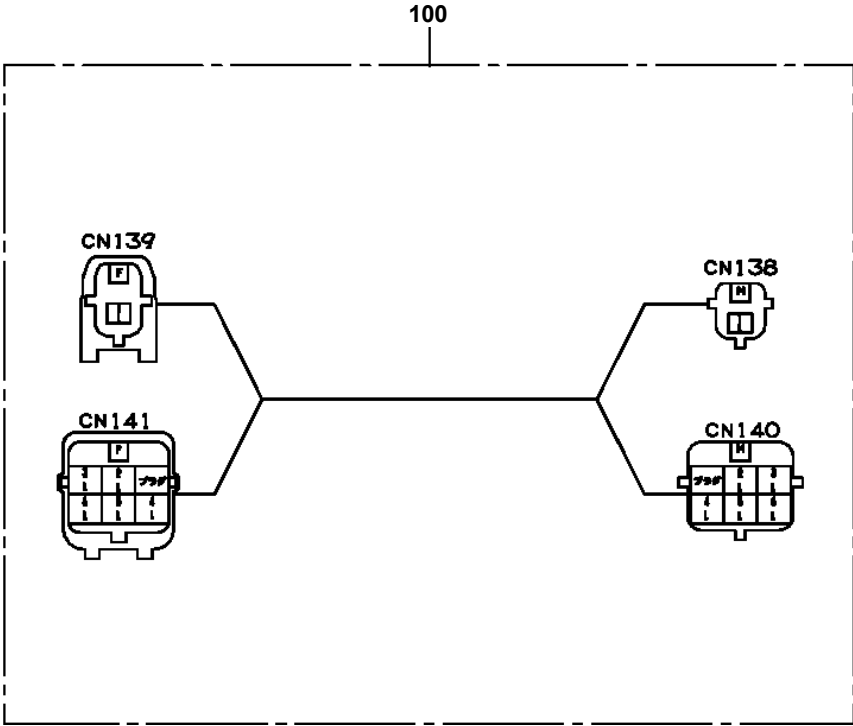
- Thank you very much for reading the preview of the manual.
- You can download the complete manual from: www.heydownloads.com by clicking the link below



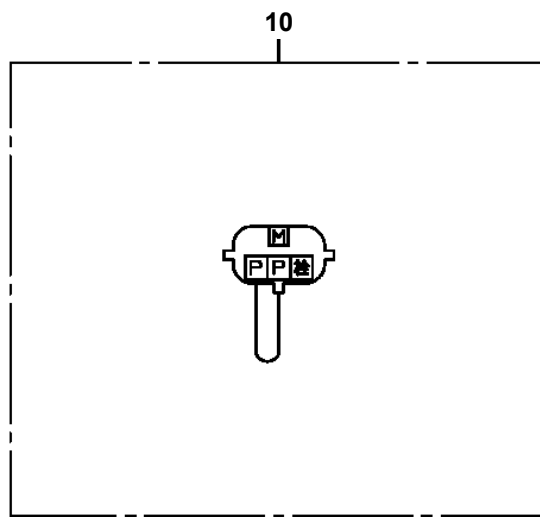
- Please note: If there is no response to CLICKING the link, please download this PDF first and then click on it.

CLICK HERE TO **DOWNLOAD** THE COMPLETE MANUAL

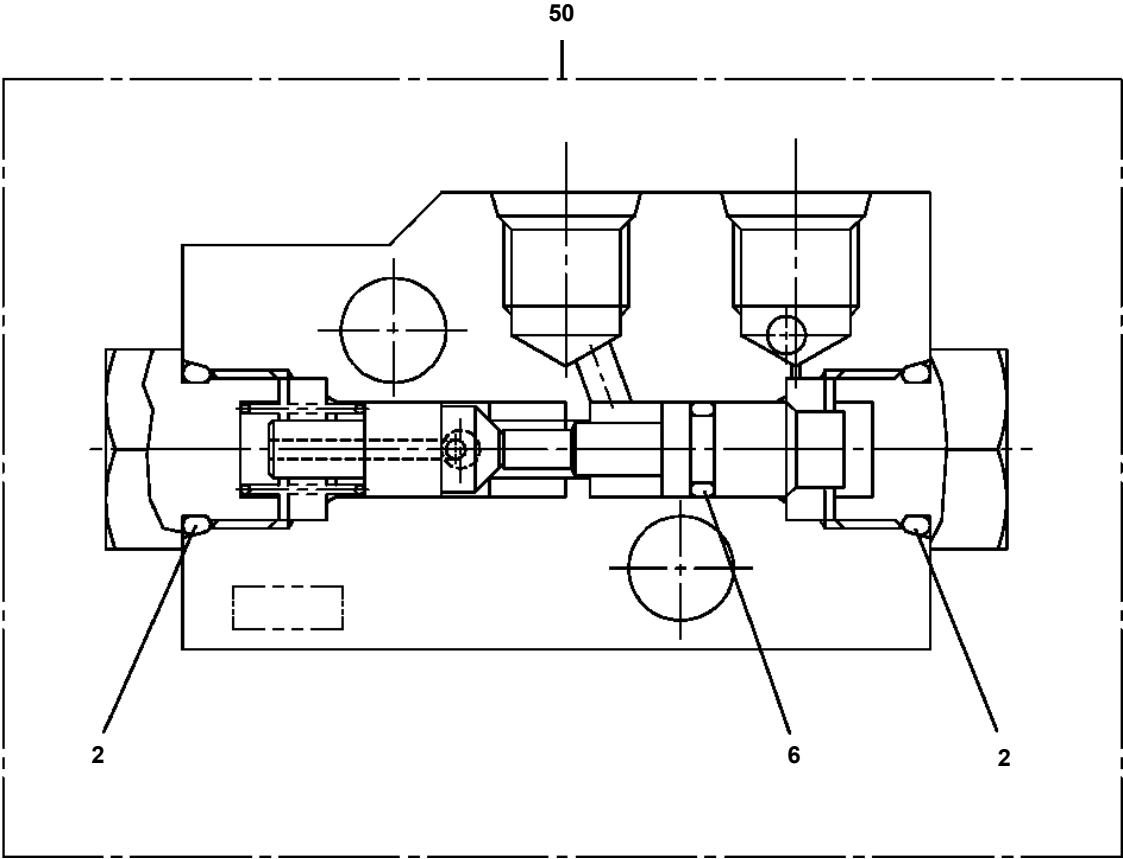
**TM-ZX250 41048401133A FRAME
PH5033872-00 HARNESS**



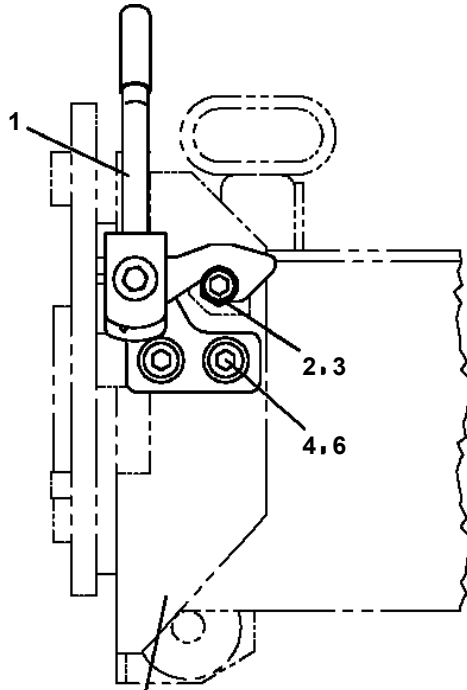
**TM-ZX250 41048401133A FRAME
PH5034471-00 HARNESS**



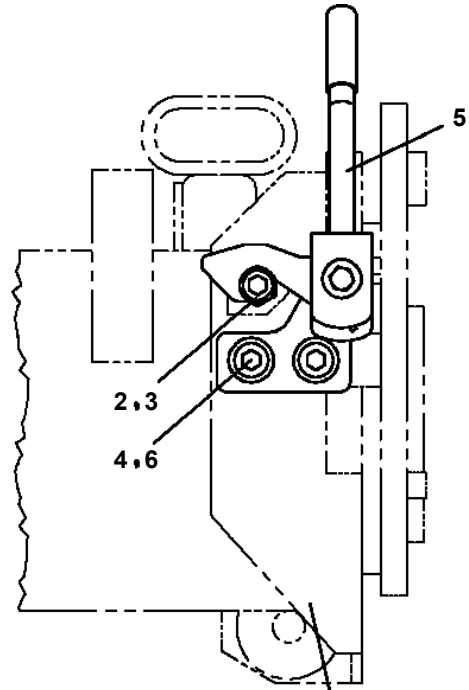
**TM-ZX250 41048401133A FRAME
PI1280051-00 VALVE,PILOT CHECK**



**TM-ZX250 41048401133A FRAME
PJ3410036-02 LOCK ASSY**

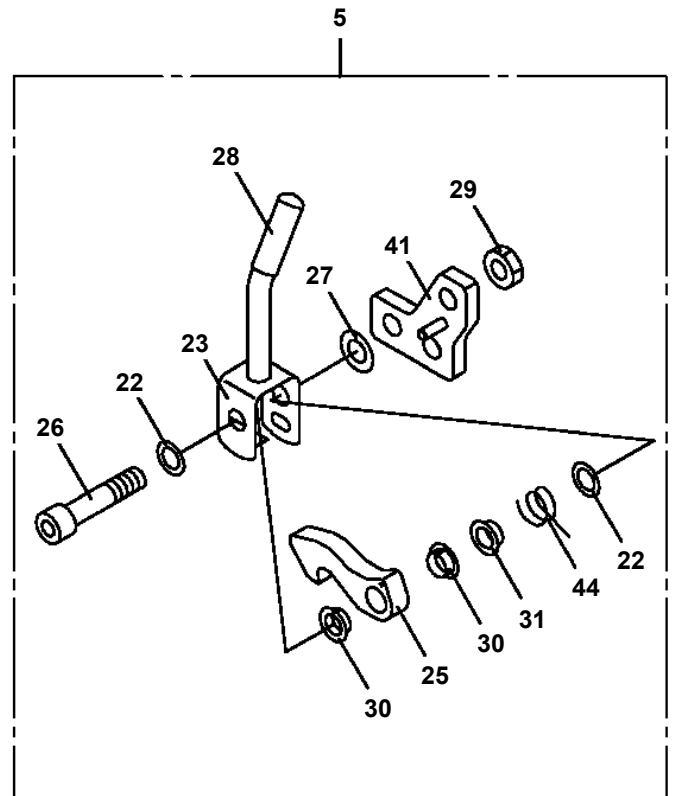
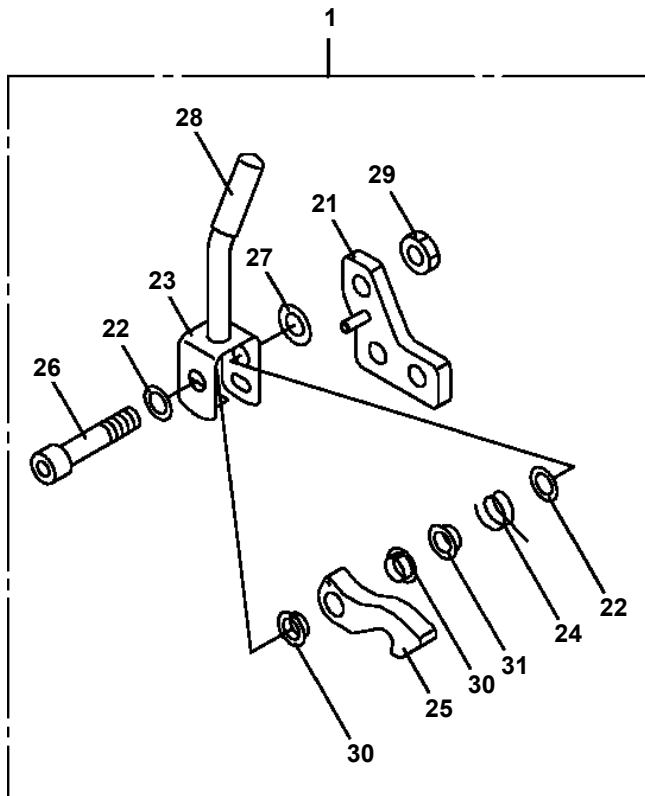


左リアアウトリガ
REAR OUTRIGGER
LEFT SIDE

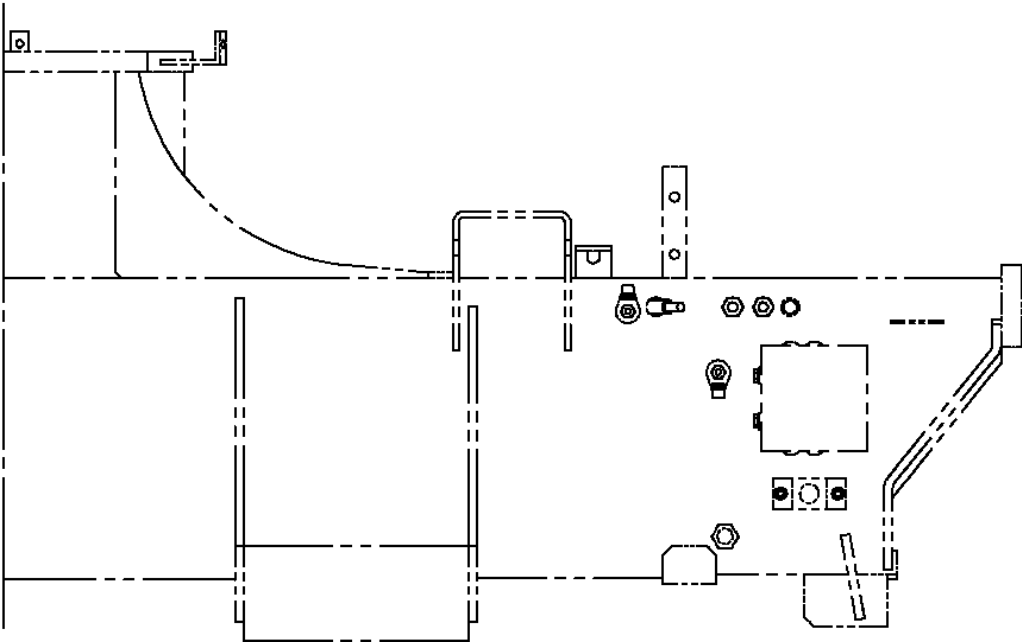
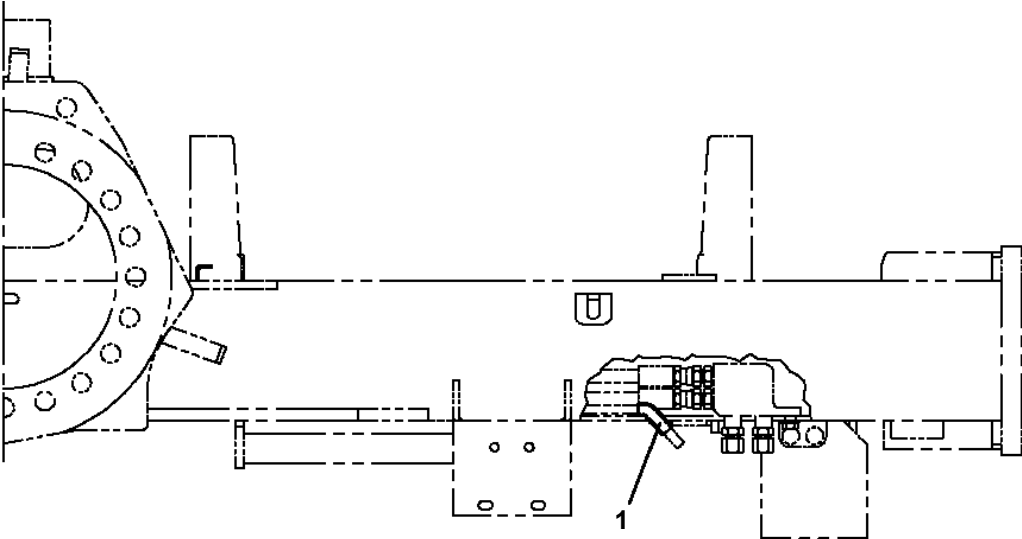


右リアアウトリガ
REAR OUTRIGGER
RIGHT SIDE

車両後端より見る
VIEWED FROM REAR
OF VEHICLE



TM-ZX250 41048401133A FRAME
PK1330402-00 COVER (O/R HARNESS PROTECT)



TM-ZX250 41048401133A FRAME

Pos No.	Parts No	Parts Name	Qty	Unit	Technical Data	Serial No (Start)	Serial No (End)	Remarks	Pages
1	31701750100	SUPPORT	1						
2	37000147840	PIN	1						
3	80620210050	PIN,SNAP	1						
4	37000165020	PIN	1						
5	80136340020	PIN,SPLIT	1		4X20				
7	31701580801	LEVER	1						
8	31322224200	PLATE	1		L=1				
9	31323330100	KNOB (BLACK)	1						

TM-ZX250 41048401133A FRAME

Pos No.	Parts No	Parts Name	Qty	Unit	Technical Data	Serial No (Start)	Serial No (End)	Rema
2	(*****)	ELEC.ASSY (POST)	1					
3	(*****)	ELEC.ASSY (POST/HEAD BULB)	1					

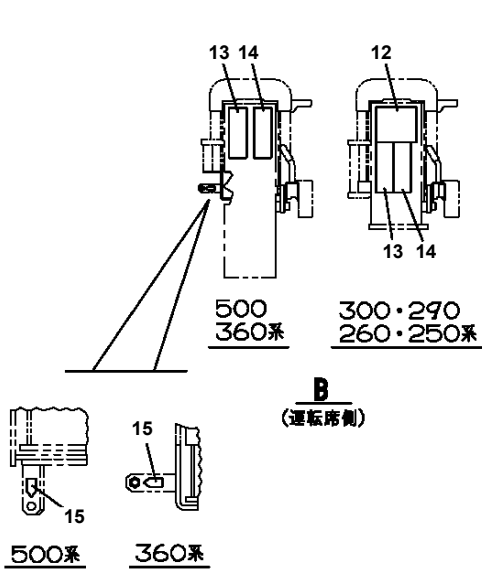
TM-ZX250 41048401133A FRAME

Pos No.	Parts No	Parts Name	Qty	Unit	Technical Data	Serial No (Start)	Serial No (End)	Remarks	Page
7	82165904190	BULB,LAMP	1		HALOGEN 24V 55W H3				
100	82165904160	LAMP	1						

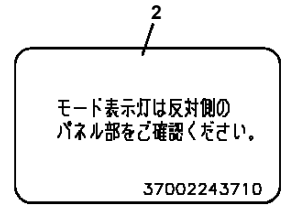
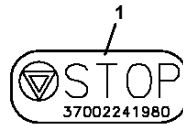
TM-ZX250 41048401133A FRAME

Pos No.	Parts No	Parts Name	Qty	Unit	Technical Data	Serial No (Start)	Serial No (End)	Remarks	Pages
1	31360741200	HARNESS	1						000128
2	31360202500	SUPPORT	2						
3	31501491100	LAMP ASSY	2						
4	90186206010	BOLT,FLANGE	8		M6X10				
5	31501491200	COVER	1		L=500				
6	82100002007	CLAMP	2		WRC10				
7	91850310305	CLAMP	2						
8	91810130240	FASTENER	3						
9	31350700300	HARNESS (L=50)	2						000129
21	82199444329	LAMP (YELLOW)	2		24V 12W				
22	31501491110	SUPPORT	2						
36	82166600010	BULB,LAMP	2		24V/12W				

TM-ZX250 41048401133A FRAME PN5012021-02 NAME PLATE ASSY (OUTRIGGER CAUTION PLATE ETC.)



B
(運転席側)



12

注 記/アウトリガ取扱い

- 水平面上に設置し、機体の水平を水準器で確認しながら両側ジャッキ共に最小操作で調整を完了してください。
- アウトリガは最大張出で使用してください。
- アウトリガロックがロック状態であることを確認した後ジャッキを調整してください。
- 走行する前に、ジャッキを全縮小しアウトリガを格納してください。アウトリガロックと走行用ロックがロック状態であることを確認してください。

<アウトリガロック>

<走行用ロック>

37002240210

13

△WARNING

RISK OF INJURY

Keep feet clear when outrigger operation.

△ 警告

けがの恐れ
アウトリガ操作中は足を入れるな。

37002240210

14

△WARNING

PINCH HAZARD

Keep fingers away when retracting outriggers.

△ 警告

挟まれ注意
アウトリガ縮小時は指を入れるな。

37002240110

16

ウインチ油室線のフェーシングは3年毎に交換してください。
次回の交換は
年 月です
370-022-20450

18

旋回格納位置
370-022-20450

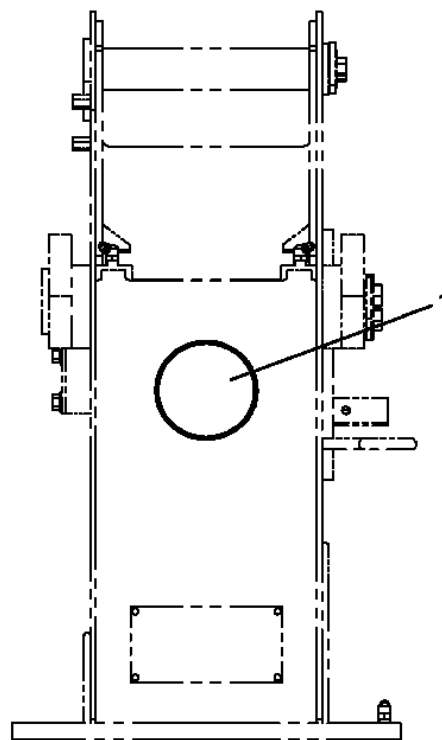
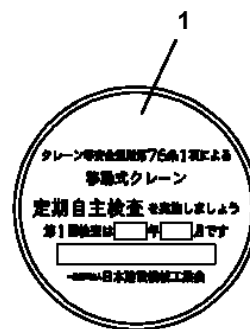
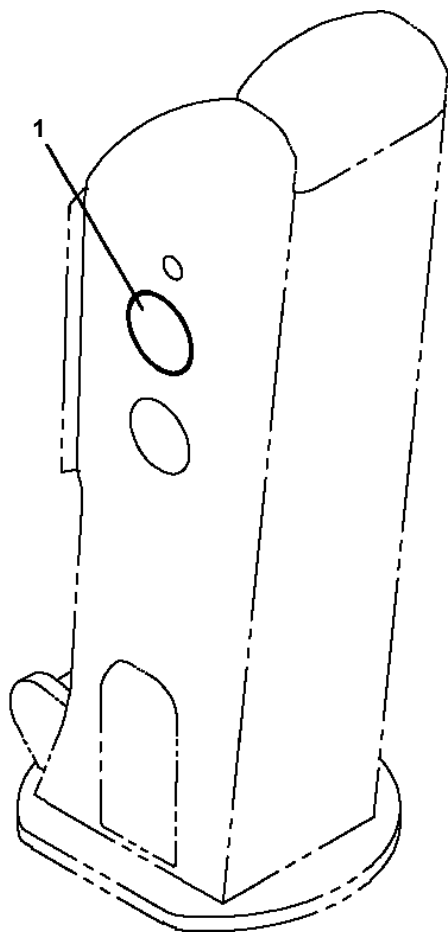
20

架装物着脱順序材料表 (出荷時)

品目名	材料名	品目名	材料名
アームスライドプレート	PA	パネルスイッチ	PC
操作レバーノブ	EVAC, ABS	リレー・コネクタボックス	ABS
操作パネル	ABS	上巻制御器	PC
蓋面カバー	PE	下巻制御器	PC, PBT
ケーブル・ホース保護部品	PP	通電ユニット	PC, PBT
アウトリガロックレバー	ABS	巻巻機	PC, PBT
スリッパリング	PC		
パネル表示器	PC		

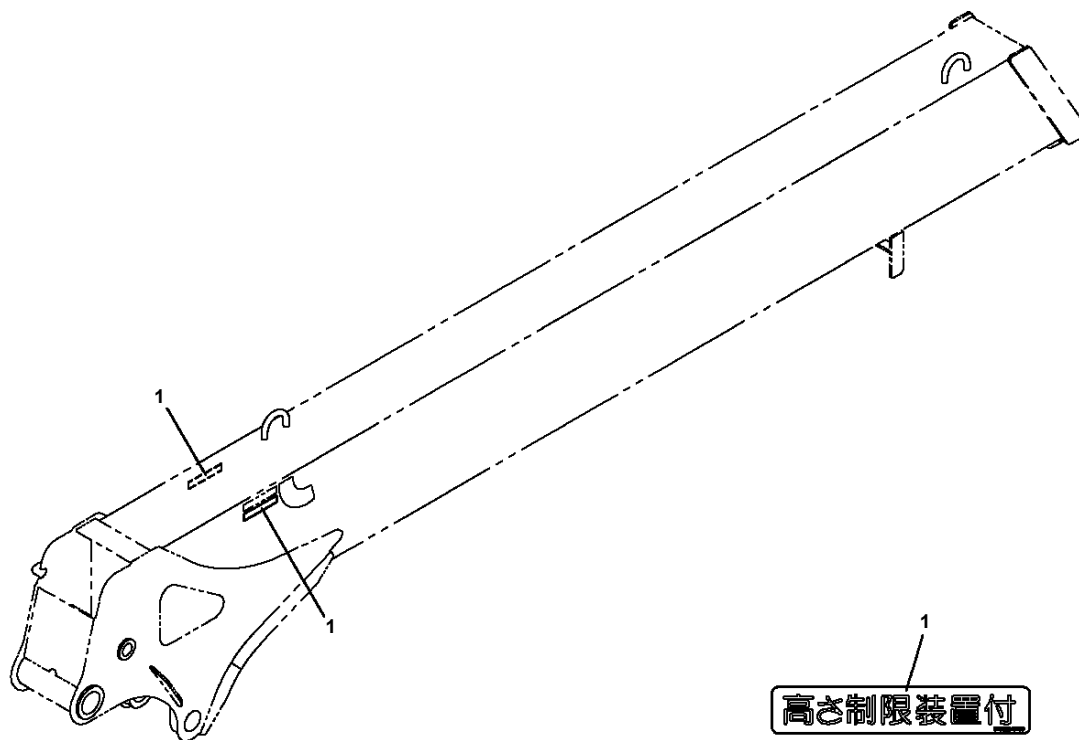
37002240090

TM-ZX250 41048401133A FRAME
PN5012089-01 NAME PLATE ASSY (PERIODICAL VOLUNTARY INSPECTION)



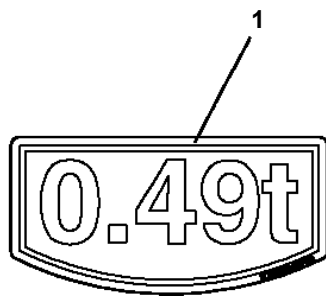
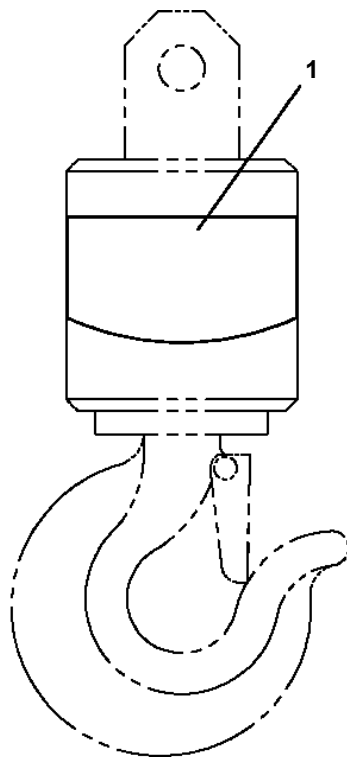
ZS220
(ポスト前面)

TM-ZX250 41048401133A FRAME
PN5012125-00 NAME PLATE ASSY



高さ制限装置付

TM-ZX250 41048401133A FRAME
PN5012189-00 NAME PLATE ASSY (0.49T)



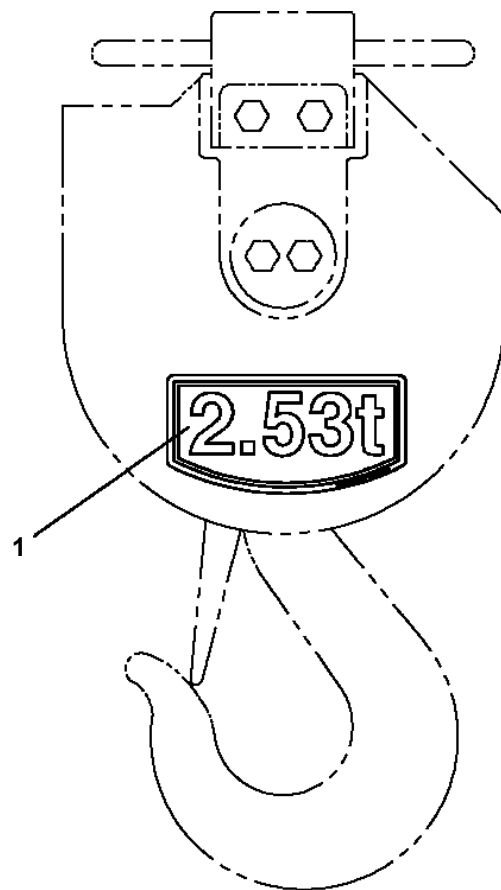
TM-ZX250 41048401133A FRAME
PN5012297-00 NAME PLATE ASSY

1

停止仕様(定格荷重制限装置付)

27002041.000

TM-ZX250 41048401133A FRAME
PO1015508-01 PLATE ASSY,NAME (HOOK)



TM-ZX250 41048401133A FRAME

PO5080313-00 OPE.ASSY,CONT.VALVE (ELEVATING,WINCH,TELESCOPING/U)

オペ .ASSY,ソウサハ` ルフ` (キフク,ウインチ,シンシユク/Uハイレッツ)
OPE.ASSY,CONT.VALVE (ELEVATING,WINCH,TELESCOPING/U)

符号	日本語名称	英語名称	備考
1	オペ .ASSY,ソウサハ` ルフ`	OPE.ASSY,CONT.VALVE	
2	ネームプ` レ-トASSY	NAME PLATE ASSY	

適用製造番号によっては取り付けがないものもあります。

MACHINES OF SOME SERIAL NO. ARE NOT EQUIPPED WITH THESE PARTS.

TM-ZX250 41048401133A FRAME
PP5150037-00 PARTS ASSY,RADIO CONTROLLER

パーツASSY, ラジコン
PARTS ASSY,RADIO CONTROLLER

符号	日本語名称	英語名称	備考
2	アンテナユニット	ANTENNA UNIT	通信ユニット (RCS-FR3N)
3	ボックス、オペレーション	BOX, OPERATION	LCD送信機 (RCS-FT3N)
5	ハイゼンASSY	ELEC. ASSY	通信ユニット
6	バッグ	BAG	
9	コントロールユニット	CONTROL UNIT	制御器 (RCS-FC3)

適用製造番号によっては取り付けがないものもあります。

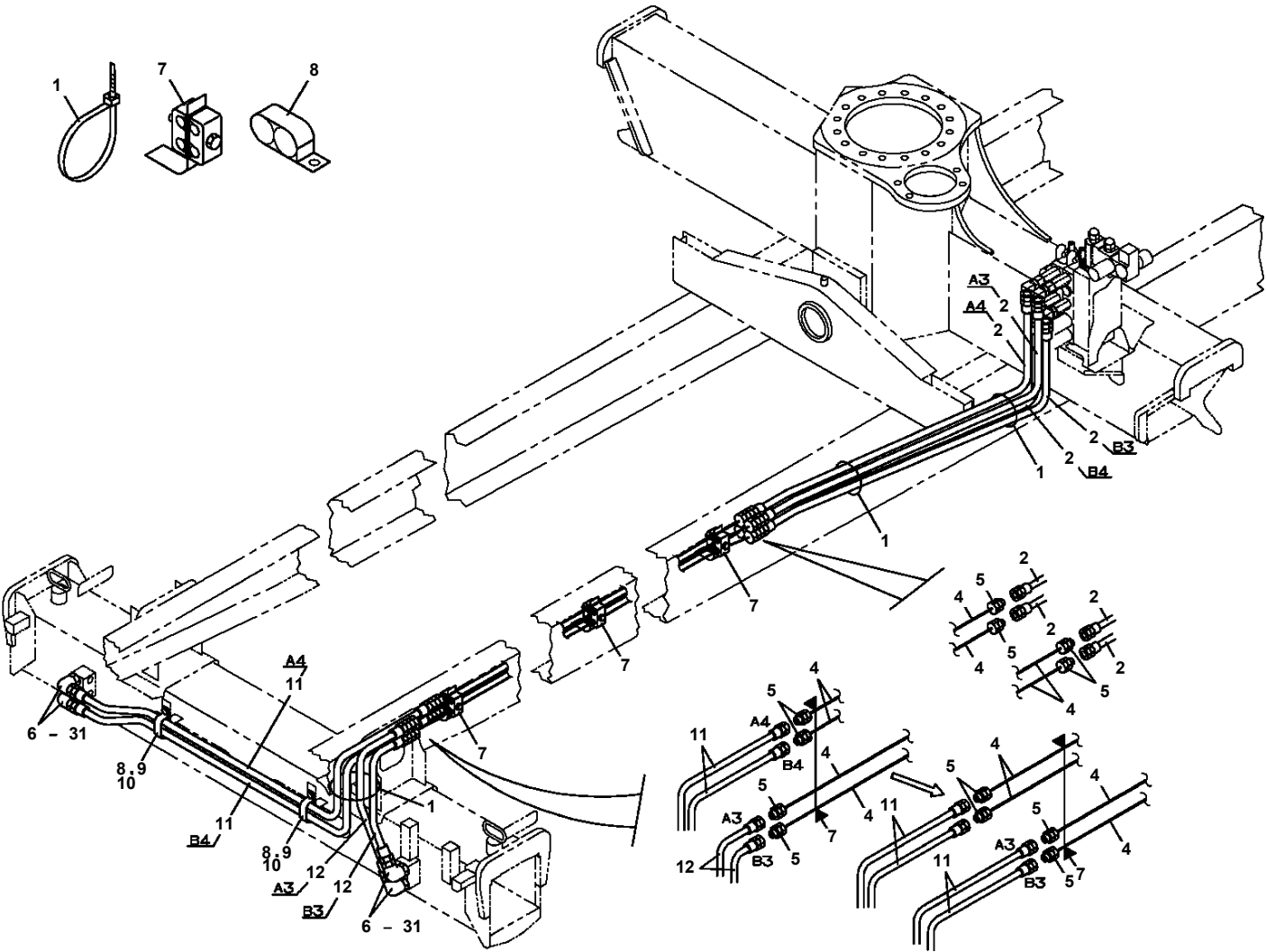
MACHINES OF SOME SERIAL NO. ARE NOT EQUIPPED WITH THESE PARTS.

TM-ZX250 41048401133A FRAME
PP5240012-00 PLATE,NAME

当銘板については、弊社出先サービス員経由で御用命ください。

FOR THIS NAMEPLATE, CONTACT
TADANO DISTRIBUTOR OR DEALER.

TM-ZX250 41048401133A FRAME
PP6010513-01 PIPING ASSY (REAR,JACK)



TM-ZX250 41048401133A FRAME

Pos No.	Parts No	Parts Name	Qty	Unit	Technical Data	Serial No (Start)	Serial No (End)	Remarks	Pa
1	80400160205	JOINT (WITH O-RING)	1						
2	80303130241	FITTING,ELBOW	2		KLO18-040E				
3	80302090251	FITTING	1		KCO018-060N				
4	37000913850	JOINT (WITH O-RING)	2		L,G3/4-G1/2				
5	80305010160	FITTING,TEE	1		KTA18-000E				
6	80301010160	FITTING	1		KUA18-000N				
7	91002802400	O-RING	3		1B P24				
8	37002457320	HOSE	1		L=1900				
10	31734241010	PIPE	5						
11	80305171804	FITTING,TEE	1						
12	80320010140	FITTING	1		KUD18-040N				
14	37000552600	SUPPORT	2						
15	90101210045	BOLT	1		M10X45				
16	90302041001	WASHER,SPRING	3		10				
17	90201201000	NUT	1		M10				
18	37000713620	CLAMP ASSY	1						
19	90101210020	BOLT	2		M10X20				
20	37000925740	JOINT	1		S G1/2-G1/2				
21	91002801800	O-RING	1		1B P18				
22	91860100022	CLAMP	3		KCR-W22				
23	90186208025	BOLT,FLANGE	3		M8X25				
24	90280200800	NUT,FLANGE	3		M8				
25	82100001413	TUBE,SPIRAL	1	M	SE-15BK				
26	91810150020	FASTENER	1		L=488				
28	37002457330	HOSE	1		L=2000				
29	37012409600	HOSE	1		L=2100				
30	80400160173	JOINT	2						
51	91002801800	O-RING	3		1B P18				
61	91002802400	O-RING	2		1B P24				

TM-ZX250 41048401133A FRAME

Pos No.	Parts No	Parts Name	Qty	Unit	Technical Data	Serial No (Start)	Serial No (End)	Remarks
2	90186210014	BOLT,FLANGE	2		M10X14			
3	37000924350	FITTING	4					
4	91002801100	O-RING	4		1B P11			
5	31648500101	JOINT (WITH PLUG)	2				LE0384	
	31671280100	JOINT ASSY	2			LE0385		
6	91002801000	O-RING	4		1B P10			
7	36180380000	SENDER,PRESSURE	4				LE0384	
8	90172110065	BOLT,HEXAGON SOCKET	4		M10X65			
9	31671433000	SUPPORT	2					
10	31671434000	SUPPORT	2					
11	90180208012	BOLT,BUTTON	8		M8X12			
31	37002401840	HOSE,TWIN	2		L=1260			
32	80491002020	JOINT (WITH O-RING)	4					
33	31644591450	JOINT	2					
34	31671451100	HARNESS	2				LE0384	
	31671451101	HARNESS	2			LE0385		
35	91810130240	FASTENER	8				LE0291	
	91810130240	FASTENER	10			LE0292		
36	31648501300	CLAMP	2					
42	80316030020	PLUG	2		PT1/8		LE0384	
51	91002801100	O-RING	4		1B P11			

TM-ZX250 41048401133A FRAME

Pos No.	Parts No	Parts Name	Qty	Unit	Technical Data	Serial No (Start)	Serial No (End)	Remarks	Pages
1	31733764100	SUPPORT	1						
2	90171110025	BOLT	2		M10X25				
3	90302041001	WASHER,SPRING	2		10				
4	90303071001	WASHER,PLAIN	2		10				
5	90201781000	NUT	2		M10				
6	90303071201	WASHER,PLAIN	1		12				
7	90101212025	BOLT	1		M12X25				
8	90302041201	WASHER,SPRING	1		12				
9	31733762200	SUPPORT	1						
10	90186208050	BOLT,FLANGE	2		M8X50				
11	37000301930	SPACER	2		L=35				

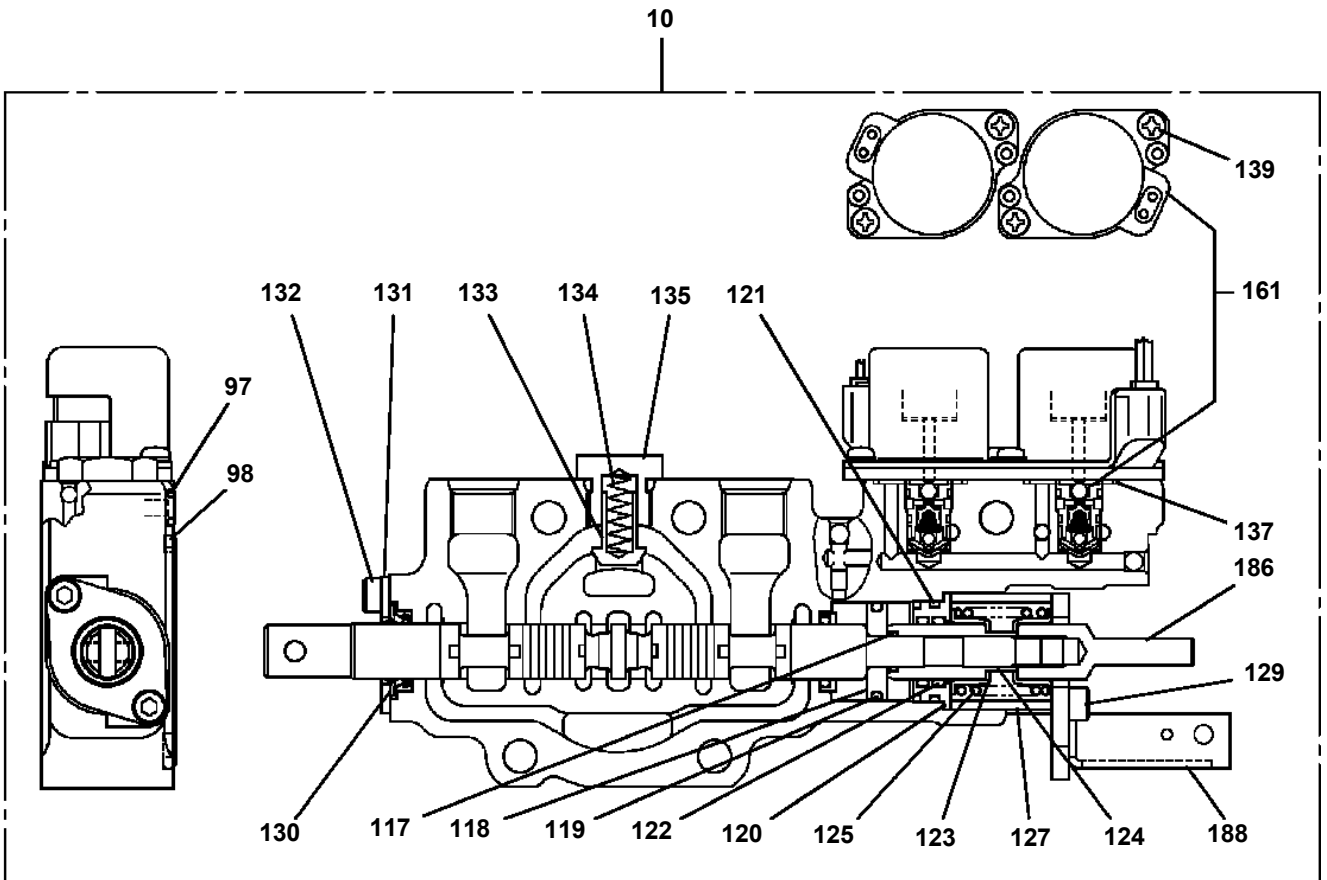
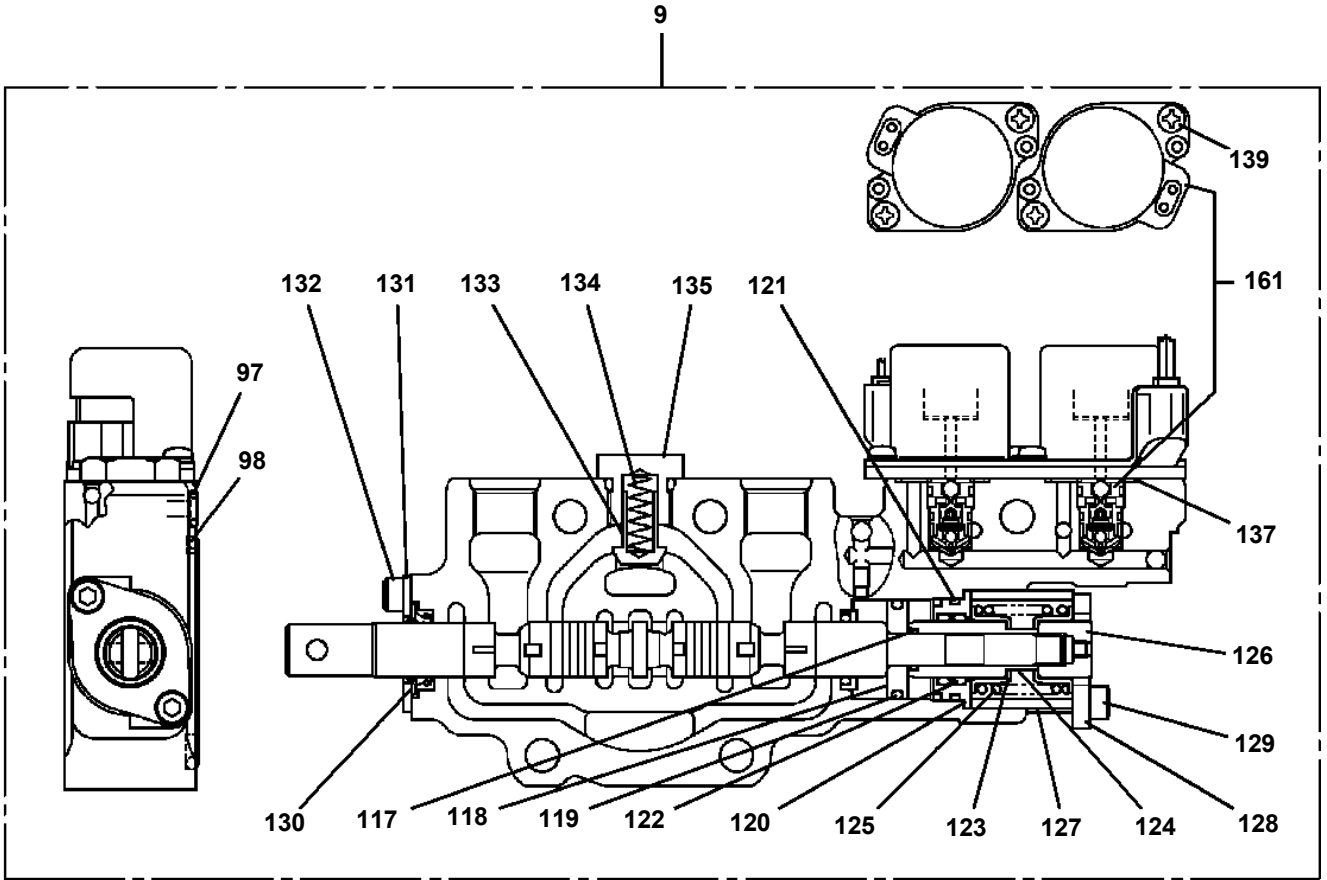
TM-ZX250 41048401133A FRAME

Pos No.	Parts No	Parts Name	Qty	Unit	Technical Data	Serial No (Start)	Serial No (End)	Remarks	Page
50	31659410300	SWITCH (S/W 2PC'S)	1						

TM-ZX250 41048401133A FRAME

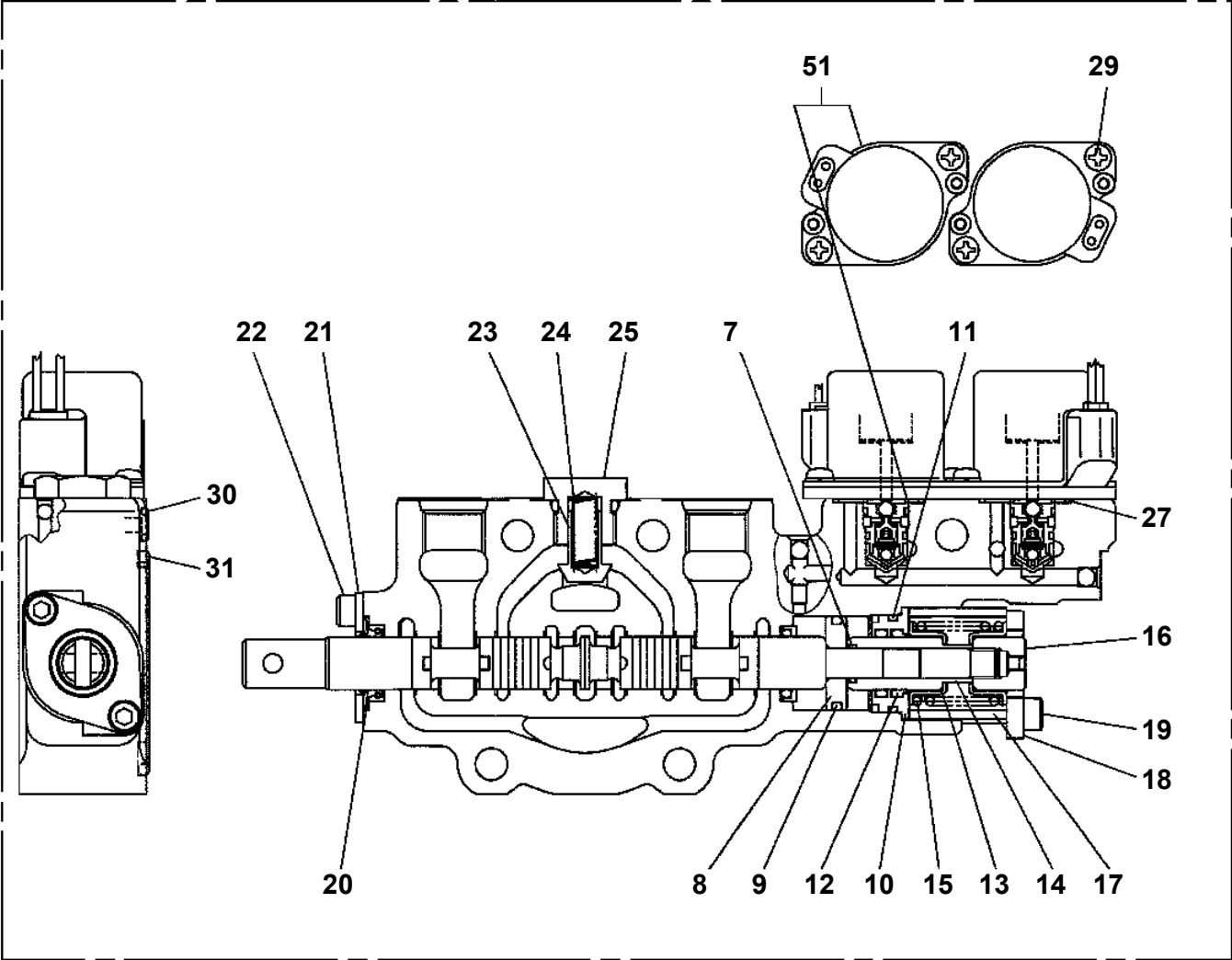
Pos No.	Parts No	Parts Name	Qty	Unit	Technical Data	Serial No (Start)	Serial No (End)	Remarks	Pages
10	36804914000	BOX,STOWING	1						

TM-ZX250 41048401133A FRAME
PV5150041-02 VALVE ASSY,REMOTE CONTROL



**TM-ZX250 41048401133A FRAME
PV5460053-00 VALVE, CONTROL**

100



**TM-ZX250 41048401133A FRAME
PX5010638-00 MOUNT ASSY (DUMP SELECT)**

マウントASSY (ダンプ・ハイヨウハ・ルプ)
MOUNT ASSY (DUMP SELECT)

符号	日本語名称	英語名称	備考
1	マウントASSY (ダンプ・セレクト)	MOUNT ASSY	車両側
2	ハイカンASSY	PIPING ASSY	クレーン側

適用製造番号によっては取り付けがないものもあります。

MACHINES OF SOME SERIAL NO. ARE NOT EQUIPPED WITH THESE PARTS.

TM-ZX250 41048401133A FRAME

Pos No.	Parts No	Parts Name	Qty	Unit	Technical Data	Serial No (Start)	Serial No (End)	R
1	(*****)	OUTRIGGER ASSY,REAR (ROTARY)	1					
2	(*****)	MOUNT ASSY (DUMP SELECT)	1					
3	(*****)	ELEC.ASSY	1			LE0282		

TM-ZX250 41048401133A FRAME

Pos No.	Parts No	Parts Name	Qty	Unit	Technical Data	Serial No (Start)	Serial No (End)	Remarks
1	36150080000	DETECTOR ASSY,MOMENT	1					
2	36150100000	DETECTOR ASSY,MOMENT	1					
3	91850700101	CLAMP	2		L=208			
4	91810130250	FASTENER	2					

CLICK HERE TO **DOWNLOAD** THE COMPLETE MANUAL

- Thank you very much for reading the preview of the manual.
- You can download the complete manual from: www.heydownloads.com by clicking the link below



- Please note: If there is no response to CLICKING the link, please download this PDF first and then click on it.

CLICK HERE TO **DOWNLOAD** THE COMPLETE MANUAL